



Table 1: Northern Region Micron Price Guides

WEEK 42			12 MONTH COMPARISONS								3 YEAR COMPARISONS					10 YEAR COMPARISONS				
15/04/2026	1/04/2026		15/04/2025	Now		Now		Now				Now					Now			
MPG	Price	Change	Last Year	to Last Year	Low	to Low	High	to High	Low	High	Average	to 3yr ave	Percentile	Low	High	Average	to 10yr ave	Percentile		
NRI	1884	+36 1.9%	1280	+604 47%	1224	+660 54%	1884	0 0%	1117	1884	1296	+588 45%	100%	1021	2163	1476	+408 28%	87%		
15*	2725 n	+50 1.9%	2400	+325 14%	2275	+450 20%	2750	-25 -1%	2275	2975	2512	+213 8%	89%	1657	3750	2465	+260 11%	69%		
15.5*	2655 n	+75 2.9%	2155	+500 23%	2070	+585 28%	2655	0 0%	2070	2825	2299	+356 15%	95%	1615	3450	2402	+253 11%	69%		
16*	2590 n	+70 2.8%	1915	+675 35%	1762	+828 47%	2590	0 0%	1762	2590	2029	+561 28%	100%	1575	3300	2343	+247 11%	69%		
16.5	2570 n	+56 2.2%	1782	+788 44%	1680	+890 53%	2570	0 0%	1670	2570	1937	+633 33%	100%	1546	3187	2230	+340 15%	75%		
17	2537	+57 2.3%	1712	+825 48%	1648	+889 54%	2537	0 0%	1600	2537	1844	+693 38%	100%	1478	3008	2124	+413 19%	81%		
17.5	2512	+57 2.3%	1652	+860 52%	1609	+903 56%	2512	0 0%	1508	2512	1761	+751 43%	100%	1383	2845	2019	+493 24%	90%		
18	2455	+32 1.3%	1618	+837 52%	1558	+897 58%	2458	-3 0%	1432	2458	1682	+773 46%	99%	1272	2708	1909	+546 29%	94%		
18.5	2372	+26 1.1%	1582	+790 50%	1532	+840 55%	2372	0 0%	1358	2372	1612	+760 47%	100%	1174	2591	1807	+565 31%	94%		
19	2292	+32 1.4%	1548	+744 48%	1482	+810 55%	2315	-23 -1%	1327	2315	1554	+738 47%	99%	1116	2465	1713	+579 34%	93%		
19.5	2156	+51 2.4%	1529	+627 41%	1453	+703 48%	2208	-52 -2%	1289	2208	1512	+644 43%	98%	1079	2404	1643	+513 31%	89%		
20	2125 n	+65 3.2%	1492	+633 42%	1432	+693 48%	2154	-29 -1%	1262	2154	1476	+649 44%	99%	1047	2391	1584	+541 34%	89%		
21	2100 n	+50 2.4%	1474	+626 42%	1400	+700 50%	2100	0 0%	1232	2100	1445	+655 45%	100%	1016	2368	1535	+565 37%	89%		
22	2050 n	+60 3.0%	1462	+588 40%	1380	+670 49%	2050	0 0%	1200	2050	1415	+635 45%	100%	1009	2342	1501	+549 37%	89%		
23	1640 n	+67 4.3%	1220	+420 34%	1195	+445 37%	1640	0 0%	960	1640	1192	+448 38%	100%	957	2316	1372	+268 20%	81%		
24	1240 n	+2 0.2%	850	+390 46%	800	+440 55%	1240	0 0%	766	1240	919	+321 35%	100%	770	2114	1190	+50 4%	61%		
25	1015 n	+5 0.5%	730	+285 39%	711	+304 43%	1088	-73 -7%	635	1088	763	+252 33%	94%	635	1801	1009	+6 1%	58%		
26	838 n	+3 0.4%	615	+223 36%	588	+250 43%	942	-104 -11%	465	942	613	+225 37%	91%	465	1545	871	-33 -4%	56%		
28	668 n	+8 1.2%	442	+226 51%	420	+248 59%	728	-60 -8%	290	728	441	+227 51%	89%	310	1318	611	+57 9%	58%		
30	570 n	+10 1.8%	363	+207 57%	358	+212 59%	635	-65 -10%	255	635	392	+178 45%	89%	285	998	499	+71 14%	63%		
32	508 n	+3 0.6%	335	+173 52%	322	+186 58%	510	-2 0%	227	510	332	+176 53%	99%	210	659	364	+144 40%	90%		
MC	1100 n	+32 3.0%	738	+362 49%	700	+400 57%	1100	0 0%	689	1100	752	+348 46%	100%	656	1563	959	+141 15%	75%		
AU BALES OFFERED	44,765		* 16.5 is the lowest Micron Price Guide (MPG) published by The Australian Wool Exchange (AWEX). Therefore MPG's below 16.5 micron are an estimate based on the best available information at the time of publication. Likewise, for any category where there is insufficient quantity offered to enable AWEX to quote, a quote will also be provided.																	
AU BALES SOLD	43,596		* Recording of 15 & 15.5 micron commenced in October 2017, and as a result some historic data is not yet available for those MPG's. Where historic data is not available an estimate based on '16 micron statistics' and incorporating the existing 15 & 15.5 micron data, will be provided as a guide.																	
AU PASSED-IN%	2.6%																			
AUD/USD	0.7138	3.3%																		

Source: Australian Wool Exchange, Australian Wool Innovation, Riemann, x-rates.com, Reserve Bank of Australia, Australian Wool Testing Authority, Australian Bureau Statistics (ABS), Woolmark.

Disclaimer: Jemalong Wool Pty Ltd make no representations about the content and suitability of the information contained in this report. Specifically, Jemalong Wool does not warrant, guarantee or make any representations regarding the correctness, accuracy, reliability, currency, or any other aspect regarding characteristics or use of information presented in these materials. The user accepts sole responsibility and risk associated with the use and results of these materials, irrespective of the purpose of which such use or results are applied. In no event shall Jemalong Wool be liable for any loss or damages arising out of or in connection with the use of these materials.

Copyright © Jemalong Wool Pty Ltd, 2006-2026. Apart from any use permitted under the Copyright Act 1968, no part may be copied or reproduced by any process nor stored electronically without the written permission of Jemalong Wool Pty Ltd. This report has been compiled by Jemalong Wool Pty Ltd for internal use and for the benefit of Jemalong Wool clients. You should only read this report if you are authorised to do so, if you are not authorised then you must destroy all electronic and paper copies immediately. Under no circumstance are you permitted to forward this report to a third-party.

MARKET COMMENTARY Source: AWI

The market returned strongly this week following the Easter recess, recording gains of 38 cents in the EMI and 35 cents in the WMI. Despite a stronger Australian dollar, USD returns also improved to a level not seen since July 2019, highlighting underlying demand strength in the market, with buyers willing to absorb currency headwinds, at the elevated price level.

Merino fleece led the market, with average gains of 50–60 cents. The crossbred sector recorded more modest gains of 10–15 cents, while Merino cardings closed 15-20 cents dearer.

Pricing across all selling centres continued to highlight strong buyer preference for quality, with premiums for better style types remaining well supported. Discounts for higher vegetable matter, lower strength and shorter length wools remained significant, indicating an ongoing processor focus on performance and yield. This reinforces the current market structure, where demand is concentrated in higher-specification Merino types, while broader, lower-quality wools continue to trade at a relative discount.

This week also saw a larger offering pass through the sale rooms, with wool accumulated over the recess increasing the national offering to 44,765 bales (an increase of 8,500 bales). This short-term increase in supply did little to dampen competition, as strong buyer activity led to a clearance rate of 97.4%, indicating that buyers were seeking volume rather than showing resistance at higher price levels.

Next week's offering is expected to fall by ~12,000 bales, a significant reduction that should provide continued support for current price levels. Next week, Melbourne and Fremantle sell on Tuesday-Wednesday, while Sydney sells on Wednesday only.

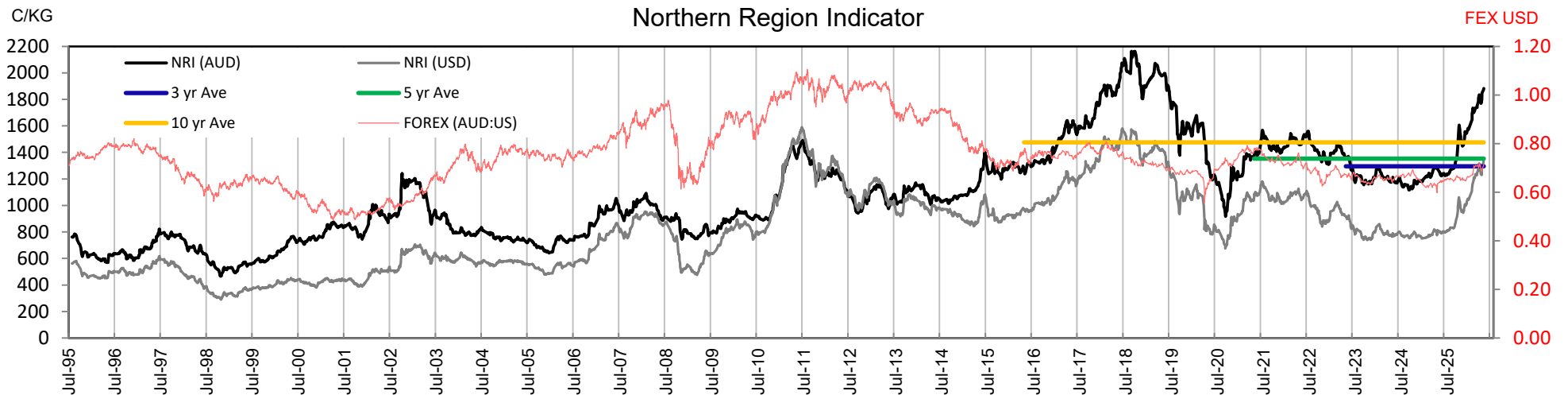




Table 2: Three Year Decile Table, since: 1/04/2023

Decile %	16	16.5	17	17.5	18	18.5	19	19.5	20	21	22	23	24	25	26	28	30	32	MC
1 10%	1825	1727	1658	1580	1494	1430	1387	1344	1308	1275	1222	1017	800	671	496	338	317	261	699
2 20%	1845	1762	1680	1605	1520	1450	1405	1360	1324	1288	1250	1080	820	688	522	350	327	283	701
3 30%	1891	1791	1700	1623	1540	1467	1414	1376	1337	1306	1272	1100	858	697	549	361	335	290	707
4 40%	1912	1806	1712	1635	1562	1492	1435	1389	1354	1316	1287	1120	870	709	561	375	340	300	711
5 50%	1927	1828	1730	1659	1587	1522	1467	1423	1385	1338	1315	1136	885	725	578	390	355	305	721
6 60%	2000	1887	1770	1681	1612	1554	1502	1466	1441	1412	1390	1169	920	732	595	415	367	325	730
7 70%	2069	1983	1858	1737	1646	1590	1535	1506	1473	1448	1429	1210	970	762	616	443	383	337	742
8 80%	2200	2132	2052	1950	1850	1734	1631	1585	1548	1520	1520	1275	990	840	742	550	478	368	792
9 90%	2377	2313	2216	2128	2064	1988	1918	1881	1854	1838	1810	1495	1100	959	828	669	571	481	828
10 100%	2590	2570	2537	2512	2458	2372	2315	2208	2154	2100	2050	1640	1240	1088	942	728	635	510	1100
MPG	2590	2570	2537	2512	2455	2372	2292	2156	2125	2100	2050	1640	1240	1015	838	668	570	508	1100
3 Yr Percentile	100%	100%	100%	100%	99%	100%	99%	98%	99%	100%	100%	100%	100%	94%	91%	89%	89%	99%	100%

Table 3: Ten Year Decile Table, since: 1/04/2016

Decile %	16	16.5	17	17.5	18	18.5	19	19.5	20	21	22	23	24	25	26	28	30	32	MC
1 10%	1800	1712	1640	1578	1514	1448	1392	1351	1312	1259	1212	1079	859	697	550	350	320	240	706
2 20%	1900	1793	1705	1630	1560	1504	1452	1408	1347	1290	1250	1106	900	732	592	377	335	253	730
3 30%	2005	1887	1781	1694	1617	1562	1515	1469	1382	1315	1285	1129	951	801	652	411	355	276	805
4 40%	2136	2038	1980	1905	1802	1678	1582	1497	1427	1361	1328	1158	979	845	726	460	380	295	869
5 50%	2295	2219	2143	2020	1913	1800	1658	1538	1467	1420	1386	1220	1010	876	772	531	440	332	904
6 60%	2450	2347	2258	2161	2011	1861	1729	1611	1531	1471	1439	1355	1225	1046	903	680	560	396	988
7 70%	2600	2517	2381	2251	2112	1958	1820	1734	1657	1597	1521	1446	1330	1175	1071	760	594	435	1076
8 80%	2810	2634	2512	2379	2211	2103	1992	1895	1847	1798	1776	1626	1490	1251	1140	820	665	465	1146
9 90%	3060	2862	2665	2511	2393	2287	2211	2167	2149	2129	2110	1962	1811	1504	1321	933	710	508	1275
10 100%	3300	3187	3008	2845	2708	2591	2465	2404	2391	2368	2342	2316	2114	1801	1545	1318	998	659	1563
MPG	2590	2570	2537	2512	2455	2372	2292	2156	2125	2100	2050	1640	1240	1015	838	668	570	508	1100
10 Yr Percentile	69%	75%	81%	90%	94%	94%	93%	89%	89%	89%	89%	81%	61%	58%	56%	58%	63%	90%	75%

Definitions:

- * A Percentile, is a value on a scale of one hundred that indicates the percent of a distribution that is equal to or below it. In general a percentile between 25% and 75% is considered normal, a percentile below 25% is considered below normal and a percentile above 75% is considered above normal.
Three and ten year percentiles shown on the bottom line of table 2 & 3 (above) and in table 1 (on page 1), detail the amount of time during the past 3 & 10 years where the market has traded either at or below its current price.
 - * Deciles are a method of sorting ranked data into 10 equal groups. The data may be ranked from largest to smallest or vice versa.
The above Decile tables sort price Percentiles into 10 equal groups (in ascending order), with table 2 ranking the previous 3 years prices, while table 3 ranks prices over the previous 10 years
- Example:** In Table 2, a Decile Rank of 6 for 19 microns, shows 19 microns have traded at or below 1502 for 60% of the time, over the past three years.
In Table 3, a Decile Rank of 6 for 19 microns, shows 19 microns have traded at or below 1729 for 60% of the time, over the past ten years.



Table 4: Riemann Forwards, as at: **15/04/26** Any highlighted in yellow are recent trades, trading since: **Thursday, 9 April 2026**

MICRON (Total Traded = 35)	18um (1 Traded)	18.5um (2 Traded)	19um (18 Traded)	19.5um (2 Traded)	21um (12 Traded)	22um (0 Traded)	23um (0 Traded)	28um (0 Traded)	30um (0 Traded)
Apr-2026 (6)			23/02/26 2060 (5)		13/01/26 1875 (1)				
May-2026 (8)	11/02/26 2225 (1)		13/01/26 1950 (2)	23/02/26 2070 (2)	20/02/26 2020 (3)				
Jun-2026 (13)		1/04/26 2200 (2)	25/03/26 2020 (8)		1/04/26 1950 (3)				
Jul-2026 (3)			14/04/26 2100 (2)		14/04/26 2055 (1)				
Aug-2026									
Sep-2026 (1)					9/12/25 1800 (1)				
Oct-2026 (3)			1/04/26 1990 (1)		14/01/26 1875 (2)				
Nov-2026 (1)					9/12/25 1805 (1)				
Dec-2026									
Jan-2027									
Feb-2027									
Mar-2027									
Apr-2027									
May-2027									
Jun-2027									
Jul-2027									
Aug-2027									
Sep-2027									
Oct-2027									
Nov-2027									
Dec-2027									
Jan-2028									
Feb-2028									

FORWARD CONTRACT MONTH

Explanatory Notes: Prices quoted reflect the most recent trades, at time of print.
Disclaimer: While all due care has been taken in the preparation of this document, no warranty is made as to its accuracy, reliability or completeness. To the extent permitted by law neither Jemalong or their sources including subsidiaries and staff, accept liability to any person for loss or damage arising from the use of this information.



Table 5: Riemann Options, as at: **15/04/26** Any highlighted in yellow are recent trades, trading since: **Friday, 10 April 2026**

MICRON (Total Traded = 0)	18um Strike - Premium (0 Traded)	18.5um Strike - Premium (0 Traded)	19um Strike - Premium (0 Traded)	19.5um Strike - Premium (0 Traded)	21um Strike - Premium (0 Traded)	22um Strike - Premium (0 Traded)	23um Strike - Premium (0 Traded)	28um Strike - Premium (0 Traded)	30um Strike - Premium (0 Traded)
Apr-2026									
May-2026									
Jun-2026									
Jul-2026									
Aug-2026									
Sep-2026									
Oct-2026									
Nov-2026									
Dec-2026									
Jan-2027									
Feb-2027									
Mar-2027									
Apr-2027									
May-2027									
Jun-2027									
Jul-2027									
Aug-2027									
Sep-2027									
Oct-2027									
Nov-2027									
Dec-2027									
Jan-2028									
Feb-2028									

OPTIONS CONTRACT MONTH



Table 6: National Market Share

	Rank	Current Selling Week Week 42			Previous Selling Week Week 40			Last Season 2024-25			2 Years Ago 2023-24			3 Years Ago 2022-23			5 Years Ago 2020-21			10 Years Ago 2015-16		
		Buyer	Bales	MS%	Buyer	Bales	MS%	Buyer	Bales	MS%	Buyer	Bales	MS%	Buyer	Bales	MS%	Buyer	Bales	MS%	Buyer	Bales	MS%
Top 10, Auction Buyers	1	TECM	9,238	21%	TECM	6,361	18%	TECM	229,513	16%	TECM	269,885	16%	TECM	236,574	15%	TECM	228,018	15%	TECM	223,011	13%
	2	EWES	5,106	12%	PMWF	5,365	15%	EWES	183,456	13%	EWES	200,309	12%	EWES	184,465	11%	EWES	159,908	10%	CTXS	158,343	10%
	3	PMWF	4,735	11%	EWES	3,920	11%	TIAM	155,816	11%	TIAM	163,248	10%	TIAM	165,940	10%	FOXM	129,251	8%	FOXM	151,685	9%
	4	AMEM	3,427	8%	AMEM	3,245	9%	FOXM	115,227	8%	PMWF	130,958	8%	FOXM	114,903	7%	TIAM	121,176	8%	LEMM	124,422	8%
	5	TIAM	3,091	7%	TIAM	2,831	8%	SMAM	102,067	7%	FOXM	112,236	7%	AMEM	94,128	6%	UWCM	100,677	6%	TIAM	105,610	6%
	6	SMAM	2,990	7%	SMAM	2,407	7%	PMWF	101,929	7%	PEAM	110,013	7%	PMWF	92,939	6%	LEMM	98,471	6%	AMEM	104,017	6%
	7	UWCM	2,372	5%	FOXM	2,291	6%	AMEM	79,894	6%	AMEM	103,230	6%	UWCM	81,113	5%	AMEM	90,244	6%	GWEA	91,407	6%
	8	FOXM	2,276	5%	UWCM	2,067	6%	PEAM	78,127	6%	UWCM	90,284	5%	SMAM	81,046	5%	PMWF	84,389	5%	MODM	83,453	5%
	9	PEAM	2,206	5%	PEAM	1,709	5%	UWCM	73,595	5%	SMAM	76,401	5%	PEAM	76,571	5%	MODM	70,426	4%	PMWF	82,132	5%
	10	MEWS	1,908	4%	MEWS	1,045	3%	MEWS	41,323	3%	MEWS	67,040	4%	MEWS	64,650	4%	KATS	63,487	4%	MCHA	64,453	4%
MFLC TOP 5	1	TECM	4,580	19%	PMWF	4,464	22%	TIAM	113,479	15%	TECM	147,611	16%	TECM	128,047	15%	TECM	131,264	15%	CTXS	124,326	13%
	2	PMWF	4,165	17%	TECM	2,829	14%	TECM	108,786	14%	PMWF	124,594	14%	TIAM	115,988	14%	TIAM	93,870	10%	TECM	112,996	12%
	3	EWES	2,368	10%	EWES	2,186	11%	PMWF	95,314	12%	TIAM	117,878	13%	EWES	93,911	11%	EWES	83,559	9%	LEMM	91,475	10%
	4	SMAM	2,223	9%	TIAM	2,093	10%	EWES	94,695	12%	EWES	103,468	12%	PMWF	87,904	10%	LEMM	81,281	9%	FOXM	84,992	9%
	5	TIAM	2,131	9%	SMAM	2,031	10%	SMAM	79,384	10%	MEWS	65,151	7%	MEWS	63,681	7%	PMWF	80,872	9%	PMWF	77,550	8%
MSKT TOP 5	1	TECM	1,794	28%	AMEM	1,136	23%	TECM	52,792	24%	TECM	51,028	20%	EWES	46,781	18%	TECM	42,521	18%	TIAM	41,055	17%
	2	AMEM	992	16%	TECM	821	16%	EWES	40,704	18%	EWES	50,301	20%	TECM	45,453	17%	UWCM	34,928	14%	TECM	39,290	16%
	3	EWES	827	13%	EWES	715	14%	TIAM	26,993	12%	TIAM	34,378	14%	TIAM	36,973	14%	EWES	34,884	14%	AMEM	29,982	12%
	4	SMAM	599	9%	PMWF	687	14%	AMEM	18,460	8%	AMEM	26,328	10%	SMAM	18,671	7%	WCWF	21,915	9%	MODM	26,227	11%
	5	TIAM	507	8%	FOXM	394	8%	SMAM	17,308	8%	FOXM	13,839	5%	FOXM	17,752	7%	TIAM	18,193	8%	FOXM	18,153	7%
XB TOP 5	1	TECM	1,960	24%	TECM	2,076	31%	TECM	43,969	17%	PEAM	68,181	22%	PEAM	54,447	18%	MODM	34,090	15%	TECM	46,757	17%
	2	PEAM	1,273	15%	PEAM	994	15%	PEAM	43,966	17%	TECM	48,337	15%	TECM	41,194	14%	TECM	33,794	15%	KATS	27,734	10%
	3	EWES	1,183	14%	UWCM	961	14%	EWES	30,639	12%	KATS	28,741	9%	MODM	28,282	9%	PEAM	30,636	13%	FOXM	27,096	10%
	4	UWCM	1,160	14%	EWES	701	11%	UWCM	24,901	9%	EWES	27,305	9%	EWES	25,981	9%	EWES	22,525	10%	CTXS	22,768	8%
	5	TIAM	379	5%	FOXM	403	6%	KATS	20,772	8%	UWCM	24,830	8%	UWCM	23,318	8%	UWCM	18,968	8%	MODM	21,130	8%
ODDS TOP 5	1	UWCM	976	20%	UWCM	968	25%	UWCM	25,237	16%	UWCM	31,740	16%	MCHA	29,569	16%	FOXM	25,868	13%	MCHA	39,964	20%
	2	TECM	904	19%	TECM	635	16%	TECM	23,966	15%	TECM	22,909	12%	UWCM	29,451	16%	MCHA	23,579	12%	VWPM	30,258	15%
	3	EWES	728	15%	AMEM	378	10%	FOXM	19,320	12%	FOXM	19,823	10%	TECM	21,880	12%	UWCM	21,008	11%	TECM	23,968	12%
	4	AMEM	419	9%	MCHA	352	9%	EWES	17,418	11%	EWES	19,235	10%	EWES	17,792	9%	TECM	20,439	11%	FOXM	21,444	11%
	5	MCHA	405	8%	EWES	318	8%	MCHA	13,272	8%	MCHA	16,141	8%	FOXM	16,585	9%	EWES	18,940	10%	GWEA	10,802	5%
Auction Totals		<u>Bales Sold</u>	<u>\$/Bale</u>		<u>Bales Sold</u>	<u>\$/Bale</u>	<u>Bales Sold</u>	<u>\$/Bale</u>	<u>Bales Sold</u>	<u>\$/Bale</u>	<u>Bales Sold</u>	<u>\$/Bale</u>	<u>Bales Sold</u>	<u>\$/Bale</u>	<u>Bales Sold</u>	<u>\$/Bale</u>	<u>Bales Sold</u>	<u>\$/Bale</u>	<u>Bales Sold</u>	<u>\$/Bale</u>		
		43,596	\$ 2,031		35,602	\$ 1,996	1,419,576	\$1,362	1,659,483	\$1,348	1,607,799	\$1,503	1,558,820	\$1,455	1,652,727	\$1,424						
		<u>Auction Value</u>		<u>Auction Value</u>		<u>Auction Value</u>		<u>Auction Value</u>		<u>Auction Value</u>		<u>Auction Value</u>		<u>Auction Value</u>		<u>Auction Value</u>		<u>Auction Value</u>				
		\$88,560,000		\$71,070,000		\$1,933,603,248		\$2,236,630,000		\$2,416,900,000		\$2,267,750,000		\$2,354,185,590								

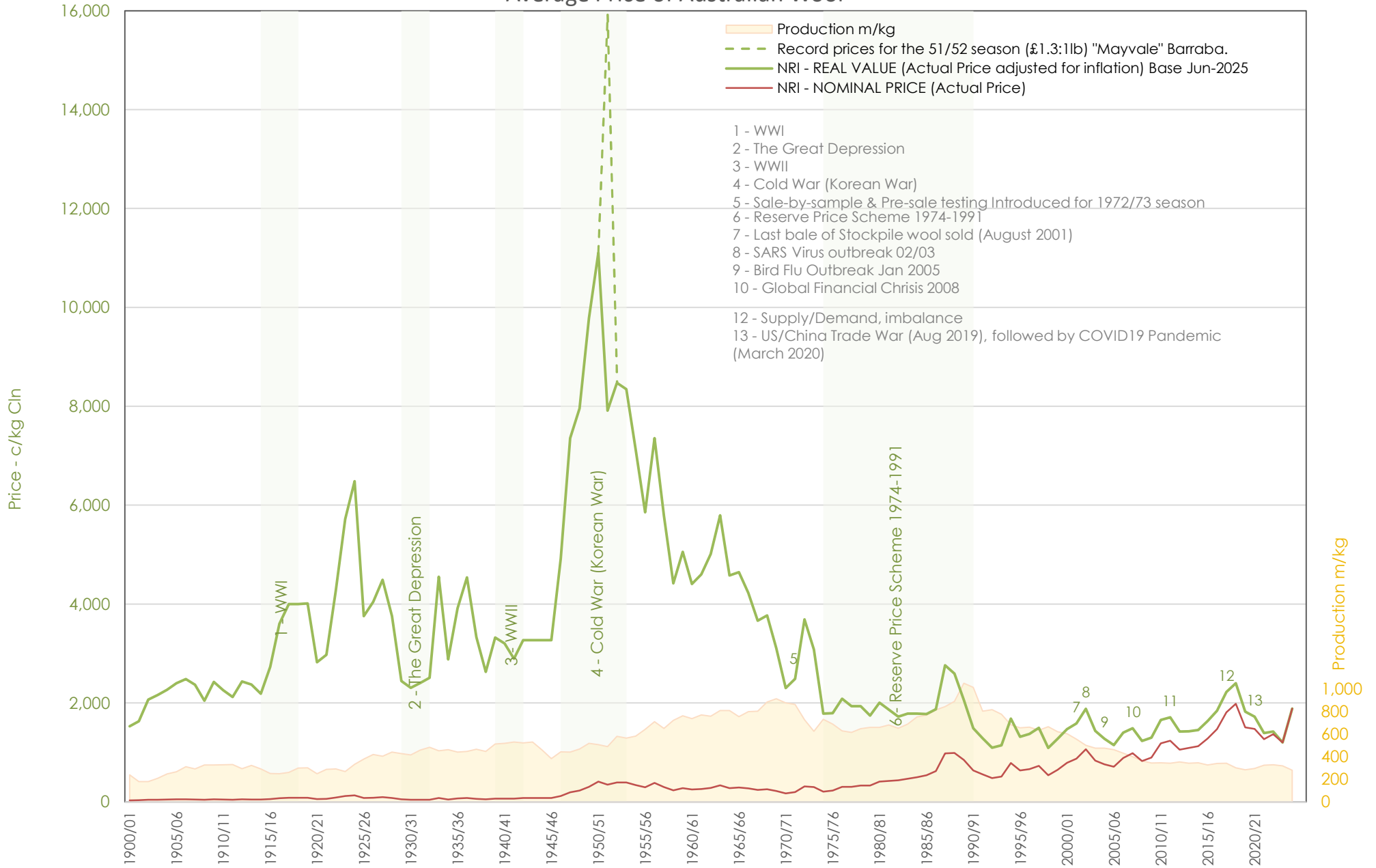


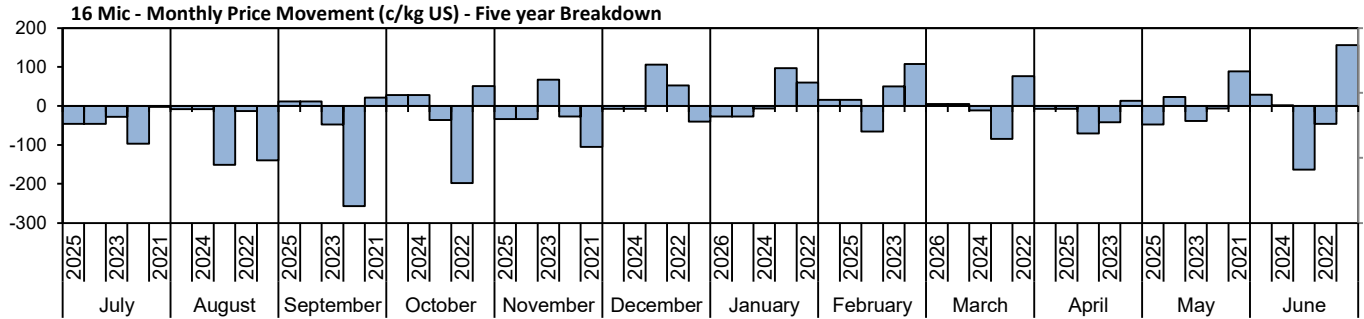
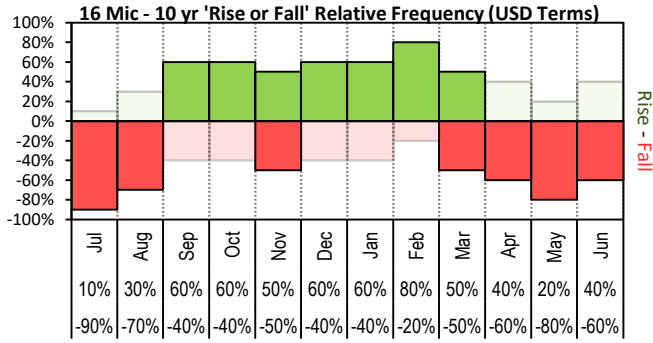
Table 7: NSW Production Statistics

		MAX	MIN	MAX GAIN	MAX REDUCTION												
2024-25																	
Statistical Devision, Area Code & Towns		Auction Bales (FH)	Micron	+/- YoY	Vmb %	+/- YoY	Yield % Sch Dry	+/- YoY	Length mm	+/- YoY	Strength Nkt	+/- YoY	Ave Price c/kg				
Northern	N02 Tenterfield, Glen Innes	5,110	18.8	-0.8	2.1	0.5	70.5	-0.5	84	2.8	40	-2.6	1016				
	N03 Guyra	36,593	20.2	-0.7	2.2	0.4	66.0	-2.4	83	1.3	37	-3.4	926				
	N04 Inverell	3,277	19.0	0.4	3.7	0.4	67.4	-0.5	87	3.6	36	-2.6	846				
	N05 Armidale	543	19.2	0.6	3.3	-1.0	69.8	1.5	85	0.9	38	-0.8	889				
	N06 Tamworth, Gunnedah, Quirindi	4,430	20.3	-0.1	4.2	0.2	66.2	-1.2	85	1.8	41	-0.2	802				
	N07 Moree	2,863	19.5	0.5	5.4	-0.4	60.2	-1.1	91	5.6	37	-0.5	668				
	N08 Narrabri	2,091	19.7	0.7	4.6	-1.2	63.5	0.6	86	4.9	41	-0.2	740				
	North Western & Far West	N09 Cobar, Bourke, Wanaaring	7,005	19.5	0.1	4.7	-0.4	59.4	0.5	90	2.7	38	-1.7	688			
N12 Walgett		8,652	19.3	0.0	6.4	-1.4	60.1	1.0	90	4.4	36	-2.2	676				
N13 Nyngan		16,258	19.6	0.1	6.9	-0.2	59.3	-0.9	89	2.6	39	0.9	659				
N14 Dubbo, Narromine		17,475	21.5	0.5	4.3	0.0	62.5	-0.5	87	2.9	39	0.5	590				
N16 Dunedoo		5,160	20.5	0.4	3.8	0.4	65.8	-0.1	85	1.8	39	1.1	714				
N17 Mudgee, Wellington, Gulgong		18,133	19.9	0.4	2.7	0.0	67.4	-0.5	85	3.6	40	-0.7	847				
N33 Coonabarabran		2,372	20.1	-0.3	4.3	0.3	65.4	-0.3	87	2.4	38	0.1	717				
N34 Coonamble		6,020	20.3	0.2	5.8	0.9	62.3	-0.7	88	2.0	39	2.3	664				
N36 Gilgandra, Gulargambone		5,501	21.2	0.2	4.0	0.0	63.7	-0.7	89	3.5	39	-0.4	647				
N40 Brewarrina		5,860	19.8	0.2	5.8	-0.9	59.6	-0.2	91	3.7	39	-0.2	687				
N10 Wilcannia, Broken Hill	17,987	20.1	0.0	4.1	-0.3	57.7	0.4	93	2.7	37	0.1	660					
Central West	N15 Forbes, Parkes, Cowra	32,103	20.6	0.1	3.1	-0.2	64.6	-0.3	88	3.6	38	-1.6	693				
	N18 Lithgow, Oberon	1,860	22.2	0.0	1.5	0.0	70.8	-0.3	90	5.0	39	-3.6	824				
	N19 Orange, Bathurst	44,594	21.8	-0.1	2.2	0.2	68.3	-0.8	88	3.0	38	-2.0	730				
	N25 West Wyalong	17,602	19.8	-0.1	2.8	-0.3	63.5	-0.3	91	3.5	37	-1.4	730				
	N35 Condobolin, Lake Cargelligo	7,253	20.7	0.3	5.1	-0.8	61.0	0.4	90	6.4	40	1.4	611				
Murrumbidgee	N26 Cootamundra, Temora	22,208	20.9	-0.3	1.8	0.0	64.5	-1.9	90	0.9	36	-2.2	678				
	N27 Adelong, Gundagai	11,481	20.7	-1.0	2.2	0.4	66.2	-2.6	89	0.6	36	-2.6	746				
	N29 Wagga, Narrandera	30,930	21.4	-0.3	2.0	-0.1	63.5	-1.8	88	-0.7	35	-2.9	647				
	N37 Griffith, Hillston	10,676	21.0	-0.3	4.0	-1.3	63.0	1.4	88	5.0	41	-1.6	651				
	N39 Hay, Coleambally	18,427	20.0	0.0	4.2	-2.1	63.4	1.4	88	1.6	41	-0.5	740				
Murray	N11 Wentworth, Balranald	12,070	20.8	0.2	5.3	-1.2	60.2	1.6	94	1.5	38	1.6	635				
	N28 Albury, Corowa, Holbrook	27,445	21.0	-0.5	1.5	0.0	64.4	-2.9	85	-1.8	35	-3.9	725				
	N31 Deniliquin	21,720	20.5	-0.2	3.2	-1.0	64.9	0.3	90	2.5	37	-3.2	710				
	N38 Finley, Berrigan, Jerilderie	8,139	20.0	0.1	2.6	-1.0	64.6	0.1	87	2.1	40	-0.5	762				
South Eastern	N23 Goulburn, Young, Yass	95,490	19.8	-0.2	1.7	0.2	68.3	-1.3	88	0.9	37	-1.5	851				
	N24 Monaro (Cooma, Bombala)	28,406	19.2	-0.3	1.4	-0.2	70.1	-0.4	90	1.1	36	-0.8	911				
	N32 A.C.T.	214	18.8	1.2	1.8	0.6	67.1	-4.6	88	2.1	35	-3.9	871				
	N43 South Coast (Bega)	279	18.4	-0.2	1.1	0.3	74.3	-0.2	86	-2.1	40	-4.3	1099				
NSW	AWEX Sale Statistics 24-25	612,559	20.4	-0.2	2.8	-0.1	65.3	-0.9	88	1.8	38	-1.3	773				

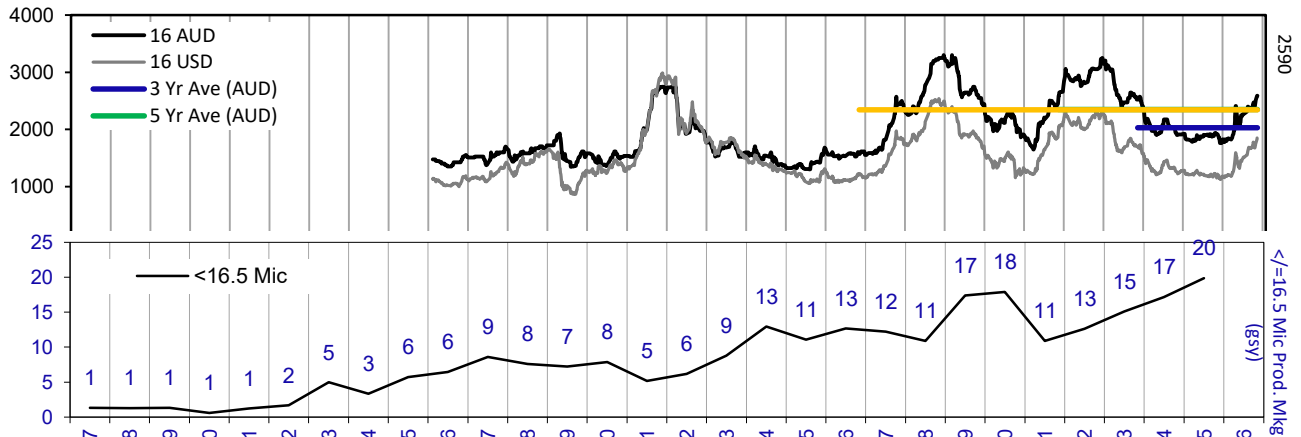
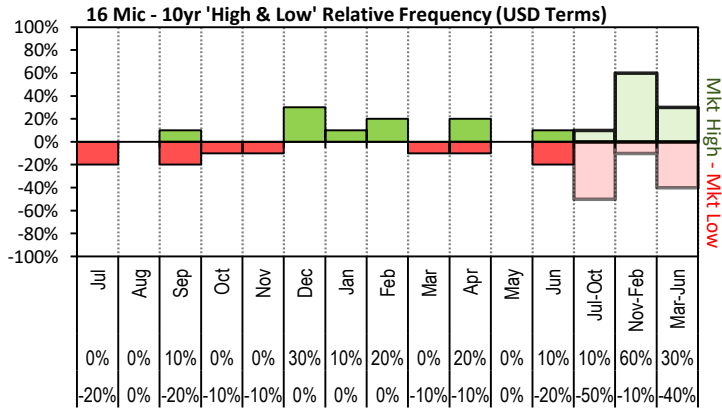
AWTA Mthly Key Test Data			Bales Tested	+/- YoY	Micron	+/- YoY	VMB	+/- YoY	Yld	+/- YoY	Lth	+/- YoY	Nkt	+/- YoY	POBM +/-
AUSTRALIA	Current Season	February Y.T.D	144,668	-8,250	21.3	0.3	2.3	0.0	63.6	-0.5	87	1.1	31	0.3	49 -0.9
	Previous Seasons	2024-25	1,017,318	-105,659	0.0	-20.5	0.0	-2.2	0.0	-65.0	0	-88.0	0	-34.0	0 -46.0
		2023-24	1,122,977	-125674	20.5	-0.3	2.2	-0.1	65.0	-0.9	88	0.0	34	-1.0	46 -4.0
		2022-23	1,248,651	7769	20.8	0.0	2.3	0.1	65.9	-0.6	88	-2.0	35	0.0	50 -1.0
	Y.T.D.	2022-23	1,240,882	27,809	20.8	0.0	2.2	0.0	66.5	1.0	90	1.1	35	-0.1	49 -0.1

Average Price of Australian Wool

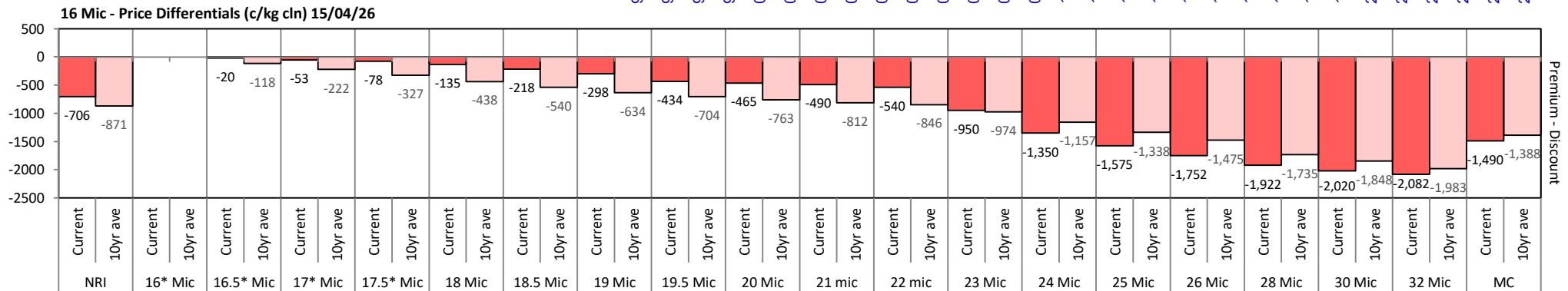


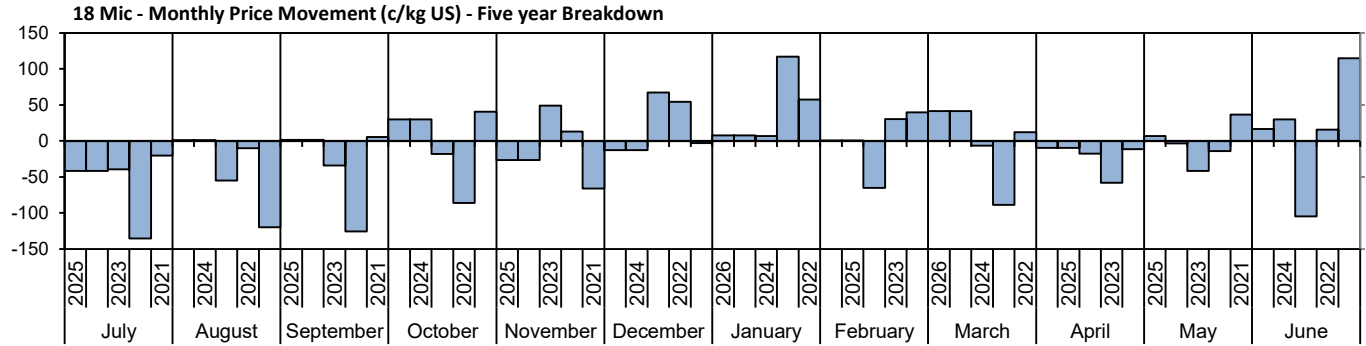
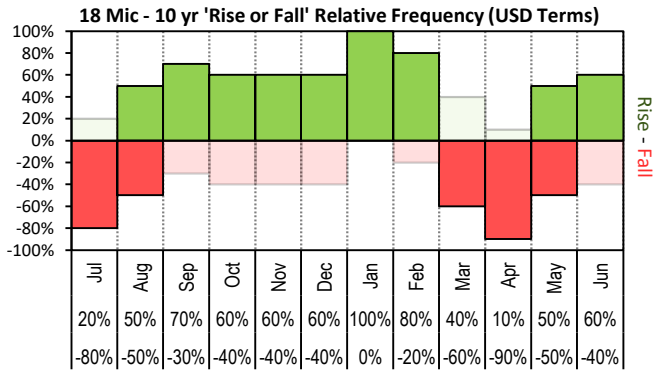


The above 'Rise or Fall' graph, shows how often the market has risen or fallen in a given month over the past 10 years, it does not show the extent of the movement only the frequency of direction. The 'Monthly Price Movement' graph shows the extent of movement for each month, for the past 5 years.

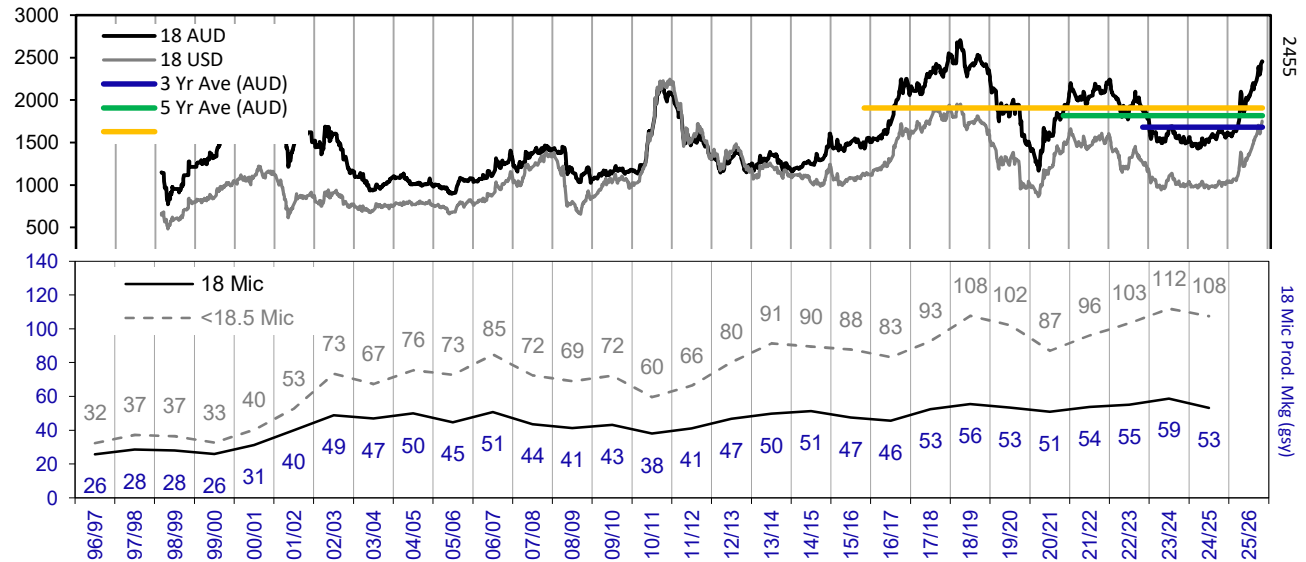
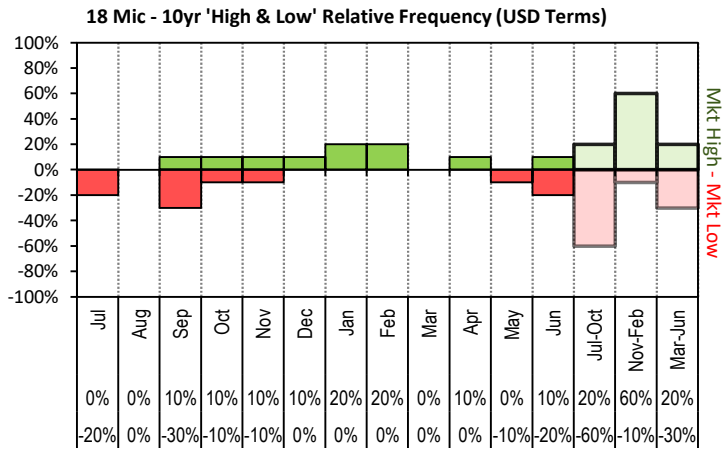


The above graph, shows how often the '12 month high & low' have been achieved for a

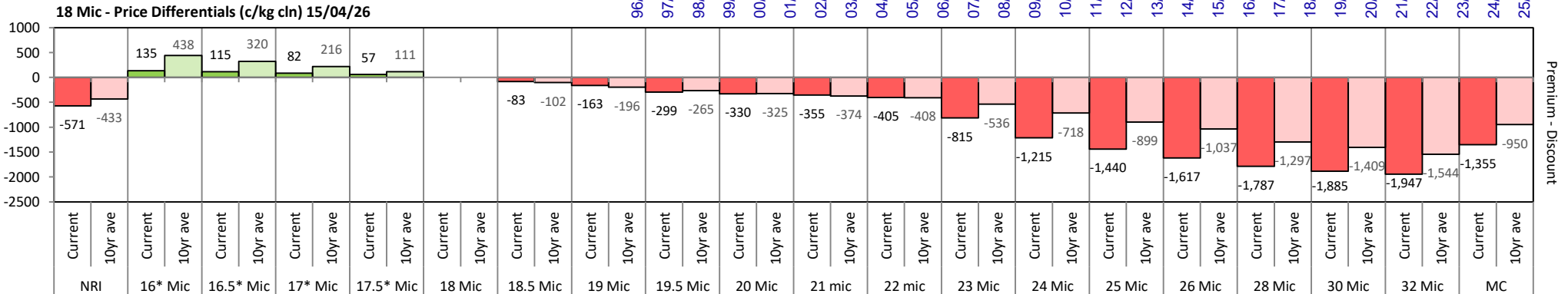


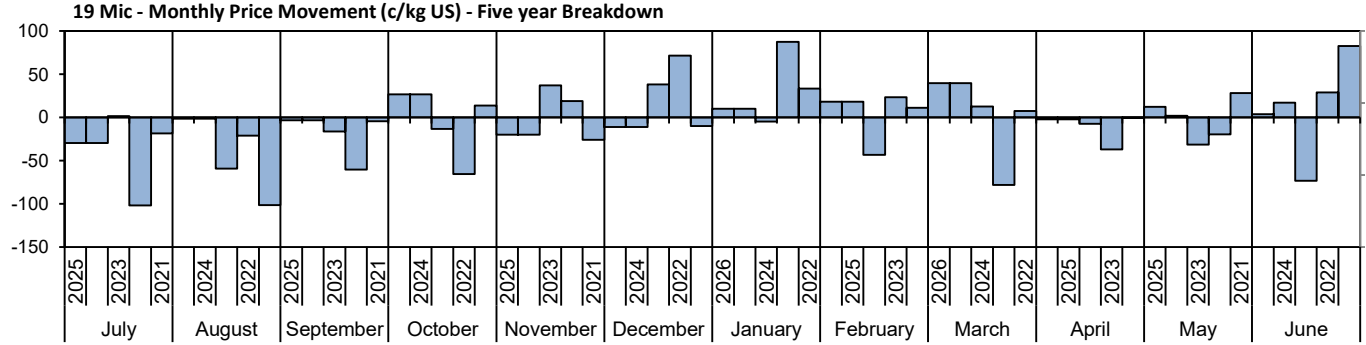
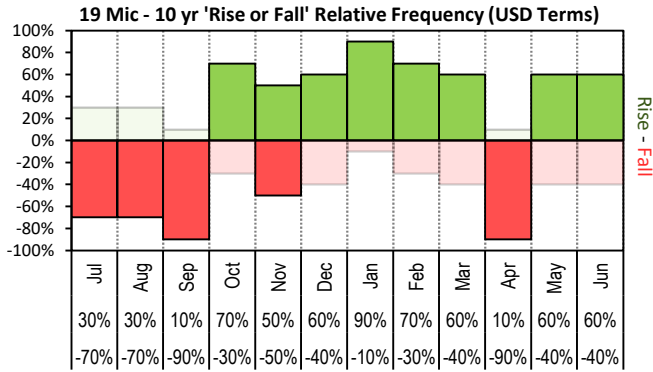


The above 'Rise or Fall' graph, shows how often the market has risen or fallen in a given month over the past 10 years, it does not show the extent of the movement only the frequency of direction. The 'Monthly Price Movement' graph shows the extent of movement for each month, for the past 5 years.

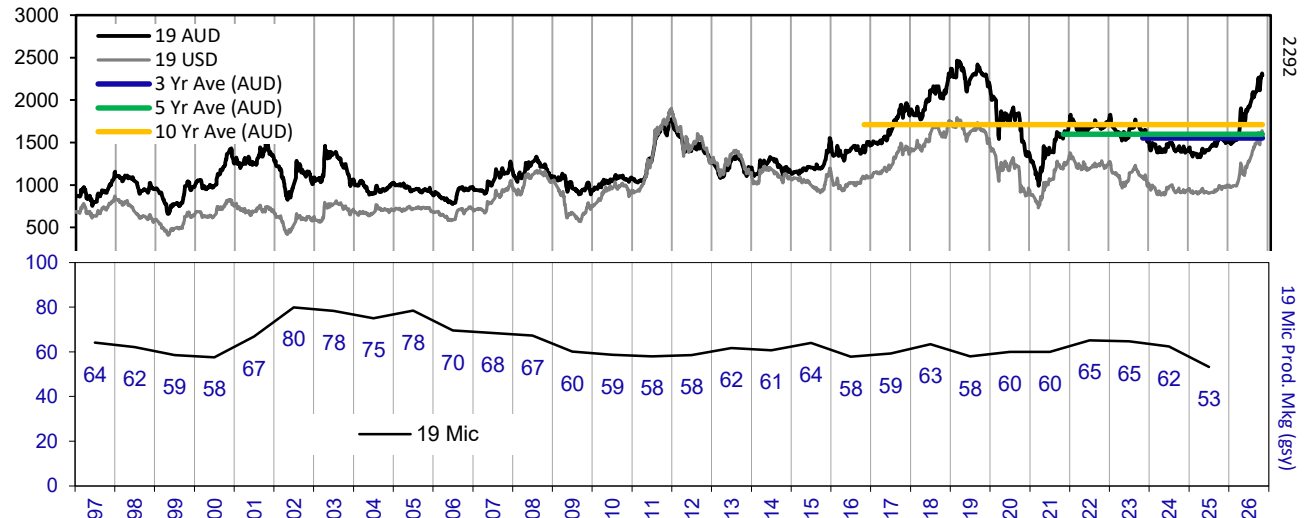
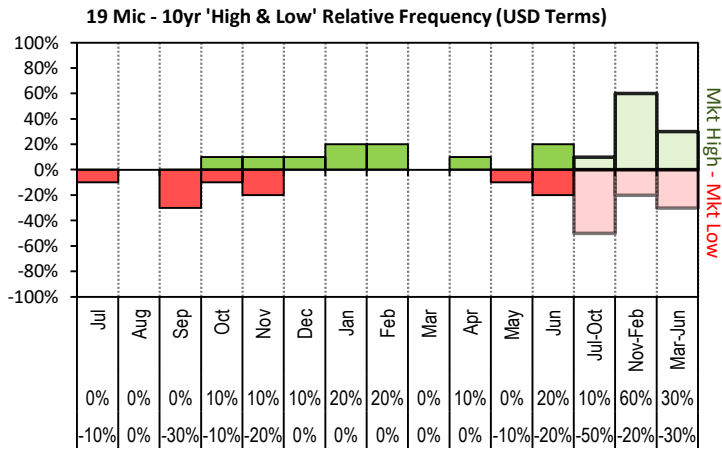


The above graph, shows how often the '12 month high & low' have been achieved for a given month over the past 10 years. It is not a measure of probability.

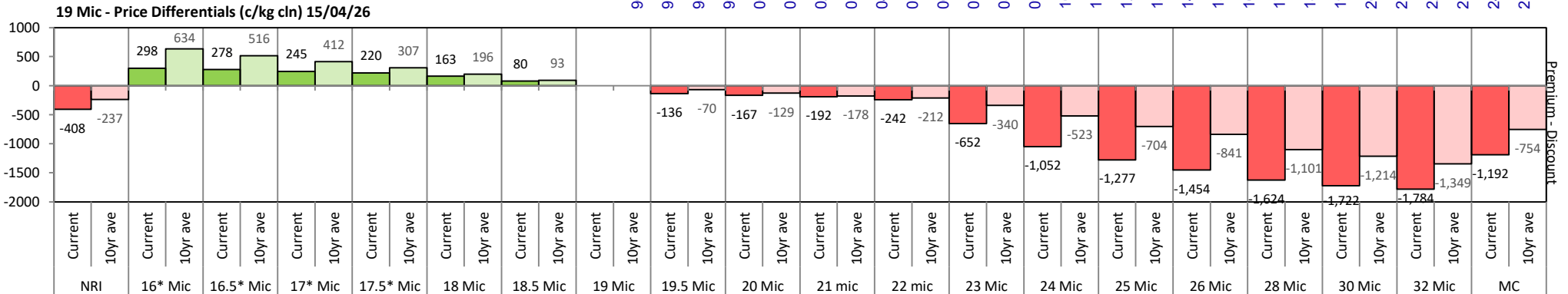


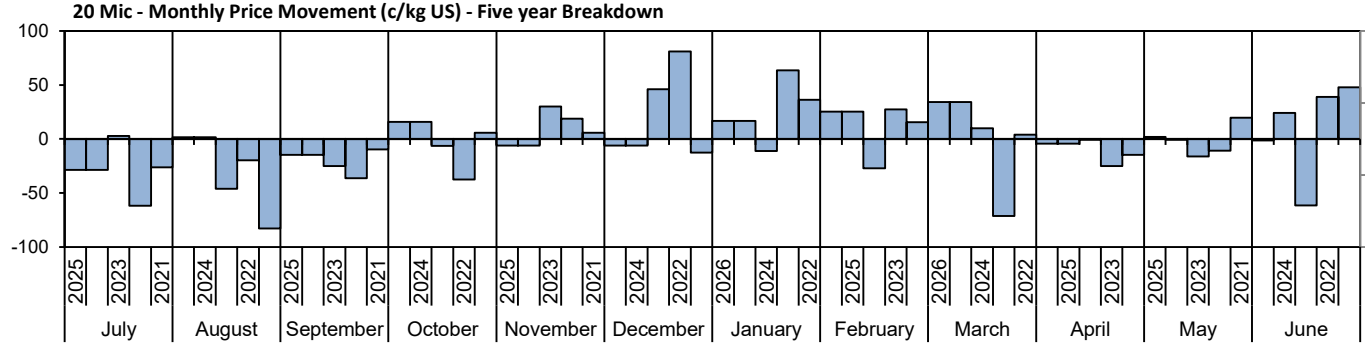
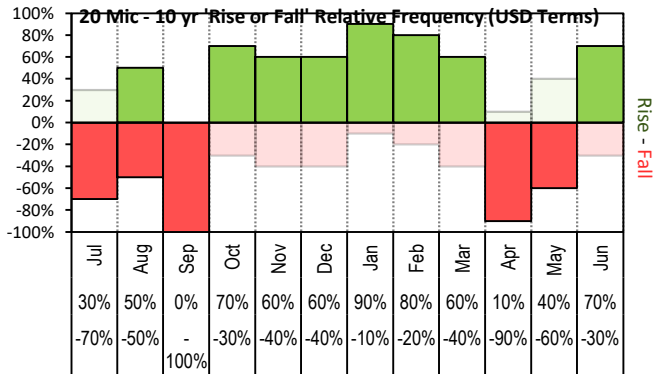


The above 'Rise or Fall' graph, shows how often the market has risen or fallen in a given month over the past 10 years, it does not show the extent of the movement only the frequency of direction. The 'Monthly Price Movement' graph shows the extent of movement for each month, for the past 5 years.

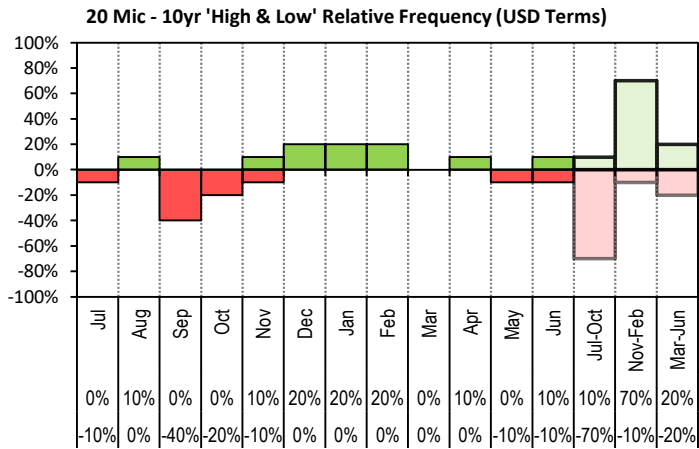


The above graph, shows how often the '12 month high & low' have been achieved for a given month over the past 10 years. It is not a measure of probability.

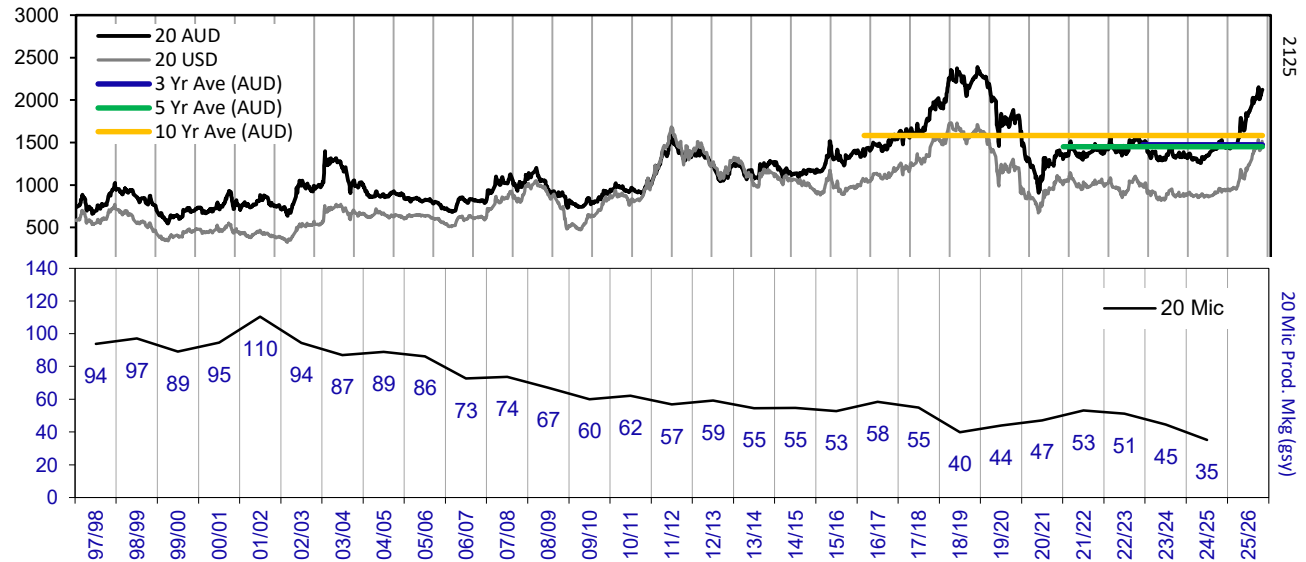




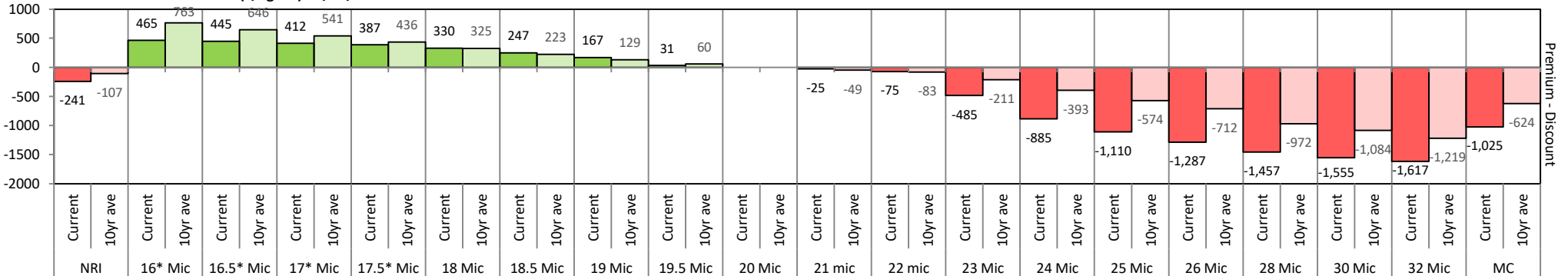
The above 'Rise or Fall' graph, shows how often the market has risen or fallen in a given month over the past 10 years, it does not show the extent of the movement only the frequency of direction. The 'Monthly Price Movement' graph shows the extent of movement for each month, for the past 5 years.

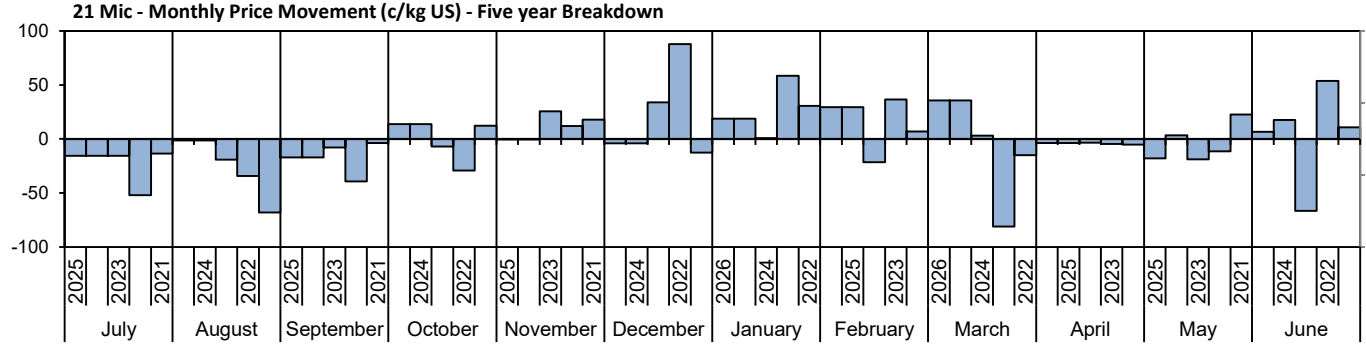
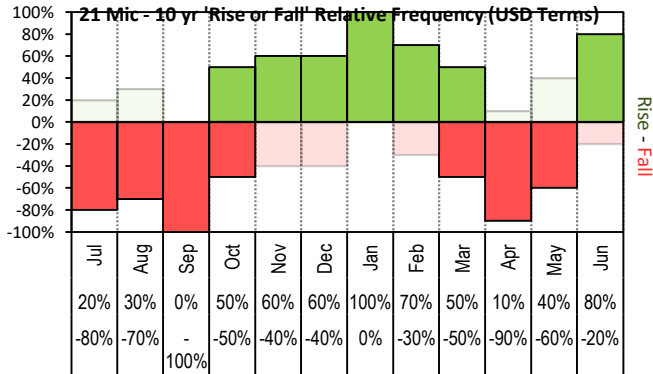


The above graph, shows how often the '12 month high & low' have been achieved for a given month over the past 10 years. It is not a measure of probability.

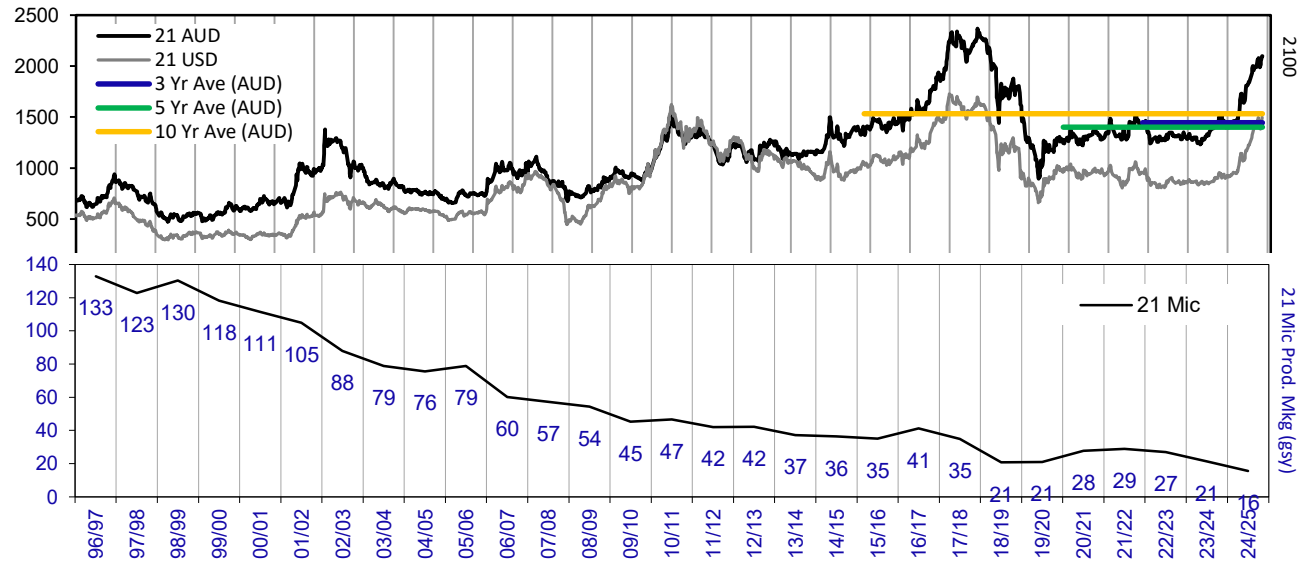
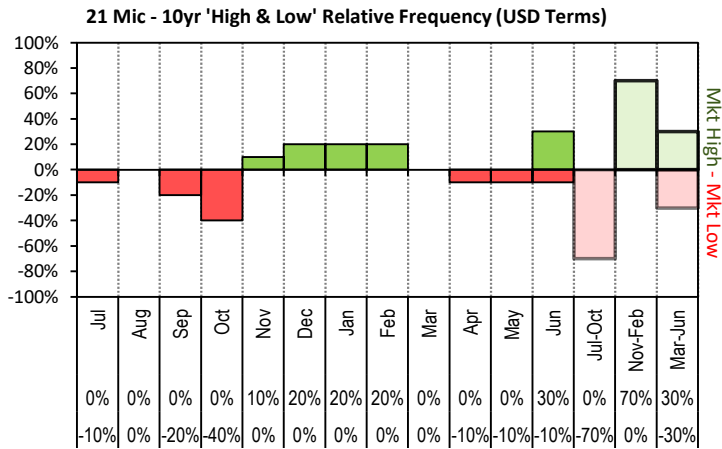


20 Mic - Price Differentials (c/kg cln) 15/04/26

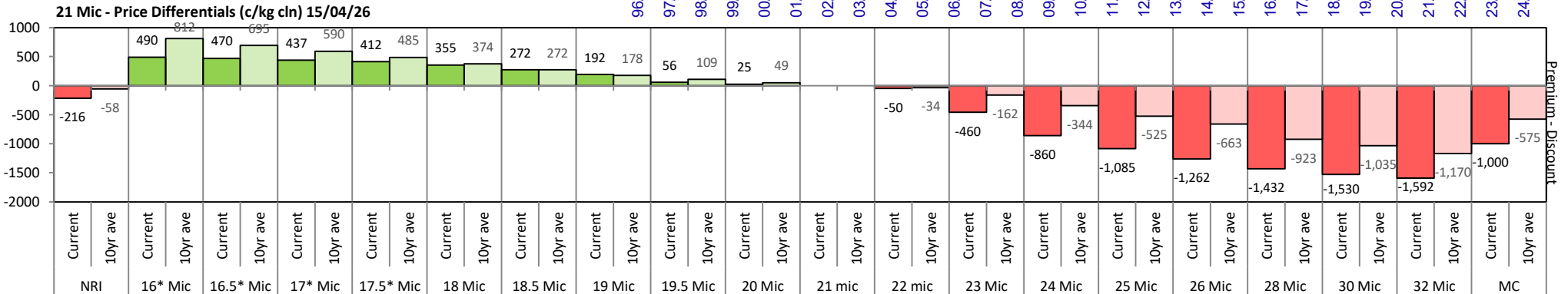


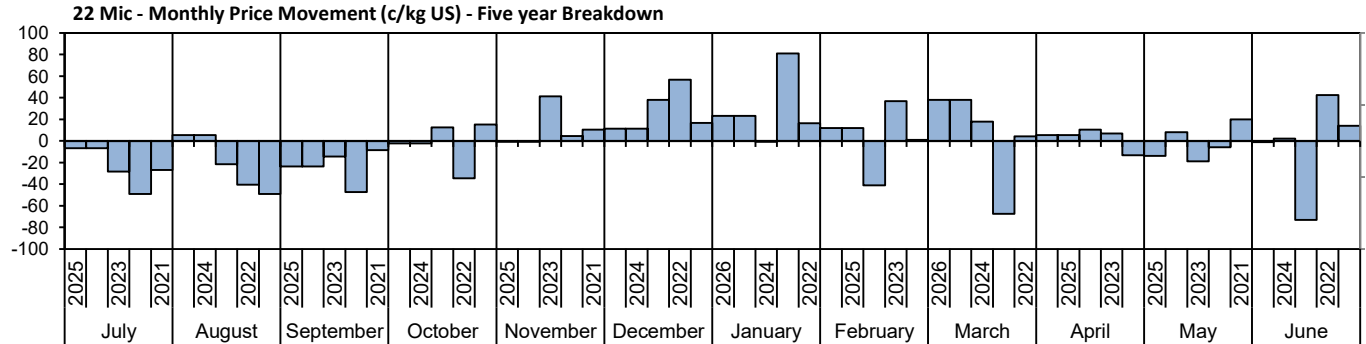
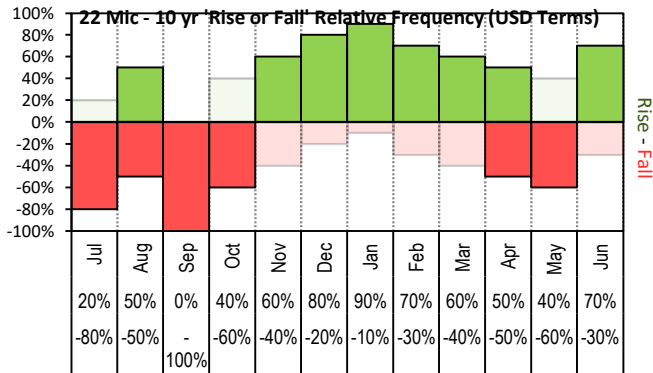


The above 'Rise or Fall' graph, shows how often the market has risen or fallen in a given month over the past 10 years, it does not show the extent of the movement only the frequency of direction. The 'Monthly Price Movement' graph shows the extent of movement for each month, for the past 5 years.

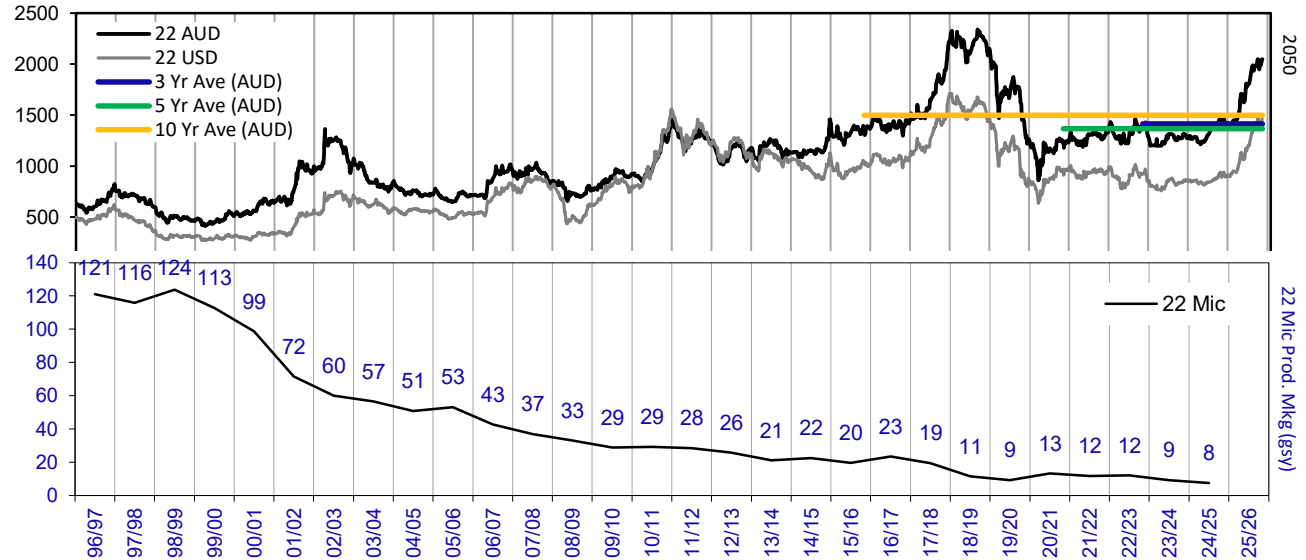
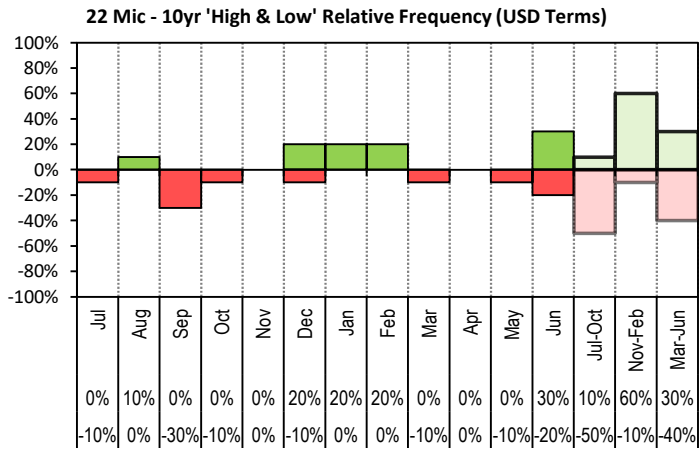


The above graph, shows how often the '12 month high & low' have been achieved for a given month over the past 10 years. It is not a measure of probability.

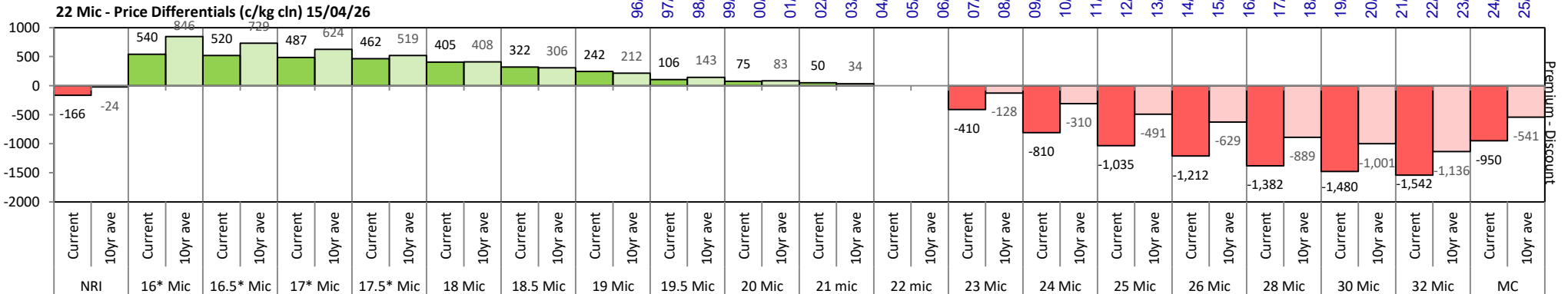


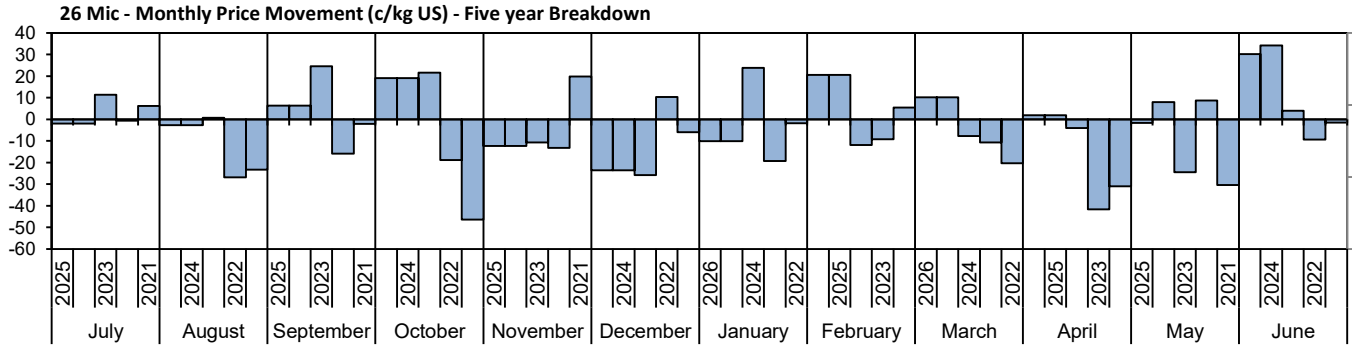
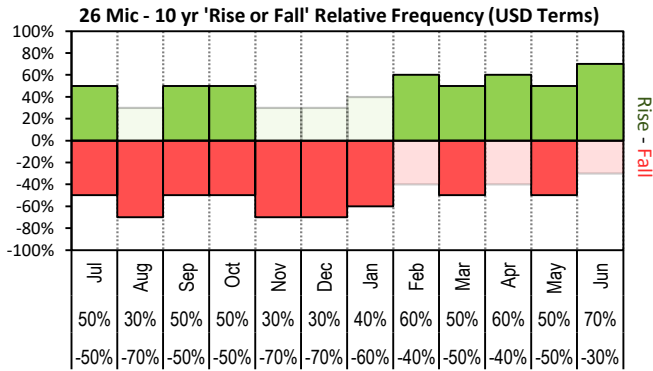


The above 'Rise or Fall' graph, shows how often the market has risen or fallen in a given month over the past 10 years, it does not show the extent of the movement only the frequency of direction. The 'Monthly Price Movement' graph shows the extent of movement for each month, for the past 5 years.

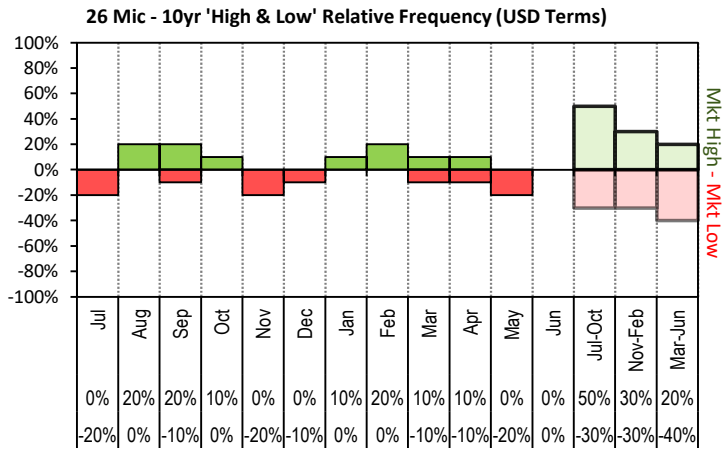


The above graph, shows how often the '12 month high & low' have been achieved for a given month over the past 10 years. It is not a measure of probability.

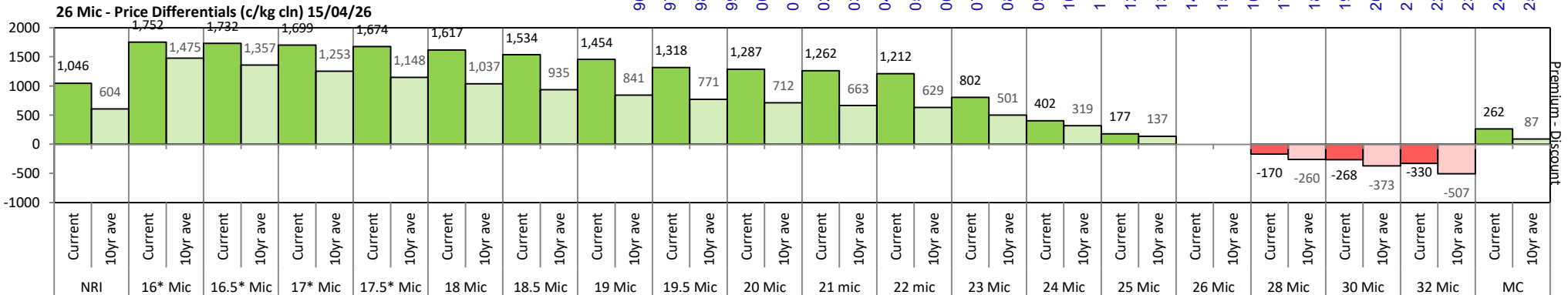
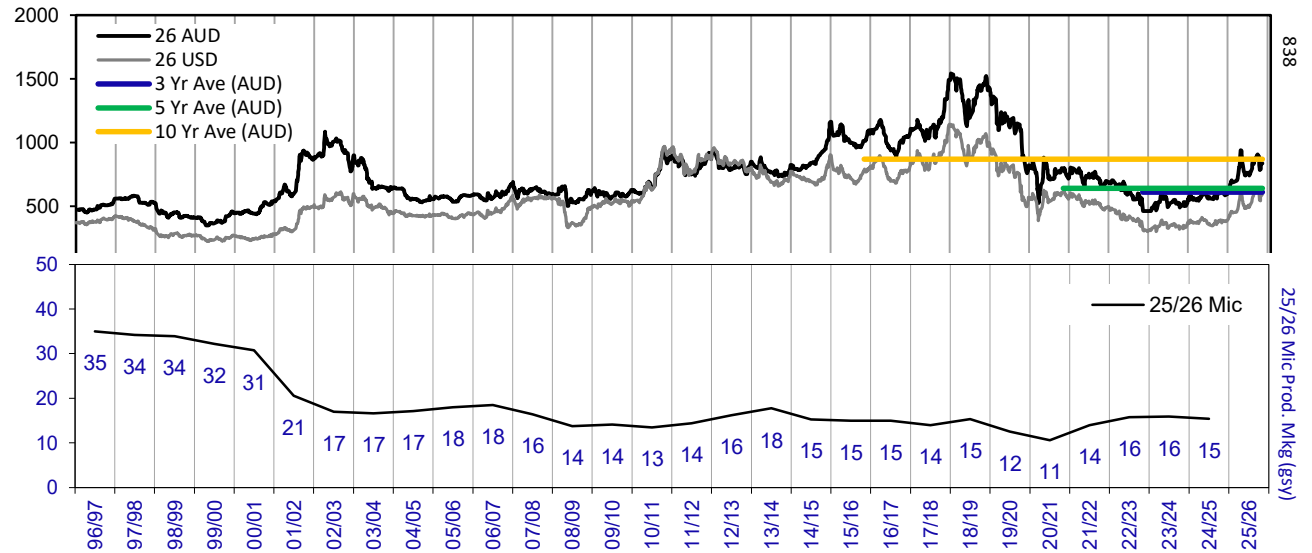


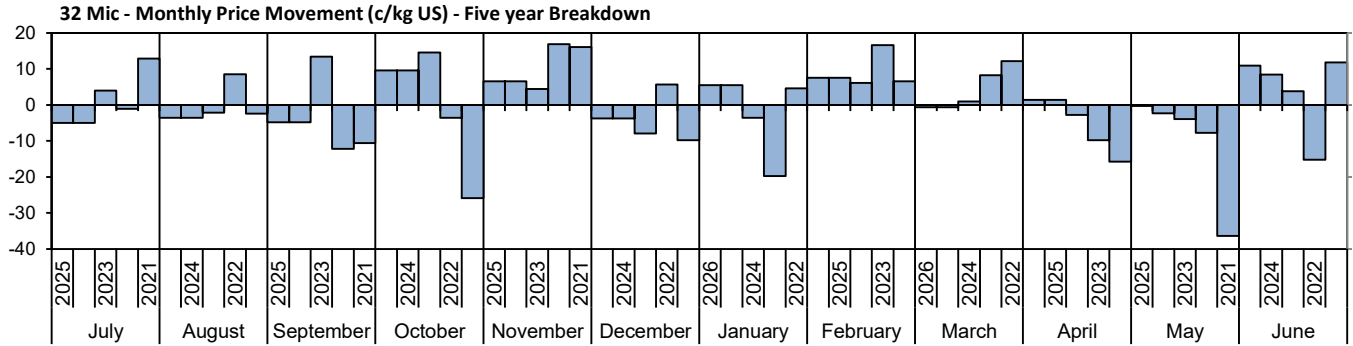
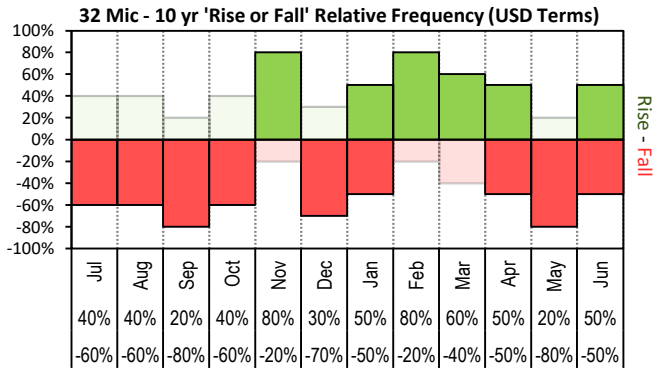


The above 'Rise or Fall' graph, shows how often the market has risen or fallen in a given month over the past 10 years, it does not show the extent of the movement only the frequency of direction. The 'Monthly Price Movement' graph shows the extent of movement for each month, for the past 5 years.

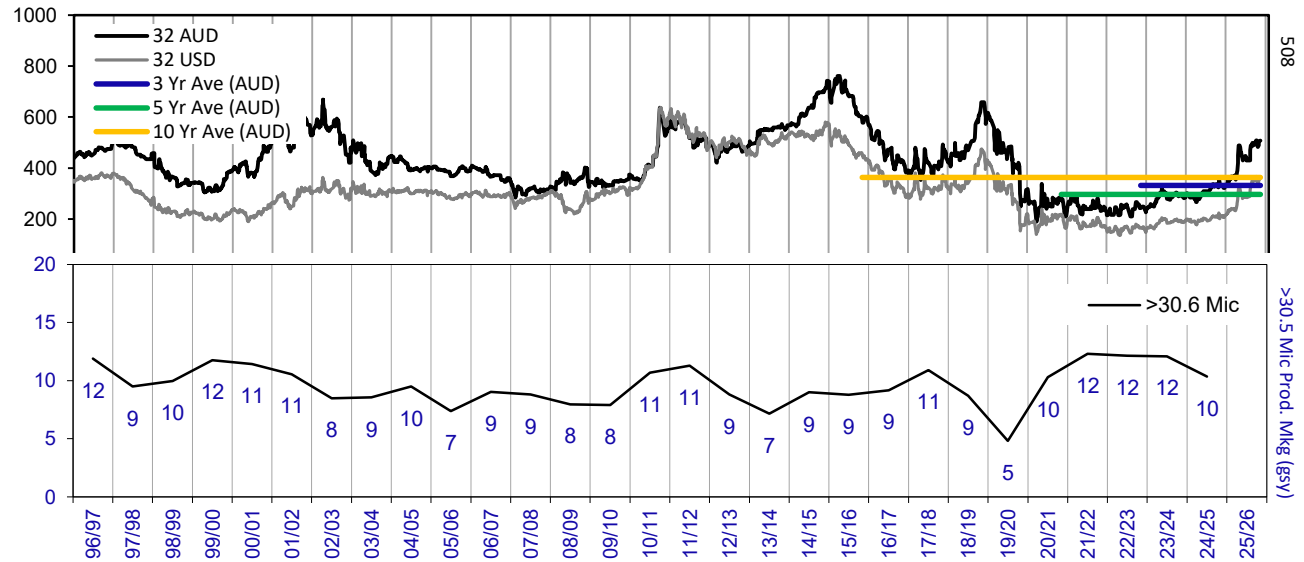
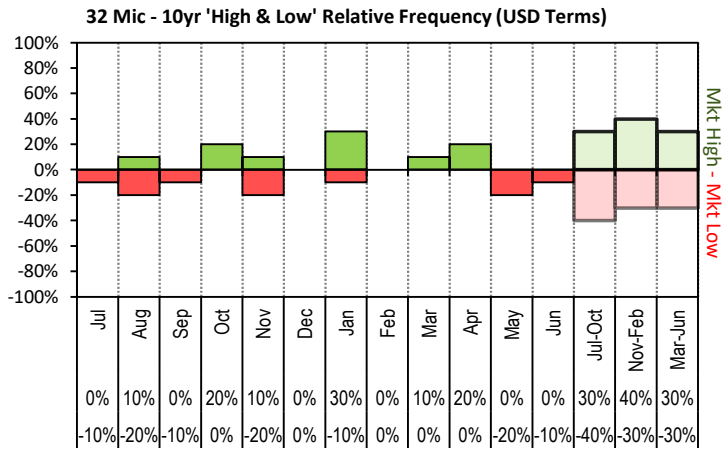


The above graph, shows how often the '12 month high & low' have been achieved for a given month over the past 10 years. It is not a measure of probability.

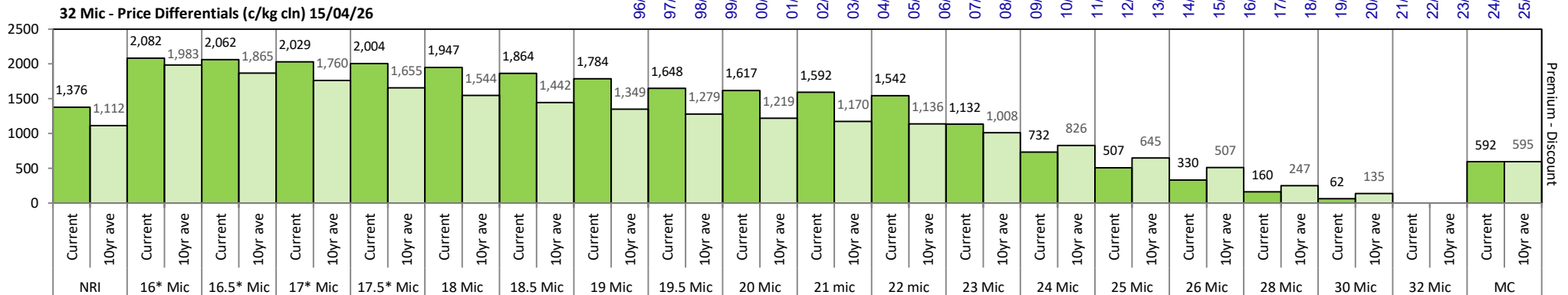


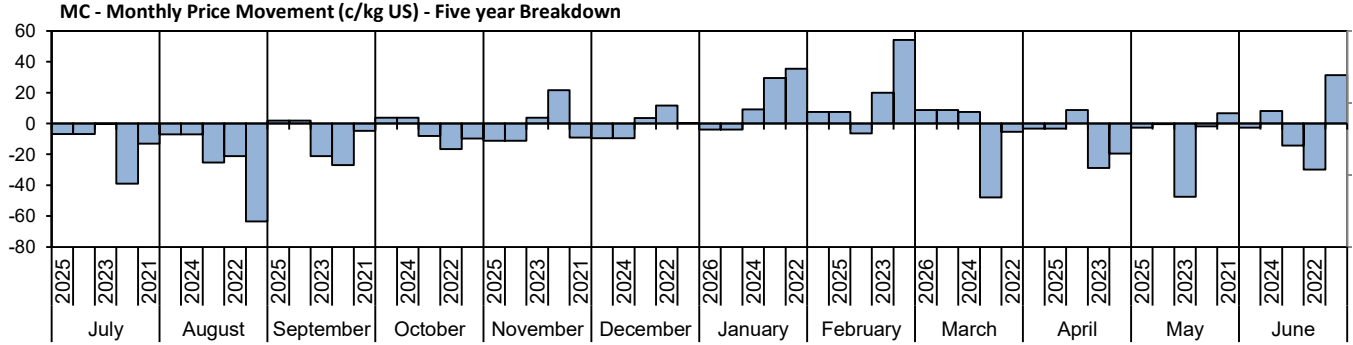
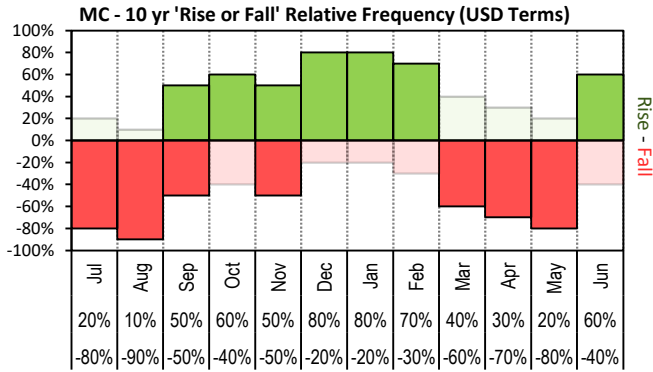


The above 'Rise or Fall' graph, shows how often the market has risen or fallen in a given month over the past 10 years, it does not show the extent of the movement only the frequency of direction. The 'Monthly Price Movement' graph shows the extent of movement for each month, for the past 5 years.

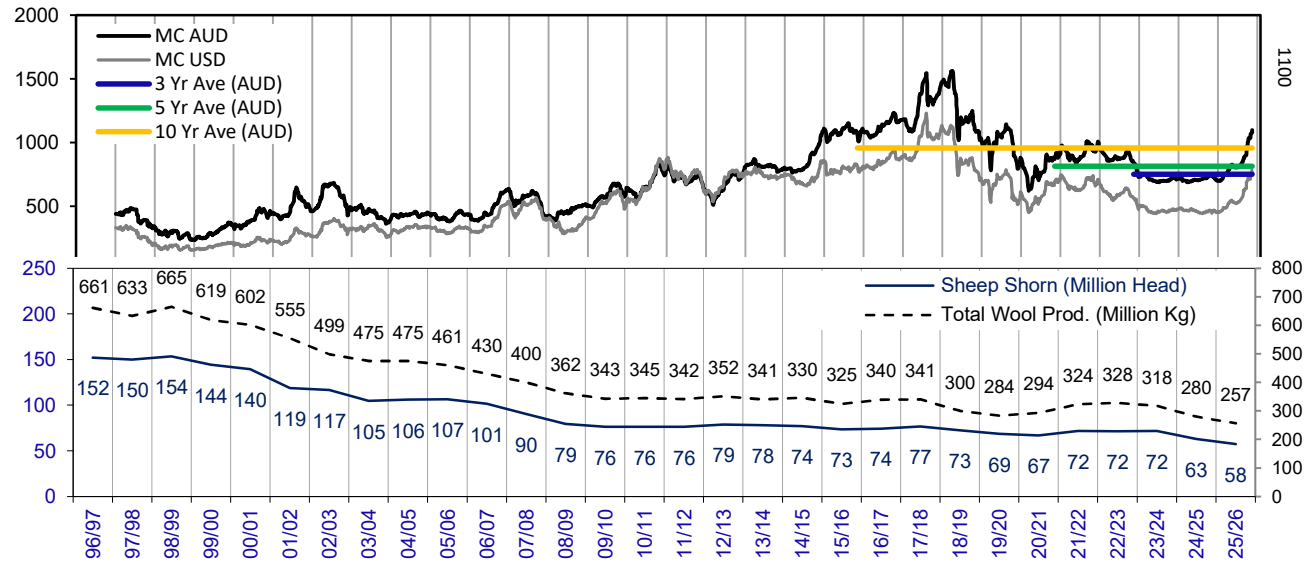
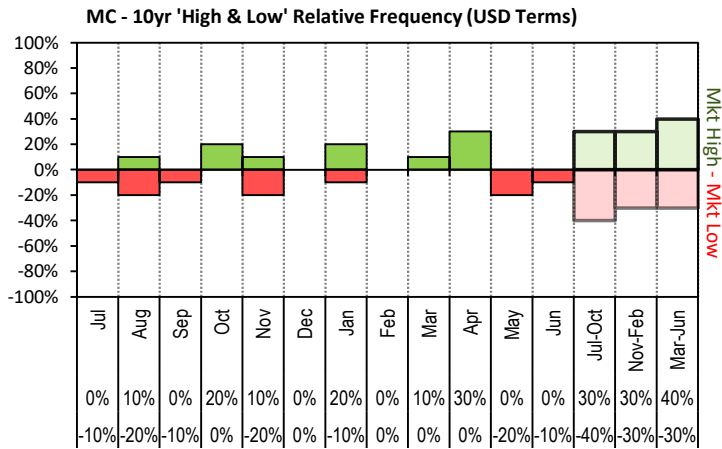


The above graph, shows how often the '12 month high & low' have been achieved for a given month over the past 10 years. It is not a measure of probability.

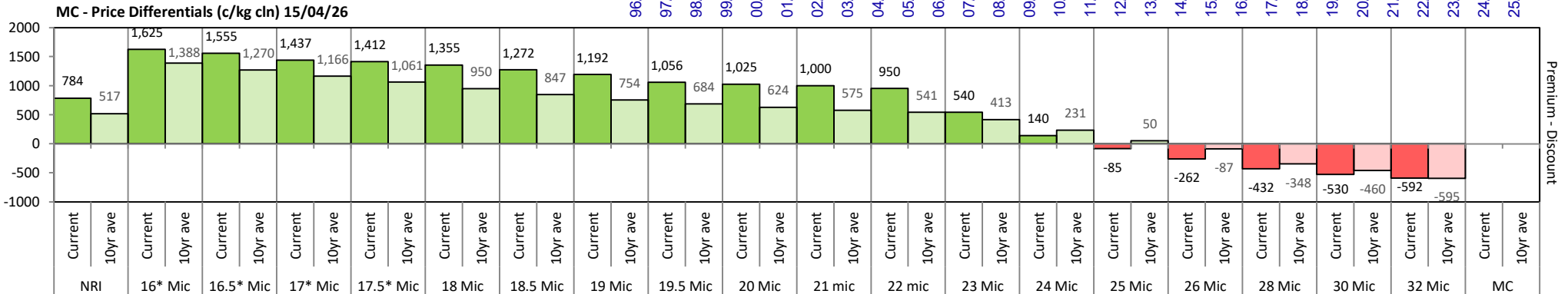




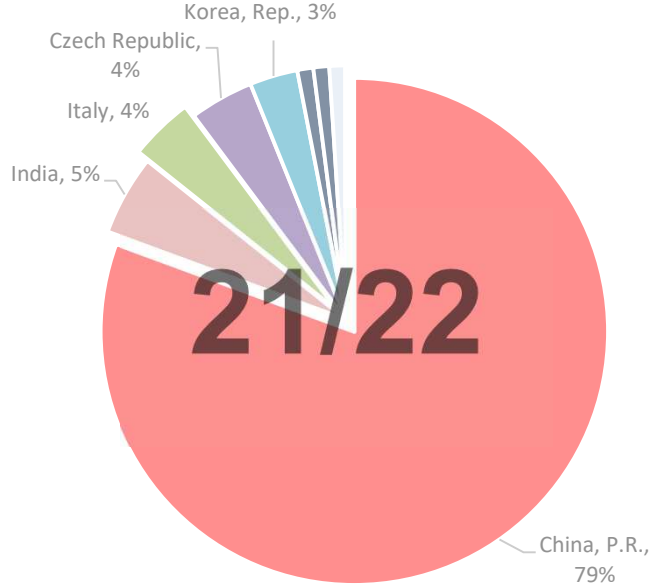
The above 'Rise or Fall' graph, shows how often the market has risen or fallen in a given month over the past 10 years, it does not show the extent of the movement only the frequency of direction. The 'Monthly Price Movement' graph shows the extent of movement for each month, for the past 5 years.



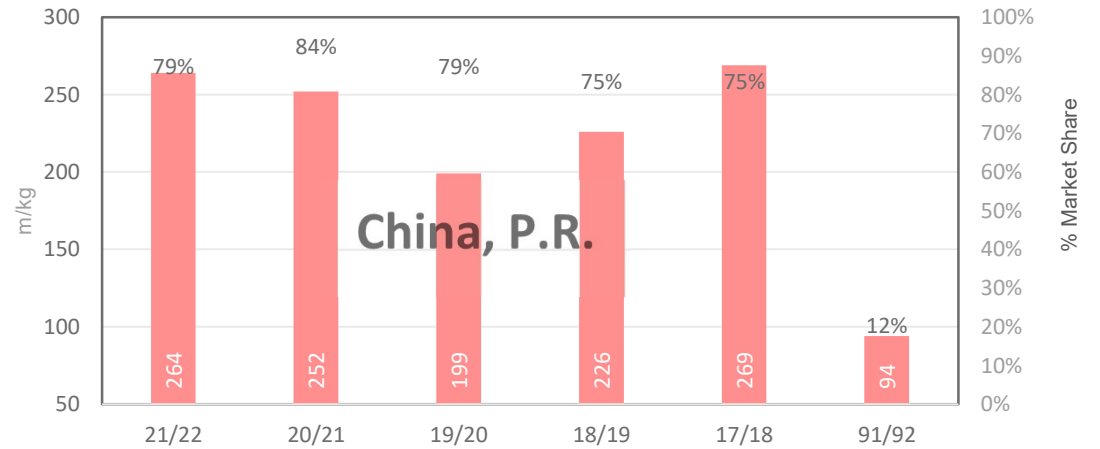
The above graph, shows how often the '12 month high & low' have been achieved for a given month over the past 10 years. It is not a measure of probability.



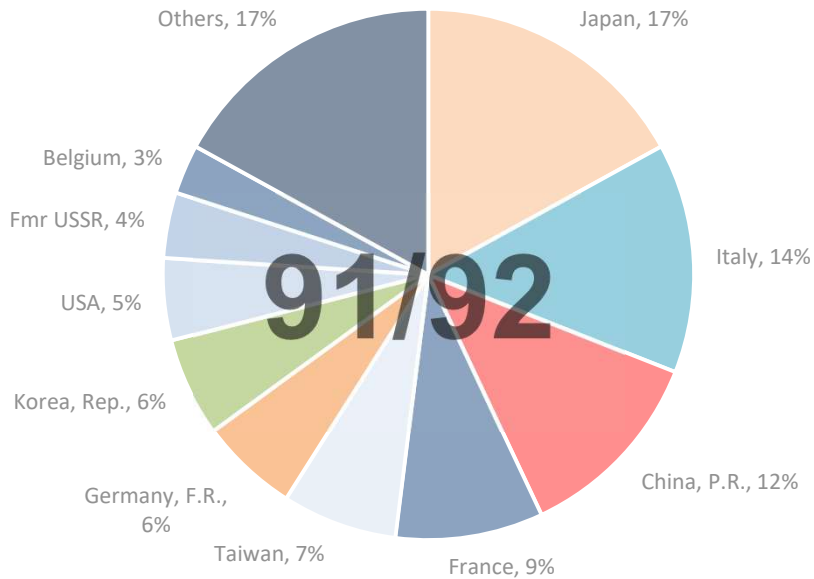
21/22 - Export Snap Shot (335.46 m/kg greasy equivalent)



China, P.R. (Largest Market Share)



91/92 - Export Snap Shot (784.7 m/kg greasy equivalent)



Seasonal Change m/kg

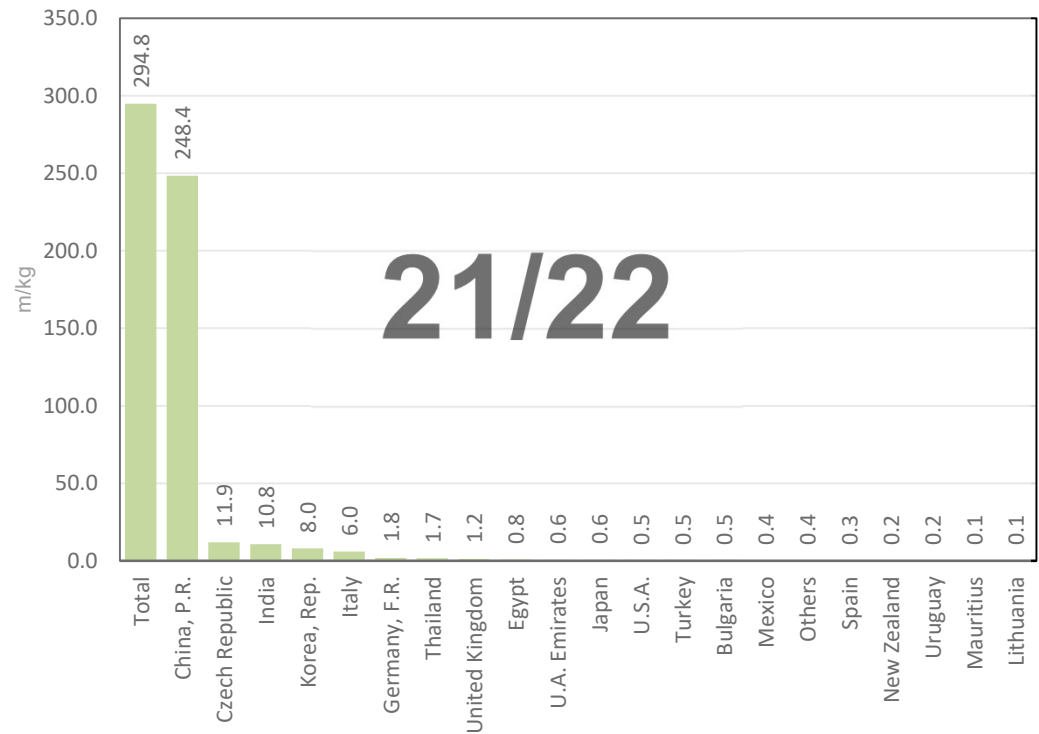


Table 8: Returns pr head for skirted fleece wool.

Skirted FLC Weight 9 Kg		Micron																	
		16	16.5	17	17.5	18	18.5	19	19.5	20	21	22	23	24	25	26	28	30	32
Yield (Sch Dry)	25% Current	\$58	\$58	\$57	\$57	\$55	\$53	\$52	\$49	\$48	\$47	\$46	\$37	\$28	\$23	\$19	\$15	\$13	\$11
	10yr ave.	\$53	\$50	\$48	\$45	\$43	\$41	\$39	\$37	\$36	\$35	\$34	\$31	\$27	\$23	\$20	\$14	\$11	\$8
	30% Current	\$70	\$69	\$68	\$68	\$66	\$64	\$62	\$58	\$57	\$57	\$55	\$44	\$33	\$27	\$23	\$18	\$15	\$14
	10yr ave.	\$63	\$60	\$57	\$55	\$52	\$49	\$46	\$44	\$43	\$41	\$41	\$37	\$32	\$27	\$24	\$16	\$13	\$10
	35% Current	\$82	\$81	\$80	\$79	\$77	\$75	\$72	\$68	\$67	\$66	\$65	\$52	\$39	\$32	\$26	\$21	\$18	\$16
	10yr ave.	\$74	\$70	\$67	\$64	\$60	\$57	\$54	\$52	\$50	\$48	\$47	\$43	\$37	\$32	\$27	\$19	\$16	\$11
	40% Current	\$93	\$93	\$91	\$90	\$88	\$85	\$83	\$78	\$77	\$76	\$74	\$59	\$45	\$37	\$30	\$24	\$21	\$18
	10yr ave.	\$84	\$80	\$76	\$73	\$69	\$65	\$62	\$59	\$57	\$55	\$54	\$49	\$43	\$36	\$31	\$22	\$18	\$13
	45% Current	\$105	\$104	\$103	\$102	\$99	\$96	\$93	\$87	\$86	\$85	\$83	\$66	\$50	\$41	\$34	\$27	\$23	\$21
	10yr ave.	\$95	\$90	\$86	\$82	\$77	\$73	\$69	\$67	\$64	\$62	\$61	\$56	\$48	\$41	\$35	\$25	\$20	\$15
	50% Current	\$117	\$116	\$114	\$113	\$110	\$107	\$103	\$97	\$96	\$95	\$92	\$74	\$56	\$46	\$38	\$30	\$26	\$23
	10yr ave.	\$105	\$100	\$96	\$91	\$86	\$81	\$77	\$74	\$71	\$69	\$68	\$62	\$54	\$45	\$39	\$27	\$22	\$16
	55% Current	\$128	\$127	\$126	\$124	\$122	\$117	\$113	\$107	\$105	\$104	\$101	\$81	\$61	\$50	\$41	\$33	\$28	\$25
	10yr ave.	\$116	\$110	\$105	\$100	\$94	\$89	\$85	\$81	\$78	\$76	\$74	\$68	\$59	\$50	\$43	\$30	\$25	\$18
	60% Current	\$140	\$139	\$137	\$136	\$133	\$128	\$124	\$116	\$115	\$113	\$111	\$89	\$67	\$55	\$45	\$36	\$31	\$27
	10yr ave.	\$127	\$120	\$115	\$109	\$103	\$98	\$93	\$89	\$86	\$83	\$81	\$74	\$64	\$54	\$47	\$33	\$27	\$20
	65% Current	\$152	\$150	\$148	\$147	\$144	\$139	\$134	\$126	\$124	\$123	\$120	\$96	\$73	\$59	\$49	\$39	\$33	\$30
	10yr ave.	\$137	\$130	\$124	\$118	\$112	\$106	\$100	\$96	\$93	\$90	\$88	\$80	\$70	\$59	\$51	\$36	\$29	\$21
	70% Current	\$163	\$162	\$160	\$158	\$155	\$149	\$144	\$136	\$134	\$132	\$129	\$103	\$78	\$64	\$53	\$42	\$36	\$32
	10yr ave.	\$148	\$140	\$134	\$127	\$120	\$114	\$108	\$104	\$100	\$97	\$95	\$86	\$75	\$64	\$55	\$38	\$31	\$23
75% Current	\$175	\$173	\$171	\$170	\$166	\$160	\$155	\$146	\$143	\$142	\$138	\$111	\$84	\$69	\$57	\$45	\$38	\$34	
10yr ave.	\$158	\$151	\$143	\$136	\$129	\$122	\$116	\$111	\$107	\$104	\$101	\$93	\$80	\$68	\$59	\$41	\$34	\$25	
80% Current	\$186	\$185	\$183	\$181	\$177	\$171	\$165	\$155	\$153	\$151	\$148	\$118	\$89	\$73	\$60	\$48	\$41	\$37	
10yr ave.	\$169	\$161	\$153	\$145	\$137	\$130	\$123	\$118	\$114	\$111	\$108	\$99	\$86	\$73	\$63	\$44	\$36	\$26	
85% Current	\$198	\$197	\$194	\$192	\$188	\$181	\$175	\$165	\$163	\$161	\$157	\$125	\$95	\$78	\$64	\$51	\$44	\$39	
10yr ave.	\$179	\$171	\$162	\$154	\$146	\$138	\$131	\$126	\$121	\$117	\$115	\$105	\$91	\$77	\$67	\$47	\$38	\$28	

The above shows estimated returns per head for skirted fleece wool. These figures do not take into account the value of skirtings and oddments and do not take into account discounts that may apply for faults under individual circumstances. These figures are based on a market index of 100% and should be used as a guide only. Returns over \$30 / head for fleece wool are highlighted.

Table 9: Returns pr head for skirted fleece wool.

Skirted FLC Weight 8 Kg		Micron																	
		16	16.5	17	17.5	18	18.5	19	19.5	20	21	22	23	24	25	26	28	30	32
Yield (Sch Dry)	25% Current	\$52	\$51	\$51	\$50	\$49	\$47	\$46	\$43	\$43	\$42	\$41	\$33	\$25	\$20	\$17	\$13	\$11	\$10
	10yr ave.	\$47	\$45	\$42	\$40	\$38	\$36	\$34	\$33	\$32	\$31	\$30	\$27	\$24	\$20	\$17	\$12	\$10	\$7
	30% Current	\$62	\$62	\$61	\$60	\$59	\$57	\$55	\$52	\$51	\$50	\$49	\$39	\$30	\$24	\$20	\$16	\$14	\$12
	10yr ave.	\$56	\$54	\$51	\$48	\$46	\$43	\$41	\$39	\$38	\$37	\$36	\$33	\$29	\$24	\$21	\$15	\$12	\$9
	35% Current	\$73	\$72	\$71	\$70	\$69	\$66	\$64	\$60	\$60	\$59	\$57	\$46	\$35	\$28	\$23	\$19	\$16	\$14
	10yr ave.	\$66	\$62	\$59	\$57	\$53	\$51	\$48	\$46	\$44	\$43	\$42	\$38	\$33	\$28	\$24	\$17	\$14	\$10
	40% Current	\$83	\$82	\$81	\$80	\$79	\$76	\$73	\$69	\$68	\$67	\$66	\$52	\$40	\$32	\$27	\$21	\$18	\$16
	10yr ave.	\$75	\$71	\$68	\$65	\$61	\$58	\$55	\$53	\$51	\$49	\$48	\$44	\$38	\$32	\$28	\$20	\$16	\$12
	45% Current	\$93	\$93	\$91	\$90	\$88	\$85	\$83	\$78	\$77	\$76	\$74	\$59	\$45	\$37	\$30	\$24	\$21	\$18
	10yr ave.	\$84	\$80	\$76	\$73	\$69	\$65	\$62	\$59	\$57	\$55	\$54	\$49	\$43	\$36	\$31	\$22	\$18	\$13
	50% Current	\$104	\$103	\$101	\$100	\$98	\$95	\$92	\$86	\$85	\$84	\$82	\$66	\$50	\$41	\$34	\$27	\$23	\$20
	10yr ave.	\$94	\$89	\$85	\$81	\$76	\$72	\$69	\$66	\$63	\$61	\$60	\$55	\$48	\$40	\$35	\$24	\$20	\$15
	55% Current	\$114	\$113	\$112	\$111	\$108	\$104	\$101	\$95	\$94	\$92	\$90	\$72	\$55	\$45	\$37	\$29	\$25	\$22
	10yr ave.	\$103	\$98	\$93	\$89	\$84	\$80	\$75	\$72	\$70	\$68	\$66	\$60	\$52	\$44	\$38	\$27	\$22	\$16
	60% Current	\$124	\$123	\$122	\$121	\$118	\$114	\$110	\$103	\$102	\$101	\$98	\$79	\$60	\$49	\$40	\$32	\$27	\$24
	10yr ave.	\$112	\$107	\$102	\$97	\$92	\$87	\$82	\$79	\$76	\$74	\$72	\$66	\$57	\$48	\$42	\$29	\$24	\$17
	65% Current	\$135	\$134	\$132	\$131	\$128	\$123	\$119	\$112	\$111	\$109	\$107	\$85	\$64	\$53	\$44	\$35	\$30	\$26
	10yr ave.	\$122	\$116	\$110	\$105	\$99	\$94	\$89	\$85	\$82	\$80	\$78	\$71	\$62	\$52	\$45	\$32	\$26	\$19
70% Current	\$145	\$144	\$142	\$141	\$137	\$133	\$128	\$121	\$119	\$118	\$115	\$92	\$69	\$57	\$47	\$37	\$32	\$28	
10yr ave.	\$131	\$125	\$119	\$113	\$107	\$101	\$96	\$92	\$89	\$86	\$84	\$77	\$67	\$57	\$49	\$34	\$28	\$20	
75% Current	\$155	\$154	\$152	\$151	\$147	\$142	\$138	\$129	\$128	\$126	\$123	\$98	\$74	\$61	\$50	\$40	\$34	\$30	
10yr ave.	\$141	\$134	\$127	\$121	\$115	\$108	\$103	\$99	\$95	\$92	\$90	\$82	\$71	\$61	\$52	\$37	\$30	\$22	
80% Current	\$166	\$164	\$162	\$161	\$157	\$152	\$147	\$138	\$136	\$134	\$131	\$105	\$79	\$65	\$54	\$43	\$36	\$33	
10yr ave.	\$150	\$143	\$136	\$129	\$122	\$116	\$110	\$105	\$101	\$98	\$96	\$88	\$76	\$65	\$56	\$39	\$32	\$23	
85% Current	\$176	\$175	\$173	\$171	\$167	\$161	\$156	\$147	\$145	\$143	\$139	\$112	\$84	\$69	\$57	\$45	\$39	\$35	
10yr ave.	\$159	\$152	\$144	\$137	\$130	\$123	\$116	\$112	\$108	\$104	\$102	\$93	\$81	\$69	\$59	\$42	\$34	\$25	

The above shows estimated returns per head for skirted fleece wool. These figures do not take into account the value of skirtings and oddments and do not take into account discounts that may apply for faults under individual circumstances. These figures are based on a market index of 100% and should be used as a guide only. Returns over \$30 / head for fleece wool are highlighted.

Table 10: Returns pr head for skirted fleece wool.

Skirted FLC Weight 7 Kg		Micron																	
		16	16.5	17	17.5	18	18.5	19	19.5	20	21	22	23	24	25	26	28	30	32
Yield (Sch Dry)	25% Current	\$45	\$45	\$44	\$44	\$43	\$42	\$40	\$38	\$37	\$37	\$36	\$29	\$22	\$18	\$15	\$12	\$10	\$9
	10yr ave.	\$41	\$39	\$37	\$35	\$33	\$32	\$30	\$29	\$28	\$27	\$26	\$24	\$21	\$18	\$15	\$11	\$9	\$6
	30% Current	\$54	\$54	\$53	\$53	\$52	\$50	\$48	\$45	\$45	\$44	\$43	\$34	\$26	\$21	\$18	\$14	\$12	\$11
	10yr ave.	\$49	\$47	\$45	\$42	\$40	\$38	\$36	\$35	\$33	\$32	\$32	\$29	\$25	\$21	\$18	\$13	\$10	\$8
	35% Current	\$63	\$63	\$62	\$62	\$60	\$58	\$56	\$53	\$52	\$51	\$50	\$40	\$30	\$25	\$21	\$16	\$14	\$12
	10yr ave.	\$57	\$55	\$52	\$49	\$47	\$44	\$42	\$40	\$39	\$38	\$37	\$34	\$29	\$25	\$21	\$15	\$12	\$9
	40% Current	\$73	\$72	\$71	\$70	\$69	\$66	\$64	\$60	\$60	\$59	\$57	\$46	\$35	\$28	\$23	\$19	\$16	\$14
	10yr ave.	\$66	\$62	\$59	\$57	\$53	\$51	\$48	\$46	\$44	\$43	\$42	\$38	\$33	\$28	\$24	\$17	\$14	\$10
	45% Current	\$82	\$81	\$80	\$79	\$77	\$75	\$72	\$68	\$67	\$66	\$65	\$52	\$39	\$32	\$26	\$21	\$18	\$16
	10yr ave.	\$74	\$70	\$67	\$64	\$60	\$57	\$54	\$52	\$50	\$48	\$47	\$43	\$37	\$32	\$27	\$19	\$16	\$11
	50% Current	\$91	\$90	\$89	\$88	\$86	\$83	\$80	\$75	\$74	\$74	\$72	\$57	\$43	\$36	\$29	\$23	\$20	\$18
	10yr ave.	\$82	\$78	\$74	\$71	\$67	\$63	\$60	\$58	\$55	\$54	\$53	\$48	\$42	\$35	\$30	\$21	\$17	\$13
	55% Current	\$100	\$99	\$98	\$97	\$95	\$91	\$88	\$83	\$82	\$81	\$79	\$63	\$48	\$39	\$32	\$26	\$22	\$20
	10yr ave.	\$90	\$86	\$82	\$78	\$73	\$70	\$66	\$63	\$61	\$59	\$58	\$53	\$46	\$39	\$34	\$24	\$19	\$14
	60% Current	\$109	\$108	\$107	\$106	\$103	\$100	\$96	\$91	\$89	\$88	\$86	\$69	\$52	\$43	\$35	\$28	\$24	\$21
	10yr ave.	\$98	\$94	\$89	\$85	\$80	\$76	\$72	\$69	\$67	\$64	\$63	\$58	\$50	\$42	\$37	\$26	\$21	\$15
	65% Current	\$118	\$117	\$115	\$114	\$112	\$108	\$104	\$98	\$97	\$96	\$93	\$75	\$56	\$46	\$38	\$30	\$26	\$23
	10yr ave.	\$107	\$101	\$97	\$92	\$87	\$82	\$78	\$75	\$72	\$70	\$68	\$62	\$54	\$46	\$40	\$28	\$23	\$17
	70% Current	\$127	\$126	\$124	\$123	\$120	\$116	\$112	\$106	\$104	\$103	\$100	\$80	\$61	\$50	\$41	\$33	\$28	\$25
10yr ave.	\$115	\$109	\$104	\$99	\$94	\$89	\$84	\$81	\$78	\$75	\$74	\$67	\$58	\$49	\$43	\$30	\$24	\$18	
75% Current	\$136	\$135	\$133	\$132	\$129	\$125	\$120	\$113	\$112	\$110	\$108	\$86	\$65	\$53	\$44	\$35	\$30	\$27	
10yr ave.	\$123	\$117	\$112	\$106	\$100	\$95	\$90	\$86	\$83	\$81	\$79	\$72	\$62	\$53	\$46	\$32	\$26	\$19	
80% Current	\$145	\$144	\$142	\$141	\$137	\$133	\$128	\$121	\$119	\$118	\$115	\$92	\$69	\$57	\$47	\$37	\$32	\$28	
10yr ave.	\$131	\$125	\$119	\$113	\$107	\$101	\$96	\$92	\$89	\$86	\$84	\$77	\$67	\$57	\$49	\$34	\$28	\$20	
85% Current	\$154	\$153	\$151	\$149	\$146	\$141	\$136	\$128	\$126	\$125	\$122	\$98	\$74	\$60	\$50	\$40	\$34	\$30	
10yr ave.	\$139	\$133	\$126	\$120	\$114	\$108	\$102	\$98	\$94	\$91	\$89	\$82	\$71	\$60	\$52	\$36	\$30	\$22	

The above shows estimated returns per head for skirted fleece wool. These figures do not take into account the value of skirtings and oddments and do not take into account discounts that may apply for faults under individual circumstances. These figures are based on a market index of 100% and should be used as a guide only. Returns over \$30 / head for fleece wool are highlighted.

Table 11: Returns pr head for skirted fleece wool.

Skirted FLC Weight 6 Kg		Micron																	
		16	16.5	17	17.5	18	18.5	19	19.5	20	21	22	23	24	25	26	28	30	32
Yield (Sch Dry)	25% Current	\$39	\$39	\$38	\$38	\$37	\$36	\$34	\$32	\$32	\$32	\$31	\$25	\$19	\$15	\$13	\$10	\$9	\$8
	10yr ave.	\$35	\$33	\$32	\$30	\$29	\$27	\$26	\$25	\$24	\$23	\$23	\$21	\$18	\$15	\$13	\$9	\$7	\$5
	30% Current	\$47	\$46	\$46	\$45	\$44	\$43	\$41	\$39	\$38	\$38	\$37	\$30	\$22	\$18	\$15	\$12	\$10	\$9
	10yr ave.	\$42	\$40	\$38	\$36	\$34	\$33	\$31	\$30	\$29	\$28	\$27	\$25	\$21	\$18	\$16	\$11	\$9	\$7
	35% Current	\$54	\$54	\$53	\$53	\$52	\$50	\$48	\$45	\$45	\$44	\$43	\$34	\$26	\$21	\$18	\$14	\$12	\$11
	10yr ave.	\$49	\$47	\$45	\$42	\$40	\$38	\$36	\$35	\$33	\$32	\$32	\$29	\$25	\$21	\$18	\$13	\$10	\$8
	40% Current	\$62	\$62	\$61	\$60	\$59	\$57	\$55	\$52	\$51	\$50	\$49	\$39	\$30	\$24	\$20	\$16	\$14	\$12
	10yr ave.	\$56	\$54	\$51	\$48	\$46	\$43	\$41	\$39	\$38	\$37	\$36	\$33	\$29	\$24	\$21	\$15	\$12	\$9
	45% Current	\$70	\$69	\$68	\$68	\$66	\$64	\$62	\$58	\$57	\$57	\$55	\$44	\$33	\$27	\$23	\$18	\$15	\$14
	10yr ave.	\$63	\$60	\$57	\$55	\$52	\$49	\$46	\$44	\$43	\$41	\$41	\$37	\$32	\$27	\$24	\$16	\$13	\$10
	50% Current	\$78	\$77	\$76	\$75	\$74	\$71	\$69	\$65	\$64	\$63	\$62	\$49	\$37	\$30	\$25	\$20	\$17	\$15
	10yr ave.	\$70	\$67	\$64	\$61	\$57	\$54	\$51	\$49	\$48	\$46	\$45	\$41	\$36	\$30	\$26	\$18	\$15	\$11
	55% Current	\$85	\$85	\$84	\$83	\$81	\$78	\$76	\$71	\$70	\$69	\$68	\$54	\$41	\$33	\$28	\$22	\$19	\$17
	10yr ave.	\$77	\$74	\$70	\$67	\$63	\$60	\$57	\$54	\$52	\$51	\$50	\$45	\$39	\$33	\$29	\$20	\$16	\$12
	60% Current	\$93	\$93	\$91	\$90	\$88	\$85	\$83	\$78	\$77	\$76	\$74	\$59	\$45	\$37	\$30	\$24	\$21	\$18
	10yr ave.	\$84	\$80	\$76	\$73	\$69	\$65	\$62	\$59	\$57	\$55	\$54	\$49	\$43	\$36	\$31	\$22	\$18	\$13
	65% Current	\$101	\$100	\$99	\$98	\$96	\$93	\$89	\$84	\$83	\$82	\$80	\$64	\$48	\$40	\$33	\$26	\$22	\$20
	10yr ave.	\$91	\$87	\$83	\$79	\$74	\$70	\$67	\$64	\$62	\$60	\$59	\$54	\$46	\$39	\$34	\$24	\$19	\$14
	70% Current	\$109	\$108	\$107	\$106	\$103	\$100	\$96	\$91	\$89	\$88	\$86	\$69	\$52	\$43	\$35	\$28	\$24	\$21
	10yr ave.	\$98	\$94	\$89	\$85	\$80	\$76	\$72	\$69	\$67	\$64	\$63	\$58	\$50	\$42	\$37	\$26	\$21	\$15
75% Current	\$117	\$116	\$114	\$113	\$110	\$107	\$103	\$97	\$96	\$95	\$92	\$74	\$56	\$46	\$38	\$30	\$26	\$23	
10yr ave.	\$105	\$100	\$96	\$91	\$86	\$81	\$77	\$74	\$71	\$69	\$68	\$62	\$54	\$45	\$39	\$27	\$22	\$16	
80% Current	\$124	\$123	\$122	\$121	\$118	\$114	\$110	\$103	\$102	\$101	\$98	\$79	\$60	\$49	\$40	\$32	\$27	\$24	
10yr ave.	\$112	\$107	\$102	\$97	\$92	\$87	\$82	\$79	\$76	\$74	\$72	\$66	\$57	\$48	\$42	\$29	\$24	\$17	
85% Current	\$132	\$131	\$129	\$128	\$125	\$121	\$117	\$110	\$108	\$107	\$105	\$84	\$63	\$52	\$43	\$34	\$29	\$26	
10yr ave.	\$119	\$114	\$108	\$103	\$97	\$92	\$87	\$84	\$81	\$78	\$77	\$70	\$61	\$51	\$44	\$31	\$25	\$19	

The above shows estimated returns per head for skirted fleece wool. These figures do not take into account the value of skirtings and oddments and do not take into account discounts that may apply for faults under individual circumstances. These figures are based on a market index of 100% and should be used as a guide only. Returns over \$30 / head for fleece wool are highlighted.

Table 12: Returns pr head for skirted fleece wool.

Skirted FLC Weight 5 Kg		Micron																	
		16	16.5	17	17.5	18	18.5	19	19.5	20	21	22	23	24	25	26	28	30	32
Yield (Sch Dry)	25% Current	\$32	\$32	\$32	\$31	\$31	\$30	\$29	\$27	\$27	\$26	\$26	\$21	\$16	\$13	\$10	\$8	\$7	\$6
	10yr ave.	\$29	\$28	\$27	\$25	\$24	\$23	\$21	\$21	\$20	\$19	\$19	\$17	\$15	\$13	\$11	\$8	\$6	\$5
	30% Current	\$39	\$39	\$38	\$38	\$37	\$36	\$34	\$32	\$32	\$32	\$31	\$25	\$19	\$15	\$13	\$10	\$9	\$8
	10yr ave.	\$35	\$33	\$32	\$30	\$29	\$27	\$26	\$25	\$24	\$23	\$23	\$21	\$18	\$15	\$13	\$9	\$7	\$5
	35% Current	\$45	\$45	\$44	\$44	\$43	\$42	\$40	\$38	\$37	\$37	\$36	\$29	\$22	\$18	\$15	\$12	\$10	\$9
	10yr ave.	\$41	\$39	\$37	\$35	\$33	\$32	\$30	\$29	\$28	\$27	\$26	\$24	\$21	\$18	\$15	\$11	\$9	\$6
	40% Current	\$52	\$51	\$51	\$50	\$49	\$47	\$46	\$43	\$43	\$42	\$41	\$33	\$25	\$20	\$17	\$13	\$11	\$10
	10yr ave.	\$47	\$45	\$42	\$40	\$38	\$36	\$34	\$33	\$32	\$31	\$30	\$27	\$24	\$20	\$17	\$12	\$10	\$7
	45% Current	\$58	\$58	\$57	\$57	\$55	\$53	\$52	\$49	\$48	\$47	\$46	\$37	\$28	\$23	\$19	\$15	\$13	\$11
	10yr ave.	\$53	\$50	\$48	\$45	\$43	\$41	\$39	\$37	\$36	\$35	\$34	\$31	\$27	\$23	\$20	\$14	\$11	\$8
	50% Current	\$65	\$64	\$63	\$63	\$61	\$59	\$57	\$54	\$53	\$53	\$51	\$41	\$31	\$25	\$21	\$17	\$14	\$13
	10yr ave.	\$59	\$56	\$53	\$50	\$48	\$45	\$43	\$41	\$40	\$38	\$38	\$34	\$30	\$25	\$22	\$15	\$12	\$9
	55% Current	\$71	\$71	\$70	\$69	\$68	\$65	\$63	\$59	\$58	\$58	\$56	\$45	\$34	\$28	\$23	\$18	\$16	\$14
	10yr ave.	\$64	\$61	\$58	\$56	\$52	\$50	\$47	\$45	\$44	\$42	\$41	\$38	\$33	\$28	\$24	\$17	\$14	\$10
	60% Current	\$78	\$77	\$76	\$75	\$74	\$71	\$69	\$65	\$64	\$63	\$62	\$49	\$37	\$30	\$25	\$20	\$17	\$15
	10yr ave.	\$70	\$67	\$64	\$61	\$57	\$54	\$51	\$49	\$48	\$46	\$45	\$41	\$36	\$30	\$26	\$18	\$15	\$11
	65% Current	\$84	\$84	\$82	\$82	\$80	\$77	\$74	\$70	\$69	\$68	\$67	\$53	\$40	\$33	\$27	\$22	\$19	\$17
	10yr ave.	\$76	\$72	\$69	\$66	\$62	\$59	\$56	\$53	\$51	\$50	\$49	\$45	\$39	\$33	\$28	\$20	\$16	\$12
	70% Current	\$91	\$90	\$89	\$88	\$86	\$83	\$80	\$75	\$74	\$74	\$72	\$57	\$43	\$36	\$29	\$23	\$20	\$18
	10yr ave.	\$82	\$78	\$74	\$71	\$67	\$63	\$60	\$58	\$55	\$54	\$53	\$48	\$42	\$35	\$30	\$21	\$17	\$13
75% Current	\$97	\$96	\$95	\$94	\$92	\$89	\$86	\$81	\$80	\$79	\$77	\$62	\$47	\$38	\$31	\$25	\$21	\$19	
10yr ave.	\$88	\$84	\$80	\$76	\$72	\$68	\$64	\$62	\$59	\$58	\$56	\$51	\$45	\$38	\$33	\$23	\$19	\$14	
80% Current	\$104	\$103	\$101	\$100	\$98	\$95	\$92	\$86	\$85	\$84	\$82	\$66	\$50	\$41	\$34	\$27	\$23	\$20	
10yr ave.	\$94	\$89	\$85	\$81	\$76	\$72	\$69	\$66	\$63	\$61	\$60	\$55	\$48	\$40	\$35	\$24	\$20	\$15	
85% Current	\$110	\$109	\$108	\$107	\$104	\$101	\$97	\$92	\$90	\$89	\$87	\$70	\$53	\$43	\$36	\$28	\$24	\$22	
10yr ave.	\$100	\$95	\$90	\$86	\$81	\$77	\$73	\$70	\$67	\$65	\$64	\$58	\$51	\$43	\$37	\$26	\$21	\$15	

The above shows estimated returns per head for skirted fleece wool. These figures do not take into account the value of skirtings and oddments and do not take into account discounts that may apply for faults under individual circumstances. These figures are based on a market index of 100% and should be used as a guide only. Returns over \$30 / head for fleece wool are highlighted.

Table 13: Returns pr head for skirted fleece wool.

Skirted FLC Weight 4 Kg		Micron																	
		16	16.5	17	17.5	18	18.5	19	19.5	20	21	22	23	24	25	26	28	30	32
Yield (Sch Dry)	25% Current	\$26	\$26	\$25	\$25	\$25	\$24	\$23	\$22	\$21	\$21	\$21	\$16	\$12	\$10	\$8	\$7	\$6	\$5
	10yr ave.	\$23	\$22	\$21	\$20	\$19	\$18	\$17	\$16	\$16	\$15	\$15	\$14	\$12	\$10	\$9	\$6	\$5	\$4
	30% Current	\$31	\$31	\$30	\$30	\$29	\$28	\$28	\$26	\$26	\$25	\$25	\$20	\$15	\$12	\$10	\$8	\$7	\$6
	10yr ave.	\$28	\$27	\$25	\$24	\$23	\$22	\$21	\$20	\$19	\$18	\$18	\$16	\$14	\$12	\$10	\$7	\$6	\$4
	35% Current	\$36	\$36	\$36	\$35	\$34	\$33	\$32	\$30	\$30	\$29	\$29	\$23	\$17	\$14	\$12	\$9	\$8	\$7
	10yr ave.	\$33	\$31	\$30	\$28	\$27	\$25	\$24	\$23	\$22	\$21	\$21	\$19	\$17	\$14	\$12	\$9	\$7	\$5
	40% Current	\$41	\$41	\$41	\$40	\$39	\$38	\$37	\$34	\$34	\$34	\$33	\$26	\$20	\$16	\$13	\$11	\$9	\$8
	10yr ave.	\$37	\$36	\$34	\$32	\$31	\$29	\$27	\$26	\$25	\$25	\$24	\$22	\$19	\$16	\$14	\$10	\$8	\$6
	45% Current	\$47	\$46	\$46	\$45	\$44	\$43	\$41	\$39	\$38	\$38	\$37	\$30	\$22	\$18	\$15	\$12	\$10	\$9
	10yr ave.	\$42	\$40	\$38	\$36	\$34	\$33	\$31	\$30	\$29	\$28	\$27	\$25	\$21	\$18	\$16	\$11	\$9	\$7
	50% Current	\$52	\$51	\$51	\$50	\$49	\$47	\$46	\$43	\$43	\$42	\$41	\$33	\$25	\$20	\$17	\$13	\$11	\$10
	10yr ave.	\$47	\$45	\$42	\$40	\$38	\$36	\$34	\$33	\$32	\$31	\$30	\$27	\$24	\$20	\$17	\$12	\$10	\$7
	55% Current	\$57	\$57	\$56	\$55	\$54	\$52	\$50	\$47	\$47	\$46	\$45	\$36	\$27	\$22	\$18	\$15	\$13	\$11
	10yr ave.	\$52	\$49	\$47	\$44	\$42	\$40	\$38	\$36	\$35	\$34	\$33	\$30	\$26	\$22	\$19	\$13	\$11	\$8
	60% Current	\$62	\$62	\$61	\$60	\$59	\$57	\$55	\$52	\$51	\$50	\$49	\$39	\$30	\$24	\$20	\$16	\$14	\$12
	10yr ave.	\$56	\$54	\$51	\$48	\$46	\$43	\$41	\$39	\$38	\$37	\$36	\$33	\$29	\$24	\$21	\$15	\$12	\$9
	65% Current	\$67	\$67	\$66	\$65	\$64	\$62	\$60	\$56	\$55	\$55	\$53	\$43	\$32	\$26	\$22	\$17	\$15	\$13
	10yr ave.	\$61	\$58	\$55	\$52	\$50	\$47	\$45	\$43	\$41	\$40	\$39	\$36	\$31	\$26	\$23	\$16	\$13	\$9
70% Current	\$73	\$72	\$71	\$70	\$69	\$66	\$64	\$60	\$60	\$59	\$57	\$46	\$35	\$28	\$23	\$19	\$16	\$14	
10yr ave.	\$66	\$62	\$59	\$57	\$53	\$51	\$48	\$46	\$44	\$43	\$42	\$38	\$33	\$28	\$24	\$17	\$14	\$10	
75% Current	\$78	\$77	\$76	\$75	\$74	\$71	\$69	\$65	\$64	\$63	\$62	\$49	\$37	\$30	\$25	\$20	\$17	\$15	
10yr ave.	\$70	\$67	\$64	\$61	\$57	\$54	\$51	\$49	\$48	\$46	\$45	\$41	\$36	\$30	\$26	\$18	\$15	\$11	
80% Current	\$83	\$82	\$81	\$80	\$79	\$76	\$73	\$69	\$68	\$67	\$66	\$52	\$40	\$32	\$27	\$21	\$18	\$16	
10yr ave.	\$75	\$71	\$68	\$65	\$61	\$58	\$55	\$53	\$51	\$49	\$48	\$44	\$38	\$32	\$28	\$20	\$16	\$12	
85% Current	\$88	\$87	\$86	\$85	\$83	\$81	\$78	\$73	\$72	\$71	\$70	\$56	\$42	\$35	\$28	\$23	\$19	\$17	
10yr ave.	\$80	\$76	\$72	\$69	\$65	\$61	\$58	\$56	\$54	\$52	\$51	\$47	\$40	\$34	\$30	\$21	\$17	\$12	

The above shows estimated returns per head for skirted fleece wool. These figures do not take into account the value of skirtings and oddments and do not take into account discounts that may apply for faults under individual circumstances. These figures are based on a market index of 100% and should be used as a guide only. Returns over \$30 / head for fleece wool are highlighted.

Table 14: Returns pr head for skirted fleece wool.

Skirted FLC Weight 3 Kg		Micron																	
		16	16.5	17	17.5	18	18.5	19	19.5	20	21	22	23	24	25	26	28	30	32
Yield (Sch Dry)	25% Current	\$19	\$19	\$19	\$19	\$18	\$18	\$17	\$16	\$16	\$16	\$15	\$12	\$9	\$8	\$6	\$5	\$4	\$4
	10yr ave.	\$18	\$17	\$16	\$15	\$14	\$14	\$13	\$12	\$12	\$12	\$11	\$10	\$9	\$8	\$7	\$5	\$4	\$3
	30% Current	\$23	\$23	\$23	\$23	\$22	\$21	\$21	\$19	\$19	\$19	\$18	\$15	\$11	\$9	\$8	\$6	\$5	\$5
	10yr ave.	\$21	\$20	\$19	\$18	\$17	\$16	\$15	\$15	\$14	\$14	\$14	\$12	\$11	\$9	\$8	\$5	\$4	\$3
	35% Current	\$27	\$27	\$27	\$26	\$26	\$25	\$24	\$23	\$22	\$22	\$22	\$17	\$13	\$11	\$9	\$7	\$6	\$5
	10yr ave.	\$25	\$23	\$22	\$21	\$20	\$19	\$18	\$17	\$17	\$16	\$16	\$14	\$12	\$11	\$9	\$6	\$5	\$4
	40% Current	\$31	\$31	\$30	\$30	\$29	\$28	\$28	\$26	\$26	\$25	\$25	\$20	\$15	\$12	\$10	\$8	\$7	\$6
	10yr ave.	\$28	\$27	\$25	\$24	\$23	\$22	\$21	\$20	\$19	\$18	\$18	\$16	\$14	\$12	\$10	\$7	\$6	\$4
	45% Current	\$35	\$35	\$34	\$34	\$33	\$32	\$31	\$29	\$29	\$28	\$28	\$22	\$17	\$14	\$11	\$9	\$8	\$7
	10yr ave.	\$32	\$30	\$29	\$27	\$26	\$24	\$23	\$22	\$21	\$21	\$20	\$19	\$16	\$14	\$12	\$8	\$7	\$5
	50% Current	\$39	\$39	\$38	\$38	\$37	\$36	\$34	\$32	\$32	\$32	\$31	\$25	\$19	\$15	\$13	\$10	\$9	\$8
	10yr ave.	\$35	\$33	\$32	\$30	\$29	\$27	\$26	\$25	\$24	\$23	\$23	\$21	\$18	\$15	\$13	\$9	\$7	\$5
	55% Current	\$43	\$42	\$42	\$41	\$41	\$39	\$38	\$36	\$35	\$35	\$34	\$27	\$20	\$17	\$14	\$11	\$9	\$8
	10yr ave.	\$39	\$37	\$35	\$33	\$31	\$30	\$28	\$27	\$26	\$25	\$25	\$23	\$20	\$17	\$14	\$10	\$8	\$6
	60% Current	\$47	\$46	\$46	\$45	\$44	\$43	\$41	\$39	\$38	\$38	\$37	\$30	\$22	\$18	\$15	\$12	\$10	\$9
	10yr ave.	\$42	\$40	\$38	\$36	\$34	\$33	\$31	\$30	\$29	\$28	\$27	\$25	\$21	\$18	\$16	\$11	\$9	\$7
	65% Current	\$51	\$50	\$49	\$49	\$48	\$46	\$45	\$42	\$41	\$41	\$40	\$32	\$24	\$20	\$16	\$13	\$11	\$10
	10yr ave.	\$46	\$43	\$41	\$39	\$37	\$35	\$33	\$32	\$31	\$30	\$29	\$27	\$23	\$20	\$17	\$12	\$10	\$7
70% Current	\$54	\$54	\$53	\$53	\$52	\$50	\$48	\$45	\$45	\$44	\$43	\$34	\$26	\$21	\$18	\$14	\$12	\$11	
10yr ave.	\$49	\$47	\$45	\$42	\$40	\$38	\$36	\$35	\$33	\$32	\$32	\$29	\$25	\$21	\$18	\$13	\$10	\$8	
75% Current	\$58	\$58	\$57	\$57	\$55	\$53	\$52	\$49	\$48	\$47	\$46	\$37	\$28	\$23	\$19	\$15	\$13	\$11	
10yr ave.	\$53	\$50	\$48	\$45	\$43	\$41	\$39	\$37	\$36	\$35	\$34	\$31	\$27	\$23	\$20	\$14	\$11	\$8	
80% Current	\$62	\$62	\$61	\$60	\$59	\$57	\$55	\$52	\$51	\$50	\$49	\$39	\$30	\$24	\$20	\$16	\$14	\$12	
10yr ave.	\$56	\$54	\$51	\$48	\$46	\$43	\$41	\$39	\$38	\$37	\$36	\$33	\$29	\$24	\$21	\$15	\$12	\$9	
85% Current	\$66	\$66	\$65	\$64	\$63	\$60	\$58	\$55	\$54	\$54	\$52	\$42	\$32	\$26	\$21	\$17	\$15	\$13	
10yr ave.	\$60	\$57	\$54	\$51	\$49	\$46	\$44	\$42	\$40	\$39	\$38	\$35	\$30	\$26	\$22	\$16	\$13	\$9	

The above shows estimated returns per head for skirted fleece wool. These figures do not take into account the value of skirtings and oddments and do not take into account discounts that may apply for faults under individual circumstances. These figures are based on a market index of 100% and should be used as a guide only. Returns over \$30 / head for fleece wool are highlighted.



Table 15: Returns pr head for skirted fleece wool.

Skirted FLC Weight 2 Kg		Micron																	
		16	16.5	17	17.5	18	18.5	19	19.5	20	21	22	23	24	25	26	28	30	32
Yield (Sch Dry)	25% Current	\$13	\$13	\$13	\$13	\$12	\$12	\$11	\$11	\$11	\$11	\$10	\$8	\$6	\$5	\$4	\$3	\$3	\$3
	10yr ave.	\$12	\$11	\$11	\$10	\$10	\$9	\$9	\$8	\$8	\$8	\$8	\$7	\$6	\$5	\$4	\$3	\$2	\$2
	30% Current	\$16	\$15	\$15	\$15	\$15	\$14	\$14	\$13	\$13	\$13	\$12	\$10	\$7	\$6	\$5	\$4	\$3	\$3
	10yr ave.	\$14	\$13	\$13	\$12	\$11	\$11	\$10	\$10	\$10	\$9	\$9	\$8	\$7	\$6	\$5	\$4	\$3	\$2
	35% Current	\$18	\$18	\$18	\$18	\$17	\$17	\$16	\$15	\$15	\$15	\$14	\$11	\$9	\$7	\$6	\$5	\$4	\$4
	10yr ave.	\$16	\$16	\$15	\$14	\$13	\$13	\$12	\$12	\$11	\$11	\$11	\$10	\$8	\$7	\$6	\$4	\$3	\$3
	40% Current	\$21	\$21	\$20	\$20	\$20	\$19	\$18	\$17	\$17	\$17	\$16	\$13	\$10	\$8	\$7	\$5	\$5	\$4
	10yr ave.	\$19	\$18	\$17	\$16	\$15	\$14	\$14	\$13	\$13	\$12	\$12	\$11	\$10	\$8	\$7	\$5	\$4	\$3
	45% Current	\$23	\$23	\$23	\$23	\$22	\$21	\$21	\$19	\$19	\$19	\$18	\$15	\$11	\$9	\$8	\$6	\$5	\$5
	10yr ave.	\$21	\$20	\$19	\$18	\$17	\$16	\$15	\$15	\$14	\$14	\$14	\$12	\$11	\$9	\$8	\$5	\$4	\$3
	50% Current	\$26	\$26	\$25	\$25	\$25	\$24	\$23	\$22	\$21	\$21	\$21	\$16	\$12	\$10	\$8	\$7	\$6	\$5
	10yr ave.	\$23	\$22	\$21	\$20	\$19	\$18	\$17	\$16	\$16	\$15	\$15	\$14	\$12	\$10	\$9	\$6	\$5	\$4
	55% Current	\$28	\$28	\$28	\$28	\$27	\$26	\$25	\$24	\$23	\$23	\$23	\$18	\$14	\$11	\$9	\$7	\$6	\$6
	10yr ave.	\$26	\$25	\$23	\$22	\$21	\$20	\$19	\$18	\$17	\$17	\$17	\$15	\$13	\$11	\$10	\$7	\$5	\$4
	60% Current	\$31	\$31	\$30	\$30	\$29	\$28	\$28	\$26	\$26	\$25	\$25	\$20	\$15	\$12	\$10	\$8	\$7	\$6
	10yr ave.	\$28	\$27	\$25	\$24	\$23	\$22	\$21	\$20	\$19	\$18	\$18	\$16	\$14	\$12	\$10	\$7	\$6	\$4
	65% Current	\$34	\$33	\$33	\$33	\$32	\$31	\$30	\$28	\$28	\$27	\$27	\$21	\$16	\$13	\$11	\$9	\$7	\$7
10yr ave.	\$30	\$29	\$28	\$26	\$25	\$23	\$22	\$21	\$21	\$20	\$20	\$18	\$15	\$13	\$11	\$8	\$6	\$5	
70% Current	\$36	\$36	\$36	\$35	\$34	\$33	\$32	\$30	\$30	\$29	\$29	\$23	\$17	\$14	\$12	\$9	\$8	\$7	
10yr ave.	\$33	\$31	\$30	\$28	\$27	\$25	\$24	\$23	\$22	\$21	\$21	\$19	\$17	\$14	\$12	\$9	\$7	\$5	
75% Current	\$39	\$39	\$38	\$38	\$37	\$36	\$34	\$32	\$32	\$32	\$31	\$25	\$19	\$15	\$13	\$10	\$9	\$8	
10yr ave.	\$35	\$33	\$32	\$30	\$29	\$27	\$26	\$25	\$24	\$23	\$23	\$21	\$18	\$15	\$13	\$9	\$7	\$5	
80% Current	\$41	\$41	\$41	\$40	\$39	\$38	\$37	\$34	\$34	\$34	\$33	\$26	\$20	\$16	\$13	\$11	\$9	\$8	
10yr ave.	\$37	\$36	\$34	\$32	\$31	\$29	\$27	\$26	\$25	\$25	\$24	\$22	\$19	\$16	\$14	\$10	\$8	\$6	
85% Current	\$44	\$44	\$43	\$43	\$42	\$40	\$39	\$37	\$36	\$36	\$35	\$28	\$21	\$17	\$14	\$11	\$10	\$9	
10yr ave.	\$40	\$38	\$36	\$34	\$32	\$31	\$29	\$28	\$27	\$26	\$26	\$23	\$20	\$17	\$15	\$10	\$8	\$6	

The above shows estimated returns per head for skirted fleece wool. These figures do not take into account the value of skirtings and oddments and do not take into account discounts that may apply for faults under individual circumstances. These figures are based on a market index of 100% and should be used as a guide only. Returns over \$30 / head for fleece wool are highlighted.