



Table 1: Northern Region Micron Price Guides

CURRENT MARKET			PERCENTILES		AVERAGES				12 MONTH COMPARISONS								TRADING RANGE		
Mic.	16/09/2010	8/09/2010	3yr	10yr	Now		Now		15/09/2009		Now		Now		Now		Clean c/kg		
Price	Current	Weekly			3 year	compared	10 year	compared	This time	compared	12 Month	compared	12 Month	compared	12 Month	compared	12	3	10
Guides	Price	Change			Average	to 3yr ave	Average	to 10yr ave	Last Year	to Last Year	Low	to Low	High	to High			Mth	Year	Year
NRI	898	-7 -0.8%	45%	62%	897	+1 0%	865	+33 4%	833	+65 8%	870	+28 3%	974	-76 -8%	104	343	584		
16*	1650	0	63%		1616	+34 2%			1470	+180 12%	1345	+305 23%	1650	0 0%	305	645			
16.5*	1510	-30 -2.0%	71%		1475	+35 2%			1340	+170 13%	1260	+250 20%	1540	-30 -2%	280	544			
17*	1390	0	60%	71%	1355	+35 3%	1436	-46 -3%	1230	+160 13%	1175	+215 18%	1400	-10 -1%	225	498	1850		
17.5*	1280	0	55%		1293	-13 -1%			1165	+115 10%	1155	+125 11%	1290	-10 -1%	135	493			
18	1224	-8 -0.7%	59%	54%	1236	-12 -1%	1296	-72 -6%	1119	+105 9%	1113	+111 10%	1238	-14 -1%	125	432	1392		
18.5	1152	-13 -1.1%	58%		1164	-12 -1%			1053	+99 9%	1073	+79 7%	1183	-31 -3%	110	425			
19	1054	-8 -0.8%	41%	52%	1073	-19 -2%	1068	-14 -1%	991	+63 6%	1017	+37 4%	1120	-66 -6%	103	443	706		
19.5	956	-15 -1.6%	32%		989	-33 -3%			916	+40 4%	953	+3 0%	1067	-111 -10%	114	457			
20	909	-8 -0.9%	44%	57%	918	-9 -1%	909	0 0%	845	+64 8%	893	+16 2%	1023	-114 -11%	130	464	717		
21	886	-7 -0.8%	50%	60%	879	+7 1%	861	+25 3%	817	+69 8%	863	+23 3%	1006	-120 -12%	143	426	786		
22	857	-13 -1.5%	49%	60%	854	+3 0%	838	+19 2%	800	+57 7%	828	+29 4%	971	-114 -12%	143	360	830		
23	837	-15 -1.8%	52%	60%	831	+6 1%	817	+20 2%	783	+54 7%	806	+31 4%	940	-103 -11%	134	311	831		
24	793	-15 -1.9%	53%	60%	783	+10 1%	782	+11 1%	765	+28 4%	760	+33 4%	881	-88 -10%	121	257	804		
25	703	+1 0.1%	73%	69%	667	+36 5%	702	+1 0%	654	+49 7%	650	+53 8%	725	-22 -3%	75	188	727		
26	606	0	51%	51%	599	+7 1%	644	-38 -6%	596	+10 2%	560	+46 8%	630	-24 -4%	70	155	641		
28	448	-4 -0.9%	31%	13%	459	-11 -2%	521	-73 -14%	468	-20 -4%	430	+18 4%	493	-45 -9%	63	119	465		
30	399	+1 0.3%	57%	21%	393	+6 2%	455	-56 -12%	403	-4 -1%	374	+25 7%	434	-35 -8%	60	136	384		
32	354	+1 0.3%	72%	22%	342	+12 4%	413	-59 -14%	343	+11 3%	324	+30 9%	375	-21 -6%	51	108	372		
MC	564	+2 0.4%	56%	76%	539	+25 5%	494	+70 14%	541	+23 4%	561	+3 1%	681	-117 -17%	120	289	331		

Note:

* Due to the irregular market quoting for some fine wool categories, figures shown relating to micron categories below 18 micron are an estimate based on the AWEX Premium & Discounts Report & other available information.

* For any category, where there is insufficient quantity offered to enable AWEX to quote, a quote will be provided based on the best available information.

* 10 Year data is not available for some micron categories, which may result in blank spaces in the table above.

Definitions:

* A Percentile, is a value on a scale of one hundred that indicates the percent of a distribution that is equal to or below it. In general a percentile between 25% and 75% is considered normal, a percentile below 25% is considered below normal and a percentile above 75% is considered above normal.

Three and ten year percentiles shown in the table above, detail the period of time during the past 3 & 10 years that the market has traded either at or below its current price.

The higher the percentile, the stronger the market.

Source: Australian Wool Exchange, Australian Wool Innovation, Sydney Futures Exchange, x-rates.com

Disclaimer: While all due care has been taken in the preparation of this document, no warranty is made as to its accuracy, reliability or completeness. To the extent permitted by law neither Jemalong or their sources including subsidiaries and staff, accept liability to any person for loss or damage arising from the use of this information.



MARKET COMMENTARY

Australian Dollar 93.00 cents US as of 16/09/2010

NORTHERN REGION – Sale Week 11/10 (40,526 bales offered nationally)

Wednesday

Merino Fleece: Best style and high Nkt fine microns sold well attracting prices similar to previous levels, where as the lower Nkt lots suffered discounting for high mid breaks. The strong AUD did contribute to 19 micron and broader easing 5-10 cents.

Merino Skirting's: Buyers Supported most microns with 5% Vm and less, while the burrier types were irregular and did close in buyers favour.

Merino Oddments: Lock's and Crutching's finished in buyers favour for the 20 micron and broader types, while the finer microns remained firm. Stains were also unchanged.

Crossbreds: After a firm start, 27 to 29 microns drifted slightly, closing 5 cents lower, however 30 microns and broader remained fully firm.

Offering: 5,168 bales were offered in the North with 12.9% Passed-In.

Thursday

Merino Fleece: Buyers concentrated on 21 microns with 20 to 21 microns closing in sellers favour. Broader microns eased 5 cents as did 18 to 19.5 microns. The fine end of the market remained unchanged on a limited offering.

Merino Skirting's: Good competition spread over all descriptions left the skirting market unchanged.

Merino Oddments: Lock's and Crutching's remained unchanged through out the day while stains were 10 cents dearer.

Crossbreds: A smaller offering left all microns firm and unchanged.

Offering: 5,284 bales were offered in the North with 7.2% Passed-In.

Source: AWEX

46,314 bales have been rostered for next week's sale. Jemalong are selling on Thursday 23rd September.

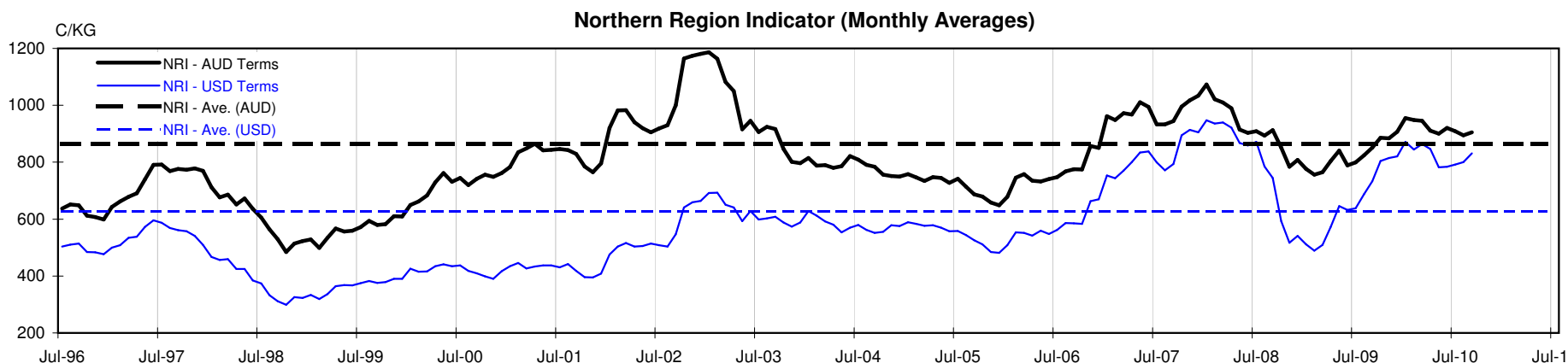




Table 4: 19 micron SFE

Wednesday, 15 September 2010

Delivery Mth	Oct-10	Dec-10	Feb-11	Apr-11	Jun-11	Aug-11	Oct-11	Dec-11	Feb-12
19 Micron SFE	1053	1053	1053	1053	1053	1053	1053	1053	1053
Average	1019	1031	1039	1047	1051	1053	1050	1044	1052
Maximum	1088	1088	1088	1088	1088	1088	1080	1065	1065
Minimum	884	905	936	983	1025	1034	1034	1034	1034

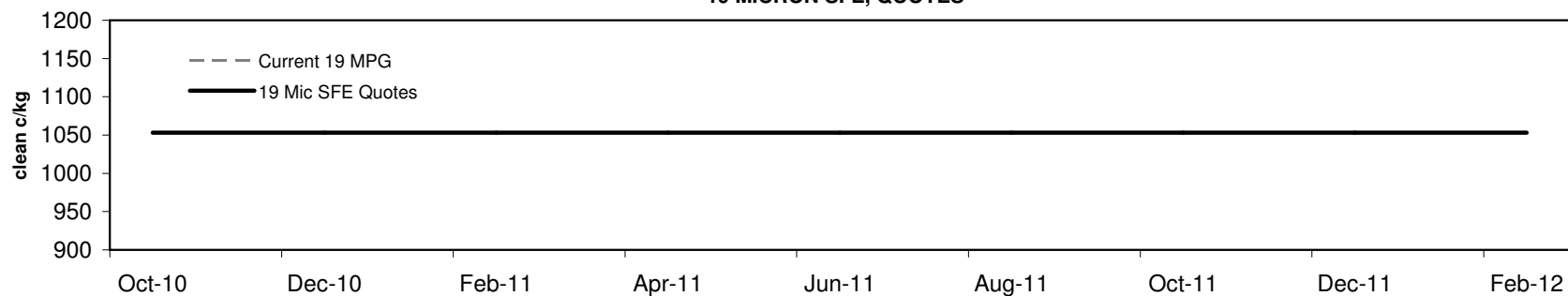
Table 5: 19 micron SFE, as a percentile of the 19 micron MPG

3 Year Percentile	40%	40%	40%	40%	40%	40%	40%	40%	40%
10 Year Percentile	52%	52%	52%	52%	52%	52%	52%	52%	52%

Table 6: 19 micron SFE, compared to MPG

Current 19 MPG	-1	0%	-1	0%	-1	0%	-1	0%	-1	0%	-1	0%	-1	0%	-1	0%	-1	0%
19 MPG, 1 Year Average	-13	-1%	-13	-1%	-13	-1%	-13	-1%	-13	-1%	-13	-1%	-13	-1%	-13	-1%	-13	-1%
19 MPG, 3 Year Average	-20	-2%	-20	-2%	-20	-2%	-20	-2%	-20	-2%	-20	-2%	-20	-2%	-20	-2%	-20	-2%
19 MPG, 10 Year Average	-15	-1%	-15	-1%	-15	-1%	-15	-1%	-15	-1%	-15	-1%	-15	-1%	-15	-1%	-15	-1%

19 MICRON SFE, QUOTES



19 MICRON SFE, FRONT MONTH PRICE MOVEMENT (mthly averages)

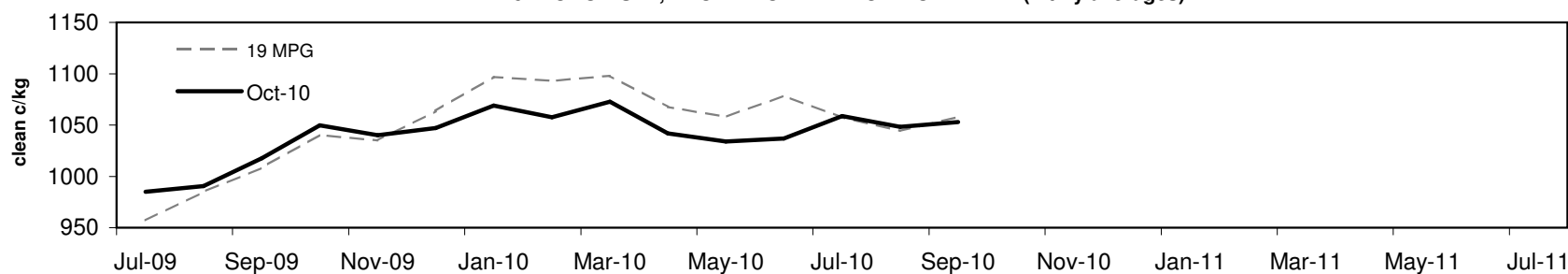




Table 7: 21 micron SFE

Wednesday, 15 September 2010

Delivery Mth	Oct-10	Dec-10	Feb-11	Apr-11	Jun-11	Aug-11	Oct-11	Dec-11	Feb-12
21 Micron SFE	904	903	903	891	890	880	890	880	880
Average	900	913	923	932	936	937	927	910	904
Maximum	1003	1013	1004	1004	1004	1004	992	951	925
Minimum	742	780	818	860	891	890	880	880	880

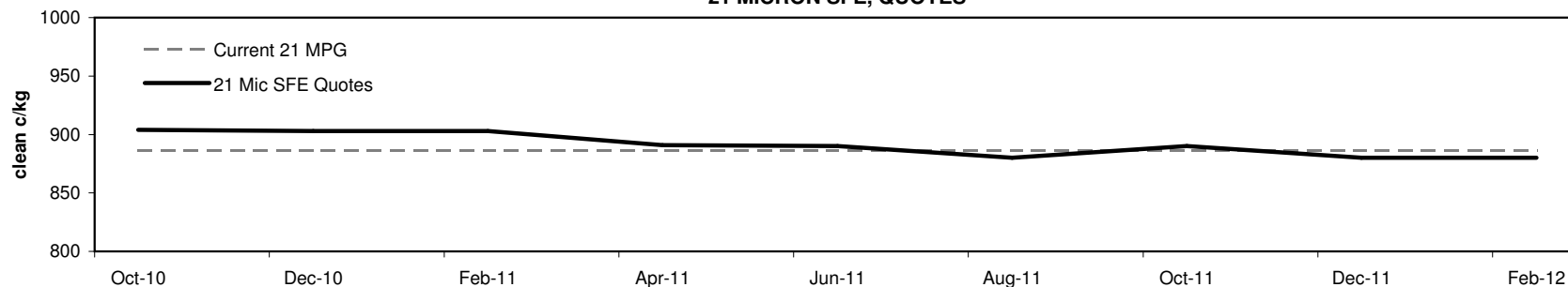
Table 8: 21 micron SFE, as a percentile of the 21 micron MPG

3 Year Percentile	54%	54%	54%	50%	50%	48%	50%	48%	48%
10 Year Percentile	62%	62%	62%	61%	61%	59%	61%	59%	59%

Table 9: 21 micron SFE, compared to MPG

Current 21 MPG	+18	2%	+17	2%	+17	2%	+5	1%	+4	0%	-6	-1%	+4	0%	-6	-1%	-6	-1%
21 MPG, 1 Year Average	-20	-2%	-21	-2%	-21	-2%	-33	-4%	-34	-4%	-44	-5%	-34	-4%	-44	-5%	-44	-5%
21 MPG, 3 Year Average	+25	3%	+24	3%	+24	3%	+12	1%	+11	1%	+1	0%	+11	1%	+1	0%	+1	0%
21 MPG, 10 Year Average	+43	5%	+42	5%	+42	5%	+30	3%	+29	3%	+19	2%	+29	3%	+19	2%	+19	2%

21 MICRON SFE, QUOTES



21 MICRON SFE, FRONT MONTH PRICE MOVEMENT (mthly averages)

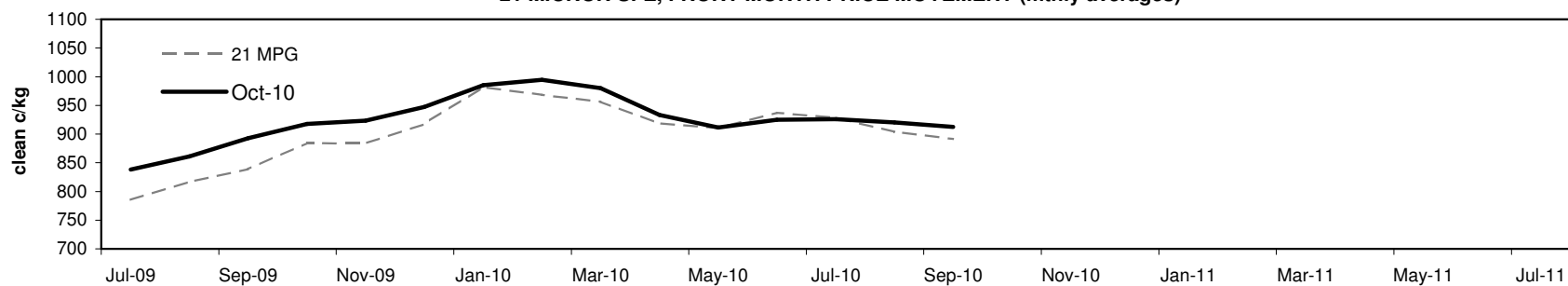




Table 10: 23 micron SFE

Wednesday, 15 September 2010

Delivery Mth	Oct-10	Dec-10	Feb-11	Apr-11	Jun-11	Aug-11	Oct-11	Dec-11	Feb-12
23 Micron SFE	887	887	887	887	887	887	887	887	887
Average	819	836	850	860	870	886	894	884	884
Maximum	927	927	927	927	927	927	927	887	887
Minimum	690	716	760	760	803	803	883	883	883

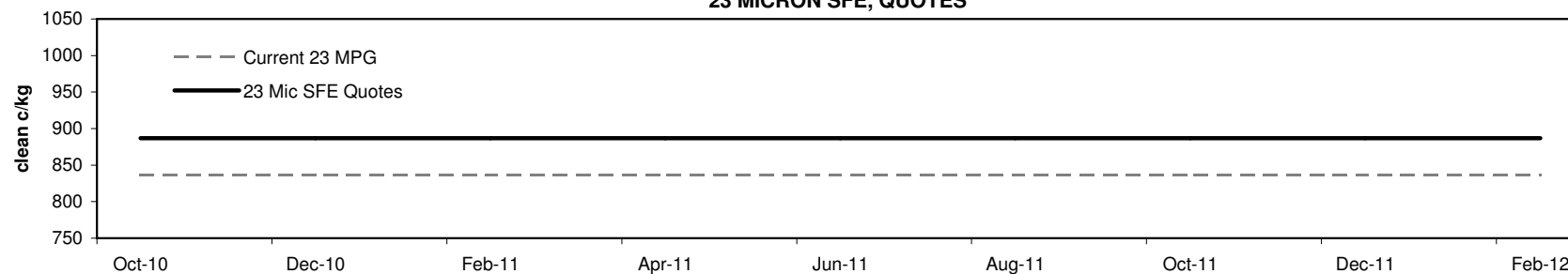
Table 11: 23 micron SFE, as a percentile of the 23 micron MPG

3 Year Percentile	67%	67%	67%	67%	67%	67%	67%	67%	67%
10 Year Percentile	67%	67%	67%	67%	67%	67%	67%	67%	67%

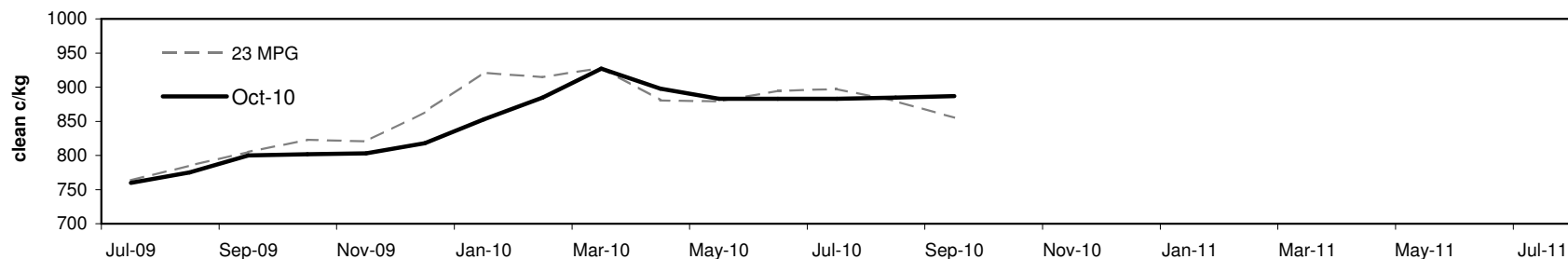
Table 12: 23 micron SFE, compared to MPG

Current 19 MPG	+50	6%	+50	6%	+50	6%	+50	6%	+50	6%	+50	6%	+50	6%	+50	6%	+50	6%
23 MPG, 1 Year Average	+7	1%	+7	1%	+7	1%	+7	1%	+7	1%	+7	1%	+7	1%	+7	1%	+7	1%
23 MPG, 3 Year Average	+56	7%	+56	7%	+56	7%	+56	7%	+56	7%	+56	7%	+56	7%	+56	7%	+56	7%
23 MPG, 10 Year Average	+70	9%	+70	9%	+70	9%	+70	9%	+70	9%	+70	9%	+70	9%	+70	9%	+70	9%

23 MICRON SFE, QUOTES

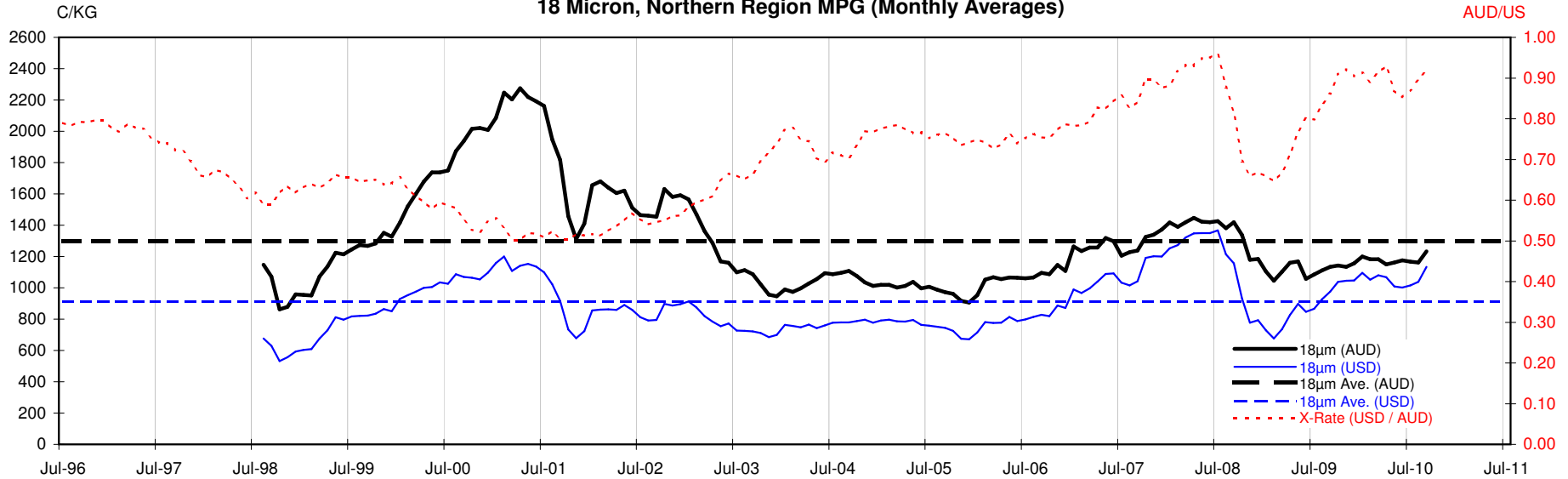


23 MICRON SFE, FRONT MONTH PRICE MOVEMENT (mthly averages)

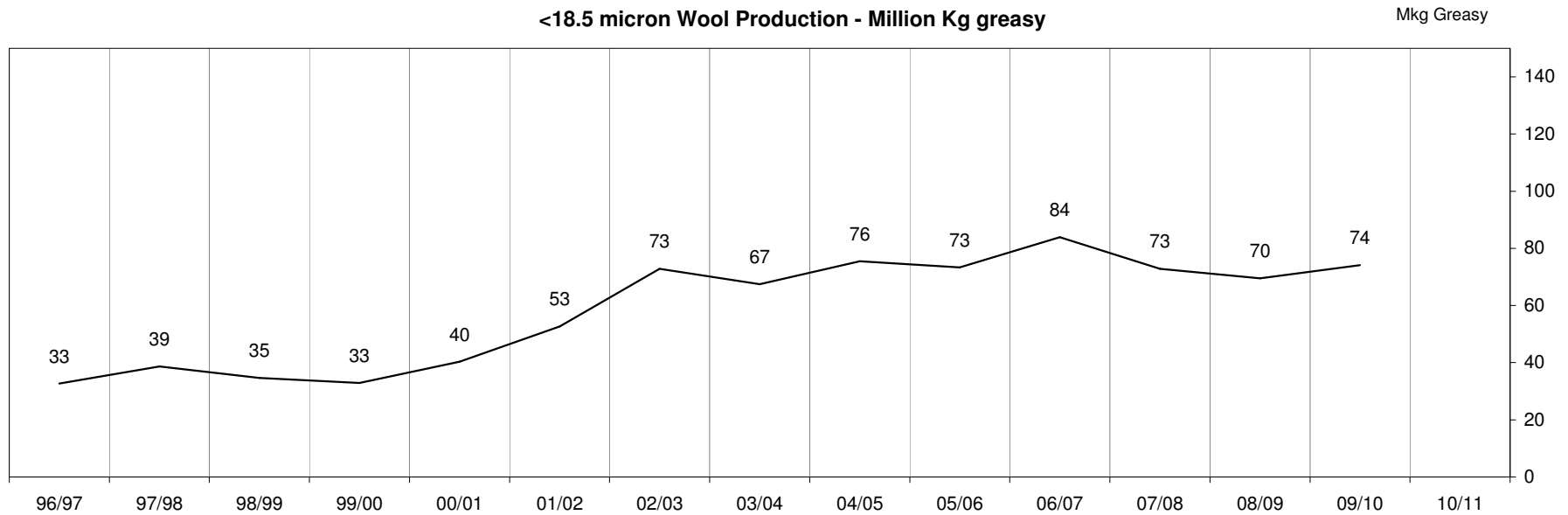


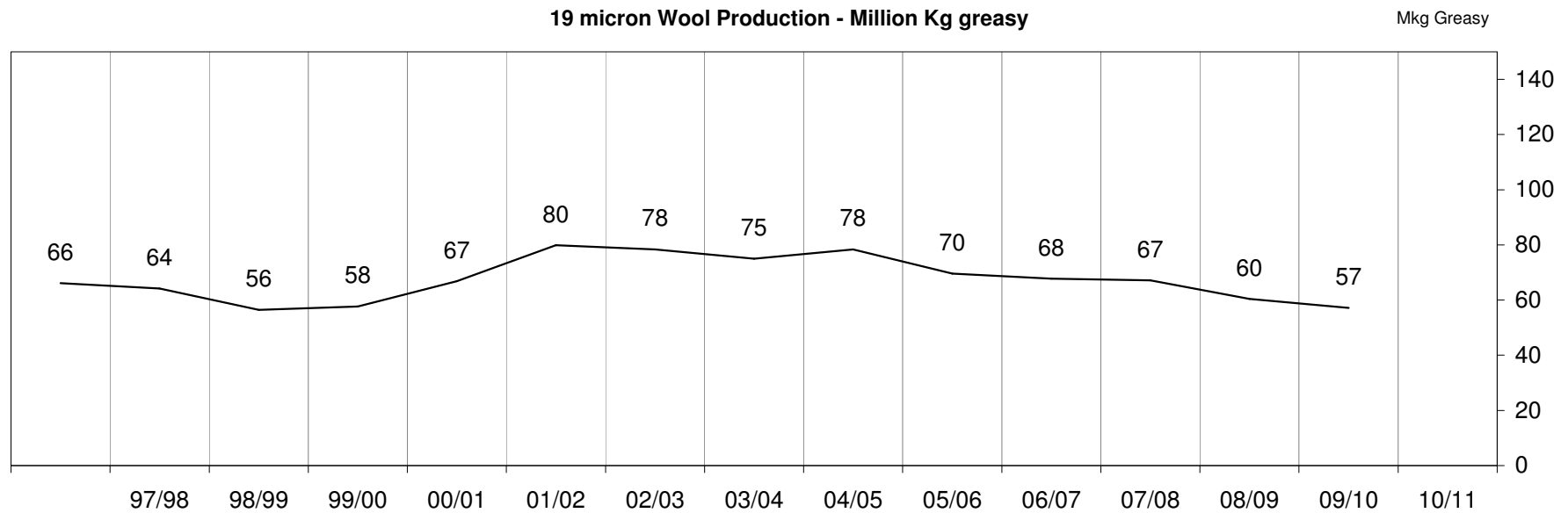
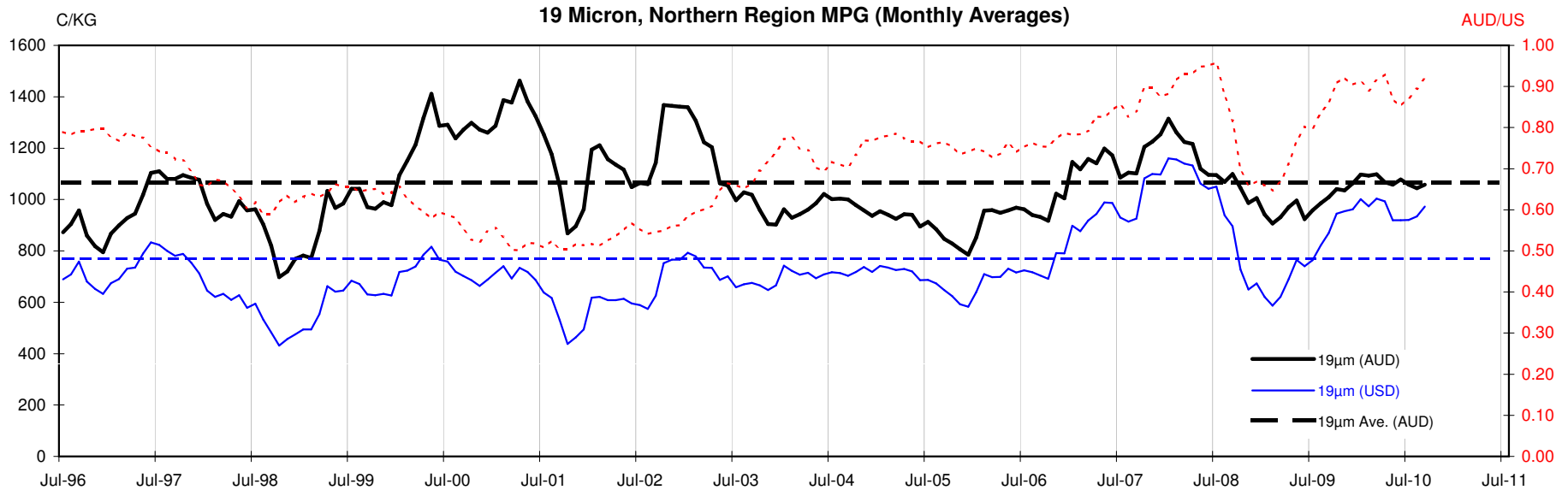


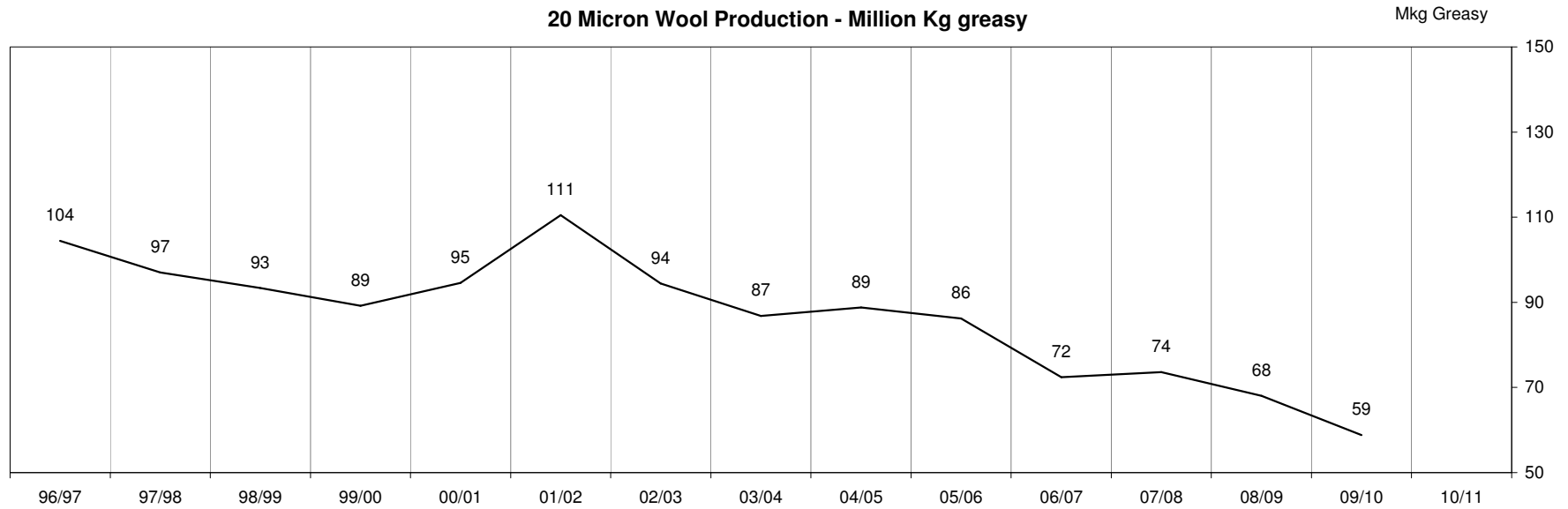
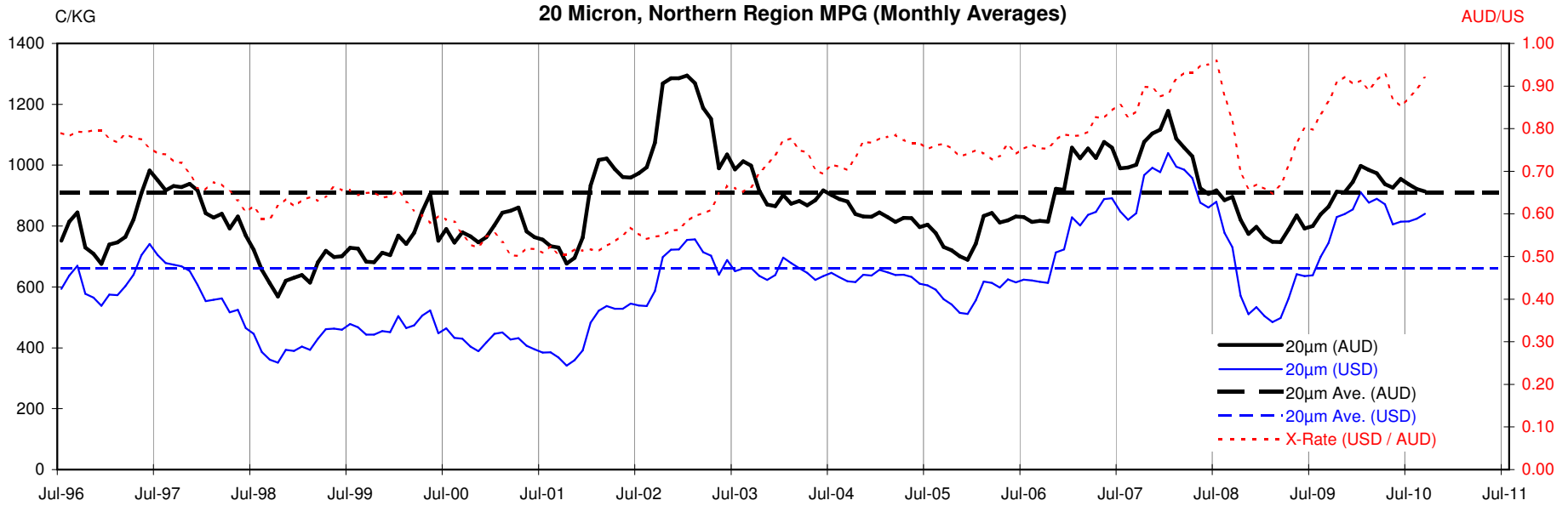
18 Micron, Northern Region MPG (Monthly Averages)

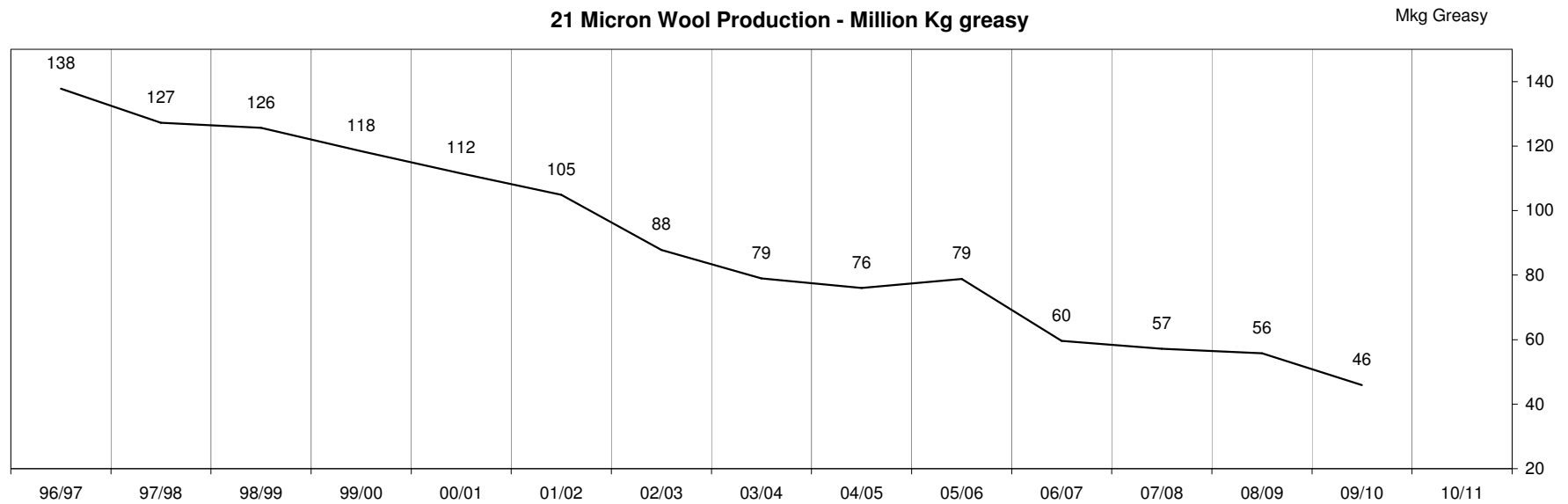
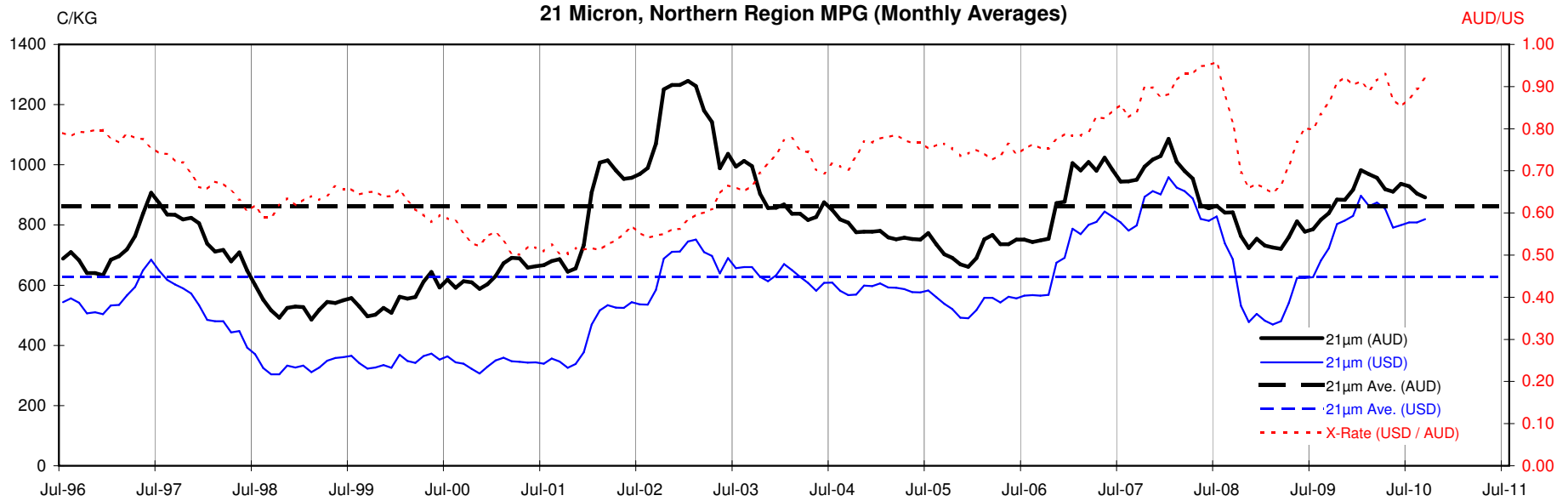


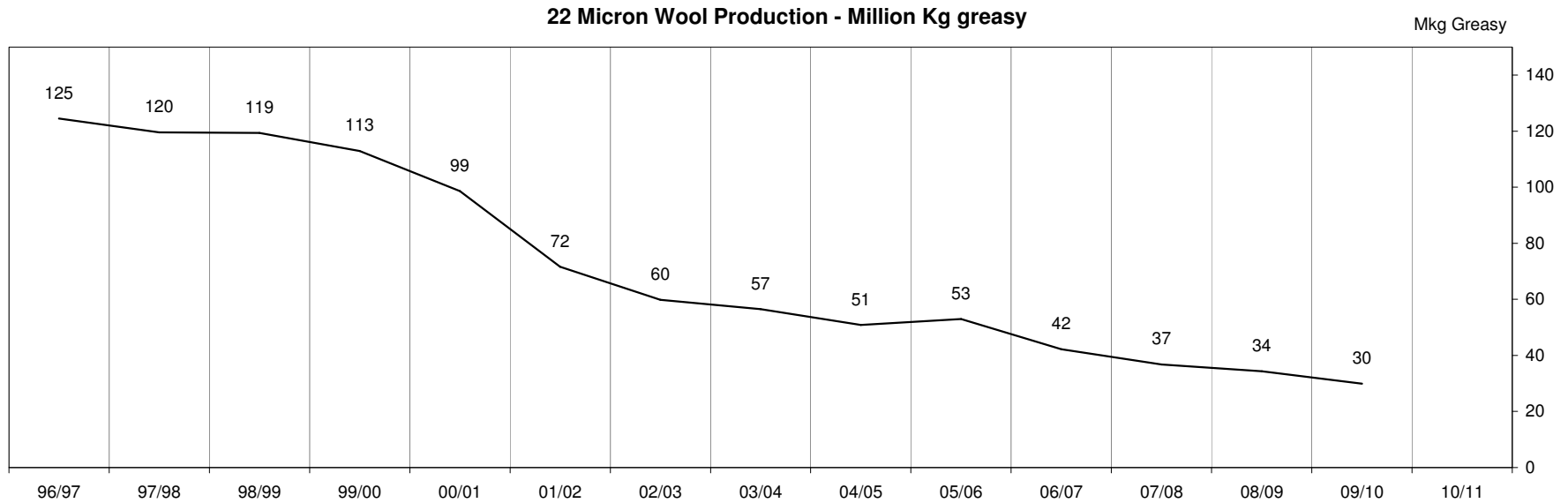
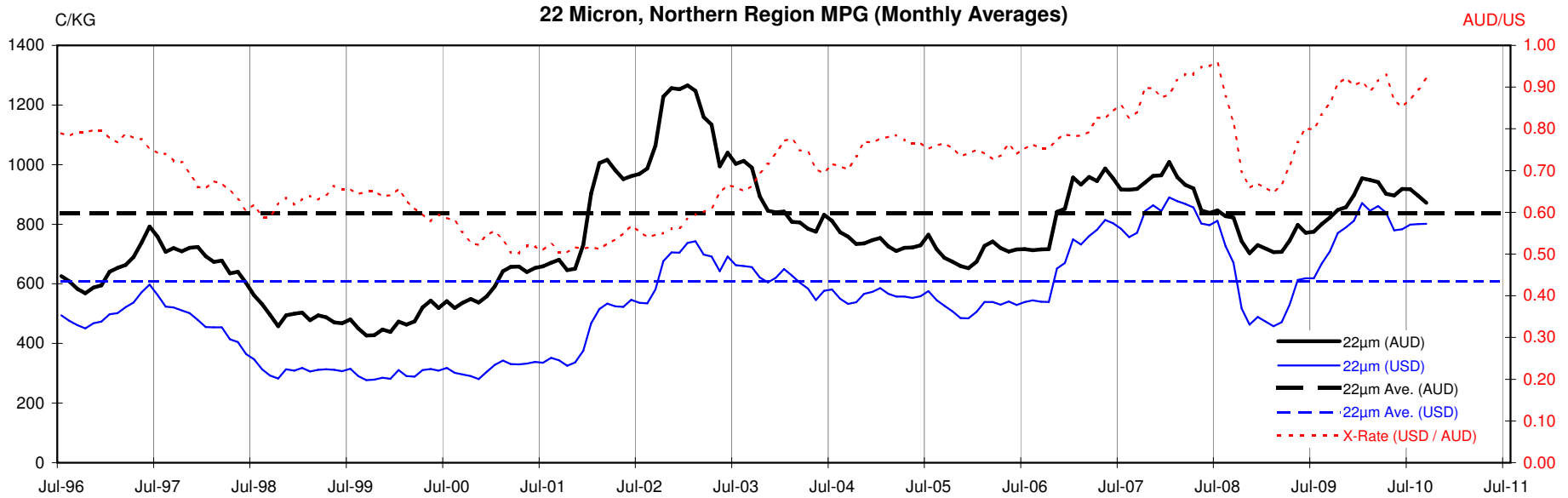
<18.5 micron Wool Production - Million Kg greasy

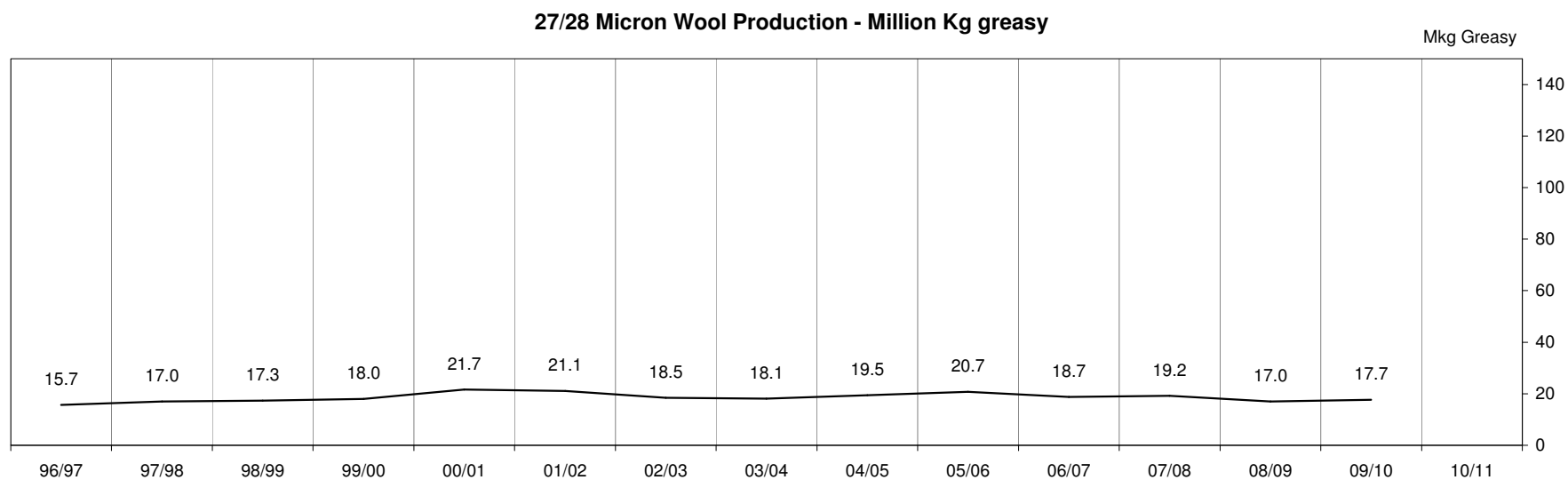
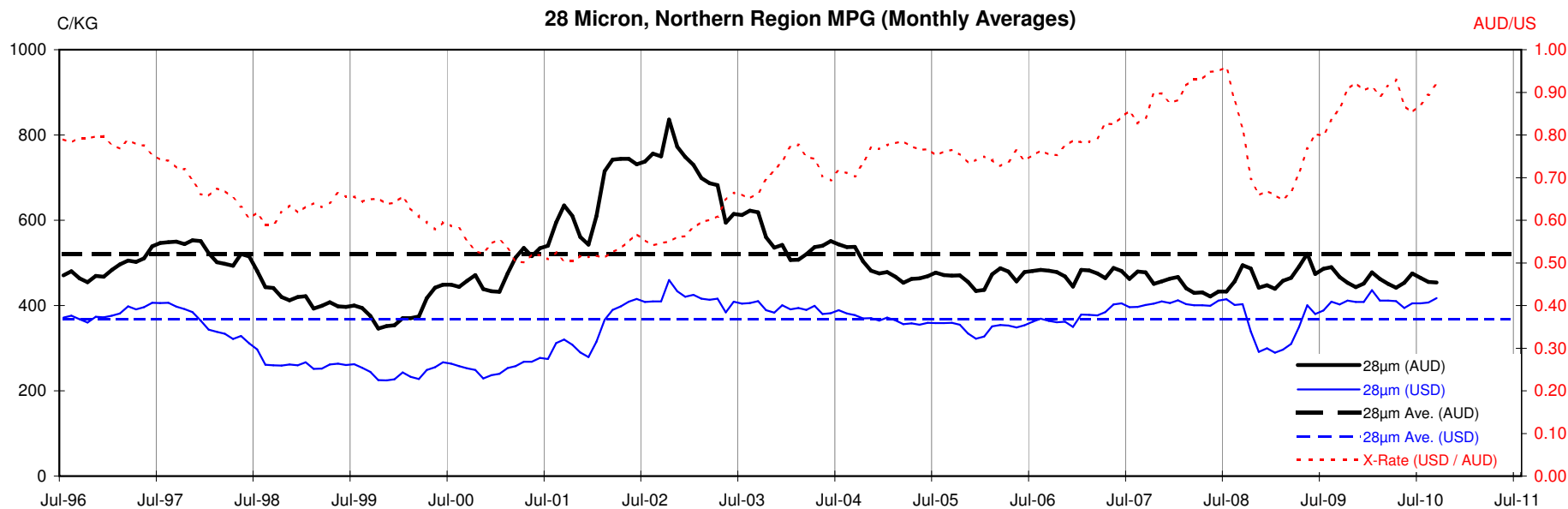












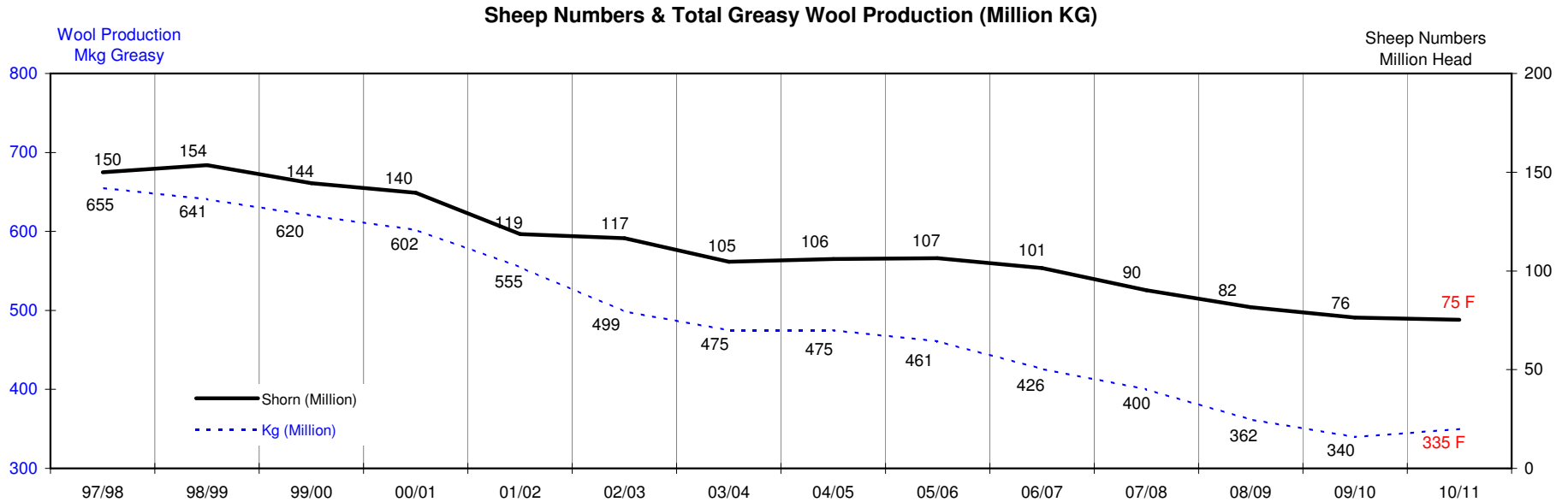
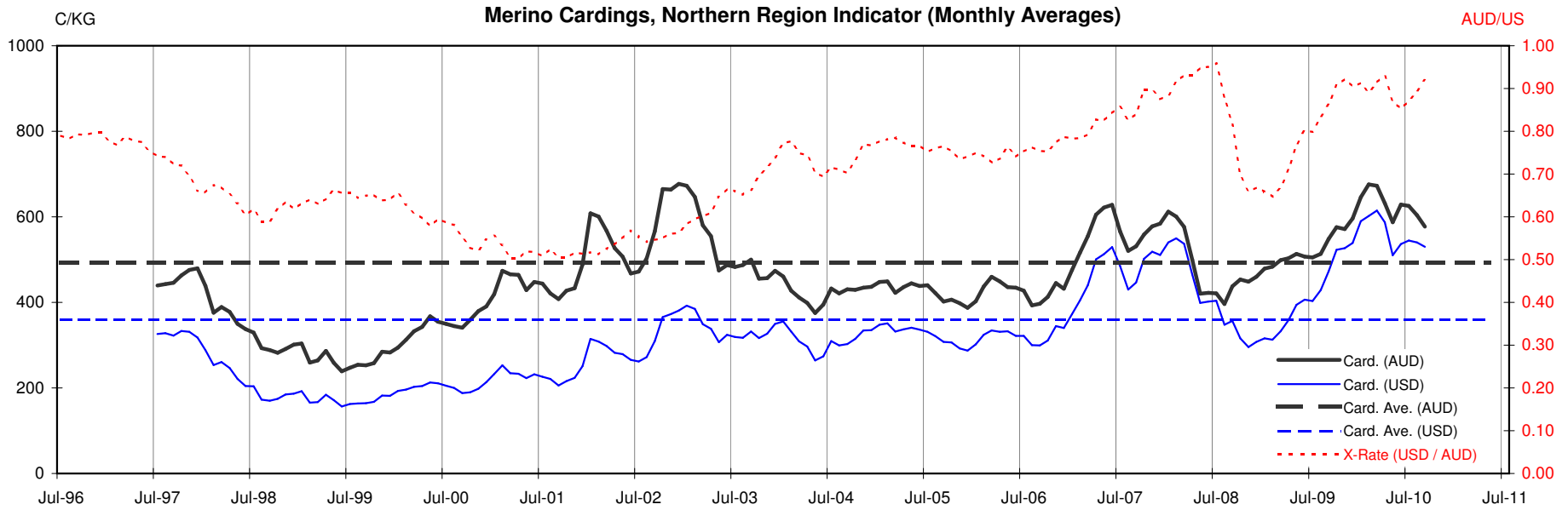




Table 13: Returns pr head for skirted fleece wool.

Skirted FLC Weight 9 Kg			Micron																	
			16	16.5	17	17.5	18	18.5	19	19.5	20	21	22	23	24	25	26	28	30	32
Yield (Sch Dry)	25%	Current	\$37	\$34	\$31	\$29	\$28	\$26	\$24	\$22	\$20	\$20	\$19	\$19	\$18	\$16	\$14	\$10	\$9	\$8
		10yr ave.			\$32		\$29		\$24		\$20	\$19	\$19	\$18	\$18	\$16	\$14	\$12	\$10	\$9
	30%	Current	\$45	\$41	\$38	\$35	\$33	\$31	\$28	\$26	\$25	\$24	\$23	\$23	\$21	\$19	\$16	\$12	\$11	\$10
		10yr ave.			\$39		\$35		\$29		\$25	\$23	\$23	\$22	\$21	\$19	\$17	\$14	\$12	\$11
	35%	Current	\$52	\$48	\$44	\$40	\$39	\$36	\$33	\$30	\$29	\$28	\$27	\$26	\$25	\$22	\$19	\$14	\$13	\$11
		10yr ave.			\$45		\$41		\$34		\$29	\$27	\$26	\$26	\$25	\$22	\$20	\$16	\$14	\$13
	40%	Current	\$59	\$54	\$50	\$46	\$44	\$41	\$38	\$34	\$33	\$32	\$31	\$30	\$29	\$25	\$22	\$16	\$14	\$13
		10yr ave.			\$52		\$47		\$38		\$33	\$31	\$30	\$29	\$28	\$25	\$23	\$19	\$16	\$15
	45%	Current	\$67	\$61	\$56	\$52	\$50	\$47	\$43	\$39	\$37	\$36	\$35	\$34	\$32	\$28	\$25	\$18	\$16	\$14
		10yr ave.			\$58		\$52		\$43		\$37	\$35	\$34	\$33	\$32	\$28	\$26	\$21	\$18	\$17
	50%	Current	\$74	\$68	\$63	\$58	\$55	\$52	\$47	\$43	\$41	\$40	\$39	\$38	\$36	\$32	\$27	\$20	\$18	\$16
		10yr ave.			\$65		\$58		\$48		\$41	\$39	\$38	\$37	\$35	\$32	\$29	\$23	\$20	\$19
	55%	Current	\$82	\$75	\$69	\$63	\$61	\$57	\$52	\$47	\$45	\$44	\$42	\$41	\$39	\$35	\$30	\$22	\$20	\$18
		10yr ave.			\$71		\$64		\$53		\$45	\$43	\$41	\$40	\$39	\$35	\$32	\$26	\$23	\$20
	60%	Current	\$89	\$82	\$75	\$69	\$66	\$62	\$57	\$52	\$49	\$48	\$46	\$45	\$43	\$38	\$33	\$24	\$22	\$19
		10yr ave.			\$78		\$70		\$58		\$49	\$46	\$45	\$44	\$42	\$38	\$35	\$28	\$25	\$22
65%	Current	\$97	\$88	\$81	\$75	\$72	\$67	\$62	\$56	\$53	\$52	\$50	\$49	\$46	\$41	\$35	\$26	\$23	\$21	
	10yr ave.			\$84		\$76		\$62		\$53	\$50	\$49	\$48	\$46	\$41	\$38	\$30	\$27	\$24	
70%	Current	\$104	\$95	\$88	\$81	\$77	\$73	\$66	\$60	\$57	\$56	\$54	\$53	\$50	\$44	\$38	\$28	\$25	\$22	
	10yr ave.			\$90		\$82		\$67		\$57	\$54	\$53	\$51	\$49	\$44	\$41	\$33	\$29	\$26	
75%	Current	\$111	\$102	\$94	\$86	\$83	\$78	\$71	\$65	\$61	\$60	\$58	\$56	\$54	\$47	\$41	\$30	\$27	\$24	
	10yr ave.			\$97		\$87		\$72		\$61	\$58	\$57	\$55	\$53	\$47	\$43	\$35	\$31	\$28	
80%	Current	\$119	\$109	\$100	\$92	\$88	\$83	\$76	\$69	\$65	\$64	\$62	\$60	\$57	\$51	\$44	\$32	\$29	\$25	
	10yr ave.			\$103		\$93		\$77		\$65	\$62	\$60	\$59	\$56	\$51	\$46	\$38	\$33	\$30	
85%	Current	\$126	\$116	\$106	\$98	\$94	\$88	\$81	\$73	\$70	\$68	\$66	\$64	\$61	\$54	\$46	\$34	\$31	\$27	
	10yr ave.			\$110		\$99		\$82		\$70	\$66	\$64	\$63	\$60	\$54	\$49	\$40	\$35	\$32	

The above shows estimated returns per head for skirted fleece wool. These figures do not take into account the value of skirtings and oddments and do not take into account discounts that may apply for faults under individual circumstances. These figures are based on a market index of 100% and should be used as a guide only. Returns over \$30 / head for fleece wool are highlighted.

Source: Australian Wool Exchange, Australian Wool Innovation, Sydney Futures Exchange, x-rates.com

Disclaimer: While all due care has been taken in the preparation of this document, no warranty is made as to its accuracy, reliability or completeness. To the extent permitted by law neither Jemalong or their sources including subsidiaries and staff, accept liability to any person for loss or damage arising from the use of this information.



Table 14: Returns pr head for skirted fleece wool.

Skirted FLC Weight 8 Kg			Micron																	
			16	16.5	17	17.5	18	18.5	19	19.5	20	21	22	23	24	25	26	28	30	32
Yield (Sch Dry)	25%	Current	\$37	\$34	\$31	\$29	\$28	\$26	\$24	\$22	\$20	\$20	\$19	\$19	\$18	\$16	\$14	\$10	\$9	\$8
		10yr ave.			\$32		\$29		\$24		\$20	\$19	\$19	\$18	\$18	\$16	\$14	\$12	\$10	\$9
	30%	Current	\$45	\$41	\$38	\$35	\$33	\$31	\$28	\$26	\$25	\$24	\$23	\$23	\$21	\$19	\$16	\$12	\$11	\$10
		10yr ave.			\$39		\$35		\$29		\$25	\$23	\$23	\$22	\$21	\$19	\$17	\$14	\$12	\$11
	35%	Current	\$52	\$48	\$44	\$40	\$39	\$36	\$33	\$30	\$29	\$28	\$27	\$26	\$25	\$22	\$19	\$14	\$13	\$11
		10yr ave.			\$45		\$41		\$34		\$29	\$27	\$26	\$26	\$25	\$22	\$20	\$16	\$14	\$13
	40%	Current	\$59	\$54	\$50	\$46	\$44	\$41	\$38	\$34	\$33	\$32	\$31	\$30	\$29	\$25	\$22	\$16	\$14	\$13
		10yr ave.			\$52		\$47		\$38		\$33	\$31	\$30	\$29	\$28	\$25	\$23	\$19	\$16	\$15
	45%	Current	\$67	\$61	\$56	\$52	\$50	\$47	\$43	\$39	\$37	\$36	\$35	\$34	\$32	\$28	\$25	\$18	\$16	\$14
		10yr ave.			\$58		\$52		\$43		\$37	\$35	\$34	\$33	\$32	\$28	\$26	\$21	\$18	\$17
	50%	Current	\$74	\$68	\$63	\$58	\$55	\$52	\$47	\$43	\$41	\$40	\$39	\$38	\$36	\$32	\$27	\$20	\$18	\$16
		10yr ave.			\$65		\$58		\$48		\$41	\$39	\$38	\$37	\$35	\$32	\$29	\$23	\$20	\$19
	55%	Current	\$82	\$75	\$69	\$63	\$61	\$57	\$52	\$47	\$45	\$44	\$42	\$41	\$39	\$35	\$30	\$22	\$20	\$18
		10yr ave.			\$71		\$64		\$53		\$45	\$43	\$41	\$40	\$39	\$35	\$32	\$26	\$23	\$20
	60%	Current	\$89	\$82	\$75	\$69	\$66	\$62	\$57	\$52	\$49	\$48	\$46	\$45	\$43	\$38	\$33	\$24	\$22	\$19
		10yr ave.			\$78		\$70		\$58		\$49	\$46	\$45	\$44	\$42	\$38	\$35	\$28	\$25	\$22
65%	Current	\$97	\$88	\$81	\$75	\$72	\$67	\$62	\$56	\$53	\$52	\$50	\$49	\$46	\$41	\$35	\$26	\$23	\$21	
	10yr ave.			\$84		\$76		\$62		\$53	\$50	\$49	\$48	\$46	\$41	\$38	\$30	\$27	\$24	
70%	Current	\$104	\$95	\$88	\$81	\$77	\$73	\$66	\$60	\$57	\$56	\$54	\$53	\$50	\$44	\$38	\$28	\$25	\$22	
	10yr ave.			\$90		\$82		\$67		\$57	\$54	\$53	\$51	\$49	\$44	\$41	\$33	\$29	\$26	
75%	Current	\$111	\$102	\$94	\$86	\$83	\$78	\$71	\$65	\$61	\$60	\$58	\$56	\$54	\$47	\$41	\$30	\$27	\$24	
	10yr ave.			\$97		\$87		\$72		\$61	\$58	\$57	\$55	\$53	\$47	\$43	\$35	\$31	\$28	
80%	Current	\$119	\$109	\$100	\$92	\$88	\$83	\$76	\$69	\$65	\$64	\$62	\$60	\$57	\$51	\$44	\$32	\$29	\$25	
	10yr ave.			\$103		\$93		\$77		\$65	\$62	\$60	\$59	\$56	\$51	\$46	\$38	\$33	\$30	
85%	Current	\$126	\$116	\$106	\$98	\$94	\$88	\$81	\$73	\$70	\$68	\$66	\$64	\$61	\$54	\$46	\$34	\$31	\$27	
	10yr ave.			\$110		\$99		\$82		\$70	\$66	\$64	\$63	\$60	\$54	\$49	\$40	\$35	\$32	

The above shows estimated returns per head for skirted fleece wool. These figures do not take into account the value of skirtings and oddments and do not take into account discounts that may apply for faults under individual circumstances. These figures are based on a market index of 100% and should be used as a guide only. Returns over \$30 / head for fleece wool are highlighted.

Source: Australian Wool Exchange, Australian Wool Innovation, Sydney Futures Exchange, x-rates.com

Disclaimer: While all due care has been taken in the preparation of this document, no warranty is made as to its accuracy, reliability or completeness. To the extent permitted by law neither Jemalong or their sources including subsidiaries and staff, accept liability to any person for loss or damage arising from the use of this information.



Table 15: Returns pr head for skirted fleece wool.

Skirted FLC Weight 7 Kg			Micron																	
			16	16.5	17	17.5	18	18.5	19	19.5	20	21	22	23	24	25	26	28	30	32
Yield (Sch Dry)	25%	Current	\$37	\$34	\$31	\$29	\$28	\$26	\$24	\$22	\$20	\$20	\$19	\$19	\$18	\$16	\$14	\$10	\$9	\$8
		10yr ave.			\$32		\$29		\$24		\$20	\$19	\$19	\$18	\$18	\$16	\$14	\$12	\$10	\$9
	30%	Current	\$45	\$41	\$38	\$35	\$33	\$31	\$28	\$26	\$25	\$24	\$23	\$23	\$21	\$19	\$16	\$12	\$11	\$10
		10yr ave.			\$39		\$35		\$29		\$25	\$23	\$23	\$22	\$21	\$19	\$17	\$14	\$12	\$11
	35%	Current	\$52	\$48	\$44	\$40	\$39	\$36	\$33	\$30	\$29	\$28	\$27	\$26	\$25	\$22	\$19	\$14	\$13	\$11
		10yr ave.			\$45		\$41		\$34		\$29	\$27	\$26	\$26	\$25	\$22	\$20	\$16	\$14	\$13
	40%	Current	\$59	\$54	\$50	\$46	\$44	\$41	\$38	\$34	\$33	\$32	\$31	\$30	\$29	\$25	\$22	\$16	\$14	\$13
		10yr ave.			\$52		\$47		\$38		\$33	\$31	\$30	\$29	\$28	\$25	\$23	\$19	\$16	\$15
	45%	Current	\$67	\$61	\$56	\$52	\$50	\$47	\$43	\$39	\$37	\$36	\$35	\$34	\$32	\$28	\$25	\$18	\$16	\$14
		10yr ave.			\$58		\$52		\$43		\$37	\$35	\$34	\$33	\$32	\$28	\$26	\$21	\$18	\$17
	50%	Current	\$74	\$68	\$63	\$58	\$55	\$52	\$47	\$43	\$41	\$40	\$39	\$38	\$36	\$32	\$27	\$20	\$18	\$16
		10yr ave.			\$65		\$58		\$48		\$41	\$39	\$38	\$37	\$35	\$32	\$29	\$23	\$20	\$19
	55%	Current	\$82	\$75	\$69	\$63	\$61	\$57	\$52	\$47	\$45	\$44	\$42	\$41	\$39	\$35	\$30	\$22	\$20	\$18
		10yr ave.			\$71		\$64		\$53		\$45	\$43	\$41	\$40	\$39	\$35	\$32	\$26	\$23	\$20
	60%	Current	\$89	\$82	\$75	\$69	\$66	\$62	\$57	\$52	\$49	\$48	\$46	\$45	\$43	\$38	\$33	\$24	\$22	\$19
		10yr ave.			\$78		\$70		\$58		\$49	\$46	\$45	\$44	\$42	\$38	\$35	\$28	\$25	\$22
65%	Current	\$97	\$88	\$81	\$75	\$72	\$67	\$62	\$56	\$53	\$52	\$50	\$49	\$46	\$41	\$35	\$26	\$23	\$21	
	10yr ave.			\$84		\$76		\$62		\$53	\$50	\$49	\$48	\$46	\$41	\$38	\$30	\$27	\$24	
70%	Current	\$104	\$95	\$88	\$81	\$77	\$73	\$66	\$60	\$57	\$56	\$54	\$53	\$50	\$44	\$38	\$28	\$25	\$22	
	10yr ave.			\$90		\$82		\$67		\$57	\$54	\$53	\$51	\$49	\$44	\$41	\$33	\$29	\$26	
75%	Current	\$111	\$102	\$94	\$86	\$83	\$78	\$71	\$65	\$61	\$60	\$58	\$56	\$54	\$47	\$41	\$30	\$27	\$24	
	10yr ave.			\$97		\$87		\$72		\$61	\$58	\$57	\$55	\$53	\$47	\$43	\$35	\$31	\$28	
80%	Current	\$119	\$109	\$100	\$92	\$88	\$83	\$76	\$69	\$65	\$64	\$62	\$60	\$57	\$51	\$44	\$32	\$29	\$25	
	10yr ave.			\$103		\$93		\$77		\$65	\$62	\$60	\$59	\$56	\$51	\$46	\$38	\$33	\$30	
85%	Current	\$126	\$116	\$106	\$98	\$94	\$88	\$81	\$73	\$70	\$68	\$66	\$64	\$61	\$54	\$46	\$34	\$31	\$27	
	10yr ave.			\$110		\$99		\$82		\$70	\$66	\$64	\$63	\$60	\$54	\$49	\$40	\$35	\$32	

The above shows estimated returns per head for skirted fleece wool. These figures do not take into account the value of skirtings and oddments and do not take into account discounts that may apply for faults under individual circumstances. These figures are based on a market index of 100% and should be used as a guide only. Returns over \$30 / head for fleece wool are highlighted.

Source: Australian Wool Exchange, Australian Wool Innovation, Sydney Futures Exchange, x-rates.com

Disclaimer: While all due care has been taken in the preparation of this document, no warranty is made as to its accuracy, reliability or completeness. To the extent permitted by law neither Jemalong or their sources including subsidiaries and staff, accept liability to any person for loss or damage arising from the use of this information.



Table 16: Returns pr head for skirted fleece wool.

Skirted FLC Weight 6 Kg			Micron																	
			16	16.5	17	17.5	18	18.5	19	19.5	20	21	22	23	24	25	26	28	30	32
Yield (Sch Dry)	25%	Current	\$37	\$34	\$31	\$29	\$28	\$26	\$24	\$22	\$20	\$20	\$19	\$19	\$18	\$16	\$14	\$10	\$9	\$8
		10yr ave.			\$32		\$29		\$24		\$20	\$19	\$19	\$18	\$18	\$16	\$14	\$12	\$10	\$9
	30%	Current	\$45	\$41	\$38	\$35	\$33	\$31	\$28	\$26	\$25	\$24	\$23	\$23	\$21	\$19	\$16	\$12	\$11	\$10
		10yr ave.			\$39		\$35		\$29		\$25	\$23	\$23	\$22	\$21	\$19	\$17	\$14	\$12	\$11
	35%	Current	\$52	\$48	\$44	\$40	\$39	\$36	\$33	\$30	\$29	\$28	\$27	\$26	\$25	\$22	\$19	\$14	\$13	\$11
		10yr ave.			\$45		\$41		\$34		\$29	\$27	\$26	\$26	\$25	\$22	\$20	\$16	\$14	\$13
	40%	Current	\$59	\$54	\$50	\$46	\$44	\$41	\$38	\$34	\$33	\$32	\$31	\$30	\$29	\$25	\$22	\$16	\$14	\$13
		10yr ave.			\$52		\$47		\$38		\$33	\$31	\$30	\$29	\$28	\$25	\$23	\$19	\$16	\$15
	45%	Current	\$67	\$61	\$56	\$52	\$50	\$47	\$43	\$39	\$37	\$36	\$35	\$34	\$32	\$28	\$25	\$18	\$16	\$14
		10yr ave.			\$58		\$52		\$43		\$37	\$35	\$34	\$33	\$32	\$28	\$26	\$21	\$18	\$17
	50%	Current	\$74	\$68	\$63	\$58	\$55	\$52	\$47	\$43	\$41	\$40	\$39	\$38	\$36	\$32	\$27	\$20	\$18	\$16
		10yr ave.			\$65		\$58		\$48		\$41	\$39	\$38	\$37	\$35	\$32	\$29	\$23	\$20	\$19
	55%	Current	\$82	\$75	\$69	\$63	\$61	\$57	\$52	\$47	\$45	\$44	\$42	\$41	\$39	\$35	\$30	\$22	\$20	\$18
		10yr ave.			\$71		\$64		\$53		\$45	\$43	\$41	\$40	\$39	\$35	\$32	\$26	\$23	\$20
	60%	Current	\$89	\$82	\$75	\$69	\$66	\$62	\$57	\$52	\$49	\$48	\$46	\$45	\$43	\$38	\$33	\$24	\$22	\$19
		10yr ave.			\$78		\$70		\$58		\$49	\$46	\$45	\$44	\$42	\$38	\$35	\$28	\$25	\$22
65%	Current	\$97	\$88	\$81	\$75	\$72	\$67	\$62	\$56	\$53	\$52	\$50	\$49	\$46	\$41	\$35	\$26	\$23	\$21	
	10yr ave.			\$84		\$76		\$62		\$53	\$50	\$49	\$48	\$46	\$41	\$38	\$30	\$27	\$24	
70%	Current	\$104	\$95	\$88	\$81	\$77	\$73	\$66	\$60	\$57	\$56	\$54	\$53	\$50	\$44	\$38	\$28	\$25	\$22	
	10yr ave.			\$90		\$82		\$67		\$57	\$54	\$53	\$51	\$49	\$44	\$41	\$33	\$29	\$26	
75%	Current	\$111	\$102	\$94	\$86	\$83	\$78	\$71	\$65	\$61	\$60	\$58	\$56	\$54	\$47	\$41	\$30	\$27	\$24	
	10yr ave.			\$97		\$87		\$72		\$61	\$58	\$57	\$55	\$53	\$47	\$43	\$35	\$31	\$28	
80%	Current	\$119	\$109	\$100	\$92	\$88	\$83	\$76	\$69	\$65	\$64	\$62	\$60	\$57	\$51	\$44	\$32	\$29	\$25	
	10yr ave.			\$103		\$93		\$77		\$65	\$62	\$60	\$59	\$56	\$51	\$46	\$38	\$33	\$30	
85%	Current	\$126	\$116	\$106	\$98	\$94	\$88	\$81	\$73	\$70	\$68	\$66	\$64	\$61	\$54	\$46	\$34	\$31	\$27	
	10yr ave.			\$110		\$99		\$82		\$70	\$66	\$64	\$63	\$60	\$54	\$49	\$40	\$35	\$32	

The above shows estimated returns per head for skirted fleece wool. These figures do not take into account the value of skirtings and oddments and do not take into account discounts that may apply for faults under individual circumstances. These figures are based on a market index of 100% and should be used as a guide only. Returns over \$30 / head for fleece wool are highlighted.

Source: Australian Wool Exchange, Australian Wool Innovation, Sydney Futures Exchange, x-rates.com

Disclaimer: While all due care has been taken in the preparation of this document, no warranty is made as to its accuracy, reliability or completeness. To the extent permitted by law neither Jemalong or their sources including subsidiaries and staff, accept liability to any person for loss or damage arising from the use of this information.



Table 17: Returns pr head for skirted fleece wool.

Skirted FLC Weight 5 Kg			Micron																	
			16	16.5	17	17.5	18	18.5	19	19.5	20	21	22	23	24	25	26	28	30	32
Yield (Sch Dry)	25%	Current	\$37	\$34	\$31	\$29	\$28	\$26	\$24	\$22	\$20	\$20	\$19	\$19	\$18	\$16	\$14	\$10	\$9	\$8
		10yr ave.			\$32		\$29		\$24		\$20	\$19	\$19	\$18	\$18	\$16	\$14	\$12	\$10	\$9
	30%	Current	\$45	\$41	\$38	\$35	\$33	\$31	\$28	\$26	\$25	\$24	\$23	\$23	\$21	\$19	\$16	\$12	\$11	\$10
		10yr ave.			\$39		\$35		\$29		\$25	\$23	\$23	\$22	\$21	\$19	\$17	\$14	\$12	\$11
	35%	Current	\$52	\$48	\$44	\$40	\$39	\$36	\$33	\$30	\$29	\$28	\$27	\$26	\$25	\$22	\$19	\$14	\$13	\$11
		10yr ave.			\$45		\$41		\$34		\$29	\$27	\$26	\$26	\$25	\$22	\$20	\$16	\$14	\$13
	40%	Current	\$59	\$54	\$50	\$46	\$44	\$41	\$38	\$34	\$33	\$32	\$31	\$30	\$29	\$25	\$22	\$16	\$14	\$13
		10yr ave.			\$52		\$47		\$38		\$33	\$31	\$30	\$29	\$28	\$25	\$23	\$19	\$16	\$15
	45%	Current	\$67	\$61	\$56	\$52	\$50	\$47	\$43	\$39	\$37	\$36	\$35	\$34	\$32	\$28	\$25	\$18	\$16	\$14
		10yr ave.			\$58		\$52		\$43		\$37	\$35	\$34	\$33	\$32	\$28	\$26	\$21	\$18	\$17
	50%	Current	\$74	\$68	\$63	\$58	\$55	\$52	\$47	\$43	\$41	\$40	\$39	\$38	\$36	\$32	\$27	\$20	\$18	\$16
		10yr ave.			\$65		\$58		\$48		\$41	\$39	\$38	\$37	\$35	\$32	\$29	\$23	\$20	\$19
	55%	Current	\$82	\$75	\$69	\$63	\$61	\$57	\$52	\$47	\$45	\$44	\$42	\$41	\$39	\$35	\$30	\$22	\$20	\$18
		10yr ave.			\$71		\$64		\$53		\$45	\$43	\$41	\$40	\$39	\$35	\$32	\$26	\$23	\$20
	60%	Current	\$89	\$82	\$75	\$69	\$66	\$62	\$57	\$52	\$49	\$48	\$46	\$45	\$43	\$38	\$33	\$24	\$22	\$19
		10yr ave.			\$78		\$70		\$58		\$49	\$46	\$45	\$44	\$42	\$38	\$35	\$28	\$25	\$22
65%	Current	\$97	\$88	\$81	\$75	\$72	\$67	\$62	\$56	\$53	\$52	\$50	\$49	\$46	\$41	\$35	\$26	\$23	\$21	
	10yr ave.			\$84		\$76		\$62		\$53	\$50	\$49	\$48	\$46	\$41	\$38	\$30	\$27	\$24	
70%	Current	\$104	\$95	\$88	\$81	\$77	\$73	\$66	\$60	\$57	\$56	\$54	\$53	\$50	\$44	\$38	\$28	\$25	\$22	
	10yr ave.			\$90		\$82		\$67		\$57	\$54	\$53	\$51	\$49	\$44	\$41	\$33	\$29	\$26	
75%	Current	\$111	\$102	\$94	\$86	\$83	\$78	\$71	\$65	\$61	\$60	\$58	\$56	\$54	\$47	\$41	\$30	\$27	\$24	
	10yr ave.			\$97		\$87		\$72		\$61	\$58	\$57	\$55	\$53	\$47	\$43	\$35	\$31	\$28	
80%	Current	\$119	\$109	\$100	\$92	\$88	\$83	\$76	\$69	\$65	\$64	\$62	\$60	\$57	\$51	\$44	\$32	\$29	\$25	
	10yr ave.			\$103		\$93		\$77		\$65	\$62	\$60	\$59	\$56	\$51	\$46	\$38	\$33	\$30	
85%	Current	\$126	\$116	\$106	\$98	\$94	\$88	\$81	\$73	\$70	\$68	\$66	\$64	\$61	\$54	\$46	\$34	\$31	\$27	
	10yr ave.			\$110		\$99		\$82		\$70	\$66	\$64	\$63	\$60	\$54	\$49	\$40	\$35	\$32	

The above shows estimated returns per head for skirted fleece wool. These figures do not take into account the value of skirtings and oddments and do not take into account discounts that may apply for faults under individual circumstances. These figures are based on a market index of 100% and should be used as a guide only. Returns over \$30 / head for fleece wool are highlighted.

Source: Australian Wool Exchange, Australian Wool Innovation, Sydney Futures Exchange, x-rates.com

Disclaimer: While all due care has been taken in the preparation of this document, no warranty is made as to its accuracy, reliability or completeness. To the extent permitted by law neither Jemalong or their sources including subsidiaries and staff, accept liability to any person for loss or damage arising from the use of this information.



Table 18: Returns pr head for skirted fleece wool.

Skirted FLC Weight 4 Kg			Micron																	
			16	16.5	17	17.5	18	18.5	19	19.5	20	21	22	23	24	25	26	28	30	32
Yield (Sch Dry)	25%	Current	\$37	\$34	\$31	\$29	\$28	\$26	\$24	\$22	\$20	\$20	\$19	\$19	\$18	\$16	\$14	\$10	\$9	\$8
		10yr ave.			\$32		\$29		\$24		\$20	\$19	\$19	\$18	\$18	\$16	\$14	\$12	\$10	\$9
	30%	Current	\$45	\$41	\$38	\$35	\$33	\$31	\$28	\$26	\$25	\$24	\$23	\$23	\$21	\$19	\$16	\$12	\$11	\$10
		10yr ave.			\$39		\$35		\$29		\$25	\$23	\$23	\$22	\$21	\$19	\$17	\$14	\$12	\$11
	35%	Current	\$52	\$48	\$44	\$40	\$39	\$36	\$33	\$30	\$29	\$28	\$27	\$26	\$25	\$22	\$19	\$14	\$13	\$11
		10yr ave.			\$45		\$41		\$34		\$29	\$27	\$26	\$26	\$25	\$22	\$20	\$16	\$14	\$13
	40%	Current	\$59	\$54	\$50	\$46	\$44	\$41	\$38	\$34	\$33	\$32	\$31	\$30	\$29	\$25	\$22	\$16	\$14	\$13
		10yr ave.			\$52		\$47		\$38		\$33	\$31	\$30	\$29	\$28	\$25	\$23	\$19	\$16	\$15
	45%	Current	\$67	\$61	\$56	\$52	\$50	\$47	\$43	\$39	\$37	\$36	\$35	\$34	\$32	\$28	\$25	\$18	\$16	\$14
		10yr ave.			\$58		\$52		\$43		\$37	\$35	\$34	\$33	\$32	\$28	\$26	\$21	\$18	\$17
	50%	Current	\$74	\$68	\$63	\$58	\$55	\$52	\$47	\$43	\$41	\$40	\$39	\$38	\$36	\$32	\$27	\$20	\$18	\$16
		10yr ave.			\$65		\$58		\$48		\$41	\$39	\$38	\$37	\$35	\$32	\$29	\$23	\$20	\$19
	55%	Current	\$82	\$75	\$69	\$63	\$61	\$57	\$52	\$47	\$45	\$44	\$42	\$41	\$39	\$35	\$30	\$22	\$20	\$18
		10yr ave.			\$71		\$64		\$53		\$45	\$43	\$41	\$40	\$39	\$35	\$32	\$26	\$23	\$20
	60%	Current	\$89	\$82	\$75	\$69	\$66	\$62	\$57	\$52	\$49	\$48	\$46	\$45	\$43	\$38	\$33	\$24	\$22	\$19
		10yr ave.			\$78		\$70		\$58		\$49	\$46	\$45	\$44	\$42	\$38	\$35	\$28	\$25	\$22
65%	Current	\$97	\$88	\$81	\$75	\$72	\$67	\$62	\$56	\$53	\$52	\$50	\$49	\$46	\$41	\$35	\$26	\$23	\$21	
	10yr ave.			\$84		\$76		\$62		\$53	\$50	\$49	\$48	\$46	\$41	\$38	\$30	\$27	\$24	
70%	Current	\$104	\$95	\$88	\$81	\$77	\$73	\$66	\$60	\$57	\$56	\$54	\$53	\$50	\$44	\$38	\$28	\$25	\$22	
	10yr ave.			\$90		\$82		\$67		\$57	\$54	\$53	\$51	\$49	\$44	\$41	\$33	\$29	\$26	
75%	Current	\$111	\$102	\$94	\$86	\$83	\$78	\$71	\$65	\$61	\$60	\$58	\$56	\$54	\$47	\$41	\$30	\$27	\$24	
	10yr ave.			\$97		\$87		\$72		\$61	\$58	\$57	\$55	\$53	\$47	\$43	\$35	\$31	\$28	
80%	Current	\$119	\$109	\$100	\$92	\$88	\$83	\$76	\$69	\$65	\$64	\$62	\$60	\$57	\$51	\$44	\$32	\$29	\$25	
	10yr ave.			\$103		\$93		\$77		\$65	\$62	\$60	\$59	\$56	\$51	\$46	\$38	\$33	\$30	
85%	Current	\$126	\$116	\$106	\$98	\$94	\$88	\$81	\$73	\$70	\$68	\$66	\$64	\$61	\$54	\$46	\$34	\$31	\$27	
	10yr ave.			\$110		\$99		\$82		\$70	\$66	\$64	\$63	\$60	\$54	\$49	\$40	\$35	\$32	

The above shows estimated returns per head for skirted fleece wool. These figures do not take into account the value of skirtings and oddments and do not take into account discounts that may apply for faults under individual circumstances. These figures are based on a market index of 100% and should be used as a guide only. Returns over \$30 / head for fleece wool are highlighted.

Source: Australian Wool Exchange, Australian Wool Innovation, Sydney Futures Exchange, x-rates.com

Disclaimer: While all due care has been taken in the preparation of this document, no warranty is made as to its accuracy, reliability or completeness. To the extent permitted by law neither Jemalong or their sources including subsidiaries and staff, accept liability to any person for loss or damage arising from the use of this information.



Table 19: Returns pr head for skirted fleece wool.

Skirted FLC Weight 3 Kg			Micron																	
			16	16.5	17	17.5	18	18.5	19	19.5	20	21	22	23	24	25	26	28	30	32
Yield (Sch Dry)	25%	Current	\$37	\$34	\$31	\$29	\$28	\$26	\$24	\$22	\$20	\$20	\$19	\$19	\$18	\$16	\$14	\$10	\$9	\$8
		10yr ave.			\$32		\$29		\$24		\$20	\$19	\$19	\$18	\$18	\$16	\$14	\$12	\$10	\$9
	30%	Current	\$45	\$41	\$38	\$35	\$33	\$31	\$28	\$26	\$25	\$24	\$23	\$23	\$21	\$19	\$16	\$12	\$11	\$10
		10yr ave.			\$39		\$35		\$29		\$25	\$23	\$23	\$22	\$21	\$19	\$17	\$14	\$12	\$11
	35%	Current	\$52	\$48	\$44	\$40	\$39	\$36	\$33	\$30	\$29	\$28	\$27	\$26	\$25	\$22	\$19	\$14	\$13	\$11
		10yr ave.			\$45		\$41		\$34		\$29	\$27	\$26	\$26	\$25	\$22	\$20	\$16	\$14	\$13
	40%	Current	\$59	\$54	\$50	\$46	\$44	\$41	\$38	\$34	\$33	\$32	\$31	\$30	\$29	\$25	\$22	\$16	\$14	\$13
		10yr ave.			\$52		\$47		\$38		\$33	\$31	\$30	\$29	\$28	\$25	\$23	\$19	\$16	\$15
	45%	Current	\$67	\$61	\$56	\$52	\$50	\$47	\$43	\$39	\$37	\$36	\$35	\$34	\$32	\$28	\$25	\$18	\$16	\$14
		10yr ave.			\$58		\$52		\$43		\$37	\$35	\$34	\$33	\$32	\$28	\$26	\$21	\$18	\$17
	50%	Current	\$74	\$68	\$63	\$58	\$55	\$52	\$47	\$43	\$41	\$40	\$39	\$38	\$36	\$32	\$27	\$20	\$18	\$16
		10yr ave.			\$65		\$58		\$48		\$41	\$39	\$38	\$37	\$35	\$32	\$29	\$23	\$20	\$19
	55%	Current	\$82	\$75	\$69	\$63	\$61	\$57	\$52	\$47	\$45	\$44	\$42	\$41	\$39	\$35	\$30	\$22	\$20	\$18
		10yr ave.			\$71		\$64		\$53		\$45	\$43	\$41	\$40	\$39	\$35	\$32	\$26	\$23	\$20
	60%	Current	\$89	\$82	\$75	\$69	\$66	\$62	\$57	\$52	\$49	\$48	\$46	\$45	\$43	\$38	\$33	\$24	\$22	\$19
		10yr ave.			\$78		\$70		\$58		\$49	\$46	\$45	\$44	\$42	\$38	\$35	\$28	\$25	\$22
65%	Current	\$97	\$88	\$81	\$75	\$72	\$67	\$62	\$56	\$53	\$52	\$50	\$49	\$46	\$41	\$35	\$26	\$23	\$21	
	10yr ave.			\$84		\$76		\$62		\$53	\$50	\$49	\$48	\$46	\$41	\$38	\$30	\$27	\$24	
70%	Current	\$104	\$95	\$88	\$81	\$77	\$73	\$66	\$60	\$57	\$56	\$54	\$53	\$50	\$44	\$38	\$28	\$25	\$22	
	10yr ave.			\$90		\$82		\$67		\$57	\$54	\$53	\$51	\$49	\$44	\$41	\$33	\$29	\$26	
75%	Current	\$111	\$102	\$94	\$86	\$83	\$78	\$71	\$65	\$61	\$60	\$58	\$56	\$54	\$47	\$41	\$30	\$27	\$24	
	10yr ave.			\$97		\$87		\$72		\$61	\$58	\$57	\$55	\$53	\$47	\$43	\$35	\$31	\$28	
80%	Current	\$119	\$109	\$100	\$92	\$88	\$83	\$76	\$69	\$65	\$64	\$62	\$60	\$57	\$51	\$44	\$32	\$29	\$25	
	10yr ave.			\$103		\$93		\$77		\$65	\$62	\$60	\$59	\$56	\$51	\$46	\$38	\$33	\$30	
85%	Current	\$126	\$116	\$106	\$98	\$94	\$88	\$81	\$73	\$70	\$68	\$66	\$64	\$61	\$54	\$46	\$34	\$31	\$27	
	10yr ave.			\$110		\$99		\$82		\$70	\$66	\$64	\$63	\$60	\$54	\$49	\$40	\$35	\$32	

The above shows estimated returns per head for skirted fleece wool. These figures do not take into account the value of skirtings and oddments and do not take into account discounts that may apply for faults under individual circumstances. These figures are based on a market index of 100% and should be used as a guide only. Returns over \$30 / head for fleece wool are highlighted.

Source: Australian Wool Exchange, Australian Wool Innovation, Sydney Futures Exchange, x-rates.com

Disclaimer: While all due care has been taken in the preparation of this document, no warranty is made as to its accuracy, reliability or completeness. To the extent permitted by law neither Jemalong or their sources including subsidiaries and staff, accept liability to any person for loss or damage arising from the use of this information.



Table 20: Returns pr head for skirted fleece wool.

Skirted FLC Weight 2 Kg			Micron																	
			16	16.5	17	17.5	18	18.5	19	19.5	20	21	22	23	24	25	26	28	30	32
Yield (Sch Dry)	25%	Current	\$37	\$34	\$31	\$29	\$28	\$26	\$24	\$22	\$20	\$20	\$19	\$19	\$18	\$16	\$14	\$10	\$9	\$8
		10yr ave.			\$32		\$29		\$24		\$20	\$19	\$19	\$18	\$18	\$16	\$14	\$12	\$10	\$9
	30%	Current	\$45	\$41	\$38	\$35	\$33	\$31	\$28	\$26	\$25	\$24	\$23	\$23	\$21	\$19	\$16	\$12	\$11	\$10
		10yr ave.			\$39		\$35		\$29		\$25	\$23	\$23	\$22	\$21	\$19	\$17	\$14	\$12	\$11
	35%	Current	\$52	\$48	\$44	\$40	\$39	\$36	\$33	\$30	\$29	\$28	\$27	\$26	\$25	\$22	\$19	\$14	\$13	\$11
		10yr ave.			\$45		\$41		\$34		\$29	\$27	\$26	\$26	\$25	\$22	\$20	\$16	\$14	\$13
	40%	Current	\$59	\$54	\$50	\$46	\$44	\$41	\$38	\$34	\$33	\$32	\$31	\$30	\$29	\$25	\$22	\$16	\$14	\$13
		10yr ave.			\$52		\$47		\$38		\$33	\$31	\$30	\$29	\$28	\$25	\$23	\$19	\$16	\$15
	45%	Current	\$67	\$61	\$56	\$52	\$50	\$47	\$43	\$39	\$37	\$36	\$35	\$34	\$32	\$28	\$25	\$18	\$16	\$14
		10yr ave.			\$58		\$52		\$43		\$37	\$35	\$34	\$33	\$32	\$28	\$26	\$21	\$18	\$17
	50%	Current	\$74	\$68	\$63	\$58	\$55	\$52	\$47	\$43	\$41	\$40	\$39	\$38	\$36	\$32	\$27	\$20	\$18	\$16
		10yr ave.			\$65		\$58		\$48		\$41	\$39	\$38	\$37	\$35	\$32	\$29	\$23	\$20	\$19
	55%	Current	\$82	\$75	\$69	\$63	\$61	\$57	\$52	\$47	\$45	\$44	\$42	\$41	\$39	\$35	\$30	\$22	\$20	\$18
		10yr ave.			\$71		\$64		\$53		\$45	\$43	\$41	\$40	\$39	\$35	\$32	\$26	\$23	\$20
	60%	Current	\$89	\$82	\$75	\$69	\$66	\$62	\$57	\$52	\$49	\$48	\$46	\$45	\$43	\$38	\$33	\$24	\$22	\$19
		10yr ave.			\$78		\$70		\$58		\$49	\$46	\$45	\$44	\$42	\$38	\$35	\$28	\$25	\$22
65%	Current	\$97	\$88	\$81	\$75	\$72	\$67	\$62	\$56	\$53	\$52	\$50	\$49	\$46	\$41	\$35	\$26	\$23	\$21	
	10yr ave.			\$84		\$76		\$62		\$53	\$50	\$49	\$48	\$46	\$41	\$38	\$30	\$27	\$24	
70%	Current	\$104	\$95	\$88	\$81	\$77	\$73	\$66	\$60	\$57	\$56	\$54	\$53	\$50	\$44	\$38	\$28	\$25	\$22	
	10yr ave.			\$90		\$82		\$67		\$57	\$54	\$53	\$51	\$49	\$44	\$41	\$33	\$29	\$26	
75%	Current	\$111	\$102	\$94	\$86	\$83	\$78	\$71	\$65	\$61	\$60	\$58	\$56	\$54	\$47	\$41	\$30	\$27	\$24	
	10yr ave.			\$97		\$87		\$72		\$61	\$58	\$57	\$55	\$53	\$47	\$43	\$35	\$31	\$28	
80%	Current	\$119	\$109	\$100	\$92	\$88	\$83	\$76	\$69	\$65	\$64	\$62	\$60	\$57	\$51	\$44	\$32	\$29	\$25	
	10yr ave.			\$103		\$93		\$77		\$65	\$62	\$60	\$59	\$56	\$51	\$46	\$38	\$33	\$30	
85%	Current	\$126	\$116	\$106	\$98	\$94	\$88	\$81	\$73	\$70	\$68	\$66	\$64	\$61	\$54	\$46	\$34	\$31	\$27	
	10yr ave.			\$110		\$99		\$82		\$70	\$66	\$64	\$63	\$60	\$54	\$49	\$40	\$35	\$32	

The above shows estimated returns per head for skirted fleece wool. These figures do not take into account the value of skirtings and oddments and do not take into account discounts that may apply for faults under individual circumstances. These figures are based on a market index of 100% and should be used as a guide only. Returns over \$30 / head for fleece wool are highlighted.

Source: Australian Wool Exchange, Australian Wool Innovation, Sydney Futures Exchange, x-rates.com

Disclaimer: While all due care has been taken in the preparation of this document, no warranty is made as to its accuracy, reliability or completeness. To the extent permitted by law neither Jemalong or their sources including subsidiaries and staff, accept liability to any person for loss or damage arising from the use of this information.