



Table 1: Northern Region Micron Price Guides

CURRENT MARKET					PERCENTILES		AVERAGES					12 MONTH COMPARISONS								TRADING RANGE		
Mic.	16/12/2010	9/12/2010	Price	Current			Weekly	3 year	Now	10 year	Now	15/12/2009	Now	Now	Now	Now	Now	Now	Clean c/kg			
Guides	Price	Change	3yr	10yr	Average	compared to 3yr ave		Average	compared to 10yr ave	This time Last Year	compared to Last Year	12 Month Low	compared to Low	12 Month High	compared to High	12 Mth	3 Year	10 Year				
NRI	1073	+20 1.9%	97%	93%	897	+176 20%		872	+201 23%	899	+174 19%	890	+183 21%	1080	-7 -1%	190	343	584				
16*	2030	+10 0.5%	99%		1637	+393 24%				1385	+645 47%	1480	+550 37%	2050	-20 -1%	570	665					
16.5*	1910	+15 0.8%	99%		1500	+410 27%				1290	+620 48%	1365	+545 40%	1980	-70 -4%	615	724					
17*	1810	+25 1.4%	99%	96%	1374	+436 32%	1412	+398 28%		1200	+610 51%	1230	+580 47%	1815	-5 0%	585	643	1797				
17.5*	1720	+50 2.9%	99%		1308	+412 31%				1170	+550 47%	1175	+545 46%	1725	-5 0%	550	638					
18	1631	+41 2.5%	99%	87%	1248	+383 31%	1283	+348 27%		1138	+493 43%	1134	+497 44%	1636	-5 0%	502	601	1392				
18.5	1490	+36 2.4%	98%		1171	+319 27%				1100	+390 35%	1088	+402 37%	1507	-17 -1%	419	536					
19	1306	+34 2.6%	97%	89%	1072	+234 22%	1066	+240 23%		1047	+259 25%	1031	+275 27%	1312	-6 0%	281	443	706				
19.5	1144	+39 3.4%	92%		983	+161 16%				993	+151 15%	952	+192 20%	1168	-24 -2%	216	457					
20	1034	+26 2.5%	88%	83%	911	+123 14%	915	+119 13%		932	+102 11%	904	+130 14%	1076	-42 -4%	172	464	717				
21	1008	+28 2.8%	94%	85%	876	+132 15%	870	+138 16%		904	+104 12%	878	+130 15%	1039	-31 -3%	161	427	744				
22	961	+22 2.3%	93%	79%	852	+109 13%	847	+114 13%		881	+80 9%	847	+114 13%	990	-29 -3%	143	360	742				
23	904	+11 1.2%	83%	71%	828	+76 9%	826	+78 9%		848	+56 7%	827	+77 9%	940	-36 -4%	113	311	750				
24	820	-8 -1.0%	67%	63%	781	+39 5%	790	+30 4%		784	+36 5%	780	+40 5%	881	-61 -7%	101	257	739				
25	738	-12 -1.6%	90%	76%	671	+67 10%	709	+29 4%		655	+83 13%	660	+78 12%	781	-43 -6%	121	215	690				
26	634	-16 -2.5%	81%	63%	602	+32 5%	650	-16 -2%		576	+58 10%	576	+58 10%	696	-62 -9%	120	192	636				
28	484	+1 0.2%	85%	50%	461	+23 5%	522	-38 -7%		452	+32 7%	436	+48 11%	502	-18 -4%	66	119	465				
30	436	-9 -2.1%	92%	55%	399	+37 9%	456	-20 -4%		384	+52 14%	382	+54 14%	447	-11 -2%	65	128	384				
32	409	-5 -1.2%	96%	60%	349	+60 17%	413	-4 -1%		332	+77 23%	333	+76 23%	414	-5 -1%	81	108	372				
MC	632	-26 -4.1%	84%	90%	544	+88 16%	500	+132 26%		596	+36 6%	561	+71 13%	681	-49 -7%	120	289	304				

Note:

* Due to the irregular market quoting for some fine wool categories, figures shown relating to micron categories below 18 micron are an estimate based on the AWEX Premium & Discounts Report & other available information.

* For any category, where there is insufficient quantity offered to enable AWEX to quote, a quote will be provided based on the best available information.

* 10 Year data is not available for some micron categories, which may result in blank spaces in the table above.

Definitions:

* A Percentile, is a value on a scale of one hundred that indicates the percent of a distribution that is equal to or below it. In general a percentile between 25% and 75% is considered normal, a percentile below 25% is considered below normal and a percentile above 75% is considered above normal.

Three and ten year percentiles shown in the table above, detail the period of time during the past 3 & 10 years that the market has traded either at or below its current price.

The higher the percentile, the stronger the market.

Source: Australian Wool Exchange, Australian Wool Innovation, Sydney Futures Exchange, x-rates.com

Disclaimer: While all due care has been taken in the preparation of this document, no warranty is made as to its accuracy, reliability or completeness. To the extent permitted by law neither Jemalong or their sources including subsidiaries and staff, accept liability to any person for loss or damage arising from the use of this information.



MARKET COMMENTARY

Australian Dollar 98.11 cents US as of 16/12/2010

NORTHERN REGION –Sale Week 24/10 (49,970 bales offered nationally)

After an irregular start on Tuesday, buyer support increased and momentum grew as the sale progressed. Most merino fleece closed the day 5-10 cents higher, with the lower style & strength lots attracting the most attention, merino skirting's were also in demand with burrier types 10-15 cents dearer (19 to 20 microns were most affected). The oddment market didn't fair so well, with Locks, crutching's & stains all up to 10 cents cheaper. 30 to 32 micron crossbred also lost 10 cents while the 27 to 29 micron range were firm (tending in sellers favour).

On Wednesday the rush was on, with buyers trying to complete orders before the recess. 19.5 micron and finer rose 25-35 cents while 20 to 22 microns closed 20 cents dearer. All oddment categories continued to loose ground, with Locks, crutching & stains falling up to 20 cents. 27 to 29 micron crossbred closed in sellers favour as did the broader end, with 30 to 32 microns recouping 5 cents on the previous day.

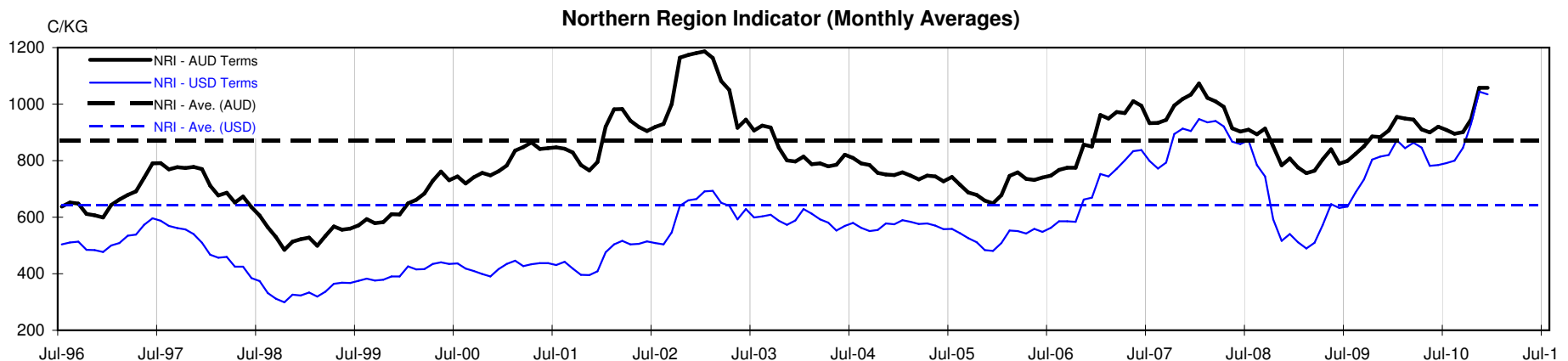




Table 4: 19 micron SFE

Wednesday, 15 December 2010

Delivery Mth	Dec-10	Feb-11	Apr-11	Jun-11	Aug-11	Oct-11	Dec-11	Feb-12	Apr-12
19 Micron SFE	1269	1269	1312	1312	1260	1217	1177	1157	1117
Average	1032	1058	1066	1076	1081	1084	1083	1093	1111
Maximum	1106	1269	1269	1312	1312	1280	1265	1240	1240
Minimum	905	936	983	1025	1034	1034	1034	1034	1053

Table 5: 19 micron SFE, as a percentile of the 19 micron MPG

3 Year Percentile	92%	92%	98%	98%	91%	85%	83%	82%	79%
10 Year Percentile	87%	87%	90%	90%	86%	81%	77%	75%	69%

Table 6: 19 micron SFE, compared to MPG

Current 19 MPG	-37	-3%	-37	-3%	+6	0%	+6	0%	-46	-4%	-89	-7%	-129	-10%	-149	-11%	-189	-14%
19 MPG, 1 Year Average	+160	14%	+160	14%	+203	18%	+203	18%	+151	14%	+108	10%	+68	6%	+48	4%	+8	1%
19 MPG, 3 Year Average	+197	18%	+197	18%	+240	22%	+240	22%	+188	18%	+145	14%	+105	10%	+85	8%	+45	4%
19 MPG, 10 Year Average	+203	19%	+203	19%	+246	23%	+246	23%	+194	18%	+151	14%	+111	10%	+91	9%	+51	5%

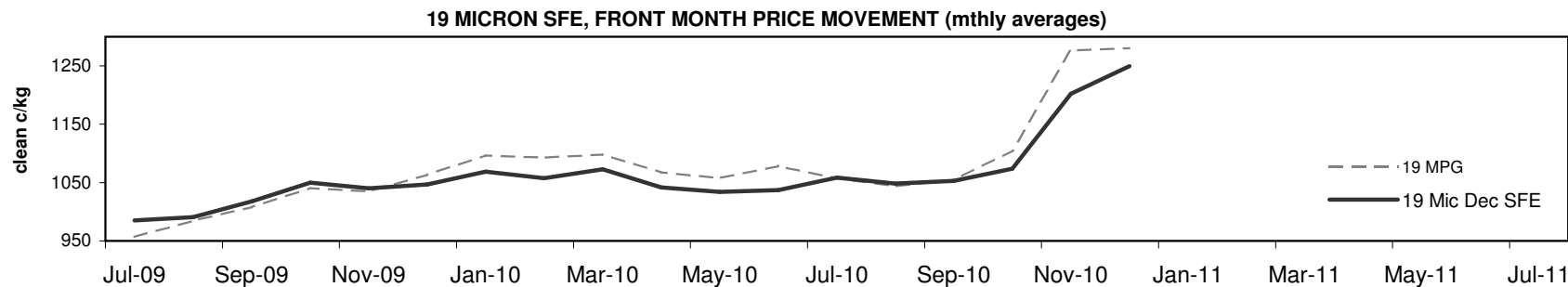
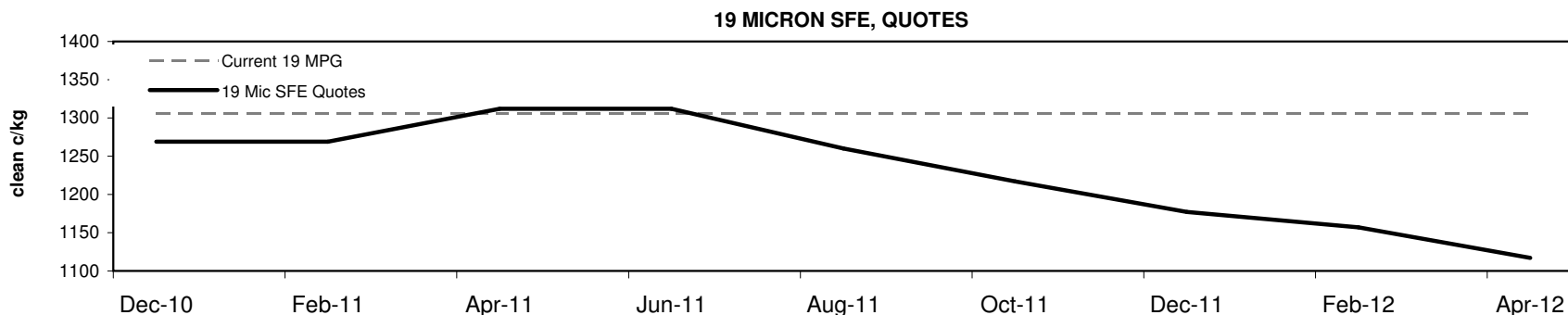




Table 7: 21 micron SFE

Wednesday, 15 December 2010

Delivery Mth	Dec-10	Feb-11	Apr-11	Jun-11	Aug-11	Oct-11	Dec-11	Feb-12	Apr-12
21 Micron SFE	1009	1020	1013	1007	1003	1005	1005	1005	1005
Average	914	933	940	944	945	938	930	931	943
Maximum	1013	1020	1025	1026	1025	1018	1017	1018	1017
Minimum	780	818	860	891	890	880	880	880	880

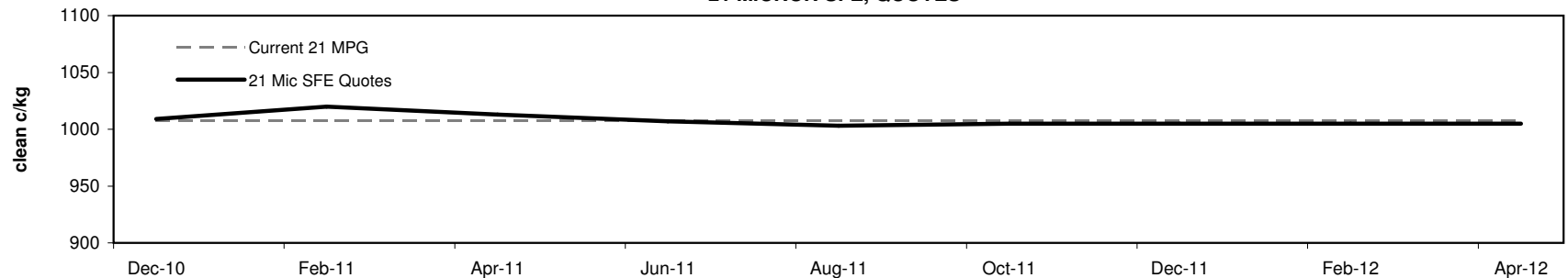
Table 8: 21 micron SFE, as a percentile of the 21 micron MPG

3 Year Percentile	95%	95%	95%	94%	93%	94%	94%	94%	94%
10 Year Percentile	86%	87%	86%	85%	84%	84%	84%	84%	84%

Table 9: 21 micron SFE, compared to MPG

Current 21 MPG	+1	0%	+12	1%	+5	0%	-1	0%	-5	0%	-3	0%	-3	0%	-3	0%	-3	0%
21 MPG, 1 Year Average	+65	7%	+76	8%	+69	7%	+63	7%	+59	6%	+61	6%	+61	6%	+61	6%	+61	6%
21 MPG, 3 Year Average	+133	15%	+144	16%	+137	16%	+131	15%	+127	15%	+129	15%	+129	15%	+129	15%	+129	15%
21 MPG, 10 Year Average	+139	16%	+150	17%	+143	16%	+137	16%	+133	15%	+135	16%	+135	16%	+135	16%	+135	16%

21 MICRON SFE, QUOTES



21 MICRON SFE, FRONT MONTH PRICE MOVEMENT (monthly averages)

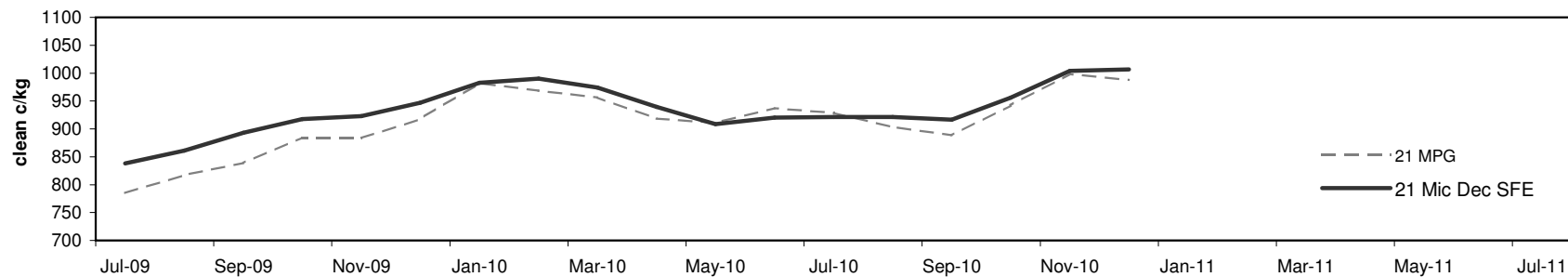




Table 10: 23 micron SFE

Wednesday, 15 December 2010

Delivery Mth	Dec-10	Feb-11	Apr-11	Jun-11	Aug-11	Oct-11	Dec-11	Feb-12	Apr-12
23 Micron SFE	883	883	883	883	883	883	883	883	883
Average	839	856	865	874	886	891	884	884	885
Maximum	927	927	927	927	927	927	887	887	887
Minimum	716	760	760	803	803	883	883	883	883

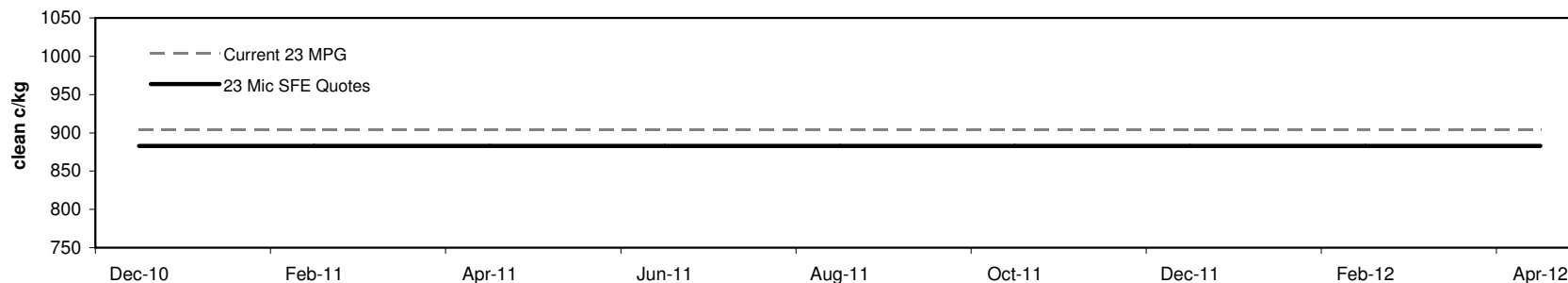
Table 11: 23 micron SFE, as a percentile of the 23 micron MPG

3 Year Percentile	68%	68%	68%	68%	68%	68%	68%	68%	68%
10 Year Percentile	64%	64%	64%	64%	64%	64%	64%	64%	64%

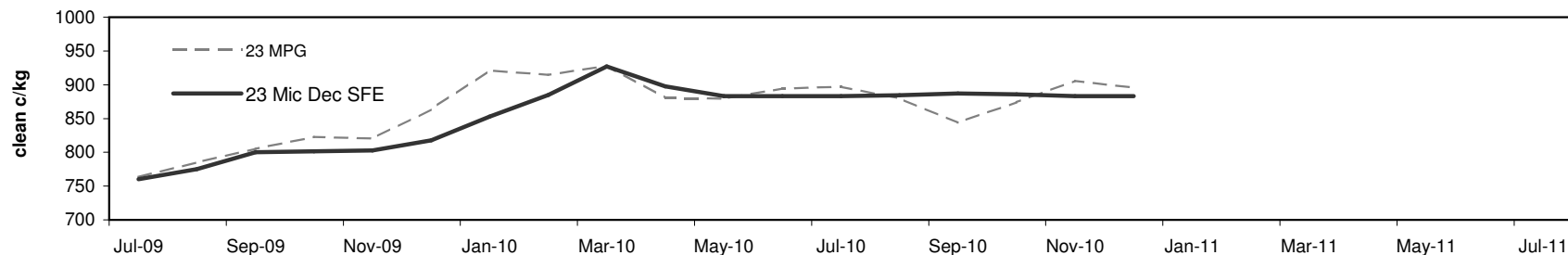
Table 12: 23 micron SFE, compared to MPG

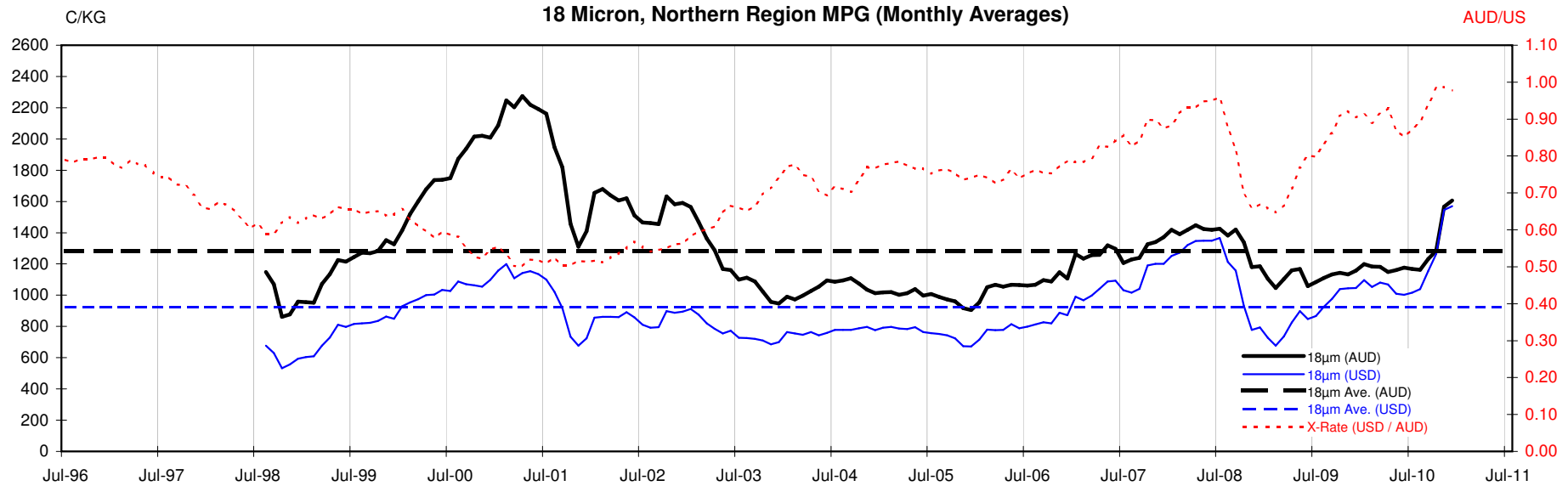
Current 19 MPG	-21	-2%	-21	-2%	-21	-2%	-21	-2%	-21	-2%	-21	-2%	-21	-2%	-21	-2%	-21	-2%
23 MPG, 1 Year Average	-10	-1%	-10	-1%	-10	-1%	-10	-1%	-10	-1%	-10	-1%	-10	-1%	-10	-1%	-10	-1%
23 MPG, 3 Year Average	+55	7%	+55	7%	+55	7%	+55	7%	+55	7%	+55	7%	+55	7%	+55	7%	+55	7%
23 MPG, 10 Year Average	+57	7%	+57	7%	+57	7%	+57	7%	+57	7%	+57	7%	+57	7%	+57	7%	+57	7%

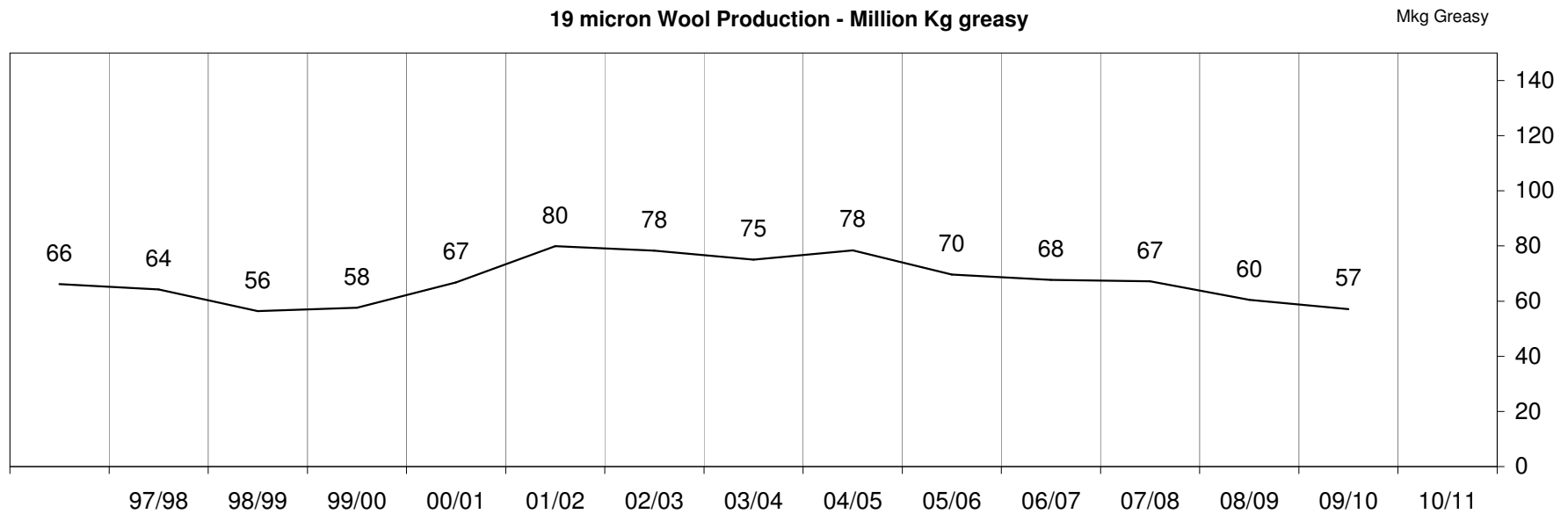
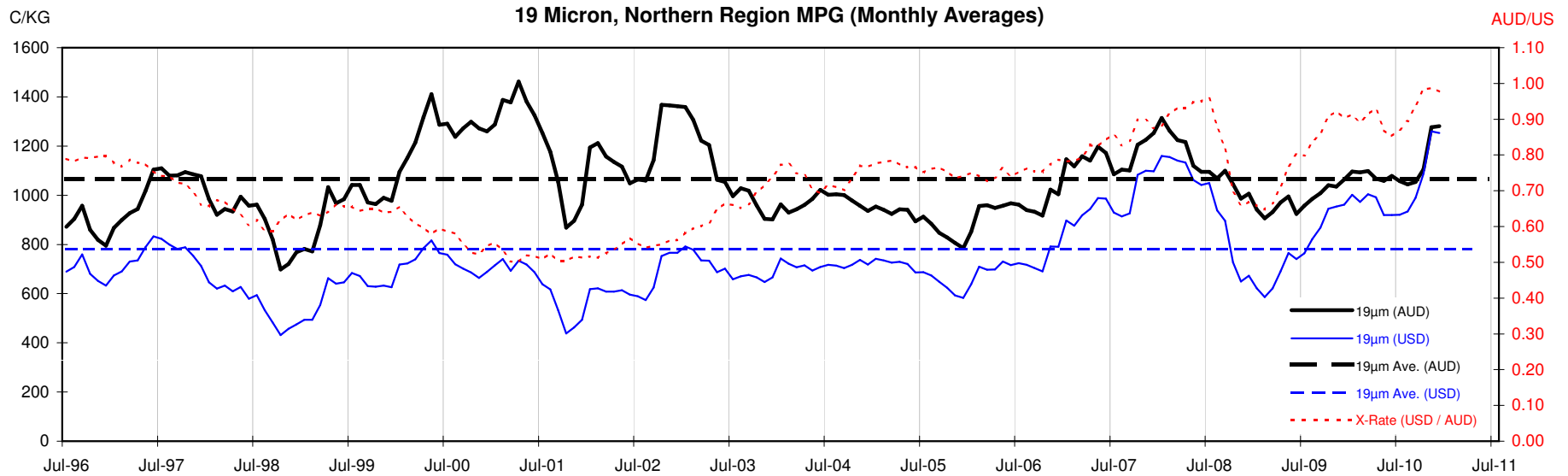
23 MICRON SFE, QUOTES

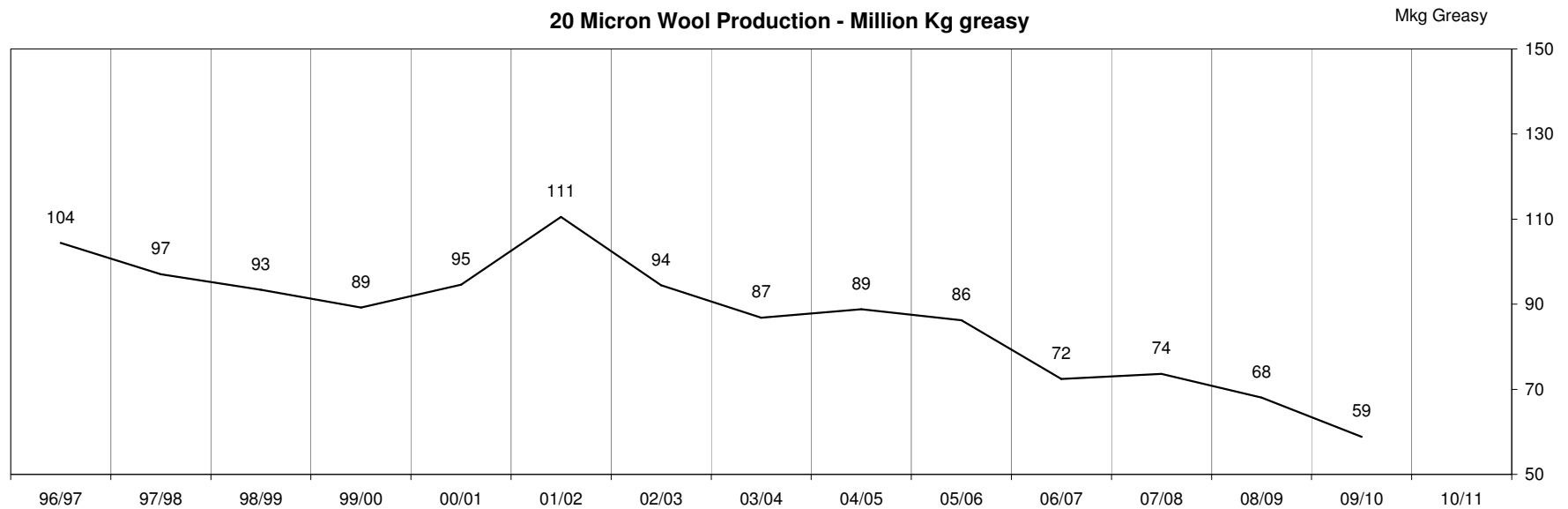
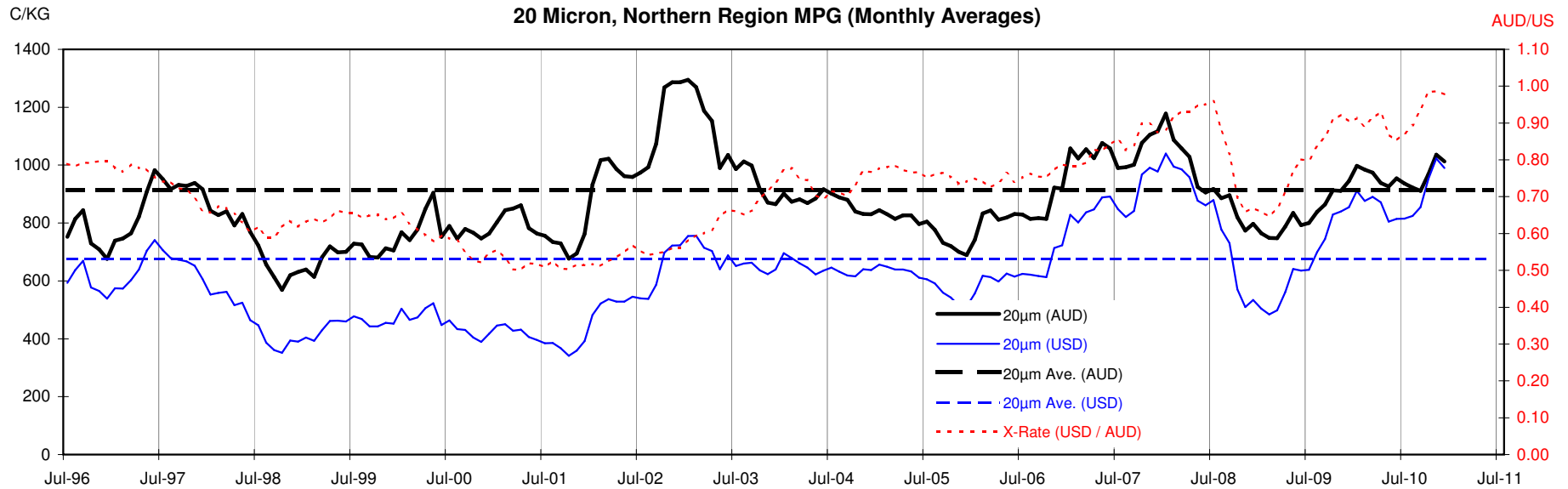


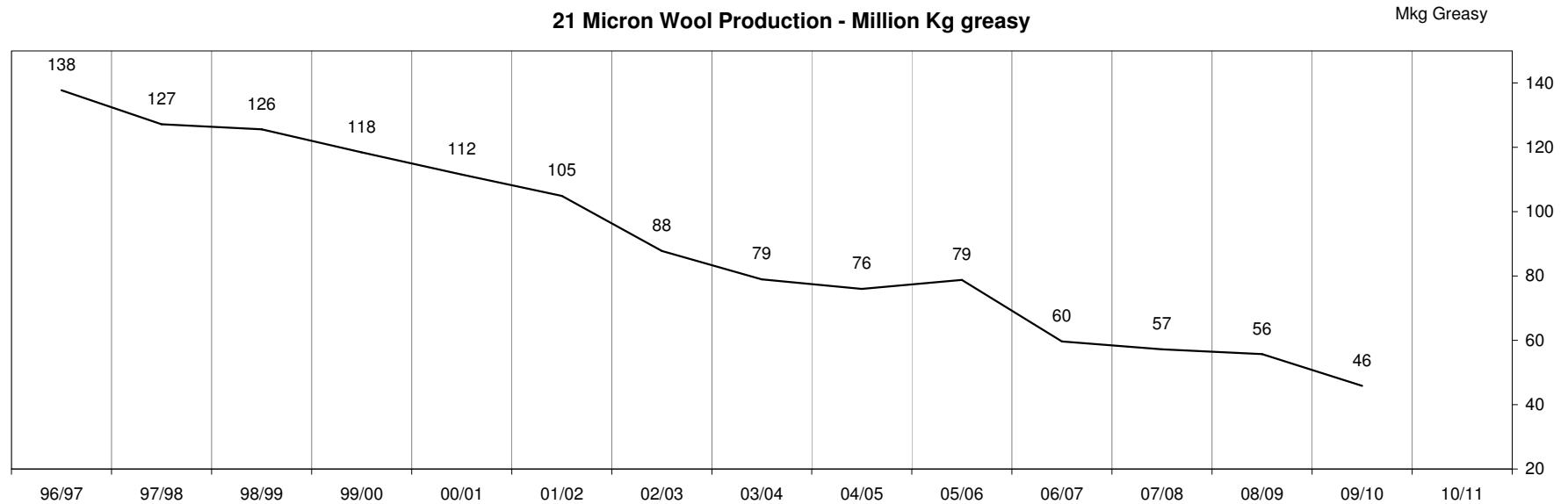
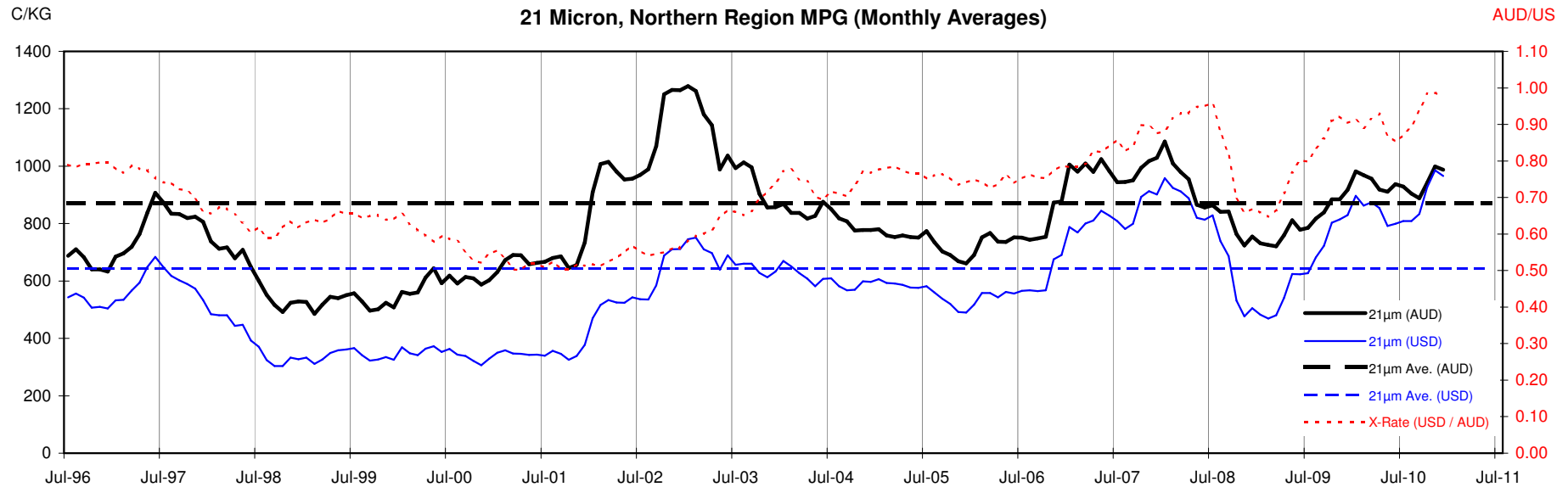
23 MICRON SFE, FRONT MONTH PRICE MOVEMENT (mthly averages)

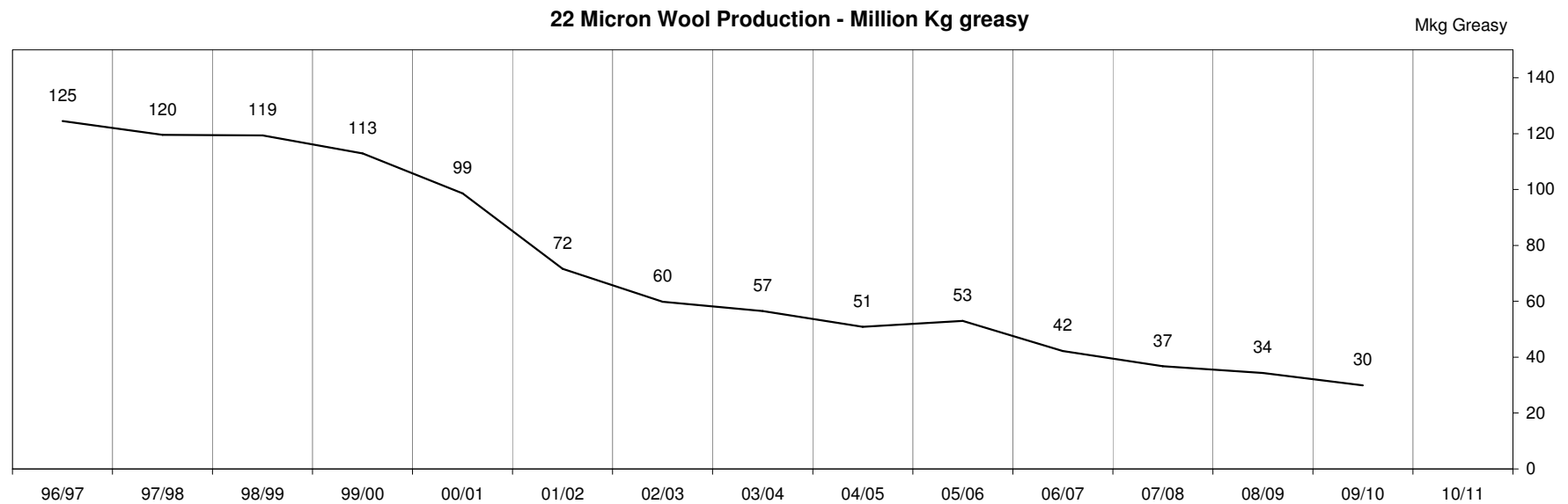
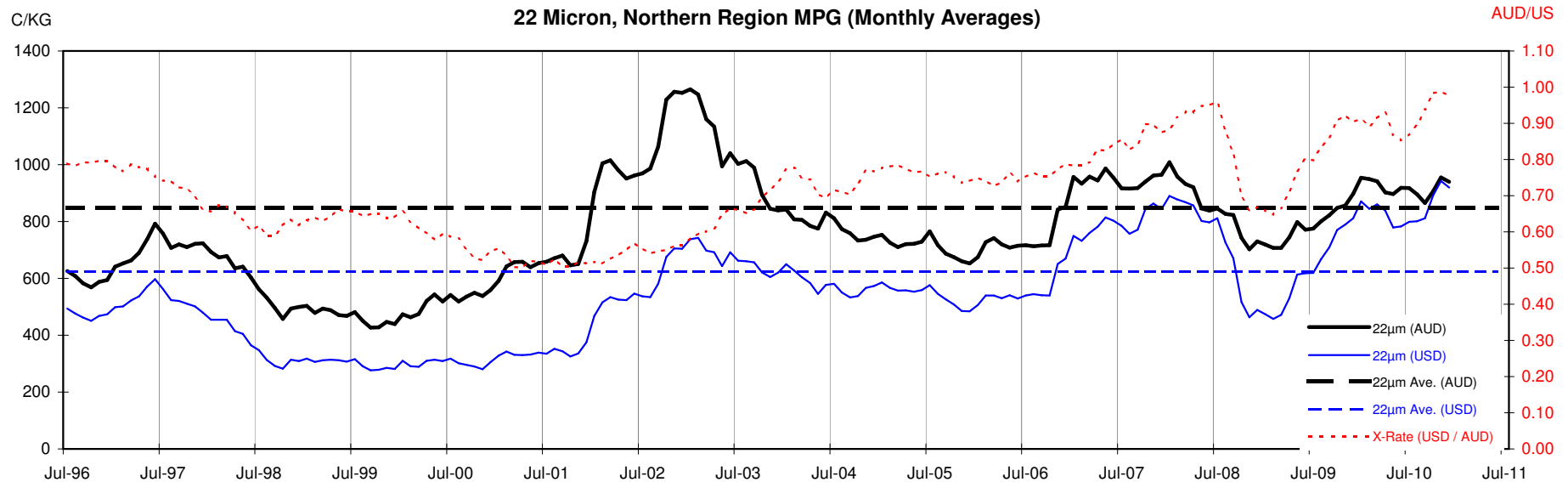


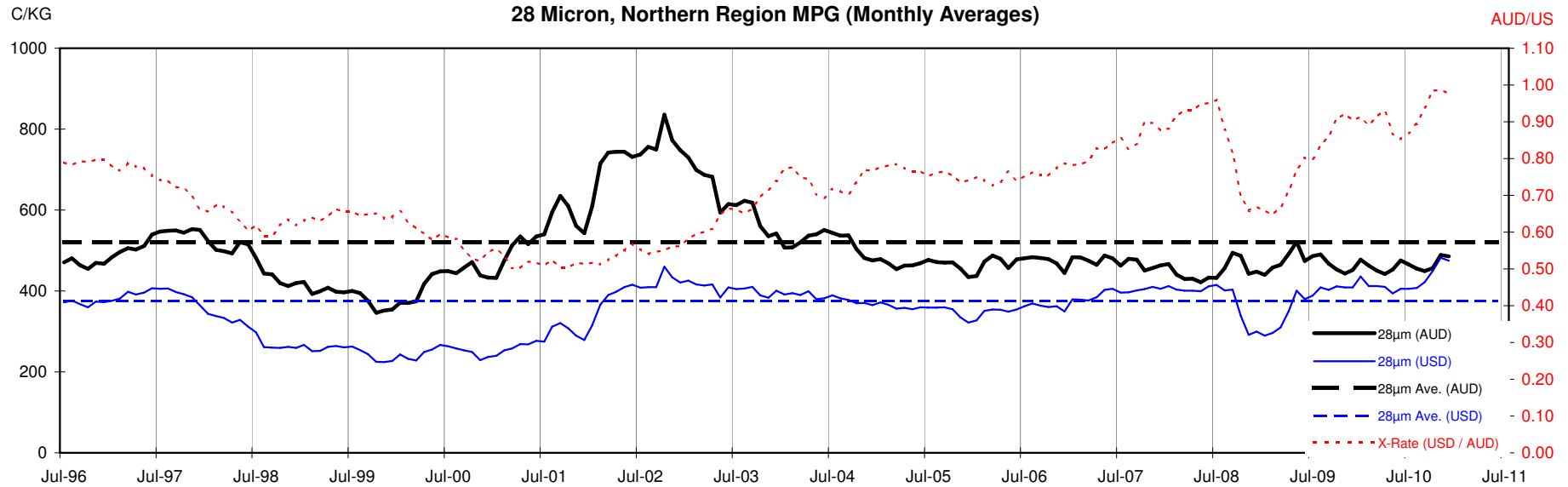




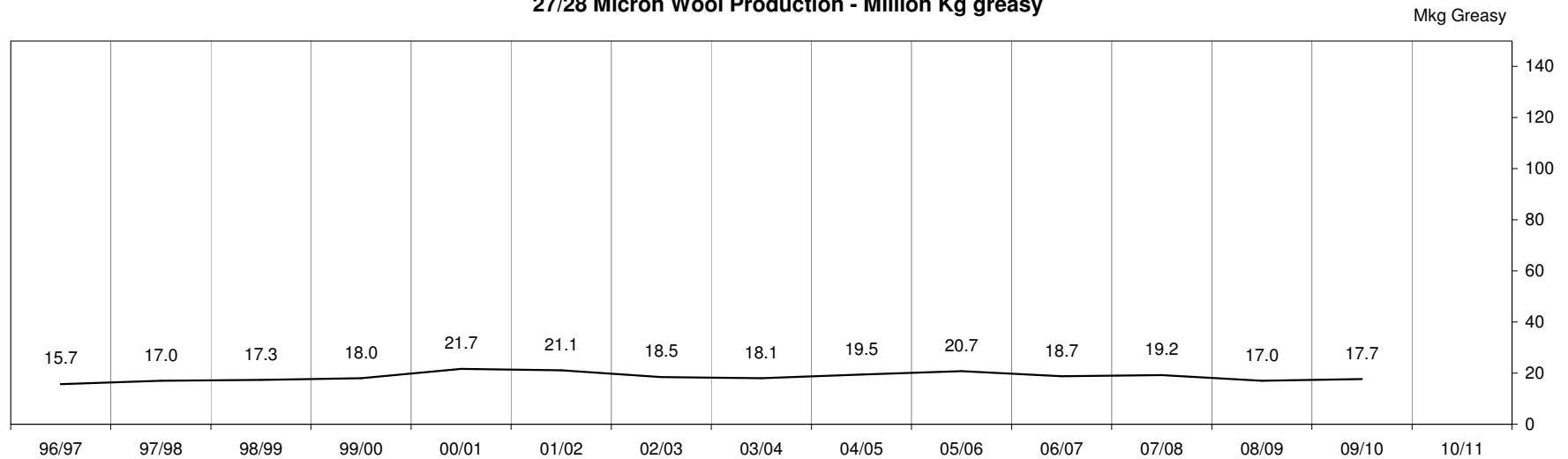








27/28 Micron Wool Production - Million Kg greasy



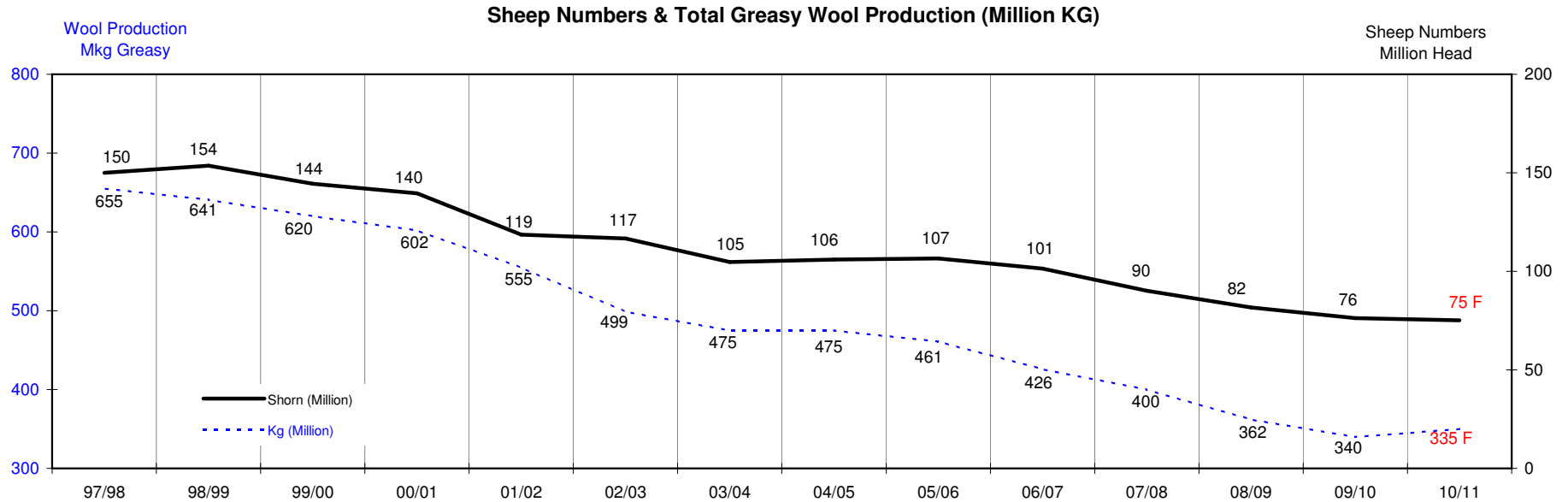
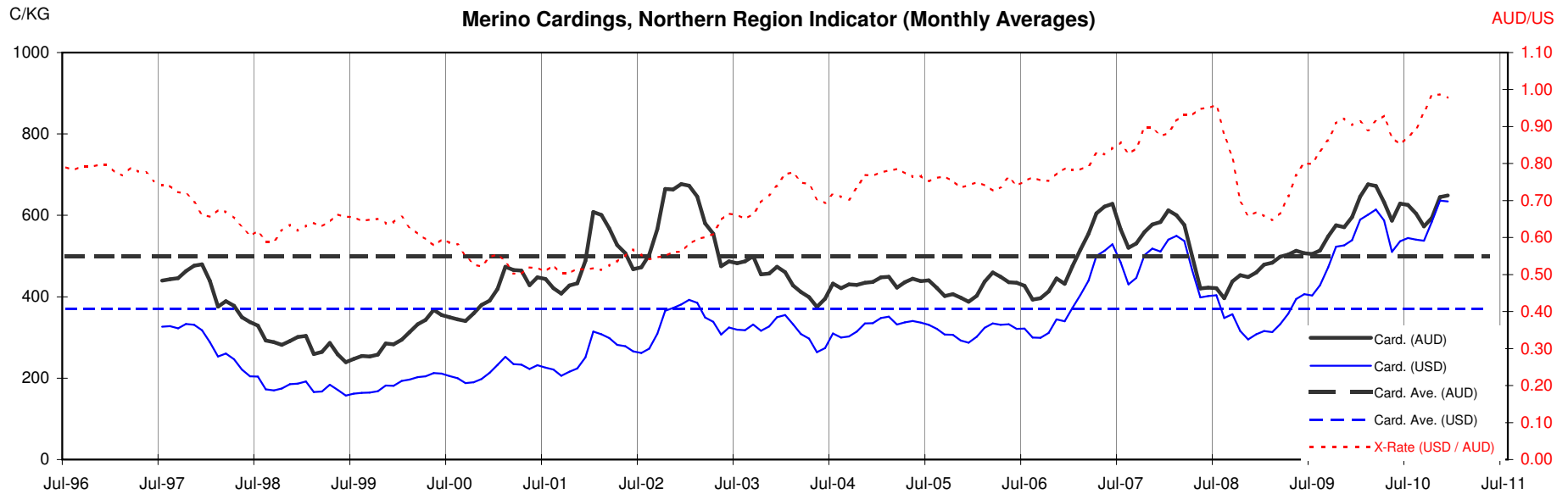




Table 13: Returns pr head for skirted fleece wool.

Skirted FLC Weight 9 Kg		Micron																	
		16	16.5	17	17.5	18	18.5	19	19.5	20	21	22	23	24	25	26	28	30	32
Yield (Sch Dry)	25% Current	\$46	\$43	\$41	\$39	\$37	\$34	\$29	\$26	\$23	\$23	\$22	\$20	\$18	\$17	\$14	\$11	\$10	\$9
	10yr ave.			\$32		\$29		\$24		\$21	\$20	\$19	\$19	\$18	\$16	\$15	\$12	\$10	\$9
	30% Current	\$55	\$52	\$49	\$46	\$44	\$40	\$35	\$31	\$28	\$27	\$26	\$24	\$22	\$20	\$17	\$13	\$12	\$11
	10yr ave.			\$38		\$35		\$29		\$25	\$23	\$23	\$22	\$21	\$19	\$18	\$14	\$12	\$11
	35% Current	\$64	\$60	\$57	\$54	\$51	\$47	\$41	\$36	\$33	\$32	\$30	\$28	\$26	\$23	\$20	\$15	\$14	\$13
	10yr ave.			\$44		\$40		\$34		\$29	\$27	\$27	\$26	\$25	\$22	\$20	\$16	\$14	\$13
	40% Current	\$73	\$69	\$65	\$62	\$59	\$54	\$47	\$41	\$37	\$36	\$35	\$33	\$30	\$27	\$23	\$17	\$16	\$15
	10yr ave.			\$51		\$46		\$38		\$33	\$31	\$30	\$30	\$28	\$26	\$23	\$19	\$16	\$15
	45% Current	\$82	\$77	\$73	\$70	\$66	\$60	\$53	\$46	\$42	\$41	\$39	\$37	\$33	\$30	\$26	\$20	\$18	\$17
	10yr ave.			\$57		\$52		\$43		\$37	\$35	\$34	\$33	\$32	\$29	\$26	\$21	\$18	\$17
	50% Current	\$91	\$86	\$81	\$77	\$73	\$67	\$59	\$51	\$47	\$45	\$43	\$41	\$37	\$33	\$29	\$22	\$20	\$18
	10yr ave.			\$64		\$58		\$48		\$41	\$39	\$38	\$37	\$36	\$32	\$29	\$23	\$21	\$19
	55% Current	\$100	\$95	\$90	\$85	\$81	\$74	\$65	\$57	\$51	\$50	\$48	\$45	\$41	\$37	\$31	\$24	\$22	\$20
	10yr ave.			\$70		\$64		\$53		\$45	\$43	\$42	\$41	\$39	\$35	\$32	\$26	\$23	\$20
	60% Current	\$110	\$103	\$98	\$93	\$88	\$80	\$71	\$62	\$56	\$54	\$52	\$49	\$44	\$40	\$34	\$26	\$24	\$22
	10yr ave.			\$76		\$69		\$58		\$49	\$47	\$46	\$45	\$43	\$38	\$35	\$28	\$25	\$22
	65% Current	\$119	\$112	\$106	\$101	\$95	\$87	\$76	\$67	\$60	\$59	\$56	\$53	\$48	\$43	\$37	\$28	\$26	\$24
	10yr ave.			\$83		\$75		\$62		\$54	\$51	\$50	\$48	\$46	\$41	\$38	\$31	\$27	\$24
	70% Current	\$128	\$120	\$114	\$108	\$103	\$94	\$82	\$72	\$65	\$64	\$61	\$57	\$52	\$46	\$40	\$30	\$27	\$26
	10yr ave.			\$89		\$81		\$67		\$58	\$55	\$53	\$52	\$50	\$45	\$41	\$33	\$29	\$26
	75% Current	\$137	\$129	\$122	\$116	\$110	\$101	\$88	\$77	\$70	\$68	\$65	\$61	\$55	\$50	\$43	\$33	\$29	\$28
	10yr ave.			\$95		\$87		\$72		\$62	\$59	\$57	\$56	\$53	\$48	\$44	\$35	\$31	\$28
	80% Current	\$146	\$138	\$130	\$124	\$117	\$107	\$94	\$82	\$74	\$73	\$69	\$65	\$59	\$53	\$46	\$35	\$31	\$29
	10yr ave.			\$102		\$92		\$77		\$66	\$63	\$61	\$59	\$57	\$51	\$47	\$38	\$33	\$30
	85% Current	\$155	\$146	\$138	\$132	\$125	\$114	\$100	\$88	\$79	\$77	\$74	\$69	\$63	\$56	\$49	\$37	\$33	\$31
	10yr ave.			\$108		\$98		\$82		\$70	\$67	\$65	\$63	\$60	\$54	\$50	\$40	\$35	\$32

The above shows estimated returns per head for skirted fleece wool. These figures do not take into account the value of skirtings and oddments and do not take into account discounts that may apply for faults under individual circumstances. These figures are based on a market index of 100% and should be used as a guide only. Returns over \$30 / head for fleece wool are highlighted.

Source: Australian Wool Exchange, Australian Wool Innovation, Sydney Futures Exchange, x-rates.com

Disclaimer: While all due care has been taken in the preparation of this document, no warranty is made as to its accuracy, reliability or completeness. To the extent permitted by law neither Jemalong or their sources including subsidiaries and staff, accept liability to any person for loss or damage arising from the use of this information.



Table 14: Returns pr head for skirted fleece wool.

Skirted FLC Weight 8 Kg		Micron																	
		16	16.5	17	17.5	18	18.5	19	19.5	20	21	22	23	24	25	26	28	30	32
Yield (Sch Dry)	25% Current	\$41	\$38	\$36	\$34	\$33	\$30	\$26	\$23	\$21	\$20	\$19	\$18	\$16	\$15	\$13	\$10	\$9	\$8
	10yr ave.			\$28		\$26		\$21		\$18	\$17	\$17	\$17	\$16	\$14	\$13	\$10	\$9	\$8
	30% Current	\$49	\$46	\$43	\$41	\$39	\$36	\$31	\$27	\$25	\$24	\$23	\$22	\$20	\$18	\$15	\$12	\$10	\$10
	10yr ave.			\$34		\$31		\$26		\$22	\$21	\$20	\$20	\$19	\$17	\$16	\$13	\$11	\$10
	35% Current	\$57	\$53	\$51	\$48	\$46	\$42	\$37	\$32	\$29	\$28	\$27	\$25	\$23	\$21	\$18	\$14	\$12	\$11
	10yr ave.			\$40		\$36		\$30		\$26	\$24	\$24	\$23	\$22	\$20	\$18	\$15	\$13	\$12
	40% Current	\$65	\$61	\$58	\$55	\$52	\$48	\$42	\$37	\$33	\$32	\$31	\$29	\$26	\$24	\$20	\$15	\$14	\$13
	10yr ave.			\$45		\$41		\$34		\$29	\$28	\$27	\$26	\$25	\$23	\$21	\$17	\$15	\$13
	45% Current	\$73	\$69	\$65	\$62	\$59	\$54	\$47	\$41	\$37	\$36	\$35	\$33	\$30	\$27	\$23	\$17	\$16	\$15
	10yr ave.			\$51		\$46		\$38		\$33	\$31	\$30	\$30	\$28	\$26	\$23	\$19	\$16	\$15
	50% Current	\$81	\$76	\$72	\$69	\$65	\$60	\$52	\$46	\$41	\$40	\$38	\$36	\$33	\$30	\$25	\$19	\$17	\$16
	10yr ave.			\$56		\$51		\$43		\$37	\$35	\$34	\$33	\$32	\$28	\$26	\$21	\$18	\$17
	55% Current	\$89	\$84	\$80	\$76	\$72	\$66	\$57	\$50	\$45	\$44	\$42	\$40	\$36	\$32	\$28	\$21	\$19	\$18
	10yr ave.			\$62		\$56		\$47		\$40	\$38	\$37	\$36	\$35	\$31	\$29	\$23	\$20	\$18
	60% Current	\$97	\$92	\$87	\$83	\$78	\$72	\$63	\$55	\$50	\$48	\$46	\$43	\$39	\$35	\$30	\$23	\$21	\$20
	10yr ave.			\$68		\$62		\$51		\$44	\$42	\$41	\$40	\$38	\$34	\$31	\$25	\$22	\$20
	65% Current	\$106	\$99	\$94	\$89	\$85	\$77	\$68	\$59	\$54	\$52	\$50	\$47	\$43	\$38	\$33	\$25	\$23	\$21
	10yr ave.			\$73		\$67		\$55		\$48	\$45	\$44	\$43	\$41	\$37	\$34	\$27	\$24	\$21
	70% Current	\$114	\$107	\$101	\$96	\$91	\$83	\$73	\$64	\$58	\$56	\$54	\$51	\$46	\$41	\$36	\$27	\$24	\$23
	10yr ave.			\$79		\$72		\$60		\$51	\$49	\$47	\$46	\$44	\$40	\$36	\$29	\$26	\$23
	75% Current	\$122	\$115	\$109	\$103	\$98	\$89	\$78	\$69	\$62	\$60	\$58	\$54	\$49	\$44	\$38	\$29	\$26	\$25
	10yr ave.			\$85		\$77		\$64		\$55	\$52	\$51	\$50	\$47	\$43	\$39	\$31	\$27	\$25
	80% Current	\$130	\$122	\$116	\$110	\$104	\$95	\$84	\$73	\$66	\$65	\$62	\$58	\$52	\$47	\$41	\$31	\$28	\$26
	10yr ave.			\$90		\$82		\$68		\$59	\$56	\$54	\$53	\$51	\$45	\$42	\$33	\$29	\$26
	85% Current	\$138	\$130	\$123	\$117	\$111	\$101	\$89	\$78	\$70	\$69	\$65	\$61	\$56	\$50	\$43	\$33	\$30	\$28
	10yr ave.			\$96		\$87		\$72		\$62	\$59	\$58	\$56	\$54	\$48	\$44	\$35	\$31	\$28

The above shows estimated returns per head for skirted fleece wool. These figures do not take into account the value of skirtings and oddments and do not take into account discounts that may apply for faults under individual circumstances. These figures are based on a market index of 100% and should be used as a guide only. Returns over \$30 / head for fleece wool are highlighted.

Source: Australian Wool Exchange, Australian Wool Innovation, Sydney Futures Exchange, x-rates.com

Disclaimer: While all due care has been taken in the preparation of this document, no warranty is made as to its accuracy, reliability or completeness. To the extent permitted by law neither Jemalong or their sources including subsidiaries and staff, accept liability to any person for loss or damage arising from the use of this information.



Table 15: Returns pr head for skirted fleece wool.

Skirted FLC Weight		Micron																	
7 Kg		16	16.5	17	17.5	18	18.5	19	19.5	20	21	22	23	24	25	26	28	30	32
Yield (Sch Dry)	25% Current	\$36	\$33	\$32	\$30	\$29	\$26	\$23	\$20	\$18	\$18	\$17	\$16	\$14	\$13	\$11	\$8	\$8	\$7
	10yr ave.			\$25		\$22		\$19		\$16	\$15	\$15	\$14	\$14	\$12	\$11	\$9	\$8	\$7
	30% Current	\$43	\$40	\$38	\$36	\$34	\$31	\$27	\$24	\$22	\$21	\$20	\$19	\$17	\$15	\$13	\$10	\$9	\$9
	10yr ave.			\$30		\$27		\$22		\$19	\$18	\$18	\$17	\$17	\$15	\$14	\$11	\$10	\$9
	35% Current	\$50	\$47	\$44	\$42	\$40	\$37	\$32	\$28	\$25	\$25	\$24	\$22	\$20	\$18	\$16	\$12	\$11	\$10
	10yr ave.			\$35		\$31		\$26		\$22	\$21	\$21	\$20	\$19	\$17	\$16	\$13	\$11	\$10
	40% Current	\$57	\$53	\$51	\$48	\$46	\$42	\$37	\$32	\$29	\$28	\$27	\$25	\$23	\$21	\$18	\$14	\$12	\$11
	10yr ave.			\$40		\$36		\$30		\$26	\$24	\$24	\$23	\$22	\$20	\$18	\$15	\$13	\$12
	45% Current	\$64	\$60	\$57	\$54	\$51	\$47	\$41	\$36	\$33	\$32	\$30	\$28	\$26	\$23	\$20	\$15	\$14	\$13
	10yr ave.			\$44		\$40		\$34		\$29	\$27	\$27	\$26	\$25	\$22	\$20	\$16	\$14	\$13
	50% Current	\$71	\$67	\$63	\$60	\$57	\$52	\$46	\$40	\$36	\$35	\$34	\$32	\$29	\$26	\$22	\$17	\$15	\$14
	10yr ave.			\$49		\$45		\$37		\$32	\$30	\$30	\$29	\$28	\$25	\$23	\$18	\$16	\$14
	55% Current	\$78	\$74	\$70	\$66	\$63	\$57	\$50	\$44	\$40	\$39	\$37	\$35	\$32	\$28	\$24	\$19	\$17	\$16
	10yr ave.			\$54		\$49		\$41		\$35	\$33	\$33	\$32	\$30	\$27	\$25	\$20	\$18	\$16
	60% Current	\$85	\$80	\$76	\$72	\$69	\$63	\$55	\$48	\$43	\$42	\$40	\$38	\$34	\$31	\$27	\$20	\$18	\$17
	10yr ave.			\$59		\$54		\$45		\$38	\$37	\$36	\$35	\$33	\$30	\$27	\$22	\$19	\$17
	65% Current	\$92	\$87	\$82	\$78	\$74	\$68	\$59	\$52	\$47	\$46	\$44	\$41	\$37	\$34	\$29	\$22	\$20	\$19
	10yr ave.			\$64		\$58		\$49		\$42	\$40	\$39	\$38	\$36	\$32	\$30	\$24	\$21	\$19
	70% Current	\$99	\$94	\$89	\$84	\$80	\$73	\$64	\$56	\$51	\$49	\$47	\$44	\$40	\$36	\$31	\$24	\$21	\$20
	10yr ave.			\$69		\$63		\$52		\$45	\$43	\$42	\$40	\$39	\$35	\$32	\$26	\$22	\$20
	75% Current	\$107	\$100	\$95	\$90	\$86	\$78	\$69	\$60	\$54	\$53	\$50	\$47	\$43	\$39	\$33	\$25	\$23	\$21
	10yr ave.			\$74		\$67		\$56		\$48	\$46	\$44	\$43	\$41	\$37	\$34	\$27	\$24	\$22
	80% Current	\$114	\$107	\$101	\$96	\$91	\$83	\$73	\$64	\$58	\$56	\$54	\$51	\$46	\$41	\$36	\$27	\$24	\$23
	10yr ave.			\$79		\$72		\$60		\$51	\$49	\$47	\$46	\$44	\$40	\$36	\$29	\$26	\$23
	85% Current	\$121	\$114	\$108	\$102	\$97	\$89	\$78	\$68	\$62	\$60	\$57	\$54	\$49	\$44	\$38	\$29	\$26	\$24
	10yr ave.			\$84		\$76		\$63		\$54	\$52	\$50	\$49	\$47	\$42	\$39	\$31	\$27	\$25

The above shows estimated returns per head for skirted fleece wool. These figures do not take into account the value of skirtings and oddments and do not take into account discounts that may apply for faults under individual circumstances. These figures are based on a market index of 100% and should be used as a guide only. Returns over \$30 / head for fleece wool are highlighted.

Source: Australian Wool Exchange, Australian Wool Innovation, Sydney Futures Exchange, x-rates.com

Disclaimer: While all due care has been taken in the preparation of this document, no warranty is made as to its accuracy, reliability or completeness. To the extent permitted by law neither Jemalong or their sources including subsidiaries and staff, accept liability to any person for loss or damage arising from the use of this information.



Table 16: Returns pr head for skirted fleece wool.

Skirted FLC Weight 6 Kg		Micron																	
		16	16.5	17	17.5	18	18.5	19	19.5	20	21	22	23	24	25	26	28	30	32
Yield (Sch Dry)	25% Current	\$30	\$29	\$27	\$26	\$24	\$22	\$20	\$17	\$16	\$15	\$14	\$14	\$12	\$11	\$10	\$7	\$7	\$6
	10yr ave.			\$21		\$19		\$16		\$14	\$13	\$13	\$12	\$12	\$11	\$10	\$8	\$7	\$6
	30% Current	\$37	\$34	\$33	\$31	\$29	\$27	\$24	\$21	\$19	\$18	\$17	\$16	\$15	\$13	\$11	\$9	\$8	\$7
	10yr ave.			\$25		\$23		\$19		\$16	\$16	\$15	\$15	\$14	\$13	\$12	\$9	\$8	\$7
	35% Current	\$43	\$40	\$38	\$36	\$34	\$31	\$27	\$24	\$22	\$21	\$20	\$19	\$17	\$15	\$13	\$10	\$9	\$9
	10yr ave.			\$30		\$27		\$22		\$19	\$18	\$18	\$17	\$17	\$15	\$14	\$11	\$10	\$9
	40% Current	\$49	\$46	\$43	\$41	\$39	\$36	\$31	\$27	\$25	\$24	\$23	\$22	\$20	\$18	\$15	\$12	\$10	\$10
	10yr ave.			\$34		\$31		\$26		\$22	\$21	\$20	\$20	\$19	\$17	\$16	\$13	\$11	\$10
	45% Current	\$55	\$52	\$49	\$46	\$44	\$40	\$35	\$31	\$28	\$27	\$26	\$24	\$22	\$20	\$17	\$13	\$12	\$11
	10yr ave.			\$38		\$35		\$29		\$25	\$23	\$23	\$22	\$21	\$19	\$18	\$14	\$12	\$11
	50% Current	\$61	\$57	\$54	\$52	\$49	\$45	\$39	\$34	\$31	\$30	\$29	\$27	\$25	\$22	\$19	\$15	\$13	\$12
	10yr ave.			\$42		\$38		\$32		\$27	\$26	\$25	\$25	\$24	\$21	\$20	\$16	\$14	\$12
	55% Current	\$67	\$63	\$60	\$57	\$54	\$49	\$43	\$38	\$34	\$33	\$32	\$30	\$27	\$24	\$21	\$16	\$14	\$13
	10yr ave.			\$47		\$42		\$35		\$30	\$29	\$28	\$27	\$26	\$23	\$21	\$17	\$15	\$14
	60% Current	\$73	\$69	\$65	\$62	\$59	\$54	\$47	\$41	\$37	\$36	\$35	\$33	\$30	\$27	\$23	\$17	\$16	\$15
	10yr ave.			\$51		\$46		\$38		\$33	\$31	\$30	\$30	\$28	\$26	\$23	\$19	\$16	\$15
	65% Current	\$79	\$74	\$71	\$67	\$64	\$58	\$51	\$45	\$40	\$39	\$37	\$35	\$32	\$29	\$25	\$19	\$17	\$16
	10yr ave.			\$55		\$50		\$42		\$36	\$34	\$33	\$32	\$31	\$28	\$25	\$20	\$18	\$16
	70% Current	\$85	\$80	\$76	\$72	\$69	\$63	\$55	\$48	\$43	\$42	\$40	\$38	\$34	\$31	\$27	\$20	\$18	\$17
	10yr ave.			\$59		\$54		\$45		\$38	\$37	\$36	\$35	\$33	\$30	\$27	\$22	\$19	\$17
	75% Current	\$91	\$86	\$81	\$77	\$73	\$67	\$59	\$51	\$47	\$45	\$43	\$41	\$37	\$33	\$29	\$22	\$20	\$18
	10yr ave.			\$64		\$58		\$48		\$41	\$39	\$38	\$37	\$36	\$32	\$29	\$23	\$21	\$19
	80% Current	\$97	\$92	\$87	\$83	\$78	\$72	\$63	\$55	\$50	\$48	\$46	\$43	\$39	\$35	\$30	\$23	\$21	\$20
	10yr ave.			\$68		\$62		\$51		\$44	\$42	\$41	\$40	\$38	\$34	\$31	\$25	\$22	\$20
	85% Current	\$104	\$97	\$92	\$88	\$83	\$76	\$67	\$58	\$53	\$51	\$49	\$46	\$42	\$38	\$32	\$25	\$22	\$21
	10yr ave.			\$72		\$65		\$54		\$47	\$44	\$43	\$42	\$40	\$36	\$33	\$27	\$23	\$21

The above shows estimated returns per head for skirted fleece wool. These figures do not take into account the value of skirtings and oddments and do not take into account discounts that may apply for faults under individual circumstances. These figures are based on a market index of 100% and should be used as a guide only. Returns over \$30 / head for fleece wool are highlighted.

Source: Australian Wool Exchange, Australian Wool Innovation, Sydney Futures Exchange, x-rates.com

Disclaimer: While all due care has been taken in the preparation of this document, no warranty is made as to its accuracy, reliability or completeness. To the extent permitted by law neither Jemalong or their sources including subsidiaries and staff, accept liability to any person for loss or damage arising from the use of this information.



Table 17: Returns pr head for skirted fleece wool.

Skirted FLC Weight 5 Kg		Micron																	
		16	16.5	17	17.5	18	18.5	19	19.5	20	21	22	23	24	25	26	28	30	32
Yield (Sch Dry)	25% Current	\$25	\$24	\$23	\$22	\$20	\$19	\$16	\$14	\$13	\$13	\$12	\$11	\$10	\$9	\$8	\$6	\$5	\$5
	10yr ave.			\$18		\$16		\$13		\$11	\$11	\$11	\$10	\$10	\$9	\$8	\$7	\$6	\$5
	30% Current	\$30	\$29	\$27	\$26	\$24	\$22	\$20	\$17	\$16	\$15	\$14	\$14	\$12	\$11	\$10	\$7	\$7	\$6
	10yr ave.			\$21		\$19		\$16		\$14	\$13	\$13	\$12	\$12	\$11	\$10	\$8	\$7	\$6
	35% Current	\$36	\$33	\$32	\$30	\$29	\$26	\$23	\$20	\$18	\$18	\$17	\$16	\$14	\$13	\$11	\$8	\$8	\$7
	10yr ave.			\$25		\$22		\$19		\$16	\$15	\$15	\$14	\$14	\$12	\$11	\$9	\$8	\$7
	40% Current	\$41	\$38	\$36	\$34	\$33	\$30	\$26	\$23	\$21	\$20	\$19	\$18	\$16	\$15	\$13	\$10	\$9	\$8
	10yr ave.			\$28		\$26		\$21		\$18	\$17	\$17	\$17	\$16	\$14	\$13	\$10	\$9	\$8
	45% Current	\$46	\$43	\$41	\$39	\$37	\$34	\$29	\$26	\$23	\$23	\$22	\$20	\$18	\$17	\$14	\$11	\$10	\$9
	10yr ave.			\$32		\$29		\$24		\$21	\$20	\$19	\$19	\$18	\$16	\$15	\$12	\$10	\$9
	50% Current	\$51	\$48	\$45	\$43	\$41	\$37	\$33	\$29	\$26	\$25	\$24	\$23	\$21	\$18	\$16	\$12	\$11	\$10
	10yr ave.			\$35		\$32		\$27		\$23	\$22	\$21	\$21	\$20	\$18	\$16	\$13	\$11	\$10
	55% Current	\$56	\$53	\$50	\$47	\$45	\$41	\$36	\$31	\$28	\$28	\$26	\$25	\$23	\$20	\$17	\$13	\$12	\$11
	10yr ave.			\$39		\$35		\$29		\$25	\$24	\$23	\$23	\$22	\$19	\$18	\$14	\$13	\$11
	60% Current	\$61	\$57	\$54	\$52	\$49	\$45	\$39	\$34	\$31	\$30	\$29	\$27	\$25	\$22	\$19	\$15	\$13	\$12
	10yr ave.			\$42		\$38		\$32		\$27	\$26	\$25	\$25	\$24	\$21	\$20	\$16	\$14	\$12
	65% Current	\$66	\$62	\$59	\$56	\$53	\$48	\$42	\$37	\$34	\$33	\$31	\$29	\$27	\$24	\$21	\$16	\$14	\$13
	10yr ave.			\$46		\$42		\$35		\$30	\$28	\$28	\$27	\$26	\$23	\$21	\$17	\$15	\$13
	70% Current	\$71	\$67	\$63	\$60	\$57	\$52	\$46	\$40	\$36	\$35	\$34	\$32	\$29	\$26	\$22	\$17	\$15	\$14
	10yr ave.			\$49		\$45		\$37		\$32	\$30	\$30	\$29	\$28	\$25	\$23	\$18	\$16	\$14
	75% Current	\$76	\$72	\$68	\$65	\$61	\$56	\$49	\$43	\$39	\$38	\$36	\$34	\$31	\$28	\$24	\$18	\$16	\$15
	10yr ave.			\$53		\$48		\$40		\$34	\$33	\$32	\$31	\$30	\$27	\$24	\$20	\$17	\$15
	80% Current	\$81	\$76	\$72	\$69	\$65	\$60	\$52	\$46	\$41	\$40	\$38	\$36	\$33	\$30	\$25	\$19	\$17	\$16
	10yr ave.			\$56		\$51		\$43		\$37	\$35	\$34	\$33	\$32	\$28	\$26	\$21	\$18	\$17
	85% Current	\$86	\$81	\$77	\$73	\$69	\$63	\$56	\$49	\$44	\$43	\$41	\$38	\$35	\$31	\$27	\$21	\$19	\$17
	10yr ave.			\$60		\$55		\$45		\$39	\$37	\$36	\$35	\$34	\$30	\$28	\$22	\$19	\$18

The above shows estimated returns per head for skirted fleece wool. These figures do not take into account the value of skirtings and oddments and do not take into account discounts that may apply for faults under individual circumstances. These figures are based on a market index of 100% and should be used as a guide only. Returns over \$30 / head for fleece wool are highlighted.

Source: Australian Wool Exchange, Australian Wool Innovation, Sydney Futures Exchange, x-rates.com

Disclaimer: While all due care has been taken in the preparation of this document, no warranty is made as to its accuracy, reliability or completeness. To the extent permitted by law neither Jemalong or their sources including subsidiaries and staff, accept liability to any person for loss or damage arising from the use of this information.



Table 18: Returns pr head for skirted fleece wool.

Skirted FLC Weight 4 Kg			Micron																	
			16	16.5	17	17.5	18	18.5	19	19.5	20	21	22	23	24	25	26	28	30	32
Yield (Sch Dry)	25%	Current	\$20	\$19	\$18	\$17	\$16	\$15	\$13	\$11	\$10	\$10	\$10	\$9	\$8	\$7	\$6	\$5	\$4	\$4
		10yr ave.			\$14		\$13		\$11		\$9	\$9	\$8	\$8	\$7	\$7	\$5	\$5	\$4	
	30%	Current	\$24	\$23	\$22	\$21	\$20	\$18	\$16	\$14	\$12	\$12	\$12	\$11	\$10	\$9	\$8	\$6	\$5	\$5
		10yr ave.			\$17		\$15		\$13		\$11	\$10	\$10	\$10	\$9	\$9	\$8	\$6	\$5	\$5
	35%	Current	\$28	\$27	\$25	\$24	\$23	\$21	\$18	\$16	\$14	\$14	\$13	\$13	\$11	\$10	\$9	\$7	\$6	\$6
		10yr ave.			\$20		\$18		\$15		\$13	\$12	\$12	\$12	\$11	\$10	\$9	\$7	\$6	\$6
	40%	Current	\$32	\$31	\$29	\$28	\$26	\$24	\$21	\$18	\$17	\$16	\$15	\$14	\$13	\$12	\$10	\$8	\$7	\$7
		10yr ave.			\$23		\$21		\$17		\$15	\$14	\$14	\$13	\$13	\$11	\$10	\$8	\$7	\$7
	45%	Current	\$37	\$34	\$33	\$31	\$29	\$27	\$24	\$21	\$19	\$18	\$17	\$16	\$15	\$13	\$11	\$9	\$8	\$7
		10yr ave.			\$25		\$23		\$19		\$16	\$16	\$15	\$15	\$14	\$13	\$12	\$9	\$8	\$7
	50%	Current	\$41	\$38	\$36	\$34	\$33	\$30	\$26	\$23	\$21	\$20	\$19	\$18	\$16	\$15	\$13	\$10	\$9	\$8
		10yr ave.			\$28		\$26		\$21		\$18	\$17	\$17	\$17	\$16	\$14	\$13	\$10	\$9	\$8
	55%	Current	\$45	\$42	\$40	\$38	\$36	\$33	\$29	\$25	\$23	\$22	\$21	\$20	\$18	\$16	\$14	\$11	\$10	\$9
		10yr ave.			\$31		\$28		\$23		\$20	\$19	\$19	\$18	\$17	\$16	\$14	\$11	\$10	\$9
	60%	Current	\$49	\$46	\$43	\$41	\$39	\$36	\$31	\$27	\$25	\$24	\$23	\$22	\$20	\$18	\$15	\$12	\$10	\$10
		10yr ave.			\$34		\$31		\$26		\$22	\$21	\$20	\$20	\$19	\$17	\$16	\$13	\$11	\$10
65%	Current	\$53	\$50	\$47	\$45	\$42	\$39	\$34	\$30	\$27	\$26	\$25	\$24	\$21	\$19	\$16	\$13	\$11	\$11	
	10yr ave.			\$37		\$33		\$28		\$24	\$23	\$22	\$21	\$21	\$18	\$17	\$14	\$12	\$11	
70%	Current	\$57	\$53	\$51	\$48	\$46	\$42	\$37	\$32	\$29	\$28	\$27	\$25	\$23	\$21	\$18	\$14	\$12	\$11	
	10yr ave.			\$40		\$36		\$30		\$26	\$24	\$24	\$23	\$22	\$20	\$18	\$15	\$13	\$12	
75%	Current	\$61	\$57	\$54	\$52	\$49	\$45	\$39	\$34	\$31	\$30	\$29	\$27	\$25	\$22	\$19	\$15	\$13	\$12	
	10yr ave.			\$42		\$38		\$32		\$27	\$26	\$25	\$25	\$24	\$21	\$20	\$16	\$14	\$12	
80%	Current	\$65	\$61	\$58	\$55	\$52	\$48	\$42	\$37	\$33	\$32	\$31	\$29	\$26	\$24	\$20	\$15	\$14	\$13	
	10yr ave.			\$45		\$41		\$34		\$29	\$28	\$27	\$26	\$25	\$23	\$21	\$17	\$15	\$13	
85%	Current	\$69	\$65	\$62	\$58	\$55	\$51	\$44	\$39	\$35	\$34	\$33	\$31	\$28	\$25	\$22	\$16	\$15	\$14	
	10yr ave.			\$48		\$44		\$36		\$31	\$30	\$29	\$28	\$27	\$24	\$22	\$18	\$16	\$14	

The above shows estimated returns per head for skirted fleece wool. These figures do not take into account the value of skirtings and oddments and do not take into account discounts that may apply for faults under individual circumstances. These figures are based on a market index of 100% and should be used as a guide only. Returns over \$30 / head for fleece wool are highlighted.

Source: Australian Wool Exchange, Australian Wool Innovation, Sydney Futures Exchange, x-rates.com

Disclaimer: While all due care has been taken in the preparation of this document, no warranty is made as to its accuracy, reliability or completeness. To the extent permitted by law neither Jemalong or their sources including subsidiaries and staff, accept liability to any person for loss or damage arising from the use of this information.



Table 19: Returns pr head for skirted fleece wool.

Skirted FLC Weight 3 Kg		Micron																	
		16	16.5	17	17.5	18	18.5	19	19.5	20	21	22	23	24	25	26	28	30	32
Yield (Sch Dry)	25% Current	\$15	\$14	\$14	\$13	\$12	\$11	\$10	\$9	\$8	\$8	\$7	\$7	\$6	\$6	\$5	\$4	\$3	\$3
	10yr ave.			\$11		\$10		\$8		\$7	\$7	\$6	\$6	\$6	\$5	\$5	\$4	\$3	\$3
	30% Current	\$18	\$17	\$16	\$15	\$15	\$13	\$12	\$10	\$9	\$9	\$9	\$8	\$7	\$7	\$6	\$4	\$4	\$4
	10yr ave.			\$13		\$12		\$10		\$8	\$8	\$8	\$7	\$7	\$6	\$6	\$5	\$4	\$4
	35% Current	\$21	\$20	\$19	\$18	\$17	\$16	\$14	\$12	\$11	\$11	\$10	\$9	\$9	\$8	\$7	\$5	\$5	\$4
	10yr ave.			\$15		\$13		\$11		\$10	\$9	\$9	\$9	\$8	\$7	\$7	\$5	\$5	\$4
	40% Current	\$24	\$23	\$22	\$21	\$20	\$18	\$16	\$14	\$12	\$12	\$12	\$11	\$10	\$9	\$8	\$6	\$5	\$5
	10yr ave.			\$17		\$15		\$13		\$11	\$10	\$10	\$10	\$9	\$9	\$8	\$6	\$5	\$5
	45% Current	\$27	\$26	\$24	\$23	\$22	\$20	\$18	\$15	\$14	\$14	\$13	\$12	\$11	\$10	\$9	\$7	\$6	\$6
	10yr ave.			\$19		\$17		\$14		\$12	\$12	\$11	\$11	\$11	\$10	\$9	\$7	\$6	\$6
	50% Current	\$30	\$29	\$27	\$26	\$24	\$22	\$20	\$17	\$16	\$15	\$14	\$14	\$12	\$11	\$10	\$7	\$7	\$6
	10yr ave.			\$21		\$19		\$16		\$14	\$13	\$13	\$12	\$12	\$11	\$10	\$8	\$7	\$6
	55% Current	\$33	\$32	\$30	\$28	\$27	\$25	\$22	\$19	\$17	\$17	\$16	\$15	\$14	\$12	\$10	\$8	\$7	\$7
	10yr ave.			\$23		\$21		\$18		\$15	\$14	\$14	\$14	\$13	\$12	\$11	\$9	\$8	\$7
	60% Current	\$37	\$34	\$33	\$31	\$29	\$27	\$24	\$21	\$19	\$18	\$17	\$16	\$15	\$13	\$11	\$9	\$8	\$7
	10yr ave.			\$25		\$23		\$19		\$16	\$16	\$15	\$15	\$14	\$13	\$12	\$9	\$8	\$7
	65% Current	\$40	\$37	\$35	\$34	\$32	\$29	\$25	\$22	\$20	\$20	\$19	\$18	\$16	\$14	\$12	\$9	\$9	\$8
	10yr ave.			\$28		\$25		\$21		\$18	\$17	\$17	\$16	\$15	\$14	\$13	\$10	\$9	\$8
	70% Current	\$43	\$40	\$38	\$36	\$34	\$31	\$27	\$24	\$22	\$21	\$20	\$19	\$17	\$15	\$13	\$10	\$9	\$9
	10yr ave.			\$30		\$27		\$22		\$19	\$18	\$18	\$17	\$17	\$15	\$14	\$11	\$10	\$9
	75% Current	\$46	\$43	\$41	\$39	\$37	\$34	\$29	\$26	\$23	\$23	\$22	\$20	\$18	\$17	\$14	\$11	\$10	\$9
	10yr ave.			\$32		\$29		\$24		\$21	\$20	\$19	\$19	\$18	\$16	\$15	\$12	\$10	\$9
	80% Current	\$49	\$46	\$43	\$41	\$39	\$36	\$31	\$27	\$25	\$24	\$23	\$22	\$20	\$18	\$15	\$12	\$10	\$10
	10yr ave.			\$34		\$31		\$26		\$22	\$21	\$20	\$20	\$19	\$17	\$16	\$13	\$11	\$10
	85% Current	\$52	\$49	\$46	\$44	\$42	\$38	\$33	\$29	\$26	\$26	\$25	\$23	\$21	\$19	\$16	\$12	\$11	\$10
	10yr ave.			\$36		\$33		\$27		\$23	\$22	\$22	\$21	\$20	\$18	\$17	\$13	\$12	\$11

The above shows estimated returns per head for skirted fleece wool. These figures do not take into account the value of skirtings and oddments and do not take into account discounts that may apply for faults under individual circumstances. These figures are based on a market index of 100% and should be used as a guide only. Returns over \$30 / head for fleece wool are highlighted.

Source: Australian Wool Exchange, Australian Wool Innovation, Sydney Futures Exchange, x-rates.com

Disclaimer: While all due care has been taken in the preparation of this document, no warranty is made as to its accuracy, reliability or completeness. To the extent permitted by law neither Jemalong or their sources including subsidiaries and staff, accept liability to any person for loss or damage arising from the use of this information.



Table 20: Returns pr head for skirted fleece wool.

Skirted FLC Weight 2 Kg		Micron																	
		16	16.5	17	17.5	18	18.5	19	19.5	20	21	22	23	24	25	26	28	30	32
Yield (Sch Dry)	25% Current	\$10	\$10	\$9	\$9	\$8	\$7	\$7	\$6	\$5	\$5	\$5	\$5	\$4	\$4	\$3	\$2	\$2	\$2
	10yr ave.			\$7		\$6		\$5		\$5	\$4	\$4	\$4	\$4	\$4	\$3	\$3	\$2	\$2
	30% Current	\$12	\$11	\$11	\$10	\$10	\$9	\$8	\$7	\$6	\$6	\$6	\$5	\$5	\$4	\$4	\$3	\$3	\$2
	10yr ave.			\$8		\$8		\$6		\$5	\$5	\$5	\$5	\$5	\$4	\$4	\$3	\$3	\$2
	35% Current	\$14	\$13	\$13	\$12	\$11	\$10	\$9	\$8	\$7	\$7	\$7	\$6	\$6	\$5	\$4	\$3	\$3	\$3
	10yr ave.			\$10		\$9		\$7		\$6	\$6	\$6	\$6	\$6	\$5	\$5	\$4	\$3	\$3
	40% Current	\$16	\$15	\$14	\$14	\$13	\$12	\$10	\$9	\$8	\$8	\$8	\$7	\$7	\$6	\$5	\$4	\$3	\$3
	10yr ave.			\$11		\$10		\$9		\$7	\$7	\$7	\$7	\$6	\$6	\$5	\$4	\$4	\$3
	45% Current	\$18	\$17	\$16	\$15	\$15	\$13	\$12	\$10	\$9	\$9	\$9	\$8	\$7	\$7	\$6	\$4	\$4	\$4
	10yr ave.			\$13		\$12		\$10		\$8	\$8	\$8	\$7	\$7	\$6	\$6	\$5	\$4	\$4
	50% Current	\$20	\$19	\$18	\$17	\$16	\$15	\$13	\$11	\$10	\$10	\$10	\$9	\$8	\$7	\$6	\$5	\$4	\$4
	10yr ave.			\$14		\$13		\$11		\$9	\$9	\$8	\$8	\$8	\$7	\$7	\$5	\$5	\$4
	55% Current	\$22	\$21	\$20	\$19	\$18	\$16	\$14	\$13	\$11	\$11	\$11	\$10	\$9	\$8	\$7	\$5	\$5	\$4
	10yr ave.			\$16		\$14		\$12		\$10	\$10	\$9	\$9	\$9	\$8	\$7	\$6	\$5	\$5
	60% Current	\$24	\$23	\$22	\$21	\$20	\$18	\$16	\$14	\$12	\$12	\$12	\$11	\$10	\$9	\$8	\$6	\$5	\$5
	10yr ave.			\$17		\$15		\$13		\$11	\$10	\$10	\$10	\$9	\$9	\$8	\$6	\$5	\$5
	65% Current	\$26	\$25	\$24	\$22	\$21	\$19	\$17	\$15	\$13	\$13	\$12	\$12	\$11	\$10	\$8	\$6	\$6	\$5
	10yr ave.			\$18		\$17		\$14		\$12	\$11	\$11	\$11	\$10	\$9	\$8	\$7	\$6	\$5
	70% Current	\$28	\$27	\$25	\$24	\$23	\$21	\$18	\$16	\$14	\$14	\$13	\$13	\$11	\$10	\$9	\$7	\$6	\$6
	10yr ave.			\$20		\$18		\$15		\$13	\$12	\$12	\$12	\$11	\$10	\$9	\$7	\$6	\$6
	75% Current	\$30	\$29	\$27	\$26	\$24	\$22	\$20	\$17	\$16	\$15	\$14	\$14	\$12	\$11	\$10	\$7	\$7	\$6
	10yr ave.			\$21		\$19		\$16		\$14	\$13	\$13	\$12	\$12	\$11	\$10	\$8	\$7	\$6
	80% Current	\$32	\$31	\$29	\$28	\$26	\$24	\$21	\$18	\$17	\$16	\$15	\$14	\$13	\$12	\$10	\$8	\$7	\$7
	10yr ave.			\$23		\$21		\$17		\$15	\$14	\$14	\$13	\$13	\$11	\$10	\$8	\$7	\$7
	85% Current	\$35	\$32	\$31	\$29	\$28	\$25	\$22	\$19	\$18	\$17	\$16	\$15	\$14	\$13	\$11	\$8	\$7	\$7
	10yr ave.			\$24		\$22		\$18		\$16	\$15	\$14	\$14	\$13	\$12	\$11	\$9	\$8	\$7

The above shows estimated returns per head for skirted fleece wool. These figures do not take into account the value of skirtings and oddments and do not take into account discounts that may apply for faults under individual circumstances. These figures are based on a market index of 100% and should be used as a guide only. Returns over \$30 / head for fleece wool are highlighted.

Source: Australian Wool Exchange, Australian Wool Innovation, Sydney Futures Exchange, x-rates.com

Disclaimer: While all due care has been taken in the preparation of this document, no warranty is made as to its accuracy, reliability or completeness. To the extent permitted by law neither Jemalong or their sources including subsidiaries and staff, accept liability to any person for loss or damage arising from the use of this information.