



JEMALONG WOOL BULLETIN

(week ending 17/02/2011)

Table 1: Northern Region Micron Price Guides

CURRENT MARKET				PERCENTILES		AVERAGES						12 MONTH COMPARISONS								TRADING RANGE		
Mic.	17/02/2011	10/02/2011	3 year Average			Now compared to 3yr ave	10 year Average	Now compared to 10yr ave	16/02/2010 This time Last Year	Now compared to Last Year	12 Month Low	Now compared to Low	12 Month High	Now compared to High	Clean c/kg	12 Mth	3 Year	10 Year				
Price Guides	Current Price	Weekly Change		3yr	10yr																	
NRI	1320	+12 0.9%	99%	99%	910	+410 45%	880	+440 50%	952	+368 39%	890	+430 48%	1324	-4 0%	434	575	666					
16*	2700	+30 1.1%	100%		1682	+1018 61%			1590	+1110 70%	1510	+1190 79%	2700	0 0%	1190	1315						
16.5*	2520	+20 0.8%	100%		1547	+973 63%			1430	+1090 76%	1395	+1125 81%	2520	0 0%	1125	1268						
17*	2400	-20 -0.8%	99%	99%	1420	+980 69%	1400	+1000 71%	1260	+1140 90%	1230	+1170 95%	2420	-20 -1%	1190	1251	1656					
17.5*	2230	-60 -2.7%	98%		1347	+883 66%			1205	+1025 85%	1175	+1055 90%	2290	-60 -3%	1115	1206						
18	2096	+24 1.1%	99%	95%	1281	+815 64%	1280	+816 64%	1185	+911 77%	1134	+962 85%	2124	-28 -1%	990	1089	1392					
18.5	1882	-14 -0.7%	98%		1198	+684 57%			1146	+736 64%	1088	+794 73%	1963	-81 -4%	875	992						
19	1611	+22 1.4%	98%	99%	1089	+522 48%	1070	+541 51%	1101	+510 46%	1031	+580 56%	1658	-47 -3%	627	764	854					
19.5	1388	+17 1.2%	98%		991	+397 40%			1039	+349 34%	952	+436 46%	1409	-21 -1%	457	595						
20	1216	+24 2.0%	99%	94%	913	+303 33%	921	+295 32%	993	+223 22%	904	+312 35%	1230	-14 -1%	326	491	717					
21	1155	+18 1.6%	98%	93%	880	+275 31%	878	+277 32%	979	+176 18%	878	+277 32%	1175	-20 -2%	297	488	737					
22	1113	+26 2.3%	99%	93%	857	+256 30%	855	+258 30%	959	+154 16%	847	+266 31%	1141	-28 -2%	294	467	733					
23	1055	+17 1.6%	99%	93%	834	+221 26%	834	+221 26%	925	+130 14%	827	+228 28%	1070	-15 -1%	243	407	720					
24	1004	+16 1.6%	100%	91%	787	+217 28%	797	+207 26%	835	+169 20%	780	+224 29%	1004	0 0%	224	357	699					
25	859	+14 1.6%	100%	82%	677	+182 27%	715	+144 20%	681	+178 26%	660	+199 30%	859	0 0%	199	293	638					
26	773	+13 1.7%	100%	81%	608	+165 27%	654	+119 18%	609	+164 27%	576	+197 34%	773	0 0%	197	269	579					
28	580	+22 3.8%	100%	77%	467	+113 24%	523	+57 11%	462	+118 26%	436	+144 33%	580	0 0%	144	161	465					
30	517	+17 3.3%	100%	77%	407	+110 27%	457	+60 13%	400	+117 29%	382	+135 35%	517	0 0%	135	170	385					
32	458	+13 2.8%	100%	73%	356	+102 29%	413	+45 11%	349	+109 31%	346	+112 32%	458	0 0%	112	152	372					
MC	734	+13 1.8%	100%	100%	549	+185 34%	504	+230 46%	676	+58 9%	561	+173 31%	734	0 0%	173	342	354					

Note:

* Due to the irregular market quoting for some fine wool categories, figures shown relating to micron categories below 18 micron are an estimate based on the AWEX Premium & Discounts Report & other available information.

* For any category, where there is insufficient quantity offered to enable AWEX to quote, a quote will be provided based on the best available information.

* 10 Year data is not available for some micron categories, which may result in blank spaces in the table above.

Definitions:

* A Percentile, is a value on a scale of one hundred that indicates the percent of a distribution that is equal to or below it. In general a percentile between 25% and 75% is considered normal, a percentile below 25% is considered below normal and a percentile above 75% is considered above normal.

Three and ten year percentiles shown in the table above, detail the period of time during the past 3 & 10 years that the market has traded either at or below its current price.

The higher the percentile, the stronger the market.

Source: Australian Wool Exchange, Australian Wool Innovation, Sydney Futures Exchange, x-rates.com

Disclaimer: While all due care has been taken in the preparation of this document, no warranty is made as to its accuracy, reliability or completeness. To the extent permitted by law neither Jemalong or their sources including subsidiaries and staff, accept liability to any person for loss or damage arising from the use of this information.



MARKET COMMENTARY

One Australian Dollar = \$ 1.01 US, as of 17/02/2011

NORTHERN REGION –Sale Week 33/10 (47,284 bales offered nationally)

On Wednesday - The market opened on a softer note however gained support as the sale progressed. Fine microns were mixed with some better style & strength lots gaining ground, where as the lesser types retreated (17.5 microns and 18.5 microns were most affected). 19 micron and broader ended the day par to 5 cents dearer. Merino skirting saw solid competition (on a limited offering) for the <4% Vm types, however the higher Vm types eased 10-20 cents. Due to seasonal conditions there has been an increase in col & cot types on offer, lots containing these faults are receiving some heavy discount. In the oddments, Crutchings & stains finished in sellers favour while locks were 10 cents dearer. 27 to 30 micron crossbred fleece closed firm to 5 cents dearer.

On Thursday - The market pushed higher, with 18 to 23 microns lifting 15 to 20 cents (with the lower style and strength lots coming under close scrutiny). Wide spread competition had skirtings, 19 micron and finer 10-20 cents dearer for most descriptions, while 20 micron and broader closed in sellers favour. Oddments also improved, with fine locks 20 cents dearer, while 19 micron and broader were 5-10 cents dearer. Crutchings were also 10 cents dearer while stains remained unchanged.

Northern Region Indicator (Monthly Averages)

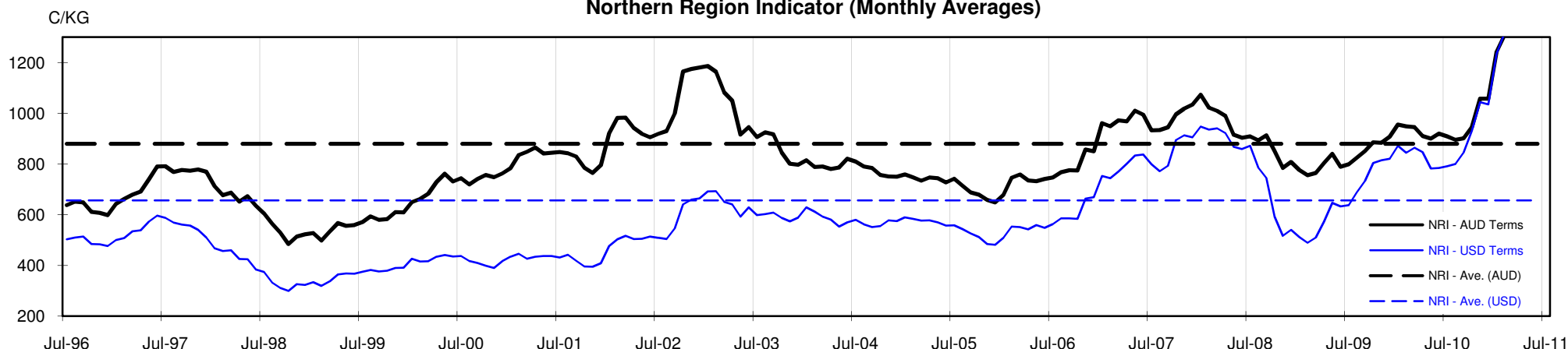




Table 4: 19 micron SFE

Wednesday, 16 February 2011

Delivery Mth	Feb-11	Apr-11	Jun-11	Aug-11	Oct-11	Dec-11	Feb-12	Apr-12	Jun-12
19 Micron SFE	1580	1580	1570	1525	1480	1460	1448	1378	1378
Average	1059	1107	1120	1130	1137	1142	1165	1201	1252
Maximum	1580	1605	1600	1590	1562	1538	1532	1520	1450
Minimum	936	983	1025	1034	1034	1034	1034	1053	1106

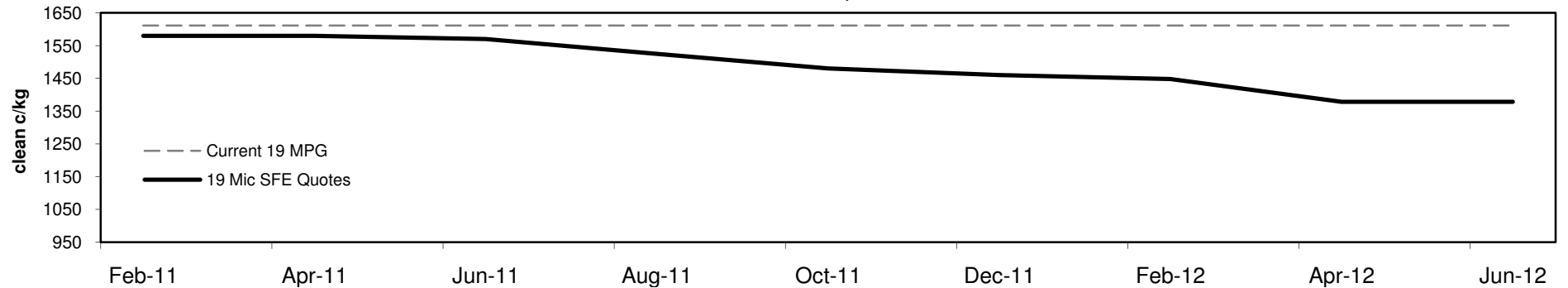
Table 5: 19 micron SFE, as a percentile of the 19 micron MPG

3 Year Percentile	97%	97%	97%	96%	96%	96%	96%	95%	95%
10 Year Percentile	99%	99%	99%	99%	98%	98%	98%	96%	96%

Table 6: 19 micron SFE, compared to MPG

Current 19 MPG	-31	-2%	-31	-2%	-41	-3%	-86	-5%	-131	-8%	-151	-9%	-163	-10%	-233	-14%	-233	-14%
19 MPG, 1 Year Average	+389	33%	+389	33%	+379	32%	+334	28%	+289	24%	+269	23%	+257	22%	+187	16%	+187	16%
19 MPG, 3 Year Average	+491	45%	+491	45%	+481	44%	+436	40%	+391	36%	+371	34%	+359	33%	+289	27%	+289	27%
19 MPG, 10 Year Average	+510	48%	+510	48%	+500	47%	+455	43%	+410	38%	+390	36%	+378	35%	+308	29%	+308	29%

19 MICRON SFE, QUOTES



19 Micron SFE, Front month movement

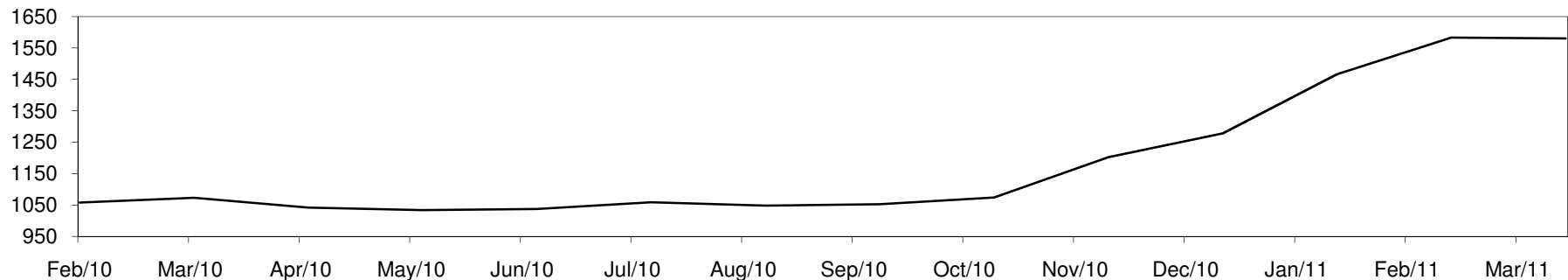




Table 7: 21 micron SFE

Wednesday, 16 February 2011

Delivery Mth	Feb-11	Apr-11	Jun-11	Aug-11	Oct-11	Dec-11	Feb-12	Apr-12	Jun-12
21 Micron SFE	1133	1131	1121	1088	1057	1025	1034	1027	1025
Average	933	958	962	963	957	952	951	974	1015
Maximum	1133	1220	1193	1160	1133	1115	1053	1080	1080
Minimum	818	860	891	890	880	880	880	880	934

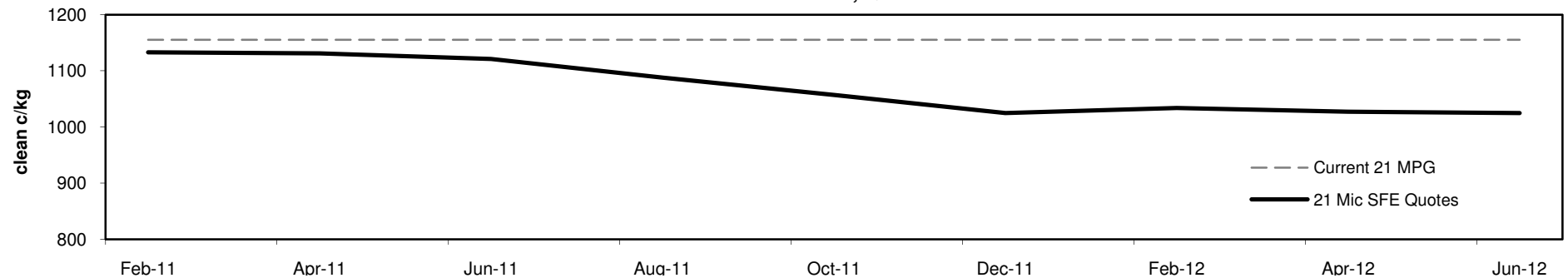
Table 8: 21 micron SFE, as a percentile of the 21 micron MPG

3 Year Percentile	97%	97%	97%	96%	95%	95%	95%	95%	95%
10 Year Percentile	93%	93%	93%	92%	91%	86%	88%	87%	86%

Table 9: 21 micron SFE, compared to MPG

Current 21 MPG	-22	-2%	-24	-2%	-34	-3%	-67	-6%	-98	-8%	-130	-11%	-121	-10%	-128	-11%	-130	-11%
21 MPG, 1 Year Average	+163	17%	+161	17%	+151	16%	+118	12%	+87	9%	+55	6%	+64	7%	+57	6%	+55	6%
21 MPG, 3 Year Average	+253	29%	+251	29%	+241	27%	+208	24%	+177	20%	+145	16%	+154	17%	+147	17%	+145	16%
21 MPG, 10 Year Average	+255	29%	+253	29%	+243	28%	+210	24%	+179	20%	+147	17%	+156	18%	+149	17%	+147	17%

21 MICRON SFE, QUOTES



21 Micron SFE, Front month movement

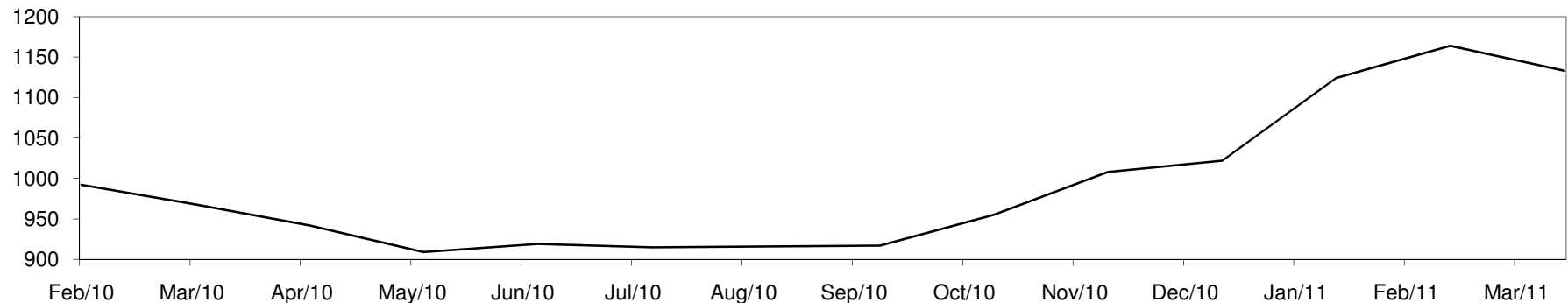




Table 10: 23 micron SFE

Wednesday, 16 February 2011

Delivery Mth	Feb-11	Apr-11	Jun-11	Aug-11	Oct-11	Dec-11	Feb-12	Apr-12	Jun-12
23 Micron SFE	890	890	890	890	890	890	890	890	890
Average	856	867	875	886	891	885	886	887	886
Maximum	927	927	927	927	927	890	890	890	890
Minimum	760	760	803	803	883	883	883	883	883

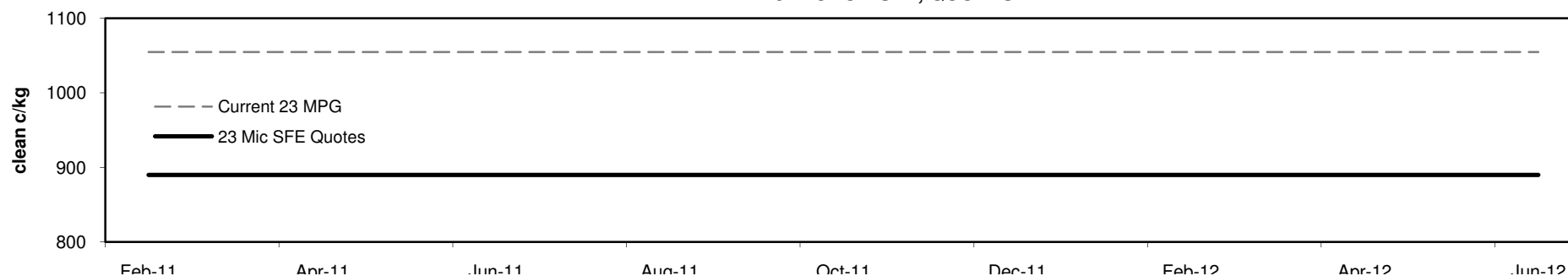
Table 11: 23 micron SFE, as a percentile of the 23 micron MPG

3 Year Percentile	73%	73%	73%	73%	73%	73%	73%	73%	73%
10 Year Percentile	64%	64%	64%	64%	64%	64%	64%	64%	64%

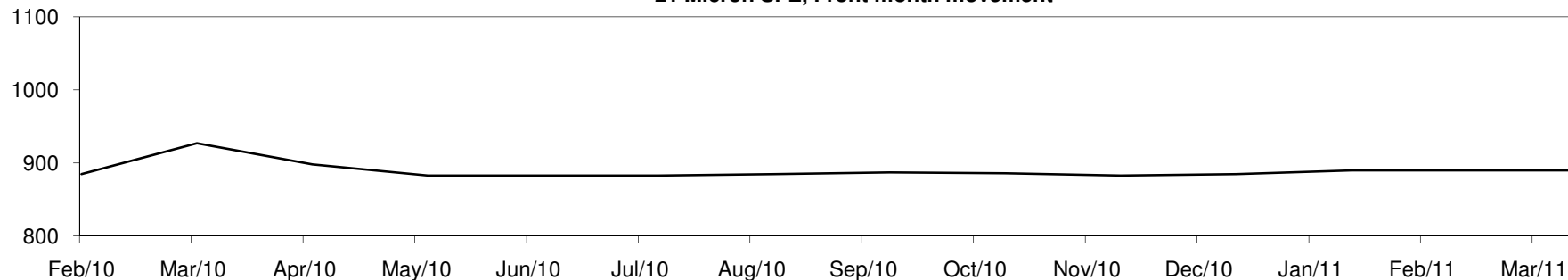
Table 12: 23 micron SFE, compared to MPG

Current 19 MPG	-165	-16%	-165	-16%	-165	-16%	-165	####	-165	-16%	-165	-16%	-165	-16%	-165	-16%	-165	-16%
23 MPG, 1 Year Average	-22	-2%	-22	-2%	-22	-2%	-22	-2%	-22	-2%	-22	-2%	-22	-2%	-22	-2%	-22	-2%
23 MPG, 3 Year Average	+56	7%	+56	7%	+56	7%	+56	7%	+56	7%	+56	7%	+56	7%	+56	7%	+56	7%
23 MPG, 10 Year Average	+56	7%	+56	7%	+56	7%	+56	7%	+56	7%	+56	7%	+56	7%	+56	7%	+56	7%

23 MICRON SFE, QUOTES

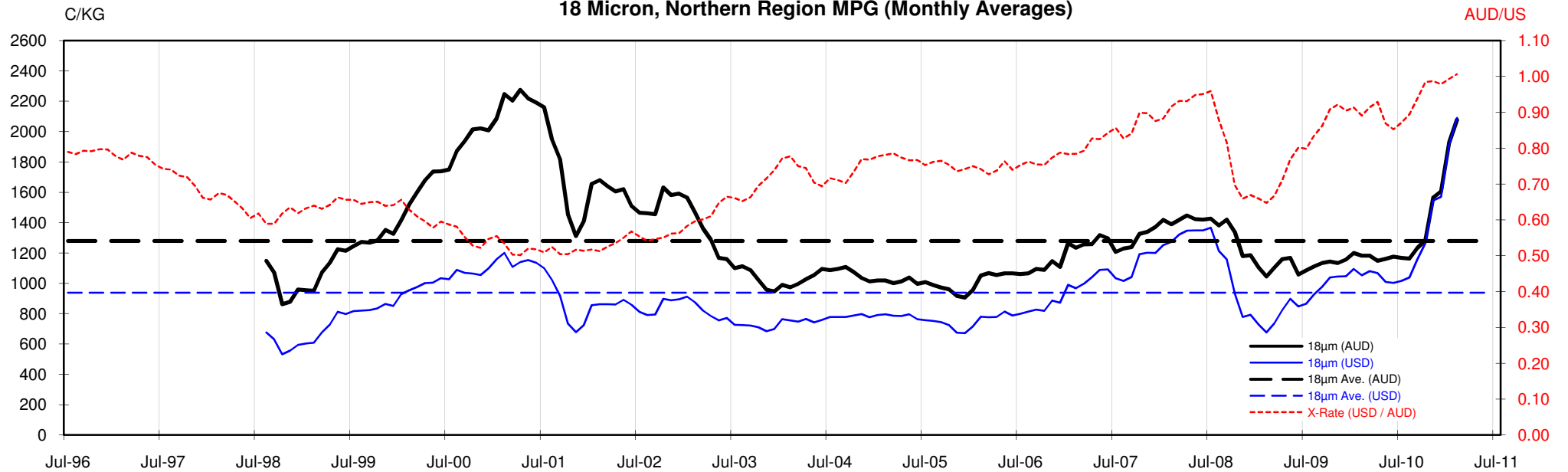


21 Micron SFE, Front month movement

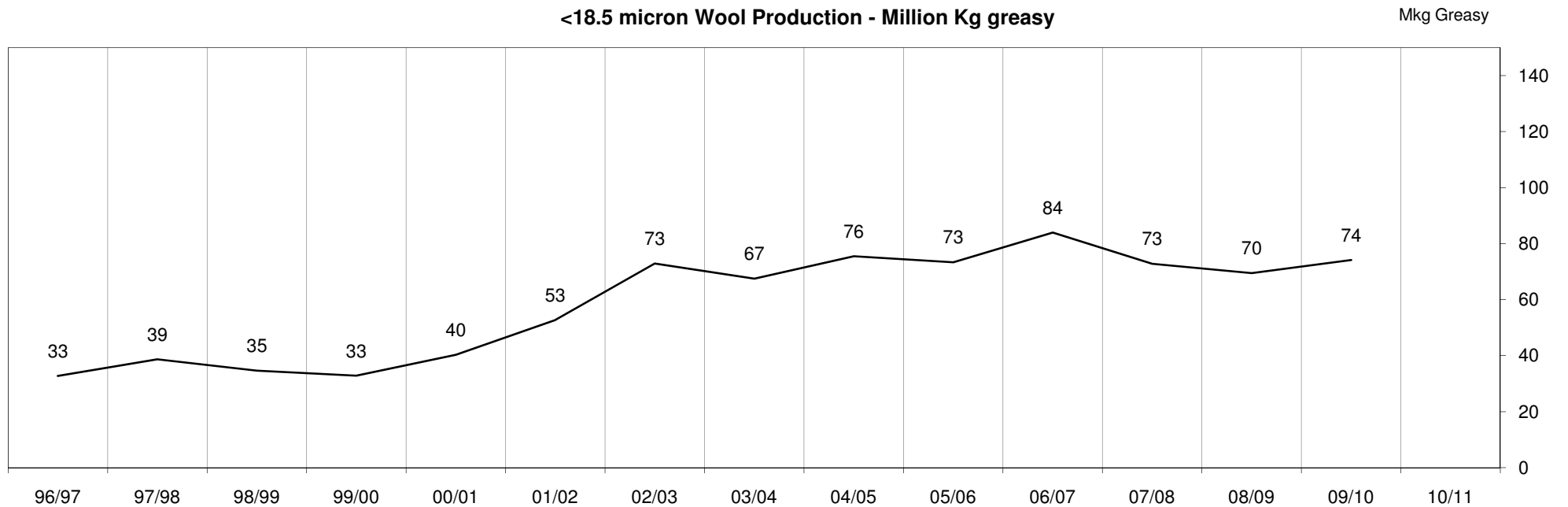


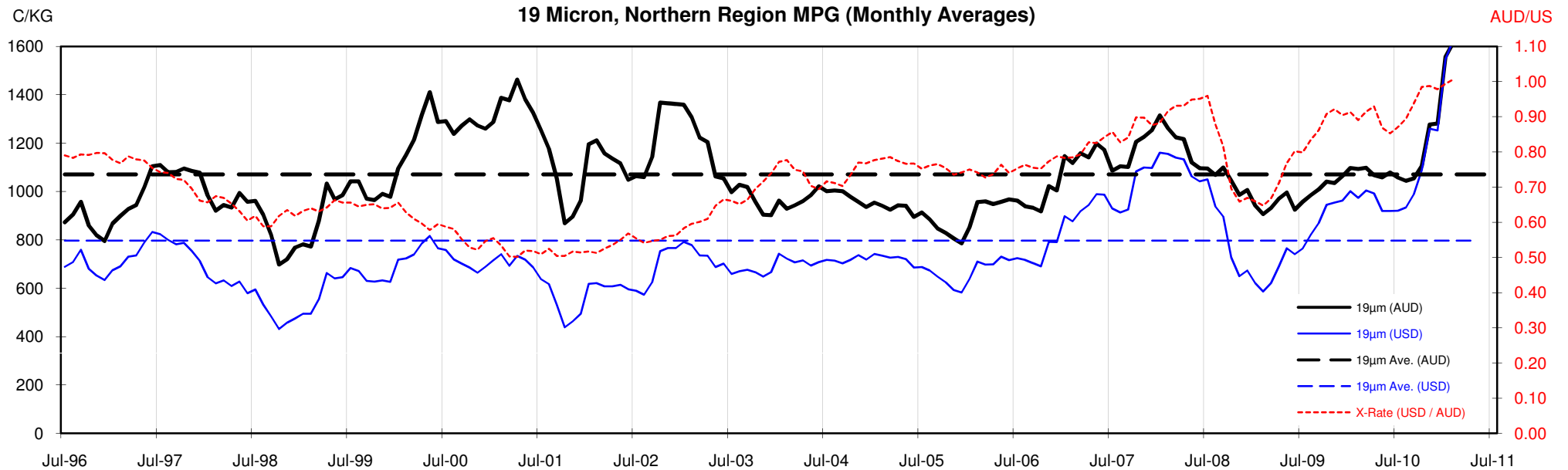


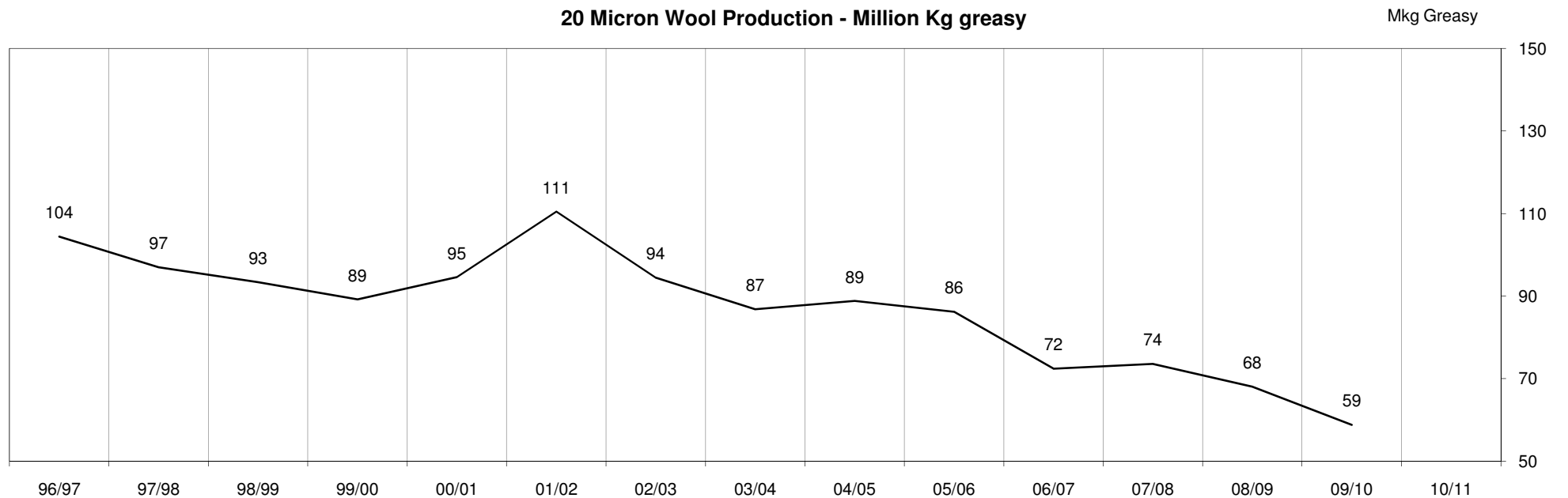
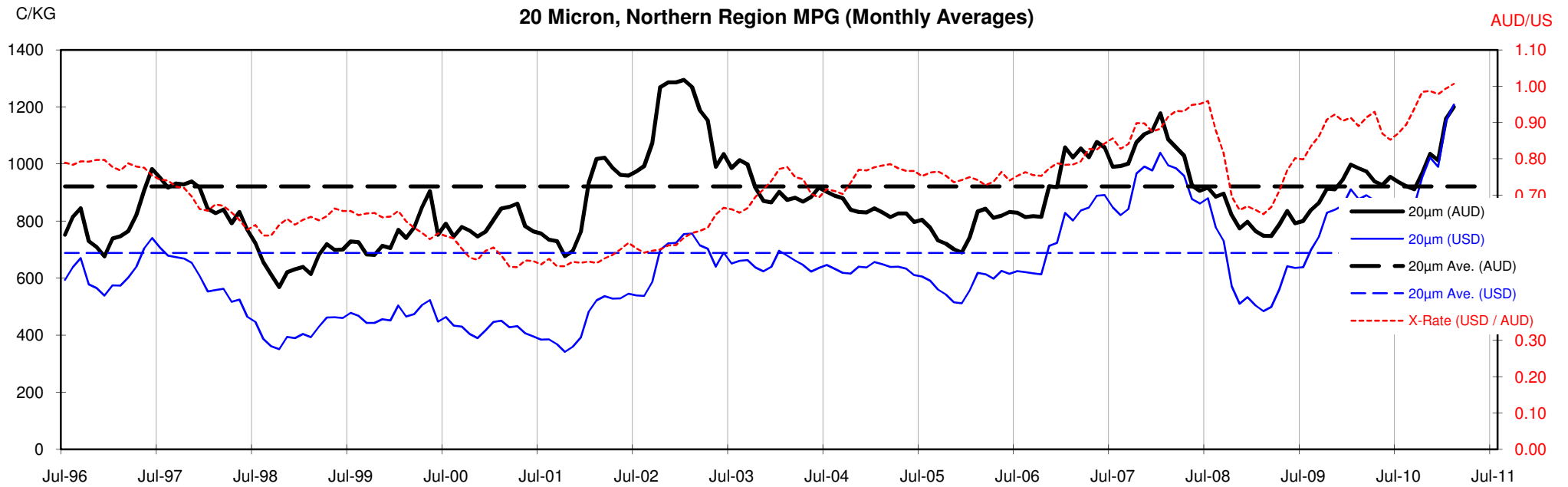
18 Micron, Northern Region MPG (Monthly Averages)

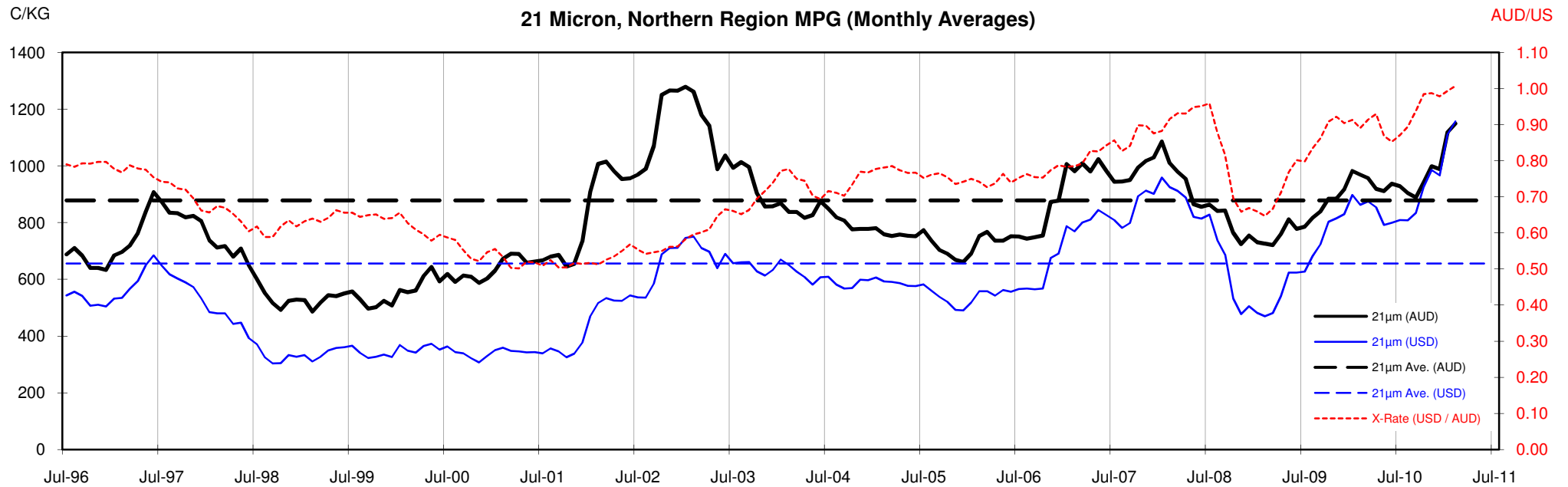


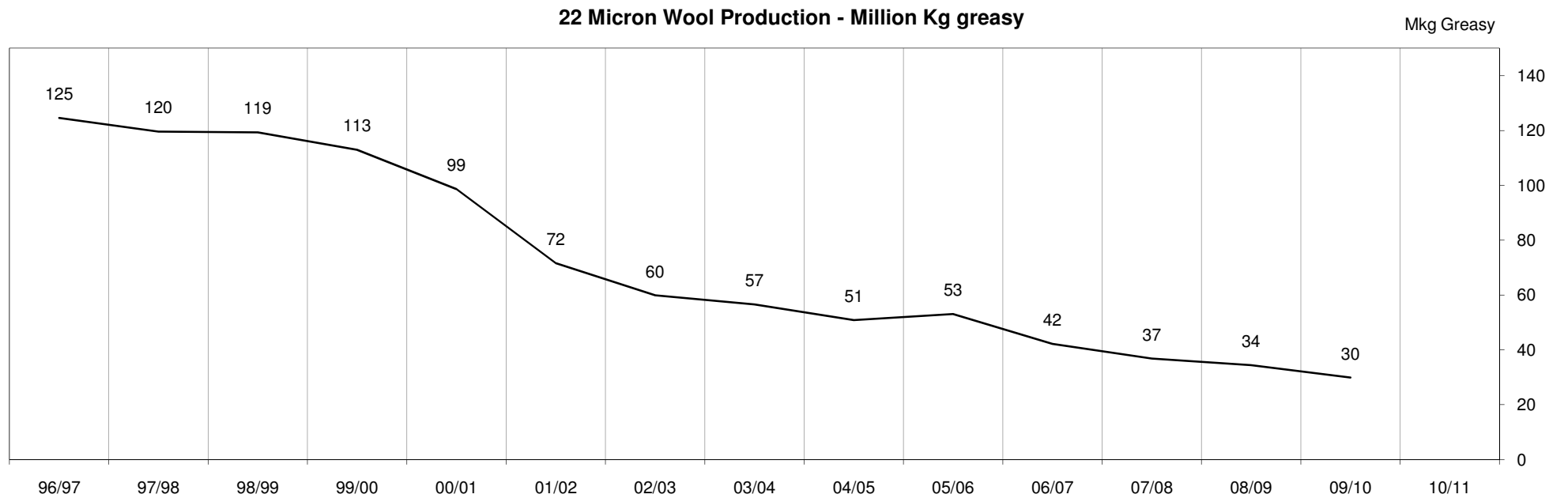
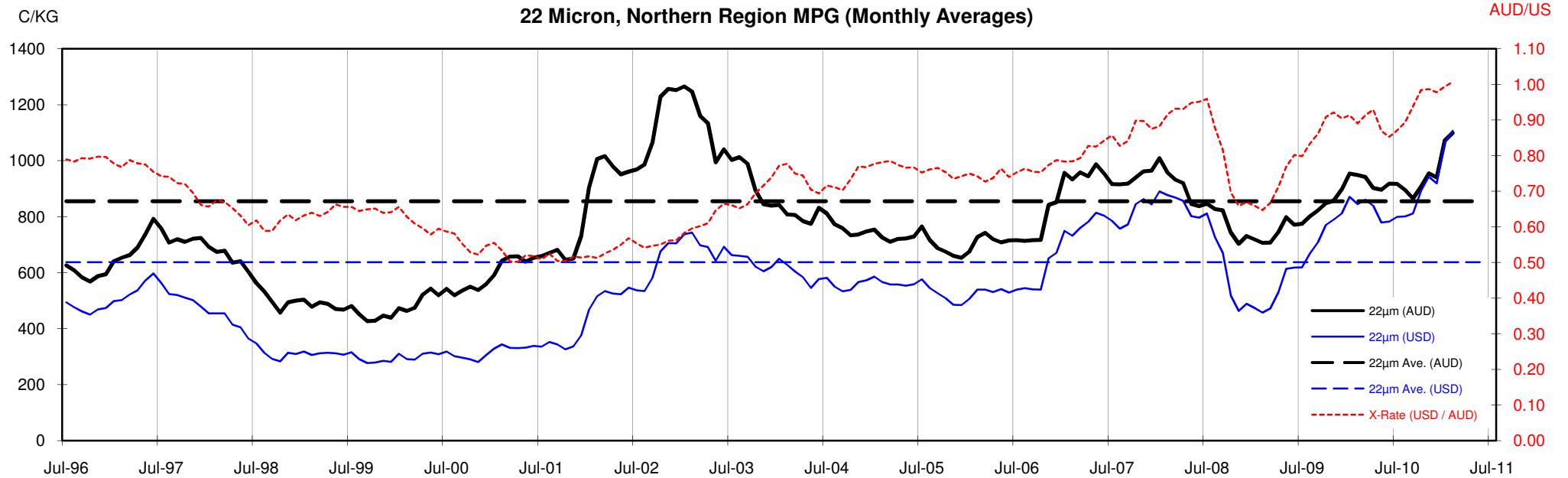
<18.5 micron Wool Production - Million Kg greasy

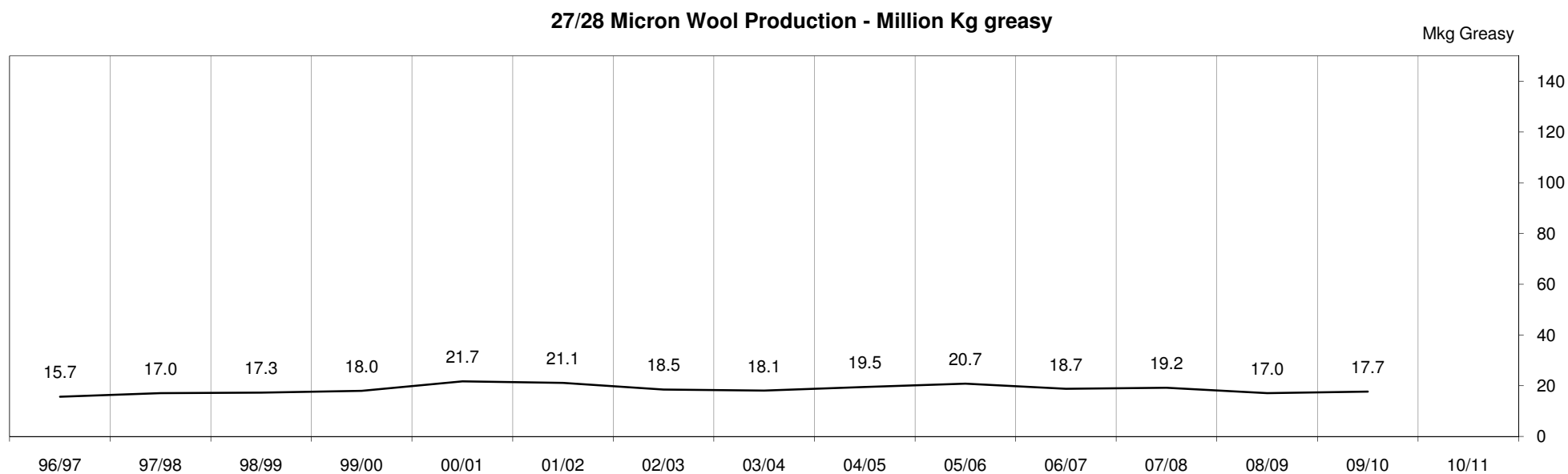
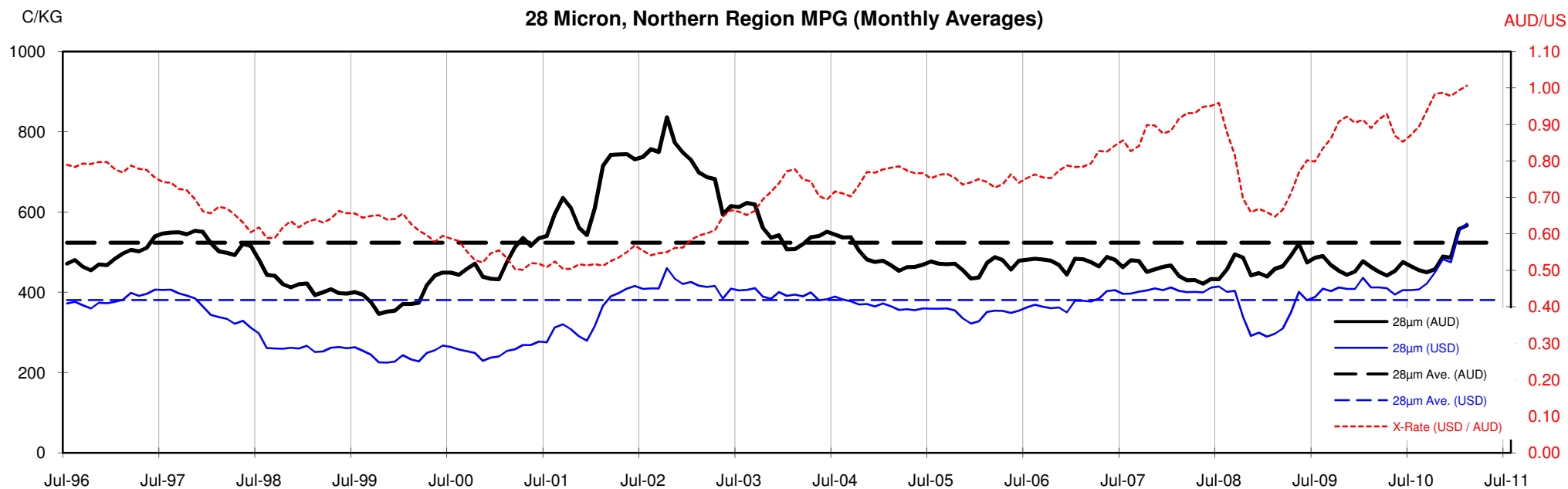












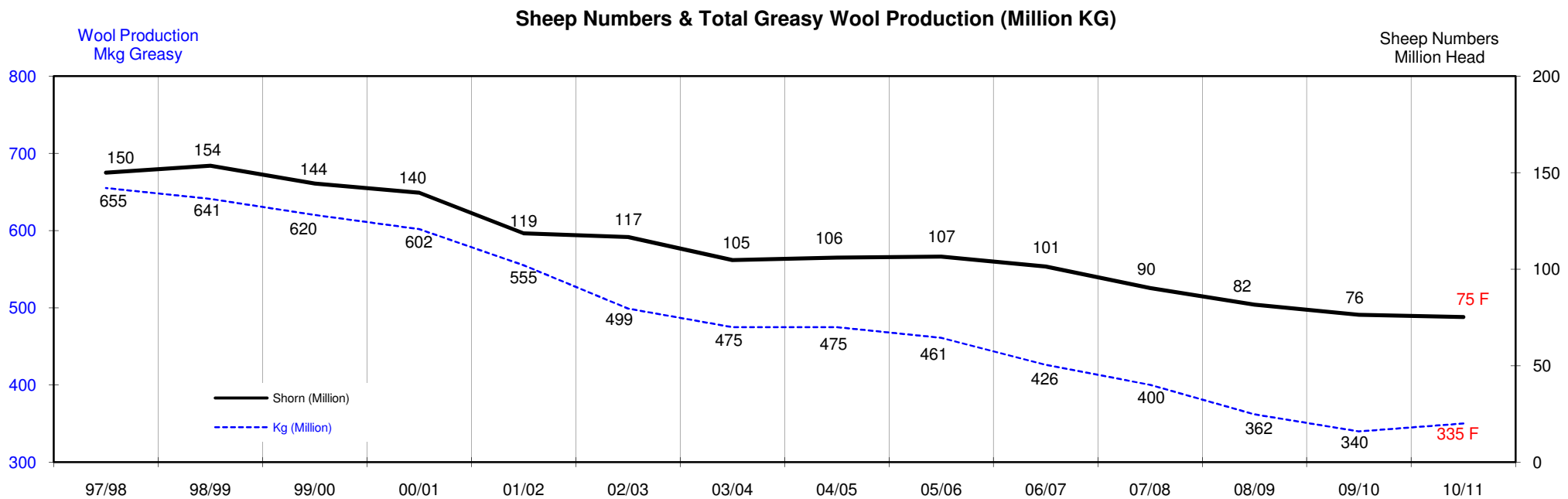
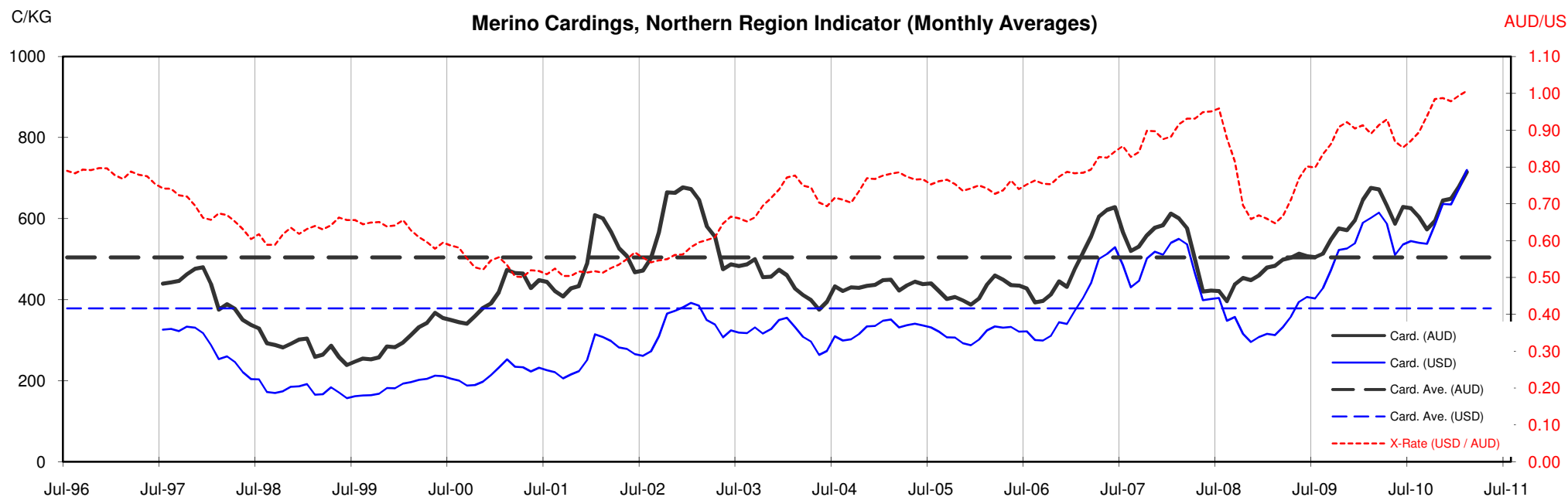




Table 13: Returns pr head for skirted fleece wool.

Skirted FLC Weight		Micron																	
9 Kg		16	16.5	17	17.5	18	18.5	19	19.5	20	21	22	23	24	25	26	28	30	32
Yield (Sch Dry)	25% Current	\$61	\$57	\$54	\$50	\$47	\$42	\$36	\$31	\$27	\$26	\$25	\$24	\$23	\$19	\$17	\$13	\$12	\$10
	10yr ave.			\$32		\$29		\$24		\$21	\$20	\$19	\$19	\$18	\$16	\$15	\$12	\$10	\$9
	30% Current	\$73	\$68	\$65	\$60	\$57	\$51	\$43	\$37	\$33	\$31	\$30	\$28	\$27	\$23	\$21	\$16	\$14	\$12
	10yr ave.			\$38		\$35		\$29		\$25	\$24	\$23	\$23	\$22	\$19	\$18	\$14	\$12	\$11
	35% Current	\$85	\$79	\$76	\$70	\$66	\$59	\$51	\$44	\$38	\$36	\$35	\$33	\$32	\$27	\$24	\$18	\$16	\$14
	10yr ave.			\$44		\$40		\$34		\$29	\$28	\$27	\$26	\$25	\$23	\$21	\$16	\$14	\$13
	40% Current	\$97	\$91	\$86	\$80	\$75	\$68	\$58	\$50	\$44	\$42	\$40	\$38	\$36	\$31	\$28	\$21	\$19	\$16
	10yr ave.			\$50		\$46		\$39		\$33	\$32	\$31	\$30	\$29	\$26	\$24	\$19	\$16	\$15
	45% Current	\$109	\$102	\$97	\$90	\$85	\$76	\$65	\$56	\$49	\$47	\$45	\$43	\$41	\$35	\$31	\$23	\$21	\$19
	10yr ave.			\$57		\$52		\$43		\$37	\$36	\$35	\$34	\$32	\$29	\$26	\$21	\$19	\$17
	50% Current	\$122	\$113	\$108	\$100	\$94	\$85	\$72	\$62	\$55	\$52	\$50	\$47	\$45	\$39	\$35	\$26	\$23	\$21
	10yr ave.			\$63		\$58		\$48		\$41	\$40	\$38	\$38	\$36	\$32	\$29	\$24	\$21	\$19
	55% Current	\$134	\$125	\$119	\$110	\$104	\$93	\$80	\$69	\$60	\$57	\$55	\$52	\$50	\$43	\$38	\$29	\$26	\$23
	10yr ave.			\$69		\$63		\$53		\$46	\$43	\$42	\$41	\$39	\$35	\$32	\$26	\$23	\$20
	60% Current	\$146	\$136	\$130	\$120	\$113	\$102	\$87	\$75	\$66	\$62	\$60	\$57	\$54	\$46	\$42	\$31	\$28	\$25
	10yr ave.			\$76		\$69		\$58		\$50	\$47	\$46	\$45	\$43	\$39	\$35	\$28	\$25	\$22
	65% Current	\$158	\$147	\$140	\$130	\$123	\$110	\$94	\$81	\$71	\$68	\$65	\$62	\$59	\$50	\$45	\$34	\$30	\$27
	10yr ave.			\$82		\$75		\$63		\$54	\$51	\$50	\$49	\$47	\$42	\$38	\$31	\$27	\$24
	70% Current	\$170	\$159	\$151	\$140	\$132	\$119	\$101	\$87	\$77	\$73	\$70	\$66	\$63	\$54	\$49	\$37	\$33	\$29
	10yr ave.			\$88		\$81		\$67		\$58	\$55	\$54	\$53	\$50	\$45	\$41	\$33	\$29	\$26
	75% Current	\$182	\$170	\$162	\$151	\$141	\$127	\$109	\$94	\$82	\$78	\$75	\$71	\$68	\$58	\$52	\$39	\$35	\$31
	10yr ave.			\$95		\$86		\$72		\$62	\$59	\$58	\$56	\$54	\$48	\$44	\$35	\$31	\$28
	80% Current	\$194	\$181	\$173	\$161	\$151	\$136	\$116	\$100	\$88	\$83	\$80	\$76	\$72	\$62	\$56	\$42	\$37	\$33
	10yr ave.			\$101		\$92		\$77		\$66	\$63	\$62	\$60	\$57	\$51	\$47	\$38	\$33	\$30
	85% Current	\$207	\$193	\$184	\$171	\$160	\$144	\$123	\$106	\$93	\$88	\$85	\$81	\$77	\$66	\$59	\$44	\$40	\$35
	10yr ave.			\$107		\$98		\$82		\$70	\$67	\$65	\$64	\$61	\$55	\$50	\$40	\$35	\$32

The above shows estimated returns per head for skirted fleece wool. These figures do not take into account the value of skirtings and oddments and do not take into account discounts that may apply for faults under individual circumstances. These figures are based on a market index of 100% and should be used as a guide only. Returns over \$30 / head for fleece wool are highlighted.

Source: Australian Wool Exchange, Australian Wool Innovation, Sydney Futures Exchange, x-rates.com

Disclaimer: While all due care has been taken in the preparation of this document, no warranty is made as to its accuracy, reliability or completeness. To the extent permitted by law neither Jemalong or their sources including subsidiaries and staff, accept liability to any person for loss or damage arising from the use of this information.



Table 14: Returns pr head for skirted fleece wool.

Skirted FLC Weight		Micron																	
8 Kg		16	16.5	17	17.5	18	18.5	19	19.5	20	21	22	23	24	25	26	28	30	32
Yield (Sch Dry)	25% Current	\$54	\$50	\$48	\$45	\$42	\$38	\$32	\$28	\$24	\$23	\$22	\$21	\$20	\$17	\$15	\$12	\$10	\$9
	10yr ave.			\$28		\$26		\$21		\$18	\$18	\$17	\$17	\$16	\$14	\$13	\$10	\$9	\$8
	30% Current	\$65	\$60	\$58	\$54	\$50	\$45	\$39	\$33	\$29	\$28	\$27	\$25	\$24	\$21	\$19	\$14	\$12	\$11
	10yr ave.			\$34		\$31		\$26		\$22	\$21	\$21	\$20	\$19	\$17	\$16	\$13	\$11	\$10
	35% Current	\$76	\$71	\$67	\$62	\$59	\$53	\$45	\$39	\$34	\$32	\$31	\$30	\$28	\$24	\$22	\$16	\$14	\$13
	10yr ave.			\$39		\$36		\$30		\$26	\$25	\$24	\$23	\$22	\$20	\$18	\$15	\$13	\$12
	40% Current	\$86	\$81	\$77	\$71	\$67	\$60	\$52	\$44	\$39	\$37	\$36	\$34	\$32	\$27	\$25	\$19	\$17	\$15
	10yr ave.			\$45		\$41		\$34		\$29	\$28	\$27	\$27	\$26	\$23	\$21	\$17	\$15	\$13
	45% Current	\$97	\$91	\$86	\$80	\$75	\$68	\$58	\$50	\$44	\$42	\$40	\$38	\$36	\$31	\$28	\$21	\$19	\$16
	10yr ave.			\$50		\$46		\$39		\$33	\$32	\$31	\$30	\$29	\$26	\$24	\$19	\$16	\$15
	50% Current	\$108	\$101	\$96	\$89	\$84	\$75	\$64	\$56	\$49	\$46	\$45	\$42	\$40	\$34	\$31	\$23	\$21	\$18
	10yr ave.			\$56		\$51		\$43		\$37	\$35	\$34	\$33	\$32	\$29	\$26	\$21	\$18	\$17
	55% Current	\$119	\$111	\$106	\$98	\$92	\$83	\$71	\$61	\$54	\$51	\$49	\$46	\$44	\$38	\$34	\$26	\$23	\$20
	10yr ave.			\$62		\$56		\$47		\$41	\$39	\$38	\$37	\$35	\$31	\$29	\$23	\$20	\$18
	60% Current	\$130	\$121	\$115	\$107	\$101	\$90	\$77	\$67	\$58	\$55	\$53	\$51	\$48	\$41	\$37	\$28	\$25	\$22
	10yr ave.			\$67		\$61		\$51		\$44	\$42	\$41	\$40	\$38	\$34	\$31	\$25	\$22	\$20
	65% Current	\$140	\$131	\$125	\$116	\$109	\$98	\$84	\$72	\$63	\$60	\$58	\$55	\$52	\$45	\$40	\$30	\$27	\$24
	10yr ave.			\$73		\$67		\$56		\$48	\$46	\$44	\$43	\$41	\$37	\$34	\$27	\$24	\$21
	70% Current	\$151	\$141	\$134	\$125	\$117	\$105	\$90	\$78	\$68	\$65	\$62	\$59	\$56	\$48	\$43	\$32	\$29	\$26
	10yr ave.			\$78		\$72		\$60		\$52	\$49	\$48	\$47	\$45	\$40	\$37	\$29	\$26	\$23
	75% Current	\$162	\$151	\$144	\$134	\$126	\$113	\$97	\$83	\$73	\$69	\$67	\$63	\$60	\$52	\$46	\$35	\$31	\$27
	10yr ave.			\$84		\$77		\$64		\$55	\$53	\$51	\$50	\$48	\$43	\$39	\$31	\$27	\$25
	80% Current	\$173	\$161	\$154	\$143	\$134	\$120	\$103	\$89	\$78	\$74	\$71	\$68	\$64	\$55	\$49	\$37	\$33	\$29
	10yr ave.			\$90		\$82		\$68		\$59	\$56	\$55	\$53	\$51	\$46	\$42	\$33	\$29	\$26
	85% Current	\$184	\$171	\$163	\$152	\$143	\$128	\$110	\$94	\$83	\$79	\$76	\$72	\$68	\$58	\$53	\$39	\$35	\$31
	10yr ave.			\$95		\$87		\$73		\$63	\$60	\$58	\$57	\$54	\$49	\$44	\$36	\$31	\$28

The above shows estimated returns per head for skirted fleece wool. These figures do not take into account the value of skirtings and oddments and do not take into account discounts that may apply for faults under individual circumstances. These figures are based on a market index of 100% and should be used as a guide only. Returns over \$30 / head for fleece wool are highlighted.

Source: Australian Wool Exchange, Australian Wool Innovation, Sydney Futures Exchange, x-rates.com

Disclaimer: While all due care has been taken in the preparation of this document, no warranty is made as to its accuracy, reliability or completeness. To the extent permitted by law neither Jemalong or their sources including subsidiaries and staff, accept liability to any person for loss or damage arising from the use of this information.



Table 15: Returns pr head for skirted fleece wool.

Skirted FLC Weight		Micron																	
7 Kg		16	16.5	17	17.5	18	18.5	19	19.5	20	21	22	23	24	25	26	28	30	32
Yield (Sch Dry)	25% Current	\$47	\$44	\$42	\$39	\$37	\$33	\$28	\$24	\$21	\$20	\$19	\$18	\$18	\$15	\$14	\$10	\$9	\$8
	10yr ave.			\$25		\$22		\$19		\$16	\$15	\$15	\$15	\$14	\$13	\$11	\$9	\$8	\$7
	30% Current	\$57	\$53	\$50	\$47	\$44	\$40	\$34	\$29	\$26	\$24	\$23	\$22	\$21	\$18	\$16	\$12	\$11	\$10
	10yr ave.			\$29		\$27		\$22		\$19	\$18	\$18	\$18	\$17	\$15	\$14	\$11	\$10	\$9
	35% Current	\$66	\$62	\$59	\$55	\$51	\$46	\$39	\$34	\$30	\$28	\$27	\$26	\$25	\$21	\$19	\$14	\$13	\$11
	10yr ave.			\$34		\$31		\$26		\$23	\$22	\$21	\$20	\$20	\$18	\$16	\$13	\$11	\$10
	40% Current	\$76	\$71	\$67	\$62	\$59	\$53	\$45	\$39	\$34	\$32	\$31	\$30	\$28	\$24	\$22	\$16	\$14	\$13
	10yr ave.			\$39		\$36		\$30		\$26	\$25	\$24	\$23	\$22	\$20	\$18	\$15	\$13	\$12
	45% Current	\$85	\$79	\$76	\$70	\$66	\$59	\$51	\$44	\$38	\$36	\$35	\$33	\$32	\$27	\$24	\$18	\$16	\$14
	10yr ave.			\$44		\$40		\$34		\$29	\$28	\$27	\$26	\$25	\$23	\$21	\$16	\$14	\$13
	50% Current	\$95	\$88	\$84	\$78	\$73	\$66	\$56	\$49	\$43	\$40	\$39	\$37	\$35	\$30	\$27	\$20	\$18	\$16
	10yr ave.			\$49		\$45		\$37		\$32	\$31	\$30	\$29	\$28	\$25	\$23	\$18	\$16	\$14
	55% Current	\$104	\$97	\$92	\$86	\$81	\$72	\$62	\$53	\$47	\$44	\$43	\$41	\$39	\$33	\$30	\$22	\$20	\$18
	10yr ave.			\$54		\$49		\$41		\$35	\$34	\$33	\$32	\$31	\$28	\$25	\$20	\$18	\$16
	60% Current	\$113	\$106	\$101	\$94	\$88	\$79	\$68	\$58	\$51	\$49	\$47	\$44	\$42	\$36	\$32	\$24	\$22	\$19
	10yr ave.			\$59		\$54		\$45		\$39	\$37	\$36	\$35	\$33	\$30	\$27	\$22	\$19	\$17
	65% Current	\$123	\$115	\$109	\$101	\$95	\$86	\$73	\$63	\$55	\$53	\$51	\$48	\$46	\$39	\$35	\$26	\$24	\$21
	10yr ave.			\$64		\$58		\$49		\$42	\$40	\$39	\$38	\$36	\$33	\$30	\$24	\$21	\$19
	70% Current	\$132	\$123	\$118	\$109	\$103	\$92	\$79	\$68	\$60	\$57	\$55	\$52	\$49	\$42	\$38	\$28	\$25	\$22
	10yr ave.			\$69		\$63		\$52		\$45	\$43	\$42	\$41	\$39	\$35	\$32	\$26	\$22	\$20
	75% Current	\$142	\$132	\$126	\$117	\$110	\$99	\$85	\$73	\$64	\$61	\$58	\$55	\$53	\$45	\$41	\$30	\$27	\$24
	10yr ave.			\$74		\$67		\$56		\$48	\$46	\$45	\$44	\$42	\$38	\$34	\$27	\$24	\$22
	80% Current	\$151	\$141	\$134	\$125	\$117	\$105	\$90	\$78	\$68	\$65	\$62	\$59	\$56	\$48	\$43	\$32	\$29	\$26
	10yr ave.			\$78		\$72		\$60		\$52	\$49	\$48	\$47	\$45	\$40	\$37	\$29	\$26	\$23
	85% Current	\$161	\$150	\$143	\$133	\$125	\$112	\$96	\$83	\$72	\$69	\$66	\$63	\$60	\$51	\$46	\$35	\$31	\$27
	10yr ave.			\$83		\$76		\$64		\$55	\$52	\$51	\$50	\$47	\$43	\$39	\$31	\$27	\$25

The above shows estimated returns per head for skirted fleece wool. These figures do not take into account the value of skirtings and oddments and do not take into account discounts that may apply for faults under individual circumstances. These figures are based on a market index of 100% and should be used as a guide only. Returns over \$30 / head for fleece wool are highlighted.

Source: Australian Wool Exchange, Australian Wool Innovation, Sydney Futures Exchange, x-rates.com

Disclaimer: While all due care has been taken in the preparation of this document, no warranty is made as to its accuracy, reliability or completeness. To the extent permitted by law neither Jemalong or their sources including subsidiaries and staff, accept liability to any person for loss or damage arising from the use of this information.



Table 16: Returns pr head for skirted fleece wool.

Skirted FLC Weight		Micron																		
		16	16.5	17	17.5	18	18.5	19	19.5	20	21	22	23	24	25	26	28	30	32	
Yield (Sch Dry)	25%	Current	\$41	\$38	\$36	\$33	\$31	\$28	\$24	\$21	\$18	\$17	\$17	\$16	\$15	\$13	\$12	\$9	\$8	\$7
	10yr ave.			\$21		\$19		\$16		\$14	\$13	\$13	\$13	\$12	\$11	\$10	\$8	\$7	\$6	
	30%	Current	\$49	\$45	\$43	\$40	\$38	\$34	\$29	\$25	\$22	\$21	\$20	\$19	\$18	\$15	\$14	\$10	\$9	\$8
	10yr ave.			\$25		\$23		\$19		\$17	\$16	\$15	\$15	\$14	\$13	\$12	\$9	\$8	\$7	
	35%	Current	\$57	\$53	\$50	\$47	\$44	\$40	\$34	\$29	\$26	\$24	\$23	\$22	\$21	\$18	\$16	\$12	\$11	\$10
	10yr ave.			\$29		\$27		\$22		\$19	\$18	\$18	\$18	\$17	\$15	\$14	\$11	\$10	\$9	
	40%	Current	\$65	\$60	\$58	\$54	\$50	\$45	\$39	\$33	\$29	\$28	\$27	\$25	\$24	\$21	\$19	\$14	\$12	\$11
	10yr ave.			\$34		\$31		\$26		\$22	\$21	\$21	\$20	\$19	\$17	\$16	\$13	\$11	\$10	
	45%	Current	\$73	\$68	\$65	\$60	\$57	\$51	\$43	\$37	\$33	\$31	\$30	\$28	\$27	\$23	\$21	\$16	\$14	\$12
	10yr ave.			\$38		\$35		\$29		\$25	\$24	\$23	\$23	\$22	\$19	\$18	\$14	\$12	\$11	
	50%	Current	\$81	\$76	\$72	\$67	\$63	\$56	\$48	\$42	\$36	\$35	\$33	\$32	\$30	\$26	\$23	\$17	\$16	\$14
	10yr ave.			\$42		\$38		\$32		\$28	\$26	\$26	\$25	\$24	\$21	\$20	\$16	\$14	\$12	
	55%	Current	\$89	\$83	\$79	\$74	\$69	\$62	\$53	\$46	\$40	\$38	\$37	\$35	\$33	\$28	\$26	\$19	\$17	\$15
	10yr ave.			\$46		\$42		\$35		\$30	\$29	\$28	\$28	\$26	\$24	\$22	\$17	\$15	\$14	
60%	Current	\$97	\$91	\$86	\$80	\$75	\$68	\$58	\$50	\$44	\$42	\$40	\$38	\$36	\$31	\$28	\$21	\$19	\$16	
10yr ave.			\$50		\$46		\$39		\$33	\$32	\$31	\$30	\$29	\$26	\$24	\$19	\$16	\$15		
65%	Current	\$105	\$98	\$94	\$87	\$82	\$73	\$63	\$54	\$47	\$45	\$43	\$41	\$39	\$34	\$30	\$23	\$20	\$18	
10yr ave.			\$55		\$50		\$42		\$36	\$34	\$33	\$33	\$31	\$28	\$26	\$20	\$18	\$16		
70%	Current	\$113	\$106	\$101	\$94	\$88	\$79	\$68	\$58	\$51	\$49	\$47	\$44	\$42	\$36	\$32	\$24	\$22	\$19	
10yr ave.			\$59		\$54		\$45		\$39	\$37	\$36	\$35	\$33	\$30	\$27	\$22	\$19	\$17		
75%	Current	\$122	\$113	\$108	\$100	\$94	\$85	\$72	\$62	\$55	\$52	\$50	\$47	\$45	\$39	\$35	\$26	\$23	\$21	
10yr ave.			\$63		\$58		\$48		\$41	\$40	\$38	\$38	\$36	\$32	\$29	\$24	\$21	\$19		
80%	Current	\$130	\$121	\$115	\$107	\$101	\$90	\$77	\$67	\$58	\$55	\$53	\$51	\$48	\$41	\$37	\$28	\$25	\$22	
10yr ave.			\$67		\$61		\$51		\$44	\$42	\$41	\$40	\$38	\$34	\$31	\$25	\$22	\$20		
85%	Current	\$138	\$129	\$122	\$114	\$107	\$96	\$82	\$71	\$62	\$59	\$57	\$54	\$51	\$44	\$39	\$30	\$26	\$23	
10yr ave.			\$71		\$65		\$55		\$47	\$45	\$44	\$43	\$41	\$36	\$33	\$27	\$23	\$21		

The above shows estimated returns per head for skirted fleece wool. These figures do not take into account the value of skirtings and oddments and do not take into account discounts that may apply for faults under individual circumstances. These figures are based on a market index of 100% and should be used as a guide only. Returns over \$30 / head for fleece wool are highlighted.

Source: Australian Wool Exchange, Australian Wool Innovation, Sydney Futures Exchange, x-rates.com

Disclaimer: While all due care has been taken in the preparation of this document, no warranty is made as to its accuracy, reliability or completeness. To the extent permitted by law neither Jemalong or their sources including subsidiaries and staff, accept liability to any person for loss or damage arising from the use of this information.



Table 17: Returns pr head for skirted fleece wool.

Skirted FLC Weight		Micron																	
5 Kg		16	16.5	17	17.5	18	18.5	19	19.5	20	21	22	23	24	25	26	28	30	32
Yield (Sch Dry)	25% Current	\$34	\$32	\$30	\$28	\$26	\$24	\$20	\$17	\$15	\$14	\$14	\$13	\$13	\$11	\$10	\$7	\$6	\$6
	10yr ave.			\$18		\$16		\$13		\$12	\$11	\$11	\$10	\$10	\$9	\$8	\$7	\$6	\$5
	30% Current	\$41	\$38	\$36	\$33	\$31	\$28	\$24	\$21	\$18	\$17	\$17	\$16	\$15	\$13	\$12	\$9	\$8	\$7
	10yr ave.			\$21		\$19		\$16		\$14	\$13	\$13	\$13	\$12	\$11	\$10	\$8	\$7	\$6
	35% Current	\$47	\$44	\$42	\$39	\$37	\$33	\$28	\$24	\$21	\$20	\$19	\$18	\$18	\$15	\$14	\$10	\$9	\$8
	10yr ave.			\$25		\$22		\$19		\$16	\$15	\$15	\$15	\$14	\$13	\$11	\$9	\$8	\$7
	40% Current	\$54	\$50	\$48	\$45	\$42	\$38	\$32	\$28	\$24	\$23	\$22	\$21	\$20	\$17	\$15	\$12	\$10	\$9
	10yr ave.			\$28		\$26		\$21		\$18	\$18	\$17	\$17	\$16	\$14	\$13	\$10	\$9	\$8
	45% Current	\$61	\$57	\$54	\$50	\$47	\$42	\$36	\$31	\$27	\$26	\$25	\$24	\$23	\$19	\$17	\$13	\$12	\$10
	10yr ave.			\$32		\$29		\$24		\$21	\$20	\$19	\$19	\$18	\$16	\$15	\$12	\$10	\$9
	50% Current	\$68	\$63	\$60	\$56	\$52	\$47	\$40	\$35	\$30	\$29	\$28	\$26	\$25	\$21	\$19	\$15	\$13	\$11
	10yr ave.			\$35		\$32		\$27		\$23	\$22	\$21	\$21	\$20	\$18	\$16	\$13	\$11	\$10
	55% Current	\$74	\$69	\$66	\$61	\$58	\$52	\$44	\$38	\$33	\$32	\$31	\$29	\$28	\$24	\$21	\$16	\$14	\$13
	10yr ave.			\$39		\$35		\$29		\$25	\$24	\$24	\$23	\$22	\$20	\$18	\$14	\$13	\$11
	60% Current	\$81	\$76	\$72	\$67	\$63	\$56	\$48	\$42	\$36	\$35	\$33	\$32	\$30	\$26	\$23	\$17	\$16	\$14
	10yr ave.			\$42		\$38		\$32		\$28	\$26	\$26	\$25	\$24	\$21	\$20	\$16	\$14	\$12
	65% Current	\$88	\$82	\$78	\$72	\$68	\$61	\$52	\$45	\$40	\$38	\$36	\$34	\$33	\$28	\$25	\$19	\$17	\$15
	10yr ave.			\$46		\$42		\$35		\$30	\$29	\$28	\$27	\$26	\$23	\$21	\$17	\$15	\$13
	70% Current	\$95	\$88	\$84	\$78	\$73	\$66	\$56	\$49	\$43	\$40	\$39	\$37	\$35	\$30	\$27	\$20	\$18	\$16
	10yr ave.			\$49		\$45		\$37		\$32	\$31	\$30	\$29	\$28	\$25	\$23	\$18	\$16	\$14
	75% Current	\$101	\$95	\$90	\$84	\$79	\$71	\$60	\$52	\$46	\$43	\$42	\$40	\$38	\$32	\$29	\$22	\$19	\$17
	10yr ave.			\$53		\$48		\$40		\$35	\$33	\$32	\$31	\$30	\$27	\$25	\$20	\$17	\$15
	80% Current	\$108	\$101	\$96	\$89	\$84	\$75	\$64	\$56	\$49	\$46	\$45	\$42	\$40	\$34	\$31	\$23	\$21	\$18
	10yr ave.			\$56		\$51		\$43		\$37	\$35	\$34	\$33	\$32	\$29	\$26	\$21	\$18	\$17
	85% Current	\$115	\$107	\$102	\$95	\$89	\$80	\$68	\$59	\$52	\$49	\$47	\$45	\$43	\$37	\$33	\$25	\$22	\$19
	10yr ave.			\$60		\$54		\$45		\$39	\$37	\$36	\$35	\$34	\$30	\$28	\$22	\$19	\$18

The above shows estimated returns per head for skirted fleece wool. These figures do not take into account the value of skirtings and oddments and do not take into account discounts that may apply for faults under individual circumstances. These figures are based on a market index of 100% and should be used as a guide only. Returns over \$30 / head for fleece wool are highlighted.

Source: Australian Wool Exchange, Australian Wool Innovation, Sydney Futures Exchange, x-rates.com

Disclaimer: While all due care has been taken in the preparation of this document, no warranty is made as to its accuracy, reliability or completeness. To the extent permitted by law neither Jemalong or their sources including subsidiaries and staff, accept liability to any person for loss or damage arising from the use of this information.



Table 18: Returns pr head for skirted fleece wool.

Skirted FLC Weight		Micron																	
4 Kg		16	16.5	17	17.5	18	18.5	19	19.5	20	21	22	23	24	25	26	28	30	32
Yield (Sch Dry)	25% Current	\$27	\$25	\$24	\$22	\$21	\$19	\$16	\$14	\$12	\$12	\$11	\$11	\$10	\$9	\$8	\$6	\$5	\$5
	10yr ave.			\$14		\$13		\$11		\$9	\$9	\$9	\$8	\$8	\$7	\$7	\$5	\$5	\$4
	30% Current	\$32	\$30	\$29	\$27	\$25	\$23	\$19	\$17	\$15	\$14	\$13	\$13	\$12	\$10	\$9	\$7	\$6	\$5
	10yr ave.			\$17		\$15		\$13		\$11	\$11	\$10	\$10	\$10	\$9	\$8	\$6	\$5	\$5
	35% Current	\$38	\$35	\$34	\$31	\$29	\$26	\$23	\$19	\$17	\$16	\$16	\$15	\$14	\$12	\$11	\$8	\$7	\$6
	10yr ave.			\$20		\$18		\$15		\$13	\$12	\$12	\$12	\$11	\$10	\$9	\$7	\$6	\$6
	40% Current	\$43	\$40	\$38	\$36	\$34	\$30	\$26	\$22	\$19	\$18	\$18	\$17	\$16	\$14	\$12	\$9	\$8	\$7
	10yr ave.			\$22		\$20		\$17		\$15	\$14	\$14	\$13	\$13	\$11	\$10	\$8	\$7	\$7
	45% Current	\$49	\$45	\$43	\$40	\$38	\$34	\$29	\$25	\$22	\$21	\$20	\$19	\$18	\$15	\$14	\$10	\$9	\$8
	10yr ave.			\$25		\$23		\$19		\$17	\$16	\$15	\$15	\$14	\$13	\$12	\$9	\$8	\$7
	50% Current	\$54	\$50	\$48	\$45	\$42	\$38	\$32	\$28	\$24	\$23	\$22	\$21	\$20	\$17	\$15	\$12	\$10	\$9
	10yr ave.			\$28		\$26		\$21		\$18	\$18	\$17	\$17	\$16	\$14	\$13	\$10	\$9	\$8
	55% Current	\$59	\$55	\$53	\$49	\$46	\$41	\$35	\$31	\$27	\$25	\$24	\$23	\$22	\$19	\$17	\$13	\$11	\$10
	10yr ave.			\$31		\$28		\$24		\$20	\$19	\$19	\$18	\$18	\$16	\$14	\$12	\$10	\$9
	60% Current	\$65	\$60	\$58	\$54	\$50	\$45	\$39	\$33	\$29	\$28	\$27	\$25	\$24	\$21	\$19	\$14	\$12	\$11
	10yr ave.			\$34		\$31		\$26		\$22	\$21	\$21	\$20	\$19	\$17	\$16	\$13	\$11	\$10
	65% Current	\$70	\$66	\$62	\$58	\$54	\$49	\$42	\$36	\$32	\$30	\$29	\$27	\$26	\$22	\$20	\$15	\$13	\$12
	10yr ave.			\$36		\$33		\$28		\$24	\$23	\$22	\$22	\$21	\$19	\$17	\$14	\$12	\$11
	70% Current	\$76	\$71	\$67	\$62	\$59	\$53	\$45	\$39	\$34	\$32	\$31	\$30	\$28	\$24	\$22	\$16	\$14	\$13
	10yr ave.			\$39		\$36		\$30		\$26	\$25	\$24	\$23	\$22	\$20	\$18	\$15	\$13	\$12
	75% Current	\$81	\$76	\$72	\$67	\$63	\$56	\$48	\$42	\$36	\$35	\$33	\$32	\$30	\$26	\$23	\$17	\$16	\$14
	10yr ave.			\$42		\$38		\$32		\$28	\$26	\$26	\$25	\$24	\$21	\$20	\$16	\$14	\$12
	80% Current	\$86	\$81	\$77	\$71	\$67	\$60	\$52	\$44	\$39	\$37	\$36	\$34	\$32	\$27	\$25	\$19	\$17	\$15
	10yr ave.			\$45		\$41		\$34		\$29	\$28	\$27	\$27	\$26	\$23	\$21	\$17	\$15	\$13
	85% Current	\$92	\$86	\$82	\$76	\$71	\$64	\$55	\$47	\$41	\$39	\$38	\$36	\$34	\$29	\$26	\$20	\$18	\$16
	10yr ave.			\$48		\$44		\$36		\$31	\$30	\$29	\$28	\$27	\$24	\$22	\$18	\$16	\$14

The above shows estimated returns per head for skirted fleece wool. These figures do not take into account the value of skirtings and oddments and do not take into account discounts that may apply for faults under individual circumstances. These figures are based on a market index of 100% and should be used as a guide only. Returns over \$30 / head for fleece wool are highlighted.

Source: Australian Wool Exchange, Australian Wool Innovation, Sydney Futures Exchange, x-rates.com

Disclaimer: While all due care has been taken in the preparation of this document, no warranty is made as to its accuracy, reliability or completeness. To the extent permitted by law neither Jemalong or their sources including subsidiaries and staff, accept liability to any person for loss or damage arising from the use of this information.



Table 19: Returns pr head for skirted fleece wool.

Skirted FLC Weight		Micron																	
3 Kg		16	16.5	17	17.5	18	18.5	19	19.5	20	21	22	23	24	25	26	28	30	32
Yield (Sch Dry)	25% Current	\$20	\$19	\$18	\$17	\$16	\$14	\$12	\$10	\$9	\$9	\$8	\$8	\$8	\$6	\$6	\$4	\$4	\$3
	10yr ave.			\$11		\$10		\$8		\$7	\$7	\$6	\$6	\$6	\$5	\$5	\$4	\$3	\$3
	30% Current	\$24	\$23	\$22	\$20	\$19	\$17	\$14	\$12	\$11	\$10	\$10	\$9	\$9	\$8	\$7	\$5	\$5	\$4
	10yr ave.			\$13		\$12		\$10		\$8	\$8	\$8	\$8	\$7	\$6	\$6	\$5	\$4	\$4
	35% Current	\$28	\$26	\$25	\$23	\$22	\$20	\$17	\$15	\$13	\$12	\$12	\$11	\$11	\$9	\$8	\$6	\$5	\$5
	10yr ave.			\$15		\$13		\$11		\$10	\$9	\$9	\$9	\$8	\$8	\$7	\$5	\$5	\$4
	40% Current	\$32	\$30	\$29	\$27	\$25	\$23	\$19	\$17	\$15	\$14	\$13	\$13	\$12	\$10	\$9	\$7	\$6	\$5
	10yr ave.			\$17		\$15		\$13		\$11	\$11	\$10	\$10	\$10	\$9	\$8	\$6	\$5	\$5
	45% Current	\$36	\$34	\$32	\$30	\$28	\$25	\$22	\$19	\$16	\$16	\$15	\$14	\$14	\$12	\$10	\$8	\$7	\$6
	10yr ave.			\$19		\$17		\$14		\$12	\$12	\$12	\$11	\$11	\$10	\$9	\$7	\$6	\$6
	50% Current	\$41	\$38	\$36	\$33	\$31	\$28	\$24	\$21	\$18	\$17	\$17	\$16	\$15	\$13	\$12	\$9	\$8	\$7
	10yr ave.			\$21		\$19		\$16		\$14	\$13	\$13	\$13	\$12	\$11	\$10	\$8	\$7	\$6
	55% Current	\$45	\$42	\$40	\$37	\$35	\$31	\$27	\$23	\$20	\$19	\$18	\$17	\$17	\$14	\$13	\$10	\$9	\$8
	10yr ave.			\$23		\$21		\$18		\$15	\$14	\$14	\$14	\$13	\$12	\$11	\$9	\$8	\$7
	60% Current	\$49	\$45	\$43	\$40	\$38	\$34	\$29	\$25	\$22	\$21	\$20	\$19	\$18	\$15	\$14	\$10	\$9	\$8
	10yr ave.			\$25		\$23		\$19		\$17	\$16	\$15	\$15	\$14	\$13	\$12	\$9	\$8	\$7
	65% Current	\$53	\$49	\$47	\$43	\$41	\$37	\$31	\$27	\$24	\$23	\$22	\$21	\$20	\$17	\$15	\$11	\$10	\$9
	10yr ave.			\$27		\$25		\$21		\$18	\$17	\$17	\$16	\$16	\$14	\$13	\$10	\$9	\$8
	70% Current	\$57	\$53	\$50	\$47	\$44	\$40	\$34	\$29	\$26	\$24	\$23	\$22	\$21	\$18	\$16	\$12	\$11	\$10
	10yr ave.			\$29		\$27		\$22		\$19	\$18	\$18	\$18	\$17	\$15	\$14	\$11	\$10	\$9
	75% Current	\$61	\$57	\$54	\$50	\$47	\$42	\$36	\$31	\$27	\$26	\$25	\$24	\$23	\$19	\$17	\$13	\$12	\$10
	10yr ave.			\$32		\$29		\$24		\$21	\$20	\$19	\$19	\$18	\$16	\$15	\$12	\$10	\$9
	80% Current	\$65	\$60	\$58	\$54	\$50	\$45	\$39	\$33	\$29	\$28	\$27	\$25	\$24	\$21	\$19	\$14	\$12	\$11
	10yr ave.			\$34		\$31		\$26		\$22	\$21	\$21	\$20	\$19	\$17	\$16	\$13	\$11	\$10
	85% Current	\$69	\$64	\$61	\$57	\$53	\$48	\$41	\$35	\$31	\$29	\$28	\$27	\$26	\$22	\$20	\$15	\$13	\$12
	10yr ave.			\$36		\$33		\$27		\$23	\$22	\$22	\$21	\$20	\$18	\$17	\$13	\$12	\$11

The above shows estimated returns per head for skirted fleece wool. These figures do not take into account the value of skirtings and oddments and do not take into account discounts that may apply for faults under individual circumstances. These figures are based on a market index of 100% and should be used as a guide only. Returns over \$30 / head for fleece wool are highlighted.

Source: Australian Wool Exchange, Australian Wool Innovation, Sydney Futures Exchange, x-rates.com

Disclaimer: While all due care has been taken in the preparation of this document, no warranty is made as to its accuracy, reliability or completeness. To the extent permitted by law neither Jemalong or their sources including subsidiaries and staff, accept liability to any person for loss or damage arising from the use of this information.



Table 20: Returns pr head for skirted fleece wool.

Skirted FLC Weight		Micron																	
2 Kg		16	16.5	17	17.5	18	18.5	19	19.5	20	21	22	23	24	25	26	28	30	32
Yield (Sch Dry)	25% Current	\$14	\$13	\$12	\$11	\$10	\$9	\$8	\$7	\$6	\$6	\$6	\$5	\$5	\$4	\$4	\$3	\$3	\$2
	10yr ave.			\$7		\$6		\$5		\$5	\$4	\$4	\$4	\$4	\$4	\$3	\$3	\$2	\$2
	30% Current	\$16	\$15	\$14	\$13	\$13	\$11	\$10	\$8	\$7	\$7	\$7	\$6	\$6	\$5	\$5	\$3	\$3	\$3
	10yr ave.			\$8		\$8		\$6		\$6	\$5	\$5	\$5	\$5	\$4	\$4	\$3	\$3	\$2
	35% Current	\$19	\$18	\$17	\$16	\$15	\$13	\$11	\$10	\$9	\$8	\$8	\$7	\$7	\$6	\$5	\$4	\$4	\$3
	10yr ave.			\$10		\$9		\$7		\$6	\$6	\$6	\$6	\$6	\$5	\$5	\$4	\$3	\$3
	40% Current	\$22	\$20	\$19	\$18	\$17	\$15	\$13	\$11	\$10	\$9	\$9	\$8	\$8	\$7	\$6	\$5	\$4	\$4
	10yr ave.			\$11		\$10		\$9		\$7	\$7	\$7	\$7	\$6	\$6	\$5	\$4	\$4	\$3
	45% Current	\$24	\$23	\$22	\$20	\$19	\$17	\$14	\$12	\$11	\$10	\$10	\$9	\$9	\$8	\$7	\$5	\$5	\$4
	10yr ave.			\$13		\$12		\$10		\$8	\$8	\$8	\$8	\$7	\$6	\$6	\$5	\$4	\$4
	50% Current	\$27	\$25	\$24	\$22	\$21	\$19	\$16	\$14	\$12	\$12	\$11	\$11	\$10	\$9	\$8	\$6	\$5	\$5
	10yr ave.			\$14		\$13		\$11		\$9	\$9	\$9	\$8	\$8	\$7	\$7	\$5	\$5	\$4
	55% Current	\$30	\$28	\$26	\$25	\$23	\$21	\$18	\$15	\$13	\$13	\$12	\$12	\$11	\$9	\$9	\$6	\$6	\$5
	10yr ave.			\$15		\$14		\$12		\$10	\$10	\$9	\$9	\$9	\$8	\$7	\$6	\$5	\$5
	60% Current	\$32	\$30	\$29	\$27	\$25	\$23	\$19	\$17	\$15	\$14	\$13	\$13	\$12	\$10	\$9	\$7	\$6	\$5
	10yr ave.			\$17		\$15		\$13		\$11	\$11	\$10	\$10	\$10	\$9	\$8	\$6	\$5	\$5
	65% Current	\$35	\$33	\$31	\$29	\$27	\$24	\$21	\$18	\$16	\$15	\$14	\$14	\$13	\$11	\$10	\$8	\$7	\$6
	10yr ave.			\$18		\$17		\$14		\$12	\$11	\$11	\$11	\$10	\$9	\$9	\$7	\$6	\$5
	70% Current	\$38	\$35	\$34	\$31	\$29	\$26	\$23	\$19	\$17	\$16	\$16	\$15	\$14	\$12	\$11	\$8	\$7	\$6
	10yr ave.			\$20		\$18		\$15		\$13	\$12	\$12	\$12	\$11	\$10	\$9	\$7	\$6	\$6
	75% Current	\$41	\$38	\$36	\$33	\$31	\$28	\$24	\$21	\$18	\$17	\$17	\$16	\$15	\$13	\$12	\$9	\$8	\$7
	10yr ave.			\$21		\$19		\$16		\$14	\$13	\$13	\$13	\$12	\$11	\$10	\$8	\$7	\$6
	80% Current	\$43	\$40	\$38	\$36	\$34	\$30	\$26	\$22	\$19	\$18	\$18	\$17	\$16	\$14	\$12	\$9	\$8	\$7
	10yr ave.			\$22		\$20		\$17		\$15	\$14	\$14	\$13	\$13	\$11	\$10	\$8	\$7	\$7
	85% Current	\$46	\$43	\$41	\$38	\$36	\$32	\$27	\$24	\$21	\$20	\$19	\$18	\$17	\$15	\$13	\$10	\$9	\$8
	10yr ave.			\$24		\$22		\$18		\$16	\$15	\$15	\$14	\$14	\$12	\$11	\$9	\$8	\$7

The above shows estimated returns per head for skirted fleece wool. These figures do not take into account the value of skirtings and oddments and do not take into account discounts that may apply for faults under individual circumstances. These figures are based on a market index of 100% and should be used as a guide only. Returns over \$30 / head for fleece wool are highlighted.

Source: Australian Wool Exchange, Australian Wool Innovation, Sydney Futures Exchange, x-rates.com

Disclaimer: While all due care has been taken in the preparation of this document, no warranty is made as to its accuracy, reliability or completeness. To the extent permitted by law neither Jemalong or their sources including subsidiaries and staff, accept liability to any person for loss or damage arising from the use of this information.