



Table 1: Northern Region Micron Price Guides

CURRENT MARKET					PERCENTILES		AVERAGES					12 MONTH COMPARISONS								TRADING RANGE			
Mic.	17/03/2011	10/03/2011					Now			Now			16/03/2010		Now		Now		Now		Clean c/kg		
Price	Current	Weekly																					
Guides	Price	Change		3yr	10yr	3 year	compared	10 year	compared												12	3	10
						Average	to 3yr ave	Average	to 10yr ave			Last Year	to Last Year	12 Month	compared	12 Month	compared	12 Month	compared	Mth	Year	Year	
														Low	to Low	High	to High						
NRI	1427	+20	1.4%	100%	100%	921	+506 55%	884	+543 61%	942	+485 51%	890	+537 60%	1427	0	0%		537	678	769			
16*	2680	-20	-0.7%	97%		1708	+972 57%			1590	+1090 69%	1510	+1170 77%	2700	-20	-1%		1190	1315				
16.5*	2640	+20	0.8%	100%		1573	+1067 68%			1450	+1190 82%	1395	+1245 89%	2640	0	0%		1245	1386				
17*	2520	-10	-0.4%	99%	99%	1447	+1073 74%	1398	+1122 80%	1280	+1240 97%	1230	+1290 105%	2530	-10	0%		1300	1359	1559			
17.5*	2350	-10	-0.4%	99%		1371	+979 71%			1210	+1140 94%	1175	+1175 100%	2360	-10	0%		1185	1274				
18	2176	0		98%	97%	1302	+874 67%	1280	+896 70%	1176	+1000 85%	1134	+1042 92%	2193	-17	-1%		1059	1158	1392			
18.5	1945	-3	-0.2%	98%		1215	+730 60%			1137	+808 71%	1088	+857 79%	1963	-18	-1%		875	992				
19	1692	+5	0.3%	100%	100%	1101	+591 54%	1073	+619 58%	1090	+602 55%	1031	+661 64%	1692	0	0%		661	798	888			
19.5	1498	+21	1.4%	100%		1000	+498 50%			1022	+476 47%	952	+546 57%	1498	0	0%		546	684				
20	1360	+46	3.4%	100%	99%	920	+440 48%	925	+435 47%	972	+388 40%	904	+456 50%	1360	0	0%		456	620	717			
21	1282	+48	3.7%	100%	99%	887	+395 45%	883	+399 45%	955	+327 34%	878	+404 46%	1282	0	0%		404	595	737			
22	1263	+64	5.1%	100%	98%	865	+398 46%	859	+404 47%	939	+324 35%	847	+416 49%	1263	0	0%		416	588	732			
23	1223	+69	5.6%	100%	96%	840	+383 46%	838	+385 46%	925	+298 32%	827	+396 48%	1223	0	0%		396	560	719			
24	1113	+53	4.8%	100%	94%	793	+320 40%	800	+313 39%	835	+278 33%	780	+333 43%	1113	0	0%		333	466	691			
25	1002	+37	3.7%	100%	94%	684	+318 46%	718	+284 40%	687	+315 46%	660	+342 52%	1002	0	0%		342	436	635			
26	893	+22	2.5%	100%	88%	614	+279 45%	657	+236 36%	591	+302 51%	577	+316 55%	893	0	0%		316	389	573			
28	724	+7	1.0%	100%	90%	474	+250 53%	525	+199 38%	449	+275 61%	436	+288 66%	724	0	0%		288	305	465			
30	670	+5	0.7%	100%	99%	415	+255 61%	458	+212 46%	398	+272 68%	382	+288 75%	670	0	0%		288	321	385			
32	630	+26	4.1%	99%	99%	364	+266 73%	415	+215 52%	351	+279 79%	349	+281 81%	638	-8	-1%		289	325	372			
MC	817	+7	0.9%	99%	99%	555	+262 47%	507	+310 61%	670	+147 22%	561	+256 46%	818	-1	0%		257	426	438			

Note:

* Due to the irregular market quoting for some fine wool categories, figures shown relating to micron categories below 18 micron are an estimate based on the AWEX Premium & Discounts Report & other available information.

* For any category, where there is insufficient quantity offered to enable AWEX to quote, a quote will be provided based on the best available information.

* 10 Year data is not available for some micron categories, which may result in blank spaces in the table above.

Definitions:

* A Percentile, is a value on a scale of one hundred that indicates the percent of a distribution that is equal to or below it. In general a percentile between 25% and 75% is considered normal, a percentile below 25% is considered below normal and a percentile above 75% is considered above normal.

Three and ten year percentiles shown in the table above, detail the period of time during the past 3 & 10 years that the market has traded either at or below its current price.

The higher the percentile, the stronger the market.

Source: Australian Wool Exchange, Australian Wool Innovation, Sydney Futures Exchange, x-rates.com

Disclaimer: While all due care has been taken in the preparation of this document, no warranty is made as to its accuracy, reliability or completeness. To the extent permitted by law neither Jemalong or their sources including subsidiaries and staff, accept liability to any person for loss or damage arising from the use of this information.



MARKET COMMENTARY

One Australian Dollar = \$ 0.98 US, as of 17/03/2011

NORTHERN REGION –Sale Week 37/10 (45,775 bales offered nationally)

On Wednesday - A very positive market had most merino fleece categories gaining further ground. 20 micron and broader were 20-30 cents dearer while 19 to 19.5 microns rose 5-10 cents. Mixed results in the fine end saw improved support for the lower style & strength lots counter balance a lack of support for the better style & strength types. In the skirtings, heavy buyer discounting was widespread for the off types containing cot and colour (due to an abundance of these types on offer) however the better style & length types remained fully firm. Locks, crutchings & stains all gained 10 cents as did 28 to 30 micron crossbred. On a limited offering 32 micron were 30 cents dearer.

On Thursday - The market continued to push higher with buyers attracted to the medium to stronger microns. 20 to 23 micron fleece rose a further 25 to 35 cents, 19.5 managed a 15 cent rise, while 18 to 19 microns were unmoved. The finer microns were tending in buyers favour on a limited offering. Solid competition had the lower Vm skirtings 10-20 cents dearer where as the burrier types remained firm. Crutchings also remained firm, however stains drifted lower along with 18 to 19 micron locks. 27 to 30 micron crossbreds finished the day unchanged while 32 microns came off yesterdays peak by 10 cents.

Northern Region Indicator (Monthly Averages)

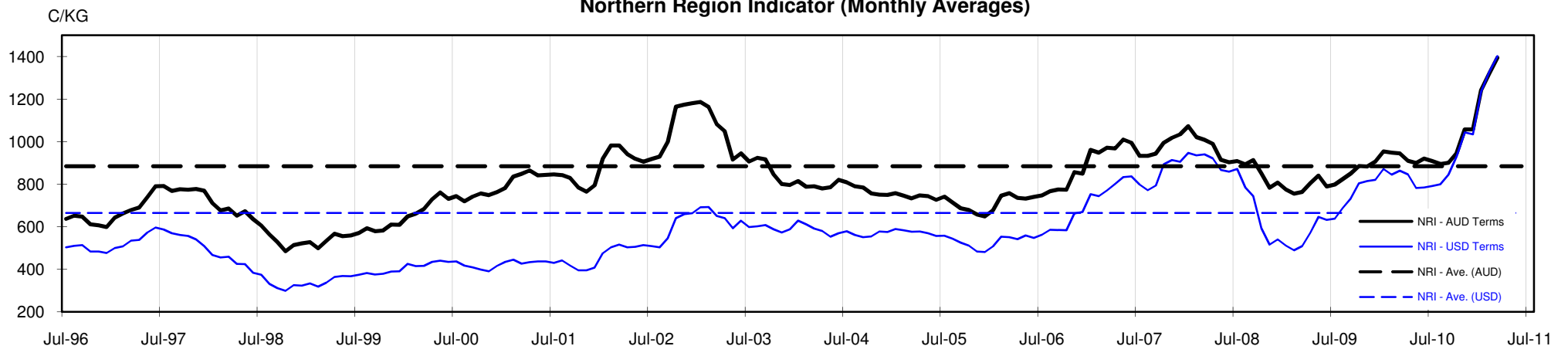




Table 4: 19 micron SFE

Wednesday, 16 March 2011

Delivery Mth	Apr-11	Jun-11	Aug-11	Oct-11	Dec-11	Feb-11	Apr-12	Jun-12	Aug-12
19 Micron SFE	1625	1613	1588	1550	1520	1488	1418	1423	1423
Average	1148	1160	1168	1176	1202	1114	1285	1376	1403
Maximum	1625	1613	1588	1550	1532	1613	1450	1450	1423
Minimum	1025	1034	1034	1034	1034	983	1106	1210	1385

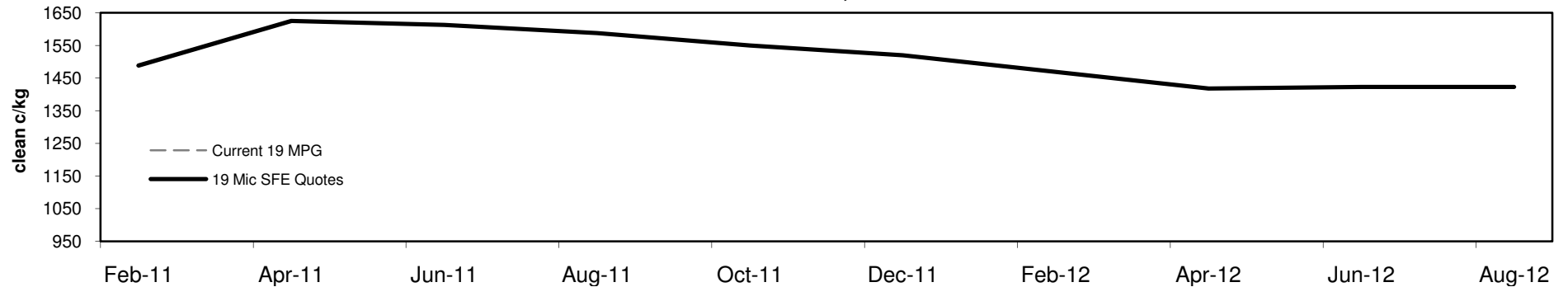
Table 5: 19 micron SFE, as a percentile of the 19 micron MPG

3 Year Percentile	96%	95%	94%	93%	93%	93%	93%	93%	93%
10 Year Percentile	98%	98%	98%	98%	98%	98%	97%	97%	97%

Table 6: 19 micron SFE, compared to MPG

Current 19 MPG	-67	-4%	-79	-5%	-104	-6%	-142	-8%	-172	-10%	-204	-12%	-274	-16%	-269	-16%	-269	-16%
19 MPG, 1 Year Average	+386	31%	+374	30%	+349	28%	+311	25%	+281	23%	+249	20%	+179	14%	+184	15%	+184	15%
19 MPG, 3 Year Average	+524	48%	+512	46%	+487	44%	+449	41%	+419	38%	+387	35%	+317	29%	+322	29%	+322	29%
19 MPG, 10 Year Average	+552	51%	+540	50%	+515	48%	+477	44%	+447	42%	+415	39%	+345	32%	+350	33%	+350	33%

19 MICRON SFE, QUOTES



19 Micron SFE, Front month movement

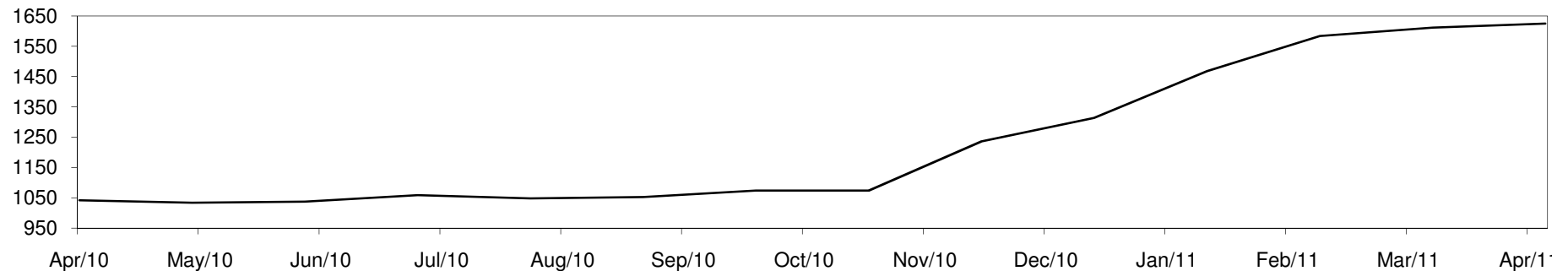




Table 7: 21 micron SFE

Wednesday, 16 March 2011

Delivery Mth	Apr-11	Jun-11	Aug-11	Oct-11	Dec-11	Feb-11	Apr-12	Jun-12	Aug-12
21 Micron SFE	1290	1260	1224	1173	1146	1051	1101	1051	1051
Average	977	979	973	967	969	962	1031	1037	1058
Maximum	1293	1265	1230	1186	1177	1260	1132	1082	1082
Minimum	891	890	880	880	880	860	934	990	1048

Table 8: 21 micron SFE, as a percentile of the 21 micron MPG

3 Year Percentile	100%	99%	98%	96%	95%	92%	93%	92%	92%
10 Year Percentile	99%	96%	95%	93%	92%	90%	91%	90%	90%

Table 9: 21 micron SFE, compared to MPG

Current 21 MPG	+8	1%	-22	-2%	-58	-5%	-109	-9%	-136	-11%	-231	-18%	-181	-14%	-231	-18%	-231	-18%
21 MPG, 1 Year Average	+297	30%	+267	27%	+231	23%	+180	18%	+153	15%	+58	6%	+108	11%	+58	6%	+58	6%
21 MPG, 3 Year Average	+403	45%	+373	42%	+337	38%	+286	32%	+259	29%	+164	18%	+214	24%	+164	18%	+164	18%
21 MPG, 10 Year Average	+407	46%	+377	43%	+341	39%	+290	33%	+263	30%	+168	19%	+218	25%	+168	19%	+168	19%

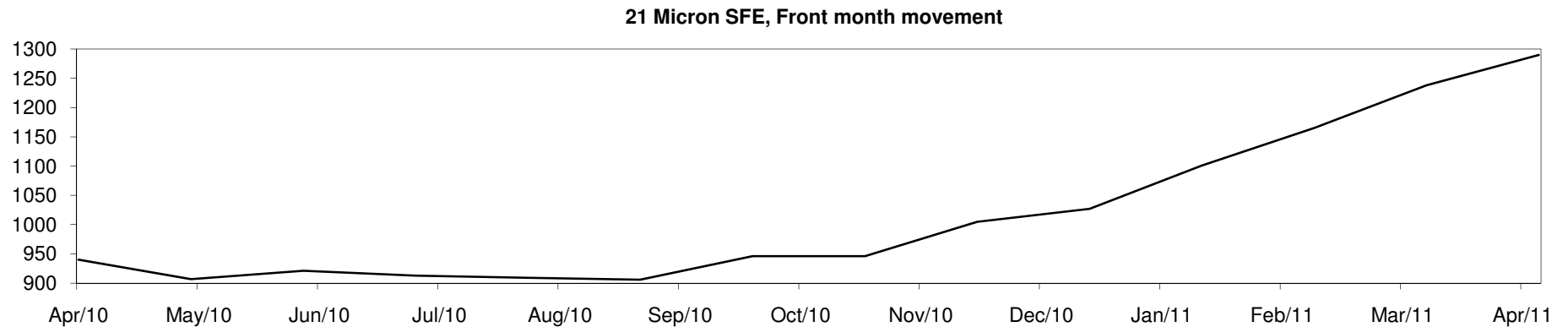
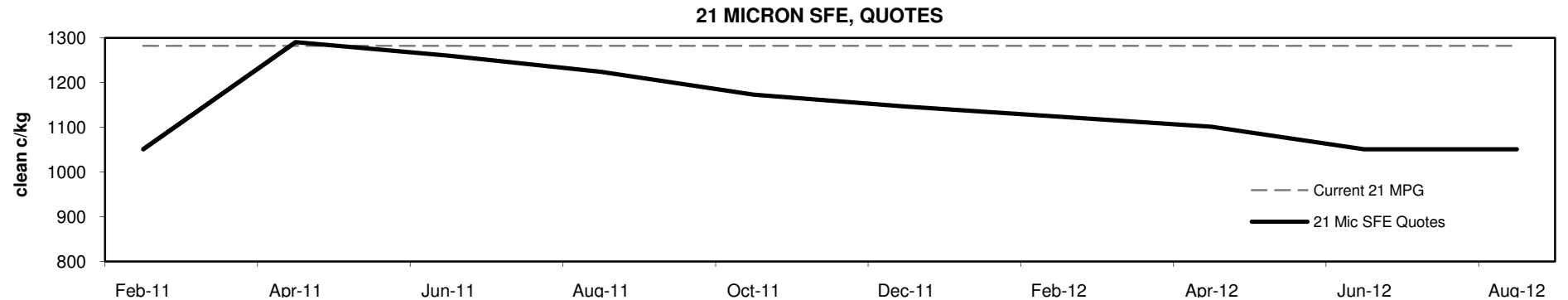




Table 10: 23 micron SFE

Wednesday, 16 March 2011

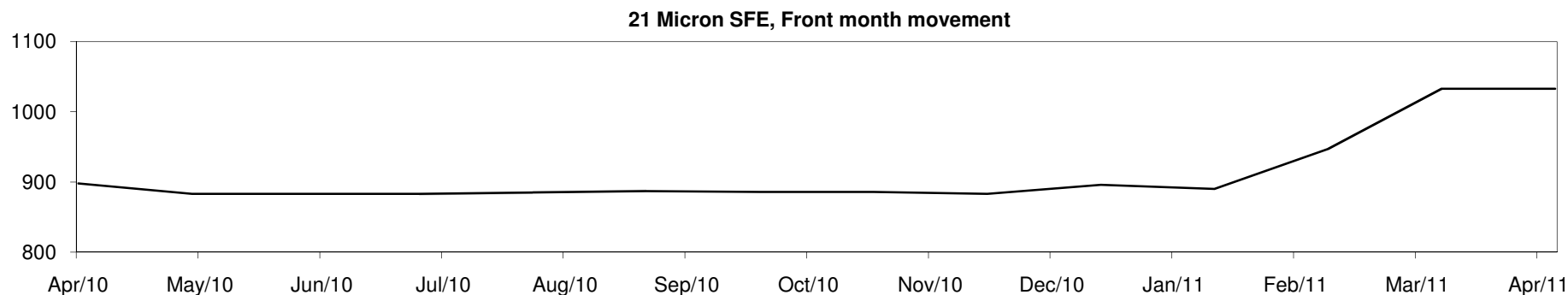
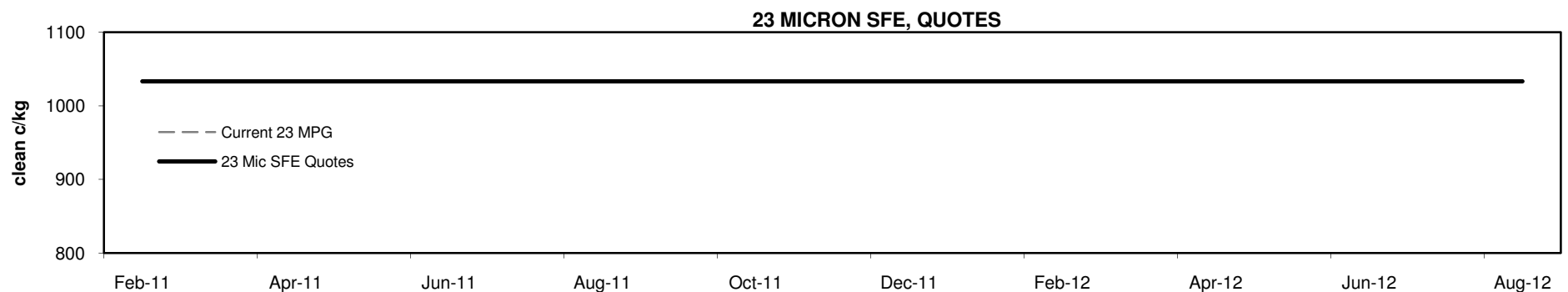
Delivery Mth	Apr-11	Jun-11	Aug-11	Oct-11	Dec-11	Feb-11	Apr-12	Jun-12	Aug-12
23 Micron SFE	1033	1033	1033	1033	1033	1033	1033	1033	1033
Average	885	896	902	899	902	870	919	943	1033
Maximum	1033	1033	1033	1033	1033	1033	1033	1033	1033
Minimum	803	803	883	883	883	760	883	890	1033

Table 11: 23 micron SFE, as a percentile of the 23 micron MPG

3 Year Percentile	94%	94%	94%	94%	94%	94%	94%	94%	94%
10 Year Percentile	91%	91%	91%	91%	91%	91%	91%	91%	91%

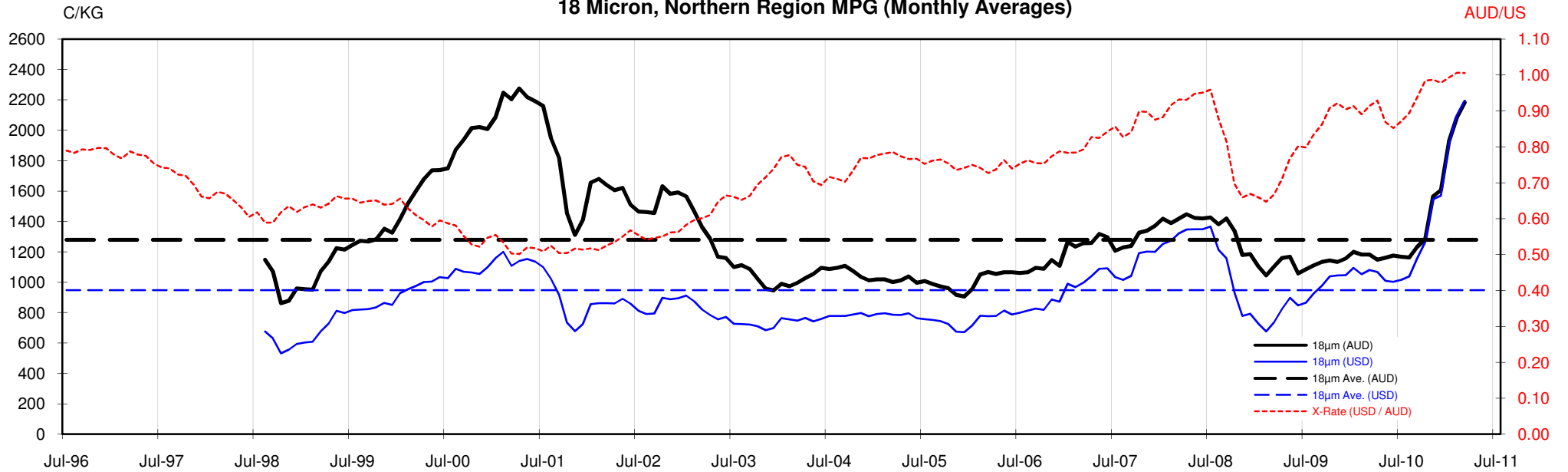
Table 12: 23 micron SFE, compared to MPG

Current 19 MPG	-190	-16%	-190	-16%	-190	-16%	-190	-16%	-190	-16%	-190	-16%	-190	-16%	-190	-16%	-190	-16%
23 MPG, 1 Year Average	+103	11%	+103	11%	+103	11%	+103	11%	+103	11%	+103	11%	+103	11%	+103	11%	+103	11%
23 MPG, 3 Year Average	+193	23%	+193	23%	+193	23%	+193	23%	+193	23%	+193	23%	+193	23%	+193	23%	+193	23%
23 MPG, 10 Year Average	+195	23%	+195	23%	+195	23%	+195	23%	+195	23%	+195	23%	+195	23%	+195	23%	+195	23%



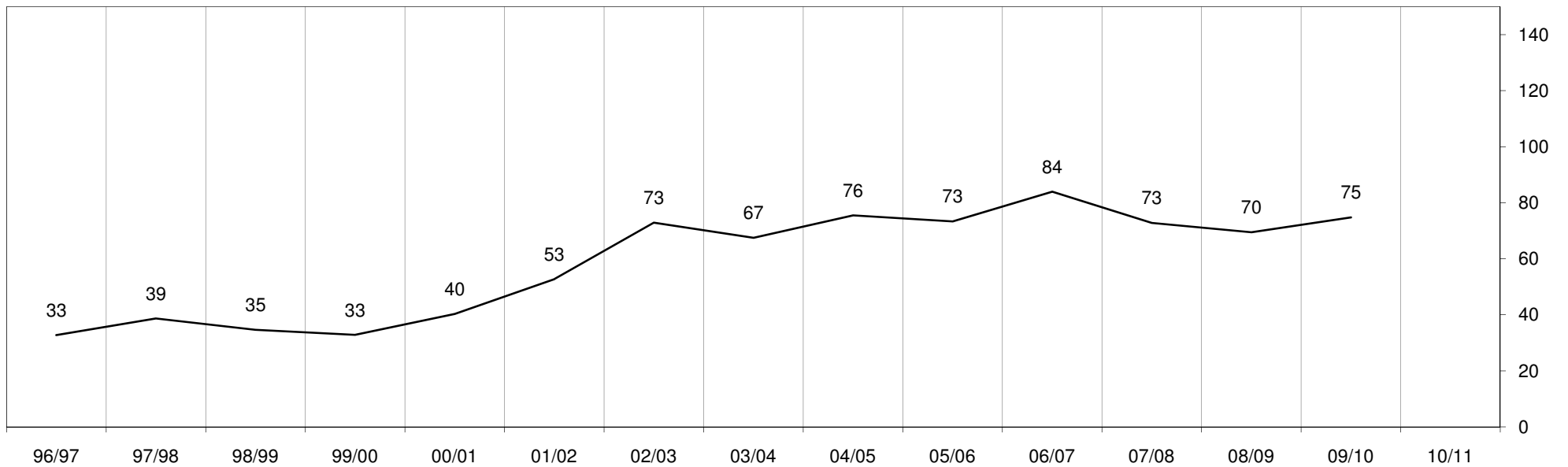


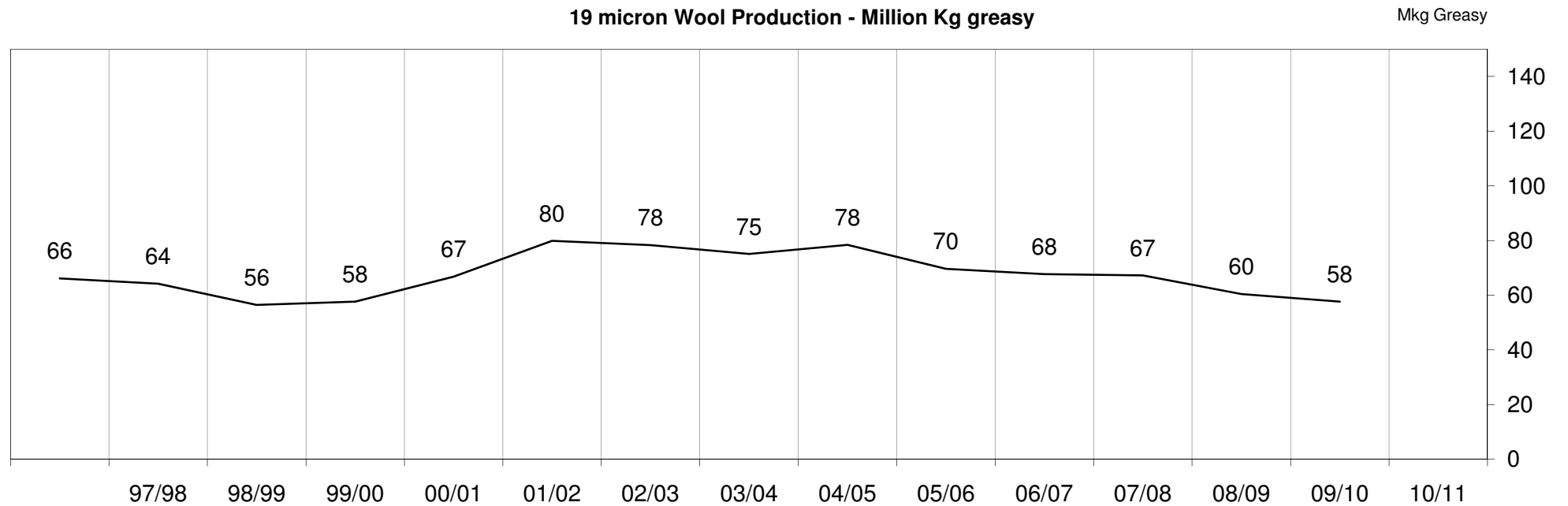
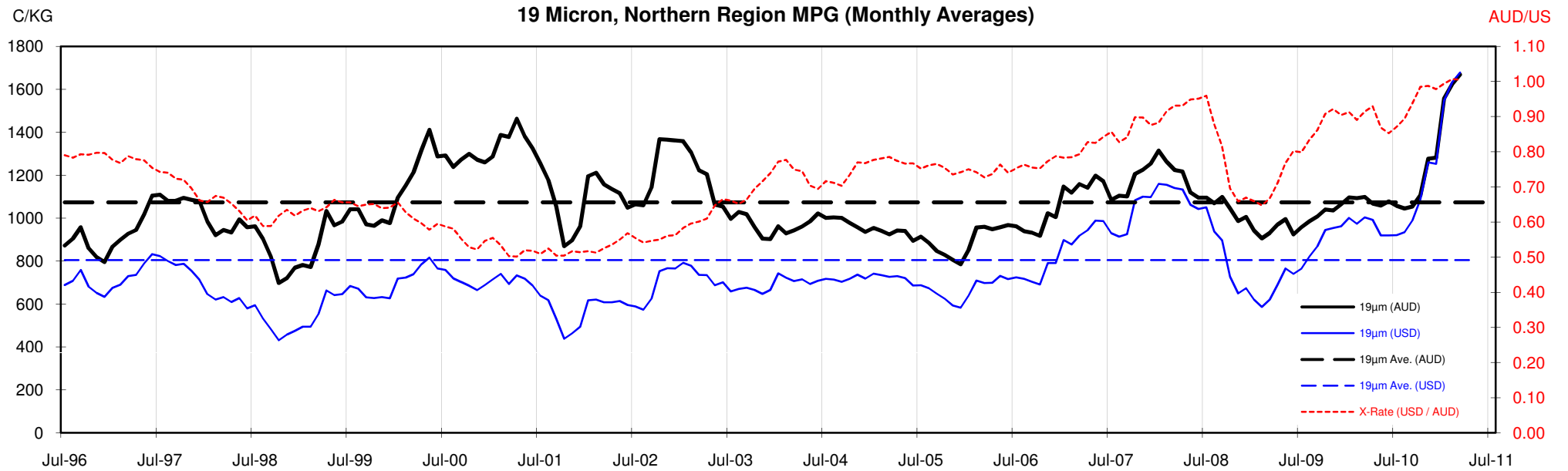
18 Micron, Northern Region MPG (Monthly Averages)

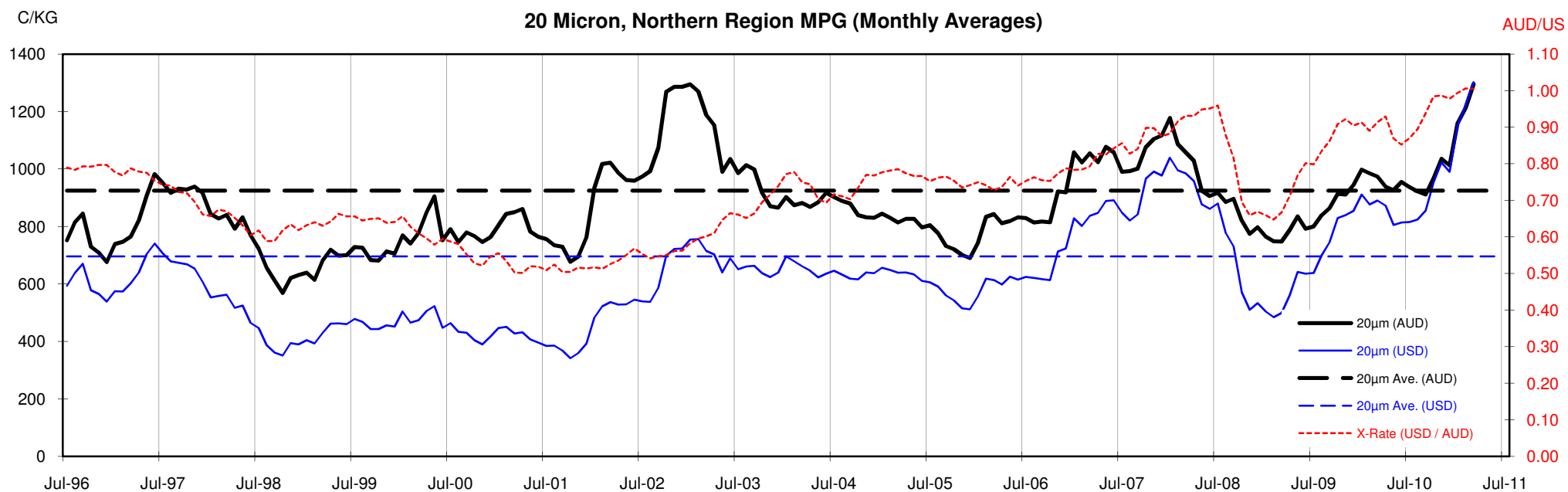


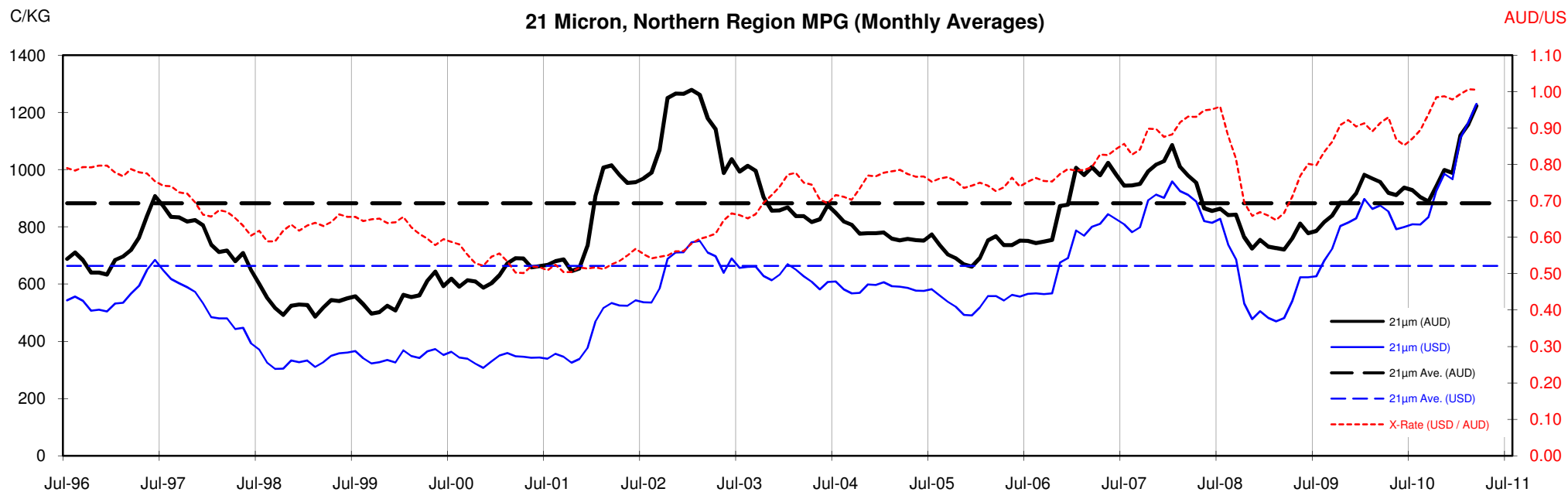
<18.5 micron Wool Production - Million Kg greasy

Mkg Greasy



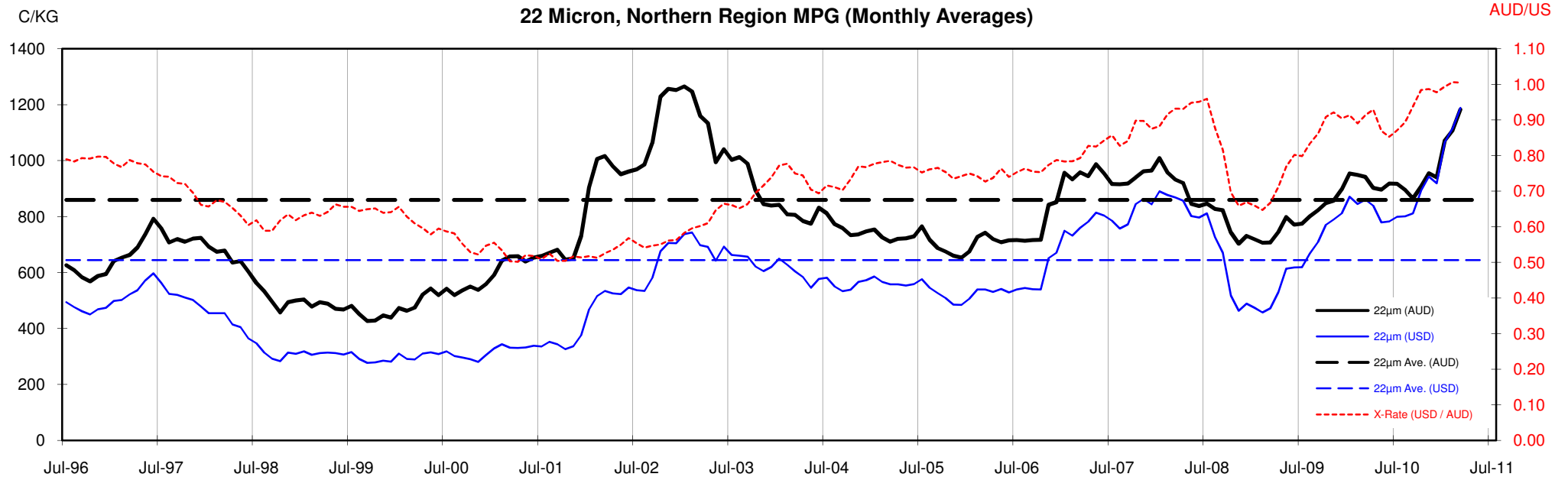






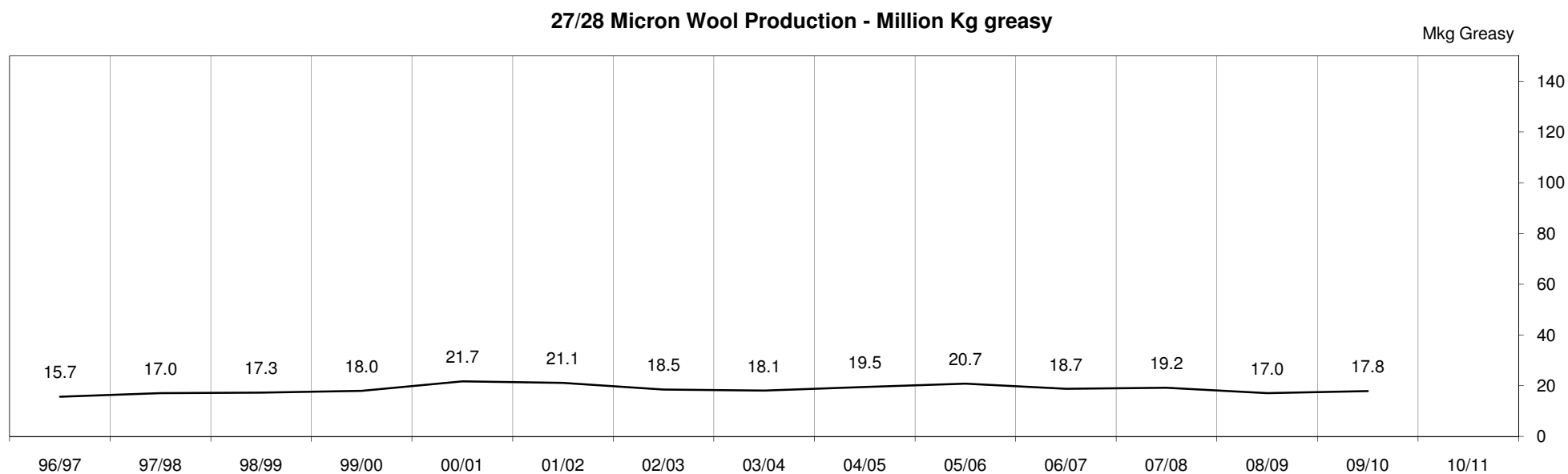
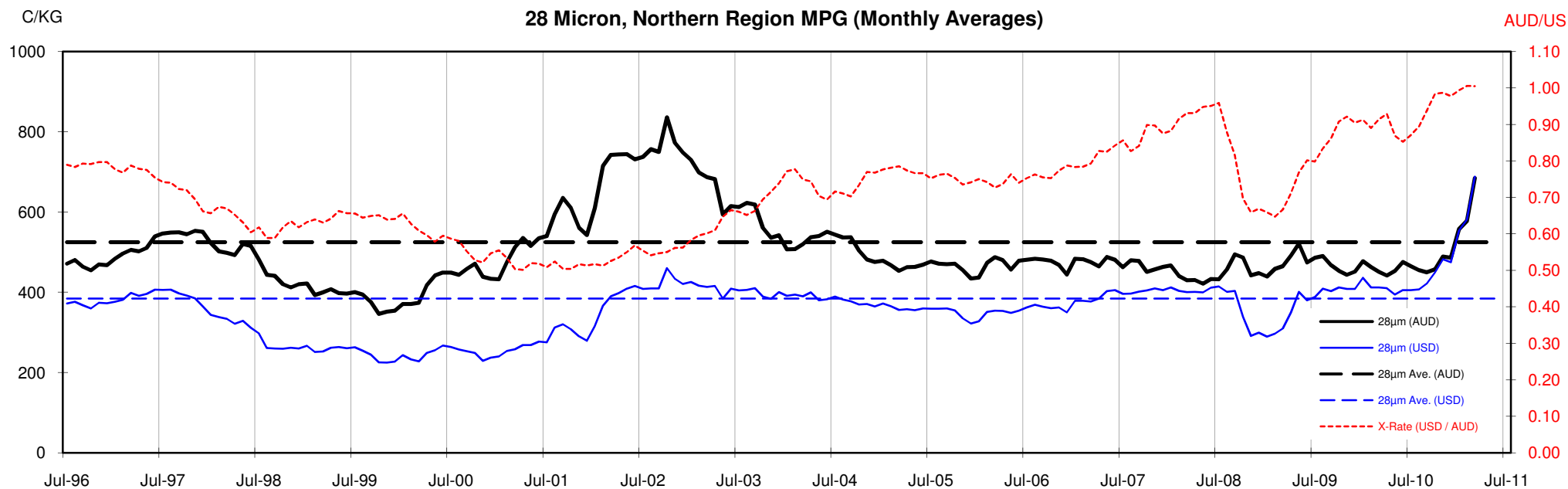


22 Micron, Northern Region MPG (Monthly Averages)



22 Micron Wool Production - Million Kg greasy





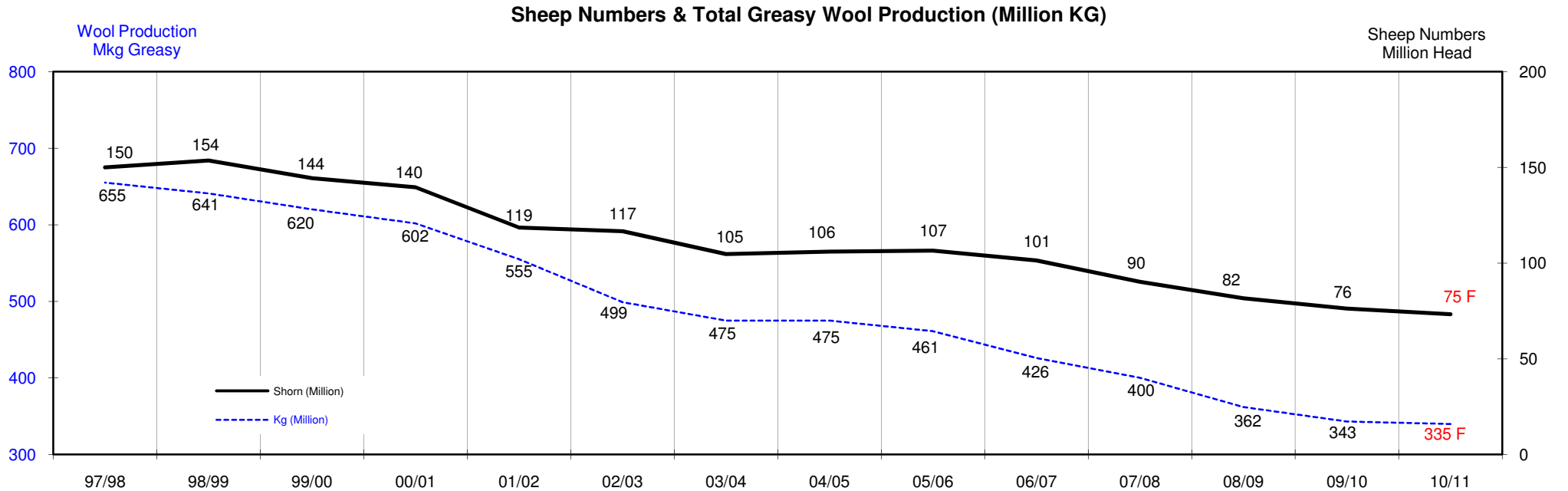
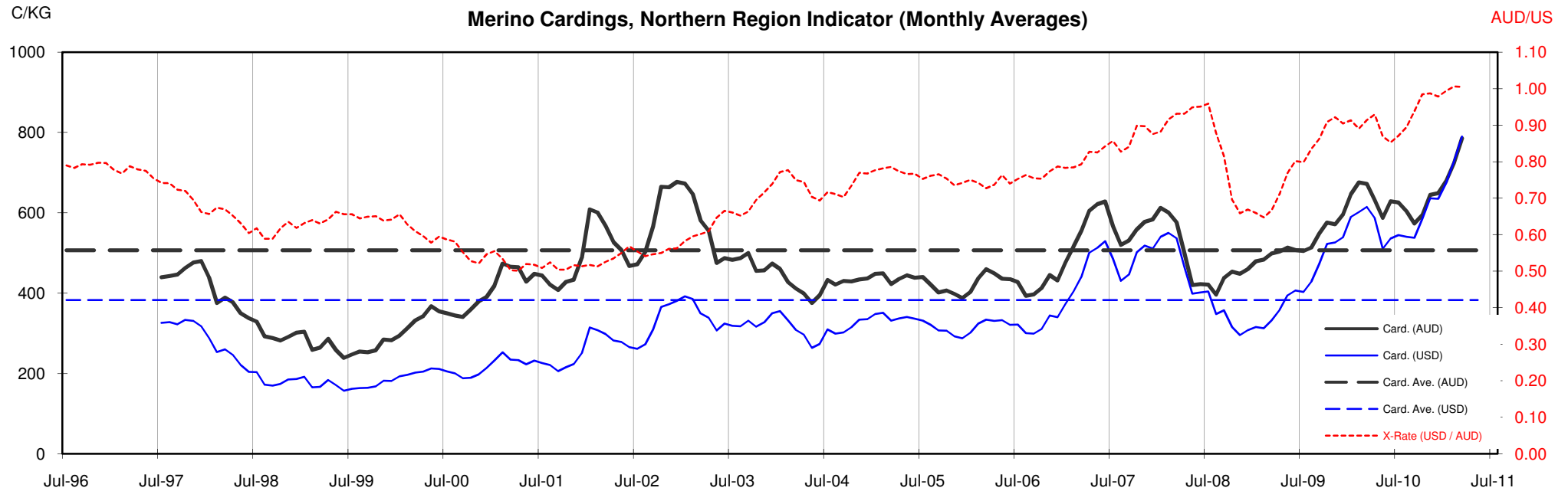




Table 13: Returns pr head for skirted fleece wool.

Skirted FLC Weight		Micron																	
9 Kg		16	16.5	17	17.5	18	18.5	19	19.5	20	21	22	23	24	25	26	28	30	32
Yield (Sch Dry)	25% Current	\$60	\$59	\$57	\$53	\$49	\$44	\$38	\$34	\$31	\$29	\$28	\$28	\$25	\$23	\$20	\$16	\$15	\$14
	10yr ave.			\$31		\$29		\$24		\$21	\$20	\$19	\$19	\$18	\$16	\$15	\$12	\$10	\$9
	30% Current	\$72	\$71	\$68	\$63	\$59	\$53	\$46	\$40	\$37	\$35	\$34	\$33	\$30	\$27	\$24	\$20	\$18	\$17
	10yr ave.			\$38		\$35		\$29		\$25	\$24	\$23	\$23	\$22	\$19	\$18	\$14	\$12	\$11
	35% Current	\$84	\$83	\$79	\$74	\$69	\$61	\$53	\$47	\$43	\$40	\$40	\$39	\$35	\$32	\$28	\$23	\$21	\$20
	10yr ave.			\$44		\$40		\$34		\$29	\$28	\$27	\$26	\$25	\$23	\$21	\$17	\$14	\$13
	40% Current	\$96	\$95	\$91	\$85	\$78	\$70	\$61	\$54	\$49	\$46	\$45	\$44	\$40	\$36	\$32	\$26	\$24	\$23
	10yr ave.			\$50		\$46		\$39		\$33	\$32	\$31	\$30	\$29	\$26	\$24	\$19	\$16	\$15
	45% Current	\$109	\$107	\$102	\$95	\$88	\$79	\$69	\$61	\$55	\$52	\$51	\$50	\$45	\$41	\$36	\$29	\$27	\$26
	10yr ave.			\$57		\$52		\$43		\$37	\$36	\$35	\$34	\$32	\$29	\$27	\$21	\$19	\$17
	50% Current	\$121	\$119	\$113	\$106	\$98	\$88	\$76	\$67	\$61	\$58	\$57	\$55	\$50	\$45	\$40	\$33	\$30	\$28
	10yr ave.			\$63		\$58		\$48		\$42	\$40	\$39	\$38	\$36	\$32	\$30	\$24	\$21	\$19
	55% Current	\$133	\$131	\$125	\$116	\$108	\$96	\$84	\$74	\$67	\$63	\$63	\$61	\$55	\$50	\$44	\$36	\$33	\$31
	10yr ave.			\$69		\$63		\$53		\$46	\$44	\$43	\$41	\$40	\$36	\$33	\$26	\$23	\$21
	60% Current	\$145	\$143	\$136	\$127	\$118	\$105	\$91	\$81	\$73	\$69	\$68	\$66	\$60	\$54	\$48	\$39	\$36	\$34
	10yr ave.			\$75		\$69		\$58		\$50	\$48	\$46	\$45	\$43	\$39	\$35	\$28	\$25	\$22
	65% Current	\$157	\$154	\$147	\$137	\$127	\$114	\$99	\$88	\$80	\$75	\$74	\$72	\$65	\$59	\$52	\$42	\$39	\$37
	10yr ave.			\$82		\$75		\$63		\$54	\$52	\$50	\$49	\$47	\$42	\$38	\$31	\$27	\$24
	70% Current	\$169	\$166	\$159	\$148	\$137	\$123	\$107	\$94	\$86	\$81	\$80	\$77	\$70	\$63	\$56	\$46	\$42	\$40
	10yr ave.			\$88		\$81		\$68		\$58	\$56	\$54	\$53	\$50	\$45	\$41	\$33	\$29	\$26
	75% Current	\$181	\$178	\$170	\$159	\$147	\$131	\$114	\$101	\$92	\$87	\$85	\$83	\$75	\$68	\$60	\$49	\$45	\$43
	10yr ave.			\$94		\$86		\$72		\$62	\$60	\$58	\$57	\$54	\$48	\$44	\$35	\$31	\$28
	80% Current	\$193	\$190	\$181	\$169	\$157	\$140	\$122	\$108	\$98	\$92	\$91	\$88	\$80	\$72	\$64	\$52	\$48	\$45
	10yr ave.			\$101		\$92		\$77		\$67	\$64	\$62	\$60	\$58	\$52	\$47	\$38	\$33	\$30
	85% Current	\$205	\$202	\$193	\$180	\$166	\$149	\$129	\$115	\$104	\$98	\$97	\$94	\$85	\$77	\$68	\$55	\$51	\$48
	10yr ave.			\$107		\$98		\$82		\$71	\$68	\$66	\$64	\$61	\$55	\$50	\$40	\$35	\$32

The above shows estimated returns per head for skirted fleece wool. These figures do not take into account the value of skirtings and oddments and do not take into account discounts that may apply for faults under individual circumstances. These figures are based on a market index of 100% and should be used as a guide only. Returns over \$30 / head for fleece wool are highlighted.

Source: Australian Wool Exchange, Australian Wool Innovation, Sydney Futures Exchange, x-rates.com

Disclaimer: While all due care has been taken in the preparation of this document, no warranty is made as to its accuracy, reliability or completeness. To the extent permitted by law neither Jemalong or their sources including subsidiaries and staff, accept liability to any person for loss or damage arising from the use of this information.



Table 14: Returns pr head for skirted fleece wool.

Skirted FLC Weight		Micron																	
8 Kg		16	16.5	17	17.5	18	18.5	19	19.5	20	21	22	23	24	25	26	28	30	32
Yield (Sch Dry)	25% Current	\$54	\$53	\$50	\$47	\$44	\$39	\$34	\$30	\$27	\$26	\$25	\$24	\$22	\$20	\$18	\$14	\$13	\$13
	10yr ave.			\$28		\$26		\$21		\$19	\$18	\$17	\$17	\$16	\$14	\$13	\$11	\$9	\$8
	30% Current	\$64	\$63	\$60	\$56	\$52	\$47	\$41	\$36	\$33	\$31	\$30	\$29	\$27	\$24	\$21	\$17	\$16	\$15
	10yr ave.			\$34		\$31		\$26		\$22	\$21	\$21	\$20	\$19	\$17	\$16	\$13	\$11	\$10
	35% Current	\$75	\$74	\$71	\$66	\$61	\$54	\$47	\$42	\$38	\$36	\$35	\$34	\$31	\$28	\$25	\$20	\$19	\$18
	10yr ave.			\$39		\$36		\$30		\$26	\$25	\$24	\$23	\$22	\$20	\$18	\$15	\$13	\$12
	40% Current	\$86	\$84	\$81	\$75	\$70	\$62	\$54	\$48	\$44	\$41	\$40	\$39	\$36	\$32	\$29	\$23	\$21	\$20
	10yr ave.			\$45		\$41		\$34		\$30	\$28	\$27	\$27	\$26	\$23	\$21	\$17	\$15	\$13
	45% Current	\$96	\$95	\$91	\$85	\$78	\$70	\$61	\$54	\$49	\$46	\$45	\$44	\$40	\$36	\$32	\$26	\$24	\$23
	10yr ave.			\$50		\$46		\$39		\$33	\$32	\$31	\$30	\$29	\$26	\$24	\$19	\$16	\$15
	50% Current	\$107	\$106	\$101	\$94	\$87	\$78	\$68	\$60	\$54	\$51	\$51	\$49	\$45	\$40	\$36	\$29	\$27	\$25
	10yr ave.			\$56		\$51		\$43		\$37	\$35	\$34	\$34	\$32	\$29	\$26	\$21	\$18	\$17
	55% Current	\$118	\$116	\$111	\$103	\$96	\$86	\$74	\$66	\$60	\$56	\$56	\$54	\$49	\$44	\$39	\$32	\$29	\$28
	10yr ave.			\$62		\$56		\$47		\$41	\$39	\$38	\$37	\$35	\$32	\$29	\$23	\$20	\$18
	60% Current	\$129	\$127	\$121	\$113	\$104	\$93	\$81	\$72	\$65	\$62	\$61	\$59	\$53	\$48	\$43	\$35	\$32	\$30
	10yr ave.			\$67		\$61		\$52		\$44	\$42	\$41	\$40	\$38	\$34	\$32	\$25	\$22	\$20
	65% Current	\$139	\$137	\$131	\$122	\$113	\$101	\$88	\$78	\$71	\$67	\$66	\$64	\$58	\$52	\$46	\$38	\$35	\$33
	10yr ave.			\$73		\$67		\$56		\$48	\$46	\$45	\$44	\$42	\$37	\$34	\$27	\$24	\$22
	70% Current	\$150	\$148	\$141	\$132	\$122	\$109	\$95	\$84	\$76	\$72	\$71	\$68	\$62	\$56	\$50	\$41	\$38	\$35
	10yr ave.			\$78		\$72		\$60		\$52	\$49	\$48	\$47	\$45	\$40	\$37	\$29	\$26	\$23
	75% Current	\$161	\$158	\$151	\$141	\$131	\$117	\$102	\$90	\$82	\$77	\$76	\$73	\$67	\$60	\$54	\$43	\$40	\$38
	10yr ave.			\$84		\$77		\$64		\$56	\$53	\$52	\$50	\$48	\$43	\$39	\$32	\$27	\$25
	80% Current	\$172	\$169	\$161	\$150	\$139	\$124	\$108	\$96	\$87	\$82	\$81	\$78	\$71	\$64	\$57	\$46	\$43	\$40
	10yr ave.			\$89		\$82		\$69		\$59	\$57	\$55	\$54	\$51	\$46	\$42	\$34	\$29	\$27
	85% Current	\$182	\$180	\$171	\$160	\$148	\$132	\$115	\$102	\$92	\$87	\$86	\$83	\$76	\$68	\$61	\$49	\$46	\$43
	10yr ave.			\$95		\$87		\$73		\$63	\$60	\$58	\$57	\$54	\$49	\$45	\$36	\$31	\$28

The above shows estimated returns per head for skirted fleece wool. These figures do not take into account the value of skirtings and oddments and do not take into account discounts that may apply for faults under individual circumstances. These figures are based on a market index of 100% and should be used as a guide only. Returns over \$30 / head for fleece wool are highlighted.

Source: Australian Wool Exchange, Australian Wool Innovation, Sydney Futures Exchange, x-rates.com

Disclaimer: While all due care has been taken in the preparation of this document, no warranty is made as to its accuracy, reliability or completeness. To the extent permitted by law neither Jemalong or their sources including subsidiaries and staff, accept liability to any person for loss or damage arising from the use of this information.



Table 15: Returns pr head for skirted fleece wool.

Skirted FLC Weight		Micron																	
7 Kg		16	16.5	17	17.5	18	18.5	19	19.5	20	21	22	23	24	25	26	28	30	32
Yield (Sch Dry)	25% Current	\$47	\$46	\$44	\$41	\$38	\$34	\$30	\$26	\$24	\$22	\$22	\$21	\$19	\$18	\$16	\$13	\$12	\$11
	10yr ave.			\$24		\$22		\$19		\$16	\$15	\$15	\$15	\$14	\$13	\$11	\$9	\$8	\$7
	30% Current	\$56	\$55	\$53	\$49	\$46	\$41	\$36	\$31	\$29	\$27	\$27	\$26	\$23	\$21	\$19	\$15	\$14	\$13
	10yr ave.			\$29		\$27		\$23		\$19	\$19	\$18	\$18	\$17	\$15	\$14	\$11	\$10	\$9
	35% Current	\$66	\$65	\$62	\$58	\$53	\$48	\$41	\$37	\$33	\$31	\$31	\$30	\$27	\$25	\$22	\$18	\$16	\$15
	10yr ave.			\$34		\$31		\$26		\$23	\$22	\$21	\$21	\$20	\$18	\$16	\$13	\$11	\$10
	40% Current	\$75	\$74	\$71	\$66	\$61	\$54	\$47	\$42	\$38	\$36	\$35	\$34	\$31	\$28	\$25	\$20	\$19	\$18
	10yr ave.			\$39		\$36		\$30		\$26	\$25	\$24	\$23	\$22	\$20	\$18	\$15	\$13	\$12
	45% Current	\$84	\$83	\$79	\$74	\$69	\$61	\$53	\$47	\$43	\$40	\$40	\$39	\$35	\$32	\$28	\$23	\$21	\$20
	10yr ave.			\$44		\$40		\$34		\$29	\$28	\$27	\$26	\$25	\$23	\$21	\$17	\$14	\$13
	50% Current	\$94	\$92	\$88	\$82	\$76	\$68	\$59	\$52	\$48	\$45	\$44	\$43	\$39	\$35	\$31	\$25	\$23	\$22
	10yr ave.			\$49		\$45		\$38		\$32	\$31	\$30	\$29	\$28	\$25	\$23	\$18	\$16	\$15
	55% Current	\$103	\$102	\$97	\$90	\$84	\$75	\$65	\$58	\$52	\$49	\$49	\$47	\$43	\$39	\$34	\$28	\$26	\$24
	10yr ave.			\$54		\$49		\$41		\$36	\$34	\$33	\$32	\$31	\$28	\$25	\$20	\$18	\$16
	60% Current	\$113	\$111	\$106	\$99	\$91	\$82	\$71	\$63	\$57	\$54	\$53	\$51	\$47	\$42	\$38	\$30	\$28	\$26
	10yr ave.			\$59		\$54		\$45		\$39	\$37	\$36	\$35	\$34	\$30	\$28	\$22	\$19	\$17
	65% Current	\$122	\$120	\$115	\$107	\$99	\$88	\$77	\$68	\$62	\$58	\$57	\$56	\$51	\$46	\$41	\$33	\$30	\$29
	10yr ave.			\$64		\$58		\$49		\$42	\$40	\$39	\$38	\$36	\$33	\$30	\$24	\$21	\$19
	70% Current	\$131	\$129	\$123	\$115	\$107	\$95	\$83	\$73	\$67	\$63	\$62	\$60	\$55	\$49	\$44	\$35	\$33	\$31
	10yr ave.			\$69		\$63		\$53		\$45	\$43	\$42	\$41	\$39	\$35	\$32	\$26	\$22	\$20
	75% Current	\$141	\$139	\$132	\$123	\$114	\$102	\$89	\$79	\$71	\$67	\$66	\$64	\$58	\$53	\$47	\$38	\$35	\$33
	10yr ave.			\$73		\$67		\$56		\$49	\$46	\$45	\$44	\$42	\$38	\$34	\$28	\$24	\$22
	80% Current	\$150	\$148	\$141	\$132	\$122	\$109	\$95	\$84	\$76	\$72	\$71	\$68	\$62	\$56	\$50	\$41	\$38	\$35
	10yr ave.			\$78		\$72		\$60		\$52	\$49	\$48	\$47	\$45	\$40	\$37	\$29	\$26	\$23
	85% Current	\$159	\$157	\$150	\$140	\$129	\$116	\$101	\$89	\$81	\$76	\$75	\$73	\$66	\$60	\$53	\$43	\$40	\$37
	10yr ave.			\$83		\$76		\$64		\$55	\$53	\$51	\$50	\$48	\$43	\$39	\$31	\$27	\$25

The above shows estimated returns per head for skirted fleece wool. These figures do not take into account the value of skirtings and oddments and do not take into account discounts that may apply for faults under individual circumstances. These figures are based on a market index of 100% and should be used as a guide only. Returns over \$30 / head for fleece wool are highlighted.

Source: Australian Wool Exchange, Australian Wool Innovation, Sydney Futures Exchange, x-rates.com

Disclaimer: While all due care has been taken in the preparation of this document, no warranty is made as to its accuracy, reliability or completeness. To the extent permitted by law neither Jemalong or their sources including subsidiaries and staff, accept liability to any person for loss or damage arising from the use of this information.



Table 16: Returns pr head for skirted fleece wool.

Skirted FLC Weight		Micron																	
6 Kg		16	16.5	17	17.5	18	18.5	19	19.5	20	21	22	23	24	25	26	28	30	32
Yield (Sch Dry)	25% Current	\$40	\$40	\$38	\$35	\$33	\$29	\$25	\$22	\$20	\$19	\$19	\$18	\$17	\$15	\$13	\$11	\$10	\$9
	10yr ave.			\$21		\$19		\$16		\$14	\$13	\$13	\$13	\$12	\$11	\$10	\$8	\$7	\$6
	30% Current	\$48	\$48	\$45	\$42	\$39	\$35	\$30	\$27	\$24	\$23	\$23	\$22	\$20	\$18	\$16	\$13	\$12	\$11
	10yr ave.			\$25		\$23		\$19		\$17	\$16	\$15	\$15	\$14	\$13	\$12	\$9	\$8	\$7
	35% Current	\$56	\$55	\$53	\$49	\$46	\$41	\$36	\$31	\$29	\$27	\$27	\$26	\$23	\$21	\$19	\$15	\$14	\$13
	10yr ave.			\$29		\$27		\$23		\$19	\$19	\$18	\$18	\$17	\$15	\$14	\$11	\$10	\$9
	40% Current	\$64	\$63	\$60	\$56	\$52	\$47	\$41	\$36	\$33	\$31	\$30	\$29	\$27	\$24	\$21	\$17	\$16	\$15
	10yr ave.			\$34		\$31		\$26		\$22	\$21	\$21	\$20	\$19	\$17	\$16	\$13	\$11	\$10
	45% Current	\$72	\$71	\$68	\$63	\$59	\$53	\$46	\$40	\$37	\$35	\$34	\$33	\$30	\$27	\$24	\$20	\$18	\$17
	10yr ave.			\$38		\$35		\$29		\$25	\$24	\$23	\$23	\$22	\$19	\$18	\$14	\$12	\$11
	50% Current	\$80	\$79	\$76	\$71	\$65	\$58	\$51	\$45	\$41	\$38	\$38	\$37	\$33	\$30	\$27	\$22	\$20	\$19
	10yr ave.			\$42		\$38		\$32		\$28	\$26	\$26	\$25	\$24	\$22	\$20	\$16	\$14	\$12
	55% Current	\$88	\$87	\$83	\$78	\$72	\$64	\$56	\$49	\$45	\$42	\$42	\$40	\$37	\$33	\$29	\$24	\$22	\$21
	10yr ave.			\$46		\$42		\$35		\$31	\$29	\$28	\$28	\$26	\$24	\$22	\$17	\$15	\$14
	60% Current	\$96	\$95	\$91	\$85	\$78	\$70	\$61	\$54	\$49	\$46	\$45	\$44	\$40	\$36	\$32	\$26	\$24	\$23
	10yr ave.			\$50		\$46		\$39		\$33	\$32	\$31	\$30	\$29	\$26	\$24	\$19	\$16	\$15
	65% Current	\$105	\$103	\$98	\$92	\$85	\$76	\$66	\$58	\$53	\$50	\$49	\$48	\$43	\$39	\$35	\$28	\$26	\$25
	10yr ave.			\$55		\$50		\$42		\$36	\$34	\$34	\$33	\$31	\$28	\$26	\$20	\$18	\$16
	70% Current	\$113	\$111	\$106	\$99	\$91	\$82	\$71	\$63	\$57	\$54	\$53	\$51	\$47	\$42	\$38	\$30	\$28	\$26
	10yr ave.			\$59		\$54		\$45		\$39	\$37	\$36	\$35	\$34	\$30	\$28	\$22	\$19	\$17
	75% Current	\$121	\$119	\$113	\$106	\$98	\$88	\$76	\$67	\$61	\$58	\$57	\$55	\$50	\$45	\$40	\$33	\$30	\$28
	10yr ave.			\$63		\$58		\$48		\$42	\$40	\$39	\$38	\$36	\$32	\$30	\$24	\$21	\$19
	80% Current	\$129	\$127	\$121	\$113	\$104	\$93	\$81	\$72	\$65	\$62	\$61	\$59	\$53	\$48	\$43	\$35	\$32	\$30
	10yr ave.			\$67		\$61		\$52		\$44	\$42	\$41	\$40	\$38	\$34	\$32	\$25	\$22	\$20
	85% Current	\$137	\$135	\$129	\$120	\$111	\$99	\$86	\$76	\$69	\$65	\$64	\$62	\$57	\$51	\$46	\$37	\$34	\$32
	10yr ave.			\$71		\$65		\$55		\$47	\$45	\$44	\$43	\$41	\$37	\$34	\$27	\$23	\$21

The above shows estimated returns per head for skirted fleece wool. These figures do not take into account the value of skirtings and oddments and do not take into account discounts that may apply for faults under individual circumstances. These figures are based on a market index of 100% and should be used as a guide only. Returns over \$30 / head for fleece wool are highlighted.

Source: Australian Wool Exchange, Australian Wool Innovation, Sydney Futures Exchange, x-rates.com

Disclaimer: While all due care has been taken in the preparation of this document, no warranty is made as to its accuracy, reliability or completeness. To the extent permitted by law neither Jemalong or their sources including subsidiaries and staff, accept liability to any person for loss or damage arising from the use of this information.



Table 17: Returns pr head for skirted fleece wool.

Skirted FLC Weight 5 Kg			Micron																	
			16	16.5	17	17.5	18	18.5	19	19.5	20	21	22	23	24	25	26	28	30	32
Yield (Sch Dry)	25%	Current	\$34	\$33	\$32	\$29	\$27	\$24	\$21	\$19	\$17	\$16	\$16	\$15	\$14	\$13	\$11	\$9	\$8	\$8
		10yr ave.			\$17		\$16		\$13		\$12	\$11	\$11	\$10	\$10	\$9	\$8	\$7	\$6	\$5
	30%	Current	\$40	\$40	\$38	\$35	\$33	\$29	\$25	\$22	\$20	\$19	\$19	\$18	\$17	\$15	\$13	\$11	\$10	\$9
		10yr ave.			\$21		\$19		\$16		\$14	\$13	\$13	\$13	\$12	\$11	\$10	\$8	\$7	\$6
	35%	Current	\$47	\$46	\$44	\$41	\$38	\$34	\$30	\$26	\$24	\$22	\$22	\$21	\$19	\$18	\$16	\$13	\$12	\$11
		10yr ave.			\$24		\$22		\$19		\$16	\$15	\$15	\$15	\$14	\$13	\$11	\$9	\$8	\$7
	40%	Current	\$54	\$53	\$50	\$47	\$44	\$39	\$34	\$30	\$27	\$26	\$25	\$24	\$22	\$20	\$18	\$14	\$13	\$13
		10yr ave.			\$28		\$26		\$21		\$19	\$18	\$17	\$17	\$16	\$14	\$13	\$11	\$9	\$8
	45%	Current	\$60	\$59	\$57	\$53	\$49	\$44	\$38	\$34	\$31	\$29	\$28	\$28	\$25	\$23	\$20	\$16	\$15	\$14
		10yr ave.			\$31		\$29		\$24		\$21	\$20	\$19	\$19	\$18	\$16	\$15	\$12	\$10	\$9
	50%	Current	\$67	\$66	\$63	\$59	\$54	\$49	\$42	\$37	\$34	\$32	\$32	\$31	\$28	\$25	\$22	\$18	\$17	\$16
		10yr ave.			\$35		\$32		\$27		\$23	\$22	\$21	\$21	\$20	\$18	\$16	\$13	\$11	\$10
	55%	Current	\$74	\$73	\$69	\$65	\$60	\$53	\$47	\$41	\$37	\$35	\$35	\$34	\$31	\$28	\$25	\$20	\$18	\$17
		10yr ave.			\$38		\$35		\$30		\$25	\$24	\$24	\$23	\$22	\$20	\$18	\$14	\$13	\$11
60%	Current	\$80	\$79	\$76	\$71	\$65	\$58	\$51	\$45	\$41	\$38	\$38	\$37	\$33	\$30	\$27	\$22	\$20	\$19	
	10yr ave.			\$42		\$38		\$32		\$28	\$26	\$26	\$25	\$24	\$22	\$20	\$16	\$14	\$12	
65%	Current	\$87	\$86	\$82	\$76	\$71	\$63	\$55	\$49	\$44	\$42	\$41	\$40	\$36	\$33	\$29	\$24	\$22	\$20	
	10yr ave.			\$45		\$42		\$35		\$30	\$29	\$28	\$27	\$26	\$23	\$21	\$17	\$15	\$13	
70%	Current	\$94	\$92	\$88	\$82	\$76	\$68	\$59	\$52	\$48	\$45	\$44	\$43	\$39	\$35	\$31	\$25	\$23	\$22	
	10yr ave.			\$49		\$45		\$38		\$32	\$31	\$30	\$29	\$28	\$25	\$23	\$18	\$16	\$15	
75%	Current	\$101	\$99	\$95	\$88	\$82	\$73	\$63	\$56	\$51	\$48	\$47	\$46	\$42	\$38	\$33	\$27	\$25	\$24	
	10yr ave.			\$52		\$48		\$40		\$35	\$33	\$32	\$31	\$30	\$27	\$25	\$20	\$17	\$16	
80%	Current	\$107	\$106	\$101	\$94	\$87	\$78	\$68	\$60	\$54	\$51	\$51	\$49	\$45	\$40	\$36	\$29	\$27	\$25	
	10yr ave.			\$56		\$51		\$43		\$37	\$35	\$34	\$34	\$32	\$29	\$26	\$21	\$18	\$17	
85%	Current	\$114	\$112	\$107	\$100	\$92	\$83	\$72	\$64	\$58	\$54	\$54	\$52	\$47	\$43	\$38	\$31	\$28	\$27	
	10yr ave.			\$59		\$54		\$46		\$39	\$38	\$37	\$36	\$34	\$31	\$28	\$22	\$19	\$18	

The above shows estimated returns per head for skirted fleece wool. These figures do not take into account the value of skirtings and oddments and do not take into account discounts that may apply for faults under individual circumstances. These figures are based on a market index of 100% and should be used as a guide only. Returns over \$30 / head for fleece wool are highlighted.

Source: Australian Wool Exchange, Australian Wool Innovation, Sydney Futures Exchange, x-rates.com

Disclaimer: While all due care has been taken in the preparation of this document, no warranty is made as to its accuracy, reliability or completeness. To the extent permitted by law neither Jemalong or their sources including subsidiaries and staff, accept liability to any person for loss or damage arising from the use of this information.



Table 18: Returns pr head for skirted fleece wool.

Skirted FLC Weight		Micron																	
4 Kg		16	16.5	17	17.5	18	18.5	19	19.5	20	21	22	23	24	25	26	28	30	32
Yield (Sch Dry)	25% Current	\$27	\$26	\$25	\$24	\$22	\$19	\$17	\$15	\$14	\$13	\$13	\$12	\$11	\$10	\$9	\$7	\$7	\$6
	10yr ave.			\$14		\$13		\$11		\$9	\$9	\$9	\$8	\$8	\$7	\$7	\$5	\$5	\$4
	30% Current	\$32	\$32	\$30	\$28	\$26	\$23	\$20	\$18	\$16	\$15	\$15	\$15	\$13	\$12	\$11	\$9	\$8	\$8
	10yr ave.			\$17		\$15		\$13		\$11	\$11	\$10	\$10	\$10	\$9	\$8	\$6	\$5	\$5
	35% Current	\$38	\$37	\$35	\$33	\$30	\$27	\$24	\$21	\$19	\$18	\$18	\$17	\$16	\$14	\$13	\$10	\$9	\$9
	10yr ave.			\$20		\$18		\$15		\$13	\$12	\$12	\$12	\$11	\$10	\$9	\$7	\$6	\$6
	40% Current	\$43	\$42	\$40	\$38	\$35	\$31	\$27	\$24	\$22	\$21	\$20	\$20	\$18	\$16	\$14	\$12	\$11	\$10
	10yr ave.			\$22		\$20		\$17		\$15	\$14	\$14	\$13	\$13	\$11	\$11	\$8	\$7	\$7
	45% Current	\$48	\$48	\$45	\$42	\$39	\$35	\$30	\$27	\$24	\$23	\$23	\$22	\$20	\$18	\$16	\$13	\$12	\$11
	10yr ave.			\$25		\$23		\$19		\$17	\$16	\$15	\$15	\$14	\$13	\$12	\$9	\$8	\$7
	50% Current	\$54	\$53	\$50	\$47	\$44	\$39	\$34	\$30	\$27	\$26	\$25	\$24	\$22	\$20	\$18	\$14	\$13	\$13
	10yr ave.			\$28		\$26		\$21		\$19	\$18	\$17	\$17	\$16	\$14	\$13	\$11	\$9	\$8
	55% Current	\$59	\$58	\$55	\$52	\$48	\$43	\$37	\$33	\$30	\$28	\$28	\$27	\$24	\$22	\$20	\$16	\$15	\$14
	10yr ave.			\$31		\$28		\$24		\$20	\$19	\$19	\$18	\$18	\$16	\$14	\$12	\$10	\$9
	60% Current	\$64	\$63	\$60	\$56	\$52	\$47	\$41	\$36	\$33	\$31	\$30	\$29	\$27	\$24	\$21	\$17	\$16	\$15
	10yr ave.			\$34		\$31		\$26		\$22	\$21	\$21	\$20	\$19	\$17	\$16	\$13	\$11	\$10
	65% Current	\$70	\$69	\$66	\$61	\$57	\$51	\$44	\$39	\$35	\$33	\$33	\$32	\$29	\$26	\$23	\$19	\$17	\$16
	10yr ave.			\$36		\$33		\$28		\$24	\$23	\$22	\$22	\$21	\$19	\$17	\$14	\$12	\$11
	70% Current	\$75	\$74	\$71	\$66	\$61	\$54	\$47	\$42	\$38	\$36	\$35	\$34	\$31	\$28	\$25	\$20	\$19	\$18
	10yr ave.			\$39		\$36		\$30		\$26	\$25	\$24	\$23	\$22	\$20	\$18	\$15	\$13	\$12
	75% Current	\$80	\$79	\$76	\$71	\$65	\$58	\$51	\$45	\$41	\$38	\$38	\$37	\$33	\$30	\$27	\$22	\$20	\$19
	10yr ave.			\$42		\$38		\$32		\$28	\$26	\$26	\$25	\$24	\$22	\$20	\$16	\$14	\$12
	80% Current	\$86	\$84	\$81	\$75	\$70	\$62	\$54	\$48	\$44	\$41	\$40	\$39	\$36	\$32	\$29	\$23	\$21	\$20
	10yr ave.			\$45		\$41		\$34		\$30	\$28	\$27	\$27	\$26	\$23	\$21	\$17	\$15	\$13
	85% Current	\$91	\$90	\$86	\$80	\$74	\$66	\$58	\$51	\$46	\$44	\$43	\$42	\$38	\$34	\$30	\$25	\$23	\$21
	10yr ave.			\$48		\$44		\$36		\$31	\$30	\$29	\$28	\$27	\$24	\$22	\$18	\$16	\$14

The above shows estimated returns per head for skirted fleece wool. These figures do not take into account the value of skirtings and oddments and do not take into account discounts that may apply for faults under individual circumstances. These figures are based on a market index of 100% and should be used as a guide only. Returns over \$30 / head for fleece wool are highlighted.

Source: Australian Wool Exchange, Australian Wool Innovation, Sydney Futures Exchange, x-rates.com

Disclaimer: While all due care has been taken in the preparation of this document, no warranty is made as to its accuracy, reliability or completeness. To the extent permitted by law neither Jemalong or their sources including subsidiaries and staff, accept liability to any person for loss or damage arising from the use of this information.



Table 19: Returns pr head for skirted fleece wool.

Skirted FLC Weight		Micron																	
3 Kg		16	16.5	17	17.5	18	18.5	19	19.5	20	21	22	23	24	25	26	28	30	32
Yield (Sch Dry)	25% Current	\$20	\$20	\$19	\$18	\$16	\$15	\$13	\$11	\$10	\$10	\$9	\$9	\$8	\$8	\$7	\$5	\$5	\$5
	10yr ave.			\$10		\$10		\$8		\$7	\$7	\$6	\$6	\$6	\$5	\$5	\$4	\$3	\$3
	30% Current	\$24	\$24	\$23	\$21	\$20	\$18	\$15	\$13	\$12	\$12	\$11	\$11	\$10	\$9	\$8	\$7	\$6	\$6
	10yr ave.			\$13		\$12		\$10		\$8	\$8	\$8	\$8	\$7	\$6	\$6	\$5	\$4	\$4
	35% Current	\$28	\$28	\$26	\$25	\$23	\$20	\$18	\$16	\$14	\$13	\$13	\$13	\$12	\$11	\$9	\$8	\$7	\$7
	10yr ave.			\$15		\$13		\$11		\$10	\$9	\$9	\$9	\$8	\$8	\$7	\$6	\$5	\$4
	40% Current	\$32	\$32	\$30	\$28	\$26	\$23	\$20	\$18	\$16	\$15	\$15	\$15	\$13	\$12	\$11	\$9	\$8	\$8
	10yr ave.			\$17		\$15		\$13		\$11	\$11	\$10	\$10	\$10	\$9	\$8	\$6	\$5	\$5
	45% Current	\$36	\$36	\$34	\$32	\$29	\$26	\$23	\$20	\$18	\$17	\$17	\$17	\$15	\$14	\$12	\$10	\$9	\$9
	10yr ave.			\$19		\$17		\$14		\$12	\$12	\$12	\$11	\$11	\$10	\$9	\$7	\$6	\$6
	50% Current	\$40	\$40	\$38	\$35	\$33	\$29	\$25	\$22	\$20	\$19	\$19	\$18	\$17	\$15	\$13	\$11	\$10	\$9
	10yr ave.			\$21		\$19		\$16		\$14	\$13	\$13	\$13	\$12	\$11	\$10	\$8	\$7	\$6
	55% Current	\$44	\$44	\$42	\$39	\$36	\$32	\$28	\$25	\$22	\$21	\$21	\$20	\$18	\$17	\$15	\$12	\$11	\$10
	10yr ave.			\$23		\$21		\$18		\$15	\$15	\$14	\$14	\$13	\$12	\$11	\$9	\$8	\$7
	60% Current	\$48	\$48	\$45	\$42	\$39	\$35	\$30	\$27	\$24	\$23	\$23	\$22	\$20	\$18	\$16	\$13	\$12	\$11
	10yr ave.			\$25		\$23		\$19		\$17	\$16	\$15	\$15	\$14	\$13	\$12	\$9	\$8	\$7
	65% Current	\$52	\$51	\$49	\$46	\$42	\$38	\$33	\$29	\$27	\$25	\$25	\$24	\$22	\$20	\$17	\$14	\$13	\$12
	10yr ave.			\$27		\$25		\$21		\$18	\$17	\$17	\$16	\$16	\$14	\$13	\$10	\$9	\$8
	70% Current	\$56	\$55	\$53	\$49	\$46	\$41	\$36	\$31	\$29	\$27	\$27	\$26	\$23	\$21	\$19	\$15	\$14	\$13
	10yr ave.			\$29		\$27		\$23		\$19	\$19	\$18	\$18	\$17	\$15	\$14	\$11	\$10	\$9
	75% Current	\$60	\$59	\$57	\$53	\$49	\$44	\$38	\$34	\$31	\$29	\$28	\$28	\$25	\$23	\$20	\$16	\$15	\$14
	10yr ave.			\$31		\$29		\$24		\$21	\$20	\$19	\$19	\$18	\$16	\$15	\$12	\$10	\$9
	80% Current	\$64	\$63	\$60	\$56	\$52	\$47	\$41	\$36	\$33	\$31	\$30	\$29	\$27	\$24	\$21	\$17	\$16	\$15
	10yr ave.			\$34		\$31		\$26		\$22	\$21	\$21	\$20	\$19	\$17	\$16	\$13	\$11	\$10
	85% Current	\$68	\$67	\$64	\$60	\$55	\$50	\$43	\$38	\$35	\$33	\$32	\$31	\$28	\$26	\$23	\$18	\$17	\$16
	10yr ave.			\$36		\$33		\$27		\$24	\$23	\$22	\$21	\$20	\$18	\$17	\$13	\$12	\$11

The above shows estimated returns per head for skirted fleece wool. These figures do not take into account the value of skirtings and oddments and do not take into account discounts that may apply for faults under individual circumstances. These figures are based on a market index of 100% and should be used as a guide only. Returns over \$30 / head for fleece wool are highlighted.

Source: Australian Wool Exchange, Australian Wool Innovation, Sydney Futures Exchange, x-rates.com

Disclaimer: While all due care has been taken in the preparation of this document, no warranty is made as to its accuracy, reliability or completeness. To the extent permitted by law neither Jemalong or their sources including subsidiaries and staff, accept liability to any person for loss or damage arising from the use of this information.



Table 20: Returns pr head for skirted fleece wool.

Skirted FLC Weight 2 Kg		Micron																	
		16	16.5	17	17.5	18	18.5	19	19.5	20	21	22	23	24	25	26	28	30	32
Yield (Sch Dry)	25% Current	\$13	\$13	\$13	\$12	\$11	\$10	\$8	\$7	\$7	\$6	\$6	\$6	\$6	\$5	\$4	\$4	\$3	\$3
	10yr ave.			\$7		\$6		\$5		\$5	\$4	\$4	\$4	\$4	\$4	\$3	\$3	\$2	\$2
	30% Current	\$16	\$16	\$15	\$14	\$13	\$12	\$10	\$9	\$8	\$8	\$8	\$7	\$7	\$6	\$5	\$4	\$4	\$4
	10yr ave.			\$8		\$8		\$6		\$6	\$5	\$5	\$5	\$5	\$4	\$4	\$3	\$3	\$2
	35% Current	\$19	\$18	\$18	\$16	\$15	\$14	\$12	\$10	\$10	\$9	\$9	\$9	\$8	\$7	\$6	\$5	\$5	\$4
	10yr ave.			\$10		\$9		\$8		\$6	\$6	\$6	\$6	\$6	\$5	\$5	\$4	\$3	\$3
	40% Current	\$21	\$21	\$20	\$19	\$17	\$16	\$14	\$12	\$11	\$10	\$10	\$10	\$9	\$8	\$7	\$6	\$5	\$5
	10yr ave.			\$11		\$10		\$9		\$7	\$7	\$7	\$7	\$6	\$6	\$5	\$4	\$4	\$3
	45% Current	\$24	\$24	\$23	\$21	\$20	\$18	\$15	\$13	\$12	\$12	\$11	\$11	\$10	\$9	\$8	\$7	\$6	\$6
	10yr ave.			\$13		\$12		\$10		\$8	\$8	\$8	\$8	\$7	\$6	\$6	\$5	\$4	\$4
	50% Current	\$27	\$26	\$25	\$24	\$22	\$19	\$17	\$15	\$14	\$13	\$13	\$12	\$11	\$10	\$9	\$7	\$7	\$6
	10yr ave.			\$14		\$13		\$11		\$9	\$9	\$9	\$8	\$8	\$7	\$7	\$5	\$5	\$4
	55% Current	\$29	\$29	\$28	\$26	\$24	\$21	\$19	\$16	\$15	\$14	\$14	\$13	\$12	\$11	\$10	\$8	\$7	\$7
	10yr ave.			\$15		\$14		\$12		\$10	\$10	\$9	\$9	\$9	\$8	\$7	\$6	\$5	\$5
	60% Current	\$32	\$32	\$30	\$28	\$26	\$23	\$20	\$18	\$16	\$15	\$15	\$15	\$13	\$12	\$11	\$9	\$8	\$8
	10yr ave.			\$17		\$15		\$13		\$11	\$11	\$10	\$10	\$10	\$9	\$8	\$6	\$5	\$5
	65% Current	\$35	\$34	\$33	\$31	\$28	\$25	\$22	\$19	\$18	\$17	\$16	\$16	\$14	\$13	\$12	\$9	\$9	\$8
	10yr ave.			\$18		\$17		\$14		\$12	\$11	\$11	\$11	\$10	\$9	\$9	\$7	\$6	\$5
	70% Current	\$38	\$37	\$35	\$33	\$30	\$27	\$24	\$21	\$19	\$18	\$18	\$17	\$16	\$14	\$13	\$10	\$9	\$9
	10yr ave.			\$20		\$18		\$15		\$13	\$12	\$12	\$12	\$11	\$10	\$9	\$7	\$6	\$6
	75% Current	\$40	\$40	\$38	\$35	\$33	\$29	\$25	\$22	\$20	\$19	\$19	\$18	\$17	\$15	\$13	\$11	\$10	\$9
	10yr ave.			\$21		\$19		\$16		\$14	\$13	\$13	\$13	\$12	\$11	\$10	\$8	\$7	\$6
	80% Current	\$43	\$42	\$40	\$38	\$35	\$31	\$27	\$24	\$22	\$21	\$20	\$20	\$18	\$16	\$14	\$12	\$11	\$10
	10yr ave.			\$22		\$20		\$17		\$15	\$14	\$14	\$13	\$13	\$11	\$11	\$8	\$7	\$7
	85% Current	\$46	\$45	\$43	\$40	\$37	\$33	\$29	\$25	\$23	\$22	\$21	\$21	\$19	\$17	\$15	\$12	\$11	\$11
	10yr ave.			\$24		\$22		\$18		\$16	\$15	\$15	\$14	\$14	\$12	\$11	\$9	\$8	\$7

The above shows estimated returns per head for skirted fleece wool. These figures do not take into account the value of skirtings and oddments and do not take into account discounts that may apply for faults under individual circumstances. These figures are based on a market index of 100% and should be used as a guide only. Returns over \$30 / head for fleece wool are highlighted.

Source: Australian Wool Exchange, Australian Wool Innovation, Sydney Futures Exchange, x-rates.com

Disclaimer: While all due care has been taken in the preparation of this document, no warranty is made as to its accuracy, reliability or completeness. To the extent permitted by law neither Jemalong or their sources including subsidiaries and staff, accept liability to any person for loss or damage arising from the use of this information.