



**Table 1: Northern Region Micron Price Guides**

WEEK 38				12 MONTH COMPARISONS								3 YEAR COMPARISONS						10 YEAR COMPARISONS					
Mic.	17/03/2016	10/03/2016		18/03/2015	Now		Now		Now					Now						Now			
Price	Current	Weekly		This time	compared		12 Month	compared	12 Month	compared				compared					10 year	compared			
Guides	Price	Change		Last Year	to Last Year		Low	to Low	High	to High		Low	High	Average	to 3yr ave	Percentile			Average	to 10yr ave			
NRI	1252	+2 0.2%		1114	+138 12%		1114	+138 12%	1399	-147 -11%		1004	1399	1138	+114 10%	78%	738	1491	1034	+218 21%			
16*	1580	0		1500	+80 5%		1460	+120 8%	1710	-130 -8%		1340	1810	1524	+56 4%	63%	1350	2800	1712	-132 -8%			
16.5*	1550	-10 -0.6%		1400	+150 11%		1400	+150 11%	1660	-110 -7%		1300	1660	1453	+97 7%	77%	1290	2680	1586	-36 -2%			
17*	1540	-5 -0.3%		1380	+160 12%		1378	+162 12%	1640	-100 -6%		1245	1640	1400	+140 10%	87%	1190	2530	1474	+66 4%			
17.5*	1520	-10 -0.7%		1370	+150 11%		1337	+183 14%	1620	-100 -6%		1200	1620	1372	+148 11%	86%	1130	2360	1407	+113 8%			
18	1450	+4 0.3%		1303	+147 11%		1299	+151 12%	1607	-157 -10%		1163	1607	1324	+126 10%	81%	1042	2193	1337	+113 8%			
18.5	1419	+2 0.1%		1262	+157 12%		1259	+160 13%	1579	-160 -10%		1134	1579	1296	+123 9%	80%	986	1963	1274	+145 11%			
19	1382	+10 0.7%		1210	+172 14%		1204	+178 15%	1553	-171 -11%		1113	1553	1262	+120 10%	80%	902	1776	1204	+178 15%			
19.5	1361	+17 1.3%		1186	+175 15%		1177	+184 16%	1529	-168 -11%		1093	1529	1238	+123 10%	83%	821	1670	1143	+218 19%			
20	1331	-2 -0.2%		1170	+161 14%		1169	+162 14%	1517	-186 -12%		1080	1517	1222	+109 9%	82%	746	1588	1092	+239 22%			
21	1328	-5 -0.4%		1164	+164 14%		1157	+171 15%	1500	-172 -11%		1076	1500	1214	+114 9%	86%	714	1522	1059	+269 25%			
22	1318	+3 0.2%		1147	+171 15%		1134	+184 16%	1458	-140 -10%		1060	1458	1200	+118 10%	87%	692	1461	1031	+287 28%			
23	1302	-14 -1.1%		1127	+175 16%		1121	+181 16%	1396	-94 -7%		1046	1396	1185	+117 10%	88%	675	1396	1003	+299 30%			
24	1162	-2 -0.2%		1077	+85 8%		1077	+85 8%	1354	-192 -14%		973	1354	1107	+55 5%	75%	647	1354	932	+230 25%			
25	1069	+9 0.8%		993	+76 8%		993	+76 8%	1245	-176 -14%		811	1245	967	+102 11%	79%	567	1245	811	+258 32%			
26	977	+6 0.6%		918	+59 6%		918	+59 6%	1165	-188 -16%		738	1165	879	+98 11%	77%	532	1165	730	+247 34%			
28	824	-6 -0.7%		831	-7 -1%		724	+100 14%	974	-150 -15%		583	974	742	+82 11%	69%	424	974	580	+244 42%			
30	699	-4 -0.6%		787	-88 -11%		696	+3 0%	897	-198 -22%		543	897	697	+2 0%	62%	343	897	523	+176 34%			
32	604	-5 -0.8%		698	-94 -13%		604	0 0%	762	-158 -21%		468	762	608	-4 -1%	55%	297	762	461	+143 31%			
MC	1080	+3 0.3%		916	+164 18%		916	+164 18%	1152	-72 -6%		712	1152	894	+186 21%	84%	392	1152	669	+411 61%			
AU BALES OFFERED		38,842	* Due to the irregular market quoting for some fine wool categories, figures shown relating to micron categories below 18 micron are an estimate based on the																				
AU BALES SOLD		36,597	AWEX Premium & Discounts Report & other available information.																				
AU PASSED-IN%		5.8%	* For any category, where there is insufficient quantity offered to enable AWEX to quote, a quote will be provided based on the best available information.																				
AUD/USD		0.76468																					

Source: Australian Wool Exchange, Australian Wool Innovation, Riemann, x-rates.com, Reserve Bank of Australia, Australian Wool Testing Authority.

Disclaimer: Jemalong Wool Pty Ltd make no representations about the content and suitability of the information contained in this report. Specifically, Jemalong Wool does not warrant, guarantee or make any representations regarding the correctness, accuracy, reliability, currency, or any other aspect regarding characteristics or use of information presented in these materials. The user accepts sole responsibility and risk associated with the use and results of these materials, irrespective of the purpose of which such use or results are applied. In no event shall Jemalong Wool be liable for any loss or damages (including without limitation special, or consequential damages), where in an action of contract, negligence, or tort, arising out of or in connection with the use of performance of these materials.



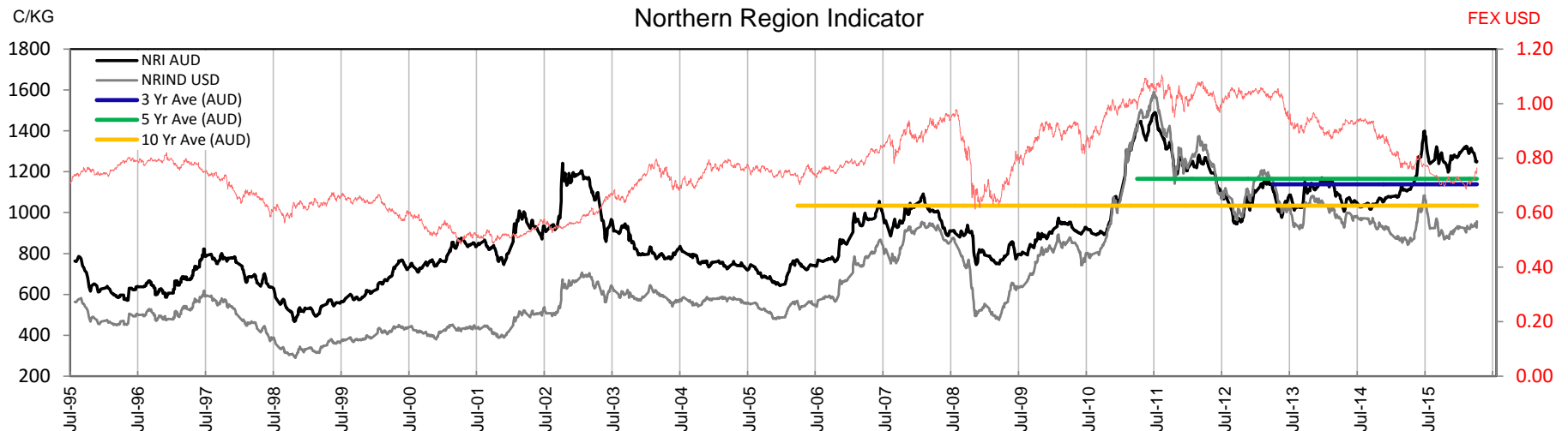
## MARKET COMMENTARY

There was a turnaround in sentiment this week with the NRI, closing two cents higher. It was its first gain after eight consecutive daily losses spanning more than three weeks.

A catalogue similar to the past fortnight, totalling just below 39,000 bales, opened slowly on Wednesday. It was a staggered start between selling centres and the small Sydney sale initially opened weaker. Enthusiasm increased over the day however, with Melbourne firming 5 cents, and Fremantle lifting 10 cents late in the day. It was a mirror image of that pattern on Thursday however, with a strong start losing momentum over the day. The east coast still managed increases for the day, but Fremantle lost ground. The irregularity came on the back of a sharp bounce in the Australian dollar which jumped 1.6 US cents the previous night. Although there were some losses over the two days, the net result still mostly favoured the positive side of the ledger. Prices closed 5 to 10 cents higher when compared with the previous sale with Melbourne receiving the biggest advantage. A strong start pushed Merino Skirtings slightly higher for the week. Crossbreds were mixed; cheaper in Sydney but dearer in Melbourne (despite a weak final day). Cardings also had varied results although the movements compared to the previous week were minimal.

Just over 48,000 bales are expected next week, the largest sale since early January, and the final sale before the annual one-week Easter recess.

Source: AWEX





**Table 2: Three Year Decile Table, since: 1/03/2013**

Decile	%	16	16.5	17	17.5	18	18.5	19	19.5	20	21	22	23	24	25	26	28	30	32	MC
1	10%	1390	1324	1280	1242	1197	1170	1148	1133	1124	1116	1101	1090	1037	853	760	625	581	490	752
2	20%	1420	1365	1310	1284	1217	1195	1173	1154	1141	1136	1128	1117	1050	877	785	647	614	505	780
3	30%	1480	1400	1340	1300	1258	1228	1197	1175	1160	1155	1140	1129	1062	900	803	659	629	551	794
4	40%	1520	1426	1360	1330	1279	1251	1211	1190	1179	1165	1156	1141	1072	911	813	670	635	560	810
5	50%	1560	1460	1380	1355	1302	1270	1245	1221	1206	1196	1182	1167	1081	920	821	678	645	571	819
6	60%	1580	1490	1422	1390	1348	1313	1286	1263	1238	1224	1208	1195	1095	933	844	707	676	613	835
7	70%	1600	1525	1469	1420	1384	1355	1324	1290	1260	1251	1236	1216	1109	995	929	826	760	658	932
8	80%	1620	1560	1512	1486	1444	1417	1373	1340	1320	1304	1285	1268	1181	1069	997	844	794	698	1069
9	90%	1670	1610	1550	1538	1493	1460	1410	1378	1357	1350	1336	1320	1213	1125	1059	896	831	714	1096
10	100%	1810	1660	1640	1620	1607	1579	1553	1529	1517	1500	1458	1396	1354	1245	1165	974	897	762	1152
MPG		1580	1550	1540	1520	1450	1419	1382	1361	1331	1328	1318	1302	1162	1069	977	824	699	604	1080
3 Yr Percentile		63%	77%	87%	86%	81%	80%	80%	83%	82%	86%	87%	88%	75%	79%	77%	69%	62%	55%	84%

**Table 3: Ten Year Decile Table, since: 1/03/2006**

Decile	%	16	16.5	17	17.5	18	18.5	19	19.5	20	21	22	23	24	25	26	28	30	32	MC
1	10%	1421	1340	1250	1175	1105	1034	957	881	818	755	730	715	688	634	577	446	376	325	442
2	20%	1500	1395	1280	1210	1160	1107	1042	964	902	860	838	816	765	657	593	462	398	348	501
3	30%	1550	1415	1310	1257	1196	1150	1089	1003	950	926	904	881	818	684	609	472	410	358	553
4	40%	1580	1450	1345	1300	1237	1189	1130	1085	1030	979	941	907	834	710	630	484	428	386	596
5	50%	1600	1483	1390	1335	1279	1243	1178	1137	1096	1057	1017	985	897	779	690	536	472	414	632
6	60%	1650	1520	1430	1388	1340	1281	1217	1175	1146	1135	1122	1096	1025	884	782	622	574	490	713
7	70%	1700	1590	1500	1450	1395	1326	1280	1239	1205	1188	1167	1139	1060	909	814	650	611	548	756
8	80%	1800	1700	1570	1520	1460	1418	1359	1325	1274	1260	1230	1198	1095	946	846	676	634	571	810
9	90%	2100	1910	1730	1625	1570	1504	1458	1409	1364	1330	1300	1264	1160	1015	928	814	730	643	909
10	100%	2800	2680	2530	2360	2193	1963	1776	1670	1588	1522	1461	1396	1354	1245	1165	974	897	762	1152
MPG		1580	1550	1540	1520	1450	1419	1382	1361	1331	1328	1318	1302	1162	1069	977	824	699	604	1080
10 Yr Percentile		41%	66%	76%	80%	78%	80%	81%	83%	84%	89%	93%	95%	90%	93%	93%	90%	88%	85%	95%

**Definitions:**

\* A Percentile, is a value on a scale of one hundred that indicates the percent of a distribution that is equal to or below it. In general a percentile between 25% and 75% is considered normal, a percentile below 25% is considered below normal and a percentile above 75% is considered above normal.

Three and ten year percentiles shown on the bottom line of table 2 & 3 (above) and in table 1 (on page 1), detail the amount of time during the past 3 & 10 years where the market has traded either at or below its current price.

\* Deciles are a method of sorting ranked data into 10 equal groups. The data may be ranked from largest to smallest or vice versa.

The above Decile tables sort price Percentiles into 10 equal groups (in ascending order), with table 2 ranking the previous 3 years prices, while table 3 ranks prices over the previous 10 years.

**Example:** In Table 2, a Decile Rank of 6 for 19 microns, shows 19 microns have traded at or below 1286 for 60% of the time, over the past three years.

In Table 3, a Decile Rank of 6 for 19 microns, shows 19 microns have traded at or below 1217 for 60% of the time, over the past ten years.



Table 4: Riemann Forwards, latest trades as at: Last Date

Any highlighted in yellow are recent trades, trading since: Friday, 11 March 2016

CONTRACT MICRON	18.5um	19um	19.5um	21um	22um	23um	28um	30um
CONTRACT MONTH	Mar-2016	28/05/15 1420	13/03/16 1375		16/12/15 1350			
	Apr-2016	3/06/15 1420	3/03/16 1405	25/05/15 1290	12/01/16 1375			
	May-2016	10/07/15 1350	19/01/16 1440		12/01/16 1375			
	Jun-2016		12/08/15 1400		11/01/16 1350			
	Jul-2016	13/03/16 1410	13/03/16 1365		17/02/16 1350			
	Aug-2016				11/02/16 1330			
	Sep-2016		13/03/16 1350		5/01/16 1310			
	Oct-2016		16/07/15 1350		5/01/16 1300			
	Nov-2016				12/08/15 1275			
	Dec-2016				12/08/15 1275			
	Jan-2017		20/01/16 1425		16/07/15 1250			
	Feb-2017	14/12/15 1430			20/01/16 1300			
	Mar-2017							
	Apr-2017							
	May-2017							
	Jun-2017							
	Jul-2017							
	Aug-2017							
	Sep-2017							
	Oct-2017							
	Nov-2017							
	Dec-2017							
	Jan-2018							

Explanatory Notes: Prices quoted reflect the most recent trades, at time of print.

Disclaimer: While all due care has been taken in the preparation of this document, no warranty is made as to its accuracy, reliability or completeness. To the extent permitted by law neither Jemalong or their sources including subsidiaries and staff, accept liability to any person for loss or damage arising from the use of this information.



**Table 5: National Market Share**

	Rank	Current Selling Week Week 38			Previous Selling Week Week 37			Last Season 2014-15			2 Years Ago 2013-14			3 Years Ago 2012-13			5 Years Ago 2010-11			10 Years Ago 2005-06		
		Buyer	Bales	MS%	Buyer	Bales	MS%	Buyer	Bales	MS%	Buyer	Bales	MS%	Buyer	Bales	MS%	Buyer	Bales	MS%	Buyer	Bales	MS%
Top 10, Auction Buyers	1	TECM	5,820	16%	CTXS	3,984	12%	TECM	248,371	14%	TECM	205,136	13%	TECM	179,176	10%	VTRA	209,391	12%	ITOS	160,935	7%
	2	FOXN	3,845	11%	WCWF	3,971	12%	FOXN	173,810	10%	FOXN	134,581	8%	VTRA	163,810	9%	TECM	179,439	10%	TECM	143,493	6%
	3	CTXS	3,441	9%	TECM	3,590	11%	CTXS	167,211	9%	CTXS	122,964	8%	FOXN	143,826	8%	FOXN	142,143	8%	MODM	138,670	6%
	4	GWEA	3,124	9%	GWEA	2,913	9%	AMEM	122,220	7%	AMEM	111,263	7%	LEMM	126,564	7%	QCTB	120,699	7%	RWRS	136,029	6%
	5	LEMM	2,447	7%	FOXN	2,747	8%	LEMM	117,153	7%	LEMM	109,224	7%	QCTB	98,756	6%	WIEM	99,585	6%	BWEA	116,533	5%
	6	AMEM	2,323	6%	AMEM	2,564	8%	TIAM	113,797	6%	TIAM	105,736	7%	PMWF	96,935	6%	LEMM	85,346	5%	KATS	112,562	5%
	7	PMWF	1,965	5%	LEMM	2,115	6%	PMWF	96,998	5%	QCTB	88,700	5%	MODM	84,363	5%	MODM	81,981	5%	FOXN	107,337	5%
	8	MCHA	1,274	3%	TIAM	1,945	6%	MODM	84,256	5%	MODM	79,977	5%	CTXS	82,166	5%	PMWF	77,588	4%	PLEX	104,556	5%
	9	MODM	1,212	3%	PMWF	1,388	4%	KATS	74,875	4%	PMWF	77,875	5%	AMEM	77,849	4%	CTXS	75,127	4%	GSAS	91,841	4%
	10	KATS	1,205	3%	KATS	1,227	4%	GSAS	64,436	4%	GSAS	54,462	3%	KATS	65,782	4%	KATS	67,867	4%	LEMM	83,238	4%
MFLC TOP 5	1	TECM	2,944	14%	CTXS	3,589	19%	TECM	139,806	14%	TECM	106,291	12%	VTRA	118,432	12%	VTRA	169,191	17%	ITOS	125,727	9%
	2	CTXS	2,915	14%	GWEA	1,673	9%	CTXS	130,004	13%	CTXS	87,889	10%	LEMM	110,118	11%	QCTB	98,673	10%	TECM	110,145	8%
	3	GWEA	1,973	10%	FOXN	1,631	9%	FOXN	103,547	10%	LEMM	82,374	9%	PMWF	93,136	10%	TECM	79,395	8%	BWEA	106,407	8%
	4	FOXN	1,935	9%	TECM	1,558	8%	PMWF	90,101	9%	FOXN	80,423	9%	TECM	89,286	9%	PMWF	71,718	7%	KATS	97,707	7%
	5	PMWF	1,926	9%	LEMM	1,441	8%	LEMM	79,881	8%	PMWF	69,890	8%	QCTB	71,715	7%	LEMM	70,280	7%	RWRS	83,993	6%
MSKT TOP 5	1	TECM	1,305	26%	WCWF	3,214	67%	TIAM	49,870	18%	TIAM	47,607	19%	MODM	37,284	14%	MODM	39,745	14%	MODM	73,069	20%
	2	AMEM	513	10%	TECM	922	19%	AMEM	43,367	16%	TECM	31,474	12%	TECM	34,301	13%	WIEM	36,566	13%	PLEX	54,141	15%
	3	TIAM	437	9%	TIAM	578	12%	TECM	39,495	14%	AMEM	29,775	12%	WIEM	27,916	10%	TECM	28,858	10%	GSAS	33,830	9%
	4	FOXN	365	7%	AMEM	525	11%	MODM	23,165	8%	MODM	23,791	9%	TIAM	24,196	9%	PLEX	23,282	8%	RWRS	25,276	7%
	5	WCWF	326	7%	VWPM	369	8%	FOXN	17,015	6%	GSAS	13,843	5%	AMEM	23,012	8%	FOXN	16,098	6%	QUWA	21,918	6%
XB TOP 5	1	TECM	970	15%	GWEA	805	14%	KATS	65,119	22%	TECM	40,364	15%	FOXN	39,356	14%	FOXN	48,708	19%	FOXN	42,688	20%
	2	FOXN	924	14%	MODM	769	13%	TECM	40,231	14%	CTXS	34,779	13%	TECM	30,323	11%	TECM	43,133	17%	TECM	26,464	12%
	3	GWEA	759	12%	TECM	590	10%	CTXS	35,691	12%	FOXN	24,218	9%	VTRA	27,832	10%	VTRA	20,904	8%	MOPS	15,695	7%
	4	MODM	558	9%	KATS	548	10%	FOXN	34,007	12%	MODM	21,512	8%	KATS	26,057	9%	MODM	20,556	8%	ITOS	15,342	7%
	5	LEMM	465	7%	AMEM	546	9%	AMEM	15,044	5%	AMEM	20,336	7%	CTXS	25,631	9%	CTXS	16,667	7%	MODM	11,602	5%
ODDS TOP 5	1	MCHA	813	18%	VWPM	628	14%	MCHA	38,934	18%	MCHA	36,085	17%	MCHA	35,985	16%	MCHA	30,570	13%	MCHA	43,561	17%
	2	FOXN	621	14%	TECM	520	12%	TECM	28,839	13%	TECM	27,007	13%	FOXN	28,185	12%	TECM	28,053	12%	FOXN	37,436	14%
	3	TECM	601	13%	MCHA	424	10%	FOXN	19,241	9%	VWPM	22,432	11%	TECM	25,266	11%	FOXN	27,422	12%	QUWA	19,886	8%
	4	VWPM	416	9%	FOXN	336	8%	LEMM	12,309	6%	FOXN	18,811	9%	VWPM	20,692	9%	VWPM	22,267	10%	RWRS	18,879	7%
	5	GWEA	350	8%	GWEA	313	7%	MAFM	11,640	5%	RWRS	13,524	6%	VTRA	13,022	6%	RWRS	15,878	7%	DAWS	16,313	6%
Auction Totals		<u>Offered</u>	<u>Sold</u>		<u>Offered</u>	<u>Sold</u>		<u>Bales Sold</u>	<u>\$/Bale</u>		<u>Bales Sold</u>	<u>\$/Bale</u>		<u>Bales Sold</u>	<u>\$/Bale</u>		<u>Bales Sold</u>	<u>\$/Bale</u>		<u>Bales Sold</u>	<u>\$/Bale</u>	
		38,842	36,597		39,082	33,662		1,800,510	\$1,545		1,625,115	\$1,509		1,742,881	\$1,418		1,786,249	\$1,467		2,213,822	\$1,018	
		<u>Passed-In</u>	<u>PI%</u>		<u>Passed-In</u>	<u>PI%</u>		<u>Export Value</u>			<u>Export Value</u>			<u>Export Value</u>			<u>Export Value</u>			<u>Export Value</u>		
		2,245	5.8%		5,420	13.9%		\$2,781,914,309			\$2,452,791,892			\$2,470,844,153			\$2,619,977,188			\$2,254,128,782		

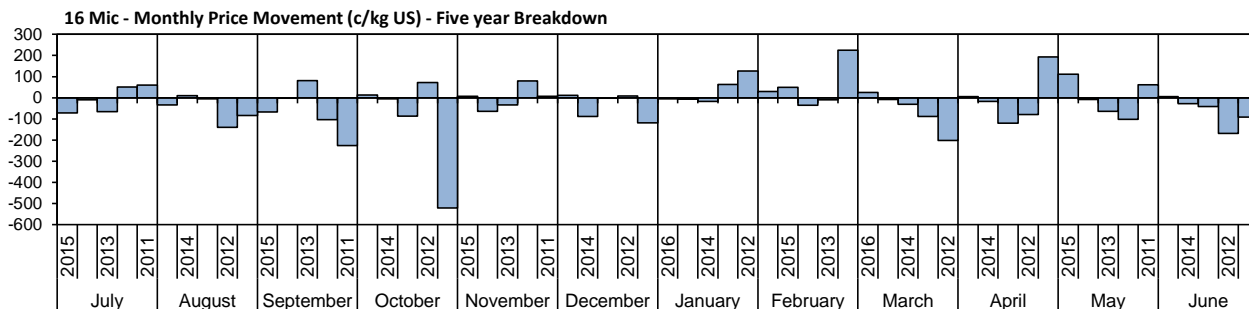
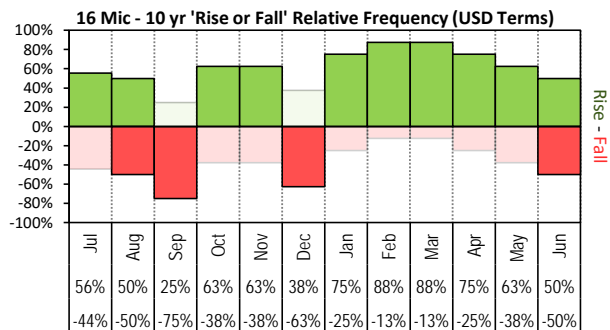


# JEMALONG WOOL BULLETIN

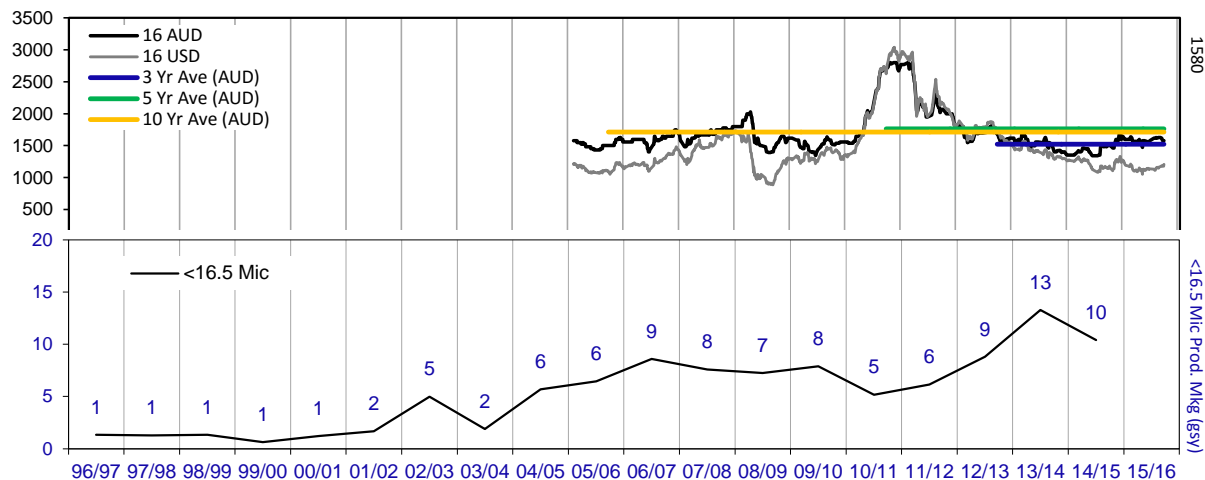
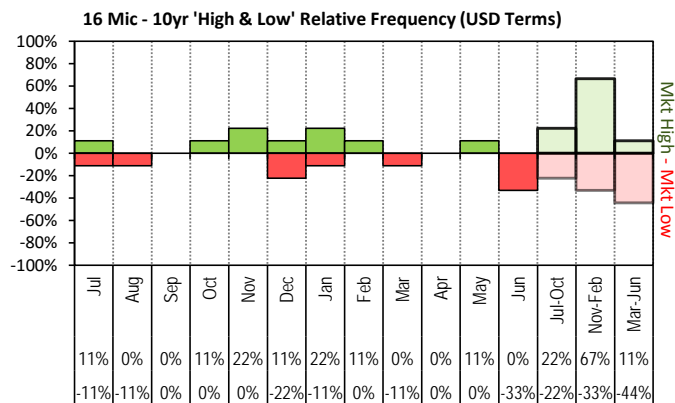
(week ending 17/03/2016)

**Table 6: NSW Production Statistics**

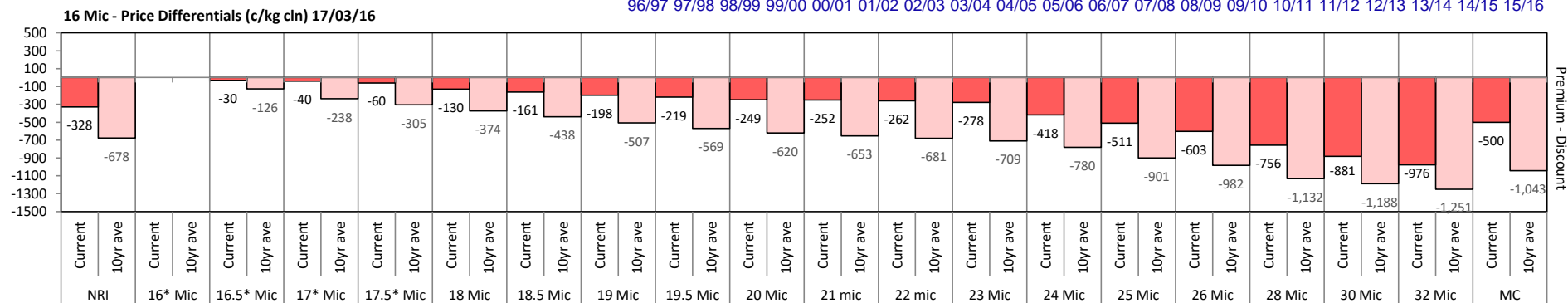
MAX			MIN		MAX GAIN		MAX REDUCTION								
2014-15															
Statistical Devision, Area Code & Towns			Auction Bales (FH)	Micron	+/- YoY	Vmb %	+/- YoY	Yield % Sch Dry	+/- YoY	Length mm	+/- YoY	Strength Nkt	+/- YoY	Ave Price c/kg	
Northern	N02	Tenterfield, Glen Innes	8,433	19.2	-0.2	1.1	-0.9	70.8	-0.8	83	2.5	43	2.6	821	
	N03	Guyra	33,037	18.6	0.0	0.9	-0.9	71.8	-0.3	84	3.7	39	-0.4	877	
	N04	Inverell	4,027	18.3	0.1	2.1	-1.3	70.3	0.8	86	3.5	39	2.0	803	
	N05	Armidale	1,780	20.2	0.4	3.1	-1.1	68.1	0.8	88	2.8	38	3.1	726	
	N06	Tamworth, Gunnedah, Quirindi	5,373	20.3	-0.1	2.7	-0.6	67.9	0.7	86	1.9	39	2.8	747	
	N07	Moree	5,201	19.9	0.3	3.1	-0.1	62.6	-1.1	89	3.2	35	-0.5	661	
	N08	Narrabri	3,273	19.4	0.2	2.3	-0.3	64.4	-1.6	88	2.7	36	0.4	692	
	N09	Cobar, Bourke, Wanaaring	10,367	19.8	0.1	3.3	-0.4	60.1	0.1	88	2.4	34	-2.4	653	
North Western & Far West	N12	Walgett	7,125	19.2	-0.4	3.1	0.0	60.7	-1.8	86	2.4	33	-3.2	663	
	N13	Nyngan	21,678	20.4	0.1	6.2	1.1	60.3	-1.4	90	1.8	37	0.3	623	
	N14	Dubbo, Narromine	23,235	21.3	0.1	4.2	0.5	61.6	-0.5	88	2.3	37	1.3	585	
	N16	Dunedoo	7,687	19.9	0.3	2.7	0.1	65.8	-1.2	91	2.7	37	2.3	708	
	N17	Mudgee, Wellington, Gulgong	24,417	19.8	0.2	2.3	0.1	67.6	-0.7	87	3.8	39	0.9	726	
	N33	Coonabarabran	3,646	20.8	0.4	4.5	0.9	64.1	-1.7	88	3.2	34	-0.2	631	
	N34	Coonamble	7,831	20.1	-0.1	5.7	1.9	59.3	-1.9	88	2.4	36	0.1	626	
	N36	Gilgandra, Gulgargambone	6,941	21.1	-0.1	4.6	1.0	62.1	-0.9	87	1.8	36	0.5	617	
	N40	Brewarrina	5,191	19.4	0.1	2.1	0.1	63.8	-1.7	86	4.1	38	-1.3	690	
	N10	Wilcannia, Broken Hill	25,000	21.0	0.4	2.6	0.4	60.5	0.8	90	3.2	34	-1.4	654	
Central West	N15	Forbes, Parkes, Cowra	55,313	21.2	-0.5	2.9	0.2	63.7	0.1	90	2.2	36	1.8	626	
	N18	Lithgow, Oberon	2,584	20.8	0.2	1.2	-0.6	70.3	1.1	86	2.7	37	-0.8	727	
	N19	Orange, Bathurst	57,152	22.1	0.1	1.5	0.1	68.2	-0.7	88	3.0	37	0.1	674	
	N25	West Wyalong	27,332	20.8	0.2	2.2	-0.3	63.1	0.9	91	2.8	36	1.2	646	
	N35	Condobolin, Lake Cargelligo	11,646	20.8	0.2	4.9	0.5	60.1	-0.4	90	4.2	36	0.3	593	
Murrumbidgee	N26	Cootamundra, Temora	28,871	21.7	0.0	1.7	-0.2	63.7	0.6	89	2.9	36	1.7	633	
	N27	Adelong, Gundagai	12,930	21.8	0.4	1.4	-0.2	68.1	0.6	90	1.6	35	0.8	653	
	N29	Wagga, Narrandera	33,397	22.0	0.1	1.3	-0.3	64.4	0.0	90	2.0	36	32.8	633	
	N37	Griffith, Hillston	13,228	21.5	0.2	3.8	-0.3	62.0	0.8	87	1.6	38	0.5	620	
	N39	Hay, Coleambally	17,225	20.8	0.3	3.0	-0.5	63.8	1.5	91	3.9	39	3.2	673	
Murray	N11	Wentworth, Balranald	15,106	21.4	0.7	4.2	0.2	60.8	0.7	92	2.8	37	1.4	628	
	N28	Albury, Corowa, Holbrook	29,800	21.5	-0.1	1.3	-0.2	66.9	0.8	88	1.5	36	2.5	672	
	N31	Deniliquin	24,348	21.3	0.6	2.1	-0.2	66.1	1.5	91	6.1	40	7.4	673	
	N38	Finley, Berrigan, Jerilderie	9,426	20.8	0.4	2.1	-0.5	65.7	1.9	88	2.8	41	5.9	691	
South Eastern	N23	Goulburn, Young, Yass	102,592	20.0	0.3	1.2	0.0	68.4	-0.1	90	4.5	36	-0.6	734	
	N24	Monaro (Cooma, Bombala)	36,484	19.7	-0.1	1.3	-0.2	70.2	0.6	93	4.4	38	2.0	751	
	N32	A.C.T.	220	21.4	1.3	3.3	-0.6	59.4	0.2	86	-2.4	32	0.5	560	
	N43	South Coast (Bega)	474	19.2	0.2	1.0	0.3	73.2	0.2	89	2.0	45	5.9	876	
NSW	AWEX Sale Statistics 14-15		711,134	20.7	0.1	2.3	0.0	65.6	0.1	89	3.2	37	1.0	688	
AWTA Mthly Key Test Data			Bales Tested	+/- YoY	Micron	+/- YoY	VMB	+/- YoY	Yld	+/- YoY	Lth	+/- YoY	Nkt	+/- YoY	POBM +/-
AUSTRALIA	Current Season	February Y.T.D	179,425	371	21.5	0.0	2.1	0.2	64.0	-0.7	86	-0.4	34	0.0	49 5.5
			1,315,327	-80,870	21.1	0.0	1.8	0.0	65.3	-0.4	89	0.0	34	0.0	51 -1.0
	Previous Seasons	2014-15	1,396,197	-13831	21.1	0.2	1.8	0.0	65.7	0.0	89	2.0	34	1.0	52 3.0
		2013-14	1,410,028	-57007	20.9	-0.4	1.8	-0.3	65.7	-0.3	87	-1.0	33	-1.0	49 0.0
		2012-13	1,467,035	61,450	21.3	-0.3	2.1	-0.3	66.0	-0.1	88	0.1	34	0.2	49 -1.6



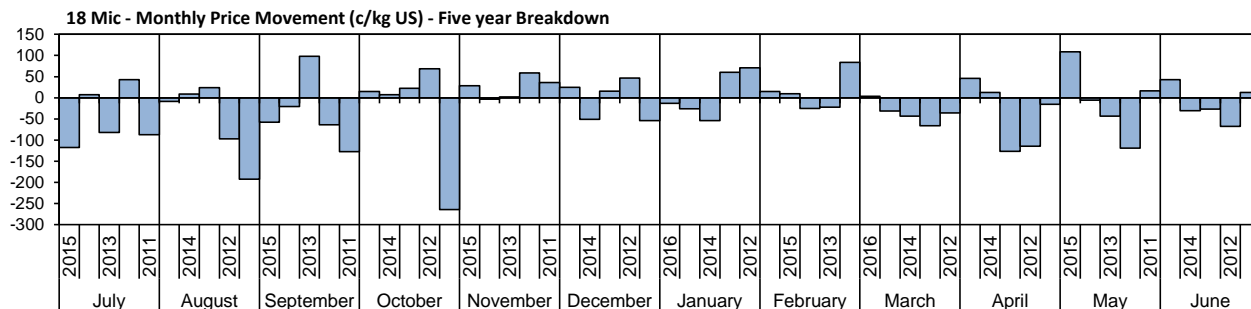
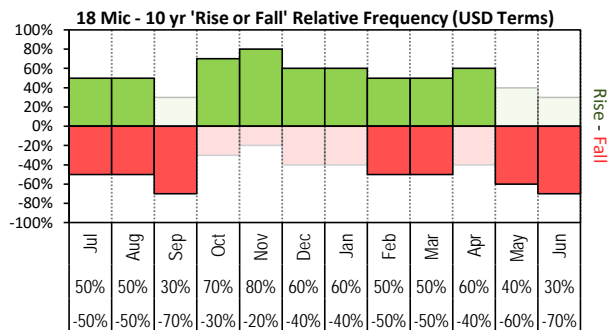
The above 'Rise or Fall' graph, shows how often the market has risen or fallen in a given month over the past 10 years, it does not show the extent of the movement only the frequency of direction. The 'Monthly Price Movement' graph shows the extent of movement for each month, for the past 5 years.



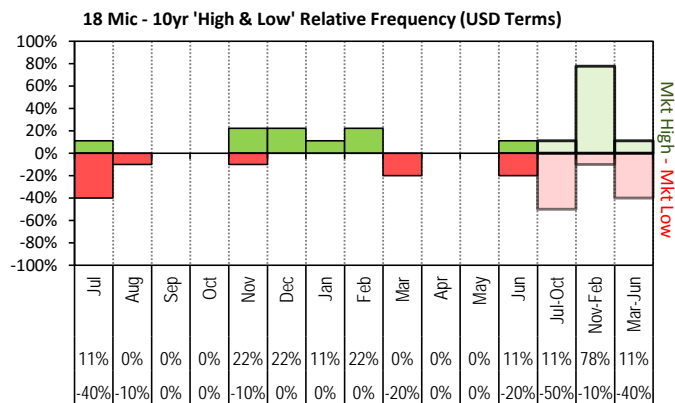
The above graph, shows how often the '12 month high & low' have been achieved for a



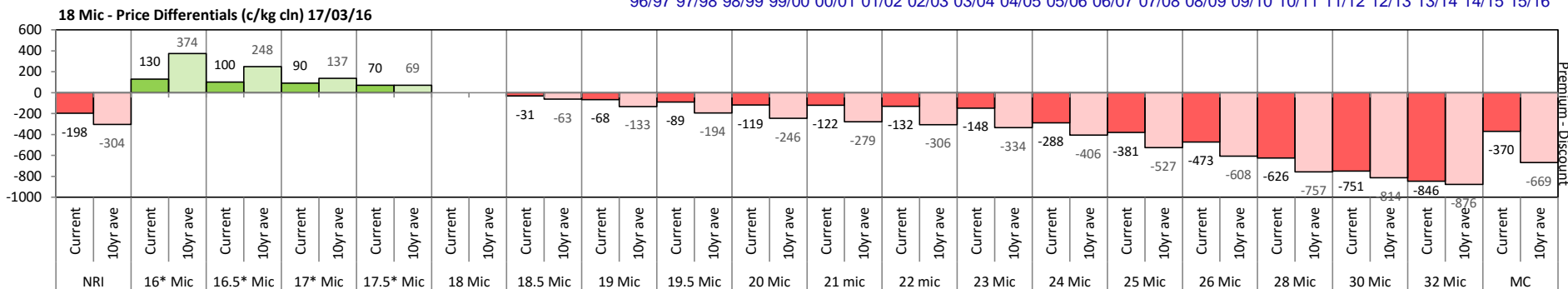
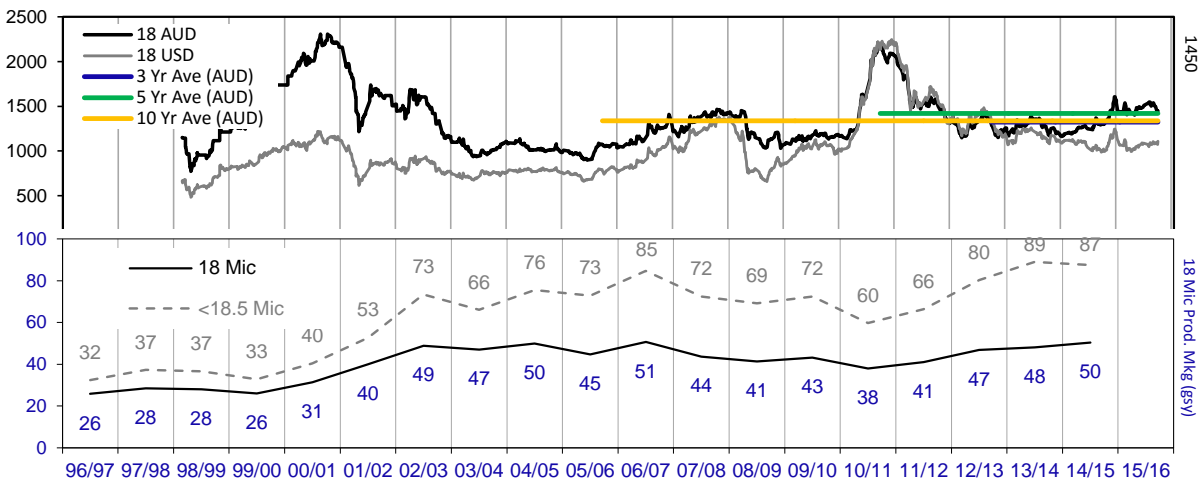




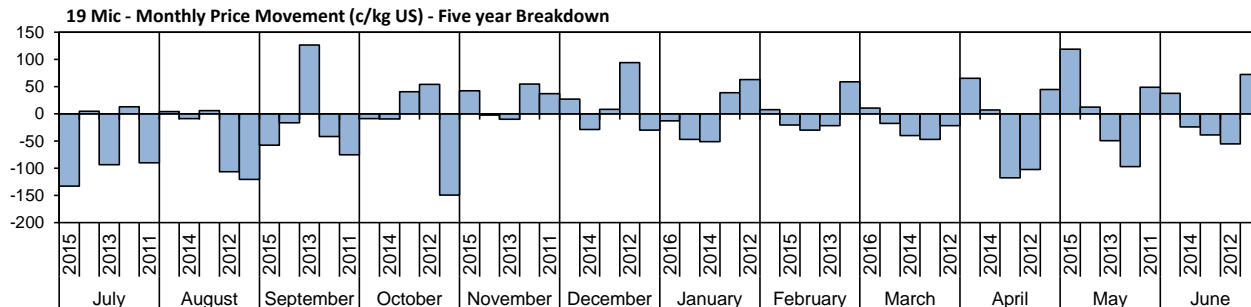
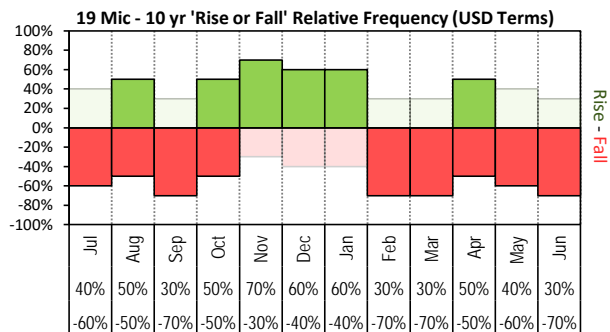
The above 'Rise or Fall' graph, shows how often the market has risen or fallen in a given month over the past 10 years, it does not show the extent of the movement only the frequency of direction. The 'Monthly Price Movement' graph shows the extent of movement for each month, for the past 5 years.



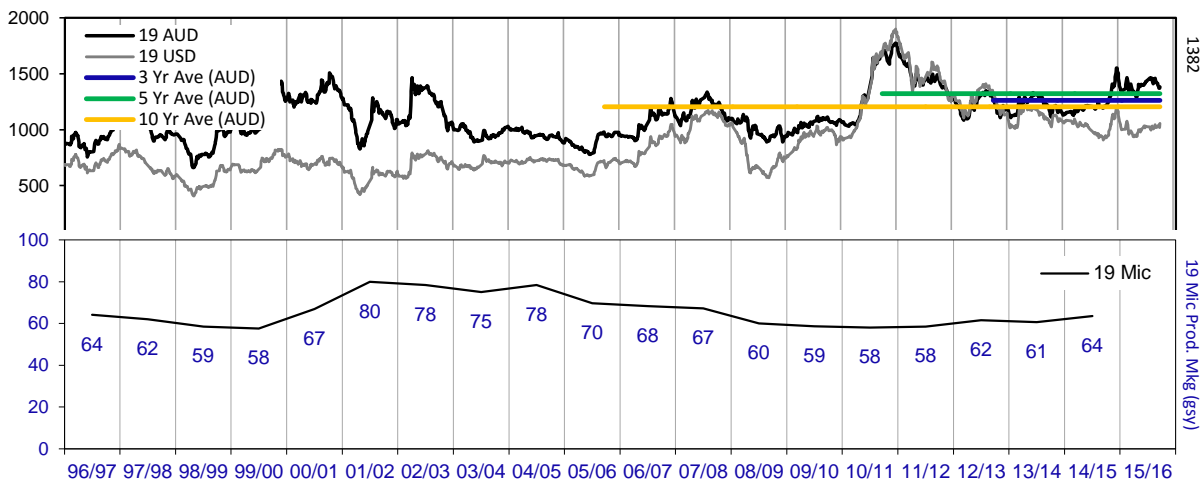
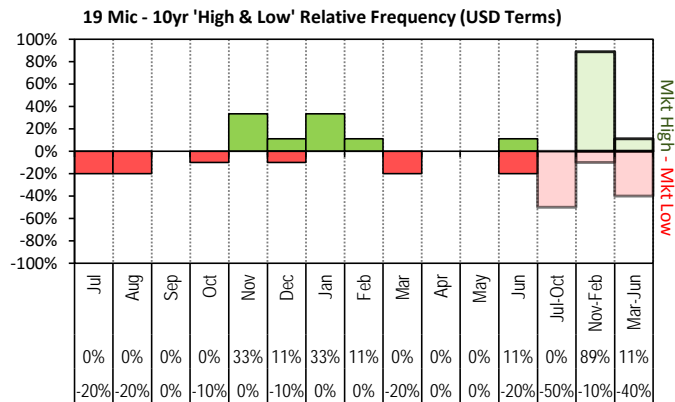
The above graph, shows how often the '12 month high & low' have been achieved for a given month over the past 10 years. It is not a measure of probability.



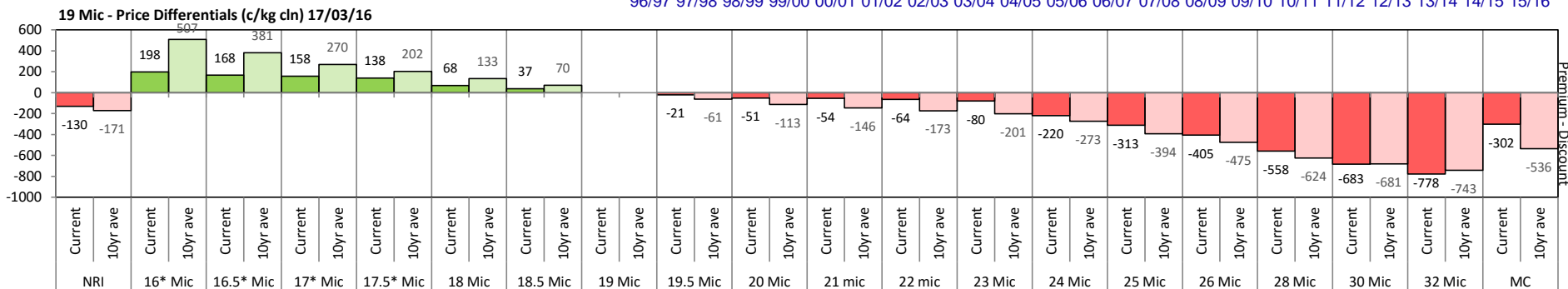


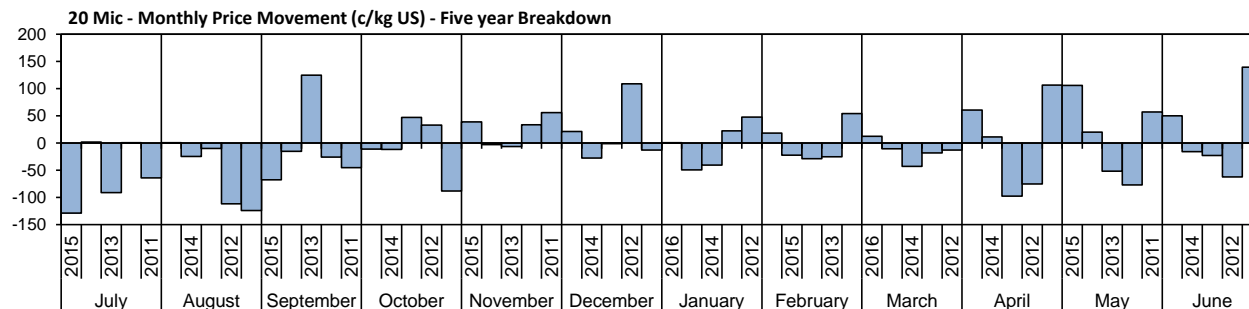
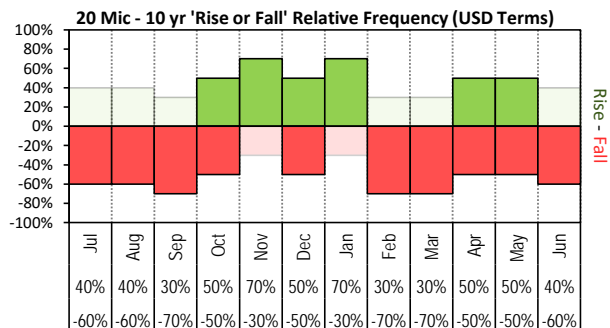


The above 'Rise or Fall' graph, shows how often the market has risen or fallen in a given month over the past 10 years, it does not show the extent of the movement only the frequency of direction. The 'Monthly Price Movement' graph shows the extent of movement for each month, for the past 5 years.

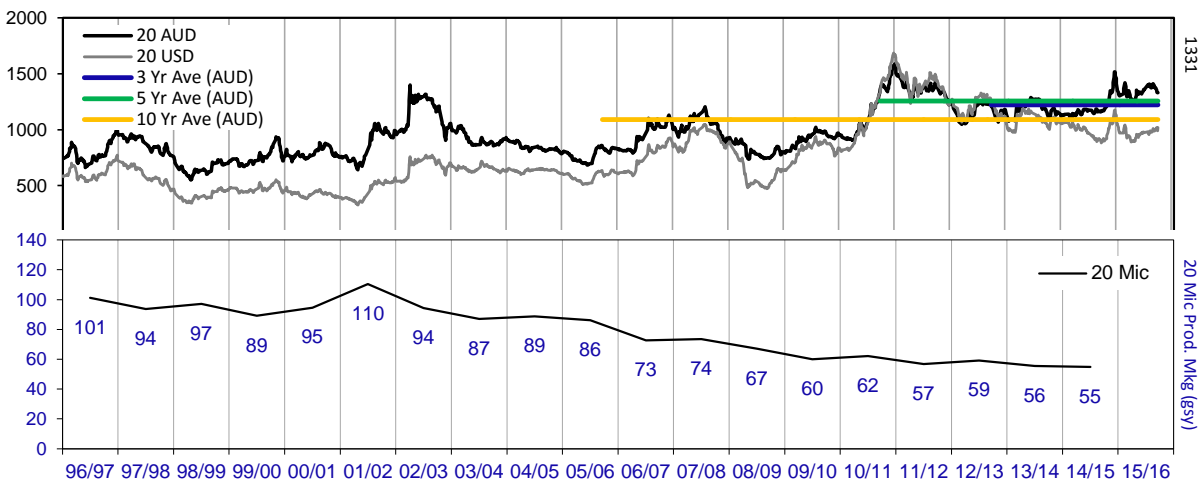
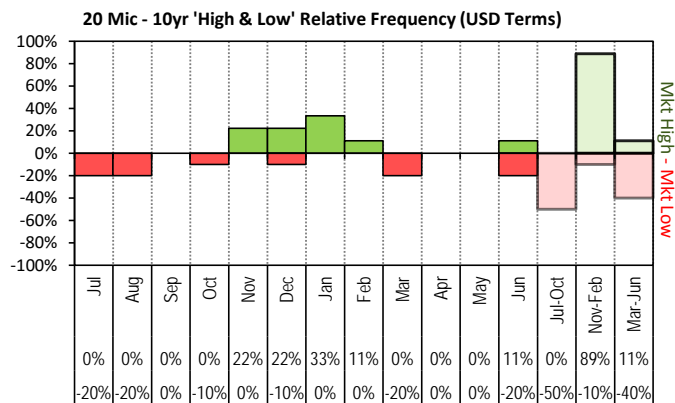


The above graph, shows how often the '12 month high & low' have been achieved for a given month over the past 10 years. It is not a measure of probability.

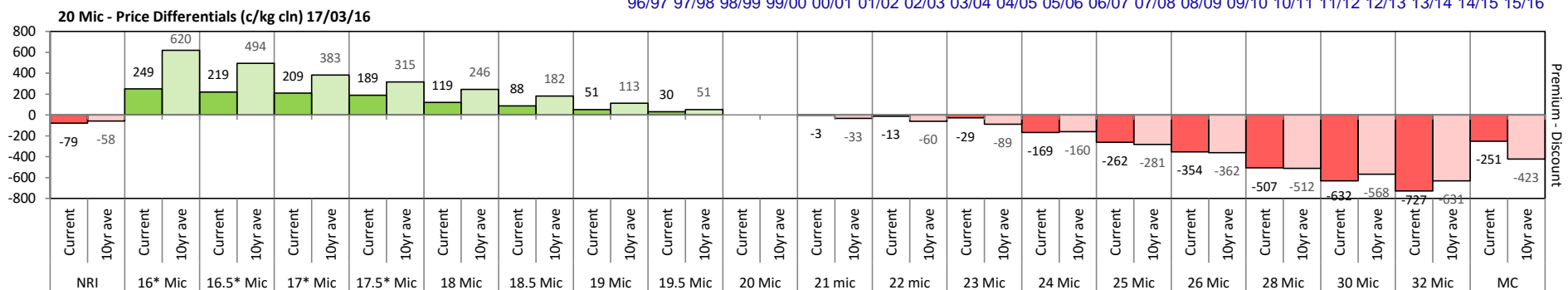


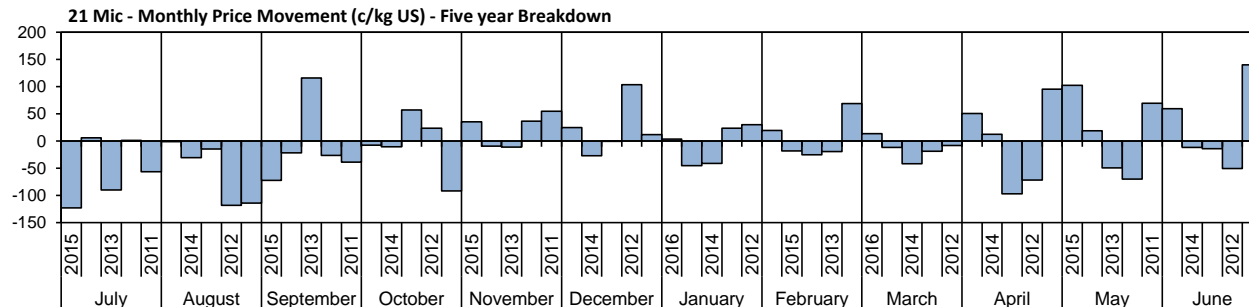
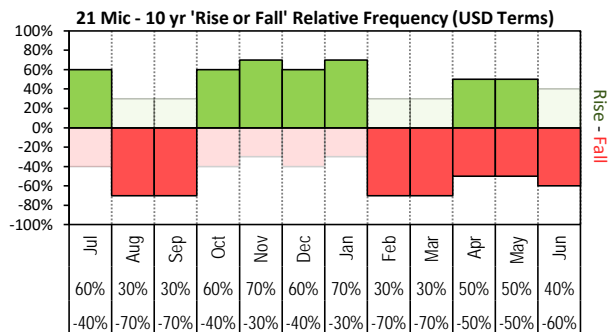


The above 'Rise or Fall' graph, shows how often the market has risen or fallen in a given month over the past 10 years, it does not show the extent of the movement only the frequency of direction. The 'Monthly Price Movement' graph shows the extent of movement for each month, for the past 5 years.

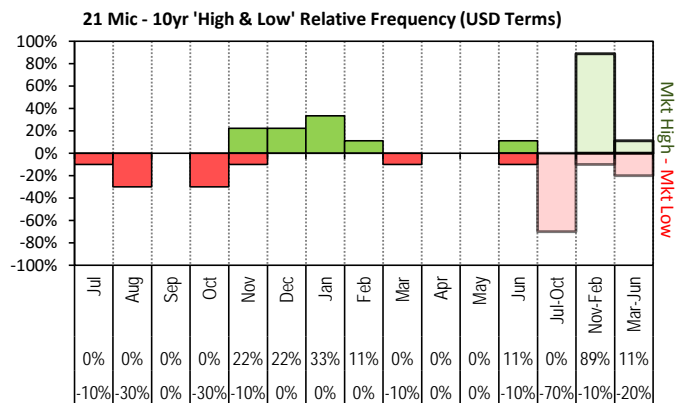


The above graph, shows how often the '12 month high & low' have been achieved for a given month over the past 10 years. It is not a measure of probability.

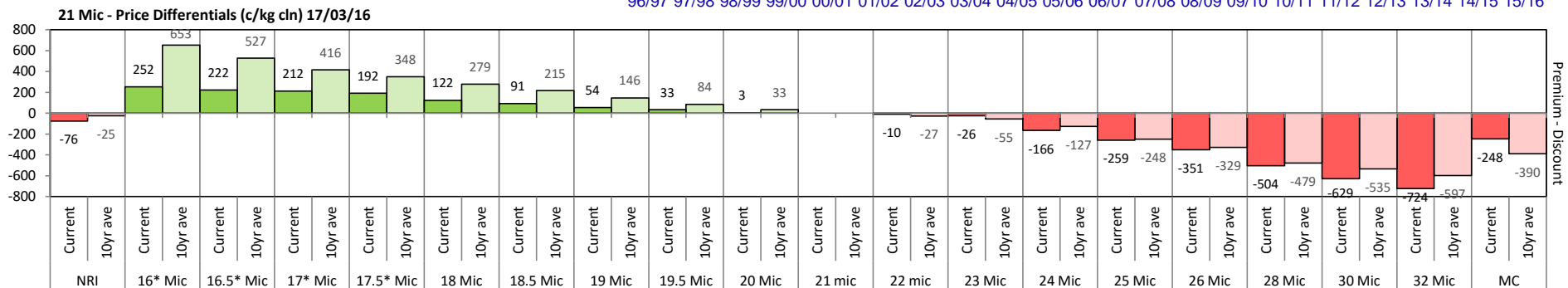
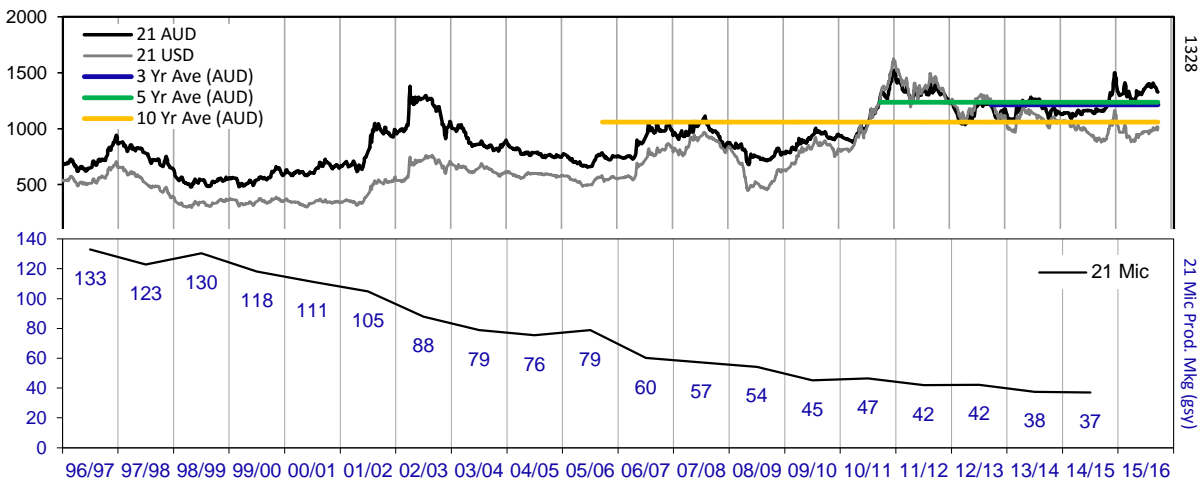


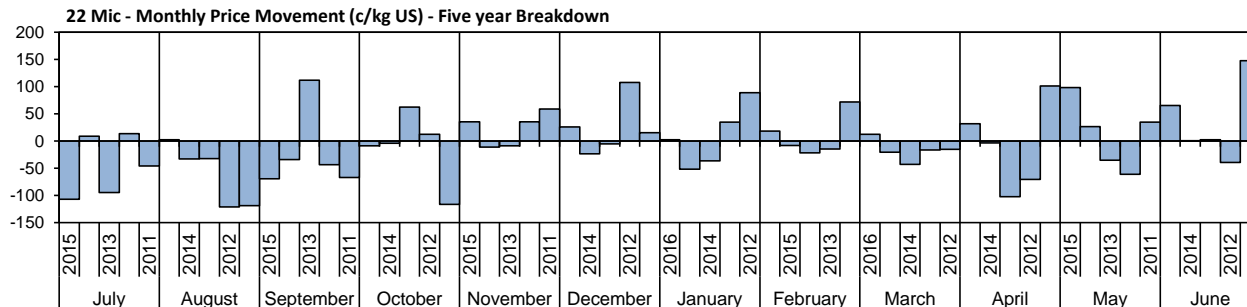
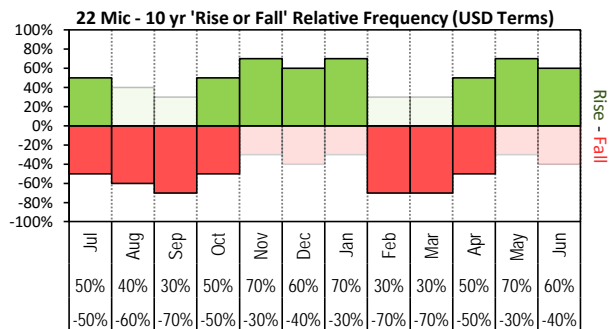


The above 'Rise or Fall' graph, shows how often the market has risen or fallen in a given month over the past 10 years, it does not show the extent of the movement only the frequency of direction. The 'Monthly Price Movement' graph shows the extent of movement for each month, for the past 5 years.

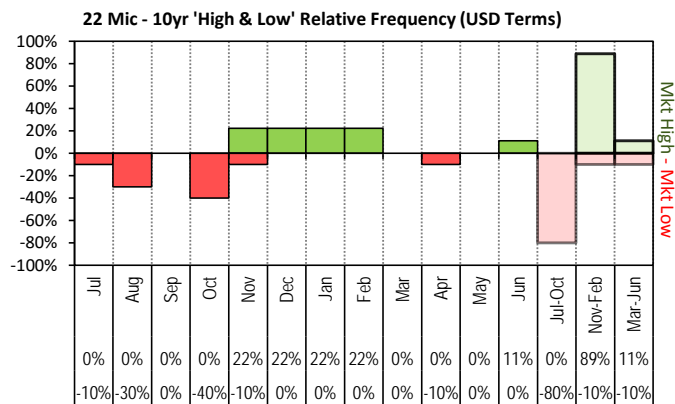


The above graph, shows how often the '12 month high & low' have been achieved for a given month over the past 10 years. It is not a measure of probability.

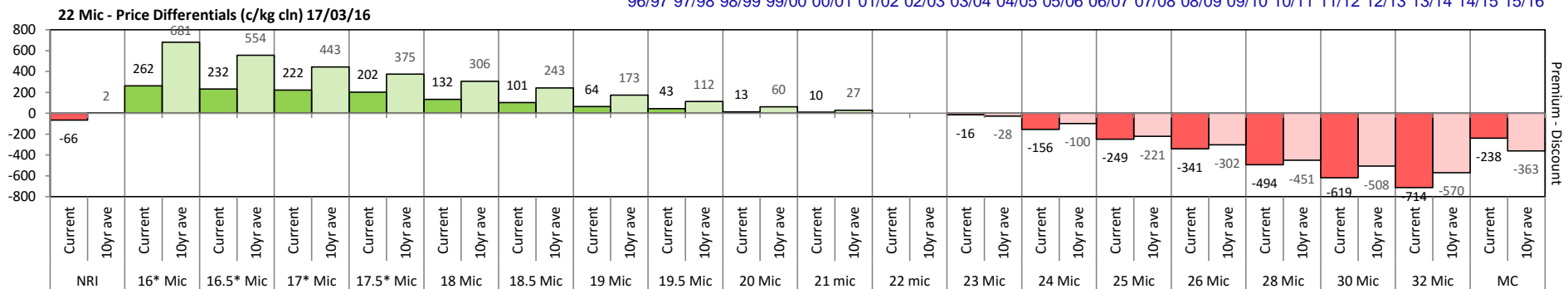
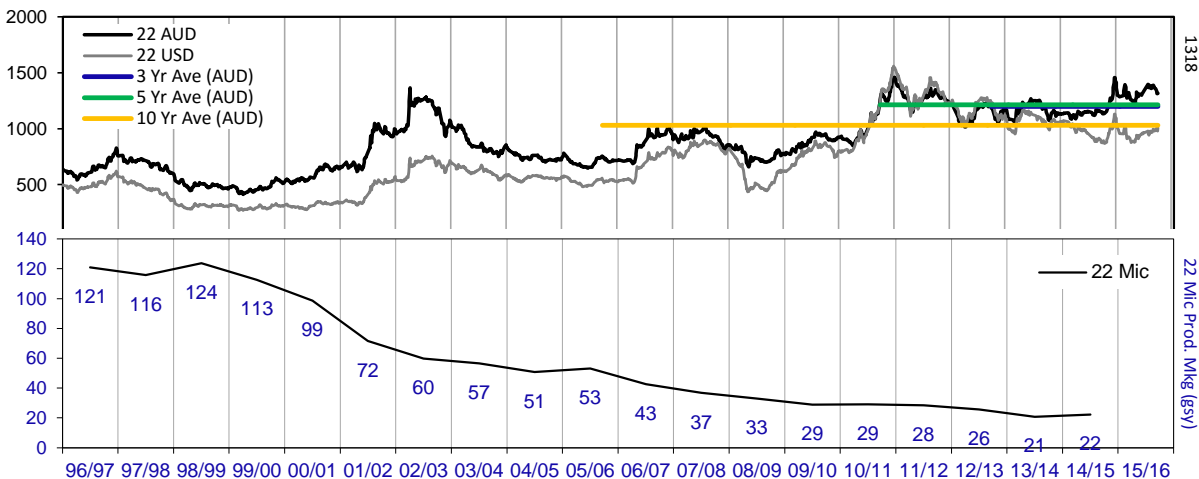


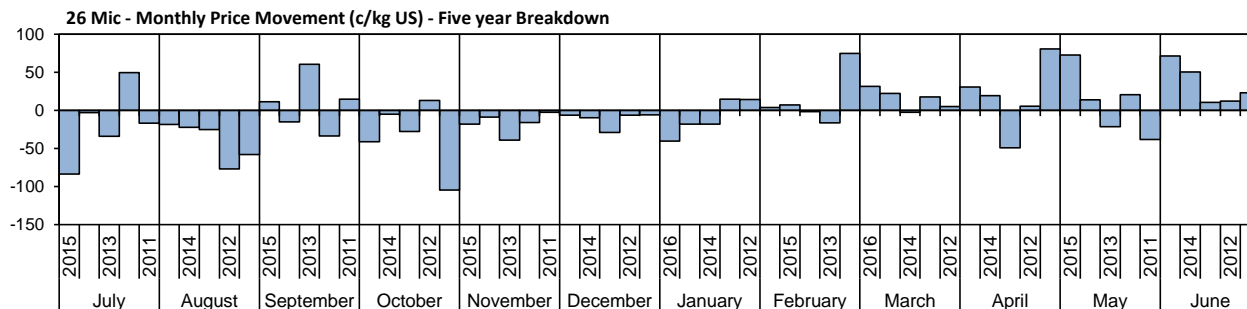
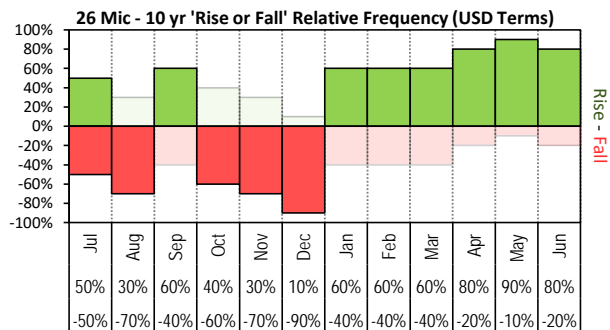


The above 'Rise or Fall' graph, shows how often the market has risen or fallen in a given month over the past 10 years, it does not show the extent of the movement only the frequency of direction. The 'Monthly Price Movement' graph shows the extent of movement for each month, for the past 5 years.

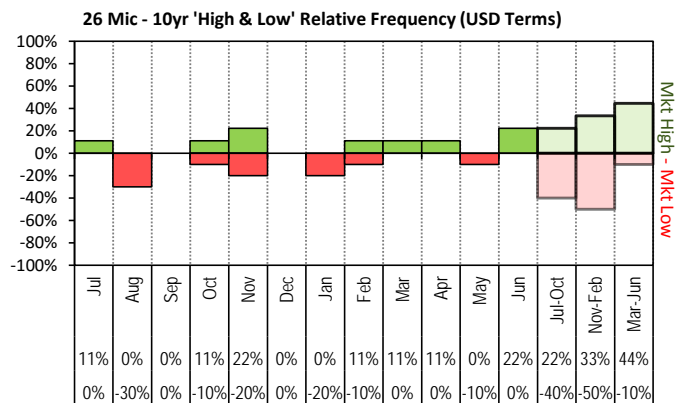


The above graph, shows how often the '12 month high & low' have been achieved for a given month over the past 10 years. It is not a measure of probability.

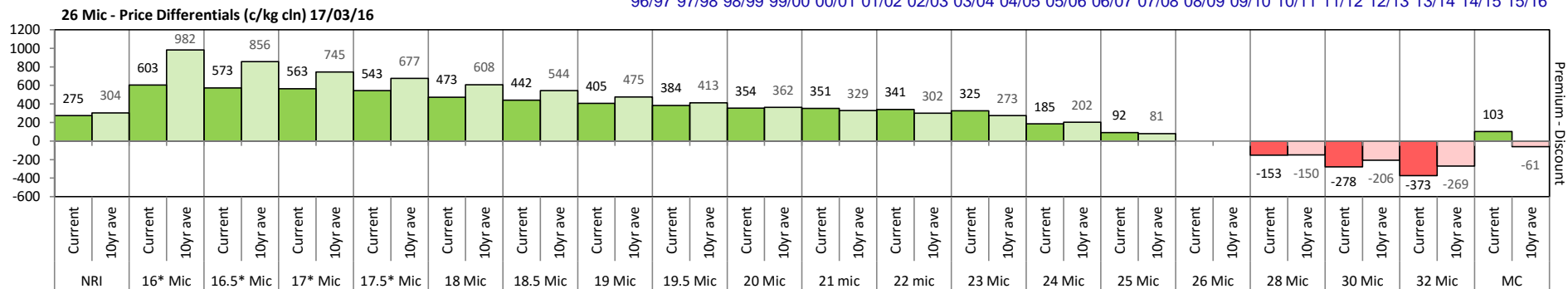
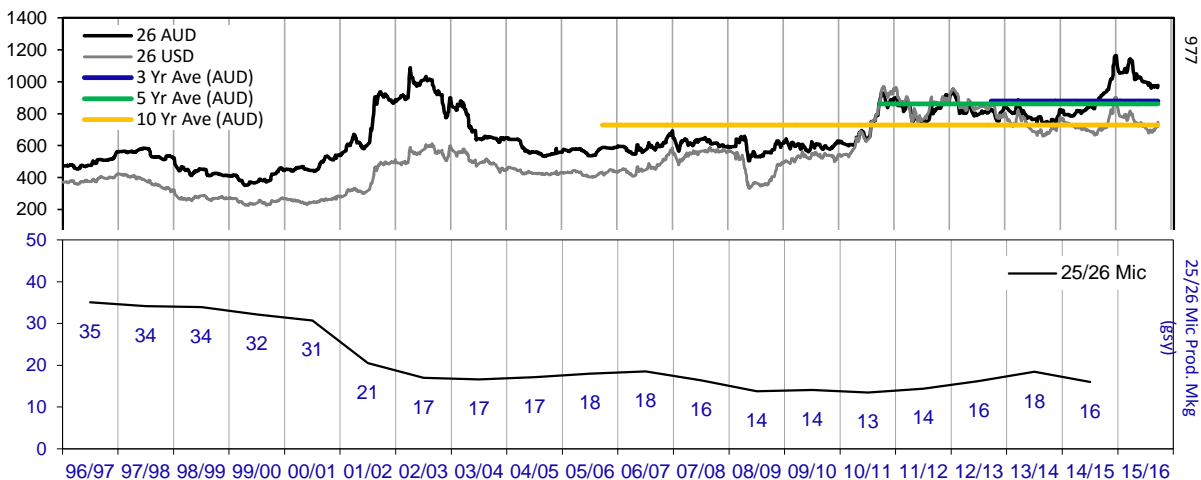


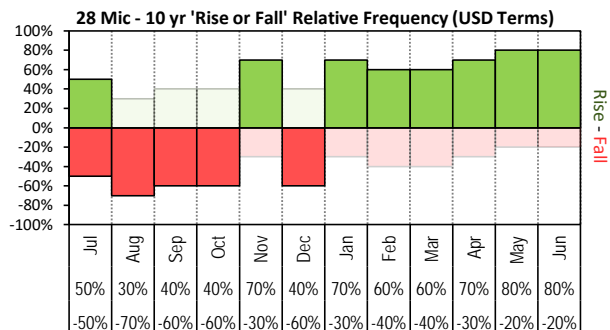


The above 'Rise or Fall' graph, shows how often the market has risen or fallen in a given month over the past 10 years, it does not show the extent of the movement only the frequency of direction. The 'Monthly Price Movement' graph shows the extent of movement for each month, for the past 5 years.

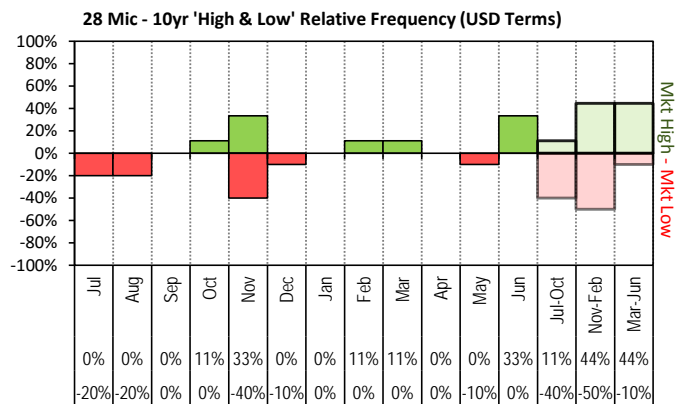
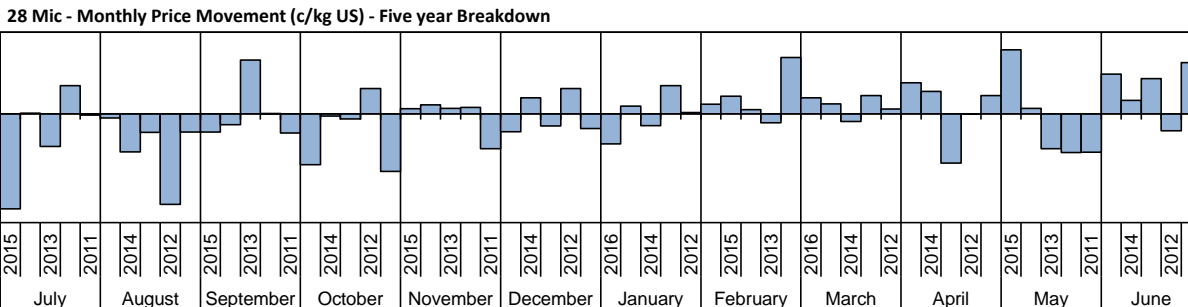


The above graph, shows how often the '12 month high & low' have been achieved for a given month over the past 10 years. It is not a measure of probability.

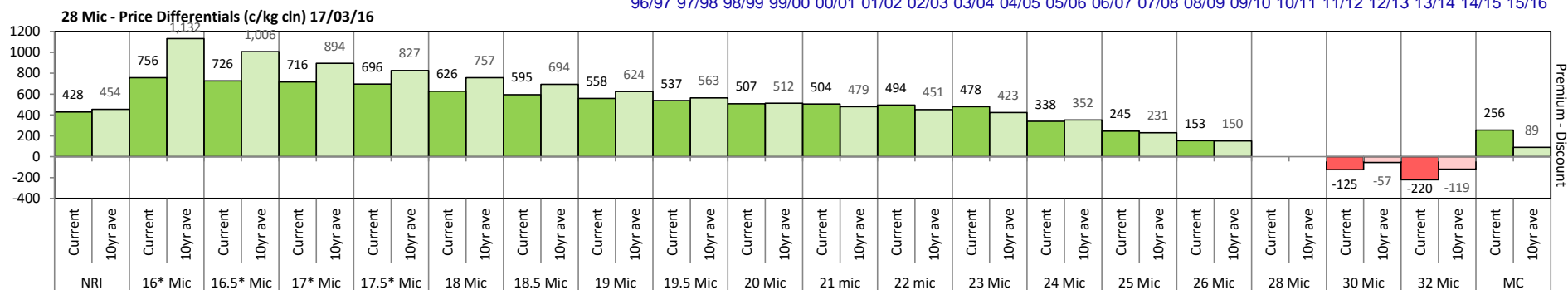
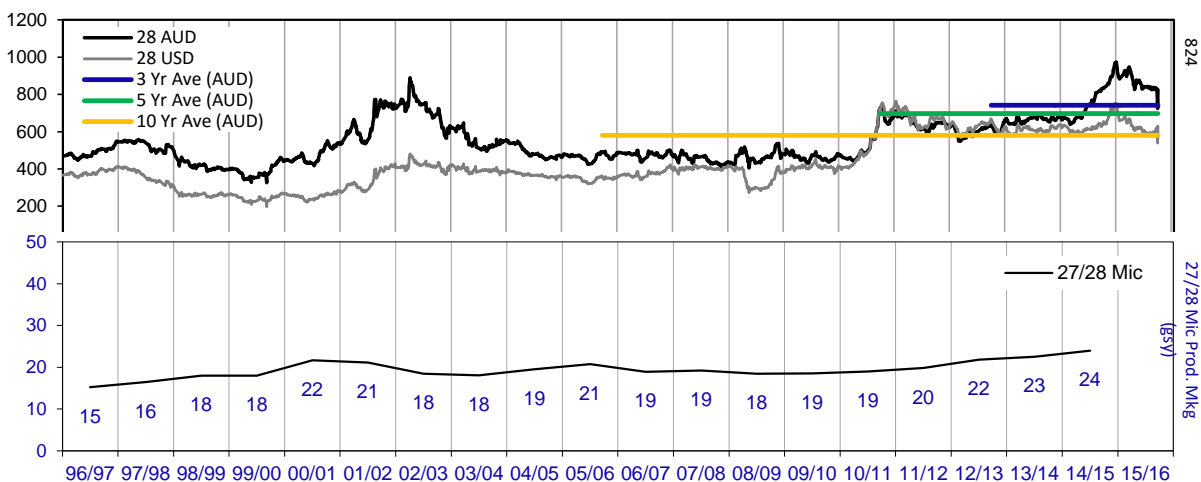


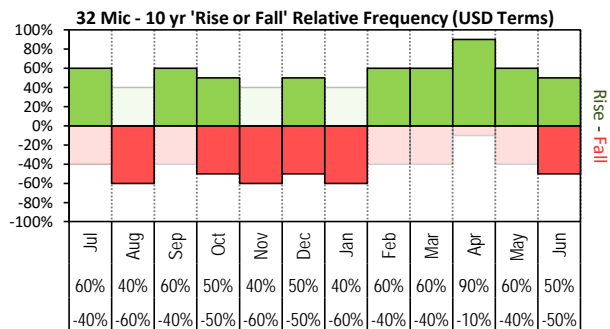


The above '**Rise or Fall**' graph, shows how often the market has risen or fallen in a given month over the past 10 years, it does not show the extent of the movement only the frequency of direction. The '**Monthly Price Movement**' graph shows the extent of movement for each month, for the past 5 years.

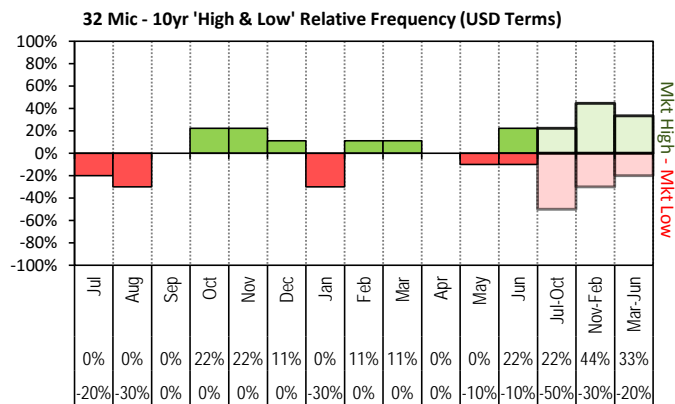
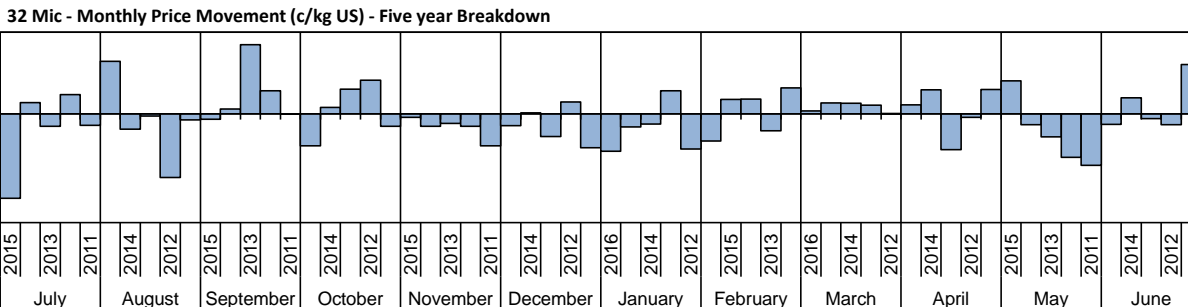


The above graph, shows how often the '12 month high & low' have been achieved for a given month over the past 10 years. It is not a measure of probability.

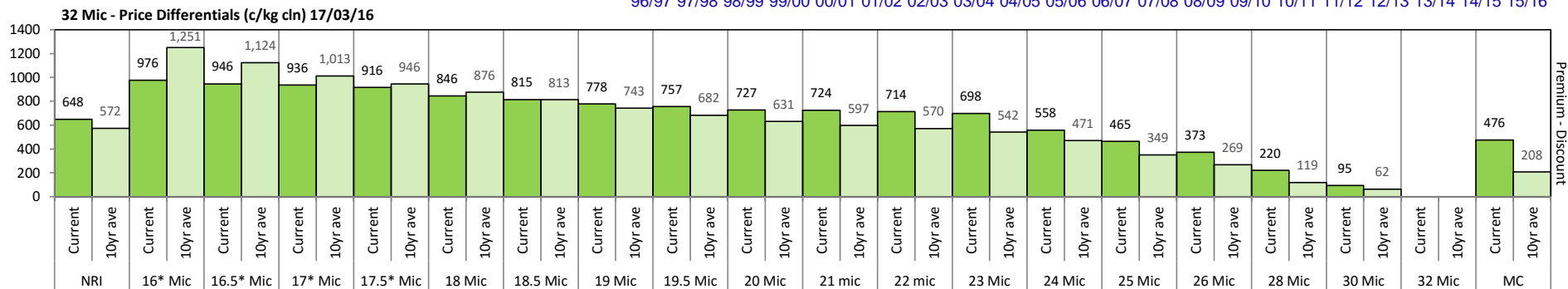
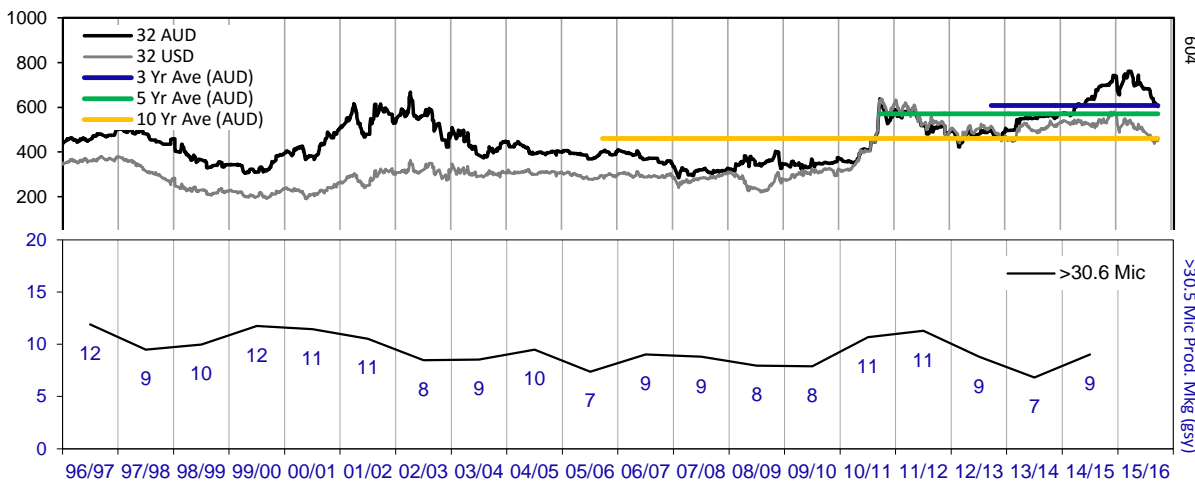




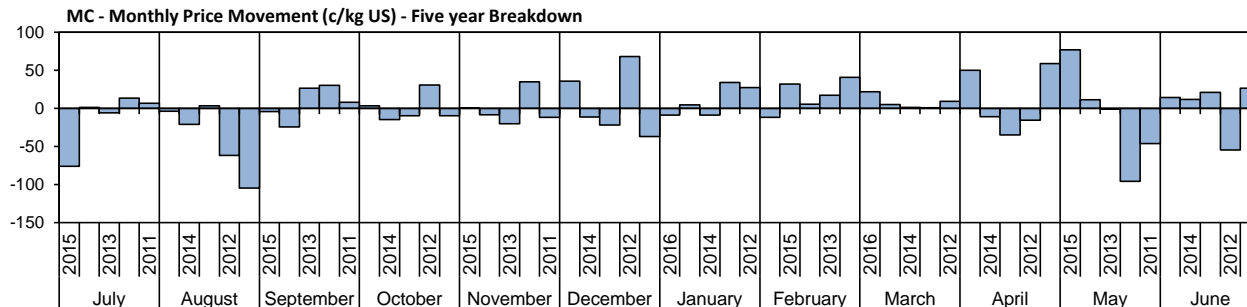
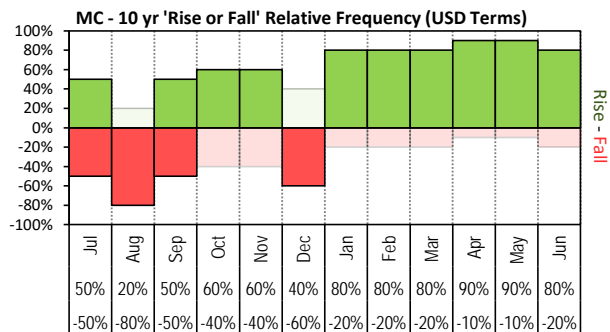
The above 'Rise or Fall' graph, shows how often the market has risen or fallen in a given month over the past 10 years, it does not show the extent of the movement only the frequency of direction. The 'Monthly Price Movement' graph shows the extent of movement for each month, for the past 5 years.



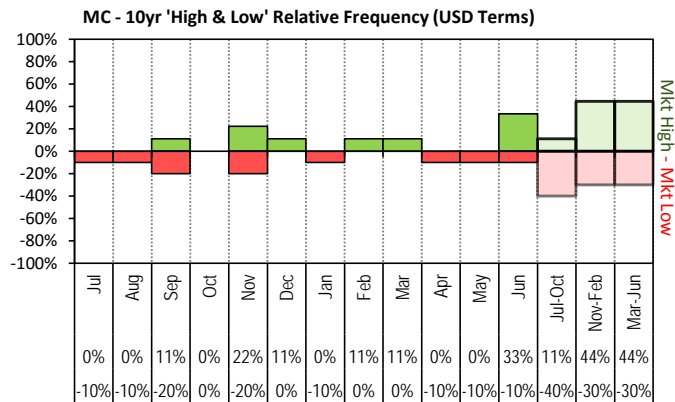
The above graph, shows how often the '12 month high & low' have been achieved for a given month over the past 10 years. It is not a measure of probability.



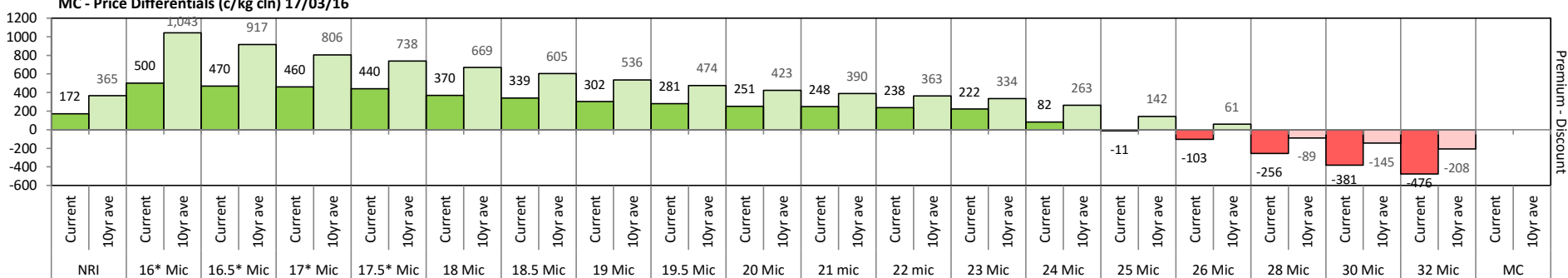
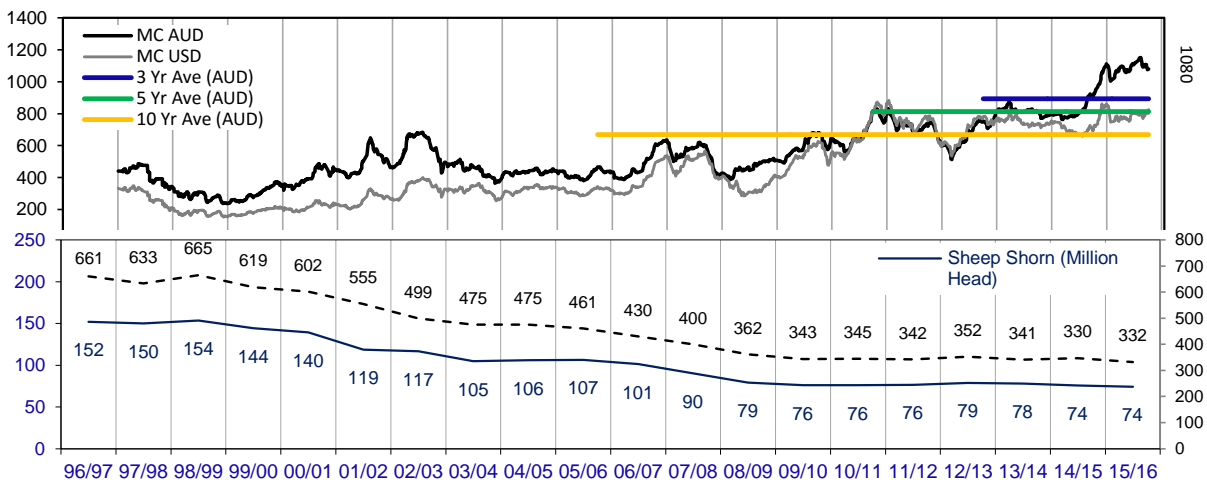




The above 'Rise or Fall' graph, shows how often the market has risen or fallen in a given month over the past 10 years, it does not show the extent of the movement only the frequency of direction. The 'Monthly Price Movement' graph shows the extent of movement for each month, for the past 5 years.



The above graph, shows how often the '12 month high & low' have been achieved for a given month over the past 10 years. It is not a measure of probability.





## Two Year Export Snapshot (Greasy Equivalent - Million Kilos)

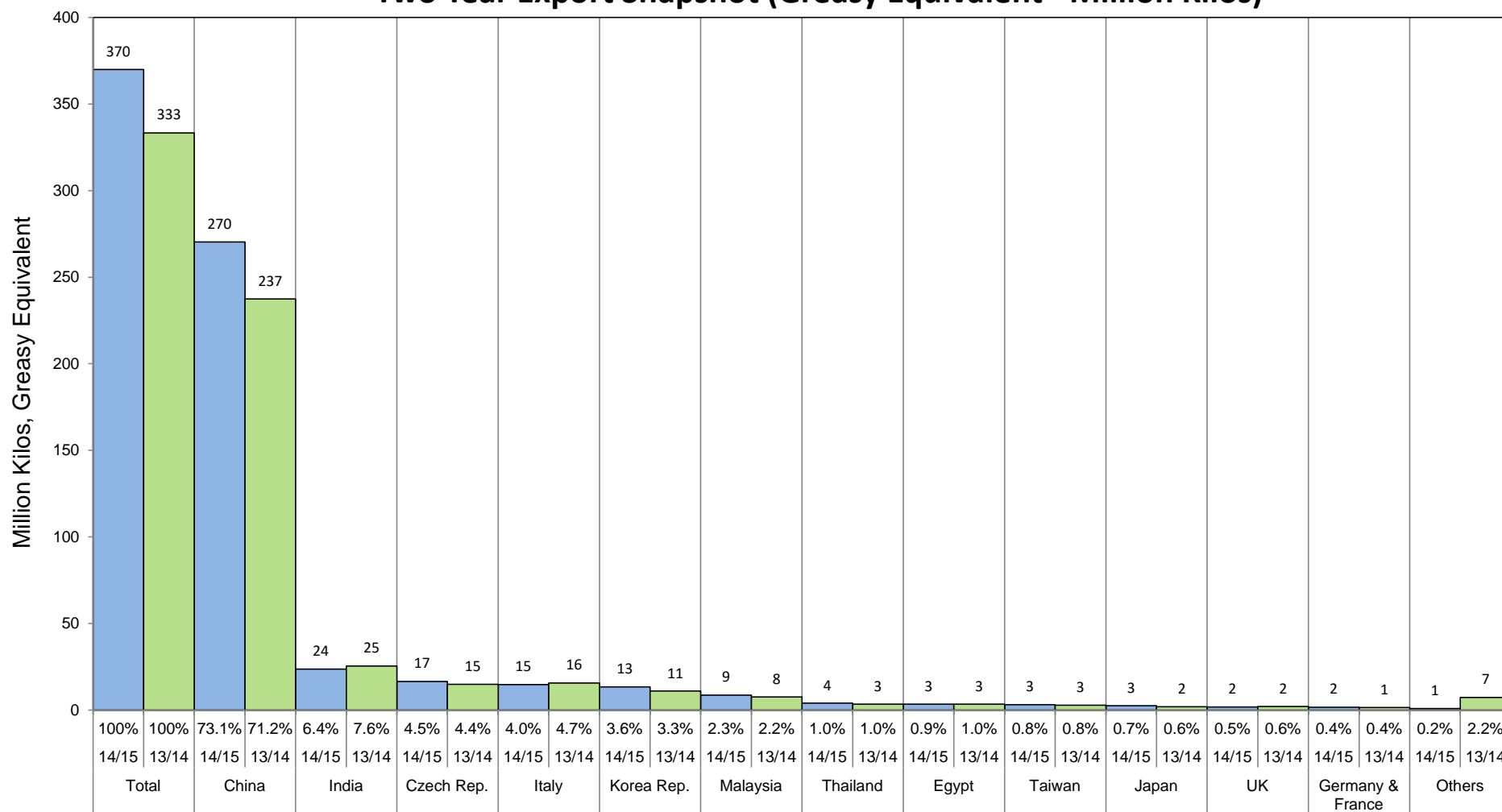




Table 7: Returns pr head for skirted fleece wool.

Skirted FLC Weight		Micron																	
9 Kg		16	16.5	17	17.5	18	18.5	19	19.5	20	21	22	23	24	25	26	28	30	32
Yield (Sch Dry)	25% Current	\$36	\$35	\$35	\$34	\$33	\$32	\$31	\$31	\$30	\$30	\$30	\$29	\$26	\$24	\$22	\$19	\$16	\$14
	10yr ave.	\$39	\$36	\$33	\$32	\$30	\$29	\$27	\$26	\$25	\$24	\$23	\$23	\$21	\$18	\$16	\$13	\$12	\$10
	30% Current	\$43	\$42	\$42	\$41	\$39	\$38	\$37	\$37	\$36	\$36	\$36	\$35	\$31	\$29	\$26	\$22	\$19	\$16
	10yr ave.	\$46	\$43	\$40	\$38	\$36	\$34	\$33	\$31	\$29	\$29	\$28	\$27	\$25	\$22	\$20	\$16	\$14	\$12
	35% Current	\$50	\$49	\$49	\$48	\$46	\$45	\$44	\$43	\$42	\$42	\$42	\$41	\$37	\$34	\$31	\$26	\$22	\$19
	10yr ave.	\$54	\$50	\$46	\$44	\$42	\$40	\$38	\$36	\$34	\$33	\$32	\$32	\$29	\$26	\$23	\$18	\$16	\$15
	40% Current	\$57	\$56	\$55	\$55	\$52	\$51	\$50	\$49	\$48	\$48	\$47	\$47	\$42	\$38	\$35	\$30	\$25	\$22
	10yr ave.	\$62	\$57	\$53	\$51	\$48	\$46	\$43	\$41	\$39	\$38	\$37	\$36	\$34	\$29	\$26	\$21	\$19	\$17
	45% Current	\$64	\$63	\$62	\$62	\$59	\$57	\$56	\$55	\$54	\$54	\$53	\$53	\$47	\$43	\$40	\$33	\$28	\$24
	10yr ave.	\$69	\$64	\$60	\$57	\$54	\$52	\$49	\$46	\$44	\$43	\$42	\$41	\$38	\$33	\$30	\$23	\$21	\$19
	50% Current	\$71	\$70	\$69	\$68	\$65	\$64	\$62	\$61	\$60	\$60	\$59	\$59	\$52	\$48	\$44	\$37	\$31	\$27
	10yr ave.	\$77	\$71	\$66	\$63	\$60	\$57	\$54	\$51	\$49	\$48	\$46	\$45	\$42	\$36	\$33	\$26	\$24	\$21
	55% Current	\$78	\$77	\$76	\$75	\$72	\$70	\$68	\$67	\$66	\$66	\$65	\$64	\$58	\$53	\$48	\$41	\$35	\$30
	10yr ave.	\$85	\$79	\$73	\$70	\$66	\$63	\$60	\$57	\$54	\$52	\$51	\$50	\$46	\$40	\$36	\$29	\$26	\$23
	60% Current	\$85	\$84	\$83	\$82	\$78	\$77	\$75	\$73	\$72	\$72	\$71	\$70	\$63	\$58	\$53	\$44	\$38	\$33
	10yr ave.	\$92	\$86	\$80	\$76	\$72	\$69	\$65	\$62	\$59	\$57	\$56	\$54	\$50	\$44	\$39	\$31	\$28	\$25
	65% Current	\$92	\$91	\$90	\$89	\$85	\$83	\$81	\$80	\$78	\$78	\$77	\$76	\$68	\$63	\$57	\$48	\$41	\$35
	10yr ave.	\$100	\$93	\$86	\$82	\$78	\$75	\$70	\$67	\$64	\$62	\$60	\$59	\$55	\$47	\$43	\$34	\$31	\$27
	70% Current	\$100	\$98	\$97	\$96	\$91	\$89	\$87	\$86	\$84	\$84	\$83	\$82	\$73	\$67	\$62	\$52	\$44	\$38
	10yr ave.	\$108	\$100	\$93	\$89	\$84	\$80	\$76	\$72	\$69	\$67	\$65	\$63	\$59	\$51	\$46	\$37	\$33	\$29
	75% Current	\$107	\$105	\$104	\$103	\$98	\$96	\$93	\$92	\$90	\$90	\$89	\$88	\$78	\$72	\$66	\$56	\$47	\$41
	10yr ave.	\$116	\$107	\$99	\$95	\$90	\$86	\$81	\$77	\$74	\$71	\$70	\$68	\$63	\$55	\$49	\$39	\$35	\$31
	80% Current	\$114	\$112	\$111	\$109	\$104	\$102	\$100	\$98	\$96	\$96	\$95	\$94	\$84	\$77	\$70	\$59	\$50	\$43
	10yr ave.	\$123	\$114	\$106	\$101	\$96	\$92	\$87	\$82	\$79	\$76	\$74	\$72	\$67	\$58	\$53	\$42	\$38	\$33
	85% Current	\$121	\$119	\$118	\$116	\$111	\$109	\$106	\$104	\$102	\$102	\$101	\$100	\$89	\$82	\$75	\$63	\$53	\$46
	10yr ave.	\$131	\$121	\$113	\$108	\$102	\$97	\$92	\$87	\$84	\$81	\$79	\$77	\$71	\$62	\$56	\$44	\$40	\$35

The above shows estimated returns per head for skirted fleece wool. These figures do not take into account the value of skirtings and oddments and do not take into account discounts that may apply for faults under individual circumstances. These figures are based on a market index of 100% and should be used as a guide only. Returns over \$30 / head for fleece wool are highlighted.



Table 8: Returns pr head for skirted fleece wool.

Skirted FLC Weight 8 Kg		Micron																	
		16	16.5	17	17.5	18	18.5	19	19.5	20	21	22	23	24	25	26	28	30	32
Yield (Sch Dry)	25% Current	\$32	\$31	\$31	\$30	\$29	\$28	\$28	\$27	\$27	\$27	\$26	\$26	\$23	\$21	\$20	\$16	\$14	\$12
	10yr ave.	\$34	\$32	\$29	\$28	\$27	\$25	\$24	\$23	\$22	\$21	\$21	\$20	\$19	\$16	\$15	\$12	\$10	\$9
	30% Current	\$38	\$37	\$37	\$36	\$35	\$34	\$33	\$33	\$32	\$32	\$32	\$31	\$28	\$26	\$23	\$20	\$17	\$14
	10yr ave.	\$41	\$38	\$35	\$34	\$32	\$31	\$29	\$27	\$26	\$25	\$25	\$24	\$22	\$19	\$18	\$14	\$13	\$11
	35% Current	\$44	\$43	\$43	\$43	\$41	\$40	\$39	\$38	\$37	\$37	\$37	\$36	\$33	\$30	\$27	\$23	\$20	\$17
	10yr ave.	\$48	\$44	\$41	\$39	\$37	\$36	\$34	\$32	\$31	\$30	\$29	\$28	\$26	\$23	\$20	\$16	\$15	\$13
	40% Current	\$51	\$50	\$49	\$49	\$46	\$45	\$44	\$44	\$43	\$42	\$42	\$42	\$37	\$34	\$31	\$26	\$22	\$19
	10yr ave.	\$55	\$51	\$47	\$45	\$43	\$41	\$39	\$37	\$35	\$34	\$33	\$32	\$30	\$26	\$23	\$19	\$17	\$15
	45% Current	\$57	\$56	\$55	\$55	\$52	\$51	\$50	\$49	\$48	\$48	\$47	\$47	\$42	\$38	\$35	\$30	\$25	\$22
	10yr ave.	\$62	\$57	\$53	\$51	\$48	\$46	\$43	\$41	\$39	\$38	\$37	\$36	\$34	\$29	\$26	\$21	\$19	\$17
	50% Current	\$63	\$62	\$62	\$61	\$58	\$57	\$55	\$54	\$53	\$53	\$53	\$52	\$46	\$43	\$39	\$33	\$28	\$24
	10yr ave.	\$68	\$63	\$59	\$56	\$53	\$51	\$48	\$46	\$44	\$42	\$41	\$40	\$37	\$32	\$29	\$23	\$21	\$18
	55% Current	\$70	\$68	\$68	\$67	\$64	\$62	\$61	\$60	\$59	\$58	\$58	\$57	\$51	\$47	\$43	\$36	\$31	\$27
	10yr ave.	\$75	\$70	\$65	\$62	\$59	\$56	\$53	\$50	\$48	\$47	\$45	\$44	\$41	\$36	\$32	\$26	\$23	\$20
	60% Current	\$76	\$74	\$74	\$73	\$70	\$68	\$66	\$65	\$64	\$64	\$63	\$62	\$56	\$51	\$47	\$40	\$34	\$29
	10yr ave.	\$82	\$76	\$71	\$68	\$64	\$61	\$58	\$55	\$52	\$51	\$49	\$48	\$45	\$39	\$35	\$28	\$25	\$22
	65% Current	\$82	\$81	\$80	\$79	\$75	\$74	\$72	\$71	\$69	\$69	\$69	\$68	\$60	\$56	\$51	\$43	\$36	\$31
	10yr ave.	\$89	\$82	\$77	\$73	\$70	\$66	\$63	\$59	\$57	\$55	\$54	\$52	\$48	\$42	\$38	\$30	\$27	\$24
	70% Current	\$88	\$87	\$86	\$85	\$81	\$79	\$77	\$76	\$75	\$74	\$74	\$73	\$65	\$60	\$55	\$46	\$39	\$34
	10yr ave.	\$96	\$89	\$83	\$79	\$75	\$71	\$67	\$64	\$61	\$59	\$58	\$56	\$52	\$45	\$41	\$32	\$29	\$26
	75% Current	\$95	\$93	\$92	\$91	\$87	\$85	\$83	\$82	\$80	\$80	\$79	\$78	\$70	\$64	\$59	\$49	\$42	\$36
	10yr ave.	\$103	\$95	\$88	\$84	\$80	\$76	\$72	\$69	\$66	\$64	\$62	\$60	\$56	\$49	\$44	\$35	\$31	\$28
	80% Current	\$101	\$99	\$99	\$97	\$93	\$91	\$88	\$87	\$85	\$85	\$84	\$83	\$74	\$68	\$63	\$53	\$45	\$39
	10yr ave.	\$110	\$102	\$94	\$90	\$86	\$82	\$77	\$73	\$70	\$68	\$66	\$64	\$60	\$52	\$47	\$37	\$33	\$30
	85% Current	\$107	\$105	\$105	\$103	\$99	\$96	\$94	\$93	\$91	\$90	\$90	\$89	\$79	\$73	\$66	\$56	\$48	\$41
	10yr ave.	\$116	\$108	\$100	\$96	\$91	\$87	\$82	\$78	\$74	\$72	\$70	\$68	\$63	\$55	\$50	\$39	\$36	\$31

The above shows estimated returns per head for skirted fleece wool. These figures do not take into account the value of skirtings and oddments and do not take into account discounts that may apply for faults under individual circumstances. These figures are based on a market index of 100% and should be used as a guide only. Returns over \$30 / head for fleece wool are highlighted.



Table 9: Returns pr head for skirted fleece wool.

Skirted FLC Weight		Micron																	
7 Kg		16	16.5	17	17.5	18	18.5	19	19.5	20	21	22	23	24	25	26	28	30	32
Yield (Sch Dry)	25% Current	\$28	\$27	\$27	\$27	\$25	\$25	\$24	\$24	\$23	\$23	\$23	\$23	\$20	\$19	\$17	\$14	\$12	\$11
	10yr ave.	\$30	\$28	\$26	\$25	\$23	\$22	\$21	\$20	\$19	\$19	\$18	\$18	\$16	\$14	\$13	\$10	\$9	\$8
	30% Current	\$33	\$33	\$32	\$32	\$30	\$30	\$29	\$29	\$28	\$28	\$28	\$27	\$24	\$22	\$21	\$17	\$15	\$13
	10yr ave.	\$36	\$33	\$31	\$30	\$28	\$27	\$25	\$24	\$23	\$22	\$22	\$21	\$20	\$17	\$15	\$12	\$11	\$10
	35% Current	\$39	\$38	\$38	\$37	\$36	\$35	\$34	\$33	\$33	\$33	\$32	\$32	\$28	\$26	\$24	\$20	\$17	\$15
	10yr ave.	\$42	\$39	\$36	\$34	\$33	\$31	\$29	\$28	\$27	\$26	\$25	\$25	\$23	\$20	\$18	\$14	\$13	\$11
	40% Current	\$44	\$43	\$43	\$43	\$41	\$40	\$39	\$38	\$37	\$37	\$37	\$36	\$33	\$30	\$27	\$23	\$20	\$17
	10yr ave.	\$48	\$44	\$41	\$39	\$37	\$36	\$34	\$32	\$31	\$30	\$29	\$28	\$26	\$23	\$20	\$16	\$15	\$13
	45% Current	\$50	\$49	\$49	\$48	\$46	\$45	\$44	\$43	\$42	\$42	\$42	\$41	\$37	\$34	\$31	\$26	\$22	\$19
	10yr ave.	\$54	\$50	\$46	\$44	\$42	\$40	\$38	\$36	\$34	\$33	\$32	\$32	\$29	\$26	\$23	\$18	\$16	\$15
	50% Current	\$55	\$54	\$54	\$53	\$51	\$50	\$48	\$48	\$47	\$46	\$46	\$46	\$41	\$37	\$34	\$29	\$24	\$21
	10yr ave.	\$60	\$56	\$52	\$49	\$47	\$45	\$42	\$40	\$38	\$37	\$36	\$35	\$33	\$28	\$26	\$20	\$18	\$16
	55% Current	\$61	\$60	\$59	\$59	\$56	\$55	\$53	\$52	\$51	\$51	\$51	\$50	\$45	\$41	\$38	\$32	\$27	\$23
	10yr ave.	\$66	\$61	\$57	\$54	\$51	\$49	\$46	\$44	\$42	\$41	\$40	\$39	\$36	\$31	\$28	\$22	\$20	\$18
	60% Current	\$66	\$65	\$65	\$64	\$61	\$60	\$58	\$57	\$56	\$56	\$55	\$55	\$49	\$45	\$41	\$35	\$29	\$25
	10yr ave.	\$72	\$67	\$62	\$59	\$56	\$54	\$51	\$48	\$46	\$44	\$43	\$42	\$39	\$34	\$31	\$24	\$22	\$19
	65% Current	\$72	\$71	\$70	\$69	\$66	\$65	\$63	\$62	\$61	\$60	\$60	\$59	\$53	\$49	\$44	\$37	\$32	\$27
	10yr ave.	\$78	\$72	\$67	\$64	\$61	\$58	\$55	\$52	\$50	\$48	\$47	\$46	\$42	\$37	\$33	\$26	\$24	\$21
	70% Current	\$77	\$76	\$75	\$74	\$71	\$70	\$68	\$67	\$65	\$65	\$65	\$64	\$57	\$52	\$48	\$40	\$34	\$30
	10yr ave.	\$84	\$78	\$72	\$69	\$66	\$62	\$59	\$56	\$54	\$52	\$51	\$49	\$46	\$40	\$36	\$28	\$26	\$23
	75% Current	\$83	\$81	\$81	\$80	\$76	\$74	\$73	\$71	\$70	\$70	\$69	\$68	\$61	\$56	\$51	\$43	\$37	\$32
	10yr ave.	\$90	\$83	\$77	\$74	\$70	\$67	\$63	\$60	\$57	\$56	\$54	\$53	\$49	\$43	\$38	\$30	\$27	\$24
	80% Current	\$88	\$87	\$86	\$85	\$81	\$79	\$77	\$76	\$75	\$74	\$74	\$73	\$65	\$60	\$55	\$46	\$39	\$34
	10yr ave.	\$96	\$89	\$83	\$79	\$75	\$71	\$67	\$64	\$61	\$59	\$58	\$56	\$52	\$45	\$41	\$32	\$29	\$26
	85% Current	\$94	\$92	\$92	\$90	\$86	\$84	\$82	\$81	\$79	\$79	\$78	\$77	\$69	\$64	\$58	\$49	\$42	\$36
	10yr ave.	\$102	\$94	\$88	\$84	\$80	\$76	\$72	\$68	\$65	\$63	\$61	\$60	\$55	\$48	\$43	\$35	\$31	\$27

The above shows estimated returns per head for skirted fleece wool. These figures do not take into account the value of skirtings and oddments and do not take into account discounts that may apply for faults under individual circumstances. These figures are based on a market index of 100% and should be used as a guide only. Returns over \$30 / head for fleece wool are highlighted.



Table 10: Returns pr head for skirted fleece wool.

Skirted FLC Weight		Micron																	
6 Kg		16	16.5	17	17.5	18	18.5	19	19.5	20	21	22	23	24	25	26	28	30	32
Yield (Sch Dry)	25% Current	\$24	\$23	\$23	\$23	\$22	\$21	\$21	\$20	\$20	\$20	\$20	\$20	\$17	\$16	\$15	\$12	\$10	\$9
	10yr ave.	\$26	\$24	\$22	\$21	\$20	\$19	\$18	\$17	\$16	\$16	\$15	\$15	\$14	\$12	\$11	\$9	\$8	\$7
	30% Current	\$28	\$28	\$28	\$27	\$26	\$26	\$25	\$24	\$24	\$24	\$24	\$23	\$21	\$19	\$18	\$15	\$13	\$11
	10yr ave.	\$31	\$29	\$27	\$25	\$24	\$23	\$22	\$21	\$20	\$19	\$19	\$18	\$17	\$15	\$13	\$10	\$9	\$8
	35% Current	\$33	\$33	\$32	\$32	\$30	\$30	\$29	\$29	\$28	\$28	\$28	\$27	\$24	\$22	\$21	\$17	\$15	\$13
	10yr ave.	\$36	\$33	\$31	\$30	\$28	\$27	\$25	\$24	\$23	\$22	\$22	\$21	\$20	\$17	\$15	\$12	\$11	\$10
	40% Current	\$38	\$37	\$37	\$36	\$35	\$34	\$33	\$33	\$32	\$32	\$32	\$31	\$28	\$26	\$23	\$20	\$17	\$14
	10yr ave.	\$41	\$38	\$35	\$34	\$32	\$31	\$29	\$27	\$26	\$25	\$25	\$24	\$22	\$19	\$18	\$14	\$13	\$11
	45% Current	\$43	\$42	\$42	\$41	\$39	\$38	\$37	\$37	\$36	\$36	\$36	\$35	\$31	\$29	\$26	\$22	\$19	\$16
	10yr ave.	\$46	\$43	\$40	\$38	\$36	\$34	\$33	\$31	\$29	\$29	\$28	\$27	\$25	\$22	\$20	\$16	\$14	\$12
	50% Current	\$47	\$47	\$46	\$46	\$44	\$43	\$41	\$41	\$40	\$40	\$40	\$39	\$35	\$32	\$29	\$25	\$21	\$18
	10yr ave.	\$51	\$48	\$44	\$42	\$40	\$38	\$36	\$34	\$33	\$32	\$31	\$30	\$28	\$24	\$22	\$17	\$16	\$14
	55% Current	\$52	\$51	\$51	\$50	\$48	\$47	\$46	\$45	\$44	\$44	\$43	\$43	\$38	\$35	\$32	\$27	\$23	\$20
	10yr ave.	\$56	\$52	\$49	\$46	\$44	\$42	\$40	\$38	\$36	\$35	\$34	\$33	\$31	\$27	\$24	\$19	\$17	\$15
	60% Current	\$57	\$56	\$55	\$55	\$52	\$51	\$50	\$49	\$48	\$48	\$47	\$47	\$42	\$38	\$35	\$30	\$25	\$22
	10yr ave.	\$62	\$57	\$53	\$51	\$48	\$46	\$43	\$41	\$39	\$38	\$37	\$36	\$34	\$29	\$26	\$21	\$19	\$17
	65% Current	\$62	\$60	\$60	\$59	\$57	\$55	\$54	\$53	\$52	\$52	\$51	\$51	\$45	\$42	\$38	\$32	\$27	\$24
	10yr ave.	\$67	\$62	\$57	\$55	\$52	\$50	\$47	\$45	\$43	\$41	\$40	\$39	\$36	\$32	\$28	\$23	\$20	\$18
	70% Current	\$66	\$65	\$65	\$64	\$61	\$60	\$58	\$57	\$56	\$56	\$55	\$55	\$49	\$45	\$41	\$35	\$29	\$25
	10yr ave.	\$72	\$67	\$62	\$59	\$56	\$54	\$51	\$48	\$46	\$44	\$43	\$42	\$39	\$34	\$31	\$24	\$22	\$19
	75% Current	\$71	\$70	\$69	\$68	\$65	\$64	\$62	\$61	\$60	\$60	\$59	\$59	\$52	\$48	\$44	\$37	\$31	\$27
	10yr ave.	\$77	\$71	\$66	\$63	\$60	\$57	\$54	\$51	\$49	\$48	\$46	\$45	\$42	\$36	\$33	\$26	\$24	\$21
	80% Current	\$76	\$74	\$74	\$73	\$70	\$68	\$66	\$65	\$64	\$64	\$63	\$62	\$56	\$51	\$47	\$40	\$34	\$29
	10yr ave.	\$82	\$76	\$71	\$68	\$64	\$61	\$58	\$55	\$52	\$51	\$49	\$48	\$45	\$39	\$35	\$28	\$25	\$22
	85% Current	\$81	\$79	\$79	\$78	\$74	\$72	\$70	\$69	\$68	\$68	\$67	\$66	\$59	\$55	\$50	\$42	\$36	\$31
	10yr ave.	\$87	\$81	\$75	\$72	\$68	\$65	\$61	\$58	\$56	\$54	\$53	\$51	\$48	\$41	\$37	\$30	\$27	\$24

The above shows estimated returns per head for skirted fleece wool. These figures do not take into account the value of skirtings and oddments and do not take into account discounts that may apply for faults under individual circumstances. These figures are based on a market index of 100% and should be used as a guide only. Returns over \$30 / head for fleece wool are highlighted.



Table 11: Returns pr head for skirted fleece wool.

Skirted FLC Weight		Micron																	
5 Kg		16	16.5	17	17.5	18	18.5	19	19.5	20	21	22	23	24	25	26	28	30	32
Yield (Sch Dry)	25% Current	\$20	\$19	\$19	\$19	\$18	\$18	\$17	\$17	\$17	\$17	\$16	\$16	\$15	\$13	\$12	\$10	\$9	\$8
	10yr ave.	\$21	\$20	\$18	\$18	\$17	\$16	\$15	\$14	\$14	\$13	\$13	\$13	\$12	\$10	\$9	\$7	\$7	\$6
	30% Current	\$24	\$23	\$23	\$23	\$22	\$21	\$21	\$20	\$20	\$20	\$20	\$20	\$17	\$16	\$15	\$12	\$10	\$9
	10yr ave.	\$26	\$24	\$22	\$21	\$20	\$19	\$18	\$17	\$16	\$16	\$15	\$15	\$14	\$12	\$11	\$9	\$8	\$7
	35% Current	\$28	\$27	\$27	\$27	\$25	\$25	\$24	\$24	\$23	\$23	\$23	\$23	\$20	\$19	\$17	\$14	\$12	\$11
	10yr ave.	\$30	\$28	\$26	\$25	\$23	\$22	\$21	\$20	\$19	\$19	\$18	\$18	\$16	\$14	\$13	\$10	\$9	\$8
	40% Current	\$32	\$31	\$31	\$30	\$29	\$28	\$28	\$27	\$27	\$27	\$26	\$26	\$23	\$21	\$20	\$16	\$14	\$12
	10yr ave.	\$34	\$32	\$29	\$28	\$27	\$25	\$24	\$23	\$22	\$21	\$21	\$20	\$19	\$16	\$15	\$12	\$10	\$9
	45% Current	\$36	\$35	\$35	\$34	\$33	\$32	\$31	\$31	\$30	\$30	\$30	\$29	\$26	\$24	\$22	\$19	\$16	\$14
	10yr ave.	\$39	\$36	\$33	\$32	\$30	\$29	\$27	\$26	\$25	\$24	\$23	\$23	\$21	\$18	\$16	\$13	\$12	\$10
	50% Current	\$40	\$39	\$39	\$38	\$36	\$35	\$35	\$34	\$33	\$33	\$33	\$33	\$29	\$27	\$24	\$21	\$17	\$15
	10yr ave.	\$43	\$40	\$37	\$35	\$33	\$32	\$30	\$29	\$27	\$26	\$26	\$25	\$23	\$20	\$18	\$15	\$13	\$12
	55% Current	\$43	\$43	\$42	\$42	\$40	\$39	\$38	\$37	\$37	\$37	\$36	\$36	\$32	\$29	\$27	\$23	\$19	\$17
	10yr ave.	\$47	\$44	\$41	\$39	\$37	\$35	\$33	\$31	\$30	\$29	\$28	\$28	\$26	\$22	\$20	\$16	\$14	\$13
	60% Current	\$47	\$47	\$46	\$46	\$44	\$43	\$41	\$41	\$40	\$40	\$40	\$39	\$35	\$32	\$29	\$25	\$21	\$18
	10yr ave.	\$51	\$48	\$44	\$42	\$40	\$38	\$36	\$34	\$33	\$32	\$31	\$30	\$28	\$24	\$22	\$17	\$16	\$14
	65% Current	\$51	\$50	\$50	\$49	\$47	\$46	\$45	\$44	\$43	\$43	\$43	\$42	\$38	\$35	\$32	\$27	\$23	\$20
	10yr ave.	\$56	\$52	\$48	\$46	\$43	\$41	\$39	\$37	\$35	\$34	\$34	\$33	\$30	\$26	\$24	\$19	\$17	\$15
	70% Current	\$55	\$54	\$54	\$53	\$51	\$50	\$48	\$48	\$47	\$46	\$46	\$46	\$41	\$37	\$34	\$29	\$24	\$21
	10yr ave.	\$60	\$56	\$52	\$49	\$47	\$45	\$42	\$40	\$38	\$37	\$36	\$35	\$33	\$28	\$26	\$20	\$18	\$16
	75% Current	\$59	\$58	\$58	\$57	\$54	\$53	\$52	\$51	\$50	\$50	\$49	\$49	\$44	\$40	\$37	\$31	\$26	\$23
	10yr ave.	\$64	\$59	\$55	\$53	\$50	\$48	\$45	\$43	\$41	\$40	\$39	\$38	\$35	\$30	\$27	\$22	\$20	\$17
	80% Current	\$63	\$62	\$62	\$61	\$58	\$57	\$55	\$54	\$53	\$53	\$53	\$52	\$46	\$43	\$39	\$33	\$28	\$24
	10yr ave.	\$68	\$63	\$59	\$56	\$53	\$51	\$48	\$46	\$44	\$42	\$41	\$40	\$37	\$32	\$29	\$23	\$21	\$18
	85% Current	\$67	\$66	\$65	\$65	\$62	\$60	\$59	\$58	\$57	\$56	\$56	\$55	\$49	\$45	\$42	\$35	\$30	\$26
	10yr ave.	\$73	\$67	\$63	\$60	\$57	\$54	\$51	\$49	\$46	\$45	\$44	\$43	\$40	\$34	\$31	\$25	\$22	\$20

The above shows estimated returns per head for skirted fleece wool. These figures do not take into account the value of skirtings and oddments and do not take into account discounts that may apply for faults under individual circumstances. These figures are based on a market index of 100% and should be used as a guide only. Returns over \$30 / head for fleece wool are highlighted.





Table 12: Returns pr head for skirted fleece wool.

Skirted FLC Weight  4 Kg			Micron																	
			16	16.5	17	17.5	18	18.5	19	19.5	20	21	22	23	24	25	26	28	30	32
Yield (Sch Dry)	25%	Current	\$16	\$16	\$15	\$15	\$15	\$14	\$14	\$14	\$13	\$13	\$13	\$13	\$12	\$11	\$10	\$8	\$7	\$6
		10yr ave.	\$17	\$16	\$15	\$14	\$13	\$13	\$12	\$11	\$11	\$11	\$10	\$10	\$9	\$8	\$7	\$6	\$5	\$5
	30%	Current	\$19	\$19	\$18	\$18	\$17	\$17	\$17	\$16	\$16	\$16	\$16	\$16	\$14	\$13	\$12	\$10	\$8	\$7
		10yr ave.	\$21	\$19	\$18	\$17	\$16	\$15	\$14	\$14	\$13	\$13	\$12	\$12	\$11	\$10	\$9	\$7	\$6	\$6
	35%	Current	\$22	\$22	\$22	\$21	\$20	\$20	\$19	\$19	\$19	\$19	\$18	\$18	\$16	\$15	\$14	\$12	\$10	\$8
		10yr ave.	\$24	\$22	\$21	\$20	\$19	\$18	\$17	\$16	\$15	\$15	\$14	\$14	\$13	\$11	\$10	\$8	\$7	\$6
	40%	Current	\$25	\$25	\$25	\$24	\$23	\$23	\$22	\$22	\$21	\$21	\$21	\$21	\$19	\$17	\$16	\$13	\$11	\$10
		10yr ave.	\$27	\$25	\$24	\$23	\$21	\$20	\$19	\$18	\$17	\$17	\$16	\$16	\$15	\$13	\$12	\$9	\$8	\$7
	45%	Current	\$28	\$28	\$28	\$27	\$26	\$26	\$25	\$24	\$24	\$24	\$24	\$23	\$21	\$19	\$18	\$15	\$13	\$11
		10yr ave.	\$31	\$29	\$27	\$25	\$24	\$23	\$22	\$21	\$20	\$19	\$19	\$18	\$17	\$15	\$13	\$10	\$9	\$8
	50%	Current	\$32	\$31	\$31	\$30	\$29	\$28	\$28	\$27	\$27	\$27	\$26	\$26	\$23	\$21	\$20	\$16	\$14	\$12
		10yr ave.	\$34	\$32	\$29	\$28	\$27	\$25	\$24	\$23	\$22	\$21	\$21	\$20	\$19	\$16	\$15	\$12	\$10	\$9
	55%	Current	\$35	\$34	\$34	\$33	\$32	\$31	\$30	\$30	\$29	\$29	\$29	\$29	\$26	\$24	\$21	\$18	\$15	\$13
		10yr ave.	\$38	\$35	\$32	\$31	\$29	\$28	\$26	\$25	\$24	\$23	\$23	\$22	\$21	\$18	\$16	\$13	\$12	\$10
	60%	Current	\$38	\$37	\$37	\$36	\$35	\$34	\$33	\$33	\$32	\$32	\$32	\$31	\$28	\$26	\$23	\$20	\$17	\$14
		10yr ave.	\$41	\$38	\$35	\$34	\$32	\$31	\$29	\$27	\$26	\$25	\$25	\$24	\$22	\$19	\$18	\$14	\$13	\$11
65%	Current	\$41	\$40	\$40	\$40	\$38	\$37	\$36	\$35	\$35	\$35	\$34	\$34	\$30	\$28	\$25	\$21	\$18	\$16	
	10yr ave.	\$45	\$41	\$38	\$37	\$35	\$33	\$31	\$30	\$28	\$28	\$27	\$26	\$24	\$21	\$19	\$15	\$14	\$12	
70%	Current	\$44	\$43	\$43	\$43	\$41	\$40	\$39	\$38	\$37	\$37	\$37	\$36	\$33	\$30	\$27	\$23	\$20	\$17	
	10yr ave.	\$48	\$44	\$41	\$39	\$37	\$36	\$34	\$32	\$31	\$30	\$29	\$28	\$26	\$23	\$20	\$16	\$15	\$13	
75%	Current	\$47	\$47	\$46	\$46	\$44	\$43	\$41	\$41	\$40	\$40	\$40	\$39	\$35	\$32	\$29	\$25	\$21	\$18	
	10yr ave.	\$51	\$48	\$44	\$42	\$40	\$38	\$36	\$34	\$33	\$32	\$31	\$30	\$28	\$24	\$22	\$17	\$16	\$14	
80%	Current	\$51	\$50	\$49	\$49	\$46	\$45	\$44	\$44	\$43	\$42	\$42	\$42	\$37	\$34	\$31	\$26	\$22	\$19	
	10yr ave.	\$55	\$51	\$47	\$45	\$43	\$41	\$39	\$37	\$35	\$34	\$33	\$32	\$30	\$26	\$23	\$19	\$17	\$15	
85%	Current	\$54	\$53	\$52	\$52	\$49	\$48	\$47	\$46	\$45	\$45	\$45	\$44	\$40	\$36	\$33	\$28	\$24	\$21	
	10yr ave.	\$58	\$54	\$50	\$48	\$45	\$43	\$41	\$39	\$37	\$36	\$35	\$34	\$32	\$28	\$25	\$20	\$18	\$16	

The above shows estimated returns per head for skirted fleece wool. These figures do not take into account the value of skirtings and oddments and do not take into account discounts that may apply for faults under individual circumstances. These figures are based on a market index of 100% and should be used as a guide only. Returns over \$30 / head for fleece wool are highlighted.



Table 13: Returns pr head for skirted fleece wool.

Skirted FLC Weight  3 Kg			Micron																	
			16	16.5	17	17.5	18	18.5	19	19.5	20	21	22	23	24	25	26	28	30	32
Yield (Sch Dry)	25%	Current	\$12	\$12	\$12	\$11	\$11	\$11	\$10	\$10	\$10	\$10	\$10	\$10	\$9	\$8	\$7	\$6	\$5	\$5
		10yr ave.	\$13	\$12	\$11	\$11	\$10	\$10	\$9	\$9	\$8	\$8	\$8	\$8	\$7	\$6	\$5	\$4	\$4	\$3
	30%	Current	\$14	\$14	\$14	\$14	\$13	\$13	\$12	\$12	\$12	\$12	\$12	\$12	\$10	\$10	\$9	\$7	\$6	\$5
		10yr ave.	\$15	\$14	\$13	\$13	\$12	\$11	\$11	\$10	\$10	\$10	\$9	\$9	\$8	\$7	\$7	\$5	\$5	\$4
	35%	Current	\$17	\$16	\$16	\$16	\$15	\$15	\$15	\$14	\$14	\$14	\$14	\$14	\$12	\$11	\$10	\$9	\$7	\$6
		10yr ave.	\$18	\$17	\$15	\$15	\$14	\$13	\$13	\$12	\$11	\$11	\$11	\$11	\$10	\$9	\$8	\$6	\$5	\$5
	40%	Current	\$19	\$19	\$18	\$18	\$17	\$17	\$17	\$16	\$16	\$16	\$16	\$16	\$14	\$13	\$12	\$10	\$8	\$7
		10yr ave.	\$21	\$19	\$18	\$17	\$16	\$15	\$14	\$14	\$13	\$13	\$12	\$12	\$11	\$10	\$9	\$7	\$6	\$6
	45%	Current	\$21	\$21	\$21	\$21	\$20	\$19	\$19	\$18	\$18	\$18	\$18	\$18	\$16	\$14	\$13	\$11	\$9	\$8
		10yr ave.	\$23	\$21	\$20	\$19	\$18	\$17	\$16	\$15	\$15	\$14	\$14	\$14	\$13	\$11	\$10	\$8	\$7	\$6
	50%	Current	\$24	\$23	\$23	\$23	\$22	\$21	\$21	\$20	\$20	\$20	\$20	\$20	\$17	\$16	\$15	\$12	\$10	\$9
		10yr ave.	\$26	\$24	\$22	\$21	\$20	\$19	\$18	\$17	\$16	\$16	\$15	\$15	\$14	\$12	\$11	\$9	\$8	\$7
	55%	Current	\$26	\$26	\$25	\$25	\$24	\$23	\$23	\$22	\$22	\$22	\$22	\$21	\$19	\$18	\$16	\$14	\$12	\$10
		10yr ave.	\$28	\$26	\$24	\$23	\$22	\$21	\$20	\$19	\$18	\$17	\$17	\$17	\$15	\$13	\$12	\$10	\$9	\$8
	60%	Current	\$28	\$28	\$28	\$27	\$26	\$26	\$25	\$24	\$24	\$24	\$24	\$23	\$21	\$19	\$18	\$15	\$13	\$11
		10yr ave.	\$31	\$29	\$27	\$25	\$24	\$23	\$22	\$21	\$20	\$19	\$19	\$18	\$17	\$15	\$13	\$10	\$9	\$8
	65%	Current	\$31	\$30	\$30	\$30	\$28	\$28	\$27	\$27	\$26	\$26	\$26	\$25	\$23	\$21	\$19	\$16	\$14	\$12
		10yr ave.	\$33	\$31	\$29	\$27	\$26	\$25	\$23	\$22	\$21	\$21	\$20	\$20	\$18	\$16	\$14	\$11	\$10	\$9
	70%	Current	\$33	\$33	\$32	\$32	\$30	\$30	\$29	\$29	\$28	\$28	\$28	\$27	\$24	\$22	\$21	\$17	\$15	\$13
		10yr ave.	\$36	\$33	\$31	\$30	\$28	\$27	\$25	\$24	\$23	\$22	\$22	\$21	\$20	\$17	\$15	\$12	\$11	\$10
	75%	Current	\$36	\$35	\$35	\$34	\$33	\$32	\$31	\$31	\$30	\$30	\$30	\$29	\$26	\$24	\$22	\$19	\$16	\$14
		10yr ave.	\$39	\$36	\$33	\$32	\$30	\$29	\$27	\$26	\$25	\$24	\$23	\$23	\$21	\$18	\$16	\$13	\$12	\$10
	80%	Current	\$38	\$37	\$37	\$36	\$35	\$34	\$33	\$33	\$32	\$32	\$32	\$31	\$28	\$26	\$23	\$20	\$17	\$14
		10yr ave.	\$41	\$38	\$35	\$34	\$32	\$31	\$29	\$27	\$26	\$25	\$25	\$24	\$22	\$19	\$18	\$14	\$13	\$11
	85%	Current	\$40	\$40	\$39	\$39	\$37	\$36	\$35	\$35	\$34	\$34	\$34	\$33	\$30	\$27	\$25	\$21	\$18	\$15
		10yr ave.	\$44	\$40	\$38	\$36	\$34	\$32	\$31	\$29	\$28	\$27	\$26	\$26	\$24	\$21	\$19	\$15	\$13	\$12

The above shows estimated returns per head for skirted fleece wool. These figures do not take into account the value of skirtings and oddments and do not take into account discounts that may apply for faults under individual circumstances. These figures are based on a market index of 100% and should be used as a guide only. Returns over \$30 / head for fleece wool are highlighted.



Table 14: Returns pr head for skirted fleece wool.

Skirted FLC Weight		Micron																	
2 Kg		16	16.5	17	17.5	18	18.5	19	19.5	20	21	22	23	24	25	26	28	30	32
Yield (Sch Dry)	25% Current	\$8	\$8	\$8	\$8	\$7	\$7	\$7	\$7	\$7	\$7	\$7	\$7	\$6	\$5	\$5	\$4	\$3	\$3
	10yr ave.	\$9	\$8	\$7	\$7	\$7	\$6	\$6	\$6	\$5	\$5	\$5	\$5	\$5	\$4	\$4	\$3	\$3	\$2
	30% Current	\$9	\$9	\$9	\$9	\$9	\$9	\$8	\$8	\$8	\$8	\$8	\$8	\$7	\$6	\$6	\$5	\$4	\$4
	10yr ave.	\$10	\$10	\$9	\$8	\$8	\$8	\$7	\$7	\$7	\$6	\$6	\$6	\$6	\$5	\$4	\$3	\$3	\$3
	35% Current	\$11	\$11	\$11	\$11	\$10	\$10	\$10	\$10	\$9	\$9	\$9	\$9	\$8	\$7	\$7	\$6	\$5	\$4
	10yr ave.	\$12	\$11	\$10	\$10	\$9	\$9	\$8	\$8	\$8	\$7	\$7	\$7	\$7	\$6	\$5	\$4	\$4	\$3
	40% Current	\$13	\$12	\$12	\$12	\$12	\$11	\$11	\$11	\$11	\$11	\$11	\$10	\$9	\$9	\$8	\$7	\$6	\$5
	10yr ave.	\$14	\$13	\$12	\$11	\$11	\$10	\$10	\$9	\$9	\$8	\$8	\$8	\$7	\$6	\$6	\$5	\$4	\$4
	45% Current	\$14	\$14	\$14	\$14	\$13	\$13	\$12	\$12	\$12	\$12	\$12	\$12	\$10	\$10	\$9	\$7	\$6	\$5
	10yr ave.	\$15	\$14	\$13	\$13	\$12	\$11	\$11	\$10	\$10	\$10	\$9	\$9	\$8	\$7	\$7	\$5	\$5	\$4
	50% Current	\$16	\$16	\$15	\$15	\$15	\$14	\$14	\$14	\$13	\$13	\$13	\$13	\$12	\$11	\$10	\$8	\$7	\$6
	10yr ave.	\$17	\$16	\$15	\$14	\$13	\$13	\$12	\$11	\$11	\$11	\$10	\$10	\$9	\$8	\$7	\$6	\$5	\$5
	55% Current	\$17	\$17	\$17	\$17	\$16	\$16	\$15	\$15	\$15	\$15	\$14	\$14	\$13	\$12	\$11	\$9	\$8	\$7
	10yr ave.	\$19	\$17	\$16	\$15	\$15	\$14	\$13	\$13	\$12	\$12	\$11	\$11	\$10	\$9	\$8	\$6	\$6	\$5
	60% Current	\$19	\$19	\$18	\$18	\$17	\$17	\$17	\$16	\$16	\$16	\$16	\$16	\$14	\$13	\$12	\$10	\$8	\$7
	10yr ave.	\$21	\$19	\$18	\$17	\$16	\$15	\$14	\$14	\$13	\$13	\$12	\$12	\$11	\$10	\$9	\$7	\$6	\$6
	65% Current	\$21	\$20	\$20	\$20	\$19	\$18	\$18	\$18	\$17	\$17	\$17	\$17	\$15	\$14	\$13	\$11	\$9	\$8
	10yr ave.	\$22	\$21	\$19	\$18	\$17	\$17	\$16	\$15	\$14	\$14	\$13	\$13	\$12	\$11	\$9	\$8	\$7	\$6
	70% Current	\$22	\$22	\$22	\$21	\$20	\$20	\$19	\$19	\$19	\$19	\$18	\$18	\$16	\$15	\$14	\$12	\$10	\$8
	10yr ave.	\$24	\$22	\$21	\$20	\$19	\$18	\$17	\$16	\$15	\$15	\$14	\$14	\$13	\$11	\$10	\$8	\$7	\$6
	75% Current	\$24	\$23	\$23	\$23	\$22	\$21	\$21	\$20	\$20	\$20	\$20	\$20	\$17	\$16	\$15	\$12	\$10	\$9
	10yr ave.	\$26	\$24	\$22	\$21	\$20	\$19	\$18	\$17	\$16	\$16	\$15	\$15	\$14	\$12	\$11	\$9	\$8	\$7
	80% Current	\$25	\$25	\$25	\$24	\$23	\$23	\$22	\$22	\$21	\$21	\$21	\$21	\$19	\$17	\$16	\$13	\$11	\$10
	10yr ave.	\$27	\$25	\$24	\$23	\$21	\$20	\$19	\$18	\$17	\$17	\$16	\$16	\$15	\$13	\$12	\$9	\$8	\$7
	85% Current	\$27	\$26	\$26	\$26	\$25	\$24	\$23	\$23	\$23	\$23	\$22	\$22	\$20	\$18	\$17	\$14	\$12	\$10
	10yr ave.	\$29	\$27	\$25	\$24	\$23	\$22	\$20	\$19	\$19	\$18	\$18	\$17	\$16	\$14	\$12	\$10	\$9	\$8

The above shows estimated returns per head for skirted fleece wool. These figures do not take into account the value of skirtings and oddments and do not take into account discounts that may apply for faults under individual circumstances. These figures are based on a market index of 100% and should be used as a guide only. Returns over \$30 / head for fleece wool are highlighted.