



Table 1: Northern Region Micron Price Guides

CURRENT MARKET			12 MONTH COMPARISONS						3 YEAR COMPARISONS					Percentile	10 YEAR COMPARISONS					Percentile
Mic.	17/05/2012	10/05/2012	18/05/2011	Now		Now		Now		Low	High	Average	Now		Low	High	Now			
Price Guides	Current Price	Weekly Change	This time Last Year	compared to Last Year	12 Month Low	compared to Low	12 Month High	compared to High	compared to 3yr ave				10 year Average	compared to 10yr ave						
NRI	1144	-38 -3.3%	1399	-255 -18%	1144	0 0%	1491	-347 -23%	790 1491	1094	+50 5%	53%	1100 2530	657 1491	934	+210 22%	84%			
16*	2000	0	2800	-800 -29%	1950	+50 3%	2800	-800 -29%	1385 2800	1974	+26 1%	55%								
16.5*	1840	-20 -1.1%	2620	-780 -30%	1800	+40 2%	2680	-840 -31%	1280 2680	1818	+22 1%	52%								
17*	1550	-60 -3.9%	2430	-880 -36%	1550	0 0%	2430	-880 -36%	1180 2530	1663	-113 -7%	48%								
17.5*	1460	-70 -4.8%	2290	-830 -36%	1460	0 0%	2290	-830 -36%	1130 2360	1561	-101 -6%	48%	916 2193	1271	+107 8%	70%				
18	1378	-77 -5.6%	2060	-682 -33%	1378	0 0%	2094	-716 -34%	1060 2193	1472	-94 -6%	47%								
18.5	1355	-52 -3.8%	1859	-504 -27%	1355	0 0%	1895	-540 -28%	995 1963	1384	-29 -2%	48%								
19	1338	-26 -1.9%	1684	-346 -21%	1338	0 0%	1776	-438 -25%	934 1776	1291	+47 4%	53%								
19.5	1323	-29 -2.2%	1540	-217 -14%	1323	0 0%	1670	-347 -21%	842 1670	1203	+120 10%	54%	700 1588	990	+315 32%	90%				
20	1305	-29 -2.2%	1414	-109 -8%	1292	+13 1%	1588	-283 -18%	788 1588	1133	+172 15%	62%								
21	1296	-18 -1.4%	1351	-55 -4%	1235	+61 5%	1522	-226 -15%	774 1522	1099	+197 18%	66%								
22	1261	-25 -2.0%	1291	-30 -2%	1147	+114 10%	1461	-200 -14%	767 1461	1064	+197 19%	71%								
23	1225	-14 -1.1%	1226	-1 0%	1048	+177 17%	1347	-122 -9%	756 1347	1017	+208 20%	77%	651 1347	891	+334 37%	92%				
24	1130	-9 -0.8%	1027	+103 10%	983	+147 15%	1213	-83 -7%	722 1213	932	+198 21%	87%	638 1299	839	+291 35%	93%				
25	1007	-4 -0.4%	936	+71 8%	870	+137 16%	1015	-8 -1%	627 1048	803	+204 25%	96%	566 1198	743	+264 36%	93%				
26	881	-2 -0.2%	869	+12 1%	739	+142 19%	900	-19 -2%	570 928	711	+170 24%	91%	532 1088	675	+206 31%	88%				
28	650	-1 -0.2%	643	+7 1%	596	+54 9%	711	-61 -9%	435 734	550	+100 18%	78%	424 889	529	+121 23%	84%				
30	576	-7 -1.2%	581	-5 -1%	524	+52 10%	648	-72 -11%	378 670	492	+84 17%	68%	343 729	462	+114 25%	82%				
32	482	-36 -7.5%	539	-57 -11%	481	+1 0%	590	-108 -18%	326 638	440	+42 10%	60%	297 669	416	+66 16%	78%				
MC	658	-24 -3.6%	758	-100 -13%	658	0 0%	831	-173 -21%	503 831	664	-6 -1%	47%	380 831	537	+121 23%	83%				

Note:

* Due to the irregular market quoting for some fine wool categories, figures shown relating to micron categories below 18 micron are an estimate based on the AWEX Premium & Discounts Report & other available information.

* For any category, where there is insufficient quantity offered to enable AWEX to quote, a quote will be provided based on the best available information.

* 10 Year data is not available for some micron categories, which may result in blank spaces in the table above.

Definitions:

* A Percentile, is a value on a scale of one hundred that indicates the percent of a distribution that is equal to or below it. In general a percentile between 25% and 75% is considered normal, a percentile below 25% is considered below normal and a percentile above 75% is considered above normal.

Three and ten year percentiles shown in the table above, detail the period of time during the past 3 & 10 years that the market has traded either at or below its current price.

The higher the percentile, the stronger the market.

Source: Australian Wool Exchange, Australian Wool Innovation, Sydney Futures Exchange, x-rates.com

Disclaimer: While all due care has been taken in the preparation of this document, no warranty is made as to its accuracy, reliability or completeness. To the extent permitted by law neither Jemalong or their sources including subsidiaries and staff, accept liability to any person for loss or damage arising from the use of this information.



MARKET COMMENTARY

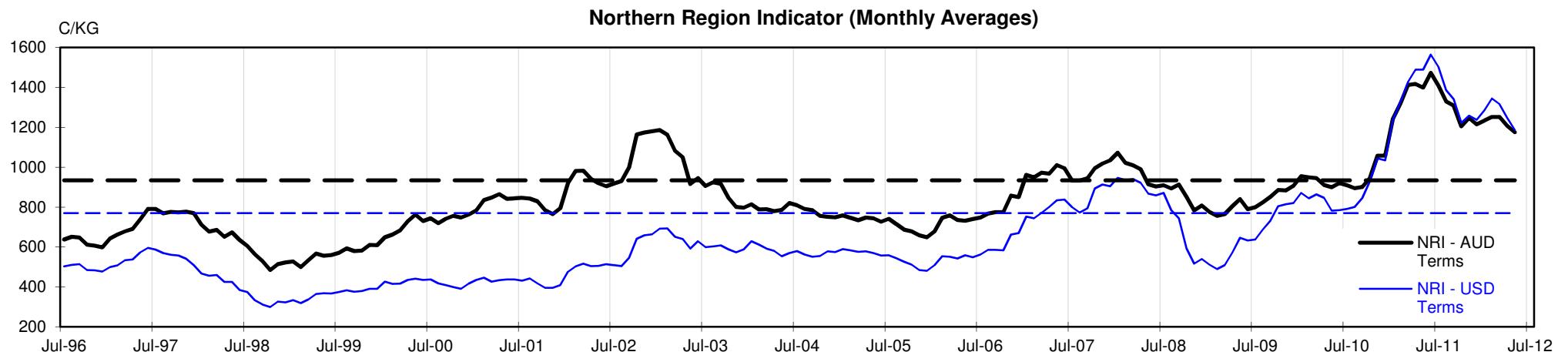
One Australian Dollar = \$ 0.99 US, as of 17/05/2012

NORTHERN REGION –Sale Week 46/11 (40,723 bales offered nationally)

Wednesdays market saw a substantial correction for any lots containing VM, colour or cott faults. FNF medium microns with less than 1% Vm were the most attractive to buyers, losing only 10 cents, while similar lots containing 2% Vm and/or a high mid break lost at least 20 to 30 cents. However it was the finer microns that suffered the most, falling 50 to 70 cents. Merino skirtings saw all descriptions retreat generally 30 cents in an offering dominated by cott & colour, with 6% Vm and greater most affected. In the oddments, locks remained firm, while crutchings eased 10 cents and stains closed 20 cents cheaper. Crossbred lamb and weaner categories made up the bulk of the offering with adult fleece in limited supply. Subsequently 27 to 30 microns posted minor movements on a nominal basis. 26.0% PI

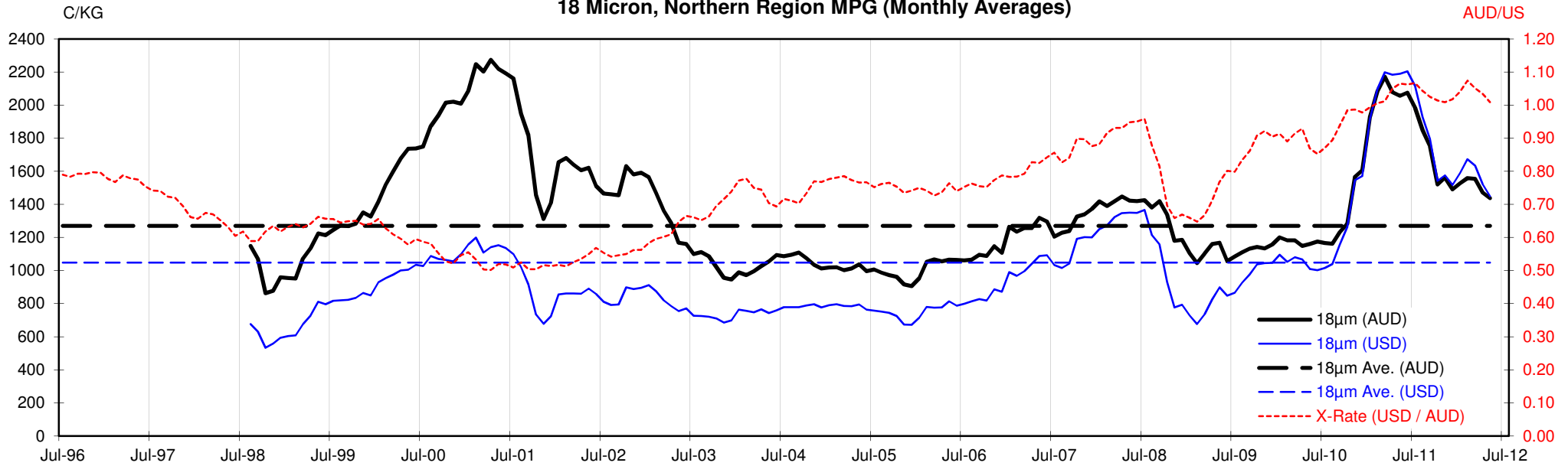
Thursdays market had wider spread competition with punctuated support for very high Nkt lots. Medium to broad microns contracted 10 to 15 cents with LB fault lots restricted to a narrow trading range (for 19 to 21 microns) and the high mid break lots still distinguished with significant discounts. Merino skirtings continued to lose ground as most descriptions closed 20 cents lower than the previous day, despite some support for the odd better length and good colour lot. All oddment categories lost ground with locks, stains and crutchings all losing 20 cents off their previous levels. On another very small offering 27 to 29 micron crossbreds remained unchanged (on a nominal basis) while 30 microns eased by 5-10 cents. 18.6% PI

In General, this weeks marked had significant holes re-appear for the lower style lots. Fleece, skirtings & oddments containing unscourable colour, cott/Jwl and or high Vm were heavily discounted, while locks containing shanks, colour and/or stain were also left behind. The heavy discounting for these types is a direct result of the increased volumes of these faulty types on offer, accompanied by the current low demand situation.

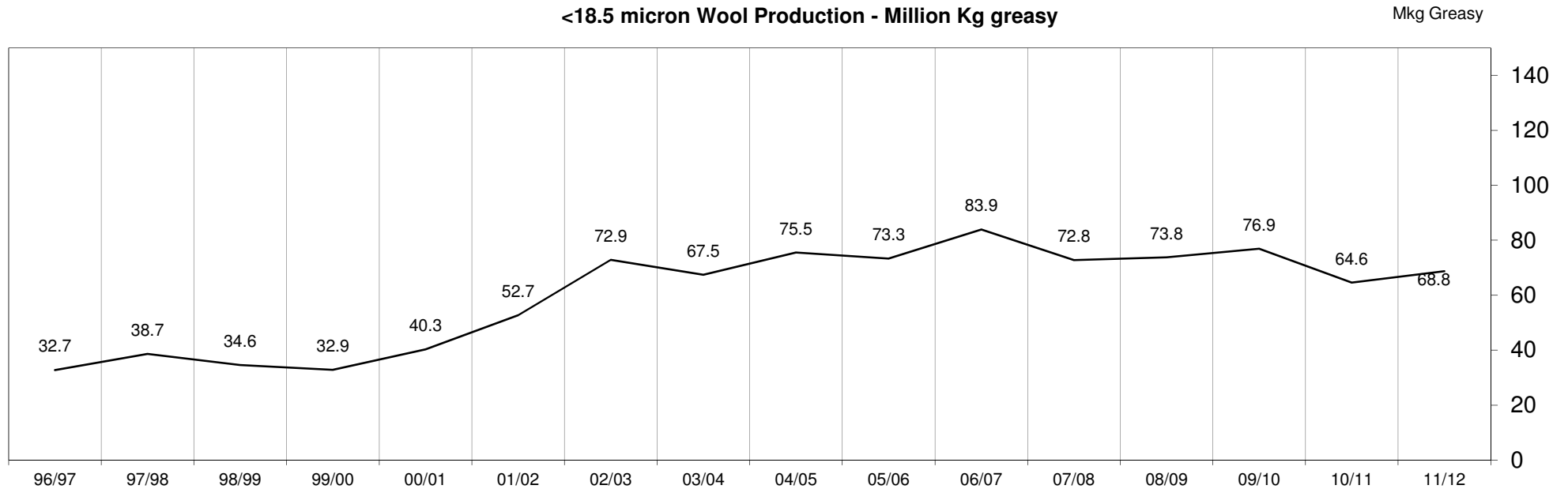


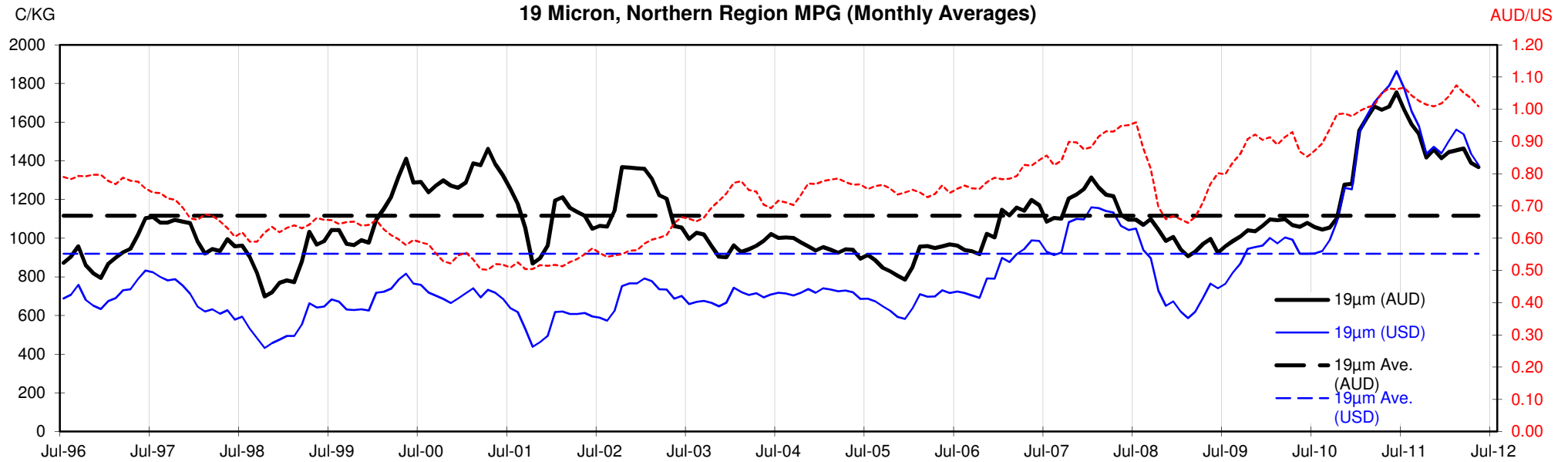


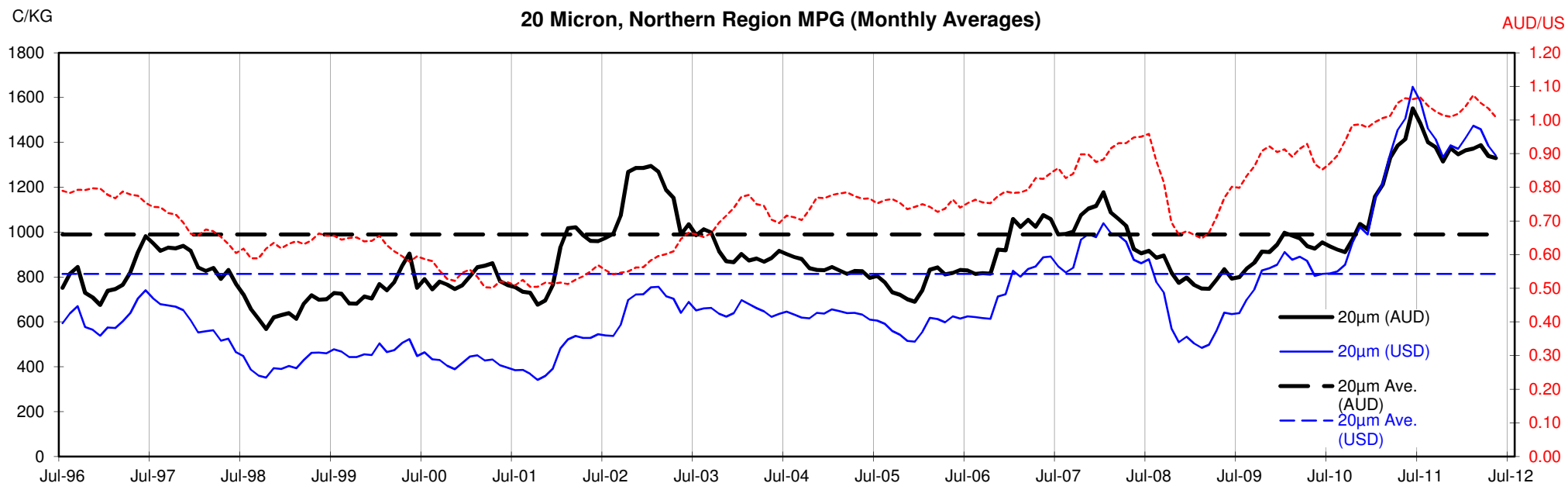
18 Micron, Northern Region MPG (Monthly Averages)

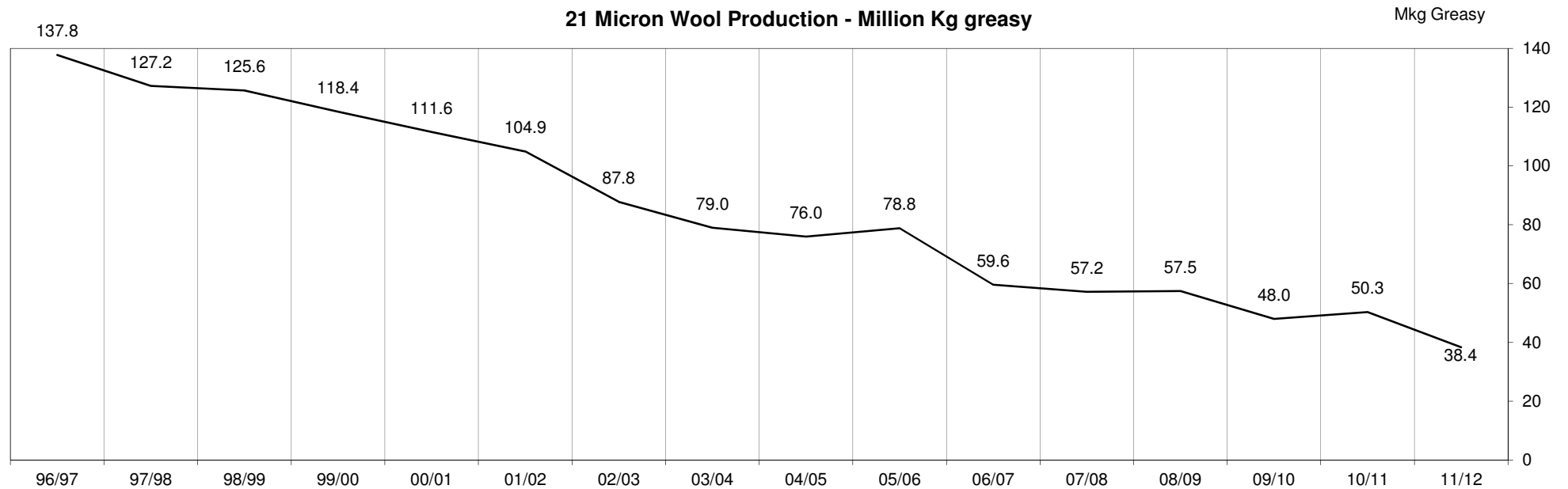
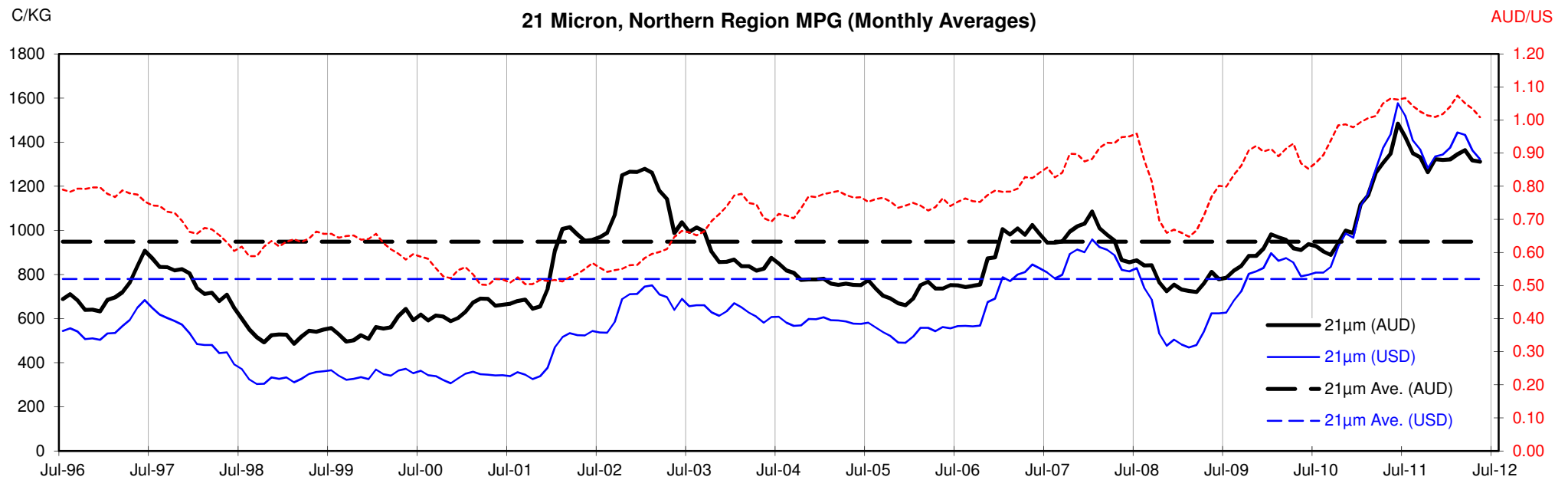


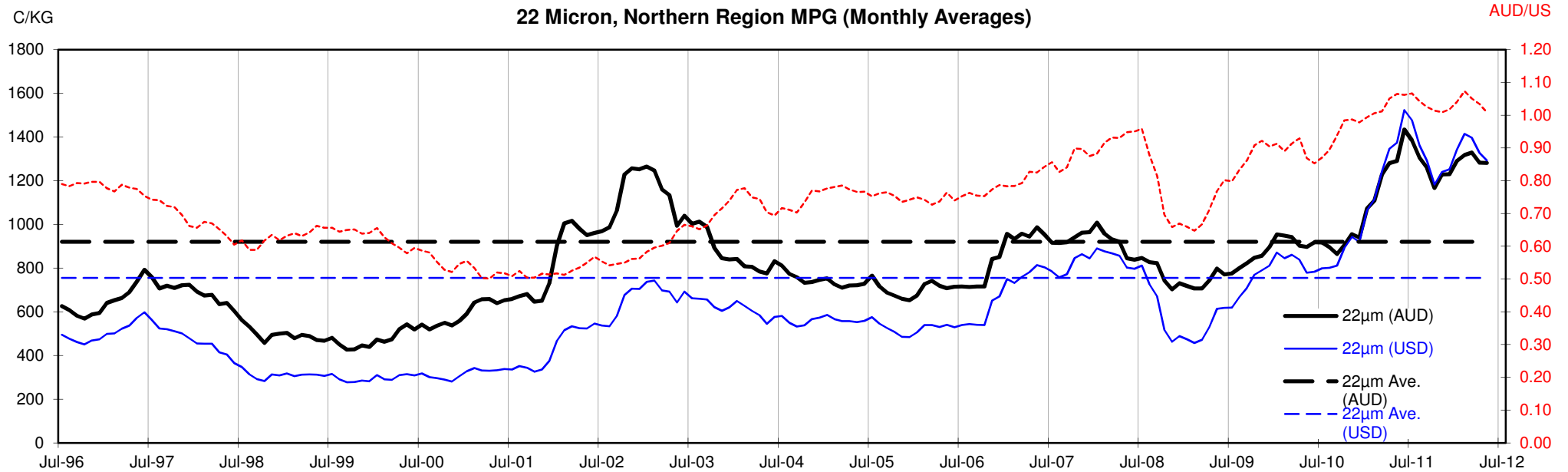
<18.5 micron Wool Production - Million Kg greasy

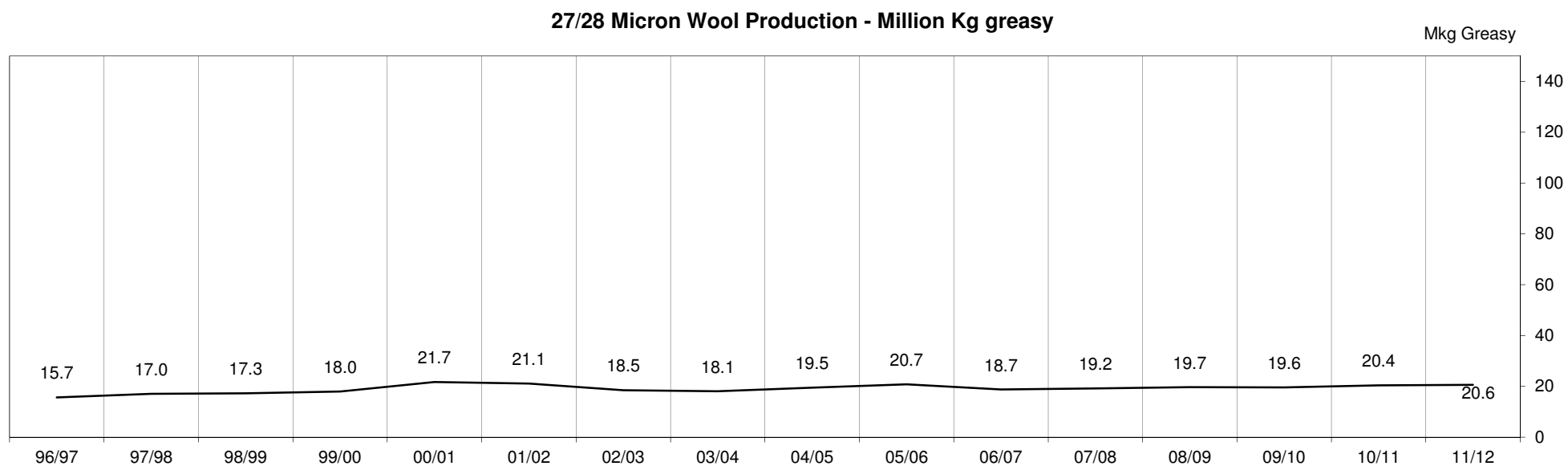
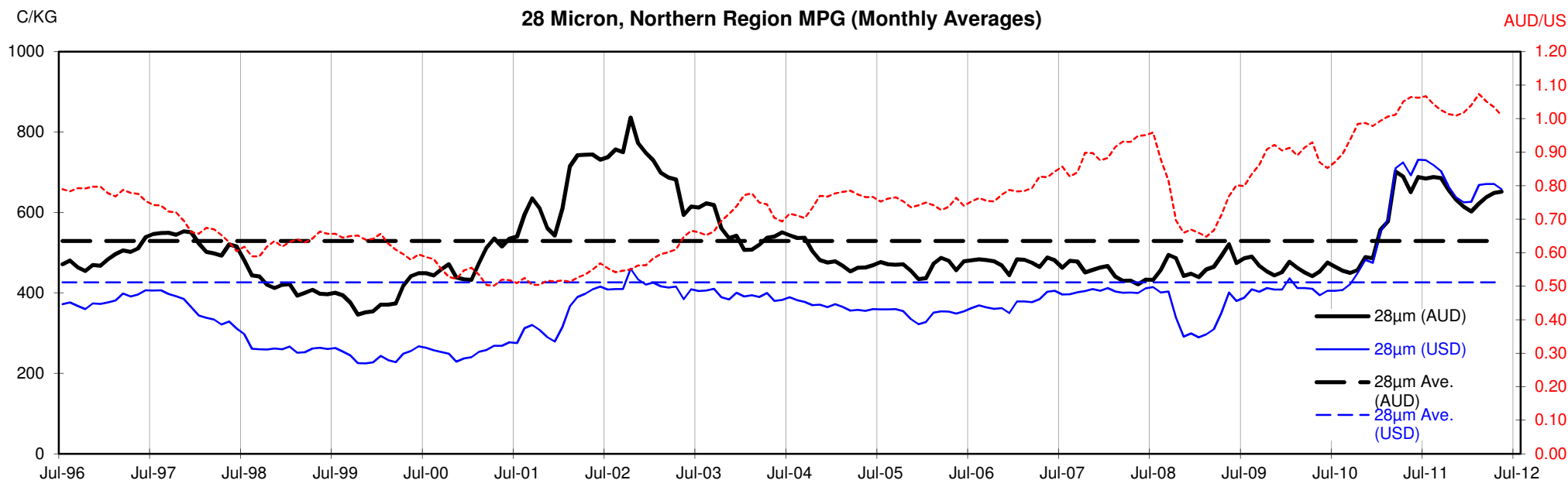












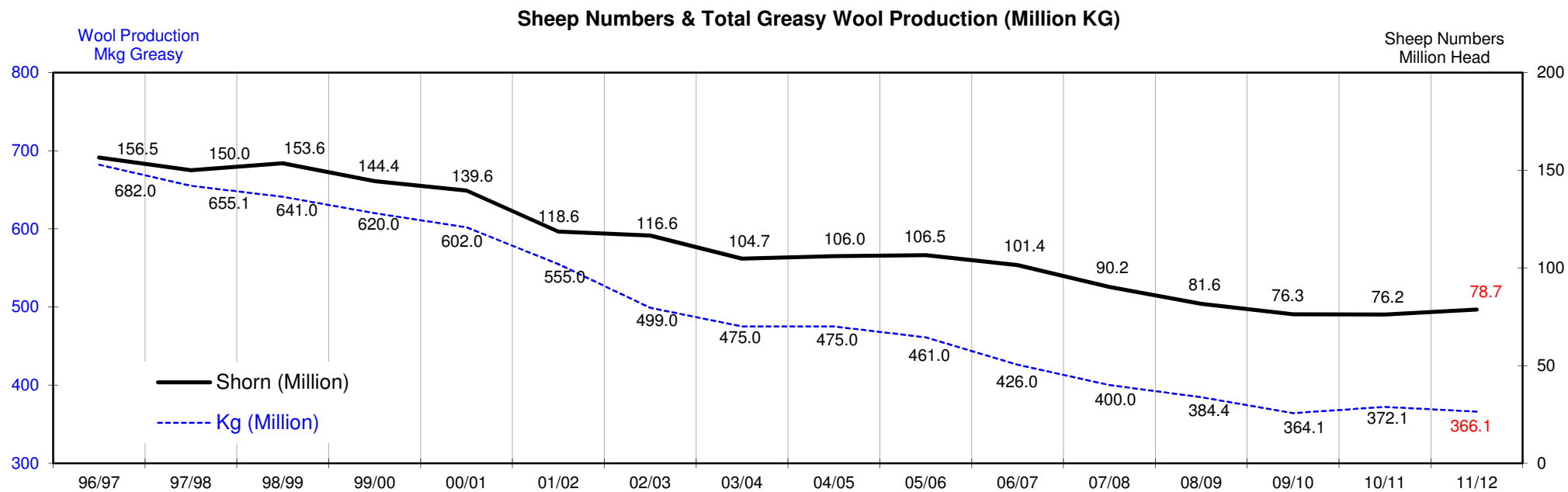
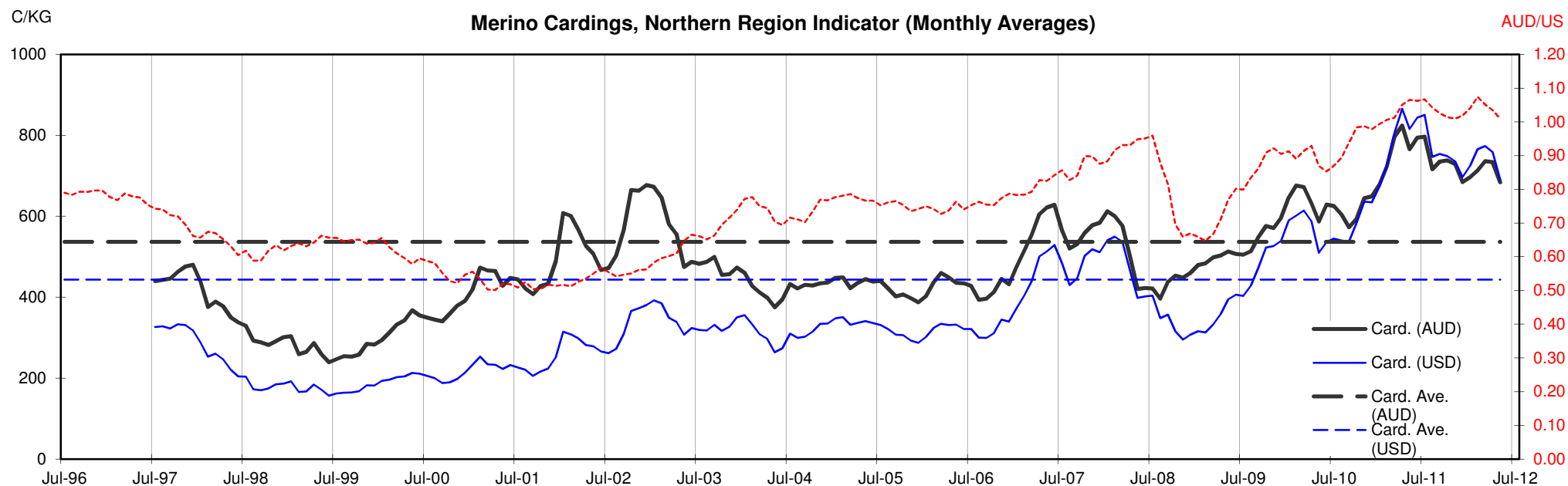




Table 13: Returns pr head for skirted fleece wool.

Skirted FLC Weight			Micron																	
			16	16.5	17	17.5	18	18.5	19	19.5	20	21	22	23	24	25	26	28	30	32
Yield (Sch Dry)	9 Kg																			
	25%	Current	\$45	\$41	\$35	\$33	\$31	\$30	\$30	\$30	\$29	\$29	\$28	\$28	\$25	\$23	\$20	\$15	\$13	\$11
		10yr ave.			\$33		\$29		\$25		\$22	\$21	\$21	\$20	\$19	\$17	\$15	\$12	\$10	\$9
	30%	Current	\$54	\$50	\$42	\$39	\$37	\$37	\$36	\$36	\$35	\$35	\$34	\$33	\$31	\$27	\$24	\$18	\$16	\$13
		10yr ave.			\$39		\$34		\$30		\$27	\$26	\$25	\$24	\$23	\$20	\$18	\$14	\$12	\$11
	35%	Current	\$63	\$58	\$49	\$46	\$43	\$43	\$42	\$42	\$41	\$41	\$40	\$39	\$36	\$32	\$28	\$20	\$18	\$15
		10yr ave.			\$46		\$40		\$35		\$31	\$30	\$29	\$28	\$26	\$23	\$21	\$17	\$15	\$13
	40%	Current	\$72	\$66	\$56	\$53	\$50	\$49	\$48	\$48	\$47	\$47	\$45	\$44	\$41	\$36	\$32	\$23	\$21	\$17
		10yr ave.			\$52		\$46		\$40		\$36	\$34	\$33	\$32	\$30	\$27	\$24	\$19	\$17	\$15
	45%	Current	\$81	\$75	\$63	\$59	\$56	\$55	\$54	\$54	\$53	\$52	\$51	\$50	\$46	\$41	\$36	\$26	\$23	\$20
		10yr ave.			\$59		\$51		\$45		\$40	\$38	\$37	\$36	\$34	\$30	\$27	\$21	\$19	\$17
	50%	Current	\$90	\$83	\$70	\$66	\$62	\$61	\$60	\$60	\$59	\$58	\$57	\$55	\$51	\$45	\$40	\$29	\$26	\$22
		10yr ave.			\$65		\$57		\$50		\$45	\$43	\$41	\$40	\$38	\$33	\$30	\$24	\$21	\$19
	55%	Current	\$99	\$91	\$77	\$72	\$68	\$67	\$66	\$65	\$65	\$64	\$62	\$61	\$56	\$50	\$44	\$32	\$29	\$24
	10yr ave.			\$72		\$63		\$55		\$49	\$47	\$46	\$44	\$42	\$37	\$33	\$26	\$23	\$21	
60%	Current	\$108	\$99	\$84	\$79	\$74	\$73	\$72	\$71	\$70	\$70	\$68	\$66	\$61	\$54	\$48	\$35	\$31	\$26	
	10yr ave.			\$79		\$69		\$60		\$53	\$51	\$50	\$48	\$45	\$40	\$36	\$29	\$25	\$22	
65%	Current	\$117	\$108	\$91	\$85	\$81	\$79	\$78	\$77	\$76	\$76	\$74	\$72	\$66	\$59	\$52	\$38	\$34	\$28	
	10yr ave.			\$85		\$74		\$65		\$58	\$56	\$54	\$52	\$49	\$43	\$39	\$31	\$27	\$24	
70%	Current	\$126	\$116	\$98	\$92	\$87	\$85	\$84	\$83	\$82	\$82	\$79	\$77	\$71	\$63	\$56	\$41	\$36	\$30	
	10yr ave.			\$92		\$80		\$70		\$62	\$60	\$58	\$56	\$53	\$47	\$43	\$33	\$29	\$26	
75%	Current	\$135	\$124	\$105	\$99	\$93	\$91	\$90	\$89	\$88	\$87	\$85	\$83	\$76	\$68	\$59	\$44	\$39	\$33	
	10yr ave.			\$98		\$86		\$75		\$67	\$64	\$62	\$60	\$57	\$50	\$46	\$36	\$31	\$28	
80%	Current	\$144	\$132	\$112	\$105	\$99	\$98	\$96	\$95	\$94	\$93	\$91	\$88	\$81	\$73	\$63	\$47	\$41	\$35	
	10yr ave.			\$105		\$92		\$80		\$71	\$68	\$66	\$64	\$60	\$53	\$49	\$38	\$33	\$30	
85%	Current	\$153	\$141	\$119	\$112	\$105	\$104	\$102	\$101	\$100	\$99	\$96	\$94	\$86	\$77	\$67	\$50	\$44	\$37	
	10yr ave.			\$111		\$97		\$85		\$76	\$73	\$70	\$68	\$64	\$57	\$52	\$40	\$35	\$32	

The above shows estimated returns per head for skirted fleece wool. These figures do not take into account the value of skirtings and oddments and do not take into account discounts that may apply for faults under individual circumstances. These figures are based on a market index of 100% and should be used as a guide only. Returns over \$30 / head for fleece wool are highlighted.

Source: Australian Wool Exchange, Australian Wool Innovation, Sydney Futures Exchange, x-rates.com

Disclaimer: While all due care has been taken in the preparation of this document, no warranty is made as to its accuracy, reliability or completeness. To the extent permitted by law neither Jemalong or their sources including subsidiaries and staff, accept liability to any person for loss or damage arising from the use of this information.



Table 14: Returns pr head for skirted fleece wool.

Skirted FLC Weight		Micron																	
8 Kg		16	16.5	17	17.5	18	18.5	19	19.5	20	21	22	23	24	25	26	28	30	32
Yield (Sch Dry)	25% Current	\$40	\$37	\$31	\$29	\$28	\$27	\$27	\$26	\$26	\$26	\$25	\$25	\$23	\$20	\$18	\$13	\$12	\$10
	10yr ave.			\$29		\$25		\$22		\$20	\$19	\$18	\$18	\$17	\$15	\$14	\$11	\$9	\$8
	30% Current	\$48	\$44	\$37	\$35	\$33	\$33	\$32	\$32	\$31	\$31	\$30	\$29	\$27	\$24	\$21	\$16	\$14	\$12
	10yr ave.			\$35		\$31		\$27		\$24	\$23	\$22	\$21	\$20	\$18	\$16	\$13	\$11	\$10
	35% Current	\$56	\$52	\$43	\$41	\$39	\$38	\$37	\$37	\$37	\$36	\$35	\$34	\$32	\$28	\$25	\$18	\$16	\$13
	10yr ave.			\$41		\$36		\$31		\$28	\$27	\$26	\$25	\$23	\$21	\$19	\$15	\$13	\$12
	40% Current	\$64	\$59	\$50	\$47	\$44	\$43	\$43	\$42	\$42	\$41	\$40	\$39	\$36	\$32	\$28	\$21	\$18	\$15
	10yr ave.			\$47		\$41		\$36		\$32	\$30	\$29	\$29	\$27	\$24	\$22	\$17	\$15	\$13
	45% Current	\$72	\$66	\$56	\$53	\$50	\$49	\$48	\$48	\$47	\$47	\$45	\$44	\$41	\$36	\$32	\$23	\$21	\$17
	10yr ave.			\$52		\$46		\$40		\$36	\$34	\$33	\$32	\$30	\$27	\$24	\$19	\$17	\$15
	50% Current	\$80	\$74	\$62	\$58	\$55	\$54	\$54	\$53	\$52	\$52	\$50	\$49	\$45	\$40	\$35	\$26	\$23	\$19
	10yr ave.			\$58		\$51		\$45		\$40	\$38	\$37	\$36	\$34	\$30	\$27	\$21	\$18	\$17
	55% Current	\$88	\$81	\$68	\$64	\$61	\$60	\$59	\$58	\$57	\$57	\$55	\$54	\$50	\$44	\$39	\$29	\$25	\$21
	10yr ave.			\$64		\$56		\$49		\$44	\$42	\$40	\$39	\$37	\$33	\$30	\$23	\$20	\$18
	60% Current	\$96	\$88	\$74	\$70	\$66	\$65	\$64	\$64	\$63	\$62	\$61	\$59	\$54	\$48	\$42	\$31	\$28	\$23
	10yr ave.			\$70		\$61		\$54		\$48	\$46	\$44	\$43	\$40	\$36	\$32	\$25	\$22	\$20
	65% Current	\$104	\$96	\$81	\$76	\$72	\$70	\$70	\$69	\$68	\$67	\$66	\$64	\$59	\$52	\$46	\$34	\$30	\$25
	10yr ave.			\$76		\$66		\$58		\$51	\$49	\$48	\$46	\$44	\$39	\$35	\$28	\$24	\$22
	70% Current	\$112	\$103	\$87	\$82	\$77	\$76	\$75	\$74	\$73	\$73	\$71	\$69	\$63	\$56	\$49	\$36	\$32	\$27
	10yr ave.			\$81		\$71		\$62		\$55	\$53	\$52	\$50	\$47	\$42	\$38	\$30	\$26	\$23
	75% Current	\$120	\$110	\$93	\$88	\$83	\$81	\$80	\$79	\$78	\$78	\$76	\$74	\$68	\$60	\$53	\$39	\$35	\$29
	10yr ave.			\$87		\$76		\$67		\$59	\$57	\$55	\$53	\$50	\$45	\$41	\$32	\$28	\$25
	80% Current	\$128	\$118	\$99	\$93	\$88	\$87	\$86	\$85	\$84	\$83	\$81	\$78	\$72	\$64	\$56	\$42	\$37	\$31
	10yr ave.			\$93		\$81		\$71		\$63	\$61	\$59	\$57	\$54	\$48	\$43	\$34	\$30	\$27
	85% Current	\$136	\$125	\$105	\$99	\$94	\$92	\$91	\$90	\$89	\$88	\$86	\$83	\$77	\$68	\$60	\$44	\$39	\$33
	10yr ave.			\$99		\$86		\$76		\$67	\$65	\$63	\$61	\$57	\$51	\$46	\$36	\$31	\$28

The above shows estimated returns per head for skirted fleece wool. These figures do not take into account the value of skirtings and oddments and do not take into account discounts that may apply for faults under individual circumstances. These figures are based on a market index of 100% and should be used as a guide only. Returns over \$30 / head for fleece wool are highlighted.

Source: Australian Wool Exchange, Australian Wool Innovation, Sydney Futures Exchange, x-rates.com

Disclaimer: While all due care has been taken in the preparation of this document, no warranty is made as to its accuracy, reliability or completeness. To the extent permitted by law neither Jemalong or their sources including subsidiaries and staff, accept liability to any person for loss or damage arising from the use of this information.



Table 15: Returns pr head for skirted fleece wool.

Skirted FLC Weight		Micron																	
7 Kg		16	16.5	17	17.5	18	18.5	19	19.5	20	21	22	23	24	25	26	28	30	32
Yield (Sch Dry)	25% Current	\$35	\$32	\$27	\$26	\$24	\$24	\$23	\$23	\$23	\$23	\$22	\$21	\$20	\$18	\$15	\$11	\$10	\$8
	10yr ave.			\$25	\$22	\$22		\$20		\$17	\$17	\$16	\$16	\$15	\$13	\$12	\$9	\$8	\$7
	30% Current	\$42	\$39	\$33	\$31	\$29	\$28	\$28	\$28	\$27	\$27	\$26	\$26	\$24	\$21	\$19	\$14	\$12	\$10
	10yr ave.			\$31	\$27		\$23		\$21	\$20	\$19	\$19	\$18	\$16	\$14	\$11	\$10	\$9	
	35% Current	\$49	\$45	\$38	\$36	\$34	\$33	\$33	\$32	\$32	\$32	\$31	\$30	\$28	\$25	\$22	\$16	\$14	\$12
	10yr ave.			\$36	\$31		\$27		\$24	\$23	\$23	\$22	\$21	\$18	\$17	\$13	\$11	\$10	
	40% Current	\$56	\$52	\$43	\$41	\$39	\$38	\$37	\$37	\$37	\$36	\$35	\$34	\$32	\$28	\$25	\$18	\$16	\$13
	10yr ave.			\$41	\$36		\$31		\$28	\$27	\$26	\$25	\$23	\$21	\$19	\$15	\$13	\$12	
	45% Current	\$63	\$58	\$49	\$46	\$43	\$43	\$42	\$42	\$41	\$41	\$40	\$39	\$36	\$32	\$28	\$20	\$18	\$15
	10yr ave.			\$46	\$40		\$35		\$31	\$30	\$29	\$28	\$26	\$23	\$21	\$17	\$15	\$13	
	50% Current	\$70	\$64	\$54	\$51	\$48	\$47	\$47	\$46	\$46	\$45	\$44	\$43	\$40	\$35	\$31	\$23	\$20	\$17
	10yr ave.			\$51	\$44		\$39		\$35	\$33	\$32	\$31	\$29	\$26	\$24	\$19	\$16	\$15	
	55% Current	\$77	\$71	\$60	\$56	\$53	\$52	\$52	\$51	\$50	\$50	\$49	\$47	\$44	\$39	\$34	\$25	\$22	\$19
	10yr ave.			\$56	\$49		\$43		\$38	\$37	\$35	\$34	\$32	\$29	\$26	\$20	\$18	\$16	
	60% Current	\$84	\$77	\$65	\$61	\$58	\$57	\$56	\$56	\$55	\$54	\$53	\$51	\$47	\$42	\$37	\$27	\$24	\$20
	10yr ave.			\$61	\$53		\$47		\$42	\$40	\$39	\$37	\$35	\$31	\$28	\$22	\$19	\$17	
	65% Current	\$91	\$84	\$71	\$66	\$63	\$62	\$61	\$60	\$59	\$59	\$57	\$56	\$51	\$46	\$40	\$30	\$26	\$22
	10yr ave.			\$66	\$58		\$51		\$45	\$43	\$42	\$41	\$38	\$34	\$31	\$24	\$21	\$19	
	70% Current	\$98	\$90	\$76	\$72	\$68	\$66	\$66	\$65	\$64	\$64	\$62	\$60	\$55	\$49	\$43	\$32	\$28	\$24
	10yr ave.			\$71	\$62		\$55		\$49	\$47	\$45	\$44	\$41	\$36	\$33	\$26	\$23	\$20	
	75% Current	\$105	\$97	\$81	\$77	\$72	\$71	\$70	\$69	\$69	\$68	\$66	\$64	\$59	\$53	\$46	\$34	\$30	\$25
	10yr ave.			\$76	\$67		\$59		\$52	\$50	\$48	\$47	\$44	\$39	\$35	\$28	\$24	\$22	
	80% Current	\$112	\$103	\$87	\$82	\$77	\$76	\$75	\$74	\$73	\$73	\$71	\$69	\$63	\$56	\$49	\$36	\$32	\$27
	10yr ave.			\$81	\$71		\$62		\$55	\$53	\$52	\$50	\$47	\$42	\$38	\$30	\$26	\$23	
	85% Current	\$119	\$109	\$92	\$87	\$82	\$81	\$80	\$79	\$78	\$77	\$75	\$73	\$67	\$60	\$52	\$39	\$34	\$29
	10yr ave.			\$87	\$76		\$66		\$59	\$56	\$55	\$53	\$50	\$44	\$40	\$31	\$27	\$25	

The above shows estimated returns per head for skirted fleece wool. These figures do not take into account the value of skirtings and oddments and do not take into account discounts that may apply for faults under individual circumstances. These figures are based on a market index of 100% and should be used as a guide only. Returns over \$30 / head for fleece wool are highlighted.

Source: Australian Wool Exchange, Australian Wool Innovation, Sydney Futures Exchange, x-rates.com

Disclaimer: While all due care has been taken in the preparation of this document, no warranty is made as to its accuracy, reliability or completeness. To the extent permitted by law neither Jemalong or their sources including subsidiaries and staff, accept liability to any person for loss or damage arising from the use of this information.



Table 16: Returns pr head for skirted fleece wool.

Skirted FLC Weight		Micron																	
6 Kg		16	16.5	17	17.5	18	18.5	19	19.5	20	21	22	23	24	25	26	28	30	32
Yield (Sch Dry)	25% Current	\$30	\$28	\$23	\$22	\$21	\$20	\$20	\$20	\$20	\$19	\$19	\$18	\$17	\$15	\$13	\$10	\$9	\$7
	10yr ave.			\$22		\$19		\$17		\$15	\$14	\$14	\$13	\$13	\$11	\$10	\$8	\$7	\$6
	30% Current	\$36	\$33	\$28	\$26	\$25	\$24	\$24	\$24	\$23	\$23	\$23	\$22	\$20	\$18	\$16	\$12	\$10	\$9
	10yr ave.			\$26		\$23		\$20		\$18	\$17	\$17	\$16	\$15	\$13	\$12	\$10	\$8	\$7
	35% Current	\$42	\$39	\$33	\$31	\$29	\$28	\$28	\$28	\$27	\$27	\$26	\$26	\$24	\$21	\$19	\$14	\$12	\$10
	10yr ave.			\$31		\$27		\$23		\$21	\$20	\$19	\$19	\$18	\$16	\$14	\$11	\$10	\$9
	40% Current	\$48	\$44	\$37	\$35	\$33	\$33	\$32	\$32	\$31	\$31	\$30	\$29	\$27	\$24	\$21	\$16	\$14	\$12
	10yr ave.			\$35		\$31		\$27		\$24	\$23	\$22	\$21	\$20	\$18	\$16	\$13	\$11	\$10
	45% Current	\$54	\$50	\$42	\$39	\$37	\$37	\$36	\$36	\$35	\$35	\$34	\$33	\$31	\$27	\$24	\$18	\$16	\$13
	10yr ave.			\$39		\$34		\$30		\$27	\$26	\$25	\$24	\$23	\$20	\$18	\$14	\$12	\$11
	50% Current	\$60	\$55	\$47	\$44	\$41	\$41	\$40	\$40	\$39	\$39	\$38	\$37	\$34	\$30	\$26	\$20	\$17	\$14
	10yr ave.			\$44		\$38		\$33		\$30	\$28	\$28	\$27	\$25	\$22	\$20	\$16	\$14	\$12
	55% Current	\$66	\$61	\$51	\$48	\$45	\$45	\$44	\$44	\$43	\$43	\$42	\$40	\$37	\$33	\$29	\$21	\$19	\$16
	10yr ave.			\$48		\$42		\$37		\$33	\$31	\$30	\$29	\$28	\$25	\$22	\$17	\$15	\$14
	60% Current	\$72	\$66	\$56	\$53	\$50	\$49	\$48	\$48	\$47	\$47	\$45	\$44	\$41	\$36	\$32	\$23	\$21	\$17
	10yr ave.			\$52		\$46		\$40		\$36	\$34	\$33	\$32	\$30	\$27	\$24	\$19	\$17	\$15
	65% Current	\$78	\$72	\$60	\$57	\$54	\$53	\$52	\$52	\$51	\$51	\$49	\$48	\$44	\$39	\$34	\$25	\$22	\$19
	10yr ave.			\$57		\$50		\$43		\$39	\$37	\$36	\$35	\$33	\$29	\$26	\$21	\$18	\$16
	70% Current	\$84	\$77	\$65	\$61	\$58	\$57	\$56	\$56	\$55	\$54	\$53	\$51	\$47	\$42	\$37	\$27	\$24	\$20
	10yr ave.			\$61		\$53		\$47		\$42	\$40	\$39	\$37	\$35	\$31	\$28	\$22	\$19	\$17
	75% Current	\$90	\$83	\$70	\$66	\$62	\$61	\$60	\$60	\$59	\$58	\$57	\$55	\$51	\$45	\$40	\$29	\$26	\$22
	10yr ave.			\$65		\$57		\$50		\$45	\$43	\$41	\$40	\$38	\$33	\$30	\$24	\$21	\$19
	80% Current	\$96	\$88	\$74	\$70	\$66	\$65	\$64	\$64	\$63	\$62	\$61	\$59	\$54	\$48	\$42	\$31	\$28	\$23
	10yr ave.			\$70		\$61		\$54		\$48	\$46	\$44	\$43	\$40	\$36	\$32	\$25	\$22	\$20
	85% Current	\$102	\$94	\$79	\$74	\$70	\$69	\$68	\$67	\$67	\$66	\$64	\$62	\$58	\$51	\$45	\$33	\$29	\$25
	10yr ave.			\$74		\$65		\$57		\$50	\$48	\$47	\$45	\$43	\$38	\$34	\$27	\$24	\$21

The above shows estimated returns per head for skirted fleece wool. These figures do not take into account the value of skirtings and oddments and do not take into account discounts that may apply for faults under individual circumstances. These figures are based on a market index of 100% and should be used as a guide only. Returns over \$30 / head for fleece wool are highlighted.

Source: Australian Wool Exchange, Australian Wool Innovation, Sydney Futures Exchange, x-rates.com

Disclaimer: While all due care has been taken in the preparation of this document, no warranty is made as to its accuracy, reliability or completeness. To the extent permitted by law neither Jemalong or their sources including subsidiaries and staff, accept liability to any person for loss or damage arising from the use of this information.



Table 17: Returns pr head for skirted fleece wool.

Skirted FLC Weight		Micron																	
5 Kg		16	16.5	17	17.5	18	18.5	19	19.5	20	21	22	23	24	25	26	28	30	32
Yield (Sch Dry)	25% Current	\$25	\$23	\$19	\$18	\$17	\$17	\$17	\$17	\$16	\$16	\$16	\$15	\$14	\$13	\$11	\$8	\$7	\$6
	10yr ave.			\$18		\$16		\$14		\$12	\$12	\$12	\$11	\$10	\$9	\$8	\$7	\$6	\$5
	30% Current	\$30	\$28	\$23	\$22	\$21	\$20	\$20	\$20	\$20	\$19	\$19	\$18	\$17	\$15	\$13	\$10	\$9	\$7
	10yr ave.			\$22		\$19		\$17		\$15	\$14	\$14	\$13	\$13	\$11	\$10	\$8	\$7	\$6
	35% Current	\$35	\$32	\$27	\$26	\$24	\$24	\$23	\$23	\$23	\$23	\$22	\$21	\$20	\$18	\$15	\$11	\$10	\$8
	10yr ave.			\$25		\$22		\$20		\$17	\$17	\$16	\$16	\$15	\$13	\$12	\$9	\$8	\$7
	40% Current	\$40	\$37	\$31	\$29	\$28	\$27	\$27	\$26	\$26	\$26	\$25	\$25	\$23	\$20	\$18	\$13	\$12	\$10
	10yr ave.			\$29		\$25		\$22		\$20	\$19	\$18	\$18	\$17	\$15	\$14	\$11	\$9	\$8
	45% Current	\$45	\$41	\$35	\$33	\$31	\$30	\$30	\$30	\$29	\$29	\$28	\$28	\$25	\$23	\$20	\$15	\$13	\$11
	10yr ave.			\$33		\$29		\$25		\$22	\$21	\$21	\$20	\$19	\$17	\$15	\$12	\$10	\$9
	50% Current	\$50	\$46	\$39	\$37	\$34	\$34	\$33	\$33	\$33	\$32	\$32	\$31	\$28	\$25	\$22	\$16	\$14	\$12
	10yr ave.			\$36		\$32		\$28		\$25	\$24	\$23	\$22	\$21	\$19	\$17	\$13	\$12	\$10
	55% Current	\$55	\$51	\$43	\$40	\$38	\$37	\$37	\$36	\$36	\$36	\$35	\$34	\$31	\$28	\$24	\$18	\$16	\$13
	10yr ave.			\$40		\$35		\$31		\$27	\$26	\$25	\$25	\$23	\$20	\$19	\$15	\$13	\$11
	60% Current	\$60	\$55	\$47	\$44	\$41	\$41	\$40	\$40	\$39	\$39	\$38	\$37	\$34	\$30	\$26	\$20	\$17	\$14
	10yr ave.			\$44		\$38		\$33		\$30	\$28	\$28	\$27	\$25	\$22	\$20	\$16	\$14	\$12
	65% Current	\$65	\$60	\$50	\$47	\$45	\$44	\$43	\$43	\$42	\$42	\$41	\$40	\$37	\$33	\$29	\$21	\$19	\$16
	10yr ave.			\$47		\$41		\$36		\$32	\$31	\$30	\$29	\$27	\$24	\$22	\$17	\$15	\$14
	70% Current	\$70	\$64	\$54	\$51	\$48	\$47	\$47	\$46	\$46	\$45	\$44	\$43	\$40	\$35	\$31	\$23	\$20	\$17
	10yr ave.			\$51		\$44		\$39		\$35	\$33	\$32	\$31	\$29	\$26	\$24	\$19	\$16	\$15
	75% Current	\$75	\$69	\$58	\$55	\$52	\$51	\$50	\$50	\$49	\$49	\$47	\$46	\$42	\$38	\$33	\$24	\$22	\$18
	10yr ave.			\$55		\$48		\$42		\$37	\$36	\$35	\$33	\$31	\$28	\$25	\$20	\$17	\$16
	80% Current	\$80	\$74	\$62	\$58	\$55	\$54	\$54	\$53	\$52	\$52	\$50	\$49	\$45	\$40	\$35	\$26	\$23	\$19
	10yr ave.			\$58		\$51		\$45		\$40	\$38	\$37	\$36	\$34	\$30	\$27	\$21	\$18	\$17
	85% Current	\$85	\$78	\$66	\$62	\$59	\$58	\$57	\$56	\$55	\$55	\$54	\$52	\$48	\$43	\$37	\$28	\$24	\$20
	10yr ave.			\$62		\$54		\$47		\$42	\$40	\$39	\$38	\$36	\$32	\$29	\$22	\$20	\$18

The above shows estimated returns per head for skirted fleece wool. These figures do not take into account the value of skirtings and oddments and do not take into account discounts that may apply for faults under individual circumstances. These figures are based on a market index of 100% and should be used as a guide only. Returns over \$30 / head for fleece wool are highlighted.

Source: Australian Wool Exchange, Australian Wool Innovation, Sydney Futures Exchange, x-rates.com

Disclaimer: While all due care has been taken in the preparation of this document, no warranty is made as to its accuracy, reliability or completeness. To the extent permitted by law neither Jemalong or their sources including subsidiaries and staff, accept liability to any person for loss or damage arising from the use of this information.



Table 18: Returns pr head for skirted fleece wool.

Skirted FLC Weight 4 Kg		Micron																	
		16	16.5	17	17.5	18	18.5	19	19.5	20	21	22	23	24	25	26	28	30	32
Yield (Sch Dry)	25% Current	\$20	\$18	\$16	\$15	\$14	\$14	\$13	\$13	\$13	\$13	\$13	\$12	\$11	\$10	\$9	\$7	\$6	\$5
	10yr ave.			\$15		\$13		\$11		\$10	\$9	\$9	\$9	\$8	\$7	\$7	\$5	\$5	\$4
	30% Current	\$24	\$22	\$19	\$18	\$17	\$16	\$16	\$16	\$16	\$16	\$15	\$15	\$14	\$12	\$11	\$8	\$7	\$6
	10yr ave.			\$17		\$15		\$13		\$12	\$11	\$11	\$11	\$10	\$9	\$8	\$6	\$6	\$5
	35% Current	\$28	\$26	\$22	\$20	\$19	\$19	\$19	\$19	\$18	\$18	\$18	\$17	\$16	\$14	\$12	\$9	\$8	\$7
	10yr ave.			\$20		\$18		\$16		\$14	\$13	\$13	\$12	\$12	\$10	\$9	\$7	\$6	\$6
	40% Current	\$32	\$29	\$25	\$23	\$22	\$22	\$21	\$21	\$21	\$21	\$20	\$20	\$18	\$16	\$14	\$10	\$9	\$8
	10yr ave.			\$23		\$20		\$18		\$16	\$15	\$15	\$14	\$13	\$12	\$11	\$8	\$7	\$7
	45% Current	\$36	\$33	\$28	\$26	\$25	\$24	\$24	\$24	\$23	\$23	\$23	\$22	\$20	\$18	\$16	\$12	\$10	\$9
	10yr ave.			\$26		\$23		\$20		\$18	\$17	\$17	\$16	\$15	\$13	\$12	\$10	\$8	\$7
	50% Current	\$40	\$37	\$31	\$29	\$28	\$27	\$27	\$26	\$26	\$26	\$25	\$25	\$23	\$20	\$18	\$13	\$12	\$10
	10yr ave.			\$29		\$25		\$22		\$20	\$19	\$18	\$18	\$17	\$15	\$14	\$11	\$9	\$8
	55% Current	\$44	\$40	\$34	\$32	\$30	\$30	\$29	\$29	\$29	\$29	\$28	\$27	\$25	\$22	\$19	\$14	\$13	\$11
	10yr ave.			\$32		\$28		\$25		\$22	\$21	\$20	\$20	\$18	\$16	\$15	\$12	\$10	\$9
	60% Current	\$48	\$44	\$37	\$35	\$33	\$33	\$32	\$32	\$31	\$31	\$30	\$29	\$27	\$24	\$21	\$16	\$14	\$12
	10yr ave.			\$35		\$31		\$27		\$24	\$23	\$22	\$21	\$20	\$18	\$16	\$13	\$11	\$10
	65% Current	\$52	\$48	\$40	\$38	\$36	\$35	\$35	\$34	\$34	\$34	\$33	\$32	\$29	\$26	\$23	\$17	\$15	\$13
	10yr ave.			\$38		\$33		\$29		\$26	\$25	\$24	\$23	\$22	\$19	\$18	\$14	\$12	\$11
	70% Current	\$56	\$52	\$43	\$41	\$39	\$38	\$37	\$37	\$37	\$36	\$35	\$34	\$32	\$28	\$25	\$18	\$16	\$13
	10yr ave.			\$41		\$36		\$31		\$28	\$27	\$26	\$25	\$23	\$21	\$19	\$15	\$13	\$12
	75% Current	\$60	\$55	\$47	\$44	\$41	\$41	\$40	\$40	\$39	\$39	\$38	\$37	\$34	\$30	\$26	\$20	\$17	\$14
	10yr ave.			\$44		\$38		\$33		\$30	\$28	\$28	\$27	\$25	\$22	\$20	\$16	\$14	\$12
	80% Current	\$64	\$59	\$50	\$47	\$44	\$43	\$43	\$42	\$42	\$41	\$40	\$39	\$36	\$32	\$28	\$21	\$18	\$15
	10yr ave.			\$47		\$41		\$36		\$32	\$30	\$29	\$29	\$27	\$24	\$22	\$17	\$15	\$13
	85% Current	\$68	\$63	\$53	\$50	\$47	\$46	\$45	\$45	\$44	\$44	\$43	\$42	\$38	\$34	\$30	\$22	\$20	\$16
	10yr ave.			\$49		\$43		\$38		\$34	\$32	\$31	\$30	\$29	\$25	\$23	\$18	\$16	\$14

The above shows estimated returns per head for skirted fleece wool. These figures do not take into account the value of skirtings and oddments and do not take into account discounts that may apply for faults under individual circumstances. These figures are based on a market index of 100% and should be used as a guide only. Returns over \$30 / head for fleece wool are highlighted.

Source: Australian Wool Exchange, Australian Wool Innovation, Sydney Futures Exchange, x-rates.com

Disclaimer: While all due care has been taken in the preparation of this document, no warranty is made as to its accuracy, reliability or completeness. To the extent permitted by law neither Jemalong or their sources including subsidiaries and staff, accept liability to any person for loss or damage arising from the use of this information.



Table 19: Returns pr head for skirted fleece wool.

Skirted FLC Weight		Micron																	
3 Kg		16	16.5	17	17.5	18	18.5	19	19.5	20	21	22	23	24	25	26	28	30	32
Yield (Sch Dry)	25% Current	\$15	\$14	\$12	\$11	\$10	\$10	\$10	\$10	\$10	\$10	\$9	\$9	\$8	\$8	\$7	\$5	\$4	\$4
	10yr ave.			\$11		\$10		\$8		\$7	\$7	\$7	\$7	\$6	\$6	\$5	\$4	\$3	\$3
	30% Current	\$18	\$17	\$14	\$13	\$12	\$12	\$12	\$12	\$12	\$12	\$11	\$11	\$10	\$9	\$8	\$6	\$5	\$4
	10yr ave.			\$13		\$11		\$10		\$9	\$9	\$8	\$8	\$8	\$7	\$6	\$5	\$4	\$4
	35% Current	\$21	\$19	\$16	\$15	\$14	\$14	\$14	\$14	\$14	\$14	\$13	\$13	\$12	\$11	\$9	\$7	\$6	\$5
	10yr ave.			\$15		\$13		\$12		\$10	\$10	\$10	\$9	\$9	\$8	\$7	\$6	\$5	\$4
	40% Current	\$24	\$22	\$19	\$18	\$17	\$16	\$16	\$16	\$16	\$16	\$15	\$15	\$14	\$12	\$11	\$8	\$7	\$6
	10yr ave.			\$17		\$15		\$13		\$12	\$11	\$11	\$11	\$10	\$9	\$8	\$6	\$6	\$5
	45% Current	\$27	\$25	\$21	\$20	\$19	\$18	\$18	\$18	\$18	\$17	\$17	\$17	\$15	\$14	\$12	\$9	\$8	\$7
	10yr ave.			\$20		\$17		\$15		\$13	\$13	\$12	\$12	\$11	\$10	\$9	\$7	\$6	\$6
	50% Current	\$30	\$28	\$23	\$22	\$21	\$20	\$20	\$20	\$20	\$19	\$19	\$18	\$17	\$15	\$13	\$10	\$9	\$7
	10yr ave.			\$22		\$19		\$17		\$15	\$14	\$14	\$13	\$13	\$11	\$10	\$8	\$7	\$6
	55% Current	\$33	\$30	\$26	\$24	\$23	\$22	\$22	\$22	\$22	\$21	\$21	\$20	\$19	\$17	\$15	\$11	\$10	\$8
	10yr ave.			\$24		\$21		\$18		\$16	\$16	\$15	\$15	\$14	\$12	\$11	\$9	\$8	\$7
	60% Current	\$36	\$33	\$28	\$26	\$25	\$24	\$24	\$24	\$23	\$23	\$23	\$22	\$20	\$18	\$16	\$12	\$10	\$9
	10yr ave.			\$26		\$23		\$20		\$18	\$17	\$17	\$16	\$15	\$13	\$12	\$10	\$8	\$7
	65% Current	\$39	\$36	\$30	\$28	\$27	\$26	\$26	\$26	\$25	\$25	\$25	\$24	\$22	\$20	\$17	\$13	\$11	\$9
	10yr ave.			\$28		\$25		\$22		\$19	\$19	\$18	\$17	\$16	\$14	\$13	\$10	\$9	\$8
	70% Current	\$42	\$39	\$33	\$31	\$29	\$28	\$28	\$28	\$27	\$27	\$26	\$26	\$24	\$21	\$19	\$14	\$12	\$10
	10yr ave.			\$31		\$27		\$23		\$21	\$20	\$19	\$19	\$18	\$16	\$14	\$11	\$10	\$9
	75% Current	\$45	\$41	\$35	\$33	\$31	\$30	\$30	\$30	\$29	\$29	\$28	\$28	\$25	\$23	\$20	\$15	\$13	\$11
	10yr ave.			\$33		\$29		\$25		\$22	\$21	\$21	\$20	\$19	\$17	\$15	\$12	\$10	\$9
	80% Current	\$48	\$44	\$37	\$35	\$33	\$33	\$32	\$32	\$31	\$31	\$30	\$29	\$27	\$24	\$21	\$16	\$14	\$12
	10yr ave.			\$35		\$31		\$27		\$24	\$23	\$22	\$21	\$20	\$18	\$16	\$13	\$11	\$10
	85% Current	\$51	\$47	\$40	\$37	\$35	\$35	\$34	\$34	\$33	\$33	\$32	\$31	\$29	\$26	\$22	\$17	\$15	\$12
	10yr ave.			\$37		\$32		\$28		\$25	\$24	\$23	\$23	\$21	\$19	\$17	\$13	\$12	\$11

The above shows estimated returns per head for skirted fleece wool. These figures do not take into account the value of skirtings and oddments and do not take into account discounts that may apply for faults under individual circumstances. These figures are based on a market index of 100% and should be used as a guide only. Returns over \$30 / head for fleece wool are highlighted.

Source: Australian Wool Exchange, Australian Wool Innovation, Sydney Futures Exchange, x-rates.com

Disclaimer: While all due care has been taken in the preparation of this document, no warranty is made as to its accuracy, reliability or completeness. To the extent permitted by law neither Jemalong or their sources including subsidiaries and staff, accept liability to any person for loss or damage arising from the use of this information.



Table 20: Returns pr head for skirted fleece wool.

Skirted FLC Weight		Micron																	
2 Kg		16	16.5	17	17.5	18	18.5	19	19.5	20	21	22	23	24	25	26	28	30	32
Yield (Sch Dry)	25% Current	\$10	\$9	\$8	\$7	\$7	\$7	\$7	\$7	\$7	\$6	\$6	\$6	\$6	\$5	\$4	\$3	\$3	\$2
	10yr ave.			\$7		\$6		\$6		\$5	\$5	\$5	\$4	\$4	\$4	\$3	\$3	\$2	\$2
	30% Current	\$12	\$11	\$9	\$9	\$8	\$8	\$8	\$8	\$8	\$8	\$8	\$7	\$7	\$6	\$5	\$4	\$3	\$3
	10yr ave.			\$9		\$8		\$7		\$6	\$6	\$6	\$5	\$5	\$4	\$4	\$3	\$3	\$2
	35% Current	\$14	\$13	\$11	\$10	\$10	\$9	\$9	\$9	\$9	\$9	\$9	\$9	\$8	\$7	\$6	\$5	\$4	\$3
	10yr ave.			\$10		\$9		\$8		\$7	\$7	\$6	\$6	\$6	\$5	\$5	\$4	\$3	\$3
	40% Current	\$16	\$15	\$12	\$12	\$11	\$11	\$11	\$11	\$10	\$10	\$10	\$10	\$9	\$8	\$7	\$5	\$5	\$4
	10yr ave.			\$12		\$10		\$9		\$8	\$8	\$7	\$7	\$7	\$6	\$5	\$4	\$4	\$3
	45% Current	\$18	\$17	\$14	\$13	\$12	\$12	\$12	\$12	\$12	\$12	\$11	\$11	\$10	\$9	\$8	\$6	\$5	\$4
	10yr ave.			\$13		\$11		\$10		\$9	\$9	\$8	\$8	\$8	\$7	\$6	\$5	\$4	\$4
	50% Current	\$20	\$18	\$16	\$15	\$14	\$14	\$13	\$13	\$13	\$13	\$13	\$12	\$11	\$10	\$9	\$7	\$6	\$5
	10yr ave.			\$15		\$13		\$11		\$10	\$9	\$9	\$9	\$8	\$7	\$7	\$5	\$5	\$4
	55% Current	\$22	\$20	\$17	\$16	\$15	\$15	\$15	\$15	\$14	\$14	\$14	\$13	\$12	\$11	\$10	\$7	\$6	\$5
	10yr ave.			\$16		\$14		\$12		\$11	\$10	\$10	\$10	\$9	\$8	\$7	\$6	\$5	\$5
	60% Current	\$24	\$22	\$19	\$18	\$17	\$16	\$16	\$16	\$16	\$16	\$15	\$15	\$14	\$12	\$11	\$8	\$7	\$6
	10yr ave.			\$17		\$15		\$13		\$12	\$11	\$11	\$11	\$10	\$9	\$8	\$6	\$6	\$5
	65% Current	\$26	\$24	\$20	\$19	\$18	\$18	\$17	\$17	\$17	\$17	\$16	\$16	\$15	\$13	\$11	\$8	\$7	\$6
	10yr ave.			\$19		\$17		\$14		\$13	\$12	\$12	\$12	\$11	\$10	\$9	\$7	\$6	\$5
	70% Current	\$28	\$26	\$22	\$20	\$19	\$19	\$19	\$19	\$18	\$18	\$18	\$17	\$16	\$14	\$12	\$9	\$8	\$7
	10yr ave.			\$20		\$18		\$16		\$14	\$13	\$13	\$12	\$12	\$10	\$9	\$7	\$6	\$6
	75% Current	\$30	\$28	\$23	\$22	\$21	\$20	\$20	\$20	\$20	\$19	\$19	\$18	\$17	\$15	\$13	\$10	\$9	\$7
	10yr ave.			\$22		\$19		\$17		\$15	\$14	\$14	\$13	\$13	\$11	\$10	\$8	\$7	\$6
	80% Current	\$32	\$29	\$25	\$23	\$22	\$22	\$21	\$21	\$21	\$21	\$20	\$20	\$18	\$16	\$14	\$10	\$9	\$8
	10yr ave.			\$23		\$20		\$18		\$16	\$15	\$15	\$14	\$13	\$12	\$11	\$8	\$7	\$7
	85% Current	\$34	\$31	\$26	\$25	\$23	\$23	\$23	\$22	\$22	\$22	\$21	\$21	\$19	\$17	\$15	\$11	\$10	\$8
	10yr ave.			\$25		\$22		\$19		\$17	\$16	\$16	\$15	\$14	\$13	\$11	\$9	\$8	\$7

The above shows estimated returns per head for skirted fleece wool. These figures do not take into account the value of skirtings and oddments and do not take into account discounts that may apply for faults under individual circumstances. These figures are based on a market index of 100% and should be used as a guide only. Returns over \$30 / head for fleece wool are highlighted.

Source: Australian Wool Exchange, Australian Wool Innovation, Sydney Futures Exchange, x-rates.com

Disclaimer: While all due care has been taken in the preparation of this document, no warranty is made as to its accuracy, reliability or completeness. To the extent permitted by law neither Jemalong or their sources including subsidiaries and staff, accept liability to any person for loss or damage arising from the use of this information.