



Table 1: Northern Region Micron Price Guides

CURRENT MARKET				PERCENTILES		AVERAGES						12 MONTH COMPARISONS								TRADING RANGE			
Mic.	18/11/2010	11/11/2010						Now		Now		17/11/2009	Now		Now		Now		Clean c/kg				
Price	Current	Weekly				<u>3 year</u>	compared		<u>10 year</u>	compared		This time	compared		12 Month	compared		12 Month	compared		12	3	10
Guides	Price	Change		3yr	10yr	Average	to 3yr ave		Average	to 10yr ave		Last Year	to Last Year		Low	to Low		High	to High		Mth	Year	Year
NRI	1077	+6 0.6%		98%	93%	896	+181 20%		869	+208 24%		880	+197 22%		890	+187 21%		1077	0 0%		187	343	584
16*	2050	+50 2.4%		100%		1627	+423 26%					1400	+650 46%		1345	+705 52%		2050	0 0%		705	665	
16.5*	1980	+155 7.8%		100%		1488	+492 33%					1300	+680 52%		1260	+720 57%		1980	0 0%		720	728	
17*	1815	+110 6.1%		100%	96%	1364	+451 33%		1408	+407 29%		1195	+620 52%		1180	+635 54%		1815	0 0%		635	646	1797
17.5*	1725	+110 6.4%		100%		1300	+425 33%					1180	+545 46%		1160	+565 49%		1725	0 0%		565	641	
18	1632	+92 5.6%		100%	88%	1240	+392 32%		1286	+346 27%		1129	+503 45%		1134	+498 44%		1632	0 0%		498	597	1392
18.5	1507	+76 5.0%		100%		1166	+341 29%					1082	+425 39%		1088	+419 39%		1507	0 0%		419	536	
19	1306	+10 0.8%		98%	90%	1071	+235 22%		1066	+240 23%		1031	+275 27%		1031	+275 27%		1306	0 0%		275	443	706
19.5	1140	-28 -2.5%		88%		985	+155 16%					960	+180 19%		952	+188 20%		1168	-28 -2%		216	457	
20	1039	-37 -3.6%		86%	84%	914	+125 14%		913	+126 14%		902	+137 15%		904	+135 15%		1076	-37 -3%		172	465	717
21	1003	-36 -3.6%		92%	83%	877	+126 14%		867	+136 16%		875	+128 15%		878	+125 14%		1039	-36 -3%		161	427	737
22	960	-30 -3.1%		91%	78%	853	+107 13%		844	+116 14%		854	+106 12%		847	+113 13%		990	-30 -3%		143	361	735
23	917	-12 -1.3%		86%	74%	830	+87 10%		823	+94 11%		820	+97 12%		827	+90 11%		940	-23 -2%		113	311	728
24	843	-14 -1.7%		85%	73%	783	+60 8%		787	+56 7%		760	+83 11%		779	+64 8%		881	-38 -4%		102	257	705
25	779	-2 -0.3%		99%	80%	671	+108 16%		707	+72 10%		654	+125 19%		650	+129 20%		781	-2 0%		131	215	650
26	696	+10 1.4%		100%	79%	601	+95 16%		648	+48 7%		581	+115 20%		560	+136 24%		696	0 0%		136	192	589
28	499	+3 0.6%		94%	58%	460	+39 8%		521	-22 -4%		445	+54 12%		430	+69 16%		502	-3 -1%		72	119	465
30	444	+1 0.2%		96%	59%	397	+47 12%		455	-11 -2%		381	+63 17%		377	+67 18%		447	-3 -1%		70	128	385
32	410	+3 0.7%		100%	60%	346	+64 18%		412	-2 0%		337	+73 22%		331	+79 24%		410	0 0%		79	104	372
MC	651	+12 1.8%		92%	93%	542	+109 20%		498	+153 31%		567	+84 15%		561	+90 16%		681	-30 -4%		120	289	304

Note:

* Due to the irregular market quoting for some fine wool categories, figures shown relating to micron categories below 18 micron are an estimate based on the AWEX Premium & Discounts Report & other available information.

* For any category, where there is insufficient quantity offered to enable AWEX to quote, a quote will be provided based on the best available information.

* 10 Year data is not available for some micron categories, which may result in blank spaces in the table above.

Definitions:

* A Percentile, is a value on a scale of one hundred that indicates the percent of a distribution that is equal to or below it. In general a percentile between 25% and 75% is considered normal, a percentile below 25% is considered below normal and a percentile above 75% is considered above normal.

Three and ten year percentiles shown in the table above, detail the period of time during the past 3 & 10 years that the market has traded either at or below its current price.

The higher the percentile, the stronger the market.

Source: Australian Wool Exchange, Australian Wool Innovation, Sydney Futures Exchange, x-rates.com

Disclaimer: While all due care has been taken in the preparation of this document, no warranty is made as to its accuracy, reliability or completeness. To the extent permitted by law neither Jemalong or their sources including subsidiaries and staff, accept liability to any person for loss or damage arising from the use of this information.



MARKET COMMENTARY

Australian Dollar 84.28 cents US as of 18/11/2010

NORTHERN REGION – Sale Week 20/10 (62,504 bales offered nationally)

Merino Fleece - As the AUD dropped below parity, the finer microns continued onward & upward, with most fine categories gaining between 90 & 150 cents. 19 microns closed the week around 10 cents dearer, while the broader end fell 15-40 cents, with buyers taking a "wait and see" approach, in response to the currency movement. A minor correction after the sharp rises of recent weeks, was to be expected.

Merino Skirting's - On Wednesday the gap between the freer types and burrier types widened with <4% Vm types improving by up to 50 cents, while the burrier types eased with the finer microns most affected. On Thursday the finer microns once again attracted strong competition, while the broader end closed in buyers favour.

Oddments - Locks closed the week generally unchanged, while crutching's were around 10 cents dearer and stains closing 30-40 cents dearer.

Crossbreds: 26 to 32 microns maintained good support and generally closed in sellers favour on Wednesday. On Thursday the broader end drifted back into buyers favour, finishing the week unchanged to slightly dearer.

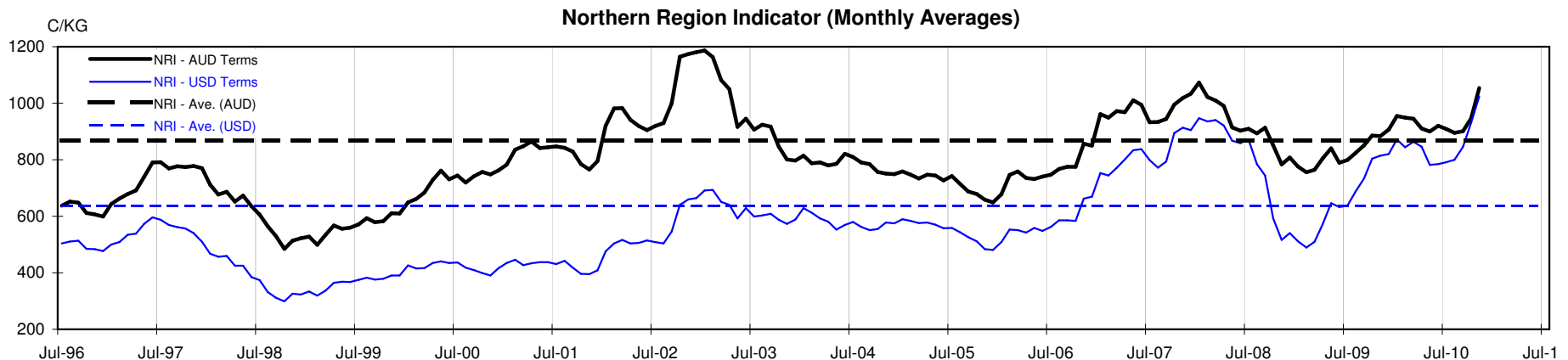




Table 4: 19 micron SFE

Wednesday, 17 November 2010

Delivery Mth	Dec-10	Feb-11	Apr-11	Jun-11	Aug-11	Oct-11	Dec-11	Feb-12	Apr-12
19 Micron SFE	1230	1230	1265	1265	1265	1255	1230	1210	1170
Average	1032	1048	1055	1061	1064	1065	1064	1074	1090
Maximum	1106	1230	1230	1265	1265	1265	1265	1240	1240
Minimum	905	936	983	1025	1034	1034	1034	1034	1053

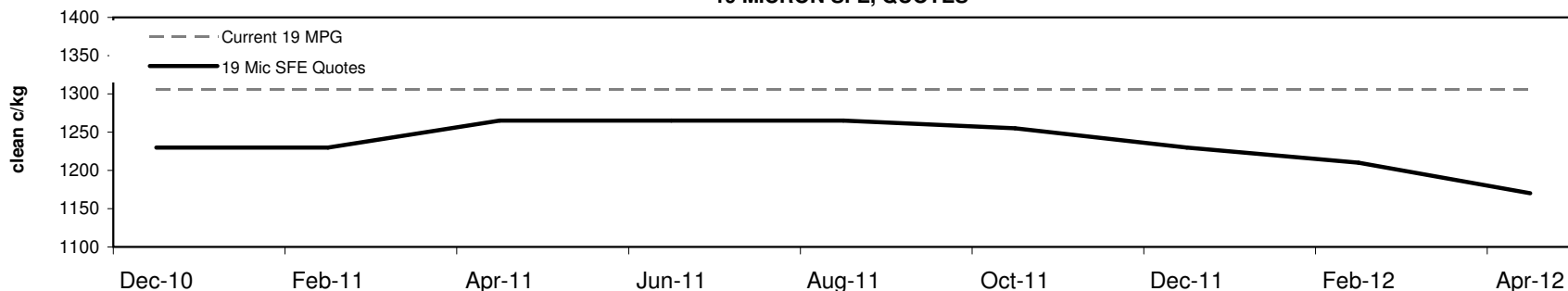
Table 5: 19 micron SFE, as a percentile of the 19 micron MPG

3 Year Percentile	89%	89%	93%	93%	93%	92%	89%	86%	84%
10 Year Percentile	84%	84%	87%	87%	87%	87%	84%	81%	78%

Table 6: 19 micron SFE, compared to MPG

Current 19 MPG	-76	-6%	-76	-6%	-41	-3%	-41	-3%	-41	-3%	-51	-4%	-76	-6%	-96	-7%	-136	-10%
19 MPG, 1 Year Average	+139	13%	+139	13%	+174	16%	+174	16%	+174	16%	+164	15%	+139	13%	+119	11%	+79	7%
19 MPG, 3 Year Average	+159	15%	+159	15%	+194	18%	+194	18%	+194	18%	+184	17%	+159	15%	+139	13%	+99	9%
19 MPG, 10 Year Average	+164	15%	+164	15%	+199	19%	+199	19%	+199	19%	+189	18%	+164	15%	+144	14%	+104	10%

19 MICRON SFE, QUOTES



19 MICRON SFE, FRONT MONTH PRICE MOVEMENT (mthly averages)

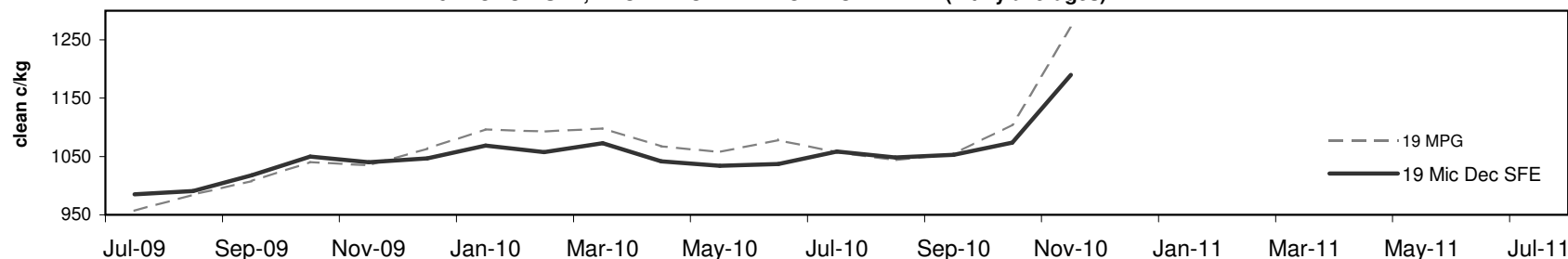




Table 7: 21 micron SFE

Wednesday, 17 November 2010

Delivery Mth	Dec-10	Feb-11	Apr-11	Jun-11	Aug-11	Oct-11	Dec-11	Feb-12	Apr-12
21 Micron SFE	1010	1013	1017	1013	1005	1009	1009	1009	1009
Average	914	928	936	939	940	931	921	919	927
Maximum	1013	1020	1025	1026	1025	1015	1015	1015	1015
Minimum	780	818	860	891	890	880	880	880	880

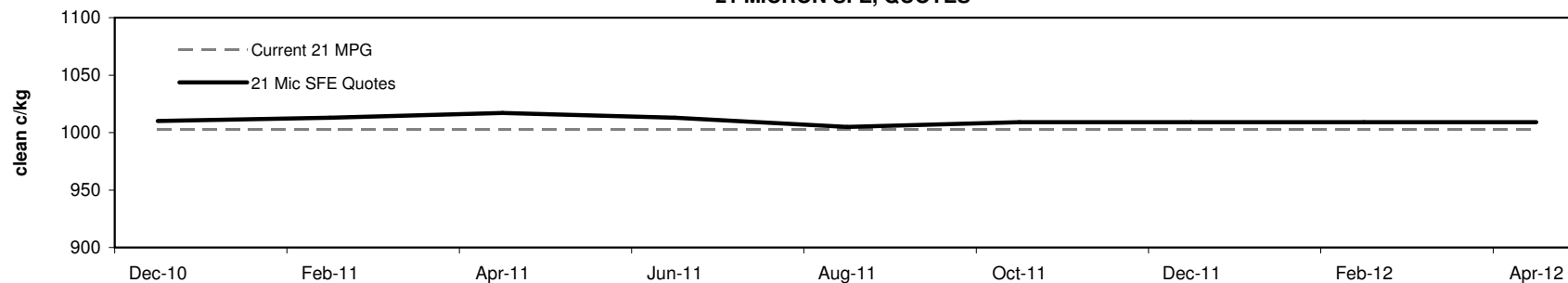
Table 8: 21 micron SFE, as a percentile of the 21 micron MPG

3 Year Percentile	93%	93%	93%	93%	92%	93%	93%	93%	93%
10 Year Percentile	85%	86%	86%	86%	84%	85%	85%	85%	85%

Table 9: 21 micron SFE, compared to MPG

Current 21 MPG	+7	1%	+10	1%	+14	1%	+10	1%	+2	0%	+6	1%	+6	1%	+6	1%	+6	1%
21 MPG, 1 Year Average	+71	8%	+74	8%	+78	8%	+74	8%	+66	7%	+70	7%	+70	7%	+70	7%	+70	7%
21 MPG, 3 Year Average	+133	15%	+136	16%	+140	16%	+136	16%	+128	15%	+132	15%	+132	15%	+132	15%	+132	15%
21 MPG, 10 Year Average	+143	16%	+146	17%	+150	17%	+146	17%	+138	16%	+142	16%	+142	16%	+142	16%	+142	16%

21 MICRON SFE, QUOTES



21 MICRON SFE, FRONT MONTH PRICE MOVEMENT (monthly averages)

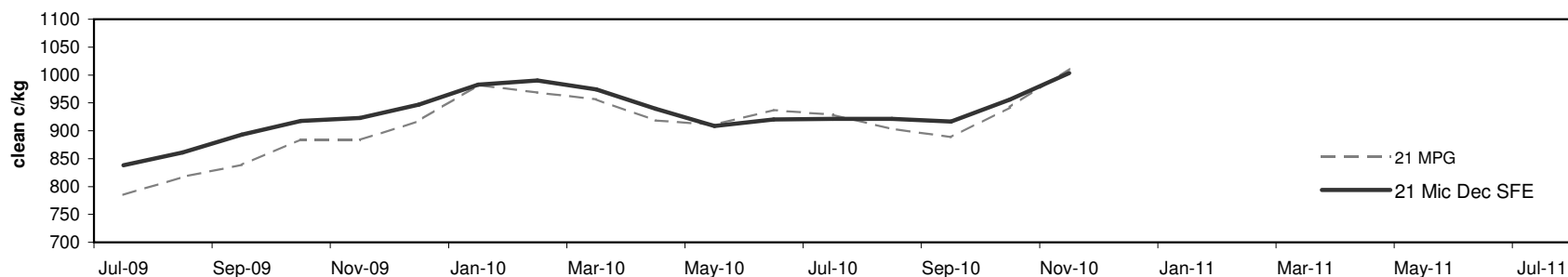




Table 10: 23 micron SFE

Wednesday, 17 November 2010

Delivery Mth	Dec-10	Feb-11	Apr-11	Jun-11	Aug-11	Oct-11	Dec-11	Feb-12	Apr-12
23 Micron SFE	883	883	883	883	883	883	883	883	883
Average	839	854	863	873	886	892	884	885	886
Maximum	927	927	927	927	927	927	887	887	887
Minimum	716	760	760	803	803	883	883	883	883

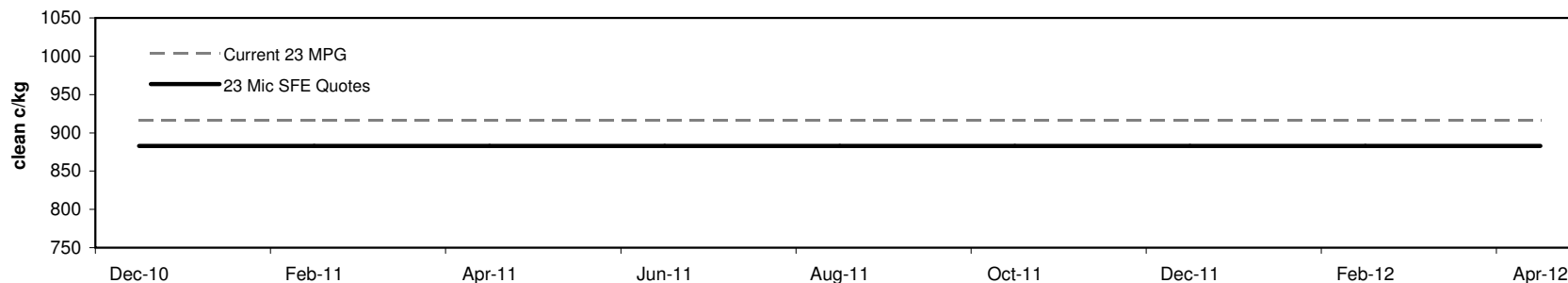
Table 11: 23 micron SFE, as a percentile of the 23 micron MPG

3 Year Percentile	69%	69%	69%	69%	69%	69%	69%	69%	69%
10 Year Percentile	64%	64%	64%	64%	64%	64%	64%	64%	64%

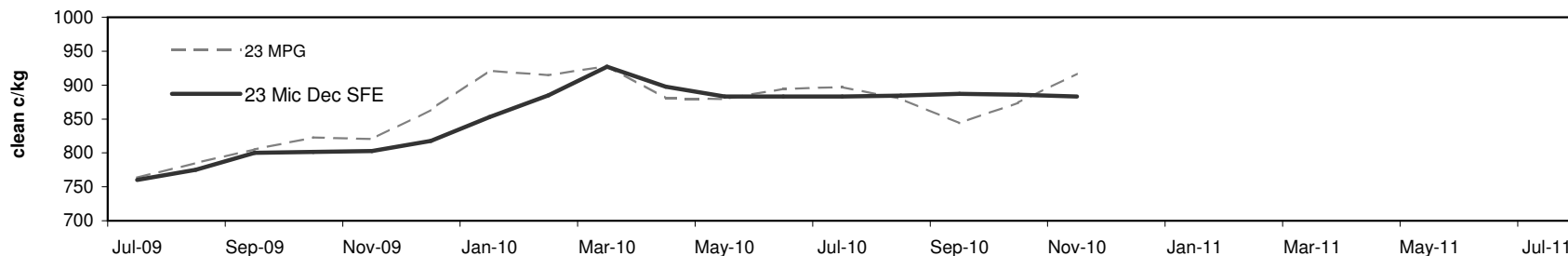
Table 12: 23 micron SFE, compared to MPG

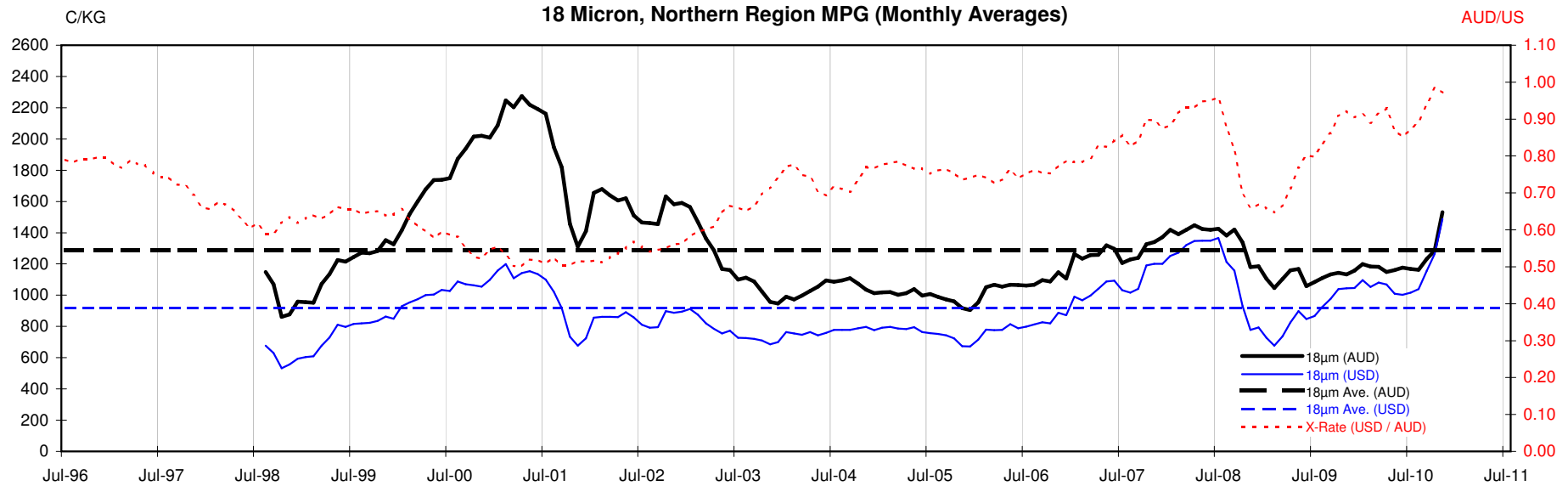
Current 19 MPG	-34	-4%	-34	-4%	-34	-4%	-34	-4%	-34	-4%	-34	-4%	-34	-4%	-34	-4%	-34	-4%
23 MPG, 1 Year Average	-8	-1%	-8	-1%	-8	-1%	-8	-1%	-8	-1%	-8	-1%	-8	-1%	-8	-1%	-8	-1%
23 MPG, 3 Year Average	+53	6%	+53	6%	+53	6%	+53	6%	+53	6%	+53	6%	+53	6%	+53	6%	+53	6%
23 MPG, 10 Year Average	+60	7%	+60	7%	+60	7%	+60	7%	+60	7%	+60	7%	+60	7%	+60	7%	+60	7%

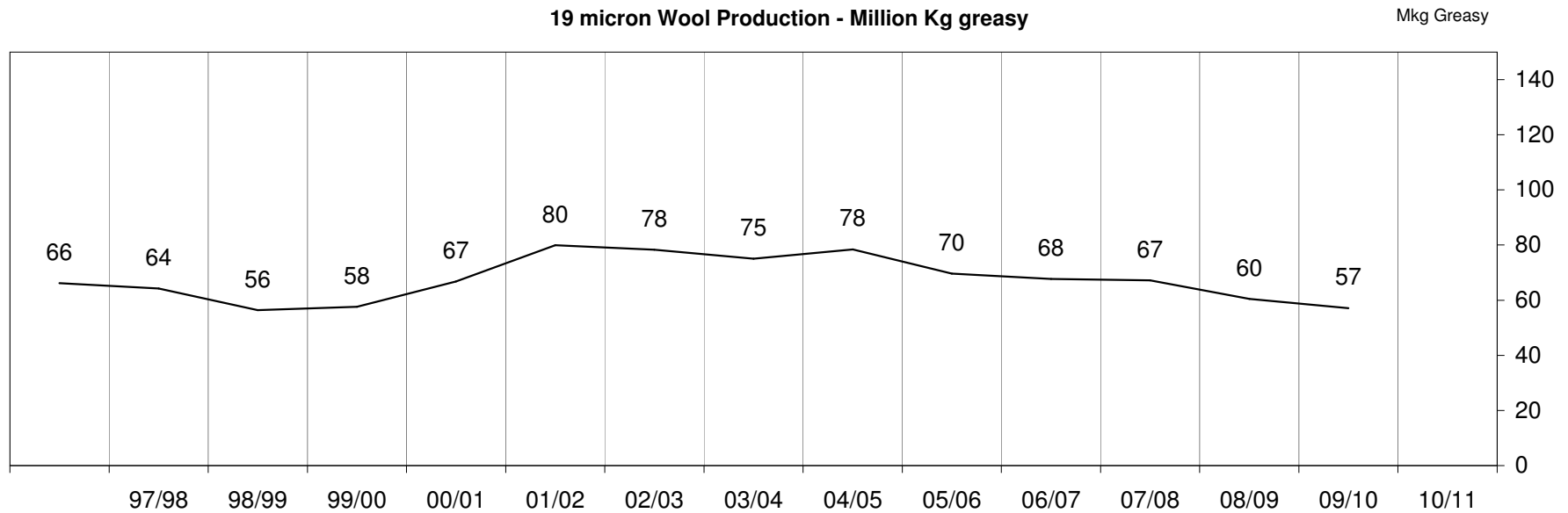
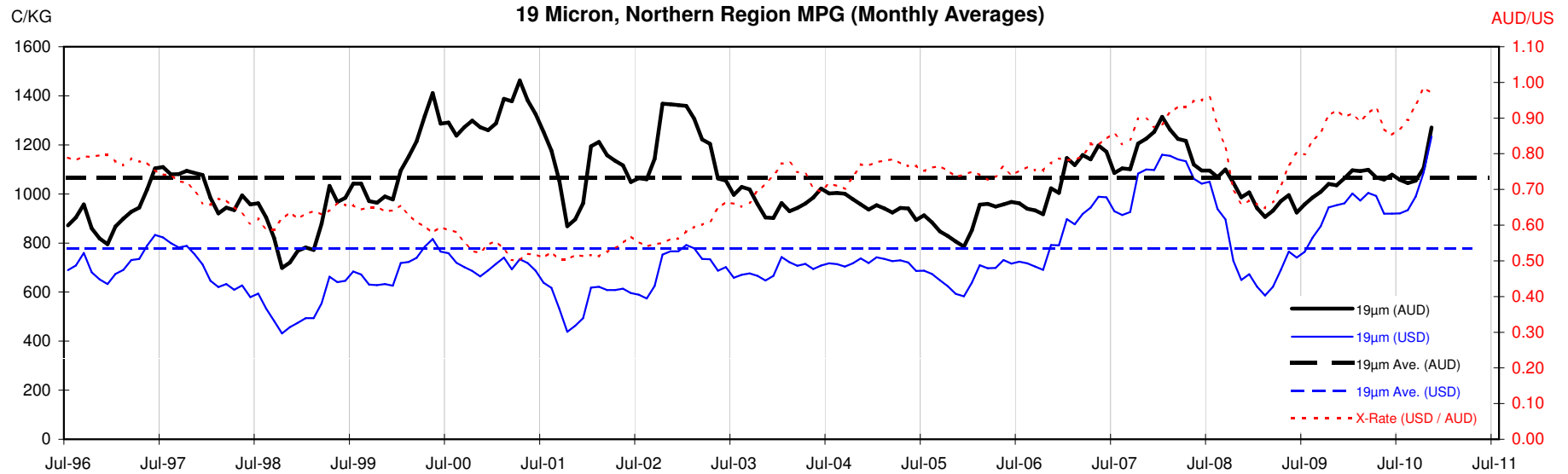
23 MICRON SFE, QUOTES

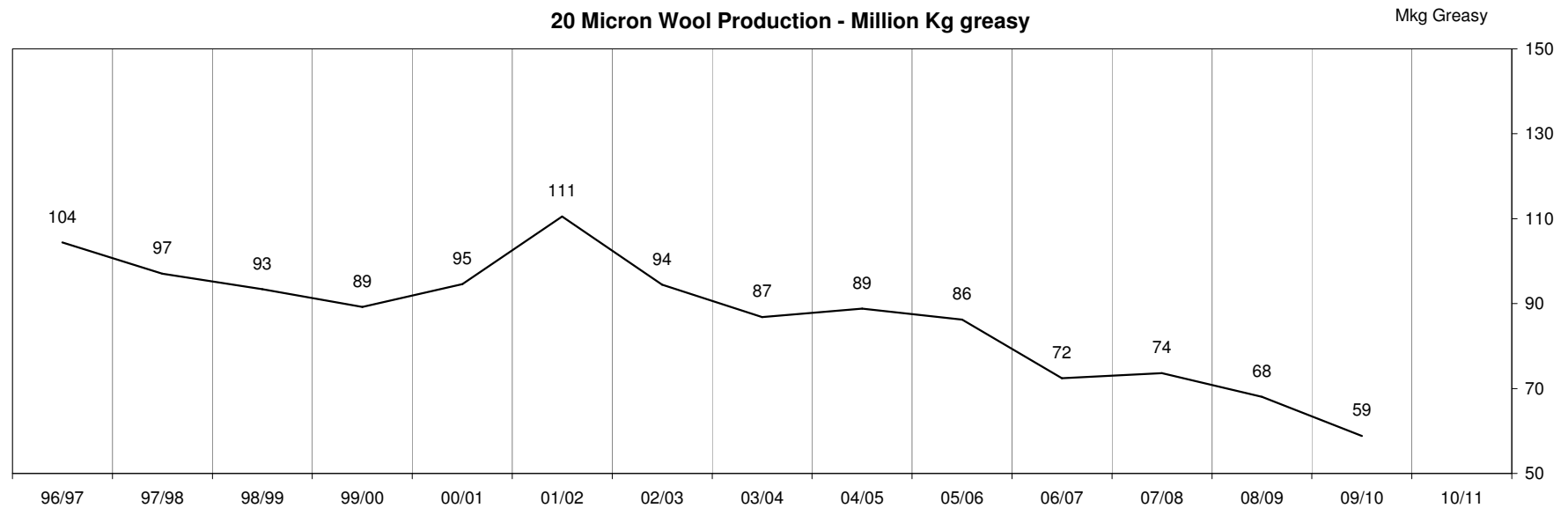
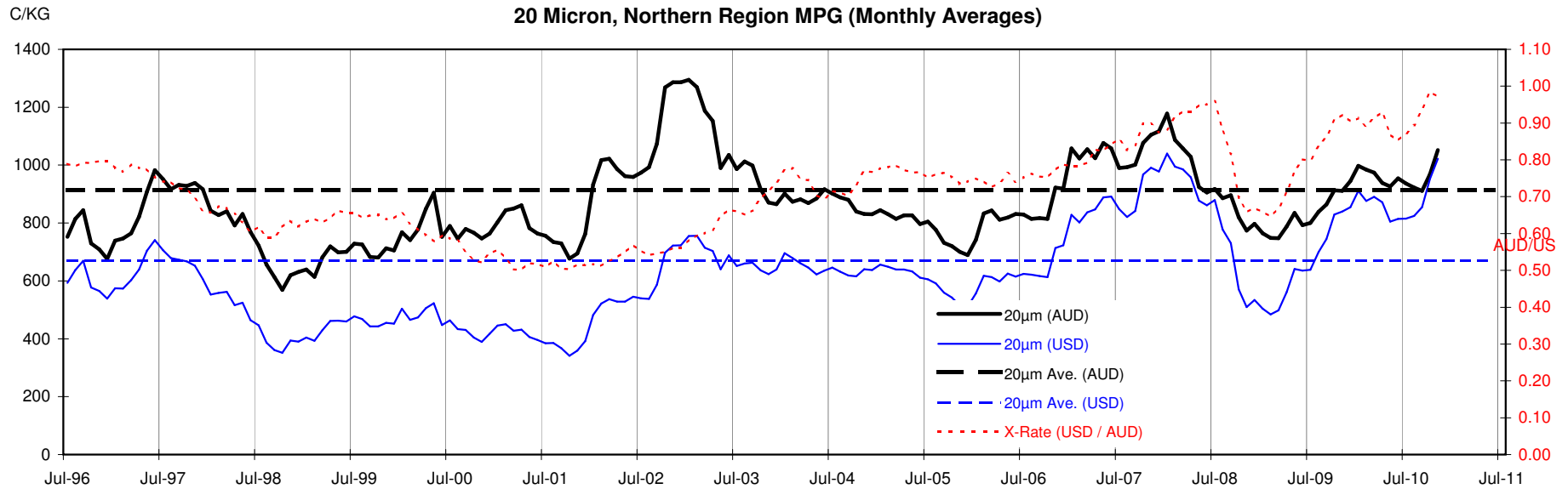


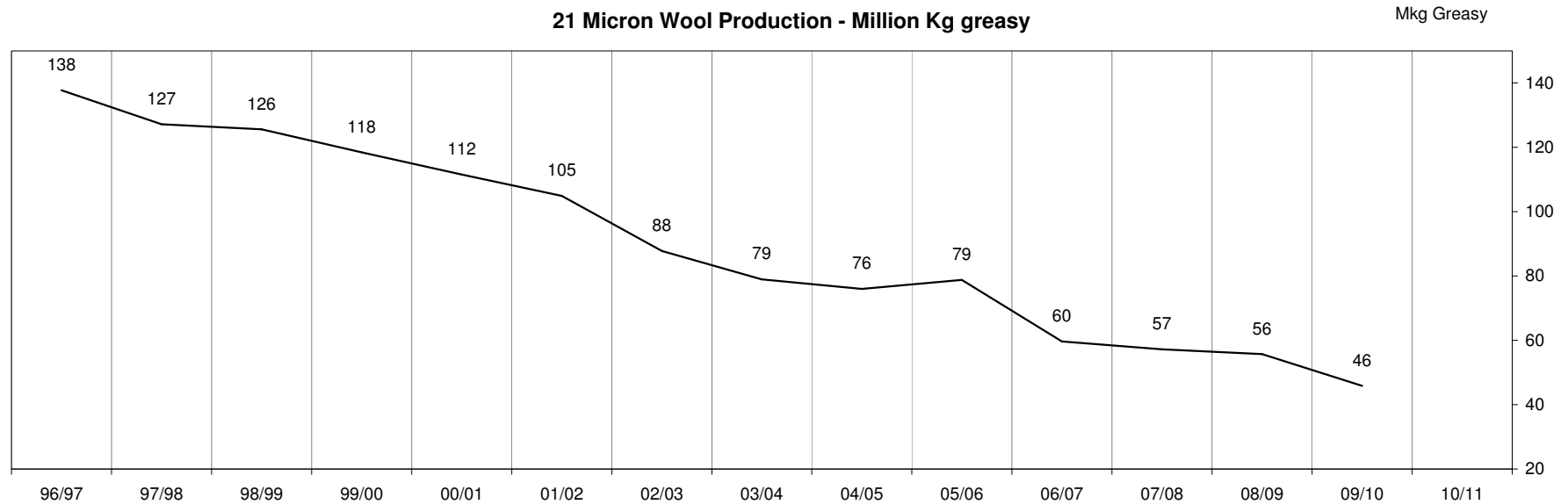
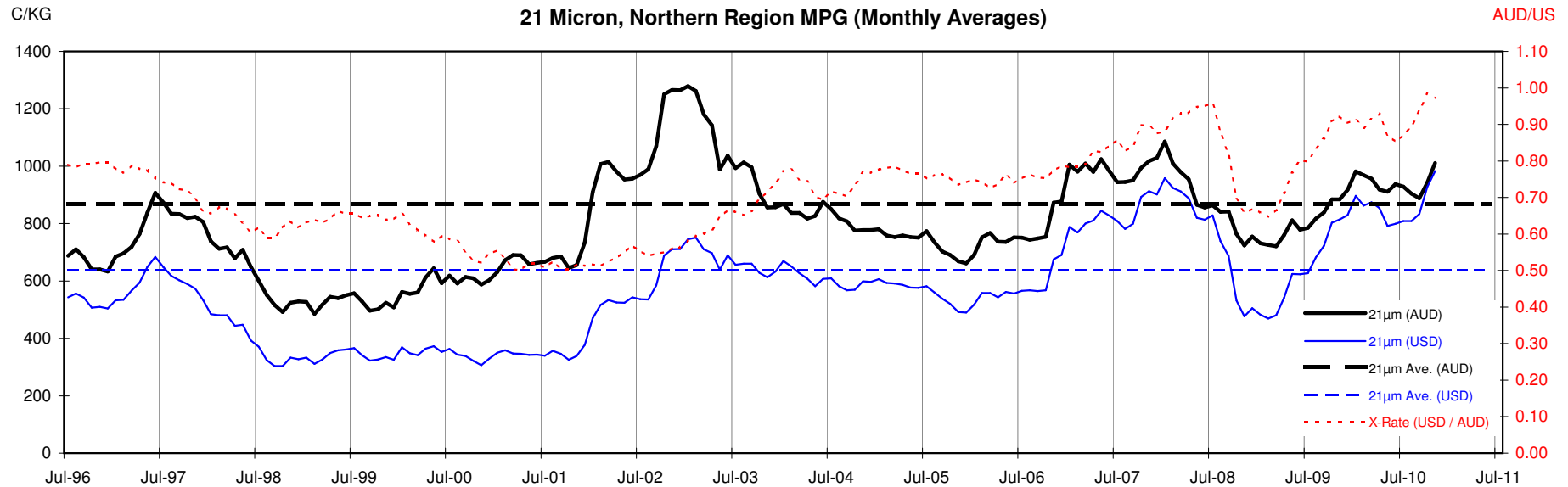
23 MICRON SFE, FRONT MONTH PRICE MOVEMENT (mthly averages)

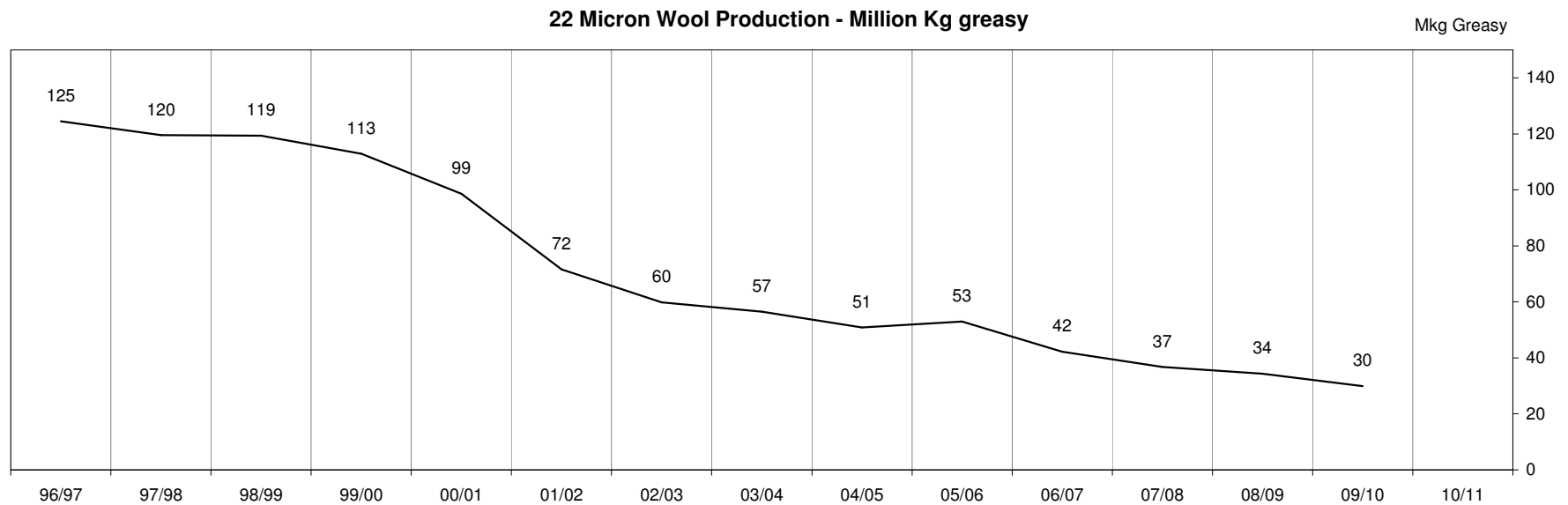
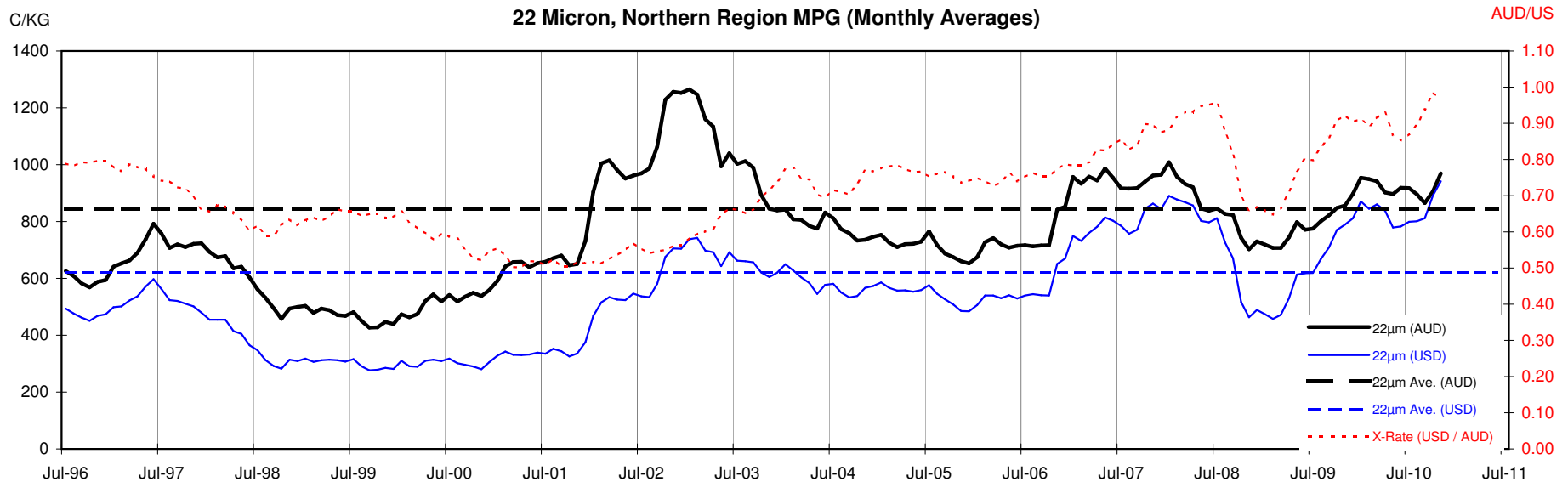


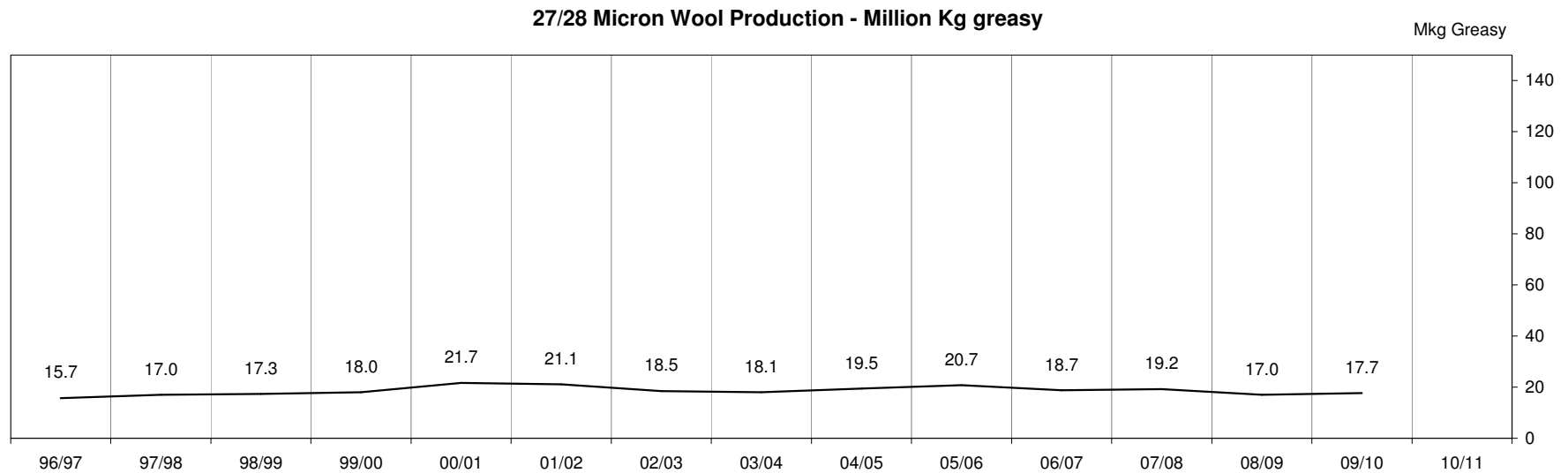
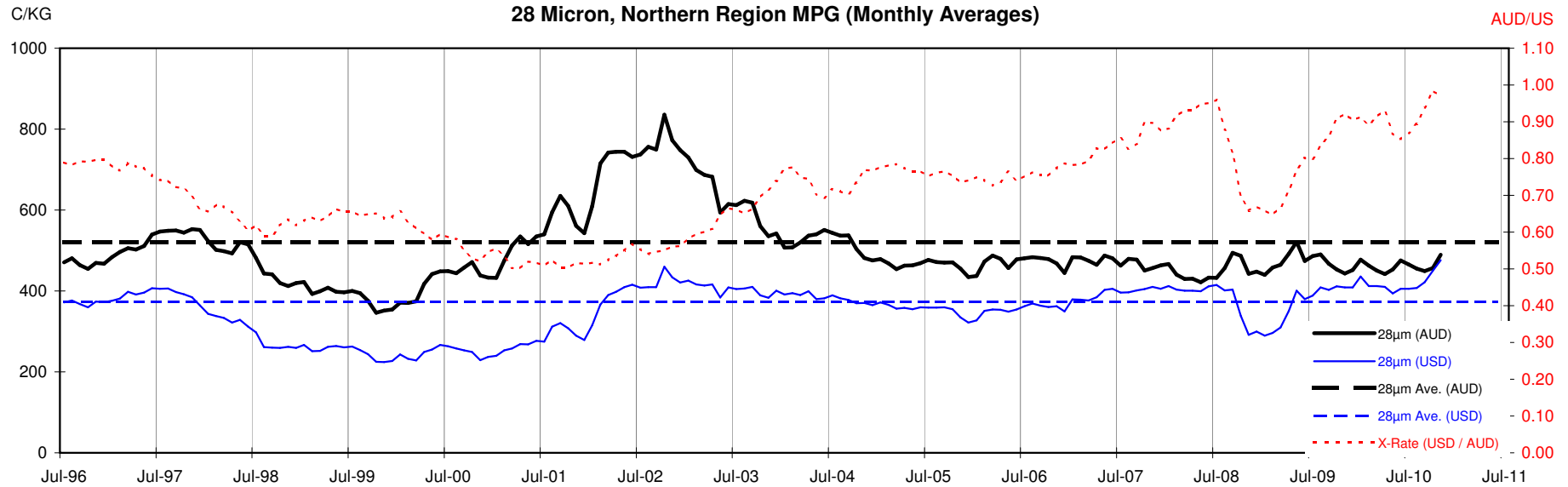












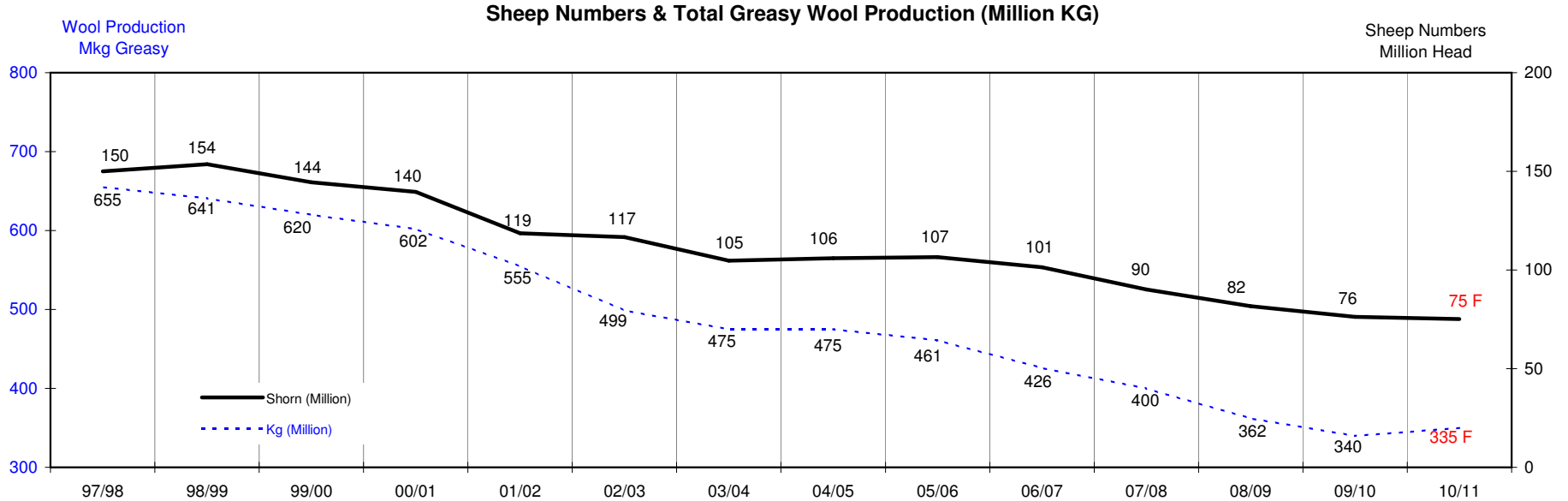
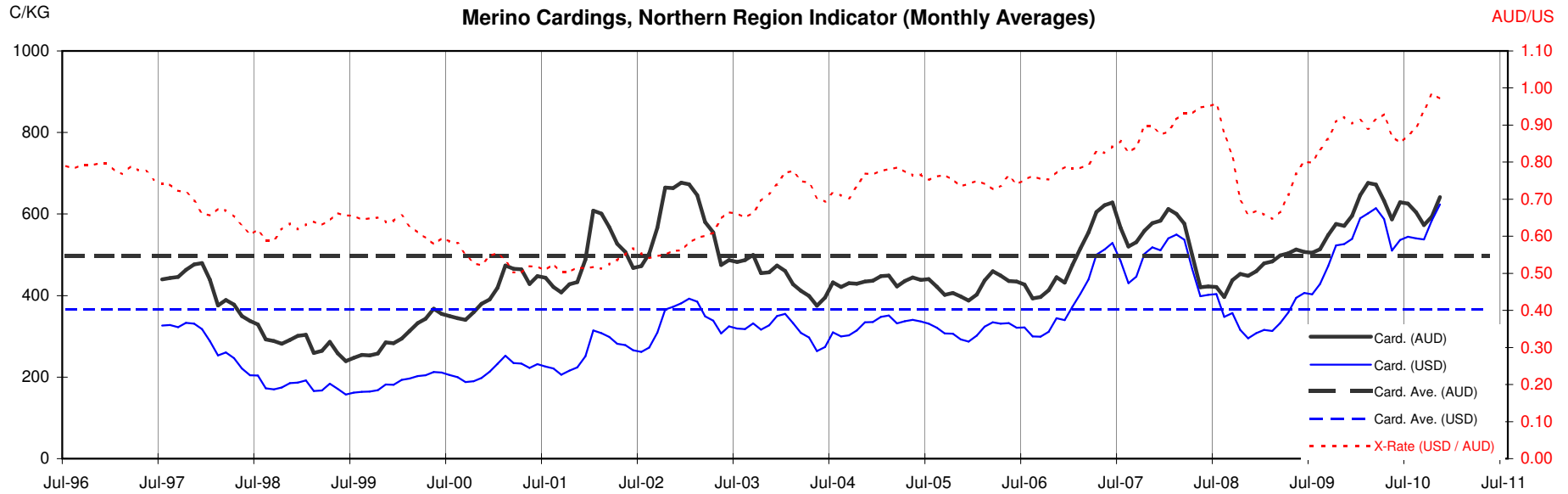




Table 13: Returns pr head for skirted fleece wool.

Skirted FLC Weight 9 Kg		Micron																	
		16	16.5	17	17.5	18	18.5	19	19.5	20	21	22	23	24	25	26	28	30	32
Yield (Sch Dry)	25% Current	\$46	\$45	\$41	\$39	\$37	\$34	\$29	\$26	\$23	\$23	\$22	\$21	\$19	\$18	\$16	\$11	\$10	\$9
	10yr ave.			\$32		\$29		\$24		\$21	\$20	\$19	\$19	\$18	\$16	\$15	\$12	\$10	\$9
	30% Current	\$55	\$53	\$49	\$47	\$44	\$41	\$35	\$31	\$28	\$27	\$26	\$25	\$23	\$21	\$19	\$13	\$12	\$11
	10yr ave.			\$38		\$35		\$29		\$25	\$23	\$23	\$22	\$21	\$19	\$17	\$14	\$12	\$11
	35% Current	\$65	\$62	\$57	\$54	\$51	\$47	\$41	\$36	\$33	\$32	\$30	\$29	\$27	\$25	\$22	\$16	\$14	\$13
	10yr ave.			\$44		\$41		\$34		\$29	\$27	\$27	\$26	\$25	\$22	\$20	\$16	\$14	\$13
	40% Current	\$74	\$71	\$65	\$62	\$59	\$54	\$47	\$41	\$37	\$36	\$35	\$33	\$30	\$28	\$25	\$18	\$16	\$15
	10yr ave.			\$51		\$46		\$38		\$33	\$31	\$30	\$30	\$28	\$25	\$23	\$19	\$16	\$15
	45% Current	\$83	\$80	\$74	\$70	\$66	\$61	\$53	\$46	\$42	\$41	\$39	\$37	\$34	\$32	\$28	\$20	\$18	\$17
	10yr ave.			\$57		\$52		\$43		\$37	\$35	\$34	\$33	\$32	\$29	\$26	\$21	\$18	\$17
	50% Current	\$92	\$89	\$82	\$78	\$73	\$68	\$59	\$51	\$47	\$45	\$43	\$41	\$38	\$35	\$31	\$22	\$20	\$18
	10yr ave.			\$63		\$58		\$48		\$41	\$39	\$38	\$37	\$35	\$32	\$29	\$23	\$20	\$19
	55% Current	\$101	\$98	\$90	\$85	\$81	\$75	\$65	\$56	\$51	\$50	\$48	\$45	\$42	\$39	\$34	\$25	\$22	\$20
	10yr ave.			\$70		\$64		\$53		\$45	\$43	\$42	\$41	\$39	\$35	\$32	\$26	\$23	\$20
	60% Current	\$111	\$107	\$98	\$93	\$88	\$81	\$71	\$62	\$56	\$54	\$52	\$50	\$46	\$42	\$38	\$27	\$24	\$22
	10yr ave.			\$76		\$69		\$58		\$49	\$47	\$46	\$44	\$42	\$38	\$35	\$28	\$25	\$22
	65% Current	\$120	\$116	\$106	\$101	\$95	\$88	\$76	\$67	\$61	\$59	\$56	\$54	\$49	\$46	\$41	\$29	\$26	\$24
	10yr ave.			\$82		\$75		\$62		\$53	\$51	\$49	\$48	\$46	\$41	\$38	\$30	\$27	\$24
	70% Current	\$129	\$125	\$114	\$109	\$103	\$95	\$82	\$72	\$65	\$63	\$60	\$58	\$53	\$49	\$44	\$31	\$28	\$26
	10yr ave.			\$89		\$81		\$67		\$58	\$55	\$53	\$52	\$50	\$45	\$41	\$33	\$29	\$26
	75% Current	\$138	\$134	\$123	\$116	\$110	\$102	\$88	\$77	\$70	\$68	\$65	\$62	\$57	\$53	\$47	\$34	\$30	\$28
	10yr ave.			\$95		\$87		\$72		\$62	\$59	\$57	\$56	\$53	\$48	\$44	\$35	\$31	\$28
	80% Current	\$148	\$143	\$131	\$124	\$118	\$109	\$94	\$82	\$75	\$72	\$69	\$66	\$61	\$56	\$50	\$36	\$32	\$30
	10yr ave.			\$101		\$93		\$77		\$66	\$62	\$61	\$59	\$57	\$51	\$47	\$38	\$33	\$30
	85% Current	\$157	\$151	\$139	\$132	\$125	\$115	\$100	\$87	\$79	\$77	\$73	\$70	\$64	\$60	\$53	\$38	\$34	\$31
	10yr ave.			\$108		\$98		\$82		\$70	\$66	\$65	\$63	\$60	\$54	\$50	\$40	\$35	\$32

The above shows estimated returns per head for skirted fleece wool. These figures do not take into account the value of skirtings and oddments and do not take into account discounts that may apply for faults under individual circumstances. These figures are based on a market index of 100% and should be used as a guide only. Returns over \$30 / head for fleece wool are highlighted.

Source: Australian Wool Exchange, Australian Wool Innovation, Sydney Futures Exchange, x-rates.com

Disclaimer: While all due care has been taken in the preparation of this document, no warranty is made as to its accuracy, reliability or completeness. To the extent permitted by law neither Jemalong or their sources including subsidiaries and staff, accept liability to any person for loss or damage arising from the use of this information.



Table 14: Returns pr head for skirted fleece wool.

Skirted FLC Weight		Micron																	
8 Kg		16	16.5	17	17.5	18	18.5	19	19.5	20	21	22	23	24	25	26	28	30	32
Yield (Sch Dry)	25% Current	\$46	\$45	\$41	\$39	\$37	\$34	\$29	\$26	\$23	\$23	\$22	\$21	\$19	\$18	\$16	\$11	\$10	\$9
	10yr ave.			\$32		\$29		\$24		\$21	\$20	\$19	\$19	\$18	\$16	\$15	\$12	\$10	\$9
	30% Current	\$55	\$53	\$49	\$47	\$44	\$41	\$35	\$31	\$28	\$27	\$26	\$25	\$23	\$21	\$19	\$13	\$12	\$11
	10yr ave.			\$38		\$35		\$29		\$25	\$23	\$23	\$22	\$21	\$19	\$17	\$14	\$12	\$11
	35% Current	\$65	\$62	\$57	\$54	\$51	\$47	\$41	\$36	\$33	\$32	\$30	\$29	\$27	\$25	\$22	\$16	\$14	\$13
	10yr ave.			\$44		\$41		\$34		\$29	\$27	\$27	\$26	\$25	\$22	\$20	\$16	\$14	\$13
	40% Current	\$74	\$71	\$65	\$62	\$59	\$54	\$47	\$41	\$37	\$36	\$35	\$33	\$30	\$28	\$25	\$18	\$16	\$15
	10yr ave.			\$51		\$46		\$38		\$33	\$31	\$30	\$30	\$28	\$25	\$23	\$19	\$16	\$15
	45% Current	\$83	\$80	\$74	\$70	\$66	\$61	\$53	\$46	\$42	\$41	\$39	\$37	\$34	\$32	\$28	\$20	\$18	\$17
	10yr ave.			\$57		\$52		\$43		\$37	\$35	\$34	\$33	\$32	\$29	\$26	\$21	\$18	\$17
	50% Current	\$92	\$89	\$82	\$78	\$73	\$68	\$59	\$51	\$47	\$45	\$43	\$41	\$38	\$35	\$31	\$22	\$20	\$18
	10yr ave.			\$63		\$58		\$48		\$41	\$39	\$38	\$37	\$35	\$32	\$29	\$23	\$20	\$19
	55% Current	\$101	\$98	\$90	\$85	\$81	\$75	\$65	\$56	\$51	\$50	\$48	\$45	\$42	\$39	\$34	\$25	\$22	\$20
	10yr ave.			\$70		\$64		\$53		\$45	\$43	\$42	\$41	\$39	\$35	\$32	\$26	\$23	\$20
	60% Current	\$111	\$107	\$98	\$93	\$88	\$81	\$71	\$62	\$56	\$54	\$52	\$50	\$46	\$42	\$38	\$27	\$24	\$22
	10yr ave.			\$76		\$69		\$58		\$49	\$47	\$46	\$44	\$42	\$38	\$35	\$28	\$25	\$22
	65% Current	\$120	\$116	\$106	\$101	\$95	\$88	\$76	\$67	\$61	\$59	\$56	\$54	\$49	\$46	\$41	\$29	\$26	\$24
	10yr ave.			\$82		\$75		\$62		\$53	\$51	\$49	\$48	\$46	\$41	\$38	\$30	\$27	\$24
	70% Current	\$129	\$125	\$114	\$109	\$103	\$95	\$82	\$72	\$65	\$63	\$60	\$58	\$53	\$49	\$44	\$31	\$28	\$26
	10yr ave.			\$89		\$81		\$67		\$58	\$55	\$53	\$52	\$50	\$45	\$41	\$33	\$29	\$26
	75% Current	\$138	\$134	\$123	\$116	\$110	\$102	\$88	\$77	\$70	\$68	\$65	\$62	\$57	\$53	\$47	\$34	\$30	\$28
	10yr ave.			\$95		\$87		\$72		\$62	\$59	\$57	\$56	\$53	\$48	\$44	\$35	\$31	\$28
	80% Current	\$148	\$143	\$131	\$124	\$118	\$109	\$94	\$82	\$75	\$72	\$69	\$66	\$61	\$56	\$50	\$36	\$32	\$30
	10yr ave.			\$101		\$93		\$77		\$66	\$62	\$61	\$59	\$57	\$51	\$47	\$38	\$33	\$30
	85% Current	\$157	\$151	\$139	\$132	\$125	\$115	\$100	\$87	\$79	\$77	\$73	\$70	\$64	\$60	\$53	\$38	\$34	\$31
	10yr ave.			\$108		\$98		\$82		\$70	\$66	\$65	\$63	\$60	\$54	\$50	\$40	\$35	\$32

The above shows estimated returns per head for skirted fleece wool. These figures do not take into account the value of skirtings and oddments and do not take into account discounts that may apply for faults under individual circumstances. These figures are based on a market index of 100% and should be used as a guide only. Returns over \$30 / head for fleece wool are highlighted.

Source: Australian Wool Exchange, Australian Wool Innovation, Sydney Futures Exchange, x-rates.com

Disclaimer: While all due care has been taken in the preparation of this document, no warranty is made as to its accuracy, reliability or completeness. To the extent permitted by law neither Jemalong or their sources including subsidiaries and staff, accept liability to any person for loss or damage arising from the use of this information.



Table 15: Returns pr head for skirted fleece wool.

Skirted FLC Weight 7 Kg			Micron																	
			16	16.5	17	17.5	18	18.5	19	19.5	20	21	22	23	24	25	26	28	30	32
Yield (Sch Dry)	25%	Current	\$46	\$45	\$41	\$39	\$37	\$34	\$29	\$26	\$23	\$23	\$22	\$21	\$19	\$18	\$16	\$11	\$10	\$9
		10yr ave.			\$32		\$29		\$24		\$21	\$20	\$19	\$19	\$18	\$16	\$15	\$12	\$10	\$9
	30%	Current	\$55	\$53	\$49	\$47	\$44	\$41	\$35	\$31	\$28	\$27	\$26	\$25	\$23	\$21	\$19	\$13	\$12	\$11
		10yr ave.			\$38		\$35		\$29		\$25	\$23	\$23	\$22	\$21	\$19	\$17	\$14	\$12	\$11
	35%	Current	\$65	\$62	\$57	\$54	\$51	\$47	\$41	\$36	\$33	\$32	\$30	\$29	\$27	\$25	\$22	\$16	\$14	\$13
		10yr ave.			\$44		\$41		\$34		\$29	\$27	\$27	\$26	\$25	\$22	\$20	\$16	\$14	\$13
	40%	Current	\$74	\$71	\$65	\$62	\$59	\$54	\$47	\$41	\$37	\$36	\$35	\$33	\$30	\$28	\$25	\$18	\$16	\$15
		10yr ave.			\$51		\$46		\$38		\$33	\$31	\$30	\$30	\$28	\$25	\$23	\$19	\$16	\$15
	45%	Current	\$83	\$80	\$74	\$70	\$66	\$61	\$53	\$46	\$42	\$41	\$39	\$37	\$34	\$32	\$28	\$20	\$18	\$17
		10yr ave.			\$57		\$52		\$43		\$37	\$35	\$34	\$33	\$32	\$29	\$26	\$21	\$18	\$17
	50%	Current	\$92	\$89	\$82	\$78	\$73	\$68	\$59	\$51	\$47	\$45	\$43	\$41	\$38	\$35	\$31	\$22	\$20	\$18
		10yr ave.			\$63		\$58		\$48		\$41	\$39	\$38	\$37	\$35	\$32	\$29	\$23	\$20	\$19
	55%	Current	\$101	\$98	\$90	\$85	\$81	\$75	\$65	\$56	\$51	\$50	\$48	\$45	\$42	\$39	\$34	\$25	\$22	\$20
		10yr ave.			\$70		\$64		\$53		\$45	\$43	\$42	\$41	\$39	\$35	\$32	\$26	\$23	\$20
60%	Current	\$111	\$107	\$98	\$93	\$88	\$81	\$71	\$62	\$56	\$54	\$52	\$50	\$46	\$42	\$38	\$27	\$24	\$22	
	10yr ave.			\$76		\$69		\$58		\$49	\$47	\$46	\$44	\$42	\$38	\$35	\$28	\$25	\$22	
65%	Current	\$120	\$116	\$106	\$101	\$95	\$88	\$76	\$67	\$61	\$59	\$56	\$54	\$49	\$46	\$41	\$29	\$26	\$24	
	10yr ave.			\$82		\$75		\$62		\$53	\$51	\$49	\$48	\$46	\$41	\$38	\$30	\$27	\$24	
70%	Current	\$129	\$125	\$114	\$109	\$103	\$95	\$82	\$72	\$65	\$63	\$60	\$58	\$53	\$49	\$44	\$31	\$28	\$26	
	10yr ave.			\$89		\$81		\$67		\$58	\$55	\$53	\$52	\$50	\$45	\$41	\$33	\$29	\$26	
75%	Current	\$138	\$134	\$123	\$116	\$110	\$102	\$88	\$77	\$70	\$68	\$65	\$62	\$57	\$53	\$47	\$34	\$30	\$28	
	10yr ave.			\$95		\$87		\$72		\$62	\$59	\$57	\$56	\$53	\$48	\$44	\$35	\$31	\$28	
80%	Current	\$148	\$143	\$131	\$124	\$118	\$109	\$94	\$82	\$75	\$72	\$69	\$66	\$61	\$56	\$50	\$36	\$32	\$30	
	10yr ave.			\$101		\$93		\$77		\$66	\$62	\$61	\$59	\$57	\$51	\$47	\$38	\$33	\$30	
85%	Current	\$157	\$151	\$139	\$132	\$125	\$115	\$100	\$87	\$79	\$77	\$73	\$70	\$64	\$60	\$53	\$38	\$34	\$31	
	10yr ave.			\$108		\$98		\$82		\$70	\$66	\$65	\$63	\$60	\$54	\$50	\$40	\$35	\$32	

The above shows estimated returns per head for skirted fleece wool. These figures do not take into account the value of skirtings and oddments and do not take into account discounts that may apply for faults under individual circumstances. These figures are based on a market index of 100% and should be used as a guide only. Returns over \$30 / head for fleece wool are highlighted.

Source: Australian Wool Exchange, Australian Wool Innovation, Sydney Futures Exchange, x-rates.com

Disclaimer: While all due care has been taken in the preparation of this document, no warranty is made as to its accuracy, reliability or completeness. To the extent permitted by law neither Jemalong or their sources including subsidiaries and staff, accept liability to any person for loss or damage arising from the use of this information.



Table 16: Returns pr head for skirted fleece wool.

Skirted FLC Weight 6 Kg		Micron																	
		16	16.5	17	17.5	18	18.5	19	19.5	20	21	22	23	24	25	26	28	30	32
Yield (Sch Dry)	25% Current	\$46	\$45	\$41	\$39	\$37	\$34	\$29	\$26	\$23	\$23	\$22	\$21	\$19	\$18	\$16	\$11	\$10	\$9
	10yr ave.			\$32		\$29		\$24		\$21	\$20	\$19	\$19	\$18	\$16	\$15	\$12	\$10	\$9
	30% Current	\$55	\$53	\$49	\$47	\$44	\$41	\$35	\$31	\$28	\$27	\$26	\$25	\$23	\$21	\$19	\$13	\$12	\$11
	10yr ave.			\$38		\$35		\$29		\$25	\$23	\$23	\$22	\$21	\$19	\$17	\$14	\$12	\$11
	35% Current	\$65	\$62	\$57	\$54	\$51	\$47	\$41	\$36	\$33	\$32	\$30	\$29	\$27	\$25	\$22	\$16	\$14	\$13
	10yr ave.			\$44		\$41		\$34		\$29	\$27	\$27	\$26	\$25	\$22	\$20	\$16	\$14	\$13
	40% Current	\$74	\$71	\$65	\$62	\$59	\$54	\$47	\$41	\$37	\$36	\$35	\$33	\$30	\$28	\$25	\$18	\$16	\$15
	10yr ave.			\$51		\$46		\$38		\$33	\$31	\$30	\$30	\$28	\$25	\$23	\$19	\$16	\$15
	45% Current	\$83	\$80	\$74	\$70	\$66	\$61	\$53	\$46	\$42	\$41	\$39	\$37	\$34	\$32	\$28	\$20	\$18	\$17
	10yr ave.			\$57		\$52		\$43		\$37	\$35	\$34	\$33	\$32	\$29	\$26	\$21	\$18	\$17
	50% Current	\$92	\$89	\$82	\$78	\$73	\$68	\$59	\$51	\$47	\$45	\$43	\$41	\$38	\$35	\$31	\$22	\$20	\$18
	10yr ave.			\$63		\$58		\$48		\$41	\$39	\$38	\$37	\$35	\$32	\$29	\$23	\$20	\$19
	55% Current	\$101	\$98	\$90	\$85	\$81	\$75	\$65	\$56	\$51	\$50	\$48	\$45	\$42	\$39	\$34	\$25	\$22	\$20
	10yr ave.			\$70		\$64		\$53		\$45	\$43	\$42	\$41	\$39	\$35	\$32	\$26	\$23	\$20
	60% Current	\$111	\$107	\$98	\$93	\$88	\$81	\$71	\$62	\$56	\$54	\$52	\$50	\$46	\$42	\$38	\$27	\$24	\$22
	10yr ave.			\$76		\$69		\$58		\$49	\$47	\$46	\$44	\$42	\$38	\$35	\$28	\$25	\$22
	65% Current	\$120	\$116	\$106	\$101	\$95	\$88	\$76	\$67	\$61	\$59	\$56	\$54	\$49	\$46	\$41	\$29	\$26	\$24
	10yr ave.			\$82		\$75		\$62		\$53	\$51	\$49	\$48	\$46	\$41	\$38	\$30	\$27	\$24
	70% Current	\$129	\$125	\$114	\$109	\$103	\$95	\$82	\$72	\$65	\$63	\$60	\$58	\$53	\$49	\$44	\$31	\$28	\$26
	10yr ave.			\$89		\$81		\$67		\$58	\$55	\$53	\$52	\$50	\$45	\$41	\$33	\$29	\$26
	75% Current	\$138	\$134	\$123	\$116	\$110	\$102	\$88	\$77	\$70	\$68	\$65	\$62	\$57	\$53	\$47	\$34	\$30	\$28
	10yr ave.			\$95		\$87		\$72		\$62	\$59	\$57	\$56	\$53	\$48	\$44	\$35	\$31	\$28
	80% Current	\$148	\$143	\$131	\$124	\$118	\$109	\$94	\$82	\$75	\$72	\$69	\$66	\$61	\$56	\$50	\$36	\$32	\$30
	10yr ave.			\$101		\$93		\$77		\$66	\$62	\$61	\$59	\$57	\$51	\$47	\$38	\$33	\$30
	85% Current	\$157	\$151	\$139	\$132	\$125	\$115	\$100	\$87	\$79	\$77	\$73	\$70	\$64	\$60	\$53	\$38	\$34	\$31
	10yr ave.			\$108		\$98		\$82		\$70	\$66	\$65	\$63	\$60	\$54	\$50	\$40	\$35	\$32

The above shows estimated returns per head for skirted fleece wool. These figures do not take into account the value of skirtings and oddments and do not take into account discounts that may apply for faults under individual circumstances. These figures are based on a market index of 100% and should be used as a guide only. Returns over \$30 / head for fleece wool are highlighted.

Source: Australian Wool Exchange, Australian Wool Innovation, Sydney Futures Exchange, x-rates.com

Disclaimer: While all due care has been taken in the preparation of this document, no warranty is made as to its accuracy, reliability or completeness. To the extent permitted by law neither Jemalong or their sources including subsidiaries and staff, accept liability to any person for loss or damage arising from the use of this information.



Table 17: Returns pr head for skirted fleece wool.

Skirted FLC Weight 5 Kg		Micron																	
		16	16.5	17	17.5	18	18.5	19	19.5	20	21	22	23	24	25	26	28	30	32
Yield (Sch Dry)	25% Current	\$46	\$45	\$41	\$39	\$37	\$34	\$29	\$26	\$23	\$23	\$22	\$21	\$19	\$18	\$16	\$11	\$10	\$9
	10yr ave.			\$32		\$29		\$24		\$21	\$20	\$19	\$19	\$18	\$16	\$15	\$12	\$10	\$9
	30% Current	\$55	\$53	\$49	\$47	\$44	\$41	\$35	\$31	\$28	\$27	\$26	\$25	\$23	\$21	\$19	\$13	\$12	\$11
	10yr ave.			\$38		\$35		\$29		\$25	\$23	\$23	\$22	\$21	\$19	\$17	\$14	\$12	\$11
	35% Current	\$65	\$62	\$57	\$54	\$51	\$47	\$41	\$36	\$33	\$32	\$30	\$29	\$27	\$25	\$22	\$16	\$14	\$13
	10yr ave.			\$44		\$41		\$34		\$29	\$27	\$27	\$26	\$25	\$22	\$20	\$16	\$14	\$13
	40% Current	\$74	\$71	\$65	\$62	\$59	\$54	\$47	\$41	\$37	\$36	\$35	\$33	\$30	\$28	\$25	\$18	\$16	\$15
	10yr ave.			\$51		\$46		\$38		\$33	\$31	\$30	\$30	\$28	\$25	\$23	\$19	\$16	\$15
	45% Current	\$83	\$80	\$74	\$70	\$66	\$61	\$53	\$46	\$42	\$41	\$39	\$37	\$34	\$32	\$28	\$20	\$18	\$17
	10yr ave.			\$57		\$52		\$43		\$37	\$35	\$34	\$33	\$32	\$29	\$26	\$21	\$18	\$17
	50% Current	\$92	\$89	\$82	\$78	\$73	\$68	\$59	\$51	\$47	\$45	\$43	\$41	\$38	\$35	\$31	\$22	\$20	\$18
	10yr ave.			\$63		\$58		\$48		\$41	\$39	\$38	\$37	\$35	\$32	\$29	\$23	\$20	\$19
	55% Current	\$101	\$98	\$90	\$85	\$81	\$75	\$65	\$56	\$51	\$50	\$48	\$45	\$42	\$39	\$34	\$25	\$22	\$20
	10yr ave.			\$70		\$64		\$53		\$45	\$43	\$42	\$41	\$39	\$35	\$32	\$26	\$23	\$20
	60% Current	\$111	\$107	\$98	\$93	\$88	\$81	\$71	\$62	\$56	\$54	\$52	\$50	\$46	\$42	\$38	\$27	\$24	\$22
	10yr ave.			\$76		\$69		\$58		\$49	\$47	\$46	\$44	\$42	\$38	\$35	\$28	\$25	\$22
	65% Current	\$120	\$116	\$106	\$101	\$95	\$88	\$76	\$67	\$61	\$59	\$56	\$54	\$49	\$46	\$41	\$29	\$26	\$24
	10yr ave.			\$82		\$75		\$62		\$53	\$51	\$49	\$48	\$46	\$41	\$38	\$30	\$27	\$24
	70% Current	\$129	\$125	\$114	\$109	\$103	\$95	\$82	\$72	\$65	\$63	\$60	\$58	\$53	\$49	\$44	\$31	\$28	\$26
	10yr ave.			\$89		\$81		\$67		\$58	\$55	\$53	\$52	\$50	\$45	\$41	\$33	\$29	\$26
	75% Current	\$138	\$134	\$123	\$116	\$110	\$102	\$88	\$77	\$70	\$68	\$65	\$62	\$57	\$53	\$47	\$34	\$30	\$28
	10yr ave.			\$95		\$87		\$72		\$62	\$59	\$57	\$56	\$53	\$48	\$44	\$35	\$31	\$28
	80% Current	\$148	\$143	\$131	\$124	\$118	\$109	\$94	\$82	\$75	\$72	\$69	\$66	\$61	\$56	\$50	\$36	\$32	\$30
	10yr ave.			\$101		\$93		\$77		\$66	\$62	\$61	\$59	\$57	\$51	\$47	\$38	\$33	\$30
	85% Current	\$157	\$151	\$139	\$132	\$125	\$115	\$100	\$87	\$79	\$77	\$73	\$70	\$64	\$60	\$53	\$38	\$34	\$31
	10yr ave.			\$108		\$98		\$82		\$70	\$66	\$65	\$63	\$60	\$54	\$50	\$40	\$35	\$32

The above shows estimated returns per head for skirted fleece wool. These figures do not take into account the value of skirtings and oddments and do not take into account discounts that may apply for faults under individual circumstances. These figures are based on a market index of 100% and should be used as a guide only. Returns over \$30 / head for fleece wool are highlighted.

Source: Australian Wool Exchange, Australian Wool Innovation, Sydney Futures Exchange, x-rates.com

Disclaimer: While all due care has been taken in the preparation of this document, no warranty is made as to its accuracy, reliability or completeness. To the extent permitted by law neither Jemalong or their sources including subsidiaries and staff, accept liability to any person for loss or damage arising from the use of this information.



Table 18: Returns pr head for skirted fleece wool.

Skirted FLC Weight 4 Kg		Micron																	
		16	16.5	17	17.5	18	18.5	19	19.5	20	21	22	23	24	25	26	28	30	32
Yield (Sch Dry)	25% Current	\$46	\$45	\$41	\$39	\$37	\$34	\$29	\$26	\$23	\$23	\$22	\$21	\$19	\$18	\$16	\$11	\$10	\$9
	10yr ave.			\$32		\$29		\$24		\$21	\$20	\$19	\$19	\$18	\$16	\$15	\$12	\$10	\$9
	30% Current	\$55	\$53	\$49	\$47	\$44	\$41	\$35	\$31	\$28	\$27	\$26	\$25	\$23	\$21	\$19	\$13	\$12	\$11
	10yr ave.			\$38		\$35		\$29		\$25	\$23	\$23	\$22	\$21	\$19	\$17	\$14	\$12	\$11
	35% Current	\$65	\$62	\$57	\$54	\$51	\$47	\$41	\$36	\$33	\$32	\$30	\$29	\$27	\$25	\$22	\$16	\$14	\$13
	10yr ave.			\$44		\$41		\$34		\$29	\$27	\$27	\$26	\$25	\$22	\$20	\$16	\$14	\$13
	40% Current	\$74	\$71	\$65	\$62	\$59	\$54	\$47	\$41	\$37	\$36	\$35	\$33	\$30	\$28	\$25	\$18	\$16	\$15
	10yr ave.			\$51		\$46		\$38		\$33	\$31	\$30	\$30	\$28	\$25	\$23	\$19	\$16	\$15
	45% Current	\$83	\$80	\$74	\$70	\$66	\$61	\$53	\$46	\$42	\$41	\$39	\$37	\$34	\$32	\$28	\$20	\$18	\$17
	10yr ave.			\$57		\$52		\$43		\$37	\$35	\$34	\$33	\$32	\$29	\$26	\$21	\$18	\$17
	50% Current	\$92	\$89	\$82	\$78	\$73	\$68	\$59	\$51	\$47	\$45	\$43	\$41	\$38	\$35	\$31	\$22	\$20	\$18
	10yr ave.			\$63		\$58		\$48		\$41	\$39	\$38	\$37	\$35	\$32	\$29	\$23	\$20	\$19
	55% Current	\$101	\$98	\$90	\$85	\$81	\$75	\$65	\$56	\$51	\$50	\$48	\$45	\$42	\$39	\$34	\$25	\$22	\$20
	10yr ave.			\$70		\$64		\$53		\$45	\$43	\$42	\$41	\$39	\$35	\$32	\$26	\$23	\$20
	60% Current	\$111	\$107	\$98	\$93	\$88	\$81	\$71	\$62	\$56	\$54	\$52	\$50	\$46	\$42	\$38	\$27	\$24	\$22
	10yr ave.			\$76		\$69		\$58		\$49	\$47	\$46	\$44	\$42	\$38	\$35	\$28	\$25	\$22
	65% Current	\$120	\$116	\$106	\$101	\$95	\$88	\$76	\$67	\$61	\$59	\$56	\$54	\$49	\$46	\$41	\$29	\$26	\$24
	10yr ave.			\$82		\$75		\$62		\$53	\$51	\$49	\$48	\$46	\$41	\$38	\$30	\$27	\$24
	70% Current	\$129	\$125	\$114	\$109	\$103	\$95	\$82	\$72	\$65	\$63	\$60	\$58	\$53	\$49	\$44	\$31	\$28	\$26
	10yr ave.			\$89		\$81		\$67		\$58	\$55	\$53	\$52	\$50	\$45	\$41	\$33	\$29	\$26
	75% Current	\$138	\$134	\$123	\$116	\$110	\$102	\$88	\$77	\$70	\$68	\$65	\$62	\$57	\$53	\$47	\$34	\$30	\$28
	10yr ave.			\$95		\$87		\$72		\$62	\$59	\$57	\$56	\$53	\$48	\$44	\$35	\$31	\$28
	80% Current	\$148	\$143	\$131	\$124	\$118	\$109	\$94	\$82	\$75	\$72	\$69	\$66	\$61	\$56	\$50	\$36	\$32	\$30
	10yr ave.			\$101		\$93		\$77		\$66	\$62	\$61	\$59	\$57	\$51	\$47	\$38	\$33	\$30
	85% Current	\$157	\$151	\$139	\$132	\$125	\$115	\$100	\$87	\$79	\$77	\$73	\$70	\$64	\$60	\$53	\$38	\$34	\$31
	10yr ave.			\$108		\$98		\$82		\$70	\$66	\$65	\$63	\$60	\$54	\$50	\$40	\$35	\$32

The above shows estimated returns per head for skirted fleece wool. These figures do not take into account the value of skirtings and oddments and do not take into account discounts that may apply for faults under individual circumstances. These figures are based on a market index of 100% and should be used as a guide only. Returns over \$30 / head for fleece wool are highlighted.

Source: Australian Wool Exchange, Australian Wool Innovation, Sydney Futures Exchange, x-rates.com

Disclaimer: While all due care has been taken in the preparation of this document, no warranty is made as to its accuracy, reliability or completeness. To the extent permitted by law neither Jemalong or their sources including subsidiaries and staff, accept liability to any person for loss or damage arising from the use of this information.



Table 19: Returns pr head for skirted fleece wool.

Skirted FLC Weight 3 Kg		Micron																	
		16	16.5	17	17.5	18	18.5	19	19.5	20	21	22	23	24	25	26	28	30	32
Yield (Sch Dry)	25% Current	\$46	\$45	\$41	\$39	\$37	\$34	\$29	\$26	\$23	\$23	\$22	\$21	\$19	\$18	\$16	\$11	\$10	\$9
	10yr ave.			\$32		\$29		\$24		\$21	\$20	\$19	\$19	\$18	\$16	\$15	\$12	\$10	\$9
	30% Current	\$55	\$53	\$49	\$47	\$44	\$41	\$35	\$31	\$28	\$27	\$26	\$25	\$23	\$21	\$19	\$13	\$12	\$11
	10yr ave.			\$38		\$35		\$29		\$25	\$23	\$23	\$22	\$21	\$19	\$17	\$14	\$12	\$11
	35% Current	\$65	\$62	\$57	\$54	\$51	\$47	\$41	\$36	\$33	\$32	\$30	\$29	\$27	\$25	\$22	\$16	\$14	\$13
	10yr ave.			\$44		\$41		\$34		\$29	\$27	\$27	\$26	\$25	\$22	\$20	\$16	\$14	\$13
	40% Current	\$74	\$71	\$65	\$62	\$59	\$54	\$47	\$41	\$37	\$36	\$35	\$33	\$30	\$28	\$25	\$18	\$16	\$15
	10yr ave.			\$51		\$46		\$38		\$33	\$31	\$30	\$30	\$28	\$25	\$23	\$19	\$16	\$15
	45% Current	\$83	\$80	\$74	\$70	\$66	\$61	\$53	\$46	\$42	\$41	\$39	\$37	\$34	\$32	\$28	\$20	\$18	\$17
	10yr ave.			\$57		\$52		\$43		\$37	\$35	\$34	\$33	\$32	\$29	\$26	\$21	\$18	\$17
	50% Current	\$92	\$89	\$82	\$78	\$73	\$68	\$59	\$51	\$47	\$45	\$43	\$41	\$38	\$35	\$31	\$22	\$20	\$18
	10yr ave.			\$63		\$58		\$48		\$41	\$39	\$38	\$37	\$35	\$32	\$29	\$23	\$20	\$19
	55% Current	\$101	\$98	\$90	\$85	\$81	\$75	\$65	\$56	\$51	\$50	\$48	\$45	\$42	\$39	\$34	\$25	\$22	\$20
	10yr ave.			\$70		\$64		\$53		\$45	\$43	\$42	\$41	\$39	\$35	\$32	\$26	\$23	\$20
	60% Current	\$111	\$107	\$98	\$93	\$88	\$81	\$71	\$62	\$56	\$54	\$52	\$50	\$46	\$42	\$38	\$27	\$24	\$22
	10yr ave.			\$76		\$69		\$58		\$49	\$47	\$46	\$44	\$42	\$38	\$35	\$28	\$25	\$22
	65% Current	\$120	\$116	\$106	\$101	\$95	\$88	\$76	\$67	\$61	\$59	\$56	\$54	\$49	\$46	\$41	\$29	\$26	\$24
	10yr ave.			\$82		\$75		\$62		\$53	\$51	\$49	\$48	\$46	\$41	\$38	\$30	\$27	\$24
	70% Current	\$129	\$125	\$114	\$109	\$103	\$95	\$82	\$72	\$65	\$63	\$60	\$58	\$53	\$49	\$44	\$31	\$28	\$26
	10yr ave.			\$89		\$81		\$67		\$58	\$55	\$53	\$52	\$50	\$45	\$41	\$33	\$29	\$26
	75% Current	\$138	\$134	\$123	\$116	\$110	\$102	\$88	\$77	\$70	\$68	\$65	\$62	\$57	\$53	\$47	\$34	\$30	\$28
	10yr ave.			\$95		\$87		\$72		\$62	\$59	\$57	\$56	\$53	\$48	\$44	\$35	\$31	\$28
	80% Current	\$148	\$143	\$131	\$124	\$118	\$109	\$94	\$82	\$75	\$72	\$69	\$66	\$61	\$56	\$50	\$36	\$32	\$30
	10yr ave.			\$101		\$93		\$77		\$66	\$62	\$61	\$59	\$57	\$51	\$47	\$38	\$33	\$30
	85% Current	\$157	\$151	\$139	\$132	\$125	\$115	\$100	\$87	\$79	\$77	\$73	\$70	\$64	\$60	\$53	\$38	\$34	\$31
	10yr ave.			\$108		\$98		\$82		\$70	\$66	\$65	\$63	\$60	\$54	\$50	\$40	\$35	\$32

The above shows estimated returns per head for skirted fleece wool. These figures do not take into account the value of skirtings and oddments and do not take into account discounts that may apply for faults under individual circumstances. These figures are based on a market index of 100% and should be used as a guide only. Returns over \$30 / head for fleece wool are highlighted.

Source: Australian Wool Exchange, Australian Wool Innovation, Sydney Futures Exchange, x-rates.com

Disclaimer: While all due care has been taken in the preparation of this document, no warranty is made as to its accuracy, reliability or completeness. To the extent permitted by law neither Jemalong or their sources including subsidiaries and staff, accept liability to any person for loss or damage arising from the use of this information.



Table 20: Returns pr head for skirted fleece wool.

Skirted FLC Weight 2 Kg		Micron																	
		16	16.5	17	17.5	18	18.5	19	19.5	20	21	22	23	24	25	26	28	30	32
Yield (Sch Dry)	25% Current	\$46	\$45	\$41	\$39	\$37	\$34	\$29	\$26	\$23	\$23	\$22	\$21	\$19	\$18	\$16	\$11	\$10	\$9
	10yr ave.			\$32		\$29		\$24		\$21	\$20	\$19	\$19	\$18	\$16	\$15	\$12	\$10	\$9
	30% Current	\$55	\$53	\$49	\$47	\$44	\$41	\$35	\$31	\$28	\$27	\$26	\$25	\$23	\$21	\$19	\$13	\$12	\$11
	10yr ave.			\$38		\$35		\$29		\$25	\$23	\$23	\$22	\$21	\$19	\$17	\$14	\$12	\$11
	35% Current	\$65	\$62	\$57	\$54	\$51	\$47	\$41	\$36	\$33	\$32	\$30	\$29	\$27	\$25	\$22	\$16	\$14	\$13
	10yr ave.			\$44		\$41		\$34		\$29	\$27	\$27	\$26	\$25	\$22	\$20	\$16	\$14	\$13
	40% Current	\$74	\$71	\$65	\$62	\$59	\$54	\$47	\$41	\$37	\$36	\$35	\$33	\$30	\$28	\$25	\$18	\$16	\$15
	10yr ave.			\$51		\$46		\$38		\$33	\$31	\$30	\$30	\$28	\$25	\$23	\$19	\$16	\$15
	45% Current	\$83	\$80	\$74	\$70	\$66	\$61	\$53	\$46	\$42	\$41	\$39	\$37	\$34	\$32	\$28	\$20	\$18	\$17
	10yr ave.			\$57		\$52		\$43		\$37	\$35	\$34	\$33	\$32	\$29	\$26	\$21	\$18	\$17
	50% Current	\$92	\$89	\$82	\$78	\$73	\$68	\$59	\$51	\$47	\$45	\$43	\$41	\$38	\$35	\$31	\$22	\$20	\$18
	10yr ave.			\$63		\$58		\$48		\$41	\$39	\$38	\$37	\$35	\$32	\$29	\$23	\$20	\$19
	55% Current	\$101	\$98	\$90	\$85	\$81	\$75	\$65	\$56	\$51	\$50	\$48	\$45	\$42	\$39	\$34	\$25	\$22	\$20
	10yr ave.			\$70		\$64		\$53		\$45	\$43	\$42	\$41	\$39	\$35	\$32	\$26	\$23	\$20
	60% Current	\$111	\$107	\$98	\$93	\$88	\$81	\$71	\$62	\$56	\$54	\$52	\$50	\$46	\$42	\$38	\$27	\$24	\$22
	10yr ave.			\$76		\$69		\$58		\$49	\$47	\$46	\$44	\$42	\$38	\$35	\$28	\$25	\$22
	65% Current	\$120	\$116	\$106	\$101	\$95	\$88	\$76	\$67	\$61	\$59	\$56	\$54	\$49	\$46	\$41	\$29	\$26	\$24
	10yr ave.			\$82		\$75		\$62		\$53	\$51	\$49	\$48	\$46	\$41	\$38	\$30	\$27	\$24
	70% Current	\$129	\$125	\$114	\$109	\$103	\$95	\$82	\$72	\$65	\$63	\$60	\$58	\$53	\$49	\$44	\$31	\$28	\$26
	10yr ave.			\$89		\$81		\$67		\$58	\$55	\$53	\$52	\$50	\$45	\$41	\$33	\$29	\$26
	75% Current	\$138	\$134	\$123	\$116	\$110	\$102	\$88	\$77	\$70	\$68	\$65	\$62	\$57	\$53	\$47	\$34	\$30	\$28
	10yr ave.			\$95		\$87		\$72		\$62	\$59	\$57	\$56	\$53	\$48	\$44	\$35	\$31	\$28
	80% Current	\$148	\$143	\$131	\$124	\$118	\$109	\$94	\$82	\$75	\$72	\$69	\$66	\$61	\$56	\$50	\$36	\$32	\$30
	10yr ave.			\$101		\$93		\$77		\$66	\$62	\$61	\$59	\$57	\$51	\$47	\$38	\$33	\$30
	85% Current	\$157	\$151	\$139	\$132	\$125	\$115	\$100	\$87	\$79	\$77	\$73	\$70	\$64	\$60	\$53	\$38	\$34	\$31
	10yr ave.			\$108		\$98		\$82		\$70	\$66	\$65	\$63	\$60	\$54	\$50	\$40	\$35	\$32

The above shows estimated returns per head for skirted fleece wool. These figures do not take into account the value of skirtings and oddments and do not take into account discounts that may apply for faults under individual circumstances. These figures are based on a market index of 100% and should be used as a guide only. Returns over \$30 / head for fleece wool are highlighted.

Source: Australian Wool Exchange, Australian Wool Innovation, Sydney Futures Exchange, x-rates.com

Disclaimer: While all due care has been taken in the preparation of this document, no warranty is made as to its accuracy, reliability or completeness. To the extent permitted by law neither Jemalong or their sources including subsidiaries and staff, accept liability to any person for loss or damage arising from the use of this information.