



Table 1: Northern Region Micron Price Guides

CURRENT MARKET				12 MONTH COMPARISONS								3 YEAR COMPARISONS					Percentile	10 YEAR COMPARISONS					Percentile
Mic. Price Guides	19/01/2012 Current Price	12/01/2012 Weekly Change		19/01/2011 This time Last Year	Now compared to Last Year	12 Month Low	Now compared to Low	12 Month High	Now compared to High	Low	High	Average	Now compared to 3yr ave	Low	High	10 year Average		Now compared to 10yr ave					
NRI	1224	-26 -2.1%		1306	-82 -6%	1182	+42 4%	1491	-267 -18%	751	1491	1046	+178 17%	70%	657	1491	925	+299 32%	91%				
16*	2050	+70 3.4%		2370	-320 -14%	1950	+100 5%	2800	-750 -27%	1385	2800	1912	+138 7%	69%									
16.5*	1830	0		2300	-470 -20%	1800	+30 2%	2680	-850 -32%	1249	2680	1759	+71 4%	63%									
17*	1685	0		2220	-535 -24%	1620	+65 4%	2530	-845 -33%	1167	2530	1620	+65 4%	63%	1100	2530	1447	+238 16%	84%				
17.5*	1600	-20 -1.3%		2040	-440 -22%	1530	+70 5%	2360	-760 -32%	1082	2360	1519	+81 5%	67%									
18	1508	-50 -3.3%		2021	-513 -25%	1469	+39 3%	2193	-685 -31%	1035	2193	1429	+79 6%	64%	916	2193	1275	+233 18%	81%				
18.5	1463	-45 -3.1%		1864	-401 -22%	1431	+32 2%	1963	-500 -25%	971	1963	1339	+124 9%	65%									
19	1430	-42 -2.9%		1645	-215 -13%	1391	+39 3%	1776	-346 -19%	894	1776	1239	+191 15%	70%	803	1776	1107	+323 29%	91%				
19.5	1401	-38 -2.7%		1401	0 0%	1289	+112 9%	1670	-269 -16%	816	1670	1144	+257 22%	74%									
20	1349	-45 -3.3%		1230	+119 10%	1138	+211 19%	1588	-239 -15%	745	1588	1069	+280 26%	77%	700	1588	978	+371 38%	93%				
21	1305	-42 -3.2%		1175	+130 11%	1101	+204 19%	1522	-217 -14%	721	1522	1035	+270 26%	79%	668	1522	937	+368 39%	94%				
22	1276	-27 -2.1%		1141	+135 12%	1051	+225 21%	1461	-185 -13%	702	1461	1001	+275 27%	86%	659	1461	910	+366 40%	95%				
23	1227	-4 -0.3%		1070	+157 15%	977	+250 26%	1324	-97 -7%	690	1324	957	+270 28%	89%	652	1340	881	+346 39%	94%				
24	1108	+7 0.6%		975	+133 14%	882	+226 26%	1170	-62 -5%	665	1170	880	+228 26%	96%	638	1299	833	+275 33%	93%				
25	894	0		811	+83 10%	761	+133 17%	1048	-154 -15%	569	1048	761	+133 17%	79%	567	1198	742	+152 20%	77%				
26	755	-8 -1.1%		741	+14 2%	664	+91 14%	928	-173 -19%	546	928	682	+73 11%	71%	532	1088	677	+78 12%	72%				
28	597	-16 -2.7%		577	+20 3%	515	+82 16%	734	-137 -19%	435	734	533	+64 12%	70%	424	889	533	+64 12%	74%				
30	531	-25 -4.7%		505	+26 5%	460	+71 15%	670	-139 -21%	378	670	477	+54 11%	70%	344	729	464	+67 14%	75%				
32	481	-37 -7.7%		448	+33 7%	409	+72 18%	638	-157 -25%	326	638	425	+56 13%	70%	297	669	418	+63 15%	76%				
MC	696	+1 0.1%		696	0 0%	652	+44 7%	831	-135 -16%	483	831	640	+56 9%	70%	380	831	531	+165 31%	91%				

Note:

* Due to the irregular market quoting for some fine wool categories, figures shown relating to micron categories below 18 micron are an estimate based on the AWEX Premium & Discounts Report & other available information.

* For any category, where there is insufficient quantity offered to enable AWEX to quote, a quote will be provided based on the best available information.

* 10 Year data is not available for some micron categories, which may result in blank spaces in the table above.

Definitions:

* A Percentile, is a value on a scale of one hundred that indicates the percent of a distribution that is equal to or below it. In general a percentile between 25% and 75% is considered normal, a percentile below 25% is considered below normal and a percentile above 75% is considered above normal.

Three and ten year percentiles shown in the table above, detail the period of time during the past 3 & 10 years that the market has traded either at or below its current price.

The higher the percentile, the stronger the market.

Source: Australian Wool Exchange, Australian Wool Innovation, Sydney Futures Exchange, x-rates.com

Disclaimer: While all due care has been taken in the preparation of this document, no warranty is made as to its accuracy, reliability or completeness. To the extent permitted by law neither Jemalong or their sources including subsidiaries and staff, accept liability to any person for loss or damage arising from the use of this information.



MARKET COMMENTARY

One Australian Dollar = \$ 1.04 US, as of 19/01/2012

NORTHERN REGION –Sale Week 29/11 (59,975 bales offered nationally)

Wednesdays market had almost all microns retreating 30-40 cents, with the fine end least affected (with some support in the 17 micron area and with selected finer lots posting small gains on a limited selection). Compared to last week, 18 micron closed 30 cents lower and 19 to 21 were generally 40 cents cheaper, 22 microns finished 20 cents lower on the back of a small offering. In contrast to the fleece market, skirtings remained firm for the burrier types while the lower Vm lots gained buye rinterrest as the sale progressed to close firm. Locks eased 10 cents while crutchings and stains gained 10. The crossbred market also lost ground with 27 to 30 micron fleece falling around 25 cents. 12.3% Passed-In.

Thursdays market saw the finer microns a little mixed with 17 micron and finer 10 cents dearer, while a small pocked of around 18 microns fell 15 cents. 19 micron and broader were generally unchanged when comparing similar types to Wednesdays higher Vm offering. Merino Skirtings attracted strong competition, to close very firm tending in sellers favour. Best bulk & colour locks remained unchanged while the good to average types eased 10-15 cents. Crutchings gained a further 10 cents while stains closed firm. 27 to 30 micron crossbreds remained fully firm, with a high clearance rate on a large offering, however the broader end eased with 32 microns falling 10 cents. 7.0% Passed-In.

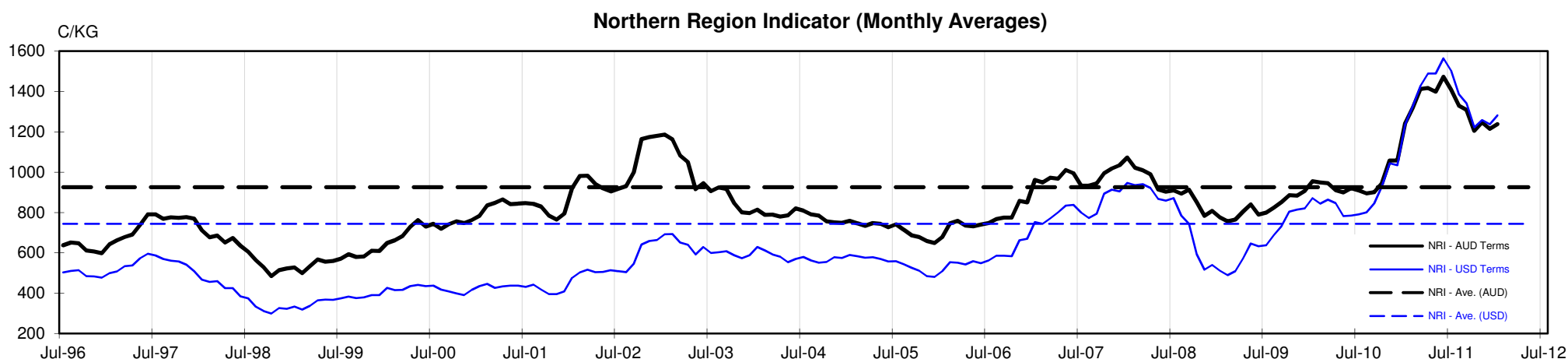




Table 4: 19 micron SFE

Wednesday, 18 January 2012

Delivery Mth	Feb-12	Apr-12	Jun-12	Aug-12	Oct-12	Dec-12	Feb-13	Mar-13	Apr-13
19 Micron SFE	1397	1367	1337	1327	1327	1287	1287	1287	1287
Average	1375	1386	1402	1390	1389	1389	1349	1328	1328
Maximum	1652	1622	1612	1525	1525	1525	1525	1375	1375
Minimum	1053	1106	1210	1285	1285	1285	1265	1265	1265

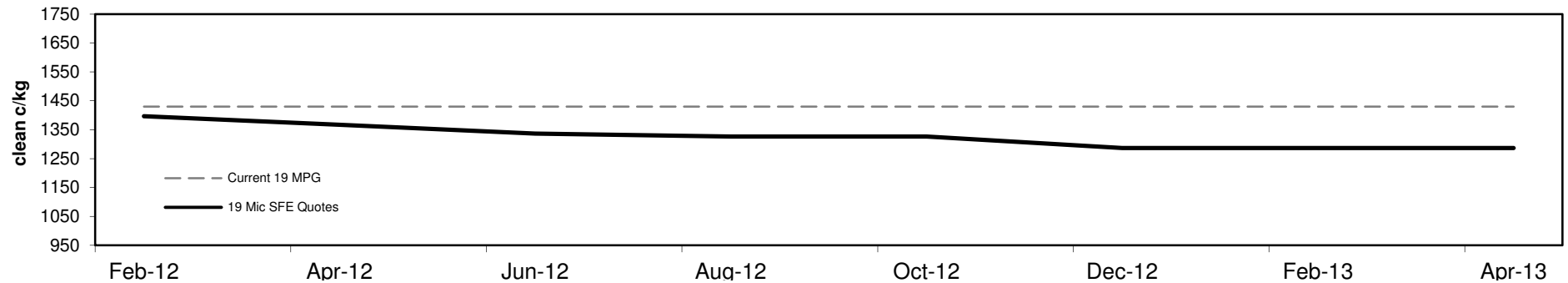
Table 5: 19 micron SFE, as a percentile of the 19 micron MPG

3 Year Percentile	66%	65%	65%	65%	65%	62%	62%	62%	62%
10 Year Percentile	90%	88%	87%	87%	87%	84%	84%	84%	84%

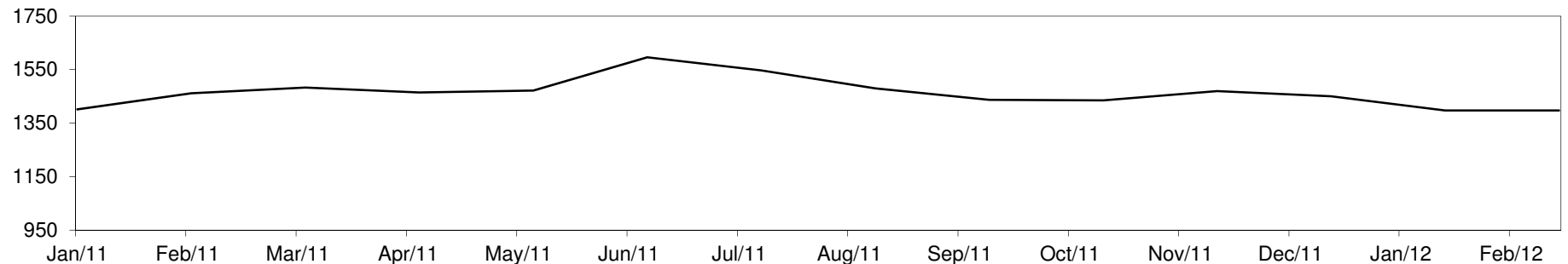
Table 6: 19 micron SFE, compared to MPG

SFE - MPG	-33	-2%	-63	-4%	-93	-7%	-103	-7%	-103	-7%	-143	-10%	-143	-10%	-143	-10%	-143	-10%
SFE - MPG, 1 year Ave.	-181	-11%	-211	-13%	-241	-15%	-251	-16%	-251	-16%	-291	-18%	-291	-18%	-291	-18%	-291	-18%
SFE - MPG, 3 year Ave.	+158	13%	+128	10%	+98	8%	+88	7%	+88	7%	+48	4%	+48	4%	+48	4%	+48	4%
SFE - MPG, 10 year Ave.	+290	26%	+260	23%	+230	21%	+220	20%	+220	20%	+180	16%	+180	16%	+180	16%	+180	16%

19 MICRON SFE, QUOTES



19 Micron SFE, Front month movement





JEMALONG WOOL BULLETIN

(week ending 19/01/2012)

Table 7: 21 micron SFE

Wednesday, 18 January 2012

Delivery Mth	Feb-12	Apr-12	Jun-12	Aug-12	Oct-12	Dec-12	Feb-13	Mar-13	Apr-13
21 Micron SFE	1330	1310	1297	1265	1194	1116	1137	1116	1116
Average	1143	1159	1156	1161	1148	1148	1144	1120	1120
Maximum	1393	1360	1347	1321	1283	1283	1222	1187	1187
Minimum	880	934	990	1046	1013	1013	1080	1048	1048

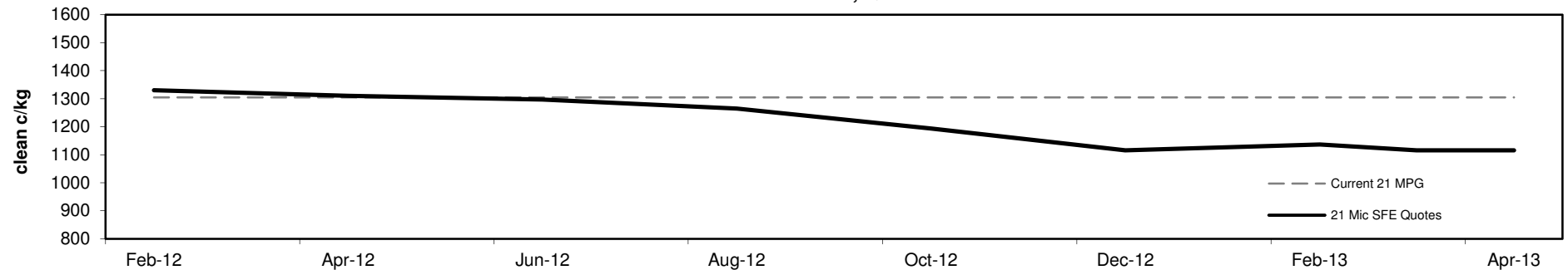
Table 8: 21 micron SFE, as a percentile of the 21 micron MPG

3 Year Percentile	86%	81%	78%	74%	71%	66%	67%	66%	66%
10 Year Percentile	96%	94%	93%	90%	86%	84%	84%	84%	84%

Table 9: 21 micron SFE, compared to MPG

SFE - MPG	+25	2%	+5	0%	-8	-1%	-40	-3%	-111	-9%	-189	-14%	-168	-13%	-189	-14%	-189	-14%
SFE - MPG, 1 year Ave.	+6	0%	-14	-1%	-27	-2%	-59	-4%	-130	-10%	-208	-16%	-187	-14%	-208	-16%	-208	-16%
SFE - MPG, 3 year Ave.	+295	29%	+275	27%	+262	25%	+230	22%	+159	15%	+81	8%	+102	10%	+81	8%	+81	8%
SFE - MPG, 10 year Ave.	+393	42%	+373	40%	+360	38%	+328	35%	+257	27%	+179	19%	+200	21%	+179	19%	+179	19%

21 MICRON SFE, QUOTES



21 Micron SFE, Front month movement

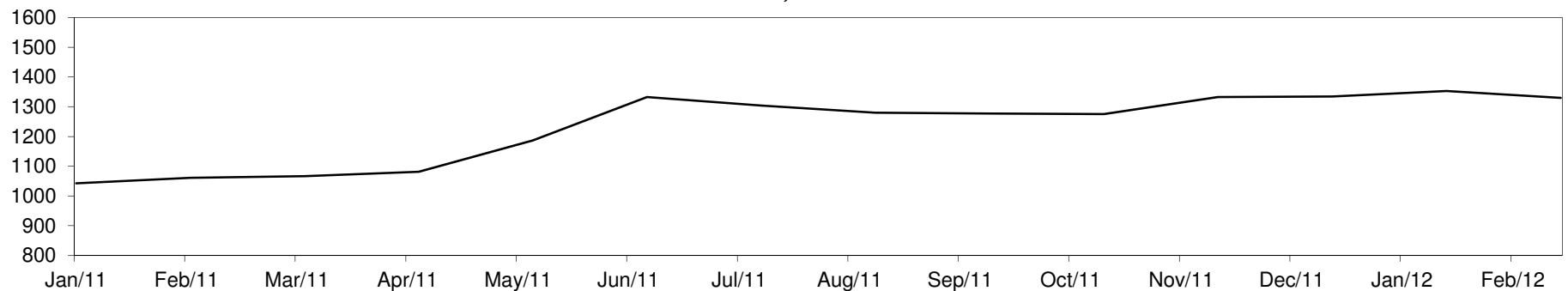




Table 10: 23 micron SFE

Wednesday, 18 January 2012

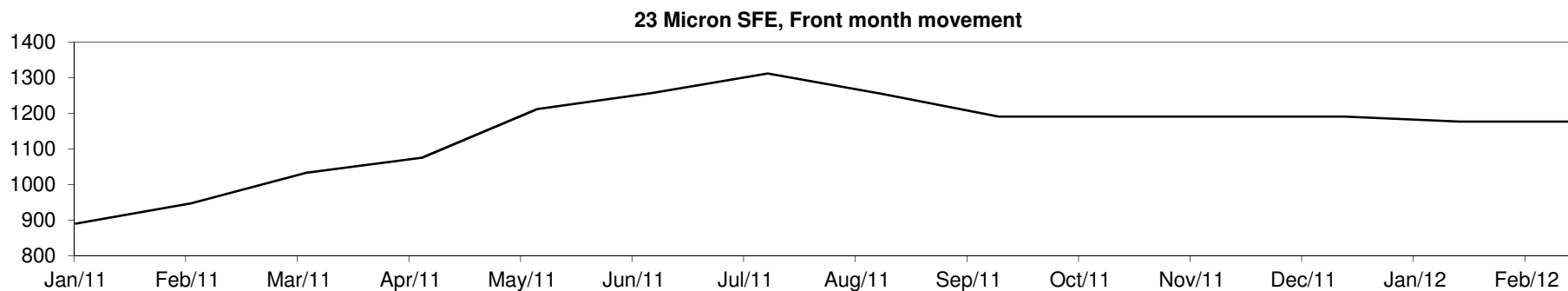
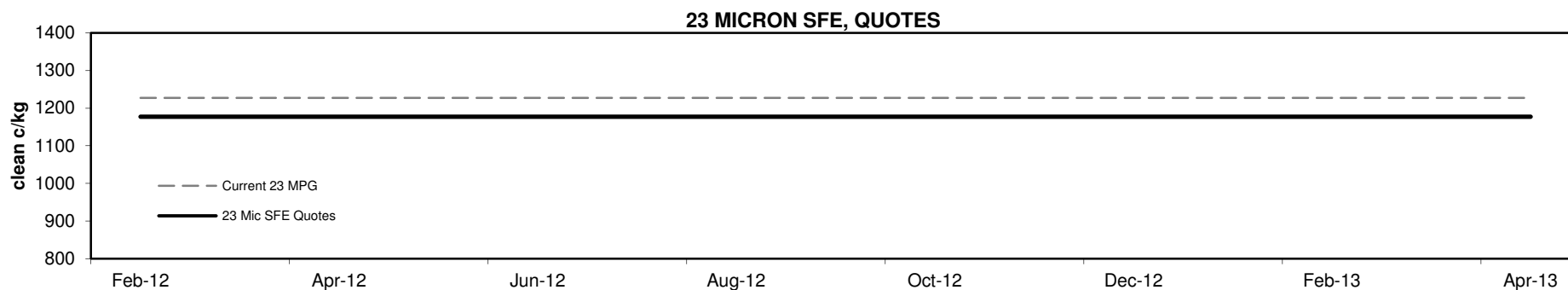
Delivery Mth	Feb-12	Apr-12	Jun-12	Aug-12	Oct-12	Dec-12	Feb-13	Mar-13	Apr-13
23 Micron SFE	1177	1177	1177	1177	1177	1177	1177	1177	1177
Average	1073	1103	1137	1182	1217	1217	1218	1189	1189
Maximum	1312	1312	1312	1312	1312	1312	1312	1191	1191
Minimum	883	883	890	1033	1177	1177	1177	1177	1177

Table 11: 23 micron SFE, as a percentile of the 23 micron MPG

3 Year Percentile	84%	84%	84%	84%	84%	84%	84%	84%	84%
10 Year Percentile	90%	90%	90%	90%	90%	90%	90%	90%	90%

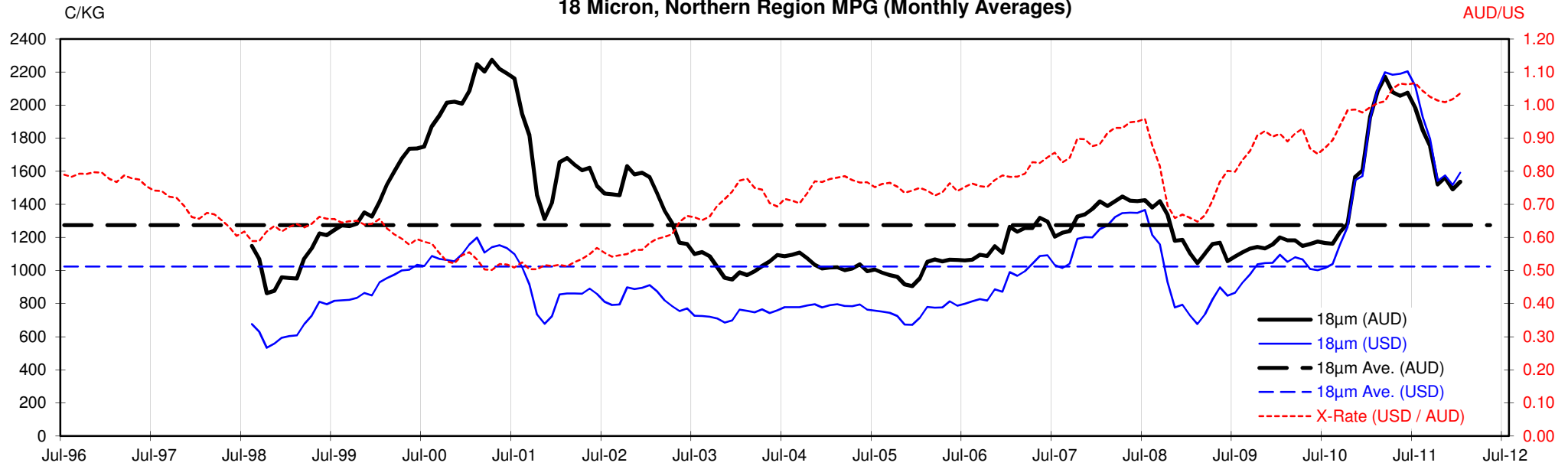
Table 12: 23 micron SFE, compared to MPG

SFE - MPG	-50	-4%	-50	-4%	-50	-4%	-50	-4%	-50	-4%	-50	-4%	-50	-4%	-50	-4%	-50	-4%
SFE - MPG, 1 year Ave.	-6	-1%	-6	-1%	-6	-1%	-6	-1%	-6	-1%	-6	-1%	-6	-1%	-6	-1%	-6	-1%
SFE - MPG, 3 year Ave.	+220	23%	+220	23%	+220	23%	+220	23%	+220	23%	+220	23%	+220	23%	+220	23%	+220	23%
SFE - MPG, 10 year Ave.	+296	34%	+296	34%	+296	34%	+296	34%	+296	34%	+296	34%	+296	34%	+296	34%	+296	34%

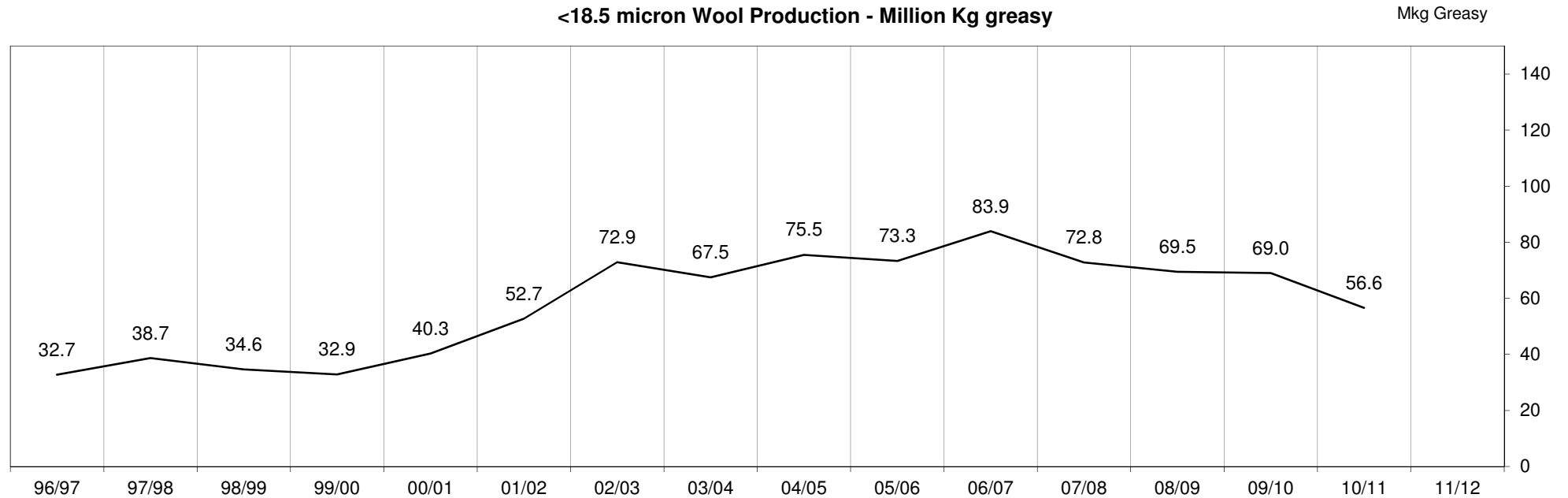


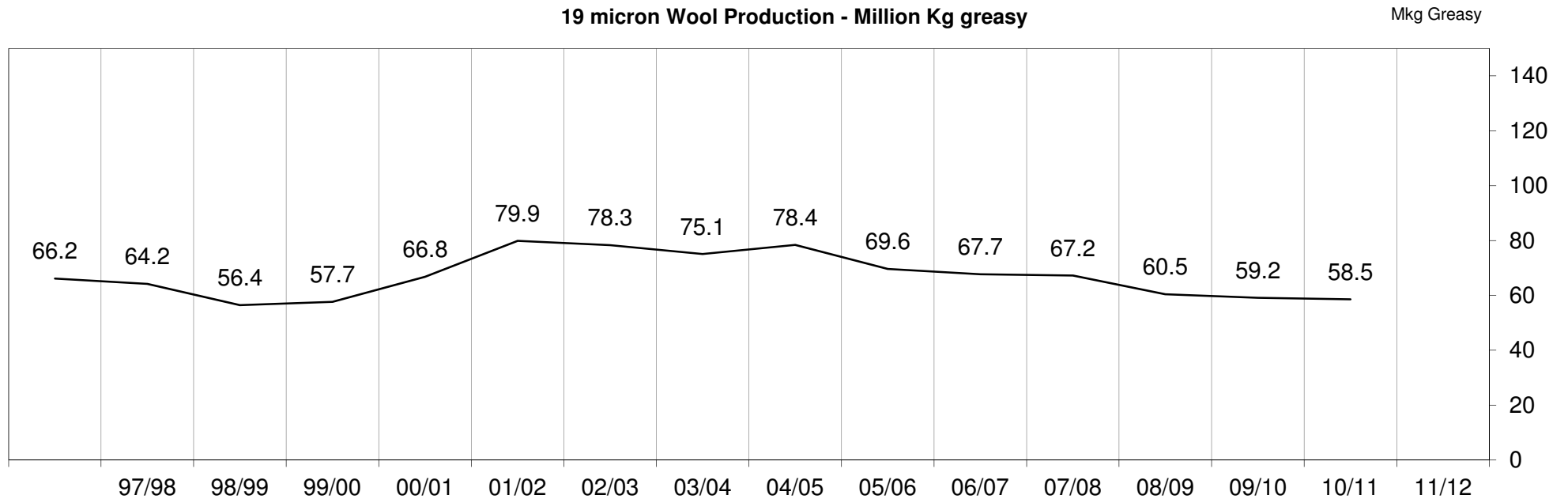
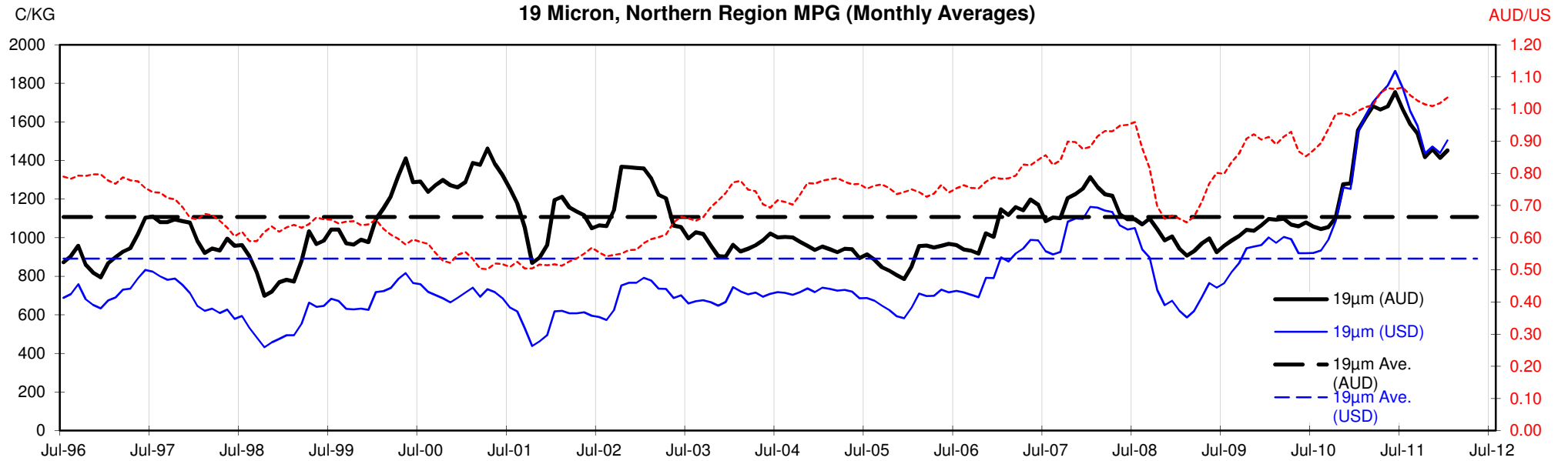


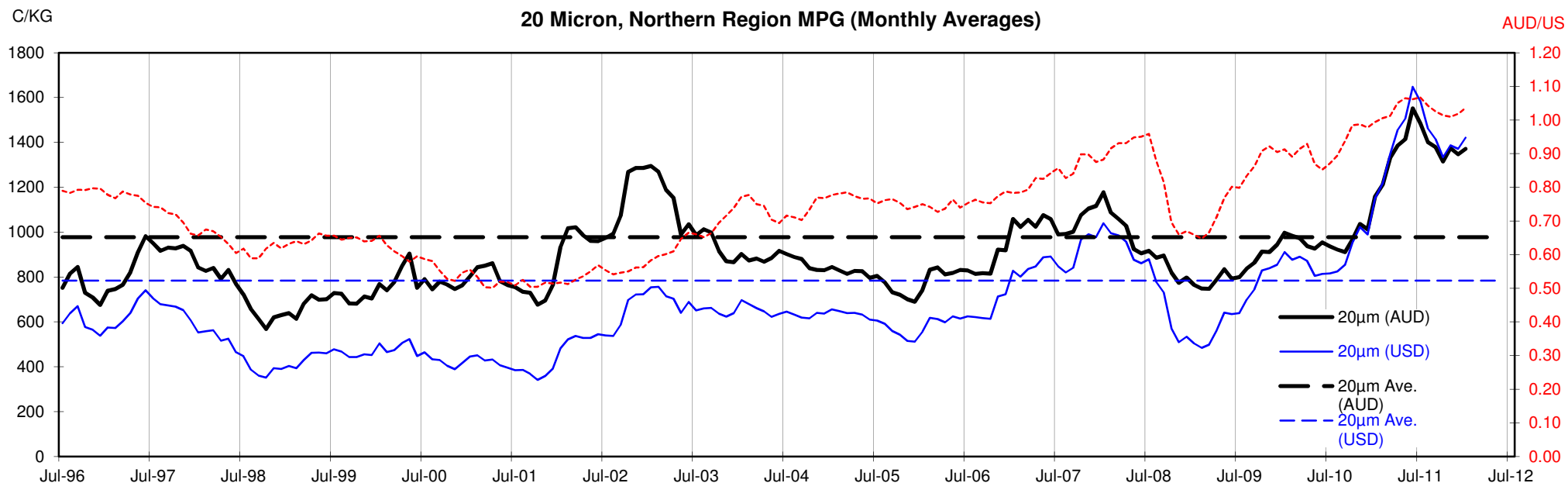
18 Micron, Northern Region MPG (Monthly Averages)

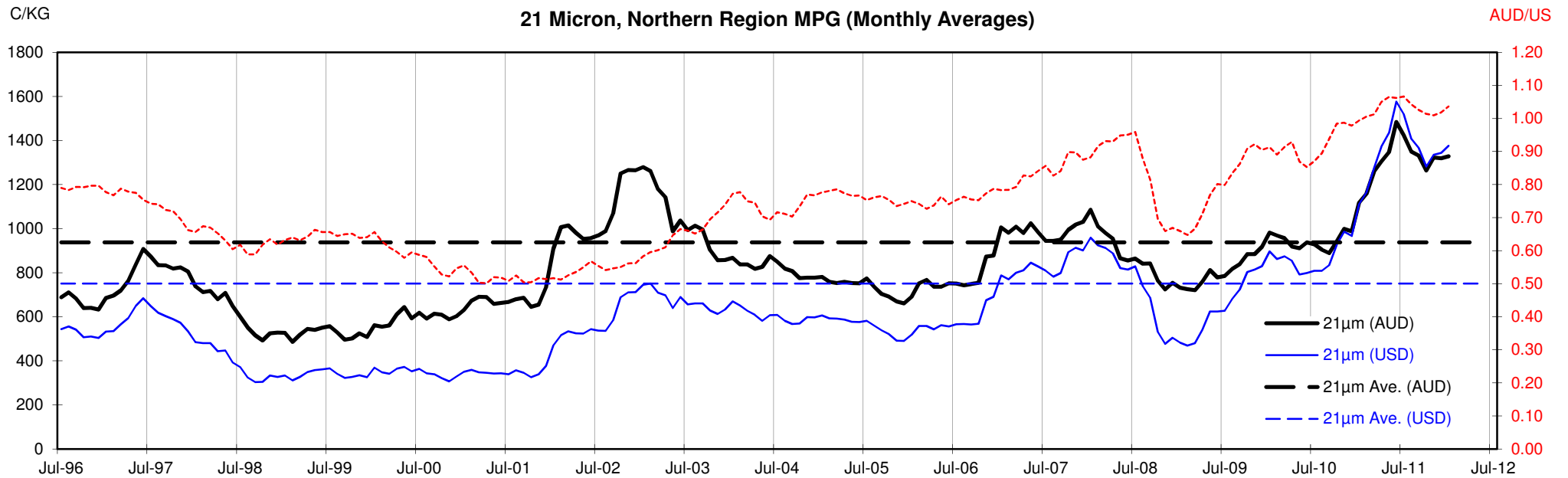


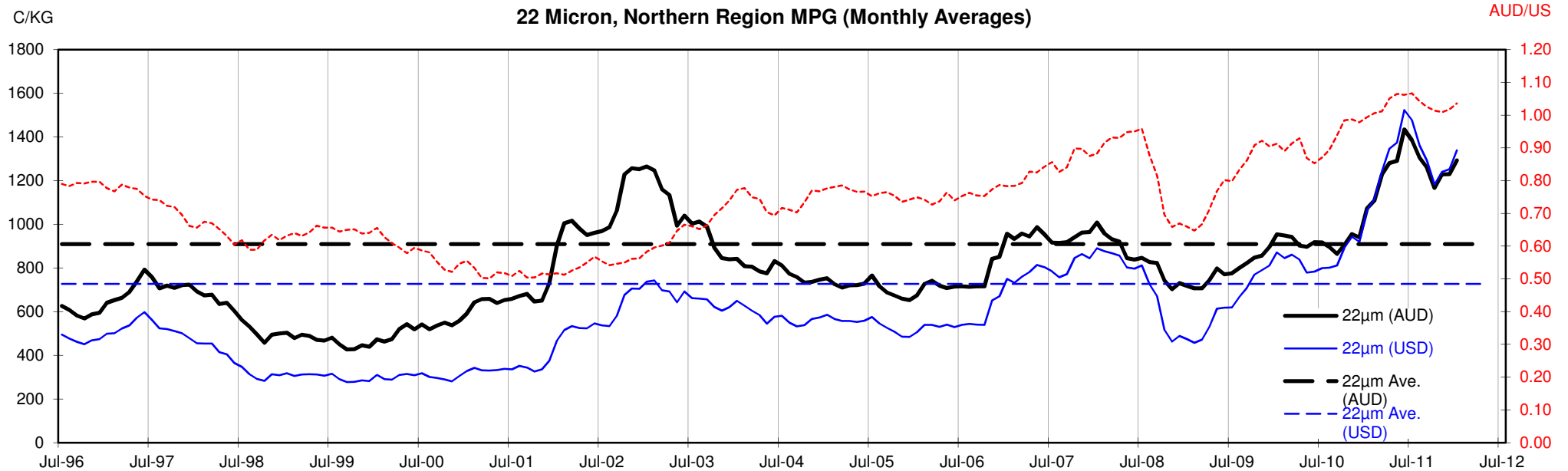
<18.5 micron Wool Production - Million Kg greasy

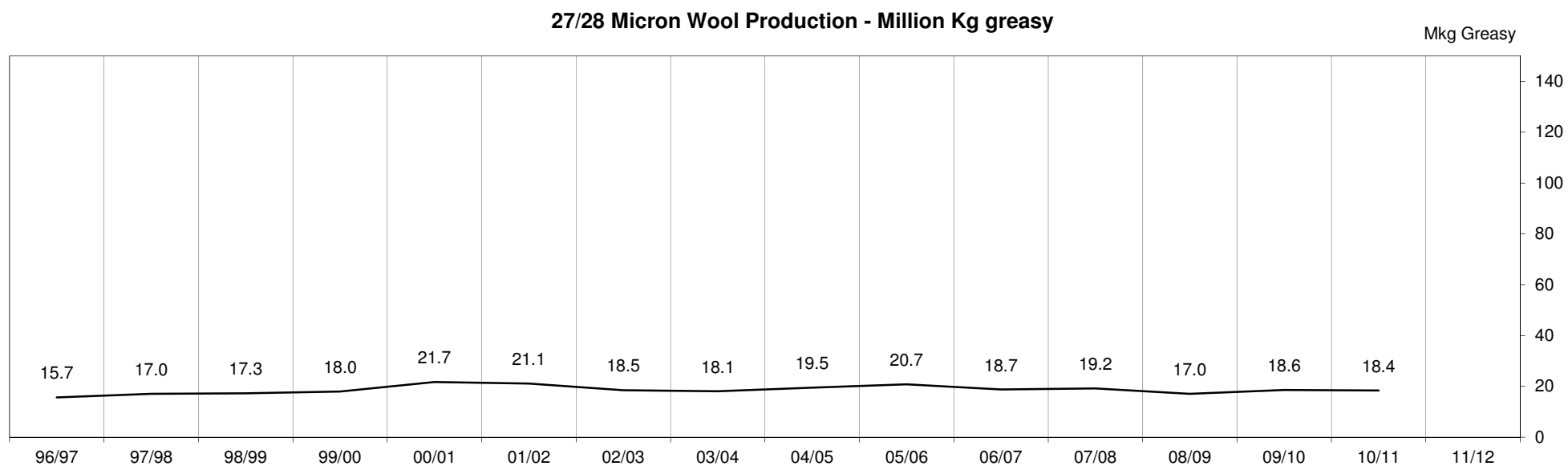
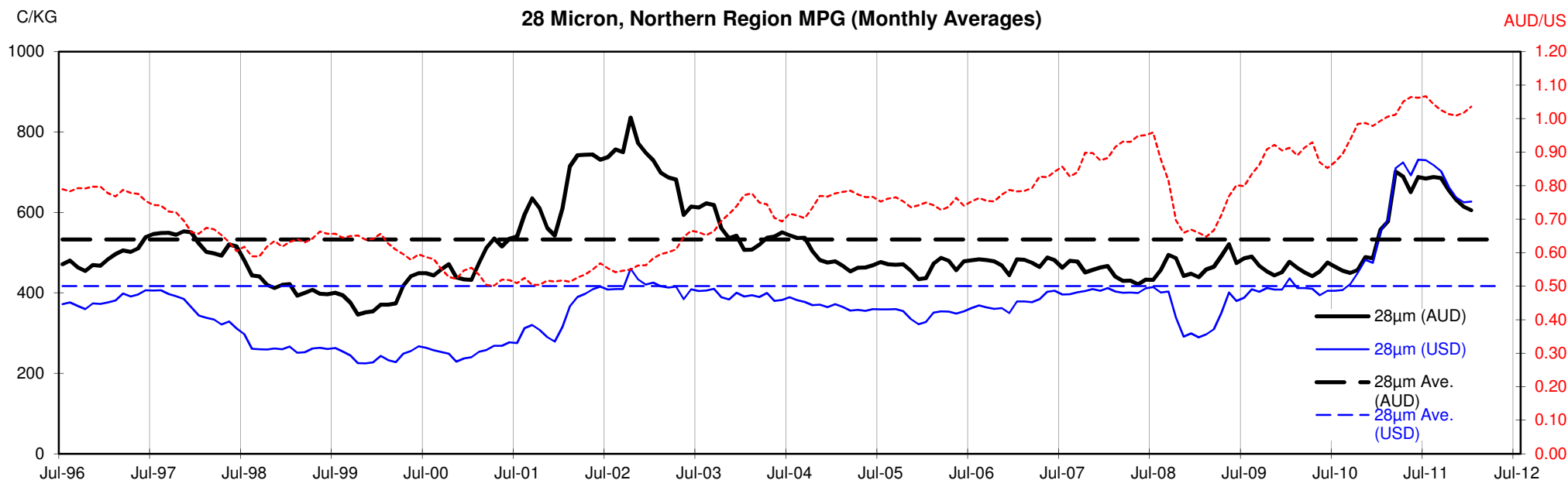












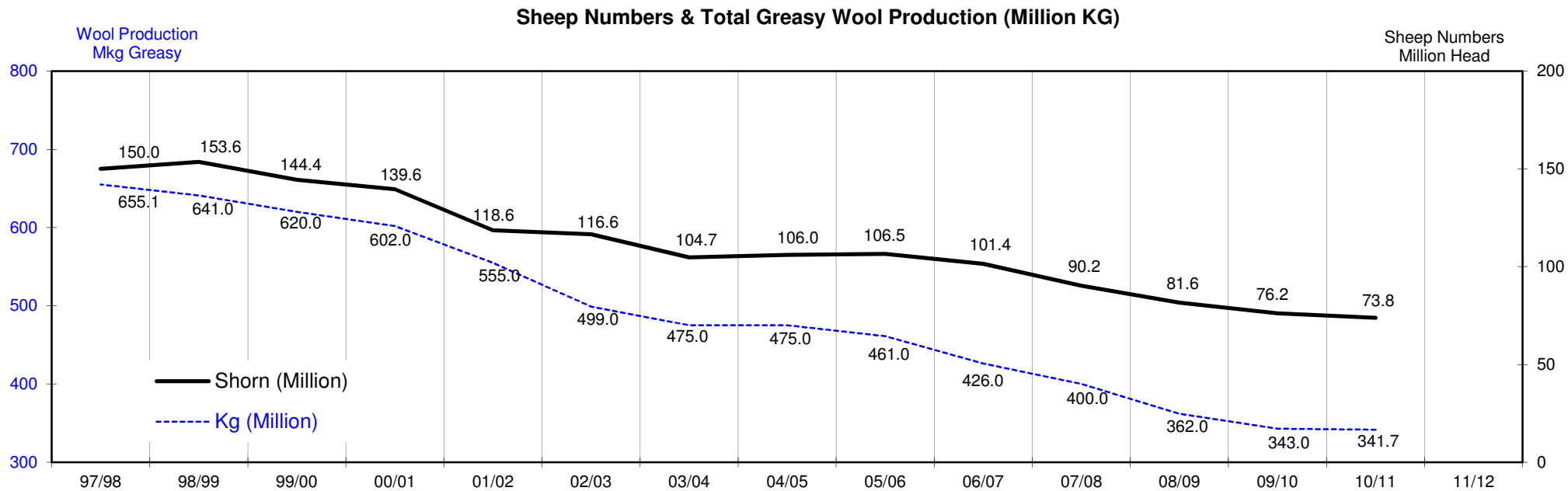
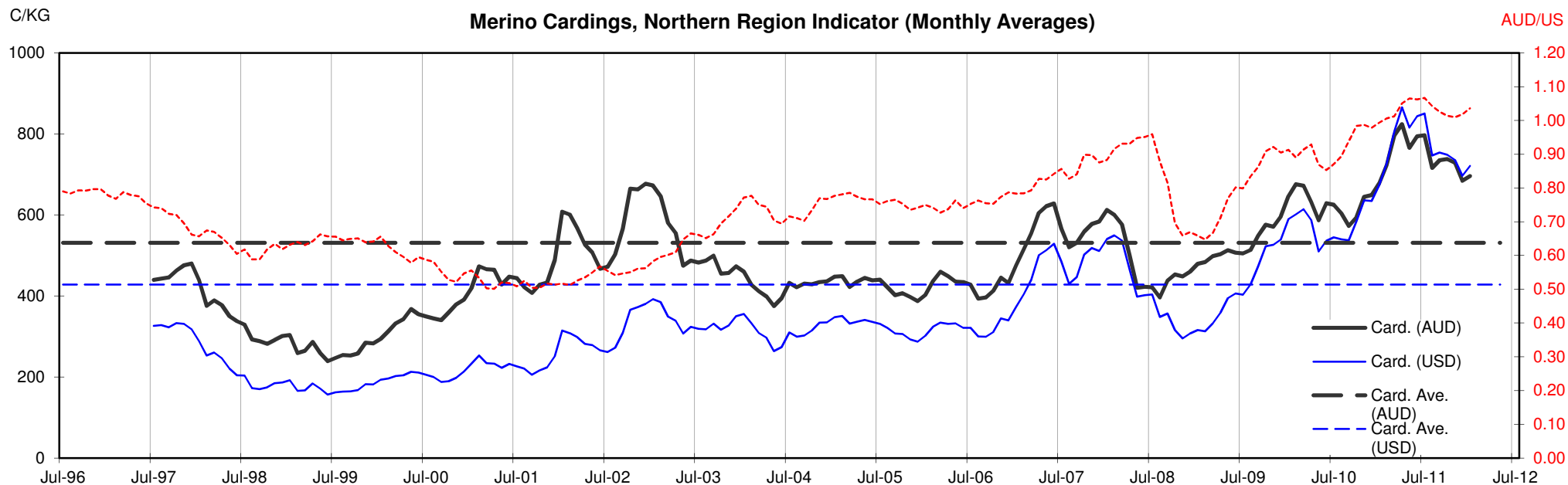




Table 13: Returns pr head for skirted fleece wool.

Skirted FLC Weight			Micron																	
			16	16.5	17	17.5	18	18.5	19	19.5	20	21	22	23	24	25	26	28	30	32
Yield (Sch Dry)	9 Kg																			
	25%	Current	\$46	\$41	\$38	\$36	\$34	\$33	\$32	\$32	\$30	\$29	\$29	\$28	\$25	\$20	\$17	\$13	\$12	\$11
		10yr ave.			\$33		\$29		\$25		\$22	\$21	\$20	\$20	\$19	\$17	\$15	\$12	\$10	\$9
	30%	Current	\$55	\$49	\$45	\$43	\$41	\$40	\$39	\$38	\$36	\$35	\$34	\$33	\$30	\$24	\$20	\$16	\$14	\$13
		10yr ave.			\$39		\$34		\$30		\$26	\$25	\$25	\$24	\$22	\$20	\$18	\$14	\$13	\$11
	35%	Current	\$65	\$58	\$53	\$50	\$48	\$46	\$45	\$44	\$42	\$41	\$40	\$39	\$35	\$28	\$24	\$19	\$17	\$15
		10yr ave.			\$46		\$40		\$35		\$31	\$30	\$29	\$28	\$26	\$23	\$21	\$17	\$15	\$13
	40%	Current	\$74	\$66	\$61	\$58	\$54	\$53	\$51	\$50	\$49	\$47	\$46	\$44	\$40	\$32	\$27	\$21	\$19	\$17
		10yr ave.			\$52		\$46		\$40		\$35	\$34	\$33	\$32	\$30	\$27	\$24	\$19	\$17	\$15
	45%	Current	\$83	\$74	\$68	\$65	\$61	\$59	\$58	\$57	\$55	\$53	\$52	\$50	\$45	\$36	\$31	\$24	\$22	\$19
		10yr ave.			\$59		\$52		\$45		\$40	\$38	\$37	\$36	\$34	\$30	\$27	\$22	\$19	\$17
	50%	Current	\$92	\$82	\$76	\$72	\$68	\$66	\$64	\$63	\$61	\$59	\$57	\$55	\$50	\$40	\$34	\$27	\$24	\$22
		10yr ave.			\$65		\$57		\$50		\$44	\$42	\$41	\$40	\$37	\$33	\$30	\$24	\$21	\$19
	55%	Current	\$101	\$91	\$83	\$79	\$75	\$72	\$71	\$69	\$67	\$65	\$63	\$61	\$55	\$44	\$37	\$30	\$26	\$24
	10yr ave.			\$72		\$63		\$55		\$48	\$46	\$45	\$44	\$41	\$37	\$34	\$26	\$23	\$21	
60%	Current	\$111	\$99	\$91	\$86	\$81	\$79	\$77	\$76	\$73	\$70	\$69	\$66	\$60	\$48	\$41	\$32	\$29	\$26	
	10yr ave.			\$78		\$69		\$60		\$53	\$51	\$49	\$48	\$45	\$40	\$37	\$29	\$25	\$23	
65%	Current	\$120	\$107	\$99	\$94	\$88	\$86	\$84	\$82	\$79	\$76	\$75	\$72	\$65	\$52	\$44	\$35	\$31	\$28	
	10yr ave.			\$85		\$75		\$65		\$57	\$55	\$53	\$52	\$49	\$43	\$40	\$31	\$27	\$24	
70%	Current	\$129	\$115	\$106	\$101	\$95	\$92	\$90	\$88	\$85	\$82	\$80	\$77	\$70	\$56	\$48	\$38	\$33	\$30	
	10yr ave.			\$91		\$80		\$70		\$62	\$59	\$57	\$56	\$52	\$47	\$43	\$34	\$29	\$26	
75%	Current	\$138	\$124	\$114	\$108	\$102	\$99	\$97	\$95	\$91	\$88	\$86	\$83	\$75	\$60	\$51	\$40	\$36	\$32	
	10yr ave.			\$98		\$86		\$75		\$66	\$63	\$61	\$59	\$56	\$50	\$46	\$36	\$31	\$28	
80%	Current	\$148	\$132	\$121	\$115	\$109	\$105	\$103	\$101	\$97	\$94	\$92	\$88	\$80	\$64	\$54	\$43	\$38	\$35	
	10yr ave.			\$104		\$92		\$80		\$70	\$67	\$66	\$63	\$60	\$53	\$49	\$38	\$33	\$30	
85%	Current	\$157	\$140	\$129	\$122	\$115	\$112	\$109	\$107	\$103	\$100	\$98	\$94	\$85	\$68	\$58	\$46	\$41	\$37	
	10yr ave.			\$111		\$98		\$85		\$75	\$72	\$70	\$67	\$64	\$57	\$52	\$41	\$35	\$32	

The above shows estimated returns per head for skirted fleece wool. These figures do not take into account the value of skirtings and oddments and do not take into account discounts that may apply for faults under individual circumstances. These figures are based on a market index of 100% and should be used as a guide only. Returns over \$30 / head for fleece wool are highlighted.

Source: Australian Wool Exchange, Australian Wool Innovation, Sydney Futures Exchange, x-rates.com

Disclaimer: While all due care has been taken in the preparation of this document, no warranty is made as to its accuracy, reliability or completeness. To the extent permitted by law neither Jemalong or their sources including subsidiaries and staff, accept liability to any person for loss or damage arising from the use of this information.



Table 14: Returns pr head for skirted fleece wool.

Skirted FLC Weight 8 Kg			Micron																	
			16	16.5	17	17.5	18	18.5	19	19.5	20	21	22	23	24	25	26	28	30	32
Yield (Sch Dry)	25%	Current	\$41	\$37	\$34	\$32	\$30	\$29	\$29	\$28	\$27	\$26	\$26	\$25	\$22	\$18	\$15	\$12	\$11	\$10
		10yr ave.			\$29		\$26		\$22		\$20	\$19	\$18	\$18	\$17	\$15	\$14	\$11	\$9	\$8
	30%	Current	\$49	\$44	\$40	\$38	\$36	\$35	\$34	\$34	\$32	\$31	\$31	\$29	\$27	\$21	\$18	\$14	\$13	\$12
		10yr ave.			\$35		\$31		\$27		\$23	\$22	\$22	\$21	\$20	\$18	\$16	\$13	\$11	\$10
	35%	Current	\$57	\$51	\$47	\$45	\$42	\$41	\$40	\$39	\$38	\$37	\$36	\$34	\$31	\$25	\$21	\$17	\$15	\$13
		10yr ave.			\$41		\$36		\$31		\$27	\$26	\$25	\$25	\$23	\$21	\$19	\$15	\$13	\$12
	40%	Current	\$66	\$59	\$54	\$51	\$48	\$47	\$46	\$45	\$43	\$42	\$41	\$39	\$35	\$29	\$24	\$19	\$17	\$15
		10yr ave.			\$46		\$41		\$35		\$31	\$30	\$29	\$28	\$27	\$24	\$22	\$17	\$15	\$13
	45%	Current	\$74	\$66	\$61	\$58	\$54	\$53	\$51	\$50	\$49	\$47	\$46	\$44	\$40	\$32	\$27	\$21	\$19	\$17
		10yr ave.			\$52		\$46		\$40		\$35	\$34	\$33	\$32	\$30	\$27	\$24	\$19	\$17	\$15
	50%	Current	\$82	\$73	\$67	\$64	\$60	\$59	\$57	\$56	\$54	\$52	\$51	\$49	\$44	\$36	\$30	\$24	\$21	\$19
		10yr ave.			\$58		\$51		\$44		\$39	\$37	\$36	\$35	\$33	\$30	\$27	\$21	\$19	\$17
	55%	Current	\$90	\$81	\$74	\$70	\$66	\$64	\$63	\$62	\$59	\$57	\$56	\$54	\$49	\$39	\$33	\$26	\$23	\$21
		10yr ave.			\$64		\$56		\$49		\$43	\$41	\$40	\$39	\$37	\$33	\$30	\$23	\$20	\$18
60%	Current	\$98	\$88	\$81	\$77	\$72	\$70	\$69	\$67	\$65	\$63	\$61	\$59	\$53	\$43	\$36	\$29	\$25	\$23	
	10yr ave.			\$69		\$61		\$53		\$47	\$45	\$44	\$42	\$40	\$36	\$32	\$26	\$22	\$20	
65%	Current	\$107	\$95	\$88	\$83	\$78	\$76	\$74	\$73	\$70	\$68	\$66	\$64	\$58	\$46	\$39	\$31	\$28	\$25	
	10yr ave.			\$75		\$66		\$58		\$51	\$49	\$47	\$46	\$43	\$39	\$35	\$28	\$24	\$22	
70%	Current	\$115	\$102	\$94	\$90	\$84	\$82	\$80	\$78	\$76	\$73	\$71	\$69	\$62	\$50	\$42	\$33	\$30	\$27	
	10yr ave.			\$81		\$71		\$62		\$55	\$52	\$51	\$49	\$47	\$42	\$38	\$30	\$26	\$23	
75%	Current	\$123	\$110	\$101	\$96	\$90	\$88	\$86	\$84	\$81	\$78	\$77	\$74	\$66	\$54	\$45	\$36	\$32	\$29	
	10yr ave.			\$87		\$77		\$66		\$59	\$56	\$55	\$53	\$50	\$45	\$41	\$32	\$28	\$25	
80%	Current	\$131	\$117	\$108	\$102	\$97	\$94	\$92	\$90	\$86	\$84	\$82	\$79	\$71	\$57	\$48	\$38	\$34	\$31	
	10yr ave.			\$93		\$82		\$71		\$63	\$60	\$58	\$56	\$53	\$47	\$43	\$34	\$30	\$27	
85%	Current	\$139	\$124	\$115	\$109	\$103	\$99	\$97	\$95	\$92	\$89	\$87	\$83	\$75	\$61	\$51	\$41	\$36	\$33	
	10yr ave.			\$98		\$87		\$75		\$67	\$64	\$62	\$60	\$57	\$50	\$46	\$36	\$32	\$28	

The above shows estimated returns per head for skirted fleece wool. These figures do not take into account the value of skirtings and oddments and do not take into account discounts that may apply for faults under individual circumstances. These figures are based on a market index of 100% and should be used as a guide only. Returns over \$30 / head for fleece wool are highlighted.

Source: Australian Wool Exchange, Australian Wool Innovation, Sydney Futures Exchange, x-rates.com

Disclaimer: While all due care has been taken in the preparation of this document, no warranty is made as to its accuracy, reliability or completeness. To the extent permitted by law neither Jemalong or their sources including subsidiaries and staff, accept liability to any person for loss or damage arising from the use of this information.



Table 15: Returns pr head for skirted fleece wool.

Skirted FLC Weight		Micron																	
7 Kg		16	16.5	17	17.5	18	18.5	19	19.5	20	21	22	23	24	25	26	28	30	32
Yield (Sch Dry)	25% Current	\$36	\$32	\$29	\$28	\$26	\$26	\$25	\$25	\$24	\$23	\$22	\$21	\$19	\$16	\$13	\$10	\$9	\$8
	10yr ave.			\$25	\$22			\$19		\$17	\$16	\$16	\$15	\$15	\$13	\$12	\$9	\$8	\$7
	30% Current	\$43	\$38	\$35	\$34	\$32	\$31	\$30	\$29	\$28	\$27	\$27	\$26	\$23	\$19	\$16	\$13	\$11	\$10
	10yr ave.			\$30		\$27		\$23		\$21	\$20	\$19	\$19	\$17	\$16	\$14	\$11	\$10	\$9
	35% Current	\$50	\$45	\$41	\$39	\$37	\$36	\$35	\$34	\$33	\$32	\$31	\$30	\$27	\$22	\$18	\$15	\$13	\$12
	10yr ave.			\$35		\$31		\$27		\$24	\$23	\$22	\$22	\$20	\$18	\$17	\$13	\$11	\$10
	40% Current	\$57	\$51	\$47	\$45	\$42	\$41	\$40	\$39	\$38	\$37	\$36	\$34	\$31	\$25	\$21	\$17	\$15	\$13
	10yr ave.			\$41		\$36		\$31		\$27	\$26	\$25	\$25	\$23	\$21	\$19	\$15	\$13	\$12
	45% Current	\$65	\$58	\$53	\$50	\$48	\$46	\$45	\$44	\$42	\$41	\$40	\$39	\$35	\$28	\$24	\$19	\$17	\$15
	10yr ave.			\$46		\$40		\$35		\$31	\$30	\$29	\$28	\$26	\$23	\$21	\$17	\$15	\$13
	50% Current	\$72	\$64	\$59	\$56	\$53	\$51	\$50	\$49	\$47	\$46	\$45	\$43	\$39	\$31	\$26	\$21	\$19	\$17
	10yr ave.			\$51		\$45		\$39		\$34	\$33	\$32	\$31	\$29	\$26	\$24	\$19	\$16	\$15
	55% Current	\$79	\$70	\$65	\$62	\$58	\$56	\$55	\$54	\$52	\$50	\$49	\$47	\$43	\$34	\$29	\$23	\$20	\$19
	10yr ave.			\$56		\$49		\$43		\$38	\$36	\$35	\$34	\$32	\$29	\$26	\$21	\$18	\$16
	60% Current	\$86	\$77	\$71	\$67	\$63	\$61	\$60	\$59	\$57	\$55	\$54	\$52	\$47	\$38	\$32	\$25	\$22	\$20
	10yr ave.			\$61		\$54		\$46		\$41	\$39	\$38	\$37	\$35	\$31	\$28	\$22	\$19	\$18
	65% Current	\$93	\$83	\$77	\$73	\$69	\$67	\$65	\$64	\$61	\$59	\$58	\$56	\$50	\$41	\$34	\$27	\$24	\$22
	10yr ave.			\$66		\$58		\$50		\$44	\$43	\$41	\$40	\$38	\$34	\$31	\$24	\$21	\$19
	70% Current	\$100	\$90	\$83	\$78	\$74	\$72	\$70	\$69	\$66	\$64	\$63	\$60	\$54	\$44	\$37	\$29	\$26	\$24
	10yr ave.			\$71		\$62		\$54		\$48	\$46	\$45	\$43	\$41	\$36	\$33	\$26	\$23	\$20
	75% Current	\$108	\$96	\$88	\$84	\$79	\$77	\$75	\$74	\$71	\$69	\$67	\$64	\$58	\$47	\$40	\$31	\$28	\$25
	10yr ave.			\$76		\$67		\$58		\$51	\$49	\$48	\$46	\$44	\$39	\$36	\$28	\$24	\$22
	80% Current	\$115	\$102	\$94	\$90	\$84	\$82	\$80	\$78	\$76	\$73	\$71	\$69	\$62	\$50	\$42	\$33	\$30	\$27
	10yr ave.			\$81		\$71		\$62		\$55	\$52	\$51	\$49	\$47	\$42	\$38	\$30	\$26	\$23
	85% Current	\$122	\$109	\$100	\$95	\$90	\$87	\$85	\$83	\$80	\$78	\$76	\$73	\$66	\$53	\$45	\$36	\$32	\$29
	10yr ave.			\$86		\$76		\$66		\$58	\$56	\$54	\$52	\$50	\$44	\$40	\$32	\$28	\$25

The above shows estimated returns per head for skirted fleece wool. These figures do not take into account the value of skirtings and oddments and do not take into account discounts that may apply for faults under individual circumstances. These figures are based on a market index of 100% and should be used as a guide only. Returns over \$30 / head for fleece wool are highlighted.

Source: Australian Wool Exchange, Australian Wool Innovation, Sydney Futures Exchange, x-rates.com

Disclaimer: While all due care has been taken in the preparation of this document, no warranty is made as to its accuracy, reliability or completeness. To the extent permitted by law neither Jemalong or their sources including subsidiaries and staff, accept liability to any person for loss or damage arising from the use of this information.



Table 16: Returns pr head for skirted fleece wool.

Skirted FLC Weight		Micron																	
6 Kg		16	16.5	17	17.5	18	18.5	19	19.5	20	21	22	23	24	25	26	28	30	32
Yield (Sch Dry)	25% Current	\$31	\$27	\$25	\$24	\$23	\$22	\$21	\$21	\$20	\$20	\$19	\$18	\$17	\$13	\$11	\$9	\$8	\$7
	10yr ave.			\$22		\$19		\$17		\$15	\$14	\$14	\$13	\$12	\$11	\$10	\$8	\$7	\$6
	30% Current	\$37	\$33	\$30	\$29	\$27	\$26	\$26	\$25	\$24	\$23	\$23	\$22	\$20	\$16	\$14	\$11	\$10	\$9
	10yr ave.			\$26		\$23		\$20		\$18	\$17	\$16	\$16	\$15	\$13	\$12	\$10	\$8	\$8
	35% Current	\$43	\$38	\$35	\$34	\$32	\$31	\$30	\$29	\$28	\$27	\$27	\$26	\$23	\$19	\$16	\$13	\$11	\$10
	10yr ave.			\$30		\$27		\$23		\$21	\$20	\$19	\$19	\$17	\$16	\$14	\$11	\$10	\$9
	40% Current	\$49	\$44	\$40	\$38	\$36	\$35	\$34	\$34	\$32	\$31	\$31	\$29	\$27	\$21	\$18	\$14	\$13	\$12
	10yr ave.			\$35		\$31		\$27		\$23	\$22	\$22	\$21	\$20	\$18	\$16	\$13	\$11	\$10
	45% Current	\$55	\$49	\$45	\$43	\$41	\$40	\$39	\$38	\$36	\$35	\$34	\$33	\$30	\$24	\$20	\$16	\$14	\$13
	10yr ave.			\$39		\$34		\$30		\$26	\$25	\$25	\$24	\$22	\$20	\$18	\$14	\$13	\$11
	50% Current	\$62	\$55	\$51	\$48	\$45	\$44	\$43	\$42	\$40	\$39	\$38	\$37	\$33	\$27	\$23	\$18	\$16	\$14
	10yr ave.			\$43		\$38		\$33		\$29	\$28	\$27	\$26	\$25	\$22	\$20	\$16	\$14	\$13
	55% Current	\$68	\$60	\$56	\$53	\$50	\$48	\$47	\$46	\$45	\$43	\$42	\$40	\$37	\$30	\$25	\$20	\$18	\$16
	10yr ave.			\$48		\$42		\$37		\$32	\$31	\$30	\$29	\$27	\$24	\$22	\$18	\$15	\$14
	60% Current	\$74	\$66	\$61	\$58	\$54	\$53	\$51	\$50	\$49	\$47	\$46	\$44	\$40	\$32	\$27	\$21	\$19	\$17
	10yr ave.			\$52		\$46		\$40		\$35	\$34	\$33	\$32	\$30	\$27	\$24	\$19	\$17	\$15
	65% Current	\$80	\$71	\$66	\$62	\$59	\$57	\$56	\$55	\$53	\$51	\$50	\$48	\$43	\$35	\$29	\$23	\$21	\$19
	10yr ave.			\$56		\$50		\$43		\$38	\$37	\$35	\$34	\$32	\$29	\$26	\$21	\$18	\$16
	70% Current	\$86	\$77	\$71	\$67	\$63	\$61	\$60	\$59	\$57	\$55	\$54	\$52	\$47	\$38	\$32	\$25	\$22	\$20
	10yr ave.			\$61		\$54		\$46		\$41	\$39	\$38	\$37	\$35	\$31	\$28	\$22	\$19	\$18
	75% Current	\$92	\$82	\$76	\$72	\$68	\$66	\$64	\$63	\$61	\$59	\$57	\$55	\$50	\$40	\$34	\$27	\$24	\$22
	10yr ave.			\$65		\$57		\$50		\$44	\$42	\$41	\$40	\$37	\$33	\$30	\$24	\$21	\$19
	80% Current	\$98	\$88	\$81	\$77	\$72	\$70	\$69	\$67	\$65	\$63	\$61	\$59	\$53	\$43	\$36	\$29	\$25	\$23
	10yr ave.			\$69		\$61		\$53		\$47	\$45	\$44	\$42	\$40	\$36	\$32	\$26	\$22	\$20
	85% Current	\$105	\$93	\$86	\$82	\$77	\$75	\$73	\$71	\$69	\$67	\$65	\$63	\$57	\$46	\$39	\$30	\$27	\$25
	10yr ave.			\$74		\$65		\$56		\$50	\$48	\$46	\$45	\$42	\$38	\$35	\$27	\$24	\$21

The above shows estimated returns per head for skirted fleece wool. These figures do not take into account the value of skirtings and oddments and do not take into account discounts that may apply for faults under individual circumstances. These figures are based on a market index of 100% and should be used as a guide only. Returns over \$30 / head for fleece wool are highlighted.

Source: Australian Wool Exchange, Australian Wool Innovation, Sydney Futures Exchange, x-rates.com

Disclaimer: While all due care has been taken in the preparation of this document, no warranty is made as to its accuracy, reliability or completeness. To the extent permitted by law neither Jemalong or their sources including subsidiaries and staff, accept liability to any person for loss or damage arising from the use of this information.



Table 17: Returns pr head for skirted fleece wool.

Skirted FLC Weight		Micron																	
5 Kg		16	16.5	17	17.5	18	18.5	19	19.5	20	21	22	23	24	25	26	28	30	32
Yield (Sch Dry)	25% Current	\$26	\$23	\$21	\$20	\$19	\$18	\$18	\$18	\$17	\$16	\$16	\$15	\$14	\$11	\$9	\$7	\$7	\$6
	10yr ave.			\$18		\$16		\$14		\$12	\$12	\$11	\$11	\$10	\$9	\$8	\$7	\$6	\$5
	30% Current	\$31	\$27	\$25	\$24	\$23	\$22	\$21	\$21	\$20	\$20	\$19	\$18	\$17	\$13	\$11	\$9	\$8	\$7
	10yr ave.			\$22		\$19		\$17		\$15	\$14	\$14	\$13	\$12	\$11	\$10	\$8	\$7	\$6
	35% Current	\$36	\$32	\$29	\$28	\$26	\$26	\$25	\$25	\$24	\$23	\$22	\$21	\$19	\$16	\$13	\$10	\$9	\$8
	10yr ave.			\$25		\$22		\$19		\$17	\$16	\$16	\$15	\$15	\$13	\$12	\$9	\$8	\$7
	40% Current	\$41	\$37	\$34	\$32	\$30	\$29	\$29	\$28	\$27	\$26	\$26	\$25	\$22	\$18	\$15	\$12	\$11	\$10
	10yr ave.			\$29		\$26		\$22		\$20	\$19	\$18	\$18	\$17	\$15	\$14	\$11	\$9	\$8
	45% Current	\$46	\$41	\$38	\$36	\$34	\$33	\$32	\$32	\$30	\$29	\$29	\$28	\$25	\$20	\$17	\$13	\$12	\$11
	10yr ave.			\$33		\$29		\$25		\$22	\$21	\$20	\$20	\$19	\$17	\$15	\$12	\$10	\$9
	50% Current	\$51	\$46	\$42	\$40	\$38	\$37	\$36	\$35	\$34	\$33	\$32	\$31	\$28	\$22	\$19	\$15	\$13	\$12
	10yr ave.			\$36		\$32		\$28		\$24	\$23	\$23	\$22	\$21	\$19	\$17	\$13	\$12	\$10
	55% Current	\$56	\$50	\$46	\$44	\$41	\$40	\$39	\$39	\$37	\$36	\$35	\$34	\$30	\$25	\$21	\$16	\$15	\$13
	10yr ave.			\$40		\$35		\$30		\$27	\$26	\$25	\$24	\$23	\$20	\$19	\$15	\$13	\$11
	60% Current	\$62	\$55	\$51	\$48	\$45	\$44	\$43	\$42	\$40	\$39	\$38	\$37	\$33	\$27	\$23	\$18	\$16	\$14
	10yr ave.			\$43		\$38		\$33		\$29	\$28	\$27	\$26	\$25	\$22	\$20	\$16	\$14	\$13
	65% Current	\$67	\$59	\$55	\$52	\$49	\$48	\$46	\$46	\$44	\$42	\$41	\$40	\$36	\$29	\$25	\$19	\$17	\$16
	10yr ave.			\$47		\$41		\$36		\$32	\$30	\$30	\$29	\$27	\$24	\$22	\$17	\$15	\$14
	70% Current	\$72	\$64	\$59	\$56	\$53	\$51	\$50	\$49	\$47	\$46	\$45	\$43	\$39	\$31	\$26	\$21	\$19	\$17
	10yr ave.			\$51		\$45		\$39		\$34	\$33	\$32	\$31	\$29	\$26	\$24	\$19	\$16	\$15
	75% Current	\$77	\$69	\$63	\$60	\$57	\$55	\$54	\$53	\$51	\$49	\$48	\$46	\$42	\$34	\$28	\$22	\$20	\$18
	10yr ave.			\$54		\$48		\$42		\$37	\$35	\$34	\$33	\$31	\$28	\$25	\$20	\$17	\$16
	80% Current	\$82	\$73	\$67	\$64	\$60	\$59	\$57	\$56	\$54	\$52	\$51	\$49	\$44	\$36	\$30	\$24	\$21	\$19
	10yr ave.			\$58		\$51		\$44		\$39	\$37	\$36	\$35	\$33	\$30	\$27	\$21	\$19	\$17
	85% Current	\$87	\$78	\$72	\$68	\$64	\$62	\$61	\$60	\$57	\$55	\$54	\$52	\$47	\$38	\$32	\$25	\$23	\$20
	10yr ave.			\$61		\$54		\$47		\$42	\$40	\$39	\$37	\$35	\$32	\$29	\$23	\$20	\$18

The above shows estimated returns per head for skirted fleece wool. These figures do not take into account the value of skirtings and oddments and do not take into account discounts that may apply for faults under individual circumstances. These figures are based on a market index of 100% and should be used as a guide only. Returns over \$30 / head for fleece wool are highlighted.

Source: Australian Wool Exchange, Australian Wool Innovation, Sydney Futures Exchange, x-rates.com

Disclaimer: While all due care has been taken in the preparation of this document, no warranty is made as to its accuracy, reliability or completeness. To the extent permitted by law neither Jemalong or their sources including subsidiaries and staff, accept liability to any person for loss or damage arising from the use of this information.



Table 18: Returns pr head for skirted fleece wool.

Skirted FLC Weight		Micron																	
4 Kg		16	16.5	17	17.5	18	18.5	19	19.5	20	21	22	23	24	25	26	28	30	32
Yield (Sch Dry)	25% Current	\$21	\$18	\$17	\$16	\$15	\$15	\$14	\$14	\$13	\$13	\$13	\$12	\$11	\$9	\$8	\$6	\$5	\$5
	10yr ave.			\$14		\$13		\$11		\$10	\$9	\$9	\$9	\$8	\$7	\$7	\$5	\$5	\$4
	30% Current	\$25	\$22	\$20	\$19	\$18	\$18	\$17	\$17	\$16	\$16	\$15	\$15	\$13	\$11	\$9	\$7	\$6	\$6
	10yr ave.			\$17		\$15		\$13		\$12	\$11	\$11	\$11	\$10	\$9	\$8	\$6	\$6	\$5
	35% Current	\$29	\$26	\$24	\$22	\$21	\$20	\$20	\$20	\$19	\$18	\$18	\$17	\$16	\$13	\$11	\$8	\$7	\$7
	10yr ave.			\$20		\$18		\$15		\$14	\$13	\$13	\$12	\$12	\$10	\$9	\$7	\$6	\$6
	40% Current	\$33	\$29	\$27	\$26	\$24	\$23	\$23	\$22	\$22	\$21	\$20	\$20	\$18	\$14	\$12	\$10	\$8	\$8
	10yr ave.			\$23		\$20		\$18		\$16	\$15	\$15	\$14	\$13	\$12	\$11	\$9	\$7	\$7
	45% Current	\$37	\$33	\$30	\$29	\$27	\$26	\$26	\$25	\$24	\$23	\$23	\$22	\$20	\$16	\$14	\$11	\$10	\$9
	10yr ave.			\$26		\$23		\$20		\$18	\$17	\$16	\$16	\$15	\$13	\$12	\$10	\$8	\$8
	50% Current	\$41	\$37	\$34	\$32	\$30	\$29	\$29	\$28	\$27	\$26	\$26	\$25	\$22	\$18	\$15	\$12	\$11	\$10
	10yr ave.			\$29		\$26		\$22		\$20	\$19	\$18	\$18	\$17	\$15	\$14	\$11	\$9	\$8
	55% Current	\$45	\$40	\$37	\$35	\$33	\$32	\$31	\$31	\$30	\$29	\$28	\$27	\$24	\$20	\$17	\$13	\$12	\$11
	10yr ave.			\$32		\$28		\$24		\$22	\$21	\$20	\$19	\$18	\$16	\$15	\$12	\$10	\$9
	60% Current	\$49	\$44	\$40	\$38	\$36	\$35	\$34	\$34	\$32	\$31	\$31	\$29	\$27	\$21	\$18	\$14	\$13	\$12
	10yr ave.			\$35		\$31		\$27		\$23	\$22	\$22	\$21	\$20	\$18	\$16	\$13	\$11	\$10
	65% Current	\$53	\$48	\$44	\$42	\$39	\$38	\$37	\$36	\$35	\$34	\$33	\$32	\$29	\$23	\$20	\$16	\$14	\$13
	10yr ave.			\$38		\$33		\$29		\$25	\$24	\$24	\$23	\$22	\$19	\$18	\$14	\$12	\$11
	70% Current	\$57	\$51	\$47	\$45	\$42	\$41	\$40	\$39	\$38	\$37	\$36	\$34	\$31	\$25	\$21	\$17	\$15	\$13
	10yr ave.			\$41		\$36		\$31		\$27	\$26	\$25	\$25	\$23	\$21	\$19	\$15	\$13	\$12
	75% Current	\$62	\$55	\$51	\$48	\$45	\$44	\$43	\$42	\$40	\$39	\$38	\$37	\$33	\$27	\$23	\$18	\$16	\$14
	10yr ave.			\$43		\$38		\$33		\$29	\$28	\$27	\$26	\$25	\$22	\$20	\$16	\$14	\$13
	80% Current	\$66	\$59	\$54	\$51	\$48	\$47	\$46	\$45	\$43	\$42	\$41	\$39	\$35	\$29	\$24	\$19	\$17	\$15
	10yr ave.			\$46		\$41		\$35		\$31	\$30	\$29	\$28	\$27	\$24	\$22	\$17	\$15	\$13
	85% Current	\$70	\$62	\$57	\$54	\$51	\$50	\$49	\$48	\$46	\$44	\$43	\$42	\$38	\$30	\$26	\$20	\$18	\$16
	10yr ave.			\$49		\$43		\$38		\$33	\$32	\$31	\$30	\$28	\$25	\$23	\$18	\$16	\$14

The above shows estimated returns per head for skirted fleece wool. These figures do not take into account the value of skirtings and oddments and do not take into account discounts that may apply for faults under individual circumstances. These figures are based on a market index of 100% and should be used as a guide only. Returns over \$30 / head for fleece wool are highlighted.

Source: Australian Wool Exchange, Australian Wool Innovation, Sydney Futures Exchange, x-rates.com

Disclaimer: While all due care has been taken in the preparation of this document, no warranty is made as to its accuracy, reliability or completeness. To the extent permitted by law neither Jemalong or their sources including subsidiaries and staff, accept liability to any person for loss or damage arising from the use of this information.



Table 19: Returns pr head for skirted fleece wool.

Skirted FLC Weight		Micron																	
3 Kg		16	16.5	17	17.5	18	18.5	19	19.5	20	21	22	23	24	25	26	28	30	32
Yield (Sch Dry)	25% Current	\$15	\$14	\$13	\$12	\$11	\$11	\$11	\$11	\$10	\$10	\$10	\$9	\$8	\$7	\$6	\$4	\$4	\$4
	10yr ave.			\$11		\$10		\$8		\$7	\$7	\$7	\$7	\$6	\$6	\$5	\$4	\$3	\$3
	30% Current	\$18	\$16	\$15	\$14	\$14	\$13	\$13	\$13	\$12	\$12	\$11	\$11	\$10	\$8	\$7	\$5	\$5	\$4
	10yr ave.			\$13		\$11		\$10		\$9	\$8	\$8	\$8	\$7	\$7	\$6	\$5	\$4	\$4
	35% Current	\$22	\$19	\$18	\$17	\$16	\$15	\$15	\$15	\$14	\$14	\$13	\$13	\$12	\$9	\$8	\$6	\$6	\$5
	10yr ave.			\$15		\$13		\$12		\$10	\$10	\$10	\$9	\$9	\$8	\$7	\$6	\$5	\$4
	40% Current	\$25	\$22	\$20	\$19	\$18	\$18	\$17	\$17	\$16	\$16	\$15	\$15	\$13	\$11	\$9	\$7	\$6	\$6
	10yr ave.			\$17		\$15		\$13		\$12	\$11	\$11	\$11	\$10	\$9	\$8	\$6	\$6	\$5
	45% Current	\$28	\$25	\$23	\$22	\$20	\$20	\$19	\$19	\$18	\$18	\$17	\$17	\$15	\$12	\$10	\$8	\$7	\$6
	10yr ave.			\$20		\$17		\$15		\$13	\$13	\$12	\$12	\$11	\$10	\$9	\$7	\$6	\$6
	50% Current	\$31	\$27	\$25	\$24	\$23	\$22	\$21	\$21	\$20	\$20	\$19	\$18	\$17	\$13	\$11	\$9	\$8	\$7
	10yr ave.			\$22		\$19		\$17		\$15	\$14	\$14	\$13	\$12	\$11	\$10	\$8	\$7	\$6
	55% Current	\$34	\$30	\$28	\$26	\$25	\$24	\$24	\$23	\$22	\$22	\$21	\$20	\$18	\$15	\$12	\$10	\$9	\$8
	10yr ave.			\$24		\$21		\$18		\$16	\$15	\$15	\$15	\$14	\$12	\$11	\$9	\$8	\$7
	60% Current	\$37	\$33	\$30	\$29	\$27	\$26	\$26	\$25	\$24	\$23	\$23	\$22	\$20	\$16	\$14	\$11	\$10	\$9
	10yr ave.			\$26		\$23		\$20		\$18	\$17	\$16	\$16	\$15	\$13	\$12	\$10	\$8	\$8
	65% Current	\$40	\$36	\$33	\$31	\$29	\$29	\$28	\$27	\$26	\$25	\$25	\$24	\$22	\$17	\$15	\$12	\$10	\$9
	10yr ave.			\$28		\$25		\$22		\$19	\$18	\$18	\$17	\$16	\$14	\$13	\$10	\$9	\$8
	70% Current	\$43	\$38	\$35	\$34	\$32	\$31	\$30	\$29	\$28	\$27	\$27	\$26	\$23	\$19	\$16	\$13	\$11	\$10
	10yr ave.			\$30		\$27		\$23		\$21	\$20	\$19	\$19	\$17	\$16	\$14	\$11	\$10	\$9
	75% Current	\$46	\$41	\$38	\$36	\$34	\$33	\$32	\$32	\$30	\$29	\$29	\$28	\$25	\$20	\$17	\$13	\$12	\$11
	10yr ave.			\$33		\$29		\$25		\$22	\$21	\$20	\$20	\$19	\$17	\$15	\$12	\$10	\$9
	80% Current	\$49	\$44	\$40	\$38	\$36	\$35	\$34	\$34	\$32	\$31	\$31	\$29	\$27	\$21	\$18	\$14	\$13	\$12
	10yr ave.			\$35		\$31		\$27		\$23	\$22	\$22	\$21	\$20	\$18	\$16	\$13	\$11	\$10
	85% Current	\$52	\$47	\$43	\$41	\$38	\$37	\$36	\$36	\$34	\$33	\$33	\$31	\$28	\$23	\$19	\$15	\$14	\$12
	10yr ave.			\$37		\$33		\$28		\$25	\$24	\$23	\$22	\$21	\$19	\$17	\$14	\$12	\$11

The above shows estimated returns per head for skirted fleece wool. These figures do not take into account the value of skirtings and oddments and do not take into account discounts that may apply for faults under individual circumstances. These figures are based on a market index of 100% and should be used as a guide only. Returns over \$30 / head for fleece wool are highlighted.

Source: Australian Wool Exchange, Australian Wool Innovation, Sydney Futures Exchange, x-rates.com

Disclaimer: While all due care has been taken in the preparation of this document, no warranty is made as to its accuracy, reliability or completeness. To the extent permitted by law neither Jemalong or their sources including subsidiaries and staff, accept liability to any person for loss or damage arising from the use of this information.



Table 20: Returns pr head for skirted fleece wool.

Skirted FLC Weight		Micron																	
2 Kg		16	16.5	17	17.5	18	18.5	19	19.5	20	21	22	23	24	25	26	28	30	32
Yield (Sch Dry)	25% Current	\$10	\$9	\$8	\$8	\$8	\$7	\$7	\$7	\$7	\$7	\$6	\$6	\$6	\$4	\$4	\$3	\$3	\$2
	10yr ave.			\$7		\$6		\$6		\$5	\$5	\$5	\$4	\$4	\$4	\$3	\$3	\$2	\$2
	30% Current	\$12	\$11	\$10	\$10	\$9	\$9	\$9	\$8	\$8	\$8	\$8	\$7	\$7	\$5	\$5	\$4	\$3	\$3
	10yr ave.			\$9		\$8		\$7		\$6	\$6	\$5	\$5	\$5	\$4	\$4	\$3	\$3	\$3
	35% Current	\$14	\$13	\$12	\$11	\$11	\$10	\$10	\$10	\$9	\$9	\$9	\$9	\$8	\$6	\$5	\$4	\$4	\$3
	10yr ave.			\$10		\$9		\$8		\$7	\$7	\$6	\$6	\$6	\$5	\$5	\$4	\$3	\$3
	40% Current	\$16	\$15	\$13	\$13	\$12	\$12	\$11	\$11	\$11	\$10	\$10	\$10	\$9	\$7	\$6	\$5	\$4	\$4
	10yr ave.			\$12		\$10		\$9		\$8	\$7	\$7	\$7	\$7	\$6	\$5	\$4	\$4	\$3
	45% Current	\$18	\$16	\$15	\$14	\$14	\$13	\$13	\$13	\$12	\$12	\$11	\$11	\$10	\$8	\$7	\$5	\$5	\$4
	10yr ave.			\$13		\$11		\$10		\$9	\$8	\$8	\$8	\$7	\$7	\$6	\$5	\$4	\$4
	50% Current	\$21	\$18	\$17	\$16	\$15	\$15	\$14	\$14	\$13	\$13	\$13	\$12	\$11	\$9	\$8	\$6	\$5	\$5
	10yr ave.			\$14		\$13		\$11		\$10	\$9	\$9	\$9	\$8	\$7	\$7	\$5	\$5	\$4
	55% Current	\$23	\$20	\$19	\$18	\$17	\$16	\$16	\$15	\$15	\$14	\$14	\$13	\$12	\$10	\$8	\$7	\$6	\$5
	10yr ave.			\$16		\$14		\$12		\$11	\$10	\$10	\$10	\$9	\$8	\$7	\$6	\$5	\$5
	60% Current	\$25	\$22	\$20	\$19	\$18	\$18	\$17	\$17	\$16	\$16	\$15	\$15	\$13	\$11	\$9	\$7	\$6	\$6
	10yr ave.			\$17		\$15		\$13		\$12	\$11	\$11	\$11	\$10	\$9	\$8	\$6	\$6	\$5
	65% Current	\$27	\$24	\$22	\$21	\$20	\$19	\$19	\$18	\$18	\$17	\$17	\$16	\$14	\$12	\$10	\$8	\$7	\$6
	10yr ave.			\$19		\$17		\$14		\$13	\$12	\$12	\$11	\$11	\$10	\$9	\$7	\$6	\$5
	70% Current	\$29	\$26	\$24	\$22	\$21	\$20	\$20	\$20	\$19	\$18	\$18	\$17	\$16	\$13	\$11	\$8	\$7	\$7
	10yr ave.			\$20		\$18		\$15		\$14	\$13	\$13	\$12	\$12	\$10	\$9	\$7	\$6	\$6
	75% Current	\$31	\$27	\$25	\$24	\$23	\$22	\$21	\$21	\$20	\$20	\$19	\$18	\$17	\$13	\$11	\$9	\$8	\$7
	10yr ave.			\$22		\$19		\$17		\$15	\$14	\$14	\$13	\$12	\$11	\$10	\$8	\$7	\$6
	80% Current	\$33	\$29	\$27	\$26	\$24	\$23	\$23	\$22	\$22	\$21	\$20	\$20	\$18	\$14	\$12	\$10	\$8	\$8
	10yr ave.			\$23		\$20		\$18		\$16	\$15	\$15	\$14	\$13	\$12	\$11	\$9	\$7	\$7
	85% Current	\$35	\$31	\$29	\$27	\$26	\$25	\$24	\$24	\$23	\$22	\$22	\$21	\$19	\$15	\$13	\$10	\$9	\$8
	10yr ave.			\$25		\$22		\$19		\$17	\$16	\$15	\$15	\$14	\$13	\$12	\$9	\$8	\$7

The above shows estimated returns per head for skirted fleece wool. These figures do not take into account the value of skirtings and oddments and do not take into account discounts that may apply for faults under individual circumstances. These figures are based on a market index of 100% and should be used as a guide only. Returns over \$30 / head for fleece wool are highlighted.

Source: Australian Wool Exchange, Australian Wool Innovation, Sydney Futures Exchange, x-rates.com

Disclaimer: While all due care has been taken in the preparation of this document, no warranty is made as to its accuracy, reliability or completeness. To the extent permitted by law neither Jemalong or their sources including subsidiaries and staff, accept liability to any person for loss or damage arising from the use of this information.