



Table 1: Northern Region Micron Price Guides

CURRENT MARKET				12 MONTH COMPARISONS								3 YEAR COMPARISONS					Percentile	10 YEAR COMPARISONS					Percentile
Mic.	19/04/2012	4/04/2012		20/04/2011	Now		Now		Now				Now										
Price	Current	Weekly		This time	compared		compared		compared				compared										
Guides	Price	Change		Last Year	to Last Year		to Low		to High		Low	High	Average	to 3yr ave				Low	High	10 year	compared		
							Low		High											Average	to 10yr ave		
NRI	1194	-34 -2.8%		1388	-194 -14%		1188	+6 1%	1491	-297 -20%	790	1491	1085	+109 10%	60%			657	1491	932	+262 28%	88%	
16*	2000	-50 -2.5%		2780	-780 -28%		1950	+50 3%	2800	-800 -29%	1385	2800	1964	+36 2%	57%								
16.5*	1850	-40 -2.2%		2600	-750 -29%		1800	+50 3%	2680	-830 -31%	1280	2680	1807	+43 2%	58%								
17*	1610	-80 -5.0%		2470	-860 -35%		1610	0 0%	2500	-890 -36%	1180	2530	1656	-46 -3%	53%	1100	2530			1454	+156 11%	80%	
17.5*	1520	-35 -2.3%		2270	-750 -33%		1520	0 0%	2310	-790 -34%	1130	2360	1554	-34 -2%	53%								
18	1454	-41 -2.8%		2038	-584 -29%		1454	0 0%	2128	-674 -32%	1059	2193	1465	-11 -1%	53%	916	2193			1272	+182 14%	78%	
18.5	1396	-51 -3.7%		1834	-438 -24%		1395	+1 0%	1918	-522 -27%	995	1963	1376	+20 1%	54%								
19	1374	-31 -2.3%		1617	-243 -15%		1374	0 0%	1776	-402 -23%	930	1776	1281	+93 7%	59%	803	1776			1113	+261 23%	87%	
19.5	1357	-29 -2.1%		1470	-113 -8%		1344	+13 1%	1670	-313 -19%	841	1670	1191	+166 14%	62%								
20	1329	-27 -2.0%		1370	-41 -3%		1292	+37 3%	1588	-259 -16%	788	1588	1119	+210 19%	70%	700	1588			987	+342 35%	91%	
21	1308	-25 -1.9%		1284	+24 2%		1235	+73 6%	1522	-214 -14%	774	1522	1085	+223 21%	76%	668	1522			946	+362 38%	93%	
22	1274	-27 -2.1%		1255	+19 2%		1147	+127 11%	1461	-187 -13%	767	1461	1051	+223 21%	79%	659	1461			917	+357 39%	94%	
23	1232	-28 -2.3%		1220	+12 1%		1048	+184 18%	1347	-115 -9%	756	1347	1004	+228 23%	85%	652	1347			888	+344 39%	93%	
24	1156	-16 -1.4%		1077	+79 7%		983	+173 18%	1213	-57 -5%	722	1207	921	+235 26%	95%	638	1299			837	+319 38%	93%	
25	979	+3 0.3%		958	+21 2%		870	+109 13%	1015	-36 -4%	626	1048	794	+185 23%	91%	567	1198			743	+236 32%	91%	
26	835	-6 -0.7%		888	-53 -6%		739	+96 13%	928	-93 -10%	569	928	704	+131 19%	82%	532	1088			675	+160 24%	80%	
28	648	0		659	-11 -2%		596	+52 9%	724	-76 -10%	435	734	547	+101 18%	79%	424	889			530	+118 22%	83%	
30	581	-2 -0.3%		592	-11 -2%		524	+57 11%	648	-67 -10%	378	670	489	+92 19%	75%	344	729			462	+119 26%	83%	
32	513	+2 0.4%		571	-58 -10%		481	+32 7%	596	-83 -14%	326	638	437	+76 17%	69%	297	669			416	+97 23%	81%	
MC	733	-10 -1.4%		817	-84 -10%		673	+60 9%	831	-98 -12%	503	831	659	+74 11%	79%	380	831			535	+198 37%	94%	

Note:

\* Due to the irregular market quoting for some fine wool categories, figures shown relating to micron categories below 18 micron are an estimate based on the AWEX Premium & Discounts Report & other available information.

\* For any category, where there is insufficient quantity offered to enable AWEX to quote, a quote will be provided based on the best available information.

\* 10 Year data is not available for some micron categories, which may result in blank spaces in the table above.

Definitions:

\* A Percentile, is a value on a scale of one hundred that indicates the percent of a distribution that is equal to or below it. In general a percentile between 25% and 75% is considered normal, a percentile below 25% is considered below normal and a percentile above 75% is considered above normal.

Three and ten year percentiles shown in the table above, detail the period of time during the past 3 & 10 years that the market has traded either at or below its current price.

The higher the percentile, the stronger the market.

Source: Australian Wool Exchange, Australian Wool Innovation, Sydney Futures Exchange, x-rates.com

Disclaimer: While all due care has been taken in the preparation of this document, no warranty is made as to its accuracy, reliability or completeness. To the extent permitted by law neither Jemalong or their sources including subsidiaries and staff, accept liability to any person for loss or damage arising from the use of this information.



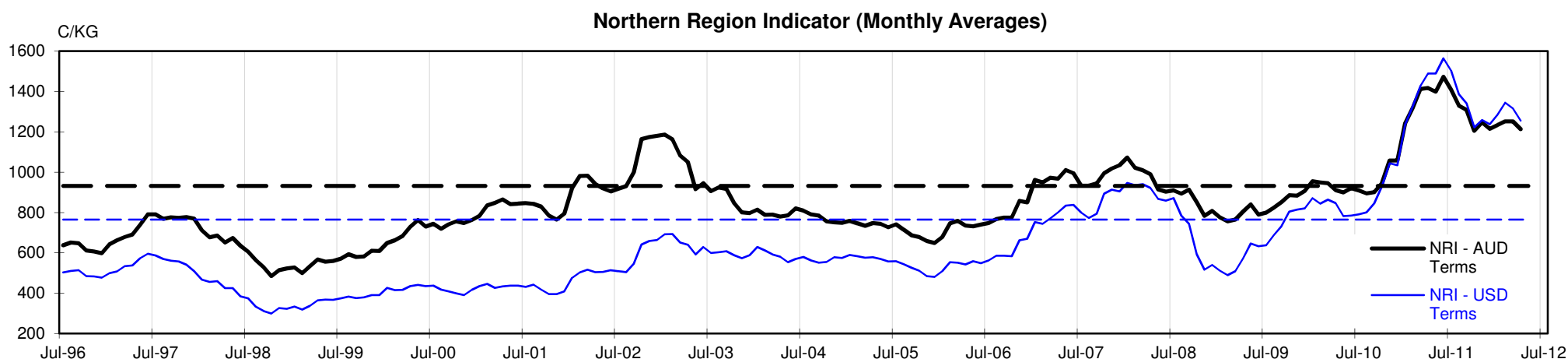
## MARKET COMMENTARY

One Australian Dollar = \$ 1.04 US, as of 19/04/2012

### NORTHERN REGION –Sale Week 42/11 (59,539 bales offered nationally)

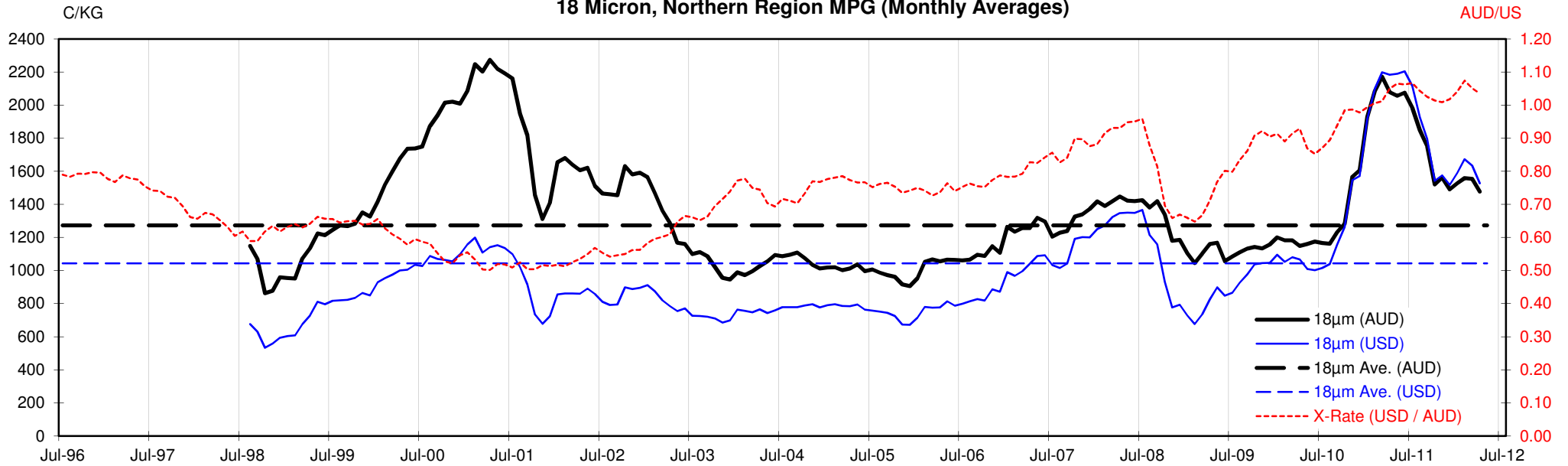
Wednesdays market on a large offering (following the weeks recess) and on the back of Melbourne's Tuesday sale saw prices fall by around 30 to 50 cents, with the finer end most affected (losing up to 70 & 80 cents in places). The fleece offering consisted predominantly of style 5 or lower, with a high percentage of high mid breaks on offer, resulting in heavy buyer discounting, leaving the better style & lower mid breaks less affected. Merino skirtings also lost 50-60 cents with the burrier 6-8% Vm lots most affected, cot & colour were also prevalent in the higher Vm types and therefore attracted further solid buyer discounting. Stains & crutchings closed the day unchanged, while locks were 10-15 cents cheaper. Crossbreds remained generally unchanged for 27 to 30 microns on an offering containing a high proportion of unclassified or non-conforming lots. 12.6% PI

Thursdays market meet seller resistance, with a 20% passed in rate, which had buyers maintaining Wednesdays levels for the fine and medium microns while the broader end lifted slightly by 5-10 cents. Lower Vm skirtings (<4%) remained generally unchanged while the burrier 5-8% Vm types struggled and finished a further 20 cent's lower. Washing & carbo locks eased 5-10 cents for 19 micron and broader, where as the finer end closed 20 cents cheaper. Crutchings continued to remain unchanged while stains were 10 cents easier. Crossbreds were in line with the merino market and remained fully firm for 27 to 30 microns. 19.2% PI

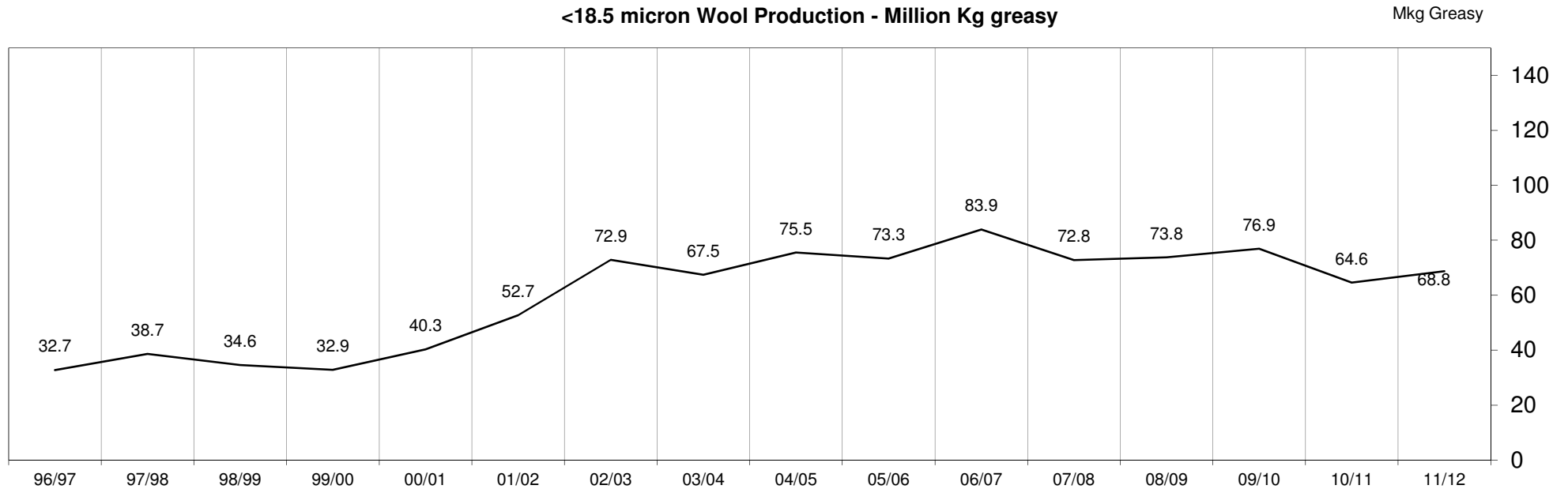


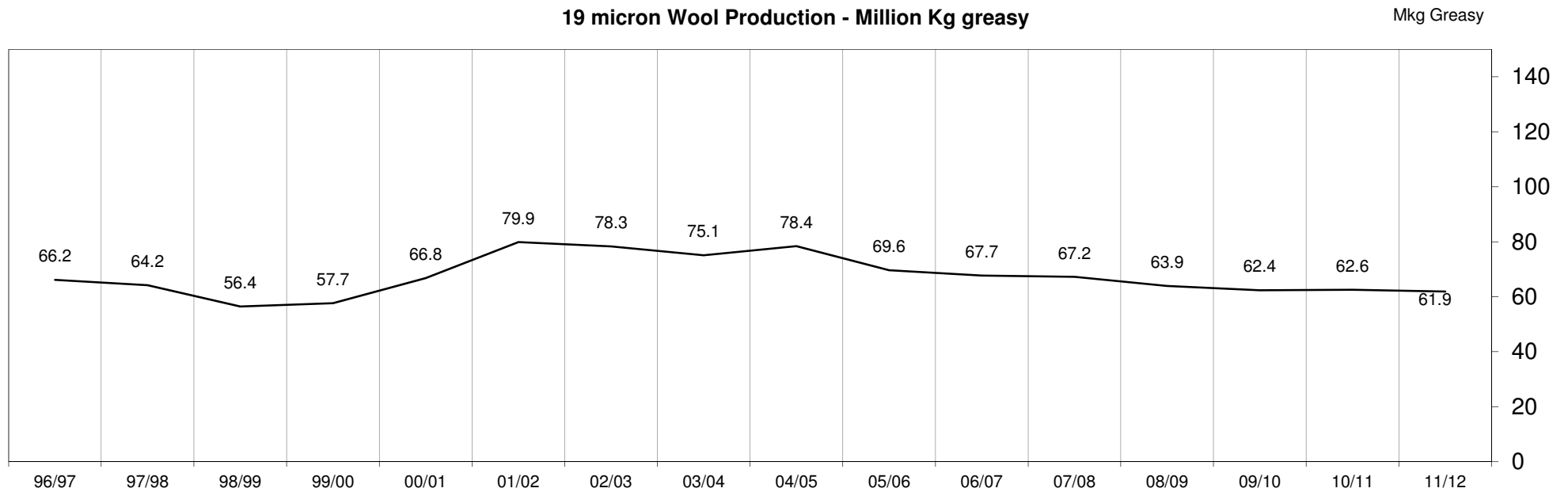
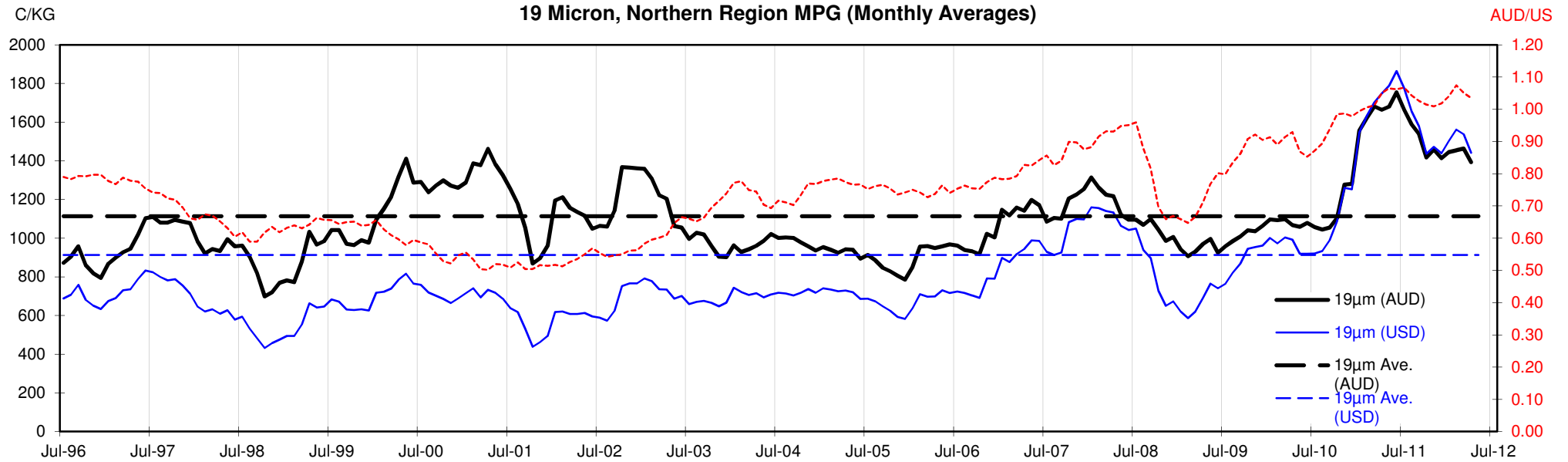


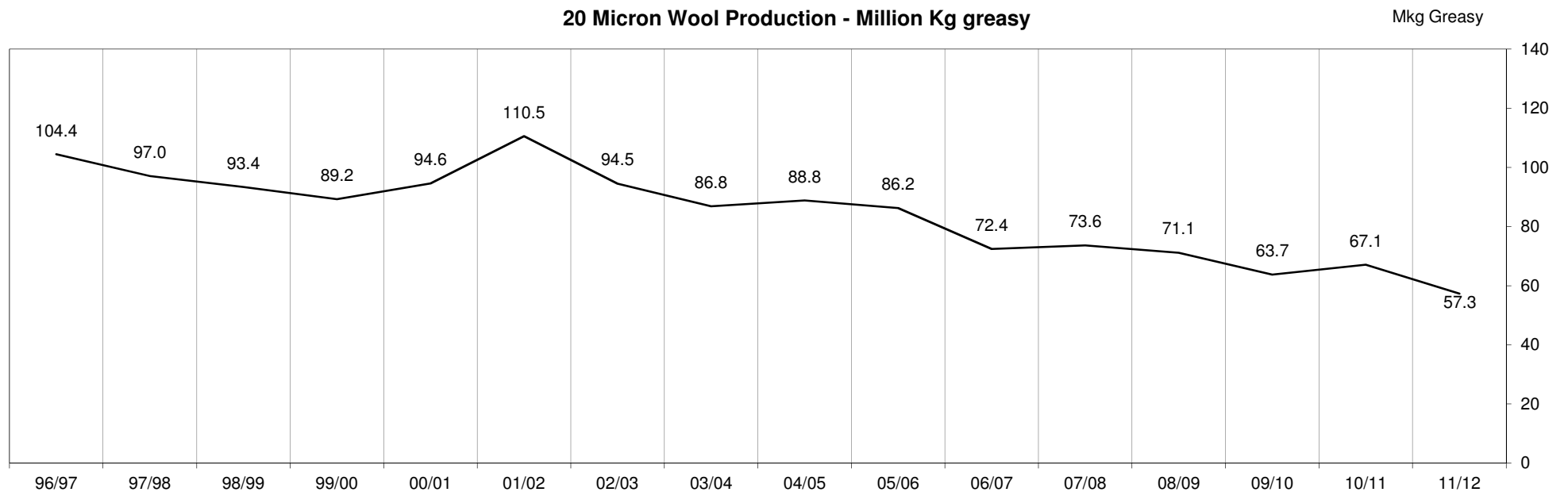
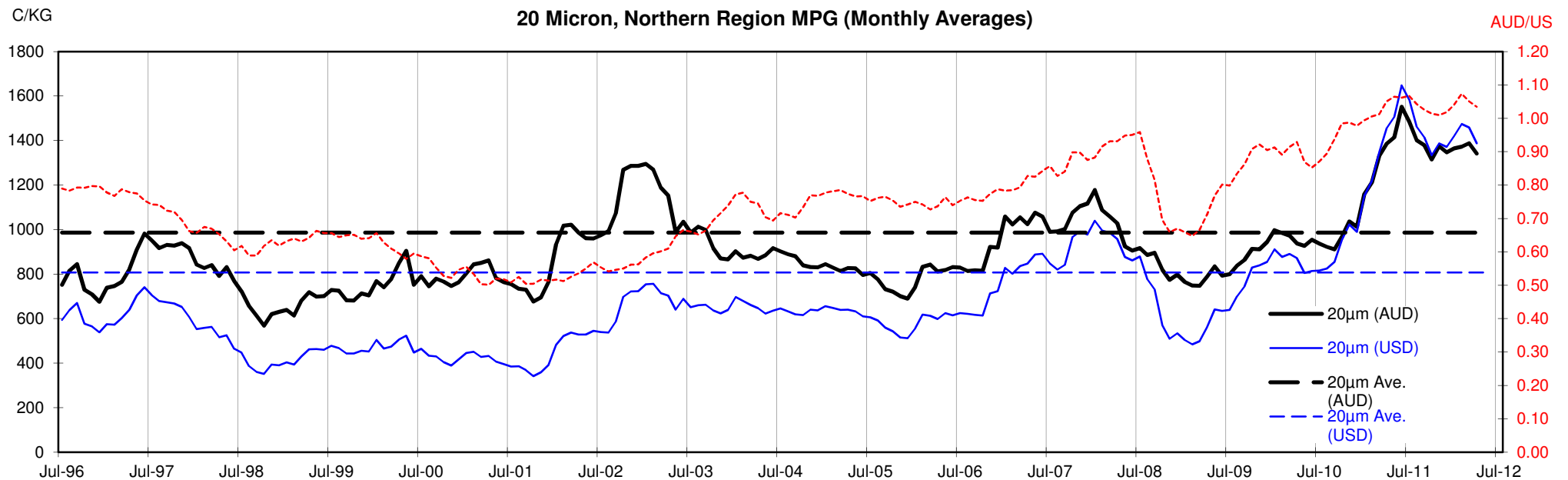
18 Micron, Northern Region MPG (Monthly Averages)

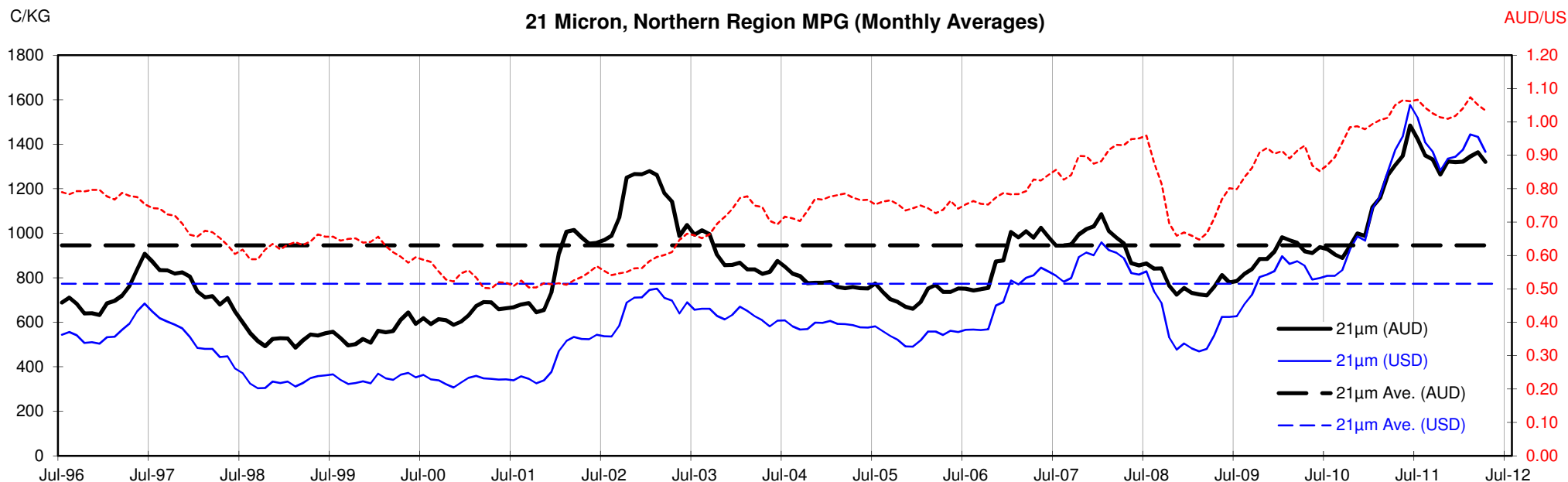


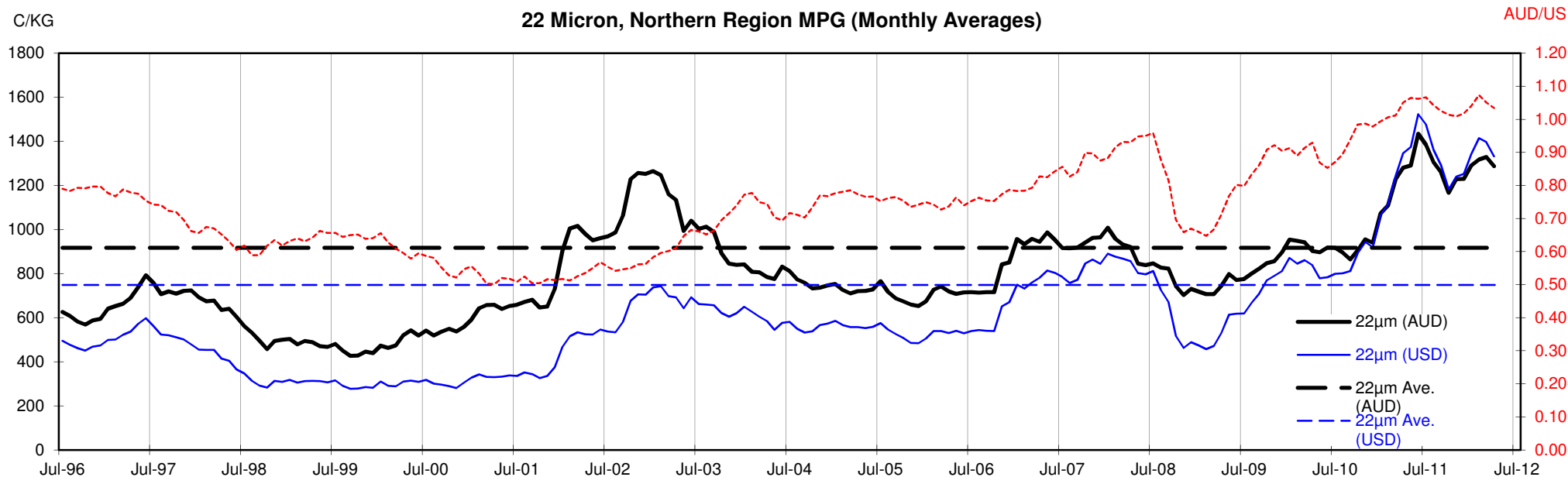
<18.5 micron Wool Production - Million Kg greasy

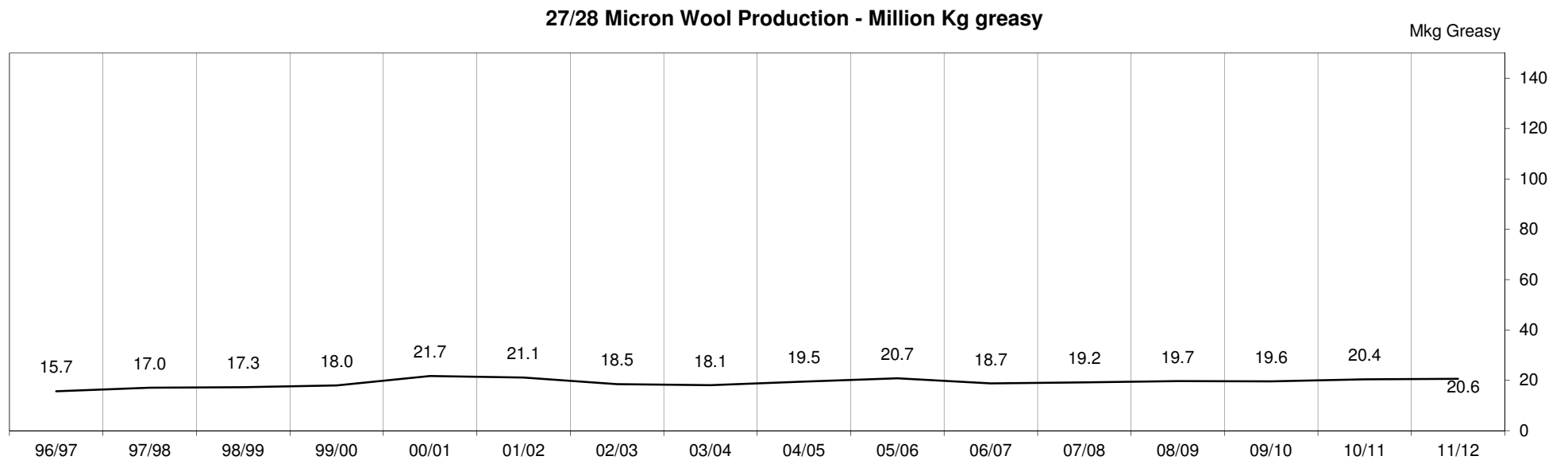
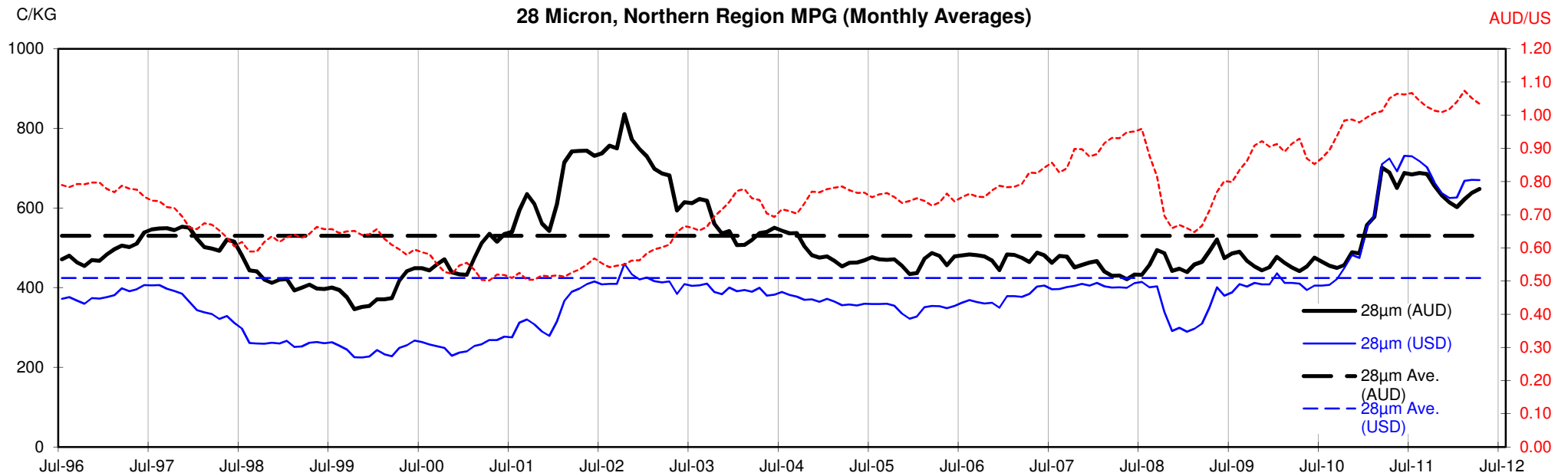














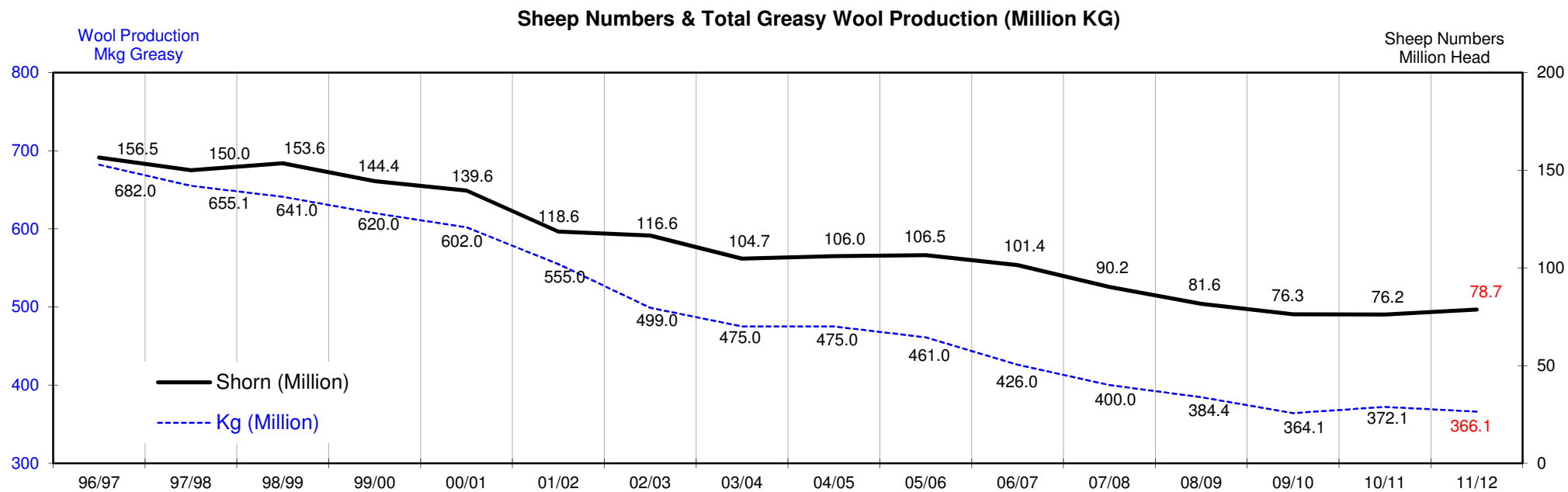
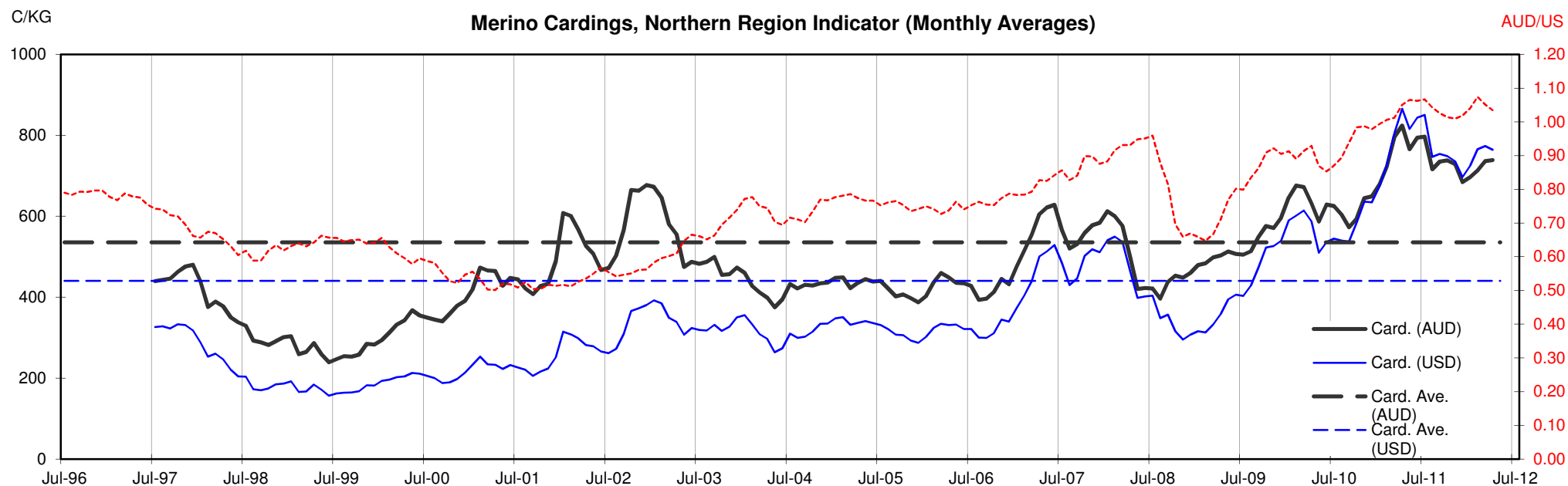




Table 13: Returns pr head for skirted fleece wool.

Skirted FLC Weight		Micron																	
9 Kg		16	16.5	17	17.5	18	18.5	19	19.5	20	21	22	23	24	25	26	28	30	32
Yield (Sch Dry)	25% Current	\$45	\$42	\$36	\$34	\$33	\$31	\$31	\$31	\$30	\$29	\$29	\$28	\$26	\$22	\$19	\$15	\$13	\$12
	10yr ave.			\$33		\$29		\$25		\$22	\$21	\$21	\$20	\$19	\$17	\$15	\$12	\$10	\$9
	30% Current	\$54	\$50	\$43	\$41	\$39	\$38	\$37	\$37	\$36	\$35	\$34	\$33	\$31	\$26	\$23	\$17	\$16	\$14
	10yr ave.			\$39		\$34		\$30		\$27	\$26	\$25	\$24	\$23	\$20	\$18	\$14	\$12	\$11
	35% Current	\$63	\$58	\$51	\$48	\$46	\$44	\$43	\$43	\$42	\$41	\$40	\$39	\$36	\$31	\$26	\$20	\$18	\$16
	10yr ave.			\$46		\$40		\$35		\$31	\$30	\$29	\$28	\$26	\$23	\$21	\$17	\$15	\$13
	40% Current	\$72	\$67	\$58	\$55	\$52	\$50	\$49	\$49	\$48	\$47	\$46	\$44	\$42	\$35	\$30	\$23	\$21	\$18
	10yr ave.			\$52		\$46		\$40		\$36	\$34	\$33	\$32	\$30	\$27	\$24	\$19	\$17	\$15
	45% Current	\$81	\$75	\$65	\$62	\$59	\$57	\$56	\$55	\$54	\$53	\$52	\$50	\$47	\$40	\$34	\$26	\$24	\$21
	10yr ave.			\$59		\$52		\$45		\$40	\$38	\$37	\$36	\$34	\$30	\$27	\$21	\$19	\$17
	50% Current	\$90	\$83	\$72	\$68	\$65	\$63	\$62	\$61	\$60	\$59	\$57	\$55	\$52	\$44	\$38	\$29	\$26	\$23
	10yr ave.			\$65		\$57		\$50		\$44	\$43	\$41	\$40	\$38	\$33	\$30	\$24	\$21	\$19
	55% Current	\$99	\$92	\$80	\$75	\$72	\$69	\$68	\$67	\$66	\$65	\$63	\$61	\$57	\$48	\$41	\$32	\$29	\$25
	10yr ave.			\$72		\$63		\$55		\$49	\$47	\$45	\$44	\$41	\$37	\$33	\$26	\$23	\$21
	60% Current	\$108	\$100	\$87	\$82	\$79	\$75	\$74	\$73	\$72	\$71	\$69	\$67	\$62	\$53	\$45	\$35	\$31	\$28
	10yr ave.			\$79		\$69		\$60		\$53	\$51	\$50	\$48	\$45	\$40	\$36	\$29	\$25	\$22
	65% Current	\$117	\$108	\$94	\$89	\$85	\$82	\$80	\$79	\$78	\$77	\$75	\$72	\$68	\$57	\$49	\$38	\$34	\$30
	10yr ave.			\$85		\$74		\$65		\$58	\$55	\$54	\$52	\$49	\$43	\$39	\$31	\$27	\$24
	70% Current	\$126	\$117	\$101	\$96	\$92	\$88	\$87	\$85	\$84	\$82	\$80	\$78	\$73	\$62	\$53	\$41	\$37	\$32
	10yr ave.			\$92		\$80		\$70		\$62	\$60	\$58	\$56	\$53	\$47	\$43	\$33	\$29	\$26
	75% Current	\$135	\$125	\$109	\$103	\$98	\$94	\$93	\$92	\$90	\$88	\$86	\$83	\$78	\$66	\$56	\$44	\$39	\$35
	10yr ave.			\$98		\$86		\$75		\$67	\$64	\$62	\$60	\$56	\$50	\$46	\$36	\$31	\$28
	80% Current	\$144	\$133	\$116	\$109	\$105	\$101	\$99	\$98	\$96	\$94	\$92	\$89	\$83	\$70	\$60	\$47	\$42	\$37
	10yr ave.			\$105		\$92		\$80		\$71	\$68	\$66	\$64	\$60	\$53	\$49	\$38	\$33	\$30
	85% Current	\$153	\$142	\$123	\$116	\$111	\$107	\$105	\$104	\$102	\$100	\$97	\$94	\$88	\$75	\$64	\$50	\$44	\$39
	10yr ave.			\$111		\$97		\$85		\$76	\$72	\$70	\$68	\$64	\$57	\$52	\$41	\$35	\$32

The above shows estimated returns per head for skirted fleece wool. These figures do not take into account the value of skirtings and oddments and do not take into account discounts that may apply for faults under individual circumstances. These figures are based on a market index of 100% and should be used as a guide only. Returns over \$30 / head for fleece wool are highlighted.

Source: Australian Wool Exchange, Australian Wool Innovation, Sydney Futures Exchange, x-rates.com

Disclaimer: While all due care has been taken in the preparation of this document, no warranty is made as to its accuracy, reliability or completeness. To the extent permitted by law neither Jemalong or their sources including subsidiaries and staff, accept liability to any person for loss or damage arising from the use of this information.



Table 14: Returns pr head for skirted fleece wool.

Skirted FLC Weight		Micron																	
8 Kg		16	16.5	17	17.5	18	18.5	19	19.5	20	21	22	23	24	25	26	28	30	32
Yield (Sch Dry)	25% Current	\$40	\$37	\$32	\$30	\$29	\$28	\$27	\$27	\$27	\$26	\$25	\$25	\$23	\$20	\$17	\$13	\$12	\$10
	10yr ave.			\$29		\$25		\$22		\$20	\$19	\$18	\$18	\$17	\$15	\$14	\$11	\$9	\$8
	30% Current	\$48	\$44	\$39	\$36	\$35	\$34	\$33	\$33	\$32	\$31	\$31	\$30	\$28	\$23	\$20	\$16	\$14	\$12
	10yr ave.			\$35		\$31		\$27		\$24	\$23	\$22	\$21	\$20	\$18	\$16	\$13	\$11	\$10
	35% Current	\$56	\$52	\$45	\$43	\$41	\$39	\$38	\$38	\$37	\$37	\$36	\$34	\$32	\$27	\$23	\$18	\$16	\$14
	10yr ave.			\$41		\$36		\$31		\$28	\$26	\$26	\$25	\$23	\$21	\$19	\$15	\$13	\$12
	40% Current	\$64	\$59	\$52	\$49	\$47	\$45	\$44	\$43	\$43	\$42	\$41	\$39	\$37	\$31	\$27	\$21	\$19	\$16
	10yr ave.			\$47		\$41		\$36		\$32	\$30	\$29	\$28	\$27	\$24	\$22	\$17	\$15	\$13
	45% Current	\$72	\$67	\$58	\$55	\$52	\$50	\$49	\$49	\$48	\$47	\$46	\$44	\$42	\$35	\$30	\$23	\$21	\$18
	10yr ave.			\$52		\$46		\$40		\$36	\$34	\$33	\$32	\$30	\$27	\$24	\$19	\$17	\$15
	50% Current	\$80	\$74	\$64	\$61	\$58	\$56	\$55	\$54	\$53	\$52	\$51	\$49	\$46	\$39	\$33	\$26	\$23	\$21
	10yr ave.			\$58		\$51		\$45		\$39	\$38	\$37	\$36	\$33	\$30	\$27	\$21	\$18	\$17
	55% Current	\$88	\$81	\$71	\$67	\$64	\$61	\$60	\$60	\$58	\$58	\$56	\$54	\$51	\$43	\$37	\$29	\$26	\$23
	10yr ave.			\$64		\$56		\$49		\$43	\$42	\$40	\$39	\$37	\$33	\$30	\$23	\$20	\$18
	60% Current	\$96	\$89	\$77	\$73	\$70	\$67	\$66	\$65	\$64	\$63	\$61	\$59	\$55	\$47	\$40	\$31	\$28	\$25
	10yr ave.			\$70		\$61		\$53		\$47	\$45	\$44	\$43	\$40	\$36	\$32	\$25	\$22	\$20
	65% Current	\$104	\$96	\$84	\$79	\$76	\$73	\$71	\$71	\$69	\$68	\$66	\$64	\$60	\$51	\$43	\$34	\$30	\$27
	10yr ave.			\$76		\$66		\$58		\$51	\$49	\$48	\$46	\$44	\$39	\$35	\$28	\$24	\$22
	70% Current	\$112	\$104	\$90	\$85	\$81	\$78	\$77	\$76	\$74	\$73	\$71	\$69	\$65	\$55	\$47	\$36	\$33	\$29
	10yr ave.			\$81		\$71		\$62		\$55	\$53	\$51	\$50	\$47	\$42	\$38	\$30	\$26	\$23
	75% Current	\$120	\$111	\$97	\$91	\$87	\$84	\$82	\$81	\$80	\$78	\$76	\$74	\$69	\$59	\$50	\$39	\$35	\$31
	10yr ave.			\$87		\$76		\$67		\$59	\$57	\$55	\$53	\$50	\$45	\$41	\$32	\$28	\$25
	80% Current	\$128	\$118	\$103	\$97	\$93	\$89	\$88	\$87	\$85	\$84	\$82	\$79	\$74	\$63	\$53	\$41	\$37	\$33
	10yr ave.			\$93		\$81		\$71		\$63	\$61	\$59	\$57	\$54	\$48	\$43	\$34	\$30	\$27
	85% Current	\$136	\$126	\$109	\$103	\$99	\$95	\$93	\$92	\$90	\$89	\$87	\$84	\$79	\$67	\$57	\$44	\$40	\$35
	10yr ave.			\$99		\$86		\$76		\$67	\$64	\$62	\$60	\$57	\$51	\$46	\$36	\$31	\$28

The above shows estimated returns per head for skirted fleece wool. These figures do not take into account the value of skirtings and oddments and do not take into account discounts that may apply for faults under individual circumstances. These figures are based on a market index of 100% and should be used as a guide only. Returns over \$30 / head for fleece wool are highlighted.

Source: Australian Wool Exchange, Australian Wool Innovation, Sydney Futures Exchange, x-rates.com

Disclaimer: While all due care has been taken in the preparation of this document, no warranty is made as to its accuracy, reliability or completeness. To the extent permitted by law neither Jemalong or their sources including subsidiaries and staff, accept liability to any person for loss or damage arising from the use of this information.



Table 15: Returns pr head for skirted fleece wool.

Skirted FLC Weight		Micron																	
7 Kg		16	16.5	17	17.5	18	18.5	19	19.5	20	21	22	23	24	25	26	28	30	32
Yield (Sch Dry)	25% Current	\$35	\$32	\$28	\$27	\$25	\$24	\$24	\$24	\$23	\$23	\$22	\$22	\$20	\$17	\$15	\$11	\$10	\$9
	10yr ave.			\$25		\$22		\$19		\$17	\$17	\$16	\$16	\$15	\$13	\$12	\$9	\$8	\$7
	30% Current	\$42	\$39	\$34	\$32	\$31	\$29	\$29	\$28	\$28	\$27	\$27	\$26	\$24	\$21	\$18	\$14	\$12	\$11
	10yr ave.			\$31		\$27		\$23		\$21	\$20	\$19	\$19	\$18	\$16	\$14	\$11	\$10	\$9
	35% Current	\$49	\$45	\$39	\$37	\$36	\$34	\$34	\$33	\$33	\$32	\$31	\$30	\$28	\$24	\$20	\$16	\$14	\$13
	10yr ave.			\$36		\$31		\$27		\$24	\$23	\$22	\$22	\$21	\$18	\$17	\$13	\$11	\$10
	40% Current	\$56	\$52	\$45	\$43	\$41	\$39	\$38	\$38	\$37	\$37	\$36	\$34	\$32	\$27	\$23	\$18	\$16	\$14
	10yr ave.			\$41		\$36		\$31		\$28	\$26	\$26	\$25	\$23	\$21	\$19	\$15	\$13	\$12
	45% Current	\$63	\$58	\$51	\$48	\$46	\$44	\$43	\$43	\$42	\$41	\$40	\$39	\$36	\$31	\$26	\$20	\$18	\$16
	10yr ave.			\$46		\$40		\$35		\$31	\$30	\$29	\$28	\$26	\$23	\$21	\$17	\$15	\$13
	50% Current	\$70	\$65	\$56	\$53	\$51	\$49	\$48	\$47	\$47	\$46	\$45	\$43	\$40	\$34	\$29	\$23	\$20	\$18
	10yr ave.			\$51		\$45		\$39		\$35	\$33	\$32	\$31	\$29	\$26	\$24	\$19	\$16	\$15
	55% Current	\$77	\$71	\$62	\$59	\$56	\$54	\$53	\$52	\$51	\$50	\$49	\$47	\$45	\$38	\$32	\$25	\$22	\$20
	10yr ave.			\$56		\$49		\$43		\$38	\$36	\$35	\$34	\$32	\$29	\$26	\$20	\$18	\$16
	60% Current	\$84	\$78	\$68	\$64	\$61	\$59	\$58	\$57	\$56	\$55	\$54	\$52	\$49	\$41	\$35	\$27	\$24	\$22
	10yr ave.			\$61		\$53		\$47		\$41	\$40	\$39	\$37	\$35	\$31	\$28	\$22	\$19	\$17
	65% Current	\$91	\$84	\$73	\$69	\$66	\$64	\$63	\$62	\$60	\$60	\$58	\$56	\$53	\$45	\$38	\$29	\$26	\$23
	10yr ave.			\$66		\$58		\$51		\$45	\$43	\$42	\$40	\$38	\$34	\$31	\$24	\$21	\$19
	70% Current	\$98	\$91	\$79	\$74	\$71	\$68	\$67	\$66	\$65	\$64	\$62	\$60	\$57	\$48	\$41	\$32	\$28	\$25
	10yr ave.			\$71		\$62		\$55		\$48	\$46	\$45	\$44	\$41	\$36	\$33	\$26	\$23	\$20
	75% Current	\$105	\$97	\$85	\$80	\$76	\$73	\$72	\$71	\$70	\$69	\$67	\$65	\$61	\$51	\$44	\$34	\$31	\$27
	10yr ave.			\$76		\$67		\$58		\$52	\$50	\$48	\$47	\$44	\$39	\$35	\$28	\$24	\$22
	80% Current	\$112	\$104	\$90	\$85	\$81	\$78	\$77	\$76	\$74	\$73	\$71	\$69	\$65	\$55	\$47	\$36	\$33	\$29
	10yr ave.			\$81		\$71		\$62		\$55	\$53	\$51	\$50	\$47	\$42	\$38	\$30	\$26	\$23
	85% Current	\$119	\$110	\$96	\$90	\$87	\$83	\$82	\$81	\$79	\$78	\$76	\$73	\$69	\$58	\$50	\$39	\$35	\$31
	10yr ave.			\$87		\$76		\$66		\$59	\$56	\$55	\$53	\$50	\$44	\$40	\$32	\$27	\$25

The above shows estimated returns per head for skirted fleece wool. These figures do not take into account the value of skirtings and oddments and do not take into account discounts that may apply for faults under individual circumstances. These figures are based on a market index of 100% and should be used as a guide only. Returns over \$30 / head for fleece wool are highlighted.

Source: Australian Wool Exchange, Australian Wool Innovation, Sydney Futures Exchange, x-rates.com

Disclaimer: While all due care has been taken in the preparation of this document, no warranty is made as to its accuracy, reliability or completeness. To the extent permitted by law neither Jemalong or their sources including subsidiaries and staff, accept liability to any person for loss or damage arising from the use of this information.



Table 16: Returns pr head for skirted fleece wool.

Skirted FLC Weight		Micron																	
6 Kg		16	16.5	17	17.5	18	18.5	19	19.5	20	21	22	23	24	25	26	28	30	32
Yield (Sch Dry)	25% Current	\$30	\$28	\$24	\$23	\$22	\$21	\$21	\$20	\$20	\$20	\$19	\$18	\$17	\$15	\$13	\$10	\$9	\$8
	10yr ave.			\$22		\$19		\$17		\$15	\$14	\$14	\$13	\$13	\$11	\$10	\$8	\$7	\$6
	30% Current	\$36	\$33	\$29	\$27	\$26	\$25	\$25	\$24	\$24	\$24	\$23	\$22	\$21	\$18	\$15	\$12	\$10	\$9
	10yr ave.			\$26		\$23		\$20		\$18	\$17	\$17	\$16	\$15	\$13	\$12	\$10	\$8	\$7
	35% Current	\$42	\$39	\$34	\$32	\$31	\$29	\$29	\$28	\$28	\$27	\$27	\$26	\$24	\$21	\$18	\$14	\$12	\$11
	10yr ave.			\$31		\$27		\$23		\$21	\$20	\$19	\$19	\$18	\$16	\$14	\$11	\$10	\$9
	40% Current	\$48	\$44	\$39	\$36	\$35	\$34	\$33	\$33	\$32	\$31	\$31	\$30	\$28	\$23	\$20	\$16	\$14	\$12
	10yr ave.			\$35		\$31		\$27		\$24	\$23	\$22	\$21	\$20	\$18	\$16	\$13	\$11	\$10
	45% Current	\$54	\$50	\$43	\$41	\$39	\$38	\$37	\$37	\$36	\$35	\$34	\$33	\$31	\$26	\$23	\$17	\$16	\$14
	10yr ave.			\$39		\$34		\$30		\$27	\$26	\$25	\$24	\$23	\$20	\$18	\$14	\$12	\$11
	50% Current	\$60	\$56	\$48	\$46	\$44	\$42	\$41	\$41	\$40	\$39	\$38	\$37	\$35	\$29	\$25	\$19	\$17	\$15
	10yr ave.			\$44		\$38		\$33		\$30	\$28	\$28	\$27	\$25	\$22	\$20	\$16	\$14	\$12
	55% Current	\$66	\$61	\$53	\$50	\$48	\$46	\$45	\$45	\$44	\$43	\$42	\$41	\$38	\$32	\$28	\$21	\$19	\$17
	10yr ave.			\$48		\$42		\$37		\$33	\$31	\$30	\$29	\$28	\$25	\$22	\$17	\$15	\$14
	60% Current	\$72	\$67	\$58	\$55	\$52	\$50	\$49	\$49	\$48	\$47	\$46	\$44	\$42	\$35	\$30	\$23	\$21	\$18
	10yr ave.			\$52		\$46		\$40		\$36	\$34	\$33	\$32	\$30	\$27	\$24	\$19	\$17	\$15
	65% Current	\$78	\$72	\$63	\$59	\$57	\$54	\$54	\$53	\$52	\$51	\$50	\$48	\$45	\$38	\$33	\$25	\$23	\$20
	10yr ave.			\$57		\$50		\$43		\$38	\$37	\$36	\$35	\$33	\$29	\$26	\$21	\$18	\$16
	70% Current	\$84	\$78	\$68	\$64	\$61	\$59	\$58	\$57	\$56	\$55	\$54	\$52	\$49	\$41	\$35	\$27	\$24	\$22
	10yr ave.			\$61		\$53		\$47		\$41	\$40	\$39	\$37	\$35	\$31	\$28	\$22	\$19	\$17
	75% Current	\$90	\$83	\$72	\$68	\$65	\$63	\$62	\$61	\$60	\$59	\$57	\$55	\$52	\$44	\$38	\$29	\$26	\$23
	10yr ave.			\$65		\$57		\$50		\$44	\$43	\$41	\$40	\$38	\$33	\$30	\$24	\$21	\$19
	80% Current	\$96	\$89	\$77	\$73	\$70	\$67	\$66	\$65	\$64	\$63	\$61	\$59	\$55	\$47	\$40	\$31	\$28	\$25
	10yr ave.			\$70		\$61		\$53		\$47	\$45	\$44	\$43	\$40	\$36	\$32	\$25	\$22	\$20
	85% Current	\$102	\$94	\$82	\$78	\$74	\$71	\$70	\$69	\$68	\$67	\$65	\$63	\$59	\$50	\$43	\$33	\$30	\$26
	10yr ave.			\$74		\$65		\$57		\$50	\$48	\$47	\$45	\$43	\$38	\$34	\$27	\$24	\$21

The above shows estimated returns per head for skirted fleece wool. These figures do not take into account the value of skirtings and oddments and do not take into account discounts that may apply for faults under individual circumstances. These figures are based on a market index of 100% and should be used as a guide only. Returns over \$30 / head for fleece wool are highlighted.

Source: Australian Wool Exchange, Australian Wool Innovation, Sydney Futures Exchange, x-rates.com

Disclaimer: While all due care has been taken in the preparation of this document, no warranty is made as to its accuracy, reliability or completeness. To the extent permitted by law neither Jemalong or their sources including subsidiaries and staff, accept liability to any person for loss or damage arising from the use of this information.



Table 17: Returns pr head for skirted fleece wool.

Skirted FLC Weight		Micron																	
5 Kg		16	16.5	17	17.5	18	18.5	19	19.5	20	21	22	23	24	25	26	28	30	32
Yield (Sch Dry)	25% Current	\$25	\$23	\$20	\$19	\$18	\$17	\$17	\$17	\$17	\$16	\$16	\$15	\$14	\$12	\$10	\$8	\$7	\$6
	10yr ave.			\$18		\$16		\$14		\$12	\$12	\$11	\$11	\$10	\$9	\$8	\$7	\$6	\$5
	30% Current	\$30	\$28	\$24	\$23	\$22	\$21	\$21	\$20	\$20	\$20	\$19	\$18	\$17	\$15	\$13	\$10	\$9	\$8
	10yr ave.			\$22		\$19		\$17		\$15	\$14	\$14	\$13	\$13	\$11	\$10	\$8	\$7	\$6
	35% Current	\$35	\$32	\$28	\$27	\$25	\$24	\$24	\$24	\$23	\$23	\$22	\$22	\$20	\$17	\$15	\$11	\$10	\$9
	10yr ave.			\$25		\$22		\$19		\$17	\$17	\$16	\$16	\$15	\$13	\$12	\$9	\$8	\$7
	40% Current	\$40	\$37	\$32	\$30	\$29	\$28	\$27	\$27	\$27	\$26	\$25	\$25	\$23	\$20	\$17	\$13	\$12	\$10
	10yr ave.			\$29		\$25		\$22		\$20	\$19	\$18	\$18	\$17	\$15	\$14	\$11	\$9	\$8
	45% Current	\$45	\$42	\$36	\$34	\$33	\$31	\$31	\$31	\$30	\$29	\$29	\$28	\$26	\$22	\$19	\$15	\$13	\$12
	10yr ave.			\$33		\$29		\$25		\$22	\$21	\$21	\$20	\$19	\$17	\$15	\$12	\$10	\$9
	50% Current	\$50	\$46	\$40	\$38	\$36	\$35	\$34	\$34	\$33	\$33	\$32	\$31	\$29	\$24	\$21	\$16	\$15	\$13
	10yr ave.			\$36		\$32		\$28		\$25	\$24	\$23	\$22	\$21	\$19	\$17	\$13	\$12	\$10
	55% Current	\$55	\$51	\$44	\$42	\$40	\$38	\$38	\$37	\$37	\$36	\$35	\$34	\$32	\$27	\$23	\$18	\$16	\$14
	10yr ave.			\$40		\$35		\$31		\$27	\$26	\$25	\$24	\$23	\$20	\$19	\$15	\$13	\$11
	60% Current	\$60	\$56	\$48	\$46	\$44	\$42	\$41	\$41	\$40	\$39	\$38	\$37	\$35	\$29	\$25	\$19	\$17	\$15
	10yr ave.			\$44		\$38		\$33		\$30	\$28	\$28	\$27	\$25	\$22	\$20	\$16	\$14	\$12
	65% Current	\$65	\$60	\$52	\$49	\$47	\$45	\$45	\$44	\$43	\$43	\$41	\$40	\$38	\$32	\$27	\$21	\$19	\$17
	10yr ave.			\$47		\$41		\$36		\$32	\$31	\$30	\$29	\$27	\$24	\$22	\$17	\$15	\$14
	70% Current	\$70	\$65	\$56	\$53	\$51	\$49	\$48	\$47	\$47	\$46	\$45	\$43	\$40	\$34	\$29	\$23	\$20	\$18
	10yr ave.			\$51		\$45		\$39		\$35	\$33	\$32	\$31	\$29	\$26	\$24	\$19	\$16	\$15
	75% Current	\$75	\$69	\$60	\$57	\$55	\$52	\$51	\$50	\$49	\$48	\$46	\$43	\$37	\$31	\$24	\$22	\$19	
	10yr ave.			\$55		\$48		\$42		\$37	\$35	\$34	\$33	\$31	\$28	\$25	\$20	\$17	\$16
	80% Current	\$80	\$74	\$64	\$61	\$58	\$56	\$55	\$54	\$53	\$52	\$51	\$49	\$46	\$39	\$33	\$26	\$23	\$21
	10yr ave.			\$58		\$51		\$45		\$39	\$38	\$37	\$36	\$33	\$30	\$27	\$21	\$18	\$17
	85% Current	\$85	\$79	\$68	\$65	\$62	\$59	\$58	\$58	\$56	\$56	\$54	\$52	\$49	\$42	\$35	\$28	\$25	\$22
	10yr ave.			\$62		\$54		\$47		\$42	\$40	\$39	\$38	\$36	\$32	\$29	\$23	\$20	\$18

The above shows estimated returns per head for skirted fleece wool. These figures do not take into account the value of skirtings and oddments and do not take into account discounts that may apply for faults under individual circumstances. These figures are based on a market index of 100% and should be used as a guide only. Returns over \$30 / head for fleece wool are highlighted.

Source: Australian Wool Exchange, Australian Wool Innovation, Sydney Futures Exchange, x-rates.com

Disclaimer: While all due care has been taken in the preparation of this document, no warranty is made as to its accuracy, reliability or completeness. To the extent permitted by law neither Jemalong or their sources including subsidiaries and staff, accept liability to any person for loss or damage arising from the use of this information.



Table 18: Returns pr head for skirted fleece wool.

Skirted FLC Weight		Micron																	
4 Kg		16	16.5	17	17.5	18	18.5	19	19.5	20	21	22	23	24	25	26	28	30	32
Yield (Sch Dry)	25% Current	\$20	\$19	\$16	\$15	\$15	\$14	\$14	\$14	\$13	\$13	\$13	\$12	\$12	\$10	\$8	\$6	\$6	\$5
	10yr ave.			\$15		\$13		\$11		\$10	\$9	\$9	\$9	\$8	\$7	\$7	\$5	\$5	\$4
	30% Current	\$24	\$22	\$19	\$18	\$17	\$17	\$16	\$16	\$16	\$16	\$15	\$15	\$14	\$12	\$10	\$8	\$7	\$6
	10yr ave.			\$17		\$15		\$13		\$12	\$11	\$11	\$11	\$10	\$9	\$8	\$6	\$6	\$5
	35% Current	\$28	\$26	\$23	\$21	\$20	\$20	\$19	\$19	\$19	\$18	\$18	\$17	\$16	\$14	\$12	\$9	\$8	\$7
	10yr ave.			\$20		\$18		\$16		\$14	\$13	\$13	\$12	\$12	\$10	\$9	\$7	\$6	\$6
	40% Current	\$32	\$30	\$26	\$24	\$23	\$22	\$22	\$22	\$21	\$21	\$20	\$20	\$18	\$16	\$13	\$10	\$9	\$8
	10yr ave.			\$23		\$20		\$18		\$16	\$15	\$15	\$14	\$13	\$12	\$11	\$8	\$7	\$7
	45% Current	\$36	\$33	\$29	\$27	\$26	\$25	\$25	\$24	\$24	\$24	\$23	\$22	\$21	\$18	\$15	\$12	\$10	\$9
	10yr ave.			\$26		\$23		\$20		\$18	\$17	\$17	\$16	\$15	\$13	\$12	\$10	\$8	\$7
	50% Current	\$40	\$37	\$32	\$30	\$29	\$28	\$27	\$27	\$27	\$26	\$25	\$25	\$23	\$20	\$17	\$13	\$12	\$10
	10yr ave.			\$29		\$25		\$22		\$20	\$19	\$18	\$18	\$17	\$15	\$14	\$11	\$9	\$8
	55% Current	\$44	\$41	\$35	\$33	\$32	\$31	\$30	\$30	\$29	\$29	\$28	\$27	\$25	\$22	\$18	\$14	\$13	\$11
	10yr ave.			\$32		\$28		\$24		\$22	\$21	\$20	\$20	\$18	\$16	\$15	\$12	\$10	\$9
	60% Current	\$48	\$44	\$39	\$36	\$35	\$34	\$33	\$33	\$32	\$31	\$31	\$30	\$28	\$23	\$20	\$16	\$14	\$12
	10yr ave.			\$35		\$31		\$27		\$24	\$23	\$22	\$21	\$20	\$18	\$16	\$13	\$11	\$10
	65% Current	\$52	\$48	\$42	\$40	\$38	\$36	\$36	\$35	\$35	\$34	\$33	\$32	\$30	\$25	\$22	\$17	\$15	\$13
	10yr ave.			\$38		\$33		\$29		\$26	\$25	\$24	\$23	\$22	\$19	\$18	\$14	\$12	\$11
	70% Current	\$56	\$52	\$45	\$43	\$41	\$39	\$38	\$38	\$37	\$37	\$36	\$34	\$32	\$27	\$23	\$18	\$16	\$14
	10yr ave.			\$41		\$36		\$31		\$28	\$26	\$26	\$25	\$23	\$21	\$19	\$15	\$13	\$12
	75% Current	\$60	\$56	\$48	\$46	\$44	\$42	\$41	\$41	\$40	\$39	\$38	\$37	\$35	\$29	\$25	\$19	\$17	\$15
	10yr ave.			\$44		\$38		\$33		\$30	\$28	\$28	\$27	\$25	\$22	\$20	\$16	\$14	\$12
	80% Current	\$64	\$59	\$52	\$49	\$47	\$45	\$44	\$43	\$43	\$42	\$41	\$39	\$37	\$31	\$27	\$21	\$19	\$16
	10yr ave.			\$47		\$41		\$36		\$32	\$30	\$29	\$28	\$27	\$24	\$22	\$17	\$15	\$13
	85% Current	\$68	\$63	\$55	\$52	\$49	\$47	\$47	\$46	\$45	\$44	\$43	\$42	\$39	\$33	\$28	\$22	\$20	\$17
	10yr ave.			\$49		\$43		\$38		\$34	\$32	\$31	\$30	\$28	\$25	\$23	\$18	\$16	\$14

The above shows estimated returns per head for skirted fleece wool. These figures do not take into account the value of skirtings and oddments and do not take into account discounts that may apply for faults under individual circumstances. These figures are based on a market index of 100% and should be used as a guide only. Returns over \$30 / head for fleece wool are highlighted.

Source: Australian Wool Exchange, Australian Wool Innovation, Sydney Futures Exchange, x-rates.com

Disclaimer: While all due care has been taken in the preparation of this document, no warranty is made as to its accuracy, reliability or completeness. To the extent permitted by law neither Jemalong or their sources including subsidiaries and staff, accept liability to any person for loss or damage arising from the use of this information.





Table 19: Returns pr head for skirted fleece wool.

Skirted FLC Weight <div>3 Kg</div>		Micron																		
		16	16.5	17	17.5	18	18.5	19	19.5	20	21	22	23	24	25	26	28	30	32	
Yield (Sch Dry)	25%	Current	\$15	\$14	\$12	\$11	\$11	\$10	\$10	\$10	\$10	\$10	\$10	\$9	\$9	\$7	\$6	\$5	\$4	\$4
		10yr ave.			\$11		\$10		\$8		\$7	\$7	\$7	\$7	\$6	\$6	\$5	\$4	\$3	\$3
	30%	Current	\$18	\$17	\$14	\$14	\$13	\$13	\$12	\$12	\$12	\$12	\$11	\$11	\$10	\$9	\$8	\$6	\$5	\$5
		10yr ave.			\$13		\$11		\$10		\$9	\$9	\$8	\$8	\$8	\$7	\$6	\$5	\$4	\$4
	35%	Current	\$21	\$19	\$17	\$16	\$15	\$15	\$14	\$14	\$14	\$14	\$13	\$13	\$12	\$10	\$9	\$7	\$6	\$5
		10yr ave.			\$15		\$13		\$12		\$10	\$10	\$10	\$9	\$9	\$8	\$7	\$6	\$5	\$4
	40%	Current	\$24	\$22	\$19	\$18	\$17	\$17	\$16	\$16	\$16	\$16	\$15	\$15	\$14	\$12	\$10	\$8	\$7	\$6
		10yr ave.			\$17		\$15		\$13		\$12	\$11	\$11	\$11	\$10	\$9	\$8	\$6	\$6	\$5
	45%	Current	\$27	\$25	\$22	\$21	\$20	\$19	\$19	\$18	\$18	\$18	\$17	\$17	\$16	\$13	\$11	\$9	\$8	\$7
		10yr ave.			\$20		\$17		\$15		\$13	\$13	\$12	\$12	\$11	\$10	\$9	\$7	\$6	\$6
	50%	Current	\$30	\$28	\$24	\$23	\$22	\$21	\$21	\$20	\$20	\$20	\$19	\$18	\$17	\$15	\$13	\$10	\$9	\$8
		10yr ave.			\$22		\$19		\$17		\$15	\$14	\$14	\$13	\$13	\$11	\$10	\$8	\$7	\$6
	55%	Current	\$33	\$31	\$27	\$25	\$24	\$23	\$23	\$22	\$22	\$22	\$21	\$20	\$19	\$16	\$14	\$11	\$10	\$8
		10yr ave.			\$24		\$21		\$18		\$16	\$16	\$15	\$15	\$14	\$12	\$11	\$9	\$8	\$7
	60%	Current	\$36	\$33	\$29	\$27	\$26	\$25	\$25	\$24	\$24	\$24	\$23	\$22	\$21	\$18	\$15	\$12	\$10	\$9
		10yr ave.			\$26		\$23		\$20		\$18	\$17	\$17	\$16	\$15	\$13	\$12	\$10	\$8	\$7
65%	Current	\$39	\$36	\$31	\$30	\$28	\$27	\$27	\$26	\$26	\$26	\$25	\$24	\$23	\$19	\$16	\$13	\$11	\$10	
	10yr ave.			\$28		\$25		\$22		\$19	\$18	\$18	\$17	\$16	\$14	\$13	\$10	\$9	\$8	
70%	Current	\$42	\$39	\$34	\$32	\$31	\$29	\$29	\$28	\$28	\$27	\$27	\$26	\$24	\$21	\$18	\$14	\$12	\$11	
	10yr ave.			\$31		\$27		\$23		\$21	\$20	\$19	\$19	\$18	\$16	\$14	\$11	\$10	\$9	
75%	Current	\$45	\$42	\$36	\$34	\$33	\$31	\$31	\$31	\$30	\$29	\$29	\$28	\$26	\$22	\$19	\$15	\$13	\$12	
	10yr ave.			\$33		\$29		\$25		\$22	\$21	\$21	\$20	\$19	\$17	\$15	\$12	\$10	\$9	
80%	Current	\$48	\$44	\$39	\$36	\$35	\$34	\$33	\$33	\$32	\$31	\$31	\$30	\$28	\$23	\$20	\$16	\$14	\$12	
	10yr ave.			\$35		\$31		\$27		\$24	\$23	\$22	\$21	\$20	\$18	\$16	\$13	\$11	\$10	
85%	Current	\$51	\$47	\$41	\$39	\$37	\$36	\$35	\$35	\$34	\$33	\$32	\$31	\$29	\$25	\$21	\$17	\$15	\$13	
	10yr ave.			\$37		\$32		\$28		\$25	\$24	\$23	\$23	\$21	\$19	\$17	\$14	\$12	\$11	

The above shows estimated returns per head for skirted fleece wool. These figures do not take into account the value of skirtings and oddments and do not take into account discounts that may apply for faults under individual circumstances. These figures are based on a market index of 100% and should be used as a guide only. Returns over \$30 / head for fleece wool are highlighted.

Source: Australian Wool Exchange, Australian Wool Innovation, Sydney Futures Exchange, x-rates.com

Disclaimer: While all due care has been taken in the preparation of this document, no warranty is made as to its accuracy, reliability or completeness. To the extent permitted by law neither Jemalong or their sources including subsidiaries and staff, accept liability to any person for loss or damage arising from the use of this information.





Table 20: Returns pr head for skirted fleece wool.

Skirted FLC Weight		Micron																	
2 Kg		16	16.5	17	17.5	18	18.5	19	19.5	20	21	22	23	24	25	26	28	30	32
Yield (Sch Dry)	25% Current	\$10	\$9	\$8	\$8	\$7	\$7	\$7	\$7	\$7	\$7	\$6	\$6	\$6	\$5	\$4	\$3	\$3	\$3
	10yr ave.			\$7		\$6		\$6		\$5	\$5	\$5	\$4	\$4	\$4	\$3	\$3	\$2	\$2
	30% Current	\$12	\$11	\$10	\$9	\$9	\$8	\$8	\$8	\$8	\$8	\$8	\$7	\$7	\$6	\$5	\$4	\$3	\$3
	10yr ave.			\$9		\$8		\$7		\$6	\$6	\$6	\$5	\$5	\$4	\$4	\$3	\$3	\$2
	35% Current	\$14	\$13	\$11	\$11	\$10	\$10	\$10	\$9	\$9	\$9	\$9	\$9	\$8	\$7	\$6	\$5	\$4	\$4
	10yr ave.			\$10		\$9		\$8		\$7	\$7	\$6	\$6	\$6	\$5	\$5	\$4	\$3	\$3
	40% Current	\$16	\$15	\$13	\$12	\$12	\$11	\$11	\$11	\$11	\$10	\$10	\$10	\$9	\$8	\$7	\$5	\$5	\$4
	10yr ave.			\$12		\$10		\$9		\$8	\$8	\$7	\$7	\$7	\$6	\$5	\$4	\$4	\$3
	45% Current	\$18	\$17	\$14	\$14	\$13	\$13	\$12	\$12	\$12	\$12	\$11	\$11	\$10	\$9	\$8	\$6	\$5	\$5
	10yr ave.			\$13		\$11		\$10		\$9	\$9	\$8	\$8	\$8	\$7	\$6	\$5	\$4	\$4
	50% Current	\$20	\$19	\$16	\$15	\$15	\$14	\$14	\$14	\$13	\$13	\$13	\$12	\$12	\$10	\$8	\$6	\$6	\$5
	10yr ave.			\$15		\$13		\$11		\$10	\$9	\$9	\$9	\$8	\$7	\$7	\$5	\$5	\$4
	55% Current	\$22	\$20	\$18	\$17	\$16	\$15	\$15	\$15	\$15	\$14	\$14	\$14	\$13	\$11	\$9	\$7	\$6	\$6
	10yr ave.			\$16		\$14		\$12		\$11	\$10	\$10	\$10	\$9	\$8	\$7	\$6	\$5	\$5
	60% Current	\$24	\$22	\$19	\$18	\$17	\$17	\$16	\$16	\$16	\$16	\$15	\$15	\$14	\$12	\$10	\$8	\$7	\$6
	10yr ave.			\$17		\$15		\$13		\$12	\$11	\$11	\$11	\$10	\$9	\$8	\$6	\$6	\$5
	65% Current	\$26	\$24	\$21	\$20	\$19	\$18	\$18	\$18	\$17	\$17	\$17	\$16	\$15	\$13	\$11	\$8	\$8	\$7
	10yr ave.			\$19		\$17		\$14		\$13	\$12	\$12	\$12	\$11	\$10	\$9	\$7	\$6	\$5
	70% Current	\$28	\$26	\$23	\$21	\$20	\$20	\$19	\$19	\$19	\$18	\$18	\$17	\$16	\$14	\$12	\$9	\$8	\$7
	10yr ave.			\$20		\$18		\$16		\$14	\$13	\$13	\$12	\$12	\$10	\$9	\$7	\$6	\$6
	75% Current	\$30	\$28	\$24	\$23	\$22	\$21	\$21	\$20	\$20	\$20	\$19	\$18	\$17	\$15	\$13	\$10	\$9	\$8
	10yr ave.			\$22		\$19		\$17		\$15	\$14	\$14	\$13	\$13	\$11	\$10	\$8	\$7	\$6
	80% Current	\$32	\$30	\$26	\$24	\$23	\$22	\$22	\$22	\$21	\$21	\$20	\$20	\$18	\$16	\$13	\$10	\$9	\$8
	10yr ave.			\$23		\$20		\$18		\$16	\$15	\$15	\$14	\$13	\$12	\$11	\$8	\$7	\$7
	85% Current	\$34	\$31	\$27	\$26	\$25	\$24	\$23	\$23	\$23	\$22	\$22	\$21	\$20	\$17	\$14	\$11	\$10	\$9
	10yr ave.			\$25		\$22		\$19		\$17	\$16	\$16	\$15	\$14	\$13	\$11	\$9	\$8	\$7

The above shows estimated returns per head for skirted fleece wool. These figures do not take into account the value of skirtings and oddments and do not take into account discounts that may apply for faults under individual circumstances. These figures are based on a market index of 100% and should be used as a guide only. Returns over \$30 / head for fleece wool are highlighted.

Source: Australian Wool Exchange, Australian Wool Innovation, Sydney Futures Exchange, x-rates.com

Disclaimer: While all due care has been taken in the preparation of this document, no warranty is made as to its accuracy, reliability or completeness. To the extent permitted by law neither Jemalong or their sources including subsidiaries and staff, accept liability to any person for loss or damage arising from the use of this information.