



Table 1: Northern Region Micron Price Guides

CURRENT MARKET				PERCENTILES		AVERAGES						12 MONTH COMPARISONS								TRADING RANGE		
Mic.	19/05/2011	12/05/2011	Now			Now			18/05/2010		Now		Now		Now		Clean c/kg					
Price	Current	Weekly	3yr	10yr	3 year Average	compared to 3yr ave	10 year Average	compared to 10yr ave	This time Last Year	compared to Last Year	12 Month Low	compared to Low	12 Month High	compared to High	12 Mth	3 Year	10 Year					
Guides	Price	Change																				
NRI	1429	+45 3.1%	97%	99%	946	+483 51%	894	+535 60%	898	+531 59%	890	+539 61%	1447	-18 -1%	557	698	789					
16*	2800	0	100%		1766	+1034 59%			1540	+1260 82%	1540	+1260 82%	2800	0 0%	1260	1415						
16.5*	2620	0	96%		1624	+996 61%			1400	+1220 87%	1395	+1225 88%	2670	-50 -2%	1275	1418						
17*	2430	+10 0.4%	94%	97%	1497	+933 62%	1420	+1010 71%	1250	+1180 94%	1230	+1200 98%	2530	-100 -4%	1300	1361	1559					
17.5*	2290	+40 1.7%	95%		1415	+875 62%			1200	+1090 91%	1185	+1105 93%	2360	-70 -3%	1175	1276						
18	2094	+43 2.1%	94%	97%	1337	+757 57%	1277	+817 64%	1154	+940 81%	1138	+956 84%	2193	-99 -5%	1055	1158	1304					
18.5	1894	+63 3.3%	94%		1245	+649 52%			1096	+798 73%	1110	+784 71%	1963	-69 -4%	853	992						
19	1739	+85 4.9%	100%	100%	1129	+610 54%	1077	+662 61%	1057	+682 65%	1031	+708 69%	1739	0 0%	708	845	935					
19.5	1599	+88 5.5%	100%		1025	+574 56%			972	+627 65%	952	+647 68%	1599	0 0%	647	785						
20	1472	+82 5.6%	100%	100%	944	+528 56%	935	+537 57%	924	+548 59%	904	+568 63%	1472	0 0%	568	733	788					
21	1402	+72 5.1%	100%	100%	911	+491 54%	894	+508 57%	913	+489 54%	878	+524 60%	1402	0 0%	524	715	757					
22	1329	+59 4.4%	100%	99%	888	+441 50%	870	+459 53%	898	+431 48%	847	+482 57%	1329	0 0%	482	655	724					
23	1243	+27 2.2%	97%	98%	863	+380 44%	848	+395 47%	881	+362 41%	827	+416 50%	1291	-48 -4%	464	628	705					
24	1027	+2 0.2%	95%	92%	809	+218 27%	808	+219 27%	830	+197 24%	780	+247 32%	1170	-143 -12%	390	523	669					
25	936	+20 2.1%	95%	86%	700	+236 34%	725	+211 29%	694	+242 35%	695	+241 35%	1048	-112 -11%	353	482	631					
26	869	+13 1.5%	95%	84%	631	+238 38%	663	+206 31%	597	+272 46%	598	+271 45%	928	-59 -6%	330	424	557					
28	660	+20 3.0%	95%	85%	488	+172 35%	527	+133 25%	451	+209 46%	443	+217 49%	734	-74 -10%	291	308	465					
30	594	+13 2.2%	95%	86%	429	+165 38%	460	+134 29%	397	+197 50%	389	+205 53%	670	-76 -11%	281	316	385					
32	543	+12 2.2%	95%	83%	378	+165 44%	416	+127 31%	352	+191 54%	353	+190 54%	638	-95 -15%	285	321	372					
MC	754	-20 -2.7%	93%	98%	574	+180 31%	513	+241 47%	587	+167 28%	561	+193 34%	830	-76 -9%	269	438	450					

**Note:**

\* Due to the irregular market quoting for some fine wool categories, figures shown relating to micron categories below 18 micron are an estimate based on the AWEX Premium & Discounts Report & other available information.

\* For any category, where there is insufficient quantity offered to enable AWEX to quote, a quote will be provided based on the best available information.

\* 10 Year data is not available for some micron categories, which may result in blank spaces in the table above.

**Definitions:**

\* A Percentile, is a value on a scale of one hundred that indicates the percent of a distribution that is equal to or below it. In general a percentile between 25% and 75% is considered normal, a percentile below 25% is considered below normal and a percentile above 75% is considered above normal.

Three and ten year percentiles shown in the table above, detail the period of time during the past 3 & 10 years that the market has traded either at or below its current price.

The higher the percentile, the stronger the market.

Source: Australian Wool Exchange, Australian Wool Innovation, Sydney Futures Exchange, x-rates.com

Disclaimer: While all due care has been taken in the preparation of this document, no warranty is made as to its accuracy, reliability or completeness. To the extent permitted by law neither Jemalong or their sources including subsidiaries and staff, accept liability to any person for loss or damage arising from the use of this information.



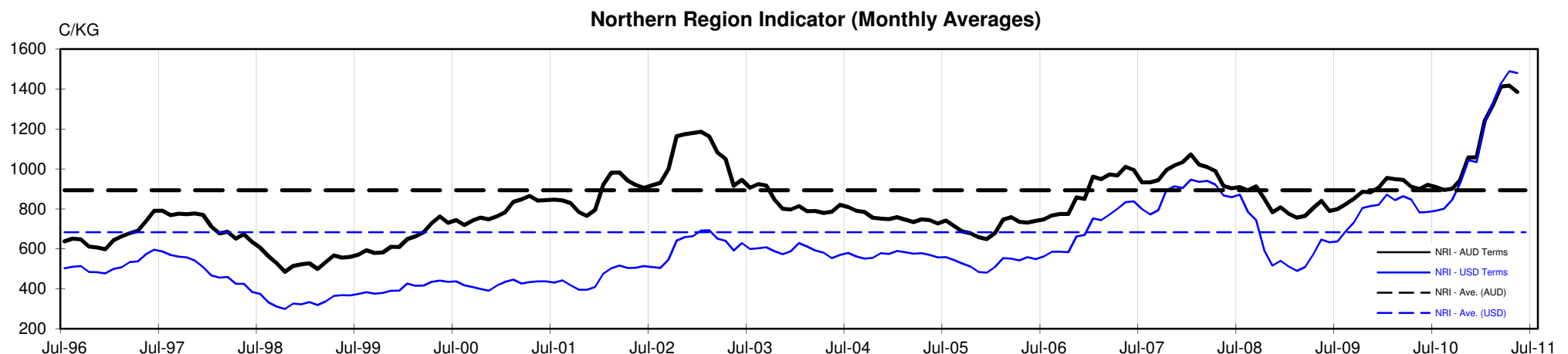
## MARKET COMMENTARY

One Australian Dollar = \$ 1.06 US, as of 19/05/2011

NORTHERN REGION –Sale Week 46/10 (40,835 bales offered nationally)

On Wednesday - Strong buyer support pushed the market another 20-30 cents dearer. 18.5 to 19.5 microns gained 30 cents while 20 to 21.5 microns ended the day 20 to 25 cents dearer. Fine microns while few and far between showed signs of 10 cent improvement. In the skirtings, a limited offering of 3%-5% Vm types gained 10-20 cents, while the burrier types afflicted with cot & colour showed little sign of improvement and as a result were met with seller resistance and consequently a high passed-in rate of 19%. The oddment market took a step back and lost some ground with locks falling 20 cents, while stains and crutchings closed 10-20 cents lower. Fine crossbreds rose 25 cents while 27 to 30 microns were 5 cents dearer.

On Thursday - The early focus was on the 21 micron area (which rose 20 cents), however after an hours trade 19 to 21 microns had pushed 50 to 60 cents dearer (for up to 2% Vm types). The finer end of the spectrum (on a reduced offering) was also well supported with 18.5 to 17.5 microns closing 30 cents higher. Skirtings, while not as dramatic, posted 10 to 20 cent gains across all descriptions. In the oddments, locks continued to ease, falling a further 10 cents, while crutchings & stains remained unchanged on a limited offering. Crossbreds gained 15 to 20 cents for 27 to 30 microns.





**Table 4: 19 micron SFE**

Wednesday, 18 May 2011

Delivery Mth	Jun-11	Aug-11	Oct-11	Dec-11	Feb-11	Apr-12	Jun-12	Aug-12	Oct-12
19 Micron SFE	1650	1580	1538	1503	1471	1443	1413	1392	1392
Average	1217	1224	1231	1257	1113	1325	1382	1379	1346
Maximum	1670	1637	1595	1560	1605	1458	1450	1450	1392
Minimum	1034	1034	1034	1034	983	1106	1210	1285	1285

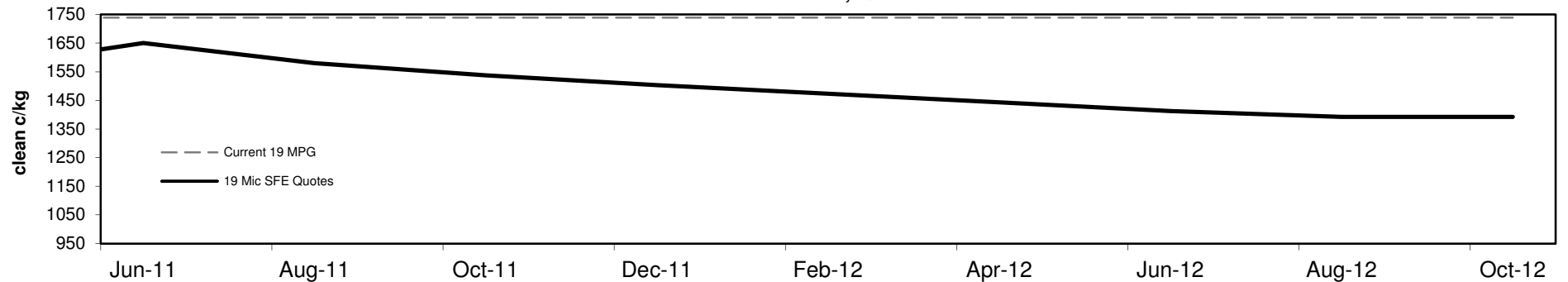
**Table 5: 19 micron SFE, as a percentile of the 19 micron MPG**

3 Year Percentile	94%	89%	87%	87%	87%	87%	87%	87%	87%
10 Year Percentile	98%	97%	96%	96%	96%	96%	96%	96%	96%

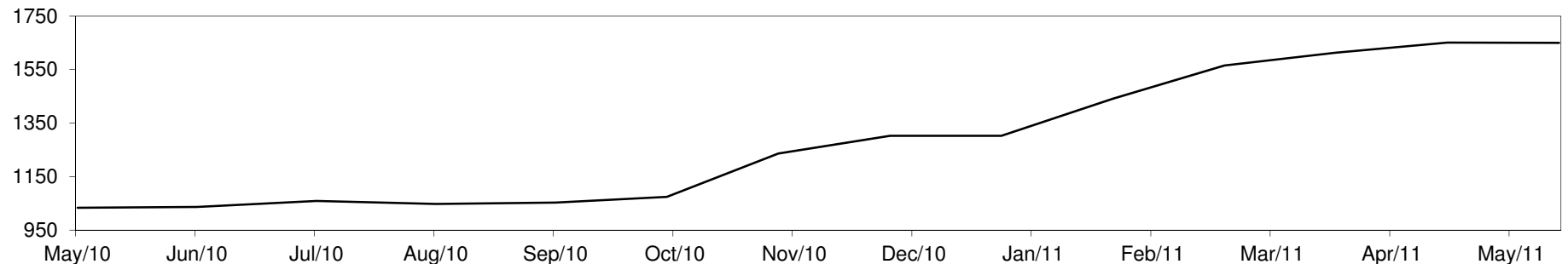
**Table 6: 19 micron SFE, compared to MPG**

Current 19 MPG	-89	-5%	-159	-9%	-201	-12%	-236	-14%	-268	-15%	-296	-17%	-326	-19%	-347	-20%	-347	-20%
19 MPG, 1 Year Average	+310	23%	+240	18%	+198	15%	+163	12%	+131	10%	+103	8%	+73	5%	+52	4%	+52	4%
19 MPG, 3 Year Average	+521	46%	+451	40%	+409	36%	+374	33%	+342	30%	+314	28%	+284	25%	+263	23%	+263	23%
19 MPG, 10 Year Average	+573	53%	+503	47%	+461	43%	+426	40%	+394	37%	+366	34%	+336	31%	+315	29%	+315	29%

**19 MICRON SFE, QUOTES**



**19 Micron SFE, Front month movement**





**Table 7: 21 micron SFE**

Wednesday, 18 May 2011

Delivery Mth	Jun-11	Aug-11	Oct-11	Dec-11	Feb-11	Apr-12	Jun-12	Aug-12	Oct-12
21 Micron SFE	1378	1339	1277	1249	1219	1101	1144	1134	1101
Average	1017	1013	1005	1007	962	1052	1054	1070	1051
Maximum	1378	1339	1277	1249	1339	1149	1144	1134	1101
Minimum	890	880	880	880	860	934	990	1046	1013

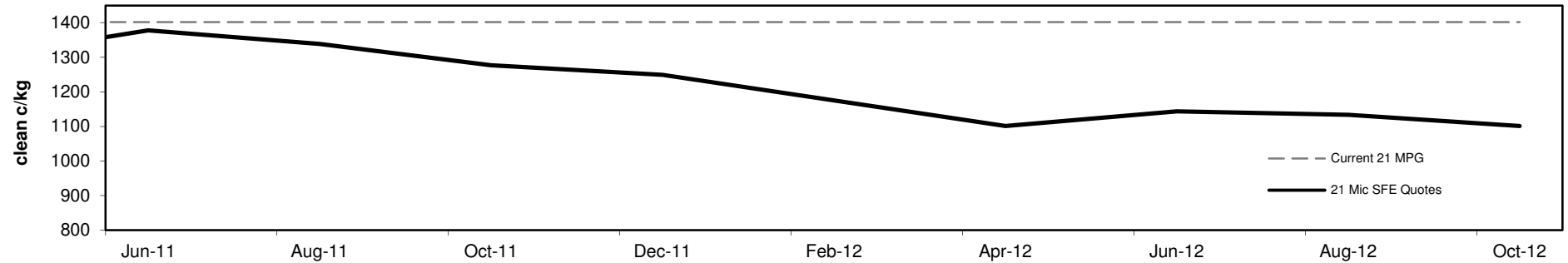
**Table 8: 21 micron SFE, as a percentile of the 21 micron MPG**

3 Year Percentile	99%	99%	94%	94%	93%	87%	89%	89%	87%
10 Year Percentile	99%	99%	97%	94%	93%	90%	91%	90%	90%

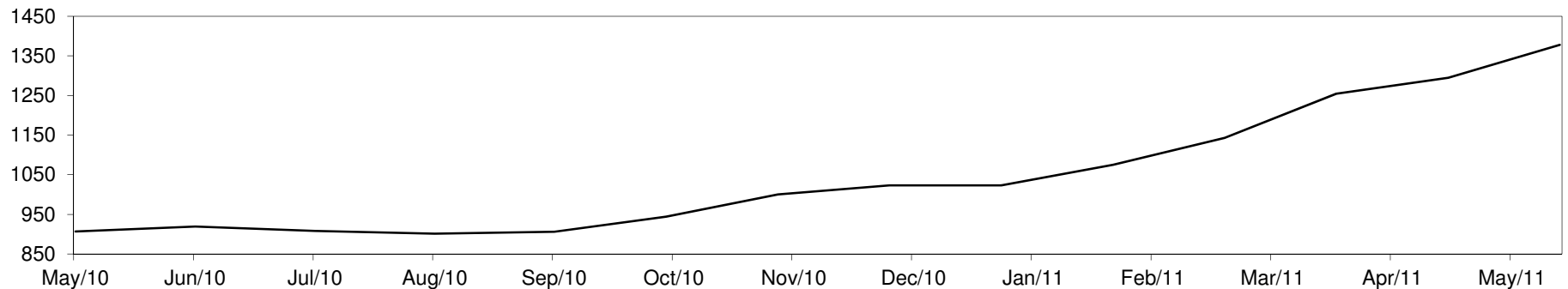
**Table 9: 21 micron SFE, compared to MPG**

Current 21 MPG	-24	-2%	-63	-4%	-125	-9%	-153	-11%	-183	-13%	-301	-21%	-258	-18%	-268	-19%	-301	-21%
21 MPG, 1 Year Average	+315	30%	+276	26%	+214	20%	+186	18%	+156	15%	+38	4%	+81	8%	+71	7%	+38	4%
21 MPG, 3 Year Average	+467	51%	+428	47%	+366	40%	+338	37%	+308	34%	+190	21%	+233	26%	+223	24%	+190	21%
21 MPG, 10 Year Average	+484	54%	+445	50%	+383	43%	+355	40%	+325	36%	+207	23%	+250	28%	+240	27%	+207	23%

**21 MICRON SFE, QUOTES**



**21 Micron SFE, Front month movement**





**Table 10: 23 micron SFE**

Wednesday, 18 May 2011

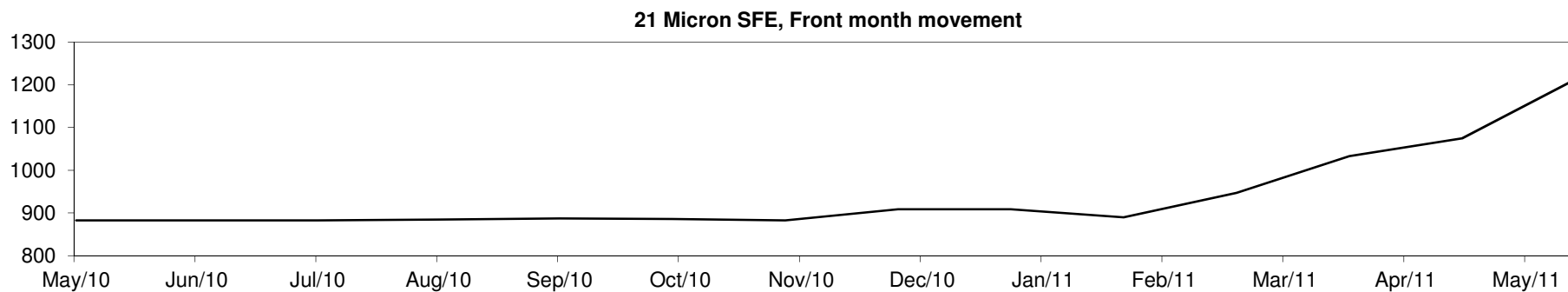
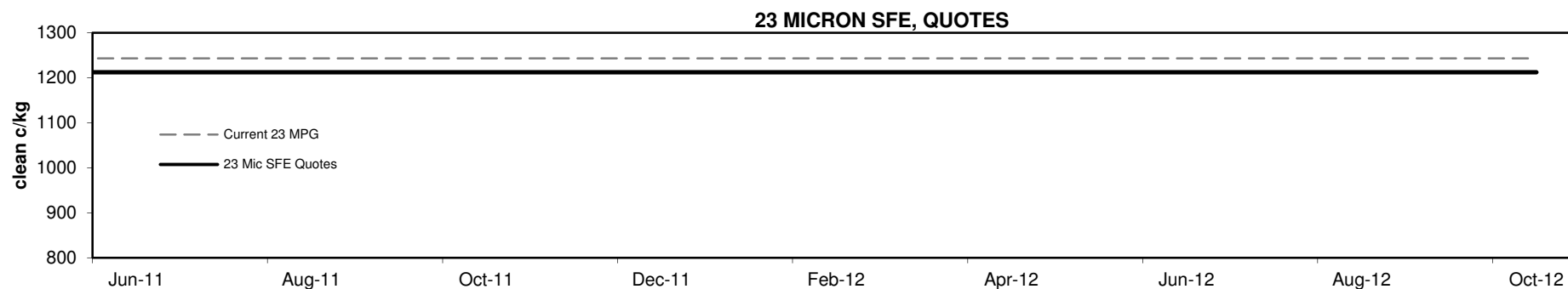
Delivery Mth	Jun-11	Aug-11	Oct-11	Dec-11	Feb-11	Apr-12	Jun-12	Aug-12	Oct-12
23 Micron SFE	1212	1212	1212	1212	1212	1212	1212	1212	1212
Average	922	930	931	941	870	978	1014	1087	1212
Maximum	1212	1212	1212	1212	1212	1212	1212	1212	1212
Minimum	803	883	883	883	760	883	890	1033	1212

**Table 11: 23 micron SFE, as a percentile of the 23 micron MPG**

3 Year Percentile	95%	95%	95%	95%	95%	95%	95%	95%	95%
10 Year Percentile	95%	95%	95%	95%	95%	95%	95%	95%	95%

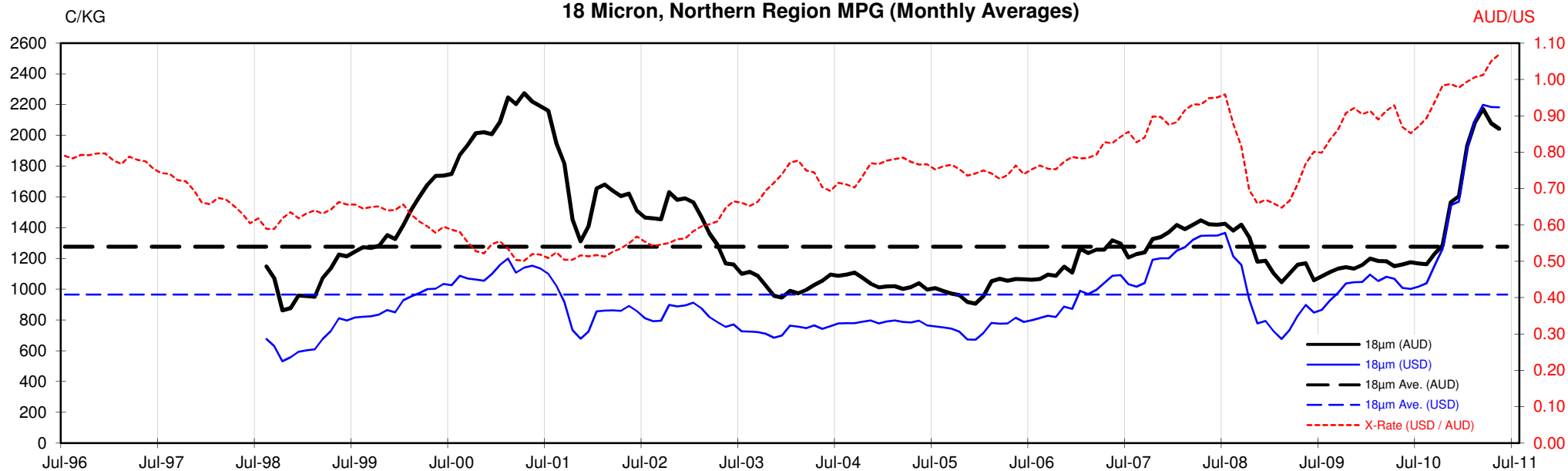
**Table 12: 23 micron SFE, compared to MPG**

Current 23 MPG	-31	-2%	-31	-2%	-31	-2%	-31	-2%	-31	-2%	-31	-2%	-31	-2%	-31	-2%	-31	-2%
23 MPG, 1 Year Average	+219	22%	+219	22%	+219	22%	+219	22%	+219	22%	+219	22%	+219	22%	+219	22%	+219	22%
23 MPG, 3 Year Average	+349	40%	+349	40%	+349	40%	+349	40%	+349	40%	+349	40%	+349	40%	+349	40%	+349	40%
23 MPG, 10 Year Average	+364	43%	+364	43%	+364	43%	+364	43%	+364	43%	+364	43%	+364	43%	+364	43%	+364	43%

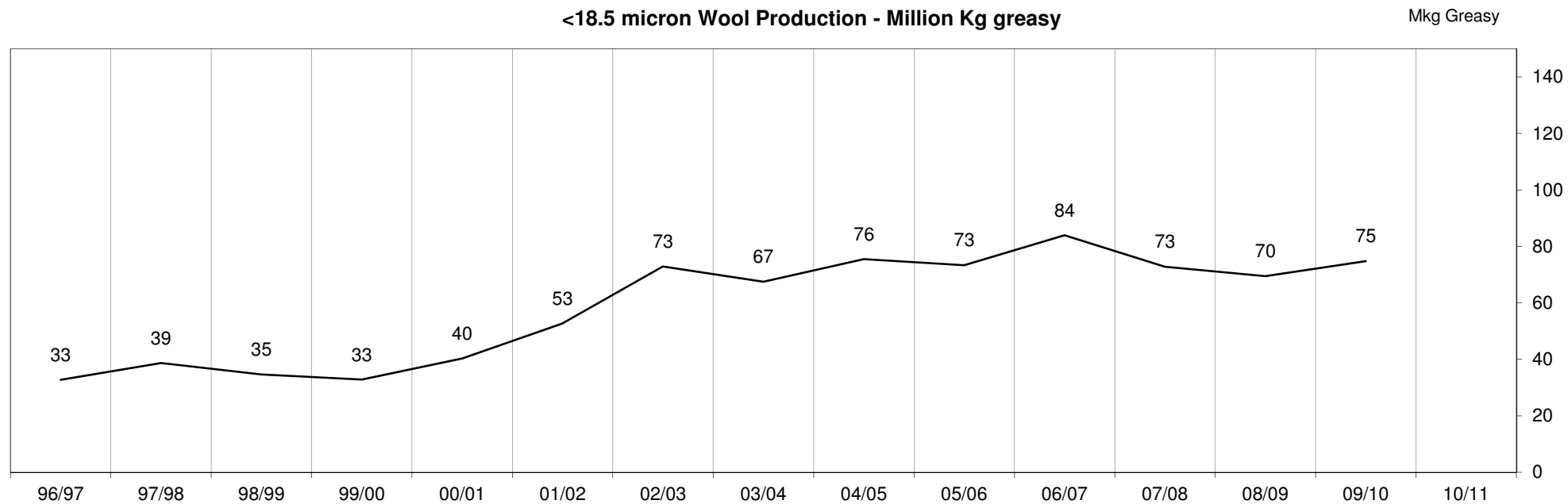


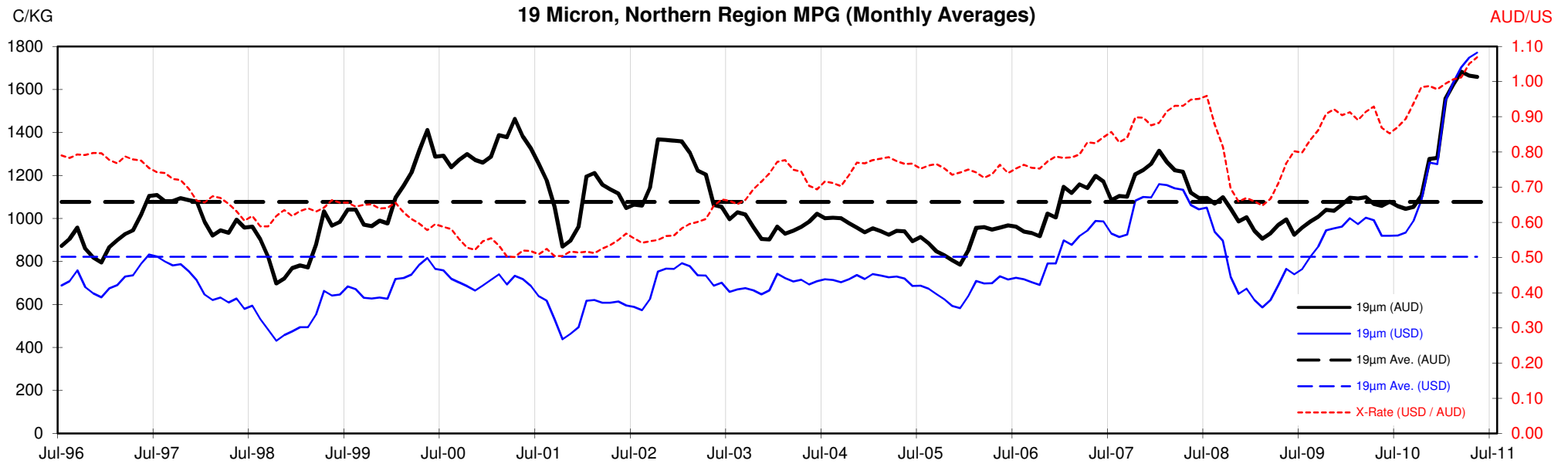


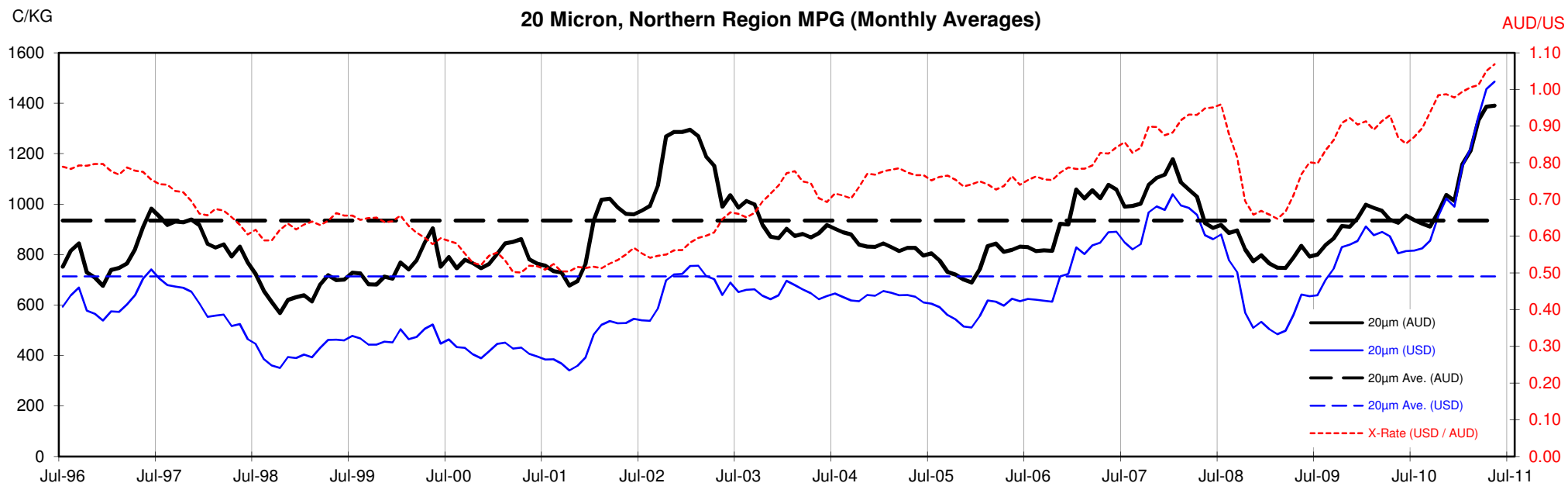
### 18 Micron, Northern Region MPG (Monthly Averages)



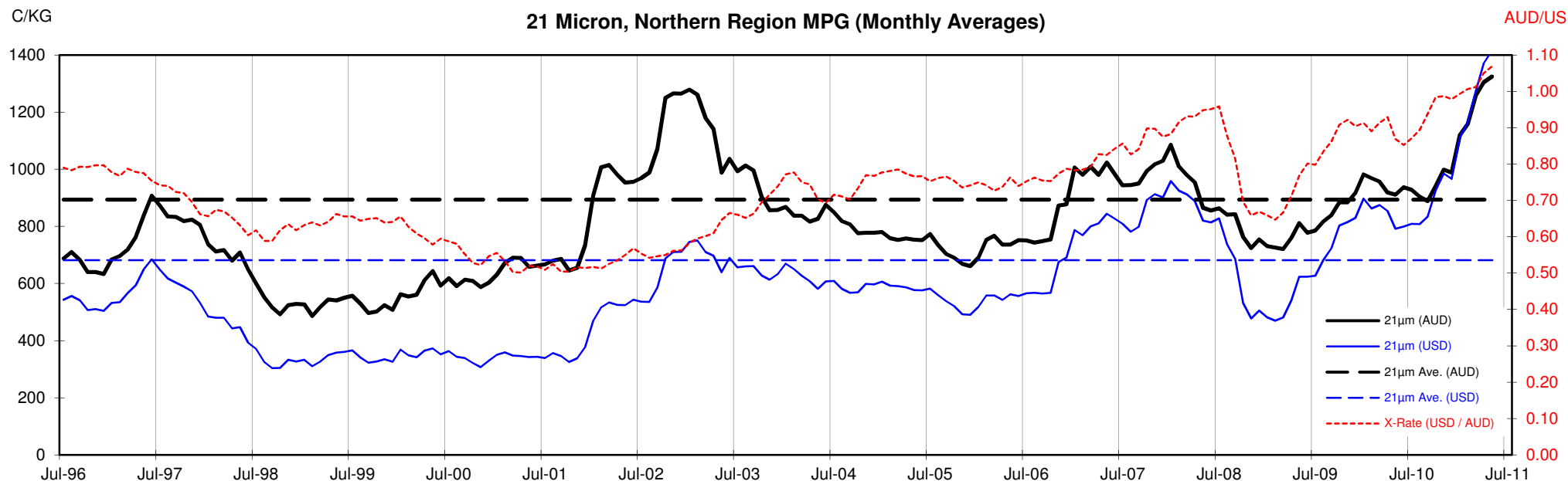
### <18.5 micron Wool Production - Million Kg greasy

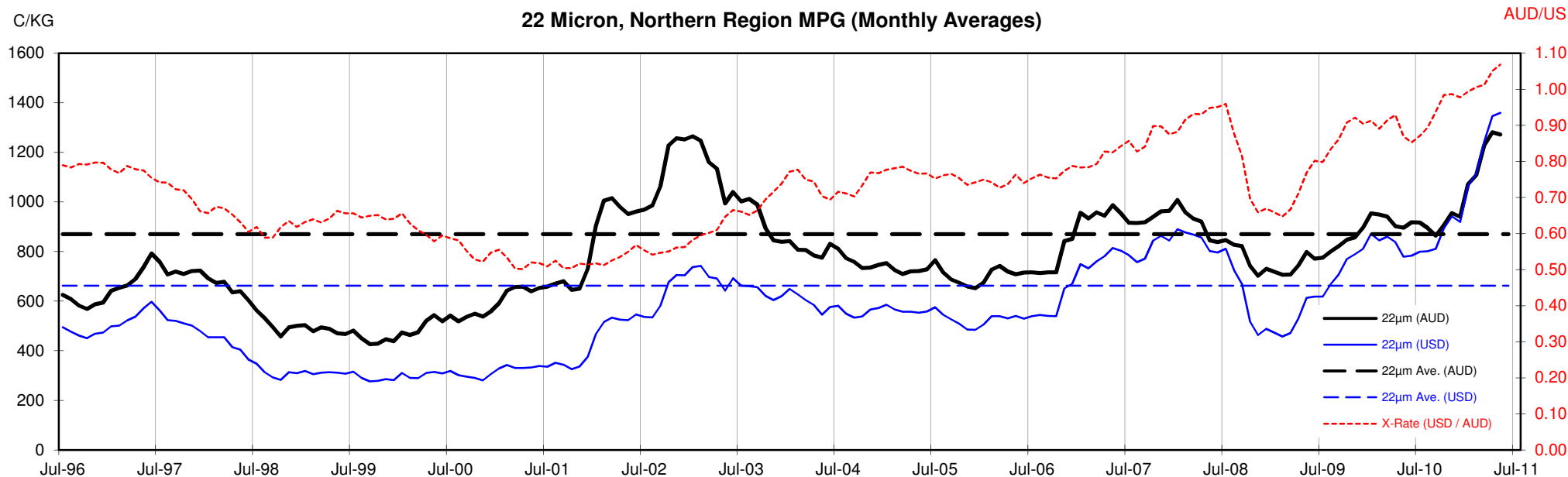


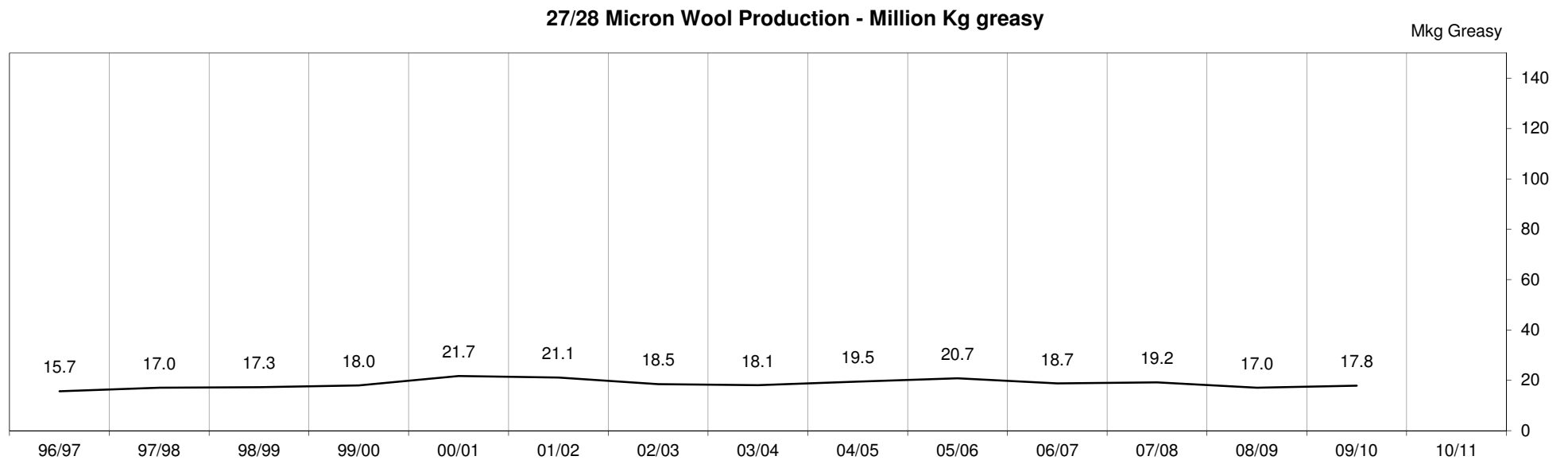
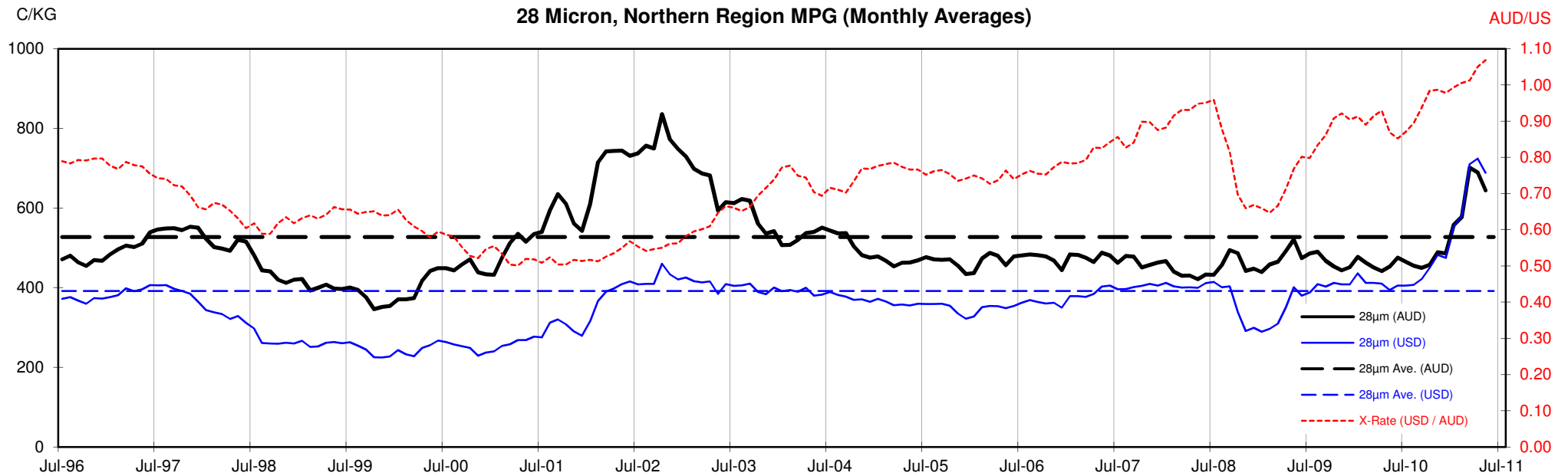












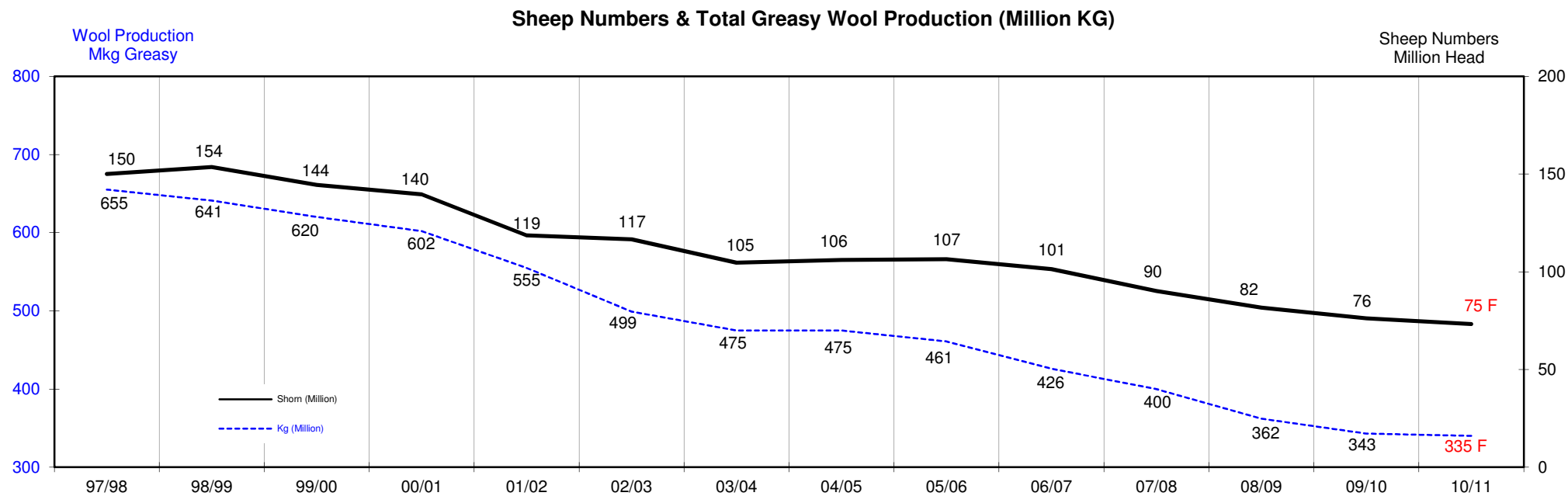
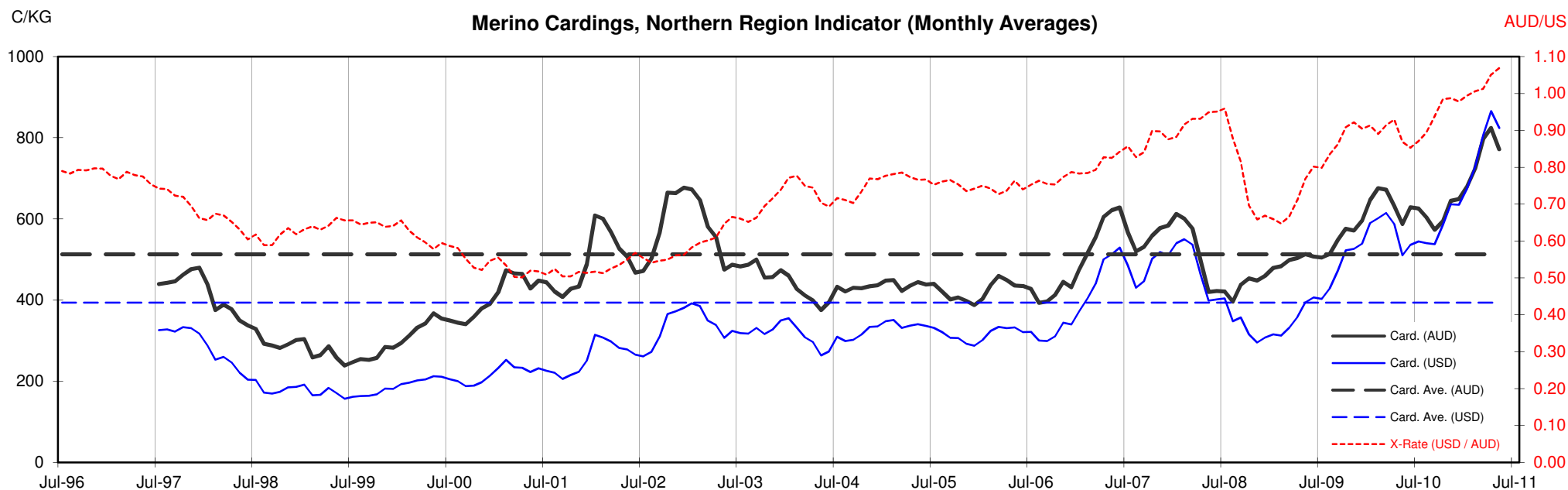




Table 13: Returns pr head for skirted fleece wool.

Skirted FLC Weight			Micron																	
9 Kg			16	16.5	17	17.5	18	18.5	19	19.5	20	21	22	23	24	25	26	28	30	32
Yield (Sch Dry)	25%	Current	\$63	\$59	\$55	\$52	\$47	\$43	\$39	\$36	\$33	\$32	\$30	\$28	\$23	\$21	\$20	\$15	\$13	\$12
		10yr ave.			\$32		\$29		\$24		\$21	\$20	\$20	\$19	\$18	\$16	\$15	\$12	\$10	\$9
	30%	Current	\$76	\$71	\$66	\$62	\$57	\$51	\$47	\$43	\$40	\$38	\$36	\$34	\$28	\$25	\$23	\$18	\$16	\$15
		10yr ave.			\$38		\$34		\$29		\$25	\$24	\$23	\$23	\$22	\$20	\$18	\$14	\$12	\$11
	35%	Current	\$88	\$83	\$77	\$72	\$66	\$60	\$55	\$50	\$46	\$44	\$42	\$39	\$32	\$29	\$27	\$21	\$19	\$17
		10yr ave.			\$45		\$40		\$34		\$29	\$28	\$27	\$27	\$25	\$23	\$21	\$17	\$14	\$13
	40%	Current	\$101	\$94	\$87	\$82	\$75	\$68	\$63	\$58	\$53	\$50	\$48	\$45	\$37	\$34	\$31	\$24	\$21	\$20
		10yr ave.			\$51		\$46		\$39		\$34	\$32	\$31	\$31	\$29	\$26	\$24	\$19	\$17	\$15
	45%	Current	\$113	\$106	\$98	\$93	\$85	\$77	\$70	\$65	\$60	\$57	\$54	\$50	\$42	\$38	\$35	\$27	\$24	\$22
		10yr ave.			\$58		\$52		\$44		\$38	\$36	\$35	\$34	\$33	\$29	\$27	\$21	\$19	\$17
	50%	Current	\$126	\$118	\$109	\$103	\$94	\$85	\$78	\$72	\$66	\$63	\$60	\$56	\$46	\$42	\$39	\$30	\$27	\$24
		10yr ave.			\$64		\$57		\$48		\$42	\$40	\$39	\$38	\$36	\$33	\$30	\$24	\$21	\$19
	55%	Current	\$139	\$130	\$120	\$113	\$104	\$94	\$86	\$79	\$73	\$69	\$66	\$62	\$51	\$46	\$43	\$33	\$29	\$27
		10yr ave.			\$70		\$63		\$53		\$46	\$44	\$43	\$42	\$40	\$36	\$33	\$26	\$23	\$21
	60%	Current	\$151	\$141	\$131	\$124	\$113	\$102	\$94	\$86	\$79	\$76	\$72	\$67	\$55	\$51	\$47	\$36	\$32	\$29
		10yr ave.			\$77		\$69		\$58		\$50	\$48	\$47	\$46	\$44	\$39	\$36	\$28	\$25	\$22
	65%	Current	\$164	\$153	\$142	\$134	\$122	\$111	\$102	\$94	\$86	\$82	\$78	\$73	\$60	\$55	\$51	\$39	\$35	\$32
		10yr ave.			\$83		\$75		\$63		\$55	\$52	\$51	\$50	\$47	\$42	\$39	\$31	\$27	\$24
	70%	Current	\$176	\$165	\$153	\$144	\$132	\$119	\$110	\$101	\$93	\$88	\$84	\$78	\$65	\$59	\$55	\$42	\$37	\$34
		10yr ave.			\$89		\$80		\$68		\$59	\$56	\$55	\$53	\$51	\$46	\$42	\$33	\$29	\$26
	75%	Current	\$189	\$177	\$164	\$155	\$141	\$128	\$117	\$108	\$99	\$95	\$90	\$84	\$69	\$63	\$59	\$45	\$40	\$37
		10yr ave.			\$96		\$86		\$73		\$63	\$60	\$59	\$57	\$55	\$49	\$45	\$36	\$31	\$28
	80%	Current	\$202	\$189	\$175	\$165	\$151	\$136	\$125	\$115	\$106	\$101	\$96	\$89	\$74	\$67	\$63	\$48	\$43	\$39
		10yr ave.			\$102		\$92		\$78		\$67	\$64	\$63	\$61	\$58	\$52	\$48	\$38	\$33	\$30
	85%	Current	\$214	\$200	\$186	\$175	\$160	\$145	\$133	\$122	\$113	\$107	\$102	\$95	\$79	\$72	\$66	\$50	\$45	\$42
		10yr ave.			\$109		\$98		\$82		\$72	\$68	\$67	\$65	\$62	\$55	\$51	\$40	\$35	\$32

The above shows estimated returns per head for skirted fleece wool. These figures do not take into account the value of skirtings and oddments and do not take into account discounts that may apply for faults under individual circumstances. These figures are based on a market index of 100% and should be used as a guide only. Returns over \$30 / head for fleece wool are highlighted.

Source: Australian Wool Exchange, Australian Wool Innovation, Sydney Futures Exchange, x-rates.com

Disclaimer: While all due care has been taken in the preparation of this document, no warranty is made as to its accuracy, reliability or completeness. To the extent permitted by law neither Jemalong or their sources including subsidiaries and staff, accept liability to any person for loss or damage arising from the use of this information.



Table 14: Returns pr head for skirted fleece wool.

Skirted FLC Weight		Micron																	
8 Kg		16	16.5	17	17.5	18	18.5	19	19.5	20	21	22	23	24	25	26	28	30	32
Yield (Sch Dry)	25% Current	\$56	\$52	\$49	\$46	\$42	\$38	\$35	\$32	\$29	\$28	\$27	\$25	\$21	\$19	\$17	\$13	\$12	\$11
	10yr ave.			\$28		\$26		\$22		\$19	\$18	\$17	\$17	\$16	\$15	\$13	\$11	\$9	\$8
	30% Current	\$67	\$63	\$58	\$55	\$50	\$45	\$42	\$38	\$35	\$34	\$32	\$30	\$25	\$22	\$21	\$16	\$14	\$13
	10yr ave.			\$34		\$31		\$26		\$22	\$21	\$21	\$20	\$19	\$17	\$16	\$13	\$11	\$10
	35% Current	\$78	\$73	\$68	\$64	\$59	\$53	\$49	\$45	\$41	\$39	\$37	\$35	\$29	\$26	\$24	\$18	\$17	\$15
	10yr ave.			\$40		\$36		\$30		\$26	\$25	\$24	\$24	\$23	\$20	\$19	\$15	\$13	\$12
	40% Current	\$90	\$84	\$78	\$73	\$67	\$61	\$56	\$51	\$47	\$45	\$43	\$40	\$33	\$30	\$28	\$21	\$19	\$17
	10yr ave.			\$45		\$41		\$34		\$30	\$29	\$28	\$27	\$26	\$23	\$21	\$17	\$15	\$13
	45% Current	\$101	\$94	\$87	\$82	\$75	\$68	\$63	\$58	\$53	\$50	\$48	\$45	\$37	\$34	\$31	\$24	\$21	\$20
	10yr ave.			\$51		\$46		\$39		\$34	\$32	\$31	\$31	\$29	\$26	\$24	\$19	\$17	\$15
	50% Current	\$112	\$105	\$97	\$92	\$84	\$76	\$70	\$64	\$59	\$56	\$53	\$50	\$41	\$37	\$35	\$26	\$24	\$22
	10yr ave.			\$57		\$51		\$43		\$37	\$36	\$35	\$34	\$32	\$29	\$27	\$21	\$18	\$17
	55% Current	\$123	\$115	\$107	\$101	\$92	\$83	\$77	\$70	\$65	\$62	\$58	\$55	\$45	\$41	\$38	\$29	\$26	\$24
	10yr ave.			\$62		\$56		\$47		\$41	\$39	\$38	\$37	\$36	\$32	\$29	\$23	\$20	\$18
	60% Current	\$134	\$126	\$117	\$110	\$101	\$91	\$83	\$77	\$71	\$67	\$64	\$60	\$49	\$45	\$42	\$32	\$29	\$26
	10yr ave.			\$68		\$61		\$52		\$45	\$43	\$42	\$41	\$39	\$35	\$32	\$25	\$22	\$20
	65% Current	\$146	\$136	\$126	\$119	\$109	\$98	\$90	\$83	\$77	\$73	\$69	\$65	\$53	\$49	\$45	\$34	\$31	\$28
	10yr ave.			\$74		\$66		\$56		\$49	\$46	\$45	\$44	\$42	\$38	\$34	\$27	\$24	\$22
	70% Current	\$157	\$147	\$136	\$128	\$117	\$106	\$97	\$90	\$82	\$79	\$74	\$70	\$58	\$52	\$49	\$37	\$33	\$30
	10yr ave.			\$80		\$72		\$60		\$52	\$50	\$49	\$47	\$45	\$41	\$37	\$30	\$26	\$23
	75% Current	\$168	\$157	\$146	\$137	\$126	\$114	\$104	\$96	\$88	\$84	\$80	\$75	\$62	\$56	\$52	\$40	\$36	\$33
	10yr ave.			\$85		\$77		\$65		\$56	\$54	\$52	\$51	\$48	\$44	\$40	\$32	\$28	\$25
	80% Current	\$179	\$168	\$156	\$147	\$134	\$121	\$111	\$102	\$94	\$90	\$85	\$80	\$66	\$60	\$56	\$42	\$38	\$35
	10yr ave.			\$91		\$82		\$69		\$60	\$57	\$56	\$54	\$52	\$46	\$42	\$34	\$29	\$27
	85% Current	\$190	\$178	\$165	\$156	\$142	\$129	\$118	\$109	\$100	\$95	\$90	\$85	\$70	\$64	\$59	\$45	\$40	\$37
	10yr ave.			\$97		\$87		\$73		\$64	\$61	\$59	\$58	\$55	\$49	\$45	\$36	\$31	\$28

The above shows estimated returns per head for skirted fleece wool. These figures do not take into account the value of skirtings and oddments and do not take into account discounts that may apply for faults under individual circumstances. These figures are based on a market index of 100% and should be used as a guide only. Returns over \$30 / head for fleece wool are highlighted.

Source: Australian Wool Exchange, Australian Wool Innovation, Sydney Futures Exchange, x-rates.com

Disclaimer: While all due care has been taken in the preparation of this document, no warranty is made as to its accuracy, reliability or completeness. To the extent permitted by law neither Jemalong or their sources including subsidiaries and staff, accept liability to any person for loss or damage arising from the use of this information.



Table 15: Returns pr head for skirted fleece wool.

Skirted FLC Weight		Micron																	
7 Kg		16	16.5	17	17.5	18	18.5	19	19.5	20	21	22	23	24	25	26	28	30	32
Yield (Sch Dry)	25% Current	\$49	\$46	\$43	\$40	\$37	\$33	\$30	\$28	\$26	\$25	\$23	\$22	\$18	\$16	\$15	\$12	\$10	\$10
	10yr ave.			\$25		\$22		\$19		\$16	\$16	\$15	\$15	\$14	\$13	\$12	\$9	\$8	\$7
	30% Current	\$59	\$55	\$51	\$48	\$44	\$40	\$37	\$34	\$31	\$29	\$28	\$26	\$22	\$20	\$18	\$14	\$12	\$11
	10yr ave.			\$30		\$27		\$23		\$20	\$19	\$18	\$18	\$17	\$15	\$14	\$11	\$10	\$9
	35% Current	\$69	\$64	\$60	\$56	\$51	\$46	\$43	\$39	\$36	\$34	\$33	\$30	\$25	\$23	\$21	\$16	\$15	\$13
	10yr ave.			\$35		\$31		\$26		\$23	\$22	\$21	\$21	\$20	\$18	\$16	\$13	\$11	\$10
	40% Current	\$78	\$73	\$68	\$64	\$59	\$53	\$49	\$45	\$41	\$39	\$37	\$35	\$29	\$26	\$24	\$18	\$17	\$15
	10yr ave.			\$40		\$36		\$30		\$26	\$25	\$24	\$24	\$23	\$20	\$19	\$15	\$13	\$12
	45% Current	\$88	\$83	\$77	\$72	\$66	\$60	\$55	\$50	\$46	\$44	\$42	\$39	\$32	\$29	\$27	\$21	\$19	\$17
	10yr ave.			\$45		\$40		\$34		\$29	\$28	\$27	\$27	\$25	\$23	\$21	\$17	\$14	\$13
	50% Current	\$98	\$92	\$85	\$80	\$73	\$66	\$61	\$56	\$52	\$49	\$47	\$44	\$36	\$33	\$30	\$23	\$21	\$19
	10yr ave.			\$50		\$45		\$38		\$33	\$31	\$30	\$30	\$28	\$25	\$23	\$18	\$16	\$15
	55% Current	\$108	\$101	\$94	\$88	\$81	\$73	\$67	\$62	\$57	\$54	\$51	\$48	\$40	\$36	\$33	\$25	\$23	\$21
	10yr ave.			\$55		\$49		\$41		\$36	\$34	\$33	\$33	\$31	\$28	\$26	\$20	\$18	\$16
	60% Current	\$118	\$110	\$102	\$96	\$88	\$80	\$73	\$67	\$62	\$59	\$56	\$52	\$43	\$39	\$36	\$28	\$25	\$23
	10yr ave.			\$60		\$54		\$45		\$39	\$38	\$37	\$36	\$34	\$30	\$28	\$22	\$19	\$17
	65% Current	\$127	\$119	\$111	\$104	\$95	\$86	\$79	\$73	\$67	\$64	\$60	\$57	\$47	\$43	\$40	\$30	\$27	\$25
	10yr ave.			\$65		\$58		\$49		\$43	\$41	\$40	\$39	\$37	\$33	\$30	\$24	\$21	\$19
	70% Current	\$137	\$128	\$119	\$112	\$103	\$93	\$85	\$78	\$72	\$69	\$65	\$61	\$50	\$46	\$43	\$32	\$29	\$27
	10yr ave.			\$70		\$63		\$53		\$46	\$44	\$43	\$42	\$40	\$36	\$32	\$26	\$23	\$20
	75% Current	\$147	\$138	\$128	\$120	\$110	\$99	\$91	\$84	\$77	\$74	\$70	\$65	\$54	\$49	\$46	\$35	\$31	\$29
	10yr ave.			\$75		\$67		\$57		\$49	\$47	\$46	\$45	\$42	\$38	\$35	\$28	\$24	\$22
	80% Current	\$157	\$147	\$136	\$128	\$117	\$106	\$97	\$90	\$82	\$79	\$74	\$70	\$58	\$52	\$49	\$37	\$33	\$30
	10yr ave.			\$80		\$72		\$60		\$52	\$50	\$49	\$47	\$45	\$41	\$37	\$30	\$26	\$23
	85% Current	\$167	\$156	\$145	\$136	\$125	\$113	\$103	\$95	\$88	\$83	\$79	\$74	\$61	\$56	\$52	\$39	\$35	\$32
	10yr ave.			\$84		\$76		\$64		\$56	\$53	\$52	\$50	\$48	\$43	\$39	\$31	\$27	\$25

The above shows estimated returns per head for skirted fleece wool. These figures do not take into account the value of skirtings and oddments and do not take into account discounts that may apply for faults under individual circumstances. These figures are based on a market index of 100% and should be used as a guide only. Returns over \$30 / head for fleece wool are highlighted.

Source: Australian Wool Exchange, Australian Wool Innovation, Sydney Futures Exchange, x-rates.com

Disclaimer: While all due care has been taken in the preparation of this document, no warranty is made as to its accuracy, reliability or completeness. To the extent permitted by law neither Jemalong or their sources including subsidiaries and staff, accept liability to any person for loss or damage arising from the use of this information.



Table 16: Returns pr head for skirted fleece wool.

Skirted FLC Weight		Micron																		
		16	16.5	17	17.5	18	18.5	19	19.5	20	21	22	23	24	25	26	28	30	32	
Yield (Sch Dry)	25%	Current	\$42	\$39	\$36	\$34	\$31	\$28	\$26	\$24	\$22	\$21	\$20	\$19	\$15	\$14	\$13	\$10	\$9	\$8
	10yr ave.			\$21		\$19		\$16		\$14	\$13	\$13	\$13	\$12	\$11	\$10	\$8	\$7	\$6	
	30%	Current	\$50	\$47	\$44	\$41	\$38	\$34	\$31	\$29	\$26	\$25	\$24	\$22	\$18	\$17	\$16	\$12	\$11	\$10
	10yr ave.			\$26		\$23		\$19		\$17	\$16	\$16	\$15	\$15	\$13	\$12	\$9	\$8	\$7	
	35%	Current	\$59	\$55	\$51	\$48	\$44	\$40	\$37	\$34	\$31	\$29	\$28	\$26	\$22	\$20	\$18	\$14	\$12	\$11
	10yr ave.			\$30		\$27		\$23		\$20	\$19	\$18	\$18	\$17	\$15	\$14	\$11	\$10	\$9	
	40%	Current	\$67	\$63	\$58	\$55	\$50	\$45	\$42	\$38	\$35	\$34	\$32	\$30	\$25	\$22	\$21	\$16	\$14	\$13
	10yr ave.			\$34		\$31		\$26		\$22	\$21	\$21	\$20	\$19	\$17	\$16	\$13	\$11	\$10	
	45%	Current	\$76	\$71	\$66	\$62	\$57	\$51	\$47	\$43	\$40	\$38	\$36	\$34	\$28	\$25	\$23	\$18	\$16	\$15
	10yr ave.			\$38		\$34		\$29		\$25	\$24	\$23	\$23	\$22	\$20	\$18	\$14	\$12	\$11	
	50%	Current	\$84	\$79	\$73	\$69	\$63	\$57	\$52	\$48	\$44	\$42	\$40	\$37	\$31	\$28	\$26	\$20	\$18	\$16
	10yr ave.			\$43		\$38		\$32		\$28	\$27	\$26	\$25	\$24	\$22	\$20	\$16	\$14	\$12	
	55%	Current	\$92	\$86	\$80	\$76	\$69	\$63	\$57	\$53	\$49	\$46	\$44	\$41	\$34	\$31	\$29	\$22	\$20	\$18
	10yr ave.			\$47		\$42		\$36		\$31	\$30	\$29	\$28	\$27	\$24	\$22	\$17	\$15	\$14	
60%	Current	\$101	\$94	\$87	\$82	\$75	\$68	\$63	\$58	\$53	\$50	\$48	\$45	\$37	\$34	\$31	\$24	\$21	\$20	
10yr ave.			\$51		\$46		\$39		\$34	\$32	\$31	\$31	\$29	\$26	\$24	\$19	\$17	\$15		
65%	Current	\$109	\$102	\$95	\$89	\$82	\$74	\$68	\$62	\$57	\$55	\$52	\$48	\$40	\$37	\$34	\$26	\$23	\$21	
10yr ave.			\$55		\$50		\$42		\$36	\$35	\$34	\$33	\$32	\$28	\$26	\$21	\$18	\$16		
70%	Current	\$118	\$110	\$102	\$96	\$88	\$80	\$73	\$67	\$62	\$59	\$56	\$52	\$43	\$39	\$36	\$28	\$25	\$23	
10yr ave.			\$60		\$54		\$45		\$39	\$38	\$37	\$36	\$34	\$30	\$28	\$22	\$19	\$17		
75%	Current	\$126	\$118	\$109	\$103	\$94	\$85	\$78	\$72	\$66	\$63	\$60	\$56	\$46	\$42	\$39	\$30	\$27	\$24	
10yr ave.			\$64		\$57		\$48		\$42	\$40	\$39	\$38	\$36	\$33	\$30	\$24	\$21	\$19		
80%	Current	\$134	\$126	\$117	\$110	\$101	\$91	\$83	\$77	\$71	\$67	\$64	\$60	\$49	\$45	\$42	\$32	\$29	\$26	
10yr ave.			\$68		\$61		\$52		\$45	\$43	\$42	\$41	\$39	\$35	\$32	\$25	\$22	\$20		
85%	Current	\$143	\$134	\$124	\$117	\$107	\$97	\$89	\$82	\$75	\$72	\$68	\$63	\$52	\$48	\$44	\$34	\$30	\$28	
10yr ave.			\$72		\$65		\$55		\$48	\$46	\$44	\$43	\$41	\$37	\$34	\$27	\$23	\$21		

The above shows estimated returns per head for skirted fleece wool. These figures do not take into account the value of skirtings and oddments and do not take into account discounts that may apply for faults under individual circumstances. These figures are based on a market index of 100% and should be used as a guide only. Returns over \$30 / head for fleece wool are highlighted.

Source: Australian Wool Exchange, Australian Wool Innovation, Sydney Futures Exchange, x-rates.com

Disclaimer: While all due care has been taken in the preparation of this document, no warranty is made as to its accuracy, reliability or completeness. To the extent permitted by law neither Jemalong or their sources including subsidiaries and staff, accept liability to any person for loss or damage arising from the use of this information.





Table 17: Returns pr head for skirted fleece wool.

Skirted FLC Weight		Micron																	
5 Kg		16	16.5	17	17.5	18	18.5	19	19.5	20	21	22	23	24	25	26	28	30	32
Yield (Sch Dry)	25% Current	\$35	\$33	\$30	\$29	\$26	\$24	\$22	\$20	\$18	\$18	\$17	\$16	\$13	\$12	\$11	\$8	\$7	\$7
	10yr ave.			\$18		\$16		\$13		\$12	\$11	\$11	\$11	\$10	\$9	\$8	\$7	\$6	\$5
	30% Current	\$42	\$39	\$36	\$34	\$31	\$28	\$26	\$24	\$22	\$21	\$20	\$19	\$15	\$14	\$13	\$10	\$9	\$8
	10yr ave.			\$21		\$19		\$16		\$14	\$13	\$13	\$13	\$12	\$11	\$10	\$8	\$7	\$6
	35% Current	\$49	\$46	\$43	\$40	\$37	\$33	\$30	\$28	\$26	\$25	\$23	\$22	\$18	\$16	\$15	\$12	\$10	\$10
	10yr ave.			\$25		\$22		\$19		\$16	\$16	\$15	\$15	\$14	\$13	\$12	\$9	\$8	\$7
	40% Current	\$56	\$52	\$49	\$46	\$42	\$38	\$35	\$32	\$29	\$28	\$27	\$25	\$21	\$19	\$17	\$13	\$12	\$11
	10yr ave.			\$28		\$26		\$22		\$19	\$18	\$17	\$17	\$16	\$15	\$13	\$11	\$9	\$8
	45% Current	\$63	\$59	\$55	\$52	\$47	\$43	\$39	\$36	\$33	\$32	\$30	\$28	\$23	\$21	\$20	\$15	\$13	\$12
	10yr ave.			\$32		\$29		\$24		\$21	\$20	\$20	\$19	\$18	\$16	\$15	\$12	\$10	\$9
	50% Current	\$70	\$66	\$61	\$57	\$52	\$47	\$43	\$40	\$37	\$35	\$33	\$31	\$26	\$23	\$22	\$17	\$15	\$14
	10yr ave.			\$36		\$32		\$27		\$23	\$22	\$22	\$21	\$20	\$18	\$17	\$13	\$12	\$10
	55% Current	\$77	\$72	\$67	\$63	\$58	\$52	\$48	\$44	\$40	\$39	\$37	\$34	\$28	\$26	\$24	\$18	\$16	\$15
	10yr ave.			\$39		\$35		\$30		\$26	\$25	\$24	\$23	\$22	\$20	\$18	\$14	\$13	\$11
	60% Current	\$84	\$79	\$73	\$69	\$63	\$57	\$52	\$48	\$44	\$42	\$40	\$37	\$31	\$28	\$26	\$20	\$18	\$16
	10yr ave.			\$43		\$38		\$32		\$28	\$27	\$26	\$25	\$24	\$22	\$20	\$16	\$14	\$12
	65% Current	\$91	\$85	\$79	\$74	\$68	\$62	\$57	\$52	\$48	\$46	\$43	\$40	\$33	\$30	\$28	\$21	\$19	\$18
	10yr ave.			\$46		\$42		\$35		\$30	\$29	\$28	\$28	\$26	\$24	\$22	\$17	\$15	\$14
	70% Current	\$98	\$92	\$85	\$80	\$73	\$66	\$61	\$56	\$52	\$49	\$47	\$44	\$36	\$33	\$30	\$23	\$21	\$19
	10yr ave.			\$50		\$45		\$38		\$33	\$31	\$30	\$30	\$28	\$25	\$23	\$18	\$16	\$15
	75% Current	\$105	\$98	\$91	\$86	\$79	\$71	\$65	\$60	\$55	\$53	\$50	\$47	\$39	\$35	\$33	\$25	\$22	\$20
	10yr ave.			\$53		\$48		\$40		\$35	\$34	\$33	\$32	\$30	\$27	\$25	\$20	\$17	\$16
	80% Current	\$112	\$105	\$97	\$92	\$84	\$76	\$70	\$64	\$59	\$56	\$53	\$50	\$41	\$37	\$35	\$26	\$24	\$22
	10yr ave.			\$57		\$51		\$43		\$37	\$36	\$35	\$34	\$32	\$29	\$27	\$21	\$18	\$17
	85% Current	\$119	\$111	\$103	\$97	\$89	\$80	\$74	\$68	\$63	\$60	\$56	\$53	\$44	\$40	\$37	\$28	\$25	\$23
	10yr ave.			\$60		\$54		\$46		\$40	\$38	\$37	\$36	\$34	\$31	\$28	\$22	\$20	\$18

The above shows estimated returns per head for skirted fleece wool. These figures do not take into account the value of skirtings and oddments and do not take into account discounts that may apply for faults under individual circumstances. These figures are based on a market index of 100% and should be used as a guide only. Returns over \$30 / head for fleece wool are highlighted.

Source: Australian Wool Exchange, Australian Wool Innovation, Sydney Futures Exchange, x-rates.com

Disclaimer: While all due care has been taken in the preparation of this document, no warranty is made as to its accuracy, reliability or completeness. To the extent permitted by law neither Jemalong or their sources including subsidiaries and staff, accept liability to any person for loss or damage arising from the use of this information.



Table 18: Returns pr head for skirted fleece wool.

Skirted FLC Weight		Micron																	
4 Kg		16	16.5	17	17.5	18	18.5	19	19.5	20	21	22	23	24	25	26	28	30	32
Yield (Sch Dry)	25% Current	\$28	\$26	\$24	\$23	\$21	\$19	\$17	\$16	\$15	\$14	\$13	\$12	\$10	\$9	\$9	\$7	\$6	\$5
	10yr ave.			\$14		\$13		\$11		\$9	\$9	\$9	\$8	\$8	\$7	\$7	\$5	\$5	\$4
	30% Current	\$34	\$31	\$29	\$27	\$25	\$23	\$21	\$19	\$18	\$17	\$16	\$15	\$12	\$11	\$10	\$8	\$7	\$7
	10yr ave.			\$17		\$15		\$13		\$11	\$11	\$10	\$10	\$10	\$9	\$8	\$6	\$6	\$5
	35% Current	\$39	\$37	\$34	\$32	\$29	\$27	\$24	\$22	\$21	\$20	\$19	\$17	\$14	\$13	\$12	\$9	\$8	\$8
	10yr ave.			\$20		\$18		\$15		\$13	\$13	\$12	\$12	\$11	\$10	\$9	\$7	\$6	\$6
	40% Current	\$45	\$42	\$39	\$37	\$34	\$30	\$28	\$26	\$24	\$22	\$21	\$20	\$16	\$15	\$14	\$11	\$10	\$9
	10yr ave.			\$23		\$20		\$17		\$15	\$14	\$14	\$14	\$13	\$12	\$11	\$8	\$7	\$7
	45% Current	\$50	\$47	\$44	\$41	\$38	\$34	\$31	\$29	\$26	\$25	\$24	\$22	\$18	\$17	\$16	\$12	\$11	\$10
	10yr ave.			\$26		\$23		\$19		\$17	\$16	\$16	\$15	\$15	\$13	\$12	\$9	\$8	\$7
	50% Current	\$56	\$52	\$49	\$46	\$42	\$38	\$35	\$32	\$29	\$28	\$27	\$25	\$21	\$19	\$17	\$13	\$12	\$11
	10yr ave.			\$28		\$26		\$22		\$19	\$18	\$17	\$17	\$16	\$15	\$13	\$11	\$9	\$8
	55% Current	\$62	\$58	\$53	\$50	\$46	\$42	\$38	\$35	\$32	\$31	\$29	\$27	\$23	\$21	\$19	\$15	\$13	\$12
	10yr ave.			\$31		\$28		\$24		\$21	\$20	\$19	\$19	\$18	\$16	\$15	\$12	\$10	\$9
	60% Current	\$67	\$63	\$58	\$55	\$50	\$45	\$42	\$38	\$35	\$34	\$32	\$30	\$25	\$22	\$21	\$16	\$14	\$13
	10yr ave.			\$34		\$31		\$26		\$22	\$21	\$21	\$20	\$19	\$17	\$16	\$13	\$11	\$10
	65% Current	\$73	\$68	\$63	\$60	\$54	\$49	\$45	\$42	\$38	\$36	\$35	\$32	\$27	\$24	\$23	\$17	\$15	\$14
	10yr ave.			\$37		\$33		\$28		\$24	\$23	\$23	\$22	\$21	\$19	\$17	\$14	\$12	\$11
	70% Current	\$78	\$73	\$68	\$64	\$59	\$53	\$49	\$45	\$41	\$39	\$37	\$35	\$29	\$26	\$24	\$18	\$17	\$15
	10yr ave.			\$40		\$36		\$30		\$26	\$25	\$24	\$24	\$23	\$20	\$19	\$15	\$13	\$12
	75% Current	\$84	\$79	\$73	\$69	\$63	\$57	\$52	\$48	\$44	\$42	\$40	\$37	\$31	\$28	\$26	\$20	\$18	\$16
	10yr ave.			\$43		\$38		\$32		\$28	\$27	\$26	\$25	\$24	\$22	\$20	\$16	\$14	\$12
	80% Current	\$90	\$84	\$78	\$73	\$67	\$61	\$56	\$51	\$47	\$45	\$43	\$40	\$33	\$30	\$28	\$21	\$19	\$17
	10yr ave.			\$45		\$41		\$34		\$30	\$29	\$28	\$27	\$26	\$23	\$21	\$17	\$15	\$13
	85% Current	\$95	\$89	\$83	\$78	\$71	\$64	\$59	\$54	\$50	\$48	\$45	\$42	\$35	\$32	\$30	\$22	\$20	\$18
	10yr ave.			\$48		\$43		\$37		\$32	\$30	\$30	\$29	\$27	\$25	\$23	\$18	\$16	\$14

The above shows estimated returns per head for skirted fleece wool. These figures do not take into account the value of skirtings and oddments and do not take into account discounts that may apply for faults under individual circumstances. These figures are based on a market index of 100% and should be used as a guide only. Returns over \$30 / head for fleece wool are highlighted.

Source: Australian Wool Exchange, Australian Wool Innovation, Sydney Futures Exchange, x-rates.com

Disclaimer: While all due care has been taken in the preparation of this document, no warranty is made as to its accuracy, reliability or completeness. To the extent permitted by law neither Jemalong or their sources including subsidiaries and staff, accept liability to any person for loss or damage arising from the use of this information.



Table 19: Returns pr head for skirted fleece wool.

Skirted FLC Weight		Micron																	
3 Kg		16	16.5	17	17.5	18	18.5	19	19.5	20	21	22	23	24	25	26	28	30	32
Yield (Sch Dry)	25% Current	\$21	\$20	\$18	\$17	\$16	\$14	\$13	\$12	\$11	\$11	\$10	\$9	\$8	\$7	\$7	\$5	\$4	\$4
	10yr ave.			\$11		\$10		\$8		\$7	\$7	\$7	\$6	\$6	\$5	\$5	\$4	\$3	\$3
	30% Current	\$25	\$24	\$22	\$21	\$19	\$17	\$16	\$14	\$13	\$13	\$12	\$11	\$9	\$8	\$8	\$6	\$5	\$5
	10yr ave.			\$13		\$11		\$10		\$8	\$8	\$8	\$8	\$7	\$7	\$6	\$5	\$4	\$4
	35% Current	\$29	\$28	\$26	\$24	\$22	\$20	\$18	\$17	\$15	\$15	\$14	\$13	\$11	\$10	\$9	\$7	\$6	\$6
	10yr ave.			\$15		\$13		\$11		\$10	\$9	\$9	\$9	\$8	\$8	\$7	\$6	\$5	\$4
	40% Current	\$34	\$31	\$29	\$27	\$25	\$23	\$21	\$19	\$18	\$17	\$16	\$15	\$12	\$11	\$10	\$8	\$7	\$7
	10yr ave.			\$17		\$15		\$13		\$11	\$11	\$10	\$10	\$10	\$9	\$8	\$6	\$6	\$5
	45% Current	\$38	\$35	\$33	\$31	\$28	\$26	\$23	\$22	\$20	\$19	\$18	\$17	\$14	\$13	\$12	\$9	\$8	\$7
	10yr ave.			\$19		\$17		\$15		\$13	\$12	\$12	\$11	\$11	\$10	\$9	\$7	\$6	\$6
	50% Current	\$42	\$39	\$36	\$34	\$31	\$28	\$26	\$24	\$22	\$21	\$20	\$19	\$15	\$14	\$13	\$10	\$9	\$8
	10yr ave.			\$21		\$19		\$16		\$14	\$13	\$13	\$13	\$12	\$11	\$10	\$8	\$7	\$6
	55% Current	\$46	\$43	\$40	\$38	\$35	\$31	\$29	\$26	\$24	\$23	\$22	\$21	\$17	\$15	\$14	\$11	\$10	\$9
	10yr ave.			\$23		\$21		\$18		\$15	\$15	\$14	\$14	\$13	\$12	\$11	\$9	\$8	\$7
	60% Current	\$50	\$47	\$44	\$41	\$38	\$34	\$31	\$29	\$26	\$25	\$24	\$22	\$18	\$17	\$16	\$12	\$11	\$10
	10yr ave.			\$26		\$23		\$19		\$17	\$16	\$16	\$15	\$15	\$13	\$12	\$9	\$8	\$7
	65% Current	\$55	\$51	\$47	\$45	\$41	\$37	\$34	\$31	\$29	\$27	\$26	\$24	\$20	\$18	\$17	\$13	\$12	\$11
	10yr ave.			\$28		\$25		\$21		\$18	\$17	\$17	\$17	\$16	\$14	\$13	\$10	\$9	\$8
	70% Current	\$59	\$55	\$51	\$48	\$44	\$40	\$37	\$34	\$31	\$29	\$28	\$26	\$22	\$20	\$18	\$14	\$12	\$11
	10yr ave.			\$30		\$27		\$23		\$20	\$19	\$18	\$18	\$17	\$15	\$14	\$11	\$10	\$9
	75% Current	\$63	\$59	\$55	\$52	\$47	\$43	\$39	\$36	\$33	\$32	\$30	\$28	\$23	\$21	\$20	\$15	\$13	\$12
	10yr ave.			\$32		\$29		\$24		\$21	\$20	\$20	\$19	\$18	\$16	\$15	\$12	\$10	\$9
	80% Current	\$67	\$63	\$58	\$55	\$50	\$45	\$42	\$38	\$35	\$34	\$32	\$30	\$25	\$22	\$21	\$16	\$14	\$13
	10yr ave.			\$34		\$31		\$26		\$22	\$21	\$21	\$20	\$19	\$17	\$16	\$13	\$11	\$10
	85% Current	\$71	\$67	\$62	\$58	\$53	\$48	\$44	\$41	\$38	\$36	\$34	\$32	\$26	\$24	\$22	\$17	\$15	\$14
	10yr ave.			\$36		\$33		\$27		\$24	\$23	\$22	\$22	\$21	\$18	\$17	\$13	\$12	\$11

The above shows estimated returns per head for skirted fleece wool. These figures do not take into account the value of skirtings and oddments and do not take into account discounts that may apply for faults under individual circumstances. These figures are based on a market index of 100% and should be used as a guide only. Returns over \$30 / head for fleece wool are highlighted.

Source: Australian Wool Exchange, Australian Wool Innovation, Sydney Futures Exchange, x-rates.com

Disclaimer: While all due care has been taken in the preparation of this document, no warranty is made as to its accuracy, reliability or completeness. To the extent permitted by law neither Jemalong or their sources including subsidiaries and staff, accept liability to any person for loss or damage arising from the use of this information.



Table 20: Returns pr head for skirted fleece wool.

Skirted FLC Weight		Micron																	
2 Kg		16	16.5	17	17.5	18	18.5	19	19.5	20	21	22	23	24	25	26	28	30	32
Yield (Sch Dry)	25% Current	\$14	\$13	\$12	\$11	\$10	\$9	\$9	\$8	\$7	\$7	\$7	\$6	\$5	\$5	\$4	\$3	\$3	\$3
	10yr ave.			\$7		\$6		\$5		\$5	\$4	\$4	\$4	\$4	\$4	\$3	\$3	\$2	\$2
	30% Current	\$17	\$16	\$15	\$14	\$13	\$11	\$10	\$10	\$9	\$8	\$8	\$7	\$6	\$6	\$5	\$4	\$4	\$3
	10yr ave.			\$9		\$8		\$6		\$6	\$5	\$5	\$5	\$5	\$4	\$4	\$3	\$3	\$2
	35% Current	\$20	\$18	\$17	\$16	\$15	\$13	\$12	\$11	\$10	\$10	\$9	\$9	\$7	\$7	\$6	\$5	\$4	\$4
	10yr ave.			\$10		\$9		\$8		\$7	\$6	\$6	\$6	\$6	\$5	\$5	\$4	\$3	\$3
	40% Current	\$22	\$21	\$19	\$18	\$17	\$15	\$14	\$13	\$12	\$11	\$11	\$10	\$8	\$7	\$7	\$5	\$5	\$4
	10yr ave.			\$11		\$10		\$9		\$7	\$7	\$7	\$7	\$6	\$6	\$5	\$4	\$4	\$3
	45% Current	\$25	\$24	\$22	\$21	\$19	\$17	\$16	\$14	\$13	\$13	\$12	\$11	\$9	\$8	\$8	\$6	\$5	\$5
	10yr ave.			\$13		\$11		\$10		\$8	\$8	\$8	\$8	\$7	\$7	\$6	\$5	\$4	\$4
	50% Current	\$28	\$26	\$24	\$23	\$21	\$19	\$17	\$16	\$15	\$14	\$13	\$12	\$10	\$9	\$9	\$7	\$6	\$5
	10yr ave.			\$14		\$13		\$11		\$9	\$9	\$9	\$8	\$8	\$7	\$7	\$5	\$5	\$4
	55% Current	\$31	\$29	\$27	\$25	\$23	\$21	\$19	\$18	\$16	\$15	\$15	\$14	\$11	\$10	\$10	\$7	\$7	\$6
	10yr ave.			\$16		\$14		\$12		\$10	\$10	\$10	\$9	\$9	\$8	\$7	\$6	\$5	\$5
	60% Current	\$34	\$31	\$29	\$27	\$25	\$23	\$21	\$19	\$18	\$17	\$16	\$15	\$12	\$11	\$10	\$8	\$7	\$7
	10yr ave.			\$17		\$15		\$13		\$11	\$11	\$10	\$10	\$10	\$9	\$8	\$6	\$6	\$5
	65% Current	\$36	\$34	\$32	\$30	\$27	\$25	\$23	\$21	\$19	\$18	\$17	\$16	\$13	\$12	\$11	\$9	\$8	\$7
	10yr ave.			\$18		\$17		\$14		\$12	\$12	\$11	\$11	\$11	\$9	\$9	\$7	\$6	\$5
	70% Current	\$39	\$37	\$34	\$32	\$29	\$27	\$24	\$22	\$21	\$20	\$19	\$17	\$14	\$13	\$12	\$9	\$8	\$8
	10yr ave.			\$20		\$18		\$15		\$13	\$13	\$12	\$12	\$11	\$10	\$9	\$7	\$6	\$6
	75% Current	\$42	\$39	\$36	\$34	\$31	\$28	\$26	\$24	\$22	\$21	\$20	\$19	\$15	\$14	\$13	\$10	\$9	\$8
	10yr ave.			\$21		\$19		\$16		\$14	\$13	\$13	\$13	\$12	\$11	\$10	\$8	\$7	\$6
	80% Current	\$45	\$42	\$39	\$37	\$34	\$30	\$28	\$26	\$24	\$22	\$21	\$20	\$16	\$15	\$14	\$11	\$10	\$9
	10yr ave.			\$23		\$20		\$17		\$15	\$14	\$14	\$14	\$13	\$12	\$11	\$8	\$7	\$7
	85% Current	\$48	\$45	\$41	\$39	\$36	\$32	\$30	\$27	\$25	\$24	\$23	\$21	\$17	\$16	\$15	\$11	\$10	\$9
	10yr ave.			\$24		\$22		\$18		\$16	\$15	\$15	\$14	\$14	\$12	\$11	\$9	\$8	\$7

The above shows estimated returns per head for skirted fleece wool. These figures do not take into account the value of skirtings and oddments and do not take into account discounts that may apply for faults under individual circumstances. These figures are based on a market index of 100% and should be used as a guide only. Returns over \$30 / head for fleece wool are highlighted.

Source: Australian Wool Exchange, Australian Wool Innovation, Sydney Futures Exchange, x-rates.com

Disclaimer: While all due care has been taken in the preparation of this document, no warranty is made as to its accuracy, reliability or completeness. To the extent permitted by law neither Jemalong or their sources including subsidiaries and staff, accept liability to any person for loss or damage arising from the use of this information.