



Table 1: Northern Region Micron Price Guides

CURRENT MARKET				PERCENTILES		AVERAGES						12 MONTH COMPARISONS								TRADING RANGE		
Mic.	19/08/2010	12/08/2010	Now			Now			18/08/2009		Now		Now		Now		Clean c/kg					
Price	Current	Weekly	3yr	10yr	<u>3 year</u>	compared	10 year	compared	18/08/2009	compared	12 Month	compared	12 Month	compared	12 Month	compared	12	3	10			
Guides	Price	Change			Average	to 3yr ave		Average		to 10yr ave		This time		to Last Year		Low				to Low	High	to High
NRI	897	+3 0.3%	45%	61%	898	-1	0%	864	+33	4%	822	+75	9%	827	+70	8%	974	-77	-8%	147	343	584
16*	1570	+30 1.9%	44%		1614	-44	-3%				1590	-20	-1%	1345	+225	17%	1640	-70	-4%	295	645	
16.5*	1440	+45 3.1%	54%		1472	-32	-2%				1360	+80	6%	1260	+180	14%	1490	-50	-3%	230	551	
17*	1270	+40 3.1%	43%	43%	1353	-83	-6%	1451	-181	-12%	1235	+35	3%	1175	+95	8%	1290	-20	-2%	115	503	570
17.5*	1230	+45 3.7%	51%		1294	-64	-5%				1170	+60	5%	1155	+75	6%	1235	-5	0%	80	498	
18	1168	+22 1.9%	39%	39%	1236	-68	-6%	1302	-134	-10%	1103	+65	6%	1110	+58	5%	1228	-60	-5%	118	432	432
18.5	1125	+14 1.2%	44%		1164	-39	-3%				1048	+77	7%	1048	+77	7%	1183	-58	-5%	135	425	
19	1048	+8 0.8%	39%	51%	1074	-26	-2%	1069	-21	-2%	983	+65	7%	974	+74	8%	1120	-72	-6%	146	443	706
19.5	966	+3 0.3%	38%		991	-25	-3%				902	+64	7%	900	+66	7%	1067	-101	-9%	167	457	
20	928	+2 0.2%	55%	62%	921	+7	1%	908	+20	2%	841	+87	10%	830	+98	12%	1023	-95	-9%	193	465	717
21	906	-3 -0.3%	56%	62%	880	+26	3%	859	+47	5%	826	+80	10%	809	+97	12%	1006	-100	-10%	197	427	786
22	897	-9 -1.0%	59%	63%	855	+42	5%	835	+62	7%	808	+89	11%	790	+107	14%	971	-74	-8%	181	361	825
23	883	-8 -0.9%	66%	66%	832	+51	6%	814	+69	8%	788	+95	12%	776	+107	14%	940	-57	-6%	164	311	828
24	829	-8 -1.0%	72%	69%	784	+45	6%	779	+50	6%	763	+66	9%	752	+77	10%	881	-52	-6%	129	257	800
25	695	0	64%	65%	667	+28	4%	701	-6	-1%	660	+35	5%	627	+68	11%	725	-30	-4%	98	189	726
26	601	-3 -0.5%	47%	49%	600	+1	0%	643	-42	-7%	619	-18	-3%	560	+41	7%	630	-29	-5%	70	155	641
28	457	+3 0.7%	49%	20%	460	-3	-1%	521	-64	-12%	498	-41	-8%	430	+27	6%	493	-36	-7%	63	119	465
30	405	+5 1.2%	66%	26%	393	+12	3%	455	-50	-11%	432	-27	-6%	374	+31	8%	434	-29	-7%	60	136	384
32	361	+5 1.4%	83%	26%	341	+20	6%	413	-52	-13%	356	+5	1%	324	+37	11%	375	-14	-4%	51	108	372
MC	604	+6 1.0%	81%	86%	538	+66	12%	492	+112	23%	503	+101	20%	534	+70	13%	681	-77	-11%	147	289	325

Note:

- * Due to the irregular market quoting for some fine wool categories, figures shown relating to micron categories below 18 micron are an estimate based on the 42 nkt AWEX Premium & Discounts Report & other available information.
- * For any category, where there is insufficient quantity offered to enable AWEX to quote, a quote will be provided based on the best available information.
- * 10 Year data is not available for some micron categories, which may result in blank spaces in the table above.

Definitions:

- * A Percentile, is a value on a scale of one hundred that indicates the percent of a distribution that is equal to or below it. In general a percentile between 25% and 75% is considered normal, a percentile below 25% is considered below normal and a percentile above 75% is considered above normal.

Three and ten year percentiles shown in the table above, detail the period of time during the past 3 & 10 years that the market has traded either at or below its current price.

The higher the percentile, the stronger the market.

Source: Australian Wool Exchange, Australian Wool Innovation, Sydney Futures Exchange, x-rates.com

Disclaimer: While all due care has been taken in the preparation of this document, no warranty is made as to its accuracy, reliability or completeness. To the extent permitted by law neither Jemalong or their sources including subsidiaries and staff, accept liability to any person for loss or damage arising from the use of this information.



MARKET COMMENTARY

Australian Dollar 90.00 cents US as of 19/08/2010

It's fair to say the mood in the market is looking more upbeat, with buyers optimistic about further rises in coming months.

Most of the optimism is centered around the finer end of the market (less than 18.5 microns) with reports of renewed demand from Europe. Comments from local exporters indicate they expect to see an increased presence from Europe over the coming months, as European processors take advantage of the fresh "new season" wool on offer.

The German economy appears to be performing well (due to a lower exchange rate and strong exports) and much of the hype and public attention toward the euro crisis has now eased, which can only be positive for our reactive wool market. However those closely watching Europe's economies are warning that Europe is not out of trouble, and there are still European countries implementing painful austerity measures and consequentially will experience sluggish growth. Having been virtually absent from the market for the past 18 months and with their economies still under pressure Europe's re-entry to the wool market may boil down to just a bit of restocking? however their presence is most welcome and will help bringing about much needed competition.

In China there are still reasonable amounts of processed wool in stock (at the spinners stage), and although the Chinese are still processing some of their own domestic clip there is not much greasy wool being held by top makers or local exporters. Chinese processors are reportedly looking to purchase wool in the spring when they believe there will be larger volumes of on offer? (what volumes?)

In light of the above, we expect to see increased demand in the coming months from both China & Europe and supply will be a critical influence during September & October. As is always the case, the market will remain vulnerable to external influences such as European economies and concerns of a double-dip recession in the US.

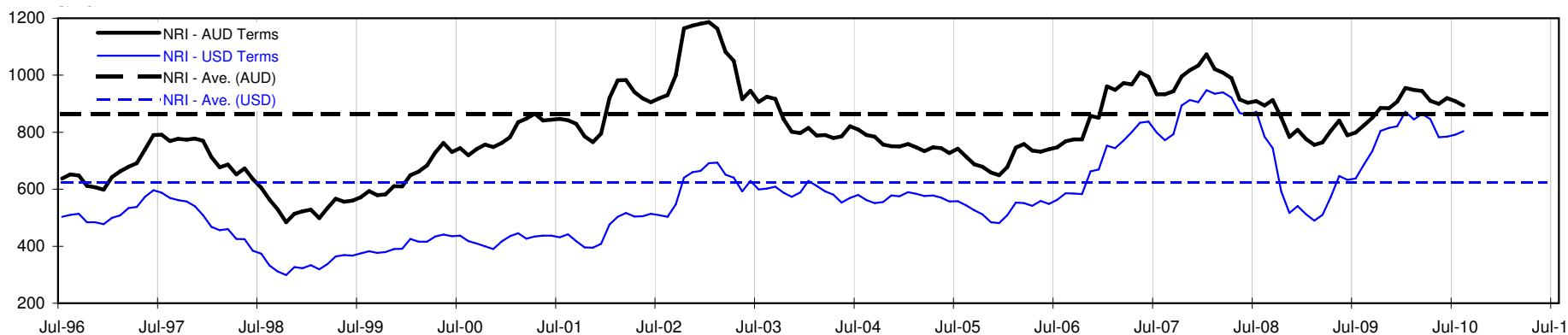




Table 4: 19 micron SFE

Wednesday, 18 August 2010

Delivery Mth	Aug-10	Oct-10	Dec-10	Feb-11	Apr-11	Jun-11	Aug-11	Oct-11	Dec-11
19 Micron SFE	1045	1045	1045	1045	1045	1045	1045	1045	1045
Average	1019	1029	1038	1046	1051	1052	1050	1042	1051
Maximum	1088	1088	1088	1088	1088	1088	1080	1065	1065
Minimum	884	905	936	983	1025	1034	1034	1034	1034

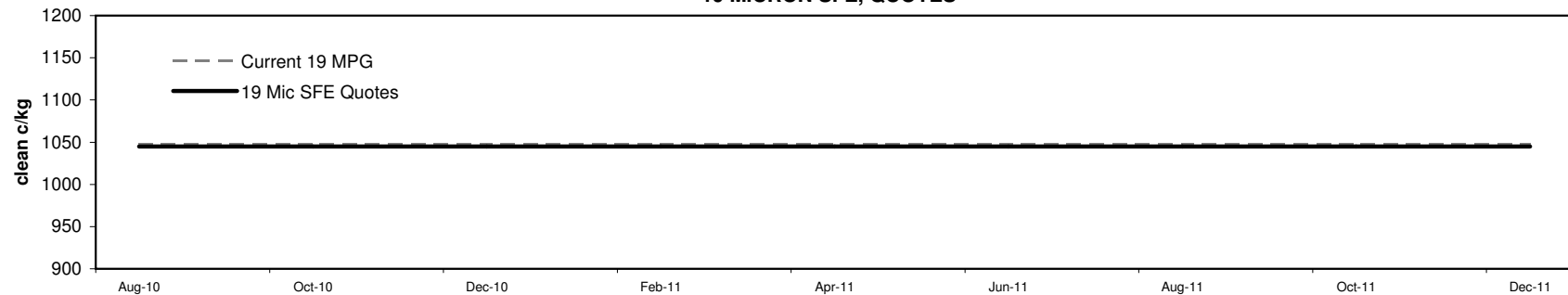
Table 5: 19 micron SFE, as a percentile of the 19 micron MPG

3 Year Percentile	37%	37%	37%	37%	37%	37%	37%	37%	37%
10 Year Percentile	50%	50%	50%	50%	50%	50%	50%	50%	50%

Table 6: 19 micron SFE, compared to MPG

Current 19 MPG	-3	0%	-3	0%	-3	0%	-3	0%	-3	0%	-3	0%	-3	0%	-3	0%	-3	0%
19 MPG, 1 Year Average	-17	-2%	-17	-2%	-17	-2%	-17	-2%	-17	-2%	-17	-2%	-17	-2%	-17	-2%	-17	-2%
19 MPG, 3 Year Average	-29	-3%	-29	-3%	-29	-3%	-29	-3%	-29	-3%	-29	-3%	-29	-3%	-29	-3%	-29	-3%
19 MPG, 10 Year Average	-24	-2%	-24	-2%	-24	-2%	-24	-2%	-24	-2%	-24	-2%	-24	-2%	-24	-2%	-24	-2%

19 MICRON SFE, QUOTES



19 MICRON SFE, FRONT MONTH PRICE MOVEMENT (mthly averages)

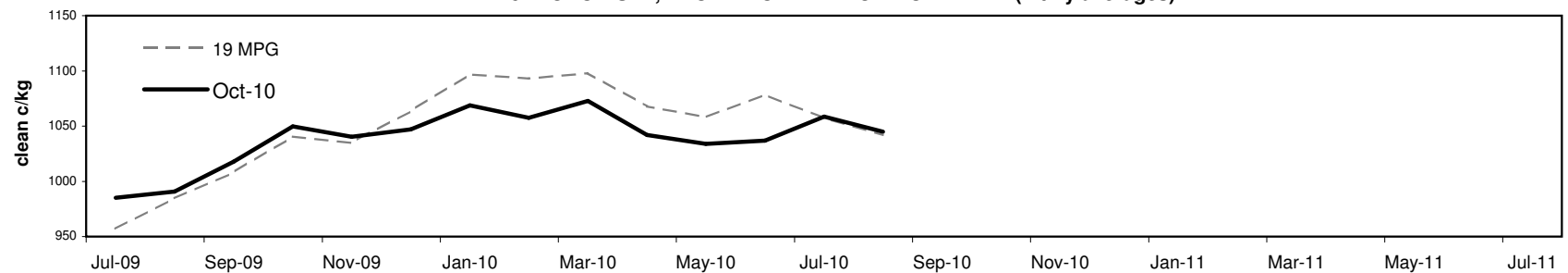




Table 7: 21 micron SFE

Wednesday, 18 August 2010

Delivery Mth	Aug-10	Oct-10	Dec-10	Feb-11	Apr-11	Jun-11	Aug-11	Oct-11	Dec-11
21 Micron SFE	948	926	933	928	916	898	908	898	898
Average	900	912	924	933	939	941	933	913	910
Maximum	1003	1013	1004	1004	1004	1004	992	951	925
Minimum	742	780	818	860	891	890	891	890	890

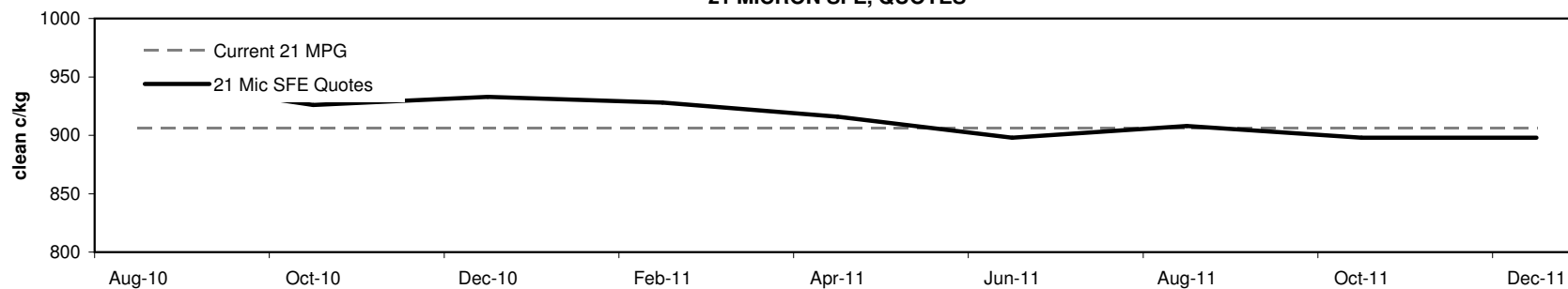
Table 8: 21 micron SFE, as a percentile of the 21 micron MPG

3 Year Percentile	72%	64%	66%	65%	60%	54%	57%	54%	54%
10 Year Percentile	69%	66%	67%	66%	64%	61%	63%	61%	61%

Table 9: 21 micron SFE, compared to MPG

Current 21 MPG	+42	5%	+20	2%	+27	3%	+22	2%	+10	1%	-8	-1%	+2	0%	-8	-1%	-8	-1%
21 MPG, 1 Year Average	+28	3%	+6	1%	+13	1%	+8	1%	-4	0%	-22	-2%	-12	-1%	-22	-2%	-22	-2%
21 MPG, 3 Year Average	+68	8%	+46	5%	+53	6%	+48	5%	+36	4%	+18	2%	+28	3%	+18	2%	+18	2%
21 MPG, 10 Year Average	+89	10%	+67	8%	+74	9%	+69	8%	+57	7%	+39	5%	+49	6%	+39	5%	+39	5%

21 MICRON SFE, QUOTES



21 MICRON SFE, FRONT MONTH PRICE MOVEMENT (mthly averages)

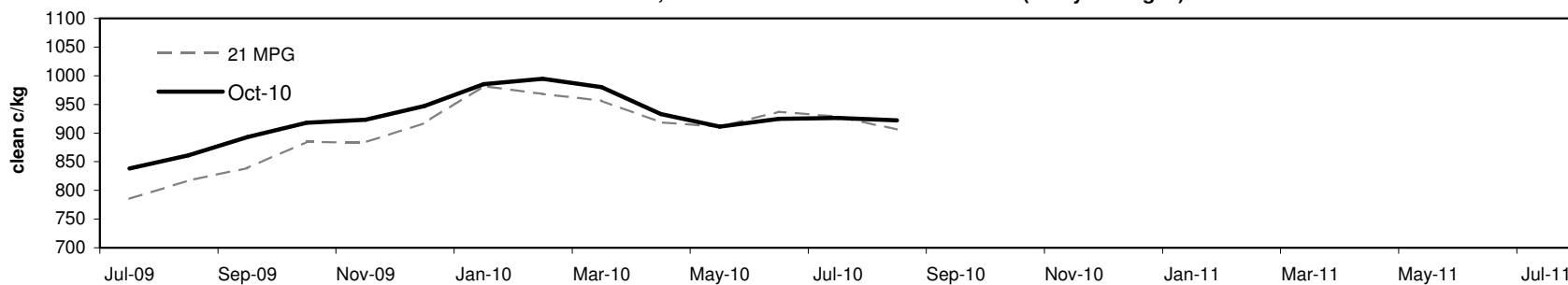




Table 10: 23 micron SFE

Wednesday, 18 August 2010

Delivery Mth	Aug-10	Oct-10	Dec-10	Feb-11	Apr-11	Jun-11	Aug-11	Oct-11	Dec-11
23 Micron SFE	883	883	883	883	883	883	883	883	883
Average	818	833	847	858	869	886	895	883	883
Maximum	927	927	927	927	927	927	927	883	883
Minimum	690	716	760	760	803	803	883	883	883

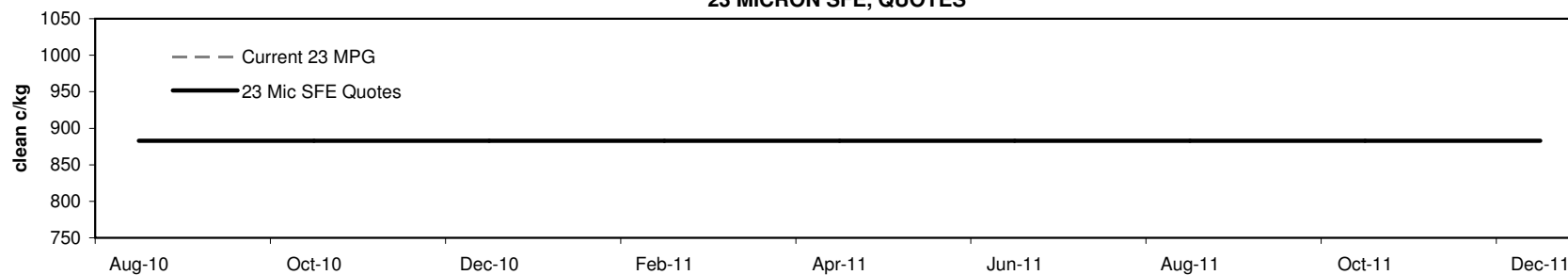
Table 11: 23 micron SFE, as a percentile of the 23 micron MPG

3 Year Percentile	66%	66%	66%	66%	66%	66%	66%	66%	66%
10 Year Percentile	66%	66%	66%	66%	66%	66%	66%	66%	66%

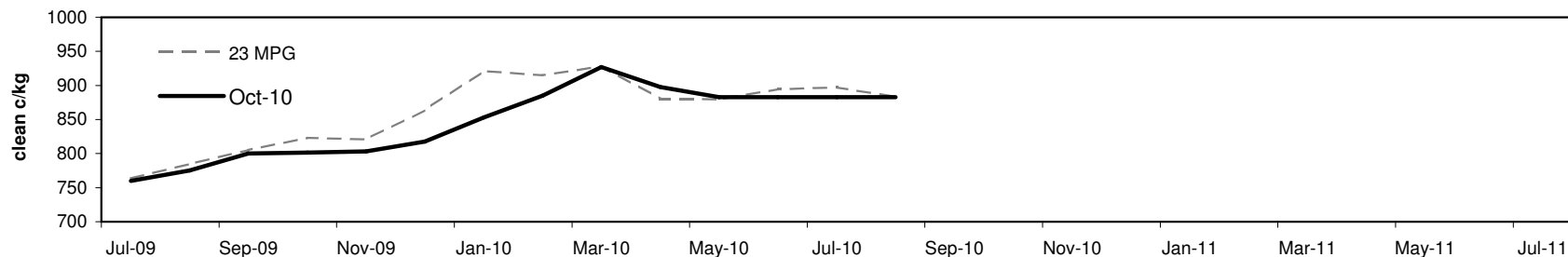
Table 12: 23 micron SFE, compared to MPG

Current 19 MPG	0	0%	0	0%	0	0%	0	0%	0	0%	0	0%	0	0%	0	0%	0	0%
23 MPG, 1 Year Average	+7	1%	+7	1%	+7	1%	+7	1%	+7	1%	+7	1%	+7	1%	+7	1%	+7	1%
23 MPG, 3 Year Average	+51	6%	+51	6%	+51	6%	+51	6%	+51	6%	+51	6%	+51	6%	+51	6%	+51	6%
23 MPG, 10 Year Average	+69	8%	+69	8%	+69	8%	+69	8%	+69	8%	+69	8%	+69	8%	+69	8%	+69	8%

23 MICRON SFE, QUOTES

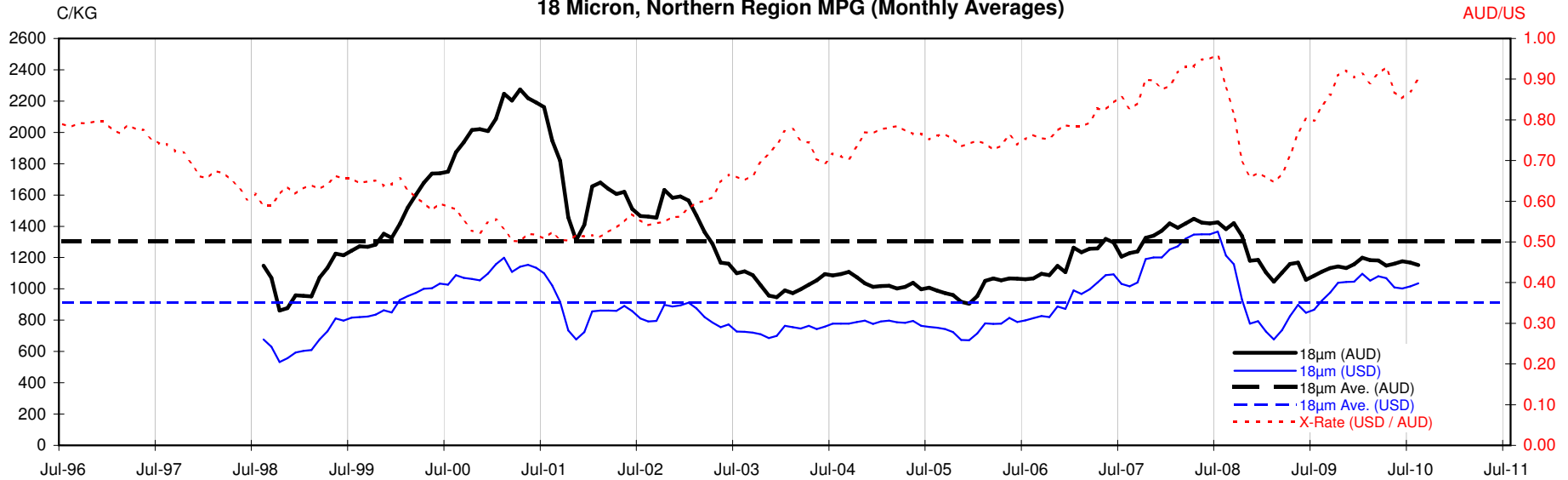


23 MICRON SFE, FRONT MONTH PRICE MOVEMENT (mthly averages)

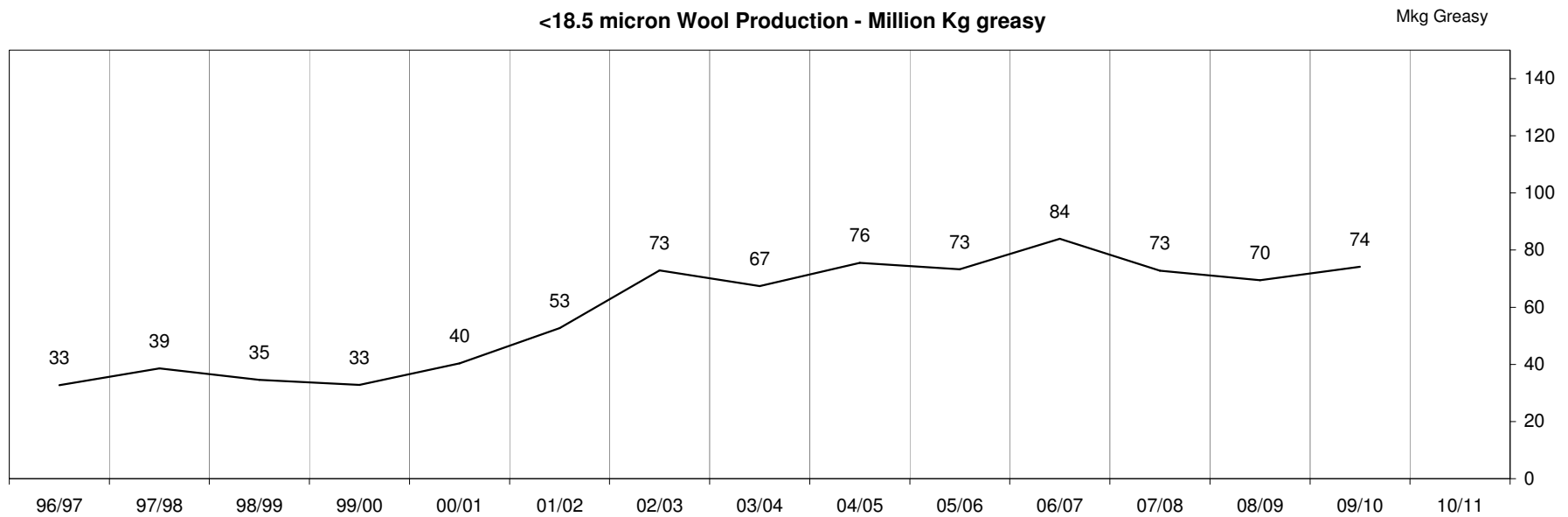


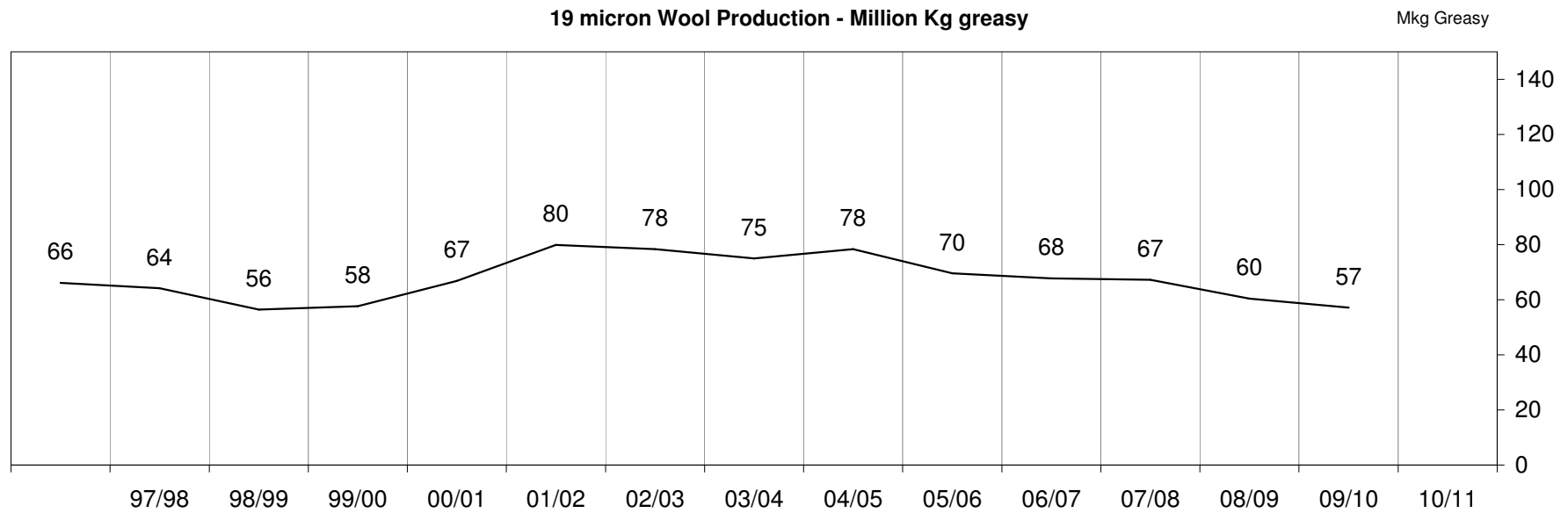
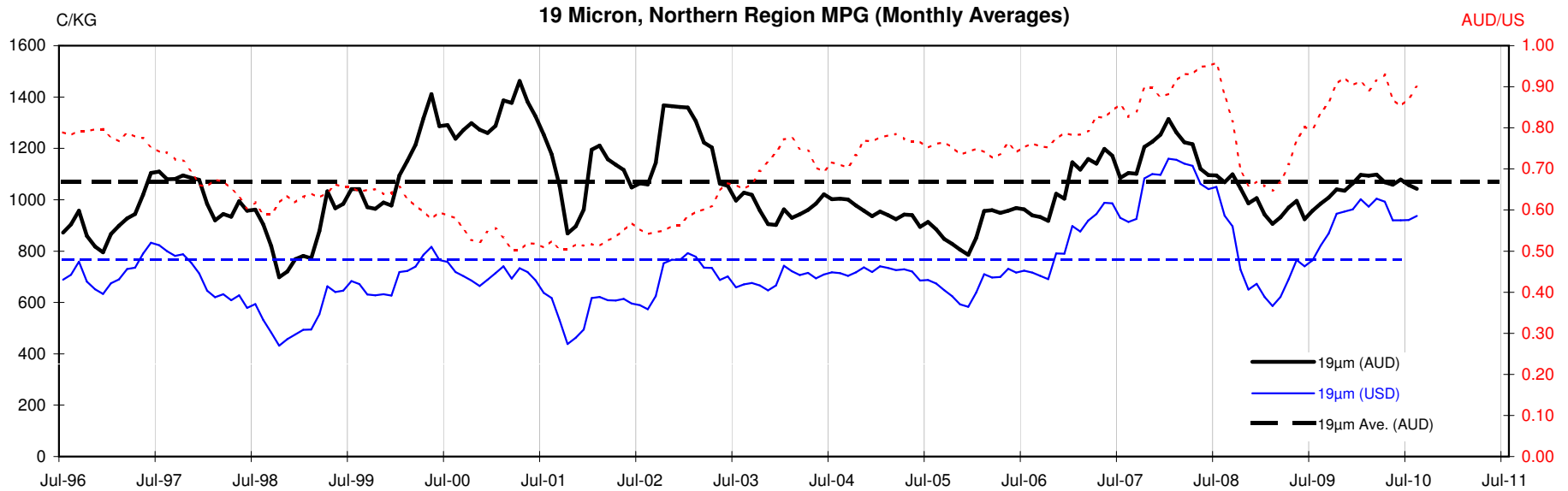


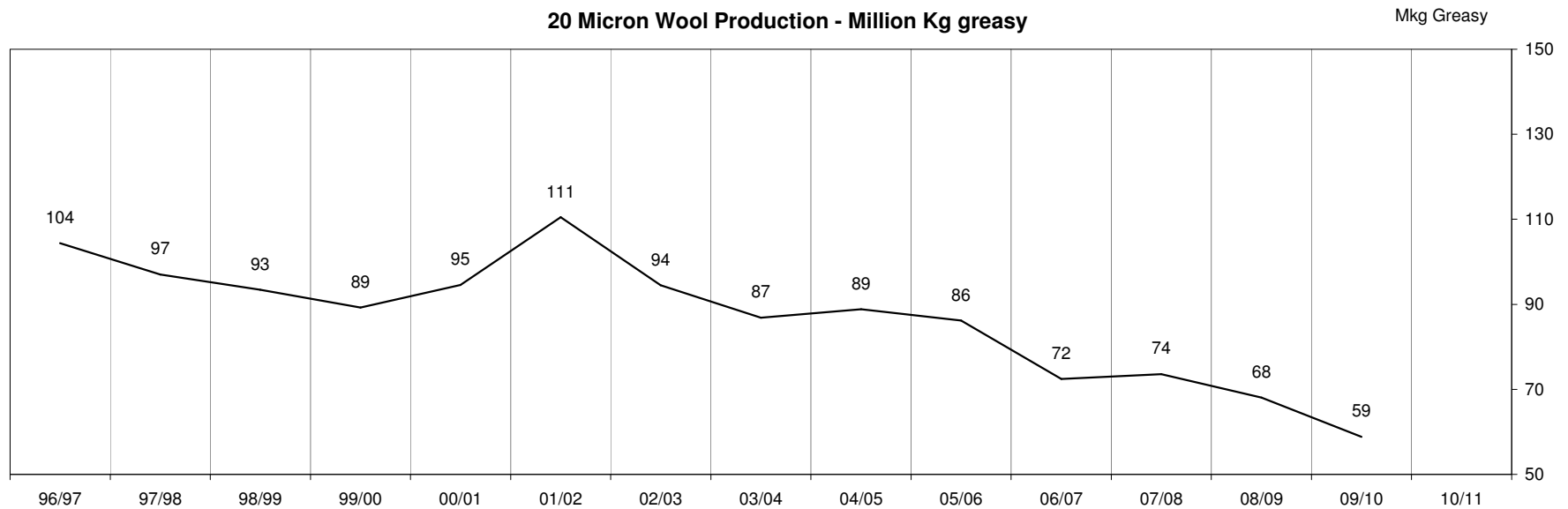
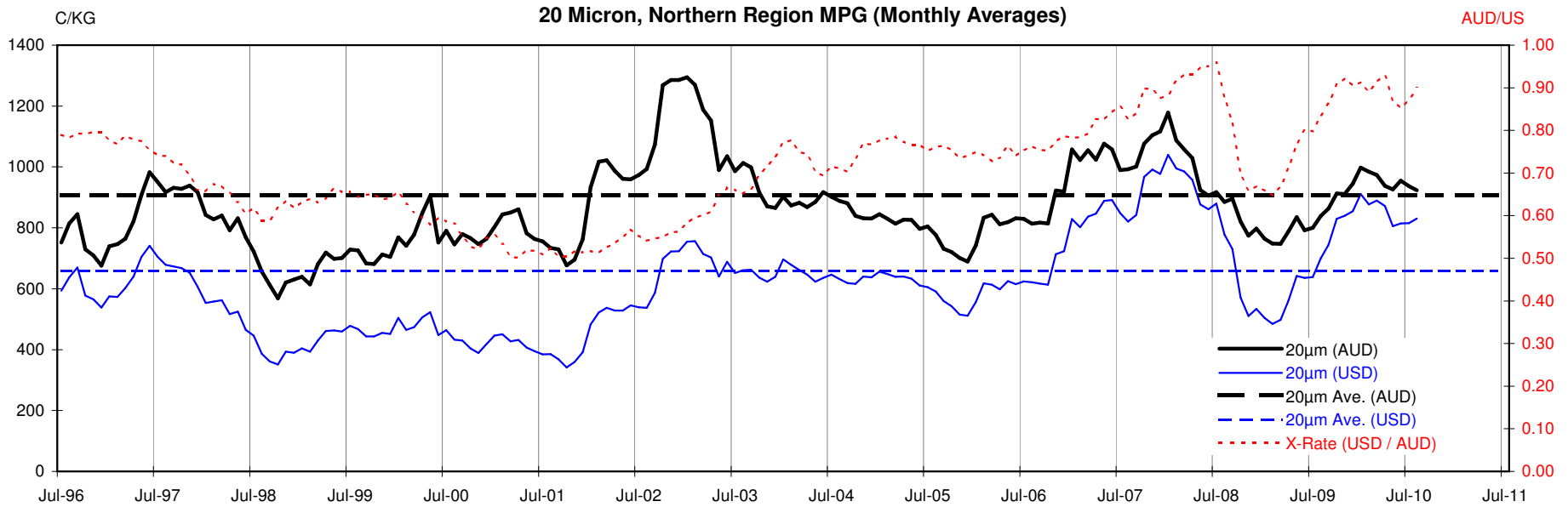
18 Micron, Northern Region MPG (Monthly Averages)

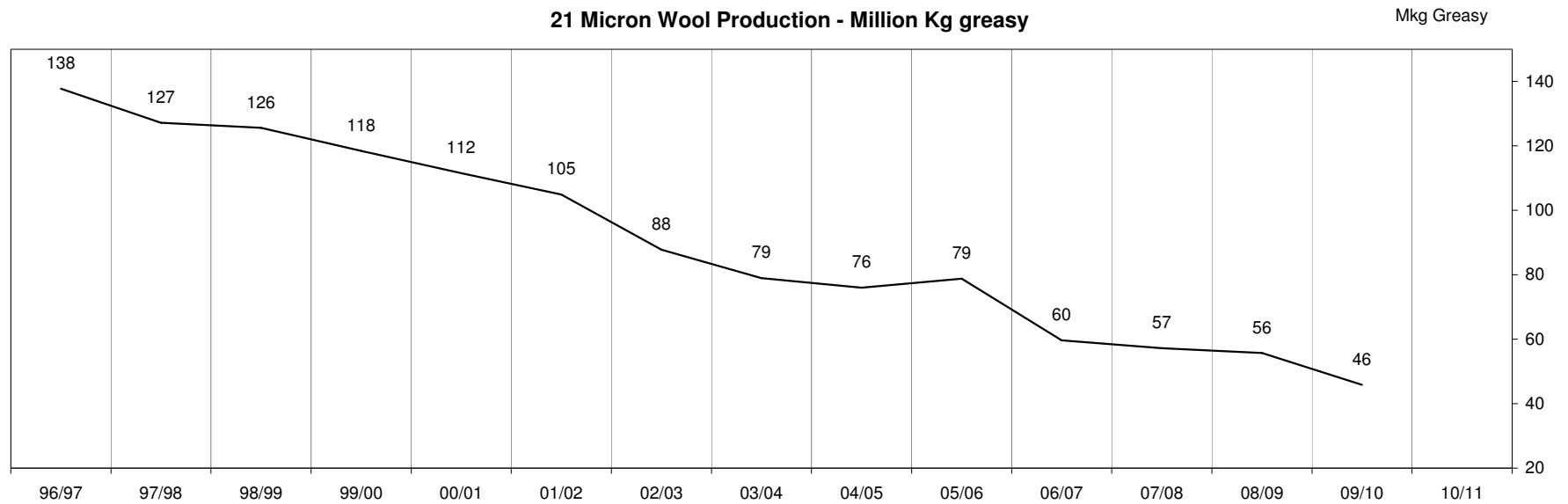
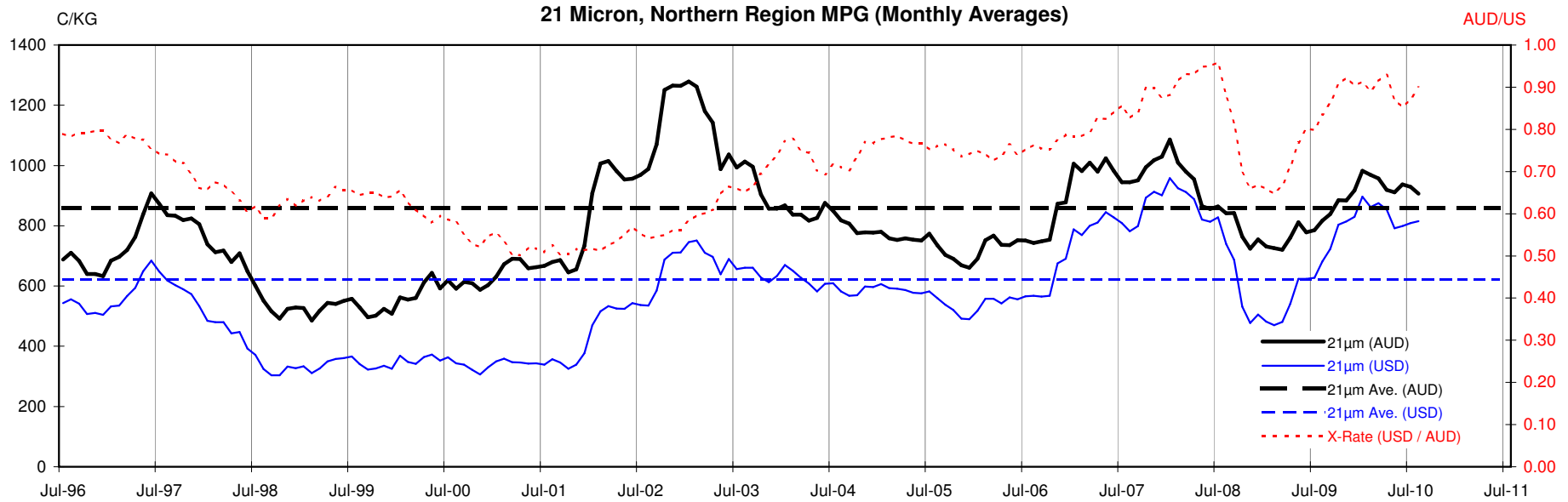


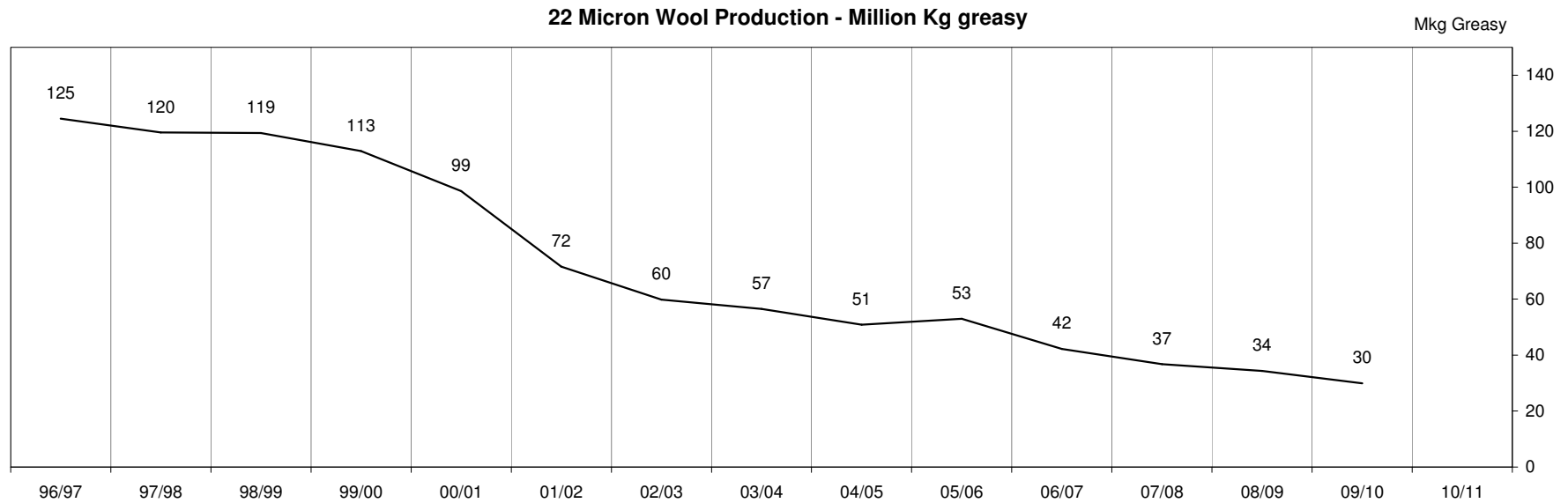
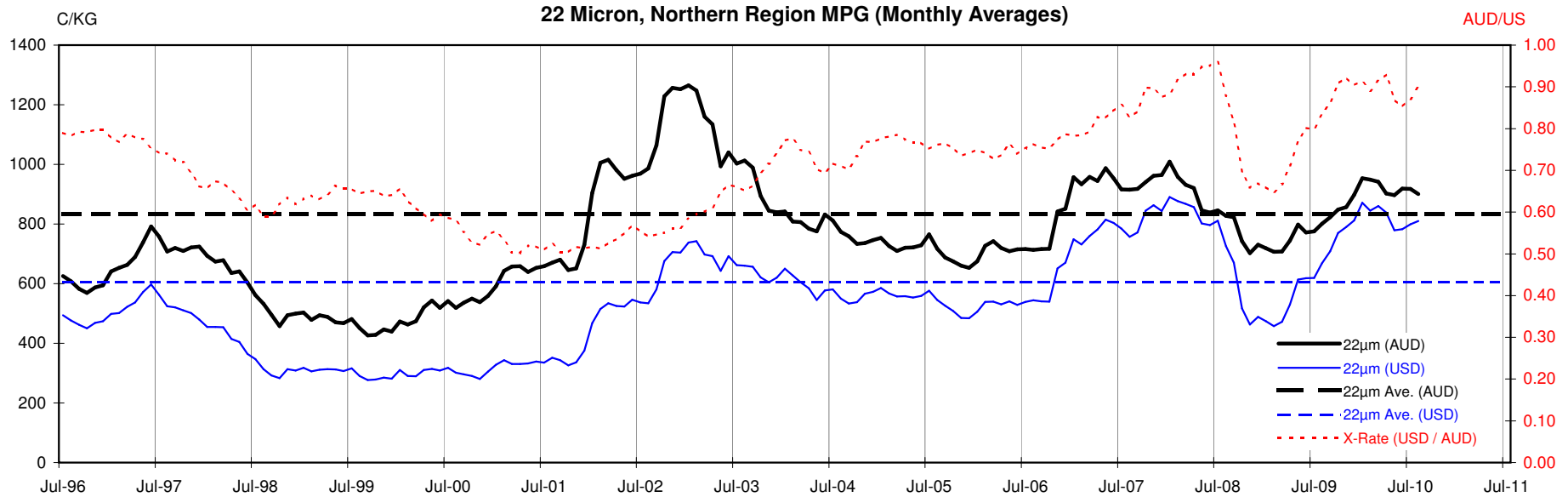
<18.5 micron Wool Production - Million Kg greasy

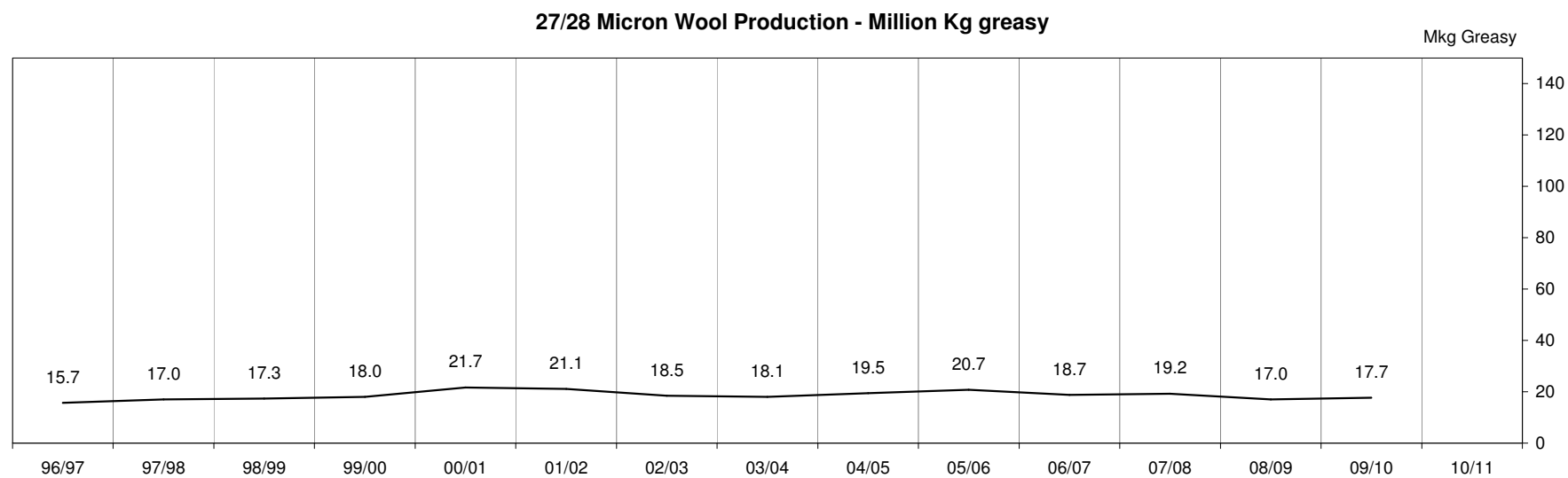
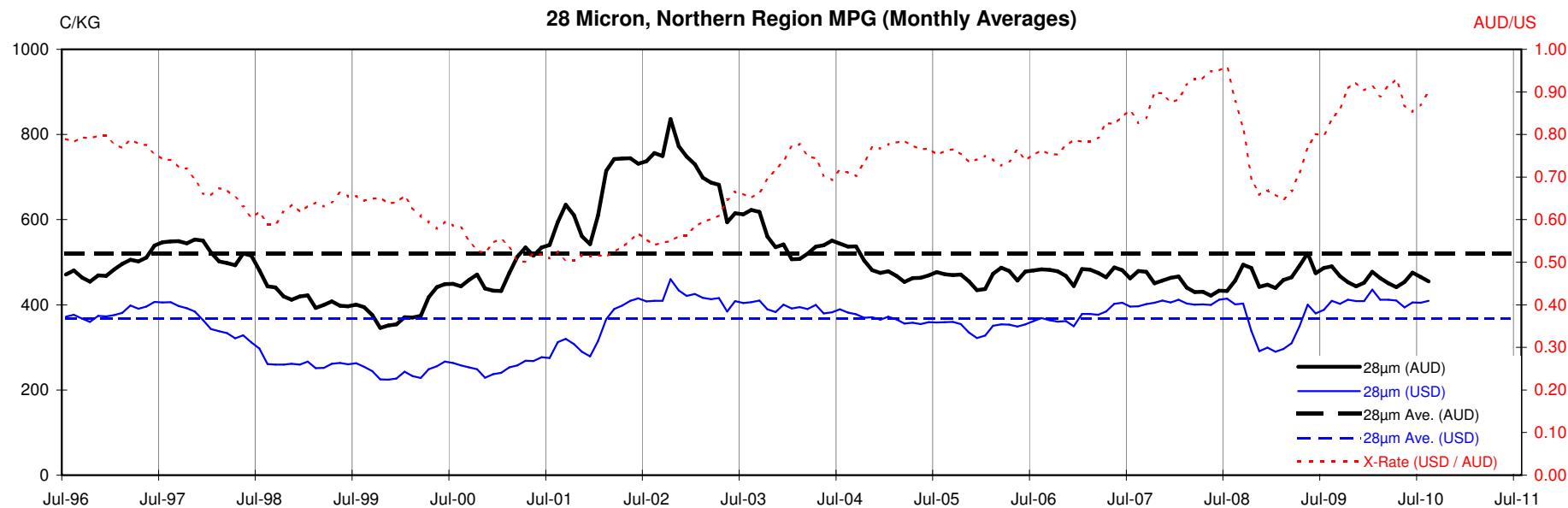












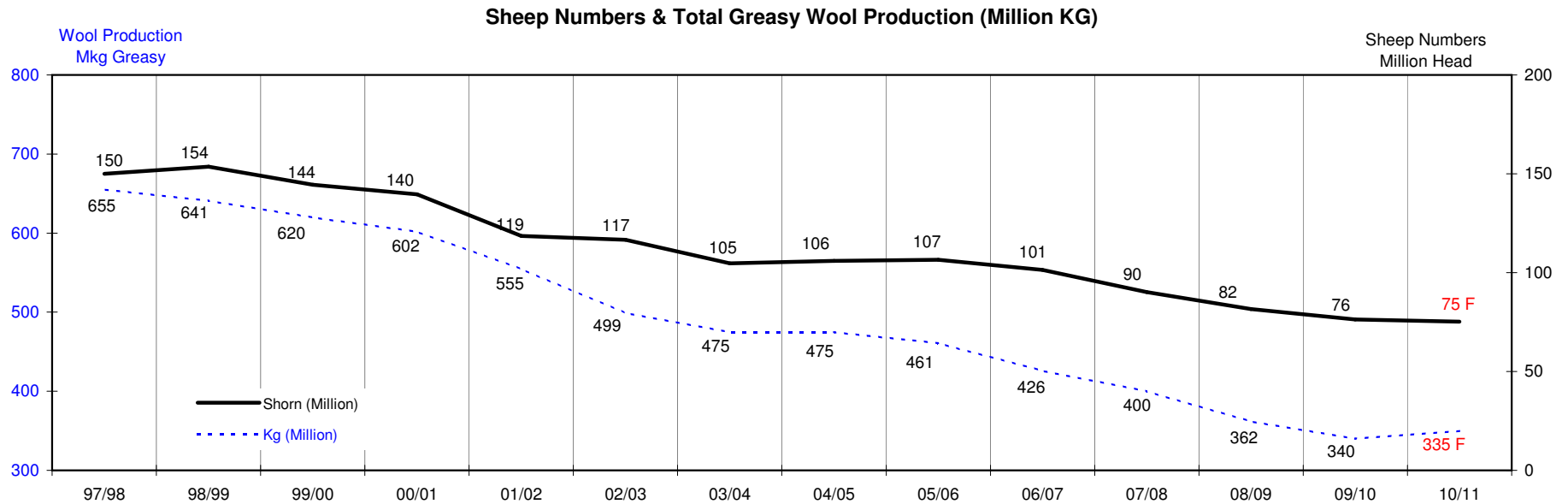
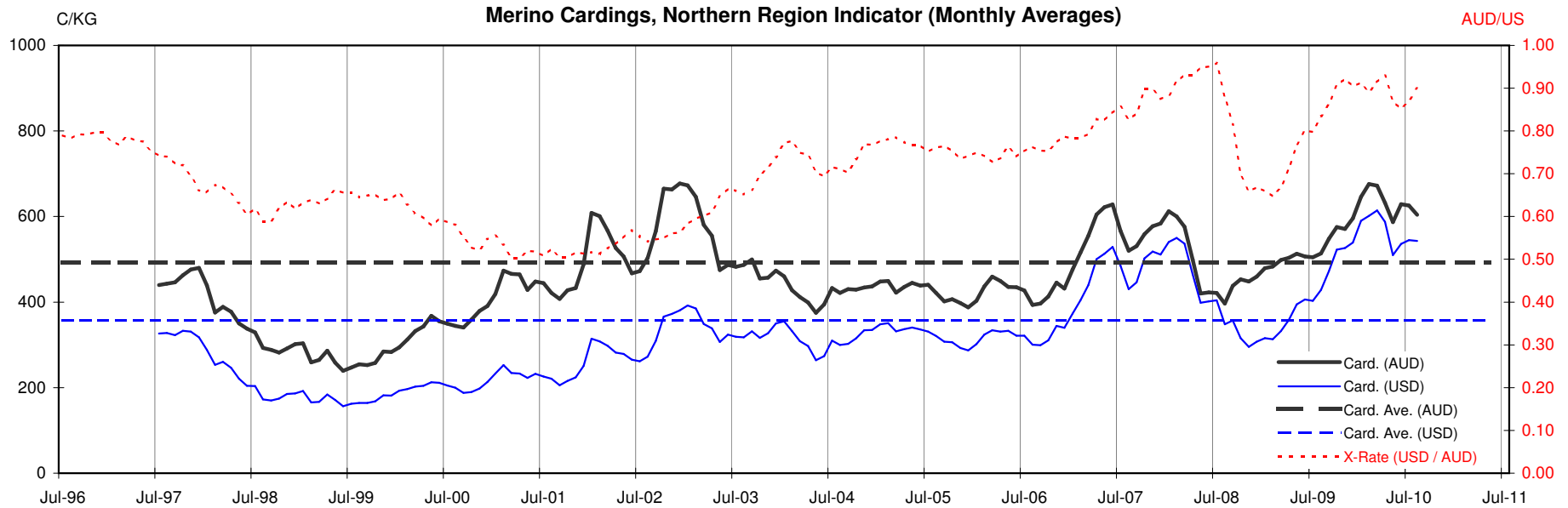




Table 13: Returns pr head for skirted fleece wool.

Skirted FLC Weight		Micron																	
9 Kg		16	16.5	17	17.5	18	18.5	19	19.5	20	21	22	23	24	25	26	28	30	32
Yield (Sch Dry)	25% Current	\$35	\$32	\$29	\$28	\$26	\$25	\$24	\$22	\$21	\$20	\$20	\$20	\$19	\$16	\$14	\$10	\$9	\$8
	10yr ave.			\$33		\$29		\$24		\$20	\$19	\$19	\$18	\$18	\$16	\$14	\$12	\$10	\$9
	30% Current	\$42	\$39	\$34	\$33	\$32	\$30	\$28	\$26	\$25	\$24	\$24	\$24	\$22	\$19	\$16	\$12	\$11	\$10
	10yr ave.			\$39	\$35			\$29		\$25	\$23	\$23	\$22	\$21	\$19	\$17	\$14	\$12	\$11
	35% Current	\$49	\$45	\$40	\$39	\$37	\$35	\$33	\$30	\$29	\$29	\$28	\$28	\$26	\$22	\$19	\$14	\$13	\$11
	10yr ave.			\$46	\$41			\$34		\$29	\$27	\$26	\$26	\$25	\$22	\$20	\$16	\$14	\$13
	40% Current	\$57	\$52	\$46	\$44	\$42	\$41	\$38	\$35	\$33	\$33	\$32	\$32	\$30	\$25	\$22	\$16	\$15	\$13
	10yr ave.			\$52	\$47			\$38		\$33	\$31	\$30	\$29	\$28	\$25	\$23	\$19	\$16	\$15
	45% Current	\$64	\$58	\$51	\$50	\$47	\$46	\$42	\$39	\$38	\$37	\$36	\$36	\$34	\$28	\$24	\$19	\$16	\$15
	10yr ave.			\$59	\$53			\$43		\$37	\$35	\$34	\$33	\$32	\$28	\$26	\$21	\$18	\$17
	50% Current	\$71	\$65	\$57	\$55	\$53	\$51	\$47	\$43	\$42	\$41	\$40	\$40	\$37	\$31	\$27	\$21	\$18	\$16
	10yr ave.			\$65	\$59			\$48		\$41	\$39	\$38	\$37	\$35	\$32	\$29	\$23	\$20	\$19
	55% Current	\$78	\$71	\$63	\$61	\$58	\$56	\$52	\$48	\$46	\$45	\$44	\$44	\$41	\$34	\$30	\$23	\$20	\$18
	10yr ave.			\$72	\$64			\$53		\$45	\$43	\$41	\$40	\$39	\$35	\$32	\$26	\$23	\$20
	60% Current	\$85	\$78	\$69	\$66	\$63	\$61	\$57	\$52	\$50	\$49	\$48	\$48	\$45	\$38	\$32	\$25	\$22	\$19
	10yr ave.			\$78	\$70			\$58		\$49	\$46	\$45	\$44	\$42	\$38	\$35	\$28	\$25	\$22
	65% Current	\$92	\$84	\$74	\$72	\$68	\$66	\$61	\$57	\$54	\$53	\$52	\$52	\$48	\$41	\$35	\$27	\$24	\$21
	10yr ave.			\$85	\$76			\$63		\$53	\$50	\$49	\$48	\$46	\$41	\$38	\$30	\$27	\$24
	70% Current	\$99	\$91	\$80	\$77	\$74	\$71	\$66	\$61	\$58	\$57	\$57	\$56	\$52	\$44	\$38	\$29	\$26	\$23
	10yr ave.			\$91	\$82			\$67		\$57	\$54	\$53	\$51	\$49	\$44	\$41	\$33	\$29	\$26
	75% Current	\$106	\$97	\$86	\$83	\$79	\$76	\$71	\$65	\$63	\$61	\$61	\$60	\$56	\$47	\$41	\$31	\$27	\$24
	10yr ave.			\$98	\$88			\$72		\$61	\$58	\$56	\$55	\$53	\$47	\$43	\$35	\$31	\$28
	80% Current	\$113	\$104	\$91	\$89	\$84	\$81	\$75	\$70	\$67	\$65	\$65	\$64	\$60	\$50	\$43	\$33	\$29	\$26
	10yr ave.			\$104	\$94			\$77		\$65	\$62	\$60	\$59	\$56	\$50	\$46	\$38	\$33	\$30
	85% Current	\$120	\$110	\$97	\$94	\$89	\$86	\$80	\$74	\$71	\$69	\$69	\$68	\$63	\$53	\$46	\$35	\$31	\$28
	10yr ave.			\$111	\$100			\$82		\$69	\$66	\$64	\$62	\$60	\$54	\$49	\$40	\$35	\$32

The above shows estimated returns per head for skirted fleece wool. These figures do not take into account the value of skirtings and oddments and do not take into account discounts that may apply for faults under individual circumstances. These figures are based on a market index of 100% and should be used as a guide only. Returns over \$30 / head for fleece wool are highlighted.

Source: Australian Wool Exchange, Australian Wool Innovation, Sydney Futures Exchange, x-rates.com

Disclaimer: While all due care has been taken in the preparation of this document, no warranty is made as to its accuracy, reliability or completeness. To the extent permitted by law neither Jemalong or their sources including subsidiaries and staff, accept liability to any person for loss or damage arising from the use of this information.



Table 14: Returns pr head for skirted fleece wool.

Skirted FLC Weight 8 Kg			Micron																	
			16	16.5	17	17.5	18	18.5	19	19.5	20	21	22	23	24	25	26	28	30	32
Yield (Sch Dry)	25%	Current	\$35	\$32	\$29	\$28	\$26	\$25	\$24	\$22	\$21	\$20	\$20	\$20	\$19	\$16	\$14	\$10	\$9	\$8
		10yr ave.			\$33		\$29		\$24		\$20	\$19	\$19	\$18	\$18	\$16	\$14	\$12	\$10	\$9
	30%	Current	\$42	\$39	\$34	\$33	\$32	\$30	\$28	\$26	\$25	\$24	\$24	\$24	\$22	\$19	\$16	\$12	\$11	\$10
		10yr ave.			\$39		\$35		\$29		\$25	\$23	\$23	\$22	\$21	\$19	\$17	\$14	\$12	\$11
	35%	Current	\$49	\$45	\$40	\$39	\$37	\$35	\$33	\$30	\$29	\$29	\$28	\$28	\$26	\$22	\$19	\$14	\$13	\$11
		10yr ave.			\$46		\$41		\$34		\$29	\$27	\$26	\$26	\$25	\$22	\$20	\$16	\$14	\$13
	40%	Current	\$57	\$52	\$46	\$44	\$42	\$41	\$38	\$35	\$33	\$33	\$32	\$32	\$30	\$25	\$22	\$16	\$15	\$13
		10yr ave.			\$52		\$47		\$38		\$33	\$31	\$30	\$29	\$28	\$25	\$23	\$19	\$16	\$15
	45%	Current	\$64	\$58	\$51	\$50	\$47	\$46	\$42	\$39	\$38	\$37	\$36	\$36	\$34	\$28	\$24	\$19	\$16	\$15
		10yr ave.			\$59		\$53		\$43		\$37	\$35	\$34	\$33	\$32	\$28	\$26	\$21	\$18	\$17
	50%	Current	\$71	\$65	\$57	\$55	\$53	\$51	\$47	\$43	\$42	\$41	\$40	\$40	\$37	\$31	\$27	\$21	\$18	\$16
		10yr ave.			\$65		\$59		\$48		\$41	\$39	\$38	\$37	\$35	\$32	\$29	\$23	\$20	\$19
	55%	Current	\$78	\$71	\$63	\$61	\$58	\$56	\$52	\$48	\$46	\$45	\$44	\$44	\$41	\$34	\$30	\$23	\$20	\$18
		10yr ave.			\$72		\$64		\$53		\$45	\$43	\$41	\$40	\$39	\$35	\$32	\$26	\$23	\$20
	60%	Current	\$85	\$78	\$69	\$66	\$63	\$61	\$57	\$52	\$50	\$49	\$48	\$48	\$45	\$38	\$32	\$25	\$22	\$19
		10yr ave.			\$78		\$70		\$58		\$49	\$46	\$45	\$44	\$42	\$38	\$35	\$28	\$25	\$22
65%	Current	\$92	\$84	\$74	\$72	\$68	\$66	\$61	\$57	\$54	\$53	\$52	\$52	\$48	\$41	\$35	\$27	\$24	\$21	
	10yr ave.			\$85		\$76		\$63		\$53	\$50	\$49	\$48	\$46	\$41	\$38	\$30	\$27	\$24	
70%	Current	\$99	\$91	\$80	\$77	\$74	\$71	\$66	\$61	\$58	\$57	\$57	\$56	\$52	\$44	\$38	\$29	\$26	\$23	
	10yr ave.			\$91		\$82		\$67		\$57	\$54	\$53	\$51	\$49	\$44	\$41	\$33	\$29	\$26	
75%	Current	\$106	\$97	\$86	\$83	\$79	\$76	\$71	\$65	\$63	\$61	\$61	\$60	\$56	\$47	\$41	\$31	\$27	\$24	
	10yr ave.			\$98		\$88		\$72		\$61	\$58	\$56	\$55	\$53	\$47	\$43	\$35	\$31	\$28	
80%	Current	\$113	\$104	\$91	\$89	\$84	\$81	\$75	\$70	\$67	\$65	\$65	\$64	\$60	\$50	\$43	\$33	\$29	\$26	
	10yr ave.			\$104		\$94		\$77		\$65	\$62	\$60	\$59	\$56	\$50	\$46	\$38	\$33	\$30	
85%	Current	\$120	\$110	\$97	\$94	\$89	\$86	\$80	\$74	\$71	\$69	\$69	\$68	\$63	\$53	\$46	\$35	\$31	\$28	
	10yr ave.			\$111		\$100		\$82		\$69	\$66	\$64	\$62	\$60	\$54	\$49	\$40	\$35	\$32	

The above shows estimated returns per head for skirted fleece wool. These figures do not take into account the value of skirtings and oddments and do not take into account discounts that may apply for faults under individual circumstances. These figures are based on a market index of 100% and should be used as a guide only. Returns over \$30 / head for fleece wool are highlighted.

Source: Australian Wool Exchange, Australian Wool Innovation, Sydney Futures Exchange, x-rates.com

Disclaimer: While all due care has been taken in the preparation of this document, no warranty is made as to its accuracy, reliability or completeness. To the extent permitted by law neither Jemalong or their sources including subsidiaries and staff, accept liability to any person for loss or damage arising from the use of this information.



Table 15: Returns pr head for skirted fleece wool.

Skirted FLC Weight 7 Kg			Micron																	
			16	16.5	17	17.5	18	18.5	19	19.5	20	21	22	23	24	25	26	28	30	32
Yield (Sch Dry)	25%	Current	\$35	\$32	\$29	\$28	\$26	\$25	\$24	\$22	\$21	\$20	\$20	\$20	\$19	\$16	\$14	\$10	\$9	\$8
		10yr ave.			\$33		\$29		\$24		\$20	\$19	\$19	\$18	\$18	\$16	\$14	\$12	\$10	\$9
	30%	Current	\$42	\$39	\$34	\$33	\$32	\$30	\$28	\$26	\$25	\$24	\$24	\$24	\$22	\$19	\$16	\$12	\$11	\$10
		10yr ave.			\$39		\$35		\$29		\$25	\$23	\$23	\$22	\$21	\$19	\$17	\$14	\$12	\$11
	35%	Current	\$49	\$45	\$40	\$39	\$37	\$35	\$33	\$30	\$29	\$29	\$28	\$28	\$26	\$22	\$19	\$14	\$13	\$11
		10yr ave.			\$46		\$41		\$34		\$29	\$27	\$26	\$26	\$25	\$22	\$20	\$16	\$14	\$13
	40%	Current	\$57	\$52	\$46	\$44	\$42	\$41	\$38	\$35	\$33	\$33	\$32	\$32	\$30	\$25	\$22	\$16	\$15	\$13
		10yr ave.			\$52		\$47		\$38		\$33	\$31	\$30	\$29	\$28	\$25	\$23	\$19	\$16	\$15
	45%	Current	\$64	\$58	\$51	\$50	\$47	\$46	\$42	\$39	\$38	\$37	\$36	\$36	\$34	\$28	\$24	\$19	\$16	\$15
		10yr ave.			\$59		\$53		\$43		\$37	\$35	\$34	\$33	\$32	\$28	\$26	\$21	\$18	\$17
	50%	Current	\$71	\$65	\$57	\$55	\$53	\$51	\$47	\$43	\$42	\$41	\$40	\$40	\$37	\$31	\$27	\$21	\$18	\$16
		10yr ave.			\$65		\$59		\$48		\$41	\$39	\$38	\$37	\$35	\$32	\$29	\$23	\$20	\$19
	55%	Current	\$78	\$71	\$63	\$61	\$58	\$56	\$52	\$48	\$46	\$45	\$44	\$44	\$41	\$34	\$30	\$23	\$20	\$18
		10yr ave.			\$72		\$64		\$53		\$45	\$43	\$41	\$40	\$39	\$35	\$32	\$26	\$23	\$20
	60%	Current	\$85	\$78	\$69	\$66	\$63	\$61	\$57	\$52	\$50	\$49	\$48	\$48	\$45	\$38	\$32	\$25	\$22	\$19
		10yr ave.			\$78		\$70		\$58		\$49	\$46	\$45	\$44	\$42	\$38	\$35	\$28	\$25	\$22
65%	Current	\$92	\$84	\$74	\$72	\$68	\$66	\$61	\$57	\$54	\$53	\$52	\$52	\$48	\$41	\$35	\$27	\$24	\$21	
	10yr ave.			\$85		\$76		\$63		\$53	\$50	\$49	\$48	\$46	\$41	\$38	\$30	\$27	\$24	
70%	Current	\$99	\$91	\$80	\$77	\$74	\$71	\$66	\$61	\$58	\$57	\$57	\$56	\$52	\$44	\$38	\$29	\$26	\$23	
	10yr ave.			\$91		\$82		\$67		\$57	\$54	\$53	\$51	\$49	\$44	\$41	\$33	\$29	\$26	
75%	Current	\$106	\$97	\$86	\$83	\$79	\$76	\$71	\$65	\$63	\$61	\$61	\$60	\$56	\$47	\$41	\$31	\$27	\$24	
	10yr ave.			\$98		\$88		\$72		\$61	\$58	\$56	\$55	\$53	\$47	\$43	\$35	\$31	\$28	
80%	Current	\$113	\$104	\$91	\$89	\$84	\$81	\$75	\$70	\$67	\$65	\$65	\$64	\$60	\$50	\$43	\$33	\$29	\$26	
	10yr ave.			\$104		\$94		\$77		\$65	\$62	\$60	\$59	\$56	\$50	\$46	\$38	\$33	\$30	
85%	Current	\$120	\$110	\$97	\$94	\$89	\$86	\$80	\$74	\$71	\$69	\$69	\$68	\$63	\$53	\$46	\$35	\$31	\$28	
	10yr ave.			\$111		\$100		\$82		\$69	\$66	\$64	\$62	\$60	\$54	\$49	\$40	\$35	\$32	

The above shows estimated returns per head for skirted fleece wool. These figures do not take into account the value of skirtings and oddments and do not take into account discounts that may apply for faults under individual circumstances. These figures are based on a market index of 100% and should be used as a guide only. Returns over \$30 / head for fleece wool are highlighted.

Source: Australian Wool Exchange, Australian Wool Innovation, Sydney Futures Exchange, x-rates.com

Disclaimer: While all due care has been taken in the preparation of this document, no warranty is made as to its accuracy, reliability or completeness. To the extent permitted by law neither Jemalong or their sources including subsidiaries and staff, accept liability to any person for loss or damage arising from the use of this information.



Table 16: Returns pr head for skirted fleece wool.

Skirted FLC Weight 6 Kg			Micron																	
			16	16.5	17	17.5	18	18.5	19	19.5	20	21	22	23	24	25	26	28	30	32
Yield (Sch Dry)	25%	Current	\$35	\$32	\$29	\$28	\$26	\$25	\$24	\$22	\$21	\$20	\$20	\$20	\$19	\$16	\$14	\$10	\$9	\$8
		10yr ave.			\$33		\$29		\$24		\$20	\$19	\$19	\$18	\$18	\$16	\$14	\$12	\$10	\$9
	30%	Current	\$42	\$39	\$34	\$33	\$32	\$30	\$28	\$26	\$25	\$24	\$24	\$24	\$22	\$19	\$16	\$12	\$11	\$10
		10yr ave.			\$39		\$35		\$29		\$25	\$23	\$23	\$22	\$21	\$19	\$17	\$14	\$12	\$11
	35%	Current	\$49	\$45	\$40	\$39	\$37	\$35	\$33	\$30	\$29	\$29	\$28	\$28	\$26	\$22	\$19	\$14	\$13	\$11
		10yr ave.			\$46		\$41		\$34		\$29	\$27	\$26	\$26	\$25	\$22	\$20	\$16	\$14	\$13
	40%	Current	\$57	\$52	\$46	\$44	\$42	\$41	\$38	\$35	\$33	\$33	\$32	\$32	\$30	\$25	\$22	\$16	\$15	\$13
		10yr ave.			\$52		\$47		\$38		\$33	\$31	\$30	\$29	\$28	\$25	\$23	\$19	\$16	\$15
	45%	Current	\$64	\$58	\$51	\$50	\$47	\$46	\$42	\$39	\$38	\$37	\$36	\$36	\$34	\$28	\$24	\$19	\$16	\$15
		10yr ave.			\$59		\$53		\$43		\$37	\$35	\$34	\$33	\$32	\$28	\$26	\$21	\$18	\$17
	50%	Current	\$71	\$65	\$57	\$55	\$53	\$51	\$47	\$43	\$42	\$41	\$40	\$40	\$37	\$31	\$27	\$21	\$18	\$16
		10yr ave.			\$65		\$59		\$48		\$41	\$39	\$38	\$37	\$35	\$32	\$29	\$23	\$20	\$19
	55%	Current	\$78	\$71	\$63	\$61	\$58	\$56	\$52	\$48	\$46	\$45	\$44	\$44	\$41	\$34	\$30	\$23	\$20	\$18
		10yr ave.			\$72		\$64		\$53		\$45	\$43	\$41	\$40	\$39	\$35	\$32	\$26	\$23	\$20
	60%	Current	\$85	\$78	\$69	\$66	\$63	\$61	\$57	\$52	\$50	\$49	\$48	\$48	\$45	\$38	\$32	\$25	\$22	\$19
		10yr ave.			\$78		\$70		\$58		\$49	\$46	\$45	\$44	\$42	\$38	\$35	\$28	\$25	\$22
65%	Current	\$92	\$84	\$74	\$72	\$68	\$66	\$61	\$57	\$54	\$53	\$52	\$52	\$48	\$41	\$35	\$27	\$24	\$21	
	10yr ave.			\$85		\$76		\$63		\$53	\$50	\$49	\$48	\$46	\$41	\$38	\$30	\$27	\$24	
70%	Current	\$99	\$91	\$80	\$77	\$74	\$71	\$66	\$61	\$58	\$57	\$57	\$56	\$52	\$44	\$38	\$29	\$26	\$23	
	10yr ave.			\$91		\$82		\$67		\$57	\$54	\$53	\$51	\$49	\$44	\$41	\$33	\$29	\$26	
75%	Current	\$106	\$97	\$86	\$83	\$79	\$76	\$71	\$65	\$63	\$61	\$61	\$60	\$56	\$47	\$41	\$31	\$27	\$24	
	10yr ave.			\$98		\$88		\$72		\$61	\$58	\$56	\$55	\$53	\$47	\$43	\$35	\$31	\$28	
80%	Current	\$113	\$104	\$91	\$89	\$84	\$81	\$75	\$70	\$67	\$65	\$65	\$64	\$60	\$50	\$43	\$33	\$29	\$26	
	10yr ave.			\$104		\$94		\$77		\$65	\$62	\$60	\$59	\$56	\$50	\$46	\$38	\$33	\$30	
85%	Current	\$120	\$110	\$97	\$94	\$89	\$86	\$80	\$74	\$71	\$69	\$69	\$68	\$63	\$53	\$46	\$35	\$31	\$28	
	10yr ave.			\$111		\$100		\$82		\$69	\$66	\$64	\$62	\$60	\$54	\$49	\$40	\$35	\$32	

The above shows estimated returns per head for skirted fleece wool. These figures do not take into account the value of skirtings and oddments and do not take into account discounts that may apply for faults under individual circumstances. These figures are based on a market index of 100% and should be used as a guide only. Returns over \$30 / head for fleece wool are highlighted.

Source: Australian Wool Exchange, Australian Wool Innovation, Sydney Futures Exchange, x-rates.com

Disclaimer: While all due care has been taken in the preparation of this document, no warranty is made as to its accuracy, reliability or completeness. To the extent permitted by law neither Jemalong or their sources including subsidiaries and staff, accept liability to any person for loss or damage arising from the use of this information.



Table 17: Returns pr head for skirted fleece wool.

Skirted FLC Weight 5 Kg			Micron																	
			16	16.5	17	17.5	18	18.5	19	19.5	20	21	22	23	24	25	26	28	30	32
Yield (Sch Dry)	25%	Current	\$35	\$32	\$29	\$28	\$26	\$25	\$24	\$22	\$21	\$20	\$20	\$20	\$19	\$16	\$14	\$10	\$9	\$8
		10yr ave.			\$33		\$29		\$24		\$20	\$19	\$19	\$18	\$18	\$16	\$14	\$12	\$10	\$9
	30%	Current	\$42	\$39	\$34	\$33	\$32	\$30	\$28	\$26	\$25	\$24	\$24	\$24	\$22	\$19	\$16	\$12	\$11	\$10
		10yr ave.			\$39		\$35		\$29		\$25	\$23	\$23	\$22	\$21	\$19	\$17	\$14	\$12	\$11
	35%	Current	\$49	\$45	\$40	\$39	\$37	\$35	\$33	\$30	\$29	\$29	\$28	\$28	\$26	\$22	\$19	\$14	\$13	\$11
		10yr ave.			\$46		\$41		\$34		\$29	\$27	\$26	\$26	\$25	\$22	\$20	\$16	\$14	\$13
	40%	Current	\$57	\$52	\$46	\$44	\$42	\$41	\$38	\$35	\$33	\$33	\$32	\$32	\$30	\$25	\$22	\$16	\$15	\$13
		10yr ave.			\$52		\$47		\$38		\$33	\$31	\$30	\$29	\$28	\$25	\$23	\$19	\$16	\$15
	45%	Current	\$64	\$58	\$51	\$50	\$47	\$46	\$42	\$39	\$38	\$37	\$36	\$36	\$34	\$28	\$24	\$19	\$16	\$15
		10yr ave.			\$59		\$53		\$43		\$37	\$35	\$34	\$33	\$32	\$28	\$26	\$21	\$18	\$17
	50%	Current	\$71	\$65	\$57	\$55	\$53	\$51	\$47	\$43	\$42	\$41	\$40	\$40	\$37	\$31	\$27	\$21	\$18	\$16
		10yr ave.			\$65		\$59		\$48		\$41	\$39	\$38	\$37	\$35	\$32	\$29	\$23	\$20	\$19
	55%	Current	\$78	\$71	\$63	\$61	\$58	\$56	\$52	\$48	\$46	\$45	\$44	\$44	\$41	\$34	\$30	\$23	\$20	\$18
		10yr ave.			\$72		\$64		\$53		\$45	\$43	\$41	\$40	\$39	\$35	\$32	\$26	\$23	\$20
	60%	Current	\$85	\$78	\$69	\$66	\$63	\$61	\$57	\$52	\$50	\$49	\$48	\$48	\$45	\$38	\$32	\$25	\$22	\$19
		10yr ave.			\$78		\$70		\$58		\$49	\$46	\$45	\$44	\$42	\$38	\$35	\$28	\$25	\$22
65%	Current	\$92	\$84	\$74	\$72	\$68	\$66	\$61	\$57	\$54	\$53	\$52	\$52	\$48	\$41	\$35	\$27	\$24	\$21	
	10yr ave.			\$85		\$76		\$63		\$53	\$50	\$49	\$48	\$46	\$41	\$38	\$30	\$27	\$24	
70%	Current	\$99	\$91	\$80	\$77	\$74	\$71	\$66	\$61	\$58	\$57	\$57	\$56	\$52	\$44	\$38	\$29	\$26	\$23	
	10yr ave.			\$91		\$82		\$67		\$57	\$54	\$53	\$51	\$49	\$44	\$41	\$33	\$29	\$26	
75%	Current	\$106	\$97	\$86	\$83	\$79	\$76	\$71	\$65	\$63	\$61	\$61	\$60	\$56	\$47	\$41	\$31	\$27	\$24	
	10yr ave.			\$98		\$88		\$72		\$61	\$58	\$56	\$55	\$53	\$47	\$43	\$35	\$31	\$28	
80%	Current	\$113	\$104	\$91	\$89	\$84	\$81	\$75	\$70	\$67	\$65	\$65	\$64	\$60	\$50	\$43	\$33	\$29	\$26	
	10yr ave.			\$104		\$94		\$77		\$65	\$62	\$60	\$59	\$56	\$50	\$46	\$38	\$33	\$30	
85%	Current	\$120	\$110	\$97	\$94	\$89	\$86	\$80	\$74	\$71	\$69	\$69	\$68	\$63	\$53	\$46	\$35	\$31	\$28	
	10yr ave.			\$111		\$100		\$82		\$69	\$66	\$64	\$62	\$60	\$54	\$49	\$40	\$35	\$32	

The above shows estimated returns per head for skirted fleece wool. These figures do not take into account the value of skirtings and oddments and do not take into account discounts that may apply for faults under individual circumstances. These figures are based on a market index of 100% and should be used as a guide only. Returns over \$30 / head for fleece wool are highlighted.

Source: Australian Wool Exchange, Australian Wool Innovation, Sydney Futures Exchange, x-rates.com

Disclaimer: While all due care has been taken in the preparation of this document, no warranty is made as to its accuracy, reliability or completeness. To the extent permitted by law neither Jemalong or their sources including subsidiaries and staff, accept liability to any person for loss or damage arising from the use of this information.



Table 18: Returns pr head for skirted fleece wool.

Skirted FLC Weight 4 Kg			Micron																	
			16	16.5	17	17.5	18	18.5	19	19.5	20	21	22	23	24	25	26	28	30	32
Yield (Sch Dry)	25%	Current	\$35	\$32	\$29	\$28	\$26	\$25	\$24	\$22	\$21	\$20	\$20	\$20	\$19	\$16	\$14	\$10	\$9	\$8
		10yr ave.			\$33		\$29		\$24		\$20	\$19	\$19	\$18	\$18	\$16	\$14	\$12	\$10	\$9
	30%	Current	\$42	\$39	\$34	\$33	\$32	\$30	\$28	\$26	\$25	\$24	\$24	\$24	\$22	\$19	\$16	\$12	\$11	\$10
		10yr ave.			\$39	\$35	\$35		\$29		\$25	\$23	\$23	\$22	\$21	\$19	\$17	\$14	\$12	\$11
	35%	Current	\$49	\$45	\$40	\$39	\$37	\$35	\$33	\$30	\$29	\$29	\$28	\$28	\$26	\$22	\$19	\$14	\$13	\$11
		10yr ave.			\$46		\$41		\$34		\$29	\$27	\$26	\$26	\$25	\$22	\$20	\$16	\$14	\$13
	40%	Current	\$57	\$52	\$46	\$44	\$42	\$41	\$38	\$35	\$33	\$33	\$32	\$32	\$30	\$25	\$22	\$16	\$15	\$13
		10yr ave.			\$52		\$47		\$38		\$33	\$31	\$30	\$29	\$28	\$25	\$23	\$19	\$16	\$15
	45%	Current	\$64	\$58	\$51	\$50	\$47	\$46	\$42	\$39	\$38	\$37	\$36	\$36	\$34	\$28	\$24	\$19	\$16	\$15
		10yr ave.			\$59		\$53		\$43		\$37	\$35	\$34	\$33	\$32	\$28	\$26	\$21	\$18	\$17
	50%	Current	\$71	\$65	\$57	\$55	\$53	\$51	\$47	\$43	\$42	\$41	\$40	\$40	\$37	\$31	\$27	\$21	\$18	\$16
		10yr ave.			\$65		\$59		\$48		\$41	\$39	\$38	\$37	\$35	\$32	\$29	\$23	\$20	\$19
	55%	Current	\$78	\$71	\$63	\$61	\$58	\$56	\$52	\$48	\$46	\$45	\$44	\$44	\$41	\$34	\$30	\$23	\$20	\$18
		10yr ave.			\$72		\$64		\$53		\$45	\$43	\$41	\$40	\$39	\$35	\$32	\$26	\$23	\$20
	60%	Current	\$85	\$78	\$69	\$66	\$63	\$61	\$57	\$52	\$50	\$49	\$48	\$48	\$45	\$38	\$32	\$25	\$22	\$19
		10yr ave.			\$78		\$70		\$58		\$49	\$46	\$45	\$44	\$42	\$38	\$35	\$28	\$25	\$22
65%	Current	\$92	\$84	\$74	\$72	\$68	\$66	\$61	\$57	\$54	\$53	\$52	\$52	\$48	\$41	\$35	\$27	\$24	\$21	
	10yr ave.			\$85		\$76		\$63		\$53	\$50	\$49	\$48	\$46	\$41	\$38	\$30	\$27	\$24	
70%	Current	\$99	\$91	\$80	\$77	\$74	\$71	\$66	\$61	\$58	\$57	\$57	\$56	\$52	\$44	\$38	\$29	\$26	\$23	
	10yr ave.			\$91		\$82		\$67		\$57	\$54	\$53	\$51	\$49	\$44	\$41	\$33	\$29	\$26	
75%	Current	\$106	\$97	\$86	\$83	\$79	\$76	\$71	\$65	\$63	\$61	\$61	\$60	\$56	\$47	\$41	\$31	\$27	\$24	
	10yr ave.			\$98		\$88		\$72		\$61	\$58	\$56	\$55	\$53	\$47	\$43	\$35	\$31	\$28	
80%	Current	\$113	\$104	\$91	\$89	\$84	\$81	\$75	\$70	\$67	\$65	\$65	\$64	\$60	\$50	\$43	\$33	\$29	\$26	
	10yr ave.			\$104		\$94		\$77		\$65	\$62	\$60	\$59	\$56	\$50	\$46	\$38	\$33	\$30	
85%	Current	\$120	\$110	\$97	\$94	\$89	\$86	\$80	\$74	\$71	\$69	\$69	\$68	\$63	\$53	\$46	\$35	\$31	\$28	
	10yr ave.			\$111		\$100		\$82		\$69	\$66	\$64	\$62	\$60	\$54	\$49	\$40	\$35	\$32	

The above shows estimated returns per head for skirted fleece wool. These figures do not take into account the value of skirtings and oddments and do not take into account discounts that may apply for faults under individual circumstances. These figures are based on a market index of 100% and should be used as a guide only. Returns over \$30 / head for fleece wool are highlighted.

Source: Australian Wool Exchange, Australian Wool Innovation, Sydney Futures Exchange, x-rates.com

Disclaimer: While all due care has been taken in the preparation of this document, no warranty is made as to its accuracy, reliability or completeness. To the extent permitted by law neither Jemalong or their sources including subsidiaries and staff, accept liability to any person for loss or damage arising from the use of this information.



Table 19: Returns pr head for skirted fleece wool.

Skirted FLC Weight 3 Kg			Micron																	
			16	16.5	17	17.5	18	18.5	19	19.5	20	21	22	23	24	25	26	28	30	32
Yield (Sch Dry)	25%	Current	\$35	\$32	\$29	\$28	\$26	\$25	\$24	\$22	\$21	\$20	\$20	\$20	\$19	\$16	\$14	\$10	\$9	\$8
		10yr ave.			\$33		\$29		\$24		\$20	\$19	\$19	\$18	\$18	\$16	\$14	\$12	\$10	\$9
	30%	Current	\$42	\$39	\$34	\$33	\$32	\$30	\$28	\$26	\$25	\$24	\$24	\$24	\$22	\$19	\$16	\$12	\$11	\$10
		10yr ave.			\$39		\$35		\$29		\$25	\$23	\$23	\$22	\$21	\$19	\$17	\$14	\$12	\$11
	35%	Current	\$49	\$45	\$40	\$39	\$37	\$35	\$33	\$30	\$29	\$29	\$28	\$28	\$26	\$22	\$19	\$14	\$13	\$11
		10yr ave.			\$46		\$41		\$34		\$29	\$27	\$26	\$26	\$25	\$22	\$20	\$16	\$14	\$13
	40%	Current	\$57	\$52	\$46	\$44	\$42	\$41	\$38	\$35	\$33	\$33	\$32	\$32	\$30	\$25	\$22	\$16	\$15	\$13
		10yr ave.			\$52		\$47		\$38		\$33	\$31	\$30	\$29	\$28	\$25	\$23	\$19	\$16	\$15
	45%	Current	\$64	\$58	\$51	\$50	\$47	\$46	\$42	\$39	\$38	\$37	\$36	\$36	\$34	\$28	\$24	\$19	\$16	\$15
		10yr ave.			\$59		\$53		\$43		\$37	\$35	\$34	\$33	\$32	\$28	\$26	\$21	\$18	\$17
	50%	Current	\$71	\$65	\$57	\$55	\$53	\$51	\$47	\$43	\$42	\$41	\$40	\$40	\$37	\$31	\$27	\$21	\$18	\$16
		10yr ave.			\$65		\$59		\$48		\$41	\$39	\$38	\$37	\$35	\$32	\$29	\$23	\$20	\$19
	55%	Current	\$78	\$71	\$63	\$61	\$58	\$56	\$52	\$48	\$46	\$45	\$44	\$44	\$41	\$34	\$30	\$23	\$20	\$18
		10yr ave.			\$72		\$64		\$53		\$45	\$43	\$41	\$40	\$39	\$35	\$32	\$26	\$23	\$20
	60%	Current	\$85	\$78	\$69	\$66	\$63	\$61	\$57	\$52	\$50	\$49	\$48	\$48	\$45	\$38	\$32	\$25	\$22	\$19
		10yr ave.			\$78		\$70		\$58		\$49	\$46	\$45	\$44	\$42	\$38	\$35	\$28	\$25	\$22
65%	Current	\$92	\$84	\$74	\$72	\$68	\$66	\$61	\$57	\$54	\$53	\$52	\$52	\$48	\$41	\$35	\$27	\$24	\$21	
	10yr ave.			\$85		\$76		\$63		\$53	\$50	\$49	\$48	\$46	\$41	\$38	\$30	\$27	\$24	
70%	Current	\$99	\$91	\$80	\$77	\$74	\$71	\$66	\$61	\$58	\$57	\$57	\$56	\$52	\$44	\$38	\$29	\$26	\$23	
	10yr ave.			\$91		\$82		\$67		\$57	\$54	\$53	\$51	\$49	\$44	\$41	\$33	\$29	\$26	
75%	Current	\$106	\$97	\$86	\$83	\$79	\$76	\$71	\$65	\$63	\$61	\$61	\$60	\$56	\$47	\$41	\$31	\$27	\$24	
	10yr ave.			\$98		\$88		\$72		\$61	\$58	\$56	\$55	\$53	\$47	\$43	\$35	\$31	\$28	
80%	Current	\$113	\$104	\$91	\$89	\$84	\$81	\$75	\$70	\$67	\$65	\$65	\$64	\$60	\$50	\$43	\$33	\$29	\$26	
	10yr ave.			\$104		\$94		\$77		\$65	\$62	\$60	\$59	\$56	\$50	\$46	\$38	\$33	\$30	
85%	Current	\$120	\$110	\$97	\$94	\$89	\$86	\$80	\$74	\$71	\$69	\$69	\$68	\$63	\$53	\$46	\$35	\$31	\$28	
	10yr ave.			\$111		\$100		\$82		\$69	\$66	\$64	\$62	\$60	\$54	\$49	\$40	\$35	\$32	

The above shows estimated returns per head for skirted fleece wool. These figures do not take into account the value of skirtings and oddments and do not take into account discounts that may apply for faults under individual circumstances. These figures are based on a market index of 100% and should be used as a guide only. Returns over \$30 / head for fleece wool are highlighted.

Source: Australian Wool Exchange, Australian Wool Innovation, Sydney Futures Exchange, x-rates.com

Disclaimer: While all due care has been taken in the preparation of this document, no warranty is made as to its accuracy, reliability or completeness. To the extent permitted by law neither Jemalong or their sources including subsidiaries and staff, accept liability to any person for loss or damage arising from the use of this information.



Table 20: Returns pr head for skirted fleece wool.

Skirted FLC Weight 2 Kg			Micron																	
			16	16.5	17	17.5	18	18.5	19	19.5	20	21	22	23	24	25	26	28	30	32
Yield (Sch Dry)	25%	Current	\$35	\$32	\$29	\$28	\$26	\$25	\$24	\$22	\$21	\$20	\$20	\$20	\$19	\$16	\$14	\$10	\$9	\$8
		10yr ave.			\$33		\$29		\$24		\$20	\$19	\$19	\$18	\$18	\$16	\$14	\$12	\$10	\$9
	30%	Current	\$42	\$39	\$34	\$33	\$32	\$30	\$28	\$26	\$25	\$24	\$24	\$24	\$22	\$19	\$16	\$12	\$11	\$10
		10yr ave.			\$39		\$35		\$29		\$25	\$23	\$23	\$22	\$21	\$19	\$17	\$14	\$12	\$11
	35%	Current	\$49	\$45	\$40	\$39	\$37	\$35	\$33	\$30	\$29	\$29	\$28	\$28	\$26	\$22	\$19	\$14	\$13	\$11
		10yr ave.			\$46		\$41		\$34		\$29	\$27	\$26	\$26	\$25	\$22	\$20	\$16	\$14	\$13
	40%	Current	\$57	\$52	\$46	\$44	\$42	\$41	\$38	\$35	\$33	\$33	\$32	\$32	\$30	\$25	\$22	\$16	\$15	\$13
		10yr ave.			\$52		\$47		\$38		\$33	\$31	\$30	\$29	\$28	\$25	\$23	\$19	\$16	\$15
	45%	Current	\$64	\$58	\$51	\$50	\$47	\$46	\$42	\$39	\$38	\$37	\$36	\$36	\$34	\$28	\$24	\$19	\$16	\$15
		10yr ave.			\$59		\$53		\$43		\$37	\$35	\$34	\$33	\$32	\$28	\$26	\$21	\$18	\$17
	50%	Current	\$71	\$65	\$57	\$55	\$53	\$51	\$47	\$43	\$42	\$41	\$40	\$40	\$37	\$31	\$27	\$21	\$18	\$16
		10yr ave.			\$65		\$59		\$48		\$41	\$39	\$38	\$37	\$35	\$32	\$29	\$23	\$20	\$19
	55%	Current	\$78	\$71	\$63	\$61	\$58	\$56	\$52	\$48	\$46	\$45	\$44	\$44	\$41	\$34	\$30	\$23	\$20	\$18
		10yr ave.			\$72		\$64		\$53		\$45	\$43	\$41	\$40	\$39	\$35	\$32	\$26	\$23	\$20
	60%	Current	\$85	\$78	\$69	\$66	\$63	\$61	\$57	\$52	\$50	\$49	\$48	\$48	\$45	\$38	\$32	\$25	\$22	\$19
		10yr ave.			\$78		\$70		\$58		\$49	\$46	\$45	\$44	\$42	\$38	\$35	\$28	\$25	\$22
65%	Current	\$92	\$84	\$74	\$72	\$68	\$66	\$61	\$57	\$54	\$53	\$52	\$52	\$48	\$41	\$35	\$27	\$24	\$21	
	10yr ave.			\$85		\$76		\$63		\$53	\$50	\$49	\$48	\$46	\$41	\$38	\$30	\$27	\$24	
70%	Current	\$99	\$91	\$80	\$77	\$74	\$71	\$66	\$61	\$58	\$57	\$57	\$56	\$52	\$44	\$38	\$29	\$26	\$23	
	10yr ave.			\$91		\$82		\$67		\$57	\$54	\$53	\$51	\$49	\$44	\$41	\$33	\$29	\$26	
75%	Current	\$106	\$97	\$86	\$83	\$79	\$76	\$71	\$65	\$63	\$61	\$61	\$60	\$56	\$47	\$41	\$31	\$27	\$24	
	10yr ave.			\$98		\$88		\$72		\$61	\$58	\$56	\$55	\$53	\$47	\$43	\$35	\$31	\$28	
80%	Current	\$113	\$104	\$91	\$89	\$84	\$81	\$75	\$70	\$67	\$65	\$65	\$64	\$60	\$50	\$43	\$33	\$29	\$26	
	10yr ave.			\$104		\$94		\$77		\$65	\$62	\$60	\$59	\$56	\$50	\$46	\$38	\$33	\$30	
85%	Current	\$120	\$110	\$97	\$94	\$89	\$86	\$80	\$74	\$71	\$69	\$69	\$68	\$63	\$53	\$46	\$35	\$31	\$28	
	10yr ave.			\$111		\$100		\$82		\$69	\$66	\$64	\$62	\$60	\$54	\$49	\$40	\$35	\$32	

The above shows estimated returns per head for skirted fleece wool. These figures do not take into account the value of skirtings and oddments and do not take into account discounts that may apply for faults under individual circumstances. These figures are based on a market index of 100% and should be used as a guide only. Returns over \$30 / head for fleece wool are highlighted.

Source: Australian Wool Exchange, Australian Wool Innovation, Sydney Futures Exchange, x-rates.com

Disclaimer: While all due care has been taken in the preparation of this document, no warranty is made as to its accuracy, reliability or completeness. To the extent permitted by law neither Jemalong or their sources including subsidiaries and staff, accept liability to any person for loss or damage arising from the use of this information.