



# JEMALONG WOOL BULLETIN

(week ending 20/09/2013)

Page 1/21

**Table 1: Northern Region Micron Price Guides**

WEEK 12			12 MONTH COMPARISONS								3 YEAR COMPARISONS						*10 YEAR COMPARISONS					
Mic.	19/09/2013	12/09/2013	19/09/2012	Now		Now		Now				Now		Percentile	* 16-17.5um since Aug 05			Now		Percentile		
Price	Current	Weekly	This time	compared	12 Month	compared	12 Month	compared			compared		Low		High	Average	compared	*10 year	compared			
Guides	Price	Change	Last Year	to Last Year	Low	to Low	High	to High	Low	High	Average	to 3yr ave		Low	High	Average	to *10yr ave					
NRI	1094	-24 -2.2%	967	+127 13%	954	+140 15%	1158	-64 -6%	935	1491	1166	-72 -6%	39%	657	1491	931	+163 18%	83%				
16*	1650	0	1570	+80 5%	1540	+110 7%	1810	-160 -9%	1540	2800	2036	-386 -19%	21%	1390	2800	1750	-100 -6%	57%				
16.5*	1520	-30 -2.0%	1415	+105 7%	1400	+120 9%	1660	-140 -8%	1400	2680	1875	-355 -19%	24%	1280	2680	1604	-84 -5%	61%				
17*	1390	-20 -1.4%	1305	+85 7%	1250	+140 11%	1530	-140 -9%	1285	2530	1717	-327 -19%	24%	1100	2530	1442	-52 -4%	59%				
17.5*	1340	-15 -1.1%	1260	+80 6%	1200	+140 12%	1465	-125 -9%	1230	2360	1617	-277 -17%	29%	1020	2360	1382	-42 -3%	58%				
18	1274	-26 -2.0%	1187	+87 7%	1153	+121 10%	1416	-142 -10%	1158	2193	1525	-251 -16%	23%	916	2193	1248	+26 2%	66%				
18.5	1233	-31 -2.5%	1150	+83 7%	1122	+111 10%	1378	-145 -11%	1125	1963	1442	-209 -14%	23%	843	1963	1183	+50 4%	66%				
19	1211	-28 -2.3%	1119	+92 8%	1096	+115 10%	1348	-137 -10%	1086	1776	1365	-154 -11%	26%	803	1776	1113	+98 9%	74%				
19.5	1190	-24 -2.0%	1091	+99 9%	1073	+117 11%	1310	-120 -9%	1002	1670	1295	-105 -8%	32%	749	1670	1047	+143 14%	79%				
20	1163	-24 -2.1%	1078	+85 8%	1054	+109 10%	1270	-107 -8%	962	1588	1238	-75 -6%	33%	700	1588	989	+174 18%	80%				
21	1146	-28 -2.4%	1071	+75 7%	1036	+110 11%	1252	-106 -8%	942	1522	1208	-62 -5%	34%	668	1522	946	+200 21%	81%				
22	1132	-29 -2.6%	1046	+86 8%	1015	+117 12%	1234	-102 -8%	905	1461	1173	-41 -3%	34%	659	1461	916	+216 24%	81%				
23	1124	-44 -3.9%	1016	+108 11%	1002	+122 12%	1213	-89 -7%	872	1347	1129	-5 0%	42%	651	1347	886	+238 27%	83%				
24	1099	-29 -2.6%	964	+135 14%	940	+159 17%	1140	-41 -4%	803	1213	1032	+67 6%	74%	638	1213	828	+271 33%	92%				
25	943	-14 -1.5%	891	+52 6%	840	+103 12%	957	-14 -1%	738	1049	907	+36 4%	69%	566	1049	729	+214 29%	91%				
26	843	-30 -3.6%	803	+40 5%	753	+90 12%	887	-44 -5%	634	939	808	+35 4%	68%	532	939	660	+183 28%	91%				
28	659	-18 -2.7%	565	+94 17%	565	+94 17%	689	-30 -4%	450	734	615	+44 7%	78%	424	734	517	+142 27%	94%				
30	632	-18 -2.8%	549	+83 15%	526	+106 20%	650	-18 -3%	398	670	564	+68 12%	90%	343	670	459	+173 38%	97%				
32	527	-18 -3.4%	468	+59 13%	463	+64 14%	545	-18 -3%	356	638	498	+29 6%	72%	297	638	408	+119 29%	92%				
MC	834	-32 -3.8%	572	+262 46%	572	+262 46%	874	-40 -5%	532	874	709	+125 18%	96%	380	874	548	+286 52%	98%				
BALES OFFERED		47,476	* Due to the irregular market quoting for some fine wool categories, figures shown relating to micron categories below 18 micron are an estimate based on the																			
BALES SOLD		42,028	AWEX Premium & Discounts Report & other available information.																			
PASSED-IN%		11.5%	* For any category, where there is insufficient quantity offered to enable AWEX to quote, a quote will be provided based on the best available information.																			
AUD/USD		0.95089	* 10 Year data is not available for 16 to 17.5 microns, therefore 10 year statistics for those micron categories only date back as far as August 2005.																			

Source: Australian Wool Exchange, Australian Wool Innovation, Riemann, x-rates.com, Reserve Bank of Australia, Australian Wool Testing Authority.

Disclaimer: Jemalong Wool Pty Ltd make no representations about the content and suitability of the information contained in this report. Specifically, Jemalong Wool does not warrant, guarantee or make any representations regarding the correctness, accuracy, reliability, currency, or any other aspect regarding characteristics or use of information presented in these materials. The user accepts sole responsibility and risk associated with the use and results of these materials, irrespective of the purpose of which such use or results are applied. In no event shall Jemalong Wool be liable for any loss or damages (including without limitation special, or consequential damages), where in an action of contract, negligence,



## MARKET COMMENTARY

This week saw another large offering presented for sale, with 47,476 bales catalogued. Like last week, the increased volume was a reaction to the bullish market conditions that were experienced a fortnight earlier. Unfortunately the market continued to ease, but to a lesser extent than the correction of the previous week.

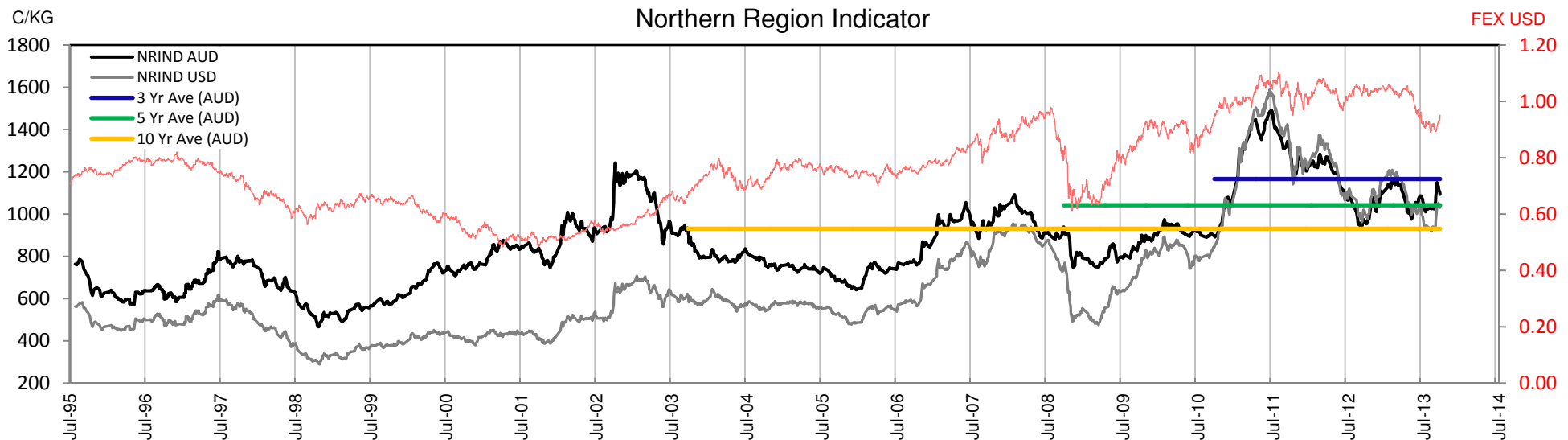
The weaker market was however met with some seller resistance. Over 4% of the catalogue was withdrawn prior to sale, while 11.5% was passed in over the course of the two days.

Compared to last season, an additional 30,000 bales are forecast to come onto the market over the next three weeks, which could put further pressure on price. The strengthening AUD may also inhibit new business in the short term, and may have hurt some exporters this week due to the unexpected sharp rise. With September / October shipment reported to be well covered, the urgency to fill orders appears to have diminished and as a result the strengthening AUD is unlikely to force the market up in the short term, unless some fresh business is written.

This week's Northern Region market was generally 20-30 cents cheaper across the board, however for the majority of buyer's trading in USD, the market was actually 5-10 cents dearer.

Year to date auction figures show we have sold ~20,000 bales more this season, than we had for the same period in 2012/13. AWTA's (August) test data showed tested volumes were down 5% Y.O.Y. And on a similar note, the Australian Wool Production Forecasting Committee has also slightly lowered the production forecast for 2013/14, due to the adverse seasonal conditions impacting sheep numbers and fleece weights. With little stock being held throughout the pipe line, supply will likely become an issue at some point in the coming months, should demand pick up.

The forward market was also quieter this week; however 30,000kg did sell on Riemann (since last Thursdays close), with 21 micron for October at 1155 c/kg and for November at 1180 c/kg.





**Table 2: Three Year Decile Table, since: 1/09/2010**

Decile %	16	16.5	17	17.5	18	18.5	19	19.5	20	21	22	23	24	25	26	28	30	32	MC
1 10%	1600	1442	1311	1265	1201	1163	1126	1096	1055	1045	1028	1005	945	814	742	550	501	425	599
2 20%	1650	1500	1368	1302	1253	1217	1183	1137	1093	1088	1070	1047	980	873	761	579	531	466	628
3 30%	1700	1550	1415	1350	1311	1275	1237	1174	1142	1131	1101	1074	996	890	794	597	550	479	679
4 40%	1800	1605	1469	1405	1363	1324	1290	1255	1203	1176	1158	1111	1022	899	806	618	566	488	702
5 50%	1980	1830	1610	1530	1460	1400	1331	1291	1244	1226	1195	1151	1045	907	818	627	580	495	726
6 60%	2050	1890	1701	1600	1531	1467	1413	1359	1296	1256	1220	1183	1067	918	828	639	583	503	736
7 70%	2150	1950	1782	1680	1591	1505	1462	1404	1350	1308	1256	1198	1093	949	849	648	595	518	750
8 80%	2600	2450	2250	2050	1847	1687	1575	1448	1380	1331	1287	1235	1112	971	867	663	615	558	771
9 90%	2750	2600	2420	2268	2073	1868	1663	1500	1406	1363	1319	1271	1145	1000	892	688	632	581	819
10 100%	2800	2680	2530	2360	2193	1963	1776	1670	1588	1522	1461	1347	1213	1049	939	734	670	638	874
MPG	1650	1520	1390	1340	1274	1233	1211	1190	1163	1146	1132	1124	1099	943	843	659	632	527	834
3 Yr Percentile	21%	24%	24%	29%	23%	23%	26%	32%	33%	34%	34%	42%	74%	69%	68%	78%	90%	72%	96%

**Table 3: Ten Year Decile Table, since: 1/09/2003**

Decile %	16	16.5	17	17.5	18	18.5	19	19.5	20	21	22	23	24	25	26	28	30	32	MC
1 10%	1480	1350	1187	1141	999	963	914	850	788	738	710	691	667	596	556	445	377	326	408
2 20%	1530	1400	1235	1175	1043	1000	941	879	824	760	730	705	678	627	573	457	398	349	430
3 30%	1560	1415	1261	1200	1083	1032	971	911	853	804	775	750	709	645	588	467	410	361	442
4 40%	1600	1450	1300	1250	1135	1073	1013	952	891	852	828	806	760	661	601	474	425	381	461
5 50%	1620	1480	1340	1300	1180	1132	1065	984	926	893	867	842	800	684	618	483	432	394	517
6 60%	1670	1515	1400	1350	1236	1178	1108	1047	989	959	924	894	827	705	639	498	439	403	575
7 70%	1750	1600	1445	1420	1320	1260	1176	1116	1071	1011	964	930	859	744	664	539	473	428	617
8 80%	1950	1776	1570	1506	1403	1323	1264	1193	1148	1126	1094	1071	996	889	792	596	549	478	679
9 90%	2150	1950	1770	1680	1555	1484	1431	1386	1328	1284	1231	1189	1079	926	834	643	590	512	743
10 100%	2800	2680	2530	2360	2193	1963	1776	1670	1588	1522	1461	1347	1213	1049	939	734	670	638	874
MPG	1650	1520	1390	1340	1274	1233	1211	1190	1163	1146	1132	1124	1099	943	843	659	632	527	834
3 Yr Percentile	21%	24%	24%	29%	23%	23%	26%	32%	33%	34%	34%	42%	74%	69%	68%	78%	90%	72%	96%

**Decile Tables are a useful tool for working out price targets.**

**Percentiles are a more accurate guide to where the market is currently trading (The higher the percentile, the stronger the market).**

**Definitions:**

\* A Percentile, is a value on a scale of one hundred that indicates the percent of a distribution that is equal to or below it. In general a percentile between 25% and 75% is considered normal, a percentile below 25% is considered below normal and a percentile above 75% is considered above normal.

Three and ten year percentiles shown on the bottom line of table 2 & 3 (above) and in table 1 (on page 1), detail the amount of time during the past 3 & 10 years where the market has traded either at or below its current price.

\* Deciles are a method of sorting ranked data into 10 equal groups. The data may be ranked from largest to smallest or vice versa.

The above Decile tables sort price Percentiles into 10 equal groups (in ascending order), with table 2 ranking the previous 3 years prices, while table 3 ranks prices over the previous 10 year

**Example:** In Table 2, a Decile Rank of 6 for 19 microns, shows 19 microns have traded at or below 1413 for 60% of the time, over the past three years.

In Table 3, a Decile Rank of 6 for 19 microns, shows 19 microns have traded at or below 1108 for 60% of the time, over the past ten years.



# JEMALONG WOOL BULLETIN

(week ending 20/09/2013)

**Table 4: Riemann Forwards, latest trades as at: Wednesday 18/9/2013 14:56** Any highlighted in yellow are recent trades, trading since: **Friday, 13 September 2013**

CONTRACT MICRON		18.5um	19um	19.5um	21um	22um	23um	28um	30um
CONTRACT MONTH	Sep-2013	30/08/13 1230	28/08/13 1160	29/08/13 1180	5/09/13 1210	30/08/13 1130	29/08/13 1110		
	Oct-2013		11/09/13 1235	4/09/13 1240	13/09/13 1155	5/03/13 1150	3/09/13 1150		
	Nov-2013		5/03/13 1310		18/09/13 1180				12/06/13 550
	Dec-2013		30/01/13 1320	2/09/13 1180	6/09/13 1180	29/01/13 1150			
	Jan-2014		30/01/13 1280		9/09/13 1185			29/08/13 630	
	Feb-2014		18/12/12 1250		30/08/13 1150				
	Mar-2014				30/08/13 1150				
	Apr-2014				6/09/13 1160				
	May-2014				3/09/13 1160				
	Jun-2014				3/09/13 1150				
	Jul-2014								
	Aug-2014								
	Sep-2014								
	Oct-2014				12/04/13 1050				
	Nov-2014								
	Dec-2014								
	Jan-2015								
	Feb-2015								
	Mar-2015								
	Apr-2015								
	May-2015								
	Jun-2015								
	Jul-2015								

Explanatory Notes: Prices quoted reflect the most recent trades, at time of print.

Disclaimer: While all due care has been taken in the preparation of this document, no warranty is made as to its accuracy, reliability or completeness. To the extent permitted by law neither Jemalong or their sources including subsidiaries and staff, accept liability to any person for loss or damage arising from the use of this information.



# JEMALONG WOOL BULLETIN

(week ending 20/09/2013)

Table 5: National Market Share

	Rank	Current Selling Week Week 12			Previous Selling Week Week 11			Last Season 2012-13			2 Years Ago 2011-12			3 Years Ago 2010-11			5 Years Ago 2008-09			10 Years Ago 2003-04		
		Buyer	Bales	MS%	Buyer	Bales	MS%	Buyer	Bales	MS%	Buyer	Bales	MS%	Buyer	Bales	MS%	Buyer	Bales	MS%	Buyer	Bales	MS%
Top 10, Auction Buyers	1	TECM	4,343	10%	TECM	4,069	10%	TECM	179,176	10%	VTRA	229,207	14%	VTRA	209,391	12%	TECM	207,010	12%	ITOS	235,726	11%
	2	AMEM	3,995	10%	AMEM	3,495	9%	VTRA	163,810	9%	TECM	153,616	9%	TECM	179,439	10%	FOXM	127,295	7%	BWEA	158,769	7%
	3	LEMM	2,935	7%	TIAM	3,247	8%	FOXM	143,826	8%	FOXM	136,698	8%	FOXM	142,143	8%	ABB	120,742	7%	PLEX	151,168	7%
	4	CTXS	2,761	7%	LEMM	3,163	8%	LEMM	126,564	7%	QCTB	112,745	7%	QCTB	120,699	7%	WIEM	111,432	6%	LEMM	127,649	6%
	5	PMWF	2,495	6%	CTXS	2,928	7%	QCTB	98,756	6%	WIEM	100,817	6%	WIEM	99,585	6%	LEMM	103,040	6%	RWRS	126,145	6%
	6	QCTB	2,382	6%	MODM	2,310	6%	PMWF	96,935	6%	LEMM	88,348	5%	LEMM	85,346	5%	KATS	99,613	6%	MODM	121,461	6%
	7	FOXM	2,317	6%	FOXM	2,229	5%	MODM	84,363	5%	MODM	74,646	4%	MODM	81,981	5%	PMWF	80,995	5%	ADSS	120,262	6%
	8	TIAM	2,168	5%	QCTB	1,983	5%	CTXS	82,166	5%	CTXS	69,266	4%	PMWF	77,588	4%	RWRS	63,736	4%	FOXM	84,578	4%
	9	GSAS	1,789	4%	PMWF	1,957	5%	AMEM	77,849	4%	PMWF	64,659	4%	CTXS	75,127	4%	BWEA	61,930	4%	GSAS	83,137	4%
	10	MODM	1,729	4%	VWPM	1,933	5%	KATS	65,782	4%	GSAS	58,233	3%	KATS	67,867	4%	PLEX	60,943	3%	TECM	80,168	4%
MFLC TOP 5	1	AMEM	2,810	11%	LEMM	2,840	11%	VTRA	118,432	12%	VTRA	171,425	19%	VTRA	169,191	17%	ABB	103,759	10%	ITOS	195,318	15%
	2	LEMM	2,592	10%	TECM	2,435	10%	LEMM	110,118	11%	QCTB	86,901	10%	QCTB	98,673	10%	TECM	87,221	9%	ADSS	107,535	8%
	3	TECM	2,370	9%	CTXS	2,407	10%	PMWF	93,136	10%	TECM	76,083	8%	TECM	79,395	8%	LEMM	84,758	8%	BWEA	95,591	7%
	4	PMWF	2,082	8%	AMEM	1,849	7%	TECM	89,286	9%	LEMM	68,961	8%	PMWF	71,718	7%	PMWF	76,778	8%	LEMM	90,541	7%
	5	CTXS	1,833	7%	TIAM	1,752	7%	QCTB	71,715	7%	PMWF	60,070	7%	LEMM	70,280	7%	KATS	76,726	8%	RWRS	82,647	6%
MSKT TOP 5	1	TECM	1,209	17%	TIAM	1,476	19%	MODM	37,284	14%	WIEM	43,156	16%	MODM	39,745	14%	PLEX	37,871	13%	PLEX	63,186	17%
	2	TIAM	972	14%	TECM	963	13%	TECM	34,301	13%	MODM	30,285	11%	WIEM	36,566	13%	WIEM	33,859	12%	MODM	47,008	13%
	3	AMEM	812	11%	AMEM	954	12%	WIEM	27,916	10%	TECM	25,264	9%	TECM	28,858	10%	MODM	28,540	10%	GSAS	36,194	10%
	4	WCWF	477	7%	WCWF	686	9%	TIAM	24,196	9%	PLEX	21,990	8%	PLEX	23,282	8%	FOXM	18,936	7%	BWEA	32,347	9%
	5	MODM	408	6%	MODM	582	8%	AMEM	23,012	8%	GSAS	16,284	6%	FOXM	16,098	6%	GSAS	18,523	6%	LEMM	28,595	8%
XBFS TOP 5	1	CTXS	928	20%	AMEM	546	13%	FOXM	39,356	14%	FOXM	41,689	15%	FOXM	48,708	19%	TECM	87,455	38%	BWEA	26,673	14%
	2	QCTB	697	15%	CTXS	521	13%	TECM	30,323	11%	VTRA	31,427	12%	TECM	43,133	17%	FOXM	42,053	18%	FOXM	25,096	13%
	3	KATS	415	9%	TECM	427	10%	VTRA	27,832	10%	TECM	31,094	11%	VTRA	20,904	8%	KATS	13,002	6%	TECM	20,352	11%
	4	TECM	361	8%	QCTB	390	10%	KATS	26,057	9%	QCTB	22,610	8%	MODM	20,556	8%	WCWF	11,989	5%	ITOS	15,082	8%
	5	MAFM	350	7%	FOXM	359	9%	CTXS	25,631	9%	CTXS	19,985	7%	CTXS	16,667	7%	MOPS	11,051	5%	MODM	12,658	7%
ODDS TOP 5	1	MCHA	1,065	25%	MCHA	806	20%	MCHA	35,985	16%	FOXM	34,603	15%	MCHA	30,570	13%	MCHA	36,454	17%	MCHA	50,531	20%
	2	VWPM	457	11%	VWPM	545	13%	FOXM	28,185	12%	MCHA	30,689	13%	TECM	28,053	12%	FOXM	24,114	11%	FOXM	37,097	15%
	3	TECM	403	9%	FOXM	384	9%	TECM	25,266	11%	VWPM	22,219	10%	FOXM	27,422	12%	MAFM	18,568	8%	MAFM	20,235	8%
	4	FOXM	394	9%	RWRS	373	9%	VWPM	20,692	9%	VTRA	21,495	9%	VWPM	22,267	10%	TECM	17,571	8%	RWRS	11,904	5%
	5	RWRS	394	9%	TECM	244	6%	VTRA	13,022	6%	TECM	21,175	9%	RWRS	15,878	7%	RWRS	16,248	7%	ITOS	9,637	4%
Totals		<u>Offered</u>	<u>Sold</u>		<u>Offered</u>	<u>Sold</u>		<u>Auction Bales Sold</u>			<u>Auction Bales Sold</u>			<u>Auction Bales Sold</u>			<u>Auction Bales Sold</u>			<u>Auction Bales Sold</u>		
		47,476	42,028		48,862	40,591		1,742,881			1,683,024			1,786,249			1,755,070			2,130,684		
		<u>Passed-In</u>	<u>PI%</u>		<u>Passed-In</u>	<u>PI%</u>		<u>Export Value</u>			<u>Export Value</u>			<u>Export Value</u>			<u>Export Value</u>			<u>Export Value</u>		
		5,448	11.5%		8,271	16.9%		\$2,272,770,228			\$2,691,010,531			\$2,619,977,188			\$2,008,440,340			\$2,487,625,451		



# JEMALONG WOOL BULLETIN

(week ending 20/09/2013)

Page 6/21

Table 6: NSW Production Statistics

2012-13		Auction		+/-		+/-	Yield %	+/-	Length	+/-	Strength	+/-	Ave Price
Statistical Devision, Area Code & Towns		Bales (FH)	Micron	YoY	Vmb %	YoY	Sch Dry	YoY	mm	YoY	Nkt	YoY	c/kg
Northern	N02 Tenterfield, Glen Innes	9,672	19.5	-0.6	1.8	-0.7	72.7	1.6	81	-0.7	41	0.4	829
	N03 Guyra	36,328	18.9	-0.1	1.8	-0.5	73.7	1.5	81	-0.9	42	1.0	948
	N04 Inverell	4,372	19.1	0.2	3.4	-1.3	69.7	0.7	83	-1.6	38	-0.6	759
	N05 Armidale	1,984	19.9	0.1	3.9	-0.7	69.4	1.5	82	-1.2	38	-0.5	710
	N06 Tamworth, Gunnedah, Quirindi	6,492	20.5	0.1	4.0	-0.7	68.5	1.1	84	-0.2	38	-0.7	708
	N07 Moree	6,363	20.0	-0.1	4.2	-1.2	64.5	0.7	87	-1.9	36	0.8	619
	N08 Narrabri	3,263	19.9	0.1	3.6	-1.3	67.3	2.0	88	-0.2	39	1.9	621
North Western & Far West	N09 Cobar, Bourke, Wanaaring	12,329	20.5	-0.2	4.3	-0.8	60.7	0.0	88	0.2	37	0.2	591
	N12 Walgett	8,512	19.9	-0.3	4.3	-1.8	64.1	1.8	86	0.1	37	1.8	616
	N13 Nyngan	18,905	20.5	-0.1	4.9	-2.0	63.7	2.3	88	0.0	37	1.1	597
	N14 Dubbo, Narromine	21,765	21.6	0.0	4.3	-1.0	63.1	1.1	85	0.0	36	0.4	539
	N16 Dunedoo	6,893	20.0	0.0	3.4	-0.2	67.8	-0.6	88	-0.4	34	0.2	678
	N17 Mudgee, Wellington, Gulgong	20,969	19.7	-0.1	3.4	-0.3	68.3	0.4	83	0.2	38	0.7	728
	N33 Coonabarabran	3,677	20.9	0.1	4.6	0.1	67.0	0.4	85	1.7	34	-1.6	611
	N34 Coonamble	8,142	20.4	-0.1	4.4	-2.4	63.4	1.5	87	2.7	35	0.9	605
	N36 Gilgandra, Gulgargambone	6,030	21.5	-0.1	3.9	-0.7	65.0	0.3	86	-0.3	36	0.3	580
	N40 Brewarrina	7,487	20.2	0.0	2.3	-0.9	66.6	1.8	86	-1.7	39	4.0	688
	N10 Wilcannia, Broken Hill	25,295	21.3	-0.5	2.8	-0.9	61.1	-0.2	89	-1.4	37	1.1	595
Central West	N15 Forbes, Parkes, Cowra	47,591	21.5	0.0	3.3	-0.8	64.1	0.6	86	-0.2	36	0.1	570
	N18 Lithgow, Oberon	3,402	20.7	-0.2	3.3	-0.3	68.0	0.0	83	1.1	38	0.3	672
	N19 Orange, Bathurst	50,922	22.1	-0.2	2.3	-0.5	69.4	1.0	85	0.3	38	1.4	646
	N25 West Wyalong	25,261	21.0	-0.3	2.9	-0.6	63.4	-0.6	89	-0.5	36	0.8	592
	N35 Condobolin, Lake Cargelligo	10,701	21.0	-0.3	5.3	-1.1	60.1	-9.8	86	0.2	36	-0.8	535
Murrumbidgee	N26 Cootamundra, Temora	26,106	22.1	-0.1	2.1	-0.5	64.1	-0.3	86	-0.8	35	0.6	568
	N27 Adelong, Gundagai	10,213	21.6	-0.5	2.7	-1.0	68.1	0.4	88	0.6	36	0.2	616
	N29 Wagga, Narrandera	32,841	22.7	-0.1	1.6	-0.6	66.2	-0.9	90	0.3	36	1.3	572
	N37 Griffith, Hillston	12,036	22.0	-0.2	4.1	-0.9	61.1	-1.3	84	-2.2	40	1.3	545
	N39 Hay, Coleambally	17,044	21.3	-0.1	3.4	-1.9	64.0	0.1	90	2.4	39	-0.9	614
Murray	N11 Wentworth, Balranald	17,328	21.7	-0.3	4.8	-2.0	60.9	0.9	92	1.5	38	0.3	555
	N28 Albury, Corowa, Holbrook	28,883	21.9	-0.3	1.5	-0.3	67.0	-0.6	89	-0.1	37	1.8	613
	N31 Deniliquin	23,340	21.3	-0.1	2.5	-1.1	65.7	-0.1	88	0.4	39	1.2	622
	N38 Finley, Berrigan, Jerilderie	9,124	21.0	-0.3	2.5	-0.9	65.2	-0.3	88	-1.5	39	1.1	630
South Eastern	N23 Goulburn, Young, Yass	94,784	20.1	-0.1	1.7	-0.7	69.5	0.7	86	0.3	38	1.7	714
	N24 Monaro (Cooma, Bombala)	37,228	20.3	-0.2	1.9	-0.5	69.6	1.5	90	0.5	37	1.5	666
	N32 A.C.T.	183	20.4	0.7	3.1	-1.6	61.7	-2.5	89	9.0	31	-3.0	594
	N43 South Coast (Bega)	409	19.2	0.3	0.8	-1.8	74.3	3.9	84	3.3	42	2.9	862
NSW	AWEX Sale Statistics 12-13	685,519	21.0	-0.1	2.8	-0.8	66.4	0.6	87	0.1	38	1.0	658

AWTA Monthly Key Test Data		Bales Tested	Micron	+/- MoM	VMB	+/- MoM	Yld	+/- MoM	Lth	+/- MoM	Nkt	+/- MoM	POBM +/-
NSW	Aug-2013	53,755	20.1	-1.0	4.8	-1.0	64.6	-0.5	86	-1.1	38	-0.1	52 9.8
Australia	Aug-2013	153,490	20.4	-0.8	2.1	-0.6	64.4	-0.7	88	1.0	35	-0.5	49 4.9

MAX MIN Max Gain Max Reduction

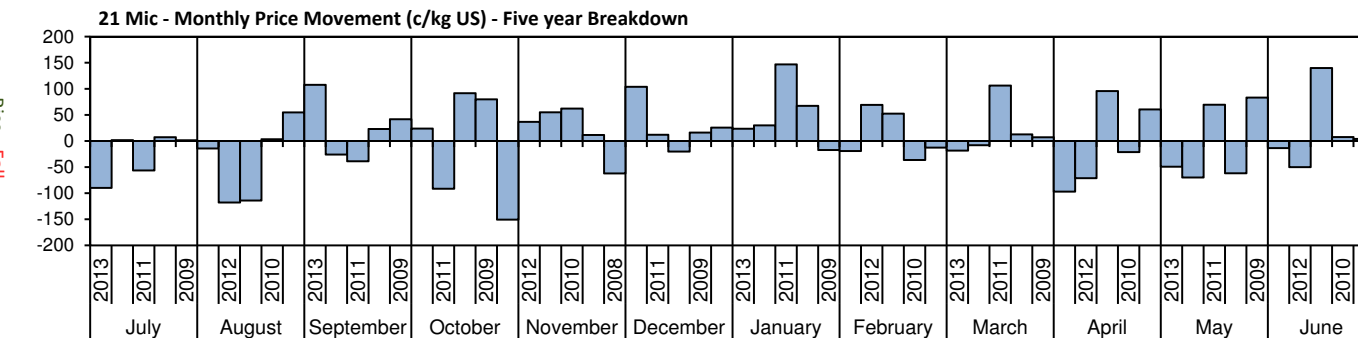
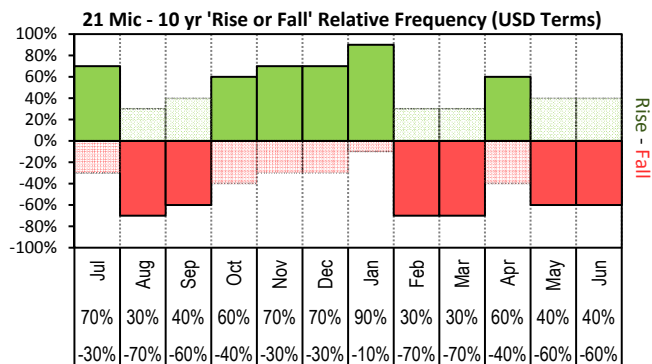




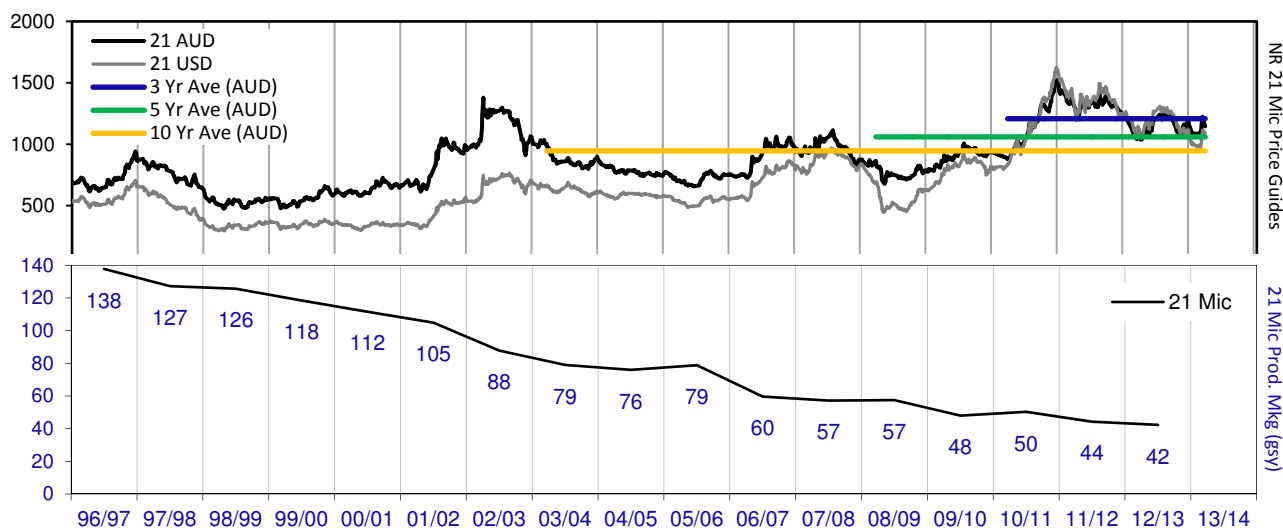
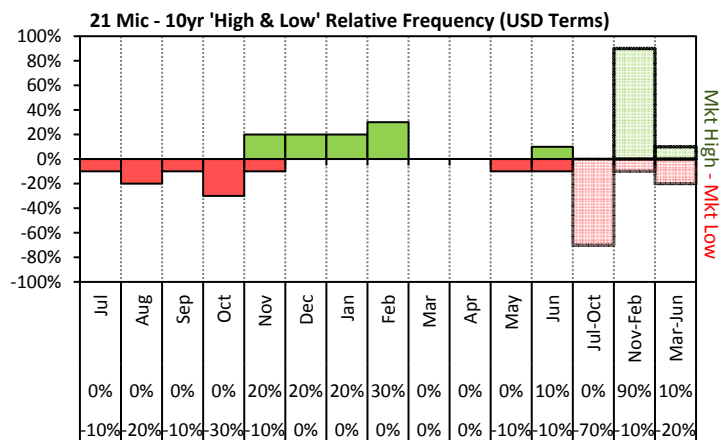
# JEMALONG WOOL BULLETIN

(week ending 20/09/2013)

Page 7/21



The above 'Rise or Fall' graph, shows how often the market has risen or fallen in a given month over the past 10 years, it does not show the extent of the movement only the frequency of direction. The 'Monthly Price Movement' graph shows the extent of movement for each month, for the past 5 years.



The above graph, shows how often the '12 month high & low' have been achieved for a given month over the past 10 years. It is not a measure of probability.

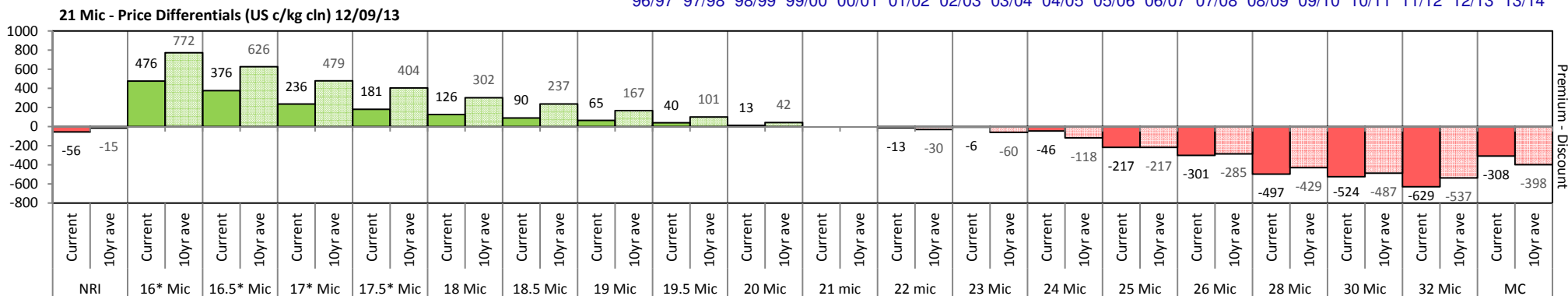




Table 7: Returns pr head for skirted fleece wool.

Skirted FLC Weight 9 Kg		Micron																	
		16	16.5	17	17.5	18	18.5	19	19.5	20	21	22	23	24	25	26	28	30	32
Yield (Sch Dry)	25% Current	\$34	\$32	\$30	\$29	\$27	\$25	\$23	\$21	\$18	\$17	\$16	\$16	\$16	\$13	\$13	\$10	\$10	\$8
	10yr ave.	\$39	\$36	\$32	\$31	\$28	\$27	\$25	\$24	\$22	\$21	\$21	\$20	\$19	\$16	\$15	\$12	\$10	\$9
	30% Current	\$41	\$38	\$36	\$35	\$32	\$30	\$28	\$25	\$22	\$20	\$20	\$19	\$19	\$16	\$15	\$12	\$12	\$10
	10yr ave.	\$47	\$43	\$39	\$37	\$34	\$32	\$30	\$28	\$27	\$26	\$25	\$24	\$22	\$20	\$18	\$14	\$12	\$11
	35% Current	\$48	\$44	\$42	\$40	\$38	\$35	\$33	\$30	\$25	\$24	\$23	\$23	\$22	\$18	\$18	\$14	\$13	\$12
	10yr ave.	\$55	\$51	\$45	\$44	\$39	\$37	\$35	\$33	\$31	\$30	\$29	\$28	\$26	\$23	\$21	\$16	\$14	\$13
	40% Current	\$55	\$50	\$48	\$46	\$43	\$40	\$37	\$34	\$29	\$27	\$26	\$26	\$25	\$21	\$20	\$17	\$15	\$13
	10yr ave.	\$63	\$58	\$52	\$50	\$45	\$43	\$40	\$38	\$36	\$34	\$33	\$32	\$30	\$26	\$24	\$19	\$17	\$15
	45% Current	\$62	\$57	\$53	\$52	\$48	\$45	\$42	\$38	\$33	\$31	\$30	\$29	\$28	\$24	\$23	\$19	\$17	\$15
	10yr ave.	\$71	\$65	\$58	\$56	\$51	\$48	\$45	\$42	\$40	\$38	\$37	\$36	\$34	\$30	\$27	\$21	\$19	\$17
	50% Current	\$68	\$63	\$59	\$58	\$54	\$50	\$47	\$42	\$36	\$34	\$33	\$32	\$31	\$26	\$25	\$21	\$19	\$17
	10yr ave.	\$79	\$72	\$65	\$62	\$56	\$53	\$50	\$47	\$45	\$43	\$41	\$40	\$37	\$33	\$30	\$23	\$21	\$18
	55% Current	\$75	\$69	\$65	\$63	\$59	\$55	\$51	\$47	\$40	\$38	\$36	\$36	\$34	\$29	\$28	\$23	\$21	\$18
	10yr ave.	\$87	\$79	\$71	\$68	\$62	\$59	\$55	\$52	\$49	\$47	\$45	\$44	\$41	\$36	\$33	\$26	\$23	\$20
	60% Current	\$82	\$76	\$71	\$69	\$64	\$60	\$56	\$51	\$44	\$41	\$39	\$39	\$37	\$31	\$30	\$25	\$23	\$20
	10yr ave.	\$95	\$87	\$78	\$75	\$67	\$64	\$60	\$57	\$53	\$51	\$49	\$48	\$45	\$39	\$36	\$28	\$25	\$22
	65% Current	\$89	\$82	\$77	\$75	\$70	\$65	\$61	\$55	\$47	\$44	\$43	\$42	\$41	\$34	\$33	\$27	\$25	\$22
	10yr ave.	\$102	\$94	\$84	\$81	\$73	\$69	\$65	\$61	\$58	\$55	\$54	\$52	\$48	\$43	\$39	\$30	\$27	\$24
	70% Current	\$96	\$88	\$83	\$81	\$75	\$70	\$65	\$59	\$51	\$48	\$46	\$45	\$44	\$37	\$35	\$29	\$27	\$23
	10yr ave.	\$110	\$101	\$91	\$87	\$79	\$75	\$70	\$66	\$62	\$60	\$58	\$56	\$52	\$46	\$42	\$33	\$29	\$26
	75% Current	\$103	\$95	\$89	\$86	\$81	\$75	\$70	\$64	\$55	\$51	\$49	\$49	\$47	\$39	\$38	\$31	\$29	\$25
	10yr ave.	\$118	\$108	\$97	\$93	\$84	\$80	\$75	\$71	\$67	\$64	\$62	\$60	\$56	\$49	\$45	\$35	\$31	\$28
	80% Current	\$109	\$101	\$95	\$92	\$86	\$80	\$75	\$68	\$58	\$55	\$52	\$52	\$50	\$42	\$40	\$33	\$31	\$27
	10yr ave.	\$126	\$115	\$104	\$100	\$90	\$85	\$80	\$75	\$71	\$68	\$66	\$64	\$60	\$52	\$48	\$37	\$33	\$29
	85% Current	\$116	\$107	\$101	\$98	\$91	\$85	\$79	\$72	\$62	\$58	\$56	\$55	\$53	\$45	\$43	\$35	\$33	\$28
	10yr ave.	\$134	\$123	\$110	\$106	\$95	\$90	\$85	\$80	\$76	\$72	\$70	\$68	\$63	\$56	\$50	\$40	\$35	\$31

The above shows estimated returns per head for skirted fleece wool. These figures do not take into account the value of skirtings and oddments and do not take into account discounts that may apply for faults under individual circumstances. These figures are based on a market index of 100% and should be used as a guide only. Returns over \$30 / head for fleece wool are highlighted.





Table 8: Returns pr head for skirted fleece wool.

Skirted FLC Weight 8 Kg		Micron																	
		16	16.5	17	17.5	18	18.5	19	19.5	20	21	22	23	24	25	26	28	30	32
Yield (Sch Dry)	25% Current	\$30	\$28	\$26	\$26	\$24	\$22	\$21	\$19	\$16	\$15	\$15	\$14	\$14	\$12	\$11	\$9	\$9	\$7
	10yr ave.	\$35	\$32	\$29	\$28	\$25	\$24	\$22	\$21	\$20	\$19	\$18	\$18	\$17	\$15	\$13	\$10	\$9	\$8
	30% Current	\$36	\$34	\$32	\$31	\$29	\$27	\$25	\$23	\$19	\$18	\$17	\$17	\$17	\$14	\$13	\$11	\$10	\$9
	10yr ave.	\$42	\$38	\$35	\$33	\$30	\$28	\$27	\$25	\$24	\$23	\$22	\$21	\$20	\$17	\$16	\$12	\$11	\$10
	35% Current	\$43	\$39	\$37	\$36	\$33	\$31	\$29	\$26	\$23	\$21	\$20	\$20	\$19	\$16	\$16	\$13	\$12	\$10
	10yr ave.	\$49	\$45	\$40	\$39	\$35	\$33	\$31	\$29	\$28	\$26	\$26	\$25	\$23	\$20	\$18	\$14	\$13	\$11
	40% Current	\$49	\$45	\$42	\$41	\$38	\$36	\$33	\$30	\$26	\$24	\$23	\$23	\$22	\$19	\$18	\$15	\$14	\$12
	10yr ave.	\$56	\$51	\$46	\$44	\$40	\$38	\$36	\$34	\$32	\$30	\$29	\$28	\$26	\$23	\$21	\$17	\$15	\$13
	45% Current	\$55	\$50	\$48	\$46	\$43	\$40	\$37	\$34	\$29	\$27	\$26	\$26	\$25	\$21	\$20	\$17	\$15	\$13
	10yr ave.	\$63	\$58	\$52	\$50	\$45	\$43	\$40	\$38	\$36	\$34	\$33	\$32	\$30	\$26	\$24	\$19	\$17	\$15
	50% Current	\$61	\$56	\$53	\$51	\$48	\$45	\$42	\$38	\$32	\$30	\$29	\$29	\$28	\$23	\$22	\$18	\$17	\$15
	10yr ave.	\$70	\$64	\$58	\$55	\$50	\$47	\$45	\$42	\$40	\$38	\$37	\$35	\$33	\$29	\$26	\$21	\$18	\$16
	55% Current	\$67	\$62	\$58	\$56	\$53	\$49	\$46	\$41	\$36	\$33	\$32	\$32	\$31	\$26	\$25	\$20	\$19	\$16
	10yr ave.	\$77	\$71	\$63	\$61	\$55	\$52	\$49	\$46	\$44	\$42	\$40	\$39	\$36	\$32	\$29	\$23	\$20	\$18
	60% Current	\$73	\$67	\$63	\$61	\$57	\$54	\$50	\$45	\$39	\$36	\$35	\$35	\$33	\$28	\$27	\$22	\$20	\$18
	10yr ave.	\$84	\$77	\$69	\$66	\$60	\$57	\$53	\$50	\$47	\$45	\$44	\$43	\$40	\$35	\$32	\$25	\$22	\$20
	65% Current	\$79	\$73	\$69	\$67	\$62	\$58	\$54	\$49	\$42	\$39	\$38	\$38	\$36	\$30	\$29	\$24	\$22	\$19
	10yr ave.	\$91	\$83	\$75	\$72	\$65	\$62	\$58	\$54	\$51	\$49	\$48	\$46	\$43	\$38	\$34	\$27	\$24	\$21
	70% Current	\$85	\$78	\$74	\$72	\$67	\$62	\$58	\$53	\$45	\$43	\$41	\$40	\$39	\$33	\$31	\$26	\$24	\$21
	10yr ave.	\$98	\$90	\$81	\$77	\$70	\$66	\$62	\$59	\$55	\$53	\$51	\$50	\$46	\$41	\$37	\$29	\$26	\$23
	75% Current	\$91	\$84	\$79	\$77	\$72	\$67	\$62	\$57	\$48	\$46	\$44	\$43	\$42	\$35	\$34	\$28	\$26	\$22
	10yr ave.	\$105	\$96	\$87	\$83	\$75	\$71	\$67	\$63	\$59	\$57	\$55	\$53	\$50	\$44	\$40	\$31	\$28	\$24
	80% Current	\$97	\$90	\$84	\$82	\$76	\$71	\$66	\$60	\$52	\$49	\$47	\$46	\$44	\$37	\$36	\$29	\$27	\$24
	10yr ave.	\$112	\$103	\$92	\$88	\$80	\$76	\$71	\$67	\$63	\$61	\$59	\$57	\$53	\$47	\$42	\$33	\$29	\$26
	85% Current	\$103	\$95	\$90	\$87	\$81	\$76	\$71	\$64	\$55	\$52	\$50	\$49	\$47	\$40	\$38	\$31	\$29	\$25
	10yr ave.	\$119	\$109	\$98	\$94	\$85	\$80	\$76	\$71	\$67	\$64	\$62	\$60	\$56	\$50	\$45	\$35	\$31	\$28

The above shows estimated returns per head for skirted fleece wool. These figures do not take into account the value of skirtings and oddments and do not take into account discounts that may apply for faults under individual circumstances. These figures are based on a market index of 100% and should be used as a guide only. Returns over \$30 / head for fleece wool are highlighted.



Table 9: Returns pr head for skirted fleece wool.

Skirted FLC Weight <b>7 Kg</b>		Micron																	
		16	16.5	17	17.5	18	18.5	19	19.5	20	21	22	23	24	25	26	28	30	32
Yield (Sch Dry)	25% Current	\$27	\$25	\$23	\$22	\$21	\$20	\$18	\$16	\$14	\$13	\$13	\$13	\$12	\$10	\$10	\$8	\$7	\$6
	10yr ave.	\$31	\$28	\$25	\$24	\$22	\$21	\$19	\$18	\$17	\$17	\$16	\$16	\$14	\$13	\$12	\$9	\$8	\$7
	30% Current	\$32	\$29	\$28	\$27	\$25	\$23	\$22	\$20	\$17	\$16	\$15	\$15	\$15	\$12	\$12	\$10	\$9	\$8
	10yr ave.	\$37	\$34	\$30	\$29	\$26	\$25	\$23	\$22	\$21	\$20	\$19	\$19	\$17	\$15	\$14	\$11	\$10	\$9
	35% Current	\$37	\$34	\$32	\$31	\$29	\$27	\$25	\$23	\$20	\$19	\$18	\$18	\$17	\$14	\$14	\$11	\$10	\$9
	10yr ave.	\$43	\$39	\$35	\$34	\$31	\$29	\$27	\$26	\$24	\$23	\$22	\$22	\$20	\$18	\$16	\$13	\$11	\$10
	40% Current	\$43	\$39	\$37	\$36	\$33	\$31	\$29	\$26	\$23	\$21	\$20	\$20	\$19	\$16	\$16	\$13	\$12	\$10
	10yr ave.	\$49	\$45	\$40	\$39	\$35	\$33	\$31	\$29	\$28	\$26	\$26	\$25	\$23	\$20	\$18	\$14	\$13	\$11
	45% Current	\$48	\$44	\$42	\$40	\$38	\$35	\$33	\$30	\$25	\$24	\$23	\$23	\$22	\$18	\$18	\$14	\$13	\$12
	10yr ave.	\$55	\$51	\$45	\$44	\$39	\$37	\$35	\$33	\$31	\$30	\$29	\$28	\$26	\$23	\$21	\$16	\$14	\$13
	50% Current	\$53	\$49	\$46	\$45	\$42	\$39	\$36	\$33	\$28	\$27	\$26	\$25	\$24	\$20	\$20	\$16	\$15	\$13
	10yr ave.	\$61	\$56	\$50	\$48	\$44	\$41	\$39	\$37	\$35	\$33	\$32	\$31	\$29	\$26	\$23	\$18	\$16	\$14
	55% Current	\$59	\$54	\$51	\$49	\$46	\$43	\$40	\$36	\$31	\$29	\$28	\$28	\$27	\$22	\$22	\$18	\$16	\$14
	10yr ave.	\$67	\$62	\$56	\$53	\$48	\$46	\$43	\$40	\$38	\$36	\$35	\$34	\$32	\$28	\$25	\$20	\$18	\$16
	60% Current	\$64	\$59	\$55	\$54	\$50	\$47	\$44	\$40	\$34	\$32	\$31	\$30	\$29	\$24	\$24	\$19	\$18	\$15
	10yr ave.	\$74	\$67	\$61	\$58	\$52	\$50	\$47	\$44	\$42	\$40	\$38	\$37	\$35	\$31	\$28	\$22	\$19	\$17
	65% Current	\$69	\$64	\$60	\$58	\$54	\$51	\$47	\$43	\$37	\$35	\$33	\$33	\$32	\$26	\$26	\$21	\$19	\$17
	10yr ave.	\$80	\$73	\$66	\$63	\$57	\$54	\$51	\$48	\$45	\$43	\$42	\$40	\$38	\$33	\$30	\$24	\$21	\$19
	70% Current	\$74	\$69	\$65	\$63	\$59	\$55	\$51	\$46	\$40	\$37	\$36	\$35	\$34	\$29	\$28	\$22	\$21	\$18
	10yr ave.	\$86	\$79	\$71	\$68	\$61	\$58	\$55	\$51	\$48	\$46	\$45	\$43	\$41	\$36	\$32	\$25	\$22	\$20
	75% Current	\$80	\$74	\$69	\$67	\$63	\$59	\$54	\$49	\$42	\$40	\$38	\$38	\$36	\$31	\$30	\$24	\$22	\$19
	10yr ave.	\$92	\$84	\$76	\$73	\$66	\$62	\$58	\$55	\$52	\$50	\$48	\$47	\$43	\$38	\$35	\$27	\$24	\$21
	80% Current	\$85	\$78	\$74	\$72	\$67	\$62	\$58	\$53	\$45	\$43	\$41	\$40	\$39	\$33	\$31	\$26	\$24	\$21
	10yr ave.	\$98	\$90	\$81	\$77	\$70	\$66	\$62	\$59	\$55	\$53	\$51	\$50	\$46	\$41	\$37	\$29	\$26	\$23
	85% Current	\$90	\$83	\$79	\$76	\$71	\$66	\$62	\$56	\$48	\$45	\$43	\$43	\$41	\$35	\$33	\$27	\$25	\$22
	10yr ave.	\$104	\$95	\$86	\$82	\$74	\$70	\$66	\$62	\$59	\$56	\$55	\$53	\$49	\$43	\$39	\$31	\$27	\$24

The above shows estimated returns per head for skirted fleece wool. These figures do not take into account the value of skirtings and oddments and do not take into account discounts that may apply for faults under individual circumstances. These figures are based on a market index of 100% and should be used as a guide only. Returns over \$30 / head for fleece wool are highlighted.



Table 10: Returns pr head for skirted fleece wool.

Skirted FLC Weight		Micron																	
6 Kg		16	16.5	17	17.5	18	18.5	19	19.5	20	21	22	23	24	25	26	28	30	32
Yield (Sch Dry)	25% Current	\$23	\$21	\$20	\$19	\$18	\$17	\$16	\$14	\$12	\$11	\$11	\$11	\$10	\$9	\$8	\$7	\$6	\$6
	10yr ave.	\$26	\$24	\$22	\$21	\$19	\$18	\$17	\$16	\$15	\$14	\$14	\$13	\$12	\$11	\$10	\$8	\$7	\$6
	30% Current	\$27	\$25	\$24	\$23	\$21	\$20	\$19	\$17	\$15	\$14	\$13	\$13	\$12	\$10	\$10	\$8	\$8	\$7
	10yr ave.	\$32	\$29	\$26	\$25	\$22	\$21	\$20	\$19	\$18	\$17	\$16	\$16	\$15	\$13	\$12	\$9	\$8	\$7
	35% Current	\$32	\$29	\$28	\$27	\$25	\$23	\$22	\$20	\$17	\$16	\$15	\$15	\$15	\$12	\$12	\$10	\$9	\$8
	10yr ave.	\$37	\$34	\$30	\$29	\$26	\$25	\$23	\$22	\$21	\$20	\$19	\$19	\$17	\$15	\$14	\$11	\$10	\$9
	40% Current	\$36	\$34	\$32	\$31	\$29	\$27	\$25	\$23	\$19	\$18	\$17	\$17	\$17	\$14	\$13	\$11	\$10	\$9
	10yr ave.	\$42	\$38	\$35	\$33	\$30	\$28	\$27	\$25	\$24	\$23	\$22	\$21	\$20	\$17	\$16	\$12	\$11	\$10
	45% Current	\$41	\$38	\$36	\$35	\$32	\$30	\$28	\$25	\$22	\$20	\$20	\$19	\$19	\$16	\$15	\$12	\$12	\$10
	10yr ave.	\$47	\$43	\$39	\$37	\$34	\$32	\$30	\$28	\$27	\$26	\$25	\$24	\$22	\$20	\$18	\$14	\$12	\$11
	50% Current	\$46	\$42	\$40	\$38	\$36	\$33	\$31	\$28	\$24	\$23	\$22	\$22	\$21	\$17	\$17	\$14	\$13	\$11
	10yr ave.	\$53	\$48	\$43	\$41	\$37	\$35	\$33	\$31	\$30	\$28	\$27	\$27	\$25	\$22	\$20	\$16	\$14	\$12
	55% Current	\$50	\$46	\$44	\$42	\$39	\$37	\$34	\$31	\$27	\$25	\$24	\$24	\$23	\$19	\$19	\$15	\$14	\$12
	10yr ave.	\$58	\$53	\$48	\$46	\$41	\$39	\$37	\$35	\$33	\$31	\$30	\$29	\$27	\$24	\$22	\$17	\$15	\$13
	60% Current	\$55	\$50	\$48	\$46	\$43	\$40	\$37	\$34	\$29	\$27	\$26	\$26	\$25	\$21	\$20	\$17	\$15	\$13
	10yr ave.	\$63	\$58	\$52	\$50	\$45	\$43	\$40	\$38	\$36	\$34	\$33	\$32	\$30	\$26	\$24	\$19	\$17	\$15
	65% Current	\$59	\$55	\$51	\$50	\$47	\$43	\$40	\$37	\$32	\$30	\$28	\$28	\$27	\$23	\$22	\$18	\$17	\$14
	10yr ave.	\$68	\$63	\$56	\$54	\$49	\$46	\$43	\$41	\$39	\$37	\$36	\$35	\$32	\$28	\$26	\$20	\$18	\$16
	70% Current	\$64	\$59	\$55	\$54	\$50	\$47	\$44	\$40	\$34	\$32	\$31	\$30	\$29	\$24	\$24	\$19	\$18	\$15
	10yr ave.	\$74	\$67	\$61	\$58	\$52	\$50	\$47	\$44	\$42	\$40	\$38	\$37	\$35	\$31	\$28	\$22	\$19	\$17
	75% Current	\$68	\$63	\$59	\$58	\$54	\$50	\$47	\$42	\$36	\$34	\$33	\$32	\$31	\$26	\$25	\$21	\$19	\$17
	10yr ave.	\$79	\$72	\$65	\$62	\$56	\$53	\$50	\$47	\$45	\$43	\$41	\$40	\$37	\$33	\$30	\$23	\$21	\$18
	80% Current	\$73	\$67	\$63	\$61	\$57	\$54	\$50	\$45	\$39	\$36	\$35	\$35	\$33	\$28	\$27	\$22	\$20	\$18
	10yr ave.	\$84	\$77	\$69	\$66	\$60	\$57	\$53	\$50	\$47	\$45	\$44	\$43	\$40	\$35	\$32	\$25	\$22	\$20
	85% Current	\$78	\$71	\$67	\$65	\$61	\$57	\$53	\$48	\$41	\$39	\$37	\$37	\$35	\$30	\$29	\$23	\$22	\$19
	10yr ave.	\$89	\$82	\$74	\$70	\$64	\$60	\$57	\$53	\$50	\$48	\$47	\$45	\$42	\$37	\$34	\$26	\$23	\$21

The above shows estimated returns per head for skirted fleece wool. These figures do not take into account the value of skirtings and oddments and do not take into account discounts that may apply for faults under individual circumstances. These figures are based on a market index of 100% and should be used as a guide only. Returns over \$30 / head for fleece wool are highlighted.



Table 11: Returns pr head for skirted fleece wool.

Skirted FLC Weight		Micron																	
5 Kg		16	16.5	17	17.5	18	18.5	19	19.5	20	21	22	23	24	25	26	28	30	32
Yield (Sch Dry)	25% Current	\$19	\$18	\$17	\$16	\$15	\$14	\$13	\$12	\$10	\$9	\$9	\$9	\$9	\$7	\$7	\$6	\$5	\$5
	10yr ave.	\$22	\$20	\$18	\$17	\$16	\$15	\$14	\$13	\$12	\$12	\$11	\$11	\$10	\$9	\$8	\$6	\$6	\$5
	30% Current	\$23	\$21	\$20	\$19	\$18	\$17	\$16	\$14	\$12	\$11	\$11	\$11	\$10	\$9	\$8	\$7	\$6	\$6
	10yr ave.	\$26	\$24	\$22	\$21	\$19	\$18	\$17	\$16	\$15	\$14	\$14	\$13	\$12	\$11	\$10	\$8	\$7	\$6
	35% Current	\$27	\$25	\$23	\$22	\$21	\$20	\$18	\$16	\$14	\$13	\$13	\$13	\$12	\$10	\$10	\$8	\$7	\$6
	10yr ave.	\$31	\$28	\$25	\$24	\$22	\$21	\$19	\$18	\$17	\$17	\$16	\$16	\$14	\$13	\$12	\$9	\$8	\$7
	40% Current	\$30	\$28	\$26	\$26	\$24	\$22	\$21	\$19	\$16	\$15	\$15	\$14	\$14	\$12	\$11	\$9	\$9	\$7
	10yr ave.	\$35	\$32	\$29	\$28	\$25	\$24	\$22	\$21	\$20	\$19	\$18	\$18	\$17	\$15	\$13	\$10	\$9	\$8
	45% Current	\$34	\$32	\$30	\$29	\$27	\$25	\$23	\$21	\$18	\$17	\$16	\$16	\$16	\$13	\$13	\$10	\$10	\$8
	10yr ave.	\$39	\$36	\$32	\$31	\$28	\$27	\$25	\$24	\$22	\$21	\$21	\$20	\$19	\$16	\$15	\$12	\$10	\$9
	50% Current	\$38	\$35	\$33	\$32	\$30	\$28	\$26	\$24	\$20	\$19	\$18	\$18	\$17	\$15	\$14	\$11	\$11	\$9
	10yr ave.	\$44	\$40	\$36	\$35	\$31	\$30	\$28	\$26	\$25	\$24	\$23	\$22	\$21	\$18	\$17	\$13	\$11	\$10
	55% Current	\$42	\$39	\$36	\$35	\$33	\$31	\$29	\$26	\$22	\$21	\$20	\$20	\$19	\$16	\$15	\$13	\$12	\$10
	10yr ave.	\$48	\$44	\$40	\$38	\$34	\$33	\$31	\$29	\$27	\$26	\$25	\$24	\$23	\$20	\$18	\$14	\$13	\$11
	60% Current	\$46	\$42	\$40	\$38	\$36	\$33	\$31	\$28	\$24	\$23	\$22	\$22	\$21	\$17	\$17	\$14	\$13	\$11
	10yr ave.	\$53	\$48	\$43	\$41	\$37	\$35	\$33	\$31	\$30	\$28	\$27	\$27	\$25	\$22	\$20	\$16	\$14	\$12
	65% Current	\$49	\$46	\$43	\$42	\$39	\$36	\$34	\$31	\$26	\$25	\$24	\$23	\$23	\$19	\$18	\$15	\$14	\$12
	10yr ave.	\$57	\$52	\$47	\$45	\$41	\$38	\$36	\$34	\$32	\$31	\$30	\$29	\$27	\$24	\$21	\$17	\$15	\$13
	70% Current	\$53	\$49	\$46	\$45	\$42	\$39	\$36	\$33	\$28	\$27	\$26	\$25	\$24	\$20	\$20	\$16	\$15	\$13
	10yr ave.	\$61	\$56	\$50	\$48	\$44	\$41	\$39	\$37	\$35	\$33	\$32	\$31	\$29	\$26	\$23	\$18	\$16	\$14
	75% Current	\$57	\$53	\$50	\$48	\$45	\$42	\$39	\$35	\$30	\$28	\$27	\$27	\$26	\$22	\$21	\$17	\$16	\$14
	10yr ave.	\$66	\$60	\$54	\$52	\$47	\$44	\$42	\$39	\$37	\$35	\$34	\$33	\$31	\$27	\$25	\$19	\$17	\$15
	80% Current	\$61	\$56	\$53	\$51	\$48	\$45	\$42	\$38	\$32	\$30	\$29	\$29	\$28	\$23	\$22	\$18	\$17	\$15
	10yr ave.	\$70	\$64	\$58	\$55	\$50	\$47	\$45	\$42	\$40	\$38	\$37	\$35	\$33	\$29	\$26	\$21	\$18	\$16
	85% Current	\$65	\$60	\$56	\$54	\$51	\$47	\$44	\$40	\$34	\$32	\$31	\$31	\$29	\$25	\$24	\$20	\$18	\$16
	10yr ave.	\$74	\$68	\$61	\$59	\$53	\$50	\$47	\$44	\$42	\$40	\$39	\$38	\$35	\$31	\$28	\$22	\$20	\$17

The above shows estimated returns per head for skirted fleece wool. These figures do not take into account the value of skirtings and oddments and do not take into account discounts that may apply for faults under individual circumstances. These figures are based on a market index of 100% and should be used as a guide only. Returns over \$30 / head for fleece wool are highlighted.



Table 12: Returns pr head for skirted fleece wool.

Skirted FLC Weight 4 Kg		Micron																	
		16	16.5	17	17.5	18	18.5	19	19.5	20	21	22	23	24	25	26	28	30	32
Yield (Sch Dry)	25% Current	\$15	\$14	\$13	\$13	\$12	\$11	\$10	\$9	\$8	\$8	\$7	\$7	\$7	\$6	\$6	\$5	\$4	\$4
	10yr ave.	\$18	\$16	\$14	\$14	\$12	\$12	\$11	\$10	\$10	\$9	\$9	\$9	\$8	\$7	\$7	\$5	\$5	\$4
	30% Current	\$18	\$17	\$16	\$15	\$14	\$13	\$12	\$11	\$10	\$9	\$9	\$9	\$8	\$7	\$7	\$6	\$5	\$4
	10yr ave.	\$21	\$19	\$17	\$17	\$15	\$14	\$13	\$13	\$12	\$11	\$11	\$11	\$10	\$9	\$8	\$6	\$6	\$5
	35% Current	\$21	\$20	\$18	\$18	\$17	\$16	\$15	\$13	\$11	\$11	\$10	\$10	\$10	\$8	\$8	\$6	\$6	\$5
	10yr ave.	\$25	\$22	\$20	\$19	\$17	\$17	\$16	\$15	\$14	\$13	\$13	\$12	\$12	\$10	\$9	\$7	\$6	\$6
	40% Current	\$24	\$22	\$21	\$20	\$19	\$18	\$17	\$15	\$13	\$12	\$12	\$12	\$11	\$9	\$9	\$7	\$7	\$6
	10yr ave.	\$28	\$26	\$23	\$22	\$20	\$19	\$18	\$17	\$16	\$15	\$15	\$14	\$13	\$12	\$11	\$8	\$7	\$7
	45% Current	\$27	\$25	\$24	\$23	\$21	\$20	\$19	\$17	\$15	\$14	\$13	\$13	\$12	\$10	\$10	\$8	\$8	\$7
	10yr ave.	\$32	\$29	\$26	\$25	\$22	\$21	\$20	\$19	\$18	\$17	\$16	\$16	\$15	\$13	\$12	\$9	\$8	\$7
	50% Current	\$30	\$28	\$26	\$26	\$24	\$22	\$21	\$19	\$16	\$15	\$15	\$14	\$14	\$12	\$11	\$9	\$9	\$7
	10yr ave.	\$35	\$32	\$29	\$28	\$25	\$24	\$22	\$21	\$20	\$19	\$18	\$18	\$17	\$15	\$13	\$10	\$9	\$8
	55% Current	\$33	\$31	\$29	\$28	\$26	\$25	\$23	\$21	\$18	\$17	\$16	\$16	\$15	\$13	\$12	\$10	\$9	\$8
	10yr ave.	\$39	\$35	\$32	\$30	\$27	\$26	\$24	\$23	\$22	\$21	\$20	\$19	\$18	\$16	\$15	\$11	\$10	\$9
	60% Current	\$36	\$34	\$32	\$31	\$29	\$27	\$25	\$23	\$19	\$18	\$17	\$17	\$17	\$14	\$13	\$11	\$10	\$9
	10yr ave.	\$42	\$38	\$35	\$33	\$30	\$28	\$27	\$25	\$24	\$23	\$22	\$21	\$20	\$17	\$16	\$12	\$11	\$10
	65% Current	\$40	\$36	\$34	\$33	\$31	\$29	\$27	\$24	\$21	\$20	\$19	\$19	\$18	\$15	\$15	\$12	\$11	\$10
	10yr ave.	\$46	\$42	\$37	\$36	\$32	\$31	\$29	\$27	\$26	\$25	\$24	\$23	\$22	\$19	\$17	\$13	\$12	\$11
	70% Current	\$43	\$39	\$37	\$36	\$33	\$31	\$29	\$26	\$23	\$21	\$20	\$20	\$19	\$16	\$16	\$13	\$12	\$10
	10yr ave.	\$49	\$45	\$40	\$39	\$35	\$33	\$31	\$29	\$28	\$26	\$26	\$25	\$23	\$20	\$18	\$14	\$13	\$11
	75% Current	\$46	\$42	\$40	\$38	\$36	\$33	\$31	\$28	\$24	\$23	\$22	\$22	\$21	\$17	\$17	\$14	\$13	\$11
	10yr ave.	\$53	\$48	\$43	\$41	\$37	\$35	\$33	\$31	\$30	\$28	\$27	\$27	\$25	\$22	\$20	\$16	\$14	\$12
	80% Current	\$49	\$45	\$42	\$41	\$38	\$36	\$33	\$30	\$26	\$24	\$23	\$23	\$22	\$19	\$18	\$15	\$14	\$12
	10yr ave.	\$56	\$51	\$46	\$44	\$40	\$38	\$36	\$34	\$32	\$30	\$29	\$28	\$26	\$23	\$21	\$17	\$15	\$13
	85% Current	\$52	\$48	\$45	\$44	\$41	\$38	\$35	\$32	\$27	\$26	\$25	\$25	\$24	\$20	\$19	\$16	\$14	\$13
	10yr ave.	\$60	\$55	\$49	\$47	\$42	\$40	\$38	\$36	\$34	\$32	\$31	\$30	\$28	\$25	\$22	\$18	\$16	\$14

The above shows estimated returns per head for skirted fleece wool. These figures do not take into account the value of skirtings and oddments and do not take into account discounts that may apply for faults under individual circumstances. These figures are based on a market index of 100% and should be used as a guide only. Returns over \$30 / head for fleece wool are highlighted.



Table 13: Returns pr head for skirted fleece wool.

Skirted FLC Weight <b>3 Kg</b>		Micron																	
		16	16.5	17	17.5	18	18.5	19	19.5	20	21	22	23	24	25	26	28	30	32
Yield (Sch Dry)	25% Current	\$11	\$11	\$10	\$10	\$9	\$8	\$8	\$7	\$6	\$6	\$5	\$5	\$5	\$4	\$4	\$3	\$3	\$3
	10yr ave.	\$13	\$12	\$11	\$10	\$9	\$9	\$8	\$8	\$7	\$7	\$7	\$7	\$6	\$5	\$5	\$4	\$3	\$3
	30% Current	\$14	\$13	\$12	\$12	\$11	\$10	\$9	\$8	\$7	\$7	\$7	\$6	\$6	\$5	\$5	\$4	\$4	\$3
	10yr ave.	\$16	\$14	\$13	\$12	\$11	\$11	\$10	\$9	\$9	\$9	\$8	\$8	\$7	\$7	\$6	\$5	\$4	\$4
	35% Current	\$16	\$15	\$14	\$13	\$13	\$12	\$11	\$10	\$8	\$8	\$8	\$8	\$7	\$6	\$6	\$5	\$4	\$4
	10yr ave.	\$18	\$17	\$15	\$15	\$13	\$12	\$12	\$11	\$10	\$10	\$10	\$9	\$9	\$8	\$7	\$5	\$5	\$4
	40% Current	\$18	\$17	\$16	\$15	\$14	\$13	\$12	\$11	\$10	\$9	\$9	\$9	\$8	\$7	\$7	\$6	\$5	\$4
	10yr ave.	\$21	\$19	\$17	\$17	\$15	\$14	\$13	\$13	\$12	\$11	\$11	\$11	\$10	\$9	\$8	\$6	\$6	\$5
	45% Current	\$21	\$19	\$18	\$17	\$16	\$15	\$14	\$13	\$11	\$10	\$10	\$10	\$9	\$8	\$8	\$6	\$6	\$5
	10yr ave.	\$24	\$22	\$19	\$19	\$17	\$16	\$15	\$14	\$13	\$13	\$12	\$12	\$11	\$10	\$9	\$7	\$6	\$6
	50% Current	\$23	\$21	\$20	\$19	\$18	\$17	\$16	\$14	\$12	\$11	\$11	\$11	\$10	\$9	\$8	\$7	\$6	\$6
	10yr ave.	\$26	\$24	\$22	\$21	\$19	\$18	\$17	\$16	\$15	\$14	\$14	\$13	\$12	\$11	\$10	\$8	\$7	\$6
	55% Current	\$25	\$23	\$22	\$21	\$20	\$18	\$17	\$16	\$13	\$13	\$12	\$12	\$11	\$10	\$9	\$8	\$7	\$6
	10yr ave.	\$29	\$26	\$24	\$23	\$21	\$20	\$18	\$17	\$16	\$16	\$15	\$15	\$14	\$12	\$11	\$9	\$8	\$7
	60% Current	\$27	\$25	\$24	\$23	\$21	\$20	\$19	\$17	\$15	\$14	\$13	\$13	\$12	\$10	\$10	\$8	\$8	\$7
	10yr ave.	\$32	\$29	\$26	\$25	\$22	\$21	\$20	\$19	\$18	\$17	\$16	\$16	\$15	\$13	\$12	\$9	\$8	\$7
	65% Current	\$30	\$27	\$26	\$25	\$23	\$22	\$20	\$18	\$16	\$15	\$14	\$14	\$14	\$11	\$11	\$9	\$8	\$7
	10yr ave.	\$34	\$31	\$28	\$27	\$24	\$23	\$22	\$20	\$19	\$18	\$18	\$17	\$16	\$14	\$13	\$10	\$9	\$8
	70% Current	\$32	\$29	\$28	\$27	\$25	\$23	\$22	\$20	\$17	\$16	\$15	\$15	\$15	\$12	\$12	\$10	\$9	\$8
	10yr ave.	\$37	\$34	\$30	\$29	\$26	\$25	\$23	\$22	\$21	\$20	\$19	\$19	\$17	\$15	\$14	\$11	\$10	\$9
	75% Current	\$34	\$32	\$30	\$29	\$27	\$25	\$23	\$21	\$18	\$17	\$16	\$16	\$16	\$13	\$13	\$10	\$10	\$8
	10yr ave.	\$39	\$36	\$32	\$31	\$28	\$27	\$25	\$24	\$22	\$21	\$21	\$20	\$19	\$16	\$15	\$12	\$10	\$9
	80% Current	\$36	\$34	\$32	\$31	\$29	\$27	\$25	\$23	\$19	\$18	\$17	\$17	\$17	\$14	\$13	\$11	\$10	\$9
	10yr ave.	\$42	\$38	\$35	\$33	\$30	\$28	\$27	\$25	\$24	\$23	\$22	\$21	\$20	\$17	\$16	\$12	\$11	\$10
	85% Current	\$39	\$36	\$34	\$33	\$30	\$28	\$26	\$24	\$21	\$19	\$19	\$18	\$18	\$15	\$14	\$12	\$11	\$9
	10yr ave.	\$45	\$41	\$37	\$35	\$32	\$30	\$28	\$27	\$25	\$24	\$23	\$23	\$21	\$19	\$17	\$13	\$12	\$10

The above shows estimated returns per head for skirted fleece wool. These figures do not take into account the value of skirtings and oddments and do not take into account discounts that may apply for faults under individual circumstances. These figures are based on a market index of 100% and should be used as a guide only. Returns over \$30 / head for fleece wool are highlighted.





Table 14: Returns pr head for skirted fleece wool.

Skirted FLC Weight  2 Kg			Micron																	
			16	16.5	17	17.5	18	18.5	19	19.5	20	21	22	23	24	25	26	28	30	32
Yield (Sch Dry)	25%	Current	\$8	\$7	\$7	\$6	\$6	\$6	\$5	\$5	\$4	\$4	\$4	\$4	\$3	\$3	\$3	\$2	\$2	\$2
		10yr ave.	\$9	\$8	\$7	\$7	\$6	\$6	\$6	\$5	\$5	\$5	\$5	\$4	\$4	\$4	\$3	\$3	\$2	\$2
	30%	Current	\$9	\$8	\$8	\$8	\$7	\$7	\$6	\$6	\$5	\$5	\$4	\$4	\$4	\$3	\$3	\$3	\$3	\$2
		10yr ave.	\$11	\$10	\$9	\$8	\$7	\$7	\$7	\$6	\$6	\$6	\$5	\$5	\$5	\$4	\$4	\$3	\$3	\$2
	35%	Current	\$11	\$10	\$9	\$9	\$8	\$8	\$7	\$7	\$6	\$5	\$5	\$5	\$5	\$4	\$4	\$3	\$3	\$3
		10yr ave.	\$12	\$11	\$10	\$10	\$9	\$8	\$8	\$7	\$7	\$7	\$6	\$6	\$6	\$5	\$5	\$4	\$3	\$3
	40%	Current	\$12	\$11	\$11	\$10	\$10	\$9	\$8	\$8	\$6	\$6	\$6	\$6	\$6	\$5	\$4	\$4	\$3	\$3
		10yr ave.	\$14	\$13	\$12	\$11	\$10	\$9	\$9	\$8	\$8	\$8	\$7	\$7	\$7	\$6	\$5	\$4	\$4	\$3
	45%	Current	\$14	\$13	\$12	\$12	\$11	\$10	\$9	\$8	\$7	\$7	\$7	\$6	\$6	\$5	\$5	\$4	\$4	\$3
		10yr ave.	\$16	\$14	\$13	\$12	\$11	\$11	\$10	\$9	\$9	\$9	\$8	\$8	\$7	\$7	\$6	\$5	\$4	\$4
	50%	Current	\$15	\$14	\$13	\$13	\$12	\$11	\$10	\$9	\$8	\$8	\$7	\$7	\$7	\$6	\$6	\$5	\$4	\$4
		10yr ave.	\$18	\$16	\$14	\$14	\$12	\$12	\$11	\$10	\$10	\$9	\$9	\$9	\$8	\$7	\$7	\$5	\$5	\$4
	55%	Current	\$17	\$15	\$15	\$14	\$13	\$12	\$11	\$10	\$9	\$8	\$8	\$8	\$8	\$6	\$6	\$5	\$5	\$4
		10yr ave.	\$19	\$18	\$16	\$15	\$14	\$13	\$12	\$12	\$11	\$10	\$10	\$10	\$9	\$8	\$7	\$6	\$5	\$4
	60%	Current	\$18	\$17	\$16	\$15	\$14	\$13	\$12	\$11	\$10	\$9	\$9	\$9	\$8	\$7	\$7	\$6	\$5	\$4
		10yr ave.	\$21	\$19	\$17	\$17	\$15	\$14	\$13	\$13	\$12	\$11	\$11	\$11	\$10	\$9	\$8	\$6	\$6	\$5
	65%	Current	\$20	\$18	\$17	\$17	\$16	\$14	\$13	\$12	\$11	\$10	\$9	\$9	\$9	\$8	\$7	\$6	\$6	\$5
		10yr ave.	\$23	\$21	\$19	\$18	\$16	\$15	\$14	\$14	\$13	\$12	\$12	\$12	\$11	\$9	\$9	\$7	\$6	\$5
	70%	Current	\$21	\$20	\$18	\$18	\$17	\$16	\$15	\$13	\$11	\$11	\$10	\$10	\$10	\$8	\$8	\$6	\$6	\$5
		10yr ave.	\$25	\$22	\$20	\$19	\$17	\$17	\$16	\$15	\$14	\$13	\$13	\$12	\$12	\$10	\$9	\$7	\$6	\$6
	75%	Current	\$23	\$21	\$20	\$19	\$18	\$17	\$16	\$14	\$12	\$11	\$11	\$11	\$10	\$9	\$8	\$7	\$6	\$6
		10yr ave.	\$26	\$24	\$22	\$21	\$19	\$18	\$17	\$16	\$15	\$14	\$14	\$13	\$12	\$11	\$10	\$8	\$7	\$6
	80%	Current	\$24	\$22	\$21	\$20	\$19	\$18	\$17	\$15	\$13	\$12	\$12	\$12	\$11	\$9	\$9	\$7	\$7	\$6
		10yr ave.	\$28	\$26	\$23	\$22	\$20	\$19	\$18	\$17	\$16	\$15	\$15	\$14	\$13	\$12	\$11	\$8	\$7	\$7
	85%	Current	\$26	\$24	\$22	\$22	\$20	\$19	\$18	\$16	\$14	\$13	\$12	\$12	\$12	\$10	\$10	\$8	\$7	\$6
		10yr ave.	\$30	\$27	\$25	\$23	\$21	\$20	\$19	\$18	\$17	\$16	\$16	\$15	\$14	\$12	\$11	\$9	\$8	\$7

The above shows estimated returns per head for skirted fleece wool. These figures do not take into account the value of skirtings and oddments and do not take into account discounts that may apply for faults under individual circumstances. These figures are based on a market index of 100% and should be used as a guide only. Returns over \$30 / head for fleece wool are highlighted.