



Table 1: Northern Region Micron Price Guides

CURRENT MARKET				PERCENTILES		AVERAGES						12 MONTH COMPARISONS								TRADING RANGE			
Mic. Price Guides	20/01/11 Current Price	13/01/11 Weekly Change	Now			Now			19/01/10		Now		Now		Now		Clean c/kg						
				3yr	10yr	<u>3 year</u> Average	compared to 3yr ave		<u>10 year</u> Average	compared to 10yr ave		This time Last Year	compared to Last Year	12 Month Low	compared to Low	12 Month High	compared to High		12 Mth	3 Year	10 Year		
NRI	1251	+43	3.4%	99%	99%	902	+349	39%	876	+375	43%	955	+296	31%	890	+361	41%	1306	-55	-4%	416	557	648
16*	2370	0		100%		1655	+715	43%				1480	+890	60%	1510	+860	57%	2370	0	0%	860	985	
16.5*	2300	+80	3.5%	100%		1520	+780	51%				1365	+935	68%	1395	+905	65%	2300	0	0%	905	1047	
17*	2220	+150	6.8%	100%	97%	1393	+827	59%	1405	+815	58%	1270	+950	75%	1230	+990	80%	2220	0	0%	990	1050	1797
17.5*	2040	+90	4.4%	100%		1323	+717	54%				1230	+810	66%	1175	+865	74%	2040	0	0%	865	955	
18	1953	+96	4.9%	99%	94%	1261	+692	55%	1281	+672	52%	1208	+745	62%	1134	+819	72%	2021	-68	-3%	887	986	1392
18.5	1795	+78	4.3%	99%		1182	+613	52%				1174	+621	53%	1088	+707	65%	1864	-69	-4%	776	893	
19	1544	-11	-0.7%	99%	99%	1079	+465	43%	1068	+476	45%	1113	+431	39%	1031	+513	50%	1645	-101	-6%	614	751	841
19.5	1325	+7	0.5%	99%		985	+340	35%				1054	+271	26%	952	+373	39%	1401	-76	-5%	449	587	
20	1145	-8	-0.7%	99%	92%	910	+235	26%	918	+227	25%	1002	+143	14%	904	+241	27%	1230	-85	-7%	326	491	717
21	1103	-13	-1.2%	99%	93%	877	+226	26%	874	+229	26%	987	+116	12%	878	+225	26%	1175	-72	-6%	297	488	737
22	1058	-11	-1.0%	99%	93%	854	+204	24%	851	+207	24%	956	+102	11%	847	+211	25%	1141	-83	-7%	294	467	735
23	1008	-2	-0.2%	99%	90%	830	+178	21%	830	+178	21%	921	+87	9%	827	+181	22%	1070	-62	-6%	243	407	728
24	945	+48	5.1%	99%	83%	782	+163	21%	793	+152	19%	861	+84	10%	780	+165	21%	975	-30	-3%	195	328	706
25	814	+49	6.0%	100%	81%	673	+141	21%	712	+102	14%	680	+134	20%	660	+154	23%	814	0	0%	154	248	653
26	752	+78	10.4%	100%	81%	604	+148	25%	652	+100	15%	600	+152	25%	576	+176	31%	752	0	0%	176	248	591
28	579	+56	9.7%	100%	77%	463	+116	25%	523	+56	11%	480	+99	21%	436	+143	33%	579	0	0%	143	160	465
30	509	+45	8.8%	100%	77%	403	+106	26%	456	+53	12%	410	+99	24%	382	+127	33%	509	0	0%	127	162	385
32	446	+32	7.2%	99%	71%	352	+94	27%	413	+33	8%	344	+102	30%	346	+100	29%	448	-2	0%	102	142	372
MC	688	+30	4.4%	99%	99%	545	+143	26%	502	+186	37%	642	+46	7%	561	+127	23%	696	-8	-1%	135	304	316

Note:

* Due to the irregular market quoting for some fine wool categories, figures shown relating to micron categories below 18 micron are an estimate based on the AWEX Premium & Discounts Report & other available information.

* For any category, where there is insufficient quantity offered to enable AWEX to quote, a quote will be provided based on the best available information.

* 10 Year data is not available for some micron categories, which may result in blank spaces in the table above.

Definitions:

* A Percentile, is a value on a scale of one hundred that indicates the percent of a distribution that is equal to or below it. In general a percentile between 25% and 75% is considered normal, a percentile below 25% is considered below normal and a percentile above 75% is considered above normal.

Three and ten year percentiles shown in the table above, detail the period of time during the past 3 & 10 years that the market has traded either at or below its current price.

The higher the percentile, the stronger the market.

Source: Australian Wool Exchange, Australian Wool Innovation, Sydney Futures Exchange, x-rates.com

Disclaimer: While all due care has been taken in the preparation of this document, no warranty is made as to its accuracy, reliability or completeness. To the extent permitted by law neither Jemalong or their sources including subsidiaries and staff, accept liability to any person for loss or damage arising from the use of this information.



MARKET COMMENTARY

Australian Dollar 99.56 cents US as of 20/01/11

NORTHERN REGION –Sale Week 29/10 (60,150 bales offered nationally)

On Wednesday the market continued on its upward assault with 18.5 microns and finer jumping a further 150 cents, with some better style lots up to 200 cents dearer. 19 micron closed around 90 dearer while 20 microns and broader posted gains of 60-70 cents. Merino fleece did however ease upto 30 cents in late trade. Most skirting's were 150 cents dearer, with the burrier types least affected, however some of the finer types posted up to 200 cent increases. Oddments were also up with stains 25 cents dearer, crutching's 35 cents dearer and locks 50-60 cents dearer. In the crossbreds, 27 to 29 microns rose 50-60 cents, while 30 microns and broader were 35-40 cents dearer.

On Thursday the market recoiled back with 19.5 micron and broader 70-80 cents lower, while the finer end lost 100 cents with the better style 18.5 micron lots less affected. 17 microns on a limited offering held reasonably well. Skirting's generally retreated 50 cents while some descriptions closed higher. Locks were 15-20 cents cheaper, crutching's were slightly easier and stains remained unchanged. Fine crossbreds were 5-10 cents dearer while 29 to 30 microns were unchanged.

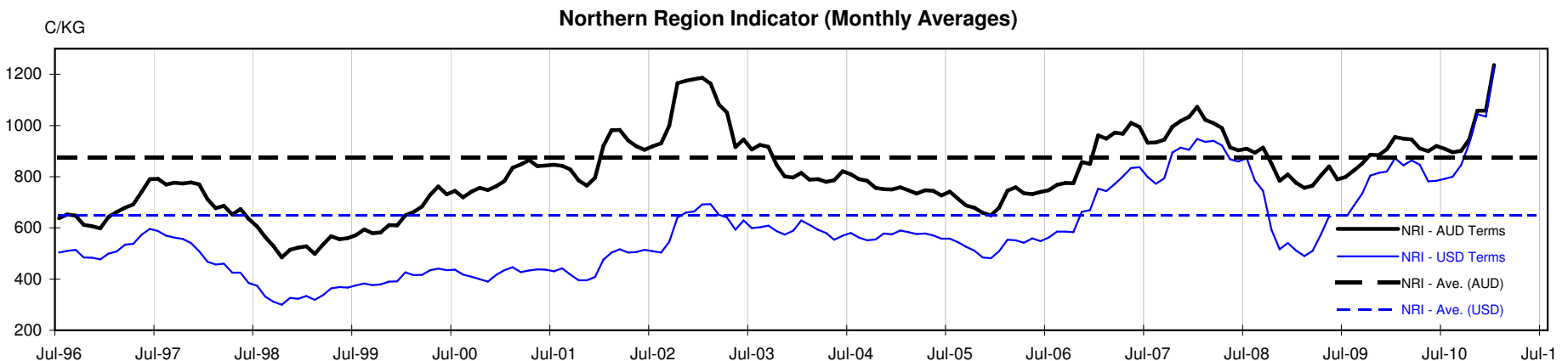




Table 4: 19 micron SFE

Wednesday, 19 January 2011

Delivery Mth	Feb-11	Apr-11	Jun-11	Aug-11	Oct-11	Dec-11	Feb-12	Apr-12	Jun-12
19 Micron SFE	1605	1600	1573	1545	1530	1524	1512	1442	1442
Average	1059	1080	1091	1098	1103	1106	1121	1147	1198
Maximum	1605	1605	1600	1573	1545	1538	1532	1520	1450
Minimum	936	983	1025	1034	1034	1034	1034	1053	1106

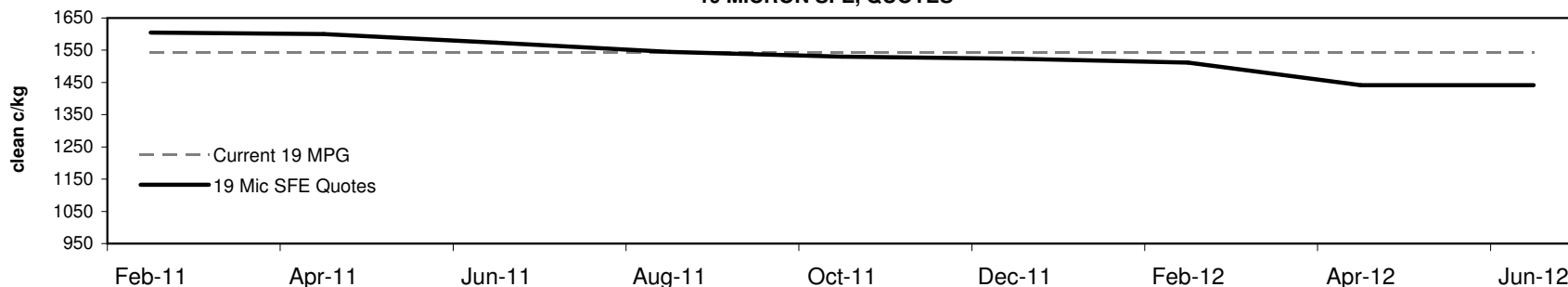
Table 5: 19 micron SFE, as a percentile of the 19 micron MPG

3 Year Percentile	99%	99%	99%	99%	99%	99%	99%	98%	98%
10 Year Percentile	99%	99%	99%	99%	99%	99%	99%	99%	99%

Table 6: 19 micron SFE, compared to MPG

Current 19 MPG	+61	4%	+56	4%	+29	2%	+1	0%	-14	-1%	-20	-1%	-32	-2%	-102	-7%	-102	-7%
19 MPG, 1 Year Average	+457	40%	+452	39%	+425	37%	+397	35%	+382	33%	+376	33%	+364	32%	+294	26%	+294	26%
19 MPG, 3 Year Average	+526	49%	+521	48%	+494	46%	+466	43%	+451	42%	+445	41%	+433	40%	+363	34%	+363	34%
19 MPG, 10 Year Average	+537	50%	+532	50%	+505	47%	+477	45%	+462	43%	+456	43%	+444	42%	+374	35%	+374	35%

19 MICRON SFE, QUOTES



19 Micron SFE, Front month movement

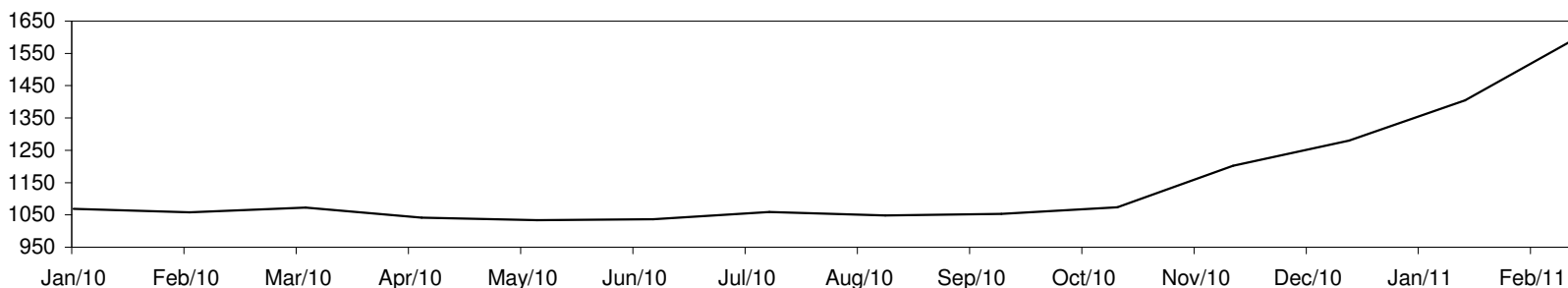




Table 7: 21 micron SFE

Wednesday, 19 January 2011

Delivery Mth	Feb-11	Apr-11	Jun-11	Aug-11	Oct-11	Dec-11	Feb-12	Apr-12	Jun-12
21 Micron SFE	1187	1152	1105	1078	1060	990	1040	1040	990
Average	933	947	951	951	945	938	939	957	1002
Maximum	1187	1220	1185	1160	1133	1115	1050	1080	1080
Minimum	818	860	891	890	880	880	880	880	934

Table 8: 21 micron SFE, as a percentile of the 21 micron MPG

3 Year Percentile	100%	99%	99%	98%	98%	91%	98%	98%	91%
10 Year Percentile	94%	93%	93%	92%	92%	79%	90%	90%	79%

Table 9: 21 micron SFE, compared to MPG

Current 21 MPG	+84	8%	+49	4%	+2	0%	-25	-2%	-43	-4%	-113	-10%	-63	-6%	-63	-6%	-113	-10%
21 MPG, 1 Year Average	+231	24%	+196	21%	+149	16%	+122	13%	+104	11%	+34	4%	+84	9%	+84	9%	+34	4%
21 MPG, 3 Year Average	+310	35%	+275	31%	+228	26%	+201	23%	+183	21%	+113	13%	+163	19%	+163	19%	+113	13%
21 MPG, 10 Year Average	+313	36%	+278	32%	+231	26%	+204	23%	+186	21%	+116	13%	+166	19%	+166	19%	+116	13%

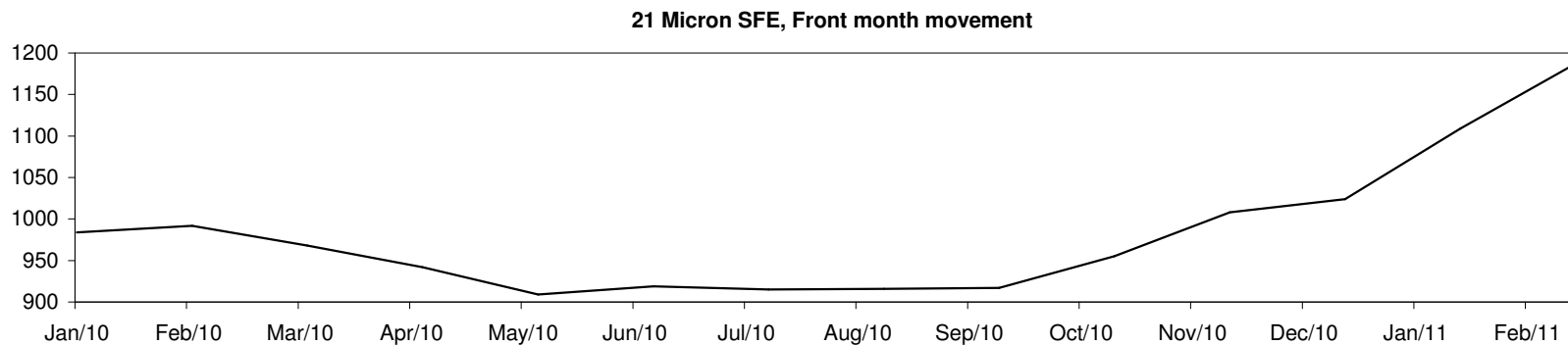
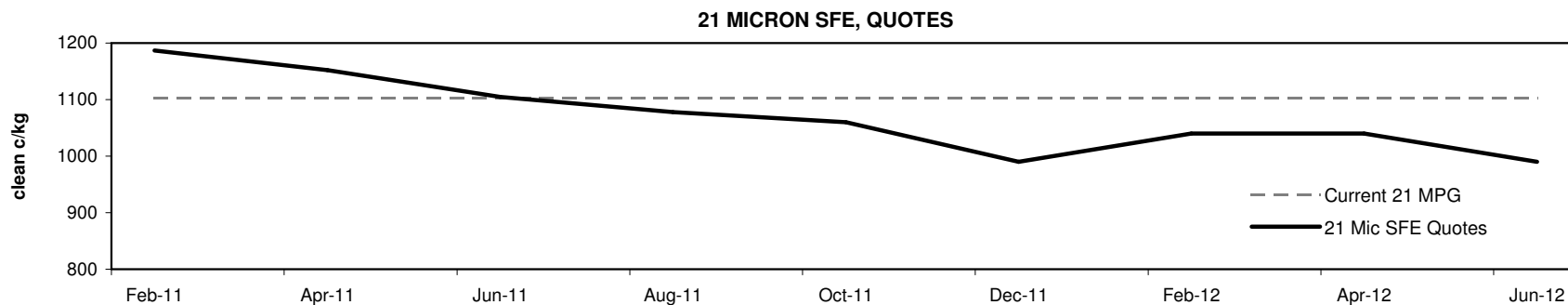




Table 10: 23 micron SFE

Wednesday, 19 January 2011

Delivery Mth	Feb-11	Apr-11	Jun-11	Aug-11	Oct-11	Dec-11	Feb-12	Apr-12	Jun-12
23 Micron SFE	890	890	890	890	890	890	890	890	890
Average	856	866	874	886	891	885	885	886	885
Maximum	927	927	927	927	927	890	890	890	890
Minimum	760	760	803	803	883	883	883	883	883

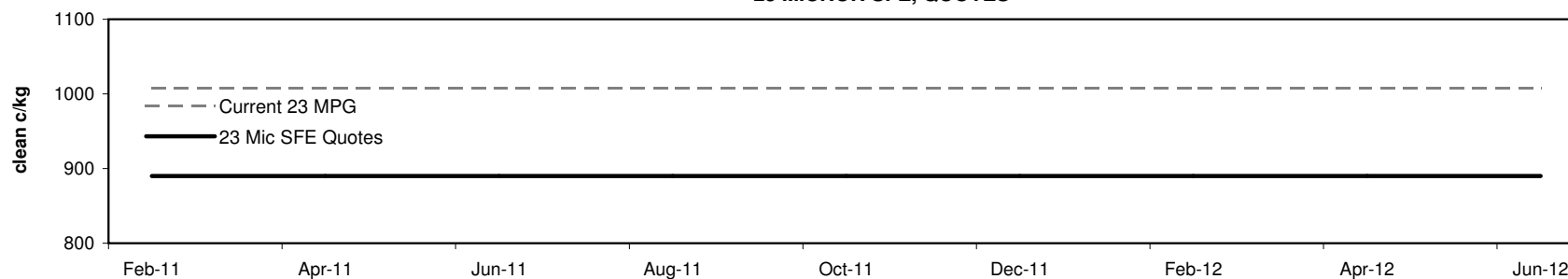
Table 11: 23 micron SFE, as a percentile of the 23 micron MPG

3 Year Percentile	73%	73%	73%	73%	73%	73%	73%	73%	73%
10 Year Percentile	65%	65%	65%	65%	65%	65%	65%	65%	65%

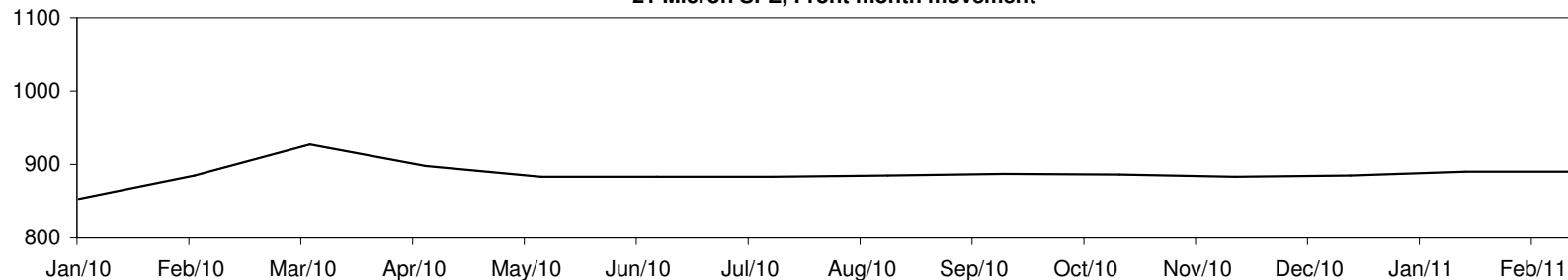
Table 12: 23 micron SFE, compared to MPG

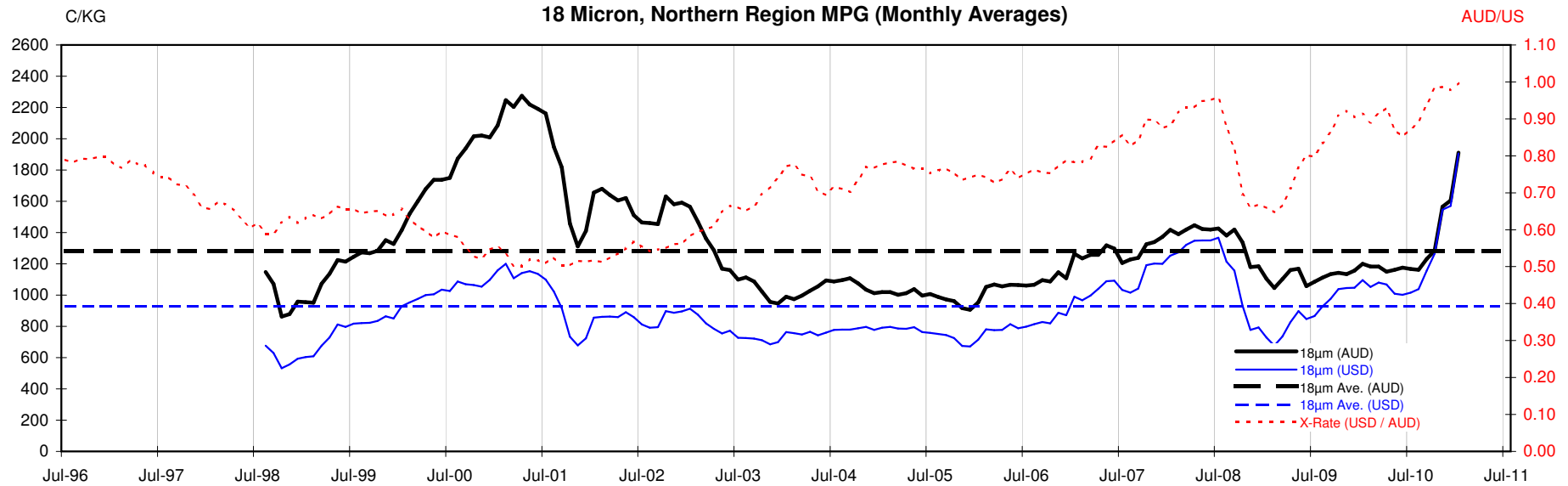
Current 19 MPG	-118	-12%	-118	-12%	-118	-12%	-118	####	-118	-12%	-118	-12%	-118	-12%	-118	-12%	-118	-12%
23 MPG, 1 Year Average	-11	-1%	-11	-1%	-11	-1%	-11	-1%	-11	-1%	-11	-1%	-11	-1%	-11	-1%	-11	-1%
23 MPG, 3 Year Average	+60	7%	+60	7%	+60	7%	+60	7%	+60	7%	+60	7%	+60	7%	+60	7%	+60	7%
23 MPG, 10 Year Average	+60	7%	+60	7%	+60	7%	+60	7%	+60	7%	+60	7%	+60	7%	+60	7%	+60	7%

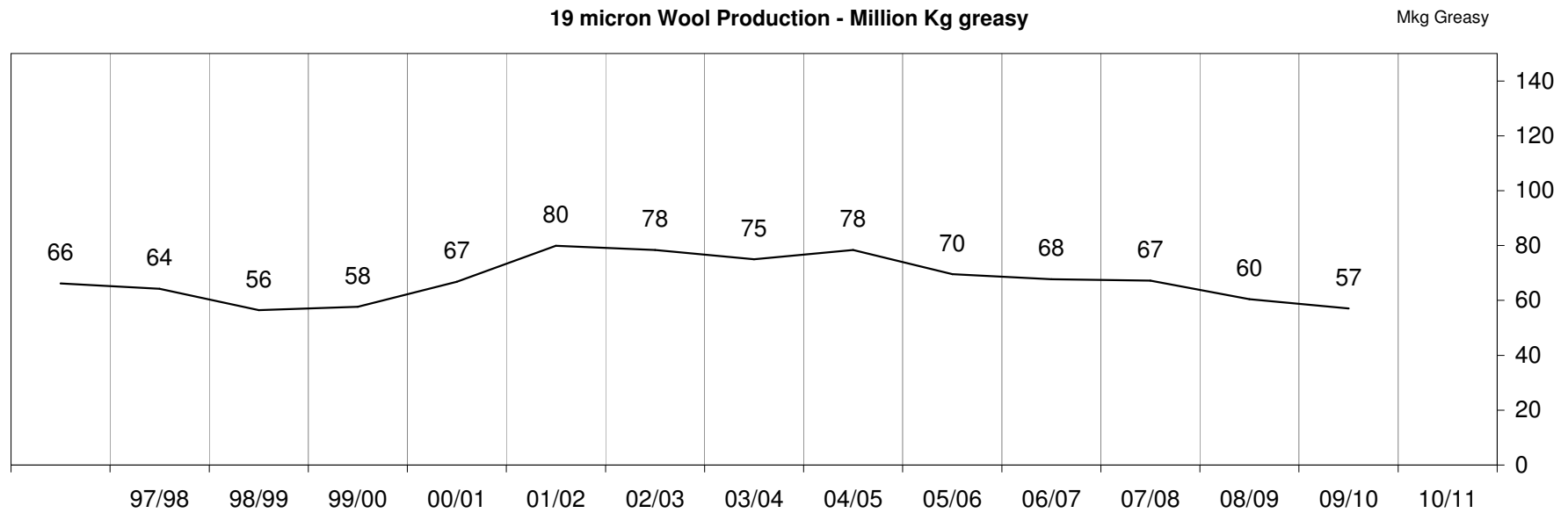
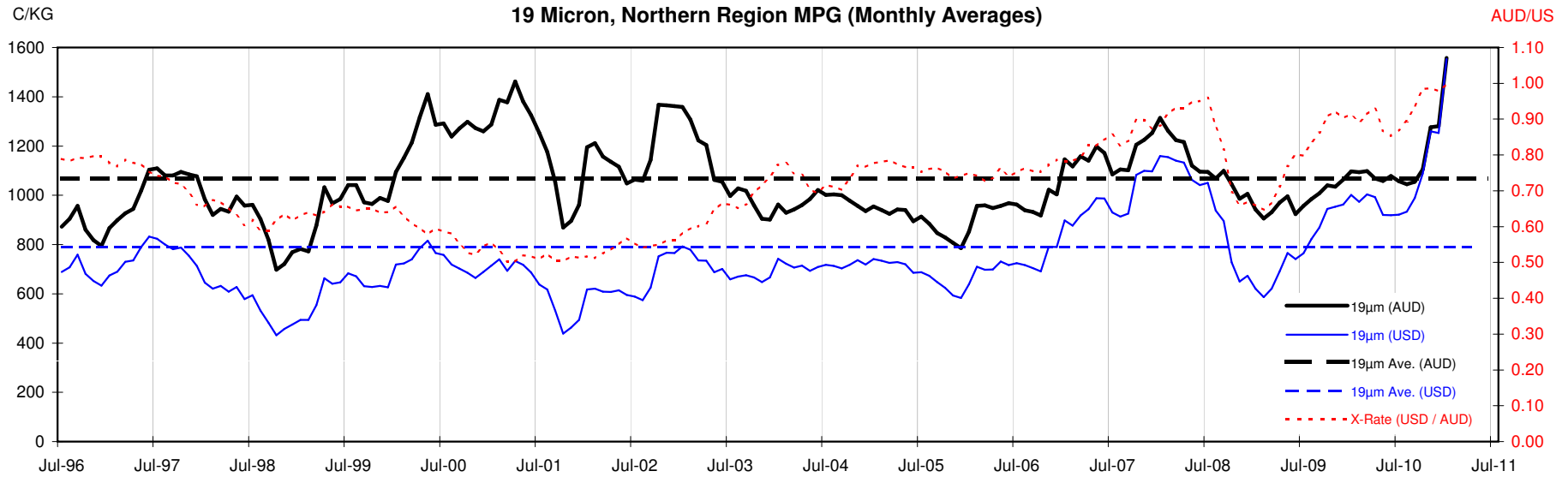
23 MICRON SFE, QUOTES

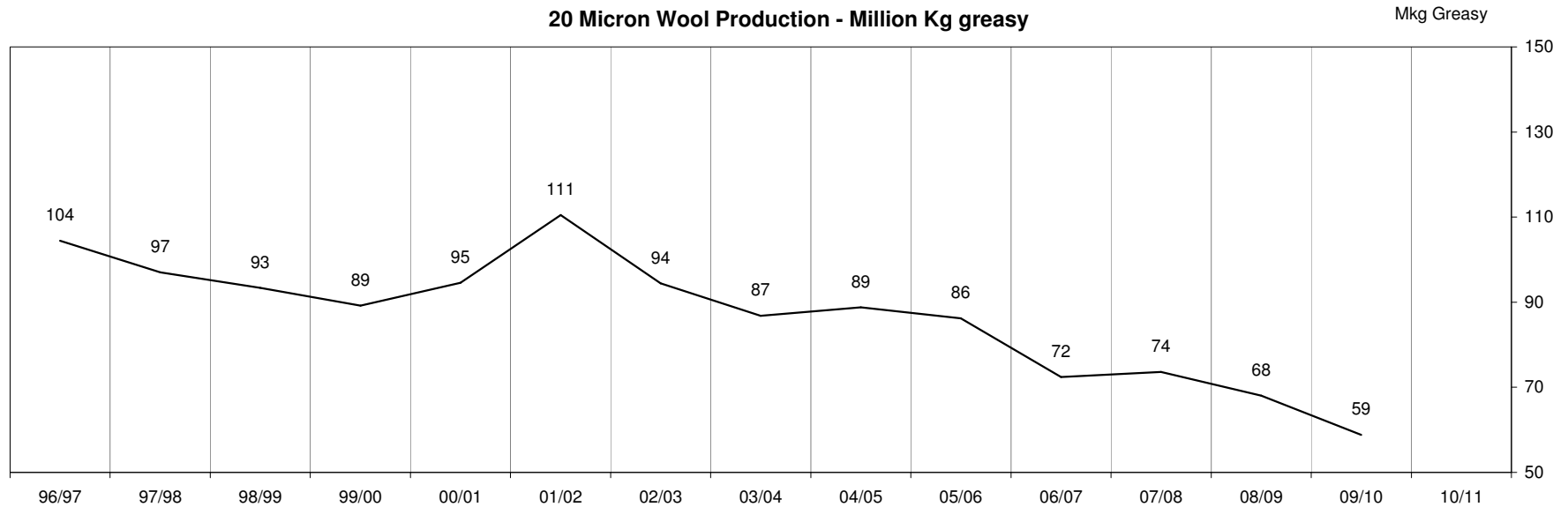
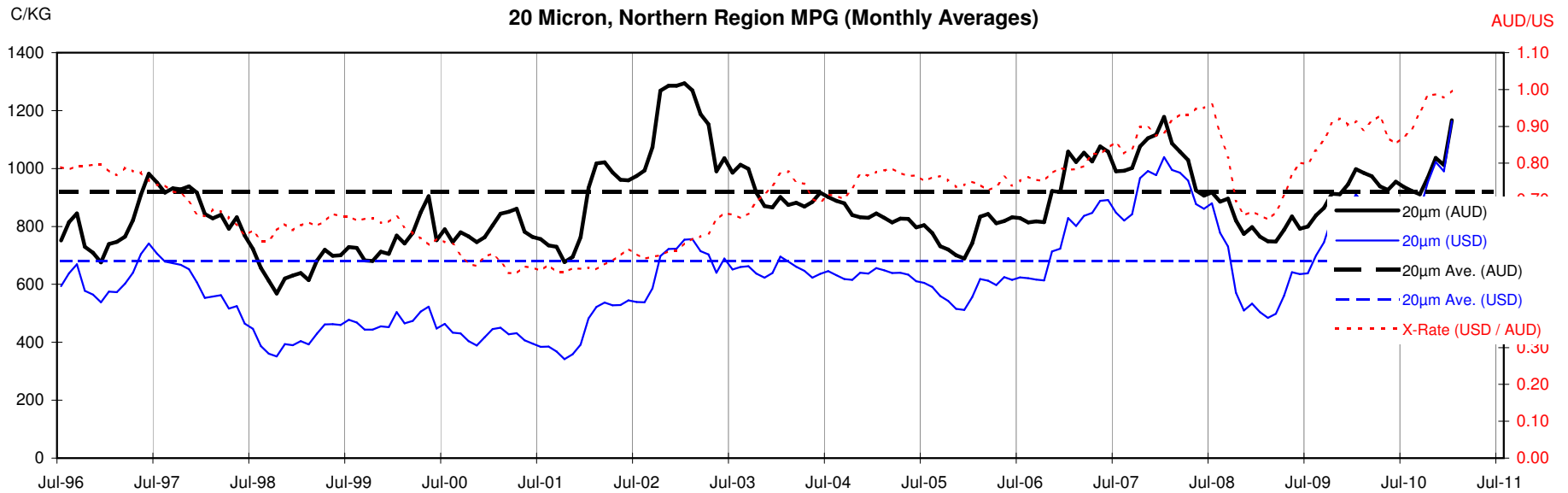


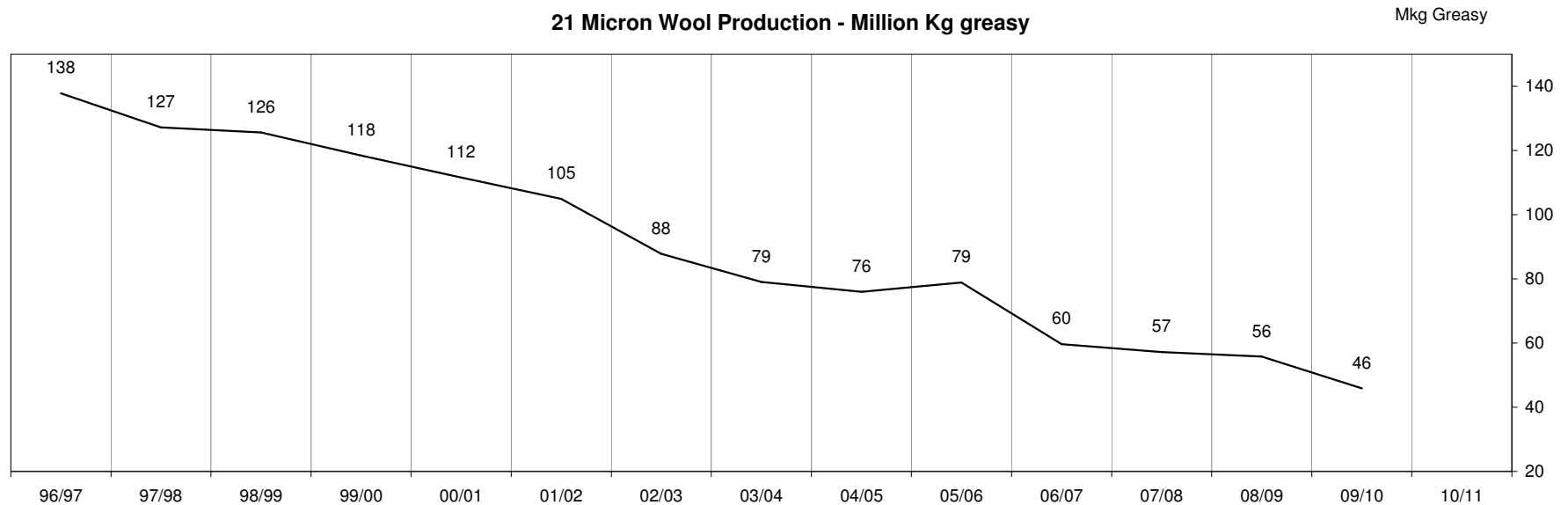
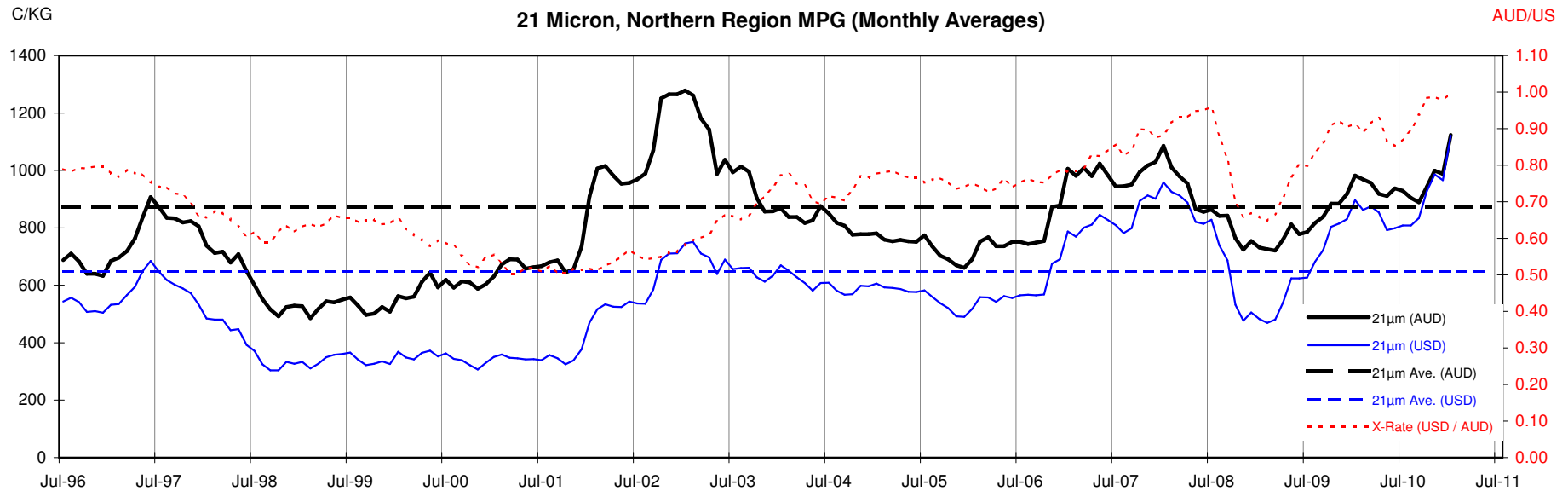
21 Micron SFE, Front month movement

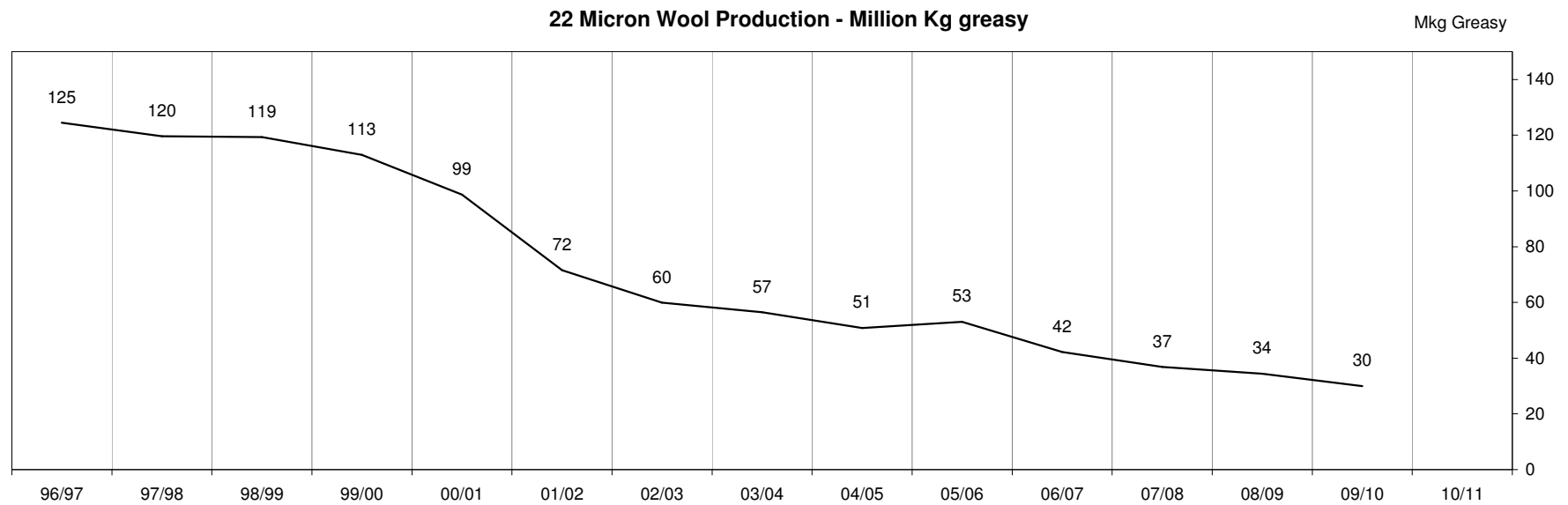
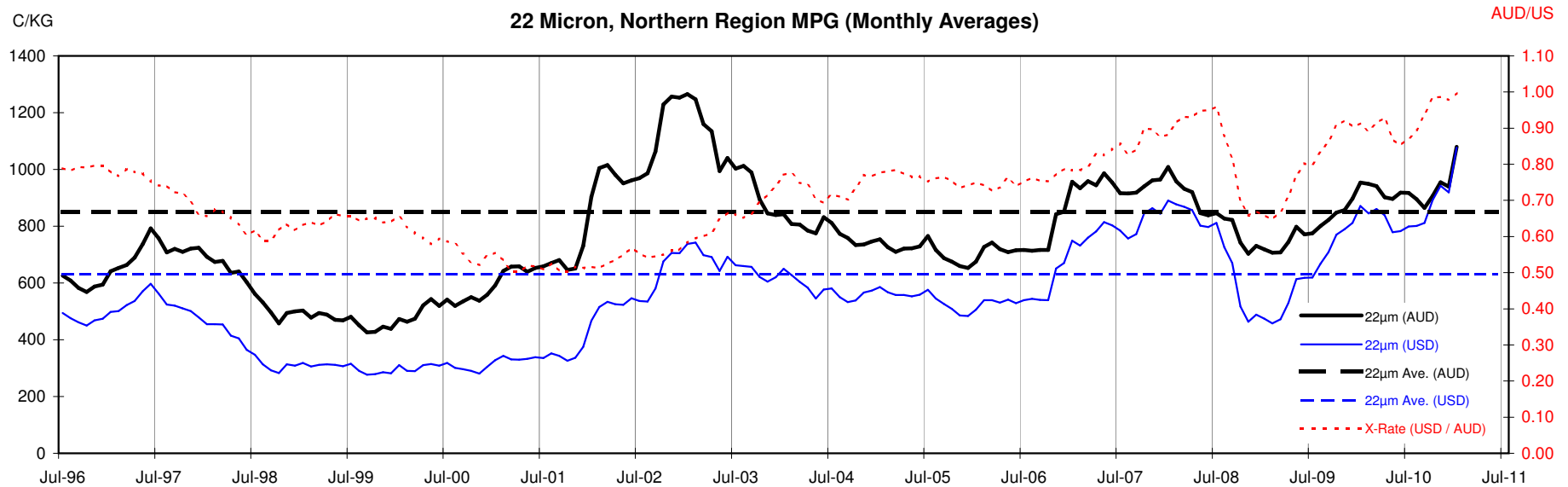


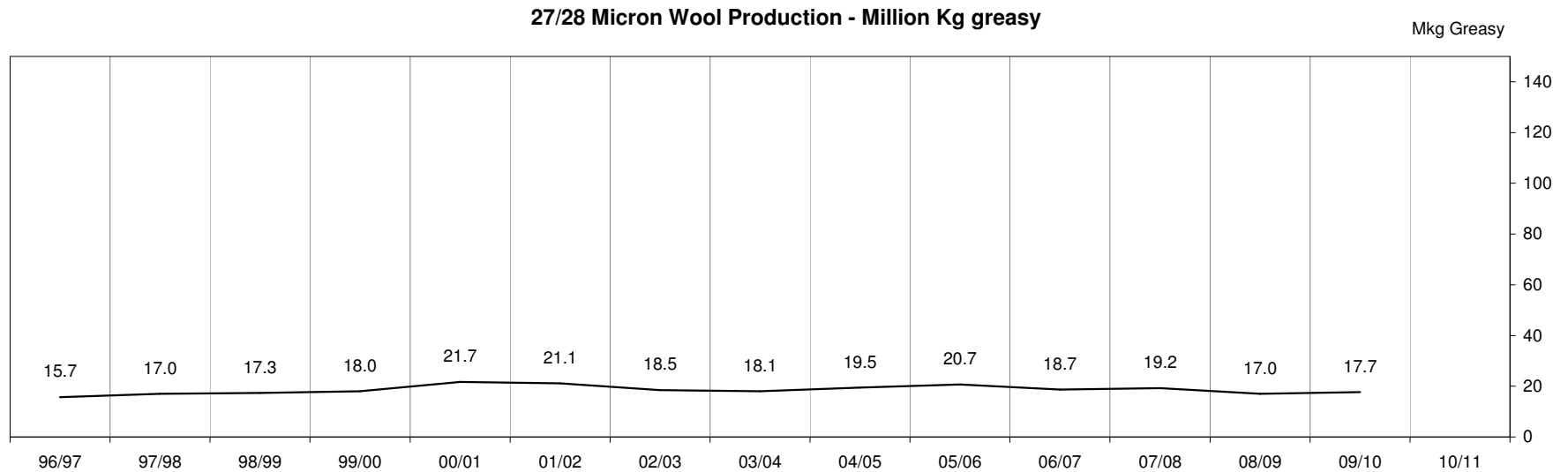
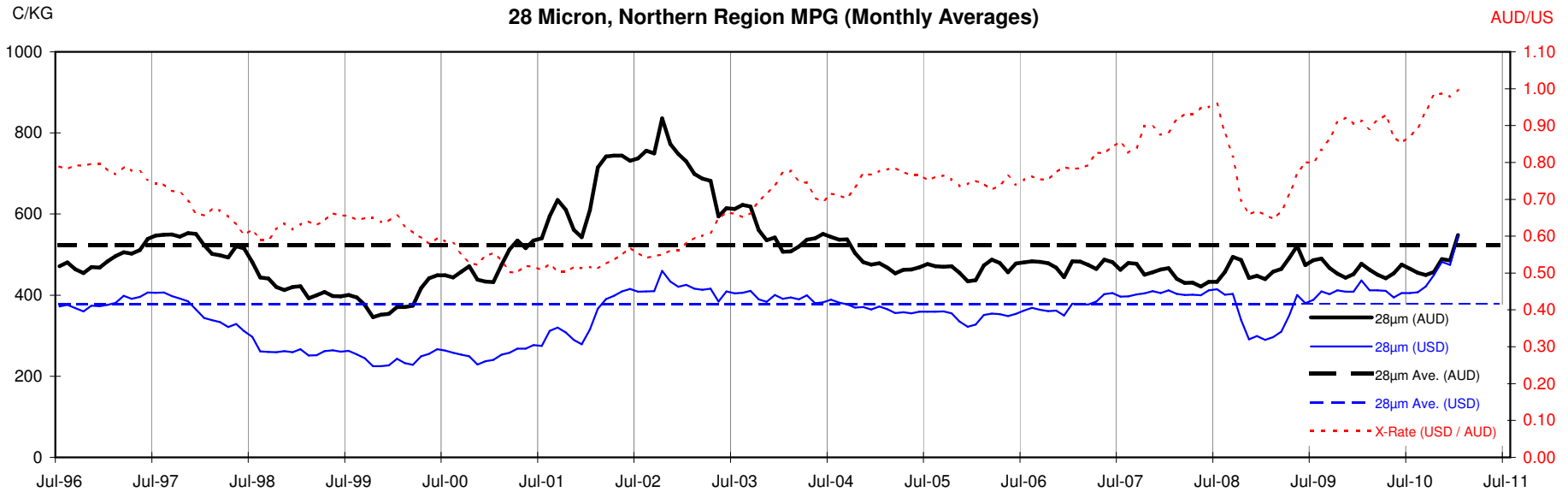












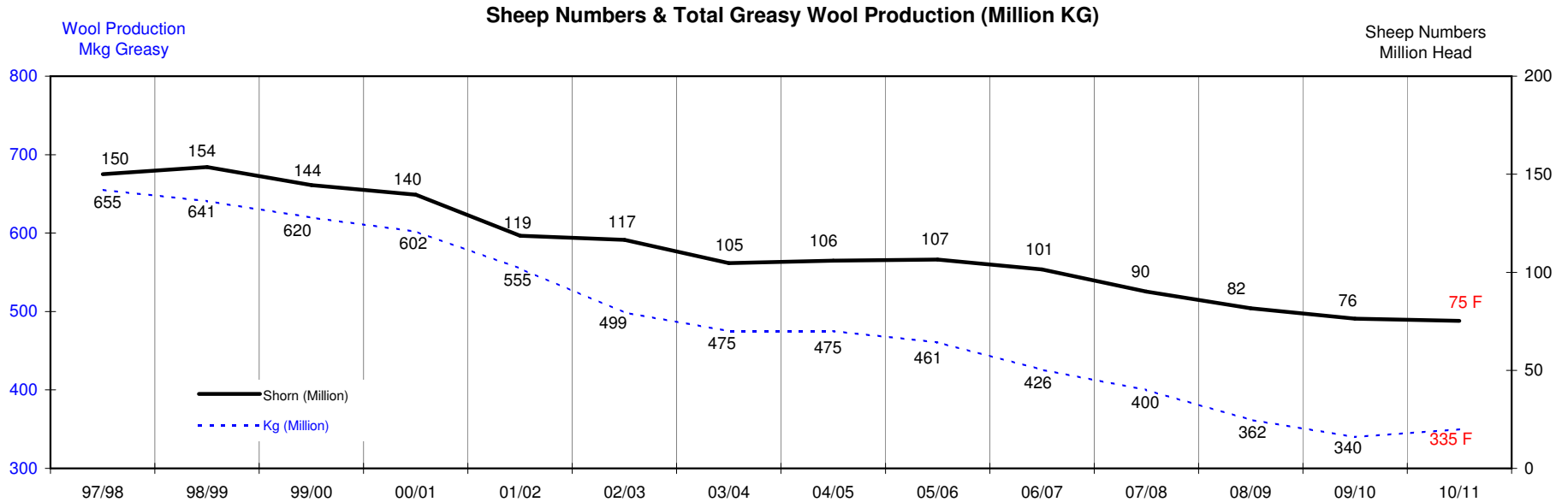
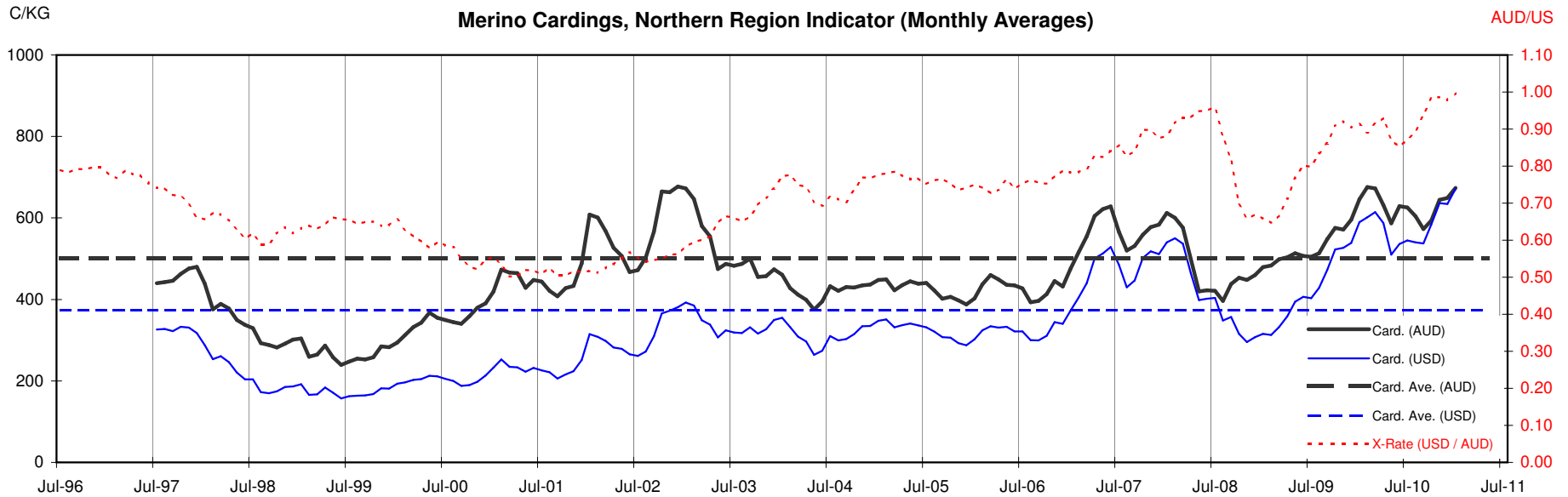




Table 13: Returns pr head for skirted fleece wool.

Skirted FLC Weight 9 Kg		Micron																	
		16	16.5	17	17.5	18	18.5	19	19.5	20	21	22	23	24	25	26	28	30	32
Yield (Sch Dry)	25% Current	\$53	\$52	\$50	\$46	\$44	\$40	\$35	\$30	\$26	\$25	\$24	\$23	\$21	\$18	\$17	\$13	\$11	\$10
	10yr ave.			\$32		\$29		\$24		\$21	\$20	\$19	\$19	\$18	\$16	\$15	\$12	\$10	\$9
	30% Current	\$64	\$62	\$60	\$55	\$53	\$48	\$42	\$36	\$31	\$30	\$29	\$27	\$26	\$22	\$20	\$16	\$14	\$12
	10yr ave.			\$38		\$35		\$29		\$25	\$24	\$23	\$22	\$21	\$19	\$18	\$14	\$12	\$11
	35% Current	\$75	\$72	\$70	\$64	\$62	\$57	\$49	\$42	\$36	\$35	\$33	\$32	\$30	\$26	\$24	\$18	\$16	\$14
	10yr ave.			\$44		\$40		\$34		\$29	\$28	\$27	\$26	\$25	\$22	\$21	\$16	\$14	\$13
	40% Current	\$85	\$83	\$80	\$73	\$70	\$65	\$56	\$48	\$41	\$40	\$38	\$36	\$34	\$29	\$27	\$21	\$18	\$16
	10yr ave.			\$51		\$46		\$38		\$33	\$31	\$31	\$30	\$29	\$26	\$23	\$19	\$16	\$15
	45% Current	\$96	\$93	\$90	\$83	\$79	\$73	\$63	\$54	\$46	\$45	\$43	\$41	\$38	\$33	\$30	\$23	\$21	\$18
	10yr ave.			\$57		\$52		\$43		\$37	\$35	\$34	\$34	\$32	\$29	\$26	\$21	\$18	\$17
	50% Current	\$107	\$104	\$100	\$92	\$88	\$81	\$69	\$60	\$52	\$50	\$48	\$45	\$43	\$37	\$34	\$26	\$23	\$20
	10yr ave.			\$63		\$58		\$48		\$41	\$39	\$38	\$37	\$36	\$32	\$29	\$24	\$21	\$19
	55% Current	\$117	\$114	\$110	\$101	\$97	\$89	\$76	\$66	\$57	\$55	\$52	\$50	\$47	\$40	\$37	\$29	\$25	\$22
	10yr ave.			\$70		\$63		\$53		\$45	\$43	\$42	\$41	\$39	\$35	\$32	\$26	\$23	\$20
	60% Current	\$128	\$124	\$120	\$110	\$105	\$97	\$83	\$72	\$62	\$60	\$57	\$54	\$51	\$44	\$41	\$31	\$27	\$24
	10yr ave.			\$76		\$69		\$58		\$50	\$47	\$46	\$45	\$43	\$38	\$35	\$28	\$25	\$22
	65% Current	\$139	\$135	\$130	\$119	\$114	\$105	\$90	\$78	\$67	\$65	\$62	\$59	\$55	\$48	\$44	\$34	\$30	\$26
	10yr ave.			\$82		\$75		\$62		\$54	\$51	\$50	\$49	\$46	\$42	\$38	\$31	\$27	\$24
	70% Current	\$149	\$145	\$140	\$129	\$123	\$113	\$97	\$83	\$72	\$69	\$67	\$64	\$60	\$51	\$47	\$36	\$32	\$28
	10yr ave.			\$89		\$81		\$67		\$58	\$55	\$54	\$52	\$50	\$45	\$41	\$33	\$29	\$26
	75% Current	\$160	\$155	\$150	\$138	\$132	\$121	\$104	\$89	\$77	\$74	\$71	\$68	\$64	\$55	\$51	\$39	\$34	\$30
	10yr ave.			\$95		\$86		\$72		\$62	\$59	\$57	\$56	\$54	\$48	\$44	\$35	\$31	\$28
	80% Current	\$171	\$166	\$160	\$147	\$141	\$129	\$111	\$95	\$82	\$79	\$76	\$73	\$68	\$59	\$54	\$42	\$37	\$32
	10yr ave.			\$101		\$92		\$77		\$66	\$63	\$61	\$60	\$57	\$51	\$47	\$38	\$33	\$30
	85% Current	\$181	\$176	\$170	\$156	\$149	\$137	\$118	\$101	\$88	\$84	\$81	\$77	\$72	\$62	\$58	\$44	\$39	\$34
	10yr ave.			\$107		\$98		\$82		\$70	\$67	\$65	\$63	\$61	\$54	\$50	\$40	\$35	\$32

The above shows estimated returns per head for skirted fleece wool. These figures do not take into account the value of skirtings and oddments and do not take into account discounts that may apply for faults under individual circumstances. These figures are based on a market index of 100% and should be used as a guide only. Returns over \$30 / head for fleece wool are highlighted.

Source: Australian Wool Exchange, Australian Wool Innovation, Sydney Futures Exchange, x-rates.com

Disclaimer: While all due care has been taken in the preparation of this document, no warranty is made as to its accuracy, reliability or completeness. To the extent permitted by law neither Jemalong or their sources including subsidiaries and staff, accept liability to any person for loss or damage arising from the use of this information.



Table 14: Returns pr head for skirted fleece wool.

Skirted FLC Weight 8 Kg		Micron																	
		16	16.5	17	17.5	18	18.5	19	19.5	20	21	22	23	24	25	26	28	30	32
Yield (Sch Dry)	25% Current	\$47	\$46	\$44	\$41	\$39	\$36	\$31	\$27	\$23	\$22	\$21	\$20	\$19	\$16	\$15	\$12	\$10	\$9
	10yr ave.			\$28		\$26		\$21		\$18	\$17	\$17	\$17	\$16	\$14	\$13	\$10	\$9	\$8
	30% Current	\$57	\$55	\$53	\$49	\$47	\$43	\$37	\$32	\$27	\$26	\$25	\$24	\$23	\$20	\$18	\$14	\$12	\$11
	10yr ave.			\$34		\$31		\$26		\$22	\$21	\$20	\$20	\$19	\$17	\$16	\$13	\$11	\$10
	35% Current	\$66	\$64	\$62	\$57	\$55	\$50	\$43	\$37	\$32	\$31	\$30	\$28	\$26	\$23	\$21	\$16	\$14	\$12
	10yr ave.			\$39		\$36		\$30		\$26	\$24	\$24	\$23	\$22	\$20	\$18	\$15	\$13	\$12
	40% Current	\$76	\$74	\$71	\$65	\$62	\$57	\$49	\$42	\$37	\$35	\$34	\$32	\$30	\$26	\$24	\$19	\$16	\$14
	10yr ave.			\$45		\$41		\$34		\$29	\$28	\$27	\$27	\$25	\$23	\$21	\$17	\$15	\$13
	45% Current	\$85	\$83	\$80	\$73	\$70	\$65	\$56	\$48	\$41	\$40	\$38	\$36	\$34	\$29	\$27	\$21	\$18	\$16
	10yr ave.			\$51		\$46		\$38		\$33	\$31	\$31	\$30	\$29	\$26	\$23	\$19	\$16	\$15
	50% Current	\$95	\$92	\$89	\$82	\$78	\$72	\$62	\$53	\$46	\$44	\$42	\$40	\$38	\$33	\$30	\$23	\$20	\$18
	10yr ave.			\$56		\$51		\$43		\$37	\$35	\$34	\$33	\$32	\$28	\$26	\$21	\$18	\$17
	55% Current	\$104	\$101	\$98	\$90	\$86	\$79	\$68	\$58	\$50	\$49	\$47	\$44	\$42	\$36	\$33	\$25	\$22	\$20
	10yr ave.			\$62		\$56		\$47		\$40	\$38	\$37	\$37	\$35	\$31	\$29	\$23	\$20	\$18
	60% Current	\$114	\$110	\$107	\$98	\$94	\$86	\$74	\$64	\$55	\$53	\$51	\$48	\$45	\$39	\$36	\$28	\$24	\$21
	10yr ave.			\$67		\$61		\$51		\$44	\$42	\$41	\$40	\$38	\$34	\$31	\$25	\$22	\$20
	65% Current	\$123	\$120	\$115	\$106	\$102	\$93	\$80	\$69	\$60	\$57	\$55	\$52	\$49	\$42	\$39	\$30	\$26	\$23
	10yr ave.			\$73		\$67		\$56		\$48	\$45	\$44	\$43	\$41	\$37	\$34	\$27	\$24	\$21
	70% Current	\$133	\$129	\$124	\$114	\$109	\$101	\$86	\$74	\$64	\$62	\$59	\$56	\$53	\$46	\$42	\$32	\$29	\$25
	10yr ave.			\$79		\$72		\$60		\$51	\$49	\$48	\$46	\$44	\$40	\$37	\$29	\$26	\$23
	75% Current	\$142	\$138	\$133	\$122	\$117	\$108	\$93	\$80	\$69	\$66	\$63	\$60	\$57	\$49	\$45	\$35	\$31	\$27
	10yr ave.			\$84		\$77		\$64		\$55	\$52	\$51	\$50	\$48	\$43	\$39	\$31	\$27	\$25
	80% Current	\$152	\$147	\$142	\$131	\$125	\$115	\$99	\$85	\$73	\$71	\$68	\$65	\$60	\$52	\$48	\$37	\$33	\$29
	10yr ave.			\$90		\$82		\$68		\$59	\$56	\$54	\$53	\$51	\$46	\$42	\$33	\$29	\$26
	85% Current	\$161	\$156	\$151	\$139	\$133	\$122	\$105	\$90	\$78	\$75	\$72	\$69	\$64	\$55	\$51	\$39	\$35	\$30
	10yr ave.			\$96		\$87		\$73		\$62	\$59	\$58	\$56	\$54	\$48	\$44	\$36	\$31	\$28

The above shows estimated returns per head for skirted fleece wool. These figures do not take into account the value of skirtings and oddments and do not take into account discounts that may apply for faults under individual circumstances. These figures are based on a market index of 100% and should be used as a guide only. Returns over \$30 / head for fleece wool are highlighted.

Source: Australian Wool Exchange, Australian Wool Innovation, Sydney Futures Exchange, x-rates.com

Disclaimer: While all due care has been taken in the preparation of this document, no warranty is made as to its accuracy, reliability or completeness. To the extent permitted by law neither Jemalong or their sources including subsidiaries and staff, accept liability to any person for loss or damage arising from the use of this information.



Table 15: Returns pr head for skirted fleece wool.

Skirted FLC Weight		Micron																	
7 Kg		16	16.5	17	17.5	18	18.5	19	19.5	20	21	22	23	24	25	26	28	30	32
Yield (Sch Dry)	25% Current	\$41	\$40	\$39	\$36	\$34	\$31	\$27	\$23	\$20	\$19	\$19	\$18	\$17	\$14	\$13	\$10	\$9	\$8
	10yr ave.			\$25		\$22		\$19		\$16	\$15	\$15	\$15	\$14	\$12	\$11	\$9	\$8	\$7
	30% Current	\$50	\$48	\$47	\$43	\$41	\$38	\$32	\$28	\$24	\$23	\$22	\$21	\$20	\$17	\$16	\$12	\$11	\$9
	10yr ave.			\$30		\$27		\$22		\$19	\$18	\$18	\$17	\$17	\$15	\$14	\$11	\$10	\$9
	35% Current	\$58	\$56	\$54	\$50	\$48	\$44	\$38	\$32	\$28	\$27	\$26	\$25	\$23	\$20	\$18	\$14	\$12	\$11
	10yr ave.			\$34		\$31		\$26		\$22	\$21	\$21	\$20	\$19	\$17	\$16	\$13	\$11	\$10
	40% Current	\$66	\$64	\$62	\$57	\$55	\$50	\$43	\$37	\$32	\$31	\$30	\$28	\$26	\$23	\$21	\$16	\$14	\$12
	10yr ave.			\$39		\$36		\$30		\$26	\$24	\$24	\$23	\$22	\$20	\$18	\$15	\$13	\$12
	45% Current	\$75	\$72	\$70	\$64	\$62	\$57	\$49	\$42	\$36	\$35	\$33	\$32	\$30	\$26	\$24	\$18	\$16	\$14
	10yr ave.			\$44		\$40		\$34		\$29	\$28	\$27	\$26	\$25	\$22	\$21	\$16	\$14	\$13
	50% Current	\$83	\$81	\$78	\$71	\$68	\$63	\$54	\$46	\$40	\$39	\$37	\$35	\$33	\$28	\$26	\$20	\$18	\$16
	10yr ave.			\$49		\$45		\$37		\$32	\$31	\$30	\$29	\$28	\$25	\$23	\$18	\$16	\$14
	55% Current	\$91	\$89	\$85	\$79	\$75	\$69	\$59	\$51	\$44	\$42	\$41	\$39	\$36	\$31	\$29	\$22	\$20	\$17
	10yr ave.			\$54		\$49		\$41		\$35	\$34	\$33	\$32	\$31	\$27	\$25	\$20	\$18	\$16
	60% Current	\$100	\$97	\$93	\$86	\$82	\$75	\$65	\$56	\$48	\$46	\$44	\$42	\$40	\$34	\$32	\$24	\$21	\$19
	10yr ave.			\$59		\$54		\$45		\$39	\$37	\$36	\$35	\$33	\$30	\$27	\$22	\$19	\$17
	65% Current	\$108	\$105	\$101	\$93	\$89	\$82	\$70	\$60	\$52	\$50	\$48	\$46	\$43	\$37	\$34	\$26	\$23	\$20
	10yr ave.			\$64		\$58		\$49		\$42	\$40	\$39	\$38	\$36	\$32	\$30	\$24	\$21	\$19
	70% Current	\$116	\$113	\$109	\$100	\$96	\$88	\$76	\$65	\$56	\$54	\$52	\$49	\$46	\$40	\$37	\$28	\$25	\$22
	10yr ave.			\$69		\$63		\$52		\$45	\$43	\$42	\$41	\$39	\$35	\$32	\$26	\$22	\$20
	75% Current	\$124	\$121	\$117	\$107	\$103	\$94	\$81	\$70	\$60	\$58	\$56	\$53	\$50	\$43	\$39	\$30	\$27	\$23
	10yr ave.			\$74		\$67		\$56		\$48	\$46	\$45	\$44	\$42	\$37	\$34	\$27	\$24	\$22
	80% Current	\$133	\$129	\$124	\$114	\$109	\$101	\$86	\$74	\$64	\$62	\$59	\$56	\$53	\$46	\$42	\$32	\$29	\$25
	10yr ave.			\$79		\$72		\$60		\$51	\$49	\$48	\$46	\$44	\$40	\$37	\$29	\$26	\$23
	85% Current	\$141	\$137	\$132	\$121	\$116	\$107	\$92	\$79	\$68	\$66	\$63	\$60	\$56	\$48	\$45	\$34	\$30	\$27
	10yr ave.			\$84		\$76		\$64		\$55	\$52	\$51	\$49	\$47	\$42	\$39	\$31	\$27	\$25

The above shows estimated returns per head for skirted fleece wool. These figures do not take into account the value of skirtings and oddments and do not take into account discounts that may apply for faults under individual circumstances. These figures are based on a market index of 100% and should be used as a guide only. Returns over \$30 / head for fleece wool are highlighted.

Source: Australian Wool Exchange, Australian Wool Innovation, Sydney Futures Exchange, x-rates.com

Disclaimer: While all due care has been taken in the preparation of this document, no warranty is made as to its accuracy, reliability or completeness. To the extent permitted by law neither Jemalong or their sources including subsidiaries and staff, accept liability to any person for loss or damage arising from the use of this information.



Table 16: Returns pr head for skirted fleece wool.

Skirted FLC Weight 6 Kg		Micron																	
		16	16.5	17	17.5	18	18.5	19	19.5	20	21	22	23	24	25	26	28	30	32
Yield (Sch Dry)	25% Current	\$36	\$35	\$33	\$31	\$29	\$27	\$23	\$20	\$17	\$17	\$16	\$15	\$14	\$12	\$11	\$9	\$8	\$7
	10yr ave.			\$21		\$19		\$16		\$14	\$13	\$13	\$12	\$12	\$11	\$10	\$8	\$7	\$6
	30% Current	\$43	\$41	\$40	\$37	\$35	\$32	\$28	\$24	\$21	\$20	\$19	\$18	\$17	\$15	\$14	\$10	\$9	\$8
	10yr ave.			\$25		\$23		\$19		\$17	\$16	\$15	\$15	\$14	\$13	\$12	\$9	\$8	\$7
	35% Current	\$50	\$48	\$47	\$43	\$41	\$38	\$32	\$28	\$24	\$23	\$22	\$21	\$20	\$17	\$16	\$12	\$11	\$9
	10yr ave.			\$30		\$27		\$22		\$19	\$18	\$18	\$17	\$17	\$15	\$14	\$11	\$10	\$9
	40% Current	\$57	\$55	\$53	\$49	\$47	\$43	\$37	\$32	\$27	\$26	\$25	\$24	\$23	\$20	\$18	\$14	\$12	\$11
	10yr ave.			\$34		\$31		\$26		\$22	\$21	\$20	\$20	\$19	\$17	\$16	\$13	\$11	\$10
	45% Current	\$64	\$62	\$60	\$55	\$53	\$48	\$42	\$36	\$31	\$30	\$29	\$27	\$26	\$22	\$20	\$16	\$14	\$12
	10yr ave.			\$38		\$35		\$29		\$25	\$24	\$23	\$22	\$21	\$19	\$18	\$14	\$12	\$11
	50% Current	\$71	\$69	\$67	\$61	\$59	\$54	\$46	\$40	\$34	\$33	\$32	\$30	\$28	\$24	\$23	\$17	\$15	\$13
	10yr ave.			\$42		\$38		\$32		\$28	\$26	\$26	\$25	\$24	\$21	\$20	\$16	\$14	\$12
	55% Current	\$78	\$76	\$73	\$67	\$64	\$59	\$51	\$44	\$38	\$36	\$35	\$33	\$31	\$27	\$25	\$19	\$17	\$15
	10yr ave.			\$46		\$42		\$35		\$30	\$29	\$28	\$27	\$26	\$23	\$22	\$17	\$15	\$14
	60% Current	\$85	\$83	\$80	\$73	\$70	\$65	\$56	\$48	\$41	\$40	\$38	\$36	\$34	\$29	\$27	\$21	\$18	\$16
	10yr ave.			\$51		\$46		\$38		\$33	\$31	\$31	\$30	\$29	\$26	\$23	\$19	\$16	\$15
	65% Current	\$92	\$90	\$87	\$80	\$76	\$70	\$60	\$52	\$45	\$43	\$41	\$39	\$37	\$32	\$29	\$23	\$20	\$17
	10yr ave.			\$55		\$50		\$42		\$36	\$34	\$33	\$32	\$31	\$28	\$25	\$20	\$18	\$16
	70% Current	\$100	\$97	\$93	\$86	\$82	\$75	\$65	\$56	\$48	\$46	\$44	\$42	\$40	\$34	\$32	\$24	\$21	\$19
	10yr ave.			\$59		\$54		\$45		\$39	\$37	\$36	\$35	\$33	\$30	\$27	\$22	\$19	\$17
	75% Current	\$107	\$104	\$100	\$92	\$88	\$81	\$69	\$60	\$52	\$50	\$48	\$45	\$43	\$37	\$34	\$26	\$23	\$20
	10yr ave.			\$63		\$58		\$48		\$41	\$39	\$38	\$37	\$36	\$32	\$29	\$24	\$21	\$19
	80% Current	\$114	\$110	\$107	\$98	\$94	\$86	\$74	\$64	\$55	\$53	\$51	\$48	\$45	\$39	\$36	\$28	\$24	\$21
	10yr ave.			\$67		\$61		\$51		\$44	\$42	\$41	\$40	\$38	\$34	\$31	\$25	\$22	\$20
	85% Current	\$121	\$117	\$113	\$104	\$100	\$92	\$79	\$68	\$58	\$56	\$54	\$51	\$48	\$42	\$38	\$30	\$26	\$23
	10yr ave.			\$72		\$65		\$54		\$47	\$45	\$43	\$42	\$40	\$36	\$33	\$27	\$23	\$21

The above shows estimated returns per head for skirted fleece wool. These figures do not take into account the value of skirtings and oddments and do not take into account discounts that may apply for faults under individual circumstances. These figures are based on a market index of 100% and should be used as a guide only. Returns over \$30 / head for fleece wool are highlighted.

Source: Australian Wool Exchange, Australian Wool Innovation, Sydney Futures Exchange, x-rates.com

Disclaimer: While all due care has been taken in the preparation of this document, no warranty is made as to its accuracy, reliability or completeness. To the extent permitted by law neither Jemalong or their sources including subsidiaries and staff, accept liability to any person for loss or damage arising from the use of this information.



Table 17: Returns pr head for skirted fleece wool.

Skirted FLC Weight		Micron																	
5 Kg		16	16.5	17	17.5	18	18.5	19	19.5	20	21	22	23	24	25	26	28	30	32
Yield (Sch Dry)	25% Current	\$30	\$29	\$28	\$26	\$24	\$22	\$19	\$17	\$14	\$14	\$13	\$13	\$12	\$10	\$9	\$7	\$6	\$6
	10yr ave.			\$18		\$16		\$13		\$11	\$11	\$11	\$10	\$10	\$9	\$8	\$7	\$6	\$5
	30% Current	\$36	\$35	\$33	\$31	\$29	\$27	\$23	\$20	\$17	\$17	\$16	\$15	\$14	\$12	\$11	\$9	\$8	\$7
	10yr ave.			\$21		\$19		\$16		\$14	\$13	\$13	\$12	\$12	\$11	\$10	\$8	\$7	\$6
	35% Current	\$41	\$40	\$39	\$36	\$34	\$31	\$27	\$23	\$20	\$19	\$19	\$18	\$17	\$14	\$13	\$10	\$9	\$8
	10yr ave.			\$25		\$22		\$19		\$16	\$15	\$15	\$15	\$14	\$12	\$11	\$9	\$8	\$7
	40% Current	\$47	\$46	\$44	\$41	\$39	\$36	\$31	\$27	\$23	\$22	\$21	\$20	\$19	\$16	\$15	\$12	\$10	\$9
	10yr ave.			\$28		\$26		\$21		\$18	\$17	\$17	\$17	\$16	\$14	\$13	\$10	\$9	\$8
	45% Current	\$53	\$52	\$50	\$46	\$44	\$40	\$35	\$30	\$26	\$25	\$24	\$23	\$21	\$18	\$17	\$13	\$11	\$10
	10yr ave.			\$32		\$29		\$24		\$21	\$20	\$19	\$19	\$18	\$16	\$15	\$12	\$10	\$9
	50% Current	\$59	\$58	\$56	\$51	\$49	\$45	\$39	\$33	\$29	\$28	\$26	\$25	\$24	\$20	\$19	\$14	\$13	\$11
	10yr ave.			\$35		\$32		\$27		\$23	\$22	\$21	\$21	\$20	\$18	\$16	\$13	\$11	\$10
	55% Current	\$65	\$63	\$61	\$56	\$54	\$49	\$42	\$36	\$31	\$30	\$29	\$28	\$26	\$22	\$21	\$16	\$14	\$12
	10yr ave.			\$39		\$35		\$29		\$25	\$24	\$23	\$23	\$22	\$20	\$18	\$14	\$13	\$11
	60% Current	\$71	\$69	\$67	\$61	\$59	\$54	\$46	\$40	\$34	\$33	\$32	\$30	\$28	\$24	\$23	\$17	\$15	\$13
	10yr ave.			\$42		\$38		\$32		\$28	\$26	\$26	\$25	\$24	\$21	\$20	\$16	\$14	\$12
	65% Current	\$77	\$75	\$72	\$66	\$63	\$58	\$50	\$43	\$37	\$36	\$34	\$33	\$31	\$26	\$24	\$19	\$17	\$14
	10yr ave.			\$46		\$42		\$35		\$30	\$28	\$28	\$27	\$26	\$23	\$21	\$17	\$15	\$13
	70% Current	\$83	\$81	\$78	\$71	\$68	\$63	\$54	\$46	\$40	\$39	\$37	\$35	\$33	\$28	\$26	\$20	\$18	\$16
	10yr ave.			\$49		\$45		\$37		\$32	\$31	\$30	\$29	\$28	\$25	\$23	\$18	\$16	\$14
	75% Current	\$89	\$86	\$83	\$77	\$73	\$67	\$58	\$50	\$43	\$41	\$40	\$38	\$35	\$31	\$28	\$22	\$19	\$17
	10yr ave.			\$53		\$48		\$40		\$34	\$33	\$32	\$31	\$30	\$27	\$24	\$20	\$17	\$15
	80% Current	\$95	\$92	\$89	\$82	\$78	\$72	\$62	\$53	\$46	\$44	\$42	\$40	\$38	\$33	\$30	\$23	\$20	\$18
	10yr ave.			\$56		\$51		\$43		\$37	\$35	\$34	\$33	\$32	\$28	\$26	\$21	\$18	\$17
	85% Current	\$101	\$98	\$94	\$87	\$83	\$76	\$66	\$56	\$49	\$47	\$45	\$43	\$40	\$35	\$32	\$25	\$22	\$19
	10yr ave.			\$60		\$54		\$45		\$39	\$37	\$36	\$35	\$34	\$30	\$28	\$22	\$19	\$18

The above shows estimated returns per head for skirted fleece wool. These figures do not take into account the value of skirtings and oddments and do not take into account discounts that may apply for faults under individual circumstances. These figures are based on a market index of 100% and should be used as a guide only. Returns over \$30 / head for fleece wool are highlighted.

Source: Australian Wool Exchange, Australian Wool Innovation, Sydney Futures Exchange, x-rates.com

Disclaimer: While all due care has been taken in the preparation of this document, no warranty is made as to its accuracy, reliability or completeness. To the extent permitted by law neither Jemalong or their sources including subsidiaries and staff, accept liability to any person for loss or damage arising from the use of this information.



Table 18: Returns pr head for skirted fleece wool.

Skirted FLC Weight		Micron																	
4 Kg		16	16.5	17	17.5	18	18.5	19	19.5	20	21	22	23	24	25	26	28	30	32
Yield (Sch Dry)	25% Current	\$24	\$23	\$22	\$20	\$20	\$18	\$15	\$13	\$11	\$11	\$11	\$10	\$9	\$8	\$8	\$6	\$5	\$4
	10yr ave.			\$14		\$13		\$11		\$9	\$9	\$9	\$8	\$8	\$7	\$7	\$5	\$5	\$4
	30% Current	\$28	\$28	\$27	\$24	\$23	\$22	\$19	\$16	\$14	\$13	\$13	\$12	\$11	\$10	\$9	\$7	\$6	\$5
	10yr ave.			\$17		\$15		\$13		\$11	\$10	\$10	\$10	\$10	\$9	\$8	\$6	\$5	\$5
	35% Current	\$33	\$32	\$31	\$29	\$27	\$25	\$22	\$19	\$16	\$15	\$15	\$14	\$13	\$11	\$11	\$8	\$7	\$6
	10yr ave.			\$20		\$18		\$15		\$13	\$12	\$12	\$12	\$11	\$10	\$9	\$7	\$6	\$6
	40% Current	\$38	\$37	\$36	\$33	\$31	\$29	\$25	\$21	\$18	\$18	\$17	\$16	\$15	\$13	\$12	\$9	\$8	\$7
	10yr ave.			\$22		\$20		\$17		\$15	\$14	\$14	\$13	\$13	\$11	\$10	\$8	\$7	\$7
	45% Current	\$43	\$41	\$40	\$37	\$35	\$32	\$28	\$24	\$21	\$20	\$19	\$18	\$17	\$15	\$14	\$10	\$9	\$8
	10yr ave.			\$25		\$23		\$19		\$17	\$16	\$15	\$15	\$14	\$13	\$12	\$9	\$8	\$7
	50% Current	\$47	\$46	\$44	\$41	\$39	\$36	\$31	\$27	\$23	\$22	\$21	\$20	\$19	\$16	\$15	\$12	\$10	\$9
	10yr ave.			\$28		\$26		\$21		\$18	\$17	\$17	\$17	\$16	\$14	\$13	\$10	\$9	\$8
	55% Current	\$52	\$51	\$49	\$45	\$43	\$39	\$34	\$29	\$25	\$24	\$23	\$22	\$21	\$18	\$17	\$13	\$11	\$10
	10yr ave.			\$31		\$28		\$23		\$20	\$19	\$19	\$18	\$17	\$16	\$14	\$12	\$10	\$9
	60% Current	\$57	\$55	\$53	\$49	\$47	\$43	\$37	\$32	\$27	\$26	\$25	\$24	\$23	\$20	\$18	\$14	\$12	\$11
	10yr ave.			\$34		\$31		\$26		\$22	\$21	\$20	\$20	\$19	\$17	\$16	\$13	\$11	\$10
	65% Current	\$62	\$60	\$58	\$53	\$51	\$47	\$40	\$34	\$30	\$29	\$28	\$26	\$25	\$21	\$20	\$15	\$13	\$12
	10yr ave.			\$37		\$33		\$28		\$24	\$23	\$22	\$22	\$21	\$19	\$17	\$14	\$12	\$11
	70% Current	\$66	\$64	\$62	\$57	\$55	\$50	\$43	\$37	\$32	\$31	\$30	\$28	\$26	\$23	\$21	\$16	\$14	\$12
	10yr ave.			\$39		\$36		\$30		\$26	\$24	\$24	\$23	\$22	\$20	\$18	\$15	\$13	\$12
	75% Current	\$71	\$69	\$67	\$61	\$59	\$54	\$46	\$40	\$34	\$33	\$32	\$30	\$28	\$24	\$23	\$17	\$15	\$13
	10yr ave.			\$42		\$38		\$32		\$28	\$26	\$26	\$25	\$24	\$21	\$20	\$16	\$14	\$12
	80% Current	\$76	\$74	\$71	\$65	\$62	\$57	\$49	\$42	\$37	\$35	\$34	\$32	\$30	\$26	\$24	\$19	\$16	\$14
	10yr ave.			\$45		\$41		\$34		\$29	\$28	\$27	\$27	\$25	\$23	\$21	\$17	\$15	\$13
	85% Current	\$81	\$78	\$75	\$69	\$66	\$61	\$52	\$45	\$39	\$38	\$36	\$34	\$32	\$28	\$26	\$20	\$17	\$15
	10yr ave.			\$48		\$44		\$36		\$31	\$30	\$29	\$28	\$27	\$24	\$22	\$18	\$16	\$14

The above shows estimated returns per head for skirted fleece wool. These figures do not take into account the value of skirtings and oddments and do not take into account discounts that may apply for faults under individual circumstances. These figures are based on a market index of 100% and should be used as a guide only. Returns over \$30 / head for fleece wool are highlighted.

Source: Australian Wool Exchange, Australian Wool Innovation, Sydney Futures Exchange, x-rates.com

Disclaimer: While all due care has been taken in the preparation of this document, no warranty is made as to its accuracy, reliability or completeness. To the extent permitted by law neither Jemalong or their sources including subsidiaries and staff, accept liability to any person for loss or damage arising from the use of this information.



Table 19: Returns pr head for skirted fleece wool.

Skirted FLC Weight 3 Kg		Micron																	
		16	16.5	17	17.5	18	18.5	19	19.5	20	21	22	23	24	25	26	28	30	32
Yield (Sch Dry)	25% Current	\$18	\$17	\$17	\$15	\$15	\$13	\$12	\$10	\$9	\$8	\$8	\$8	\$7	\$6	\$6	\$4	\$4	\$3
	10yr ave.			\$11		\$10		\$8		\$7	\$7	\$6	\$6	\$6	\$5	\$5	\$4	\$3	\$3
	30% Current	\$21	\$21	\$20	\$18	\$18	\$16	\$14	\$12	\$10	\$10	\$10	\$9	\$9	\$7	\$7	\$5	\$5	\$4
	10yr ave.			\$13		\$12		\$10		\$8	\$8	\$8	\$7	\$7	\$6	\$6	\$5	\$4	\$4
	35% Current	\$25	\$24	\$23	\$21	\$21	\$19	\$16	\$14	\$12	\$12	\$11	\$11	\$10	\$9	\$8	\$6	\$5	\$5
	10yr ave.			\$15		\$13		\$11		\$10	\$9	\$9	\$9	\$8	\$7	\$7	\$5	\$5	\$4
	40% Current	\$28	\$28	\$27	\$24	\$23	\$22	\$19	\$16	\$14	\$13	\$13	\$12	\$11	\$10	\$9	\$7	\$6	\$5
	10yr ave.			\$17		\$15		\$13		\$11	\$10	\$10	\$10	\$10	\$9	\$8	\$6	\$5	\$5
	45% Current	\$32	\$31	\$30	\$28	\$26	\$24	\$21	\$18	\$15	\$15	\$14	\$14	\$13	\$11	\$10	\$8	\$7	\$6
	10yr ave.			\$19		\$17		\$14		\$12	\$12	\$11	\$11	\$11	\$10	\$9	\$7	\$6	\$6
	50% Current	\$36	\$35	\$33	\$31	\$29	\$27	\$23	\$20	\$17	\$17	\$16	\$15	\$14	\$12	\$11	\$9	\$8	\$7
	10yr ave.			\$21		\$19		\$16		\$14	\$13	\$13	\$12	\$12	\$11	\$10	\$8	\$7	\$6
	55% Current	\$39	\$38	\$37	\$34	\$32	\$30	\$25	\$22	\$19	\$18	\$17	\$17	\$16	\$13	\$12	\$10	\$8	\$7
	10yr ave.			\$23		\$21		\$18		\$15	\$14	\$14	\$14	\$13	\$12	\$11	\$9	\$8	\$7
	60% Current	\$43	\$41	\$40	\$37	\$35	\$32	\$28	\$24	\$21	\$20	\$19	\$18	\$17	\$15	\$14	\$10	\$9	\$8
	10yr ave.			\$25		\$23		\$19		\$17	\$16	\$15	\$15	\$14	\$13	\$12	\$9	\$8	\$7
	65% Current	\$46	\$45	\$43	\$40	\$38	\$35	\$30	\$26	\$22	\$22	\$21	\$20	\$18	\$16	\$15	\$11	\$10	\$9
	10yr ave.			\$27		\$25		\$21		\$18	\$17	\$17	\$16	\$15	\$14	\$13	\$10	\$9	\$8
	70% Current	\$50	\$48	\$47	\$43	\$41	\$38	\$32	\$28	\$24	\$23	\$22	\$21	\$20	\$17	\$16	\$12	\$11	\$9
	10yr ave.			\$30		\$27		\$22		\$19	\$18	\$18	\$17	\$17	\$15	\$14	\$11	\$10	\$9
	75% Current	\$53	\$52	\$50	\$46	\$44	\$40	\$35	\$30	\$26	\$25	\$24	\$23	\$21	\$18	\$17	\$13	\$11	\$10
	10yr ave.			\$32		\$29		\$24		\$21	\$20	\$19	\$19	\$18	\$16	\$15	\$12	\$10	\$9
	80% Current	\$57	\$55	\$53	\$49	\$47	\$43	\$37	\$32	\$27	\$26	\$25	\$24	\$23	\$20	\$18	\$14	\$12	\$11
	10yr ave.			\$34		\$31		\$26		\$22	\$21	\$20	\$20	\$19	\$17	\$16	\$13	\$11	\$10
	85% Current	\$60	\$59	\$57	\$52	\$50	\$46	\$39	\$34	\$29	\$28	\$27	\$26	\$24	\$21	\$19	\$15	\$13	\$11
	10yr ave.			\$36		\$33		\$27		\$23	\$22	\$22	\$21	\$20	\$18	\$17	\$13	\$12	\$11

The above shows estimated returns per head for skirted fleece wool. These figures do not take into account the value of skirtings and oddments and do not take into account discounts that may apply for faults under individual circumstances. These figures are based on a market index of 100% and should be used as a guide only. Returns over \$30 / head for fleece wool are highlighted.

Source: Australian Wool Exchange, Australian Wool Innovation, Sydney Futures Exchange, x-rates.com

Disclaimer: While all due care has been taken in the preparation of this document, no warranty is made as to its accuracy, reliability or completeness. To the extent permitted by law neither Jemalong or their sources including subsidiaries and staff, accept liability to any person for loss or damage arising from the use of this information.



Table 20: Returns pr head for skirted fleece wool.

Skirted FLC Weight 2 Kg		Micron																	
		16	16.5	17	17.5	18	18.5	19	19.5	20	21	22	23	24	25	26	28	30	32
Yield (Sch Dry)	25% Current	\$12	\$12	\$11	\$10	\$10	\$9	\$8	\$7	\$6	\$6	\$5	\$5	\$5	\$4	\$4	\$3	\$3	\$2
	10yr ave.			\$7		\$6		\$5		\$5	\$4	\$4	\$4	\$4	\$4	\$3	\$3	\$2	\$2
	30% Current	\$14	\$14	\$13	\$12	\$12	\$11	\$9	\$8	\$7	\$7	\$6	\$6	\$6	\$5	\$5	\$3	\$3	\$3
	10yr ave.			\$8		\$8		\$6		\$6	\$5	\$5	\$5	\$5	\$4	\$4	\$3	\$3	\$2
	35% Current	\$17	\$16	\$16	\$14	\$14	\$13	\$11	\$9	\$8	\$8	\$7	\$7	\$7	\$6	\$5	\$4	\$4	\$3
	10yr ave.			\$10		\$9		\$7		\$6	\$6	\$6	\$6	\$6	\$5	\$5	\$4	\$3	\$3
	40% Current	\$19	\$18	\$18	\$16	\$16	\$14	\$12	\$11	\$9	\$9	\$8	\$8	\$8	\$7	\$6	\$5	\$4	\$4
	10yr ave.			\$11		\$10		\$9		\$7	\$7	\$7	\$7	\$6	\$6	\$5	\$4	\$4	\$3
	45% Current	\$21	\$21	\$20	\$18	\$18	\$16	\$14	\$12	\$10	\$10	\$10	\$9	\$9	\$7	\$7	\$5	\$5	\$4
	10yr ave.			\$13		\$12		\$10		\$8	\$8	\$8	\$7	\$7	\$6	\$6	\$5	\$4	\$4
	50% Current	\$24	\$23	\$22	\$20	\$20	\$18	\$15	\$13	\$11	\$11	\$11	\$10	\$9	\$8	\$8	\$6	\$5	\$4
	10yr ave.			\$14		\$13		\$11		\$9	\$9	\$9	\$8	\$8	\$7	\$7	\$5	\$5	\$4
	55% Current	\$26	\$25	\$24	\$22	\$21	\$20	\$17	\$15	\$13	\$12	\$12	\$11	\$10	\$9	\$8	\$6	\$6	\$5
	10yr ave.			\$15		\$14		\$12		\$10	\$10	\$9	\$9	\$9	\$8	\$7	\$6	\$5	\$5
	60% Current	\$28	\$28	\$27	\$24	\$23	\$22	\$19	\$16	\$14	\$13	\$13	\$12	\$11	\$10	\$9	\$7	\$6	\$5
	10yr ave.			\$17		\$15		\$13		\$11	\$10	\$10	\$10	\$10	\$9	\$8	\$6	\$5	\$5
	65% Current	\$31	\$30	\$29	\$27	\$25	\$23	\$20	\$17	\$15	\$14	\$14	\$13	\$12	\$11	\$10	\$8	\$7	\$6
	10yr ave.			\$18		\$17		\$14		\$12	\$11	\$11	\$11	\$10	\$9	\$8	\$7	\$6	\$5
	70% Current	\$33	\$32	\$31	\$29	\$27	\$25	\$22	\$19	\$16	\$15	\$15	\$14	\$13	\$11	\$11	\$8	\$7	\$6
	10yr ave.			\$20		\$18		\$15		\$13	\$12	\$12	\$12	\$11	\$10	\$9	\$7	\$6	\$6
	75% Current	\$36	\$35	\$33	\$31	\$29	\$27	\$23	\$20	\$17	\$17	\$16	\$15	\$14	\$12	\$11	\$9	\$8	\$7
	10yr ave.			\$21		\$19		\$16		\$14	\$13	\$13	\$12	\$12	\$11	\$10	\$8	\$7	\$6
	80% Current	\$38	\$37	\$36	\$33	\$31	\$29	\$25	\$21	\$18	\$18	\$17	\$16	\$15	\$13	\$12	\$9	\$8	\$7
	10yr ave.			\$22		\$20		\$17		\$15	\$14	\$14	\$13	\$13	\$11	\$10	\$8	\$7	\$7
	85% Current	\$40	\$39	\$38	\$35	\$33	\$31	\$26	\$23	\$19	\$19	\$18	\$17	\$16	\$14	\$13	\$10	\$9	\$8
	10yr ave.			\$24		\$22		\$18		\$16	\$15	\$14	\$14	\$13	\$12	\$11	\$9	\$8	\$7

The above shows estimated returns per head for skirted fleece wool. These figures do not take into account the value of skirtings and oddments and do not take into account discounts that may apply for faults under individual circumstances. These figures are based on a market index of 100% and should be used as a guide only. Returns over \$30 / head for fleece wool are highlighted.

Source: Australian Wool Exchange, Australian Wool Innovation, Sydney Futures Exchange, x-rates.com

Disclaimer: While all due care has been taken in the preparation of this document, no warranty is made as to its accuracy, reliability or completeness. To the extent permitted by law neither Jemalong or their sources including subsidiaries and staff, accept liability to any person for loss or damage arising from the use of this information.