



# JEMALONG WOOL BULLETIN

(week ending 20/04/2011)

**Table 1: Northern Region Micron Price Guides**

CURRENT MARKET			PERCENTILES		AVERAGES						12 MONTH COMPARISONS								TRADING RANGE		
Mic. Price Guides	20/04/2011 Current Price	14/04/2011 Weekly Change			Now			Now			19/04/2010		Now		Now		Now		Clean c/kg		
			3yr	10yr	3 year Average	compared to 3yr ave		10 year Average	compared to 10yr ave	This time Last Year	compared to Last Year	12 Month Low	compared to Low	12 Month High	compared to High	12 Mth	3 Year	10 Year			
NRI	1388	-28 -2.0%	96%	98%	933	+455 49%		889	+499 56%	914	+474 52%	890	+498 56%	1447	-59 -4%	557	698	789			
16*	2780	-20 -0.7%	98%		1737	+1043 60%				1510	+1270 84%	1540	+1240 81%	2800	-20 -1%	1260	1415				
16.5*	2600	-70 -2.7%	95%		1598	+1002 63%				1400	+1200 86%	1395	+1205 86%	2670	-70 -3%	1275	1417				
17*	2470	-20 -0.8%	95%	97%	1472	+998 68%	1409	+1061 75%		1255	+1215 97%	1230	+1240 101%	2530	-60 -2%	1300	1360	1559			
17.5*	2270	0	94%		1393	+877 63%				1175	+1095 93%	1185	+1085 92%	2360	-90 -4%	1175	1275				
18	2038	-40 -2.0%	92%	95%	1319	+719 55%	1278	+760 59%		1140	+898 79%	1138	+900 79%	2193	-155 -7%	1055	1158	1353			
18.5	1834	-34 -1.9%	91%		1230	+604 49%				1092	+742 68%	1095	+739 67%	1963	-129 -7%	868	992				
19	1617	-47 -2.9%	92%	98%	1114	+503 45%	1075	+542 50%		1069	+548 51%	1031	+586 57%	1708	-91 -5%	677	814	904			
19.5	1470	-27 -1.8%	96%		1011	+459 45%				997	+473 47%	952	+518 54%	1529	-59 -4%	577	715				
20	1370	-15 -1.1%	97%	99%	931	+439 47%	930	+440 47%		938	+432 46%	904	+466 52%	1402	-32 -2%	498	663	718			
21	1284	-24 -1.9%	97%	98%	898	+386 43%	888	+396 45%		918	+366 40%	878	+406 46%	1324	-40 -3%	446	637	737			
22	1255	-28 -2.2%	97%	97%	876	+379 43%	865	+390 45%		904	+351 39%	847	+408 48%	1313	-58 -4%	466	639	732			
23	1220	-37 -3.0%	97%	95%	852	+368 43%	844	+376 45%		880	+340 39%	827	+393 48%	1291	-71 -5%	464	628	719			
24	1077	-35 -3.2%	96%	93%	802	+275 34%	805	+272 34%		818	+259 32%	780	+297 38%	1170	-93 -8%	390	523	690			
25	958	-33 -3.4%	96%	89%	693	+265 38%	722	+236 33%		660	+298 45%	668	+290 43%	1048	-90 -9%	380	482	635			
26	888	-31 -3.5%	97%	87%	624	+264 42%	660	+228 35%		580	+308 53%	585	+303 52%	928	-40 -4%	343	424	573			
28	659	-29 -4.4%	95%	85%	482	+177 37%	526	+133 25%		436	+223 51%	443	+216 49%	734	-75 -10%	291	315	465			
30	592	-31 -5.2%	95%	86%	423	+169 40%	460	+132 29%		382	+210 55%	389	+203 52%	670	-78 -12%	281	320	385			
32	571	-12 -2.1%	96%	90%	372	+199 53%	416	+155 37%		349	+222 64%	351	+220 63%	638	-67 -11%	287	323	372			
MC	817	-12 -1.5%	97%	99%	564	+253 45%	510	+307 60%		626	+191 31%	561	+256 46%	830	-13 -2%	269	438	450			

**Note:**

\* Due to the irregular market quoting for some fine wool categories, figures shown relating to micron categories below 18 micron are an estimate based on the AWEX Premium & Discounts Report & other available information.

\* For any category, where there is insufficient quantity offered to enable AWEX to quote, a quote will be provided based on the best available information.

\* 10 Year data is not available for some micron categories, which may result in blank spaces in the table above.

**Definitions:**

\* A Percentile, is a value on a scale of one hundred that indicates the percent of a distribution that is equal to or below it. In general a percentile between 25% and 75% is considered normal, a percentile below 25% is considered below normal and a percentile above 75% is considered above normal.

Three and ten year percentiles shown in the table above, detail the period of time during the past 3 & 10 years that the market has traded either at or below its current price.

The higher the percentile, the stronger the market.

Source: Australian Wool Exchange, Australian Wool Innovation, Sydney Futures Exchange, x-rates.com

Disclaimer: While all due care has been taken in the preparation of this document, no warranty is made as to its accuracy, reliability or completeness. To the extent permitted by law neither Jemalong or their sources including subsidiaries and staff, accept liability to any person for loss or damage arising from the use of this information.



**MARKET COMMENTARY**

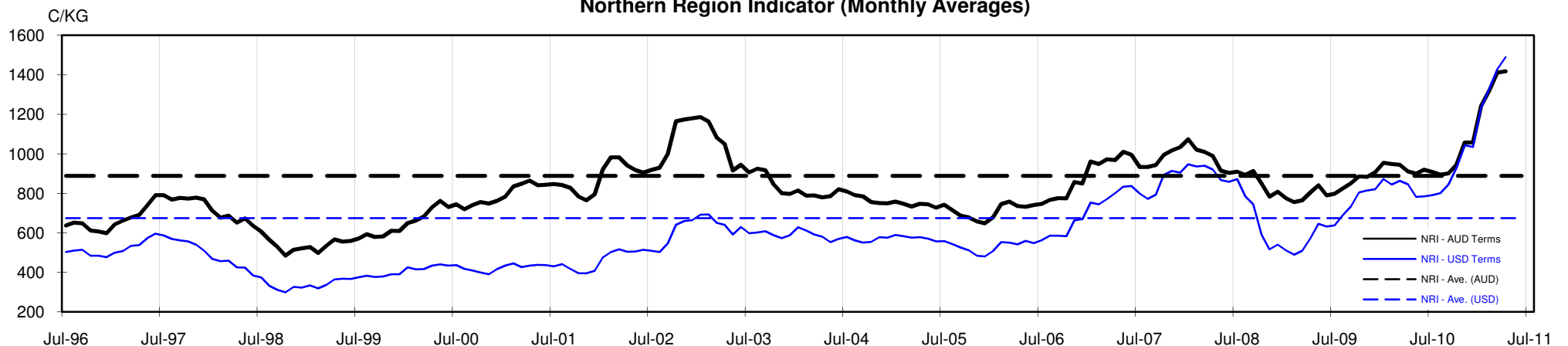
**One Australian Dollar = \$ 1.07 US, as of 20/04/2011**

**NORTHERN REGION –Sale Week 42/10 (50,355 bales offered nationally)**

On Tuesday - Merino fleece lost ground with decreases in the order of 20-30 cents common. The 19 micron and finer end, saw best styles least affected (with odd lots dearer), however the lower styles displaying low specifications and some colour have suffered 40-60 cent discounts. 19.5 to 23 microns lost 20-30 cents, with the broader end most affected. Merino skirtings also lost around 25 cents with most styles and VM ranges affected. Lots containing heavy colour or hard cots have again been heavily discounted. Locks eased 20-25 cents, while stains lost 10 and crutchings were generally unchanged. Crossbreds also lost ground with a small selection of low style lots closing 15-30 cents cheaper.

On Wednesday - Prices reduced further, on the back of a lower style selection. While 19 micron and finer suffered the largest falls to close 20 cents lower, the few better style lots on offer continued to find good support, closing in line with the previous day. 20 & 21 microns also showed little change, while the small number of 22 & 23 micron lots fell 10 cents. Skirtings of best length and style were generally unchanged, however cotty types (particularly in the 8% to 15% Vm range) were heavily discounted. In the oddments, locks & crutchings remained unchanged, while stains were slightly dearer. Crossbreds were generally unchanged on a limited selection.

**Northern Region Indicator (Monthly Averages)**





**Table 4: 19 micron SFE**

Tuesday, 19 April 2011

Delivery Mth	Apr-11	Jun-11	Aug-11	Oct-11	Dec-11	Feb-11	Apr-12	Jun-12	Aug-12
19 Micron SFE	1685	1660	1590	1533	1498	1466	1396	1366	1338
Average	1182	1196	1205	1213	1239	1114	1313	1384	1393
Maximum	1685	1670	1637	1595	1560	1660	1458	1450	1450
Minimum	1025	1034	1034	1034	1034	983	1106	1210	1338

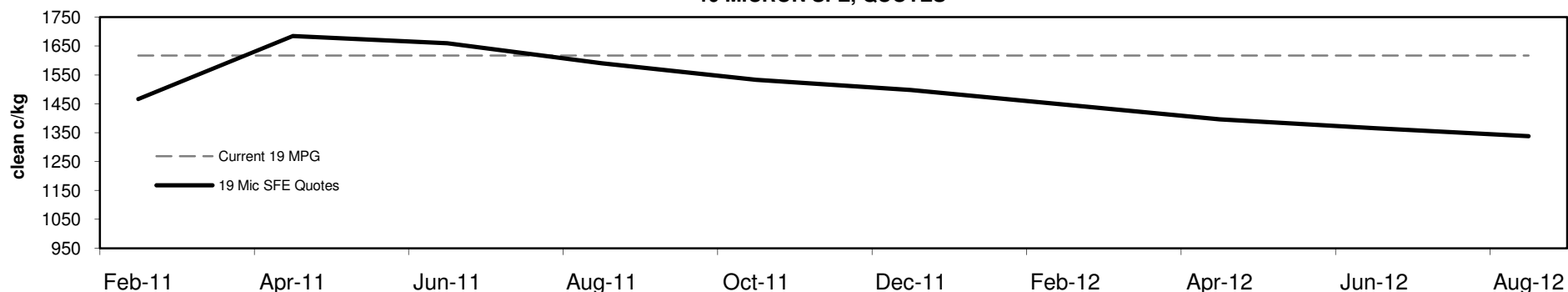
**Table 5: 19 micron SFE, as a percentile of the 19 micron MPG**

3 Year Percentile	96%	95%	92%	90%	90%	90%	90%	90%	90%
10 Year Percentile	99%	98%	97%	97%	97%	97%	96%	94%	92%

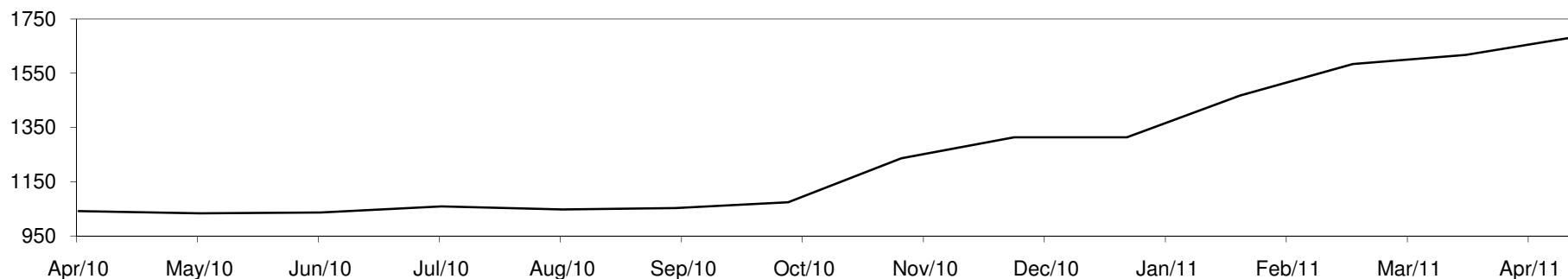
**Table 6: 19 micron SFE, compared to MPG**

Current 19 MPG	+68	4%	+43	3%	-27	-2%	-84	-5%	-119	-7%	-151	-9%	-221	-14%	-251	-16%	-279	-17%
19 MPG, 1 Year Average	+395	31%	+370	29%	+300	23%	+243	19%	+208	16%	+176	14%	+106	8%	+76	6%	+48	4%
19 MPG, 3 Year Average	+571	51%	+546	49%	+476	43%	+419	38%	+384	34%	+352	32%	+282	25%	+252	23%	+224	20%
19 MPG, 10 Year Average	+610	57%	+585	54%	+515	48%	+458	43%	+423	39%	+391	36%	+321	30%	+291	27%	+263	24%

**19 MICRON SFE, QUOTES**



**19 Micron SFE, Front month movement**





**Table 7: 21 micron SFE**

Tuesday, 19 April 2011

Delivery Mth	Apr-11	Jun-11	Aug-11	Oct-11	Dec-11	Feb-11	Apr-12	Jun-12	Aug-12
21 Micron SFE	1320	1297	1240	1205	1175	1065	1123	1067	1065
Average	1000	1002	997	991	994	962	1052	1049	1068
Maximum	1340	1327	1287	1240	1200	1297	1149	1093	1093
Minimum	891	890	880	880	880	860	934	990	1048

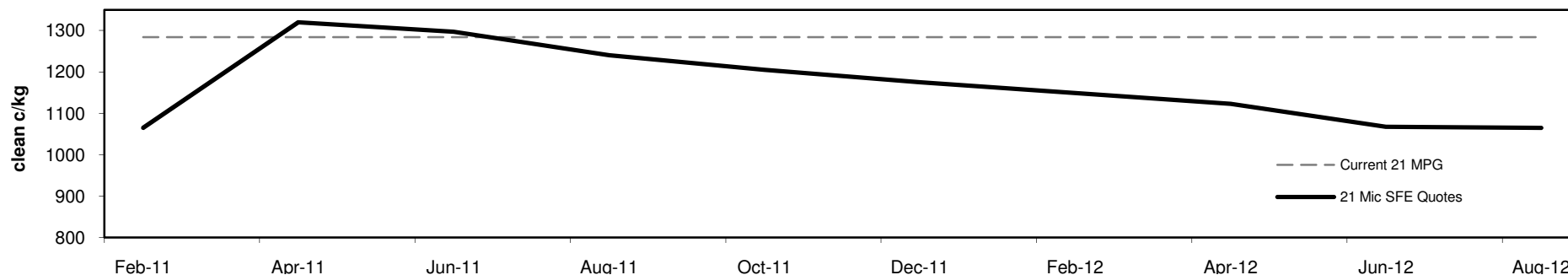
**Table 8: 21 micron SFE, as a percentile of the 21 micron MPG**

3 Year Percentile	98%	97%	96%	96%	94%	90%	91%	90%	90%
10 Year Percentile	99%	99%	95%	93%	92%	90%	91%	90%	90%

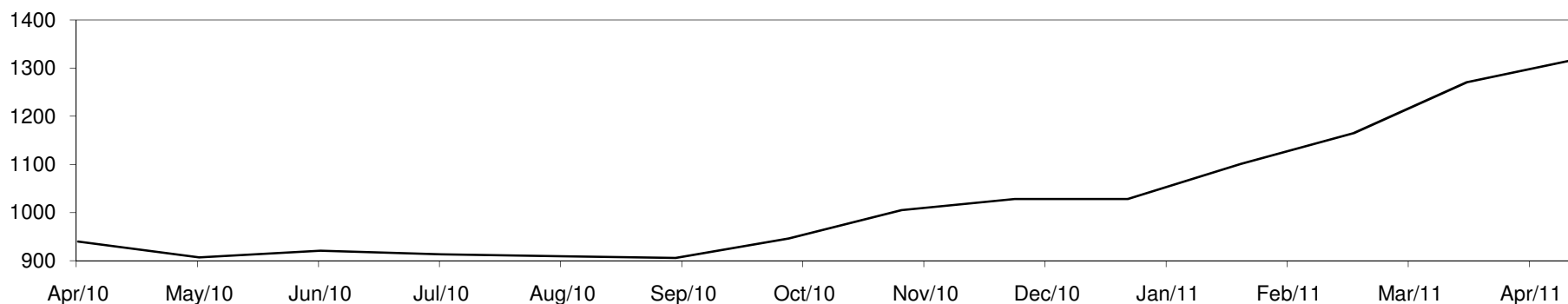
**Table 9: 21 micron SFE, compared to MPG**

Current 21 MPG	+36	3%	+13	1%	-44	-3%	-79	-6%	-109	-8%	-219	-17%	-161	-13%	-217	-17%	-219	-17%
21 MPG, 1 Year Average	+292	28%	+269	26%	+212	21%	+177	17%	+147	14%	+37	4%	+95	9%	+39	4%	+37	4%
21 MPG, 3 Year Average	+422	47%	+399	44%	+342	38%	+307	34%	+277	31%	+167	19%	+225	25%	+169	19%	+167	19%
21 MPG, 10 Year Average	+432	49%	+409	46%	+352	40%	+317	36%	+287	32%	+177	20%	+235	26%	+179	20%	+177	20%

**21 MICRON SFE, QUOTES**



**21 Micron SFE, Front month movement**





**Table 10: 23 micron SFE**

Tuesday, 19 April 2011

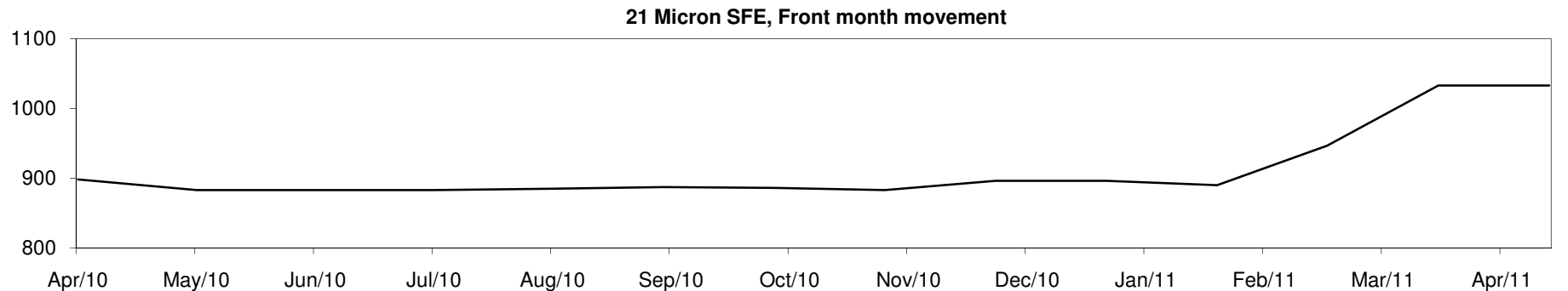
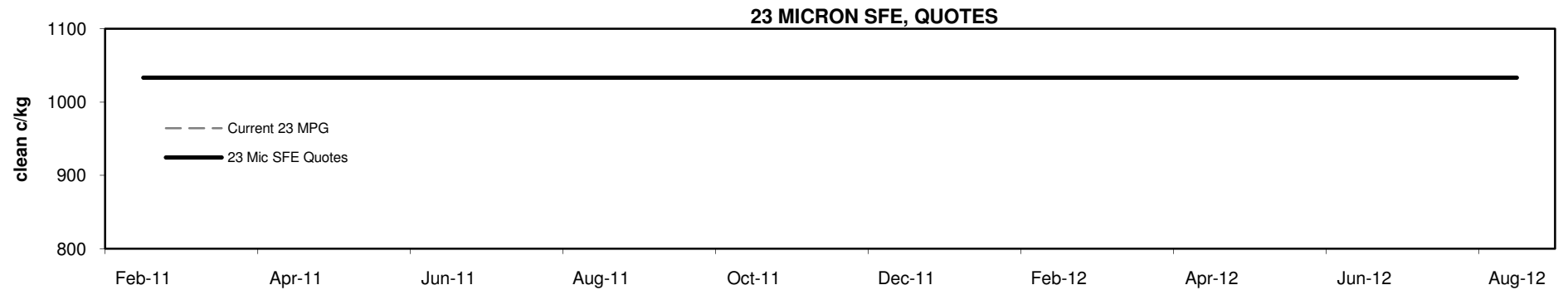
Delivery Mth	Apr-11	Jun-11	Aug-11	Oct-11	Dec-11	Feb-11	Apr-12	Jun-12	Aug-12
23 Micron SFE	1033	1033	1033	1033	1033	1033	1033	1033	1033
Average	894	907	913	911	918	870	943	971	1033
Maximum	1033	1033	1033	1033	1033	1033	1033	1033	1033
Minimum	803	803	883	883	883	760	883	890	1033

**Table 11: 23 micron SFE, as a percentile of the 23 micron MPG**

3 Year Percentile	92%	92%	92%	92%	92%	92%	92%	92%	92%
10 Year Percentile	90%	90%	90%	90%	90%	90%	90%	90%	90%

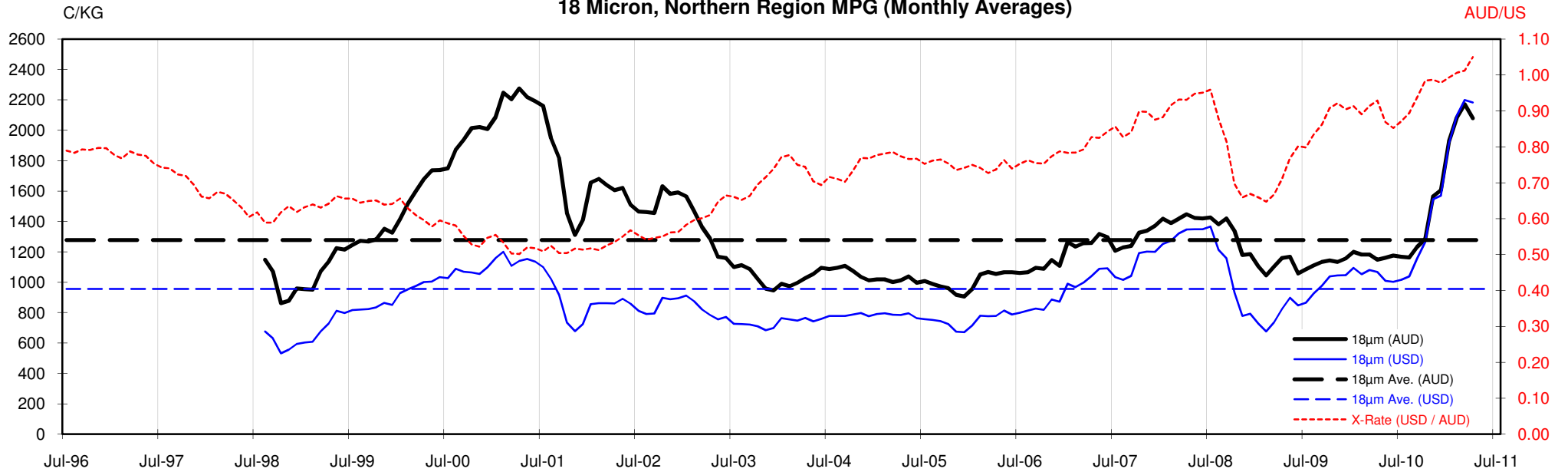
**Table 12: 23 micron SFE, compared to MPG**

Current 23 MPG	-187	-15%	-187	-15%	-187	-15%	-187	-15%	-187	-15%	-187	-15%	-187	-15%	-187	-15%	-187	-15%
23 MPG, 1 Year Average	+68	7%	+68	7%	+68	7%	+68	7%	+68	7%	+68	7%	+68	7%	+68	7%	+68	7%
23 MPG, 3 Year Average	+181	21%	+181	21%	+181	21%	+181	21%	+181	21%	+181	21%	+181	21%	+181	21%	+181	21%
23 MPG, 10 Year Average	+189	22%	+189	22%	+189	22%	+189	22%	+189	22%	+189	22%	+189	22%	+189	22%	+189	22%



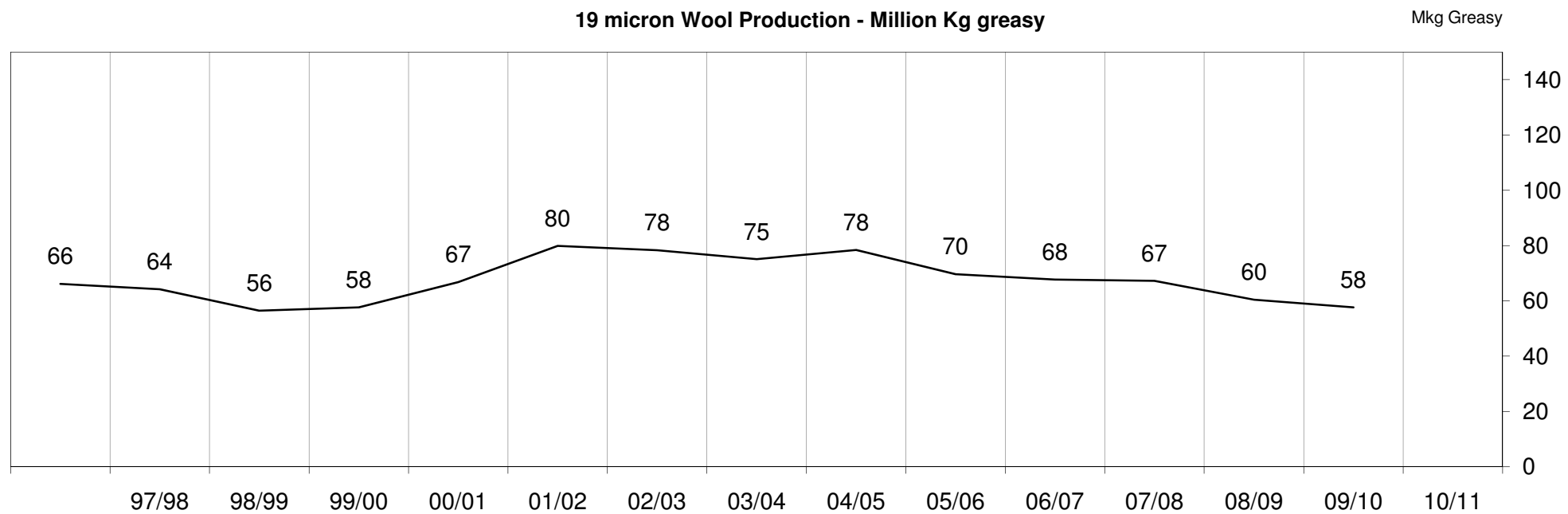
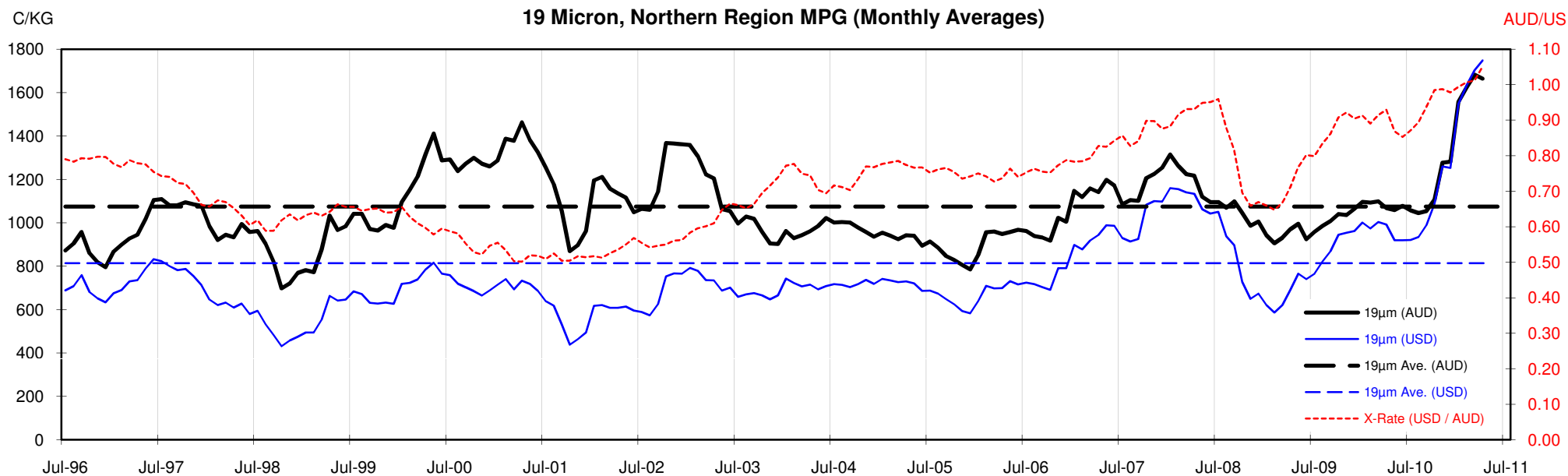


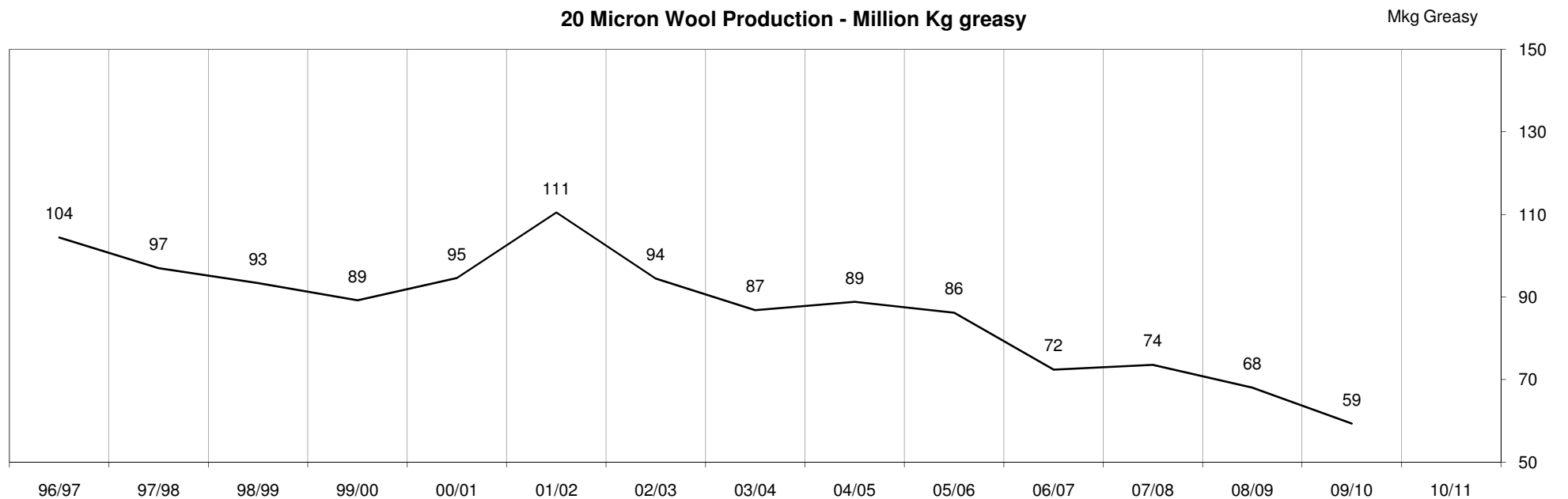
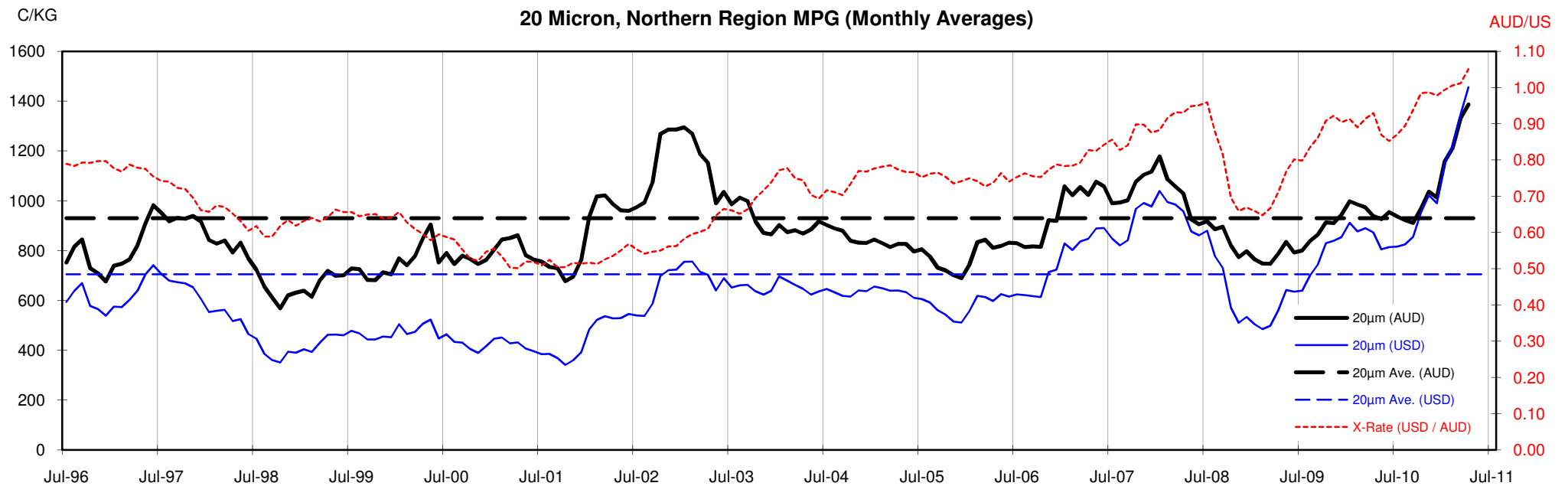
18 Micron, Northern Region MPG (Monthly Averages)



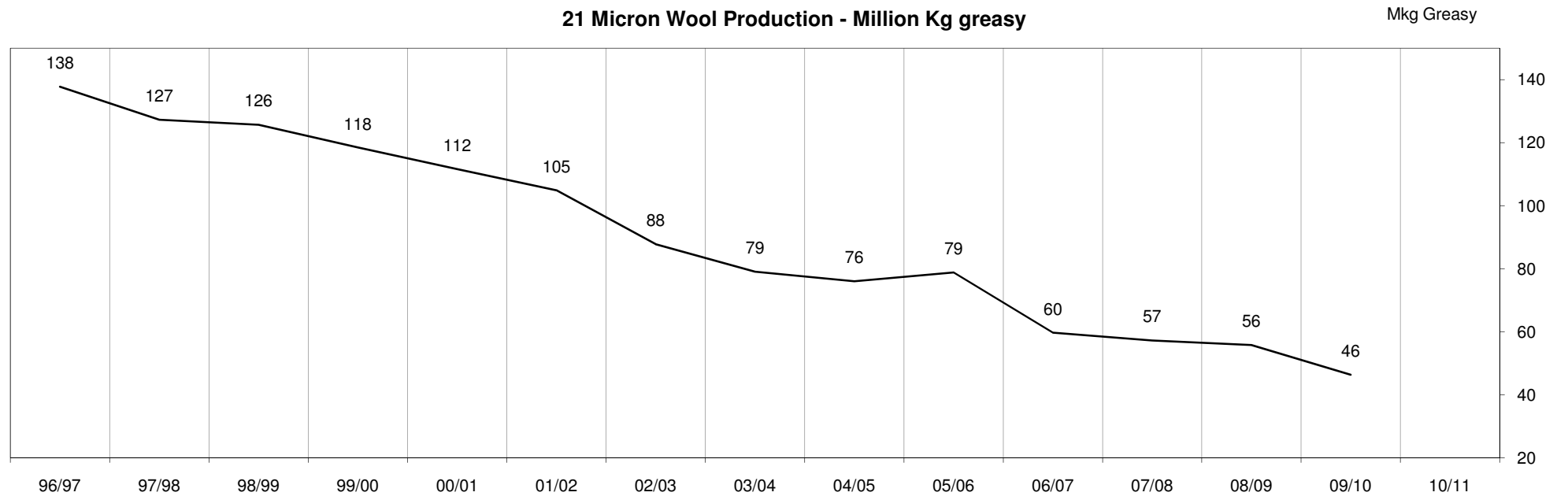
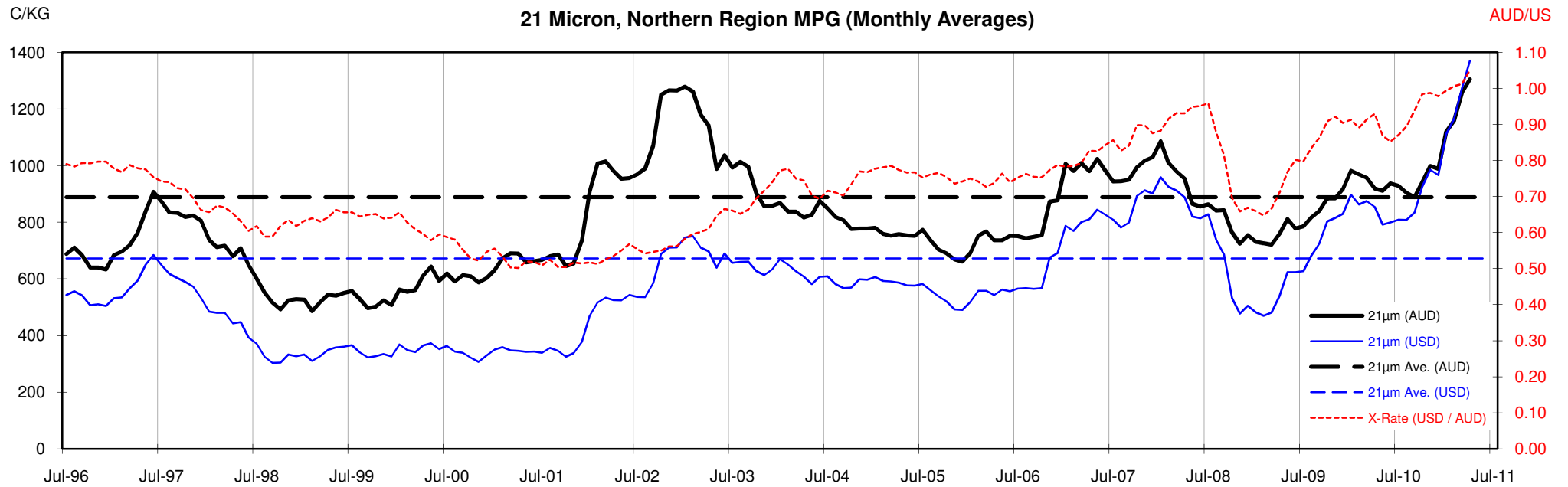
<18.5 micron Wool Production - Million Kg greasy





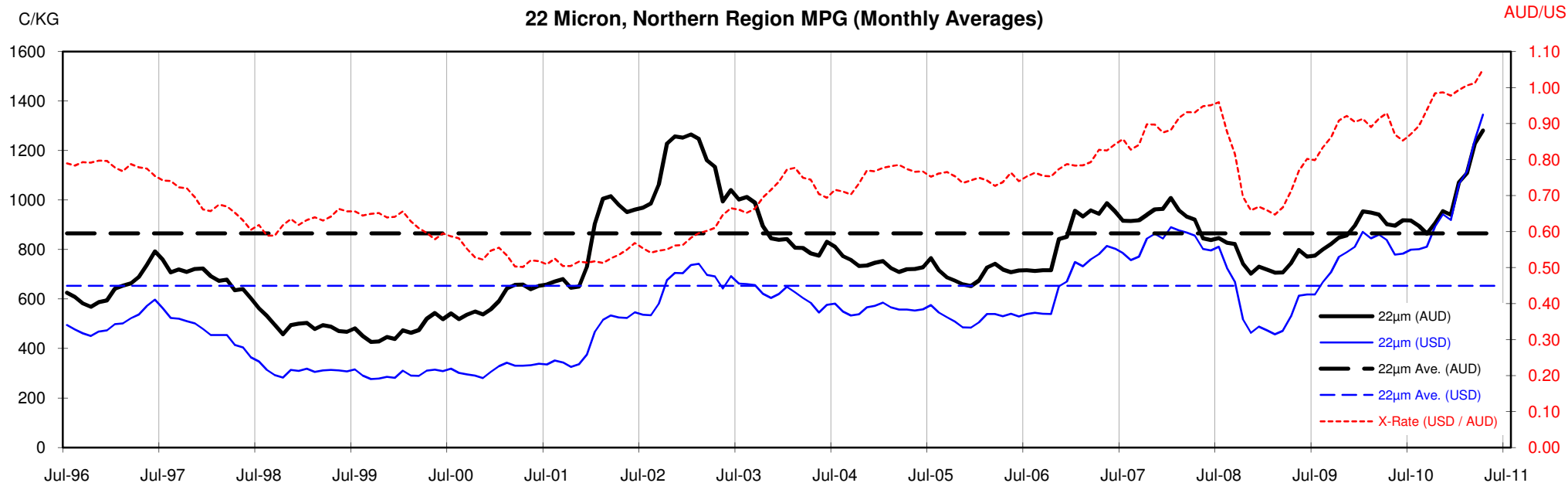






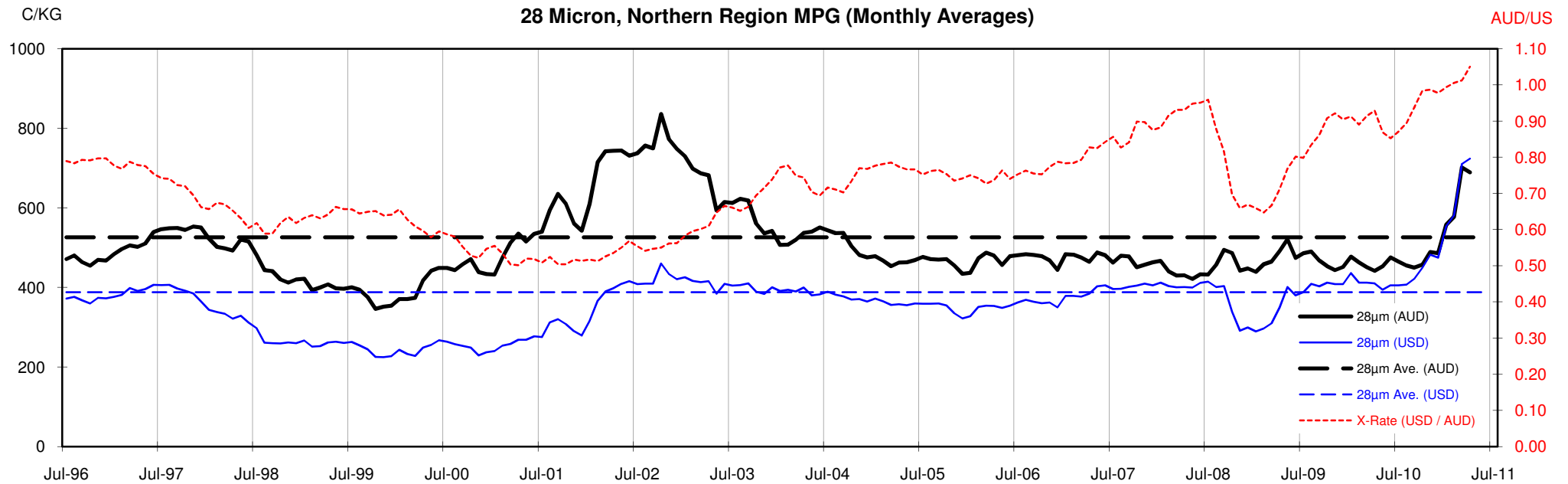


22 Micron, Northern Region MPG (Monthly Averages)



22 Micron Wool Production - Million Kg greasy





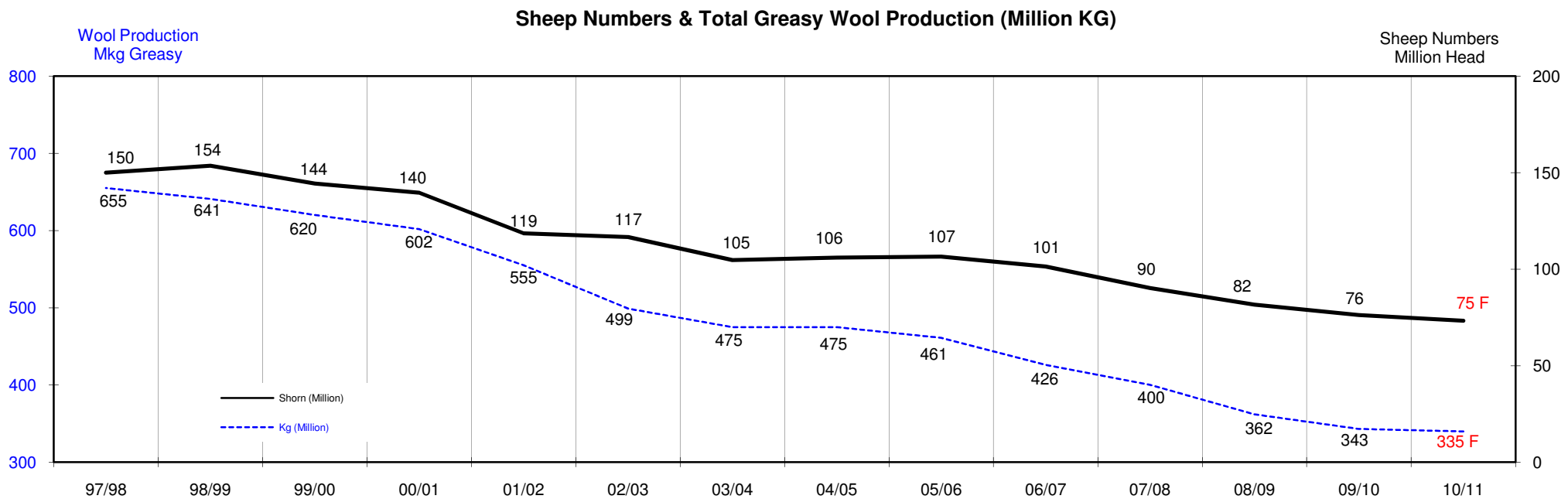
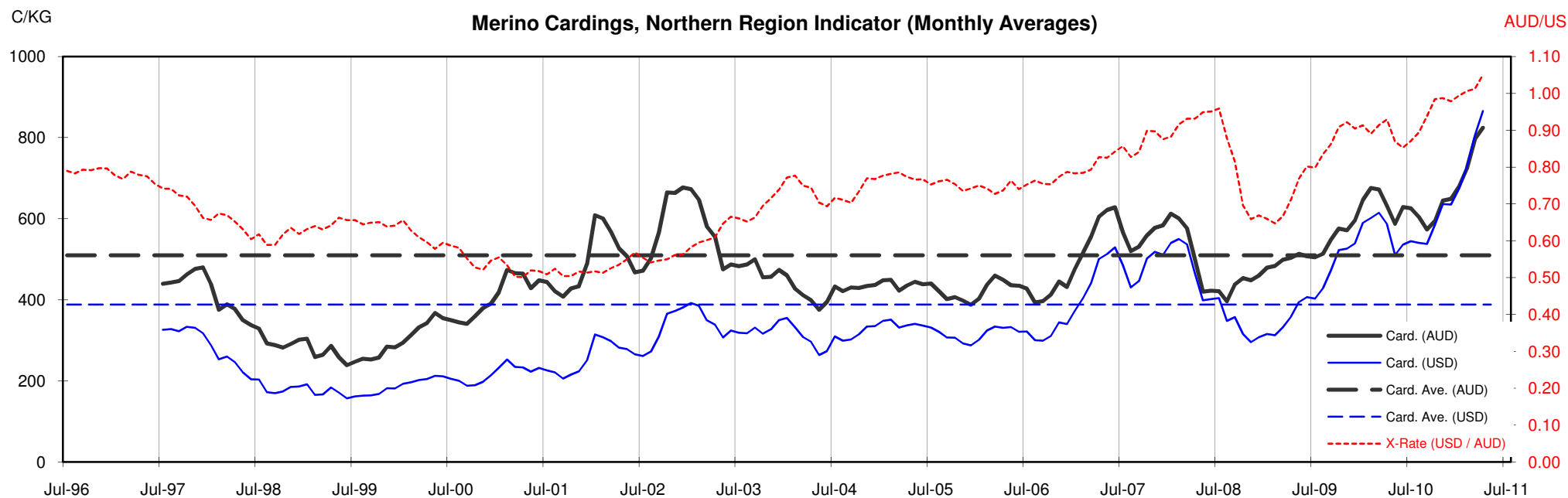




Table 13: Returns pr head for skirted fleece wool.

Skirted FLC Weight		Micron																	
9 Kg		16	16.5	17	17.5	18	18.5	19	19.5	20	21	22	23	24	25	26	28	30	32
Yield (Sch Dry)	25% Current	\$63	\$59	\$56	\$51	\$46	\$41	\$36	\$33	\$31	\$29	\$28	\$27	\$24	\$22	\$20	\$15	\$13	\$13
	10yr ave.			\$32		\$29		\$24		\$21	\$20	\$19	\$19	\$18	\$16	\$15	\$12	\$10	\$9
	30% Current	\$75	\$70	\$67	\$61	\$55	\$50	\$44	\$40	\$37	\$35	\$34	\$33	\$29	\$26	\$24	\$18	\$16	\$15
	10yr ave.			\$38		\$35		\$29		\$25	\$24	\$23	\$23	\$22	\$19	\$18	\$14	\$12	\$11
	35% Current	\$88	\$82	\$78	\$72	\$64	\$58	\$51	\$46	\$43	\$40	\$40	\$38	\$34	\$30	\$28	\$21	\$19	\$18
	10yr ave.			\$44		\$40		\$34		\$29	\$28	\$27	\$27	\$25	\$23	\$21	\$17	\$14	\$13
	40% Current	\$100	\$94	\$89	\$82	\$73	\$66	\$58	\$53	\$49	\$46	\$45	\$44	\$39	\$34	\$32	\$24	\$21	\$21
	10yr ave.			\$51		\$46		\$39		\$33	\$32	\$31	\$30	\$29	\$26	\$24	\$19	\$17	\$15
	45% Current	\$113	\$105	\$100	\$92	\$83	\$74	\$65	\$60	\$55	\$52	\$51	\$49	\$44	\$39	\$36	\$27	\$24	\$23
	10yr ave.			\$57		\$52		\$44		\$38	\$36	\$35	\$34	\$33	\$29	\$27	\$21	\$19	\$17
	50% Current	\$125	\$117	\$111	\$102	\$92	\$83	\$73	\$66	\$62	\$58	\$56	\$55	\$48	\$43	\$40	\$30	\$27	\$26
	10yr ave.			\$63		\$58		\$48		\$42	\$40	\$39	\$38	\$36	\$32	\$30	\$24	\$21	\$19
	55% Current	\$138	\$129	\$122	\$112	\$101	\$91	\$80	\$73	\$68	\$64	\$62	\$60	\$53	\$47	\$44	\$33	\$29	\$28
	10yr ave.			\$70		\$63		\$53		\$46	\$44	\$43	\$42	\$40	\$36	\$33	\$26	\$23	\$21
	60% Current	\$150	\$140	\$133	\$123	\$110	\$99	\$87	\$79	\$74	\$69	\$68	\$66	\$58	\$52	\$48	\$36	\$32	\$31
	10yr ave.			\$76		\$69		\$58		\$50	\$48	\$47	\$46	\$43	\$39	\$36	\$28	\$25	\$22
	65% Current	\$163	\$152	\$144	\$133	\$119	\$107	\$95	\$86	\$80	\$75	\$73	\$71	\$63	\$56	\$52	\$39	\$35	\$33
	10yr ave.			\$82		\$75		\$63		\$54	\$52	\$51	\$49	\$47	\$42	\$39	\$31	\$27	\$24
	70% Current	\$175	\$164	\$156	\$143	\$128	\$116	\$102	\$93	\$86	\$81	\$79	\$77	\$68	\$60	\$56	\$42	\$37	\$36
	10yr ave.			\$89		\$81		\$68		\$59	\$56	\$54	\$53	\$51	\$45	\$42	\$33	\$29	\$26
	75% Current	\$188	\$176	\$167	\$153	\$138	\$124	\$109	\$99	\$92	\$87	\$85	\$82	\$73	\$65	\$60	\$44	\$40	\$39
	10yr ave.			\$95		\$86		\$73		\$63	\$60	\$58	\$57	\$54	\$49	\$45	\$36	\$31	\$28
	80% Current	\$200	\$187	\$178	\$163	\$147	\$132	\$116	\$106	\$99	\$92	\$90	\$88	\$78	\$69	\$64	\$47	\$43	\$41
	10yr ave.			\$101		\$92		\$77		\$67	\$64	\$62	\$61	\$58	\$52	\$48	\$38	\$33	\$30
	85% Current	\$213	\$199	\$189	\$174	\$156	\$140	\$124	\$112	\$105	\$98	\$96	\$93	\$82	\$73	\$68	\$50	\$45	\$44
	10yr ave.			\$108		\$98		\$82		\$71	\$68	\$66	\$65	\$62	\$55	\$50	\$40	\$35	\$32

The above shows estimated returns per head for skirted fleece wool. These figures do not take into account the value of skirtings and oddments and do not take into account discounts that may apply for faults under individual circumstances. These figures are based on a market index of 100% and should be used as a guide only. Returns over \$30 / head for fleece wool are highlighted.

Source: Australian Wool Exchange, Australian Wool Innovation, Sydney Futures Exchange, x-rates.com

Disclaimer: While all due care has been taken in the preparation of this document, no warranty is made as to its accuracy, reliability or completeness. To the extent permitted by law neither Jemalong or their sources including subsidiaries and staff, accept liability to any person for loss or damage arising from the use of this information.



Table 14: Returns pr head for skirted fleece wool.

Skirted FLC Weight		Micron																	
8 Kg		16	16.5	17	17.5	18	18.5	19	19.5	20	21	22	23	24	25	26	28	30	32
Yield (Sch Dry)	25% Current	\$56	\$52	\$49	\$45	\$41	\$37	\$32	\$29	\$27	\$26	\$25	\$24	\$22	\$19	\$18	\$13	\$12	\$11
	10yr ave.			\$28		\$26		\$22		\$19	\$18	\$17	\$17	\$16	\$14	\$13	\$11	\$9	\$8
	30% Current	\$67	\$62	\$59	\$54	\$49	\$44	\$39	\$35	\$33	\$31	\$30	\$29	\$26	\$23	\$21	\$16	\$14	\$14
	10yr ave.			\$34		\$31		\$26		\$22	\$21	\$21	\$20	\$19	\$17	\$16	\$13	\$11	\$10
	35% Current	\$78	\$73	\$69	\$64	\$57	\$51	\$45	\$41	\$38	\$36	\$35	\$34	\$30	\$27	\$25	\$18	\$17	\$16
	10yr ave.			\$39		\$36		\$30		\$26	\$25	\$24	\$24	\$23	\$20	\$18	\$15	\$13	\$12
	40% Current	\$89	\$83	\$79	\$73	\$65	\$59	\$52	\$47	\$44	\$41	\$40	\$39	\$34	\$31	\$28	\$21	\$19	\$18
	10yr ave.			\$45		\$41		\$34		\$30	\$28	\$28	\$27	\$26	\$23	\$21	\$17	\$15	\$13
	45% Current	\$100	\$94	\$89	\$82	\$73	\$66	\$58	\$53	\$49	\$46	\$45	\$44	\$39	\$34	\$32	\$24	\$21	\$21
	10yr ave.			\$51		\$46		\$39		\$33	\$32	\$31	\$30	\$29	\$26	\$24	\$19	\$17	\$15
	50% Current	\$111	\$104	\$99	\$91	\$82	\$73	\$65	\$59	\$55	\$51	\$50	\$49	\$43	\$38	\$36	\$26	\$24	\$23
	10yr ave.			\$56		\$51		\$43		\$37	\$36	\$35	\$34	\$32	\$29	\$26	\$21	\$18	\$17
	55% Current	\$122	\$114	\$109	\$100	\$90	\$81	\$71	\$65	\$60	\$56	\$55	\$54	\$47	\$42	\$39	\$29	\$26	\$25
	10yr ave.			\$62		\$56		\$47		\$41	\$39	\$38	\$37	\$35	\$32	\$29	\$23	\$20	\$18
	60% Current	\$133	\$125	\$119	\$109	\$98	\$88	\$78	\$71	\$66	\$62	\$60	\$59	\$52	\$46	\$43	\$32	\$28	\$27
	10yr ave.			\$68		\$61		\$52		\$45	\$43	\$42	\$41	\$39	\$35	\$32	\$25	\$22	\$20
	65% Current	\$145	\$135	\$128	\$118	\$106	\$95	\$84	\$76	\$71	\$67	\$65	\$63	\$56	\$50	\$46	\$34	\$31	\$30
	10yr ave.			\$73		\$66		\$56		\$48	\$46	\$45	\$44	\$42	\$38	\$34	\$27	\$24	\$22
	70% Current	\$156	\$146	\$138	\$127	\$114	\$103	\$91	\$82	\$77	\$72	\$70	\$68	\$60	\$54	\$50	\$37	\$33	\$32
	10yr ave.			\$79		\$72		\$60		\$52	\$50	\$48	\$47	\$45	\$40	\$37	\$29	\$26	\$23
	75% Current	\$167	\$156	\$148	\$136	\$122	\$110	\$97	\$88	\$82	\$77	\$75	\$73	\$65	\$57	\$53	\$40	\$36	\$34
	10yr ave.			\$85		\$77		\$65		\$56	\$53	\$52	\$51	\$48	\$43	\$40	\$32	\$28	\$25
	80% Current	\$178	\$166	\$158	\$145	\$130	\$117	\$103	\$94	\$88	\$82	\$80	\$78	\$69	\$61	\$57	\$42	\$38	\$37
	10yr ave.			\$90		\$82		\$69		\$60	\$57	\$55	\$54	\$52	\$46	\$42	\$34	\$29	\$27
	85% Current	\$189	\$177	\$168	\$154	\$139	\$125	\$110	\$100	\$93	\$87	\$85	\$83	\$73	\$65	\$60	\$45	\$40	\$39
	10yr ave.			\$96		\$87		\$73		\$63	\$60	\$59	\$57	\$55	\$49	\$45	\$36	\$31	\$28

The above shows estimated returns per head for skirted fleece wool. These figures do not take into account the value of skirtings and oddments and do not take into account discounts that may apply for faults under individual circumstances. These figures are based on a market index of 100% and should be used as a guide only. Returns over \$30 / head for fleece wool are highlighted.

Source: Australian Wool Exchange, Australian Wool Innovation, Sydney Futures Exchange, x-rates.com

Disclaimer: While all due care has been taken in the preparation of this document, no warranty is made as to its accuracy, reliability or completeness. To the extent permitted by law neither Jemalong or their sources including subsidiaries and staff, accept liability to any person for loss or damage arising from the use of this information.



Table 15: Returns pr head for skirted fleece wool.

Skirted FLC Weight		Micron																	
7 Kg		16	16.5	17	17.5	18	18.5	19	19.5	20	21	22	23	24	25	26	28	30	32
Yield (Sch Dry)	25% Current	\$49	\$46	\$43	\$40	\$36	\$32	\$28	\$26	\$24	\$22	\$22	\$21	\$19	\$17	\$16	\$12	\$10	\$10
	10yr ave.			\$25		\$22		\$19		\$16	\$16	\$15	\$15	\$14	\$13	\$12	\$9	\$8	\$7
	30% Current	\$58	\$55	\$52	\$48	\$43	\$39	\$34	\$31	\$29	\$27	\$26	\$26	\$23	\$20	\$19	\$14	\$12	\$12
	10yr ave.			\$30		\$27		\$23		\$20	\$19	\$18	\$18	\$17	\$15	\$14	\$11	\$10	\$9
	35% Current	\$68	\$64	\$61	\$56	\$50	\$45	\$40	\$36	\$34	\$31	\$31	\$30	\$26	\$23	\$22	\$16	\$15	\$14
	10yr ave.			\$35		\$31		\$26		\$23	\$22	\$21	\$21	\$20	\$18	\$16	\$13	\$11	\$10
	40% Current	\$78	\$73	\$69	\$64	\$57	\$51	\$45	\$41	\$38	\$36	\$35	\$34	\$30	\$27	\$25	\$18	\$17	\$16
	10yr ave.			\$39		\$36		\$30		\$26	\$25	\$24	\$24	\$23	\$20	\$18	\$15	\$13	\$12
	45% Current	\$88	\$82	\$78	\$72	\$64	\$58	\$51	\$46	\$43	\$40	\$40	\$38	\$34	\$30	\$28	\$21	\$19	\$18
	10yr ave.			\$44		\$40		\$34		\$29	\$28	\$27	\$27	\$25	\$23	\$21	\$17	\$14	\$13
	50% Current	\$97	\$91	\$86	\$79	\$71	\$64	\$57	\$51	\$48	\$45	\$44	\$43	\$38	\$34	\$31	\$23	\$21	\$20
	10yr ave.			\$49		\$45		\$38		\$33	\$31	\$30	\$30	\$28	\$25	\$23	\$18	\$16	\$15
	55% Current	\$107	\$100	\$95	\$87	\$78	\$71	\$62	\$57	\$53	\$49	\$48	\$47	\$41	\$37	\$34	\$25	\$23	\$22
	10yr ave.			\$54		\$49		\$41		\$36	\$34	\$33	\$32	\$31	\$28	\$25	\$20	\$18	\$16
	60% Current	\$117	\$109	\$104	\$95	\$86	\$77	\$68	\$62	\$58	\$54	\$53	\$51	\$45	\$40	\$37	\$28	\$25	\$24
	10yr ave.			\$59		\$54		\$45		\$39	\$37	\$36	\$35	\$34	\$30	\$28	\$22	\$19	\$17
	65% Current	\$126	\$118	\$112	\$103	\$93	\$83	\$74	\$67	\$62	\$58	\$57	\$56	\$49	\$44	\$40	\$30	\$27	\$26
	10yr ave.			\$64		\$58		\$49		\$42	\$40	\$39	\$38	\$37	\$33	\$30	\$24	\$21	\$19
	70% Current	\$136	\$127	\$121	\$111	\$100	\$90	\$79	\$72	\$67	\$63	\$61	\$60	\$53	\$47	\$44	\$32	\$29	\$28
	10yr ave.			\$69		\$63		\$53		\$46	\$44	\$42	\$41	\$39	\$35	\$32	\$26	\$23	\$20
	75% Current	\$146	\$137	\$130	\$119	\$107	\$96	\$85	\$77	\$72	\$67	\$66	\$64	\$57	\$50	\$47	\$35	\$31	\$30
	10yr ave.			\$74		\$67		\$56		\$49	\$47	\$45	\$44	\$42	\$38	\$35	\$28	\$24	\$22
	80% Current	\$156	\$146	\$138	\$127	\$114	\$103	\$91	\$82	\$77	\$72	\$70	\$68	\$60	\$54	\$50	\$37	\$33	\$32
	10yr ave.			\$79		\$72		\$60		\$52	\$50	\$48	\$47	\$45	\$40	\$37	\$29	\$26	\$23
	85% Current	\$165	\$155	\$147	\$135	\$121	\$109	\$96	\$87	\$82	\$76	\$75	\$73	\$64	\$57	\$53	\$39	\$35	\$34
	10yr ave.			\$84		\$76		\$64		\$55	\$53	\$51	\$50	\$48	\$43	\$39	\$31	\$27	\$25

The above shows estimated returns per head for skirted fleece wool. These figures do not take into account the value of skirtings and oddments and do not take into account discounts that may apply for faults under individual circumstances. These figures are based on a market index of 100% and should be used as a guide only. Returns over \$30 / head for fleece wool are highlighted.

Source: Australian Wool Exchange, Australian Wool Innovation, Sydney Futures Exchange, x-rates.com

Disclaimer: While all due care has been taken in the preparation of this document, no warranty is made as to its accuracy, reliability or completeness. To the extent permitted by law neither Jemalong or their sources including subsidiaries and staff, accept liability to any person for loss or damage arising from the use of this information.



Table 16: Returns pr head for skirted fleece wool.

Skirted FLC Weight		Micron																		
		16	16.5	17	17.5	18	18.5	19	19.5	20	21	22	23	24	25	26	28	30	32	
Yield (Sch Dry)	25%	Current	\$42	\$39	\$37	\$34	\$31	\$28	\$24	\$22	\$21	\$19	\$19	\$18	\$16	\$14	\$13	\$10	\$9	\$9
	10yr ave.			\$21		\$19		\$16		\$14	\$13	\$13	\$13	\$12	\$11	\$10	\$8	\$7	\$6	
	30%	Current	\$50	\$47	\$44	\$41	\$37	\$33	\$29	\$26	\$25	\$23	\$23	\$22	\$19	\$17	\$16	\$12	\$11	\$10
	10yr ave.			\$25		\$23		\$19		\$17	\$16	\$16	\$15	\$14	\$13	\$12	\$9	\$8	\$7	
	35%	Current	\$58	\$55	\$52	\$48	\$43	\$39	\$34	\$31	\$29	\$27	\$26	\$26	\$23	\$20	\$19	\$14	\$12	\$12
	10yr ave.			\$30		\$27		\$23		\$20	\$19	\$18	\$18	\$17	\$15	\$14	\$11	\$10	\$9	
	40%	Current	\$67	\$62	\$59	\$54	\$49	\$44	\$39	\$35	\$33	\$31	\$30	\$29	\$26	\$23	\$21	\$16	\$14	\$14
	10yr ave.			\$34		\$31		\$26		\$22	\$21	\$21	\$20	\$19	\$17	\$16	\$13	\$11	\$10	
	45%	Current	\$75	\$70	\$67	\$61	\$55	\$50	\$44	\$40	\$37	\$35	\$34	\$33	\$29	\$26	\$24	\$18	\$16	\$15
	10yr ave.			\$38		\$35		\$29		\$25	\$24	\$23	\$23	\$22	\$19	\$18	\$14	\$12	\$11	
	50%	Current	\$83	\$78	\$74	\$68	\$61	\$55	\$49	\$44	\$41	\$39	\$38	\$37	\$32	\$29	\$27	\$20	\$18	\$17
	10yr ave.			\$42		\$38		\$32		\$28	\$27	\$26	\$25	\$24	\$22	\$20	\$16	\$14	\$12	
	55%	Current	\$92	\$86	\$82	\$75	\$67	\$61	\$53	\$49	\$45	\$42	\$41	\$40	\$36	\$32	\$29	\$22	\$20	\$19
	10yr ave.			\$46		\$42		\$35		\$31	\$29	\$29	\$28	\$27	\$24	\$22	\$17	\$15	\$14	
60%	Current	\$100	\$94	\$89	\$82	\$73	\$66	\$58	\$53	\$49	\$46	\$45	\$44	\$39	\$34	\$32	\$24	\$21	\$21	
10yr ave.			\$51		\$46		\$39		\$33	\$32	\$31	\$30	\$29	\$26	\$24	\$19	\$17	\$15		
65%	Current	\$108	\$101	\$96	\$89	\$79	\$72	\$63	\$57	\$53	\$50	\$49	\$48	\$42	\$37	\$35	\$26	\$23	\$22	
10yr ave.			\$55		\$50		\$42		\$36	\$35	\$34	\$33	\$31	\$28	\$26	\$21	\$18	\$16		
70%	Current	\$117	\$109	\$104	\$95	\$86	\$77	\$68	\$62	\$58	\$54	\$53	\$51	\$45	\$40	\$37	\$28	\$25	\$24	
10yr ave.			\$59		\$54		\$45		\$39	\$37	\$36	\$35	\$34	\$30	\$28	\$22	\$19	\$17		
75%	Current	\$125	\$117	\$111	\$102	\$92	\$83	\$73	\$66	\$62	\$58	\$56	\$55	\$48	\$43	\$40	\$30	\$27	\$26	
10yr ave.			\$63		\$58		\$48		\$42	\$40	\$39	\$38	\$36	\$32	\$30	\$24	\$21	\$19		
80%	Current	\$133	\$125	\$119	\$109	\$98	\$88	\$78	\$71	\$66	\$62	\$60	\$59	\$52	\$46	\$43	\$32	\$28	\$27	
10yr ave.			\$68		\$61		\$52		\$45	\$43	\$42	\$41	\$39	\$35	\$32	\$25	\$22	\$20		
85%	Current	\$142	\$133	\$126	\$116	\$104	\$94	\$82	\$75	\$70	\$65	\$64	\$62	\$55	\$49	\$45	\$34	\$30	\$29	
10yr ave.			\$72		\$65		\$55		\$47	\$45	\$44	\$43	\$41	\$37	\$34	\$27	\$23	\$21		

The above shows estimated returns per head for skirted fleece wool. These figures do not take into account the value of skirtings and oddments and do not take into account discounts that may apply for faults under individual circumstances. These figures are based on a market index of 100% and should be used as a guide only. Returns over \$30 / head for fleece wool are highlighted.

Source: Australian Wool Exchange, Australian Wool Innovation, Sydney Futures Exchange, x-rates.com

Disclaimer: While all due care has been taken in the preparation of this document, no warranty is made as to its accuracy, reliability or completeness. To the extent permitted by law neither Jemalong or their sources including subsidiaries and staff, accept liability to any person for loss or damage arising from the use of this information.





Table 17: Returns pr head for skirted fleece wool.

Skirted FLC Weight		Micron																		
		16	16.5	17	17.5	18	18.5	19	19.5	20	21	22	23	24	25	26	28	30	32	
Yield (Sch Dry)	25%	Current	\$35	\$33	\$31	\$28	\$25	\$23	\$20	\$18	\$17	\$16	\$16	\$15	\$13	\$12	\$11	\$8	\$7	\$7
	10yr ave.			\$18		\$16		\$13		\$12	\$11	\$11	\$11	\$10	\$9	\$8	\$7	\$6	\$5	
	30%	Current	\$42	\$39	\$37	\$34	\$31	\$28	\$24	\$22	\$21	\$19	\$19	\$18	\$16	\$14	\$13	\$10	\$9	\$9
	10yr ave.			\$21		\$19		\$16		\$14	\$13	\$13	\$13	\$12	\$11	\$10	\$8	\$7	\$6	
	35%	Current	\$49	\$46	\$43	\$40	\$36	\$32	\$28	\$26	\$24	\$22	\$22	\$21	\$19	\$17	\$16	\$12	\$10	\$10
	10yr ave.			\$25		\$22		\$19		\$16	\$16	\$15	\$15	\$14	\$13	\$12	\$9	\$8	\$7	
	40%	Current	\$56	\$52	\$49	\$45	\$41	\$37	\$32	\$29	\$27	\$26	\$25	\$24	\$22	\$19	\$18	\$13	\$12	\$11
	10yr ave.			\$28		\$26		\$22		\$19	\$18	\$17	\$17	\$16	\$14	\$13	\$11	\$9	\$8	
	45%	Current	\$63	\$59	\$56	\$51	\$46	\$41	\$36	\$33	\$31	\$29	\$28	\$27	\$24	\$22	\$20	\$15	\$13	\$13
	10yr ave.			\$32		\$29		\$24		\$21	\$20	\$19	\$19	\$18	\$16	\$15	\$12	\$10	\$9	
	50%	Current	\$70	\$65	\$62	\$57	\$51	\$46	\$40	\$37	\$34	\$32	\$31	\$31	\$27	\$24	\$22	\$16	\$15	\$14
	10yr ave.			\$35		\$32		\$27		\$23	\$22	\$22	\$21	\$20	\$18	\$17	\$13	\$12	\$10	
	55%	Current	\$76	\$72	\$68	\$62	\$56	\$50	\$44	\$40	\$38	\$35	\$35	\$34	\$30	\$26	\$24	\$18	\$16	\$16
	10yr ave.			\$39		\$35		\$30		\$26	\$24	\$24	\$23	\$22	\$20	\$18	\$14	\$13	\$11	
60%	Current	\$83	\$78	\$74	\$68	\$61	\$55	\$49	\$44	\$41	\$39	\$38	\$37	\$32	\$29	\$27	\$20	\$18	\$17	
10yr ave.			\$42		\$38		\$32		\$28	\$27	\$26	\$25	\$24	\$22	\$20	\$16	\$14	\$12		
65%	Current	\$90	\$85	\$80	\$74	\$66	\$60	\$53	\$48	\$45	\$42	\$41	\$40	\$35	\$31	\$29	\$21	\$19	\$19	
10yr ave.			\$46		\$42		\$35		\$30	\$29	\$28	\$27	\$26	\$23	\$21	\$17	\$15	\$14		
70%	Current	\$97	\$91	\$86	\$79	\$71	\$64	\$57	\$51	\$48	\$45	\$44	\$43	\$38	\$34	\$31	\$23	\$21	\$20	
10yr ave.			\$49		\$45		\$38		\$33	\$31	\$30	\$30	\$28	\$25	\$23	\$18	\$16	\$15		
75%	Current	\$104	\$98	\$93	\$85	\$76	\$69	\$61	\$55	\$51	\$48	\$47	\$46	\$40	\$36	\$33	\$25	\$22	\$21	
10yr ave.			\$53		\$48		\$40		\$35	\$33	\$32	\$32	\$30	\$27	\$25	\$20	\$17	\$16		
80%	Current	\$111	\$104	\$99	\$91	\$82	\$73	\$65	\$59	\$55	\$51	\$50	\$49	\$43	\$38	\$36	\$26	\$24	\$23	
10yr ave.			\$56		\$51		\$43		\$37	\$36	\$35	\$34	\$32	\$29	\$26	\$21	\$18	\$17		
85%	Current	\$118	\$111	\$105	\$96	\$87	\$78	\$69	\$62	\$58	\$55	\$53	\$52	\$46	\$41	\$38	\$28	\$25	\$24	
10yr ave.			\$60		\$54		\$46		\$40	\$38	\$37	\$36	\$34	\$31	\$28	\$22	\$20	\$18		

The above shows estimated returns per head for skirted fleece wool. These figures do not take into account the value of skirtings and oddments and do not take into account discounts that may apply for faults under individual circumstances. These figures are based on a market index of 100% and should be used as a guide only. Returns over \$30 / head for fleece wool are highlighted.

Source: Australian Wool Exchange, Australian Wool Innovation, Sydney Futures Exchange, x-rates.com

Disclaimer: While all due care has been taken in the preparation of this document, no warranty is made as to its accuracy, reliability or completeness. To the extent permitted by law neither Jemalong or their sources including subsidiaries and staff, accept liability to any person for loss or damage arising from the use of this information.



Table 18: Returns pr head for skirted fleece wool.

Skirted FLC Weight		Micron																	
4 Kg		16	16.5	17	17.5	18	18.5	19	19.5	20	21	22	23	24	25	26	28	30	32
Yield (Sch Dry)	25% Current	\$28	\$26	\$25	\$23	\$20	\$18	\$16	\$15	\$14	\$13	\$13	\$12	\$11	\$10	\$9	\$7	\$6	\$6
	10yr ave.			\$14		\$13		\$11		\$9	\$9	\$9	\$8	\$8	\$7	\$7	\$5	\$5	\$4
	30% Current	\$33	\$31	\$30	\$27	\$24	\$22	\$19	\$18	\$16	\$15	\$15	\$15	\$13	\$11	\$11	\$8	\$7	\$7
	10yr ave.			\$17		\$15		\$13		\$11	\$11	\$10	\$10	\$10	\$9	\$8	\$6	\$6	\$5
	35% Current	\$39	\$36	\$35	\$32	\$29	\$26	\$23	\$21	\$19	\$18	\$18	\$17	\$15	\$13	\$12	\$9	\$8	\$8
	10yr ave.			\$20		\$18		\$15		\$13	\$12	\$12	\$12	\$11	\$10	\$9	\$7	\$6	\$6
	40% Current	\$44	\$42	\$40	\$36	\$33	\$29	\$26	\$24	\$22	\$21	\$20	\$20	\$17	\$15	\$14	\$11	\$9	\$9
	10yr ave.			\$23		\$20		\$17		\$15	\$14	\$14	\$14	\$13	\$12	\$11	\$8	\$7	\$7
	45% Current	\$50	\$47	\$44	\$41	\$37	\$33	\$29	\$26	\$25	\$23	\$23	\$22	\$19	\$17	\$16	\$12	\$11	\$10
	10yr ave.			\$25		\$23		\$19		\$17	\$16	\$16	\$15	\$14	\$13	\$12	\$9	\$8	\$7
	50% Current	\$56	\$52	\$49	\$45	\$41	\$37	\$32	\$29	\$27	\$26	\$25	\$24	\$22	\$19	\$18	\$13	\$12	\$11
	10yr ave.			\$28		\$26		\$22		\$19	\$18	\$17	\$17	\$16	\$14	\$13	\$11	\$9	\$8
	55% Current	\$61	\$57	\$54	\$50	\$45	\$40	\$36	\$32	\$30	\$28	\$28	\$27	\$24	\$21	\$20	\$14	\$13	\$13
	10yr ave.			\$31		\$28		\$24		\$20	\$20	\$19	\$19	\$18	\$16	\$15	\$12	\$10	\$9
	60% Current	\$67	\$62	\$59	\$54	\$49	\$44	\$39	\$35	\$33	\$31	\$30	\$29	\$26	\$23	\$21	\$16	\$14	\$14
	10yr ave.			\$34		\$31		\$26		\$22	\$21	\$21	\$20	\$19	\$17	\$16	\$13	\$11	\$10
	65% Current	\$72	\$68	\$64	\$59	\$53	\$48	\$42	\$38	\$36	\$33	\$33	\$32	\$28	\$25	\$23	\$17	\$15	\$15
	10yr ave.			\$37		\$33		\$28		\$24	\$23	\$22	\$22	\$21	\$19	\$17	\$14	\$12	\$11
	70% Current	\$78	\$73	\$69	\$64	\$57	\$51	\$45	\$41	\$38	\$36	\$35	\$34	\$30	\$27	\$25	\$18	\$17	\$16
	10yr ave.			\$39		\$36		\$30		\$26	\$25	\$24	\$24	\$23	\$20	\$18	\$15	\$13	\$12
	75% Current	\$83	\$78	\$74	\$68	\$61	\$55	\$49	\$44	\$41	\$39	\$38	\$37	\$32	\$29	\$27	\$20	\$18	\$17
	10yr ave.			\$42		\$38		\$32		\$28	\$27	\$26	\$25	\$24	\$22	\$20	\$16	\$14	\$12
	80% Current	\$89	\$83	\$79	\$73	\$65	\$59	\$52	\$47	\$44	\$41	\$40	\$39	\$34	\$31	\$28	\$21	\$19	\$18
	10yr ave.			\$45		\$41		\$34		\$30	\$28	\$28	\$27	\$26	\$23	\$21	\$17	\$15	\$13
	85% Current	\$95	\$88	\$84	\$77	\$69	\$62	\$55	\$50	\$47	\$44	\$43	\$41	\$37	\$33	\$30	\$22	\$20	\$19
	10yr ave.			\$48		\$43		\$37		\$32	\$30	\$29	\$29	\$27	\$25	\$22	\$18	\$16	\$14

The above shows estimated returns per head for skirted fleece wool. These figures do not take into account the value of skirtings and oddments and do not take into account discounts that may apply for faults under individual circumstances. These figures are based on a market index of 100% and should be used as a guide only. Returns over \$30 / head for fleece wool are highlighted.

Source: Australian Wool Exchange, Australian Wool Innovation, Sydney Futures Exchange, x-rates.com

Disclaimer: While all due care has been taken in the preparation of this document, no warranty is made as to its accuracy, reliability or completeness. To the extent permitted by law neither Jemalong or their sources including subsidiaries and staff, accept liability to any person for loss or damage arising from the use of this information.



Table 19: Returns pr head for skirted fleece wool.

Skirted FLC Weight		Micron																	
3 Kg		16	16.5	17	17.5	18	18.5	19	19.5	20	21	22	23	24	25	26	28	30	32
Yield (Sch Dry)	25% Current	\$21	\$20	\$19	\$17	\$15	\$14	\$12	\$11	\$10	\$10	\$9	\$9	\$8	\$7	\$7	\$5	\$4	\$4
	10yr ave.			\$11		\$10		\$8		\$7	\$7	\$6	\$6	\$6	\$5	\$5	\$4	\$3	\$3
	30% Current	\$25	\$23	\$22	\$20	\$18	\$17	\$15	\$13	\$12	\$12	\$11	\$11	\$10	\$9	\$8	\$6	\$5	\$5
	10yr ave.			\$13		\$12		\$10		\$8	\$8	\$8	\$8	\$7	\$6	\$6	\$5	\$4	\$4
	35% Current	\$29	\$27	\$26	\$24	\$21	\$19	\$17	\$15	\$14	\$13	\$13	\$13	\$11	\$10	\$9	\$7	\$6	\$6
	10yr ave.			\$15		\$13		\$11		\$10	\$9	\$9	\$9	\$8	\$8	\$7	\$6	\$5	\$4
	40% Current	\$33	\$31	\$30	\$27	\$24	\$22	\$19	\$18	\$16	\$15	\$15	\$15	\$13	\$11	\$11	\$8	\$7	\$7
	10yr ave.			\$17		\$15		\$13		\$11	\$11	\$10	\$10	\$10	\$9	\$8	\$6	\$6	\$5
	45% Current	\$38	\$35	\$33	\$31	\$28	\$25	\$22	\$20	\$18	\$17	\$17	\$16	\$15	\$13	\$12	\$9	\$8	\$8
	10yr ave.			\$19		\$17		\$15		\$13	\$12	\$12	\$11	\$11	\$10	\$9	\$7	\$6	\$6
	50% Current	\$42	\$39	\$37	\$34	\$31	\$28	\$24	\$22	\$21	\$19	\$19	\$18	\$16	\$14	\$13	\$10	\$9	\$9
	10yr ave.			\$21		\$19		\$16		\$14	\$13	\$13	\$13	\$12	\$11	\$10	\$8	\$7	\$6
	55% Current	\$46	\$43	\$41	\$37	\$34	\$30	\$27	\$24	\$23	\$21	\$21	\$20	\$18	\$16	\$15	\$11	\$10	\$9
	10yr ave.			\$23		\$21		\$18		\$15	\$15	\$14	\$14	\$13	\$12	\$11	\$9	\$8	\$7
	60% Current	\$50	\$47	\$44	\$41	\$37	\$33	\$29	\$26	\$25	\$23	\$23	\$22	\$19	\$17	\$16	\$12	\$11	\$10
	10yr ave.			\$25		\$23		\$19		\$17	\$16	\$16	\$15	\$14	\$13	\$12	\$9	\$8	\$7
	65% Current	\$54	\$51	\$48	\$44	\$40	\$36	\$32	\$29	\$27	\$25	\$24	\$24	\$21	\$19	\$17	\$13	\$12	\$11
	10yr ave.			\$27		\$25		\$21		\$18	\$17	\$17	\$16	\$16	\$14	\$13	\$10	\$9	\$8
	70% Current	\$58	\$55	\$52	\$48	\$43	\$39	\$34	\$31	\$29	\$27	\$26	\$26	\$23	\$20	\$19	\$14	\$12	\$12
	10yr ave.			\$30		\$27		\$23		\$20	\$19	\$18	\$18	\$17	\$15	\$14	\$11	\$10	\$9
	75% Current	\$63	\$59	\$56	\$51	\$46	\$41	\$36	\$33	\$31	\$29	\$28	\$27	\$24	\$22	\$20	\$15	\$13	\$13
	10yr ave.			\$32		\$29		\$24		\$21	\$20	\$19	\$19	\$18	\$16	\$15	\$12	\$10	\$9
	80% Current	\$67	\$62	\$59	\$54	\$49	\$44	\$39	\$35	\$33	\$31	\$30	\$29	\$26	\$23	\$21	\$16	\$14	\$14
	10yr ave.			\$34		\$31		\$26		\$22	\$21	\$21	\$20	\$19	\$17	\$16	\$13	\$11	\$10
	85% Current	\$71	\$66	\$63	\$58	\$52	\$47	\$41	\$37	\$35	\$33	\$32	\$31	\$27	\$24	\$23	\$17	\$15	\$15
	10yr ave.			\$36		\$33		\$27		\$24	\$23	\$22	\$22	\$21	\$18	\$17	\$13	\$12	\$11

The above shows estimated returns per head for skirted fleece wool. These figures do not take into account the value of skirtings and oddments and do not take into account discounts that may apply for faults under individual circumstances. These figures are based on a market index of 100% and should be used as a guide only. Returns over \$30 / head for fleece wool are highlighted.

Source: Australian Wool Exchange, Australian Wool Innovation, Sydney Futures Exchange, x-rates.com

Disclaimer: While all due care has been taken in the preparation of this document, no warranty is made as to its accuracy, reliability or completeness. To the extent permitted by law neither Jemalong or their sources including subsidiaries and staff, accept liability to any person for loss or damage arising from the use of this information.



Table 20: Returns pr head for skirted fleece wool.

Skirted FLC Weight		Micron																	
2 Kg		16	16.5	17	17.5	18	18.5	19	19.5	20	21	22	23	24	25	26	28	30	32
Yield (Sch Dry)	25% Current	\$14	\$13	\$12	\$11	\$10	\$9	\$8	\$7	\$7	\$6	\$6	\$6	\$5	\$5	\$4	\$3	\$3	\$3
	10yr ave.			\$7		\$6		\$5		\$5	\$4	\$4	\$4	\$4	\$4	\$3	\$3	\$2	\$2
	30% Current	\$17	\$16	\$15	\$14	\$12	\$11	\$10	\$9	\$8	\$8	\$8	\$7	\$6	\$6	\$5	\$4	\$4	\$3
	10yr ave.			\$8		\$8		\$6		\$6	\$5	\$5	\$5	\$5	\$4	\$4	\$3	\$3	\$2
	35% Current	\$19	\$18	\$17	\$16	\$14	\$13	\$11	\$10	\$10	\$9	\$9	\$9	\$8	\$7	\$6	\$5	\$4	\$4
	10yr ave.			\$10		\$9		\$8		\$7	\$6	\$6	\$6	\$6	\$5	\$5	\$4	\$3	\$3
	40% Current	\$22	\$21	\$20	\$18	\$16	\$15	\$13	\$12	\$11	\$10	\$10	\$10	\$9	\$8	\$7	\$5	\$5	\$5
	10yr ave.			\$11		\$10		\$9		\$7	\$7	\$7	\$7	\$6	\$6	\$5	\$4	\$4	\$3
	45% Current	\$25	\$23	\$22	\$20	\$18	\$17	\$15	\$13	\$12	\$12	\$11	\$11	\$10	\$9	\$8	\$6	\$5	\$5
	10yr ave.			\$13		\$12		\$10		\$8	\$8	\$8	\$8	\$7	\$6	\$6	\$5	\$4	\$4
	50% Current	\$28	\$26	\$25	\$23	\$20	\$18	\$16	\$15	\$14	\$13	\$13	\$12	\$11	\$10	\$9	\$7	\$6	\$6
	10yr ave.			\$14		\$13		\$11		\$9	\$9	\$9	\$8	\$8	\$7	\$7	\$5	\$5	\$4
	55% Current	\$31	\$29	\$27	\$25	\$22	\$20	\$18	\$16	\$15	\$14	\$14	\$13	\$12	\$11	\$10	\$7	\$7	\$6
	10yr ave.			\$15		\$14		\$12		\$10	\$10	\$10	\$9	\$9	\$8	\$7	\$6	\$5	\$5
	60% Current	\$33	\$31	\$30	\$27	\$24	\$22	\$19	\$18	\$16	\$15	\$15	\$15	\$13	\$11	\$11	\$8	\$7	\$7
	10yr ave.			\$17		\$15		\$13		\$11	\$11	\$10	\$10	\$10	\$9	\$8	\$6	\$6	\$5
	65% Current	\$36	\$34	\$32	\$30	\$26	\$24	\$21	\$19	\$18	\$17	\$16	\$16	\$14	\$12	\$12	\$9	\$8	\$7
	10yr ave.			\$18		\$17		\$14		\$12	\$12	\$11	\$11	\$10	\$9	\$9	\$7	\$6	\$5
	70% Current	\$39	\$36	\$35	\$32	\$29	\$26	\$23	\$21	\$19	\$18	\$18	\$17	\$15	\$13	\$12	\$9	\$8	\$8
	10yr ave.			\$20		\$18		\$15		\$13	\$12	\$12	\$12	\$11	\$10	\$9	\$7	\$6	\$6
	75% Current	\$42	\$39	\$37	\$34	\$31	\$28	\$24	\$22	\$21	\$19	\$19	\$18	\$16	\$14	\$13	\$10	\$9	\$9
	10yr ave.			\$21		\$19		\$16		\$14	\$13	\$13	\$13	\$12	\$11	\$10	\$8	\$7	\$6
	80% Current	\$44	\$42	\$40	\$36	\$33	\$29	\$26	\$24	\$22	\$21	\$20	\$20	\$17	\$15	\$14	\$11	\$9	\$9
	10yr ave.			\$23		\$20		\$17		\$15	\$14	\$14	\$14	\$13	\$12	\$11	\$8	\$7	\$7
	85% Current	\$47	\$44	\$42	\$39	\$35	\$31	\$27	\$25	\$23	\$22	\$21	\$21	\$18	\$16	\$15	\$11	\$10	\$10
	10yr ave.			\$24		\$22		\$18		\$16	\$15	\$15	\$14	\$14	\$12	\$11	\$9	\$8	\$7

The above shows estimated returns per head for skirted fleece wool. These figures do not take into account the value of skirtings and oddments and do not take into account discounts that may apply for faults under individual circumstances. These figures are based on a market index of 100% and should be used as a guide only. Returns over \$30 / head for fleece wool are highlighted.

Source: Australian Wool Exchange, Australian Wool Innovation, Sydney Futures Exchange, x-rates.com

Disclaimer: While all due care has been taken in the preparation of this document, no warranty is made as to its accuracy, reliability or completeness. To the extent permitted by law neither Jemalong or their sources including subsidiaries and staff, accept liability to any person for loss or damage arising from the use of this information.