



Table 1: Northern Region Micron Price Guides

CURRENT MARKET				PERCENTILES		AVERAGES						12 MONTH COMPARISONS								TRADING RANGE		
Mic.	21/10/2010	14/10/2010	Now			Now			20/10/2009		Now		Now		Now		Clean c/kg					
Price	Current	Weekly	3yr	10yr	<u>3 year</u>	compared	10 year	compared	This time	compared	12 Month	compared	12 Month	compared	12 Month	compared	12	3	10			
Guides	Price	Change			Average	to 3yr ave		Average		to 10yr ave		Last Year		to Last Year		Low				to Low	High	to High
NRI	954	+18 1.9%	81%	80%	895	+59 7%	867	+87 10%	876	+78 9%	872	+82 9%	974	-20 -2%	102	343	584					
16*	1700	0	75%		1617	+83 5%			1510	+190 13%	1345	+355 26%	1700	0 0%	355	645						
16.5*	1515	+5 0.3%	71%		1476	+39 3%			1310	+205 16%	1260	+255 20%	1540	-25 -2%	280	546						
17*	1415	+15 1.1%	68%	77%	1355	+60 4%	1420	-5 0%	1240	+175 14%	1175	+240 20%	1415	0 0%	240	499	1850					
17.5*	1335	+25 1.9%	65%		1292	+43 3%			1195	+140 12%	1155	+180 16%	1335	0 0%	180	494						
18	1279	+28 2.2%	66%	61%	1234	+45 4%	1290	-11 -1%	1140	+139 12%	1116	+163 15%	1279	0 0%	163	432	1392					
18.5	1217	+36 3.0%	66%		1162	+55 5%			1093	+124 11%	1073	+144 13%	1217	0 0%	144	425						
19	1114	+28 2.5%	79%	68%	1070	+44 4%	1066	+48 5%	1036	+78 8%	1021	+93 9%	1120	-6 -1%	99	443	706					
19.5	1026	+23 2.2%	77%		985	+41 4%			967	+59 6%	952	+74 8%	1067	-41 -4%	115	457						
20	977	+14 1.4%	76%	70%	915	+62 7%	911	+66 7%	898	+79 9%	893	+84 9%	1023	-46 -4%	130	464	717					
21	950	+7 0.7%	76%	70%	877	+73 8%	864	+86 10%	869	+81 9%	870	+80 9%	1006	-56 -6%	136	427	786					
22	914	+9 1.0%	70%	67%	853	+61 7%	840	+74 9%	834	+80 10%	846	+68 8%	971	-57 -6%	125	360	822					
23	884	+11 1.2%	70%	66%	830	+54 7%	820	+64 8%	810	+74 9%	816	+68 8%	940	-56 -6%	124	311	826					
24	818	+15 1.8%	64%	63%	783	+35 4%	784	+34 4%	766	+52 7%	760	+58 8%	881	-63 -7%	121	257	800					
25	751	-3 -0.4%	98%	79%	668	+83 12%	705	+46 7%	700	+51 7%	650	+101 16%	760	-9 -1%	110	194	725					
26	641	-12 -1.9%	95%	70%	600	+41 7%	646	-5 -1%	577	+64 11%	560	+81 14%	653	-12 -2%	93	155	641					
28	463	+13 2.8%	58%	26%	459	+4 1%	521	-58 -11%	446	+17 4%	430	+33 8%	493	-30 -6%	63	119	465					
30	410	+11 2.7%	72%	31%	395	+15 4%	455	-45 -10%	386	+24 6%	374	+36 10%	434	-24 -6%	60	136	384					
32	370	+14 3.8%	93%	32%	344	+26 8%	412	-42 -10%	324	+46 14%	331	+39 12%	375	-5 -1%	44	108	372					
MC	611	+30 4.9%	82%	87%	540	+71 13%	496	+115 23%	570	+41 7%	561	+50 9%	681	-70 -10%	120	289	308					

**Note:**

\* Due to the irregular market quoting for some fine wool categories, figures shown relating to micron categories below 18 micron are an estimate based on the AWEX Premium & Discounts Report & other available information.

\* For any category, where there is insufficient quantity offered to enable AWEX to quote, a quote will be provided based on the best available information.

\* 10 Year data is not available for some micron categories, which may result in blank spaces in the table above.

**Definitions:**

\* A Percentile, is a value on a scale of one hundred that indicates the percent of a distribution that is equal to or below it. In general a percentile between 25% and 75% is considered normal, a percentile below 25% is considered below normal and a percentile above 75% is considered above normal.

Three and ten year percentiles shown in the table above, detail the period of time during the past 3 & 10 years that the market has traded either at or below its current price.

The higher the percentile, the stronger the market.

Source: Australian Wool Exchange, Australian Wool Innovation, Sydney Futures Exchange, x-rates.com

Disclaimer: While all due care has been taken in the preparation of this document, no warranty is made as to its accuracy, reliability or completeness. To the extent permitted by law neither Jemalong or their sources including subsidiaries and staff, accept liability to any person for loss or damage arising from the use of this information.



## MARKET COMMENTARY

Australian Dollar 98.25 cents US as of 21/10/2010

### NORTHERN REGION – Sale Week 16/10 (48,487 bales offered nationally)

#### Merino Fleece:

**On Wednesday** – With the AUD falling overnight, the market lifted 15-20 cents. Fine to medium categories were generally 20 cents dearer, while the broader range gained 15.

**On Thursday** – The market had mixed results today with the broader microns easing 5-10 cents, the mediums closed in sellers favour by 3-5 cents and the fine end were 10-20 cents dearer, with the main focus on 18 and 18.5 microns.

#### Merino Skirting's:

**On Wednesday** – In line with the fleece market, skirting's were 15-20 cents dearer across the board.

**On Thursday** – The skirting's market remained very strong with all descriptions closing in sellers favour.

#### Oddments:

**On Wednesday** – All carbo categories posted a resounding 20 cent rise, while the washing types were less affected.

**On Thursday** – Buyers pushed all categories, lifting locks by 10-15 cents, crutching's by 20 and stains by 10..

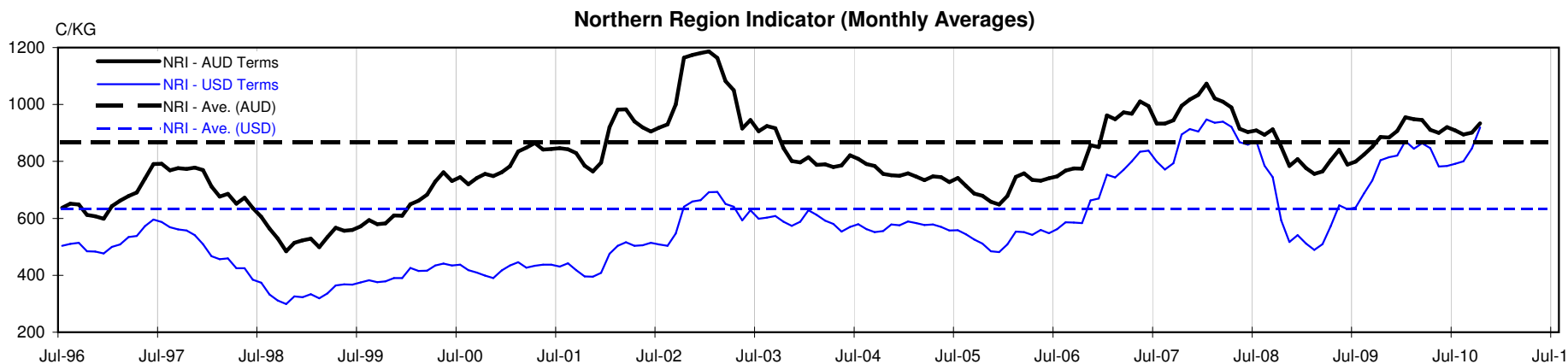
#### Crossbreds:

**On Wednesday** – 27 to 32 microns rose 10-15 cents with other microns less affected.

**On Thursday** – Fine crossbreds had a downward correction of 10 cents, leaving 27 to 30 microns unchanged.

49,325 Bales are rostered for next weeks Newcastle sale.

Source AWEX





**Table 4: 19 micron SFE**

Wednesday, 20 October 2010

Delivery Mth	Oct-10	Dec-10	Feb-11	Apr-11	Jun-11	Aug-11	Oct-11	Dec-11	Feb-12
19 Micron SFE	1053	1053	1053	1053	1053	1053	1053	1053	1053
Average	1019	1032	1040	1047	1051	1053	1051	1046	1052
Maximum	1088	1088	1088	1088	1088	1088	1080	1065	1065
Minimum	884	905	936	983	1025	1034	1034	1034	1034

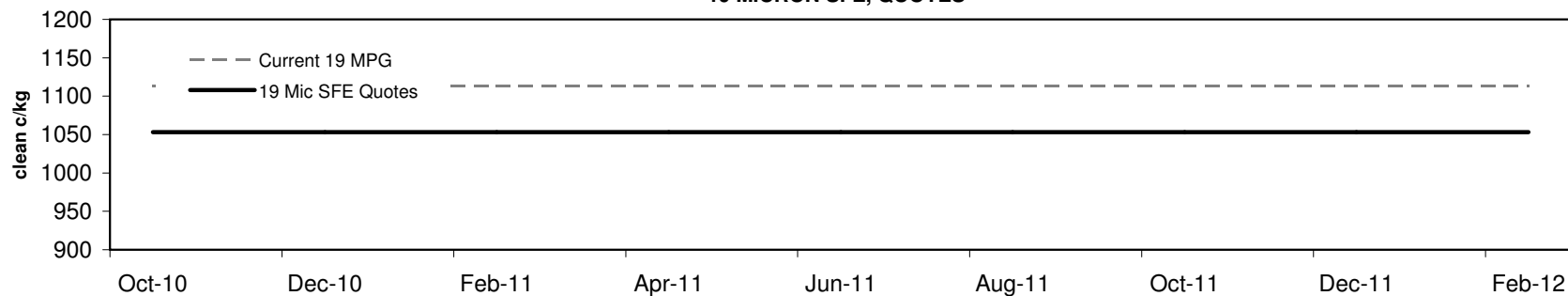
**Table 5: 19 micron SFE, as a percentile of the 19 micron MPG**

3 Year Percentile	43%	43%	43%	43%	43%	43%	43%	43%	43%
10 Year Percentile	52%	52%	52%	52%	52%	52%	52%	52%	52%

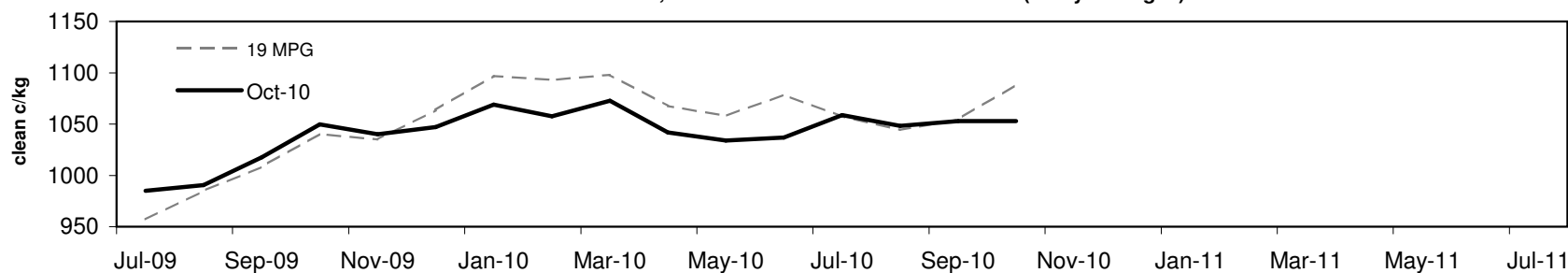
**Table 6: 19 micron SFE, compared to MPG**

Current 19 MPG	-61	-5%	-61	-5%	-61	-5%	-61	-5%	-61	-5%	-61	-5%	-61	-5%	-61	-5%	-61	-5%
19 MPG, 1 Year Average	-17	-2%	-17	-2%	-17	-2%	-17	-2%	-17	-2%	-17	-2%	-17	-2%	-17	-2%	-17	-2%
19 MPG, 3 Year Average	-17	-2%	-17	-2%	-17	-2%	-17	-2%	-17	-2%	-17	-2%	-17	-2%	-17	-2%	-17	-2%
19 MPG, 10 Year Average	-13	-1%	-13	-1%	-13	-1%	-13	-1%	-13	-1%	-13	-1%	-13	-1%	-13	-1%	-13	-1%

**19 MICRON SFE, QUOTES**



**19 MICRON SFE, FRONT MONTH PRICE MOVEMENT (mthly averages)**





**Table 7: 21 micron SFE**

Wednesday, 20 October 2010

Delivery Mth	Oct-10	Dec-10	Feb-11	Apr-11	Jun-11	Aug-11	Oct-11	Dec-11	Feb-12
21 Micron SFE	968	965	960	949	944	928	938	928	928
Average	900	914	924	932	935	935	925	913	906
Maximum	1003	1013	1004	1004	1004	1004	992	951	940
Minimum	742	780	818	860	891	890	880	880	880

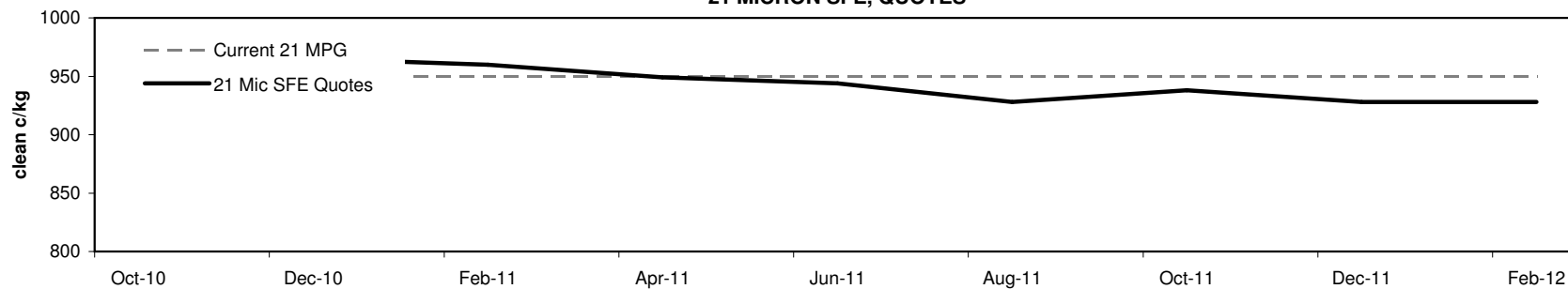
**Table 8: 21 micron SFE, as a percentile of the 21 micron MPG**

3 Year Percentile	82%	80%	79%	75%	74%	69%	72%	69%	69%
10 Year Percentile	74%	73%	71%	69%	69%	66%	68%	66%	66%

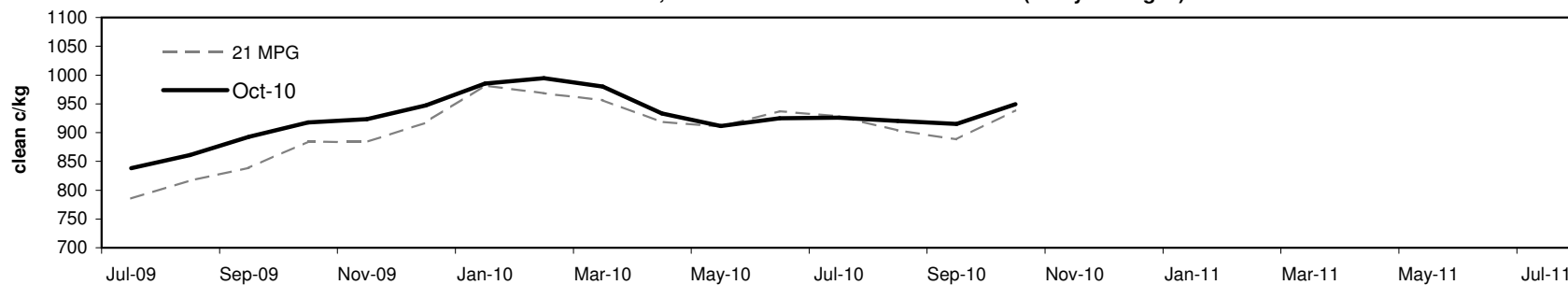
**Table 9: 21 micron SFE, compared to MPG**

Current 21 MPG	+18	2%	+15	2%	+10	1%	-1	0%	-6	-1%	-22	-2%	-12	-1%	-22	-2%	-22	-2%
21 MPG, 1 Year Average	+40	4%	+37	4%	+32	3%	+21	2%	+16	2%	0	0%	+10	1%	0	0%	0	0%
21 MPG, 3 Year Average	+91	10%	+88	10%	+83	9%	+72	8%	+67	8%	+51	6%	+61	7%	+51	6%	+51	6%
21 MPG, 10 Year Average	+104	12%	+101	12%	+96	11%	+85	10%	+80	9%	+64	7%	+74	9%	+64	7%	+64	7%

**21 MICRON SFE, QUOTES**



**21 MICRON SFE, FRONT MONTH PRICE MOVEMENT (mthly averages)**





**Table 10: 23 micron SFE**

Wednesday, 20 October 2010

Delivery Mth	Oct-10	Dec-10	Feb-11	Apr-11	Jun-11	Aug-11	Oct-11	Dec-11	Feb-12
23 Micron SFE	887	887	887	887	887	887	887	887	887
Average	819	839	853	862	872	886	893	884	885
Maximum	927	927	927	927	927	927	927	887	887
Minimum	690	716	760	760	803	803	883	883	883

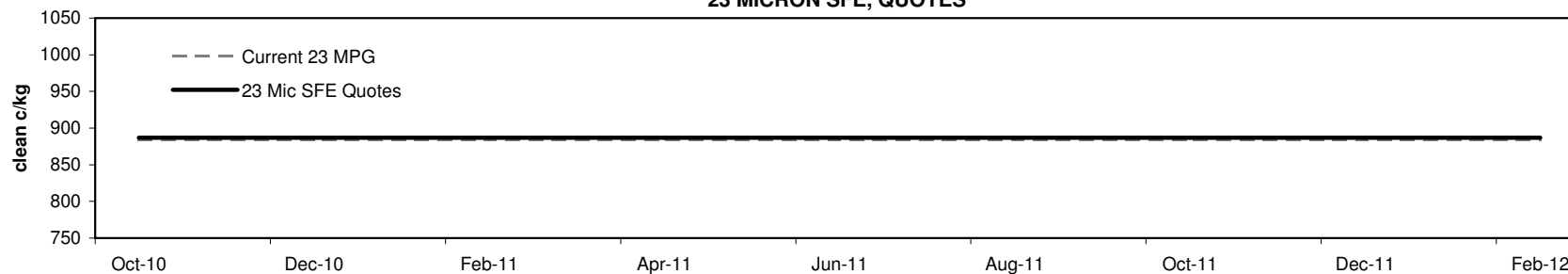
**Table 11: 23 micron SFE, as a percentile of the 23 micron MPG**

3 Year Percentile	71%	71%	71%	71%	71%	71%	71%	71%	71%
10 Year Percentile	66%	66%	66%	66%	66%	66%	66%	66%	66%

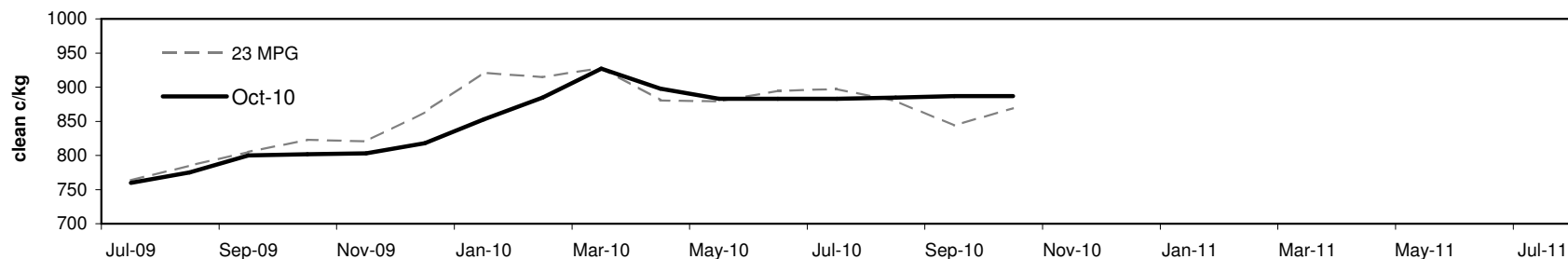
**Table 12: 23 micron SFE, compared to MPG**

Current 19 MPG	+3	0%	+3	0%	+3	0%	+3	0%	+3	0%	+3	0%	+3	0%	+3	0%
23 MPG, 1 Year Average	+4	0%	+4	0%	+4	0%	+4	0%	+4	0%	+4	0%	+4	0%	+4	0%
23 MPG, 3 Year Average	+57	7%	+57	7%	+57	7%	+57	7%	+57	7%	+57	7%	+57	7%	+57	7%
23 MPG, 10 Year Average	+67	8%	+67	8%	+67	8%	+67	8%	+67	8%	+67	8%	+67	8%	+67	8%

**23 MICRON SFE, QUOTES**

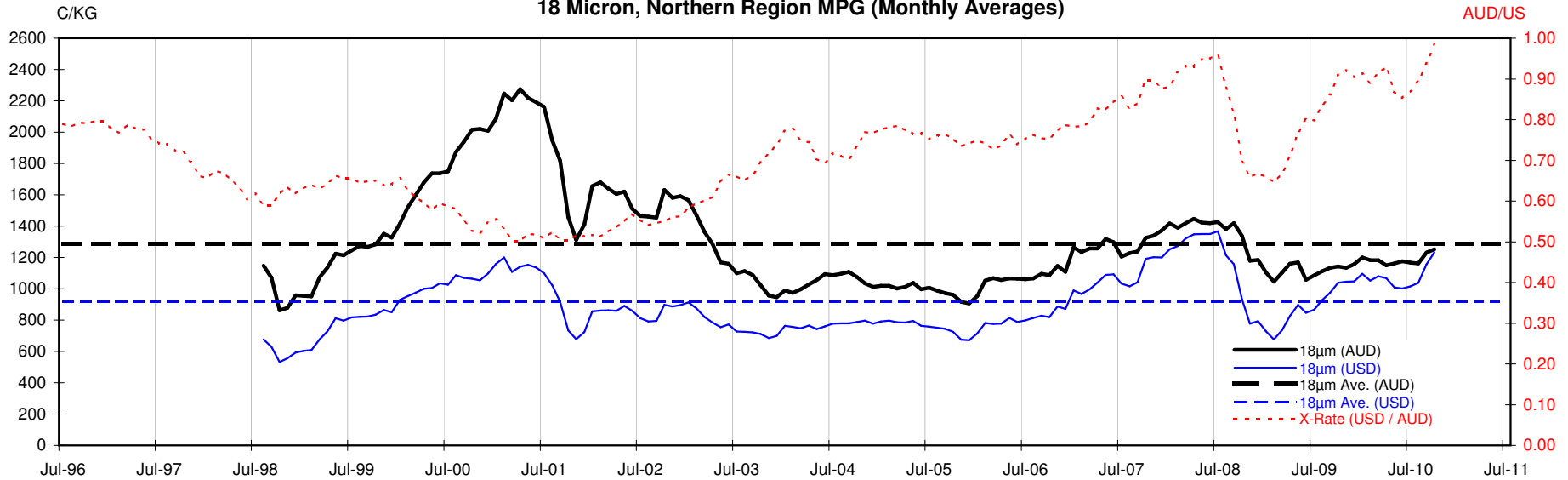


**23 MICRON SFE, FRONT MONTH PRICE MOVEMENT (mthly averages)**



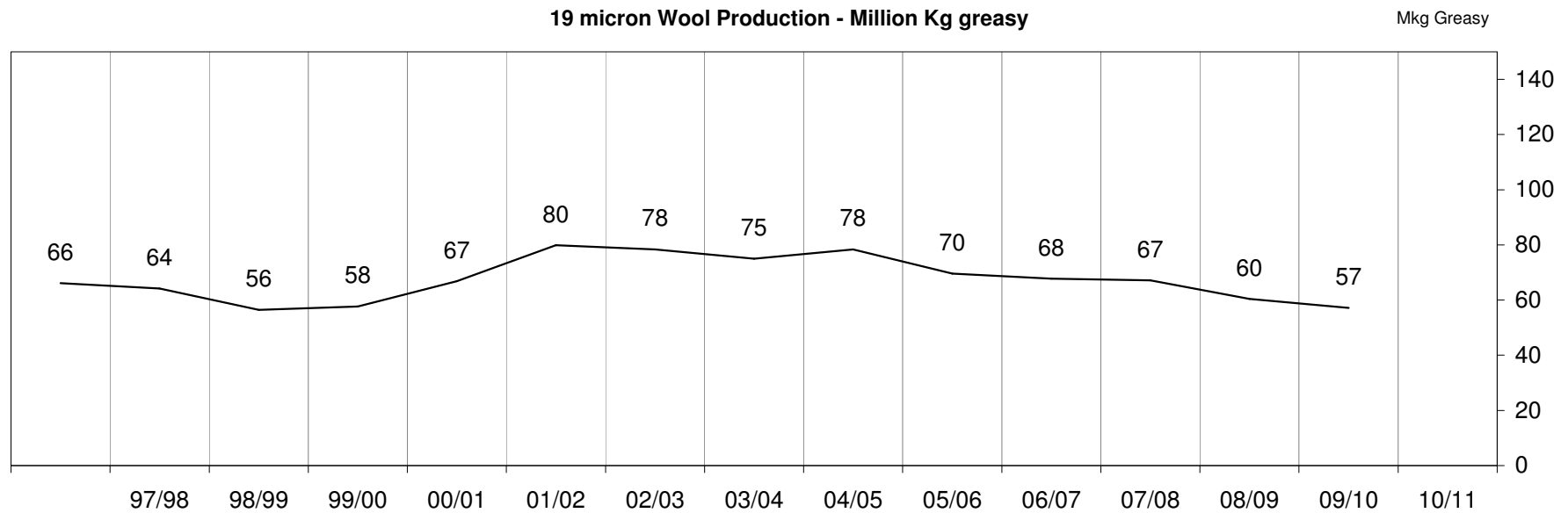
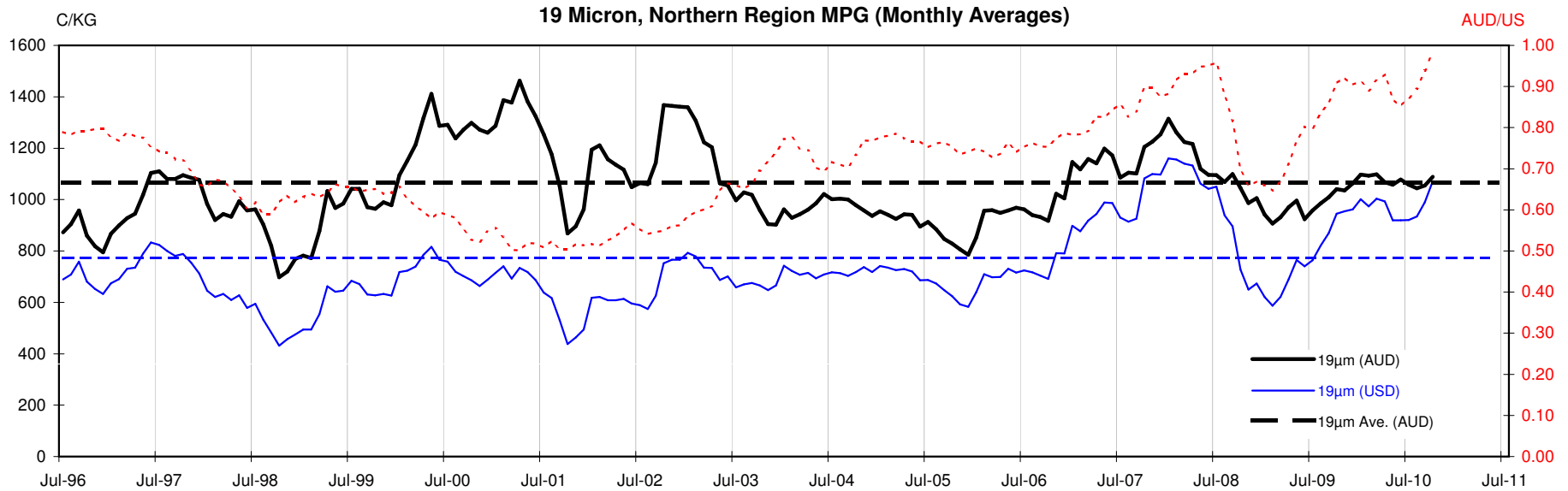


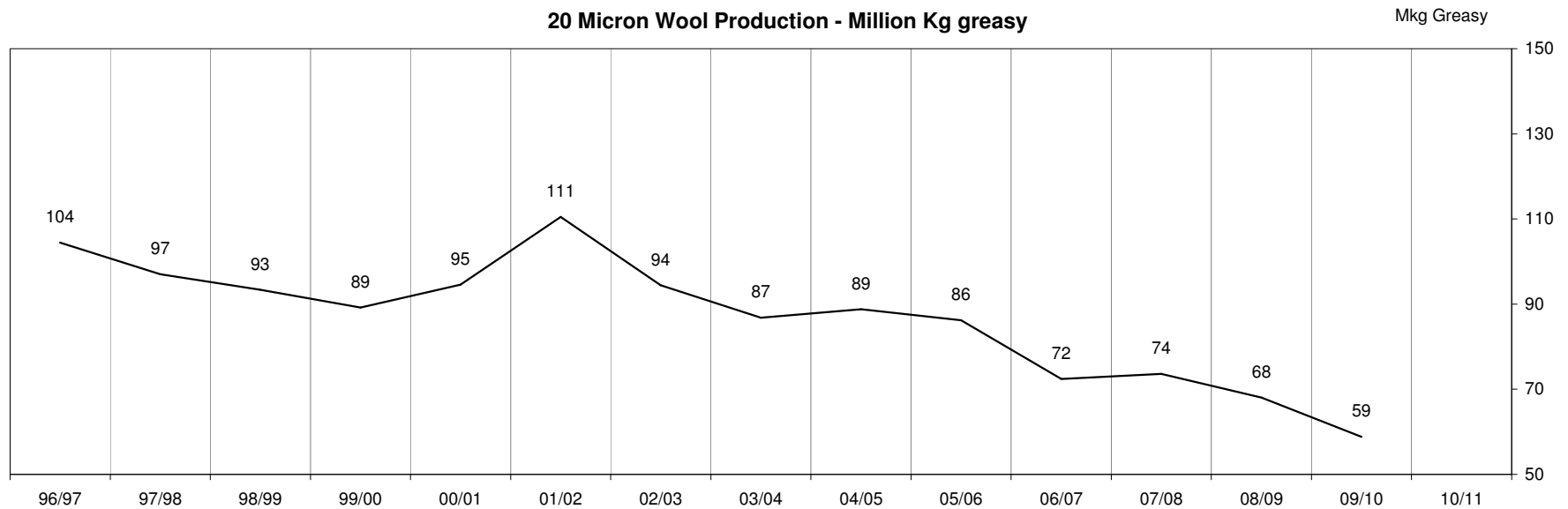
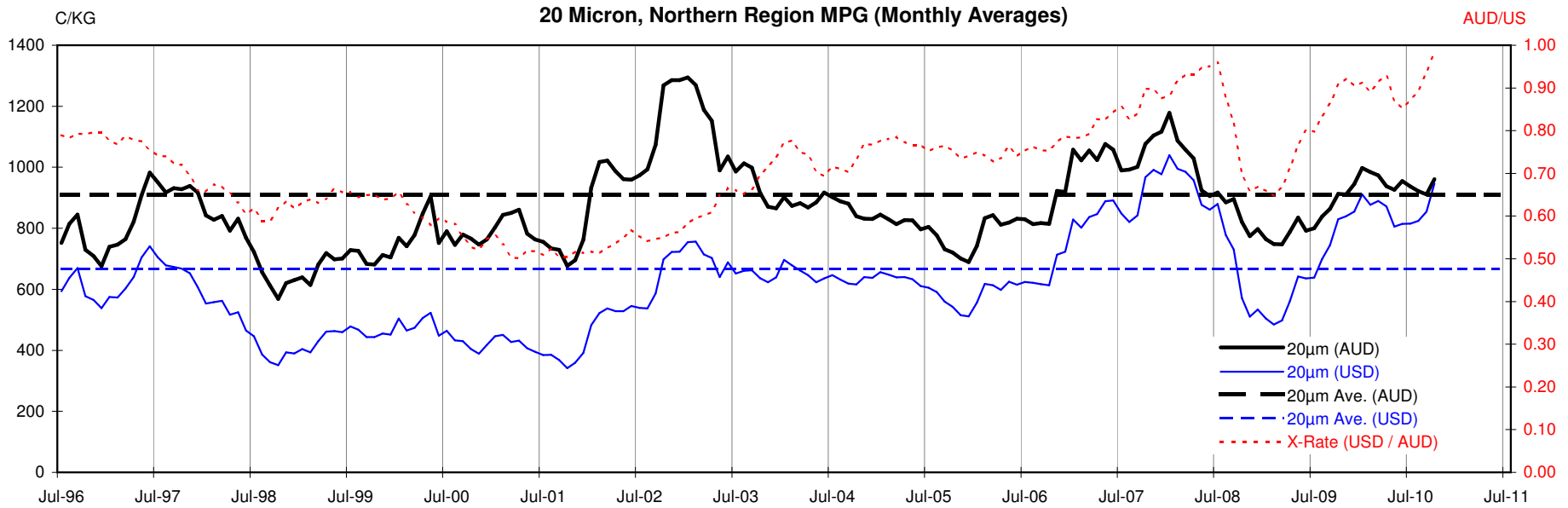
18 Micron, Northern Region MPG (Monthly Averages)



<18.5 micron Wool Production - Million Kg greasy



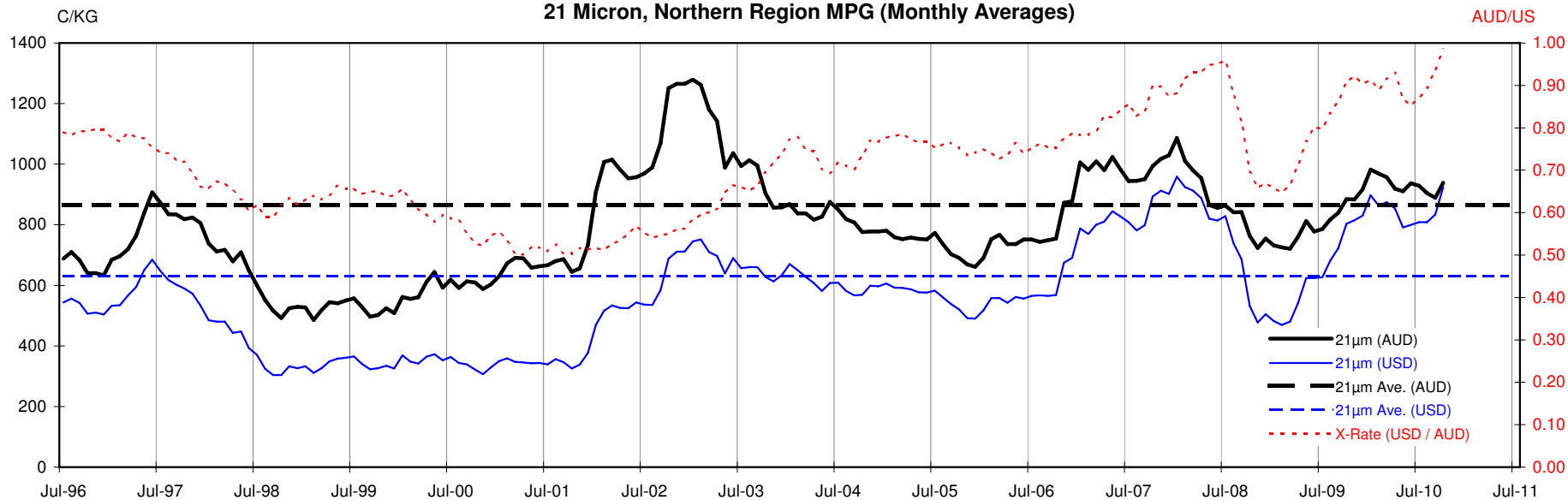








21 Micron, Northern Region MPG (Monthly Averages)

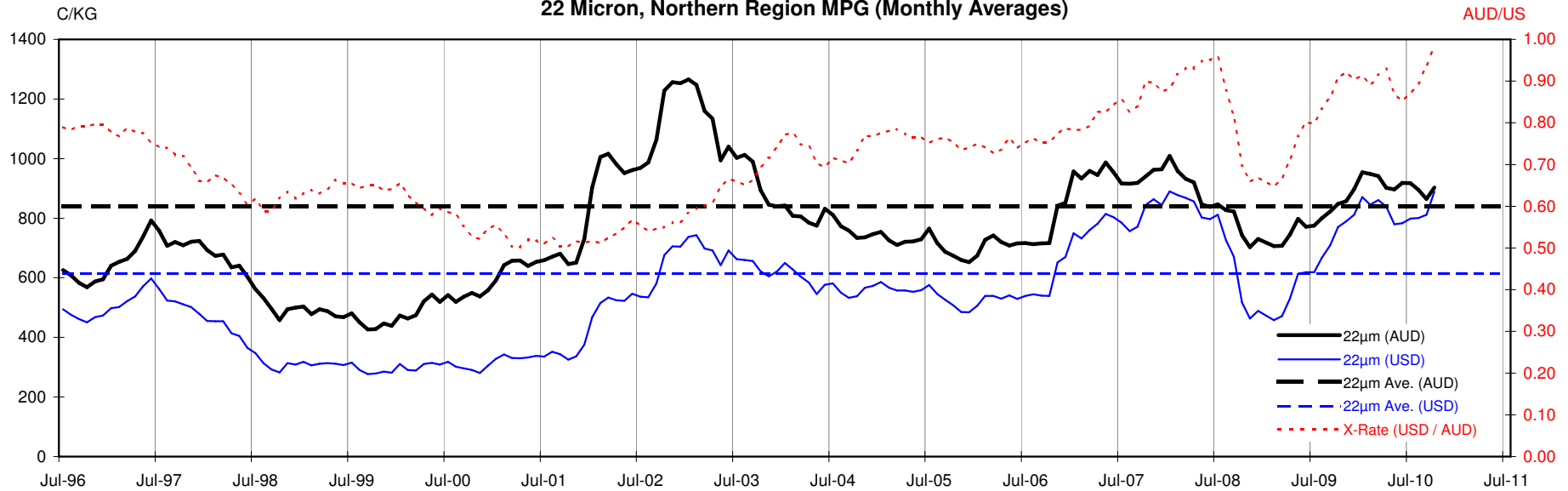


21 Micron Wool Production - Million Kg greasy



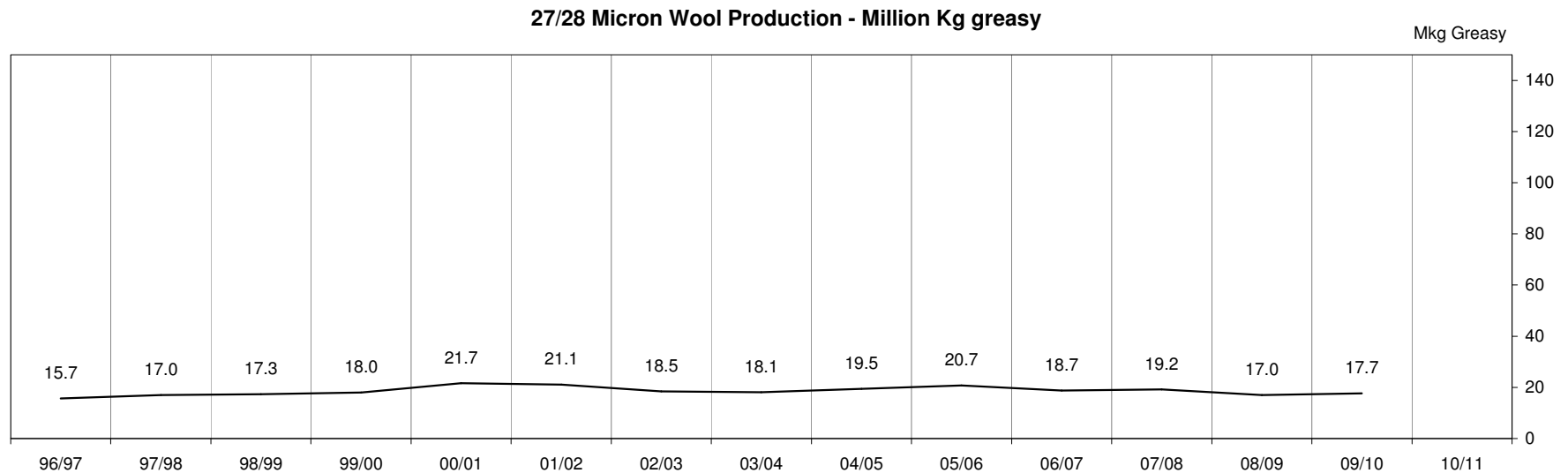
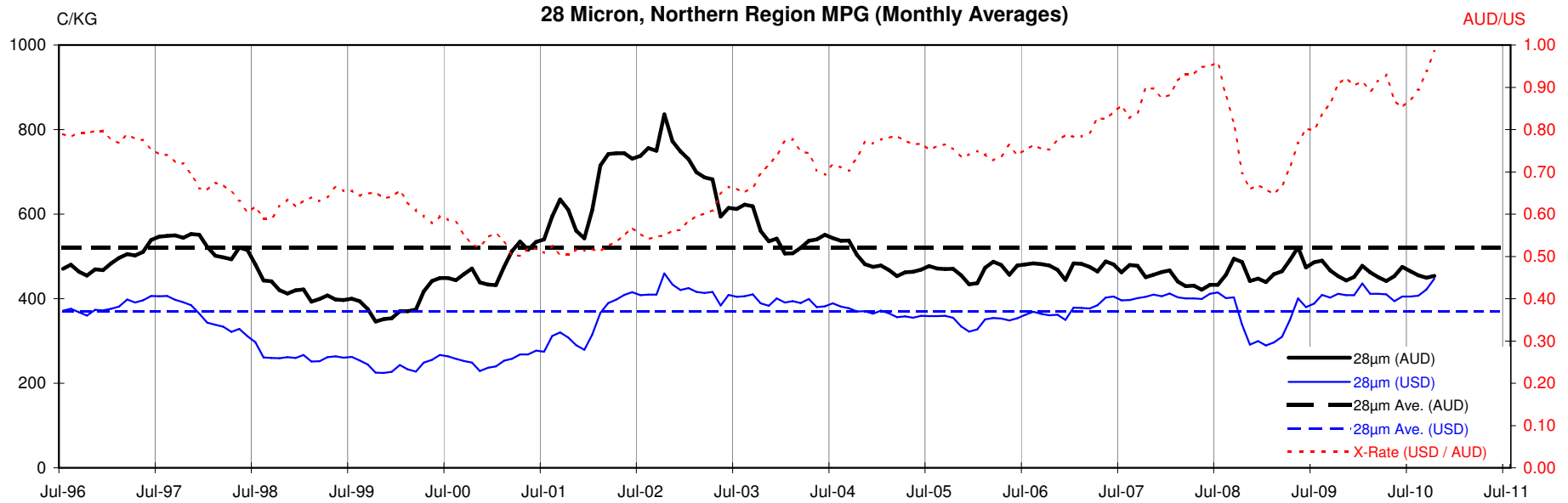


22 Micron, Northern Region MPG (Monthly Averages)



22 Micron Wool Production - Million Kg greasy





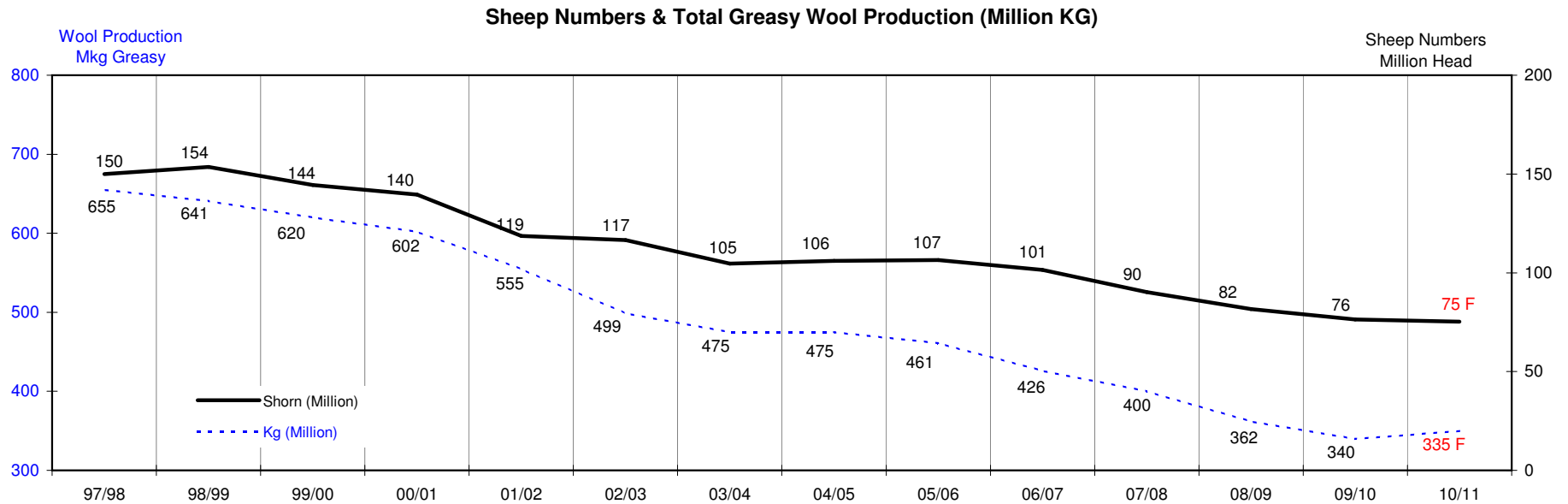
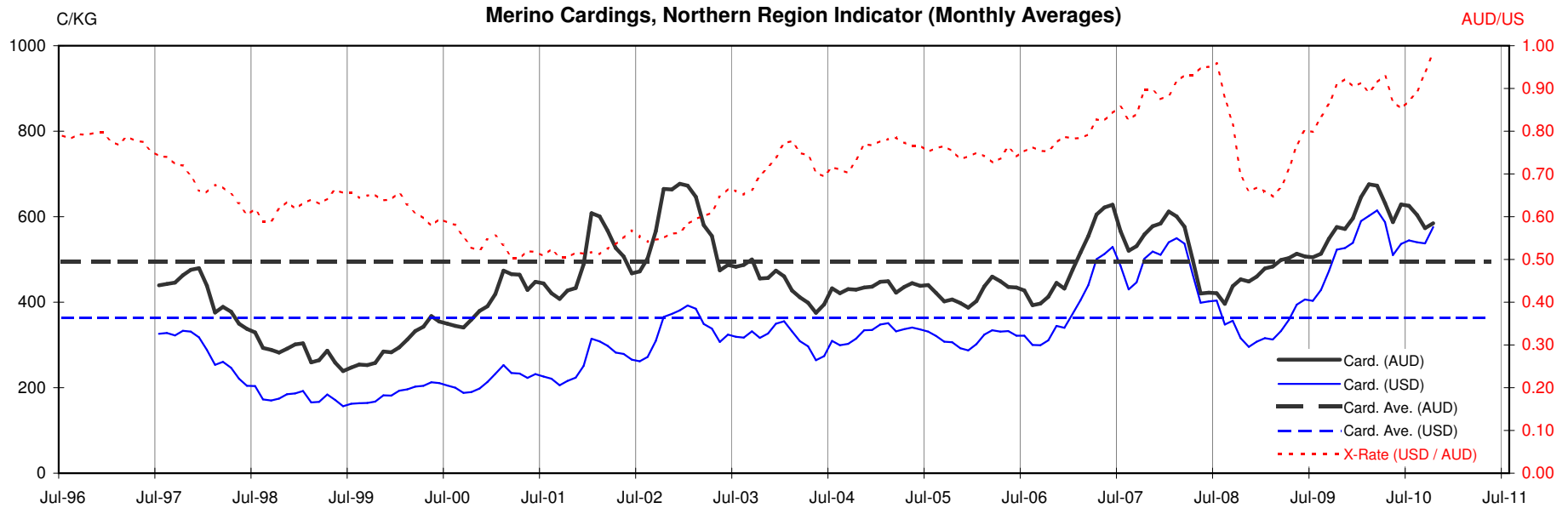




Table 13: Returns pr head for skirted fleece wool.

Skirted FLC Weight  9 Kg			Micron																	
			16	16.5	17	17.5	18	18.5	19	19.5	20	21	22	23	24	25	26	28	30	32
Yield (Sch Dry)	25%	Current	\$38	\$34	\$32	\$30	\$29	\$27	\$25	\$23	\$22	\$21	\$21	\$20	\$18	\$17	\$14	\$10	\$9	\$8
		10yr ave.			\$32		\$29		\$24		\$20	\$19	\$19	\$18	\$18	\$16	\$15	\$12	\$10	\$9
	30%	Current	\$46	\$41	\$38	\$36	\$35	\$33	\$30	\$28	\$26	\$26	\$25	\$24	\$22	\$20	\$17	\$13	\$11	\$10
		10yr ave.			\$38		\$35		\$29		\$25	\$23	\$23	\$22	\$21	\$19	\$17	\$14	\$12	\$11
	35%	Current	\$54	\$48	\$45	\$42	\$40	\$38	\$35	\$32	\$31	\$30	\$29	\$28	\$26	\$24	\$20	\$15	\$13	\$12
		10yr ave.			\$45		\$41		\$34		\$29	\$27	\$26	\$26	\$25	\$22	\$20	\$16	\$14	\$13
	40%	Current	\$61	\$55	\$51	\$48	\$46	\$44	\$40	\$37	\$35	\$34	\$33	\$32	\$29	\$27	\$23	\$17	\$15	\$13
		10yr ave.			\$51		\$46		\$38		\$33	\$31	\$30	\$30	\$28	\$25	\$23	\$19	\$16	\$15
	45%	Current	\$69	\$61	\$57	\$54	\$52	\$49	\$45	\$42	\$40	\$38	\$37	\$36	\$33	\$30	\$26	\$19	\$17	\$15
		10yr ave.			\$58		\$52		\$43		\$37	\$35	\$34	\$33	\$32	\$29	\$26	\$21	\$18	\$17
	50%	Current	\$77	\$68	\$64	\$60	\$58	\$55	\$50	\$46	\$44	\$43	\$41	\$40	\$37	\$34	\$29	\$21	\$18	\$17
		10yr ave.			\$64		\$58		\$48		\$41	\$39	\$38	\$37	\$35	\$32	\$29	\$23	\$20	\$19
	55%	Current	\$84	\$75	\$70	\$66	\$63	\$60	\$55	\$51	\$48	\$47	\$45	\$44	\$40	\$37	\$32	\$23	\$20	\$18
		10yr ave.			\$70		\$64		\$53		\$45	\$43	\$42	\$41	\$39	\$35	\$32	\$26	\$23	\$20
	60%	Current	\$92	\$82	\$76	\$72	\$69	\$66	\$60	\$55	\$53	\$51	\$49	\$48	\$44	\$41	\$35	\$25	\$22	\$20
		10yr ave.			\$77		\$70		\$58		\$49	\$47	\$45	\$44	\$42	\$38	\$35	\$28	\$25	\$22
65%	Current	\$99	\$89	\$83	\$78	\$75	\$71	\$65	\$60	\$57	\$56	\$53	\$52	\$48	\$44	\$37	\$27	\$24	\$22	
	10yr ave.			\$83		\$75		\$62		\$53	\$51	\$49	\$48	\$46	\$41	\$38	\$30	\$27	\$24	
70%	Current	\$107	\$95	\$89	\$84	\$81	\$77	\$70	\$65	\$62	\$60	\$58	\$56	\$52	\$47	\$40	\$29	\$26	\$23	
	10yr ave.			\$89		\$81		\$67		\$57	\$54	\$53	\$52	\$49	\$44	\$41	\$33	\$29	\$26	
75%	Current	\$115	\$102	\$96	\$90	\$86	\$82	\$75	\$69	\$66	\$64	\$62	\$60	\$55	\$51	\$43	\$31	\$28	\$25	
	10yr ave.			\$96		\$87		\$72		\$61	\$58	\$57	\$55	\$53	\$48	\$44	\$35	\$31	\$28	
80%	Current	\$122	\$109	\$102	\$96	\$92	\$88	\$80	\$74	\$70	\$68	\$66	\$64	\$59	\$54	\$46	\$33	\$30	\$27	
	10yr ave.			\$102		\$93		\$77		\$66	\$62	\$60	\$59	\$56	\$51	\$47	\$38	\$33	\$30	
85%	Current	\$130	\$116	\$108	\$102	\$98	\$93	\$85	\$78	\$75	\$73	\$70	\$68	\$63	\$57	\$49	\$35	\$31	\$28	
	10yr ave.			\$109		\$99		\$82		\$70	\$66	\$64	\$63	\$60	\$54	\$49	\$40	\$35	\$32	

The above shows estimated returns per head for skirted fleece wool. These figures do not take into account the value of skirtings and oddments and do not take into account discounts that may apply for faults under individual circumstances. These figures are based on a market index of 100% and should be used as a guide only. Returns over \$30 / head for fleece wool are highlighted.

Source: Australian Wool Exchange, Australian Wool Innovation, Sydney Futures Exchange, x-rates.com

Disclaimer: While all due care has been taken in the preparation of this document, no warranty is made as to its accuracy, reliability or completeness. To the extent permitted by law neither Jemalong or their sources including subsidiaries and staff, accept liability to any person for loss or damage arising from the use of this information.



Table 14: Returns pr head for skirted fleece wool.

Skirted FLC Weight  8 Kg			Micron																	
			16	16.5	17	17.5	18	18.5	19	19.5	20	21	22	23	24	25	26	28	30	32
Yield (Sch Dry)	25%	Current	\$38	\$34	\$32	\$30	\$29	\$27	\$25	\$23	\$22	\$21	\$21	\$20	\$18	\$17	\$14	\$10	\$9	\$8
		10yr ave.			\$32		\$29		\$24		\$20	\$19	\$19	\$18	\$18	\$16	\$15	\$12	\$10	\$9
	30%	Current	\$46	\$41	\$38	\$36	\$35	\$33	\$30	\$28	\$26	\$26	\$25	\$24	\$22	\$20	\$17	\$13	\$11	\$10
		10yr ave.			\$38		\$35		\$29		\$25	\$23	\$23	\$22	\$21	\$19	\$17	\$14	\$12	\$11
	35%	Current	\$54	\$48	\$45	\$42	\$40	\$38	\$35	\$32	\$31	\$30	\$29	\$28	\$26	\$24	\$20	\$15	\$13	\$12
		10yr ave.			\$45		\$41		\$34		\$29	\$27	\$26	\$26	\$25	\$22	\$20	\$16	\$14	\$13
	40%	Current	\$61	\$55	\$51	\$48	\$46	\$44	\$40	\$37	\$35	\$34	\$33	\$32	\$29	\$27	\$23	\$17	\$15	\$13
		10yr ave.			\$51		\$46		\$38		\$33	\$31	\$30	\$30	\$28	\$25	\$23	\$19	\$16	\$15
	45%	Current	\$69	\$61	\$57	\$54	\$52	\$49	\$45	\$42	\$40	\$38	\$37	\$36	\$33	\$30	\$26	\$19	\$17	\$15
		10yr ave.			\$58		\$52		\$43		\$37	\$35	\$34	\$33	\$32	\$29	\$26	\$21	\$18	\$17
	50%	Current	\$77	\$68	\$64	\$60	\$58	\$55	\$50	\$46	\$44	\$43	\$41	\$40	\$37	\$34	\$29	\$21	\$18	\$17
		10yr ave.			\$64		\$58		\$48		\$41	\$39	\$38	\$37	\$35	\$32	\$29	\$23	\$20	\$19
	55%	Current	\$84	\$75	\$70	\$66	\$63	\$60	\$55	\$51	\$48	\$47	\$45	\$44	\$40	\$37	\$32	\$23	\$20	\$18
		10yr ave.			\$70		\$64		\$53		\$45	\$43	\$42	\$41	\$39	\$35	\$32	\$26	\$23	\$20
60%	Current	\$92	\$82	\$76	\$72	\$69	\$66	\$60	\$55	\$53	\$51	\$49	\$48	\$44	\$41	\$35	\$25	\$22	\$20	
	10yr ave.			\$77		\$70		\$58		\$49	\$47	\$45	\$44	\$42	\$38	\$35	\$28	\$25	\$22	
65%	Current	\$99	\$89	\$83	\$78	\$75	\$71	\$65	\$60	\$57	\$56	\$53	\$52	\$48	\$44	\$37	\$27	\$24	\$22	
	10yr ave.			\$83		\$75		\$62		\$53	\$51	\$49	\$48	\$46	\$41	\$38	\$30	\$27	\$24	
70%	Current	\$107	\$95	\$89	\$84	\$81	\$77	\$70	\$65	\$62	\$60	\$58	\$56	\$52	\$47	\$40	\$29	\$26	\$23	
	10yr ave.			\$89		\$81		\$67		\$57	\$54	\$53	\$52	\$49	\$44	\$41	\$33	\$29	\$26	
75%	Current	\$115	\$102	\$96	\$90	\$86	\$82	\$75	\$69	\$66	\$64	\$62	\$60	\$55	\$51	\$43	\$31	\$28	\$25	
	10yr ave.			\$96		\$87		\$72		\$61	\$58	\$57	\$55	\$53	\$48	\$44	\$35	\$31	\$28	
80%	Current	\$122	\$109	\$102	\$96	\$92	\$88	\$80	\$74	\$70	\$68	\$66	\$64	\$59	\$54	\$46	\$33	\$30	\$27	
	10yr ave.			\$102		\$93		\$77		\$66	\$62	\$60	\$59	\$56	\$51	\$47	\$38	\$33	\$30	
85%	Current	\$130	\$116	\$108	\$102	\$98	\$93	\$85	\$78	\$75	\$73	\$70	\$68	\$63	\$57	\$49	\$35	\$31	\$28	
	10yr ave.			\$109		\$99		\$82		\$70	\$66	\$64	\$63	\$60	\$54	\$49	\$40	\$35	\$32	

The above shows estimated returns per head for skirted fleece wool. These figures do not take into account the value of skirtings and oddments and do not take into account discounts that may apply for faults under individual circumstances. These figures are based on a market index of 100% and should be used as a guide only. Returns over \$30 / head for fleece wool are highlighted.

Source: Australian Wool Exchange, Australian Wool Innovation, Sydney Futures Exchange, x-rates.com

Disclaimer: While all due care has been taken in the preparation of this document, no warranty is made as to its accuracy, reliability or completeness. To the extent permitted by law neither Jemalong or their sources including subsidiaries and staff, accept liability to any person for loss or damage arising from the use of this information.



Table 15: Returns pr head for skirted fleece wool.

Skirted FLC Weight  7 Kg			Micron																	
			16	16.5	17	17.5	18	18.5	19	19.5	20	21	22	23	24	25	26	28	30	32
Yield (Sch Dry)	25%	Current	\$38	\$34	\$32	\$30	\$29	\$27	\$25	\$23	\$22	\$21	\$21	\$20	\$18	\$17	\$14	\$10	\$9	\$8
		10yr ave.			\$32		\$29		\$24		\$20	\$19	\$19	\$18	\$18	\$16	\$15	\$12	\$10	\$9
	30%	Current	\$46	\$41	\$38	\$36	\$35	\$33	\$30	\$28	\$26	\$26	\$25	\$24	\$22	\$20	\$17	\$13	\$11	\$10
		10yr ave.			\$38		\$35		\$29		\$25	\$23	\$23	\$22	\$21	\$19	\$17	\$14	\$12	\$11
	35%	Current	\$54	\$48	\$45	\$42	\$40	\$38	\$35	\$32	\$31	\$30	\$29	\$28	\$26	\$24	\$20	\$15	\$13	\$12
		10yr ave.			\$45		\$41		\$34		\$29	\$27	\$26	\$26	\$25	\$22	\$20	\$16	\$14	\$13
	40%	Current	\$61	\$55	\$51	\$48	\$46	\$44	\$40	\$37	\$35	\$34	\$33	\$32	\$29	\$27	\$23	\$17	\$15	\$13
		10yr ave.			\$51		\$46		\$38		\$33	\$31	\$30	\$30	\$28	\$25	\$23	\$19	\$16	\$15
	45%	Current	\$69	\$61	\$57	\$54	\$52	\$49	\$45	\$42	\$40	\$38	\$37	\$36	\$33	\$30	\$26	\$19	\$17	\$15
		10yr ave.			\$58		\$52		\$43		\$37	\$35	\$34	\$33	\$32	\$29	\$26	\$21	\$18	\$17
	50%	Current	\$77	\$68	\$64	\$60	\$58	\$55	\$50	\$46	\$44	\$43	\$41	\$40	\$37	\$34	\$29	\$21	\$18	\$17
		10yr ave.			\$64		\$58		\$48		\$41	\$39	\$38	\$37	\$35	\$32	\$29	\$23	\$20	\$19
	55%	Current	\$84	\$75	\$70	\$66	\$63	\$60	\$55	\$51	\$48	\$47	\$45	\$44	\$40	\$37	\$32	\$23	\$20	\$18
		10yr ave.			\$70		\$64		\$53		\$45	\$43	\$42	\$41	\$39	\$35	\$32	\$26	\$23	\$20
	60%	Current	\$92	\$82	\$76	\$72	\$69	\$66	\$60	\$55	\$53	\$51	\$49	\$48	\$44	\$41	\$35	\$25	\$22	\$20
		10yr ave.			\$77		\$70		\$58		\$49	\$47	\$45	\$44	\$42	\$38	\$35	\$28	\$25	\$22
65%	Current	\$99	\$89	\$83	\$78	\$75	\$71	\$65	\$60	\$57	\$56	\$53	\$52	\$48	\$44	\$37	\$27	\$24	\$22	
	10yr ave.			\$83		\$75		\$62		\$53	\$51	\$49	\$48	\$46	\$41	\$38	\$30	\$27	\$24	
70%	Current	\$107	\$95	\$89	\$84	\$81	\$77	\$70	\$65	\$62	\$60	\$58	\$56	\$52	\$47	\$40	\$29	\$26	\$23	
	10yr ave.			\$89		\$81		\$67		\$57	\$54	\$53	\$52	\$49	\$44	\$41	\$33	\$29	\$26	
75%	Current	\$115	\$102	\$96	\$90	\$86	\$82	\$75	\$69	\$66	\$64	\$62	\$60	\$55	\$51	\$43	\$31	\$28	\$25	
	10yr ave.			\$96		\$87		\$72		\$61	\$58	\$57	\$55	\$53	\$48	\$44	\$35	\$31	\$28	
80%	Current	\$122	\$109	\$102	\$96	\$92	\$88	\$80	\$74	\$70	\$68	\$66	\$64	\$59	\$54	\$46	\$33	\$30	\$27	
	10yr ave.			\$102		\$93		\$77		\$66	\$62	\$60	\$59	\$56	\$51	\$47	\$38	\$33	\$30	
85%	Current	\$130	\$116	\$108	\$102	\$98	\$93	\$85	\$78	\$75	\$73	\$70	\$68	\$63	\$57	\$49	\$35	\$31	\$28	
	10yr ave.			\$109		\$99		\$82		\$70	\$66	\$64	\$63	\$60	\$54	\$49	\$40	\$35	\$32	

The above shows estimated returns per head for skirted fleece wool. These figures do not take into account the value of skirtings and oddments and do not take into account discounts that may apply for faults under individual circumstances. These figures are based on a market index of 100% and should be used as a guide only. Returns over \$30 / head for fleece wool are highlighted.

Source: Australian Wool Exchange, Australian Wool Innovation, Sydney Futures Exchange, x-rates.com

Disclaimer: While all due care has been taken in the preparation of this document, no warranty is made as to its accuracy, reliability or completeness. To the extent permitted by law neither Jemalong or their sources including subsidiaries and staff, accept liability to any person for loss or damage arising from the use of this information.



Table 16: Returns pr head for skirted fleece wool.

Skirted FLC Weight  6 Kg			Micron																	
			16	16.5	17	17.5	18	18.5	19	19.5	20	21	22	23	24	25	26	28	30	32
Yield (Sch Dry)	25%	Current	\$38	\$34	\$32	\$30	\$29	\$27	\$25	\$23	\$22	\$21	\$21	\$20	\$18	\$17	\$14	\$10	\$9	\$8
		10yr ave.			\$32		\$29		\$24		\$20	\$19	\$19	\$18	\$18	\$16	\$15	\$12	\$10	\$9
	30%	Current	\$46	\$41	\$38	\$36	\$35	\$33	\$30	\$28	\$26	\$26	\$25	\$24	\$22	\$20	\$17	\$13	\$11	\$10
		10yr ave.			\$38		\$35		\$29		\$25	\$23	\$23	\$22	\$21	\$19	\$17	\$14	\$12	\$11
	35%	Current	\$54	\$48	\$45	\$42	\$40	\$38	\$35	\$32	\$31	\$30	\$29	\$28	\$26	\$24	\$20	\$15	\$13	\$12
		10yr ave.			\$45		\$41		\$34		\$29	\$27	\$26	\$26	\$25	\$22	\$20	\$16	\$14	\$13
	40%	Current	\$61	\$55	\$51	\$48	\$46	\$44	\$40	\$37	\$35	\$34	\$33	\$32	\$29	\$27	\$23	\$17	\$15	\$13
		10yr ave.			\$51		\$46		\$38		\$33	\$31	\$30	\$30	\$28	\$25	\$23	\$19	\$16	\$15
	45%	Current	\$69	\$61	\$57	\$54	\$52	\$49	\$45	\$42	\$40	\$38	\$37	\$36	\$33	\$30	\$26	\$19	\$17	\$15
		10yr ave.			\$58		\$52		\$43		\$37	\$35	\$34	\$33	\$32	\$29	\$26	\$21	\$18	\$17
	50%	Current	\$77	\$68	\$64	\$60	\$58	\$55	\$50	\$46	\$44	\$43	\$41	\$40	\$37	\$34	\$29	\$21	\$18	\$17
		10yr ave.			\$64		\$58		\$48		\$41	\$39	\$38	\$37	\$35	\$32	\$29	\$23	\$20	\$19
	55%	Current	\$84	\$75	\$70	\$66	\$63	\$60	\$55	\$51	\$48	\$47	\$45	\$44	\$40	\$37	\$32	\$23	\$20	\$18
		10yr ave.			\$70		\$64		\$53		\$45	\$43	\$42	\$41	\$39	\$35	\$32	\$26	\$23	\$20
	60%	Current	\$92	\$82	\$76	\$72	\$69	\$66	\$60	\$55	\$53	\$51	\$49	\$48	\$44	\$41	\$35	\$25	\$22	\$20
		10yr ave.			\$77		\$70		\$58		\$49	\$47	\$45	\$44	\$42	\$38	\$35	\$28	\$25	\$22
65%	Current	\$99	\$89	\$83	\$78	\$75	\$71	\$65	\$60	\$57	\$56	\$53	\$52	\$48	\$44	\$37	\$27	\$24	\$22	
	10yr ave.			\$83		\$75		\$62		\$53	\$51	\$49	\$48	\$46	\$41	\$38	\$30	\$27	\$24	
70%	Current	\$107	\$95	\$89	\$84	\$81	\$77	\$70	\$65	\$62	\$60	\$58	\$56	\$52	\$47	\$40	\$29	\$26	\$23	
	10yr ave.			\$89		\$81		\$67		\$57	\$54	\$53	\$52	\$49	\$44	\$41	\$33	\$29	\$26	
75%	Current	\$115	\$102	\$96	\$90	\$86	\$82	\$75	\$69	\$66	\$64	\$62	\$60	\$55	\$51	\$43	\$31	\$28	\$25	
	10yr ave.			\$96		\$87		\$72		\$61	\$58	\$57	\$55	\$53	\$48	\$44	\$35	\$31	\$28	
80%	Current	\$122	\$109	\$102	\$96	\$92	\$88	\$80	\$74	\$70	\$68	\$66	\$64	\$59	\$54	\$46	\$33	\$30	\$27	
	10yr ave.			\$102		\$93		\$77		\$66	\$62	\$60	\$59	\$56	\$51	\$47	\$38	\$33	\$30	
85%	Current	\$130	\$116	\$108	\$102	\$98	\$93	\$85	\$78	\$75	\$73	\$70	\$68	\$63	\$57	\$49	\$35	\$31	\$28	
	10yr ave.			\$109		\$99		\$82		\$70	\$66	\$64	\$63	\$60	\$54	\$49	\$40	\$35	\$32	

The above shows estimated returns per head for skirted fleece wool. These figures do not take into account the value of skirtings and oddments and do not take into account discounts that may apply for faults under individual circumstances. These figures are based on a market index of 100% and should be used as a guide only. Returns over \$30 / head for fleece wool are highlighted.

Source: Australian Wool Exchange, Australian Wool Innovation, Sydney Futures Exchange, x-rates.com

Disclaimer: While all due care has been taken in the preparation of this document, no warranty is made as to its accuracy, reliability or completeness. To the extent permitted by law neither Jemalong or their sources including subsidiaries and staff, accept liability to any person for loss or damage arising from the use of this information.





Table 17: Returns pr head for skirted fleece wool.

Skirted FLC Weight  5 Kg			Micron																	
			16	16.5	17	17.5	18	18.5	19	19.5	20	21	22	23	24	25	26	28	30	32
Yield (Sch Dry)	25%	Current	\$38	\$34	\$32	\$30	\$29	\$27	\$25	\$23	\$22	\$21	\$21	\$20	\$18	\$17	\$14	\$10	\$9	\$8
		10yr ave.			\$32		\$29		\$24		\$20	\$19	\$19	\$18	\$18	\$16	\$15	\$12	\$10	\$9
	30%	Current	\$46	\$41	\$38	\$36	\$35	\$33	\$30	\$28	\$26	\$26	\$25	\$24	\$22	\$20	\$17	\$13	\$11	\$10
		10yr ave.			\$38		\$35		\$29		\$25	\$23	\$23	\$22	\$21	\$19	\$17	\$14	\$12	\$11
	35%	Current	\$54	\$48	\$45	\$42	\$40	\$38	\$35	\$32	\$31	\$30	\$29	\$28	\$26	\$24	\$20	\$15	\$13	\$12
		10yr ave.			\$45		\$41		\$34		\$29	\$27	\$26	\$26	\$25	\$22	\$20	\$16	\$14	\$13
	40%	Current	\$61	\$55	\$51	\$48	\$46	\$44	\$40	\$37	\$35	\$34	\$33	\$32	\$29	\$27	\$23	\$17	\$15	\$13
		10yr ave.			\$51		\$46		\$38		\$33	\$31	\$30	\$30	\$28	\$25	\$23	\$19	\$16	\$15
	45%	Current	\$69	\$61	\$57	\$54	\$52	\$49	\$45	\$42	\$40	\$38	\$37	\$36	\$33	\$30	\$26	\$19	\$17	\$15
		10yr ave.			\$58		\$52		\$43		\$37	\$35	\$34	\$33	\$32	\$29	\$26	\$21	\$18	\$17
	50%	Current	\$77	\$68	\$64	\$60	\$58	\$55	\$50	\$46	\$44	\$43	\$41	\$40	\$37	\$34	\$29	\$21	\$18	\$17
		10yr ave.			\$64		\$58		\$48		\$41	\$39	\$38	\$37	\$35	\$32	\$29	\$23	\$20	\$19
	55%	Current	\$84	\$75	\$70	\$66	\$63	\$60	\$55	\$51	\$48	\$47	\$45	\$44	\$40	\$37	\$32	\$23	\$20	\$18
		10yr ave.			\$70		\$64		\$53		\$45	\$43	\$42	\$41	\$39	\$35	\$32	\$26	\$23	\$20
	60%	Current	\$92	\$82	\$76	\$72	\$69	\$66	\$60	\$55	\$53	\$51	\$49	\$48	\$44	\$41	\$35	\$25	\$22	\$20
		10yr ave.			\$77		\$70		\$58		\$49	\$47	\$45	\$44	\$42	\$38	\$35	\$28	\$25	\$22
65%	Current	\$99	\$89	\$83	\$78	\$75	\$71	\$65	\$60	\$57	\$56	\$53	\$52	\$48	\$44	\$37	\$27	\$24	\$22	
	10yr ave.			\$83		\$75		\$62		\$53	\$51	\$49	\$48	\$46	\$41	\$38	\$30	\$27	\$24	
70%	Current	\$107	\$95	\$89	\$84	\$81	\$77	\$70	\$65	\$62	\$60	\$58	\$56	\$52	\$47	\$40	\$29	\$26	\$23	
	10yr ave.			\$89		\$81		\$67		\$57	\$54	\$53	\$52	\$49	\$44	\$41	\$33	\$29	\$26	
75%	Current	\$115	\$102	\$96	\$90	\$86	\$82	\$75	\$69	\$66	\$64	\$62	\$60	\$55	\$51	\$43	\$31	\$28	\$25	
	10yr ave.			\$96		\$87		\$72		\$61	\$58	\$57	\$55	\$53	\$48	\$44	\$35	\$31	\$28	
80%	Current	\$122	\$109	\$102	\$96	\$92	\$88	\$80	\$74	\$70	\$68	\$66	\$64	\$59	\$54	\$46	\$33	\$30	\$27	
	10yr ave.			\$102		\$93		\$77		\$66	\$62	\$60	\$59	\$56	\$51	\$47	\$38	\$33	\$30	
85%	Current	\$130	\$116	\$108	\$102	\$98	\$93	\$85	\$78	\$75	\$73	\$70	\$68	\$63	\$57	\$49	\$35	\$31	\$28	
	10yr ave.			\$109		\$99		\$82		\$70	\$66	\$64	\$63	\$60	\$54	\$49	\$40	\$35	\$32	

The above shows estimated returns per head for skirted fleece wool. These figures do not take into account the value of skirtings and oddments and do not take into account discounts that may apply for faults under individual circumstances. These figures are based on a market index of 100% and should be used as a guide only. Returns over \$30 / head for fleece wool are highlighted.

Source: Australian Wool Exchange, Australian Wool Innovation, Sydney Futures Exchange, x-rates.com

Disclaimer: While all due care has been taken in the preparation of this document, no warranty is made as to its accuracy, reliability or completeness. To the extent permitted by law neither Jemalong or their sources including subsidiaries and staff, accept liability to any person for loss or damage arising from the use of this information.



Table 18: Returns pr head for skirted fleece wool.

Skirted FLC Weight		Micron																	
4 Kg		16	16.5	17	17.5	18	18.5	19	19.5	20	21	22	23	24	25	26	28	30	32
Yield (Sch Dry)	25% Current	\$38	\$34	\$32	\$30	\$29	\$27	\$25	\$23	\$22	\$21	\$21	\$20	\$18	\$17	\$14	\$10	\$9	\$8
	10yr ave.			\$32		\$29		\$24		\$20	\$19	\$19	\$18	\$18	\$16	\$15	\$12	\$10	\$9
	30% Current	\$46	\$41	\$38	\$36	\$35	\$33	\$30	\$28	\$26	\$26	\$25	\$24	\$22	\$20	\$17	\$13	\$11	\$10
	10yr ave.			\$38		\$35		\$29		\$25	\$23	\$23	\$22	\$21	\$19	\$17	\$14	\$12	\$11
	35% Current	\$54	\$48	\$45	\$42	\$40	\$38	\$35	\$32	\$31	\$30	\$29	\$28	\$26	\$24	\$20	\$15	\$13	\$12
	10yr ave.			\$45		\$41		\$34		\$29	\$27	\$26	\$26	\$25	\$22	\$20	\$16	\$14	\$13
	40% Current	\$61	\$55	\$51	\$48	\$46	\$44	\$40	\$37	\$35	\$34	\$33	\$32	\$29	\$27	\$23	\$17	\$15	\$13
	10yr ave.			\$51		\$46		\$38		\$33	\$31	\$30	\$30	\$28	\$25	\$23	\$19	\$16	\$15
	45% Current	\$69	\$61	\$57	\$54	\$52	\$49	\$45	\$42	\$40	\$38	\$37	\$36	\$33	\$30	\$26	\$19	\$17	\$15
	10yr ave.			\$58		\$52		\$43		\$37	\$35	\$34	\$33	\$32	\$29	\$26	\$21	\$18	\$17
	50% Current	\$77	\$68	\$64	\$60	\$58	\$55	\$50	\$46	\$44	\$43	\$41	\$40	\$37	\$34	\$29	\$21	\$18	\$17
	10yr ave.			\$64		\$58		\$48		\$41	\$39	\$38	\$37	\$35	\$32	\$29	\$23	\$20	\$19
	55% Current	\$84	\$75	\$70	\$66	\$63	\$60	\$55	\$51	\$48	\$47	\$45	\$44	\$40	\$37	\$32	\$23	\$20	\$18
	10yr ave.			\$70		\$64		\$53		\$45	\$43	\$42	\$41	\$39	\$35	\$32	\$26	\$23	\$20
	60% Current	\$92	\$82	\$76	\$72	\$69	\$66	\$60	\$55	\$53	\$51	\$49	\$48	\$44	\$41	\$35	\$25	\$22	\$20
	10yr ave.			\$77		\$70		\$58		\$49	\$47	\$45	\$44	\$42	\$38	\$35	\$28	\$25	\$22
	65% Current	\$99	\$89	\$83	\$78	\$75	\$71	\$65	\$60	\$57	\$56	\$53	\$52	\$48	\$44	\$37	\$27	\$24	\$22
	10yr ave.			\$83		\$75		\$62		\$53	\$51	\$49	\$48	\$46	\$41	\$38	\$30	\$27	\$24
	70% Current	\$107	\$95	\$89	\$84	\$81	\$77	\$70	\$65	\$62	\$60	\$58	\$56	\$52	\$47	\$40	\$29	\$26	\$23
	10yr ave.			\$89		\$81		\$67		\$57	\$54	\$53	\$52	\$49	\$44	\$41	\$33	\$29	\$26
	75% Current	\$115	\$102	\$96	\$90	\$86	\$82	\$75	\$69	\$66	\$64	\$62	\$60	\$55	\$51	\$43	\$31	\$28	\$25
	10yr ave.			\$96		\$87		\$72		\$61	\$58	\$57	\$55	\$53	\$48	\$44	\$35	\$31	\$28
	80% Current	\$122	\$109	\$102	\$96	\$92	\$88	\$80	\$74	\$70	\$68	\$66	\$64	\$59	\$54	\$46	\$33	\$30	\$27
	10yr ave.			\$102		\$93		\$77		\$66	\$62	\$60	\$59	\$56	\$51	\$47	\$38	\$33	\$30
	85% Current	\$130	\$116	\$108	\$102	\$98	\$93	\$85	\$78	\$75	\$73	\$70	\$68	\$63	\$57	\$49	\$35	\$31	\$28
	10yr ave.			\$109		\$99		\$82		\$70	\$66	\$64	\$63	\$60	\$54	\$49	\$40	\$35	\$32

The above shows estimated returns per head for skirted fleece wool. These figures do not take into account the value of skirtings and oddments and do not take into account discounts that may apply for faults under individual circumstances. These figures are based on a market index of 100% and should be used as a guide only. Returns over \$30 / head for fleece wool are highlighted.

Source: Australian Wool Exchange, Australian Wool Innovation, Sydney Futures Exchange, x-rates.com

Disclaimer: While all due care has been taken in the preparation of this document, no warranty is made as to its accuracy, reliability or completeness. To the extent permitted by law neither Jemalong or their sources including subsidiaries and staff, accept liability to any person for loss or damage arising from the use of this information.



Table 19: Returns pr head for skirted fleece wool.

Skirted FLC Weight  3 Kg			Micron																	
			16	16.5	17	17.5	18	18.5	19	19.5	20	21	22	23	24	25	26	28	30	32
Yield (Sch Dry)	25%	Current	\$38	\$34	\$32	\$30	\$29	\$27	\$25	\$23	\$22	\$21	\$21	\$20	\$18	\$17	\$14	\$10	\$9	\$8
		10yr ave.			\$32		\$29		\$24		\$20	\$19	\$19	\$18	\$18	\$16	\$15	\$12	\$10	\$9
	30%	Current	\$46	\$41	\$38	\$36	\$35	\$33	\$30	\$28	\$26	\$26	\$25	\$24	\$22	\$20	\$17	\$13	\$11	\$10
		10yr ave.			\$38		\$35		\$29		\$25	\$23	\$23	\$22	\$21	\$19	\$17	\$14	\$12	\$11
	35%	Current	\$54	\$48	\$45	\$42	\$40	\$38	\$35	\$32	\$31	\$30	\$29	\$28	\$26	\$24	\$20	\$15	\$13	\$12
		10yr ave.			\$45		\$41		\$34		\$29	\$27	\$26	\$26	\$25	\$22	\$20	\$16	\$14	\$13
	40%	Current	\$61	\$55	\$51	\$48	\$46	\$44	\$40	\$37	\$35	\$34	\$33	\$32	\$29	\$27	\$23	\$17	\$15	\$13
		10yr ave.			\$51		\$46		\$38		\$33	\$31	\$30	\$30	\$28	\$25	\$23	\$19	\$16	\$15
	45%	Current	\$69	\$61	\$57	\$54	\$52	\$49	\$45	\$42	\$40	\$38	\$37	\$36	\$33	\$30	\$26	\$19	\$17	\$15
		10yr ave.			\$58		\$52		\$43		\$37	\$35	\$34	\$33	\$32	\$29	\$26	\$21	\$18	\$17
	50%	Current	\$77	\$68	\$64	\$60	\$58	\$55	\$50	\$46	\$44	\$43	\$41	\$40	\$37	\$34	\$29	\$21	\$18	\$17
		10yr ave.			\$64		\$58		\$48		\$41	\$39	\$38	\$37	\$35	\$32	\$29	\$23	\$20	\$19
	55%	Current	\$84	\$75	\$70	\$66	\$63	\$60	\$55	\$51	\$48	\$47	\$45	\$44	\$40	\$37	\$32	\$23	\$20	\$18
		10yr ave.			\$70		\$64		\$53		\$45	\$43	\$42	\$41	\$39	\$35	\$32	\$26	\$23	\$20
	60%	Current	\$92	\$82	\$76	\$72	\$69	\$66	\$60	\$55	\$53	\$51	\$49	\$48	\$44	\$41	\$35	\$25	\$22	\$20
		10yr ave.			\$77		\$70		\$58		\$49	\$47	\$45	\$44	\$42	\$38	\$35	\$28	\$25	\$22
65%	Current	\$99	\$89	\$83	\$78	\$75	\$71	\$65	\$60	\$57	\$56	\$53	\$52	\$48	\$44	\$37	\$27	\$24	\$22	
	10yr ave.			\$83		\$75		\$62		\$53	\$51	\$49	\$48	\$46	\$41	\$38	\$30	\$27	\$24	
70%	Current	\$107	\$95	\$89	\$84	\$81	\$77	\$70	\$65	\$62	\$60	\$58	\$56	\$52	\$47	\$40	\$29	\$26	\$23	
	10yr ave.			\$89		\$81		\$67		\$57	\$54	\$53	\$52	\$49	\$44	\$41	\$33	\$29	\$26	
75%	Current	\$115	\$102	\$96	\$90	\$86	\$82	\$75	\$69	\$66	\$64	\$62	\$60	\$55	\$51	\$43	\$31	\$28	\$25	
	10yr ave.			\$96		\$87		\$72		\$61	\$58	\$57	\$55	\$53	\$48	\$44	\$35	\$31	\$28	
80%	Current	\$122	\$109	\$102	\$96	\$92	\$88	\$80	\$74	\$70	\$68	\$66	\$64	\$59	\$54	\$46	\$33	\$30	\$27	
	10yr ave.			\$102		\$93		\$77		\$66	\$62	\$60	\$59	\$56	\$51	\$47	\$38	\$33	\$30	
85%	Current	\$130	\$116	\$108	\$102	\$98	\$93	\$85	\$78	\$75	\$73	\$70	\$68	\$63	\$57	\$49	\$35	\$31	\$28	
	10yr ave.			\$109		\$99		\$82		\$70	\$66	\$64	\$63	\$60	\$54	\$49	\$40	\$35	\$32	

The above shows estimated returns per head for skirted fleece wool. These figures do not take into account the value of skirtings and oddments and do not take into account discounts that may apply for faults under individual circumstances. These figures are based on a market index of 100% and should be used as a guide only. Returns over \$30 / head for fleece wool are highlighted.

Source: Australian Wool Exchange, Australian Wool Innovation, Sydney Futures Exchange, x-rates.com

Disclaimer: While all due care has been taken in the preparation of this document, no warranty is made as to its accuracy, reliability or completeness. To the extent permitted by law neither Jemalong or their sources including subsidiaries and staff, accept liability to any person for loss or damage arising from the use of this information.



Table 20: Returns pr head for skirted fleece wool.

Skirted FLC Weight		Micron																	
2 Kg		16	16.5	17	17.5	18	18.5	19	19.5	20	21	22	23	24	25	26	28	30	32
Yield (Sch Dry)	25% Current	\$38	\$34	\$32	\$30	\$29	\$27	\$25	\$23	\$22	\$21	\$21	\$20	\$18	\$17	\$14	\$10	\$9	\$8
	10yr ave.			\$32		\$29		\$24		\$20	\$19	\$19	\$18	\$18	\$16	\$15	\$12	\$10	\$9
	30% Current	\$46	\$41	\$38	\$36	\$35	\$33	\$30	\$28	\$26	\$26	\$25	\$24	\$22	\$20	\$17	\$13	\$11	\$10
	10yr ave.			\$38		\$35		\$29		\$25	\$23	\$23	\$22	\$21	\$19	\$17	\$14	\$12	\$11
	35% Current	\$54	\$48	\$45	\$42	\$40	\$38	\$35	\$32	\$31	\$30	\$29	\$28	\$26	\$24	\$20	\$15	\$13	\$12
	10yr ave.			\$45		\$41		\$34		\$29	\$27	\$26	\$26	\$25	\$22	\$20	\$16	\$14	\$13
	40% Current	\$61	\$55	\$51	\$48	\$46	\$44	\$40	\$37	\$35	\$34	\$33	\$32	\$29	\$27	\$23	\$17	\$15	\$13
	10yr ave.			\$51		\$46		\$38		\$33	\$31	\$30	\$30	\$28	\$25	\$23	\$19	\$16	\$15
	45% Current	\$69	\$61	\$57	\$54	\$52	\$49	\$45	\$42	\$40	\$38	\$37	\$36	\$33	\$30	\$26	\$19	\$17	\$15
	10yr ave.			\$58		\$52		\$43		\$37	\$35	\$34	\$33	\$32	\$29	\$26	\$21	\$18	\$17
	50% Current	\$77	\$68	\$64	\$60	\$58	\$55	\$50	\$46	\$44	\$43	\$41	\$40	\$37	\$34	\$29	\$21	\$18	\$17
	10yr ave.			\$64		\$58		\$48		\$41	\$39	\$38	\$37	\$35	\$32	\$29	\$23	\$20	\$19
	55% Current	\$84	\$75	\$70	\$66	\$63	\$60	\$55	\$51	\$48	\$47	\$45	\$44	\$40	\$37	\$32	\$23	\$20	\$18
	10yr ave.			\$70		\$64		\$53		\$45	\$43	\$42	\$41	\$39	\$35	\$32	\$26	\$23	\$20
	60% Current	\$92	\$82	\$76	\$72	\$69	\$66	\$60	\$55	\$53	\$51	\$49	\$48	\$44	\$41	\$35	\$25	\$22	\$20
	10yr ave.			\$77		\$70		\$58		\$49	\$47	\$45	\$44	\$42	\$38	\$35	\$28	\$25	\$22
	65% Current	\$99	\$89	\$83	\$78	\$75	\$71	\$65	\$60	\$57	\$56	\$53	\$52	\$48	\$44	\$37	\$27	\$24	\$22
	10yr ave.			\$83		\$75		\$62		\$53	\$51	\$49	\$48	\$46	\$41	\$38	\$30	\$27	\$24
	70% Current	\$107	\$95	\$89	\$84	\$81	\$77	\$70	\$65	\$62	\$60	\$58	\$56	\$52	\$47	\$40	\$29	\$26	\$23
	10yr ave.			\$89		\$81		\$67		\$57	\$54	\$53	\$52	\$49	\$44	\$41	\$33	\$29	\$26
	75% Current	\$115	\$102	\$96	\$90	\$86	\$82	\$75	\$69	\$66	\$64	\$62	\$60	\$55	\$51	\$43	\$31	\$28	\$25
	10yr ave.			\$96		\$87		\$72		\$61	\$58	\$57	\$55	\$53	\$48	\$44	\$35	\$31	\$28
	80% Current	\$122	\$109	\$102	\$96	\$92	\$88	\$80	\$74	\$70	\$68	\$66	\$64	\$59	\$54	\$46	\$33	\$30	\$27
	10yr ave.			\$102		\$93		\$77		\$66	\$62	\$60	\$59	\$56	\$51	\$47	\$38	\$33	\$30
	85% Current	\$130	\$116	\$108	\$102	\$98	\$93	\$85	\$78	\$75	\$73	\$70	\$68	\$63	\$57	\$49	\$35	\$31	\$28
	10yr ave.			\$109		\$99		\$82		\$70	\$66	\$64	\$63	\$60	\$54	\$49	\$40	\$35	\$32

The above shows estimated returns per head for skirted fleece wool. These figures do not take into account the value of skirtings and oddments and do not take into account discounts that may apply for faults under individual circumstances. These figures are based on a market index of 100% and should be used as a guide only. Returns over \$30 / head for fleece wool are highlighted.

Source: Australian Wool Exchange, Australian Wool Innovation, Sydney Futures Exchange, x-rates.com

Disclaimer: While all due care has been taken in the preparation of this document, no warranty is made as to its accuracy, reliability or completeness. To the extent permitted by law neither Jemalong or their sources including subsidiaries and staff, accept liability to any person for loss or damage arising from the use of this information.