



JEMALONG WOOL BULLETIN

(week ending 22/09/2011)

Table 1: Northern Region Micron Price Guides

CURRENT MARKET			12 MONTH COMPARISONS								3 YEAR COMPARISONS						Percentile	10 YEAR COMPARISONS					Percentile
Mic. Price Guides	22/09/2011 Current Price	15/09/2011 Weekly Change	21/09/2010 This time Last Year	Now compared to Last Year	12 Month Low	Now compared to Low	12 Month High	Now compared to High	Low	High	Average	Now compared to 3yr ave	Low	High	10 year Average	Now compared to 10yr ave							
NRI	1286	-39 -3.0%	898	+388 43%	911	+375 41%	1491	-205 -14%	749	1491	1000	+286 29%	78%	658	1491	912	+374 41%	94%					
16*	2500	-100 -4.0%	1650	+850 52%	1670	+830 50%	2800	-300 -11%	1385	2800	1863	+637 34%	78%										
16.5*	2250	-200 -8.9%	1510	+740 49%	1500	+750 50%	2680	-430 -16%	1253	2680	1714	+536 31%	77%										
17*	2100	-130 -6.2%	1390	+710 51%	1390	+710 51%	2530	-430 -17%	1170	2530	1582	+518 33%	77%										
17.5*	1870	-180 -9.6%	1280	+590 46%	1300	+570 44%	2360	-490 -21%	1085	2360	1485	+385 26%	76%										
18	1671	-114 -6.8%	1224	+447 37%	1237	+434 35%	2193	-522 -24%	1035	2193	1394	+277 20%	76%	916	2193	1273	+398 31%	91%					
18.5	1573	-72 -4.6%	1152	+421 37%	1163	+410 35%	1963	-390 -20%	971	1963	1298	+275 21%	76%	843	1963	1092	+412 38%	93%					
19	1504	-49 -3.3%	1054	+450 43%	1058	+446 42%	1776	-272 -15%	894	1776	1191	+313 26%	76%	804	1776								
19.5	1420	-53 -3.7%	956	+464 49%	973	+447 46%	1670	-250 -15%	814	1670	1088	+332 31%	80%	749	1670								
20	1353	-32 -2.4%	909	+444 49%	931	+422 45%	1588	-235 -15%	739	1588	1006	+347 34%	83%	684	1588				959	+394 41%	95%		
21	1309	-28 -2.1%	886	+423 48%	914	+395 43%	1522	-213 -14%	687	1522	972	+337 35%	85%	645	1522				918	+391 43%	96%		
22	1241	-32 -2.6%	857	+384 45%	885	+356 40%	1461	-220 -15%	674	1461	946	+295 31%	83%	643	1461	893	+348 39%	91%					
23	1108	-55 -5.0%	837	+271 32%	849	+259 31%	1324	-216 -16%	663	1324	909	+199 22%	82%	642	1340	868	+240 28%	88%					
24	1000	-29 -2.9%	793	+207 26%	787	+213 27%	1170	-170 -15%	647	1170	840	+160 19%	79%	637	1299	822	+178 22%	85%					
25	949	-20 -2.1%	703	+246 35%	716	+233 33%	1048	-99 -9%	566	1048	729	+220 30%	89%	567	1198	735	+214 29%	86%					
26	865	-11 -1.3%	606	+259 43%	613	+252 41%	928	-63 -7%	504	928	659	+206 31%	88%	532	1088	673	+192 29%	82%					
28	686	-2 -0.3%	448	+238 53%	449	+237 53%	734	-48 -7%	431	734	514	+172 33%	89%	424	889	531	+155 29%	84%					
30	622	-11 -1.8%	399	+223 56%	390	+232 59%	670	-48 -7%	377	670	458	+164 36%	88%	344	729	463	+159 34%	89%					
32	584	+4 0.7%	354	+230 65%	354	+230 65%	638	-54 -8%	326	638	405	+179 44%	94%	297	669	417	+167 40%	93%					
MC	732	-19 -2.6%	564	+168 30%	569	+163 29%	831	-99 -12%	444	831	612	+120 20%	83%	380	831	524	+208 40%	95%					

Note:

* Due to the irregular market quoting for some fine wool categories, figures shown relating to micron categories below 18 micron are an estimate based on the AWEX Premium & Discounts Report & other available information.

* For any category, where there is insufficient quantity offered to enable AWEX to quote, a quote will be provided based on the best available information.

* 10 Year data is not available for some micron categories, which may result in blank spaces in the table above.

Definitions:

* A Percentile, is a value on a scale of one hundred that indicates the percent of a distribution that is equal to or below it. In general a percentile between 25% and 75% is considered normal, a percentile below 25% is considered below normal and a percentile above 75% is considered above normal.

Three and ten year percentiles shown in the table above, detail the period of time during the past 3 & 10 years that the market has traded either at or below its current price.

The higher the percentile, the stronger the market.

Source: Australian Wool Exchange, Australian Wool Innovation, Sydney Futures Exchange, x-rates.com

Disclaimer: While all due care has been taken in the preparation of this document, no warranty is made as to its accuracy, reliability or completeness. To the extent permitted by law neither Jemalong or their sources including subsidiaries and staff, accept liability to any person for loss or damage arising from the use of this information.



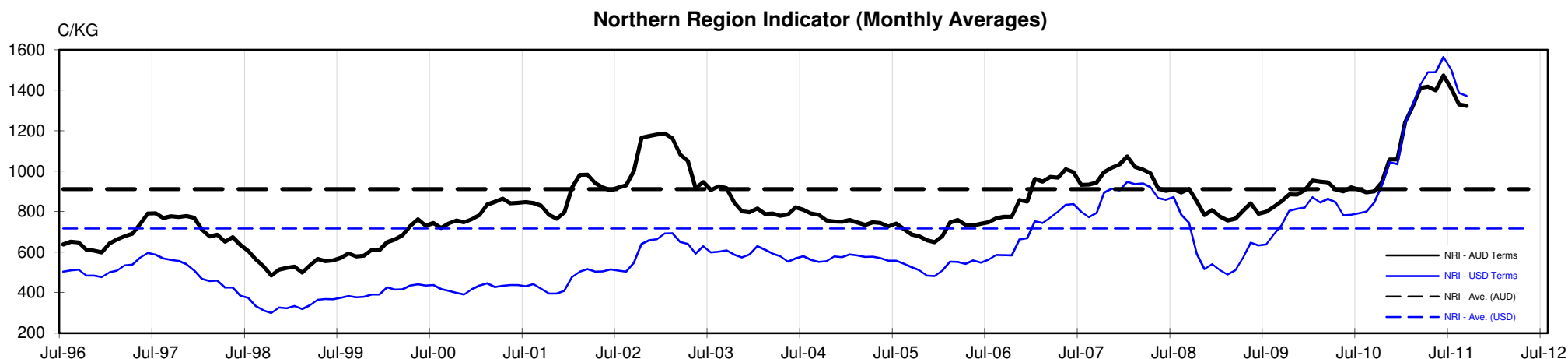
MARKET COMMENTARY

One Australian Dollar = \$ 0.99 US, as of 22/09/2011

NORTHERN REGION –Sale Week 12/11 (52,639 bales offered nationally)

On Wednesday - Continuing on from Tuesdays losses in the South, 19 to 19.5 microns lost 40, while 20 to 21 microns fell 20. The finer end however dropped 60-100 cents with very little enquiry at this end of the market. Merino skirtings in contrast were mostly well supported, although the finer end did ease 10-20 cents. Skirtings containing any cot & jowl continue to be heavily discounted. The carding market eased slightly, with Locks, Crutchings and Stains all falling by 10 cents. On a positive note, the 27-30 micron crossbred market maintained good support throughout the day and closed unchanged. 9.5% PI

On Thursday - Prices continued to ease back, with the finer microns irregular. There was some strength evident for selected (high nkt best style) fine lots, however the lower style & strength types continued to ease 10-20 cents as did those in the broader micron ranges (although they were less affected). Fine skirtings (<18 microns) were largely unchanged, while others were 10-20 cents cheaper. Locks & crutchings were generally 10-20 cents, while crossbreds eased slightly (around 5 cents). 16.6% PI





JEMALONG WOOL BULLETIN

(week ending 22/09/2011)

Table 4: 19 micron SFE

Wednesday, 21 September 2011

Delivery Mth	Oct-11	Dec-11	Feb-11	Apr-12	Jun-12	Aug-12	Oct-12	Dec-12	Feb-12
19 Micron SFE	1555	1505	1455	1435	1405	1395	1395	1355	1355
Average	1312	1333	1113	1378	1411	1400	1404	1404	1358
Maximum	1707	1677	1605	1622	1612	1525	1525	1525	1652
Minimum	1034	1034	983	1106	1210	1285	1285	1285	1053

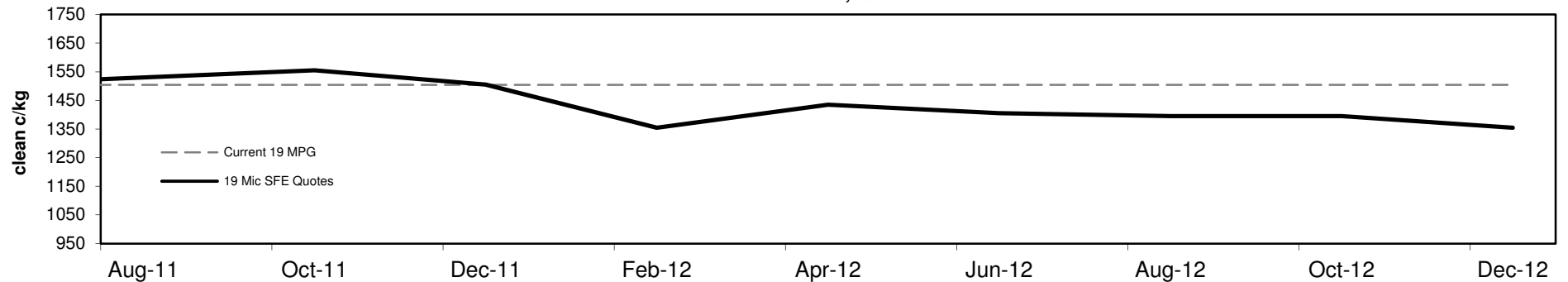
Table 5: 19 micron SFE, as a percentile of the 19 micron MPG

3 Year Percentile	78%	76%	76%	76%	76%	76%	76%	76%	76%
10 Year Percentile	94%	93%	93%	93%	93%	93%	93%	91%	91%

Table 6: 19 micron SFE, compared to MPG

SFE - MPG	+51	3%	+1	0%	-49	-3%	-69	-5%	-99	-7%	-109	-7%	-109	-7%	-149	-10%	-149	-10%
SFE - MPG, 1 year Ave.	+19	1%	-31	-2%	-81	-5%	-101	-7%	-131	-9%	-141	-9%	-141	-9%	-181	-12%	-181	-12%
SFE - MPG, 3 year Ave.	+364	31%	+314	26%	+264	22%	+244	20%	+214	18%	+204	17%	+204	17%	+164	14%	+164	14%
SFE - MPG, 10 year Ave.	+463	42%	+413	38%	+363	33%	+343	31%	+313	29%	+303	28%	+303	28%	+263	24%	+263	24%

19 MICRON SFE, QUOTES



19 Micron SFE, Front month movement

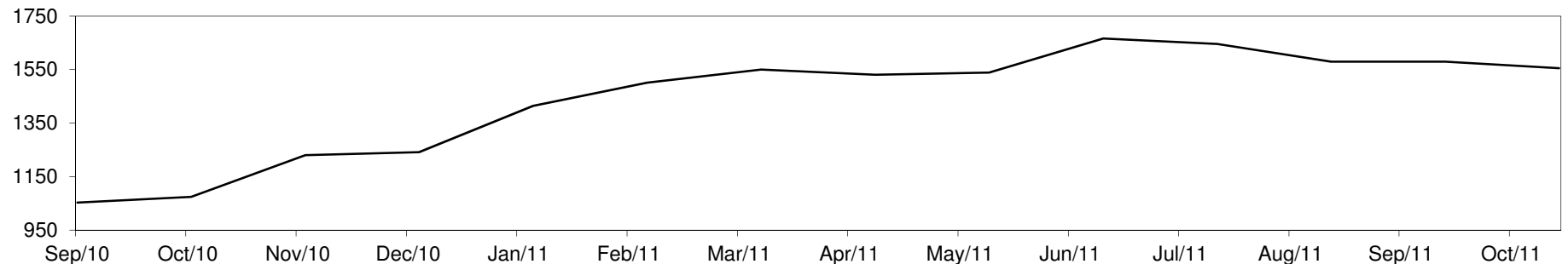




Table 7: 21 micron SFE

Wednesday, 21 September 2011

Delivery Mth	Oct-11	Dec-11	Feb-11	Apr-12	Jun-12	Aug-12	Oct-12	Dec-12	Feb-12
21 Micron SFE	1337	1305	1256	1211	1182	1071	1139	1106	1071
Average	1085	1089	962	1117	1113	1135	1154	1154	1097
Maximum	1434	1411	1343	1303	1326	1316	1283	1283	1393
Minimum	880	880	860	934	990	1046	1013	1013	880

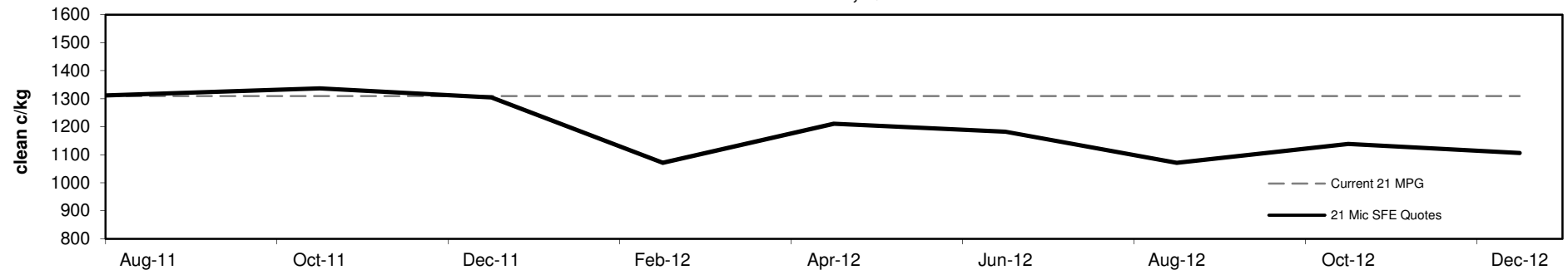
Table 8: 21 micron SFE, as a percentile of the 21 micron MPG

3 Year Percentile	90%	85%	83%	82%	80%	76%	78%	77%	76%
10 Year Percentile	97%	95%	92%	90%	88%	86%	87%	87%	86%

Table 9: 21 micron SFE, compared to MPG

SFE - MPG	+28	2%	-4	0%	-53	-4%	-98	-7%	-127	-10%	-238	-18%	-170	-13%	-203	-16%	-238	-18%
SFE - MPG, 1 year Ave.	+111	9%	+79	6%	+30	2%	-15	-1%	-44	-4%	-155	-13%	-87	-7%	-120	-10%	-155	-13%
SFE - MPG, 3 year Ave.	+365	38%	+333	34%	+284	29%	+239	25%	+210	22%	+99	10%	+167	17%	+134	14%	+99	10%
SFE - MPG, 10 year Ave.	+419	46%	+387	42%	+338	37%	+293	32%	+264	29%	+153	17%	+221	24%	+188	20%	+153	17%

21 MICRON SFE, QUOTES



21 Micron SFE, Front month movement

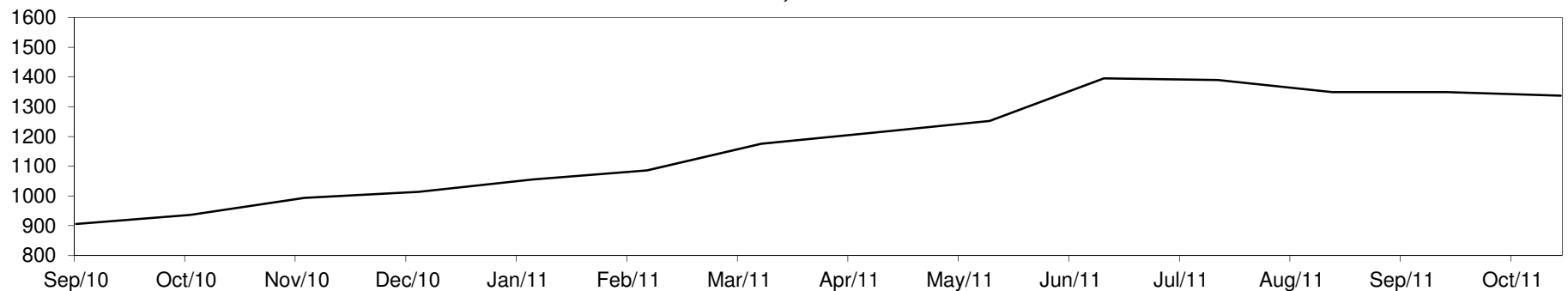




Table 10: 23 micron SFE

Wednesday, 21 September 2011

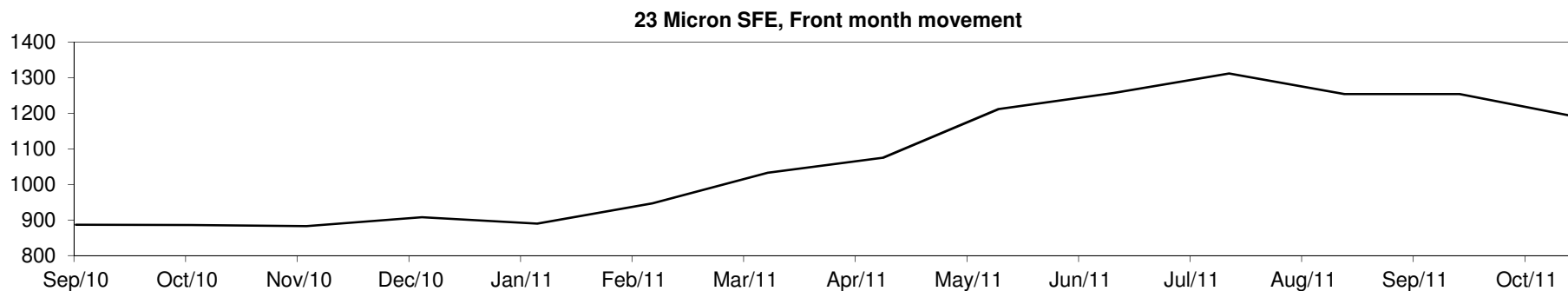
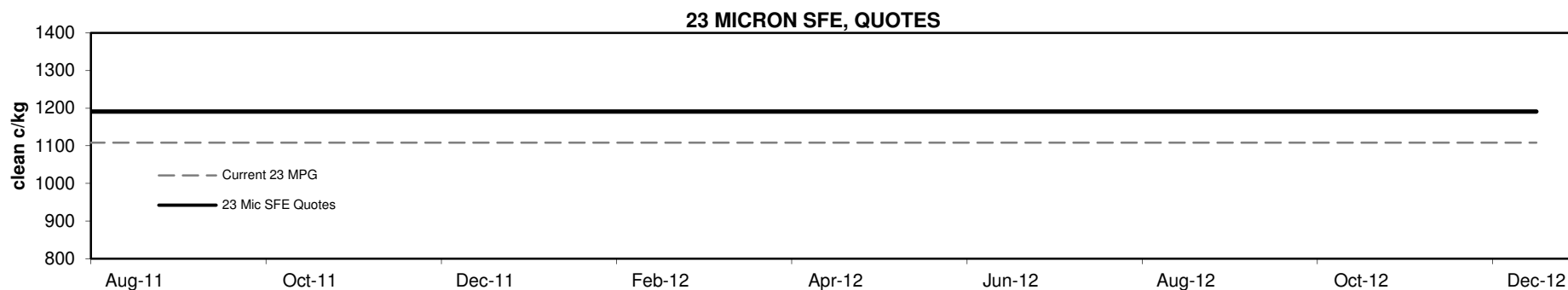
Delivery Mth	Oct-11	Dec-11	Feb-11	Apr-12	Jun-12	Aug-12	Oct-12	Dec-12	Feb-12
23 Micron SFE	1191	1191	1191	1191	1191	1191	1191	1191	1191
Average	999	1017	870	1074	1116	1178	1239	1239	1041
Maximum	1312	1312	1191	1312	1312	1312	1312	1312	1312
Minimum	883	883	760	883	890	1033	1191	1191	883

Table 11: 23 micron SFE, as a percentile of the 23 micron MPG

3 Year Percentile	87%	87%	87%	87%	87%	87%	87%	87%	87%
10 Year Percentile	91%	91%	91%	91%	91%	91%	91%	91%	91%

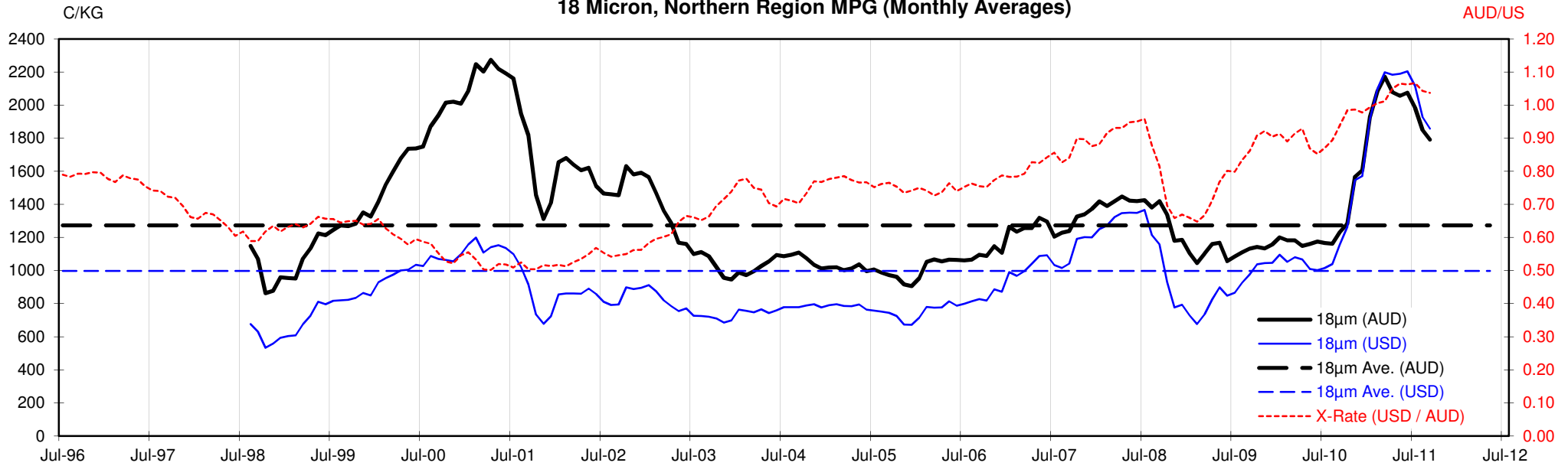
Table 12: 23 micron SFE, compared to MPG

SFE - MPG	+83	7%	+83	7%	+83	7%	+83	7%	+83	7%	+83	7%	+83	7%	+83	7%	+83	7%
SFE - MPG, 1 year Ave.	+79	7%	+79	7%	+79	7%	+79	7%	+79	7%	+79	7%	+79	7%	+79	7%	+79	7%
SFE - MPG, 3 year Ave.	+282	31%	+282	31%	+282	31%	+282	31%	+282	31%	+282	31%	+282	31%	+282	31%	+282	31%
SFE - MPG, 10 year Ave.	+323	37%	+323	37%	+323	37%	+323	37%	+323	37%	+323	37%	+323	37%	+323	37%	+323	37%

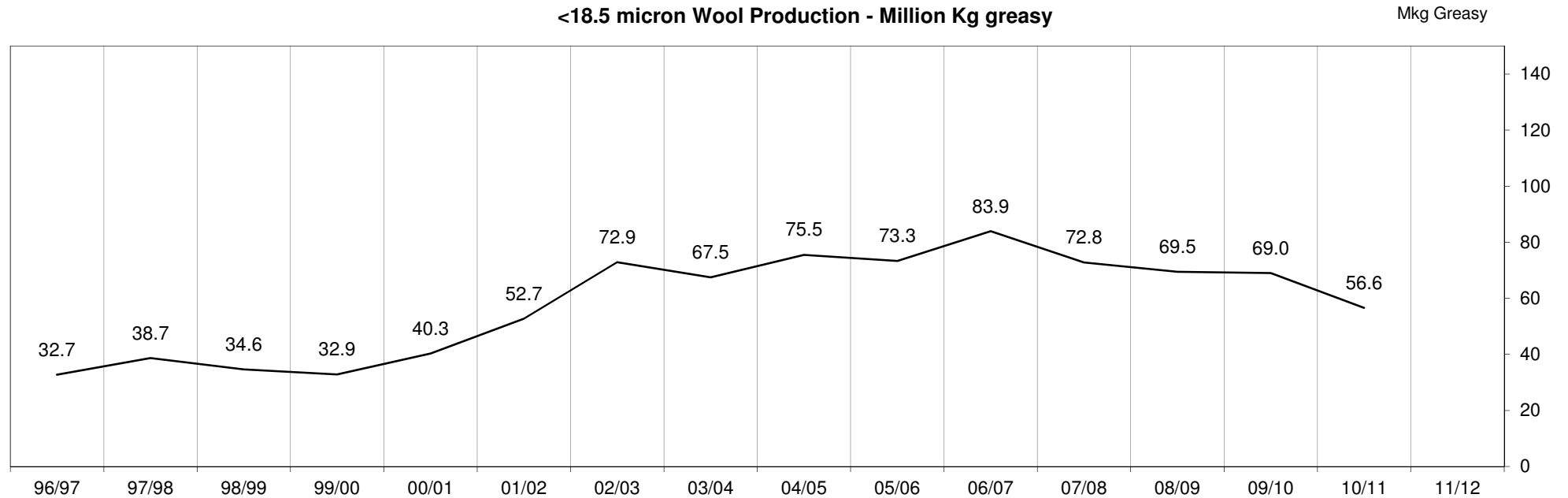


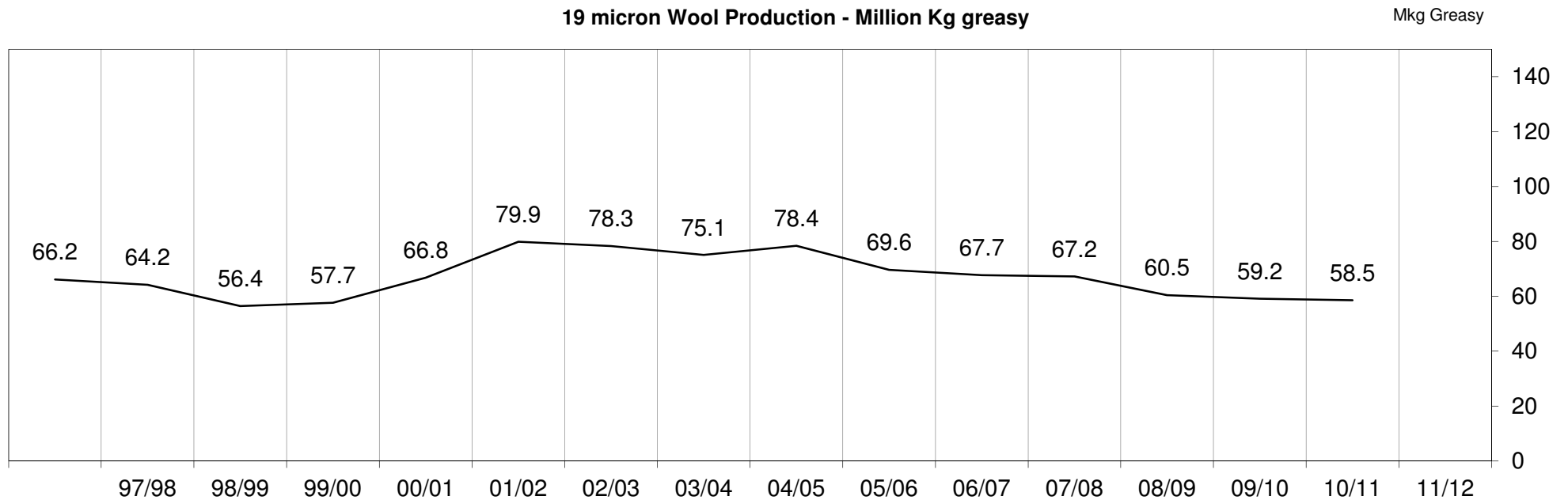
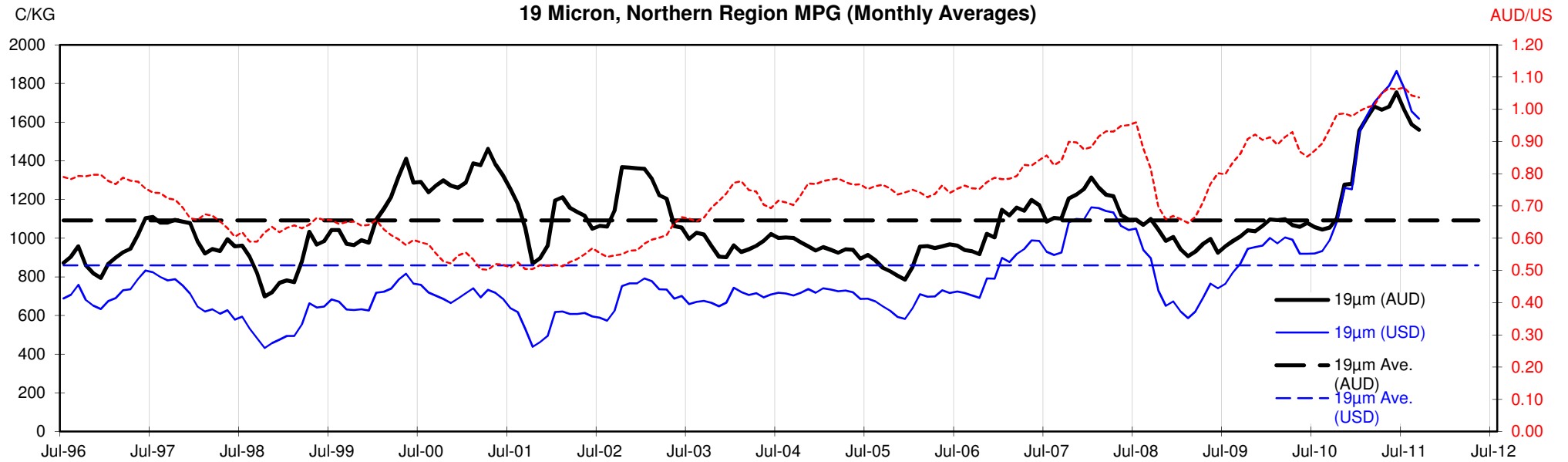


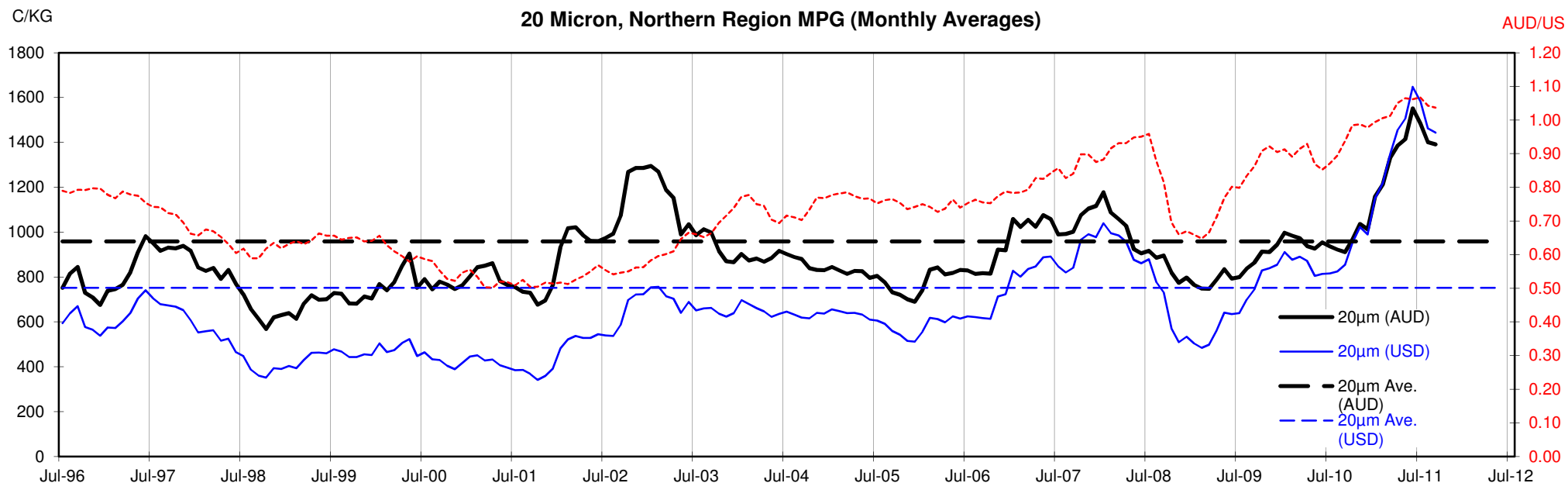
18 Micron, Northern Region MPG (Monthly Averages)

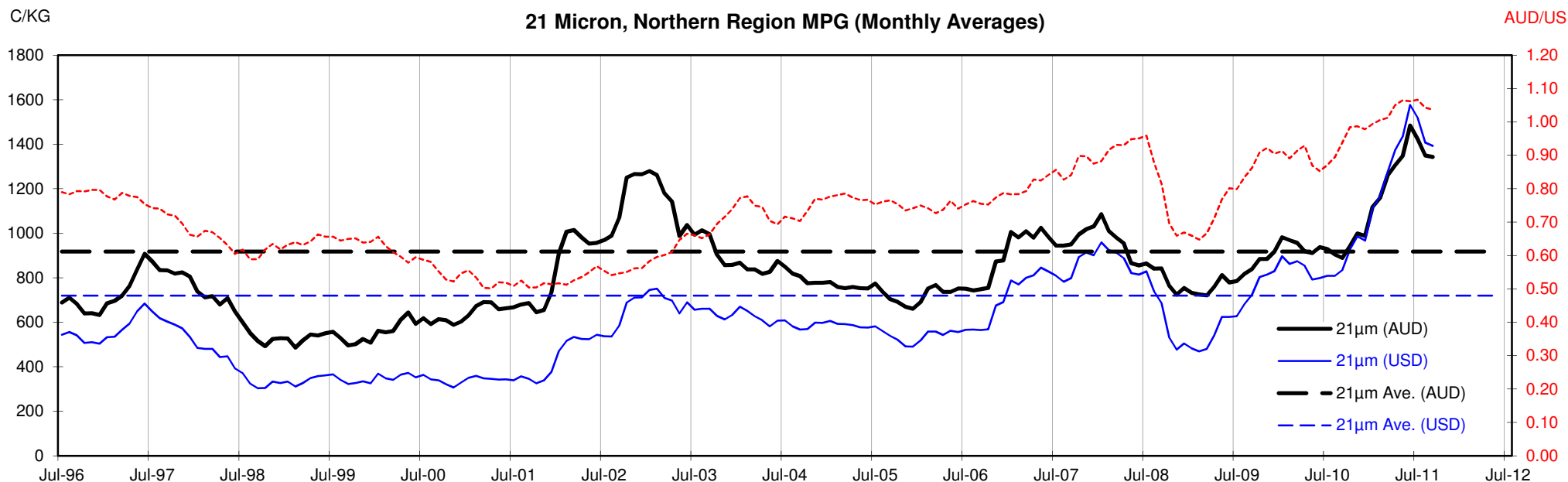


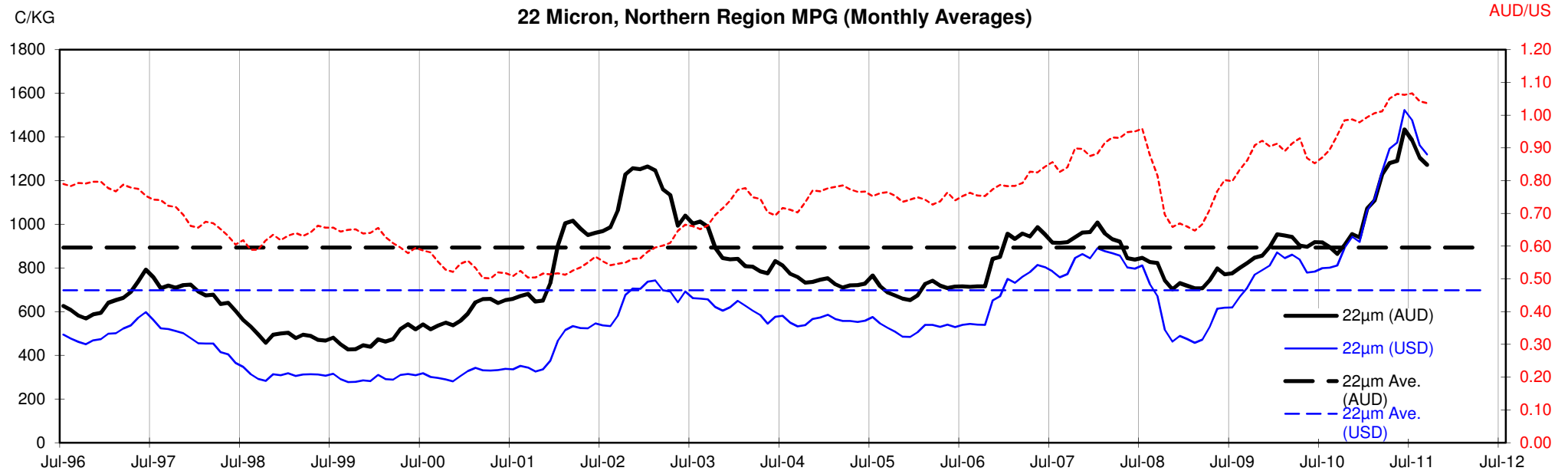
<18.5 micron Wool Production - Million Kg greasy

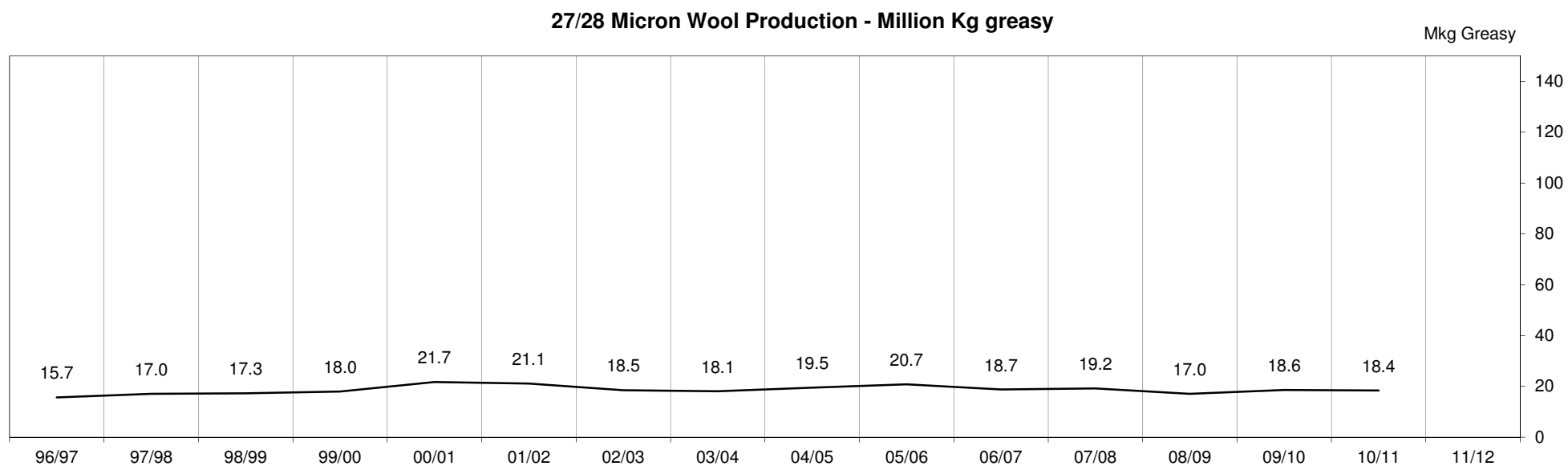
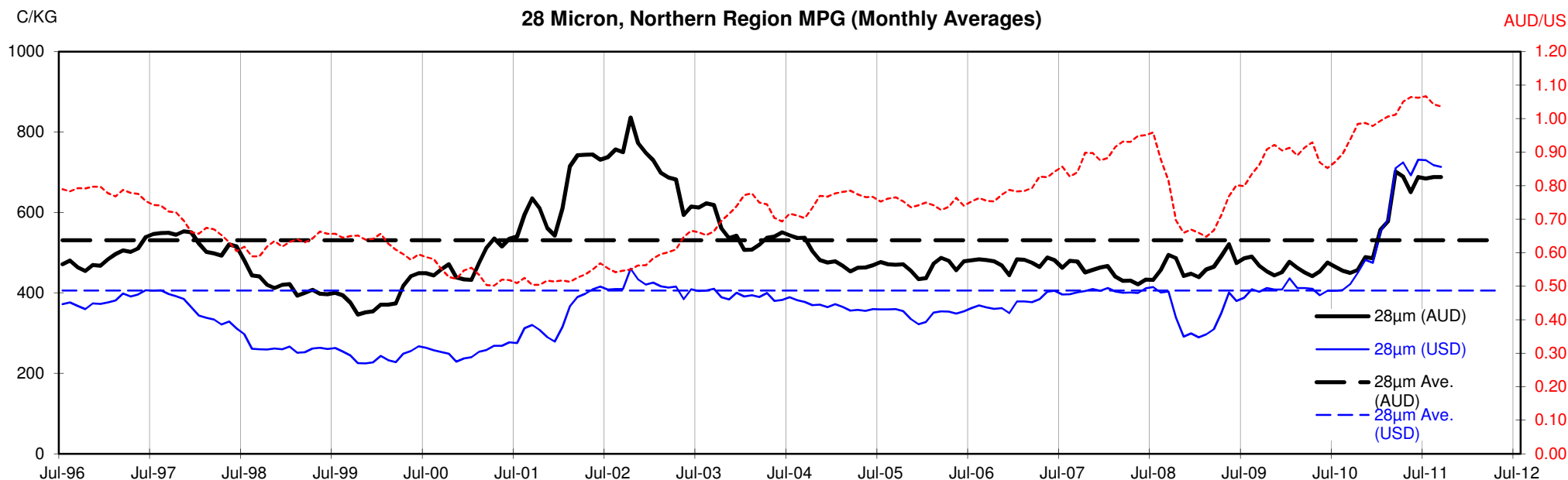












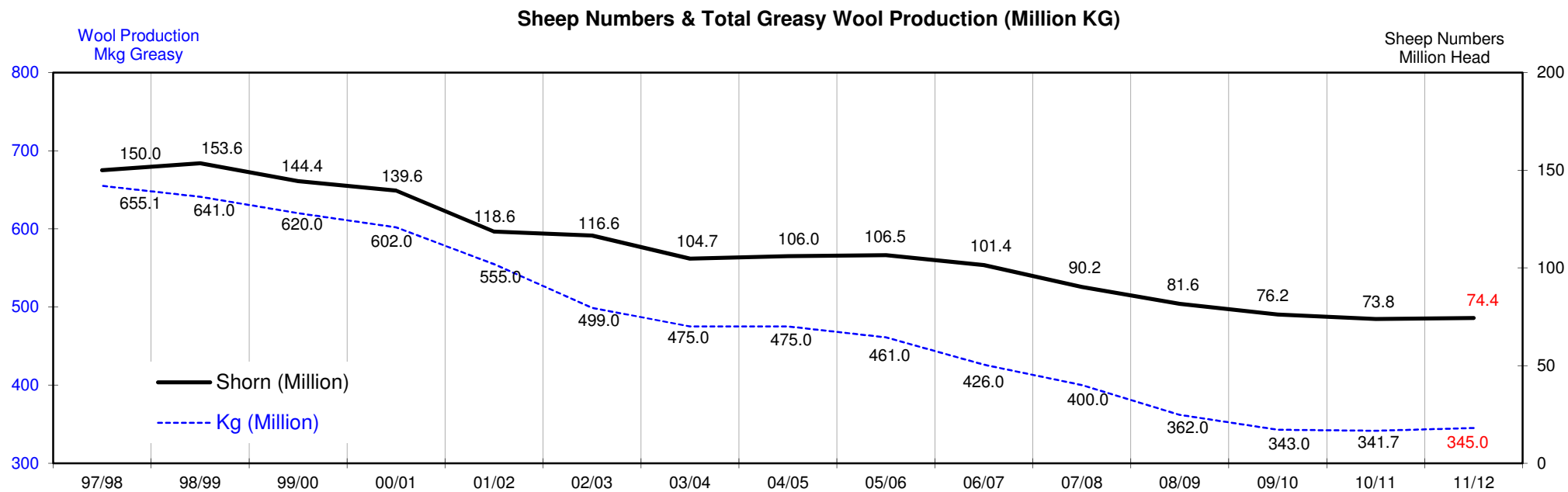
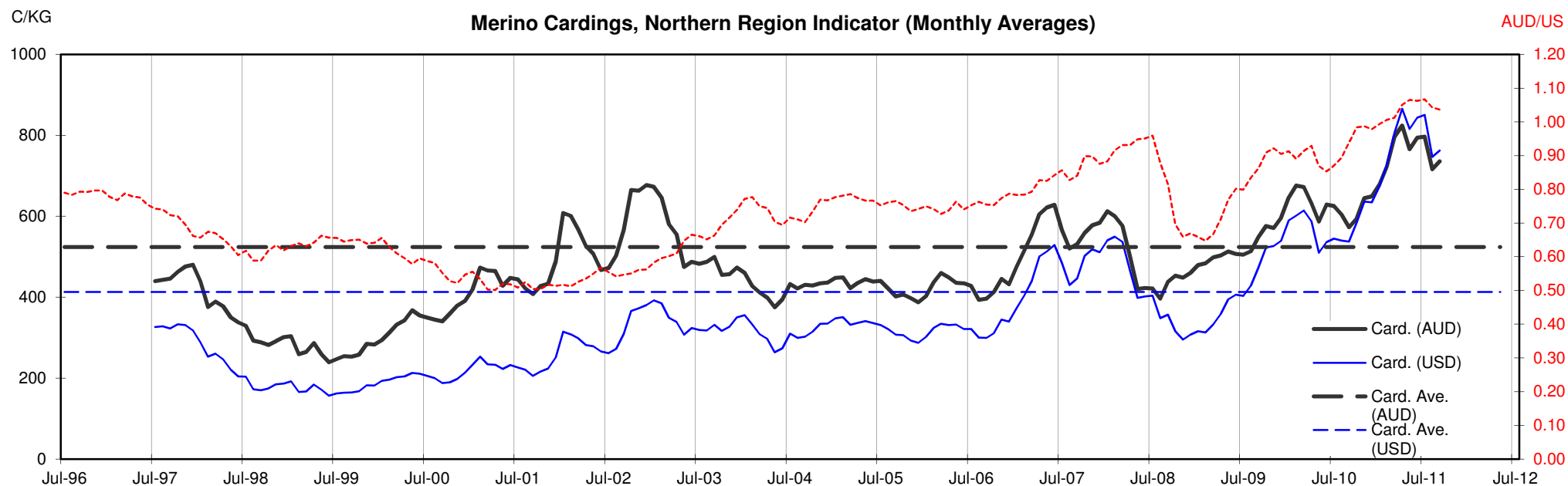




Table 13: Returns pr head for skirted fleece wool.

Skirted FLC Weight		Micron																	
9 Kg		16	16.5	17	17.5	18	18.5	19	19.5	20	21	22	23	24	25	26	28	30	32
Yield (Sch Dry)	25% Current	\$56	\$51	\$47	\$42	\$38	\$35	\$34	\$32	\$30	\$29	\$28	\$25	\$23	\$21	\$19	\$15	\$14	\$13
	10yr ave.			\$32		\$29		\$25		\$22	\$21	\$20	\$20	\$18	\$17	\$15	\$12	\$10	\$9
	30% Current	\$68	\$61	\$57	\$50	\$45	\$42	\$41	\$38	\$37	\$35	\$34	\$30	\$27	\$26	\$23	\$19	\$17	\$16
	10yr ave.			\$39		\$34		\$29		\$26	\$25	\$24	\$23	\$22	\$20	\$18	\$14	\$13	\$11
	35% Current	\$79	\$71	\$66	\$59	\$53	\$50	\$47	\$45	\$43	\$41	\$39	\$35	\$32	\$30	\$27	\$22	\$20	\$18
	10yr ave.			\$45		\$40		\$34		\$30	\$29	\$28	\$27	\$26	\$23	\$21	\$17	\$15	\$13
	40% Current	\$90	\$81	\$76	\$67	\$60	\$57	\$54	\$51	\$49	\$47	\$45	\$40	\$36	\$34	\$31	\$25	\$22	\$21
	10yr ave.			\$52		\$46		\$39		\$35	\$33	\$32	\$31	\$30	\$26	\$24	\$19	\$17	\$15
	45% Current	\$101	\$91	\$85	\$76	\$68	\$64	\$61	\$58	\$55	\$53	\$50	\$45	\$41	\$38	\$35	\$28	\$25	\$24
	10yr ave.			\$58		\$52		\$44		\$39	\$37	\$36	\$35	\$33	\$30	\$27	\$22	\$19	\$17
	50% Current	\$113	\$101	\$95	\$84	\$75	\$71	\$68	\$64	\$61	\$59	\$56	\$50	\$45	\$43	\$39	\$31	\$28	\$26
	10yr ave.			\$65		\$57		\$49		\$43	\$41	\$40	\$39	\$37	\$33	\$30	\$24	\$21	\$19
	55% Current	\$124	\$111	\$104	\$93	\$83	\$78	\$74	\$70	\$67	\$65	\$61	\$55	\$50	\$47	\$43	\$34	\$31	\$29
	10yr ave.			\$71		\$63		\$54		\$47	\$45	\$44	\$43	\$41	\$36	\$33	\$26	\$23	\$21
	60% Current	\$135	\$122	\$113	\$101	\$90	\$85	\$81	\$77	\$73	\$71	\$67	\$60	\$54	\$51	\$47	\$37	\$34	\$32
	10yr ave.			\$78		\$69		\$59		\$52	\$50	\$48	\$47	\$44	\$40	\$36	\$29	\$25	\$23
	65% Current	\$146	\$132	\$123	\$109	\$98	\$92	\$88	\$83	\$79	\$77	\$73	\$65	\$59	\$56	\$51	\$40	\$36	\$34
	10yr ave.			\$84		\$74		\$64		\$56	\$54	\$52	\$51	\$48	\$43	\$39	\$31	\$27	\$24
	70% Current	\$158	\$142	\$132	\$118	\$105	\$99	\$95	\$89	\$85	\$82	\$78	\$70	\$63	\$60	\$54	\$43	\$39	\$37
	10yr ave.			\$91		\$80		\$69		\$60	\$58	\$56	\$55	\$52	\$46	\$42	\$33	\$29	\$26
	75% Current	\$169	\$152	\$142	\$126	\$113	\$106	\$102	\$96	\$91	\$88	\$84	\$75	\$68	\$64	\$58	\$46	\$42	\$39
	10yr ave.			\$97		\$86		\$74		\$65	\$62	\$60	\$59	\$55	\$50	\$45	\$36	\$31	\$28
	80% Current	\$180	\$162	\$151	\$135	\$120	\$113	\$108	\$102	\$97	\$94	\$89	\$80	\$72	\$68	\$62	\$49	\$45	\$42
	10yr ave.			\$104		\$92		\$79		\$69	\$66	\$64	\$62	\$59	\$53	\$48	\$38	\$33	\$30
	85% Current	\$191	\$172	\$161	\$143	\$128	\$120	\$115	\$109	\$104	\$100	\$95	\$85	\$77	\$73	\$66	\$52	\$48	\$45
	10yr ave.			\$110		\$97		\$84		\$73	\$70	\$68	\$66	\$63	\$56	\$51	\$41	\$35	\$32

The above shows estimated returns per head for skirted fleece wool. These figures do not take into account the value of skirtings and oddments and do not take into account discounts that may apply for faults under individual circumstances. These figures are based on a market index of 100% and should be used as a guide only. Returns over \$30 / head for fleece wool are highlighted.

Source: Australian Wool Exchange, Australian Wool Innovation, Sydney Futures Exchange, x-rates.com

Disclaimer: While all due care has been taken in the preparation of this document, no warranty is made as to its accuracy, reliability or completeness. To the extent permitted by law neither Jemalong or their sources including subsidiaries and staff, accept liability to any person for loss or damage arising from the use of this information.



Table 14: Returns pr head for skirted fleece wool.

Skirted FLC Weight			Micron																	
			16	16.5	17	17.5	18	18.5	19	19.5	20	21	22	23	24	25	26	28	30	32
Yield (Sch Dry)	25%	Current	\$50	\$45	\$42	\$37	\$33	\$31	\$30	\$28	\$27	\$26	\$25	\$22	\$20	\$19	\$17	\$14	\$12	\$12
		10yr ave.			\$29		\$25		\$22		\$19	\$18	\$18	\$17	\$16	\$15	\$13	\$11	\$9	\$8
	30%	Current	\$60	\$54	\$50	\$45	\$40	\$38	\$36	\$34	\$32	\$31	\$30	\$27	\$24	\$23	\$21	\$16	\$15	\$14
		10yr ave.			\$35		\$31		\$26		\$23	\$22	\$21	\$21	\$20	\$18	\$16	\$13	\$11	\$10
	35%	Current	\$70	\$63	\$59	\$52	\$47	\$44	\$42	\$40	\$38	\$37	\$35	\$31	\$28	\$27	\$24	\$19	\$17	\$16
		10yr ave.			\$40		\$36		\$31		\$27	\$26	\$25	\$24	\$23	\$21	\$19	\$15	\$13	\$12
	40%	Current	\$80	\$72	\$67	\$60	\$53	\$50	\$48	\$45	\$43	\$42	\$40	\$35	\$32	\$30	\$28	\$22	\$20	\$19
		10yr ave.			\$46		\$41		\$35		\$31	\$29	\$29	\$28	\$26	\$24	\$22	\$17	\$15	\$13
	45%	Current	\$90	\$81	\$76	\$67	\$60	\$57	\$54	\$51	\$49	\$47	\$45	\$40	\$36	\$34	\$31	\$25	\$22	\$21
		10yr ave.			\$52		\$46		\$39		\$35	\$33	\$32	\$31	\$30	\$26	\$24	\$19	\$17	\$15
	50%	Current	\$100	\$90	\$84	\$75	\$67	\$63	\$60	\$57	\$54	\$52	\$50	\$44	\$40	\$38	\$35	\$27	\$25	\$23
		10yr ave.			\$58		\$51		\$44		\$38	\$37	\$36	\$35	\$33	\$29	\$27	\$21	\$19	\$17
	55%	Current	\$110	\$99	\$92	\$82	\$74	\$69	\$66	\$62	\$60	\$58	\$55	\$49	\$44	\$42	\$38	\$30	\$27	\$26
		10yr ave.			\$64		\$56		\$48		\$42	\$40	\$39	\$38	\$36	\$32	\$30	\$23	\$20	\$18
60%	Current	\$120	\$108	\$101	\$90	\$80	\$76	\$72	\$68	\$65	\$63	\$60	\$53	\$48	\$46	\$42	\$33	\$30	\$28	
	10yr ave.			\$69		\$61		\$52		\$46	\$44	\$43	\$42	\$39	\$35	\$32	\$25	\$22	\$20	
65%	Current	\$130	\$117	\$109	\$97	\$87	\$82	\$78	\$74	\$70	\$68	\$65	\$58	\$52	\$49	\$45	\$36	\$32	\$30	
	10yr ave.			\$75		\$66		\$57		\$50	\$48	\$46	\$45	\$43	\$38	\$35	\$28	\$24	\$22	
70%	Current	\$140	\$126	\$118	\$105	\$94	\$88	\$84	\$80	\$76	\$73	\$69	\$62	\$56	\$53	\$48	\$38	\$35	\$33	
	10yr ave.			\$81		\$71		\$61		\$54	\$51	\$50	\$49	\$46	\$41	\$38	\$30	\$26	\$23	
75%	Current	\$150	\$135	\$126	\$112	\$100	\$94	\$90	\$85	\$81	\$79	\$74	\$66	\$60	\$57	\$52	\$41	\$37	\$35	
	10yr ave.			\$87		\$76		\$66		\$58	\$55	\$54	\$52	\$49	\$44	\$40	\$32	\$28	\$25	
80%	Current	\$160	\$144	\$134	\$120	\$107	\$101	\$96	\$91	\$87	\$84	\$79	\$71	\$64	\$61	\$55	\$44	\$40	\$37	
	10yr ave.			\$92		\$81		\$70		\$61	\$59	\$57	\$56	\$53	\$47	\$43	\$34	\$30	\$27	
85%	Current	\$170	\$153	\$143	\$127	\$114	\$107	\$102	\$97	\$92	\$89	\$84	\$75	\$68	\$65	\$59	\$47	\$42	\$40	
	10yr ave.			\$98		\$87		\$74		\$65	\$62	\$61	\$59	\$56	\$50	\$46	\$36	\$31	\$28	

The above shows estimated returns per head for skirted fleece wool. These figures do not take into account the value of skirtings and oddments and do not take into account discounts that may apply for faults under individual circumstances. These figures are based on a market index of 100% and should be used as a guide only. Returns over \$30 / head for fleece wool are highlighted.

Source: Australian Wool Exchange, Australian Wool Innovation, Sydney Futures Exchange, x-rates.com

Disclaimer: While all due care has been taken in the preparation of this document, no warranty is made as to its accuracy, reliability or completeness. To the extent permitted by law neither Jemalong or their sources including subsidiaries and staff, accept liability to any person for loss or damage arising from the use of this information.



Table 15: Returns pr head for skirted fleece wool.

Skirted FLC Weight		Micron																		
		16	16.5	17	17.5	18	18.5	19	19.5	20	21	22	23	24	25	26	28	30	32	
Yield (Sch Dry)	25%	Current	\$44	\$39	\$37	\$33	\$29	\$28	\$26	\$25	\$24	\$23	\$22	\$19	\$18	\$17	\$15	\$12	\$11	\$10
	10yr ave.			\$25		\$22		\$19		\$17	\$16	\$16	\$15	\$14	\$13	\$12	\$9	\$8	\$7	
	30%	Current	\$53	\$47	\$44	\$39	\$35	\$33	\$32	\$30	\$28	\$27	\$26	\$23	\$21	\$20	\$18	\$14	\$13	\$12
	10yr ave.			\$30		\$27		\$23		\$20	\$19	\$19	\$18	\$17	\$15	\$14	\$11	\$10	\$9	
	35%	Current	\$61	\$55	\$51	\$46	\$41	\$39	\$37	\$35	\$33	\$32	\$30	\$27	\$25	\$23	\$21	\$17	\$15	\$14
	10yr ave.			\$35		\$31		\$27		\$23	\$22	\$22	\$21	\$20	\$18	\$16	\$13	\$11	\$10	
	40%	Current	\$70	\$63	\$59	\$52	\$47	\$44	\$42	\$40	\$38	\$37	\$35	\$31	\$28	\$27	\$24	\$19	\$17	\$16
	10yr ave.			\$40		\$36		\$31		\$27	\$26	\$25	\$24	\$23	\$21	\$19	\$15	\$13	\$12	
	45%	Current	\$79	\$71	\$66	\$59	\$53	\$50	\$47	\$45	\$43	\$41	\$39	\$35	\$32	\$30	\$27	\$22	\$20	\$18
	10yr ave.			\$45		\$40		\$34		\$30	\$29	\$28	\$27	\$26	\$23	\$21	\$17	\$15	\$13	
	50%	Current	\$88	\$79	\$74	\$65	\$58	\$55	\$53	\$50	\$47	\$46	\$43	\$39	\$35	\$33	\$30	\$24	\$22	\$20
	10yr ave.			\$51		\$45		\$38		\$34	\$32	\$31	\$30	\$29	\$26	\$24	\$19	\$16	\$15	
	55%	Current	\$96	\$87	\$81	\$72	\$64	\$61	\$58	\$55	\$52	\$50	\$48	\$43	\$39	\$37	\$33	\$26	\$24	\$22
	10yr ave.			\$56		\$49		\$42		\$37	\$35	\$34	\$33	\$32	\$28	\$26	\$20	\$18	\$16	
60%	Current	\$105	\$95	\$88	\$79	\$70	\$66	\$63	\$60	\$57	\$55	\$52	\$47	\$42	\$40	\$36	\$29	\$26	\$25	
10yr ave.			\$61		\$53		\$46		\$40	\$39	\$38	\$36	\$35	\$31	\$28	\$22	\$19	\$18		
65%	Current	\$114	\$102	\$96	\$85	\$76	\$72	\$68	\$65	\$62	\$60	\$56	\$50	\$46	\$43	\$39	\$31	\$28	\$27	
10yr ave.			\$66		\$58		\$50		\$44	\$42	\$41	\$39	\$37	\$33	\$31	\$24	\$21	\$19		
70%	Current	\$123	\$110	\$103	\$92	\$82	\$77	\$74	\$70	\$66	\$64	\$61	\$54	\$49	\$47	\$42	\$34	\$30	\$29	
10yr ave.			\$71		\$62		\$54		\$47	\$45	\$44	\$43	\$40	\$36	\$33	\$26	\$23	\$20		
75%	Current	\$131	\$118	\$110	\$98	\$88	\$83	\$79	\$75	\$71	\$69	\$65	\$58	\$53	\$50	\$45	\$36	\$33	\$31	
10yr ave.			\$76		\$67		\$57		\$50	\$48	\$47	\$46	\$43	\$39	\$35	\$28	\$24	\$22		
80%	Current	\$140	\$126	\$118	\$105	\$94	\$88	\$84	\$80	\$76	\$73	\$69	\$62	\$56	\$53	\$48	\$38	\$35	\$33	
10yr ave.			\$81		\$71		\$61		\$54	\$51	\$50	\$49	\$46	\$41	\$38	\$30	\$26	\$23		
85%	Current	\$149	\$134	\$125	\$111	\$99	\$94	\$89	\$84	\$81	\$78	\$74	\$66	\$60	\$56	\$51	\$41	\$37	\$35	
10yr ave.			\$86		\$76		\$65		\$57	\$55	\$53	\$52	\$49	\$44	\$40	\$32	\$28	\$25		

The above shows estimated returns per head for skirted fleece wool. These figures do not take into account the value of skirtings and oddments and do not take into account discounts that may apply for faults under individual circumstances. These figures are based on a market index of 100% and should be used as a guide only. Returns over \$30 / head for fleece wool are highlighted.

Source: Australian Wool Exchange, Australian Wool Innovation, Sydney Futures Exchange, x-rates.com

Disclaimer: While all due care has been taken in the preparation of this document, no warranty is made as to its accuracy, reliability or completeness. To the extent permitted by law neither Jemalong or their sources including subsidiaries and staff, accept liability to any person for loss or damage arising from the use of this information.



Table 16: Returns pr head for skirted fleece wool.

Skirted FLC Weight		Micron																	
6 Kg		16	16.5	17	17.5	18	18.5	19	19.5	20	21	22	23	24	25	26	28	30	32
Yield (Sch Dry)	25% Current	\$38	\$34	\$32	\$28	\$25	\$24	\$23	\$21	\$20	\$20	\$19	\$17	\$15	\$14	\$13	\$10	\$9	\$9
	10yr ave.			\$22		\$19		\$16		\$14	\$14	\$13	\$13	\$12	\$11	\$10	\$8	\$7	\$6
	30% Current	\$45	\$41	\$38	\$34	\$30	\$28	\$27	\$26	\$24	\$24	\$22	\$20	\$18	\$17	\$16	\$12	\$11	\$11
	10yr ave.			\$26		\$23		\$20		\$17	\$17	\$16	\$16	\$15	\$13	\$12	\$10	\$8	\$8
	35% Current	\$53	\$47	\$44	\$39	\$35	\$33	\$32	\$30	\$28	\$27	\$26	\$23	\$21	\$20	\$18	\$14	\$13	\$12
	10yr ave.			\$30		\$27		\$23		\$20	\$19	\$19	\$18	\$17	\$15	\$14	\$11	\$10	\$9
	40% Current	\$60	\$54	\$50	\$45	\$40	\$38	\$36	\$34	\$32	\$31	\$30	\$27	\$24	\$23	\$21	\$16	\$15	\$14
	10yr ave.			\$35		\$31		\$26		\$23	\$22	\$21	\$21	\$20	\$18	\$16	\$13	\$11	\$10
	45% Current	\$68	\$61	\$57	\$50	\$45	\$42	\$41	\$38	\$37	\$35	\$34	\$30	\$27	\$26	\$23	\$19	\$17	\$16
	10yr ave.			\$39		\$34		\$29		\$26	\$25	\$24	\$23	\$22	\$20	\$18	\$14	\$13	\$11
	50% Current	\$75	\$68	\$63	\$56	\$50	\$47	\$45	\$43	\$41	\$39	\$37	\$33	\$30	\$28	\$26	\$21	\$19	\$18
	10yr ave.			\$43		\$38		\$33		\$29	\$28	\$27	\$26	\$25	\$22	\$20	\$16	\$14	\$13
	55% Current	\$83	\$74	\$69	\$62	\$55	\$52	\$50	\$47	\$45	\$43	\$41	\$37	\$33	\$31	\$29	\$23	\$21	\$19
	10yr ave.			\$48		\$42		\$36		\$32	\$30	\$29	\$29	\$27	\$24	\$22	\$18	\$15	\$14
	60% Current	\$90	\$81	\$76	\$67	\$60	\$57	\$54	\$51	\$49	\$47	\$45	\$40	\$36	\$34	\$31	\$25	\$22	\$21
	10yr ave.			\$52		\$46		\$39		\$35	\$33	\$32	\$31	\$30	\$26	\$24	\$19	\$17	\$15
	65% Current	\$98	\$88	\$82	\$73	\$65	\$61	\$59	\$55	\$53	\$51	\$48	\$43	\$39	\$37	\$34	\$27	\$24	\$23
	10yr ave.			\$56		\$50		\$43		\$37	\$36	\$35	\$34	\$32	\$29	\$26	\$21	\$18	\$16
	70% Current	\$105	\$95	\$88	\$79	\$70	\$66	\$63	\$60	\$57	\$55	\$52	\$47	\$42	\$40	\$36	\$29	\$26	\$25
	10yr ave.			\$61		\$53		\$46		\$40	\$39	\$38	\$36	\$35	\$31	\$28	\$22	\$19	\$18
	75% Current	\$113	\$101	\$95	\$84	\$75	\$71	\$68	\$64	\$61	\$59	\$56	\$50	\$45	\$43	\$39	\$31	\$28	\$26
	10yr ave.			\$65		\$57		\$49		\$43	\$41	\$40	\$39	\$37	\$33	\$30	\$24	\$21	\$19
	80% Current	\$120	\$108	\$101	\$90	\$80	\$76	\$72	\$68	\$65	\$63	\$60	\$53	\$48	\$46	\$42	\$33	\$30	\$28
	10yr ave.			\$69		\$61		\$52		\$46	\$44	\$43	\$42	\$39	\$35	\$32	\$25	\$22	\$20
	85% Current	\$128	\$115	\$107	\$95	\$85	\$80	\$77	\$72	\$69	\$67	\$63	\$57	\$51	\$48	\$44	\$35	\$32	\$30
	10yr ave.			\$74		\$65		\$56		\$49	\$47	\$46	\$44	\$42	\$37	\$34	\$27	\$24	\$21

The above shows estimated returns per head for skirted fleece wool. These figures do not take into account the value of skirtings and oddments and do not take into account discounts that may apply for faults under individual circumstances. These figures are based on a market index of 100% and should be used as a guide only. Returns over \$30 / head for fleece wool are highlighted.

Source: Australian Wool Exchange, Australian Wool Innovation, Sydney Futures Exchange, x-rates.com

Disclaimer: While all due care has been taken in the preparation of this document, no warranty is made as to its accuracy, reliability or completeness. To the extent permitted by law neither Jemalong or their sources including subsidiaries and staff, accept liability to any person for loss or damage arising from the use of this information.



Table 17: Returns pr head for skirted fleece wool.

Skirted FLC Weight		Micron																		
		16	16.5	17	17.5	18	18.5	19	19.5	20	21	22	23	24	25	26	28	30	32	
Yield (Sch Dry)	25%	Current	\$31	\$28	\$26	\$23	\$21	\$20	\$19	\$18	\$17	\$16	\$16	\$14	\$13	\$12	\$11	\$9	\$8	\$7
	10yr ave.			\$18		\$16		\$14		\$12	\$11	\$11	\$11	\$10	\$9	\$8	\$7	\$6	\$5	
	30%	Current	\$38	\$34	\$32	\$28	\$25	\$24	\$23	\$21	\$20	\$20	\$19	\$17	\$15	\$14	\$13	\$10	\$9	\$9
	10yr ave.			\$22		\$19		\$16		\$14	\$14	\$13	\$13	\$12	\$11	\$10	\$8	\$7	\$6	
	35%	Current	\$44	\$39	\$37	\$33	\$29	\$28	\$26	\$25	\$24	\$23	\$22	\$19	\$18	\$17	\$15	\$12	\$11	\$10
	10yr ave.			\$25		\$22		\$19		\$17	\$16	\$16	\$15	\$14	\$13	\$12	\$9	\$8	\$7	
	40%	Current	\$50	\$45	\$42	\$37	\$33	\$31	\$30	\$28	\$27	\$26	\$25	\$22	\$20	\$19	\$17	\$14	\$12	\$12
	10yr ave.			\$29		\$25		\$22		\$19	\$18	\$18	\$17	\$16	\$15	\$13	\$11	\$9	\$8	
	45%	Current	\$56	\$51	\$47	\$42	\$38	\$35	\$34	\$32	\$30	\$29	\$28	\$25	\$23	\$21	\$19	\$15	\$14	\$13
	10yr ave.			\$32		\$29		\$25		\$22	\$21	\$20	\$20	\$18	\$17	\$15	\$12	\$10	\$9	
	50%	Current	\$63	\$56	\$53	\$47	\$42	\$39	\$38	\$36	\$34	\$33	\$31	\$28	\$25	\$24	\$22	\$17	\$16	\$15
	10yr ave.			\$36		\$32		\$27		\$24	\$23	\$22	\$22	\$21	\$18	\$17	\$13	\$12	\$10	
	55%	Current	\$69	\$62	\$58	\$51	\$46	\$43	\$41	\$39	\$37	\$36	\$34	\$30	\$28	\$26	\$24	\$19	\$17	\$16
	10yr ave.			\$40		\$35		\$30		\$26	\$25	\$25	\$24	\$23	\$20	\$19	\$15	\$13	\$11	
60%	Current	\$75	\$68	\$63	\$56	\$50	\$47	\$45	\$43	\$41	\$39	\$37	\$33	\$30	\$28	\$26	\$21	\$19	\$18	
10yr ave.			\$43		\$38		\$33		\$29	\$28	\$27	\$26	\$25	\$22	\$20	\$16	\$14	\$13		
65%	Current	\$81	\$73	\$68	\$61	\$54	\$51	\$49	\$46	\$44	\$43	\$40	\$36	\$33	\$31	\$28	\$22	\$20	\$19	
10yr ave.			\$47		\$41		\$35		\$31	\$30	\$29	\$28	\$27	\$24	\$22	\$17	\$15	\$14		
70%	Current	\$88	\$79	\$74	\$65	\$58	\$55	\$53	\$50	\$47	\$46	\$43	\$39	\$35	\$33	\$30	\$24	\$22	\$20	
10yr ave.			\$51		\$45		\$38		\$34	\$32	\$31	\$30	\$29	\$26	\$24	\$19	\$16	\$15		
75%	Current	\$94	\$84	\$79	\$70	\$63	\$59	\$56	\$53	\$51	\$49	\$47	\$42	\$38	\$36	\$32	\$26	\$23	\$22	
10yr ave.			\$54		\$48		\$41		\$36	\$34	\$33	\$33	\$31	\$28	\$25	\$20	\$17	\$16		
80%	Current	\$100	\$90	\$84	\$75	\$67	\$63	\$60	\$57	\$54	\$52	\$50	\$44	\$40	\$38	\$35	\$27	\$25	\$23	
10yr ave.			\$58		\$51		\$44		\$38	\$37	\$36	\$35	\$33	\$29	\$27	\$21	\$19	\$17		
85%	Current	\$106	\$96	\$89	\$79	\$71	\$67	\$64	\$60	\$58	\$56	\$53	\$47	\$43	\$40	\$37	\$29	\$26	\$25	
10yr ave.			\$61		\$54		\$46		\$41	\$39	\$38	\$37	\$35	\$31	\$29	\$23	\$20	\$18		

The above shows estimated returns per head for skirted fleece wool. These figures do not take into account the value of skirtings and oddments and do not take into account discounts that may apply for faults under individual circumstances. These figures are based on a market index of 100% and should be used as a guide only. Returns over \$30 / head for fleece wool are highlighted.

Source: Australian Wool Exchange, Australian Wool Innovation, Sydney Futures Exchange, x-rates.com

Disclaimer: While all due care has been taken in the preparation of this document, no warranty is made as to its accuracy, reliability or completeness. To the extent permitted by law neither Jemalong or their sources including subsidiaries and staff, accept liability to any person for loss or damage arising from the use of this information.



Table 18: Returns pr head for skirted fleece wool.

Skirted FLC Weight		Micron																	
4 Kg		16	16.5	17	17.5	18	18.5	19	19.5	20	21	22	23	24	25	26	28	30	32
Yield (Sch Dry)	25% Current	\$25	\$23	\$21	\$19	\$17	\$16	\$15	\$14	\$14	\$13	\$12	\$11	\$10	\$9	\$9	\$7	\$6	\$6
	10yr ave.			\$14		\$13		\$11		\$10	\$9	\$9	\$9	\$8	\$7	\$7	\$5	\$5	\$4
	30% Current	\$30	\$27	\$25	\$22	\$20	\$19	\$18	\$17	\$16	\$16	\$15	\$13	\$12	\$11	\$10	\$8	\$7	\$7
	10yr ave.			\$17		\$15		\$13		\$12	\$11	\$11	\$10	\$10	\$9	\$8	\$6	\$6	\$5
	35% Current	\$35	\$32	\$29	\$26	\$23	\$22	\$21	\$20	\$19	\$18	\$17	\$16	\$14	\$13	\$12	\$10	\$9	\$8
	10yr ave.			\$20		\$18		\$15		\$13	\$13	\$13	\$12	\$12	\$10	\$9	\$7	\$6	\$6
	40% Current	\$40	\$36	\$34	\$30	\$27	\$25	\$24	\$23	\$22	\$21	\$20	\$18	\$16	\$15	\$14	\$11	\$10	\$9
	10yr ave.			\$23		\$20		\$17		\$15	\$15	\$14	\$14	\$13	\$12	\$11	\$8	\$7	\$7
	45% Current	\$45	\$41	\$38	\$34	\$30	\$28	\$27	\$26	\$24	\$24	\$22	\$20	\$18	\$17	\$16	\$12	\$11	\$11
	10yr ave.			\$26		\$23		\$20		\$17	\$17	\$16	\$16	\$15	\$13	\$12	\$10	\$8	\$8
	50% Current	\$50	\$45	\$42	\$37	\$33	\$31	\$30	\$28	\$27	\$26	\$25	\$22	\$20	\$19	\$17	\$14	\$12	\$12
	10yr ave.			\$29		\$25		\$22		\$19	\$18	\$18	\$17	\$16	\$15	\$13	\$11	\$9	\$8
	55% Current	\$55	\$50	\$46	\$41	\$37	\$35	\$33	\$31	\$30	\$29	\$27	\$24	\$22	\$21	\$19	\$15	\$14	\$13
	10yr ave.			\$32		\$28		\$24		\$21	\$20	\$20	\$19	\$18	\$16	\$15	\$12	\$10	\$9
	60% Current	\$60	\$54	\$50	\$45	\$40	\$38	\$36	\$34	\$32	\$31	\$30	\$27	\$24	\$23	\$21	\$16	\$15	\$14
	10yr ave.			\$35		\$31		\$26		\$23	\$22	\$21	\$21	\$20	\$18	\$16	\$13	\$11	\$10
	65% Current	\$65	\$59	\$55	\$49	\$43	\$41	\$39	\$37	\$35	\$34	\$32	\$29	\$26	\$25	\$22	\$18	\$16	\$15
	10yr ave.			\$38		\$33		\$28		\$25	\$24	\$23	\$23	\$21	\$19	\$17	\$14	\$12	\$11
	70% Current	\$70	\$63	\$59	\$52	\$47	\$44	\$42	\$40	\$38	\$37	\$35	\$31	\$28	\$27	\$24	\$19	\$17	\$16
	10yr ave.			\$40		\$36		\$31		\$27	\$26	\$25	\$24	\$23	\$21	\$19	\$15	\$13	\$12
	75% Current	\$75	\$68	\$63	\$56	\$50	\$47	\$45	\$43	\$41	\$39	\$37	\$33	\$30	\$28	\$26	\$21	\$19	\$18
	10yr ave.			\$43		\$38		\$33		\$29	\$28	\$27	\$26	\$25	\$22	\$20	\$16	\$14	\$13
	80% Current	\$80	\$72	\$67	\$60	\$53	\$50	\$48	\$45	\$43	\$42	\$40	\$35	\$32	\$30	\$28	\$22	\$20	\$19
	10yr ave.			\$46		\$41		\$35		\$31	\$29	\$29	\$28	\$26	\$24	\$22	\$17	\$15	\$13
	85% Current	\$85	\$77	\$71	\$64	\$57	\$53	\$51	\$48	\$46	\$45	\$42	\$38	\$34	\$32	\$29	\$23	\$21	\$20
	10yr ave.			\$49		\$43		\$37		\$33	\$31	\$30	\$30	\$28	\$25	\$23	\$18	\$16	\$14

The above shows estimated returns per head for skirted fleece wool. These figures do not take into account the value of skirtings and oddments and do not take into account discounts that may apply for faults under individual circumstances. These figures are based on a market index of 100% and should be used as a guide only. Returns over \$30 / head for fleece wool are highlighted.

Source: Australian Wool Exchange, Australian Wool Innovation, Sydney Futures Exchange, x-rates.com

Disclaimer: While all due care has been taken in the preparation of this document, no warranty is made as to its accuracy, reliability or completeness. To the extent permitted by law neither Jemalong or their sources including subsidiaries and staff, accept liability to any person for loss or damage arising from the use of this information.



Table 19: Returns pr head for skirted fleece wool.

Skirted FLC Weight		Micron																	
3 Kg		16	16.5	17	17.5	18	18.5	19	19.5	20	21	22	23	24	25	26	28	30	32
Yield (Sch Dry)	25% Current	\$19	\$17	\$16	\$14	\$13	\$12	\$11	\$11	\$10	\$10	\$9	\$8	\$8	\$7	\$6	\$5	\$5	\$4
	10yr ave.			\$11		\$10		\$8		\$7	\$7	\$7	\$7	\$6	\$6	\$5	\$4	\$3	\$3
	30% Current	\$23	\$20	\$19	\$17	\$15	\$14	\$14	\$13	\$12	\$12	\$11	\$10	\$9	\$9	\$8	\$6	\$6	\$5
	10yr ave.			\$13		\$11		\$10		\$9	\$8	\$8	\$8	\$7	\$7	\$6	\$5	\$4	\$4
	35% Current	\$26	\$24	\$22	\$20	\$18	\$17	\$16	\$15	\$14	\$14	\$13	\$12	\$11	\$10	\$9	\$7	\$7	\$6
	10yr ave.			\$15		\$13		\$11		\$10	\$10	\$9	\$9	\$9	\$8	\$7	\$6	\$5	\$4
	40% Current	\$30	\$27	\$25	\$22	\$20	\$19	\$18	\$17	\$16	\$16	\$15	\$13	\$12	\$11	\$10	\$8	\$7	\$7
	10yr ave.			\$17		\$15		\$13		\$12	\$11	\$11	\$10	\$10	\$9	\$8	\$6	\$6	\$5
	45% Current	\$34	\$30	\$28	\$25	\$23	\$21	\$20	\$19	\$18	\$18	\$17	\$15	\$14	\$13	\$12	\$9	\$8	\$8
	10yr ave.			\$19		\$17		\$15		\$13	\$12	\$12	\$12	\$11	\$10	\$9	\$7	\$6	\$6
	50% Current	\$38	\$34	\$32	\$28	\$25	\$24	\$23	\$21	\$20	\$20	\$19	\$17	\$15	\$14	\$13	\$10	\$9	\$9
	10yr ave.			\$22		\$19		\$16		\$14	\$14	\$13	\$13	\$12	\$11	\$10	\$8	\$7	\$6
	55% Current	\$41	\$37	\$35	\$31	\$28	\$26	\$25	\$23	\$22	\$22	\$20	\$18	\$17	\$16	\$14	\$11	\$10	\$10
	10yr ave.			\$24		\$21		\$18		\$16	\$15	\$15	\$14	\$14	\$12	\$11	\$9	\$8	\$7
	60% Current	\$45	\$41	\$38	\$34	\$30	\$28	\$27	\$26	\$24	\$24	\$22	\$20	\$18	\$17	\$16	\$12	\$11	\$11
	10yr ave.			\$26		\$23		\$20		\$17	\$17	\$16	\$16	\$15	\$13	\$12	\$10	\$8	\$8
	65% Current	\$49	\$44	\$41	\$36	\$33	\$31	\$29	\$28	\$26	\$26	\$24	\$22	\$20	\$19	\$17	\$13	\$12	\$11
	10yr ave.			\$28		\$25		\$21		\$19	\$18	\$17	\$17	\$16	\$14	\$13	\$10	\$9	\$8
	70% Current	\$53	\$47	\$44	\$39	\$35	\$33	\$32	\$30	\$28	\$27	\$26	\$23	\$21	\$20	\$18	\$14	\$13	\$12
	10yr ave.			\$30		\$27		\$23		\$20	\$19	\$19	\$18	\$17	\$15	\$14	\$11	\$10	\$9
	75% Current	\$56	\$51	\$47	\$42	\$38	\$35	\$34	\$32	\$30	\$29	\$28	\$25	\$23	\$21	\$19	\$15	\$14	\$13
	10yr ave.			\$32		\$29		\$25		\$22	\$21	\$20	\$20	\$18	\$17	\$15	\$12	\$10	\$9
	80% Current	\$60	\$54	\$50	\$45	\$40	\$38	\$36	\$34	\$32	\$31	\$30	\$27	\$24	\$23	\$21	\$16	\$15	\$14
	10yr ave.			\$35		\$31		\$26		\$23	\$22	\$21	\$21	\$20	\$18	\$16	\$13	\$11	\$10
	85% Current	\$64	\$57	\$54	\$48	\$43	\$40	\$38	\$36	\$35	\$33	\$32	\$28	\$26	\$24	\$22	\$17	\$16	\$15
	10yr ave.			\$37		\$32		\$28		\$24	\$23	\$23	\$22	\$21	\$19	\$17	\$14	\$12	\$11

The above shows estimated returns per head for skirted fleece wool. These figures do not take into account the value of skirtings and oddments and do not take into account discounts that may apply for faults under individual circumstances. These figures are based on a market index of 100% and should be used as a guide only. Returns over \$30 / head for fleece wool are highlighted.

Source: Australian Wool Exchange, Australian Wool Innovation, Sydney Futures Exchange, x-rates.com

Disclaimer: While all due care has been taken in the preparation of this document, no warranty is made as to its accuracy, reliability or completeness. To the extent permitted by law neither Jemalong or their sources including subsidiaries and staff, accept liability to any person for loss or damage arising from the use of this information.



Table 20: Returns pr head for skirted fleece wool.

Skirted FLC Weight		Micron																	
2 Kg		16	16.5	17	17.5	18	18.5	19	19.5	20	21	22	23	24	25	26	28	30	32
Yield (Sch Dry)	25% Current	\$13	\$11	\$11	\$9	\$8	\$8	\$8	\$7	\$7	\$7	\$6	\$6	\$5	\$5	\$4	\$3	\$3	\$3
	10yr ave.			\$7		\$6		\$5		\$5	\$5	\$4	\$4	\$4	\$4	\$3	\$3	\$2	\$2
	30% Current	\$15	\$14	\$13	\$11	\$10	\$9	\$9	\$9	\$8	\$8	\$7	\$7	\$6	\$6	\$5	\$4	\$4	\$4
	10yr ave.			\$9		\$8		\$7		\$6	\$6	\$5	\$5	\$5	\$4	\$4	\$3	\$3	\$3
	35% Current	\$18	\$16	\$15	\$13	\$12	\$11	\$11	\$10	\$9	\$9	\$9	\$8	\$7	\$7	\$6	\$5	\$4	\$4
	10yr ave.			\$10		\$9		\$8		\$7	\$6	\$6	\$6	\$6	\$5	\$5	\$4	\$3	\$3
	40% Current	\$20	\$18	\$17	\$15	\$13	\$13	\$12	\$11	\$11	\$10	\$10	\$9	\$8	\$8	\$7	\$5	\$5	\$5
	10yr ave.			\$12		\$10		\$9		\$8	\$7	\$7	\$7	\$7	\$6	\$5	\$4	\$4	\$3
	45% Current	\$23	\$20	\$19	\$17	\$15	\$14	\$14	\$13	\$12	\$12	\$11	\$10	\$9	\$9	\$8	\$6	\$6	\$5
	10yr ave.			\$13		\$11		\$10		\$9	\$8	\$8	\$8	\$7	\$7	\$6	\$5	\$4	\$4
	50% Current	\$25	\$23	\$21	\$19	\$17	\$16	\$15	\$14	\$14	\$13	\$12	\$11	\$10	\$9	\$9	\$7	\$6	\$6
	10yr ave.			\$14		\$13		\$11		\$10	\$9	\$9	\$9	\$8	\$7	\$7	\$5	\$5	\$4
	55% Current	\$28	\$25	\$23	\$21	\$18	\$17	\$17	\$16	\$15	\$14	\$14	\$12	\$11	\$10	\$10	\$8	\$7	\$6
	10yr ave.			\$16		\$14		\$12		\$11	\$10	\$10	\$10	\$9	\$8	\$7	\$6	\$5	\$5
	60% Current	\$30	\$27	\$25	\$22	\$20	\$19	\$18	\$17	\$16	\$16	\$15	\$13	\$12	\$11	\$10	\$8	\$7	\$7
	10yr ave.			\$17		\$15		\$13		\$12	\$11	\$11	\$10	\$10	\$9	\$8	\$6	\$6	\$5
	65% Current	\$33	\$29	\$27	\$24	\$22	\$20	\$20	\$18	\$18	\$17	\$16	\$14	\$13	\$12	\$11	\$9	\$8	\$8
	10yr ave.			\$19		\$17		\$14		\$12	\$12	\$12	\$11	\$11	\$10	\$9	\$7	\$6	\$5
	70% Current	\$35	\$32	\$29	\$26	\$23	\$22	\$21	\$20	\$19	\$18	\$17	\$16	\$14	\$13	\$12	\$10	\$9	\$8
	10yr ave.			\$20		\$18		\$15		\$13	\$13	\$13	\$12	\$12	\$10	\$9	\$7	\$6	\$6
	75% Current	\$38	\$34	\$32	\$28	\$25	\$24	\$23	\$21	\$20	\$20	\$19	\$17	\$15	\$14	\$13	\$10	\$9	\$9
	10yr ave.			\$22		\$19		\$16		\$14	\$14	\$13	\$13	\$12	\$11	\$10	\$8	\$7	\$6
	80% Current	\$40	\$36	\$34	\$30	\$27	\$25	\$24	\$23	\$22	\$21	\$20	\$18	\$16	\$15	\$14	\$11	\$10	\$9
	10yr ave.			\$23		\$20		\$17		\$15	\$15	\$14	\$14	\$13	\$12	\$11	\$8	\$7	\$7
	85% Current	\$43	\$38	\$36	\$32	\$28	\$27	\$26	\$24	\$23	\$22	\$21	\$19	\$17	\$16	\$15	\$12	\$11	\$10
	10yr ave.			\$25		\$22		\$19		\$16	\$16	\$15	\$15	\$14	\$12	\$11	\$9	\$8	\$7

The above shows estimated returns per head for skirted fleece wool. These figures do not take into account the value of skirtings and oddments and do not take into account discounts that may apply for faults under individual circumstances. These figures are based on a market index of 100% and should be used as a guide only. Returns over \$30 / head for fleece wool are highlighted.

Source: Australian Wool Exchange, Australian Wool Innovation, Sydney Futures Exchange, x-rates.com

Disclaimer: While all due care has been taken in the preparation of this document, no warranty is made as to its accuracy, reliability or completeness. To the extent permitted by law neither Jemalong or their sources including subsidiaries and staff, accept liability to any person for loss or damage arising from the use of this information.