



Table 1: Northern Region Micron Price Guides

CURRENT MARKET			12 MONTH COMPARISONS							3 YEAR COMPARISONS					Percentile	10 YEAR COMPARISONS					Percentile
Mic.	22/02/2012	15/02/2012	22/02/2011	Now	Now	Now	Now	Now	Now	Low	High	Average	Now			Low	High	10 year	Now		
Guides	Price	Weekly Change	This time Last Year	compared to Last Year	12 Month Low	compared to Low	12 Month High	compared to High					compared to 3yr ave					Average	compared to 10yr ave		
NRI	1247	-33 -2.6%	1320	-73 -6%	1188	+59 5%	1491	-244 -16%		767	1491	1060	+187 18%	71%		657	1491	928	+319 34%		92%
16*	2130	-70 -3.3%	2700	-570 -21%	1950	+180 9%	2800	-670 -24%		1385	2800	1936	+194 10%	69%							
16.5*	1930	-90 -4.7%	2520	-590 -23%	1800	+130 7%	2680	-750 -28%		1280	2680	1781	+149 8%	69%							
17*	1700	-90 -5.3%	2400	-700 -29%	1620	+80 5%	2530	-830 -33%		1180	2530	1636	+64 4%	63%		1100	2530	1450	+250 17%		84%
17.5*	1620	-60 -3.7%	2230	-610 -27%	1530	+90 6%	2360	-740 -31%		1130	2360	1535	+85 6%	67%							
18	1555	-48 -3.1%	2096	-541 -26%	1469	+86 6%	2193	-638 -29%		1043	2193	1443	+112 8%	66%		916	2193	1274	+281 22%		84%
18.5	1492	-48 -3.2%	1882	-390 -21%	1431	+61 4%	1963	-471 -24%		976	1963	1353	+139 10%	69%							
19	1444	-46 -3.2%	1611	-167 -10%	1391	+53 4%	1776	-332 -19%		901	1776	1255	+189 15%	70%		803	1776	1109	+335 30%		91%
19.5	1403	-45 -3.2%	1388	+15 1%	1344	+59 4%	1670	-267 -16%		830	1670	1161	+242 21%	73%							
20	1368	-30 -2.2%	1216	+152 13%	1186	+182 15%	1588	-220 -14%		746	1588	1086	+282 26%	79%		700	1588	981	+387 39%		94%
21	1332	-47 -3.5%	1155	+177 15%	1137	+195 17%	1522	-190 -12%		722	1522	1052	+280 27%	85%		668	1522	940	+392 42%		95%
22	1306	-45 -3.4%	1113	+193 17%	1086	+220 20%	1461	-155 -11%		708	1461	1019	+287 28%	89%		659	1461	912	+394 43%		97%
23	1286	-55 -4.3%	1055	+231 22%	1037	+249 24%	1347	-61 -5%		696	1347	974	+312 32%	94%		652	1347	884	+402 45%		98%
24	1165	0	1004	+161 16%	983	+182 19%	1170	-5 0%		669	1170	894	+271 30%	99%		638	1299	834	+331 40%		95%
25	1010	-5 -0.5%	859	+151 18%	840	+170 20%	1048	-38 -4%		574	1048	772	+238 31%	97%		567	1198	742	+268 36%		93%
26	821	-12 -1.5%	773	+48 6%	739	+82 11%	928	-107 -12%		556	928	689	+132 19%	80%		532	1088	677	+144 21%		78%
28	640	+3 0.5%	580	+60 10%	558	+82 15%	734	-94 -13%		435	734	538	+102 19%	77%		424	889	532	+108 20%		80%
30	581	-2 -0.3%	517	+64 12%	500	+81 16%	670	-89 -13%		378	670	480	+101 21%	76%		344	729	463	+118 25%		81%
32	508	-8 -1.6%	458	+50 11%	445	+63 14%	638	-130 -20%		326	638	429	+79 18%	70%		297	669	418	+90 22%		79%
MC	726	+12 1.7%	734	-8 -1%	673	+53 8%	831	-105 -13%		493	831	646	+80 12%	76%		380	831	532	+194 36%		93%

**Note:**

\* Due to the irregular market quoting for some fine wool categories, figures shown relating to micron categories below 18 micron are an estimate based on the AWEX Premium & Discounts Report & other available information.

\* For any category, where there is insufficient quantity offered to enable AWEX to quote, a quote will be provided based on the best available information.

\* 10 Year data is not available for some micron categories, which may result in blank spaces in the table above.

**Definitions:**

\* A Percentile, is a value on a scale of one hundred that indicates the percent of a distribution that is equal to or below it. In general a percentile between 25% and 75% is considered normal, a percentile below 25% is considered below normal and a percentile above 75% is considered above normal.

Three and ten year percentiles shown in the table above, detail the period of time during the past 3 & 10 years that the market has traded either at or below its current price.

The higher the percentile, the stronger the market.

Source: Australian Wool Exchange, Australian Wool Innovation, Sydney Futures Exchange, x-rates.com

Disclaimer: While all due care has been taken in the preparation of this document, no warranty is made as to its accuracy, reliability or completeness. To the extent permitted by law neither Jemalong or their sources including subsidiaries and staff, accept liability to any person for loss or damage arising from the use of this information.



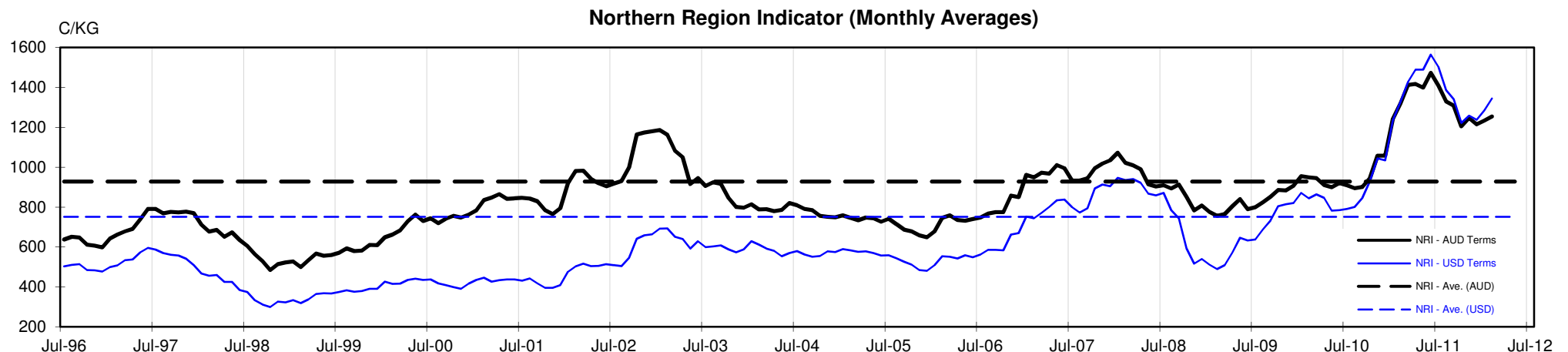
## MARKET COMMENTARY

One Australian Dollar = \$ 1.07 US, as of 22/02/2012

### NORTHERN REGION –Sale Week 34/11 ( 52,966 bales offered nationally)

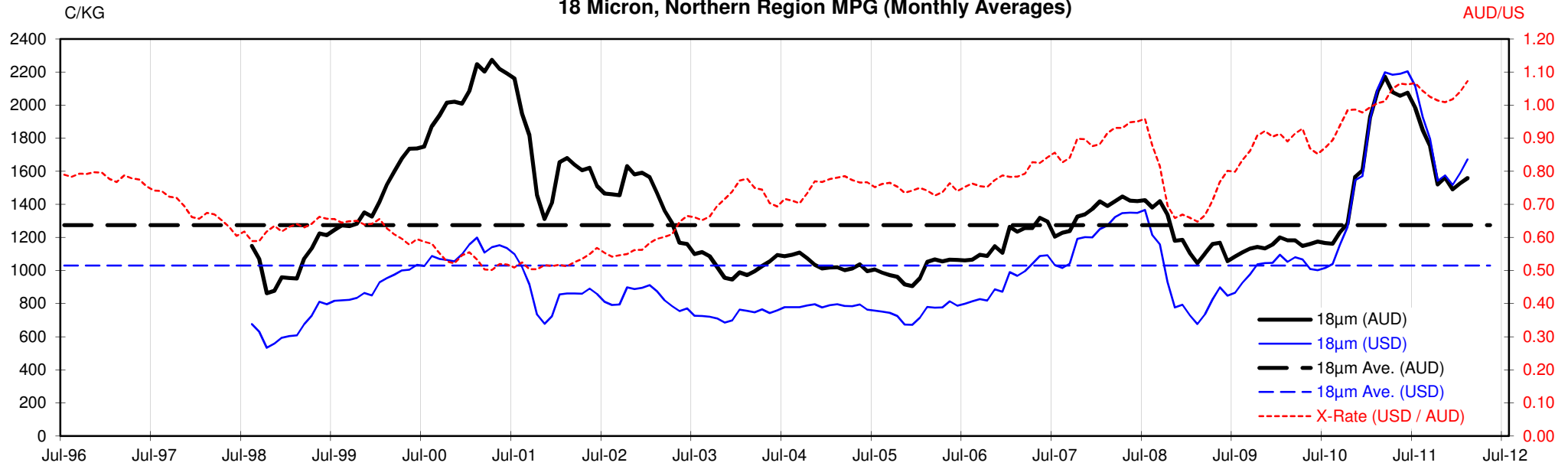
Tuesdays market fell 30 to 40 cents when compared to the previous weeks close. The medium & fine microns generally lots 30 cents while 21 micron and broader were 40 cents cheaper. Wide spread competition left merino skirtings fully firm, with the better style & length lots with 6% Vm and higher tending in sellers favour (despite some irregularity due to the presence of cott & colour). Strong competition had locks 5 cents dearer for 19 micron and broader, while some solid premiums were paid for 17 microns. Crutchings remained fully firm and stains gained 10 cents. The crossbred market also enjoyed good support and improved by 5 cents for 28 to 32 microns. 10.5% PI

Wednesdays market saw merino fleece continue to slip, with the finer microns most affected. 20 microns and broader were generally 5 to 10 cents cheaper while the medium range were reduced by 15 to 20 cents. It was the 17.5 micron and finer range that contracted the most, losing 30-40 cents on the eve of next weeks Newcastle sale. Merino skirtings remained unchanged for all descriptions except 19 microns which eased around 10 cents for lots containing greater than 5% Vm. Good support lifted locks a further 5 cents while stains gained 10-20 and crutchings remained firm. The crossbred market was mixed, with the broader end of 29 to 32 microns easing 10 cents while the 27 to 28 micron range remained unchanged. 16.4% PI. 49,494 bales are to be offered next week (+17.2% on previous estimates).

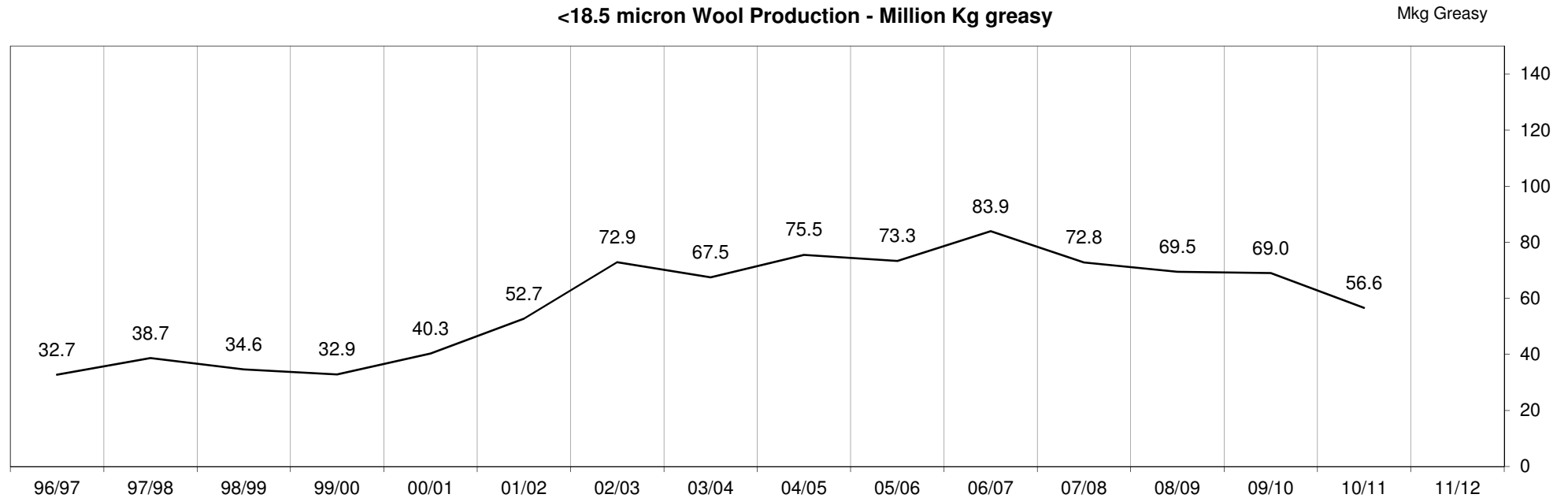


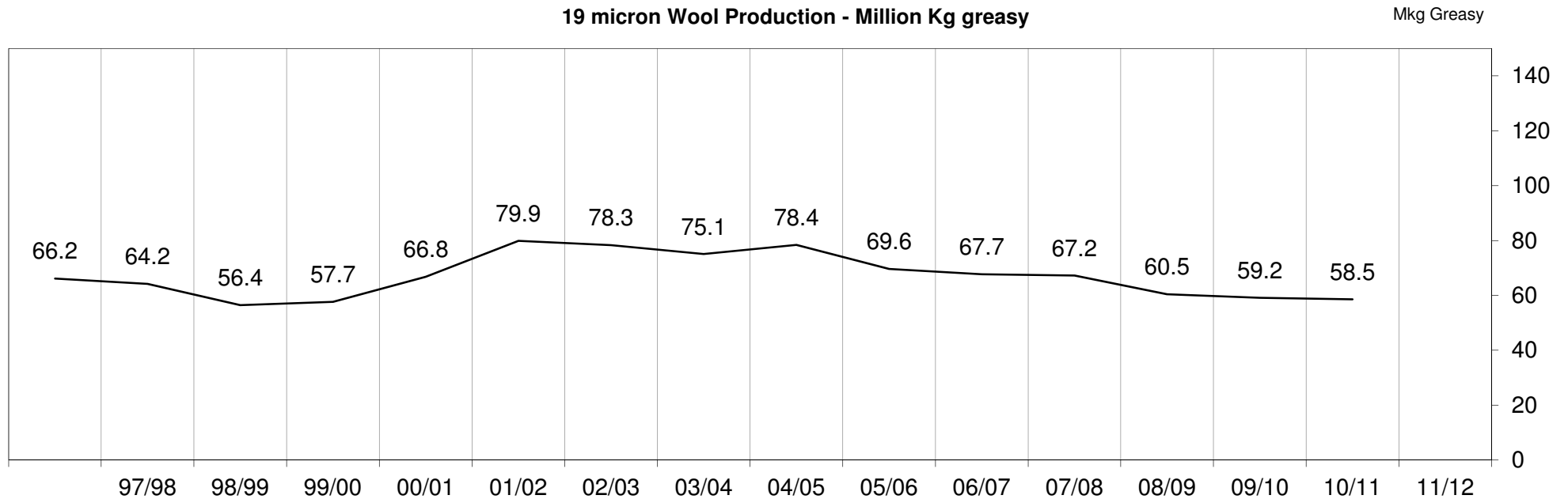
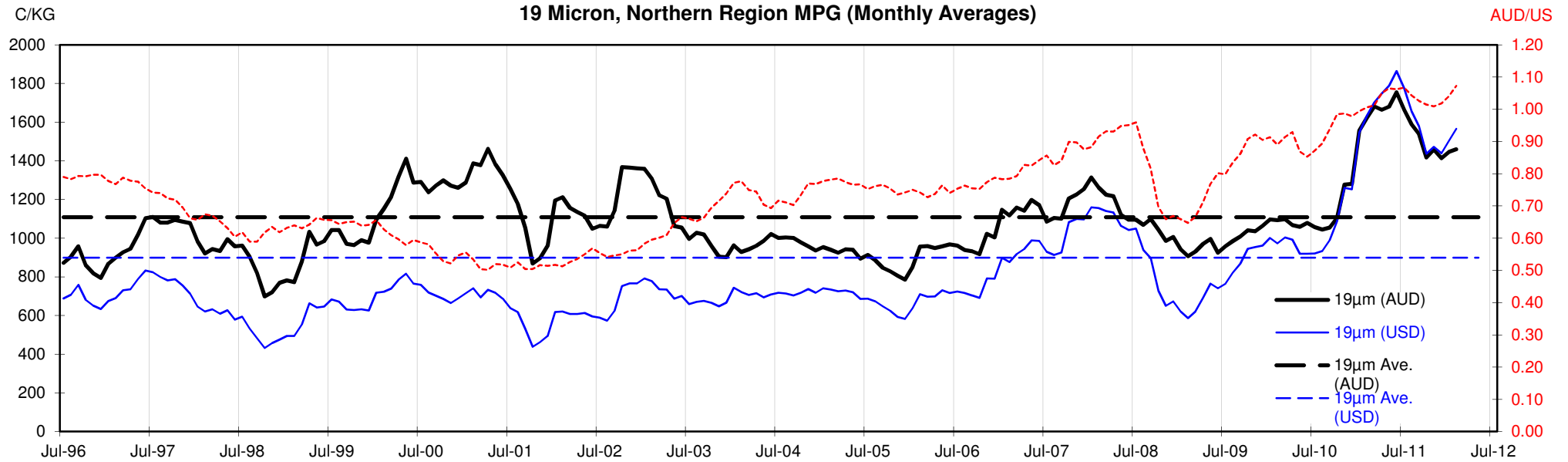


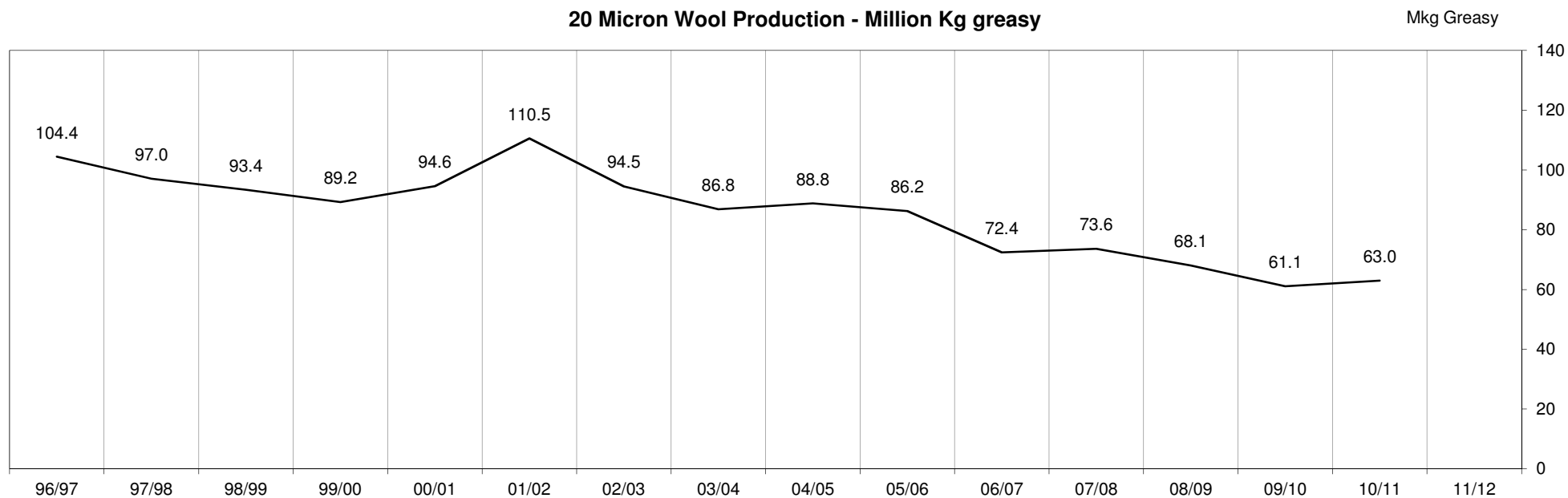
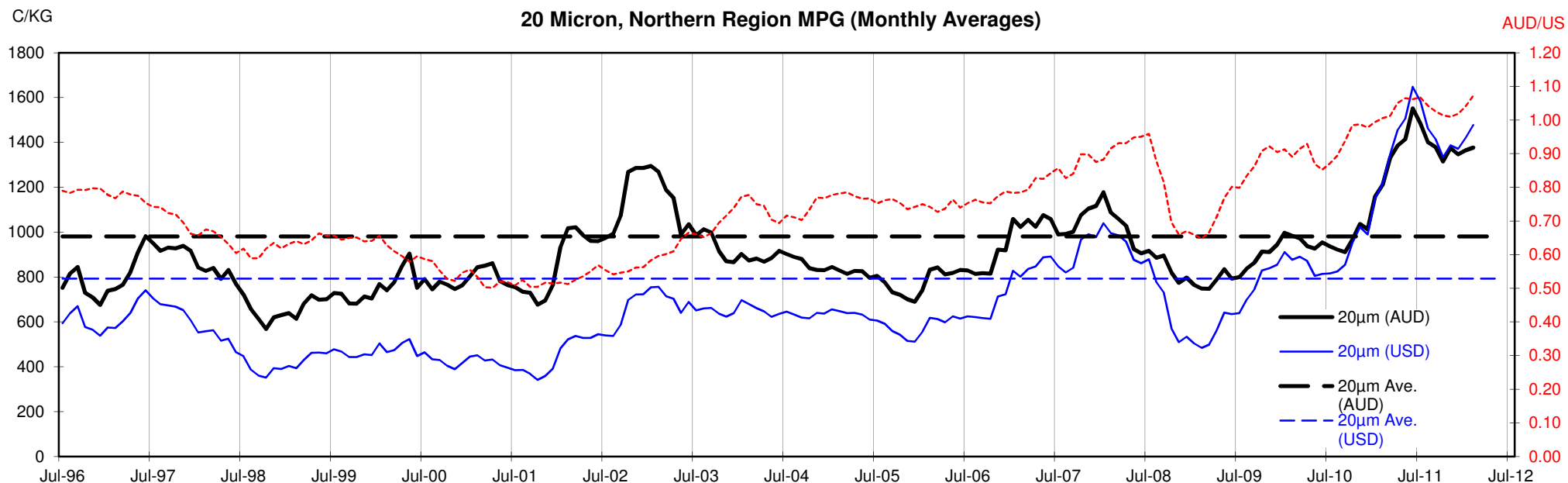
18 Micron, Northern Region MPG (Monthly Averages)

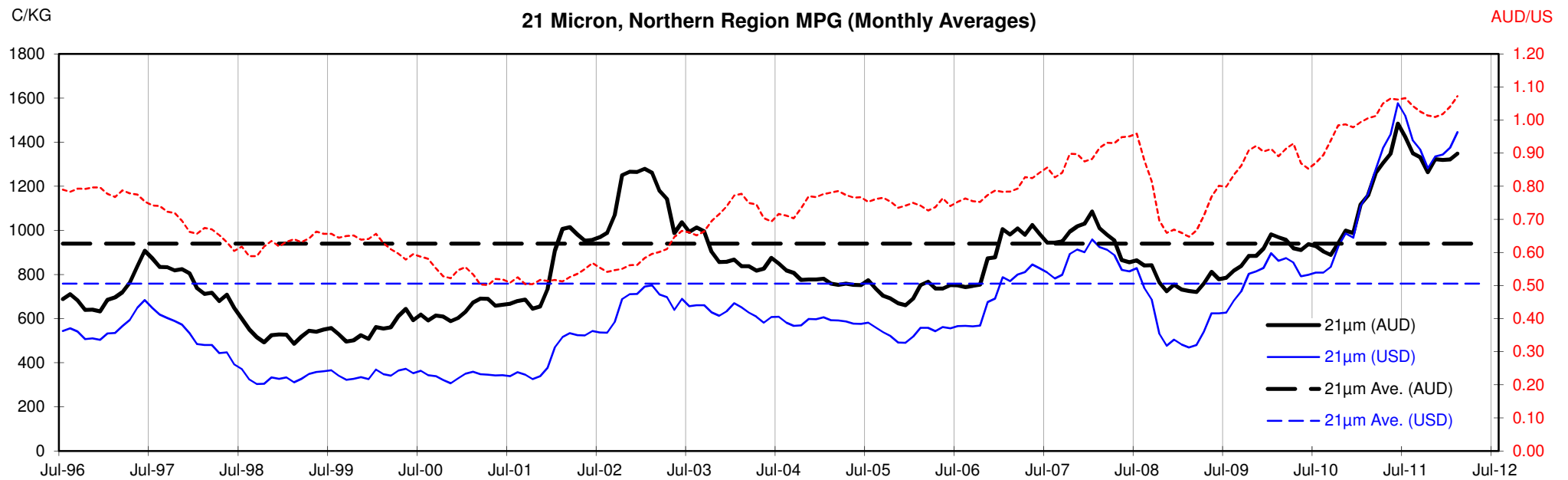


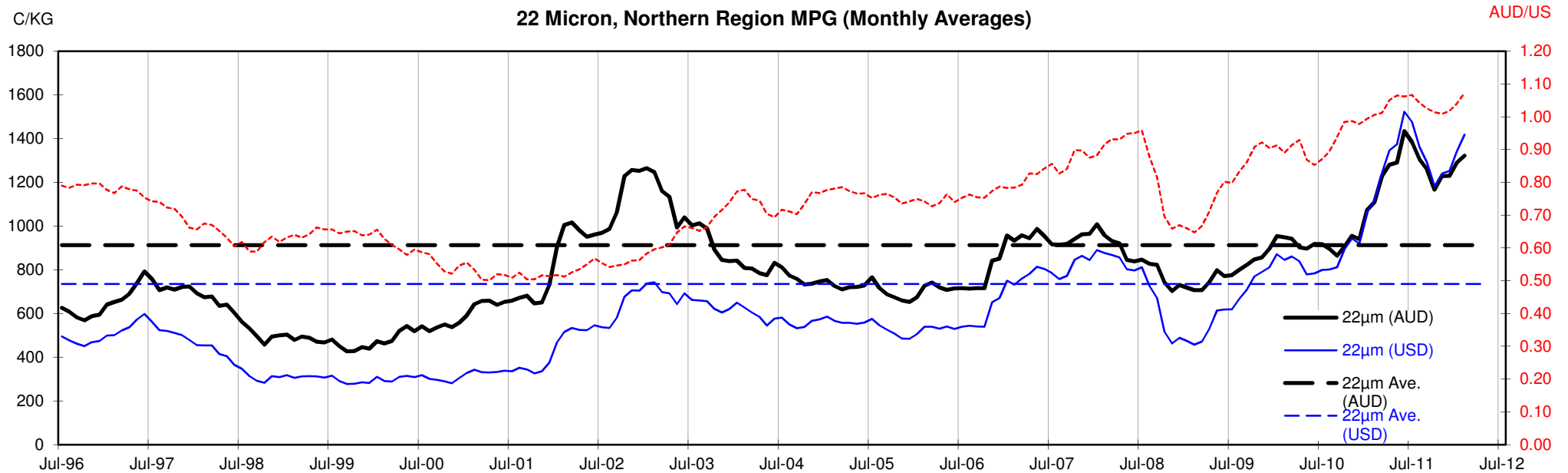
<18.5 micron Wool Production - Million Kg greasy

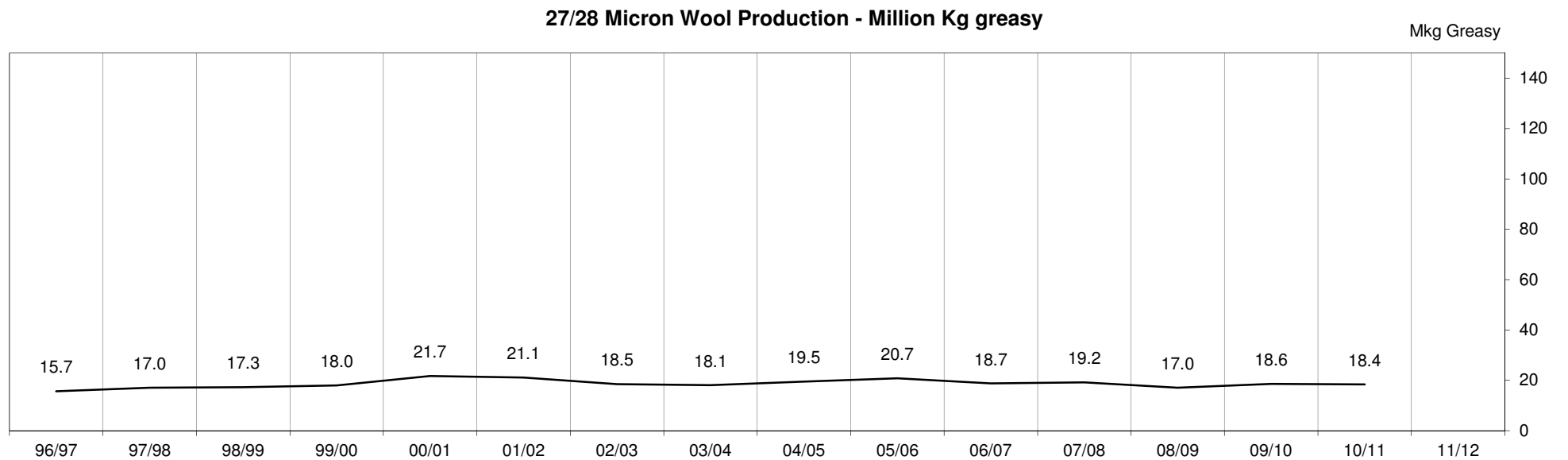
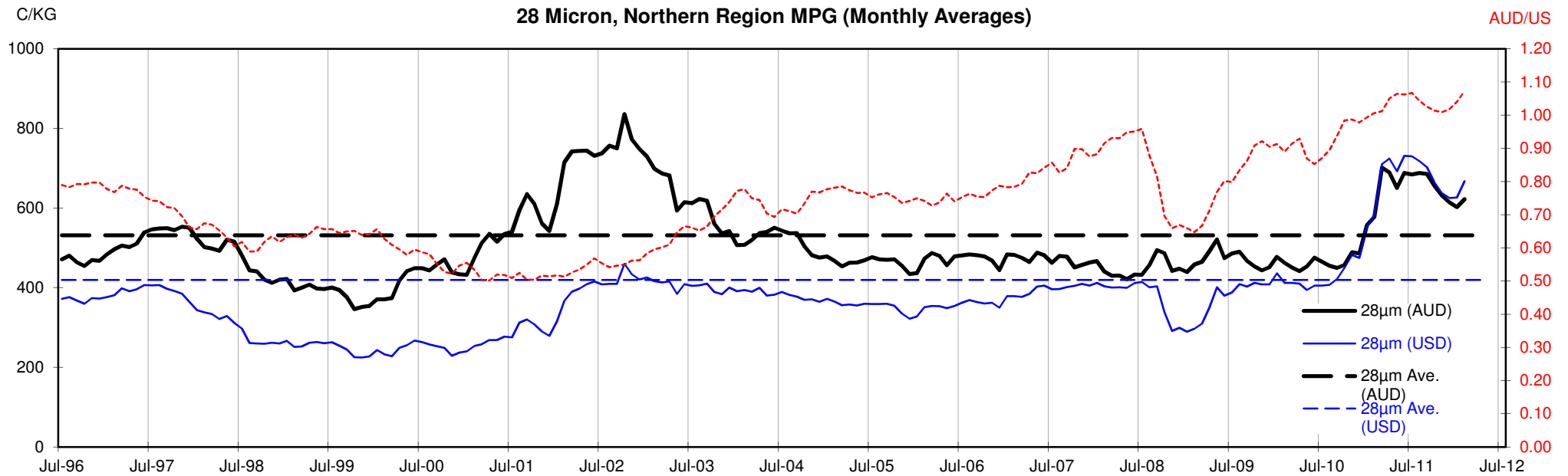














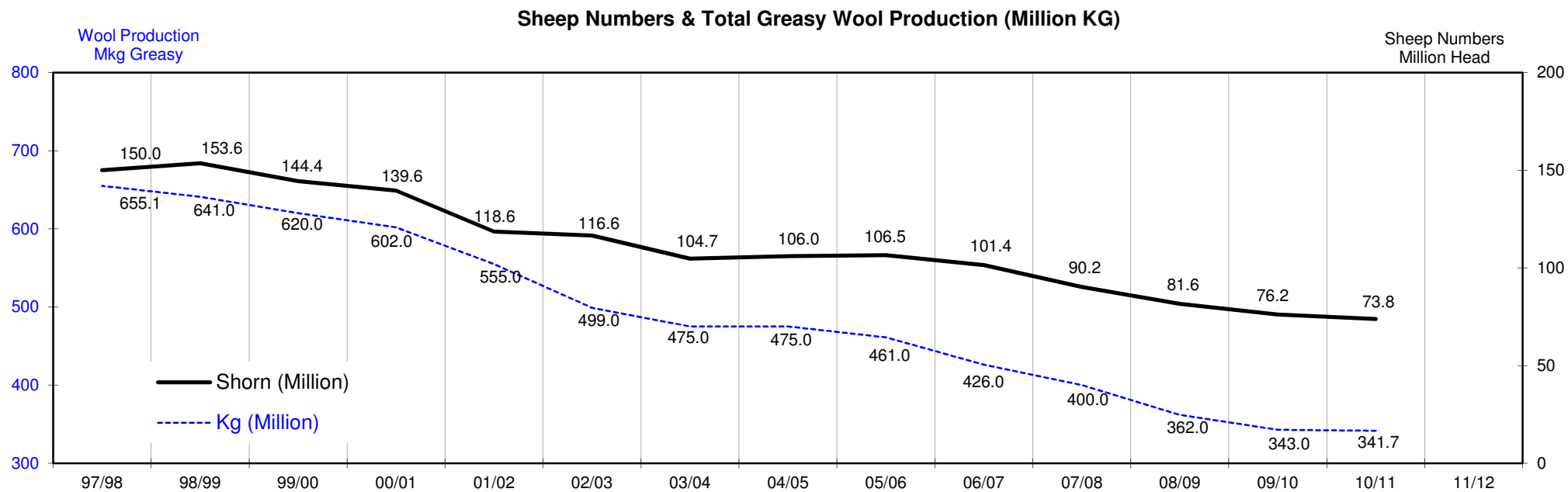
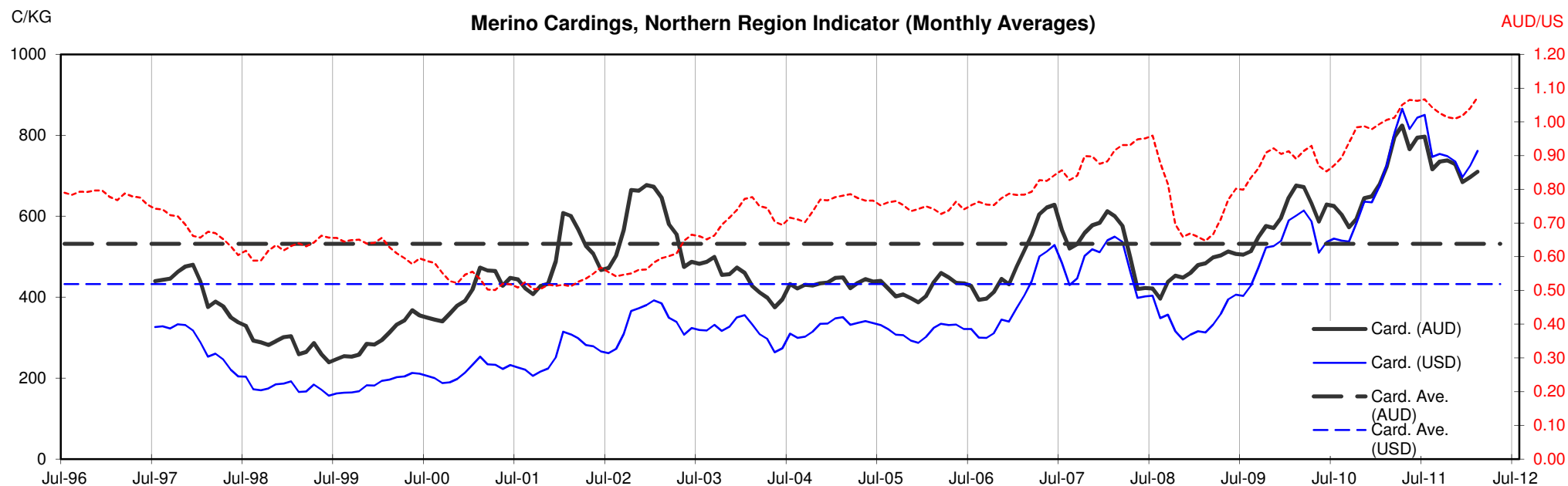




Table 13: Returns pr head for skirted fleece wool.

Skirted FLC Weight		Micron																	
9 Kg		16	16.5	17	17.5	18	18.5	19	19.5	20	21	22	23	24	25	26	28	30	32
Yield (Sch Dry)	25% Current	\$48	\$43	\$38	\$36	\$35	\$34	\$32	\$32	\$31	\$30	\$29	\$29	\$26	\$23	\$18	\$14	\$13	\$11
	10yr ave.			\$33		\$29		\$25		\$22	\$21	\$21	\$20	\$19	\$17	\$15	\$12	\$10	\$9
	30% Current	\$58	\$52	\$46	\$44	\$42	\$40	\$39	\$38	\$37	\$36	\$35	\$35	\$31	\$27	\$22	\$17	\$16	\$14
	10yr ave.			\$39		\$34		\$30		\$26	\$25	\$25	\$24	\$23	\$20	\$18	\$14	\$13	\$11
	35% Current	\$67	\$61	\$54	\$51	\$49	\$47	\$45	\$44	\$43	\$42	\$41	\$41	\$37	\$32	\$26	\$20	\$18	\$16
	10yr ave.			\$46		\$40		\$35		\$31	\$30	\$29	\$28	\$26	\$23	\$21	\$17	\$15	\$13
	40% Current	\$77	\$69	\$61	\$58	\$56	\$54	\$52	\$51	\$49	\$48	\$47	\$46	\$42	\$36	\$30	\$23	\$21	\$18
	10yr ave.			\$52		\$46		\$40		\$35	\$34	\$33	\$32	\$30	\$27	\$24	\$19	\$17	\$15
	45% Current	\$86	\$78	\$69	\$66	\$63	\$60	\$58	\$57	\$55	\$54	\$53	\$52	\$47	\$41	\$33	\$26	\$24	\$21
	10yr ave.			\$59		\$52		\$45		\$40	\$38	\$37	\$36	\$34	\$30	\$27	\$22	\$19	\$17
	50% Current	\$96	\$87	\$77	\$73	\$70	\$67	\$65	\$63	\$62	\$60	\$59	\$58	\$52	\$45	\$37	\$29	\$26	\$23
	10yr ave.			\$65		\$57		\$50		\$44	\$42	\$41	\$40	\$38	\$33	\$30	\$24	\$21	\$19
	55% Current	\$105	\$96	\$84	\$80	\$77	\$74	\$71	\$69	\$68	\$66	\$65	\$64	\$58	\$50	\$41	\$32	\$29	\$25
	10yr ave.			\$72		\$63		\$55		\$49	\$47	\$45	\$44	\$41	\$37	\$34	\$26	\$23	\$21
	60% Current	\$115	\$104	\$92	\$87	\$84	\$81	\$78	\$76	\$74	\$72	\$71	\$69	\$63	\$55	\$44	\$35	\$31	\$27
	10yr ave.			\$78		\$69		\$60		\$53	\$51	\$49	\$48	\$45	\$40	\$37	\$29	\$25	\$23
	65% Current	\$125	\$113	\$99	\$95	\$91	\$87	\$84	\$82	\$80	\$78	\$76	\$75	\$68	\$59	\$48	\$37	\$34	\$30
	10yr ave.			\$85		\$75		\$65		\$57	\$55	\$53	\$52	\$49	\$43	\$40	\$31	\$27	\$24
	70% Current	\$134	\$122	\$107	\$102	\$98	\$94	\$91	\$88	\$86	\$84	\$82	\$81	\$73	\$64	\$52	\$40	\$37	\$32
	10yr ave.			\$91		\$80		\$70		\$62	\$59	\$57	\$56	\$53	\$47	\$43	\$34	\$29	\$26
	75% Current	\$144	\$130	\$115	\$109	\$105	\$101	\$97	\$95	\$92	\$90	\$88	\$87	\$79	\$68	\$55	\$43	\$39	\$34
	10yr ave.			\$98		\$86		\$75		\$66	\$63	\$62	\$60	\$56	\$50	\$46	\$36	\$31	\$28
	80% Current	\$153	\$139	\$122	\$117	\$112	\$107	\$104	\$101	\$98	\$96	\$94	\$93	\$84	\$73	\$59	\$46	\$42	\$37
	10yr ave.			\$104		\$92		\$80		\$71	\$68	\$66	\$64	\$60	\$53	\$49	\$38	\$33	\$30
	85% Current	\$163	\$148	\$130	\$124	\$119	\$114	\$110	\$107	\$105	\$102	\$100	\$98	\$89	\$77	\$63	\$49	\$44	\$39
	10yr ave.			\$111		\$97		\$85		\$75	\$72	\$70	\$68	\$64	\$57	\$52	\$41	\$35	\$32

The above shows estimated returns per head for skirted fleece wool. These figures do not take into account the value of skirtings and oddments and do not take into account discounts that may apply for faults under individual circumstances. These figures are based on a market index of 100% and should be used as a guide only. Returns over \$30 / head for fleece wool are highlighted.

Source: Australian Wool Exchange, Australian Wool Innovation, Sydney Futures Exchange, x-rates.com

Disclaimer: While all due care has been taken in the preparation of this document, no warranty is made as to its accuracy, reliability or completeness. To the extent permitted by law neither Jemalong or their sources including subsidiaries and staff, accept liability to any person for loss or damage arising from the use of this information.



Table 14: Returns pr head for skirted fleece wool.

Skirted FLC Weight		Micron																	
8 Kg		16	16.5	17	17.5	18	18.5	19	19.5	20	21	22	23	24	25	26	28	30	32
Yield (Sch Dry)	25% Current	\$43	\$39	\$34	\$32	\$31	\$30	\$29	\$28	\$27	\$27	\$26	\$26	\$23	\$20	\$16	\$13	\$12	\$10
	10yr ave.			\$29		\$25		\$22		\$20	\$19	\$18	\$18	\$17	\$15	\$14	\$11	\$9	\$8
	30% Current	\$51	\$46	\$41	\$39	\$37	\$36	\$35	\$34	\$33	\$32	\$31	\$31	\$28	\$24	\$20	\$15	\$14	\$12
	10yr ave.			\$35		\$31		\$27		\$24	\$23	\$22	\$21	\$20	\$18	\$16	\$13	\$11	\$10
	35% Current	\$60	\$54	\$48	\$45	\$44	\$42	\$40	\$39	\$38	\$37	\$37	\$36	\$33	\$28	\$23	\$18	\$16	\$14
	10yr ave.			\$41		\$36		\$31		\$27	\$26	\$26	\$25	\$23	\$21	\$19	\$15	\$13	\$12
	40% Current	\$68	\$62	\$54	\$52	\$50	\$48	\$46	\$45	\$44	\$43	\$42	\$41	\$37	\$32	\$26	\$20	\$19	\$16
	10yr ave.			\$46		\$41		\$35		\$31	\$30	\$29	\$28	\$27	\$24	\$22	\$17	\$15	\$13
	45% Current	\$77	\$69	\$61	\$58	\$56	\$54	\$52	\$51	\$49	\$48	\$47	\$46	\$42	\$36	\$30	\$23	\$21	\$18
	10yr ave.			\$52		\$46		\$40		\$35	\$34	\$33	\$32	\$30	\$27	\$24	\$19	\$17	\$15
	50% Current	\$85	\$77	\$68	\$65	\$62	\$60	\$58	\$56	\$55	\$53	\$52	\$51	\$47	\$40	\$33	\$26	\$23	\$20
	10yr ave.			\$58		\$51		\$44		\$39	\$38	\$36	\$35	\$33	\$30	\$27	\$21	\$19	\$17
	55% Current	\$94	\$85	\$75	\$71	\$68	\$66	\$64	\$62	\$60	\$59	\$57	\$57	\$51	\$44	\$36	\$28	\$26	\$22
	10yr ave.			\$64		\$56		\$49		\$43	\$41	\$40	\$39	\$37	\$33	\$30	\$23	\$20	\$18
	60% Current	\$102	\$93	\$82	\$78	\$75	\$72	\$69	\$67	\$66	\$64	\$63	\$62	\$56	\$48	\$39	\$31	\$28	\$24
	10yr ave.			\$70		\$61		\$53		\$47	\$45	\$44	\$42	\$40	\$36	\$32	\$26	\$22	\$20
	65% Current	\$111	\$100	\$88	\$84	\$81	\$78	\$75	\$73	\$71	\$69	\$68	\$67	\$61	\$53	\$43	\$33	\$30	\$26
	10yr ave.			\$75		\$66		\$58		\$51	\$49	\$47	\$46	\$43	\$39	\$35	\$28	\$24	\$22
	70% Current	\$119	\$108	\$95	\$91	\$87	\$84	\$81	\$79	\$77	\$75	\$73	\$72	\$65	\$57	\$46	\$36	\$33	\$28
	10yr ave.			\$81		\$71		\$62		\$55	\$53	\$51	\$50	\$47	\$42	\$38	\$30	\$26	\$23
	75% Current	\$128	\$116	\$102	\$97	\$93	\$90	\$87	\$84	\$82	\$80	\$78	\$77	\$70	\$61	\$49	\$38	\$35	\$30
	10yr ave.			\$87		\$76		\$67		\$59	\$56	\$55	\$53	\$50	\$45	\$41	\$32	\$28	\$25
	80% Current	\$136	\$124	\$109	\$104	\$100	\$95	\$92	\$90	\$88	\$85	\$84	\$82	\$75	\$65	\$53	\$41	\$37	\$33
	10yr ave.			\$93		\$82		\$71		\$63	\$60	\$58	\$57	\$53	\$47	\$43	\$34	\$30	\$27
	85% Current	\$145	\$131	\$116	\$110	\$106	\$101	\$98	\$95	\$93	\$91	\$89	\$87	\$79	\$69	\$56	\$44	\$40	\$35
	10yr ave.			\$99		\$87		\$75		\$67	\$64	\$62	\$60	\$57	\$50	\$46	\$36	\$31	\$28

The above shows estimated returns per head for skirted fleece wool. These figures do not take into account the value of skirtings and oddments and do not take into account discounts that may apply for faults under individual circumstances. These figures are based on a market index of 100% and should be used as a guide only. Returns over \$30 / head for fleece wool are highlighted.

Source: Australian Wool Exchange, Australian Wool Innovation, Sydney Futures Exchange, x-rates.com

Disclaimer: While all due care has been taken in the preparation of this document, no warranty is made as to its accuracy, reliability or completeness. To the extent permitted by law neither Jemalong or their sources including subsidiaries and staff, accept liability to any person for loss or damage arising from the use of this information.



Table 15: Returns pr head for skirted fleece wool.

Skirted FLC Weight			Micron																	
			16	16.5	17	17.5	18	18.5	19	19.5	20	21	22	23	24	25	26	28	30	32
Yield (Sch Dry)	7 Kg																			
	25%	Current	\$37	\$34	\$30	\$28	\$27	\$26	\$25	\$25	\$24	\$23	\$23	\$23	\$20	\$18	\$14	\$11	\$10	\$9
		10yr ave.			\$25		\$22		\$19		\$17	\$16	\$16	\$15	\$15	\$13	\$12	\$9	\$8	\$7
	30%	Current	\$45	\$41	\$36	\$34	\$33	\$31	\$30	\$29	\$29	\$28	\$27	\$27	\$24	\$21	\$17	\$13	\$12	\$11
		10yr ave.			\$30		\$27		\$23		\$21	\$20	\$19	\$19	\$18	\$16	\$14	\$11	\$10	\$9
	35%	Current	\$52	\$47	\$42	\$40	\$38	\$37	\$35	\$34	\$34	\$33	\$32	\$32	\$29	\$25	\$20	\$16	\$14	\$12
		10yr ave.			\$36		\$31		\$27		\$24	\$23	\$22	\$22	\$20	\$18	\$17	\$13	\$11	\$10
	40%	Current	\$60	\$54	\$48	\$45	\$44	\$42	\$40	\$39	\$38	\$37	\$37	\$36	\$33	\$28	\$23	\$18	\$16	\$14
		10yr ave.			\$41		\$36		\$31		\$27	\$26	\$26	\$25	\$23	\$21	\$19	\$15	\$13	\$12
	45%	Current	\$67	\$61	\$54	\$51	\$49	\$47	\$45	\$44	\$43	\$42	\$41	\$41	\$37	\$32	\$26	\$20	\$18	\$16
		10yr ave.			\$46		\$40		\$35		\$31	\$30	\$29	\$28	\$26	\$23	\$21	\$17	\$15	\$13
	50%	Current	\$75	\$68	\$60	\$57	\$54	\$52	\$51	\$49	\$48	\$47	\$46	\$45	\$41	\$35	\$29	\$22	\$20	\$18
		10yr ave.			\$51		\$45		\$39		\$34	\$33	\$32	\$31	\$29	\$26	\$24	\$19	\$16	\$15
	55%	Current	\$82	\$74	\$65	\$62	\$60	\$57	\$56	\$54	\$53	\$51	\$50	\$50	\$45	\$39	\$32	\$25	\$22	\$20
	10yr ave.			\$56		\$49		\$43		\$38	\$36	\$35	\$34	\$32	\$29	\$26	\$20	\$18	\$16	
60%	Current	\$89	\$81	\$71	\$68	\$65	\$63	\$61	\$59	\$57	\$56	\$55	\$54	\$49	\$42	\$34	\$27	\$24	\$21	
	10yr ave.			\$61		\$54		\$47		\$41	\$39	\$38	\$37	\$35	\$31	\$28	\$22	\$19	\$18	
65%	Current	\$97	\$88	\$77	\$74	\$71	\$68	\$66	\$64	\$62	\$61	\$59	\$59	\$53	\$46	\$37	\$29	\$26	\$23	
	10yr ave.			\$66		\$58		\$50		\$45	\$43	\$41	\$40	\$38	\$34	\$31	\$24	\$21	\$19	
70%	Current	\$104	\$95	\$83	\$79	\$76	\$73	\$71	\$69	\$67	\$65	\$64	\$63	\$57	\$49	\$40	\$31	\$28	\$25	
	10yr ave.			\$71		\$62		\$54		\$48	\$46	\$45	\$43	\$41	\$36	\$33	\$26	\$23	\$20	
75%	Current	\$112	\$101	\$89	\$85	\$82	\$78	\$76	\$74	\$72	\$70	\$69	\$68	\$61	\$53	\$43	\$34	\$31	\$27	
	10yr ave.			\$76		\$67		\$58		\$52	\$49	\$48	\$46	\$44	\$39	\$36	\$28	\$24	\$22	
80%	Current	\$119	\$108	\$95	\$91	\$87	\$84	\$81	\$79	\$77	\$75	\$73	\$72	\$65	\$57	\$46	\$36	\$33	\$28	
	10yr ave.			\$81		\$71		\$62		\$55	\$53	\$51	\$50	\$47	\$42	\$38	\$30	\$26	\$23	
85%	Current	\$127	\$115	\$101	\$96	\$93	\$89	\$86	\$83	\$81	\$79	\$78	\$77	\$69	\$60	\$49	\$38	\$35	\$30	
	10yr ave.			\$86		\$76		\$66		\$58	\$56	\$54	\$53	\$50	\$44	\$40	\$32	\$28	\$25	

The above shows estimated returns per head for skirted fleece wool. These figures do not take into account the value of skirtings and oddments and do not take into account discounts that may apply for faults under individual circumstances. These figures are based on a market index of 100% and should be used as a guide only. Returns over \$30 / head for fleece wool are highlighted.

Source: Australian Wool Exchange, Australian Wool Innovation, Sydney Futures Exchange, x-rates.com

Disclaimer: While all due care has been taken in the preparation of this document, no warranty is made as to its accuracy, reliability or completeness. To the extent permitted by law neither Jemalong or their sources including subsidiaries and staff, accept liability to any person for loss or damage arising from the use of this information.



Table 16: Returns pr head for skirted fleece wool.

Skirted FLC Weight		Micron																	
6 Kg		16	16.5	17	17.5	18	18.5	19	19.5	20	21	22	23	24	25	26	28	30	32
Yield (Sch Dry)	25% Current	\$32	\$29	\$26	\$24	\$23	\$22	\$22	\$21	\$21	\$20	\$20	\$19	\$17	\$15	\$12	\$10	\$9	\$8
	10yr ave.			\$22		\$19		\$17		\$15	\$14	\$14	\$13	\$13	\$11	\$10	\$8	\$7	\$6
	30% Current	\$38	\$35	\$31	\$29	\$28	\$27	\$26	\$25	\$25	\$24	\$24	\$23	\$21	\$18	\$15	\$12	\$10	\$9
	10yr ave.			\$26		\$23		\$20		\$18	\$17	\$16	\$16	\$15	\$13	\$12	\$10	\$8	\$8
	35% Current	\$45	\$41	\$36	\$34	\$33	\$31	\$30	\$29	\$29	\$28	\$27	\$27	\$24	\$21	\$17	\$13	\$12	\$11
	10yr ave.			\$30		\$27		\$23		\$21	\$20	\$19	\$19	\$18	\$16	\$14	\$11	\$10	\$9
	40% Current	\$51	\$46	\$41	\$39	\$37	\$36	\$35	\$34	\$33	\$32	\$31	\$31	\$28	\$24	\$20	\$15	\$14	\$12
	10yr ave.			\$35		\$31		\$27		\$24	\$23	\$22	\$21	\$20	\$18	\$16	\$13	\$11	\$10
	45% Current	\$58	\$52	\$46	\$44	\$42	\$40	\$39	\$38	\$37	\$36	\$35	\$35	\$31	\$27	\$22	\$17	\$16	\$14
	10yr ave.			\$39		\$34		\$30		\$26	\$25	\$25	\$24	\$23	\$20	\$18	\$14	\$13	\$11
	50% Current	\$64	\$58	\$51	\$49	\$47	\$45	\$43	\$42	\$41	\$40	\$39	\$39	\$35	\$30	\$25	\$19	\$17	\$15
	10yr ave.			\$44		\$38		\$33		\$29	\$28	\$27	\$27	\$25	\$22	\$20	\$16	\$14	\$13
	55% Current	\$70	\$64	\$56	\$53	\$51	\$49	\$48	\$46	\$45	\$44	\$43	\$42	\$38	\$33	\$27	\$21	\$19	\$17
	10yr ave.			\$48		\$42		\$37		\$32	\$31	\$30	\$29	\$28	\$24	\$22	\$18	\$15	\$14
	60% Current	\$77	\$69	\$61	\$58	\$56	\$54	\$52	\$51	\$49	\$48	\$47	\$46	\$42	\$36	\$30	\$23	\$21	\$18
	10yr ave.			\$52		\$46		\$40		\$35	\$34	\$33	\$32	\$30	\$27	\$24	\$19	\$17	\$15
	65% Current	\$83	\$75	\$66	\$63	\$61	\$58	\$56	\$55	\$53	\$52	\$51	\$50	\$45	\$39	\$32	\$25	\$23	\$20
	10yr ave.			\$57		\$50		\$43		\$38	\$37	\$36	\$34	\$33	\$29	\$26	\$21	\$18	\$16
	70% Current	\$89	\$81	\$71	\$68	\$65	\$63	\$61	\$59	\$57	\$56	\$55	\$54	\$49	\$42	\$34	\$27	\$24	\$21
	10yr ave.			\$61		\$54		\$47		\$41	\$39	\$38	\$37	\$35	\$31	\$28	\$22	\$19	\$18
	75% Current	\$96	\$87	\$77	\$73	\$70	\$67	\$65	\$63	\$62	\$60	\$59	\$58	\$52	\$45	\$37	\$29	\$26	\$23
	10yr ave.			\$65		\$57		\$50		\$44	\$42	\$41	\$40	\$38	\$33	\$30	\$24	\$21	\$19
	80% Current	\$102	\$93	\$82	\$78	\$75	\$72	\$69	\$67	\$66	\$64	\$63	\$62	\$56	\$48	\$39	\$31	\$28	\$24
	10yr ave.			\$70		\$61		\$53		\$47	\$45	\$44	\$42	\$40	\$36	\$32	\$26	\$22	\$20
	85% Current	\$109	\$98	\$87	\$83	\$79	\$76	\$74	\$72	\$70	\$68	\$67	\$66	\$59	\$52	\$42	\$33	\$30	\$26
	10yr ave.			\$74		\$65		\$57		\$50	\$48	\$47	\$45	\$43	\$38	\$35	\$27	\$24	\$21

The above shows estimated returns per head for skirted fleece wool. These figures do not take into account the value of skirtings and oddments and do not take into account discounts that may apply for faults under individual circumstances. These figures are based on a market index of 100% and should be used as a guide only. Returns over \$30 / head for fleece wool are highlighted.

Source: Australian Wool Exchange, Australian Wool Innovation, Sydney Futures Exchange, x-rates.com

Disclaimer: While all due care has been taken in the preparation of this document, no warranty is made as to its accuracy, reliability or completeness. To the extent permitted by law neither Jemalong or their sources including subsidiaries and staff, accept liability to any person for loss or damage arising from the use of this information.



Table 17: Returns pr head for skirted fleece wool.

Skirted FLC Weight		Micron																	
5 Kg		16	16.5	17	17.5	18	18.5	19	19.5	20	21	22	23	24	25	26	28	30	32
Yield (Sch Dry)	25% Current	\$27	\$24	\$21	\$20	\$19	\$19	\$18	\$18	\$17	\$17	\$16	\$16	\$15	\$13	\$10	\$8	\$7	\$6
	10yr ave.			\$18		\$16		\$14		\$12	\$12	\$11	\$11	\$10	\$9	\$8	\$7	\$6	\$5
	30% Current	\$32	\$29	\$26	\$24	\$23	\$22	\$22	\$21	\$21	\$20	\$20	\$19	\$17	\$15	\$12	\$10	\$9	\$8
	10yr ave.			\$22		\$19		\$17		\$15	\$14	\$14	\$13	\$13	\$11	\$10	\$8	\$7	\$6
	35% Current	\$37	\$34	\$30	\$28	\$27	\$26	\$25	\$25	\$24	\$23	\$23	\$23	\$20	\$18	\$14	\$11	\$10	\$9
	10yr ave.			\$25		\$22		\$19		\$17	\$16	\$16	\$15	\$15	\$13	\$12	\$9	\$8	\$7
	40% Current	\$43	\$39	\$34	\$32	\$31	\$30	\$29	\$28	\$27	\$27	\$26	\$26	\$23	\$20	\$16	\$13	\$12	\$10
	10yr ave.			\$29		\$25		\$22		\$20	\$19	\$18	\$18	\$17	\$15	\$14	\$11	\$9	\$8
	45% Current	\$48	\$43	\$38	\$36	\$35	\$34	\$32	\$32	\$31	\$30	\$29	\$29	\$26	\$23	\$18	\$14	\$13	\$11
	10yr ave.			\$33		\$29		\$25		\$22	\$21	\$21	\$20	\$19	\$17	\$15	\$12	\$10	\$9
	50% Current	\$53	\$48	\$43	\$41	\$39	\$37	\$36	\$35	\$34	\$33	\$33	\$32	\$29	\$25	\$21	\$16	\$15	\$13
	10yr ave.			\$36		\$32		\$28		\$25	\$24	\$23	\$22	\$21	\$19	\$17	\$13	\$12	\$10
	55% Current	\$59	\$53	\$47	\$45	\$43	\$41	\$40	\$39	\$38	\$37	\$36	\$35	\$32	\$28	\$23	\$18	\$16	\$14
	10yr ave.			\$40		\$35		\$30		\$27	\$26	\$25	\$24	\$23	\$20	\$19	\$15	\$13	\$11
	60% Current	\$64	\$58	\$51	\$49	\$47	\$45	\$43	\$42	\$41	\$40	\$39	\$39	\$35	\$30	\$25	\$19	\$17	\$15
	10yr ave.			\$44		\$38		\$33		\$29	\$28	\$27	\$27	\$25	\$22	\$20	\$16	\$14	\$13
	65% Current	\$69	\$63	\$55	\$53	\$51	\$48	\$47	\$46	\$44	\$43	\$42	\$42	\$38	\$33	\$27	\$21	\$19	\$17
	10yr ave.			\$47		\$41		\$36		\$32	\$31	\$30	\$29	\$27	\$24	\$22	\$17	\$15	\$14
	70% Current	\$75	\$68	\$60	\$57	\$54	\$52	\$51	\$49	\$48	\$47	\$46	\$45	\$41	\$35	\$29	\$22	\$20	\$18
	10yr ave.			\$51		\$45		\$39		\$34	\$33	\$32	\$31	\$29	\$26	\$24	\$19	\$16	\$15
	75% Current	\$80	\$72	\$64	\$61	\$58	\$56	\$54	\$53	\$51	\$50	\$49	\$48	\$44	\$38	\$31	\$24	\$22	\$19
	10yr ave.			\$54		\$48		\$42		\$37	\$35	\$34	\$33	\$31	\$28	\$25	\$20	\$17	\$16
	80% Current	\$85	\$77	\$68	\$65	\$62	\$60	\$58	\$56	\$55	\$53	\$52	\$51	\$47	\$40	\$33	\$26	\$23	\$20
	10yr ave.			\$58		\$51		\$44		\$39	\$38	\$36	\$35	\$33	\$30	\$27	\$21	\$19	\$17
	85% Current	\$91	\$82	\$72	\$69	\$66	\$63	\$61	\$60	\$58	\$57	\$56	\$55	\$50	\$43	\$35	\$27	\$25	\$22
	10yr ave.			\$62		\$54		\$47		\$42	\$40	\$39	\$38	\$35	\$32	\$29	\$23	\$20	\$18

The above shows estimated returns per head for skirted fleece wool. These figures do not take into account the value of skirtings and oddments and do not take into account discounts that may apply for faults under individual circumstances. These figures are based on a market index of 100% and should be used as a guide only. Returns over \$30 / head for fleece wool are highlighted.

Source: Australian Wool Exchange, Australian Wool Innovation, Sydney Futures Exchange, x-rates.com

Disclaimer: While all due care has been taken in the preparation of this document, no warranty is made as to its accuracy, reliability or completeness. To the extent permitted by law neither Jemalong or their sources including subsidiaries and staff, accept liability to any person for loss or damage arising from the use of this information.



Table 18: Returns pr head for skirted fleece wool.

Skirted FLC Weight		Micron																	
4 Kg		16	16.5	17	17.5	18	18.5	19	19.5	20	21	22	23	24	25	26	28	30	32
Yield (Sch Dry)	25% Current	\$21	\$19	\$17	\$16	\$16	\$15	\$14	\$14	\$14	\$13	\$13	\$13	\$12	\$10	\$8	\$6	\$6	\$5
	10yr ave.			\$15	\$13	\$13	\$11	\$11	\$10	\$9	\$9	\$9	\$8	\$7	\$7	\$5	\$5	\$4	
	30% Current	\$26	\$23	\$20	\$19	\$19	\$18	\$17	\$17	\$16	\$16	\$16	\$15	\$14	\$12	\$10	\$8	\$7	\$6
	10yr ave.			\$17	\$15	\$15	\$13	\$13	\$12	\$11	\$11	\$11	\$10	\$9	\$8	\$6	\$6	\$5	
	35% Current	\$30	\$27	\$24	\$23	\$22	\$21	\$20	\$20	\$19	\$19	\$18	\$18	\$16	\$14	\$11	\$9	\$8	\$7
	10yr ave.			\$20	\$18	\$18	\$16	\$16	\$14	\$13	\$13	\$12	\$12	\$10	\$9	\$7	\$6	\$6	
	40% Current	\$34	\$31	\$27	\$26	\$25	\$24	\$23	\$22	\$22	\$21	\$21	\$21	\$19	\$16	\$13	\$10	\$9	\$8
	10yr ave.			\$23	\$20	\$20	\$18	\$18	\$16	\$15	\$15	\$14	\$13	\$12	\$11	\$9	\$7	\$7	
	45% Current	\$38	\$35	\$31	\$29	\$28	\$27	\$26	\$25	\$25	\$24	\$24	\$23	\$21	\$18	\$15	\$12	\$10	\$9
	10yr ave.			\$26	\$23	\$23	\$20	\$20	\$18	\$17	\$16	\$16	\$15	\$13	\$12	\$10	\$8	\$8	
	50% Current	\$43	\$39	\$34	\$32	\$31	\$30	\$29	\$28	\$27	\$27	\$26	\$26	\$23	\$20	\$16	\$13	\$12	\$10
	10yr ave.			\$29	\$25	\$25	\$22	\$22	\$20	\$19	\$18	\$18	\$17	\$15	\$14	\$11	\$9	\$8	
	55% Current	\$47	\$42	\$37	\$36	\$34	\$33	\$32	\$31	\$30	\$29	\$29	\$28	\$26	\$22	\$18	\$14	\$13	\$11
	10yr ave.			\$32	\$28	\$28	\$24	\$24	\$22	\$21	\$20	\$19	\$18	\$16	\$15	\$12	\$10	\$9	
	60% Current	\$51	\$46	\$41	\$39	\$37	\$36	\$35	\$34	\$33	\$32	\$31	\$31	\$28	\$24	\$20	\$15	\$14	\$12
	10yr ave.			\$35	\$31	\$31	\$27	\$27	\$24	\$23	\$22	\$21	\$20	\$18	\$16	\$13	\$11	\$10	
	65% Current	\$55	\$50	\$44	\$42	\$40	\$39	\$38	\$36	\$36	\$35	\$34	\$33	\$30	\$26	\$21	\$17	\$15	\$13
	10yr ave.			\$38	\$33	\$33	\$29	\$29	\$26	\$24	\$24	\$23	\$22	\$19	\$18	\$14	\$12	\$11	
	70% Current	\$60	\$54	\$48	\$45	\$44	\$42	\$40	\$39	\$38	\$37	\$37	\$36	\$33	\$28	\$23	\$18	\$16	\$14
	10yr ave.			\$41	\$36	\$36	\$31	\$31	\$27	\$26	\$26	\$25	\$23	\$21	\$19	\$15	\$13	\$12	
	75% Current	\$64	\$58	\$51	\$49	\$47	\$45	\$43	\$42	\$41	\$40	\$39	\$39	\$35	\$30	\$25	\$19	\$17	\$15
	10yr ave.			\$44	\$38	\$38	\$33	\$33	\$29	\$28	\$27	\$27	\$25	\$22	\$20	\$16	\$14	\$13	
	80% Current	\$68	\$62	\$54	\$52	\$50	\$48	\$46	\$45	\$44	\$43	\$42	\$41	\$37	\$32	\$26	\$20	\$19	\$16
	10yr ave.			\$46	\$41	\$41	\$35	\$35	\$31	\$30	\$29	\$28	\$27	\$24	\$22	\$17	\$15	\$13	
	85% Current	\$72	\$66	\$58	\$55	\$53	\$51	\$49	\$48	\$47	\$45	\$44	\$44	\$40	\$34	\$28	\$22	\$20	\$17
	10yr ave.			\$49	\$43	\$43	\$38	\$38	\$33	\$32	\$31	\$30	\$28	\$25	\$23	\$18	\$16	\$14	

The above shows estimated returns per head for skirted fleece wool. These figures do not take into account the value of skirtings and oddments and do not take into account discounts that may apply for faults under individual circumstances. These figures are based on a market index of 100% and should be used as a guide only. Returns over \$30 / head for fleece wool are highlighted.

Source: Australian Wool Exchange, Australian Wool Innovation, Sydney Futures Exchange, x-rates.com

Disclaimer: While all due care has been taken in the preparation of this document, no warranty is made as to its accuracy, reliability or completeness. To the extent permitted by law neither Jemalong or their sources including subsidiaries and staff, accept liability to any person for loss or damage arising from the use of this information.





Table 19: Returns pr head for skirted fleece wool.

Skirted FLC Weight		Micron																	
3 Kg		16	16.5	17	17.5	18	18.5	19	19.5	20	21	22	23	24	25	26	28	30	32
Yield (Sch Dry)	25% Current	\$16	\$14	\$13	\$12	\$12	\$11	\$11	\$11	\$10	\$10	\$10	\$10	\$9	\$8	\$6	\$5	\$4	\$4
	10yr ave.			\$11		\$10		\$8		\$7	\$7	\$7	\$7	\$6	\$6	\$5	\$4	\$3	\$3
	30% Current	\$19	\$17	\$15	\$15	\$14	\$13	\$13	\$13	\$12	\$12	\$12	\$12	\$10	\$9	\$7	\$6	\$5	\$5
	10yr ave.			\$13		\$11		\$10		\$9	\$8	\$8	\$8	\$8	\$7	\$6	\$5	\$4	\$4
	35% Current	\$22	\$20	\$18	\$17	\$16	\$16	\$15	\$15	\$14	\$14	\$14	\$14	\$12	\$11	\$9	\$7	\$6	\$5
	10yr ave.			\$15		\$13		\$12		\$10	\$10	\$10	\$9	\$9	\$8	\$7	\$6	\$5	\$4
	40% Current	\$26	\$23	\$20	\$19	\$19	\$18	\$17	\$17	\$16	\$16	\$16	\$15	\$14	\$12	\$10	\$8	\$7	\$6
	10yr ave.			\$17		\$15		\$13		\$12	\$11	\$11	\$11	\$10	\$9	\$8	\$6	\$6	\$5
	45% Current	\$29	\$26	\$23	\$22	\$21	\$20	\$19	\$19	\$18	\$18	\$18	\$17	\$16	\$14	\$11	\$9	\$8	\$7
	10yr ave.			\$20		\$17		\$15		\$13	\$13	\$12	\$12	\$11	\$10	\$9	\$7	\$6	\$6
	50% Current	\$32	\$29	\$26	\$24	\$23	\$22	\$22	\$21	\$21	\$20	\$20	\$19	\$17	\$15	\$12	\$10	\$9	\$8
	10yr ave.			\$22		\$19		\$17		\$15	\$14	\$14	\$13	\$13	\$11	\$10	\$8	\$7	\$6
	55% Current	\$35	\$32	\$28	\$27	\$26	\$25	\$24	\$23	\$23	\$22	\$22	\$21	\$19	\$17	\$14	\$11	\$10	\$8
	10yr ave.			\$24		\$21		\$18		\$16	\$16	\$15	\$15	\$14	\$12	\$11	\$9	\$8	\$7
	60% Current	\$38	\$35	\$31	\$29	\$28	\$27	\$26	\$25	\$25	\$24	\$24	\$23	\$21	\$18	\$15	\$12	\$10	\$9
	10yr ave.			\$26		\$23		\$20		\$18	\$17	\$16	\$16	\$15	\$13	\$12	\$10	\$8	\$8
	65% Current	\$42	\$38	\$33	\$32	\$30	\$29	\$28	\$27	\$27	\$26	\$25	\$25	\$23	\$20	\$16	\$12	\$11	\$10
	10yr ave.			\$28		\$25		\$22		\$19	\$18	\$18	\$17	\$16	\$14	\$13	\$10	\$9	\$8
	70% Current	\$45	\$41	\$36	\$34	\$33	\$31	\$30	\$29	\$29	\$28	\$27	\$27	\$24	\$21	\$17	\$13	\$12	\$11
	10yr ave.			\$30		\$27		\$23		\$21	\$20	\$19	\$19	\$18	\$16	\$14	\$11	\$10	\$9
	75% Current	\$48	\$43	\$38	\$36	\$35	\$34	\$32	\$32	\$31	\$30	\$29	\$29	\$26	\$23	\$18	\$14	\$13	\$11
	10yr ave.			\$33		\$29		\$25		\$22	\$21	\$21	\$20	\$19	\$17	\$15	\$12	\$10	\$9
	80% Current	\$51	\$46	\$41	\$39	\$37	\$36	\$35	\$34	\$33	\$32	\$31	\$31	\$28	\$24	\$20	\$15	\$14	\$12
	10yr ave.			\$35		\$31		\$27		\$24	\$23	\$22	\$21	\$20	\$18	\$16	\$13	\$11	\$10
	85% Current	\$54	\$49	\$43	\$41	\$40	\$38	\$37	\$36	\$35	\$34	\$33	\$33	\$30	\$26	\$21	\$16	\$15	\$13
	10yr ave.			\$37		\$32		\$28		\$25	\$24	\$23	\$23	\$21	\$19	\$17	\$14	\$12	\$11

The above shows estimated returns per head for skirted fleece wool. These figures do not take into account the value of skirtings and oddments and do not take into account discounts that may apply for faults under individual circumstances. These figures are based on a market index of 100% and should be used as a guide only. Returns over \$30 / head for fleece wool are highlighted.

Source: Australian Wool Exchange, Australian Wool Innovation, Sydney Futures Exchange, x-rates.com

Disclaimer: While all due care has been taken in the preparation of this document, no warranty is made as to its accuracy, reliability or completeness. To the extent permitted by law neither Jemalong or their sources including subsidiaries and staff, accept liability to any person for loss or damage arising from the use of this information.





Table 20: Returns pr head for skirted fleece wool.

Skirted FLC Weight		Micron																	
2 Kg		16	16.5	17	17.5	18	18.5	19	19.5	20	21	22	23	24	25	26	28	30	32
Yield (Sch Dry)	25% Current	\$11	\$10	\$9	\$8	\$8	\$7	\$7	\$7	\$7	\$7	\$7	\$6	\$6	\$5	\$4	\$3	\$3	\$3
	10yr ave.			\$7		\$6		\$6		\$5	\$5	\$5	\$4	\$4	\$4	\$3	\$3	\$2	\$2
	30% Current	\$13	\$12	\$10	\$10	\$9	\$9	\$9	\$8	\$8	\$8	\$8	\$8	\$7	\$6	\$5	\$4	\$3	\$3
	10yr ave.			\$9		\$8		\$7		\$6	\$6	\$5	\$5	\$5	\$4	\$4	\$3	\$3	\$3
	35% Current	\$15	\$14	\$12	\$11	\$11	\$10	\$10	\$10	\$10	\$9	\$9	\$9	\$8	\$7	\$6	\$4	\$4	\$4
	10yr ave.			\$10		\$9		\$8		\$7	\$7	\$6	\$6	\$6	\$5	\$5	\$4	\$3	\$3
	40% Current	\$17	\$15	\$14	\$13	\$12	\$12	\$12	\$11	\$11	\$11	\$10	\$10	\$9	\$8	\$7	\$5	\$5	\$4
	10yr ave.			\$12		\$10		\$9		\$8	\$8	\$7	\$7	\$7	\$6	\$5	\$4	\$4	\$3
	45% Current	\$19	\$17	\$15	\$15	\$14	\$13	\$13	\$13	\$12	\$12	\$12	\$12	\$10	\$9	\$7	\$6	\$5	\$5
	10yr ave.			\$13		\$11		\$10		\$9	\$8	\$8	\$8	\$8	\$7	\$6	\$5	\$4	\$4
	50% Current	\$21	\$19	\$17	\$16	\$16	\$15	\$14	\$14	\$14	\$13	\$13	\$13	\$12	\$10	\$8	\$6	\$6	\$5
	10yr ave.			\$15		\$13		\$11		\$10	\$9	\$9	\$9	\$8	\$7	\$7	\$5	\$5	\$4
	55% Current	\$23	\$21	\$19	\$18	\$17	\$16	\$16	\$15	\$15	\$15	\$14	\$14	\$13	\$11	\$9	\$7	\$6	\$6
	10yr ave.			\$16		\$14		\$12		\$11	\$10	\$10	\$10	\$9	\$8	\$7	\$6	\$5	\$5
	60% Current	\$26	\$23	\$20	\$19	\$19	\$18	\$17	\$17	\$16	\$16	\$16	\$15	\$14	\$12	\$10	\$8	\$7	\$6
	10yr ave.			\$17		\$15		\$13		\$12	\$11	\$11	\$11	\$10	\$9	\$8	\$6	\$6	\$5
	65% Current	\$28	\$25	\$22	\$21	\$20	\$19	\$19	\$18	\$18	\$17	\$17	\$17	\$15	\$13	\$11	\$8	\$8	\$7
	10yr ave.			\$19		\$17		\$14		\$13	\$12	\$12	\$11	\$11	\$10	\$9	\$7	\$6	\$5
	70% Current	\$30	\$27	\$24	\$23	\$22	\$21	\$20	\$20	\$19	\$19	\$18	\$18	\$16	\$14	\$11	\$9	\$8	\$7
	10yr ave.			\$20		\$18		\$16		\$14	\$13	\$13	\$12	\$12	\$10	\$9	\$7	\$6	\$6
	75% Current	\$32	\$29	\$26	\$24	\$23	\$22	\$22	\$21	\$21	\$20	\$20	\$19	\$17	\$15	\$12	\$10	\$9	\$8
	10yr ave.			\$22		\$19		\$17		\$15	\$14	\$14	\$13	\$13	\$11	\$10	\$8	\$7	\$6
	80% Current	\$34	\$31	\$27	\$26	\$25	\$24	\$23	\$22	\$22	\$21	\$21	\$21	\$19	\$16	\$13	\$10	\$9	\$8
	10yr ave.			\$23		\$20		\$18		\$16	\$15	\$15	\$14	\$13	\$12	\$11	\$9	\$7	\$7
	85% Current	\$36	\$33	\$29	\$28	\$26	\$25	\$25	\$24	\$23	\$23	\$22	\$22	\$20	\$17	\$14	\$11	\$10	\$9
	10yr ave.			\$25		\$22		\$19		\$17	\$16	\$16	\$15	\$14	\$13	\$12	\$9	\$8	\$7

The above shows estimated returns per head for skirted fleece wool. These figures do not take into account the value of skirtings and oddments and do not take into account discounts that may apply for faults under individual circumstances. These figures are based on a market index of 100% and should be used as a guide only. Returns over \$30 / head for fleece wool are highlighted.

Source: Australian Wool Exchange, Australian Wool Innovation, Sydney Futures Exchange, x-rates.com

Disclaimer: While all due care has been taken in the preparation of this document, no warranty is made as to its accuracy, reliability or completeness. To the extent permitted by law neither Jemalong or their sources including subsidiaries and staff, accept liability to any person for loss or damage arising from the use of this information.