



**Table 1: Northern Region Micron Price Guides**

WEEK 47			12 MONTH COMPARISONS								3 YEAR COMPARISONS					10 YEAR COMPARISONS				
22/05/2024 15/05/2024			23/05/2023	Now	Now			Now					Now		Percentile			Now		Percentile
Current	Weekly		This time	compared	12 Month	compared	12 Month	compared				compared				10 year	compared			
MPG	Price	Change	Last Year	to Last Year	Low	to Low	High	to High	Low	High	Average	to 3yr ave		Low	High	Average	to 10yr ave			
NRI	1171	-6 -0.5%	1301	-130 -10%	1156	+15 1%	1301	-130 -10%	1156	1568	1359	-188 -14%	4%	749	2163	1445	-274 -19%	45%		
15*	2450	-25 -1.0%	2975	-525 -18%	2450	0 0%	2975	-525 -18%	2450	3750	3071	-621 -20%	36%	1698	3750	2874	-424 -15%	54%		
15.5*	2175	-100 -4.4%	2800	-625 -22%	2175	0 0%	2800	-625 -22%	2175	3450	2832	-657 -23%	29%	1507	3450	2552	-377 -15%	54%		
16*	1912	0	2415	-503 -21%	1900	+12 1%	2415	-503 -21%	1900	3250	2560	-648 -25%	5%	1325	3300	2243	-331 -15%	54%		
16.5	1781	-12 -0.7%	2355	-574 -24%	1755	+26 1%	2355	-574 -24%	1755	2952	2392	-611 -26%	2%	1276	3187	2143	-362 -17%	49%		
17	1685	-7 -0.4%	2092	-407 -19%	1650	+35 2%	2092	-407 -19%	1650	2749	2224	-539 -24%	2%	1192	3008	2041	-356 -17%	54%		
17.5	1592	+4 0.3%	1935	-343 -18%	1567	+25 2%	1935	-343 -18%	1567	2514	2048	-456 -22%	4%	1116	2845	1944	-352 -18%	54%		
18	1506	+1 0.1%	1838	-332 -18%	1492	+14 1%	1838	-332 -18%	1492	2246	1872	-366 -20%	3%	1050	2708	1841	-335 -18%	51%		
18.5	1443	-11 -0.8%	1660	-217 -13%	1424	+19 1%	1660	-217 -13%	1424	2042	1721	-278 -16%	3%	1000	2591	1745	-302 -17%	49%		
19	1408	+2 0.1%	1544	-136 -9%	1382	+26 2%	1544	-136 -9%	1382	1830	1591	-183 -12%	9%	917	2465	1653	-245 -15%	52%		
19.5	1359	-19 -1.4%	1495	-136 -9%	1334	+25 2%	1495	-136 -9%	1334	1675	1487	-128 -9%	8%	835	2404	1586	-227 -14%	51%		
20	1324	-27 -2.0%	1419	-95 -7%	1291	+33 3%	1422	-98 -7%	1291	1586	1399	-75 -5%	11%	749	2391	1529	-205 -13%	52%		
21	1286	-20 -1.5%	1380	-94 -7%	1242	+44 4%	1380	-94 -7%	1224	1529	1332	-46 -3%	20%	722	2368	1482	-196 -13%	54%		
22	1276	-29 -2.2%	1344	-68 -5%	1200	+76 6%	1344	-68 -5%	1190	1465	1289	-13 -1%	46%	702	2342	1450	-174 -12%	61%		
23	1081	-20 -1.8%	1096	-15 -1%	960	+121 13%	1130	-49 -4%	960	1268	1107	-26 -2%	29%	682	2316	1362	-281 -21%	38%		
24	861	-9 -1.0%	866	-5 -1%	766	+95 12%	937	-76 -8%	766	1060	918	-57 -6%	17%	662	2114	1223	-362 -30%	29%		
25	694	+2 0.3%	718	-24 -3%	650	+44 7%	780	-86 -11%	650	924	788	-94 -12%	17%	569	1801	1052	-358 -34%	20%		
26	518	+13 2.6%	465	+53 11%	465	+53 11%	611	-93 -15%	465	806	619	-101 -16%	18%	465	1545	922	-404 -44%	3%		
28	355	0	320	+35 11%	290	+65 22%	408	-53 -13%	290	530	379	-24 -6%	44%	320	1318	668	-313 -47%	7%		
30	328	-2 -0.6%	292	+36 12%	255	+73 29%	370	-42 -11%	255	421	332	-4 -1%	46%	288	998	559	-231 -41%	7%		
32	285	+3 1.1%	235	+50 21%	227	+58 26%	320	-35 -11%	210	320	257	+28 11%	80%	215	762	420	-135 -32%	18%		
MC	714	0	758	-44 -6%	689	+25 4%	758	-44 -6%	689	1011	841	-127 -15%	20%	394	1563	995	-281 -28%	37%		
AU BALES OFFERED		35,518	* 16.5 is the lowest Micron Price Guide (MPG) published by The Australian Wool Exchange (AWEX). Therefore MPG's below 16.5 micron are an estimate based on the best available information at the time of publication. Likewise, for any category where there is insufficient quantity offered to enable AWEX to quote, a quote will also be provided.																	
AU BALES SOLD		33,310																		
AU PASSED-IN%		6.2%	* Recording of 15 & 15.5 micron commenced in October 2017, and as a result some historic data is not yet available for those MPG's. Where historic data is not available an estimate based on '16 micron statistics' and incorporating the existing 15 & 15.5 micron data, will be provided as a guide.																	
AUD/USD		0.6674 0.4%																		

Source: Australian Wool Exchange, Australian Wool Innovation, Riemann, x-rates.com, Reserve Bank of Australia, Australian Wool Testing Authority, Australian Bureau Statistics (ABS), Woolmark.

Disclaimer: Jemalong Wool Pty Ltd make no representations about the content and suitability of the information contained in this report. Specifically, Jemalong Wool does not warrant, guarantee or make any representations regarding the correctness, accuracy, reliability, currency, or any other aspect regarding characteristics or use of information presented in these materials. The user accepts sole responsibility and risk associated with the use and results of these materials, irrespective of the purpose of which such use or results are applied. In no event shall Jemalong Wool be liable for any loss or damages arising out of or in connection with the use of these materials.

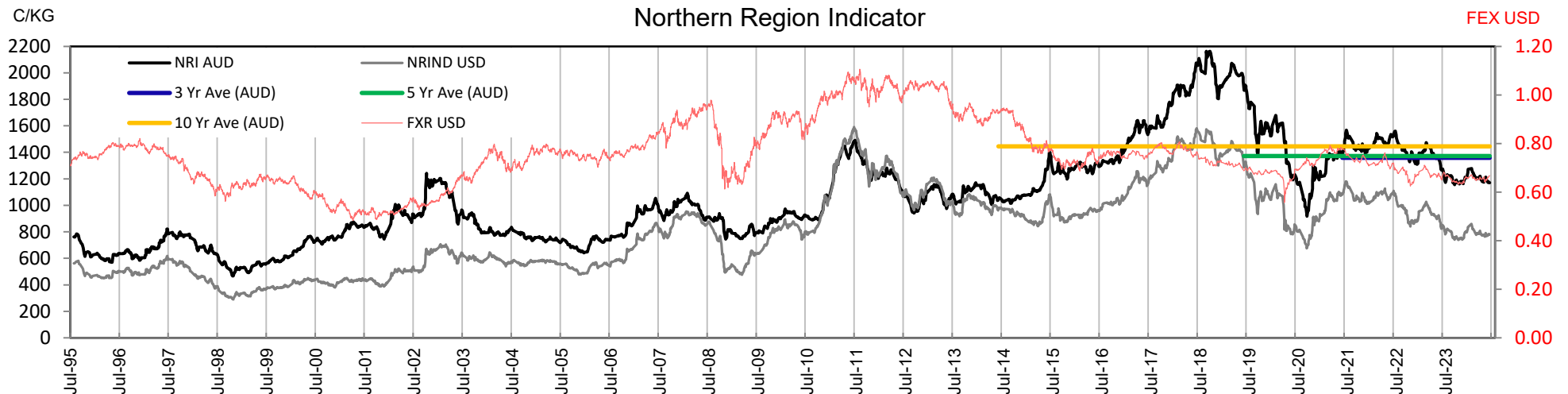
Copyright © Jemalong Wool Pty Ltd, 2006-2024. Apart from any use permitted under the Copyright Act 1968, no part may be copied or reproduced by any process nor stored electronically without the written permission of Jemalong Wool Pty Ltd. This report has been compiled by Jemalong Wool Pty Ltd for internal use and for the benefit of Jemalong Wool clients. You should only read this report if you are authorised to do so, if you are not authorised then you must destroy all electronic and paper copies immediately. Under no circumstance are you permitted to forward this report to a third-party.

**MARKET COMMENTARY** Source: AWEX

The market fell again this series, although the reduction was marginal and there were positive movements within certain pockets. Merino fleece movements were varied, with individual MPGs ranging between plus 4 and minus 29 cents. Mixed results in the oddments, skirtings, and crossbreds left the EMI down 5 cents for the series.

The EMI opened the 2024 calendar year at 1,212 cents, the EMI is now trading at 1,130 cents, a fall of 82 cents, which equates to a 6.8% reduction. That said, the EMI is now sitting marginally higher than the beginning of the season. The EMI opened the 2023/24 season (beginning of July 2023) at 1,126 cents.

Next week's offering is forecast to fall below 35,000 bales. There are currently 33,164 bales expected to be on offer in Sydney, Melbourne and Fremantle. Even if this full quantity is realised, it will be the smallest sale since January.





**Table 2: Three Year Decile Table, since: 1/05/2021**

Decile	%	16	16.5	17	17.5	18	18.5	19	19.5	20	21	22	23	24	25	26	28	30	32	MC
1	10%	1950	1841	1722	1618	1529	1459	1409	1366	1323	1275	1206	1019	808	684	489	328	295	222	701
2	20%	2025	1931	1787	1677	1579	1500	1432	1382	1335	1285	1230	1065	867	699	520	340	305	240	714
3	30%	2187	2035	1930	1789	1659	1567	1491	1432	1354	1299	1253	1083	879	731	539	348	317	242	748
4	40%	2515	2338	2199	2020	1849	1688	1570	1477	1369	1310	1270	1100	900	760	570	353	325	247	857
5	50%	2600	2430	2300	2115	1948	1775	1624	1498	1386	1316	1283	1108	933	794	611	365	330	250	867
6	60%	2795	2598	2396	2197	2003	1822	1657	1519	1402	1323	1302	1122	945	821	656	384	337	257	881
7	70%	2875	2652	2445	2251	2032	1854	1680	1542	1427	1343	1315	1137	958	843	689	405	343	271	899
8	80%	2983	2798	2595	2335	2090	1883	1702	1561	1456	1380	1336	1153	975	864	725	415	355	285	929
9	90%	3062	2852	2638	2395	2145	1929	1737	1591	1511	1431	1382	1172	1000	885	758	442	370	300	964
10	100%	3250	2952	2749	2514	2246	2042	1830	1675	1586	1529	1465	1268	1060	924	806	530	421	320	1011
MPG		1912	1781	1685	1592	1506	1443	1408	1359	1324	1286	1276	1081	861	694	518	355	328	285	714
3 Yr Percentile		5%	2%	2%	4%	3%	3%	9%	8%	11%	20%	46%	29%	17%	17%	18%	44%	46%	80%	20%

**Table 3: Ten Year Decile Table, sinc 1/05/2014**

Decile	%	16	16.5	17	17.5	18	18.5	19	19.5	20	21	22	23	24	25	26	28	30	32	MC
1	10%	1456	1375	1261	1202	1157	1103	1036	961	896	855	834	811	763	655	561	390	338	250	496
2	20%	1530	1441	1312	1275	1217	1171	1111	1055	1002	963	929	896	821	690	597	445	370	295	581
3	30%	1575	1502	1383	1337	1291	1251	1191	1145	1111	1085	1058	998	865	728	626	467	399	337	656
4	40%	1625	1576	1484	1455	1394	1322	1272	1232	1197	1176	1156	1090	954	828	694	485	423	361	728
5	50%	1775	1783	1601	1557	1499	1447	1392	1354	1305	1262	1221	1125	1002	871	769	579	505	396	788
6	60%	2025	1974	1773	1669	1582	1518	1468	1420	1358	1308	1271	1163	1063	907	814	648	576	448	858
7	70%	2255	2268	2103	1984	1850	1722	1607	1493	1404	1350	1318	1238	1119	984	883	685	617	491	926
8	80%	2575	2499	2338	2200	2042	1869	1712	1588	1500	1444	1398	1350	1252	1128	1043	784	655	552	1067
9	90%	2855	2733	2536	2391	2203	2070	1923	1823	1775	1753	1718	1638	1504	1264	1150	880	730	603	1160
10	100%	3300	3187	3008	2845	2708	2591	2465	2404	2391	2368	2342	2316	2114	1801	1545	1318	998	762	1563
MPG		1912	1781	1685	1592	1506	1443	1408	1359	1324	1286	1276	1081	861	694	518	355	328	285	714
10 Yr Percentile		54%	49%	54%	54%	51%	49%	52%	51%	52%	54%	61%	38%	29%	20%	3%	7%	7%	18%	37%

**Definitions:**

\* A Percentile, is a value on a scale of one hundred that indicates the percent of a distribution that is equal to or below it. In general a percentile between 25% and 75% is considered normal, a percentile below 25% is considered below normal and a percentile above 75% is considered above normal.

Three and ten year percentiles shown on the bottom line of table 2 & 3 (above) and in table 1 (on page 1), detail the amount of time during the past 3 & 10 years where the market has traded either at or below its current price.

\* Deciles are a method of sorting ranked data into 10 equal groups. The data may be ranked from largest to smallest or vice versa.

The above Decile tables sort price Percentiles into 10 equal groups (in ascending order), with table 2 ranking the previous 3 years prices, while table 3 ranks prices over the previous 10 years

**Example:** In Table 2, a Decile Rank of 6 for 19 microns, shows 19 microns have traded at or below 1657 for 60% of the time, over the past three years.

In Table 3, a Decile Rank of 6 for 19 microns, shows 19 microns have traded at or below 1468 for 60% of the time, over the past ten years.



**Table 4: Riemann Forwards, as at: 22/05/24** **Any highlighted in yellow are recent trades, trading since: Thursday, 16 May 2024**

MICRON (Total Traded = 48)		18um (0 Traded)	18.5um (1 Traded)	19um (31 Traded)	19.5um (7 Traded)	21um (9 Traded)	22um (0 Traded)	23um (0 Traded)	28um (0 Traded)	30um (0 Traded)
FORWARD CONTRACT MONTH	May-2024 (13)			23/04/24 <b>1455</b> (2)	23/04/24 <b>1425</b> (6)	23/04/24 <b>1355</b> (5)				
	Jun-2024 (6)			16/04/24 <b>1445</b> (5)		16/04/24 <b>1335</b> (1)				
	Jul-2024 (9)		22/05/24 <b>1455</b> (1)	11/04/24 <b>1455</b> (6)		22/05/24 <b>1300</b> (2)				
	Aug-2024 (3)			28/08/23 <b>1480</b> (3)						
	Sep-2024 (5)			25/08/23 <b>1480</b> (4)		31/01/23 <b>1400</b> (1)				
	Oct-2024 (1)			28/08/23 <b>1480</b> (1)						
	Nov-2024 (1)			28/08/23 <b>1480</b> (1)						
	Dec-2024 (1)			28/08/23 <b>1480</b> (1)						
	Jan-2025 (2)			14/12/23 <b>1505</b> (2)						
	Feb-2025 (1)			27/09/23 <b>1470</b> (1)						
	Mar-2025 (2)			27/03/24 <b>1470</b> (1)	15/03/24 <b>1500</b> (1)					
	Apr-2025 (1)			8/04/24 <b>1470</b> (1)						
	May-2025 (1)			8/04/24 <b>1470</b> (1)						
	Jun-2025									
	Jul-2025 (1)			8/04/24 <b>1470</b> (1)						
	Aug-2025									
	Sep-2025 (1)			31/01/23 <b>1670</b> (1)						
	Oct-2025									
	Nov-2025									
	Dec-2025									
	Jan-2026									
	Feb-2026									
	Mar-2026									

Explanatory Notes: Prices quoted reflect the most recent trades, at time of print.

Disclaimer: While all due care has been taken in the preparation of this document, no warranty is made as to its accuracy, reliability or completeness. To the extent permitted by law neither Jemalong or their sources including subsidiaries and staff, accept liability to any person for loss or damage arising from the use of this information.





**Table 6: National Market Share**

	Rank	Current Selling Week Week 47			Previous Selling Week Week 46			Last Season 2022-23			2 Years Ago 2021-22			3 Years Ago 2020-21			5 Years Ago 2018-19			10 Years Ago 2013-14		
		Buyer	Bales	MS%	Buyer	Bales	MS%	Buyer	Bales	MS%	Buyer	Bales	MS%	Buyer	Bales	MS%	Buyer	Bales	MS%	Buyer	Bales	MS%
Top 10, Auction Buyers	1	TIAM	4,623	14%	TECM	4,804	14%	TECM	236,574	15%	TECM	249,539	16%	TECM	228,018	15%	TECM	183,590	12%	TECM	205,136	13%
	2	EWES	4,121	12%	EWES	4,281	13%	EWES	184,465	11%	EWES	149,341	9%	EWES	159,908	10%	FOXM	137,101	9%	FOXM	134,581	8%
	3	TECM	3,844	12%	TIAM	3,442	10%	TIAM	165,940	10%	TIAM	141,971	9%	FOXM	129,251	8%	TIAM	125,963	8%	CTXS	122,964	8%
	4	FOXM	3,169	10%	PMWF	2,477	7%	FOXM	114,903	7%	FOXM	124,824	8%	TIAM	121,176	8%	SETS	117,207	8%	AMEM	111,263	7%
	5	PMWF	2,776	8%	FOXM	2,059	6%	AMEM	94,128	6%	PMWF	103,975	6%	UWCM	100,677	6%	AMEM	112,113	8%	LEMM	109,224	7%
	6	SMAM	2,308	7%	AMEM	1,967	6%	PMWF	92,939	6%	AMEM	94,736	6%	LEMM	98,471	6%	EWES	94,720	6%	TIAM	105,736	7%
	7	UWCM	1,888	6%	UWCM	1,943	6%	UWCM	81,113	5%	SMAM	77,361	5%	AMEM	90,244	6%	KATS	85,234	6%	QCTB	88,700	5%
	8	PEAM	1,848	6%	SMAM	1,906	6%	SMAM	81,046	5%	UWCM	72,834	5%	PMWF	84,389	5%	PMWF	80,474	5%	MODM	79,977	5%
	9	AMEM	1,366	4%	MEWS	1,783	5%	PEAM	76,571	5%	MODM	65,816	4%	MODM	70,426	4%	UWCM	65,978	4%	PMWF	77,875	5%
	10	MODM	1,081	3%	MODM	1,488	4%	MEWS	64,650	4%	MCHA	65,536	4%	KATS	63,487	4%	MCHA	63,262	4%	GSAS	54,462	3%
MFLC TOP 5	1	TIAM	3,403	18%	TECM	2,584	14%	TECM	128,047	15%	TECM	142,007	16%	TECM	131,264	15%	SETS	109,434	13%	TECM	106,291	12%
	2	PMWF	2,557	14%	TIAM	2,396	13%	TIAM	115,988	14%	TIAM	111,323	13%	TIAM	93,870	10%	TECM	99,231	12%	CTXS	87,889	10%
	3	EWES	2,441	13%	EWES	2,291	13%	EWES	93,911	11%	PMWF	100,286	11%	EWES	83,559	9%	TIAM	80,594	10%	LEMM	82,374	9%
	4	SMAM	1,886	10%	PMWF	2,187	12%	PMWF	87,904	10%	EWES	71,533	8%	LEMM	81,281	9%	PMWF	72,193	9%	FOXM	80,423	9%
	5	TECM	1,655	9%	MEWS	1,742	10%	MEWS	63,681	7%	FOXM	57,425	6%	PMWF	80,872	9%	FOXM	65,851	8%	PMWF	69,890	8%
MSKT TOP 5	1	EWES	1,012	19%	EWES	1,209	22%	EWES	46,781	18%	TECM	49,174	20%	TECM	42,521	18%	AMEM	35,047	17%	TIAM	47,607	19%
	2	TIAM	894	17%	TIAM	890	16%	TECM	45,453	17%	EWES	37,117	15%	UWCM	34,928	14%	TECM	32,363	15%	TECM	31,474	12%
	3	TECM	765	14%	TECM	857	16%	TIAM	36,973	14%	TIAM	25,176	10%	EWES	34,884	14%	TIAM	30,903	15%	AMEM	29,775	12%
	4	FOXM	626	12%	FOXM	418	8%	SMAM	18,671	7%	AMEM	22,149	9%	WCWF	21,915	9%	EWES	26,210	12%	MODM	23,791	9%
	5	AMEM	445	8%	AMEM	405	7%	FOXM	17,752	7%	SMAM	16,956	7%	TIAM	18,193	8%	MODM	16,112	8%	GSAS	13,843	5%
XB TOP 5	1	TECM	942	18%	TECM	894	16%	PEAM	54,447	1600%	PEAM	41,337	1500%	MODM	34,090	900%	TECM	35,843	200%	TECM	40,364	200%
	2	PEAM	712	13%	PEAM	753	14%	TECM	41,194	200%	TECM	39,558	100%	TECM	33,794	100%	FOXM	35,810	800%	CTXS	34,779	2000%
	3	MODM	594	11%	MODM	719	13%	MODM	28,282	1100%	MODM	29,690	900%	PEAM	30,636	1200%	EWES	20,980	400%	FOXM	24,218	700%
	4	MAFM	390	7%	EWES	492	9%	EWES	25,981	100%	FOXM	27,002	600%	EWES	22,525	300%	MODM	19,069	500%	MODM	21,512	400%
	5	UWCM	369	7%	UWCM	414	7%	UWCM	23,318	700%	EWES	22,497	200%	UWCM	18,968	200%	AMEM	17,248	100%	AMEM	20,336	300%
ODDS TOP 5	1	UWCM	669	17%	UWCM	793	20%	MCHA	29,569	16%	FOXM	24,503	13%	FOXM	25,868	13%	MCHA	37,911	21%	MCHA	36,085	17%
	2	FOXM	589	15%	TECM	469	12%	UWCM	29,451	16%	MCHA	24,204	13%	MCHA	23,579	12%	VWPM	26,672	15%	TECM	27,007	13%
	3	TECM	482	12%	FOXM	439	11%	TECM	21,880	12%	UWCM	23,550	12%	UWCM	21,008	11%	FOXM	26,591	15%	VWPM	22,432	11%
	4	EWES	336	8%	MCHA	334	8%	EWES	17,792	9%	TECM	18,800	10%	TECM	20,439	11%	EWES	16,659	9%	FOXM	18,811	9%
	5	AMEM	282	7%	EWES	289	7%	FOXM	16,585	9%	VWPM	18,708	10%	EWES	18,940	10%	TECM	16,153	9%	RWRS	13,524	6%
Auction Totals		<u>Bales Sold</u>	<u>\$/Bale</u>		<u>Bales Sold</u>	<u>\$/Bale</u>		<u>Bales Sold</u>	<u>\$/Bale</u>		<u>Bales Sold</u>	<u>\$/Bale</u>		<u>Bales Sold</u>	<u>\$/Bale</u>		<u>Bales Sold</u>	<u>\$/Bale</u>		<u>Bales Sold</u>	<u>\$/Bale</u>	
		33,310	\$ 1,328		33,189	\$ 1,328		1,607,799	\$1,503		1,606,540	\$1,590		1,558,820	\$1,455		1,477,234	\$2,161		1,625,113	\$1,208	
		<u>Auction Value</u>			<u>Auction Value</u>		<u>Auction Value</u>		<u>Auction Value</u>		<u>Auction Value</u>		<u>Auction Value</u>		<u>Auction Value</u>		<u>Auction Value</u>		<u>Auction Value</u>		<u>Auction Value</u>	
		\$44,250,000			\$44,070,000		\$2,416,900,000		\$2,554,240,000		\$2,267,750,000		\$3,192,210,000		\$1,963,374,355							

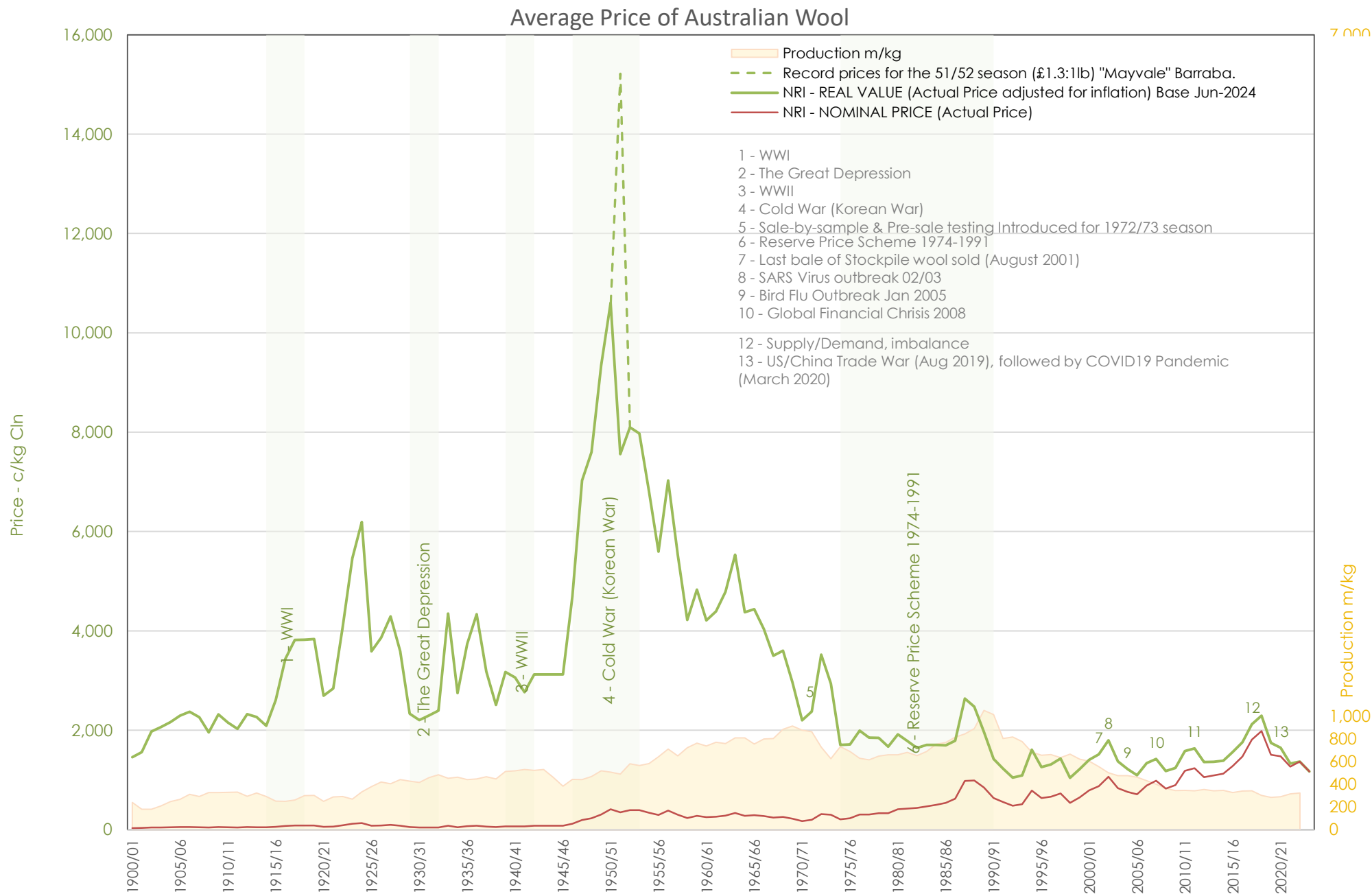


**Table 7: NSW Production Statistics**

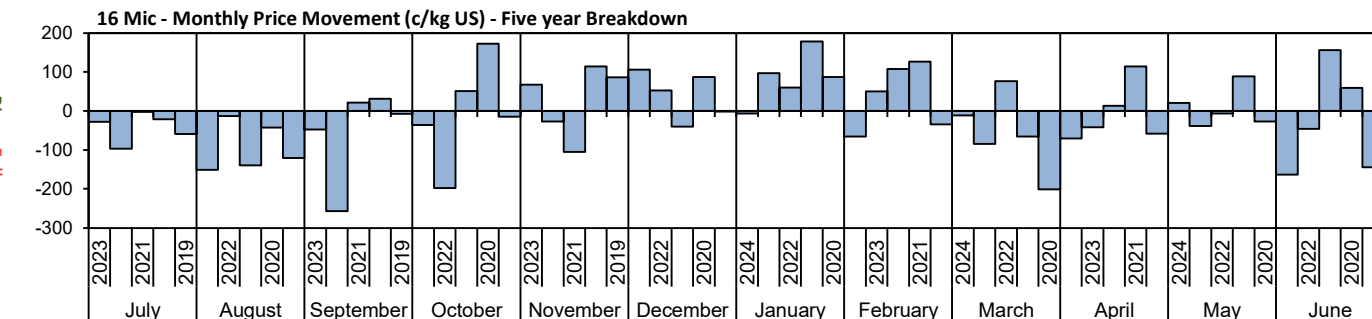
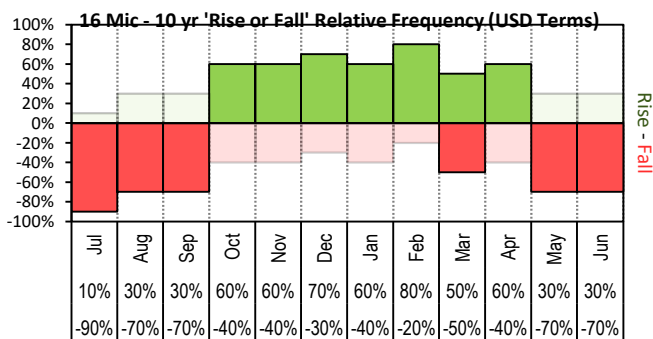
MAX			MIN		MAX GAIN		MAX REDUCTION								
2022-23				Statistical Devision, Area Code & Towns											
				Auction Bales (FH)	Micron	+/- YoY	Vmb %	+/- YoY	Yield % Sch Dry	+/- YoY	Length mm	+/- YoY	Strength Nkt	+/- YoY	Ave Price c/kg
Northern	N02	Tenterfield, Glen Innes		5,588	19.0	0.2	2.0	-0.2	72.5	1.6	83	-1.4	40	0.3	1270
	N03	Guyra		41,286	21.2	0.3	2.2	-0.2	68.5	2.0	83	0.0	39	0.6	1079
	N04	Inverell		3,572	18.8	-0.5	4.3	-0.3	67.9	1.7	82	-1.0	38	-0.2	966
	N05	Armidale		801	20.7	0.3	4.4	0.1	67.8	0.4	81	-0.1	38	-2.7	740
	N06	Tamworth, Gunnedah, Quirindi		4,918	20.2	0.3	4.6	-0.3	67.3	1.6	83	-1.7	38	0.9	917
	N07	Moree		4,107	19.5	-0.3	5.9	1.2	63.1	0.0	86	0.6	41	0.6	744
	N08	Narrabri		2,877	19.6	0.2	5.5	1.8	64.8	-0.7	81	-0.7	42	-0.6	817
North Western & Far West	N09	Cobar, Bourke, Wanaaring		8,119	20.0	0.1	5.3	1.0	58.9	-0.1	90	2.7	38	-1.1	707
	N12	Walgett		8,287	19.7	0.0	5.4	1.6	62.4	0.9	87	-1.6	40	0.5	745
	N13	Nyngan		17,679	19.9	-0.2	6.8	0.0	60.6	2.0	88	0.0	38	-0.8	704
	N14	Dubbo, Narromine		17,642	20.9	-0.1	4.6	-0.8	64.5	3.6	84	0.4	38	-0.2	707
	N16	Dunedoo		6,683	19.9	-0.9	4.3	-0.6	67.4	2.2	82	-3.4	39	3.0	863
	N17	Mudgee, Wellington, Gulgong		20,219	19.5	-0.2	3.5	-0.5	69.1	2.6	82	0.1	39	0.8	1035
	N33	Coonabarabran		3,121	19.9	-0.5	5.3	-0.8	66.4	2.5	85	-2.0	37	-0.9	812
	N34	Coonamble		7,225	20.4	-0.3	5.2	0.0	64.5	1.1	86	0.0	38	-1.7	739
	N36	Gilgandra, Gulargambone		4,950	20.8	-0.4	4.5	0.0	65.8	2.5	88	-0.8	39	0.0	757
	N40	Brewarrina		7,427	19.9	-0.3	4.9	1.4	61.8	0.6	91	-0.4	40	0.1	735
	N10	Wilcannia, Broken Hill		21,122	20.8	0.2	4.0	0.7	57.4	0.5	93	3.1	38	-0.5	642
Central West	N15	Forbes, Parkes, Cowra		36,813	20.6	0.0	3.4	-0.4	66.3	2.6	87	0.0	37	-0.2	771
	N18	Lithgow, Oberon		2,186	20.8	-1.7	1.9	-0.2	71.9	1.0	88	0.9	39	1.1	1088
	N19	Orange, Bathurst		49,012	21.9	0.1	2.5	-0.2	70.0	1.9	85	0.0	38	0.4	828
	N25	West Wyalong		20,045	19.9	-0.1	3.3	-0.2	64.5	1.9	89	-0.3	37	-0.1	812
	N35	Condobolin, Lake Cargelligo		7,435	20.5	0.1	5.3	-1.0	62.3	3.8	87	3.4	38	-1.2	674
Murrumbidgee	N26	Cootamundra, Temora		26,083	21.3	-0.3	2.0	-0.1	66.7	1.5	90	2.3	36	-0.2	749
	N27	Adelong, Gundagai		15,003	21.4	0.0	2.1	-0.7	69.4	1.8	90	0.7	36	0.9	800
	N29	Wagga, Narrandera		36,302	21.8	0.0	2.2	0.0	66.6	1.9	87	0.0	37	0.9	716
	N37	Griffith, Hillston		12,918	21.3	-0.1	5.0	-0.5	62.1	1.6	87	2.9	39	-1.8	641
	N39	Hay, Coleambally		18,475	20.3	0.3	5.3	0.0	62.7	1.6	88	4.0	41	-0.2	740
Murray	N11	Wentworth, Balranald		12,682	21.2	0.4	5.0	-0.4	59.7	1.8	97	5.6	38	0.0	638
	N28	Albury, Corowa, Holbrook		31,836	21.6	0.2	1.6	0.2	68.6	1.4	89	0.9	36	-0.1	802
	N31	Deniliquin		26,172	20.8	0.2	4.0	0.1	65.4	1.8	91	2.8	38	2.1	752
	N38	Finley, Berrigan, Jerilderie		10,469	20.2	0.0	3.6	0.3	65.1	1.6	87	1.5	39	-1.2	788
South Eastern	N23	Goulburn, Young, Yass		102,043	20.1	-0.2	2.1	0.0	70.3	1.5	88	-1.9	37	1.2	976
	N24	Monaro (Cooma, Bombala)		32,937	19.7	0.0	1.8	-0.2	70.8	1.6	92	-2.1	34	-0.4	972
	N32	A.C.T.		115	17.9	0.4	1.7	-0.7	73.9	4.4	87	-15.1	38	4.4	1334
	N43	South Coast (Bega)		436	18.9	-0.6	0.9	0.0	75.9	0.6	92	0.4	39	-3.8	1257
NSW	AWEX Sale Statistics 22-23			684,947	20.8	0.0	3.1	-0.1	66.9	1.7	88	0.7	38	0.2	857

AWTA Mthly Key Test Data			Bales Tested	+/- YoY	Micron	+/- YoY	VMB	+/- YoY	Yld	+/- YoY	Lth	+/- YoY	Nkt	+/- YoY	POBM +/-
AUSTRALIA	Current Season	April	176,234	37,792	20.7	0.3	2.2	-0.6	63.6	-1.2	85	-1.9	35	-1.4	49 2.3
		Y.T.D	1,594,983	-5,078	20.8	0.0	2.2	-0.1	65.5	-0.7	87	-2.0	35	1.0	50 2.0
	Previous Seasons	2022-23	1,600,061	19652	20.8	-0.1	2.3	0.0	66.2	1.1	89	1.0	34	-1.0	48 -1.0
		2021-22	1,580,409	104961	20.9	0.1	2.3	0.3	65.1	1.1	88	-1.0	35	1.0	49 0.0
		Y.T.D.	1,475,448	10,553	20.8	0.3	2.0	0.3	64.0	1.6	89	2.9	34	1.4	49 1.9

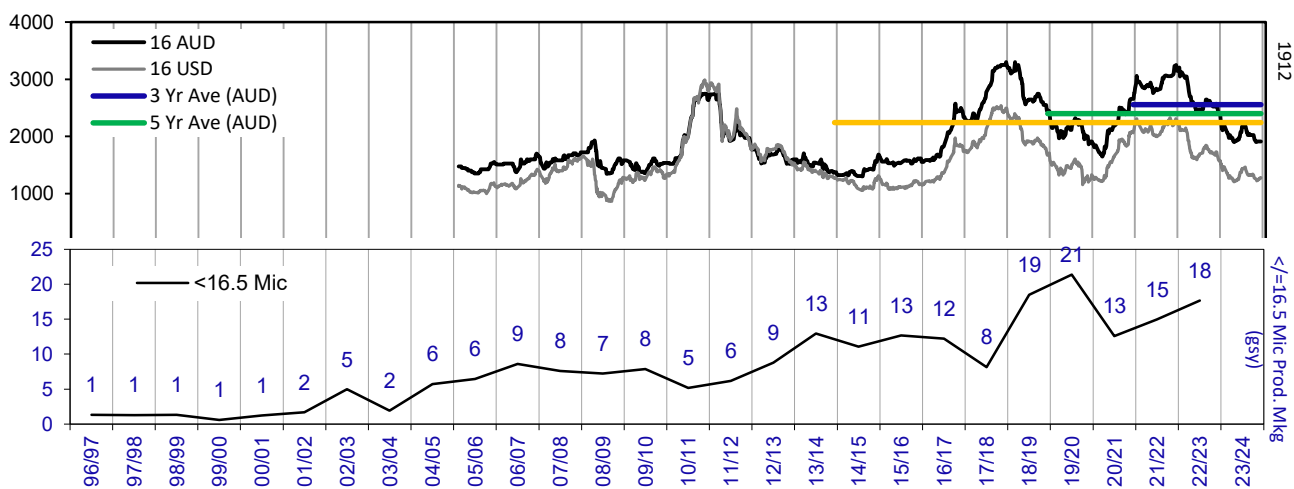
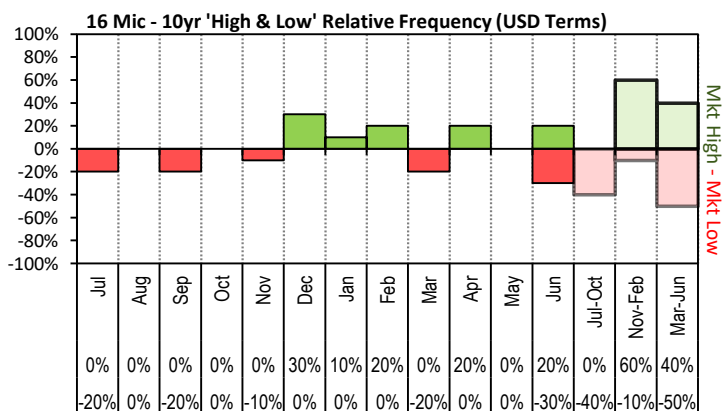




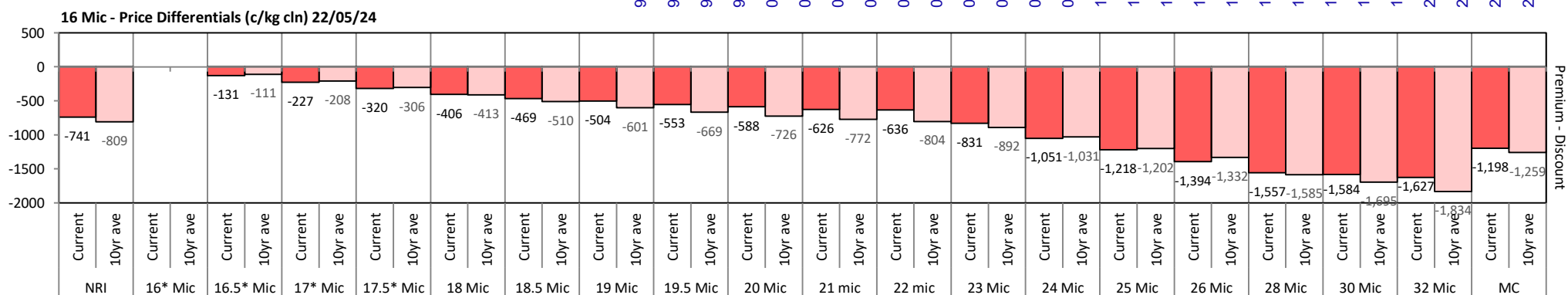


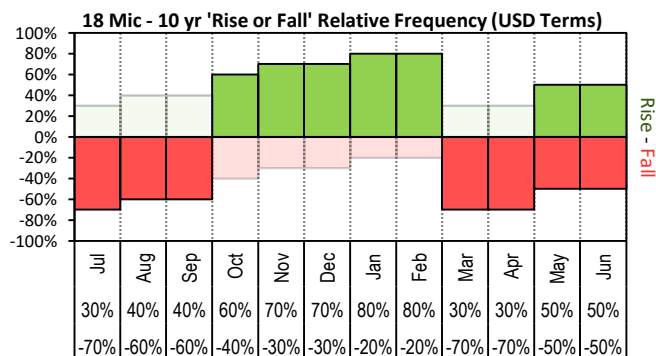


The above 'Rise or Fall' graph, shows how often the market has risen or fallen in a given month over the past 10 years, it does not show the extent of the movement only the frequency of direction. The 'Monthly Price Movement' graph shows the extent of movement for each month, for the past 5 years.

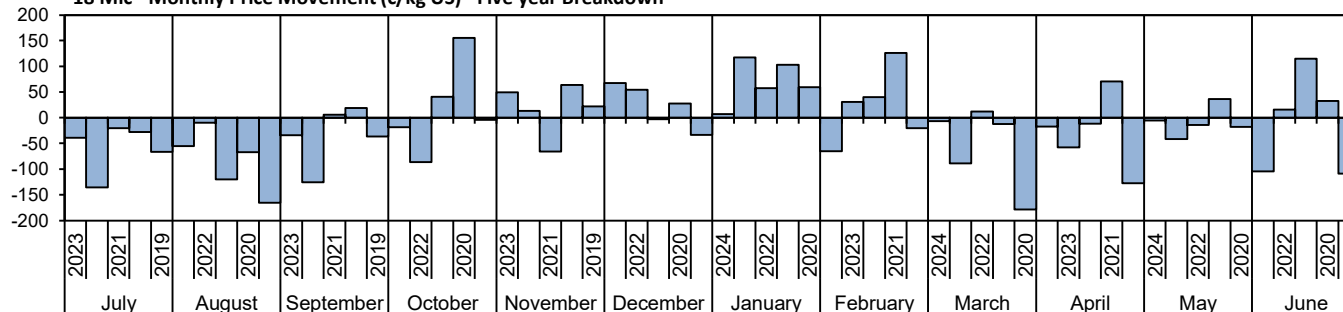


The above graph, shows how often the '12 month high & low' have been achieved for a

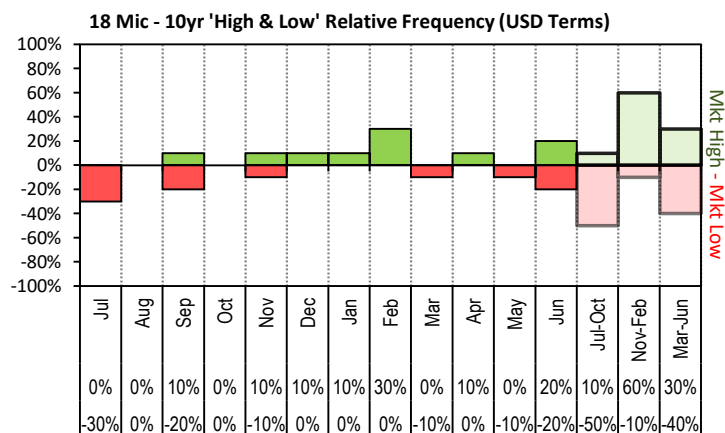




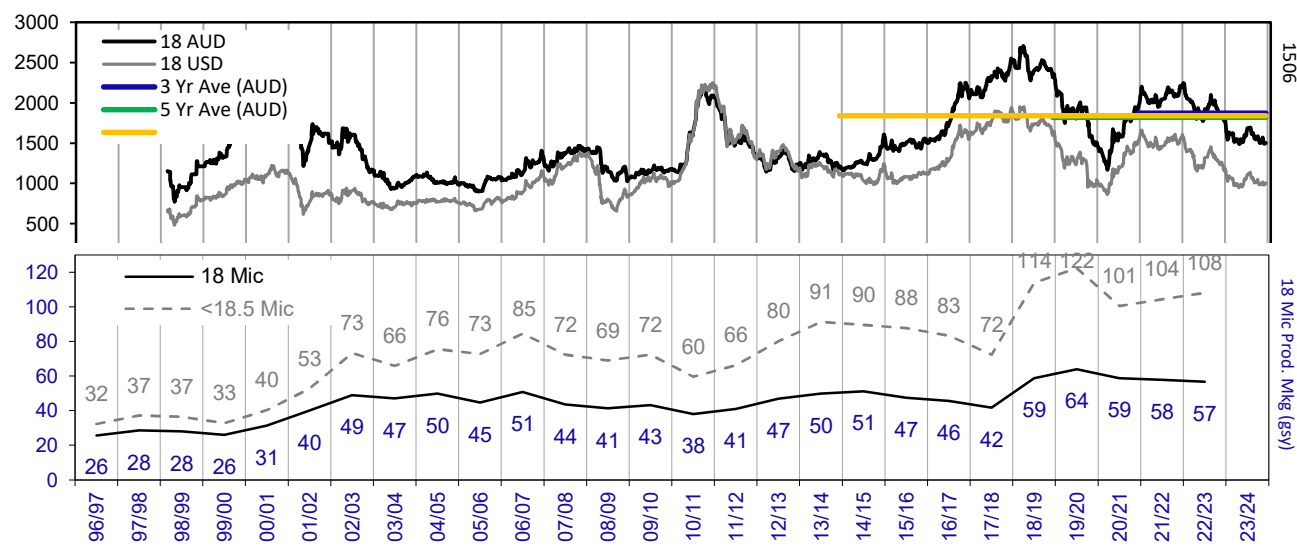
### 18 Mic - Monthly Price Movement (c/kg US) - Five year Breakdown



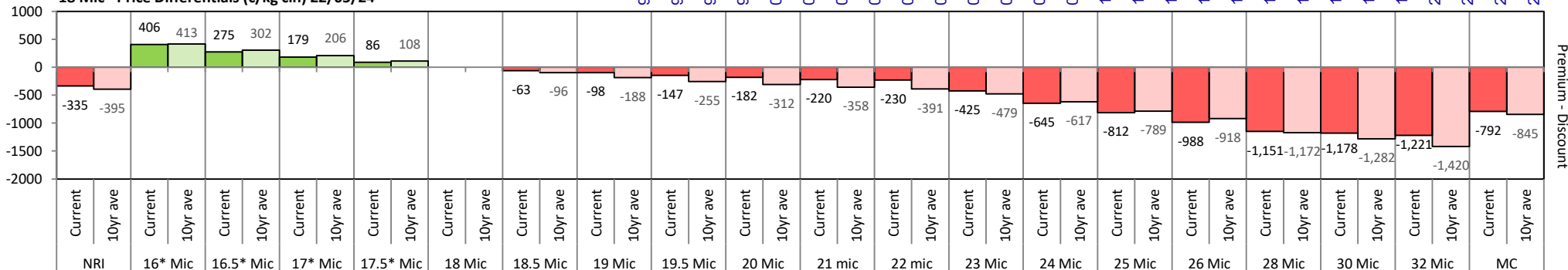
risen or fallen in a given month over the past 10 years, it does not show the extent of the movement only the frequency of direction. The **'Monthly Price Movement'** graph shows the extent of movement for each month, for the past 5 years.

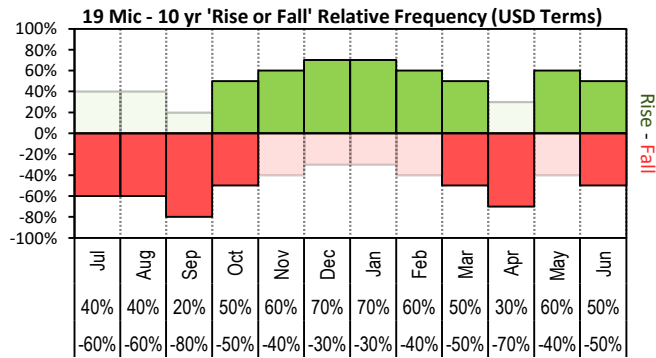


The above graph, shows how often the '12 month high & low' have been achieved for a given month over the past 10 years. It is not a measure of probability.

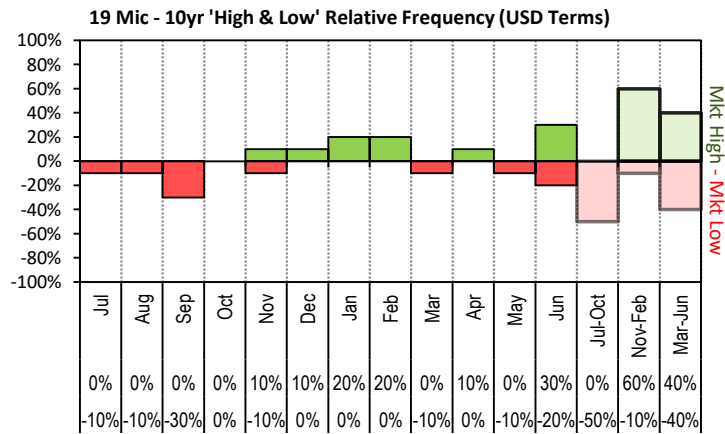
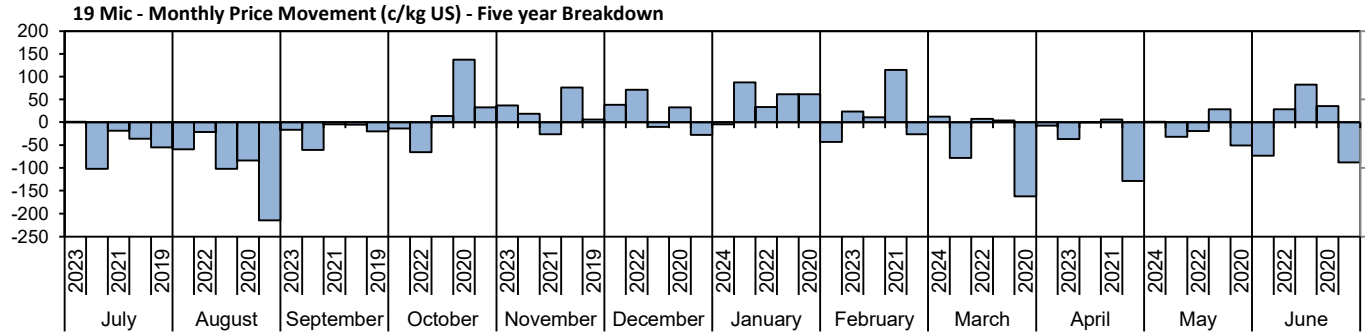


18 Mic - Price Differentials (c/kg cln) 22/05/24

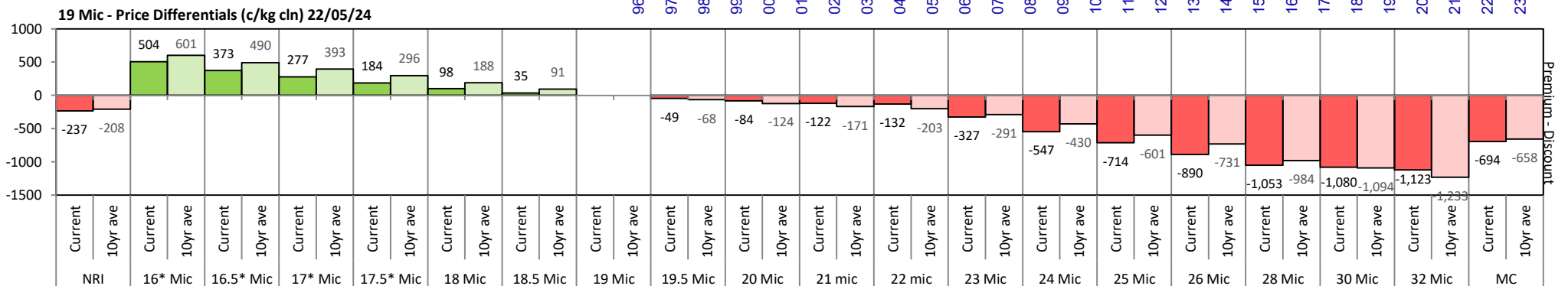
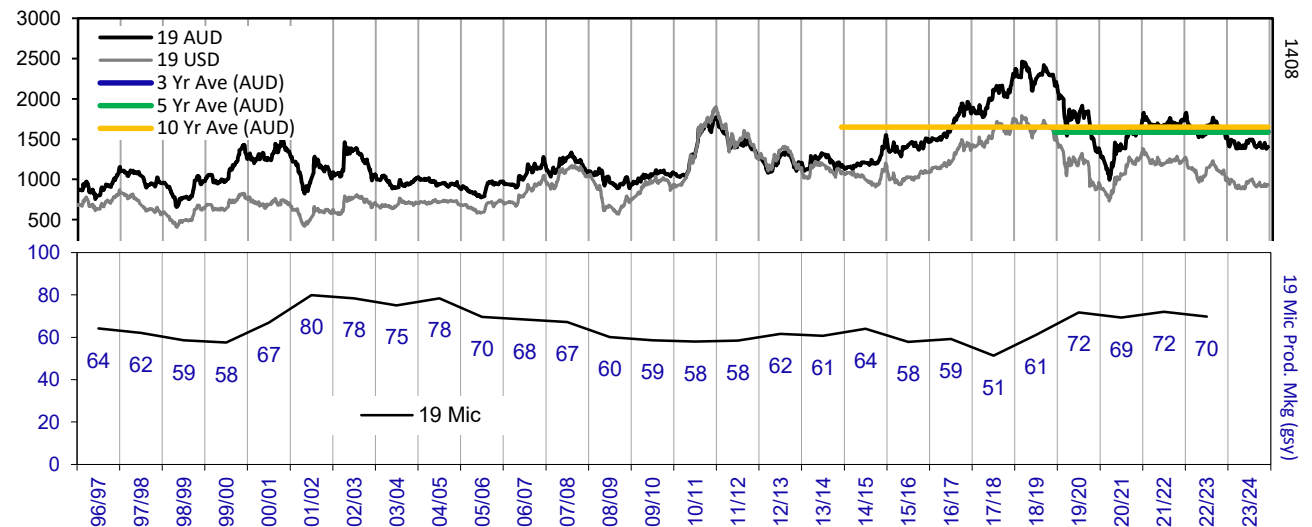


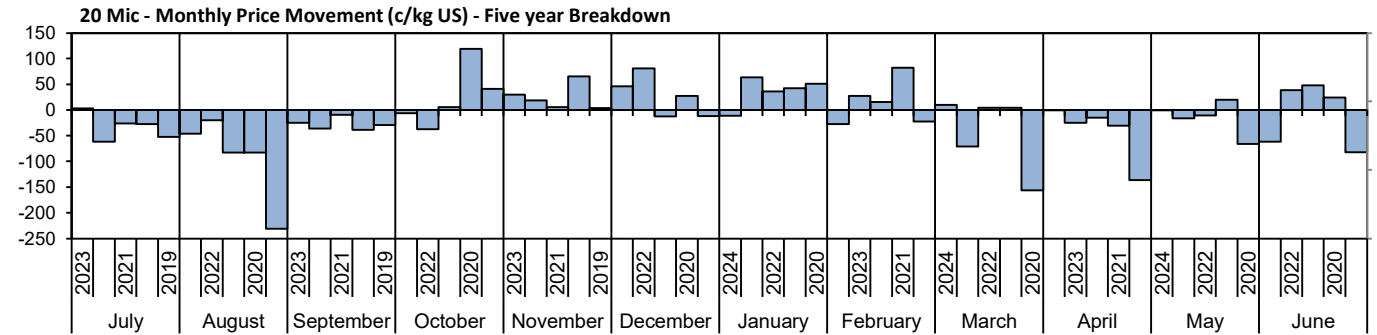
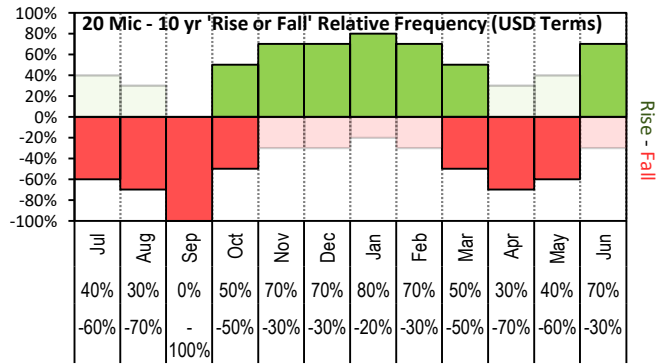


The above '**Rise or Fall**' graph, shows how often the market has risen or fallen in a given month over the past 10 years, it does not show the extent of the movement only the frequency of direction. The '**Monthly Price Movement**' graph shows the extent of movement for each month, for the past 5 years.

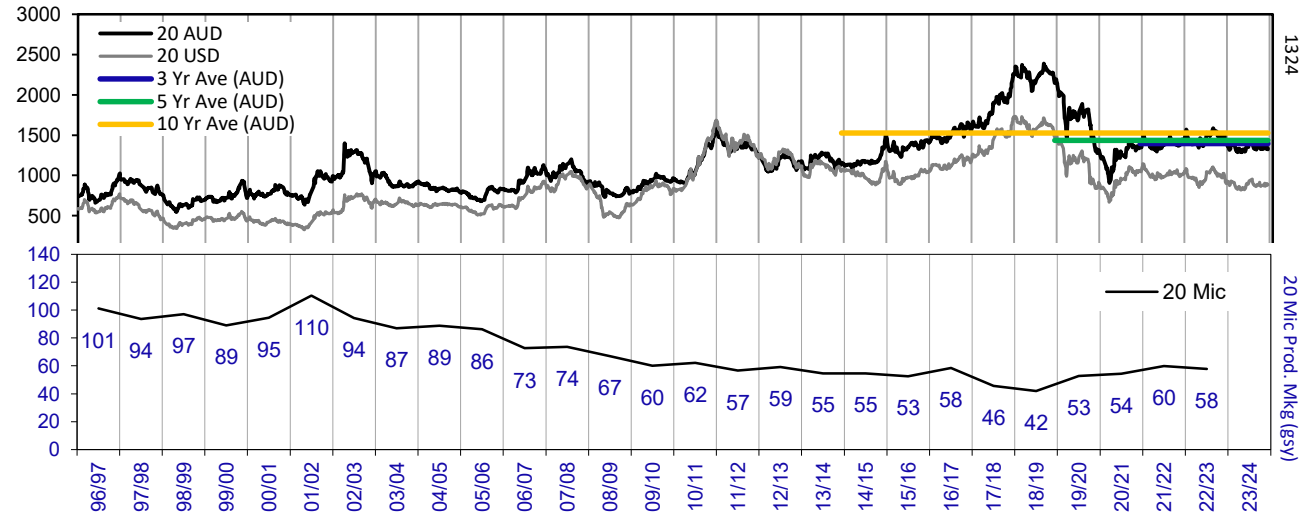
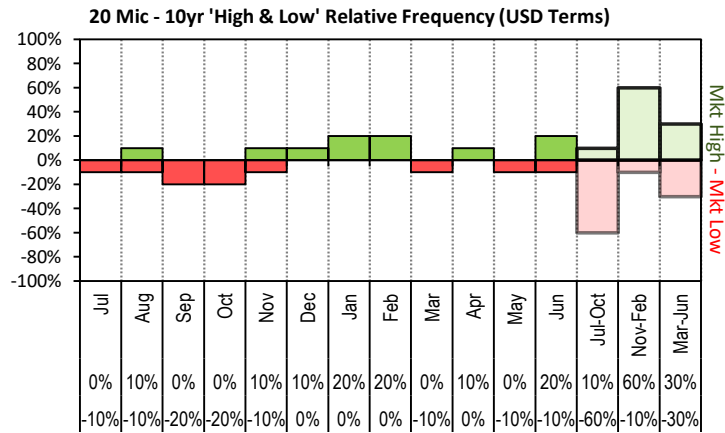


The above graph, shows how often the '12 month high & low' have been achieved for a given month over the past 10 years. It is not a measure of probability.

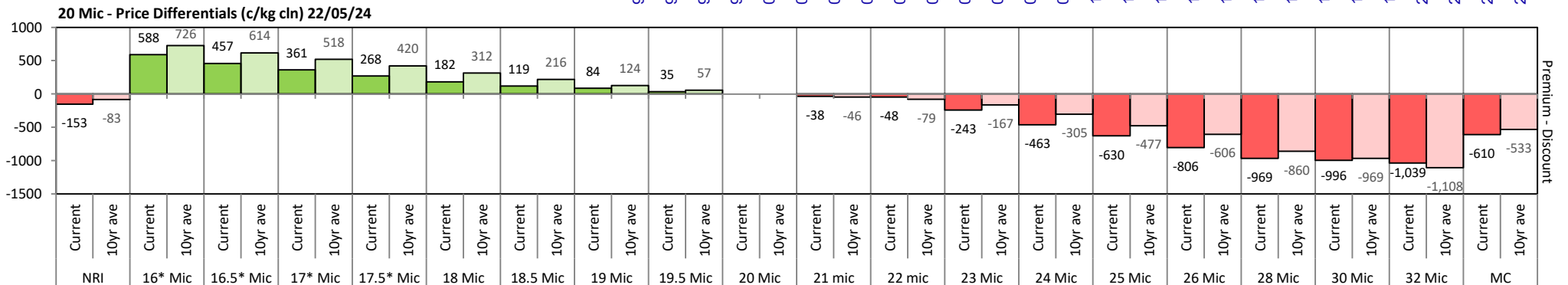


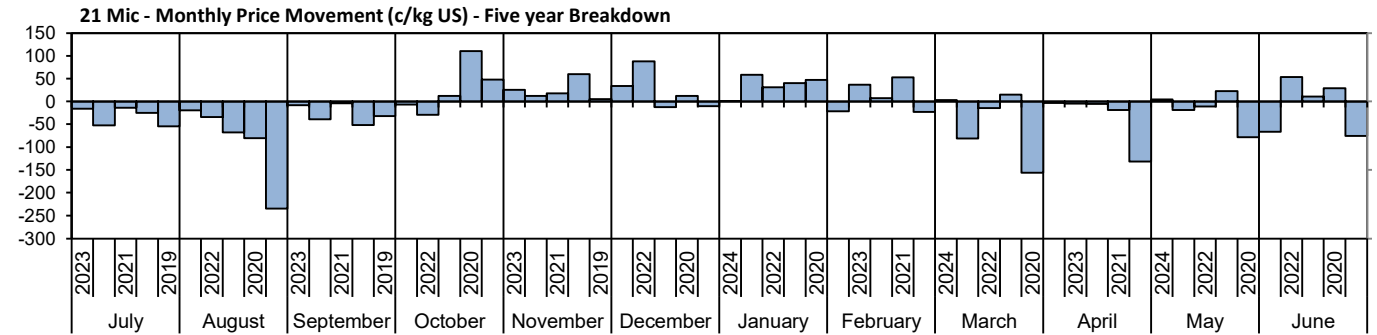
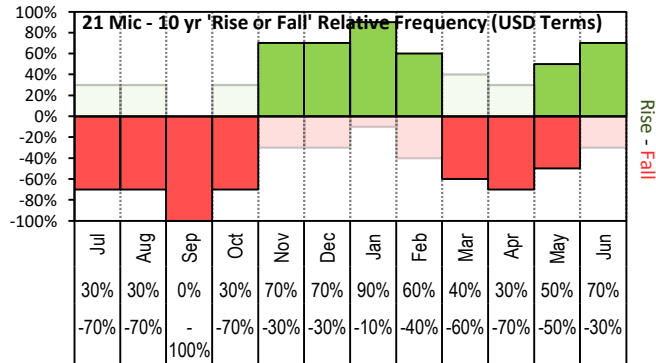


The above 'Rise or Fall' graph, shows how often the market has risen or fallen in a given month over the past 10 years, it does not show the extent of the movement only the frequency of direction. The 'Monthly Price Movement' graph shows the extent of movement for each month, for the past 5 years.

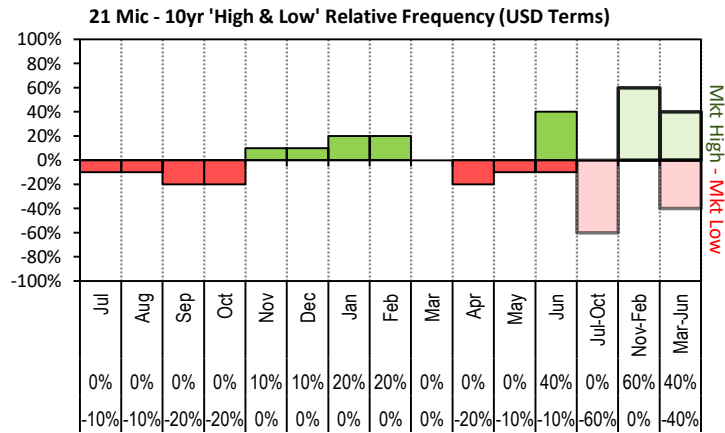


The above graph, shows how often the '12 month high & low' have been achieved for a given month over the past 10 years. It is not a measure of probability.

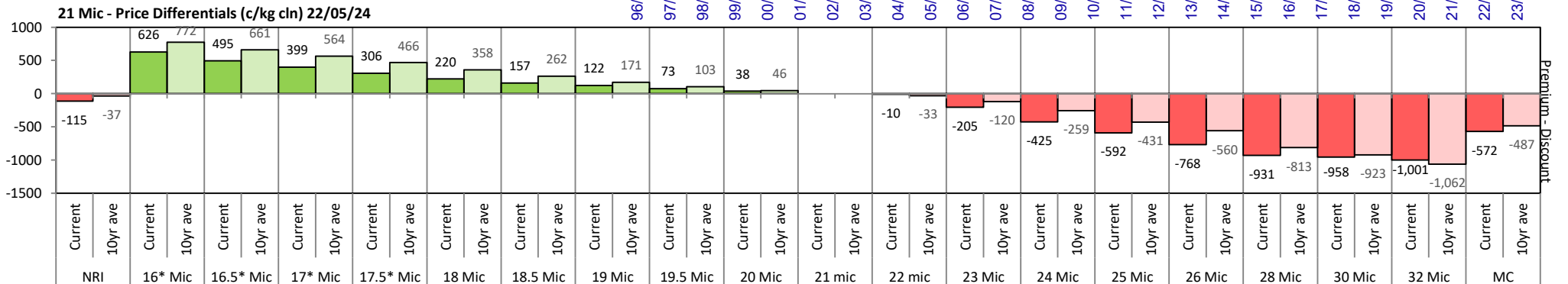
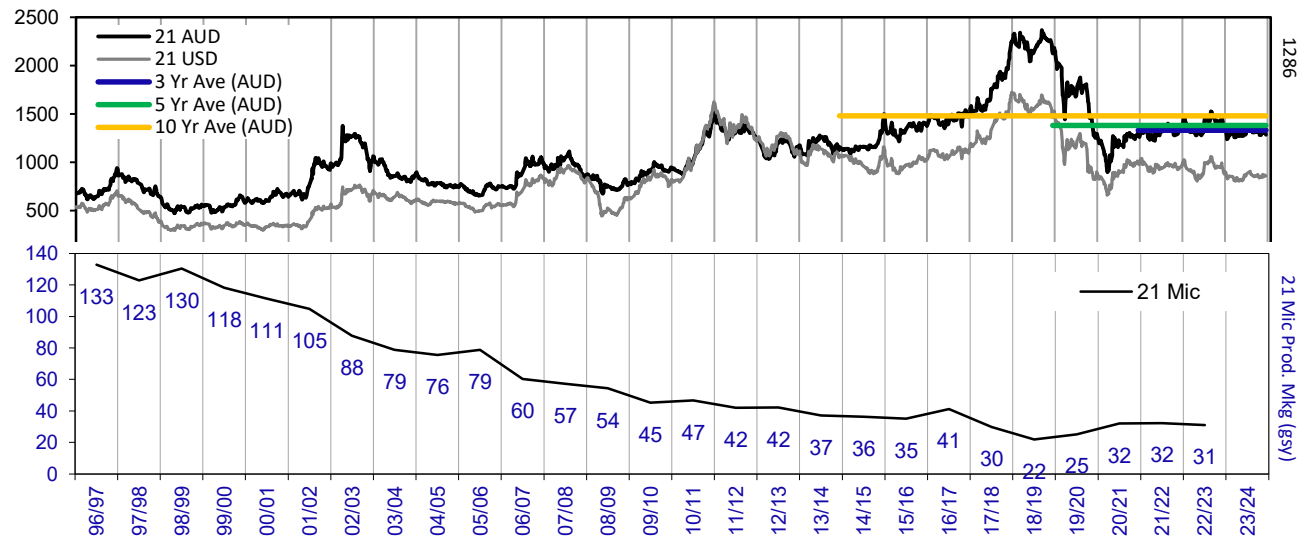


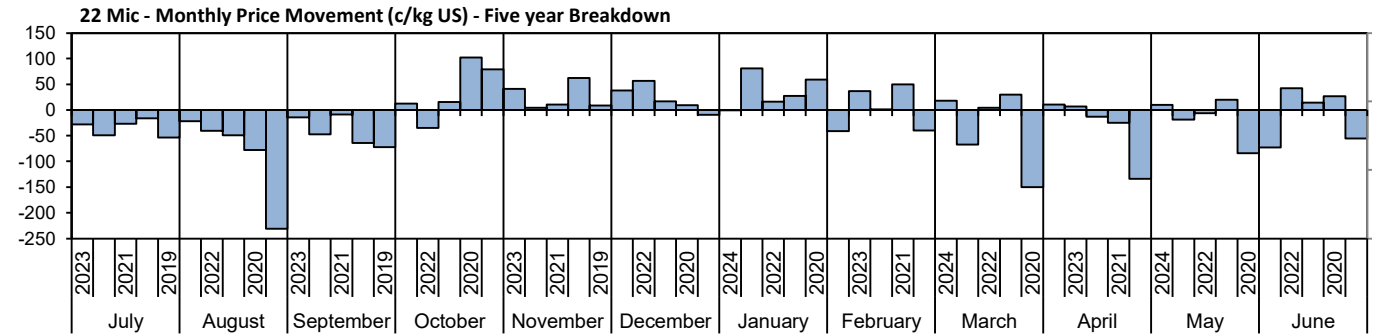
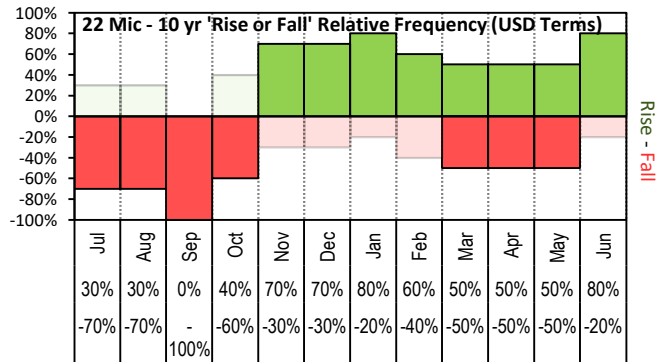


The above 'Rise or Fall' graph, shows how often the market has risen or fallen in a given month over the past 10 years, it does not show the extent of the movement only the frequency of direction. The 'Monthly Price Movement' graph shows the extent of movement for each month, for the past 5 years.

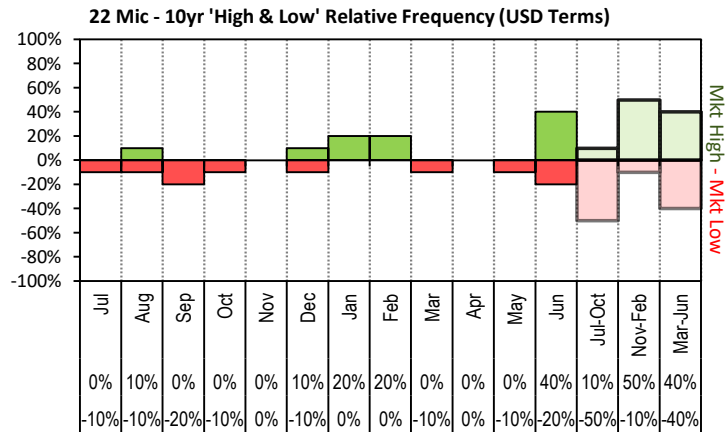


The above graph, shows how often the '12 month high & low' have been achieved for a given month over the past 10 years. It is not a measure of probability.

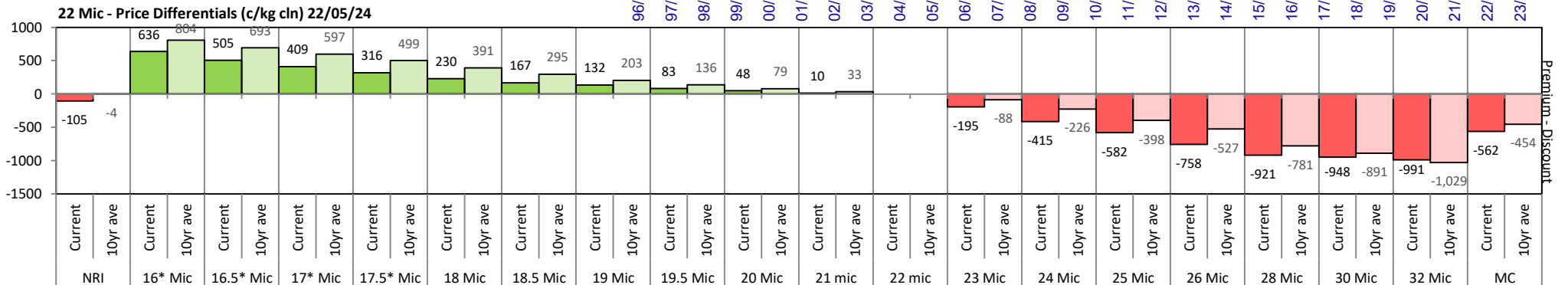
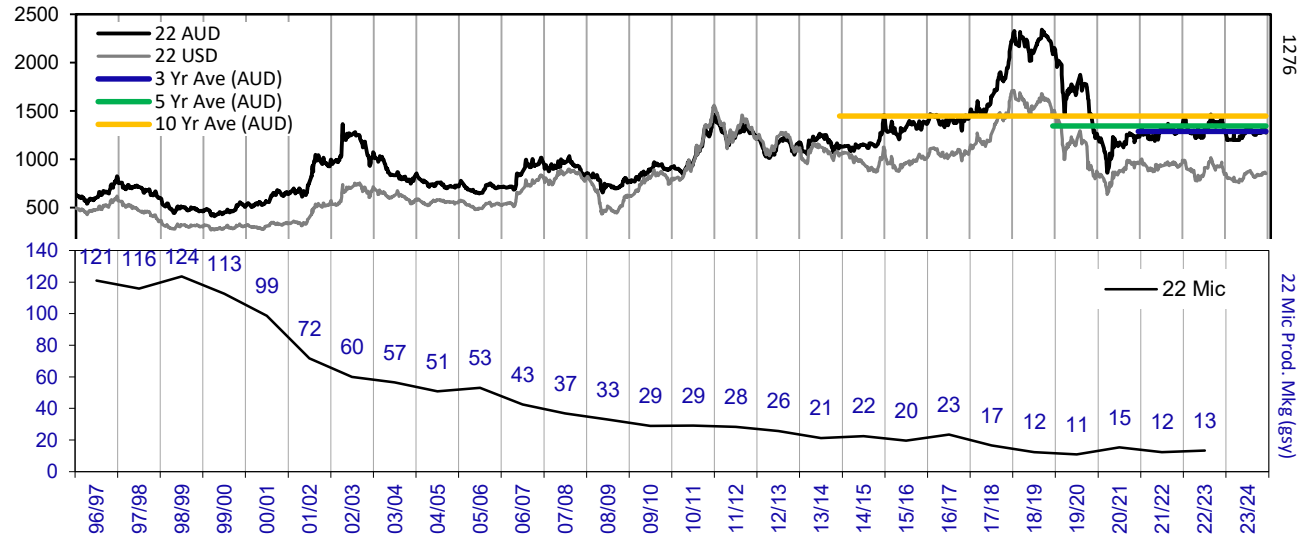


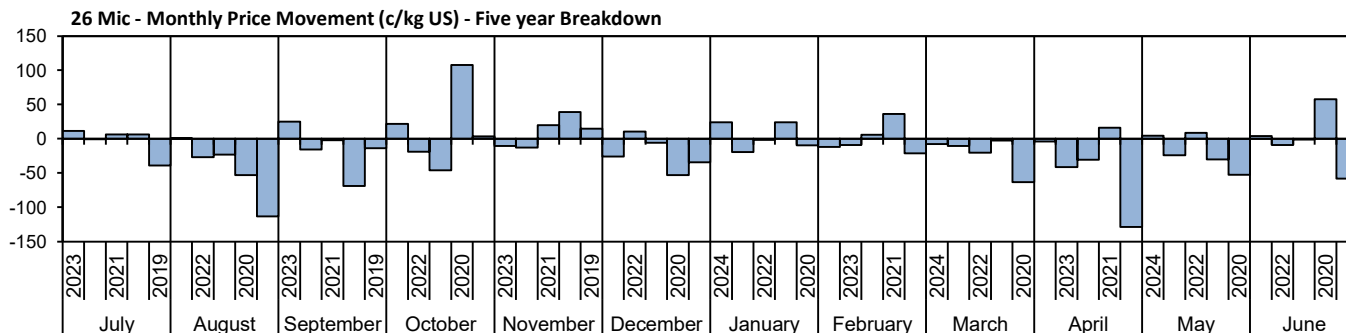
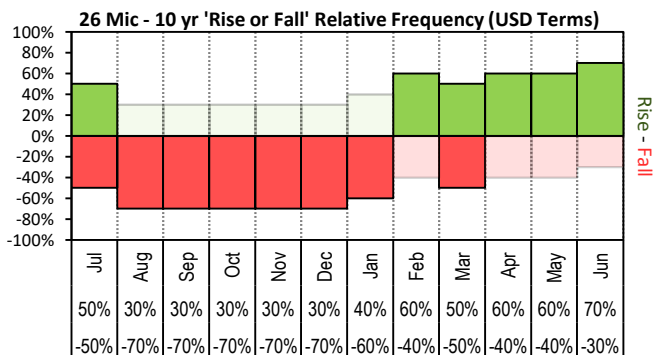


The above 'Rise or Fall' graph, shows how often the market has risen or fallen in a given month over the past 10 years, it does not show the extent of the movement only the frequency of direction. The 'Monthly Price Movement' graph shows the extent of movement for each month, for the past 5 years.

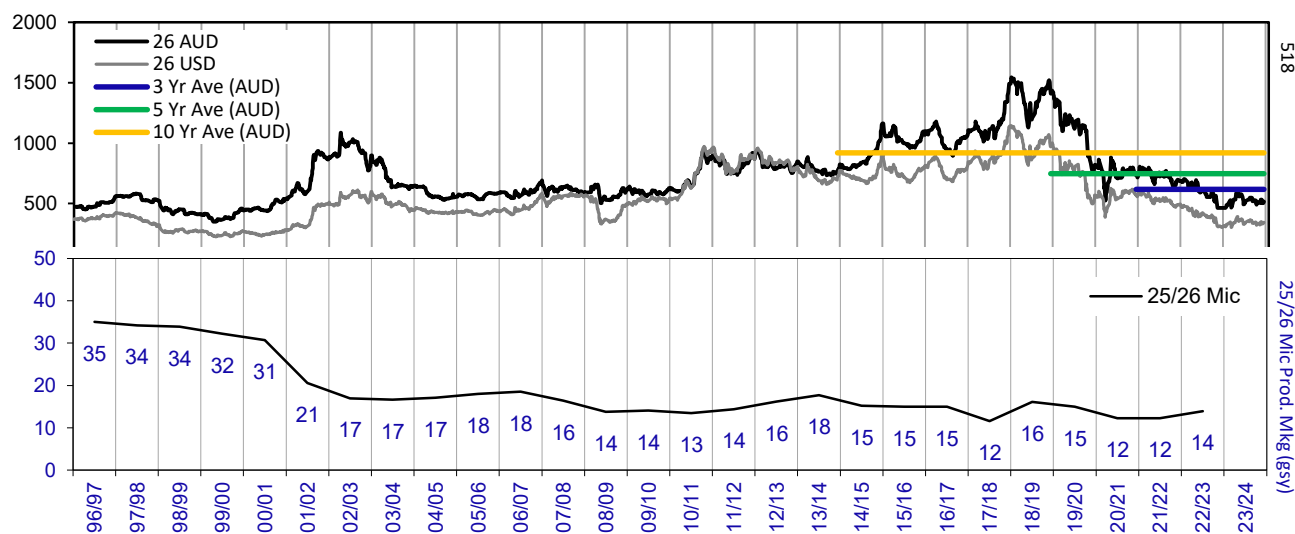
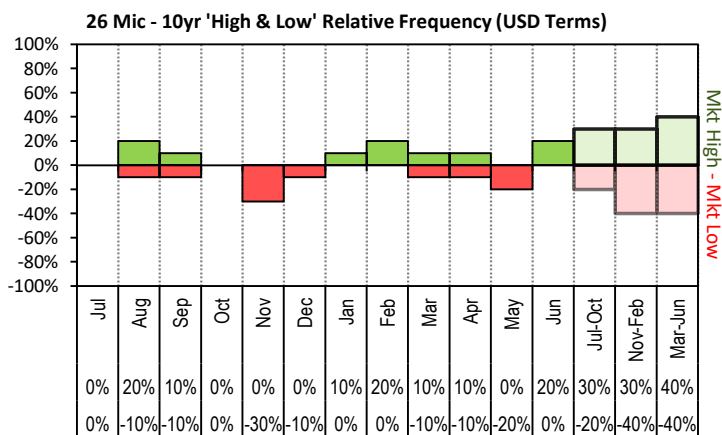


The above graph, shows how often the '12 month high & low' have been achieved for a given month over the past 10 years. It is not a measure of probability.

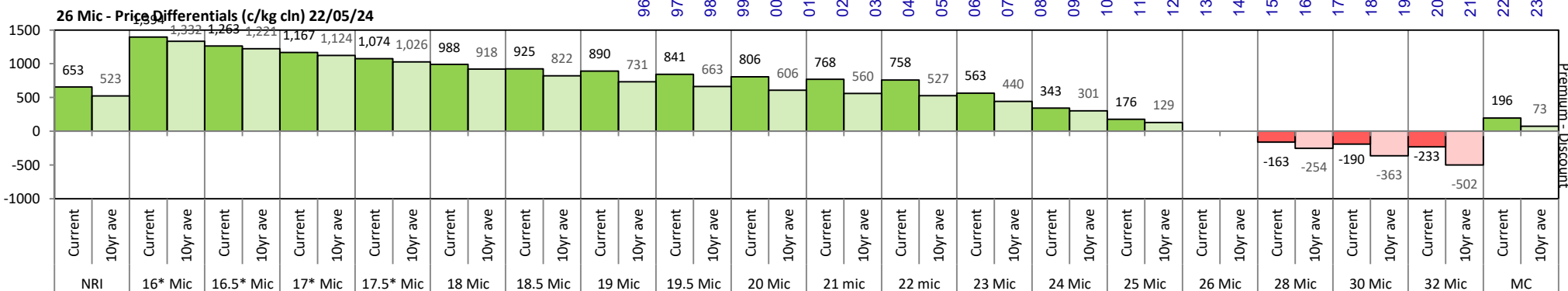




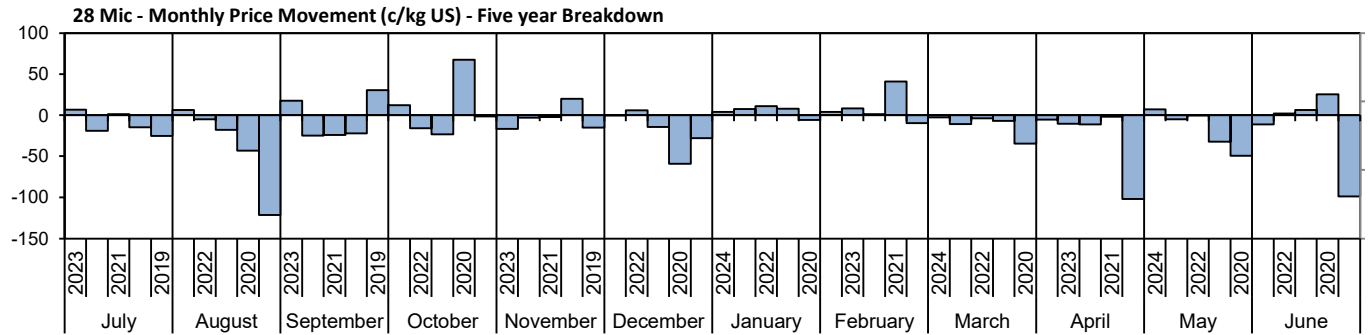
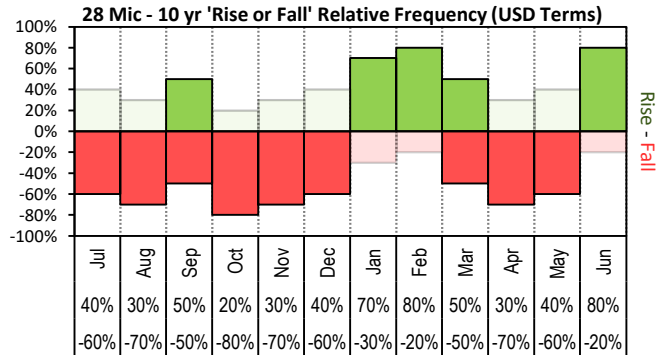
The above 'Rise or Fall' graph, shows how often the market has risen or fallen in a given month over the past 10 years, it does not show the extent of the movement only the frequency of direction. The 'Monthly Price Movement' graph shows the extent of movement for each month, for the past 5 years.



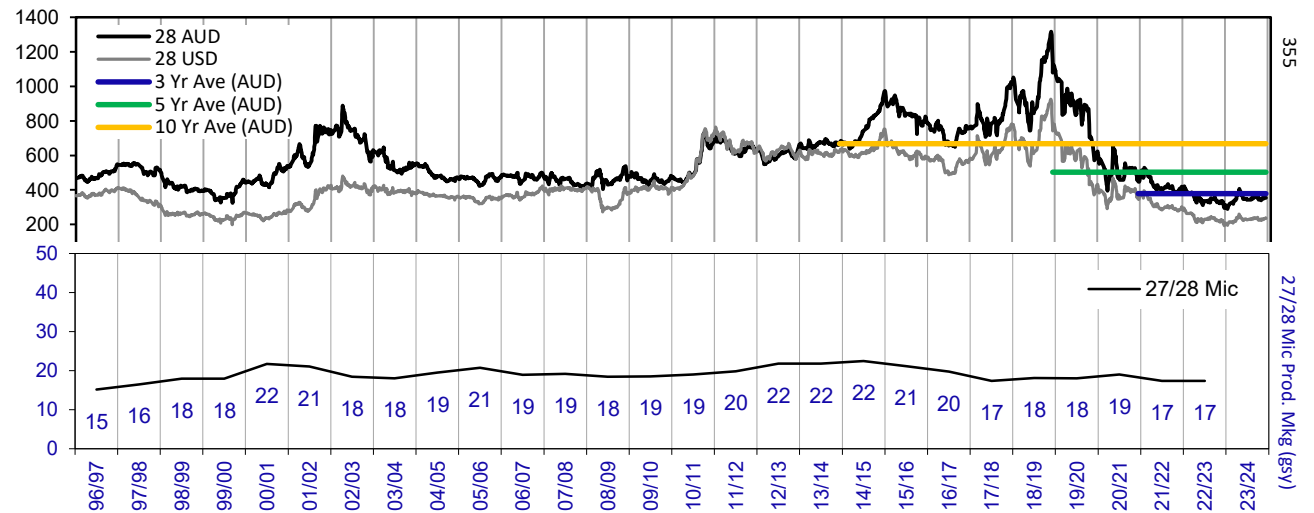
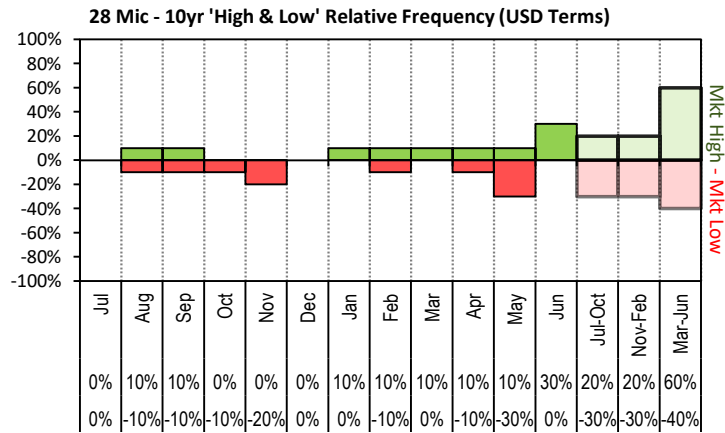
The above graph, shows how often the '12 month high & low' have been achieved for a given month over the past 10 years. It is not a measure of probability.



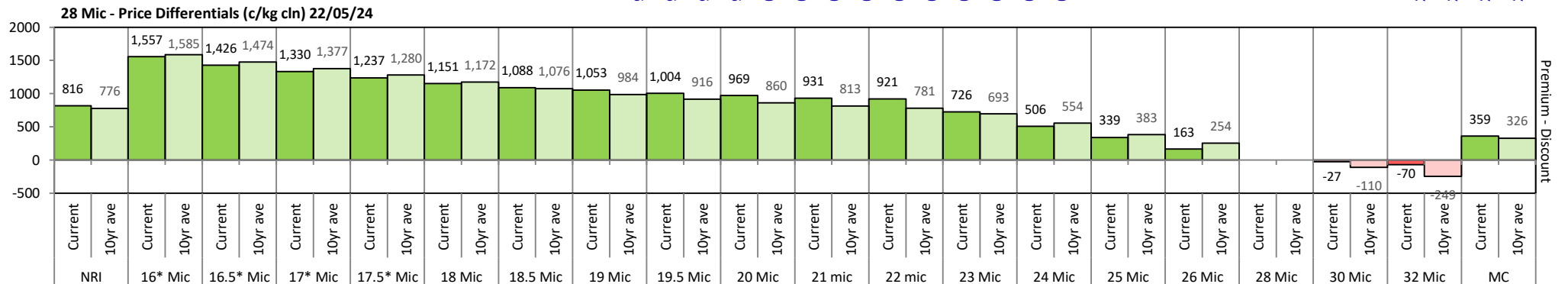


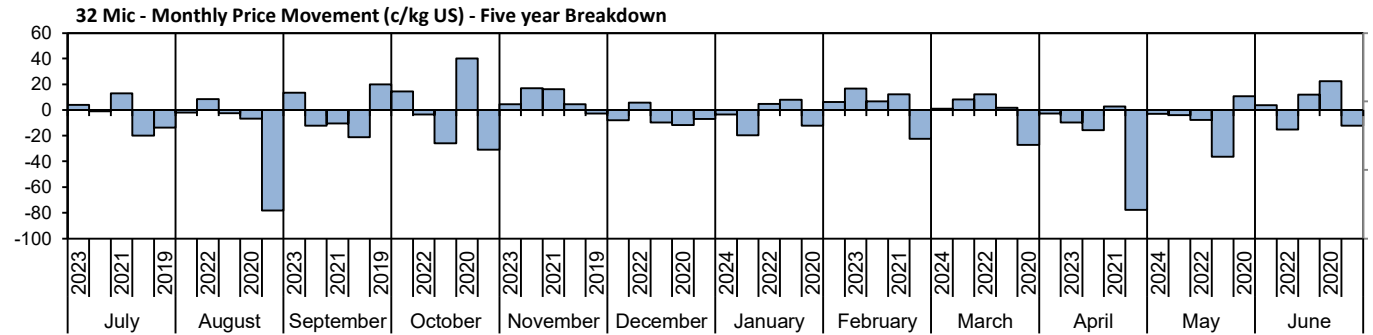
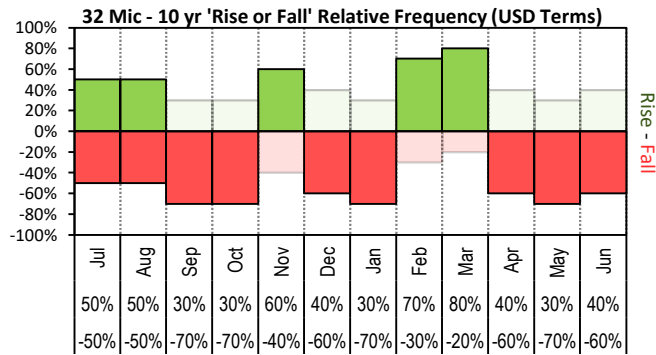


The above 'Rise or Fall' graph, shows how often the market has risen or fallen in a given month over the past 10 years, it does not show the extent of the movement only the frequency of direction. The 'Monthly Price Movement' graph shows the extent of movement for each month, for the past 5 years.

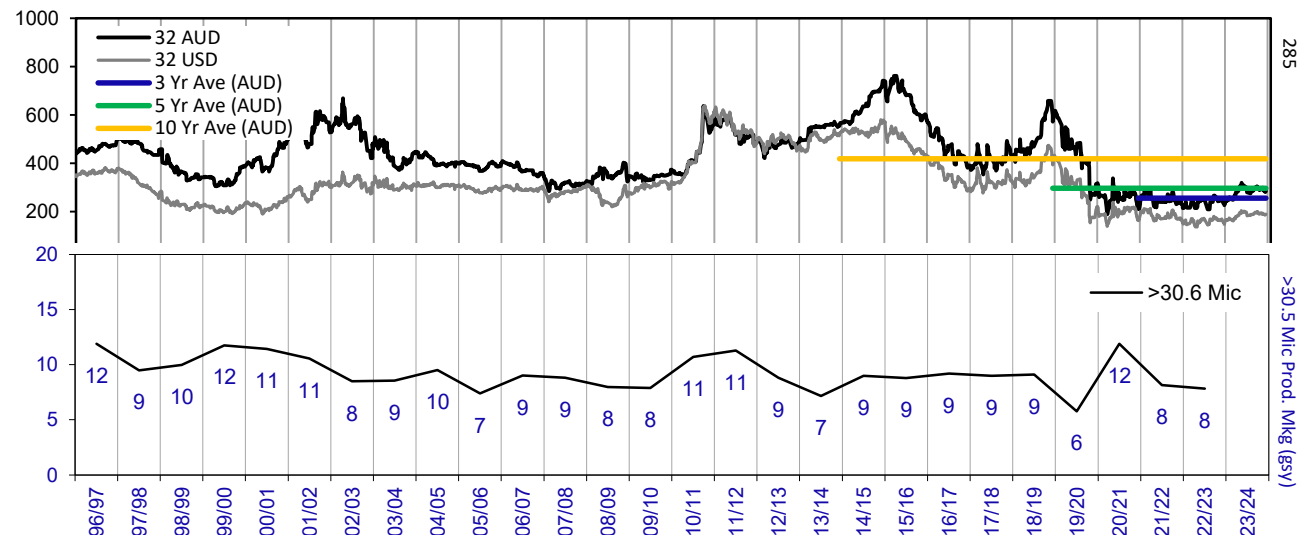
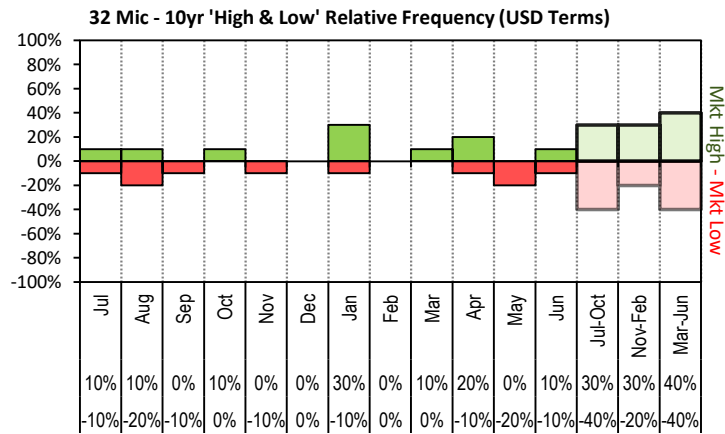


The above graph, shows how often the '12 month high & low' have been achieved for a given month over the past 10 years. It is not a measure of probability.

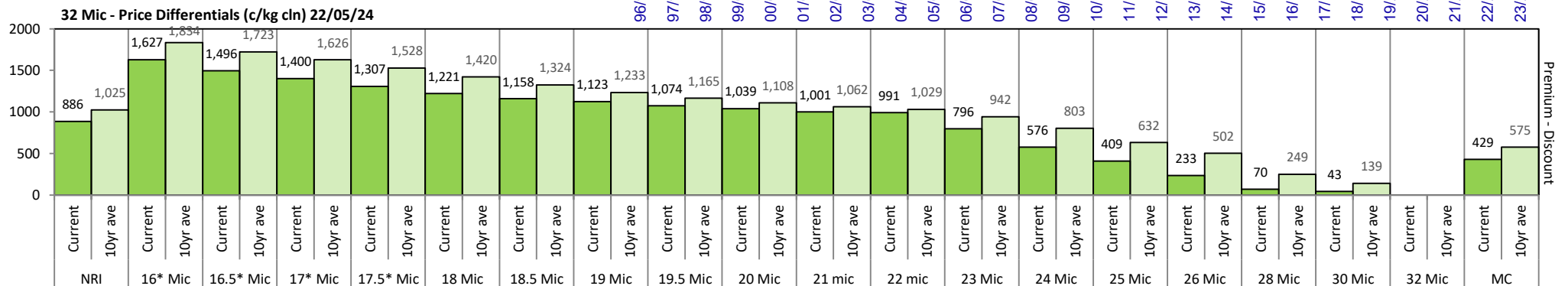


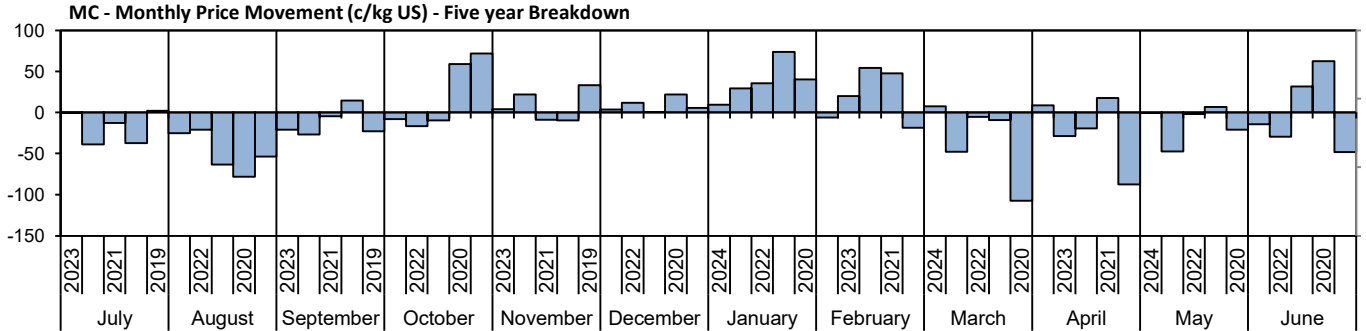
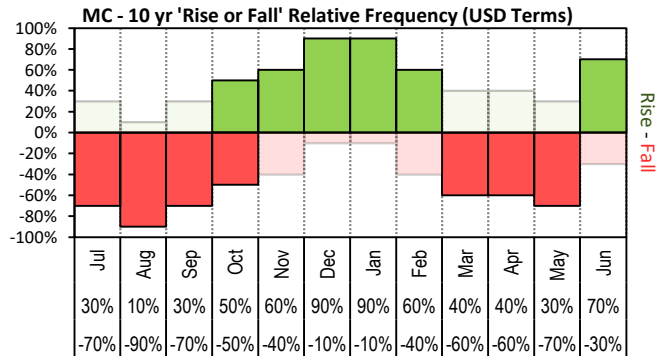


The above 'Rise or Fall' graph, shows how often the market has risen or fallen in a given month over the past 10 years, it does not show the extent of the movement only the frequency of direction. The 'Monthly Price Movement' graph shows the extent of movement for each month, for the past 5 years.

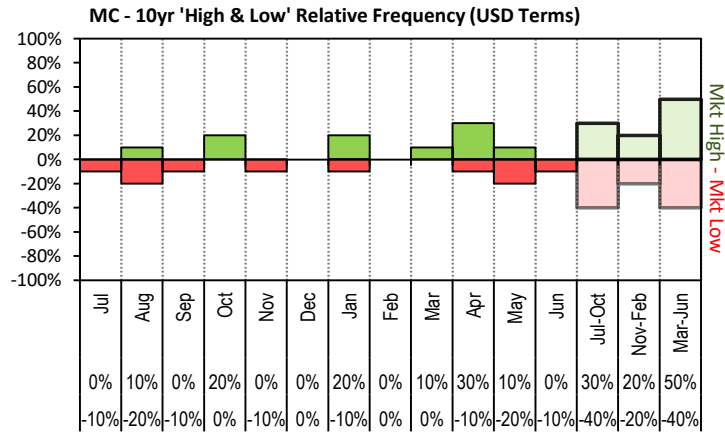


The above graph, shows how often the '12 month high & low' have been achieved for a given month over the past 10 years. It is not a measure of probability.

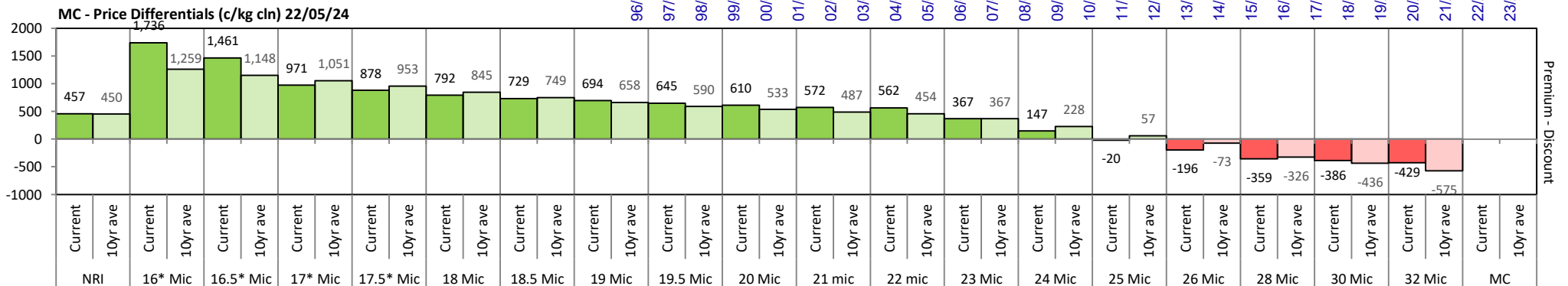
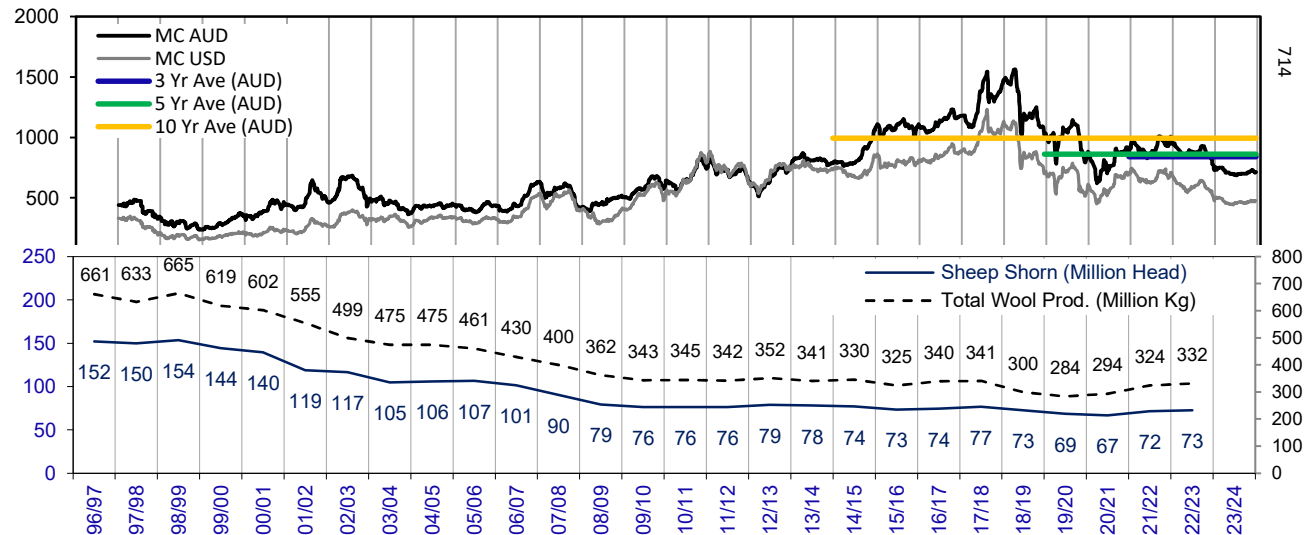




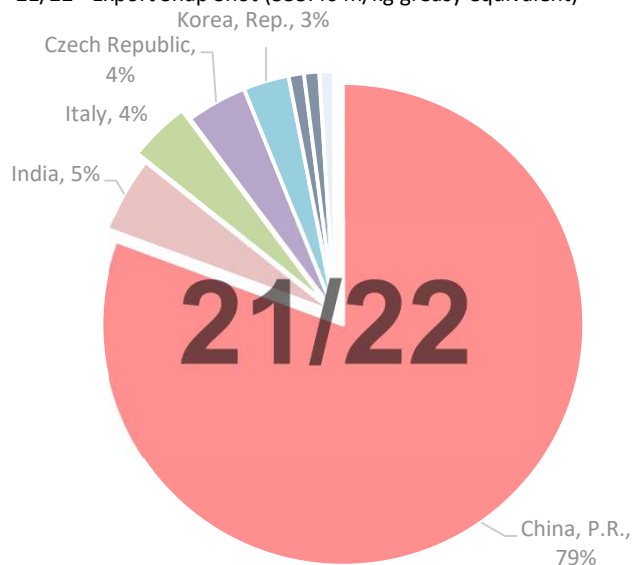
The above 'Rise or Fall' graph, shows how often the market has risen or fallen in a given month over the past 10 years, it does not show the extent of the movement only the frequency of direction. The 'Monthly Price Movement' graph shows the extent of movement for each month, for the past 5 years.



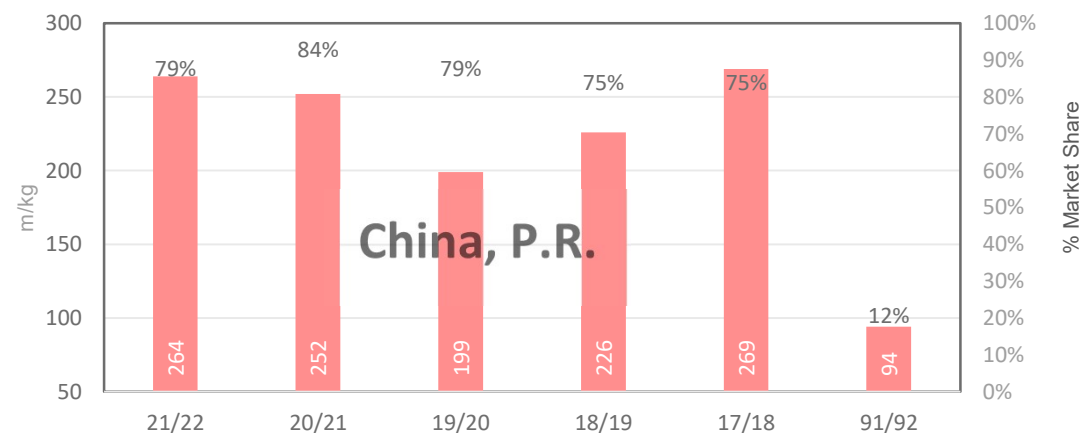
The above graph, shows how often the '12 month high & low' have been achieved for a given month over the past 10 years. It is not a measure of probability.



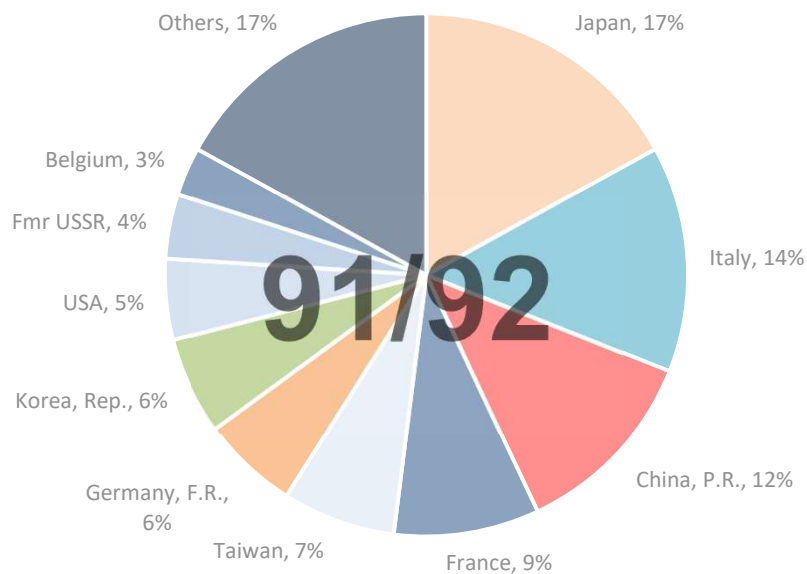
21/22 - Export Snap Shot (335.46 m/kg greasy equivalent)



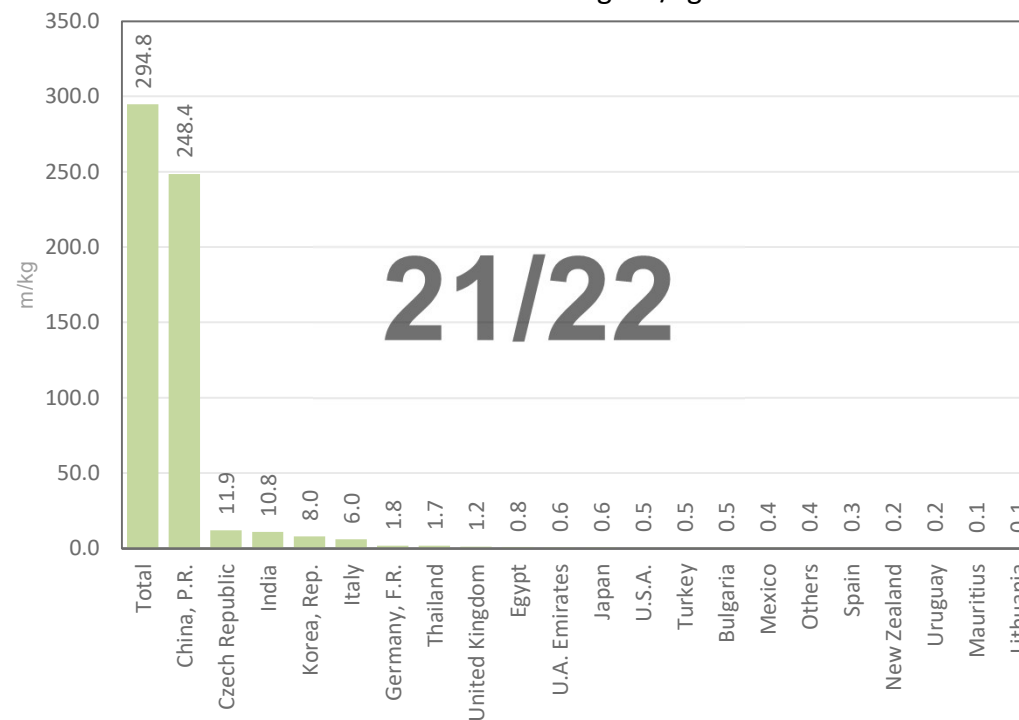
China, P.R. (Largest Market Share)



91/92 - Export Snap Shot (784.7 m/kg greasy equivalent)



Seasonal Change m/kg





**Table 8: Returns pr head for skirted fleece wool.**

<b>Skirted FLC Weight</b> <b>9 Kg</b>		<b>Micron</b>																	
		16	16.5	17	17.5	18	18.5	19	19.5	20	21	22	23	24	25	26	28	30	32
<b>Yield (Sch Dry)</b>	25% Current	\$43	\$40	\$38	\$36	\$34	\$32	\$32	\$31	\$30	\$29	\$29	\$24	\$19	\$16	\$12	\$8	\$7	\$6
	10yr ave.	\$50	\$48	\$46	\$44	\$41	\$39	\$37	\$36	\$34	\$33	\$33	\$31	\$28	\$24	\$21	\$15	\$13	\$9
	30% Current	\$52	\$48	\$45	\$43	\$41	\$39	\$38	\$37	\$36	\$35	\$34	\$29	\$23	\$19	\$14	\$10	\$9	\$8
	10yr ave.	\$61	\$58	\$55	\$52	\$50	\$47	\$45	\$43	\$41	\$40	\$39	\$37	\$33	\$28	\$25	\$18	\$15	\$11
	35% Current	\$60	\$56	\$53	\$50	\$47	\$45	\$44	\$43	\$42	\$41	\$40	\$34	\$27	\$22	\$16	\$11	\$10	\$9
	10yr ave.	\$71	\$68	\$64	\$61	\$58	\$55	\$52	\$50	\$48	\$47	\$46	\$43	\$39	\$33	\$29	\$21	\$18	\$13
	40% Current	\$69	\$64	\$61	\$57	\$54	\$52	\$51	\$49	\$48	\$46	\$46	\$39	\$31	\$25	\$19	\$13	\$12	\$10
	10yr ave.	\$81	\$77	\$73	\$70	\$66	\$63	\$60	\$57	\$55	\$53	\$52	\$49	\$44	\$38	\$33	\$24	\$20	\$15
	45% Current	\$77	\$72	\$68	\$64	\$61	\$58	\$57	\$55	\$54	\$52	\$52	\$44	\$35	\$28	\$21	\$14	\$13	\$12
	10yr ave.	\$91	\$87	\$83	\$79	\$75	\$71	\$67	\$64	\$62	\$60	\$59	\$55	\$50	\$43	\$37	\$27	\$23	\$17
	50% Current	\$86	\$80	\$76	\$72	\$68	\$65	\$63	\$61	\$60	\$58	\$57	\$49	\$39	\$31	\$23	\$16	\$15	\$13
	10yr ave.	\$101	\$96	\$92	\$87	\$83	\$79	\$74	\$71	\$69	\$67	\$65	\$61	\$55	\$47	\$41	\$30	\$25	\$19
	55% Current	\$95	\$88	\$83	\$79	\$75	\$71	\$70	\$67	\$66	\$64	\$63	\$54	\$43	\$34	\$26	\$18	\$16	\$14
	10yr ave.	\$111	\$106	\$101	\$96	\$91	\$86	\$82	\$79	\$76	\$73	\$72	\$67	\$61	\$52	\$46	\$33	\$28	\$21
	60% Current	\$103	\$96	\$91	\$86	\$81	\$78	\$76	\$73	\$71	\$69	\$69	\$58	\$46	\$37	\$28	\$19	\$18	\$15
	10yr ave.	\$121	\$116	\$110	\$105	\$99	\$94	\$89	\$86	\$83	\$80	\$78	\$74	\$66	\$57	\$50	\$36	\$30	\$23
	65% Current	\$112	\$104	\$99	\$93	\$88	\$84	\$82	\$80	\$77	\$75	\$75	\$63	\$50	\$41	\$30	\$21	\$19	\$17
	10yr ave.	\$131	\$125	\$119	\$114	\$108	\$102	\$97	\$93	\$89	\$87	\$85	\$80	\$72	\$62	\$54	\$39	\$33	\$25
	70% Current	\$120	\$112	\$106	\$100	\$95	\$91	\$89	\$86	\$83	\$81	\$80	\$68	\$54	\$44	\$33	\$22	\$21	\$18
	10yr ave.	\$141	\$135	\$129	\$122	\$116	\$110	\$104	\$100	\$96	\$93	\$91	\$86	\$77	\$66	\$58	\$42	\$35	\$26
	75% Current	\$129	\$120	\$114	\$107	\$102	\$97	\$95	\$92	\$89	\$87	\$86	\$73	\$58	\$47	\$35	\$24	\$22	\$19
	10yr ave.	\$151	\$145	\$138	\$131	\$124	\$118	\$112	\$107	\$103	\$100	\$98	\$92	\$83	\$71	\$62	\$45	\$38	\$28
	80% Current	\$138	\$128	\$121	\$115	\$108	\$104	\$101	\$98	\$95	\$93	\$92	\$78	\$62	\$50	\$37	\$26	\$24	\$21
	10yr ave.	\$161	\$154	\$147	\$140	\$133	\$126	\$119	\$114	\$110	\$107	\$104	\$98	\$88	\$76	\$66	\$48	\$40	\$30
	85% Current	\$146	\$136	\$129	\$122	\$115	\$110	\$108	\$104	\$101	\$98	\$98	\$83	\$66	\$53	\$40	\$27	\$25	\$22
	10yr ave.	\$172	\$164	\$156	\$149	\$141	\$133	\$126	\$121	\$117	\$113	\$111	\$104	\$94	\$80	\$71	\$51	\$43	\$32

The above shows estimated returns per head for skirted fleece wool. These figures do not take into account the value of skirtings and oddments and do not take into account discounts that may apply for faults under individual circumstances. These figures are based on a market index of 100% and should be used as a guide only. Returns over \$30 / head for fleece wool are highlighted.



**Table 9: Returns pr head for skirted fleece wool.**

Skirted FLC Weight <b>8 Kg</b>		Micron																	
		16	16.5	17	17.5	18	18.5	19	19.5	20	21	22	23	24	25	26	28	30	32
Yield (Sch Dry)	25% Current	\$38	\$36	\$34	\$32	\$30	\$29	\$28	\$27	\$26	\$26	\$26	\$22	\$17	\$14	\$10	\$7	\$7	\$6
	10yr ave.	\$45	\$43	\$41	\$39	\$37	\$35	\$33	\$32	\$31	\$30	\$29	\$27	\$24	\$21	\$18	\$13	\$11	\$8
	30% Current	\$46	\$43	\$40	\$38	\$36	\$35	\$34	\$33	\$32	\$31	\$31	\$26	\$21	\$17	\$12	\$9	\$8	\$7
	10yr ave.	\$54	\$51	\$49	\$47	\$44	\$42	\$40	\$38	\$37	\$36	\$35	\$33	\$29	\$25	\$22	\$16	\$13	\$10
	35% Current	\$54	\$50	\$47	\$45	\$42	\$40	\$39	\$38	\$37	\$36	\$36	\$30	\$24	\$19	\$15	\$10	\$9	\$8
	10yr ave.	\$63	\$60	\$57	\$54	\$52	\$49	\$46	\$44	\$43	\$41	\$41	\$38	\$34	\$29	\$26	\$19	\$16	\$12
	40% Current	\$61	\$57	\$54	\$51	\$48	\$46	\$45	\$43	\$42	\$41	\$41	\$35	\$28	\$22	\$17	\$11	\$10	\$9
	10yr ave.	\$72	\$69	\$65	\$62	\$59	\$56	\$53	\$51	\$49	\$47	\$46	\$44	\$39	\$34	\$30	\$21	\$18	\$13
	45% Current	\$69	\$64	\$61	\$57	\$54	\$52	\$51	\$49	\$48	\$46	\$46	\$39	\$31	\$25	\$19	\$13	\$12	\$10
	10yr ave.	\$81	\$77	\$73	\$70	\$66	\$63	\$60	\$57	\$55	\$53	\$52	\$49	\$44	\$38	\$33	\$24	\$20	\$15
	50% Current	\$76	\$71	\$67	\$64	\$60	\$58	\$56	\$54	\$53	\$51	\$51	\$43	\$34	\$28	\$21	\$14	\$13	\$11
	10yr ave.	\$90	\$86	\$82	\$78	\$74	\$70	\$66	\$63	\$61	\$59	\$58	\$54	\$49	\$42	\$37	\$27	\$22	\$17
	55% Current	\$84	\$78	\$74	\$70	\$66	\$63	\$62	\$60	\$58	\$57	\$56	\$48	\$38	\$31	\$23	\$16	\$14	\$13
	10yr ave.	\$99	\$94	\$90	\$86	\$81	\$77	\$73	\$70	\$67	\$65	\$64	\$60	\$54	\$46	\$41	\$29	\$25	\$18
	60% Current	\$92	\$85	\$81	\$76	\$72	\$69	\$68	\$65	\$64	\$62	\$61	\$52	\$41	\$33	\$25	\$17	\$16	\$14
	10yr ave.	\$108	\$103	\$98	\$93	\$88	\$84	\$79	\$76	\$73	\$71	\$70	\$65	\$59	\$50	\$44	\$32	\$27	\$20
	65% Current	\$99	\$93	\$88	\$83	\$78	\$75	\$73	\$71	\$69	\$67	\$66	\$56	\$45	\$36	\$27	\$18	\$17	\$15
	10yr ave.	\$117	\$111	\$106	\$101	\$96	\$91	\$86	\$82	\$80	\$77	\$75	\$71	\$64	\$55	\$48	\$35	\$29	\$22
	70% Current	\$107	\$100	\$94	\$89	\$84	\$81	\$79	\$76	\$74	\$72	\$71	\$61	\$48	\$39	\$29	\$20	\$18	\$16
	10yr ave.	\$126	\$120	\$114	\$109	\$103	\$98	\$93	\$89	\$86	\$83	\$81	\$76	\$68	\$59	\$52	\$37	\$31	\$24
	75% Current	\$115	\$107	\$101	\$96	\$90	\$87	\$84	\$82	\$79	\$77	\$77	\$65	\$52	\$42	\$31	\$21	\$20	\$17
	10yr ave.	\$135	\$129	\$122	\$117	\$110	\$105	\$99	\$95	\$92	\$89	\$87	\$82	\$73	\$63	\$55	\$40	\$34	\$25
	80% Current	\$122	\$114	\$108	\$102	\$96	\$92	\$90	\$87	\$85	\$82	\$82	\$69	\$55	\$44	\$33	\$23	\$21	\$18
	10yr ave.	\$144	\$137	\$131	\$124	\$118	\$112	\$106	\$102	\$98	\$95	\$93	\$87	\$78	\$67	\$59	\$43	\$36	\$27
	85% Current	\$130	\$121	\$115	\$108	\$102	\$98	\$96	\$92	\$90	\$87	\$87	\$74	\$59	\$47	\$35	\$24	\$22	\$19
	10yr ave.	\$153	\$146	\$139	\$132	\$125	\$119	\$112	\$108	\$104	\$101	\$99	\$93	\$83	\$72	\$63	\$45	\$38	\$29

The above shows estimated returns per head for skirted fleece wool. These figures do not take into account the value of skirtings and oddments and do not take into account discounts that may apply for faults under individual circumstances. These figures are based on a market index of 100% and should be used as a guide only. Returns over \$30 / head for fleece wool are highlighted.



**Table 10: Returns pr head for skirted fleece wool.**

<b>Skirted FLC Weight</b> <b>7 Kg</b>		<b>Micron</b>																	
		16	16.5	17	17.5	18	18.5	19	19.5	20	21	22	23	24	25	26	28	30	32
<b>Yield (Sch Dry)</b>	25% Current	\$33	\$31	\$29	\$28	\$26	\$25	\$25	\$24	\$23	\$23	\$22	\$19	\$15	\$12	\$9	\$6	\$6	\$5
	10yr ave.	\$39	\$38	\$36	\$34	\$32	\$31	\$29	\$28	\$27	\$26	\$25	\$24	\$21	\$18	\$16	\$12	\$10	\$7
	30% Current	\$40	\$37	\$35	\$33	\$32	\$30	\$30	\$29	\$28	\$27	\$27	\$23	\$18	\$15	\$11	\$7	\$7	\$6
	10yr ave.	\$47	\$45	\$43	\$41	\$39	\$37	\$35	\$33	\$32	\$31	\$30	\$29	\$26	\$22	\$19	\$14	\$12	\$9
	35% Current	\$47	\$44	\$41	\$39	\$37	\$35	\$34	\$33	\$32	\$32	\$31	\$26	\$21	\$17	\$13	\$9	\$8	\$7
	10yr ave.	\$55	\$53	\$50	\$48	\$45	\$43	\$40	\$39	\$37	\$36	\$36	\$33	\$30	\$26	\$23	\$16	\$14	\$10
	40% Current	\$54	\$50	\$47	\$45	\$42	\$40	\$39	\$38	\$37	\$36	\$36	\$30	\$24	\$19	\$15	\$10	\$9	\$8
	10yr ave.	\$63	\$60	\$57	\$54	\$52	\$49	\$46	\$44	\$43	\$41	\$41	\$38	\$34	\$29	\$26	\$19	\$16	\$12
	45% Current	\$60	\$56	\$53	\$50	\$47	\$45	\$44	\$43	\$42	\$41	\$40	\$34	\$27	\$22	\$16	\$11	\$10	\$9
	10yr ave.	\$71	\$68	\$64	\$61	\$58	\$55	\$52	\$50	\$48	\$47	\$46	\$43	\$39	\$33	\$29	\$21	\$18	\$13
	50% Current	\$67	\$62	\$59	\$56	\$53	\$51	\$49	\$48	\$46	\$45	\$45	\$38	\$30	\$24	\$18	\$12	\$11	\$10
	10yr ave.	\$79	\$75	\$71	\$68	\$64	\$61	\$58	\$56	\$54	\$52	\$51	\$48	\$43	\$37	\$32	\$23	\$20	\$15
	55% Current	\$74	\$69	\$65	\$61	\$58	\$56	\$54	\$52	\$51	\$50	\$49	\$42	\$33	\$27	\$20	\$14	\$13	\$11
	10yr ave.	\$86	\$83	\$79	\$75	\$71	\$67	\$64	\$61	\$59	\$57	\$56	\$52	\$47	\$41	\$35	\$26	\$22	\$16
	60% Current	\$80	\$75	\$71	\$67	\$63	\$61	\$59	\$57	\$56	\$54	\$54	\$45	\$36	\$29	\$22	\$15	\$14	\$12
	10yr ave.	\$94	\$90	\$86	\$82	\$77	\$73	\$69	\$67	\$64	\$62	\$61	\$57	\$51	\$44	\$39	\$28	\$23	\$18
	65% Current	\$87	\$81	\$77	\$72	\$69	\$66	\$64	\$62	\$60	\$59	\$58	\$49	\$39	\$32	\$24	\$16	\$15	\$13
	10yr ave.	\$102	\$98	\$93	\$88	\$84	\$79	\$75	\$72	\$70	\$67	\$66	\$62	\$56	\$48	\$42	\$30	\$25	\$19
	70% Current	\$94	\$87	\$83	\$78	\$74	\$71	\$69	\$67	\$65	\$63	\$63	\$53	\$42	\$34	\$25	\$17	\$16	\$14
	10yr ave.	\$110	\$105	\$100	\$95	\$90	\$86	\$81	\$78	\$75	\$73	\$71	\$67	\$60	\$52	\$45	\$33	\$27	\$21
	75% Current	\$100	\$94	\$88	\$84	\$79	\$76	\$74	\$71	\$70	\$68	\$67	\$57	\$45	\$36	\$27	\$19	\$17	\$15
	10yr ave.	\$118	\$113	\$107	\$102	\$97	\$92	\$87	\$83	\$80	\$78	\$76	\$72	\$64	\$55	\$48	\$35	\$29	\$22
	80% Current	\$107	\$100	\$94	\$89	\$84	\$81	\$79	\$76	\$74	\$72	\$71	\$61	\$48	\$39	\$29	\$20	\$18	\$16
	10yr ave.	\$126	\$120	\$114	\$109	\$103	\$98	\$93	\$89	\$86	\$83	\$81	\$76	\$68	\$59	\$52	\$37	\$31	\$24
	85% Current	\$114	\$106	\$100	\$95	\$90	\$86	\$84	\$81	\$79	\$77	\$76	\$64	\$51	\$41	\$31	\$21	\$20	\$17
	10yr ave.	\$133	\$128	\$121	\$116	\$110	\$104	\$98	\$94	\$91	\$88	\$86	\$81	\$73	\$63	\$55	\$40	\$33	\$25

The above shows estimated returns per head for skirted fleece wool. These figures do not take into account the value of skirtings and oddments and do not take into account discounts that may apply for faults under individual circumstances. These figures are based on a market index of 100% and should be used as a guide only. Returns over \$30 / head for fleece wool are highlighted.





**Table 11: Returns pr head for skirted fleece wool.**

Skirted FLC Weight  6 Kg			Micron																	
			16	16.5	17	17.5	18	18.5	19	19.5	20	21	22	23	24	25	26	28	30	32
Yield (Sch Dry)	25%	Current	\$29	\$27	\$25	\$24	\$23	\$22	\$21	\$20	\$20	\$19	\$19	\$16	\$13	\$10	\$8	\$5	\$5	\$4
		10yr ave.	\$34	\$32	\$31	\$29	\$28	\$26	\$25	\$24	\$23	\$22	\$22	\$20	\$18	\$16	\$14	\$10	\$8	\$6
	30%	Current	\$34	\$32	\$30	\$29	\$27	\$26	\$25	\$24	\$24	\$23	\$23	\$19	\$15	\$12	\$9	\$6	\$6	\$5
		10yr ave.	\$40	\$39	\$37	\$35	\$33	\$31	\$30	\$29	\$28	\$27	\$26	\$25	\$22	\$19	\$17	\$12	\$10	\$8
	35%	Current	\$40	\$37	\$35	\$33	\$32	\$30	\$30	\$29	\$28	\$27	\$27	\$23	\$18	\$15	\$11	\$7	\$7	\$6
		10yr ave.	\$47	\$45	\$43	\$41	\$39	\$37	\$35	\$33	\$32	\$31	\$30	\$29	\$26	\$22	\$19	\$14	\$12	\$9
	40%	Current	\$46	\$43	\$40	\$38	\$36	\$35	\$34	\$33	\$32	\$31	\$31	\$26	\$21	\$17	\$12	\$9	\$8	\$7
		10yr ave.	\$54	\$51	\$49	\$47	\$44	\$42	\$40	\$38	\$37	\$36	\$35	\$33	\$29	\$25	\$22	\$16	\$13	\$10
	45%	Current	\$52	\$48	\$45	\$43	\$41	\$39	\$38	\$37	\$36	\$35	\$34	\$29	\$23	\$19	\$14	\$10	\$9	\$8
		10yr ave.	\$61	\$58	\$55	\$52	\$50	\$47	\$45	\$43	\$41	\$40	\$39	\$37	\$33	\$28	\$25	\$18	\$15	\$11
	50%	Current	\$57	\$53	\$51	\$48	\$45	\$43	\$42	\$41	\$40	\$39	\$38	\$32	\$26	\$21	\$16	\$11	\$10	\$9
		10yr ave.	\$67	\$64	\$61	\$58	\$55	\$52	\$50	\$48	\$46	\$44	\$44	\$41	\$37	\$32	\$28	\$20	\$17	\$13
	55%	Current	\$63	\$59	\$56	\$53	\$50	\$48	\$46	\$45	\$44	\$42	\$42	\$36	\$28	\$23	\$17	\$12	\$11	\$9
		10yr ave.	\$74	\$71	\$67	\$64	\$61	\$58	\$55	\$52	\$50	\$49	\$48	\$45	\$40	\$35	\$30	\$22	\$18	\$14
	60%	Current	\$69	\$64	\$61	\$57	\$54	\$52	\$51	\$49	\$48	\$46	\$46	\$39	\$31	\$25	\$19	\$13	\$12	\$10
		10yr ave.	\$81	\$77	\$73	\$70	\$66	\$63	\$60	\$57	\$55	\$53	\$52	\$49	\$44	\$38	\$33	\$24	\$20	\$15
	65%	Current	\$75	\$69	\$66	\$62	\$59	\$56	\$55	\$53	\$52	\$50	\$50	\$42	\$34	\$27	\$20	\$14	\$13	\$11
		10yr ave.	\$87	\$84	\$80	\$76	\$72	\$68	\$64	\$62	\$60	\$58	\$57	\$53	\$48	\$41	\$36	\$26	\$22	\$16
	70%	Current	\$80	\$75	\$71	\$67	\$63	\$61	\$59	\$57	\$56	\$54	\$54	\$45	\$36	\$29	\$22	\$15	\$14	\$12
		10yr ave.	\$94	\$90	\$86	\$82	\$77	\$73	\$69	\$67	\$64	\$62	\$61	\$57	\$51	\$44	\$39	\$28	\$23	\$18
	75%	Current	\$86	\$80	\$76	\$72	\$68	\$65	\$63	\$61	\$60	\$58	\$57	\$49	\$39	\$31	\$23	\$16	\$15	\$13
		10yr ave.	\$101	\$96	\$92	\$87	\$83	\$79	\$74	\$71	\$69	\$67	\$65	\$61	\$55	\$47	\$41	\$30	\$25	\$19
	80%	Current	\$92	\$85	\$81	\$76	\$72	\$69	\$68	\$65	\$64	\$62	\$61	\$52	\$41	\$33	\$25	\$17	\$16	\$14
		10yr ave.	\$108	\$103	\$98	\$93	\$88	\$84	\$79	\$76	\$73	\$71	\$70	\$65	\$59	\$50	\$44	\$32	\$27	\$20
	85%	Current	\$98	\$91	\$86	\$81	\$77	\$74	\$72	\$69	\$68	\$66	\$65	\$55	\$44	\$35	\$26	\$18	\$17	\$15
		10yr ave.	\$114	\$109	\$104	\$99	\$94	\$89	\$84	\$81	\$78	\$76	\$74	\$69	\$62	\$54	\$47	\$34	\$29	\$21

The above shows estimated returns per head for skirted fleece wool. These figures do not take into account the value of skirtings and oddments and do not take into account discounts that may apply for faults under individual circumstances. These figures are based on a market index of 100% and should be used as a guide only. Returns over \$30 / head for fleece wool are highlighted.



**Table 12: Returns pr head for skirted fleece wool.**

<b>Skirted FLC Weight</b>		<b>Micron</b>																	
<b>5 Kg</b>		16	16.5	17	17.5	18	18.5	19	19.5	20	21	22	23	24	25	26	28	30	32
<b>Yield (Sch Dry)</b>	25% Current	\$24	\$22	\$21	\$20	\$19	\$18	\$18	\$17	\$17	\$16	\$16	\$14	\$11	\$9	\$6	\$4	\$4	\$4
	10yr ave.	\$28	\$27	\$26	\$24	\$23	\$22	\$21	\$20	\$19	\$19	\$18	\$17	\$15	\$13	\$12	\$8	\$7	\$5
	30% Current	\$29	\$27	\$25	\$24	\$23	\$22	\$21	\$20	\$20	\$19	\$19	\$16	\$13	\$10	\$8	\$5	\$5	\$4
	10yr ave.	\$34	\$32	\$31	\$29	\$28	\$26	\$25	\$24	\$23	\$22	\$22	\$20	\$18	\$16	\$14	\$10	\$8	\$6
	35% Current	\$33	\$31	\$29	\$28	\$26	\$25	\$25	\$24	\$23	\$23	\$22	\$19	\$15	\$12	\$9	\$6	\$6	\$5
	10yr ave.	\$39	\$38	\$36	\$34	\$32	\$31	\$29	\$28	\$27	\$26	\$25	\$24	\$21	\$18	\$16	\$12	\$10	\$7
	40% Current	\$38	\$36	\$34	\$32	\$30	\$29	\$28	\$27	\$26	\$26	\$26	\$22	\$17	\$14	\$10	\$7	\$7	\$6
	10yr ave.	\$45	\$43	\$41	\$39	\$37	\$35	\$33	\$32	\$31	\$30	\$29	\$27	\$24	\$21	\$18	\$13	\$11	\$8
	45% Current	\$43	\$40	\$38	\$36	\$34	\$32	\$32	\$31	\$30	\$29	\$29	\$24	\$19	\$16	\$12	\$8	\$7	\$6
	10yr ave.	\$50	\$48	\$46	\$44	\$41	\$39	\$37	\$36	\$34	\$33	\$33	\$31	\$28	\$24	\$21	\$15	\$13	\$9
	50% Current	\$48	\$45	\$42	\$40	\$38	\$36	\$35	\$34	\$33	\$32	\$32	\$27	\$22	\$17	\$13	\$9	\$8	\$7
	10yr ave.	\$56	\$54	\$51	\$49	\$46	\$44	\$41	\$40	\$38	\$37	\$36	\$34	\$31	\$26	\$23	\$17	\$14	\$11
	55% Current	\$53	\$49	\$46	\$44	\$41	\$40	\$39	\$37	\$36	\$35	\$35	\$30	\$24	\$19	\$14	\$10	\$9	\$8
	10yr ave.	\$62	\$59	\$56	\$53	\$51	\$48	\$45	\$44	\$42	\$41	\$40	\$37	\$34	\$29	\$25	\$18	\$15	\$12
	60% Current	\$57	\$53	\$51	\$48	\$45	\$43	\$42	\$41	\$40	\$39	\$38	\$32	\$26	\$21	\$16	\$11	\$10	\$9
	10yr ave.	\$67	\$64	\$61	\$58	\$55	\$52	\$50	\$48	\$46	\$44	\$44	\$41	\$37	\$32	\$28	\$20	\$17	\$13
	65% Current	\$62	\$58	\$55	\$52	\$49	\$47	\$46	\$44	\$43	\$42	\$41	\$35	\$28	\$23	\$17	\$12	\$11	\$9
	10yr ave.	\$73	\$70	\$66	\$63	\$60	\$57	\$54	\$52	\$50	\$48	\$47	\$44	\$40	\$34	\$30	\$22	\$18	\$14
	70% Current	\$67	\$62	\$59	\$56	\$53	\$51	\$49	\$48	\$46	\$45	\$45	\$38	\$30	\$24	\$18	\$12	\$11	\$10
	10yr ave.	\$79	\$75	\$71	\$68	\$64	\$61	\$58	\$56	\$54	\$52	\$51	\$48	\$43	\$37	\$32	\$23	\$20	\$15
	75% Current	\$72	\$67	\$63	\$60	\$56	\$54	\$53	\$51	\$50	\$48	\$48	\$41	\$32	\$26	\$19	\$13	\$12	\$11
	10yr ave.	\$84	\$80	\$77	\$73	\$69	\$65	\$62	\$59	\$57	\$56	\$54	\$51	\$46	\$39	\$35	\$25	\$21	\$16
	80% Current	\$76	\$71	\$67	\$64	\$60	\$58	\$56	\$54	\$53	\$51	\$51	\$43	\$34	\$28	\$21	\$14	\$13	\$11
	10yr ave.	\$90	\$86	\$82	\$78	\$74	\$70	\$66	\$63	\$61	\$59	\$58	\$54	\$49	\$42	\$37	\$27	\$22	\$17
	85% Current	\$81	\$76	\$72	\$68	\$64	\$61	\$60	\$58	\$56	\$55	\$54	\$46	\$37	\$29	\$22	\$15	\$14	\$12
	10yr ave.	\$95	\$91	\$87	\$83	\$78	\$74	\$70	\$67	\$65	\$63	\$62	\$58	\$52	\$45	\$39	\$28	\$24	\$18

The above shows estimated returns per head for skirted fleece wool. These figures do not take into account the value of skirtings and oddments and do not take into account discounts that may apply for faults under individual circumstances. These figures are based on a market index of 100% and should be used as a guide only. Returns over \$30 / head for fleece wool are highlighted.

**Table 13: Returns pr head for skirted fleece wool.**

<b>Skirted FLC Weight</b> <b>4 Kg</b>		<b>Micron</b>																	
		16	16.5	17	17.5	18	18.5	19	19.5	20	21	22	23	24	25	26	28	30	32
<b>Yield (Sch Dry)</b>	25% Current	\$19	\$18	\$17	\$16	\$15	\$14	\$14	\$14	\$13	\$13	\$13	\$11	\$9	\$7	\$5	\$4	\$3	\$3
	10yr ave.	\$22	\$21	\$20	\$19	\$18	\$17	\$17	\$16	\$15	\$15	\$15	\$14	\$12	\$11	\$9	\$7	\$6	\$4
	30% Current	\$23	\$21	\$20	\$19	\$18	\$17	\$17	\$16	\$16	\$15	\$15	\$13	\$10	\$8	\$6	\$4	\$4	\$3
	10yr ave.	\$27	\$26	\$24	\$23	\$22	\$21	\$20	\$19	\$18	\$18	\$17	\$16	\$15	\$13	\$11	\$8	\$7	\$5
	35% Current	\$27	\$25	\$24	\$22	\$21	\$20	\$20	\$19	\$19	\$18	\$18	\$15	\$12	\$10	\$7	\$5	\$5	\$4
	10yr ave.	\$31	\$30	\$29	\$27	\$26	\$24	\$23	\$22	\$21	\$21	\$20	\$19	\$17	\$15	\$13	\$9	\$8	\$6
	40% Current	\$31	\$28	\$27	\$25	\$24	\$23	\$23	\$22	\$21	\$21	\$20	\$17	\$14	\$11	\$8	\$6	\$5	\$5
	10yr ave.	\$36	\$34	\$33	\$31	\$29	\$28	\$26	\$25	\$24	\$24	\$23	\$22	\$20	\$17	\$15	\$11	\$9	\$7
	45% Current	\$34	\$32	\$30	\$29	\$27	\$26	\$25	\$24	\$24	\$23	\$23	\$19	\$15	\$12	\$9	\$6	\$6	\$5
	10yr ave.	\$40	\$39	\$37	\$35	\$33	\$31	\$30	\$29	\$28	\$27	\$26	\$25	\$22	\$19	\$17	\$12	\$10	\$8
	50% Current	\$38	\$36	\$34	\$32	\$30	\$29	\$28	\$27	\$26	\$26	\$26	\$22	\$17	\$14	\$10	\$7	\$7	\$6
	10yr ave.	\$45	\$43	\$41	\$39	\$37	\$35	\$33	\$32	\$31	\$30	\$29	\$27	\$24	\$21	\$18	\$13	\$11	\$8
	55% Current	\$42	\$39	\$37	\$35	\$33	\$32	\$31	\$30	\$29	\$28	\$28	\$24	\$19	\$15	\$11	\$8	\$7	\$6
	10yr ave.	\$49	\$47	\$45	\$43	\$41	\$38	\$36	\$35	\$34	\$33	\$32	\$30	\$27	\$23	\$20	\$15	\$12	\$9
	60% Current	\$46	\$43	\$40	\$38	\$36	\$35	\$34	\$33	\$32	\$31	\$31	\$26	\$21	\$17	\$12	\$9	\$8	\$7
	10yr ave.	\$54	\$51	\$49	\$47	\$44	\$42	\$40	\$38	\$37	\$36	\$35	\$33	\$29	\$25	\$22	\$16	\$13	\$10
	65% Current	\$50	\$46	\$44	\$41	\$39	\$38	\$37	\$35	\$34	\$33	\$33	\$28	\$22	\$18	\$13	\$9	\$9	\$7
	10yr ave.	\$58	\$56	\$53	\$51	\$48	\$45	\$43	\$41	\$40	\$39	\$38	\$35	\$32	\$27	\$24	\$17	\$15	\$11
	70% Current	\$54	\$50	\$47	\$45	\$42	\$40	\$39	\$38	\$37	\$36	\$36	\$30	\$24	\$19	\$15	\$10	\$9	\$8
	10yr ave.	\$63	\$60	\$57	\$54	\$52	\$49	\$46	\$44	\$43	\$41	\$41	\$38	\$34	\$29	\$26	\$19	\$16	\$12
	75% Current	\$57	\$53	\$51	\$48	\$45	\$43	\$42	\$41	\$40	\$39	\$38	\$32	\$26	\$21	\$16	\$11	\$10	\$9
	10yr ave.	\$67	\$64	\$61	\$58	\$55	\$52	\$50	\$48	\$46	\$44	\$44	\$41	\$37	\$32	\$28	\$20	\$17	\$13
	80% Current	\$61	\$57	\$54	\$51	\$48	\$46	\$45	\$43	\$42	\$41	\$41	\$35	\$28	\$22	\$17	\$11	\$10	\$9
	10yr ave.	\$72	\$69	\$65	\$62	\$59	\$56	\$53	\$51	\$49	\$47	\$46	\$44	\$39	\$34	\$30	\$21	\$18	\$13
	85% Current	\$65	\$61	\$57	\$54	\$51	\$49	\$48	\$46	\$45	\$44	\$43	\$37	\$29	\$24	\$18	\$12	\$11	\$10
	10yr ave.	\$76	\$73	\$69	\$66	\$63	\$59	\$56	\$54	\$52	\$50	\$49	\$46	\$42	\$36	\$31	\$23	\$19	\$14

The above shows estimated returns per head for skirted fleece wool. These figures do not take into account the value of skirtings and oddments and do not take into account discounts that may apply for faults under individual circumstances. These figures are based on a market index of 100% and should be used as a guide only. Returns over \$30 / head for fleece wool are highlighted.



**Table 14: Returns pr head for skirted fleece wool.**

<b>Skirted FLC Weight</b> <b>3 Kg</b>		<b>Micron</b>																	
		16	16.5	17	17.5	18	18.5	19	19.5	20	21	22	23	24	25	26	28	30	32
<b>Yield (Sch Dry)</b>	25% Current	\$14	\$13	\$13	\$12	\$11	\$11	\$11	\$10	\$10	\$10	\$10	\$8	\$6	\$5	\$4	\$3	\$2	\$2
	10yr ave.	\$17	\$16	\$15	\$15	\$14	\$13	\$12	\$12	\$11	\$11	\$11	\$10	\$9	\$8	\$7	\$5	\$4	\$3
	30% Current	\$17	\$16	\$15	\$14	\$14	\$13	\$13	\$12	\$12	\$12	\$11	\$10	\$8	\$6	\$5	\$3	\$3	\$3
	10yr ave.	\$20	\$19	\$18	\$17	\$17	\$16	\$15	\$14	\$14	\$13	\$13	\$12	\$11	\$9	\$8	\$6	\$5	\$4
	35% Current	\$20	\$19	\$18	\$17	\$16	\$15	\$15	\$14	\$14	\$14	\$13	\$11	\$9	\$7	\$5	\$4	\$3	\$3
	10yr ave.	\$24	\$23	\$21	\$20	\$19	\$18	\$17	\$17	\$16	\$16	\$15	\$14	\$13	\$11	\$10	\$7	\$6	\$4
	40% Current	\$23	\$21	\$20	\$19	\$18	\$17	\$17	\$16	\$16	\$15	\$15	\$13	\$10	\$8	\$6	\$4	\$4	\$3
	10yr ave.	\$27	\$26	\$24	\$23	\$22	\$21	\$20	\$19	\$18	\$18	\$17	\$16	\$15	\$13	\$11	\$8	\$7	\$5
	45% Current	\$26	\$24	\$23	\$21	\$20	\$19	\$19	\$18	\$18	\$17	\$17	\$15	\$12	\$9	\$7	\$5	\$4	\$4
	10yr ave.	\$30	\$29	\$28	\$26	\$25	\$24	\$22	\$21	\$21	\$20	\$20	\$18	\$17	\$14	\$12	\$9	\$8	\$6
	50% Current	\$29	\$27	\$25	\$24	\$23	\$22	\$21	\$20	\$20	\$19	\$19	\$16	\$13	\$10	\$8	\$5	\$5	\$4
	10yr ave.	\$34	\$32	\$31	\$29	\$28	\$26	\$25	\$24	\$23	\$22	\$22	\$20	\$18	\$16	\$14	\$10	\$8	\$6
	55% Current	\$32	\$29	\$28	\$26	\$25	\$24	\$23	\$22	\$22	\$21	\$21	\$18	\$14	\$11	\$9	\$6	\$5	\$5
	10yr ave.	\$37	\$35	\$34	\$32	\$30	\$29	\$27	\$26	\$25	\$24	\$24	\$22	\$20	\$17	\$15	\$11	\$9	\$7
	60% Current	\$34	\$32	\$30	\$29	\$27	\$26	\$25	\$24	\$24	\$23	\$23	\$19	\$15	\$12	\$9	\$6	\$6	\$5
	10yr ave.	\$40	\$39	\$37	\$35	\$33	\$31	\$30	\$29	\$28	\$27	\$26	\$25	\$22	\$19	\$17	\$12	\$10	\$8
	65% Current	\$37	\$35	\$33	\$31	\$29	\$28	\$27	\$27	\$26	\$25	\$25	\$21	\$17	\$14	\$10	\$7	\$6	\$6
	10yr ave.	\$44	\$42	\$40	\$38	\$36	\$34	\$32	\$31	\$30	\$29	\$28	\$27	\$24	\$21	\$18	\$13	\$11	\$8
	70% Current	\$40	\$37	\$35	\$33	\$32	\$30	\$30	\$29	\$28	\$27	\$27	\$23	\$18	\$15	\$11	\$7	\$7	\$6
	10yr ave.	\$47	\$45	\$43	\$41	\$39	\$37	\$35	\$33	\$32	\$31	\$30	\$29	\$26	\$22	\$19	\$14	\$12	\$9
	75% Current	\$43	\$40	\$38	\$36	\$34	\$32	\$32	\$31	\$30	\$29	\$29	\$24	\$19	\$16	\$12	\$8	\$7	\$6
	10yr ave.	\$50	\$48	\$46	\$44	\$41	\$39	\$37	\$36	\$34	\$33	\$33	\$31	\$28	\$24	\$21	\$15	\$13	\$9
	80% Current	\$46	\$43	\$40	\$38	\$36	\$35	\$34	\$33	\$32	\$31	\$31	\$26	\$21	\$17	\$12	\$9	\$8	\$7
	10yr ave.	\$54	\$51	\$49	\$47	\$44	\$42	\$40	\$38	\$37	\$36	\$35	\$33	\$29	\$25	\$22	\$16	\$13	\$10
	85% Current	\$49	\$45	\$43	\$41	\$38	\$37	\$36	\$35	\$34	\$33	\$33	\$28	\$22	\$18	\$13	\$9	\$8	\$7
	10yr ave.	\$57	\$55	\$52	\$50	\$47	\$44	\$42	\$40	\$39	\$38	\$37	\$35	\$31	\$27	\$24	\$17	\$14	\$11

The above shows estimated returns per head for skirted fleece wool. These figures do not take into account the value of skirtings and oddments and do not take into account discounts that may apply for faults under individual circumstances. These figures are based on a market index of 100% and should be used as a guide only. Returns over \$30 / head for fleece wool are highlighted.



**Table 15: Returns pr head for skirted fleece wool.**

<b>Skirted FLC Weight</b> <b>2 Kg</b>		<b>Micron</b>																	
		16	16.5	17	17.5	18	18.5	19	19.5	20	21	22	23	24	25	26	28	30	32
<b>Yield (Sch Dry)</b>	25% Current	\$10	\$9	\$8	\$8	\$8	\$7	\$7	\$7	\$7	\$6	\$6	\$5	\$4	\$3	\$3	\$2	\$2	\$1
	10yr ave.	\$11	\$11	\$10	\$10	\$9	\$9	\$8	\$8	\$8	\$7	\$7	\$7	\$6	\$5	\$5	\$3	\$3	\$2
	30% Current	\$11	\$11	\$10	\$10	\$9	\$9	\$8	\$8	\$8	\$8	\$8	\$6	\$5	\$4	\$3	\$2	\$2	\$2
	10yr ave.	\$13	\$13	\$12	\$12	\$11	\$10	\$10	\$10	\$9	\$9	\$9	\$8	\$7	\$6	\$6	\$4	\$3	\$3
	35% Current	\$13	\$12	\$12	\$11	\$11	\$10	\$10	\$10	\$9	\$9	\$9	\$8	\$6	\$5	\$4	\$2	\$2	\$2
	10yr ave.	\$16	\$15	\$14	\$14	\$13	\$12	\$12	\$11	\$11	\$10	\$10	\$10	\$9	\$7	\$6	\$5	\$4	\$3
	40% Current	\$15	\$14	\$13	\$13	\$12	\$12	\$11	\$11	\$11	\$10	\$10	\$9	\$7	\$6	\$4	\$3	\$3	\$2
	10yr ave.	\$18	\$17	\$16	\$16	\$15	\$14	\$13	\$13	\$12	\$12	\$12	\$11	\$10	\$8	\$7	\$5	\$4	\$3
	45% Current	\$17	\$16	\$15	\$14	\$14	\$13	\$13	\$12	\$12	\$12	\$11	\$10	\$8	\$6	\$5	\$3	\$3	\$3
	10yr ave.	\$20	\$19	\$18	\$17	\$17	\$16	\$15	\$14	\$14	\$13	\$13	\$12	\$11	\$9	\$8	\$6	\$5	\$4
	50% Current	\$19	\$18	\$17	\$16	\$15	\$14	\$14	\$14	\$13	\$13	\$13	\$11	\$9	\$7	\$5	\$4	\$3	\$3
	10yr ave.	\$22	\$21	\$20	\$19	\$18	\$17	\$17	\$16	\$15	\$15	\$15	\$14	\$12	\$11	\$9	\$7	\$6	\$4
	55% Current	\$21	\$20	\$19	\$18	\$17	\$16	\$15	\$15	\$15	\$14	\$14	\$12	\$9	\$8	\$6	\$4	\$4	\$3
	10yr ave.	\$25	\$24	\$22	\$21	\$20	\$19	\$18	\$17	\$17	\$16	\$16	\$15	\$13	\$12	\$10	\$7	\$6	\$5
	60% Current	\$23	\$21	\$20	\$19	\$18	\$17	\$17	\$16	\$16	\$15	\$15	\$13	\$10	\$8	\$6	\$4	\$4	\$3
	10yr ave.	\$27	\$26	\$24	\$23	\$22	\$21	\$20	\$19	\$18	\$18	\$17	\$16	\$15	\$13	\$11	\$8	\$7	\$5
	65% Current	\$25	\$23	\$22	\$21	\$20	\$19	\$18	\$18	\$17	\$17	\$17	\$14	\$11	\$9	\$7	\$5	\$4	\$4
	10yr ave.	\$29	\$28	\$27	\$25	\$24	\$23	\$21	\$21	\$20	\$19	\$19	\$18	\$16	\$14	\$12	\$9	\$7	\$5
	70% Current	\$27	\$25	\$24	\$22	\$21	\$20	\$20	\$19	\$19	\$18	\$18	\$15	\$12	\$10	\$7	\$5	\$5	\$4
	10yr ave.	\$31	\$30	\$29	\$27	\$26	\$24	\$23	\$22	\$21	\$21	\$20	\$19	\$17	\$15	\$13	\$9	\$8	\$6
	75% Current	\$29	\$27	\$25	\$24	\$23	\$22	\$21	\$20	\$20	\$19	\$19	\$16	\$13	\$10	\$8	\$5	\$5	\$4
	10yr ave.	\$34	\$32	\$31	\$29	\$28	\$26	\$25	\$24	\$23	\$22	\$22	\$20	\$18	\$16	\$14	\$10	\$8	\$6
	80% Current	\$31	\$28	\$27	\$25	\$24	\$23	\$23	\$22	\$21	\$21	\$20	\$17	\$14	\$11	\$8	\$6	\$5	\$5
	10yr ave.	\$36	\$34	\$33	\$31	\$29	\$28	\$26	\$25	\$24	\$24	\$23	\$22	\$20	\$17	\$15	\$11	\$9	\$7
	85% Current	\$33	\$30	\$29	\$27	\$26	\$25	\$24	\$23	\$23	\$22	\$22	\$18	\$15	\$12	\$9	\$6	\$6	\$5
	10yr ave.	\$38	\$36	\$35	\$33	\$31	\$30	\$28	\$27	\$26	\$25	\$25	\$23	\$21	\$18	\$16	\$11	\$10	\$7

The above shows estimated returns per head for skirted fleece wool. These figures do not take into account the value of skirtings and oddments and do not take into account discounts that may apply for faults under individual circumstances. These figures are based on a market index of 100% and should be used as a guide only. Returns over \$30 / head for fleece wool are highlighted.