



# JEMALONG WOOL BULLETIN

(week ending 23/06/2011)

**Table 1: Northern Region Micron Price Guides**

CURRENT MARKET				12 MONTH COMPARISONS								3 YEAR COMPARISONS					10 YEAR COMPARISONS					
Mic.	23/06/2011	16/06/2011		22/06/2010	Now		Now		Now							Percentile						
Price	Current	Weekly		This time	compared		compared		compared								Low	High	10 year	Now		Percentile
Guides	Price	Change		Last Year	to Last Year		to Last Year		to Last Year		Low	High	Average	compared					Average	to 10yr ave		
NRI	1491	+6 0.4%		924	+567 61%		68%		0 0%		749	1491	963	+528 55%		100%	658	1491	899	+592 66%		100%
16*	2770	+50 1.8%		1560	+1210 78%		80%		-30 -1%		1385	2800	1792	+978 55%		95%						
16.5*	2680	+110 4.1%		1415	+1265 89%		92%		0 0%		1254	2680	1648	+1032 63%		100%						
17*	2390	-10 -0.4%		1250	+1140 91%		94%		-140 -6%		1171	2530	1521	+869 57%		87%	1100	2659	1430	+960 67%		94%
17.5*	2270	0		1195	+1075 90%		92%		-90 -4%		1086	2360	1437	+833 58%		92%						
18	2066	-7 -0.3%		1172	+894 76%		82%		-127 -6%		1035	2193	1355	+711 52%		89%	916	2193	1276	+790 62%		96%
18.5	1867	0		1137	+730 64%		68%		-96 -5%		971	1963	1262	+605 48%		90%	843	1963				
19	1751	-18 -1.0%		1083	+668 62%		70%		-25 -1%		894	1776	1148	+603 53%		97%	804	1776	1081	+670 62%		99%
19.5	1662	-7 -0.4%		998	+664 67%		75%		-8 0%		814	1670	1044	+618 59%		98%	749	1670				
20	1588	+13 0.8%		963	+625 65%		76%		0 0%		740	1588	963	+625 65%		100%	684	1588	941	+647 69%		100%
21	1522	+8 0.5%		946	+576 61%		73%		0 0%		687	1522	929	+593 64%		100%	645	1522	901	+621 69%		100%
22	1461	+3 0.2%		924	+537 58%		72%		0 0%		675	1461	905	+556 61%		100%	643	1461	877	+584 67%		100%
23	1324	+6 0.5%		897	+427 48%		60%		0 0%		663	1324	877	+447 51%		100%	640	1340	854	+470 55%		99%
24	1096	-4 -0.4%		836	+260 31%		41%		-74 -6%		647	1170	818	+278 34%		95%	635	1299	812	+284 35%		93%
25	984	0		708	+276 39%		42%		-64 -6%		566	1048	709	+275 39%		96%	567	1198	728	+256 35%		92%
26	899	+4 0.4%		630	+269 43%		50%		-29 -3%		504	928	639	+260 41%		96%	532	1088	666	+233 35%		88%
28	706	+15 2.1%		480	+226 47%		59%		-28 -4%		427	734	495	+211 43%		96%	424	889	529	+177 33%		87%
30	644	+12 1.9%		430	+214 50%		66%		-26 -4%		355	670	437	+207 47%		96%	344	729	461	+183 40%		96%
32	590	+12 2.0%		375	+215 57%		67%		-48 -8%		321	638	385	+205 53%		96%	297	669	417	+173 41%		96%
MC	831	+19 2.3%		634	+197 31%		48%		0 0%		392	831	584	+247 42%		100%	380	831	516	+315 61%		100%

**Note:**

\* Due to the irregular market quoting for some fine wool categories, figures shown relating to micron categories below 18 micron are an estimate based on the AWEX Premium & Discounts Report & other available information.

\* For any category, where there is insufficient quantity offered to enable AWEX to quote, a quote will be provided based on the best available information.

\* 10 Year data is not available for some micron categories, which may result in blank spaces in the table above.

**Definitions:**

\* A Percentile, is a value on a scale of one hundred that indicates the percent of a distribution that is equal to or below it. In general a percentile between 25% and 75% is considered normal, a percentile below 25% is considered below normal and a percentile above 75% is considered above normal.

Three and ten year percentiles shown in the table above, detail the period of time during the past 3 & 10 years that the market has traded either at or below its current price.

The higher the percentile, the stronger the market.

Source: Australian Wool Exchange, Australian Wool Innovation, Sydney Futures Exchange, x-rates.com

Disclaimer: While all due care has been taken in the preparation of this document, no warranty is made as to its accuracy, reliability or completeness. To the extent permitted by law neither Jemalong or their sources including subsidiaries and staff, accept liability to any person for loss or damage arising from the use of this information.



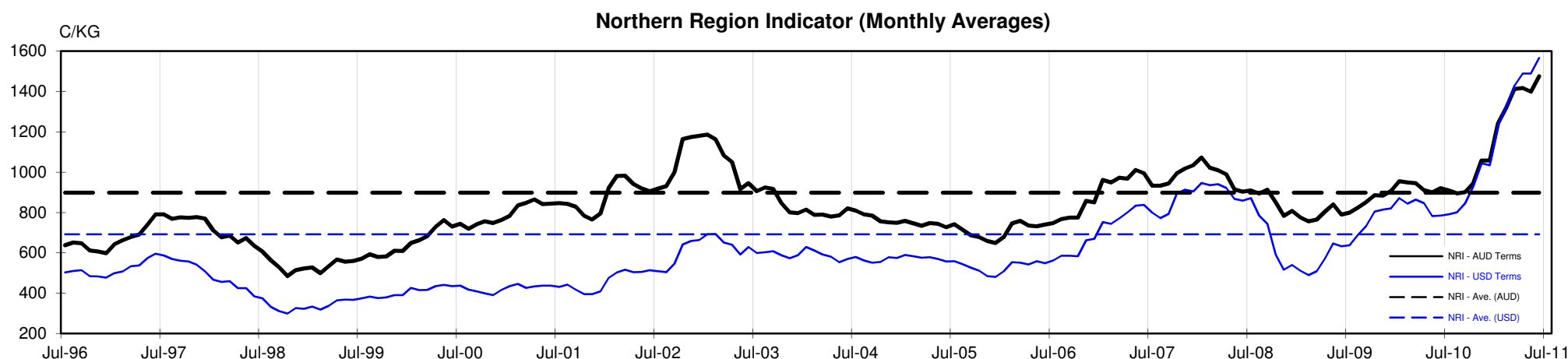
## MARKET COMMENTARY

One Australian Dollar = \$ 1.05 US, as of 23/06/2011

### NORTHERN REGION –Sale Week 51/10 (22,714 bales offered nationally)

On Wednesday - The medium to broad microns were very much affected by the quantity of Vm present. Lots with less than 1% were thin on the ground and attracted strong support. The 2-3% "B" fault lots also remained very firm to sellers favour however it was the clumpy burr area that eased under the weight of the offering. The finer microns, whilst limited, did lack some support for the lower style and higher Vm lots, which eased 10-20 cents. Skirtings were dominated by a mostly burry selection, leaving the >8% lots generally unchanged tending slightly cheaper, however the lower Vm types remained fully firm on the back of limited offering. Strong support had locks up 10 cents while crutchings & stains remained fully firm tending in sellers favour. On another small offering, 28-30 microns were 5-10 cents dearer on a nominal basis.

On Thursday - Buyers pushed the broader range a little higher on the back of a limited FNF selection. 20 to 21 microns lifted a further 10 cents while 22 microns gained 5 cents. Medium microns continued to struggle losing 10-15 cents off their previous value, while the fine end finished firm on a limited selection. Low Vm skirtings with <4% gained around 20 cents (on mostly a burry offering), higher Vm lots >6% were irregular and tended to be softer while cot & colour were still attracting solid discounts. All oddments were well supported as locks & crutchings gained a further 10 cents, while stains gained a little extra to close 20 cents dearer. Crossbreds once again nudged higher on the back of a small offering with 28 to 30 microns 5-10 cents above Wednesdays levels.





**Table 4: 19 micron SFE**

Wednesday, 22 June 2011

Delivery Mth	Aug-11	Oct-11	Dec-11	Feb-11	Apr-12	Jun-12	Aug-12	Oct-12	Dec-12
19 Micron SFE	1737	1707	1660	1610	1560	1530	1443	1443	1443
Average	1259	1265	1291	1114	1356	1408	1405	1416	1416
Maximum	1737	1707	1677	1707	1622	1612	1525	1525	1525
Minimum	1034	1034	1034	983	1106	1210	1285	1285	1285

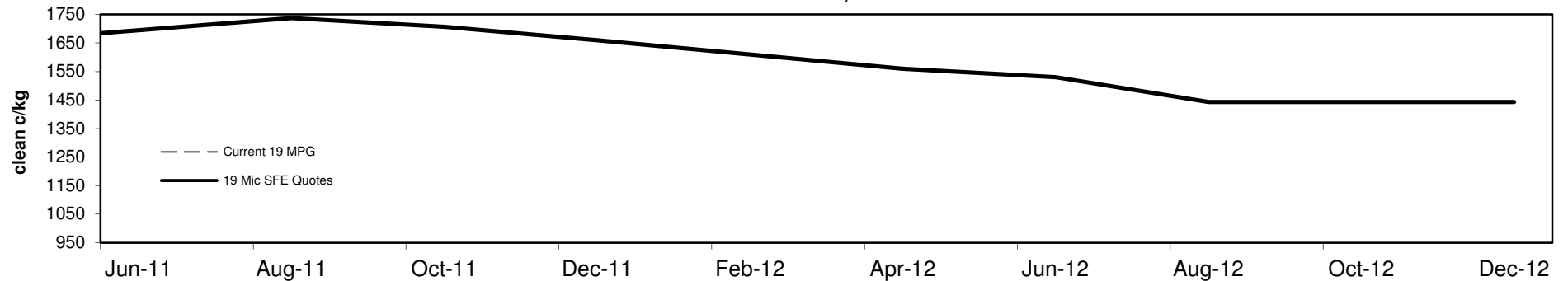
**Table 5: 19 micron SFE, as a percentile of the 19 micron MPG**

3 Year Percentile	96%	95%	91%	86%	85%	84%	84%	84%	84%
10 Year Percentile	99%	98%	97%	96%	96%	95%	95%	95%	95%

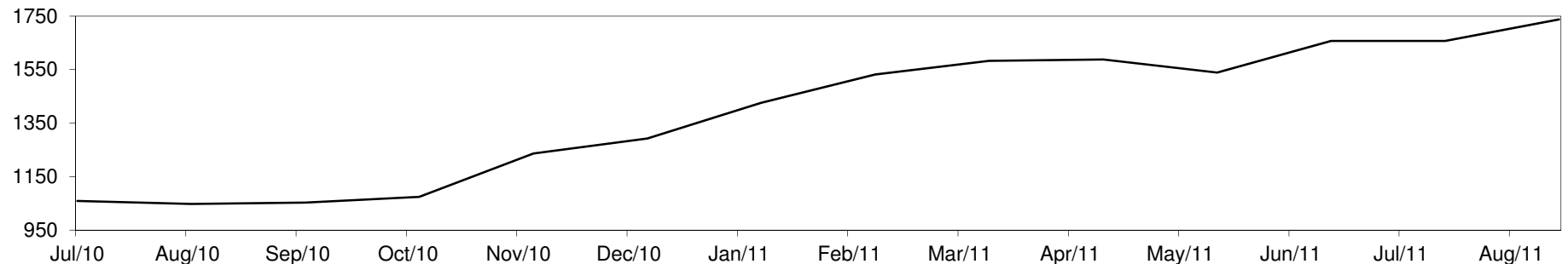
**Table 6: 19 micron SFE, compared to MPG**

SFE - MPG	-14	-1%	-44	-3%	-91	-5%	-141	-8%	-191	-11%	-221	-13%	-308	-18%	-308	-18%	-308	-18%
SFE - MPG, 1 year Ave.	+338	24%	+308	22%	+261	19%	+211	15%	+161	12%	+131	9%	+44	3%	+44	3%	+44	3%
SFE - MPG, 3 year Ave.	+589	51%	+559	49%	+512	45%	+462	40%	+412	36%	+382	33%	+295	26%	+295	26%	+295	26%
SFE - MPG, 10 year Ave.	+656	61%	+626	58%	+579	54%	+529	49%	+479	44%	+449	42%	+362	33%	+362	33%	+362	33%

**19 MICRON SFE, QUOTES**



**19 Micron SFE, Front month movement**





**Table 7: 21 micron SFE**

Wednesday, 22 June 2011

Delivery Mth	Aug-11	Oct-11	Dec-11	Feb-11	Apr-12	Jun-12	Aug-12	Oct-12	Dec-12
21 Micron SFE	1490	1405	1385	1338	1290	1200	1242	1209	1200
Average	1045	1036	1040	962	1076	1090	1117	1134	1134
Maximum	1490	1434	1411	1405	1303	1326	1316	1283	1283
Minimum	880	880	880	860	934	990	1046	1013	1013

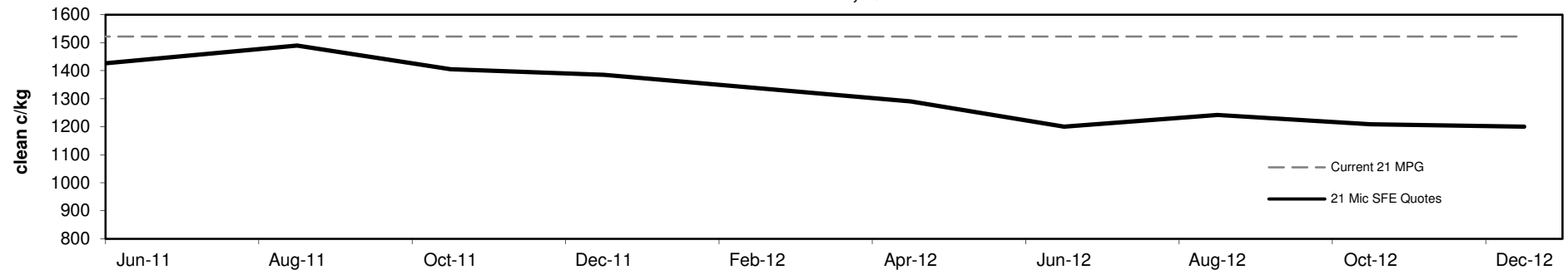
**Table 8: 21 micron SFE, as a percentile of the 21 micron MPG**

3 Year Percentile	98%	96%	96%	96%	92%	89%	90%	89%	89%
10 Year Percentile	99%	99%	98%	98%	97%	91%	93%	92%	91%

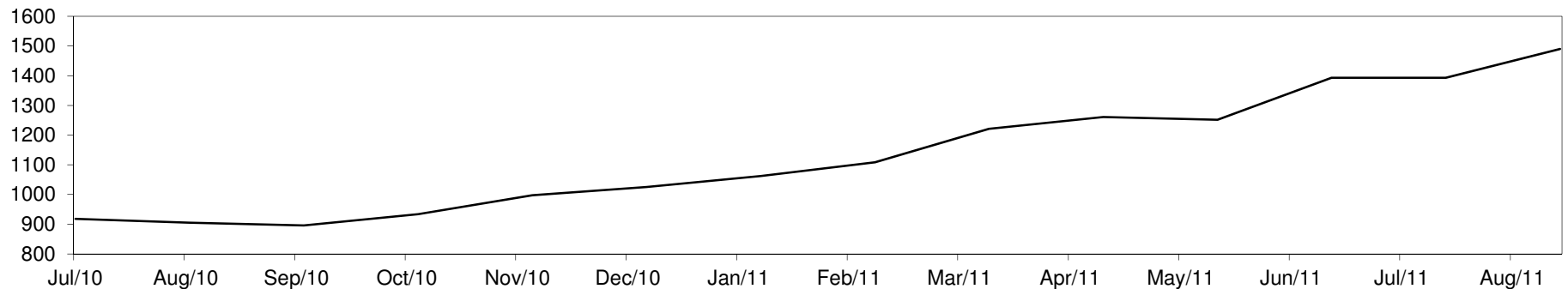
**Table 9: 21 micron SFE, compared to MPG**

SFE - MPG	-32	-2%	-117	-8%	-137	-9%	-184	-12%	-232	-15%	-322	-21%	-280	-18%	-313	-21%	-322	-21%
SFE - MPG, 1 year Ave.	+379	34%	+294	26%	+274	25%	+227	20%	+179	16%	+89	8%	+131	12%	+98	9%	+89	8%
SFE - MPG, 3 year Ave.	+561	60%	+476	51%	+456	49%	+409	44%	+361	39%	+271	29%	+313	34%	+280	30%	+271	29%
SFE - MPG, 10 year Ave.	+589	65%	+504	56%	+484	54%	+437	49%	+389	43%	+299	33%	+341	38%	+308	34%	+299	33%

**21 MICRON SFE, QUOTES**



**21 Micron SFE, Front month movement**





**Table 10: 23 micron SFE**

Wednesday, 22 June 2011

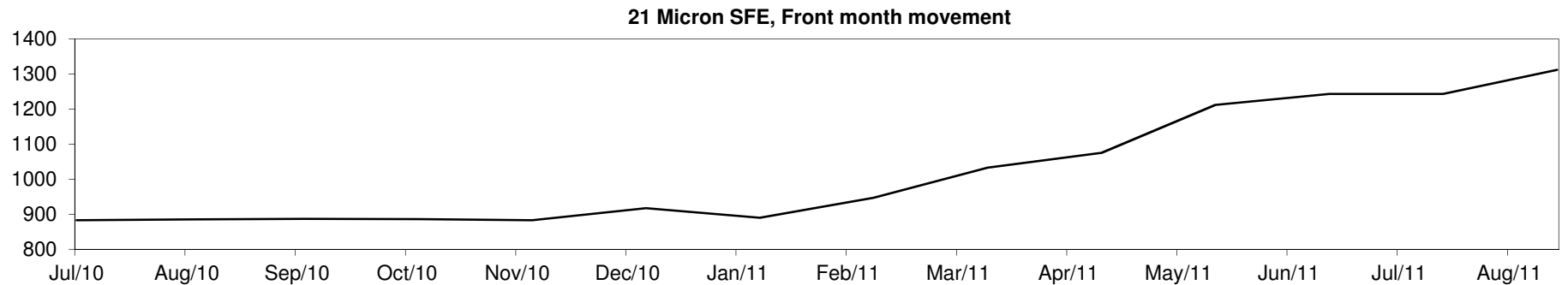
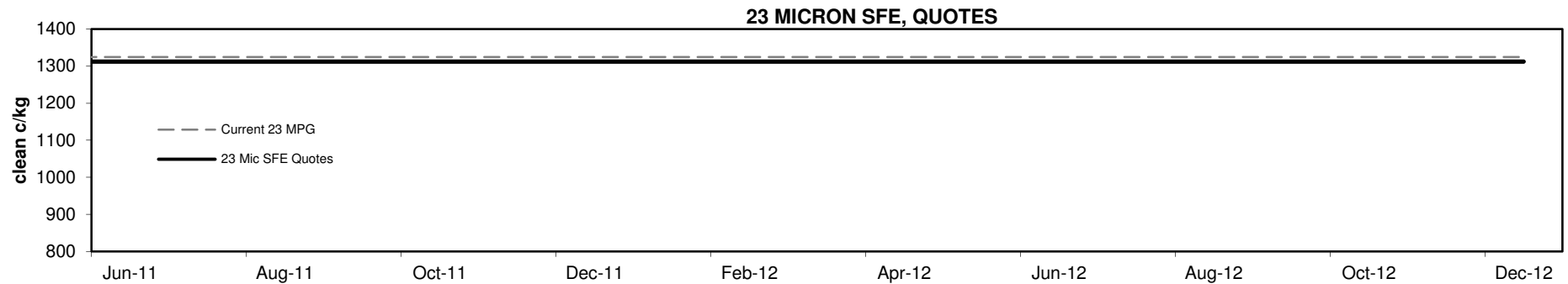
Delivery Mth	Aug-11	Oct-11	Dec-11	Feb-11	Apr-12	Jun-12	Aug-12	Oct-12	Dec-12
23 Micron SFE	1312	1312	1312	1312	1312	1312	1312	1312	1312
Average	954	957	970	870	1019	1059	1132	1224	1224
Maximum	1312	1312	1312	1312	1312	1312	1312	1312	1312
Minimum	883	883	883	760	883	890	1033	1212	1212

**Table 11: 23 micron SFE, as a percentile of the 23 micron MPG**

3 Year Percentile	98%	98%	98%	98%	98%	98%	98%	98%	98%
10 Year Percentile	99%	99%	99%	99%	99%	99%	99%	99%	99%

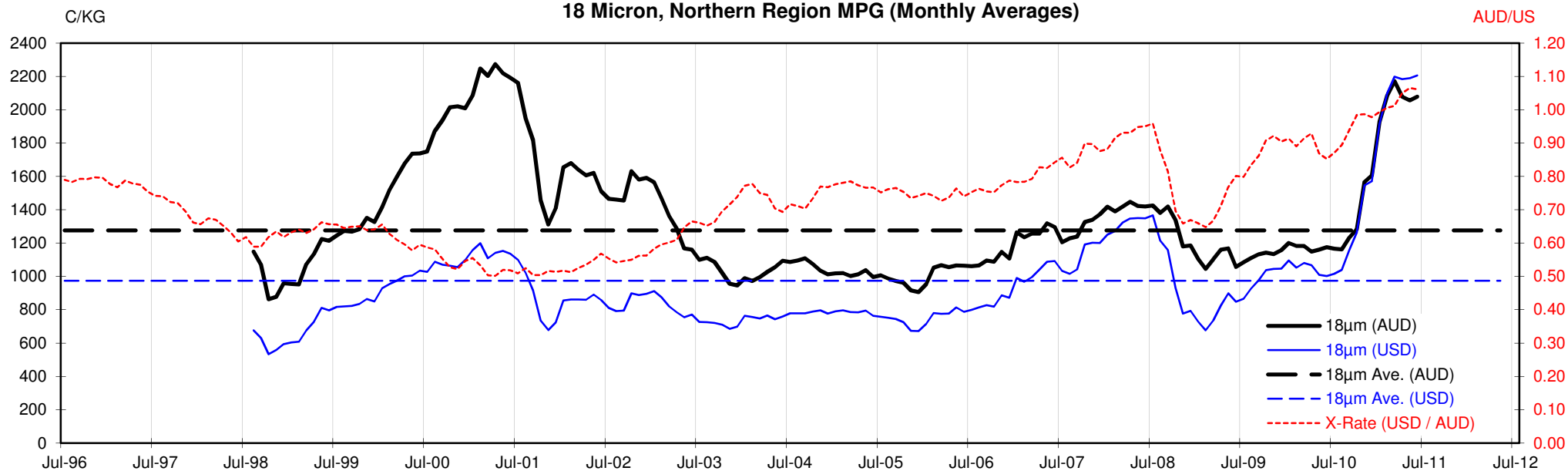
**Table 12: 23 micron SFE, compared to MPG**

SFE - MPG	-12	-1%	-12	-1%	-12	-1%	-12	-1%	-12	-1%	-12	-1%	-12	-1%	-12	-1%	-12	-1%
SFE - MPG, 1 year Ave.	+284	28%	+284	28%	+284	28%	+284	28%	+284	28%	+284	28%	+284	28%	+284	28%	+284	28%
SFE - MPG, 3 year Ave.	+435	50%	+435	50%	+435	50%	+435	50%	+435	50%	+435	50%	+435	50%	+435	50%	+435	50%
SFE - MPG, 10 year Ave.	+458	54%	+458	54%	+458	54%	+458	54%	+458	54%	+458	54%	+458	54%	+458	54%	+458	54%

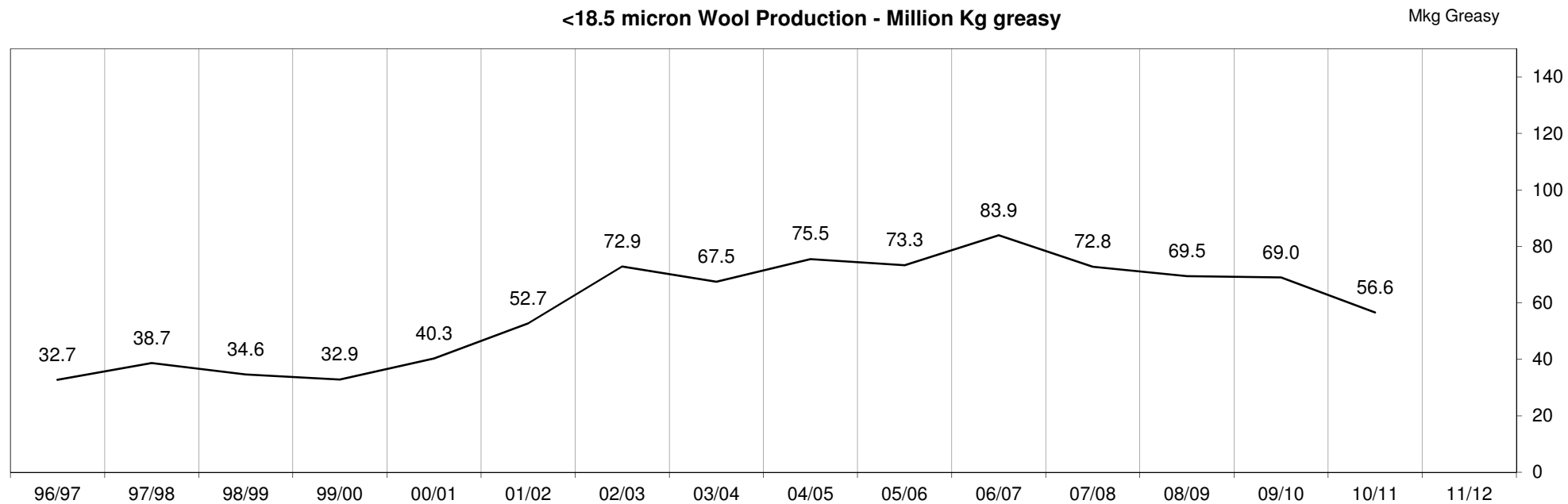


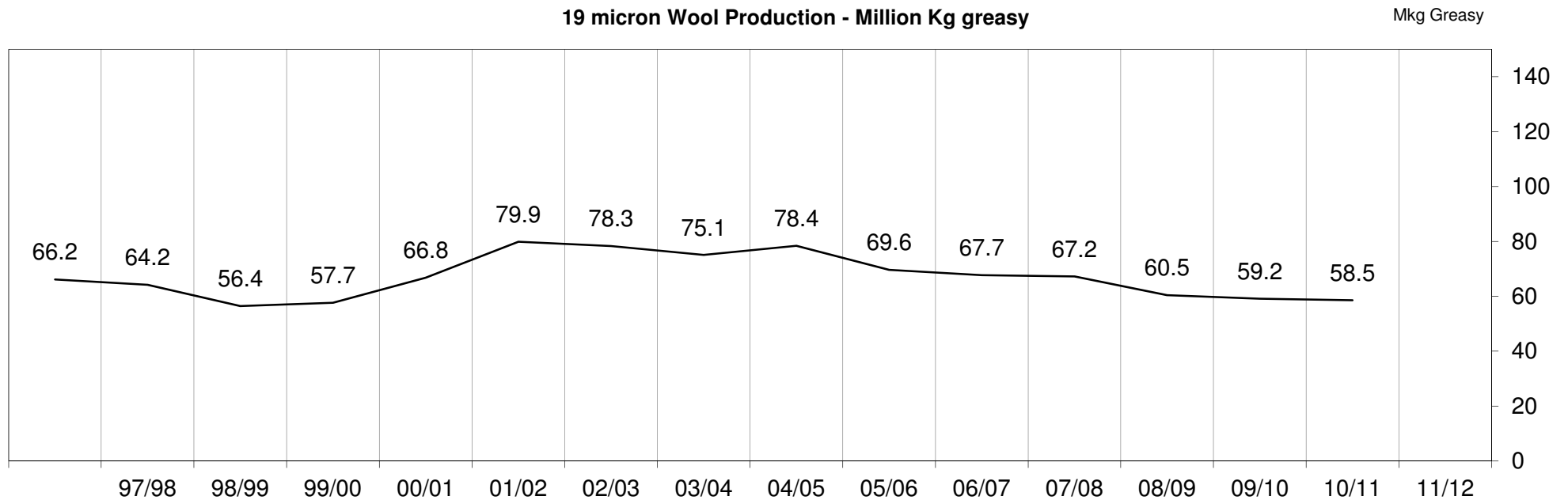
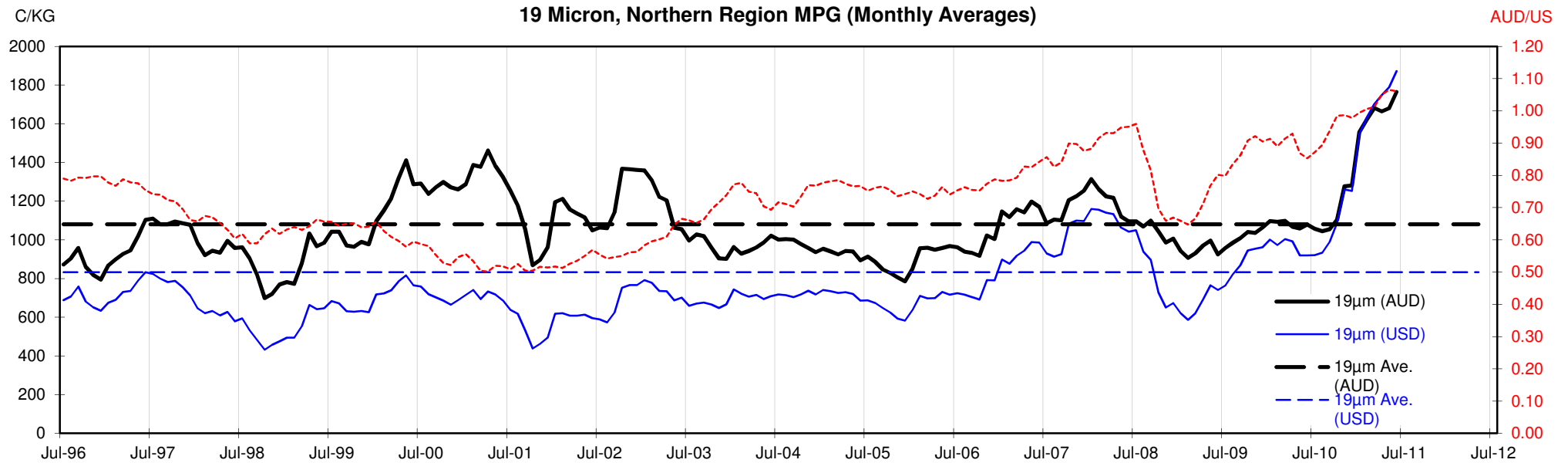


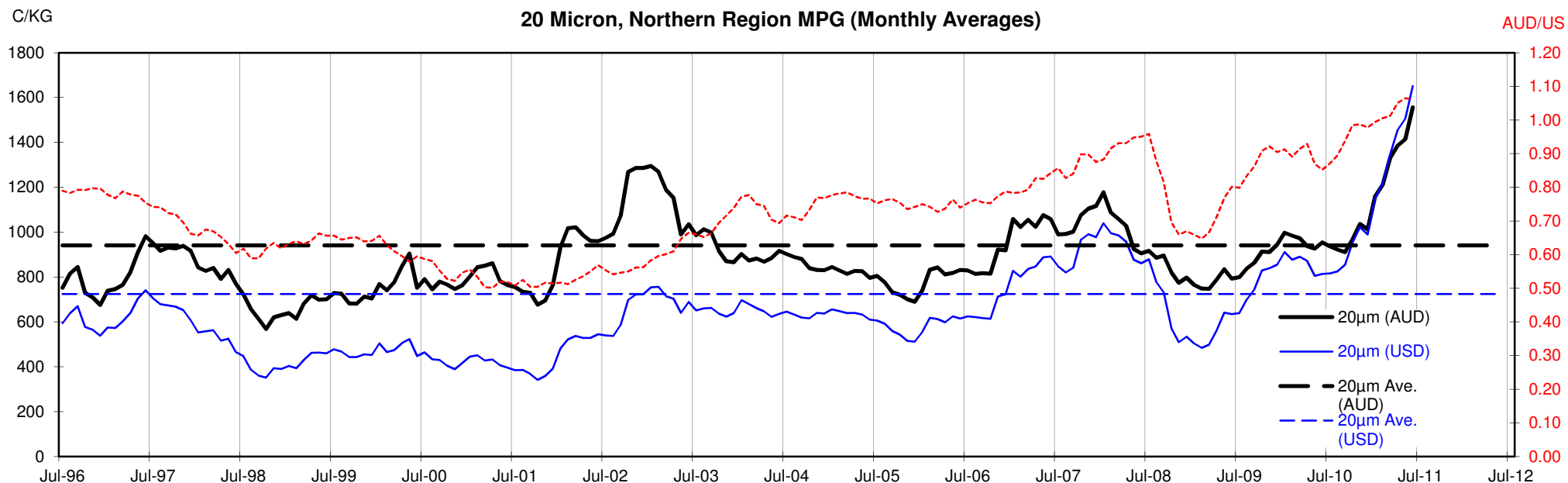
### 18 Micron, Northern Region MPG (Monthly Averages)



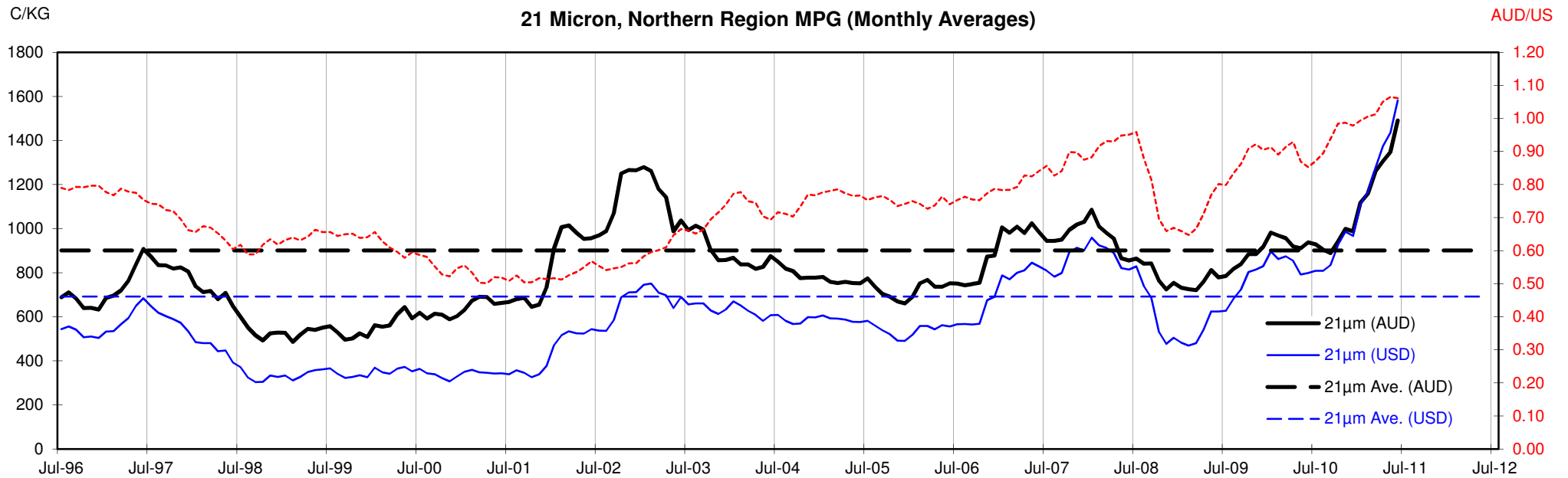
### <18.5 micron Wool Production - Million Kg greasy

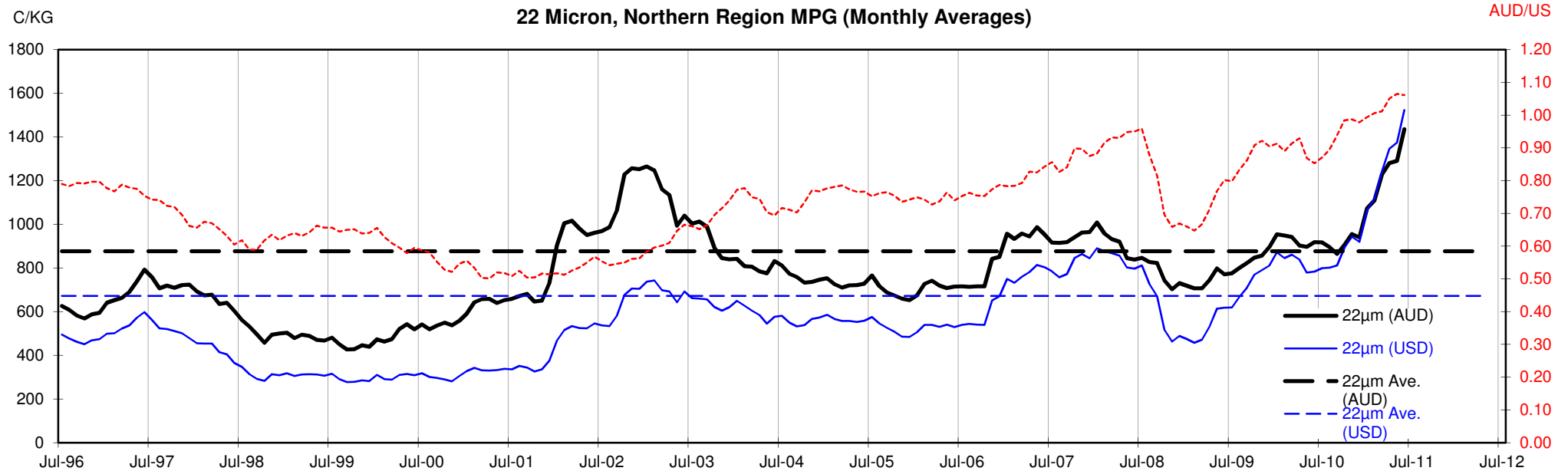


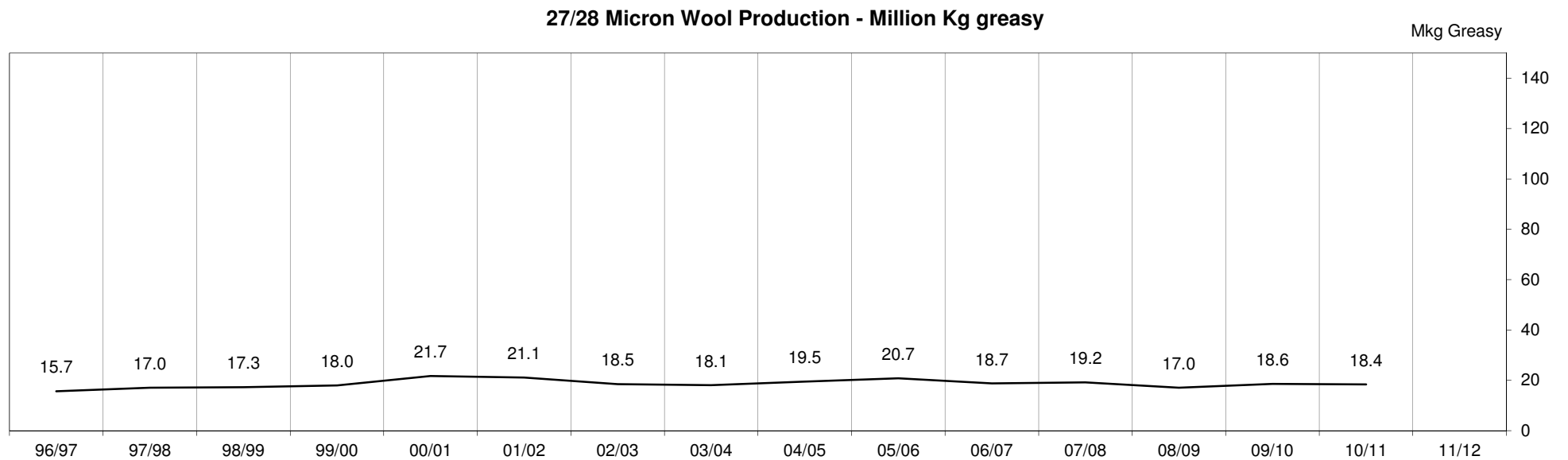
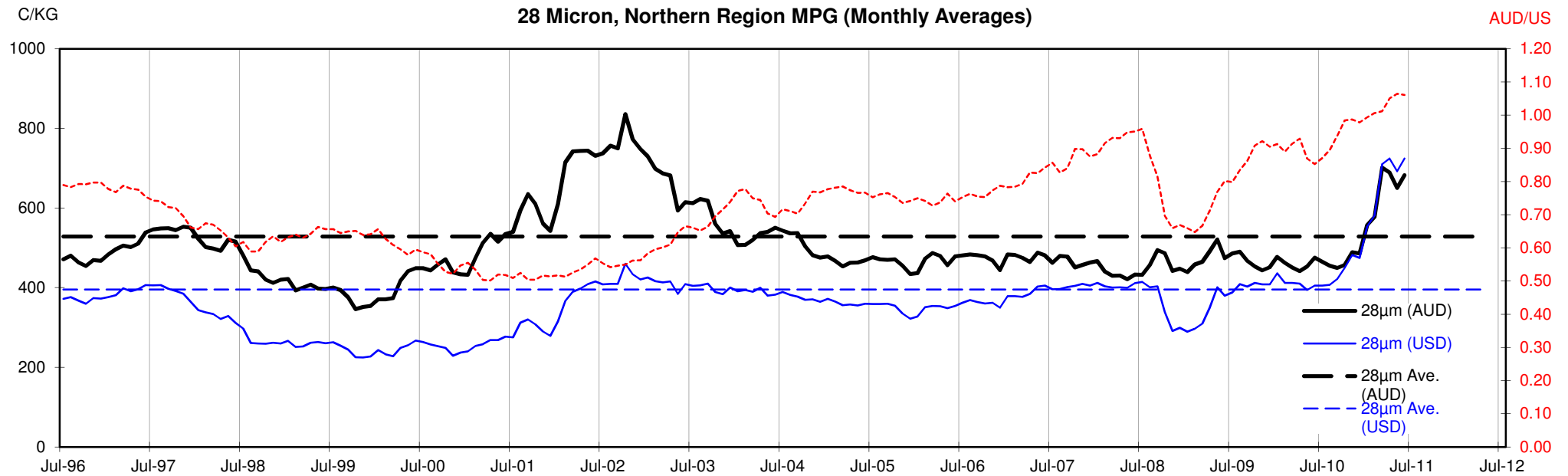












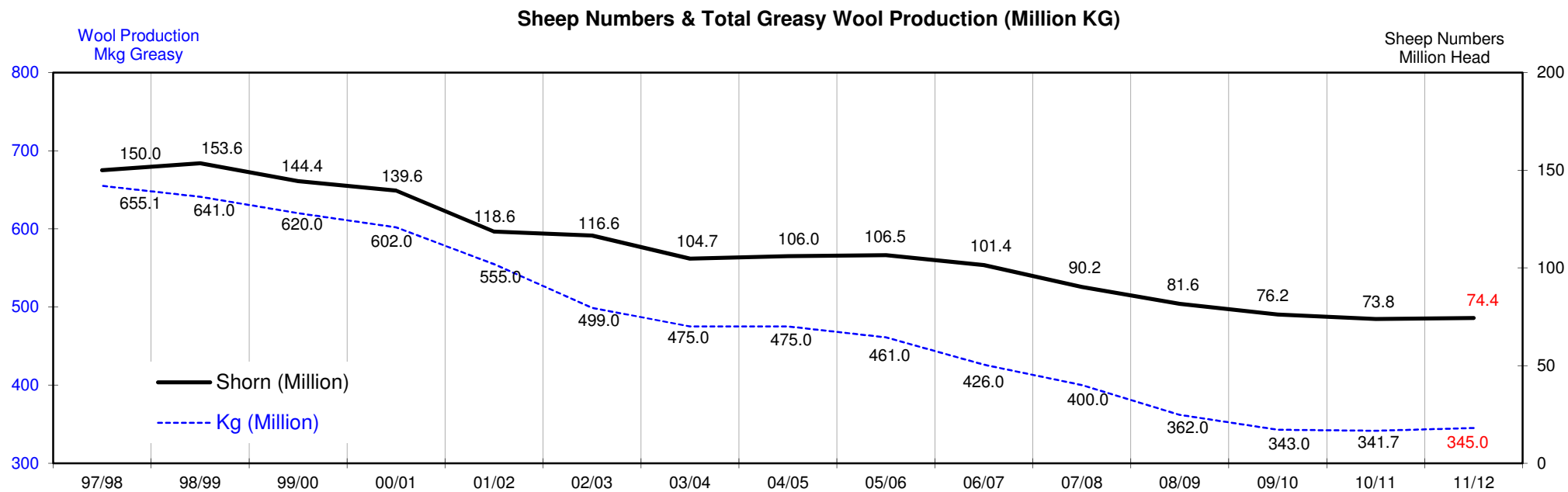
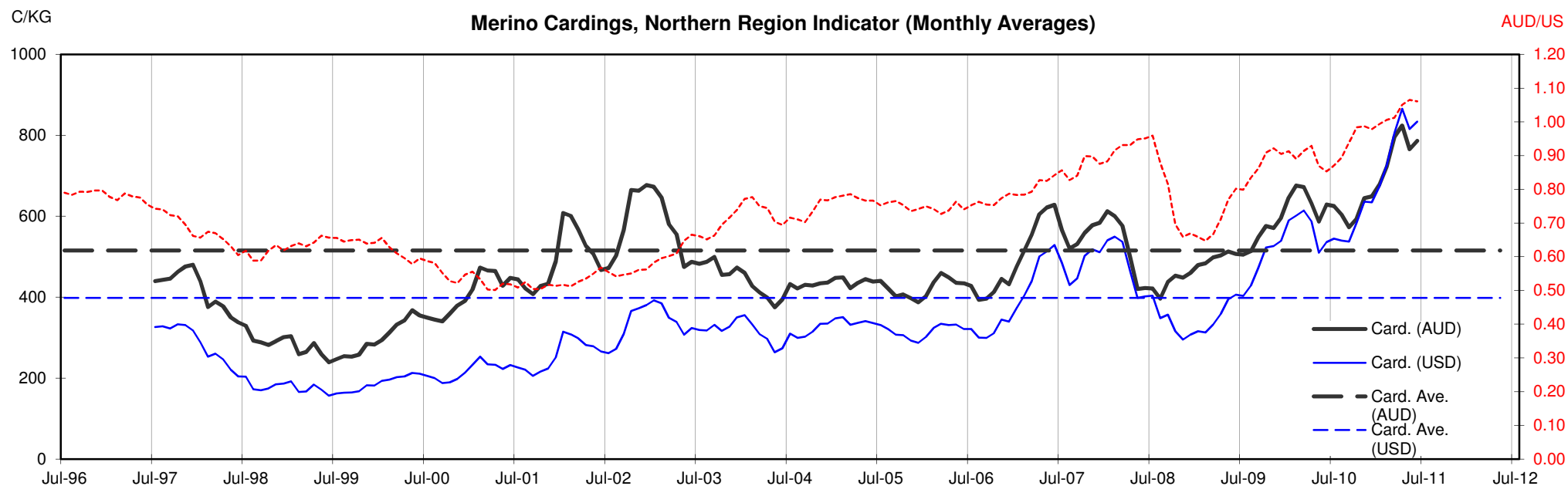




Table 13: Returns pr head for skirted fleece wool.

Skirted FLC Weight		Micron																	
9 Kg		16	16.5	17	17.5	18	18.5	19	19.5	20	21	22	23	24	25	26	28	30	32
Yield (Sch Dry)	25% Current	\$62	\$60	\$54	\$51	\$46	\$42	\$39	\$37	\$36	\$34	\$33	\$30	\$25	\$22	\$20	\$16	\$14	\$13
	10yr ave.			\$32		\$29		\$24		\$21	\$20	\$20	\$19	\$18	\$16	\$15	\$12	\$10	\$9
	30% Current	\$75	\$72	\$65	\$61	\$56	\$50	\$47	\$45	\$43	\$41	\$39	\$36	\$30	\$27	\$24	\$19	\$17	\$16
	10yr ave.			\$39		\$34		\$29		\$25	\$24	\$24	\$23	\$22	\$20	\$18	\$14	\$12	\$11
	35% Current	\$87	\$84	\$75	\$72	\$65	\$59	\$55	\$52	\$50	\$48	\$46	\$42	\$35	\$31	\$28	\$22	\$20	\$19
	10yr ave.			\$45		\$40		\$34		\$30	\$28	\$28	\$27	\$26	\$23	\$21	\$17	\$15	\$13
	40% Current	\$100	\$96	\$86	\$82	\$74	\$67	\$63	\$60	\$57	\$55	\$53	\$48	\$39	\$35	\$32	\$25	\$23	\$21
	10yr ave.			\$51		\$46		\$39		\$34	\$32	\$32	\$31	\$29	\$26	\$24	\$19	\$17	\$15
	45% Current	\$112	\$109	\$97	\$92	\$84	\$76	\$71	\$67	\$64	\$62	\$59	\$54	\$44	\$40	\$36	\$29	\$26	\$24
	10yr ave.			\$58		\$52		\$44		\$38	\$36	\$36	\$35	\$33	\$29	\$27	\$21	\$19	\$17
	50% Current	\$125	\$121	\$108	\$102	\$93	\$84	\$79	\$75	\$71	\$68	\$66	\$60	\$49	\$44	\$40	\$32	\$29	\$27
	10yr ave.			\$64		\$57		\$49		\$42	\$41	\$39	\$38	\$37	\$33	\$30	\$24	\$21	\$19
	55% Current	\$137	\$133	\$118	\$112	\$102	\$92	\$87	\$82	\$79	\$75	\$72	\$66	\$54	\$49	\$45	\$35	\$32	\$29
	10yr ave.			\$71		\$63		\$54		\$47	\$45	\$43	\$42	\$40	\$36	\$33	\$26	\$23	\$21
	60% Current	\$150	\$145	\$129	\$123	\$112	\$101	\$95	\$90	\$86	\$82	\$79	\$71	\$59	\$53	\$49	\$38	\$35	\$32
	10yr ave.			\$77		\$69		\$58		\$51	\$49	\$47	\$46	\$44	\$39	\$36	\$29	\$25	\$23
	65% Current	\$162	\$157	\$140	\$133	\$121	\$109	\$102	\$97	\$93	\$89	\$85	\$77	\$64	\$58	\$53	\$41	\$38	\$35
	10yr ave.			\$84		\$75		\$63		\$55	\$53	\$51	\$50	\$48	\$43	\$39	\$31	\$27	\$24
	70% Current	\$175	\$169	\$151	\$143	\$130	\$118	\$110	\$105	\$100	\$96	\$92	\$83	\$69	\$62	\$57	\$44	\$41	\$37
	10yr ave.			\$90		\$80		\$68		\$59	\$57	\$55	\$54	\$51	\$46	\$42	\$33	\$29	\$26
	75% Current	\$187	\$181	\$161	\$153	\$139	\$126	\$118	\$112	\$107	\$103	\$99	\$89	\$74	\$66	\$61	\$48	\$43	\$40
	10yr ave.			\$97		\$86		\$73		\$64	\$61	\$59	\$58	\$55	\$49	\$45	\$36	\$31	\$28
	80% Current	\$199	\$193	\$172	\$163	\$149	\$134	\$126	\$120	\$114	\$110	\$105	\$95	\$79	\$71	\$65	\$51	\$46	\$42
	10yr ave.			\$103		\$92		\$78		\$68	\$65	\$63	\$61	\$58	\$52	\$48	\$38	\$33	\$30
	85% Current	\$212	\$205	\$183	\$174	\$158	\$143	\$134	\$127	\$121	\$116	\$112	\$101	\$84	\$75	\$69	\$54	\$49	\$45
	10yr ave.			\$109		\$98		\$83		\$72	\$69	\$67	\$65	\$62	\$56	\$51	\$40	\$35	\$32

The above shows estimated returns per head for skirted fleece wool. These figures do not take into account the value of skirtings and oddments and do not take into account discounts that may apply for faults under individual circumstances. These figures are based on a market index of 100% and should be used as a guide only. Returns over \$30 / head for fleece wool are highlighted.

Source: Australian Wool Exchange, Australian Wool Innovation, Sydney Futures Exchange, x-rates.com

Disclaimer: While all due care has been taken in the preparation of this document, no warranty is made as to its accuracy, reliability or completeness. To the extent permitted by law neither Jemalong or their sources including subsidiaries and staff, accept liability to any person for loss or damage arising from the use of this information.



Table 14: Returns pr head for skirted fleece wool.

Skirted FLC Weight		Micron																	
8 Kg		16	16.5	17	17.5	18	18.5	19	19.5	20	21	22	23	24	25	26	28	30	32
Yield (Sch Dry)	25% Current	\$55	\$54	\$48	\$45	\$41	\$37	\$35	\$33	\$32	\$30	\$29	\$26	\$22	\$20	\$18	\$14	\$13	\$12
	10yr ave.			\$29		\$26		\$22		\$19	\$18	\$18	\$17	\$16	\$15	\$13	\$11	\$9	\$8
	30% Current	\$66	\$64	\$57	\$54	\$50	\$45	\$42	\$40	\$38	\$37	\$35	\$32	\$26	\$24	\$22	\$17	\$15	\$14
	10yr ave.			\$34		\$31		\$26		\$23	\$22	\$21	\$20	\$19	\$17	\$16	\$13	\$11	\$10
	35% Current	\$78	\$75	\$67	\$64	\$58	\$52	\$49	\$47	\$44	\$43	\$41	\$37	\$31	\$28	\$25	\$20	\$18	\$17
	10yr ave.			\$40		\$36		\$30		\$26	\$25	\$25	\$24	\$23	\$20	\$19	\$15	\$13	\$12
	40% Current	\$89	\$86	\$76	\$73	\$66	\$60	\$56	\$53	\$51	\$49	\$47	\$42	\$35	\$31	\$29	\$23	\$21	\$19
	10yr ave.			\$46		\$41		\$35		\$30	\$29	\$28	\$27	\$26	\$23	\$21	\$17	\$15	\$13
	45% Current	\$100	\$96	\$86	\$82	\$74	\$67	\$63	\$60	\$57	\$55	\$53	\$48	\$39	\$35	\$32	\$25	\$23	\$21
	10yr ave.			\$51		\$46		\$39		\$34	\$32	\$32	\$31	\$29	\$26	\$24	\$19	\$17	\$15
	50% Current	\$111	\$107	\$96	\$91	\$83	\$75	\$70	\$66	\$64	\$61	\$58	\$53	\$44	\$39	\$36	\$28	\$26	\$24
	10yr ave.			\$57		\$51		\$43		\$38	\$36	\$35	\$34	\$32	\$29	\$27	\$21	\$18	\$17
	55% Current	\$122	\$118	\$105	\$100	\$91	\$82	\$77	\$73	\$70	\$67	\$64	\$58	\$48	\$43	\$40	\$31	\$28	\$26
	10yr ave.			\$63		\$56		\$48		\$41	\$40	\$39	\$38	\$36	\$32	\$29	\$23	\$20	\$18
	60% Current	\$133	\$129	\$115	\$109	\$99	\$90	\$84	\$80	\$76	\$73	\$70	\$64	\$53	\$47	\$43	\$34	\$31	\$28
	10yr ave.			\$69		\$61		\$52		\$45	\$43	\$42	\$41	\$39	\$35	\$32	\$25	\$22	\$20
	65% Current	\$144	\$139	\$124	\$118	\$107	\$97	\$91	\$86	\$83	\$79	\$76	\$69	\$57	\$51	\$47	\$37	\$33	\$31
	10yr ave.			\$74		\$66		\$56		\$49	\$47	\$46	\$44	\$42	\$38	\$35	\$28	\$24	\$22
	70% Current	\$155	\$150	\$134	\$127	\$116	\$105	\$98	\$93	\$89	\$85	\$82	\$74	\$61	\$55	\$50	\$40	\$36	\$33
	10yr ave.			\$80		\$71		\$61		\$53	\$50	\$49	\$48	\$45	\$41	\$37	\$30	\$26	\$23
	75% Current	\$166	\$161	\$143	\$136	\$124	\$112	\$105	\$100	\$95	\$91	\$88	\$79	\$66	\$59	\$54	\$42	\$39	\$35
	10yr ave.			\$86		\$77		\$65		\$56	\$54	\$53	\$51	\$49	\$44	\$40	\$32	\$28	\$25
	80% Current	\$177	\$172	\$153	\$145	\$132	\$119	\$112	\$106	\$102	\$97	\$94	\$85	\$70	\$63	\$58	\$45	\$41	\$38
	10yr ave.			\$92		\$82		\$69		\$60	\$58	\$56	\$55	\$52	\$47	\$43	\$34	\$30	\$27
	85% Current	\$188	\$182	\$163	\$154	\$140	\$127	\$119	\$113	\$108	\$103	\$99	\$90	\$75	\$67	\$61	\$48	\$44	\$40
	10yr ave.			\$97		\$87		\$74		\$64	\$61	\$60	\$58	\$55	\$50	\$45	\$36	\$31	\$28

The above shows estimated returns per head for skirted fleece wool. These figures do not take into account the value of skirtings and oddments and do not take into account discounts that may apply for faults under individual circumstances. These figures are based on a market index of 100% and should be used as a guide only. Returns over \$30 / head for fleece wool are highlighted.

Source: Australian Wool Exchange, Australian Wool Innovation, Sydney Futures Exchange, x-rates.com

Disclaimer: While all due care has been taken in the preparation of this document, no warranty is made as to its accuracy, reliability or completeness. To the extent permitted by law neither Jemalong or their sources including subsidiaries and staff, accept liability to any person for loss or damage arising from the use of this information.



Table 15: Returns pr head for skirted fleece wool.

Skirted FLC Weight		Micron																	
7 Kg		16	16.5	17	17.5	18	18.5	19	19.5	20	21	22	23	24	25	26	28	30	32
Yield (Sch Dry)	25% Current	\$48	\$47	\$42	\$40	\$36	\$33	\$31	\$29	\$28	\$27	\$26	\$23	\$19	\$17	\$16	\$12	\$11	\$10
	10yr ave.			\$25		\$22		\$19		\$16	\$16	\$15	\$15	\$14	\$13	\$12	\$9	\$8	\$7
	30% Current	\$58	\$56	\$50	\$48	\$43	\$39	\$37	\$35	\$33	\$32	\$31	\$28	\$23	\$21	\$19	\$15	\$14	\$12
	10yr ave.			\$30		\$27		\$23		\$20	\$19	\$18	\$18	\$17	\$15	\$14	\$11	\$10	\$9
	35% Current	\$68	\$66	\$59	\$56	\$51	\$46	\$43	\$41	\$39	\$37	\$36	\$32	\$27	\$24	\$22	\$17	\$16	\$14
	10yr ave.			\$35		\$31		\$26		\$23	\$22	\$21	\$21	\$20	\$18	\$16	\$13	\$11	\$10
	40% Current	\$78	\$75	\$67	\$64	\$58	\$52	\$49	\$47	\$44	\$43	\$41	\$37	\$31	\$28	\$25	\$20	\$18	\$17
	10yr ave.			\$40		\$36		\$30		\$26	\$25	\$25	\$24	\$23	\$20	\$19	\$15	\$13	\$12
	45% Current	\$87	\$84	\$75	\$72	\$65	\$59	\$55	\$52	\$50	\$48	\$46	\$42	\$35	\$31	\$28	\$22	\$20	\$19
	10yr ave.			\$45		\$40		\$34		\$30	\$28	\$28	\$27	\$26	\$23	\$21	\$17	\$15	\$13
	50% Current	\$97	\$94	\$84	\$79	\$72	\$65	\$61	\$58	\$56	\$53	\$51	\$46	\$38	\$34	\$31	\$25	\$23	\$21
	10yr ave.			\$50		\$45		\$38		\$33	\$32	\$31	\$30	\$28	\$25	\$23	\$19	\$16	\$15
	55% Current	\$107	\$103	\$92	\$87	\$80	\$72	\$67	\$64	\$61	\$59	\$56	\$51	\$42	\$38	\$35	\$27	\$25	\$23
	10yr ave.			\$55		\$49		\$42		\$36	\$35	\$34	\$33	\$31	\$28	\$26	\$20	\$18	\$16
	60% Current	\$116	\$113	\$100	\$95	\$87	\$78	\$74	\$70	\$67	\$64	\$61	\$56	\$46	\$41	\$38	\$30	\$27	\$25
	10yr ave.			\$60		\$54		\$45		\$40	\$38	\$37	\$36	\$34	\$31	\$28	\$22	\$19	\$18
	65% Current	\$126	\$122	\$109	\$103	\$94	\$85	\$80	\$76	\$72	\$69	\$66	\$60	\$50	\$45	\$41	\$32	\$29	\$27
	10yr ave.			\$65		\$58		\$49		\$43	\$41	\$40	\$39	\$37	\$33	\$30	\$24	\$21	\$19
	70% Current	\$136	\$131	\$117	\$111	\$101	\$91	\$86	\$81	\$78	\$75	\$72	\$65	\$54	\$48	\$44	\$35	\$32	\$29
	10yr ave.			\$70		\$63		\$53		\$46	\$44	\$43	\$42	\$40	\$36	\$33	\$26	\$23	\$20
	75% Current	\$145	\$141	\$125	\$119	\$108	\$98	\$92	\$87	\$83	\$80	\$77	\$70	\$58	\$52	\$47	\$37	\$34	\$31
	10yr ave.			\$75		\$67		\$57		\$49	\$47	\$46	\$45	\$43	\$38	\$35	\$28	\$24	\$22
	80% Current	\$155	\$150	\$134	\$127	\$116	\$105	\$98	\$93	\$89	\$85	\$82	\$74	\$61	\$55	\$50	\$40	\$36	\$33
	10yr ave.			\$80		\$71		\$61		\$53	\$50	\$49	\$48	\$45	\$41	\$37	\$30	\$26	\$23
	85% Current	\$165	\$159	\$142	\$135	\$123	\$111	\$104	\$99	\$94	\$91	\$87	\$79	\$65	\$59	\$53	\$42	\$38	\$35
	10yr ave.			\$85		\$76		\$64		\$56	\$54	\$52	\$51	\$48	\$43	\$40	\$31	\$27	\$25

The above shows estimated returns per head for skirted fleece wool. These figures do not take into account the value of skirtings and oddments and do not take into account discounts that may apply for faults under individual circumstances. These figures are based on a market index of 100% and should be used as a guide only. Returns over \$30 / head for fleece wool are highlighted.

Source: Australian Wool Exchange, Australian Wool Innovation, Sydney Futures Exchange, x-rates.com

Disclaimer: While all due care has been taken in the preparation of this document, no warranty is made as to its accuracy, reliability or completeness. To the extent permitted by law neither Jemalong or their sources including subsidiaries and staff, accept liability to any person for loss or damage arising from the use of this information.



Table 16: Returns pr head for skirted fleece wool.

Skirted FLC Weight		Micron																	
6 Kg		16	16.5	17	17.5	18	18.5	19	19.5	20	21	22	23	24	25	26	28	30	32
Yield (Sch Dry)	25% Current	\$42	\$40	\$36	\$34	\$31	\$28	\$26	\$25	\$24	\$23	\$22	\$20	\$16	\$15	\$13	\$11	\$10	\$9
	10yr ave.			\$21		\$19		\$16		\$14	\$14	\$13	\$13	\$12	\$11	\$10	\$8	\$7	\$6
	30% Current	\$50	\$48	\$43	\$41	\$37	\$34	\$32	\$30	\$29	\$27	\$26	\$24	\$20	\$18	\$16	\$13	\$12	\$11
	10yr ave.			\$26		\$23		\$19		\$17	\$16	\$16	\$15	\$15	\$13	\$12	\$10	\$8	\$8
	35% Current	\$58	\$56	\$50	\$48	\$43	\$39	\$37	\$35	\$33	\$32	\$31	\$28	\$23	\$21	\$19	\$15	\$14	\$12
	10yr ave.			\$30		\$27		\$23		\$20	\$19	\$18	\$18	\$17	\$15	\$14	\$11	\$10	\$9
	40% Current	\$66	\$64	\$57	\$54	\$50	\$45	\$42	\$40	\$38	\$37	\$35	\$32	\$26	\$24	\$22	\$17	\$15	\$14
	10yr ave.			\$34		\$31		\$26		\$23	\$22	\$21	\$20	\$19	\$17	\$16	\$13	\$11	\$10
	45% Current	\$75	\$72	\$65	\$61	\$56	\$50	\$47	\$45	\$43	\$41	\$39	\$36	\$30	\$27	\$24	\$19	\$17	\$16
	10yr ave.			\$39		\$34		\$29		\$25	\$24	\$24	\$23	\$22	\$20	\$18	\$14	\$12	\$11
	50% Current	\$83	\$80	\$72	\$68	\$62	\$56	\$53	\$50	\$48	\$46	\$44	\$40	\$33	\$30	\$27	\$21	\$19	\$18
	10yr ave.			\$43		\$38		\$32		\$28	\$27	\$26	\$26	\$24	\$22	\$20	\$16	\$14	\$13
	55% Current	\$91	\$88	\$79	\$75	\$68	\$62	\$58	\$55	\$52	\$50	\$48	\$44	\$36	\$32	\$30	\$23	\$21	\$19
	10yr ave.			\$47		\$42		\$36		\$31	\$30	\$29	\$28	\$27	\$24	\$22	\$17	\$15	\$14
	60% Current	\$100	\$96	\$86	\$82	\$74	\$67	\$63	\$60	\$57	\$55	\$53	\$48	\$39	\$35	\$32	\$25	\$23	\$21
	10yr ave.			\$51		\$46		\$39		\$34	\$32	\$32	\$31	\$29	\$26	\$24	\$19	\$17	\$15
	65% Current	\$108	\$105	\$93	\$89	\$81	\$73	\$68	\$65	\$62	\$59	\$57	\$52	\$43	\$38	\$35	\$28	\$25	\$23
	10yr ave.			\$56		\$50		\$42		\$37	\$35	\$34	\$33	\$32	\$28	\$26	\$21	\$18	\$16
	70% Current	\$116	\$113	\$100	\$95	\$87	\$78	\$74	\$70	\$67	\$64	\$61	\$56	\$46	\$41	\$38	\$30	\$27	\$25
	10yr ave.			\$60		\$54		\$45		\$40	\$38	\$37	\$36	\$34	\$31	\$28	\$22	\$19	\$18
	75% Current	\$125	\$121	\$108	\$102	\$93	\$84	\$79	\$75	\$71	\$68	\$66	\$60	\$49	\$44	\$40	\$32	\$29	\$27
	10yr ave.			\$64		\$57		\$49		\$42	\$41	\$39	\$38	\$37	\$33	\$30	\$24	\$21	\$19
	80% Current	\$133	\$129	\$115	\$109	\$99	\$90	\$84	\$80	\$76	\$73	\$70	\$64	\$53	\$47	\$43	\$34	\$31	\$28
	10yr ave.			\$69		\$61		\$52		\$45	\$43	\$42	\$41	\$39	\$35	\$32	\$25	\$22	\$20
	85% Current	\$141	\$137	\$122	\$116	\$105	\$95	\$89	\$85	\$81	\$78	\$75	\$68	\$56	\$50	\$46	\$36	\$33	\$30
	10yr ave.			\$73		\$65		\$55		\$48	\$46	\$45	\$44	\$41	\$37	\$34	\$27	\$24	\$21

The above shows estimated returns per head for skirted fleece wool. These figures do not take into account the value of skirtings and oddments and do not take into account discounts that may apply for faults under individual circumstances. These figures are based on a market index of 100% and should be used as a guide only. Returns over \$30 / head for fleece wool are highlighted.

Source: Australian Wool Exchange, Australian Wool Innovation, Sydney Futures Exchange, x-rates.com

Disclaimer: While all due care has been taken in the preparation of this document, no warranty is made as to its accuracy, reliability or completeness. To the extent permitted by law neither Jemalong or their sources including subsidiaries and staff, accept liability to any person for loss or damage arising from the use of this information.





Table 17: Returns pr head for skirted fleece wool.

Skirted FLC Weight		Micron																		
		16	16.5	17	17.5	18	18.5	19	19.5	20	21	22	23	24	25	26	28	30	32	
Yield (Sch Dry)	25%	Current	\$35	\$34	\$30	\$28	\$26	\$23	\$22	\$21	\$20	\$19	\$18	\$17	\$14	\$12	\$11	\$9	\$8	\$7
	10yr ave.			\$18		\$16		\$14		\$12	\$11	\$11	\$11	\$10	\$9	\$8	\$7	\$6	\$5	
	30%	Current	\$42	\$40	\$36	\$34	\$31	\$28	\$26	\$25	\$24	\$23	\$22	\$20	\$16	\$15	\$13	\$11	\$10	\$9
	10yr ave.			\$21		\$19		\$16		\$14	\$14	\$13	\$13	\$12	\$11	\$10	\$8	\$7	\$6	
	35%	Current	\$48	\$47	\$42	\$40	\$36	\$33	\$31	\$29	\$28	\$27	\$26	\$23	\$19	\$17	\$16	\$12	\$11	\$10
	10yr ave.			\$25		\$22		\$19		\$16	\$16	\$15	\$15	\$14	\$13	\$12	\$9	\$8	\$7	
	40%	Current	\$55	\$54	\$48	\$45	\$41	\$37	\$35	\$33	\$32	\$30	\$29	\$26	\$22	\$20	\$18	\$14	\$13	\$12
	10yr ave.			\$29		\$26		\$22		\$19	\$18	\$18	\$17	\$16	\$15	\$13	\$11	\$9	\$8	
	45%	Current	\$62	\$60	\$54	\$51	\$46	\$42	\$39	\$37	\$36	\$34	\$33	\$30	\$25	\$22	\$20	\$16	\$14	\$13
	10yr ave.			\$32		\$29		\$24		\$21	\$20	\$20	\$19	\$18	\$16	\$15	\$12	\$10	\$9	
	50%	Current	\$69	\$67	\$60	\$57	\$52	\$47	\$44	\$42	\$40	\$38	\$37	\$33	\$27	\$25	\$22	\$18	\$16	\$15
	10yr ave.			\$36		\$32		\$27		\$24	\$23	\$22	\$21	\$20	\$18	\$17	\$13	\$12	\$10	
	55%	Current	\$76	\$74	\$66	\$62	\$57	\$51	\$48	\$46	\$44	\$42	\$40	\$36	\$30	\$27	\$25	\$19	\$18	\$16
	10yr ave.			\$39		\$35		\$30		\$26	\$25	\$24	\$23	\$22	\$20	\$18	\$15	\$13	\$11	
60%	Current	\$83	\$80	\$72	\$68	\$62	\$56	\$53	\$50	\$48	\$46	\$44	\$40	\$33	\$30	\$27	\$21	\$19	\$18	
10yr ave.			\$43		\$38		\$32		\$28	\$27	\$26	\$26	\$24	\$22	\$20	\$16	\$14	\$13		
65%	Current	\$90	\$87	\$78	\$74	\$67	\$61	\$57	\$54	\$52	\$49	\$47	\$43	\$36	\$32	\$29	\$23	\$21	\$19	
10yr ave.			\$46		\$41		\$35		\$31	\$29	\$29	\$28	\$26	\$24	\$22	\$17	\$15	\$14		
70%	Current	\$97	\$94	\$84	\$79	\$72	\$65	\$61	\$58	\$56	\$53	\$51	\$46	\$38	\$34	\$31	\$25	\$23	\$21	
10yr ave.			\$50		\$45		\$38		\$33	\$32	\$31	\$30	\$28	\$25	\$23	\$19	\$16	\$15		
75%	Current	\$104	\$101	\$90	\$85	\$77	\$70	\$66	\$62	\$60	\$57	\$55	\$50	\$41	\$37	\$34	\$26	\$24	\$22	
10yr ave.			\$54		\$48		\$41		\$35	\$34	\$33	\$32	\$30	\$27	\$25	\$20	\$17	\$16		
80%	Current	\$111	\$107	\$96	\$91	\$83	\$75	\$70	\$66	\$64	\$61	\$58	\$53	\$44	\$39	\$36	\$28	\$26	\$24	
10yr ave.			\$57		\$51		\$43		\$38	\$36	\$35	\$34	\$32	\$29	\$27	\$21	\$18	\$17		
85%	Current	\$118	\$114	\$102	\$96	\$88	\$79	\$74	\$71	\$67	\$65	\$62	\$56	\$47	\$42	\$38	\$30	\$27	\$25	
10yr ave.			\$61		\$54		\$46		\$40	\$38	\$37	\$36	\$35	\$31	\$28	\$22	\$20	\$18		

The above shows estimated returns per head for skirted fleece wool. These figures do not take into account the value of skirtings and oddments and do not take into account discounts that may apply for faults under individual circumstances. These figures are based on a market index of 100% and should be used as a guide only. Returns over \$30 / head for fleece wool are highlighted.

Source: Australian Wool Exchange, Australian Wool Innovation, Sydney Futures Exchange, x-rates.com

Disclaimer: While all due care has been taken in the preparation of this document, no warranty is made as to its accuracy, reliability or completeness. To the extent permitted by law neither Jemalong or their sources including subsidiaries and staff, accept liability to any person for loss or damage arising from the use of this information.



Table 18: Returns pr head for skirted fleece wool.

Skirted FLC Weight 4 Kg		Micron																	
		16	16.5	17	17.5	18	18.5	19	19.5	20	21	22	23	24	25	26	28	30	32
Yield (Sch Dry)	25% Current	\$28	\$27	\$24	\$23	\$21	\$19	\$18	\$17	\$16	\$15	\$15	\$13	\$11	\$10	\$9	\$7	\$6	\$6
	10yr ave.			\$14	\$13	\$11				\$9	\$9	\$9	\$9	\$8	\$7	\$7	\$5	\$5	\$4
	30% Current	\$33	\$32	\$29	\$27	\$25	\$22	\$21	\$20	\$19	\$18	\$18	\$16	\$13	\$12	\$11	\$8	\$8	\$7
	10yr ave.			\$17		\$15		\$13		\$11	\$11	\$11	\$10	\$10	\$9	\$8	\$6	\$6	\$5
	35% Current	\$39	\$38	\$33	\$32	\$29	\$26	\$25	\$23	\$22	\$21	\$20	\$19	\$15	\$14	\$13	\$10	\$9	\$8
	10yr ave.			\$20		\$18		\$15		\$13	\$13	\$12	\$12	\$11	\$10	\$9	\$7	\$6	\$6
	40% Current	\$44	\$43	\$38	\$36	\$33	\$30	\$28	\$27	\$25	\$24	\$23	\$21	\$18	\$16	\$14	\$11	\$10	\$9
	10yr ave.			\$23		\$20		\$17		\$15	\$14	\$14	\$14	\$13	\$12	\$11	\$8	\$7	\$7
	45% Current	\$50	\$48	\$43	\$41	\$37	\$34	\$32	\$30	\$29	\$27	\$26	\$24	\$20	\$18	\$16	\$13	\$12	\$11
	10yr ave.			\$26		\$23		\$19		\$17	\$16	\$16	\$15	\$15	\$13	\$12	\$10	\$8	\$8
	50% Current	\$55	\$54	\$48	\$45	\$41	\$37	\$35	\$33	\$32	\$30	\$29	\$26	\$22	\$20	\$18	\$14	\$13	\$12
	10yr ave.			\$29		\$26		\$22		\$19	\$18	\$18	\$17	\$16	\$15	\$13	\$11	\$9	\$8
	55% Current	\$61	\$59	\$53	\$50	\$45	\$41	\$39	\$37	\$35	\$33	\$32	\$29	\$24	\$22	\$20	\$16	\$14	\$13
	10yr ave.			\$31		\$28		\$24		\$21	\$20	\$19	\$19	\$18	\$16	\$15	\$12	\$10	\$9
	60% Current	\$66	\$64	\$57	\$54	\$50	\$45	\$42	\$40	\$38	\$37	\$35	\$32	\$26	\$24	\$22	\$17	\$15	\$14
	10yr ave.			\$34		\$31		\$26		\$23	\$22	\$21	\$20	\$19	\$17	\$16	\$13	\$11	\$10
	65% Current	\$72	\$70	\$62	\$59	\$54	\$49	\$46	\$43	\$41	\$40	\$38	\$34	\$28	\$26	\$23	\$18	\$17	\$15
	10yr ave.			\$37		\$33		\$28		\$24	\$23	\$23	\$22	\$21	\$19	\$17	\$14	\$12	\$11
	70% Current	\$78	\$75	\$67	\$64	\$58	\$52	\$49	\$47	\$44	\$43	\$41	\$37	\$31	\$28	\$25	\$20	\$18	\$17
	10yr ave.			\$40		\$36		\$30		\$26	\$25	\$25	\$24	\$23	\$20	\$19	\$15	\$13	\$12
	75% Current	\$83	\$80	\$72	\$68	\$62	\$56	\$53	\$50	\$48	\$46	\$44	\$40	\$33	\$30	\$27	\$21	\$19	\$18
	10yr ave.			\$43		\$38		\$32		\$28	\$27	\$26	\$26	\$24	\$22	\$20	\$16	\$14	\$13
	80% Current	\$89	\$86	\$76	\$73	\$66	\$60	\$56	\$53	\$51	\$49	\$47	\$42	\$35	\$31	\$29	\$23	\$21	\$19
	10yr ave.			\$46		\$41		\$35		\$30	\$29	\$28	\$27	\$26	\$23	\$21	\$17	\$15	\$13
	85% Current	\$94	\$91	\$81	\$77	\$70	\$63	\$60	\$57	\$54	\$52	\$50	\$45	\$37	\$33	\$31	\$24	\$22	\$20
	10yr ave.			\$49		\$43		\$37		\$32	\$31	\$30	\$29	\$28	\$25	\$23	\$18	\$16	\$14

The above shows estimated returns per head for skirted fleece wool. These figures do not take into account the value of skirtings and oddments and do not take into account discounts that may apply for faults under individual circumstances. These figures are based on a market index of 100% and should be used as a guide only. Returns over \$30 / head for fleece wool are highlighted.

Source: Australian Wool Exchange, Australian Wool Innovation, Sydney Futures Exchange, x-rates.com

Disclaimer: While all due care has been taken in the preparation of this document, no warranty is made as to its accuracy, reliability or completeness. To the extent permitted by law neither Jemalong or their sources including subsidiaries and staff, accept liability to any person for loss or damage arising from the use of this information.



Table 19: Returns pr head for skirted fleece wool.

Skirted FLC Weight		Micron																	
3 Kg		16	16.5	17	17.5	18	18.5	19	19.5	20	21	22	23	24	25	26	28	30	32
Yield (Sch Dry)	25% Current	\$21	\$20	\$18	\$17	\$15	\$14	\$13	\$12	\$12	\$11	\$11	\$10	\$8	\$7	\$7	\$5	\$5	\$4
	10yr ave.			\$11		\$10		\$8		\$7	\$7	\$7	\$6	\$6	\$5	\$5	\$4	\$3	\$3
	30% Current	\$25	\$24	\$22	\$20	\$19	\$17	\$16	\$15	\$14	\$14	\$13	\$12	\$10	\$9	\$8	\$6	\$6	\$5
	10yr ave.			\$13		\$11		\$10		\$8	\$8	\$8	\$8	\$7	\$7	\$6	\$5	\$4	\$4
	35% Current	\$29	\$28	\$25	\$24	\$22	\$20	\$18	\$17	\$17	\$16	\$15	\$14	\$12	\$10	\$9	\$7	\$7	\$6
	10yr ave.			\$15		\$13		\$11		\$10	\$9	\$9	\$9	\$9	\$8	\$7	\$6	\$5	\$4
	40% Current	\$33	\$32	\$29	\$27	\$25	\$22	\$21	\$20	\$19	\$18	\$18	\$16	\$13	\$12	\$11	\$8	\$8	\$7
	10yr ave.			\$17		\$15		\$13		\$11	\$11	\$11	\$10	\$10	\$9	\$8	\$6	\$6	\$5
	45% Current	\$37	\$36	\$32	\$31	\$28	\$25	\$24	\$22	\$21	\$21	\$20	\$18	\$15	\$13	\$12	\$10	\$9	\$8
	10yr ave.			\$19		\$17		\$15		\$13	\$12	\$12	\$12	\$11	\$10	\$9	\$7	\$6	\$6
	50% Current	\$42	\$40	\$36	\$34	\$31	\$28	\$26	\$25	\$24	\$23	\$22	\$20	\$16	\$15	\$13	\$11	\$10	\$9
	10yr ave.			\$21		\$19		\$16		\$14	\$14	\$13	\$13	\$12	\$11	\$10	\$8	\$7	\$6
	55% Current	\$46	\$44	\$39	\$37	\$34	\$31	\$29	\$27	\$26	\$25	\$24	\$22	\$18	\$16	\$15	\$12	\$11	\$10
	10yr ave.			\$24		\$21		\$18		\$16	\$15	\$14	\$14	\$13	\$12	\$11	\$9	\$8	\$7
	60% Current	\$50	\$48	\$43	\$41	\$37	\$34	\$32	\$30	\$29	\$27	\$26	\$24	\$20	\$18	\$16	\$13	\$12	\$11
	10yr ave.			\$26		\$23		\$19		\$17	\$16	\$16	\$15	\$15	\$13	\$12	\$10	\$8	\$8
	65% Current	\$54	\$52	\$47	\$44	\$40	\$36	\$34	\$32	\$31	\$30	\$28	\$26	\$21	\$19	\$18	\$14	\$13	\$12
	10yr ave.			\$28		\$25		\$21		\$18	\$18	\$17	\$17	\$16	\$14	\$13	\$10	\$9	\$8
	70% Current	\$58	\$56	\$50	\$48	\$43	\$39	\$37	\$35	\$33	\$32	\$31	\$28	\$23	\$21	\$19	\$15	\$14	\$12
	10yr ave.			\$30		\$27		\$23		\$20	\$19	\$18	\$18	\$17	\$15	\$14	\$11	\$10	\$9
	75% Current	\$62	\$60	\$54	\$51	\$46	\$42	\$39	\$37	\$36	\$34	\$33	\$30	\$25	\$22	\$20	\$16	\$14	\$13
	10yr ave.			\$32		\$29		\$24		\$21	\$20	\$20	\$19	\$18	\$16	\$15	\$12	\$10	\$9
	80% Current	\$66	\$64	\$57	\$54	\$50	\$45	\$42	\$40	\$38	\$37	\$35	\$32	\$26	\$24	\$22	\$17	\$15	\$14
	10yr ave.			\$34		\$31		\$26		\$23	\$22	\$21	\$20	\$19	\$17	\$16	\$13	\$11	\$10
	85% Current	\$71	\$68	\$61	\$58	\$53	\$48	\$45	\$42	\$40	\$39	\$37	\$34	\$28	\$25	\$23	\$18	\$16	\$15
	10yr ave.			\$36		\$33		\$28		\$24	\$23	\$22	\$22	\$21	\$19	\$17	\$13	\$12	\$11

The above shows estimated returns per head for skirted fleece wool. These figures do not take into account the value of skirtings and oddments and do not take into account discounts that may apply for faults under individual circumstances. These figures are based on a market index of 100% and should be used as a guide only. Returns over \$30 / head for fleece wool are highlighted.

Source: Australian Wool Exchange, Australian Wool Innovation, Sydney Futures Exchange, x-rates.com

Disclaimer: While all due care has been taken in the preparation of this document, no warranty is made as to its accuracy, reliability or completeness. To the extent permitted by law neither Jemalong or their sources including subsidiaries and staff, accept liability to any person for loss or damage arising from the use of this information.



Table 20: Returns pr head for skirted fleece wool.

Skirted FLC Weight		Micron																	
2 Kg		16	16.5	17	17.5	18	18.5	19	19.5	20	21	22	23	24	25	26	28	30	32
Yield (Sch Dry)	25% Current	\$14	\$13	\$12	\$11	\$10	\$9	\$9	\$8	\$8	\$8	\$7	\$7	\$5	\$5	\$4	\$4	\$3	\$3
	10yr ave.			\$7		\$6		\$5		\$5	\$5	\$4	\$4	\$4	\$4	\$3	\$3	\$2	\$2
	30% Current	\$17	\$16	\$14	\$14	\$12	\$11	\$11	\$10	\$10	\$9	\$9	\$8	\$7	\$6	\$5	\$4	\$4	\$4
	10yr ave.			\$9		\$8		\$6		\$6	\$5	\$5	\$5	\$5	\$4	\$4	\$3	\$3	\$3
	35% Current	\$19	\$19	\$17	\$16	\$14	\$13	\$12	\$12	\$11	\$11	\$10	\$9	\$8	\$7	\$6	\$5	\$5	\$4
	10yr ave.			\$10		\$9		\$8		\$7	\$6	\$6	\$6	\$6	\$5	\$5	\$4	\$3	\$3
	40% Current	\$22	\$21	\$19	\$18	\$17	\$15	\$14	\$13	\$13	\$12	\$12	\$11	\$9	\$8	\$7	\$6	\$5	\$5
	10yr ave.			\$11		\$10		\$9		\$8	\$7	\$7	\$7	\$6	\$6	\$5	\$4	\$4	\$3
	45% Current	\$25	\$24	\$22	\$20	\$19	\$17	\$16	\$15	\$14	\$14	\$13	\$12	\$10	\$9	\$8	\$6	\$6	\$5
	10yr ave.			\$13		\$11		\$10		\$8	\$8	\$8	\$8	\$7	\$7	\$6	\$5	\$4	\$4
	50% Current	\$28	\$27	\$24	\$23	\$21	\$19	\$18	\$17	\$16	\$15	\$15	\$13	\$11	\$10	\$9	\$7	\$6	\$6
	10yr ave.			\$14		\$13		\$11		\$9	\$9	\$9	\$9	\$8	\$7	\$7	\$5	\$5	\$4
	55% Current	\$30	\$29	\$26	\$25	\$23	\$21	\$19	\$18	\$17	\$17	\$16	\$15	\$12	\$11	\$10	\$8	\$7	\$6
	10yr ave.			\$16		\$14		\$12		\$10	\$10	\$10	\$9	\$9	\$8	\$7	\$6	\$5	\$5
	60% Current	\$33	\$32	\$29	\$27	\$25	\$22	\$21	\$20	\$19	\$18	\$18	\$16	\$13	\$12	\$11	\$8	\$8	\$7
	10yr ave.			\$17		\$15		\$13		\$11	\$11	\$11	\$10	\$10	\$9	\$8	\$6	\$6	\$5
	65% Current	\$36	\$35	\$31	\$30	\$27	\$24	\$23	\$22	\$21	\$20	\$19	\$17	\$14	\$13	\$12	\$9	\$8	\$8
	10yr ave.			\$19		\$17		\$14		\$12	\$12	\$11	\$11	\$11	\$9	\$9	\$7	\$6	\$5
	70% Current	\$39	\$38	\$33	\$32	\$29	\$26	\$25	\$23	\$22	\$21	\$20	\$19	\$15	\$14	\$13	\$10	\$9	\$8
	10yr ave.			\$20		\$18		\$15		\$13	\$13	\$12	\$12	\$11	\$10	\$9	\$7	\$6	\$6
	75% Current	\$42	\$40	\$36	\$34	\$31	\$28	\$26	\$25	\$24	\$23	\$22	\$20	\$16	\$15	\$13	\$11	\$10	\$9
	10yr ave.			\$21		\$19		\$16		\$14	\$14	\$13	\$13	\$12	\$11	\$10	\$8	\$7	\$6
	80% Current	\$44	\$43	\$38	\$36	\$33	\$30	\$28	\$27	\$25	\$24	\$23	\$21	\$18	\$16	\$14	\$11	\$10	\$9
	10yr ave.			\$23		\$20		\$17		\$15	\$14	\$14	\$14	\$13	\$12	\$11	\$8	\$7	\$7
	85% Current	\$47	\$46	\$41	\$39	\$35	\$32	\$30	\$28	\$27	\$26	\$25	\$23	\$19	\$17	\$15	\$12	\$11	\$10
	10yr ave.			\$24		\$22		\$18		\$16	\$15	\$15	\$15	\$14	\$12	\$11	\$9	\$8	\$7

The above shows estimated returns per head for skirted fleece wool. These figures do not take into account the value of skirtings and oddments and do not take into account discounts that may apply for faults under individual circumstances. These figures are based on a market index of 100% and should be used as a guide only. Returns over \$30 / head for fleece wool are highlighted.

Source: Australian Wool Exchange, Australian Wool Innovation, Sydney Futures Exchange, x-rates.com

Disclaimer: While all due care has been taken in the preparation of this document, no warranty is made as to its accuracy, reliability or completeness. To the extent permitted by law neither Jemalong or their sources including subsidiaries and staff, accept liability to any person for loss or damage arising from the use of this information.