



Table 1: Northern Region Micron Price Guides

WEEK 08			12 MONTH COMPARISONS								3 YEAR COMPARISONS					10 YEAR COMPARISONS				
23/08/2023 16/08/2023			23/08/2022	Now	Now		Now				Now		Percentile			Now		Percentile		
Current	Weekly	This time	compared	12 Month	compared	12 Month	compared			Average	compared	10 year		compared						
MPG	Price	Change	Last Year	to Last Year	Low	to Low	High	to High	Low	High	Average	to 3yr ave	Low	High	Average	to 10yr ave				
NRI	1171	-42 -3.5%	1416	-245 -17%	1171	0 0%	1475	-304 -21%	919	1568	1372	-201 -15%	4%	661	2163	1438	-267 -19%	49%		
15*	2550	-237 -8.5%	3450	-900 -26%	2550	0 0%	3450	-900 -26%	1945	3750	3109	-559 -18%	42%	1711	3750	2846	-296 -10%	60%		
15.5*	2250	-287 -11.3%	3250	-1000 -31%	2250	0 0%	3250	-1000 -31%	1800	3450	2864	-614 -21%	18%	1509	3450	2511	-261 -10%	60%		
16*	1975	-50 -2.5%	3050	-1075 -35%	1975	0 0%	3050	-1075 -35%	1650	3250	2622	-647 -25%	4%	1325	3300	2204	-229 -10%	60%		
16.5	1870	-130 -6.5%	2863	-993 -35%	1870	0 0%	2868	-998 -35%	1482	2952	2437	-567 -23%	5%	1276	3187	2111	-241 -11%	54%		
17	1765	-107 -5.7%	2603	-838 -32%	1765	0 0%	2613	-848 -32%	1382	2749	2266	-501 -22%	5%	1103	3008	2009	-244 -12%	61%		
17.5	1633	-67 -3.9%	2318	-685 -30%	1633	0 0%	2316	-683 -29%	1291	2514	2083	-450 -22%	5%	1115	2845	1917	-284 -15%	58%		
18	1515	-68 -4.3%	2012	-497 -25%	1515	0 0%	2100	-585 -28%	1172	2246	1893	-378 -20%	4%	926	2708	1819	-304 -17%	55%		
18.5	1458	-33 -2.2%	1786	-328 -18%	1448	+10 1%	1902	-444 -23%	1062	2042	1731	-273 -16%	7%	855	2591	1727	-269 -16%	54%		
19	1386	-38 -2.7%	1619	-233 -14%	1386	0 0%	1772	-386 -22%	995	1830	1589	-203 -13%	8%	812	2465	1638	-252 -15%	53%		
19.5	1354	-30 -2.2%	1496	-142 -9%	1354	0 0%	1675	-321 -19%	949	1675	1474	-120 -8%	12%	755	2404	1573	-219 -14%	53%		
20	1307	-38 -2.8%	1391	-84 -6%	1307	0 0%	1586	-279 -18%	910	1586	1375	-68 -5%	13%	704	2391	1518	-211 -14%	54%		
21	1259	-41 -3.2%	1316	-57 -4%	1242	+17 1%	1529	-270 -18%	898	1529	1301	-42 -3%	21%	671	2368	1474	-215 -15%	53%		
22	1200	0	1268	-68 -5%	1200	0 0%	1465	-265 -18%	863	1465	1259	-59 -5%	17%	660	2342	1443	-243 -17%	49%		
23	992	0	1134	-142 -13%	983	+9 1%	1203	-211 -18%	814	1268	1110	-118 -11%	7%	655	2316	1369	-377 -28%	33%		
24	803	0	950	-147 -15%	784	+19 2%	970	-167 -17%	750	1115	946	-143 -15%	5%	644	2114	1240	-437 -35%	20%		
25	650	-45 -6.5%	843	-193 -23%	650	0 0%	867	-217 -25%	552	924	815	-165 -20%	2%	569	1801	1064	-414 -39%	14%		
26	488	+20 4.3%	658	-170 -26%	465	+23 5%	696	-208 -30%	465	883	672	-184 -27%	9%	465	1545	941	-453 -48%	1%		
28	340	+10 3.0%	387	-47 -12%	290	+50 17%	380	-40 -11%	290	663	417	-77 -18%	21%	320	1318	692	-352 -51%	3%		
30	317	0	332	-15 -5%	255	+62 24%	335	-18 -5%	255	533	351	-34 -10%	29%	288	998	582	-265 -46%	4%		
32	263	+13 5.2%	247	+16 6%	210	+53 25%	267	-4 -1%	190	339	248	+15 6%	76%	215	762	440	-177 -40%	12%		
MC	730	-4 -0.5%	868	-138 -16%	730	0 0%	929	-199 -21%	637	1011	866	-136 -16%	5%	392	1563	1003	-273 -27%	41%		
AU BALES OFFERED		35,970	* 16.5 is the lowest Micron Price Guide (MPG) published by The Australian Wool Exchange (AWEX). Therefore MPG's below 16.5 micron are an estimate based on the best available information at the time of publication. Likewise, for any category where there is insufficient quantity offered to enable AWEX to quote, a quote will also be provided. * Recording of 15 & 15.5 micron commenced in October 2017, and as a result some historic data is not yet available for those MPG's. Where historic data is not available an estimate based on '16 micron statistics' and incorporating the existing 15 & 15.5 micron data, will be provided as a guide.																	
AU BALES SOLD		30,536																		
AU PASSED-IN%		15.1%																		
AUD/USD		0.6441 -0.1%																		

Source: Australian Wool Exchange, Australian Wool Innovation, Riemann, x-rates.com, Reserve Bank of Australia, Australian Wool Testing Authority, Australian Bureau Statistics (ABS), Woolmark.

Disclaimer: Jemalong Wool Pty Ltd make no representations about the content and suitability of the information contained in this report. Specifically, Jemalong Wool does not warrant, guarantee or make any representations regarding the correctness, accuracy, reliability, currency, or any other aspect regarding characteristics or use of information presented in these materials. The user accepts sole responsibility and risk associated with the use and results of these materials, irrespective of the purpose of which such use or results are applied. In no event shall Jemalong Wool be liable for any loss or damages arising out of or in connection with the use of these materials.

Copyright © Jemalong Wool Pty Ltd, 2006-2023. Apart from any use permitted under the Copyright Act 1968, no part may be copied or reproduced by any process nor stored electronically without the written permission of Jemalong Wool Pty Ltd. This report has been compiled by Jemalong Wool Pty Ltd for internal use and for the benefit of Jemalong Wool clients. You should only read this report if you are authorised to do so, if you are not authorised then you must destroy all electronic and paper copies immediately. Under no circumstance are you permitted to forward this report to a third-party.

MARKET COMMENTARY Source: AWEX

The market has continued to fall for the third consecutive series, driven mainly by falls in the merino fleece sector. From the opening bid, the offer prices were noticeably lower than the previous week and continued to ease as the sale progressed. By the end of the first day, the MPGs for Merino fleece had dropped 14-75 cents. As a result, the EMI fell 24 cents for the day (with relatively small movements in the other sectors preventing a larger fall).

Falls continued on day two but to a lesser extent, although the pattern was similar, with a soft opening followed by a slow but continual decline. The Merino fleece MPG's lost 11-35 cents for the day, resulting in a 12-cent drop in the EMI.

The EMI closed the week 36 cents lower at 1,127 cents. It is now at its lowest point since June and is 215 cents (16%) below the same time last year. One positive for the week was the broader crossbred types, which defied the overall trend, managing a gain of 7-13 cents. Fremantle resumes selling next week, and all three centres will continue to operate weekly until the Christmas recess.

With the return of the West, the national offering has been bolstered; currently, there are expected to be 48,653 bales on offer.

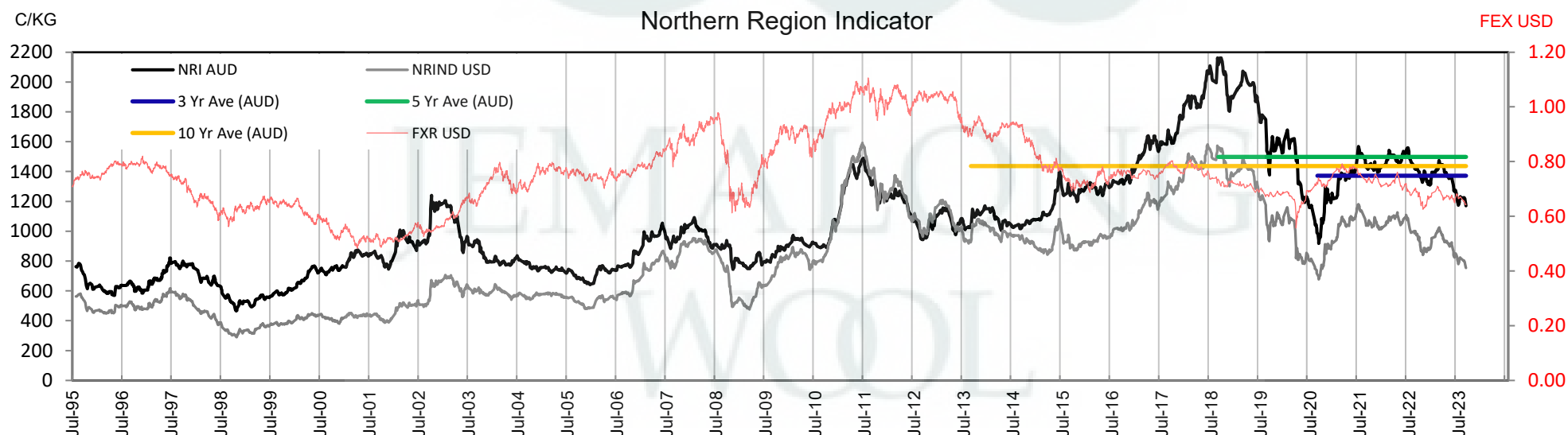




Table 2: Three Year Decile Table, since: 1/08/2020

Decile	%	16	16.5	17	17.5	18	18.5	19	19.5	20	21	22	23	24	25	26	28	30	32	MC
1	10%	2112	1973	1842	1708	1573	1468	1390	1319	1249	1185	1161	1030	865	710	489	328	295	217	740
2	20%	2365	2209	2063	1902	1770	1634	1515	1431	1335	1258	1205	1079	897	760	580	340	305	232	789
3	30%	2475	2295	2145	1988	1828	1677	1567	1466	1352	1280	1228	1099	931	796	638	363	318	240	859
4	40%	2550	2372	2237	2067	1878	1737	1611	1487	1370	1291	1247	1110	947	821	675	396	330	245	867
5	50%	2625	2457	2307	2130	1950	1784	1625	1499	1386	1305	1262	1119	958	838	696	410	342	248	879
6	60%	2785	2597	2394	2197	2003	1822	1656	1519	1402	1317	1285	1129	967	848	721	423	357	250	889
7	70%	2875	2651	2445	2250	2032	1854	1680	1542	1427	1342	1309	1140	979	858	739	460	374	257	909
8	80%	2976	2798	2595	2335	2090	1883	1702	1561	1456	1380	1336	1155	988	872	765	484	395	267	929
9	90%	3062	2852	2638	2395	2145	1929	1737	1591	1510	1431	1382	1173	1019	889	783	515	419	278	964
10	100%	3250	2952	2749	2514	2246	2042	1830	1675	1586	1529	1465	1268	1115	924	883	663	533	339	1011
MPG		1975	1870	1765	1633	1515	1458	1386	1354	1307	1259	1200	992	803	650	488	340	317	263	730
3 Yr Percentile		4%	5%	5%	5%	4%	7%	8%	12%	13%	21%	17%	7%	5%	2%	9%	21%	29%	76%	5%

Table 3: Ten Year Decile Table, since: 1/08/2013

Decile	%	16	16.5	17	17.5	18	18.5	19	19.5	20	21	22	23	24	25	26	28	30	32	MC
1	10%	1425	1373	1243	1201	1111	1038	968	897	828	763	737	721	696	638	571	423	349	250	446
2	20%	1510	1435	1292	1270	1192	1145	1080	994	936	912	894	871	803	675	595	452	385	314	539
3	30%	1548	1491	1359	1327	1260	1213	1148	1107	1067	1007	964	929	848	715	625	470	407	349	618
4	40%	1600	1559	1430	1422	1350	1290	1226	1180	1154	1139	1128	1076	951	824	689	485	429	374	726
5	50%	1685	1694	1545	1528	1447	1396	1332	1291	1249	1230	1202	1123	1000	870	768	574	501	399	786
6	60%	1975	1998	1728	1679	1562	1504	1460	1414	1350	1298	1255	1160	1060	905	812	646	575	447	853
7	70%	2250	2290	2108	2006	1846	1717	1603	1492	1402	1348	1316	1236	1114	984	880	684	616	490	924
8	80%	2575	2528	2338	2215	2038	1868	1710	1585	1498	1442	1396	1350	1249	1125	1041	782	654	551	1066
9	90%	2851	2773	2536	2396	2201	2067	1923	1818	1773	1753	1716	1637	1501	1261	1150	879	730	603	1159
10	100%	3300	3187	3008	2845	2708	2591	2465	2404	2391	2368	2342	2316	2114	1801	1545	1318	998	762	1563
MPG		1975	1870	1765	1633	1515	1458	1386	1354	1307	1259	1200	992	803	650	488	340	317	263	730
10 Yr Percentile		60%	54%	61%	58%	55%	54%	53%	53%	54%	53%	49%	33%	20%	14%	1%	3%	4%	12%	41%

Definitions:

* A Percentile, is a value on a scale of one hundred that indicates the percent of a distribution that is equal to or below it. In general a percentile between 25% and 75% is considered normal, a percentile below 25% is considered below normal and a percentile above 75% is considered above normal.

Three and ten year percentiles shown on the bottom line of table 2 & 3 (above) and in table 1 (on page 1), detail the amount of time during the past 3 & 10 years where the market has traded either at or below its current price.

* Deciles are a method of sorting ranked data into 10 equal groups. The data may be ranked from largest to smallest or vice versa.

The above Decile tables sort price Percentiles into 10 equal groups (in ascending order), with table 2 ranking the previous 3 years prices, while table 3 ranks prices over the previous 10 years.

Example: In Table 2, a Decile Rank of 6 for 19 microns, shows 19 microns have traded at or below 1656 for 60% of the time, over the past three years.

In Table 3, a Decile Rank of 6 for 19 microns, shows 19 microns have traded at or below 1460 for 60% of the time, over the past ten years.



Table 4: Riemann Forwards, as at: 23/08/23 Any highlighted in yellow are recent trades, trading since: Thursday, 17 August 2023

MICRON (Total Traded = 58)		18um (1 Traded)	18.5um (0 Traded)	19um (35 Traded)	19.5um (3 Traded)	21um (14 Traded)	22um (0 Traded)	23um (0 Traded)	28um (5 Traded)	30um (0 Traded)
FORWARD CONTRACT MONTH	Aug-2023 (12)	6/02/23 2005 (1)		15/08/23 1445 (3)	4/07/23 1400 (1)	15/08/23 1335 (7)				
	Sep-2023 (17)			4/07/23 1455 (9)		8/08/23 1340 (5)			8/03/23 410 (3)	
	Oct-2023 (5)			1/12/22 1550 (1)	3/05/23 1595 (1)	6/05/22 1300 (1)			17/02/23 415 (2)	
	Nov-2023 (2)			1/12/22 1550 (1)	3/05/23 1595 (1)					
	Dec-2023 (3)			10/05/23 1660 (3)						
	Jan-2024 (5)			1/06/23 1550 (5)						
	Feb-2024 (2)			8/06/23 1550 (2)						
	Mar-2024 (2)			9/06/23 1550 (2)						
	Apr-2024 (1)			14/06/23 1550 (1)						
	May-2024 (1)			15/06/23 1520 (1)						
	Jun-2024 (1)			19/06/23 1520 (1)						
	Jul-2024 (1)			19/06/23 1520 (1)						
	Aug-2024 (2)			22/06/23 1500 (2)						
	Sep-2024 (4)			15/06/23 1520 (3)		31/01/23 1400 (1)				
	Oct-2024									
	Nov-2024									
	Dec-2024									
	Jan-2025									
	Feb-2025									
	Mar-2025									
	Apr-2025									
	May-2025									
	Jun-2025									

Explanatory Notes: Prices quoted reflect the most recent trades, at time of print.

Disclaimer: While all due care has been taken in the preparation of this document, no warranty is made as to its accuracy, reliability or completeness. To the extent permitted by law neither Jemalong or their sources including subsidiaries and staff, accept liability to any person for loss or damage arising from the use of this information.



Table 6: National Market Share

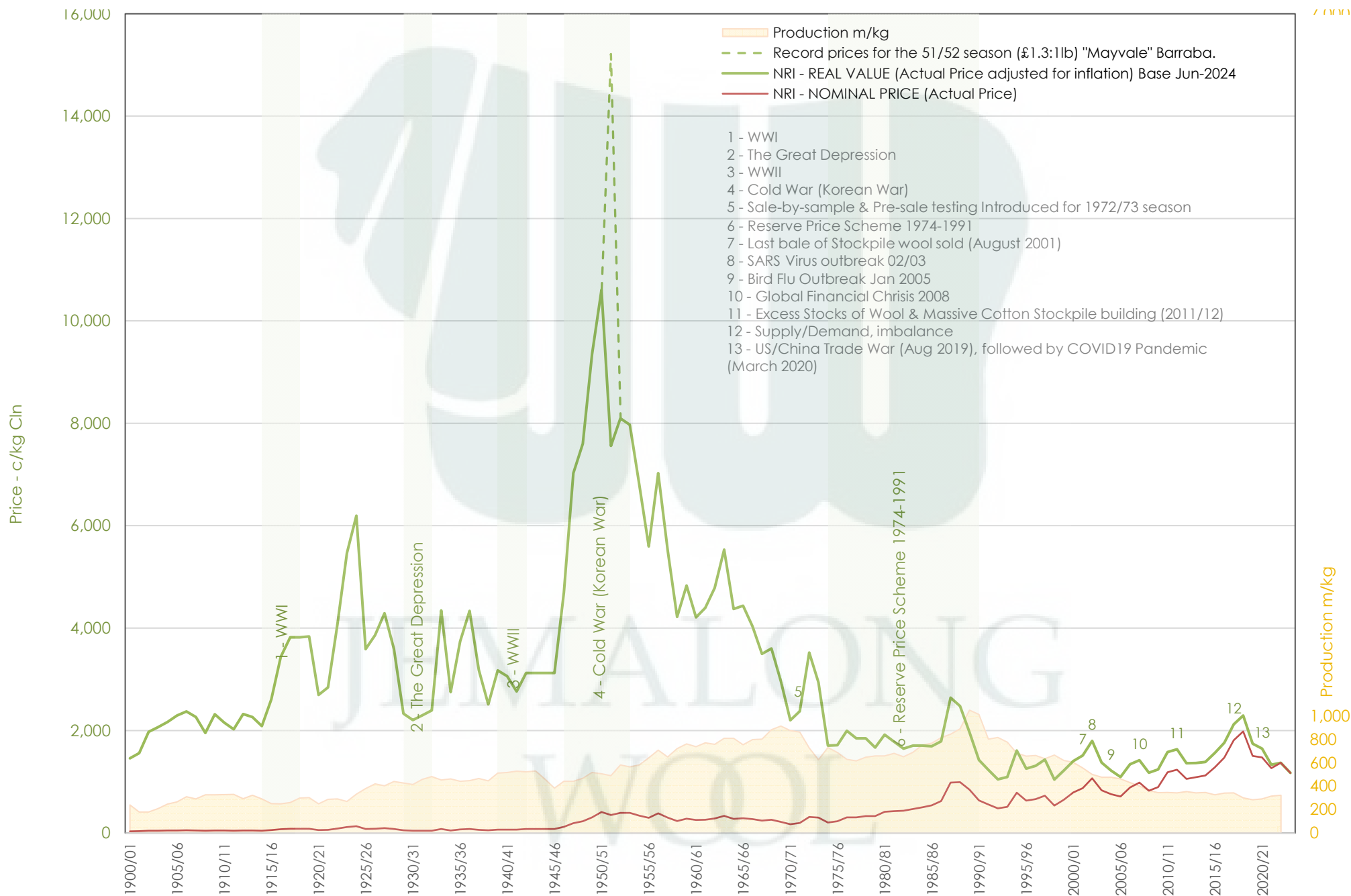
	Rank	Current Selling Week Week 08			Previous Selling Week Week 07			Last Season 2022-23			2 Years Ago 2021-22			3 Years Ago 2020-21			5 Years Ago 2018-19			10 Years Ago 2013-14		
		Buyer	Bales	MS%	Buyer	Bales	MS%	Buyer	Bales	MS%	Buyer	Bales	MS%	Buyer	Bales	MS%	Buyer	Bales	MS%	Buyer	Bales	MS%
Top 10, Auction Buyers	1	TECM	3,886	13%	TECM	7,966	19%	TECM	236,574	15%	TECM	249,539	16%	TECM	228,018	15%	TECM	183,590	12%	TECM	205,136	13%
	2	TIAM	3,110	10%	EWES	4,918	12%	EWES	184,465	11%	EWES	149,341	9%	EWES	159,908	10%	FOXM	137,101	9%	FOXM	134,581	8%
	3	EWES	2,973	10%	TIAM	4,448	11%	TIAM	165,940	10%	TIAM	141,971	9%	FOXM	129,251	8%	TIAM	125,963	8%	CTXS	122,964	8%
	4	PEAM	2,962	10%	PMWF	3,100	8%	FOXM	114,903	7%	FOXM	124,824	8%	TIAM	121,176	8%	SETS	117,207	8%	AMEM	111,263	7%
	5	AMEM	2,108	7%	SMAM	2,092	5%	AMEM	94,128	6%	PMWF	103,975	6%	UWCM	100,677	6%	AMEM	112,113	8%	LEMM	109,224	7%
	6	FOXM	1,687	6%	AMEM	1,956	5%	PMWF	92,939	6%	AMEM	94,736	6%	LEMM	98,471	6%	EWES	94,720	6%	TIAM	105,736	7%
	7	UWCM	1,667	5%	PEAM	1,898	5%	UWCM	81,113	5%	SMAM	77,361	5%	AMEM	90,244	6%	KATS	85,234	6%	QCTB	88,700	5%
	8	SMAM	1,660	5%	FOXM	1,877	5%	SMAM	81,046	5%	UWCM	72,834	5%	PMWF	84,389	5%	PMWF	80,474	5%	MODM	79,977	5%
	9	PMWF	1,611	5%	UWCM	1,721	4%	PEAM	76,571	5%	MODM	65,816	4%	MODM	70,426	4%	UWCM	65,978	4%	PMWF	77,875	5%
	10	MODM	1,322	4%	MEWS	1,672	4%	MEWS	64,650	4%	MCHA	65,536	4%	KATS	63,487	4%	MCHA	63,262	4%	GSAS	54,462	3%
MFLC TOP 5	1	TIAM	2,187	14%	TECM	4,777	20%	TECM	128,047	15%	TECM	142,007	16%	TECM	131,264	15%	SETS	109,434	13%	TECM	106,291	12%
	2	TECM	2,140	13%	TIAM	3,713	16%	TIAM	115,988	14%	TIAM	111,323	13%	TIAM	93,870	10%	TECM	99,231	12%	CTXS	87,889	10%
	3	PMWF	1,547	10%	PMWF	2,863	12%	EWES	93,911	11%	PMWF	100,286	11%	EWES	83,559	9%	TIAM	80,594	10%	LEMM	82,374	9%
	4	SMAM	1,259	8%	EWES	2,374	10%	PMWF	87,904	10%	EWES	71,533	8%	LEMM	81,281	9%	PMWF	72,193	9%	FOXM	80,423	9%
	5	PEAM	1,214	8%	MEWS	1,672	7%	MEWS	63,681	7%	FOXM	57,425	6%	PMWF	80,872	9%	FOXM	65,851	8%	PMWF	69,890	8%
MSKT TOP 5	1	TECM	995	19%	TECM	1,808	25%	EWES	46,781	18%	TECM	49,174	20%	TECM	42,521	18%	AMEM	35,047	17%	TIAM	47,607	19%
	2	EWES	989	19%	EWES	1,372	19%	TECM	45,453	17%	EWES	37,117	15%	UWCM	34,928	14%	TECM	32,363	15%	TECM	31,474	12%
	3	TIAM	770	15%	TIAM	625	9%	TIAM	36,973	14%	TIAM	25,176	10%	EWES	34,884	14%	TIAM	30,903	15%	AMEM	29,775	12%
	4	SMAM	388	7%	AMEM	599	8%	SMAM	18,671	7%	AMEM	22,149	9%	WCWF	21,915	9%	EWES	26,210	12%	MODM	23,791	9%
	5	AMEM	376	7%	WATM	423	6%	FOXM	17,752	7%	SMAM	16,956	7%	TIAM	18,193	8%	MODM	16,112	8%	GSAS	13,843	5%
XB TOP 5	1	PEAM	1,736	29%	PEAM	1,188	20%	PEAM	54,447	1600%	PEAM	41,337	1500%	MODM	34,090	900%	TECM	35,843	200%	TECM	40,364	200%
	2	MODM	538	9%	TECM	945	16%	TECM	41,194	200%	TECM	39,558	100%	TECM	33,794	100%	FOXM	35,810	800%	CTXS	34,779	2000%
	3	AMEM	520	9%	EWES	627	11%	MODM	28,282	1100%	MODM	29,690	900%	PEAM	30,636	1200%	EWES	20,980	400%	FOXM	24,218	700%
	4	UWCM	516	9%	UWCM	496	8%	EWES	25,981	100%	FOXM	27,002	600%	EWES	22,525	300%	MODM	19,069	500%	MODM	21,512	400%
	5	EWES	508	8%	MODM	485	8%	UWCM	23,318	700%	EWES	22,497	200%	UWCM	18,968	200%	AMEM	17,248	100%	AMEM	20,336	300%
ODDS TOP 5	1	UWCM	582	18%	UWCM	602	14%	MCHA	29,569	16%	FOXM	24,503	13%	FOXM	25,868	13%	MCHA	37,911	21%	MCHA	36,085	17%
	2	FOXM	416	13%	EWES	545	13%	UWCM	29,451	16%	MCHA	24,204	13%	MCHA	23,579	12%	VWPM	26,672	15%	TECM	27,007	13%
	3	EWES	378	11%	VWPM	507	12%	TECM	21,880	12%	UWCM	23,550	12%	UWCM	21,008	11%	FOXM	26,591	15%	VWPM	22,432	11%
	4	MCHA	377	11%	TECM	436	10%	EWES	17,792	9%	TECM	18,800	10%	TECM	20,439	11%	EWES	16,659	9%	FOXM	18,811	9%
	5	WATM	345	10%	FOXM	399	9%	FOXM	16,585	9%	VWPM	18,708	10%	EWES	18,940	10%	TECM	16,153	9%	RWRS	13,524	6%
Auction Totals		<u>Bales Sold</u>	<u>\$/Bale</u>		<u>Bales Sold</u>	<u>\$/Bale</u>		<u>Bales Sold</u>	<u>\$/Bale</u>		<u>Bales Sold</u>	<u>\$/Bale</u>		<u>Bales Sold</u>	<u>\$/Bale</u>		<u>Bales Sold</u>	<u>\$/Bale</u>		<u>Bales Sold</u>	<u>\$/Bale</u>	
		30,536	\$ 1,277		41,298	\$ 1,397		1,607,799	\$1,503		1,606,540	\$1,590		1,558,820	\$1,455		1,477,234	\$2,161		1,625,113	\$1,208	
		<u>Auction Value</u>			<u>Auction Value</u>			<u>Auction Value</u>			<u>Auction Value</u>			<u>Auction Value</u>			<u>Auction Value</u>			<u>Auction Value</u>		
		\$38,980,000			\$57,700,000			\$2,416,900,000			\$2,554,240,000			\$2,267,750,000			\$3,192,210,000			\$1,963,374,355		

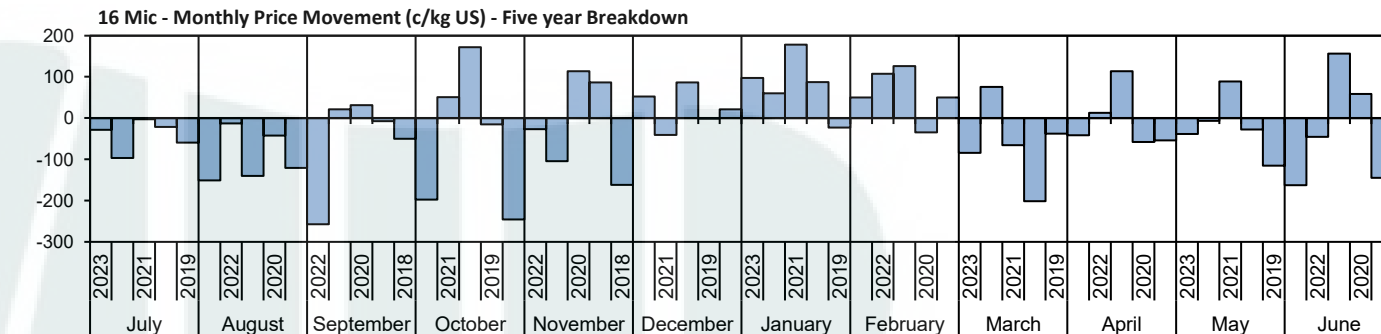
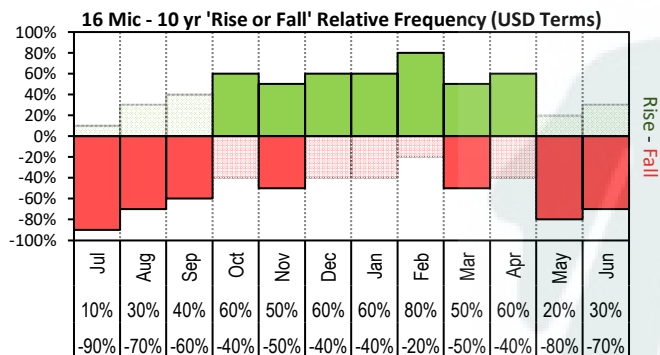


Table 7: NSW Production Statistics

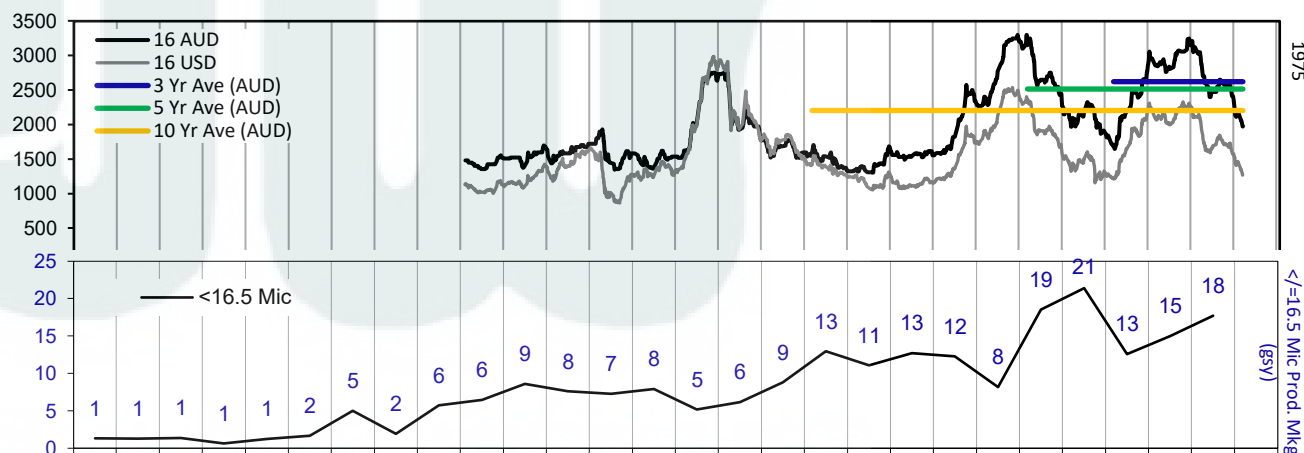
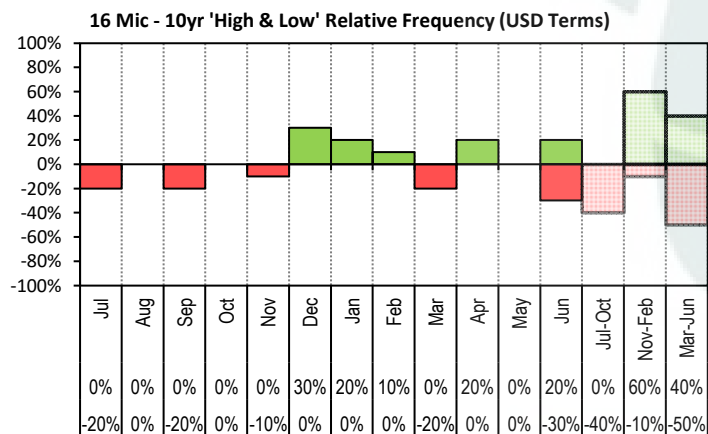
MAX			MIN		MAX GAIN		MAX REDUCTION								
2022-23															
Statistical Devision, Area Code & Towns				Auction Bales (FH)	Micron	+/- YoY	Vmb %	+/- YoY	Yield % Sch Dry	+/- YoY	Length mm	+/- YoY	Strength Nkt	+/- YoY	Ave Price c/kg
Northern	N02	Tenterfield, Glen Innes		5,588	19.0	0.2	2.0	-0.2	72.5	1.6	83	-1.4	40	0.3	1270
	N03	Guyra		41,286	21.2	0.3	2.2	-0.2	68.5	2.0	83	0.0	39	0.6	1079
	N04	Inverell		3,572	18.8	-0.5	4.3	-0.3	67.9	1.7	82	-1.0	38	-0.2	966
	N05	Armidale		801	20.7	0.3	4.4	0.1	67.8	0.4	81	-0.1	38	-2.7	740
	N06	Tamworth, Gunnedah, Quirindi		4,918	20.2	0.3	4.6	-0.3	67.3	1.6	83	-1.7	38	0.9	917
	N07	Moree		4,107	19.5	-0.3	5.9	1.2	63.1	0.0	86	0.6	41	0.6	744
	N08	Narrabri		2,877	19.6	0.2	5.5	1.8	64.8	-0.7	81	-0.7	42	-0.6	817
	North Western & Far West	N09	Cobar, Bourke, Wanaaring		8,119	20.0	0.1	5.3	1.0	58.9	-0.1	90	2.7	38	-1.1
N12		Walgett		8,287	19.7	0.0	5.4	1.6	62.4	0.9	87	-1.6	40	0.5	745
N13		Nyngan		17,679	19.9	-0.2	6.8	0.0	60.6	2.0	88	0.0	38	-0.8	704
N14		Dubbo, Narromine		17,642	20.9	-0.1	4.6	-0.8	64.5	3.6	84	0.4	38	-0.2	707
N16		Dunedoo		6,683	19.9	-0.9	4.3	-0.6	67.4	2.2	82	-3.4	39	3.0	863
N17		Mudgee, Wellington, Gulgong		20,219	19.5	-0.2	3.5	-0.5	69.1	2.6	82	0.1	39	0.8	1035
N33		Coonabarabran		3,121	19.9	-0.5	5.3	-0.8	66.4	2.5	85	-2.0	37	-0.9	812
N34		Coonamble		7,225	20.4	-0.3	5.2	0.0	64.5	1.1	86	0.0	38	-1.7	739
N36		Gilgandra, Gulargambone		4,950	20.8	-0.4	4.5	0.0	65.8	2.5	88	-0.8	39	0.0	757
N40		Brewarrina		7,427	19.9	-0.3	4.9	1.4	61.8	0.6	91	-0.4	40	0.1	735
Central West	N10	Wilcannia, Broken Hill		21,122	20.8	0.2	4.0	0.7	57.4	0.5	93	3.1	38	-0.5	642
	N15	Forbes, Parkes, Cowra		36,813	20.6	0.0	3.4	-0.4	66.3	2.6	87	0.0	37	-0.2	771
	N18	Lithgow, Oberon		2,186	20.8	-1.7	1.9	-0.2	71.9	1.0	88	0.9	39	1.1	1088
	N19	Orange, Bathurst		49,012	21.9	0.1	2.5	-0.2	70.0	1.9	85	0.0	38	0.4	828
	N25	West Wyalong		20,045	19.9	-0.1	3.3	-0.2	64.5	1.9	89	-0.3	37	-0.1	812
Murrumbidgee	N35	Condobolin, Lake Cargelligo		7,435	20.5	0.1	5.3	-1.0	62.3	3.8	87	3.4	38	-1.2	674
	N26	Cootamundra, Temora		26,083	21.3	-0.3	2.0	-0.1	66.7	1.5	90	2.3	36	-0.2	749
	N27	Adelong, Gundagai		15,003	21.4	0.0	2.1	-0.7	69.4	1.8	90	0.7	36	0.9	800
	N29	Wagga, Narrandera		36,302	21.8	0.0	2.2	0.0	66.6	1.9	87	0.0	37	0.9	716
	N37	Griffith, Hillston		12,918	21.3	-0.1	5.0	-0.5	62.1	1.6	87	2.9	39	-1.8	641
	N39	Hay, Coleambally		18,475	20.3	0.3	5.3	0.0	62.7	1.6	88	4.0	41	-0.2	740
Murray	N11	Wentworth, Balranald		12,682	21.2	0.4	5.0	-0.4	59.7	1.8	97	5.6	38	0.0	638
	N28	Albury, Corowa, Holbrook		31,836	21.6	0.2	1.6	0.2	68.6	1.4	89	0.9	36	-0.1	802
	N31	Deniliquin		26,172	20.8	0.2	4.0	0.1	65.4	1.8	91	2.8	38	2.1	752
	N38	Finley, Berrigan, Jerilderie		10,469	20.2	0.0	3.6	0.3	65.1	1.6	87	1.5	39	-1.2	788
South Eastern	N23	Goulburn, Young, Yass		102,043	20.1	-0.2	2.1	0.0	70.3	1.5	88	-1.9	37	1.2	976
	N24	Monaro (Cooma, Bombala)		32,937	19.7	0.0	1.8	-0.2	70.8	1.6	92	-2.1	34	-0.4	972
	N32	A.C.T.		115	17.9	0.4	1.7	-0.7	73.9	4.4	87	-15.1	38	4.4	1334
	N43	South Coast (Bega)		436	18.9	-0.6	0.9	0.0	75.9	0.6	92	0.4	39	-3.8	1257
NSW	AWEX Sale Statistics 22-23			684,947	20.8	0.0	3.1	-0.1	66.9	1.7	88	0.7	38	0.2	857

AWTA Mthly Key Test Data			Bales Tested	+/- YoY	Micron	+/- YoY	VMB	+/- YoY	Yld	+/- YoY	Lth	+/- YoY	Nkt	+/- YoY	POBM +/-
AUSTRALIA	Current Season	June	138,442	7,306	20.4	-0.1	2.8	0.1	64.8	0.6	87	-0.7	37	0.4	47 -0.6
		Y.T.D	1,937,321	61,904	20.8	0.0	2.4	0.1	65.9	1.0	89	1.0	35	0.0	48 0.0
	Previous Seasons	2021-22	1,875,417	97893	20.8	0.0	2.3	0.2	64.9	1.0	88	0.0	35	1.0	48 -1.0
		2020-21	1,777,524	122329	20.8	0.3	2.1	0.4	63.9	1.7	88	2.0	34	1.0	49 -2.0
		Y.T.D.	2019-20	1,655,195	-132,230	20.5	0.0	1.7	-0.4	62.2	-0.9	86	2.0	33	-0.7

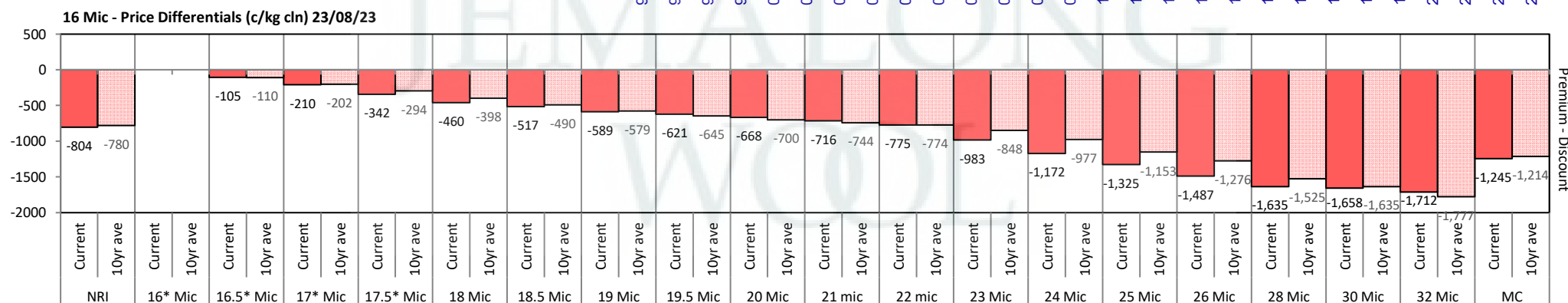


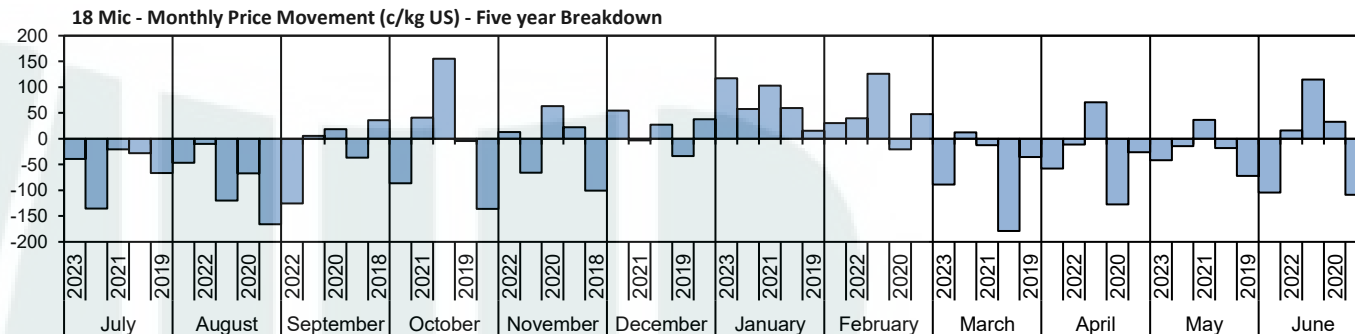
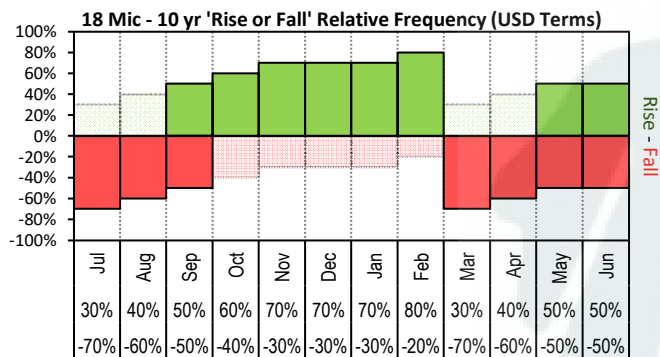


The above 'Rise or Fall' graph, shows how often the market has risen or fallen in a given month over the past 10 years, it does not show the extent of the movement only the frequency of direction. The 'Monthly Price Movement' graph shows the extent of movement for each month, for the past 5 years.

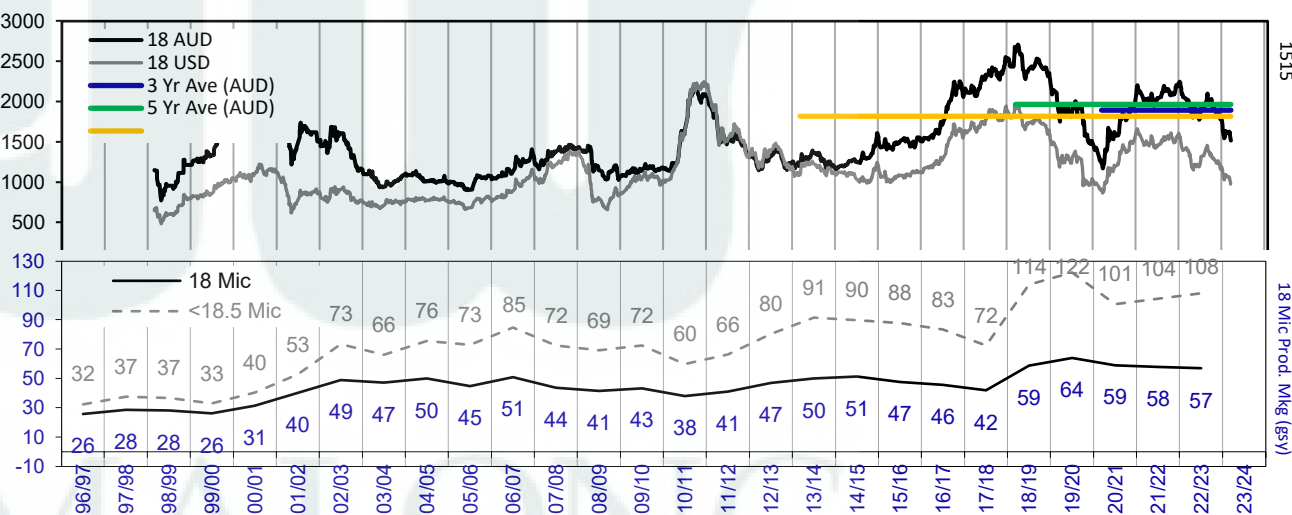
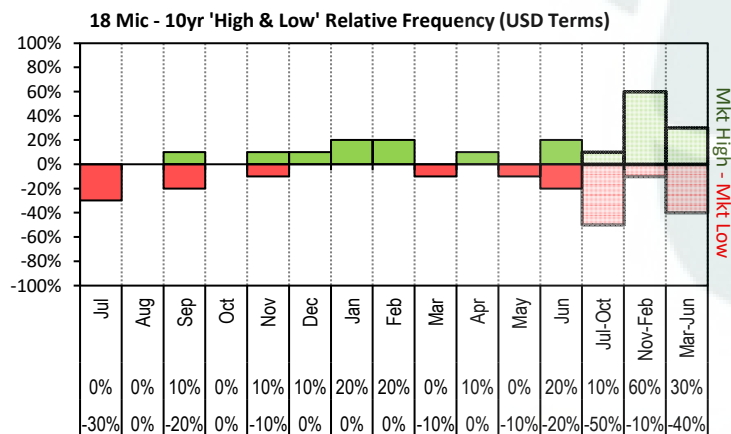


The above graph, shows how often the '12 month high & low' have been achieved for a

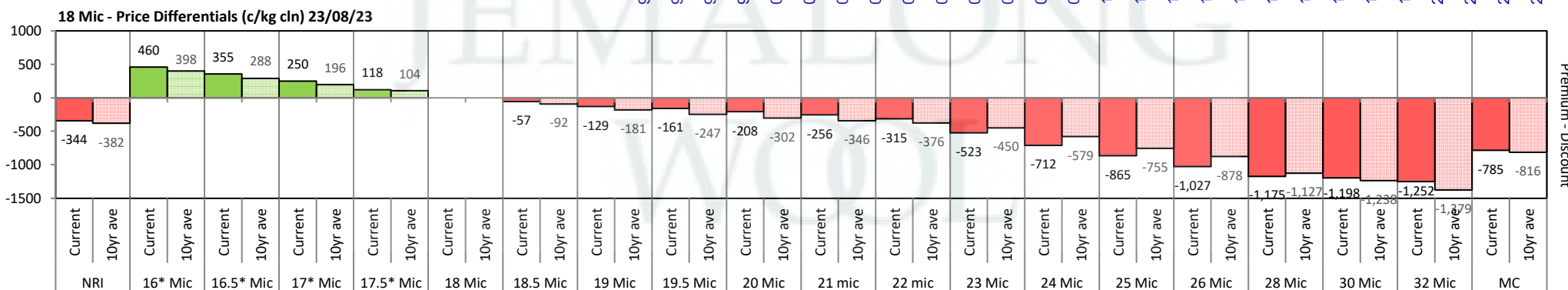


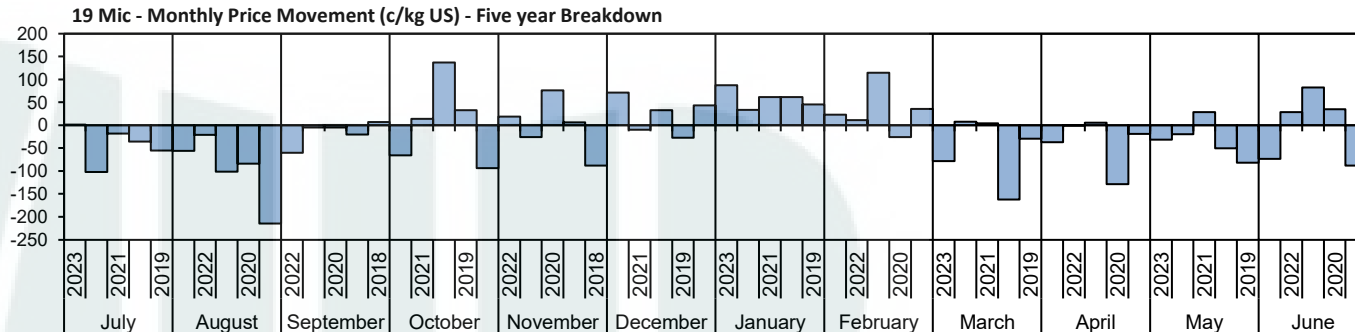
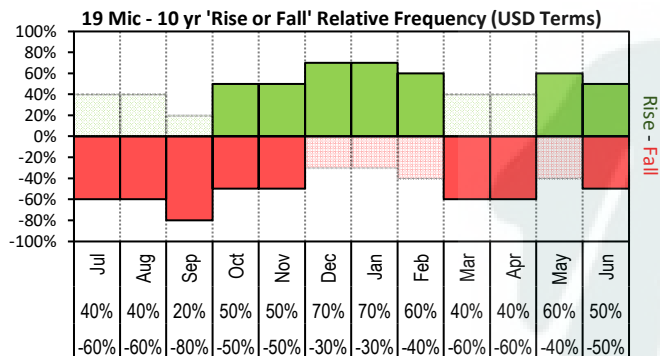


The above 'Rise or Fall' graph, shows how often the market has risen or fallen in a given month over the past 10 years, it does not show the extent of the movement only the frequency of direction. The 'Monthly Price Movement' graph shows the extent of movement for each month, for the past 5 years.

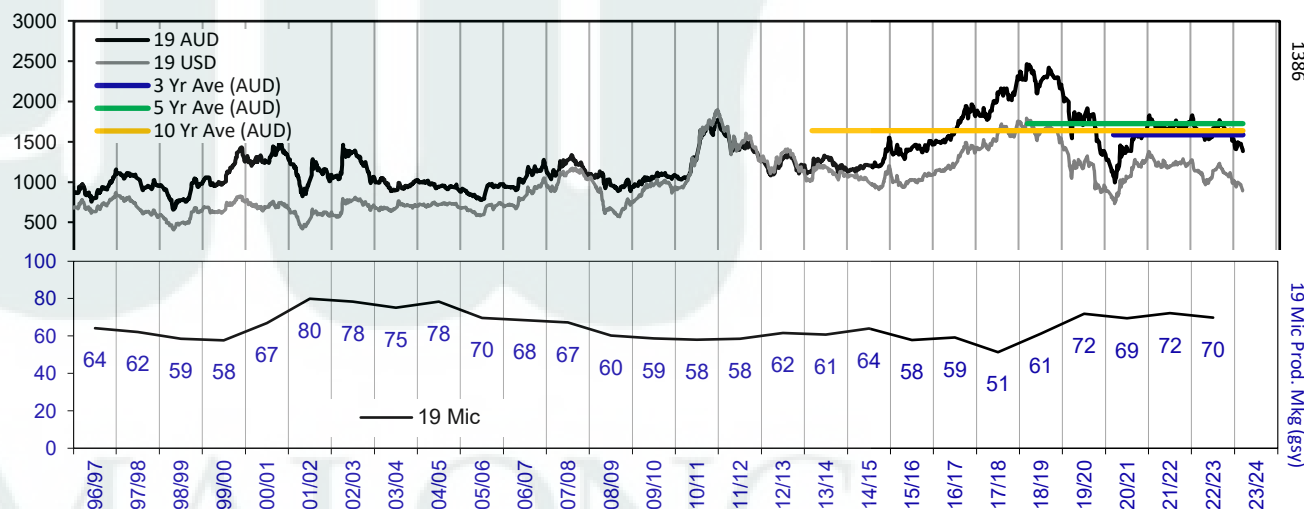
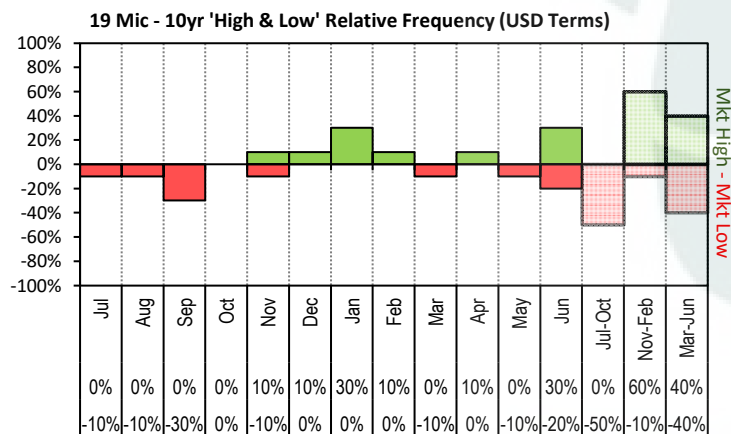


The above graph, shows how often the '12 month high & low' have been achieved for a given month over the past 10 years. It is not a measure of probability.

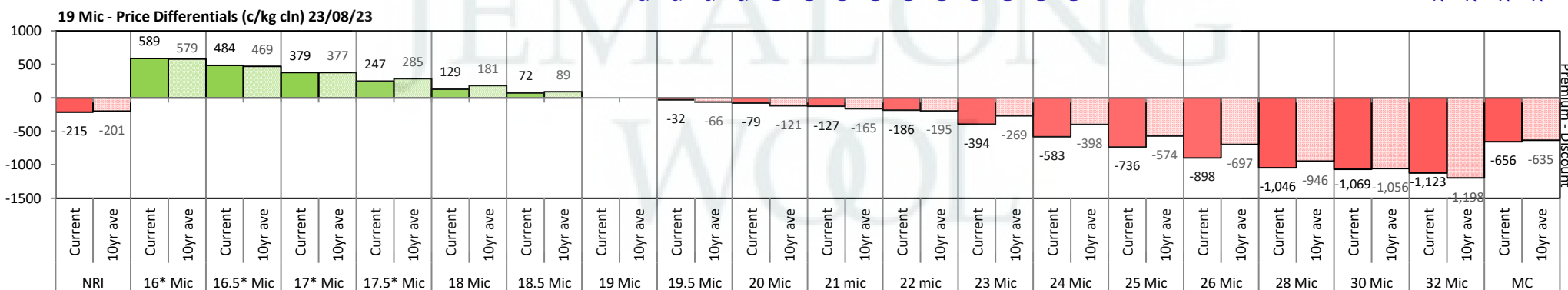


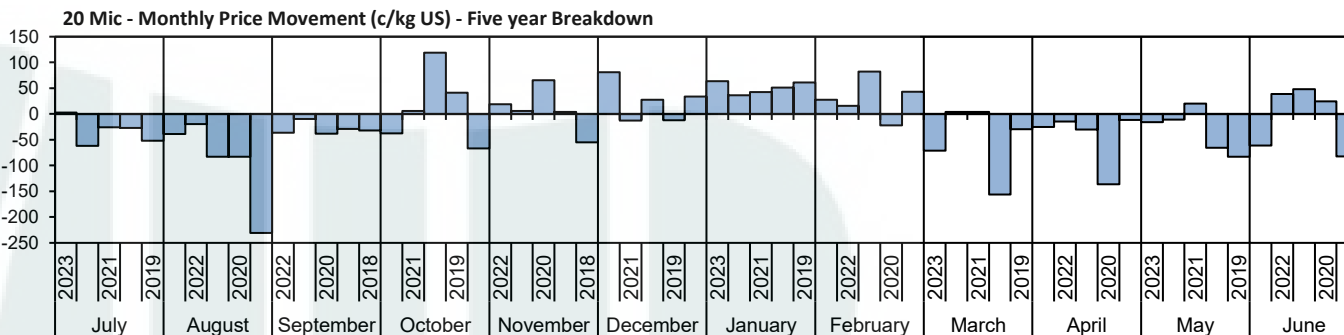


The above 'Rise or Fall' graph, shows how often the market has risen or fallen in a given month over the past 10 years, it does not show the extent of the movement only the frequency of direction. The 'Monthly Price Movement' graph shows the extent of movement for each month, for the past 5 years.

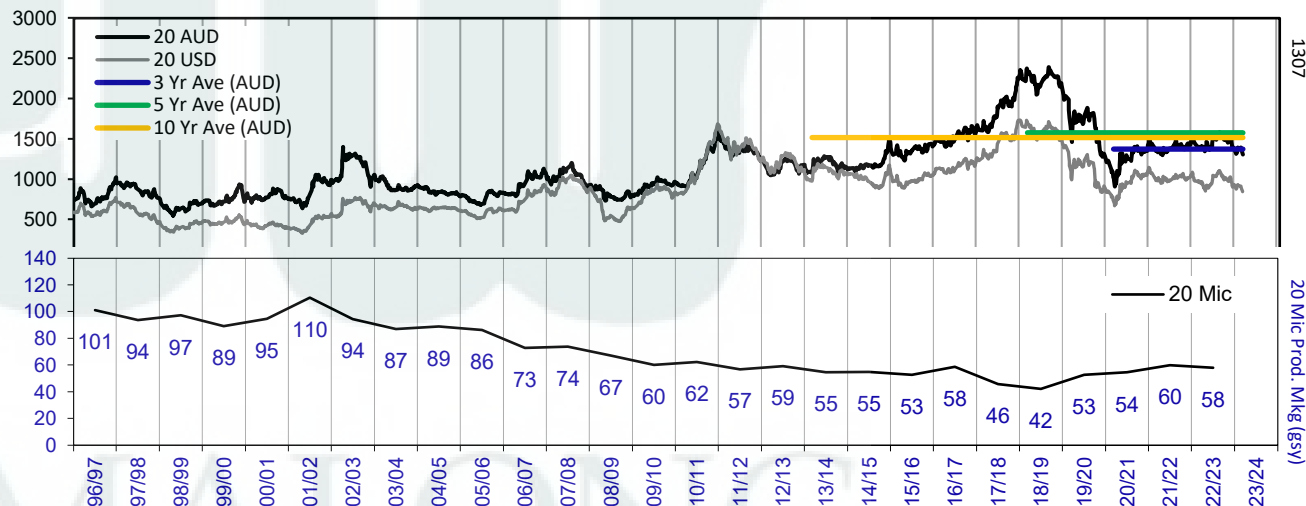


The above graph, shows how often the '12 month high & low' have been achieved for a given month over the past 10 years. It is not a measure of probability.



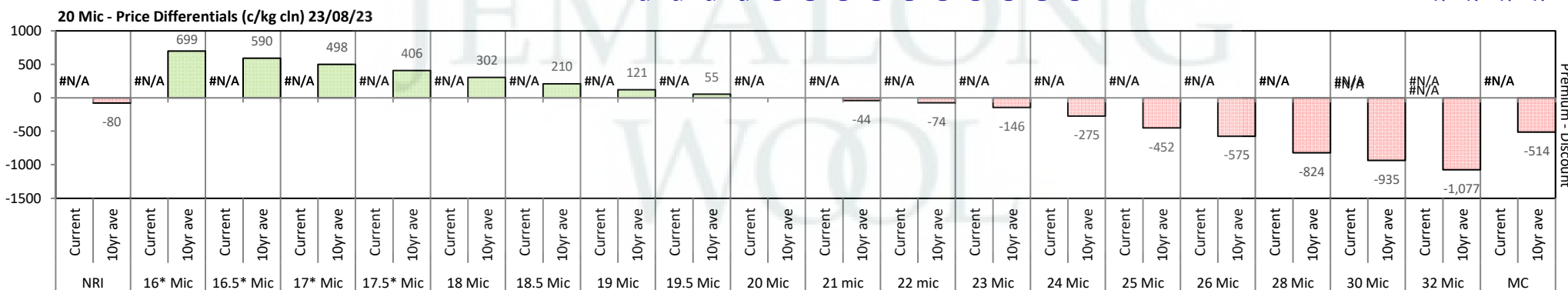


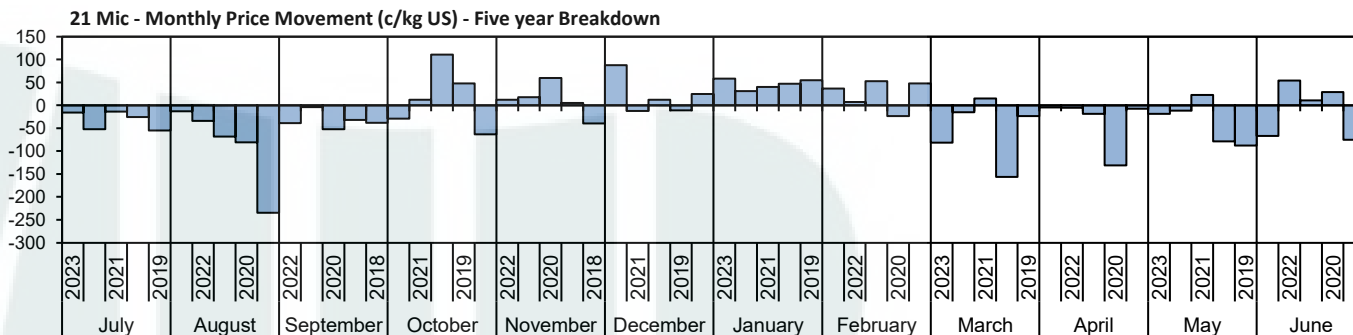
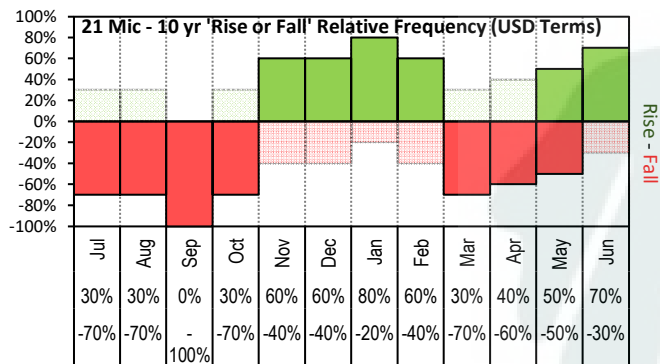
Movement' graph shows the extent of movement for each month, for the past 5 years.



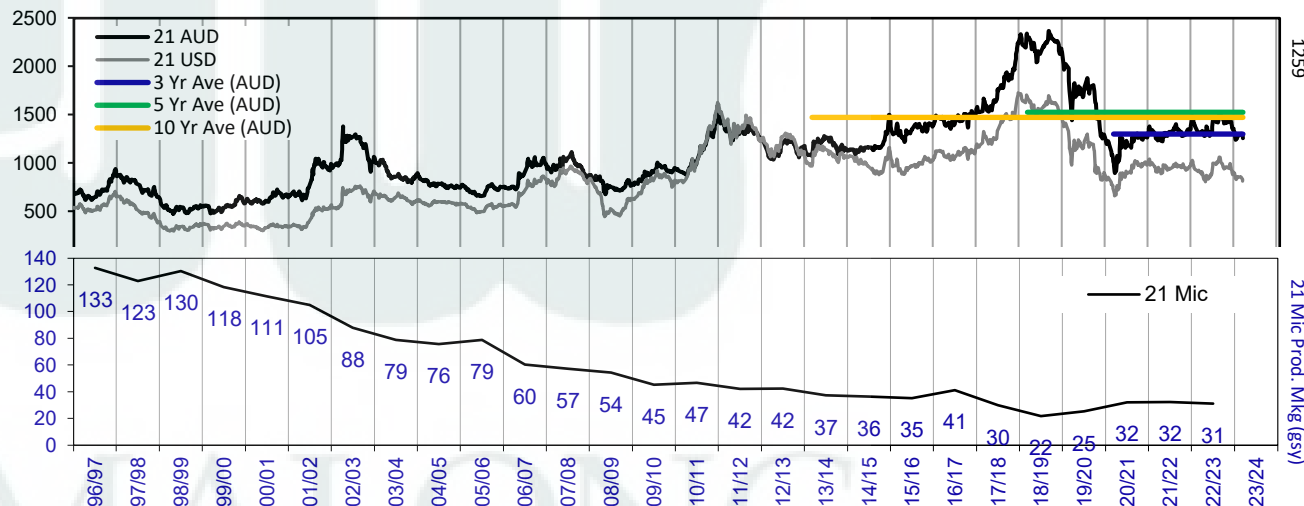
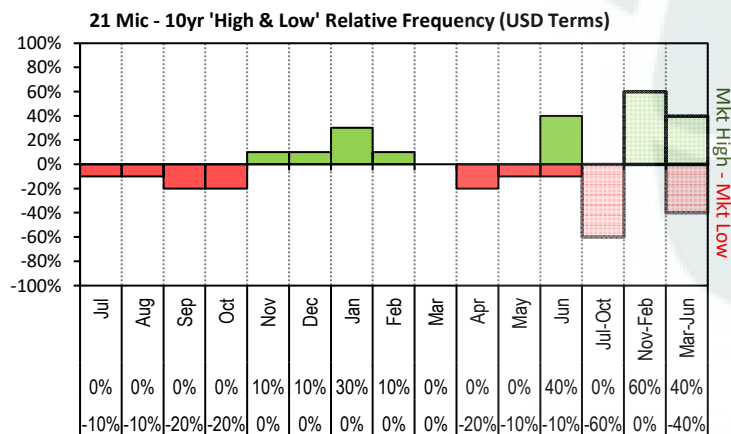
1307

20 Mic Prod. Mkg (gsy)

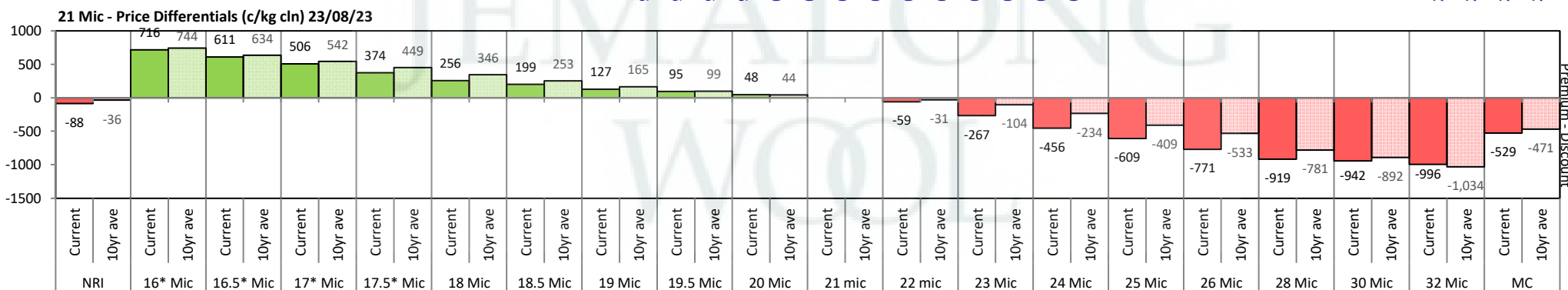


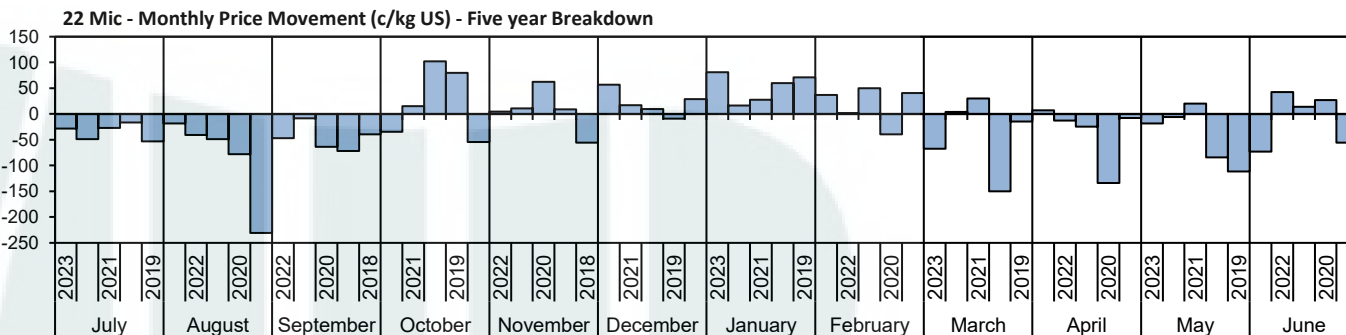
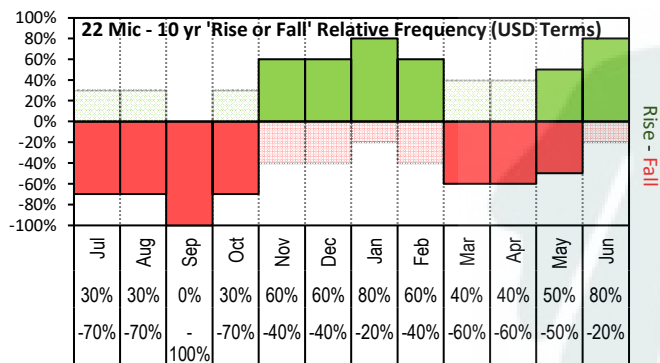


The above 'Rise or Fall' graph, shows how often the market has risen or fallen in a given month over the past 10 years, it does not show the extent of the movement only the frequency of direction. The 'Monthly Price Movement' graph shows the extent of movement for each month, for the past 5 years.

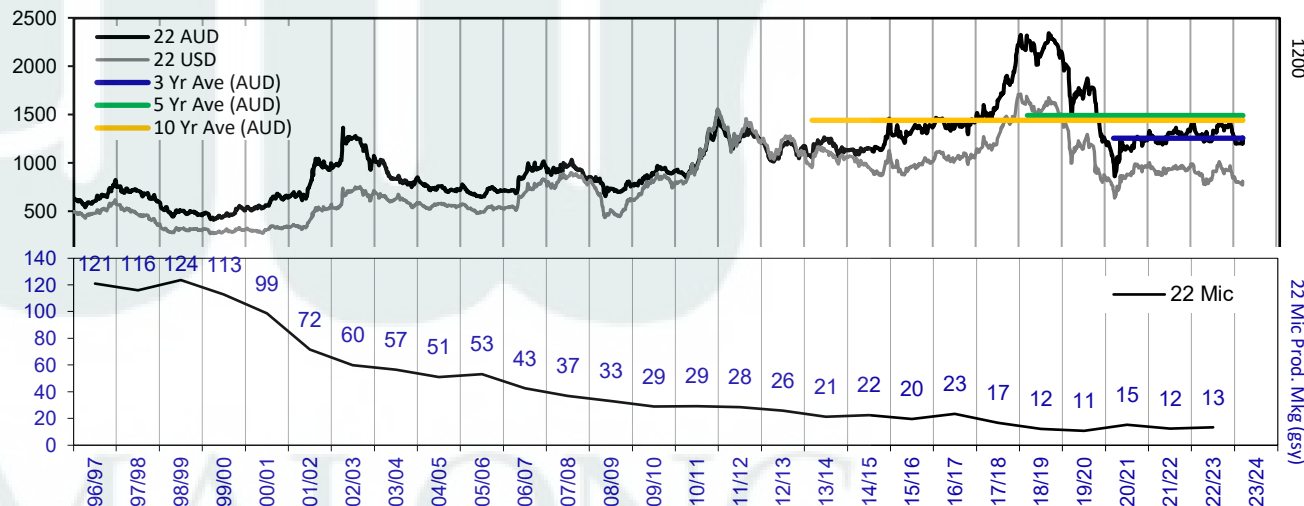
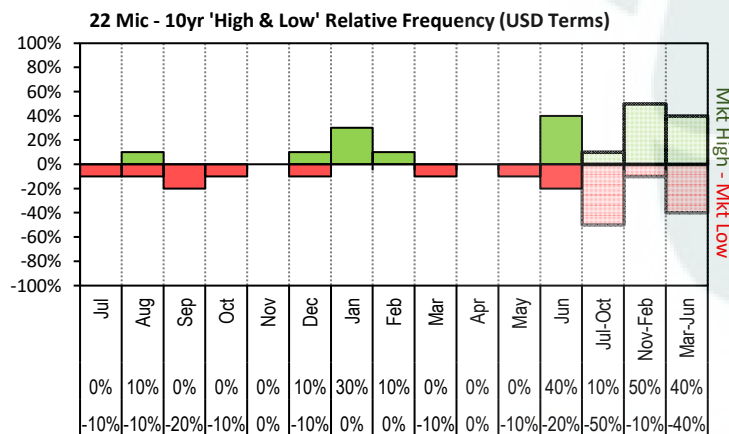


The above graph, shows how often the '12 month high & low' have been achieved for a given month over the past 10 years. It is not a measure of probability.

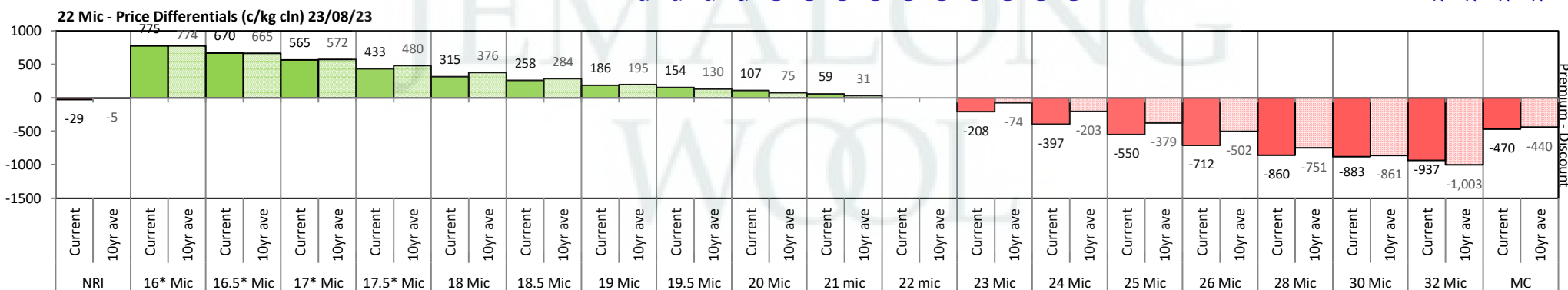


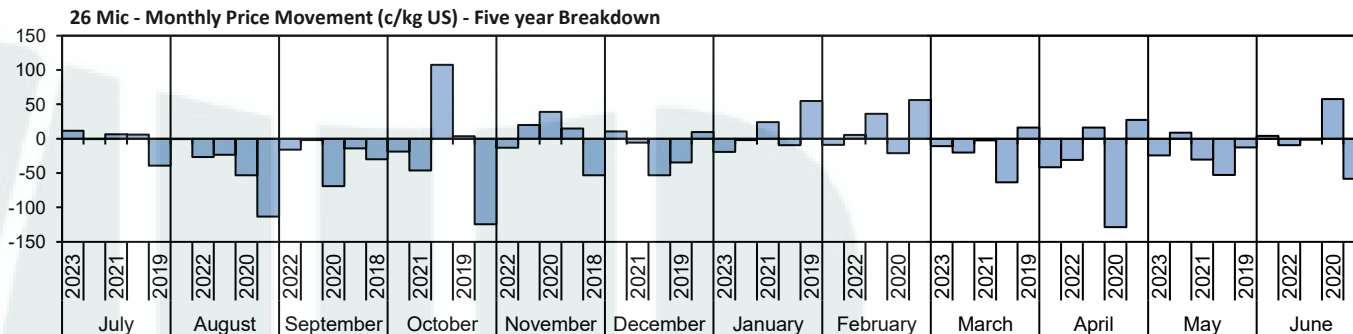
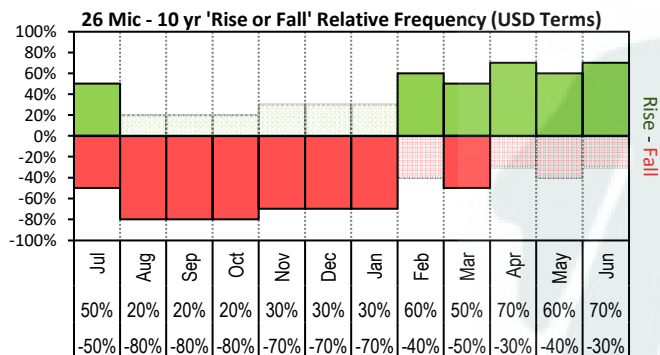


The above 'Rise or Fall' graph, shows how often the market has risen or fallen in a given month over the past 10 years, it does not show the extent of the movement only the frequency of direction. The 'Monthly Price Movement' graph shows the extent of movement for each month, for the past 5 years.

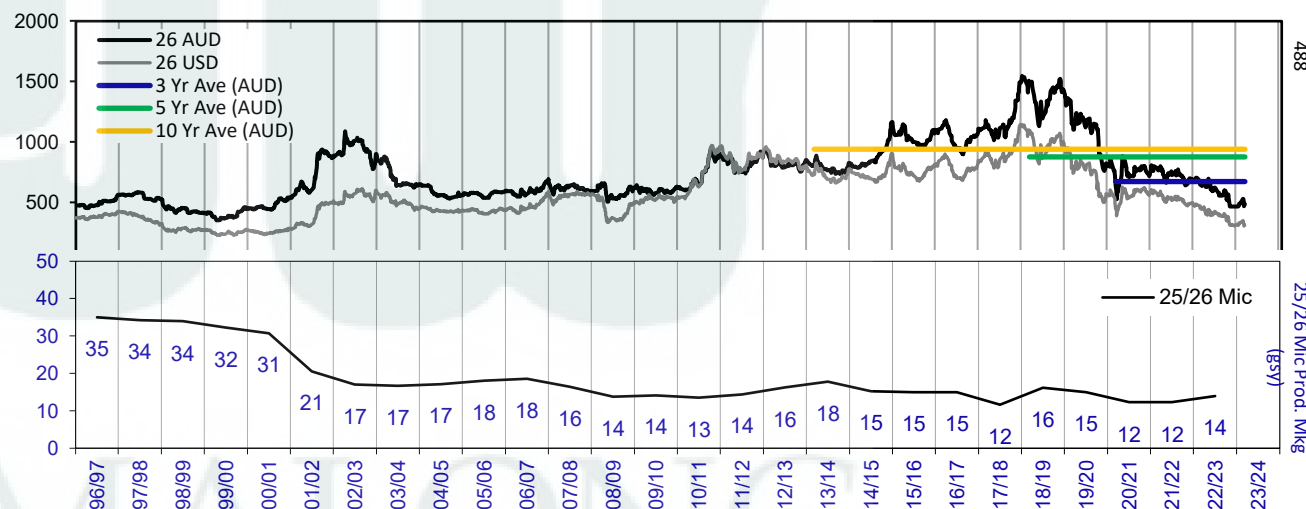
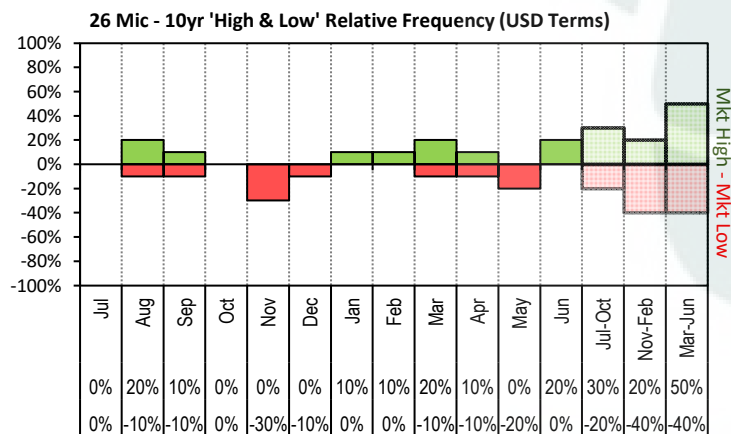


The above graph, shows how often the '12 month high & low' have been achieved for a given month over the past 10 years. It is not a measure of probability.

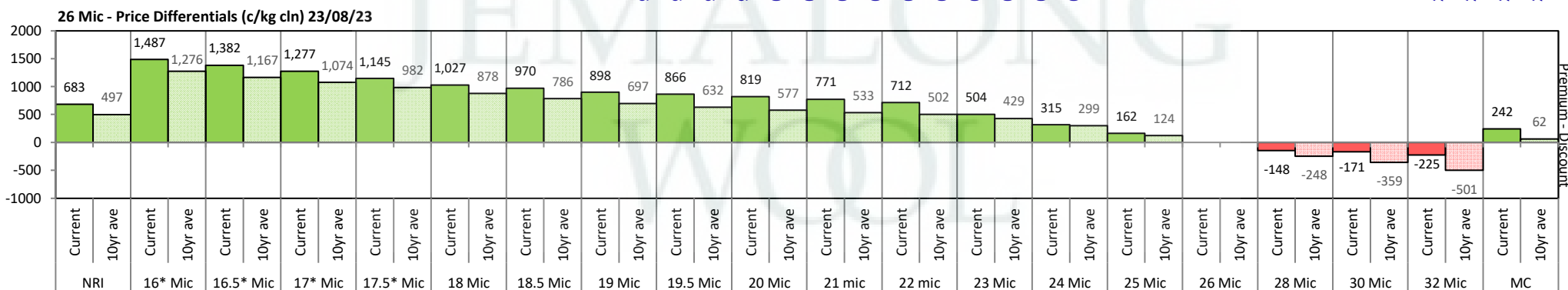


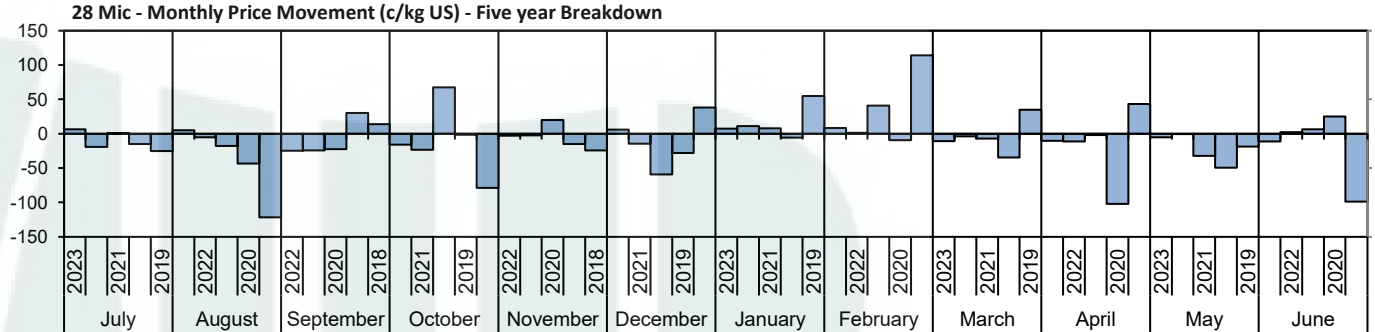
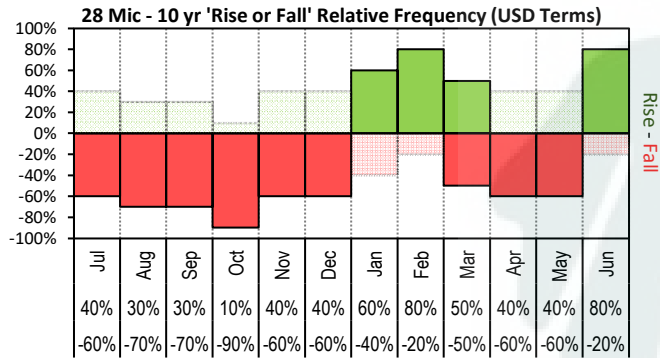


The above 'Rise or Fall' graph, shows how often the market has risen or fallen in a given month over the past 10 years, it does not show the extent of the movement only the frequency of direction. The 'Monthly Price Movement' graph shows the extent of movement for each month, for the past 5 years.

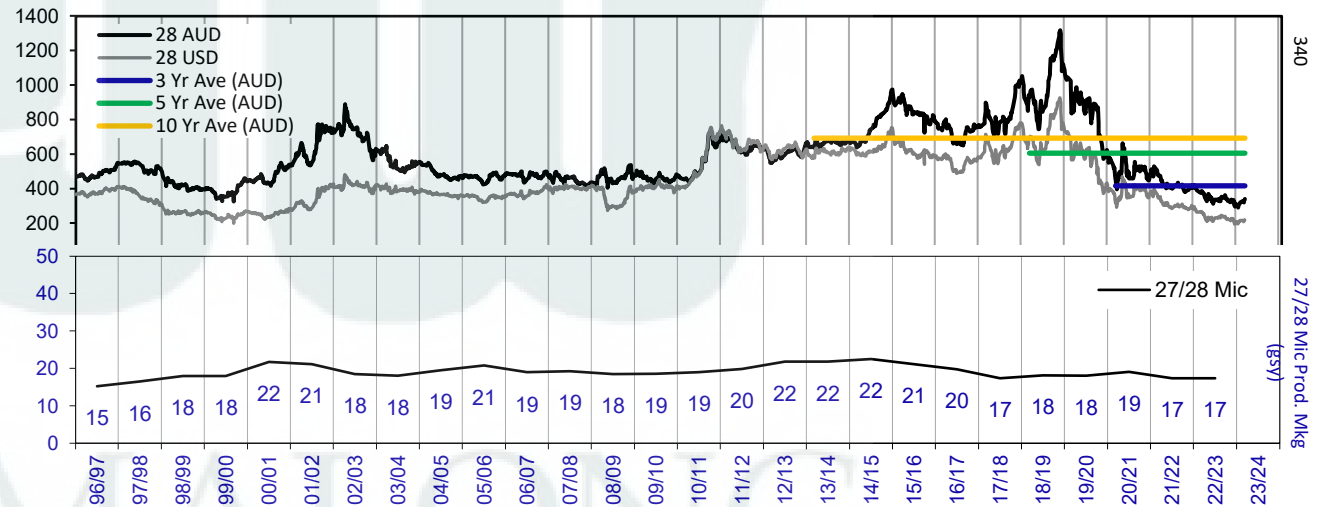
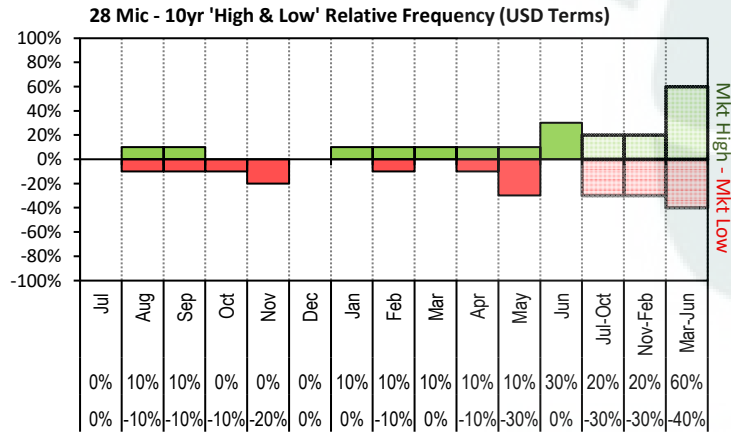


The above graph, shows how often the '12 month high & low' have been achieved for a given month over the past 10 years. It is not a measure of probability.

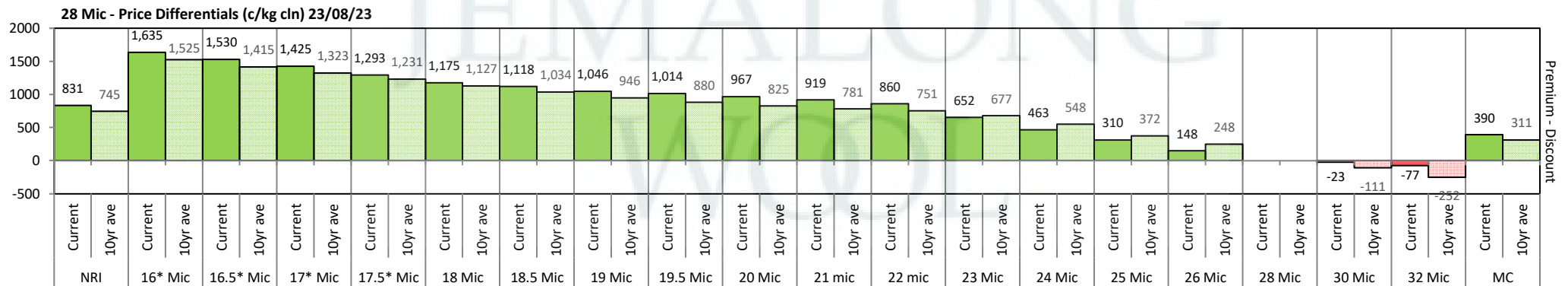


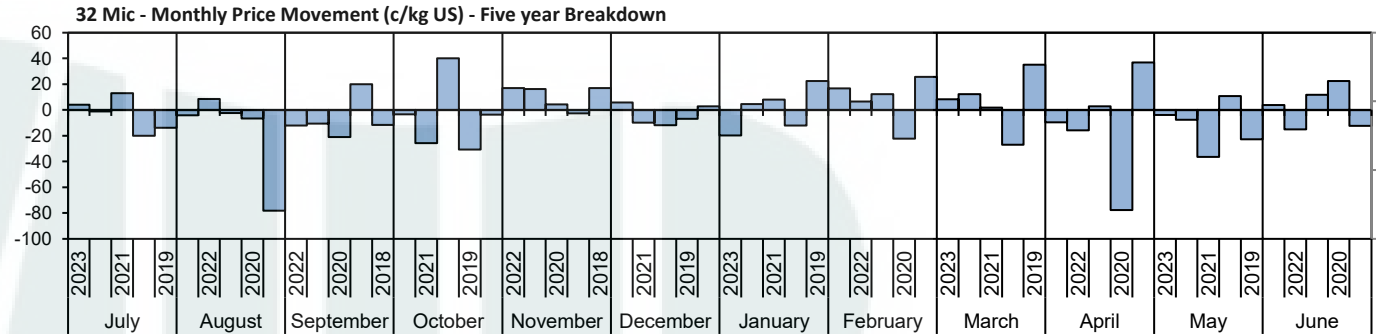
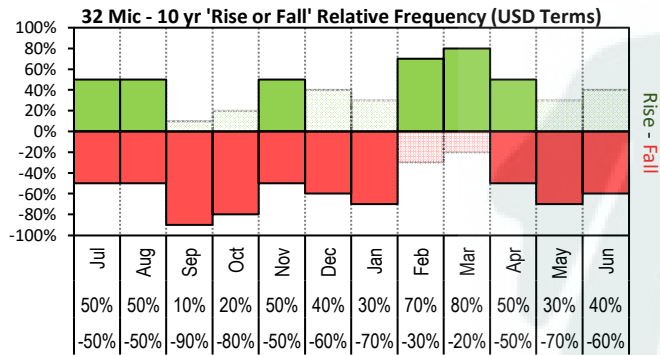


The above 'Rise or Fall' graph, shows how often the market has risen or fallen in a given month over the past 10 years, it does not show the extent of the movement only the frequency of direction. The 'Monthly Price Movement' graph shows the extent of movement for each month, for the past 5 years.

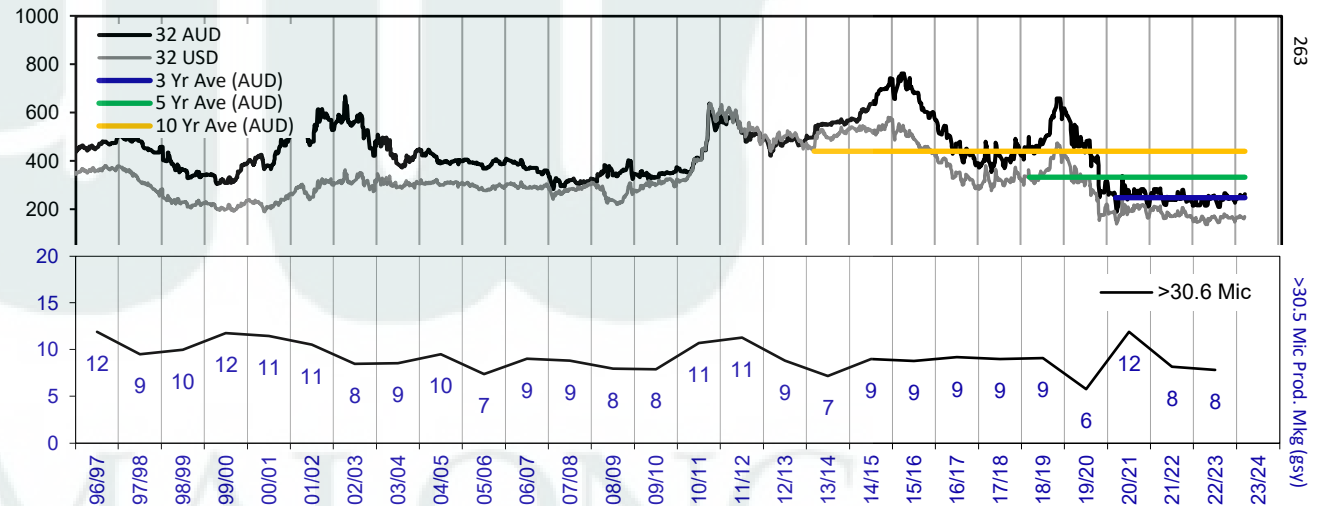
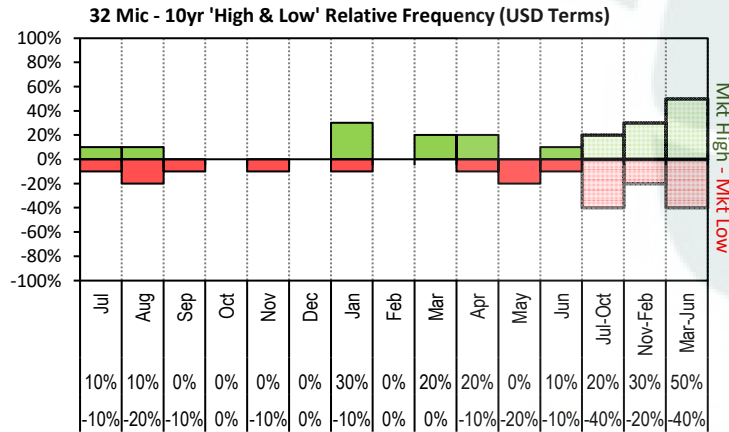


The above graph, shows how often the '12 month high & low' have been achieved for a given month over the past 10 years. It is not a measure of probability.

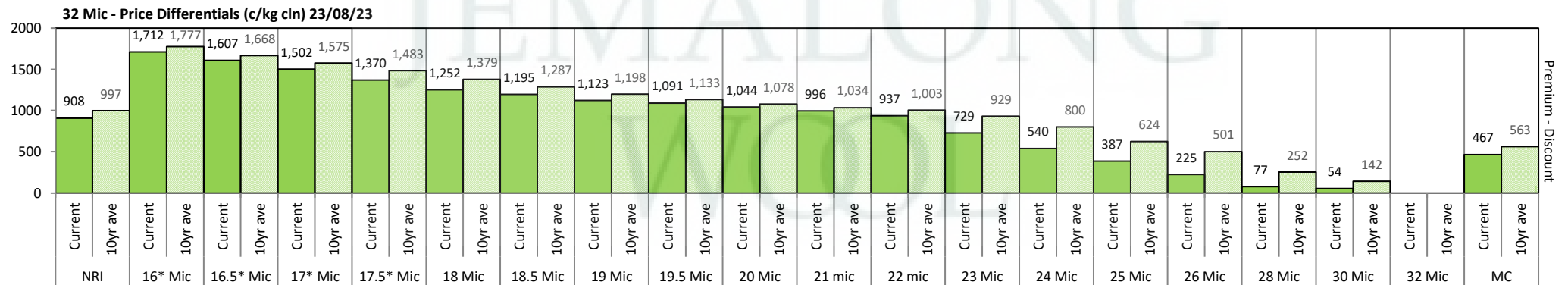


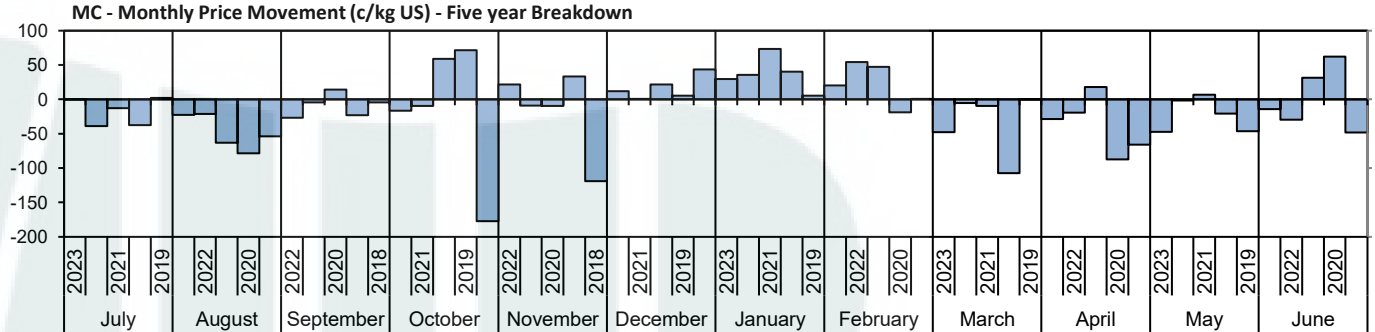
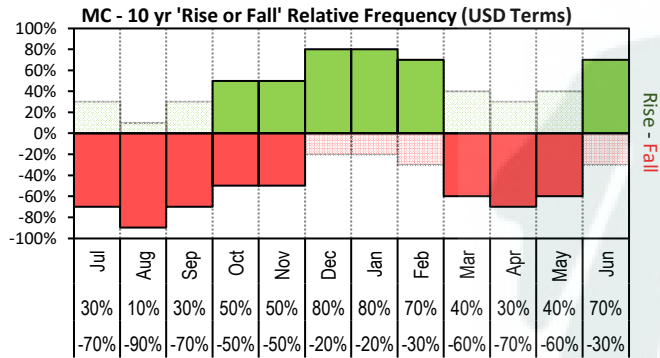


The above 'Rise or Fall' graph, shows how often the market has risen or fallen in a given month over the past 10 years, it does not show the extent of the movement only the frequency of direction. The 'Monthly Price Movement' graph shows the extent of movement for each month, for the past 5 years.

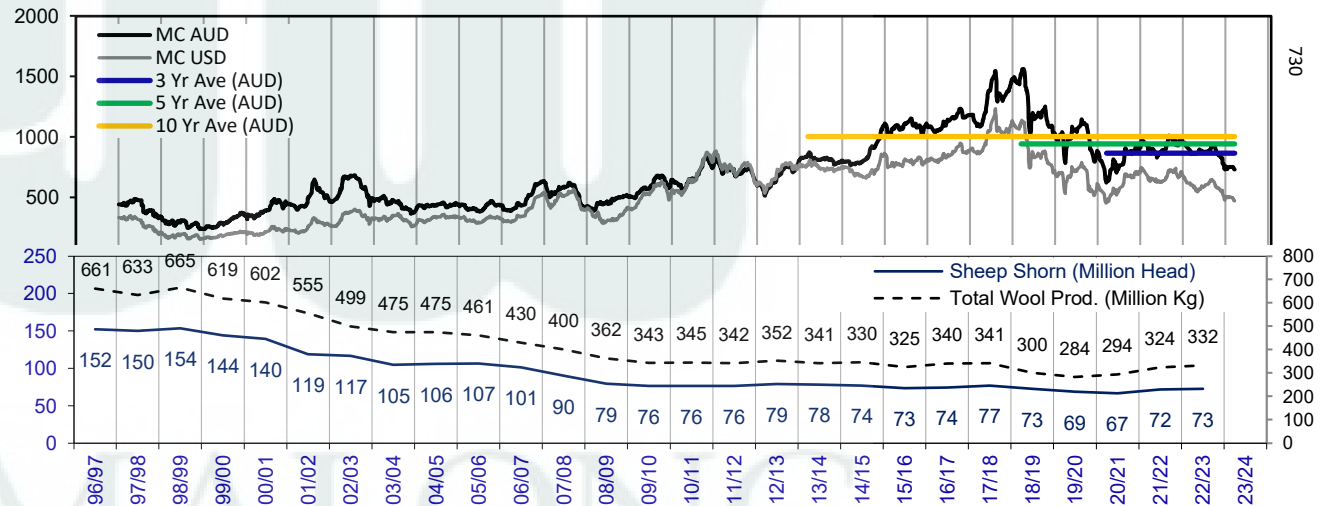
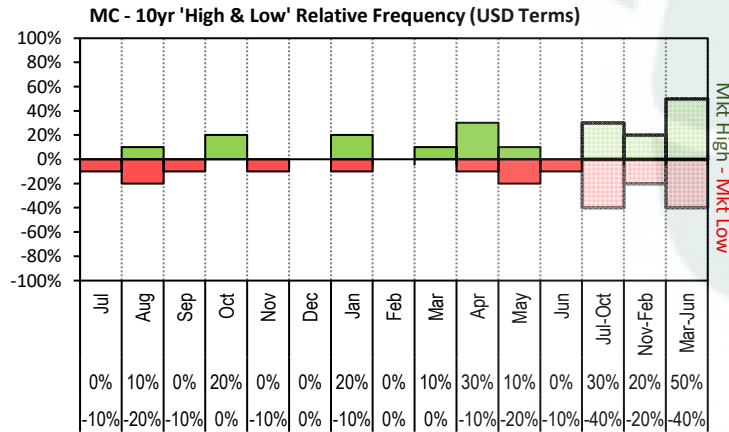


The above graph, shows how often the '12 month high & low' have been achieved for a given month over the past 10 years. It is not a measure of probability.

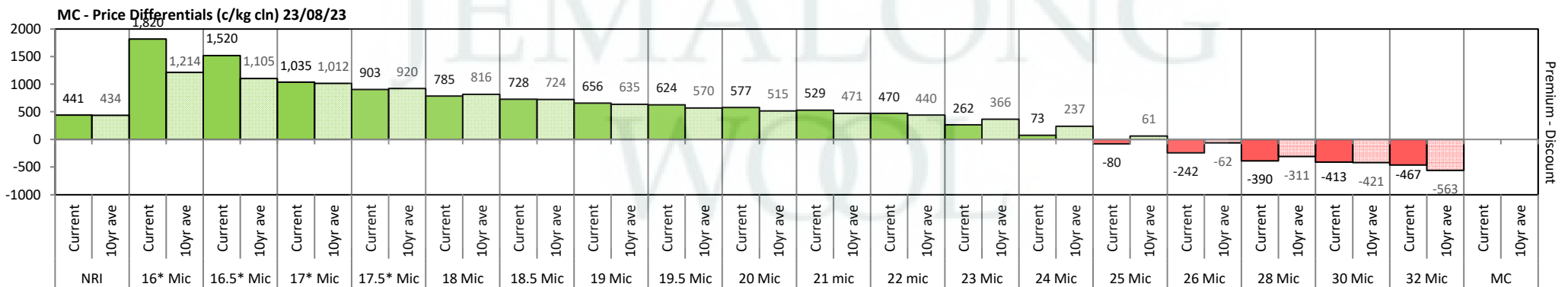




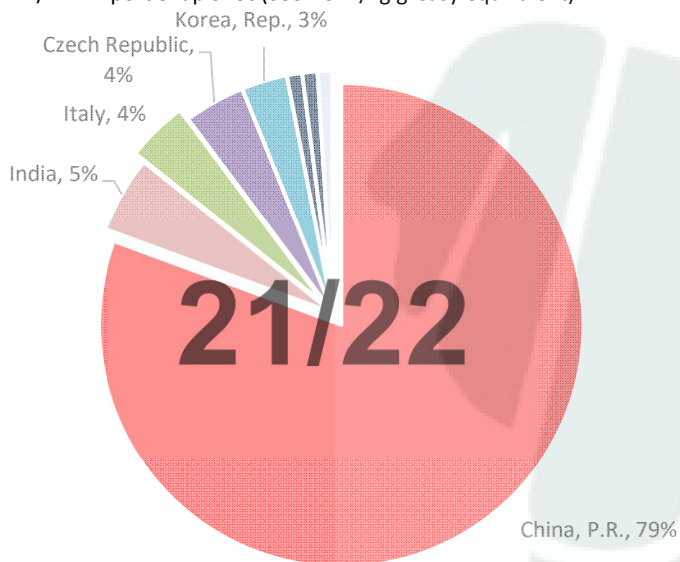
The above 'Rise or Fall' graph, shows how often the market has risen or fallen in a given month over the past 10 years, it does not show the extent of the movement only the frequency of direction. The 'Monthly Price Movement' graph shows the extent of movement for each month, for the past 5 years.



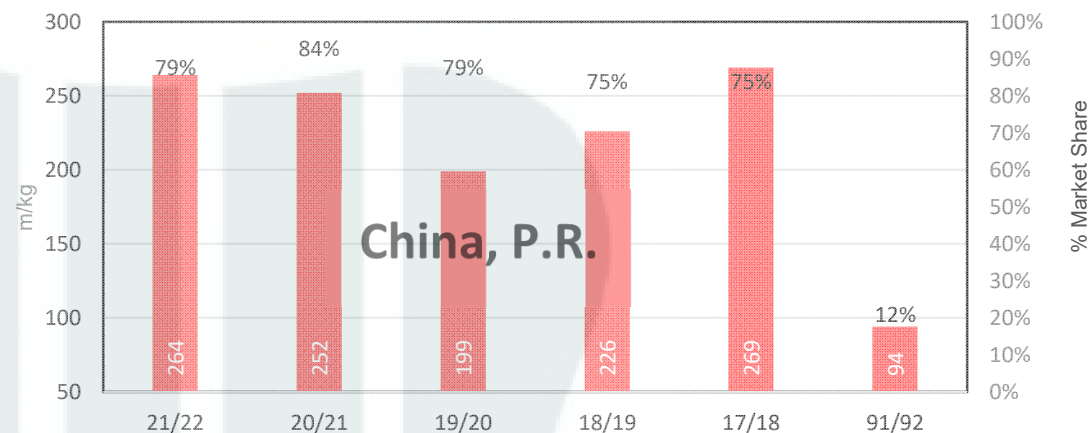
The above graph, shows how often the '12 month high & low' have been achieved for a given month over the past 10 years. It is not a measure of probability.



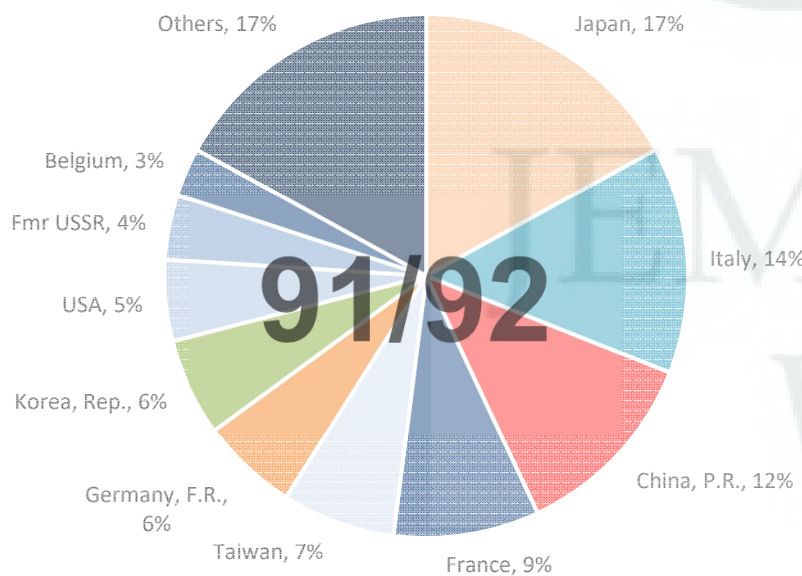
21/22 - Export Snap Shot (335.46 m/kg greasy equivalent)



China, P.R. (Largest Market Share)



91/92 - Export Snap Shot (784.7 m/kg greasy equivalent)



Seasonal Change m/kg





Table 8: Returns pr head for skirted fleece wool.

Skirted FLC Weight		Micron																	
9 Kg		16	16.5	17	17.5	18	18.5	19	19.5	20	21	22	23	24	25	26	28	30	32
Yield (Sch Dry)	25% Current	\$44	\$42	\$40	\$37	\$34	\$33	\$31	\$30	\$29	\$28	\$27	\$22	\$18	\$15	\$11	\$8	\$7	\$6
	10yr ave.	\$50	\$47	\$45	\$43	\$41	\$39	\$37	\$35	\$34	\$33	\$32	\$31	\$28	\$24	\$21	\$16	\$13	\$10
	30% Current	\$53	\$50	\$48	\$44	\$41	\$39	\$37	\$37	\$35	\$34	\$32	\$27	\$22	\$18	\$13	\$9	\$9	\$7
	10yr ave.	\$60	\$57	\$54	\$52	\$49	\$47	\$44	\$42	\$41	\$40	\$39	\$37	\$33	\$29	\$25	\$19	\$16	\$12
	35% Current	\$62	\$59	\$56	\$51	\$48	\$46	\$44	\$43	\$41	\$40	\$38	\$31	\$25	\$20	\$15	\$11	\$10	\$8
	10yr ave.	\$69	\$66	\$63	\$60	\$57	\$54	\$52	\$50	\$48	\$46	\$45	\$43	\$39	\$34	\$30	\$22	\$18	\$14
	40% Current	\$71	\$67	\$64	\$59	\$55	\$52	\$50	\$49	\$47	\$45	\$43	\$36	\$29	\$23	\$18	\$12	\$11	\$9
	10yr ave.	\$79	\$76	\$72	\$69	\$65	\$62	\$59	\$57	\$55	\$53	\$52	\$49	\$45	\$38	\$34	\$25	\$21	\$16
	45% Current	\$80	\$76	\$71	\$66	\$61	\$59	\$56	\$55	\$53	\$51	\$49	\$40	\$33	\$26	\$20	\$14	\$13	\$11
	10yr ave.	\$89	\$85	\$81	\$78	\$74	\$70	\$66	\$64	\$61	\$60	\$58	\$55	\$50	\$43	\$38	\$28	\$24	\$18
	50% Current	\$89	\$84	\$79	\$73	\$68	\$66	\$62	\$61	\$59	\$57	\$54	\$45	\$36	\$29	\$22	\$15	\$14	\$12
	10yr ave.	\$99	\$95	\$90	\$86	\$82	\$78	\$74	\$71	\$68	\$66	\$65	\$62	\$56	\$48	\$42	\$31	\$26	\$20
	55% Current	\$98	\$93	\$87	\$81	\$75	\$72	\$69	\$67	\$65	\$62	\$59	\$49	\$40	\$32	\$24	\$17	\$16	\$13
	10yr ave.	\$109	\$104	\$99	\$95	\$90	\$85	\$81	\$78	\$75	\$73	\$71	\$68	\$61	\$53	\$47	\$34	\$29	\$22
	60% Current	\$107	\$101	\$95	\$88	\$82	\$79	\$75	\$73	\$71	\$68	\$65	\$54	\$43	\$35	\$26	\$18	\$17	\$14
	10yr ave.	\$119	\$114	\$108	\$104	\$98	\$93	\$88	\$85	\$82	\$80	\$78	\$74	\$67	\$57	\$51	\$37	\$31	\$24
	65% Current	\$116	\$109	\$103	\$96	\$89	\$85	\$81	\$79	\$76	\$74	\$70	\$58	\$47	\$38	\$29	\$20	\$19	\$15
	10yr ave.	\$129	\$123	\$118	\$112	\$106	\$101	\$96	\$92	\$89	\$86	\$84	\$80	\$73	\$62	\$55	\$40	\$34	\$26
	70% Current	\$124	\$118	\$111	\$103	\$95	\$92	\$87	\$85	\$82	\$79	\$76	\$62	\$51	\$41	\$31	\$21	\$20	\$17
	10yr ave.	\$139	\$133	\$127	\$121	\$115	\$109	\$103	\$99	\$96	\$93	\$91	\$86	\$78	\$67	\$59	\$44	\$37	\$28
	75% Current	\$133	\$126	\$119	\$110	\$102	\$98	\$94	\$91	\$88	\$85	\$81	\$67	\$54	\$44	\$33	\$23	\$21	\$18
	10yr ave.	\$149	\$142	\$136	\$129	\$123	\$117	\$111	\$106	\$102	\$99	\$97	\$92	\$84	\$72	\$64	\$47	\$39	\$30
	80% Current	\$142	\$135	\$127	\$118	\$109	\$105	\$100	\$97	\$94	\$91	\$86	\$71	\$58	\$47	\$35	\$24	\$23	\$19
	10yr ave.	\$159	\$152	\$145	\$138	\$131	\$124	\$118	\$113	\$109	\$106	\$104	\$99	\$89	\$77	\$68	\$50	\$42	\$32
	85% Current	\$151	\$143	\$135	\$125	\$116	\$112	\$106	\$104	\$100	\$96	\$92	\$76	\$61	\$50	\$37	\$26	\$24	\$20
	10yr ave.	\$169	\$161	\$154	\$147	\$139	\$132	\$125	\$120	\$116	\$113	\$110	\$105	\$95	\$81	\$72	\$53	\$45	\$34

The above shows estimated returns per head for skirted fleece wool. These figures do not take into account the value of skirtings and oddments and do not take into account discounts that may apply for faults under individual circumstances. These figures are based on a market index of 100% and should be used as a guide only. Returns over \$30 / head for fleece wool are highlighted.



Table 9: Returns pr head for skirted fleece wool.

Skirted FLC Weight 8 Kg		Micron																	
		16	16.5	17	17.5	18	18.5	19	19.5	20	21	22	23	24	25	26	28	30	32
Yield (Sch Dry)	25% Current	\$40	\$37	\$35	\$33	\$30	\$29	\$28	\$27	\$26	\$25	\$24	\$20	\$16	\$13	\$10	\$7	\$6	\$5
	10yr ave.	\$44	\$42	\$40	\$38	\$36	\$35	\$33	\$31	\$30	\$29	\$29	\$27	\$25	\$21	\$19	\$14	\$12	\$9
	30% Current	\$47	\$45	\$42	\$39	\$36	\$35	\$33	\$32	\$31	\$30	\$29	\$24	\$19	\$16	\$12	\$8	\$8	\$6
	10yr ave.	\$53	\$51	\$48	\$46	\$44	\$41	\$39	\$38	\$36	\$35	\$35	\$33	\$30	\$26	\$23	\$17	\$14	\$11
	35% Current	\$55	\$52	\$49	\$46	\$42	\$41	\$39	\$38	\$37	\$35	\$34	\$28	\$22	\$18	\$14	\$10	\$9	\$7
	10yr ave.	\$62	\$59	\$56	\$54	\$51	\$48	\$46	\$44	\$43	\$41	\$40	\$38	\$35	\$30	\$26	\$19	\$16	\$12
	40% Current	\$63	\$60	\$56	\$52	\$48	\$47	\$44	\$43	\$42	\$40	\$38	\$32	\$26	\$21	\$16	\$11	\$10	\$8
	10yr ave.	\$71	\$68	\$64	\$61	\$58	\$55	\$52	\$50	\$49	\$47	\$46	\$44	\$40	\$34	\$30	\$22	\$19	\$14
	45% Current	\$71	\$67	\$64	\$59	\$55	\$52	\$50	\$49	\$47	\$45	\$43	\$36	\$29	\$23	\$18	\$12	\$11	\$9
	10yr ave.	\$79	\$76	\$72	\$69	\$65	\$62	\$59	\$57	\$55	\$53	\$52	\$49	\$45	\$38	\$34	\$25	\$21	\$16
	50% Current	\$79	\$75	\$71	\$65	\$61	\$58	\$55	\$54	\$52	\$50	\$48	\$40	\$32	\$26	\$20	\$14	\$13	\$11
	10yr ave.	\$88	\$84	\$80	\$77	\$73	\$69	\$66	\$63	\$61	\$59	\$58	\$55	\$50	\$43	\$38	\$28	\$23	\$18
	55% Current	\$87	\$82	\$78	\$72	\$67	\$64	\$61	\$60	\$58	\$55	\$53	\$44	\$35	\$29	\$21	\$15	\$14	\$12
	10yr ave.	\$97	\$93	\$88	\$84	\$80	\$76	\$72	\$69	\$67	\$65	\$63	\$60	\$55	\$47	\$41	\$30	\$26	\$19
	60% Current	\$95	\$90	\$85	\$78	\$73	\$70	\$67	\$65	\$63	\$60	\$58	\$48	\$39	\$31	\$23	\$16	\$15	\$13
	10yr ave.	\$106	\$101	\$96	\$92	\$87	\$83	\$79	\$76	\$73	\$71	\$69	\$66	\$60	\$51	\$45	\$33	\$28	\$21
	65% Current	\$103	\$97	\$92	\$85	\$79	\$76	\$72	\$70	\$68	\$65	\$62	\$52	\$42	\$34	\$25	\$18	\$16	\$14
	10yr ave.	\$115	\$110	\$104	\$100	\$95	\$90	\$85	\$82	\$79	\$77	\$75	\$71	\$64	\$55	\$49	\$36	\$30	\$23
	70% Current	\$111	\$105	\$99	\$91	\$85	\$82	\$78	\$76	\$73	\$71	\$67	\$56	\$45	\$36	\$27	\$19	\$18	\$15
	10yr ave.	\$123	\$118	\$113	\$107	\$102	\$97	\$92	\$88	\$85	\$83	\$81	\$77	\$69	\$60	\$53	\$39	\$33	\$25
	75% Current	\$119	\$112	\$106	\$98	\$91	\$87	\$83	\$81	\$78	\$76	\$72	\$60	\$48	\$39	\$29	\$20	\$19	\$16
	10yr ave.	\$132	\$127	\$121	\$115	\$109	\$104	\$98	\$94	\$91	\$88	\$87	\$82	\$74	\$64	\$56	\$42	\$35	\$26
	80% Current	\$126	\$120	\$113	\$105	\$97	\$93	\$89	\$87	\$84	\$81	\$77	\$63	\$51	\$42	\$31	\$22	\$20	\$17
	10yr ave.	\$141	\$135	\$129	\$123	\$116	\$111	\$105	\$101	\$97	\$94	\$92	\$88	\$79	\$68	\$60	\$44	\$37	\$28
	85% Current	\$134	\$127	\$120	\$111	\$103	\$99	\$94	\$92	\$89	\$86	\$82	\$67	\$55	\$44	\$33	\$23	\$22	\$18
	10yr ave.	\$150	\$144	\$137	\$130	\$124	\$117	\$111	\$107	\$103	\$100	\$98	\$93	\$84	\$72	\$64	\$47	\$40	\$30

The above shows estimated returns per head for skirted fleece wool. These figures do not take into account the value of skirtings and oddments and do not take into account discounts that may apply for faults under individual circumstances. These figures are based on a market index of 100% and should be used as a guide only. Returns over \$30 / head for fleece wool are highlighted.



Table 10: Returns pr head for skirted fleece wool.

Skirted FLC Weight 7 Kg		Micron																	
		16	16.5	17	17.5	18	18.5	19	19.5	20	21	22	23	24	25	26	28	30	32
Yield (Sch Dry)	25% Current	\$35	\$33	\$31	\$29	\$27	\$26	\$24	\$24	\$23	\$22	\$21	\$17	\$14	\$11	\$9	\$6	\$6	\$5
	10yr ave.	\$39	\$37	\$35	\$34	\$32	\$30	\$29	\$28	\$27	\$26	\$25	\$24	\$22	\$19	\$16	\$12	\$10	\$8
	30% Current	\$41	\$39	\$37	\$34	\$32	\$31	\$29	\$28	\$27	\$26	\$25	\$21	\$17	\$14	\$10	\$7	\$7	\$6
	10yr ave.	\$46	\$44	\$42	\$40	\$38	\$36	\$34	\$33	\$32	\$31	\$30	\$29	\$26	\$22	\$20	\$15	\$12	\$9
	35% Current	\$48	\$46	\$43	\$40	\$37	\$36	\$34	\$33	\$32	\$31	\$29	\$24	\$20	\$16	\$12	\$8	\$8	\$6
	10yr ave.	\$54	\$52	\$49	\$47	\$45	\$42	\$40	\$39	\$37	\$36	\$35	\$34	\$30	\$26	\$23	\$17	\$14	\$11
	40% Current	\$55	\$52	\$49	\$46	\$42	\$41	\$39	\$38	\$37	\$35	\$34	\$28	\$22	\$18	\$14	\$10	\$9	\$7
	10yr ave.	\$62	\$59	\$56	\$54	\$51	\$48	\$46	\$44	\$43	\$41	\$40	\$38	\$35	\$30	\$26	\$19	\$16	\$12
	45% Current	\$62	\$59	\$56	\$51	\$48	\$46	\$44	\$43	\$41	\$40	\$38	\$31	\$25	\$20	\$15	\$11	\$10	\$8
	10yr ave.	\$69	\$66	\$63	\$60	\$57	\$54	\$52	\$50	\$48	\$46	\$45	\$43	\$39	\$34	\$30	\$22	\$18	\$14
	50% Current	\$69	\$65	\$62	\$57	\$53	\$51	\$49	\$47	\$46	\$44	\$42	\$35	\$28	\$23	\$17	\$12	\$11	\$9
	10yr ave.	\$77	\$74	\$70	\$67	\$64	\$60	\$57	\$55	\$53	\$52	\$51	\$48	\$43	\$37	\$33	\$24	\$20	\$15
	55% Current	\$76	\$72	\$68	\$63	\$58	\$56	\$53	\$52	\$50	\$48	\$46	\$38	\$31	\$25	\$19	\$13	\$12	\$10
	10yr ave.	\$85	\$81	\$77	\$74	\$70	\$66	\$63	\$61	\$58	\$57	\$56	\$53	\$48	\$41	\$36	\$27	\$22	\$17
	60% Current	\$83	\$79	\$74	\$69	\$64	\$61	\$58	\$57	\$55	\$53	\$50	\$42	\$34	\$27	\$20	\$14	\$13	\$11
	10yr ave.	\$93	\$89	\$84	\$81	\$76	\$73	\$69	\$66	\$64	\$62	\$61	\$57	\$52	\$45	\$40	\$29	\$24	\$18
	65% Current	\$90	\$85	\$80	\$74	\$69	\$66	\$63	\$62	\$59	\$57	\$55	\$45	\$37	\$30	\$22	\$15	\$14	\$12
	10yr ave.	\$100	\$96	\$91	\$87	\$83	\$79	\$75	\$72	\$69	\$67	\$66	\$62	\$56	\$48	\$43	\$31	\$26	\$20
	70% Current	\$97	\$92	\$86	\$80	\$74	\$71	\$68	\$66	\$64	\$62	\$59	\$49	\$39	\$32	\$24	\$17	\$16	\$13
	10yr ave.	\$108	\$103	\$98	\$94	\$89	\$85	\$80	\$77	\$74	\$72	\$71	\$67	\$61	\$52	\$46	\$34	\$29	\$22
	75% Current	\$104	\$98	\$93	\$86	\$80	\$77	\$73	\$71	\$69	\$66	\$63	\$52	\$42	\$34	\$26	\$18	\$17	\$14
	10yr ave.	\$116	\$111	\$105	\$101	\$95	\$91	\$86	\$83	\$80	\$77	\$76	\$72	\$65	\$56	\$49	\$36	\$31	\$23
	80% Current	\$111	\$105	\$99	\$91	\$85	\$82	\$78	\$76	\$73	\$71	\$67	\$56	\$45	\$36	\$27	\$19	\$18	\$15
	10yr ave.	\$123	\$118	\$113	\$107	\$102	\$97	\$92	\$88	\$85	\$83	\$81	\$77	\$69	\$60	\$53	\$39	\$33	\$25
	85% Current	\$118	\$111	\$105	\$97	\$90	\$87	\$82	\$81	\$78	\$75	\$71	\$59	\$48	\$39	\$29	\$20	\$19	\$16
	10yr ave.	\$131	\$126	\$120	\$114	\$108	\$103	\$97	\$94	\$90	\$88	\$86	\$81	\$74	\$63	\$56	\$41	\$35	\$26

The above shows estimated returns per head for skirted fleece wool. These figures do not take into account the value of skirtings and oddments and do not take into account discounts that may apply for faults under individual circumstances. These figures are based on a market index of 100% and should be used as a guide only. Returns over \$30 / head for fleece wool are highlighted.



Table 11: Returns pr head for skirted fleece wool.

Skirted FLC Weight 6 Kg		Micron																	
		16	16.5	17	17.5	18	18.5	19	19.5	20	21	22	23	24	25	26	28	30	32
Yield (Sch Dry)	25% Current	\$30	\$28	\$26	\$24	\$23	\$22	\$21	\$20	\$20	\$19	\$18	\$15	\$12	\$10	\$7	\$5	\$5	\$4
	10yr ave.	\$33	\$32	\$30	\$29	\$27	\$26	\$25	\$24	\$23	\$22	\$22	\$21	\$19	\$16	\$14	\$10	\$9	\$7
	30% Current	\$36	\$34	\$32	\$29	\$27	\$26	\$25	\$24	\$24	\$23	\$22	\$18	\$14	\$12	\$9	\$6	\$6	\$5
	10yr ave.	\$40	\$38	\$36	\$35	\$33	\$31	\$29	\$28	\$27	\$27	\$26	\$25	\$22	\$19	\$17	\$12	\$10	\$8
	35% Current	\$41	\$39	\$37	\$34	\$32	\$31	\$29	\$28	\$27	\$26	\$25	\$21	\$17	\$14	\$10	\$7	\$7	\$6
	10yr ave.	\$46	\$44	\$42	\$40	\$38	\$36	\$34	\$33	\$32	\$31	\$30	\$29	\$26	\$22	\$20	\$15	\$12	\$9
	40% Current	\$47	\$45	\$42	\$39	\$36	\$35	\$33	\$32	\$31	\$30	\$29	\$24	\$19	\$16	\$12	\$8	\$8	\$6
	10yr ave.	\$53	\$51	\$48	\$46	\$44	\$41	\$39	\$38	\$36	\$35	\$35	\$33	\$30	\$26	\$23	\$17	\$14	\$11
	45% Current	\$53	\$50	\$48	\$44	\$41	\$39	\$37	\$37	\$35	\$34	\$32	\$27	\$22	\$18	\$13	\$9	\$9	\$7
	10yr ave.	\$60	\$57	\$54	\$52	\$49	\$47	\$44	\$42	\$41	\$40	\$39	\$37	\$33	\$29	\$25	\$19	\$16	\$12
	50% Current	\$59	\$56	\$53	\$49	\$45	\$44	\$42	\$41	\$39	\$38	\$36	\$30	\$24	\$20	\$15	\$10	\$10	\$8
	10yr ave.	\$66	\$63	\$60	\$58	\$55	\$52	\$49	\$47	\$46	\$44	\$43	\$41	\$37	\$32	\$28	\$21	\$17	\$13
	55% Current	\$65	\$62	\$58	\$54	\$50	\$48	\$46	\$45	\$43	\$42	\$40	\$33	\$26	\$21	\$16	\$11	\$10	\$9
	10yr ave.	\$73	\$70	\$66	\$63	\$60	\$57	\$54	\$52	\$50	\$49	\$48	\$45	\$41	\$35	\$31	\$23	\$19	\$15
	60% Current	\$71	\$67	\$64	\$59	\$55	\$52	\$50	\$49	\$47	\$45	\$43	\$36	\$29	\$23	\$18	\$12	\$11	\$9
	10yr ave.	\$79	\$76	\$72	\$69	\$65	\$62	\$59	\$57	\$55	\$53	\$52	\$49	\$45	\$38	\$34	\$25	\$21	\$16
	65% Current	\$77	\$73	\$69	\$64	\$59	\$57	\$54	\$53	\$51	\$49	\$47	\$39	\$31	\$25	\$19	\$13	\$12	\$10
	10yr ave.	\$86	\$82	\$78	\$75	\$71	\$67	\$64	\$61	\$59	\$57	\$56	\$53	\$48	\$41	\$37	\$27	\$23	\$17
	70% Current	\$83	\$79	\$74	\$69	\$64	\$61	\$58	\$57	\$55	\$53	\$50	\$42	\$34	\$27	\$20	\$14	\$13	\$11
	10yr ave.	\$93	\$89	\$84	\$81	\$76	\$73	\$69	\$66	\$64	\$62	\$61	\$57	\$52	\$45	\$40	\$29	\$24	\$18
	75% Current	\$89	\$84	\$79	\$73	\$68	\$66	\$62	\$61	\$59	\$57	\$54	\$45	\$36	\$29	\$22	\$15	\$14	\$12
	10yr ave.	\$99	\$95	\$90	\$86	\$82	\$78	\$74	\$71	\$68	\$66	\$65	\$62	\$56	\$48	\$42	\$31	\$26	\$20
	80% Current	\$95	\$90	\$85	\$78	\$73	\$70	\$67	\$65	\$63	\$60	\$58	\$48	\$39	\$31	\$23	\$16	\$15	\$13
	10yr ave.	\$106	\$101	\$96	\$92	\$87	\$83	\$79	\$76	\$73	\$71	\$69	\$66	\$60	\$51	\$45	\$33	\$28	\$21
	85% Current	\$101	\$95	\$90	\$83	\$77	\$74	\$71	\$69	\$67	\$64	\$61	\$51	\$41	\$33	\$25	\$17	\$16	\$13
	10yr ave.	\$112	\$108	\$102	\$98	\$93	\$88	\$84	\$80	\$77	\$75	\$74	\$70	\$63	\$54	\$48	\$35	\$30	\$22

The above shows estimated returns per head for skirted fleece wool. These figures do not take into account the value of skirtings and oddments and do not take into account discounts that may apply for faults under individual circumstances. These figures are based on a market index of 100% and should be used as a guide only. Returns over \$30 / head for fleece wool are highlighted.



Table 12: Returns pr head for skirted fleece wool.

Skirted FLC Weight		Micron																	
5 Kg		16	16.5	17	17.5	18	18.5	19	19.5	20	21	22	23	24	25	26	28	30	32
Yield (Sch Dry)	25% Current	\$25	\$23	\$22	\$20	\$19	\$18	\$17	\$17	\$16	\$16	\$15	\$12	\$10	\$8	\$6	\$4	\$4	\$3
	10yr ave.	\$28	\$26	\$25	\$24	\$23	\$22	\$20	\$20	\$19	\$18	\$18	\$17	\$16	\$13	\$12	\$9	\$7	\$6
	30% Current	\$30	\$28	\$26	\$24	\$23	\$22	\$21	\$20	\$20	\$19	\$18	\$15	\$12	\$10	\$7	\$5	\$5	\$4
	10yr ave.	\$33	\$32	\$30	\$29	\$27	\$26	\$25	\$24	\$23	\$22	\$22	\$21	\$19	\$16	\$14	\$10	\$9	\$7
	35% Current	\$35	\$33	\$31	\$29	\$27	\$26	\$24	\$24	\$23	\$22	\$21	\$17	\$14	\$11	\$9	\$6	\$6	\$5
	10yr ave.	\$39	\$37	\$35	\$34	\$32	\$30	\$29	\$28	\$27	\$26	\$25	\$24	\$22	\$19	\$16	\$12	\$10	\$8
	40% Current	\$40	\$37	\$35	\$33	\$30	\$29	\$28	\$27	\$26	\$25	\$24	\$20	\$16	\$13	\$10	\$7	\$6	\$5
	10yr ave.	\$44	\$42	\$40	\$38	\$36	\$35	\$33	\$31	\$30	\$29	\$29	\$27	\$25	\$21	\$19	\$14	\$12	\$9
	45% Current	\$44	\$42	\$40	\$37	\$34	\$33	\$31	\$30	\$29	\$28	\$27	\$22	\$18	\$15	\$11	\$8	\$7	\$6
	10yr ave.	\$50	\$47	\$45	\$43	\$41	\$39	\$37	\$35	\$34	\$33	\$32	\$31	\$28	\$24	\$21	\$16	\$13	\$10
	50% Current	\$49	\$47	\$44	\$41	\$38	\$36	\$35	\$34	\$33	\$31	\$30	\$25	\$20	\$16	\$12	\$9	\$8	\$7
	10yr ave.	\$55	\$53	\$50	\$48	\$45	\$43	\$41	\$39	\$38	\$37	\$36	\$34	\$31	\$27	\$24	\$17	\$15	\$11
	55% Current	\$54	\$51	\$49	\$45	\$42	\$40	\$38	\$37	\$36	\$35	\$33	\$27	\$22	\$18	\$13	\$9	\$9	\$7
	10yr ave.	\$61	\$58	\$55	\$53	\$50	\$47	\$45	\$43	\$42	\$41	\$40	\$38	\$34	\$29	\$26	\$19	\$16	\$12
	60% Current	\$59	\$56	\$53	\$49	\$45	\$44	\$42	\$41	\$39	\$38	\$36	\$30	\$24	\$20	\$15	\$10	\$10	\$8
	10yr ave.	\$66	\$63	\$60	\$58	\$55	\$52	\$49	\$47	\$46	\$44	\$43	\$41	\$37	\$32	\$28	\$21	\$17	\$13
	65% Current	\$64	\$61	\$57	\$53	\$49	\$47	\$45	\$44	\$42	\$41	\$39	\$32	\$26	\$21	\$16	\$11	\$10	\$9
	10yr ave.	\$72	\$69	\$65	\$62	\$59	\$56	\$53	\$51	\$49	\$48	\$47	\$44	\$40	\$35	\$31	\$22	\$19	\$14
	70% Current	\$69	\$65	\$62	\$57	\$53	\$51	\$49	\$47	\$46	\$44	\$42	\$35	\$28	\$23	\$17	\$12	\$11	\$9
	10yr ave.	\$77	\$74	\$70	\$67	\$64	\$60	\$57	\$55	\$53	\$52	\$51	\$48	\$43	\$37	\$33	\$24	\$20	\$15
	75% Current	\$74	\$70	\$66	\$61	\$57	\$55	\$52	\$51	\$49	\$47	\$45	\$37	\$30	\$24	\$18	\$13	\$12	\$10
	10yr ave.	\$83	\$79	\$75	\$72	\$68	\$65	\$61	\$59	\$57	\$55	\$54	\$51	\$47	\$40	\$35	\$26	\$22	\$17
	80% Current	\$79	\$75	\$71	\$65	\$61	\$58	\$55	\$54	\$52	\$50	\$48	\$40	\$32	\$26	\$20	\$14	\$13	\$11
	10yr ave.	\$88	\$84	\$80	\$77	\$73	\$69	\$66	\$63	\$61	\$59	\$58	\$55	\$50	\$43	\$38	\$28	\$23	\$18
	85% Current	\$84	\$79	\$75	\$69	\$64	\$62	\$59	\$58	\$56	\$54	\$51	\$42	\$34	\$28	\$21	\$14	\$13	\$11
	10yr ave.	\$94	\$90	\$85	\$81	\$77	\$73	\$70	\$67	\$65	\$63	\$61	\$58	\$53	\$45	\$40	\$29	\$25	\$19

The above shows estimated returns per head for skirted fleece wool. These figures do not take into account the value of skirtings and oddments and do not take into account discounts that may apply for faults under individual circumstances. These figures are based on a market index of 100% and should be used as a guide only. Returns over \$30 / head for fleece wool are highlighted.



Table 13: Returns pr head for skirted fleece wool.

Skirted FLC Weight		Micron																	
4 Kg		16	16.5	17	17.5	18	18.5	19	19.5	20	21	22	23	24	25	26	28	30	32
Yield (Sch Dry)	25% Current	\$20	\$19	\$18	\$16	\$15	\$15	\$14	\$14	\$13	\$13	\$12	\$10	\$8	\$7	\$5	\$3	\$3	\$3
	10yr ave.	\$22	\$21	\$20	\$19	\$18	\$17	\$16	\$16	\$15	\$15	\$14	\$14	\$12	\$11	\$9	\$7	\$6	\$4
	30% Current	\$24	\$22	\$21	\$20	\$18	\$17	\$17	\$16	\$16	\$15	\$14	\$12	\$10	\$8	\$6	\$4	\$4	\$3
	10yr ave.	\$26	\$25	\$24	\$23	\$22	\$21	\$20	\$19	\$18	\$18	\$17	\$16	\$15	\$13	\$11	\$8	\$7	\$5
	35% Current	\$28	\$26	\$25	\$23	\$21	\$20	\$19	\$19	\$18	\$18	\$17	\$14	\$11	\$9	\$7	\$5	\$4	\$4
	10yr ave.	\$31	\$30	\$28	\$27	\$25	\$24	\$23	\$22	\$21	\$21	\$20	\$19	\$17	\$15	\$13	\$10	\$8	\$6
	40% Current	\$32	\$30	\$28	\$26	\$24	\$23	\$22	\$22	\$21	\$20	\$19	\$16	\$13	\$10	\$8	\$5	\$5	\$4
	10yr ave.	\$35	\$34	\$32	\$31	\$29	\$28	\$26	\$25	\$24	\$24	\$23	\$22	\$20	\$17	\$15	\$11	\$9	\$7
	45% Current	\$36	\$34	\$32	\$29	\$27	\$26	\$25	\$24	\$24	\$23	\$22	\$18	\$14	\$12	\$9	\$6	\$6	\$5
	10yr ave.	\$40	\$38	\$36	\$35	\$33	\$31	\$29	\$28	\$27	\$27	\$26	\$25	\$22	\$19	\$17	\$12	\$10	\$8
	50% Current	\$40	\$37	\$35	\$33	\$30	\$29	\$28	\$27	\$26	\$25	\$24	\$20	\$16	\$13	\$10	\$7	\$6	\$5
	10yr ave.	\$44	\$42	\$40	\$38	\$36	\$35	\$33	\$31	\$30	\$29	\$29	\$27	\$25	\$21	\$19	\$14	\$12	\$9
	55% Current	\$43	\$41	\$39	\$36	\$33	\$32	\$30	\$30	\$29	\$28	\$26	\$22	\$18	\$14	\$11	\$7	\$7	\$6
	10yr ave.	\$48	\$46	\$44	\$42	\$40	\$38	\$36	\$35	\$33	\$32	\$32	\$30	\$27	\$23	\$21	\$15	\$13	\$10
	60% Current	\$47	\$45	\$42	\$39	\$36	\$35	\$33	\$32	\$31	\$30	\$29	\$24	\$19	\$16	\$12	\$8	\$8	\$6
	10yr ave.	\$53	\$51	\$48	\$46	\$44	\$41	\$39	\$38	\$36	\$35	\$35	\$33	\$30	\$26	\$23	\$17	\$14	\$11
	65% Current	\$51	\$49	\$46	\$42	\$39	\$38	\$36	\$35	\$34	\$33	\$31	\$26	\$21	\$17	\$13	\$9	\$8	\$7
	10yr ave.	\$57	\$55	\$52	\$50	\$47	\$45	\$43	\$41	\$39	\$38	\$38	\$36	\$32	\$28	\$24	\$18	\$15	\$11
	70% Current	\$55	\$52	\$49	\$46	\$42	\$41	\$39	\$38	\$37	\$35	\$34	\$28	\$22	\$18	\$14	\$10	\$9	\$7
	10yr ave.	\$62	\$59	\$56	\$54	\$51	\$48	\$46	\$44	\$43	\$41	\$40	\$38	\$35	\$30	\$26	\$19	\$16	\$12
	75% Current	\$59	\$56	\$53	\$49	\$45	\$44	\$42	\$41	\$39	\$38	\$36	\$30	\$24	\$20	\$15	\$10	\$10	\$8
	10yr ave.	\$66	\$63	\$60	\$58	\$55	\$52	\$49	\$47	\$46	\$44	\$43	\$41	\$37	\$32	\$28	\$21	\$17	\$13
	80% Current	\$63	\$60	\$56	\$52	\$48	\$47	\$44	\$43	\$42	\$40	\$38	\$32	\$26	\$21	\$16	\$11	\$10	\$8
	10yr ave.	\$71	\$68	\$64	\$61	\$58	\$55	\$52	\$50	\$49	\$47	\$46	\$44	\$40	\$34	\$30	\$22	\$19	\$14
	85% Current	\$67	\$64	\$60	\$56	\$52	\$50	\$47	\$46	\$44	\$43	\$41	\$34	\$27	\$22	\$17	\$12	\$11	\$9
	10yr ave.	\$75	\$72	\$68	\$65	\$62	\$59	\$56	\$53	\$52	\$50	\$49	\$47	\$42	\$36	\$32	\$24	\$20	\$15

The above shows estimated returns per head for skirted fleece wool. These figures do not take into account the value of skirtings and oddments and do not take into account discounts that may apply for faults under individual circumstances. These figures are based on a market index of 100% and should be used as a guide only. Returns over \$30 / head for fleece wool are highlighted.



Table 14: Returns pr head for skirted fleece wool.

Skirted FLC Weight		Micron																	
3 Kg		16	16.5	17	17.5	18	18.5	19	19.5	20	21	22	23	24	25	26	28	30	32
Yield (Sch Dry)	25% Current	\$15	\$14	\$13	\$12	\$11	\$11	\$10	\$10	\$10	\$9	\$9	\$7	\$6	\$5	\$4	\$3	\$2	\$2
	10yr ave.	\$17	\$16	\$15	\$14	\$14	\$13	\$12	\$12	\$11	\$11	\$11	\$10	\$9	\$8	\$7	\$5	\$4	\$3
	30% Current	\$18	\$17	\$16	\$15	\$14	\$13	\$12	\$12	\$12	\$11	\$11	\$9	\$7	\$6	\$4	\$3	\$3	\$2
	10yr ave.	\$20	\$19	\$18	\$17	\$16	\$16	\$15	\$14	\$14	\$13	\$13	\$12	\$11	\$10	\$8	\$6	\$5	\$4
	35% Current	\$21	\$20	\$19	\$17	\$16	\$15	\$15	\$14	\$14	\$13	\$13	\$10	\$8	\$7	\$5	\$4	\$3	\$3
	10yr ave.	\$23	\$22	\$21	\$20	\$19	\$18	\$17	\$17	\$16	\$15	\$15	\$14	\$13	\$11	\$10	\$7	\$6	\$5
	40% Current	\$24	\$22	\$21	\$20	\$18	\$17	\$17	\$16	\$16	\$15	\$14	\$12	\$10	\$8	\$6	\$4	\$4	\$3
	10yr ave.	\$26	\$25	\$24	\$23	\$22	\$21	\$20	\$19	\$18	\$18	\$17	\$16	\$15	\$13	\$11	\$8	\$7	\$5
	45% Current	\$27	\$25	\$24	\$22	\$20	\$20	\$19	\$18	\$18	\$17	\$16	\$13	\$11	\$9	\$7	\$5	\$4	\$4
	10yr ave.	\$30	\$28	\$27	\$26	\$25	\$23	\$22	\$21	\$20	\$20	\$19	\$18	\$17	\$14	\$13	\$9	\$8	\$6
	50% Current	\$30	\$28	\$26	\$24	\$23	\$22	\$21	\$20	\$20	\$19	\$18	\$15	\$12	\$10	\$7	\$5	\$5	\$4
	10yr ave.	\$33	\$32	\$30	\$29	\$27	\$26	\$25	\$24	\$23	\$22	\$22	\$21	\$19	\$16	\$14	\$10	\$9	\$7
	55% Current	\$33	\$31	\$29	\$27	\$25	\$24	\$23	\$22	\$22	\$21	\$20	\$16	\$13	\$11	\$8	\$6	\$5	\$4
	10yr ave.	\$36	\$35	\$33	\$32	\$30	\$28	\$27	\$26	\$25	\$24	\$24	\$23	\$20	\$18	\$16	\$11	\$10	\$7
	60% Current	\$36	\$34	\$32	\$29	\$27	\$26	\$25	\$24	\$24	\$23	\$22	\$18	\$14	\$12	\$9	\$6	\$6	\$5
	10yr ave.	\$40	\$38	\$36	\$35	\$33	\$31	\$29	\$28	\$27	\$27	\$26	\$25	\$22	\$19	\$17	\$12	\$10	\$8
	65% Current	\$39	\$36	\$34	\$32	\$30	\$28	\$27	\$26	\$25	\$25	\$23	\$19	\$16	\$13	\$10	\$7	\$6	\$5
	10yr ave.	\$43	\$41	\$39	\$37	\$35	\$34	\$32	\$31	\$30	\$29	\$28	\$27	\$24	\$21	\$18	\$13	\$11	\$9
	70% Current	\$41	\$39	\$37	\$34	\$32	\$31	\$29	\$28	\$27	\$26	\$25	\$21	\$17	\$14	\$10	\$7	\$7	\$6
	10yr ave.	\$46	\$44	\$42	\$40	\$38	\$36	\$34	\$33	\$32	\$31	\$30	\$29	\$26	\$22	\$20	\$15	\$12	\$9
	75% Current	\$44	\$42	\$40	\$37	\$34	\$33	\$31	\$30	\$29	\$28	\$27	\$22	\$18	\$15	\$11	\$8	\$7	\$6
	10yr ave.	\$50	\$47	\$45	\$43	\$41	\$39	\$37	\$35	\$34	\$33	\$32	\$31	\$28	\$24	\$21	\$16	\$13	\$10
	80% Current	\$47	\$45	\$42	\$39	\$36	\$35	\$33	\$32	\$31	\$30	\$29	\$24	\$19	\$16	\$12	\$8	\$8	\$6
	10yr ave.	\$53	\$51	\$48	\$46	\$44	\$41	\$39	\$38	\$36	\$35	\$35	\$33	\$30	\$26	\$23	\$17	\$14	\$11
	85% Current	\$50	\$48	\$45	\$42	\$39	\$37	\$35	\$35	\$33	\$32	\$31	\$25	\$20	\$17	\$12	\$9	\$8	\$7
	10yr ave.	\$56	\$54	\$51	\$49	\$46	\$44	\$42	\$40	\$39	\$38	\$37	\$35	\$32	\$27	\$24	\$18	\$15	\$11

The above shows estimated returns per head for skirted fleece wool. These figures do not take into account the value of skirtings and oddments and do not take into account discounts that may apply for faults under individual circumstances. These figures are based on a market index of 100% and should be used as a guide only. Returns over \$30 / head for fleece wool are highlighted.



Table 15: Returns pr head for skirted fleece wool.

Skirted FLC Weight		Micron																	
2 Kg		16	16.5	17	17.5	18	18.5	19	19.5	20	21	22	23	24	25	26	28	30	32
Yield (Sch Dry)	25% Current	\$10	\$9	\$9	\$8	\$8	\$7	\$7	\$7	\$7	\$6	\$6	\$5	\$4	\$3	\$2	\$2	\$2	\$1
	10yr ave.	\$11	\$11	\$10	\$10	\$9	\$9	\$8	\$8	\$8	\$7	\$7	\$7	\$6	\$5	\$5	\$3	\$3	\$2
	30% Current	\$12	\$11	\$11	\$10	\$9	\$9	\$8	\$8	\$8	\$8	\$7	\$6	\$5	\$4	\$3	\$2	\$2	\$2
	10yr ave.	\$13	\$13	\$12	\$12	\$11	\$10	\$10	\$9	\$9	\$9	\$9	\$8	\$7	\$6	\$6	\$4	\$3	\$3
	35% Current	\$14	\$13	\$12	\$11	\$11	\$10	\$10	\$9	\$9	\$9	\$8	\$7	\$6	\$5	\$3	\$2	\$2	\$2
	10yr ave.	\$15	\$15	\$14	\$13	\$13	\$12	\$11	\$11	\$11	\$10	\$10	\$10	\$9	\$7	\$7	\$5	\$4	\$3
	40% Current	\$16	\$15	\$14	\$13	\$12	\$12	\$11	\$11	\$10	\$10	\$10	\$8	\$6	\$5	\$4	\$3	\$3	\$2
	10yr ave.	\$18	\$17	\$16	\$15	\$15	\$14	\$13	\$13	\$12	\$12	\$12	\$11	\$10	\$9	\$8	\$6	\$5	\$4
	45% Current	\$18	\$17	\$16	\$15	\$14	\$13	\$12	\$12	\$12	\$11	\$11	\$9	\$7	\$6	\$4	\$3	\$3	\$2
	10yr ave.	\$20	\$19	\$18	\$17	\$16	\$16	\$15	\$14	\$14	\$13	\$13	\$12	\$11	\$10	\$8	\$6	\$5	\$4
	50% Current	\$20	\$19	\$18	\$16	\$15	\$15	\$14	\$14	\$13	\$13	\$12	\$10	\$8	\$7	\$5	\$3	\$3	\$3
	10yr ave.	\$22	\$21	\$20	\$19	\$18	\$17	\$16	\$16	\$15	\$15	\$14	\$14	\$12	\$11	\$9	\$7	\$6	\$4
	55% Current	\$22	\$21	\$19	\$18	\$17	\$16	\$15	\$15	\$14	\$14	\$13	\$11	\$9	\$7	\$5	\$4	\$3	\$3
	10yr ave.	\$24	\$23	\$22	\$21	\$20	\$19	\$18	\$17	\$17	\$16	\$16	\$15	\$14	\$12	\$10	\$8	\$6	\$5
	60% Current	\$24	\$22	\$21	\$20	\$18	\$17	\$17	\$16	\$16	\$15	\$14	\$12	\$10	\$8	\$6	\$4	\$4	\$3
	10yr ave.	\$26	\$25	\$24	\$23	\$22	\$21	\$20	\$19	\$18	\$18	\$17	\$16	\$15	\$13	\$11	\$8	\$7	\$5
	65% Current	\$26	\$24	\$23	\$21	\$20	\$19	\$18	\$18	\$17	\$16	\$16	\$13	\$10	\$8	\$6	\$4	\$4	\$3
	10yr ave.	\$29	\$27	\$26	\$25	\$24	\$22	\$21	\$20	\$20	\$19	\$19	\$18	\$16	\$14	\$12	\$9	\$8	\$6
	70% Current	\$28	\$26	\$25	\$23	\$21	\$20	\$19	\$19	\$18	\$18	\$17	\$14	\$11	\$9	\$7	\$5	\$4	\$4
	10yr ave.	\$31	\$30	\$28	\$27	\$25	\$24	\$23	\$22	\$21	\$21	\$20	\$19	\$17	\$15	\$13	\$10	\$8	\$6
	75% Current	\$30	\$28	\$26	\$24	\$23	\$22	\$21	\$20	\$20	\$19	\$18	\$15	\$12	\$10	\$7	\$5	\$5	\$4
	10yr ave.	\$33	\$32	\$30	\$29	\$27	\$26	\$25	\$24	\$23	\$22	\$22	\$21	\$19	\$16	\$14	\$10	\$9	\$7
	80% Current	\$32	\$30	\$28	\$26	\$24	\$23	\$22	\$22	\$21	\$20	\$19	\$16	\$13	\$10	\$8	\$5	\$5	\$4
	10yr ave.	\$35	\$34	\$32	\$31	\$29	\$28	\$26	\$25	\$24	\$24	\$23	\$22	\$20	\$17	\$15	\$11	\$9	\$7
	85% Current	\$34	\$32	\$30	\$28	\$26	\$25	\$24	\$23	\$22	\$21	\$20	\$17	\$14	\$11	\$8	\$6	\$5	\$4
	10yr ave.	\$37	\$36	\$34	\$33	\$31	\$29	\$28	\$27	\$26	\$25	\$25	\$23	\$21	\$18	\$16	\$12	\$10	\$7

The above shows estimated returns per head for skirted fleece wool. These figures do not take into account the value of skirtings and oddments and do not take into account discounts that may apply for faults under individual circumstances. These figures are based on a market index of 100% and should be used as a guide only. Returns over \$30 / head for fleece wool are highlighted.