



Table 1: Northern Region Micron Price Guides

CURRENT MARKET			PERCENTILES		AVERAGES						12 MONTH COMPARISONS								TRADING RANGE			
Mic.	23/09/2010	16/09/2010			Now			Now			22/09/2009		Now		Now		Now		Clean c/kg			
Price	Current	Weekly	3yr	10yr	<u>3 year</u>	compared		<u>10 year</u>	compared		This time	compared		12 Month	compared		12 Month	compared		12	3	10
Guides	Price	Change			Average	to 3yr ave		Average	to 10yr ave		Last Year	to Last Year	Low	to Low		High	to High		Mth	Year	Year	
NRI	894	-4 -0.4%	41%	60%	897	-3 0%		865	+29 3%		866	+28 3%		870	+24 3%		974	-80 -8%		104	343	584
16*	1650	0	63%		1616	+34 2%					1450	+200 14%		1345	+305 23%		1650	0 0%		305	645	
16.5*	1510	0	71%		1475	+35 2%					1340	+170 13%		1260	+250 20%		1540	-30 -2%		280	543	
17*	1385	-5 -0.4%	60%	70%	1355	+30 2%		1436	-51 -4%		1240	+145 12%		1175	+210 18%		1400	-15 -1%		225	497	1850
17.5*	1280	0	55%		1293	-13 -1%					1200	+80 7%		1155	+125 11%		1290	-10 -1%		135	492	
18	1222	-2 -0.2%	59%	54%	1236	-14 -1%		1296	-74 -6%		1147	+75 7%		1113	+109 10%		1238	-16 -1%		125	432	1392
18.5	1154	+2 0.2%	58%		1164	-10 -1%					1098	+56 5%		1073	+81 8%		1183	-29 -2%		110	425	
19	1048	-6 -0.6%	38%	50%	1073	-25 -2%		1068	-20 -2%		1036	+12 1%		1017	+31 3%		1120	-72 -6%		103	443	706
19.5	956	0	32%		989	-33 -3%					966	-10 -1%		952	+4 0%		1067	-111 -10%		115	457	
20	906	-3 -0.3%	43%	56%	918	-12 -1%		909	-3 0%		890	+16 2%		893	+13 1%		1023	-117 -11%		130	464	717
21	886	0	50%	60%	879	+7 1%		861	+25 3%		866	+20 2%		863	+23 3%		1006	-120 -12%		143	426	786
22	852	-5 -0.6%	46%	58%	854	-2 0%		838	+14 2%		842	+10 1%		828	+24 3%		971	-119 -12%		143	360	830
23	829	-8 -1.0%	47%	58%	831	-2 0%		817	+12 1%		825	+4 0%		806	+23 3%		940	-111 -12%		134	311	831
24	780	-13 -1.7%	43%	57%	783	-3 0%		782	-2 0%		794	-14 -2%		760	+20 3%		881	-101 -11%		121	256	804
25	704	+1 0.1%	74%	69%	667	+37 6%		702	+2 0%		695	+9 1%		650	+54 8%		725	-21 -3%		75	188	727
26	603	-3 -0.5%	47%	50%	599	+4 1%		644	-41 -6%		601	+2 0%		560	+43 8%		630	-27 -4%		70	155	641
28	443	-5 -1.1%	24%	10%	459	-16 -3%		521	-78 -15%		465	-22 -5%		430	+13 3%		493	-50 -10%		63	119	465
30	393	-6 -1.5%	47%	16%	393	0 0%		455	-62 -14%		405	-12 -3%		374	+19 5%		434	-41 -9%		60	136	384
32	354	0	72%	22%	342	+12 4%		413	-59 -14%		343	+11 3%		324	+30 9%		375	-21 -6%		51	108	372
MC	564	0	56%	76%	539	+25 5%		494	+70 14%		550	+14 3%		561	+3 1%		681	-117 -17%		120	289	331

Note:

* Due to the irregular market quoting for some fine wool categories, figures shown relating to micron categories below 18 micron are an estimate based on the AWEX Premium & Discounts Report & other available information.

* For any category, where there is insufficient quantity offered to enable AWEX to quote, a quote will be provided based on the best available information.

* 10 Year data is not available for some micron categories, which may result in blank spaces in the table above.

Definitions:

* A Percentile, is a value on a scale of one hundred that indicates the percent of a distribution that is equal to or below it. In general a percentile between 25% and 75% is considered normal, a percentile below 25% is considered below normal and a percentile above 75% is considered above normal.

Three and ten year percentiles shown in the table above, detail the period of time during the past 3 & 10 years that the market has traded either at or below its current price.

The higher the percentile, the stronger the market.

Source: Australian Wool Exchange, Australian Wool Innovation, Sydney Futures Exchange, x-rates.com

Disclaimer: While all due care has been taken in the preparation of this document, no warranty is made as to its accuracy, reliability or completeness. To the extent permitted by law neither Jemalong or their sources including subsidiaries and staff, accept liability to any person for loss or damage arising from the use of this information.



MARKET COMMENTARY

NORTHERN REGION – Sale Week 12/10 (46,106 bales offered nationally)

Australian Dollar 95.58 cents US as of 23/09/2010

Market Outlook

Since the beginning of the new selling season we have seen some good rises in the finer micron ranges driven by renewed interest from Europe. The carding market remains very strong despite having retreated a little since the beginning of the new season. The rest of the market however appears to be collared, supply (as we all know) is extremely low but at the same time, demand has also been subdued.

The short term outlook suggests the market should remain reasonable stable with supply putting a floor in potential downward movement, while upward movement will be dictated by demand (China are expected to increase their presence in the market at any time). Outside factors such as exchange rate and the state of major global economies will also influence the market.

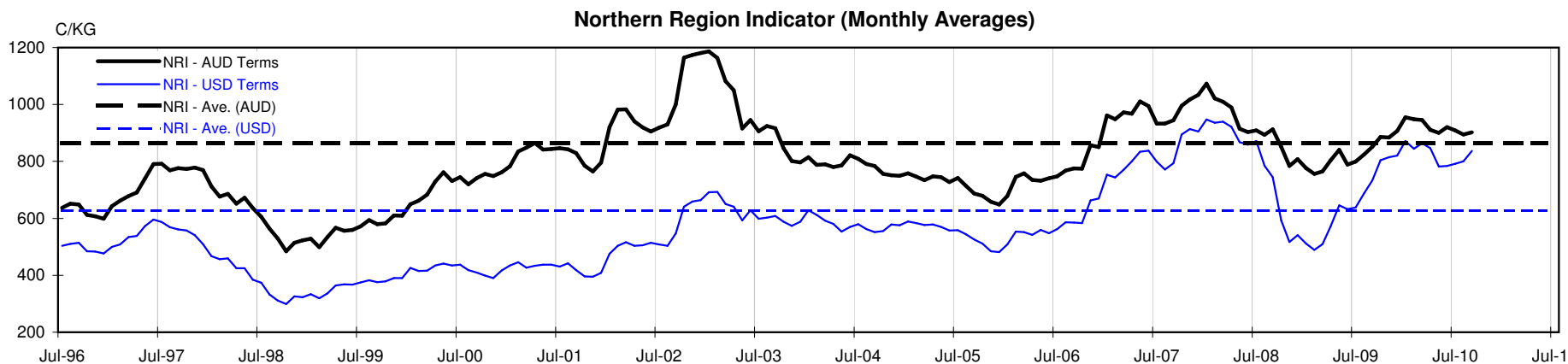




Table 4: 19 micron SFE

Wednesday, 22 September 2010

Delivery Mth	Oct-10	Dec-10	Feb-11	Apr-11	Jun-11	Aug-11	Oct-11	Dec-11	Feb-12
19 Micron SFE	1053	1053	1053	1053	1053	1053	1053	1053	1053
Average	1019	1031	1040	1047	1051	1053	1050	1045	1052
Maximum	1088	1088	1088	1088	1088	1088	1080	1065	1065
Minimum	884	905	936	983	1025	1034	1034	1034	1034

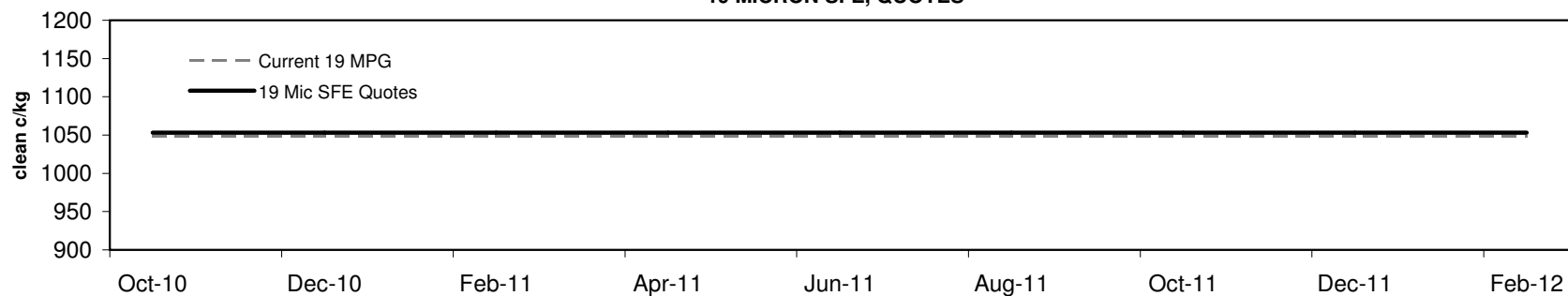
Table 5: 19 micron SFE, as a percentile of the 19 micron MPG

3 Year Percentile	40%	40%	40%	40%	40%	40%	40%	40%	40%
10 Year Percentile	52%	52%	52%	52%	52%	52%	52%	52%	52%

Table 6: 19 micron SFE, compared to MPG

Current 19 MPG	+5	0%	+5	0%	+5	0%	+5	0%	+5	0%	+5	0%	+5	0%	+5	0%	+5	0%
19 MPG, 1 Year Average	-13	-1%	-13	-1%	-13	-1%	-13	-1%	-13	-1%	-13	-1%	-13	-1%	-13	-1%	-13	-1%
19 MPG, 3 Year Average	-20	-2%	-20	-2%	-20	-2%	-20	-2%	-20	-2%	-20	-2%	-20	-2%	-20	-2%	-20	-2%
19 MPG, 10 Year Average	-15	-1%	-15	-1%	-15	-1%	-15	-1%	-15	-1%	-15	-1%	-15	-1%	-15	-1%	-15	-1%

19 MICRON SFE, QUOTES



19 MICRON SFE, FRONT MONTH PRICE MOVEMENT (mthly averages)

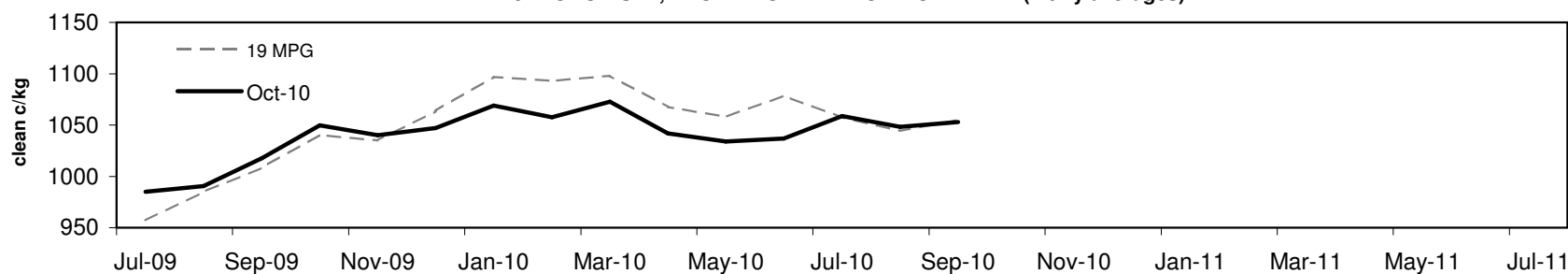




Table 7: 21 micron SFE

Wednesday, 22 September 2010

Delivery Mth	Oct-10	Dec-10	Feb-11	Apr-11	Jun-11	Aug-11	Oct-11	Dec-11	Feb-12
21 Micron SFE	915	915	914	902	911	901	911	901	901
Average	900	913	923	931	936	936	926	910	903
Maximum	1003	1013	1004	1004	1004	1004	992	951	925
Minimum	742	780	818	860	891	890	880	880	880

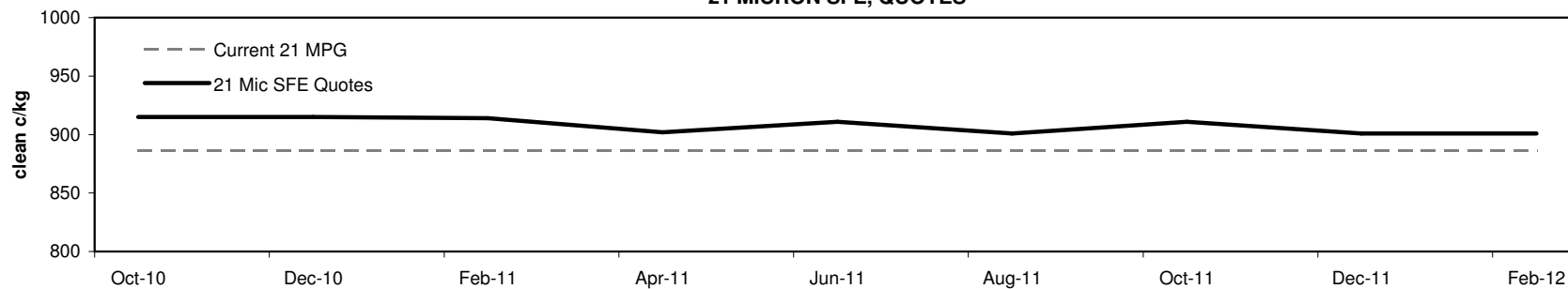
Table 8: 21 micron SFE, as a percentile of the 21 micron MPG

3 Year Percentile	59%	59%	59%	54%	57%	53%	57%	53%	53%
10 Year Percentile	64%	64%	64%	62%	63%	62%	63%	62%	62%

Table 9: 21 micron SFE, compared to MPG

Current 21 MPG	+29	3%	+29	3%	+28	3%	+16	2%	+25	3%	+15	2%	+25	3%	+15	2%	+15	2%
21 MPG, 1 Year Average	-9	-1%	-9	-1%	-10	-1%	-22	-2%	-13	-1%	-23	-2%	-13	-1%	-23	-2%	-23	-2%
21 MPG, 3 Year Average	+36	4%	+36	4%	+35	4%	+23	3%	+32	4%	+22	3%	+32	4%	+22	3%	+22	3%
21 MPG, 10 Year Average	+54	6%	+54	6%	+53	6%	+41	5%	+50	6%	+40	5%	+50	6%	+40	5%	+40	5%

21 MICRON SFE, QUOTES



21 MICRON SFE, FRONT MONTH PRICE MOVEMENT (mthly averages)

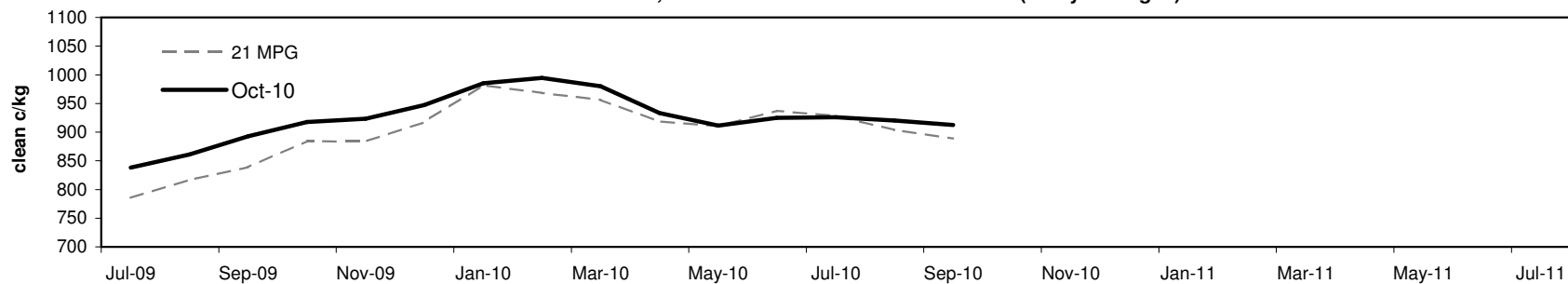




Table 10: 23 micron SFE

Wednesday, 22 September 2010

Delivery Mth	Oct-10	Dec-10	Feb-11	Apr-11	Jun-11	Aug-11	Oct-11	Dec-11	Feb-12
23 Micron SFE	887	887	887	887	887	887	887	887	887
Average	819	837	850	860	871	886	894	884	884
Maximum	927	927	927	927	927	927	927	887	887
Minimum	690	716	760	760	803	803	883	883	883

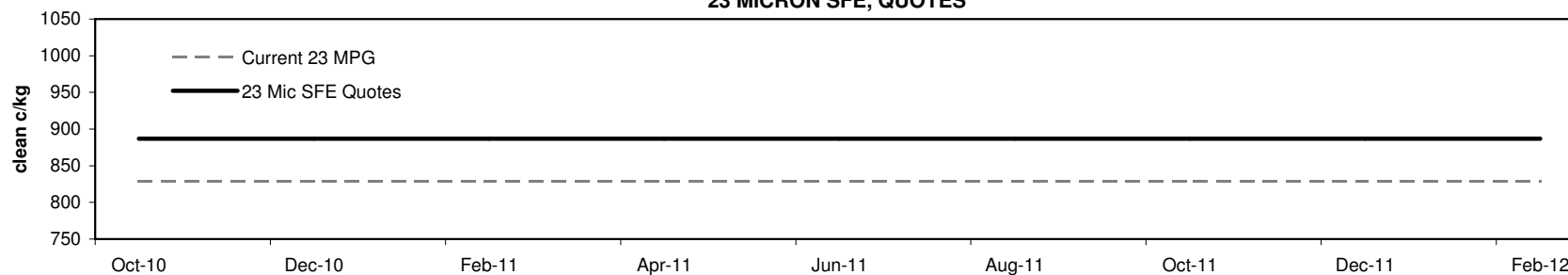
Table 11: 23 micron SFE, as a percentile of the 23 micron MPG

3 Year Percentile	67%	67%	67%	67%	67%	67%	67%	67%	67%
10 Year Percentile	67%	67%	67%	67%	67%	67%	67%	67%	67%

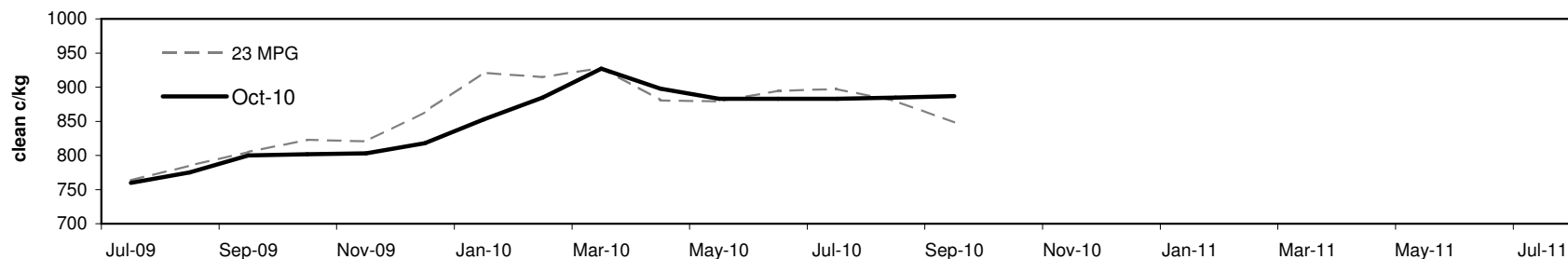
Table 12: 23 micron SFE, compared to MPG

Current 19 MPG	+58	7%	+58	7%	+58	7%	+58	7%	+58	7%	+58	7%	+58	7%	+58	7%	+58	7%
23 MPG, 1 Year Average	+8	1%	+8	1%	+8	1%	+8	1%	+8	1%	+8	1%	+8	1%	+8	1%	+8	1%
23 MPG, 3 Year Average	+56	7%	+56	7%	+56	7%	+56	7%	+56	7%	+56	7%	+56	7%	+56	7%	+56	7%
23 MPG, 10 Year Average	+70	9%	+70	9%	+70	9%	+70	9%	+70	9%	+70	9%	+70	9%	+70	9%	+70	9%

23 MICRON SFE, QUOTES

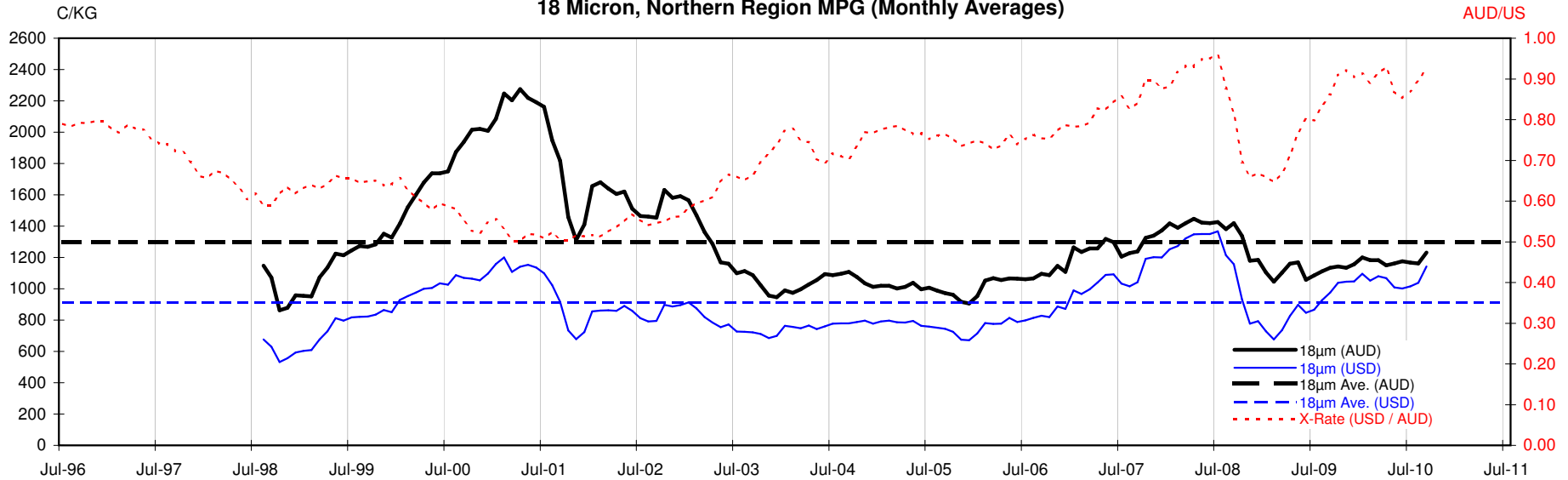


23 MICRON SFE, FRONT MONTH PRICE MOVEMENT (mthly averages)



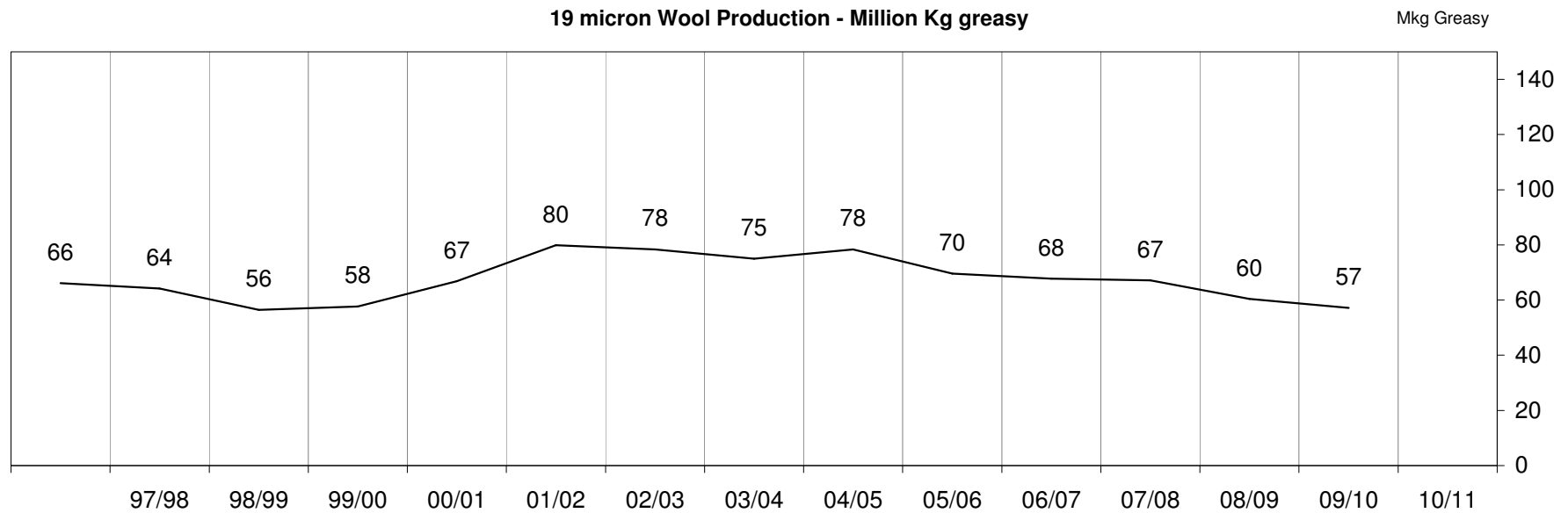
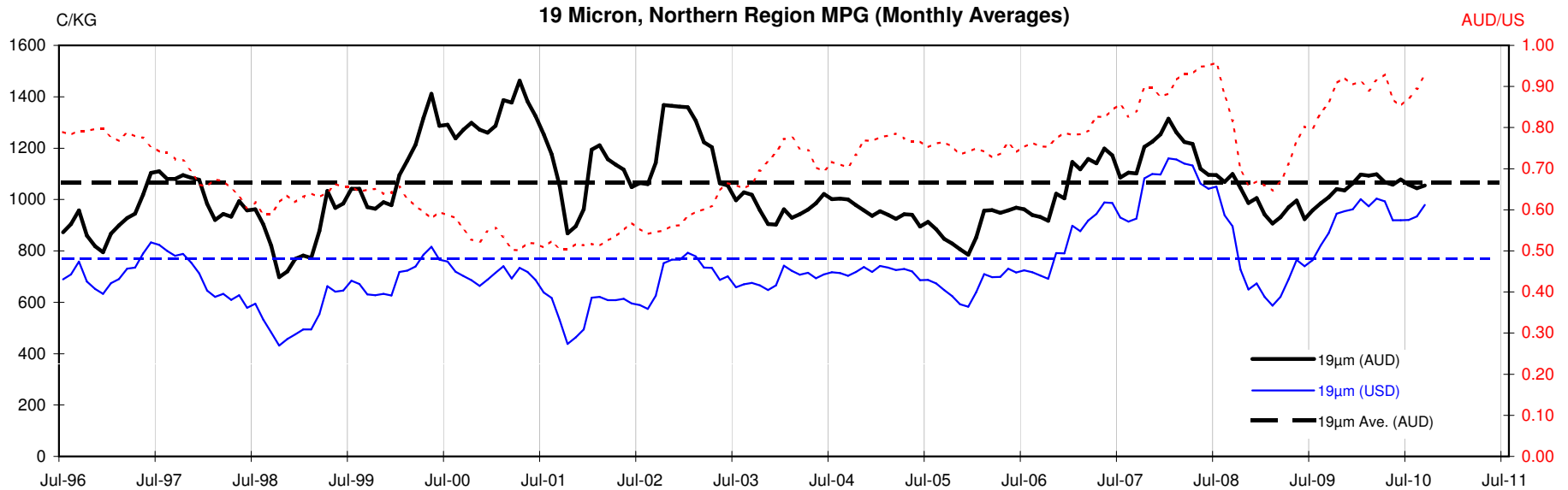


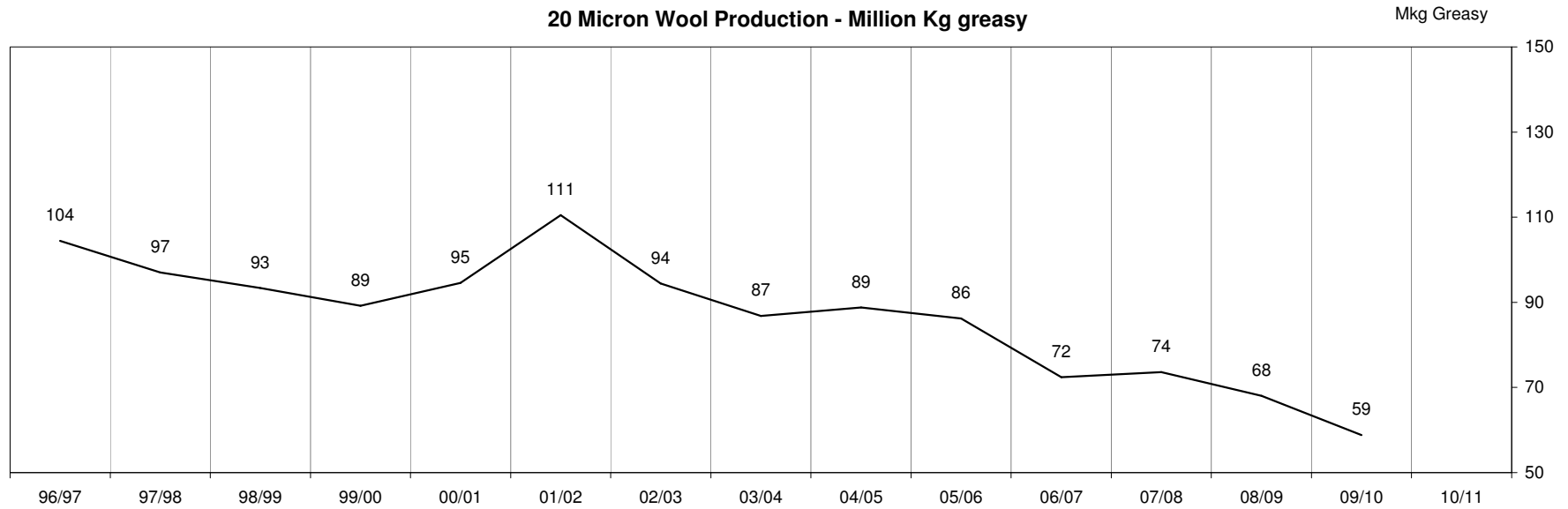
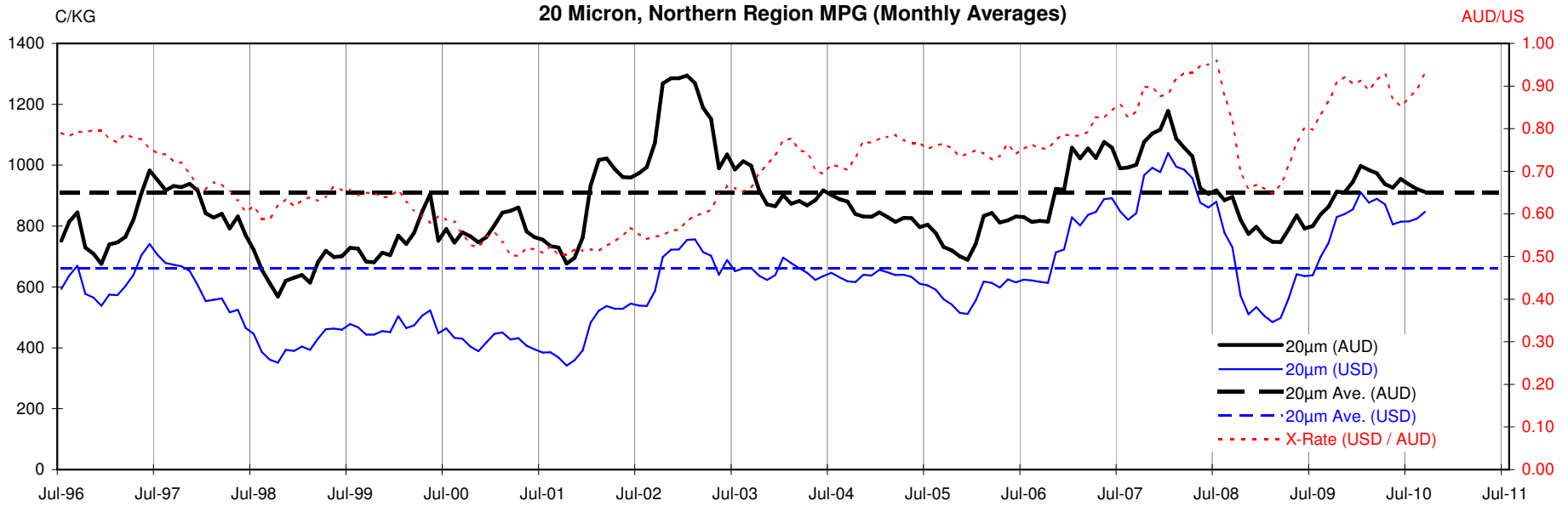
18 Micron, Northern Region MPG (Monthly Averages)

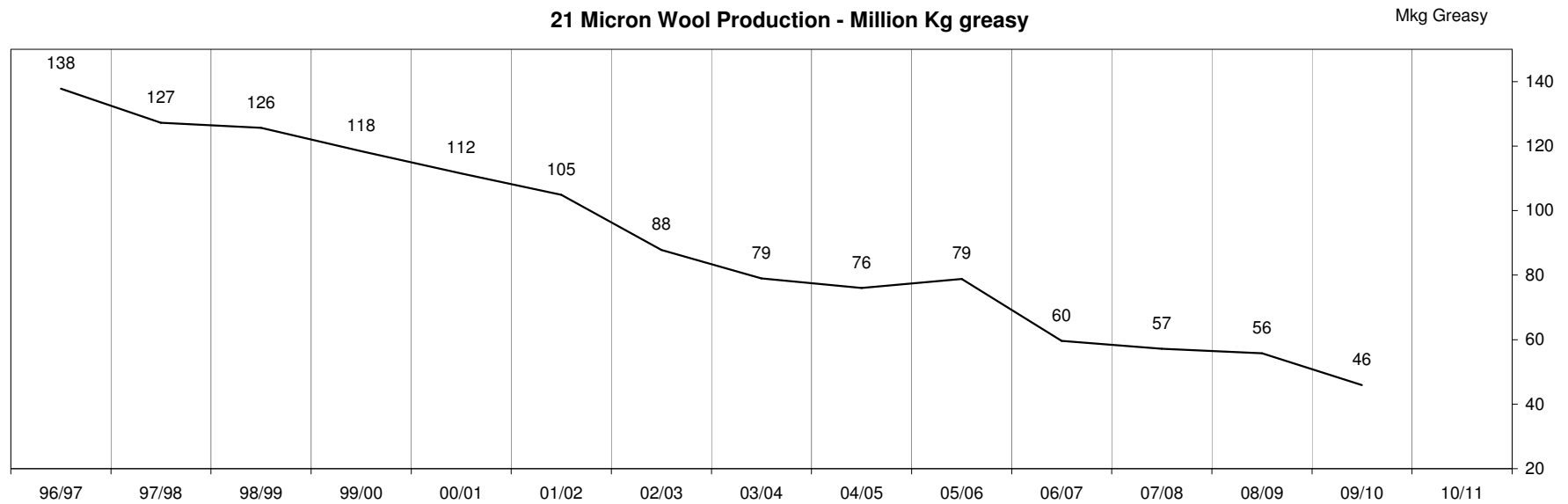
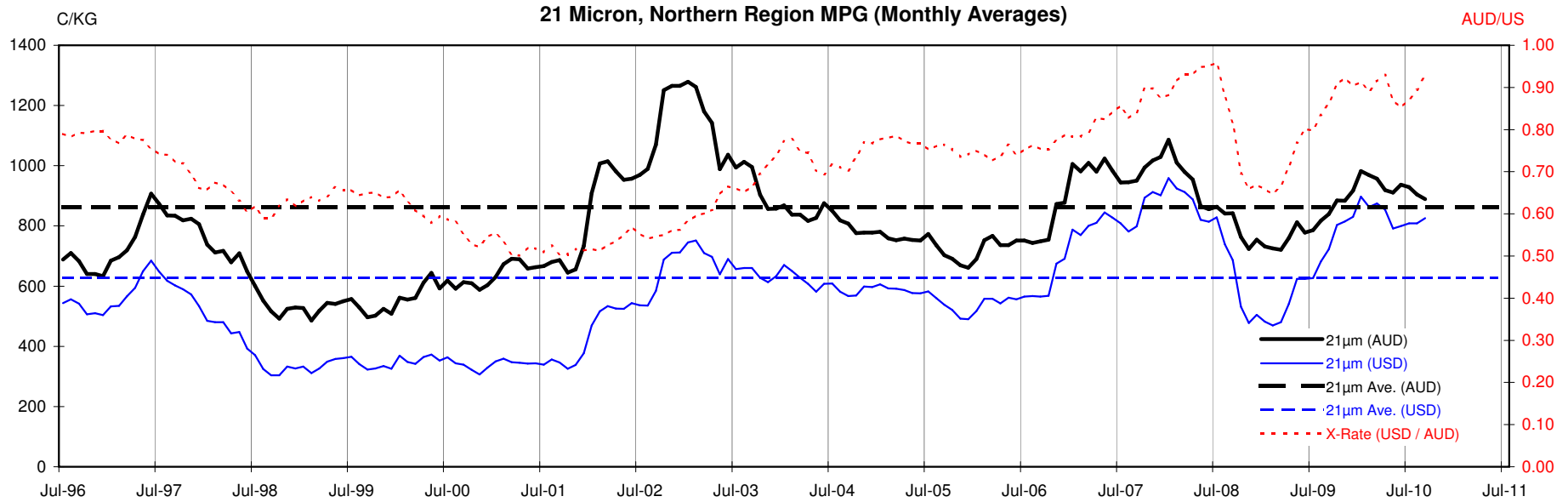


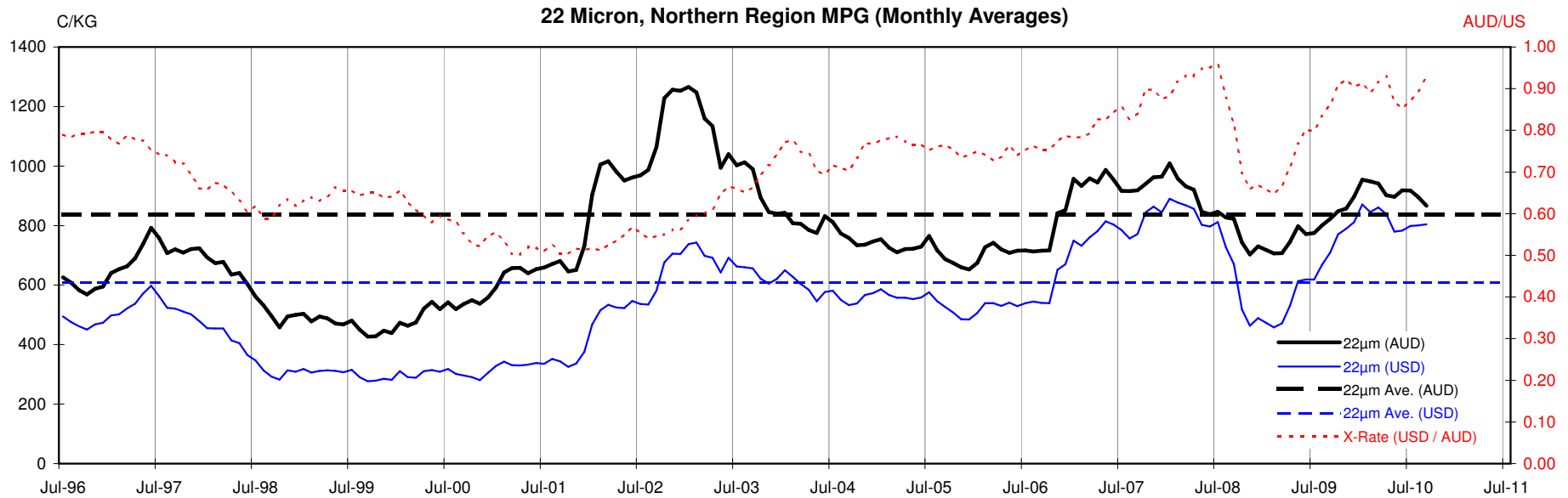
<18.5 micron Wool Production - Million Kg greasy

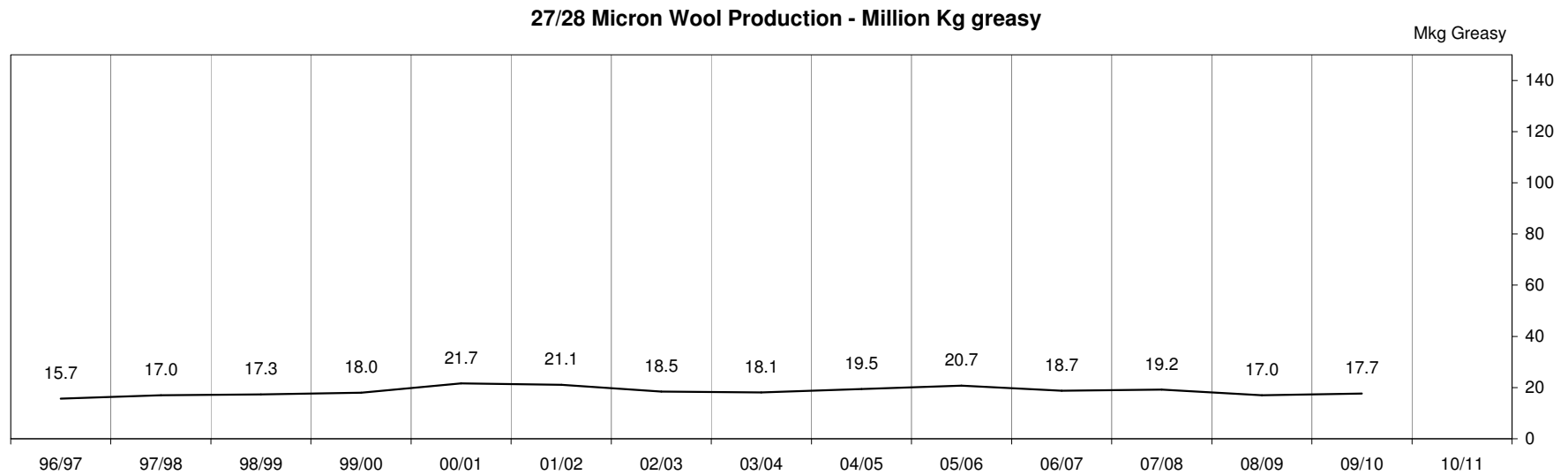
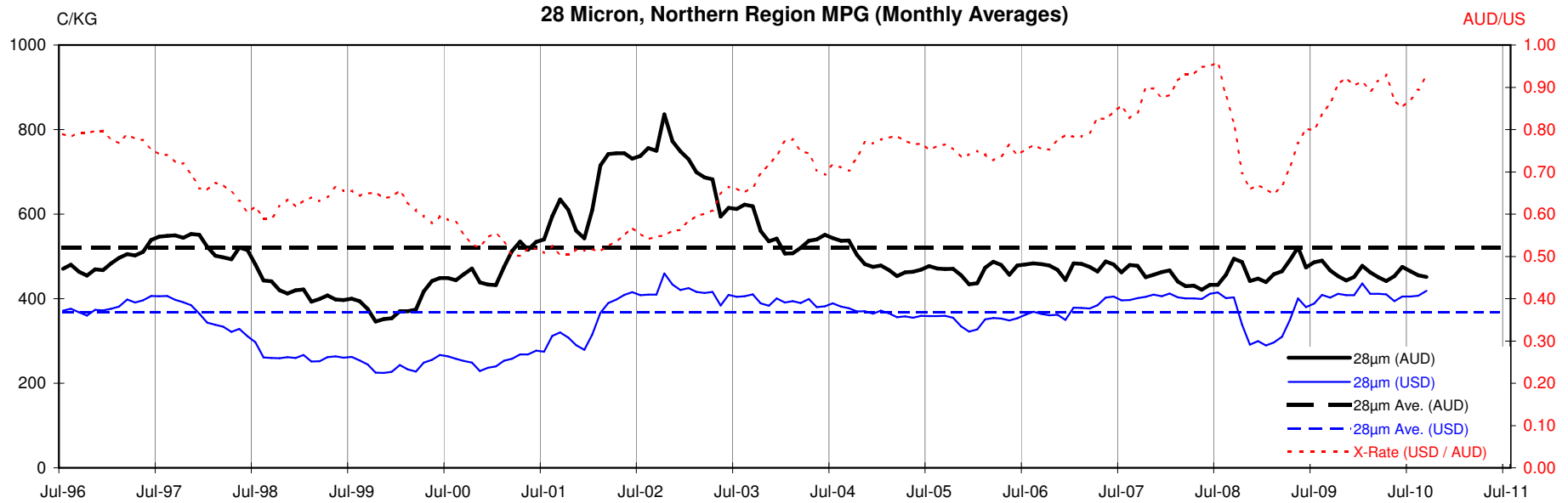












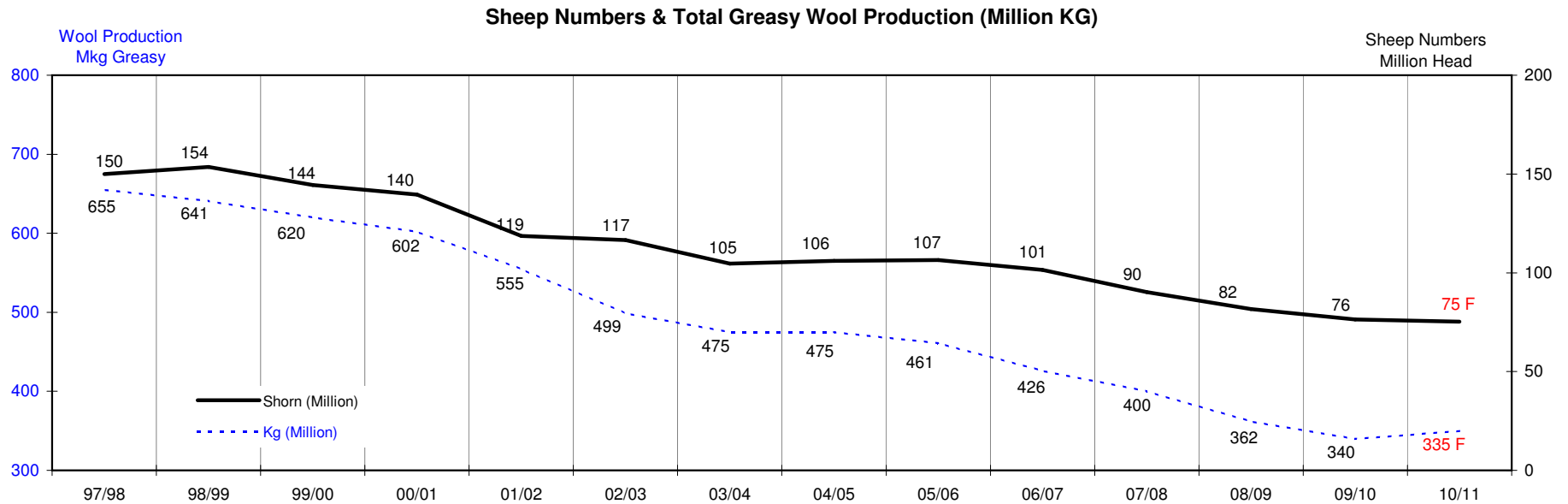
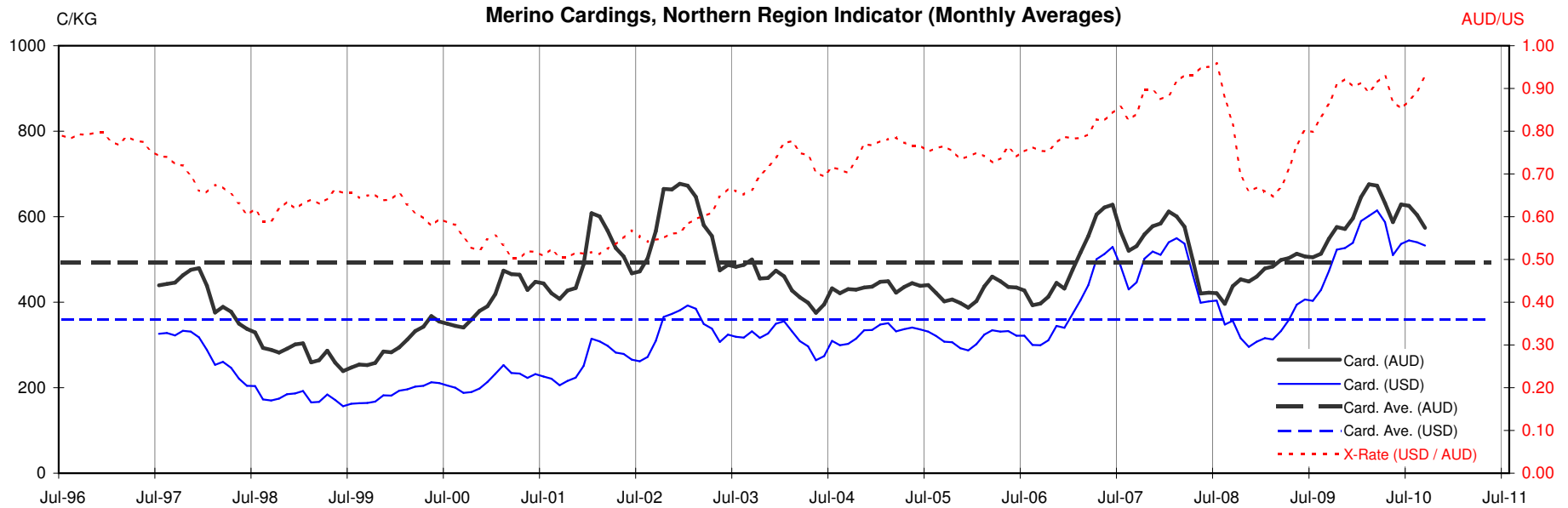




Table 13: Returns pr head for skirted fleece wool.

Skirted FLC Weight 9 Kg			Micron																	
			16	16.5	17	17.5	18	18.5	19	19.5	20	21	22	23	24	25	26	28	30	32
Yield (Sch Dry)	25%	Current	\$37	\$34	\$31	\$29	\$27	\$26	\$24	\$22	\$20	\$20	\$19	\$19	\$18	\$16	\$14	\$10	\$9	\$8
		10yr ave.			\$32		\$29		\$24		\$20	\$19	\$19	\$18	\$18	\$16	\$14	\$12	\$10	\$9
	30%	Current	\$45	\$41	\$37	\$35	\$33	\$31	\$28	\$26	\$24	\$24	\$23	\$22	\$21	\$19	\$16	\$12	\$11	\$10
		10yr ave.			\$39		\$35		\$29		\$25	\$23	\$23	\$22	\$21	\$19	\$17	\$14	\$12	\$11
	35%	Current	\$52	\$48	\$44	\$40	\$38	\$36	\$33	\$30	\$29	\$28	\$27	\$26	\$25	\$22	\$19	\$14	\$12	\$11
		10yr ave.			\$45		\$41		\$34		\$29	\$27	\$26	\$26	\$25	\$22	\$20	\$16	\$14	\$13
	40%	Current	\$59	\$54	\$50	\$46	\$44	\$42	\$38	\$34	\$33	\$32	\$31	\$30	\$28	\$25	\$22	\$16	\$14	\$13
		10yr ave.			\$52		\$47		\$38		\$33	\$31	\$30	\$29	\$28	\$25	\$23	\$19	\$16	\$15
	45%	Current	\$67	\$61	\$56	\$52	\$49	\$47	\$42	\$39	\$37	\$36	\$35	\$34	\$32	\$29	\$24	\$18	\$16	\$14
		10yr ave.			\$58		\$52		\$43		\$37	\$35	\$34	\$33	\$32	\$28	\$26	\$21	\$18	\$17
	50%	Current	\$74	\$68	\$62	\$58	\$55	\$52	\$47	\$43	\$41	\$40	\$38	\$37	\$35	\$32	\$27	\$20	\$18	\$16
		10yr ave.			\$65		\$58		\$48		\$41	\$39	\$38	\$37	\$35	\$32	\$29	\$23	\$20	\$19
	55%	Current	\$82	\$75	\$69	\$63	\$60	\$57	\$52	\$47	\$45	\$44	\$42	\$41	\$39	\$35	\$30	\$22	\$19	\$18
		10yr ave.			\$71		\$64		\$53		\$45	\$43	\$41	\$40	\$39	\$35	\$32	\$26	\$23	\$20
	60%	Current	\$89	\$82	\$75	\$69	\$66	\$62	\$57	\$52	\$49	\$48	\$46	\$45	\$42	\$38	\$33	\$24	\$21	\$19
		10yr ave.			\$78		\$70		\$58		\$49	\$46	\$45	\$44	\$42	\$38	\$35	\$28	\$25	\$22
65%	Current	\$97	\$88	\$81	\$75	\$71	\$68	\$61	\$56	\$53	\$52	\$50	\$48	\$46	\$41	\$35	\$26	\$23	\$21	
	10yr ave.			\$84		\$76		\$62		\$53	\$50	\$49	\$48	\$46	\$41	\$38	\$30	\$27	\$24	
70%	Current	\$104	\$95	\$87	\$81	\$77	\$73	\$66	\$60	\$57	\$56	\$54	\$52	\$49	\$44	\$38	\$28	\$25	\$22	
	10yr ave.			\$90		\$82		\$67		\$57	\$54	\$53	\$51	\$49	\$44	\$41	\$33	\$29	\$26	
75%	Current	\$111	\$102	\$93	\$86	\$82	\$78	\$71	\$65	\$61	\$60	\$58	\$56	\$53	\$48	\$41	\$30	\$27	\$24	
	10yr ave.			\$97		\$87		\$72		\$61	\$58	\$57	\$55	\$53	\$47	\$43	\$35	\$31	\$28	
80%	Current	\$119	\$109	\$100	\$92	\$88	\$83	\$75	\$69	\$65	\$64	\$61	\$60	\$56	\$51	\$43	\$32	\$28	\$25	
	10yr ave.			\$103		\$93		\$77		\$65	\$62	\$60	\$59	\$56	\$51	\$46	\$38	\$33	\$30	
85%	Current	\$126	\$116	\$106	\$98	\$93	\$88	\$80	\$73	\$69	\$68	\$65	\$63	\$60	\$54	\$46	\$34	\$30	\$27	
	10yr ave.			\$110		\$99		\$82		\$70	\$66	\$64	\$63	\$60	\$54	\$49	\$40	\$35	\$32	

The above shows estimated returns per head for skirted fleece wool. These figures do not take into account the value of skirtings and oddments and do not take into account discounts that may apply for faults under individual circumstances. These figures are based on a market index of 100% and should be used as a guide only. Returns over \$30 / head for fleece wool are highlighted.

Source: Australian Wool Exchange, Australian Wool Innovation, Sydney Futures Exchange, x-rates.com

Disclaimer: While all due care has been taken in the preparation of this document, no warranty is made as to its accuracy, reliability or completeness. To the extent permitted by law neither Jemalong or their sources including subsidiaries and staff, accept liability to any person for loss or damage arising from the use of this information.



Table 14: Returns pr head for skirted fleece wool.

Skirted FLC Weight 8 Kg			Micron																	
			16	16.5	17	17.5	18	18.5	19	19.5	20	21	22	23	24	25	26	28	30	32
Yield (Sch Dry)	25%	Current	\$37	\$34	\$31	\$29	\$27	\$26	\$24	\$22	\$20	\$20	\$19	\$19	\$18	\$16	\$14	\$10	\$9	\$8
		10yr ave.			\$32		\$29		\$24		\$20	\$19	\$19	\$18	\$18	\$16	\$14	\$12	\$10	\$9
	30%	Current	\$45	\$41	\$37	\$35	\$33	\$31	\$28	\$26	\$24	\$24	\$23	\$22	\$21	\$19	\$16	\$12	\$11	\$10
		10yr ave.			\$39		\$35		\$29		\$25	\$23	\$23	\$22	\$21	\$19	\$17	\$14	\$12	\$11
	35%	Current	\$52	\$48	\$44	\$40	\$38	\$36	\$33	\$30	\$29	\$28	\$27	\$26	\$25	\$22	\$19	\$14	\$12	\$11
		10yr ave.			\$45		\$41		\$34		\$29	\$27	\$26	\$26	\$25	\$22	\$20	\$16	\$14	\$13
	40%	Current	\$59	\$54	\$50	\$46	\$44	\$42	\$38	\$34	\$33	\$32	\$31	\$30	\$28	\$25	\$22	\$16	\$14	\$13
		10yr ave.			\$52		\$47		\$38		\$33	\$31	\$30	\$29	\$28	\$25	\$23	\$19	\$16	\$15
	45%	Current	\$67	\$61	\$56	\$52	\$49	\$47	\$42	\$39	\$37	\$36	\$35	\$34	\$32	\$29	\$24	\$18	\$16	\$14
		10yr ave.			\$58		\$52		\$43		\$37	\$35	\$34	\$33	\$32	\$28	\$26	\$21	\$18	\$17
	50%	Current	\$74	\$68	\$62	\$58	\$55	\$52	\$47	\$43	\$41	\$40	\$38	\$37	\$35	\$32	\$27	\$20	\$18	\$16
		10yr ave.			\$65		\$58		\$48		\$41	\$39	\$38	\$37	\$35	\$32	\$29	\$23	\$20	\$19
	55%	Current	\$82	\$75	\$69	\$63	\$60	\$57	\$52	\$47	\$45	\$44	\$42	\$41	\$39	\$35	\$30	\$22	\$19	\$18
		10yr ave.			\$71		\$64		\$53		\$45	\$43	\$41	\$40	\$39	\$35	\$32	\$26	\$23	\$20
	60%	Current	\$89	\$82	\$75	\$69	\$66	\$62	\$57	\$52	\$49	\$48	\$46	\$45	\$42	\$38	\$33	\$24	\$21	\$19
		10yr ave.			\$78		\$70		\$58		\$49	\$46	\$45	\$44	\$42	\$38	\$35	\$28	\$25	\$22
65%	Current	\$97	\$88	\$81	\$75	\$71	\$68	\$61	\$56	\$53	\$52	\$50	\$48	\$46	\$41	\$35	\$26	\$23	\$21	
	10yr ave.			\$84		\$76		\$62		\$53	\$50	\$49	\$48	\$46	\$41	\$38	\$30	\$27	\$24	
70%	Current	\$104	\$95	\$87	\$81	\$77	\$73	\$66	\$60	\$57	\$56	\$54	\$52	\$49	\$44	\$38	\$28	\$25	\$22	
	10yr ave.			\$90		\$82		\$67		\$57	\$54	\$53	\$51	\$49	\$44	\$41	\$33	\$29	\$26	
75%	Current	\$111	\$102	\$93	\$86	\$82	\$78	\$71	\$65	\$61	\$60	\$58	\$56	\$53	\$48	\$41	\$30	\$27	\$24	
	10yr ave.			\$97		\$87		\$72		\$61	\$58	\$57	\$55	\$53	\$47	\$43	\$35	\$31	\$28	
80%	Current	\$119	\$109	\$100	\$92	\$88	\$83	\$75	\$69	\$65	\$64	\$61	\$60	\$56	\$51	\$43	\$32	\$28	\$25	
	10yr ave.			\$103		\$93		\$77		\$65	\$62	\$60	\$59	\$56	\$51	\$46	\$38	\$33	\$30	
85%	Current	\$126	\$116	\$106	\$98	\$93	\$88	\$80	\$73	\$69	\$68	\$65	\$63	\$60	\$54	\$46	\$34	\$30	\$27	
	10yr ave.			\$110		\$99		\$82		\$70	\$66	\$64	\$63	\$60	\$54	\$49	\$40	\$35	\$32	

The above shows estimated returns per head for skirted fleece wool. These figures do not take into account the value of skirtings and oddments and do not take into account discounts that may apply for faults under individual circumstances. These figures are based on a market index of 100% and should be used as a guide only. Returns over \$30 / head for fleece wool are highlighted.

Source: Australian Wool Exchange, Australian Wool Innovation, Sydney Futures Exchange, x-rates.com

Disclaimer: While all due care has been taken in the preparation of this document, no warranty is made as to its accuracy, reliability or completeness. To the extent permitted by law neither Jemalong or their sources including subsidiaries and staff, accept liability to any person for loss or damage arising from the use of this information.



Table 15: Returns pr head for skirted fleece wool.

Skirted FLC Weight 7 Kg			Micron																	
			16	16.5	17	17.5	18	18.5	19	19.5	20	21	22	23	24	25	26	28	30	32
Yield (Sch Dry)	25%	Current	\$37	\$34	\$31	\$29	\$27	\$26	\$24	\$22	\$20	\$20	\$19	\$19	\$18	\$16	\$14	\$10	\$9	\$8
		10yr ave.			\$32		\$29		\$24		\$20	\$19	\$19	\$18	\$18	\$16	\$14	\$12	\$10	\$9
	30%	Current	\$45	\$41	\$37	\$35	\$33	\$31	\$28	\$26	\$24	\$24	\$23	\$22	\$21	\$19	\$16	\$12	\$11	\$10
		10yr ave.			\$39		\$35		\$29		\$25	\$23	\$23	\$22	\$21	\$19	\$17	\$14	\$12	\$11
	35%	Current	\$52	\$48	\$44	\$40	\$38	\$36	\$33	\$30	\$29	\$28	\$27	\$26	\$25	\$22	\$19	\$14	\$12	\$11
		10yr ave.			\$45		\$41		\$34		\$29	\$27	\$26	\$26	\$25	\$22	\$20	\$16	\$14	\$13
	40%	Current	\$59	\$54	\$50	\$46	\$44	\$42	\$38	\$34	\$33	\$32	\$31	\$30	\$28	\$25	\$22	\$16	\$14	\$13
		10yr ave.			\$52		\$47		\$38		\$33	\$31	\$30	\$29	\$28	\$25	\$23	\$19	\$16	\$15
	45%	Current	\$67	\$61	\$56	\$52	\$49	\$47	\$42	\$39	\$37	\$36	\$35	\$34	\$32	\$29	\$24	\$18	\$16	\$14
		10yr ave.			\$58		\$52		\$43		\$37	\$35	\$34	\$33	\$32	\$28	\$26	\$21	\$18	\$17
	50%	Current	\$74	\$68	\$62	\$58	\$55	\$52	\$47	\$43	\$41	\$40	\$38	\$37	\$35	\$32	\$27	\$20	\$18	\$16
		10yr ave.			\$65		\$58		\$48		\$41	\$39	\$38	\$37	\$35	\$32	\$29	\$23	\$20	\$19
	55%	Current	\$82	\$75	\$69	\$63	\$60	\$57	\$52	\$47	\$45	\$44	\$42	\$41	\$39	\$35	\$30	\$22	\$19	\$18
		10yr ave.			\$71		\$64		\$53		\$45	\$43	\$41	\$40	\$39	\$35	\$32	\$26	\$23	\$20
	60%	Current	\$89	\$82	\$75	\$69	\$66	\$62	\$57	\$52	\$49	\$48	\$46	\$45	\$42	\$38	\$33	\$24	\$21	\$19
		10yr ave.			\$78		\$70		\$58		\$49	\$46	\$45	\$44	\$42	\$38	\$35	\$28	\$25	\$22
65%	Current	\$97	\$88	\$81	\$75	\$71	\$68	\$61	\$56	\$53	\$52	\$50	\$48	\$46	\$41	\$35	\$26	\$23	\$21	
	10yr ave.			\$84		\$76		\$62		\$53	\$50	\$49	\$48	\$46	\$41	\$38	\$30	\$27	\$24	
70%	Current	\$104	\$95	\$87	\$81	\$77	\$73	\$66	\$60	\$57	\$56	\$54	\$52	\$49	\$44	\$38	\$28	\$25	\$22	
	10yr ave.			\$90		\$82		\$67		\$57	\$54	\$53	\$51	\$49	\$44	\$41	\$33	\$29	\$26	
75%	Current	\$111	\$102	\$93	\$86	\$82	\$78	\$71	\$65	\$61	\$60	\$58	\$56	\$53	\$48	\$41	\$30	\$27	\$24	
	10yr ave.			\$97		\$87		\$72		\$61	\$58	\$57	\$55	\$53	\$47	\$43	\$35	\$31	\$28	
80%	Current	\$119	\$109	\$100	\$92	\$88	\$83	\$75	\$69	\$65	\$64	\$61	\$60	\$56	\$51	\$43	\$32	\$28	\$25	
	10yr ave.			\$103		\$93		\$77		\$65	\$62	\$60	\$59	\$56	\$51	\$46	\$38	\$33	\$30	
85%	Current	\$126	\$116	\$106	\$98	\$93	\$88	\$80	\$73	\$69	\$68	\$65	\$63	\$60	\$54	\$46	\$34	\$30	\$27	
	10yr ave.			\$110		\$99		\$82		\$70	\$66	\$64	\$63	\$60	\$54	\$49	\$40	\$35	\$32	

The above shows estimated returns per head for skirted fleece wool. These figures do not take into account the value of skirtings and oddments and do not take into account discounts that may apply for faults under individual circumstances. These figures are based on a market index of 100% and should be used as a guide only. Returns over \$30 / head for fleece wool are highlighted.

Source: Australian Wool Exchange, Australian Wool Innovation, Sydney Futures Exchange, x-rates.com

Disclaimer: While all due care has been taken in the preparation of this document, no warranty is made as to its accuracy, reliability or completeness. To the extent permitted by law neither Jemalong or their sources including subsidiaries and staff, accept liability to any person for loss or damage arising from the use of this information.



Table 16: Returns pr head for skirted fleece wool.

Skirted FLC Weight 6 Kg			Micron																	
			16	16.5	17	17.5	18	18.5	19	19.5	20	21	22	23	24	25	26	28	30	32
Yield (Sch Dry)	25%	Current	\$37	\$34	\$31	\$29	\$27	\$26	\$24	\$22	\$20	\$20	\$19	\$19	\$18	\$16	\$14	\$10	\$9	\$8
		10yr ave.			\$32		\$29		\$24		\$20	\$19	\$19	\$18	\$18	\$16	\$14	\$12	\$10	\$9
	30%	Current	\$45	\$41	\$37	\$35	\$33	\$31	\$28	\$26	\$24	\$24	\$23	\$22	\$21	\$19	\$16	\$12	\$11	\$10
		10yr ave.			\$39		\$35		\$29		\$25	\$23	\$23	\$22	\$21	\$19	\$17	\$14	\$12	\$11
	35%	Current	\$52	\$48	\$44	\$40	\$38	\$36	\$33	\$30	\$29	\$28	\$27	\$26	\$25	\$22	\$19	\$14	\$12	\$11
		10yr ave.			\$45		\$41		\$34		\$29	\$27	\$26	\$26	\$25	\$22	\$20	\$16	\$14	\$13
	40%	Current	\$59	\$54	\$50	\$46	\$44	\$42	\$38	\$34	\$33	\$32	\$31	\$30	\$28	\$25	\$22	\$16	\$14	\$13
		10yr ave.			\$52		\$47		\$38		\$33	\$31	\$30	\$29	\$28	\$25	\$23	\$19	\$16	\$15
	45%	Current	\$67	\$61	\$56	\$52	\$49	\$47	\$42	\$39	\$37	\$36	\$35	\$34	\$32	\$29	\$24	\$18	\$16	\$14
		10yr ave.			\$58		\$52		\$43		\$37	\$35	\$34	\$33	\$32	\$28	\$26	\$21	\$18	\$17
	50%	Current	\$74	\$68	\$62	\$58	\$55	\$52	\$47	\$43	\$41	\$40	\$38	\$37	\$35	\$32	\$27	\$20	\$18	\$16
		10yr ave.			\$65		\$58		\$48		\$41	\$39	\$38	\$37	\$35	\$32	\$29	\$23	\$20	\$19
	55%	Current	\$82	\$75	\$69	\$63	\$60	\$57	\$52	\$47	\$45	\$44	\$42	\$41	\$39	\$35	\$30	\$22	\$19	\$18
		10yr ave.			\$71		\$64		\$53		\$45	\$43	\$41	\$40	\$39	\$35	\$32	\$26	\$23	\$20
	60%	Current	\$89	\$82	\$75	\$69	\$66	\$62	\$57	\$52	\$49	\$48	\$46	\$45	\$42	\$38	\$33	\$24	\$21	\$19
		10yr ave.			\$78		\$70		\$58		\$49	\$46	\$45	\$44	\$42	\$38	\$35	\$28	\$25	\$22
65%	Current	\$97	\$88	\$81	\$75	\$71	\$68	\$61	\$56	\$53	\$52	\$50	\$48	\$46	\$41	\$35	\$26	\$23	\$21	
	10yr ave.			\$84		\$76		\$62		\$53	\$50	\$49	\$48	\$46	\$41	\$38	\$30	\$27	\$24	
70%	Current	\$104	\$95	\$87	\$81	\$77	\$73	\$66	\$60	\$57	\$56	\$54	\$52	\$49	\$44	\$38	\$28	\$25	\$22	
	10yr ave.			\$90		\$82		\$67		\$57	\$54	\$53	\$51	\$49	\$44	\$41	\$33	\$29	\$26	
75%	Current	\$111	\$102	\$93	\$86	\$82	\$78	\$71	\$65	\$61	\$60	\$58	\$56	\$53	\$48	\$41	\$30	\$27	\$24	
	10yr ave.			\$97		\$87		\$72		\$61	\$58	\$57	\$55	\$53	\$47	\$43	\$35	\$31	\$28	
80%	Current	\$119	\$109	\$100	\$92	\$88	\$83	\$75	\$69	\$65	\$64	\$61	\$60	\$56	\$51	\$43	\$32	\$28	\$25	
	10yr ave.			\$103		\$93		\$77		\$65	\$62	\$60	\$59	\$56	\$51	\$46	\$38	\$33	\$30	
85%	Current	\$126	\$116	\$106	\$98	\$93	\$88	\$80	\$73	\$69	\$68	\$65	\$63	\$60	\$54	\$46	\$34	\$30	\$27	
	10yr ave.			\$110		\$99		\$82		\$70	\$66	\$64	\$63	\$60	\$54	\$49	\$40	\$35	\$32	

The above shows estimated returns per head for skirted fleece wool. These figures do not take into account the value of skirtings and oddments and do not take into account discounts that may apply for faults under individual circumstances. These figures are based on a market index of 100% and should be used as a guide only. Returns over \$30 / head for fleece wool are highlighted.

Source: Australian Wool Exchange, Australian Wool Innovation, Sydney Futures Exchange, x-rates.com

Disclaimer: While all due care has been taken in the preparation of this document, no warranty is made as to its accuracy, reliability or completeness. To the extent permitted by law neither Jemalong or their sources including subsidiaries and staff, accept liability to any person for loss or damage arising from the use of this information.



Table 17: Returns pr head for skirted fleece wool.

Skirted FLC Weight 5 Kg			Micron																	
			16	16.5	17	17.5	18	18.5	19	19.5	20	21	22	23	24	25	26	28	30	32
Yield (Sch Dry)	25%	Current	\$37	\$34	\$31	\$29	\$27	\$26	\$24	\$22	\$20	\$20	\$19	\$19	\$18	\$16	\$14	\$10	\$9	\$8
		10yr ave.			\$32		\$29		\$24		\$20	\$19	\$19	\$18	\$18	\$16	\$14	\$12	\$10	\$9
	30%	Current	\$45	\$41	\$37	\$35	\$33	\$31	\$28	\$26	\$24	\$24	\$23	\$22	\$21	\$19	\$16	\$12	\$11	\$10
		10yr ave.			\$39		\$35		\$29		\$25	\$23	\$23	\$22	\$21	\$19	\$17	\$14	\$12	\$11
	35%	Current	\$52	\$48	\$44	\$40	\$38	\$36	\$33	\$30	\$29	\$28	\$27	\$26	\$25	\$22	\$19	\$14	\$12	\$11
		10yr ave.			\$45		\$41		\$34		\$29	\$27	\$26	\$26	\$25	\$22	\$20	\$16	\$14	\$13
	40%	Current	\$59	\$54	\$50	\$46	\$44	\$42	\$38	\$34	\$33	\$32	\$31	\$30	\$28	\$25	\$22	\$16	\$14	\$13
		10yr ave.			\$52		\$47		\$38		\$33	\$31	\$30	\$29	\$28	\$25	\$23	\$19	\$16	\$15
	45%	Current	\$67	\$61	\$56	\$52	\$49	\$47	\$42	\$39	\$37	\$36	\$35	\$34	\$32	\$29	\$24	\$18	\$16	\$14
		10yr ave.			\$58		\$52		\$43		\$37	\$35	\$34	\$33	\$32	\$28	\$26	\$21	\$18	\$17
	50%	Current	\$74	\$68	\$62	\$58	\$55	\$52	\$47	\$43	\$41	\$40	\$38	\$37	\$35	\$32	\$27	\$20	\$18	\$16
		10yr ave.			\$65		\$58		\$48		\$41	\$39	\$38	\$37	\$35	\$32	\$29	\$23	\$20	\$19
	55%	Current	\$82	\$75	\$69	\$63	\$60	\$57	\$52	\$47	\$45	\$44	\$42	\$41	\$39	\$35	\$30	\$22	\$19	\$18
		10yr ave.			\$71		\$64		\$53		\$45	\$43	\$41	\$40	\$39	\$35	\$32	\$26	\$23	\$20
	60%	Current	\$89	\$82	\$75	\$69	\$66	\$62	\$57	\$52	\$49	\$48	\$46	\$45	\$42	\$38	\$33	\$24	\$21	\$19
		10yr ave.			\$78		\$70		\$58		\$49	\$46	\$45	\$44	\$42	\$38	\$35	\$28	\$25	\$22
65%	Current	\$97	\$88	\$81	\$75	\$71	\$68	\$61	\$56	\$53	\$52	\$50	\$48	\$46	\$41	\$35	\$26	\$23	\$21	
	10yr ave.			\$84		\$76		\$62		\$53	\$50	\$49	\$48	\$46	\$41	\$38	\$30	\$27	\$24	
70%	Current	\$104	\$95	\$87	\$81	\$77	\$73	\$66	\$60	\$57	\$56	\$54	\$52	\$49	\$44	\$38	\$28	\$25	\$22	
	10yr ave.			\$90		\$82		\$67		\$57	\$54	\$53	\$51	\$49	\$44	\$41	\$33	\$29	\$26	
75%	Current	\$111	\$102	\$93	\$86	\$82	\$78	\$71	\$65	\$61	\$60	\$58	\$56	\$53	\$48	\$41	\$30	\$27	\$24	
	10yr ave.			\$97		\$87		\$72		\$61	\$58	\$57	\$55	\$53	\$47	\$43	\$35	\$31	\$28	
80%	Current	\$119	\$109	\$100	\$92	\$88	\$83	\$75	\$69	\$65	\$64	\$61	\$60	\$56	\$51	\$43	\$32	\$28	\$25	
	10yr ave.			\$103		\$93		\$77		\$65	\$62	\$60	\$59	\$56	\$51	\$46	\$38	\$33	\$30	
85%	Current	\$126	\$116	\$106	\$98	\$93	\$88	\$80	\$73	\$69	\$68	\$65	\$63	\$60	\$54	\$46	\$34	\$30	\$27	
	10yr ave.			\$110		\$99		\$82		\$70	\$66	\$64	\$63	\$60	\$54	\$49	\$40	\$35	\$32	

The above shows estimated returns per head for skirted fleece wool. These figures do not take into account the value of skirtings and oddments and do not take into account discounts that may apply for faults under individual circumstances. These figures are based on a market index of 100% and should be used as a guide only. Returns over \$30 / head for fleece wool are highlighted.

Source: Australian Wool Exchange, Australian Wool Innovation, Sydney Futures Exchange, x-rates.com

Disclaimer: While all due care has been taken in the preparation of this document, no warranty is made as to its accuracy, reliability or completeness. To the extent permitted by law neither Jemalong or their sources including subsidiaries and staff, accept liability to any person for loss or damage arising from the use of this information.



Table 18: Returns pr head for skirted fleece wool.

Skirted FLC Weight 4 Kg			Micron																	
			16	16.5	17	17.5	18	18.5	19	19.5	20	21	22	23	24	25	26	28	30	32
Yield (Sch Dry)	25%	Current	\$37	\$34	\$31	\$29	\$27	\$26	\$24	\$22	\$20	\$20	\$19	\$19	\$18	\$16	\$14	\$10	\$9	\$8
		10yr ave.			\$32		\$29		\$24		\$20	\$19	\$19	\$18	\$18	\$16	\$14	\$12	\$10	\$9
	30%	Current	\$45	\$41	\$37	\$35	\$33	\$31	\$28	\$26	\$24	\$24	\$23	\$22	\$21	\$19	\$16	\$12	\$11	\$10
		10yr ave.			\$39		\$35		\$29		\$25	\$23	\$23	\$22	\$21	\$19	\$17	\$14	\$12	\$11
	35%	Current	\$52	\$48	\$44	\$40	\$38	\$36	\$33	\$30	\$29	\$28	\$27	\$26	\$25	\$22	\$19	\$14	\$12	\$11
		10yr ave.			\$45		\$41		\$34		\$29	\$27	\$26	\$26	\$25	\$22	\$20	\$16	\$14	\$13
	40%	Current	\$59	\$54	\$50	\$46	\$44	\$42	\$38	\$34	\$33	\$32	\$31	\$30	\$28	\$25	\$22	\$16	\$14	\$13
		10yr ave.			\$52		\$47		\$38		\$33	\$31	\$30	\$29	\$28	\$25	\$23	\$19	\$16	\$15
	45%	Current	\$67	\$61	\$56	\$52	\$49	\$47	\$42	\$39	\$37	\$36	\$35	\$34	\$32	\$29	\$24	\$18	\$16	\$14
		10yr ave.			\$58		\$52		\$43		\$37	\$35	\$34	\$33	\$32	\$28	\$26	\$21	\$18	\$17
	50%	Current	\$74	\$68	\$62	\$58	\$55	\$52	\$47	\$43	\$41	\$40	\$38	\$37	\$35	\$32	\$27	\$20	\$18	\$16
		10yr ave.			\$65		\$58		\$48		\$41	\$39	\$38	\$37	\$35	\$32	\$29	\$23	\$20	\$19
	55%	Current	\$82	\$75	\$69	\$63	\$60	\$57	\$52	\$47	\$45	\$44	\$42	\$41	\$39	\$35	\$30	\$22	\$19	\$18
		10yr ave.			\$71		\$64		\$53		\$45	\$43	\$41	\$40	\$39	\$35	\$32	\$26	\$23	\$20
	60%	Current	\$89	\$82	\$75	\$69	\$66	\$62	\$57	\$52	\$49	\$48	\$46	\$45	\$42	\$38	\$33	\$24	\$21	\$19
		10yr ave.			\$78		\$70		\$58		\$49	\$46	\$45	\$44	\$42	\$38	\$35	\$28	\$25	\$22
65%	Current	\$97	\$88	\$81	\$75	\$71	\$68	\$61	\$56	\$53	\$52	\$50	\$48	\$46	\$41	\$35	\$26	\$23	\$21	
	10yr ave.			\$84		\$76		\$62		\$53	\$50	\$49	\$48	\$46	\$41	\$38	\$30	\$27	\$24	
70%	Current	\$104	\$95	\$87	\$81	\$77	\$73	\$66	\$60	\$57	\$56	\$54	\$52	\$49	\$44	\$38	\$28	\$25	\$22	
	10yr ave.			\$90		\$82		\$67		\$57	\$54	\$53	\$51	\$49	\$44	\$41	\$33	\$29	\$26	
75%	Current	\$111	\$102	\$93	\$86	\$82	\$78	\$71	\$65	\$61	\$60	\$58	\$56	\$53	\$48	\$41	\$30	\$27	\$24	
	10yr ave.			\$97		\$87		\$72		\$61	\$58	\$57	\$55	\$53	\$47	\$43	\$35	\$31	\$28	
80%	Current	\$119	\$109	\$100	\$92	\$88	\$83	\$75	\$69	\$65	\$64	\$61	\$60	\$56	\$51	\$43	\$32	\$28	\$25	
	10yr ave.			\$103		\$93		\$77		\$65	\$62	\$60	\$59	\$56	\$51	\$46	\$38	\$33	\$30	
85%	Current	\$126	\$116	\$106	\$98	\$93	\$88	\$80	\$73	\$69	\$68	\$65	\$63	\$60	\$54	\$46	\$34	\$30	\$27	
	10yr ave.			\$110		\$99		\$82		\$70	\$66	\$64	\$63	\$60	\$54	\$49	\$40	\$35	\$32	

The above shows estimated returns per head for skirted fleece wool. These figures do not take into account the value of skirtings and oddments and do not take into account discounts that may apply for faults under individual circumstances. These figures are based on a market index of 100% and should be used as a guide only. Returns over \$30 / head for fleece wool are highlighted.

Source: Australian Wool Exchange, Australian Wool Innovation, Sydney Futures Exchange, x-rates.com

Disclaimer: While all due care has been taken in the preparation of this document, no warranty is made as to its accuracy, reliability or completeness. To the extent permitted by law neither Jemalong or their sources including subsidiaries and staff, accept liability to any person for loss or damage arising from the use of this information.



Table 19: Returns pr head for skirted fleece wool.

Skirted FLC Weight 3 Kg		Micron																		
		16	16.5	17	17.5	18	18.5	19	19.5	20	21	22	23	24	25	26	28	30	32	
Yield (Sch Dry)	25% Current	\$37	\$34	\$31	\$29	\$27	\$26	\$24	\$22	\$20	\$20	\$19	\$19	\$18	\$18	\$16	\$14	\$10	\$9	\$8
	10yr ave.			\$32		\$29		\$24		\$20	\$19	\$19	\$18	\$18	\$16	\$14	\$12	\$10	\$9	
	30% Current	\$45	\$41	\$37	\$35	\$33	\$31	\$28	\$26	\$24	\$24	\$23	\$22	\$21	\$19	\$16	\$12	\$11	\$10	
	10yr ave.			\$39		\$35		\$29		\$25	\$23	\$23	\$22	\$21	\$19	\$17	\$14	\$12	\$11	
	35% Current	\$52	\$48	\$44	\$40	\$38	\$36	\$33	\$30	\$29	\$28	\$27	\$26	\$25	\$22	\$19	\$14	\$12	\$11	
	10yr ave.			\$45		\$41		\$34		\$29	\$27	\$26	\$26	\$25	\$22	\$20	\$16	\$14	\$13	
	40% Current	\$59	\$54	\$50	\$46	\$44	\$42	\$38	\$34	\$33	\$32	\$31	\$30	\$28	\$25	\$22	\$16	\$14	\$13	
	10yr ave.			\$52		\$47		\$38		\$33	\$31	\$30	\$29	\$28	\$25	\$23	\$19	\$16	\$15	
	45% Current	\$67	\$61	\$56	\$52	\$49	\$47	\$42	\$39	\$37	\$36	\$35	\$34	\$32	\$29	\$24	\$18	\$16	\$14	
	10yr ave.			\$58		\$52		\$43		\$37	\$35	\$34	\$33	\$32	\$28	\$26	\$21	\$18	\$17	
	50% Current	\$74	\$68	\$62	\$58	\$55	\$52	\$47	\$43	\$41	\$40	\$38	\$37	\$35	\$32	\$27	\$20	\$18	\$16	
	10yr ave.			\$65		\$58		\$48		\$41	\$39	\$38	\$37	\$35	\$32	\$29	\$23	\$20	\$19	
	55% Current	\$82	\$75	\$69	\$63	\$60	\$57	\$52	\$47	\$45	\$44	\$42	\$41	\$39	\$35	\$30	\$22	\$19	\$18	
	10yr ave.			\$71		\$64		\$53		\$45	\$43	\$41	\$40	\$39	\$35	\$32	\$26	\$23	\$20	
60% Current	\$89	\$82	\$75	\$69	\$66	\$62	\$57	\$52	\$49	\$48	\$46	\$45	\$42	\$38	\$33	\$24	\$21	\$19		
10yr ave.			\$78		\$70		\$58		\$49	\$46	\$45	\$44	\$42	\$38	\$35	\$28	\$25	\$22		
65% Current	\$97	\$88	\$81	\$75	\$71	\$68	\$61	\$56	\$53	\$52	\$50	\$48	\$46	\$41	\$35	\$26	\$23	\$21		
10yr ave.			\$84		\$76		\$62		\$53	\$50	\$49	\$48	\$46	\$41	\$38	\$30	\$27	\$24		
70% Current	\$104	\$95	\$87	\$81	\$77	\$73	\$66	\$60	\$57	\$56	\$54	\$52	\$49	\$44	\$38	\$28	\$25	\$22		
10yr ave.			\$90		\$82		\$67		\$57	\$54	\$53	\$51	\$49	\$44	\$41	\$33	\$29	\$26		
75% Current	\$111	\$102	\$93	\$86	\$82	\$78	\$71	\$65	\$61	\$60	\$58	\$56	\$53	\$48	\$41	\$30	\$27	\$24		
10yr ave.			\$97		\$87		\$72		\$61	\$58	\$57	\$55	\$53	\$47	\$43	\$35	\$31	\$28		
80% Current	\$119	\$109	\$100	\$92	\$88	\$83	\$75	\$69	\$65	\$64	\$61	\$60	\$56	\$51	\$43	\$32	\$28	\$25		
10yr ave.			\$103		\$93		\$77		\$65	\$62	\$60	\$59	\$56	\$51	\$46	\$38	\$33	\$30		
85% Current	\$126	\$116	\$106	\$98	\$93	\$88	\$80	\$73	\$69	\$68	\$65	\$63	\$60	\$54	\$46	\$34	\$30	\$27		
10yr ave.			\$110		\$99		\$82		\$70	\$66	\$64	\$63	\$60	\$54	\$49	\$40	\$35	\$32		

The above shows estimated returns per head for skirted fleece wool. These figures do not take into account the value of skirtings and oddments and do not take into account discounts that may apply for faults under individual circumstances. These figures are based on a market index of 100% and should be used as a guide only. Returns over \$30 / head for fleece wool are highlighted.

Source: Australian Wool Exchange, Australian Wool Innovation, Sydney Futures Exchange, x-rates.com

Disclaimer: While all due care has been taken in the preparation of this document, no warranty is made as to its accuracy, reliability or completeness. To the extent permitted by law neither Jemalong or their sources including subsidiaries and staff, accept liability to any person for loss or damage arising from the use of this information.



Table 20: Returns pr head for skirted fleece wool.

Skirted FLC Weight 2 Kg			Micron																	
			16	16.5	17	17.5	18	18.5	19	19.5	20	21	22	23	24	25	26	28	30	32
Yield (Sch Dry)	25%	Current	\$37	\$34	\$31	\$29	\$27	\$26	\$24	\$22	\$20	\$20	\$19	\$19	\$18	\$16	\$14	\$10	\$9	\$8
		10yr ave.			\$32		\$29		\$24		\$20	\$19	\$19	\$18	\$18	\$16	\$14	\$12	\$10	\$9
	30%	Current	\$45	\$41	\$37	\$35	\$33	\$31	\$28	\$26	\$24	\$24	\$23	\$22	\$21	\$19	\$16	\$12	\$11	\$10
		10yr ave.			\$39		\$35		\$29		\$25	\$23	\$23	\$22	\$21	\$19	\$17	\$14	\$12	\$11
	35%	Current	\$52	\$48	\$44	\$40	\$38	\$36	\$33	\$30	\$29	\$28	\$27	\$26	\$25	\$22	\$19	\$14	\$12	\$11
		10yr ave.			\$45		\$41		\$34		\$29	\$27	\$26	\$26	\$25	\$22	\$20	\$16	\$14	\$13
	40%	Current	\$59	\$54	\$50	\$46	\$44	\$42	\$38	\$34	\$33	\$32	\$31	\$30	\$28	\$25	\$22	\$16	\$14	\$13
		10yr ave.			\$52		\$47		\$38		\$33	\$31	\$30	\$29	\$28	\$25	\$23	\$19	\$16	\$15
	45%	Current	\$67	\$61	\$56	\$52	\$49	\$47	\$42	\$39	\$37	\$36	\$35	\$34	\$32	\$29	\$24	\$18	\$16	\$14
		10yr ave.			\$58		\$52		\$43		\$37	\$35	\$34	\$33	\$32	\$28	\$26	\$21	\$18	\$17
	50%	Current	\$74	\$68	\$62	\$58	\$55	\$52	\$47	\$43	\$41	\$40	\$38	\$37	\$35	\$32	\$27	\$20	\$18	\$16
		10yr ave.			\$65		\$58		\$48		\$41	\$39	\$38	\$37	\$35	\$32	\$29	\$23	\$20	\$19
	55%	Current	\$82	\$75	\$69	\$63	\$60	\$57	\$52	\$47	\$45	\$44	\$42	\$41	\$39	\$35	\$30	\$22	\$19	\$18
		10yr ave.			\$71		\$64		\$53		\$45	\$43	\$41	\$40	\$39	\$35	\$32	\$26	\$23	\$20
	60%	Current	\$89	\$82	\$75	\$69	\$66	\$62	\$57	\$52	\$49	\$48	\$46	\$45	\$42	\$38	\$33	\$24	\$21	\$19
		10yr ave.			\$78		\$70		\$58		\$49	\$46	\$45	\$44	\$42	\$38	\$35	\$28	\$25	\$22
65%	Current	\$97	\$88	\$81	\$75	\$71	\$68	\$61	\$56	\$53	\$52	\$50	\$48	\$46	\$41	\$35	\$26	\$23	\$21	
	10yr ave.			\$84		\$76		\$62		\$53	\$50	\$49	\$48	\$46	\$41	\$38	\$30	\$27	\$24	
70%	Current	\$104	\$95	\$87	\$81	\$77	\$73	\$66	\$60	\$57	\$56	\$54	\$52	\$49	\$44	\$38	\$28	\$25	\$22	
	10yr ave.			\$90		\$82		\$67		\$57	\$54	\$53	\$51	\$49	\$44	\$41	\$33	\$29	\$26	
75%	Current	\$111	\$102	\$93	\$86	\$82	\$78	\$71	\$65	\$61	\$60	\$58	\$56	\$53	\$48	\$41	\$30	\$27	\$24	
	10yr ave.			\$97		\$87		\$72		\$61	\$58	\$57	\$55	\$53	\$47	\$43	\$35	\$31	\$28	
80%	Current	\$119	\$109	\$100	\$92	\$88	\$83	\$75	\$69	\$65	\$64	\$61	\$60	\$56	\$51	\$43	\$32	\$28	\$25	
	10yr ave.			\$103		\$93		\$77		\$65	\$62	\$60	\$59	\$56	\$51	\$46	\$38	\$33	\$30	
85%	Current	\$126	\$116	\$106	\$98	\$93	\$88	\$80	\$73	\$69	\$68	\$65	\$63	\$60	\$54	\$46	\$34	\$30	\$27	
	10yr ave.			\$110		\$99		\$82		\$70	\$66	\$64	\$63	\$60	\$54	\$49	\$40	\$35	\$32	

The above shows estimated returns per head for skirted fleece wool. These figures do not take into account the value of skirtings and oddments and do not take into account discounts that may apply for faults under individual circumstances. These figures are based on a market index of 100% and should be used as a guide only. Returns over \$30 / head for fleece wool are highlighted.

Source: Australian Wool Exchange, Australian Wool Innovation, Sydney Futures Exchange, x-rates.com

Disclaimer: While all due care has been taken in the preparation of this document, no warranty is made as to its accuracy, reliability or completeness. To the extent permitted by law neither Jemalong or their sources including subsidiaries and staff, accept liability to any person for loss or damage arising from the use of this information.