



Table 1: Northern Region Micron Price Guides

CURRENT MARKET				PERCENTILES		AVERAGES						12 MONTH COMPARISONS								TRADING RANGE		
Mic.	24/03/2011	17/03/2011	3 year Average			Now compared to 3yr ave	10 year Average	Now compared to 10yr ave	23/03/2010 This time Last Year	Now compared to Last Year	12 Month Low	Now compared to Low	12 Month High	Now compared to High	Clean c/kg 12 Mth	3 Year	10 Year					
Price Guides	Current Price	Weekly Change		3yr	10yr																	
NRI	1442	+15 1.0%	100%	100%	921	+521 57%	884	+558 63%	953	+489 51%	890	+552 62%	1442	0 0%	552	693	784					
16*	2730	+50 1.8%	100%		1709	+1021 60%			1590	+1140 72%	1510	+1220 81%	2730	0 0%	1220	1345						
16.5*	2640	0	100%		1573	+1067 68%			1450	+1190 82%	1395	+1245 89%	2640	0 0%	1245	1384						
17*	2520	0	99%	99%	1447	+1073 74%	1398	+1122 80%	1290	+1230 95%	1230	+1290 105%	2530	-10 0%	1300	1358	1559					
17.5*	2360	+10 0.4%	100%		1371	+989 72%			1225	+1135 93%	1175	+1185 101%	2360	0 0%	1185	1273						
18	2163	-13 -0.6%	97%	97%	1302	+861 66%	1280	+883 69%	1197	+966 81%	1134	+1029 91%	2193	-30 -1%	1059	1158	1392					
18.5	1939	-6 -0.3%	97%		1215	+724 60%			1159	+780 67%	1088	+851 78%	1963	-24 -1%	875	992						
19	1705	+13 0.8%	100%	100%	1102	+603 55%	1073	+632 59%	1105	+600 54%	1031	+674 65%	1705	0 0%	674	811	901					
19.5	1518	+20 1.3%	100%		1000	+518 52%			1034	+484 47%	952	+566 59%	1518	0 0%	566	704						
20	1393	+33 2.4%	100%	99%	921	+472 51%	925	+468 51%	983	+410 42%	904	+489 54%	1393	0 0%	489	653	717					
21	1321	+39 3.0%	100%	99%	888	+433 49%	883	+438 50%	967	+354 37%	878	+443 50%	1321	0 0%	443	634	737					
22	1312	+49 3.7%	100%	99%	865	+447 52%	860	+452 53%	949	+363 38%	847	+465 55%	1312	0 0%	465	637	732					
23	1291	+68 5.3%	100%	99%	841	+450 54%	838	+453 54%	937	+354 38%	827	+464 56%	1291	0 0%	464	628	719					
24	1170	+57 4.9%	100%	96%	793	+377 48%	801	+369 46%	863	+307 36%	780	+390 50%	1170	0 0%	390	523	691					
25	1048	+46 4.4%	100%	94%	684	+364 53%	718	+330 46%	700	+348 50%	660	+388 59%	1048	0 0%	388	482	635					
26	928	+35 3.8%	100%	93%	615	+313 51%	657	+271 41%	599	+329 55%	577	+351 61%	928	0 0%	351	424	573					
28	734	+10 1.4%	100%	92%	474	+260 55%	525	+209 40%	457	+277 61%	436	+298 68%	734	0 0%	298	315	465					
30	669	-1 -0.1%	99%	99%	415	+254 61%	458	+211 46%	403	+266 66%	382	+287 75%	670	-1 0%	288	321	385					
32	629	-1 -0.2%	99%	98%	364	+265 73%	415	+214 52%	353	+276 78%	349	+280 80%	638	-9 -1%	289	325	372					
MC	814	-3 -0.4%	99%	99%	555	+259 47%	507	+307 61%	681	+133 20%	561	+253 45%	818	-4 0%	257	426	438					

Note:

* Due to the irregular market quoting for some fine wool categories, figures shown relating to micron categories below 18 micron are an estimate based on the AWEX Premium & Discounts Report & other available information.

* For any category, where there is insufficient quantity offered to enable AWEX to quote, a quote will be provided based on the best available information.

* 10 Year data is not available for some micron categories, which may result in blank spaces in the table above.

Definitions:

* A Percentile, is a value on a scale of one hundred that indicates the percent of a distribution that is equal to or below it. In general a percentile between 25% and 75% is considered normal, a percentile below 25% is considered below normal and a percentile above 75% is considered above normal.

Three and ten year percentiles shown in the table above, detail the period of time during the past 3 & 10 years that the market has traded either at or below its current price.

The higher the percentile, the stronger the market.

Source: Australian Wool Exchange, Australian Wool Innovation, Sydney Futures Exchange, x-rates.com

Disclaimer: While all due care has been taken in the preparation of this document, no warranty is made as to its accuracy, reliability or completeness. To the extent permitted by law neither Jemalong or their sources including subsidiaries and staff, accept liability to any person for loss or damage arising from the use of this information.



MARKET COMMENTARY

One Australian Dollar = \$ 1.01 US, as of 24/03/2011

NORTHERN REGION –Sale Week 38/10 (48,812 bales offered nationally)

On Wednesday - The medium to broader ranges were in favour with gains of 30-40 cents for 20 to 21 microns (21 micron broke the 1300 barrier, the highest since Aug 2002). Fine microns continue to ease as the selection fades, while 19 to 19.5 microns gained 10-20 cents. The highest increases for the day were for 22 & 23 micron which jumped 50-60 cents. In the skirtings, a high passed-in rate of 27% was indicative of the large volume of cotted & Jowly types on offer. None the less most descriptions attracted good support and ended the day fully firm. Locks & crutchings also closed firm, while stains dropped 20 cents. 27 to 29 micron crossbred improved by 5-10 cents while 30

On Thursday - In the fleece, a small offering left the market fully firm, with 18 to 21 microns tending in sellers favour. Better length & low Vm skirtings were 10-20 cents dearer, while others were unchanged. Locks & crutchings were solid and remained unchanged while stains regained some of yesterdays losses to close 10 cents dearer. Fine crossbreds lifted 20 cents while the broader microns were firm tending in sellers favour.

Northern Region Indicator (Monthly Averages)

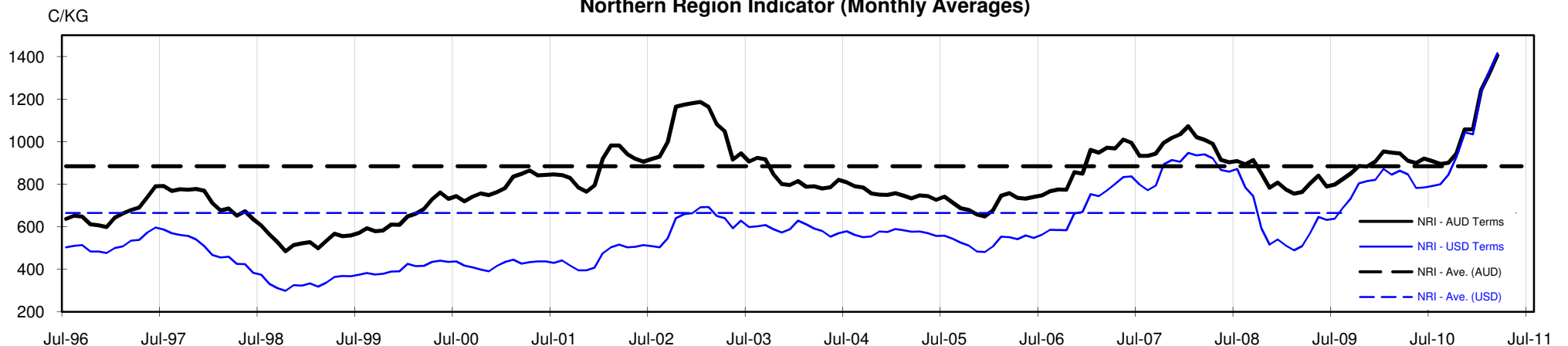




Table 4: 19 micron SFE

Wednesday, 23 March 2011

Delivery Mth	Apr-11	Jun-11	Aug-11	Oct-11	Dec-11	Feb-11	Apr-12	Jun-12	Aug-12
19 Micron SFE	1625	1645	1620	1582	1547	1515	1445	1450	1450
Average	1155	1167	1176	1184	1211	1114	1293	1380	1409
Maximum	1625	1645	1620	1582	1547	1645	1450	1450	1450
Minimum	1025	1034	1034	1034	1034	983	1106	1210	1385

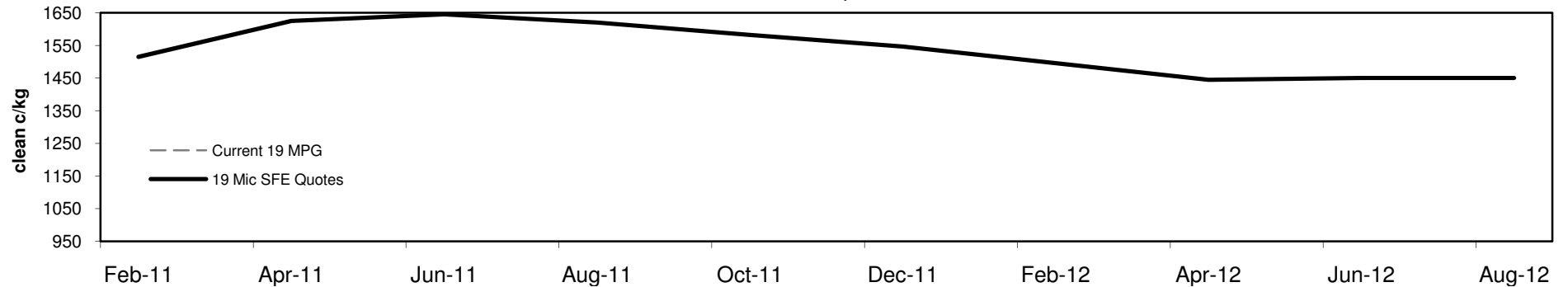
Table 5: 19 micron SFE, as a percentile of the 19 micron MPG

3 Year Percentile	95%	97%	95%	94%	93%	92%	92%	92%	92%
10 Year Percentile	98%	99%	98%	98%	98%	97%	97%	97%	97%

Table 6: 19 micron SFE, compared to MPG

Current 19 MPG	-80	-5%	-60	-4%	-85	-5%	-123	-7%	-158	-9%	-190	-11%	-260	-15%	-255	-15%	-255	-15%
19 MPG, 1 Year Average	+385	31%	+405	33%	+380	31%	+342	28%	+307	25%	+275	22%	+205	17%	+210	17%	+210	17%
19 MPG, 3 Year Average	+523	47%	+543	49%	+518	47%	+480	44%	+445	40%	+413	37%	+343	31%	+348	32%	+348	32%
19 MPG, 10 Year Average	+552	51%	+572	53%	+547	51%	+509	47%	+474	44%	+442	41%	+372	35%	+377	35%	+377	35%

19 MICRON SFE, QUOTES



19 Micron SFE, Front month movement

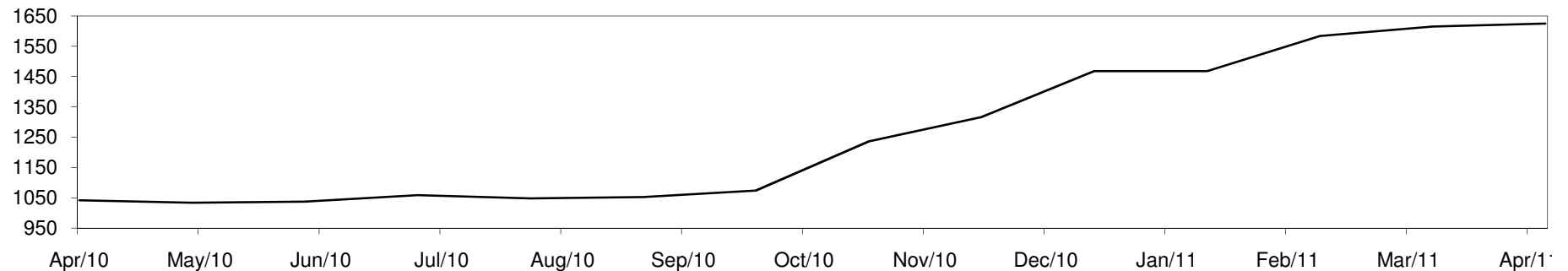




Table 7: 21 micron SFE

Wednesday, 23 March 2011

Delivery Mth	Apr-11	Jun-11	Aug-11	Oct-11	Dec-11	Feb-11	Apr-12	Jun-12	Aug-12
21 Micron SFE	1325	1315	1279	1230	1194	1093	1149	1093	1093
Average	982	984	978	972	975	962	1037	1040	1062
Maximum	1328	1317	1279	1230	1194	1315	1149	1093	1093
Minimum	891	890	880	880	880	860	934	990	1048

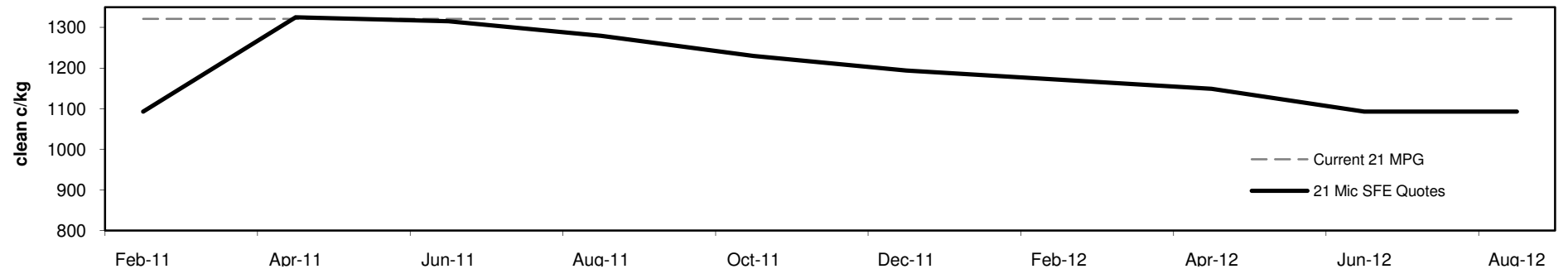
Table 8: 21 micron SFE, as a percentile of the 21 micron MPG

3 Year Percentile	100%	99%	99%	98%	98%	92%	95%	92%	92%
10 Year Percentile	99%	99%	99%	95%	93%	91%	92%	91%	91%

Table 9: 21 micron SFE, compared to MPG

Current 21 MPG	+4	0%	-6	0%	-42	-3%	-91	-7%	-127	-10%	-228	-17%	-172	-13%	-228	-17%	-228	-17%
21 MPG, 1 Year Average	+330	33%	+320	32%	+284	29%	+235	24%	+199	20%	+98	10%	+154	15%	+98	10%	+98	10%
21 MPG, 3 Year Average	+437	49%	+427	48%	+391	44%	+342	39%	+306	34%	+205	23%	+261	29%	+205	23%	+205	23%
21 MPG, 10 Year Average	+442	50%	+432	49%	+396	45%	+347	39%	+311	35%	+210	24%	+266	30%	+210	24%	+210	24%

21 MICRON SFE, QUOTES



21 Micron SFE, Front month movement

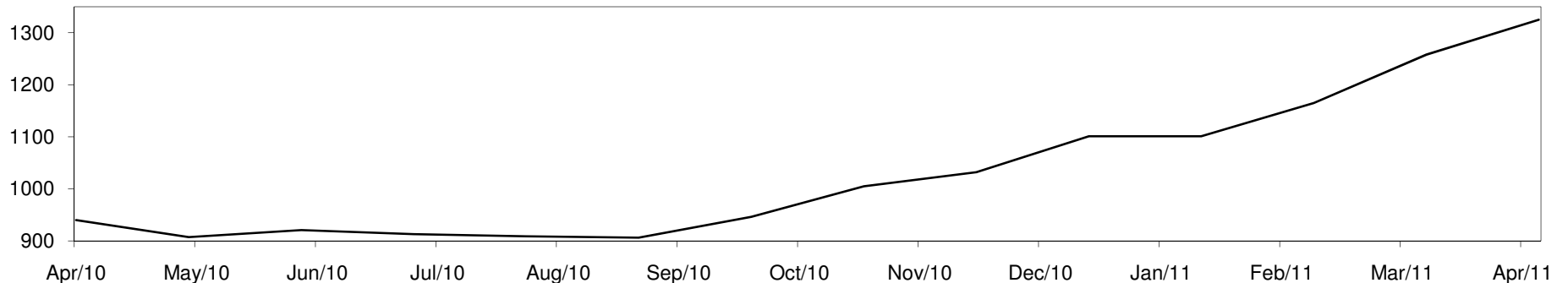




Table 10: 23 micron SFE

Wednesday, 23 March 2011

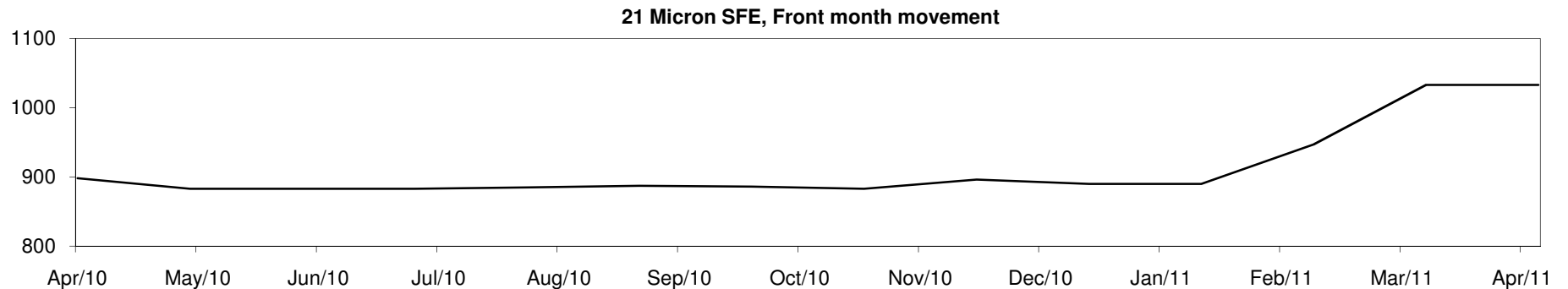
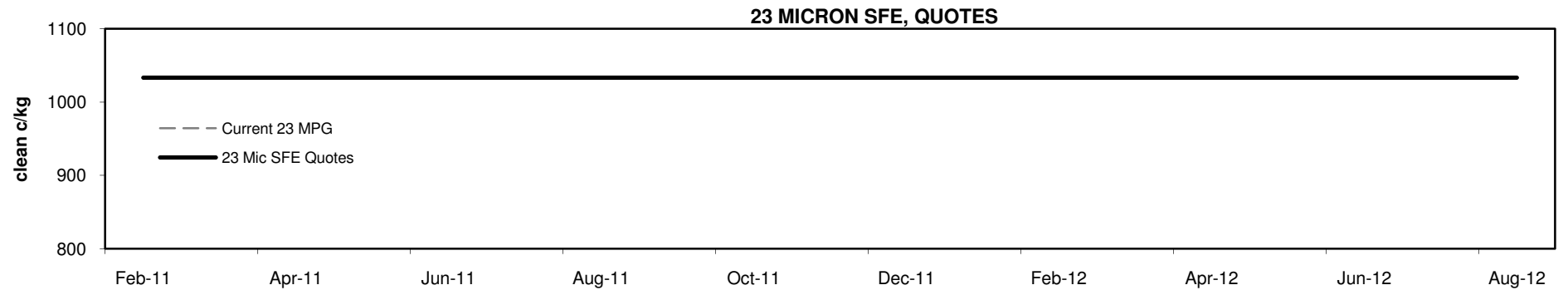
Delivery Mth	Apr-11	Jun-11	Aug-11	Oct-11	Dec-11	Feb-11	Apr-12	Jun-12	Aug-12
23 Micron SFE	1033	1033	1033	1033	1033	1033	1033	1033	1033
Average	887	899	905	902	906	870	925	951	1033
Maximum	1033	1033	1033	1033	1033	1033	1033	1033	1033
Minimum	803	803	883	883	883	760	883	890	1033

Table 11: 23 micron SFE, as a percentile of the 23 micron MPG

3 Year Percentile	94%	94%	94%	94%	94%	94%	94%	94%	94%
10 Year Percentile	91%	91%	91%	91%	91%	91%	91%	91%	91%

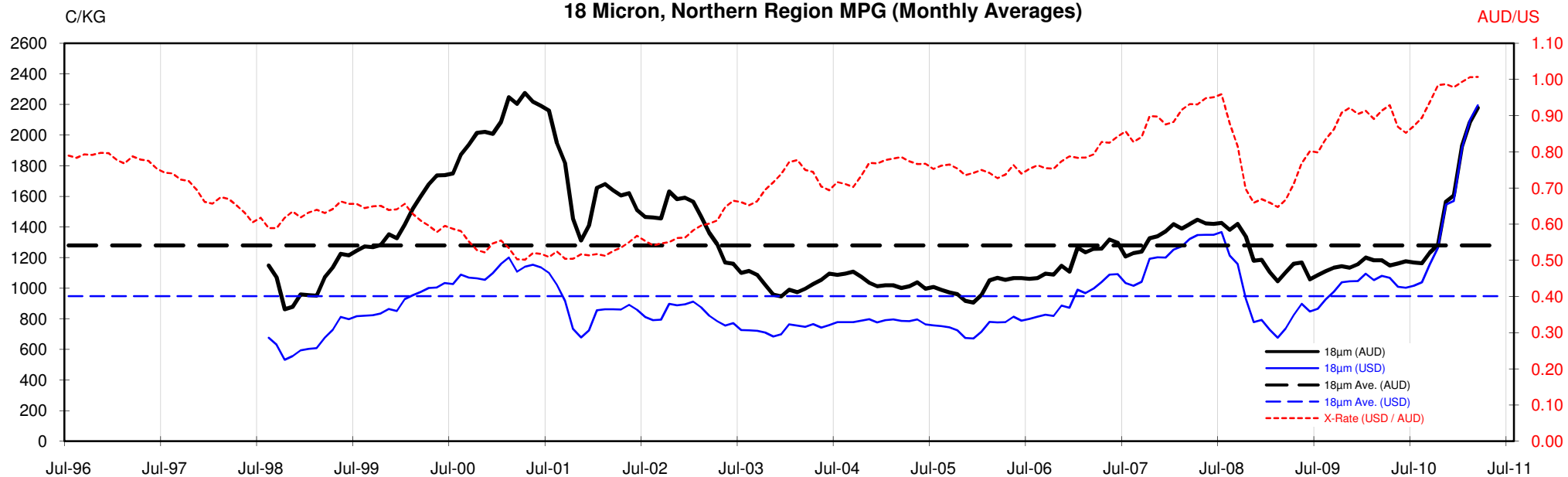
Table 12: 23 micron SFE, compared to MPG

Current 23 MPG	-258	-20%	-258	-20%	-258	-20%	-258	-20%	-258	-20%	-258	-20%	-258	-20%	-258	-20%	-258	-20%
23 MPG, 1 Year Average	+100	11%	+100	11%	+100	11%	+100	11%	+100	11%	+100	11%	+100	11%	+100	11%	+100	11%
23 MPG, 3 Year Average	+192	23%	+192	23%	+192	23%	+192	23%	+192	23%	+192	23%	+192	23%	+192	23%	+192	23%
23 MPG, 10 Year Average	+195	23%	+195	23%	+195	23%	+195	23%	+195	23%	+195	23%	+195	23%	+195	23%	+195	23%

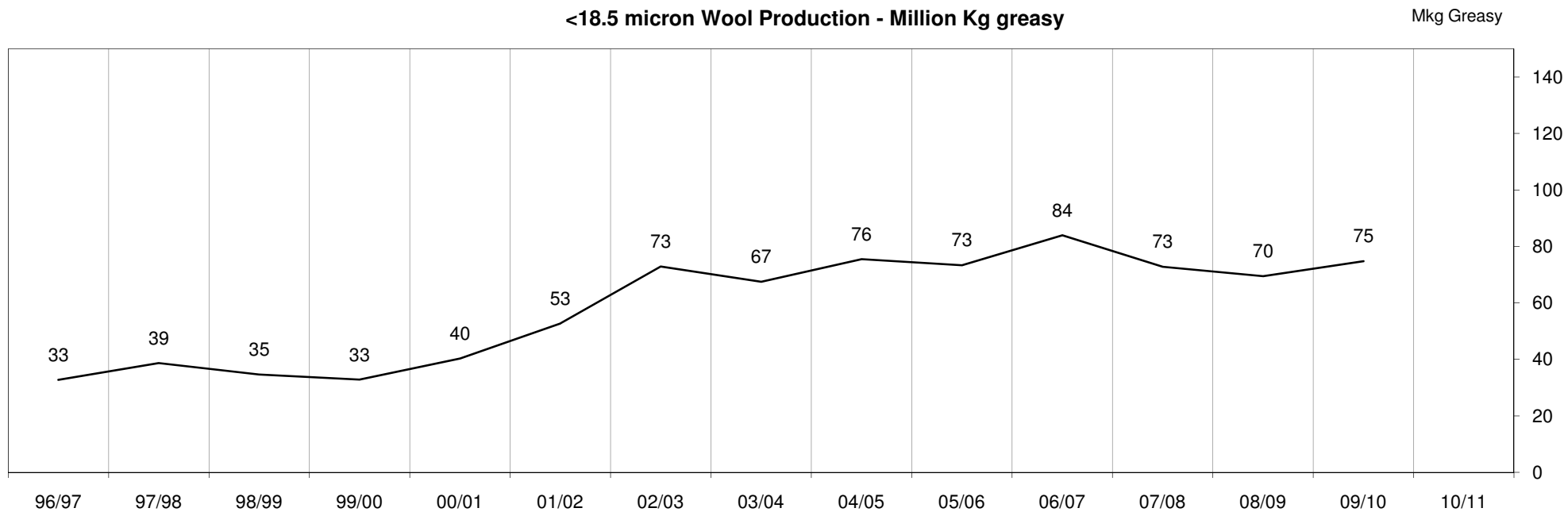


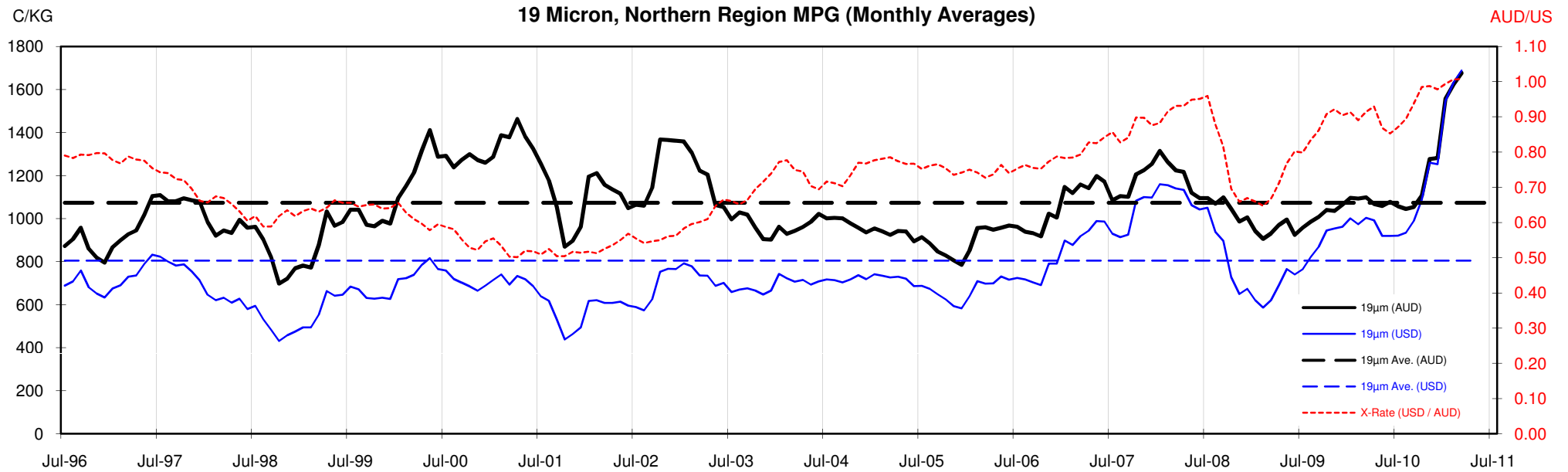


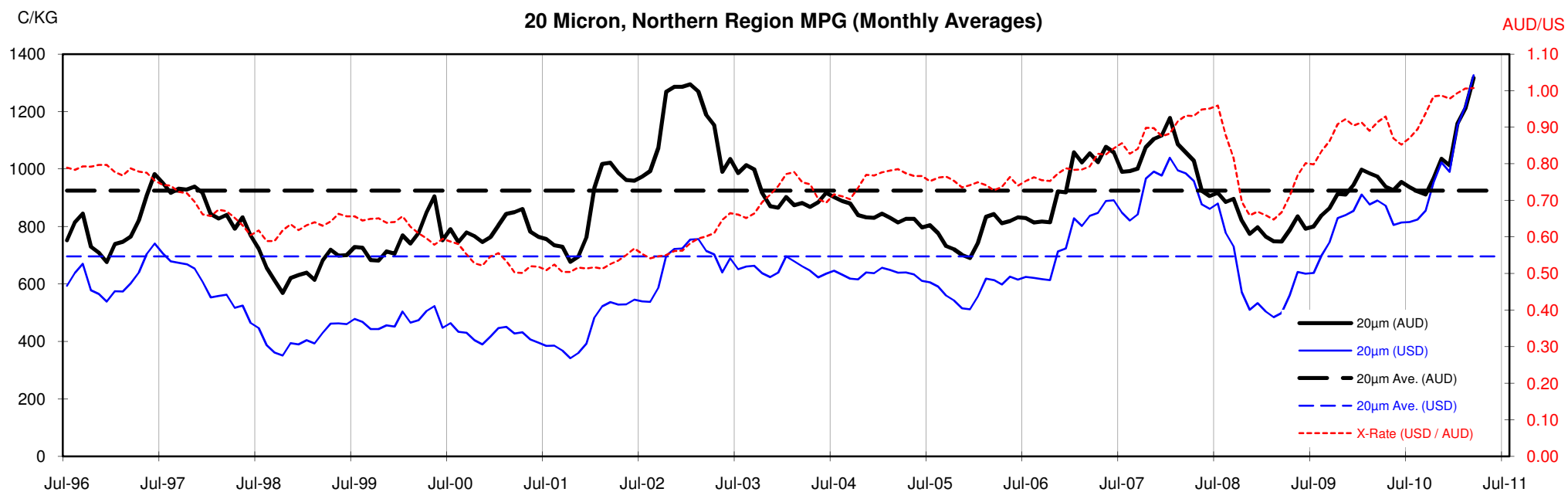
18 Micron, Northern Region MPG (Monthly Averages)

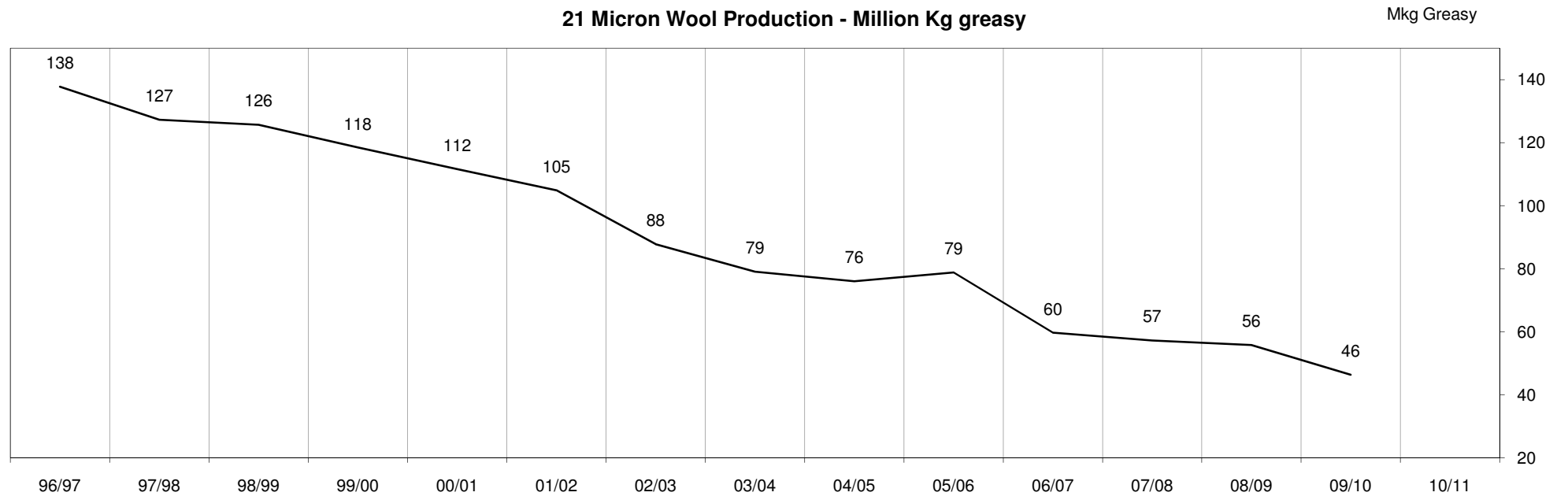
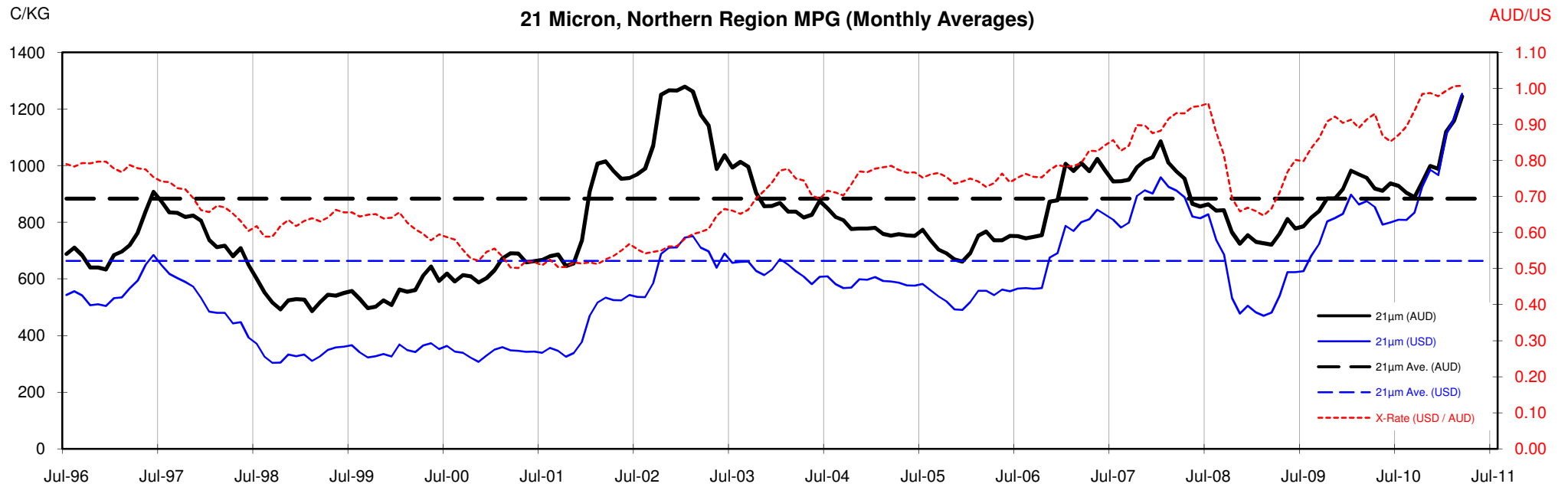


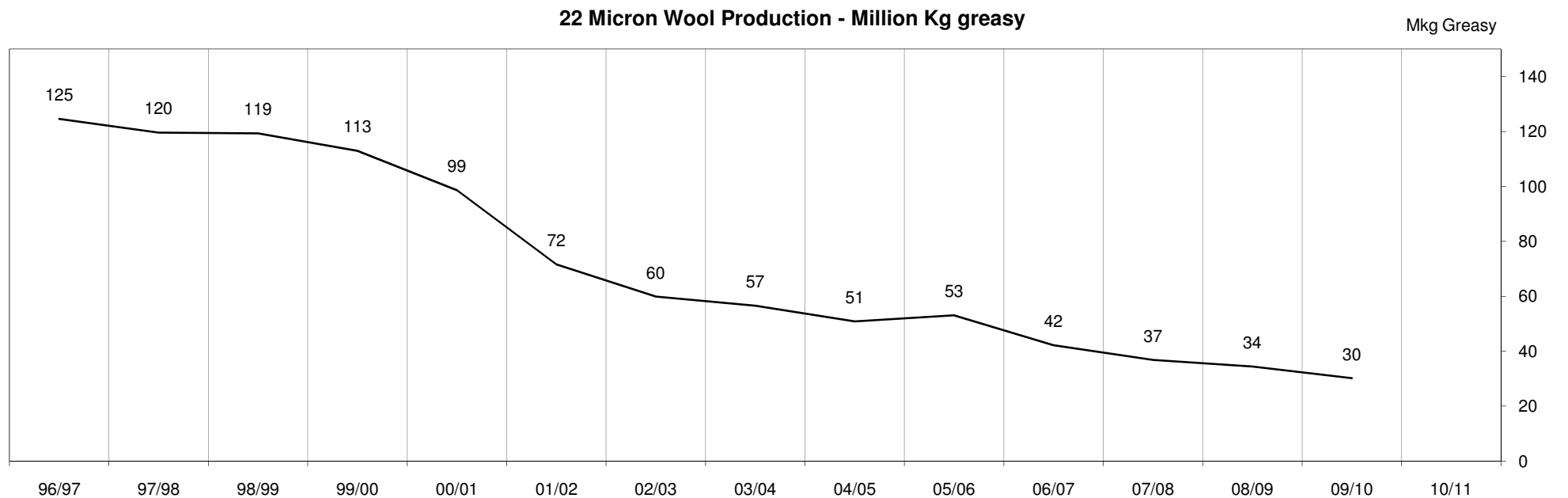
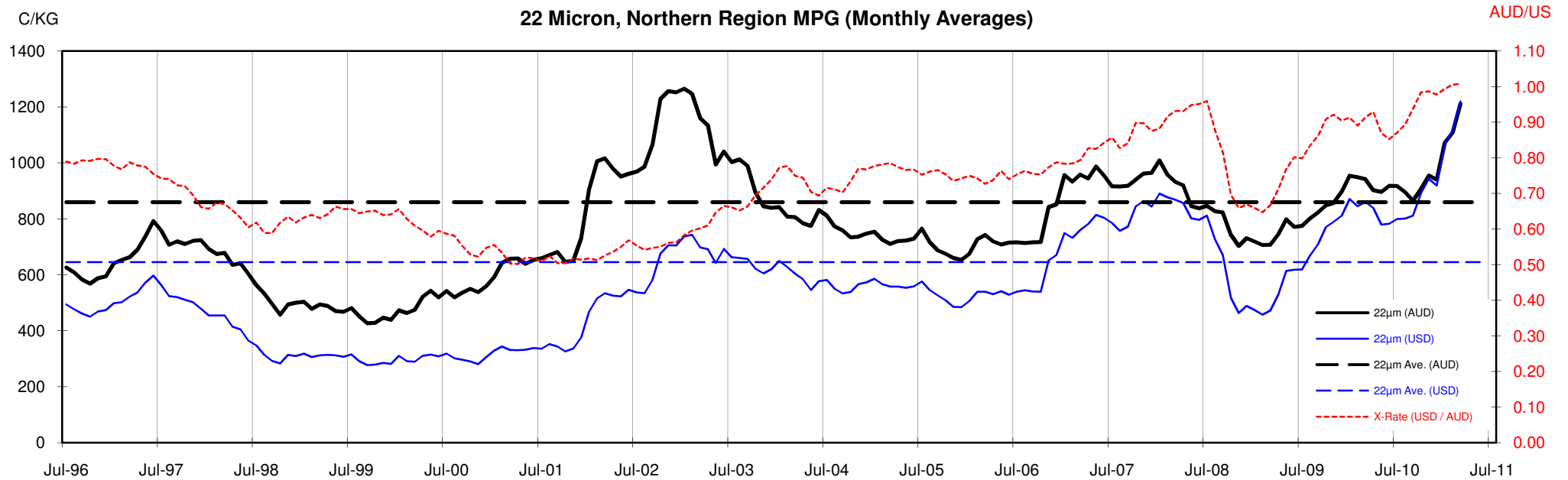
<18.5 micron Wool Production - Million Kg greasy

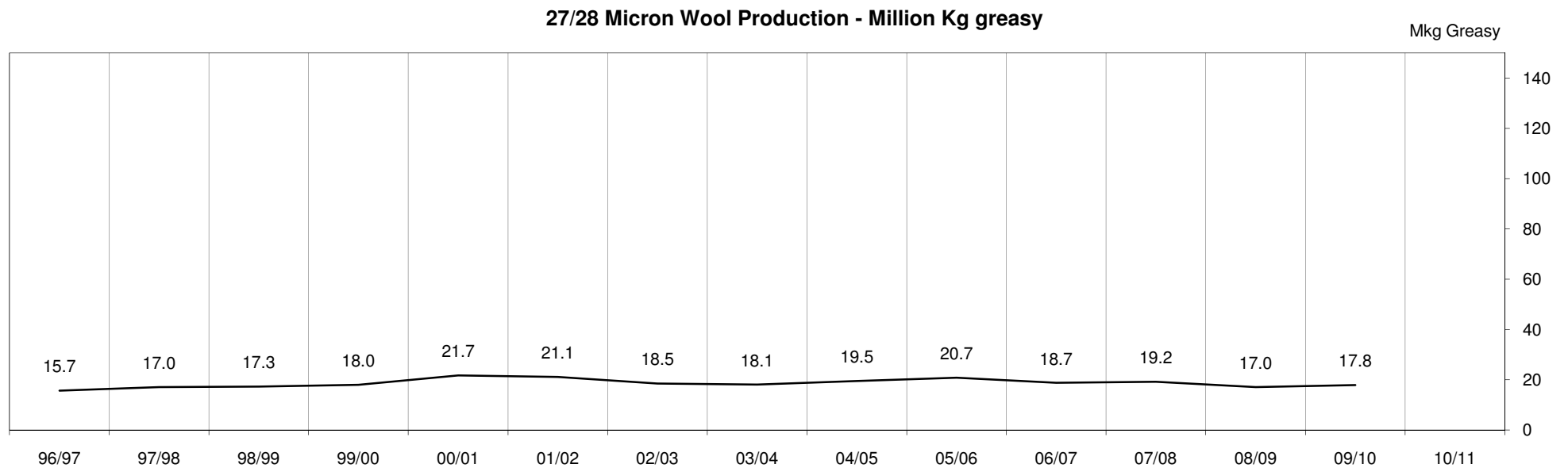
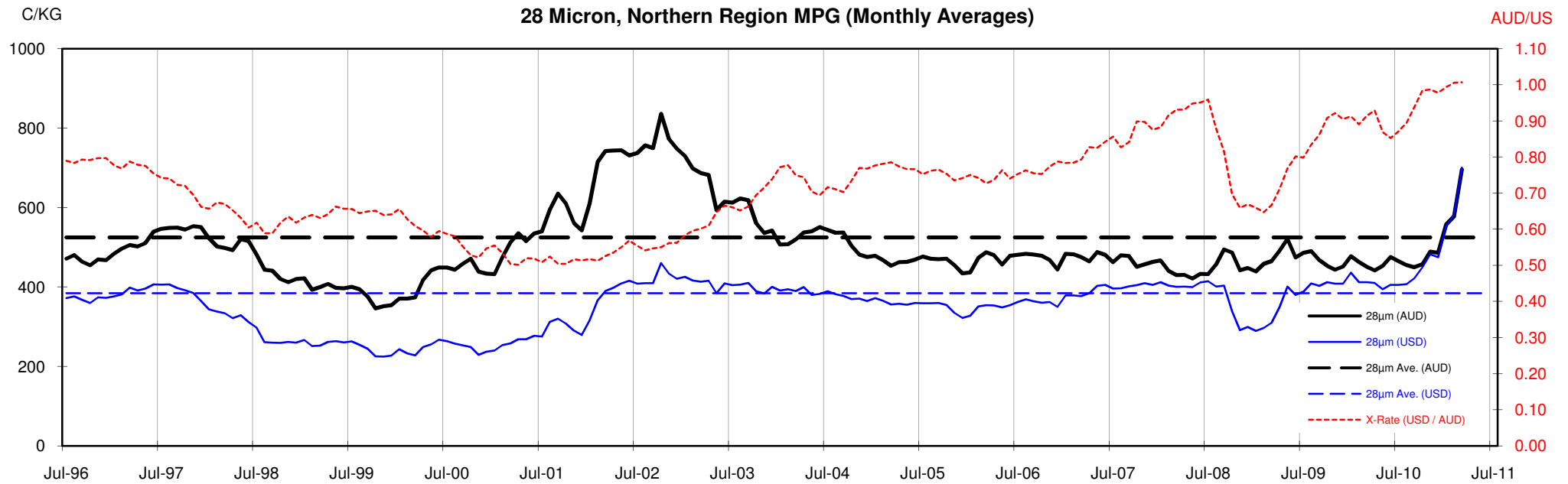












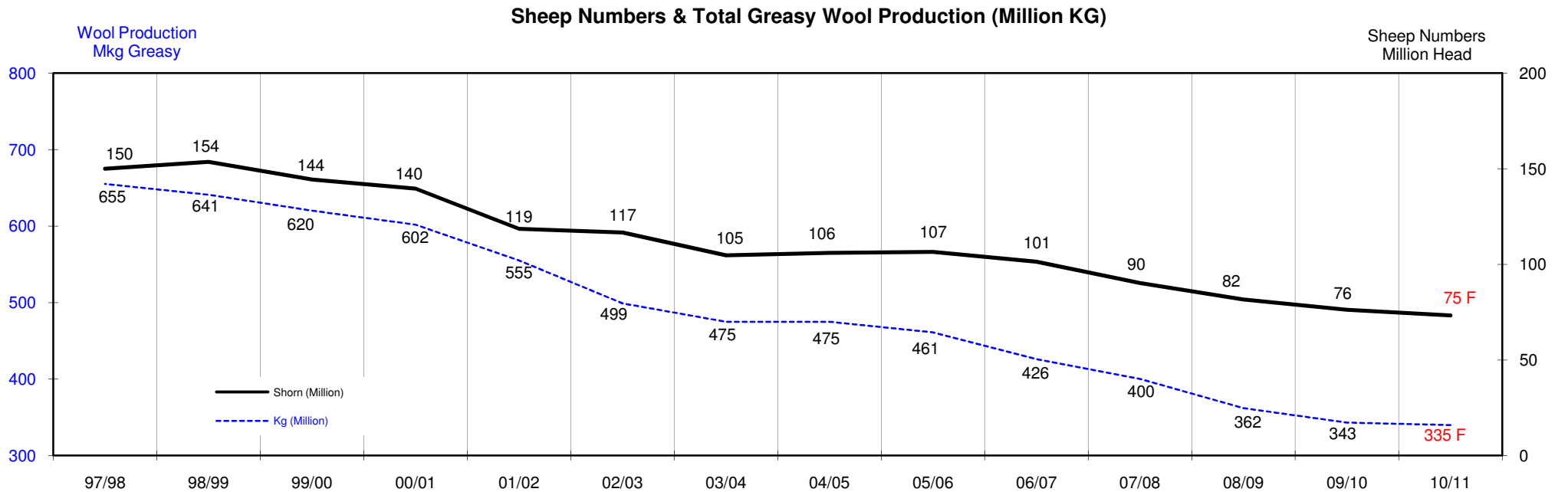
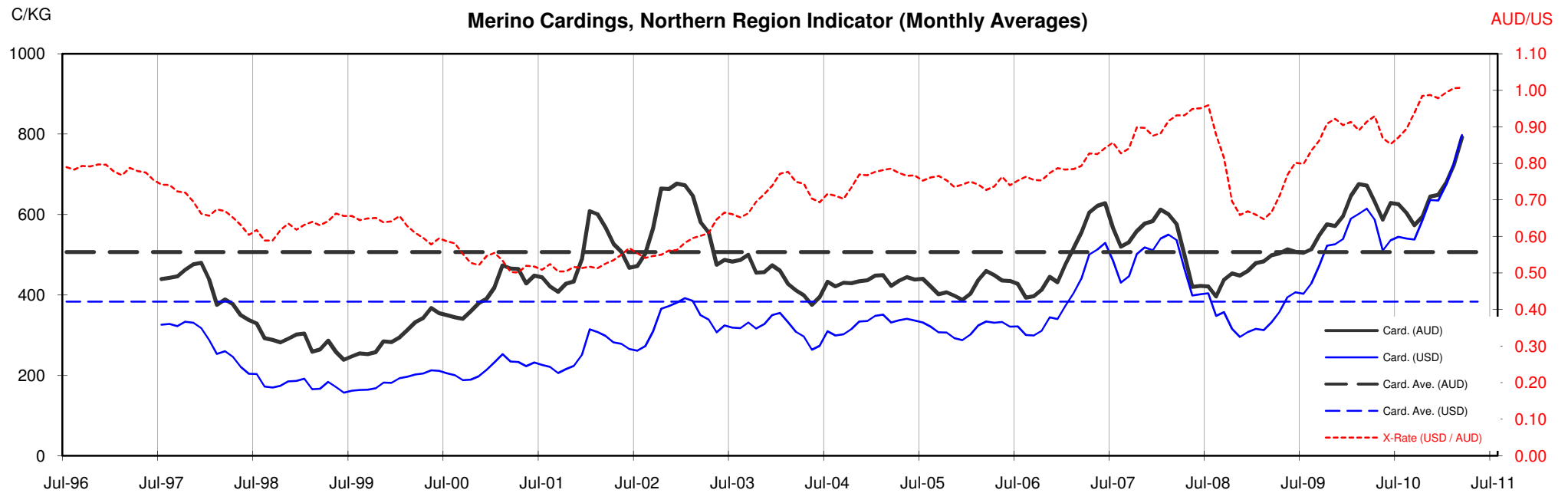




Table 13: Returns pr head for skirted fleece wool.

Skirted FLC Weight		Micron																	
9 Kg		16	16.5	17	17.5	18	18.5	19	19.5	20	21	22	23	24	25	26	28	30	32
Yield (Sch Dry)	25% Current	\$61	\$59	\$57	\$53	\$49	\$44	\$38	\$34	\$31	\$30	\$30	\$29	\$26	\$24	\$21	\$17	\$15	\$14
	10yr ave.			\$31		\$29		\$24		\$21	\$20	\$19	\$19	\$18	\$16	\$15	\$12	\$10	\$9
	30% Current	\$74	\$71	\$68	\$64	\$58	\$52	\$46	\$41	\$38	\$36	\$35	\$35	\$32	\$28	\$25	\$20	\$18	\$17
	10yr ave.			\$38		\$35		\$29		\$25	\$24	\$23	\$23	\$22	\$19	\$18	\$14	\$12	\$11
	35% Current	\$86	\$83	\$79	\$74	\$68	\$61	\$54	\$48	\$44	\$42	\$41	\$41	\$37	\$33	\$29	\$23	\$21	\$20
	10yr ave.			\$44		\$40		\$34		\$29	\$28	\$27	\$26	\$25	\$23	\$21	\$17	\$14	\$13
	40% Current	\$98	\$95	\$91	\$85	\$78	\$70	\$61	\$55	\$50	\$48	\$47	\$46	\$42	\$38	\$33	\$26	\$24	\$23
	10yr ave.			\$50		\$46		\$39		\$33	\$32	\$31	\$30	\$29	\$26	\$24	\$19	\$16	\$15
	45% Current	\$111	\$107	\$102	\$96	\$88	\$79	\$69	\$61	\$56	\$54	\$53	\$52	\$47	\$42	\$38	\$30	\$27	\$25
	10yr ave.			\$57		\$52		\$43		\$37	\$36	\$35	\$34	\$32	\$29	\$27	\$21	\$19	\$17
	50% Current	\$123	\$119	\$113	\$106	\$97	\$87	\$77	\$68	\$63	\$59	\$59	\$58	\$53	\$47	\$42	\$33	\$30	\$28
	10yr ave.			\$63		\$58		\$48		\$42	\$40	\$39	\$38	\$36	\$32	\$30	\$24	\$21	\$19
	55% Current	\$135	\$131	\$125	\$117	\$107	\$96	\$84	\$75	\$69	\$65	\$65	\$64	\$58	\$52	\$46	\$36	\$33	\$31
	10yr ave.			\$69		\$63		\$53		\$46	\$44	\$43	\$41	\$40	\$36	\$33	\$26	\$23	\$21
	60% Current	\$147	\$143	\$136	\$127	\$117	\$105	\$92	\$82	\$75	\$71	\$71	\$70	\$63	\$57	\$50	\$40	\$36	\$34
	10yr ave.			\$75		\$69		\$58		\$50	\$48	\$46	\$45	\$43	\$39	\$35	\$28	\$25	\$22
	65% Current	\$160	\$154	\$147	\$138	\$127	\$113	\$100	\$89	\$81	\$77	\$77	\$76	\$68	\$61	\$54	\$43	\$39	\$37
	10yr ave.			\$82		\$75		\$63		\$54	\$52	\$50	\$49	\$47	\$42	\$38	\$31	\$27	\$24
	70% Current	\$172	\$166	\$159	\$149	\$136	\$122	\$107	\$96	\$88	\$83	\$83	\$81	\$74	\$66	\$58	\$46	\$42	\$40
	10yr ave.			\$88		\$81		\$68		\$58	\$56	\$54	\$53	\$50	\$45	\$41	\$33	\$29	\$26
	75% Current	\$184	\$178	\$170	\$159	\$146	\$131	\$115	\$102	\$94	\$89	\$89	\$87	\$79	\$71	\$63	\$50	\$45	\$42
	10yr ave.			\$94		\$86		\$72		\$62	\$60	\$58	\$57	\$54	\$48	\$44	\$35	\$31	\$28
	80% Current	\$197	\$190	\$181	\$170	\$156	\$140	\$123	\$109	\$100	\$95	\$94	\$93	\$84	\$75	\$67	\$53	\$48	\$45
	10yr ave.			\$101		\$92		\$77		\$67	\$64	\$62	\$60	\$58	\$52	\$47	\$38	\$33	\$30
	85% Current	\$209	\$202	\$193	\$181	\$165	\$148	\$130	\$116	\$107	\$101	\$100	\$99	\$90	\$80	\$71	\$56	\$51	\$48
	10yr ave.			\$107		\$98		\$82		\$71	\$68	\$66	\$64	\$61	\$55	\$50	\$40	\$35	\$32

The above shows estimated returns per head for skirted fleece wool. These figures do not take into account the value of skirtings and oddments and do not take into account discounts that may apply for faults under individual circumstances. These figures are based on a market index of 100% and should be used as a guide only. Returns over \$30 / head for fleece wool are highlighted.

Source: Australian Wool Exchange, Australian Wool Innovation, Sydney Futures Exchange, x-rates.com

Disclaimer: While all due care has been taken in the preparation of this document, no warranty is made as to its accuracy, reliability or completeness. To the extent permitted by law neither Jemalong or their sources including subsidiaries and staff, accept liability to any person for loss or damage arising from the use of this information.



Table 14: Returns pr head for skirted fleece wool.

Skirted FLC Weight		Micron																	
8 Kg		16	16.5	17	17.5	18	18.5	19	19.5	20	21	22	23	24	25	26	28	30	32
Yield (Sch Dry)	25% Current	\$55	\$53	\$50	\$47	\$43	\$39	\$34	\$30	\$28	\$26	\$26	\$26	\$23	\$21	\$19	\$15	\$13	\$13
	10yr ave.			\$28		\$26		\$21		\$19	\$18	\$17	\$17	\$16	\$14	\$13	\$11	\$9	\$8
	30% Current	\$66	\$63	\$60	\$57	\$52	\$47	\$41	\$36	\$33	\$32	\$31	\$31	\$28	\$25	\$22	\$18	\$16	\$15
	10yr ave.			\$34		\$31		\$26		\$22	\$21	\$21	\$20	\$19	\$17	\$16	\$13	\$11	\$10
	35% Current	\$76	\$74	\$71	\$66	\$61	\$54	\$48	\$43	\$39	\$37	\$37	\$36	\$33	\$29	\$26	\$21	\$19	\$18
	10yr ave.			\$39		\$36		\$30		\$26	\$25	\$24	\$23	\$22	\$20	\$18	\$15	\$13	\$12
	40% Current	\$87	\$84	\$81	\$76	\$69	\$62	\$55	\$49	\$45	\$42	\$42	\$41	\$37	\$34	\$30	\$23	\$21	\$20
	10yr ave.			\$45		\$41		\$34		\$30	\$28	\$28	\$27	\$26	\$23	\$21	\$17	\$15	\$13
	45% Current	\$98	\$95	\$91	\$85	\$78	\$70	\$61	\$55	\$50	\$48	\$47	\$46	\$42	\$38	\$33	\$26	\$24	\$23
	10yr ave.			\$50		\$46		\$39		\$33	\$32	\$31	\$30	\$29	\$26	\$24	\$19	\$16	\$15
	50% Current	\$109	\$106	\$101	\$94	\$87	\$78	\$68	\$61	\$56	\$53	\$52	\$52	\$47	\$42	\$37	\$29	\$27	\$25
	10yr ave.			\$56		\$51		\$43		\$37	\$35	\$34	\$34	\$32	\$29	\$26	\$21	\$18	\$17
	55% Current	\$120	\$116	\$111	\$104	\$95	\$85	\$75	\$67	\$61	\$58	\$58	\$57	\$51	\$46	\$41	\$32	\$29	\$28
	10yr ave.			\$62		\$56		\$47		\$41	\$39	\$38	\$37	\$35	\$32	\$29	\$23	\$20	\$18
	60% Current	\$131	\$127	\$121	\$113	\$104	\$93	\$82	\$73	\$67	\$63	\$63	\$62	\$56	\$50	\$45	\$35	\$32	\$30
	10yr ave.			\$67		\$61		\$52		\$44	\$42	\$41	\$40	\$38	\$34	\$32	\$25	\$22	\$20
	65% Current	\$142	\$137	\$131	\$123	\$112	\$101	\$89	\$79	\$72	\$69	\$68	\$67	\$61	\$54	\$48	\$38	\$35	\$33
	10yr ave.			\$73		\$67		\$56		\$48	\$46	\$45	\$44	\$42	\$37	\$34	\$27	\$24	\$22
	70% Current	\$153	\$148	\$141	\$132	\$121	\$109	\$95	\$85	\$78	\$74	\$73	\$72	\$66	\$59	\$52	\$41	\$37	\$35
	10yr ave.			\$78		\$72		\$60		\$52	\$49	\$48	\$47	\$45	\$40	\$37	\$29	\$26	\$23
	75% Current	\$164	\$158	\$151	\$142	\$130	\$116	\$102	\$91	\$84	\$79	\$79	\$77	\$70	\$63	\$56	\$44	\$40	\$38
	10yr ave.			\$84		\$77		\$64		\$56	\$53	\$52	\$50	\$48	\$43	\$39	\$32	\$27	\$25
	80% Current	\$175	\$169	\$161	\$151	\$138	\$124	\$109	\$97	\$89	\$85	\$84	\$83	\$75	\$67	\$59	\$47	\$43	\$40
	10yr ave.			\$89		\$82		\$69		\$59	\$57	\$55	\$54	\$51	\$46	\$42	\$34	\$29	\$27
	85% Current	\$186	\$180	\$171	\$160	\$147	\$132	\$116	\$103	\$95	\$90	\$89	\$88	\$80	\$71	\$63	\$50	\$45	\$43
	10yr ave.			\$95		\$87		\$73		\$63	\$60	\$58	\$57	\$54	\$49	\$45	\$36	\$31	\$28

The above shows estimated returns per head for skirted fleece wool. These figures do not take into account the value of skirtings and oddments and do not take into account discounts that may apply for faults under individual circumstances. These figures are based on a market index of 100% and should be used as a guide only. Returns over \$30 / head for fleece wool are highlighted.

Source: Australian Wool Exchange, Australian Wool Innovation, Sydney Futures Exchange, x-rates.com

Disclaimer: While all due care has been taken in the preparation of this document, no warranty is made as to its accuracy, reliability or completeness. To the extent permitted by law neither Jemalong or their sources including subsidiaries and staff, accept liability to any person for loss or damage arising from the use of this information.



Table 15: Returns pr head for skirted fleece wool.

Skirted FLC Weight		Micron																		
		16	16.5	17	17.5	18	18.5	19	19.5	20	21	22	23	24	25	26	28	30	32	
Yield (Sch Dry)	25%	Current	\$48	\$46	\$44	\$41	\$38	\$34	\$30	\$27	\$24	\$23	\$23	\$23	\$20	\$18	\$16	\$13	\$12	\$11
	10yr ave.			\$24		\$22		\$19		\$16	\$15	\$15	\$15	\$14	\$13	\$11	\$9	\$8	\$7	
	30%	Current	\$57	\$55	\$53	\$50	\$45	\$41	\$36	\$32	\$29	\$28	\$28	\$27	\$25	\$22	\$19	\$15	\$14	\$13
	10yr ave.			\$29		\$27		\$23		\$19	\$19	\$18	\$18	\$17	\$15	\$14	\$11	\$10	\$9	
	35%	Current	\$67	\$65	\$62	\$58	\$53	\$48	\$42	\$37	\$34	\$32	\$32	\$32	\$29	\$26	\$23	\$18	\$16	\$15
	10yr ave.			\$34		\$31		\$26		\$23	\$22	\$21	\$21	\$20	\$18	\$16	\$13	\$11	\$10	
	40%	Current	\$76	\$74	\$71	\$66	\$61	\$54	\$48	\$43	\$39	\$37	\$37	\$36	\$33	\$29	\$26	\$21	\$19	\$18
	10yr ave.			\$39		\$36		\$30		\$26	\$25	\$24	\$23	\$22	\$20	\$18	\$15	\$13	\$12	
	45%	Current	\$86	\$83	\$79	\$74	\$68	\$61	\$54	\$48	\$44	\$42	\$41	\$41	\$37	\$33	\$29	\$23	\$21	\$20
	10yr ave.			\$44		\$40		\$34		\$29	\$28	\$27	\$26	\$25	\$23	\$21	\$17	\$14	\$13	
	50%	Current	\$96	\$92	\$88	\$83	\$76	\$68	\$60	\$53	\$49	\$46	\$46	\$45	\$41	\$37	\$32	\$26	\$23	\$22
	10yr ave.			\$49		\$45		\$38		\$32	\$31	\$30	\$29	\$28	\$25	\$23	\$18	\$16	\$15	
	55%	Current	\$105	\$102	\$97	\$91	\$83	\$75	\$66	\$58	\$54	\$51	\$51	\$50	\$45	\$40	\$36	\$28	\$26	\$24
	10yr ave.			\$54		\$49		\$41		\$36	\$34	\$33	\$32	\$31	\$28	\$25	\$20	\$18	\$16	
60%	Current	\$115	\$111	\$106	\$99	\$91	\$81	\$72	\$64	\$59	\$55	\$55	\$54	\$49	\$44	\$39	\$31	\$28	\$26	
10yr ave.			\$59		\$54		\$45		\$39	\$37	\$36	\$35	\$34	\$30	\$28	\$22	\$19	\$17		
65%	Current	\$124	\$120	\$115	\$107	\$98	\$88	\$78	\$69	\$63	\$60	\$60	\$59	\$53	\$48	\$42	\$33	\$30	\$29	
10yr ave.			\$64		\$58		\$49		\$42	\$40	\$39	\$38	\$36	\$33	\$30	\$24	\$21	\$19		
70%	Current	\$134	\$129	\$123	\$116	\$106	\$95	\$84	\$74	\$68	\$65	\$64	\$63	\$57	\$51	\$45	\$36	\$33	\$31	
10yr ave.			\$69		\$63		\$53		\$45	\$43	\$42	\$41	\$39	\$35	\$32	\$26	\$22	\$20		
75%	Current	\$143	\$139	\$132	\$124	\$114	\$102	\$90	\$80	\$73	\$69	\$69	\$68	\$61	\$55	\$49	\$39	\$35	\$33	
10yr ave.			\$73		\$67		\$56		\$49	\$46	\$45	\$44	\$42	\$38	\$34	\$28	\$24	\$22		
80%	Current	\$153	\$148	\$141	\$132	\$121	\$109	\$95	\$85	\$78	\$74	\$73	\$72	\$66	\$59	\$52	\$41	\$37	\$35	
10yr ave.			\$78		\$72		\$60		\$52	\$49	\$48	\$47	\$45	\$40	\$37	\$29	\$26	\$23		
85%	Current	\$162	\$157	\$150	\$140	\$129	\$115	\$101	\$90	\$83	\$79	\$78	\$77	\$70	\$62	\$55	\$44	\$40	\$37	
10yr ave.			\$83		\$76		\$64		\$55	\$53	\$51	\$50	\$48	\$43	\$39	\$31	\$27	\$25		

The above shows estimated returns per head for skirted fleece wool. These figures do not take into account the value of skirtings and oddments and do not take into account discounts that may apply for faults under individual circumstances. These figures are based on a market index of 100% and should be used as a guide only. Returns over \$30 / head for fleece wool are highlighted.

Source: Australian Wool Exchange, Australian Wool Innovation, Sydney Futures Exchange, x-rates.com

Disclaimer: While all due care has been taken in the preparation of this document, no warranty is made as to its accuracy, reliability or completeness. To the extent permitted by law neither Jemalong or their sources including subsidiaries and staff, accept liability to any person for loss or damage arising from the use of this information.



Table 16: Returns pr head for skirted fleece wool.

Skirted FLC Weight		Micron																	
6 Kg		16	16.5	17	17.5	18	18.5	19	19.5	20	21	22	23	24	25	26	28	30	32
Yield (Sch Dry)	25% Current	\$41	\$40	\$38	\$35	\$32	\$29	\$26	\$23	\$21	\$20	\$20	\$19	\$18	\$16	\$14	\$11	\$10	\$9
	10yr ave.			\$21		\$19		\$16		\$14	\$13	\$13	\$13	\$12	\$11	\$10	\$8	\$7	\$6
	30% Current	\$49	\$48	\$45	\$42	\$39	\$35	\$31	\$27	\$25	\$24	\$24	\$23	\$21	\$19	\$17	\$13	\$12	\$11
	10yr ave.			\$25		\$23		\$19		\$17	\$16	\$15	\$15	\$14	\$13	\$12	\$9	\$8	\$7
	35% Current	\$57	\$55	\$53	\$50	\$45	\$41	\$36	\$32	\$29	\$28	\$28	\$27	\$25	\$22	\$19	\$15	\$14	\$13
	10yr ave.			\$29		\$27		\$23		\$19	\$19	\$18	\$18	\$17	\$15	\$14	\$11	\$10	\$9
	40% Current	\$66	\$63	\$60	\$57	\$52	\$47	\$41	\$36	\$33	\$32	\$31	\$31	\$28	\$25	\$22	\$18	\$16	\$15
	10yr ave.			\$34		\$31		\$26		\$22	\$21	\$21	\$20	\$19	\$17	\$16	\$13	\$11	\$10
	45% Current	\$74	\$71	\$68	\$64	\$58	\$52	\$46	\$41	\$38	\$36	\$35	\$35	\$32	\$28	\$25	\$20	\$18	\$17
	10yr ave.			\$38		\$35		\$29		\$25	\$24	\$23	\$23	\$22	\$19	\$18	\$14	\$12	\$11
	50% Current	\$82	\$79	\$76	\$71	\$65	\$58	\$51	\$46	\$42	\$40	\$39	\$39	\$35	\$31	\$28	\$22	\$20	\$19
	10yr ave.			\$42		\$38		\$32		\$28	\$26	\$26	\$25	\$24	\$22	\$20	\$16	\$14	\$12
	55% Current	\$90	\$87	\$83	\$78	\$71	\$64	\$56	\$50	\$46	\$44	\$43	\$43	\$39	\$35	\$31	\$24	\$22	\$21
	10yr ave.			\$46		\$42		\$35		\$31	\$29	\$28	\$28	\$26	\$24	\$22	\$17	\$15	\$14
	60% Current	\$98	\$95	\$91	\$85	\$78	\$70	\$61	\$55	\$50	\$48	\$47	\$46	\$42	\$38	\$33	\$26	\$24	\$23
	10yr ave.			\$50		\$46		\$39		\$33	\$32	\$31	\$30	\$29	\$26	\$24	\$19	\$16	\$15
	65% Current	\$106	\$103	\$98	\$92	\$84	\$76	\$66	\$59	\$54	\$52	\$51	\$50	\$46	\$41	\$36	\$29	\$26	\$25
	10yr ave.			\$55		\$50		\$42		\$36	\$34	\$34	\$33	\$31	\$28	\$26	\$20	\$18	\$16
	70% Current	\$115	\$111	\$106	\$99	\$91	\$81	\$72	\$64	\$59	\$55	\$55	\$54	\$49	\$44	\$39	\$31	\$28	\$26
	10yr ave.			\$59		\$54		\$45		\$39	\$37	\$36	\$35	\$34	\$30	\$28	\$22	\$19	\$17
	75% Current	\$123	\$119	\$113	\$106	\$97	\$87	\$77	\$68	\$63	\$59	\$59	\$58	\$53	\$47	\$42	\$33	\$30	\$28
	10yr ave.			\$63		\$58		\$48		\$42	\$40	\$39	\$38	\$36	\$32	\$30	\$24	\$21	\$19
	80% Current	\$131	\$127	\$121	\$113	\$104	\$93	\$82	\$73	\$67	\$63	\$63	\$62	\$56	\$50	\$45	\$35	\$32	\$30
	10yr ave.			\$67		\$61		\$52		\$44	\$42	\$41	\$40	\$38	\$34	\$32	\$25	\$22	\$20
	85% Current	\$139	\$135	\$129	\$120	\$110	\$99	\$87	\$77	\$71	\$67	\$67	\$66	\$60	\$53	\$47	\$37	\$34	\$32
	10yr ave.			\$71		\$65		\$55		\$47	\$45	\$44	\$43	\$41	\$37	\$34	\$27	\$23	\$21

The above shows estimated returns per head for skirted fleece wool. These figures do not take into account the value of skirtings and oddments and do not take into account discounts that may apply for faults under individual circumstances. These figures are based on a market index of 100% and should be used as a guide only. Returns over \$30 / head for fleece wool are highlighted.

Source: Australian Wool Exchange, Australian Wool Innovation, Sydney Futures Exchange, x-rates.com

Disclaimer: While all due care has been taken in the preparation of this document, no warranty is made as to its accuracy, reliability or completeness. To the extent permitted by law neither Jemalong or their sources including subsidiaries and staff, accept liability to any person for loss or damage arising from the use of this information.



Table 17: Returns pr head for skirted fleece wool.

Skirted FLC Weight		Micron																	
5 Kg		16	16.5	17	17.5	18	18.5	19	19.5	20	21	22	23	24	25	26	28	30	32
Yield (Sch Dry)	25% Current	\$34	\$33	\$32	\$30	\$27	\$24	\$21	\$19	\$17	\$17	\$16	\$16	\$15	\$13	\$12	\$9	\$8	\$8
	10yr ave.			\$17	\$16			\$13		\$12	\$11	\$11	\$10	\$10	\$9	\$8	\$7	\$6	\$5
	30% Current	\$41	\$40	\$38	\$35	\$32	\$29	\$26	\$23	\$21	\$20	\$20	\$19	\$18	\$16	\$14	\$11	\$10	\$9
	10yr ave.			\$21		\$19		\$16		\$14	\$13	\$13	\$13	\$12	\$11	\$10	\$8	\$7	\$6
	35% Current	\$48	\$46	\$44	\$41	\$38	\$34	\$30	\$27	\$24	\$23	\$23	\$23	\$20	\$18	\$16	\$13	\$12	\$11
	10yr ave.			\$24		\$22		\$19		\$16	\$15	\$15	\$15	\$14	\$13	\$11	\$9	\$8	\$7
	40% Current	\$55	\$53	\$50	\$47	\$43	\$39	\$34	\$30	\$28	\$26	\$26	\$26	\$23	\$21	\$19	\$15	\$13	\$13
	10yr ave.			\$28		\$26		\$21		\$19	\$18	\$17	\$17	\$16	\$14	\$13	\$11	\$9	\$8
	45% Current	\$61	\$59	\$57	\$53	\$49	\$44	\$38	\$34	\$31	\$30	\$30	\$29	\$26	\$24	\$21	\$17	\$15	\$14
	10yr ave.			\$31		\$29		\$24		\$21	\$20	\$19	\$19	\$18	\$16	\$15	\$12	\$10	\$9
	50% Current	\$68	\$66	\$63	\$59	\$54	\$48	\$43	\$38	\$35	\$33	\$33	\$32	\$29	\$26	\$23	\$18	\$17	\$16
	10yr ave.			\$35		\$32		\$27		\$23	\$22	\$22	\$21	\$20	\$18	\$16	\$13	\$11	\$10
	55% Current	\$75	\$73	\$69	\$65	\$59	\$53	\$47	\$42	\$38	\$36	\$36	\$36	\$32	\$29	\$26	\$20	\$18	\$17
	10yr ave.			\$38		\$35		\$30		\$25	\$24	\$24	\$23	\$22	\$20	\$18	\$14	\$13	\$11
	60% Current	\$82	\$79	\$76	\$71	\$65	\$58	\$51	\$46	\$42	\$40	\$39	\$39	\$35	\$31	\$28	\$22	\$20	\$19
	10yr ave.			\$42		\$38		\$32		\$28	\$26	\$26	\$25	\$24	\$22	\$20	\$16	\$14	\$12
	65% Current	\$89	\$86	\$82	\$77	\$70	\$63	\$55	\$49	\$45	\$43	\$43	\$42	\$38	\$34	\$30	\$24	\$22	\$20
	10yr ave.			\$45		\$42		\$35		\$30	\$29	\$28	\$27	\$26	\$23	\$21	\$17	\$15	\$13
	70% Current	\$96	\$92	\$88	\$83	\$76	\$68	\$60	\$53	\$49	\$46	\$46	\$45	\$41	\$37	\$32	\$26	\$23	\$22
	10yr ave.			\$49		\$45		\$38		\$32	\$31	\$30	\$29	\$28	\$25	\$23	\$18	\$16	\$15
	75% Current	\$102	\$99	\$95	\$89	\$81	\$73	\$64	\$57	\$52	\$50	\$49	\$48	\$44	\$39	\$35	\$28	\$25	\$24
	10yr ave.			\$52		\$48		\$40		\$35	\$33	\$32	\$31	\$30	\$27	\$25	\$20	\$17	\$16
	80% Current	\$109	\$106	\$101	\$94	\$87	\$78	\$68	\$61	\$56	\$53	\$52	\$52	\$47	\$42	\$37	\$29	\$27	\$25
	10yr ave.			\$56		\$51		\$43		\$37	\$35	\$34	\$34	\$32	\$29	\$26	\$21	\$18	\$17
	85% Current	\$116	\$112	\$107	\$100	\$92	\$82	\$72	\$65	\$59	\$56	\$56	\$55	\$50	\$45	\$39	\$31	\$28	\$27
	10yr ave.			\$59		\$54		\$46		\$39	\$38	\$37	\$36	\$34	\$31	\$28	\$22	\$19	\$18

The above shows estimated returns per head for skirted fleece wool. These figures do not take into account the value of skirtings and oddments and do not take into account discounts that may apply for faults under individual circumstances. These figures are based on a market index of 100% and should be used as a guide only. Returns over \$30 / head for fleece wool are highlighted.

Source: Australian Wool Exchange, Australian Wool Innovation, Sydney Futures Exchange, x-rates.com

Disclaimer: While all due care has been taken in the preparation of this document, no warranty is made as to its accuracy, reliability or completeness. To the extent permitted by law neither Jemalong or their sources including subsidiaries and staff, accept liability to any person for loss or damage arising from the use of this information.



Table 18: Returns pr head for skirted fleece wool.

Skirted FLC Weight		Micron																	
4 Kg		16	16.5	17	17.5	18	18.5	19	19.5	20	21	22	23	24	25	26	28	30	32
Yield (Sch Dry)	25% Current	\$27	\$26	\$25	\$24	\$22	\$19	\$17	\$15	\$14	\$13	\$13	\$13	\$12	\$10	\$9	\$7	\$7	\$6
	10yr ave.			\$14		\$13		\$11		\$9	\$9	\$9	\$8	\$8	\$7	\$7	\$5	\$5	\$4
	30% Current	\$33	\$32	\$30	\$28	\$26	\$23	\$20	\$18	\$17	\$16	\$16	\$15	\$14	\$13	\$11	\$9	\$8	\$8
	10yr ave.			\$17		\$15		\$13		\$11	\$11	\$10	\$10	\$10	\$9	\$8	\$6	\$5	\$5
	35% Current	\$38	\$37	\$35	\$33	\$30	\$27	\$24	\$21	\$20	\$18	\$18	\$18	\$16	\$15	\$13	\$10	\$9	\$9
	10yr ave.			\$20		\$18		\$15		\$13	\$12	\$12	\$12	\$11	\$10	\$9	\$7	\$6	\$6
	40% Current	\$44	\$42	\$40	\$38	\$35	\$31	\$27	\$24	\$22	\$21	\$21	\$21	\$19	\$17	\$15	\$12	\$11	\$10
	10yr ave.			\$22		\$20		\$17		\$15	\$14	\$14	\$13	\$13	\$11	\$11	\$8	\$7	\$7
	45% Current	\$49	\$48	\$45	\$42	\$39	\$35	\$31	\$27	\$25	\$24	\$24	\$23	\$21	\$19	\$17	\$13	\$12	\$11
	10yr ave.			\$25		\$23		\$19		\$17	\$16	\$15	\$15	\$14	\$13	\$12	\$9	\$8	\$7
	50% Current	\$55	\$53	\$50	\$47	\$43	\$39	\$34	\$30	\$28	\$26	\$26	\$26	\$23	\$21	\$19	\$15	\$13	\$13
	10yr ave.			\$28		\$26		\$21		\$19	\$18	\$17	\$17	\$16	\$14	\$13	\$11	\$9	\$8
	55% Current	\$60	\$58	\$55	\$52	\$48	\$43	\$38	\$33	\$31	\$29	\$29	\$28	\$26	\$23	\$20	\$16	\$15	\$14
	10yr ave.			\$31		\$28		\$24		\$20	\$19	\$19	\$18	\$18	\$16	\$14	\$12	\$10	\$9
	60% Current	\$66	\$63	\$60	\$57	\$52	\$47	\$41	\$36	\$33	\$32	\$31	\$31	\$28	\$25	\$22	\$18	\$16	\$15
	10yr ave.			\$34		\$31		\$26		\$22	\$21	\$21	\$20	\$19	\$17	\$16	\$13	\$11	\$10
	65% Current	\$71	\$69	\$66	\$61	\$56	\$50	\$44	\$39	\$36	\$34	\$34	\$34	\$30	\$27	\$24	\$19	\$17	\$16
	10yr ave.			\$36		\$33		\$28		\$24	\$23	\$22	\$22	\$21	\$19	\$17	\$14	\$12	\$11
	70% Current	\$76	\$74	\$71	\$66	\$61	\$54	\$48	\$43	\$39	\$37	\$37	\$36	\$33	\$29	\$26	\$21	\$19	\$18
	10yr ave.			\$39		\$36		\$30		\$26	\$25	\$24	\$23	\$22	\$20	\$18	\$15	\$13	\$12
	75% Current	\$82	\$79	\$76	\$71	\$65	\$58	\$51	\$46	\$42	\$40	\$39	\$39	\$35	\$31	\$28	\$22	\$20	\$19
	10yr ave.			\$42		\$38		\$32		\$28	\$26	\$26	\$25	\$24	\$22	\$20	\$16	\$14	\$12
	80% Current	\$87	\$84	\$81	\$76	\$69	\$62	\$55	\$49	\$45	\$42	\$42	\$41	\$37	\$34	\$30	\$23	\$21	\$20
	10yr ave.			\$45		\$41		\$34		\$30	\$28	\$28	\$27	\$26	\$23	\$21	\$17	\$15	\$13
	85% Current	\$93	\$90	\$86	\$80	\$74	\$66	\$58	\$52	\$47	\$45	\$45	\$44	\$40	\$36	\$32	\$25	\$23	\$21
	10yr ave.			\$48		\$44		\$36		\$31	\$30	\$29	\$28	\$27	\$24	\$22	\$18	\$16	\$14

The above shows estimated returns per head for skirted fleece wool. These figures do not take into account the value of skirtings and oddments and do not take into account discounts that may apply for faults under individual circumstances. These figures are based on a market index of 100% and should be used as a guide only. Returns over \$30 / head for fleece wool are highlighted.

Source: Australian Wool Exchange, Australian Wool Innovation, Sydney Futures Exchange, x-rates.com

Disclaimer: While all due care has been taken in the preparation of this document, no warranty is made as to its accuracy, reliability or completeness. To the extent permitted by law neither Jemalong or their sources including subsidiaries and staff, accept liability to any person for loss or damage arising from the use of this information.



Table 19: Returns pr head for skirted fleece wool.

Skirted FLC Weight		Micron																	
3 Kg		16	16.5	17	17.5	18	18.5	19	19.5	20	21	22	23	24	25	26	28	30	32
Yield (Sch Dry)	25% Current	\$20	\$20	\$19	\$18	\$16	\$15	\$13	\$11	\$10	\$10	\$10	\$10	\$9	\$8	\$7	\$6	\$5	\$5
	10yr ave.			\$10		\$10		\$8		\$7	\$7	\$6	\$6	\$6	\$5	\$5	\$4	\$3	\$3
	30% Current	\$25	\$24	\$23	\$21	\$19	\$17	\$15	\$14	\$13	\$12	\$12	\$12	\$11	\$9	\$8	\$7	\$6	\$6
	10yr ave.			\$13		\$12		\$10		\$8	\$8	\$8	\$8	\$7	\$6	\$6	\$5	\$4	\$4
	35% Current	\$29	\$28	\$26	\$25	\$23	\$20	\$18	\$16	\$15	\$14	\$14	\$14	\$12	\$11	\$10	\$8	\$7	\$7
	10yr ave.			\$15		\$13		\$11		\$10	\$9	\$9	\$9	\$8	\$8	\$7	\$6	\$5	\$4
	40% Current	\$33	\$32	\$30	\$28	\$26	\$23	\$20	\$18	\$17	\$16	\$16	\$15	\$14	\$13	\$11	\$9	\$8	\$8
	10yr ave.			\$17		\$15		\$13		\$11	\$11	\$10	\$10	\$10	\$9	\$8	\$6	\$5	\$5
	45% Current	\$37	\$36	\$34	\$32	\$29	\$26	\$23	\$20	\$19	\$18	\$18	\$17	\$16	\$14	\$13	\$10	\$9	\$8
	10yr ave.			\$19		\$17		\$14		\$12	\$12	\$12	\$11	\$11	\$10	\$9	\$7	\$6	\$6
	50% Current	\$41	\$40	\$38	\$35	\$32	\$29	\$26	\$23	\$21	\$20	\$20	\$19	\$18	\$16	\$14	\$11	\$10	\$9
	10yr ave.			\$21		\$19		\$16		\$14	\$13	\$13	\$13	\$12	\$11	\$10	\$8	\$7	\$6
	55% Current	\$45	\$44	\$42	\$39	\$36	\$32	\$28	\$25	\$23	\$22	\$22	\$21	\$19	\$17	\$15	\$12	\$11	\$10
	10yr ave.			\$23		\$21		\$18		\$15	\$15	\$14	\$14	\$13	\$12	\$11	\$9	\$8	\$7
	60% Current	\$49	\$48	\$45	\$42	\$39	\$35	\$31	\$27	\$25	\$24	\$24	\$23	\$21	\$19	\$17	\$13	\$12	\$11
	10yr ave.			\$25		\$23		\$19		\$17	\$16	\$15	\$15	\$14	\$13	\$12	\$9	\$8	\$7
	65% Current	\$53	\$51	\$49	\$46	\$42	\$38	\$33	\$30	\$27	\$26	\$26	\$25	\$23	\$20	\$18	\$14	\$13	\$12
	10yr ave.			\$27		\$25		\$21		\$18	\$17	\$17	\$16	\$16	\$14	\$13	\$10	\$9	\$8
	70% Current	\$57	\$55	\$53	\$50	\$45	\$41	\$36	\$32	\$29	\$28	\$28	\$27	\$25	\$22	\$19	\$15	\$14	\$13
	10yr ave.			\$29		\$27		\$23		\$19	\$19	\$18	\$18	\$17	\$15	\$14	\$11	\$10	\$9
	75% Current	\$61	\$59	\$57	\$53	\$49	\$44	\$38	\$34	\$31	\$30	\$30	\$29	\$26	\$24	\$21	\$17	\$15	\$14
	10yr ave.			\$31		\$29		\$24		\$21	\$20	\$19	\$19	\$18	\$16	\$15	\$12	\$10	\$9
	80% Current	\$66	\$63	\$60	\$57	\$52	\$47	\$41	\$36	\$33	\$32	\$31	\$31	\$28	\$25	\$22	\$18	\$16	\$15
	10yr ave.			\$34		\$31		\$26		\$22	\$21	\$21	\$20	\$19	\$17	\$16	\$13	\$11	\$10
	85% Current	\$70	\$67	\$64	\$60	\$55	\$49	\$43	\$39	\$36	\$34	\$33	\$33	\$30	\$27	\$24	\$19	\$17	\$16
	10yr ave.			\$36		\$33		\$27		\$24	\$23	\$22	\$21	\$20	\$18	\$17	\$13	\$12	\$11

The above shows estimated returns per head for skirted fleece wool. These figures do not take into account the value of skirtings and oddments and do not take into account discounts that may apply for faults under individual circumstances. These figures are based on a market index of 100% and should be used as a guide only. Returns over \$30 / head for fleece wool are highlighted.

Source: Australian Wool Exchange, Australian Wool Innovation, Sydney Futures Exchange, x-rates.com

Disclaimer: While all due care has been taken in the preparation of this document, no warranty is made as to its accuracy, reliability or completeness. To the extent permitted by law neither Jemalong or their sources including subsidiaries and staff, accept liability to any person for loss or damage arising from the use of this information.



Table 20: Returns pr head for skirted fleece wool.

Skirted FLC Weight		Micron																	
2 Kg		16	16.5	17	17.5	18	18.5	19	19.5	20	21	22	23	24	25	26	28	30	32
Yield (Sch Dry)	25% Current	\$14	\$13	\$13	\$12	\$11	\$10	\$9	\$8	\$7	\$7	\$7	\$6	\$6	\$5	\$5	\$4	\$3	\$3
	10yr ave.			\$7		\$6		\$5		\$5	\$4	\$4	\$4	\$4	\$4	\$3	\$3	\$2	\$2
	30% Current	\$16	\$16	\$15	\$14	\$13	\$12	\$10	\$9	\$8	\$8	\$8	\$8	\$7	\$6	\$6	\$4	\$4	\$4
	10yr ave.			\$8		\$8		\$6		\$6	\$5	\$5	\$5	\$5	\$4	\$4	\$3	\$3	\$2
	35% Current	\$19	\$18	\$18	\$17	\$15	\$14	\$12	\$11	\$10	\$9	\$9	\$9	\$8	\$7	\$6	\$5	\$5	\$4
	10yr ave.			\$10		\$9		\$8		\$6	\$6	\$6	\$6	\$6	\$5	\$5	\$4	\$3	\$3
	40% Current	\$22	\$21	\$20	\$19	\$17	\$16	\$14	\$12	\$11	\$11	\$10	\$10	\$9	\$8	\$7	\$6	\$5	\$5
	10yr ave.			\$11		\$10		\$9		\$7	\$7	\$7	\$7	\$6	\$6	\$5	\$4	\$4	\$3
	45% Current	\$25	\$24	\$23	\$21	\$19	\$17	\$15	\$14	\$13	\$12	\$12	\$12	\$11	\$9	\$8	\$7	\$6	\$6
	10yr ave.			\$13		\$12		\$10		\$8	\$8	\$8	\$8	\$7	\$6	\$6	\$5	\$4	\$4
	50% Current	\$27	\$26	\$25	\$24	\$22	\$19	\$17	\$15	\$14	\$13	\$13	\$13	\$12	\$10	\$9	\$7	\$7	\$6
	10yr ave.			\$14		\$13		\$11		\$9	\$9	\$9	\$8	\$8	\$7	\$7	\$5	\$5	\$4
	55% Current	\$30	\$29	\$28	\$26	\$24	\$21	\$19	\$17	\$15	\$15	\$14	\$14	\$13	\$12	\$10	\$8	\$7	\$7
	10yr ave.			\$15		\$14		\$12		\$10	\$10	\$9	\$9	\$9	\$8	\$7	\$6	\$5	\$5
	60% Current	\$33	\$32	\$30	\$28	\$26	\$23	\$20	\$18	\$17	\$16	\$16	\$15	\$14	\$13	\$11	\$9	\$8	\$8
	10yr ave.			\$17		\$15		\$13		\$11	\$11	\$10	\$10	\$10	\$9	\$8	\$6	\$5	\$5
	65% Current	\$35	\$34	\$33	\$31	\$28	\$25	\$22	\$20	\$18	\$17	\$17	\$17	\$15	\$14	\$12	\$10	\$9	\$8
	10yr ave.			\$18		\$17		\$14		\$12	\$11	\$11	\$11	\$10	\$9	\$9	\$7	\$6	\$5
	70% Current	\$38	\$37	\$35	\$33	\$30	\$27	\$24	\$21	\$20	\$18	\$18	\$18	\$16	\$15	\$13	\$10	\$9	\$9
	10yr ave.			\$20		\$18		\$15		\$13	\$12	\$12	\$12	\$11	\$10	\$9	\$7	\$6	\$6
	75% Current	\$41	\$40	\$38	\$35	\$32	\$29	\$26	\$23	\$21	\$20	\$20	\$19	\$18	\$16	\$14	\$11	\$10	\$9
	10yr ave.			\$21		\$19		\$16		\$14	\$13	\$13	\$13	\$12	\$11	\$10	\$8	\$7	\$6
	80% Current	\$44	\$42	\$40	\$38	\$35	\$31	\$27	\$24	\$22	\$21	\$21	\$21	\$19	\$17	\$15	\$12	\$11	\$10
	10yr ave.			\$22		\$20		\$17		\$15	\$14	\$14	\$13	\$13	\$11	\$11	\$8	\$7	\$7
	85% Current	\$46	\$45	\$43	\$40	\$37	\$33	\$29	\$26	\$24	\$22	\$22	\$22	\$20	\$18	\$16	\$12	\$11	\$11
	10yr ave.			\$24		\$22		\$18		\$16	\$15	\$15	\$14	\$14	\$12	\$11	\$9	\$8	\$7

The above shows estimated returns per head for skirted fleece wool. These figures do not take into account the value of skirtings and oddments and do not take into account discounts that may apply for faults under individual circumstances. These figures are based on a market index of 100% and should be used as a guide only. Returns over \$30 / head for fleece wool are highlighted.

Source: Australian Wool Exchange, Australian Wool Innovation, Sydney Futures Exchange, x-rates.com

Disclaimer: While all due care has been taken in the preparation of this document, no warranty is made as to its accuracy, reliability or completeness. To the extent permitted by law neither Jemalong or their sources including subsidiaries and staff, accept liability to any person for loss or damage arising from the use of this information.