



Table 1: Northern Region Micron Price Guides

WEEK 13			12 MONTH COMPARISONS								3 YEAR COMPARISONS					*10 YEAR COMPARISONS					
Mic.	24/09/2015	17/09/2015	24/09/2014	Now		Now		Now				Now		Percentile		* 16-17.5um since Aug 05	Now				Percentile
Price	Current	Weekly	This time	compared		12 Month	compared	12 Month	compared			compared				*10 year	compared				
Guides	Price	Change	Last Year	to Last Year		Low	to Low	High	to High	Low	High	Average	to 3yr ave		Low	High	Average	to *10yr ave			
NRI	1248	-8 -0.6%	1043	+205 20%		1043	+205 20%	1399	-151 -11%	977	1399	1107	+141 13%	89%	657	1491	1004	+244 24%	89%		
16*	1570	0	1410	+160 11%		1340	+230 17%	1710	-140 -8%	1340	1810	1546	+24 2%	57%	1350	2800	1705	-135 -8%	41%		
16.5*	1510	-15 -1.0%	1340	+170 13%		1310	+200 15%	1660	-150 -9%	1300	1660	1454	+56 4%	70%	1280	2680	1574	-64 -4%	64%		
17*	1480	0	1305	+175 13%		1300	+180 14%	1640	-160 -10%	1245	1640	1382	+98 7%	86%	1108	2530	1455	+25 2%	74%		
17.5*	1460	+5 0.3%	1290	+170 13%		1290	+170 13%	1620	-160 -10%	1200	1620	1346	+114 8%	88%	1020	2360	1383	+77 6%	77%		
18	1428	-9 -0.6%	1216	+212 17%		1216	+212 17%	1607	-179 -11%	1162	1607	1298	+130 10%	88%	915	2193	1311	+117 9%	80%		
18.5	1401	-12 -0.8%	1200	+201 17%		1200	+201 17%	1579	-178 -11%	1133	1579	1269	+132 10%	89%	843	1963	1246	+155 12%	83%		
19	1346	-10 -0.7%	1161	+185 16%		1161	+185 16%	1553	-207 -13%	1109	1553	1239	+107 9%	87%	803	1776	1177	+169 14%	84%		
19.5	1304	-18 -1.4%	1137	+167 15%		1137	+167 15%	1529	-225 -15%	1093	1529	1216	+88 7%	86%	749	1670	1115	+189 17%	84%		
20	1278	-16 -1.2%	1127	+151 13%		1126	+152 13%	1517	-239 -16%	1072	1517	1197	+81 7%	86%	700	1588	1062	+216 20%	86%		
21	1265	-13 -1.0%	1116	+149 13%		1116	+149 13%	1500	-235 -16%	1062	1500	1187	+78 7%	86%	668	1522	1027	+238 23%	86%		
22	1257	-12 -0.9%	1089	+168 15%		1089	+168 15%	1458	-201 -14%	1039	1458	1171	+86 7%	87%	659	1461	1000	+257 26%	89%		
23	1241	-13 -1.0%	1105	+136 12%		1088	+153 14%	1396	-155 -11%	1020	1396	1156	+85 7%	88%	651	1396	972	+269 28%	93%		
24	1213	-14 -1.1%	1040	+173 17%		1040	+173 17%	1298	-85 -7%	948	1298	1077	+136 13%	92%	638	1297	905	+308 34%	99%		
25	1178	-16 -1.3%	915	+263 29%		905	+273 30%	1245	-67 -5%	810	1245	935	+243 26%	96%	568	1245	787	+391 50%	99%		
26	1138	-7 -0.6%	803	+335 42%		801	+337 42%	1165	-27 -2%	737	1165	847	+291 34%	97%	532	1165	708	+430 61%	99%		
28	910	-24 -2.6%	671	+239 36%		671	+239 36%	974	-64 -7%	578	974	702	+208 30%	91%	424	974	562	+348 62%	99%		
30	875	-11 -1.2%	655	+220 34%		643	+232 36%	897	-22 -2%	530	897	660	+215 33%	97%	343	876	506	+369 73%	99%		
32	758	-4 -0.5%	600	+158 26%		600	+158 26%	762	-4 -1%	465	762	576	+182 32%	97%	297	743	447	+311 70%	100%		
MC	1099	+2 0.2%	776	+323 42%		773	+326 42%	1112	-13 -1%	590	1112	825	+274 33%	98%	390	1112	635	+464 73%	99%		
AU BALES OFFERED	33,127		* Due to the irregular market quoting for some fine wool categories, figures shown relating to micron categories below 18 micron are an estimate based on the																		
AU BALES SOLD	30,238		AWEX Premium & Discounts Report & other available information.																		
AU PASSED-IN%	8.7%		* For any category, where there is insufficient quantity offered to enable AWEX to quote, a quote will be provided based on the best available information.																		
AUD/USD	0.69660		* 10 Year data is not available for 16 to 17.5 microns, therefore 10 year statistics for those micron categories only date back as far as August 2005.																		

Source: Australian Wool Exchange, Australian Wool Innovation, Riemann, x-rates.com, Reserve Bank of Australia, Australian Wool Testing Authority.

Disclaimer: Jemalong Wool Pty Ltd make no representations about the content and suitability of the information contained in this report. Specifically, Jemalong Wool does not warrant, guarantee or make any representations regarding the correctness, accuracy, reliability, currency, or any other aspect regarding characteristics or use of information presented in these materials. The user accepts sole responsibility and risk associated with the use and results of these materials, irrespective of the purpose of which such use or results are applied. In no event shall Jemalong Wool be liable for any loss or damages (including without limitation special, or consequential damages), where in an action of contract, negligence, or tort, arising out of or in connection with the use of performance of these materials.



MARKET COMMENTARY

At this time of year we often see the offering sizes begin to increase as the new season wool comes onto the market, however with only 33,127 bales offered this week, the sale was 13.5% smaller than previously forecast and almost 18% lower than the corresponding sale in 2014. The reduction in volume can be attributed to a number of factors. Firstly the market rallies that occurred in June and August cleaned out a lot of wool that may otherwise have been held for a later sale. Those same rallies may also have contributed towards a degree of seller resistance with 6% of the offering withdrawn on sale day, while 8.7% was passed in. Shorn wool production is also expected to be 4.3% lower this season due to the high turn-off of sheep in 2014/15, while the wet and cold weather in some wool producing areas may also be delaying shearing.

Despite the small offering, the market continued to retreat, with buyers reporting that business with China remains tough, and that new business is being done below the current market level.

In US dollar terms the market was around 30 cents cheaper for the week, however due to the weakening of the AUD over the course of the week, the weekly change in local currency terms was closer to 10-15 cents for most fleece categories. The finer micron fleece categories were however the exception with good spec types receiving solid premiums over their lower spec counterparts, due to the strong Italian interest in this area. Merino cardings also managed to hold their ground on a limited selection.

The trade in general remain optimistic and still believe that wools fundamentals remain sound, and that further downside will be limited. Most are tipping that we will return to a more normal seasonal price pattern where the market will find a more clear direction within the next month or two.

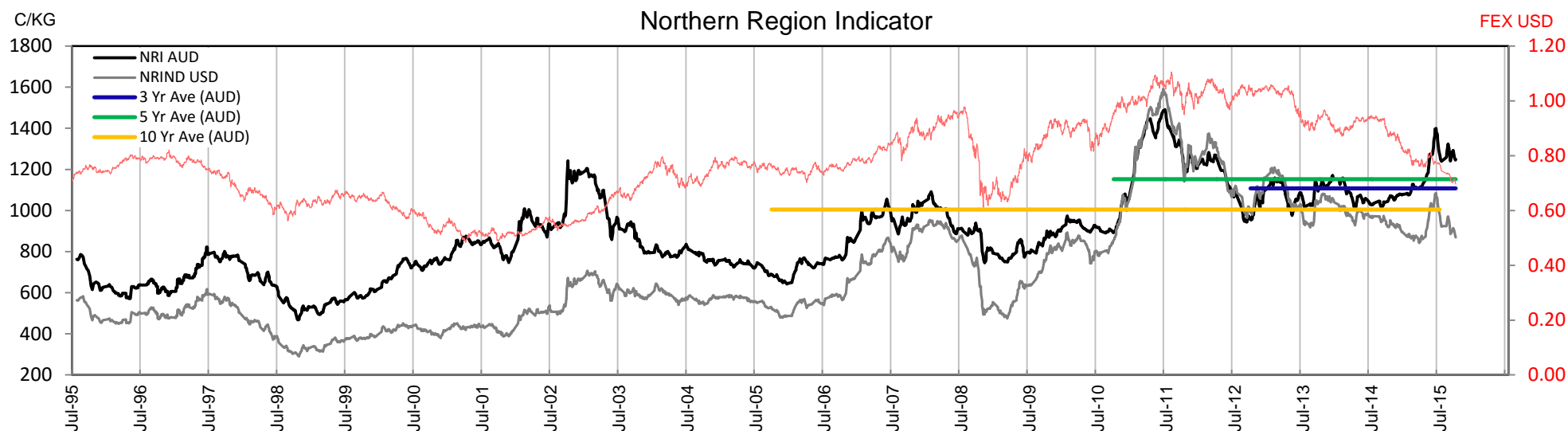




Table 2: Three Year Decile Table, since: 1/09/2012

Decile	%	16	16.5	17	17.5	18	18.5	19	19.5	20	21	22	23	24	25	26	28	30	32	MC
1	10%	1384	1320	1280	1240	1194	1166	1139	1119	1108	1101	1086	1073	993	852	758	598	551	478	713
2	20%	1420	1350	1305	1279	1211	1189	1163	1145	1132	1128	1107	1100	1037	871	782	626	582	493	753
3	30%	1472	1400	1330	1290	1244	1218	1188	1165	1145	1137	1131	1120	1050	888	794	646	614	502	779
4	40%	1510	1420	1345	1320	1265	1243	1202	1178	1163	1156	1141	1129	1060	901	806	659	629	550	791
5	50%	1560	1440	1375	1330	1283	1254	1214	1191	1179	1164	1156	1141	1070	911	814	669	634	560	808
6	60%	1590	1480	1390	1355	1303	1270	1245	1218	1204	1193	1178	1158	1080	918	822	676	642	569	815
7	70%	1600	1500	1424	1389	1340	1302	1281	1259	1229	1218	1202	1189	1094	930	838	690	657	610	829
8	80%	1650	1540	1450	1410	1368	1337	1313	1289	1258	1240	1226	1210	1103	969	887	813	775	676	909
9	90%	1710	1593	1508	1483	1438	1405	1358	1334	1313	1300	1272	1252	1171	1119	1057	896	830	712	1059
10	100%	1810	1660	1640	1620	1607	1579	1553	1529	1517	1500	1458	1396	1298	1245	1165	974	897	762	1112
MPG		1570	1510	1480	1460	1428	1401	1346	1304	1278	1265	1257	1241	1213	1178	1138	910	875	758	1099
3 Yr Percentile		57%	70%	86%	88%	88%	89%	87%	86%	86%	86%	87%	88%	92%	96%	97%	91%	97%	97%	98%

Table 3: Ten Year Decile Table, since: 1/09/2005

Decile	%	16	16.5	17	17.5	18	18.5	19	19.5	20	21	22	23	24	25	26	28	30	32	MC
1	10%	1423	1340	1225	1150	1058	1002	935	853	786	736	711	696	675	614	565	444	377	325	415
2	20%	1495	1370	1260	1190	1130	1059	983	908	838	784	769	753	728	640	583	457	398	348	451
3	30%	1540	1400	1290	1225	1170	1125	1058	972	916	878	851	829	781	660	597	469	410	359	510
4	40%	1570	1420	1320	1280	1206	1159	1098	1030	978	945	918	889	823	695	614	478	425	380	569
5	50%	1600	1460	1360	1310	1253	1201	1142	1096	1054	995	953	921	848	717	637	488	435	395	604
6	60%	1650	1500	1400	1350	1293	1253	1194	1148	1116	1089	1066	1046	976	847	749	579	531	465	655
7	70%	1700	1550	1440	1400	1358	1294	1236	1186	1164	1150	1135	1115	1040	891	793	631	581	496	730
8	80%	1800	1700	1550	1490	1423	1342	1298	1267	1229	1214	1194	1157	1072	915	820	659	623	553	781
9	90%	2100	1910	1730	1625	1570	1493	1447	1402	1347	1307	1258	1223	1102	968	865	685	643	583	816
10	100%	2800	2680	2530	2360	2193	1963	1776	1670	1588	1522	1461	1396	1297	1245	1165	974	876	743	1112
MPG		1570	1510	1480	1460	1428	1401	1346	1304	1278	1265	1257	1241	1213	1178	1138	910	875	758	1099
10 Yr Percentile		41%	64%	74%	77%	80%	83%	84%	84%	86%	86%	89%	93%	99%	99%	99%	99%	99%	100%	99%

Definitions:

* A Percentile, is a value on a scale of one hundred that indicates the percent of a distribution that is equal to or below it. In general a percentile between 25% and 75% is considered normal, a percentile below 25% is considered below normal and a percentile above 75% is considered above normal.

Three and ten year percentiles shown on the bottom line of table 2 & 3 (above) and in table 1 (on page 1), detail the amount of time during the past 3 & 10 years where the market has traded either at or below its current price.

* Deciles are a method of sorting ranked data into 10 equal groups. The data may be ranked from largest to smallest or vice versa.

The above Decile tables sort price Percentiles into 10 equal groups (in ascending order), with table 2 ranking the previous 3 years prices, while table 3 ranks prices over the previous 10 years.

Example: In Table 2, a Decile Rank of 6 for 19 microns, shows 19 microns have traded at or below 1245 for 60% of the time, over the past three years.

In Table 3, a Decile Rank of 6 for 19 microns, shows 19 microns have traded at or below 1194 for 60% of the time, over the past ten years.



Table 4: Riemann Forwards, latest trades as at: Last Date

Any highlighted in yellow are recent trades, trading since: Friday, 18 September 2015

CONTRACT MICRON		18.5um	19um	19.5um	21um	22um	23um	28um	30um
CONTRACT MONTH	Sep-2015		8/05/15 1320		10/09/15 1325			7/05/15 820	7/05/15 760
	Oct-2015		8/09/15 1400		8/09/15 1330			2/08/15 885	27/05/15 800
	Nov-2015				7/09/15 1300			26/08/15 865	7/09/15 860
	Dec-2015	27/05/15 1425	8/09/15 1400		2/09/15 1330			27/05/15 820	
	Jan-2016	21/05/15 1375	10/07/15 1350		2/09/15 1330			9/09/15 900	13/07/15 760
	Feb-2016		12/08/15 1400		11/08/15 1300			3/06/15 800	
	Mar-2016	28/05/15 1420	12/07/15 1305		12/08/15 1310				
	Apr-2016	3/06/15 1420	12/08/15 1360	25/05/15 1290	2/09/15 1280				
	May-2016	10/07/15 1350			12/08/15 1304				
	Jun-2016		12/08/15 1400		11/08/15 1300				
	Jul-2016		12/08/15 1390		12/08/15 1310				
	Aug-2016				6/08/15 1280				
	Sep-2016				6/08/15 1260				
	Oct-2016		16/07/15 1350		6/08/15 1265				
	Nov-2016				12/08/15 1275				
	Dec-2016				12/08/15 1275				
	Jan-2017		9/09/15 1355		16/07/15 1250				
	Feb-2017								
	Mar-2017								
	Apr-2017								
	May-2017								
	Jun-2017								
	Jul-2017								

Explanatory Notes: Prices quoted reflect the most recent trades, at time of print.

Disclaimer: While all due care has been taken in the preparation of this document, no warranty is made as to its accuracy, reliability or completeness. To the extent permitted by law neither Jemalong or their sources including subsidiaries and staff, accept liability to any person for loss or damage arising from the use of this information.



Table 5: National Market Share

		Current Selling Week			Previous Selling Week			Last Season			2 Years Ago			3 Years Ago			5 Years Ago			10 Years Ago		
	Rank	Buyer	Bales	MS%	Buyer	Bales	MS%	Buyer	Bales	MS%	Buyer	Bales	MS%	Buyer	Bales	MS%	Buyer	Bales	MS%	Buyer	Bales	MS%
Top 10, Auction Buyers	1	TECM	4,143	14%	FOXN	3,529	11%	TECM	248,371	14%	TECM	205,136	13%	TECM	179,176	10%	VTRA	209,391	12%	ITOS	160,935	7%
	2	CTXS	2,819	9%	CTXS	3,203	10%	FOXN	173,810	10%	FOXN	134,581	8%	VTRA	163,810	9%	TECM	179,439	10%	TECM	143,493	6%
	3	TIAM	2,602	9%	AMEM	3,111	10%	CTXS	167,211	9%	CTXS	122,964	8%	FOXN	143,826	8%	FOXN	142,143	8%	MODM	138,670	6%
	4	FOXN	2,571	9%	TECM	2,637	8%	AMEM	122,220	7%	AMEM	111,263	7%	LEMM	126,564	7%	QCTB	120,699	7%	RWRS	136,029	6%
	5	AMEM	2,532	8%	GWEA	2,596	8%	LEMM	117,153	7%	LEMM	109,224	7%	QCTB	98,756	6%	WIEM	99,585	6%	BWEA	116,533	5%
	6	LEMM	2,425	8%	LEMM	2,191	7%	TIAM	113,797	6%	TIAM	105,736	7%	PMWF	96,935	6%	LEMM	85,346	5%	KATS	112,562	5%
	7	MCHA	1,766	6%	TIAM	1,820	6%	PMWF	96,998	5%	QCTB	88,700	5%	MODM	84,363	5%	MODM	81,981	5%	FOXN	107,337	5%
	8	MODM	1,453	5%	GSAS	1,615	5%	MODM	84,256	5%	MODM	79,977	5%	CTXS	82,166	5%	PMWF	77,588	4%	PLEX	104,556	5%
	9	PMWF	1,438	5%	VWPM	1,484	5%	KATS	74,875	4%	PMWF	77,875	5%	AMEM	77,849	4%	CTXS	75,127	4%	GSAS	91,841	4%
	10	VWPM	1,134	4%	NENM	1,424	4%	GSAS	64,436	4%	GSAS	54,462	3%	KATS	65,782	4%	KATS	67,867	4%	LEMM	83,238	4%
MFLC TOP 5	1	TECM	2,794	15%	CTXS	2,338	12%	TECM	139,806	14%	TECM	106,291	12%	VTRA	118,432	12%	VTRA	169,191	17%	ITOS	125,727	9%
	2	LEMM	1,955	11%	GWEA	2,237	12%	CTXS	130,004	13%	CTXS	87,889	10%	LEMM	110,118	11%	QCTB	98,673	10%	TECM	110,145	8%
	3	CTXS	1,794	10%	FOXN	1,896	10%	FOXN	103,547	10%	LEMM	82,374	9%	PMWF	93,136	10%	TECM	79,395	8%	BWEA	106,407	8%
	4	TIAM	1,555	9%	AMEM	1,554	8%	PMWF	90,101	9%	FOXN	80,423	9%	TECM	89,286	9%	PMWF	71,718	7%	KATS	97,707	7%
	5	FOXN	1,524	8%	GSAS	1,503	8%	LEMM	79,881	8%	PMWF	69,890	8%	QCTB	71,715	7%	LEMM	70,280	7%	RWRS	83,993	6%
MSKT TOP 5	1	TIAM	1,044	20%	AMEM	1,283	22%	TIAM	49,870	18%	TIAM	47,607	19%	MODM	37,284	14%	MODM	39,745	14%	MODM	73,069	20%
	2	AMEM	825	16%	TIAM	734	13%	AMEM	43,367	16%	TECM	31,474	12%	TECM	34,301	13%	WIEM	36,566	13%	PLEX	54,141	15%
	3	MODM	719	14%	FOXN	660	11%	TECM	39,495	14%	AMEM	29,775	12%	WIEM	27,916	10%	TECM	28,858	10%	GSAS	33,830	9%
	4	TECM	519	10%	TECM	570	10%	MODM	23,165	8%	MODM	23,791	9%	TIAM	24,196	9%	PLEX	23,282	8%	RWRS	25,276	7%
	5	FOXN	480	9%	MODM	495	9%	FOXN	17,015	6%	GSAS	13,843	5%	AMEM	23,012	8%	FOXN	16,098	6%	QUWA	21,918	6%
XB TOP 5	1	CTXS	751	21%	KATS	571	14%	KATS	65,119	22%	TECM	40,364	15%	FOXN	39,356	14%	FOXN	48,708	19%	FOXN	42,688	20%
	2	TECM	558	15%	TECM	567	13%	TECM	40,231	14%	CTXS	34,779	13%	TECM	30,323	11%	TECM	43,133	17%	TECM	26,464	12%
	3	MCHA	522	14%	FOXN	543	13%	CTXS	35,691	12%	FOXN	24,218	9%	VTRA	27,832	10%	VTRA	20,904	8%	MOPS	15,695	7%
	4	FOXN	335	9%	CTXS	533	13%	FOXN	34,007	12%	MODM	21,512	8%	KATS	26,057	9%	MODM	20,556	8%	ITOS	15,342	7%
	5	KATS	242	7%	MCHA	457	11%	AMEM	15,044	5%	AMEM	20,336	7%	CTXS	25,631	9%	CTXS	16,667	7%	MODM	11,602	5%
ODDS TOP 5	1	MCHA	845	27%	VWPM	706	21%	MCHA	38,934	18%	MCHA	36,085	17%	MCHA	35,985	16%	MCHA	30,570	13%	MCHA	43,561	17%
	2	VWPM	567	18%	MCHA	640	19%	TECM	28,839	13%	TECM	27,007	13%	FOXN	28,185	12%	TECM	28,053	12%	FOXN	37,436	14%
	3	TECM	272	9%	FOXN	430	13%	FOXN	19,241	9%	VWPM	22,432	11%	TECM	25,266	11%	FOXN	27,422	12%	QUWA	19,886	8%
	4	GWEA	262	8%	GWEA	303	9%	LEMM	12,309	6%	FOXN	18,811	9%	VWPM	20,692	9%	VWPM	22,267	10%	RWRS	18,879	7%
	5	FOXN	232	7%	SNWF	223	7%	MAFM	11,640	5%	RWRS	13,524	6%	VTRA	13,022	6%	RWRS	15,878	7%	DAWS	16,313	6%
Auction Totals		<u>Offered</u>	<u>Sold</u>		<u>Offered</u>	<u>Sold</u>		<u>Bales Sold</u>	<u>\$/Bale</u>		<u>Bales Sold</u>	<u>\$/Bale</u>		<u>Bales Sold</u>	<u>\$/Bale</u>		<u>Bales Sold</u>	<u>\$/Bale</u>		<u>Bales Sold</u>	<u>\$/Bale</u>	
		33,127	30,238		37,885	32,363		1,800,510	\$1,545		1,625,115	\$1,509		1,742,881	\$1,418		1,786,249	\$1,467		2,213,822	\$1,018	
		<u>Passed-In</u>	<u>PI%</u>		<u>Passed-In</u>	<u>PI%</u>		<u>Export Value</u>			<u>Export Value</u>			<u>Export Value</u>			<u>Export Value</u>			<u>Export Value</u>		
		2,889	8.7%		5,522	14.6%		\$2,781,914,309			\$2,452,791,892			\$2,470,844,153			\$2,619,977,188			\$2,254,128,782		



Table 6: NSW Production Statistics

MAX		MIN		MAX GAIN		MAX REDUCTION									
2014-15															
Statistical Devision, Area Code & Towns				Auction Bales (FH)	Micron	+/- YoY	Vmb %	+/- YoY	Yield % Sch Dry	+/- YoY	Length mm	+/- YoY	Strength Nkt	+/- YoY	Ave Price c/kg
Northern	N02	Tenterfield, Glen Innes		8,433	19.2	-0.2	1.1	-0.9	70.8	-0.8	83	2.5	43	2.6	821
	N03	Guyra		33,037	18.6	0.0	0.9	-0.9	71.8	-0.3	84	3.7	39	-0.4	877
	N04	Inverell		4,027	18.3	0.1	2.1	-1.3	70.3	0.8	86	3.5	39	2.0	803
	N05	Armidale		1,780	20.2	0.4	3.1	-1.1	68.1	0.8	88	2.8	38	3.1	726
	N06	Tamworth, Gunnedah, Quirindi		5,373	20.3	-0.1	2.7	-0.6	67.9	0.7	86	1.9	39	2.8	747
	N07	Moree		5,201	19.9	0.3	3.1	-0.1	62.6	-1.1	89	3.2	35	-0.5	661
	N08	Narrabri		3,273	19.4	0.2	2.3	-0.3	64.4	-1.6	88	2.7	36	0.4	692
North Western & Far West	N09	Cobar, Bourke, Wanaaring		10,367	19.8	0.1	3.3	-0.4	60.1	0.1	88	2.4	34	-2.4	653
	N12	Walgett		7,125	19.2	-0.4	3.1	0.0	60.7	-1.8	86	2.4	33	-3.2	663
	N13	Nyngan		21,678	20.4	0.1	6.2	1.1	60.3	-1.4	90	1.8	37	0.3	623
	N14	Dubbo, Narromine		23,235	21.3	0.1	4.2	0.5	61.6	-0.5	88	2.3	37	1.3	585
	N16	Dunedoo		7,687	19.9	0.3	2.7	0.1	65.8	-1.2	91	2.7	37	2.3	708
	N17	Mudgee, Wellington, Gulgong		24,417	19.8	0.2	2.3	0.1	67.6	-0.7	87	3.8	39	0.9	726
	N33	Coonabarabran		3,646	20.8	0.4	4.5	0.9	64.1	-1.7	88	3.2	34	-0.2	631
	N34	Coonamble		7,831	20.1	-0.1	5.7	1.9	59.3	-1.9	88	2.4	36	0.1	626
	N36	Gilgandra, Gulargambone		6,941	21.1	-0.1	4.6	1.0	62.1	-0.9	87	1.8	36	0.5	617
	N40	Brewarrina		5,191	19.4	0.1	2.1	0.1	63.8	-1.7	86	4.1	38	-1.3	690
	N10	Wilcannia, Broken Hill		25,000	21.0	0.4	2.6	0.4	60.5	0.8	90	3.2	34	-1.4	654
Central West	N15	Forbes, Parkes, Cowra		55,313	21.2	-0.5	2.9	0.2	63.7	0.1	90	2.2	36	1.8	626
	N18	Lithgow, Oberon		2,584	20.8	0.2	1.2	-0.6	70.3	1.1	86	2.7	37	-0.8	727
	N19	Orange, Bathurst		57,152	22.1	0.1	1.5	0.1	68.2	-0.7	88	3.0	37	0.1	674
	N25	West Wyalong		27,332	20.8	0.2	2.2	-0.3	63.1	0.9	91	2.8	36	1.2	646
	N35	Condobolin, Lake Cargelligo		11,646	20.8	0.2	4.9	0.5	60.1	-0.4	90	4.2	36	0.3	593
Murrumbidgee	N26	Cootamundra, Temora		28,871	21.7	0.0	1.7	-0.2	63.7	0.6	89	2.9	36	1.7	633
	N27	Adelong, Gundagai		12,930	21.8	0.4	1.4	-0.2	68.1	0.6	90	1.6	35	0.8	653
	N29	Wagga, Narrandera		33,397	22.0	0.1	1.3	-0.3	64.4	0.0	90	2.0	36	32.8	633
	N37	Griffith, Hillston		13,228	21.5	0.2	3.8	-0.3	62.0	0.8	87	1.6	38	0.5	620
	N39	Hay, Coleambally		17,225	20.8	0.3	3.0	-0.5	63.8	1.5	91	3.9	39	3.2	673
Murray	N11	Wentworth, Balranald		15,106	21.4	0.7	4.2	0.2	60.8	0.7	92	2.8	37	1.4	628
	N28	Albury, Corowa, Holbrook		29,800	21.5	-0.1	1.3	-0.2	66.9	0.8	88	1.5	36	2.5	672
	N31	Deniliquin		24,348	21.3	0.6	2.1	-0.2	66.1	1.5	91	6.1	40	7.4	673
	N38	Finley, Berrigan, Jerilderie		9,426	20.8	0.4	2.1	-0.5	65.7	1.9	88	2.8	41	5.9	691
South Eastern	N23	Goulburn, Young, Yass		102,592	20.0	0.3	1.2	0.0	68.4	-0.1	90	4.5	36	-0.6	734
	N24	Monaro (Cooma, Bombala)		36,484	19.7	-0.1	1.3	-0.2	70.2	0.6	93	4.4	38	2.0	751
	N32	A.C.T.		220	21.4	1.3	3.3	-0.6	59.4	0.2	86	-2.4	32	0.5	560
	N43	South Coast (Bega)		474	19.2	0.2	1.0	0.3	73.2	0.2	89	2.0	45	5.9	876
NSW	AWEX Sale Statistics 14-15			711,134	20.7	0.1	2.3	0.0	65.6	0.1	89	3.2	37	1.0	688

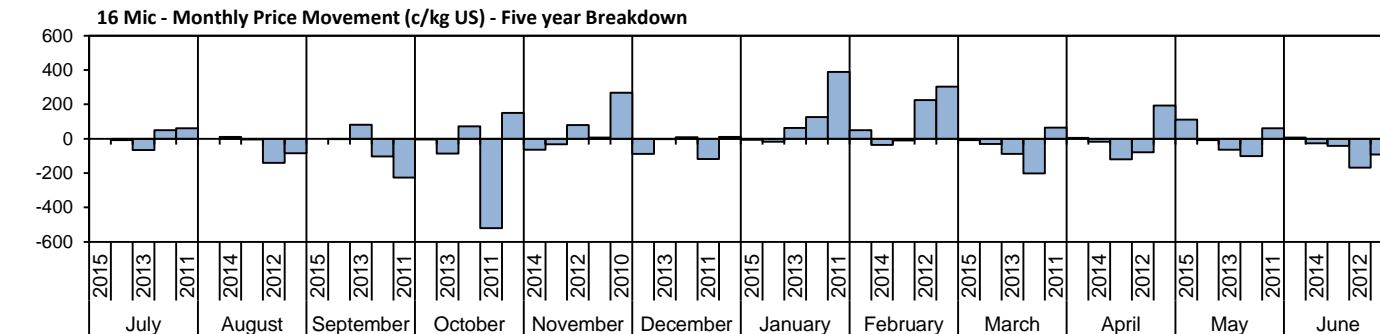
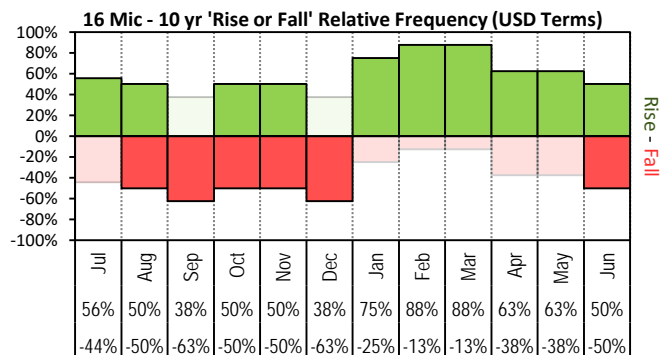
AWTA Mthly Key Test Data			Bales Tested	+/- YoY	Micron	+/- YoY	VMB	+/- YoY	Yld	+/- YoY	Lth	+/- YoY	Nkt	+/- YoY	POBM +/-
AUSTRALIA	Current	August	145,342	-13,190	20.4	-0.1	1.9	-0.2	64.5	-0.1	91	0.6	35	1.2	49 -3.0
	Season	Y.T.D	241,046	-23,870	20.5	0.0	1.9	-0.3	64.1	-0.1	89	0.0	35	1.0	49 -2.0
	Previous	2014-15	264,916	-3464.0	20.5	0.0	2.2	0.1	64.2	0.1	89	3.0	34	-2.0	51 2.0
	Seasons	2013-14	268,380	-14131.0	20.5	-0.5	2.1	-0.6	64.1	-1.1	86	-2.0	36	0.0	49 -4.0
	Y.T.D.	2012-13	282,511	-5,730	21.0	-0.2	2.7	-0.2	65.2	0.5	88	0.3	36	1.1	45 -5.3



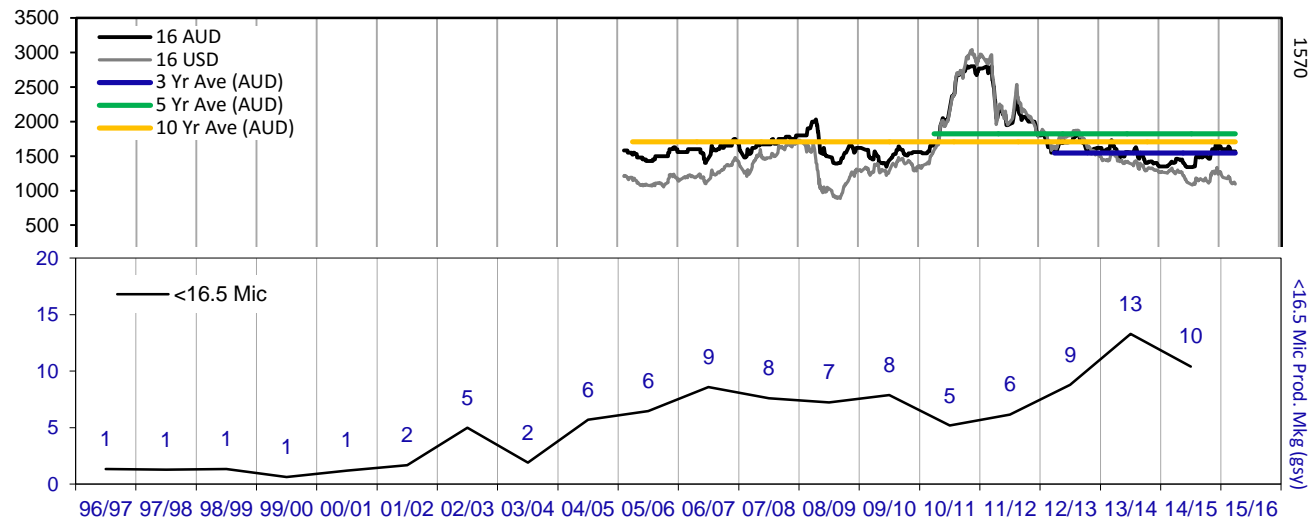
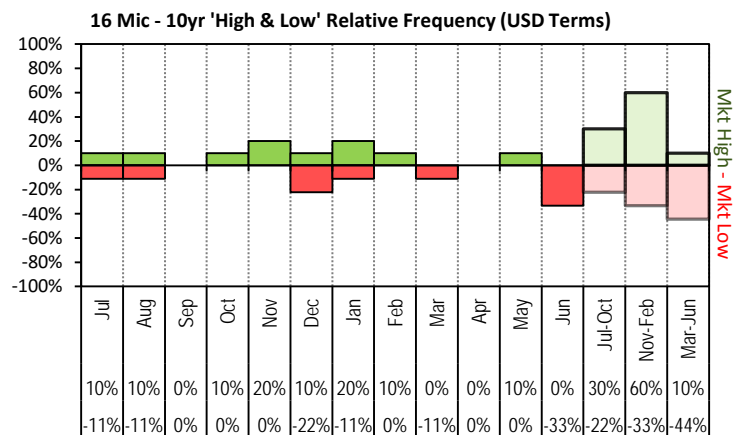
JEMALONG WOOL BULLETIN

(week ending 24/09/2015)

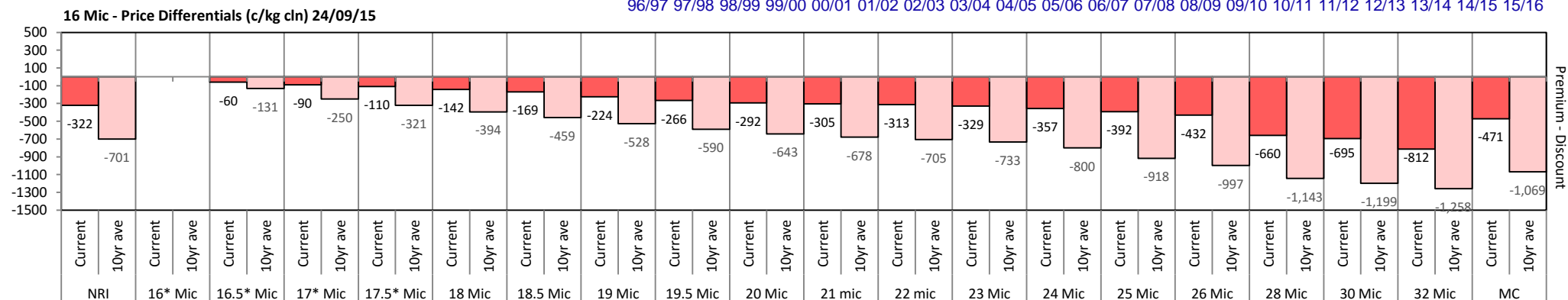
Page 7/25

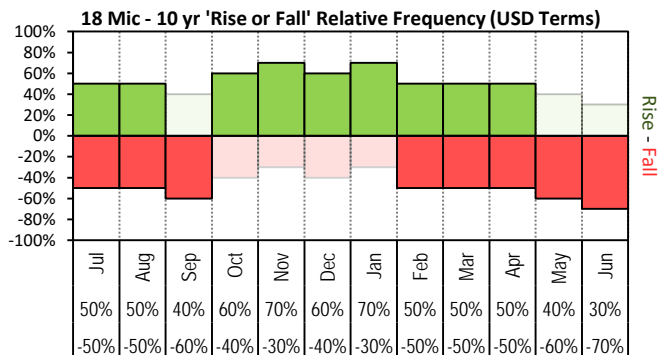


The above 'Rise or Fall' graph, shows how often the market has risen or fallen in a given month over the past 10 years, it does not show the extent of the movement only the frequency of direction. The 'Monthly Price Movement' graph shows the extent of movement for each month, for the past 5 years.

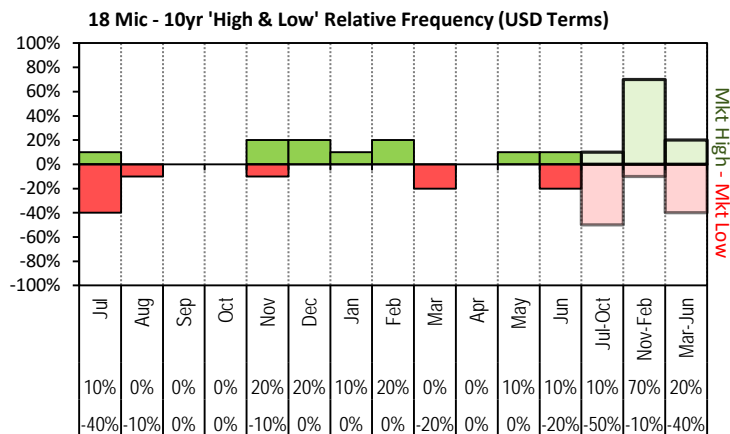
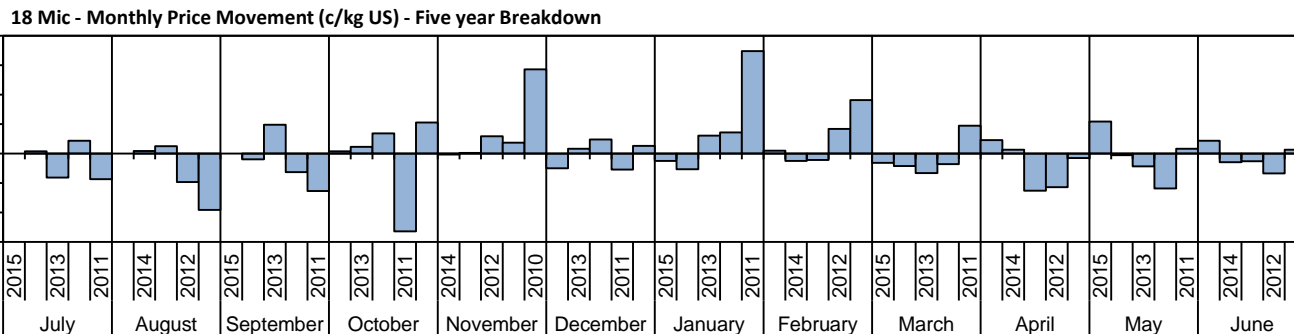


The above graph, shows how often the '12 month high & low' have been achieved for a

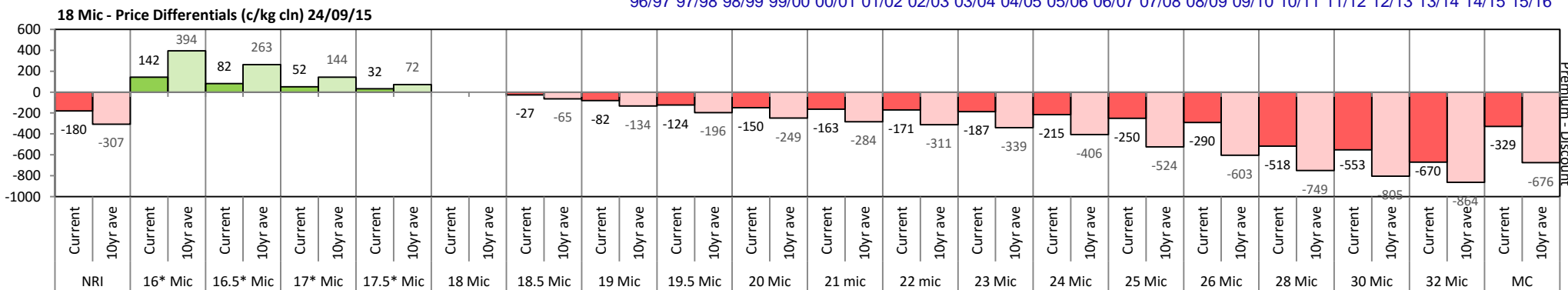
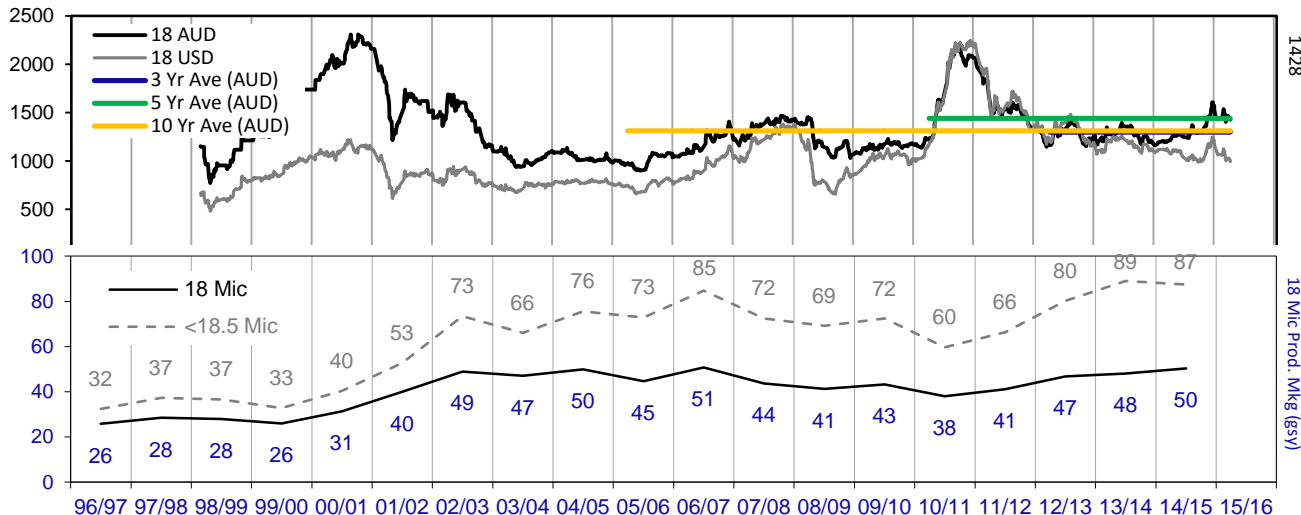


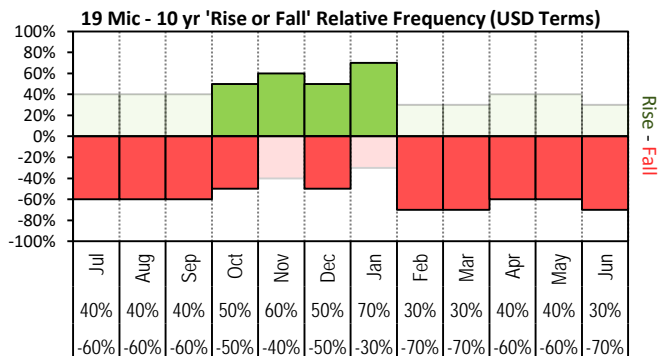


The above 'Rise or Fall' graph, shows how often the market has risen or fallen in a given month over the past 10 years, it does not show the extent of the movement only the frequency of direction. The 'Monthly Price Movement' graph shows the extent of movement for each month, for the past 5 years.

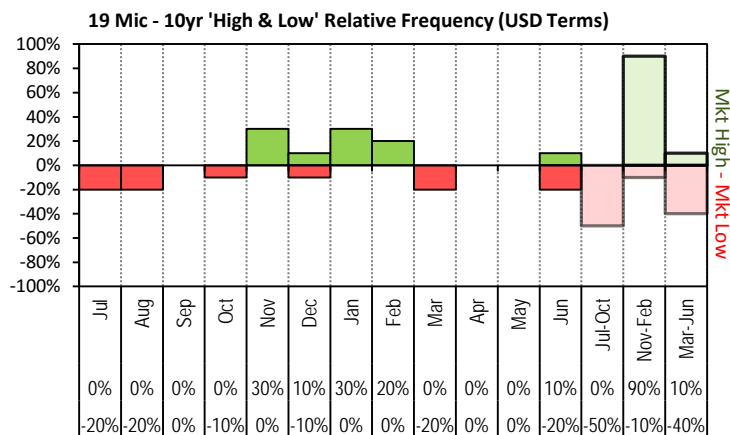
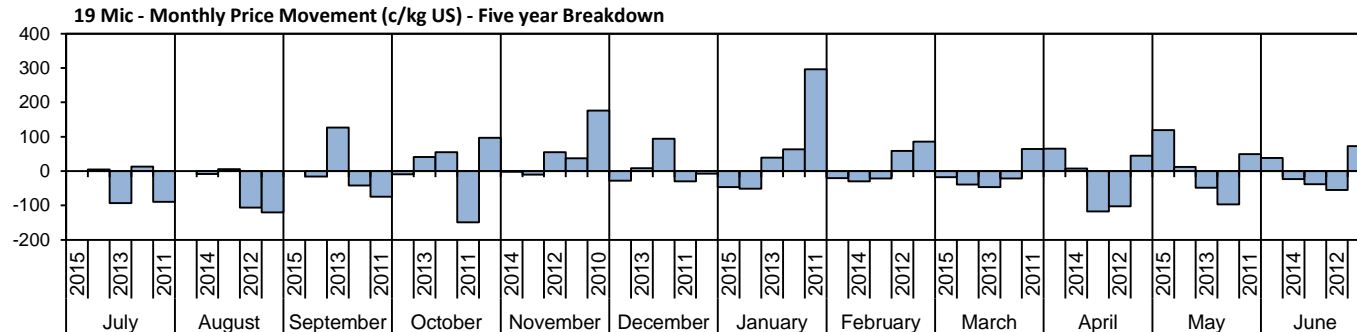


The above graph, shows how often the '12 month high & low' have been achieved for a given month over the past 10 years. It is not a measure of probability.

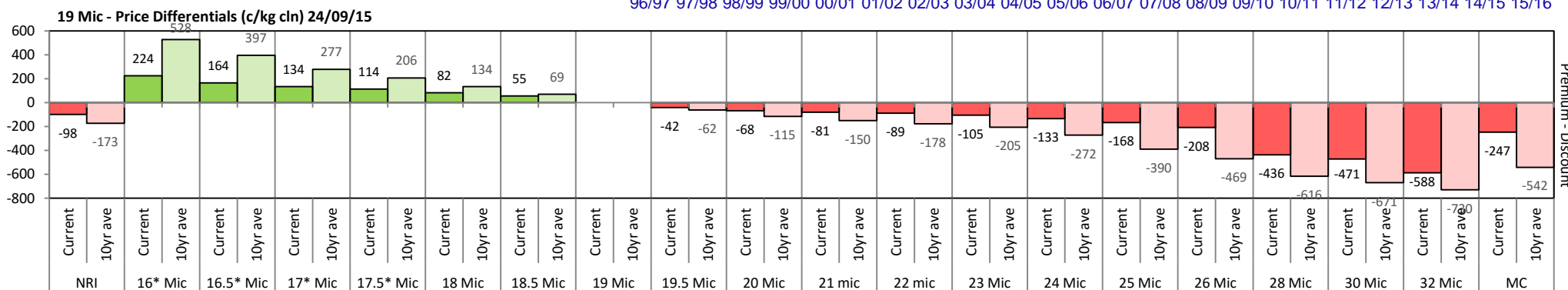
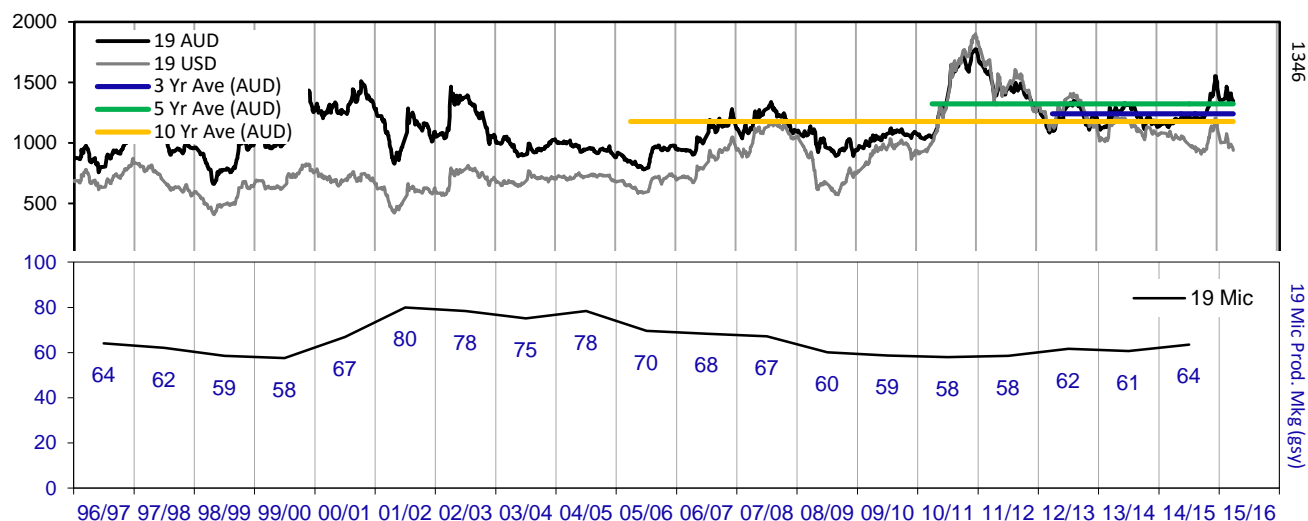




The above 'Rise or Fall' graph, shows how often the market has risen or fallen in a given month over the past 10 years, it does not show the extent of the movement only the frequency of direction. The 'Monthly Price Movement' graph shows the extent of movement for each month, for the past 5 years.



The above graph, shows how often the '12 month high & low' have been achieved for a given month over the past 10 years. It is not a measure of probability.

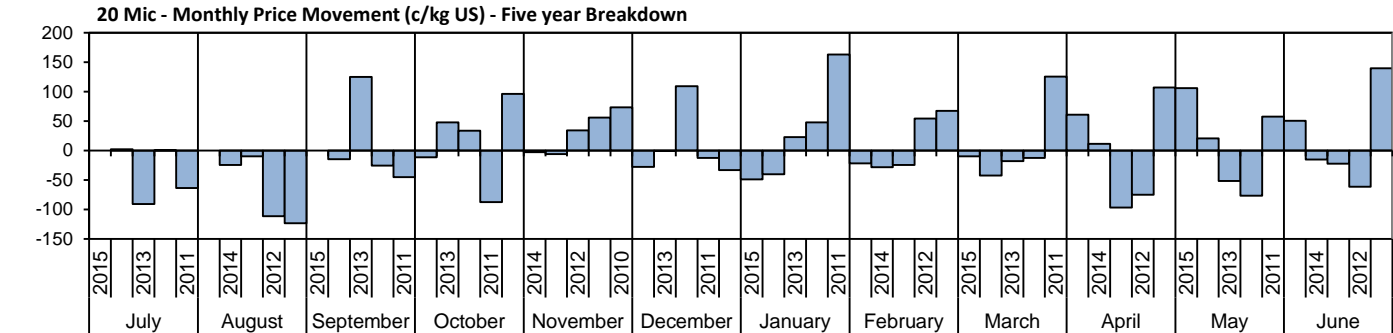
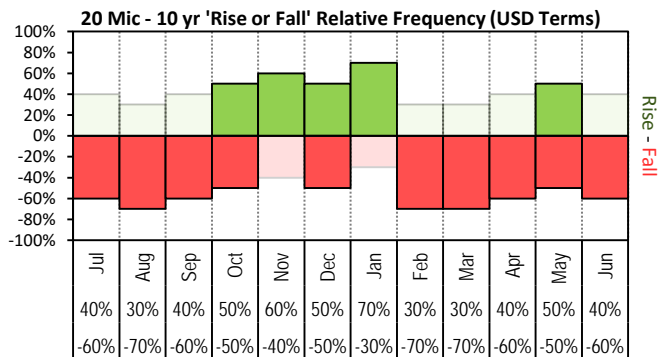




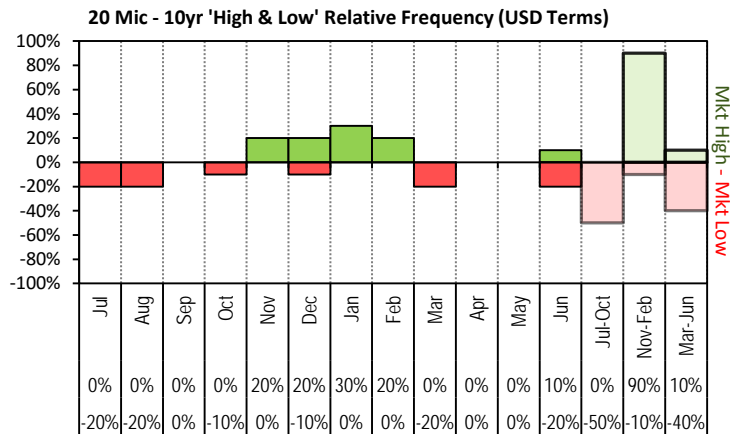
JEMALONG WOOL BULLETIN

(week ending 24/09/2015)

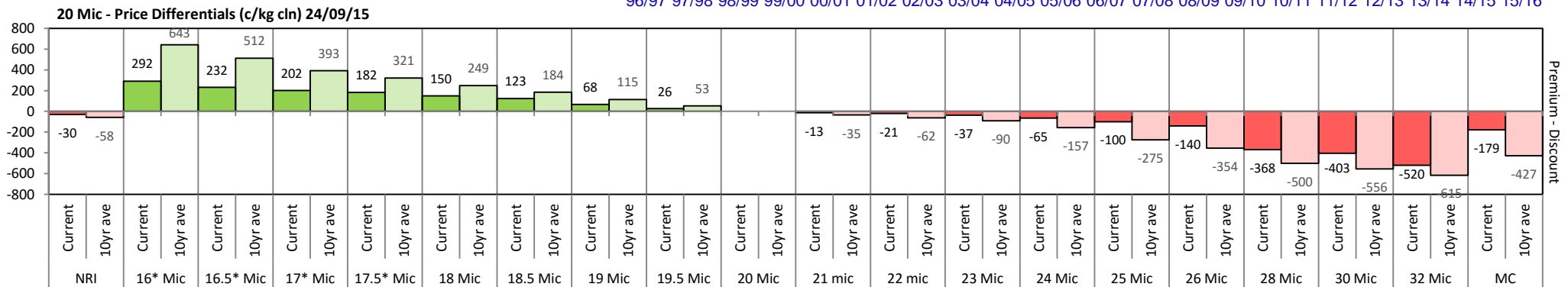
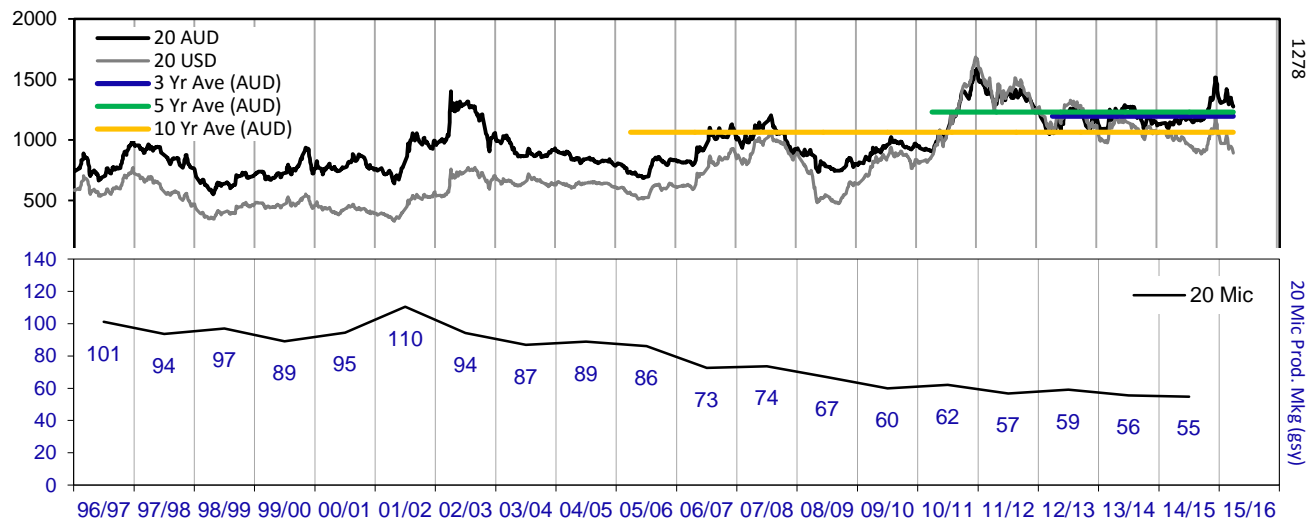
Page 10/25

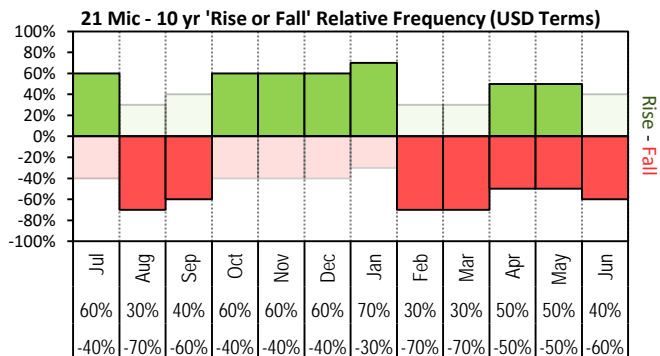


The above 'Rise or Fall' graph, shows how often the market has risen or fallen in a given month over the past 10 years, it does not show the extent of the movement only the frequency of direction. The 'Monthly Price Movement' graph shows the extent of movement for each month, for the past 5 years.

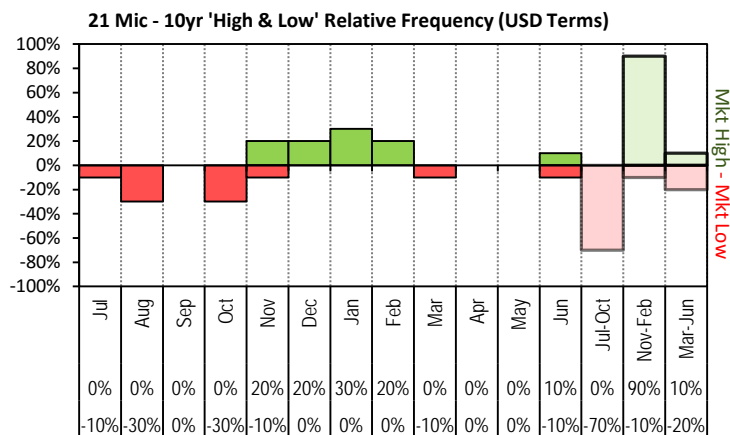
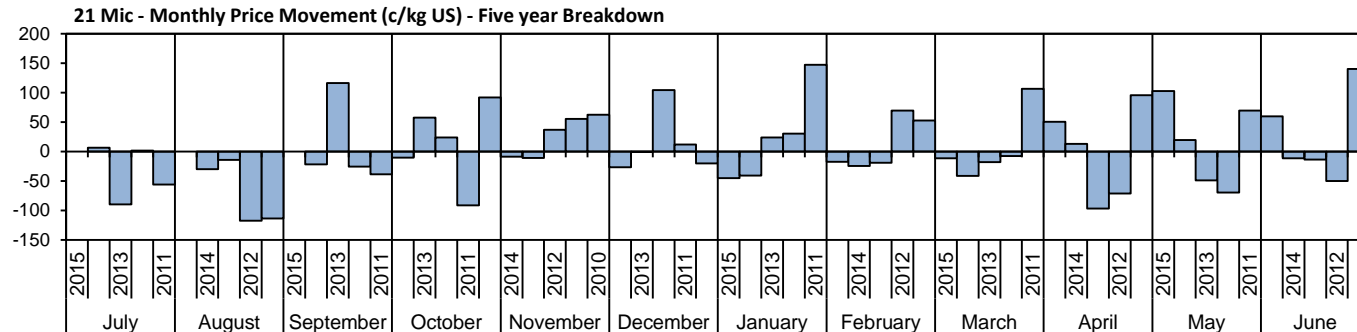


The above graph, shows how often the '12 month high & low' have been achieved for a given month over the past 10 years. It is not a measure of probability.

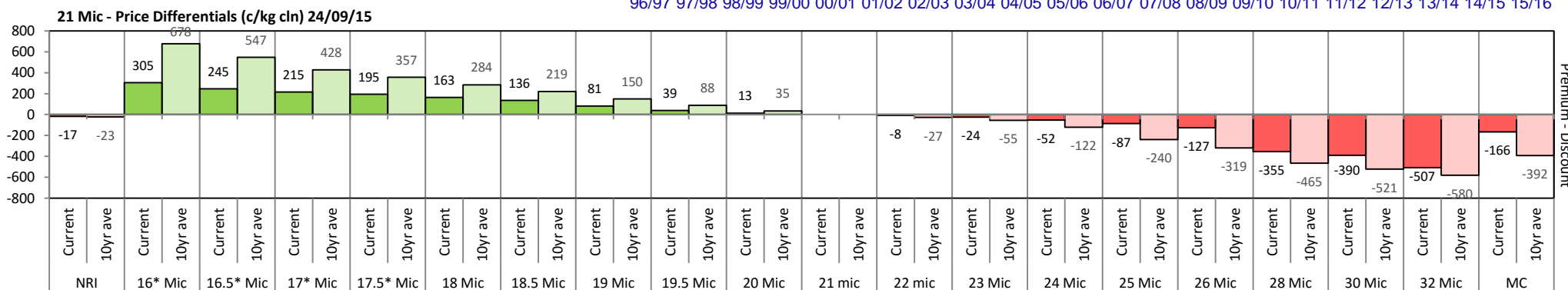
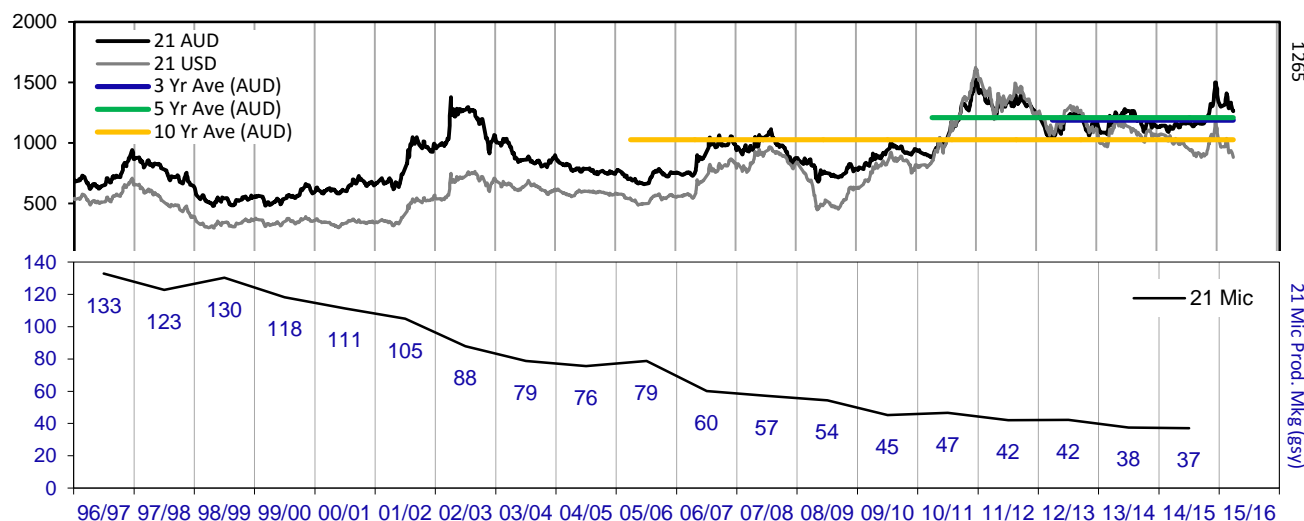




The above 'Rise or Fall' graph, shows how often the market has risen or fallen in a given month over the past 10 years, it does not show the extent of the movement only the frequency of direction. The 'Monthly Price Movement' graph shows the extent of movement for each month, for the past 5 years.



The above graph, shows how often the '12 month high & low' have been achieved for a given month over the past 10 years. It is not a measure of probability.

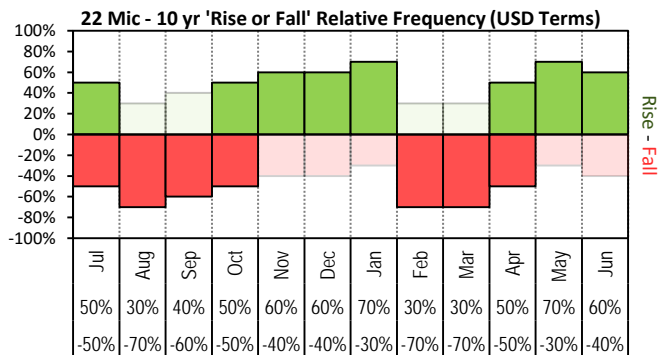




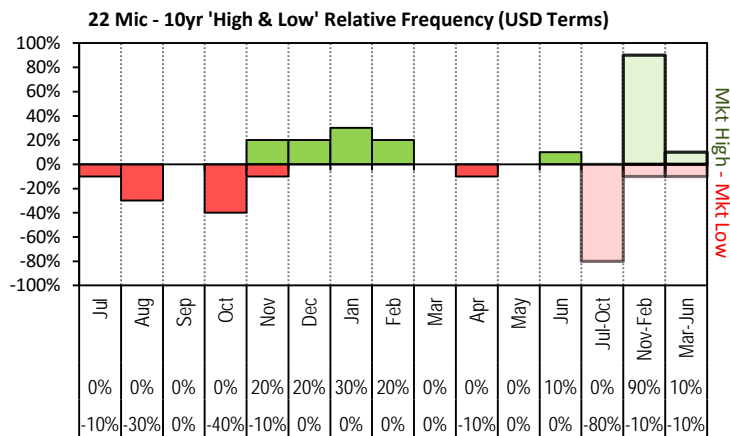
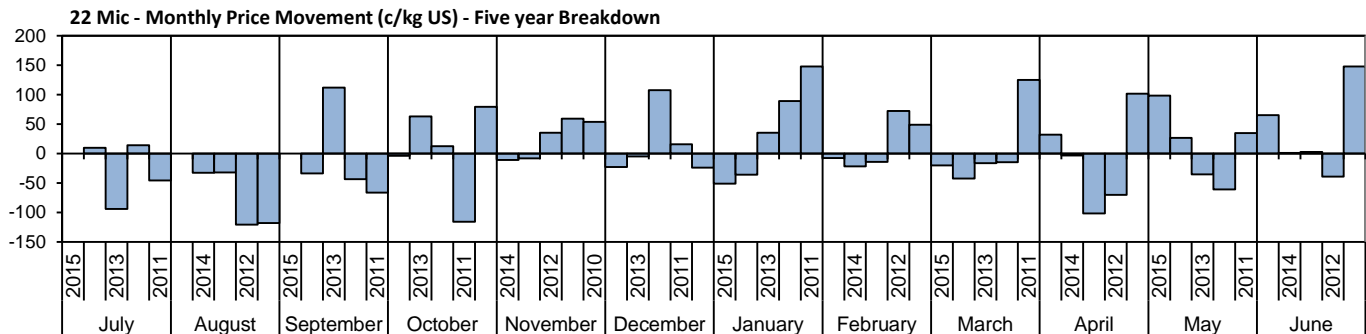
JEMALONG WOOL BULLETIN

(week ending 24/09/2015)

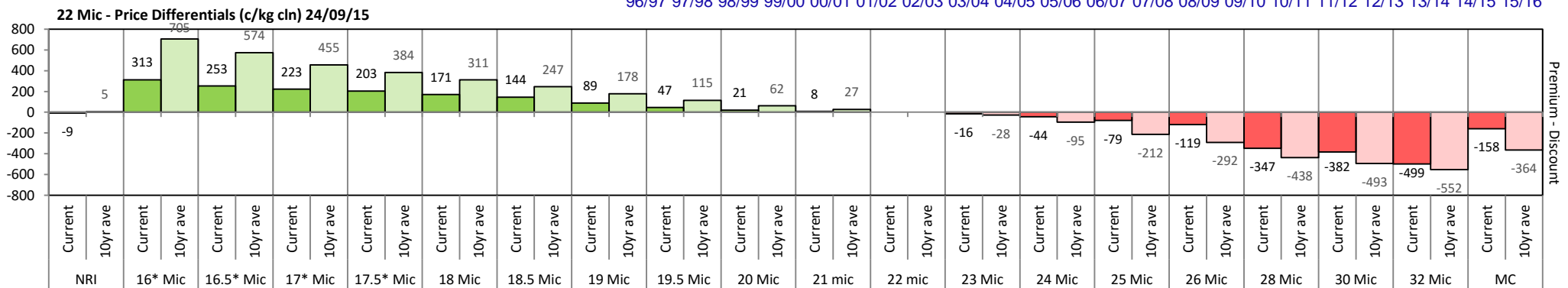
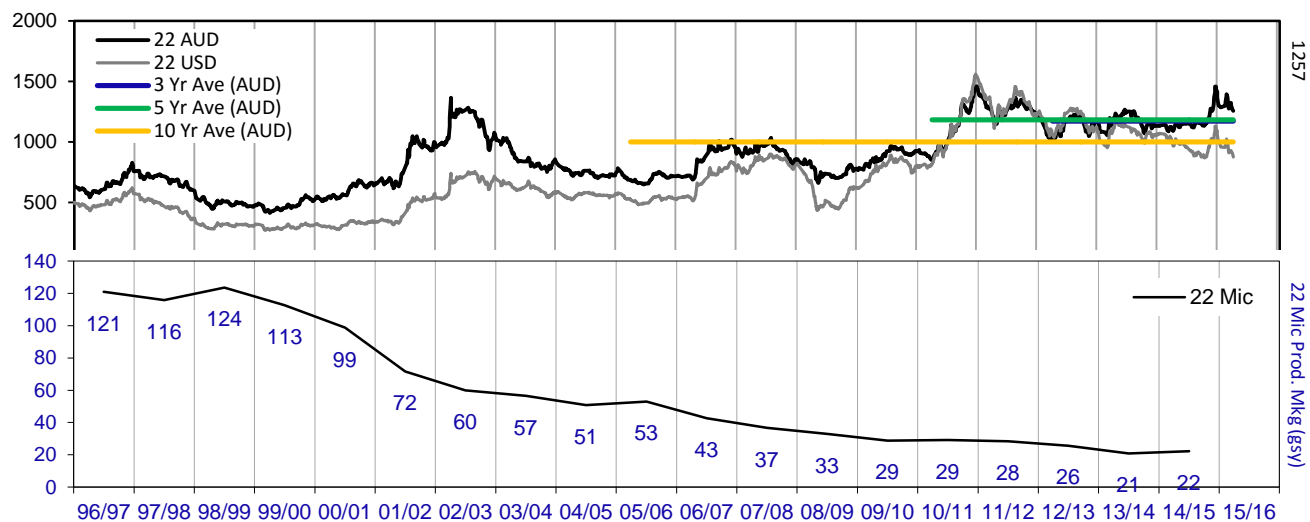
Page 12/25

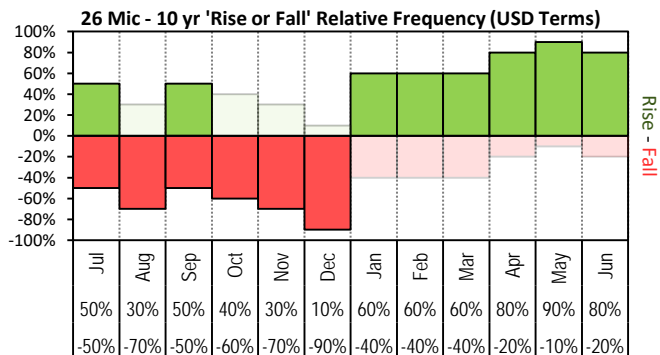


The above 'Rise or Fall' graph, shows how often the market has risen or fallen in a given month over the past 10 years, it does not show the extent of the movement only the frequency of direction. The 'Monthly Price Movement' graph shows the extent of movement for each month, for the past 5 years.

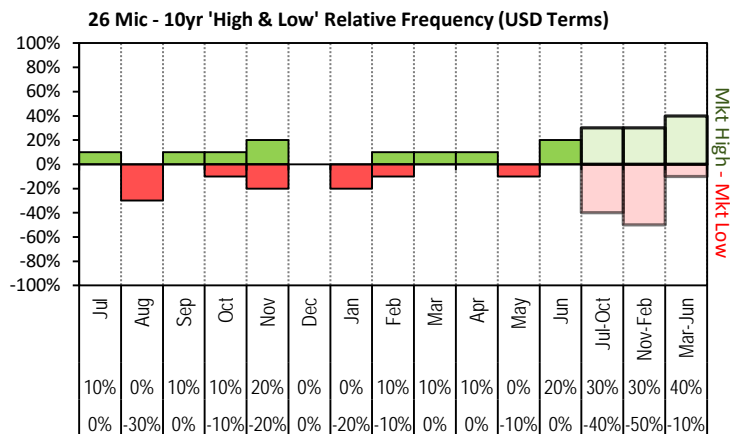
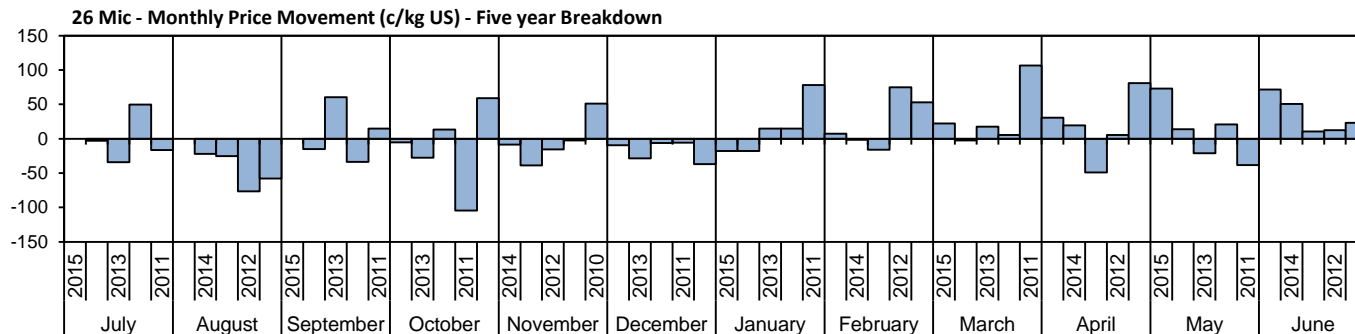


The above graph, shows how often the '12 month high & low' have been achieved for a given month over the past 10 years. It is not a measure of probability.

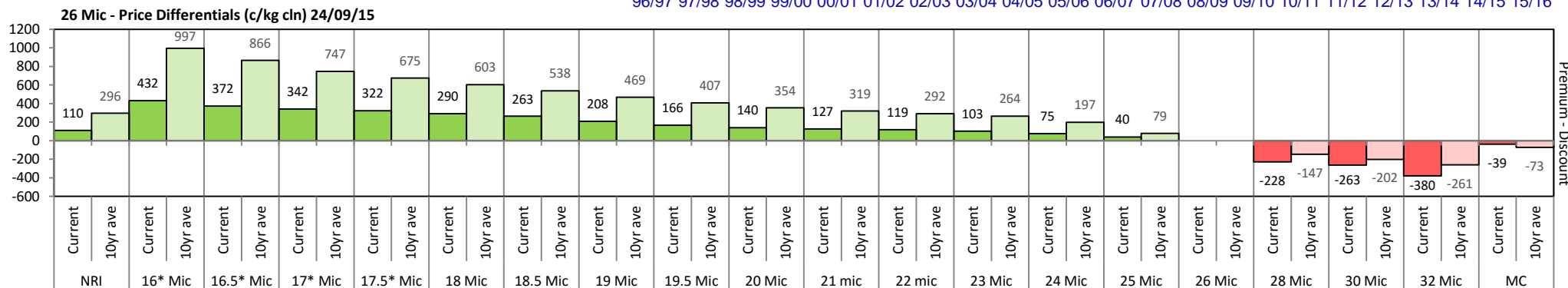
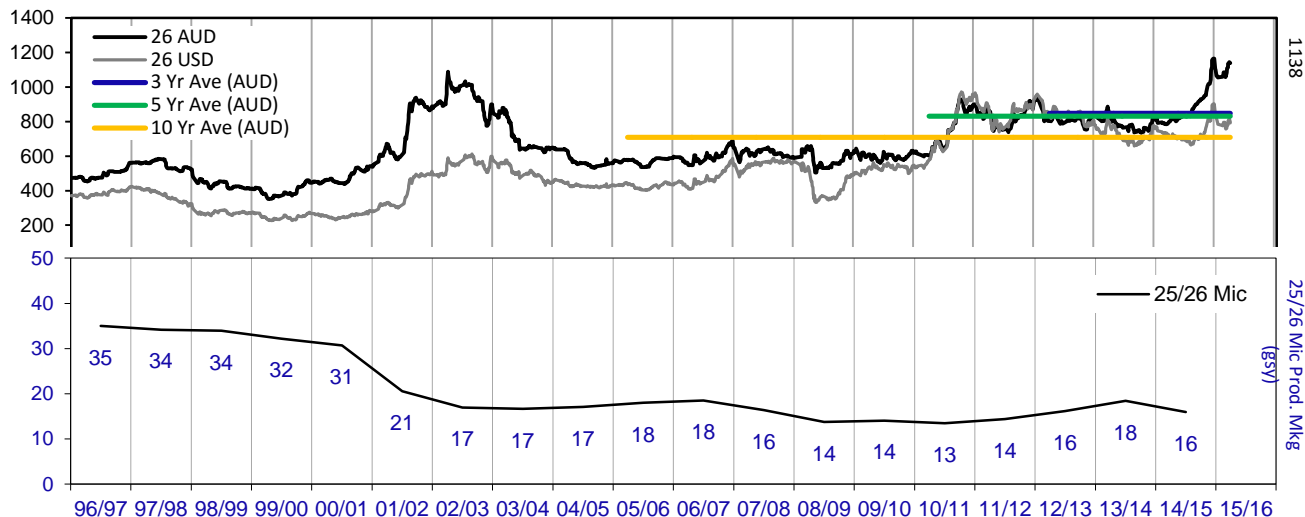


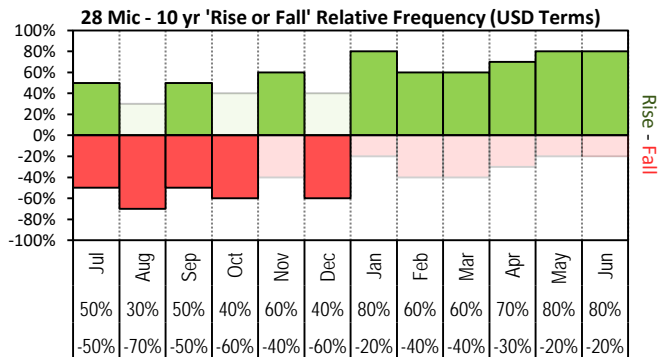


The above 'Rise or Fall' graph, shows how often the market has risen or fallen in a given month over the past 10 years, it does not show the extent of the movement only the frequency of direction. The 'Monthly Price Movement' graph shows the extent of movement for each month, for the past 5 years.

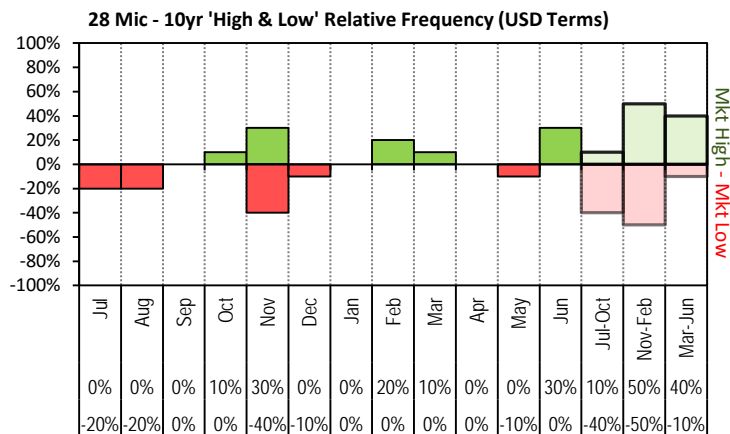
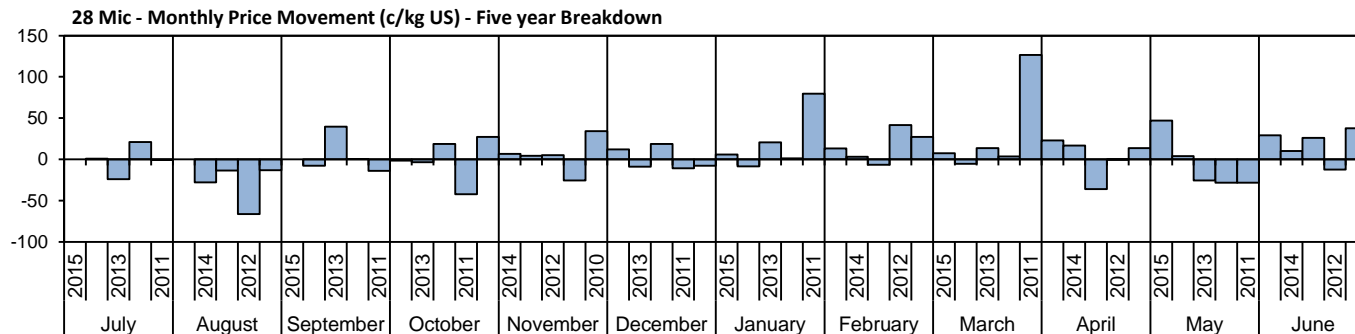


The above graph, shows how often the '12 month high & low' have been achieved for a given month over the past 10 years. It is not a measure of probability.

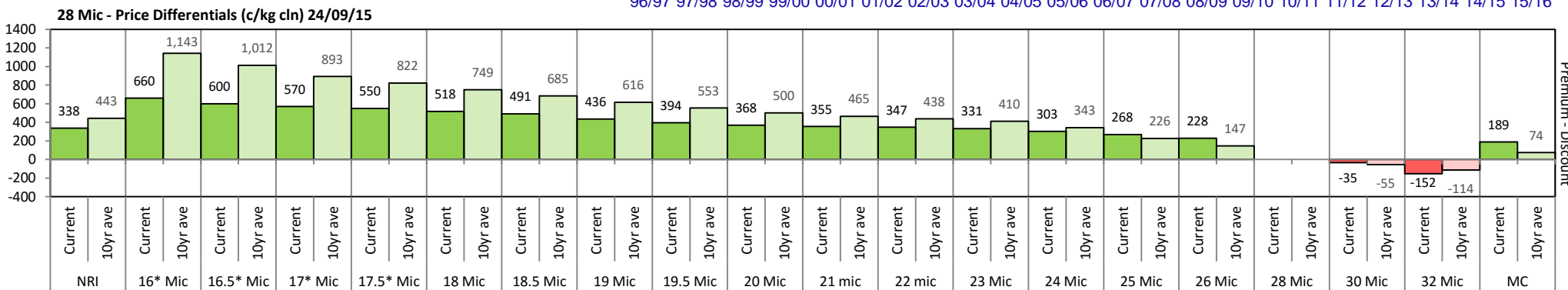
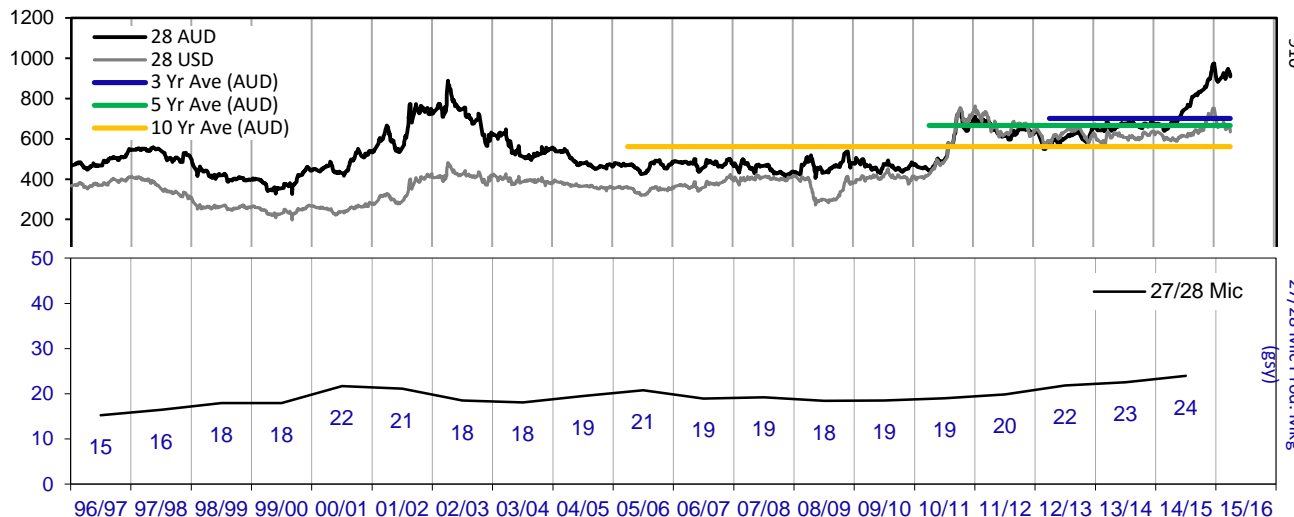


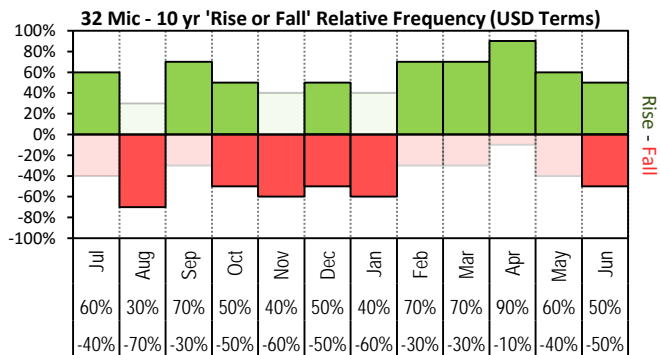


The above 'Rise or Fall' graph, shows how often the market has risen or fallen in a given month over the past 10 years, it does not show the extent of the movement only the frequency of direction. The 'Monthly Price Movement' graph shows the extent of movement for each month, for the past 5 years.

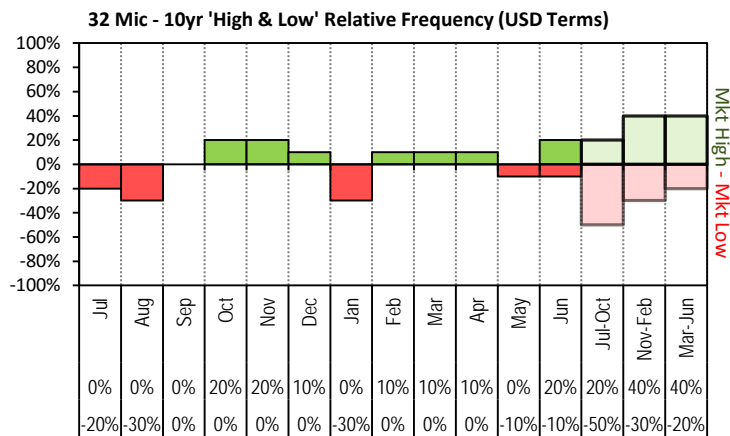
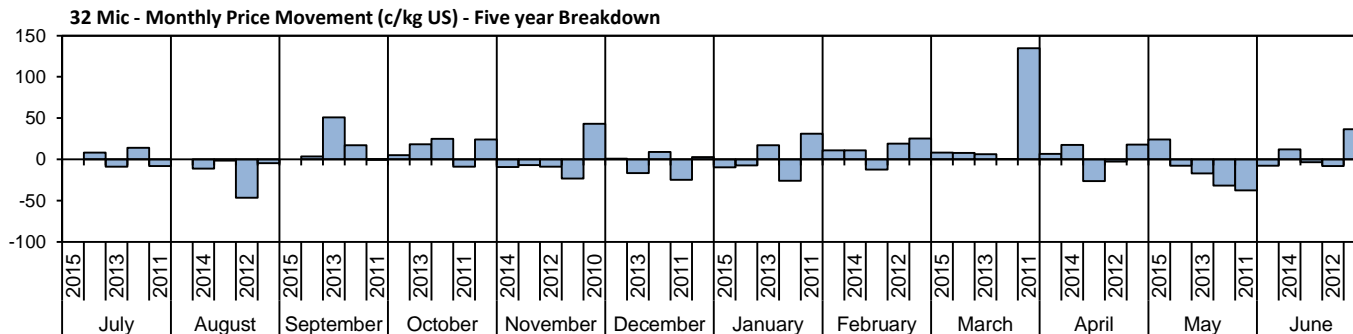


The above graph, shows how often the '12 month high & low' have been achieved for a given month over the past 10 years. It is not a measure of probability.

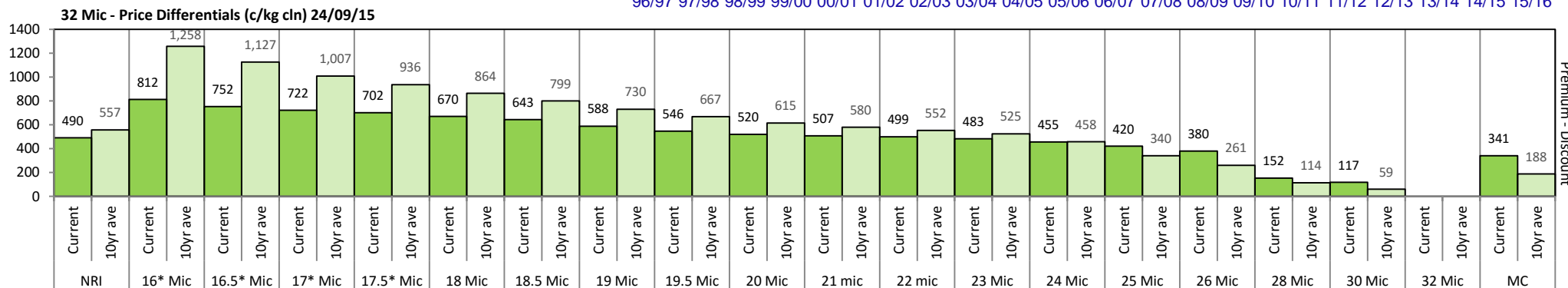
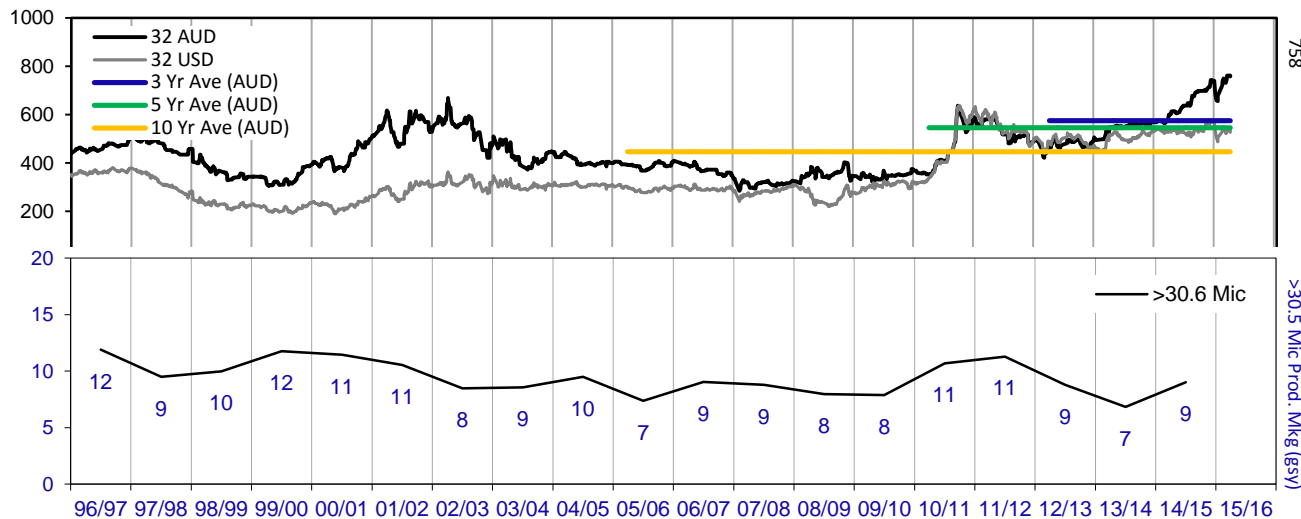


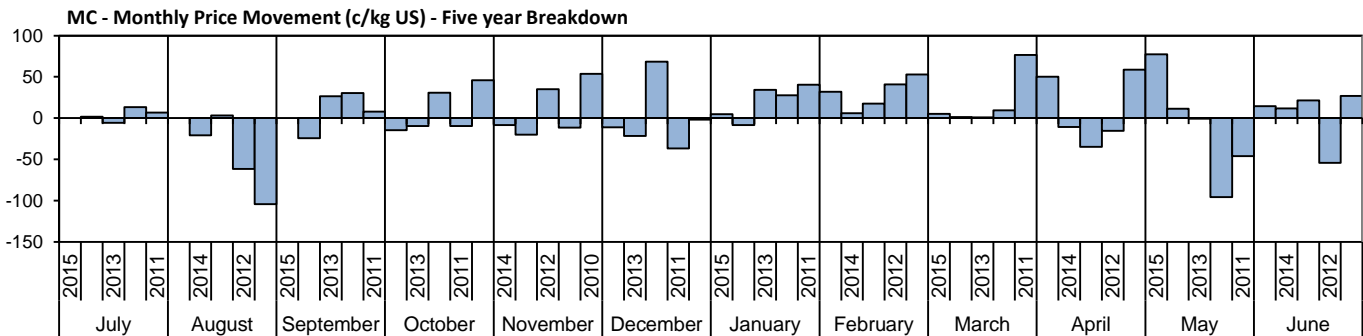
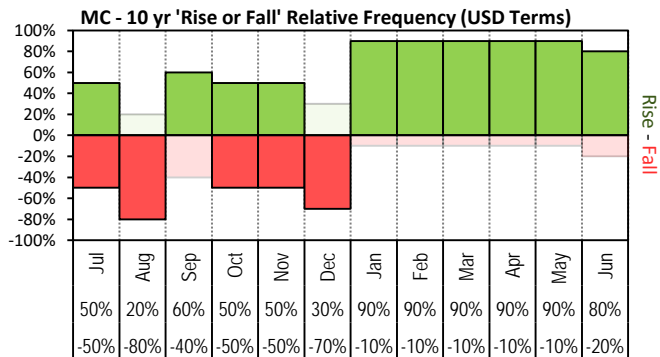


The above 'Rise or Fall' graph, shows how often the market has risen or fallen in a given month over the past 10 years, it does not show the extent of the movement only the frequency of direction. The 'Monthly Price Movement' graph shows the extent of movement for each month, for the past 5 years.

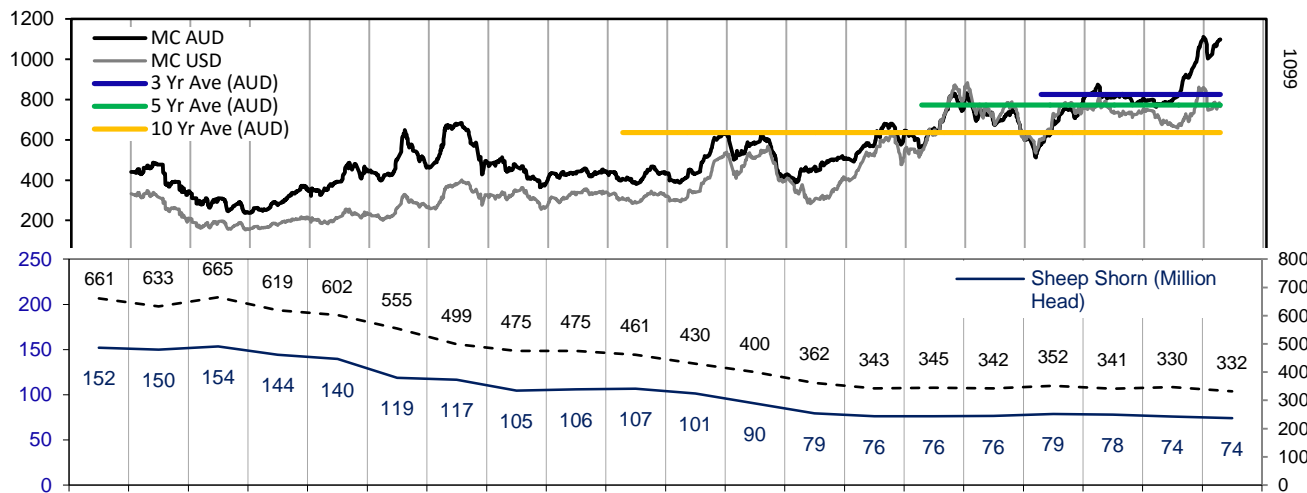
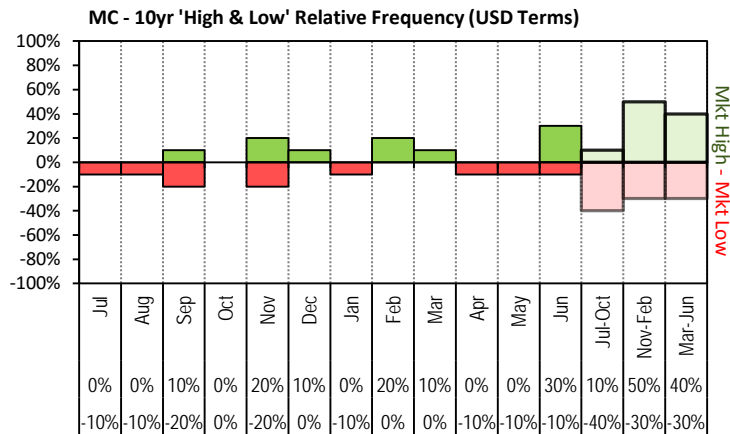


The above graph, shows how often the '12 month high & low' have been achieved for a given month over the past 10 years. It is not a measure of probability.

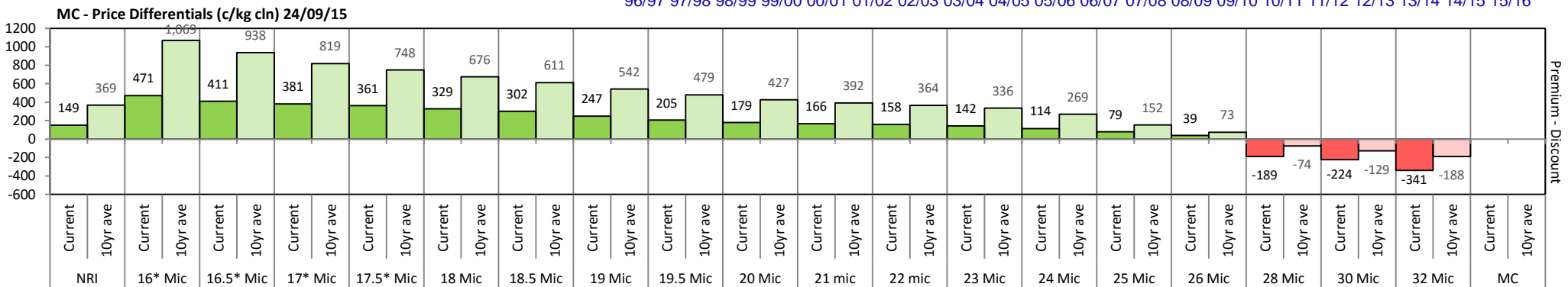




The above 'Rise or Fall' graph, shows how often the market has risen or fallen in a given month over the past 10 years, it does not show the extent of the movement only the frequency of direction. The 'Monthly Price Movement' graph shows the extent of movement for each month, for the past 5 years.



The above graph, shows how often the '12 month high & low' have been achieved for a given month over the past 10 years. It is not a measure of probability.





Two Year Export Snapshot (Greasy Equivalent - Million Kilos)

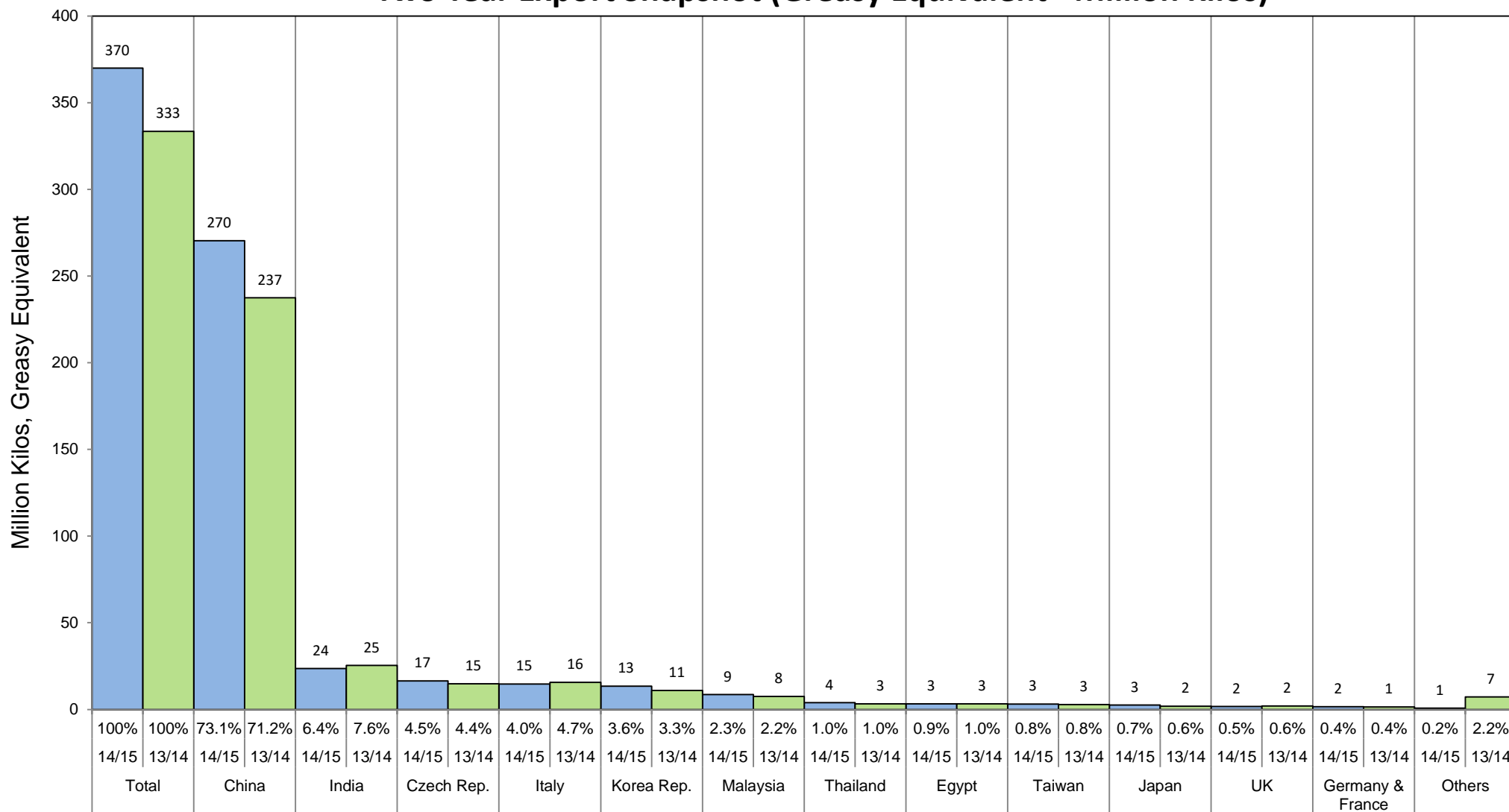




Table 7: Returns pr head for skirted fleece wool.

Skirted FLC Weight		Micron																	
9 Kg		16	16.5	17	17.5	18	18.5	19	19.5	20	21	22	23	24	25	26	28	30	32
Yield (Sch Dry)	25% Current	\$35	\$34	\$33	\$33	\$32	\$32	\$30	\$29	\$29	\$28	\$28	\$28	\$27	\$27	\$26	\$20	\$20	\$17
	10yr ave.	\$38	\$35	\$33	\$31	\$29	\$28	\$26	\$25	\$24	\$23	\$23	\$22	\$20	\$18	\$16	\$13	\$11	\$10
	30% Current	\$42	\$41	\$40	\$39	\$39	\$38	\$36	\$35	\$35	\$34	\$34	\$34	\$33	\$32	\$31	\$25	\$24	\$20
	10yr ave.	\$46	\$42	\$39	\$37	\$35	\$34	\$32	\$30	\$29	\$28	\$27	\$26	\$24	\$21	\$19	\$15	\$14	\$12
	35% Current	\$49	\$48	\$47	\$46	\$45	\$44	\$42	\$41	\$40	\$40	\$40	\$39	\$38	\$37	\$36	\$29	\$28	\$24
	10yr ave.	\$54	\$50	\$46	\$44	\$41	\$39	\$37	\$35	\$33	\$32	\$32	\$31	\$29	\$25	\$22	\$18	\$16	\$14
	40% Current	\$57	\$54	\$53	\$53	\$51	\$50	\$48	\$47	\$46	\$46	\$45	\$45	\$44	\$42	\$41	\$33	\$32	\$27
	10yr ave.	\$61	\$57	\$52	\$50	\$47	\$45	\$42	\$40	\$38	\$37	\$36	\$35	\$33	\$28	\$25	\$20	\$18	\$16
	45% Current	\$64	\$61	\$60	\$59	\$58	\$57	\$55	\$53	\$52	\$51	\$51	\$50	\$49	\$48	\$46	\$37	\$35	\$31
	10yr ave.	\$69	\$64	\$59	\$56	\$53	\$50	\$48	\$45	\$43	\$42	\$41	\$39	\$37	\$32	\$29	\$23	\$20	\$18
	50% Current	\$71	\$68	\$67	\$66	\$64	\$63	\$61	\$59	\$58	\$57	\$57	\$56	\$55	\$53	\$51	\$41	\$39	\$34
	10yr ave.	\$77	\$71	\$65	\$62	\$59	\$56	\$53	\$50	\$48	\$46	\$45	\$44	\$41	\$35	\$32	\$25	\$23	\$20
	55% Current	\$78	\$75	\$73	\$72	\$71	\$69	\$67	\$65	\$63	\$63	\$62	\$61	\$60	\$58	\$56	\$45	\$43	\$38
	10yr ave.	\$84	\$78	\$72	\$68	\$65	\$62	\$58	\$55	\$53	\$51	\$50	\$48	\$45	\$39	\$35	\$28	\$25	\$22
	60% Current	\$85	\$82	\$80	\$79	\$77	\$76	\$73	\$70	\$69	\$68	\$68	\$67	\$66	\$64	\$61	\$49	\$47	\$41
	10yr ave.	\$92	\$85	\$79	\$75	\$71	\$67	\$64	\$60	\$57	\$55	\$54	\$52	\$49	\$42	\$38	\$30	\$27	\$24
	65% Current	\$92	\$88	\$87	\$85	\$84	\$82	\$79	\$76	\$75	\$74	\$74	\$73	\$71	\$69	\$67	\$53	\$51	\$44
	10yr ave.	\$100	\$92	\$85	\$81	\$77	\$73	\$69	\$65	\$62	\$60	\$59	\$57	\$53	\$46	\$41	\$33	\$30	\$26
	70% Current	\$99	\$95	\$93	\$92	\$90	\$88	\$85	\$82	\$81	\$80	\$79	\$78	\$76	\$74	\$72	\$57	\$55	\$48
	10yr ave.	\$107	\$99	\$92	\$87	\$83	\$78	\$74	\$70	\$67	\$65	\$63	\$61	\$57	\$50	\$45	\$35	\$32	\$28
	75% Current	\$106	\$102	\$100	\$99	\$96	\$95	\$91	\$88	\$86	\$85	\$85	\$84	\$82	\$80	\$77	\$61	\$59	\$51
	10yr ave.	\$115	\$106	\$98	\$93	\$88	\$84	\$79	\$75	\$72	\$69	\$68	\$66	\$61	\$53	\$48	\$38	\$34	\$30
	80% Current	\$113	\$109	\$107	\$105	\$103	\$101	\$97	\$94	\$92	\$91	\$91	\$89	\$87	\$85	\$82	\$66	\$63	\$55
	10yr ave.	\$123	\$113	\$105	\$100	\$94	\$90	\$85	\$80	\$76	\$74	\$72	\$70	\$65	\$57	\$51	\$40	\$36	\$32
	85% Current	\$120	\$116	\$113	\$112	\$109	\$107	\$103	\$100	\$98	\$97	\$96	\$95	\$93	\$90	\$87	\$70	\$67	\$58
	10yr ave.	\$130	\$120	\$111	\$106	\$100	\$95	\$90	\$85	\$81	\$79	\$77	\$74	\$69	\$60	\$54	\$43	\$39	\$34

The above shows estimated returns per head for skirted fleece wool. These figures do not take into account the value of skirtings and oddments and do not take into account discounts that may apply for faults under individual circumstances. These figures are based on a market index of 100% and should be used as a guide only. Returns over \$30 / head for fleece wool are highlighted.



Table 8: Returns pr head for skirted fleece wool.

Skirted FLC Weight		Micron																	
8 Kg		16	16.5	17	17.5	18	18.5	19	19.5	20	21	22	23	24	25	26	28	30	32
Yield (Sch Dry)	25% Current	\$31	\$30	\$30	\$29	\$29	\$28	\$27	\$26	\$26	\$25	\$25	\$25	\$24	\$24	\$23	\$18	\$18	\$15
	10yr ave.	\$34	\$31	\$29	\$28	\$26	\$25	\$24	\$22	\$21	\$21	\$20	\$19	\$18	\$16	\$14	\$11	\$10	\$9
	30% Current	\$38	\$36	\$36	\$35	\$34	\$34	\$32	\$31	\$31	\$30	\$30	\$29	\$28	\$27	\$22	\$21	\$18	
	10yr ave.	\$41	\$38	\$35	\$33	\$31	\$30	\$28	\$27	\$25	\$25	\$24	\$23	\$22	\$19	\$17	\$13	\$12	\$11
	35% Current	\$44	\$42	\$41	\$41	\$40	\$39	\$38	\$37	\$36	\$35	\$35	\$35	\$34	\$33	\$32	\$25	\$25	\$21
	10yr ave.	\$48	\$44	\$41	\$39	\$37	\$35	\$33	\$31	\$30	\$29	\$28	\$27	\$25	\$22	\$20	\$16	\$14	\$13
	40% Current	\$50	\$48	\$47	\$47	\$46	\$45	\$43	\$42	\$41	\$40	\$40	\$40	\$39	\$38	\$36	\$29	\$28	\$24
	10yr ave.	\$55	\$50	\$47	\$44	\$42	\$40	\$38	\$36	\$34	\$33	\$32	\$31	\$29	\$25	\$23	\$18	\$16	\$14
	45% Current	\$57	\$54	\$53	\$53	\$51	\$50	\$48	\$47	\$46	\$46	\$45	\$45	\$44	\$42	\$41	\$33	\$32	\$27
	10yr ave.	\$61	\$57	\$52	\$50	\$47	\$45	\$42	\$40	\$38	\$37	\$36	\$35	\$33	\$28	\$25	\$20	\$18	\$16
	50% Current	\$63	\$60	\$59	\$58	\$57	\$56	\$54	\$52	\$51	\$51	\$50	\$50	\$49	\$47	\$46	\$36	\$35	\$30
	10yr ave.	\$68	\$63	\$58	\$55	\$52	\$50	\$47	\$45	\$42	\$41	\$40	\$39	\$36	\$31	\$28	\$22	\$20	\$18
	55% Current	\$69	\$66	\$65	\$64	\$63	\$62	\$59	\$57	\$56	\$56	\$55	\$55	\$53	\$52	\$50	\$40	\$39	\$33
	10yr ave.	\$75	\$69	\$64	\$61	\$58	\$55	\$52	\$49	\$47	\$45	\$44	\$43	\$40	\$35	\$31	\$25	\$22	\$20
	60% Current	\$75	\$72	\$71	\$70	\$69	\$67	\$65	\$63	\$61	\$61	\$60	\$60	\$58	\$57	\$55	\$44	\$42	\$36
	10yr ave.	\$82	\$76	\$70	\$66	\$63	\$60	\$56	\$54	\$51	\$49	\$48	\$47	\$43	\$38	\$34	\$27	\$24	\$21
	65% Current	\$82	\$79	\$77	\$76	\$74	\$73	\$70	\$68	\$66	\$66	\$65	\$65	\$63	\$61	\$59	\$47	\$46	\$39
	10yr ave.	\$89	\$82	\$76	\$72	\$68	\$65	\$61	\$58	\$55	\$53	\$52	\$51	\$47	\$41	\$37	\$29	\$26	\$23
	70% Current	\$88	\$85	\$83	\$82	\$80	\$78	\$75	\$73	\$72	\$71	\$70	\$69	\$68	\$66	\$64	\$51	\$49	\$42
	10yr ave.	\$95	\$88	\$81	\$77	\$73	\$70	\$66	\$62	\$59	\$58	\$56	\$54	\$51	\$44	\$40	\$31	\$28	\$25
	75% Current	\$94	\$91	\$89	\$88	\$86	\$84	\$81	\$78	\$77	\$76	\$75	\$74	\$73	\$71	\$68	\$55	\$53	\$45
	10yr ave.	\$102	\$94	\$87	\$83	\$79	\$75	\$71	\$67	\$64	\$62	\$60	\$58	\$54	\$47	\$42	\$34	\$30	\$27
	80% Current	\$100	\$97	\$95	\$93	\$91	\$90	\$86	\$83	\$82	\$81	\$80	\$79	\$78	\$75	\$73	\$58	\$56	\$49
	10yr ave.	\$109	\$101	\$93	\$89	\$84	\$80	\$75	\$71	\$68	\$66	\$64	\$62	\$58	\$50	\$45	\$36	\$32	\$29
	85% Current	\$107	\$103	\$101	\$99	\$97	\$95	\$92	\$89	\$87	\$86	\$85	\$84	\$82	\$80	\$77	\$62	\$60	\$52
	10yr ave.	\$116	\$107	\$99	\$94	\$89	\$85	\$80	\$76	\$72	\$70	\$68	\$66	\$62	\$54	\$48	\$38	\$34	\$30

The above shows estimated returns per head for skirted fleece wool. These figures do not take into account the value of skirtings and oddments and do not take into account discounts that may apply for faults under individual circumstances. These figures are based on a market index of 100% and should be used as a guide only. Returns over \$30 / head for fleece wool are highlighted.



Table 9: Returns pr head for skirted fleece wool.

Skirted FLC Weight		Micron																	
7 Kg		16	16.5	17	17.5	18	18.5	19	19.5	20	21	22	23	24	25	26	28	30	32
Yield (Sch Dry)	25% Current	\$27	\$26	\$26	\$26	\$25	\$25	\$24	\$23	\$22	\$22	\$22	\$22	\$21	\$21	\$20	\$16	\$15	\$13
	10yr ave.	\$30	\$28	\$25	\$24	\$23	\$22	\$21	\$20	\$19	\$18	\$18	\$17	\$16	\$14	\$12	\$10	\$9	\$8
	30% Current	\$33	\$32	\$31	\$31	\$30	\$29	\$28	\$27	\$27	\$27	\$26	\$26	\$25	\$25	\$24	\$19	\$18	\$16
	10yr ave.	\$36	\$33	\$31	\$29	\$28	\$26	\$25	\$23	\$22	\$22	\$21	\$20	\$19	\$17	\$15	\$12	\$11	\$9
	35% Current	\$38	\$37	\$36	\$36	\$35	\$34	\$33	\$32	\$31	\$31	\$31	\$30	\$30	\$29	\$28	\$22	\$21	\$19
	10yr ave.	\$42	\$39	\$36	\$34	\$32	\$31	\$29	\$27	\$26	\$25	\$25	\$24	\$22	\$19	\$17	\$14	\$12	\$11
	40% Current	\$44	\$42	\$41	\$41	\$40	\$39	\$38	\$37	\$36	\$35	\$35	\$35	\$34	\$33	\$32	\$25	\$25	\$21
	10yr ave.	\$48	\$44	\$41	\$39	\$37	\$35	\$33	\$31	\$30	\$29	\$28	\$27	\$25	\$22	\$20	\$16	\$14	\$13
	45% Current	\$49	\$48	\$47	\$46	\$45	\$44	\$42	\$41	\$40	\$40	\$40	\$39	\$38	\$37	\$36	\$29	\$28	\$24
	10yr ave.	\$54	\$50	\$46	\$44	\$41	\$39	\$37	\$35	\$33	\$32	\$32	\$31	\$29	\$25	\$22	\$18	\$16	\$14
	50% Current	\$55	\$53	\$52	\$51	\$50	\$49	\$47	\$46	\$45	\$44	\$44	\$43	\$42	\$41	\$40	\$32	\$31	\$27
	10yr ave.	\$60	\$55	\$51	\$48	\$46	\$44	\$41	\$39	\$37	\$36	\$35	\$34	\$32	\$28	\$25	\$20	\$18	\$16
	55% Current	\$60	\$58	\$57	\$56	\$55	\$54	\$52	\$50	\$49	\$49	\$48	\$48	\$47	\$45	\$44	\$35	\$34	\$29
	10yr ave.	\$66	\$61	\$56	\$53	\$50	\$48	\$45	\$43	\$41	\$40	\$39	\$37	\$35	\$30	\$27	\$22	\$19	\$17
	60% Current	\$66	\$63	\$62	\$61	\$60	\$59	\$57	\$55	\$54	\$53	\$53	\$52	\$51	\$49	\$48	\$38	\$37	\$32
	10yr ave.	\$72	\$66	\$61	\$58	\$55	\$52	\$49	\$47	\$45	\$43	\$42	\$41	\$38	\$33	\$30	\$24	\$21	\$19
	65% Current	\$71	\$69	\$67	\$66	\$65	\$64	\$61	\$59	\$58	\$58	\$57	\$56	\$55	\$54	\$52	\$41	\$40	\$34
	10yr ave.	\$78	\$72	\$66	\$63	\$60	\$57	\$54	\$51	\$48	\$47	\$46	\$44	\$41	\$36	\$32	\$26	\$23	\$20
	70% Current	\$77	\$74	\$73	\$72	\$70	\$69	\$66	\$64	\$63	\$62	\$62	\$61	\$59	\$58	\$56	\$45	\$43	\$37
	10yr ave.	\$84	\$77	\$71	\$68	\$64	\$61	\$58	\$55	\$52	\$50	\$49	\$48	\$44	\$39	\$35	\$28	\$25	\$22
	75% Current	\$82	\$79	\$78	\$77	\$75	\$74	\$71	\$68	\$67	\$66	\$66	\$65	\$64	\$62	\$60	\$48	\$46	\$40
	10yr ave.	\$90	\$83	\$76	\$73	\$69	\$65	\$62	\$59	\$56	\$54	\$53	\$51	\$48	\$41	\$37	\$30	\$27	\$23
	80% Current	\$88	\$85	\$83	\$82	\$80	\$78	\$75	\$73	\$72	\$71	\$70	\$69	\$68	\$66	\$64	\$51	\$49	\$42
	10yr ave.	\$95	\$88	\$81	\$77	\$73	\$70	\$66	\$62	\$59	\$58	\$56	\$54	\$51	\$44	\$40	\$31	\$28	\$25
	85% Current	\$93	\$90	\$88	\$87	\$85	\$83	\$80	\$78	\$76	\$75	\$75	\$74	\$72	\$70	\$68	\$54	\$52	\$45
	10yr ave.	\$101	\$94	\$87	\$82	\$78	\$74	\$70	\$66	\$63	\$61	\$60	\$58	\$54	\$47	\$42	\$33	\$30	\$27

The above shows estimated returns per head for skirted fleece wool. These figures do not take into account the value of skirtings and oddments and do not take into account discounts that may apply for faults under individual circumstances. These figures are based on a market index of 100% and should be used as a guide only. Returns over \$30 / head for fleece wool are highlighted.



Table 10: Returns pr head for skirted fleece wool.

Skirted FLC Weight		Micron																	
6 Kg		16	16.5	17	17.5	18	18.5	19	19.5	20	21	22	23	24	25	26	28	30	32
Yield (Sch Dry)	25% Current	\$24	\$23	\$22	\$22	\$21	\$21	\$20	\$20	\$19	\$19	\$19	\$19	\$18	\$18	\$17	\$14	\$13	\$11
	10yr ave.	\$26	\$24	\$22	\$21	\$20	\$19	\$18	\$17	\$16	\$15	\$15	\$15	\$14	\$12	\$11	\$8	\$8	\$7
	30% Current	\$28	\$27	\$27	\$26	\$26	\$25	\$24	\$23	\$23	\$23	\$23	\$22	\$22	\$21	\$20	\$16	\$16	\$14
	10yr ave.	\$31	\$28	\$26	\$25	\$24	\$22	\$21	\$20	\$19	\$18	\$18	\$17	\$16	\$14	\$13	\$10	\$9	\$8
	35% Current	\$33	\$32	\$31	\$31	\$30	\$29	\$28	\$27	\$27	\$27	\$26	\$26	\$25	\$25	\$24	\$19	\$18	\$16
	10yr ave.	\$36	\$33	\$31	\$29	\$28	\$26	\$25	\$23	\$22	\$22	\$21	\$20	\$19	\$17	\$15	\$12	\$11	\$9
	40% Current	\$38	\$36	\$36	\$35	\$34	\$34	\$32	\$31	\$31	\$30	\$30	\$30	\$29	\$28	\$27	\$22	\$21	\$18
	10yr ave.	\$41	\$38	\$35	\$33	\$31	\$30	\$28	\$27	\$25	\$25	\$24	\$23	\$22	\$19	\$17	\$13	\$12	\$11
	45% Current	\$42	\$41	\$40	\$39	\$39	\$38	\$36	\$35	\$35	\$34	\$34	\$34	\$33	\$32	\$31	\$25	\$24	\$20
	10yr ave.	\$46	\$42	\$39	\$37	\$35	\$34	\$32	\$30	\$29	\$28	\$27	\$26	\$24	\$21	\$19	\$15	\$14	\$12
	50% Current	\$47	\$45	\$44	\$44	\$43	\$42	\$40	\$39	\$38	\$38	\$38	\$37	\$36	\$35	\$34	\$27	\$26	\$23
	10yr ave.	\$51	\$47	\$44	\$41	\$39	\$37	\$35	\$33	\$32	\$31	\$30	\$29	\$27	\$24	\$21	\$17	\$15	\$13
	55% Current	\$52	\$50	\$49	\$48	\$47	\$46	\$44	\$43	\$42	\$42	\$41	\$41	\$40	\$39	\$38	\$30	\$29	\$25
	10yr ave.	\$56	\$52	\$48	\$46	\$43	\$41	\$39	\$37	\$35	\$34	\$33	\$32	\$30	\$26	\$23	\$19	\$17	\$15
	60% Current	\$57	\$54	\$53	\$53	\$51	\$50	\$48	\$47	\$46	\$46	\$45	\$45	\$44	\$42	\$41	\$33	\$32	\$27
	10yr ave.	\$61	\$57	\$52	\$50	\$47	\$45	\$42	\$40	\$38	\$37	\$36	\$35	\$33	\$28	\$25	\$20	\$18	\$16
	65% Current	\$61	\$59	\$58	\$57	\$56	\$55	\$52	\$51	\$50	\$49	\$49	\$48	\$47	\$46	\$44	\$35	\$34	\$30
	10yr ave.	\$66	\$61	\$57	\$54	\$51	\$49	\$46	\$43	\$41	\$40	\$39	\$38	\$35	\$31	\$28	\$22	\$20	\$17
	70% Current	\$66	\$63	\$62	\$61	\$60	\$59	\$57	\$55	\$54	\$53	\$53	\$52	\$51	\$49	\$48	\$38	\$37	\$32
	10yr ave.	\$72	\$66	\$61	\$58	\$55	\$52	\$49	\$47	\$45	\$43	\$42	\$41	\$38	\$33	\$30	\$24	\$21	\$19
	75% Current	\$71	\$68	\$67	\$66	\$64	\$63	\$61	\$59	\$58	\$57	\$57	\$56	\$55	\$53	\$51	\$41	\$39	\$34
	10yr ave.	\$77	\$71	\$65	\$62	\$59	\$56	\$53	\$50	\$48	\$46	\$45	\$44	\$41	\$35	\$32	\$25	\$23	\$20
	80% Current	\$75	\$72	\$71	\$70	\$69	\$67	\$65	\$63	\$61	\$61	\$60	\$60	\$58	\$57	\$55	\$44	\$42	\$36
	10yr ave.	\$82	\$76	\$70	\$66	\$63	\$60	\$56	\$54	\$51	\$49	\$48	\$47	\$43	\$38	\$34	\$27	\$24	\$21
	85% Current	\$80	\$77	\$75	\$74	\$73	\$71	\$69	\$67	\$65	\$65	\$64	\$63	\$62	\$60	\$58	\$46	\$45	\$39
	10yr ave.	\$87	\$80	\$74	\$71	\$67	\$64	\$60	\$57	\$54	\$52	\$51	\$50	\$46	\$40	\$36	\$29	\$26	\$23

The above shows estimated returns per head for skirted fleece wool. These figures do not take into account the value of skirtings and oddments and do not take into account discounts that may apply for faults under individual circumstances. These figures are based on a market index of 100% and should be used as a guide only. Returns over \$30 / head for fleece wool are highlighted.



Table 11: Returns pr head for skirted fleece wool.

Skirted FLC Weight		Micron																	
5 Kg		16	16.5	17	17.5	18	18.5	19	19.5	20	21	22	23	24	25	26	28	30	32
Yield (Sch Dry)	25% Current	\$20	\$19	\$19	\$18	\$18	\$18	\$17	\$16	\$16	\$16	\$16	\$16	\$15	\$15	\$14	\$11	\$11	\$9
	10yr ave.	\$21	\$20	\$18	\$17	\$16	\$16	\$15	\$14	\$13	\$13	\$13	\$12	\$11	\$10	\$9	\$7	\$6	\$6
	30% Current	\$24	\$23	\$22	\$22	\$21	\$21	\$20	\$20	\$19	\$19	\$19	\$19	\$18	\$18	\$17	\$14	\$13	\$11
	10yr ave.	\$26	\$24	\$22	\$21	\$20	\$19	\$18	\$17	\$16	\$15	\$15	\$15	\$14	\$12	\$11	\$8	\$8	\$7
	35% Current	\$27	\$26	\$26	\$26	\$25	\$25	\$24	\$23	\$22	\$22	\$22	\$22	\$21	\$21	\$20	\$16	\$15	\$13
	10yr ave.	\$30	\$28	\$25	\$24	\$23	\$22	\$21	\$20	\$19	\$18	\$18	\$17	\$16	\$14	\$12	\$10	\$9	\$8
	40% Current	\$31	\$30	\$30	\$29	\$29	\$28	\$27	\$26	\$26	\$25	\$25	\$25	\$24	\$24	\$23	\$18	\$18	\$15
	10yr ave.	\$34	\$31	\$29	\$28	\$26	\$25	\$24	\$22	\$21	\$21	\$20	\$19	\$18	\$16	\$14	\$11	\$10	\$9
	45% Current	\$35	\$34	\$33	\$33	\$32	\$32	\$30	\$29	\$29	\$28	\$28	\$28	\$27	\$27	\$26	\$20	\$20	\$17
	10yr ave.	\$38	\$35	\$33	\$31	\$29	\$28	\$26	\$25	\$24	\$23	\$23	\$22	\$20	\$18	\$16	\$13	\$11	\$10
	50% Current	\$39	\$38	\$37	\$37	\$36	\$35	\$34	\$33	\$32	\$32	\$31	\$31	\$30	\$29	\$28	\$23	\$22	\$19
	10yr ave.	\$43	\$39	\$36	\$35	\$33	\$31	\$29	\$28	\$27	\$26	\$25	\$24	\$23	\$20	\$18	\$14	\$13	\$11
	55% Current	\$43	\$42	\$41	\$40	\$39	\$39	\$37	\$36	\$35	\$35	\$35	\$34	\$33	\$32	\$31	\$25	\$24	\$21
	10yr ave.	\$47	\$43	\$40	\$38	\$36	\$34	\$32	\$31	\$29	\$28	\$28	\$27	\$25	\$22	\$19	\$15	\$14	\$12
	60% Current	\$47	\$45	\$44	\$44	\$43	\$42	\$40	\$39	\$38	\$38	\$38	\$37	\$36	\$35	\$34	\$27	\$26	\$23
	10yr ave.	\$51	\$47	\$44	\$41	\$39	\$37	\$35	\$33	\$32	\$31	\$30	\$29	\$27	\$24	\$21	\$17	\$15	\$13
	65% Current	\$51	\$49	\$48	\$47	\$46	\$46	\$44	\$42	\$42	\$41	\$41	\$40	\$39	\$38	\$37	\$30	\$28	\$25
	10yr ave.	\$55	\$51	\$47	\$45	\$43	\$40	\$38	\$36	\$35	\$33	\$33	\$32	\$29	\$26	\$23	\$18	\$16	\$15
	70% Current	\$55	\$53	\$52	\$51	\$50	\$49	\$47	\$46	\$45	\$44	\$44	\$43	\$42	\$41	\$40	\$32	\$31	\$27
	10yr ave.	\$60	\$55	\$51	\$48	\$46	\$44	\$41	\$39	\$37	\$36	\$35	\$34	\$32	\$28	\$25	\$20	\$18	\$16
	75% Current	\$59	\$57	\$56	\$55	\$54	\$53	\$50	\$49	\$48	\$47	\$47	\$47	\$45	\$44	\$43	\$34	\$33	\$28
	10yr ave.	\$64	\$59	\$55	\$52	\$49	\$47	\$44	\$42	\$40	\$39	\$38	\$36	\$34	\$30	\$27	\$21	\$19	\$17
	80% Current	\$63	\$60	\$59	\$58	\$57	\$56	\$54	\$52	\$51	\$51	\$50	\$50	\$49	\$47	\$46	\$36	\$35	\$30
	10yr ave.	\$68	\$63	\$58	\$55	\$52	\$50	\$47	\$45	\$42	\$41	\$40	\$39	\$36	\$31	\$28	\$22	\$20	\$18
	85% Current	\$67	\$64	\$63	\$62	\$61	\$60	\$57	\$55	\$54	\$54	\$53	\$53	\$52	\$50	\$48	\$39	\$37	\$32
	10yr ave.	\$72	\$67	\$62	\$59	\$56	\$53	\$50	\$47	\$45	\$44	\$43	\$41	\$38	\$33	\$30	\$24	\$22	\$19

The above shows estimated returns per head for skirted fleece wool. These figures do not take into account the value of skirtings and oddments and do not take into account discounts that may apply for faults under individual circumstances. These figures are based on a market index of 100% and should be used as a guide only. Returns over \$30 / head for fleece wool are highlighted.



Table 12: Returns pr head for skirted fleece wool.

Skirted FLC Weight		Micron																	
4 Kg		16	16.5	17	17.5	18	18.5	19	19.5	20	21	22	23	24	25	26	28	30	32
Yield (Sch Dry)	25% Current	\$16	\$15	\$15	\$15	\$14	\$14	\$13	\$13	\$13	\$13	\$13	\$12	\$12	\$12	\$11	\$9	\$9	\$8
	10yr ave.	\$17	\$16	\$15	\$14	\$13	\$12	\$12	\$11	\$11	\$10	\$10	\$10	\$9	\$8	\$7	\$6	\$5	\$4
	30% Current	\$19	\$18	\$18	\$18	\$17	\$17	\$16	\$16	\$15	\$15	\$15	\$15	\$15	\$14	\$14	\$11	\$11	\$9
	10yr ave.	\$20	\$19	\$17	\$17	\$16	\$15	\$14	\$13	\$13	\$12	\$12	\$12	\$11	\$9	\$8	\$7	\$6	\$5
	35% Current	\$22	\$21	\$21	\$20	\$20	\$20	\$19	\$18	\$18	\$18	\$18	\$17	\$17	\$16	\$16	\$13	\$12	\$11
	10yr ave.	\$24	\$22	\$20	\$19	\$18	\$17	\$16	\$16	\$15	\$14	\$14	\$14	\$13	\$11	\$10	\$8	\$7	\$6
	40% Current	\$25	\$24	\$24	\$23	\$23	\$22	\$22	\$21	\$20	\$20	\$20	\$20	\$19	\$19	\$18	\$15	\$14	\$12
	10yr ave.	\$27	\$25	\$23	\$22	\$21	\$20	\$19	\$18	\$17	\$16	\$16	\$16	\$14	\$13	\$11	\$9	\$8	\$7
	45% Current	\$28	\$27	\$27	\$26	\$26	\$25	\$24	\$23	\$23	\$23	\$23	\$22	\$22	\$21	\$20	\$16	\$16	\$14
	10yr ave.	\$31	\$28	\$26	\$25	\$24	\$22	\$21	\$20	\$19	\$18	\$18	\$17	\$16	\$14	\$13	\$10	\$9	\$8
	50% Current	\$31	\$30	\$30	\$29	\$29	\$28	\$27	\$26	\$26	\$25	\$25	\$25	\$24	\$24	\$23	\$18	\$18	\$15
	10yr ave.	\$34	\$31	\$29	\$28	\$26	\$25	\$24	\$22	\$21	\$21	\$20	\$19	\$18	\$16	\$14	\$11	\$10	\$9
	55% Current	\$35	\$33	\$33	\$32	\$31	\$31	\$30	\$29	\$28	\$28	\$28	\$27	\$27	\$26	\$25	\$20	\$19	\$17
	10yr ave.	\$38	\$35	\$32	\$30	\$29	\$27	\$26	\$25	\$23	\$23	\$22	\$21	\$20	\$17	\$16	\$12	\$11	\$10
	60% Current	\$38	\$36	\$36	\$35	\$34	\$34	\$32	\$31	\$31	\$30	\$30	\$30	\$29	\$28	\$27	\$22	\$21	\$18
	10yr ave.	\$41	\$38	\$35	\$33	\$31	\$30	\$28	\$27	\$25	\$25	\$24	\$23	\$22	\$19	\$17	\$13	\$12	\$11
	65% Current	\$41	\$39	\$38	\$38	\$37	\$36	\$35	\$34	\$33	\$33	\$33	\$32	\$32	\$31	\$30	\$24	\$23	\$20
	10yr ave.	\$44	\$41	\$38	\$36	\$34	\$32	\$31	\$29	\$28	\$27	\$26	\$25	\$24	\$20	\$18	\$15	\$13	\$12
	70% Current	\$44	\$42	\$41	\$41	\$40	\$39	\$38	\$37	\$36	\$35	\$35	\$35	\$34	\$33	\$32	\$25	\$25	\$21
	10yr ave.	\$48	\$44	\$41	\$39	\$37	\$35	\$33	\$31	\$30	\$29	\$28	\$27	\$25	\$22	\$20	\$16	\$14	\$13
	75% Current	\$47	\$45	\$44	\$44	\$43	\$42	\$40	\$39	\$38	\$38	\$38	\$37	\$36	\$35	\$34	\$27	\$26	\$23
	10yr ave.	\$51	\$47	\$44	\$41	\$39	\$37	\$35	\$33	\$32	\$31	\$30	\$29	\$27	\$24	\$21	\$17	\$15	\$13
	80% Current	\$50	\$48	\$47	\$47	\$46	\$45	\$43	\$42	\$41	\$40	\$40	\$40	\$39	\$38	\$36	\$29	\$28	\$24
	10yr ave.	\$55	\$50	\$47	\$44	\$42	\$40	\$38	\$36	\$34	\$33	\$32	\$31	\$29	\$25	\$23	\$18	\$16	\$14
	85% Current	\$53	\$51	\$50	\$50	\$49	\$48	\$46	\$44	\$43	\$43	\$43	\$42	\$41	\$40	\$39	\$31	\$30	\$26
	10yr ave.	\$58	\$54	\$49	\$47	\$45	\$42	\$40	\$38	\$36	\$35	\$34	\$33	\$31	\$27	\$24	\$19	\$17	\$15

The above shows estimated returns per head for skirted fleece wool. These figures do not take into account the value of skirtings and oddments and do not take into account discounts that may apply for faults under individual circumstances. These figures are based on a market index of 100% and should be used as a guide only. Returns over \$30 / head for fleece wool are highlighted.



Table 13: Returns pr head for skirted fleece wool.

Skirted FLC Weight		Micron																	
3 Kg		16	16.5	17	17.5	18	18.5	19	19.5	20	21	22	23	24	25	26	28	30	32
Yield (Sch Dry)	25% Current	\$12	\$11	\$11	\$11	\$11	\$11	\$10	\$10	\$10	\$9	\$9	\$9	\$9	\$9	\$9	\$7	\$7	\$6
	10yr ave.	\$13	\$12	\$11	\$10	\$10	\$9	\$9	\$8	\$8	\$8	\$8	\$7	\$7	\$6	\$5	\$4	\$4	\$3
	30% Current	\$14	\$14	\$13	\$13	\$13	\$13	\$12	\$12	\$12	\$11	\$11	\$11	\$11	\$11	\$10	\$8	\$8	\$7
	10yr ave.	\$15	\$14	\$13	\$12	\$12	\$11	\$11	\$10	\$10	\$9	\$9	\$9	\$8	\$7	\$6	\$5	\$5	\$4
	35% Current	\$16	\$16	\$16	\$15	\$15	\$15	\$14	\$14	\$13	\$13	\$13	\$13	\$13	\$12	\$12	\$10	\$9	\$8
	10yr ave.	\$18	\$17	\$15	\$15	\$14	\$13	\$12	\$12	\$11	\$11	\$11	\$10	\$10	\$8	\$7	\$6	\$5	\$5
	40% Current	\$19	\$18	\$18	\$18	\$17	\$17	\$16	\$16	\$15	\$15	\$15	\$15	\$15	\$14	\$14	\$11	\$11	\$9
	10yr ave.	\$20	\$19	\$17	\$17	\$16	\$15	\$14	\$13	\$13	\$12	\$12	\$12	\$11	\$9	\$8	\$7	\$6	\$5
	45% Current	\$21	\$20	\$20	\$20	\$19	\$19	\$18	\$18	\$17	\$17	\$17	\$17	\$16	\$16	\$15	\$12	\$12	\$10
	10yr ave.	\$23	\$21	\$20	\$19	\$18	\$17	\$16	\$15	\$14	\$14	\$14	\$13	\$12	\$11	\$10	\$8	\$7	\$6
	50% Current	\$24	\$23	\$22	\$22	\$21	\$21	\$20	\$20	\$19	\$19	\$19	\$19	\$18	\$18	\$17	\$14	\$13	\$11
	10yr ave.	\$26	\$24	\$22	\$21	\$20	\$19	\$18	\$17	\$16	\$15	\$15	\$15	\$14	\$12	\$11	\$8	\$8	\$7
	55% Current	\$26	\$25	\$24	\$24	\$24	\$23	\$22	\$22	\$21	\$21	\$21	\$20	\$20	\$19	\$19	\$15	\$14	\$13
	10yr ave.	\$28	\$26	\$24	\$23	\$22	\$21	\$19	\$18	\$18	\$17	\$17	\$16	\$15	\$13	\$12	\$9	\$8	\$7
	60% Current	\$28	\$27	\$27	\$26	\$26	\$25	\$24	\$23	\$23	\$23	\$23	\$22	\$22	\$21	\$20	\$16	\$16	\$14
	10yr ave.	\$31	\$28	\$26	\$25	\$24	\$22	\$21	\$20	\$19	\$18	\$18	\$17	\$16	\$14	\$13	\$10	\$9	\$8
	65% Current	\$31	\$29	\$29	\$28	\$28	\$27	\$26	\$25	\$25	\$25	\$25	\$24	\$24	\$23	\$22	\$18	\$17	\$15
	10yr ave.	\$33	\$31	\$28	\$27	\$26	\$24	\$23	\$22	\$21	\$20	\$20	\$19	\$18	\$15	\$14	\$11	\$10	\$9
	70% Current	\$33	\$32	\$31	\$31	\$30	\$29	\$28	\$27	\$27	\$27	\$26	\$26	\$25	\$25	\$24	\$19	\$18	\$16
	10yr ave.	\$36	\$33	\$31	\$29	\$28	\$26	\$25	\$23	\$22	\$22	\$21	\$20	\$19	\$17	\$15	\$12	\$11	\$9
	75% Current	\$35	\$34	\$33	\$33	\$32	\$32	\$30	\$29	\$29	\$28	\$28	\$28	\$27	\$27	\$26	\$20	\$20	\$17
	10yr ave.	\$38	\$35	\$33	\$31	\$29	\$28	\$26	\$25	\$24	\$23	\$23	\$22	\$20	\$18	\$16	\$13	\$11	\$10
	80% Current	\$38	\$36	\$36	\$35	\$34	\$34	\$32	\$31	\$31	\$30	\$30	\$30	\$29	\$28	\$27	\$22	\$21	\$18
	10yr ave.	\$41	\$38	\$35	\$33	\$31	\$30	\$28	\$27	\$25	\$25	\$24	\$23	\$22	\$19	\$17	\$13	\$12	\$11
	85% Current	\$40	\$39	\$38	\$37	\$36	\$36	\$34	\$33	\$33	\$32	\$32	\$32	\$31	\$30	\$29	\$23	\$22	\$19
	10yr ave.	\$43	\$40	\$37	\$35	\$33	\$32	\$30	\$28	\$27	\$26	\$26	\$25	\$23	\$20	\$18	\$14	\$13	\$11

The above shows estimated returns per head for skirted fleece wool. These figures do not take into account the value of skirtings and oddments and do not take into account discounts that may apply for faults under individual circumstances. These figures are based on a market index of 100% and should be used as a guide only. Returns over \$30 / head for fleece wool are highlighted.



Table 14: Returns pr head for skirted fleece wool.

Skirted FLC Weight		Micron																	
2 Kg		16	16.5	17	17.5	18	18.5	19	19.5	20	21	22	23	24	25	26	28	30	32
Yield (Sch Dry)	25% Current	\$8	\$8	\$7	\$7	\$7	\$7	\$7	\$7	\$6	\$6	\$6	\$6	\$6	\$6	\$6	\$5	\$4	\$4
	10yr ave.	\$9	\$8	\$7	\$7	\$7	\$6	\$6	\$6	\$5	\$5	\$5	\$5	\$5	\$4	\$4	\$3	\$3	\$2
	30% Current	\$9	\$9	\$9	\$9	\$9	\$8	\$8	\$8	\$8	\$8	\$8	\$7	\$7	\$7	\$7	\$5	\$5	\$5
	10yr ave.	\$10	\$9	\$9	\$8	\$8	\$7	\$7	\$7	\$6	\$6	\$6	\$6	\$5	\$5	\$4	\$3	\$3	\$3
	35% Current	\$11	\$11	\$10	\$10	\$10	\$10	\$9	\$9	\$9	\$9	\$9	\$9	\$8	\$8	\$8	\$6	\$6	\$5
	10yr ave.	\$12	\$11	\$10	\$10	\$9	\$9	\$8	\$8	\$7	\$7	\$7	\$7	\$6	\$6	\$5	\$4	\$4	\$3
	40% Current	\$13	\$12	\$12	\$12	\$11	\$11	\$11	\$10	\$10	\$10	\$10	\$10	\$10	\$9	\$9	\$7	\$7	\$6
	10yr ave.	\$14	\$13	\$12	\$11	\$10	\$10	\$9	\$9	\$8	\$8	\$8	\$8	\$7	\$6	\$6	\$4	\$4	\$4
	45% Current	\$14	\$14	\$13	\$13	\$13	\$13	\$12	\$12	\$12	\$11	\$11	\$11	\$11	\$11	\$10	\$8	\$8	\$7
	10yr ave.	\$15	\$14	\$13	\$12	\$12	\$11	\$11	\$10	\$10	\$9	\$9	\$9	\$8	\$7	\$6	\$5	\$5	\$4
	50% Current	\$16	\$15	\$15	\$15	\$14	\$14	\$13	\$13	\$13	\$13	\$13	\$12	\$12	\$12	\$11	\$9	\$9	\$8
	10yr ave.	\$17	\$16	\$15	\$14	\$13	\$12	\$12	\$11	\$11	\$10	\$10	\$10	\$9	\$8	\$7	\$6	\$5	\$4
	55% Current	\$17	\$17	\$16	\$16	\$16	\$15	\$15	\$14	\$14	\$14	\$14	\$14	\$13	\$13	\$13	\$10	\$10	\$8
	10yr ave.	\$19	\$17	\$16	\$15	\$14	\$14	\$13	\$12	\$12	\$11	\$11	\$11	\$10	\$9	\$8	\$6	\$6	\$5
	60% Current	\$19	\$18	\$18	\$18	\$17	\$17	\$16	\$16	\$15	\$15	\$15	\$15	\$15	\$14	\$14	\$11	\$11	\$9
	10yr ave.	\$20	\$19	\$17	\$17	\$16	\$15	\$14	\$13	\$13	\$12	\$12	\$12	\$11	\$9	\$8	\$7	\$6	\$5
	65% Current	\$20	\$20	\$19	\$19	\$19	\$18	\$17	\$17	\$17	\$16	\$16	\$16	\$16	\$15	\$15	\$12	\$11	\$10
	10yr ave.	\$22	\$20	\$19	\$18	\$17	\$16	\$15	\$14	\$14	\$13	\$13	\$13	\$12	\$10	\$9	\$7	\$7	\$6
	70% Current	\$22	\$21	\$21	\$20	\$20	\$20	\$19	\$18	\$18	\$18	\$18	\$17	\$17	\$16	\$16	\$13	\$12	\$11
	10yr ave.	\$24	\$22	\$20	\$19	\$18	\$17	\$16	\$16	\$15	\$14	\$14	\$14	\$13	\$11	\$10	\$8	\$7	\$6
	75% Current	\$24	\$23	\$22	\$22	\$21	\$21	\$20	\$20	\$19	\$19	\$19	\$19	\$18	\$18	\$17	\$14	\$13	\$11
	10yr ave.	\$26	\$24	\$22	\$21	\$20	\$19	\$18	\$17	\$16	\$15	\$15	\$15	\$14	\$12	\$11	\$8	\$8	\$7
	80% Current	\$25	\$24	\$24	\$23	\$23	\$22	\$22	\$21	\$20	\$20	\$20	\$20	\$19	\$19	\$18	\$15	\$14	\$12
	10yr ave.	\$27	\$25	\$23	\$22	\$21	\$20	\$19	\$18	\$17	\$16	\$16	\$16	\$14	\$13	\$11	\$9	\$8	\$7
	85% Current	\$27	\$26	\$25	\$25	\$24	\$24	\$23	\$22	\$22	\$22	\$21	\$21	\$21	\$20	\$19	\$15	\$15	\$13
	10yr ave.	\$29	\$27	\$25	\$24	\$22	\$21	\$20	\$19	\$18	\$17	\$17	\$17	\$15	\$13	\$12	\$10	\$9	\$8

The above shows estimated returns per head for skirted fleece wool. These figures do not take into account the value of skirtings and oddments and do not take into account discounts that may apply for faults under individual circumstances. These figures are based on a market index of 100% and should be used as a guide only. Returns over \$30 / head for fleece wool are highlighted.