



JEMALONG WOOL BULLETIN

(week ending 24/04/2013)

Page 1/20

Table 1: Northern Region Micron Price Guides

CURRENT MARKET			12 MONTH COMPARISONS								3 YEAR COMPARISONS					Percentile	*10 YEAR COMPARISONS						Percentile
Mic.	24/04/2013	18/04/2013	24/04/2012	Now		Now		Now				Now		Percentile	* 16-17.5um since Aug 05		Now		Percentile				
Price Guides	Current Price	Weekly Change	This time Last Year	compared to Last Year	12 Month Low	compared to Low	12 Month High	compared to High	Low	High	Average	compared to 3yr ave			Low	High	*10 year Average	compared to *10yr ave					
NRI	1012	-12 -1.2%	1194	-182 -15%	944	+68 7%	1235	-223 -18%	894	1491	1148	-136 -12%	25%	657	1491	933	+79 8%	75%					
16*	1590	0	2000	-410 -21%	1540	+50 3%	2050	-460 -22%	1540	2800	2029	-439 -22%	13%	1390	2800	1797	-207 -12%	38%					
16.5*	1440	-40 -2.8%	1850	-410 -22%	1390	+50 4%	1890	-450 -24%	1395	2680	1867	-427 -23%	15%	1273	2680	1651	-211 -13%	39%					
17*	1310	0	1610	-300 -19%	1290	+20 2%	1690	-380 -22%	1230	2530	1708	-398 -23%	14%	1100	2530	1427	-117 -8%	44%					
17.5*	1250	-15 -1.2%	1520	-270 -18%	1230	+20 2%	1555	-305 -20%	1185	2360	1607	-357 -22%	14%	1020	2360	1432	-182 -13%	40%					
18	1190	-6 -0.5%	1454	-264 -18%	1148	+42 4%	1504	-314 -21%	1152	2193	1518	-328 -22%	13%	916	2193	1253	-63 -5%	55%					
18.5	1178	-5 -0.4%	1396	-218 -16%	1116	+62 6%	1451	-273 -19%	1097	1963	1434	-256 -18%	21%	843	1963	1186	-8 -1%	62%					
19	1157	-20 -1.7%	1374	-217 -16%	1084	+73 7%	1418	-261 -18%	1044	1776	1352	-195 -14%	23%	803	1776	1116	+41 4%	71%					
19.5	1138	-16 -1.4%	1357	-219 -16%	1057	+81 8%	1400	-262 -19%	956	1670	1275	-137 -11%	28%	749	1670	1049	+89 8%	75%					
20	1119	-22 -2.0%	1329	-210 -16%	1047	+72 7%	1362	-243 -18%	909	1588	1214	-95 -8%	30%	700	1588	991	+128 13%	79%					
21	1105	-19 -1.7%	1308	-203 -16%	1036	+69 7%	1339	-234 -17%	886	1522	1184	-79 -7%	31%	668	1522	950	+155 16%	80%					
22	1092	-10 -0.9%	1274	-182 -14%	1015	+77 8%	1306	-214 -16%	860	1461	1148	-56 -5%	36%	659	1461	920	+172 19%	82%					
23	1058	-15 -1.4%	1232	-174 -14%	1002	+56 6%	1260	-202 -16%	833	1347	1102	-44 -4%	36%	651	1347	891	+167 19%	82%					
24	981	-8 -0.8%	1156	-175 -15%	940	+41 4%	1176	-195 -17%	780	1213	1007	-26 -3%	33%	638	1213	833	+148 18%	78%					
25	845	-13 -1.5%	979	-134 -14%	845	0 0%	1049	-204 -19%	694	1049	881	-36 -4%	26%	566	1049	733	+112 15%	74%					
26	755	-18 -2.4%	835	-80 -10%	755	0 0%	939	-184 -20%	596	939	782	-27 -3%	29%	532	943	664	+91 14%	74%					
28	590	-10 -1.7%	648	-58 -9%	550	+40 7%	659	-69 -10%	444	734	593	-3 -1%	37%	424	734	517	+73 14%	78%					
30	553	-4 -0.7%	581	-28 -5%	506	+47 9%	605	-52 -9%	390	670	540	+13 2%	44%	343	670	457	+96 21%	84%					
32	469	-2 -0.4%	513	-44 -9%	422	+47 11%	519	-50 -10%	352	638	481	-12 -2%	36%	297	638	408	+61 15%	79%					
MC	721	+6 0.8%	733	-12 -2%	512	+209 41%	758	-37 -5%	532	831	684	+37 5%	58%	380	831	543	+178 33%	88%					

Note:

* Due to the irregular market quoting for some fine wool categories, figures shown relating to micron categories below 18 micron are an estimate based on the AWEX Premium & Discounts Report & other available information.

* For any category, where there is insufficient quantity offered to enable AWEX to quote, a quote will be provided based on the best available information.

* 10 Year data is not available for some micron categories, which may result in blank spaces in the table above.

Definitions:

* A Percentile, is a value on a scale of one hundred that indicates the percent of a distribution that is equal to or below it. In general a percentile between 25% and 75% is considered normal, a percentile below 25% is considered below normal and a percentile above 75% is considered above normal.

Three and ten year percentiles shown in the table above, detail the period of time during the past 3 & 10 years that the market has traded either at or below its current price.

The higher the percentile, the stronger the market.

Source: Australian Wool Exchange, Australian Wool Innovation, Riemann, x-rates.com

Disclaimer: Jemalong Wool Pty Ltd make no representations about the content and suitability of the information contained in this report. Specifically, Jemalong Wool does not warrant, guarantee or make any representations regarding the correctness, accuracy, reliability, currency, or any other aspect regarding characteristics or use of information presented in these materials. The user accepts sole responsibility and risk associated with the use and results of these materials, irrespective of the purpose of which such use or results are applied. In no event shall Jemalong Wool be liable for any loss or damages (including without limitation special, or consequential damages), where in an action of contract, negligence, or tort, arising out of or in connection with the use of performance of these materials.



MARKET COMMENTARY

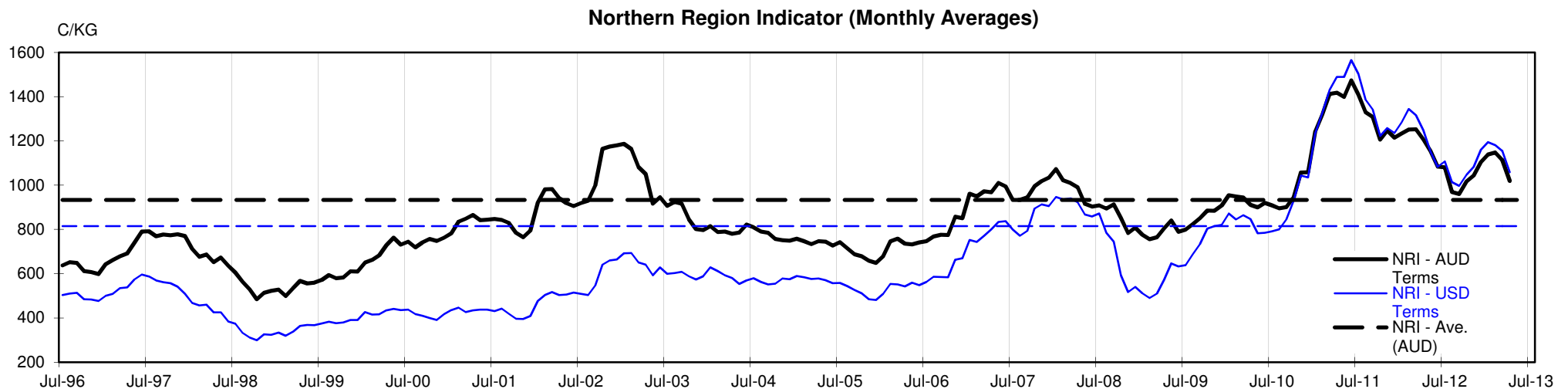
One Australian Dollar = 1.028762 US as of: 24/04/2013

NORTHERN REGION –Sale Week 43/12 (45,919 bales offered nationally)

After last weeks positive close, this weeks market opened reasonably well on Tuesday, with the finer microns attracting good support, while the broader end (after a solid start) fell away in the last half hour of trade. On Wednesday buyers struggled to maintain forward momentum, leaving the market 10-20 cents cheaper, although locks & crutchings remained fully firm.

Wooltrade & AuctionsPlus also reported a strong start to the week with plenty of enquiry and prices coming in above the previous weeks close. There was more activity on the forward market as well, with 54,500 clean kilos selling on Tuesday & Wednesday (out to October 2013), with 21 microns selling at 1150 on Tuesday (34 cents above the physical market), however they slipped back to 1100 on Wednesday (5 cents below the physical market).

45,860 bales are forecast for this week's Wednesday / Thursday sale.





JEMALONG WOOL BULLETIN

(week ending 24/04/2013)

Table 2: Riemann Forwards, latest trades as at: Wednesday 24/4/2013 17:13 **Any highlighted in yellow are recent trades, trading since: Friday, 19 April 2013**

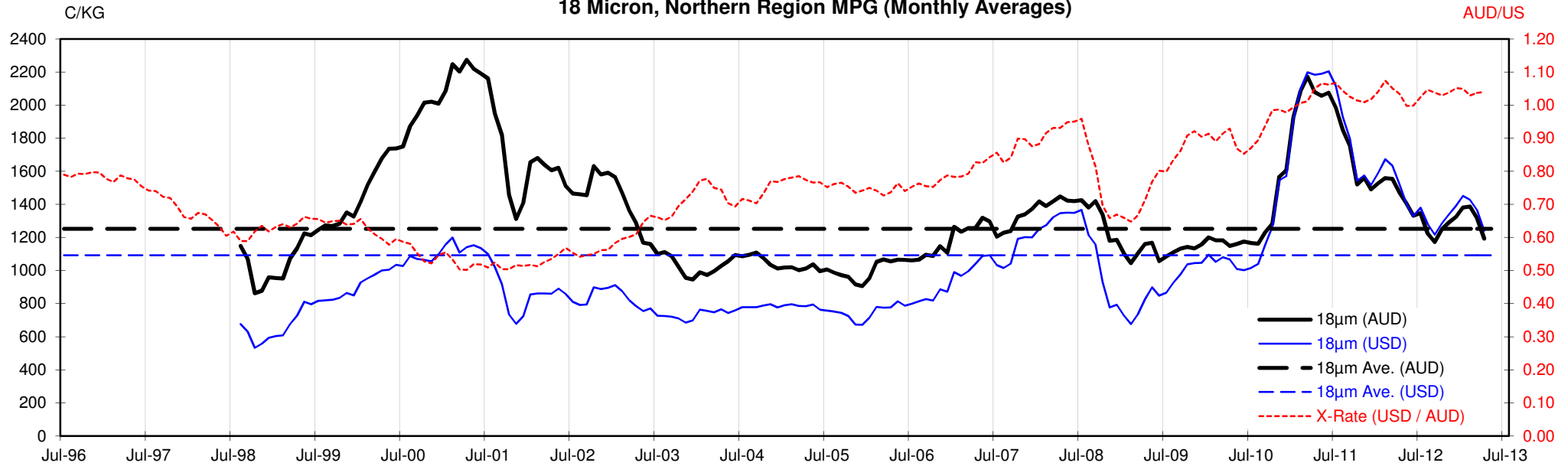
CONTRACT MICRON		18um	19um	20um	21um	22um	23um	28um	30um
CONTRACT MONTH	Apr-2013		14/03/13 1290	26/10/12 1185	21/03/13 1200			18/04/13 575	
	May-2013		14/03/13 1290	9/01/13 1250	21/03/13 1200			18/04/13 565	
	Jun-2013		14/03/13 1290		24/04/13 1100			18/04/13 555	
	Jul-2013		14/02/13 1315	5/03/13 1205	23/04/13 1150				
	Aug-2013		14/02/13 1300	18/04/13 1135	12/03/13 1200				
	Sep-2013		24/04/13 1170		20/03/13 1175				
	Oct-2013		24/04/13 1170		18/04/13 1115	5/03/13 1150	29/01/13 1120		
	Nov-2013		5/03/13 1310		27/03/13 1150				
	Dec-2013		30/01/13 1320		6/03/13 1175	29/01/13 1150			
	Jan-2014		30/01/13 1280						
	Feb-2014		18/12/12 1250		30/01/13 1180				
	Mar-2014								
	Apr-2014				18/04/13 1100				
	May-2014								
	Jun-2014								
	Jul-2014								
	Aug-2014								
	Sep-2014								
	Oct-2014				12/04/13 1050				
	Nov-2014								
	Dec-2014								
	Jan-2015								
	Feb-2015								

Explanatory Notes: Prices quoted reflect the most recent trades, at time of print.

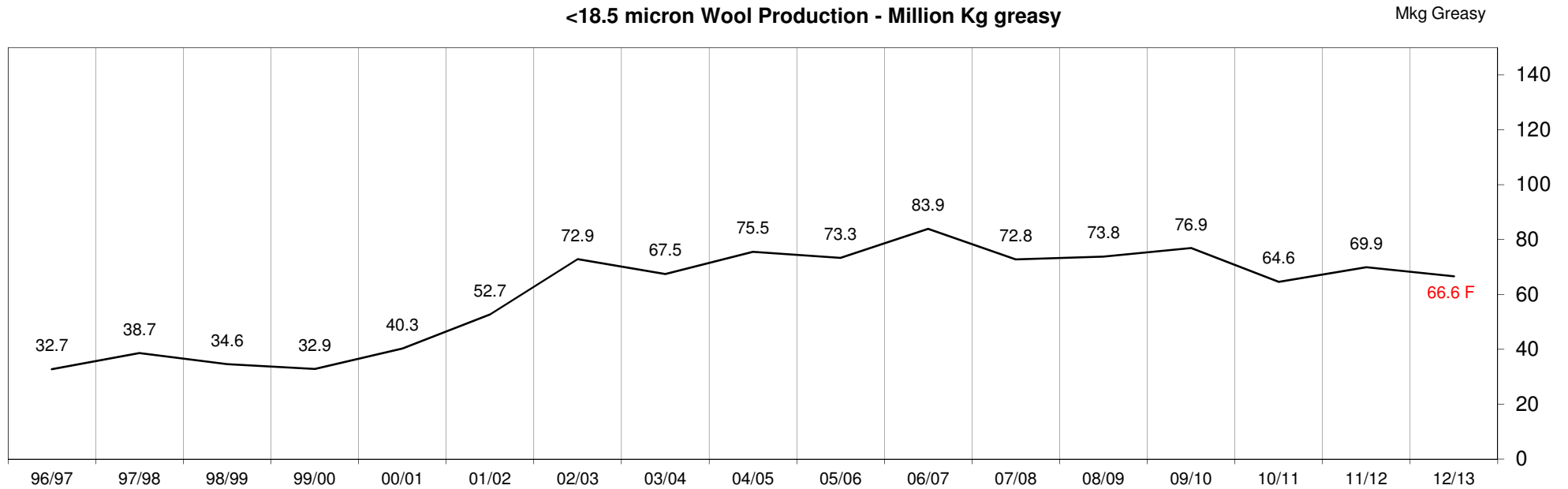
Disclaimer: While all due care has been taken in the preparation of this document, no warranty is made as to its accuracy, reliability or completeness. To the extent permitted by law neither Jemalong or their sources including subsidiaries and staff, accept liability to any person for loss or damage arising from the use of this information.

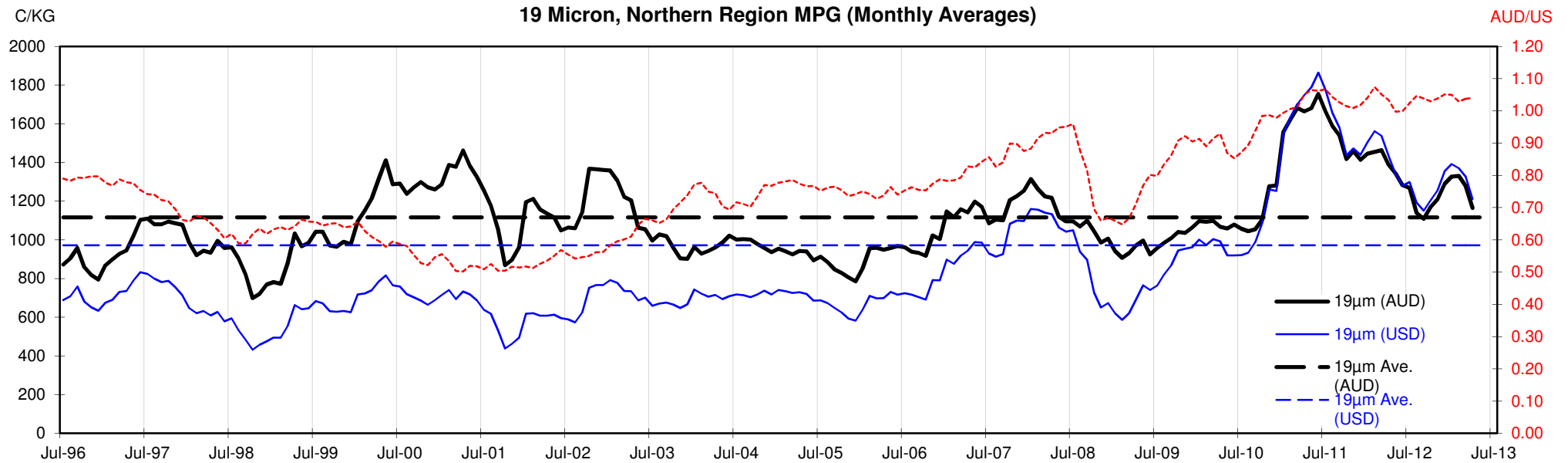


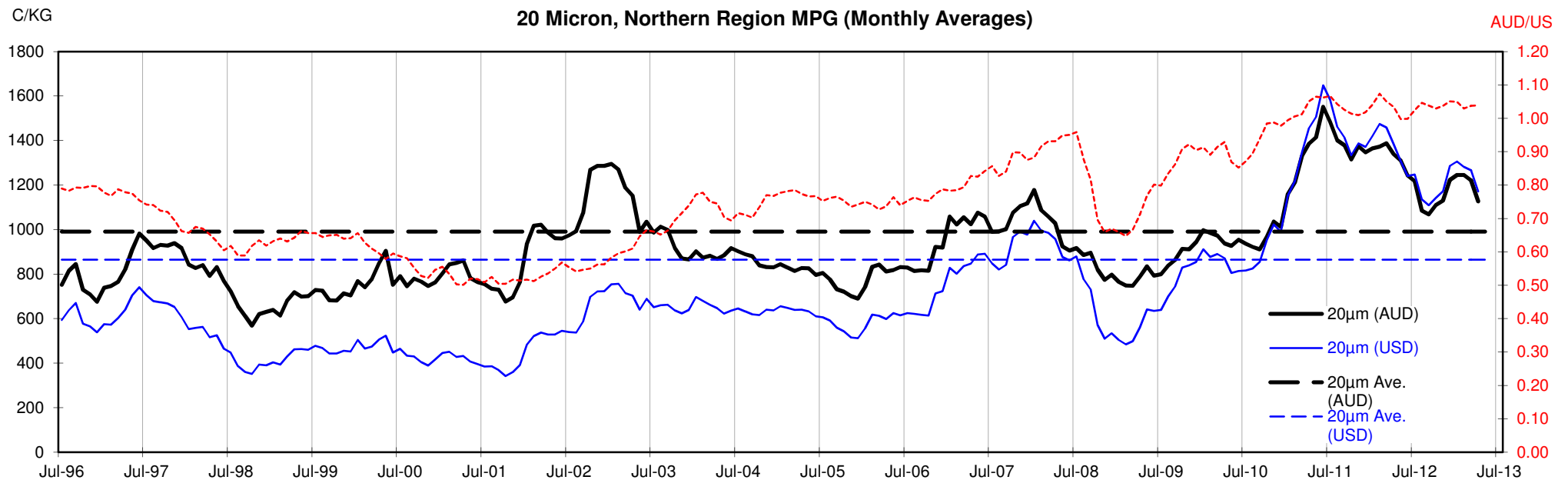
18 Micron, Northern Region MPG (Monthly Averages)

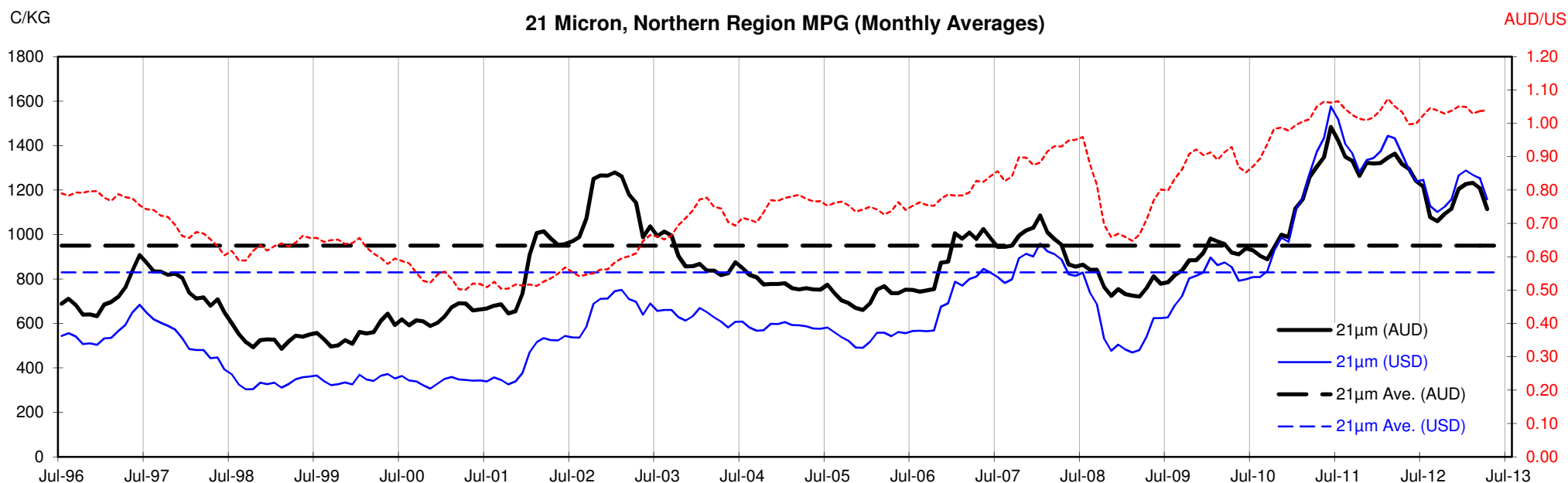


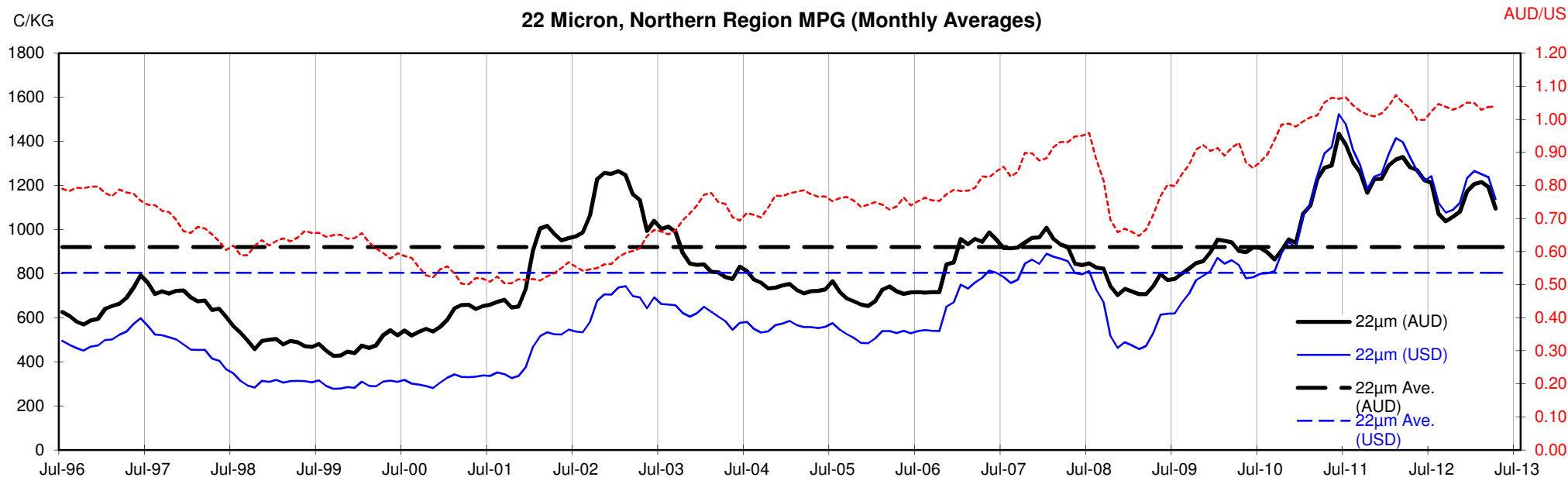
<18.5 micron Wool Production - Million Kg greasy

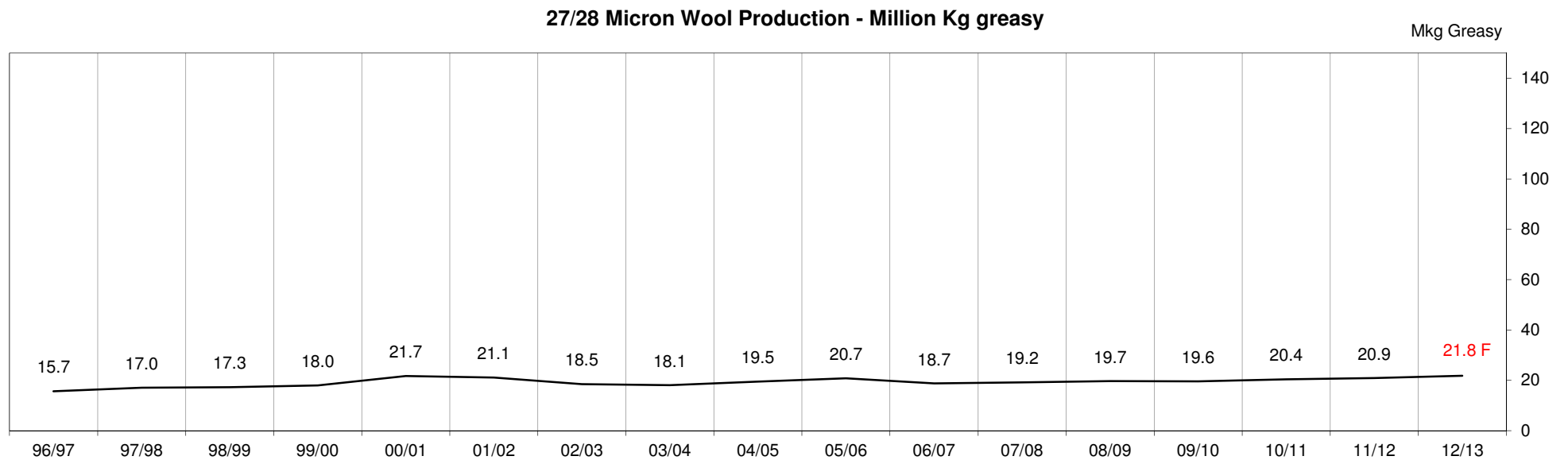
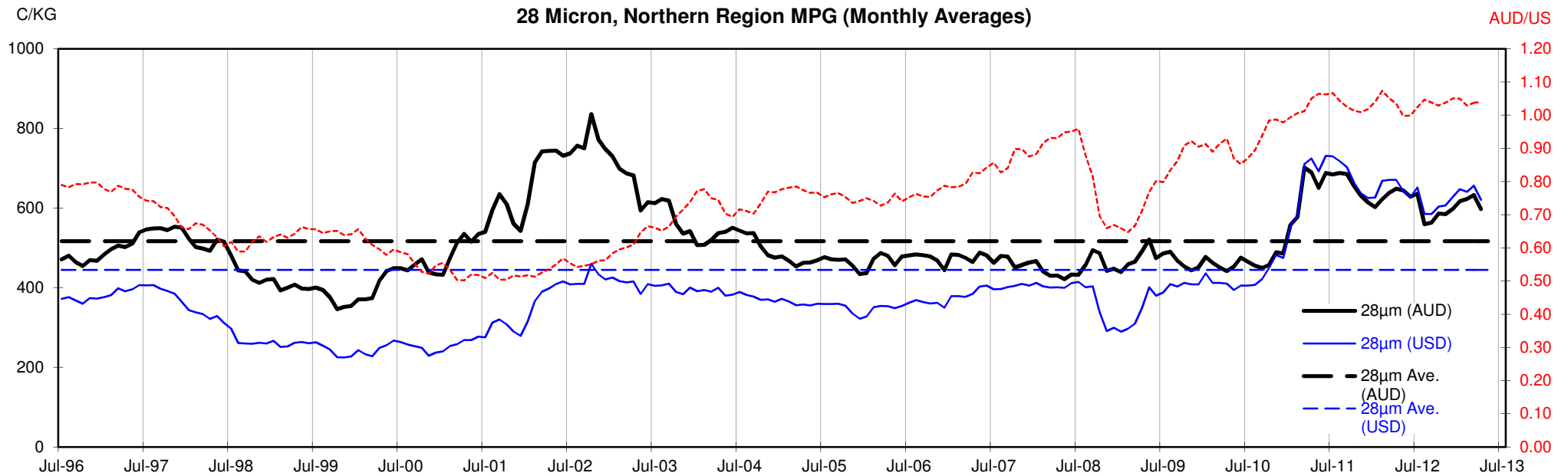












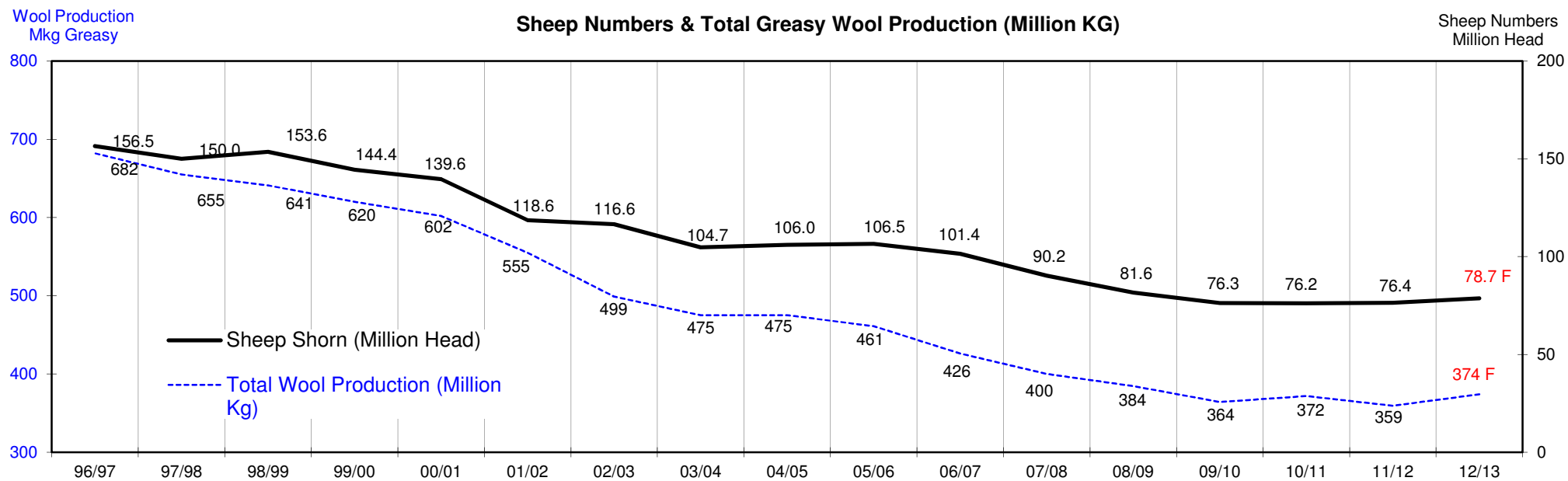
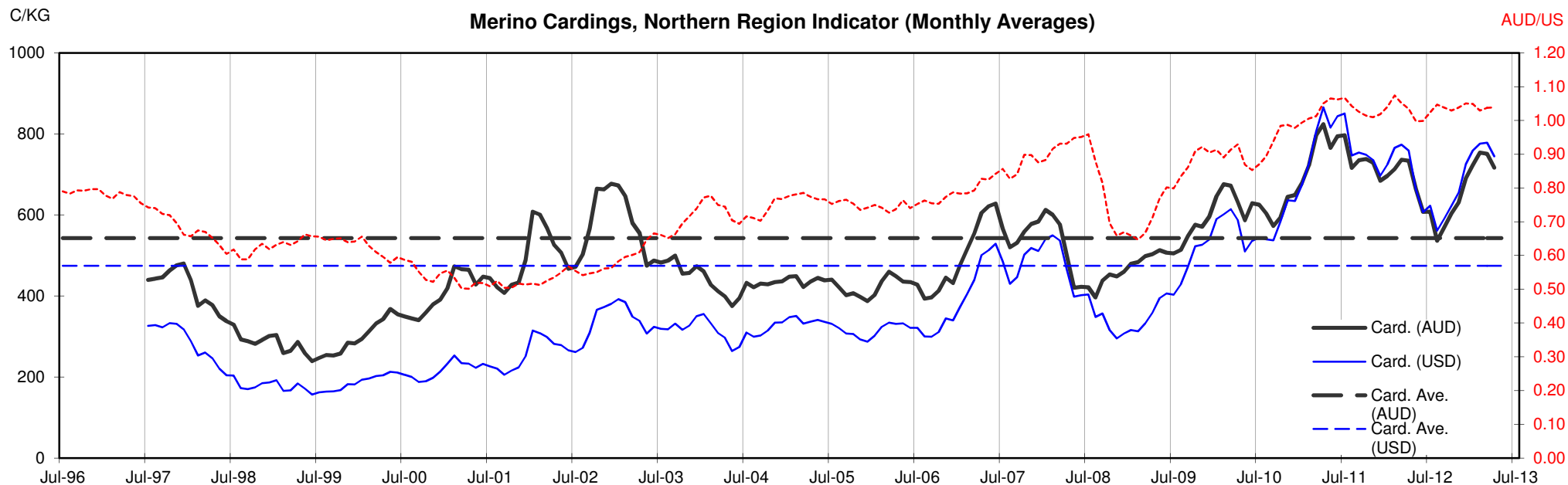




Table 13: Returns pr head for skirted fleece wool.

Skirted FLC Weight		Micron																		
		16	16.5	17	17.5	18	18.5	19	19.5	20	21	22	23	24	25	26	28	30	32	
Yield (Sch Dry)	9 Kg																			
	25%	Current 10yr ave.	\$36 \$40	\$32 \$37	\$29 \$32	\$28 \$32	\$27 \$28	\$27 \$27	\$26 \$25	\$26 \$24	\$25 \$22	\$25 \$21	\$25 \$21	\$24 \$20	\$22 \$19	\$19 \$16	\$17 \$15	\$13 \$12	\$12 \$10	\$11 \$9
	30%	Current 10yr ave.	\$43 \$49	\$39 \$45	\$35 \$39	\$34 \$39	\$32 \$34	\$32 \$32	\$31 \$30	\$31 \$28	\$30 \$27	\$30 \$26	\$29 \$25	\$29 \$24	\$26 \$22	\$23 \$20	\$20 \$18	\$16 \$14	\$15 \$12	\$13 \$11
	35%	Current 10yr ave.	\$50 \$57	\$45 \$52	\$41 \$45	\$39 \$45	\$37 \$39	\$37 \$37	\$36 \$35	\$36 \$33	\$35 \$31	\$35 \$30	\$34 \$29	\$33 \$28	\$31 \$26	\$27 \$23	\$24 \$21	\$19 \$16	\$17 \$14	\$15 \$13
	40%	Current 10yr ave.	\$57 \$65	\$52 \$59	\$47 \$51	\$45 \$52	\$43 \$45	\$42 \$43	\$42 \$40	\$41 \$38	\$40 \$36	\$40 \$34	\$39 \$33	\$38 \$32	\$35 \$30	\$30 \$26	\$27 \$24	\$21 \$19	\$20 \$16	\$17 \$15
	45%	Current 10yr ave.	\$64 \$73	\$58 \$67	\$53 \$58	\$51 \$58	\$48 \$51	\$48 \$48	\$47 \$45	\$46 \$42	\$45 \$40	\$45 \$38	\$44 \$37	\$43 \$36	\$40 \$34	\$34 \$30	\$31 \$27	\$24 \$21	\$22 \$19	\$19 \$17
	50%	Current 10yr ave.	\$72 \$81	\$65 \$74	\$59 \$64	\$56 \$64	\$54 \$56	\$53 \$53	\$52 \$50	\$51 \$47	\$50 \$45	\$50 \$43	\$49 \$41	\$48 \$40	\$44 \$37	\$38 \$33	\$34 \$30	\$27 \$23	\$25 \$21	\$21 \$18
	55%	Current 10yr ave.	\$79 \$89	\$71 \$82	\$65 \$71	\$62 \$71	\$59 \$62	\$58 \$59	\$57 \$55	\$56 \$52	\$55 \$49	\$55 \$47	\$54 \$46	\$52 \$44	\$49 \$41	\$42 \$36	\$37 \$33	\$29 \$26	\$27 \$23	\$23 \$20
	60%	Current 10yr ave.	\$86 \$97	\$78 \$89	\$71 \$77	\$68 \$77	\$64 \$68	\$64 \$64	\$62 \$60	\$61 \$57	\$60 \$54	\$60 \$51	\$59 \$50	\$57 \$48	\$53 \$45	\$46 \$40	\$41 \$36	\$32 \$28	\$30 \$25	\$25 \$22
	65%	Current 10yr ave.	\$93 \$105	\$84 \$97	\$77 \$83	\$73 \$84	\$70 \$73	\$69 \$69	\$68 \$65	\$67 \$61	\$65 \$58	\$65 \$56	\$64 \$54	\$62 \$52	\$57 \$49	\$49 \$43	\$44 \$39	\$35 \$30	\$32 \$27	\$27 \$24
	70%	Current 10yr ave.	\$100 \$113	\$91 \$104	\$83 \$90	\$79 \$90	\$75 \$79	\$74 \$75	\$73 \$70	\$72 \$66	\$70 \$62	\$70 \$60	\$69 \$58	\$67 \$56	\$62 \$52	\$53 \$46	\$48 \$42	\$37 \$33	\$35 \$29	\$30 \$26
	75%	Current 10yr ave.	\$107 \$121	\$97 \$111	\$88 \$96	\$84 \$97	\$80 \$85	\$80 \$80	\$78 \$75	\$77 \$71	\$76 \$67	\$75 \$64	\$74 \$62	\$71 \$60	\$66 \$56	\$57 \$49	\$51 \$45	\$40 \$35	\$37 \$31	\$32 \$28
	80%	Current 10yr ave.	\$114 \$129	\$104 \$119	\$94 \$103	\$90 \$103	\$86 \$90	\$85 \$85	\$83 \$80	\$82 \$76	\$81 \$71	\$80 \$68	\$79 \$66	\$76 \$64	\$71 \$60	\$61 \$53	\$54 \$48	\$42 \$37	\$40 \$33	\$34 \$29
	85%	Current 10yr ave.	\$122 \$137	\$110 \$126	\$100 \$109	\$96 \$110	\$91 \$96	\$90 \$91	\$89 \$85	\$87 \$80	\$86 \$76	\$85 \$73	\$84 \$70	\$81 \$68	\$75 \$64	\$65 \$56	\$58 \$51	\$45 \$40	\$42 \$35	\$36 \$31

The above shows estimated returns per head for skirted fleece wool. These figures do not take into account the value of skirtings and oddments and do not take into account discounts that may apply for faults under individual circumstances. These figures are based on a market index of 100% and should be used as a guide only. Returns over \$30 / head for fleece wool are highlighted.

Source: Australian Wool Exchange, Australian Wool Innovation, Sydney Futures Exchange, x-rates.com

Disclaimer: While all due care has been taken in the preparation of this document, no warranty is made as to its accuracy, reliability or completeness. To the extent permitted by law neither Jemalong or their sources including subsidiaries and staff, accept liability to any person for loss or damage arising from the use of this information.



Table 14: Returns pr head for skirted fleece wool.

Skirted FLC Weight 8 Kg		Micron																	
		16	16.5	17	17.5	18	18.5	19	19.5	20	21	22	23	24	25	26	28	30	32
Yield (Sch Dry)	25% Current	\$32	\$29	\$26	\$25	\$24	\$24	\$23	\$23	\$22	\$22	\$22	\$21	\$20	\$17	\$15	\$12	\$11	\$9
	10yr ave.	\$36	\$33	\$29	\$29	\$25	\$24	\$22	\$21	\$20	\$19	\$18	\$18	\$17	\$15	\$13	\$10	\$9	\$8
	30% Current	\$38	\$35	\$31	\$30	\$29	\$28	\$28	\$27	\$27	\$27	\$26	\$25	\$24	\$20	\$18	\$14	\$13	\$11
	10yr ave.	\$43	\$40	\$34	\$34	\$30	\$28	\$27	\$25	\$24	\$23	\$22	\$21	\$20	\$18	\$16	\$12	\$11	\$10
	35% Current	\$45	\$40	\$37	\$35	\$33	\$33	\$32	\$32	\$31	\$31	\$31	\$30	\$27	\$24	\$21	\$17	\$15	\$13
	10yr ave.	\$50	\$46	\$40	\$40	\$35	\$33	\$31	\$29	\$28	\$27	\$26	\$25	\$23	\$21	\$19	\$14	\$13	\$11
	40% Current	\$51	\$46	\$42	\$40	\$38	\$38	\$37	\$36	\$36	\$35	\$35	\$34	\$31	\$27	\$24	\$19	\$18	\$15
	10yr ave.	\$58	\$53	\$46	\$46	\$40	\$38	\$36	\$34	\$32	\$30	\$29	\$29	\$27	\$23	\$21	\$17	\$15	\$13
	45% Current	\$57	\$52	\$47	\$45	\$43	\$42	\$42	\$41	\$40	\$40	\$39	\$38	\$35	\$30	\$27	\$21	\$20	\$17
	10yr ave.	\$65	\$59	\$51	\$52	\$45	\$43	\$40	\$38	\$36	\$34	\$33	\$32	\$30	\$26	\$24	\$19	\$16	\$15
	50% Current	\$64	\$58	\$52	\$50	\$48	\$47	\$46	\$46	\$45	\$44	\$44	\$42	\$39	\$34	\$30	\$24	\$22	\$19
	10yr ave.	\$72	\$66	\$57	\$57	\$50	\$47	\$45	\$42	\$40	\$38	\$37	\$36	\$33	\$29	\$27	\$21	\$18	\$16
	55% Current	\$70	\$63	\$58	\$55	\$52	\$52	\$51	\$50	\$49	\$49	\$48	\$47	\$43	\$37	\$33	\$26	\$24	\$21
	10yr ave.	\$79	\$73	\$63	\$63	\$55	\$52	\$49	\$46	\$44	\$42	\$40	\$39	\$37	\$32	\$29	\$23	\$20	\$18
	60% Current	\$76	\$69	\$63	\$60	\$57	\$57	\$56	\$55	\$54	\$53	\$52	\$51	\$47	\$41	\$36	\$28	\$27	\$23
	10yr ave.	\$86	\$79	\$68	\$69	\$60	\$57	\$54	\$50	\$48	\$46	\$44	\$43	\$40	\$35	\$32	\$25	\$22	\$20
	65% Current	\$83	\$75	\$68	\$65	\$62	\$61	\$60	\$59	\$58	\$57	\$57	\$55	\$51	\$44	\$39	\$31	\$29	\$24
	10yr ave.	\$93	\$86	\$74	\$74	\$65	\$62	\$58	\$55	\$52	\$49	\$48	\$46	\$43	\$38	\$35	\$27	\$24	\$21
	70% Current	\$89	\$81	\$73	\$70	\$67	\$66	\$65	\$64	\$63	\$62	\$61	\$59	\$55	\$47	\$42	\$33	\$31	\$26
	10yr ave.	\$101	\$92	\$80	\$80	\$70	\$66	\$62	\$59	\$55	\$53	\$52	\$50	\$47	\$41	\$37	\$29	\$26	\$23
	75% Current	\$95	\$86	\$79	\$75	\$71	\$71	\$69	\$68	\$67	\$66	\$66	\$63	\$59	\$51	\$45	\$35	\$33	\$28
	10yr ave.	\$108	\$99	\$86	\$86	\$75	\$71	\$67	\$63	\$59	\$57	\$55	\$53	\$50	\$44	\$40	\$31	\$27	\$24
	80% Current	\$102	\$92	\$84	\$80	\$76	\$75	\$74	\$73	\$72	\$71	\$70	\$68	\$63	\$54	\$48	\$38	\$35	\$30
	10yr ave.	\$115	\$106	\$91	\$92	\$80	\$76	\$71	\$67	\$63	\$61	\$59	\$57	\$53	\$47	\$42	\$33	\$29	\$26
	85% Current	\$108	\$98	\$89	\$85	\$81	\$80	\$79	\$77	\$76	\$75	\$74	\$72	\$67	\$57	\$51	\$40	\$38	\$32
	10yr ave.	\$122	\$112	\$97	\$97	\$85	\$81	\$76	\$71	\$67	\$65	\$63	\$61	\$57	\$50	\$45	\$35	\$31	\$28

The above shows estimated returns per head for skirted fleece wool. These figures do not take into account the value of skirtings and oddments and do not take into account discounts that may apply for faults under individual circumstances. These figures are based on a market index of 100% and should be used as a guide only. Returns over \$30 / head for fleece wool are highlighted.

Source: Australian Wool Exchange, Australian Wool Innovation, Sydney Futures Exchange, x-rates.com

Disclaimer: While all due care has been taken in the preparation of this document, no warranty is made as to its accuracy, reliability or completeness. To the extent permitted by law neither Jemalong or their sources including subsidiaries and staff, accept liability to any person for loss or damage arising from the use of this information.



Table 15: Returns pr head for skirted fleece wool.

Skirted FLC Weight		Micron																	
7 Kg		16	16.5	17	17.5	18	18.5	19	19.5	20	21	22	23	24	25	26	28	30	32
Yield (Sch Dry)	25% Current	\$28	\$25	\$23	\$22	\$21	\$21	\$20	\$20	\$20	\$19	\$19	\$19	\$17	\$15	\$13	\$10	\$10	\$8
	10yr ave.	\$31	\$29	\$25	\$25	\$22	\$21	\$20	\$18	\$17	\$17	\$16	\$16	\$15	\$13	\$12	\$9	\$8	\$7
	30% Current	\$33	\$30	\$28	\$26	\$25	\$25	\$24	\$24	\$23	\$23	\$23	\$22	\$21	\$18	\$16	\$12	\$12	\$10
	10yr ave.	\$38	\$35	\$30	\$30	\$26	\$25	\$23	\$22	\$21	\$20	\$19	\$19	\$17	\$15	\$14	\$11	\$10	\$9
	35% Current	\$39	\$35	\$32	\$31	\$29	\$29	\$28	\$28	\$27	\$27	\$27	\$26	\$24	\$21	\$18	\$14	\$14	\$11
	10yr ave.	\$44	\$40	\$35	\$35	\$31	\$29	\$27	\$26	\$24	\$23	\$23	\$22	\$20	\$18	\$16	\$13	\$11	\$10
	40% Current	\$45	\$40	\$37	\$35	\$33	\$33	\$32	\$32	\$31	\$31	\$31	\$30	\$27	\$24	\$21	\$17	\$15	\$13
	10yr ave.	\$50	\$46	\$40	\$40	\$35	\$33	\$31	\$29	\$28	\$27	\$26	\$25	\$23	\$21	\$19	\$14	\$13	\$11
	45% Current	\$50	\$45	\$41	\$39	\$37	\$37	\$36	\$36	\$35	\$35	\$34	\$33	\$31	\$27	\$24	\$19	\$17	\$15
	10yr ave.	\$57	\$52	\$45	\$45	\$39	\$37	\$35	\$33	\$31	\$30	\$29	\$28	\$26	\$23	\$21	\$16	\$14	\$13
	50% Current	\$56	\$50	\$46	\$44	\$42	\$41	\$40	\$40	\$39	\$39	\$38	\$37	\$34	\$30	\$26	\$21	\$19	\$16
	10yr ave.	\$63	\$58	\$50	\$50	\$44	\$42	\$39	\$37	\$35	\$33	\$32	\$31	\$29	\$26	\$23	\$18	\$16	\$14
	55% Current	\$61	\$55	\$50	\$48	\$46	\$45	\$45	\$44	\$43	\$43	\$42	\$41	\$38	\$33	\$29	\$23	\$21	\$18
	10yr ave.	\$69	\$64	\$55	\$55	\$48	\$46	\$43	\$40	\$38	\$37	\$35	\$34	\$32	\$28	\$26	\$20	\$18	\$16
	60% Current	\$67	\$60	\$55	\$53	\$50	\$49	\$49	\$48	\$47	\$46	\$46	\$44	\$41	\$35	\$32	\$25	\$23	\$20
	10yr ave.	\$75	\$69	\$60	\$60	\$53	\$50	\$47	\$44	\$42	\$40	\$39	\$37	\$35	\$31	\$28	\$22	\$19	\$17
	65% Current	\$72	\$66	\$60	\$57	\$54	\$54	\$53	\$52	\$51	\$50	\$50	\$48	\$45	\$38	\$34	\$27	\$25	\$21
	10yr ave.	\$82	\$75	\$65	\$65	\$57	\$54	\$51	\$48	\$45	\$43	\$42	\$41	\$38	\$33	\$30	\$24	\$21	\$19
	70% Current	\$78	\$71	\$64	\$61	\$58	\$58	\$57	\$56	\$55	\$54	\$54	\$52	\$48	\$41	\$37	\$29	\$27	\$23
	10yr ave.	\$88	\$81	\$70	\$70	\$61	\$58	\$55	\$51	\$49	\$47	\$45	\$44	\$41	\$36	\$33	\$25	\$22	\$20
	75% Current	\$83	\$76	\$69	\$66	\$62	\$62	\$61	\$60	\$59	\$58	\$57	\$56	\$52	\$44	\$40	\$31	\$29	\$25
	10yr ave.	\$94	\$87	\$75	\$75	\$66	\$62	\$59	\$55	\$52	\$50	\$48	\$47	\$44	\$38	\$35	\$27	\$24	\$21
	80% Current	\$89	\$81	\$73	\$70	\$67	\$66	\$65	\$64	\$63	\$62	\$61	\$59	\$55	\$47	\$42	\$33	\$31	\$26
	10yr ave.	\$101	\$92	\$80	\$80	\$70	\$66	\$62	\$59	\$55	\$53	\$52	\$50	\$47	\$41	\$37	\$29	\$26	\$23
	85% Current	\$95	\$86	\$78	\$74	\$71	\$70	\$69	\$68	\$67	\$66	\$65	\$63	\$58	\$50	\$45	\$35	\$33	\$28
	10yr ave.	\$107	\$98	\$85	\$85	\$75	\$71	\$66	\$62	\$59	\$57	\$55	\$53	\$50	\$44	\$40	\$31	\$27	\$24

The above shows estimated returns per head for skirted fleece wool. These figures do not take into account the value of skirtings and oddments and do not take into account discounts that may apply for faults under individual circumstances. These figures are based on a market index of 100% and should be used as a guide only. Returns over \$30 / head for fleece wool are highlighted.

Source: Australian Wool Exchange, Australian Wool Innovation, Sydney Futures Exchange, x-rates.com

Disclaimer: While all due care has been taken in the preparation of this document, no warranty is made as to its accuracy, reliability or completeness. To the extent permitted by law neither Jemalong or their sources including subsidiaries and staff, accept liability to any person for loss or damage arising from the use of this information.



Table 16: Returns pr head for skirted fleece wool.

Skirted FLC Weight			Micron																	
			16	16.5	17	17.5	18	18.5	19	19.5	20	21	22	23	24	25	26	28	30	32
Yield (Sch Dry)	6 Kg																			
	25%	Current	\$24	\$22	\$20	\$19	\$18	\$18	\$17	\$17	\$17	\$17	\$16	\$16	\$15	\$13	\$11	\$9	\$8	\$7
		10yr ave.	\$27	\$25	\$21	\$21	\$19	\$18	\$17	\$16	\$15	\$14	\$14	\$13	\$12	\$11	\$10	\$8	\$7	\$6
	30%	Current	\$29	\$26	\$24	\$23	\$21	\$21	\$21	\$20	\$20	\$20	\$20	\$19	\$18	\$15	\$14	\$11	\$10	\$8
		10yr ave.	\$32	\$30	\$26	\$26	\$23	\$21	\$20	\$19	\$18	\$17	\$17	\$16	\$15	\$13	\$12	\$9	\$8	\$7
	35%	Current	\$33	\$30	\$28	\$26	\$25	\$25	\$24	\$24	\$23	\$23	\$23	\$22	\$21	\$18	\$16	\$12	\$12	\$10
		10yr ave.	\$38	\$35	\$30	\$30	\$26	\$25	\$23	\$22	\$21	\$20	\$19	\$19	\$17	\$15	\$14	\$11	\$10	\$9
	40%	Current	\$38	\$35	\$31	\$30	\$29	\$28	\$28	\$27	\$27	\$27	\$26	\$25	\$24	\$20	\$18	\$14	\$13	\$11
		10yr ave.	\$43	\$40	\$34	\$34	\$30	\$28	\$27	\$25	\$24	\$23	\$22	\$21	\$20	\$18	\$16	\$12	\$11	\$10
	45%	Current	\$43	\$39	\$35	\$34	\$32	\$32	\$31	\$31	\$30	\$30	\$29	\$29	\$26	\$23	\$20	\$16	\$15	\$13
		10yr ave.	\$49	\$45	\$39	\$39	\$34	\$32	\$30	\$28	\$27	\$26	\$25	\$24	\$22	\$20	\$18	\$14	\$12	\$11
	50%	Current	\$48	\$43	\$39	\$38	\$36	\$35	\$35	\$34	\$34	\$33	\$33	\$32	\$29	\$25	\$23	\$18	\$17	\$14
		10yr ave.	\$54	\$50	\$43	\$43	\$38	\$36	\$33	\$31	\$30	\$29	\$28	\$27	\$25	\$22	\$20	\$16	\$14	\$12
	55%	Current	\$52	\$48	\$43	\$41	\$39	\$39	\$38	\$38	\$37	\$36	\$36	\$35	\$32	\$28	\$25	\$19	\$18	\$15
		10yr ave.	\$59	\$54	\$47	\$47	\$41	\$39	\$37	\$35	\$33	\$31	\$30	\$29	\$27	\$24	\$22	\$17	\$15	\$13
	60%	Current	\$57	\$52	\$47	\$45	\$43	\$42	\$42	\$41	\$40	\$40	\$39	\$38	\$35	\$30	\$27	\$21	\$20	\$17
		10yr ave.	\$65	\$59	\$51	\$52	\$45	\$43	\$40	\$38	\$36	\$34	\$33	\$32	\$30	\$26	\$24	\$19	\$16	\$15
	65%	Current	\$62	\$56	\$51	\$49	\$46	\$46	\$45	\$44	\$44	\$43	\$43	\$41	\$38	\$33	\$29	\$23	\$22	\$18
		10yr ave.	\$70	\$64	\$56	\$56	\$49	\$46	\$44	\$41	\$39	\$37	\$36	\$35	\$32	\$29	\$26	\$20	\$18	\$16
	70%	Current	\$67	\$60	\$55	\$53	\$50	\$49	\$49	\$48	\$47	\$46	\$46	\$44	\$41	\$35	\$32	\$25	\$23	\$20
		10yr ave.	\$75	\$69	\$60	\$60	\$53	\$50	\$47	\$44	\$42	\$40	\$39	\$37	\$35	\$31	\$28	\$22	\$19	\$17
	75%	Current	\$72	\$65	\$59	\$56	\$54	\$53	\$52	\$51	\$50	\$50	\$49	\$48	\$44	\$38	\$34	\$27	\$25	\$21
		10yr ave.	\$81	\$74	\$64	\$64	\$56	\$53	\$50	\$47	\$45	\$43	\$41	\$40	\$37	\$33	\$30	\$23	\$21	\$18
	80%	Current	\$76	\$69	\$63	\$60	\$57	\$57	\$56	\$55	\$54	\$53	\$52	\$51	\$47	\$41	\$36	\$28	\$27	\$23
		10yr ave.	\$86	\$79	\$68	\$69	\$60	\$57	\$54	\$50	\$48	\$46	\$44	\$43	\$40	\$35	\$32	\$25	\$22	\$20
	85%	Current	\$81	\$73	\$67	\$64	\$61	\$60	\$59	\$58	\$57	\$56	\$56	\$54	\$50	\$43	\$39	\$30	\$28	\$24
	10yr ave.	\$92	\$84	\$73	\$73	\$64	\$60	\$57	\$53	\$51	\$48	\$47	\$45	\$42	\$37	\$34	\$26	\$23	\$21	

The above shows estimated returns per head for skirted fleece wool. These figures do not take into account the value of skirtings and oddments and do not take into account discounts that may apply for faults under individual circumstances. These figures are based on a market index of 100% and should be used as a guide only. Returns over \$30 / head for fleece wool are highlighted.

Source: Australian Wool Exchange, Australian Wool Innovation, Sydney Futures Exchange, x-rates.com

Disclaimer: While all due care has been taken in the preparation of this document, no warranty is made as to its accuracy, reliability or completeness. To the extent permitted by law neither Jemalong or their sources including subsidiaries and staff, accept liability to any person for loss or damage arising from the use of this information.



Table 17: Returns pr head for skirted fleece wool.

Skirted FLC Weight		Micron																	
5 Kg		16	16.5	17	17.5	18	18.5	19	19.5	20	21	22	23	24	25	26	28	30	32
Yield (Sch Dry)	25% Current	\$20	\$18	\$16	\$16	\$15	\$15	\$14	\$14	\$14	\$14	\$14	\$13	\$12	\$11	\$9	\$7	\$7	\$6
	10yr ave.	\$22	\$21	\$18	\$18	\$16	\$15	\$14	\$13	\$12	\$12	\$12	\$11	\$10	\$9	\$8	\$6	\$6	\$5
	30% Current	\$24	\$22	\$20	\$19	\$18	\$18	\$17	\$17	\$17	\$17	\$16	\$16	\$15	\$13	\$11	\$9	\$8	\$7
	10yr ave.	\$27	\$25	\$21	\$21	\$19	\$18	\$17	\$16	\$15	\$14	\$14	\$13	\$12	\$11	\$10	\$8	\$7	\$6
	35% Current	\$28	\$25	\$23	\$22	\$21	\$21	\$20	\$20	\$20	\$19	\$19	\$19	\$17	\$15	\$13	\$10	\$10	\$8
	10yr ave.	\$31	\$29	\$25	\$25	\$22	\$21	\$20	\$18	\$17	\$17	\$16	\$16	\$15	\$13	\$12	\$9	\$8	\$7
	40% Current	\$32	\$29	\$26	\$25	\$24	\$24	\$23	\$23	\$22	\$22	\$22	\$21	\$20	\$17	\$15	\$12	\$11	\$9
	10yr ave.	\$36	\$33	\$29	\$29	\$25	\$24	\$22	\$21	\$20	\$19	\$18	\$18	\$17	\$15	\$13	\$10	\$9	\$8
	45% Current	\$36	\$32	\$29	\$28	\$27	\$27	\$26	\$26	\$25	\$25	\$25	\$24	\$22	\$19	\$17	\$13	\$12	\$11
	10yr ave.	\$40	\$37	\$32	\$32	\$28	\$27	\$25	\$24	\$22	\$21	\$21	\$20	\$19	\$16	\$15	\$12	\$10	\$9
	50% Current	\$40	\$36	\$33	\$31	\$30	\$29	\$29	\$28	\$28	\$28	\$27	\$26	\$25	\$21	\$19	\$15	\$14	\$12
	10yr ave.	\$45	\$41	\$36	\$36	\$31	\$30	\$28	\$26	\$25	\$24	\$23	\$22	\$21	\$18	\$17	\$13	\$11	\$10
	55% Current	\$44	\$40	\$36	\$34	\$33	\$32	\$32	\$31	\$31	\$30	\$30	\$29	\$27	\$23	\$21	\$16	\$15	\$13
	10yr ave.	\$49	\$45	\$39	\$39	\$34	\$33	\$31	\$29	\$27	\$26	\$25	\$25	\$23	\$20	\$18	\$14	\$13	\$11
	60% Current	\$48	\$43	\$39	\$38	\$36	\$35	\$35	\$34	\$34	\$33	\$33	\$32	\$29	\$25	\$23	\$18	\$17	\$14
	10yr ave.	\$54	\$50	\$43	\$43	\$38	\$36	\$33	\$31	\$30	\$29	\$28	\$27	\$25	\$22	\$20	\$16	\$14	\$12
	65% Current	\$52	\$47	\$43	\$41	\$39	\$38	\$38	\$37	\$36	\$36	\$35	\$34	\$32	\$27	\$25	\$19	\$18	\$15
	10yr ave.	\$58	\$54	\$46	\$47	\$41	\$39	\$36	\$34	\$32	\$31	\$30	\$29	\$27	\$24	\$22	\$17	\$15	\$13
	70% Current	\$56	\$50	\$46	\$44	\$42	\$41	\$40	\$40	\$39	\$39	\$38	\$37	\$34	\$30	\$26	\$21	\$19	\$16
	10yr ave.	\$63	\$58	\$50	\$50	\$44	\$42	\$39	\$37	\$35	\$33	\$32	\$31	\$29	\$26	\$23	\$18	\$16	\$14
	75% Current	\$60	\$54	\$49	\$47	\$45	\$44	\$43	\$43	\$42	\$41	\$41	\$40	\$37	\$32	\$28	\$22	\$21	\$18
	10yr ave.	\$67	\$62	\$54	\$54	\$47	\$44	\$42	\$39	\$37	\$36	\$35	\$33	\$31	\$27	\$25	\$19	\$17	\$15
	80% Current	\$64	\$58	\$52	\$50	\$48	\$47	\$46	\$46	\$45	\$44	\$44	\$42	\$39	\$34	\$30	\$24	\$22	\$19
	10yr ave.	\$72	\$66	\$57	\$57	\$50	\$47	\$45	\$42	\$40	\$38	\$37	\$36	\$33	\$29	\$27	\$21	\$18	\$16
	85% Current	\$68	\$61	\$56	\$53	\$51	\$50	\$49	\$48	\$48	\$47	\$46	\$45	\$42	\$36	\$32	\$25	\$24	\$20
	10yr ave.	\$76	\$70	\$61	\$61	\$53	\$50	\$47	\$45	\$42	\$40	\$39	\$38	\$35	\$31	\$28	\$22	\$19	\$17

The above shows estimated returns per head for skirted fleece wool. These figures do not take into account the value of skirtings and oddments and do not take into account discounts that may apply for faults under individual circumstances. These figures are based on a market index of 100% and should be used as a guide only. Returns over \$30 / head for fleece wool are highlighted.

Source: Australian Wool Exchange, Australian Wool Innovation, Sydney Futures Exchange, x-rates.com

Disclaimer: While all due care has been taken in the preparation of this document, no warranty is made as to its accuracy, reliability or completeness. To the extent permitted by law neither Jemalong or their sources including subsidiaries and staff, accept liability to any person for loss or damage arising from the use of this information.



Table 18: Returns pr head for skirted fleece wool.

Skirted FLC Weight		Micron																	
4 Kg		16	16.5	17	17.5	18	18.5	19	19.5	20	21	22	23	24	25	26	28	30	32
Yield (Sch Dry)	25% Current	\$16	\$14	\$13	\$13	\$12	\$12	\$12	\$11	\$11	\$11	\$11	\$11	\$10	\$8	\$8	\$6	\$6	\$5
	10yr ave.	\$18	\$17	\$14	\$14	\$13	\$12	\$11	\$10	\$10	\$10	\$9	\$9	\$8	\$7	\$7	\$5	\$5	\$4
	30% Current	\$19	\$17	\$16	\$15	\$14	\$14	\$14	\$14	\$13	\$13	\$13	\$13	\$12	\$10	\$9	\$7	\$7	\$6
	10yr ave.	\$22	\$20	\$17	\$17	\$15	\$14	\$13	\$13	\$12	\$11	\$11	\$11	\$10	\$9	\$8	\$6	\$5	\$5
	35% Current	\$22	\$20	\$18	\$18	\$17	\$16	\$16	\$16	\$16	\$15	\$15	\$15	\$14	\$12	\$11	\$8	\$8	\$7
	10yr ave.	\$25	\$23	\$20	\$20	\$18	\$17	\$16	\$15	\$14	\$13	\$13	\$12	\$12	\$10	\$9	\$7	\$6	\$6
	40% Current	\$25	\$23	\$21	\$20	\$19	\$19	\$19	\$18	\$18	\$18	\$17	\$17	\$16	\$14	\$12	\$9	\$9	\$8
	10yr ave.	\$29	\$26	\$23	\$23	\$20	\$19	\$18	\$17	\$16	\$15	\$15	\$14	\$13	\$12	\$11	\$8	\$7	\$7
	45% Current	\$29	\$26	\$24	\$23	\$21	\$21	\$21	\$20	\$20	\$20	\$20	\$19	\$18	\$15	\$14	\$11	\$10	\$8
	10yr ave.	\$32	\$30	\$26	\$26	\$23	\$21	\$20	\$19	\$18	\$17	\$17	\$16	\$15	\$13	\$12	\$9	\$8	\$7
	50% Current	\$32	\$29	\$26	\$25	\$24	\$24	\$23	\$23	\$22	\$22	\$22	\$21	\$20	\$17	\$15	\$12	\$11	\$9
	10yr ave.	\$36	\$33	\$29	\$29	\$25	\$24	\$22	\$21	\$20	\$19	\$18	\$18	\$17	\$15	\$13	\$10	\$9	\$8
	55% Current	\$35	\$32	\$29	\$28	\$26	\$26	\$25	\$25	\$25	\$24	\$24	\$23	\$22	\$19	\$17	\$13	\$12	\$10
	10yr ave.	\$40	\$36	\$31	\$32	\$28	\$26	\$25	\$23	\$22	\$21	\$20	\$20	\$18	\$16	\$15	\$11	\$10	\$9
	60% Current	\$38	\$35	\$31	\$30	\$29	\$28	\$28	\$27	\$27	\$27	\$26	\$25	\$24	\$20	\$18	\$14	\$13	\$11
	10yr ave.	\$43	\$40	\$34	\$34	\$30	\$28	\$27	\$25	\$24	\$23	\$22	\$21	\$20	\$18	\$16	\$12	\$11	\$10
	65% Current	\$41	\$37	\$34	\$33	\$31	\$31	\$30	\$30	\$29	\$29	\$28	\$28	\$26	\$22	\$20	\$15	\$14	\$12
	10yr ave.	\$47	\$43	\$37	\$37	\$33	\$31	\$29	\$27	\$26	\$25	\$24	\$23	\$22	\$19	\$17	\$13	\$12	\$11
	70% Current	\$45	\$40	\$37	\$35	\$33	\$33	\$32	\$32	\$31	\$31	\$31	\$30	\$27	\$24	\$21	\$17	\$15	\$13
	10yr ave.	\$50	\$46	\$40	\$40	\$35	\$33	\$31	\$29	\$28	\$27	\$26	\$25	\$23	\$21	\$19	\$14	\$13	\$11
	75% Current	\$48	\$43	\$39	\$38	\$36	\$35	\$35	\$34	\$34	\$33	\$33	\$32	\$29	\$25	\$23	\$18	\$17	\$14
	10yr ave.	\$54	\$50	\$43	\$43	\$38	\$36	\$33	\$31	\$30	\$29	\$28	\$27	\$25	\$22	\$20	\$16	\$14	\$12
	80% Current	\$51	\$46	\$42	\$40	\$38	\$38	\$37	\$36	\$36	\$35	\$35	\$34	\$31	\$27	\$24	\$19	\$18	\$15
	10yr ave.	\$58	\$53	\$46	\$46	\$40	\$38	\$36	\$34	\$32	\$30	\$29	\$29	\$27	\$23	\$21	\$17	\$15	\$13
	85% Current	\$54	\$49	\$45	\$43	\$40	\$40	\$39	\$39	\$38	\$38	\$37	\$36	\$33	\$29	\$26	\$20	\$19	\$16
	10yr ave.	\$61	\$56	\$49	\$49	\$43	\$40	\$38	\$36	\$34	\$32	\$31	\$30	\$28	\$25	\$23	\$18	\$16	\$14

The above shows estimated returns per head for skirted fleece wool. These figures do not take into account the value of skirtings and oddments and do not take into account discounts that may apply for faults under individual circumstances. These figures are based on a market index of 100% and should be used as a guide only. Returns over \$30 / head for fleece wool are highlighted.

Source: Australian Wool Exchange, Australian Wool Innovation, Sydney Futures Exchange, x-rates.com

Disclaimer: While all due care has been taken in the preparation of this document, no warranty is made as to its accuracy, reliability or completeness. To the extent permitted by law neither Jemalong or their sources including subsidiaries and staff, accept liability to any person for loss or damage arising from the use of this information.



Table 19: Returns pr head for skirted fleece wool.

Skirted FLC Weight		Micron																	
3 Kg		16	16.5	17	17.5	18	18.5	19	19.5	20	21	22	23	24	25	26	28	30	32
Yield (Sch Dry)	25% Current	\$12	\$11	\$10	\$9	\$9	\$9	\$9	\$9	\$8	\$8	\$8	\$8	\$7	\$6	\$6	\$4	\$4	\$4
	10yr ave.	\$13	\$12	\$11	\$11	\$9	\$9	\$8	\$8	\$7	\$7	\$7	\$7	\$6	\$5	\$5	\$4	\$3	\$3
	30% Current	\$14	\$13	\$12	\$11	\$11	\$11	\$10	\$10	\$10	\$10	\$10	\$10	\$9	\$8	\$7	\$5	\$5	\$4
	10yr ave.	\$16	\$15	\$13	\$13	\$11	\$11	\$10	\$9	\$9	\$9	\$8	\$8	\$7	\$7	\$6	\$5	\$4	\$4
	35% Current	\$17	\$15	\$14	\$13	\$12	\$12	\$12	\$12	\$12	\$12	\$11	\$11	\$10	\$9	\$8	\$6	\$6	\$5
	10yr ave.	\$19	\$17	\$15	\$15	\$13	\$12	\$12	\$11	\$10	\$10	\$10	\$9	\$9	\$8	\$7	\$5	\$5	\$4
	40% Current	\$19	\$17	\$16	\$15	\$14	\$14	\$14	\$14	\$13	\$13	\$13	\$13	\$12	\$10	\$9	\$7	\$7	\$6
	10yr ave.	\$22	\$20	\$17	\$17	\$15	\$14	\$13	\$13	\$12	\$11	\$11	\$11	\$10	\$9	\$8	\$6	\$5	\$5
	45% Current	\$21	\$19	\$18	\$17	\$16	\$16	\$16	\$15	\$15	\$15	\$15	\$14	\$13	\$11	\$10	\$8	\$7	\$6
	10yr ave.	\$24	\$22	\$19	\$19	\$17	\$16	\$15	\$14	\$13	\$13	\$12	\$12	\$11	\$10	\$9	\$7	\$6	\$6
	50% Current	\$24	\$22	\$20	\$19	\$18	\$18	\$17	\$17	\$17	\$17	\$16	\$16	\$15	\$13	\$11	\$9	\$8	\$7
	10yr ave.	\$27	\$25	\$21	\$21	\$19	\$18	\$17	\$16	\$15	\$14	\$14	\$13	\$12	\$11	\$10	\$8	\$7	\$6
	55% Current	\$26	\$24	\$22	\$21	\$20	\$19	\$19	\$19	\$18	\$18	\$18	\$17	\$16	\$14	\$12	\$10	\$9	\$8
	10yr ave.	\$30	\$27	\$24	\$24	\$21	\$20	\$18	\$17	\$16	\$16	\$15	\$15	\$14	\$12	\$11	\$9	\$8	\$7
	60% Current	\$29	\$26	\$24	\$23	\$21	\$21	\$21	\$20	\$20	\$20	\$20	\$19	\$18	\$15	\$14	\$11	\$10	\$8
	10yr ave.	\$32	\$30	\$26	\$26	\$23	\$21	\$20	\$19	\$18	\$17	\$17	\$16	\$15	\$13	\$12	\$9	\$8	\$7
	65% Current	\$31	\$28	\$26	\$24	\$23	\$23	\$23	\$22	\$22	\$22	\$21	\$21	\$19	\$16	\$15	\$12	\$11	\$9
	10yr ave.	\$35	\$32	\$28	\$28	\$24	\$23	\$22	\$20	\$19	\$19	\$18	\$17	\$16	\$14	\$13	\$10	\$9	\$8
	70% Current	\$33	\$30	\$28	\$26	\$25	\$25	\$24	\$24	\$23	\$23	\$23	\$22	\$21	\$18	\$16	\$12	\$12	\$10
	10yr ave.	\$38	\$35	\$30	\$30	\$26	\$25	\$23	\$22	\$21	\$20	\$19	\$19	\$17	\$15	\$14	\$11	\$10	\$9
	75% Current	\$36	\$32	\$29	\$28	\$27	\$27	\$26	\$26	\$25	\$25	\$25	\$24	\$22	\$19	\$17	\$13	\$12	\$11
	10yr ave.	\$40	\$37	\$32	\$32	\$28	\$27	\$25	\$24	\$22	\$21	\$21	\$20	\$19	\$16	\$15	\$12	\$10	\$9
	80% Current	\$38	\$35	\$31	\$30	\$29	\$28	\$28	\$27	\$27	\$27	\$26	\$25	\$24	\$20	\$18	\$14	\$13	\$11
	10yr ave.	\$43	\$40	\$34	\$34	\$30	\$28	\$27	\$25	\$24	\$23	\$22	\$21	\$20	\$18	\$16	\$12	\$11	\$10
	85% Current	\$41	\$37	\$33	\$32	\$30	\$30	\$30	\$29	\$29	\$28	\$28	\$27	\$25	\$22	\$19	\$15	\$14	\$12
	10yr ave.	\$46	\$42	\$36	\$37	\$32	\$30	\$28	\$27	\$25	\$24	\$23	\$23	\$21	\$19	\$17	\$13	\$12	\$10

The above shows estimated returns per head for skirted fleece wool. These figures do not take into account the value of skirtings and oddments and do not take into account discounts that may apply for faults under individual circumstances. These figures are based on a market index of 100% and should be used as a guide only. Returns over \$30 / head for fleece wool are highlighted.

Source: Australian Wool Exchange, Australian Wool Innovation, Sydney Futures Exchange, x-rates.com

Disclaimer: While all due care has been taken in the preparation of this document, no warranty is made as to its accuracy, reliability or completeness. To the extent permitted by law neither Jemalong or their sources including subsidiaries and staff, accept liability to any person for loss or damage arising from the use of this information.



Table 20: Returns pr head for skirted fleece wool.

Skirted FLC Weight		Micron																	
2 Kg		16	16.5	17	17.5	18	18.5	19	19.5	20	21	22	23	24	25	26	28	30	32
Yield (Sch Dry)	25% Current	\$8	\$7	\$7	\$6	\$6	\$6	\$6	\$6	\$6	\$6	\$5	\$5	\$5	\$4	\$4	\$3	\$3	\$2
	10yr ave.	\$9	\$8	\$7	\$7	\$6	\$6	\$6	\$5	\$5	\$5	\$5	\$4	\$4	\$4	\$3	\$3	\$2	\$2
	30% Current	\$10	\$9	\$8	\$8	\$7	\$7	\$7	\$7	\$7	\$7	\$7	\$6	\$6	\$5	\$5	\$4	\$3	\$3
	10yr ave.	\$11	\$10	\$9	\$9	\$8	\$7	\$7	\$6	\$6	\$6	\$6	\$5	\$5	\$4	\$4	\$3	\$3	\$2
	35% Current	\$11	\$10	\$9	\$9	\$8	\$8	\$8	\$8	\$8	\$8	\$8	\$7	\$7	\$6	\$5	\$4	\$4	\$3
	10yr ave.	\$13	\$12	\$10	\$10	\$9	\$8	\$8	\$7	\$7	\$7	\$6	\$6	\$6	\$5	\$5	\$4	\$3	\$3
	40% Current	\$13	\$12	\$10	\$10	\$10	\$9	\$9	\$9	\$9	\$9	\$9	\$8	\$8	\$7	\$6	\$5	\$4	\$4
	10yr ave.	\$14	\$13	\$11	\$11	\$10	\$9	\$9	\$8	\$8	\$8	\$7	\$7	\$7	\$6	\$5	\$4	\$4	\$3
	45% Current	\$14	\$13	\$12	\$11	\$11	\$11	\$10	\$10	\$10	\$10	\$10	\$10	\$9	\$8	\$7	\$5	\$5	\$4
	10yr ave.	\$16	\$15	\$13	\$13	\$11	\$11	\$10	\$9	\$9	\$9	\$8	\$8	\$7	\$7	\$6	\$5	\$4	\$4
	50% Current	\$16	\$14	\$13	\$13	\$12	\$12	\$12	\$11	\$11	\$11	\$11	\$11	\$10	\$8	\$8	\$6	\$6	\$5
	10yr ave.	\$18	\$17	\$14	\$14	\$13	\$12	\$11	\$10	\$10	\$10	\$9	\$9	\$8	\$7	\$7	\$5	\$5	\$4
	55% Current	\$17	\$16	\$14	\$14	\$13	\$13	\$13	\$13	\$12	\$12	\$12	\$12	\$11	\$9	\$8	\$6	\$6	\$5
	10yr ave.	\$20	\$18	\$16	\$16	\$14	\$13	\$12	\$12	\$11	\$10	\$10	\$10	\$9	\$8	\$7	\$6	\$5	\$4
	60% Current	\$19	\$17	\$16	\$15	\$14	\$14	\$14	\$14	\$13	\$13	\$13	\$13	\$12	\$10	\$9	\$7	\$7	\$6
	10yr ave.	\$22	\$20	\$17	\$17	\$15	\$14	\$13	\$13	\$12	\$11	\$11	\$11	\$10	\$9	\$8	\$6	\$5	\$5
	65% Current	\$21	\$19	\$17	\$16	\$15	\$15	\$15	\$15	\$15	\$14	\$14	\$14	\$13	\$11	\$10	\$8	\$7	\$6
	10yr ave.	\$23	\$21	\$19	\$19	\$16	\$15	\$15	\$14	\$13	\$12	\$12	\$12	\$11	\$10	\$9	\$7	\$6	\$5
	70% Current	\$22	\$20	\$18	\$18	\$17	\$16	\$16	\$16	\$16	\$15	\$15	\$15	\$14	\$12	\$11	\$8	\$8	\$7
	10yr ave.	\$25	\$23	\$20	\$20	\$18	\$17	\$16	\$15	\$14	\$13	\$13	\$12	\$12	\$10	\$9	\$7	\$6	\$6
	75% Current	\$24	\$22	\$20	\$19	\$18	\$18	\$17	\$17	\$17	\$17	\$16	\$16	\$15	\$13	\$11	\$9	\$8	\$7
	10yr ave.	\$27	\$25	\$21	\$21	\$19	\$18	\$17	\$16	\$15	\$14	\$14	\$13	\$12	\$11	\$10	\$8	\$7	\$6
	80% Current	\$25	\$23	\$21	\$20	\$19	\$19	\$19	\$18	\$18	\$18	\$17	\$17	\$16	\$14	\$12	\$9	\$9	\$8
	10yr ave.	\$29	\$26	\$23	\$23	\$20	\$19	\$18	\$17	\$16	\$15	\$15	\$14	\$13	\$12	\$11	\$8	\$7	\$7
	85% Current	\$27	\$24	\$22	\$21	\$20	\$20	\$20	\$19	\$19	\$19	\$19	\$18	\$17	\$14	\$13	\$10	\$9	\$8
	10yr ave.	\$31	\$28	\$24	\$24	\$21	\$20	\$19	\$18	\$17	\$16	\$16	\$15	\$14	\$12	\$11	\$9	\$8	\$7

The above shows estimated returns per head for skirted fleece wool. These figures do not take into account the value of skirtings and oddments and do not take into account discounts that may apply for faults under individual circumstances. These figures are based on a market index of 100% and should be used as a guide only. Returns over \$30 / head for fleece wool are highlighted.

Source: Australian Wool Exchange, Australian Wool Innovation, Sydney Futures Exchange, x-rates.com

Disclaimer: While all due care has been taken in the preparation of this document, no warranty is made as to its accuracy, reliability or completeness. To the extent permitted by law neither Jemalong or their sources including subsidiaries and staff, accept liability to any person for loss or damage arising from the use of this information.