



Table 1: Northern Region Micron Price Guides

WEEK 52			12 MONTH COMPARISONS								3 YEAR COMPARISONS					*10 YEAR COMPARISONS						
Mic.	25/06/2015	18/06/2015	25/06/2014	Now		Now		Now				Now		Percentile	* 16-17.5um since Aug 05			Now				
Price	Current	Weekly	This time	compared		12 Month	compared	12 Month	compared				compared				*10 year	compared				
Guides	Price	Change	Last Year	to Last Year		Low	to Low	High	to High	Low	High	Average	to 3yr ave		Low	High	Average	to *10yr ave	Percentile			
NRI	1290	-52 -3.9%	1033	+257 25%		1017	+273 27%	1399	-109 -8%	948	1399	1087	+203 19%	96%	657	1491	991	+299 30%	92%			
16*	1640	-10 -0.6%	1350	+290 21%		1340	+300 22%	1710	-70 -4%	1340	1850	1552	+88 6%	76%	1350	2800	1704	-64 -4%	59%			
16.5*	1595	-35 -2.1%	1300	+295 23%		1300	+295 23%	1660	-65 -4%	1300	1660	1449	+146 10%	90%	1280	2680	1571	+24 2%	73%			
17*	1550	-60 -3.7%	1245	+305 24%		1245	+305 24%	1640	-90 -5%	1245	1640	1370	+180 13%	97%	1108	2530	1447	+103 7%	80%			
17.5*	1510	-60 -3.8%	1200	+310 26%		1200	+310 26%	1620	-110 -7%	1200	1620	1332	+178 13%	97%	1020	2360	1375	+135 10%	82%			
18	1462	-76 -4.9%	1161	+301 26%		1161	+301 26%	1607	-145 -9%	1158	1607	1283	+179 14%	96%	915	2193	1299	+163 13%	84%			
18.5	1424	-69 -4.6%	1137	+287 25%		1137	+287 25%	1579	-155 -10%	1125	1579	1253	+171 14%	95%	843	1963	1234	+190 15%	84%			
19	1393	-67 -4.6%	1133	+260 23%		1129	+264 23%	1553	-160 -10%	1097	1553	1224	+169 14%	96%	803	1776	1165	+228 20%	86%			
19.5	1375	-57 -4.0%	1127	+248 22%		1097	+278 25%	1529	-154 -10%	1072	1529	1199	+176 15%	96%	749	1670	1102	+273 25%	88%			
20	1352	-58 -4.1%	1125	+227 20%		1095	+257 23%	1517	-165 -11%	1055	1517	1181	+171 14%	96%	700	1588	1049	+303 29%	90%			
21	1338	-58 -4.2%	1129	+209 19%		1090	+248 23%	1500	-162 -11%	1043	1500	1171	+167 14%	96%	668	1522	1013	+325 32%	94%			
22	1301	-65 -4.8%	1133	+168 15%		1086	+215 20%	1458	-157 -11%	1025	1458	1156	+145 13%	96%	659	1461	986	+315 32%	94%			
23	1278	-62 -4.6%	1129	+149 13%		1081	+197 18%	1396	-118 -8%	1009	1396	1140	+138 12%	97%	651	1396	958	+320 33%	96%			
24	1194	-63 -5.0%	1050	+144 14%		1037	+157 15%	1297	-103 -8%	946	1297	1063	+131 12%	97%	638	1297	893	+301 34%	98%			
25	1155	-64 -5.3%	882	+273 31%		863	+292 34%	1245	-90 -7%	810	1245	921	+234 25%	97%	568	1245	776	+379 49%	99%			
26	1100	-64 -5.5%	810	+290 36%		785	+315 40%	1165	-65 -6%	738	1165	830	+270 33%	97%	532	1165	697	+403 58%	99%			
28	924	-45 -4.6%	663	+261 39%		639	+285 45%	974	-50 -5%	552	974	677	+247 36%	97%	424	974	552	+372 67%	99%			
30	826	-31 -3.6%	640	+186 29%		615	+211 34%	876	-50 -6%	517	876	637	+189 30%	95%	343	876	497	+329 66%	98%			
32	678	-62 -8.4%	569	+109 19%		563	+115 20%	743	-65 -9%	434	743	556	+122 22%	87%	297	743	440	+238 54%	96%			
MC	1096	-8 -0.7%	791	+305 39%		764	+332 43%	1112	-16 -1%	532	1112	787	+309 39%	98%	390	1112	621	+475 76%	99%			
AU BALES OFFERED		45,052	* Due to the irregular market quoting for some fine wool categories, figures shown relating to micron categories below 18 micron are an estimate based on the																			
AU BALES SOLD		37,450	AWEX Premium & Discounts Report & other available information.																			
AU PASSED-IN%		16.9%	* For any category, where there is insufficient quantity offered to enable AWEX to quote, a quote will be provided based on the best available information.																			
AUD/USD		0.77381	* 10 Year data is not available for 16 to 17.5 microns, therefore 10 year statistics for those micron categories only date back as far as August 2005.																			

Source: Australian Wool Exchange, Australian Wool Innovation, Riemann, x-rates.com, Reserve Bank of Australia, Australian Wool Testing Authority.

Disclaimer: Jemalong Wool Pty Ltd make no representations about the content and suitability of the information contained in this report. Specifically, Jemalong Wool does not warrant, guarantee or make any representations regarding the correctness, accuracy, reliability, currency, or any other aspect regarding characteristics or use of information presented in these materials. The user accepts sole responsibility and risk associated with the use and results of these materials, irrespective of the purpose of which such use or results are applied. In no event shall Jemalong Wool be liable for any loss or damages (including without limitation special, or consequential damages), where in an action of contract, negligence, or tort, arising out of or in connection with the use of performance of these

MARKET COMMENTARY

The wool market continued to deteriorate this sale, with the AWEX-NRI down 52 cents for the week to close at 1290. Just over 45,000 bales were eventually offered, almost 10,000 bales more than the initial estimate made 3 weeks ago.

The market opened significantly weaker on Wednesday when prices tumbled 50 to 60 cents, Thursday's market continued to trend lower, although the falls were more subdued, with most indicators losing around 10 cents after firming in the final hour. Selected stylish types in the finer microns also gave out positive signals when they continued to attract good support despite the weakness elsewhere. Merino Skirtings followed the fleece sector lower with a weekly movement of -50 to 70 cents clean. The Crossbred market also succumbed to the overriding market sentiment, falling 50 cents for the series week, while Merino Cardings conceded 10 to 20 cents.

This week was the final sale for the 2015/15 wool selling season, and despite the falls over the past few weeks the AWEX-NRI still managed a 257 cent (25%) improvement for the season.

Next week will see another large offering of 49,480 bales catalogued for sale, in what will be the 2nd last sale before the annual mid-year break.

Source: AWEX

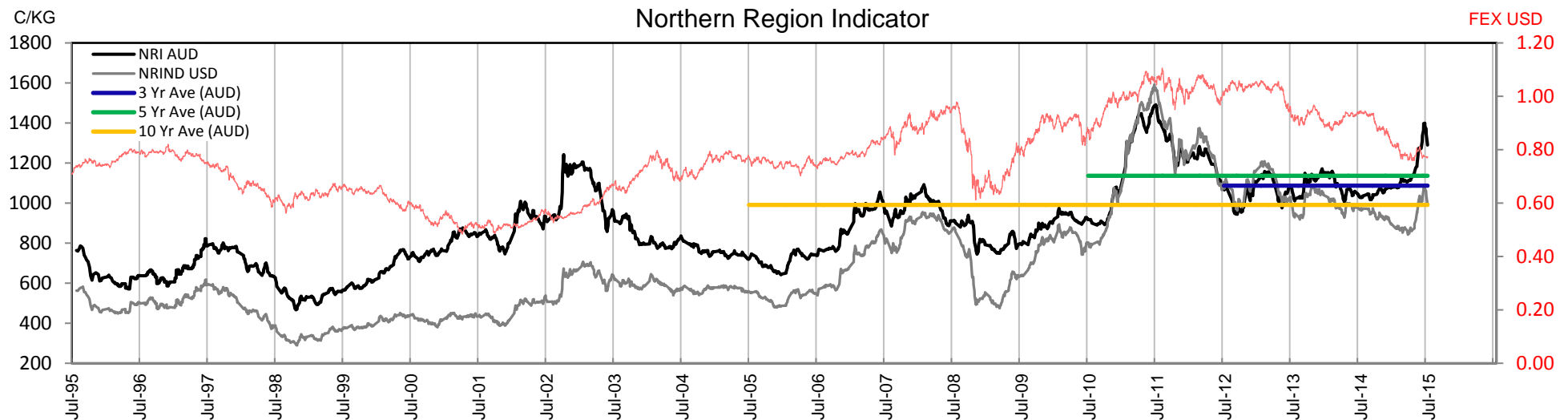




Table 2: Three Year Decile Table, since: 1/06/2012

Decile	%	16	16.5	17	17.5	18	18.5	19	19.5	20	21	22	23	24	25	26	28	30	32	MC
1	10%	1385	1320	1280	1240	1189	1156	1130	1103	1090	1085	1072	1055	982	852	758	584	545	468	618
2	20%	1420	1350	1300	1260	1203	1181	1154	1135	1126	1116	1094	1081	1025	871	782	613	566	486	729
3	30%	1475	1400	1315	1285	1226	1199	1177	1154	1138	1132	1121	1109	1045	889	795	637	591	496	758
4	40%	1510	1415	1340	1305	1258	1230	1195	1171	1153	1142	1134	1124	1058	900	804	650	617	545	783
5	50%	1555	1430	1360	1325	1275	1247	1207	1184	1167	1159	1147	1134	1065	910	813	661	629	553	795
6	60%	1590	1465	1380	1340	1293	1260	1220	1196	1182	1174	1164	1148	1075	914	820	670	635	563	810
7	70%	1620	1483	1410	1370	1313	1280	1259	1235	1212	1203	1185	1172	1084	924	831	678	646	572	819
8	80%	1650	1535	1430	1395	1350	1312	1291	1269	1238	1226	1209	1196	1096	946	852	703	670	614	834
9	90%	1720	1595	1473	1420	1382	1351	1327	1291	1264	1253	1236	1219	1111	998	925	831	786	695	920
10	100%	1850	1660	1640	1620	1607	1579	1553	1529	1517	1500	1458	1396	1297	1245	1165	974	876	743	1112
MPG		1640	1595	1550	1510	1462	1424	1393	1375	1352	1338	1301	1278	1194	1155	1100	924	826	678	1096
3 Yr Percentile		76%	90%	97%	97%	96%	95%	96%	96%	96%	96%	96%	97%	97%	97%	97%	97%	95%	87%	98%

Table 3: Ten Year Decile Table, sinc 1/06/2005

Decile	%	16	16.5	17	17.5	18	18.5	19	19.5	20	21	22	23	24	25	26	28	30	32	MC
1	10%	1423	1340	1225	1150	1058	1002	935	853	786	736	711	696	675	614	565	444	377	325	415
2	20%	1495	1370	1260	1190	1130	1059	983	908	838	784	769	753	728	640	583	457	398	348	451
3	30%	1540	1400	1290	1225	1170	1125	1058	972	916	878	851	829	781	660	597	469	410	359	510
4	40%	1570	1420	1320	1280	1206	1159	1098	1030	978	945	918	889	823	695	614	478	425	380	569
5	50%	1600	1460	1360	1310	1253	1201	1142	1096	1054	995	953	921	848	717	637	488	435	395	604
6	60%	1650	1500	1400	1350	1293	1253	1194	1148	1116	1089	1066	1046	976	847	749	579	531	465	655
7	70%	1700	1550	1440	1400	1358	1294	1236	1186	1164	1150	1135	1115	1040	891	793	631	581	496	730
8	80%	1800	1700	1550	1490	1423	1342	1298	1267	1229	1214	1194	1157	1072	915	820	659	623	553	781
9	90%	2100	1910	1730	1625	1570	1493	1447	1402	1347	1307	1258	1223	1102	968	865	685	643	583	816
10	100%	2800	2680	2530	2360	2193	1963	1776	1670	1588	1522	1461	1396	1297	1245	1165	974	876	743	1112
MPG		1640	1595	1550	1510	1462	1424	1393	1375	1352	1338	1301	1278	1194	1155	1100	924	826	678	1096
10 Yr Percentile		59%	73%	80%	82%	84%	84%	86%	88%	90%	94%	94%	96%	98%	99%	99%	99%	98%	96%	99%

Definitions:

* A Percentile, is a value on a scale of one hundred that indicates the percent of a distribution that is equal to or below it. In general a percentile between 25% and 75% is considered normal, a percentile below 25% is considered below normal and a percentile above 75% is considered above normal.

Three and ten year percentiles shown on the bottom line of table 2 & 3 (above) and in table 1 (on page 1), detail the amount of time during the past 3 & 10 years where the market has traded either at or below its current price.

* Deciles are a method of sorting ranked data into 10 equal groups. The data may be ranked from largest to smallest or vice versa.

The above Decile tables sort price Percentiles into 10 equal groups (in ascending order), with table 2 ranking the previous 3 years prices, while table 3 ranks prices over the previous 10 years:

Example: In Table 2, a Decile Rank of 6 for 19 microns, shows 19 microns have traded at or below 1220 for 60% of the time, over the past three years.

In Table 3, a Decile Rank of 6 for 19 microns, shows 19 microns have traded at or below 1194 for 60% of the time, over the past ten years.



Table 4: Riemann Forwards, latest trades as at: Last Date

Any highlighted in yellow are recent trades, trading since: Friday, 19 June 2015

CONTRACT MICRON		18.5um	19um	19.5um	21um	22um	23um	28um	30um
CONTRACT MONTH	Jun-2015	20/04/15 1285	1/06/15 1450	14/04/15 1220	27/05/15 1290				10/12/14 665
	Jul-2015			26/05/15 1340	4/06/15 1400				
	Aug-2015	14/05/15 1400	30/04/15 1270	27/05/15 1350	24/06/15 1280			7/05/15 820	7/05/15 760
	Sep-2015		8/05/15 1320		24/06/15 1260			7/05/15 820	7/05/15 760
	Oct-2015		4/06/15 1390		17/06/15 1310			11/06/15 870	27/05/15 800
	Nov-2015				11/06/15 1300			2/06/15 860	14/05/15 760
	Dec-2015	27/05/15 1425	4/06/15 1400		11/06/15 1300			27/05/15 820	
	Jan-2016	21/05/15 1375	18/06/15 1325		1/06/15 1260			17/06/15 820	3/06/15 780
	Feb-2016		8/06/15 1400		3/06/15 1250			3/06/15 800	
	Mar-2016	28/05/15 1420	7/05/15 1305		8/06/15 1280				
	Apr-2016	3/06/15 1420	8/06/15 1400	25/05/15 1290	4/06/15 1280				
	May-2016				28/05/15 1249				
	Jun-2016								
	Jul-2016		4/06/15 1360		28/05/15 1230				
	Aug-2016				2/06/15 1210				
	Sep-2016				2/06/15 1220				
	Oct-2016				4/06/15 1250				
	Nov-2016				15/06/15 1235				
	Dec-2016				29/05/15 1225				
	Jan-2017								
	Feb-2017								
	Mar-2017								
	Apr-2017								

Explanatory Notes: Prices quoted reflect the most recent trades, at time of print.

Disclaimer: While all due care has been taken in the preparation of this document, no warranty is made as to its accuracy, reliability or completeness. To the extent permitted by law neither Jemalong or their sources including subsidiaries and staff, accept liability to any person for loss or damage arising from the use of this information.



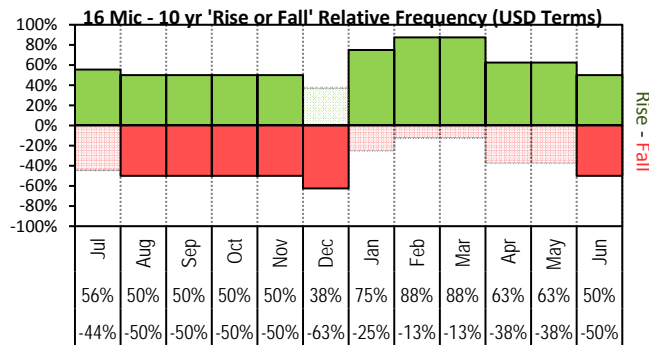
Table 5: National Market Share

	Rank	Current Selling Week Week 52			Previous Selling Week Week 51			Last Season 2013-14			2 Years Ago 2012-13			3 Years Ago 2011-12			5 Years Ago 2009-10			10 Years Ago 2004-05		
		Buyer	Bales	MS%	Buyer	Bales	MS%	Buyer	Bales	MS%	Buyer	Bales	MS%	Buyer	Bales	MS%	Buyer	Bales	MS%	Buyer	Bales	MS%
Top 10, Auction Buyers	1	CTXS	6,514	17%	CTXS	3,760	17%	TECM	205,136	13%	TECM	179,176	10%	VTRA	229,207	14%	VTRA	187,529	11%	ITOS	197,278	9%
	2	LEMM	2,981	8%	FOXN	2,101	10%	FOXN	134,581	8%	VTRA	163,810	9%	TECM	153,616	9%	TECM	170,705	10%	BWEA	183,123	8%
	3	TIAM	2,779	7%	TECM	2,020	9%	CTXS	122,964	8%	FOXN	143,826	8%	FOXN	136,698	8%	QCTB	124,619	7%	RWRS	158,390	7%
	4	TECM	2,473	7%	AMEM	1,835	8%	AMEM	111,263	7%	LEMM	126,564	7%	QCTB	112,745	7%	FOXN	120,964	7%	PLEX	126,856	6%
	5	AMEM	2,440	7%	LEMM	1,398	6%	LEMM	109,224	7%	QCTB	98,756	6%	WIEM	100,817	6%	KATS	104,262	6%	MODM	112,956	5%
	6	MCHA	2,430	6%	GSAS	1,265	6%	TIAM	105,736	7%	PMWF	96,935	6%	LEMM	88,348	5%	LEMM	93,672	5%	TECM	109,505	5%
	7	FOXN	2,175	6%	MCHA	1,214	6%	QCTB	88,700	5%	MODM	84,363	5%	MODM	74,646	4%	WIEM	93,529	5%	ADSS	101,474	4%
	8	GSAS	1,714	5%	TIAM	997	5%	MODM	79,977	5%	CTXS	82,166	5%	CTXS	69,266	4%	RWRS	88,732	5%	PMWF	97,867	4%
	9	DONS	1,458	4%	DONS	957	4%	PMWF	77,875	5%	AMEM	77,849	4%	PMWF	64,659	4%	PMWF	85,981	5%	GSAS	97,754	4%
	10	KATS	1,409	4%	KATS	685	3%	GSAS	54,462	3%	KATS	65,782	4%	GSAS	58,233	3%	MODM	65,991	4%	FOXN	97,298	4%
MFLC TOP 5	1	CTXS	5,146	24%	CTXS	3,072	24%	TECM	106,291	12%	VTRA	118,432	12%	VTRA	171,425	19%	VTRA	161,860	16%	ITOS	165,880	12%
	2	LEMM	2,187	10%	FOXN	1,183	9%	CTXS	87,889	10%	LEMM	110,118	11%	QCTB	86,901	10%	QCTB	108,716	11%	BWEA	123,477	9%
	3	DONS	1,458	7%	LEMM	1,076	8%	LEMM	82,374	9%	PMWF	93,136	10%	TECM	76,083	8%	PMWF	79,407	8%	RWRS	92,731	7%
	4	GSAS	1,454	7%	AMEM	1,072	8%	FOXN	80,423	9%	TECM	89,286	9%	LEMM	68,961	8%	LEMM	72,585	7%	PMWF	91,549	7%
	5	FOXN	1,418	7%	GSAS	1,057	8%	PMWF	69,890	8%	QCTB	71,715	7%	PMWF	60,070	7%	TECM	72,153	7%	ADSS	81,634	6%
MSKT TOP 5	1	TIAM	1,357	22%	AMEM	522	16%	TIAM	47,607	19%	MODM	37,284	14%	WIEM	43,156	16%	WIEM	38,838	14%	PLEX	59,898	16%
	2	AMEM	924	15%	FOXN	482	14%	TECM	31,474	12%	TECM	34,301	13%	MODM	30,285	11%	MODM	35,564	12%	MODM	48,703	13%
	3	TECM	551	9%	TIAM	459	14%	AMEM	29,775	12%	WIEM	27,916	10%	TECM	25,264	9%	TECM	27,266	10%	GSAS	44,078	12%
	4	LEMM	541	9%	TECM	426	13%	MODM	23,791	9%	TIAM	24,196	9%	PLEX	21,990	8%	WCWF	16,963	6%	BWEA	34,546	9%
	5	MCHA	488	8%	LEMM	242	7%	GSAS	13,843	5%	AMEM	23,012	8%	GSAS	16,284	6%	RWRS	16,541	6%	RWRS	29,257	8%
XB TOP 5	1	CTXS	1,334	26%	CTXS	605	18%	TECM	40,364	15%	FOXN	39,356	14%	FOXN	41,689	15%	TECM	46,985	20%	FOXN	39,839	19%
	2	KATS	939	18%	KATS	595	18%	CTXS	34,779	13%	TECM	30,323	11%	VTRA	31,427	12%	FOXN	46,090	20%	TECM	21,724	10%
	3	MCHA	410	8%	TECM	375	11%	FOXN	24,218	9%	VTRA	27,832	10%	TECM	31,094	11%	MODM	13,021	6%	BWEA	19,820	9%
	4	AMEM	354	7%	MCHA	352	11%	MODM	21,512	8%	KATS	26,057	9%	QCTB	22,610	8%	QCTB	12,973	6%	MOPS	15,511	7%
	5	TECM	247	5%	FOXN	315	10%	AMEM	20,336	7%	CTXS	25,631	9%	CTXS	19,985	7%	MOPS	12,341	5%	MODM	15,479	7%
ODDS TOP 5	1	MCHA	1,406	31%	MCHA	643	25%	MCHA	36,085	17%	MCHA	35,985	16%	FOXN	34,603	15%	MCHA	30,629	14%	MCHA	48,293	18%
	2	VWPM	441	10%	TECM	331	13%	TECM	27,007	13%	FOXN	28,185	12%	MCHA	30,689	13%	RWRS	24,675	11%	FOXN	34,078	12%
	3	TECM	373	8%	LAYS	219	9%	VWPM	22,432	11%	TECM	25,266	11%	VWPM	22,219	10%	TECM	24,301	11%	RWRS	27,833	10%
	4	UWCM	346	8%	MAFM	174	7%	FOXN	18,811	9%	VWPM	20,692	9%	VTRA	21,495	9%	VWPM	19,198	9%	MAFM	22,270	8%
	5	SENM	261	6%	YAWM	122	5%	RWRS	13,524	6%	VTRA	13,022	6%	TECM	21,175	9%	FOXN	18,736	8%	DAWS	16,861	6%
Auction Totals		<u>Offered</u>	<u>Sold</u>		<u>Offered</u>	<u>Sold</u>		<u>Bales Sold</u>	<u>\$/Bale</u>		<u>Bales Sold</u>	<u>\$/Bale</u>		<u>Bales Sold</u>	<u>\$/Bale</u>		<u>Bales Sold</u>	<u>\$/Bale</u>		<u>Bales Sold</u>	<u>\$/Bale</u>	
		45,052	37,450		23,622	21,967		1,625,115	\$1,509		1,742,881	\$1,418		1,683,024	\$1,599		1,735,172	\$1,159		2,264,258	\$1,098	
		<u>Passed-In</u>	<u>PI%</u>		<u>Passed-In</u>	<u>PI%</u>		<u>Export Value</u>			<u>Export Value</u>			<u>Export Value</u>			<u>Export Value</u>			<u>Export Value</u>		
		7,602	16.9%		1,655	7.0%		\$2,453,067,610			\$2,470,844,153			\$2,691,010,531			\$2,011,128,450			\$2,487,197,893		

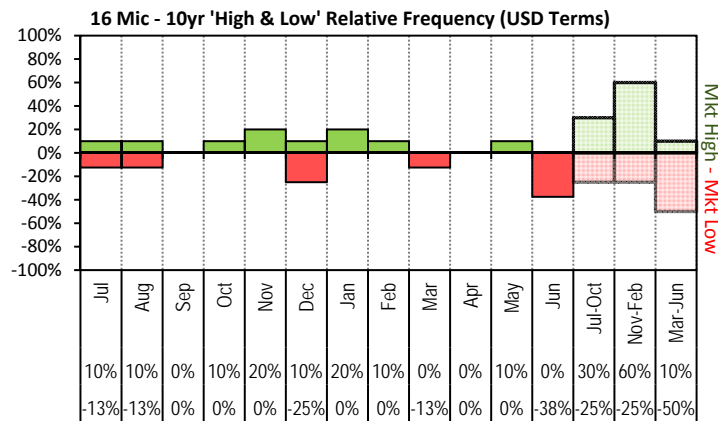
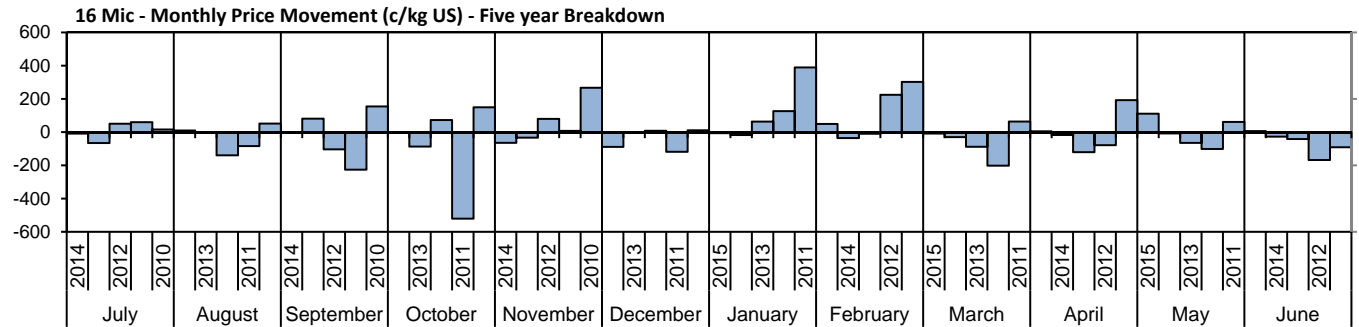


Table 6: NSW Production Statistics

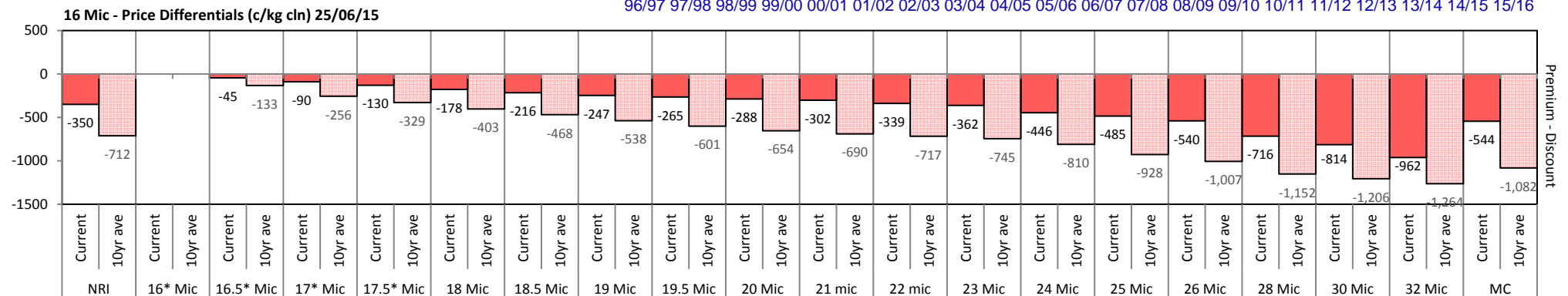
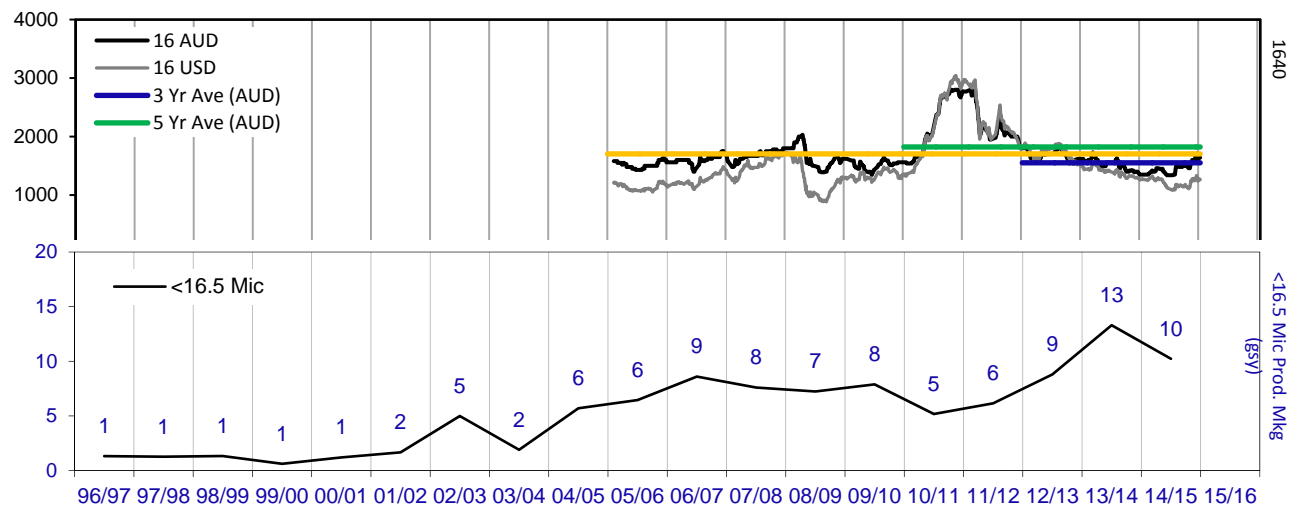
MAX		MIN		MAX GAIN		MAX REDUCTION									
2013-14															
Statistical Devision, Area Code & Towns			Auction Bales (FH)	Micron	+/- YoY	Vmb %	+/- YoY	Yield % Sch Dry	+/- YoY	Length mm	+/- YoY	Strength Nkt	+/- YoY	Ave Price c/kg	
Northern	N02	Tenterfield, Glen Innes	9,043	19.3	-0.2	2.0	0.2	71.6	-1.1	80	-0.2	40	-1.1	814	
	N03	Guyra	35,036	18.5	-0.4	1.8	0.0	72.1	-1.7	81	-0.5	40	-2.4	907	
	N04	Inverell	3,636	18.1	-1.0	3.3	-0.1	69.5	-0.1	82	-0.5	37	-1.3	783	
	N05	Armidale	2,056	19.8	0.0	4.2	0.3	67.3	-2.0	85	2.4	35	-2.7	696	
	N06	Tamworth, Gunnedah, Quirindi	6,082	20.4	-0.1	3.4	-0.6	67.2	-1.3	84	0.0	36	-1.6	711	
	N07	Moree	5,368	19.5	-0.5	3.2	-1.0	63.7	-0.8	86	-1.9	36	-0.2	643	
	N08	Narrabri	3,130	19.2	-0.7	2.5	-1.1	66.0	-1.4	86	-1.9	36	-3.1	680	
North Western & Far West	N09	Cobar, Bourke, Wanaaring	1,040	19.7	-0.8	3.8	-0.5	60.0	-0.7	85	-2.8	36	-0.6	628	
	N12	Walgett	7,303	19.6	-0.3	3.1	-1.1	62.5	-1.6	84	-2.3	36	-1.3	654	
	N13	Nyngan	18,168	20.3	-0.2	5.1	0.1	61.7	-2.0	88	0.3	37	-0.1	612	
	N14	Dubbo, Narromine	22,210	21.2	-0.4	3.7	-0.6	62.0	-1.1	86	0.5	35	-1.2	574	
	N16	Dunedoo	6,111	19.6	-0.4	2.5	-0.9	67.0	-0.8	88	0.5	35	0.3	683	
	N17	Mudgee, Wellington, Gulgong	21,223	19.6	-0.1	2.2	-1.2	68.3	0.0	84	0.8	38	-0.3	747	
	N33	Coonabarabran	3,028	20.4	-0.4	3.6	-1.0	65.8	-1.1	85	0.5	35	0.6	634	
	N34	Coonamble	6,854	20.1	-0.3	3.8	-0.6	61.2	-2.2	85	-1.5	36	0.8	633	
	N36	Gilgandra, Gulargambone	6,306	21.2	-0.4	3.6	-0.3	63.0	-2.0	86	-0.5	35	-0.4	601	
	N40	Brewarrina	4,294	19.3	-0.8	2.0	-0.3	65.4	-1.2	81	-5.0	39	0.3	711	
Central West	N10	Wilcannia, Broken Hill	22,079	20.6	-0.7	2.3	-0.5	59.7	-1.4	87	-2.3	36	-1.7	626	
	N15	Forbes, Parkes, Cowra	50,604	21.7	0.1	2.7	-0.6	63.6	-0.4	88	1.4	35	-1.8	592	
	N18	Lithgow, Oberon	2,900	20.6	-0.1	1.8	-1.5	69.2	1.2	83	0.1	38	0.1	717	
	N19	Orange, Bathurst	51,340	22.0	-0.1	1.4	-0.8	68.9	-0.5	85	0.8	37	-1.3	670	
	N25	West Wyalong	24,469	20.6	-0.4	2.6	-0.3	62.2	-1.2	88	-0.7	35	-1.3	622	
Murrumbidgee	N35	Condobolin, Lake Cargelligo	10,158	20.6	-0.4	4.5	-0.9	60.5	0.4	86	-0.8	36	-0.3	590	
	N26	Cootamundra, Temora	25,927	21.7	-0.4	1.9	-0.3	63.1	-1.0	86	0.3	34	-0.7	585	
	N27	Adelong, Gundagai	10,395	21.4	-0.3	1.6	-1.1	67.6	-0.5	88	0.2	34	-1.7	640	
	N29	Wagga, Narrandera	32,025	21.9	-0.8	1.6	0.0	64.4	-1.8	88	-2.1	3	-33.2	603	
	N37	Griffith, Hillston	11,341	21.4	-0.6	4.1	0.1	61.2	0.0	85	0.9	38	-2.8	604	
Murray	N39	Hay, Coleambally	16,531	20.4	-0.9	3.5	0.0	62.3	-1.7	88	-2.6	36	-3.4	652	
	N11	Wentworth, Balranald	15,035	20.7	-1.0	4.0	-0.8	60.1	-0.8	89	-2.4	35	-2.1	626	
	N28	Albury, Corowa, Holbrook	27,382	21.5	-0.4	1.4	-0.1	66.1	-0.9	87	-2.3	34	-3.5	634	
	N31	Deniliquin	19,849	20.7	-0.6	2.4	-0.1	64.7	-1.0	84	-3.8	33	-6.4	658	
South Eastern	N38	Finley, Berrigan, Jerilderie	8,648	20.4	-0.5	2.6	0.1	63.8	-1.3	85	-3.0	35	-3.9	644	
	N23	Goulburn, Young, Yass	86,997	19.7	-0.5	1.3	-0.4	68.4	-1.0	85	-1.1	36	-1.8	738	
	N24	Monaro (Cooma, Bombala)	34,714	19.8	-0.4	1.5	-0.4	69.6	0.1	89	-0.6	36	-0.7	698	
	N32	A.C.T.	174	20.1	-0.3	3.9	0.8	59.2	-2.6	88	-1.4	31	0.1	568	
	N43	South Coast (Bega)	418	18.9	-0.2	0.8	0.0	73.0	-1.3	87	2.5	39	-3.6	840	
NSW	AWEX Sale Statistics 13-14		648,006	20.6	-0.4	2.3	-0.4	65.5	-0.9	86	-0.8	36	-1.8	677	
AWTA Mthly Key Test Data			Bales Tested	+/- YoY	Micron	+/- YoY	VMB	+/- YoY	Yld	+/- YoY	Lth	+/- YoY	Nkt	+/- YoY	POBM +/-
AUSTRALIA	Current	May	149,766	-411	20.7	0.0	2.3	-0.2	63.2	0.1	86	1.6	35	0.4	47 2.0
	Season	Y.T.D	1,914,681	24,478	21.1	0.2	1.9	-0.1	65.0	0.0	88	1.0	34	1.0	50 2.0
	Previous	2013-14	1,890,203	-98189.0	20.9	-0.3	2.0	-0.2	65.0	-0.2	87	0.0	33	-1.0	48 -1.0
	Seasons	2012-13	1,988,392	53106.0	21.2	-0.3	2.2	-0.3	65.2	-0.3	87	0.0	34	0.0	49 1.0
	Y.T.D.	2011-12	1,935,286	-44,042	21.5	0.0	2.5	0.3	65.5	0.6	87	-0.5	34	1.3	50 -0.7

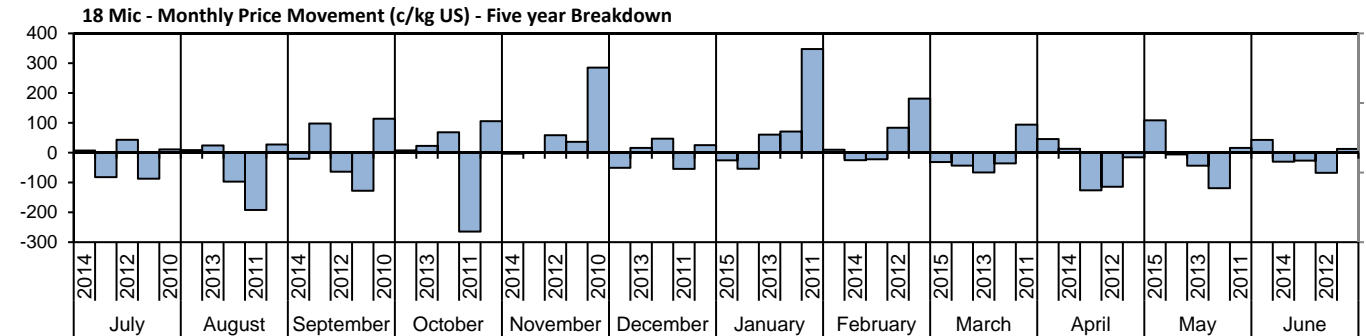
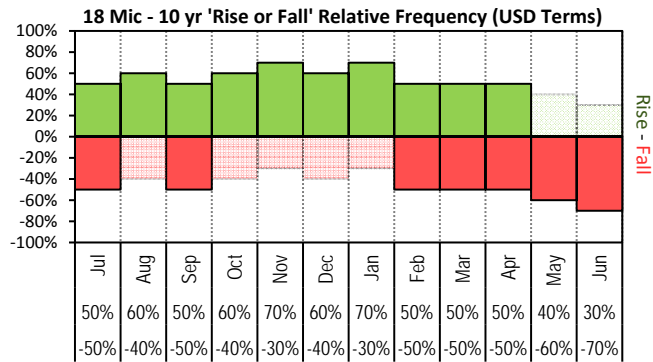


The above **'Rise or Fall'** graph, shows how often the market has risen or fallen in a given month over the past 10 years, it does not show the extent of the movement only the frequency of direction. The **'Monthly Price Movement'** graph shows the extent of movement for each month, for the past 5 years.

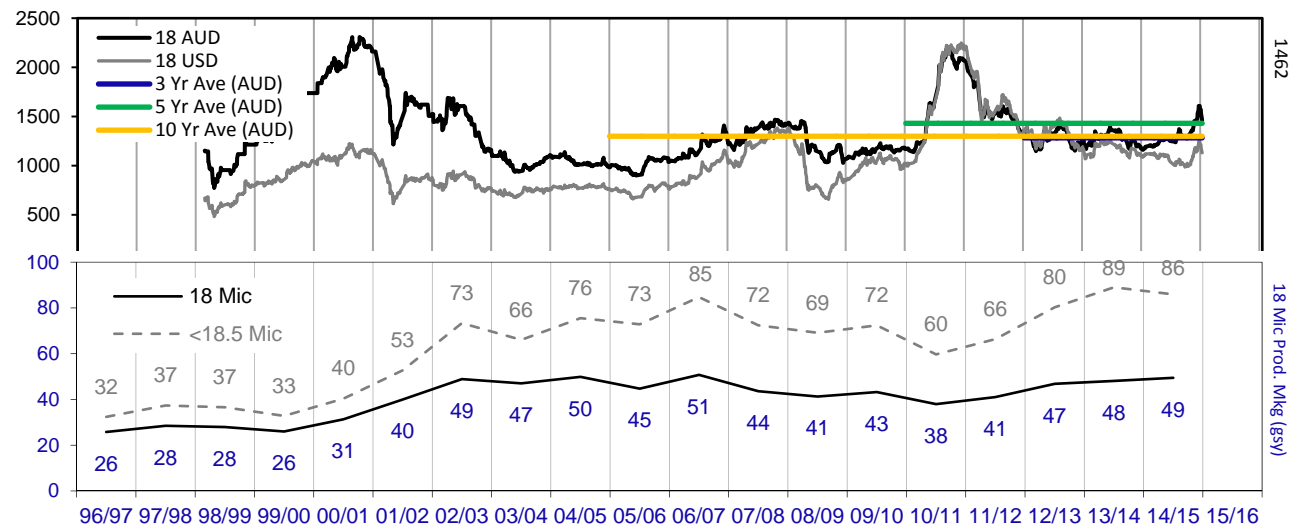
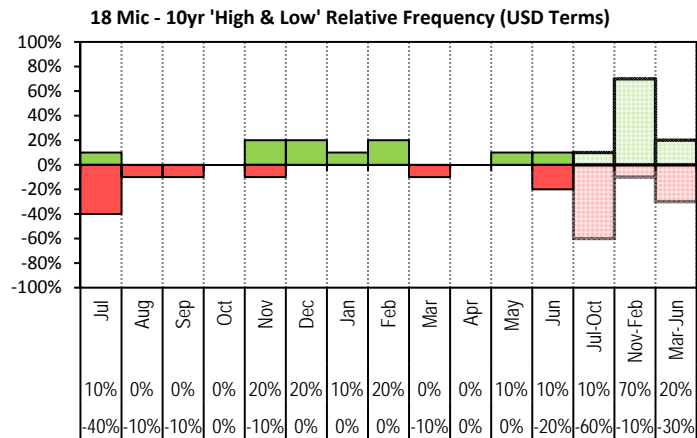


The above graph, shows how often the '12 month high & low' have been achieved for

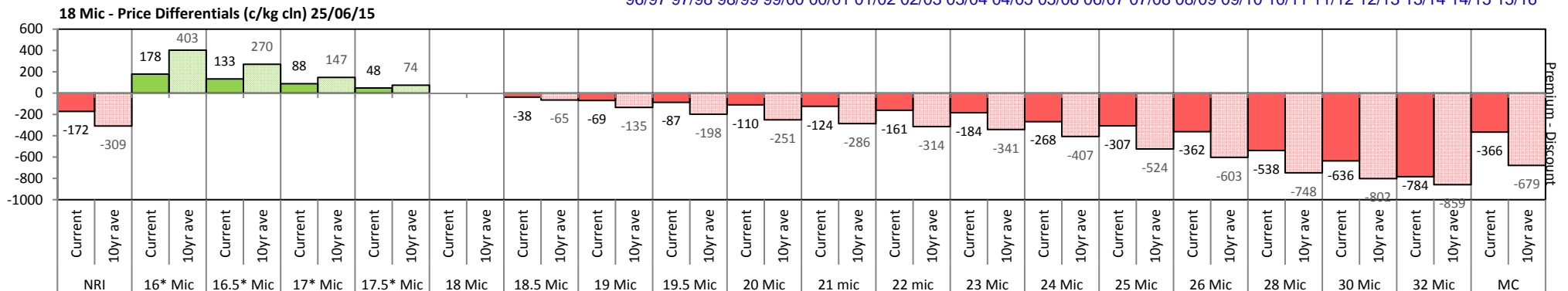


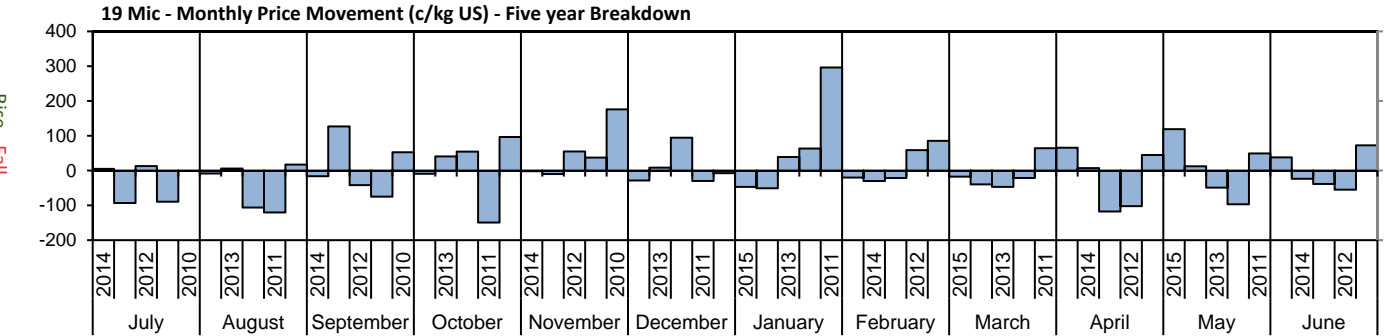
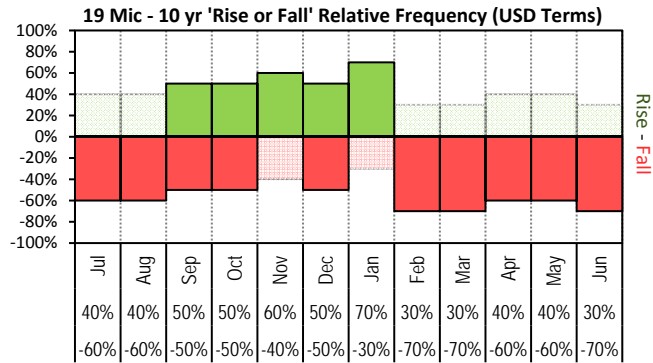


The above 'Rise or Fall' graph, shows how often the market has risen or fallen in a given month over the past 10 years, it does not show the extent of the movement only the frequency of direction. The 'Monthly Price Movement' graph shows the extent of movement for each month, for the past 5 years.

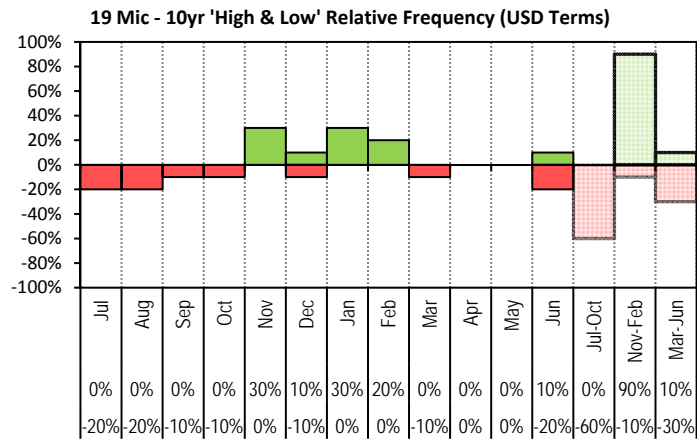


The above graph, shows how often the '12 month high & low' have been achieved for a given month over the past 10 years. It is not a measure of probability.

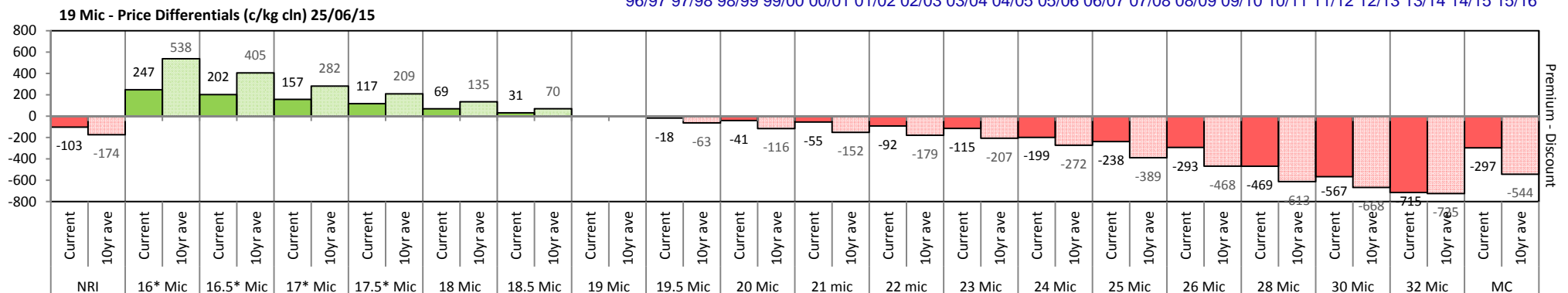
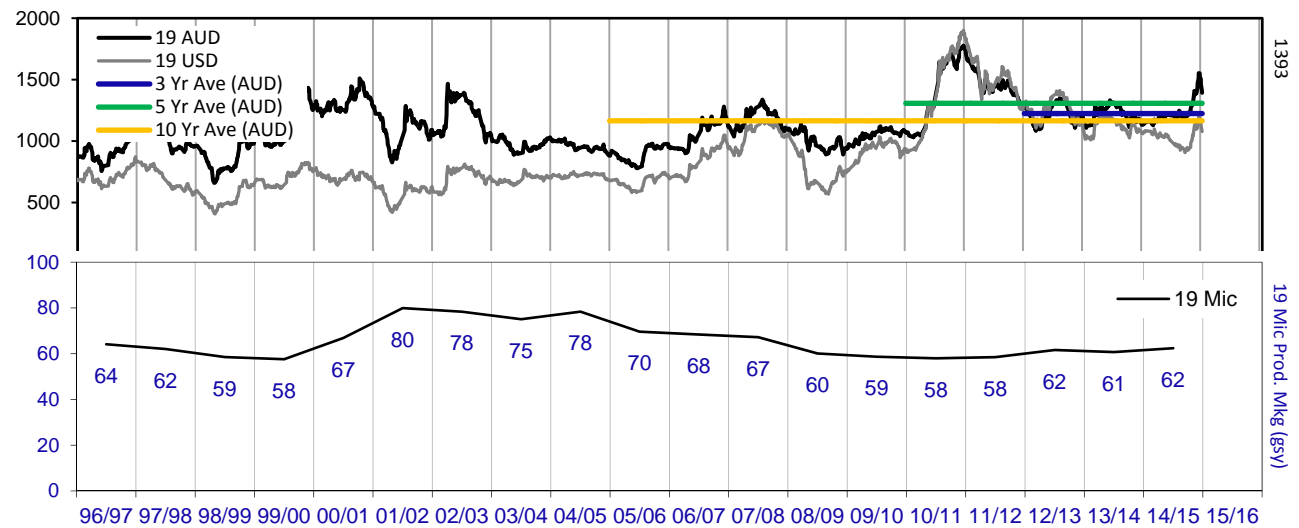


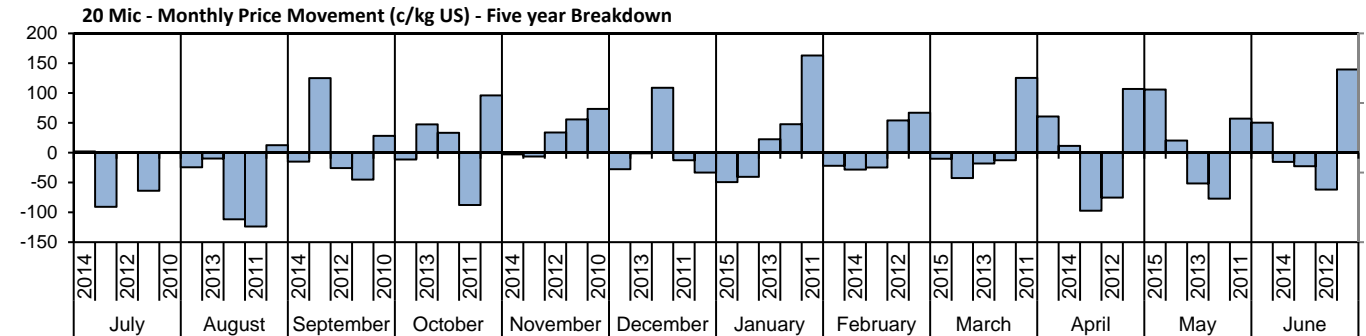
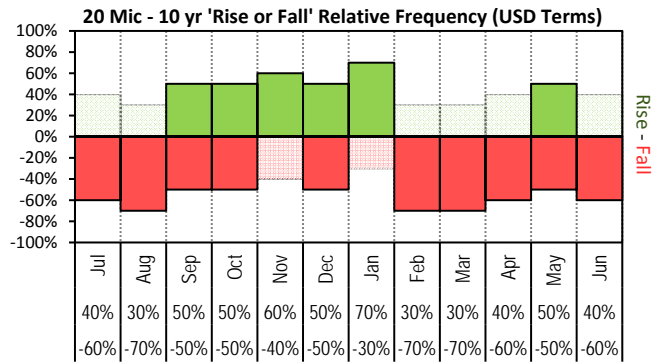


The above 'Rise or Fall' graph, shows how often the market has risen or fallen in a given month over the past 10 years, it does not show the extent of the movement only the frequency of direction. The 'Monthly Price Movement' graph shows the extent of movement for each month, for the past 5 years.

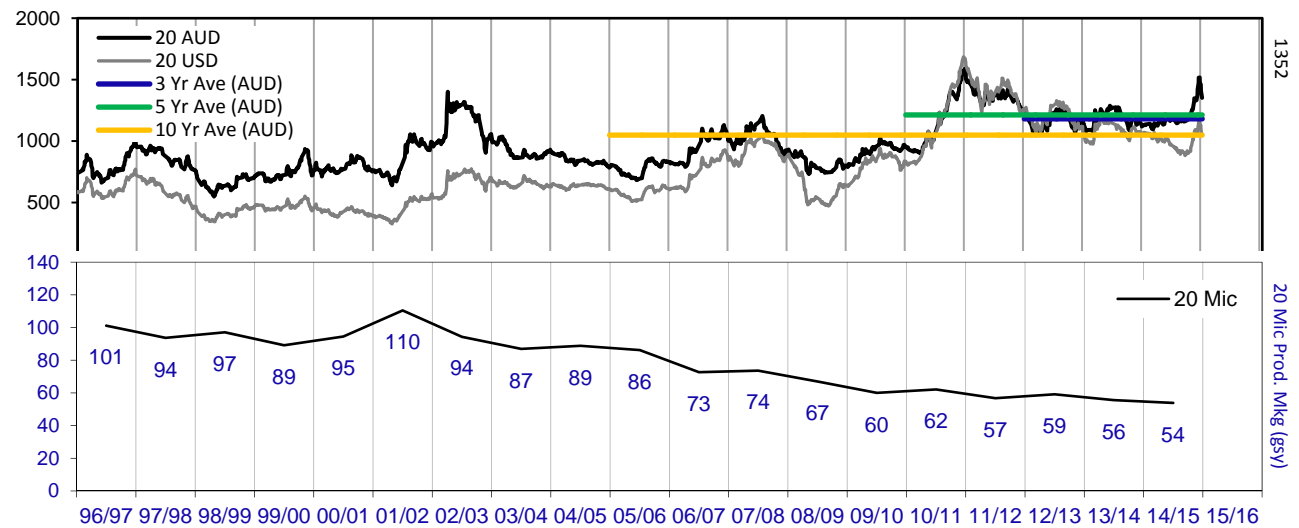
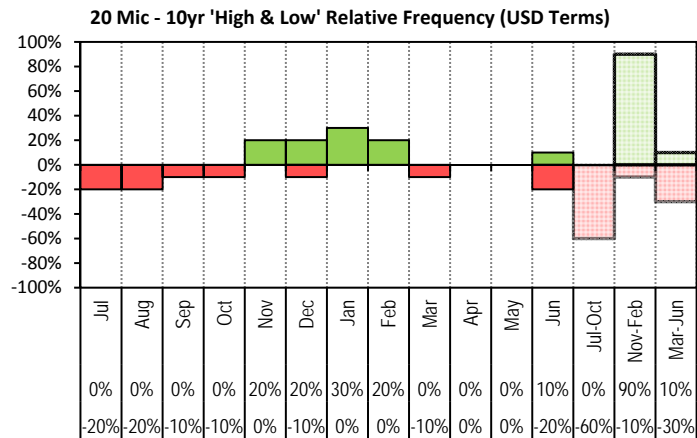


The above graph, shows how often the '12 month high & low' have been achieved for a given month over the past 10 years. It is not a measure of probability.

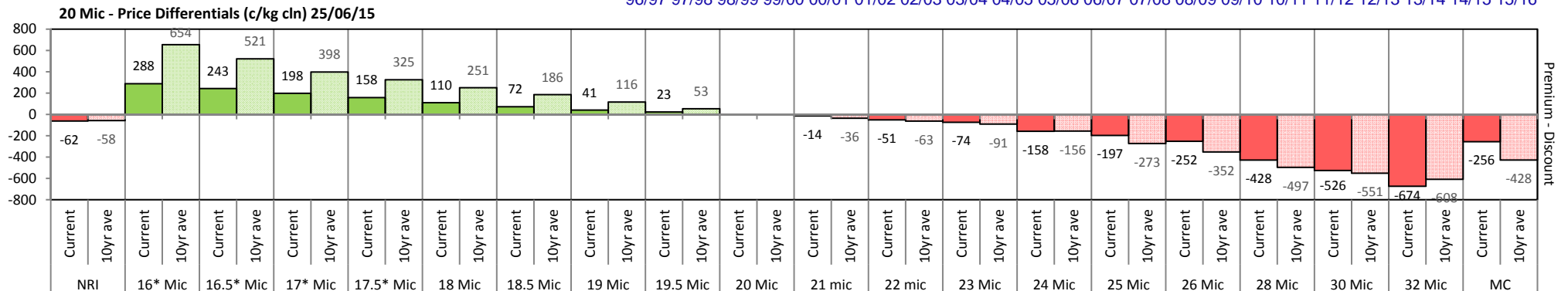


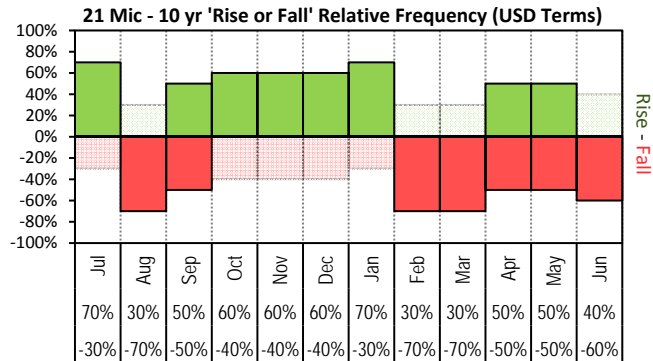


The above 'Rise or Fall' graph, shows how often the market has risen or fallen in a given month over the past 10 years, it does not show the extent of the movement only the frequency of direction. The 'Monthly Price Movement' graph shows the extent of movement for each month, for the past 5 years.

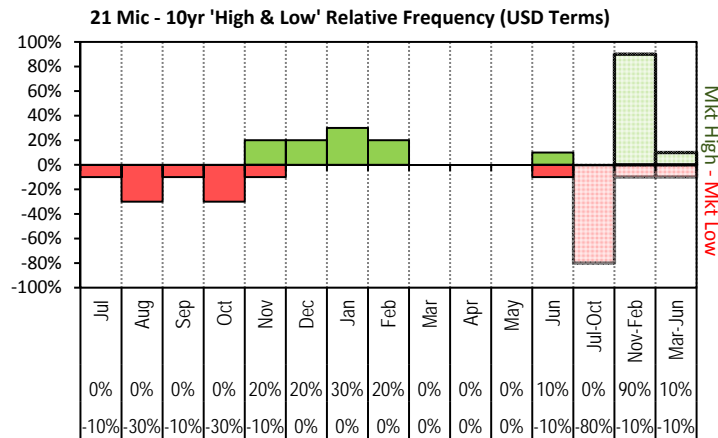
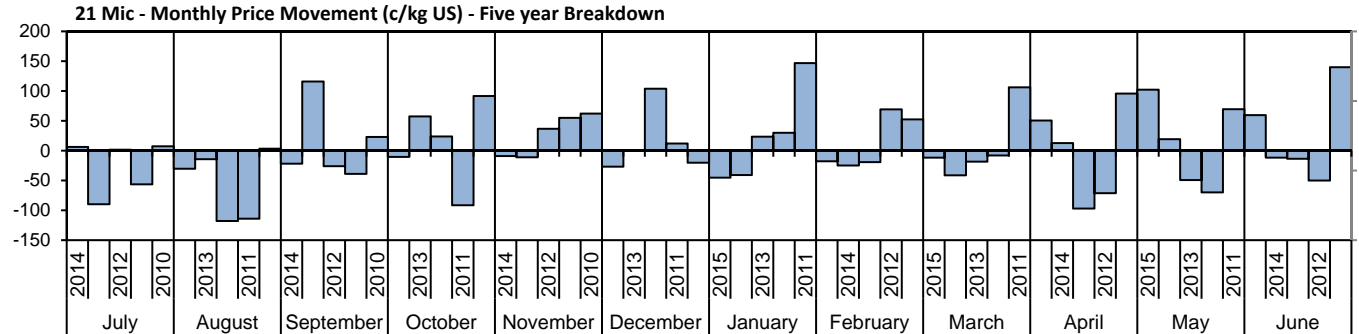


The above graph, shows how often the '12 month high & low' have been achieved for a given month over the past 10 years. It is not a measure of probability.

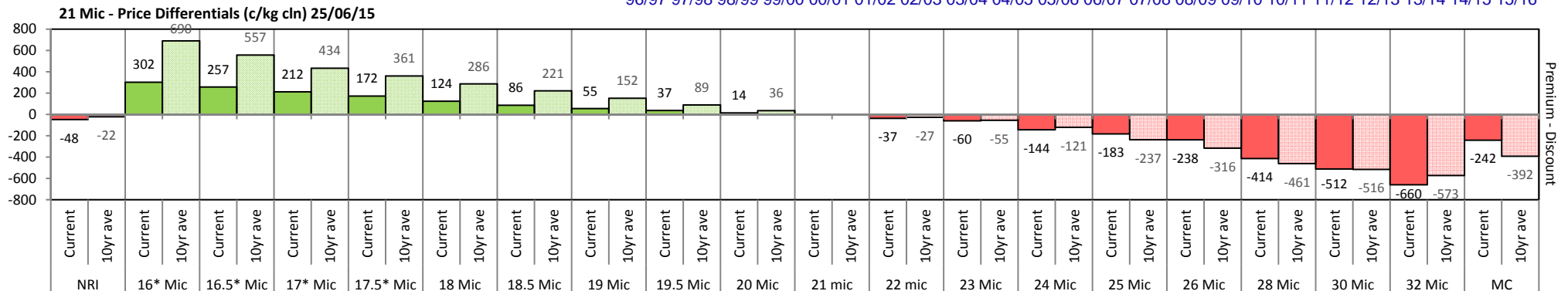
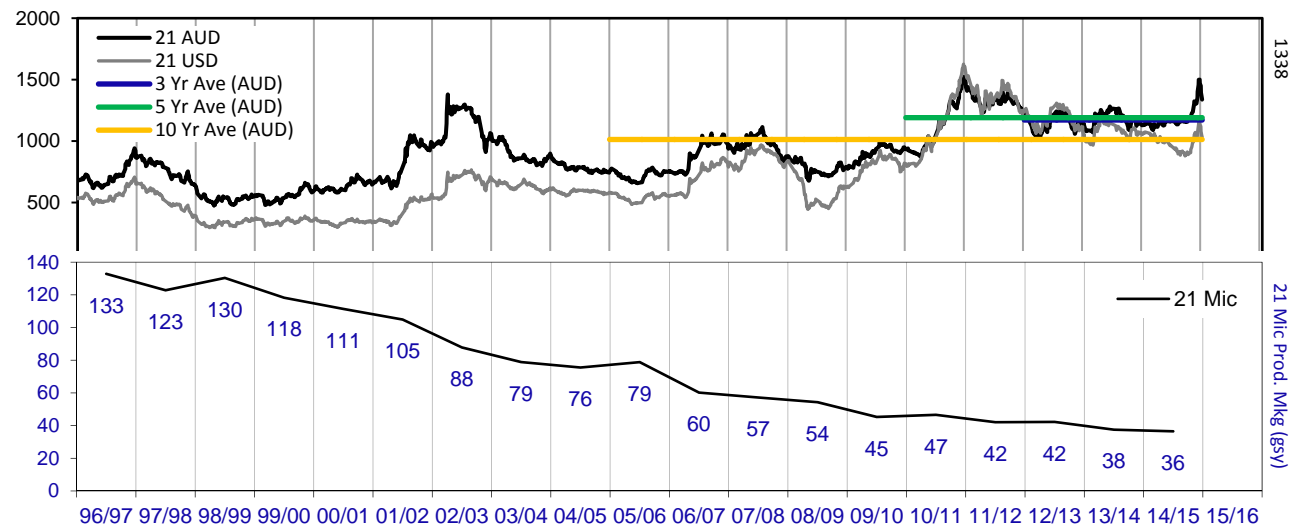


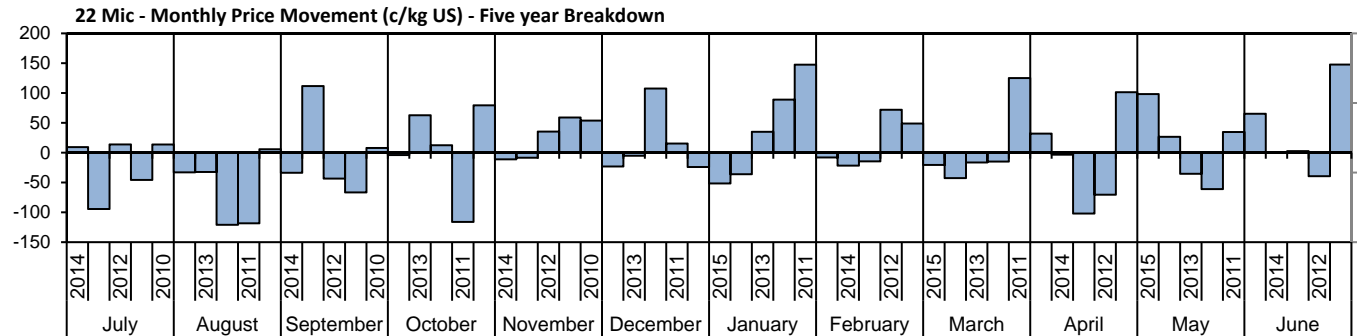
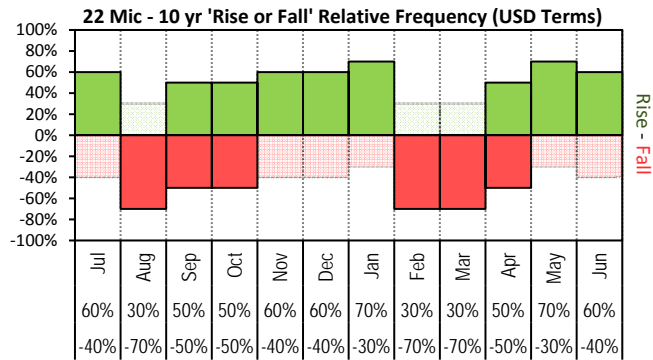


The above **'Rise or Fall'** graph, shows how often the market has risen or fallen in a given month over the past 10 years, it does not show the extent of the movement only the frequency of direction. The **'Monthly Price Movement'** graph shows the extent of movement for each month, for the past 5 years.

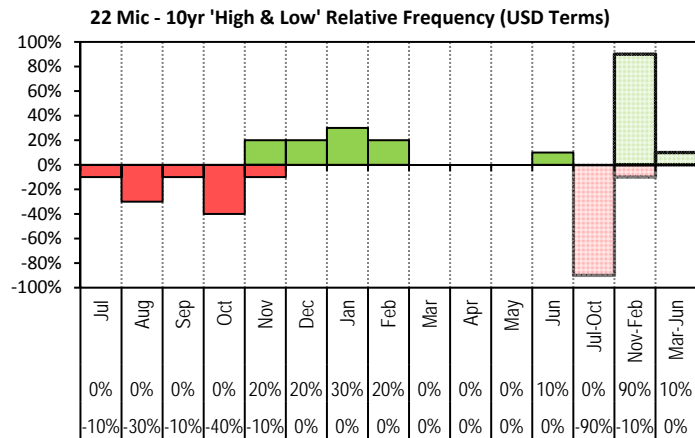


The above graph, shows how often the '12 month high & low' have been achieved for a given month over the past 10 years. It is not a measure of probability.

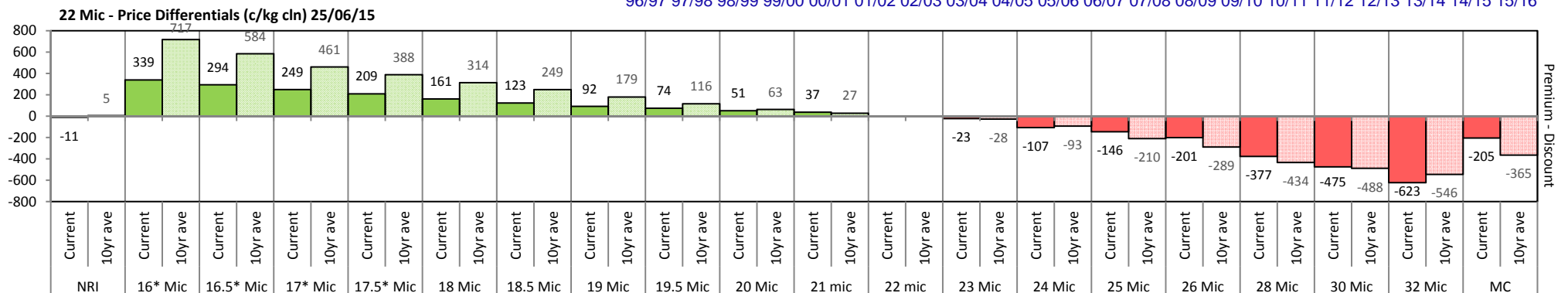
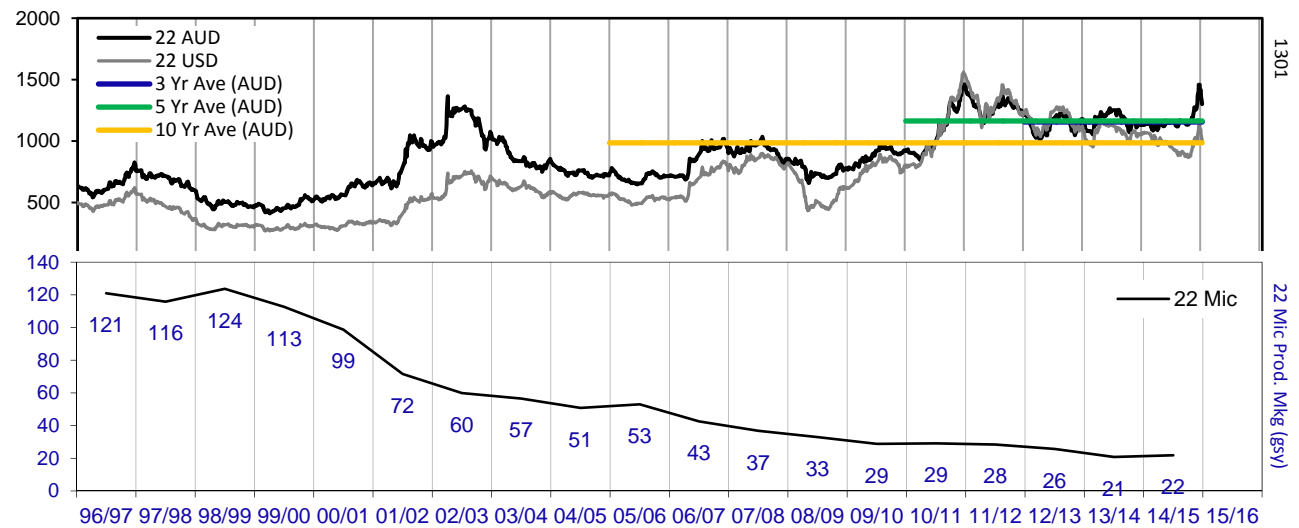


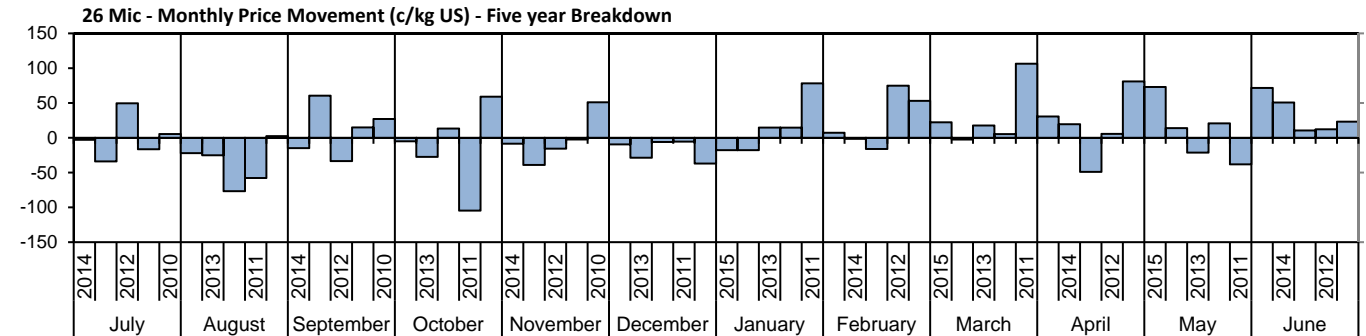
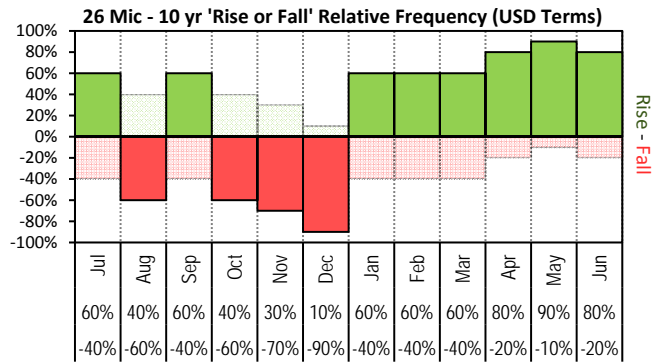


The above 'Rise or Fall' graph, shows how often the market has risen or fallen in a given month over the past 10 years, it does not show the extent of the movement only the frequency of direction. The 'Monthly Price Movement' graph shows the extent of movement for each month, for the past 5 years.

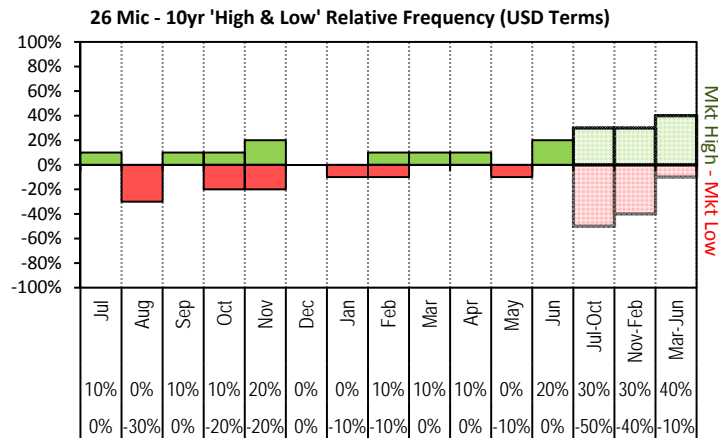


The above graph, shows how often the '12 month high & low' have been achieved for a given month over the past 10 years. It is not a measure of probability.

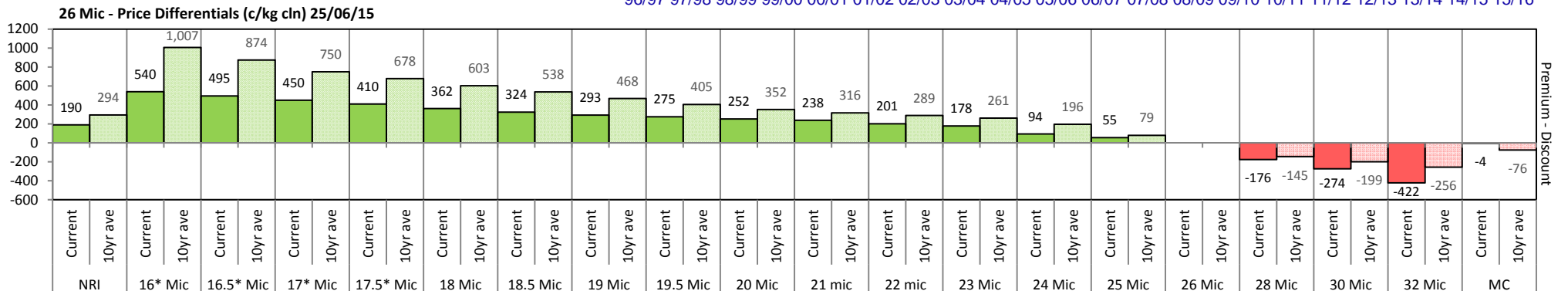
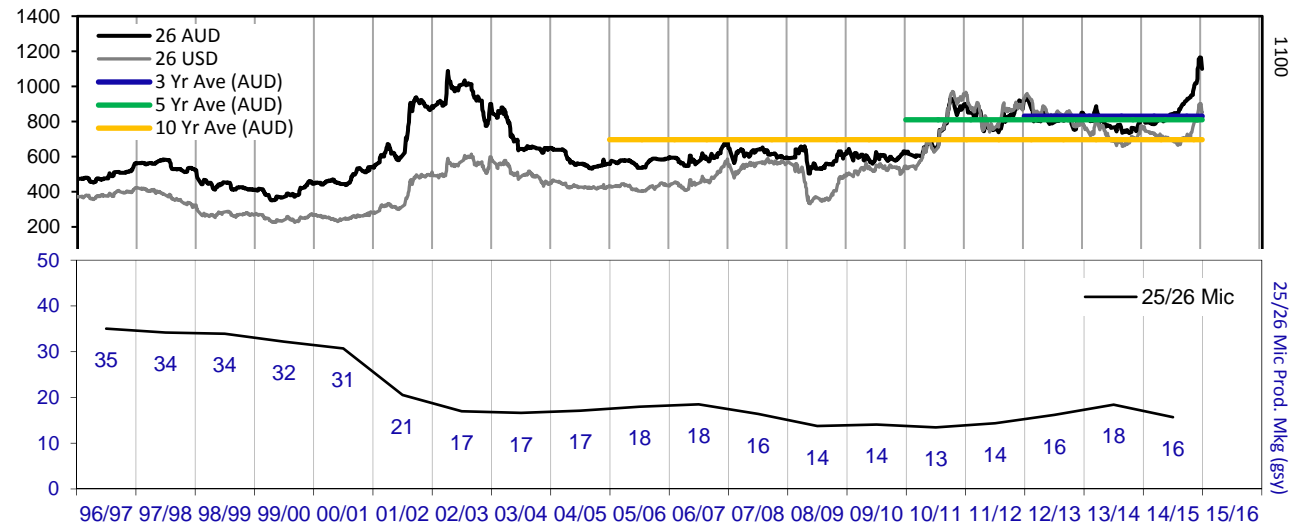


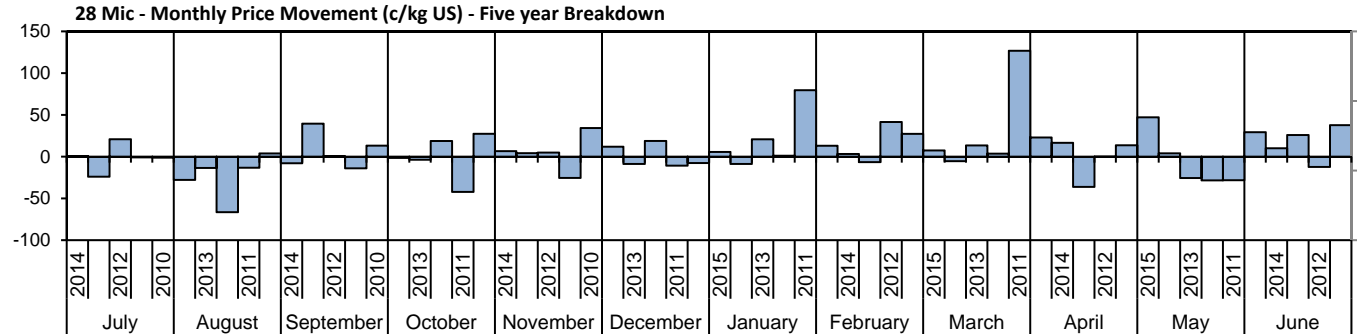
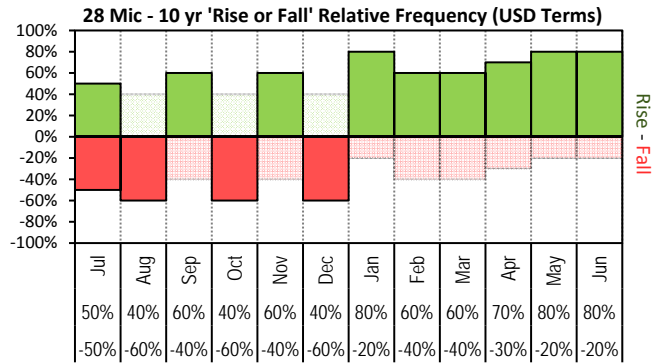


The above 'Rise or Fall' graph, shows how often the market has risen or fallen in a given month over the past 10 years, it does not show the extent of the movement only the frequency of direction. The 'Monthly Price Movement' graph shows the extent of movement for each month, for the past 5 years.

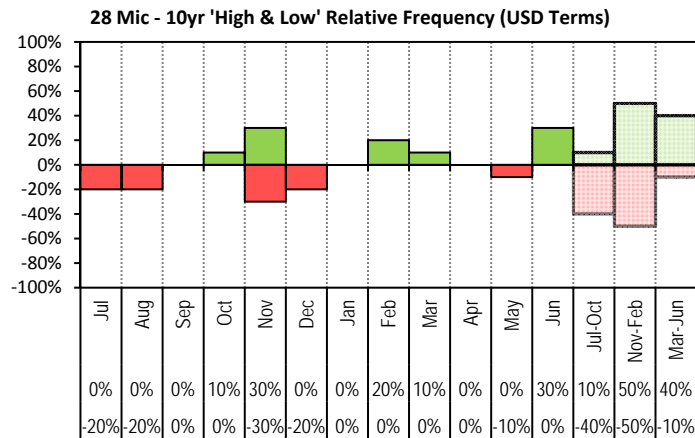


The above graph, shows how often the '12 month high & low' have been achieved for a given month over the past 10 years. It is not a measure of probability.

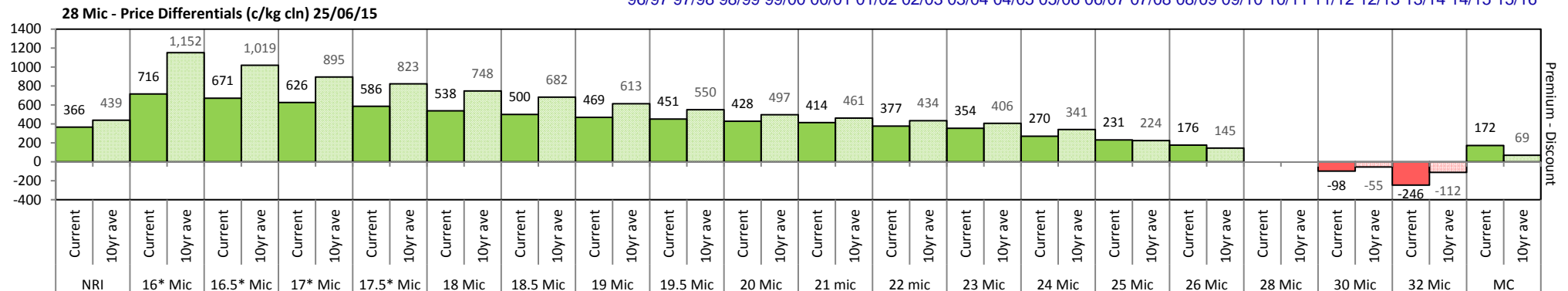
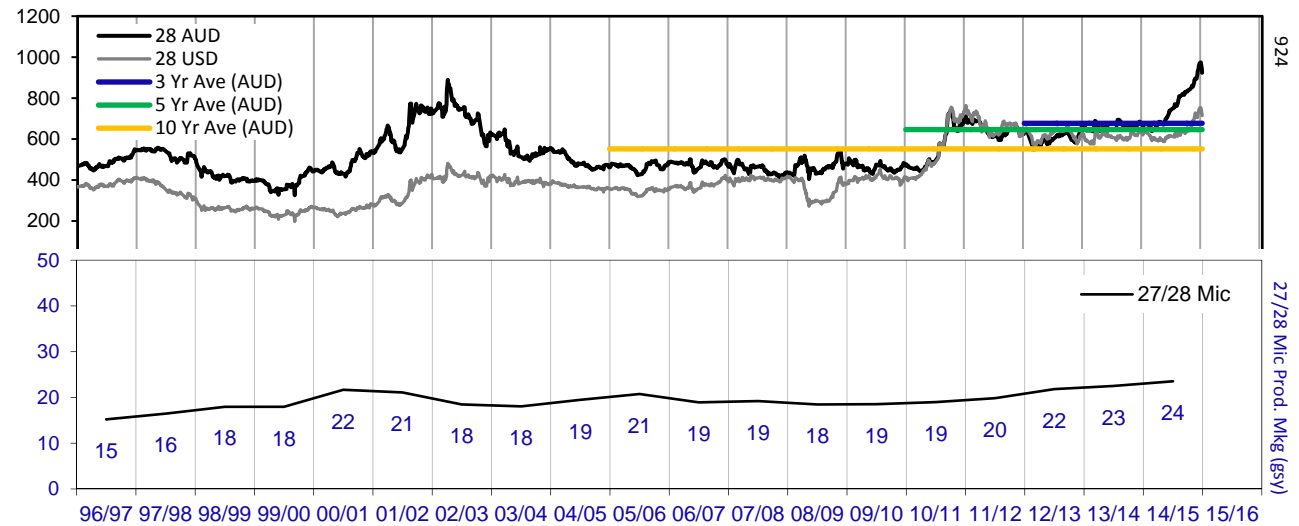


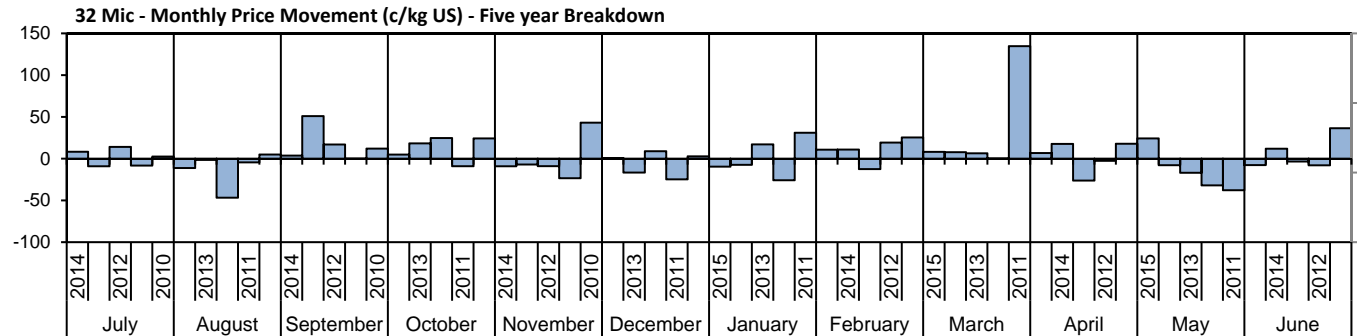
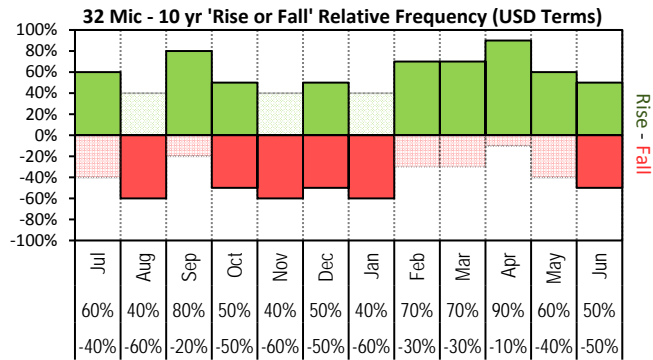


The above 'Rise or Fall' graph, shows how often the market has risen or fallen in a given month over the past 10 years, it does not show the extent of the movement only the frequency of direction. The 'Monthly Price Movement' graph shows the extent of movement for each month, for the past 5 years.

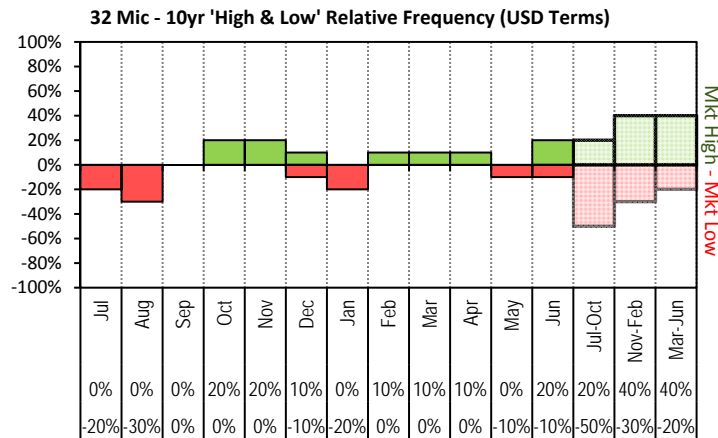


The above graph, shows how often the '12 month high & low' have been achieved for a given month over the past 10 years. It is not a measure of probability.

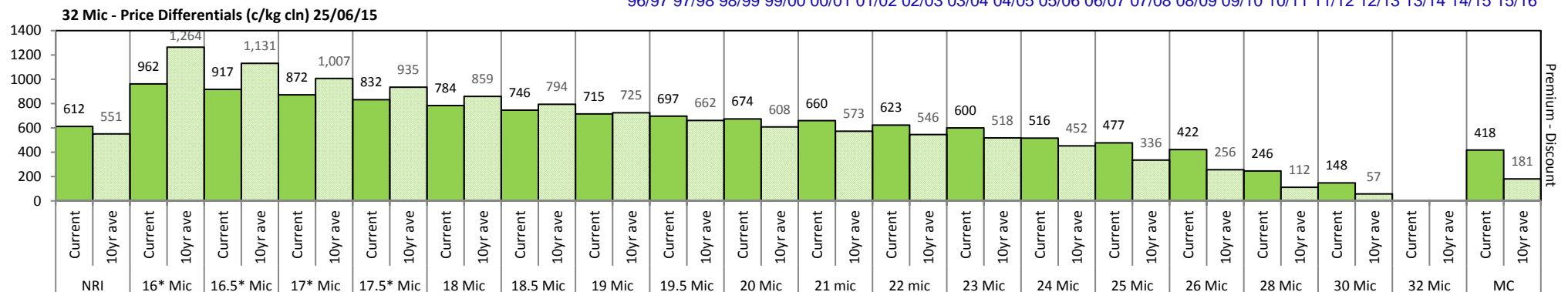
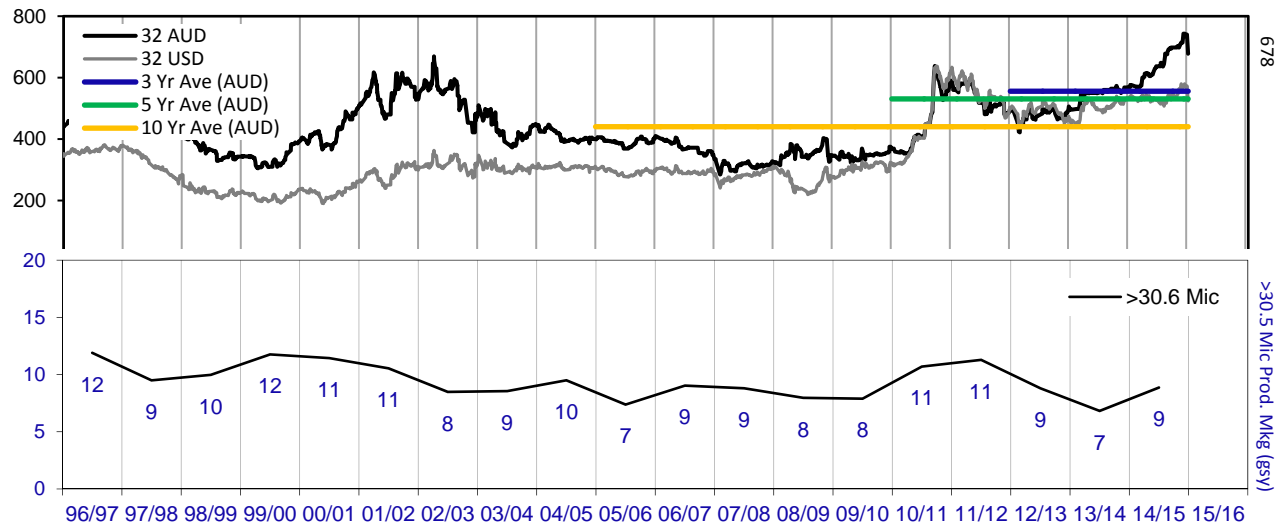


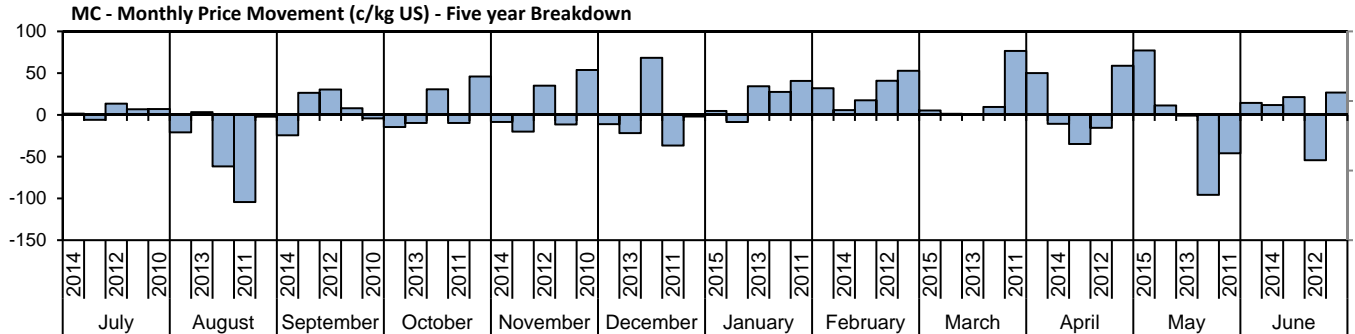
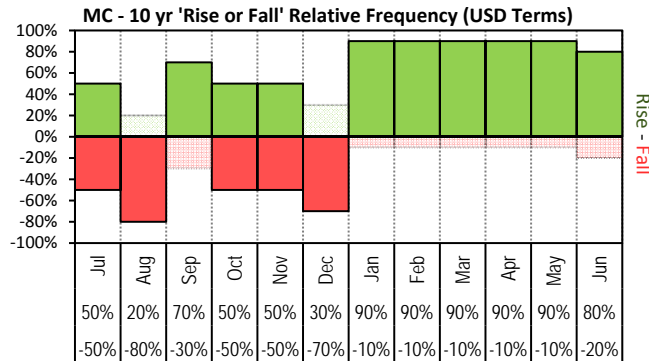


The above 'Rise or Fall' graph, shows how often the market has risen or fallen in a given month over the past 10 years, it does not show the extent of the movement only the frequency of direction. The 'Monthly Price Movement' graph shows the extent of movement for each month, for the past 5 years.

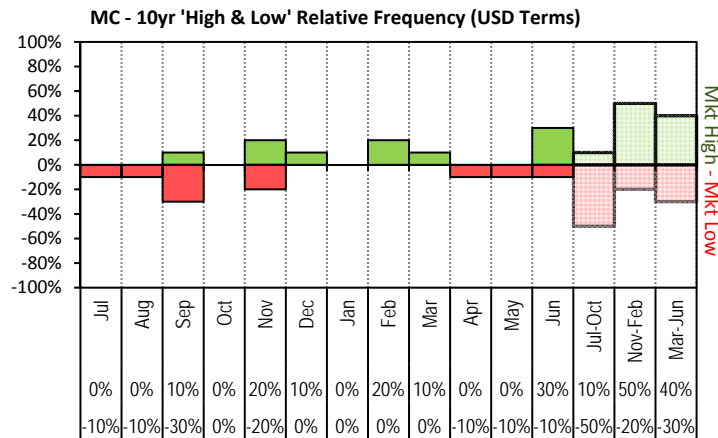


The above graph, shows how often the '12 month high & low' have been achieved for a given month over the past 10 years. It is not a measure of probability.

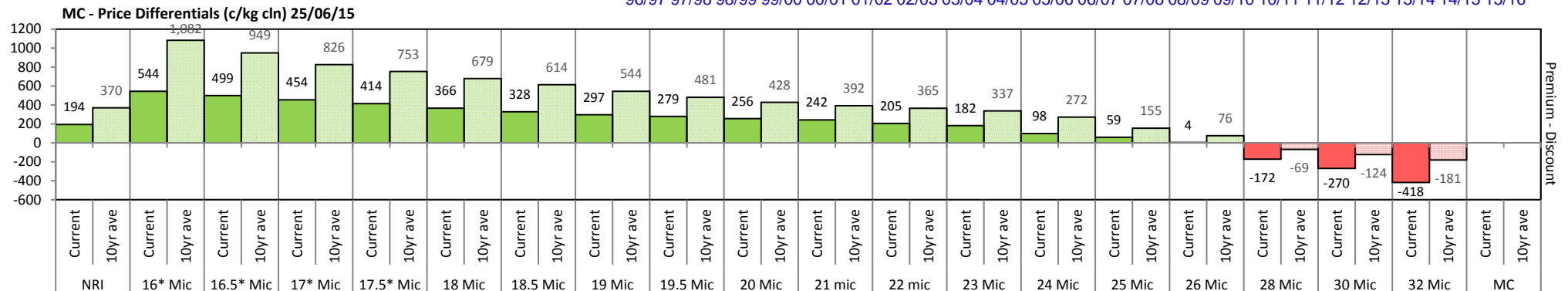
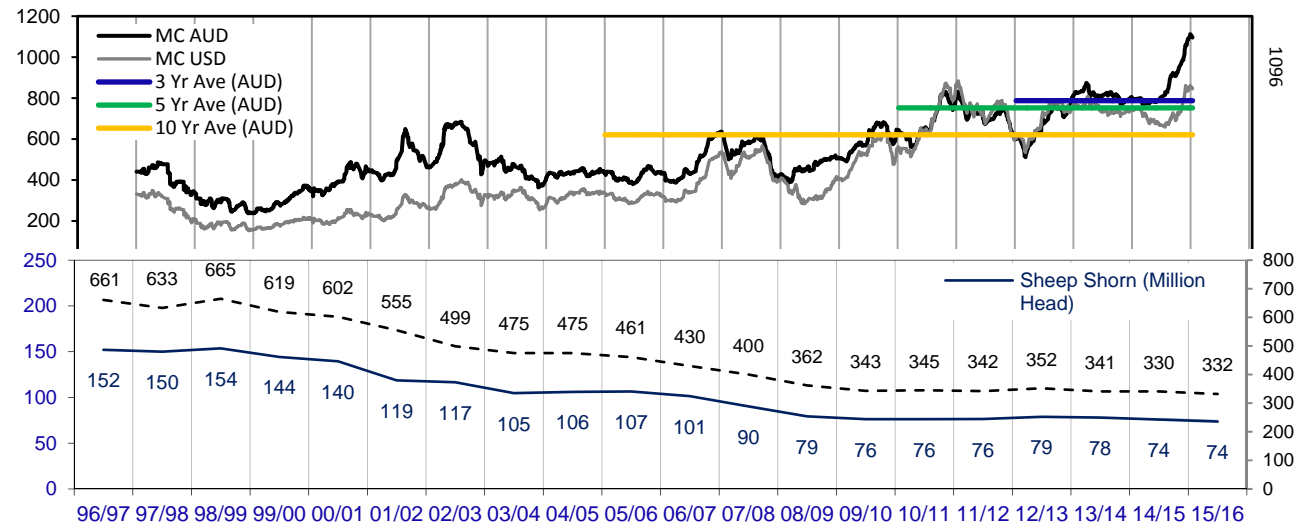




The above 'Rise or Fall' graph, shows how often the market has risen or fallen in a given month over the past 10 years, it does not show the extent of the movement only the frequency of direction. The 'Monthly Price Movement' graph shows the extent of movement for each month, for the past 5 years.



The above graph, shows how often the '12 month high & low' have been achieved for a given month over the past 10 years. It is not a measure of probability.





Two Year Export Snapshot (Greasy Equivalent - Million Kilos)

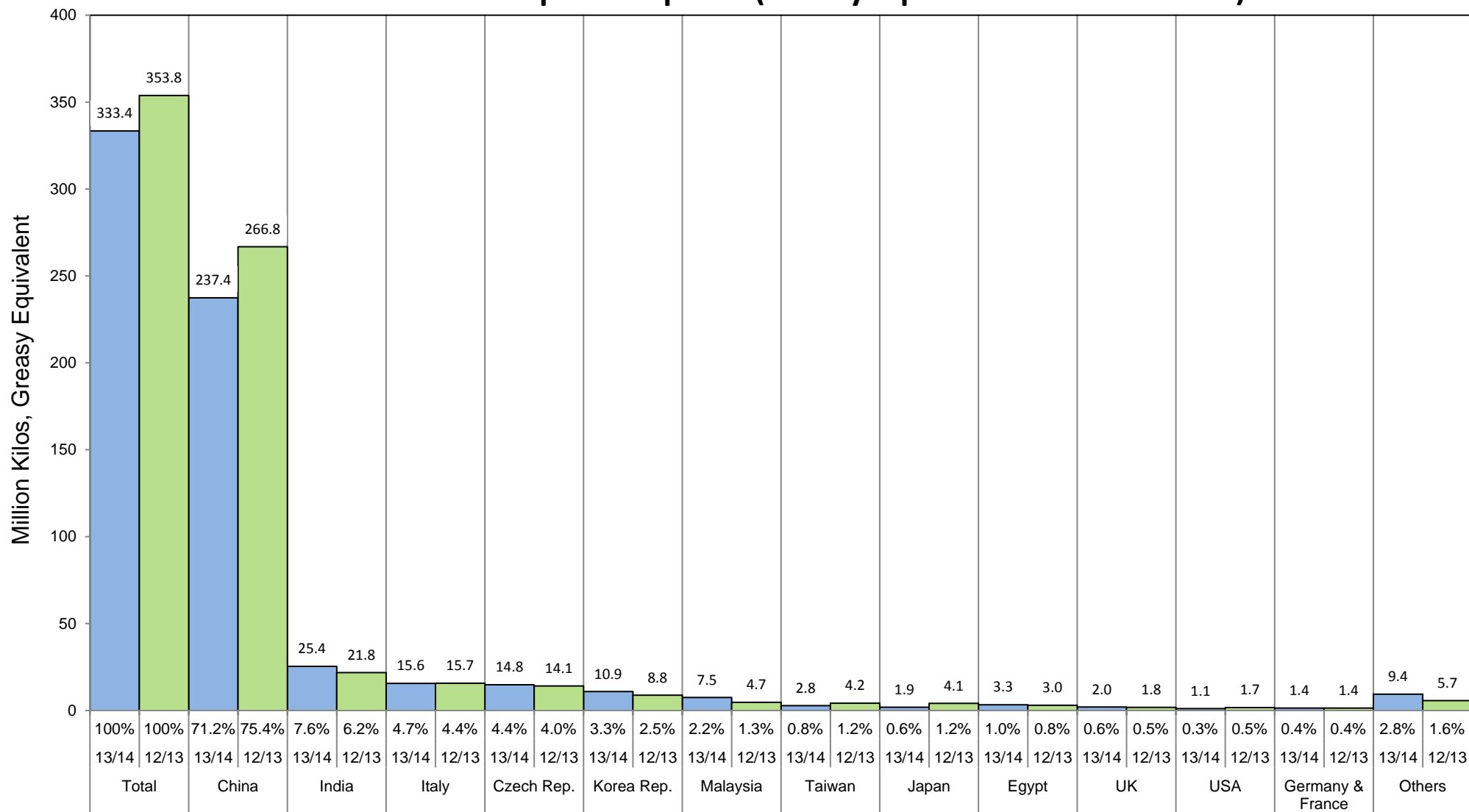




Table 7: Returns pr head for skirted fleece wool.

Skirted FLC Weight 9 Kg			Micron																	
			16	16.5	17	17.5	18	18.5	19	19.5	20	21	22	23	24	25	26	28	30	32
Yield (Sch Dry)	25%	Current	\$37	\$36	\$35	\$34	\$33	\$32	\$31	\$31	\$30	\$30	\$29	\$29	\$27	\$26	\$25	\$21	\$19	\$15
		10yr ave.	\$38	\$35	\$33	\$31	\$29	\$28	\$26	\$25	\$24	\$23	\$22	\$22	\$20	\$17	\$16	\$12	\$11	\$10
	30%	Current	\$44	\$43	\$42	\$41	\$39	\$38	\$38	\$37	\$37	\$36	\$35	\$35	\$32	\$31	\$30	\$25	\$22	\$18
		10yr ave.	\$46	\$42	\$39	\$37	\$35	\$33	\$31	\$30	\$28	\$27	\$27	\$26	\$24	\$21	\$19	\$15	\$13	\$12
	35%	Current	\$52	\$50	\$49	\$48	\$46	\$45	\$44	\$43	\$43	\$42	\$41	\$40	\$38	\$36	\$35	\$29	\$26	\$21
		10yr ave.	\$54	\$49	\$46	\$43	\$41	\$39	\$37	\$35	\$33	\$32	\$31	\$30	\$28	\$24	\$22	\$17	\$16	\$14
	40%	Current	\$59	\$57	\$56	\$54	\$53	\$51	\$50	\$50	\$49	\$48	\$47	\$46	\$43	\$42	\$40	\$33	\$30	\$24
		10yr ave.	\$61	\$57	\$52	\$50	\$47	\$44	\$42	\$40	\$38	\$36	\$35	\$34	\$32	\$28	\$25	\$20	\$18	\$16
	45%	Current	\$66	\$65	\$63	\$61	\$59	\$58	\$56	\$56	\$55	\$54	\$53	\$52	\$48	\$47	\$45	\$37	\$33	\$27
		10yr ave.	\$69	\$64	\$59	\$56	\$53	\$50	\$47	\$45	\$42	\$41	\$40	\$39	\$36	\$31	\$28	\$22	\$20	\$18
	50%	Current	\$74	\$72	\$70	\$68	\$66	\$64	\$63	\$62	\$61	\$60	\$59	\$58	\$54	\$52	\$50	\$42	\$37	\$31
		10yr ave.	\$77	\$71	\$65	\$62	\$58	\$56	\$52	\$50	\$47	\$46	\$44	\$43	\$40	\$35	\$31	\$25	\$22	\$20
	55%	Current	\$81	\$79	\$77	\$75	\$72	\$70	\$69	\$68	\$67	\$66	\$64	\$63	\$59	\$57	\$54	\$46	\$41	\$34
		10yr ave.	\$84	\$78	\$72	\$68	\$64	\$61	\$58	\$55	\$52	\$50	\$49	\$47	\$44	\$38	\$35	\$27	\$25	\$22
	60%	Current	\$89	\$86	\$84	\$82	\$79	\$77	\$75	\$74	\$73	\$72	\$70	\$69	\$64	\$62	\$59	\$50	\$45	\$37
		10yr ave.	\$92	\$85	\$78	\$74	\$70	\$67	\$63	\$60	\$57	\$55	\$53	\$52	\$48	\$42	\$38	\$30	\$27	\$24
	65%	Current	\$96	\$93	\$91	\$88	\$86	\$83	\$81	\$80	\$79	\$78	\$76	\$75	\$70	\$68	\$64	\$54	\$48	\$40
		10yr ave.	\$100	\$92	\$85	\$80	\$76	\$72	\$68	\$64	\$61	\$59	\$58	\$56	\$52	\$45	\$41	\$32	\$29	\$26
	70%	Current	\$103	\$100	\$98	\$95	\$92	\$90	\$88	\$87	\$85	\$84	\$82	\$81	\$75	\$73	\$69	\$58	\$52	\$43
		10yr ave.	\$107	\$99	\$91	\$87	\$82	\$78	\$73	\$69	\$66	\$64	\$62	\$60	\$56	\$49	\$44	\$35	\$31	\$28
	75%	Current	\$111	\$108	\$105	\$102	\$99	\$96	\$94	\$93	\$91	\$90	\$88	\$86	\$81	\$78	\$74	\$62	\$56	\$46
		10yr ave.	\$115	\$106	\$98	\$93	\$88	\$83	\$79	\$74	\$71	\$68	\$67	\$65	\$60	\$52	\$47	\$37	\$34	\$30
	80%	Current	\$118	\$115	\$112	\$109	\$105	\$103	\$100	\$99	\$97	\$96	\$94	\$92	\$86	\$83	\$79	\$67	\$59	\$49
		10yr ave.	\$123	\$113	\$104	\$99	\$94	\$89	\$84	\$79	\$76	\$73	\$71	\$69	\$64	\$56	\$50	\$40	\$36	\$32
	85%	Current	\$125	\$122	\$119	\$116	\$112	\$109	\$107	\$105	\$103	\$102	\$100	\$98	\$91	\$88	\$84	\$71	\$63	\$52
		10yr ave.	\$130	\$120	\$111	\$105	\$99	\$94	\$89	\$84	\$80	\$77	\$75	\$73	\$68	\$59	\$53	\$42	\$38	\$34

The above shows estimated returns per head for skirted fleece wool. These figures do not take into account the value of skirtings and oddments and do not take into account discounts that may apply for faults under individual circumstances. These figures are based on a market index of 100% and should be used as a guide only. Returns over \$30 / head for fleece wool are highlighted.



Table 8: Returns pr head for skirted fleece wool.

Skirted FLC Weight		Micron																	
8 Kg		16	16.5	17	17.5	18	18.5	19	19.5	20	21	22	23	24	25	26	28	30	32
Yield (Sch Dry)	25% Current	\$33	\$32	\$31	\$30	\$29	\$28	\$28	\$28	\$27	\$27	\$26	\$26	\$24	\$23	\$22	\$18	\$17	\$14
	10yr ave.	\$34	\$31	\$29	\$28	\$26	\$25	\$23	\$22	\$21	\$20	\$20	\$19	\$18	\$16	\$14	\$11	\$10	\$9
	30% Current	\$39	\$38	\$37	\$36	\$35	\$34	\$33	\$33	\$32	\$32	\$31	\$31	\$29	\$28	\$26	\$22	\$20	\$16
	10yr ave.	\$41	\$38	\$35	\$33	\$31	\$30	\$28	\$26	\$25	\$24	\$24	\$23	\$21	\$19	\$17	\$13	\$12	\$11
	35% Current	\$46	\$45	\$43	\$42	\$41	\$40	\$39	\$39	\$38	\$37	\$36	\$36	\$33	\$32	\$31	\$26	\$23	\$19
	10yr ave.	\$48	\$44	\$41	\$39	\$36	\$35	\$33	\$31	\$29	\$28	\$28	\$27	\$25	\$22	\$20	\$15	\$14	\$12
	40% Current	\$52	\$51	\$50	\$48	\$47	\$46	\$45	\$44	\$43	\$43	\$42	\$41	\$38	\$37	\$35	\$30	\$26	\$22
	10yr ave.	\$55	\$50	\$46	\$44	\$42	\$39	\$37	\$35	\$34	\$32	\$32	\$31	\$29	\$25	\$22	\$18	\$16	\$14
	45% Current	\$59	\$57	\$56	\$54	\$53	\$51	\$50	\$50	\$49	\$48	\$47	\$46	\$43	\$42	\$40	\$33	\$30	\$24
	10yr ave.	\$61	\$57	\$52	\$50	\$47	\$44	\$42	\$40	\$38	\$36	\$35	\$34	\$32	\$28	\$25	\$20	\$18	\$16
	50% Current	\$66	\$64	\$62	\$60	\$58	\$57	\$56	\$55	\$54	\$54	\$52	\$51	\$48	\$46	\$44	\$37	\$33	\$27
	10yr ave.	\$68	\$63	\$58	\$55	\$52	\$49	\$47	\$44	\$42	\$41	\$39	\$38	\$36	\$31	\$28	\$22	\$20	\$18
	55% Current	\$72	\$70	\$68	\$66	\$64	\$63	\$61	\$61	\$59	\$59	\$57	\$56	\$53	\$51	\$48	\$41	\$36	\$30
	10yr ave.	\$75	\$69	\$64	\$61	\$57	\$54	\$51	\$48	\$46	\$45	\$43	\$42	\$39	\$34	\$31	\$24	\$22	\$19
	60% Current	\$79	\$77	\$74	\$72	\$70	\$68	\$67	\$66	\$65	\$64	\$62	\$61	\$57	\$55	\$53	\$44	\$40	\$33
	10yr ave.	\$82	\$75	\$69	\$66	\$62	\$59	\$56	\$53	\$50	\$49	\$47	\$46	\$43	\$37	\$33	\$26	\$24	\$21
	65% Current	\$85	\$83	\$81	\$79	\$76	\$74	\$72	\$72	\$70	\$70	\$68	\$66	\$62	\$60	\$57	\$48	\$43	\$35
	10yr ave.	\$89	\$82	\$75	\$72	\$68	\$64	\$61	\$57	\$55	\$53	\$51	\$50	\$46	\$40	\$36	\$29	\$26	\$23
	70% Current	\$92	\$89	\$87	\$85	\$82	\$80	\$78	\$77	\$76	\$75	\$73	\$72	\$67	\$65	\$62	\$52	\$46	\$38
	10yr ave.	\$95	\$88	\$81	\$77	\$73	\$69	\$65	\$62	\$59	\$57	\$55	\$54	\$50	\$43	\$39	\$31	\$28	\$25
	75% Current	\$98	\$96	\$93	\$91	\$88	\$85	\$84	\$83	\$81	\$80	\$78	\$77	\$72	\$69	\$66	\$55	\$50	\$41
	10yr ave.	\$102	\$94	\$87	\$83	\$78	\$74	\$70	\$66	\$63	\$61	\$59	\$57	\$54	\$47	\$42	\$33	\$30	\$26
	80% Current	\$105	\$102	\$99	\$97	\$94	\$91	\$89	\$88	\$87	\$86	\$83	\$82	\$76	\$74	\$70	\$59	\$53	\$43
	10yr ave.	\$109	\$101	\$93	\$88	\$83	\$79	\$75	\$71	\$67	\$65	\$63	\$61	\$57	\$50	\$45	\$35	\$32	\$28
	85% Current	\$112	\$108	\$105	\$103	\$99	\$97	\$95	\$94	\$92	\$91	\$88	\$87	\$81	\$79	\$75	\$63	\$56	\$46
	10yr ave.	\$116	\$107	\$98	\$94	\$88	\$84	\$79	\$75	\$71	\$69	\$67	\$65	\$61	\$53	\$47	\$38	\$34	\$30

The above shows estimated returns per head for skirted fleece wool. These figures do not take into account the value of skirtings and oddments and do not take into account discounts that may apply for faults under individual circumstances. These figures are based on a market index of 100% and should be used as a guide only. Returns over \$30 / head for fleece wool are highlighted.



Table 9: Returns pr head for skirted fleece wool.

Skirted FLC Weight 7 Kg		Micron																	
		16	16.5	17	17.5	18	18.5	19	19.5	20	21	22	23	24	25	26	28	30	32
Yield (Sch Dry)	25% Current	\$29	\$28	\$27	\$26	\$26	\$25	\$24	\$24	\$24	\$23	\$23	\$22	\$21	\$20	\$19	\$16	\$14	\$12
	10yr ave.	\$30	\$27	\$25	\$24	\$23	\$22	\$20	\$19	\$18	\$18	\$17	\$17	\$16	\$14	\$12	\$10	\$9	\$8
	30% Current	\$34	\$33	\$33	\$32	\$31	\$30	\$29	\$29	\$28	\$28	\$27	\$27	\$25	\$24	\$23	\$19	\$17	\$14
	10yr ave.	\$36	\$33	\$30	\$29	\$27	\$26	\$24	\$23	\$22	\$21	\$21	\$20	\$19	\$16	\$15	\$12	\$10	\$9
	35% Current	\$40	\$39	\$38	\$37	\$36	\$35	\$34	\$34	\$33	\$33	\$32	\$31	\$29	\$28	\$27	\$23	\$20	\$17
	10yr ave.	\$42	\$38	\$35	\$34	\$32	\$30	\$29	\$27	\$26	\$25	\$24	\$23	\$22	\$19	\$17	\$14	\$12	\$11
	40% Current	\$46	\$45	\$43	\$42	\$41	\$40	\$39	\$39	\$38	\$37	\$36	\$36	\$33	\$32	\$31	\$26	\$23	\$19
	10yr ave.	\$48	\$44	\$41	\$39	\$36	\$35	\$33	\$31	\$29	\$28	\$28	\$27	\$25	\$22	\$20	\$15	\$14	\$12
	45% Current	\$52	\$50	\$49	\$48	\$46	\$45	\$44	\$43	\$43	\$42	\$41	\$40	\$38	\$36	\$35	\$29	\$26	\$21
	10yr ave.	\$54	\$49	\$46	\$43	\$41	\$39	\$37	\$35	\$33	\$32	\$31	\$30	\$28	\$24	\$22	\$17	\$16	\$14
	50% Current	\$57	\$56	\$54	\$53	\$51	\$50	\$49	\$48	\$47	\$47	\$46	\$45	\$42	\$40	\$39	\$32	\$29	\$24
	10yr ave.	\$60	\$55	\$51	\$48	\$45	\$43	\$41	\$39	\$37	\$35	\$35	\$34	\$31	\$27	\$24	\$19	\$17	\$15
	55% Current	\$63	\$61	\$60	\$58	\$56	\$55	\$54	\$53	\$52	\$52	\$50	\$49	\$46	\$44	\$42	\$36	\$32	\$26
	10yr ave.	\$66	\$60	\$56	\$53	\$50	\$48	\$45	\$42	\$40	\$39	\$38	\$37	\$34	\$30	\$27	\$21	\$19	\$17
	60% Current	\$69	\$67	\$65	\$63	\$61	\$60	\$59	\$58	\$57	\$56	\$55	\$54	\$50	\$49	\$46	\$39	\$35	\$28
	10yr ave.	\$72	\$66	\$61	\$58	\$55	\$52	\$49	\$46	\$44	\$43	\$41	\$40	\$38	\$33	\$29	\$23	\$21	\$18
	65% Current	\$75	\$73	\$71	\$69	\$67	\$65	\$63	\$63	\$62	\$61	\$59	\$58	\$54	\$53	\$50	\$42	\$38	\$31
	10yr ave.	\$78	\$71	\$66	\$63	\$59	\$56	\$53	\$50	\$48	\$46	\$45	\$44	\$41	\$35	\$32	\$25	\$23	\$20
	70% Current	\$80	\$78	\$76	\$74	\$72	\$70	\$68	\$67	\$66	\$66	\$64	\$63	\$59	\$57	\$54	\$45	\$40	\$33
	10yr ave.	\$83	\$77	\$71	\$67	\$64	\$60	\$57	\$54	\$51	\$50	\$48	\$47	\$44	\$38	\$34	\$27	\$24	\$22
	75% Current	\$86	\$84	\$81	\$79	\$77	\$75	\$73	\$72	\$71	\$70	\$68	\$67	\$63	\$61	\$58	\$49	\$43	\$36
	10yr ave.	\$89	\$82	\$76	\$72	\$68	\$65	\$61	\$58	\$55	\$53	\$52	\$50	\$47	\$41	\$37	\$29	\$26	\$23
	80% Current	\$92	\$89	\$87	\$85	\$82	\$80	\$78	\$77	\$76	\$75	\$73	\$72	\$67	\$65	\$62	\$52	\$46	\$38
	10yr ave.	\$95	\$88	\$81	\$77	\$73	\$69	\$65	\$62	\$59	\$57	\$55	\$54	\$50	\$43	\$39	\$31	\$28	\$25
	85% Current	\$98	\$95	\$92	\$90	\$87	\$85	\$83	\$82	\$80	\$80	\$77	\$76	\$71	\$69	\$65	\$55	\$49	\$40
	10yr ave.	\$101	\$93	\$86	\$82	\$77	\$73	\$69	\$66	\$62	\$60	\$59	\$57	\$53	\$46	\$41	\$33	\$30	\$26

The above shows estimated returns per head for skirted fleece wool. These figures do not take into account the value of skirtings and oddments and do not take into account discounts that may apply for faults under individual circumstances. These figures are based on a market index of 100% and should be used as a guide only. Returns over \$30 / head for fleece wool are highlighted.



Table 10: Returns pr head for skirted fleece wool.

Skirted FLC Weight		Micron																	
		16	16.5	17	17.5	18	18.5	19	19.5	20	21	22	23	24	25	26	28	30	32
Yield (Sch Dry)	25% Current	\$25	\$24	\$23	\$23	\$22	\$21	\$21	\$21	\$20	\$20	\$20	\$19	\$18	\$17	\$17	\$14	\$12	\$10
	10yr ave.	\$26	\$24	\$22	\$21	\$19	\$19	\$17	\$17	\$16	\$15	\$15	\$14	\$13	\$12	\$10	\$8	\$7	\$7
	30% Current	\$30	\$29	\$28	\$27	\$26	\$26	\$25	\$25	\$24	\$24	\$23	\$23	\$21	\$21	\$20	\$17	\$15	\$12
	10yr ave.	\$31	\$28	\$26	\$25	\$23	\$22	\$21	\$20	\$19	\$18	\$18	\$17	\$16	\$14	\$13	\$10	\$9	\$8
	35% Current	\$34	\$33	\$33	\$32	\$31	\$30	\$29	\$29	\$28	\$28	\$27	\$27	\$25	\$24	\$23	\$19	\$17	\$14
	10yr ave.	\$36	\$33	\$30	\$29	\$27	\$26	\$24	\$23	\$22	\$21	\$21	\$20	\$19	\$16	\$15	\$12	\$10	\$9
	40% Current	\$39	\$38	\$37	\$36	\$35	\$34	\$33	\$33	\$32	\$32	\$31	\$31	\$29	\$28	\$26	\$22	\$20	\$16
	10yr ave.	\$41	\$38	\$35	\$33	\$31	\$30	\$28	\$26	\$25	\$24	\$24	\$23	\$21	\$19	\$17	\$13	\$12	\$11
	45% Current	\$44	\$43	\$42	\$41	\$39	\$38	\$38	\$37	\$37	\$36	\$35	\$35	\$32	\$31	\$30	\$25	\$22	\$18
	10yr ave.	\$46	\$42	\$39	\$37	\$35	\$33	\$31	\$30	\$28	\$27	\$27	\$26	\$24	\$21	\$19	\$15	\$13	\$12
	50% Current	\$49	\$48	\$47	\$45	\$44	\$43	\$42	\$41	\$41	\$40	\$39	\$38	\$36	\$35	\$33	\$28	\$25	\$20
	10yr ave.	\$51	\$47	\$43	\$41	\$39	\$37	\$35	\$33	\$31	\$30	\$30	\$29	\$27	\$23	\$21	\$17	\$15	\$13
	55% Current	\$54	\$53	\$51	\$50	\$48	\$47	\$46	\$45	\$45	\$44	\$43	\$42	\$39	\$38	\$36	\$30	\$27	\$22
	10yr ave.	\$56	\$52	\$48	\$45	\$43	\$41	\$38	\$36	\$35	\$33	\$33	\$32	\$29	\$26	\$23	\$18	\$16	\$15
	60% Current	\$59	\$57	\$56	\$54	\$53	\$51	\$50	\$50	\$49	\$48	\$47	\$46	\$43	\$42	\$40	\$33	\$30	\$24
	10yr ave.	\$61	\$57	\$52	\$50	\$47	\$44	\$42	\$40	\$38	\$36	\$35	\$34	\$32	\$28	\$25	\$20	\$18	\$16
	65% Current	\$64	\$62	\$60	\$59	\$57	\$56	\$54	\$54	\$53	\$52	\$51	\$50	\$47	\$45	\$43	\$36	\$32	\$26
	10yr ave.	\$66	\$61	\$56	\$54	\$51	\$48	\$45	\$43	\$41	\$40	\$38	\$37	\$35	\$30	\$27	\$22	\$19	\$17
	70% Current	\$69	\$67	\$65	\$63	\$61	\$60	\$59	\$58	\$57	\$56	\$55	\$54	\$50	\$49	\$46	\$39	\$35	\$28
	10yr ave.	\$72	\$66	\$61	\$58	\$55	\$52	\$49	\$46	\$44	\$43	\$41	\$40	\$38	\$33	\$29	\$23	\$21	\$18
	75% Current	\$74	\$72	\$70	\$68	\$66	\$64	\$63	\$62	\$61	\$60	\$59	\$58	\$54	\$52	\$50	\$42	\$37	\$31
	10yr ave.	\$77	\$71	\$65	\$62	\$58	\$56	\$52	\$50	\$47	\$46	\$44	\$43	\$40	\$35	\$31	\$25	\$22	\$20
	80% Current	\$79	\$77	\$74	\$72	\$70	\$68	\$67	\$66	\$65	\$64	\$62	\$61	\$57	\$55	\$53	\$44	\$40	\$33
	10yr ave.	\$82	\$75	\$69	\$66	\$62	\$59	\$56	\$53	\$50	\$49	\$47	\$46	\$43	\$37	\$33	\$26	\$24	\$21
	85% Current	\$84	\$81	\$79	\$77	\$75	\$73	\$71	\$70	\$69	\$68	\$66	\$65	\$61	\$59	\$56	\$47	\$42	\$35
	10yr ave.	\$87	\$80	\$74	\$70	\$66	\$63	\$59	\$56	\$53	\$52	\$50	\$49	\$46	\$40	\$36	\$28	\$25	\$22

The above shows estimated returns per head for skirted fleece wool. These figures do not take into account the value of skirtings and oddments and do not take into account discounts that may apply for faults under individual circumstances. These figures are based on a market index of 100% and should be used as a guide only. Returns over \$30 / head for fleece wool are highlighted.



Table 11: Returns pr head for skirted fleece wool.

Skirted FLC Weight		Micron																	
5 Kg		16	16.5	17	17.5	18	18.5	19	19.5	20	21	22	23	24	25	26	28	30	32
Yield (Sch Dry)	25% Current	\$21	\$20	\$19	\$19	\$18	\$18	\$17	\$17	\$17	\$17	\$16	\$16	\$15	\$14	\$14	\$12	\$10	\$8
	10yr ave.	\$21	\$20	\$18	\$17	\$16	\$15	\$15	\$14	\$13	\$13	\$12	\$12	\$11	\$10	\$9	\$7	\$6	\$6
	30% Current	\$25	\$24	\$23	\$23	\$22	\$21	\$21	\$21	\$20	\$20	\$20	\$19	\$18	\$17	\$17	\$14	\$12	\$10
	10yr ave.	\$26	\$24	\$22	\$21	\$19	\$19	\$17	\$17	\$16	\$15	\$15	\$14	\$13	\$12	\$10	\$8	\$7	\$7
	35% Current	\$29	\$28	\$27	\$26	\$26	\$25	\$24	\$24	\$24	\$23	\$23	\$22	\$21	\$20	\$19	\$16	\$14	\$12
	10yr ave.	\$30	\$27	\$25	\$24	\$23	\$22	\$20	\$19	\$18	\$18	\$17	\$17	\$16	\$14	\$12	\$10	\$9	\$8
	40% Current	\$33	\$32	\$31	\$30	\$29	\$28	\$28	\$28	\$27	\$27	\$26	\$26	\$24	\$23	\$22	\$18	\$17	\$14
	10yr ave.	\$34	\$31	\$29	\$28	\$26	\$25	\$23	\$22	\$21	\$20	\$20	\$19	\$18	\$16	\$14	\$11	\$10	\$9
	45% Current	\$37	\$36	\$35	\$34	\$33	\$32	\$31	\$31	\$30	\$30	\$29	\$29	\$27	\$26	\$25	\$21	\$19	\$15
	10yr ave.	\$38	\$35	\$33	\$31	\$29	\$28	\$26	\$25	\$24	\$23	\$22	\$22	\$20	\$17	\$16	\$12	\$11	\$10
	50% Current	\$41	\$40	\$39	\$38	\$37	\$36	\$35	\$34	\$34	\$33	\$33	\$32	\$30	\$29	\$28	\$23	\$21	\$17
	10yr ave.	\$43	\$39	\$36	\$34	\$32	\$31	\$29	\$28	\$26	\$25	\$25	\$24	\$22	\$19	\$17	\$14	\$12	\$11
	55% Current	\$45	\$44	\$43	\$42	\$40	\$39	\$38	\$38	\$37	\$37	\$36	\$35	\$33	\$32	\$30	\$25	\$23	\$19
	10yr ave.	\$47	\$43	\$40	\$38	\$36	\$34	\$32	\$30	\$29	\$28	\$27	\$26	\$25	\$21	\$19	\$15	\$14	\$12
	60% Current	\$49	\$48	\$47	\$45	\$44	\$43	\$42	\$41	\$41	\$40	\$39	\$38	\$36	\$35	\$33	\$28	\$25	\$20
	10yr ave.	\$51	\$47	\$43	\$41	\$39	\$37	\$35	\$33	\$31	\$30	\$30	\$29	\$27	\$23	\$21	\$17	\$15	\$13
	65% Current	\$53	\$52	\$50	\$49	\$48	\$46	\$45	\$45	\$44	\$43	\$42	\$42	\$39	\$38	\$36	\$30	\$27	\$22
	10yr ave.	\$55	\$51	\$47	\$45	\$42	\$40	\$38	\$36	\$34	\$33	\$32	\$31	\$29	\$25	\$23	\$18	\$16	\$14
	70% Current	\$57	\$56	\$54	\$53	\$51	\$50	\$49	\$48	\$47	\$47	\$46	\$45	\$42	\$40	\$39	\$32	\$29	\$24
	10yr ave.	\$60	\$55	\$51	\$48	\$45	\$43	\$41	\$39	\$37	\$35	\$35	\$34	\$31	\$27	\$24	\$19	\$17	\$15
	75% Current	\$62	\$60	\$58	\$57	\$55	\$53	\$52	\$52	\$51	\$50	\$49	\$48	\$45	\$43	\$41	\$35	\$31	\$25
	10yr ave.	\$64	\$59	\$54	\$52	\$49	\$46	\$44	\$41	\$39	\$38	\$37	\$36	\$33	\$29	\$26	\$21	\$19	\$17
	80% Current	\$66	\$64	\$62	\$60	\$58	\$57	\$56	\$55	\$54	\$54	\$52	\$51	\$48	\$46	\$44	\$37	\$33	\$27
	10yr ave.	\$68	\$63	\$58	\$55	\$52	\$49	\$47	\$44	\$42	\$41	\$39	\$38	\$36	\$31	\$28	\$22	\$20	\$18
	85% Current	\$70	\$68	\$66	\$64	\$62	\$61	\$59	\$58	\$57	\$57	\$55	\$54	\$51	\$49	\$47	\$39	\$35	\$29
	10yr ave.	\$72	\$67	\$61	\$58	\$55	\$52	\$50	\$47	\$45	\$43	\$42	\$41	\$38	\$33	\$30	\$23	\$21	\$19

The above shows estimated returns per head for skirted fleece wool. These figures do not take into account the value of skirtings and oddments and do not take into account discounts that may apply for faults under individual circumstances. These figures are based on a market index of 100% and should be used as a guide only. Returns over \$30 / head for fleece wool are highlighted.



Table 12: Returns pr head for skirted fleece wool.

Skirted FLC Weight 4 Kg		Micron																	
		16	16.5	17	17.5	18	18.5	19	19.5	20	21	22	23	24	25	26	28	30	32
Yield (Sch Dry)	25% Current	\$16	\$16	\$16	\$15	\$15	\$14	\$14	\$14	\$14	\$13	\$13	\$13	\$12	\$12	\$11	\$9	\$8	\$7
	10yr ave.	\$17	\$16	\$14	\$14	\$13	\$12	\$12	\$11	\$10	\$10	\$10	\$10	\$9	\$8	\$7	\$6	\$5	\$4
	30% Current	\$20	\$19	\$19	\$18	\$18	\$17	\$17	\$17	\$16	\$16	\$16	\$15	\$14	\$14	\$13	\$11	\$10	\$8
	10yr ave.	\$20	\$19	\$17	\$17	\$16	\$15	\$14	\$13	\$13	\$12	\$12	\$11	\$11	\$9	\$8	\$7	\$6	\$5
	35% Current	\$23	\$22	\$22	\$21	\$20	\$20	\$20	\$19	\$19	\$19	\$18	\$18	\$17	\$16	\$15	\$13	\$12	\$9
	10yr ave.	\$24	\$22	\$20	\$19	\$18	\$17	\$16	\$15	\$15	\$14	\$14	\$13	\$13	\$11	\$10	\$8	\$7	\$6
	40% Current	\$26	\$26	\$25	\$24	\$23	\$23	\$22	\$22	\$22	\$21	\$21	\$20	\$19	\$18	\$18	\$15	\$13	\$11
	10yr ave.	\$27	\$25	\$23	\$22	\$21	\$20	\$19	\$18	\$17	\$16	\$16	\$15	\$14	\$12	\$11	\$9	\$8	\$7
	45% Current	\$30	\$29	\$28	\$27	\$26	\$26	\$25	\$25	\$24	\$24	\$23	\$23	\$21	\$21	\$20	\$17	\$15	\$12
	10yr ave.	\$31	\$28	\$26	\$25	\$23	\$22	\$21	\$20	\$19	\$18	\$18	\$17	\$16	\$14	\$13	\$10	\$9	\$8
	50% Current	\$33	\$32	\$31	\$30	\$29	\$28	\$28	\$28	\$27	\$27	\$26	\$26	\$24	\$23	\$22	\$18	\$17	\$14
	10yr ave.	\$34	\$31	\$29	\$28	\$26	\$25	\$23	\$22	\$21	\$20	\$20	\$19	\$18	\$16	\$14	\$11	\$10	\$9
	55% Current	\$36	\$35	\$34	\$33	\$32	\$31	\$31	\$30	\$30	\$29	\$29	\$28	\$26	\$25	\$24	\$20	\$18	\$15
	10yr ave.	\$37	\$35	\$32	\$30	\$29	\$27	\$26	\$24	\$23	\$22	\$22	\$21	\$20	\$17	\$15	\$12	\$11	\$10
	60% Current	\$39	\$38	\$37	\$36	\$35	\$34	\$33	\$33	\$32	\$32	\$31	\$31	\$29	\$28	\$26	\$22	\$20	\$16
	10yr ave.	\$41	\$38	\$35	\$33	\$31	\$30	\$28	\$26	\$25	\$24	\$24	\$23	\$21	\$19	\$17	\$13	\$12	\$11
	65% Current	\$43	\$41	\$40	\$39	\$38	\$37	\$36	\$36	\$35	\$35	\$34	\$33	\$31	\$30	\$29	\$24	\$21	\$18
	10yr ave.	\$44	\$41	\$38	\$36	\$34	\$32	\$30	\$29	\$27	\$26	\$26	\$25	\$23	\$20	\$18	\$14	\$13	\$11
	70% Current	\$46	\$45	\$43	\$42	\$41	\$40	\$39	\$39	\$38	\$37	\$36	\$36	\$33	\$32	\$31	\$26	\$23	\$19
	10yr ave.	\$48	\$44	\$41	\$39	\$36	\$35	\$33	\$31	\$29	\$28	\$28	\$27	\$25	\$22	\$20	\$15	\$14	\$12
	75% Current	\$49	\$48	\$47	\$45	\$44	\$43	\$42	\$41	\$41	\$40	\$39	\$38	\$36	\$35	\$33	\$28	\$25	\$20
	10yr ave.	\$51	\$47	\$43	\$41	\$39	\$37	\$35	\$33	\$31	\$30	\$30	\$29	\$27	\$23	\$21	\$17	\$15	\$13
	80% Current	\$52	\$51	\$50	\$48	\$47	\$46	\$45	\$44	\$43	\$43	\$42	\$41	\$38	\$37	\$35	\$30	\$26	\$22
	10yr ave.	\$55	\$50	\$46	\$44	\$42	\$39	\$37	\$35	\$34	\$32	\$32	\$31	\$29	\$25	\$22	\$18	\$16	\$14
	85% Current	\$56	\$54	\$53	\$51	\$50	\$48	\$47	\$47	\$46	\$45	\$44	\$43	\$41	\$39	\$37	\$31	\$28	\$23
	10yr ave.	\$58	\$53	\$49	\$47	\$44	\$42	\$40	\$37	\$36	\$34	\$34	\$33	\$30	\$26	\$24	\$19	\$17	\$15

The above shows estimated returns per head for skirted fleece wool. These figures do not take into account the value of skirtings and oddments and do not take into account discounts that may apply for faults under individual circumstances. These figures are based on a market index of 100% and should be used as a guide only. Returns over \$30 / head for fleece wool are highlighted.



Table 13: Returns pr head for skirted fleece wool.

Skirted FLC Weight		Micron																	
		16	16.5	17	17.5	18	18.5	19	19.5	20	21	22	23	24	25	26	28	30	32
Yield (Sch Dry)	25%	Current	\$12	\$12	\$12	\$11	\$11	\$11	\$10	\$10	\$10	\$10	\$10	\$9	\$9	\$8	\$7	\$6	\$5
	10yr ave.		\$13	\$12	\$11	\$10	\$10	\$9	\$9	\$8	\$8	\$7	\$7	\$7	\$6	\$5	\$4	\$4	\$3
	30%	Current	\$15	\$14	\$14	\$14	\$13	\$13	\$13	\$12	\$12	\$12	\$12	\$11	\$10	\$10	\$8	\$7	\$6
	10yr ave.		\$15	\$14	\$13	\$12	\$12	\$11	\$10	\$10	\$9	\$9	\$9	\$8	\$7	\$6	\$5	\$4	\$4
	35%	Current	\$17	\$17	\$16	\$16	\$15	\$15	\$15	\$14	\$14	\$14	\$13	\$13	\$12	\$12	\$10	\$9	\$7
	10yr ave.		\$18	\$16	\$15	\$14	\$14	\$13	\$12	\$12	\$11	\$11	\$10	\$9	\$8	\$7	\$6	\$5	\$5
	40%	Current	\$20	\$19	\$19	\$18	\$18	\$17	\$17	\$17	\$16	\$16	\$16	\$15	\$14	\$14	\$13	\$11	\$8
	10yr ave.		\$20	\$19	\$17	\$17	\$16	\$15	\$14	\$13	\$13	\$12	\$12	\$11	\$11	\$9	\$8	\$7	\$5
	45%	Current	\$22	\$22	\$21	\$20	\$20	\$19	\$19	\$19	\$18	\$18	\$18	\$17	\$16	\$16	\$15	\$12	\$9
	10yr ave.		\$23	\$21	\$20	\$19	\$18	\$17	\$16	\$15	\$14	\$14	\$13	\$13	\$12	\$10	\$9	\$7	\$6
	50%	Current	\$25	\$24	\$23	\$23	\$22	\$21	\$21	\$21	\$20	\$20	\$20	\$19	\$18	\$17	\$17	\$14	\$10
	10yr ave.		\$26	\$24	\$22	\$21	\$19	\$19	\$17	\$17	\$16	\$15	\$15	\$14	\$13	\$12	\$10	\$8	\$7
	55%	Current	\$27	\$26	\$26	\$25	\$24	\$23	\$23	\$23	\$22	\$22	\$21	\$21	\$20	\$19	\$18	\$15	\$11
	10yr ave.		\$28	\$26	\$24	\$23	\$21	\$20	\$19	\$18	\$17	\$17	\$16	\$15	\$13	\$12	\$9	\$8	\$7
	60%	Current	\$30	\$29	\$28	\$27	\$26	\$26	\$25	\$25	\$24	\$24	\$23	\$23	\$21	\$21	\$20	\$17	\$12
	10yr ave.		\$31	\$28	\$26	\$25	\$23	\$22	\$21	\$20	\$19	\$18	\$18	\$17	\$16	\$14	\$13	\$10	\$8
	65%	Current	\$32	\$31	\$30	\$29	\$29	\$28	\$27	\$27	\$26	\$26	\$25	\$25	\$23	\$23	\$21	\$18	\$13
	10yr ave.		\$33	\$31	\$28	\$27	\$25	\$24	\$23	\$21	\$20	\$20	\$19	\$19	\$17	\$15	\$14	\$11	\$9
	70%	Current	\$34	\$33	\$33	\$32	\$31	\$30	\$29	\$29	\$28	\$28	\$27	\$27	\$25	\$24	\$23	\$19	\$14
	10yr ave.		\$36	\$33	\$30	\$29	\$27	\$26	\$24	\$23	\$22	\$21	\$21	\$20	\$19	\$16	\$15	\$12	\$9
	75%	Current	\$37	\$36	\$35	\$34	\$33	\$32	\$31	\$31	\$30	\$30	\$29	\$29	\$27	\$26	\$25	\$21	\$15
	10yr ave.		\$38	\$35	\$33	\$31	\$29	\$28	\$26	\$25	\$24	\$23	\$22	\$20	\$17	\$16	\$12	\$11	\$10
	80%	Current	\$39	\$38	\$37	\$36	\$35	\$34	\$33	\$33	\$32	\$32	\$31	\$31	\$29	\$28	\$26	\$22	\$16
	10yr ave.		\$41	\$38	\$35	\$33	\$31	\$30	\$28	\$26	\$25	\$24	\$24	\$23	\$21	\$19	\$17	\$13	\$11
	85%	Current	\$42	\$41	\$40	\$39	\$37	\$36	\$36	\$35	\$34	\$34	\$33	\$33	\$30	\$29	\$28	\$24	\$17
	10yr ave.		\$43	\$40	\$37	\$35	\$33	\$31	\$30	\$28	\$27	\$26	\$25	\$24	\$23	\$20	\$18	\$14	\$11

The above shows estimated returns per head for skirted fleece wool. These figures do not take into account the value of skirtings and oddments and do not take into account discounts that may apply for faults under individual circumstances. These figures are based on a market index of 100% and should be used as a guide only. Returns over \$30 / head for fleece wool are highlighted.



Table 14: Returns pr head for skirted fleece wool.

Skirted FLC Weight 2 Kg			Micron																	
			16	16.5	17	17.5	18	18.5	19	19.5	20	21	22	23	24	25	26	28	30	32
Yield (Sch Dry)	25%	Current	\$8	\$8	\$8	\$8	\$7	\$7	\$7	\$7	\$7	\$7	\$7	\$6	\$6	\$6	\$6	\$5	\$4	\$3
		10yr ave.	\$9	\$8	\$7	\$7	\$6	\$6	\$6	\$6	\$5	\$5	\$5	\$5	\$4	\$4	\$3	\$3	\$2	\$2
	30%	Current	\$10	\$10	\$9	\$9	\$9	\$9	\$8	\$8	\$8	\$8	\$8	\$8	\$7	\$7	\$7	\$6	\$5	\$4
		10yr ave.	\$10	\$9	\$9	\$8	\$8	\$7	\$7	\$7	\$6	\$6	\$6	\$6	\$5	\$5	\$4	\$3	\$3	\$3
	35%	Current	\$11	\$11	\$11	\$11	\$10	\$10	\$10	\$10	\$9	\$9	\$9	\$9	\$8	\$8	\$8	\$6	\$6	\$5
		10yr ave.	\$12	\$11	\$10	\$10	\$9	\$9	\$8	\$8	\$7	\$7	\$7	\$7	\$6	\$5	\$5	\$4	\$3	\$3
	40%	Current	\$13	\$13	\$12	\$12	\$12	\$11	\$11	\$11	\$11	\$11	\$10	\$10	\$10	\$9	\$9	\$7	\$7	\$5
		10yr ave.	\$14	\$13	\$12	\$11	\$10	\$10	\$9	\$9	\$8	\$8	\$8	\$8	\$7	\$6	\$6	\$4	\$4	\$4
	45%	Current	\$15	\$14	\$14	\$14	\$13	\$13	\$13	\$12	\$12	\$12	\$12	\$12	\$11	\$10	\$10	\$8	\$7	\$6
		10yr ave.	\$15	\$14	\$13	\$12	\$12	\$11	\$10	\$10	\$9	\$9	\$9	\$9	\$8	\$7	\$6	\$5	\$4	\$4
	50%	Current	\$16	\$16	\$16	\$15	\$15	\$14	\$14	\$14	\$14	\$13	\$13	\$13	\$12	\$12	\$11	\$9	\$8	\$7
		10yr ave.	\$17	\$16	\$14	\$14	\$13	\$12	\$12	\$11	\$10	\$10	\$10	\$10	\$9	\$8	\$7	\$6	\$5	\$4
	55%	Current	\$18	\$18	\$17	\$17	\$16	\$16	\$15	\$15	\$15	\$15	\$14	\$14	\$13	\$13	\$12	\$10	\$9	\$7
		10yr ave.	\$19	\$17	\$16	\$15	\$14	\$14	\$13	\$12	\$12	\$11	\$11	\$11	\$10	\$9	\$8	\$6	\$5	\$5
	60%	Current	\$20	\$19	\$19	\$18	\$18	\$17	\$17	\$17	\$16	\$16	\$16	\$15	\$14	\$14	\$13	\$11	\$10	\$8
		10yr ave.	\$20	\$19	\$17	\$17	\$16	\$15	\$14	\$13	\$13	\$12	\$12	\$11	\$11	\$9	\$8	\$7	\$6	\$5
	65%	Current	\$21	\$21	\$20	\$20	\$19	\$19	\$18	\$18	\$18	\$17	\$17	\$17	\$16	\$15	\$14	\$12	\$11	\$9
		10yr ave.	\$22	\$20	\$19	\$18	\$17	\$16	\$15	\$14	\$14	\$13	\$13	\$12	\$12	\$10	\$9	\$7	\$6	\$6
	70%	Current	\$23	\$22	\$22	\$21	\$20	\$20	\$20	\$19	\$19	\$19	\$18	\$18	\$17	\$16	\$15	\$13	\$12	\$9
		10yr ave.	\$24	\$22	\$20	\$19	\$18	\$17	\$16	\$15	\$15	\$14	\$14	\$13	\$13	\$11	\$10	\$8	\$7	\$6
	75%	Current	\$25	\$24	\$23	\$23	\$22	\$21	\$21	\$21	\$20	\$20	\$20	\$19	\$18	\$17	\$17	\$14	\$12	\$10
		10yr ave.	\$26	\$24	\$22	\$21	\$19	\$19	\$17	\$17	\$16	\$15	\$15	\$14	\$13	\$12	\$10	\$8	\$7	\$7
	80%	Current	\$26	\$26	\$25	\$24	\$23	\$23	\$22	\$22	\$22	\$21	\$21	\$20	\$19	\$18	\$18	\$15	\$13	\$11
		10yr ave.	\$27	\$25	\$23	\$22	\$21	\$20	\$19	\$18	\$17	\$16	\$16	\$15	\$14	\$12	\$11	\$9	\$8	\$7
	85%	Current	\$28	\$27	\$26	\$26	\$25	\$24	\$24	\$23	\$23	\$23	\$22	\$22	\$20	\$20	\$19	\$16	\$14	\$12
		10yr ave.	\$29	\$27	\$25	\$23	\$22	\$21	\$20	\$19	\$18	\$17	\$17	\$16	\$15	\$13	\$12	\$9	\$8	\$7

The above shows estimated returns per head for skirted fleece wool. These figures do not take into account the value of skirtings and oddments and do not take into account discounts that may apply for faults under individual circumstances. These figures are based on a market index of 100% and should be used as a guide only. Returns over \$30 / head for fleece wool are highlighted.