



Table 1: Northern Region Micron Price Guides

CURRENT MARKET			PERCENTILES		AVERAGES							12 MONTH COMPARISONS								TRADING RANGE		
Mic.	25/11/2010	18/11/2010			Now			Now			24/11/2009		Now		Now		Now		Clean c/kg			
Price	Current	Weekly	3yr	10yr	<u>3 year</u>	compared		<u>10 year</u>	compared		This time	compared	12 Month	compared	12 Month	compared	12	3	10			
Guides	Price	Change			Average	to 3yr ave	Average	to 10yr ave	Last Year	to Last Year	Low	to Low	High	to High	Mth	Year	Year					
NRI	1059	-18 -1.7%	96%	92%	897	+162	18%	869	+190	22%	881	+178	20%	890	+169	19%	1080	-21 -2%	190	343	584	
16*	1970	-80 -4.1%	95%		1627	+343	21%				1400	+570	41%	1345	+625	46%	2050	-80 -4%	705	665		
16.5*	1890	-90 -4.8%	99%		1488	+402	27%				1295	+595	46%	1260	+630	50%	1980	-90 -5%	720	726		
17*	1765	-50 -2.8%	99%	96%	1365	+400	29%	1408	+357	25%	1215	+550	45%	1180	+585	50%	1815	-50 -3%	635	644	1797	
17.5*	1655	-70 -4.2%	99%		1300	+355	27%				1190	+465	39%	1160	+495	43%	1725	-70 -4%	565	639		
18	1620	-12 -0.7%	98%	86%	1241	+379	31%	1286	+334	26%	1127	+493	44%	1134	+486	43%	1636	-16 -1%	502	601	1392	
18.5	1482	-25 -1.7%	98%		1167	+315	27%				1084	+398	37%	1088	+394	36%	1507	-25 -2%	419	536		
19	1275	-31 -2.4%	94%	88%	1072	+203	19%	1066	+209	20%	1024	+251	25%	1031	+244	24%	1312	-37 -3%	281	443	706	
19.5	1113	-27 -2.4%	85%		985	+128	13%				963	+150	16%	952	+161	17%	1168	-55 -5%	216	457		
20	997	-42 -4.2%	84%	74%	914	+83	9%	913	+84	9%	912	+85	9%	904	+93	10%	1076	-79 -7%	172	464	717	
21	976	-27 -2.8%	85%	75%	877	+99	11%	867	+109	13%	885	+91	10%	878	+98	11%	1039	-63 -6%	161	427	737	
22	931	-29 -3.1%	79%	70%	853	+78	9%	844	+87	10%	857	+74	9%	847	+84	10%	990	-59 -6%	143	360	735	
23	895	-22 -2.5%	76%	68%	830	+65	8%	823	+72	9%	819	+76	9%	827	+68	8%	940	-45 -5%	113	311	728	
24	830	-13 -1.6%	75%	69%	782	+48	6%	787	+43	5%	763	+67	9%	779	+51	7%	881	-51 -6%	102	257	705	
25	767	-12 -1.6%	98%	80%	671	+96	14%	707	+60	8%	657	+110	17%	650	+117	18%	781	-14 -2%	131	215	650	
26	685	-11 -1.6%	98%	78%	601	+84	14%	648	+37	6%	571	+114	20%	560	+125	22%	696	-11 -2%	136	192	589	
28	488	-11 -2.3%	88%	53%	460	+28	6%	521	-33 -6%		435	+53	12%	430	+58	13%	502	-14 -3%	72	119	465	
30	444	0	96%	59%	397	+47	12%	455	-11 -2%		378	+66	17%	377	+67	18%	447	-3 -1%	70	128	385	
32	410	0	100%	60%	346	+64	18%	412	-2 0%		331	+79	24%	331	+79	24%	410	0 0%	79	104	372	
MC	650	-1 -0.2%	91%	93%	542	+108	20%	498	+152	31%	569	+81	14%	561	+89	16%	681	-31 -5%	120	289	304	

**Note:**

\* Due to the irregular market quoting for some fine wool categories, figures shown relating to micron categories below 18 micron are an estimate based on the AWEX Premium & Discounts Report & other available information.

\* For any category, where there is insufficient quantity offered to enable AWEX to quote, a quote will be provided based on the best available information.

\* 10 Year data is not available for some micron categories, which may result in blank spaces in the table above.

**Definitions:**

\* A Percentile, is a value on a scale of one hundred that indicates the percent of a distribution that is equal to or below it. In general a percentile between 25% and 75% is considered normal, a percentile below 25% is considered below normal and a percentile above 75% is considered above normal.

Three and ten year percentiles shown in the table above, detail the period of time during the past 3 & 10 years that the market has traded either at or below its current price.

The higher the percentile, the stronger the market.

Source: Australian Wool Exchange, Australian Wool Innovation, Sydney Futures Exchange, x-rates.com

Disclaimer: While all due care has been taken in the preparation of this document, no warranty is made as to its accuracy, reliability or completeness. To the extent permitted by law neither Jemalong or their sources including subsidiaries and staff, accept liability to any person for loss or damage arising from the use of this information.



## MARKET COMMENTARY

Australian Dollar 97.73 cents US as of 25/11/2010

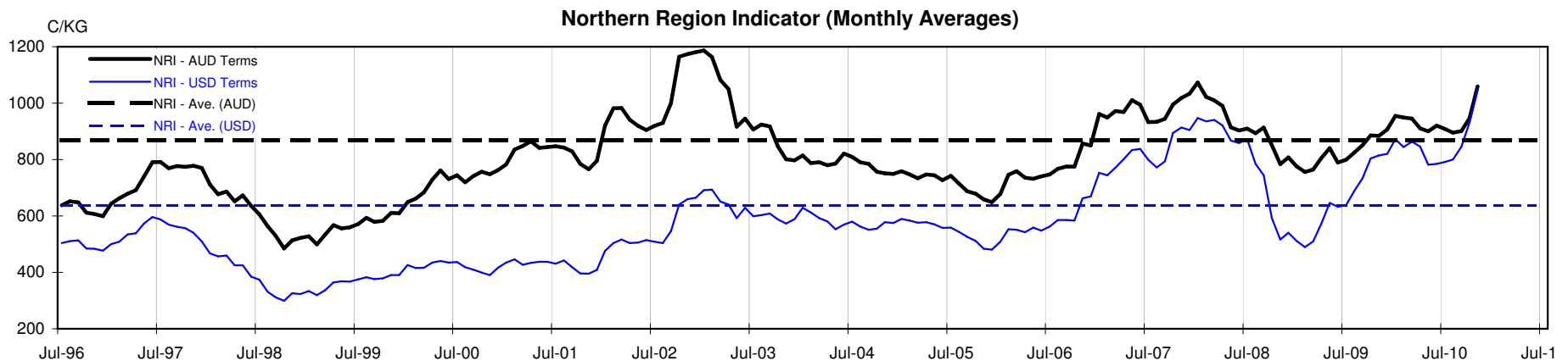
NORTHERN REGION – Sale Week 21/10 (54,788 bales offered nationally)

Merino Fleece - With fine wools dominating the market this week, the better strength/spinners style lots continued to rise (Tuesday & Wednesday's market were most affected, while Thursdays market remained firm). 16.5 micron were the only exception, losing some 20-30 cents on Tuesday (due to the larger volume on offer). The lower style & strength fine lots lost a little ground on Tuesday, then bounced back on Wednesday only to fall around 50 cents on Thursday. At the broader end of the spectrum, on a limited offering the medium to broader wools also fell slightly on Tuesday, only to firm on

Merino Skirting's - Predominantly a very good style offering had premiums being paid on Tuesday and Wednesday for good length, strength, style & Vm. On Thursday the market contracted around 30 across the board with the best style, low Vm lots least affected.

Oddments - Fine locks were well supported, while the broader end closed in buyers favour. Crutching's were firm with good premiums for the better types, stains also remained firm.

Crossbreds: A very limited offering had the crossbreds market closing generally 10 cents lower with most of the movement occurring on Thursday.





**Table 4: 19 micron SFE**

Wednesday, 24 November 2010

Delivery Mth	Dec-10	Feb-11	Apr-11	Jun-11	Aug-11	Oct-11	Dec-11	Feb-12	Apr-12
19 Micron SFE	1230	1230	1273	1273	1273	1260	1220	1200	1160
Average	1032	1050	1057	1064	1068	1070	1070	1080	1098
Maximum	1106	1230	1230	1273	1273	1273	1265	1240	1240
Minimum	905	936	983	1025	1034	1034	1034	1034	1053

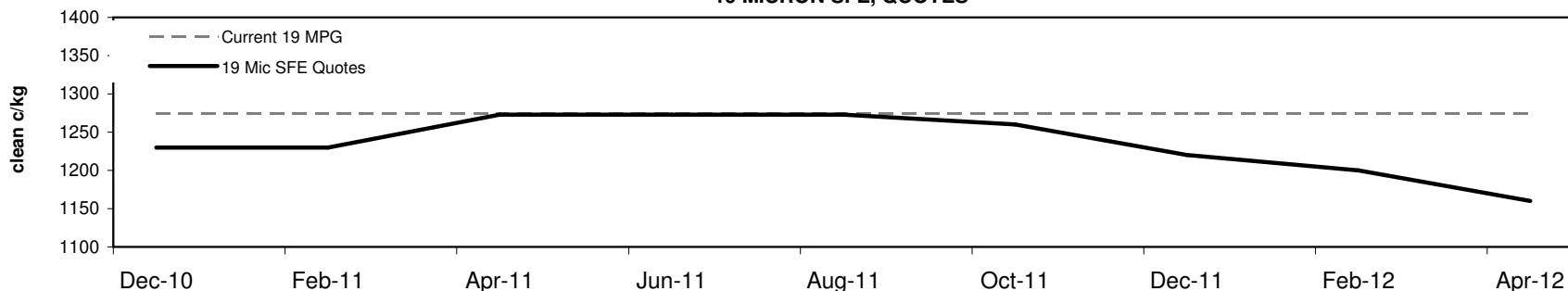
**Table 5: 19 micron SFE, as a percentile of the 19 micron MPG**

3 Year Percentile	88%	88%	94%	94%	94%	92%	86%	85%	83%
10 Year Percentile	83%	83%	88%	88%	88%	87%	82%	80%	77%

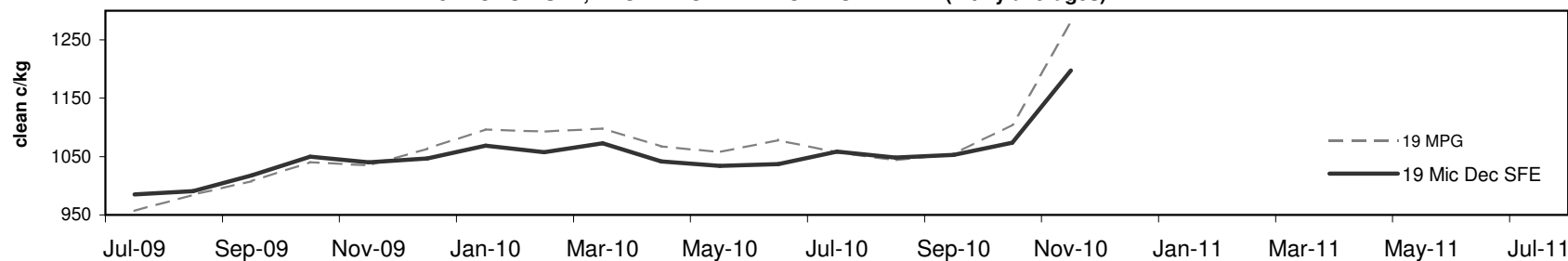
**Table 6: 19 micron SFE, compared to MPG**

Current 19 MPG	-45	-4%	-45	-4%	-2	0%	-2	0%	-2	0%	-15	-1%	-55	-4%	-75	-6%	-115	-9%
19 MPG, 1 Year Average	+139	13%	+139	13%	+182	17%	+182	17%	+182	17%	+169	15%	+129	12%	+109	10%	+69	6%
19 MPG, 3 Year Average	+158	15%	+158	15%	+201	19%	+201	19%	+201	19%	+188	18%	+148	14%	+128	12%	+88	8%
19 MPG, 10 Year Average	+164	15%	+164	15%	+207	19%	+207	19%	+207	19%	+194	18%	+154	14%	+134	13%	+94	9%

**19 MICRON SFE, QUOTES**



**19 MICRON SFE, FRONT MONTH PRICE MOVEMENT (mthly averages)**





**Table 7: 21 micron SFE**

Wednesday, 24 November 2010

Delivery Mth	Dec-10	Feb-11	Apr-11	Jun-11	Aug-11	Oct-11	Dec-11	Feb-12	Apr-12
21 Micron SFE	1004	1002	1002	993	993	992	993	992	992
Average	914	930	937	941	941	933	923	923	932
Maximum	1013	1020	1025	1026	1025	1015	1015	1015	1015
Minimum	780	818	860	891	890	880	880	880	880

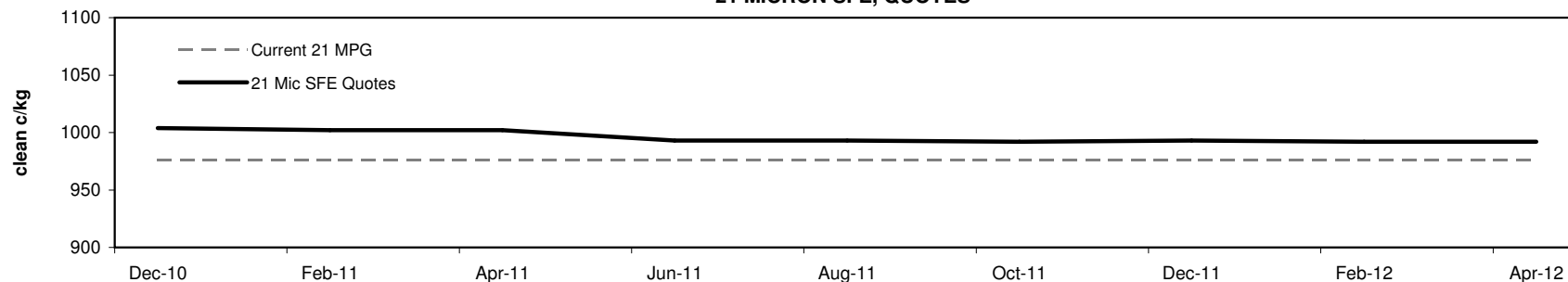
**Table 8: 21 micron SFE, as a percentile of the 21 micron MPG**

3 Year Percentile	92%	92%	92%	89%	89%	89%	89%	89%	89%
10 Year Percentile	84%	83%	83%	81%	81%	80%	81%	80%	80%

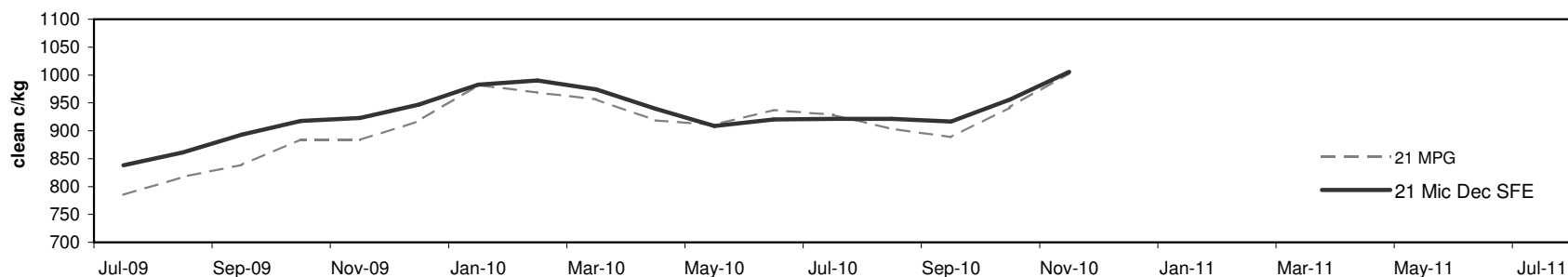
**Table 9: 21 micron SFE, compared to MPG**

Current 21 MPG	+28	3%	+26	3%	+26	3%	+17	2%	+17	2%	+16	2%	+17	2%	+16	2%	+16	2%
21 MPG, 1 Year Average	+66	7%	+64	7%	+64	7%	+55	6%	+55	6%	+54	6%	+55	6%	+54	6%	+54	6%
21 MPG, 3 Year Average	+127	14%	+125	14%	+125	14%	+116	13%	+116	13%	+115	13%	+116	13%	+115	13%	+115	13%
21 MPG, 10 Year Average	+137	16%	+135	16%	+135	16%	+126	15%	+126	15%	+125	14%	+126	15%	+125	14%	+125	14%

**21 MICRON SFE, QUOTES**



**21 MICRON SFE, FRONT MONTH PRICE MOVEMENT (monthly averages)**





**Table 10: 23 micron SFE**

Wednesday, 24 November 2010

Delivery Mth	Dec-10	Feb-11	Apr-11	Jun-11	Aug-11	Oct-11	Dec-11	Feb-12	Apr-12
23 Micron SFE	883	883	883	883	883	883	883	883	883
Average	839	855	864	873	886	892	884	885	886
Maximum	927	927	927	927	927	927	887	887	887
Minimum	716	760	760	803	803	883	883	883	883

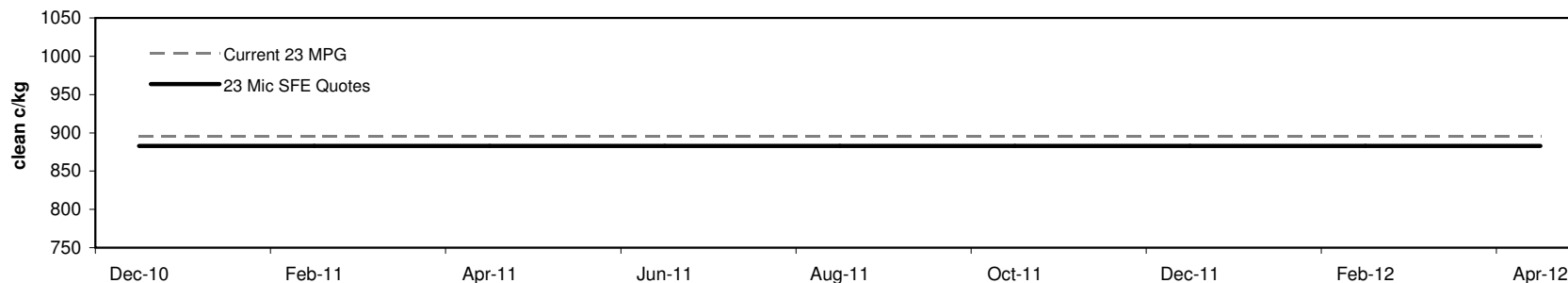
**Table 11: 23 micron SFE, as a percentile of the 23 micron MPG**

3 Year Percentile	68%	68%	68%	68%	68%	68%	68%	68%	68%
10 Year Percentile	64%	64%	64%	64%	64%	64%	64%	64%	64%

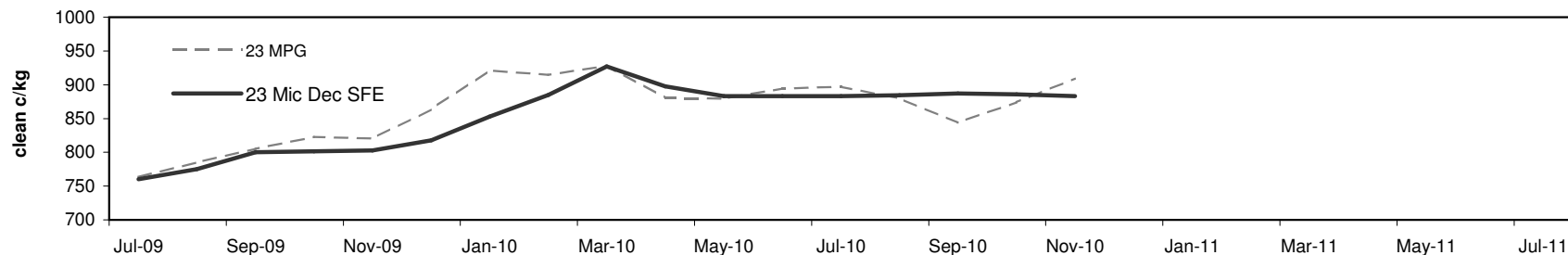
**Table 12: 23 micron SFE, compared to MPG**

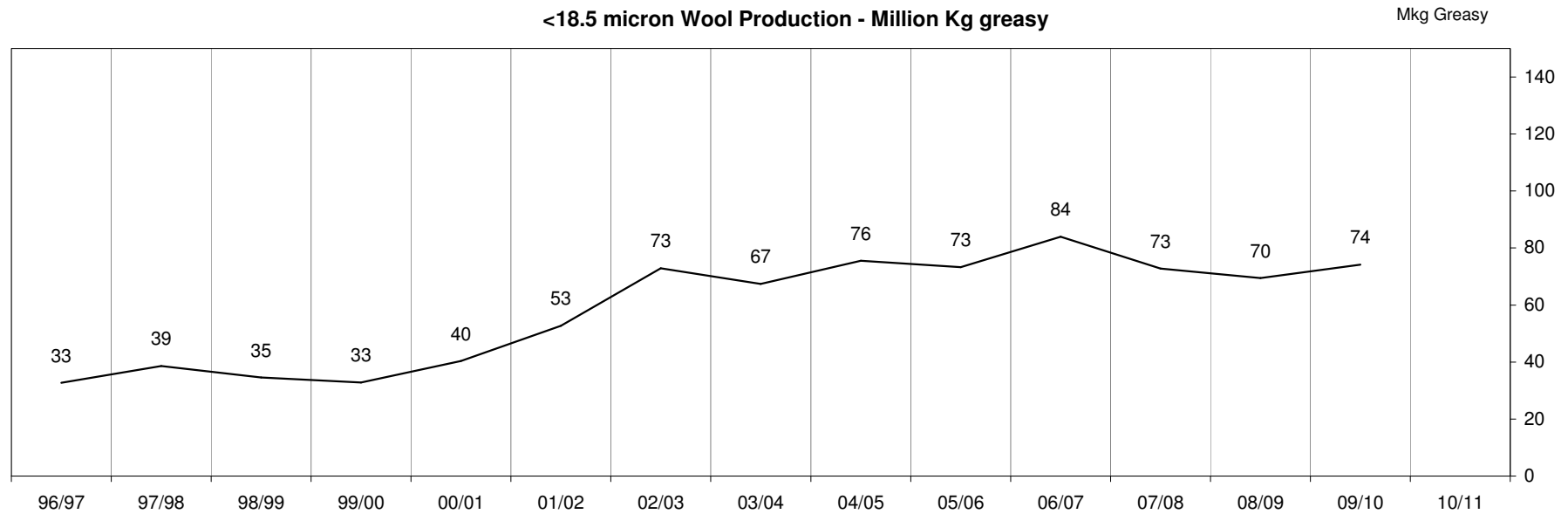
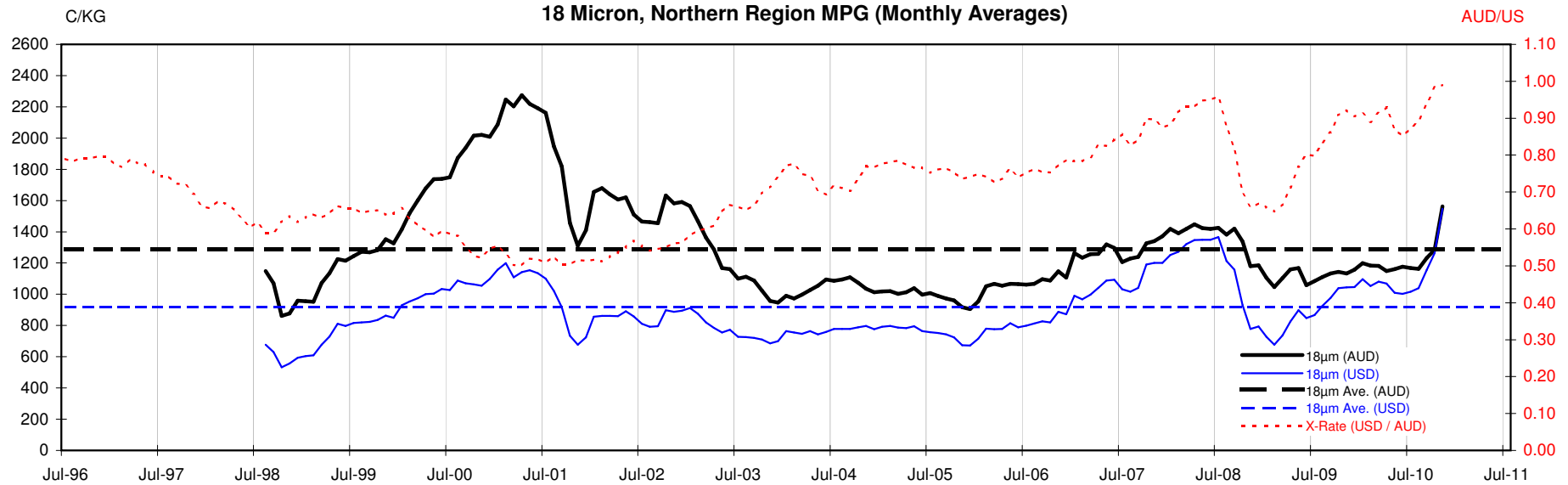
Current 19 MPG	-12	-1%	-12	-1%	-12	-1%	-12	-1%	-12	-1%	-12	-1%	-12	-1%	-12	-1%	-12	-1%
23 MPG, 1 Year Average	-8	-1%	-8	-1%	-8	-1%	-8	-1%	-8	-1%	-8	-1%	-8	-1%	-8	-1%	-8	-1%
23 MPG, 3 Year Average	+53	6%	+53	6%	+53	6%	+53	6%	+53	6%	+53	6%	+53	6%	+53	6%	+53	6%
23 MPG, 10 Year Average	+60	7%	+60	7%	+60	7%	+60	7%	+60	7%	+60	7%	+60	7%	+60	7%	+60	7%

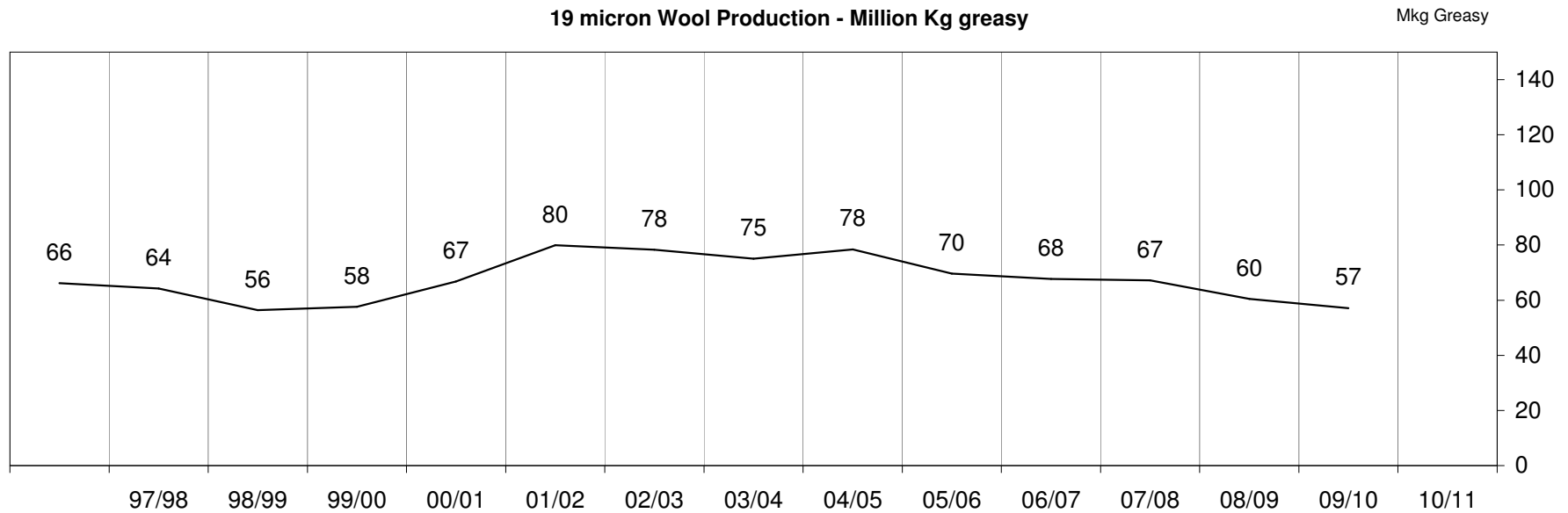
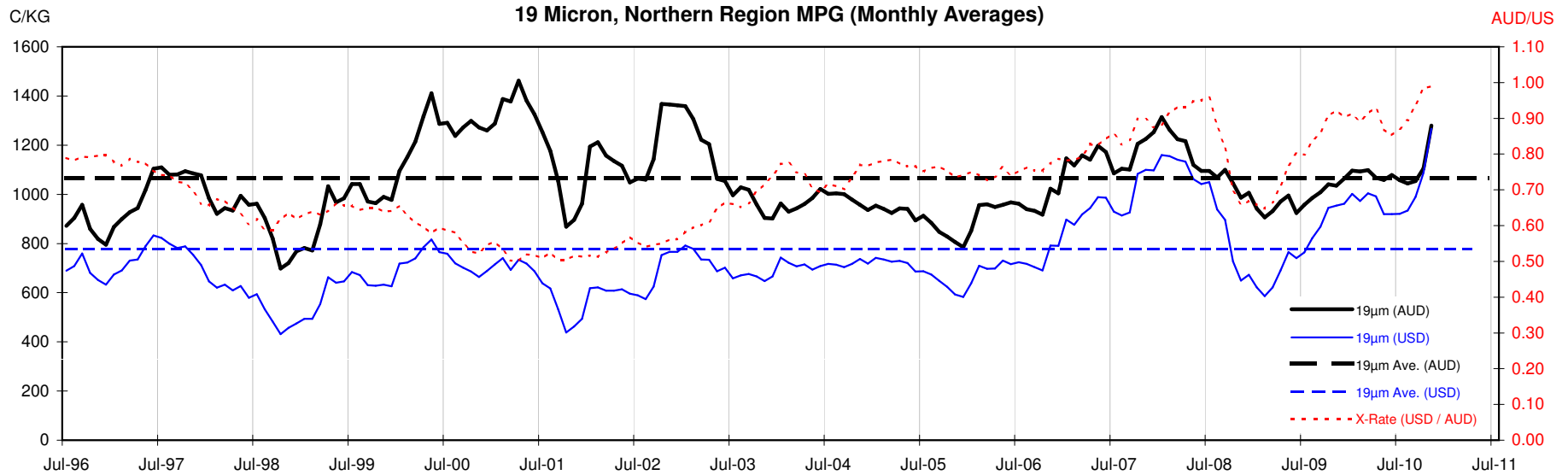
**23 MICRON SFE, QUOTES**

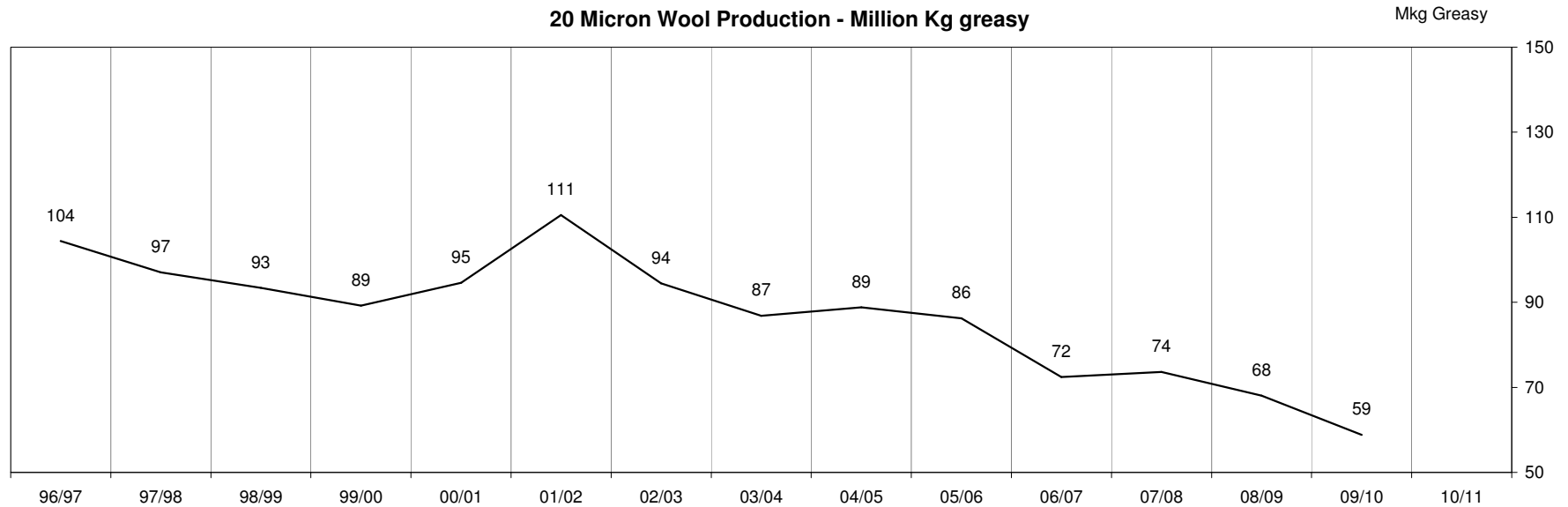
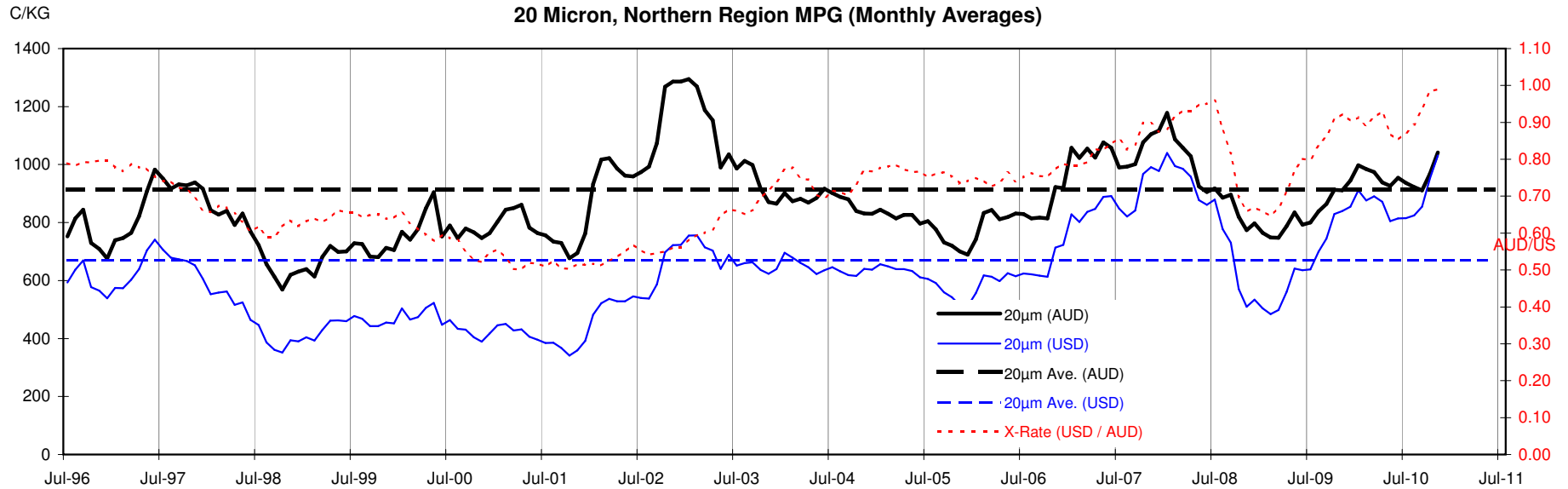


**23 MICRON SFE, FRONT MONTH PRICE MOVEMENT (mthly averages)**

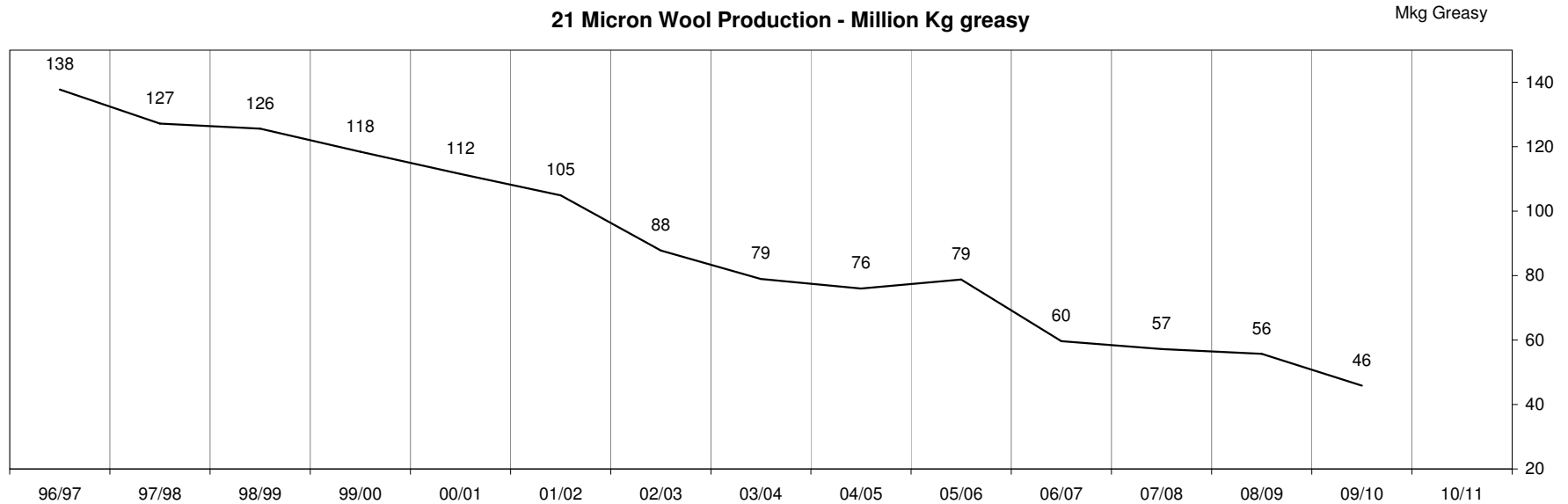
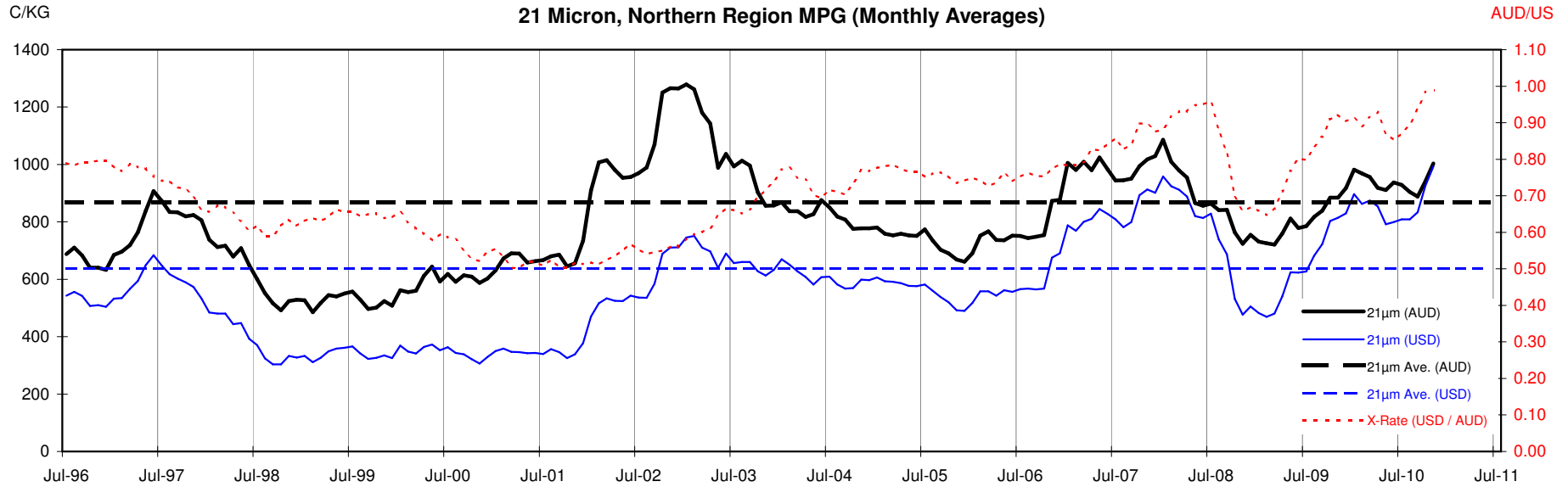


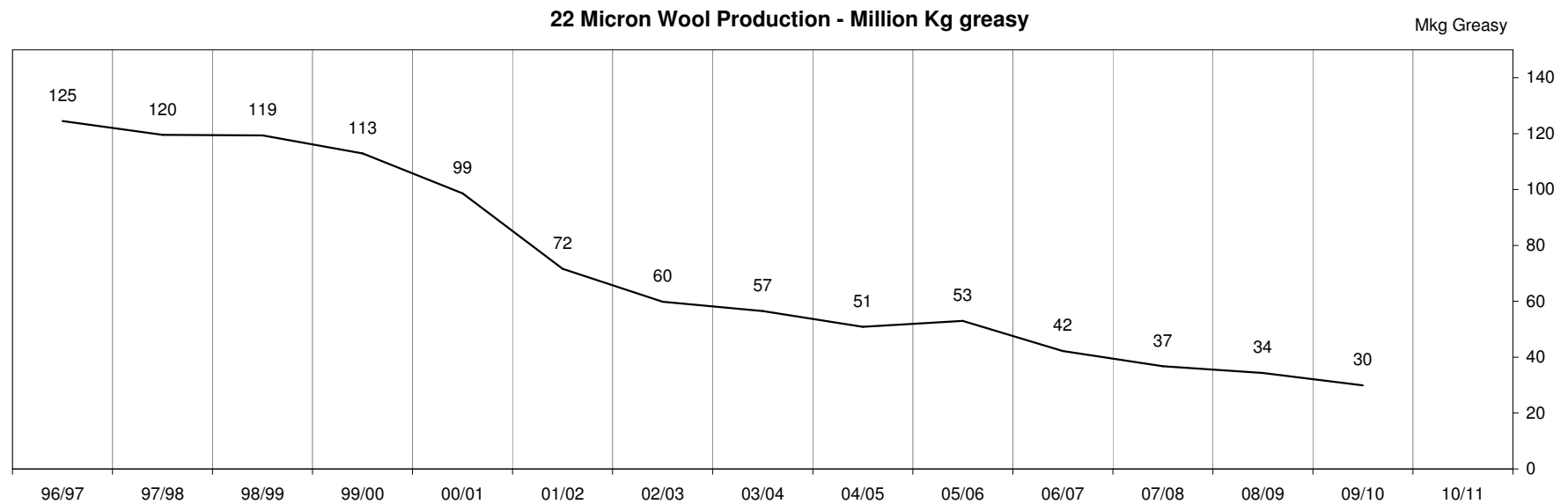
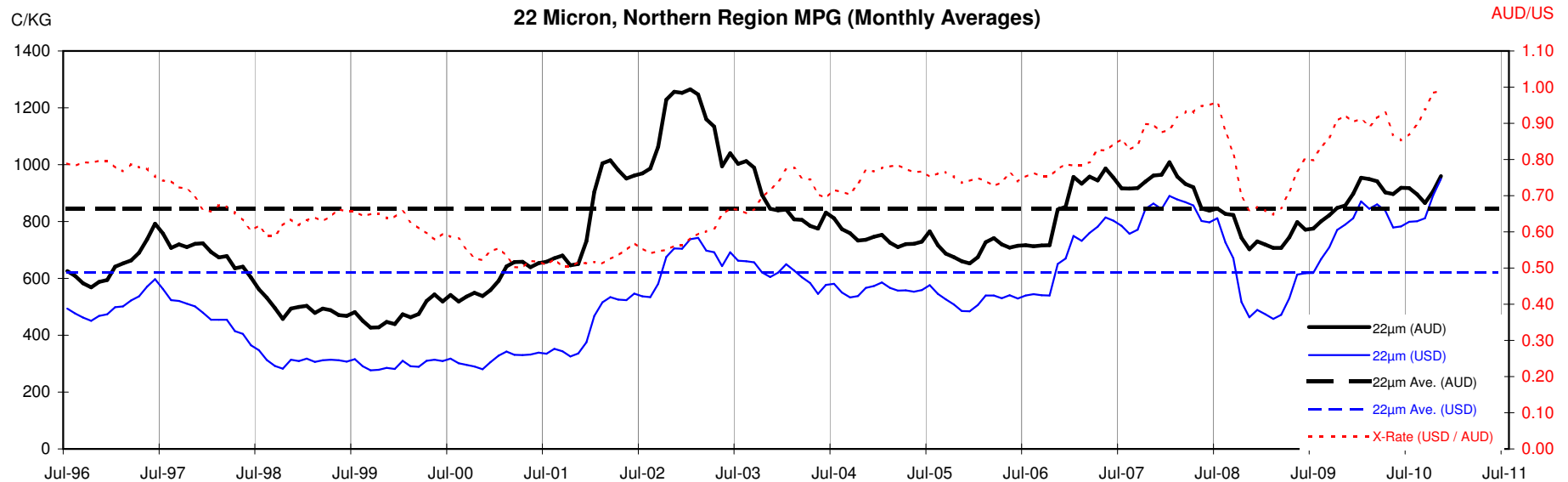


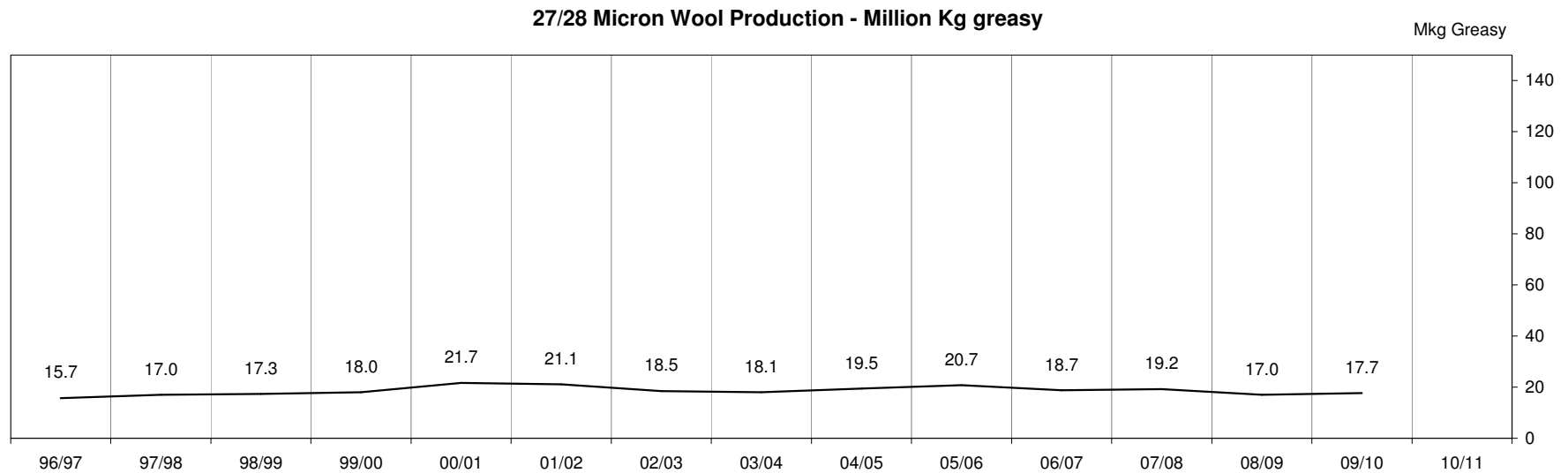
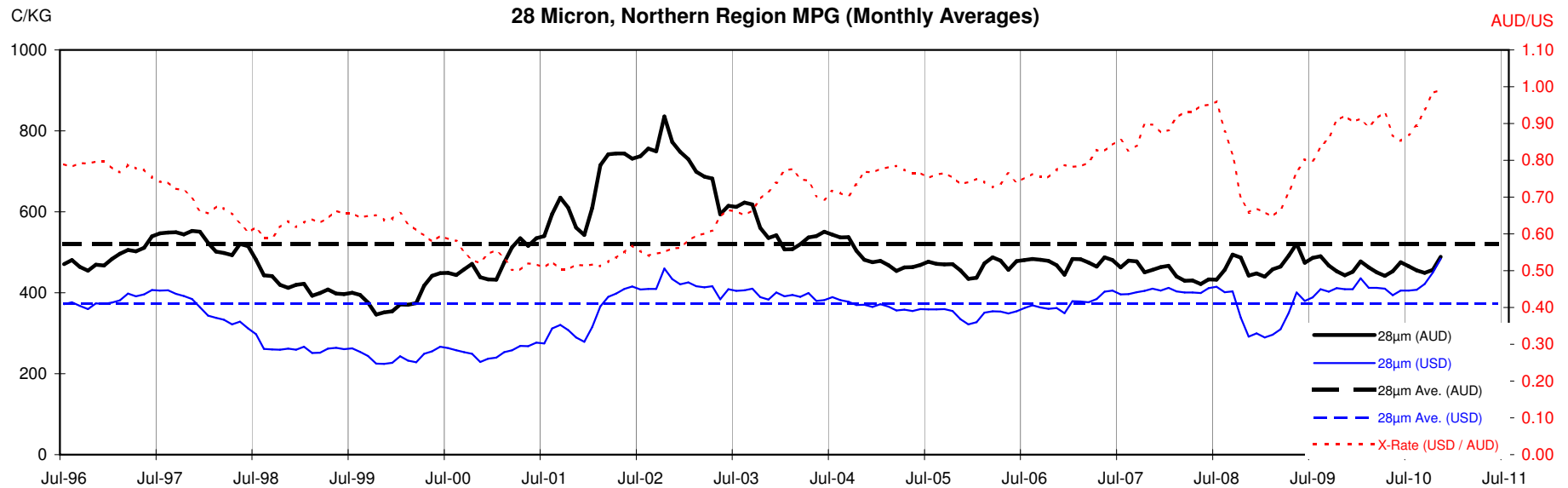












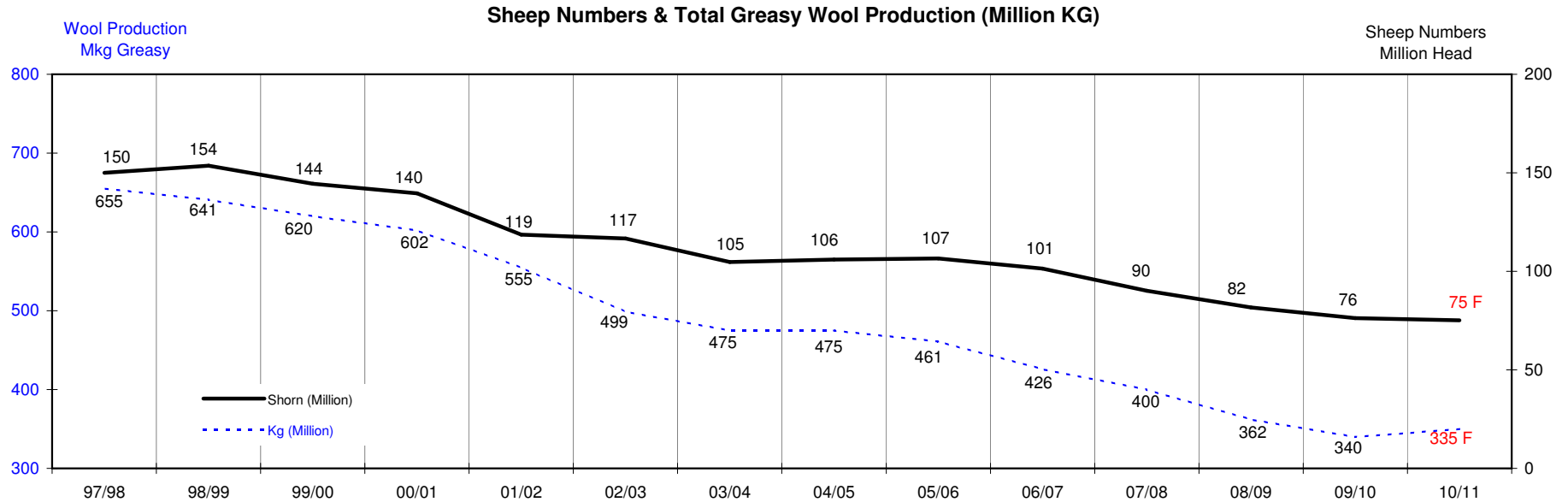
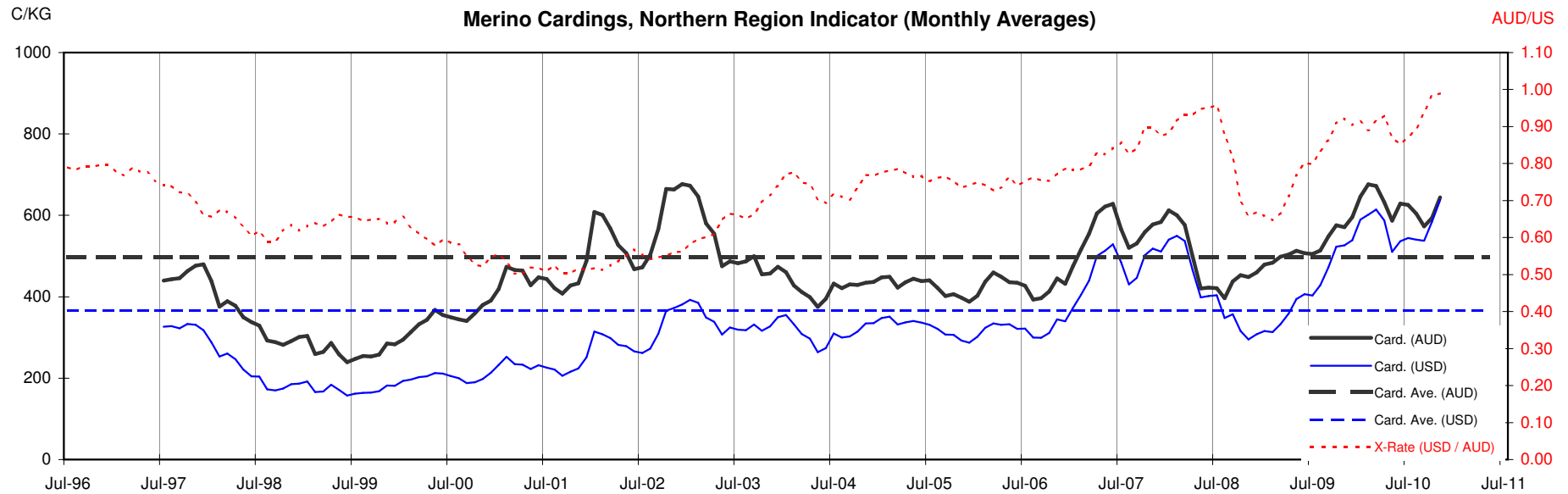




Table 13: Returns pr head for skirted fleece wool.

Skirted FLC Weight 9 Kg		Micron																	
		16	16.5	17	17.5	18	18.5	19	19.5	20	21	22	23	24	25	26	28	30	32
Yield (Sch Dry)	25% Current	\$44	\$43	\$40	\$37	\$36	\$33	\$29	\$25	\$22	\$22	\$21	\$20	\$19	\$17	\$15	\$11	\$10	\$9
	10yr ave.			\$32	\$29			\$24		\$21	\$20	\$19	\$19	\$18	\$16	\$15	\$12	\$10	\$9
	30% Current	\$53	\$51	\$48	\$45	\$44	\$40	\$34	\$30	\$27	\$26	\$25	\$24	\$22	\$21	\$18	\$13	\$12	\$11
	10yr ave.			\$38	\$35			\$29		\$25	\$23	\$23	\$22	\$21	\$19	\$17	\$14	\$12	\$11
	35% Current	\$62	\$60	\$56	\$52	\$51	\$47	\$40	\$35	\$31	\$31	\$29	\$28	\$26	\$24	\$22	\$15	\$14	\$13
	10yr ave.			\$44	\$41			\$34		\$29	\$27	\$27	\$26	\$25	\$22	\$20	\$16	\$14	\$13
	40% Current	\$71	\$68	\$64	\$60	\$58	\$53	\$46	\$40	\$36	\$35	\$34	\$32	\$30	\$28	\$25	\$18	\$16	\$15
	10yr ave.			\$51	\$46			\$38		\$33	\$31	\$30	\$30	\$28	\$25	\$23	\$19	\$16	\$15
	45% Current	\$80	\$77	\$71	\$67	\$66	\$60	\$52	\$45	\$40	\$40	\$38	\$36	\$34	\$31	\$28	\$20	\$18	\$17
	10yr ave.			\$57	\$52			\$43		\$37	\$35	\$34	\$33	\$32	\$29	\$26	\$21	\$18	\$17
	50% Current	\$89	\$85	\$79	\$74	\$73	\$67	\$57	\$50	\$45	\$44	\$42	\$40	\$37	\$35	\$31	\$22	\$20	\$18
	10yr ave.			\$63	\$58			\$48		\$41	\$39	\$38	\$37	\$35	\$32	\$29	\$23	\$20	\$19
	55% Current	\$98	\$94	\$87	\$82	\$80	\$73	\$63	\$55	\$49	\$48	\$46	\$44	\$41	\$38	\$34	\$24	\$22	\$20
	10yr ave.			\$70	\$64			\$53		\$45	\$43	\$42	\$41	\$39	\$35	\$32	\$26	\$23	\$20
	60% Current	\$106	\$102	\$95	\$89	\$87	\$80	\$69	\$60	\$54	\$53	\$50	\$48	\$45	\$41	\$37	\$26	\$24	\$22
	10yr ave.			\$76	\$69			\$58		\$49	\$47	\$46	\$44	\$42	\$38	\$35	\$28	\$25	\$22
	65% Current	\$115	\$111	\$103	\$97	\$95	\$87	\$75	\$65	\$58	\$57	\$54	\$52	\$49	\$45	\$40	\$29	\$26	\$24
	10yr ave.			\$82	\$75			\$62		\$53	\$51	\$49	\$48	\$46	\$41	\$38	\$30	\$27	\$24
	70% Current	\$124	\$119	\$111	\$104	\$102	\$93	\$80	\$70	\$63	\$61	\$59	\$56	\$52	\$48	\$43	\$31	\$28	\$26
	10yr ave.			\$89	\$81			\$67		\$58	\$55	\$53	\$52	\$50	\$45	\$41	\$33	\$29	\$26
	75% Current	\$133	\$128	\$119	\$112	\$109	\$100	\$86	\$75	\$67	\$66	\$63	\$60	\$56	\$52	\$46	\$33	\$30	\$28
	10yr ave.			\$95	\$87			\$72		\$62	\$59	\$57	\$56	\$53	\$48	\$44	\$35	\$31	\$28
	80% Current	\$142	\$136	\$127	\$119	\$117	\$107	\$92	\$80	\$72	\$70	\$67	\$64	\$60	\$55	\$49	\$35	\$32	\$30
	10yr ave.			\$101	\$93			\$77		\$66	\$62	\$61	\$59	\$57	\$51	\$47	\$38	\$33	\$30
	85% Current	\$151	\$145	\$135	\$127	\$124	\$113	\$98	\$85	\$76	\$75	\$71	\$68	\$63	\$59	\$52	\$37	\$34	\$31
	10yr ave.			\$108	\$98			\$82		\$70	\$66	\$65	\$63	\$60	\$54	\$50	\$40	\$35	\$32

The above shows estimated returns per head for skirted fleece wool. These figures do not take into account the value of skirtings and oddments and do not take into account discounts that may apply for faults under individual circumstances. These figures are based on a market index of 100% and should be used as a guide only. Returns over \$30 / head for fleece wool are highlighted.

Source: Australian Wool Exchange, Australian Wool Innovation, Sydney Futures Exchange, x-rates.com

Disclaimer: While all due care has been taken in the preparation of this document, no warranty is made as to its accuracy, reliability or completeness. To the extent permitted by law neither Jemalong or their sources including subsidiaries and staff, accept liability to any person for loss or damage arising from the use of this information.



Table 14: Returns pr head for skirted fleece wool.

Skirted FLC Weight		Micron																	
8 Kg		16	16.5	17	17.5	18	18.5	19	19.5	20	21	22	23	24	25	26	28	30	32
Yield (Sch Dry)	25% Current	\$44	\$43	\$40	\$37	\$36	\$33	\$29	\$25	\$22	\$22	\$21	\$20	\$19	\$17	\$15	\$11	\$10	\$9
	10yr ave.			\$32		\$29		\$24		\$21	\$20	\$19	\$19	\$18	\$16	\$15	\$12	\$10	\$9
	30% Current	\$53	\$51	\$48	\$45	\$44	\$40	\$34	\$30	\$27	\$26	\$25	\$24	\$22	\$21	\$18	\$13	\$12	\$11
	10yr ave.			\$38		\$35		\$29		\$25	\$23	\$23	\$22	\$21	\$19	\$17	\$14	\$12	\$11
	35% Current	\$62	\$60	\$56	\$52	\$51	\$47	\$40	\$35	\$31	\$31	\$29	\$28	\$26	\$24	\$22	\$15	\$14	\$13
	10yr ave.			\$44		\$41		\$34		\$29	\$27	\$27	\$26	\$25	\$22	\$20	\$16	\$14	\$13
	40% Current	\$71	\$68	\$64	\$60	\$58	\$53	\$46	\$40	\$36	\$35	\$34	\$32	\$30	\$28	\$25	\$18	\$16	\$15
	10yr ave.			\$51		\$46		\$38		\$33	\$31	\$30	\$30	\$28	\$25	\$23	\$19	\$16	\$15
	45% Current	\$80	\$77	\$71	\$67	\$66	\$60	\$52	\$45	\$40	\$40	\$38	\$36	\$34	\$31	\$28	\$20	\$18	\$17
	10yr ave.			\$57		\$52		\$43		\$37	\$35	\$34	\$33	\$32	\$29	\$26	\$21	\$18	\$17
	50% Current	\$89	\$85	\$79	\$74	\$73	\$67	\$57	\$50	\$45	\$44	\$42	\$40	\$37	\$35	\$31	\$22	\$20	\$18
	10yr ave.			\$63		\$58		\$48		\$41	\$39	\$38	\$37	\$35	\$32	\$29	\$23	\$20	\$19
	55% Current	\$98	\$94	\$87	\$82	\$80	\$73	\$63	\$55	\$49	\$48	\$46	\$44	\$41	\$38	\$34	\$24	\$22	\$20
	10yr ave.			\$70		\$64		\$53		\$45	\$43	\$42	\$41	\$39	\$35	\$32	\$26	\$23	\$20
	60% Current	\$106	\$102	\$95	\$89	\$87	\$80	\$69	\$60	\$54	\$53	\$50	\$48	\$45	\$41	\$37	\$26	\$24	\$22
	10yr ave.			\$76		\$69		\$58		\$49	\$47	\$46	\$44	\$42	\$38	\$35	\$28	\$25	\$22
	65% Current	\$115	\$111	\$103	\$97	\$95	\$87	\$75	\$65	\$58	\$57	\$54	\$52	\$49	\$45	\$40	\$29	\$26	\$24
	10yr ave.			\$82		\$75		\$62		\$53	\$51	\$49	\$48	\$46	\$41	\$38	\$30	\$27	\$24
	70% Current	\$124	\$119	\$111	\$104	\$102	\$93	\$80	\$70	\$63	\$61	\$59	\$56	\$52	\$48	\$43	\$31	\$28	\$26
	10yr ave.			\$89		\$81		\$67		\$58	\$55	\$53	\$52	\$50	\$45	\$41	\$33	\$29	\$26
	75% Current	\$133	\$128	\$119	\$112	\$109	\$100	\$86	\$75	\$67	\$66	\$63	\$60	\$56	\$52	\$46	\$33	\$30	\$28
	10yr ave.			\$95		\$87		\$72		\$62	\$59	\$57	\$56	\$53	\$48	\$44	\$35	\$31	\$28
	80% Current	\$142	\$136	\$127	\$119	\$117	\$107	\$92	\$80	\$72	\$70	\$67	\$64	\$60	\$55	\$49	\$35	\$32	\$30
	10yr ave.			\$101		\$93		\$77		\$66	\$62	\$61	\$59	\$57	\$51	\$47	\$38	\$33	\$30
	85% Current	\$151	\$145	\$135	\$127	\$124	\$113	\$98	\$85	\$76	\$75	\$71	\$68	\$63	\$59	\$52	\$37	\$34	\$31
	10yr ave.			\$108		\$98		\$82		\$70	\$66	\$65	\$63	\$60	\$54	\$50	\$40	\$35	\$32

The above shows estimated returns per head for skirted fleece wool. These figures do not take into account the value of skirtings and oddments and do not take into account discounts that may apply for faults under individual circumstances. These figures are based on a market index of 100% and should be used as a guide only. Returns over \$30 / head for fleece wool are highlighted.

Source: Australian Wool Exchange, Australian Wool Innovation, Sydney Futures Exchange, x-rates.com

Disclaimer: While all due care has been taken in the preparation of this document, no warranty is made as to its accuracy, reliability or completeness. To the extent permitted by law neither Jemalong or their sources including subsidiaries and staff, accept liability to any person for loss or damage arising from the use of this information.



Table 15: Returns pr head for skirted fleece wool.

Skirted FLC Weight		Micron																	
7 Kg		16	16.5	17	17.5	18	18.5	19	19.5	20	21	22	23	24	25	26	28	30	32
Yield (Sch Dry)	25% Current	\$44	\$43	\$40	\$37	\$36	\$33	\$29	\$25	\$22	\$22	\$21	\$20	\$19	\$17	\$15	\$11	\$10	\$9
	10yr ave.			\$32		\$29		\$24		\$21	\$20	\$19	\$19	\$18	\$16	\$15	\$12	\$10	\$9
	30% Current	\$53	\$51	\$48	\$45	\$44	\$40	\$34	\$30	\$27	\$26	\$25	\$24	\$22	\$21	\$18	\$13	\$12	\$11
	10yr ave.			\$38		\$35		\$29		\$25	\$23	\$23	\$22	\$21	\$19	\$17	\$14	\$12	\$11
	35% Current	\$62	\$60	\$56	\$52	\$51	\$47	\$40	\$35	\$31	\$31	\$29	\$28	\$26	\$24	\$22	\$15	\$14	\$13
	10yr ave.			\$44		\$41		\$34		\$29	\$27	\$27	\$26	\$25	\$22	\$20	\$16	\$14	\$13
	40% Current	\$71	\$68	\$64	\$60	\$58	\$53	\$46	\$40	\$36	\$35	\$34	\$32	\$30	\$28	\$25	\$18	\$16	\$15
	10yr ave.			\$51		\$46		\$38		\$33	\$31	\$30	\$30	\$28	\$25	\$23	\$19	\$16	\$15
	45% Current	\$80	\$77	\$71	\$67	\$66	\$60	\$52	\$45	\$40	\$40	\$38	\$36	\$34	\$31	\$28	\$20	\$18	\$17
	10yr ave.			\$57		\$52		\$43		\$37	\$35	\$34	\$33	\$32	\$29	\$26	\$21	\$18	\$17
	50% Current	\$89	\$85	\$79	\$74	\$73	\$67	\$57	\$50	\$45	\$44	\$42	\$40	\$37	\$35	\$31	\$22	\$20	\$18
	10yr ave.			\$63		\$58		\$48		\$41	\$39	\$38	\$37	\$35	\$32	\$29	\$23	\$20	\$19
	55% Current	\$98	\$94	\$87	\$82	\$80	\$73	\$63	\$55	\$49	\$48	\$46	\$44	\$41	\$38	\$34	\$24	\$22	\$20
	10yr ave.			\$70		\$64		\$53		\$45	\$43	\$42	\$41	\$39	\$35	\$32	\$26	\$23	\$20
	60% Current	\$106	\$102	\$95	\$89	\$87	\$80	\$69	\$60	\$54	\$53	\$50	\$48	\$45	\$41	\$37	\$26	\$24	\$22
	10yr ave.			\$76		\$69		\$58		\$49	\$47	\$46	\$44	\$42	\$38	\$35	\$28	\$25	\$22
	65% Current	\$115	\$111	\$103	\$97	\$95	\$87	\$75	\$65	\$58	\$57	\$54	\$52	\$49	\$45	\$40	\$29	\$26	\$24
	10yr ave.			\$82		\$75		\$62		\$53	\$51	\$49	\$48	\$46	\$41	\$38	\$30	\$27	\$24
	70% Current	\$124	\$119	\$111	\$104	\$102	\$93	\$80	\$70	\$63	\$61	\$59	\$56	\$52	\$48	\$43	\$31	\$28	\$26
	10yr ave.			\$89		\$81		\$67		\$58	\$55	\$53	\$52	\$50	\$45	\$41	\$33	\$29	\$26
	75% Current	\$133	\$128	\$119	\$112	\$109	\$100	\$86	\$75	\$67	\$66	\$63	\$60	\$56	\$52	\$46	\$33	\$30	\$28
	10yr ave.			\$95		\$87		\$72		\$62	\$59	\$57	\$56	\$53	\$48	\$44	\$35	\$31	\$28
	80% Current	\$142	\$136	\$127	\$119	\$117	\$107	\$92	\$80	\$72	\$70	\$67	\$64	\$60	\$55	\$49	\$35	\$32	\$30
	10yr ave.			\$101		\$93		\$77		\$66	\$62	\$61	\$59	\$57	\$51	\$47	\$38	\$33	\$30
	85% Current	\$151	\$145	\$135	\$127	\$124	\$113	\$98	\$85	\$76	\$75	\$71	\$68	\$63	\$59	\$52	\$37	\$34	\$31
	10yr ave.			\$108		\$98		\$82		\$70	\$66	\$65	\$63	\$60	\$54	\$50	\$40	\$35	\$32

The above shows estimated returns per head for skirted fleece wool. These figures do not take into account the value of skirtings and oddments and do not take into account discounts that may apply for faults under individual circumstances. These figures are based on a market index of 100% and should be used as a guide only. Returns over \$30 / head for fleece wool are highlighted.

Source: Australian Wool Exchange, Australian Wool Innovation, Sydney Futures Exchange, x-rates.com

Disclaimer: While all due care has been taken in the preparation of this document, no warranty is made as to its accuracy, reliability or completeness. To the extent permitted by law neither Jemalong or their sources including subsidiaries and staff, accept liability to any person for loss or damage arising from the use of this information.



Table 16: Returns pr head for skirted fleece wool.

Skirted FLC Weight		Micron																	
6 Kg		16	16.5	17	17.5	18	18.5	19	19.5	20	21	22	23	24	25	26	28	30	32
Yield (Sch Dry)	25% Current	\$44	\$43	\$40	\$37	\$36	\$33	\$29	\$25	\$22	\$22	\$21	\$20	\$19	\$17	\$15	\$11	\$10	\$9
	10yr ave.			\$32		\$29		\$24		\$21	\$20	\$19	\$19	\$18	\$16	\$15	\$12	\$10	\$9
	30% Current	\$53	\$51	\$48	\$45	\$44	\$40	\$34	\$30	\$27	\$26	\$25	\$24	\$22	\$21	\$18	\$13	\$12	\$11
	10yr ave.			\$38		\$35		\$29		\$25	\$23	\$23	\$22	\$21	\$19	\$17	\$14	\$12	\$11
	35% Current	\$62	\$60	\$56	\$52	\$51	\$47	\$40	\$35	\$31	\$31	\$29	\$28	\$26	\$24	\$22	\$15	\$14	\$13
	10yr ave.			\$44		\$41		\$34		\$29	\$27	\$27	\$26	\$25	\$22	\$20	\$16	\$14	\$13
	40% Current	\$71	\$68	\$64	\$60	\$58	\$53	\$46	\$40	\$36	\$35	\$34	\$32	\$30	\$28	\$25	\$18	\$16	\$15
	10yr ave.			\$51		\$46		\$38		\$33	\$31	\$30	\$30	\$28	\$25	\$23	\$19	\$16	\$15
	45% Current	\$80	\$77	\$71	\$67	\$66	\$60	\$52	\$45	\$40	\$40	\$38	\$36	\$34	\$31	\$28	\$20	\$18	\$17
	10yr ave.			\$57		\$52		\$43		\$37	\$35	\$34	\$33	\$32	\$29	\$26	\$21	\$18	\$17
	50% Current	\$89	\$85	\$79	\$74	\$73	\$67	\$57	\$50	\$45	\$44	\$42	\$40	\$37	\$35	\$31	\$22	\$20	\$18
	10yr ave.			\$63		\$58		\$48		\$41	\$39	\$38	\$37	\$35	\$32	\$29	\$23	\$20	\$19
	55% Current	\$98	\$94	\$87	\$82	\$80	\$73	\$63	\$55	\$49	\$48	\$46	\$44	\$41	\$38	\$34	\$24	\$22	\$20
	10yr ave.			\$70		\$64		\$53		\$45	\$43	\$42	\$41	\$39	\$35	\$32	\$26	\$23	\$20
	60% Current	\$106	\$102	\$95	\$89	\$87	\$80	\$69	\$60	\$54	\$53	\$50	\$48	\$45	\$41	\$37	\$26	\$24	\$22
	10yr ave.			\$76		\$69		\$58		\$49	\$47	\$46	\$44	\$42	\$38	\$35	\$28	\$25	\$22
	65% Current	\$115	\$111	\$103	\$97	\$95	\$87	\$75	\$65	\$58	\$57	\$54	\$52	\$49	\$45	\$40	\$29	\$26	\$24
	10yr ave.			\$82		\$75		\$62		\$53	\$51	\$49	\$48	\$46	\$41	\$38	\$30	\$27	\$24
	70% Current	\$124	\$119	\$111	\$104	\$102	\$93	\$80	\$70	\$63	\$61	\$59	\$56	\$52	\$48	\$43	\$31	\$28	\$26
	10yr ave.			\$89		\$81		\$67		\$58	\$55	\$53	\$52	\$50	\$45	\$41	\$33	\$29	\$26
	75% Current	\$133	\$128	\$119	\$112	\$109	\$100	\$86	\$75	\$67	\$66	\$63	\$60	\$56	\$52	\$46	\$33	\$30	\$28
	10yr ave.			\$95		\$87		\$72		\$62	\$59	\$57	\$56	\$53	\$48	\$44	\$35	\$31	\$28
	80% Current	\$142	\$136	\$127	\$119	\$117	\$107	\$92	\$80	\$72	\$70	\$67	\$64	\$60	\$55	\$49	\$35	\$32	\$30
	10yr ave.			\$101		\$93		\$77		\$66	\$62	\$61	\$59	\$57	\$51	\$47	\$38	\$33	\$30
	85% Current	\$151	\$145	\$135	\$127	\$124	\$113	\$98	\$85	\$76	\$75	\$71	\$68	\$63	\$59	\$52	\$37	\$34	\$31
	10yr ave.			\$108		\$98		\$82		\$70	\$66	\$65	\$63	\$60	\$54	\$50	\$40	\$35	\$32

The above shows estimated returns per head for skirted fleece wool. These figures do not take into account the value of skirtings and oddments and do not take into account discounts that may apply for faults under individual circumstances. These figures are based on a market index of 100% and should be used as a guide only. Returns over \$30 / head for fleece wool are highlighted.

Source: Australian Wool Exchange, Australian Wool Innovation, Sydney Futures Exchange, x-rates.com

Disclaimer: While all due care has been taken in the preparation of this document, no warranty is made as to its accuracy, reliability or completeness. To the extent permitted by law neither Jemalong or their sources including subsidiaries and staff, accept liability to any person for loss or damage arising from the use of this information.





Table 17: Returns pr head for skirted fleece wool.

Skirted FLC Weight		Micron																	
5 Kg		16	16.5	17	17.5	18	18.5	19	19.5	20	21	22	23	24	25	26	28	30	32
Yield (Sch Dry)	25% Current	\$44	\$43	\$40	\$37	\$36	\$33	\$29	\$25	\$22	\$22	\$21	\$20	\$19	\$17	\$15	\$11	\$10	\$9
	10yr ave.			\$32		\$29		\$24		\$21	\$20	\$19	\$19	\$18	\$16	\$15	\$12	\$10	\$9
	30% Current	\$53	\$51	\$48	\$45	\$44	\$40	\$34	\$30	\$27	\$26	\$25	\$24	\$22	\$21	\$18	\$13	\$12	\$11
	10yr ave.			\$38		\$35		\$29		\$25	\$23	\$23	\$22	\$21	\$19	\$17	\$14	\$12	\$11
	35% Current	\$62	\$60	\$56	\$52	\$51	\$47	\$40	\$35	\$31	\$31	\$29	\$28	\$26	\$24	\$22	\$15	\$14	\$13
	10yr ave.			\$44		\$41		\$34		\$29	\$27	\$27	\$26	\$25	\$22	\$20	\$16	\$14	\$13
	40% Current	\$71	\$68	\$64	\$60	\$58	\$53	\$46	\$40	\$36	\$35	\$34	\$32	\$30	\$28	\$25	\$18	\$16	\$15
	10yr ave.			\$51		\$46		\$38		\$33	\$31	\$30	\$30	\$28	\$25	\$23	\$19	\$16	\$15
	45% Current	\$80	\$77	\$71	\$67	\$66	\$60	\$52	\$45	\$40	\$40	\$38	\$36	\$34	\$31	\$28	\$20	\$18	\$17
	10yr ave.			\$57		\$52		\$43		\$37	\$35	\$34	\$33	\$32	\$29	\$26	\$21	\$18	\$17
	50% Current	\$89	\$85	\$79	\$74	\$73	\$67	\$57	\$50	\$45	\$44	\$42	\$40	\$37	\$35	\$31	\$22	\$20	\$18
	10yr ave.			\$63		\$58		\$48		\$41	\$39	\$38	\$37	\$35	\$32	\$29	\$23	\$20	\$19
	55% Current	\$98	\$94	\$87	\$82	\$80	\$73	\$63	\$55	\$49	\$48	\$46	\$44	\$41	\$38	\$34	\$24	\$22	\$20
	10yr ave.			\$70		\$64		\$53		\$45	\$43	\$42	\$41	\$39	\$35	\$32	\$26	\$23	\$20
	60% Current	\$106	\$102	\$95	\$89	\$87	\$80	\$69	\$60	\$54	\$53	\$50	\$48	\$45	\$41	\$37	\$26	\$24	\$22
	10yr ave.			\$76		\$69		\$58		\$49	\$47	\$46	\$44	\$42	\$38	\$35	\$28	\$25	\$22
	65% Current	\$115	\$111	\$103	\$97	\$95	\$87	\$75	\$65	\$58	\$57	\$54	\$52	\$49	\$45	\$40	\$29	\$26	\$24
	10yr ave.			\$82		\$75		\$62		\$53	\$51	\$49	\$48	\$46	\$41	\$38	\$30	\$27	\$24
	70% Current	\$124	\$119	\$111	\$104	\$102	\$93	\$80	\$70	\$63	\$61	\$59	\$56	\$52	\$48	\$43	\$31	\$28	\$26
	10yr ave.			\$89		\$81		\$67		\$58	\$55	\$53	\$52	\$50	\$45	\$41	\$33	\$29	\$26
	75% Current	\$133	\$128	\$119	\$112	\$109	\$100	\$86	\$75	\$67	\$66	\$63	\$60	\$56	\$52	\$46	\$33	\$30	\$28
	10yr ave.			\$95		\$87		\$72		\$62	\$59	\$57	\$56	\$53	\$48	\$44	\$35	\$31	\$28
	80% Current	\$142	\$136	\$127	\$119	\$117	\$107	\$92	\$80	\$72	\$70	\$67	\$64	\$60	\$55	\$49	\$35	\$32	\$30
	10yr ave.			\$101		\$93		\$77		\$66	\$62	\$61	\$59	\$57	\$51	\$47	\$38	\$33	\$30
	85% Current	\$151	\$145	\$135	\$127	\$124	\$113	\$98	\$85	\$76	\$75	\$71	\$68	\$63	\$59	\$52	\$37	\$34	\$31
	10yr ave.			\$108		\$98		\$82		\$70	\$66	\$65	\$63	\$60	\$54	\$50	\$40	\$35	\$32

The above shows estimated returns per head for skirted fleece wool. These figures do not take into account the value of skirtings and oddments and do not take into account discounts that may apply for faults under individual circumstances. These figures are based on a market index of 100% and should be used as a guide only. Returns over \$30 / head for fleece wool are highlighted.

Source: Australian Wool Exchange, Australian Wool Innovation, Sydney Futures Exchange, x-rates.com

Disclaimer: While all due care has been taken in the preparation of this document, no warranty is made as to its accuracy, reliability or completeness. To the extent permitted by law neither Jemalong or their sources including subsidiaries and staff, accept liability to any person for loss or damage arising from the use of this information.



Table 18: Returns pr head for skirted fleece wool.

Skirted FLC Weight		Micron																	
4 Kg		16	16.5	17	17.5	18	18.5	19	19.5	20	21	22	23	24	25	26	28	30	32
Yield (Sch Dry)	25% Current	\$44	\$43	\$40	\$37	\$36	\$33	\$29	\$25	\$22	\$22	\$21	\$20	\$19	\$17	\$15	\$11	\$10	\$9
	10yr ave.			\$32		\$29		\$24		\$21	\$20	\$19	\$19	\$18	\$16	\$15	\$12	\$10	\$9
	30% Current	\$53	\$51	\$48	\$45	\$44	\$40	\$34	\$30	\$27	\$26	\$25	\$24	\$22	\$21	\$18	\$13	\$12	\$11
	10yr ave.			\$38		\$35		\$29		\$25	\$23	\$23	\$22	\$21	\$19	\$17	\$14	\$12	\$11
	35% Current	\$62	\$60	\$56	\$52	\$51	\$47	\$40	\$35	\$31	\$31	\$29	\$28	\$26	\$24	\$22	\$15	\$14	\$13
	10yr ave.			\$44		\$41		\$34		\$29	\$27	\$27	\$26	\$25	\$22	\$20	\$16	\$14	\$13
	40% Current	\$71	\$68	\$64	\$60	\$58	\$53	\$46	\$40	\$36	\$35	\$34	\$32	\$30	\$28	\$25	\$18	\$16	\$15
	10yr ave.			\$51		\$46		\$38		\$33	\$31	\$30	\$30	\$28	\$25	\$23	\$19	\$16	\$15
	45% Current	\$80	\$77	\$71	\$67	\$66	\$60	\$52	\$45	\$40	\$40	\$38	\$36	\$34	\$31	\$28	\$20	\$18	\$17
	10yr ave.			\$57		\$52		\$43		\$37	\$35	\$34	\$33	\$32	\$29	\$26	\$21	\$18	\$17
	50% Current	\$89	\$85	\$79	\$74	\$73	\$67	\$57	\$50	\$45	\$44	\$42	\$40	\$37	\$35	\$31	\$22	\$20	\$18
	10yr ave.			\$63		\$58		\$48		\$41	\$39	\$38	\$37	\$35	\$32	\$29	\$23	\$20	\$19
	55% Current	\$98	\$94	\$87	\$82	\$80	\$73	\$63	\$55	\$49	\$48	\$46	\$44	\$41	\$38	\$34	\$24	\$22	\$20
	10yr ave.			\$70		\$64		\$53		\$45	\$43	\$42	\$41	\$39	\$35	\$32	\$26	\$23	\$20
	60% Current	\$106	\$102	\$95	\$89	\$87	\$80	\$69	\$60	\$54	\$53	\$50	\$48	\$45	\$41	\$37	\$26	\$24	\$22
	10yr ave.			\$76		\$69		\$58		\$49	\$47	\$46	\$44	\$42	\$38	\$35	\$28	\$25	\$22
	65% Current	\$115	\$111	\$103	\$97	\$95	\$87	\$75	\$65	\$58	\$57	\$54	\$52	\$49	\$45	\$40	\$29	\$26	\$24
	10yr ave.			\$82		\$75		\$62		\$53	\$51	\$49	\$48	\$46	\$41	\$38	\$30	\$27	\$24
	70% Current	\$124	\$119	\$111	\$104	\$102	\$93	\$80	\$70	\$63	\$61	\$59	\$56	\$52	\$48	\$43	\$31	\$28	\$26
	10yr ave.			\$89		\$81		\$67		\$58	\$55	\$53	\$52	\$50	\$45	\$41	\$33	\$29	\$26
	75% Current	\$133	\$128	\$119	\$112	\$109	\$100	\$86	\$75	\$67	\$66	\$63	\$60	\$56	\$52	\$46	\$33	\$30	\$28
	10yr ave.			\$95		\$87		\$72		\$62	\$59	\$57	\$56	\$53	\$48	\$44	\$35	\$31	\$28
	80% Current	\$142	\$136	\$127	\$119	\$117	\$107	\$92	\$80	\$72	\$70	\$67	\$64	\$60	\$55	\$49	\$35	\$32	\$30
	10yr ave.			\$101		\$93		\$77		\$66	\$62	\$61	\$59	\$57	\$51	\$47	\$38	\$33	\$30
	85% Current	\$151	\$145	\$135	\$127	\$124	\$113	\$98	\$85	\$76	\$75	\$71	\$68	\$63	\$59	\$52	\$37	\$34	\$31
	10yr ave.			\$108		\$98		\$82		\$70	\$66	\$65	\$63	\$60	\$54	\$50	\$40	\$35	\$32

The above shows estimated returns per head for skirted fleece wool. These figures do not take into account the value of skirtings and oddments and do not take into account discounts that may apply for faults under individual circumstances. These figures are based on a market index of 100% and should be used as a guide only. Returns over \$30 / head for fleece wool are highlighted.

Source: Australian Wool Exchange, Australian Wool Innovation, Sydney Futures Exchange, x-rates.com

Disclaimer: While all due care has been taken in the preparation of this document, no warranty is made as to its accuracy, reliability or completeness. To the extent permitted by law neither Jemalong or their sources including subsidiaries and staff, accept liability to any person for loss or damage arising from the use of this information.



Table 19: Returns pr head for skirted fleece wool.

Skirted FLC Weight  3 Kg			Micron																	
			16	16.5	17	17.5	18	18.5	19	19.5	20	21	22	23	24	25	26	28	30	32
Yield (Sch Dry)	25%	Current	\$44	\$43	\$40	\$37	\$36	\$33	\$29	\$25	\$22	\$22	\$21	\$20	\$19	\$17	\$15	\$11	\$10	\$9
		10yr ave.			\$32		\$29		\$24		\$21	\$20	\$19	\$19	\$18	\$16	\$15	\$12	\$10	\$9
	30%	Current	\$53	\$51	\$48	\$45	\$44	\$40	\$34	\$30	\$27	\$26	\$25	\$24	\$22	\$21	\$18	\$13	\$12	\$11
		10yr ave.			\$38		\$35		\$29		\$25	\$23	\$23	\$22	\$21	\$19	\$17	\$14	\$12	\$11
	35%	Current	\$62	\$60	\$56	\$52	\$51	\$47	\$40	\$35	\$31	\$31	\$29	\$28	\$26	\$24	\$22	\$15	\$14	\$13
		10yr ave.			\$44		\$41		\$34		\$29	\$27	\$27	\$26	\$25	\$22	\$20	\$16	\$14	\$13
	40%	Current	\$71	\$68	\$64	\$60	\$58	\$53	\$46	\$40	\$36	\$35	\$34	\$32	\$30	\$28	\$25	\$18	\$16	\$15
		10yr ave.			\$51		\$46		\$38		\$33	\$31	\$30	\$30	\$28	\$25	\$23	\$19	\$16	\$15
	45%	Current	\$80	\$77	\$71	\$67	\$66	\$60	\$52	\$45	\$40	\$40	\$38	\$36	\$34	\$31	\$28	\$20	\$18	\$17
		10yr ave.			\$57		\$52		\$43		\$37	\$35	\$34	\$33	\$32	\$29	\$26	\$21	\$18	\$17
	50%	Current	\$89	\$85	\$79	\$74	\$73	\$67	\$57	\$50	\$45	\$44	\$42	\$40	\$37	\$35	\$31	\$22	\$20	\$18
		10yr ave.			\$63		\$58		\$48		\$41	\$39	\$38	\$37	\$35	\$32	\$29	\$23	\$20	\$19
	55%	Current	\$98	\$94	\$87	\$82	\$80	\$73	\$63	\$55	\$49	\$48	\$46	\$44	\$41	\$38	\$34	\$24	\$22	\$20
		10yr ave.			\$70		\$64		\$53		\$45	\$43	\$42	\$41	\$39	\$35	\$32	\$26	\$23	\$20
60%	Current	\$106	\$102	\$95	\$89	\$87	\$80	\$69	\$60	\$54	\$53	\$50	\$48	\$45	\$41	\$37	\$26	\$24	\$22	
	10yr ave.			\$76		\$69		\$58		\$49	\$47	\$46	\$44	\$42	\$38	\$35	\$28	\$25	\$22	
65%	Current	\$115	\$111	\$103	\$97	\$95	\$87	\$75	\$65	\$58	\$57	\$54	\$52	\$49	\$45	\$40	\$29	\$26	\$24	
	10yr ave.			\$82		\$75		\$62		\$53	\$51	\$49	\$48	\$46	\$41	\$38	\$30	\$27	\$24	
70%	Current	\$124	\$119	\$111	\$104	\$102	\$93	\$80	\$70	\$63	\$61	\$59	\$56	\$52	\$48	\$43	\$31	\$28	\$26	
	10yr ave.			\$89		\$81		\$67		\$58	\$55	\$53	\$52	\$50	\$45	\$41	\$33	\$29	\$26	
75%	Current	\$133	\$128	\$119	\$112	\$109	\$100	\$86	\$75	\$67	\$66	\$63	\$60	\$56	\$52	\$46	\$33	\$30	\$28	
	10yr ave.			\$95		\$87		\$72		\$62	\$59	\$57	\$56	\$53	\$48	\$44	\$35	\$31	\$28	
80%	Current	\$142	\$136	\$127	\$119	\$117	\$107	\$92	\$80	\$72	\$70	\$67	\$64	\$60	\$55	\$49	\$35	\$32	\$30	
	10yr ave.			\$101		\$93		\$77		\$66	\$62	\$61	\$59	\$57	\$51	\$47	\$38	\$33	\$30	
85%	Current	\$151	\$145	\$135	\$127	\$124	\$113	\$98	\$85	\$76	\$75	\$71	\$68	\$63	\$59	\$52	\$37	\$34	\$31	
	10yr ave.			\$108		\$98		\$82		\$70	\$66	\$65	\$63	\$60	\$54	\$50	\$40	\$35	\$32	

The above shows estimated returns per head for skirted fleece wool. These figures do not take into account the value of skirtings and oddments and do not take into account discounts that may apply for faults under individual circumstances. These figures are based on a market index of 100% and should be used as a guide only. Returns over \$30 / head for fleece wool are highlighted.

Source: Australian Wool Exchange, Australian Wool Innovation, Sydney Futures Exchange, x-rates.com

Disclaimer: While all due care has been taken in the preparation of this document, no warranty is made as to its accuracy, reliability or completeness. To the extent permitted by law neither Jemalong or their sources including subsidiaries and staff, accept liability to any person for loss or damage arising from the use of this information.



Table 20: Returns pr head for skirted fleece wool.

Skirted FLC Weight  2 Kg			Micron																	
			16	16.5	17	17.5	18	18.5	19	19.5	20	21	22	23	24	25	26	28	30	32
Yield (Sch Dry)	25%	Current	\$44	\$43	\$40	\$37	\$36	\$33	\$29	\$25	\$22	\$22	\$21	\$20	\$19	\$17	\$15	\$11	\$10	\$9
		10yr ave.			\$32		\$29		\$24		\$21	\$20	\$19	\$19	\$18	\$16	\$15	\$12	\$10	\$9
	30%	Current	\$53	\$51	\$48	\$45	\$44	\$40	\$34	\$30	\$27	\$26	\$25	\$24	\$22	\$21	\$18	\$13	\$12	\$11
		10yr ave.			\$38		\$35		\$29		\$25	\$23	\$23	\$22	\$21	\$19	\$17	\$14	\$12	\$11
	35%	Current	\$62	\$60	\$56	\$52	\$51	\$47	\$40	\$35	\$31	\$31	\$29	\$28	\$26	\$24	\$22	\$15	\$14	\$13
		10yr ave.			\$44		\$41		\$34		\$29	\$27	\$27	\$26	\$25	\$22	\$20	\$16	\$14	\$13
	40%	Current	\$71	\$68	\$64	\$60	\$58	\$53	\$46	\$40	\$36	\$35	\$34	\$32	\$30	\$28	\$25	\$18	\$16	\$15
		10yr ave.			\$51		\$46		\$38		\$33	\$31	\$30	\$30	\$28	\$25	\$23	\$19	\$16	\$15
	45%	Current	\$80	\$77	\$71	\$67	\$66	\$60	\$52	\$45	\$40	\$40	\$38	\$36	\$34	\$31	\$28	\$20	\$18	\$17
		10yr ave.			\$57		\$52		\$43		\$37	\$35	\$34	\$33	\$32	\$29	\$26	\$21	\$18	\$17
	50%	Current	\$89	\$85	\$79	\$74	\$73	\$67	\$57	\$50	\$45	\$44	\$42	\$40	\$37	\$35	\$31	\$22	\$20	\$18
		10yr ave.			\$63		\$58		\$48		\$41	\$39	\$38	\$37	\$35	\$32	\$29	\$23	\$20	\$19
	55%	Current	\$98	\$94	\$87	\$82	\$80	\$73	\$63	\$55	\$49	\$48	\$46	\$44	\$41	\$38	\$34	\$24	\$22	\$20
		10yr ave.			\$70		\$64		\$53		\$45	\$43	\$42	\$41	\$39	\$35	\$32	\$26	\$23	\$20
60%	Current	\$106	\$102	\$95	\$89	\$87	\$80	\$69	\$60	\$54	\$53	\$50	\$48	\$45	\$41	\$37	\$26	\$24	\$22	
	10yr ave.			\$76		\$69		\$58		\$49	\$47	\$46	\$44	\$42	\$38	\$35	\$28	\$25	\$22	
65%	Current	\$115	\$111	\$103	\$97	\$95	\$87	\$75	\$65	\$58	\$57	\$54	\$52	\$49	\$45	\$40	\$29	\$26	\$24	
	10yr ave.			\$82		\$75		\$62		\$53	\$51	\$49	\$48	\$46	\$41	\$38	\$30	\$27	\$24	
70%	Current	\$124	\$119	\$111	\$104	\$102	\$93	\$80	\$70	\$63	\$61	\$59	\$56	\$52	\$48	\$43	\$31	\$28	\$26	
	10yr ave.			\$89		\$81		\$67		\$58	\$55	\$53	\$52	\$50	\$45	\$41	\$33	\$29	\$26	
75%	Current	\$133	\$128	\$119	\$112	\$109	\$100	\$86	\$75	\$67	\$66	\$63	\$60	\$56	\$52	\$46	\$33	\$30	\$28	
	10yr ave.			\$95		\$87		\$72		\$62	\$59	\$57	\$56	\$53	\$48	\$44	\$35	\$31	\$28	
80%	Current	\$142	\$136	\$127	\$119	\$117	\$107	\$92	\$80	\$72	\$70	\$67	\$64	\$60	\$55	\$49	\$35	\$32	\$30	
	10yr ave.			\$101		\$93		\$77		\$66	\$62	\$61	\$59	\$57	\$51	\$47	\$38	\$33	\$30	
85%	Current	\$151	\$145	\$135	\$127	\$124	\$113	\$98	\$85	\$76	\$75	\$71	\$68	\$63	\$59	\$52	\$37	\$34	\$31	
	10yr ave.			\$108		\$98		\$82		\$70	\$66	\$65	\$63	\$60	\$54	\$50	\$40	\$35	\$32	

The above shows estimated returns per head for skirted fleece wool. These figures do not take into account the value of skirtings and oddments and do not take into account discounts that may apply for faults under individual circumstances. These figures are based on a market index of 100% and should be used as a guide only. Returns over \$30 / head for fleece wool are highlighted.

Source: Australian Wool Exchange, Australian Wool Innovation, Sydney Futures Exchange, x-rates.com

Disclaimer: While all due care has been taken in the preparation of this document, no warranty is made as to its accuracy, reliability or completeness. To the extent permitted by law neither Jemalong or their sources including subsidiaries and staff, accept liability to any person for loss or damage arising from the use of this information.