



JEMALONG WOOL BULLETIN

(week ending 26/01/2012)

Table 1: Northern Region Micron Price Guides

CURRENT MARKET				12 MONTH COMPARISONS								3 YEAR COMPARISONS						10 YEAR COMPARISONS					
Mic.	25/01/2012	19/01/2012		25/01/2011	Now		Now		Now				Now		Percentile				Now				
Price	Current	Weekly		This time	compared		compared		compared		Low	High	Average	to 3yr ave		Low	High	10 year	compared				
Guides	Price	Change		Last Year	to Last Year		to Low		to High		Low	High	Average	to 3yr ave		Low	High	Average	to 10yr ave				
NRI	1227	+3 0.2%		1251	-24 -2%		1182	+45 4%	1491	-264 -18%	751	1491	1046	+181 17%	71%	657	1491	925	+302 33%	92%			
16*	2150	+100 4.7%		2400	-250 -10%		1950	+200 10%	2800	-650 -23%	1385	2800	1913	+237 12%	75%								
16.5*	1900	+70 3.7%		2300	-400 -17%		1800	+100 6%	2680	-780 -29%	1250	2680	1760	+140 8%	69%								
17*	1710	+25 1.5%		2220	-510 -23%		1620	+90 6%	2530	-820 -32%	1168	2530	1620	+90 6%	67%	1100	2530	1447	+263 18%	86%			
17.5*	1620	+20 1.2%		2090	-470 -22%		1530	+90 6%	2360	-740 -31%	1083	2360	1519	+101 7%	68%								
18	1513	+5 0.3%		1958	-445 -23%		1469	+44 3%	2193	-680 -31%	1035	2193	1429	+84 6%	64%	916	2193	1275	+238 19%	81%			
18.5	1467	+4 0.3%		1797	-330 -18%		1431	+36 3%	1963	-496 -25%	971	1963	1338	+129 10%	66%								
19	1431	+1 0.1%		1549	-118 -8%		1391	+40 3%	1776	-345 -19%	894	1776	1239	+192 15%	70%	803	1776	1107	+324 29%	91%			
19.5	1403	+2 0.1%		1323	+80 6%		1289	+114 9%	1670	-267 -16%	816	1670	1144	+259 23%	75%								
20	1352	+3 0.2%		1138	+214 19%		1138	+214 19%	1588	-236 -15%	745	1588	1068	+284 27%	78%	700	1588	978	+374 38%	93%			
21	1308	+3 0.2%		1105	+203 18%		1101	+207 19%	1522	-214 -14%	721	1522	1035	+273 26%	80%	668	1522	937	+371 40%	94%			
22	1288	+12 0.9%		1053	+235 22%		1051	+237 23%	1461	-173 -12%	702	1461	1001	+287 29%	88%	659	1461	910	+378 42%	96%			
23	1271	+44 3.5%		1011	+260 26%		977	+294 30%	1324	-53 -4%	690	1324	957	+314 33%	95%	652	1340	882	+389 44%	98%			
24	1135	+27 2.4%		955	+180 19%		882	+253 29%	1170	-35 -3%	665	1170	880	+255 29%	98%	638	1299	833	+302 36%	94%			
25	891	-3 -0.3%		814	+77 9%		761	+130 17%	1048	-157 -15%	569	1048	761	+130 17%	78%	567	1198	742	+149 20%	76%			
26	761	+6 0.8%		749	+12 2%		664	+97 15%	928	-167 -18%	546	928	682	+79 12%	74%	532	1088	677	+84 12%	73%			
28	596	-1 -0.2%		575	+21 4%		515	+81 16%	734	-138 -19%	435	734	533	+63 12%	69%	424	889	533	+63 12%	74%			
30	528	-3 -0.6%		504	+24 5%		460	+68 15%	670	-142 -21%	378	670	476	+52 11%	69%	344	729	464	+64 14%	75%			
32	481	0		448	+33 7%		409	+72 18%	638	-157 -25%	326	638	425	+56 13%	70%	297	669	418	+63 15%	76%			
MC	697	+1 0.1%		688	+9 1%		652	+45 7%	831	-134 -16%	483	831	640	+57 9%	70%	380	831	531	+166 31%	91%			

Note:

* Due to the irregular market quoting for some fine wool categories, figures shown relating to micron categories below 18 micron are an estimate based on the AWEX Premium & Discounts Report & other available information.

* For any category, where there is insufficient quantity offered to enable AWEX to quote, a quote will be provided based on the best available information.

* 10 Year data is not available for some micron categories, which may result in blank spaces in the table above.

Definitions:

* A Percentile, is a value on a scale of one hundred that indicates the percent of a distribution that is equal to or below it. In general a percentile between 25% and 75% is considered normal, a percentile below 25% is considered below normal and a percentile above 75% is considered above normal.

Three and ten year percentiles shown in the table above, detail the period of time during the past 3 & 10 years that the market has traded either at or below its current price.

The higher the percentile, the stronger the market.

Source: Australian Wool Exchange, Australian Wool Innovation, Sydney Futures Exchange, x-rates.com

Disclaimer: While all due care has been taken in the preparation of this document, no warranty is made as to its accuracy, reliability or completeness. To the extent permitted by law neither Jemalong or their sources including subsidiaries and staff, accept liability to any person for loss or damage arising from the use of this information.



MARKET COMMENTARY

One Australian Dollar = \$ 1.05 US, as of 25/01/2012

NORTHERN REGION –Sale Week 30/11 (46,418 bales offered nationally)

Tuesdays market found solid support at the finer end, with selected lots (less than 16.5 microns) posting rises of 50-100 cents. The broader end (greater than 22.5 microns) were also well sought after on limited numbers, resulting in gains of around 20 cents. However the bulk of the offering remained unchanged with the odd lot slightly dearer. Finer micron merino skirtings were 10 cents dearer (with best styles most affected) while others remained unchanged. Locks & stains remained unchanged, while crutchings were slightly dearer. 26 to 27 micron crossbreds were tending 5 cents dearer while the remainder of the offering was unchanged. 4.9% PI

Wednesdays market remained firm across-the-board (including the finer end, where there were some large rises recorded the previous day). The mid micron wools barely registered any movement, while the limited broader microns found good support rising by around 10 cents. Skirtings followed a similar pattern to the fleece market, with most of the catalogue firming slightly on Tuesdays level. Lower style locks were slightly cheaper (particularly at the broader end), while crutchings were slightly dearer. The 4th largest offering of crossbred wool this season remained firm and generally unchanged. 9.8% PI.

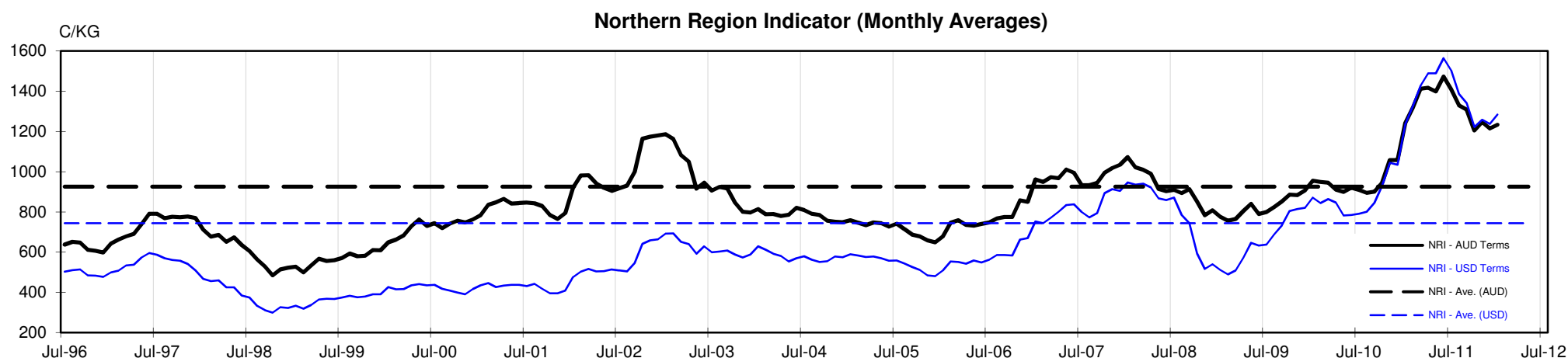




Table 4: 19 micron SFE

Tuesday, 24 January 2012

Delivery Mth	Feb-12	Apr-12	Jun-12	Aug-12	Oct-12	Dec-12	Feb-13	Mar-13	Apr-13
19 Micron SFE	1397	1367	1337	1327	1327	1287	1287	1287	1287
Average	1374	1385	1400	1388	1387	1387	1346	1325	1325
Maximum	1652	1622	1612	1525	1525	1525	1525	1375	1375
Minimum	1053	1106	1210	1285	1285	1285	1265	1265	1265

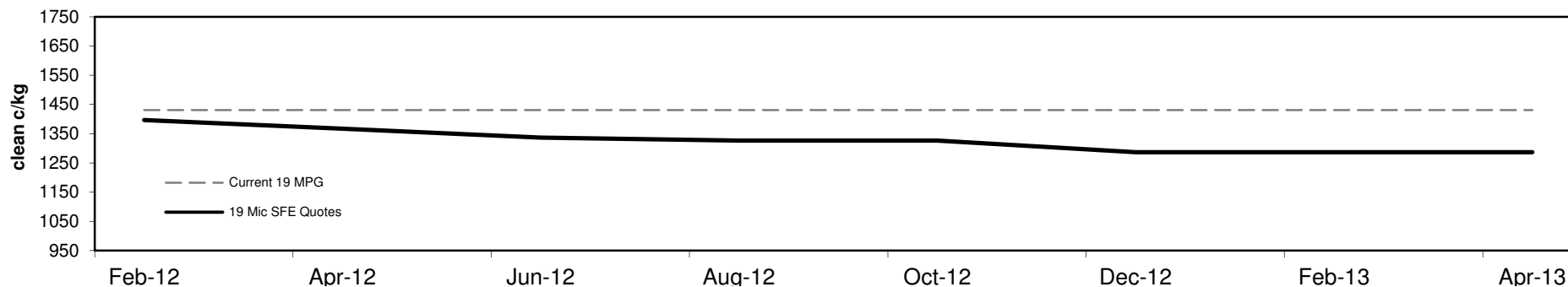
Table 5: 19 micron SFE, as a percentile of the 19 micron MPG

3 Year Percentile	65%	64%	64%	64%	64%	62%	62%	62%	62%
10 Year Percentile	90%	88%	87%	86%	86%	83%	83%	83%	83%

Table 6: 19 micron SFE, compared to MPG

SFE - MPG	-34	-2%	-64	-4%	-94	-7%	-104	-7%	-104	-7%	-144	-10%	-144	-10%	-144	-10%
SFE - MPG, 1 year Ave.	-180	-11%	-210	-13%	-240	-15%	-250	-16%	-250	-16%	-290	-18%	-290	-18%	-290	-18%
SFE - MPG, 3 year Ave.	+158	13%	+128	10%	+98	8%	+88	7%	+88	7%	+48	4%	+48	4%	+48	4%
SFE - MPG, 10 year Ave.	+290	26%	+260	23%	+230	21%	+220	20%	+220	20%	+180	16%	+180	16%	+180	16%

19 MICRON SFE, QUOTES



19 Micron SFE, Front month movement

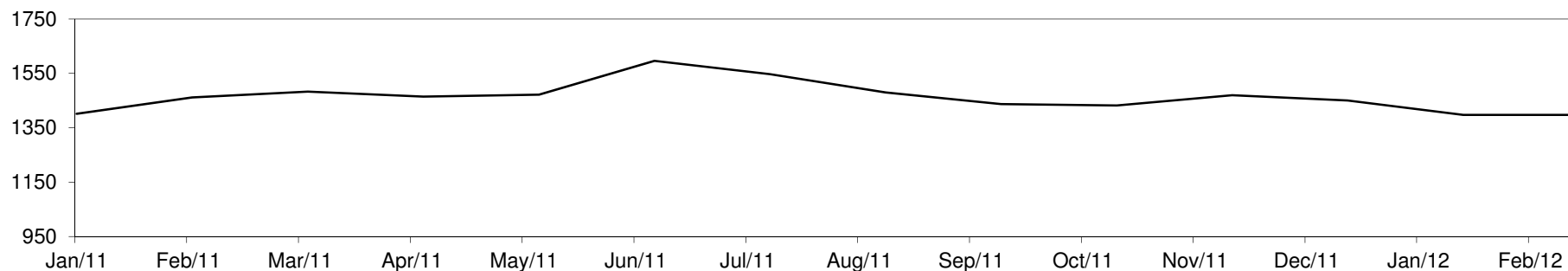




Table 7: 21 micron SFE

Tuesday, 24 January 2012

Delivery Mth	Feb-12	Apr-12	Jun-12	Aug-12	Oct-12	Dec-12	Feb-13	Mar-13	Apr-13
21 Micron SFE	1330	1309	1285	1253	1200	1124	1145	1124	1124
Average	1145	1161	1158	1164	1149	1149	1143	1122	1122
Maximum	1393	1360	1347	1321	1283	1283	1222	1187	1187
Minimum	880	934	990	1046	1013	1013	1080	1048	1048

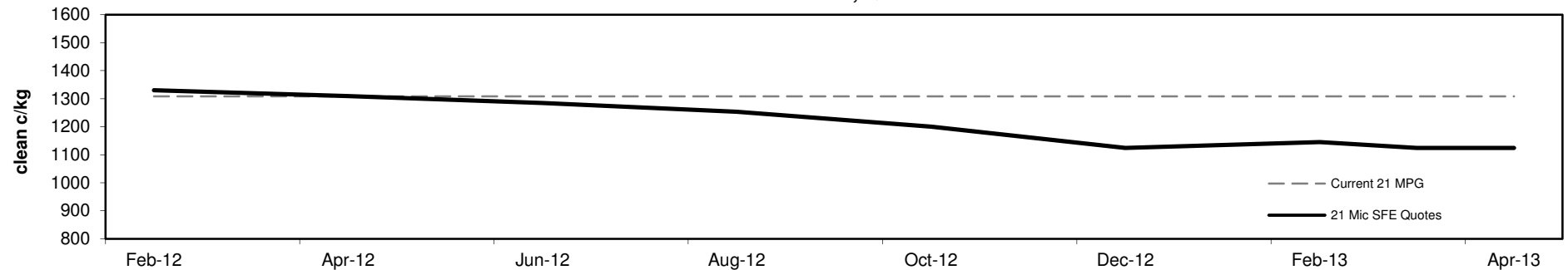
Table 8: 21 micron SFE, as a percentile of the 21 micron MPG

3 Year Percentile	86%	81%	76%	73%	70%	66%	67%	66%	66%
10 Year Percentile	96%	94%	93%	89%	86%	84%	84%	84%	84%

Table 9: 21 micron SFE, compared to MPG

SFE - MPG	+22	2%	+1	0%	-23	-2%	-55	-4%	-108	-8%	-184	-14%	-163	-12%	-184	-14%	-184	-14%
SFE - MPG, 1 year Ave.	+6	0%	-15	-1%	-39	-3%	-71	-5%	-124	-9%	-200	-15%	-179	-14%	-200	-15%	-200	-15%
SFE - MPG, 3 year Ave.	+295	29%	+274	26%	+250	24%	+218	21%	+165	16%	+89	9%	+110	11%	+89	9%	+89	9%
SFE - MPG, 10 year Ave.	+393	42%	+372	40%	+348	37%	+316	34%	+263	28%	+187	20%	+208	22%	+187	20%	+187	20%

21 MICRON SFE, QUOTES



21 Micron SFE, Front month movement

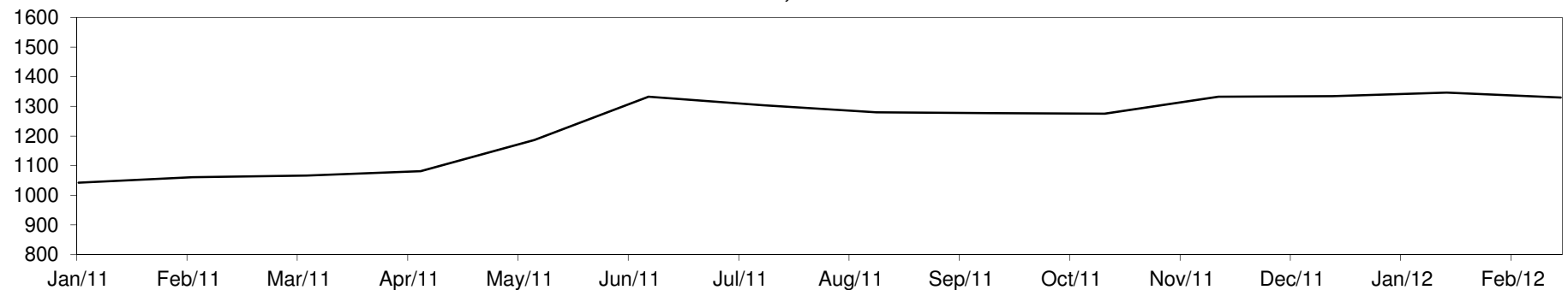




Table 10: 23 micron SFE

Tuesday, 24 January 2012

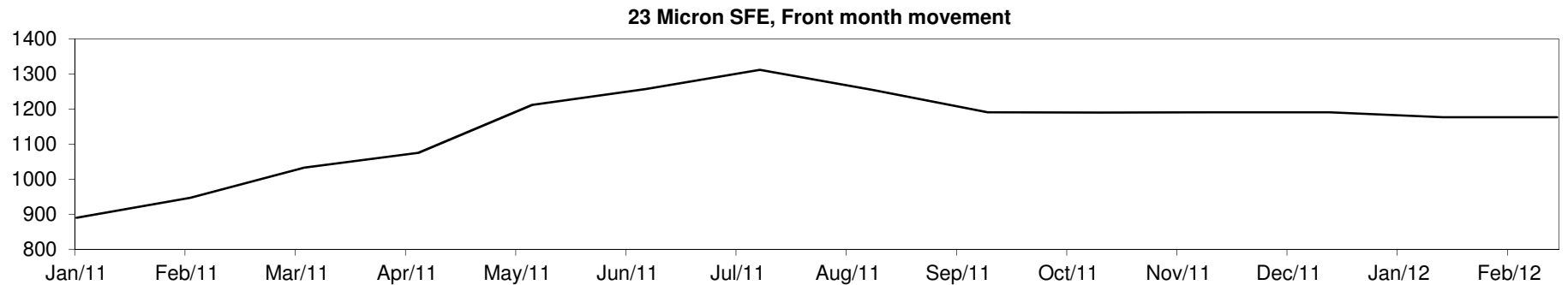
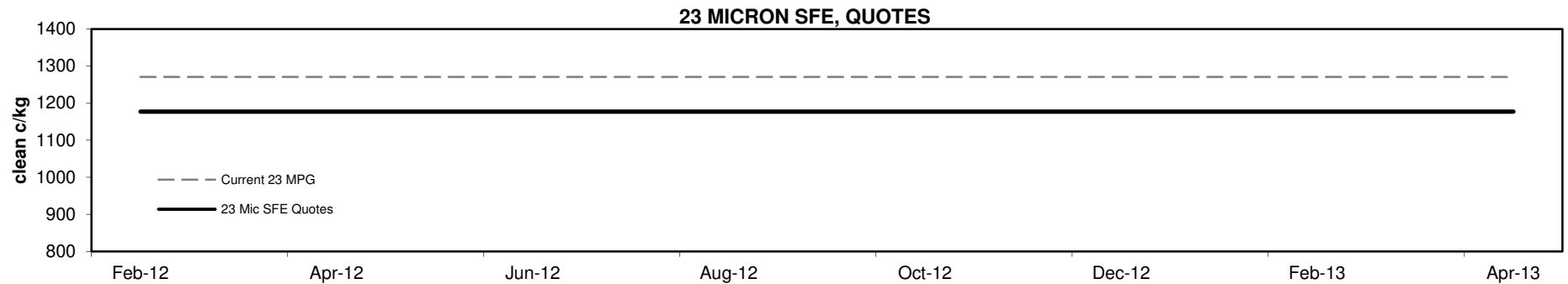
Delivery Mth	Feb-12	Apr-12	Jun-12	Aug-12	Oct-12	Dec-12	Feb-13	Mar-13	Apr-13
23 Micron SFE	1177	1177	1177	1177	1177	1177	1177	1177	1177
Average	1074	1104	1138	1181	1216	1216	1217	1189	1189
Maximum	1312	1312	1312	1312	1312	1312	1312	1191	1191
Minimum	883	883	890	1033	1177	1177	1177	1177	1177

Table 11: 23 micron SFE, as a percentile of the 23 micron MPG

3 Year Percentile	83%	83%	83%	83%	83%	83%	83%	83%	83%
10 Year Percentile	90%	90%	90%	90%	90%	90%	90%	90%	90%

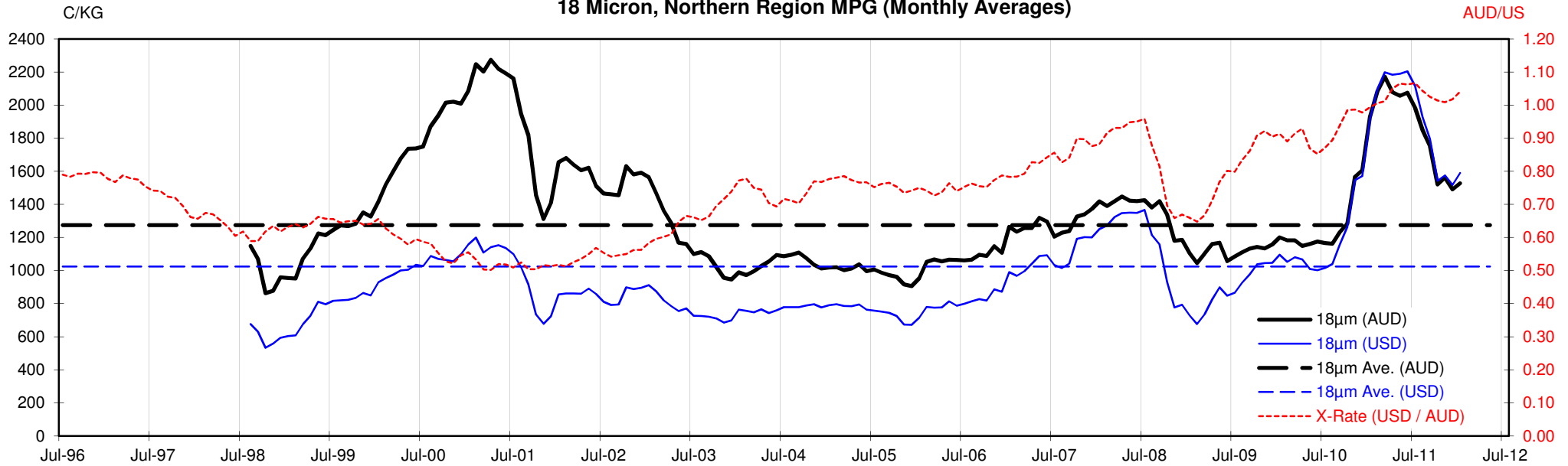
Table 12: 23 micron SFE, compared to MPG

SFE - MPG	-94	-7%	-94	-7%	-94	-7%	-94	-7%	-94	-7%	-94	-7%	-94	-7%	-94	-7%	-94	-7%
SFE - MPG, 1 year Ave.	-7	-1%	-7	-1%	-7	-1%	-7	-1%	-7	-1%	-7	-1%	-7	-1%	-7	-1%	-7	-1%
SFE - MPG, 3 year Ave.	+220	23%	+220	23%	+220	23%	+220	23%	+220	23%	+220	23%	+220	23%	+220	23%	+220	23%
SFE - MPG, 10 year Ave.	+295	33%	+295	33%	+295	33%	+295	33%	+295	33%	+295	33%	+295	33%	+295	33%	+295	33%

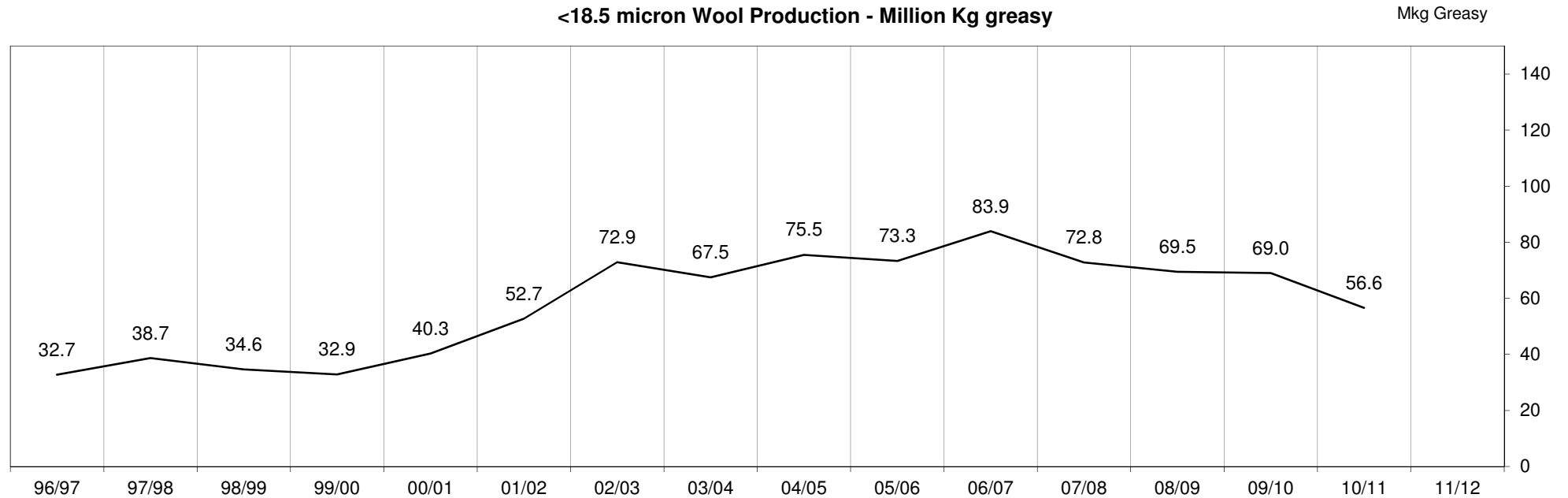


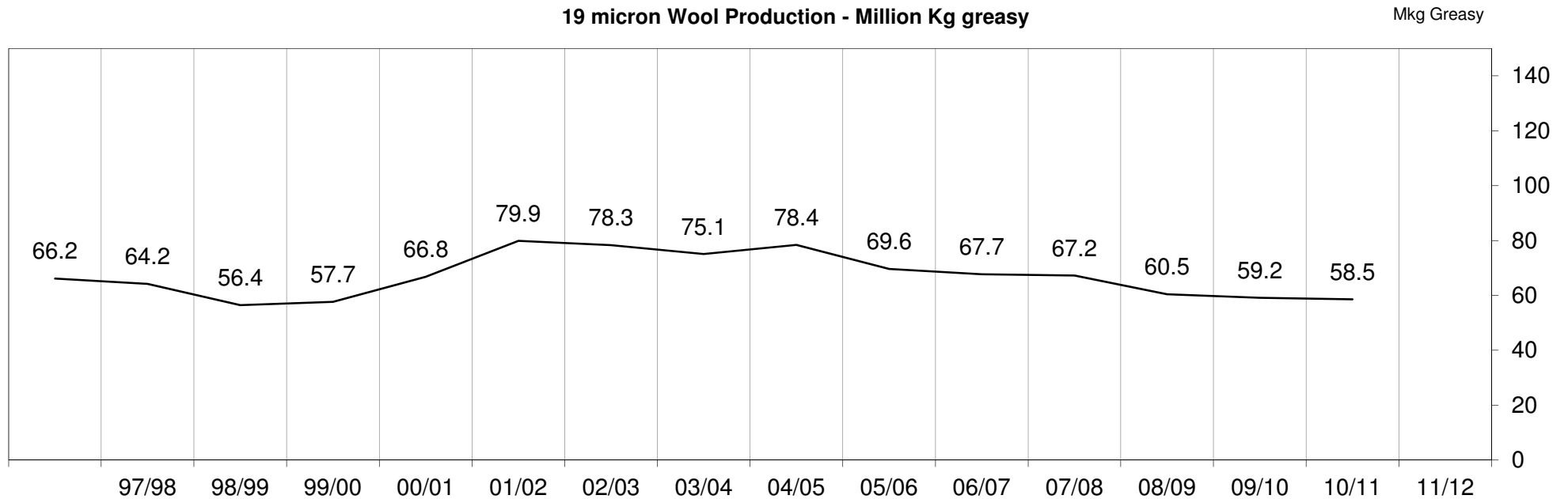
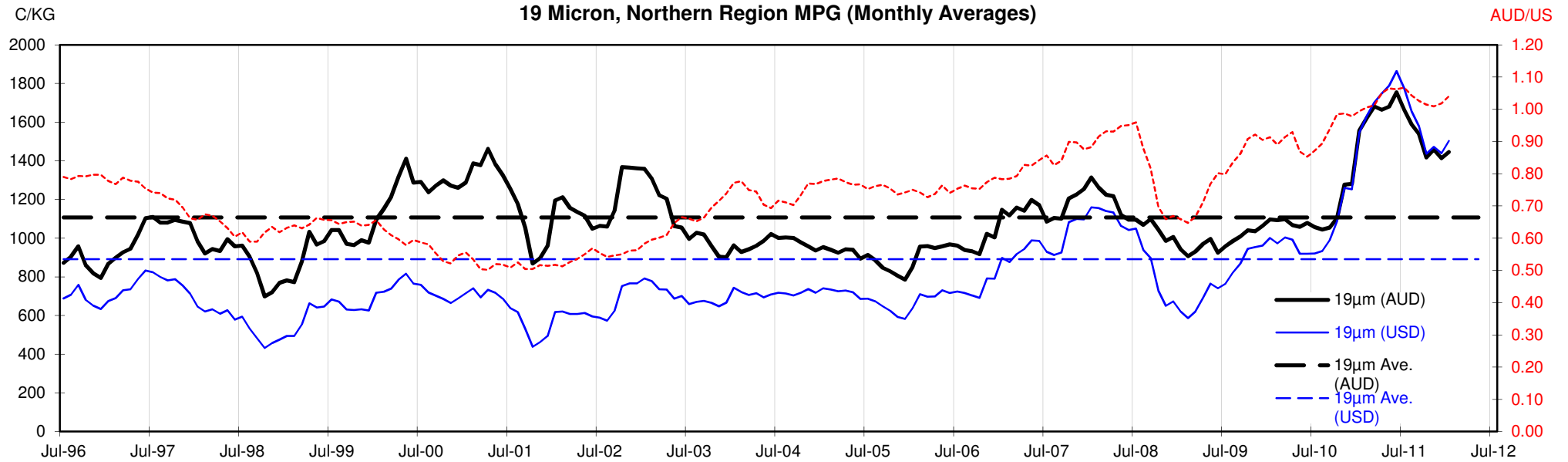


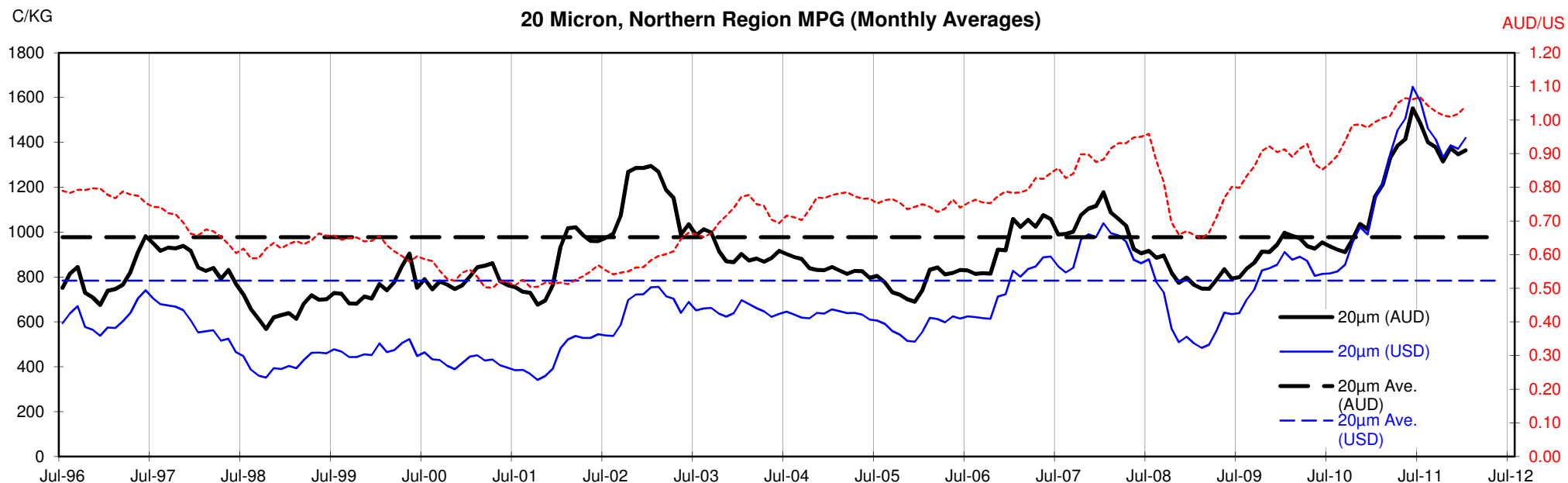
18 Micron, Northern Region MPG (Monthly Averages)

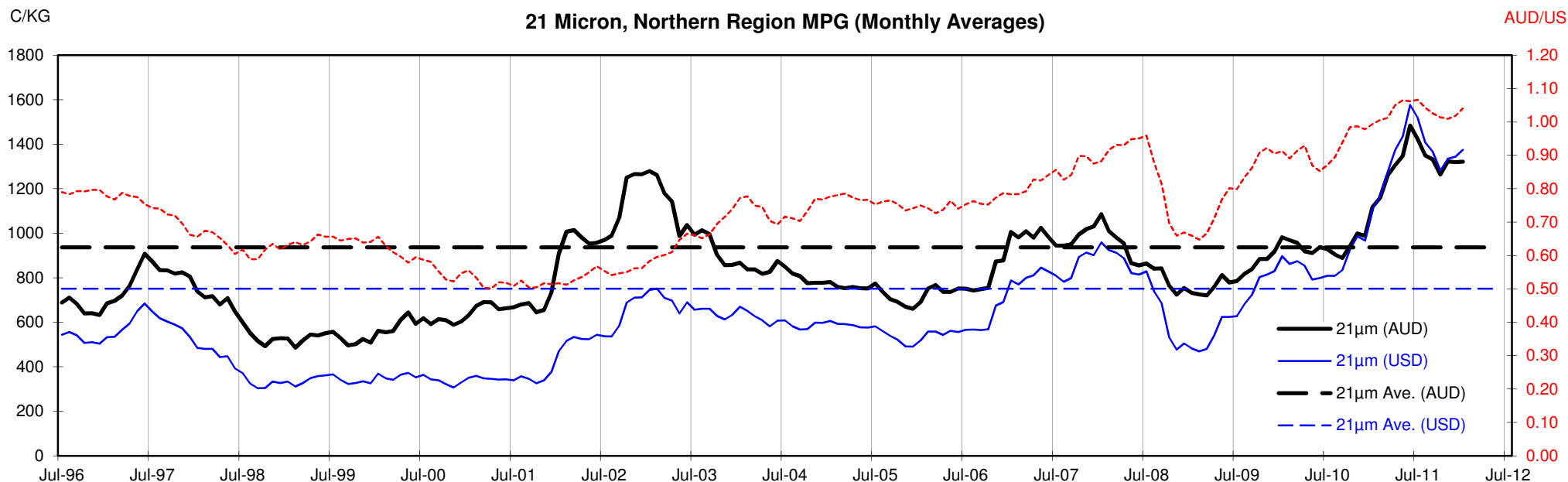


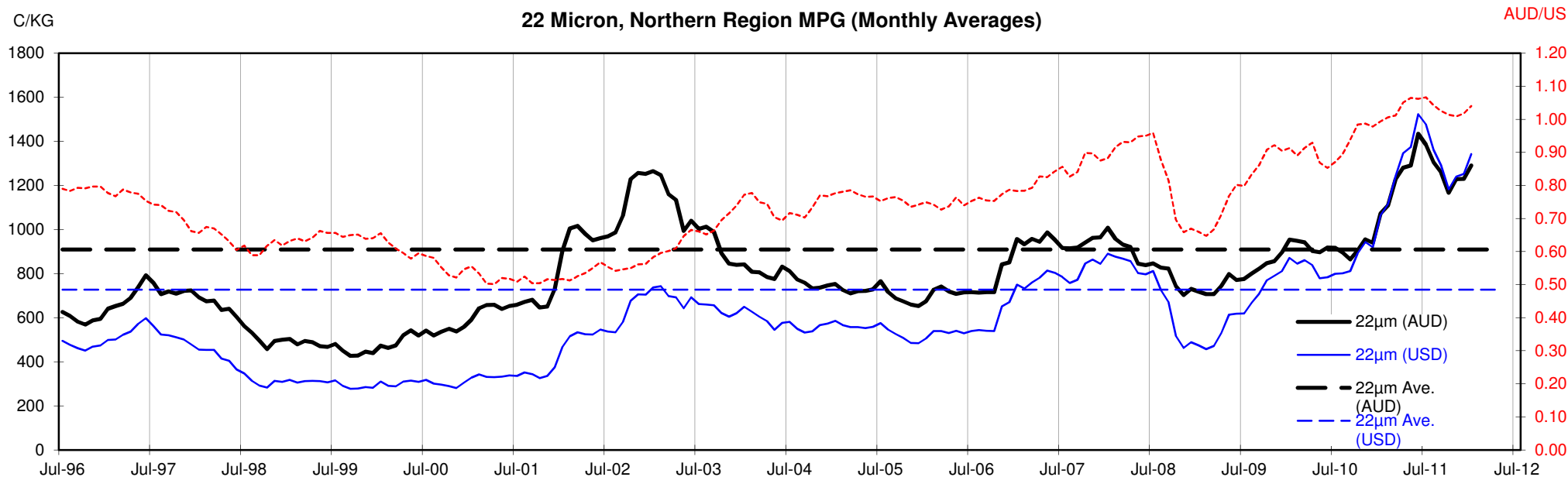
<18.5 micron Wool Production - Million Kg greasy

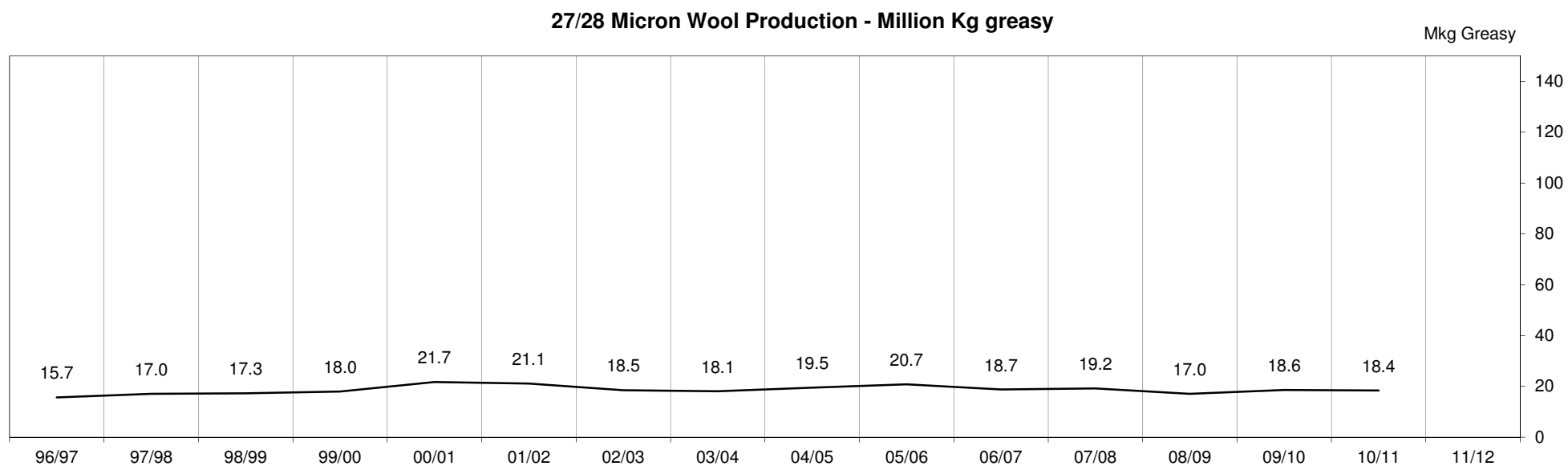
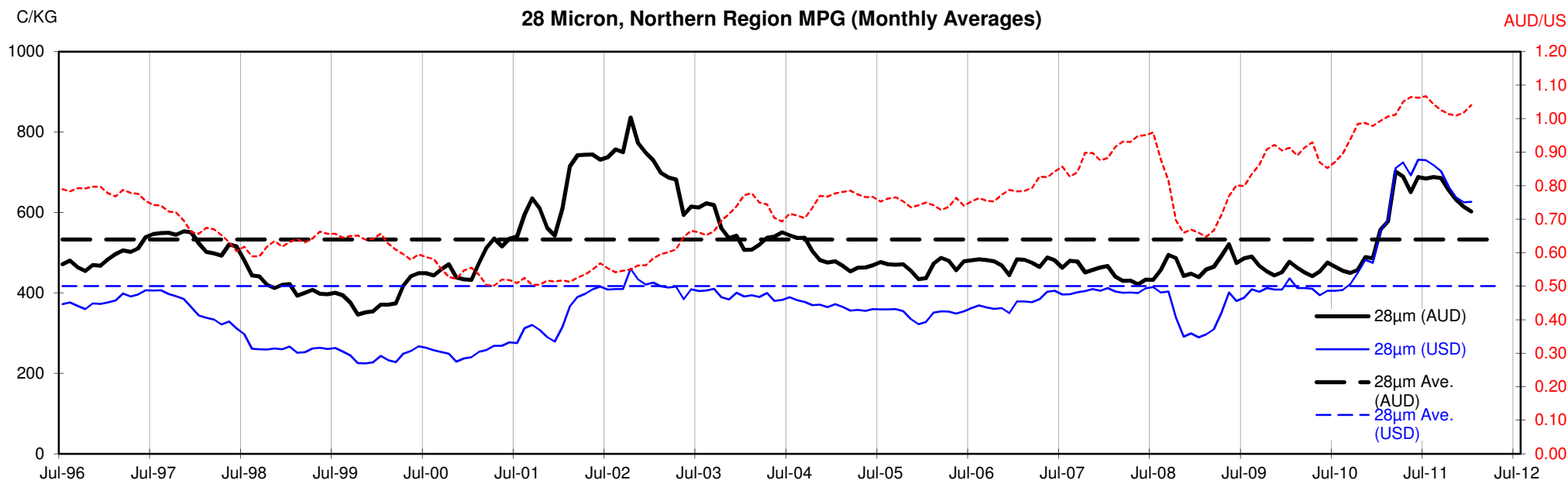












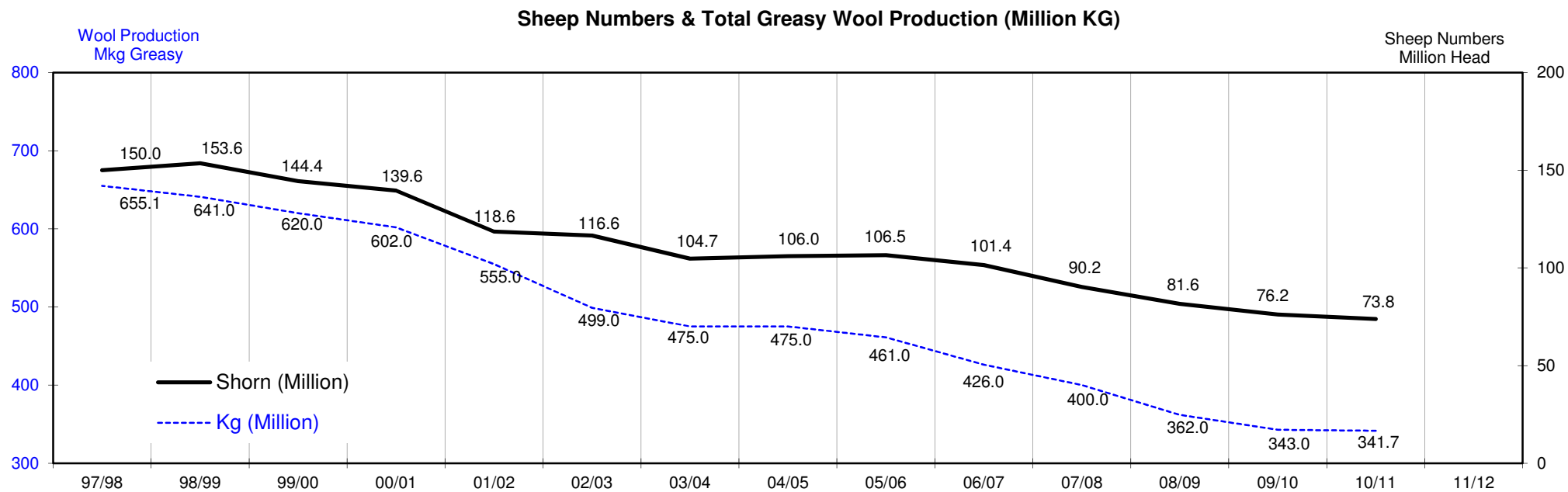
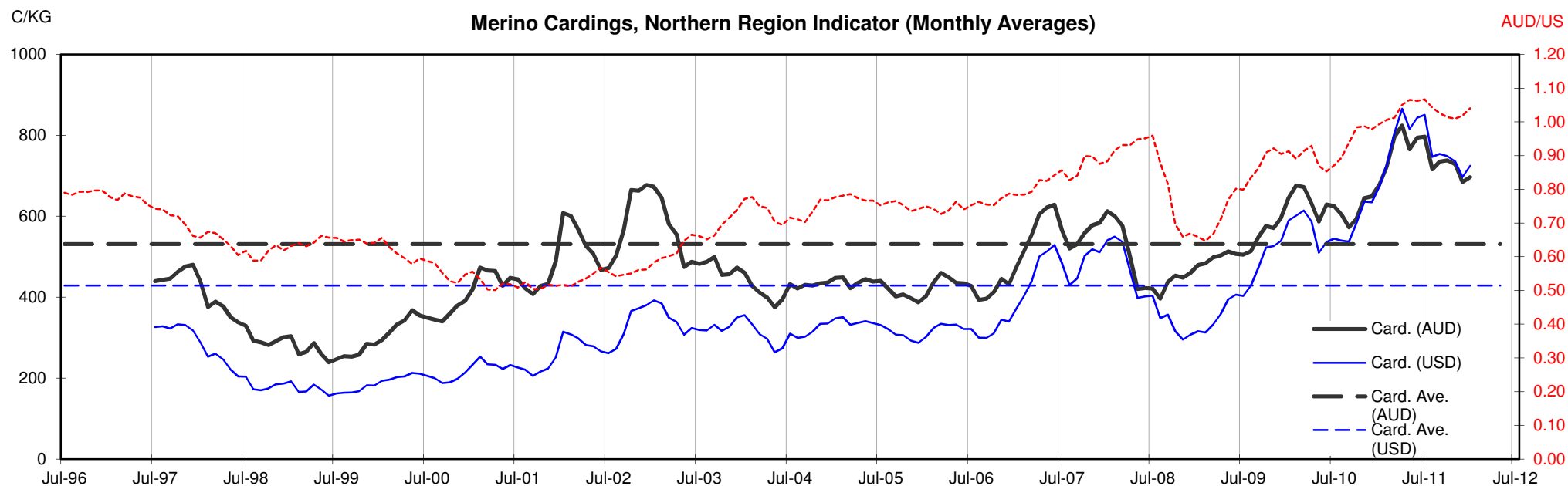




Table 13: Returns pr head for skirted fleece wool.

Skirted FLC Weight			Micron																	
			16	16.5	17	17.5	18	18.5	19	19.5	20	21	22	23	24	25	26	28	30	32
Yield (Sch Dry)	9 Kg																			
	25%	Current	\$48	\$43	\$38	\$36	\$34	\$33	\$32	\$32	\$30	\$29	\$29	\$29	\$26	\$20	\$17	\$13	\$12	\$11
		10yr ave.			\$33		\$29		\$25		\$22	\$21	\$20	\$20	\$19	\$17	\$15	\$12	\$10	\$9
	30%	Current	\$58	\$51	\$46	\$44	\$41	\$40	\$39	\$38	\$37	\$35	\$35	\$34	\$31	\$24	\$21	\$16	\$14	\$13
		10yr ave.			\$39		\$34		\$30		\$26	\$25	\$25	\$24	\$22	\$20	\$18	\$14	\$13	\$11
	35%	Current	\$68	\$60	\$54	\$51	\$48	\$46	\$45	\$44	\$43	\$41	\$41	\$40	\$36	\$28	\$24	\$19	\$17	\$15
		10yr ave.			\$46		\$40		\$35		\$31	\$30	\$29	\$28	\$26	\$23	\$21	\$17	\$15	\$13
	40%	Current	\$77	\$68	\$62	\$58	\$54	\$53	\$52	\$51	\$49	\$47	\$46	\$46	\$41	\$32	\$27	\$21	\$19	\$17
		10yr ave.			\$52		\$46		\$40		\$35	\$34	\$33	\$32	\$30	\$27	\$24	\$19	\$17	\$15
	45%	Current	\$87	\$77	\$69	\$66	\$61	\$59	\$58	\$57	\$55	\$53	\$52	\$51	\$46	\$36	\$31	\$24	\$21	\$19
		10yr ave.			\$59		\$52		\$45		\$40	\$38	\$37	\$36	\$34	\$30	\$27	\$22	\$19	\$17
	50%	Current	\$97	\$86	\$77	\$73	\$68	\$66	\$64	\$63	\$61	\$59	\$58	\$57	\$51	\$40	\$34	\$27	\$24	\$22
		10yr ave.			\$65		\$57		\$50		\$44	\$42	\$41	\$40	\$37	\$33	\$30	\$24	\$21	\$19
	55%	Current	\$106	\$94	\$85	\$80	\$75	\$73	\$71	\$69	\$67	\$65	\$64	\$63	\$56	\$44	\$38	\$30	\$26	\$24
	10yr ave.			\$72		\$63		\$55		\$48	\$46	\$45	\$44	\$41	\$37	\$34	\$26	\$23	\$21	
60%	Current	\$116	\$103	\$92	\$87	\$82	\$79	\$77	\$76	\$73	\$71	\$70	\$69	\$61	\$48	\$41	\$32	\$29	\$26	
	10yr ave.			\$78		\$69		\$60		\$53	\$51	\$49	\$48	\$45	\$40	\$37	\$29	\$25	\$23	
65%	Current	\$126	\$111	\$100	\$95	\$89	\$86	\$84	\$82	\$79	\$77	\$75	\$74	\$66	\$52	\$45	\$35	\$31	\$28	
	10yr ave.			\$85		\$75		\$65		\$57	\$55	\$53	\$52	\$49	\$43	\$40	\$31	\$27	\$24	
70%	Current	\$135	\$120	\$108	\$102	\$95	\$92	\$90	\$88	\$85	\$82	\$81	\$80	\$72	\$56	\$48	\$38	\$33	\$30	
	10yr ave.			\$91		\$80		\$70		\$62	\$59	\$57	\$56	\$52	\$47	\$43	\$34	\$29	\$26	
75%	Current	\$145	\$128	\$115	\$109	\$102	\$99	\$97	\$95	\$91	\$88	\$87	\$86	\$77	\$60	\$51	\$40	\$36	\$32	
	10yr ave.			\$98		\$86		\$75		\$66	\$63	\$61	\$60	\$56	\$50	\$46	\$36	\$31	\$28	
80%	Current	\$155	\$137	\$123	\$117	\$109	\$106	\$103	\$101	\$97	\$94	\$93	\$92	\$82	\$64	\$55	\$43	\$38	\$35	
	10yr ave.			\$104		\$92		\$80		\$70	\$67	\$66	\$64	\$60	\$53	\$49	\$38	\$33	\$30	
85%	Current	\$164	\$145	\$131	\$124	\$116	\$112	\$109	\$107	\$103	\$100	\$99	\$97	\$87	\$68	\$58	\$46	\$40	\$37	
	10yr ave.			\$111		\$98		\$85		\$75	\$72	\$70	\$67	\$64	\$57	\$52	\$41	\$35	\$32	

The above shows estimated returns per head for skirted fleece wool. These figures do not take into account the value of skirtings and oddments and do not take into account discounts that may apply for faults under individual circumstances. These figures are based on a market index of 100% and should be used as a guide only. Returns over \$30 / head for fleece wool are highlighted.

Source: Australian Wool Exchange, Australian Wool Innovation, Sydney Futures Exchange, x-rates.com

Disclaimer: While all due care has been taken in the preparation of this document, no warranty is made as to its accuracy, reliability or completeness. To the extent permitted by law neither Jemalong or their sources including subsidiaries and staff, accept liability to any person for loss or damage arising from the use of this information.



Table 14: Returns pr head for skirted fleece wool.

Skirted FLC Weight		Micron																		
		16	16.5	17	17.5	18	18.5	19	19.5	20	21	22	23	24	25	26	28	30	32	
Yield (Sch Dry)	25%	Current	\$43	\$38	\$34	\$32	\$30	\$29	\$29	\$28	\$27	\$26	\$26	\$25	\$23	\$18	\$15	\$12	\$11	\$10
	10yr ave.			\$29		\$26		\$22			\$20	\$19	\$18	\$18	\$17	\$15	\$14	\$11	\$9	\$8
	30%	Current	\$52	\$46	\$41	\$39	\$36	\$35	\$34	\$34	\$32	\$31	\$31	\$31	\$27	\$21	\$18	\$14	\$13	\$12
	10yr ave.			\$35		\$31		\$27		\$23	\$22	\$22	\$21	\$20	\$18	\$16	\$13	\$11	\$10	
	35%	Current	\$60	\$53	\$48	\$45	\$42	\$41	\$40	\$39	\$38	\$37	\$36	\$36	\$32	\$25	\$21	\$17	\$15	\$13
	10yr ave.			\$41		\$36		\$31		\$27	\$26	\$25	\$25	\$23	\$21	\$19	\$15	\$13	\$12	
	40%	Current	\$69	\$61	\$55	\$52	\$48	\$47	\$46	\$45	\$43	\$42	\$41	\$41	\$36	\$29	\$24	\$19	\$17	\$15
	10yr ave.			\$46		\$41		\$35		\$31	\$30	\$29	\$28	\$27	\$24	\$22	\$17	\$15	\$13	
	45%	Current	\$77	\$68	\$62	\$58	\$54	\$53	\$52	\$51	\$49	\$47	\$46	\$46	\$41	\$32	\$27	\$21	\$19	\$17
	10yr ave.			\$52		\$46		\$40		\$35	\$34	\$33	\$32	\$30	\$27	\$24	\$19	\$17	\$15	
	50%	Current	\$86	\$76	\$68	\$65	\$61	\$59	\$57	\$56	\$54	\$52	\$52	\$51	\$45	\$36	\$30	\$24	\$21	\$19
	10yr ave.			\$58		\$51		\$44		\$39	\$37	\$36	\$35	\$33	\$30	\$27	\$21	\$19	\$17	
	55%	Current	\$95	\$84	\$75	\$71	\$67	\$65	\$63	\$62	\$59	\$58	\$57	\$56	\$50	\$39	\$33	\$26	\$23	\$21
	10yr ave.			\$64		\$56		\$49		\$43	\$41	\$40	\$39	\$37	\$33	\$30	\$23	\$20	\$18	
60%	Current	\$103	\$91	\$82	\$78	\$73	\$70	\$69	\$67	\$65	\$63	\$62	\$61	\$54	\$43	\$37	\$29	\$25	\$23	
10yr ave.			\$69		\$61		\$53		\$47	\$45	\$44	\$42	\$40	\$36	\$32	\$26	\$22	\$20		
65%	Current	\$112	\$99	\$89	\$84	\$79	\$76	\$74	\$73	\$70	\$68	\$67	\$66	\$59	\$46	\$40	\$31	\$27	\$25	
10yr ave.			\$75		\$66		\$58		\$51	\$49	\$47	\$46	\$43	\$39	\$35	\$28	\$24	\$22		
70%	Current	\$120	\$106	\$96	\$91	\$85	\$82	\$80	\$79	\$76	\$73	\$72	\$71	\$64	\$50	\$43	\$33	\$30	\$27	
10yr ave.			\$81		\$71		\$62		\$55	\$52	\$51	\$49	\$47	\$42	\$38	\$30	\$26	\$23		
75%	Current	\$129	\$114	\$103	\$97	\$91	\$88	\$86	\$84	\$81	\$78	\$77	\$76	\$68	\$53	\$46	\$36	\$32	\$29	
10yr ave.			\$87		\$77		\$66		\$59	\$56	\$55	\$53	\$50	\$45	\$41	\$32	\$28	\$25		
80%	Current	\$138	\$122	\$109	\$104	\$97	\$94	\$92	\$90	\$87	\$84	\$82	\$81	\$73	\$57	\$49	\$38	\$34	\$31	
10yr ave.			\$93		\$82		\$71		\$63	\$60	\$58	\$56	\$53	\$47	\$43	\$34	\$30	\$27		
85%	Current	\$146	\$129	\$116	\$110	\$103	\$100	\$97	\$95	\$92	\$89	\$88	\$86	\$77	\$61	\$52	\$41	\$36	\$33	
10yr ave.			\$98		\$87		\$75		\$67	\$64	\$62	\$60	\$57	\$50	\$46	\$36	\$32	\$28		

The above shows estimated returns per head for skirted fleece wool. These figures do not take into account the value of skirtings and oddments and do not take into account discounts that may apply for faults under individual circumstances. These figures are based on a market index of 100% and should be used as a guide only. Returns over \$30 / head for fleece wool are highlighted.

Source: Australian Wool Exchange, Australian Wool Innovation, Sydney Futures Exchange, x-rates.com

Disclaimer: While all due care has been taken in the preparation of this document, no warranty is made as to its accuracy, reliability or completeness. To the extent permitted by law neither Jemalong or their sources including subsidiaries and staff, accept liability to any person for loss or damage arising from the use of this information.



Table 15: Returns pr head for skirted fleece wool.

Skirted FLC Weight		Micron																	
7 Kg		16	16.5	17	17.5	18	18.5	19	19.5	20	21	22	23	24	25	26	28	30	32
Yield (Sch Dry)	25% Current	\$38	\$33	\$30	\$28	\$26	\$26	\$25	\$25	\$24	\$23	\$23	\$22	\$20	\$16	\$13	\$10	\$9	\$8
	10yr ave.			\$25		\$22		\$19		\$17	\$16	\$16	\$15	\$15	\$13	\$12	\$9	\$8	\$7
	30% Current	\$45	\$40	\$36	\$34	\$32	\$31	\$30	\$29	\$28	\$27	\$27	\$27	\$24	\$19	\$16	\$13	\$11	\$10
	10yr ave.			\$30		\$27		\$23		\$21	\$20	\$19	\$19	\$17	\$16	\$14	\$11	\$10	\$9
	35% Current	\$53	\$47	\$42	\$40	\$37	\$36	\$35	\$34	\$33	\$32	\$32	\$31	\$28	\$22	\$19	\$15	\$13	\$12
	10yr ave.			\$35		\$31		\$27		\$24	\$23	\$22	\$22	\$20	\$18	\$17	\$13	\$11	\$10
	40% Current	\$60	\$53	\$48	\$45	\$42	\$41	\$40	\$39	\$38	\$37	\$36	\$36	\$32	\$25	\$21	\$17	\$15	\$13
	10yr ave.			\$41		\$36		\$31		\$27	\$26	\$25	\$25	\$23	\$21	\$19	\$15	\$13	\$12
	45% Current	\$68	\$60	\$54	\$51	\$48	\$46	\$45	\$44	\$43	\$41	\$41	\$40	\$36	\$28	\$24	\$19	\$17	\$15
	10yr ave.			\$46		\$40		\$35		\$31	\$30	\$29	\$28	\$26	\$23	\$21	\$17	\$15	\$13
	50% Current	\$75	\$67	\$60	\$57	\$53	\$51	\$50	\$49	\$47	\$46	\$45	\$44	\$40	\$31	\$27	\$21	\$18	\$17
	10yr ave.			\$51		\$45		\$39		\$34	\$33	\$32	\$31	\$29	\$26	\$24	\$19	\$16	\$15
	55% Current	\$83	\$73	\$66	\$62	\$58	\$56	\$55	\$54	\$52	\$50	\$50	\$49	\$44	\$34	\$29	\$23	\$20	\$19
	10yr ave.			\$56		\$49		\$43		\$38	\$36	\$35	\$34	\$32	\$29	\$26	\$21	\$18	\$16
	60% Current	\$90	\$80	\$72	\$68	\$64	\$62	\$60	\$59	\$57	\$55	\$54	\$53	\$48	\$37	\$32	\$25	\$22	\$20
	10yr ave.			\$61		\$54		\$46		\$41	\$39	\$38	\$37	\$35	\$31	\$28	\$22	\$19	\$18
	65% Current	\$98	\$86	\$78	\$74	\$69	\$67	\$65	\$64	\$62	\$60	\$59	\$58	\$52	\$41	\$35	\$27	\$24	\$22
	10yr ave.			\$66		\$58		\$50		\$44	\$43	\$41	\$40	\$38	\$34	\$31	\$24	\$21	\$19
	70% Current	\$105	\$93	\$84	\$79	\$74	\$72	\$70	\$69	\$66	\$64	\$63	\$62	\$56	\$44	\$37	\$29	\$26	\$24
	10yr ave.			\$71		\$62		\$54		\$48	\$46	\$45	\$43	\$41	\$36	\$33	\$26	\$23	\$20
	75% Current	\$113	\$100	\$90	\$85	\$79	\$77	\$75	\$74	\$71	\$69	\$68	\$67	\$60	\$47	\$40	\$31	\$28	\$25
	10yr ave.			\$76		\$67		\$58		\$51	\$49	\$48	\$46	\$44	\$39	\$36	\$28	\$24	\$22
	80% Current	\$120	\$106	\$96	\$91	\$85	\$82	\$80	\$79	\$76	\$73	\$72	\$71	\$64	\$50	\$43	\$33	\$30	\$27
	10yr ave.			\$81		\$71		\$62		\$55	\$52	\$51	\$49	\$47	\$42	\$38	\$30	\$26	\$23
	85% Current	\$128	\$113	\$102	\$96	\$90	\$87	\$85	\$83	\$80	\$78	\$77	\$76	\$68	\$53	\$45	\$35	\$31	\$29
	10yr ave.			\$86		\$76		\$66		\$58	\$56	\$54	\$52	\$50	\$44	\$40	\$32	\$28	\$25

The above shows estimated returns per head for skirted fleece wool. These figures do not take into account the value of skirtings and oddments and do not take into account discounts that may apply for faults under individual circumstances. These figures are based on a market index of 100% and should be used as a guide only. Returns over \$30 / head for fleece wool are highlighted.

Source: Australian Wool Exchange, Australian Wool Innovation, Sydney Futures Exchange, x-rates.com

Disclaimer: While all due care has been taken in the preparation of this document, no warranty is made as to its accuracy, reliability or completeness. To the extent permitted by law neither Jemalong or their sources including subsidiaries and staff, accept liability to any person for loss or damage arising from the use of this information.



Table 16: Returns pr head for skirted fleece wool.

Skirted FLC Weight		Micron																	
6 Kg		16	16.5	17	17.5	18	18.5	19	19.5	20	21	22	23	24	25	26	28	30	32
Yield (Sch Dry)	25% Current	\$32	\$29	\$26	\$24	\$23	\$22	\$21	\$21	\$20	\$20	\$19	\$19	\$17	\$13	\$11	\$9	\$8	\$7
	10yr ave.			\$22		\$19		\$17		\$15	\$14	\$14	\$13	\$12	\$11	\$10	\$8	\$7	\$6
	30% Current	\$39	\$34	\$31	\$29	\$27	\$26	\$26	\$25	\$24	\$24	\$23	\$23	\$20	\$16	\$14	\$11	\$10	\$9
	10yr ave.			\$26		\$23		\$20		\$18	\$17	\$16	\$16	\$15	\$13	\$12	\$10	\$8	\$8
	35% Current	\$45	\$40	\$36	\$34	\$32	\$31	\$30	\$29	\$28	\$27	\$27	\$27	\$24	\$19	\$16	\$13	\$11	\$10
	10yr ave.			\$30		\$27		\$23		\$21	\$20	\$19	\$19	\$17	\$16	\$14	\$11	\$10	\$9
	40% Current	\$52	\$46	\$41	\$39	\$36	\$35	\$34	\$34	\$32	\$31	\$31	\$31	\$27	\$21	\$18	\$14	\$13	\$12
	10yr ave.			\$35		\$31		\$27		\$23	\$22	\$22	\$21	\$20	\$18	\$16	\$13	\$11	\$10
	45% Current	\$58	\$51	\$46	\$44	\$41	\$40	\$39	\$38	\$37	\$35	\$35	\$34	\$31	\$24	\$21	\$16	\$14	\$13
	10yr ave.			\$39		\$34		\$30		\$26	\$25	\$25	\$24	\$22	\$20	\$18	\$14	\$13	\$11
	50% Current	\$65	\$57	\$51	\$49	\$45	\$44	\$43	\$42	\$41	\$39	\$39	\$38	\$34	\$27	\$23	\$18	\$16	\$14
	10yr ave.			\$43		\$38		\$33		\$29	\$28	\$27	\$26	\$25	\$22	\$20	\$16	\$14	\$13
	55% Current	\$71	\$63	\$56	\$53	\$50	\$48	\$47	\$46	\$45	\$43	\$43	\$42	\$37	\$29	\$25	\$20	\$17	\$16
	10yr ave.			\$48		\$42		\$37		\$32	\$31	\$30	\$29	\$27	\$24	\$22	\$18	\$15	\$14
	60% Current	\$77	\$68	\$62	\$58	\$54	\$53	\$52	\$51	\$49	\$47	\$46	\$46	\$41	\$32	\$27	\$21	\$19	\$17
	10yr ave.			\$52		\$46		\$40		\$35	\$34	\$33	\$32	\$30	\$27	\$24	\$19	\$17	\$15
	65% Current	\$84	\$74	\$67	\$63	\$59	\$57	\$56	\$55	\$53	\$51	\$50	\$50	\$44	\$35	\$30	\$23	\$21	\$19
	10yr ave.			\$56		\$50		\$43		\$38	\$37	\$35	\$34	\$32	\$29	\$26	\$21	\$18	\$16
	70% Current	\$90	\$80	\$72	\$68	\$64	\$62	\$60	\$59	\$57	\$55	\$54	\$53	\$48	\$37	\$32	\$25	\$22	\$20
	10yr ave.			\$61		\$54		\$46		\$41	\$39	\$38	\$37	\$35	\$31	\$28	\$22	\$19	\$18
	75% Current	\$97	\$86	\$77	\$73	\$68	\$66	\$64	\$63	\$61	\$59	\$58	\$57	\$51	\$40	\$34	\$27	\$24	\$22
	10yr ave.			\$65		\$57		\$50		\$44	\$42	\$41	\$40	\$37	\$33	\$30	\$24	\$21	\$19
	80% Current	\$103	\$91	\$82	\$78	\$73	\$70	\$69	\$67	\$65	\$63	\$62	\$61	\$54	\$43	\$37	\$29	\$25	\$23
	10yr ave.			\$69		\$61		\$53		\$47	\$45	\$44	\$42	\$40	\$36	\$32	\$26	\$22	\$20
	85% Current	\$110	\$97	\$87	\$83	\$77	\$75	\$73	\$72	\$69	\$67	\$66	\$65	\$58	\$45	\$39	\$30	\$27	\$25
	10yr ave.			\$74		\$65		\$56		\$50	\$48	\$46	\$45	\$42	\$38	\$35	\$27	\$24	\$21

The above shows estimated returns per head for skirted fleece wool. These figures do not take into account the value of skirtings and oddments and do not take into account discounts that may apply for faults under individual circumstances. These figures are based on a market index of 100% and should be used as a guide only. Returns over \$30 / head for fleece wool are highlighted.

Source: Australian Wool Exchange, Australian Wool Innovation, Sydney Futures Exchange, x-rates.com

Disclaimer: While all due care has been taken in the preparation of this document, no warranty is made as to its accuracy, reliability or completeness. To the extent permitted by law neither Jemalong or their sources including subsidiaries and staff, accept liability to any person for loss or damage arising from the use of this information.



Table 17: Returns pr head for skirted fleece wool.

Skirted FLC Weight		Micron																	
5 Kg		16	16.5	17	17.5	18	18.5	19	19.5	20	21	22	23	24	25	26	28	30	32
Yield (Sch Dry)	25% Current	\$27	\$24	\$21	\$20	\$19	\$18	\$18	\$18	\$17	\$16	\$16	\$16	\$14	\$11	\$10	\$7	\$7	\$6
	10yr ave.			\$18		\$16		\$14		\$12	\$12	\$11	\$11	\$10	\$9	\$8	\$7	\$6	\$5
	30% Current	\$32	\$29	\$26	\$24	\$23	\$22	\$21	\$21	\$20	\$20	\$19	\$19	\$17	\$13	\$11	\$9	\$8	\$7
	10yr ave.			\$22		\$19		\$17		\$15	\$14	\$14	\$13	\$12	\$11	\$10	\$8	\$7	\$6
	35% Current	\$38	\$33	\$30	\$28	\$26	\$26	\$25	\$25	\$24	\$23	\$23	\$22	\$20	\$16	\$13	\$10	\$9	\$8
	10yr ave.			\$25		\$22		\$19		\$17	\$16	\$16	\$15	\$15	\$13	\$12	\$9	\$8	\$7
	40% Current	\$43	\$38	\$34	\$32	\$30	\$29	\$29	\$28	\$27	\$26	\$26	\$25	\$23	\$18	\$15	\$12	\$11	\$10
	10yr ave.			\$29		\$26		\$22		\$20	\$19	\$18	\$18	\$17	\$15	\$14	\$11	\$9	\$8
	45% Current	\$48	\$43	\$38	\$36	\$34	\$33	\$32	\$32	\$30	\$29	\$29	\$29	\$26	\$20	\$17	\$13	\$12	\$11
	10yr ave.			\$33		\$29		\$25		\$22	\$21	\$20	\$20	\$19	\$17	\$15	\$12	\$10	\$9
	50% Current	\$54	\$48	\$43	\$41	\$38	\$37	\$36	\$35	\$34	\$33	\$32	\$32	\$28	\$22	\$19	\$15	\$13	\$12
	10yr ave.			\$36		\$32		\$28		\$24	\$23	\$23	\$22	\$21	\$19	\$17	\$13	\$12	\$10
	55% Current	\$59	\$52	\$47	\$45	\$42	\$40	\$39	\$39	\$37	\$36	\$35	\$35	\$31	\$25	\$21	\$16	\$15	\$13
	10yr ave.			\$40		\$35		\$30		\$27	\$26	\$25	\$24	\$23	\$20	\$19	\$15	\$13	\$11
	60% Current	\$65	\$57	\$51	\$49	\$45	\$44	\$43	\$42	\$41	\$39	\$39	\$38	\$34	\$27	\$23	\$18	\$16	\$14
	10yr ave.			\$43		\$38		\$33		\$29	\$28	\$27	\$26	\$25	\$22	\$20	\$16	\$14	\$13
	65% Current	\$70	\$62	\$56	\$53	\$49	\$48	\$47	\$46	\$44	\$43	\$42	\$41	\$37	\$29	\$25	\$19	\$17	\$16
	10yr ave.			\$47		\$41		\$36		\$32	\$30	\$30	\$29	\$27	\$24	\$22	\$17	\$15	\$14
	70% Current	\$75	\$67	\$60	\$57	\$53	\$51	\$50	\$49	\$47	\$46	\$45	\$44	\$40	\$31	\$27	\$21	\$18	\$17
	10yr ave.			\$51		\$45		\$39		\$34	\$33	\$32	\$31	\$29	\$26	\$24	\$19	\$16	\$15
	75% Current	\$81	\$71	\$64	\$61	\$57	\$55	\$54	\$53	\$51	\$49	\$48	\$48	\$43	\$33	\$29	\$22	\$20	\$18
	10yr ave.			\$54		\$48		\$42		\$37	\$35	\$34	\$33	\$31	\$28	\$25	\$20	\$17	\$16
	80% Current	\$86	\$76	\$68	\$65	\$61	\$59	\$57	\$56	\$54	\$52	\$52	\$51	\$45	\$36	\$30	\$24	\$21	\$19
	10yr ave.			\$58		\$51		\$44		\$39	\$37	\$36	\$35	\$33	\$30	\$27	\$21	\$19	\$17
	85% Current	\$91	\$81	\$73	\$69	\$64	\$62	\$61	\$60	\$57	\$56	\$55	\$54	\$48	\$38	\$32	\$25	\$22	\$20
	10yr ave.			\$61		\$54		\$47		\$42	\$40	\$39	\$37	\$35	\$32	\$29	\$23	\$20	\$18

The above shows estimated returns per head for skirted fleece wool. These figures do not take into account the value of skirtings and oddments and do not take into account discounts that may apply for faults under individual circumstances. These figures are based on a market index of 100% and should be used as a guide only. Returns over \$30 / head for fleece wool are highlighted.

Source: Australian Wool Exchange, Australian Wool Innovation, Sydney Futures Exchange, x-rates.com

Disclaimer: While all due care has been taken in the preparation of this document, no warranty is made as to its accuracy, reliability or completeness. To the extent permitted by law neither Jemalong or their sources including subsidiaries and staff, accept liability to any person for loss or damage arising from the use of this information.



Table 18: Returns pr head for skirted fleece wool.

Skirted FLC Weight		Micron																	
4 Kg		16	16.5	17	17.5	18	18.5	19	19.5	20	21	22	23	24	25	26	28	30	32
Yield (Sch Dry)	25% Current	\$22	\$19	\$17	\$16	\$15	\$15	\$14	\$14	\$14	\$13	\$13	\$13	\$11	\$9	\$8	\$6	\$5	\$5
	10yr ave.			\$14		\$13		\$11		\$10	\$9	\$9	\$9	\$8	\$7	\$7	\$5	\$5	\$4
	30% Current	\$26	\$23	\$21	\$19	\$18	\$18	\$17	\$17	\$16	\$16	\$15	\$15	\$14	\$11	\$9	\$7	\$6	\$6
	10yr ave.			\$17		\$15		\$13		\$12	\$11	\$11	\$11	\$10	\$9	\$8	\$6	\$6	\$5
	35% Current	\$30	\$27	\$24	\$23	\$21	\$21	\$20	\$20	\$19	\$18	\$18	\$18	\$16	\$12	\$11	\$8	\$7	\$7
	10yr ave.			\$20		\$18		\$15		\$14	\$13	\$13	\$12	\$12	\$10	\$9	\$7	\$6	\$6
	40% Current	\$34	\$30	\$27	\$26	\$24	\$23	\$23	\$22	\$22	\$21	\$21	\$20	\$18	\$14	\$12	\$10	\$8	\$8
	10yr ave.			\$23		\$20		\$18		\$16	\$15	\$15	\$14	\$13	\$12	\$11	\$9	\$7	\$7
	45% Current	\$39	\$34	\$31	\$29	\$27	\$26	\$26	\$25	\$24	\$24	\$23	\$23	\$20	\$16	\$14	\$11	\$10	\$9
	10yr ave.			\$26		\$23		\$20		\$18	\$17	\$16	\$16	\$15	\$13	\$12	\$10	\$8	\$8
	50% Current	\$43	\$38	\$34	\$32	\$30	\$29	\$29	\$28	\$27	\$26	\$26	\$25	\$23	\$18	\$15	\$12	\$11	\$10
	10yr ave.			\$29		\$26		\$22		\$20	\$19	\$18	\$18	\$17	\$15	\$14	\$11	\$9	\$8
	55% Current	\$47	\$42	\$38	\$36	\$33	\$32	\$31	\$31	\$30	\$29	\$28	\$28	\$25	\$20	\$17	\$13	\$12	\$11
	10yr ave.			\$32		\$28		\$24		\$22	\$21	\$20	\$19	\$18	\$16	\$15	\$12	\$10	\$9
	60% Current	\$52	\$46	\$41	\$39	\$36	\$35	\$34	\$34	\$32	\$31	\$31	\$31	\$27	\$21	\$18	\$14	\$13	\$12
	10yr ave.			\$35		\$31		\$27		\$23	\$22	\$22	\$21	\$20	\$18	\$16	\$13	\$11	\$10
	65% Current	\$56	\$49	\$44	\$42	\$39	\$38	\$37	\$36	\$35	\$34	\$33	\$33	\$30	\$23	\$20	\$15	\$14	\$13
	10yr ave.			\$38		\$33		\$29		\$25	\$24	\$24	\$23	\$22	\$19	\$18	\$14	\$12	\$11
	70% Current	\$60	\$53	\$48	\$45	\$42	\$41	\$40	\$39	\$38	\$37	\$36	\$36	\$32	\$25	\$21	\$17	\$15	\$13
	10yr ave.			\$41		\$36		\$31		\$27	\$26	\$25	\$25	\$23	\$21	\$19	\$15	\$13	\$12
	75% Current	\$65	\$57	\$51	\$49	\$45	\$44	\$43	\$42	\$41	\$39	\$39	\$38	\$34	\$27	\$23	\$18	\$16	\$14
	10yr ave.			\$43		\$38		\$33		\$29	\$28	\$27	\$26	\$25	\$22	\$20	\$16	\$14	\$13
	80% Current	\$69	\$61	\$55	\$52	\$48	\$47	\$46	\$45	\$43	\$42	\$41	\$41	\$36	\$29	\$24	\$19	\$17	\$15
	10yr ave.			\$46		\$41		\$35		\$31	\$30	\$29	\$28	\$27	\$24	\$22	\$17	\$15	\$13
	85% Current	\$73	\$65	\$58	\$55	\$51	\$50	\$49	\$48	\$46	\$44	\$44	\$43	\$39	\$30	\$26	\$20	\$18	\$16
	10yr ave.			\$49		\$43		\$38		\$33	\$32	\$31	\$30	\$28	\$25	\$23	\$18	\$16	\$14

The above shows estimated returns per head for skirted fleece wool. These figures do not take into account the value of skirtings and oddments and do not take into account discounts that may apply for faults under individual circumstances. These figures are based on a market index of 100% and should be used as a guide only. Returns over \$30 / head for fleece wool are highlighted.

Source: Australian Wool Exchange, Australian Wool Innovation, Sydney Futures Exchange, x-rates.com

Disclaimer: While all due care has been taken in the preparation of this document, no warranty is made as to its accuracy, reliability or completeness. To the extent permitted by law neither Jemalong or their sources including subsidiaries and staff, accept liability to any person for loss or damage arising from the use of this information.



Table 19: Returns pr head for skirted fleece wool.

Skirted FLC Weight		Micron																	
3 Kg		16	16.5	17	17.5	18	18.5	19	19.5	20	21	22	23	24	25	26	28	30	32
Yield (Sch Dry)	25% Current	\$16	\$14	\$13	\$12	\$11	\$11	\$11	\$11	\$10	\$10	\$10	\$10	\$9	\$7	\$6	\$4	\$4	\$4
	10yr ave.			\$11		\$10		\$8		\$7	\$7	\$7	\$7	\$6	\$6	\$5	\$4	\$3	\$3
	30% Current	\$19	\$17	\$15	\$15	\$14	\$13	\$13	\$13	\$12	\$12	\$12	\$11	\$10	\$8	\$7	\$5	\$5	\$4
	10yr ave.			\$13		\$11		\$10		\$9	\$8	\$8	\$8	\$7	\$7	\$6	\$5	\$4	\$4
	35% Current	\$23	\$20	\$18	\$17	\$16	\$15	\$15	\$15	\$14	\$14	\$14	\$13	\$12	\$9	\$8	\$6	\$6	\$5
	10yr ave.			\$15		\$13		\$12		\$10	\$10	\$10	\$9	\$9	\$8	\$7	\$6	\$5	\$4
	40% Current	\$26	\$23	\$21	\$19	\$18	\$18	\$17	\$17	\$16	\$16	\$15	\$15	\$14	\$11	\$9	\$7	\$6	\$6
	10yr ave.			\$17		\$15		\$13		\$12	\$11	\$11	\$11	\$10	\$9	\$8	\$6	\$6	\$5
	45% Current	\$29	\$26	\$23	\$22	\$20	\$20	\$19	\$19	\$18	\$18	\$17	\$17	\$15	\$12	\$10	\$8	\$7	\$6
	10yr ave.			\$20		\$17		\$15		\$13	\$13	\$12	\$12	\$11	\$10	\$9	\$7	\$6	\$6
	50% Current	\$32	\$29	\$26	\$24	\$23	\$22	\$21	\$21	\$20	\$20	\$19	\$19	\$17	\$13	\$11	\$9	\$8	\$7
	10yr ave.			\$22		\$19		\$17		\$15	\$14	\$14	\$13	\$12	\$11	\$10	\$8	\$7	\$6
	55% Current	\$35	\$31	\$28	\$27	\$25	\$24	\$24	\$23	\$22	\$22	\$21	\$21	\$19	\$15	\$13	\$10	\$9	\$8
	10yr ave.			\$24		\$21		\$18		\$16	\$15	\$15	\$15	\$14	\$12	\$11	\$9	\$8	\$7
	60% Current	\$39	\$34	\$31	\$29	\$27	\$26	\$26	\$25	\$24	\$24	\$23	\$23	\$20	\$16	\$14	\$11	\$10	\$9
	10yr ave.			\$26		\$23		\$20		\$18	\$17	\$16	\$16	\$15	\$13	\$12	\$10	\$8	\$8
	65% Current	\$42	\$37	\$33	\$32	\$30	\$29	\$28	\$27	\$26	\$26	\$25	\$25	\$22	\$17	\$15	\$12	\$10	\$9
	10yr ave.			\$28		\$25		\$22		\$19	\$18	\$18	\$17	\$16	\$14	\$13	\$10	\$9	\$8
	70% Current	\$45	\$40	\$36	\$34	\$32	\$31	\$30	\$29	\$28	\$27	\$27	\$27	\$24	\$19	\$16	\$13	\$11	\$10
	10yr ave.			\$30		\$27		\$23		\$21	\$20	\$19	\$19	\$17	\$16	\$14	\$11	\$10	\$9
	75% Current	\$48	\$43	\$38	\$36	\$34	\$33	\$32	\$32	\$30	\$29	\$29	\$29	\$26	\$20	\$17	\$13	\$12	\$11
	10yr ave.			\$33		\$29		\$25		\$22	\$21	\$20	\$20	\$19	\$17	\$15	\$12	\$10	\$9
	80% Current	\$52	\$46	\$41	\$39	\$36	\$35	\$34	\$34	\$32	\$31	\$31	\$31	\$27	\$21	\$18	\$14	\$13	\$12
	10yr ave.			\$35		\$31		\$27		\$23	\$22	\$22	\$21	\$20	\$18	\$16	\$13	\$11	\$10
	85% Current	\$55	\$48	\$44	\$41	\$39	\$37	\$36	\$36	\$34	\$33	\$33	\$32	\$29	\$23	\$19	\$15	\$13	\$12
	10yr ave.			\$37		\$33		\$28		\$25	\$24	\$23	\$22	\$21	\$19	\$17	\$14	\$12	\$11

The above shows estimated returns per head for skirted fleece wool. These figures do not take into account the value of skirtings and oddments and do not take into account discounts that may apply for faults under individual circumstances. These figures are based on a market index of 100% and should be used as a guide only. Returns over \$30 / head for fleece wool are highlighted.

Source: Australian Wool Exchange, Australian Wool Innovation, Sydney Futures Exchange, x-rates.com

Disclaimer: While all due care has been taken in the preparation of this document, no warranty is made as to its accuracy, reliability or completeness. To the extent permitted by law neither Jemalong or their sources including subsidiaries and staff, accept liability to any person for loss or damage arising from the use of this information.



Table 20: Returns pr head for skirted fleece wool.

Skirted FLC Weight		Micron																	
2 Kg		16	16.5	17	17.5	18	18.5	19	19.5	20	21	22	23	24	25	26	28	30	32
Yield (Sch Dry)	25% Current	\$11	\$10	\$9	\$8	\$8	\$7	\$7	\$7	\$7	\$7	\$6	\$6	\$6	\$4	\$4	\$3	\$3	\$2
	10yr ave.			\$7		\$6		\$6		\$5	\$5	\$5	\$4	\$4	\$4	\$3	\$3	\$2	\$2
	30% Current	\$13	\$11	\$10	\$10	\$9	\$9	\$9	\$8	\$8	\$8	\$8	\$8	\$7	\$5	\$5	\$4	\$3	\$3
	10yr ave.			\$9		\$8		\$7		\$6	\$6	\$5	\$5	\$5	\$4	\$4	\$3	\$3	\$3
	35% Current	\$15	\$13	\$12	\$11	\$11	\$10	\$10	\$10	\$9	\$9	\$9	\$9	\$8	\$6	\$5	\$4	\$4	\$3
	10yr ave.			\$10		\$9		\$8		\$7	\$7	\$6	\$6	\$6	\$5	\$5	\$4	\$3	\$3
	40% Current	\$17	\$15	\$14	\$13	\$12	\$12	\$11	\$11	\$11	\$10	\$10	\$10	\$9	\$7	\$6	\$5	\$4	\$4
	10yr ave.			\$12		\$10		\$9		\$8	\$7	\$7	\$7	\$7	\$6	\$5	\$4	\$4	\$3
	45% Current	\$19	\$17	\$15	\$15	\$14	\$13	\$13	\$13	\$12	\$12	\$12	\$11	\$10	\$8	\$7	\$5	\$5	\$4
	10yr ave.			\$13		\$11		\$10		\$9	\$8	\$8	\$8	\$7	\$7	\$6	\$5	\$4	\$4
	50% Current	\$22	\$19	\$17	\$16	\$15	\$15	\$14	\$14	\$14	\$13	\$13	\$13	\$11	\$9	\$8	\$6	\$5	\$5
	10yr ave.			\$14		\$13		\$11		\$10	\$9	\$9	\$9	\$8	\$7	\$7	\$5	\$5	\$4
	55% Current	\$24	\$21	\$19	\$18	\$17	\$16	\$16	\$15	\$15	\$14	\$14	\$14	\$12	\$10	\$8	\$7	\$6	\$5
	10yr ave.			\$16		\$14		\$12		\$11	\$10	\$10	\$10	\$9	\$8	\$7	\$6	\$5	\$5
	60% Current	\$26	\$23	\$21	\$19	\$18	\$18	\$17	\$17	\$16	\$16	\$15	\$15	\$14	\$11	\$9	\$7	\$6	\$6
	10yr ave.			\$17		\$15		\$13		\$12	\$11	\$11	\$11	\$10	\$9	\$8	\$6	\$6	\$5
	65% Current	\$28	\$25	\$22	\$21	\$20	\$19	\$19	\$18	\$18	\$17	\$17	\$17	\$15	\$12	\$10	\$8	\$7	\$6
	10yr ave.			\$19		\$17		\$14		\$13	\$12	\$12	\$11	\$11	\$10	\$9	\$7	\$6	\$5
	70% Current	\$30	\$27	\$24	\$23	\$21	\$21	\$20	\$20	\$19	\$18	\$18	\$18	\$16	\$12	\$11	\$8	\$7	\$7
	10yr ave.			\$20		\$18		\$15		\$14	\$13	\$13	\$12	\$12	\$10	\$9	\$7	\$6	\$6
	75% Current	\$32	\$29	\$26	\$24	\$23	\$22	\$21	\$21	\$20	\$20	\$19	\$19	\$17	\$13	\$11	\$9	\$8	\$7
	10yr ave.			\$22		\$19		\$17		\$15	\$14	\$14	\$13	\$12	\$11	\$10	\$8	\$7	\$6
	80% Current	\$34	\$30	\$27	\$26	\$24	\$23	\$23	\$22	\$22	\$21	\$21	\$20	\$18	\$14	\$12	\$10	\$8	\$8
	10yr ave.			\$23		\$20		\$18		\$16	\$15	\$15	\$14	\$13	\$12	\$11	\$9	\$7	\$7
	85% Current	\$37	\$32	\$29	\$28	\$26	\$25	\$24	\$24	\$23	\$22	\$22	\$22	\$19	\$15	\$13	\$10	\$9	\$8
	10yr ave.			\$25		\$22		\$19		\$17	\$16	\$15	\$15	\$14	\$13	\$12	\$9	\$8	\$7

The above shows estimated returns per head for skirted fleece wool. These figures do not take into account the value of skirtings and oddments and do not take into account discounts that may apply for faults under individual circumstances. These figures are based on a market index of 100% and should be used as a guide only. Returns over \$30 / head for fleece wool are highlighted.

Source: Australian Wool Exchange, Australian Wool Innovation, Sydney Futures Exchange, x-rates.com

Disclaimer: While all due care has been taken in the preparation of this document, no warranty is made as to its accuracy, reliability or completeness. To the extent permitted by law neither Jemalong or their sources including subsidiaries and staff, accept liability to any person for loss or damage arising from the use of this information.