



Table 1: Northern Region Micron Price Guides

WEEK 39			12 MONTH COMPARISONS						3 YEAR COMPARISONS					10 YEAR COMPARISONS				
24/03/2026		18/03/2026	24/03/2025	Now		Now		Now		Now			Percentile	10 year		Now		Percentile
MPG	Price	Weekly Change	This time Last Year	compared to Last Year	12 Month Low	compared to Low	12 Month High	compared to High	Low	High	Average	compared to 3yr ave		Low	High	Average	compared to 10yr ave	
NRI	1771	-19 -1.1%	1285	+486 38%	1224	+547 45%	1836	-65 -4%	1117	1836	1289	+482 37%	97%	1022	2163	1474	+297 20%	83%
15*	2657 n	+42 1.6%	2430	+227 9%	2275	+382 17%	2750	-93 -3%	2275	2975	2517	+140 6%	87%	1735	3750	2584	+73 3%	56%
15.5*	2515 n	+20 0.8%	2150	+365 17%	2070	+445 21%	2535	-20 -1%	2070	2875	2303	+212 9%	86%	1642	3450	2446	+69 3%	56%
16*	2405 n	-5 -0.2%	1930	+475 25%	1762	+643 36%	2472	-67 -3%	1762	2575	2029	+376 19%	91%	1570	3300	2339	+66 3%	56%
16.5	2384 n	-39 -1.6%	1815	+569 31%	1680	+704 42%	2462	-78 -3%	1670	2462	1934	+450 23%	96%	1538	3187	2225	+159 7%	63%
17	2355	-21 -0.9%	1731	+624 36%	1648	+707 43%	2433	-78 -3%	1600	2433	1840	+515 28%	98%	1478	3008	2120	+235 11%	68%
17.5	2332	-23 -1.0%	1687	+645 38%	1609	+723 45%	2412	-80 -3%	1508	2412	1755	+577 33%	97%	1383	2845	2015	+317 16%	76%
18	2299	-38 -1.6%	1633	+666 41%	1558	+741 48%	2396	-97 -4%	1432	2396	1675	+624 37%	97%	1272	2708	1905	+394 21%	84%
18.5	2228	-31 -1.4%	1592	+636 40%	1532	+696 45%	2319	-91 -4%	1358	2319	1603	+625 39%	97%	1174	2591	1803	+425 24%	87%
19	2118	-56 -2.6%	1559	+559 36%	1482	+636 43%	2268	-150 -7%	1327	2268	1545	+573 37%	97%	1117	2465	1709	+409 24%	86%
19.5	2049	-32 -1.5%	1544	+505 33%	1453	+596 41%	2208	-159 -7%	1289	2208	1503	+546 36%	97%	1081	2404	1640	+409 25%	86%
20	2016 n	+6 0.3%	1508	+508 34%	1432	+584 41%	2154	-138 -6%	1262	2154	1467	+549 37%	96%	1048	2391	1581	+435 28%	86%
21	1991 n	-57 -2.8%	1499	+492 33%	1400	+591 42%	2080	-89 -4%	1232	2080	1436	+555 39%	95%	1016	2368	1532	+459 30%	86%
22	1990 n	+40 2.1%	1450	+540 37%	1380	+610 44%	2050	-60 -3%	1200	2050	1405	+585 42%	98%	1009	2342	1498	+492 33%	87%
23	1540 n	0	1100	+440 40%	1129	+411 36%	1575	-35 -2%	960	1575	1184	+356 30%	95%	957	2316	1371	+169 12%	76%
24	1100 n	-60 -5.2%	858	+242 28%	800	+300 38%	1230	-130 -11%	766	1230	914	+186 20%	92%	770	2114	1190	-90 -8%	56%
25	965 n	-55 -5.4%	700	+265 38%	710	+255 36%	1088	-123 -11%	635	1088	759	+206 27%	92%	635	1801	1009	-44 -4%	56%
26	790 n	-35 -4.2%	602	+188 31%	588	+202 34%	942	-152 -16%	465	942	609	+181 30%	88%	465	1545	872	-82 -9%	51%
28	650 n	-15 -2.3%	425	+225 53%	420	+230 55%	728	-78 -11%	290	728	436	+214 49%	86%	310	1318	612	+38 6%	54%
30	562 n	-28 -4.7%	365	+197 54%	358	+204 57%	635	-73 -11%	255	635	388	+174 45%	89%	285	998	500	+62 12%	60%
32	488 n	-2 -0.4%	333	+155 47%	322	+166 52%	510	-22 -4%	227	510	328	+160 49%	93%	210	659	365	+123 34%	84%
MC	1035 n	-3 -0.3%	739	+296 40%	700	+335 48%	1041	-6 -1%	689	1041	749	+286 38%	98%	656	1563	959	+76 8%	64%
AU BALES OFFERED	39,673		* 16.5 is the lowest Micron Price Guide (MPG) published by The Australian Wool Exchange (AWEX). Therefore MPG's below 16.5 micron are an estimate based on the best available information at the time of publication. Likewise, for any category where there is insufficient quantity offered to enable AWEX to quote, a quote will also be provided.															
AU BALES SOLD	36,140		* Recording of 15 & 15.5 micron commenced in October 2017, and as a result some historic data is not yet available for those MPG's. Where historic data is not available an estimate based on '16 micron statistics' and incorporating the existing 15 & 15.5 micron data, will be provided as a guide.															
AU PASSED-IN%	8.9%																	
AUD/USD	0.6966 -2.2%																	

Source: Australian Wool Exchange, Australian Wool Innovation, Riemann, x-rates.com, Reserve Bank of Australia, Australian Wool Testing Authority, Australian Bureau Statistics (ABS), Woolmark.

Disclaimer: Jemalong Wool Pty Ltd make no representations about the content and suitability of the information contained in this report. Specifically, Jemalong Wool does not warrant, guarantee or make any representations regarding the correctness, accuracy, reliability, currency, or any other aspect regarding characteristics or use of information presented in these materials. The user accepts sole responsibility and risk associated with the use and results of these materials, irrespective of the purpose of which such use or results are applied. In no event shall Jemalong Wool be liable for any loss or damages arising out of or in connection with the use of these materials.

Copyright © Jemalong Wool Pty Ltd, 2006-2026. Apart from any use permitted under the Copyright Act 1968, no part may be copied or reproduced by any process nor stored electronically without the written permission of Jemalong Wool Pty Ltd. This report has been compiled by Jemalong Wool Pty Ltd for internal use and for the benefit of Jemalong Wool clients. You should only read this report if you are authorised to do so, if you are not authorised then you must destroy all electronic and paper copies immediately. Under no circumstance are you permitted to forward this report to a third-party.

MARKET COMMENTARY Source: AWEX

The wool market fell again this series, adding further losses to those witnessed during the previous selling series.

There were 39,673 bales offered to the trade (2,605 bales less than in the previous series). Tuesday's merino MPGs dropped by 5-59 cents, with only the 20-and 21-micron MPGs in the North managing gains. Falls in the crossbred, skirting and oddment sectors were also recorded, resulting in the EMI shedding 21 cents, to close at 1730 for the day.

Due to a weakening of the AUD against the US, the EMI decline was more significant in US terms. As the majority of Australian wool is traded using US currency, any change in the exchange rate has an immediate impact on the wool market. As the AUD dropped below 70 US cents for the first time since January, the fall in the EMI was 39 US cents. This was the largest fall in the EMI in USD terms since October last year when it fell by 45 cents.

On Wednesday, the market settled to a degree with mixed results recorded. By the close of trade, the EMI finished the week 27 cents lower, closing at 1,724. In US terms, it dropped 44 cents for the series, closing the week at 1,202 US.

Next week's offering is again expected to be reduced. There are currently 37,815 bales on offer in Sydney, Melbourne, and Fremantle.

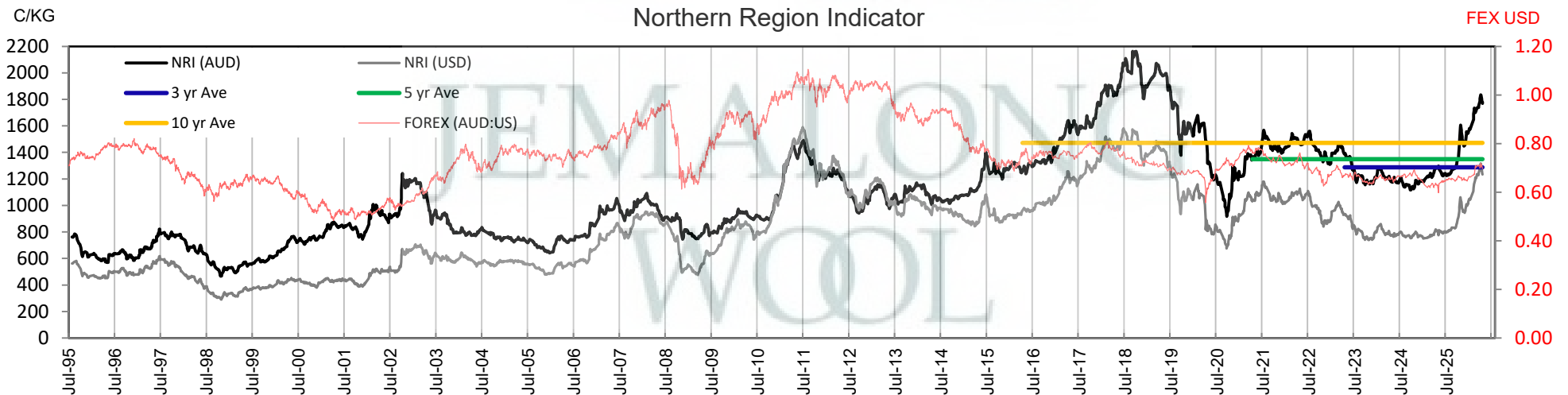




Table 2: Three Year Decile Table, since: 1/03/2023

Decile %	16	16.5	17	17.5	18	18.5	19	19.5	20	21	22	23	24	25	26	28	30	32	MC
1 10%	1825	1727	1658	1581	1494	1430	1387	1344	1308	1275	1222	1018	800	671	489	335	307	250	699
2 20%	1845	1762	1680	1605	1521	1450	1405	1360	1324	1288	1250	1080	820	688	522	350	325	280	701
3 30%	1891	1792	1700	1623	1541	1467	1414	1376	1338	1306	1273	1100	858	697	545	360	331	288	707
4 40%	1912	1807	1713	1635	1565	1492	1435	1389	1356	1317	1289	1115	870	709	561	375	340	297	711
5 50%	1927	1828	1731	1659	1589	1524	1469	1425	1385	1341	1315	1135	885	725	575	384	350	305	721
6 60%	2025	1889	1773	1682	1613	1555	1503	1469	1441	1412	1383	1163	912	732	594	410	365	322	730
7 70%	2075	1995	1858	1740	1648	1592	1535	1506	1470	1438	1409	1200	970	759	611	435	380	335	747
8 80%	2227	2168	2063	1958	1854	1722	1622	1568	1518	1503	1486	1264	990	816	705	516	437	368	805
9 90%	2402	2317	2208	2109	2028	1959	1885	1849	1812	1810	1800	1475	1030	925	805	667	570	453	829
10 100%	2575	2462	2433	2412	2396	2319	2268	2208	2154	2080	2050	1575	1230	1088	942	728	635	510	1041
MPG	2405	2384	2355	2332	2299	2228	2118	2049	2016	1991	1990	1540	1100	965	790	650	562	488	1035
3 Yr Percentile	91%	96%	98%	97%	97%	97%	97%	97%	96%	95%	98%	95%	92%	92%	88%	86%	89%	93%	98%

Table 3: Ten Year Decile Table, since: 1/03/2016

Decile %	16	16.5	17	17.5	18	18.5	19	19.5	20	21	22	23	24	25	26	28	30	32	MC
1 10%	1798	1704	1628	1575	1512	1448	1392	1351	1312	1260	1213	1079	860	697	550	350	320	240	706
2 20%	1891	1790	1702	1626	1558	1494	1442	1400	1347	1290	1251	1106	900	732	592	378	335	253	730
3 30%	2000	1880	1772	1683	1612	1554	1511	1467	1380	1315	1285	1129	951	801	654	412	355	276	805
4 40%	2125	2034	1961	1897	1787	1673	1574	1496	1423	1359	1328	1158	979	846	727	460	380	295	869
5 50%	2285	2209	2128	2012	1907	1793	1653	1536	1466	1417	1386	1220	1010	877	772	533	445	335	906
6 60%	2450	2334	2252	2158	2007	1860	1723	1601	1525	1468	1435	1353	1219	1050	920	689	560	398	993
7 70%	2600	2498	2376	2244	2108	1954	1815	1724	1646	1584	1518	1443	1328	1173	1070	763	597	435	1076
8 80%	2810	2633	2506	2377	2203	2095	1965	1888	1813	1789	1770	1622	1490	1250	1140	820	670	466	1146
9 90%	3060	2861	2665	2507	2389	2275	2197	2166	2148	2129	2110	1961	1810	1502	1320	932	710	514	1264
10 100%	3300	3187	3008	2845	2708	2591	2465	2404	2391	2368	2342	2316	2114	1801	1545	1318	998	659	1563
MPG	2405	2384	2355	2332	2299	2228	2118	2049	2016	1991	1990	1540	1100	965	790	650	562	488	1035
10 Yr Percentile	56%	63%	68%	76%	84%	87%	86%	86%	86%	86%	87%	76%	56%	56%	51%	54%	60%	84%	64%

Definitions:

- * A Percentile, is a value on a scale of one hundred that indicates the percent of a distribution that is equal to or below it. In general a percentile between 25% and 75% is considered normal, a percentile below 25% is considered below normal and a percentile above 75% is considered above normal.
Three and ten year percentiles shown on the bottom line of table 2 & 3 (above) and in table 1 (on page 1), detail the amount of time during the past 3 & 10 years where the market has traded either at or below its current price.
 - * Deciles are a method of sorting ranked data into 10 equal groups. The data may be ranked from largest to smallest or vice versa.
The above Decile tables sort price Percentiles into 10 equal groups (in ascending order), with table 2 ranking the previous 3 years prices, while table 3 ranks prices over the previous 10 years
- Example:** In Table 2, a Decile Rank of 6 for 19 microns, shows 19 microns have traded at or below 1503 for 60% of the time, over the past three years.
In Table 3, a Decile Rank of 6 for 19 microns, shows 19 microns have traded at or below 1723 for 60% of the time, over the past ten years.



Table 4: Riemann Forwards, as at: **24/03/26** Any highlighted in yellow are recent trades, trading since: **Thursday, 19 March 2026**

MICRON (Total Traded = 41)	18um (1 Traded)	18.5um (4 Traded)	19um (19 Traded)	19.5um (4 Traded)	21um (13 Traded)	22um (0 Traded)	23um (0 Traded)	28um (0 Traded)	30um (0 Traded)
Mar-2026 (11)		10/02/26 2150 (3)	27/01/26 2100 (3)	27/01/26 2050 (2)	27/01/26 2000 (3)				
Apr-2026 (6)			23/02/26 2060 (5)		13/01/26 1875 (1)				
May-2026 (8)	11/02/26 2225 (1)		13/01/26 1950 (2)	23/02/26 2070 (2)	20/02/26 2020 (3)				
Jun-2026 (11)		25/03/26 2100 (1)	25/03/26 2020 (8)		20/02/26 2020 (2)				
Jul-2026 (1)			26/02/26 2000 (1)						
Aug-2026									
Sep-2026 (1)					9/12/25 1800 (1)				
Oct-2026 (2)					14/01/26 1875 (2)				
Nov-2026 (1)					9/12/25 1805 (1)				
Dec-2026									
Jan-2027									
Feb-2027									
Mar-2027									
Apr-2027									
May-2027									
Jun-2027									
Jul-2027									
Aug-2027									
Sep-2027									
Oct-2027									
Nov-2027									
Dec-2027									
Jan-2028									

Explanatory Notes: Prices quoted reflect the most recent trades, at time of print.

Disclaimer: While all due care has been taken in the preparation of this document, no warranty is made as to its accuracy, reliability or completeness. To the extent permitted by law neither Jemalong or their sources including subsidiaries and staff, accept liability to any person for loss or damage arising from the use of this information.



Table 5: Riemann Options, as at: **24/03/26** Any highlighted in yellow are recent trades, trading since: **Friday, 20 March 2026**

MICRON (Total Traded = 0)	18um Strike - Premium (0 Traded)	18.5um Strike - Premium (0 Traded)	19um Strike - Premium (0 Traded)	19.5um Strike - Premium (0 Traded)	21um Strike - Premium (0 Traded)	22um Strike - Premium (0 Traded)	23um Strike - Premium (0 Traded)	28um Strike - Premium (0 Traded)	30um Strike - Premium (0 Traded)
Mar-2026									
Apr-2026									
May-2026									
Jun-2026									
Jul-2026									
Aug-2026									
Sep-2026									
Oct-2026									
Nov-2026									
Dec-2026									
Jan-2027									
Feb-2027									
Mar-2027									
Apr-2027									
May-2027									
Jun-2027									
Jul-2027									
Aug-2027									
Sep-2027									
Oct-2027									
Nov-2027									
Dec-2027									
Jan-2028									

OPTIONS CONTRACT MONTH

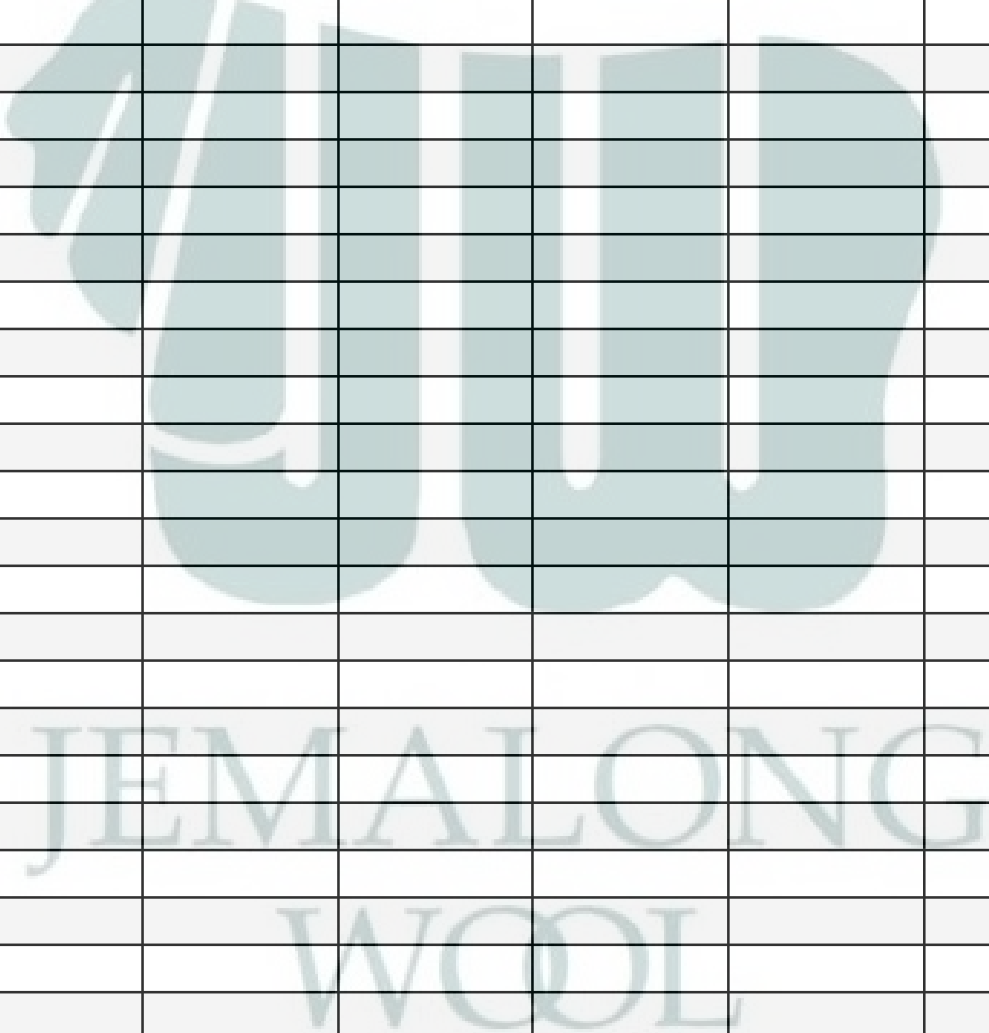




Table 6: National Market Share

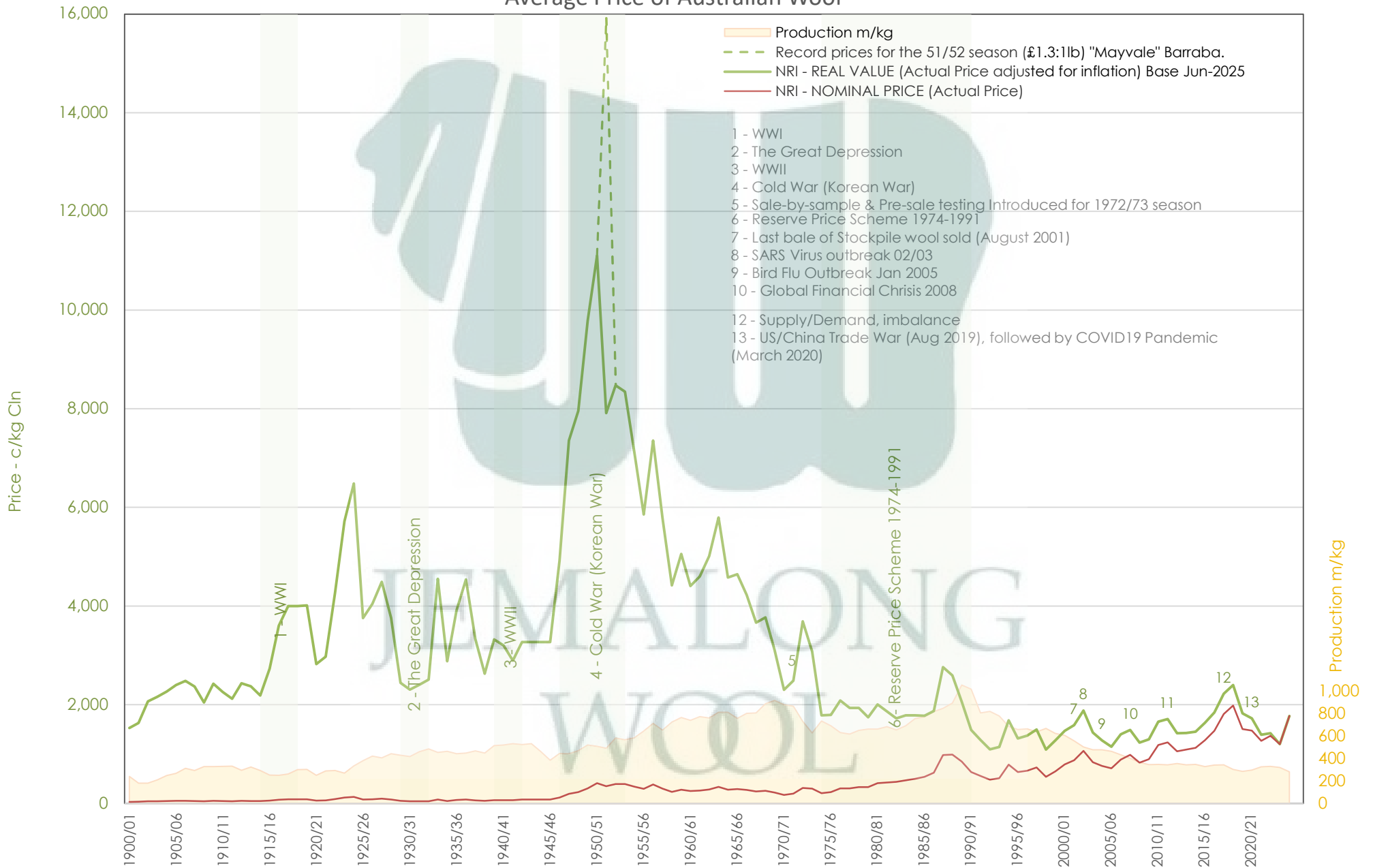
	Current Selling Week Week 39			Previous Selling Week Week 38			Last Season 2024-25			2 Years Ago 2023-24			3 Years Ago 2022-23			5 Years Ago 2020-21			10 Years Ago 2015-16			
	Rank	Buyer	Bales	MS%	Buyer	Bales	MS%	Buyer	Bales	MS%	Buyer	Bales	MS%	Buyer	Bales	MS%	Buyer	Bales	MS%	Buyer	Bales	MS%
Top 10, Auction Buyers	1	TECM	6,344	18%	TECM	6,359	17%	TECM	229,513	16%	TECM	269,885	16%	TECM	236,574	15%	TECM	228,018	15%	TECM	223,011	13%
	2	PMWF	4,639	13%	EWES	4,300	12%	EWES	183,456	13%	EWES	200,309	12%	EWES	184,465	11%	EWES	159,908	10%	CTXS	158,343	10%
	3	TIAM	4,176	12%	PMWF	3,913	11%	TIAM	155,816	11%	TIAM	163,248	10%	TIAM	165,940	10%	FOXM	129,251	8%	FOXM	151,685	9%
	4	EWES	4,082	11%	SMAM	3,593	10%	FOXM	115,227	8%	PMWF	130,958	8%	FOXM	114,903	7%	TIAM	121,176	8%	LEMM	124,422	8%
	5	SMAM	3,537	10%	TIAM	3,251	9%	SMAM	102,067	7%	FOXM	112,236	7%	AMEM	94,128	6%	UWCM	100,677	6%	TIAM	105,610	6%
	6	UWCM	2,456	7%	UWCM	2,719	7%	PMWF	101,929	7%	PEAM	110,013	7%	PMWF	92,939	6%	LEMM	98,471	6%	AMEM	104,017	6%
	7	AMEM	2,020	6%	FOXM	2,463	7%	AMEM	79,894	6%	AMEM	103,230	6%	UWCM	81,113	5%	AMEM	90,244	6%	GWEA	91,407	6%
	8	PEAM	1,521	4%	AMEM	1,768	5%	PEAM	78,127	6%	UWCM	90,284	5%	SMAM	81,046	5%	PMWF	84,389	5%	MODM	83,453	5%
	9	FOXM	1,244	3%	PEAM	1,752	5%	UWCM	73,595	5%	SMAM	76,401	5%	PEAM	76,571	5%	MODM	70,426	4%	PMWF	82,132	5%
	10	MODM	701	2%	MEWS	993	3%	MEWS	41,323	3%	MEWS	67,040	4%	MEWS	64,650	4%	KATS	63,487	4%	MCHA	64,453	4%
MFLC TOP 5	1	PMWF	3,813	19%	TECM	3,595	18%	TIAM	113,479	15%	TECM	147,611	16%	TECM	128,047	15%	TECM	131,264	15%	CTXS	124,326	13%
	2	TECM	3,241	16%	PMWF	3,207	16%	TECM	108,786	14%	PMWF	124,594	14%	TIAM	115,988	14%	TIAM	93,870	10%	TECM	112,996	12%
	3	TIAM	3,214	16%	SMAM	3,147	16%	PMWF	95,314	12%	TIAM	117,878	13%	EWES	93,911	11%	EWES	83,559	9%	LEMM	91,475	10%
	4	SMAM	3,074	15%	TIAM	2,367	12%	EWES	94,695	12%	EWES	103,468	12%	PMWF	87,904	10%	LEMM	81,281	9%	FOXM	84,992	9%
	5	EWES	1,830	9%	EWES	1,757	9%	SMAM	79,384	10%	MEWS	65,151	7%	MEWS	63,681	7%	PMWF	80,872	9%	PMWF	77,550	8%
MSKT TOP 5	1	EWES	1,090	21%	EWES	1,425	27%	TECM	52,792	24%	TECM	51,028	20%	EWES	46,781	18%	TECM	42,521	18%	TIAM	41,055	17%
	2	TECM	978	19%	TECM	805	15%	EWES	40,704	18%	EWES	50,301	20%	TECM	45,453	17%	UWCM	34,928	14%	TECM	39,290	16%
	3	PMWF	609	12%	PMWF	555	10%	TIAM	26,993	12%	TIAM	34,378	14%	TIAM	36,973	14%	EWES	34,884	14%	AMEM	29,982	12%
	4	AMEM	580	11%	FOXM	511	10%	AMEM	18,460	8%	AMEM	26,328	10%	SMAM	18,671	7%	WCWF	21,915	9%	MODM	26,227	11%
	5	TIAM	444	9%	TIAM	447	8%	SMAM	17,308	8%	FOXM	13,839	5%	FOXM	17,752	7%	TIAM	18,193	8%	FOXM	18,153	7%
XB TOP 5	1	TECM	1,560	24%	TECM	1,425	19%	TECM	43,969	17%	PEAM	68,181	22%	PEAM	54,447	18%	MODM	34,090	15%	TECM	46,757	17%
	2	PEAM	877	14%	PEAM	1,088	15%	PEAM	43,966	17%	TECM	48,337	15%	TECM	41,194	14%	TECM	33,794	15%	KATS	27,734	10%
	3	UWCM	706	11%	UWCM	1,080	15%	EWES	30,639	12%	KATS	28,741	9%	MODM	28,282	9%	PEAM	30,636	13%	FOXM	27,096	10%
	4	EWES	681	11%	EWES	775	11%	UWCM	24,901	9%	EWES	27,305	9%	EWES	25,981	9%	EWES	22,525	10%	CTXS	22,768	8%
	5	TIAM	475	7%	FOXM	591	8%	KATS	20,772	8%	UWCM	24,830	8%	UWCM	23,318	8%	UWCM	18,968	8%	MODM	21,130	8%
ODDS TOP 5	1	UWCM	1,337	31%	UWCM	1,213	32%	UWCM	25,237	16%	UWCM	31,740	16%	MCHA	29,569	16%	FOXM	25,868	13%	MCHA	39,964	20%
	2	TECM	565	13%	TECM	534	14%	TECM	23,966	15%	TECM	22,909	12%	UWCM	29,451	16%	MCHA	23,579	12%	VWPM	30,258	15%
	3	EWES	481	11%	EWES	343	9%	FOXM	19,320	12%	FOXM	19,823	10%	TECM	21,880	12%	UWCM	21,008	11%	TECM	23,968	12%
	4	MCHA	417	10%	MCHA	324	8%	EWES	17,418	11%	EWES	19,235	10%	EWES	17,792	9%	TECM	20,439	11%	FOXM	21,444	11%
	5	AMEM	227	5%	FOXM	243	6%	MCHA	13,272	8%	MCHA	16,141	8%	FOXM	16,585	9%	EWES	18,940	10%	GWEA	10,802	5%
Auction Totals	<u>Bales Sold</u>	<u>\$/Bale</u>	<u>Bales Sold</u>		<u>\$/Bale</u>		<u>Bales Sold</u>		<u>\$/Bale</u>		<u>Bales Sold</u>		<u>\$/Bale</u>		<u>Bales Sold</u>		<u>\$/Bale</u>		<u>Bales Sold</u>		<u>\$/Bale</u>	
	36,140	\$ 1,957	36,572	\$ 2,011	1,419,576	\$1,362	1,659,483	\$1,348	1,607,799	\$1,503	1,558,820	\$1,455	1,652,727	\$1,424								
	<u>Auction Value</u>		<u>Auction Value</u>		<u>Auction Value</u>		<u>Auction Value</u>		<u>Auction Value</u>		<u>Auction Value</u>		<u>Auction Value</u>		<u>Auction Value</u>		<u>Auction Value</u>		<u>Auction Value</u>		<u>Auction Value</u>	
	\$70,710,000		\$73,560,000		\$1,933,603,248		\$2,236,630,000		\$2,416,900,000		\$2,267,750,000		\$2,354,185,590									

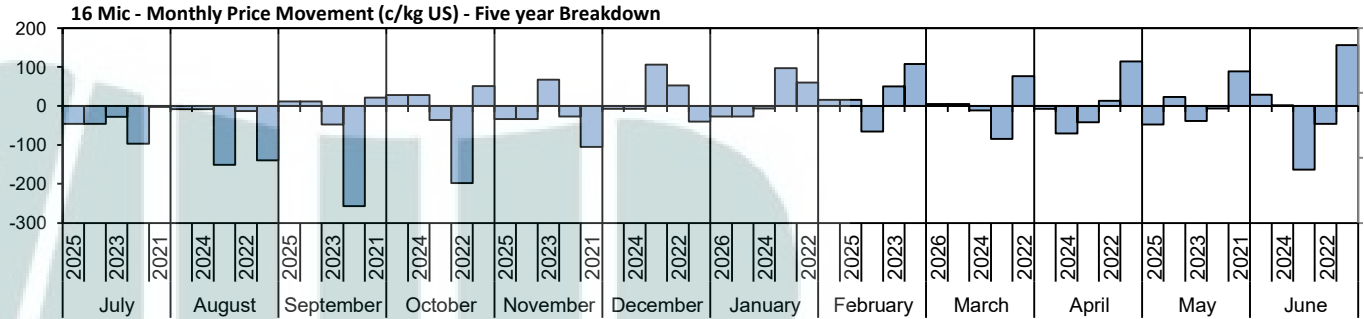
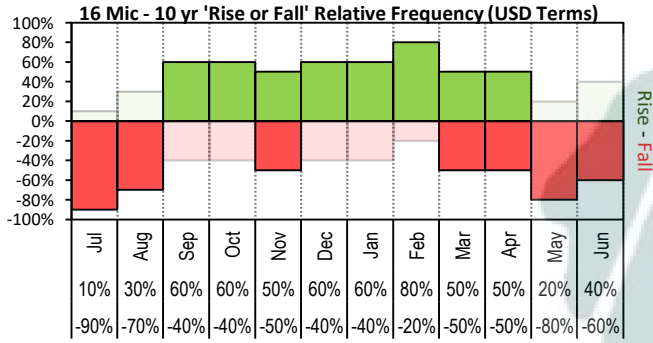


Table 7: NSW Production Statistics

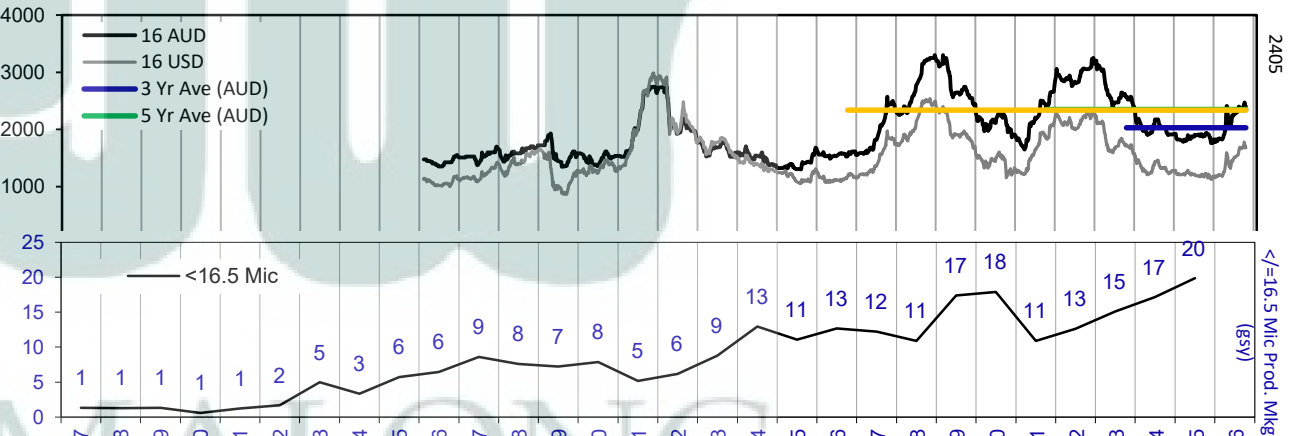
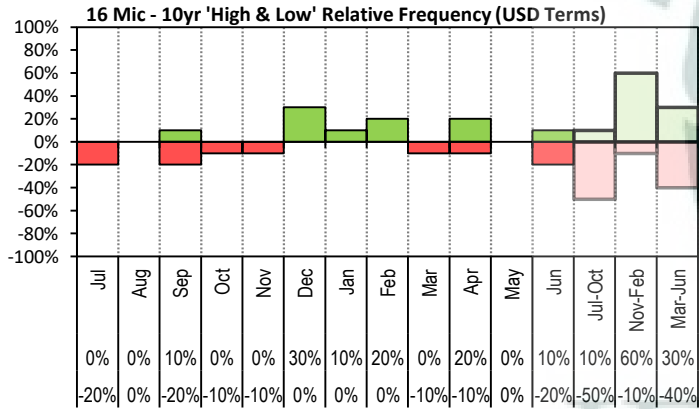
		MAX	MIN	MAX GAIN	MAX REDUCTION												
2024-25																	
Statistical Devision, Area Code & Towns		Auction Bales (FH)	Micron	+/- YoY	Vmb %	+/- YoY	Yield % Sch Dry	+/- YoY	Length mm	+/- YoY	Strength Nkt	+/- YoY	Ave Price c/kg				
Northern	N02 Tenterfield, Glen Innes	5,110	18.8	-0.8	2.1	0.5	70.5	-0.5	84	2.8	40	-2.6	1016				
	N03 Guyra	36,593	20.2	-0.7	2.2	0.4	66.0	-2.4	83	1.3	37	-3.4	926				
	N04 Inverell	3,277	19.0	0.4	3.7	0.4	67.4	-0.5	87	3.6	36	-2.6	846				
	N05 Armidale	543	19.2	0.6	3.3	-1.0	69.8	1.5	85	0.9	38	-0.8	889				
	N06 Tamworth, Gunnedah, Quirindi	4,430	20.3	-0.1	4.2	0.2	66.2	-1.2	85	1.8	41	-0.2	802				
	N07 Moree	2,863	19.5	0.5	5.4	-0.4	60.2	-1.1	91	5.6	37	-0.5	668				
	N08 Narrabri	2,091	19.7	0.7	4.6	-1.2	63.5	0.6	86	4.9	41	-0.2	740				
	North Western & Far West	N09 Cobar, Bourke, Wanaaring	7,005	19.5	0.1	4.7	-0.4	59.4	0.5	90	2.7	38	-1.7	688			
N12 Walgett		8,652	19.3	0.0	6.4	-1.4	60.1	1.0	90	4.4	36	-2.2	676				
N13 Nyngan		16,258	19.6	0.1	6.9	-0.2	59.3	-0.9	89	2.6	39	0.9	659				
N14 Dubbo, Narromine		17,475	21.5	0.5	4.3	0.0	62.5	-0.5	87	2.9	39	0.5	590				
N16 Dunedoo		5,160	20.5	0.4	3.8	0.4	65.8	-0.1	85	1.8	39	1.1	714				
N17 Mudgee, Wellington, Gulgong		18,133	19.9	0.4	2.7	0.0	67.4	-0.5	85	3.6	40	-0.7	847				
N33 Coonabarabran		2,372	20.1	-0.3	4.3	0.3	65.4	-0.3	87	2.4	38	0.1	717				
N34 Coonamble		6,020	20.3	0.2	5.8	0.9	62.3	-0.7	88	2.0	39	2.3	664				
N36 Gilgandra, Gulargambone		5,501	21.2	0.2	4.0	0.0	63.7	-0.7	89	3.5	39	-0.4	647				
N40 Brewarrina		5,860	19.8	0.2	5.8	-0.9	59.6	-0.2	91	3.7	39	-0.2	687				
N10 Wilcannia, Broken Hill	17,987	20.1	0.0	4.1	-0.3	57.7	0.4	93	2.7	37	0.1	660					
Central West	N15 Forbes, Parkes, Cowra	32,103	20.6	0.1	3.1	-0.2	64.6	-0.3	88	3.6	38	-1.6	693				
	N18 Lithgow, Oberon	1,860	22.2	0.0	1.5	0.0	70.8	-0.3	90	5.0	39	-3.6	824				
	N19 Orange, Bathurst	44,594	21.8	-0.1	2.2	0.2	68.3	-0.8	88	3.0	38	-2.0	730				
	N25 West Wyalong	17,602	19.8	-0.1	2.8	-0.3	63.5	-0.3	91	3.5	37	-1.4	730				
	N35 Condobolin, Lake Cargelligo	7,253	20.7	0.3	5.1	-0.8	61.0	0.4	90	6.4	40	1.4	611				
Murrumbidgee	N26 Cootamundra, Temora	22,208	20.9	-0.3	1.8	0.0	64.5	-1.9	90	0.9	36	-2.2	678				
	N27 Adelong, Gundagai	11,481	20.7	-1.0	2.2	0.4	66.2	-2.6	89	0.6	36	-2.6	746				
	N29 Wagga, Narrandera	30,930	21.4	-0.3	2.0	-0.1	63.5	-1.8	88	-0.7	35	-2.9	647				
	N37 Griffith, Hillston	10,676	21.0	-0.3	4.0	-1.3	63.0	1.4	88	5.0	41	-1.6	651				
	N39 Hay, Coleambally	18,427	20.0	0.0	4.2	-2.1	63.4	1.4	88	1.6	41	-0.5	740				
Murray	N11 Wentworth, Balranald	12,070	20.8	0.2	5.3	-1.2	60.2	1.6	94	1.5	38	1.6	635				
	N28 Albury, Corowa, Holbrook	27,445	21.0	-0.5	1.5	0.0	64.4	-2.9	85	-1.8	35	-3.9	725				
	N31 Deniliquin	21,720	20.5	-0.2	3.2	-1.0	64.9	0.3	90	2.5	37	-3.2	710				
	N38 Finley, Berrigan, Jerilderie	8,139	20.0	0.1	2.6	-1.0	64.6	0.1	87	2.1	40	-0.5	762				
South Eastern	N23 Goulburn, Young, Yass	95,490	19.8	-0.2	1.7	0.2	68.3	-1.3	88	0.9	37	-1.5	851				
	N24 Monaro (Cooma, Bombala)	28,406	19.2	-0.3	1.4	-0.2	70.1	-0.4	90	1.1	36	-0.8	911				
	N32 A.C.T.	214	18.8	1.2	1.8	0.6	67.1	-4.6	88	2.1	35	-3.9	871				
	N43 South Coast (Bega)	279	18.4	-0.2	1.1	0.3	74.3	-0.2	86	-2.1	40	-4.3	1099				
NSW	AWEX Sale Statistics 24-25	612,559	20.4	-0.2	2.8	-0.1	65.3	-0.9	88	1.8	38	-1.3	773				
AWTA Mthly Key Test Data		Bales Tested	+/- YoY	Micron	+/- YoY	VMB	+/- YoY	Yld	+/- YoY	Lth	+/- YoY	Nkt	+/- YoY	POBM +/-			
AUSTRALIA	Current Season	February Y.T.D	144,668	-8,250	21.3	0.3	2.3	0.0	63.6	-0.5	87	1.1	31	0.3	49 -0.9		
	Previous Seasons	2024-25	1,017,318	-105,659	0.0	-20.5	0.0	-2.2	0.0	-65.0	0	-88.0	0	-34.0	0 -46.0		
	2023-24	1,122,977	-125,674	20.5	-0.3	2.2	-0.1	65.0	-0.9	88	0.0	34	-1.0	46 -4.0			
	2022-23	1,248,651	7769	20.8	0.0	2.3	0.1	65.9	-0.6	88	-2.0	35	0.0	50 -1.0			
			1,240,882	27,809	20.8	0.0	2.2	0.0	66.5	1.0	90	1.1	35	-0.1	49 -0.1		

Average Price of Australian Wool

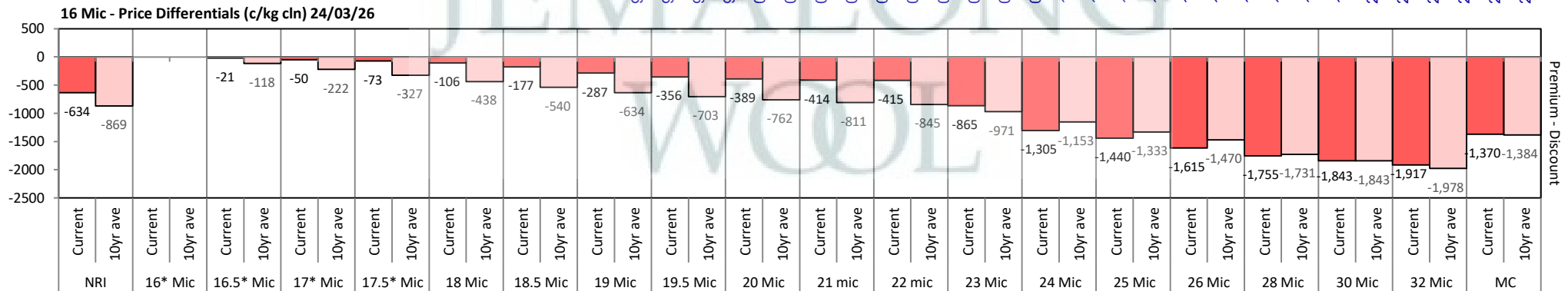


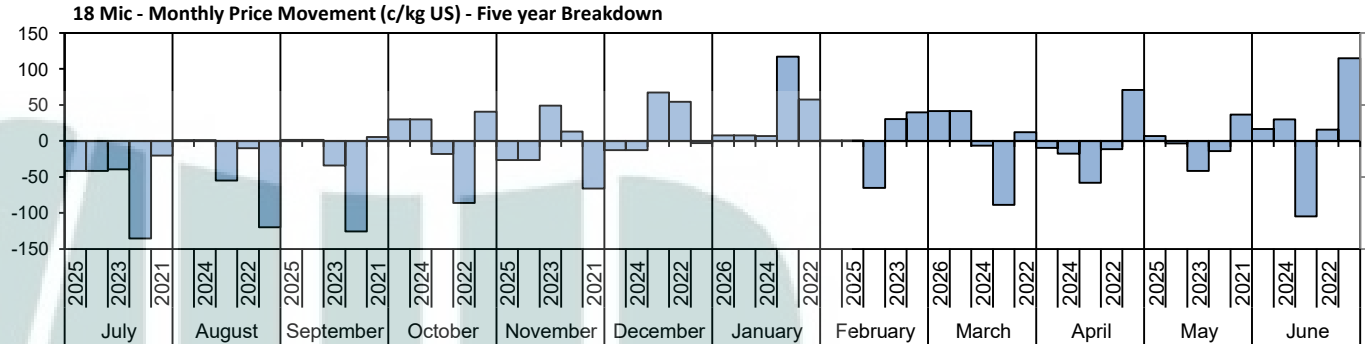
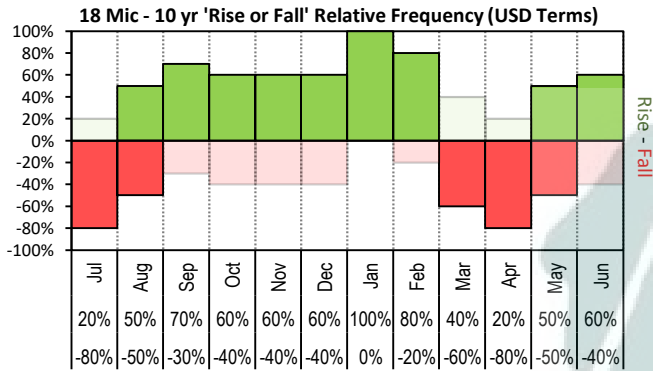


The above 'Rise or Fall' graph, shows how often the market has risen or fallen in a given month over the past 10 years, it does not show the extent of the movement only the frequency of direction. The 'Monthly Price Movement' graph shows the extent of movement for each month, for the past 5 years.

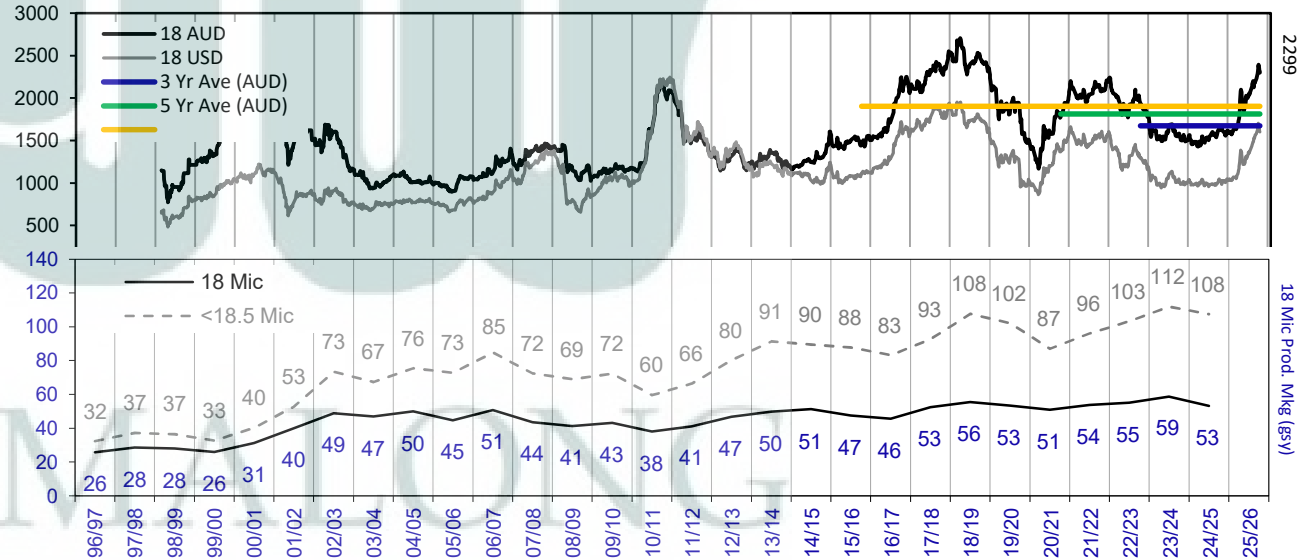
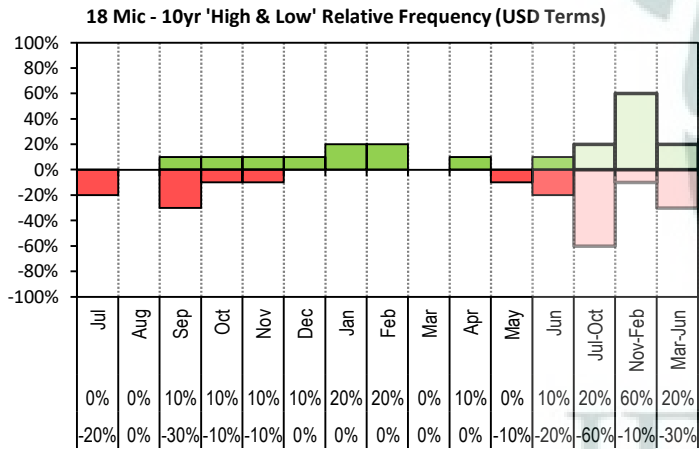


The above graph, shows how often the '12 month high & low' have been achieved for a

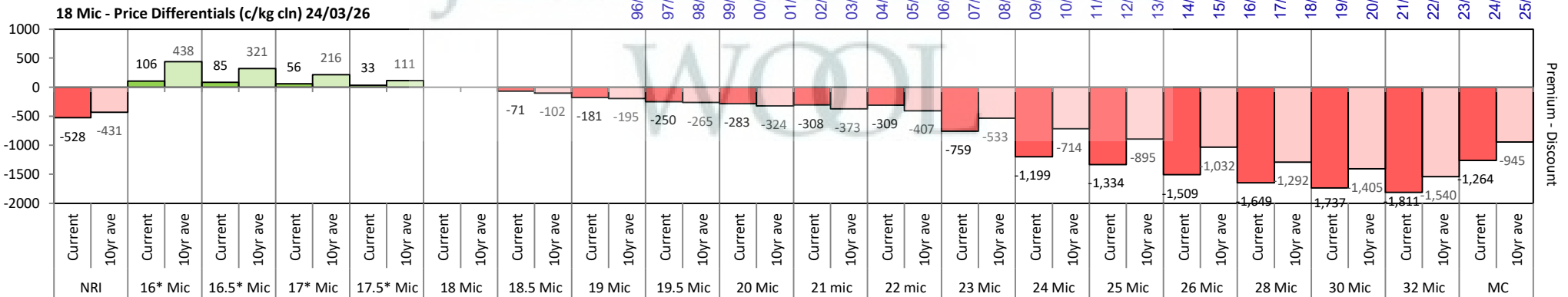


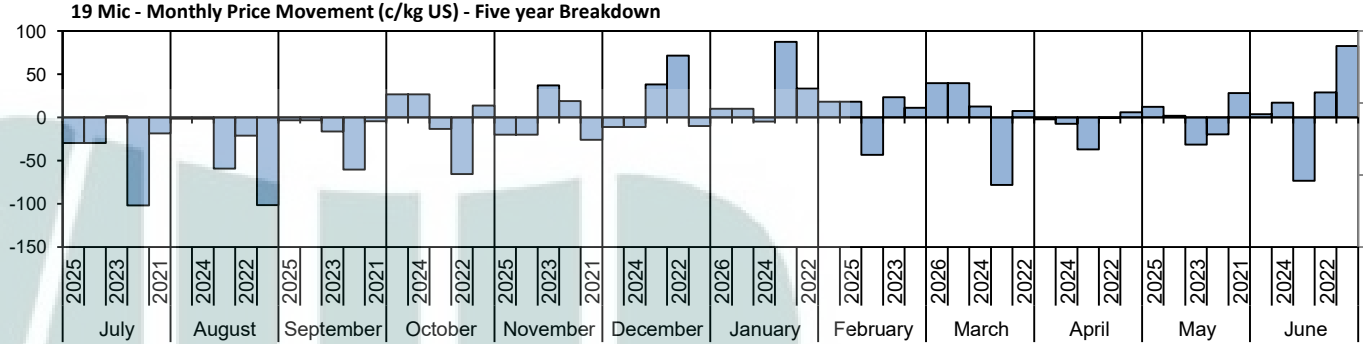
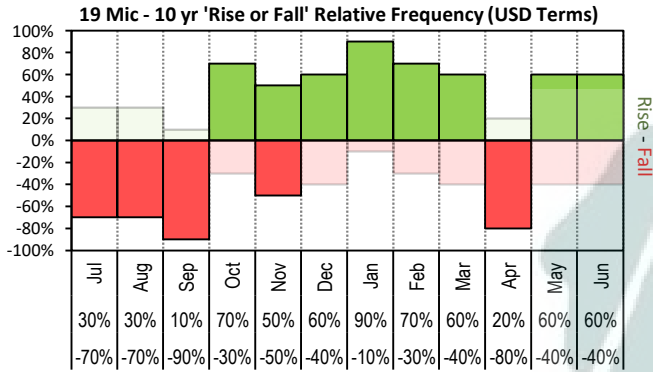


The above 'Rise or Fall' graph, shows how often the market has risen or fallen in a given month over the past 10 years, it does not show the extent of the movement only the frequency of direction. The 'Monthly Price Movement' graph shows the extent of movement for each month, for the past 5 years.

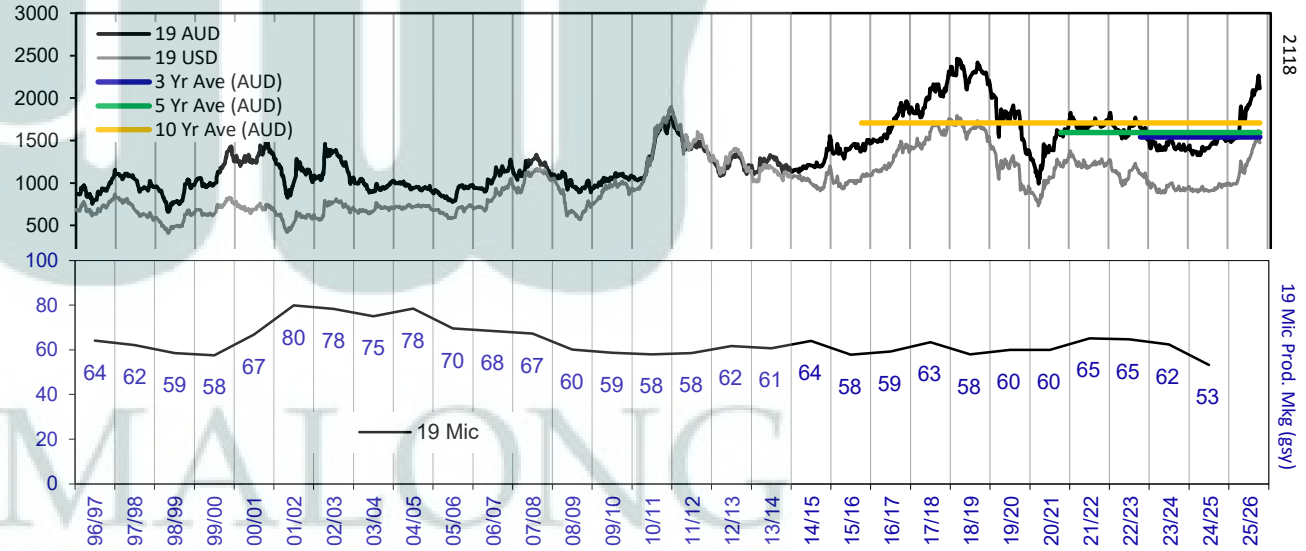
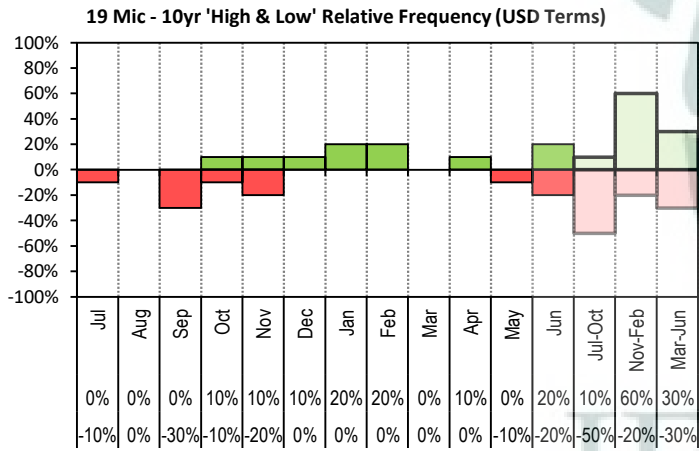


The above graph, shows how often the '12 month high & low' have been achieved for a given month over the past 10 years. It is not a measure of probability.

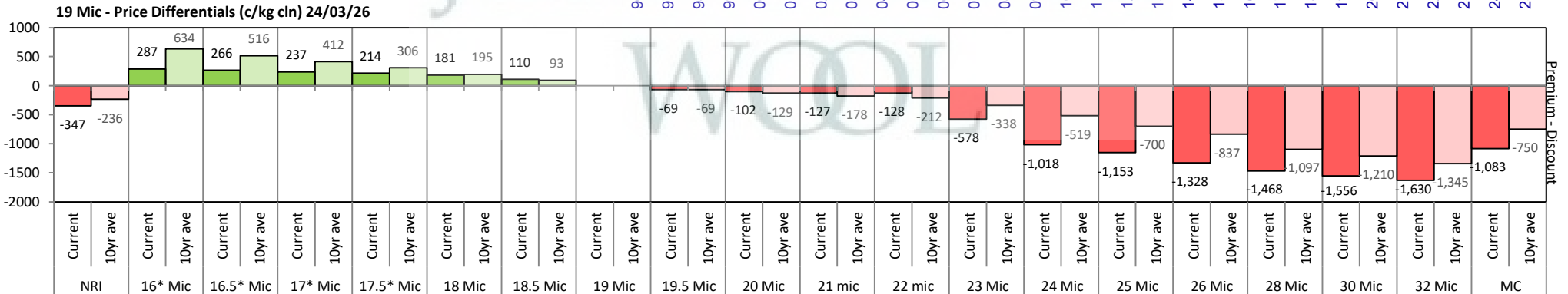


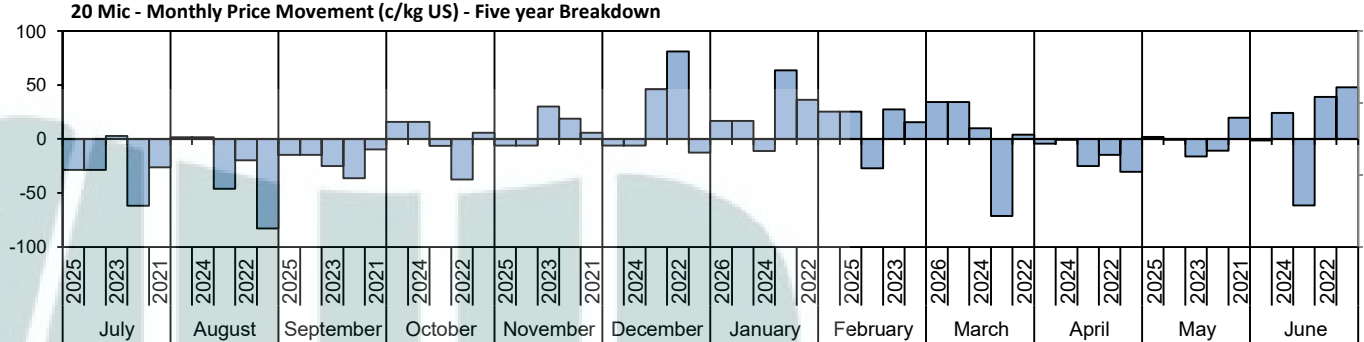
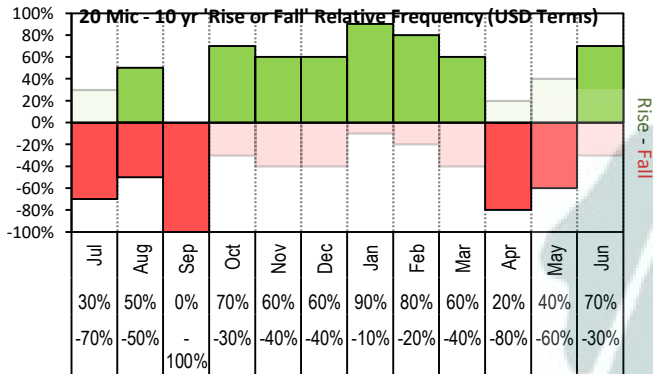


The above 'Rise or Fall' graph, shows how often the market has risen or fallen in a given month over the past 10 years, it does not show the extent of the movement only the frequency of direction. The 'Monthly Price Movement' graph shows the extent of movement for each month, for the past 5 years.

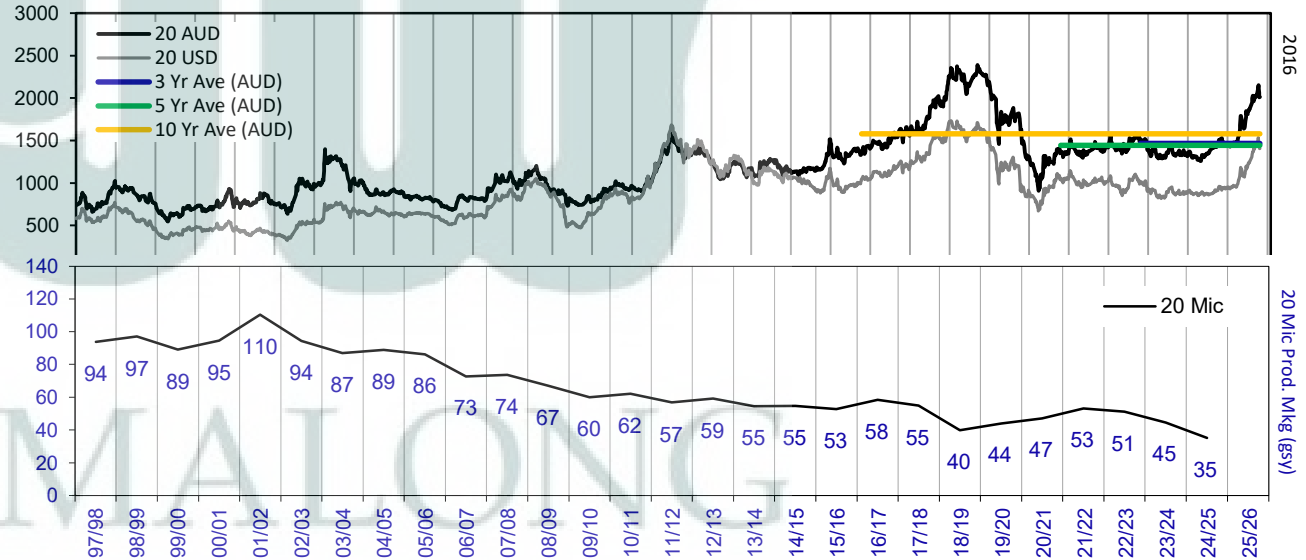
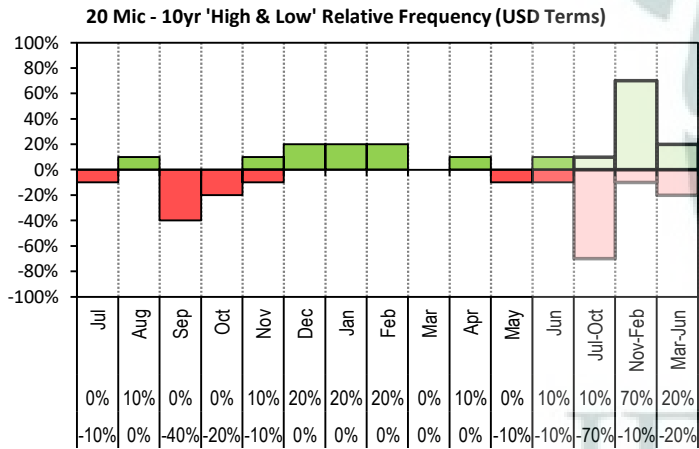


The above graph, shows how often the '12 month high & low' have been achieved for a given month over the past 10 years. It is not a measure of probability.

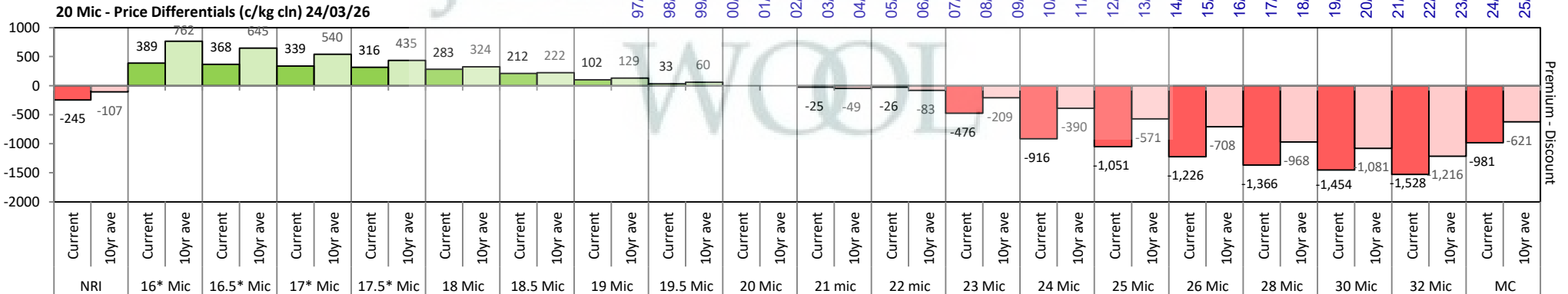


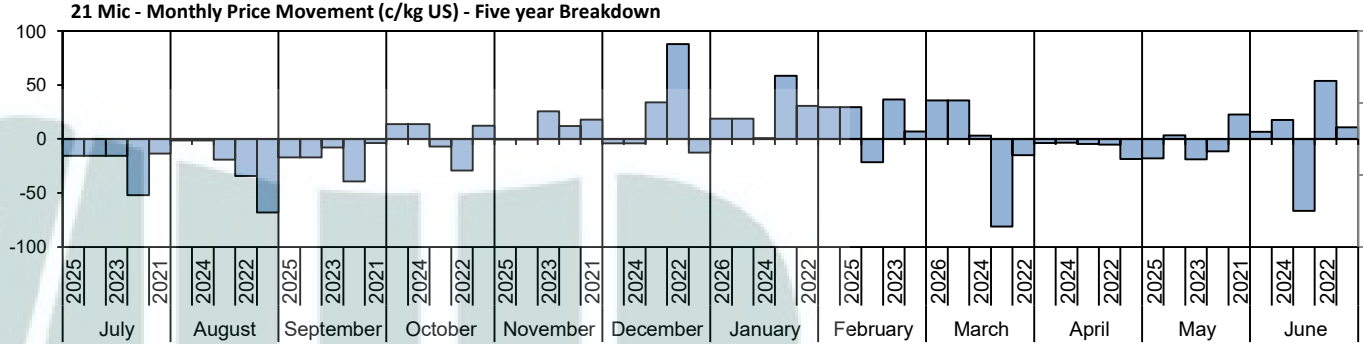
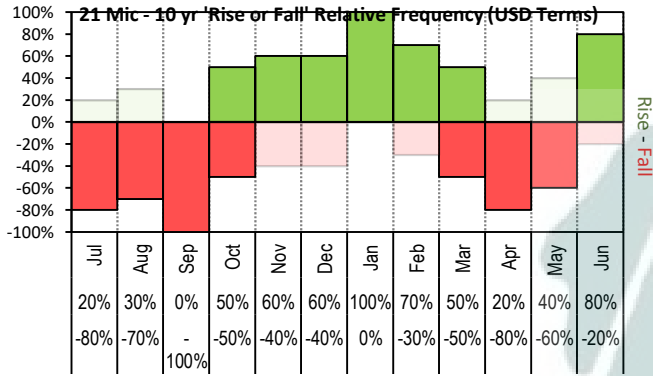


The above 'Rise or Fall' graph, shows how often the market has risen or fallen in a given month over the past 10 years, it does not show the extent of the movement only the frequency of direction. The 'Monthly Price Movement' graph shows the extent of movement for each month, for the past 5 years.

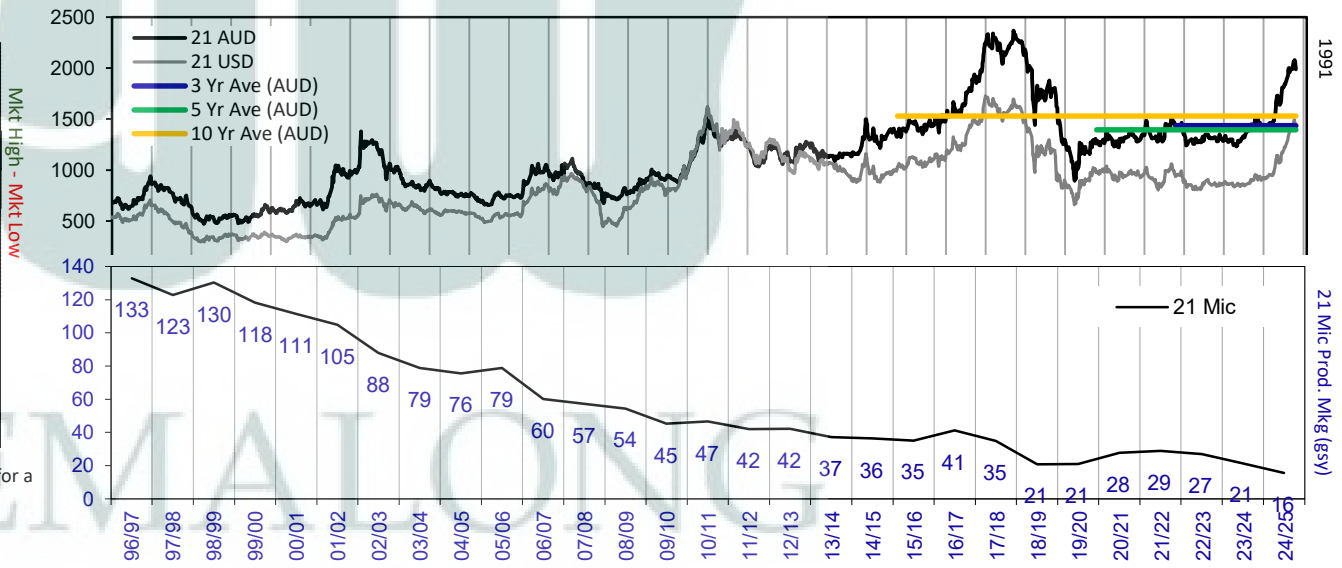
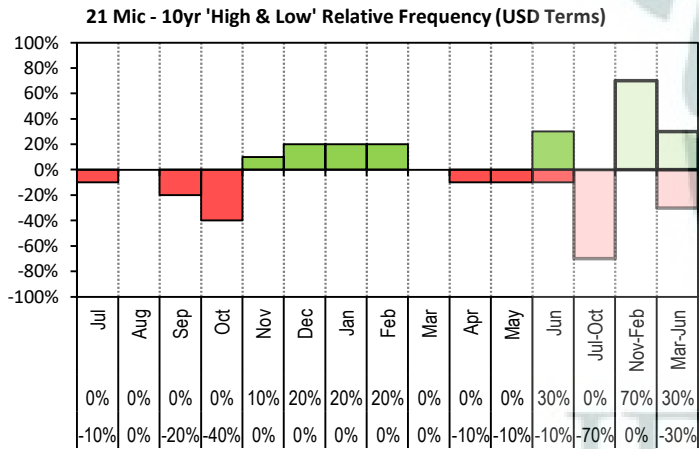


The above graph, shows how often the '12 month high & low' have been achieved for a given month over the past 10 years. It is not a measure of probability.

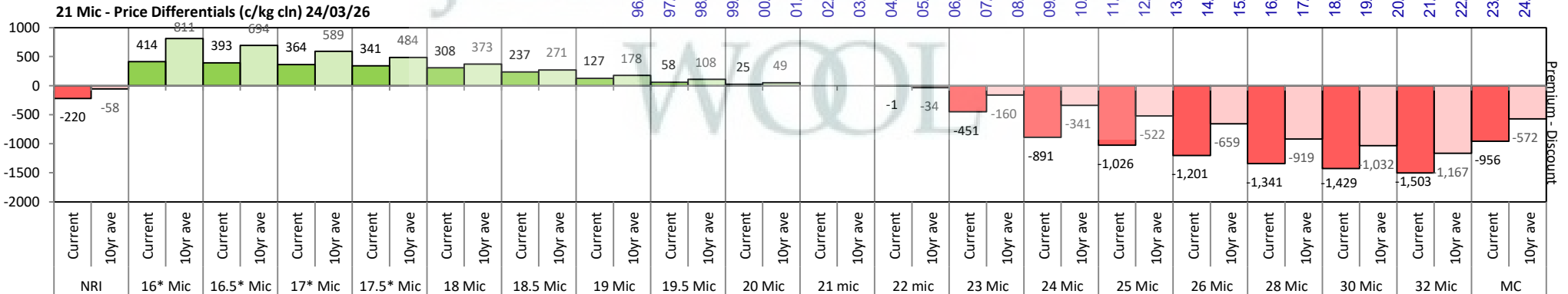


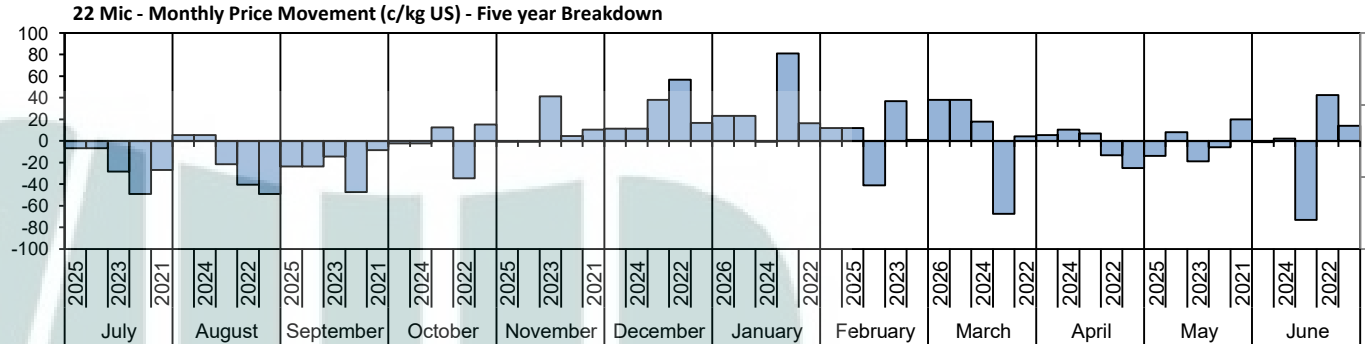
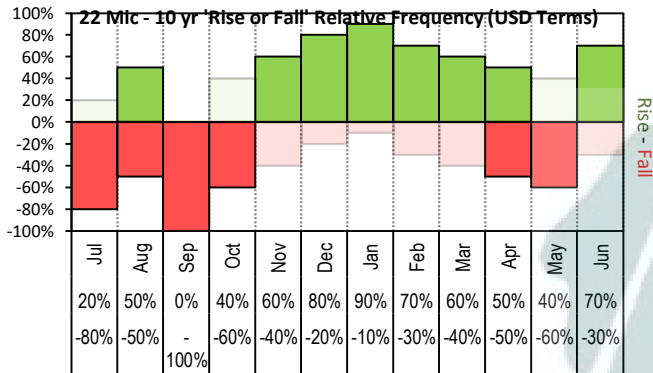


The above 'Rise or Fall' graph, shows how often the market has risen or fallen in a given month over the past 10 years, it does not show the extent of the movement only the frequency of direction. The 'Monthly Price Movement' graph shows the extent of movement for each month, for the past 5 years.

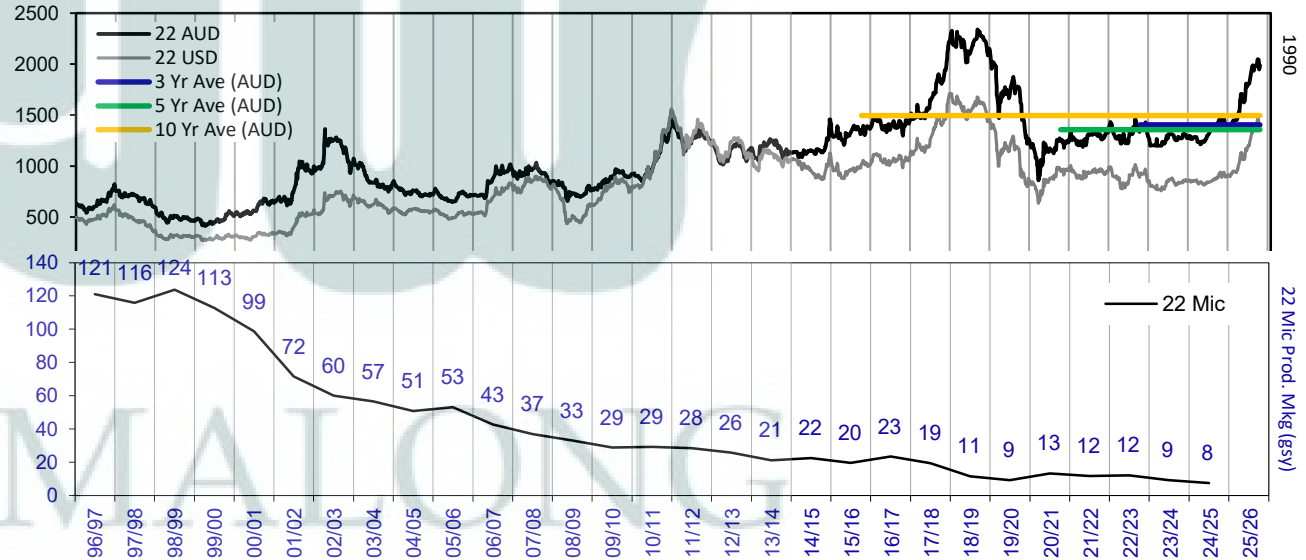
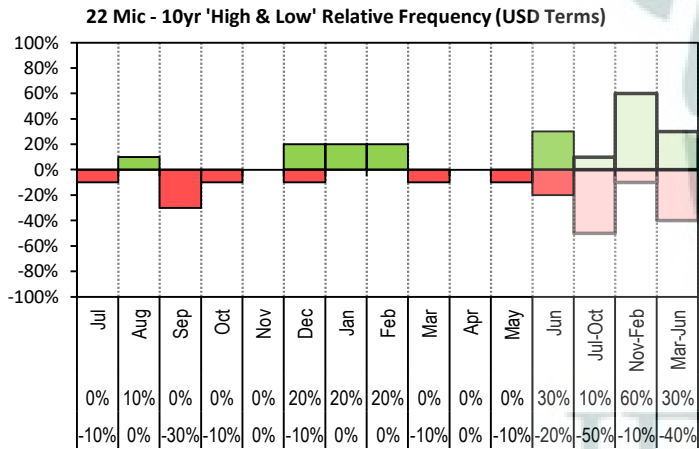


The above graph, shows how often the '12 month high & low' have been achieved for a given month over the past 10 years. It is not a measure of probability.

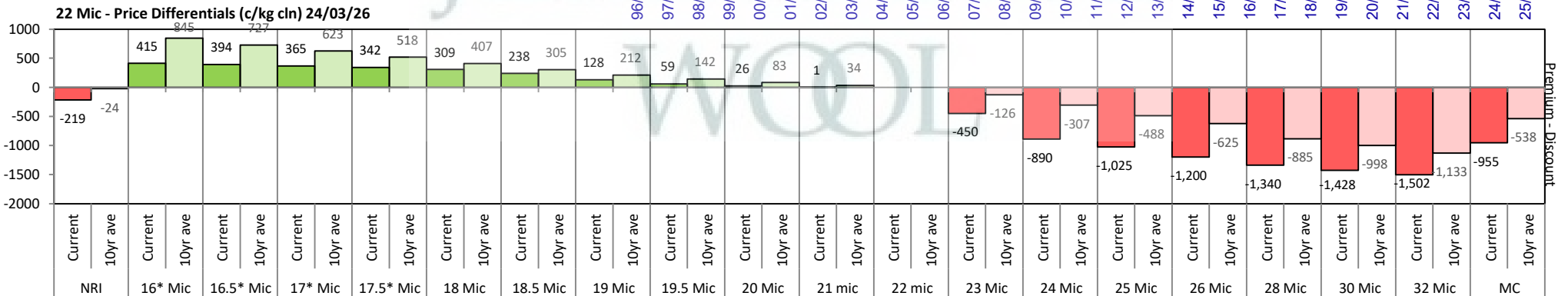


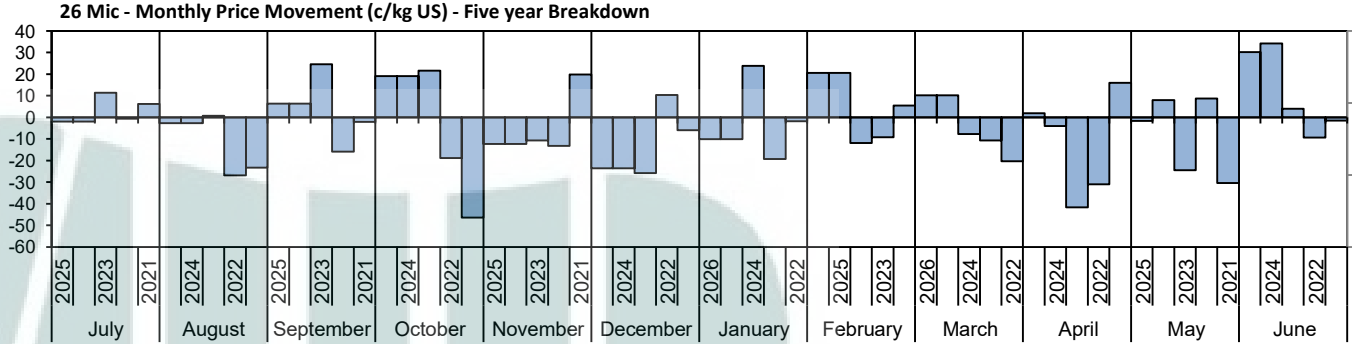
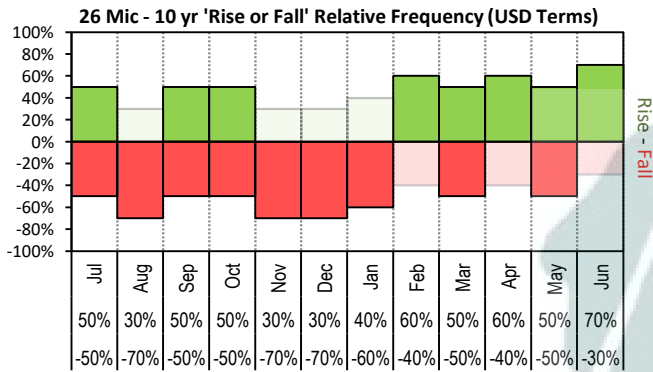


The above 'Rise or Fall' graph, shows how often the market has risen or fallen in a given month over the past 10 years, it does not show the extent of the movement only the frequency of direction. The 'Monthly Price Movement' graph shows the extent of movement for each month, for the past 5 years.

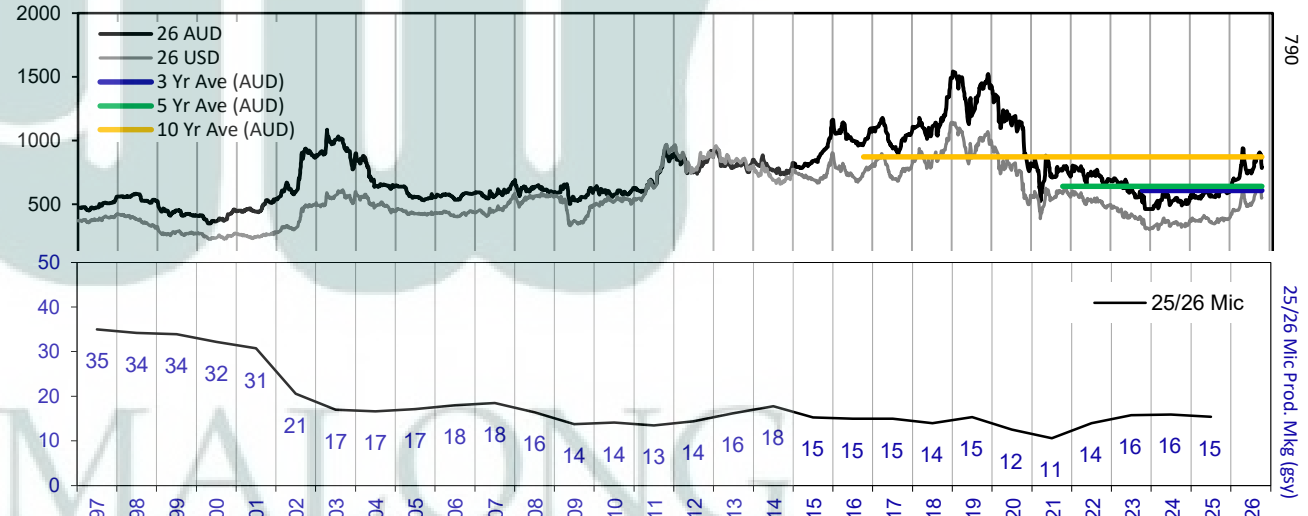
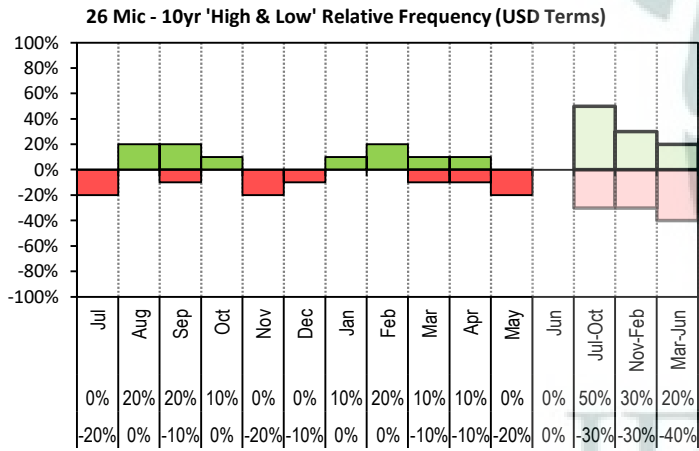


The above graph, shows how often the '12 month high & low' have been achieved for a given month over the past 10 years. It is not a measure of probability.

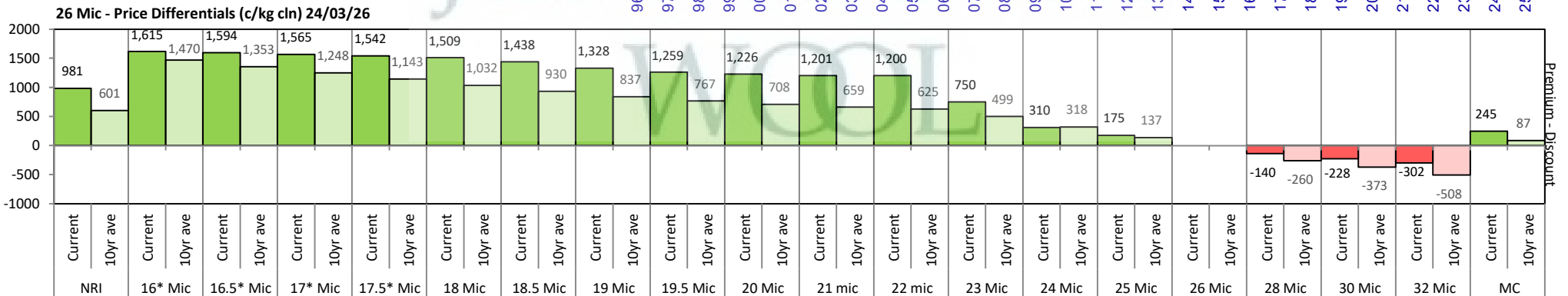


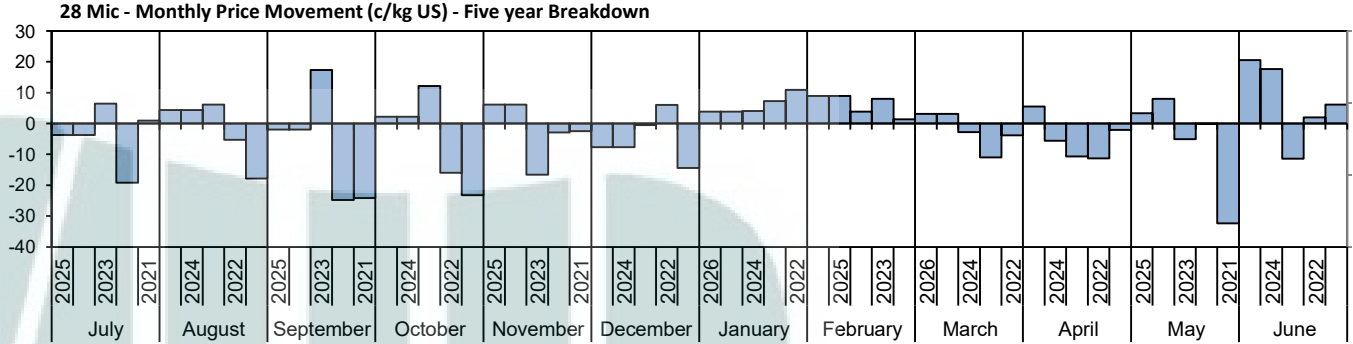
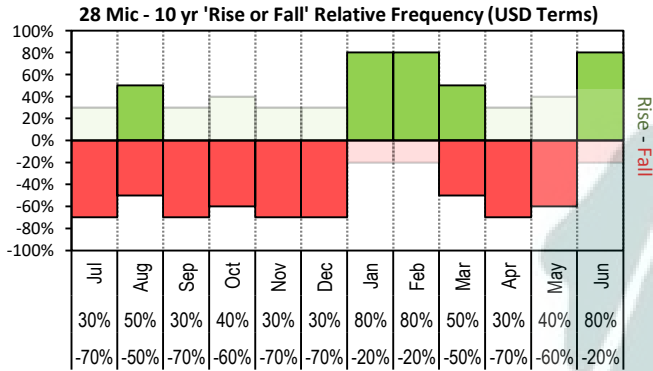


The above 'Rise or Fall' graph, shows how often the market has risen or fallen in a given month over the past 10 years, it does not show the extent of the movement only the frequency of direction. The 'Monthly Price Movement' graph shows the extent of movement for each month, for the past 5 years.

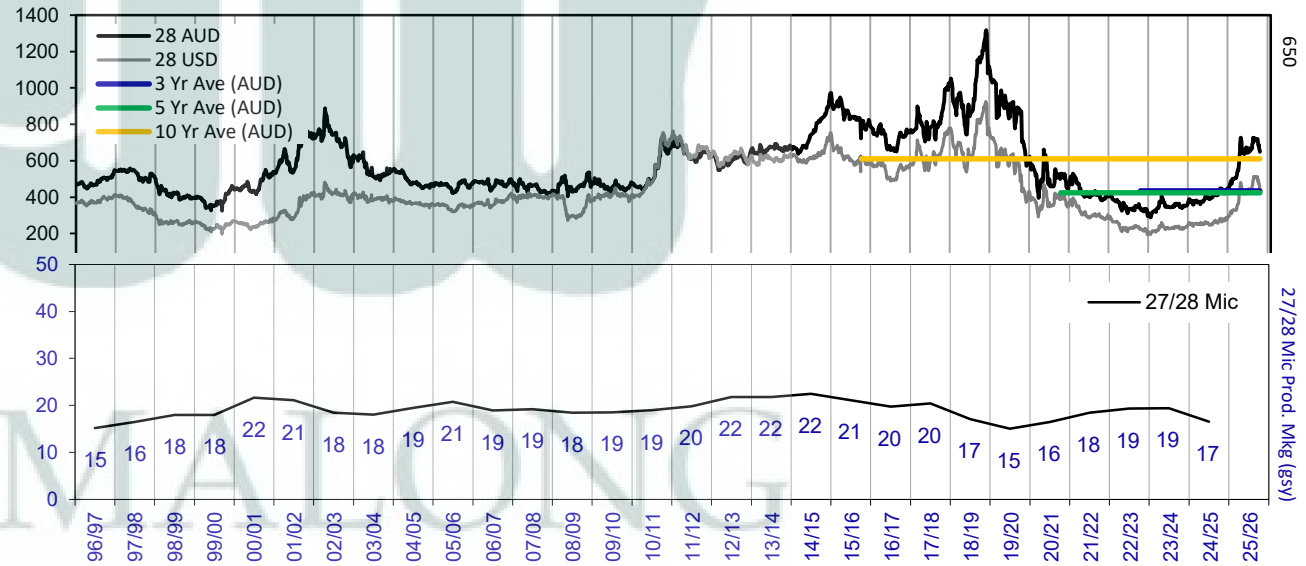
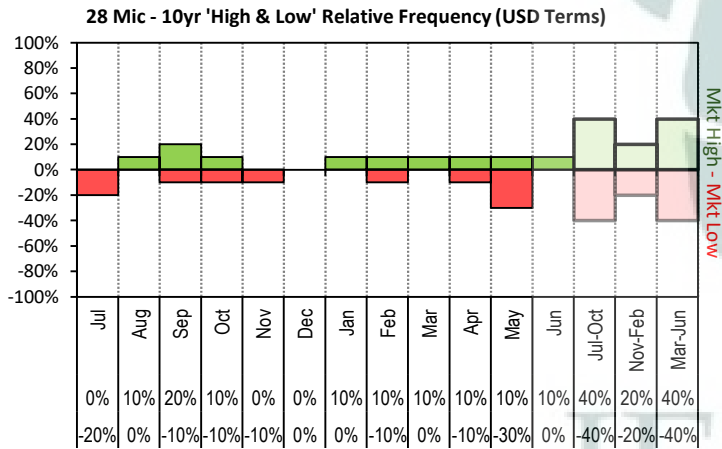


The above graph, shows how often the '12 month high & low' have been achieved for a given month over the past 10 years. It is not a measure of probability.

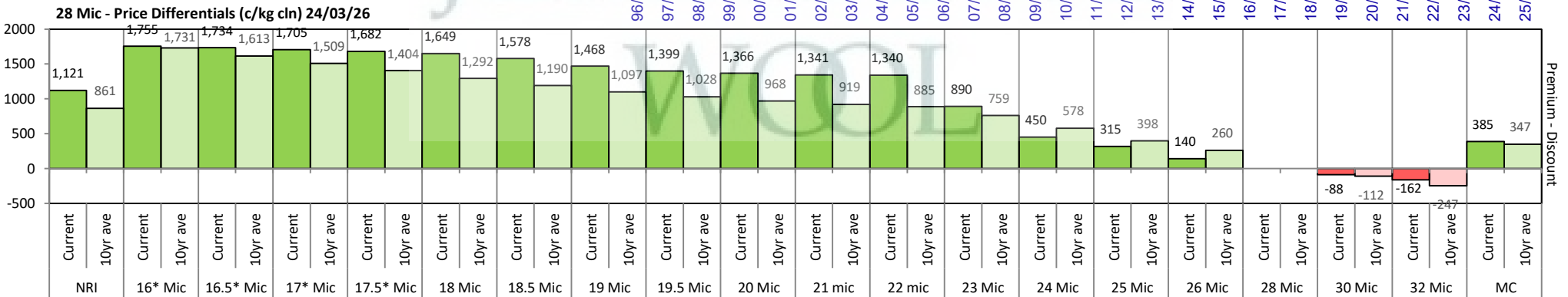


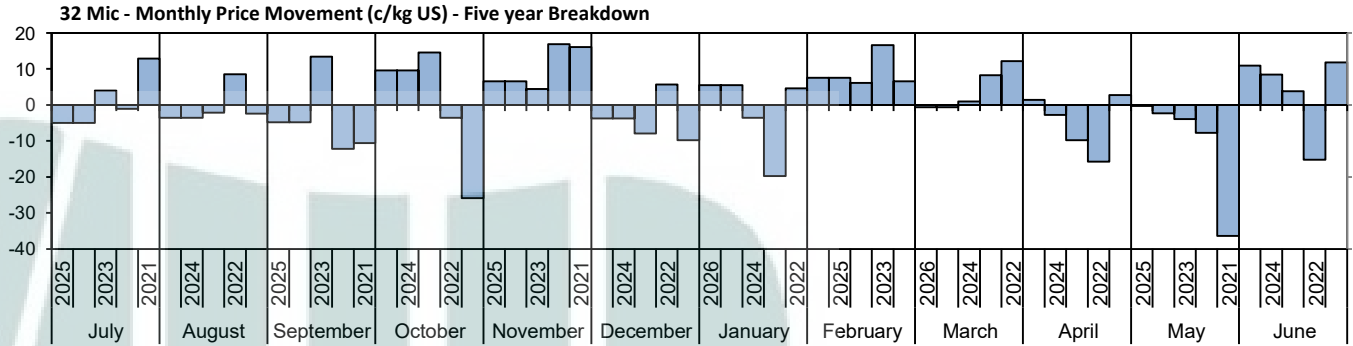
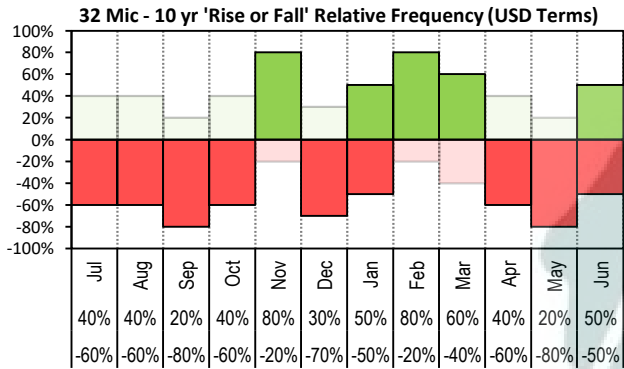


The above 'Rise or Fall' graph, shows how often the market has risen or fallen in a given month over the past 10 years, it does not show the extent of the movement only the frequency of direction. The 'Monthly Price Movement' graph shows the extent of movement for each month, for the past 5 years.

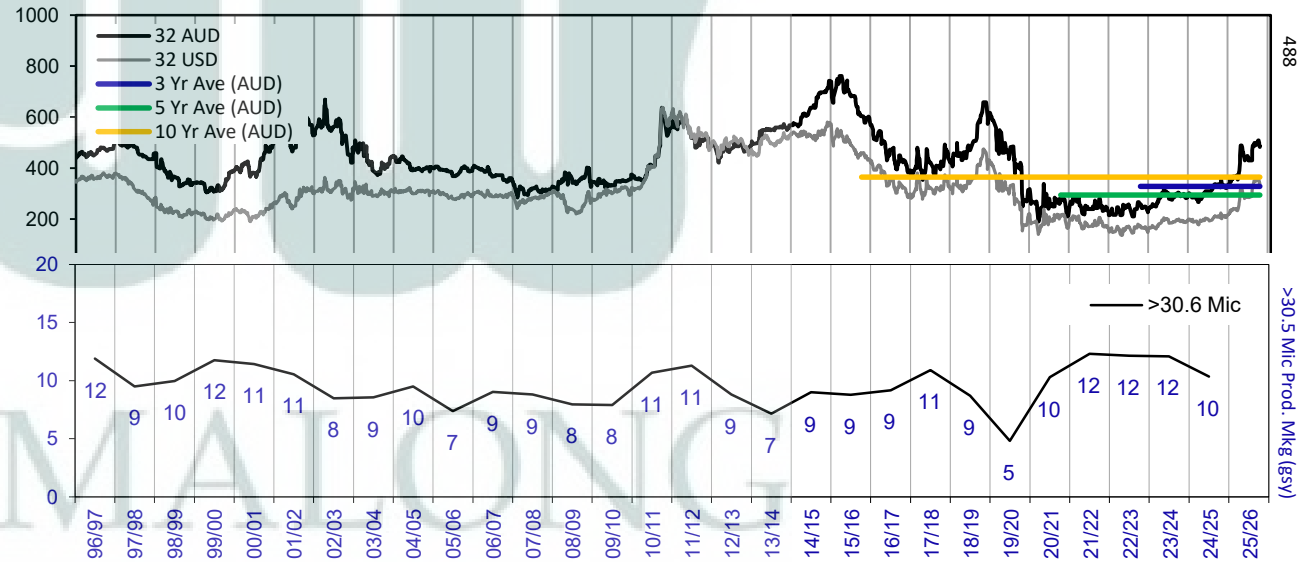
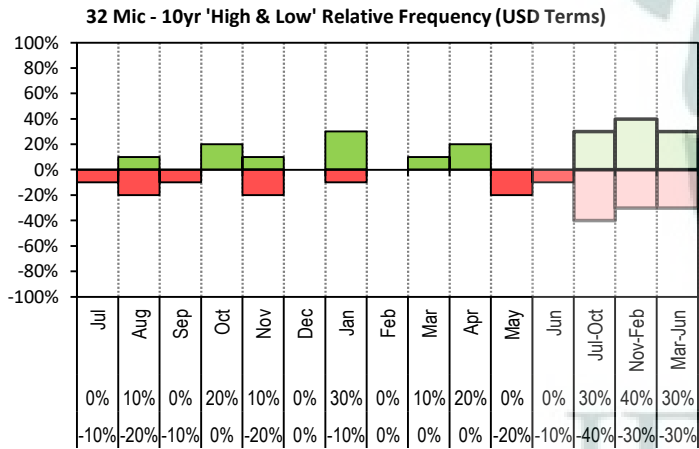


The above graph, shows how often the '12 month high & low' have been achieved for a given month over the past 10 years. It is not a measure of probability.

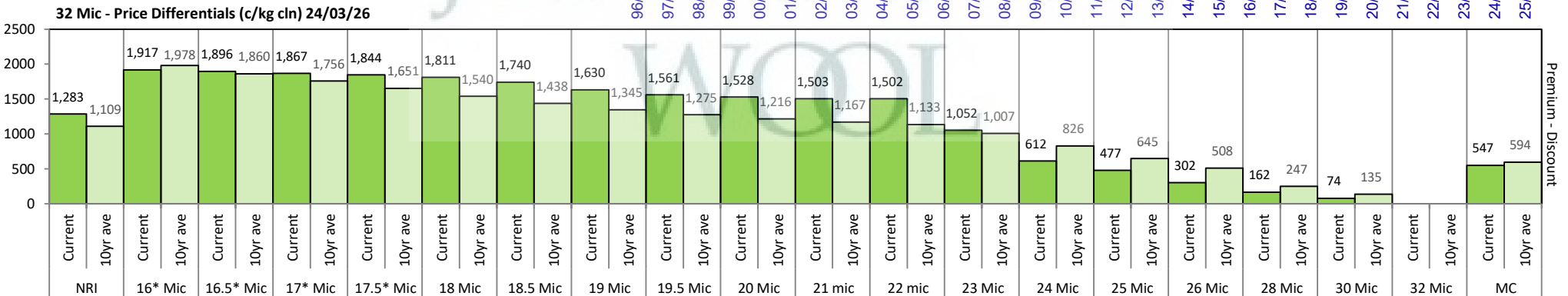
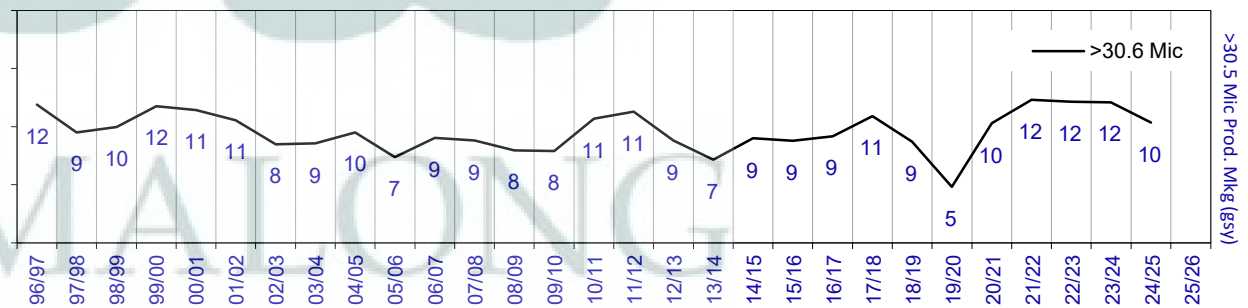


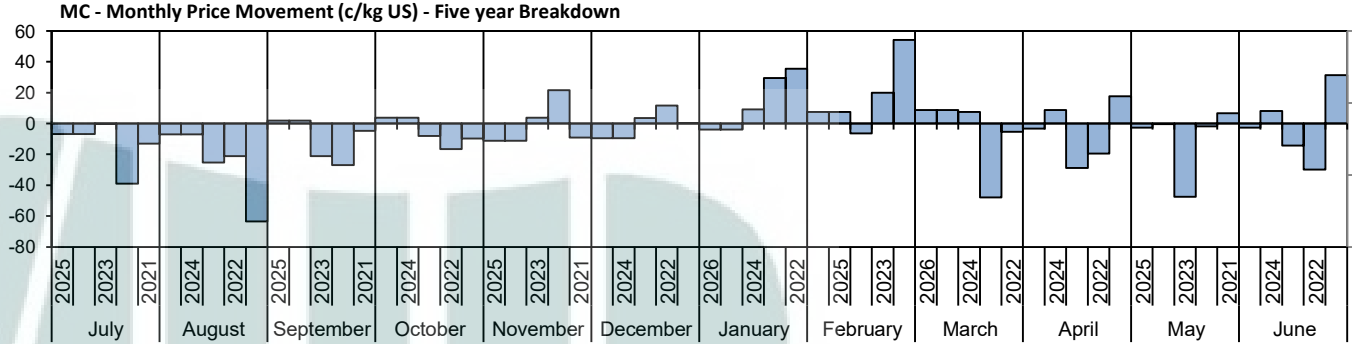
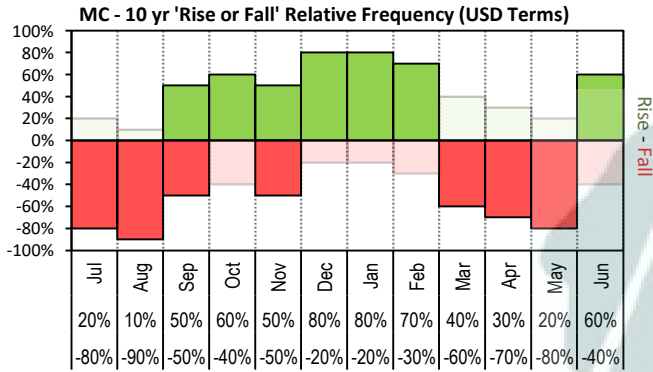


The above 'Rise or Fall' graph, shows how often the market has risen or fallen in a given month over the past 10 years, it does not show the extent of the movement only the frequency of direction. The 'Monthly Price Movement' graph shows the extent of movement for each month, for the past 5 years.

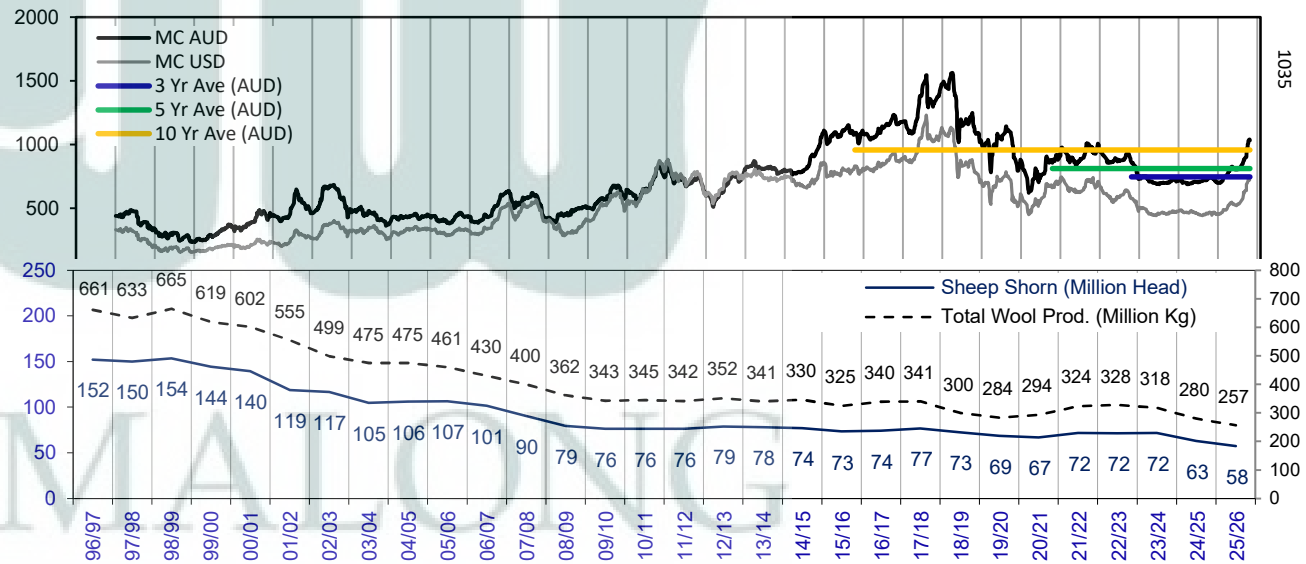
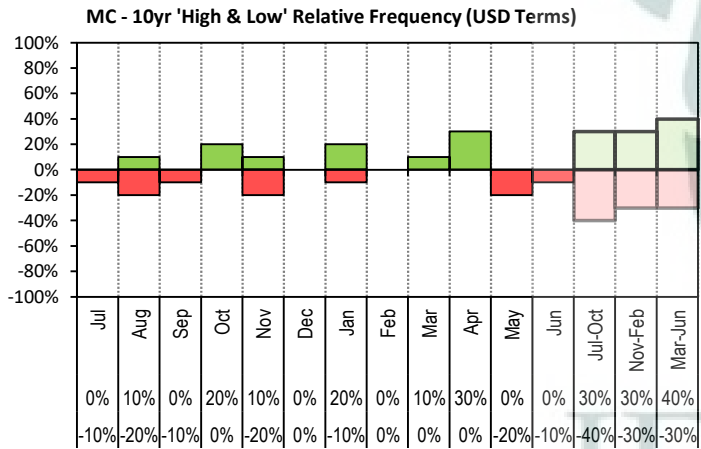


The above graph, shows how often the '12 month high & low' have been achieved for a given month over the past 10 years. It is not a measure of probability.

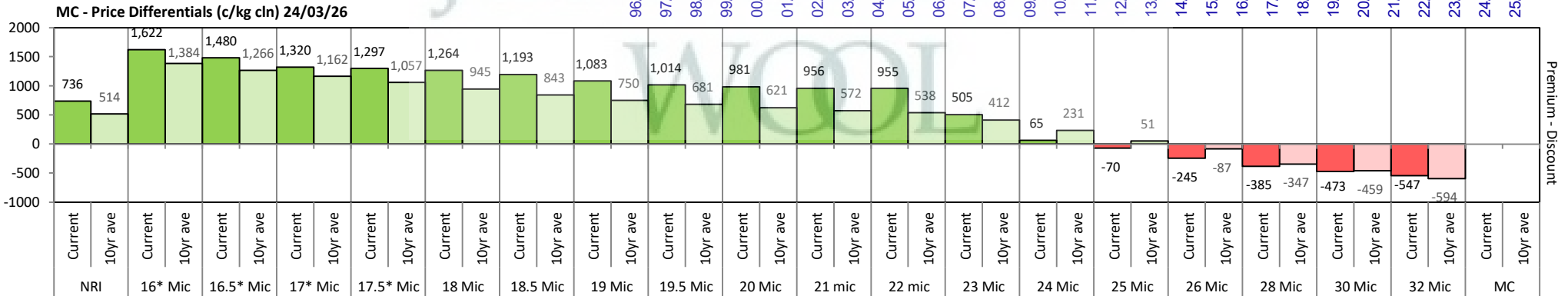




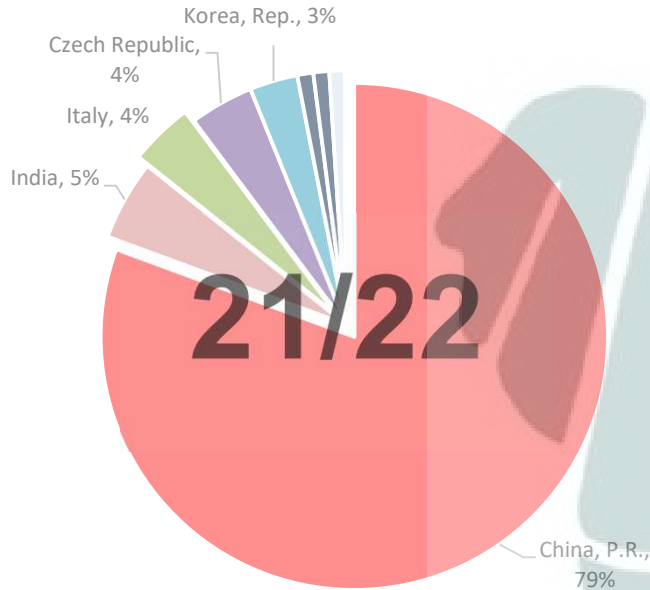
The above 'Rise or Fall' graph, shows how often the market has risen or fallen in a given month over the past 10 years, it does not show the extent of the movement only the frequency of direction. The 'Monthly Price Movement' graph shows the extent of movement for each month, for the past 5 years.



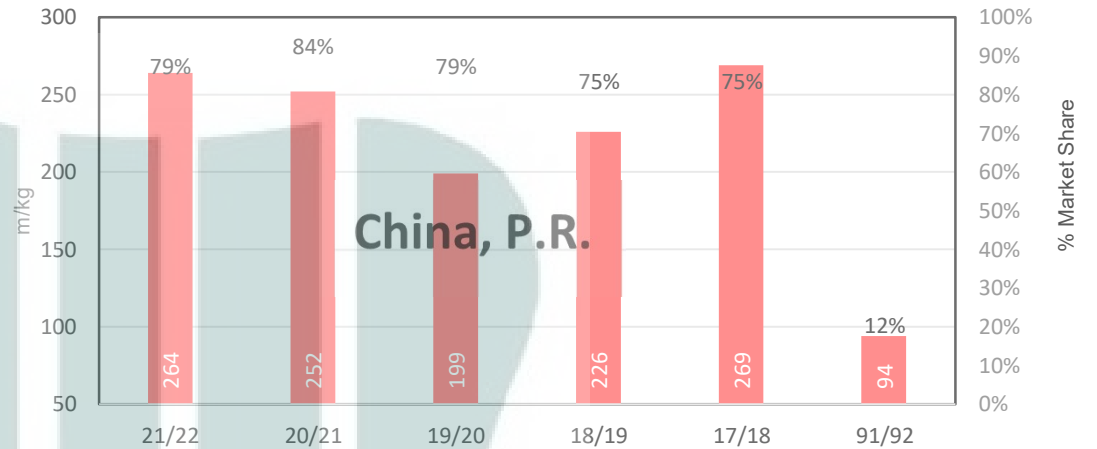
The above graph, shows how often the '12 month high & low' have been achieved for a given month over the past 10 years. It is not a measure of probability.



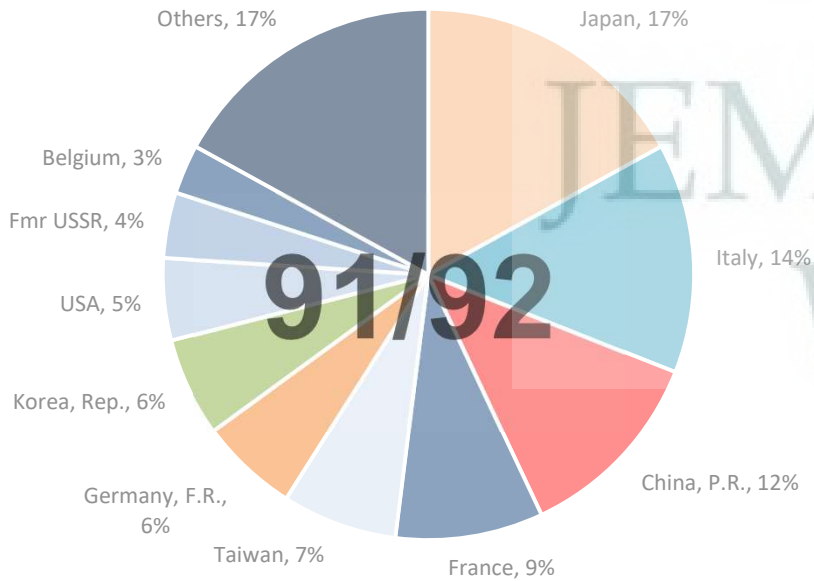
21/22 - Export Snap Shot (335.46 m/kg greasy equivalent)



China, P.R. (Largest Market Share)



91/92 - Export Snap Shot (784.7 m/kg greasy equivalent)



Seasonal Change m/kg

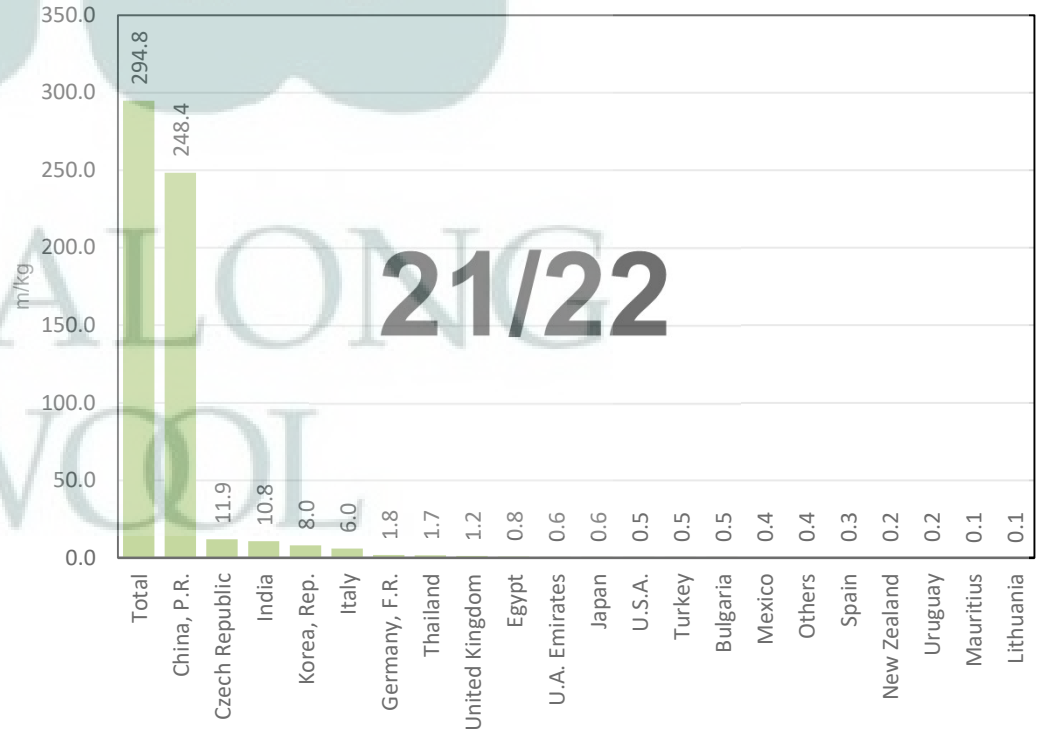


Table 8: Returns pr head for skirted fleece wool.

Skirted FLC Weight 9 Kg		Micron																	
		16	16.5	17	17.5	18	18.5	19	19.5	20	21	22	23	24	25	26	28	30	32
Yield (Sch Dry)	25% Current	\$54	\$54	\$53	\$52	\$52	\$50	\$48	\$46	\$45	\$45	\$45	\$35	\$25	\$22	\$18	\$15	\$13	\$11
	10yr ave.	\$53	\$50	\$48	\$45	\$43	\$41	\$38	\$37	\$36	\$34	\$34	\$31	\$27	\$23	\$20	\$14	\$11	\$8
	30% Current	\$65	\$64	\$64	\$63	\$62	\$60	\$57	\$55	\$54	\$54	\$54	\$42	\$30	\$26	\$21	\$18	\$15	\$13
	10yr ave.	\$63	\$60	\$57	\$54	\$51	\$49	\$46	\$44	\$43	\$41	\$40	\$37	\$32	\$27	\$24	\$17	\$14	\$10
	35% Current	\$76	\$75	\$74	\$73	\$72	\$70	\$67	\$65	\$64	\$63	\$63	\$49	\$35	\$30	\$25	\$20	\$18	\$15
	10yr ave.	\$74	\$70	\$67	\$63	\$60	\$57	\$54	\$52	\$50	\$48	\$47	\$43	\$37	\$32	\$27	\$19	\$16	\$11
	40% Current	\$87	\$86	\$85	\$84	\$83	\$80	\$76	\$74	\$73	\$72	\$72	\$55	\$40	\$35	\$28	\$23	\$20	\$18
	10yr ave.	\$84	\$80	\$76	\$73	\$69	\$65	\$62	\$59	\$57	\$55	\$54	\$49	\$43	\$36	\$31	\$22	\$18	\$13
	45% Current	\$97	\$97	\$95	\$94	\$93	\$90	\$86	\$83	\$82	\$81	\$81	\$62	\$45	\$39	\$32	\$26	\$23	\$20
	10yr ave.	\$95	\$90	\$86	\$82	\$77	\$73	\$69	\$66	\$64	\$62	\$61	\$56	\$48	\$41	\$35	\$25	\$20	\$15
	50% Current	\$108	\$107	\$106	\$105	\$103	\$100	\$95	\$92	\$91	\$90	\$90	\$69	\$50	\$43	\$36	\$29	\$25	\$22
	10yr ave.	\$105	\$100	\$95	\$91	\$86	\$81	\$77	\$74	\$71	\$69	\$67	\$62	\$54	\$45	\$39	\$28	\$23	\$16
	55% Current	\$119	\$118	\$117	\$115	\$114	\$110	\$105	\$101	\$100	\$99	\$99	\$76	\$54	\$48	\$39	\$32	\$28	\$24
	10yr ave.	\$116	\$110	\$105	\$100	\$94	\$89	\$85	\$81	\$78	\$76	\$74	\$68	\$59	\$50	\$43	\$30	\$25	\$18
	60% Current	\$130	\$129	\$127	\$126	\$124	\$120	\$114	\$111	\$109	\$108	\$107	\$83	\$59	\$52	\$43	\$35	\$30	\$26
	10yr ave.	\$126	\$120	\$114	\$109	\$103	\$97	\$92	\$89	\$85	\$83	\$81	\$74	\$64	\$54	\$47	\$33	\$27	\$20
	65% Current	\$141	\$139	\$138	\$136	\$134	\$130	\$124	\$120	\$118	\$116	\$116	\$90	\$64	\$56	\$46	\$38	\$33	\$29
	10yr ave.	\$137	\$130	\$124	\$118	\$111	\$105	\$100	\$96	\$92	\$90	\$88	\$80	\$70	\$59	\$51	\$36	\$29	\$21
	70% Current	\$152	\$150	\$148	\$147	\$145	\$140	\$133	\$129	\$127	\$125	\$125	\$97	\$69	\$61	\$50	\$41	\$35	\$31
	10yr ave.	\$147	\$140	\$134	\$127	\$120	\$114	\$108	\$103	\$100	\$97	\$94	\$86	\$75	\$64	\$55	\$39	\$32	\$23
75% Current	\$162	\$161	\$159	\$157	\$155	\$150	\$143	\$138	\$136	\$134	\$134	\$104	\$74	\$65	\$53	\$44	\$38	\$33	
10yr ave.	\$158	\$150	\$143	\$136	\$129	\$122	\$115	\$111	\$107	\$103	\$101	\$93	\$80	\$68	\$59	\$41	\$34	\$25	
80% Current	\$173	\$172	\$170	\$168	\$166	\$160	\$152	\$148	\$145	\$143	\$143	\$111	\$79	\$69	\$57	\$47	\$40	\$35	
10yr ave.	\$168	\$160	\$153	\$145	\$137	\$130	\$123	\$118	\$114	\$110	\$108	\$99	\$86	\$73	\$63	\$44	\$36	\$26	
85% Current	\$184	\$182	\$180	\$178	\$176	\$170	\$162	\$157	\$154	\$152	\$152	\$118	\$84	\$74	\$60	\$50	\$43	\$37	
10yr ave.	\$179	\$170	\$162	\$154	\$146	\$138	\$131	\$125	\$121	\$117	\$115	\$105	\$91	\$77	\$67	\$47	\$38	\$28	

The above shows estimated returns per head for skirted fleece wool. These figures do not take into account the value of skirtings and oddments and do not take into account discounts that may apply for faults under individual circumstances. These figures are based on a market index of 100% and should be used as a guide only. Returns over \$30 / head for fleece wool are highlighted.

Table 9: Returns pr head for skirted fleece wool.

Skirted FLC Weight 8 Kg		Micron																	
		16	16.5	17	17.5	18	18.5	19	19.5	20	21	22	23	24	25	26	28	30	32
Yield (Sch Dry)	25% Current	\$48	\$48	\$47	\$47	\$46	\$45	\$42	\$41	\$40	\$40	\$40	\$31	\$22	\$19	\$16	\$13	\$11	\$10
	10yr ave.	\$47	\$45	\$42	\$40	\$38	\$36	\$34	\$33	\$32	\$31	\$30	\$27	\$24	\$20	\$17	\$12	\$10	\$7
	30% Current	\$58	\$57	\$57	\$56	\$55	\$53	\$51	\$49	\$48	\$48	\$48	\$37	\$26	\$23	\$19	\$16	\$13	\$12
	10yr ave.	\$56	\$53	\$51	\$48	\$46	\$43	\$41	\$39	\$38	\$37	\$36	\$33	\$29	\$24	\$21	\$15	\$12	\$9
	35% Current	\$67	\$67	\$66	\$65	\$64	\$62	\$59	\$57	\$56	\$56	\$56	\$43	\$31	\$27	\$22	\$18	\$16	\$14
	10yr ave.	\$65	\$62	\$59	\$56	\$53	\$50	\$48	\$46	\$44	\$43	\$42	\$38	\$33	\$28	\$24	\$17	\$14	\$10
	40% Current	\$77	\$76	\$75	\$75	\$74	\$71	\$68	\$66	\$65	\$64	\$64	\$49	\$35	\$31	\$25	\$21	\$18	\$16
	10yr ave.	\$75	\$71	\$68	\$64	\$61	\$58	\$55	\$52	\$51	\$49	\$48	\$44	\$38	\$32	\$28	\$20	\$16	\$12
	45% Current	\$87	\$86	\$85	\$84	\$83	\$80	\$76	\$74	\$73	\$72	\$72	\$55	\$40	\$35	\$28	\$23	\$20	\$18
	10yr ave.	\$84	\$80	\$76	\$73	\$69	\$65	\$62	\$59	\$57	\$55	\$54	\$49	\$43	\$36	\$31	\$22	\$18	\$13
	50% Current	\$96	\$95	\$94	\$93	\$92	\$89	\$85	\$82	\$81	\$80	\$80	\$62	\$44	\$39	\$32	\$26	\$22	\$20
	10yr ave.	\$94	\$89	\$85	\$81	\$76	\$72	\$68	\$66	\$63	\$61	\$60	\$55	\$48	\$40	\$35	\$24	\$20	\$15
	55% Current	\$106	\$105	\$104	\$103	\$101	\$98	\$93	\$90	\$89	\$88	\$88	\$68	\$48	\$42	\$35	\$29	\$25	\$21
	10yr ave.	\$103	\$98	\$93	\$89	\$84	\$79	\$75	\$72	\$70	\$67	\$66	\$60	\$52	\$44	\$38	\$27	\$22	\$16
	60% Current	\$115	\$114	\$113	\$112	\$110	\$107	\$102	\$98	\$97	\$96	\$96	\$74	\$53	\$46	\$38	\$31	\$27	\$23
	10yr ave.	\$112	\$107	\$102	\$97	\$91	\$87	\$82	\$79	\$76	\$74	\$72	\$66	\$57	\$48	\$42	\$29	\$24	\$18
	65% Current	\$125	\$124	\$122	\$121	\$120	\$116	\$110	\$107	\$105	\$104	\$103	\$80	\$57	\$50	\$41	\$34	\$29	\$25
10yr ave.	\$122	\$116	\$110	\$105	\$99	\$94	\$89	\$85	\$82	\$80	\$78	\$71	\$62	\$52	\$45	\$32	\$26	\$19	
70% Current	\$135	\$134	\$132	\$131	\$129	\$125	\$119	\$115	\$113	\$111	\$111	\$86	\$62	\$54	\$44	\$36	\$31	\$27	
10yr ave.	\$131	\$125	\$119	\$113	\$107	\$101	\$96	\$92	\$89	\$86	\$84	\$77	\$67	\$57	\$49	\$34	\$28	\$20	
75% Current	\$144	\$143	\$141	\$140	\$138	\$134	\$127	\$123	\$121	\$119	\$119	\$92	\$66	\$58	\$47	\$39	\$34	\$29	
10yr ave.	\$140	\$134	\$127	\$121	\$114	\$108	\$103	\$98	\$95	\$92	\$90	\$82	\$71	\$61	\$52	\$37	\$30	\$22	
80% Current	\$154	\$153	\$151	\$149	\$147	\$143	\$136	\$131	\$129	\$127	\$127	\$99	\$70	\$62	\$51	\$42	\$36	\$31	
10yr ave.	\$150	\$142	\$136	\$129	\$122	\$115	\$109	\$105	\$101	\$98	\$96	\$88	\$76	\$65	\$56	\$39	\$32	\$23	
85% Current	\$164	\$162	\$160	\$159	\$156	\$152	\$144	\$139	\$137	\$135	\$135	\$105	\$75	\$66	\$54	\$44	\$38	\$33	
10yr ave.	\$159	\$151	\$144	\$137	\$130	\$123	\$116	\$112	\$108	\$104	\$102	\$93	\$81	\$69	\$59	\$42	\$34	\$25	

The above shows estimated returns per head for skirted fleece wool. These figures do not take into account the value of skirtings and oddments and do not take into account discounts that may apply for faults under individual circumstances. These figures are based on a market index of 100% and should be used as a guide only. Returns over \$30 / head for fleece wool are highlighted.

Table 10: Returns pr head for skirted fleece wool.

Skirted FLC Weight 7 Kg		Micron																	
		16	16.5	17	17.5	18	18.5	19	19.5	20	21	22	23	24	25	26	28	30	32
Yield (Sch Dry)	25% Current	\$42	\$42	\$41	\$41	\$40	\$39	\$37	\$36	\$35	\$35	\$35	\$27	\$19	\$17	\$14	\$11	\$10	\$9
	10yr ave.	\$41	\$39	\$37	\$35	\$33	\$32	\$30	\$29	\$28	\$27	\$26	\$24	\$21	\$18	\$15	\$11	\$9	\$6
	30% Current	\$51	\$50	\$49	\$49	\$48	\$47	\$44	\$43	\$42	\$42	\$42	\$32	\$23	\$20	\$17	\$14	\$12	\$10
	10yr ave.	\$49	\$47	\$45	\$42	\$40	\$38	\$36	\$34	\$33	\$32	\$31	\$29	\$25	\$21	\$18	\$13	\$11	\$8
	35% Current	\$59	\$58	\$58	\$57	\$56	\$55	\$52	\$50	\$49	\$49	\$49	\$38	\$27	\$24	\$19	\$16	\$14	\$12
	10yr ave.	\$57	\$55	\$52	\$49	\$47	\$44	\$42	\$40	\$39	\$38	\$37	\$34	\$29	\$25	\$21	\$15	\$12	\$9
	40% Current	\$67	\$67	\$66	\$65	\$64	\$62	\$59	\$57	\$56	\$56	\$56	\$43	\$31	\$27	\$22	\$18	\$16	\$14
	10yr ave.	\$65	\$62	\$59	\$56	\$53	\$50	\$48	\$46	\$44	\$43	\$42	\$38	\$33	\$28	\$24	\$17	\$14	\$10
	45% Current	\$76	\$75	\$74	\$73	\$72	\$70	\$67	\$65	\$64	\$63	\$63	\$49	\$35	\$30	\$25	\$20	\$18	\$15
	10yr ave.	\$74	\$70	\$67	\$63	\$60	\$57	\$54	\$52	\$50	\$48	\$47	\$43	\$37	\$32	\$27	\$19	\$16	\$11
	50% Current	\$84	\$83	\$82	\$82	\$80	\$78	\$74	\$72	\$71	\$70	\$70	\$54	\$39	\$34	\$28	\$23	\$20	\$17
	10yr ave.	\$82	\$78	\$74	\$71	\$67	\$63	\$60	\$57	\$55	\$54	\$52	\$48	\$42	\$35	\$31	\$21	\$18	\$13
	55% Current	\$93	\$92	\$91	\$90	\$89	\$86	\$82	\$79	\$78	\$77	\$77	\$59	\$42	\$37	\$30	\$25	\$22	\$19
	10yr ave.	\$90	\$86	\$82	\$78	\$73	\$69	\$66	\$63	\$61	\$59	\$58	\$53	\$46	\$39	\$34	\$24	\$19	\$14
	60% Current	\$101	\$100	\$99	\$98	\$97	\$94	\$89	\$86	\$85	\$84	\$84	\$65	\$46	\$41	\$33	\$27	\$24	\$20
	10yr ave.	\$98	\$93	\$89	\$85	\$80	\$76	\$72	\$69	\$66	\$64	\$63	\$58	\$50	\$42	\$37	\$26	\$21	\$15
	65% Current	\$109	\$108	\$107	\$106	\$105	\$101	\$96	\$93	\$92	\$91	\$91	\$70	\$50	\$44	\$36	\$30	\$26	\$22
	10yr ave.	\$106	\$101	\$96	\$92	\$87	\$82	\$78	\$75	\$72	\$70	\$68	\$62	\$54	\$46	\$40	\$28	\$23	\$17
70% Current	\$118	\$117	\$115	\$114	\$113	\$109	\$104	\$100	\$99	\$98	\$98	\$75	\$54	\$47	\$39	\$32	\$28	\$24	
10yr ave.	\$115	\$109	\$104	\$99	\$93	\$88	\$84	\$80	\$77	\$75	\$73	\$67	\$58	\$49	\$43	\$30	\$25	\$18	
75% Current	\$126	\$125	\$124	\$122	\$121	\$117	\$111	\$108	\$106	\$105	\$104	\$81	\$58	\$51	\$41	\$34	\$30	\$26	
10yr ave.	\$123	\$117	\$111	\$106	\$100	\$95	\$90	\$86	\$83	\$80	\$79	\$72	\$62	\$53	\$46	\$32	\$26	\$19	
80% Current	\$135	\$134	\$132	\$131	\$129	\$125	\$119	\$115	\$113	\$111	\$111	\$86	\$62	\$54	\$44	\$36	\$31	\$27	
10yr ave.	\$131	\$125	\$119	\$113	\$107	\$101	\$96	\$92	\$89	\$86	\$84	\$77	\$67	\$57	\$49	\$34	\$28	\$20	
85% Current	\$143	\$142	\$140	\$139	\$137	\$133	\$126	\$122	\$120	\$118	\$118	\$92	\$65	\$57	\$47	\$39	\$33	\$29	
10yr ave.	\$139	\$132	\$126	\$120	\$113	\$107	\$102	\$98	\$94	\$91	\$89	\$82	\$71	\$60	\$52	\$36	\$30	\$22	

The above shows estimated returns per head for skirted fleece wool. These figures do not take into account the value of skirtings and oddments and do not take into account discounts that may apply for faults under individual circumstances. These figures are based on a market index of 100% and should be used as a guide only. Returns over \$30 / head for fleece wool are highlighted.

Table 11: Returns pr head for skirted fleece wool.

Skirted FLC Weight 6 Kg		Micron																	
		16	16.5	17	17.5	18	18.5	19	19.5	20	21	22	23	24	25	26	28	30	32
Yield (Sch Dry)	25% Current	\$36	\$36	\$35	\$35	\$34	\$33	\$32	\$31	\$30	\$30	\$30	\$23	\$17	\$14	\$12	\$10	\$8	\$7
	10yr ave.	\$35	\$33	\$32	\$30	\$29	\$27	\$26	\$25	\$24	\$23	\$22	\$21	\$18	\$15	\$13	\$9	\$8	\$5
	30% Current	\$43	\$43	\$42	\$42	\$41	\$40	\$38	\$37	\$36	\$36	\$36	\$28	\$20	\$17	\$14	\$12	\$10	\$9
	10yr ave.	\$42	\$40	\$38	\$36	\$34	\$32	\$31	\$30	\$28	\$28	\$27	\$25	\$21	\$18	\$16	\$11	\$9	\$7
	35% Current	\$51	\$50	\$49	\$49	\$48	\$47	\$44	\$43	\$42	\$42	\$42	\$32	\$23	\$20	\$17	\$14	\$12	\$10
	10yr ave.	\$49	\$47	\$45	\$42	\$40	\$38	\$36	\$34	\$33	\$32	\$31	\$29	\$25	\$21	\$18	\$13	\$11	\$8
	40% Current	\$58	\$57	\$57	\$56	\$55	\$53	\$51	\$49	\$48	\$48	\$48	\$37	\$26	\$23	\$19	\$16	\$13	\$12
	10yr ave.	\$56	\$53	\$51	\$48	\$46	\$43	\$41	\$39	\$38	\$37	\$36	\$33	\$29	\$24	\$21	\$15	\$12	\$9
	45% Current	\$65	\$64	\$64	\$63	\$62	\$60	\$57	\$55	\$54	\$54	\$54	\$42	\$30	\$26	\$21	\$18	\$15	\$13
	10yr ave.	\$63	\$60	\$57	\$54	\$51	\$49	\$46	\$44	\$43	\$41	\$40	\$37	\$32	\$27	\$24	\$17	\$14	\$10
	50% Current	\$72	\$72	\$71	\$70	\$69	\$67	\$64	\$61	\$60	\$60	\$60	\$46	\$33	\$29	\$24	\$20	\$17	\$15
	10yr ave.	\$70	\$67	\$64	\$60	\$57	\$54	\$51	\$49	\$47	\$46	\$45	\$41	\$36	\$30	\$26	\$18	\$15	\$11
	55% Current	\$79	\$79	\$78	\$77	\$76	\$74	\$70	\$68	\$67	\$66	\$66	\$51	\$36	\$32	\$26	\$21	\$19	\$16
	10yr ave.	\$77	\$73	\$70	\$66	\$63	\$59	\$56	\$54	\$52	\$51	\$49	\$45	\$39	\$33	\$29	\$20	\$17	\$12
	60% Current	\$87	\$86	\$85	\$84	\$83	\$80	\$76	\$74	\$73	\$72	\$72	\$55	\$40	\$35	\$28	\$23	\$20	\$18
	10yr ave.	\$84	\$80	\$76	\$73	\$69	\$65	\$62	\$59	\$57	\$55	\$54	\$49	\$43	\$36	\$31	\$22	\$18	\$13
	65% Current	\$94	\$93	\$92	\$91	\$90	\$87	\$83	\$80	\$79	\$78	\$78	\$60	\$43	\$38	\$31	\$25	\$22	\$19
	10yr ave.	\$91	\$87	\$83	\$79	\$74	\$70	\$67	\$64	\$62	\$60	\$58	\$53	\$46	\$39	\$34	\$24	\$20	\$14
	70% Current	\$101	\$100	\$99	\$98	\$97	\$94	\$89	\$86	\$85	\$84	\$84	\$65	\$46	\$41	\$33	\$27	\$24	\$20
	10yr ave.	\$98	\$93	\$89	\$85	\$80	\$76	\$72	\$69	\$66	\$64	\$63	\$58	\$50	\$42	\$37	\$26	\$21	\$15
75% Current	\$108	\$107	\$106	\$105	\$103	\$100	\$95	\$92	\$91	\$90	\$90	\$69	\$50	\$43	\$36	\$29	\$25	\$22	
10yr ave.	\$105	\$100	\$95	\$91	\$86	\$81	\$77	\$74	\$71	\$69	\$67	\$62	\$54	\$45	\$39	\$28	\$23	\$16	
80% Current	\$115	\$114	\$113	\$112	\$110	\$107	\$102	\$98	\$97	\$96	\$96	\$74	\$53	\$46	\$38	\$31	\$27	\$23	
10yr ave.	\$112	\$107	\$102	\$97	\$91	\$87	\$82	\$79	\$76	\$74	\$72	\$66	\$57	\$48	\$42	\$29	\$24	\$18	
85% Current	\$123	\$122	\$120	\$119	\$117	\$114	\$108	\$104	\$103	\$102	\$101	\$79	\$56	\$49	\$40	\$33	\$29	\$25	
10yr ave.	\$119	\$113	\$108	\$103	\$97	\$92	\$87	\$84	\$81	\$78	\$76	\$70	\$61	\$51	\$44	\$31	\$26	\$19	

The above shows estimated returns per head for skirted fleece wool. These figures do not take into account the value of skirtings and oddments and do not take into account discounts that may apply for faults under individual circumstances. These figures are based on a market index of 100% and should be used as a guide only. Returns over \$30 / head for fleece wool are highlighted.

Table 12: Returns pr head for skirted fleece wool.

Skirted FLC Weight 5 Kg		Micron																	
		16	16.5	17	17.5	18	18.5	19	19.5	20	21	22	23	24	25	26	28	30	32
Yield (Sch Dry)	25% Current	\$30	\$30	\$29	\$29	\$29	\$28	\$26	\$26	\$25	\$25	\$25	\$19	\$14	\$12	\$10	\$8	\$7	\$6
	10yr ave.	\$29	\$28	\$27	\$25	\$24	\$23	\$21	\$21	\$20	\$19	\$19	\$17	\$15	\$13	\$11	\$8	\$6	\$5
	30% Current	\$36	\$36	\$35	\$35	\$34	\$33	\$32	\$31	\$30	\$30	\$30	\$23	\$17	\$14	\$12	\$10	\$8	\$7
	10yr ave.	\$35	\$33	\$32	\$30	\$29	\$27	\$26	\$25	\$24	\$23	\$22	\$21	\$18	\$15	\$13	\$9	\$8	\$5
	35% Current	\$42	\$42	\$41	\$41	\$40	\$39	\$37	\$36	\$35	\$35	\$35	\$27	\$19	\$17	\$14	\$11	\$10	\$9
	10yr ave.	\$41	\$39	\$37	\$35	\$33	\$32	\$30	\$29	\$28	\$27	\$26	\$24	\$21	\$18	\$15	\$11	\$9	\$6
	40% Current	\$48	\$48	\$47	\$47	\$46	\$45	\$42	\$41	\$40	\$40	\$40	\$31	\$22	\$19	\$16	\$13	\$11	\$10
	10yr ave.	\$47	\$45	\$42	\$40	\$38	\$36	\$34	\$33	\$32	\$31	\$30	\$27	\$24	\$20	\$17	\$12	\$10	\$7
	45% Current	\$54	\$54	\$53	\$52	\$52	\$50	\$48	\$46	\$45	\$45	\$45	\$35	\$25	\$22	\$18	\$15	\$13	\$11
	10yr ave.	\$53	\$50	\$48	\$45	\$43	\$41	\$38	\$37	\$36	\$34	\$34	\$31	\$27	\$23	\$20	\$14	\$11	\$8
	50% Current	\$60	\$60	\$59	\$58	\$57	\$56	\$53	\$51	\$50	\$50	\$50	\$39	\$28	\$24	\$20	\$16	\$14	\$12
	10yr ave.	\$58	\$56	\$53	\$50	\$48	\$45	\$43	\$41	\$40	\$38	\$37	\$34	\$30	\$25	\$22	\$15	\$13	\$9
	55% Current	\$66	\$66	\$65	\$64	\$63	\$61	\$58	\$56	\$55	\$55	\$55	\$42	\$30	\$27	\$22	\$18	\$15	\$13
	10yr ave.	\$64	\$61	\$58	\$55	\$52	\$50	\$47	\$45	\$43	\$42	\$41	\$38	\$33	\$28	\$24	\$17	\$14	\$10
	60% Current	\$72	\$72	\$71	\$70	\$69	\$67	\$64	\$61	\$60	\$60	\$60	\$46	\$33	\$29	\$24	\$20	\$17	\$15
	10yr ave.	\$70	\$67	\$64	\$60	\$57	\$54	\$51	\$49	\$47	\$46	\$45	\$41	\$36	\$30	\$26	\$18	\$15	\$11
	65% Current	\$78	\$77	\$77	\$76	\$75	\$72	\$69	\$67	\$66	\$65	\$65	\$50	\$36	\$31	\$26	\$21	\$18	\$16
	10yr ave.	\$76	\$72	\$69	\$65	\$62	\$59	\$56	\$53	\$51	\$50	\$49	\$45	\$39	\$33	\$28	\$20	\$16	\$12
	70% Current	\$84	\$83	\$82	\$82	\$80	\$78	\$74	\$72	\$71	\$70	\$70	\$54	\$39	\$34	\$28	\$23	\$20	\$17
	10yr ave.	\$82	\$78	\$74	\$71	\$67	\$63	\$60	\$57	\$55	\$54	\$52	\$48	\$42	\$35	\$31	\$21	\$18	\$13
75% Current	\$90	\$89	\$88	\$87	\$86	\$84	\$79	\$77	\$76	\$75	\$75	\$58	\$41	\$36	\$30	\$24	\$21	\$18	
10yr ave.	\$88	\$83	\$80	\$76	\$71	\$68	\$64	\$62	\$59	\$57	\$56	\$51	\$45	\$38	\$33	\$23	\$19	\$14	
80% Current	\$96	\$95	\$94	\$93	\$92	\$89	\$85	\$82	\$81	\$80	\$80	\$62	\$44	\$39	\$32	\$26	\$22	\$20	
10yr ave.	\$94	\$89	\$85	\$81	\$76	\$72	\$68	\$66	\$63	\$61	\$60	\$55	\$48	\$40	\$35	\$24	\$20	\$15	
85% Current	\$102	\$101	\$100	\$99	\$98	\$95	\$90	\$87	\$86	\$85	\$85	\$65	\$47	\$41	\$34	\$28	\$24	\$21	
10yr ave.	\$99	\$95	\$90	\$86	\$81	\$77	\$73	\$70	\$67	\$65	\$64	\$58	\$51	\$43	\$37	\$26	\$21	\$16	

The above shows estimated returns per head for skirted fleece wool. These figures do not take into account the value of skirtings and oddments and do not take into account discounts that may apply for faults under individual circumstances. These figures are based on a market index of 100% and should be used as a guide only. Returns over \$30 / head for fleece wool are highlighted.

Table 13: Returns pr head for skirted fleece wool.

Skirted FLC Weight 4 Kg		Micron																	
		16	16.5	17	17.5	18	18.5	19	19.5	20	21	22	23	24	25	26	28	30	32
Yield (Sch Dry)	25% Current	\$24	\$24	\$24	\$23	\$23	\$22	\$21	\$20	\$20	\$20	\$20	\$15	\$11	\$10	\$8	\$7	\$6	\$5
	10yr ave.	\$23	\$22	\$21	\$20	\$19	\$18	\$17	\$16	\$16	\$15	\$15	\$14	\$12	\$10	\$9	\$6	\$5	\$4
	30% Current	\$29	\$29	\$28	\$28	\$28	\$27	\$25	\$25	\$24	\$24	\$24	\$18	\$13	\$12	\$9	\$8	\$7	\$6
	10yr ave.	\$28	\$27	\$25	\$24	\$23	\$22	\$21	\$20	\$19	\$18	\$18	\$16	\$14	\$12	\$10	\$7	\$6	\$4
	35% Current	\$34	\$33	\$33	\$33	\$32	\$31	\$30	\$29	\$28	\$28	\$28	\$22	\$15	\$14	\$11	\$9	\$8	\$7
	10yr ave.	\$33	\$31	\$30	\$28	\$27	\$25	\$24	\$23	\$22	\$21	\$21	\$19	\$17	\$14	\$12	\$9	\$7	\$5
	40% Current	\$38	\$38	\$38	\$37	\$37	\$36	\$34	\$33	\$32	\$32	\$32	\$25	\$18	\$15	\$13	\$10	\$9	\$8
	10yr ave.	\$37	\$36	\$34	\$32	\$30	\$29	\$27	\$26	\$25	\$25	\$24	\$22	\$19	\$16	\$14	\$10	\$8	\$6
	45% Current	\$43	\$43	\$42	\$42	\$41	\$40	\$38	\$37	\$36	\$36	\$36	\$28	\$20	\$17	\$14	\$12	\$10	\$9
	10yr ave.	\$42	\$40	\$38	\$36	\$34	\$32	\$31	\$30	\$28	\$28	\$27	\$25	\$21	\$18	\$16	\$11	\$9	\$7
	50% Current	\$48	\$48	\$47	\$47	\$46	\$45	\$42	\$41	\$40	\$40	\$40	\$31	\$22	\$19	\$16	\$13	\$11	\$10
	10yr ave.	\$47	\$45	\$42	\$40	\$38	\$36	\$34	\$33	\$32	\$31	\$30	\$27	\$24	\$20	\$17	\$12	\$10	\$7
	55% Current	\$53	\$52	\$52	\$51	\$51	\$49	\$47	\$45	\$44	\$44	\$44	\$34	\$24	\$21	\$17	\$14	\$12	\$11
	10yr ave.	\$51	\$49	\$47	\$44	\$42	\$40	\$38	\$36	\$35	\$34	\$33	\$30	\$26	\$22	\$19	\$13	\$11	\$8
	60% Current	\$58	\$57	\$57	\$56	\$55	\$53	\$51	\$49	\$48	\$48	\$48	\$37	\$26	\$23	\$19	\$16	\$13	\$12
	10yr ave.	\$56	\$53	\$51	\$48	\$46	\$43	\$41	\$39	\$38	\$37	\$36	\$33	\$29	\$24	\$21	\$15	\$12	\$9
	65% Current	\$63	\$62	\$61	\$61	\$60	\$58	\$55	\$53	\$52	\$52	\$52	\$40	\$29	\$25	\$21	\$17	\$15	\$13
	10yr ave.	\$61	\$58	\$55	\$52	\$50	\$47	\$44	\$43	\$41	\$40	\$39	\$36	\$31	\$26	\$23	\$16	\$13	\$9
	70% Current	\$67	\$67	\$66	\$65	\$64	\$62	\$59	\$57	\$56	\$56	\$56	\$43	\$31	\$27	\$22	\$18	\$16	\$14
10yr ave.	\$65	\$62	\$59	\$56	\$53	\$50	\$48	\$46	\$44	\$43	\$42	\$38	\$33	\$28	\$24	\$17	\$14	\$10	
75% Current	\$72	\$72	\$71	\$70	\$69	\$67	\$64	\$61	\$60	\$60	\$60	\$46	\$33	\$29	\$24	\$20	\$17	\$15	
10yr ave.	\$70	\$67	\$64	\$60	\$57	\$54	\$51	\$49	\$47	\$46	\$45	\$41	\$36	\$30	\$26	\$18	\$15	\$11	
80% Current	\$77	\$76	\$75	\$75	\$74	\$71	\$68	\$66	\$65	\$64	\$64	\$49	\$35	\$31	\$25	\$21	\$18	\$16	
10yr ave.	\$75	\$71	\$68	\$64	\$61	\$58	\$55	\$52	\$51	\$49	\$48	\$44	\$38	\$32	\$28	\$20	\$16	\$12	
85% Current	\$82	\$81	\$80	\$79	\$78	\$76	\$72	\$70	\$69	\$68	\$68	\$52	\$37	\$33	\$27	\$22	\$19	\$17	
10yr ave.	\$80	\$76	\$72	\$69	\$65	\$61	\$58	\$56	\$54	\$52	\$51	\$47	\$40	\$34	\$30	\$21	\$17	\$12	

The above shows estimated returns per head for skirted fleece wool. These figures do not take into account the value of skirtings and oddments and do not take into account discounts that may apply for faults under individual circumstances. These figures are based on a market index of 100% and should be used as a guide only. Returns over \$30 / head for fleece wool are highlighted.

Table 14: Returns pr head for skirted fleece wool.

Skirted FLC Weight 3 Kg		Micron																	
		16	16.5	17	17.5	18	18.5	19	19.5	20	21	22	23	24	25	26	28	30	32
Yield (Sch Dry)	25% Current	\$18	\$18	\$18	\$17	\$17	\$17	\$16	\$15	\$15	\$15	\$15	\$12	\$8	\$7	\$6	\$5	\$4	\$4
	10yr ave.	\$18	\$17	\$16	\$15	\$14	\$14	\$13	\$12	\$12	\$11	\$11	\$10	\$9	\$8	\$7	\$5	\$4	\$3
	30% Current	\$22	\$21	\$21	\$21	\$21	\$20	\$19	\$18	\$18	\$18	\$18	\$14	\$10	\$9	\$7	\$6	\$5	\$4
	10yr ave.	\$21	\$20	\$19	\$18	\$17	\$16	\$15	\$15	\$14	\$14	\$13	\$12	\$11	\$9	\$8	\$6	\$5	\$3
	35% Current	\$25	\$25	\$25	\$24	\$24	\$23	\$22	\$22	\$21	\$21	\$21	\$16	\$12	\$10	\$8	\$7	\$6	\$5
	10yr ave.	\$25	\$23	\$22	\$21	\$20	\$19	\$18	\$17	\$17	\$16	\$16	\$14	\$12	\$11	\$9	\$6	\$5	\$4
	40% Current	\$29	\$29	\$28	\$28	\$28	\$27	\$25	\$25	\$24	\$24	\$24	\$18	\$13	\$12	\$9	\$8	\$7	\$6
	10yr ave.	\$28	\$27	\$25	\$24	\$23	\$22	\$21	\$20	\$19	\$18	\$18	\$16	\$14	\$12	\$10	\$7	\$6	\$4
	45% Current	\$32	\$32	\$32	\$31	\$31	\$30	\$29	\$28	\$27	\$27	\$27	\$21	\$15	\$13	\$11	\$9	\$8	\$7
	10yr ave.	\$32	\$30	\$29	\$27	\$26	\$24	\$23	\$22	\$21	\$21	\$20	\$19	\$16	\$14	\$12	\$8	\$7	\$5
	50% Current	\$36	\$36	\$35	\$35	\$34	\$33	\$32	\$31	\$30	\$30	\$30	\$23	\$17	\$14	\$12	\$10	\$8	\$7
	10yr ave.	\$35	\$33	\$32	\$30	\$29	\$27	\$26	\$25	\$24	\$23	\$22	\$21	\$18	\$15	\$13	\$9	\$8	\$5
	55% Current	\$40	\$39	\$39	\$38	\$38	\$37	\$35	\$34	\$33	\$33	\$33	\$25	\$18	\$16	\$13	\$11	\$9	\$8
	10yr ave.	\$39	\$37	\$35	\$33	\$31	\$30	\$28	\$27	\$26	\$25	\$25	\$23	\$20	\$17	\$14	\$10	\$8	\$6
	60% Current	\$43	\$43	\$42	\$42	\$41	\$40	\$38	\$37	\$36	\$36	\$36	\$28	\$20	\$17	\$14	\$12	\$10	\$9
	10yr ave.	\$42	\$40	\$38	\$36	\$34	\$32	\$31	\$30	\$28	\$28	\$27	\$25	\$21	\$18	\$16	\$11	\$9	\$7
	65% Current	\$47	\$46	\$46	\$45	\$45	\$43	\$41	\$40	\$39	\$39	\$39	\$30	\$21	\$19	\$15	\$13	\$11	\$10
	10yr ave.	\$46	\$43	\$41	\$39	\$37	\$35	\$33	\$32	\$31	\$30	\$29	\$27	\$23	\$20	\$17	\$12	\$10	\$7
70% Current	\$51	\$50	\$49	\$49	\$48	\$47	\$44	\$43	\$42	\$42	\$42	\$32	\$23	\$20	\$17	\$14	\$12	\$10	
10yr ave.	\$49	\$47	\$45	\$42	\$40	\$38	\$36	\$34	\$33	\$32	\$31	\$29	\$25	\$21	\$18	\$13	\$11	\$8	
75% Current	\$54	\$54	\$53	\$52	\$52	\$50	\$48	\$46	\$45	\$45	\$45	\$35	\$25	\$22	\$18	\$15	\$13	\$11	
10yr ave.	\$53	\$50	\$48	\$45	\$43	\$41	\$38	\$37	\$36	\$34	\$34	\$31	\$27	\$23	\$20	\$14	\$11	\$8	
80% Current	\$58	\$57	\$57	\$56	\$55	\$53	\$51	\$49	\$48	\$48	\$48	\$37	\$26	\$23	\$19	\$16	\$13	\$12	
10yr ave.	\$56	\$53	\$51	\$48	\$46	\$43	\$41	\$39	\$38	\$37	\$36	\$33	\$29	\$24	\$21	\$15	\$12	\$9	
85% Current	\$61	\$61	\$60	\$59	\$59	\$57	\$54	\$52	\$51	\$51	\$51	\$39	\$28	\$25	\$20	\$17	\$14	\$12	
10yr ave.	\$60	\$57	\$54	\$51	\$49	\$46	\$44	\$42	\$40	\$39	\$38	\$35	\$30	\$26	\$22	\$16	\$13	\$9	

The above shows estimated returns per head for skirted fleece wool. These figures do not take into account the value of skirtings and oddments and do not take into account discounts that may apply for faults under individual circumstances. These figures are based on a market index of 100% and should be used as a guide only. Returns over \$30 / head for fleece wool are highlighted.

Table 15: Returns pr head for skirted fleece wool.

Skirted FLC Weight 2 Kg		Micron																	
		16	16.5	17	17.5	18	18.5	19	19.5	20	21	22	23	24	25	26	28	30	32
Yield (Sch Dry)	25% Current	\$12	\$12	\$12	\$12	\$11	\$11	\$11	\$10	\$10	\$10	\$10	\$8	\$6	\$5	\$4	\$3	\$3	\$2
	10yr ave.	\$12	\$11	\$11	\$10	\$10	\$9	\$9	\$8	\$8	\$8	\$7	\$7	\$6	\$5	\$4	\$3	\$3	\$2
	30% Current	\$14	\$14	\$14	\$14	\$14	\$13	\$13	\$12	\$12	\$12	\$12	\$9	\$7	\$6	\$5	\$4	\$3	\$3
	10yr ave.	\$14	\$13	\$13	\$12	\$11	\$11	\$10	\$10	\$9	\$9	\$9	\$8	\$7	\$6	\$5	\$4	\$3	\$2
	35% Current	\$17	\$17	\$16	\$16	\$16	\$16	\$15	\$14	\$14	\$14	\$14	\$11	\$8	\$7	\$6	\$5	\$4	\$3
	10yr ave.	\$16	\$16	\$15	\$14	\$13	\$13	\$12	\$11	\$11	\$11	\$10	\$10	\$8	\$7	\$6	\$4	\$4	\$3
	40% Current	\$19	\$19	\$19	\$19	\$18	\$18	\$17	\$16	\$16	\$16	\$16	\$12	\$9	\$8	\$6	\$5	\$4	\$4
	10yr ave.	\$19	\$18	\$17	\$16	\$15	\$14	\$14	\$13	\$13	\$12	\$12	\$11	\$10	\$8	\$7	\$5	\$4	\$3
	45% Current	\$22	\$21	\$21	\$21	\$21	\$20	\$19	\$18	\$18	\$18	\$18	\$14	\$10	\$9	\$7	\$6	\$5	\$4
	10yr ave.	\$21	\$20	\$19	\$18	\$17	\$16	\$15	\$15	\$14	\$14	\$13	\$12	\$11	\$9	\$8	\$6	\$5	\$3
	50% Current	\$24	\$24	\$24	\$23	\$23	\$22	\$21	\$20	\$20	\$20	\$20	\$15	\$11	\$10	\$8	\$7	\$6	\$5
	10yr ave.	\$23	\$22	\$21	\$20	\$19	\$18	\$17	\$16	\$16	\$15	\$15	\$14	\$12	\$10	\$9	\$6	\$5	\$4
	55% Current	\$26	\$26	\$26	\$26	\$25	\$25	\$23	\$23	\$22	\$22	\$22	\$17	\$12	\$11	\$9	\$7	\$6	\$5
	10yr ave.	\$26	\$24	\$23	\$22	\$21	\$20	\$19	\$18	\$17	\$17	\$16	\$15	\$13	\$11	\$10	\$7	\$6	\$4
	60% Current	\$29	\$29	\$28	\$28	\$28	\$27	\$25	\$25	\$24	\$24	\$24	\$18	\$13	\$12	\$9	\$8	\$7	\$6
	10yr ave.	\$28	\$27	\$25	\$24	\$23	\$22	\$21	\$20	\$19	\$18	\$18	\$16	\$14	\$12	\$10	\$7	\$6	\$4
	65% Current	\$31	\$31	\$31	\$30	\$30	\$29	\$28	\$27	\$26	\$26	\$26	\$20	\$14	\$13	\$10	\$8	\$7	\$6
10yr ave.	\$30	\$29	\$28	\$26	\$25	\$23	\$22	\$21	\$21	\$20	\$19	\$18	\$15	\$13	\$11	\$8	\$7	\$5	
70% Current	\$34	\$33	\$33	\$33	\$32	\$31	\$30	\$29	\$28	\$28	\$28	\$22	\$15	\$14	\$11	\$9	\$8	\$7	
10yr ave.	\$33	\$31	\$30	\$28	\$27	\$25	\$24	\$23	\$22	\$21	\$21	\$19	\$17	\$14	\$12	\$9	\$7	\$5	
75% Current	\$36	\$36	\$35	\$35	\$34	\$33	\$32	\$31	\$30	\$30	\$30	\$23	\$17	\$14	\$12	\$10	\$8	\$7	
10yr ave.	\$35	\$33	\$32	\$30	\$29	\$27	\$26	\$25	\$24	\$23	\$22	\$21	\$18	\$15	\$13	\$9	\$8	\$5	
80% Current	\$38	\$38	\$38	\$37	\$37	\$36	\$34	\$33	\$32	\$32	\$32	\$25	\$18	\$15	\$13	\$10	\$9	\$8	
10yr ave.	\$37	\$36	\$34	\$32	\$30	\$29	\$27	\$26	\$25	\$25	\$24	\$22	\$19	\$16	\$14	\$10	\$8	\$6	
85% Current	\$41	\$41	\$40	\$40	\$39	\$38	\$36	\$35	\$34	\$34	\$34	\$26	\$19	\$16	\$13	\$11	\$10	\$8	
10yr ave.	\$40	\$38	\$36	\$34	\$32	\$31	\$29	\$28	\$27	\$26	\$25	\$23	\$20	\$17	\$15	\$10	\$9	\$6	

The above shows estimated returns per head for skirted fleece wool. These figures do not take into account the value of skirtings and oddments and do not take into account discounts that may apply for faults under individual circumstances. These figures are based on a market index of 100% and should be used as a guide only. Returns over \$30 / head for fleece wool are highlighted.