



Table 1: Northern Region Micron Price Guides

CURRENT MARKET				PERCENTILES		AVERAGES						12 MONTH COMPARISONS								TRADING RANGE		
Mic.	26/05/2011	19/05/2011	Now			Now			25/05/2010	Now			Now			Clean c/kg						
Price	Current	Weekly	3yr	10yr	3 year	compared	10 year	compared	This time	compared	12 Month	compared	12 Month	compared	12	3	10					
Guides	Price	Change			Average	to 3yr ave	Average	to 10yr ave	Last Year	to Last Year	Low	to Low	High	to High	Mth	Year	Year					
NRI	1444	+15 1.0%	99%	99%	947	+497 52%	894	+550 62%	894	+550 62%	890	+554 62%	1447	-3 0%	557	698	789					
16*	2800	0	100%		1766	+1034 59%			1560	+1240 79%	1540	+1260 82%	2800	0 0%	1260	1415						
16.5*	2620	0	96%		1624	+996 61%			1405	+1215 86%	1395	+1225 88%	2670	-50 -2%	1275	1416						
17*	2430	0	94%	97%	1497	+933 62%	1420	+1010 71%	1255	+1175 94%	1230	+1200 98%	2530	-100 -4%	1300	1360	1559					
17.5*	2290	0	95%		1415	+875 62%			1200	+1090 91%	1185	+1105 93%	2360	-70 -3%	1175	1275						
18	2094	0	94%	97%	1337	+757 57%	1277	+817 64%	1160	+934 81%	1138	+956 84%	2193	-99 -5%	1055	1158	1304					
18.5	1895	+1 0.1%	94%		1245	+650 52%			1095	+800 73%	1110	+785 71%	1963	-68 -3%	853	992						
19	1749	+10 0.6%	100%	100%	1130	+619 55%	1077	+672 62%	1040	+709 68%	1031	+718 70%	1749	0 0%	718	855	945					
19.5	1610	+11 0.7%	100%		1026	+584 57%			967	+643 66%	952	+658 69%	1610	0 0%	658	796						
20	1498	+26 1.7%	100%	100%	945	+553 59%	935	+563 60%	919	+579 63%	904	+594 66%	1498	0 0%	594	758	814					
21	1423	+21 1.5%	100%	100%	911	+512 56%	894	+529 59%	902	+521 58%	878	+545 62%	1423	0 0%	545	736	778					
22	1360	+31 2.3%	100%	99%	888	+472 53%	870	+490 56%	892	+468 52%	847	+513 61%	1360	0 0%	513	685	724					
23	1251	+8 0.6%	97%	98%	863	+388 45%	849	+402 47%	878	+373 42%	827	+424 51%	1291	-40 -3%	464	628	705					
24	1049	+22 2.1%	95%	92%	809	+240 30%	808	+241 30%	830	+219 26%	780	+269 34%	1170	-121 -10%	390	523	669					
25	956	+20 2.1%	95%	88%	700	+256 37%	725	+231 32%	698	+258 37%	695	+261 38%	1048	-92 -9%	353	482	631					
26	887	+18 2.0%	96%	87%	631	+256 41%	663	+224 34%	601	+286 48%	598	+289 48%	928	-41 -4%	330	424	557					
28	676	+16 2.4%	95%	85%	488	+188 39%	527	+149 28%	451	+225 50%	443	+233 53%	734	-58 -8%	291	308	465					
30	618	+24 3.9%	95%	90%	429	+189 44%	460	+158 34%	402	+216 54%	389	+229 59%	670	-52 -8%	281	316	385					
32	560	+17 3.0%	95%	87%	378	+182 48%	416	+144 35%	355	+205 58%	353	+207 59%	638	-78 -12%	285	321	372					
MC	742	-12 -1.6%	91%	97%	574	+168 29%	513	+229 45%	575	+167 29%	561	+181 32%	830	-88 -11%	269	438	450					

**Note:**

\* Due to the irregular market quoting for some fine wool categories, figures shown relating to micron categories below 18 micron are an estimate based on the AWEX Premium & Discounts Report & other available information.

\* For any category, where there is insufficient quantity offered to enable AWEX to quote, a quote will be provided based on the best available information.

\* 10 Year data is not available for some micron categories, which may result in blank spaces in the table above.

**Definitions:**

\* A Percentile, is a value on a scale of one hundred that indicates the percent of a distribution that is equal to or below it. In general a percentile between 25% and 75% is considered normal, a percentile below 25% is considered below normal and a percentile above 75% is considered above normal.

Three and ten year percentiles shown in the table above, detail the period of time during the past 3 & 10 years that the market has traded either at or below its current price.

The higher the percentile, the stronger the market.

Source: Australian Wool Exchange, Australian Wool Innovation, Sydney Futures Exchange, x-rates.com

Disclaimer: While all due care has been taken in the preparation of this document, no warranty is made as to its accuracy, reliability or completeness. To the extent permitted by law neither Jemalong or their sources including subsidiaries and staff, accept liability to any person for loss or damage arising from the use of this information.



**MARKET COMMENTARY**

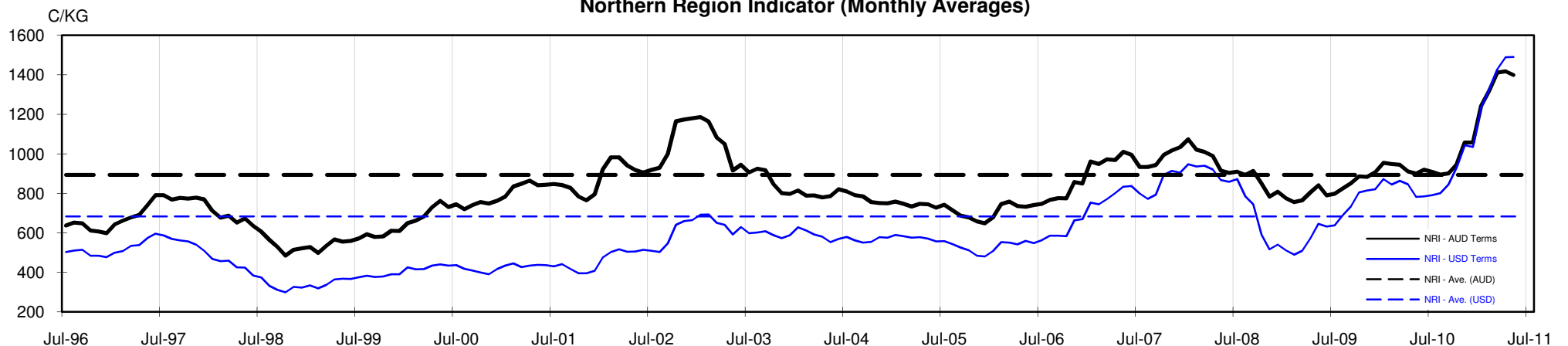
**One Australian Dollar = \$ 1.06 US, as of 26/05/2011**

**NORTHERN REGION –Sale Week 47/10 (33,495 bales offered nationally)**

On Wednesday - A small offering of predominantly 19 to 21.5 microns was well supported, leaving mid micron lots generally 10 cents dearer (with selected better types up 20). A limited offering at the finer end comprising of very few "straight" lots, left the fine end unchanged. Good support pushed most skirtings 20 cents higher, with odd better types up to 30 cents dearer. Locks and crutchings were generally unchanged. A small offering of crossbred wool saw 30 microns 5 cents dearer, while all others remained unchanged.

On Thursday - Another well supported day had 20 to 22 microns 20 cents dearer, with 22 micron and broader in short supply. The medium range improved by 5-10 cents, while the finer end once again remained unchanged on a limited offering. Merino Skittings maintained good support through out the sale, burry types with around 6% Vm and good length gained 10 cents while all other descriptions closed fully firm. Oddments continued to soften with locks and crutchings 10 cents easier, while stains closed 20 cents lower. Crossbreds lifted across most microns with 27 to 30 microns 15 to 20 cents dearer.

**Northern Region Indicator (Monthly Averages)**





**Table 4: 19 micron SFE**

Wednesday, 25 May 2011

Delivery Mth	Jun-11	Aug-11	Oct-11	Dec-11	Feb-11	Apr-12	Jun-12	Aug-12	Oct-12
19 Micron SFE	1725	1655	1585	1550	1518	1460	1430	1409	1409
Average	1224	1231	1238	1263	1114	1330	1385	1381	1361
Maximum	1725	1655	1595	1560	1655	1460	1450	1450	1409
Minimum	1034	1034	1034	1034	983	1106	1210	1285	1285

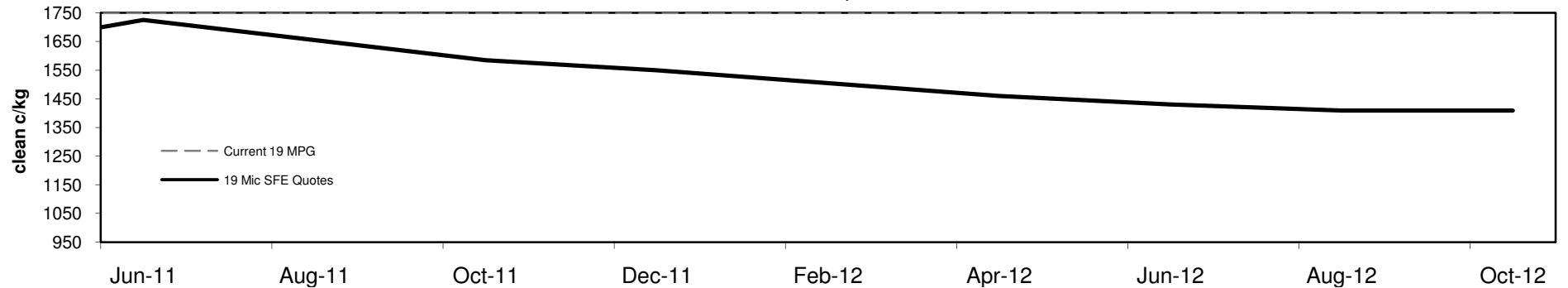
**Table 5: 19 micron SFE, as a percentile of the 19 micron MPG**

3 Year Percentile	99%	94%	88%	87%	87%	86%	86%	86%	86%
10 Year Percentile	99%	98%	96%	96%	96%	96%	96%	96%	96%

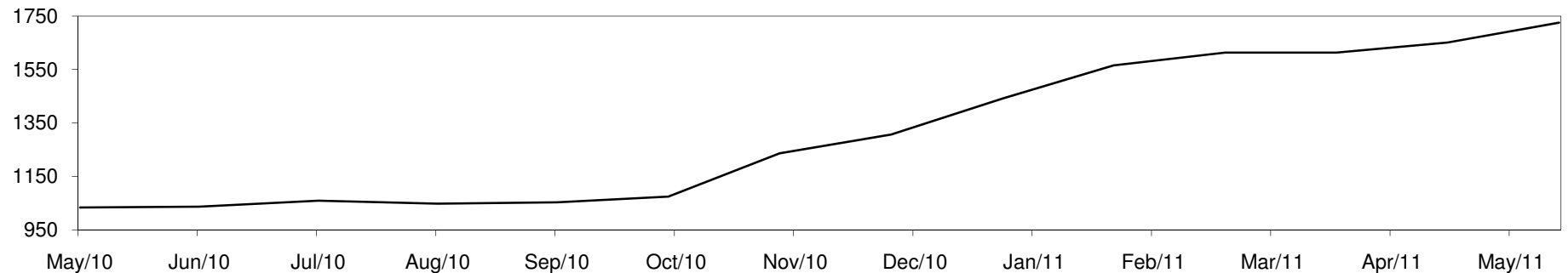
**Table 6: 19 micron SFE, compared to MPG**

Current 19 MPG	-24	-1%	-94	-5%	-164	-9%	-199	-11%	-231	-13%	-289	-17%	-319	-18%	-340	-19%	-340	-19%
19 MPG, 1 Year Average	+383	29%	+313	23%	+243	18%	+208	16%	+176	13%	+118	9%	+88	7%	+67	5%	+67	5%
19 MPG, 3 Year Average	+595	53%	+525	46%	+455	40%	+420	37%	+388	34%	+330	29%	+300	27%	+279	25%	+279	25%
19 MPG, 10 Year Average	+648	60%	+578	54%	+508	47%	+473	44%	+441	41%	+383	36%	+353	33%	+332	31%	+332	31%

**19 MICRON SFE, QUOTES**



**19 Micron SFE, Front month movement**





**Table 7: 21 micron SFE**

Wednesday, 25 May 2011

Delivery Mth	Jun-11	Aug-11	Oct-11	Dec-11	Feb-11	Apr-12	Jun-12	Aug-12	Oct-12
21 Micron SFE	1449	1388	1326	1298	1268	1150	1193	1183	1150
Average	1023	1019	1011	1013	962	1055	1059	1077	1068
Maximum	1449	1388	1326	1298	1388	1150	1193	1183	1150
Minimum	890	880	880	880	860	934	990	1046	1013

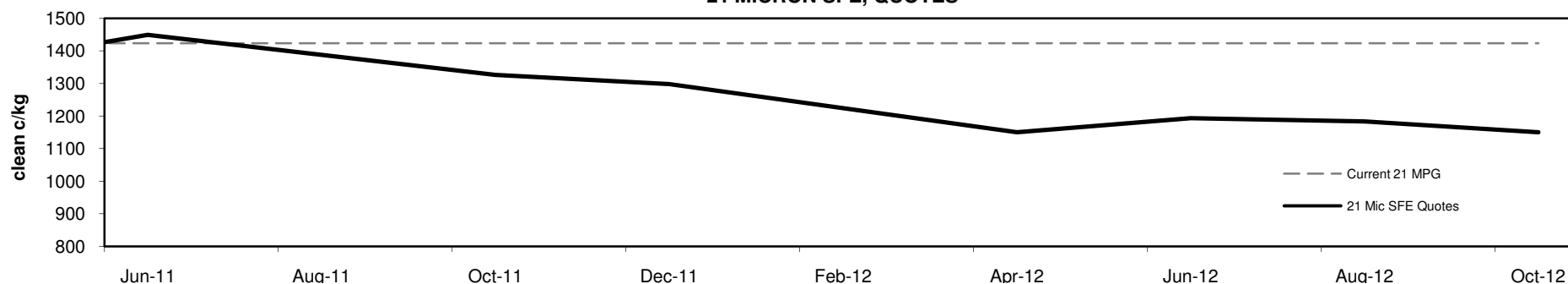
**Table 8: 21 micron SFE, as a percentile of the 21 micron MPG**

3 Year Percentile	100%	99%	98%	95%	93%	89%	92%	91%	89%
10 Year Percentile	100%	99%	99%	98%	96%	90%	92%	91%	90%

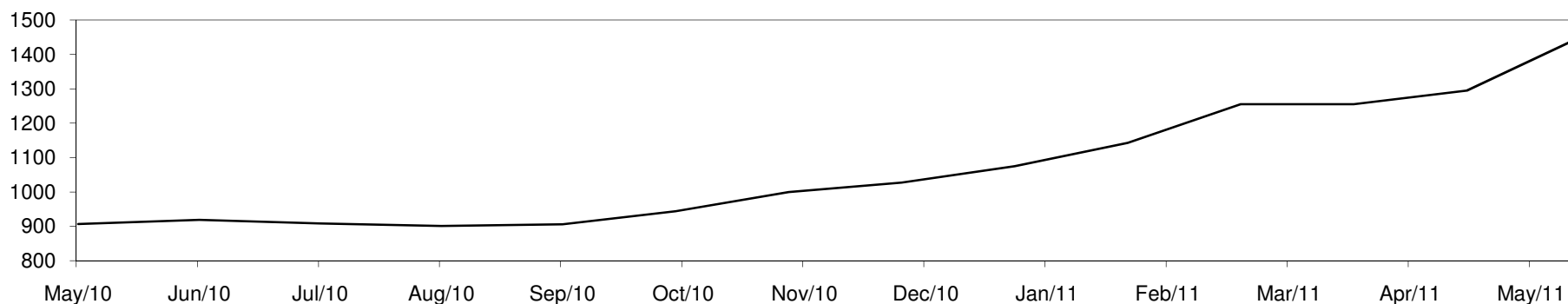
**Table 9: 21 micron SFE, compared to MPG**

Current 21 MPG	+26	2%	-35	-2%	-97	-7%	-125	-9%	-155	-11%	-273	-19%	-230	-16%	-240	-17%	-273	-19%
21 MPG, 1 Year Average	+384	36%	+323	30%	+261	25%	+233	22%	+203	19%	+85	8%	+128	12%	+118	11%	+85	8%
21 MPG, 3 Year Average	+538	59%	+477	52%	+415	46%	+387	42%	+357	39%	+239	26%	+282	31%	+272	30%	+239	26%
21 MPG, 10 Year Average	+555	62%	+494	55%	+432	48%	+404	45%	+374	42%	+256	29%	+299	33%	+289	32%	+256	29%

**21 MICRON SFE, QUOTES**



**21 Micron SFE, Front month movement**





**Table 10: 23 micron SFE**

Wednesday, 25 May 2011

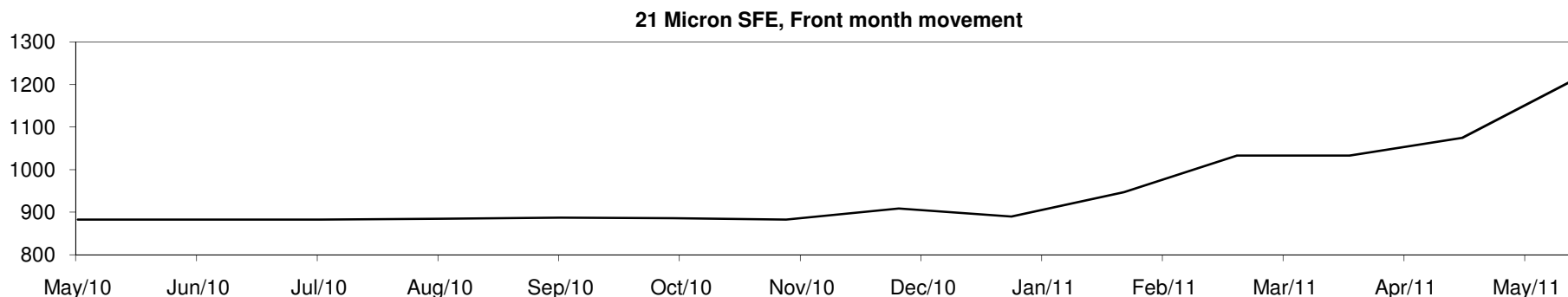
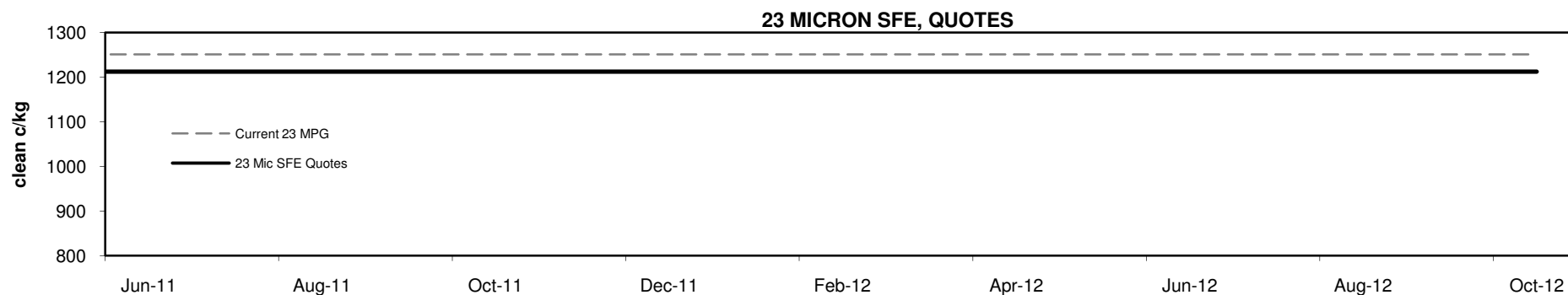
Delivery Mth	Jun-11	Aug-11	Oct-11	Dec-11	Feb-11	Apr-12	Jun-12	Aug-12	Oct-12
23 Micron SFE	1212	1212	1212	1212	1212	1212	1212	1212	1212
Average	926	935	936	947	870	987	1024	1098	1212
Maximum	1212	1212	1212	1212	1212	1212	1212	1212	1212
Minimum	803	883	883	883	760	883	890	1033	1212

**Table 11: 23 micron SFE, as a percentile of the 23 micron MPG**

3 Year Percentile	94%	94%	94%	94%	94%	94%	94%	94%	94%
10 Year Percentile	94%	94%	94%	94%	94%	94%	94%	94%	94%

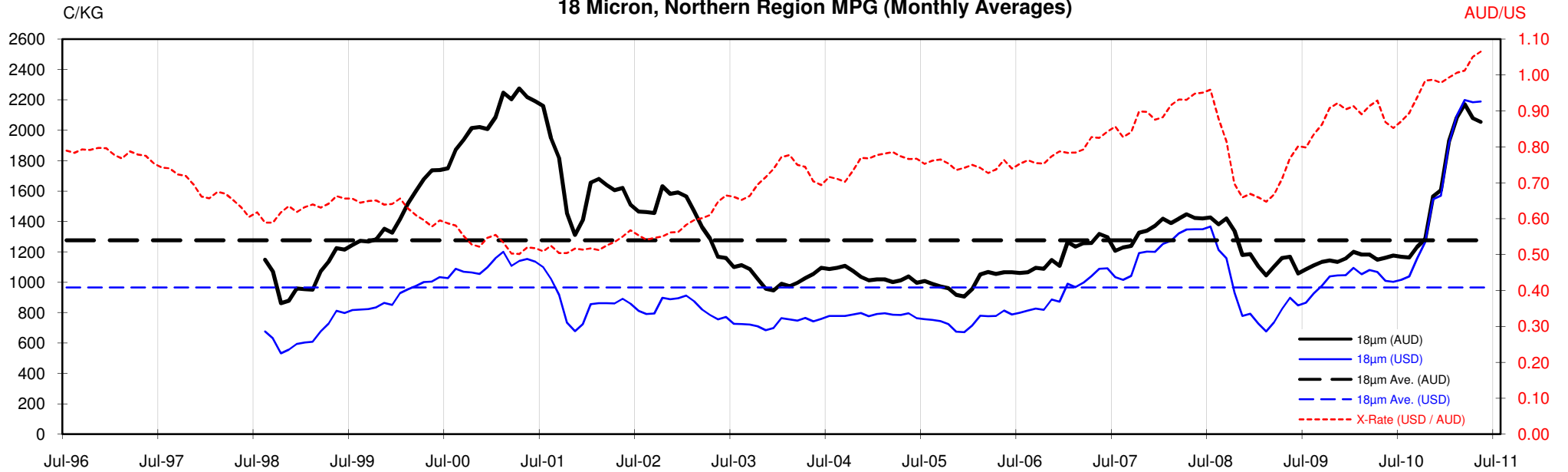
**Table 12: 23 micron SFE, compared to MPG**

Current 23 MPG	-39	-3%	-39	-3%	-39	-3%	-39	-3%	-39	-3%	-39	-3%	-39	-3%	-39	-3%	-39	-3%
23 MPG, 1 Year Average	+218	22%	+218	22%	+218	22%	+218	22%	+218	22%	+218	22%	+218	22%	+218	22%	+218	22%
23 MPG, 3 Year Average	+349	40%	+349	40%	+349	40%	+349	40%	+349	40%	+349	40%	+349	40%	+349	40%	+349	40%
23 MPG, 10 Year Average	+363	43%	+363	43%	+363	43%	+363	43%	+363	43%	+363	43%	+363	43%	+363	43%	+363	43%



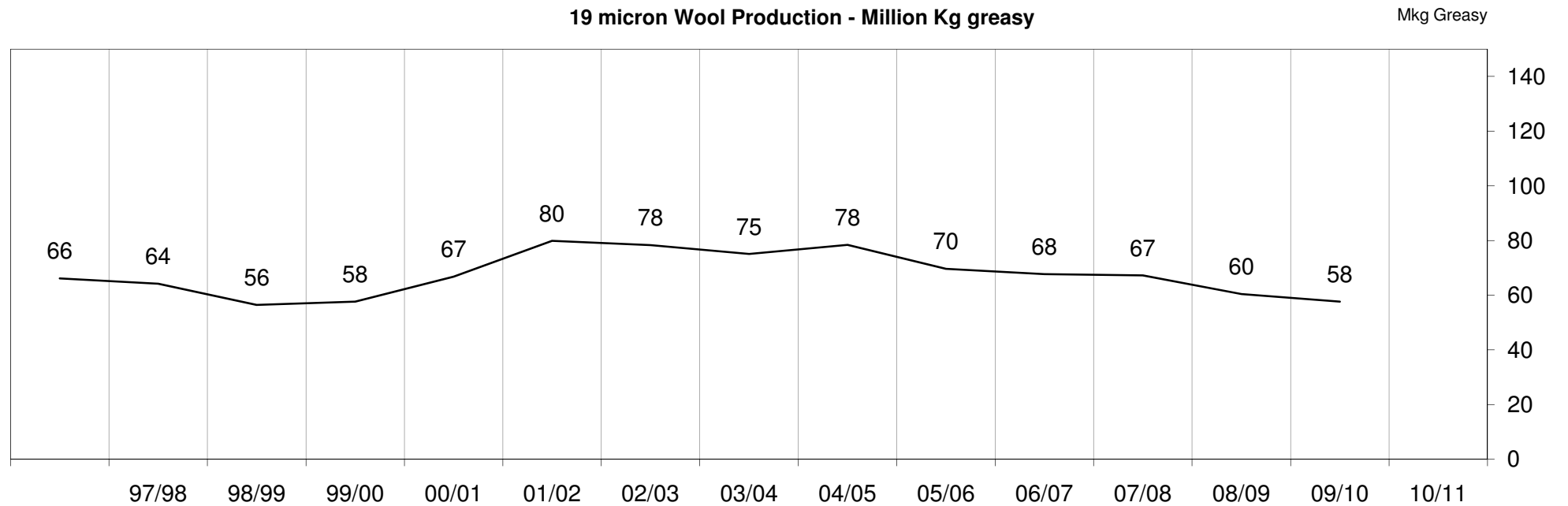
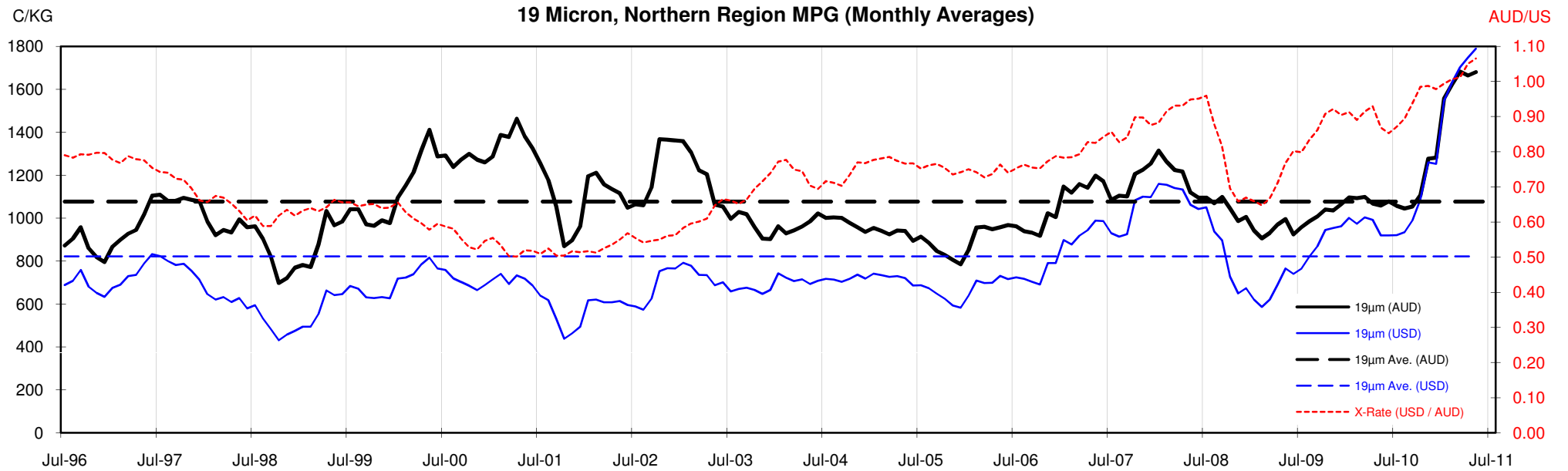


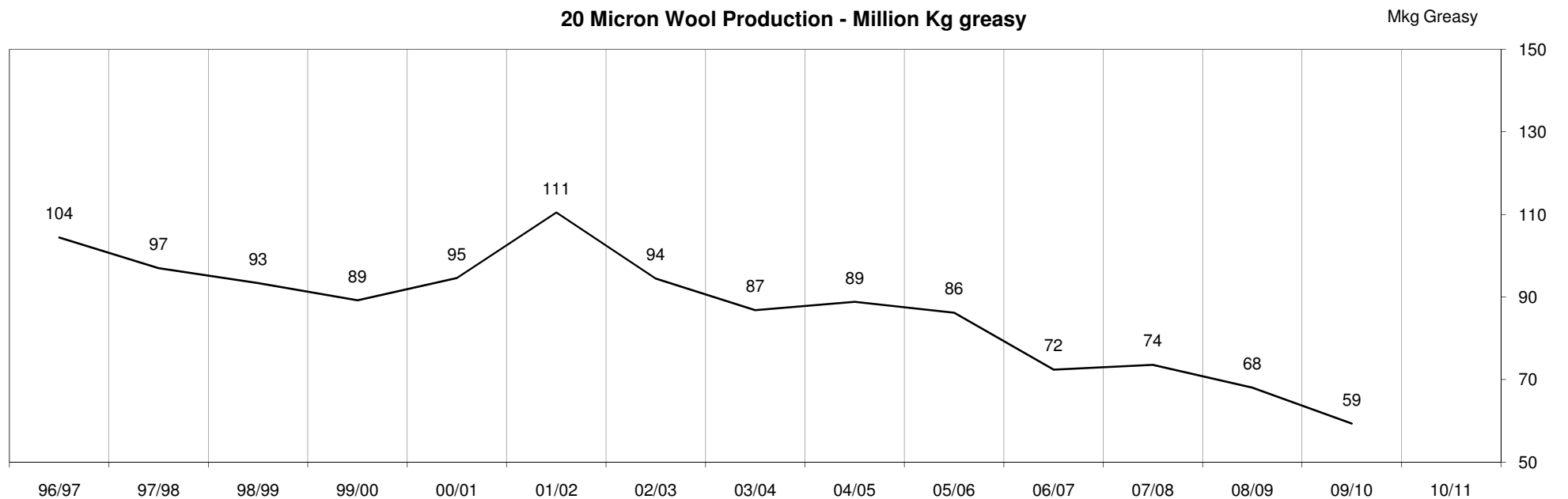
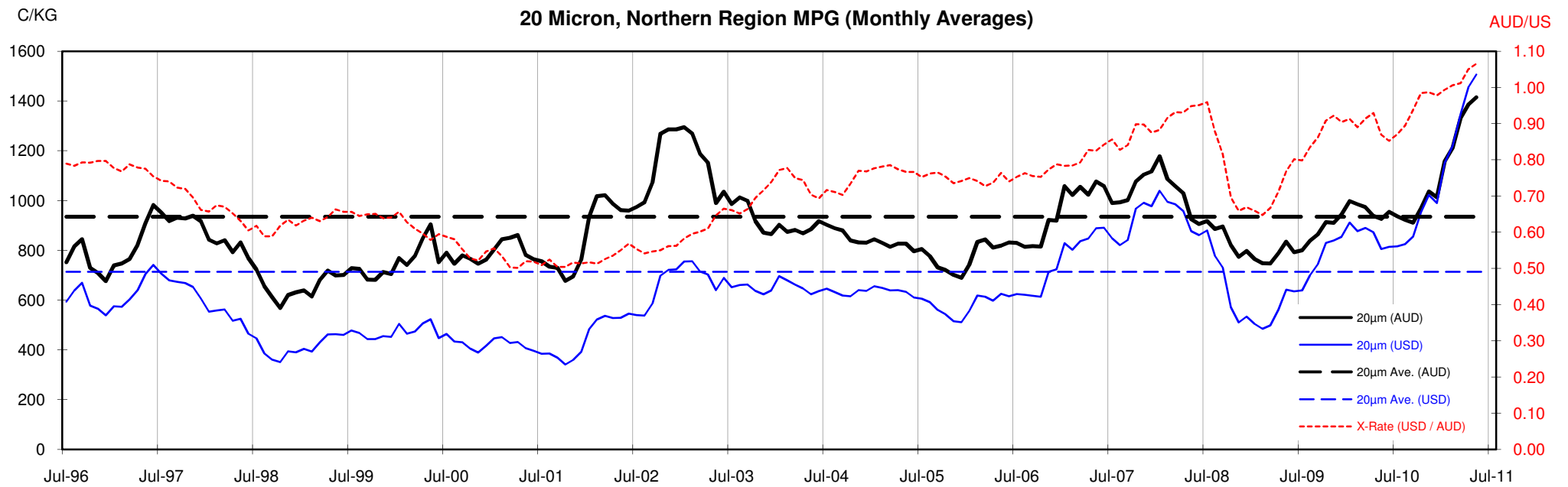
18 Micron, Northern Region MPG (Monthly Averages)



<18.5 micron Wool Production - Million Kg greasy







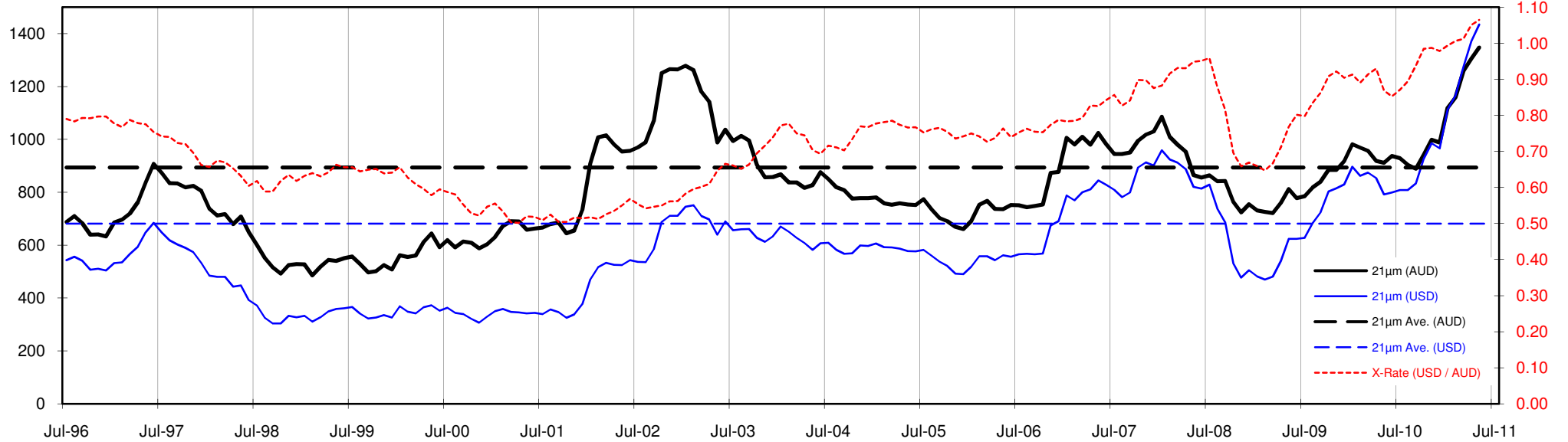




C/KG

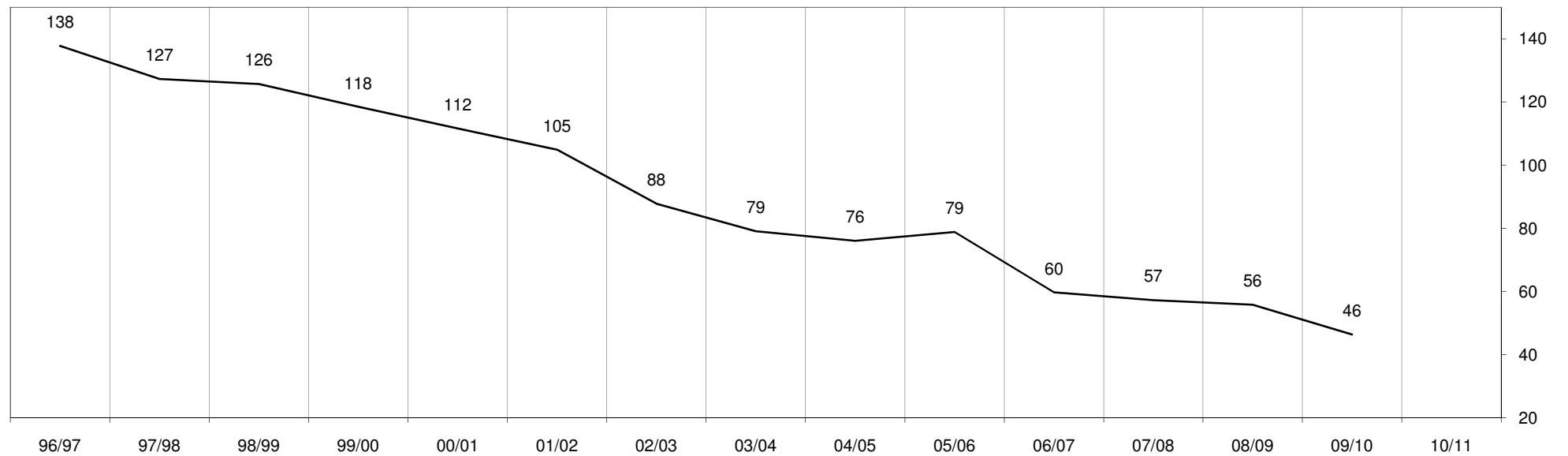
21 Micron, Northern Region MPG (Monthly Averages)

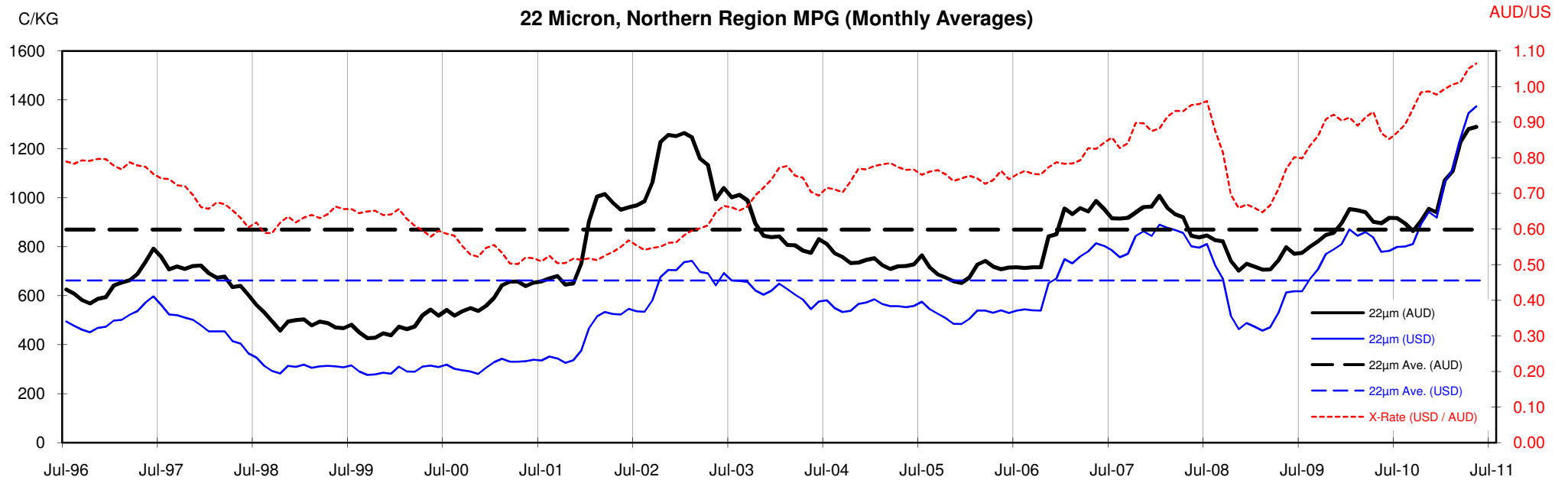
AUD/US

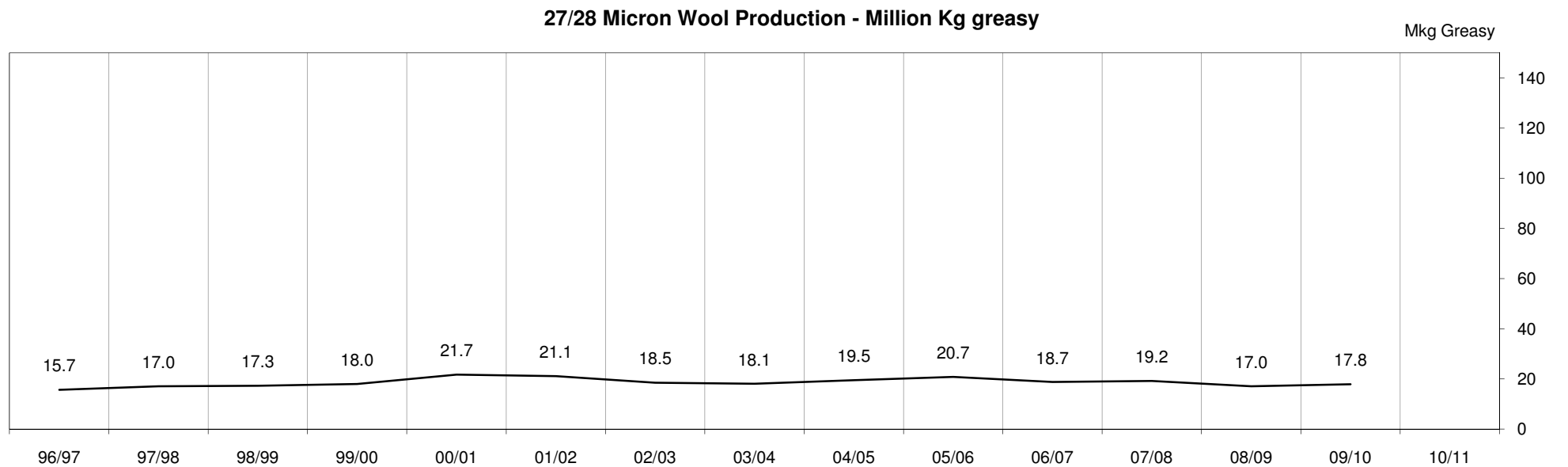
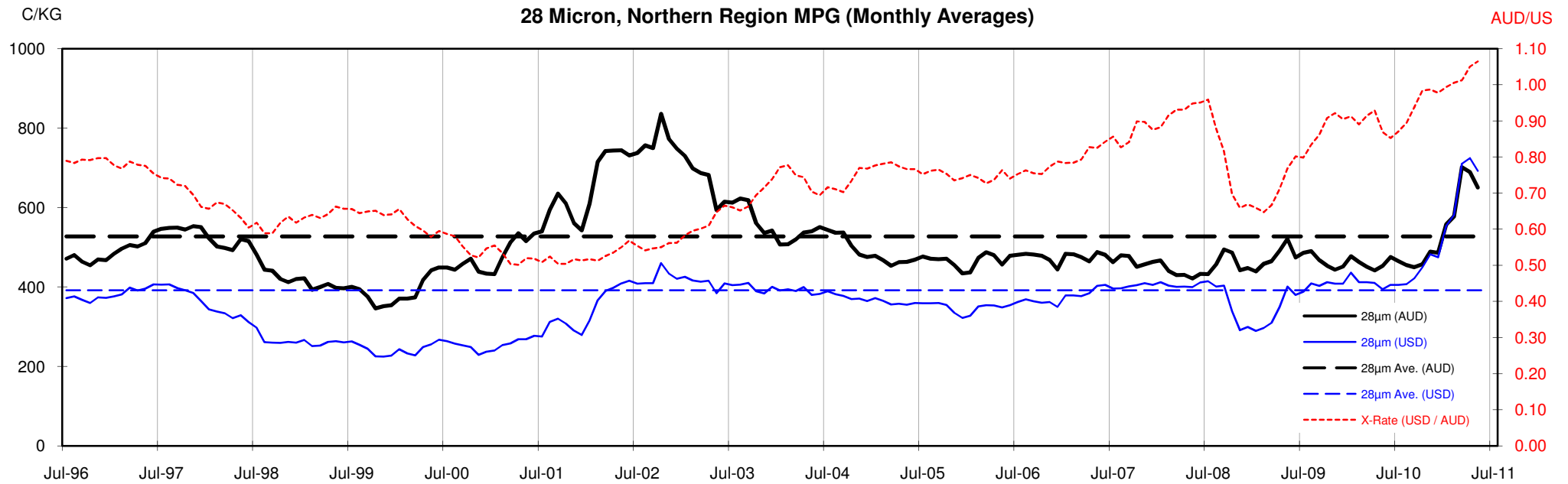


21 Micron Wool Production - Million Kg greasy

Mkg Greasy







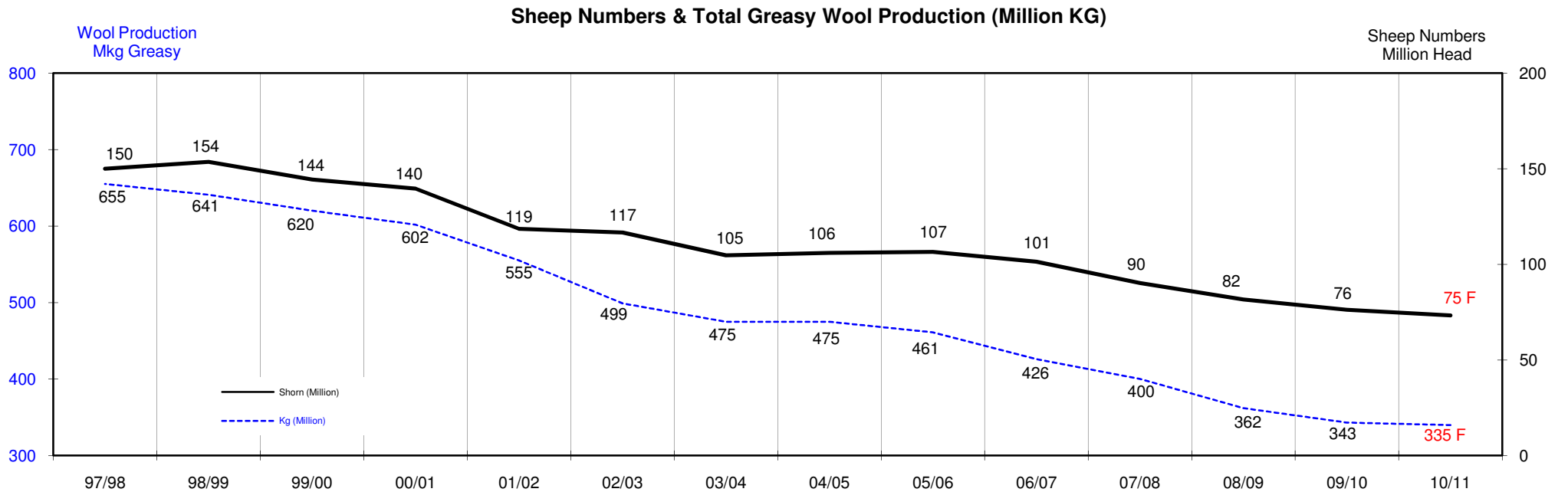
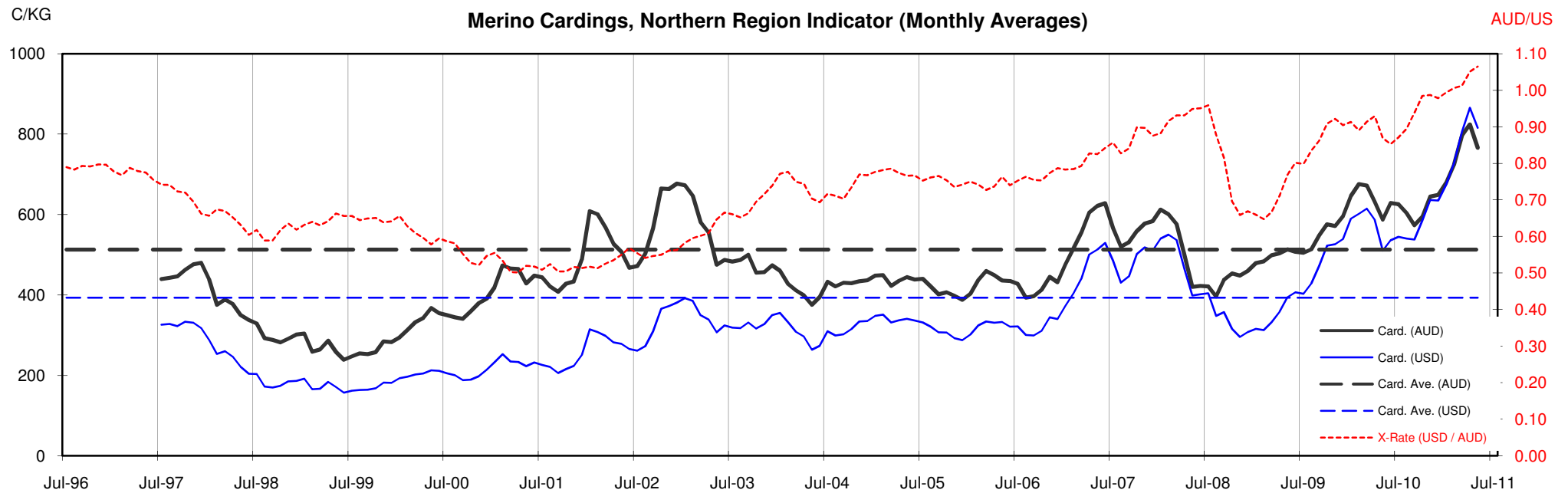




Table 13: Returns pr head for skirted fleece wool.

Skirted FLC Weight		Micron																	
9 Kg		16	16.5	17	17.5	18	18.5	19	19.5	20	21	22	23	24	25	26	28	30	32
Yield (Sch Dry)	25% Current	\$63	\$59	\$55	\$52	\$47	\$43	\$39	\$36	\$34	\$32	\$31	\$28	\$24	\$22	\$20	\$15	\$14	\$13
	10yr ave.			\$32		\$29		\$24		\$21	\$20	\$20	\$19	\$18	\$16	\$15	\$12	\$10	\$9
	30% Current	\$76	\$71	\$66	\$62	\$57	\$51	\$47	\$43	\$40	\$38	\$37	\$34	\$28	\$26	\$24	\$18	\$17	\$15
	10yr ave.			\$38		\$34		\$29		\$25	\$24	\$23	\$23	\$22	\$20	\$18	\$14	\$12	\$11
	35% Current	\$88	\$83	\$77	\$72	\$66	\$60	\$55	\$51	\$47	\$45	\$43	\$39	\$33	\$30	\$28	\$21	\$19	\$18
	10yr ave.			\$45		\$40		\$34		\$29	\$28	\$27	\$27	\$25	\$23	\$21	\$17	\$14	\$13
	40% Current	\$101	\$94	\$87	\$82	\$75	\$68	\$63	\$58	\$54	\$51	\$49	\$45	\$38	\$34	\$32	\$24	\$22	\$20
	10yr ave.			\$51		\$46		\$39		\$34	\$32	\$31	\$31	\$29	\$26	\$24	\$19	\$17	\$15
	45% Current	\$113	\$106	\$98	\$93	\$85	\$77	\$71	\$65	\$61	\$58	\$55	\$51	\$42	\$39	\$36	\$27	\$25	\$23
	10yr ave.			\$58		\$52		\$44		\$38	\$36	\$35	\$34	\$33	\$29	\$27	\$21	\$19	\$17
	50% Current	\$126	\$118	\$109	\$103	\$94	\$85	\$79	\$72	\$67	\$64	\$61	\$56	\$47	\$43	\$40	\$30	\$28	\$25
	10yr ave.			\$64		\$57		\$48		\$42	\$40	\$39	\$38	\$36	\$33	\$30	\$24	\$21	\$19
	55% Current	\$139	\$130	\$120	\$113	\$104	\$94	\$87	\$80	\$74	\$70	\$67	\$62	\$52	\$47	\$44	\$33	\$31	\$28
	10yr ave.			\$70		\$63		\$53		\$46	\$44	\$43	\$42	\$40	\$36	\$33	\$26	\$23	\$21
	60% Current	\$151	\$141	\$131	\$124	\$113	\$102	\$94	\$87	\$81	\$77	\$73	\$68	\$57	\$52	\$48	\$37	\$33	\$30
	10yr ave.			\$77		\$69		\$58		\$50	\$48	\$47	\$46	\$44	\$39	\$36	\$28	\$25	\$22
	65% Current	\$164	\$153	\$142	\$134	\$122	\$111	\$102	\$94	\$88	\$83	\$80	\$73	\$61	\$56	\$52	\$40	\$36	\$33
	10yr ave.			\$83		\$75		\$63		\$55	\$52	\$51	\$50	\$47	\$42	\$39	\$31	\$27	\$24
	70% Current	\$176	\$165	\$153	\$144	\$132	\$119	\$110	\$101	\$94	\$90	\$86	\$79	\$66	\$60	\$56	\$43	\$39	\$35
	10yr ave.			\$89		\$80		\$68		\$59	\$56	\$55	\$53	\$51	\$46	\$42	\$33	\$29	\$26
	75% Current	\$189	\$177	\$164	\$155	\$141	\$128	\$118	\$109	\$101	\$96	\$92	\$84	\$71	\$65	\$60	\$46	\$42	\$38
	10yr ave.			\$96		\$86		\$73		\$63	\$60	\$59	\$57	\$55	\$49	\$45	\$36	\$31	\$28
	80% Current	\$202	\$189	\$175	\$165	\$151	\$136	\$126	\$116	\$108	\$102	\$98	\$90	\$76	\$69	\$64	\$49	\$44	\$40
	10yr ave.			\$102		\$92		\$78		\$67	\$64	\$63	\$61	\$58	\$52	\$48	\$38	\$33	\$30
	85% Current	\$214	\$200	\$186	\$175	\$160	\$145	\$134	\$123	\$115	\$109	\$104	\$96	\$80	\$73	\$68	\$52	\$47	\$43
	10yr ave.			\$109		\$98		\$82		\$72	\$68	\$67	\$65	\$62	\$55	\$51	\$40	\$35	\$32

The above shows estimated returns per head for skirted fleece wool. These figures do not take into account the value of skirtings and oddments and do not take into account discounts that may apply for faults under individual circumstances. These figures are based on a market index of 100% and should be used as a guide only. Returns over \$30 / head for fleece wool are highlighted.

Source: Australian Wool Exchange, Australian Wool Innovation, Sydney Futures Exchange, x-rates.com

Disclaimer: While all due care has been taken in the preparation of this document, no warranty is made as to its accuracy, reliability or completeness. To the extent permitted by law neither Jemalong or their sources including subsidiaries and staff, accept liability to any person for loss or damage arising from the use of this information.



Table 14: Returns pr head for skirted fleece wool.

Skirted FLC Weight  8 Kg			Micron																	
			16	16.5	17	17.5	18	18.5	19	19.5	20	21	22	23	24	25	26	28	30	32
Yield (Sch Dry)	25%	Current	\$56	\$52	\$49	\$46	\$42	\$38	\$35	\$32	\$30	\$28	\$27	\$25	\$21	\$19	\$18	\$14	\$12	\$11
		10yr ave.			\$28		\$26		\$22		\$19	\$18	\$17	\$17	\$16	\$15	\$13	\$11	\$9	\$8
	30%	Current	\$67	\$63	\$58	\$55	\$50	\$45	\$42	\$39	\$36	\$34	\$33	\$30	\$25	\$23	\$21	\$16	\$15	\$13
		10yr ave.			\$34		\$31		\$26		\$22	\$21	\$21	\$20	\$19	\$17	\$16	\$13	\$11	\$10
	35%	Current	\$78	\$73	\$68	\$64	\$59	\$53	\$49	\$45	\$42	\$40	\$38	\$35	\$29	\$27	\$25	\$19	\$17	\$16
		10yr ave.			\$40		\$36		\$30		\$26	\$25	\$24	\$24	\$23	\$20	\$19	\$15	\$13	\$12
	40%	Current	\$90	\$84	\$78	\$73	\$67	\$61	\$56	\$52	\$48	\$46	\$44	\$40	\$34	\$31	\$28	\$22	\$20	\$18
		10yr ave.			\$45		\$41		\$34		\$30	\$29	\$28	\$27	\$26	\$23	\$21	\$17	\$15	\$13
	45%	Current	\$101	\$94	\$87	\$82	\$75	\$68	\$63	\$58	\$54	\$51	\$49	\$45	\$38	\$34	\$32	\$24	\$22	\$20
		10yr ave.			\$51		\$46		\$39		\$34	\$32	\$31	\$31	\$29	\$26	\$24	\$19	\$17	\$15
	50%	Current	\$112	\$105	\$97	\$92	\$84	\$76	\$70	\$64	\$60	\$57	\$54	\$50	\$42	\$38	\$35	\$27	\$25	\$22
		10yr ave.			\$57		\$51		\$43		\$37	\$36	\$35	\$34	\$32	\$29	\$27	\$21	\$18	\$17
	55%	Current	\$123	\$115	\$107	\$101	\$92	\$83	\$77	\$71	\$66	\$63	\$60	\$55	\$46	\$42	\$39	\$30	\$27	\$25
	10yr ave.			\$62		\$56		\$47		\$41	\$39	\$38	\$37	\$36	\$32	\$29	\$23	\$20	\$18	
60%	Current	\$134	\$126	\$117	\$110	\$101	\$91	\$84	\$77	\$72	\$68	\$65	\$60	\$50	\$46	\$43	\$32	\$30	\$27	
	10yr ave.			\$68		\$61		\$52		\$45	\$43	\$42	\$41	\$39	\$35	\$32	\$25	\$22	\$20	
65%	Current	\$146	\$136	\$126	\$119	\$109	\$99	\$91	\$84	\$78	\$74	\$71	\$65	\$55	\$50	\$46	\$35	\$32	\$29	
	10yr ave.			\$74		\$66		\$56		\$49	\$46	\$45	\$44	\$42	\$38	\$34	\$27	\$24	\$22	
70%	Current	\$157	\$147	\$136	\$128	\$117	\$106	\$98	\$90	\$84	\$80	\$76	\$70	\$59	\$54	\$50	\$38	\$35	\$31	
	10yr ave.			\$80		\$72		\$60		\$52	\$50	\$49	\$48	\$45	\$41	\$37	\$30	\$26	\$23	
75%	Current	\$168	\$157	\$146	\$137	\$126	\$114	\$105	\$97	\$90	\$85	\$82	\$75	\$63	\$57	\$53	\$41	\$37	\$34	
	10yr ave.			\$85		\$77		\$65		\$56	\$54	\$52	\$51	\$48	\$44	\$40	\$32	\$28	\$25	
80%	Current	\$179	\$168	\$156	\$147	\$134	\$121	\$112	\$103	\$96	\$91	\$87	\$80	\$67	\$61	\$57	\$43	\$40	\$36	
	10yr ave.			\$91		\$82		\$69		\$60	\$57	\$56	\$54	\$52	\$46	\$42	\$34	\$29	\$27	
85%	Current	\$190	\$178	\$165	\$156	\$142	\$129	\$119	\$109	\$102	\$97	\$92	\$85	\$71	\$65	\$60	\$46	\$42	\$38	
	10yr ave.			\$97		\$87		\$73		\$64	\$61	\$59	\$58	\$55	\$49	\$45	\$36	\$31	\$28	

The above shows estimated returns per head for skirted fleece wool. These figures do not take into account the value of skirtings and oddments and do not take into account discounts that may apply for faults under individual circumstances. These figures are based on a market index of 100% and should be used as a guide only. Returns over \$30 / head for fleece wool are highlighted.

Source: Australian Wool Exchange, Australian Wool Innovation, Sydney Futures Exchange, x-rates.com

Disclaimer: While all due care has been taken in the preparation of this document, no warranty is made as to its accuracy, reliability or completeness. To the extent permitted by law neither Jemalong or their sources including subsidiaries and staff, accept liability to any person for loss or damage arising from the use of this information.



Table 15: Returns pr head for skirted fleece wool.

Skirted FLC Weight		Micron																	
7 Kg		16	16.5	17	17.5	18	18.5	19	19.5	20	21	22	23	24	25	26	28	30	32
Yield (Sch Dry)	25% Current	\$49	\$46	\$43	\$40	\$37	\$33	\$31	\$28	\$26	\$25	\$24	\$22	\$18	\$17	\$16	\$12	\$11	\$10
	10yr ave.			\$25		\$22		\$19		\$16	\$16	\$15	\$15	\$14	\$13	\$12	\$9	\$8	\$7
	30% Current	\$59	\$55	\$51	\$48	\$44	\$40	\$37	\$34	\$31	\$30	\$29	\$26	\$22	\$20	\$19	\$14	\$13	\$12
	10yr ave.			\$30		\$27		\$23		\$20	\$19	\$18	\$18	\$17	\$15	\$14	\$11	\$10	\$9
	35% Current	\$69	\$64	\$60	\$56	\$51	\$46	\$43	\$39	\$37	\$35	\$33	\$31	\$26	\$23	\$22	\$17	\$15	\$14
	10yr ave.			\$35		\$31		\$26		\$23	\$22	\$21	\$21	\$20	\$18	\$16	\$13	\$11	\$10
	40% Current	\$78	\$73	\$68	\$64	\$59	\$53	\$49	\$45	\$42	\$40	\$38	\$35	\$29	\$27	\$25	\$19	\$17	\$16
	10yr ave.			\$40		\$36		\$30		\$26	\$25	\$24	\$24	\$23	\$20	\$19	\$15	\$13	\$12
	45% Current	\$88	\$83	\$77	\$72	\$66	\$60	\$55	\$51	\$47	\$45	\$43	\$39	\$33	\$30	\$28	\$21	\$19	\$18
	10yr ave.			\$45		\$40		\$34		\$29	\$28	\$27	\$27	\$25	\$23	\$21	\$17	\$14	\$13
	50% Current	\$98	\$92	\$85	\$80	\$73	\$66	\$61	\$56	\$52	\$50	\$48	\$44	\$37	\$33	\$31	\$24	\$22	\$20
	10yr ave.			\$50		\$45		\$38		\$33	\$31	\$30	\$30	\$28	\$25	\$23	\$18	\$16	\$15
	55% Current	\$108	\$101	\$94	\$88	\$81	\$73	\$67	\$62	\$58	\$55	\$52	\$48	\$40	\$37	\$34	\$26	\$24	\$22
	10yr ave.			\$55		\$49		\$41		\$36	\$34	\$33	\$33	\$31	\$28	\$26	\$20	\$18	\$16
	60% Current	\$118	\$110	\$102	\$96	\$88	\$80	\$73	\$68	\$63	\$60	\$57	\$53	\$44	\$40	\$37	\$28	\$26	\$24
	10yr ave.			\$60		\$54		\$45		\$39	\$38	\$37	\$36	\$34	\$30	\$28	\$22	\$19	\$17
	65% Current	\$127	\$119	\$111	\$104	\$95	\$86	\$80	\$73	\$68	\$65	\$62	\$57	\$48	\$43	\$40	\$31	\$28	\$25
	10yr ave.			\$65		\$58		\$49		\$43	\$41	\$40	\$39	\$37	\$33	\$30	\$24	\$21	\$19
	70% Current	\$137	\$128	\$119	\$112	\$103	\$93	\$86	\$79	\$73	\$70	\$67	\$61	\$51	\$47	\$43	\$33	\$30	\$27
	10yr ave.			\$70		\$63		\$53		\$46	\$44	\$43	\$42	\$40	\$36	\$32	\$26	\$23	\$20
	75% Current	\$147	\$138	\$128	\$120	\$110	\$99	\$92	\$85	\$79	\$75	\$71	\$66	\$55	\$50	\$47	\$35	\$32	\$29
	10yr ave.			\$75		\$67		\$57		\$49	\$47	\$46	\$45	\$42	\$38	\$35	\$28	\$24	\$22
	80% Current	\$157	\$147	\$136	\$128	\$117	\$106	\$98	\$90	\$84	\$80	\$76	\$70	\$59	\$54	\$50	\$38	\$35	\$31
	10yr ave.			\$80		\$72		\$60		\$52	\$50	\$49	\$48	\$45	\$41	\$37	\$30	\$26	\$23
	85% Current	\$167	\$156	\$145	\$136	\$125	\$113	\$104	\$96	\$89	\$85	\$81	\$74	\$62	\$57	\$53	\$40	\$37	\$33
	10yr ave.			\$84		\$76		\$64		\$56	\$53	\$52	\$51	\$48	\$43	\$39	\$31	\$27	\$25

The above shows estimated returns per head for skirted fleece wool. These figures do not take into account the value of skirtings and oddments and do not take into account discounts that may apply for faults under individual circumstances. These figures are based on a market index of 100% and should be used as a guide only. Returns over \$30 / head for fleece wool are highlighted.

Source: Australian Wool Exchange, Australian Wool Innovation, Sydney Futures Exchange, x-rates.com

Disclaimer: While all due care has been taken in the preparation of this document, no warranty is made as to its accuracy, reliability or completeness. To the extent permitted by law neither Jemalong or their sources including subsidiaries and staff, accept liability to any person for loss or damage arising from the use of this information.



Table 16: Returns pr head for skirted fleece wool.

Skirted FLC Weight		Micron																		
		16	16.5	17	17.5	18	18.5	19	19.5	20	21	22	23	24	25	26	28	30	32	
Yield (Sch Dry)	25%	Current	\$42	\$39	\$36	\$34	\$31	\$28	\$26	\$24	\$22	\$21	\$20	\$19	\$16	\$14	\$13	\$10	\$9	\$8
	10yr ave.			\$21		\$19		\$16		\$14	\$13	\$13	\$13	\$12	\$11	\$10	\$8	\$7	\$6	
	30%	Current	\$50	\$47	\$44	\$41	\$38	\$34	\$31	\$29	\$27	\$26	\$24	\$23	\$19	\$17	\$16	\$12	\$11	\$10
	10yr ave.			\$26		\$23		\$19		\$17	\$16	\$16	\$15	\$15	\$13	\$12	\$9	\$8	\$7	
	35%	Current	\$59	\$55	\$51	\$48	\$44	\$40	\$37	\$34	\$31	\$30	\$29	\$26	\$22	\$20	\$19	\$14	\$13	\$12
	10yr ave.			\$30		\$27		\$23		\$20	\$19	\$18	\$18	\$17	\$15	\$14	\$11	\$10	\$9	
	40%	Current	\$67	\$63	\$58	\$55	\$50	\$45	\$42	\$39	\$36	\$34	\$33	\$30	\$25	\$23	\$21	\$16	\$15	\$13
	10yr ave.			\$34		\$31		\$26		\$22	\$21	\$21	\$20	\$19	\$17	\$16	\$13	\$11	\$10	
	45%	Current	\$76	\$71	\$66	\$62	\$57	\$51	\$47	\$43	\$40	\$38	\$37	\$34	\$28	\$26	\$24	\$18	\$17	\$15
	10yr ave.			\$38		\$34		\$29		\$25	\$24	\$23	\$23	\$22	\$20	\$18	\$14	\$12	\$11	
	50%	Current	\$84	\$79	\$73	\$69	\$63	\$57	\$52	\$48	\$45	\$43	\$41	\$38	\$31	\$29	\$27	\$20	\$19	\$17
	10yr ave.			\$43		\$38		\$32		\$28	\$27	\$26	\$25	\$24	\$22	\$20	\$16	\$14	\$12	
	55%	Current	\$92	\$86	\$80	\$76	\$69	\$63	\$58	\$53	\$49	\$47	\$45	\$41	\$35	\$32	\$29	\$22	\$20	\$18
	10yr ave.			\$47		\$42		\$36		\$31	\$30	\$29	\$28	\$27	\$24	\$22	\$17	\$15	\$14	
60%	Current	\$101	\$94	\$87	\$82	\$75	\$68	\$63	\$58	\$54	\$51	\$49	\$45	\$38	\$34	\$32	\$24	\$22	\$20	
10yr ave.			\$51		\$46		\$39		\$34	\$32	\$31	\$31	\$29	\$26	\$24	\$19	\$17	\$15		
65%	Current	\$109	\$102	\$95	\$89	\$82	\$74	\$68	\$63	\$58	\$55	\$53	\$49	\$41	\$37	\$35	\$26	\$24	\$22	
10yr ave.			\$55		\$50		\$42		\$36	\$35	\$34	\$33	\$32	\$28	\$26	\$21	\$18	\$16		
70%	Current	\$118	\$110	\$102	\$96	\$88	\$80	\$73	\$68	\$63	\$60	\$57	\$53	\$44	\$40	\$37	\$28	\$26	\$24	
10yr ave.			\$60		\$54		\$45		\$39	\$38	\$37	\$36	\$34	\$30	\$28	\$22	\$19	\$17		
75%	Current	\$126	\$118	\$109	\$103	\$94	\$85	\$79	\$72	\$67	\$64	\$61	\$56	\$47	\$43	\$40	\$30	\$28	\$25	
10yr ave.			\$64		\$57		\$48		\$42	\$40	\$39	\$38	\$36	\$33	\$30	\$24	\$21	\$19		
80%	Current	\$134	\$126	\$117	\$110	\$101	\$91	\$84	\$77	\$72	\$68	\$65	\$60	\$50	\$46	\$43	\$32	\$30	\$27	
10yr ave.			\$68		\$61		\$52		\$45	\$43	\$42	\$41	\$39	\$35	\$32	\$25	\$22	\$20		
85%	Current	\$143	\$134	\$124	\$117	\$107	\$97	\$89	\$82	\$76	\$73	\$69	\$64	\$53	\$49	\$45	\$34	\$32	\$29	
10yr ave.			\$72		\$65		\$55		\$48	\$46	\$44	\$43	\$41	\$37	\$34	\$27	\$23	\$21		

The above shows estimated returns per head for skirted fleece wool. These figures do not take into account the value of skirtings and oddments and do not take into account discounts that may apply for faults under individual circumstances. These figures are based on a market index of 100% and should be used as a guide only. Returns over \$30 / head for fleece wool are highlighted.

Source: Australian Wool Exchange, Australian Wool Innovation, Sydney Futures Exchange, x-rates.com

Disclaimer: While all due care has been taken in the preparation of this document, no warranty is made as to its accuracy, reliability or completeness. To the extent permitted by law neither Jemalong or their sources including subsidiaries and staff, accept liability to any person for loss or damage arising from the use of this information.





Table 17: Returns pr head for skirted fleece wool.

Skirted FLC Weight		Micron																		
		16	16.5	17	17.5	18	18.5	19	19.5	20	21	22	23	24	25	26	28	30	32	
Yield (Sch Dry)	25%	Current	\$35	\$33	\$30	\$29	\$26	\$24	\$22	\$20	\$19	\$18	\$17	\$16	\$13	\$12	\$11	\$8	\$8	\$7
	10yr ave.			\$18		\$16		\$13		\$12	\$11	\$11	\$11	\$10	\$9	\$8	\$7	\$6	\$5	
	30%	Current	\$42	\$39	\$36	\$34	\$31	\$28	\$26	\$24	\$22	\$21	\$20	\$19	\$16	\$14	\$13	\$10	\$9	\$8
	10yr ave.			\$21		\$19		\$16		\$14	\$13	\$13	\$13	\$12	\$11	\$10	\$8	\$7	\$6	
	35%	Current	\$49	\$46	\$43	\$40	\$37	\$33	\$31	\$28	\$26	\$25	\$24	\$22	\$18	\$17	\$16	\$12	\$11	\$10
	10yr ave.			\$25		\$22		\$19		\$16	\$16	\$15	\$15	\$14	\$13	\$12	\$9	\$8	\$7	
	40%	Current	\$56	\$52	\$49	\$46	\$42	\$38	\$35	\$32	\$30	\$28	\$27	\$25	\$21	\$19	\$18	\$14	\$12	\$11
	10yr ave.			\$28		\$26		\$22		\$19	\$18	\$17	\$17	\$16	\$15	\$13	\$11	\$9	\$8	
	45%	Current	\$63	\$59	\$55	\$52	\$47	\$43	\$39	\$36	\$34	\$32	\$31	\$28	\$24	\$22	\$20	\$15	\$14	\$13
	10yr ave.			\$32		\$29		\$24		\$21	\$20	\$20	\$19	\$18	\$16	\$15	\$12	\$10	\$9	
	50%	Current	\$70	\$66	\$61	\$57	\$52	\$47	\$44	\$40	\$37	\$36	\$34	\$31	\$26	\$24	\$22	\$17	\$15	\$14
	10yr ave.			\$36		\$32		\$27		\$23	\$22	\$22	\$21	\$20	\$18	\$17	\$13	\$12	\$10	
	55%	Current	\$77	\$72	\$67	\$63	\$58	\$52	\$48	\$44	\$41	\$39	\$37	\$34	\$29	\$26	\$24	\$19	\$17	\$15
	10yr ave.			\$39		\$35		\$30		\$26	\$25	\$24	\$23	\$22	\$20	\$18	\$14	\$13	\$11	
60%	Current	\$84	\$79	\$73	\$69	\$63	\$57	\$52	\$48	\$45	\$43	\$41	\$38	\$31	\$29	\$27	\$20	\$19	\$17	
10yr ave.			\$43		\$38		\$32		\$28	\$27	\$26	\$25	\$24	\$22	\$20	\$16	\$14	\$12		
65%	Current	\$91	\$85	\$79	\$74	\$68	\$62	\$57	\$52	\$49	\$46	\$44	\$41	\$34	\$31	\$29	\$22	\$20	\$18	
10yr ave.			\$46		\$42		\$35		\$30	\$29	\$28	\$28	\$26	\$24	\$22	\$17	\$15	\$14		
70%	Current	\$98	\$92	\$85	\$80	\$73	\$66	\$61	\$56	\$52	\$50	\$48	\$44	\$37	\$33	\$31	\$24	\$22	\$20	
10yr ave.			\$50		\$45		\$38		\$33	\$31	\$30	\$30	\$28	\$25	\$23	\$18	\$16	\$15		
75%	Current	\$105	\$98	\$91	\$86	\$79	\$71	\$66	\$60	\$56	\$53	\$51	\$47	\$39	\$36	\$33	\$25	\$23	\$21	
10yr ave.			\$53		\$48		\$40		\$35	\$34	\$33	\$32	\$30	\$27	\$25	\$20	\$17	\$16		
80%	Current	\$112	\$105	\$97	\$92	\$84	\$76	\$70	\$64	\$60	\$57	\$54	\$50	\$42	\$38	\$35	\$27	\$25	\$22	
10yr ave.			\$57		\$51		\$43		\$37	\$36	\$35	\$34	\$32	\$29	\$27	\$21	\$18	\$17		
85%	Current	\$119	\$111	\$103	\$97	\$89	\$81	\$74	\$68	\$64	\$60	\$58	\$53	\$45	\$41	\$38	\$29	\$26	\$24	
10yr ave.			\$60		\$54		\$46		\$40	\$38	\$37	\$36	\$34	\$31	\$28	\$22	\$20	\$18		

The above shows estimated returns per head for skirted fleece wool. These figures do not take into account the value of skirtings and oddments and do not take into account discounts that may apply for faults under individual circumstances. These figures are based on a market index of 100% and should be used as a guide only. Returns over \$30 / head for fleece wool are highlighted.

Source: Australian Wool Exchange, Australian Wool Innovation, Sydney Futures Exchange, x-rates.com

Disclaimer: While all due care has been taken in the preparation of this document, no warranty is made as to its accuracy, reliability or completeness. To the extent permitted by law neither Jemalong or their sources including subsidiaries and staff, accept liability to any person for loss or damage arising from the use of this information.



Table 18: Returns pr head for skirted fleece wool.

Skirted FLC Weight		Micron																	
4 Kg		16	16.5	17	17.5	18	18.5	19	19.5	20	21	22	23	24	25	26	28	30	32
Yield (Sch Dry)	25% Current	\$28	\$26	\$24	\$23	\$21	\$19	\$17	\$16	\$15	\$14	\$14	\$13	\$10	\$10	\$9	\$7	\$6	\$6
	10yr ave.			\$14		\$13		\$11		\$9	\$9	\$9	\$8	\$8	\$7	\$7	\$5	\$5	\$4
	30% Current	\$34	\$31	\$29	\$27	\$25	\$23	\$21	\$19	\$18	\$17	\$16	\$15	\$13	\$11	\$11	\$8	\$7	\$7
	10yr ave.			\$17		\$15		\$13		\$11	\$11	\$10	\$10	\$10	\$9	\$8	\$6	\$6	\$5
	35% Current	\$39	\$37	\$34	\$32	\$29	\$27	\$24	\$23	\$21	\$20	\$19	\$18	\$15	\$13	\$12	\$9	\$9	\$8
	10yr ave.			\$20		\$18		\$15		\$13	\$13	\$12	\$12	\$11	\$10	\$9	\$7	\$6	\$6
	40% Current	\$45	\$42	\$39	\$37	\$34	\$30	\$28	\$26	\$24	\$23	\$22	\$20	\$17	\$15	\$14	\$11	\$10	\$9
	10yr ave.			\$23		\$20		\$17		\$15	\$14	\$14	\$14	\$13	\$12	\$11	\$8	\$7	\$7
	45% Current	\$50	\$47	\$44	\$41	\$38	\$34	\$31	\$29	\$27	\$26	\$24	\$23	\$19	\$17	\$16	\$12	\$11	\$10
	10yr ave.			\$26		\$23		\$19		\$17	\$16	\$16	\$15	\$15	\$13	\$12	\$9	\$8	\$7
	50% Current	\$56	\$52	\$49	\$46	\$42	\$38	\$35	\$32	\$30	\$28	\$27	\$25	\$21	\$19	\$18	\$14	\$12	\$11
	10yr ave.			\$28		\$26		\$22		\$19	\$18	\$17	\$17	\$16	\$15	\$13	\$11	\$9	\$8
	55% Current	\$62	\$58	\$53	\$50	\$46	\$42	\$38	\$35	\$33	\$31	\$30	\$28	\$23	\$21	\$20	\$15	\$14	\$12
	10yr ave.			\$31		\$28		\$24		\$21	\$20	\$19	\$19	\$18	\$16	\$15	\$12	\$10	\$9
	60% Current	\$67	\$63	\$58	\$55	\$50	\$45	\$42	\$39	\$36	\$34	\$33	\$30	\$25	\$23	\$21	\$16	\$15	\$13
	10yr ave.			\$34		\$31		\$26		\$22	\$21	\$21	\$20	\$19	\$17	\$16	\$13	\$11	\$10
	65% Current	\$73	\$68	\$63	\$60	\$54	\$49	\$45	\$42	\$39	\$37	\$35	\$33	\$27	\$25	\$23	\$18	\$16	\$15
	10yr ave.			\$37		\$33		\$28		\$24	\$23	\$23	\$22	\$21	\$19	\$17	\$14	\$12	\$11
	70% Current	\$78	\$73	\$68	\$64	\$59	\$53	\$49	\$45	\$42	\$40	\$38	\$35	\$29	\$27	\$25	\$19	\$17	\$16
	10yr ave.			\$40		\$36		\$30		\$26	\$25	\$24	\$24	\$23	\$20	\$19	\$15	\$13	\$12
	75% Current	\$84	\$79	\$73	\$69	\$63	\$57	\$52	\$48	\$45	\$43	\$41	\$38	\$31	\$29	\$27	\$20	\$19	\$17
	10yr ave.			\$43		\$38		\$32		\$28	\$27	\$26	\$25	\$24	\$22	\$20	\$16	\$14	\$12
	80% Current	\$90	\$84	\$78	\$73	\$67	\$61	\$56	\$52	\$48	\$46	\$44	\$40	\$34	\$31	\$28	\$22	\$20	\$18
	10yr ave.			\$45		\$41		\$34		\$30	\$29	\$28	\$27	\$26	\$23	\$21	\$17	\$15	\$13
	85% Current	\$95	\$89	\$83	\$78	\$71	\$64	\$59	\$55	\$51	\$48	\$46	\$43	\$36	\$33	\$30	\$23	\$21	\$19
	10yr ave.			\$48		\$43		\$37		\$32	\$30	\$30	\$29	\$27	\$25	\$23	\$18	\$16	\$14

The above shows estimated returns per head for skirted fleece wool. These figures do not take into account the value of skirtings and oddments and do not take into account discounts that may apply for faults under individual circumstances. These figures are based on a market index of 100% and should be used as a guide only. Returns over \$30 / head for fleece wool are highlighted.

Source: Australian Wool Exchange, Australian Wool Innovation, Sydney Futures Exchange, x-rates.com

Disclaimer: While all due care has been taken in the preparation of this document, no warranty is made as to its accuracy, reliability or completeness. To the extent permitted by law neither Jemalong or their sources including subsidiaries and staff, accept liability to any person for loss or damage arising from the use of this information.



Table 19: Returns pr head for skirted fleece wool.

Skirted FLC Weight		Micron																	
3 Kg		16	16.5	17	17.5	18	18.5	19	19.5	20	21	22	23	24	25	26	28	30	32
Yield (Sch Dry)	25% Current	\$21	\$20	\$18	\$17	\$16	\$14	\$13	\$12	\$11	\$11	\$10	\$9	\$8	\$7	\$7	\$5	\$5	\$4
	10yr ave.			\$11		\$10		\$8		\$7	\$7	\$7	\$6	\$6	\$5	\$5	\$4	\$3	\$3
	30% Current	\$25	\$24	\$22	\$21	\$19	\$17	\$16	\$14	\$13	\$13	\$12	\$11	\$9	\$9	\$8	\$6	\$6	\$5
	10yr ave.			\$13		\$11		\$10		\$8	\$8	\$8	\$8	\$7	\$7	\$6	\$5	\$4	\$4
	35% Current	\$29	\$28	\$26	\$24	\$22	\$20	\$18	\$17	\$16	\$15	\$14	\$13	\$11	\$10	\$9	\$7	\$6	\$6
	10yr ave.			\$15		\$13		\$11		\$10	\$9	\$9	\$9	\$8	\$8	\$7	\$6	\$5	\$4
	40% Current	\$34	\$31	\$29	\$27	\$25	\$23	\$21	\$19	\$18	\$17	\$16	\$15	\$13	\$11	\$11	\$8	\$7	\$7
	10yr ave.			\$17		\$15		\$13		\$11	\$11	\$10	\$10	\$10	\$9	\$8	\$6	\$6	\$5
	45% Current	\$38	\$35	\$33	\$31	\$28	\$26	\$24	\$22	\$20	\$19	\$18	\$17	\$14	\$13	\$12	\$9	\$8	\$8
	10yr ave.			\$19		\$17		\$15		\$13	\$12	\$12	\$11	\$11	\$10	\$9	\$7	\$6	\$6
	50% Current	\$42	\$39	\$36	\$34	\$31	\$28	\$26	\$24	\$22	\$21	\$20	\$19	\$16	\$14	\$13	\$10	\$9	\$8
	10yr ave.			\$21		\$19		\$16		\$14	\$13	\$13	\$13	\$12	\$11	\$10	\$8	\$7	\$6
	55% Current	\$46	\$43	\$40	\$38	\$35	\$31	\$29	\$27	\$25	\$23	\$22	\$21	\$17	\$16	\$15	\$11	\$10	\$9
	10yr ave.			\$23		\$21		\$18		\$15	\$15	\$14	\$14	\$13	\$12	\$11	\$9	\$8	\$7
	60% Current	\$50	\$47	\$44	\$41	\$38	\$34	\$31	\$29	\$27	\$26	\$24	\$23	\$19	\$17	\$16	\$12	\$11	\$10
	10yr ave.			\$26		\$23		\$19		\$17	\$16	\$16	\$15	\$15	\$13	\$12	\$9	\$8	\$7
	65% Current	\$55	\$51	\$47	\$45	\$41	\$37	\$34	\$31	\$29	\$28	\$27	\$24	\$20	\$19	\$17	\$13	\$12	\$11
	10yr ave.			\$28		\$25		\$21		\$18	\$17	\$17	\$17	\$16	\$14	\$13	\$10	\$9	\$8
	70% Current	\$59	\$55	\$51	\$48	\$44	\$40	\$37	\$34	\$31	\$30	\$29	\$26	\$22	\$20	\$19	\$14	\$13	\$12
	10yr ave.			\$30		\$27		\$23		\$20	\$19	\$18	\$18	\$17	\$15	\$14	\$11	\$10	\$9
	75% Current	\$63	\$59	\$55	\$52	\$47	\$43	\$39	\$36	\$34	\$32	\$31	\$28	\$24	\$22	\$20	\$15	\$14	\$13
	10yr ave.			\$32		\$29		\$24		\$21	\$20	\$20	\$19	\$18	\$16	\$15	\$12	\$10	\$9
	80% Current	\$67	\$63	\$58	\$55	\$50	\$45	\$42	\$39	\$36	\$34	\$33	\$30	\$25	\$23	\$21	\$16	\$15	\$13
	10yr ave.			\$34		\$31		\$26		\$22	\$21	\$21	\$20	\$19	\$17	\$16	\$13	\$11	\$10
	85% Current	\$71	\$67	\$62	\$58	\$53	\$48	\$45	\$41	\$38	\$36	\$35	\$32	\$27	\$24	\$23	\$17	\$16	\$14
	10yr ave.			\$36		\$33		\$27		\$24	\$23	\$22	\$22	\$21	\$18	\$17	\$13	\$12	\$11

The above shows estimated returns per head for skirted fleece wool. These figures do not take into account the value of skirtings and oddments and do not take into account discounts that may apply for faults under individual circumstances. These figures are based on a market index of 100% and should be used as a guide only. Returns over \$30 / head for fleece wool are highlighted.

Source: Australian Wool Exchange, Australian Wool Innovation, Sydney Futures Exchange, x-rates.com

Disclaimer: While all due care has been taken in the preparation of this document, no warranty is made as to its accuracy, reliability or completeness. To the extent permitted by law neither Jemalong or their sources including subsidiaries and staff, accept liability to any person for loss or damage arising from the use of this information.



Table 20: Returns pr head for skirted fleece wool.

Skirted FLC Weight		Micron																	
2 Kg		16	16.5	17	17.5	18	18.5	19	19.5	20	21	22	23	24	25	26	28	30	32
Yield (Sch Dry)	25% Current	\$14	\$13	\$12	\$11	\$10	\$9	\$9	\$8	\$7	\$7	\$7	\$6	\$5	\$5	\$4	\$3	\$3	\$3
	10yr ave.			\$7		\$6		\$5		\$5	\$4	\$4	\$4	\$4	\$4	\$3	\$3	\$2	\$2
	30% Current	\$17	\$16	\$15	\$14	\$13	\$11	\$10	\$10	\$9	\$9	\$8	\$8	\$6	\$6	\$5	\$4	\$4	\$3
	10yr ave.			\$9		\$8		\$6		\$6	\$5	\$5	\$5	\$5	\$4	\$4	\$3	\$3	\$2
	35% Current	\$20	\$18	\$17	\$16	\$15	\$13	\$12	\$11	\$10	\$10	\$10	\$9	\$7	\$7	\$6	\$5	\$4	\$4
	10yr ave.			\$10		\$9		\$8		\$7	\$6	\$6	\$6	\$6	\$5	\$5	\$4	\$3	\$3
	40% Current	\$22	\$21	\$19	\$18	\$17	\$15	\$14	\$13	\$12	\$11	\$11	\$10	\$8	\$8	\$7	\$5	\$5	\$4
	10yr ave.			\$11		\$10		\$9		\$7	\$7	\$7	\$7	\$6	\$6	\$5	\$4	\$4	\$3
	45% Current	\$25	\$24	\$22	\$21	\$19	\$17	\$16	\$14	\$13	\$13	\$12	\$11	\$9	\$9	\$8	\$6	\$6	\$5
	10yr ave.			\$13		\$11		\$10		\$8	\$8	\$8	\$8	\$7	\$7	\$6	\$5	\$4	\$4
	50% Current	\$28	\$26	\$24	\$23	\$21	\$19	\$17	\$16	\$15	\$14	\$14	\$13	\$10	\$10	\$9	\$7	\$6	\$6
	10yr ave.			\$14		\$13		\$11		\$9	\$9	\$9	\$8	\$8	\$7	\$7	\$5	\$5	\$4
	55% Current	\$31	\$29	\$27	\$25	\$23	\$21	\$19	\$18	\$16	\$16	\$15	\$14	\$12	\$11	\$10	\$7	\$7	\$6
	10yr ave.			\$16		\$14		\$12		\$10	\$10	\$10	\$9	\$9	\$8	\$7	\$6	\$5	\$5
	60% Current	\$34	\$31	\$29	\$27	\$25	\$23	\$21	\$19	\$18	\$17	\$16	\$15	\$13	\$11	\$11	\$8	\$7	\$7
	10yr ave.			\$17		\$15		\$13		\$11	\$11	\$10	\$10	\$10	\$9	\$8	\$6	\$6	\$5
	65% Current	\$36	\$34	\$32	\$30	\$27	\$25	\$23	\$21	\$19	\$18	\$18	\$16	\$14	\$12	\$12	\$9	\$8	\$7
	10yr ave.			\$18		\$17		\$14		\$12	\$12	\$11	\$11	\$11	\$9	\$9	\$7	\$6	\$5
	70% Current	\$39	\$37	\$34	\$32	\$29	\$27	\$24	\$23	\$21	\$20	\$19	\$18	\$15	\$13	\$12	\$9	\$9	\$8
	10yr ave.			\$20		\$18		\$15		\$13	\$13	\$12	\$12	\$11	\$10	\$9	\$7	\$6	\$6
	75% Current	\$42	\$39	\$36	\$34	\$31	\$28	\$26	\$24	\$22	\$21	\$20	\$19	\$16	\$14	\$13	\$10	\$9	\$8
	10yr ave.			\$21		\$19		\$16		\$14	\$13	\$13	\$13	\$12	\$11	\$10	\$8	\$7	\$6
	80% Current	\$45	\$42	\$39	\$37	\$34	\$30	\$28	\$26	\$24	\$23	\$22	\$20	\$17	\$15	\$14	\$11	\$10	\$9
	10yr ave.			\$23		\$20		\$17		\$15	\$14	\$14	\$14	\$13	\$12	\$11	\$8	\$7	\$7
	85% Current	\$48	\$45	\$41	\$39	\$36	\$32	\$30	\$27	\$25	\$24	\$23	\$21	\$18	\$16	\$15	\$11	\$11	\$10
	10yr ave.			\$24		\$22		\$18		\$16	\$15	\$15	\$14	\$14	\$12	\$11	\$9	\$8	\$7

The above shows estimated returns per head for skirted fleece wool. These figures do not take into account the value of skirtings and oddments and do not take into account discounts that may apply for faults under individual circumstances. These figures are based on a market index of 100% and should be used as a guide only. Returns over \$30 / head for fleece wool are highlighted.

Source: Australian Wool Exchange, Australian Wool Innovation, Sydney Futures Exchange, x-rates.com

Disclaimer: While all due care has been taken in the preparation of this document, no warranty is made as to its accuracy, reliability or completeness. To the extent permitted by law neither Jemalong or their sources including subsidiaries and staff, accept liability to any person for loss or damage arising from the use of this information.