



# JEMALONG WOOL BULLETIN

(week ending 27/06/2014)

Table 1: Northern Region Micron Price Guides

WEEK 52			12 MONTH COMPARISONS								3 YEAR COMPARISONS				*10 YEAR COMPARISONS					
Mic.	26/06/2014	19/06/2014	26/06/2013	Now		Now		Now				Now				* 16-17.5um since Aug 05	Now			
Price	Current	Weekly	This time	compared		12 Month	compared	12 Month	compared			compared				*10 year	compared			
Guides	Price	Change	Last Year	to Last Year		Low	to Low	High	to High	Low	High	Average	to 3yr ave	Percentile	Low	High	Average	to *10yr ave	Percentile	
NRI	1035	0	1068	-33 -3%		1006	+29 3%	1171	-136 -12%	893	1491	1130	-95 -8%	33%	657	1491	954	+81 8%	69%	
16*	1350	0	1620	-270 -17%		1350	0 0%	1730	-380 -22%	1350	2800	1805	-455 -25%	1%	1385	2800	1729	-379 -22%	0%	
16.5*	1300	0	1485	-185 -12%		1300	0 0%	1595	-295 -18%	1295	2680	1657	-357 -22%	2%	1280	2680	1588	-288 -18%	4%	
17*	1245	0	1345	-100 -7%		1245	0 0%	1470	-225 -15%	1215	2530	1519	-274 -18%	4%	1103	2530	1442	-197 -14%	18%	
17.5*	1200	0	1290	-90 -7%		1190	+10 1%	1420	-220 -15%	1175	2360	1444	-244 -17%	11%	1020	2360	1377	-177 -13%	28%	
18	1163	-5 -0.4%	1255	-92 -7%		1161	+2 0%	1394	-231 -17%	1141	2193	1378	-215 -16%	7%	916	2193	1271	-108 -8%	38%	
18.5	1138	-4 -0.4%	1217	-79 -6%		1129	+9 1%	1367	-229 -17%	1096	1963	1332	-194 -15%	13%	843	1963	1205	-67 -6%	44%	
19	1134	+2 0.2%	1163	-29 -2%		1108	+26 2%	1331	-197 -15%	1045	1776	1298	-164 -13%	28%	803	1776	1135	-1 0%	58%	
19.5	1133	+9 0.8%	1144	-11 -1%		1092	+41 4%	1317	-184 -14%	958	1670	1266	-133 -11%	33%	749	1670	1069	+64 6%	64%	
20	1131	+12 1.1%	1132	-1 0%		1077	+54 5%	1287	-156 -12%	910	1588	1236	-105 -8%	37%	700	1588	1012	+119 12%	71%	
21	1131	+2 0.2%	1132	-1 0%		1071	+60 6%	1281	-150 -12%	886	1522	1218	-87 -7%	40%	668	1522	971	+160 16%	73%	
22	1133	0	1167	-34 -3%		1054	+79 7%	1267	-134 -11%	861	1461	1191	-58 -5%	45%	659	1461	942	+191 20%	76%	
23	1129	0	1167	-38 -3%		1040	+89 9%	1248	-119 -10%	830	1347	1157	-28 -2%	52%	651	1347	913	+216 24%	79%	
24	1050	-16 -1.5%	1064	-14 -1%		983	+67 7%	1140	-90 -8%	779	1213	1063	-13 -1%	56%	638	1213	850	+200 24%	81%	
25	882	-32 -3.6%	911	-29 -3%		799	+83 10%	957	-75 -8%	655	1049	912	-30 -3%	43%	566	1049	740	+142 19%	75%	
26	813	-11 -1.4%	838	-25 -3%		734	+79 11%	887	-74 -8%	571	939	811	+2 0%	62%	532	939	667	+146 22%	83%	
28	665	-13 -2.0%	671	-6 -1%		638	+27 4%	694	-29 -4%	436	734	638	+27 4%	78%	424	734	526	+139 26%	90%	
30	640	-5 -0.8%	613	+27 4%		591	+49 8%	655	-15 -2%	380	670	593	+47 8%	93%	343	670	471	+169 36%	97%	
32	569	0	495	+74 15%		495	+74 15%	573	-4 -1%	331	638	520	+49 9%	88%	297	638	419	+150 36%	94%	
MC	796	+2 0.3%	827	-31 -4%		771	+25 3%	874	-78 -9%	535	874	734	+62 8%	76%	390	874	577	+219 38%	89%	
AU BALES OFFERED	30,953		* Due to the irregular market quoting for some fine wool categories, figures shown relating to micron categories below 18 micron are an estimate based on the																	
AU BALES SOLD	28,423		AWEX Premium & Discounts Report & other available information.																	
AU PASSED-IN%	8.2%		* For any category, where there is insufficient quantity offered to enable AWEX to quote, a quote will be provided based on the best available information.																	
AUD/USD	0.94082		* 10 Year data is not available for 16 to 17.5 microns, therefore 10 year statistics for those micron categories only date back as far as August 2005.																	

Source: Australian Wool Exchange, Australian Wool Innovation, Riemann, x-rates.com, Reserve Bank of Australia, Australian Wool Testing Authority.

Disclaimer: Jemalong Wool Pty Ltd make no representations about the content and suitability of the information contained in this report. Specifically, Jemalong Wool does not warrant, guarantee or make any representations regarding the correctness, accuracy, reliability, currency, or any other aspect regarding characteristics or use of information presented in these materials. The user accepts sole responsibility and risk associated with the use and results of these materials, irrespective of the purpose of which such use or results are applied. In no event shall Jemalong Wool be liable for any loss or damages (including without limitation special, or consequential damages), where in an action of contract, negligence,



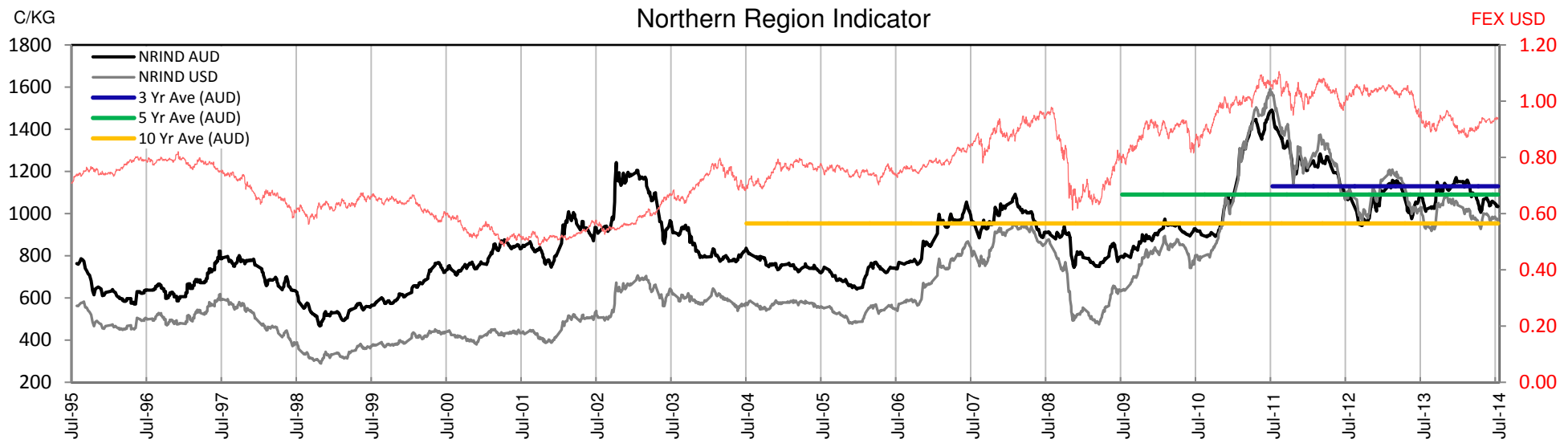
## MARKET COMMENTARY

The last sale for the 13/14 season consisted of a small volume offering of 30,953 bales.

A soft start on Wednesday saw fine merino fleece, crossbeds and stains ease slightly, while medium merino fleece attracted good support to finish the day in sellers favour. All other descriptions remained generally unchanged.

Thursday's market opened on a more positive note with solid support for the medium to broader microns, which left them 5-10 cents dearer. The fine end was also well maintained, with some better styles on offer. Buyers also gave locks a 5-10 cent lift, while the rest of the market remained fully firm.

With two more sales left before the mid-year break, more of the same is expected, with no indication of any substantial movement in the short term.





**Table 2: Three Year Decile Table, since: 1/06/2011**

Decile %	16	16.5	17	17.5	18	18.5	19	19.5	20	21	22	23	24	25	26	28	30	32	MC
1 10%	1480	1395	1255	1200	1170	1132	1071	994	947	927	906	884	823	695	603	455	399	354	590
2 20%	1540	1410	1290	1240	1191	1154	1108	1055	991	977	949	919	844	750	641	480	426	375	625
3 30%	1570	1440	1320	1280	1223	1181	1148	1113	1088	1085	1060	1040	967	845	748	574	529	464	651
4 40%	1610	1480	1377	1310	1269	1233	1202	1161	1140	1131	1107	1075	1002	873	766	600	553	481	693
5 50%	1670	1520	1410	1350	1312	1281	1259	1215	1188	1176	1153	1125	1037	891	790	626	579	493	725
6 60%	1790	1600	1450	1405	1360	1332	1293	1268	1230	1216	1196	1162	1060	902	808	643	590	512	743
7 70%	2000	1850	1670	1561	1496	1436	1356	1319	1265	1249	1220	1189	1079	914	823	655	613	549	760
8 80%	2146	1940	1770	1670	1589	1504	1453	1403	1347	1306	1255	1219	1099	943	847	668	628	560	808
9 90%	2700	2510	2390	2200	2004	1807	1613	1473	1390	1341	1301	1255	1131	984	876	682	635	573	819
10 100%	2800	2680	2530	2360	2193	1963	1776	1670	1588	1522	1461	1347	1213	1049	939	734	670	638	874
MPG	1350	1300	1245	1200	1163	1138	1134	1133	1131	1131	1133	1129	1050	882	813	665	640	569	796
3 Yr Percentile	1%	2%	4%	11%	7%	13%	28%	33%	37%	40%	45%	52%	56%	43%	62%	78%	93%	88%	76%

**Table 3: Ten Year Decile Table, sinc 1/06/2004**

Decile %	16	16.5	17	17.5	18	18.5	19	19.5	20	21	22	23	24	25	26	28	30	32	MC
1 10%	1450	1340	1200	1150	1014	984	926	850	788	736	710	691	667	596	556	445	377	326	413
2 20%	1520	1390	1250	1180	1075	1018	950	879	823	760	729	705	678	627	571	457	398	349	435
3 30%	1550	1410	1270	1210	1126	1057	1001	924	850	804	775	753	713	644	588	467	410	361	451
4 40%	1580	1440	1305	1260	1170	1122	1055	971	914	875	848	827	780	661	601	474	425	383	509
5 50%	1605	1470	1345	1300	1210	1159	1097	1029	978	943	916	888	821	695	618	482	432	395	569
6 60%	1650	1500	1400	1350	1263	1217	1143	1096	1053	994	952	920	848	717	639	497	441	405	604
7 70%	1735	1588	1440	1400	1340	1281	1216	1159	1120	1092	1069	1046	980	849	751	579	531	466	657
8 80%	1850	1720	1550	1490	1405	1330	1282	1245	1209	1193	1172	1136	1045	895	803	634	581	498	732
9 90%	2130	1940	1750	1670	1556	1486	1434	1389	1328	1286	1247	1207	1095	930	834	664	625	556	798
10 100%	2800	2680	2530	2360	2193	1963	1776	1670	1588	1522	1461	1347	1213	1049	939	734	670	638	874
MPG	1350	1300	1245	1200	1163	1138	1134	1133	1131	1131	1133	1129	1050	882	813	665	640	569	796
10 Yr Percentile	0%	4%	18%	28%	38%	44%	58%	64%	71%	73%	76%	79%	81%	75%	83%	90%	97%	94%	89%

**Decile Tables are a useful tool for working out price targets.**

**Percentiles are a more accurate guide to where the market is currently trading (The higher the percentile, the stronger the market).**

**Definitions:**

\* A Percentile, is a value on a scale of one hundred that indicates the percent of a distribution that is equal to or below it. In general a percentile between 25% and 75% is considered normal, a percentile below 25% is considered below normal and a percentile above 75% is considered above normal.

Three and ten year percentiles shown on the bottom line of table 2 & 3 (above) and in table 1 (on page 1), detail the amount of time during the past 3 & 10 years where the market has traded either at or below its current price.

\* Deciles are a method of sorting ranked data into 10 equal groups. The data may be ranked from largest to smallest or vice versa.

The above Decile tables sort price Percentiles into 10 equal groups (in ascending order), with table 2 ranking the previous 3 years prices, while table 3 ranks prices over the previous 10 year

**Example:** In Table 2, a Decile Rank of 6 for 19 microns, shows 19 microns have traded at or below 1293 for 60% of the time, over the past three years.

In Table 3, a Decile Rank of 6 for 19 microns, shows 19 microns have traded at or below 1143 for 60% of the time, over the past ten years.



Table 4: Riemann Forwards, latest trades as at: Last Date

Any highlighted in yellow are recent trades, trading since: Friday, 20 June 2014

CONTRACT MICRON		18.5um	19um	19.5um	21um	22um	23um	28um	30um
CONTRACT MONTH	Jun-2014				24/04/14 1175	9/10/13 1200			
	Jul-2014				4/06/14 1160				
	Aug-2014				28/05/14 1170				18/06/14 600
	Sep-2014				28/05/14 1140				
	Oct-2014				30/04/14 1150	5/02/14 1170			
	Nov-2014				26/05/14 1170				
	Dec-2014				4/03/14 1185				
	Jan-2015				3/02/14 1190				
	Feb-2015								
	Mar-2015								
	Apr-2015								
	May-2015								
	Jun-2015								
	Jul-2015								
	Aug-2015								
	Sep-2015								
	Oct-2015				12/06/13 1080				
	Nov-2015								
	Dec-2015								
	Jan-2016								
	Feb-2016								
	Mar-2016								
	Apr-2016								

Explanatory Notes: Prices quoted reflect the most recent trades, at time of print.

Disclaimer: While all due care has been taken in the preparation of this document, no warranty is made as to its accuracy, reliability or completeness. To the extent permitted by law neither Jemalong or their sources including subsidiaries and staff, accept liability to any person for loss or damage arising from the use of this information.



# JEMALONG WOOL BULLETIN

(week ending 27/06/2014)

Table 5: National Market Share

	Rank	Current Selling Week Week 52			Previous Selling Week Week 51			Last Season 2012-13			2 Years Ago 2011-12			3 Years Ago 2010-11			5 Years Ago 2008-09			10 Years Ago 2003-04		
		Buyer	Bales	MS%	Buyer	Bales	MS%	Buyer	Bales	MS%	Buyer	Bales	MS%	Buyer	Bales	MS%	Buyer	Bales	MS%	Buyer	Bales	MS%
Top 10, Auction Buyers	1	TECM	4,301	15%	TECM	2,907	14%	TECM	179,176	10%	VTRA	229,207	14%	VTRA	209,391	12%	TECM	207,010	12%	ITOS	235,726	11%
	2	TIAM	2,313	8%	TIAM	2,390	11%	VTRA	163,810	9%	TECM	153,616	9%	TECM	179,439	10%	FOXM	127,295	7%	BWEA	158,769	7%
	3	AMEM	2,281	8%	FOXM	2,264	11%	FOXM	143,826	8%	FOXM	136,698	8%	FOXM	142,143	8%	ABB	120,742	7%	PLEX	151,168	7%
	4	LEMM	2,255	8%	GSAS	1,742	8%	LEMM	126,564	7%	QCTB	112,745	7%	QCTB	120,699	7%	WIEM	111,432	6%	LEMM	127,649	6%
	5	FOXM	2,120	7%	LEMM	1,651	8%	QCTB	98,756	6%	WIEM	100,817	6%	WIEM	99,585	6%	LEMM	103,040	6%	RWRS	126,145	6%
	6	MCHA	1,863	7%	MODM	1,488	7%	PMWF	96,935	6%	LEMM	88,348	5%	LEMM	85,346	5%	KATS	99,613	6%	MODM	121,461	6%
	7	MODM	1,789	6%	AMEM	1,162	5%	MODM	84,363	5%	MODM	74,646	4%	MODM	81,981	5%	PMWF	80,995	5%	ADSS	120,262	6%
	8	PMWF	1,598	6%	MCHA	1,109	5%	CTXS	82,166	5%	CTXS	69,266	4%	PMWF	77,588	4%	RWRS	63,736	4%	FOXM	84,578	4%
	9	CTXS	1,236	4%	CTXS	973	5%	AMEM	77,849	4%	PMWF	64,659	4%	CTXS	75,127	4%	BWEA	61,930	4%	GSAS	83,137	4%
	10	DAWS	1,113	4%	RWRS	824	4%	KATS	65,782	4%	GSAS	58,233	3%	KATS	67,867	4%	PLEX	60,943	3%	TECM	80,168	4%
MFLC TOP 5	1	TECM	2,664	18%	TECM	1,774	15%	VTRA	118,432	12%	VTRA	171,425	19%	VTRA	169,191	17%	ABB	103,759	10%	ITOS	195,318	15%
	2	PMWF	1,521	10%	FOXM	1,705	14%	LEMM	110,118	11%	QCTB	86,901	10%	QCTB	98,673	10%	TECM	87,221	9%	ADSS	107,535	8%
	3	LEMM	1,510	10%	GSAS	1,592	13%	PMWF	93,136	10%	TECM	76,083	8%	TECM	79,395	8%	LEMM	84,758	8%	BWEA	95,591	7%
	4	FOXM	1,245	8%	TIAM	1,164	10%	TECM	89,286	9%	LEMM	68,961	8%	PMWF	71,718	7%	PMWF	76,778	8%	LEMM	90,541	7%
	5	AMEM	1,228	8%	LEMM	1,047	9%	QCTB	71,715	7%	PMWF	60,070	7%	LEMM	70,280	7%	KATS	76,726	8%	RWRS	82,647	6%
MSKT TOP 5	1	TIAM	1,314	29%	TIAM	1,222	36%	MODM	37,284	14%	WIEM	43,156	16%	MODM	39,745	14%	PLEX	37,871	13%	PLEX	63,186	17%
	2	AMEM	604	13%	TECM	534	16%	TECM	34,301	13%	MODM	30,285	11%	WIEM	36,566	13%	WIEM	33,859	12%	MODM	47,008	13%
	3	TECM	598	13%	AMEM	346	10%	WIEM	27,916	10%	TECM	25,264	9%	TECM	28,858	10%	MODM	28,540	10%	GSAS	36,194	10%
	4	MODM	512	11%	MODM	329	10%	TIAM	24,196	9%	PLEX	21,990	8%	PLEX	23,282	8%	FOXM	18,936	7%	BWEA	32,347	9%
	5	RWRS	202	4%	LEMM	182	5%	AMEM	23,012	8%	GSAS	16,284	6%	FOXM	16,098	6%	GSAS	18,523	6%	LEMM	28,595	8%
XBFS TOP 5	1	TECM	590	13%	MODM	457	13%	FOXM	39,356	14%	FOXM	41,689	15%	FOXM	48,708	19%	TECM	87,455	38%	BWEA	26,673	14%
	2	KATS	549	12%	TECM	423	12%	TECM	30,323	11%	VTRA	31,427	12%	TECM	43,133	17%	FOXM	42,053	18%	FOXM	25,096	13%
	3	MODM	504	11%	CTXS	343	10%	VTRA	27,832	10%	TECM	31,094	11%	VTRA	20,904	8%	KATS	13,002	6%	TECM	20,352	11%
	4	AMEM	387	9%	FOXM	305	9%	KATS	26,057	9%	QCTB	22,610	8%	MODM	20,556	8%	WCWF	11,989	5%	ITOS	15,082	8%
	5	MCHA	301	7%	AMEM	281	8%	CTXS	25,631	9%	CTXS	19,985	7%	CTXS	16,667	7%	MOPS	11,051	5%	MODM	12,658	7%
ODDS TOP 5	1	MCHA	1,236	30%	MCHA	743	31%	MCHA	35,985	16%	FOXM	34,603	15%	MCHA	30,570	13%	MCHA	36,454	17%	MCHA	50,531	20%
	2	TECM	449	11%	LEMM	220	9%	FOXM	28,185	12%	MCHA	30,689	13%	TECM	28,053	12%	FOXM	24,114	11%	FOXM	37,097	15%
	3	FOXM	404	10%	RWRS	205	9%	TECM	25,266	11%	VWPM	22,219	10%	FOXM	27,422	12%	MAFM	18,568	8%	MAFM	20,235	8%
	4	VWPM	366	9%	TECM	176	7%	VWPM	20,692	9%	VTRA	21,495	9%	VWPM	22,267	10%	TECM	17,571	8%	RWRS	11,904	5%
	5	LEMM	304	7%	FOXM	156	7%	VTRA	13,022	6%	TECM	21,175	9%	RWRS	15,878	7%	RWRS	16,248	7%	ITOS	9,637	4%
Totals		<u>Offered</u>	<u>Sold</u>		<u>Offered</u>	<u>Sold</u>		<u>Auction Bales Sold</u>			<u>Auction Bales Sold</u>			<u>Auction Bales Sold</u>			<u>Auction Bales Sold</u>			<u>Auction Bales Sold</u>		
		30,953	28,423		23,457	21,260		1,742,881			1,683,024			1,786,249			1,755,070			2,130,684		
		<u>Passed-In</u>	<u>PI%</u>		<u>Passed-In</u>	<u>PI%</u>		<u>Export Value</u>			<u>Export Value</u>			<u>Export Value</u>			<u>Export Value</u>			<u>Export Value</u>		
		2,530	8.2%		2,197	9.4%		\$2,272,770,228			\$2,691,010,531			\$2,619,977,188			\$2,008,440,340			\$2,487,625,451		



# JEMALONG WOOL BULLETIN

(week ending 27/06/2014)

Table 6: NSW Production Statistics

2012-13		Auction		+/-		+/-	Yield %	+/-	Length	+/-	Strength	+/-	Ave Price
Statistical Devision, Area Code & Towns		Bales (FH)	Micron	YoY	Vmb %	YoY	Sch Dry	YoY	mm	YoY	Nkt	YoY	c/kg
Northern	N02 Tenterfield, Glen Innes	9,672	19.5	-0.6	1.8	-0.7	72.7	1.6	81	-0.7	41	0.4	829
	N03 Guyra	36,328	18.9	-0.1	1.8	-0.5	73.7	1.5	81	-0.9	42	1.0	948
	N04 Inverell	4,372	19.1	0.2	3.4	-1.3	69.7	0.7	83	-1.6	38	-0.6	759
	N05 Armidale	1,984	19.9	0.1	3.9	-0.7	69.4	1.5	82	-1.2	38	-0.5	710
	N06 Tamworth, Gunnedah, Quirindi	6,492	20.5	0.1	4.0	-0.7	68.5	1.1	84	-0.2	38	-0.7	708
	N07 Moree	6,363	20.0	-0.1	4.2	-1.2	64.5	0.7	87	-1.9	36	0.8	619
	N08 Narrabri	3,263	19.9	0.1	3.6	-1.3	67.3	2.0	88	-0.2	39	1.9	621
North Western & Far West	N09 Cobar, Bourke, Wanaaring	12,329	20.5	-0.2	4.3	-0.8	60.7	0.0	88	0.2	37	0.2	591
	N12 Walgett	8,512	19.9	-0.3	4.3	-1.8	64.1	1.8	86	0.1	37	1.8	616
	N13 Nyngan	18,905	20.5	-0.1	4.9	-2.0	63.7	2.3	88	0.0	37	1.1	597
	N14 Dubbo, Narromine	21,765	21.6	0.0	4.3	-1.0	63.1	1.1	85	0.0	36	0.4	539
	N16 Dunedoo	6,893	20.0	0.0	3.4	-0.2	67.8	-0.6	88	-0.4	34	0.2	678
	N17 Mudgee, Wellington, Gulgong	20,969	19.7	-0.1	3.4	-0.3	68.3	0.4	83	0.2	38	0.7	728
	N33 Coonabarabran	3,677	20.9	0.1	4.6	0.1	67.0	0.4	85	1.7	34	-1.6	611
	N34 Coonamble	8,142	20.4	-0.1	4.4	-2.4	63.4	1.5	87	2.7	35	0.9	605
	N36 Gilgandra, Gulargambone	6,030	21.5	-0.1	3.9	-0.7	65.0	0.3	86	-0.3	36	0.3	580
	N40 Brewarrina	7,487	20.2	0.0	2.3	-0.9	66.6	1.8	86	-1.7	39	4.0	688
	N10 Wilcannia, Broken Hill	25,295	21.3	-0.5	2.8	-0.9	61.1	-0.2	89	-1.4	37	1.1	595
Central West	N15 Forbes, Parkes, Cowra	47,591	21.5	0.0	3.3	-0.8	64.1	0.6	86	-0.2	36	0.1	570
	N18 Lithgow, Oberon	3,402	20.7	-0.2	3.3	-0.3	68.0	0.0	83	1.1	38	0.3	672
	N19 Orange, Bathurst	50,922	22.1	-0.2	2.3	-0.5	69.4	1.0	85	0.3	38	1.4	646
	N25 West Wyalong	25,261	21.0	-0.3	2.9	-0.6	63.4	-0.6	89	-0.5	36	0.8	592
	N35 Condobolin, Lake Cargelligo	10,701	21.0	-0.3	5.3	-1.1	60.1	-9.8	86	0.2	36	-0.8	535
Murrumbidgee	N26 Cootamundra, Temora	26,106	22.1	-0.1	2.1	-0.5	64.1	-0.3	86	-0.8	35	0.6	568
	N27 Adelong, Gundagai	10,213	21.6	-0.5	2.7	-1.0	68.1	0.4	88	0.6	36	0.2	616
	N29 Wagga, Narrandera	32,841	22.7	-0.1	1.6	-0.6	66.2	-0.9	90	0.3	36	1.3	572
	N37 Griffith, Hillston	12,036	22.0	-0.2	4.1	-0.9	61.1	-1.3	84	-2.2	40	1.3	545
	N39 Hay, Coleambally	17,044	21.3	-0.1	3.4	-1.9	64.0	0.1	90	2.4	39	-0.9	614
Murray	N11 Wentworth, Balranald	17,328	21.7	-0.3	4.8	-2.0	60.9	0.9	92	1.5	38	0.3	555
	N28 Albury, Corowa, Holbrook	28,883	21.9	-0.3	1.5	-0.3	67.0	-0.6	89	-0.1	37	1.8	613
	N31 Deniliquin	23,340	21.3	-0.1	2.5	-1.1	65.7	-0.1	88	0.4	39	1.2	622
	N38 Finley, Berrigan, Jerilderie	9,124	21.0	-0.3	2.5	-0.9	65.2	-0.3	88	-1.5	39	1.1	630
South Eastern	N23 Goulburn, Young, Yass	94,784	20.1	-0.1	1.7	-0.7	69.5	0.7	86	0.3	38	1.7	714
	N24 Monaro (Cooma, Bombala)	37,228	20.3	-0.2	1.9	-0.5	69.6	1.5	90	0.5	37	1.5	666
	N32 A.C.T.	183	20.4	0.7	3.1	-1.6	61.7	-2.5	89	9.0	31	-3.0	594
	N43 South Coast (Bega)	409	19.2	0.3	0.8	-1.8	74.3	3.9	84	3.3	42	2.9	862
NSW	AWEX Sale Statistics 12-13	685,519	21.0	-0.1	2.8	-0.8	66.4	0.6	87	0.1	38	1.0	658

AWTA Mthly Key Test Data		Bales Tested	Micron	+/- MoM	VMB	+/- MoM	Yld	+/- MoM	Lth	+/- MoM	Nkt	+/- MoM	POBM +/-
NSW	May-2014	52,558	20.1	-0.4	5.2	-0.3	64.6	1.5	85	0.2	36	-0.2	50 -0.1
Australia	May-2014	150,177	20.7	-0.2	2.5	0.0	63.1	0.7	84	-0.6	35	0.5	45 1.3

MAX MIN Max Gain Max Reduction

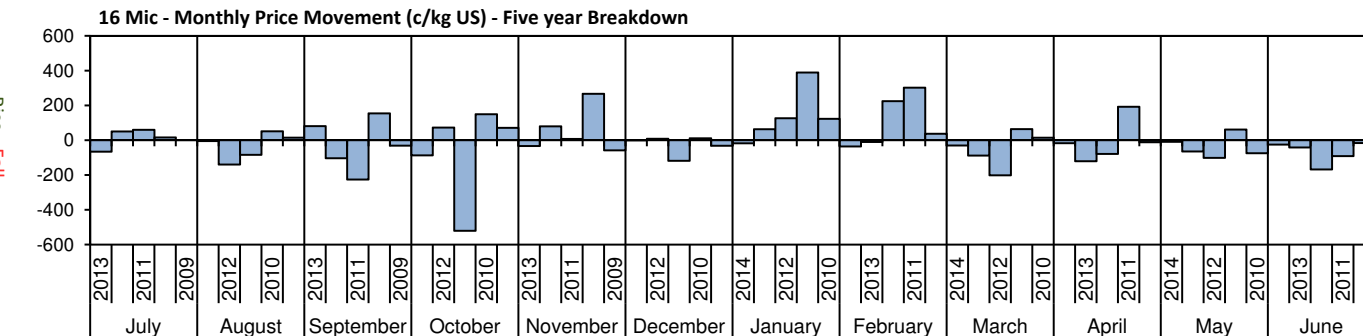
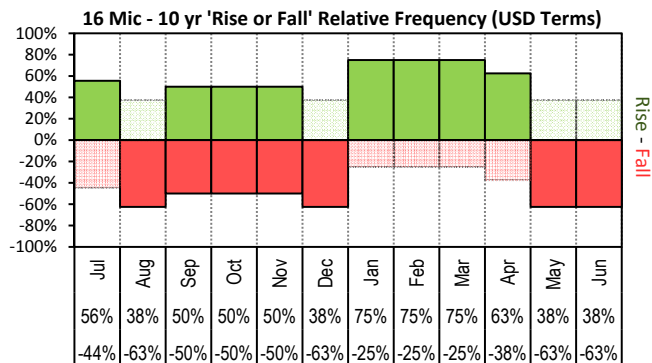




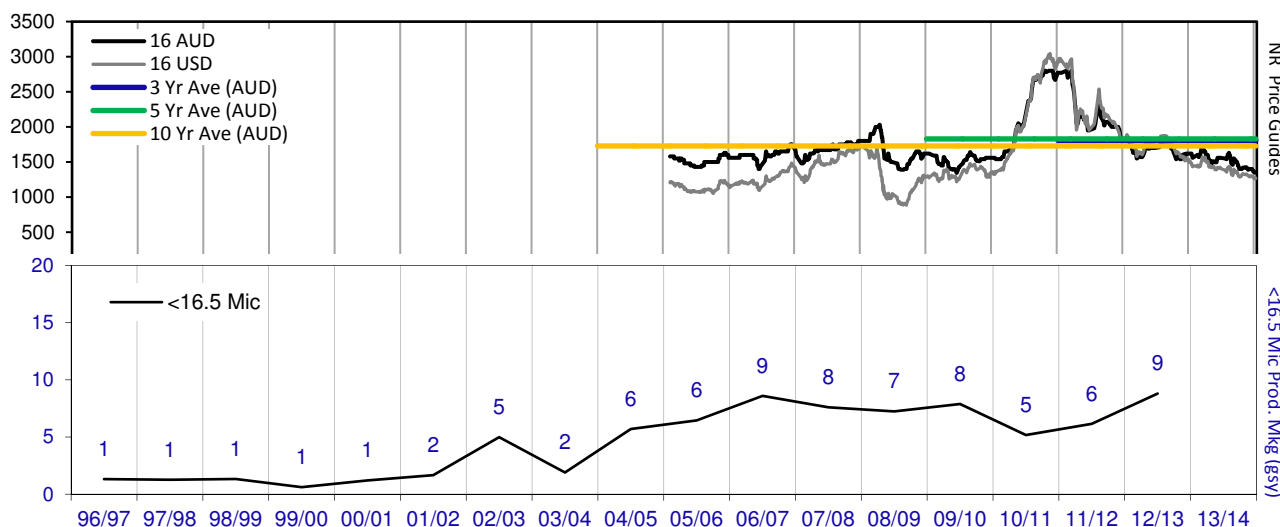
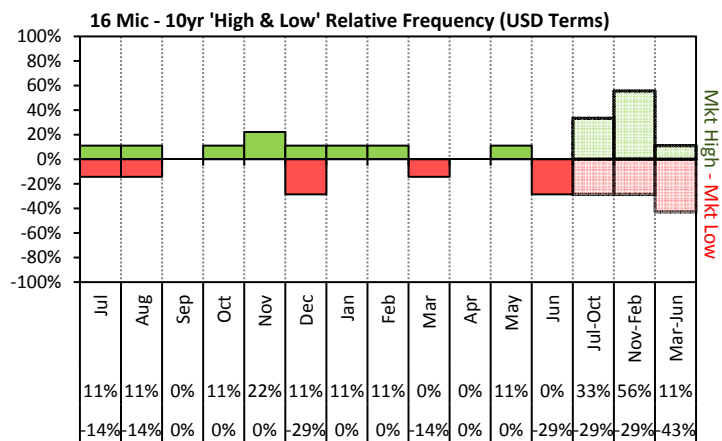
# JEMALONG WOOL BULLETIN

(week ending 27/06/2014)

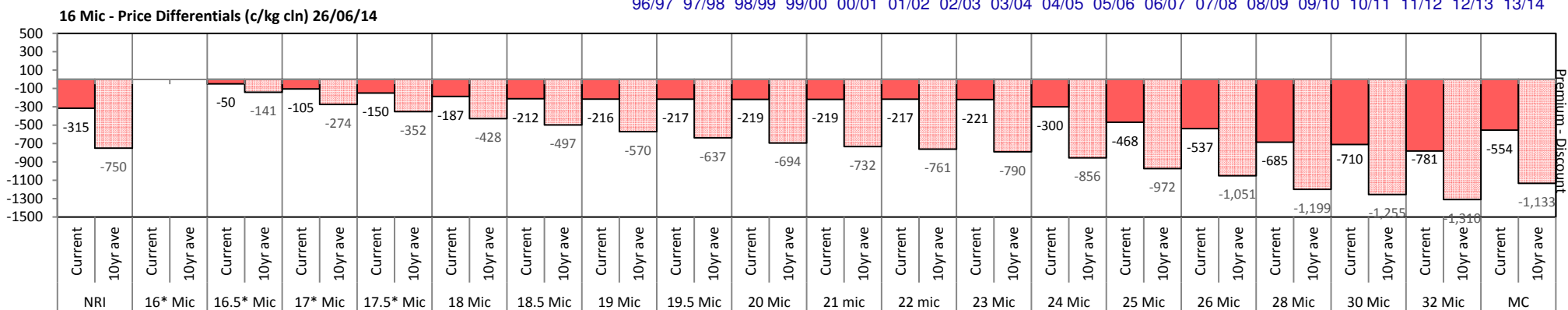
Page 7/25



The above 'Rise or Fall' graph, shows how often the market has risen or fallen in a given month over the past 10 years, it does not show the extent of the movement only the frequency of direction. The 'Monthly Price Movement' graph shows the extent of movement for each month, for the past 5 years.



The above graph, shows how often the '12 month high & low' have been achieved for a given month over the past 10 years. It is not a measure of probability.

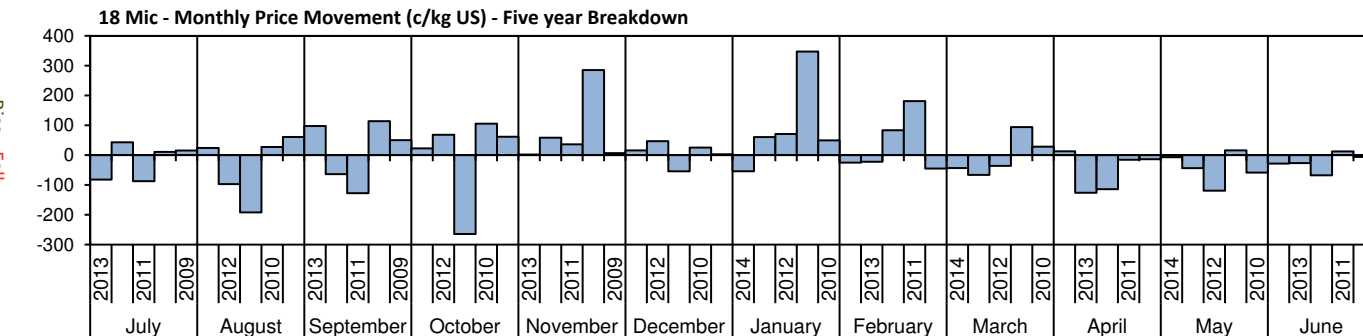
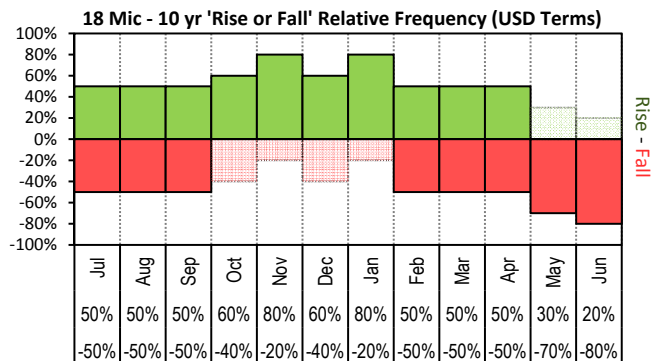




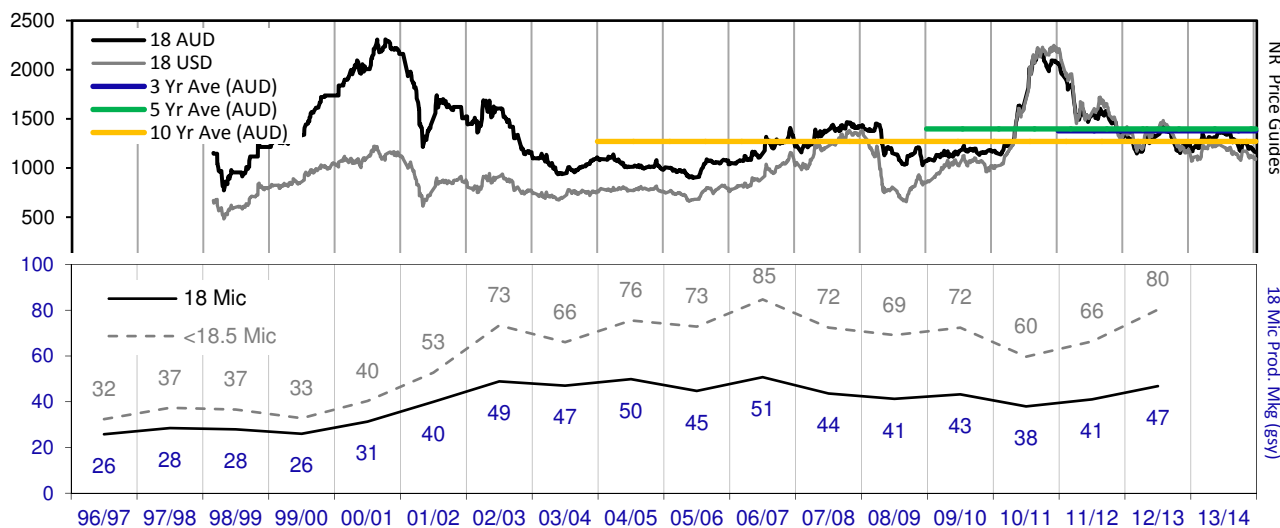
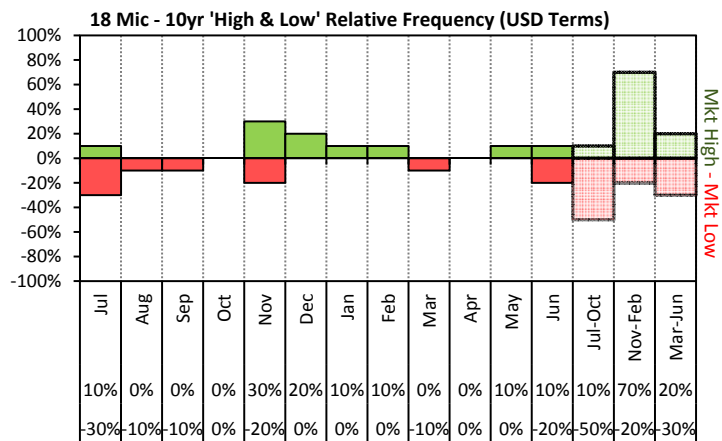
# JEMALONG WOOL BULLETIN

(week ending 27/06/2014)

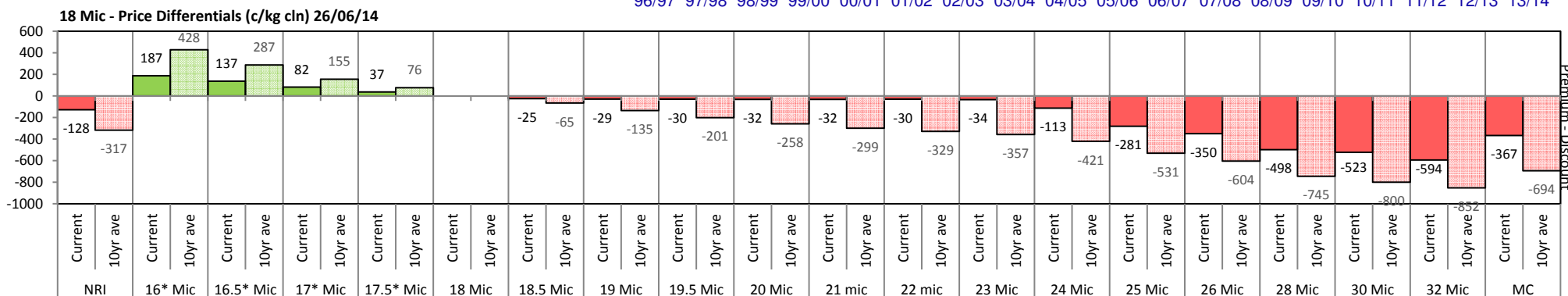
Page 8/25



The above 'Rise or Fall' graph, shows how often the market has risen or fallen in a given month over the past 10 years, it does not show the extent of the movement only the frequency of direction. The 'Monthly Price Movement' graph shows the extent of movement for each month, for the past 5 years.



The above graph, shows how often the '12 month high & low' have been achieved for a given month over the past 10 years. It is not a measure of probability.



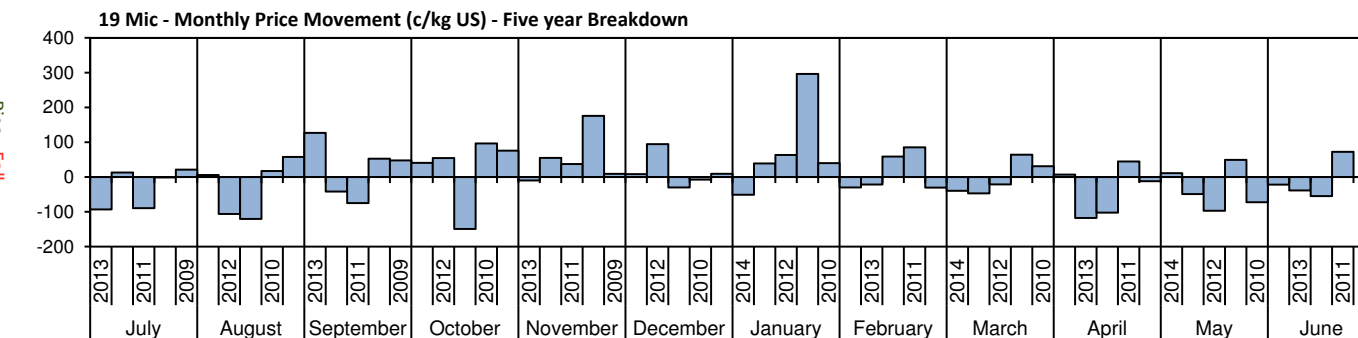
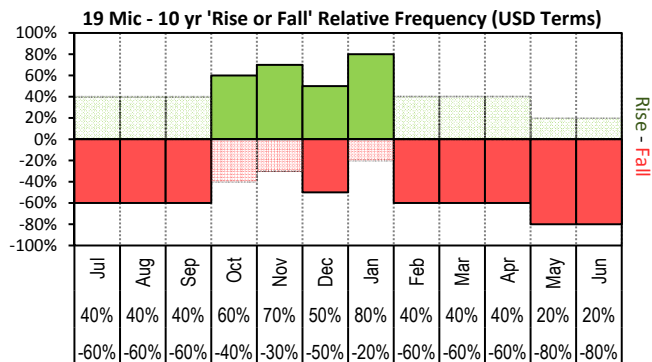




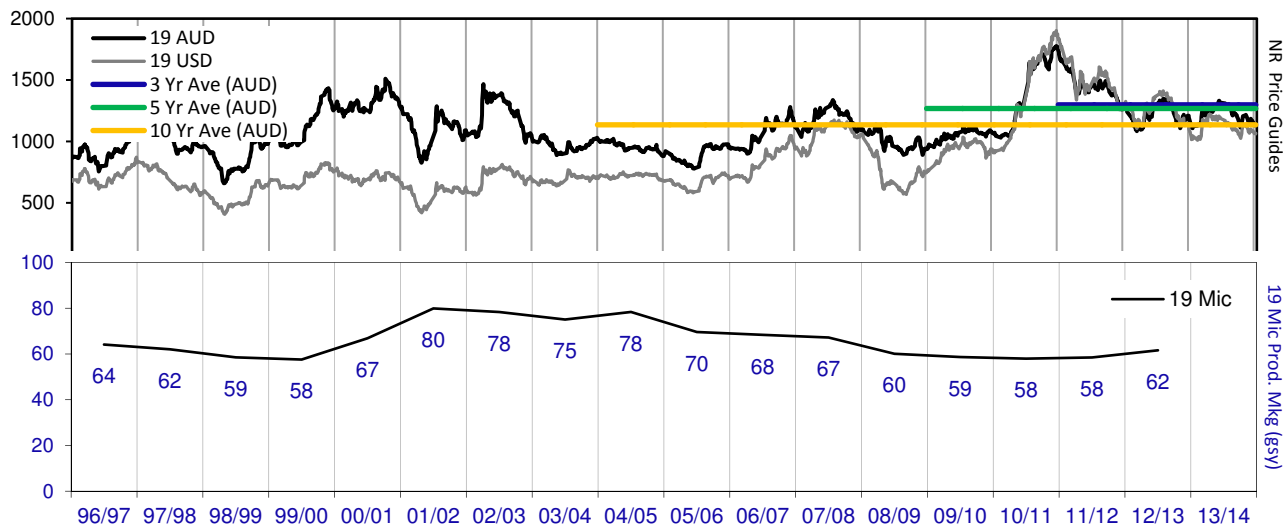
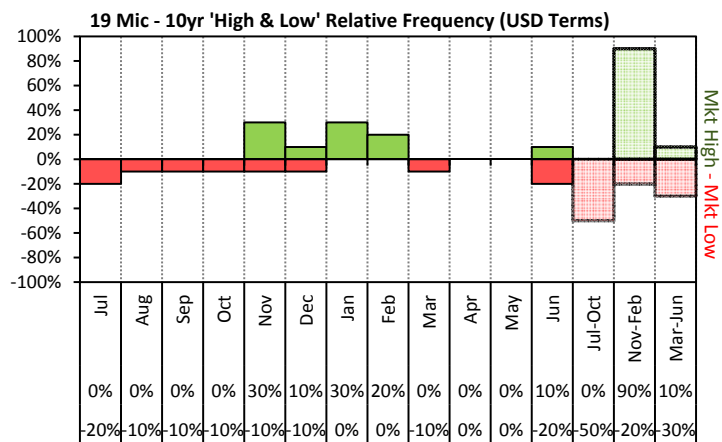
# JEMALONG WOOL BULLETIN

(week ending 27/06/2014)

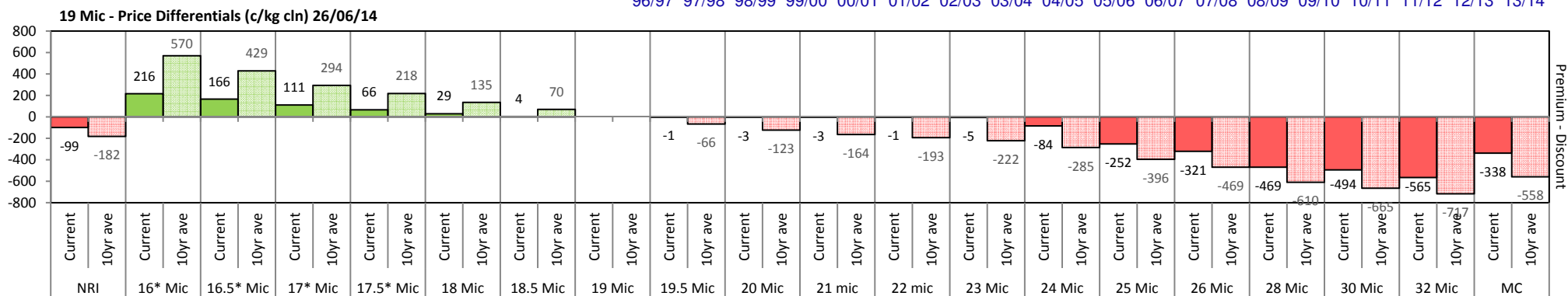
Page 9/25



The above 'Rise or Fall' graph, shows how often the market has risen or fallen in a given month over the past 10 years, it does not show the extent of the movement only the frequency of direction. The 'Monthly Price Movement' graph shows the extent of movement for each month, for the past 5 years.



The above graph, shows how often the '12 month high & low' have been achieved for a given month over the past 10 years. It is not a measure of probability.

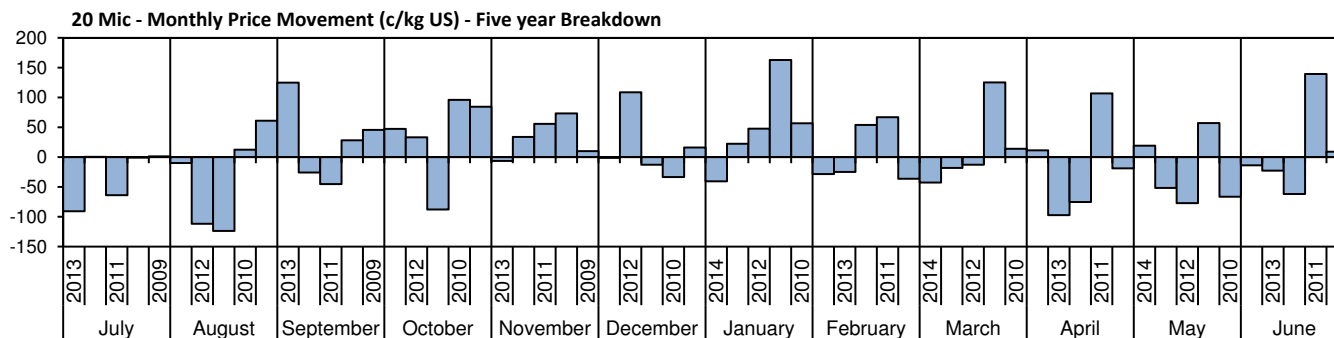
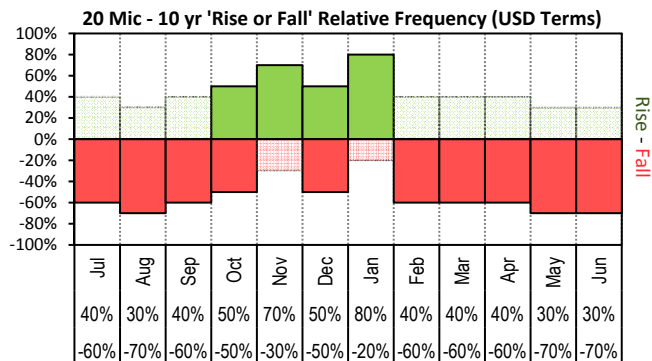




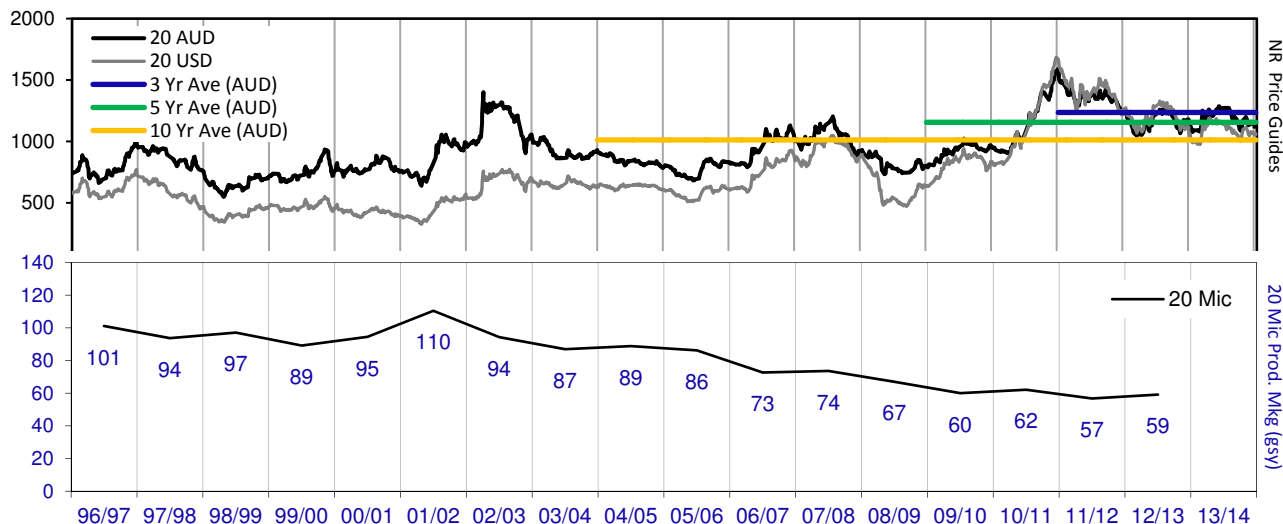
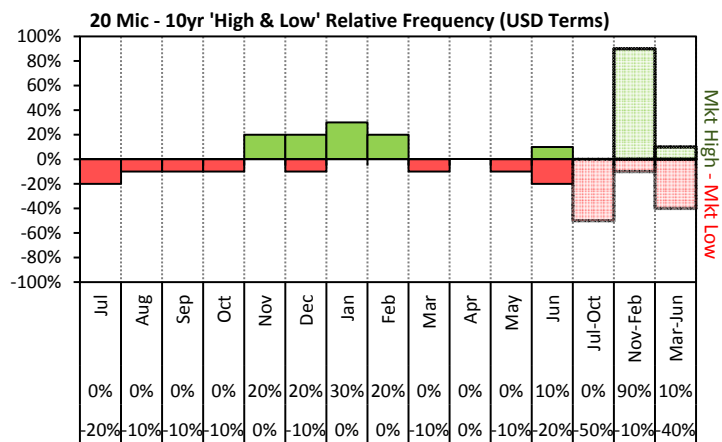
# JEMALONG WOOL BULLETIN

(week ending 27/06/2014)

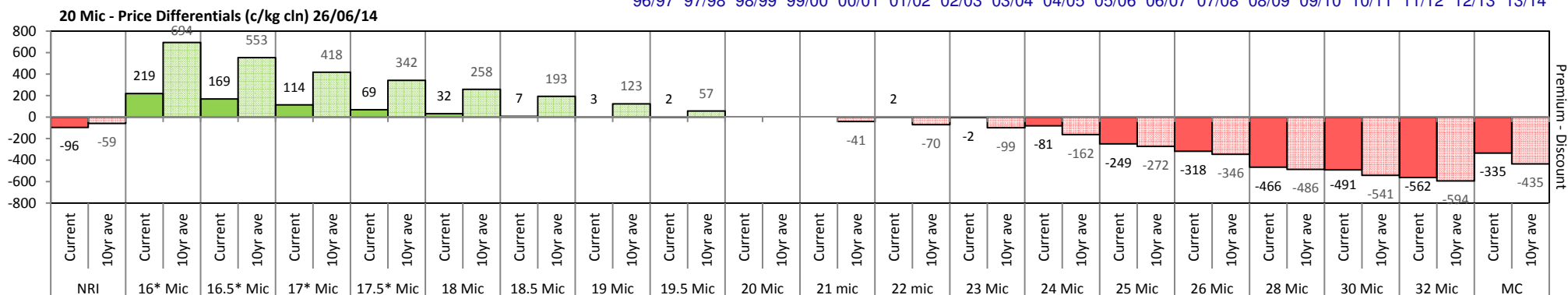
Page 10/25



The above 'Rise or Fall' graph, shows how often the market has risen or fallen in a given month over the past 10 years, it does not show the extent of the movement only the frequency of direction. The 'Monthly Price Movement' graph shows the extent of movement for each month, for the past 5 years.



The above graph, shows how often the '12 month high & low' have been achieved for a given month over the past 10 years. It is not a measure of probability.

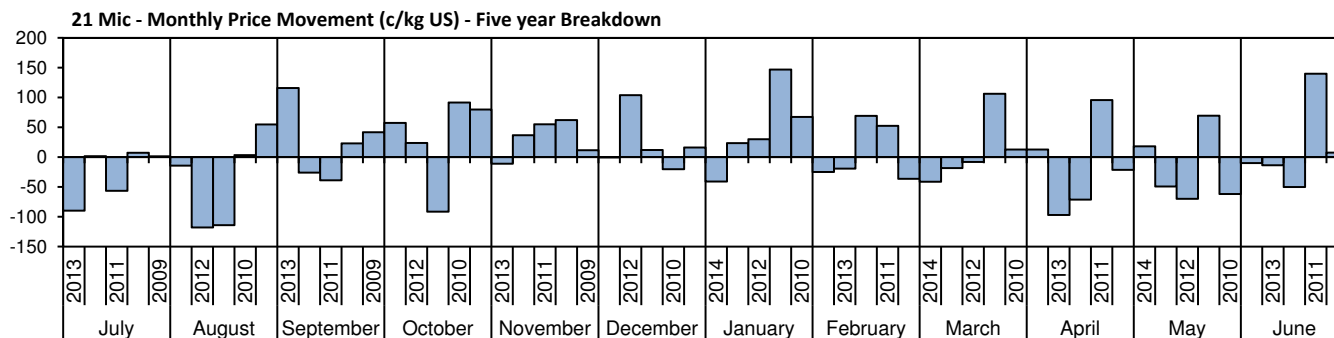
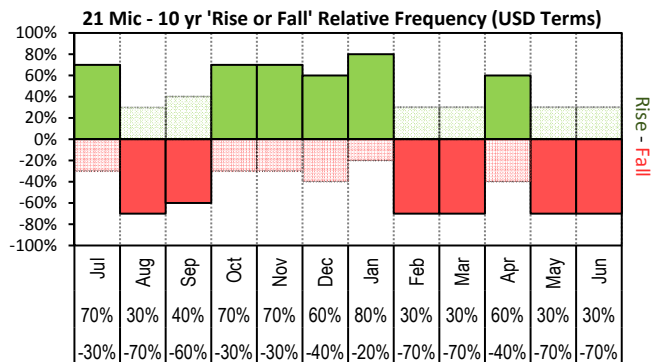




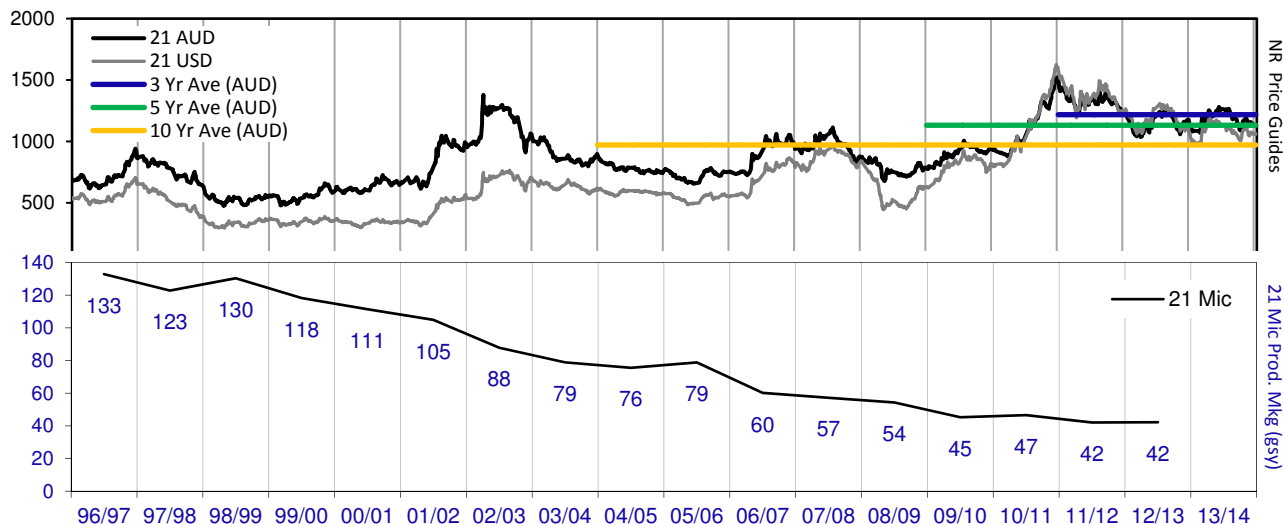
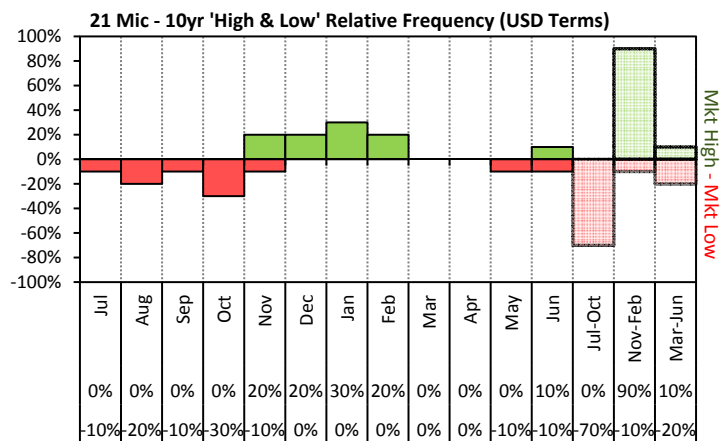
# JEMALONG WOOL BULLETIN

(week ending 27/06/2014)

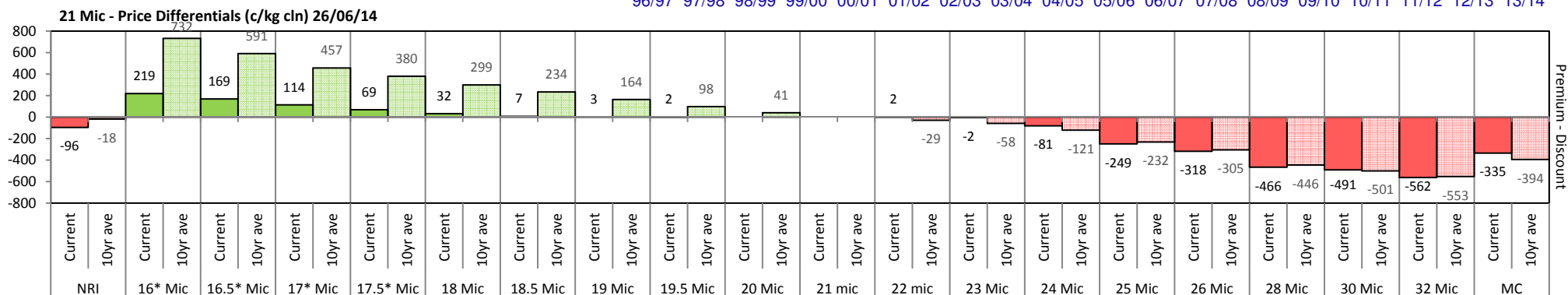
Page 11/25



The above 'Rise or Fall' graph, shows how often the market has risen or fallen in a given month over the past 10 years, it does not show the extent of the movement only the frequency of direction. The 'Monthly Price Movement' graph shows the extent of movement for each month, for the past 5 years.



The above graph, shows how often the '12 month high & low' have been achieved for a given month over the past 10 years. It is not a measure of probability.

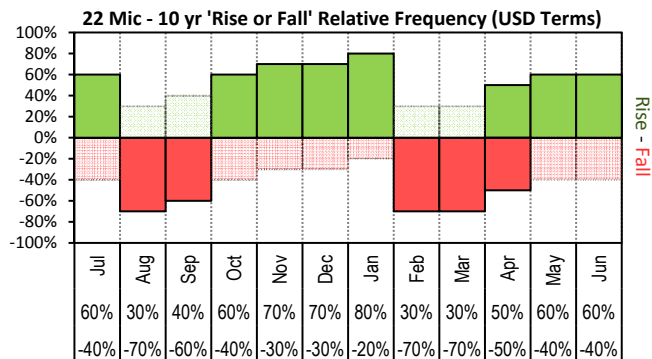




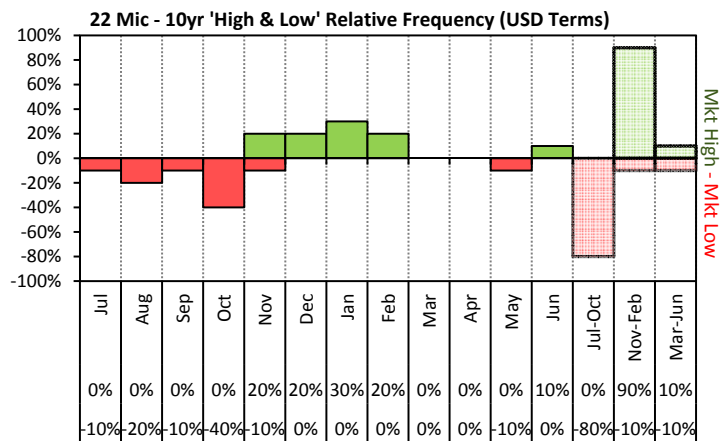
# JEMALONG WOOL BULLETIN

(week ending 27/06/2014)

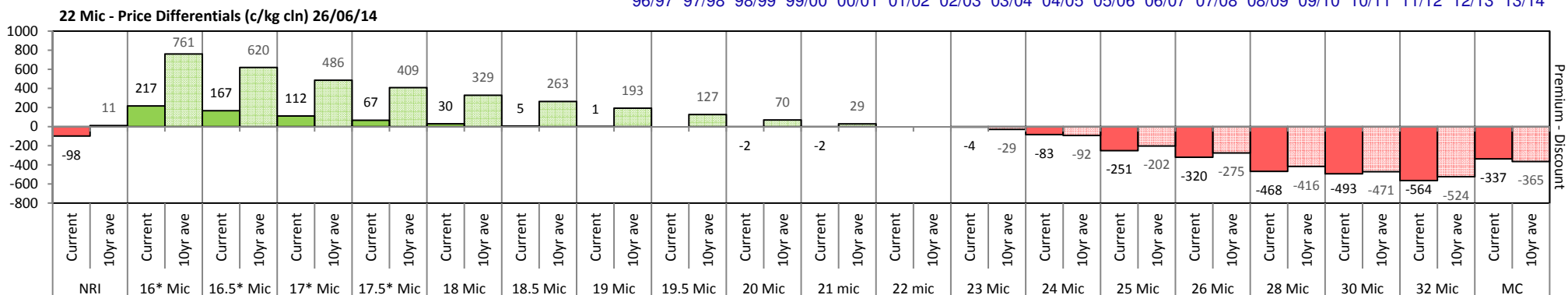
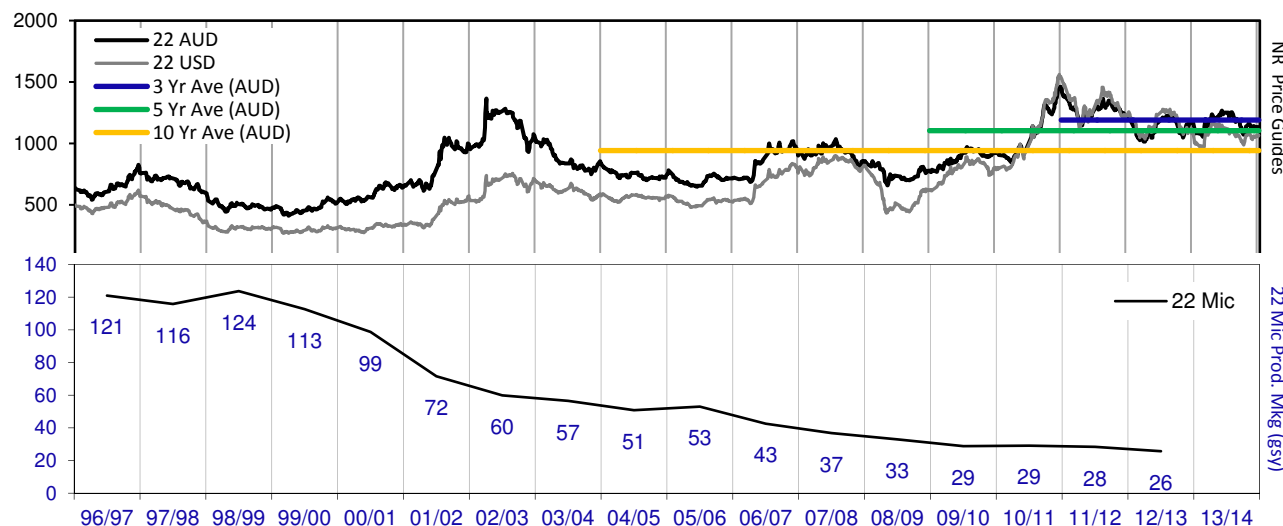
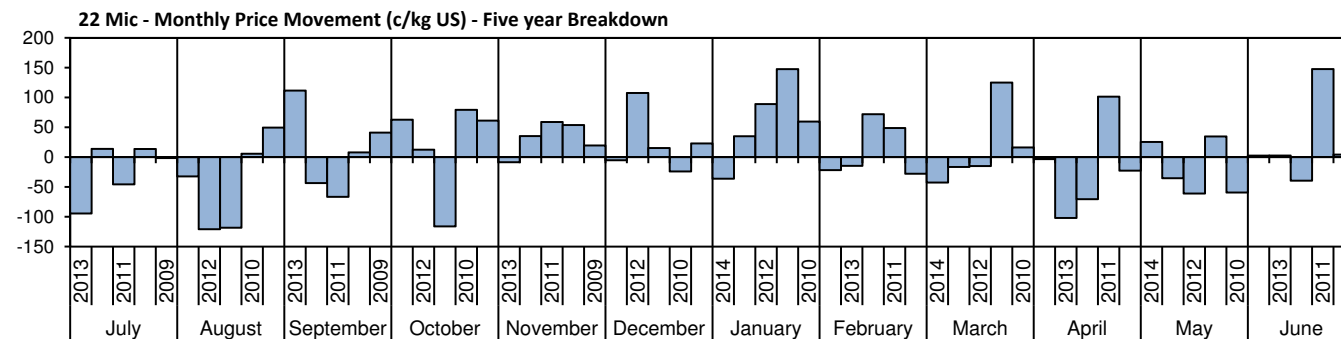
Page 12/25

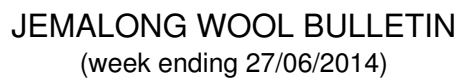


The above 'Rise or Fall' graph, shows how often the market has risen or fallen in a given month over the past 10 years, it does not show the extent of the movement only the frequency of direction. The 'Monthly Price Movement' graph shows the extent of movement for each month, for the past 5 years.



The above graph, shows how often the '12 month high & low' have been achieved for a given month over the past 10 years. It is not a measure of probability.





**26 Mic - Monthly Price Movement (c/kg US) - Five year Breakdown**

Month	Year	Price Movement (c/kg US)
July	2010	-30
July	2011	45
July	2012	-10
July	2013	5
July	2014	10
August	2010	-10
August	2011	-70
August	2012	-50
August	2013	-10
August	2014	5
September	2010	55
September	2011	-20
September	2012	15
September	2013	25
September	2014	10
October	2010	55
October	2011	15
October	2012	-100
October	2013	-10
October	2014	-10
November	2010	-10
November	2011	-40
November	2012	-10
November	2013	-10
November	2014	-10
December	2010	-10
December	2011	-10
December	2012	-10
December	2013	-10
December	2014	-10
January	2010	-10
January	2011	10
January	2012	75
January	2013	20
January	2014	-10
February	2010	-10
February	2011	70
February	2012	50
February	2013	-10
February	2014	-10
March	2010	10
March	2011	10
March	2012	105
March	2013	-10
March	2014	-10
April	2010	10
April	2011	10
April	2012	75
April	2013	-40
April	2014	10
May	2010	10
May	2011	10
May	2012	15
May	2013	-10
May	2014	-10
June	2010	50
June	2011	10
June	2012	10
June	2013	15
June	2014	-10

Period	Mkt High (%)	Mkt Low (%)
Jul	10%	0%
Aug	0%	-30%
Sep	10%	0%
Oct	10%	-20%
Nov	20%	-20%
Dec	0%	0%
Jan	0%	-10%
Feb	20%	0%
Mar	10%	0%
Apr	10%	0%
May	0%	-20%
Jun	10%	0%
Jul-Oct	30%	-50%
Nov-Feb	40%	-30%
Mar-Jun	30%	-20%

The top chart shows the NR Price (AUD) and NR Price (USD) from 1996/97 to 2013/14. The NR Price (AUD) is represented by a black line, and the NR Price (USD) is represented by a grey line. The 3 Yr Ave (AUD) is shown as a blue line, the 5 Yr Ave (AUD) as a green line, and the 10 Yr Ave (AUD) as an orange line. The NR Price (AUD) shows a significant peak around 2002/03, followed by a decline and then a recovery towards 2013/14. The NR Price (USD) shows a similar trend but at lower values.

The bottom chart shows the 25/26 Mic (gsw) from 1996/97 to 2013/14. The data points are labeled with values: 35, 34, 34, 32, 31, 21, 17, 17, 17, 18, 18, 16, 14, 14, 13, 14, 16. The 25/26 Mic (gsw) shows a general downward trend from 1996/97 to 2000/01, followed by a sharp decline and then a recovery towards 2013/14.

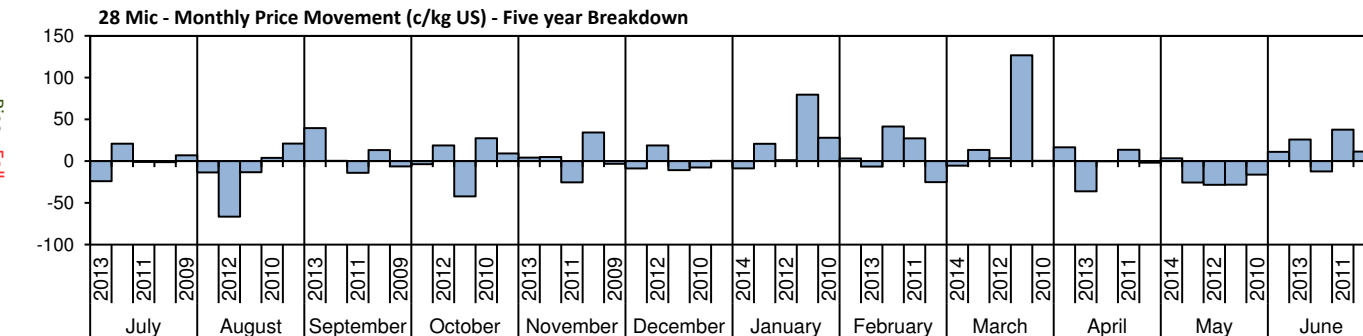
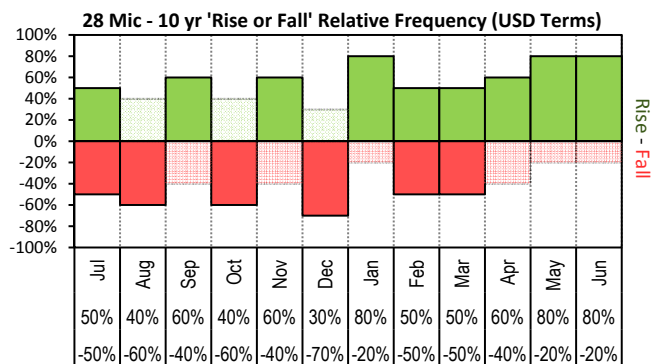
[illegible]



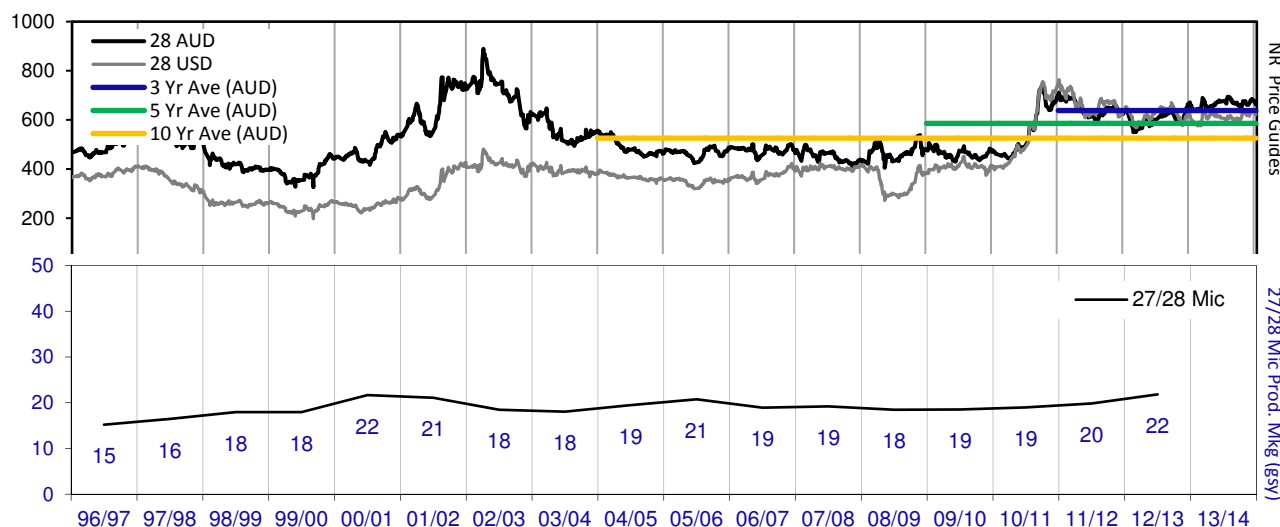
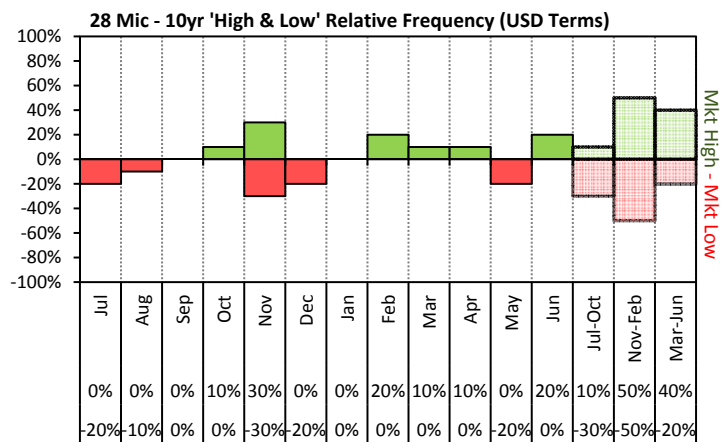
# JEMALONG WOOL BULLETIN

(week ending 27/06/2014)

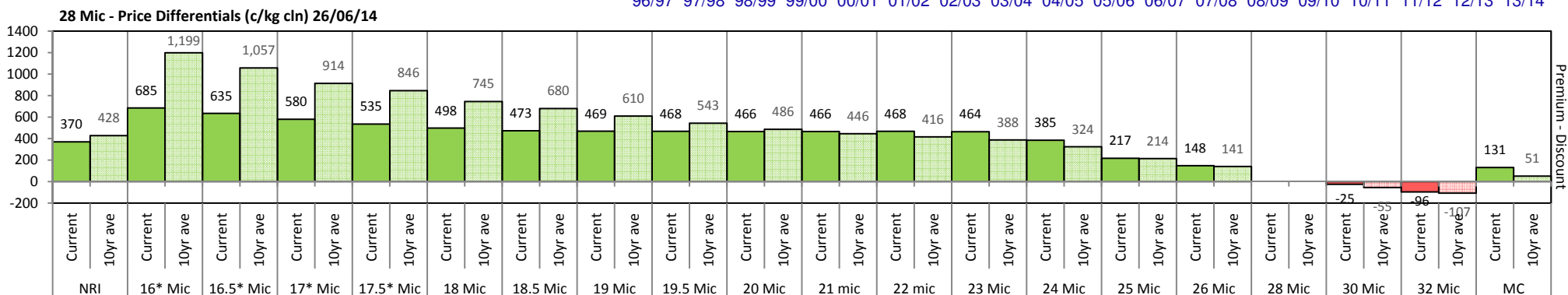
Page 14/25



The above 'Rise or Fall' graph, shows how often the market has risen or fallen in a given month over the past 10 years, it does not show the extent of the movement only the frequency of direction. The 'Monthly Price Movement' graph shows the extent of movement for each month, for the past 5 years.



The above graph, shows how often the '12 month high & low' have been achieved for a given month over the past 10 years. It is not a measure of probability.



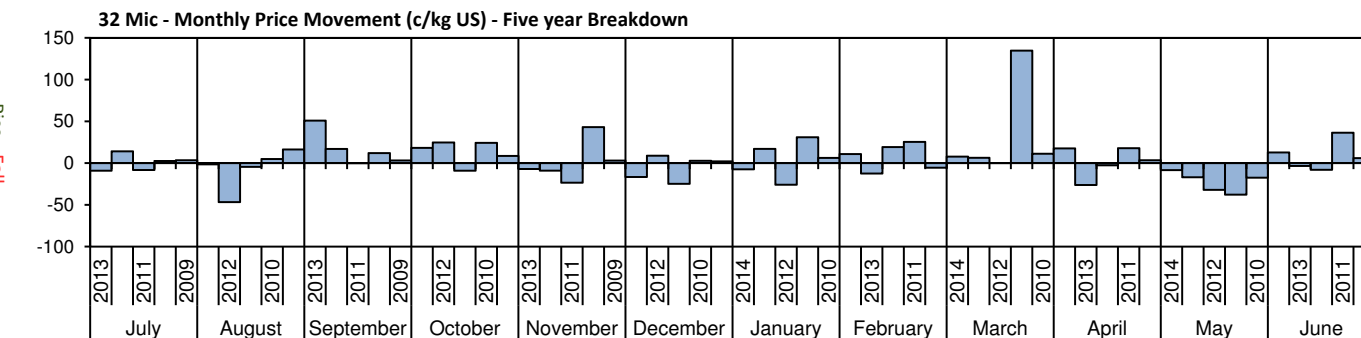
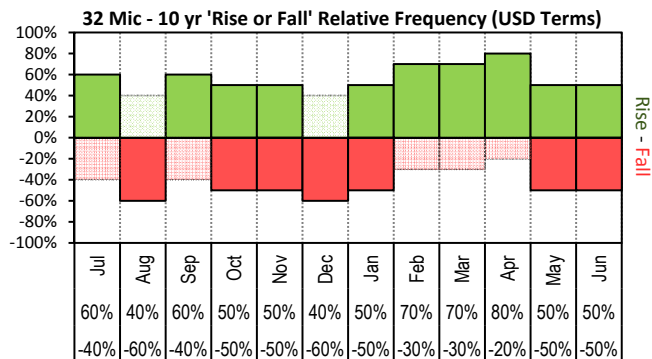




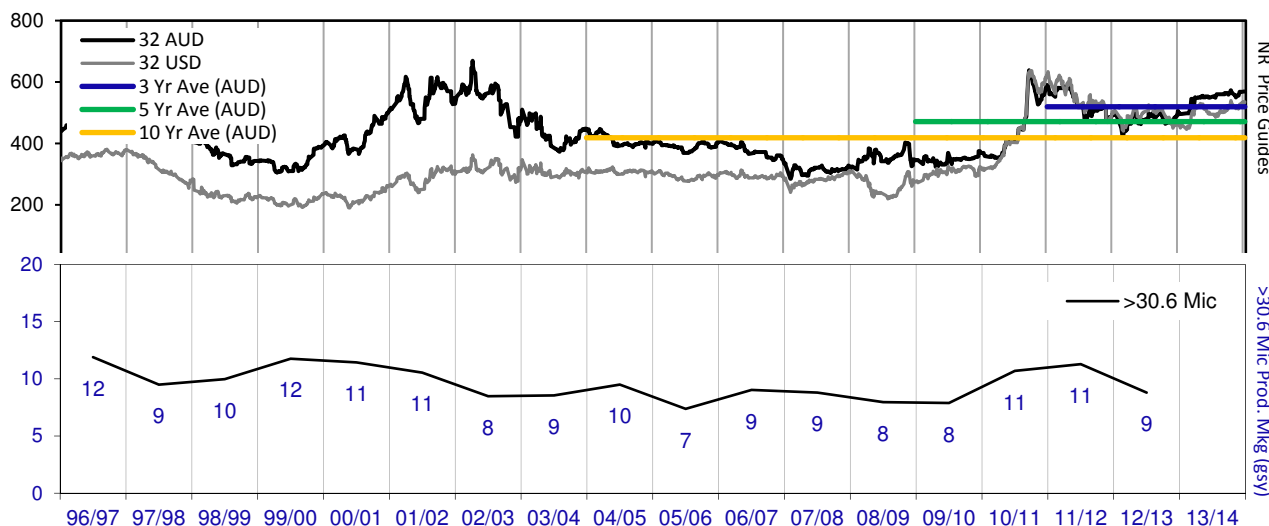
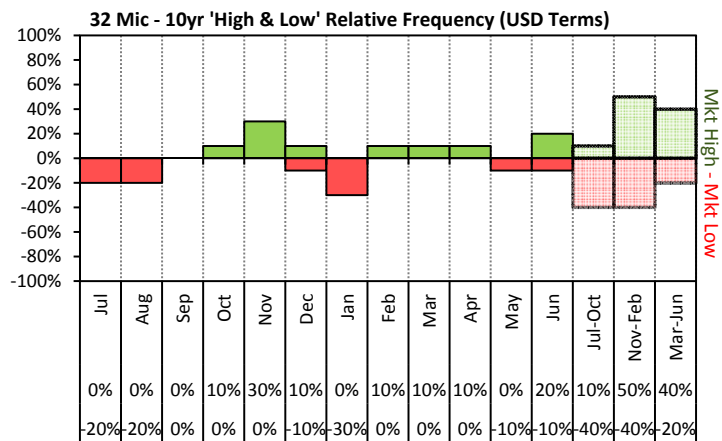
# JEMALONG WOOL BULLETIN

(week ending 27/06/2014)

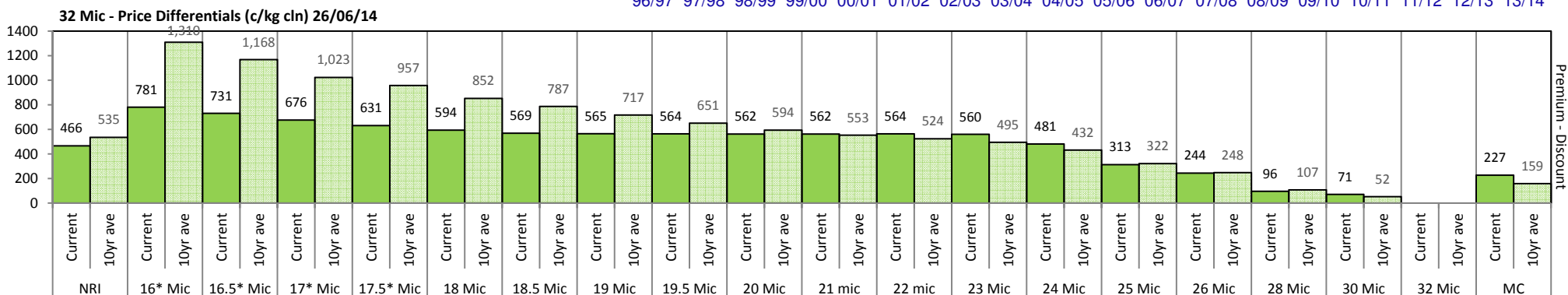
Page 15/25



The above 'Rise or Fall' graph, shows how often the market has risen or fallen in a given month over the past 10 years, it does not show the extent of the movement only the frequency of direction. The 'Monthly Price Movement' graph shows the extent of movement for each month, for the past 5 years.



The above graph, shows how often the '12 month high & low' have been achieved for a given month over the past 10 years. It is not a measure of probability.

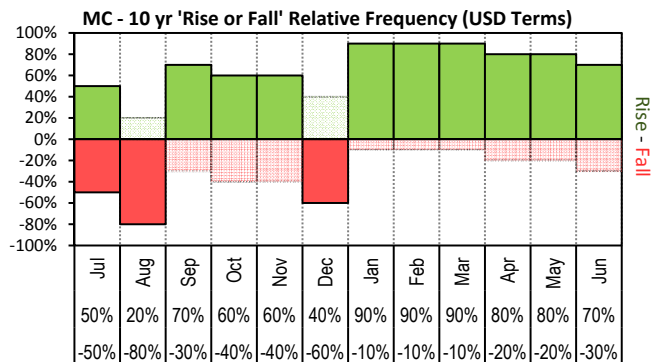




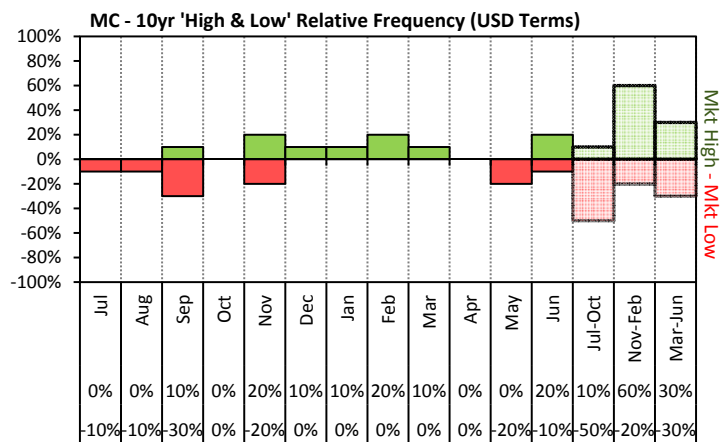
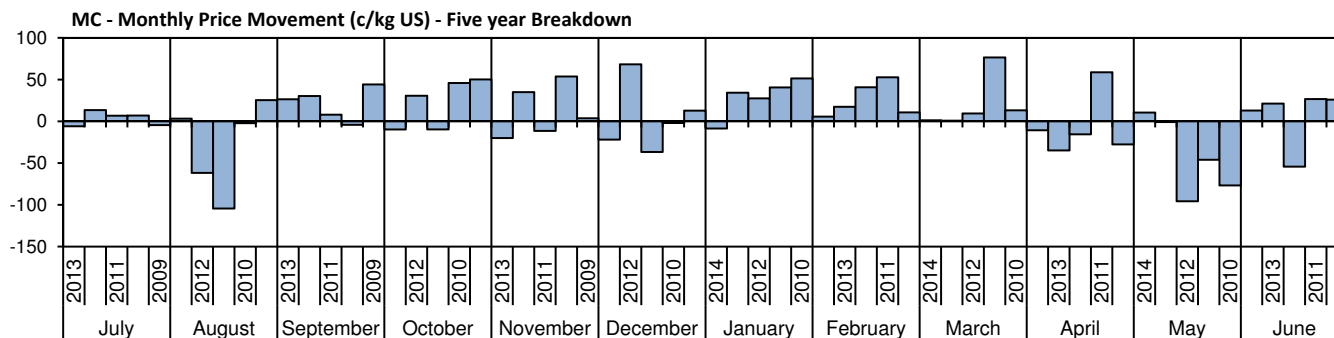
# JEMALONG WOOL BULLETIN

(week ending 27/06/2014)

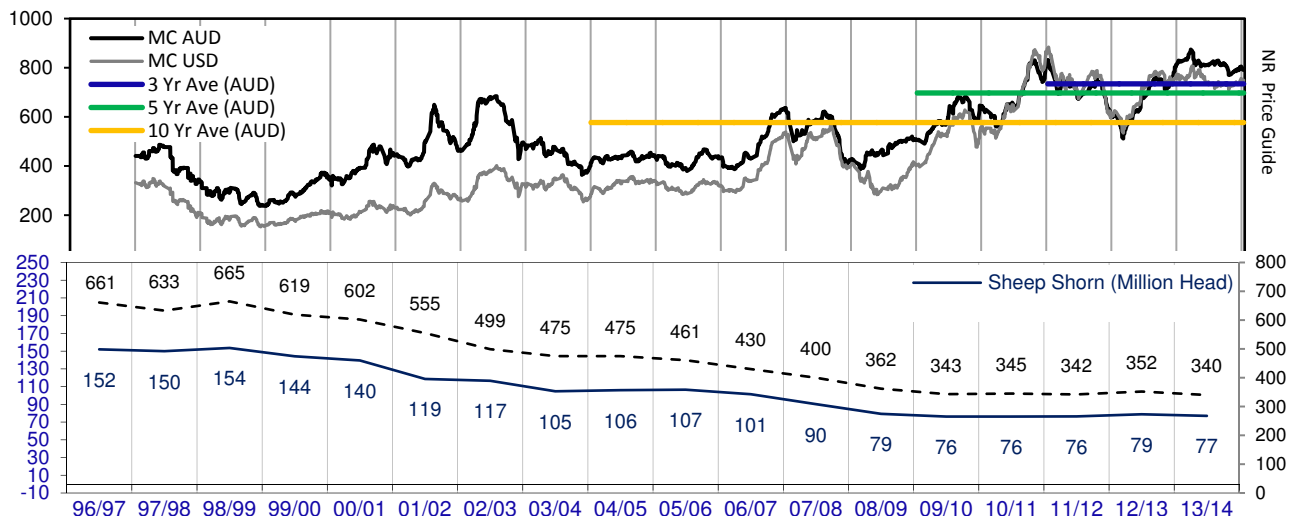
Page 16/25



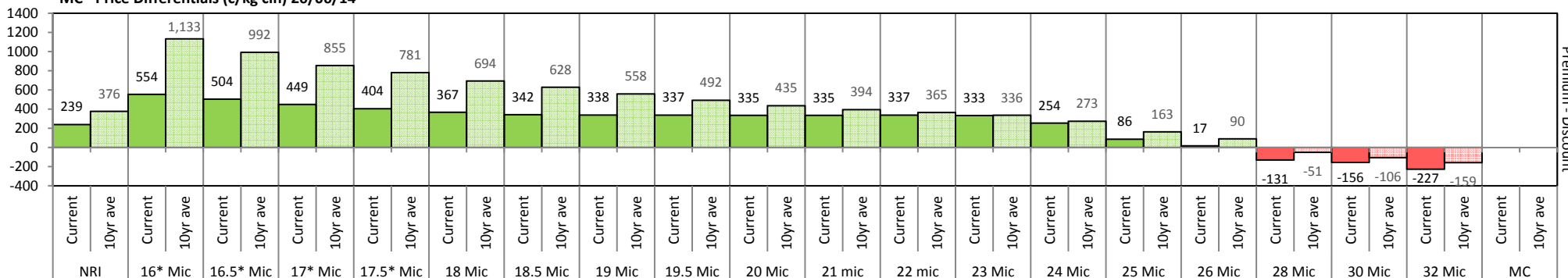
The above 'Rise or Fall' graph, shows how often the market has risen or fallen in a given month over the past 10 years, it does not show the extent of the movement only the frequency of direction. The 'Monthly Price Movement' graph shows the extent of movement for each month, for the past 5 years.



The above graph, shows how often the '12 month high & low' have been achieved for a given month over the past 10 years. It is not a measure of probability.



## MC - Price Differentials (c/kg cln) 26/06/14





## Two Year Export Snapshot (Greasy Equivalent - Million Kilos)

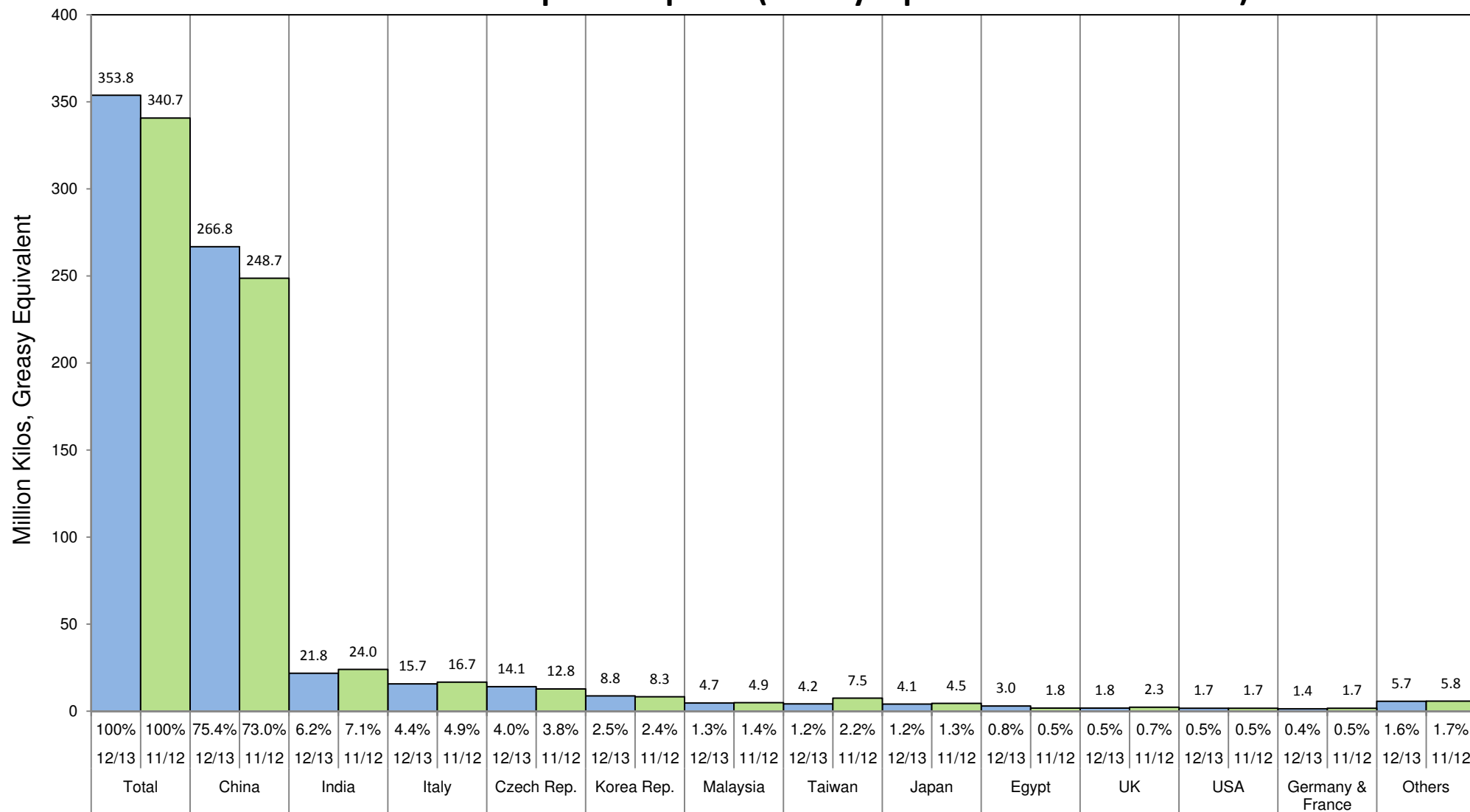




Table 7: Returns pr head for skirted fleece wool.

Skirted FLC Weight		Micron																	
9 Kg		16	16.5	17	17.5	18	18.5	19	19.5	20	21	22	23	24	25	26	28	30	32
Yield (Sch Dry)	25% Current	\$30	\$29	\$28	\$27	\$26	\$26	\$26	\$25	\$25	\$25	\$25	\$25	\$24	\$20	\$18	\$15	\$14	\$13
	10yr ave.	\$39	\$36	\$32	\$31	\$29	\$27	\$26	\$24	\$23	\$22	\$21	\$21	\$19	\$17	\$15	\$12	\$11	\$9
	30% Current	\$36	\$35	\$34	\$32	\$31	\$31	\$31	\$31	\$31	\$31	\$31	\$30	\$28	\$24	\$22	\$18	\$17	\$15
	10yr ave.	\$47	\$43	\$39	\$37	\$34	\$33	\$31	\$29	\$27	\$26	\$25	\$25	\$23	\$20	\$18	\$14	\$13	\$11
	35% Current	\$43	\$41	\$39	\$38	\$37	\$36	\$36	\$36	\$36	\$36	\$36	\$36	\$33	\$28	\$26	\$21	\$20	\$18
	10yr ave.	\$54	\$50	\$45	\$43	\$40	\$38	\$36	\$34	\$32	\$31	\$30	\$29	\$27	\$23	\$21	\$17	\$15	\$13
	40% Current	\$49	\$47	\$45	\$43	\$42	\$41	\$41	\$41	\$41	\$41	\$41	\$41	\$38	\$32	\$29	\$24	\$23	\$20
	10yr ave.	\$62	\$57	\$52	\$50	\$46	\$43	\$41	\$38	\$36	\$35	\$34	\$33	\$31	\$27	\$24	\$19	\$17	\$15
	45% Current	\$55	\$53	\$50	\$49	\$47	\$46	\$46	\$46	\$46	\$46	\$46	\$46	\$43	\$36	\$33	\$27	\$26	\$23
	10yr ave.	\$70	\$64	\$58	\$56	\$51	\$49	\$46	\$43	\$41	\$39	\$38	\$37	\$34	\$30	\$27	\$21	\$19	\$17
	50% Current	\$61	\$59	\$56	\$54	\$52	\$51	\$51	\$51	\$51	\$51	\$51	\$51	\$47	\$40	\$37	\$30	\$29	\$26
	10yr ave.	\$78	\$71	\$65	\$62	\$57	\$54	\$51	\$48	\$46	\$44	\$42	\$41	\$38	\$33	\$30	\$24	\$21	\$19
	55% Current	\$67	\$64	\$62	\$59	\$58	\$56	\$56	\$56	\$56	\$56	\$56	\$56	\$52	\$44	\$40	\$33	\$32	\$28
	10yr ave.	\$86	\$79	\$71	\$68	\$63	\$60	\$56	\$53	\$50	\$48	\$47	\$45	\$42	\$37	\$33	\$26	\$23	\$21
	60% Current	\$73	\$70	\$67	\$65	\$63	\$61	\$61	\$61	\$61	\$61	\$61	\$61	\$57	\$48	\$44	\$36	\$35	\$31
	10yr ave.	\$93	\$86	\$78	\$74	\$69	\$65	\$61	\$58	\$55	\$52	\$51	\$49	\$46	\$40	\$36	\$28	\$25	\$23
	65% Current	\$79	\$76	\$73	\$70	\$68	\$67	\$66	\$66	\$66	\$66	\$66	\$66	\$61	\$52	\$48	\$39	\$37	\$33
	10yr ave.	\$101	\$93	\$84	\$81	\$74	\$70	\$66	\$63	\$59	\$57	\$55	\$53	\$50	\$43	\$39	\$31	\$28	\$25
	70% Current	\$85	\$82	\$78	\$76	\$73	\$72	\$71	\$71	\$71	\$71	\$71	\$71	\$66	\$56	\$51	\$42	\$40	\$36
	10yr ave.	\$109	\$100	\$91	\$87	\$80	\$76	\$72	\$67	\$64	\$61	\$59	\$58	\$54	\$47	\$42	\$33	\$30	\$26
	75% Current	\$91	\$88	\$84	\$81	\$79	\$77	\$77	\$76	\$76	\$76	\$76	\$76	\$71	\$60	\$55	\$45	\$43	\$38
	10yr ave.	\$117	\$107	\$97	\$93	\$86	\$81	\$77	\$72	\$68	\$66	\$64	\$62	\$57	\$50	\$45	\$36	\$32	\$28
	80% Current	\$97	\$94	\$90	\$86	\$84	\$82	\$82	\$82	\$81	\$81	\$82	\$81	\$76	\$64	\$59	\$48	\$46	\$41
	10yr ave.	\$124	\$114	\$104	\$99	\$92	\$87	\$82	\$77	\$73	\$70	\$68	\$66	\$61	\$53	\$48	\$38	\$34	\$30
	85% Current	\$103	\$99	\$95	\$92	\$89	\$87	\$87	\$87	\$87	\$87	\$87	\$86	\$80	\$67	\$62	\$51	\$49	\$44
	10yr ave.	\$132	\$121	\$110	\$105	\$97	\$92	\$87	\$82	\$77	\$74	\$72	\$70	\$65	\$57	\$51	\$40	\$36	\$32

The above shows estimated returns per head for skirted fleece wool. These figures do not take into account the value of skirtings and oddments and do not take into account discounts that may apply for faults under individual circumstances. These figures are based on a market index of 100% and should be used as a guide only. Returns over \$30 / head for fleece wool are highlighted.



Table 8: Returns pr head for skirted fleece wool.

Skirted FLC Weight		Micron																	
8 Kg		16	16.5	17	17.5	18	18.5	19	19.5	20	21	22	23	24	25	26	28	30	32
Yield (Sch Dry)	25% Current	\$27	\$26	\$25	\$24	\$23	\$23	\$23	\$23	\$23	\$23	\$23	\$23	\$21	\$18	\$16	\$13	\$13	\$11
	10yr ave.	\$35	\$32	\$29	\$28	\$25	\$24	\$23	\$21	\$20	\$19	\$19	\$18	\$17	\$15	\$13	\$11	\$9	\$8
	30% Current	\$32	\$31	\$30	\$29	\$28	\$27	\$27	\$27	\$27	\$27	\$27	\$27	\$25	\$21	\$20	\$16	\$15	\$14
	10yr ave.	\$41	\$38	\$35	\$33	\$31	\$29	\$27	\$26	\$24	\$23	\$23	\$22	\$20	\$18	\$16	\$13	\$11	\$10
	35% Current	\$38	\$36	\$35	\$34	\$33	\$32	\$32	\$32	\$32	\$32	\$32	\$32	\$29	\$25	\$23	\$19	\$18	\$16
	10yr ave.	\$48	\$44	\$40	\$39	\$36	\$34	\$32	\$30	\$28	\$27	\$26	\$26	\$24	\$21	\$19	\$15	\$13	\$12
	40% Current	\$43	\$42	\$40	\$38	\$37	\$36	\$36	\$36	\$36	\$36	\$36	\$36	\$34	\$28	\$26	\$21	\$20	\$18
	10yr ave.	\$55	\$51	\$46	\$44	\$41	\$39	\$36	\$34	\$32	\$31	\$30	\$29	\$27	\$24	\$21	\$17	\$15	\$13
	45% Current	\$49	\$47	\$45	\$43	\$42	\$41	\$41	\$41	\$41	\$41	\$41	\$41	\$38	\$32	\$29	\$24	\$23	\$20
	10yr ave.	\$62	\$57	\$52	\$50	\$46	\$43	\$41	\$38	\$36	\$35	\$34	\$33	\$31	\$27	\$24	\$19	\$17	\$15
	50% Current	\$54	\$52	\$50	\$48	\$47	\$46	\$45	\$45	\$45	\$45	\$45	\$45	\$42	\$35	\$33	\$27	\$26	\$23
	10yr ave.	\$69	\$64	\$58	\$55	\$51	\$48	\$45	\$43	\$40	\$39	\$38	\$37	\$34	\$30	\$27	\$21	\$19	\$17
	55% Current	\$59	\$57	\$55	\$53	\$51	\$50	\$50	\$50	\$50	\$50	\$50	\$50	\$46	\$39	\$36	\$29	\$28	\$25
	10yr ave.	\$76	\$70	\$63	\$61	\$56	\$53	\$50	\$47	\$45	\$43	\$41	\$40	\$37	\$33	\$29	\$23	\$21	\$18
	60% Current	\$65	\$62	\$60	\$58	\$56	\$55	\$54	\$54	\$54	\$54	\$54	\$54	\$50	\$42	\$39	\$32	\$31	\$27
	10yr ave.	\$83	\$76	\$69	\$66	\$61	\$58	\$54	\$51	\$49	\$47	\$45	\$44	\$41	\$36	\$32	\$25	\$23	\$20
	65% Current	\$70	\$68	\$65	\$62	\$60	\$59	\$59	\$59	\$59	\$59	\$59	\$59	\$55	\$46	\$42	\$35	\$33	\$30
	10yr ave.	\$90	\$83	\$75	\$72	\$66	\$63	\$59	\$56	\$53	\$50	\$49	\$47	\$44	\$38	\$35	\$27	\$24	\$22
	70% Current	\$76	\$73	\$70	\$67	\$65	\$64	\$64	\$63	\$63	\$63	\$63	\$63	\$59	\$49	\$46	\$37	\$36	\$32
	10yr ave.	\$97	\$89	\$81	\$77	\$71	\$67	\$64	\$60	\$57	\$54	\$53	\$51	\$48	\$41	\$37	\$29	\$26	\$23
	75% Current	\$81	\$78	\$75	\$72	\$70	\$68	\$68	\$68	\$68	\$68	\$68	\$68	\$63	\$53	\$49	\$40	\$38	\$34
	10yr ave.	\$104	\$95	\$87	\$83	\$76	\$72	\$68	\$64	\$61	\$58	\$57	\$55	\$51	\$44	\$40	\$32	\$28	\$25
	80% Current	\$86	\$83	\$80	\$77	\$74	\$73	\$73	\$73	\$72	\$72	\$73	\$72	\$67	\$56	\$52	\$43	\$41	\$36
	10yr ave.	\$111	\$102	\$92	\$88	\$81	\$77	\$73	\$68	\$65	\$62	\$60	\$58	\$54	\$47	\$43	\$34	\$30	\$27
	85% Current	\$92	\$88	\$85	\$82	\$79	\$77	\$77	\$77	\$77	\$77	\$77	\$77	\$71	\$60	\$55	\$45	\$44	\$39
	10yr ave.	\$118	\$108	\$98	\$94	\$86	\$82	\$77	\$73	\$69	\$66	\$64	\$62	\$58	\$50	\$45	\$36	\$32	\$28

The above shows estimated returns per head for skirted fleece wool. These figures do not take into account the value of skirtings and oddments and do not take into account discounts that may apply for faults under individual circumstances. These figures are based on a market index of 100% and should be used as a guide only. Returns over \$30 / head for fleece wool are highlighted.



Table 9: Returns pr head for skirted fleece wool.

Skirted FLC Weight		Micron																	
7 Kg		16	16.5	17	17.5	18	18.5	19	19.5	20	21	22	23	24	25	26	28	30	32
Yield (Sch Dry)	25% Current	\$24	\$23	\$22	\$21	\$20	\$20	\$20	\$20	\$20	\$20	\$20	\$20	\$18	\$15	\$14	\$12	\$11	\$10
	10yr ave.	\$30	\$28	\$25	\$24	\$22	\$21	\$20	\$19	\$18	\$17	\$16	\$16	\$15	\$13	\$12	\$9	\$8	\$7
	30% Current	\$28	\$27	\$26	\$25	\$24	\$24	\$24	\$24	\$24	\$24	\$24	\$24	\$22	\$19	\$17	\$14	\$13	\$12
	10yr ave.	\$36	\$33	\$30	\$29	\$27	\$25	\$24	\$22	\$21	\$20	\$20	\$19	\$18	\$16	\$14	\$11	\$10	\$9
	35% Current	\$33	\$32	\$31	\$29	\$28	\$28	\$28	\$28	\$28	\$28	\$28	\$28	\$26	\$22	\$20	\$16	\$16	\$14
	10yr ave.	\$42	\$39	\$35	\$34	\$31	\$30	\$28	\$26	\$25	\$24	\$23	\$22	\$21	\$18	\$16	\$13	\$12	\$10
	40% Current	\$38	\$36	\$35	\$34	\$33	\$32	\$32	\$32	\$32	\$32	\$32	\$32	\$29	\$25	\$23	\$19	\$18	\$16
	10yr ave.	\$48	\$44	\$40	\$39	\$36	\$34	\$32	\$30	\$28	\$27	\$26	\$26	\$24	\$21	\$19	\$15	\$13	\$12
	45% Current	\$43	\$41	\$39	\$38	\$37	\$36	\$36	\$36	\$36	\$36	\$36	\$36	\$33	\$28	\$26	\$21	\$20	\$18
	10yr ave.	\$54	\$50	\$45	\$43	\$40	\$38	\$36	\$34	\$32	\$31	\$30	\$29	\$27	\$23	\$21	\$17	\$15	\$13
	50% Current	\$47	\$46	\$44	\$42	\$41	\$40	\$40	\$40	\$40	\$40	\$40	\$40	\$37	\$31	\$28	\$23	\$22	\$20
	10yr ave.	\$61	\$56	\$50	\$48	\$44	\$42	\$40	\$37	\$35	\$34	\$33	\$32	\$30	\$26	\$23	\$18	\$16	\$15
	55% Current	\$52	\$50	\$48	\$46	\$45	\$44	\$44	\$44	\$44	\$44	\$44	\$43	\$40	\$34	\$31	\$26	\$25	\$22
	10yr ave.	\$67	\$61	\$56	\$53	\$49	\$46	\$44	\$41	\$39	\$37	\$36	\$35	\$33	\$28	\$26	\$20	\$18	\$16
	60% Current	\$57	\$55	\$52	\$50	\$49	\$48	\$48	\$48	\$48	\$48	\$48	\$47	\$44	\$37	\$34	\$28	\$27	\$24
	10yr ave.	\$73	\$67	\$61	\$58	\$53	\$51	\$48	\$45	\$43	\$41	\$40	\$38	\$36	\$31	\$28	\$22	\$20	\$18
	65% Current	\$61	\$59	\$57	\$55	\$53	\$52	\$52	\$52	\$51	\$51	\$52	\$51	\$48	\$40	\$37	\$30	\$29	\$26
	10yr ave.	\$79	\$72	\$66	\$63	\$58	\$55	\$52	\$49	\$46	\$44	\$43	\$42	\$39	\$34	\$30	\$24	\$21	\$19
	70% Current	\$66	\$64	\$61	\$59	\$57	\$56	\$56	\$56	\$55	\$55	\$56	\$55	\$51	\$43	\$40	\$33	\$31	\$28
	10yr ave.	\$85	\$78	\$71	\$67	\$62	\$59	\$56	\$52	\$50	\$48	\$46	\$45	\$42	\$36	\$33	\$26	\$23	\$21
	75% Current	\$71	\$68	\$65	\$63	\$61	\$60	\$60	\$59	\$59	\$59	\$59	\$59	\$55	\$46	\$43	\$35	\$34	\$30
	10yr ave.	\$91	\$83	\$76	\$72	\$67	\$63	\$60	\$56	\$53	\$51	\$49	\$48	\$45	\$39	\$35	\$28	\$25	\$22
	80% Current	\$76	\$73	\$70	\$67	\$65	\$64	\$64	\$63	\$63	\$63	\$63	\$63	\$59	\$49	\$46	\$37	\$36	\$32
	10yr ave.	\$97	\$89	\$81	\$77	\$71	\$67	\$64	\$60	\$57	\$54	\$53	\$51	\$48	\$41	\$37	\$29	\$26	\$23
	85% Current	\$80	\$77	\$74	\$71	\$69	\$68	\$67	\$67	\$67	\$67	\$67	\$67	\$62	\$52	\$48	\$40	\$38	\$34
	10yr ave.	\$103	\$94	\$86	\$82	\$76	\$72	\$68	\$64	\$60	\$58	\$56	\$54	\$51	\$44	\$40	\$31	\$28	\$25

The above shows estimated returns per head for skirted fleece wool. These figures do not take into account the value of skirtings and oddments and do not take into account discounts that may apply for faults under individual circumstances. These figures are based on a market index of 100% and should be used as a guide only. Returns over \$30 / head for fleece wool are highlighted.





Table 10: Returns pr head for skirted fleece wool.

Skirted FLC Weight		Micron																	
6 Kg		16	16.5	17	17.5	18	18.5	19	19.5	20	21	22	23	24	25	26	28	30	32
Yield (Sch Dry)	25% Current	\$20	\$20	\$19	\$18	\$17	\$17	\$17	\$17	\$17	\$17	\$17	\$17	\$16	\$13	\$12	\$10	\$10	\$9
	10yr ave.	\$26	\$24	\$22	\$21	\$19	\$18	\$17	\$16	\$15	\$15	\$14	\$14	\$13	\$11	\$10	\$8	\$7	\$6
	30% Current	\$24	\$23	\$22	\$22	\$21	\$20	\$20	\$20	\$20	\$20	\$20	\$20	\$19	\$16	\$15	\$12	\$12	\$10
	10yr ave.	\$31	\$29	\$26	\$25	\$23	\$22	\$20	\$19	\$18	\$17	\$17	\$16	\$15	\$13	\$12	\$9	\$8	\$8
	35% Current	\$28	\$27	\$26	\$25	\$24	\$24	\$24	\$24	\$24	\$24	\$24	\$24	\$22	\$19	\$17	\$14	\$13	\$12
	10yr ave.	\$36	\$33	\$30	\$29	\$27	\$25	\$24	\$22	\$21	\$20	\$20	\$19	\$18	\$16	\$14	\$11	\$10	\$9
	40% Current	\$32	\$31	\$30	\$29	\$28	\$27	\$27	\$27	\$27	\$27	\$27	\$27	\$25	\$21	\$20	\$16	\$15	\$14
	10yr ave.	\$41	\$38	\$35	\$33	\$31	\$29	\$27	\$26	\$24	\$23	\$23	\$22	\$20	\$18	\$16	\$13	\$11	\$10
	45% Current	\$36	\$35	\$34	\$32	\$31	\$31	\$31	\$31	\$31	\$31	\$31	\$30	\$28	\$24	\$22	\$18	\$17	\$15
	10yr ave.	\$47	\$43	\$39	\$37	\$34	\$33	\$31	\$29	\$27	\$26	\$25	\$25	\$23	\$20	\$18	\$14	\$13	\$11
	50% Current	\$41	\$39	\$37	\$36	\$35	\$34	\$34	\$34	\$34	\$34	\$34	\$34	\$32	\$26	\$24	\$20	\$19	\$17
	10yr ave.	\$52	\$48	\$43	\$41	\$38	\$36	\$34	\$32	\$30	\$29	\$28	\$27	\$26	\$22	\$20	\$16	\$14	\$13
	55% Current	\$45	\$43	\$41	\$40	\$38	\$38	\$37	\$37	\$37	\$37	\$37	\$37	\$35	\$29	\$27	\$22	\$21	\$19
	10yr ave.	\$57	\$52	\$48	\$45	\$42	\$40	\$37	\$35	\$33	\$32	\$31	\$30	\$28	\$24	\$22	\$17	\$16	\$14
	60% Current	\$49	\$47	\$45	\$43	\$42	\$41	\$41	\$41	\$41	\$41	\$41	\$41	\$38	\$32	\$29	\$24	\$23	\$20
	10yr ave.	\$62	\$57	\$52	\$50	\$46	\$43	\$41	\$38	\$36	\$35	\$34	\$33	\$31	\$27	\$24	\$19	\$17	\$15
	65% Current	\$53	\$51	\$49	\$47	\$45	\$44	\$44	\$44	\$44	\$44	\$44	\$44	\$41	\$34	\$32	\$26	\$25	\$22
	10yr ave.	\$67	\$62	\$56	\$54	\$50	\$47	\$44	\$42	\$39	\$38	\$37	\$36	\$33	\$29	\$26	\$21	\$18	\$16
	70% Current	\$57	\$55	\$52	\$50	\$49	\$48	\$48	\$48	\$48	\$48	\$48	\$47	\$44	\$37	\$34	\$28	\$27	\$24
	10yr ave.	\$73	\$67	\$61	\$58	\$53	\$51	\$48	\$45	\$43	\$41	\$40	\$38	\$36	\$31	\$28	\$22	\$20	\$18
	75% Current	\$61	\$59	\$56	\$54	\$52	\$51	\$51	\$51	\$51	\$51	\$51	\$51	\$47	\$40	\$37	\$30	\$29	\$26
	10yr ave.	\$78	\$71	\$65	\$62	\$57	\$54	\$51	\$48	\$46	\$44	\$42	\$41	\$38	\$33	\$30	\$24	\$21	\$19
	80% Current	\$65	\$62	\$60	\$58	\$56	\$55	\$54	\$54	\$54	\$54	\$54	\$54	\$50	\$42	\$39	\$32	\$31	\$27
	10yr ave.	\$83	\$76	\$69	\$66	\$61	\$58	\$54	\$51	\$49	\$47	\$45	\$44	\$41	\$36	\$32	\$25	\$23	\$20
	85% Current	\$69	\$66	\$63	\$61	\$59	\$58	\$58	\$58	\$58	\$58	\$58	\$58	\$54	\$45	\$41	\$34	\$33	\$29
	10yr ave.	\$88	\$81	\$74	\$70	\$65	\$61	\$58	\$55	\$52	\$50	\$48	\$47	\$43	\$38	\$34	\$27	\$24	\$21

The above shows estimated returns per head for skirted fleece wool. These figures do not take into account the value of skirtings and oddments and do not take into account discounts that may apply for faults under individual circumstances. These figures are based on a market index of 100% and should be used as a guide only. Returns over \$30 / head for fleece wool are highlighted.



Table 11: Returns pr head for skirted fleece wool.

Skirted FLC Weight		Micron																	
5 Kg		16	16.5	17	17.5	18	18.5	19	19.5	20	21	22	23	24	25	26	28	30	32
Yield (Sch Dry)	25% Current	\$17	\$16	\$16	\$15	\$15	\$14	\$14	\$14	\$14	\$14	\$14	\$14	\$13	\$11	\$10	\$8	\$8	\$7
	10yr ave.	\$22	\$20	\$18	\$17	\$16	\$15	\$14	\$13	\$13	\$12	\$12	\$11	\$11	\$9	\$8	\$7	\$6	\$5
	30% Current	\$20	\$20	\$19	\$18	\$17	\$17	\$17	\$17	\$17	\$17	\$17	\$17	\$16	\$13	\$12	\$10	\$10	\$9
	10yr ave.	\$26	\$24	\$22	\$21	\$19	\$18	\$17	\$16	\$15	\$15	\$14	\$14	\$13	\$11	\$10	\$8	\$7	\$6
	35% Current	\$24	\$23	\$22	\$21	\$20	\$20	\$20	\$20	\$20	\$20	\$20	\$20	\$18	\$15	\$14	\$12	\$11	\$10
	10yr ave.	\$30	\$28	\$25	\$24	\$22	\$21	\$20	\$19	\$18	\$17	\$16	\$16	\$15	\$13	\$12	\$9	\$8	\$7
	40% Current	\$27	\$26	\$25	\$24	\$23	\$23	\$23	\$23	\$23	\$23	\$23	\$23	\$21	\$18	\$16	\$13	\$13	\$11
	10yr ave.	\$35	\$32	\$29	\$28	\$25	\$24	\$23	\$21	\$20	\$19	\$19	\$18	\$17	\$15	\$13	\$11	\$9	\$8
	45% Current	\$30	\$29	\$28	\$27	\$26	\$26	\$26	\$25	\$25	\$25	\$25	\$25	\$24	\$20	\$18	\$15	\$14	\$13
	10yr ave.	\$39	\$36	\$32	\$31	\$29	\$27	\$26	\$24	\$23	\$22	\$21	\$21	\$19	\$17	\$15	\$12	\$11	\$9
	50% Current	\$34	\$33	\$31	\$30	\$29	\$28	\$28	\$28	\$28	\$28	\$28	\$28	\$26	\$22	\$20	\$17	\$16	\$14
	10yr ave.	\$43	\$40	\$36	\$34	\$32	\$30	\$28	\$27	\$25	\$24	\$24	\$23	\$21	\$19	\$17	\$13	\$12	\$10
	55% Current	\$37	\$36	\$34	\$33	\$32	\$31	\$31	\$31	\$31	\$31	\$31	\$31	\$29	\$24	\$22	\$18	\$18	\$16
	10yr ave.	\$48	\$44	\$40	\$38	\$35	\$33	\$31	\$29	\$28	\$27	\$26	\$25	\$23	\$20	\$18	\$14	\$13	\$12
	60% Current	\$41	\$39	\$37	\$36	\$35	\$34	\$34	\$34	\$34	\$34	\$34	\$34	\$32	\$26	\$24	\$20	\$19	\$17
	10yr ave.	\$52	\$48	\$43	\$41	\$38	\$36	\$34	\$32	\$30	\$29	\$28	\$27	\$26	\$22	\$20	\$16	\$14	\$13
	65% Current	\$44	\$42	\$40	\$39	\$38	\$37	\$37	\$37	\$37	\$37	\$37	\$37	\$34	\$29	\$26	\$22	\$21	\$18
	10yr ave.	\$56	\$52	\$47	\$45	\$41	\$39	\$37	\$35	\$33	\$32	\$31	\$30	\$28	\$24	\$22	\$17	\$15	\$14
	70% Current	\$47	\$46	\$44	\$42	\$41	\$40	\$40	\$40	\$40	\$40	\$40	\$40	\$37	\$31	\$28	\$23	\$22	\$20
	10yr ave.	\$61	\$56	\$50	\$48	\$44	\$42	\$40	\$37	\$35	\$34	\$33	\$32	\$30	\$26	\$23	\$18	\$16	\$15
	75% Current	\$51	\$49	\$47	\$45	\$44	\$43	\$43	\$42	\$42	\$42	\$42	\$42	\$39	\$33	\$30	\$25	\$24	\$21
	10yr ave.	\$65	\$60	\$54	\$52	\$48	\$45	\$43	\$40	\$38	\$36	\$35	\$34	\$32	\$28	\$25	\$20	\$18	\$16
	80% Current	\$54	\$52	\$50	\$48	\$47	\$46	\$45	\$45	\$45	\$45	\$45	\$45	\$42	\$35	\$33	\$27	\$26	\$23
	10yr ave.	\$69	\$64	\$58	\$55	\$51	\$48	\$45	\$43	\$40	\$39	\$38	\$37	\$34	\$30	\$27	\$21	\$19	\$17
	85% Current	\$57	\$55	\$53	\$51	\$49	\$48	\$48	\$48	\$48	\$48	\$48	\$48	\$45	\$37	\$35	\$28	\$27	\$24
	10yr ave.	\$73	\$67	\$61	\$59	\$54	\$51	\$48	\$45	\$43	\$41	\$40	\$39	\$36	\$31	\$28	\$22	\$20	\$18

The above shows estimated returns per head for skirted fleece wool. These figures do not take into account the value of skirtings and oddments and do not take into account discounts that may apply for faults under individual circumstances. These figures are based on a market index of 100% and should be used as a guide only. Returns over \$30 / head for fleece wool are highlighted.



Table 12: Returns pr head for skirted fleece wool.

Skirted FLC Weight		Micron																	
4 Kg		16	16.5	17	17.5	18	18.5	19	19.5	20	21	22	23	24	25	26	28	30	32
Yield (Sch Dry)	25% Current	\$14	\$13	\$12	\$12	\$12	\$11	\$11	\$11	\$11	\$11	\$11	\$11	\$11	\$9	\$8	\$7	\$6	\$6
	10yr ave.	\$17	\$16	\$14	\$14	\$13	\$12	\$11	\$11	\$10	\$10	\$9	\$9	\$9	\$7	\$7	\$5	\$5	\$4
	30% Current	\$16	\$16	\$15	\$14	\$14	\$14	\$14	\$14	\$14	\$14	\$14	\$14	\$13	\$11	\$10	\$8	\$8	\$7
	10yr ave.	\$21	\$19	\$17	\$17	\$15	\$14	\$14	\$13	\$12	\$12	\$11	\$11	\$10	\$9	\$8	\$6	\$6	\$5
	35% Current	\$19	\$18	\$17	\$17	\$16	\$16	\$16	\$16	\$16	\$16	\$16	\$16	\$15	\$12	\$11	\$9	\$9	\$8
	10yr ave.	\$24	\$22	\$20	\$19	\$18	\$17	\$16	\$15	\$14	\$14	\$13	\$13	\$12	\$10	\$9	\$7	\$7	\$6
	40% Current	\$22	\$21	\$20	\$19	\$19	\$18	\$18	\$18	\$18	\$18	\$18	\$18	\$17	\$14	\$13	\$11	\$10	\$9
	10yr ave.	\$28	\$25	\$23	\$22	\$20	\$19	\$18	\$17	\$16	\$16	\$15	\$15	\$14	\$12	\$11	\$8	\$8	\$7
	45% Current	\$24	\$23	\$22	\$22	\$21	\$20	\$20	\$20	\$20	\$20	\$20	\$20	\$19	\$16	\$15	\$12	\$12	\$10
	10yr ave.	\$31	\$29	\$26	\$25	\$23	\$22	\$20	\$19	\$18	\$17	\$17	\$16	\$15	\$13	\$12	\$9	\$8	\$8
	50% Current	\$27	\$26	\$25	\$24	\$23	\$23	\$23	\$23	\$23	\$23	\$23	\$23	\$21	\$18	\$16	\$13	\$13	\$11
	10yr ave.	\$35	\$32	\$29	\$28	\$25	\$24	\$23	\$21	\$20	\$19	\$19	\$18	\$17	\$15	\$13	\$11	\$9	\$8
	55% Current	\$30	\$29	\$27	\$26	\$26	\$25	\$25	\$25	\$25	\$25	\$25	\$25	\$23	\$19	\$18	\$15	\$14	\$13
	10yr ave.	\$38	\$35	\$32	\$30	\$28	\$27	\$25	\$24	\$22	\$21	\$21	\$20	\$19	\$16	\$15	\$12	\$10	\$9
	60% Current	\$32	\$31	\$30	\$29	\$28	\$27	\$27	\$27	\$27	\$27	\$27	\$27	\$25	\$21	\$20	\$16	\$15	\$14
	10yr ave.	\$41	\$38	\$35	\$33	\$31	\$29	\$27	\$26	\$24	\$23	\$23	\$22	\$20	\$18	\$16	\$13	\$11	\$10
	65% Current	\$35	\$34	\$32	\$31	\$30	\$30	\$29	\$29	\$29	\$29	\$29	\$29	\$27	\$23	\$21	\$17	\$17	\$15
	10yr ave.	\$45	\$41	\$37	\$36	\$33	\$31	\$30	\$28	\$26	\$25	\$24	\$24	\$22	\$19	\$17	\$14	\$12	\$11
	70% Current	\$38	\$36	\$35	\$34	\$33	\$32	\$32	\$32	\$32	\$32	\$32	\$32	\$29	\$25	\$23	\$19	\$18	\$16
	10yr ave.	\$48	\$44	\$40	\$39	\$36	\$34	\$32	\$30	\$28	\$27	\$26	\$26	\$24	\$21	\$19	\$15	\$13	\$12
	75% Current	\$41	\$39	\$37	\$36	\$35	\$34	\$34	\$34	\$34	\$34	\$34	\$34	\$32	\$26	\$24	\$20	\$19	\$17
	10yr ave.	\$52	\$48	\$43	\$41	\$38	\$36	\$34	\$32	\$30	\$29	\$28	\$27	\$26	\$22	\$20	\$16	\$14	\$13
	80% Current	\$43	\$42	\$40	\$38	\$37	\$36	\$36	\$36	\$36	\$36	\$36	\$36	\$34	\$28	\$26	\$21	\$20	\$18
	10yr ave.	\$55	\$51	\$46	\$44	\$41	\$39	\$36	\$34	\$32	\$31	\$30	\$29	\$27	\$24	\$21	\$17	\$15	\$13
	85% Current	\$46	\$44	\$42	\$41	\$40	\$39	\$39	\$39	\$38	\$38	\$39	\$38	\$36	\$30	\$28	\$23	\$22	\$19
	10yr ave.	\$59	\$54	\$49	\$47	\$43	\$41	\$39	\$36	\$34	\$33	\$32	\$31	\$29	\$25	\$23	\$18	\$16	\$14

The above shows estimated returns per head for skirted fleece wool. These figures do not take into account the value of skirtings and oddments and do not take into account discounts that may apply for faults under individual circumstances. These figures are based on a market index of 100% and should be used as a guide only. Returns over \$30 / head for fleece wool are highlighted.



Table 13: Returns pr head for skirted fleece wool.

Skirted FLC Weight		Micron																	
3 Kg		16	16.5	17	17.5	18	18.5	19	19.5	20	21	22	23	24	25	26	28	30	32
Yield (Sch Dry)	25% Current	\$10	\$10	\$9	\$9	\$9	\$9	\$9	\$8	\$8	\$8	\$8	\$8	\$8	\$7	\$6	\$5	\$5	\$4
	10yr ave.	\$13	\$12	\$11	\$10	\$10	\$9	\$9	\$8	\$8	\$7	\$7	\$7	\$6	\$6	\$5	\$4	\$4	\$3
	30% Current	\$12	\$12	\$11	\$11	\$10	\$10	\$10	\$10	\$10	\$10	\$10	\$10	\$9	\$8	\$7	\$6	\$6	\$5
	10yr ave.	\$16	\$14	\$13	\$12	\$11	\$11	\$10	\$10	\$9	\$9	\$8	\$8	\$8	\$7	\$6	\$5	\$4	\$4
	35% Current	\$14	\$14	\$13	\$13	\$12	\$12	\$12	\$12	\$12	\$12	\$12	\$12	\$11	\$9	\$9	\$7	\$7	\$6
	10yr ave.	\$18	\$17	\$15	\$14	\$13	\$13	\$12	\$11	\$11	\$10	\$10	\$10	\$9	\$8	\$7	\$6	\$5	\$4
	40% Current	\$16	\$16	\$15	\$14	\$14	\$14	\$14	\$14	\$14	\$14	\$14	\$14	\$13	\$11	\$10	\$8	\$8	\$7
	10yr ave.	\$21	\$19	\$17	\$17	\$15	\$14	\$14	\$13	\$12	\$12	\$11	\$11	\$10	\$9	\$8	\$6	\$6	\$5
	45% Current	\$18	\$18	\$17	\$16	\$16	\$15	\$15	\$15	\$15	\$15	\$15	\$15	\$14	\$12	\$11	\$9	\$9	\$8
	10yr ave.	\$23	\$21	\$19	\$19	\$17	\$16	\$15	\$14	\$14	\$13	\$13	\$12	\$11	\$10	\$9	\$7	\$6	\$6
	50% Current	\$20	\$20	\$19	\$18	\$17	\$17	\$17	\$17	\$17	\$17	\$17	\$17	\$16	\$13	\$12	\$10	\$10	\$9
	10yr ave.	\$26	\$24	\$22	\$21	\$19	\$18	\$17	\$16	\$15	\$15	\$14	\$14	\$13	\$11	\$10	\$8	\$7	\$6
	55% Current	\$22	\$21	\$21	\$20	\$19	\$19	\$19	\$19	\$19	\$19	\$19	\$19	\$17	\$15	\$13	\$11	\$11	\$9
	10yr ave.	\$29	\$26	\$24	\$23	\$21	\$20	\$19	\$18	\$17	\$16	\$16	\$15	\$14	\$12	\$11	\$9	\$8	\$7
	60% Current	\$24	\$23	\$22	\$22	\$21	\$20	\$20	\$20	\$20	\$20	\$20	\$20	\$19	\$16	\$15	\$12	\$12	\$10
	10yr ave.	\$31	\$29	\$26	\$25	\$23	\$22	\$20	\$19	\$18	\$17	\$17	\$16	\$15	\$13	\$12	\$9	\$8	\$8
	65% Current	\$26	\$25	\$24	\$23	\$23	\$22	\$22	\$22	\$22	\$22	\$22	\$22	\$20	\$17	\$16	\$13	\$12	\$11
	10yr ave.	\$34	\$31	\$28	\$27	\$25	\$23	\$22	\$21	\$20	\$19	\$18	\$18	\$17	\$14	\$13	\$10	\$9	\$8
	70% Current	\$28	\$27	\$26	\$25	\$24	\$24	\$24	\$24	\$24	\$24	\$24	\$24	\$22	\$19	\$17	\$14	\$13	\$12
	10yr ave.	\$36	\$33	\$30	\$29	\$27	\$25	\$24	\$22	\$21	\$20	\$20	\$19	\$18	\$16	\$14	\$11	\$10	\$9
	75% Current	\$30	\$29	\$28	\$27	\$26	\$26	\$26	\$25	\$25	\$25	\$25	\$25	\$24	\$20	\$18	\$15	\$14	\$13
	10yr ave.	\$39	\$36	\$32	\$31	\$29	\$27	\$26	\$24	\$23	\$22	\$21	\$21	\$19	\$17	\$15	\$12	\$11	\$9
	80% Current	\$32	\$31	\$30	\$29	\$28	\$27	\$27	\$27	\$27	\$27	\$27	\$27	\$25	\$21	\$20	\$16	\$15	\$14
	10yr ave.	\$41	\$38	\$35	\$33	\$31	\$29	\$27	\$26	\$24	\$23	\$23	\$22	\$20	\$18	\$16	\$13	\$11	\$10
	85% Current	\$34	\$33	\$32	\$31	\$30	\$29	\$29	\$29	\$29	\$29	\$29	\$29	\$27	\$22	\$21	\$17	\$16	\$15
	10yr ave.	\$44	\$40	\$37	\$35	\$32	\$31	\$29	\$27	\$26	\$25	\$24	\$23	\$22	\$19	\$17	\$13	\$12	\$11

The above shows estimated returns per head for skirted fleece wool. These figures do not take into account the value of skirtings and oddments and do not take into account discounts that may apply for faults under individual circumstances. These figures are based on a market index of 100% and should be used as a guide only. Returns over \$30 / head for fleece wool are highlighted.



Table 14: Returns pr head for skirted fleece wool.

Skirted FLC Weight		Micron																	
2 Kg		16	16.5	17	17.5	18	18.5	19	19.5	20	21	22	23	24	25	26	28	30	32
Yield (Sch Dry)	25% Current	\$7	\$7	\$6	\$6	\$6	\$6	\$6	\$6	\$6	\$6	\$6	\$6	\$5	\$4	\$4	\$3	\$3	\$3
	10yr ave.	\$9	\$8	\$7	\$7	\$6	\$6	\$6	\$5	\$5	\$5	\$5	\$5	\$4	\$4	\$3	\$3	\$2	\$2
	30% Current	\$8	\$8	\$7	\$7	\$7	\$7	\$7	\$7	\$7	\$7	\$7	\$7	\$6	\$5	\$5	\$4	\$4	\$3
	10yr ave.	\$10	\$10	\$9	\$8	\$8	\$7	\$7	\$6	\$6	\$6	\$6	\$5	\$5	\$4	\$4	\$3	\$3	\$3
	35% Current	\$9	\$9	\$9	\$8	\$8	\$8	\$8	\$8	\$8	\$8	\$8	\$8	\$7	\$6	\$6	\$5	\$4	\$4
	10yr ave.	\$12	\$11	\$10	\$10	\$9	\$8	\$8	\$7	\$7	\$7	\$7	\$6	\$6	\$5	\$5	\$4	\$3	\$3
	40% Current	\$11	\$10	\$10	\$10	\$9	\$9	\$9	\$9	\$9	\$9	\$9	\$9	\$8	\$7	\$7	\$5	\$5	\$5
	10yr ave.	\$14	\$13	\$12	\$11	\$10	\$10	\$9	\$9	\$8	\$8	\$8	\$7	\$7	\$6	\$5	\$4	\$4	\$3
	45% Current	\$12	\$12	\$11	\$11	\$10	\$10	\$10	\$10	\$10	\$10	\$10	\$10	\$9	\$8	\$7	\$6	\$6	\$5
	10yr ave.	\$16	\$14	\$13	\$12	\$11	\$11	\$10	\$10	\$9	\$9	\$8	\$8	\$8	\$7	\$6	\$5	\$4	\$4
	50% Current	\$14	\$13	\$12	\$12	\$12	\$11	\$11	\$11	\$11	\$11	\$11	\$11	\$11	\$9	\$8	\$7	\$6	\$6
	10yr ave.	\$17	\$16	\$14	\$14	\$13	\$12	\$11	\$11	\$10	\$10	\$9	\$9	\$9	\$7	\$7	\$5	\$5	\$4
	55% Current	\$15	\$14	\$14	\$13	\$13	\$13	\$12	\$12	\$12	\$12	\$12	\$12	\$12	\$10	\$9	\$7	\$7	\$6
	10yr ave.	\$19	\$17	\$16	\$15	\$14	\$13	\$12	\$12	\$11	\$11	\$10	\$10	\$9	\$8	\$7	\$6	\$5	\$5
	60% Current	\$16	\$16	\$15	\$14	\$14	\$14	\$14	\$14	\$14	\$14	\$14	\$14	\$13	\$11	\$10	\$8	\$8	\$7
	10yr ave.	\$21	\$19	\$17	\$17	\$15	\$14	\$14	\$13	\$12	\$12	\$11	\$11	\$10	\$9	\$8	\$6	\$6	\$5
	65% Current	\$18	\$17	\$16	\$16	\$15	\$15	\$15	\$15	\$15	\$15	\$15	\$15	\$14	\$11	\$11	\$9	\$8	\$7
	10yr ave.	\$22	\$21	\$19	\$18	\$17	\$16	\$15	\$14	\$13	\$13	\$12	\$12	\$11	\$10	\$9	\$7	\$6	\$5
	70% Current	\$19	\$18	\$17	\$17	\$16	\$16	\$16	\$16	\$16	\$16	\$16	\$16	\$15	\$12	\$11	\$9	\$9	\$8
	10yr ave.	\$24	\$22	\$20	\$19	\$18	\$17	\$16	\$15	\$14	\$14	\$13	\$13	\$12	\$10	\$9	\$7	\$7	\$6
	75% Current	\$20	\$20	\$19	\$18	\$17	\$17	\$17	\$17	\$17	\$17	\$17	\$17	\$16	\$13	\$12	\$10	\$10	\$9
	10yr ave.	\$26	\$24	\$22	\$21	\$19	\$18	\$17	\$16	\$15	\$15	\$14	\$14	\$13	\$11	\$10	\$8	\$7	\$6
	80% Current	\$22	\$21	\$20	\$19	\$19	\$18	\$18	\$18	\$18	\$18	\$18	\$18	\$17	\$14	\$13	\$11	\$10	\$9
	10yr ave.	\$28	\$25	\$23	\$22	\$20	\$19	\$18	\$17	\$16	\$16	\$15	\$15	\$14	\$12	\$11	\$8	\$8	\$7
	85% Current	\$23	\$22	\$21	\$20	\$20	\$19	\$19	\$19	\$19	\$19	\$19	\$19	\$18	\$15	\$14	\$11	\$11	\$10
	10yr ave.	\$29	\$27	\$25	\$23	\$22	\$20	\$19	\$18	\$17	\$17	\$16	\$16	\$14	\$13	\$11	\$9	\$8	\$7

The above shows estimated returns per head for skirted fleece wool. These figures do not take into account the value of skirtings and oddments and do not take into account discounts that may apply for faults under individual circumstances. These figures are based on a market index of 100% and should be used as a guide only. Returns over \$30 / head for fleece wool are highlighted.