



Table 1: Northern Region Micron Price Guides

CURRENT MARKET			PERCENTILES		AVERAGES						12 MONTH COMPARISONS								TRADING RANGE			
Mic.	26/08/2010	19/08/2010					Now		Now		25/08/2009		Now		Now		Now		Clean c/kg			
Price	Current	Weekly	3yr	10yr	<u>3 year</u>	compared		<u>10 year</u>	compared		This time	compared	12 Month	compared	12 Month	compared	12 Month	compared	12	3	10	
Guides	Price	Change			Average	to 3yr ave	Average	to 10yr ave	Last Year	to Last Year	Low	to Low	High	to High	Mth	Year	Year					
NRI	897	0	46%	61%	898	-1	0%	864	+33	4%	839	+58	7%	827	+70	8%	974	-77	-8%	147	343	584
16*	1570	0	44%		1614	-44	-3%				1500	+70	5%	1345	+225	17%	1640	-70	-4%	295	645	
16.5*	1440	0	54%		1473	-33	-2%				1390	+50	4%	1260	+180	14%	1490	-50	-3%	230	552	
17*	1300	+30 2.3%	49%	50%	1354	-54	-4%	1451	-151	-10%	1250	+50	4%	1175	+125	11%	1300	0	0%	125	504	570
17.5*	1220	-10 -0.8%	45%		1294	-74	-6%				1200	+20	2%	1155	+65	6%	1235	-15	-1%	80	499	
18	1186	+18 1.5%	50%	50%	1236	-50	-4%	1302	-116	-9%	1131	+55	5%	1110	+76	7%	1228	-42	-3%	118	432	432
18.5	1140	+15 1.3%	54%		1164	-24	-2%				1072	+68	6%	1048	+92	9%	1183	-43	-4%	135	425	
19	1050	+2 0.2%	40%	52%	1074	-24	-2%	1069	-19	-2%	990	+60	6%	974	+76	8%	1120	-70	-6%	146	443	706
19.5	963	-3 -0.3%	36%		991	-28	-3%				922	+41	4%	900	+63	7%	1067	-104	-10%	167	457	
20	917	-11 -1.2%	49%	59%	921	-4	0%	908	+9	1%	846	+71	8%	830	+87	10%	1023	-106	-10%	193	465	717
21	897	-9 -1.0%	54%	61%	880	+17	2%	859	+38	4%	824	+73	9%	809	+88	11%	1006	-109	-11%	197	427	786
22	882	-15 -1.7%	55%	62%	855	+27	3%	835	+47	6%	808	+74	9%	790	+92	12%	971	-89	-9%	181	361	822
23	871	-12 -1.4%	58%	63%	832	+39	5%	814	+57	7%	796	+75	9%	776	+95	12%	940	-69	-7%	164	311	826
24	811	-18 -2.2%	58%	62%	784	+27	3%	779	+32	4%	765	+46	6%	752	+59	8%	881	-70	-8%	129	257	800
25	695	0	64%	65%	667	+28	4%	701	-6	-1%	651	+44	7%	627	+68	11%	725	-30	-4%	98	189	725
26	607	+6 1.0%	53%	51%	600	+7	1%	643	-36	-6%	618	-11	-2%	560	+47	8%	630	-23	-4%	70	155	641
28	456	-1 -0.2%	47%	20%	460	-4	-1%	521	-65	-12%	493	-37	-8%	430	+26	6%	493	-37	-8%	63	119	465
30	403	-2 -0.5%	63%	25%	393	+10	3%	455	-52	-11%	424	-21	-5%	374	+29	8%	434	-31	-7%	60	136	385
32	358	-3 -0.8%	80%	25%	341	+17	5%	413	-55	-13%	358	0	0%	324	+34	10%	375	-17	-5%	51	108	372
MC	604	0	81%	86%	538	+66	12%	492	+112	23%	535	+69	13%	534	+70	13%	681	-77	-11%	147	289	313

Note:

- * Due to the irregular market quoting for some fine wool categories, figures shown relating to micron categories below 18 micron are an estimate based on the 42 nkt AWEX Premium & Discounts Report & other available information.
- * For any category, where there is insufficient quantity offered to enable AWEX to quote, a quote will be provided based on the best available information.
- * 10 Year data is not available for some micron categories, which may result in blank spaces in the table above.

Definitions:

- * A Percentile, is a value on a scale of one hundred that indicates the percent of a distribution that is equal to or below it. In general a percentile between 25% and 75% is considered normal, a percentile below 25% is considered below normal and a percentile above 75% is considered above normal.

Three and ten year percentiles shown in the table above, detail the period of time during the past 3 & 10 years that the market has traded either at or below its current price.

The higher the percentile, the stronger the market.

Source: Australian Wool Exchange, Australian Wool Innovation, Sydney Futures Exchange, x-rates.com

Disclaimer: While all due care has been taken in the preparation of this document, no warranty is made as to its accuracy, reliability or completeness. To the extent permitted by law neither Jemalong or their sources including subsidiaries and staff, accept liability to any person for loss or damage arising from the use of this information.



MARKET COMMENTARY

Australian Dollar 89.00 cents US as of 26/08/2010

NORTHERN REGION – Sale Week 08/10 (40,126 bales offered nationally)

Wednesday

Merino Fleece: The market has delivered a balancing act, with fine microns gaining by a solid 15-20 cents, while the 19 to 19.5 micron ranges remained unchanged (with better lots slightly dearer and lower style lots slightly cheaper), 20 micron and broader closed up to 10 cents cheaper.

Merino Skirting's: Strong competition had all descriptions very firm to sellers favour with the 19 to 20 micron lots 5 cents dearer.

Merino Oddments: Lock's closed firm with the best colour lots attracting the most interest. Crutching's and stains were unchanged.

Crossbreds: 27 to 30 micron remained unchanged while the finer lots eased slightly.

Offering: 7,574 bales were offered in the North with 8.5% Passed-In.

Thursday

Merino Fleece: Once again a balancing act, with fine microns fully firm, 18 to 19 microns slightly dearer (on the back of a better style selection) and 20 microns and broader generally 5 cents cheaper.

Merino Skirting's: All descriptions closed fully firm with the better style and lower VM (<5%) getting a lift from increased competition.

Merino Oddments: Mixed results had 19 microns and finer 10 cents dearer, while the broader end slipped 10 cents lower. Crutching's and stains remained unchanged.

Crossbreds: Not a lot of movement today with 29 micron and finer fully firm and 30 to 32 microns closing in buyers favour.

Offering: 4,081 bales were offered in the North with 4.8% Passed-In.

Source: AWEX

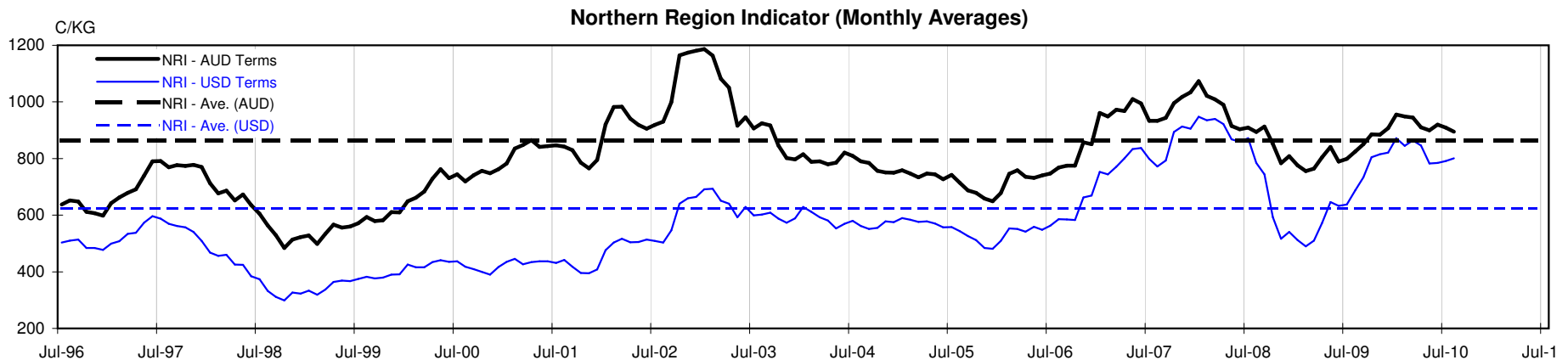




Table 4: 19 micron SFE

Wednesday, 25 August 2010

Delivery Mth	Oct-10	Dec-10	Feb-11	Apr-11	Jun-11	Aug-11	Oct-11	Dec-11	Feb-12
19 Micron SFE	1053	1053	1053	1053	1053	1053	1053	1053	1053
Average	1019	1030	1039	1046	1051	1052	1050	1043	1051
Maximum	1088	1088	1088	1088	1088	1088	1080	1065	1065
Minimum	884	905	936	983	1025	1034	1034	1034	1034

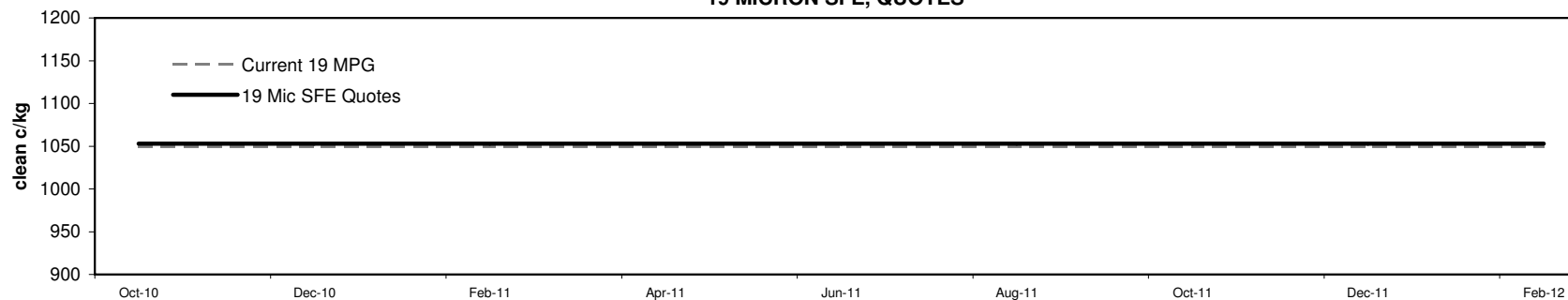
Table 5: 19 micron SFE, as a percentile of the 19 micron MPG

3 Year Percentile	41%	41%	41%	41%	41%	41%	41%	41%	41%
10 Year Percentile	52%	52%	52%	52%	52%	52%	52%	52%	52%

Table 6: 19 micron SFE, compared to MPG

Current 19 MPG	+3	0%	+3	0%	+3	0%	+3	0%	+3	0%	+3	0%	+3	0%	+3	0%	+3	0%
19 MPG, 1 Year Average	-9	-1%	-9	-1%	-9	-1%	-9	-1%	-9	-1%	-9	-1%	-9	-1%	-9	-1%	-9	-1%
19 MPG, 3 Year Average	-21	-2%	-21	-2%	-21	-2%	-21	-2%	-21	-2%	-21	-2%	-21	-2%	-21	-2%	-21	-2%
19 MPG, 10 Year Average	-16	-1%	-16	-1%	-16	-1%	-16	-1%	-16	-1%	-16	-1%	-16	-1%	-16	-1%	-16	-1%

19 MICRON SFE, QUOTES



19 MICRON SFE, FRONT MONTH PRICE MOVEMENT (mthly averages)

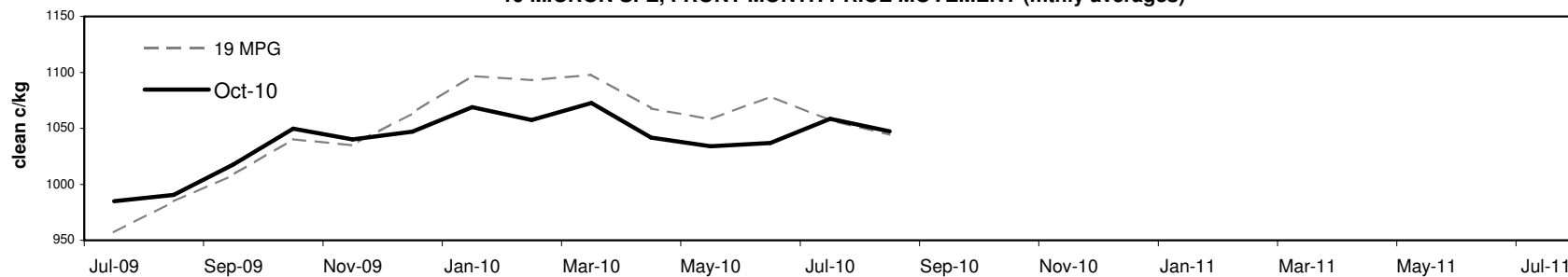




Table 7: 21 micron SFE

Wednesday, 25 August 2010

Delivery Mth	Oct-10	Dec-10	Feb-11	Apr-11	Jun-11	Aug-11	Oct-11	Dec-11	Feb-12
21 Micron SFE	915	918	918	906	898	892	888	888	892
Average	900	913	924	933	939	940	931	912	908
Maximum	1003	1013	1004	1004	1004	1004	992	951	925
Minimum	742	780	818	860	891	890	891	888	888

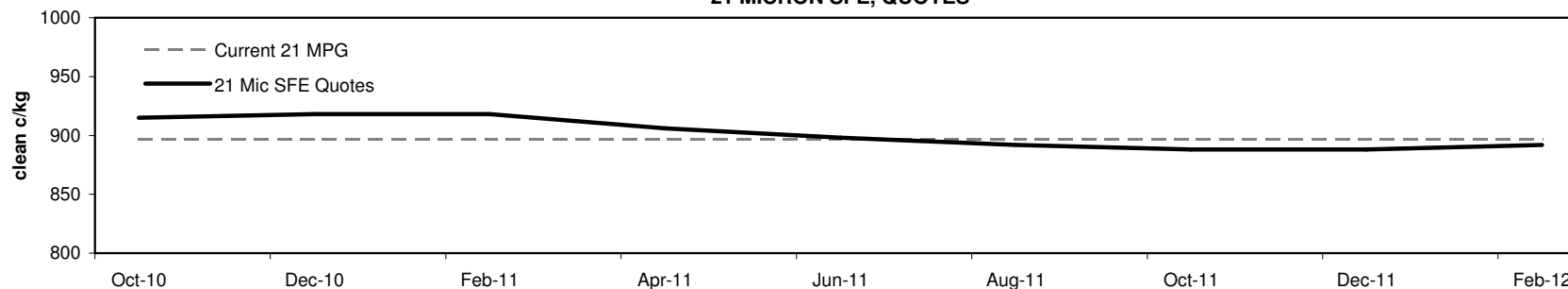
Table 8: 21 micron SFE, as a percentile of the 21 micron MPG

3 Year Percentile	61%	62%	62%	56%	54%	52%	52%	52%	52%
10 Year Percentile	64%	64%	64%	62%	61%	60%	60%	60%	60%

Table 9: 21 micron SFE, compared to MPG

Current 21 MPG	+18	2%	+21	2%	+21	2%	+9	1%	+1	0%	-5	-1%	-9	-1%	-9	-1%	-5	-1%
21 MPG, 1 Year Average	-4	0%	-1	0%	-1	0%	-13	-1%	-21	-2%	-27	-3%	-31	-3%	-31	-3%	-27	-3%
21 MPG, 3 Year Average	+35	4%	+38	4%	+38	4%	+26	3%	+18	2%	+12	1%	+8	1%	+8	1%	+12	1%
21 MPG, 10 Year Average	+56	7%	+59	7%	+59	7%	+47	5%	+39	5%	+33	4%	+29	3%	+29	3%	+33	4%

21 MICRON SFE, QUOTES



21 MICRON SFE, FRONT MONTH PRICE MOVEMENT (mthly averages)

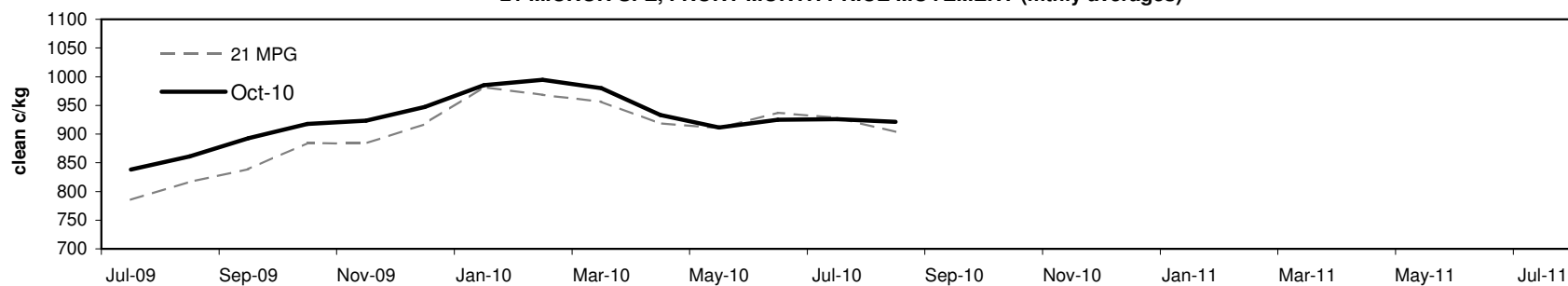




Table 10: 23 micron SFE

Wednesday, 25 August 2010

Delivery Mth	Oct-10	Dec-10	Feb-11	Apr-11	Jun-11	Aug-11	Oct-11	Dec-11	Feb-12
23 Micron SFE	887	887	887	887	887	887	887	887	887
Average	819	833	848	858	869	886	895	883	883
Maximum	927	927	927	927	927	927	927	887	887
Minimum	690	716	760	760	803	803	883	883	883

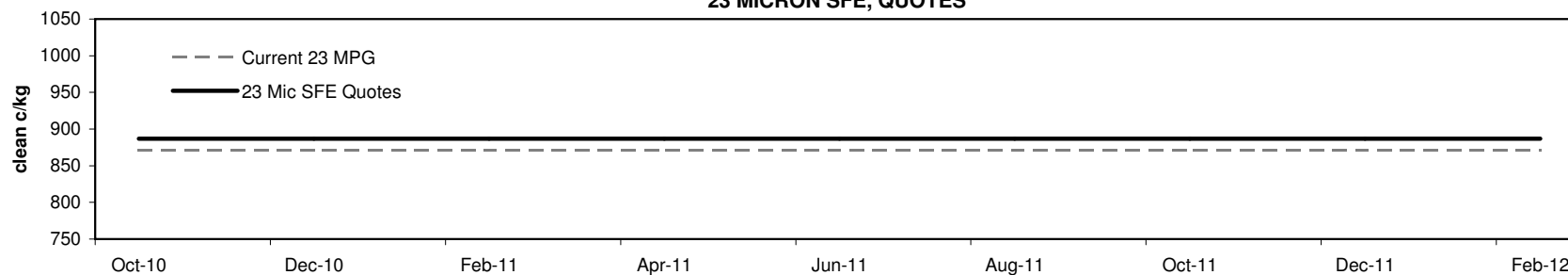
Table 11: 23 micron SFE, as a percentile of the 23 micron MPG

3 Year Percentile	68%	68%	68%	68%	68%	68%	68%	68%	68%
10 Year Percentile	66%	66%	66%	66%	66%	66%	66%	66%	66%

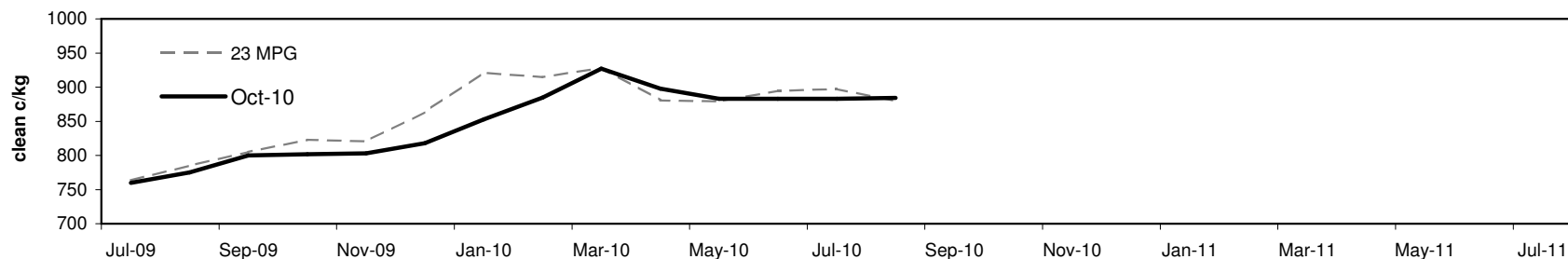
Table 12: 23 micron SFE, compared to MPG

Current 19 MPG	+16	2%	+16	2%	+16	2%	+16	2%	+16	2%	+16	2%	+16	2%	+16	2%	+16	2%
23 MPG, 1 Year Average	+11	1%	+11	1%	+11	1%	+11	1%	+11	1%	+11	1%	+11	1%	+11	1%	+11	1%
23 MPG, 3 Year Average	+55	7%	+55	7%	+55	7%	+55	7%	+55	7%	+55	7%	+55	7%	+55	7%	+55	7%
23 MPG, 10 Year Average	+73	9%	+73	9%	+73	9%	+73	9%	+73	9%	+73	9%	+73	9%	+73	9%	+73	9%

23 MICRON SFE, QUOTES

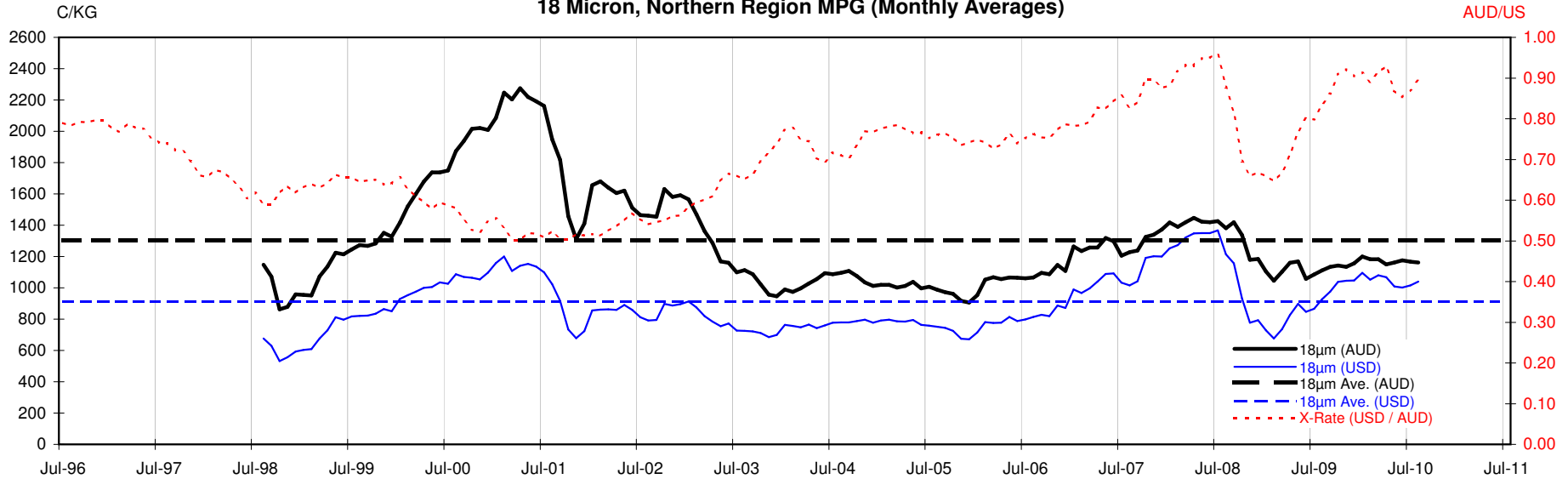


23 MICRON SFE, FRONT MONTH PRICE MOVEMENT (mthly averages)

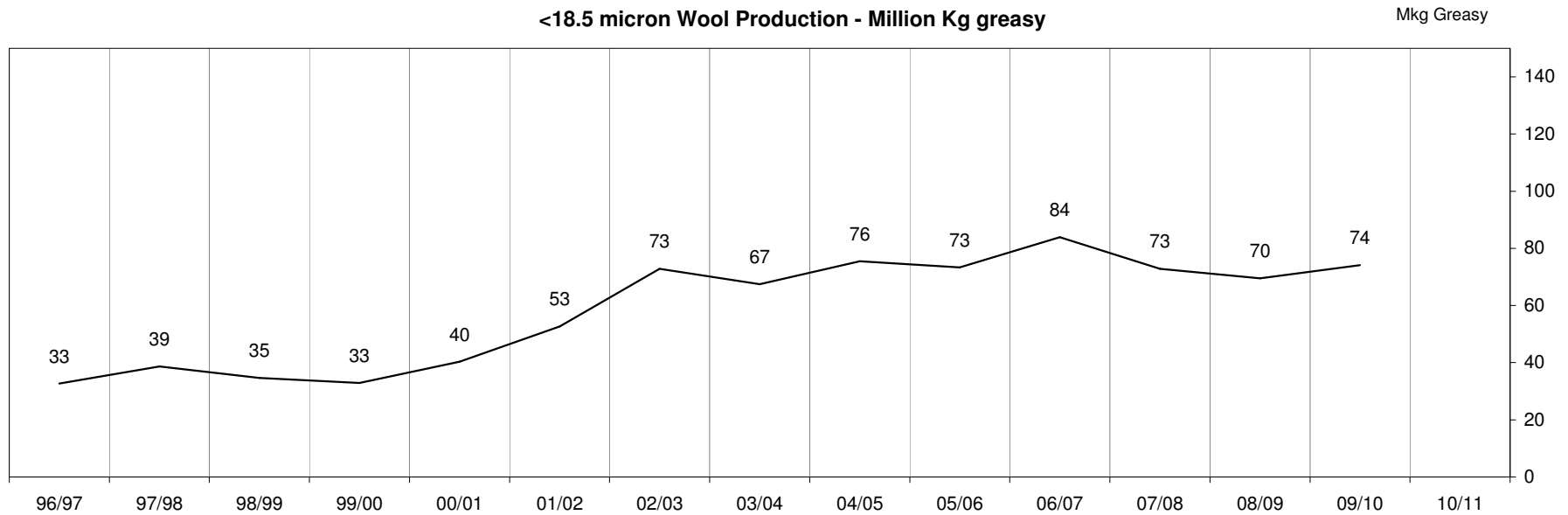


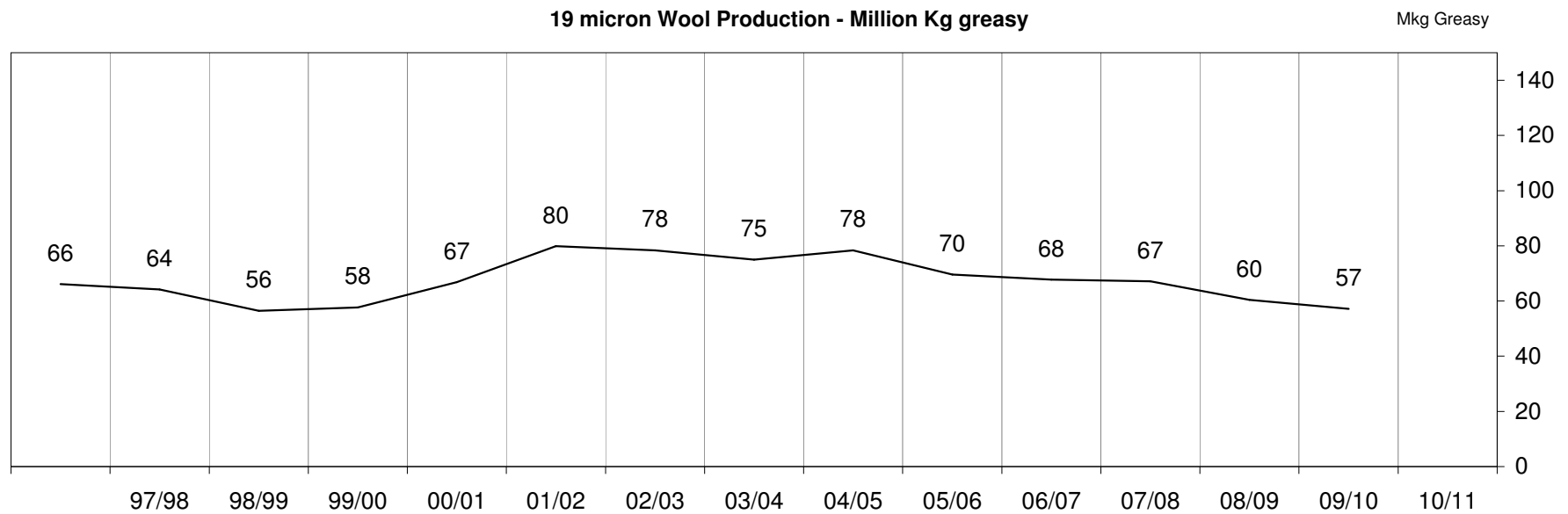
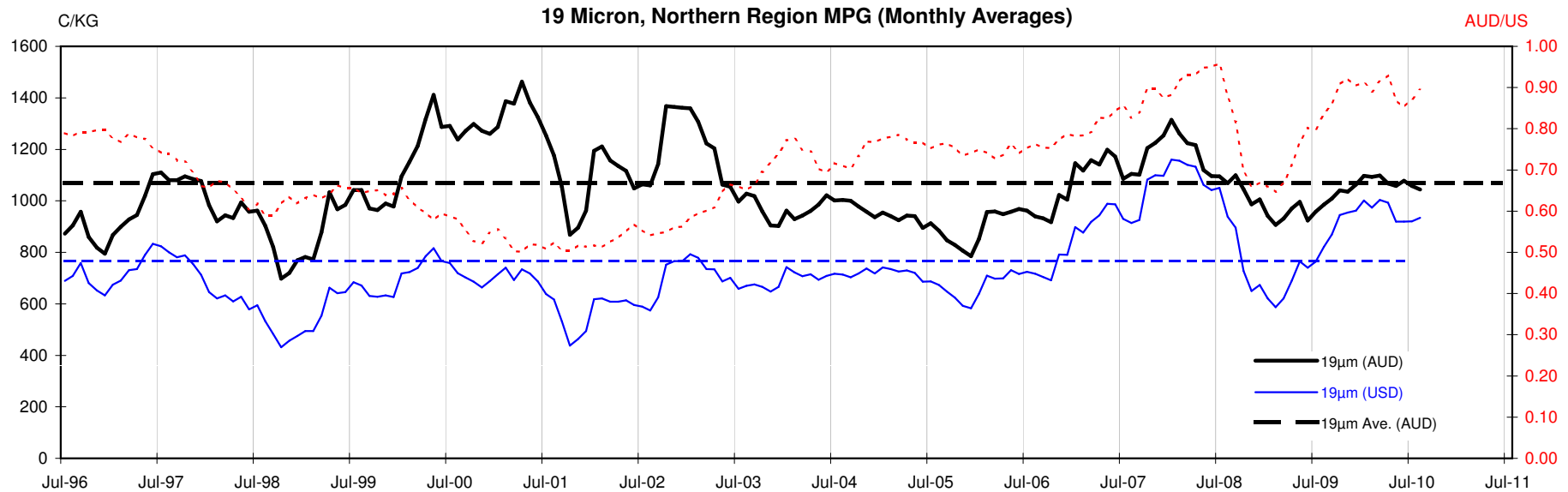


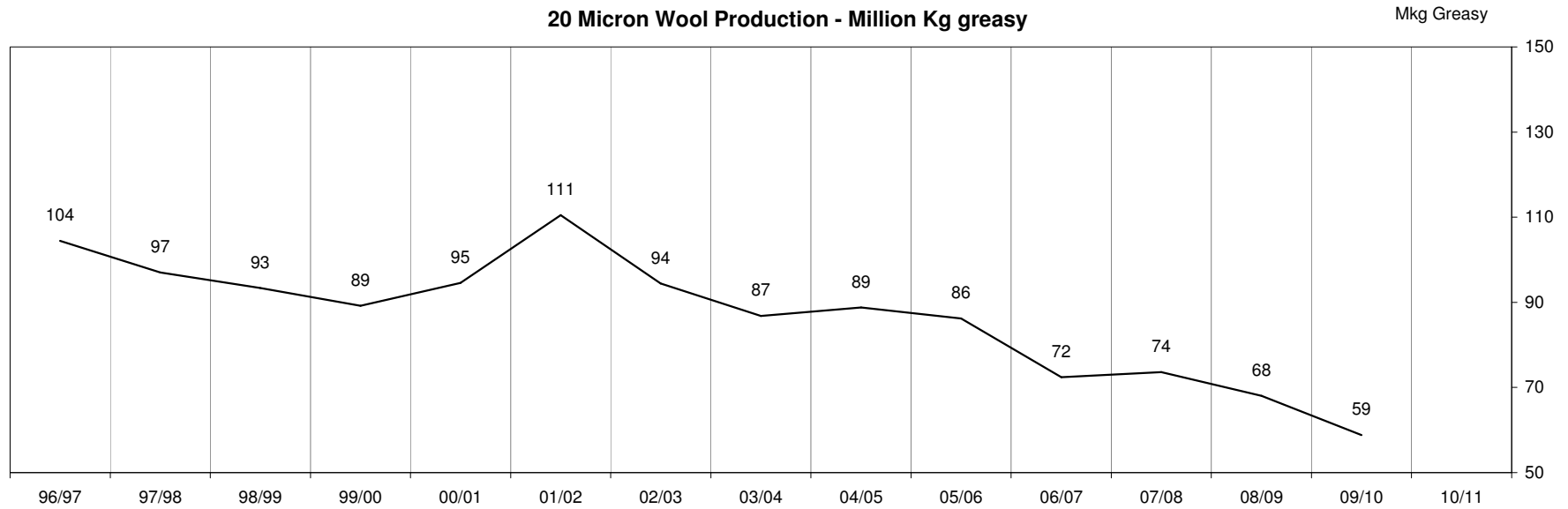
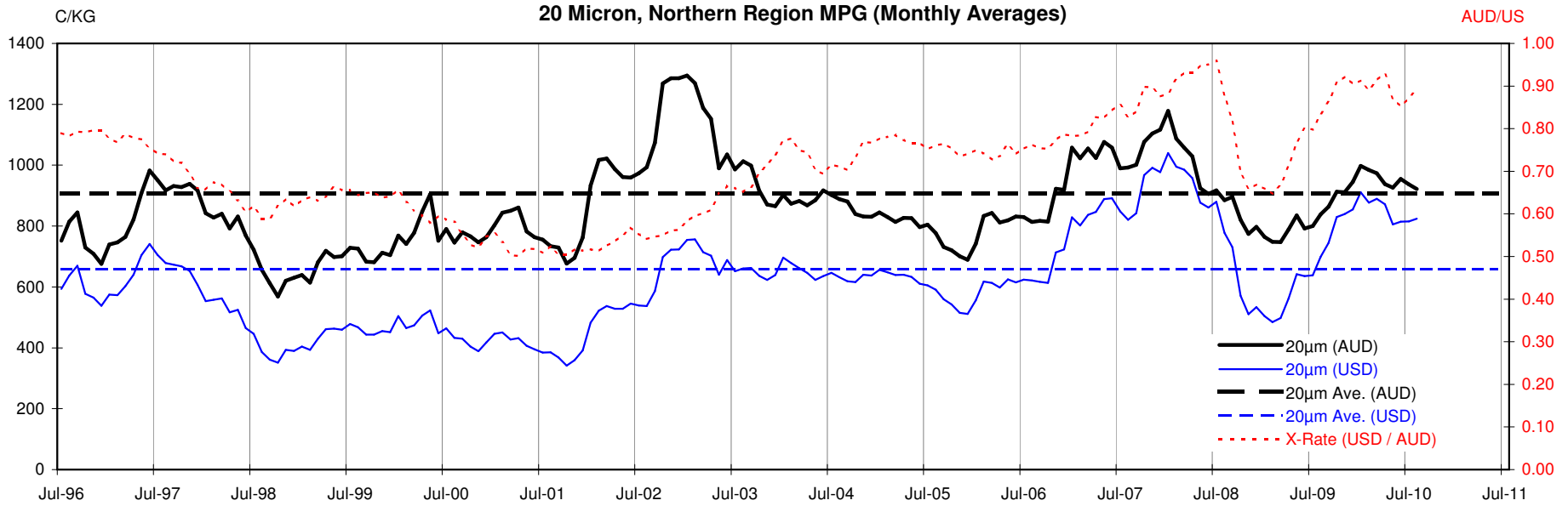
18 Micron, Northern Region MPG (Monthly Averages)

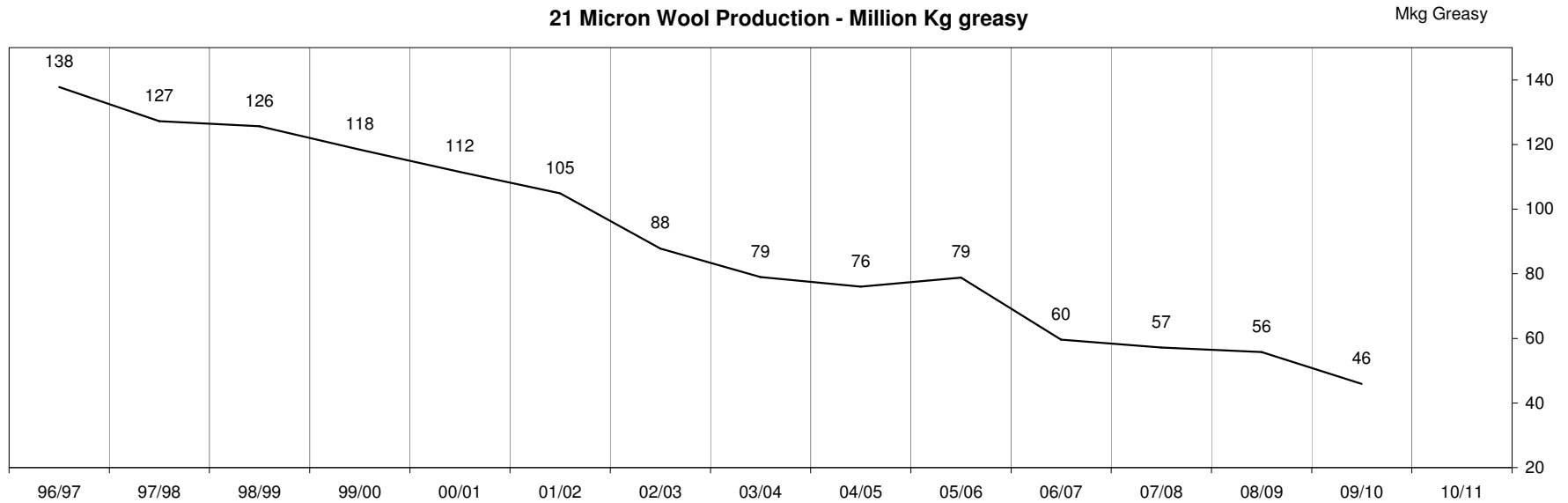
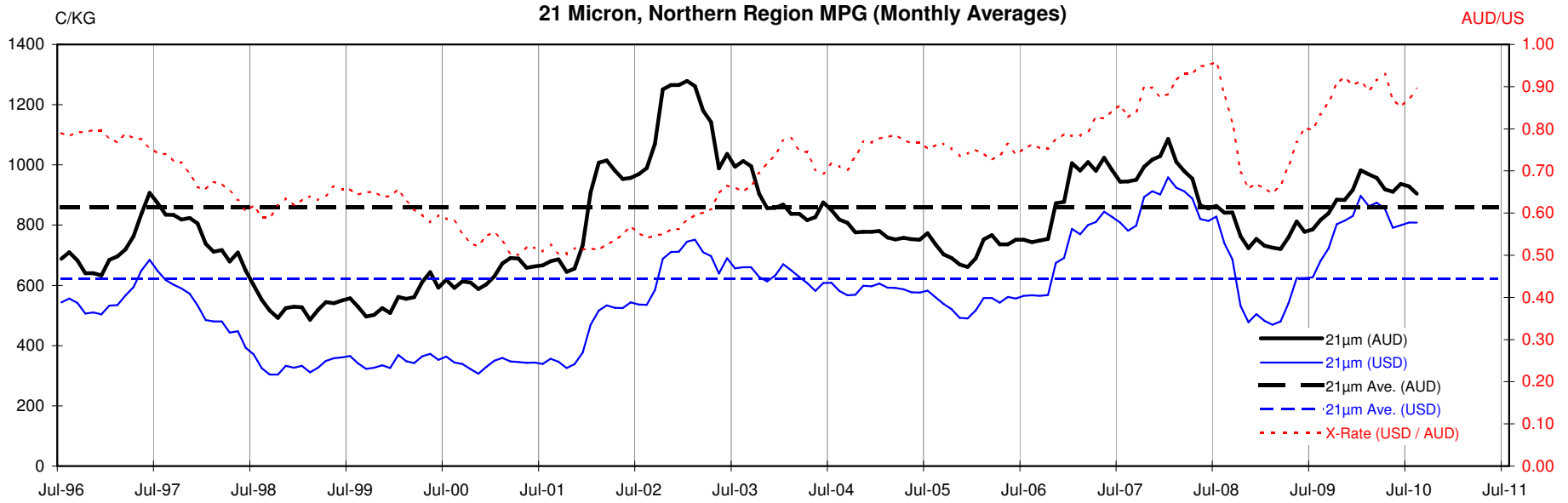


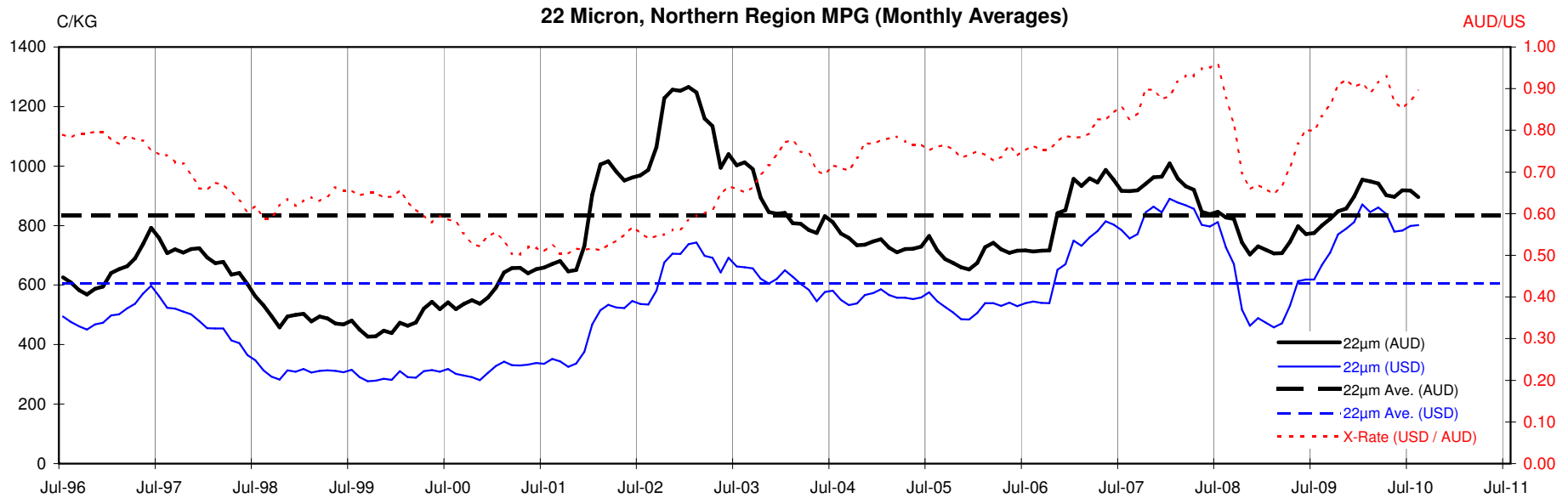
<18.5 micron Wool Production - Million Kg greasy

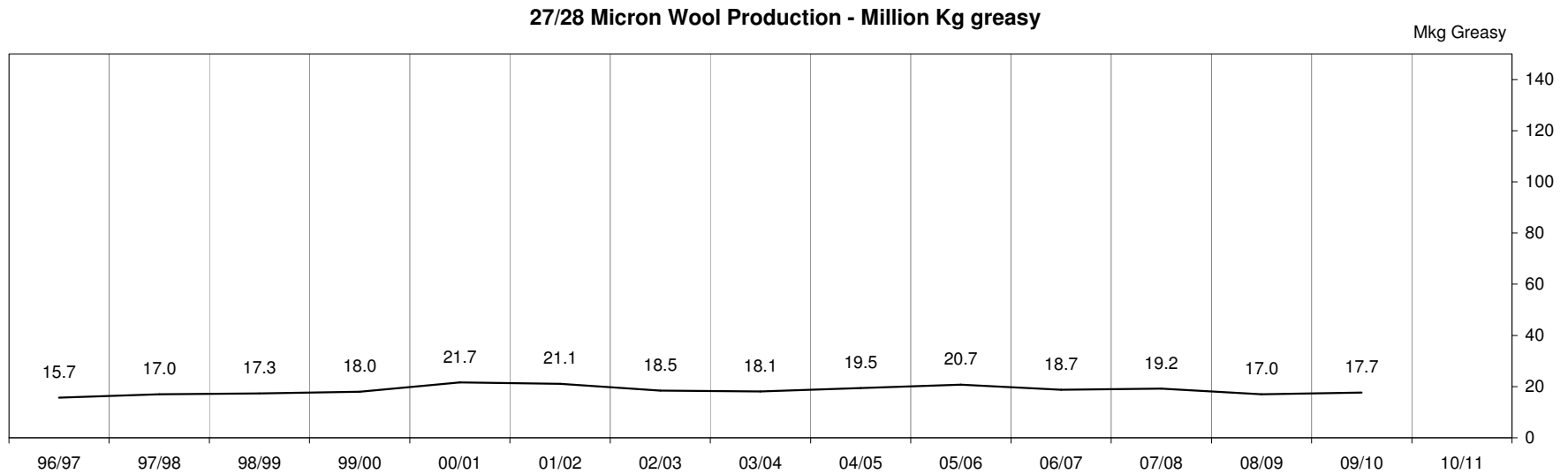
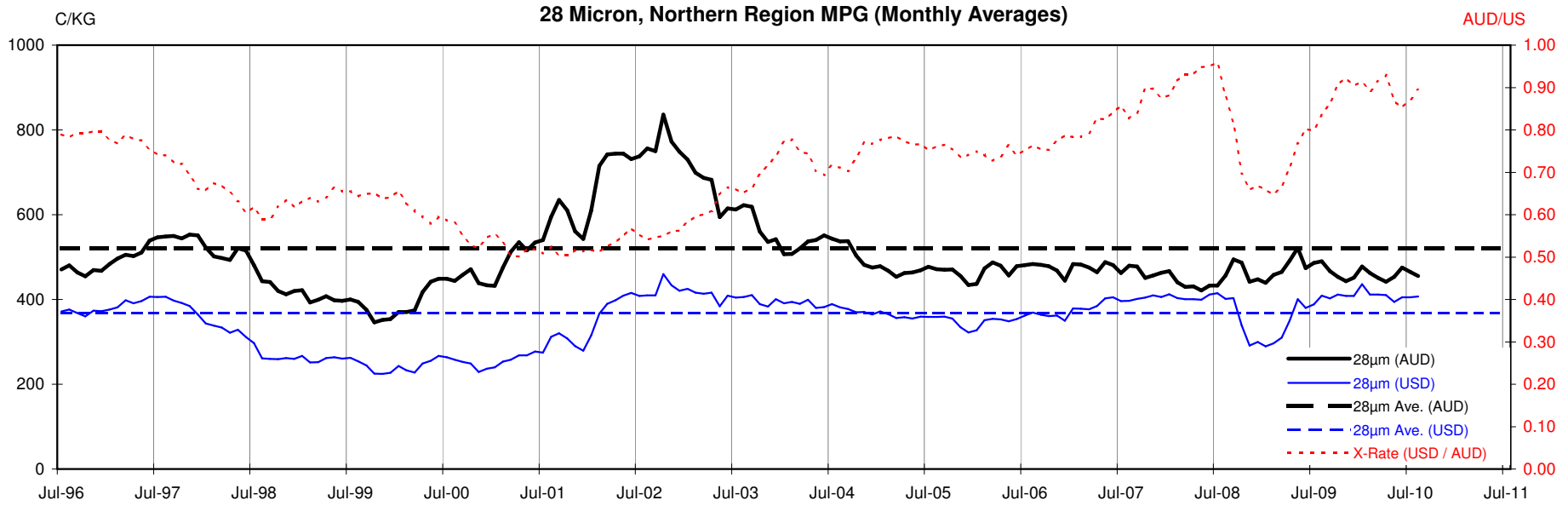












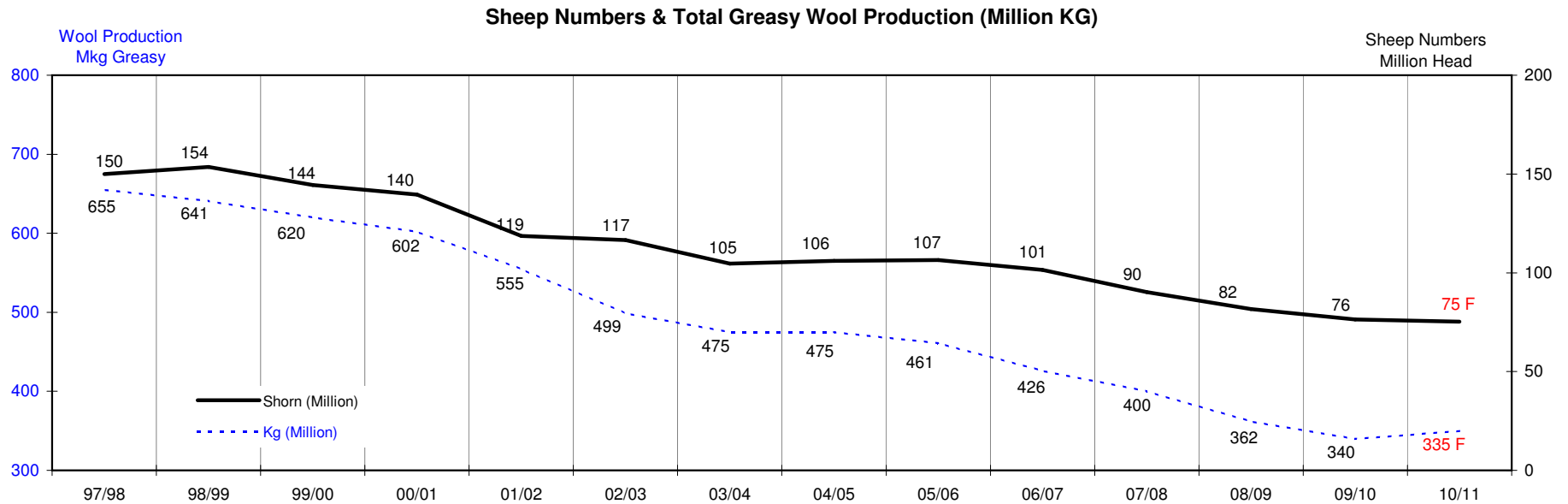
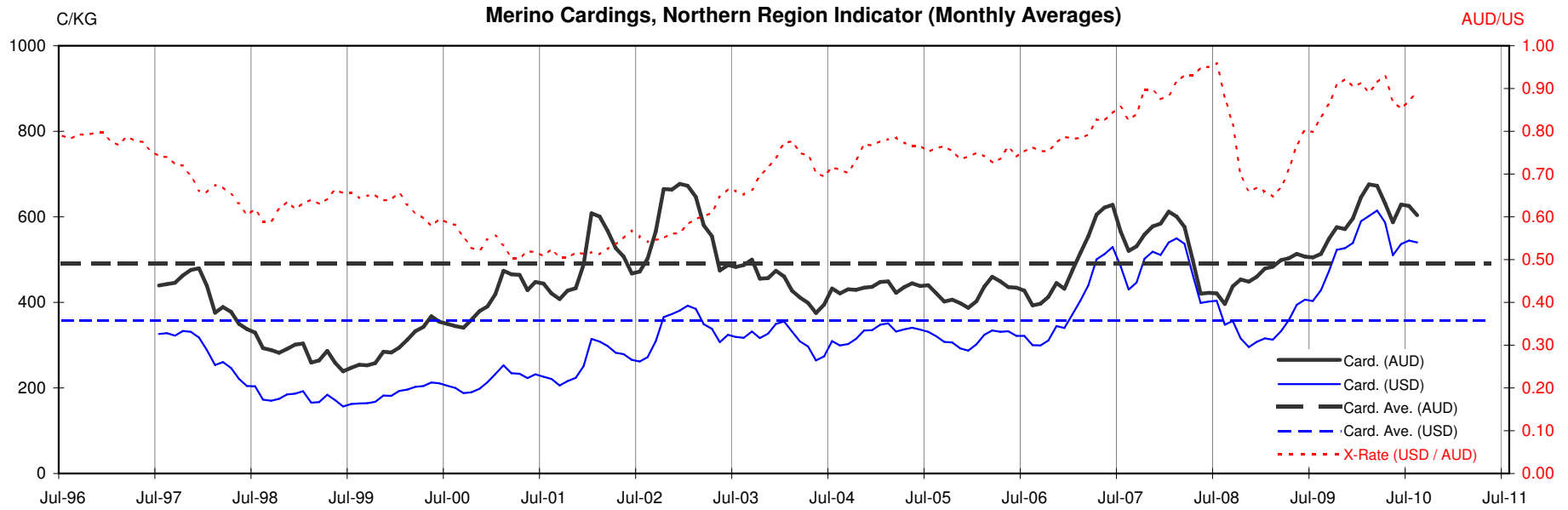




Table 13: Returns pr head for skirted fleece wool.

Skirted FLC Weight 9 Kg			Micron																	
			16	16.5	17	17.5	18	18.5	19	19.5	20	21	22	23	24	25	26	28	30	32
Yield (Sch Dry)	25%	Current	\$35	\$32	\$29	\$27	\$27	\$26	\$24	\$22	\$21	\$20	\$20	\$20	\$18	\$16	\$14	\$10	\$9	\$8
		10yr ave.			\$33		\$29		\$24		\$20	\$19	\$19	\$18	\$18	\$16	\$14	\$12	\$10	\$9
	30%	Current	\$42	\$39	\$35	\$33	\$32	\$31	\$28	\$26	\$25	\$24	\$24	\$24	\$22	\$19	\$16	\$12	\$11	\$10
		10yr ave.			\$39		\$35		\$29		\$25	\$23	\$23	\$22	\$21	\$19	\$17	\$14	\$12	\$11
	35%	Current	\$49	\$45	\$41	\$38	\$37	\$36	\$33	\$30	\$29	\$28	\$28	\$27	\$26	\$22	\$19	\$14	\$13	\$11
		10yr ave.			\$46		\$41		\$34		\$29	\$27	\$26	\$26	\$25	\$22	\$20	\$16	\$14	\$13
	40%	Current	\$57	\$52	\$47	\$44	\$43	\$41	\$38	\$35	\$33	\$32	\$32	\$31	\$29	\$25	\$22	\$16	\$15	\$13
		10yr ave.			\$52		\$47		\$38		\$33	\$31	\$30	\$29	\$28	\$25	\$23	\$19	\$16	\$15
	45%	Current	\$64	\$58	\$53	\$49	\$48	\$46	\$43	\$39	\$37	\$36	\$36	\$35	\$33	\$28	\$25	\$18	\$16	\$14
		10yr ave.			\$59		\$53		\$43		\$37	\$35	\$34	\$33	\$32	\$28	\$26	\$21	\$18	\$17
	50%	Current	\$71	\$65	\$59	\$55	\$53	\$51	\$47	\$43	\$41	\$40	\$40	\$39	\$36	\$31	\$27	\$21	\$18	\$16
		10yr ave.			\$65		\$59		\$48		\$41	\$39	\$38	\$37	\$35	\$32	\$29	\$23	\$20	\$19
	55%	Current	\$78	\$71	\$64	\$60	\$59	\$56	\$52	\$48	\$45	\$44	\$44	\$43	\$40	\$34	\$30	\$23	\$20	\$18
		10yr ave.			\$72		\$64		\$53		\$45	\$43	\$41	\$40	\$39	\$35	\$32	\$26	\$23	\$20
	60%	Current	\$85	\$78	\$70	\$66	\$64	\$62	\$57	\$52	\$50	\$48	\$48	\$47	\$44	\$38	\$33	\$25	\$22	\$19
		10yr ave.			\$78		\$70		\$58		\$49	\$46	\$45	\$44	\$42	\$38	\$35	\$28	\$25	\$22
65%	Current	\$92	\$84	\$76	\$71	\$69	\$67	\$61	\$56	\$54	\$52	\$52	\$51	\$47	\$41	\$36	\$27	\$24	\$21	
	10yr ave.			\$85		\$76		\$63		\$53	\$50	\$49	\$48	\$46	\$41	\$38	\$30	\$27	\$24	
70%	Current	\$99	\$91	\$82	\$77	\$75	\$72	\$66	\$61	\$58	\$57	\$56	\$55	\$51	\$44	\$38	\$29	\$25	\$23	
	10yr ave.			\$91		\$82		\$67		\$57	\$54	\$53	\$51	\$49	\$44	\$41	\$33	\$29	\$26	
75%	Current	\$106	\$97	\$88	\$82	\$80	\$77	\$71	\$65	\$62	\$61	\$60	\$59	\$55	\$47	\$41	\$31	\$27	\$24	
	10yr ave.			\$98		\$88		\$72		\$61	\$58	\$56	\$55	\$53	\$47	\$43	\$35	\$31	\$28	
80%	Current	\$113	\$104	\$94	\$88	\$85	\$82	\$76	\$69	\$66	\$65	\$64	\$63	\$58	\$50	\$44	\$33	\$29	\$26	
	10yr ave.			\$104		\$94		\$77		\$65	\$62	\$60	\$59	\$56	\$50	\$46	\$38	\$33	\$30	
85%	Current	\$120	\$110	\$99	\$93	\$91	\$87	\$80	\$74	\$70	\$69	\$67	\$67	\$62	\$53	\$46	\$35	\$31	\$27	
	10yr ave.			\$111		\$100		\$82		\$69	\$66	\$64	\$62	\$60	\$54	\$49	\$40	\$35	\$32	

The above shows estimated returns per head for skirted fleece wool. These figures do not take into account the value of skirtings and oddments and do not take into account discounts that may apply for faults under individual circumstances. These figures are based on a market index of 100% and should be used as a guide only. Returns over \$30 / head for fleece wool are highlighted.

Source: Australian Wool Exchange, Australian Wool Innovation, Sydney Futures Exchange, x-rates.com

Disclaimer: While all due care has been taken in the preparation of this document, no warranty is made as to its accuracy, reliability or completeness. To the extent permitted by law neither Jemalong or their sources including subsidiaries and staff, accept liability to any person for loss or damage arising from the use of this information.



Table 14: Returns pr head for skirted fleece wool.

Skirted FLC Weight 8 Kg			Micron																	
			16	16.5	17	17.5	18	18.5	19	19.5	20	21	22	23	24	25	26	28	30	32
Yield (Sch Dry)	25%	Current	\$35	\$32	\$29	\$27	\$27	\$26	\$24	\$22	\$21	\$20	\$20	\$20	\$18	\$16	\$14	\$10	\$9	\$8
		10yr ave.			\$33		\$29		\$24		\$20	\$19	\$19	\$18	\$18	\$16	\$14	\$12	\$10	\$9
	30%	Current	\$42	\$39	\$35	\$33	\$32	\$31	\$28	\$26	\$25	\$24	\$24	\$24	\$22	\$19	\$16	\$12	\$11	\$10
		10yr ave.			\$39		\$35		\$29		\$25	\$23	\$23	\$22	\$21	\$19	\$17	\$14	\$12	\$11
	35%	Current	\$49	\$45	\$41	\$38	\$37	\$36	\$33	\$30	\$29	\$28	\$28	\$27	\$26	\$22	\$19	\$14	\$13	\$11
		10yr ave.			\$46		\$41		\$34		\$29	\$27	\$26	\$26	\$25	\$22	\$20	\$16	\$14	\$13
	40%	Current	\$57	\$52	\$47	\$44	\$43	\$41	\$38	\$35	\$33	\$32	\$32	\$31	\$29	\$25	\$22	\$16	\$15	\$13
		10yr ave.			\$52		\$47		\$38		\$33	\$31	\$30	\$29	\$28	\$25	\$23	\$19	\$16	\$15
	45%	Current	\$64	\$58	\$53	\$49	\$48	\$46	\$43	\$39	\$37	\$36	\$36	\$35	\$33	\$28	\$25	\$18	\$16	\$14
		10yr ave.			\$59		\$53		\$43		\$37	\$35	\$34	\$33	\$32	\$28	\$26	\$21	\$18	\$17
	50%	Current	\$71	\$65	\$59	\$55	\$53	\$51	\$47	\$43	\$41	\$40	\$40	\$39	\$36	\$31	\$27	\$21	\$18	\$16
		10yr ave.			\$65		\$59		\$48		\$41	\$39	\$38	\$37	\$35	\$32	\$29	\$23	\$20	\$19
	55%	Current	\$78	\$71	\$64	\$60	\$59	\$56	\$52	\$48	\$45	\$44	\$44	\$43	\$40	\$34	\$30	\$23	\$20	\$18
		10yr ave.			\$72		\$64		\$53		\$45	\$43	\$41	\$40	\$39	\$35	\$32	\$26	\$23	\$20
	60%	Current	\$85	\$78	\$70	\$66	\$64	\$62	\$57	\$52	\$50	\$48	\$48	\$47	\$44	\$38	\$33	\$25	\$22	\$19
		10yr ave.			\$78		\$70		\$58		\$49	\$46	\$45	\$44	\$42	\$38	\$35	\$28	\$25	\$22
65%	Current	\$92	\$84	\$76	\$71	\$69	\$67	\$61	\$56	\$54	\$52	\$52	\$51	\$47	\$41	\$36	\$27	\$24	\$21	
	10yr ave.			\$85		\$76		\$63		\$53	\$50	\$49	\$48	\$46	\$41	\$38	\$30	\$27	\$24	
70%	Current	\$99	\$91	\$82	\$77	\$75	\$72	\$66	\$61	\$58	\$57	\$56	\$55	\$51	\$44	\$38	\$29	\$25	\$23	
	10yr ave.			\$91		\$82		\$67		\$57	\$54	\$53	\$51	\$49	\$44	\$41	\$33	\$29	\$26	
75%	Current	\$106	\$97	\$88	\$82	\$80	\$77	\$71	\$65	\$62	\$61	\$60	\$59	\$55	\$47	\$41	\$31	\$27	\$24	
	10yr ave.			\$98		\$88		\$72		\$61	\$58	\$56	\$55	\$53	\$47	\$43	\$35	\$31	\$28	
80%	Current	\$113	\$104	\$94	\$88	\$85	\$82	\$76	\$69	\$66	\$65	\$64	\$63	\$58	\$50	\$44	\$33	\$29	\$26	
	10yr ave.			\$104		\$94		\$77		\$65	\$62	\$60	\$59	\$56	\$50	\$46	\$38	\$33	\$30	
85%	Current	\$120	\$110	\$99	\$93	\$91	\$87	\$80	\$74	\$70	\$69	\$67	\$67	\$62	\$53	\$46	\$35	\$31	\$27	
	10yr ave.			\$111		\$100		\$82		\$69	\$66	\$64	\$62	\$60	\$54	\$49	\$40	\$35	\$32	

The above shows estimated returns per head for skirted fleece wool. These figures do not take into account the value of skirtings and oddments and do not take into account discounts that may apply for faults under individual circumstances. These figures are based on a market index of 100% and should be used as a guide only. Returns over \$30 / head for fleece wool are highlighted.

Source: Australian Wool Exchange, Australian Wool Innovation, Sydney Futures Exchange, x-rates.com

Disclaimer: While all due care has been taken in the preparation of this document, no warranty is made as to its accuracy, reliability or completeness. To the extent permitted by law neither Jemalong or their sources including subsidiaries and staff, accept liability to any person for loss or damage arising from the use of this information.



Table 15: Returns pr head for skirted fleece wool.

Skirted FLC Weight 7 Kg			Micron																	
			16	16.5	17	17.5	18	18.5	19	19.5	20	21	22	23	24	25	26	28	30	32
Yield (Sch Dry)	25%	Current	\$35	\$32	\$29	\$27	\$27	\$26	\$24	\$22	\$21	\$20	\$20	\$20	\$18	\$16	\$14	\$10	\$9	\$8
		10yr ave.			\$33		\$29		\$24		\$20	\$19	\$19	\$18	\$18	\$16	\$14	\$12	\$10	\$9
	30%	Current	\$42	\$39	\$35	\$33	\$32	\$31	\$28	\$26	\$25	\$24	\$24	\$24	\$22	\$19	\$16	\$12	\$11	\$10
		10yr ave.			\$39		\$35		\$29		\$25	\$23	\$23	\$22	\$21	\$19	\$17	\$14	\$12	\$11
	35%	Current	\$49	\$45	\$41	\$38	\$37	\$36	\$33	\$30	\$29	\$28	\$28	\$27	\$26	\$22	\$19	\$14	\$13	\$11
		10yr ave.			\$46		\$41		\$34		\$29	\$27	\$26	\$26	\$25	\$22	\$20	\$16	\$14	\$13
	40%	Current	\$57	\$52	\$47	\$44	\$43	\$41	\$38	\$35	\$33	\$32	\$32	\$31	\$29	\$25	\$22	\$16	\$15	\$13
		10yr ave.			\$52		\$47		\$38		\$33	\$31	\$30	\$29	\$28	\$25	\$23	\$19	\$16	\$15
	45%	Current	\$64	\$58	\$53	\$49	\$48	\$46	\$43	\$39	\$37	\$36	\$36	\$35	\$33	\$28	\$25	\$18	\$16	\$14
		10yr ave.			\$59		\$53		\$43		\$37	\$35	\$34	\$33	\$32	\$28	\$26	\$21	\$18	\$17
	50%	Current	\$71	\$65	\$59	\$55	\$53	\$51	\$47	\$43	\$41	\$40	\$40	\$39	\$36	\$31	\$27	\$21	\$18	\$16
		10yr ave.			\$65		\$59		\$48		\$41	\$39	\$38	\$37	\$35	\$32	\$29	\$23	\$20	\$19
	55%	Current	\$78	\$71	\$64	\$60	\$59	\$56	\$52	\$48	\$45	\$44	\$44	\$43	\$40	\$34	\$30	\$23	\$20	\$18
		10yr ave.			\$72		\$64		\$53		\$45	\$43	\$41	\$40	\$39	\$35	\$32	\$26	\$23	\$20
	60%	Current	\$85	\$78	\$70	\$66	\$64	\$62	\$57	\$52	\$50	\$48	\$48	\$47	\$44	\$38	\$33	\$25	\$22	\$19
		10yr ave.			\$78		\$70		\$58		\$49	\$46	\$45	\$44	\$42	\$38	\$35	\$28	\$25	\$22
65%	Current	\$92	\$84	\$76	\$71	\$69	\$67	\$61	\$56	\$54	\$52	\$52	\$51	\$47	\$41	\$36	\$27	\$24	\$21	
	10yr ave.			\$85		\$76		\$63		\$53	\$50	\$49	\$48	\$46	\$41	\$38	\$30	\$27	\$24	
70%	Current	\$99	\$91	\$82	\$77	\$75	\$72	\$66	\$61	\$58	\$57	\$56	\$55	\$51	\$44	\$38	\$29	\$25	\$23	
	10yr ave.			\$91		\$82		\$67		\$57	\$54	\$53	\$51	\$49	\$44	\$41	\$33	\$29	\$26	
75%	Current	\$106	\$97	\$88	\$82	\$80	\$77	\$71	\$65	\$62	\$61	\$60	\$59	\$55	\$47	\$41	\$31	\$27	\$24	
	10yr ave.			\$98		\$88		\$72		\$61	\$58	\$56	\$55	\$53	\$47	\$43	\$35	\$31	\$28	
80%	Current	\$113	\$104	\$94	\$88	\$85	\$82	\$76	\$69	\$66	\$65	\$64	\$63	\$58	\$50	\$44	\$33	\$29	\$26	
	10yr ave.			\$104		\$94		\$77		\$65	\$62	\$60	\$59	\$56	\$50	\$46	\$38	\$33	\$30	
85%	Current	\$120	\$110	\$99	\$93	\$91	\$87	\$80	\$74	\$70	\$69	\$67	\$67	\$62	\$53	\$46	\$35	\$31	\$27	
	10yr ave.			\$111		\$100		\$82		\$69	\$66	\$64	\$62	\$60	\$54	\$49	\$40	\$35	\$32	

The above shows estimated returns per head for skirted fleece wool. These figures do not take into account the value of skirtings and oddments and do not take into account discounts that may apply for faults under individual circumstances. These figures are based on a market index of 100% and should be used as a guide only. Returns over \$30 / head for fleece wool are highlighted.

Source: Australian Wool Exchange, Australian Wool Innovation, Sydney Futures Exchange, x-rates.com

Disclaimer: While all due care has been taken in the preparation of this document, no warranty is made as to its accuracy, reliability or completeness. To the extent permitted by law neither Jemalong or their sources including subsidiaries and staff, accept liability to any person for loss or damage arising from the use of this information.



Table 16: Returns pr head for skirted fleece wool.

Skirted FLC Weight 6 Kg			Micron																	
			16	16.5	17	17.5	18	18.5	19	19.5	20	21	22	23	24	25	26	28	30	32
Yield (Sch Dry)	25%	Current	\$35	\$32	\$29	\$27	\$27	\$26	\$24	\$22	\$21	\$20	\$20	\$20	\$18	\$16	\$14	\$10	\$9	\$8
		10yr ave.			\$33		\$29		\$24		\$20	\$19	\$19	\$18	\$18	\$16	\$14	\$12	\$10	\$9
	30%	Current	\$42	\$39	\$35	\$33	\$32	\$31	\$28	\$26	\$25	\$24	\$24	\$24	\$22	\$19	\$16	\$12	\$11	\$10
		10yr ave.			\$39	\$35	\$35		\$29		\$25	\$23	\$23	\$22	\$21	\$19	\$17	\$14	\$12	\$11
	35%	Current	\$49	\$45	\$41	\$38	\$37	\$36	\$33	\$30	\$29	\$28	\$28	\$27	\$26	\$22	\$19	\$14	\$13	\$11
		10yr ave.			\$46		\$41		\$34		\$29	\$27	\$26	\$26	\$25	\$22	\$20	\$16	\$14	\$13
	40%	Current	\$57	\$52	\$47	\$44	\$43	\$41	\$38	\$35	\$33	\$32	\$32	\$31	\$29	\$25	\$22	\$16	\$15	\$13
		10yr ave.			\$52		\$47		\$38		\$33	\$31	\$30	\$29	\$28	\$25	\$23	\$19	\$16	\$15
	45%	Current	\$64	\$58	\$53	\$49	\$48	\$46	\$43	\$39	\$37	\$36	\$36	\$35	\$33	\$28	\$25	\$18	\$16	\$14
		10yr ave.			\$59		\$53		\$43		\$37	\$35	\$34	\$33	\$32	\$28	\$26	\$21	\$18	\$17
	50%	Current	\$71	\$65	\$59	\$55	\$53	\$51	\$47	\$43	\$41	\$40	\$40	\$39	\$36	\$31	\$27	\$21	\$18	\$16
		10yr ave.			\$65		\$59		\$48		\$41	\$39	\$38	\$37	\$35	\$32	\$29	\$23	\$20	\$19
	55%	Current	\$78	\$71	\$64	\$60	\$59	\$56	\$52	\$48	\$45	\$44	\$44	\$43	\$40	\$34	\$30	\$23	\$20	\$18
		10yr ave.			\$72		\$64		\$53		\$45	\$43	\$41	\$40	\$39	\$35	\$32	\$26	\$23	\$20
60%	Current	\$85	\$78	\$70	\$66	\$64	\$62	\$57	\$52	\$50	\$48	\$48	\$47	\$44	\$38	\$33	\$25	\$22	\$19	
	10yr ave.			\$78		\$70		\$58		\$49	\$46	\$45	\$44	\$42	\$38	\$35	\$28	\$25	\$22	
65%	Current	\$92	\$84	\$76	\$71	\$69	\$67	\$61	\$56	\$54	\$52	\$52	\$51	\$47	\$41	\$36	\$27	\$24	\$21	
	10yr ave.			\$85		\$76		\$63		\$53	\$50	\$49	\$48	\$46	\$41	\$38	\$30	\$27	\$24	
70%	Current	\$99	\$91	\$82	\$77	\$75	\$72	\$66	\$61	\$58	\$57	\$56	\$55	\$51	\$44	\$38	\$29	\$25	\$23	
	10yr ave.			\$91		\$82		\$67		\$57	\$54	\$53	\$51	\$49	\$44	\$41	\$33	\$29	\$26	
75%	Current	\$106	\$97	\$88	\$82	\$80	\$77	\$71	\$65	\$62	\$61	\$60	\$59	\$55	\$47	\$41	\$31	\$27	\$24	
	10yr ave.			\$98		\$88		\$72		\$61	\$58	\$56	\$55	\$53	\$47	\$43	\$35	\$31	\$28	
80%	Current	\$113	\$104	\$94	\$88	\$85	\$82	\$76	\$69	\$66	\$65	\$64	\$63	\$58	\$50	\$44	\$33	\$29	\$26	
	10yr ave.			\$104		\$94		\$77		\$65	\$62	\$60	\$59	\$56	\$50	\$46	\$38	\$33	\$30	
85%	Current	\$120	\$110	\$99	\$93	\$91	\$87	\$80	\$74	\$70	\$69	\$67	\$67	\$62	\$53	\$46	\$35	\$31	\$27	
	10yr ave.			\$111		\$100		\$82		\$69	\$66	\$64	\$62	\$60	\$54	\$49	\$40	\$35	\$32	

The above shows estimated returns per head for skirted fleece wool. These figures do not take into account the value of skirtings and oddments and do not take into account discounts that may apply for faults under individual circumstances. These figures are based on a market index of 100% and should be used as a guide only. Returns over \$30 / head for fleece wool are highlighted.

Source: Australian Wool Exchange, Australian Wool Innovation, Sydney Futures Exchange, x-rates.com

Disclaimer: While all due care has been taken in the preparation of this document, no warranty is made as to its accuracy, reliability or completeness. To the extent permitted by law neither Jemalong or their sources including subsidiaries and staff, accept liability to any person for loss or damage arising from the use of this information.



Table 17: Returns pr head for skirted fleece wool.

Skirted FLC Weight		Micron																	
5 Kg		16	16.5	17	17.5	18	18.5	19	19.5	20	21	22	23	24	25	26	28	30	32
Yield (Sch Dry)	25% Current	\$35	\$32	\$29	\$27	\$27	\$26	\$24	\$22	\$21	\$20	\$20	\$20	\$18	\$16	\$14	\$10	\$9	\$8
	10yr ave.			\$33		\$29		\$24		\$20	\$19	\$19	\$18	\$18	\$16	\$14	\$12	\$10	\$9
	30% Current	\$42	\$39	\$35	\$33	\$32	\$31	\$28	\$26	\$25	\$24	\$24	\$24	\$22	\$19	\$16	\$12	\$11	\$10
	10yr ave.			\$39	\$35	\$35		\$29		\$25	\$23	\$23	\$22	\$21	\$19	\$17	\$14	\$12	\$11
	35% Current	\$49	\$45	\$41	\$38	\$37	\$36	\$33	\$30	\$29	\$28	\$28	\$27	\$26	\$22	\$19	\$14	\$13	\$11
	10yr ave.			\$46		\$41		\$34		\$29	\$27	\$26	\$26	\$25	\$22	\$20	\$16	\$14	\$13
	40% Current	\$57	\$52	\$47	\$44	\$43	\$41	\$38	\$35	\$33	\$32	\$32	\$31	\$29	\$25	\$22	\$16	\$15	\$13
	10yr ave.			\$52	\$47			\$38		\$33	\$31	\$30	\$29	\$28	\$25	\$23	\$19	\$16	\$15
	45% Current	\$64	\$58	\$53	\$49	\$48	\$46	\$43	\$39	\$37	\$36	\$36	\$35	\$33	\$28	\$25	\$18	\$16	\$14
	10yr ave.			\$59		\$53		\$43		\$37	\$35	\$34	\$33	\$32	\$28	\$26	\$21	\$18	\$17
	50% Current	\$71	\$65	\$59	\$55	\$53	\$51	\$47	\$43	\$41	\$40	\$40	\$39	\$36	\$31	\$27	\$21	\$18	\$16
	10yr ave.			\$65		\$59		\$48		\$41	\$39	\$38	\$37	\$35	\$32	\$29	\$23	\$20	\$19
	55% Current	\$78	\$71	\$64	\$60	\$59	\$56	\$52	\$48	\$45	\$44	\$44	\$43	\$40	\$34	\$30	\$23	\$20	\$18
	10yr ave.			\$72	\$64			\$53		\$45	\$43	\$41	\$40	\$39	\$35	\$32	\$26	\$23	\$20
	60% Current	\$85	\$78	\$70	\$66	\$64	\$62	\$57	\$52	\$50	\$48	\$48	\$47	\$44	\$38	\$33	\$25	\$22	\$19
	10yr ave.			\$78	\$70			\$58		\$49	\$46	\$45	\$44	\$42	\$38	\$35	\$28	\$25	\$22
	65% Current	\$92	\$84	\$76	\$71	\$69	\$67	\$61	\$56	\$54	\$52	\$52	\$51	\$47	\$41	\$36	\$27	\$24	\$21
	10yr ave.			\$85		\$76		\$63		\$53	\$50	\$49	\$48	\$46	\$41	\$38	\$30	\$27	\$24
	70% Current	\$99	\$91	\$82	\$77	\$75	\$72	\$66	\$61	\$58	\$57	\$56	\$55	\$51	\$44	\$38	\$29	\$25	\$23
	10yr ave.			\$91		\$82		\$67		\$57	\$54	\$53	\$51	\$49	\$44	\$41	\$33	\$29	\$26
	75% Current	\$106	\$97	\$88	\$82	\$80	\$77	\$71	\$65	\$62	\$61	\$60	\$59	\$55	\$47	\$41	\$31	\$27	\$24
	10yr ave.			\$98		\$88		\$72		\$61	\$58	\$56	\$55	\$53	\$47	\$43	\$35	\$31	\$28
	80% Current	\$113	\$104	\$94	\$88	\$85	\$82	\$76	\$69	\$66	\$65	\$64	\$63	\$58	\$50	\$44	\$33	\$29	\$26
	10yr ave.			\$104		\$94		\$77		\$65	\$62	\$60	\$59	\$56	\$50	\$46	\$38	\$33	\$30
	85% Current	\$120	\$110	\$99	\$93	\$91	\$87	\$80	\$74	\$70	\$69	\$67	\$67	\$62	\$53	\$46	\$35	\$31	\$27
	10yr ave.			\$111		\$100		\$82		\$69	\$66	\$64	\$62	\$60	\$54	\$49	\$40	\$35	\$32

The above shows estimated returns per head for skirted fleece wool. These figures do not take into account the value of skirtings and oddments and do not take into account discounts that may apply for faults under individual circumstances. These figures are based on a market index of 100% and should be used as a guide only. Returns over \$30 / head for fleece wool are highlighted.

Source: Australian Wool Exchange, Australian Wool Innovation, Sydney Futures Exchange, x-rates.com

Disclaimer: While all due care has been taken in the preparation of this document, no warranty is made as to its accuracy, reliability or completeness. To the extent permitted by law neither Jemalong or their sources including subsidiaries and staff, accept liability to any person for loss or damage arising from the use of this information.



Table 18: Returns pr head for skirted fleece wool.

Skirted FLC Weight 4 Kg			Micron																	
			16	16.5	17	17.5	18	18.5	19	19.5	20	21	22	23	24	25	26	28	30	32
Yield (Sch Dry)	25%	Current	\$35	\$32	\$29	\$27	\$27	\$26	\$24	\$22	\$21	\$20	\$20	\$20	\$18	\$16	\$14	\$10	\$9	\$8
		10yr ave.			\$33		\$29		\$24		\$20	\$19	\$19	\$18	\$18	\$16	\$14	\$12	\$10	\$9
	30%	Current	\$42	\$39	\$35	\$33	\$32	\$31	\$28	\$26	\$25	\$24	\$24	\$24	\$22	\$19	\$16	\$12	\$11	\$10
		10yr ave.			\$39		\$35		\$29		\$25	\$23	\$23	\$22	\$21	\$19	\$17	\$14	\$12	\$11
	35%	Current	\$49	\$45	\$41	\$38	\$37	\$36	\$33	\$30	\$29	\$28	\$28	\$27	\$26	\$22	\$19	\$14	\$13	\$11
		10yr ave.			\$46		\$41		\$34		\$29	\$27	\$26	\$26	\$25	\$22	\$20	\$16	\$14	\$13
	40%	Current	\$57	\$52	\$47	\$44	\$43	\$41	\$38	\$35	\$33	\$32	\$32	\$31	\$29	\$25	\$22	\$16	\$15	\$13
		10yr ave.			\$52		\$47		\$38		\$33	\$31	\$30	\$29	\$28	\$25	\$23	\$19	\$16	\$15
	45%	Current	\$64	\$58	\$53	\$49	\$48	\$46	\$43	\$39	\$37	\$36	\$36	\$35	\$33	\$28	\$25	\$18	\$16	\$14
		10yr ave.			\$59		\$53		\$43		\$37	\$35	\$34	\$33	\$32	\$28	\$26	\$21	\$18	\$17
	50%	Current	\$71	\$65	\$59	\$55	\$53	\$51	\$47	\$43	\$41	\$40	\$40	\$39	\$36	\$31	\$27	\$21	\$18	\$16
		10yr ave.			\$65		\$59		\$48		\$41	\$39	\$38	\$37	\$35	\$32	\$29	\$23	\$20	\$19
	55%	Current	\$78	\$71	\$64	\$60	\$59	\$56	\$52	\$48	\$45	\$44	\$44	\$43	\$40	\$34	\$30	\$23	\$20	\$18
		10yr ave.			\$72		\$64		\$53		\$45	\$43	\$41	\$40	\$39	\$35	\$32	\$26	\$23	\$20
	60%	Current	\$85	\$78	\$70	\$66	\$64	\$62	\$57	\$52	\$50	\$48	\$48	\$47	\$44	\$38	\$33	\$25	\$22	\$19
		10yr ave.			\$78		\$70		\$58		\$49	\$46	\$45	\$44	\$42	\$38	\$35	\$28	\$25	\$22
65%	Current	\$92	\$84	\$76	\$71	\$69	\$67	\$61	\$56	\$54	\$52	\$52	\$51	\$47	\$41	\$36	\$27	\$24	\$21	
	10yr ave.			\$85		\$76		\$63		\$53	\$50	\$49	\$48	\$46	\$41	\$38	\$30	\$27	\$24	
70%	Current	\$99	\$91	\$82	\$77	\$75	\$72	\$66	\$61	\$58	\$57	\$56	\$55	\$51	\$44	\$38	\$29	\$25	\$23	
	10yr ave.			\$91		\$82		\$67		\$57	\$54	\$53	\$51	\$49	\$44	\$41	\$33	\$29	\$26	
75%	Current	\$106	\$97	\$88	\$82	\$80	\$77	\$71	\$65	\$62	\$61	\$60	\$59	\$55	\$47	\$41	\$31	\$27	\$24	
	10yr ave.			\$98		\$88		\$72		\$61	\$58	\$56	\$55	\$53	\$47	\$43	\$35	\$31	\$28	
80%	Current	\$113	\$104	\$94	\$88	\$85	\$82	\$76	\$69	\$66	\$65	\$64	\$63	\$58	\$50	\$44	\$33	\$29	\$26	
	10yr ave.			\$104		\$94		\$77		\$65	\$62	\$60	\$59	\$56	\$50	\$46	\$38	\$33	\$30	
85%	Current	\$120	\$110	\$99	\$93	\$91	\$87	\$80	\$74	\$70	\$69	\$67	\$67	\$62	\$53	\$46	\$35	\$31	\$27	
	10yr ave.			\$111		\$100		\$82		\$69	\$66	\$64	\$62	\$60	\$54	\$49	\$40	\$35	\$32	

The above shows estimated returns per head for skirted fleece wool. These figures do not take into account the value of skirtings and oddments and do not take into account discounts that may apply for faults under individual circumstances. These figures are based on a market index of 100% and should be used as a guide only. Returns over \$30 / head for fleece wool are highlighted.

Source: Australian Wool Exchange, Australian Wool Innovation, Sydney Futures Exchange, x-rates.com

Disclaimer: While all due care has been taken in the preparation of this document, no warranty is made as to its accuracy, reliability or completeness. To the extent permitted by law neither Jemalong or their sources including subsidiaries and staff, accept liability to any person for loss or damage arising from the use of this information.



Table 19: Returns pr head for skirted fleece wool.

Skirted FLC Weight 3 Kg			Micron																	
			16	16.5	17	17.5	18	18.5	19	19.5	20	21	22	23	24	25	26	28	30	32
Yield (Sch Dry)	25%	Current	\$35	\$32	\$29	\$27	\$27	\$26	\$24	\$22	\$21	\$20	\$20	\$20	\$18	\$16	\$14	\$10	\$9	\$8
		10yr ave.			\$33		\$29		\$24		\$20	\$19	\$19	\$18	\$18	\$16	\$14	\$12	\$10	\$9
	30%	Current	\$42	\$39	\$35	\$33	\$32	\$31	\$28	\$26	\$25	\$24	\$24	\$24	\$22	\$19	\$16	\$12	\$11	\$10
		10yr ave.			\$39		\$35		\$29		\$25	\$23	\$23	\$22	\$21	\$19	\$17	\$14	\$12	\$11
	35%	Current	\$49	\$45	\$41	\$38	\$37	\$36	\$33	\$30	\$29	\$28	\$28	\$27	\$26	\$22	\$19	\$14	\$13	\$11
		10yr ave.			\$46		\$41		\$34		\$29	\$27	\$26	\$26	\$25	\$22	\$20	\$16	\$14	\$13
	40%	Current	\$57	\$52	\$47	\$44	\$43	\$41	\$38	\$35	\$33	\$32	\$32	\$31	\$29	\$25	\$22	\$16	\$15	\$13
		10yr ave.			\$52		\$47		\$38		\$33	\$31	\$30	\$29	\$28	\$25	\$23	\$19	\$16	\$15
	45%	Current	\$64	\$58	\$53	\$49	\$48	\$46	\$43	\$39	\$37	\$36	\$36	\$35	\$33	\$28	\$25	\$18	\$16	\$14
		10yr ave.			\$59		\$53		\$43		\$37	\$35	\$34	\$33	\$32	\$28	\$26	\$21	\$18	\$17
	50%	Current	\$71	\$65	\$59	\$55	\$53	\$51	\$47	\$43	\$41	\$40	\$40	\$39	\$36	\$31	\$27	\$21	\$18	\$16
		10yr ave.			\$65		\$59		\$48		\$41	\$39	\$38	\$37	\$35	\$32	\$29	\$23	\$20	\$19
	55%	Current	\$78	\$71	\$64	\$60	\$59	\$56	\$52	\$48	\$45	\$44	\$44	\$43	\$40	\$34	\$30	\$23	\$20	\$18
		10yr ave.			\$72		\$64		\$53		\$45	\$43	\$41	\$40	\$39	\$35	\$32	\$26	\$23	\$20
	60%	Current	\$85	\$78	\$70	\$66	\$64	\$62	\$57	\$52	\$50	\$48	\$48	\$47	\$44	\$38	\$33	\$25	\$22	\$19
		10yr ave.			\$78		\$70		\$58		\$49	\$46	\$45	\$44	\$42	\$38	\$35	\$28	\$25	\$22
65%	Current	\$92	\$84	\$76	\$71	\$69	\$67	\$61	\$56	\$54	\$52	\$52	\$51	\$47	\$41	\$36	\$27	\$24	\$21	
	10yr ave.			\$85		\$76		\$63		\$53	\$50	\$49	\$48	\$46	\$41	\$38	\$30	\$27	\$24	
70%	Current	\$99	\$91	\$82	\$77	\$75	\$72	\$66	\$61	\$58	\$57	\$56	\$55	\$51	\$44	\$38	\$29	\$25	\$23	
	10yr ave.			\$91		\$82		\$67		\$57	\$54	\$53	\$51	\$49	\$44	\$41	\$33	\$29	\$26	
75%	Current	\$106	\$97	\$88	\$82	\$80	\$77	\$71	\$65	\$62	\$61	\$60	\$59	\$55	\$47	\$41	\$31	\$27	\$24	
	10yr ave.			\$98		\$88		\$72		\$61	\$58	\$56	\$55	\$53	\$47	\$43	\$35	\$31	\$28	
80%	Current	\$113	\$104	\$94	\$88	\$85	\$82	\$76	\$69	\$66	\$65	\$64	\$63	\$58	\$50	\$44	\$33	\$29	\$26	
	10yr ave.			\$104		\$94		\$77		\$65	\$62	\$60	\$59	\$56	\$50	\$46	\$38	\$33	\$30	
85%	Current	\$120	\$110	\$99	\$93	\$91	\$87	\$80	\$74	\$70	\$69	\$67	\$67	\$62	\$53	\$46	\$35	\$31	\$27	
	10yr ave.			\$111		\$100		\$82		\$69	\$66	\$64	\$62	\$60	\$54	\$49	\$40	\$35	\$32	

The above shows estimated returns per head for skirted fleece wool. These figures do not take into account the value of skirtings and oddments and do not take into account discounts that may apply for faults under individual circumstances. These figures are based on a market index of 100% and should be used as a guide only. Returns over \$30 / head for fleece wool are highlighted.

Source: Australian Wool Exchange, Australian Wool Innovation, Sydney Futures Exchange, x-rates.com

Disclaimer: While all due care has been taken in the preparation of this document, no warranty is made as to its accuracy, reliability or completeness. To the extent permitted by law neither Jemalong or their sources including subsidiaries and staff, accept liability to any person for loss or damage arising from the use of this information.



Table 20: Returns pr head for skirted fleece wool.

Skirted FLC Weight 2 Kg			Micron																	
			16	16.5	17	17.5	18	18.5	19	19.5	20	21	22	23	24	25	26	28	30	32
Yield (Sch Dry)	25%	Current	\$35	\$32	\$29	\$27	\$27	\$26	\$24	\$22	\$21	\$20	\$20	\$20	\$18	\$16	\$14	\$10	\$9	\$8
		10yr ave.			\$33		\$29		\$24		\$20	\$19	\$19	\$18	\$18	\$16	\$14	\$12	\$10	\$9
	30%	Current	\$42	\$39	\$35	\$33	\$32	\$31	\$28	\$26	\$25	\$24	\$24	\$24	\$22	\$19	\$16	\$12	\$11	\$10
		10yr ave.			\$39		\$35		\$29		\$25	\$23	\$23	\$22	\$21	\$19	\$17	\$14	\$12	\$11
	35%	Current	\$49	\$45	\$41	\$38	\$37	\$36	\$33	\$30	\$29	\$28	\$28	\$27	\$26	\$22	\$19	\$14	\$13	\$11
		10yr ave.			\$46		\$41		\$34		\$29	\$27	\$26	\$26	\$25	\$22	\$20	\$16	\$14	\$13
	40%	Current	\$57	\$52	\$47	\$44	\$43	\$41	\$38	\$35	\$33	\$32	\$32	\$31	\$29	\$25	\$22	\$16	\$15	\$13
		10yr ave.			\$52		\$47		\$38		\$33	\$31	\$30	\$29	\$28	\$25	\$23	\$19	\$16	\$15
	45%	Current	\$64	\$58	\$53	\$49	\$48	\$46	\$43	\$39	\$37	\$36	\$36	\$35	\$33	\$28	\$25	\$18	\$16	\$14
		10yr ave.			\$59		\$53		\$43		\$37	\$35	\$34	\$33	\$32	\$28	\$26	\$21	\$18	\$17
	50%	Current	\$71	\$65	\$59	\$55	\$53	\$51	\$47	\$43	\$41	\$40	\$40	\$39	\$36	\$31	\$27	\$21	\$18	\$16
		10yr ave.			\$65		\$59		\$48		\$41	\$39	\$38	\$37	\$35	\$32	\$29	\$23	\$20	\$19
	55%	Current	\$78	\$71	\$64	\$60	\$59	\$56	\$52	\$48	\$45	\$44	\$44	\$43	\$40	\$34	\$30	\$23	\$20	\$18
		10yr ave.			\$72		\$64		\$53		\$45	\$43	\$41	\$40	\$39	\$35	\$32	\$26	\$23	\$20
	60%	Current	\$85	\$78	\$70	\$66	\$64	\$62	\$57	\$52	\$50	\$48	\$48	\$47	\$44	\$38	\$33	\$25	\$22	\$19
		10yr ave.			\$78		\$70		\$58		\$49	\$46	\$45	\$44	\$42	\$38	\$35	\$28	\$25	\$22
65%	Current	\$92	\$84	\$76	\$71	\$69	\$67	\$61	\$56	\$54	\$52	\$52	\$51	\$47	\$41	\$36	\$27	\$24	\$21	
	10yr ave.			\$85		\$76		\$63		\$53	\$50	\$49	\$48	\$46	\$41	\$38	\$30	\$27	\$24	
70%	Current	\$99	\$91	\$82	\$77	\$75	\$72	\$66	\$61	\$58	\$57	\$56	\$55	\$51	\$44	\$38	\$29	\$25	\$23	
	10yr ave.			\$91		\$82		\$67		\$57	\$54	\$53	\$51	\$49	\$44	\$41	\$33	\$29	\$26	
75%	Current	\$106	\$97	\$88	\$82	\$80	\$77	\$71	\$65	\$62	\$61	\$60	\$59	\$55	\$47	\$41	\$31	\$27	\$24	
	10yr ave.			\$98		\$88		\$72		\$61	\$58	\$56	\$55	\$53	\$47	\$43	\$35	\$31	\$28	
80%	Current	\$113	\$104	\$94	\$88	\$85	\$82	\$76	\$69	\$66	\$65	\$64	\$63	\$58	\$50	\$44	\$33	\$29	\$26	
	10yr ave.			\$104		\$94		\$77		\$65	\$62	\$60	\$59	\$56	\$50	\$46	\$38	\$33	\$30	
85%	Current	\$120	\$110	\$99	\$93	\$91	\$87	\$80	\$74	\$70	\$69	\$67	\$67	\$62	\$53	\$46	\$35	\$31	\$27	
	10yr ave.			\$111		\$100		\$82		\$69	\$66	\$64	\$62	\$60	\$54	\$49	\$40	\$35	\$32	

The above shows estimated returns per head for skirted fleece wool. These figures do not take into account the value of skirtings and oddments and do not take into account discounts that may apply for faults under individual circumstances. These figures are based on a market index of 100% and should be used as a guide only. Returns over \$30 / head for fleece wool are highlighted.

Source: Australian Wool Exchange, Australian Wool Innovation, Sydney Futures Exchange, x-rates.com

Disclaimer: While all due care has been taken in the preparation of this document, no warranty is made as to its accuracy, reliability or completeness. To the extent permitted by law neither Jemalong or their sources including subsidiaries and staff, accept liability to any person for loss or damage arising from the use of this information.