



JEMALONG WOOL BULLETIN

(week ending 28/01/2011)

Table 1: Northern Region Micron Price Guides

CURRENT MARKET				PERCENTILES		AVERAGES						12 MONTH COMPARISONS								TRADING RANGE		
Mic.	27/01/2011	20/01/2011	3 year Average			Now compared to 3yr ave	10 year Average	Now compared to 10yr ave	##### This time Last Year	Now compared to Last Year	12 Month Low	Now compared to Low	12 Month High	Now compared to High	Clean c/kg 12 Mth	3 Year	10 Year					
Price Guides	Current Price	Weekly Change		3yr	10yr																	
NRI	1255	+4 0.3%	99%	99%	902	+353 39%	876	+379 43%	968	+287 30%	890	+365 41%	1306	-51 -4%	416	557	648					
16*	2400	+30 1.3%	100%		1656	+744 45%			1520	+880 58%	1510	+890 59%	2400	0 0%	890	1015						
16.5*	2300	0	100%		1520	+780 51%			1410	+890 63%	1395	+905 65%	2300	0 0%	905	1046						
17*	2220	0	100%	97%	1394	+826 59%	1405	+815 58%	1280	+940 73%	1230	+990 80%	2220	0 0%	990	1049	1797					
17.5*	2090	+50 2.4%	100%		1324	+766 58%			1235	+855 69%	1175	+915 78%	2090	0 0%	915	1004						
18	1958	+5 0.3%	99%	94%	1262	+696 55%	1281	+677 53%	1208	+750 62%	1134	+824 73%	2021	-63 -3%	887	986	1392					
18.5	1803	+8 0.4%	99%		1182	+621 53%			1161	+642 55%	1088	+715 66%	1864	-61 -3%	776	893						
19	1560	+16 1.0%	99%	99%	1079	+481 45%	1068	+492 46%	1099	+461 42%	1031	+529 51%	1645	-85 -5%	614	751	841					
19.5	1332	+7 0.5%	99%		985	+347 35%			1055	+277 26%	952	+380 40%	1401	-69 -5%	449	587						
20	1147	+2 0.2%	99%	92%	910	+237 26%	918	+229 25%	1017	+130 13%	904	+243 27%	1230	-83 -7%	326	490	717					
21	1111	+8 0.7%	99%	93%	876	+235 27%	874	+237 27%	1000	+111 11%	878	+233 27%	1175	-64 -5%	297	488	737					
22	1060	+2 0.2%	99%	93%	853	+207 24%	851	+209 25%	966	+94 10%	847	+213 25%	1141	-81 -7%	294	466	735					
23	1016	+8 0.8%	99%	90%	830	+186 22%	830	+186 22%	940	+76 8%	827	+189 23%	1070	-54 -5%	243	407	728					
24	958	+13 1.4%	99%	85%	782	+176 23%	793	+165 21%	881	+77 9%	780	+178 23%	975	-17 -2%	195	328	706					
25	814	0	100%	81%	673	+141 21%	712	+102 14%	703	+111 16%	660	+154 23%	814	0 0%	154	248	653					
26	748	-4 -0.5%	99%	81%	604	+144 24%	652	+96 15%	609	+139 23%	576	+172 30%	752	-4 -1%	176	248	591					
28	574	-5 -0.9%	98%	77%	463	+111 24%	523	+51 10%	483	+91 19%	436	+138 32%	579	-5 -1%	143	160	465					
30	507	-2 -0.4%	99%	76%	403	+104 26%	456	+51 11%	411	+96 23%	382	+125 33%	509	-2 0%	127	162	384					
32	449	+3 0.7%	100%	72%	352	+97 28%	413	+36 9%	348	+101 29%	346	+103 30%	449	0 0%	103	143	372					
MC	689	+1 0.1%	99%	99%	546	+143 26%	502	+187 37%	656	+33 5%	561	+128 23%	696	-7 -1%	135	304	316					

Note:

* Due to the irregular market quoting for some fine wool categories, figures shown relating to micron categories below 18 micron are an estimate based on the AWEX Premium & Discounts Report & other available information.

* For any category, where there is insufficient quantity offered to enable AWEX to quote, a quote will be provided based on the best available information.

* 10 Year data is not available for some micron categories, which may result in blank spaces in the table above.

Definitions:

* A Percentile, is a value on a scale of one hundred that indicates the percent of a distribution that is equal to or below it. In general a percentile between 25% and 75% is considered normal, a percentile below 25% is considered below normal and a percentile above 75% is considered above normal.

Three and ten year percentiles shown in the table above, detail the period of time during the past 3 & 10 years that the market has traded either at or below its current price.

The higher the percentile, the stronger the market.

Source: Australian Wool Exchange, Australian Wool Innovation, Sydney Futures Exchange, x-rates.com

Disclaimer: While all due care has been taken in the preparation of this document, no warranty is made as to its accuracy, reliability or completeness. To the extent permitted by law neither Jemalong or their sources including subsidiaries and staff, accept liability to any person for loss or damage arising from the use of this information.



MARKET COMMENTARY

Australian Dollar 99.08 cents US as of 27/01/2011

NORTHERN REGION –Sale Week 30/10 (55,476 bales offered nationally)

On Tuesday - the market started off slowly and as expected, opened lower than the previous weeks close, however it gathered pace as the sale progressed (particularly for the more stylish 40nkt types, which closed very firm). Although the finer types were in the most demand the better style broader types were not left behind with the main pockets of weakness mostly limited to the lower styles in the medium to broader range. Skirtings were unchanged as were the oddments. Crossbreds were slightly cheaper on a small offering.

On Thursday the market was generally unchanged. The Northern Region Indicator edged 4 cents higher on the back of solid support for the better types (style 4/40nkt). The medium to broad end registered the largest increase of 5-10 cents while the finer types were mostly unchanged on a selection of mostly good-style types. Best style and length skirtings were slightly dearer, others were unchanged. Best style locks & crutchings were also slightly dearer with others unchanged. The crossbred market also remained unchanged.

Northern Region Indicator (Monthly Averages)

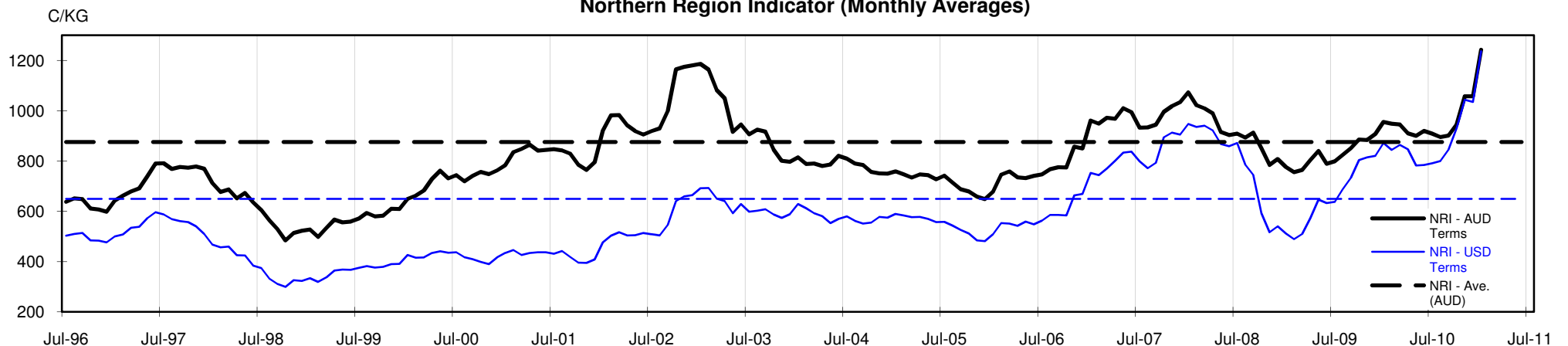




Table 4: 19 micron SFE

Wednesday, 26 January 2011

Delivery Mth	Feb-11	Apr-11	Jun-11	Aug-11	Oct-11	Dec-11	Feb-12	Apr-12	Jun-12
19 Micron SFE	1572	1550	1523	1495	1480	1474	1462	1392	1392
Average	1059	1087	1099	1106	1111	1115	1133	1163	1214
Maximum	1572	1605	1600	1573	1545	1538	1532	1520	1450
Minimum	936	983	1025	1034	1034	1034	1034	1053	1106

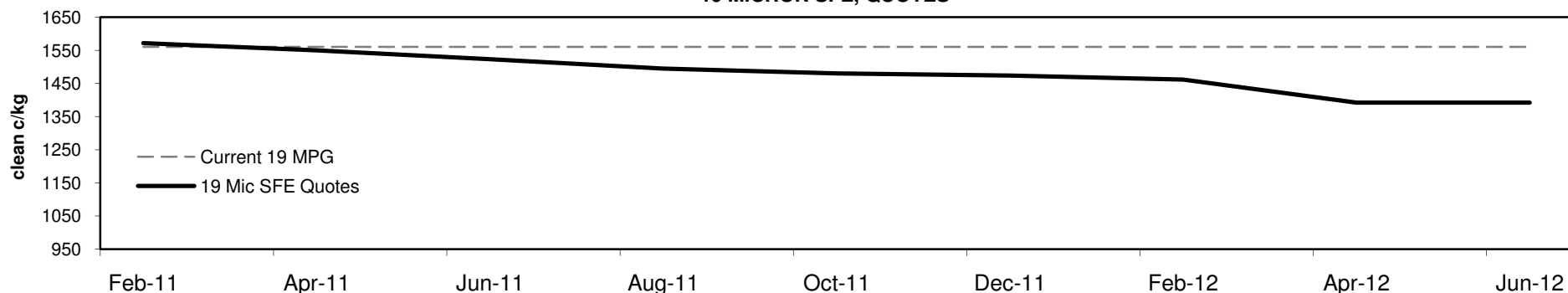
Table 5: 19 micron SFE, as a percentile of the 19 micron MPG

3 Year Percentile	99%	99%	98%	98%	98%	98%	98%	98%	98%
10 Year Percentile	99%	99%	99%	99%	99%	99%	99%	97%	97%

Table 6: 19 micron SFE, compared to MPG

Current 19 MPG	+12	1%	-10	-1%	-37	-2%	-65	-4%	-80	-5%	-86	-6%	-98	-6%	-168	-11%	-168	-11%
19 MPG, 1 Year Average	+424	37%	+402	35%	+375	33%	+347	30%	+332	29%	+326	28%	+314	27%	+244	21%	+244	21%
19 MPG, 3 Year Average	+493	46%	+471	44%	+444	41%	+416	39%	+401	37%	+395	37%	+383	35%	+313	29%	+313	29%
19 MPG, 10 Year Average	+504	47%	+482	45%	+455	43%	+427	40%	+412	39%	+406	38%	+394	37%	+324	30%	+324	30%

19 MICRON SFE, QUOTES



19 Micron SFE, Front month movement

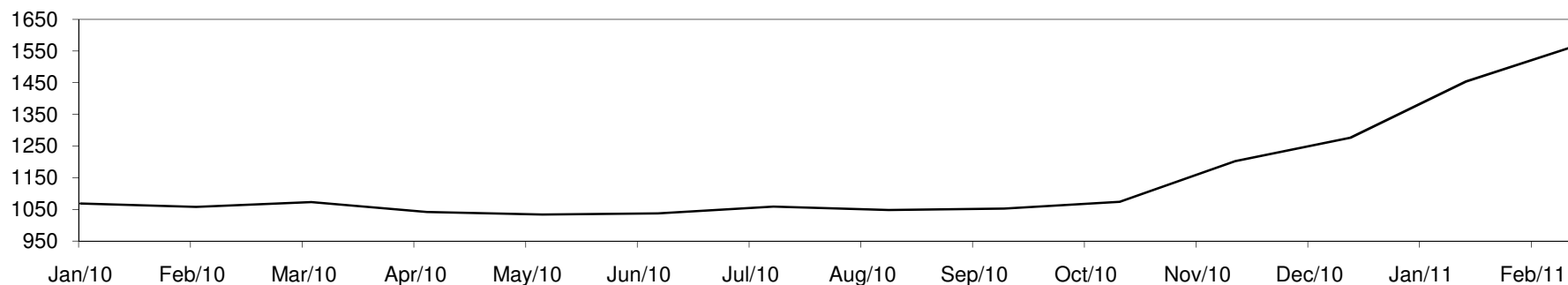




Table 7: 21 micron SFE

Wednesday, 26 January 2011

Delivery Mth	Feb-11	Apr-11	Jun-11	Aug-11	Oct-11	Dec-11	Feb-12	Apr-12	Jun-12
21 Micron SFE	1140	1105	1075	1074	1073	1053	1053	1053	1053
Average	933	950	953	953	948	942	942	961	1006
Maximum	1140	1220	1185	1160	1133	1115	1053	1080	1080
Minimum	818	860	891	890	880	880	880	880	934

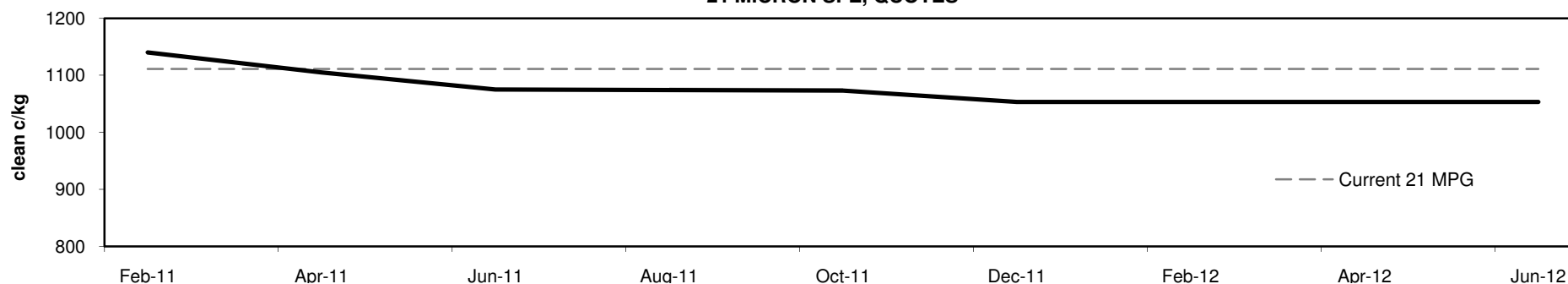
Table 8: 21 micron SFE, as a percentile of the 21 micron MPG

3 Year Percentile	99%	98%	98%	98%	98%	98%	98%	98%	98%
10 Year Percentile	93%	93%	92%	92%	92%	92%	92%	92%	92%

Table 9: 21 micron SFE, compared to MPG

Current 21 MPG	+29	3%	-6	-1%	-36	-3%	-37	-3%	-38	-3%	-58	-5%	-58	-5%	-58	-5%	-58	-5%
21 MPG, 1 Year Average	+185	19%	+150	16%	+120	13%	+119	12%	+118	12%	+98	10%	+98	10%	+98	10%	+98	10%
21 MPG, 3 Year Average	+264	30%	+229	26%	+199	23%	+198	23%	+197	22%	+177	20%	+177	20%	+177	20%	+177	20%
21 MPG, 10 Year Average	+266	30%	+231	26%	+201	23%	+200	23%	+199	23%	+179	20%	+179	20%	+179	20%	+179	20%

21 MICRON SFE, QUOTES



21 Micron SFE, Front month movement

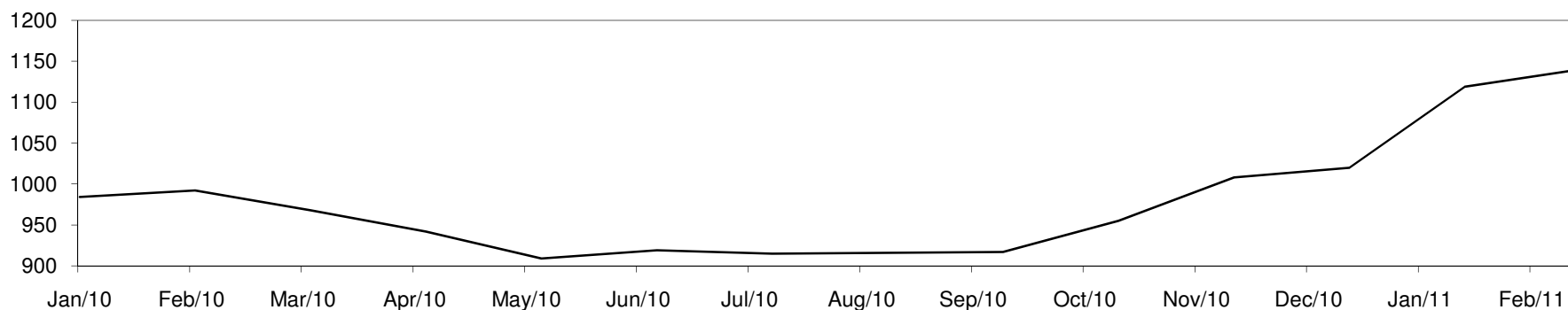




Table 10: 23 micron SFE

Wednesday, 26 January 2011

Delivery Mth	Feb-11	Apr-11	Jun-11	Aug-11	Oct-11	Dec-11	Feb-12	Apr-12	Jun-12
23 Micron SFE	890	890	890	890	890	890	890	890	890
Average	856	866	875	886	891	885	885	886	885
Maximum	927	927	927	927	927	890	890	890	890
Minimum	760	760	803	803	883	883	883	883	883

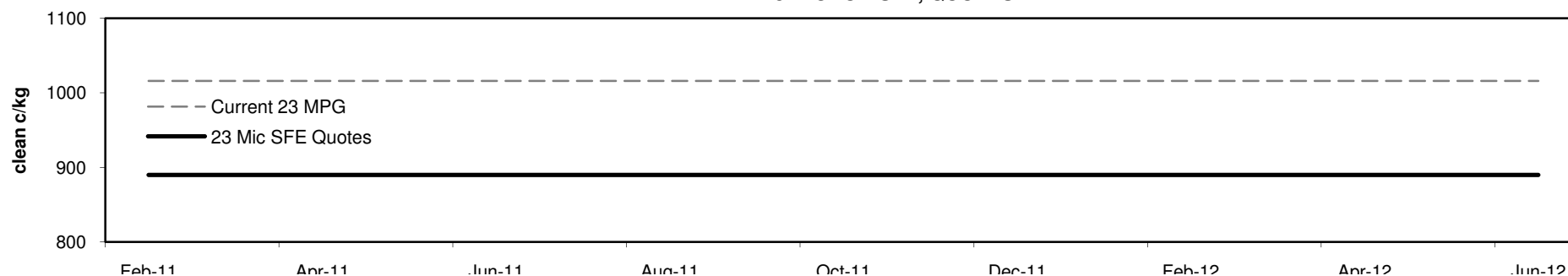
Table 11: 23 micron SFE, as a percentile of the 23 micron MPG

3 Year Percentile	72%	72%	72%	72%	72%	72%	72%	72%	72%
10 Year Percentile	65%	65%	65%	65%	65%	65%	65%	65%	65%

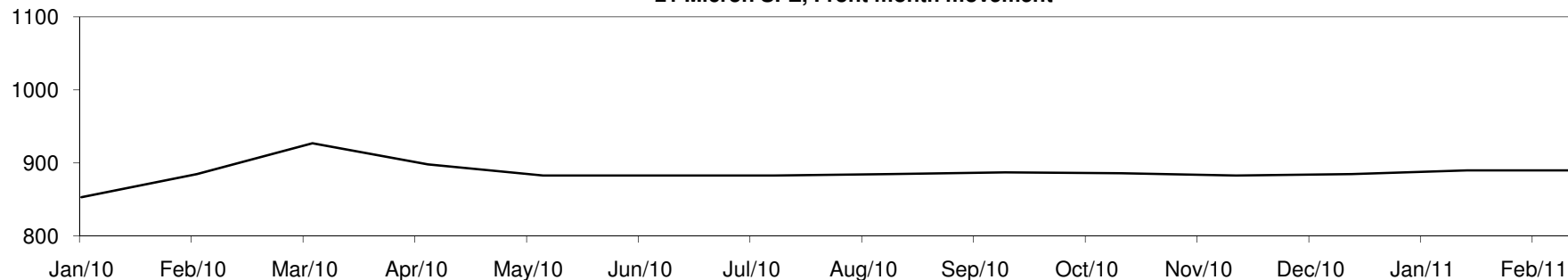
Table 12: 23 micron SFE, compared to MPG

Current 19 MPG	-126	-12%	-126	-12%	-126	-12%	-126	####	-126	-12%	-126	-12%	-126	-12%	-126	-12%	-126	-12%
23 MPG, 1 Year Average	-11	-1%	-11	-1%	-11	-1%	-11	-1%	-11	-1%	-11	-1%	-11	-1%	-11	-1%	-11	-1%
23 MPG, 3 Year Average	+60	7%	+60	7%	+60	7%	+60	7%	+60	7%	+60	7%	+60	7%	+60	7%	+60	7%
23 MPG, 10 Year Average	+60	7%	+60	7%	+60	7%	+60	7%	+60	7%	+60	7%	+60	7%	+60	7%	+60	7%

23 MICRON SFE, QUOTES

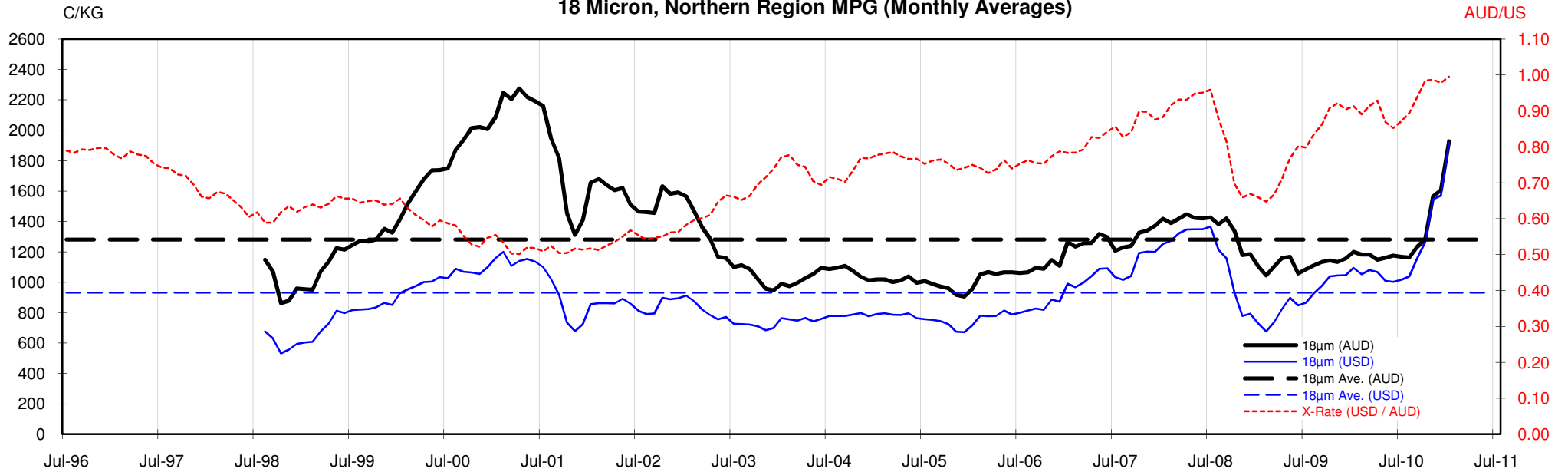


21 Micron SFE, Front month movement



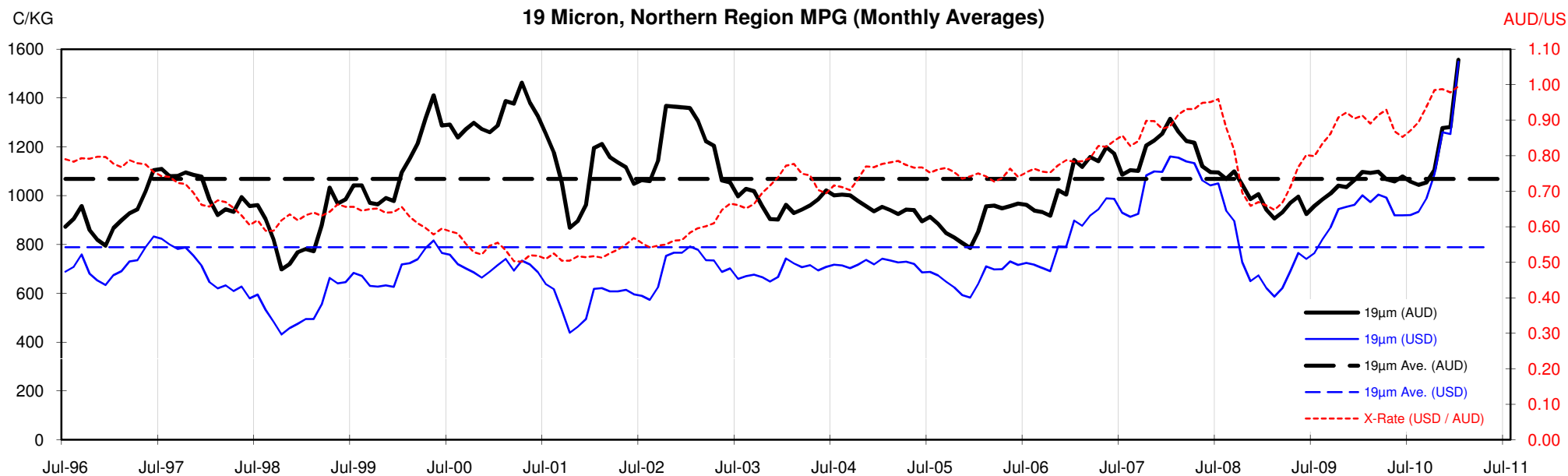


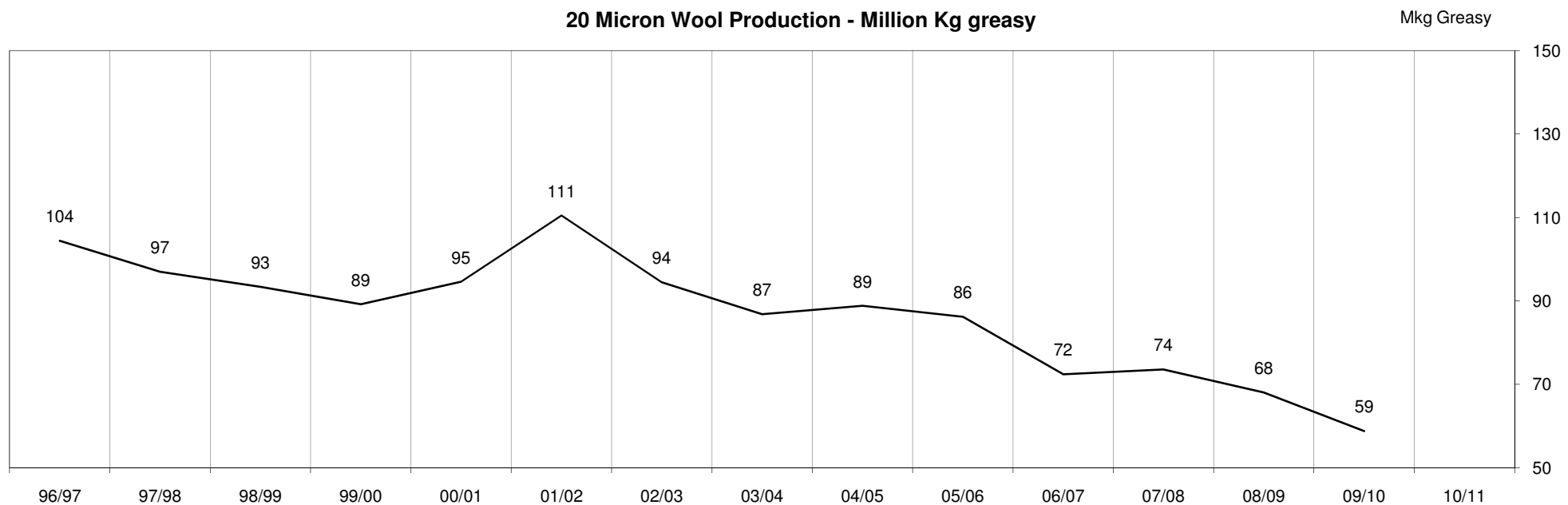
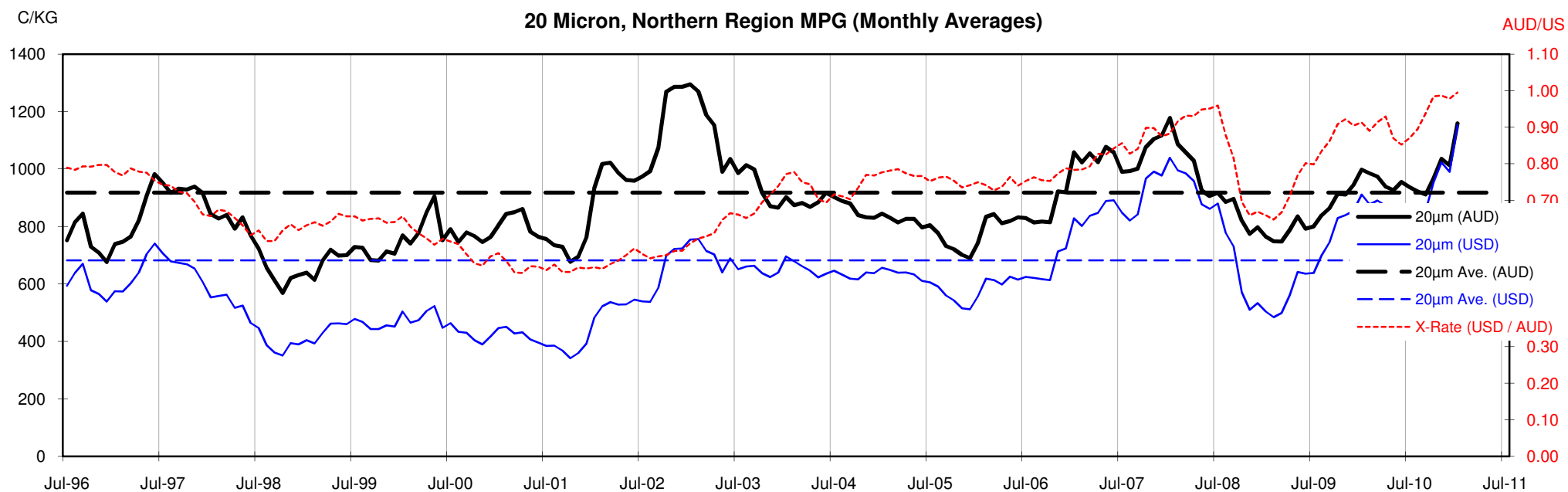
18 Micron, Northern Region MPG (Monthly Averages)

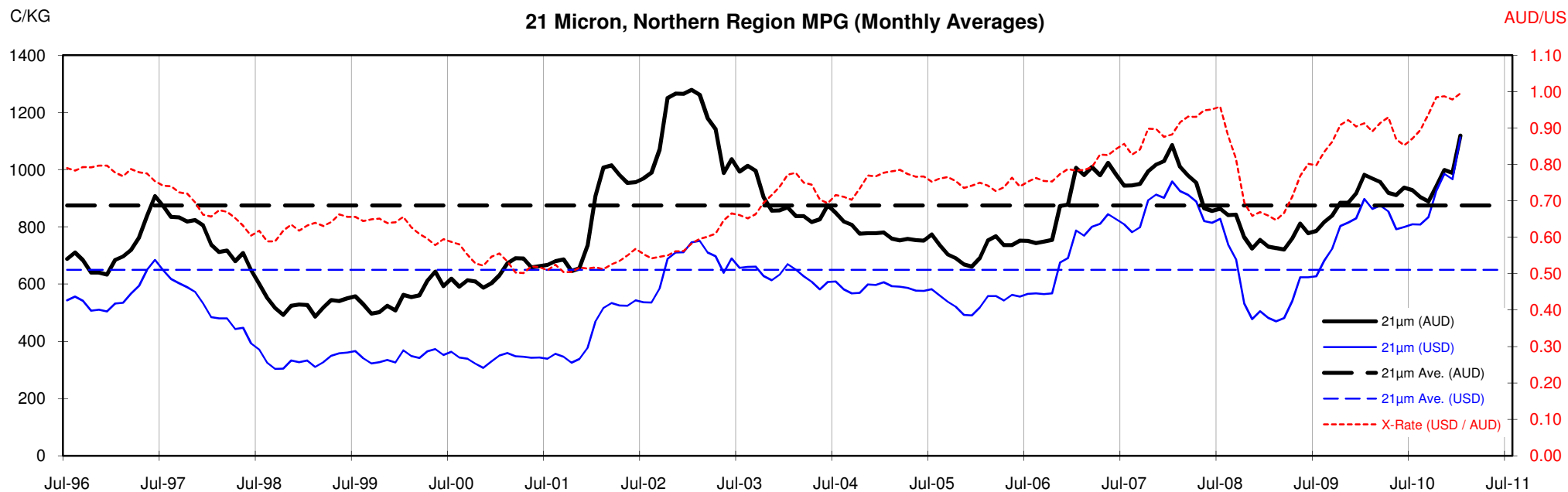


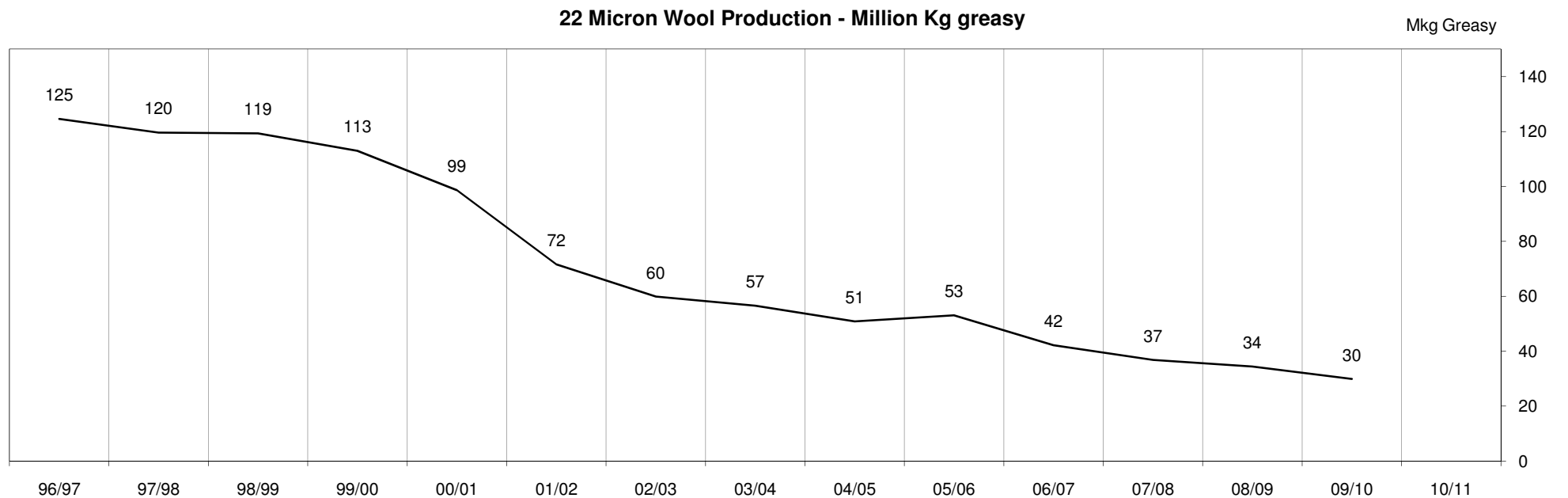
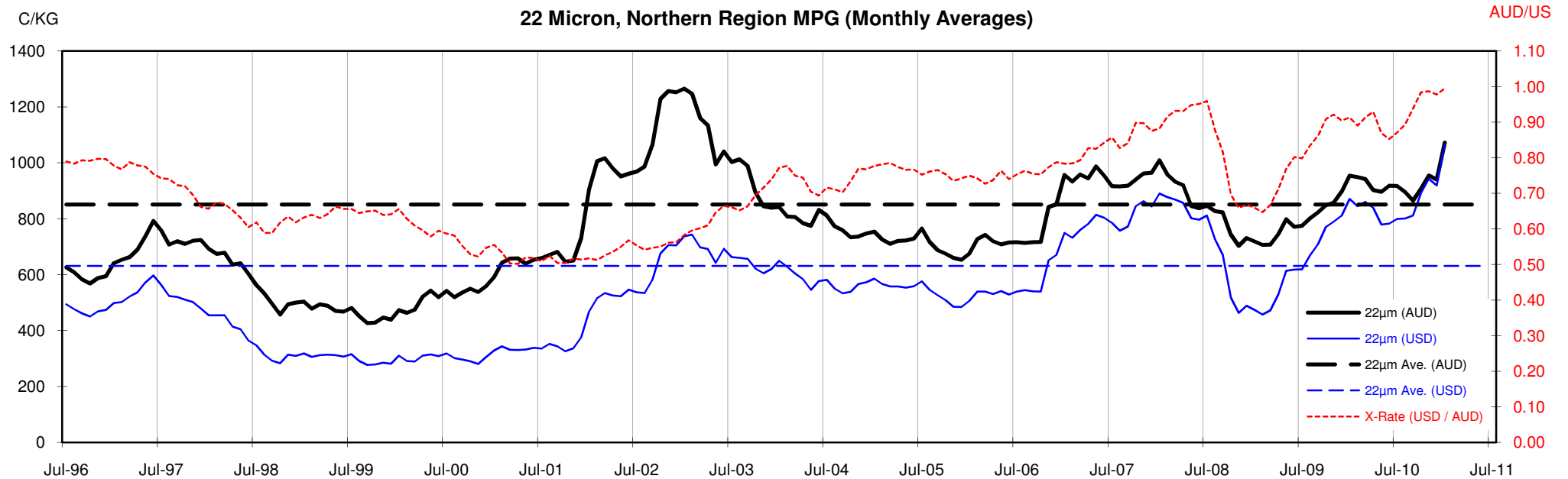
<18.5 micron Wool Production - Million Kg greasy

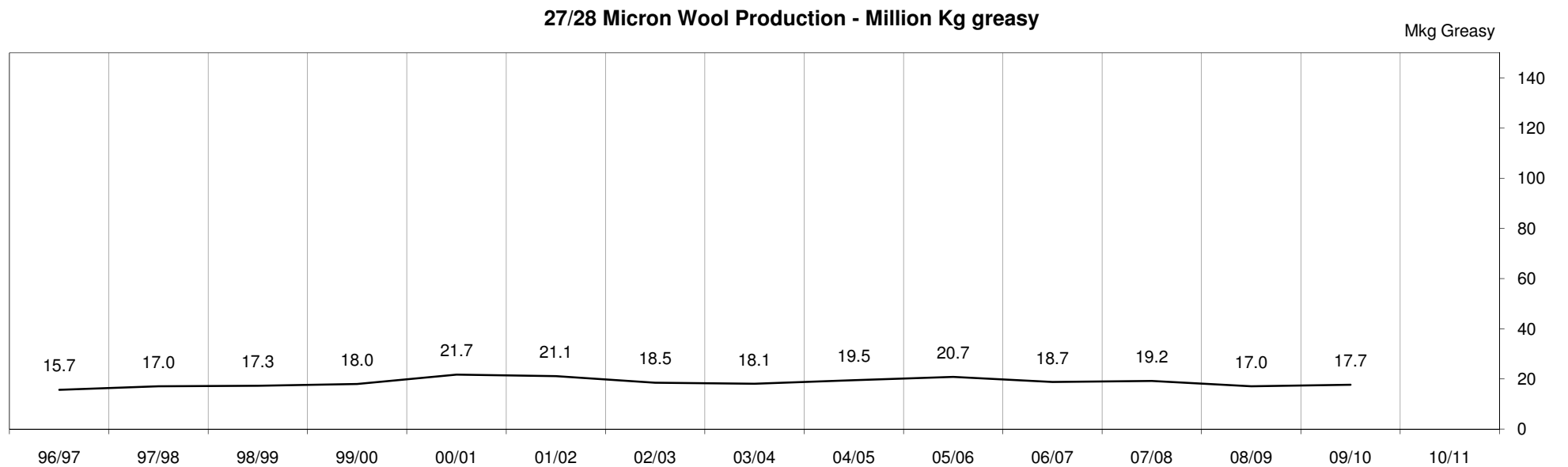
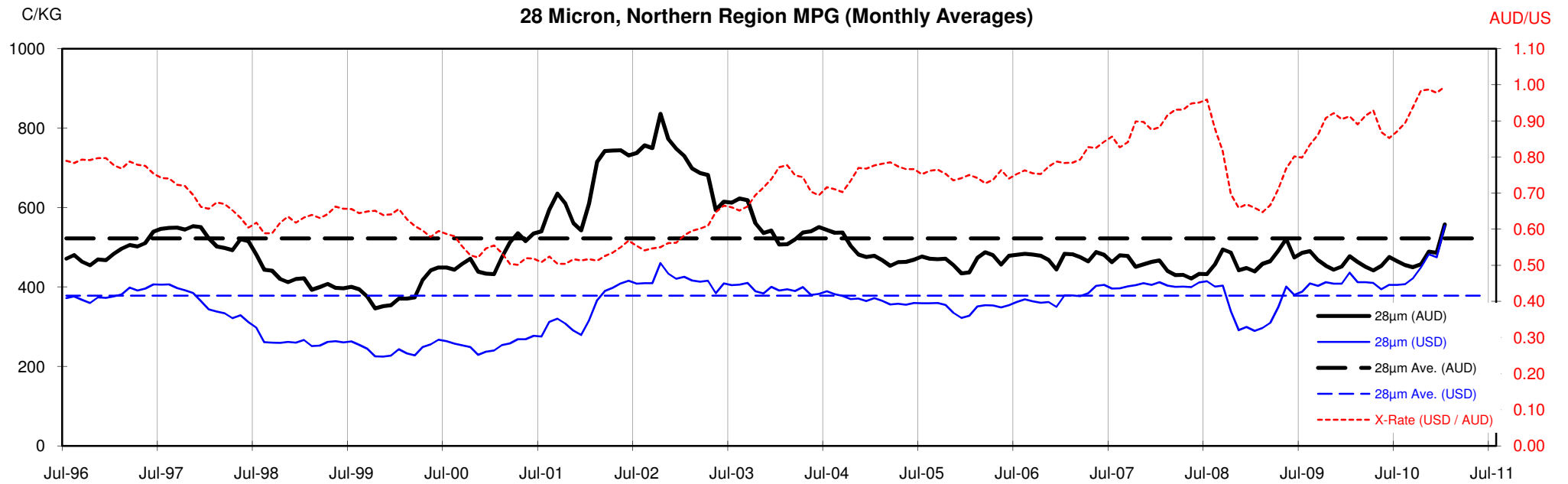


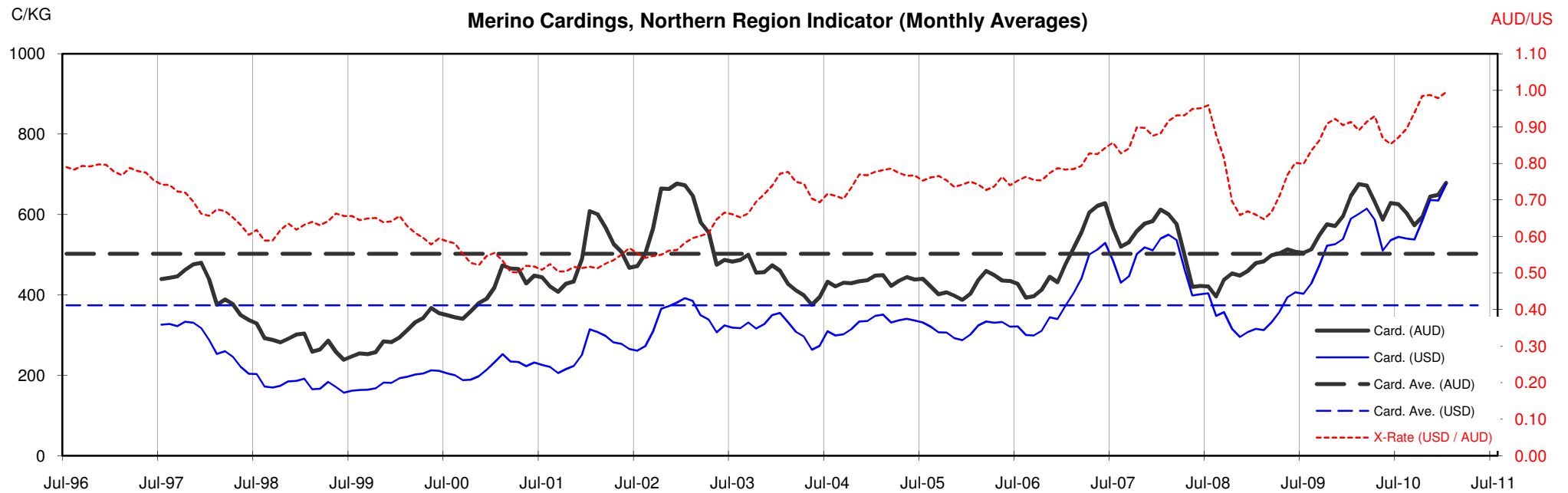












Sheep Numbers & Total Greasy Wool Production (Million KG)

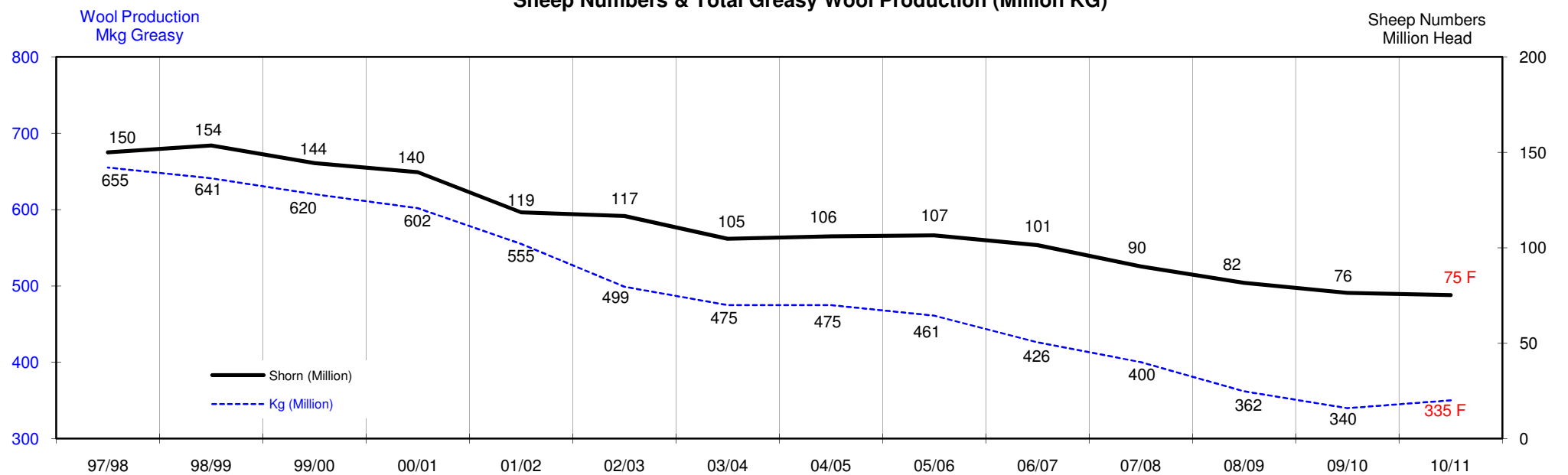




Table 13: Returns pr head for skirted fleece wool.

Skirted FLC Weight			Micron																	
9 Kg			16	16.5	17	17.5	18	18.5	19	19.5	20	21	22	23	24	25	26	28	30	32
Yield (Sch Dry)	25%	Current	\$54	\$52	\$50	\$47	\$44	\$41	\$35	\$30	\$26	\$25	\$24	\$23	\$22	\$18	\$17	\$13	\$11	\$10
		10yr ave.			\$32		\$29		\$24		\$21	\$20	\$19	\$19	\$18	\$16	\$15	\$12	\$10	\$9
	30%	Current	\$65	\$62	\$60	\$56	\$53	\$49	\$42	\$36	\$31	\$30	\$29	\$27	\$26	\$22	\$20	\$15	\$14	\$12
		10yr ave.			\$38		\$35		\$29		\$25	\$24	\$23	\$22	\$21	\$19	\$18	\$14	\$12	\$11
	35%	Current	\$76	\$72	\$70	\$66	\$62	\$57	\$49	\$42	\$36	\$35	\$33	\$32	\$30	\$26	\$24	\$18	\$16	\$14
		10yr ave.			\$44		\$40		\$34		\$29	\$28	\$27	\$26	\$25	\$22	\$21	\$16	\$14	\$13
	40%	Current	\$86	\$83	\$80	\$75	\$70	\$65	\$56	\$48	\$41	\$40	\$38	\$37	\$34	\$29	\$27	\$21	\$18	\$16
		10yr ave.			\$51		\$46		\$38		\$33	\$31	\$31	\$30	\$29	\$26	\$23	\$19	\$16	\$15
	45%	Current	\$97	\$93	\$90	\$85	\$79	\$73	\$63	\$54	\$46	\$45	\$43	\$41	\$39	\$33	\$30	\$23	\$21	\$18
		10yr ave.			\$57		\$52		\$43		\$37	\$35	\$34	\$34	\$32	\$29	\$26	\$21	\$18	\$17
	50%	Current	\$108	\$104	\$100	\$94	\$88	\$81	\$70	\$60	\$52	\$50	\$48	\$46	\$43	\$37	\$34	\$26	\$23	\$20
		10yr ave.			\$63		\$58		\$48		\$41	\$39	\$38	\$37	\$36	\$32	\$29	\$24	\$21	\$19
	55%	Current	\$119	\$114	\$110	\$103	\$97	\$89	\$77	\$66	\$57	\$55	\$52	\$50	\$47	\$40	\$37	\$28	\$25	\$22
		10yr ave.			\$70		\$63		\$53		\$45	\$43	\$42	\$41	\$39	\$35	\$32	\$26	\$23	\$20
	60%	Current	\$130	\$124	\$120	\$113	\$106	\$97	\$84	\$72	\$62	\$60	\$57	\$55	\$52	\$44	\$40	\$31	\$27	\$24
		10yr ave.			\$76		\$69		\$58		\$50	\$47	\$46	\$45	\$43	\$38	\$35	\$28	\$25	\$22
	65%	Current	\$140	\$135	\$130	\$122	\$115	\$105	\$91	\$78	\$67	\$65	\$62	\$59	\$56	\$48	\$44	\$34	\$30	\$26
		10yr ave.			\$82		\$75		\$62		\$54	\$51	\$50	\$49	\$46	\$42	\$38	\$31	\$27	\$24
	70%	Current	\$151	\$145	\$140	\$132	\$123	\$114	\$98	\$84	\$72	\$70	\$67	\$64	\$60	\$51	\$47	\$36	\$32	\$28
		10yr ave.			\$89		\$81		\$67		\$58	\$55	\$54	\$52	\$50	\$45	\$41	\$33	\$29	\$26
	75%	Current	\$162	\$155	\$150	\$141	\$132	\$122	\$105	\$90	\$77	\$75	\$72	\$69	\$65	\$55	\$50	\$39	\$34	\$30
		10yr ave.			\$95		\$86		\$72		\$62	\$59	\$57	\$56	\$54	\$48	\$44	\$35	\$31	\$28
	80%	Current	\$173	\$166	\$160	\$150	\$141	\$130	\$112	\$96	\$83	\$80	\$76	\$73	\$69	\$59	\$54	\$41	\$37	\$32
		10yr ave.			\$101		\$92		\$77		\$66	\$63	\$61	\$60	\$57	\$51	\$47	\$38	\$33	\$30
	85%	Current	\$184	\$176	\$170	\$160	\$150	\$138	\$119	\$102	\$88	\$85	\$81	\$78	\$73	\$62	\$57	\$44	\$39	\$34
		10yr ave.			\$107		\$98		\$82		\$70	\$67	\$65	\$63	\$61	\$54	\$50	\$40	\$35	\$32

The above shows estimated returns per head for skirted fleece wool. These figures do not take into account the value of skirtings and oddments and do not take into account discounts that may apply for faults under individual circumstances. These figures are based on a market index of 100% and should be used as a guide only. Returns over \$30 / head for fleece wool are highlighted.

Source: Australian Wool Exchange, Australian Wool Innovation, Sydney Futures Exchange, x-rates.com

Disclaimer: While all due care has been taken in the preparation of this document, no warranty is made as to its accuracy, reliability or completeness. To the extent permitted by law neither Jemalong or their sources including subsidiaries and staff, accept liability to any person for loss or damage arising from the use of this information.



Table 14: Returns pr head for skirted fleece wool.

Skirted FLC Weight		Micron																	
8 Kg		16	16.5	17	17.5	18	18.5	19	19.5	20	21	22	23	24	25	26	28	30	32
Yield (Sch Dry)	25% Current	\$48	\$46	\$44	\$42	\$39	\$36	\$31	\$27	\$23	\$22	\$21	\$20	\$19	\$16	\$15	\$11	\$10	\$9
	10yr ave.			\$28		\$26		\$21		\$18	\$17	\$17	\$17	\$16	\$14	\$13	\$10	\$9	\$8
	30% Current	\$58	\$55	\$53	\$50	\$47	\$43	\$37	\$32	\$28	\$27	\$25	\$24	\$23	\$20	\$18	\$14	\$12	\$11
	10yr ave.			\$34		\$31		\$26		\$22	\$21	\$20	\$20	\$19	\$17	\$16	\$13	\$11	\$10
	35% Current	\$67	\$64	\$62	\$59	\$55	\$50	\$44	\$37	\$32	\$31	\$30	\$28	\$27	\$23	\$21	\$16	\$14	\$13
	10yr ave.			\$39		\$36		\$30		\$26	\$24	\$24	\$23	\$22	\$20	\$18	\$15	\$13	\$12
	40% Current	\$77	\$74	\$71	\$67	\$63	\$58	\$50	\$43	\$37	\$36	\$34	\$33	\$31	\$26	\$24	\$18	\$16	\$14
	10yr ave.			\$45		\$41		\$34		\$29	\$28	\$27	\$27	\$25	\$23	\$21	\$17	\$15	\$13
	45% Current	\$86	\$83	\$80	\$75	\$70	\$65	\$56	\$48	\$41	\$40	\$38	\$37	\$34	\$29	\$27	\$21	\$18	\$16
	10yr ave.			\$51		\$46		\$38		\$33	\$31	\$31	\$30	\$29	\$26	\$23	\$19	\$16	\$15
	50% Current	\$96	\$92	\$89	\$84	\$78	\$72	\$62	\$53	\$46	\$44	\$42	\$41	\$38	\$33	\$30	\$23	\$20	\$18
	10yr ave.			\$56		\$51		\$43		\$37	\$35	\$34	\$33	\$32	\$28	\$26	\$21	\$18	\$17
	55% Current	\$106	\$101	\$98	\$92	\$86	\$79	\$69	\$59	\$50	\$49	\$47	\$45	\$42	\$36	\$33	\$25	\$22	\$20
	10yr ave.			\$62		\$56		\$47		\$40	\$38	\$37	\$37	\$35	\$31	\$29	\$23	\$20	\$18
	60% Current	\$115	\$110	\$107	\$100	\$94	\$87	\$75	\$64	\$55	\$53	\$51	\$49	\$46	\$39	\$36	\$28	\$24	\$22
	10yr ave.			\$67		\$61		\$51		\$44	\$42	\$41	\$40	\$38	\$34	\$31	\$25	\$22	\$20
	65% Current	\$125	\$120	\$115	\$109	\$102	\$94	\$81	\$69	\$60	\$58	\$55	\$53	\$50	\$42	\$39	\$30	\$26	\$23
	10yr ave.			\$73		\$67		\$56		\$48	\$45	\$44	\$43	\$41	\$37	\$34	\$27	\$24	\$21
	70% Current	\$134	\$129	\$124	\$117	\$110	\$101	\$87	\$75	\$64	\$62	\$59	\$57	\$54	\$46	\$42	\$32	\$28	\$25
	10yr ave.			\$79		\$72		\$60		\$51	\$49	\$48	\$46	\$44	\$40	\$37	\$29	\$26	\$23
	75% Current	\$144	\$138	\$133	\$125	\$117	\$108	\$94	\$80	\$69	\$67	\$64	\$61	\$57	\$49	\$45	\$34	\$30	\$27
	10yr ave.			\$84		\$77		\$64		\$55	\$52	\$51	\$50	\$48	\$43	\$39	\$31	\$27	\$25
	80% Current	\$154	\$147	\$142	\$134	\$125	\$115	\$100	\$85	\$73	\$71	\$68	\$65	\$61	\$52	\$48	\$37	\$32	\$29
	10yr ave.			\$90		\$82		\$68		\$59	\$56	\$54	\$53	\$51	\$46	\$42	\$33	\$29	\$26
	85% Current	\$163	\$156	\$151	\$142	\$133	\$123	\$106	\$91	\$78	\$76	\$72	\$69	\$65	\$55	\$51	\$39	\$34	\$31
	10yr ave.			\$96		\$87		\$73		\$62	\$59	\$58	\$56	\$54	\$48	\$44	\$36	\$31	\$28

The above shows estimated returns per head for skirted fleece wool. These figures do not take into account the value of skirtings and oddments and do not take into account discounts that may apply for faults under individual circumstances. These figures are based on a market index of 100% and should be used as a guide only. Returns over \$30 / head for fleece wool are highlighted.

Source: Australian Wool Exchange, Australian Wool Innovation, Sydney Futures Exchange, x-rates.com

Disclaimer: While all due care has been taken in the preparation of this document, no warranty is made as to its accuracy, reliability or completeness. To the extent permitted by law neither Jemalong or their sources including subsidiaries and staff, accept liability to any person for loss or damage arising from the use of this information.



Table 15: Returns pr head for skirted fleece wool.

Skirted FLC Weight		Micron																		
		16	16.5	17	17.5	18	18.5	19	19.5	20	21	22	23	24	25	26	28	30	32	
Yield (Sch Dry)	25%	Current	\$42	\$40	\$39	\$37	\$34	\$32	\$27	\$23	\$20	\$19	\$19	\$18	\$17	\$14	\$13	\$10	\$9	\$8
	10yr ave.			\$25		\$22		\$19		\$16	\$15	\$15	\$15	\$14	\$12	\$11	\$9	\$8	\$7	
	30%	Current	\$50	\$48	\$47	\$44	\$41	\$38	\$33	\$28	\$24	\$23	\$22	\$21	\$20	\$17	\$16	\$12	\$11	\$9
	10yr ave.			\$30		\$27		\$22		\$19	\$18	\$18	\$17	\$17	\$15	\$14	\$11	\$10	\$9	
	35%	Current	\$59	\$56	\$54	\$51	\$48	\$44	\$38	\$33	\$28	\$27	\$26	\$25	\$23	\$20	\$18	\$14	\$12	\$11
	10yr ave.			\$34		\$31		\$26		\$22	\$21	\$21	\$20	\$19	\$17	\$16	\$13	\$11	\$10	
	40%	Current	\$67	\$64	\$62	\$59	\$55	\$50	\$44	\$37	\$32	\$31	\$30	\$28	\$27	\$23	\$21	\$16	\$14	\$13
	10yr ave.			\$39		\$36		\$30		\$26	\$24	\$24	\$23	\$22	\$20	\$18	\$15	\$13	\$12	
	45%	Current	\$76	\$72	\$70	\$66	\$62	\$57	\$49	\$42	\$36	\$35	\$33	\$32	\$30	\$26	\$24	\$18	\$16	\$14
	10yr ave.			\$44		\$40		\$34		\$29	\$28	\$27	\$26	\$25	\$22	\$21	\$16	\$14	\$13	
	50%	Current	\$84	\$81	\$78	\$73	\$69	\$63	\$55	\$47	\$40	\$39	\$37	\$36	\$34	\$28	\$26	\$20	\$18	\$16
	10yr ave.			\$49		\$45		\$37		\$32	\$31	\$30	\$29	\$28	\$25	\$23	\$18	\$16	\$14	
	55%	Current	\$92	\$89	\$85	\$80	\$75	\$69	\$60	\$51	\$44	\$43	\$41	\$39	\$37	\$31	\$29	\$22	\$20	\$17
	10yr ave.			\$54		\$49		\$41		\$35	\$34	\$33	\$32	\$31	\$27	\$25	\$20	\$18	\$16	
60%	Current	\$101	\$97	\$93	\$88	\$82	\$76	\$66	\$56	\$48	\$47	\$45	\$43	\$40	\$34	\$31	\$24	\$21	\$19	
10yr ave.			\$59		\$54		\$45		\$39	\$37	\$36	\$35	\$33	\$30	\$27	\$22	\$19	\$17		
65%	Current	\$109	\$105	\$101	\$95	\$89	\$82	\$71	\$61	\$52	\$51	\$48	\$46	\$44	\$37	\$34	\$26	\$23	\$20	
10yr ave.			\$64		\$58		\$49		\$42	\$40	\$39	\$38	\$36	\$32	\$30	\$24	\$21	\$19		
70%	Current	\$118	\$113	\$109	\$102	\$96	\$88	\$76	\$65	\$56	\$54	\$52	\$50	\$47	\$40	\$37	\$28	\$25	\$22	
10yr ave.			\$69		\$63		\$52		\$45	\$43	\$42	\$41	\$39	\$35	\$32	\$26	\$22	\$20		
75%	Current	\$126	\$121	\$117	\$110	\$103	\$95	\$82	\$70	\$60	\$58	\$56	\$53	\$50	\$43	\$39	\$30	\$27	\$24	
10yr ave.			\$74		\$67		\$56		\$48	\$46	\$45	\$44	\$42	\$37	\$34	\$27	\$24	\$22		
80%	Current	\$134	\$129	\$124	\$117	\$110	\$101	\$87	\$75	\$64	\$62	\$59	\$57	\$54	\$46	\$42	\$32	\$28	\$25	
10yr ave.			\$79		\$72		\$60		\$51	\$49	\$48	\$46	\$44	\$40	\$37	\$29	\$26	\$23		
85%	Current	\$143	\$137	\$132	\$124	\$117	\$107	\$93	\$79	\$68	\$66	\$63	\$60	\$57	\$48	\$45	\$34	\$30	\$27	
10yr ave.			\$84		\$76		\$64		\$55	\$52	\$51	\$49	\$47	\$42	\$39	\$31	\$27	\$25		

The above shows estimated returns per head for skirted fleece wool. These figures do not take into account the value of skirtings and oddments and do not take into account discounts that may apply for faults under individual circumstances. These figures are based on a market index of 100% and should be used as a guide only. Returns over \$30 / head for fleece wool are highlighted.

Source: Australian Wool Exchange, Australian Wool Innovation, Sydney Futures Exchange, x-rates.com

Disclaimer: While all due care has been taken in the preparation of this document, no warranty is made as to its accuracy, reliability or completeness. To the extent permitted by law neither Jemalong or their sources including subsidiaries and staff, accept liability to any person for loss or damage arising from the use of this information.



Table 16: Returns pr head for skirted fleece wool.

Skirted FLC Weight 6 Kg			Micron																	
			16	16.5	17	17.5	18	18.5	19	19.5	20	21	22	23	24	25	26	28	30	32
Yield (Sch Dry)	25%	Current	\$36	\$35	\$33	\$31	\$29	\$27	\$23	\$20	\$17	\$17	\$16	\$15	\$14	\$12	\$11	\$9	\$8	\$7
		10yr ave.			\$21		\$19		\$16		\$14	\$13	\$13	\$12	\$12	\$11	\$10	\$8	\$7	\$6
	30%	Current	\$43	\$41	\$40	\$38	\$35	\$32	\$28	\$24	\$21	\$20	\$19	\$18	\$17	\$15	\$13	\$10	\$9	\$8
		10yr ave.			\$25		\$23		\$19		\$17	\$16	\$15	\$15	\$14	\$13	\$12	\$9	\$8	\$7
	35%	Current	\$50	\$48	\$47	\$44	\$41	\$38	\$33	\$28	\$24	\$23	\$22	\$21	\$20	\$17	\$16	\$12	\$11	\$9
		10yr ave.			\$30		\$27		\$22		\$19	\$18	\$18	\$17	\$17	\$15	\$14	\$11	\$10	\$9
	40%	Current	\$58	\$55	\$53	\$50	\$47	\$43	\$37	\$32	\$28	\$27	\$25	\$24	\$23	\$20	\$18	\$14	\$12	\$11
		10yr ave.			\$34		\$31		\$26		\$22	\$21	\$20	\$20	\$19	\$17	\$16	\$13	\$11	\$10
	45%	Current	\$65	\$62	\$60	\$56	\$53	\$49	\$42	\$36	\$31	\$30	\$29	\$27	\$26	\$22	\$20	\$15	\$14	\$12
		10yr ave.			\$38		\$35		\$29		\$25	\$24	\$23	\$22	\$21	\$19	\$18	\$14	\$12	\$11
	50%	Current	\$72	\$69	\$67	\$63	\$59	\$54	\$47	\$40	\$34	\$33	\$32	\$30	\$29	\$24	\$22	\$17	\$15	\$13
		10yr ave.			\$42		\$38		\$32		\$28	\$26	\$26	\$25	\$24	\$21	\$20	\$16	\$14	\$12
	55%	Current	\$79	\$76	\$73	\$69	\$65	\$59	\$51	\$44	\$38	\$37	\$35	\$34	\$32	\$27	\$25	\$19	\$17	\$15
		10yr ave.			\$46		\$42		\$35		\$30	\$29	\$28	\$27	\$26	\$23	\$22	\$17	\$15	\$14
	60%	Current	\$86	\$83	\$80	\$75	\$70	\$65	\$56	\$48	\$41	\$40	\$38	\$37	\$34	\$29	\$27	\$21	\$18	\$16
		10yr ave.			\$51		\$46		\$38		\$33	\$31	\$31	\$30	\$29	\$26	\$23	\$19	\$16	\$15
65%	Current	\$94	\$90	\$87	\$82	\$76	\$70	\$61	\$52	\$45	\$43	\$41	\$40	\$37	\$32	\$29	\$22	\$20	\$18	
	10yr ave.			\$55		\$50		\$42		\$36	\$34	\$33	\$32	\$31	\$28	\$25	\$20	\$18	\$16	
70%	Current	\$101	\$97	\$93	\$88	\$82	\$76	\$66	\$56	\$48	\$47	\$45	\$43	\$40	\$34	\$31	\$24	\$21	\$19	
	10yr ave.			\$59		\$54		\$45		\$39	\$37	\$36	\$35	\$33	\$30	\$27	\$22	\$19	\$17	
75%	Current	\$108	\$104	\$100	\$94	\$88	\$81	\$70	\$60	\$52	\$50	\$48	\$46	\$43	\$37	\$34	\$26	\$23	\$20	
	10yr ave.			\$63		\$58		\$48		\$41	\$39	\$38	\$37	\$36	\$32	\$29	\$24	\$21	\$19	
80%	Current	\$115	\$110	\$107	\$100	\$94	\$87	\$75	\$64	\$55	\$53	\$51	\$49	\$46	\$39	\$36	\$28	\$24	\$22	
	10yr ave.			\$67		\$61		\$51		\$44	\$42	\$41	\$40	\$38	\$34	\$31	\$25	\$22	\$20	
85%	Current	\$122	\$117	\$113	\$107	\$100	\$92	\$80	\$68	\$58	\$57	\$54	\$52	\$49	\$42	\$38	\$29	\$26	\$23	
	10yr ave.			\$72		\$65		\$54		\$47	\$45	\$43	\$42	\$40	\$36	\$33	\$27	\$23	\$21	

The above shows estimated returns per head for skirted fleece wool. These figures do not take into account the value of skirtings and oddments and do not take into account discounts that may apply for faults under individual circumstances. These figures are based on a market index of 100% and should be used as a guide only. Returns over \$30 / head for fleece wool are highlighted.

Source: Australian Wool Exchange, Australian Wool Innovation, Sydney Futures Exchange, x-rates.com

Disclaimer: While all due care has been taken in the preparation of this document, no warranty is made as to its accuracy, reliability or completeness. To the extent permitted by law neither Jemalong or their sources including subsidiaries and staff, accept liability to any person for loss or damage arising from the use of this information.



Table 17: Returns pr head for skirted fleece wool.

Skirted FLC Weight		Micron																	
5 Kg		16	16.5	17	17.5	18	18.5	19	19.5	20	21	22	23	24	25	26	28	30	32
Yield (Sch Dry)	25% Current	\$30	\$29	\$28	\$26	\$24	\$23	\$20	\$17	\$14	\$14	\$13	\$13	\$12	\$10	\$9	\$7	\$6	\$6
	10yr ave.			\$18		\$16		\$13		\$11	\$11	\$11	\$10	\$10	\$9	\$8	\$7	\$6	\$5
	30% Current	\$36	\$35	\$33	\$31	\$29	\$27	\$23	\$20	\$17	\$17	\$16	\$15	\$14	\$12	\$11	\$9	\$8	\$7
	10yr ave.			\$21		\$19		\$16		\$14	\$13	\$13	\$12	\$12	\$11	\$10	\$8	\$7	\$6
	35% Current	\$42	\$40	\$39	\$37	\$34	\$32	\$27	\$23	\$20	\$19	\$19	\$18	\$17	\$14	\$13	\$10	\$9	\$8
	10yr ave.			\$25		\$22		\$19		\$16	\$15	\$15	\$15	\$14	\$12	\$11	\$9	\$8	\$7
	40% Current	\$48	\$46	\$44	\$42	\$39	\$36	\$31	\$27	\$23	\$22	\$21	\$20	\$19	\$16	\$15	\$11	\$10	\$9
	10yr ave.			\$28		\$26		\$21		\$18	\$17	\$17	\$17	\$16	\$14	\$13	\$10	\$9	\$8
	45% Current	\$54	\$52	\$50	\$47	\$44	\$41	\$35	\$30	\$26	\$25	\$24	\$23	\$22	\$18	\$17	\$13	\$11	\$10
	10yr ave.			\$32		\$29		\$24		\$21	\$20	\$19	\$19	\$18	\$16	\$15	\$12	\$10	\$9
	50% Current	\$60	\$58	\$56	\$52	\$49	\$45	\$39	\$33	\$29	\$28	\$27	\$25	\$24	\$20	\$19	\$14	\$13	\$11
	10yr ave.			\$35		\$32		\$27		\$23	\$22	\$21	\$21	\$20	\$18	\$16	\$13	\$11	\$10
	55% Current	\$66	\$63	\$61	\$57	\$54	\$50	\$43	\$37	\$32	\$31	\$29	\$28	\$26	\$22	\$21	\$16	\$14	\$12
	10yr ave.			\$39		\$35		\$29		\$25	\$24	\$23	\$23	\$22	\$20	\$18	\$14	\$13	\$11
	60% Current	\$72	\$69	\$67	\$63	\$59	\$54	\$47	\$40	\$34	\$33	\$32	\$30	\$29	\$24	\$22	\$17	\$15	\$13
	10yr ave.			\$42		\$38		\$32		\$28	\$26	\$26	\$25	\$24	\$21	\$20	\$16	\$14	\$12
	65% Current	\$78	\$75	\$72	\$68	\$64	\$59	\$51	\$43	\$37	\$36	\$34	\$33	\$31	\$26	\$24	\$19	\$16	\$15
	10yr ave.			\$46		\$42		\$35		\$30	\$28	\$28	\$27	\$26	\$23	\$21	\$17	\$15	\$13
	70% Current	\$84	\$81	\$78	\$73	\$69	\$63	\$55	\$47	\$40	\$39	\$37	\$36	\$34	\$28	\$26	\$20	\$18	\$16
	10yr ave.			\$49		\$45		\$37		\$32	\$31	\$30	\$29	\$28	\$25	\$23	\$18	\$16	\$14
	75% Current	\$90	\$86	\$83	\$78	\$73	\$68	\$59	\$50	\$43	\$42	\$40	\$38	\$36	\$31	\$28	\$22	\$19	\$17
	10yr ave.			\$53		\$48		\$40		\$34	\$33	\$32	\$31	\$30	\$27	\$24	\$20	\$17	\$15
	80% Current	\$96	\$92	\$89	\$84	\$78	\$72	\$62	\$53	\$46	\$44	\$42	\$41	\$38	\$33	\$30	\$23	\$20	\$18
	10yr ave.			\$56		\$51		\$43		\$37	\$35	\$34	\$33	\$32	\$28	\$26	\$21	\$18	\$17
	85% Current	\$102	\$98	\$94	\$89	\$83	\$77	\$66	\$57	\$49	\$47	\$45	\$43	\$41	\$35	\$32	\$24	\$22	\$19
	10yr ave.			\$60		\$54		\$45		\$39	\$37	\$36	\$35	\$34	\$30	\$28	\$22	\$19	\$18

The above shows estimated returns per head for skirted fleece wool. These figures do not take into account the value of skirtings and oddments and do not take into account discounts that may apply for faults under individual circumstances. These figures are based on a market index of 100% and should be used as a guide only. Returns over \$30 / head for fleece wool are highlighted.

Source: Australian Wool Exchange, Australian Wool Innovation, Sydney Futures Exchange, x-rates.com

Disclaimer: While all due care has been taken in the preparation of this document, no warranty is made as to its accuracy, reliability or completeness. To the extent permitted by law neither Jemalong or their sources including subsidiaries and staff, accept liability to any person for loss or damage arising from the use of this information.



Table 18: Returns pr head for skirted fleece wool.

Skirted FLC Weight		Micron																	
4 Kg		16	16.5	17	17.5	18	18.5	19	19.5	20	21	22	23	24	25	26	28	30	32
Yield (Sch Dry)	25% Current	\$24	\$23	\$22	\$21	\$20	\$18	\$16	\$13	\$11	\$11	\$11	\$10	\$10	\$8	\$7	\$6	\$5	\$4
	10yr ave.			\$14		\$13		\$11		\$9	\$9	\$9	\$8	\$8	\$7	\$7	\$5	\$5	\$4
	30% Current	\$29	\$28	\$27	\$25	\$23	\$22	\$19	\$16	\$14	\$13	\$13	\$12	\$11	\$10	\$9	\$7	\$6	\$5
	10yr ave.			\$17		\$15		\$13		\$11	\$10	\$10	\$10	\$10	\$9	\$8	\$6	\$5	\$5
	35% Current	\$34	\$32	\$31	\$29	\$27	\$25	\$22	\$19	\$16	\$16	\$15	\$14	\$13	\$11	\$10	\$8	\$7	\$6
	10yr ave.			\$20		\$18		\$15		\$13	\$12	\$12	\$12	\$11	\$10	\$9	\$7	\$6	\$6
	40% Current	\$38	\$37	\$36	\$33	\$31	\$29	\$25	\$21	\$18	\$18	\$17	\$16	\$15	\$13	\$12	\$9	\$8	\$7
	10yr ave.			\$22		\$20		\$17		\$15	\$14	\$14	\$13	\$13	\$11	\$10	\$8	\$7	\$7
	45% Current	\$43	\$41	\$40	\$38	\$35	\$32	\$28	\$24	\$21	\$20	\$19	\$18	\$17	\$15	\$13	\$10	\$9	\$8
	10yr ave.			\$25		\$23		\$19		\$17	\$16	\$15	\$15	\$14	\$13	\$12	\$9	\$8	\$7
	50% Current	\$48	\$46	\$44	\$42	\$39	\$36	\$31	\$27	\$23	\$22	\$21	\$20	\$19	\$16	\$15	\$11	\$10	\$9
	10yr ave.			\$28		\$26		\$21		\$18	\$17	\$17	\$17	\$16	\$14	\$13	\$10	\$9	\$8
	55% Current	\$53	\$51	\$49	\$46	\$43	\$40	\$34	\$29	\$25	\$24	\$23	\$22	\$21	\$18	\$16	\$13	\$11	\$10
	10yr ave.			\$31		\$28		\$23		\$20	\$19	\$19	\$18	\$17	\$16	\$14	\$12	\$10	\$9
	60% Current	\$58	\$55	\$53	\$50	\$47	\$43	\$37	\$32	\$28	\$27	\$25	\$24	\$23	\$20	\$18	\$14	\$12	\$11
	10yr ave.			\$34		\$31		\$26		\$22	\$21	\$20	\$20	\$19	\$17	\$16	\$13	\$11	\$10
	65% Current	\$62	\$60	\$58	\$54	\$51	\$47	\$41	\$35	\$30	\$29	\$28	\$26	\$25	\$21	\$19	\$15	\$13	\$12
	10yr ave.			\$37		\$33		\$28		\$24	\$23	\$22	\$22	\$21	\$19	\$17	\$14	\$12	\$11
	70% Current	\$67	\$64	\$62	\$59	\$55	\$50	\$44	\$37	\$32	\$31	\$30	\$28	\$27	\$23	\$21	\$16	\$14	\$13
	10yr ave.			\$39		\$36		\$30		\$26	\$24	\$24	\$23	\$22	\$20	\$18	\$15	\$13	\$12
	75% Current	\$72	\$69	\$67	\$63	\$59	\$54	\$47	\$40	\$34	\$33	\$32	\$30	\$29	\$24	\$22	\$17	\$15	\$13
	10yr ave.			\$42		\$38		\$32		\$28	\$26	\$26	\$25	\$24	\$21	\$20	\$16	\$14	\$12
	80% Current	\$77	\$74	\$71	\$67	\$63	\$58	\$50	\$43	\$37	\$36	\$34	\$33	\$31	\$26	\$24	\$18	\$16	\$14
	10yr ave.			\$45		\$41		\$34		\$29	\$28	\$27	\$27	\$25	\$23	\$21	\$17	\$15	\$13
	85% Current	\$82	\$78	\$75	\$71	\$67	\$61	\$53	\$45	\$39	\$38	\$36	\$35	\$33	\$28	\$25	\$20	\$17	\$15
	10yr ave.			\$48		\$44		\$36		\$31	\$30	\$29	\$28	\$27	\$24	\$22	\$18	\$16	\$14

The above shows estimated returns per head for skirted fleece wool. These figures do not take into account the value of skirtings and oddments and do not take into account discounts that may apply for faults under individual circumstances. These figures are based on a market index of 100% and should be used as a guide only. Returns over \$30 / head for fleece wool are highlighted.

Source: Australian Wool Exchange, Australian Wool Innovation, Sydney Futures Exchange, x-rates.com

Disclaimer: While all due care has been taken in the preparation of this document, no warranty is made as to its accuracy, reliability or completeness. To the extent permitted by law neither Jemalong or their sources including subsidiaries and staff, accept liability to any person for loss or damage arising from the use of this information.



Table 19: Returns pr head for skirted fleece wool.

Skirted FLC Weight 3 Kg		Micron																	
		16	16.5	17	17.5	18	18.5	19	19.5	20	21	22	23	24	25	26	28	30	32
Yield (Sch Dry)	25% Current	\$18	\$17	\$17	\$16	\$15	\$14	\$12	\$10	\$9	\$8	\$8	\$8	\$7	\$6	\$6	\$4	\$4	\$3
	10yr ave.			\$11	\$10	\$10		\$8		\$7	\$7	\$6	\$6	\$6	\$5	\$5	\$4	\$3	\$3
	30% Current	\$22	\$21	\$20	\$19	\$18	\$16	\$14	\$12	\$10	\$10	\$10	\$9	\$9	\$7	\$7	\$5	\$5	\$4
	10yr ave.			\$13		\$12		\$10		\$8	\$8	\$8	\$7	\$7	\$6	\$6	\$5	\$4	\$4
	35% Current	\$25	\$24	\$23	\$22	\$21	\$19	\$16	\$14	\$12	\$12	\$11	\$11	\$10	\$9	\$8	\$6	\$5	\$5
	10yr ave.			\$15		\$13		\$11		\$10	\$9	\$9	\$9	\$8	\$7	\$7	\$5	\$5	\$4
	40% Current	\$29	\$28	\$27	\$25	\$23	\$22	\$19	\$16	\$14	\$13	\$13	\$12	\$11	\$10	\$9	\$7	\$6	\$5
	10yr ave.			\$17		\$15		\$13		\$11	\$10	\$10	\$10	\$10	\$9	\$8	\$6	\$5	\$5
	45% Current	\$32	\$31	\$30	\$28	\$26	\$24	\$21	\$18	\$15	\$15	\$14	\$14	\$13	\$11	\$10	\$8	\$7	\$6
	10yr ave.			\$19		\$17		\$14		\$12	\$12	\$11	\$11	\$11	\$10	\$9	\$7	\$6	\$6
	50% Current	\$36	\$35	\$33	\$31	\$29	\$27	\$23	\$20	\$17	\$17	\$16	\$15	\$14	\$12	\$11	\$9	\$8	\$7
	10yr ave.			\$21		\$19		\$16		\$14	\$13	\$13	\$12	\$12	\$11	\$10	\$8	\$7	\$6
	55% Current	\$40	\$38	\$37	\$34	\$32	\$30	\$26	\$22	\$19	\$18	\$17	\$17	\$16	\$13	\$12	\$9	\$8	\$7
	10yr ave.			\$23		\$21		\$18		\$15	\$14	\$14	\$14	\$13	\$12	\$11	\$9	\$8	\$7
	60% Current	\$43	\$41	\$40	\$38	\$35	\$32	\$28	\$24	\$21	\$20	\$19	\$18	\$17	\$15	\$13	\$10	\$9	\$8
	10yr ave.			\$25		\$23		\$19		\$17	\$16	\$15	\$15	\$14	\$13	\$12	\$9	\$8	\$7
	65% Current	\$47	\$45	\$43	\$41	\$38	\$35	\$30	\$26	\$22	\$22	\$21	\$20	\$19	\$16	\$15	\$11	\$10	\$9
	10yr ave.			\$27		\$25		\$21		\$18	\$17	\$17	\$16	\$15	\$14	\$13	\$10	\$9	\$8
	70% Current	\$50	\$48	\$47	\$44	\$41	\$38	\$33	\$28	\$24	\$23	\$22	\$21	\$20	\$17	\$16	\$12	\$11	\$9
	10yr ave.			\$30		\$27		\$22		\$19	\$18	\$18	\$17	\$17	\$15	\$14	\$11	\$10	\$9
	75% Current	\$54	\$52	\$50	\$47	\$44	\$41	\$35	\$30	\$26	\$25	\$24	\$23	\$22	\$18	\$17	\$13	\$11	\$10
	10yr ave.			\$32		\$29		\$24		\$21	\$20	\$19	\$19	\$18	\$16	\$15	\$12	\$10	\$9
	80% Current	\$58	\$55	\$53	\$50	\$47	\$43	\$37	\$32	\$28	\$27	\$25	\$24	\$23	\$20	\$18	\$14	\$12	\$11
	10yr ave.			\$34		\$31		\$26		\$22	\$21	\$20	\$20	\$19	\$17	\$16	\$13	\$11	\$10
	85% Current	\$61	\$59	\$57	\$53	\$50	\$46	\$40	\$34	\$29	\$28	\$27	\$26	\$24	\$21	\$19	\$15	\$13	\$11
	10yr ave.			\$36		\$33		\$27		\$23	\$22	\$22	\$21	\$20	\$18	\$17	\$13	\$12	\$11

The above shows estimated returns per head for skirted fleece wool. These figures do not take into account the value of skirtings and oddments and do not take into account discounts that may apply for faults under individual circumstances. These figures are based on a market index of 100% and should be used as a guide only. Returns over \$30 / head for fleece wool are highlighted.

Source: Australian Wool Exchange, Australian Wool Innovation, Sydney Futures Exchange, x-rates.com

Disclaimer: While all due care has been taken in the preparation of this document, no warranty is made as to its accuracy, reliability or completeness. To the extent permitted by law neither Jemalong or their sources including subsidiaries and staff, accept liability to any person for loss or damage arising from the use of this information.



Table 20: Returns pr head for skirted fleece wool.

Skirted FLC Weight		Micron																	
2 Kg		16	16.5	17	17.5	18	18.5	19	19.5	20	21	22	23	24	25	26	28	30	32
Yield (Sch Dry)	25% Current	\$12	\$12	\$11	\$10	\$10	\$9	\$8	\$7	\$6	\$6	\$5	\$5	\$5	\$4	\$4	\$3	\$3	\$2
	10yr ave.			\$7		\$6		\$5		\$5	\$4	\$4	\$4	\$4	\$4	\$3	\$3	\$2	\$2
	30% Current	\$14	\$14	\$13	\$13	\$12	\$11	\$9	\$8	\$7	\$7	\$6	\$6	\$6	\$5	\$4	\$3	\$3	\$3
	10yr ave.			\$8		\$8		\$6		\$6	\$5	\$5	\$5	\$5	\$4	\$4	\$3	\$3	\$2
	35% Current	\$17	\$16	\$16	\$15	\$14	\$13	\$11	\$9	\$8	\$8	\$7	\$7	\$7	\$6	\$5	\$4	\$4	\$3
	10yr ave.			\$10		\$9		\$7		\$6	\$6	\$6	\$6	\$6	\$5	\$5	\$4	\$3	\$3
	40% Current	\$19	\$18	\$18	\$17	\$16	\$14	\$12	\$11	\$9	\$9	\$8	\$8	\$8	\$7	\$6	\$5	\$4	\$4
	10yr ave.			\$11		\$10		\$9		\$7	\$7	\$7	\$7	\$6	\$6	\$5	\$4	\$4	\$3
	45% Current	\$22	\$21	\$20	\$19	\$18	\$16	\$14	\$12	\$10	\$10	\$10	\$9	\$9	\$7	\$7	\$5	\$5	\$4
	10yr ave.			\$13		\$12		\$10		\$8	\$8	\$8	\$7	\$7	\$6	\$6	\$5	\$4	\$4
	50% Current	\$24	\$23	\$22	\$21	\$20	\$18	\$16	\$13	\$11	\$11	\$11	\$10	\$10	\$8	\$7	\$6	\$5	\$4
	10yr ave.			\$14		\$13		\$11		\$9	\$9	\$9	\$8	\$8	\$7	\$7	\$5	\$5	\$4
	55% Current	\$26	\$25	\$24	\$23	\$22	\$20	\$17	\$15	\$13	\$12	\$12	\$11	\$11	\$9	\$8	\$6	\$6	\$5
	10yr ave.			\$15		\$14		\$12		\$10	\$10	\$9	\$9	\$9	\$8	\$7	\$6	\$5	\$5
	60% Current	\$29	\$28	\$27	\$25	\$23	\$22	\$19	\$16	\$14	\$13	\$13	\$12	\$11	\$10	\$9	\$7	\$6	\$5
	10yr ave.			\$17		\$15		\$13		\$11	\$10	\$10	\$10	\$10	\$9	\$8	\$6	\$5	\$5
	65% Current	\$31	\$30	\$29	\$27	\$25	\$23	\$20	\$17	\$15	\$14	\$14	\$13	\$12	\$11	\$10	\$7	\$7	\$6
	10yr ave.			\$18		\$17		\$14		\$12	\$11	\$11	\$11	\$10	\$9	\$8	\$7	\$6	\$5
	70% Current	\$34	\$32	\$31	\$29	\$27	\$25	\$22	\$19	\$16	\$16	\$15	\$14	\$13	\$11	\$10	\$8	\$7	\$6
	10yr ave.			\$20		\$18		\$15		\$13	\$12	\$12	\$12	\$11	\$10	\$9	\$7	\$6	\$6
	75% Current	\$36	\$35	\$33	\$31	\$29	\$27	\$23	\$20	\$17	\$17	\$16	\$15	\$14	\$12	\$11	\$9	\$8	\$7
	10yr ave.			\$21		\$19		\$16		\$14	\$13	\$13	\$12	\$12	\$11	\$10	\$8	\$7	\$6
	80% Current	\$38	\$37	\$36	\$33	\$31	\$29	\$25	\$21	\$18	\$18	\$17	\$16	\$15	\$13	\$12	\$9	\$8	\$7
	10yr ave.			\$22		\$20		\$17		\$15	\$14	\$14	\$13	\$13	\$11	\$10	\$8	\$7	\$7
	85% Current	\$41	\$39	\$38	\$36	\$33	\$31	\$27	\$23	\$19	\$19	\$18	\$17	\$16	\$14	\$13	\$10	\$9	\$8
	10yr ave.			\$24		\$22		\$18		\$16	\$15	\$14	\$14	\$13	\$12	\$11	\$9	\$8	\$7

The above shows estimated returns per head for skirted fleece wool. These figures do not take into account the value of skirtings and oddments and do not take into account discounts that may apply for faults under individual circumstances. These figures are based on a market index of 100% and should be used as a guide only. Returns over \$30 / head for fleece wool are highlighted.

Source: Australian Wool Exchange, Australian Wool Innovation, Sydney Futures Exchange, x-rates.com

Disclaimer: While all due care has been taken in the preparation of this document, no warranty is made as to its accuracy, reliability or completeness. To the extent permitted by law neither Jemalong or their sources including subsidiaries and staff, accept liability to any person for loss or damage arising from the use of this information.