



Table 1: Northern Region Micron Price Guides

WEEK 22				12 MONTH COMPARISONS								3 YEAR COMPARISONS					10 YEAR COMPARISONS						
26/11/2025		19/11/2025		26/11/2024		Now		Now		Now				Now		Percentile			Now		Percentile		
Current	Weekly			This time	compared	12 Month	compared	12 Month	compared			Average	to 3yr ave	10 year	compared								
MPG	Price	Change		Last Year	to Last Year	Low	to Low	High	to High	Low	High	Average	to 3yr ave		Low	High	Average	to 10yr ave					
NRI	1541	-16 -1.0%		1186	+355 30%	1178	+363 31%	1607	-66 -4%	1117	1607	1261	+280 22%	97%	1022	2163	1461	+80 5%	69%				
15*	2590 n	+40 1.6%		2455	+135 5%	2275	+315 14%	2750	-160 -6%	2275	3125	2551	+39 2%	75%	1781	3750	2685	-95 -4%	49%				
15.5*	2357 n	0		2185	+172 8%	2070	+287 14%	2525	-168 -7%	2070	2950	2339	+18 1%	72%	1621	3450	2444	-87 -4%	49%				
16*	2232 n	-18 -0.8%		1875	+357 19%	1762	+470 27%	2412	-180 -7%	1762	2650	2052	+180 9%	79%	1535	3300	2314	-82 -4%	49%				
16.5	2188 n	-4 -0.2%		1758	+430 24%	1680	+508 30%	2324	-136 -6%	1670	2513	1945	+243 12%	79%	1522	3187	2203	-15 -1%	50%				
17	2118	-25 -1.2%		1682	+436 26%	1648	+470 29%	2250	-132 -6%	1600	2405	1843	+275 15%	82%	1478	3008	2097	+21 1%	51%				
17.5	2058	-50 -2.4%		1623	+435 27%	1592	+466 29%	2192	-134 -6%	1508	2197	1746	+312 18%	88%	1383	2845	1993	+65 3%	55%				
18	2000	-28 -1.4%		1532	+468 31%	1504	+496 33%	2100	-100 -5%	1432	2100	1654	+346 21%	94%	1272	2708	1884	+116 6%	61%				
18.5	1942	-17 -0.9%		1449	+493 34%	1448	+494 34%	2039	-97 -5%	1358	2039	1573	+369 23%	97%	1174	2591	1783	+159 9%	71%				
19	1869	-16 -0.8%		1411	+458 32%	1411	+458 32%	1906	-37 -2%	1327	1906	1508	+361 24%	98%	1118	2465	1690	+179 11%	77%				
19.5	1842	-10 -0.5%		1374	+468 34%	1374	+468 34%	1852	-10 -1%	1289	1852	1462	+380 26%	98%	1081	2404	1621	+221 14%	81%				
20	1812 n	-37 -2.0%		1352	+460 34%	1348	+464 34%	1849	-37 -2%	1262	1849	1422	+390 27%	99%	1049	2391	1562	+250 16%	82%				
21	1806 n	-4 -0.2%		1320	+486 37%	1322	+484 37%	1811	-5 0%	1232	1811	1385	+421 30%	98%	1016	2368	1514	+292 19%	83%				
22	1780 n	-30 -1.7%		1289	+491 38%	1299	+481 37%	1810	-30 -2%	1200	1810	1349	+431 32%	99%	1009	2342	1480	+300 20%	84%				
23	1475 n	+25 1.7%		1150	+325 28%	1100	+375 34%	1540	-65 -4%	960	1540	1147	+328 29%	99%	958	2316	1366	+109 8%	75%				
24	970 n	-20 -2.0%		820	+150 18%	770	+200 26%	1170	-200 -17%	766	1170	896	+74 8%	82%	770	2114	1192	-222 -19%	37%				
25	858 n	-7 -0.8%		670	+188 28%	635	+223 35%	1050	-192 -18%	635	1050	740	+118 16%	93%	635	1801	1012	-154 -15%	44%				
26	755 n	+6 0.8%		578	+177 31%	558	+197 35%	942	-187 -20%	465	942	584	+171 29%	93%	465	1545	877	-122 -14%	44%				
28	660 n	-15 -2.2%		400	+260 65%	390	+270 69%	727	-67 -9%	290	727	402	+258 64%	97%	310	1318	616	+44 7%	55%				
30	525 n	-55 -9.5%		355	+170 48%	347	+178 51%	600	-75 -13%	255	600	360	+165 46%	93%	285	998	504	+21 4%	54%				
32	448 n	+6 1.4%		310	+138 45%	305	+143 47%	490	-42 -9%	210	490	305	+143 47%	96%	210	696	370	+78 21%	73%				
MC	805 n	0		706	+99 14%	700	+105 15%	829	-24 -3%	689	929	749	+56 7%	81%	656	1563	965	-160 -17%	29%				
AU BALES OFFERED		39,161		* 16.5 is the lowest Micron Price Guide (MPG) published by The Australian Wool Exchange (AWEX). Therefore MPG's below 16.5 micron are an estimate based on the best available information at the time of publication. Likewise, for any category where there is insufficient quantity offered to enable AWEX to quote, a quote will also be provided. * Recording of 15 & 15.5 micron commenced in October 2017, and as a result some historic data is not yet available for those MPG's. Where historic data is not available an estimate based on '16 micron statistics' and incorporating the existing 15 & 15.5 micron data, will be provided as a guide.																			
AU BALES SOLD		35,404																					
AU PASSED-IN%		9.6%																					
AUD/USD		0.6503 0.4%																					

Source: Australian Wool Exchange, Australian Wool Innovation, Riemann, x-rates.com, Reserve Bank of Australia, Australian Wool Testing Authority, Australian Bureau Statistics (ABS), Woolmark.

Disclaimer: Jemalong Wool Pty Ltd make no representations about the content and suitability of the information contained in this report. Specifically, Jemalong Wool does not warrant, guarantee or make any representations regarding the correctness, accuracy, reliability, currency, or any other aspect regarding characteristics or use of information presented in these materials. The user accepts sole responsibility and risk associated with the use and results of these materials, irrespective of the purpose of which such use or results are applied. In no event shall Jemalong Wool be liable for any loss or damages arising out of or in connection with the use of these materials.

Copyright © Jemalong Wool Pty Ltd, 2006-2025. Apart from any use permitted under the Copyright Act 1968, no part may be copied or reproduced by any process nor stored electronically without the written permission of Jemalong Wool Pty Ltd. This report has been compiled by Jemalong Wool Pty Ltd for internal use and for the benefit of Jemalong Wool clients. You should only read this report if you are authorised to do so, if you are not authorised then you must destroy all electronic and paper copies immediately. Under no circumstance are you permitted to forward this report to a third-party.

MARKET COMMENTARY Source: AWI

The wool market settled this week following successive weeks of price gains, with the EMI closing at 1504 AUC (978 USC), down 10 and 5 cents respectively.

Fine wools (16.5-19 μ) faced renewed pressure this week, averaging losses of 14 cents. The decline was concentrated at the finer end, where 16.5 μ and 17.5 μ categories shed 15 and 24 cents respectively.

Medium types (19-22 μ) averaged losses of 10 cents, while Crossbred wools (25-32 μ) experienced similar weakness, also down 10 cents. Cardings bucked the trend, gaining 7 cents this week. Merino skirtings were the standout performer, surging 40 cents.

This week saw offering volume increase by 32.2% as recent favourable pricing, combined with seasonal shearing patterns, pushed more wool onto the market. Despite the surge in volume, the market held firm—a positive sign for growers heading into the new year.

The Australian Dollar strengthened this week, reclaiming 0.650 as gradually improving signals from China and a softer USD backdrop provided support. China's 4.0% GDP growth through Q3 and 2.9% retail sales gain in October point to a slow but increasing recovery, supporting demand fundamentals for Australian wool exports.

It's worth reflecting on where the market stands compared to this time last year. Fine wools have climbed 25% since November 2024, medium wools 35%, and crossbreds have jumped an impressive 46%. These gains reflect the wider market picture of reduced Australian wool supply combined with improving global demand signals.

Looking ahead, 37,581 bales of Australian wool are currently forecast for sale next week.

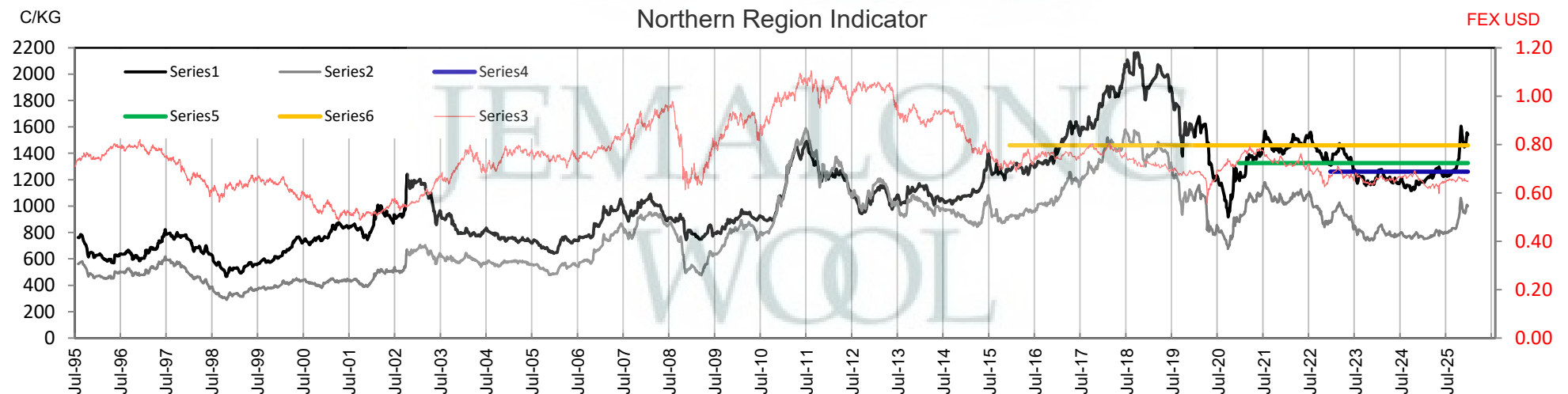




Table 2: Three Year Decile Table, since: 1/11/2022

Decile	%	16	16.5	17	17.5	18	18.5	19	19.5	20	21	22	23	24	25	26	28	30	32	MC
1	10%	1825	1728	1658	1582	1494	1431	1388	1344	1308	1275	1223	1019	800	671	489	330	298	245	699
2	20%	1845	1763	1680	1605	1522	1450	1405	1360	1324	1288	1250	1080	821	688	520	340	317	260	702
3	30%	1891	1792	1700	1623	1541	1468	1414	1376	1338	1307	1272	1100	858	697	535	350	327	280	707
4	40%	1914	1807	1715	1636	1567	1494	1436	1390	1357	1317	1287	1110	873	710	555	360	331	288	711
5	50%	1927	1830	1731	1659	1591	1524	1470	1429	1387	1341	1313	1130	885	726	564	375	340	297	722
6	60%	2025	1900	1774	1683	1615	1557	1507	1472	1441	1411	1376	1153	905	732	580	384	350	305	731
7	70%	2075	1998	1860	1744	1650	1592	1539	1507	1469	1428	1392	1174	936	759	595	410	365	322	747
8	80%	2233	2189	2067	1963	1853	1715	1621	1559	1508	1458	1428	1200	970	791	614	436	380	335	805
9	90%	2525	2356	2222	2076	1956	1830	1713	1616	1558	1520	1486	1270	990	819	705	521	440	368	859
10	100%	2650	2513	2405	2197	2100	2039	1906	1852	1849	1811	1810	1540	1170	1050	942	727	600	490	929
MPG		2232	2188	2118	2058	2000	1942	1869	1842	1812	1806	1780	1475	970	858	755	660	525	448	805
3 Yr Percentile		79%	79%	82%	88%	94%	97%	98%	98%	99%	98%	99%	99%	82%	93%	93%	97%	93%	96%	81%

Table 3: Ten Year Decile Table, since: 1/11/2015

Decile	%	16	16.5	17	17.5	18	18.5	19	19.5	20	21	22	23	24	25	26	28	30	32	MC
1	10%	1685	1628	1600	1558	1505	1445	1391	1350	1312	1260	1213	1079	860	697	550	350	320	240	706
2	20%	1859	1767	1682	1613	1545	1482	1426	1385	1345	1291	1251	1106	900	732	592	379	335	253	730
3	30%	1940	1837	1737	1664	1593	1534	1498	1452	1373	1315	1285	1129	951	801	656	412	355	276	806
4	40%	2076	1987	1889	1795	1715	1638	1550	1488	1409	1351	1323	1159	979	846	728	460	380	295	875
5	50%	2245	2164	2085	1983	1872	1762	1625	1519	1451	1408	1379	1220	1015	878	780	536	450	335	921
6	60%	2444	2322	2227	2121	1980	1845	1702	1573	1500	1453	1412	1348	1224	1065	974	718	563	398	1009
7	70%	2598	2496	2361	2231	2088	1915	1781	1696	1617	1529	1477	1412	1327	1173	1070	778	602	437	1089
8	80%	2810	2633	2503	2374	2190	2043	1898	1814	1770	1732	1710	1621	1490	1249	1139	837	683	470	1150
9	90%	3060	2860	2665	2506	2389	2268	2188	2161	2144	2129	2110	1961	1810	1501	1320	931	729	569	1258
10	100%	3300	3187	3008	2845	2708	2591	2465	2404	2391	2368	2342	2316	2114	1801	1545	1318	998	696	1563
MPG		2232	2188	2118	2058	2000	1942	1869	1842	1812	1806	1780	1475	970	858	755	660	525	448	805
10 Yr Percentile		49%	50%	51%	55%	61%	71%	77%	81%	82%	83%	84%	75%	37%	44%	44%	55%	54%	73%	29%

Definitions:

* A Percentile, is a value on a scale of one hundred that indicates the percent of a distribution that is equal to or below it. In general a percentile between 25% and 75% is considered normal, a percentile below 25% is considered below normal and a percentile above 75% is considered above normal.

Three and ten year percentiles shown on the bottom line of table 2 & 3 (above) and in table 1 (on page 1), detail the amount of time during the past 3 & 10 years where the market has traded either at or below its current price.

* Deciles are a method of sorting ranked data into 10 equal groups. The data may be ranked from largest to smallest or vice versa.

The above Decile tables sort price Percentiles into 10 equal groups (in ascending order), with table 2 ranking the previous 3 years prices, while table 3 ranks prices over the previous 10 years

Example: In Table 2, a Decile Rank of 6 for 19 microns, shows 19 microns have traded at or below 1507 for 60% of the time, over the past three years.

In Table 3, a Decile Rank of 6 for 19 microns, shows 19 microns have traded at or below 1702 for 60% of the time, over the past ten years.



Table 4: Riemann Forwards, as at: 26/11/25 Any highlighted in yellow are recent trades, trading since: Thursday, 20 November 2025

MICRON (Total Traded = 40)		18um (1 Traded)	18.5um (5 Traded)	19um (15 Traded)	19.5um (4 Traded)	21um (11 Traded)	22um (0 Traded)	23um (0 Traded)	28um (4 Traded)	30um (0 Traded)
FORWARD CONTRACT MONTH	Nov-2025 (19)	27/10/25 1890 (1)	29/10/25 1820 (4)	28/10/25 1730 (5)	21/05/25 1525 (2)	2/09/25 1505 (7)				
	Dec-2025 (1)				13/03/25 1570 (1)					
	Jan-2026 (6)			23/09/24 1500 (1)	10/10/25 1830 (1)	10/10/25 1770 (1)			1/10/25 755 (3)	
	Feb-2026 (4)		10/10/25 2000 (1)	9/10/25 1900 (2)					18/11/25 705 (1)	
	Mar-2026									
	Apr-2026 (3)			18/11/25 1905 (3)						
	May-2026 (1)					18/11/25 1800 (1)				
	Jun-2026 (5)			18/11/25 1900 (4)		27/10/25 1680 (1)				
	Jul-2026									
	Aug-2026									
	Sep-2026									
	Oct-2026 (1)					25/11/25 1825 (1)				
	Nov-2026									
	Dec-2026									
	Jan-2027									
	Feb-2027									
	Mar-2027									
	Apr-2027									
	May-2027									
	Jun-2027									
	Jul-2027									
	Aug-2027									
	Sep-2027									

Explanatory Notes: Prices quoted reflect the most recent trades, at time of print.

Disclaimer: While all due care has been taken in the preparation of this document, no warranty is made as to its accuracy, reliability or completeness. To the extent permitted by law neither Jemalong or their sources including subsidiaries and staff, accept liability to any person for loss or damage arising from the use of this information.



Table 6: National Market Share

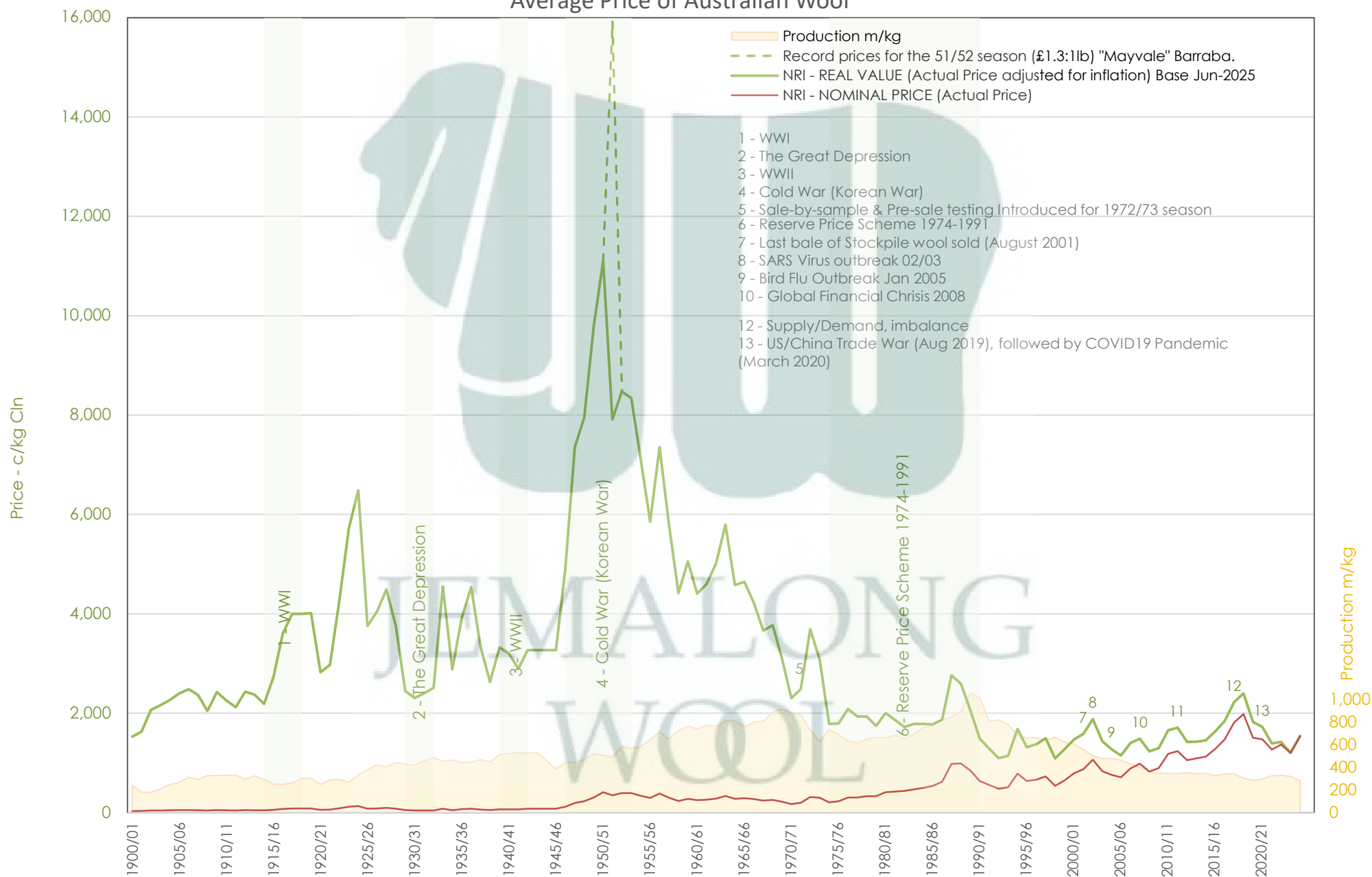
	Rank	Current Selling Week Week 22			Previous Selling Week Week 21			Last Season 2024-25			2 Years Ago 2023-24			3 Years Ago 2022-23			5 Years Ago 2020-21			10 Years Ago 2015-16		
		Buyer	Bales	MS%	Buyer	Bales	MS%	Buyer	Bales	MS%	Buyer	Bales	MS%	Buyer	Bales	MS%	Buyer	Bales	MS%	Buyer	Bales	MS%
Top 10, Auction Buyers	1	TECM	5,406	15%	TECM	4,036	14%	TECM	229,513	16%	TECM	269,885	16%	TECM	236,574	15%	TECM	228,018	15%	TECM	223,011	13%
	2	EWES	4,682	13%	EWES	3,014	11%	EWES	183,456	13%	EWES	200,309	12%	EWES	184,465	11%	EWES	159,908	10%	CTXS	158,343	10%
	3	PMWF	4,138	12%	PMWF	2,877	10%	TIAM	155,816	11%	TIAM	163,248	10%	TIAM	165,940	10%	FOXM	129,251	8%	FOXM	151,685	9%
	4	SMAM	3,289	9%	TIAM	2,449	9%	FOXM	115,227	8%	PMWF	130,958	8%	FOXM	114,903	7%	TIAM	121,176	8%	LEMM	124,422	8%
	5	TIAM	3,088	9%	UWCM	2,219	8%	SMAM	102,067	7%	FOXM	112,236	7%	AMEM	94,128	6%	UWCM	100,677	6%	TIAM	105,610	6%
	6	PEAM	2,069	6%	FOXM	2,042	7%	PMWF	101,929	7%	PEAM	110,013	7%	PMWF	92,939	6%	LEMM	98,471	6%	AMEM	104,017	6%
	7	UWCM	2,000	6%	AMEM	2,011	7%	AMEM	79,894	6%	AMEM	103,230	6%	UWCM	81,113	5%	AMEM	90,244	6%	GWEA	91,407	6%
	8	AMEM	1,981	6%	PEAM	1,931	7%	PEAM	78,127	6%	UWCM	90,284	5%	SMAM	81,046	5%	PMWF	84,389	5%	MODM	83,453	5%
	9	FOXM	1,557	4%	SMAM	1,383	5%	UWCM	73,595	5%	SMAM	76,401	5%	PEAM	76,571	5%	MODM	70,426	4%	PMWF	82,132	5%
	10	MODM	1,209	3%	MEWS	988	3%	MEWS	41,323	3%	MEWS	67,040	4%	MEWS	64,650	4%	KATS	63,487	4%	MCHA	64,453	4%
MFLC TOP 5	1	TECM	3,639	18%	PMWF	2,386	17%	TIAM	113,479	15%	TECM	147,611	16%	TECM	128,047	15%	TECM	131,264	15%	CTXS	124,326	13%
	2	PMWF	3,402	17%	TECM	2,070	15%	TECM	108,786	14%	PMWF	124,594	14%	TIAM	115,988	14%	TIAM	93,870	10%	TECM	112,996	12%
	3	EWES	2,853	14%	EWES	1,593	11%	PMWF	95,314	12%	TIAM	117,878	13%	EWES	93,911	11%	EWES	83,559	9%	LEMM	91,475	10%
	4	SMAM	2,452	12%	AMEM	1,197	8%	EWES	94,695	12%	EWES	103,468	12%	PMWF	87,904	10%	LEMM	81,281	9%	FOXM	84,992	9%
	5	TIAM	1,616	8%	FOXM	1,160	8%	SMAM	79,384	10%	MEWS	65,151	7%	MEWS	63,681	7%	PMWF	80,872	9%	PMWF	77,550	8%
MSKT TOP 5	1	TIAM	817	15%	TIAM	755	20%	TECM	52,792	24%	TECM	51,028	20%	EWES	46,781	18%	TECM	42,521	18%	TIAM	41,055	17%
	2	TECM	751	14%	TECM	559	15%	EWES	40,704	18%	EWES	50,301	20%	TECM	45,453	17%	UWCM	34,928	14%	TECM	39,290	16%
	3	EWES	732	14%	EWES	437	11%	TIAM	26,993	12%	TIAM	34,378	14%	TIAM	36,973	14%	EWES	34,884	14%	AMEM	29,982	12%
	4	SMAM	638	12%	PMWF	307	8%	AMEM	18,460	8%	AMEM	26,328	10%	SMAM	18,671	7%	WCWF	21,915	9%	MODM	26,227	11%
	5	PMWF	624	12%	SMAM	305	8%	SMAM	17,308	8%	FOXM	13,839	5%	FOXM	17,752	7%	TIAM	18,193	8%	FOXM	18,153	7%
XB TOP 5	1	PEAM	1,079	17%	PEAM	1,151	18%	TECM	43,969	17%	PEAM	68,181	22%	PEAM	54,447	18%	MODM	34,090	15%	TECM	46,757	17%
	2	MODM	909	14%	TECM	1,047	16%	PEAM	43,966	17%	TECM	48,337	15%	TECM	41,194	14%	TECM	33,794	15%	KATS	27,734	10%
	3	UWCM	883	14%	MODM	758	12%	EWES	30,639	12%	KATS	28,741	9%	MODM	28,282	9%	PEAM	30,636	13%	FOXM	27,096	10%
	4	TECM	699	11%	EWES	645	10%	UWCM	24,901	9%	EWES	27,305	9%	EWES	25,981	9%	EWES	22,525	10%	CTXS	22,768	8%
	5	EWES	653	10%	UWCM	522	8%	KATS	20,772	8%	UWCM	24,830	8%	UWCM	23,318	8%	UWCM	18,968	8%	MODM	21,130	8%
ODDS TOP 5	1	UWCM	872	22%	UWCM	1,245	31%	UWCM	25,237	16%	UWCM	31,740	16%	MCHA	29,569	16%	FOXM	25,868	13%	MCHA	39,964	20%
	2	EWES	444	11%	FOXM	385	10%	TECM	23,966	15%	TECM	22,909	12%	UWCM	29,451	16%	MCHA	23,579	12%	VWPM	30,258	15%
	3	MCHA	358	9%	TECM	360	9%	FOXM	19,320	12%	FOXM	19,823	10%	TECM	21,880	12%	UWCM	21,008	11%	TECM	23,968	12%
	4	TECM	317	8%	EWES	339	9%	EWES	17,418	11%	EWES	19,235	10%	EWES	17,792	9%	TECM	20,439	11%	FOXM	21,444	11%
	5	AMEM	303	8%	AMEM	283	7%	MCHA	13,272	8%	MCHA	16,141	8%	FOXM	16,585	9%	EWES	18,940	10%	GWEA	10,802	5%
Auction Totals		<u>Bales Sold</u>	<u>\$/Bale</u>		<u>Bales Sold</u>	<u>\$/Bale</u>		<u>Bales Sold</u>	<u>\$/Bale</u>		<u>Bales Sold</u>	<u>\$/Bale</u>		<u>Bales Sold</u>	<u>\$/Bale</u>		<u>Bales Sold</u>	<u>\$/Bale</u>		<u>Bales Sold</u>	<u>\$/Bale</u>	
		35,404	\$ 1,793		28,368	\$ 1,699		1,419,576	\$1,362		1,659,483	\$1,348		1,607,799	\$1,503		1,558,820	\$1,455		1,652,727	\$1,424	
		<u>Auction Value</u>			<u>Auction Value</u>		<u>Auction Value</u>		<u>Auction Value</u>		<u>Auction Value</u>		<u>Auction Value</u>		<u>Auction Value</u>		<u>Auction Value</u>		<u>Auction Value</u>		<u>Auction Value</u>	
		\$63,470,000			\$48,200,000		\$1,933,603,248		\$2,236,630,000		\$2,416,900,000		\$2,267,750,000		\$2,354,185,590							

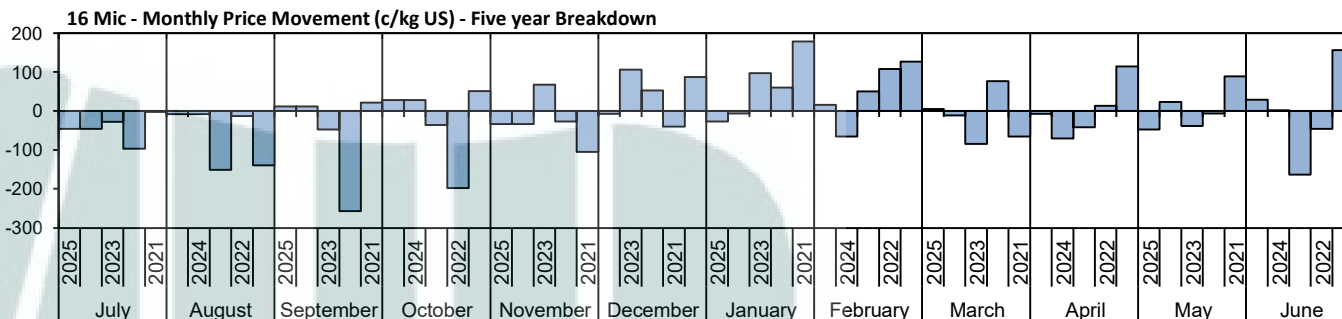
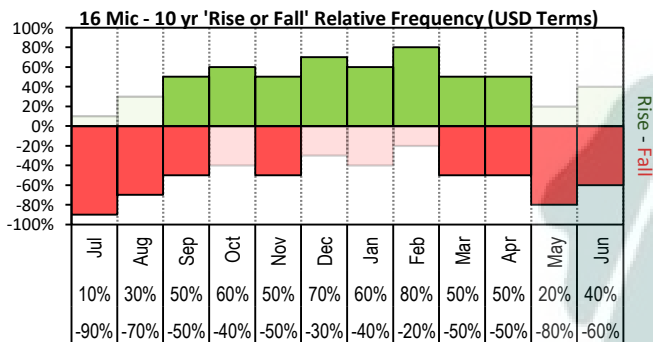


Table 7: NSW Production Statistics

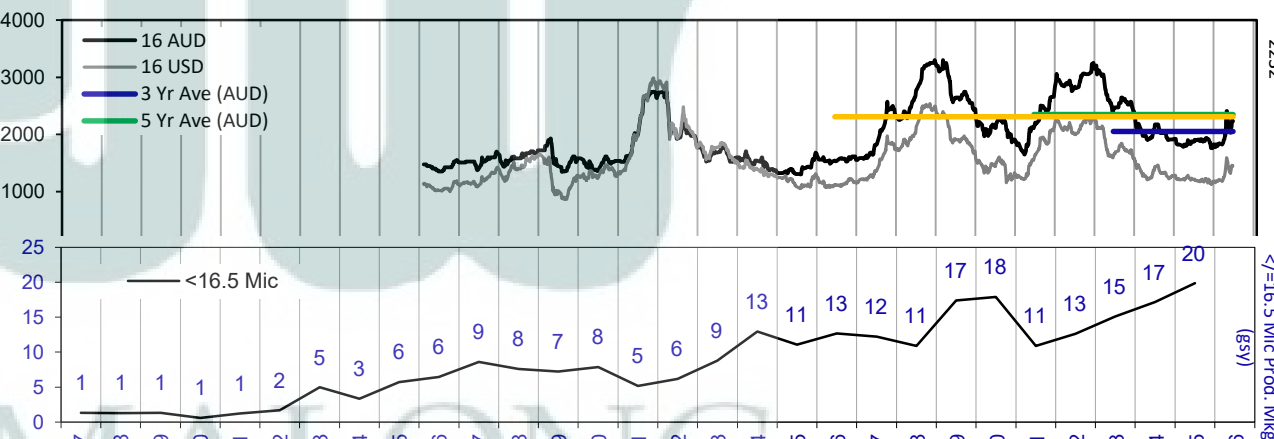
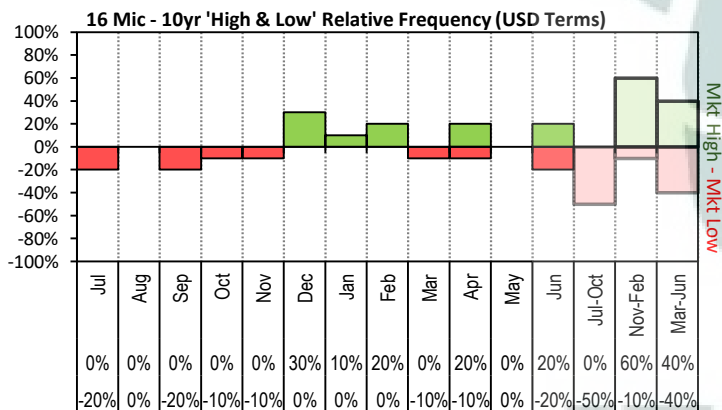
MAX			MIN		MAX GAIN		MAX REDUCTION									
2024-25																
Statistical Devision, Area Code & Towns				Auction Bales (FH)	Micron	+/- YoY	Vmb %	+/- YoY	Yield % Sch Dry	+/- YoY	Length mm	+/- YoY	Strength Nkt	+/- YoY	Ave Price c/kg	
Northern	N02	Tenterfield, Glen Innes		5,110	18.8	-0.8	2.1	0.5	70.5	-0.5	84	2.8	40	-2.6	1016	
	N03	Guyra		36,593	20.2	-0.7	2.2	0.4	66.0	-2.4	83	1.3	37	-3.4	926	
	N04	Inverell		3,277	19.0	0.4	3.7	0.4	67.4	-0.5	87	3.6	36	-2.6	846	
	N05	Armidale		543	19.2	0.6	3.3	-1.0	69.8	1.5	85	0.9	38	-0.8	889	
	N06	Tamworth, Gunnedah, Quirindi		4,430	20.3	-0.1	4.2	0.2	66.2	-1.2	85	1.8	41	-0.2	802	
	N07	Moree		2,863	19.5	0.5	5.4	-0.4	60.2	-1.1	91	5.6	37	-0.5	668	
	N08	Narrabri		2,091	19.7	0.7	4.6	-1.2	63.5	0.6	86	4.9	41	-0.2	740	
	North Western & Far West	N09	Cobar, Bourke, Wanaaring		7,005	19.5	0.1	4.7	-0.4	59.4	0.5	90	2.7	38	-1.7	688
N12		Walgett		8,652	19.3	0.0	6.4	-1.4	60.1	1.0	90	4.4	36	-2.2	676	
N13		Nyngan		16,258	19.6	0.1	6.9	-0.2	59.3	-0.9	89	2.6	39	0.9	659	
N14		Dubbo, Narromine		17,475	21.5	0.5	4.3	0.0	62.5	-0.5	87	2.9	39	0.5	590	
N16		Dunedoo		5,160	20.5	0.4	3.8	0.4	65.8	-0.1	85	1.8	39	1.1	714	
N17		Mudgee, Wellington, Gulgong		18,133	19.9	0.4	2.7	0.0	67.4	-0.5	85	3.6	40	-0.7	847	
N33		Coonabarabran		2,372	20.1	-0.3	4.3	0.3	65.4	-0.3	87	2.4	38	0.1	717	
N34		Coonamble		6,020	20.3	0.2	5.8	0.9	62.3	-0.7	88	2.0	39	2.3	664	
N36		Gilgandra, Gulargambone		5,501	21.2	0.2	4.0	0.0	63.7	-0.7	89	3.5	39	-0.4	647	
N40		Brewarrina		5,860	19.8	0.2	5.8	-0.9	59.6	-0.2	91	3.7	39	-0.2	687	
N10		Wilcannia, Broken Hill		17,987	20.1	0.0	4.1	-0.3	57.7	0.4	93	2.7	37	0.1	660	
Central West	N15	Forbes, Parkes, Cowra		32,103	20.6	0.1	3.1	-0.2	64.6	-0.3	88	3.6	38	-1.6	693	
	N18	Lithgow, Oberon		1,860	22.2	0.0	1.5	0.0	70.8	-0.3	90	5.0	39	-3.6	824	
	N19	Orange, Bathurst		44,594	21.8	-0.1	2.2	0.2	68.3	-0.8	88	3.0	38	-2.0	730	
	N25	West Wyalong		17,602	19.8	-0.1	2.8	-0.3	63.5	-0.3	91	3.5	37	-1.4	730	
	N35	Condobolin, Lake Cargelligo		7,253	20.7	0.3	5.1	-0.8	61.0	0.4	90	6.4	40	1.4	611	
Murrumbidgee	N26	Cootamundra, Temora		22,208	20.9	-0.3	1.8	0.0	64.5	-1.9	90	0.9	36	-2.2	678	
	N27	Adelong, Gundagai		11,481	20.7	-1.0	2.2	0.4	66.2	-2.6	89	0.6	36	-2.6	746	
	N29	Wagga, Narrandera		30,930	21.4	-0.3	2.0	-0.1	63.5	-1.8	88	-0.7	35	-2.9	647	
	N37	Griffith, Hillston		10,676	21.0	-0.3	4.0	-1.3	63.0	1.4	88	5.0	41	-1.6	651	
	N39	Hay, Coleambally		18,427	20.0	0.0	4.2	-2.1	63.4	1.4	88	1.6	41	-0.5	740	
Murray	N11	Wentworth, Balranald		12,070	20.8	0.2	5.3	-1.2	60.2	1.6	94	1.5	38	1.6	635	
	N28	Albury, Corowa, Holbrook		27,445	21.0	-0.5	1.5	0.0	64.4	-2.9	85	-1.8	35	-3.9	725	
	N31	Deniliquin		21,720	20.5	-0.2	3.2	-1.0	64.9	0.3	90	2.5	37	-3.2	710	
	N38	Finley, Berrigan, Jerilderie		8,139	20.0	0.1	2.6	-1.0	64.6	0.1	87	2.1	40	-0.5	762	
South Eastern	N23	Goulburn, Young, Yass		95,490	19.8	-0.2	1.7	0.2	68.3	-1.3	88	0.9	37	-1.5	851	
	N24	Monaro (Cooma, Bombala)		28,406	19.2	-0.3	1.4	-0.2	70.1	-0.4	90	1.1	36	-0.8	911	
	N32	A.C.T.		214	18.8	1.2	1.8	0.6	67.1	-4.6	88	2.1	35	-3.9	871	
	N43	South Coast (Bega)		279	18.4	-0.2	1.1	0.3	74.3	-0.2	86	-2.1	40	-4.3	1099	
NSW	AWEX Sale Statistics 24-25			612,559	20.4	-0.2	2.8	-0.1	65.3	-0.9	88	1.8	38	-1.3	773	
AWTA Mthly Key Test Data				Bales Tested	+/- YoY	Micron	+/- YoY	VMB	+/- YoY	Yld	+/- YoY	Lth	+/- YoY	Nkt	+/- YoY	POBM +/-
AUSTRALIA	Current Season	October	191,176	9,929	20.0	0.0	1.9	-0.1	65.0	-0.4	90	0.8	32	-1.4	44	-0.2
		Y.T.D	511,550	-40,729	0.0	-20.0	0.0	-2.4	0.0	-64.6	0	-90.0	0	-35.0	0	-44.0
	Previous Seasons	2024-25	552,279	-48799	20.0	-0.3	2.4	-0.2	64.6	-1.0	90	1.0	35	0.0	44	-5.0
		2023-24	601,078	17659	20.3	-0.1	2.6	0.3	65.6	0.3	89	-2.0	35	0.0	49	-1.0
		Y.T.D. 2022-23	583,419	1,402	20.4	0.0	2.3	-0.1	65.3	0.7	91	0.8	35	0.0	48	-0.5

Average Price of Australian Wool

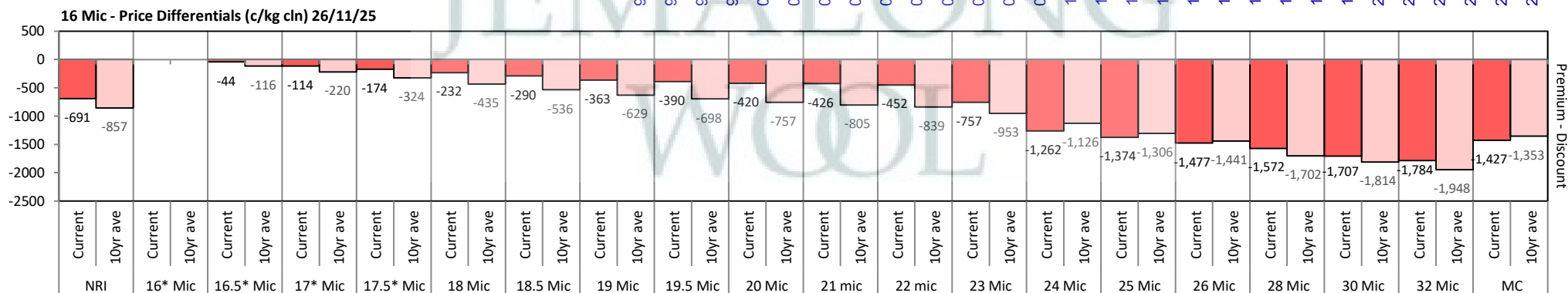


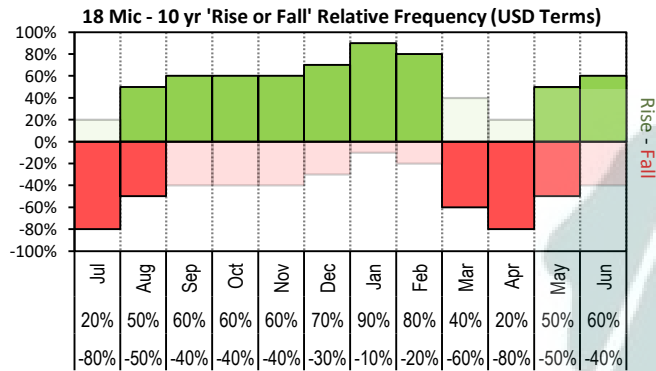


The above 'Rise or Fall' graph, shows how often the market has risen or fallen in a given month over the past 10 years, it does not show the extent of the movement only the frequency of direction. The 'Monthly Price Movement' graph shows the extent of movement for each month, for the past 5 years.

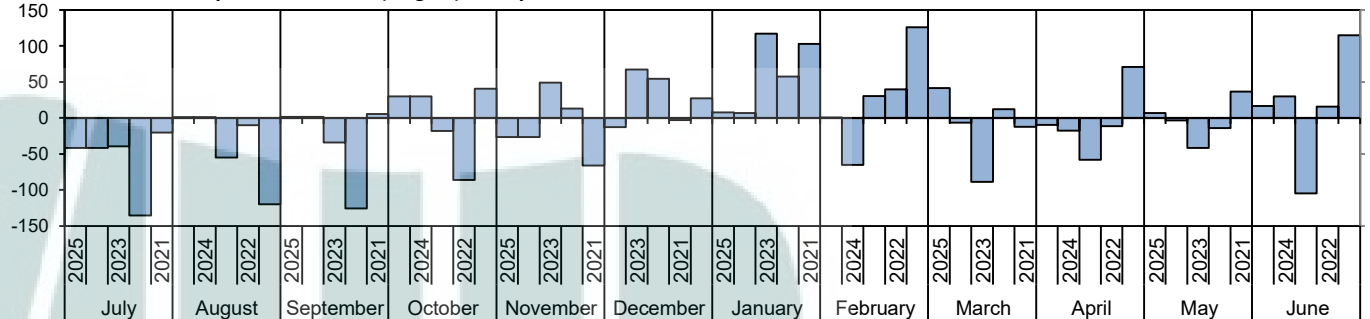


The above graph, shows how often the '12 month high & low' have been achieved for a

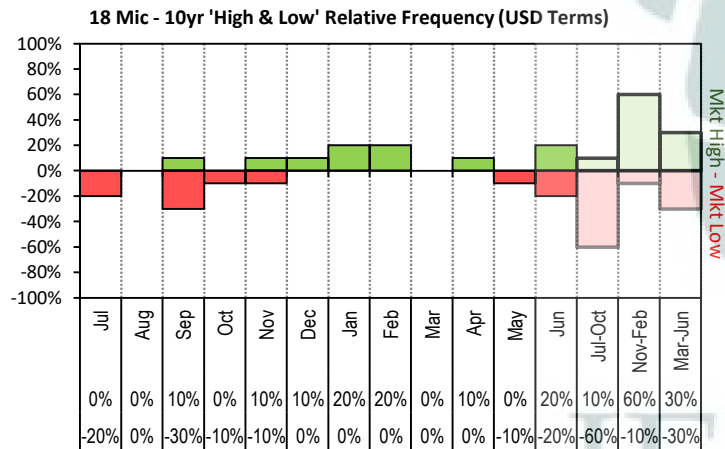




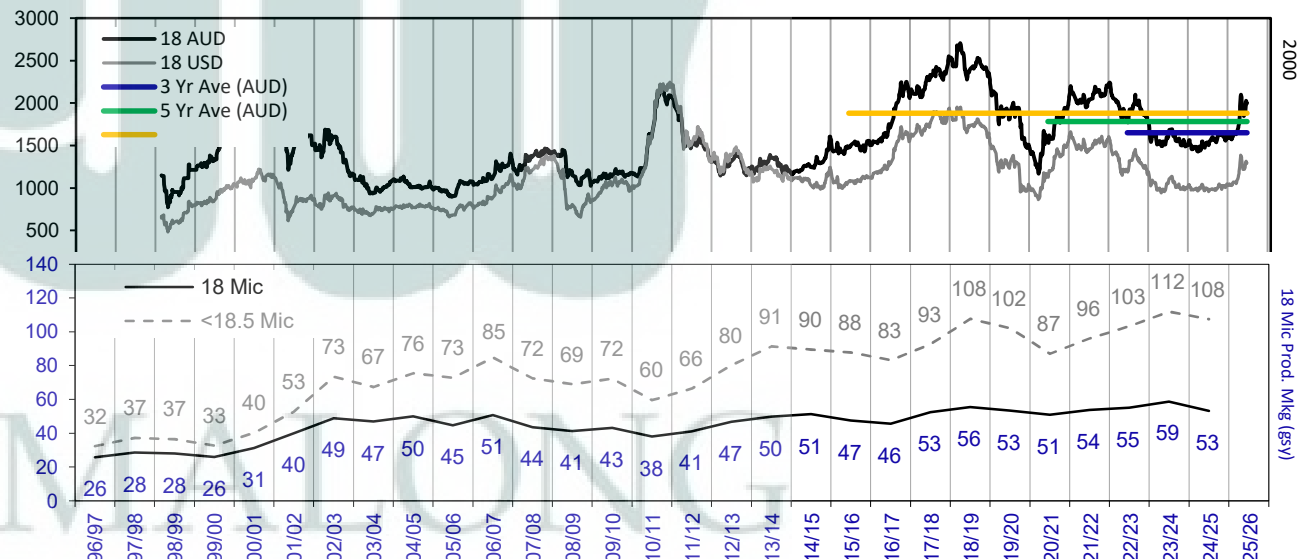
18 Mic - Monthly Price Movement (c/kg US) - Five year Breakdown



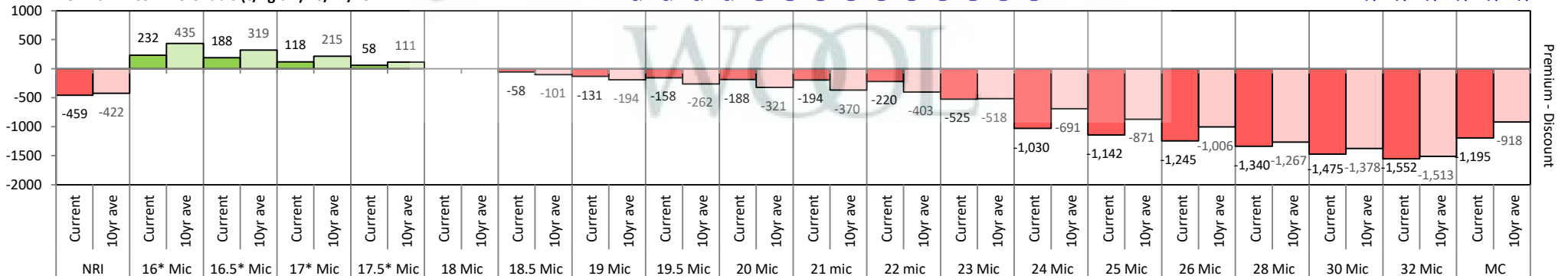
risen or fallen in a given month over the past 10 years, it does not show the extent of the movement only the frequency of direction. The '**Monthly Price Movement**' graph shows the extent of movement for each month, for the past 5 years.

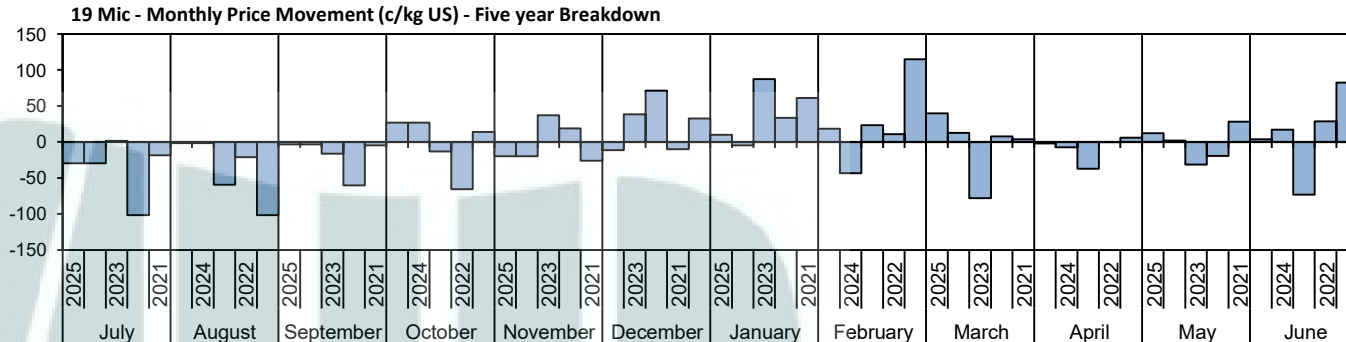
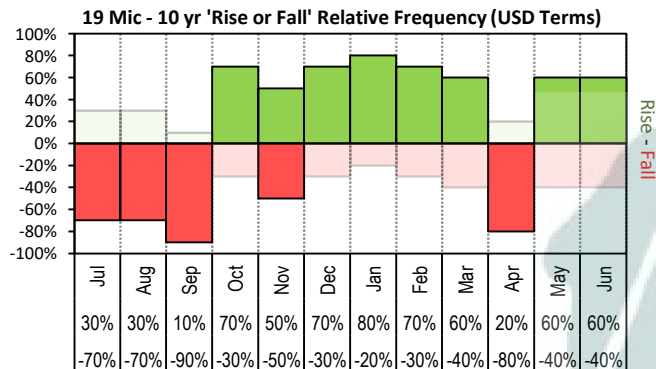


The above graph, shows how often the '12 month high & low' have been achieved for a given month over the past 10 years. It is not a measure of probability.

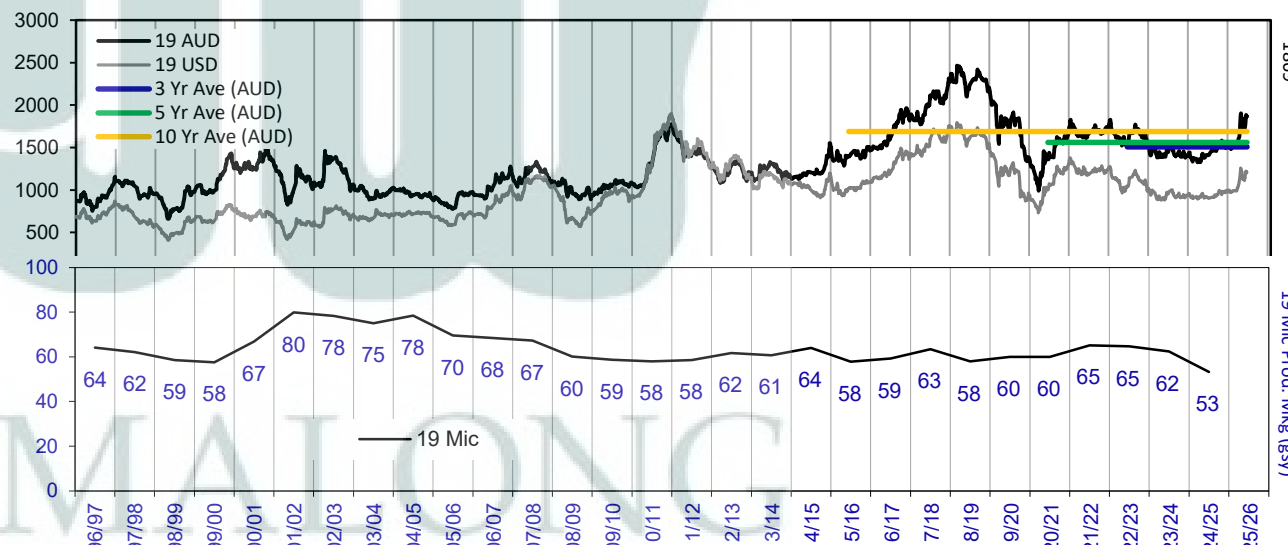
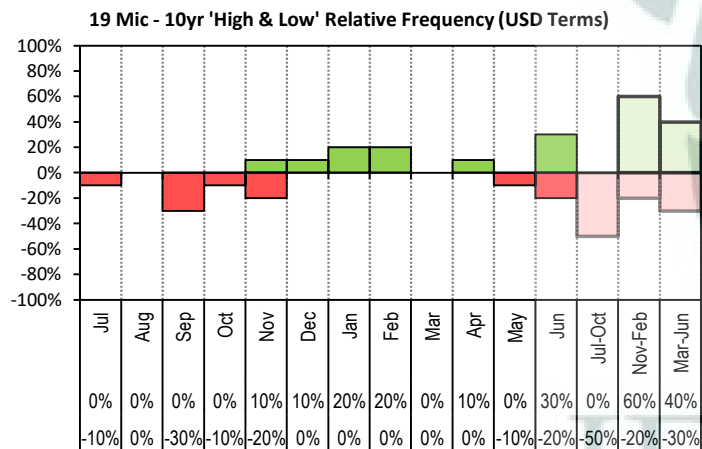


18 Mic - Price Differentials (c/kg cln) 26/11/25

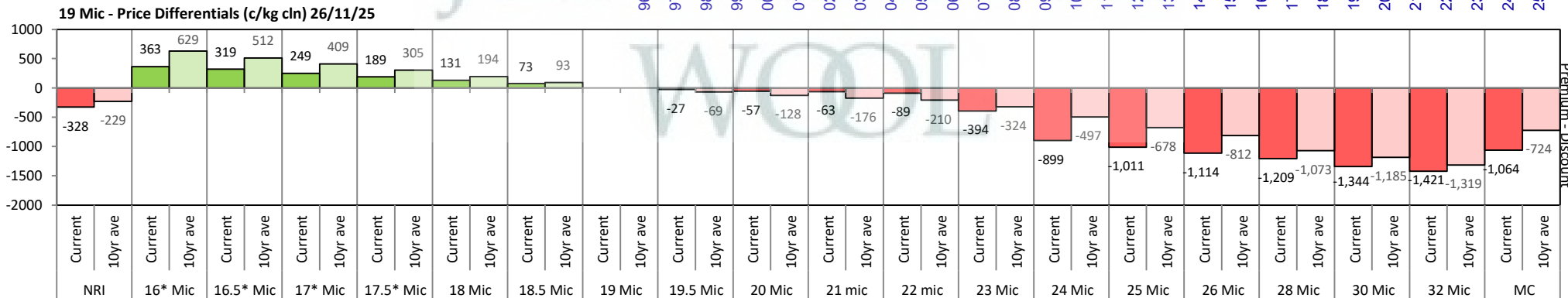


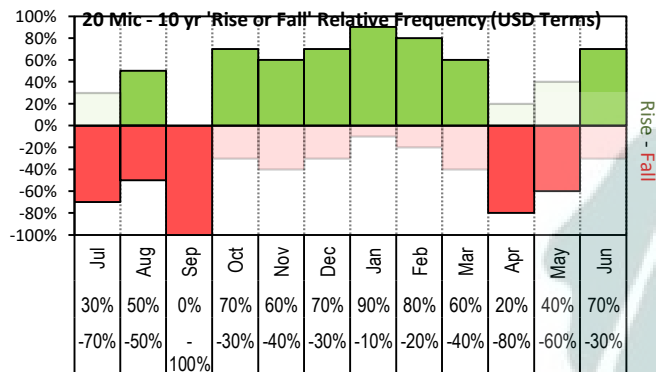


The above 'Rise or Fall' graph, shows how often the market has risen or fallen in a given month over the past 10 years, it does not show the extent of the movement only the frequency of direction. The 'Monthly Price Movement' graph shows the extent of movement for each month, for the past 5 years.

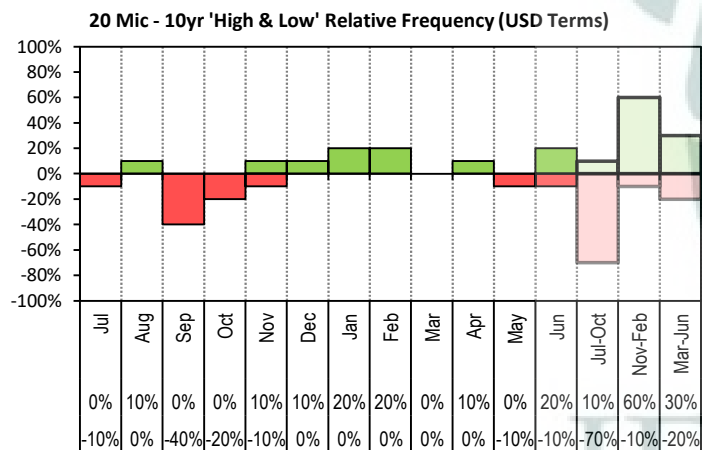
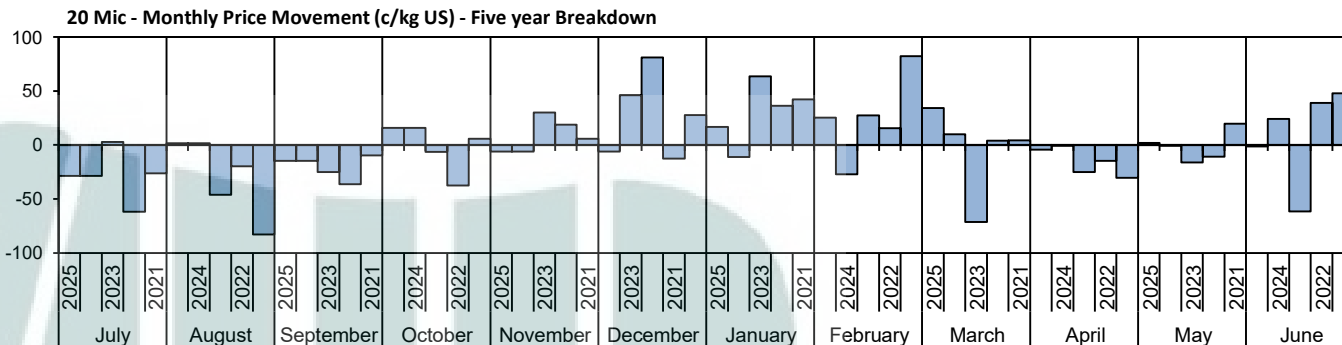


The above graph, shows how often the '12 month high & low' have been achieved for a given month over the past 10 years. It is not a measure of probability.

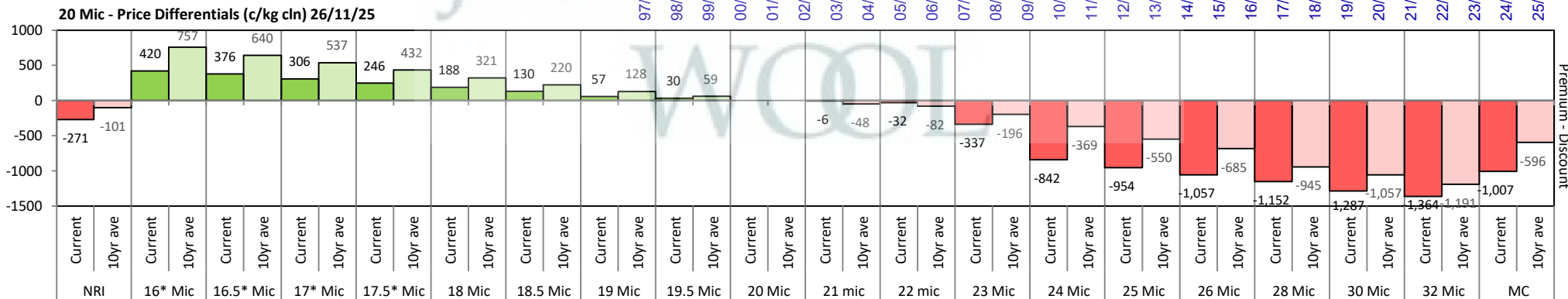
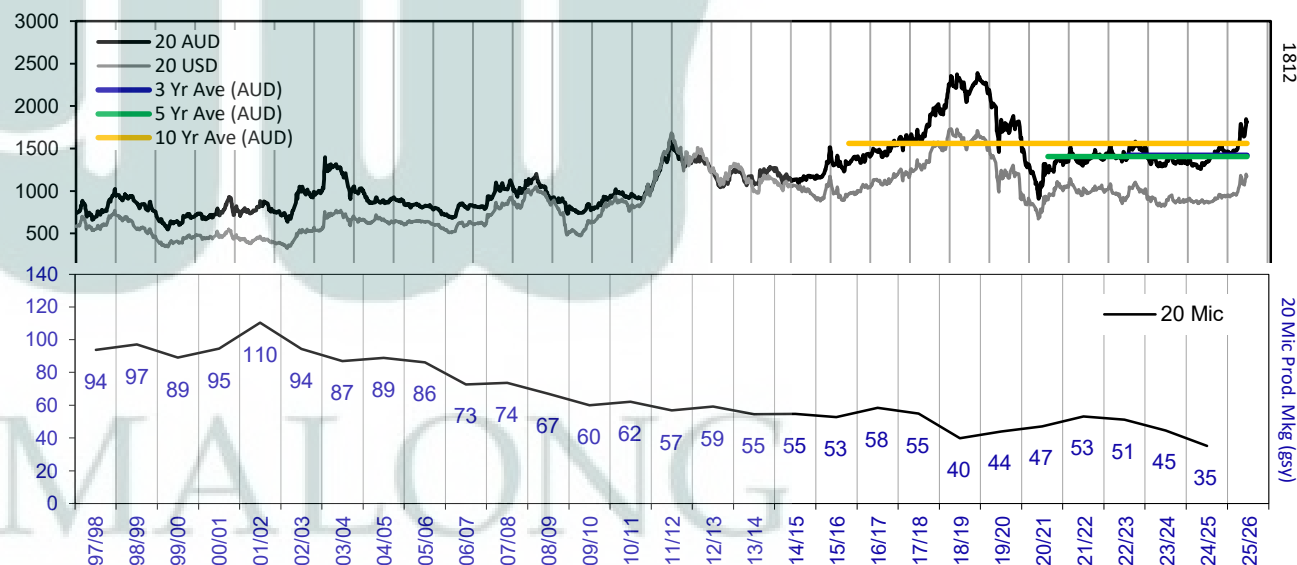


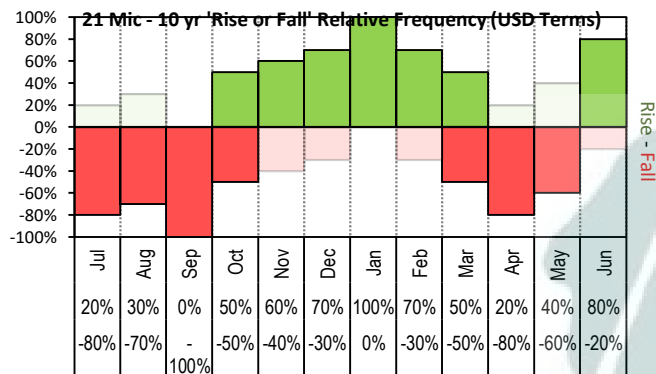


The above '**Rise or Fall**' graph, shows how often the market has risen or fallen in a given month over the past 10 years, it does not show the extent of the movement only the frequency of direction. The '**Monthly Price Movement**' graph shows the extent of movement for each month, for the past 5 years.

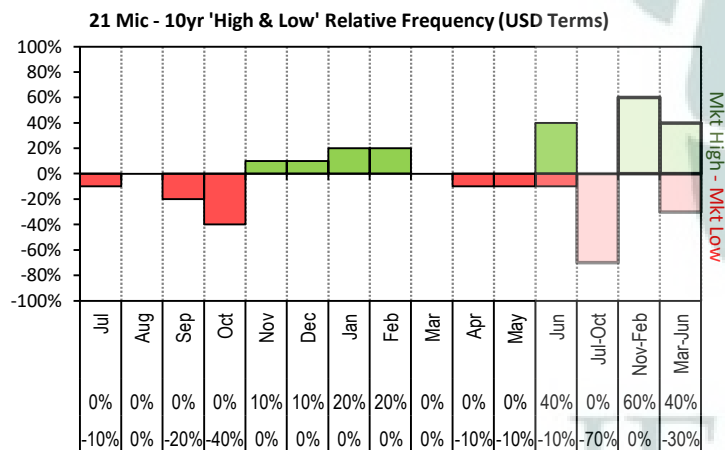
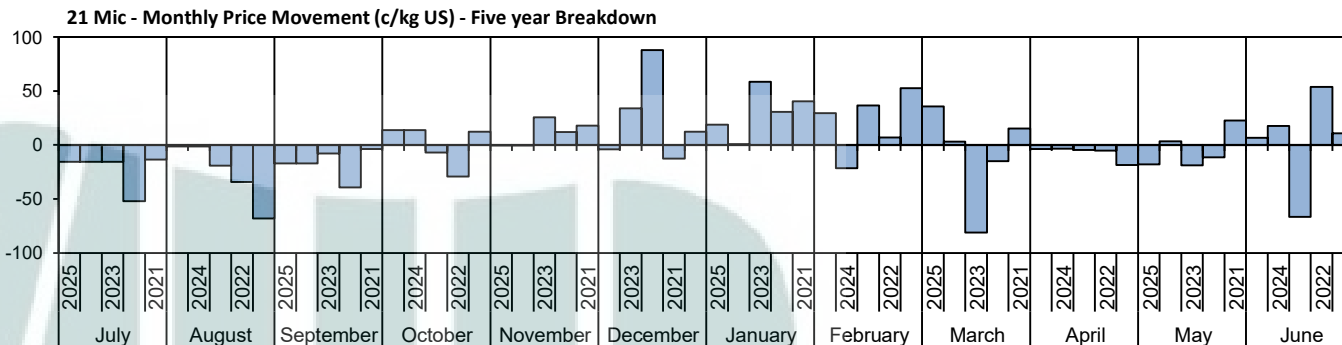


The above graph, shows how often the '12 month high & low' have been achieved for a given month over the past 10 years. It is not a measure of probability.

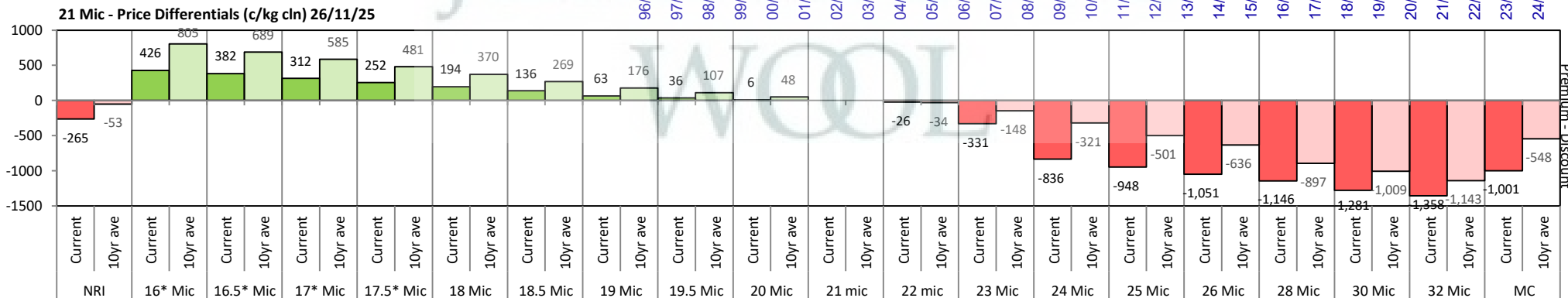
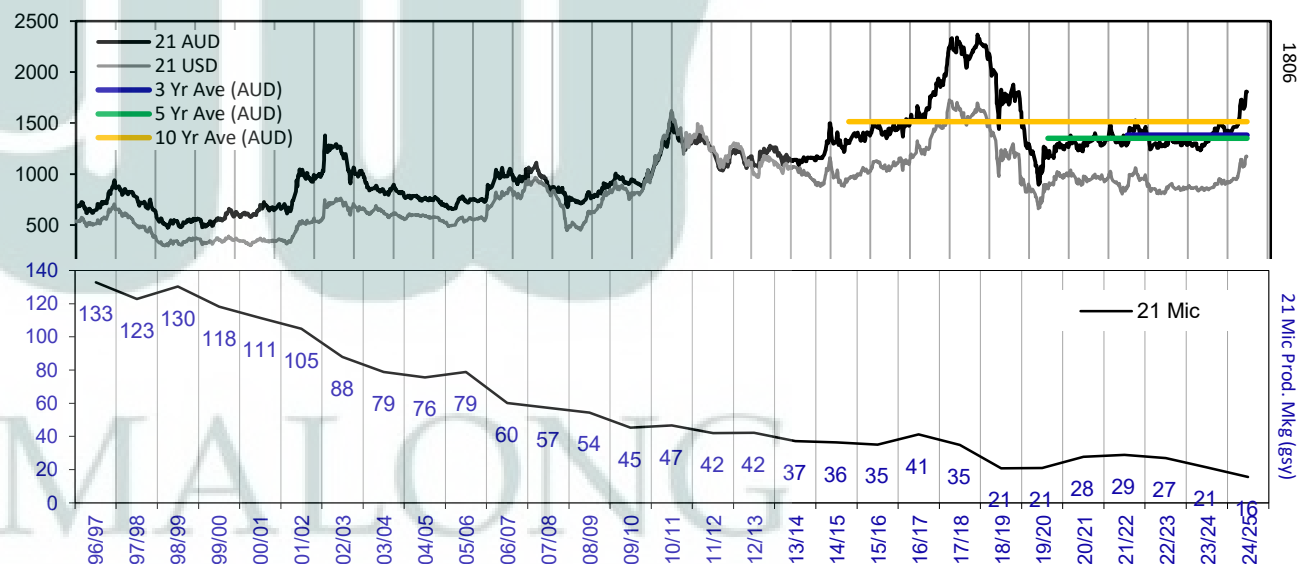


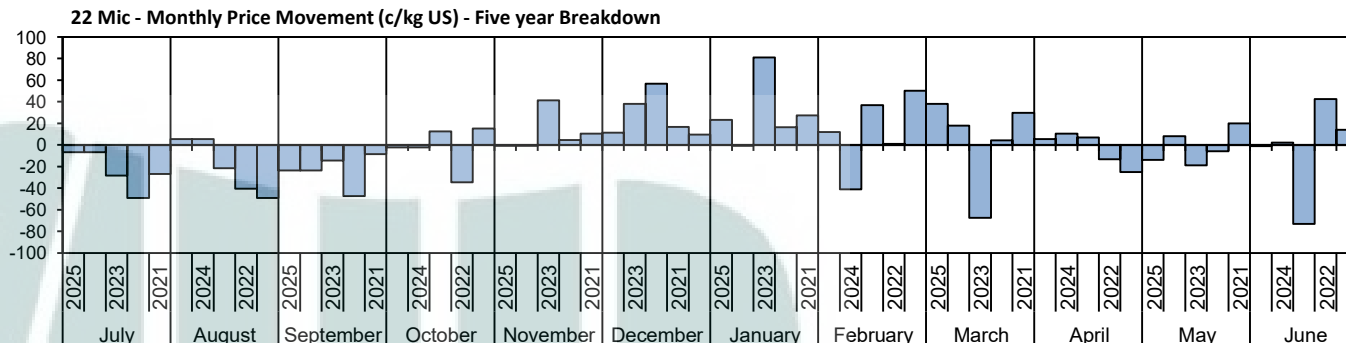
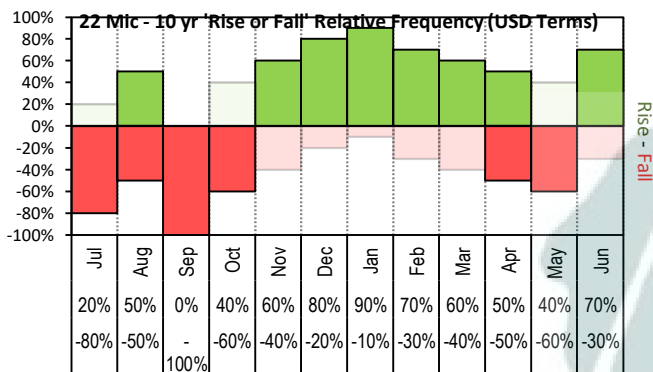


The above '**Rise or Fall**' graph, shows how often the market has risen or fallen in a given month over the past 10 years, it does not show the extent of the movement only the frequency of direction. The '**Monthly Price Movement**' graph shows the extent of movement for each month, for the past 5 years.

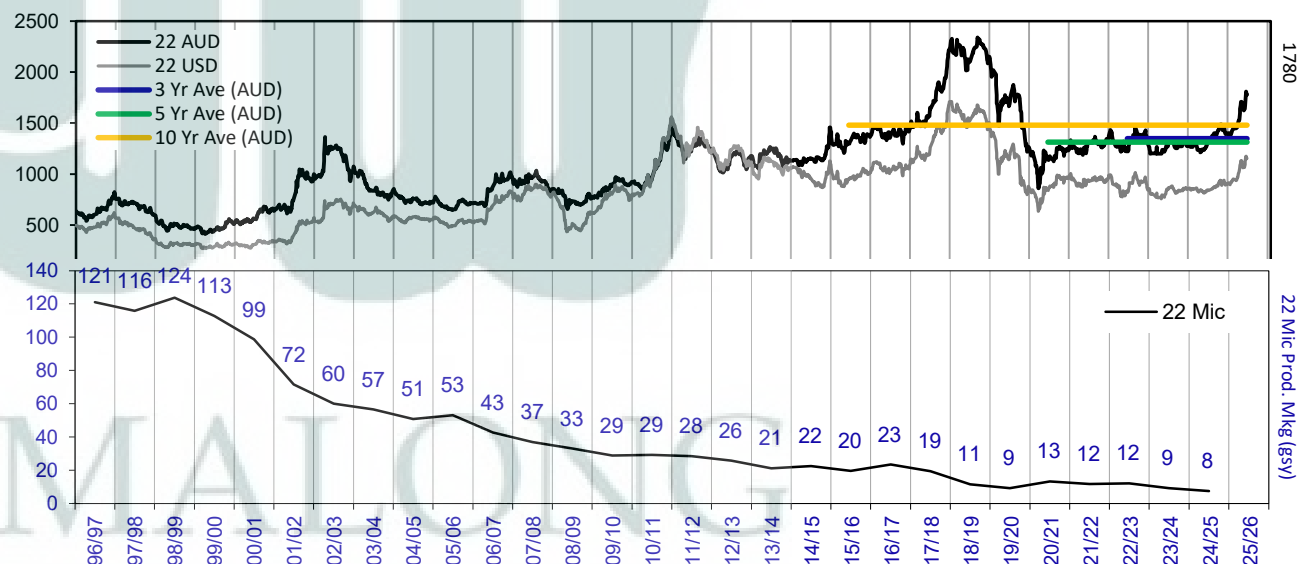
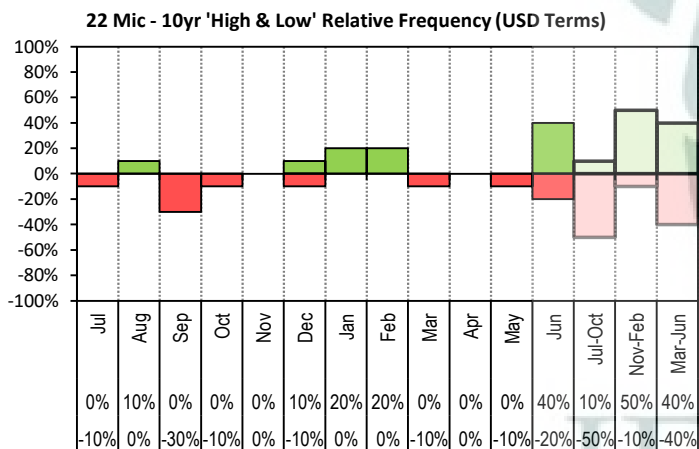


The above graph, shows how often the '12 month high & low' have been achieved for a given month over the past 10 years. It is not a measure of probability.

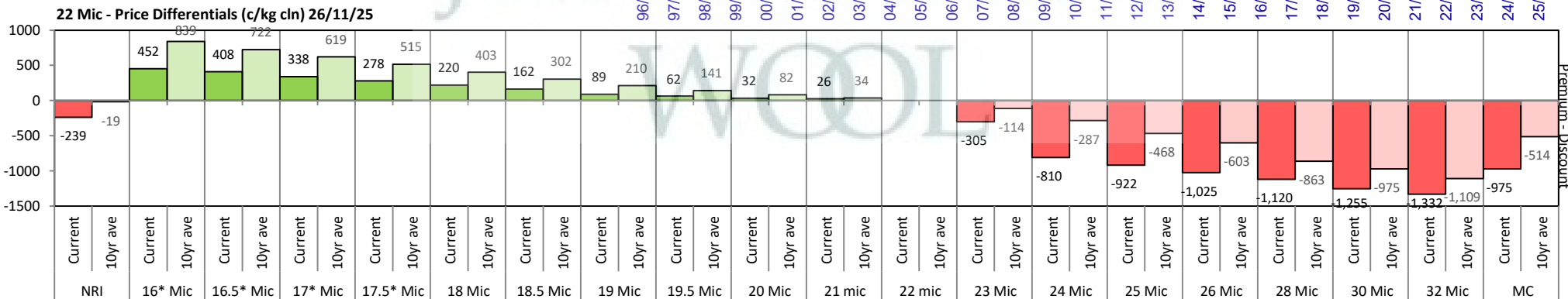


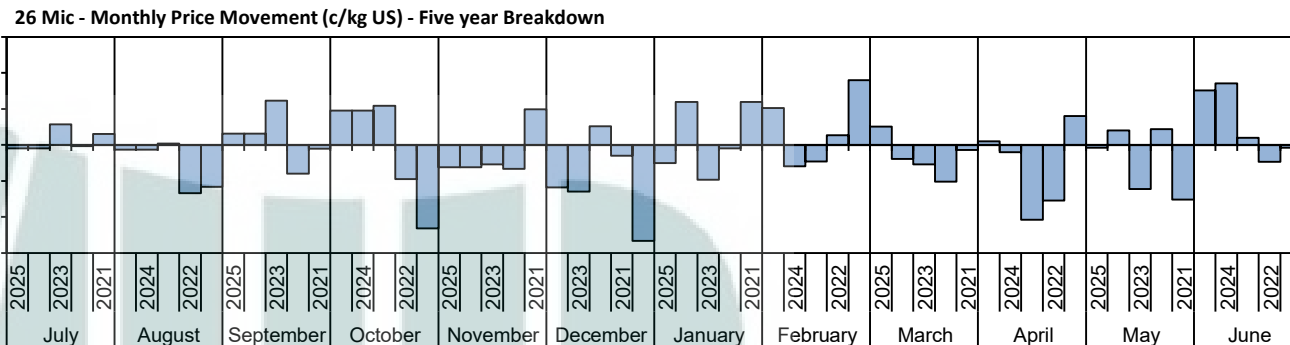
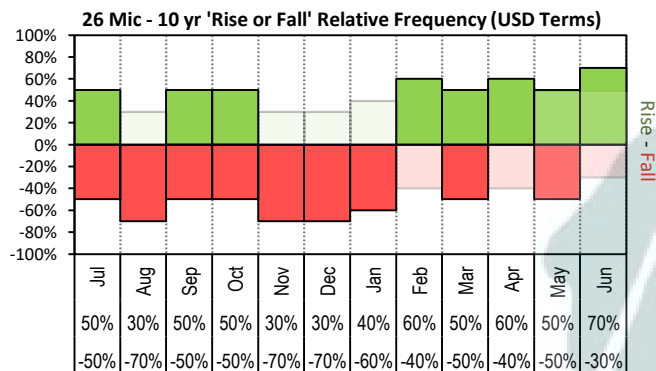


The above 'Rise or Fall' graph, shows how often the market has risen or fallen in a given month over the past 10 years, it does not show the extent of the movement only the frequency of direction. The 'Monthly Price Movement' graph shows the extent of movement for each month, for the past 5 years.

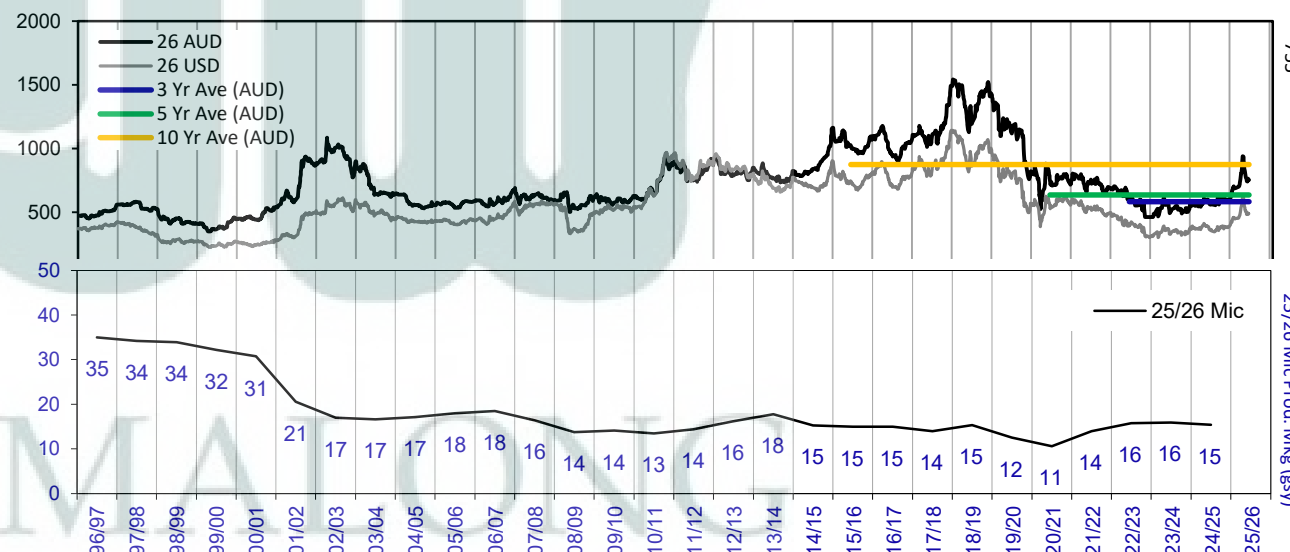
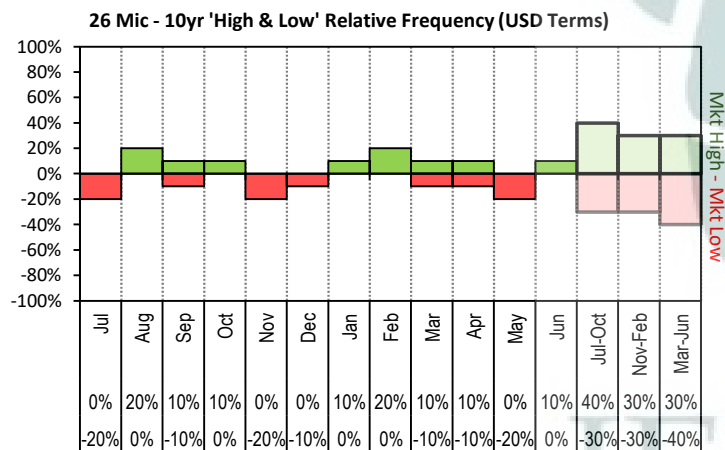


The above graph, shows how often the '12 month high & low' have been achieved for a given month over the past 10 years. It is not a measure of probability.

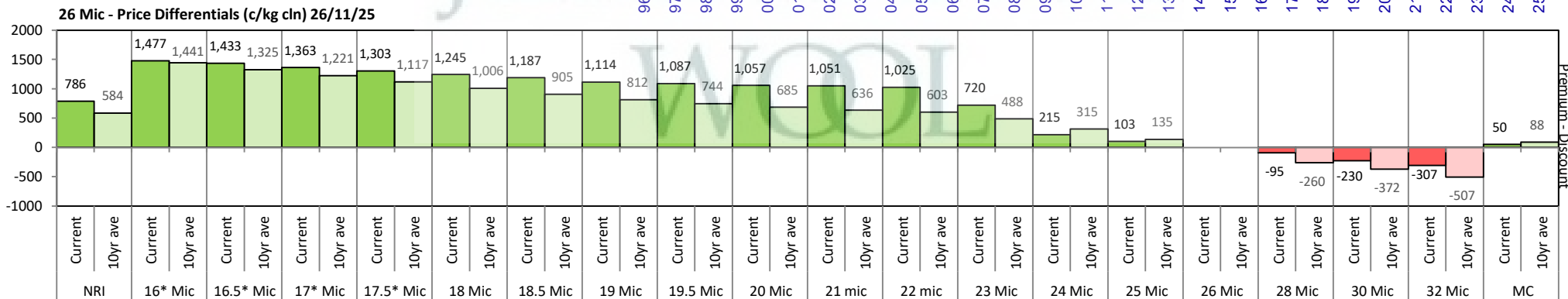


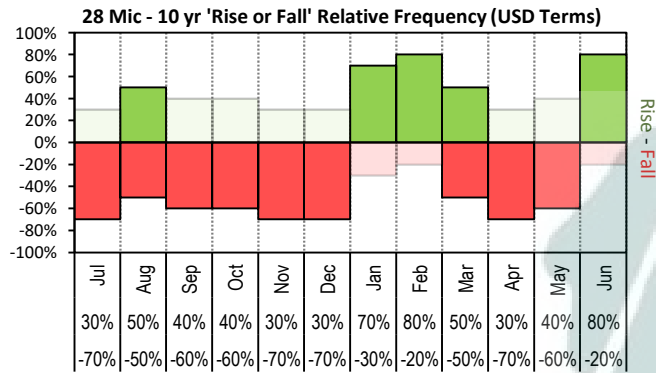


The above 'Rise or Fall' graph, shows how often the market has risen or fallen in a given month over the past 10 years, it does not show the extent of the movement only the frequency of direction. The 'Monthly Price Movement' graph shows the extent of movement for each month, for the past 5 years.

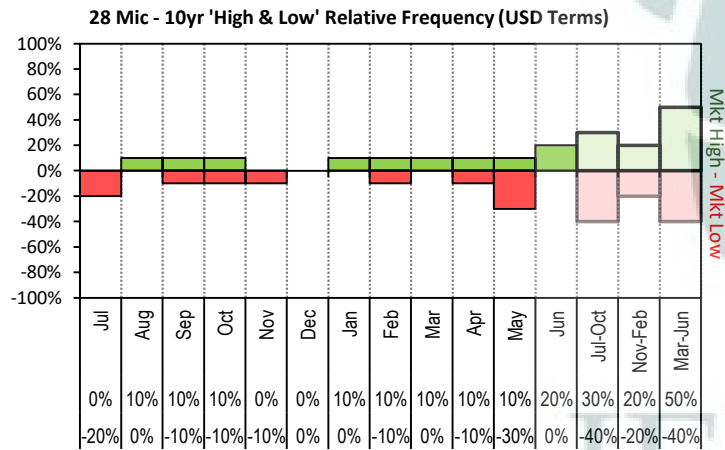
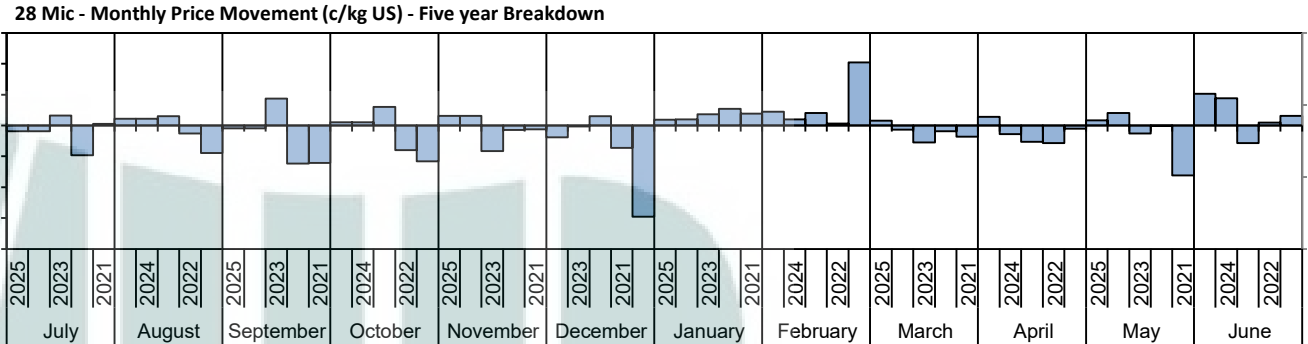


The above graph, shows how often the '12 month high & low' have been achieved for a given month over the past 10 years. It is not a measure of probability.

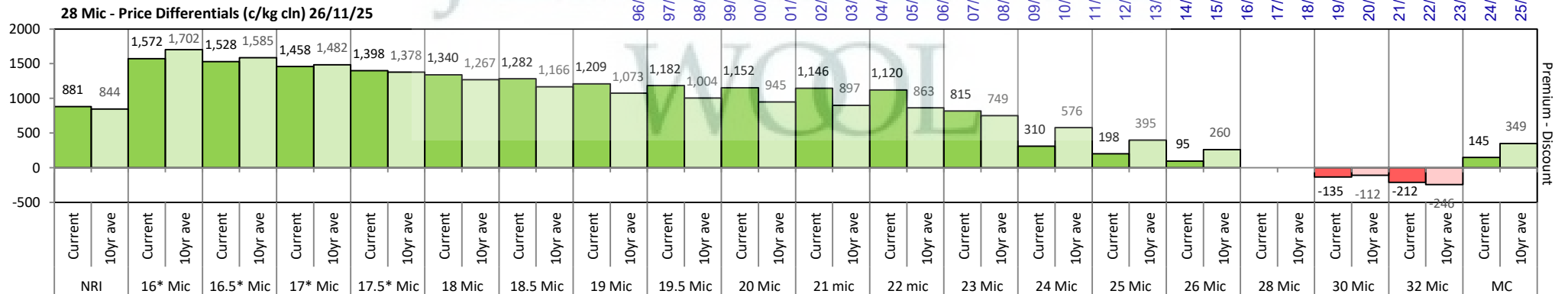
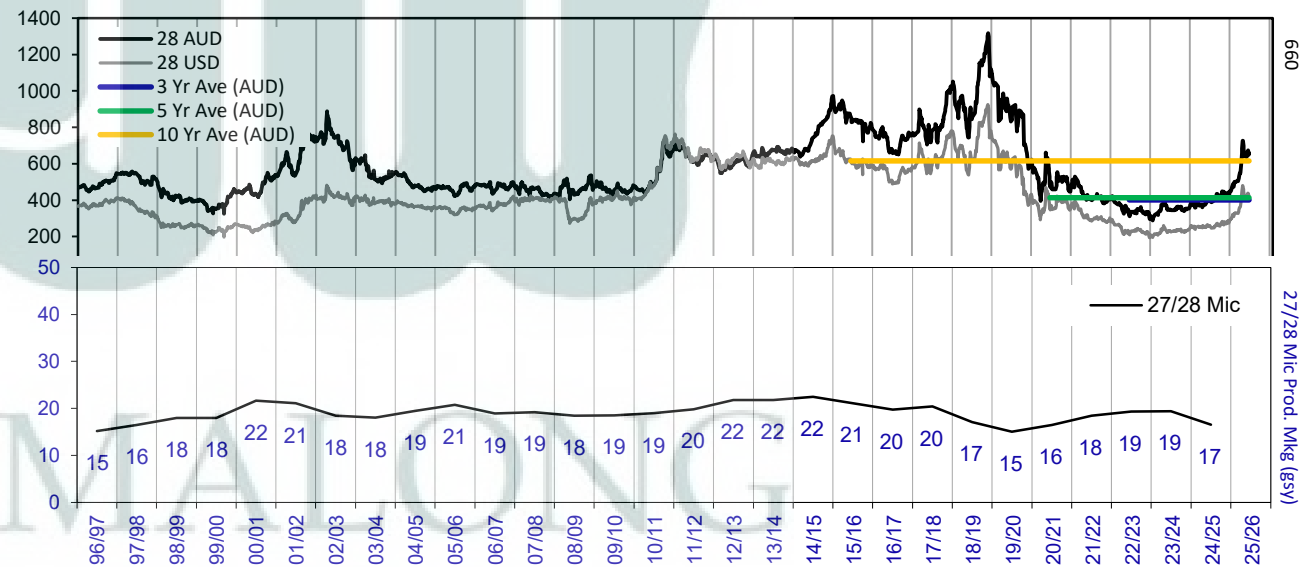


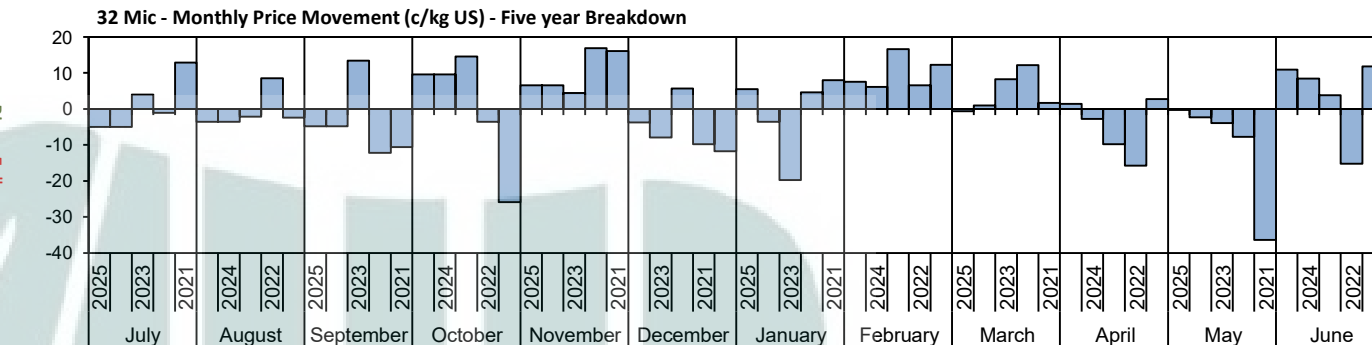
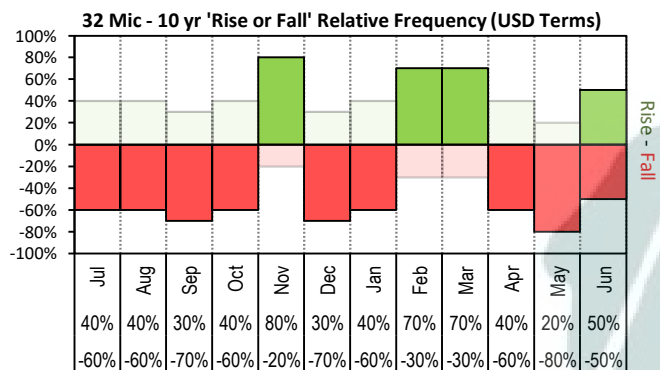


The above '**Rise or Fall**' graph, shows how often the market has risen or fallen in a given month over the past 10 years, it does not show the extent of the movement only the frequency of direction. The '**Monthly Price Movement**' graph shows the extent of movement for each month, for the past 5 years.

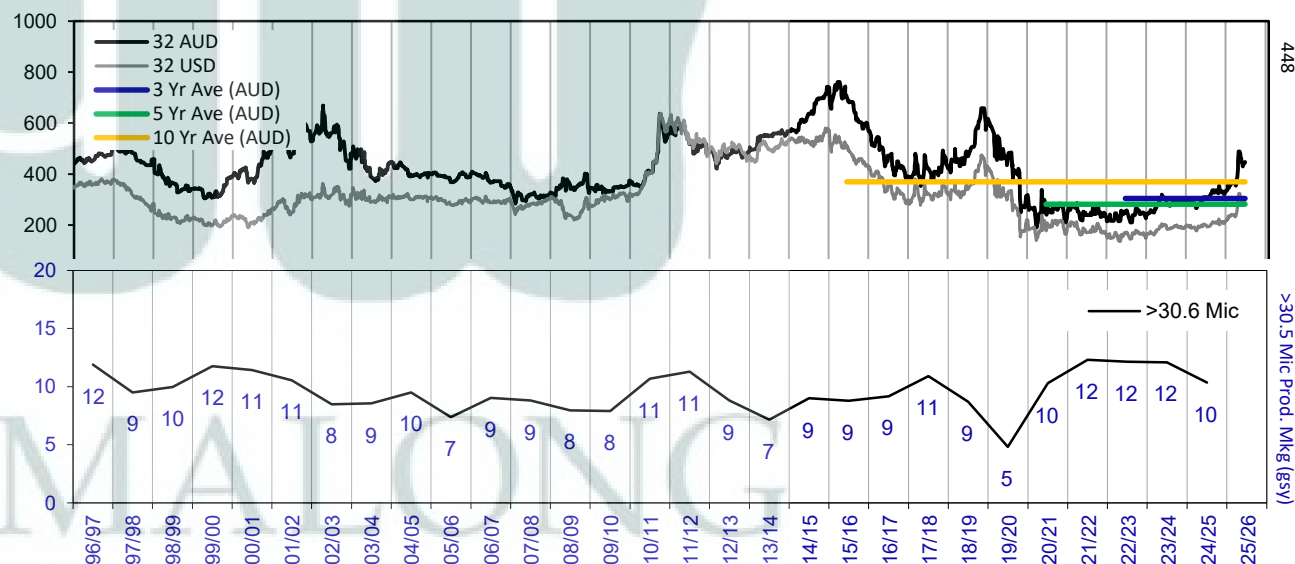
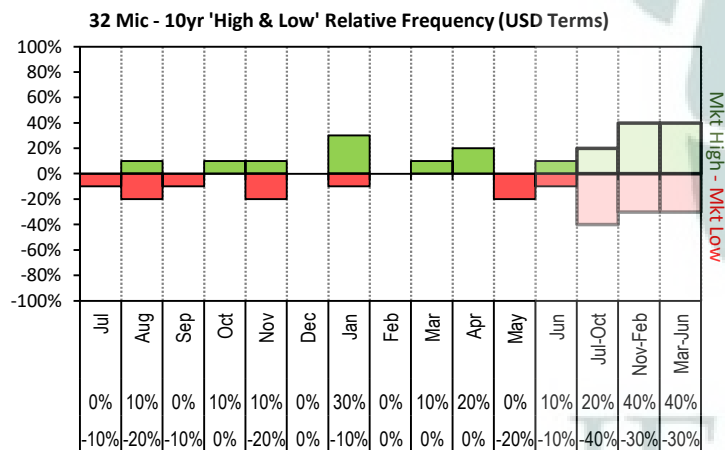


The above graph, shows how often the '12 month high & low' have been achieved for a given month over the past 10 years. It is not a measure of probability.

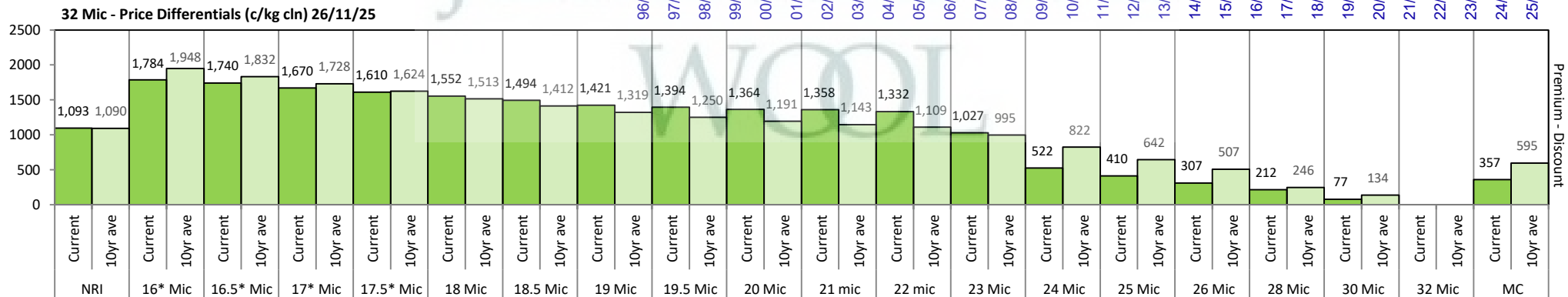


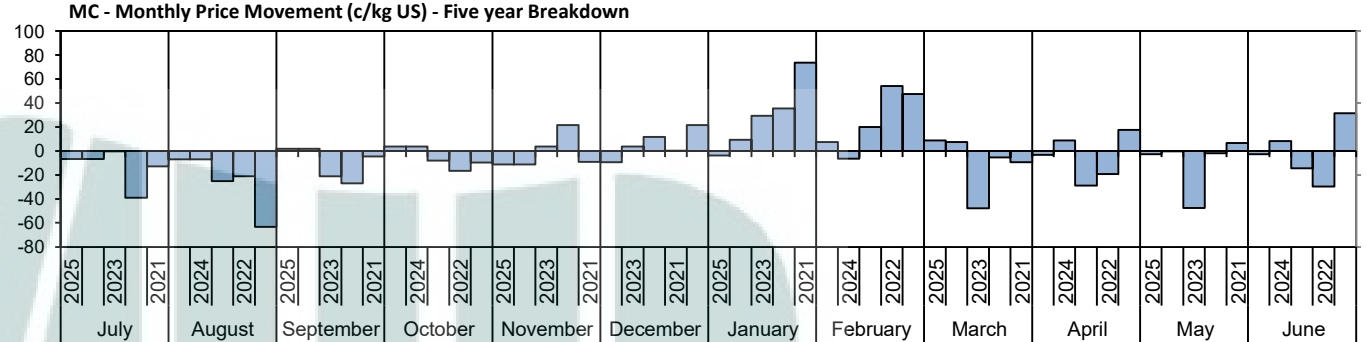
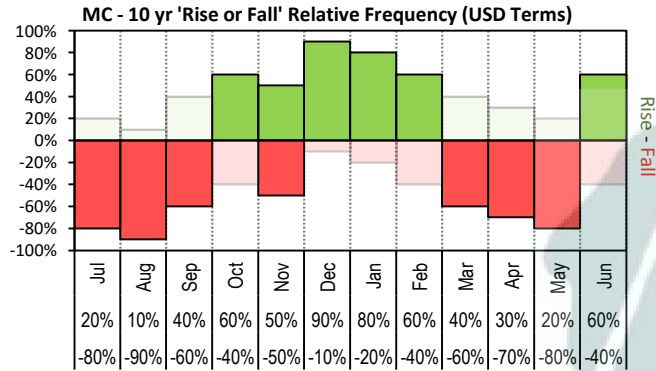


The above 'Rise or Fall' graph, shows how often the market has risen or fallen in a given month over the past 10 years, it does not show the extent of the movement only the frequency of direction. The 'Monthly Price Movement' graph shows the extent of movement for each month, for the past 5 years.

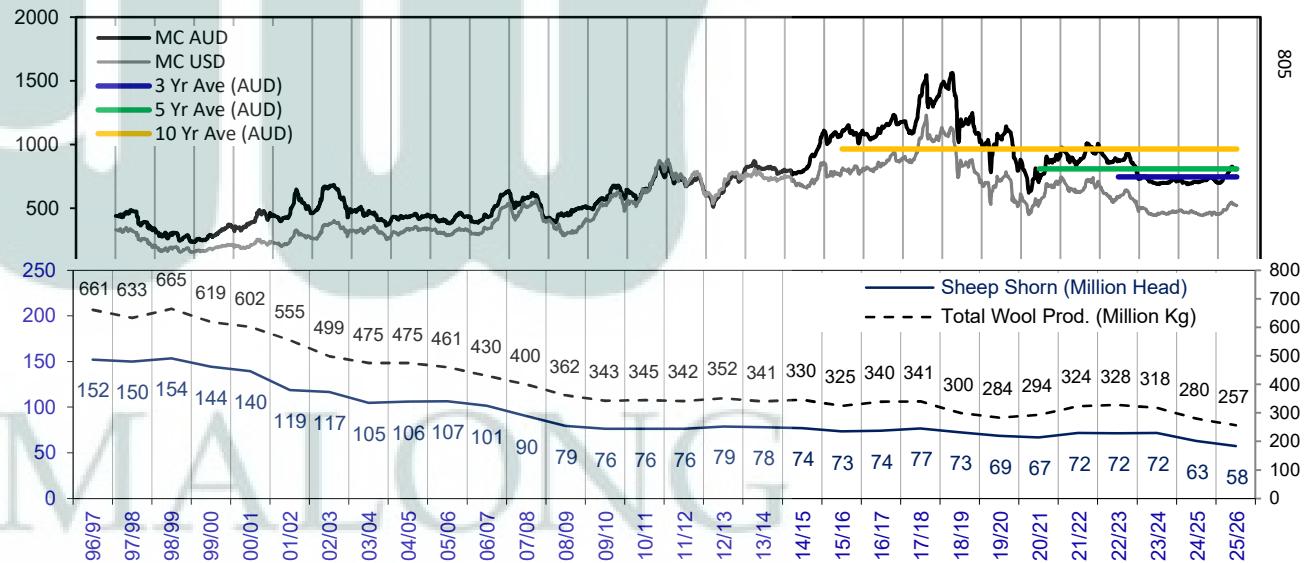
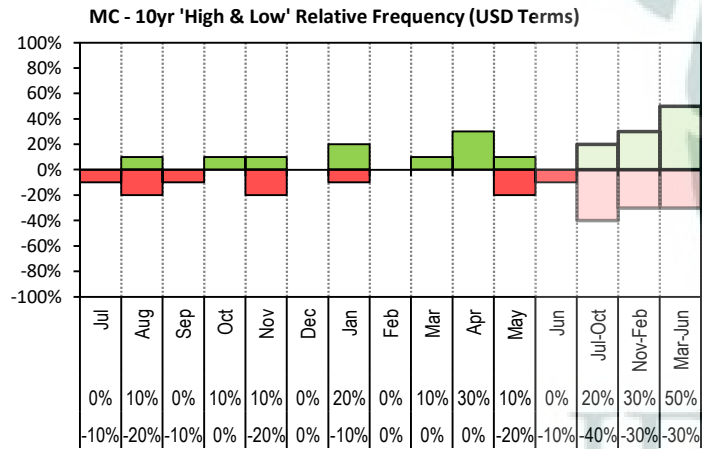


The above graph, shows how often the '12 month high & low' have been achieved for a given month over the past 10 years. It is not a measure of probability.

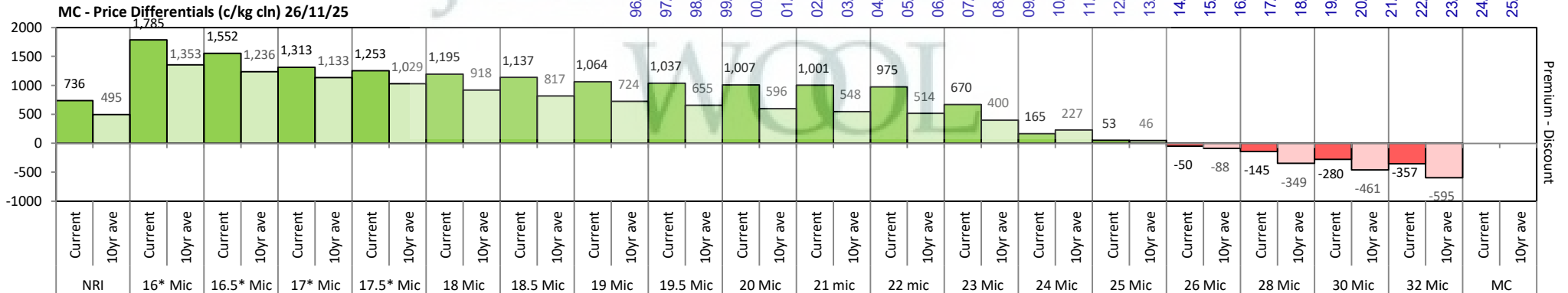




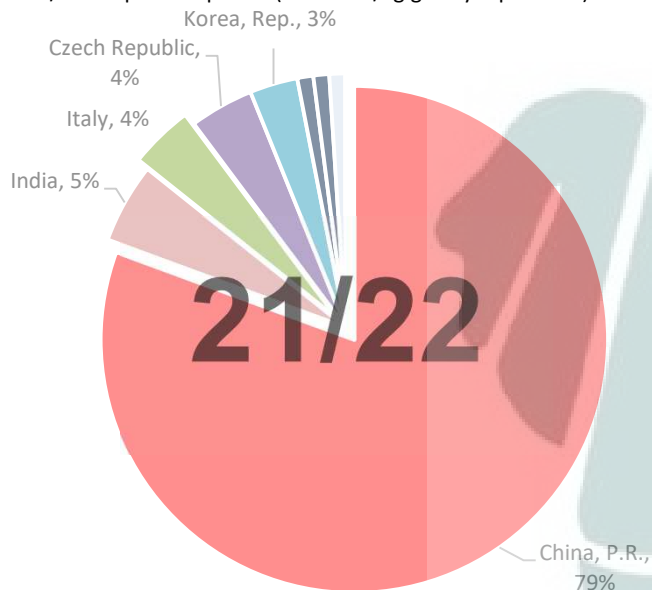
The above 'Rise or Fall' graph, shows how often the market has risen or fallen in a given month over the past 10 years, it does not show the extent of the movement only the frequency of direction. The 'Monthly Price Movement' graph shows the extent of movement for each month, for the past 5 years.



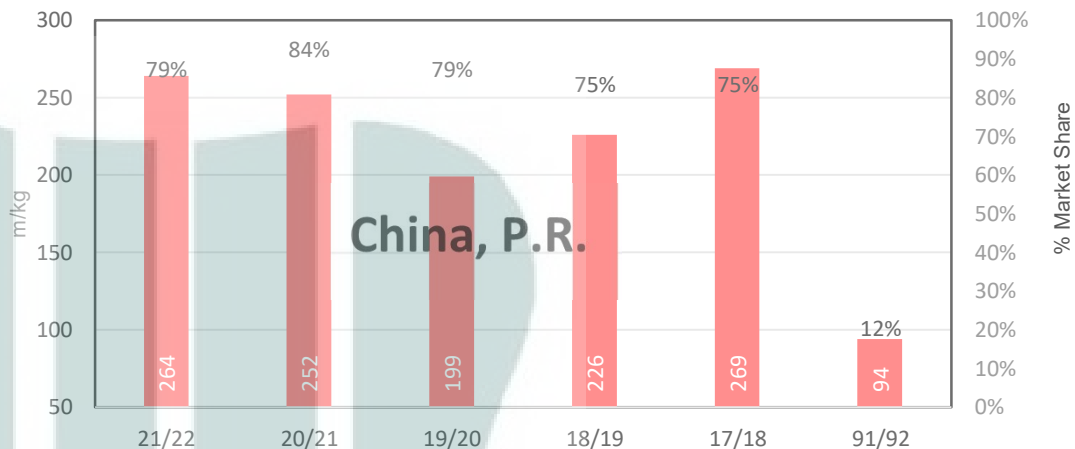
The above graph, shows how often the '12 month high & low' have been achieved for a given month over the past 10 years. It is not a measure of probability.



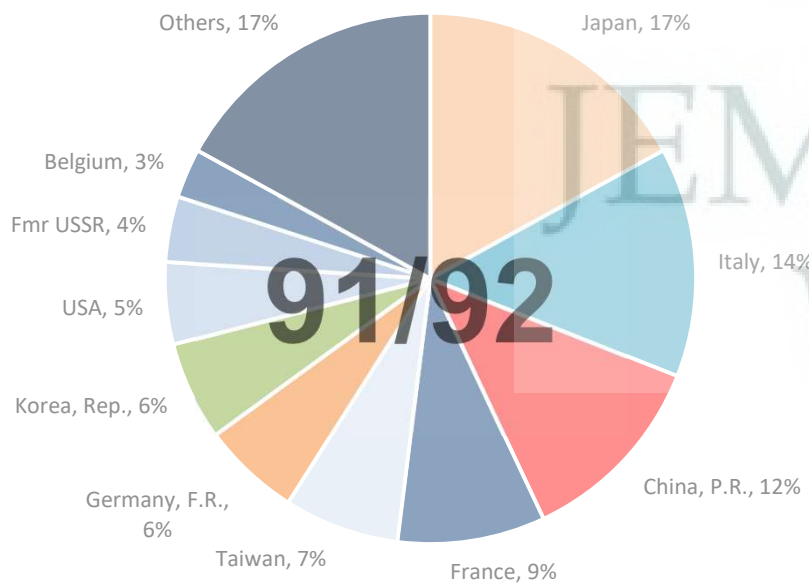
21/22 - Export Snap Shot (335.46 m/kg greasy equivalent)



China, P.R. (Largest Market Share)



91/92 - Export Snap Shot (784.7 m/kg greasy equivalent)



Seasonal Change m/kg

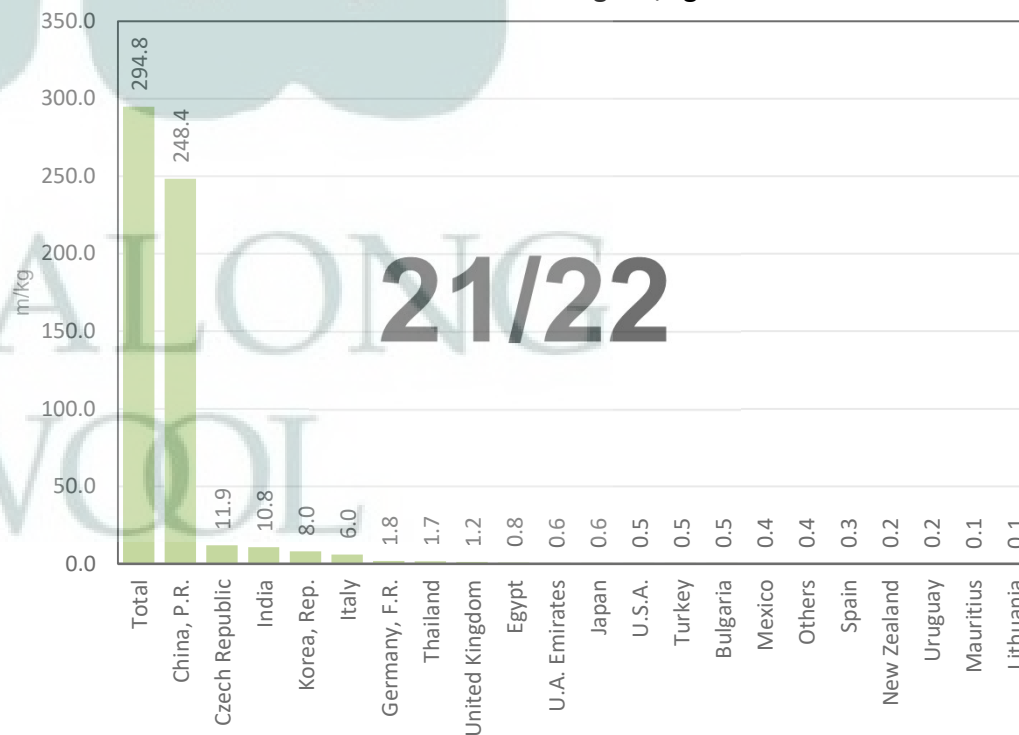


Table 8: Returns pr head for skirted fleece wool.

Skirted FLC Weight			Micron																	
9 Kg			16	16.5	17	17.5	18	18.5	19	19.5	20	21	22	23	24	25	26	28	30	32
Yield (Sch Dry)	25%	Current	\$50	\$49	\$48	\$46	\$45	\$44	\$42	\$41	\$41	\$41	\$40	\$33	\$22	\$19	\$17	\$15	\$12	\$10
		10yr ave.	\$52	\$50	\$47	\$45	\$42	\$40	\$38	\$36	\$35	\$34	\$33	\$31	\$27	\$23	\$20	\$14	\$11	\$8
	30%	Current	\$60	\$59	\$57	\$56	\$54	\$52	\$50	\$50	\$49	\$49	\$48	\$40	\$26	\$23	\$20	\$18	\$14	\$12
		10yr ave.	\$62	\$59	\$57	\$54	\$51	\$48	\$46	\$44	\$42	\$41	\$40	\$37	\$32	\$27	\$24	\$17	\$14	\$10
	35%	Current	\$70	\$69	\$67	\$65	\$63	\$61	\$59	\$58	\$57	\$57	\$56	\$46	\$31	\$27	\$24	\$21	\$17	\$14
		10yr ave.	\$73	\$69	\$66	\$63	\$59	\$56	\$53	\$51	\$49	\$48	\$47	\$43	\$38	\$32	\$28	\$19	\$16	\$12
	40%	Current	\$80	\$79	\$76	\$74	\$72	\$70	\$67	\$66	\$65	\$65	\$64	\$53	\$35	\$31	\$27	\$24	\$19	\$16
		10yr ave.	\$83	\$79	\$75	\$72	\$68	\$64	\$61	\$58	\$56	\$55	\$53	\$49	\$43	\$36	\$32	\$22	\$18	\$13
	45%	Current	\$90	\$89	\$86	\$83	\$81	\$79	\$76	\$75	\$73	\$73	\$72	\$60	\$39	\$35	\$31	\$27	\$21	\$18
		10yr ave.	\$94	\$89	\$85	\$81	\$76	\$72	\$68	\$66	\$63	\$61	\$60	\$55	\$48	\$41	\$36	\$25	\$20	\$15
	50%	Current	\$100	\$98	\$95	\$93	\$90	\$87	\$84	\$83	\$82	\$81	\$80	\$66	\$44	\$39	\$34	\$30	\$24	\$20
		10yr ave.	\$104	\$99	\$94	\$90	\$85	\$80	\$76	\$73	\$70	\$68	\$67	\$61	\$54	\$46	\$39	\$28	\$23	\$17
	55%	Current	\$110	\$108	\$105	\$102	\$99	\$96	\$93	\$91	\$90	\$89	\$88	\$73	\$48	\$42	\$37	\$33	\$26	\$22
		10yr ave.	\$115	\$109	\$104	\$99	\$93	\$88	\$84	\$80	\$77	\$75	\$73	\$68	\$59	\$50	\$43	\$30	\$25	\$18
	60%	Current	\$121	\$118	\$114	\$111	\$108	\$105	\$101	\$99	\$98	\$98	\$96	\$80	\$52	\$46	\$41	\$36	\$28	\$24
		10yr ave.	\$125	\$119	\$113	\$108	\$102	\$96	\$91	\$88	\$84	\$82	\$80	\$74	\$64	\$55	\$47	\$33	\$27	\$20
	65%	Current	\$131	\$128	\$124	\$120	\$117	\$114	\$109	\$108	\$106	\$106	\$104	\$86	\$57	\$50	\$44	\$39	\$31	\$26
		10yr ave.	\$135	\$129	\$123	\$117	\$110	\$104	\$99	\$95	\$91	\$89	\$87	\$80	\$70	\$59	\$51	\$36	\$29	\$22
	70%	Current	\$141	\$138	\$133	\$130	\$126	\$122	\$118	\$116	\$114	\$114	\$112	\$93	\$61	\$54	\$48	\$42	\$33	\$28
		10yr ave.	\$146	\$139	\$132	\$126	\$119	\$112	\$106	\$102	\$98	\$95	\$93	\$86	\$75	\$64	\$55	\$39	\$32	\$23
	75%	Current	\$151	\$148	\$143	\$139	\$135	\$131	\$126	\$124	\$122	\$122	\$120	\$100	\$65	\$58	\$51	\$45	\$35	\$30
		10yr ave.	\$156	\$149	\$142	\$135	\$127	\$120	\$114	\$109	\$105	\$102	\$100	\$92	\$80	\$68	\$59	\$42	\$34	\$25
	80%	Current	\$161	\$158	\$152	\$148	\$144	\$140	\$135	\$133	\$130	\$130	\$128	\$106	\$70	\$62	\$54	\$48	\$38	\$32
		10yr ave.	\$167	\$159	\$151	\$143	\$136	\$128	\$122	\$117	\$112	\$109	\$107	\$98	\$86	\$73	\$63	\$44	\$36	\$27
	85%	Current	\$171	\$167	\$162	\$157	\$153	\$149	\$143	\$141	\$139	\$138	\$136	\$113	\$74	\$66	\$58	\$50	\$40	\$34
		10yr ave.	\$177	\$169	\$160	\$152	\$144	\$136	\$129	\$124	\$119	\$116	\$113	\$104	\$91	\$77	\$67	\$47	\$39	\$28

The above shows estimated returns per head for skirted fleece wool. These figures do not take into account the value of skirtings and oddments and do not take into account discounts that may apply for faults under individual circumstances. These figures are based on a market index of 100% and should be used as a guide only. Returns over \$30 / head for fleece wool are highlighted.

Table 9: Returns pr head for skirted fleece wool.

Skirted FLC Weight 8 Kg		Micron																	
		16	16.5	17	17.5	18	18.5	19	19.5	20	21	22	23	24	25	26	28	30	32
Yield (Sch Dry)	25% Current	\$45	\$44	\$42	\$41	\$40	\$39	\$37	\$37	\$36	\$36	\$36	\$30	\$19	\$17	\$15	\$13	\$11	\$9
	10yr ave.	\$46	\$44	\$42	\$40	\$38	\$36	\$34	\$32	\$31	\$30	\$30	\$27	\$24	\$20	\$18	\$12	\$10	\$7
	30% Current	\$54	\$53	\$51	\$49	\$48	\$47	\$45	\$44	\$43	\$43	\$43	\$35	\$23	\$21	\$18	\$16	\$13	\$11
	10yr ave.	\$56	\$53	\$50	\$48	\$45	\$43	\$41	\$39	\$37	\$36	\$36	\$33	\$29	\$24	\$21	\$15	\$12	\$9
	35% Current	\$62	\$61	\$59	\$58	\$56	\$54	\$52	\$52	\$51	\$51	\$50	\$41	\$27	\$24	\$21	\$18	\$15	\$13
	10yr ave.	\$65	\$62	\$59	\$56	\$53	\$50	\$47	\$45	\$44	\$42	\$41	\$38	\$33	\$28	\$25	\$17	\$14	\$10
	40% Current	\$71	\$70	\$68	\$66	\$64	\$62	\$60	\$59	\$58	\$58	\$57	\$47	\$31	\$27	\$24	\$21	\$17	\$14
	10yr ave.	\$74	\$70	\$67	\$64	\$60	\$57	\$54	\$52	\$50	\$48	\$47	\$44	\$38	\$32	\$28	\$20	\$16	\$12
	45% Current	\$80	\$79	\$76	\$74	\$72	\$70	\$67	\$66	\$65	\$65	\$64	\$53	\$35	\$31	\$27	\$24	\$19	\$16
	10yr ave.	\$83	\$79	\$75	\$72	\$68	\$64	\$61	\$58	\$56	\$55	\$53	\$49	\$43	\$36	\$32	\$22	\$18	\$13
	50% Current	\$89	\$88	\$85	\$82	\$80	\$78	\$75	\$74	\$72	\$72	\$71	\$59	\$39	\$34	\$30	\$26	\$21	\$18
	10yr ave.	\$93	\$88	\$84	\$80	\$75	\$71	\$68	\$65	\$62	\$61	\$59	\$55	\$48	\$40	\$35	\$25	\$20	\$15
	55% Current	\$98	\$96	\$93	\$91	\$88	\$85	\$82	\$81	\$80	\$79	\$78	\$65	\$43	\$38	\$33	\$29	\$23	\$20
	10yr ave.	\$102	\$97	\$92	\$88	\$83	\$78	\$74	\$71	\$69	\$67	\$65	\$60	\$52	\$45	\$39	\$27	\$22	\$16
	60% Current	\$107	\$105	\$102	\$99	\$96	\$93	\$90	\$88	\$87	\$87	\$85	\$71	\$47	\$41	\$36	\$32	\$25	\$22
	10yr ave.	\$111	\$106	\$101	\$96	\$90	\$86	\$81	\$78	\$75	\$73	\$71	\$66	\$57	\$49	\$42	\$30	\$24	\$18
	65% Current	\$116	\$114	\$110	\$107	\$104	\$101	\$97	\$96	\$94	\$94	\$93	\$77	\$50	\$45	\$39	\$34	\$27	\$23
	10yr ave.	\$120	\$115	\$109	\$104	\$98	\$93	\$88	\$84	\$81	\$79	\$77	\$71	\$62	\$53	\$46	\$32	\$26	\$19
	70% Current	\$125	\$123	\$119	\$115	\$112	\$109	\$105	\$103	\$101	\$101	\$100	\$83	\$54	\$48	\$42	\$37	\$29	\$25
	10yr ave.	\$130	\$123	\$117	\$112	\$106	\$100	\$95	\$91	\$87	\$85	\$83	\$76	\$67	\$57	\$49	\$34	\$28	\$21
	75% Current	\$134	\$131	\$127	\$123	\$120	\$117	\$112	\$111	\$109	\$108	\$107	\$89	\$58	\$51	\$45	\$40	\$32	\$27
	10yr ave.	\$139	\$132	\$126	\$120	\$113	\$107	\$101	\$97	\$94	\$91	\$89	\$82	\$72	\$61	\$53	\$37	\$30	\$22
	80% Current	\$143	\$140	\$136	\$132	\$128	\$124	\$120	\$118	\$116	\$116	\$114	\$94	\$62	\$55	\$48	\$42	\$34	\$29
	10yr ave.	\$148	\$141	\$134	\$128	\$121	\$114	\$108	\$104	\$100	\$97	\$95	\$87	\$76	\$65	\$56	\$39	\$32	\$24
	85% Current	\$152	\$149	\$144	\$140	\$136	\$132	\$127	\$125	\$123	\$123	\$121	\$100	\$66	\$58	\$51	\$45	\$36	\$30
	10yr ave.	\$157	\$150	\$143	\$136	\$128	\$121	\$115	\$110	\$106	\$103	\$101	\$93	\$81	\$69	\$60	\$42	\$34	\$25

The above shows estimated returns per head for skirted fleece wool. These figures do not take into account the value of skirtings and oddments and do not take into account discounts that may apply for faults under individual circumstances. These figures are based on a market index of 100% and should be used as a guide only. Returns over \$30 / head for fleece wool are highlighted.

Table 10: Returns pr head for skirted fleece wool.

Skirted FLC Weight		Micron																	
7 Kg		16	16.5	17	17.5	18	18.5	19	19.5	20	21	22	23	24	25	26	28	30	32
Yield (Sch Dry)	25% Current	\$39	\$38	\$37	\$36	\$35	\$34	\$33	\$32	\$32	\$32	\$31	\$26	\$17	\$15	\$13	\$12	\$9	\$8
	10yr ave.	\$40	\$39	\$37	\$35	\$33	\$31	\$30	\$28	\$27	\$26	\$26	\$24	\$21	\$18	\$15	\$11	\$9	\$6
	30% Current	\$47	\$46	\$44	\$43	\$42	\$41	\$39	\$39	\$38	\$38	\$37	\$31	\$20	\$18	\$16	\$14	\$11	\$9
	10yr ave.	\$49	\$46	\$44	\$42	\$40	\$37	\$35	\$34	\$33	\$32	\$31	\$29	\$25	\$21	\$18	\$13	\$11	\$8
	35% Current	\$55	\$54	\$52	\$50	\$49	\$48	\$46	\$45	\$44	\$44	\$44	\$36	\$24	\$21	\$18	\$16	\$13	\$11
	10yr ave.	\$57	\$54	\$51	\$49	\$46	\$44	\$41	\$40	\$38	\$37	\$36	\$33	\$29	\$25	\$21	\$15	\$12	\$9
	40% Current	\$62	\$61	\$59	\$58	\$56	\$54	\$52	\$52	\$51	\$51	\$50	\$41	\$27	\$24	\$21	\$18	\$15	\$13
	10yr ave.	\$65	\$62	\$59	\$56	\$53	\$50	\$47	\$45	\$44	\$42	\$41	\$38	\$33	\$28	\$25	\$17	\$14	\$10
	45% Current	\$70	\$69	\$67	\$65	\$63	\$61	\$59	\$58	\$57	\$57	\$56	\$46	\$31	\$27	\$24	\$21	\$17	\$14
	10yr ave.	\$73	\$69	\$66	\$63	\$59	\$56	\$53	\$51	\$49	\$48	\$47	\$43	\$38	\$32	\$28	\$19	\$16	\$12
	50% Current	\$78	\$77	\$74	\$72	\$70	\$68	\$65	\$64	\$63	\$63	\$62	\$52	\$34	\$30	\$26	\$23	\$18	\$16
	10yr ave.	\$81	\$77	\$73	\$70	\$66	\$62	\$59	\$57	\$55	\$53	\$52	\$48	\$42	\$35	\$31	\$22	\$18	\$13
	55% Current	\$86	\$84	\$82	\$79	\$77	\$75	\$72	\$71	\$70	\$70	\$69	\$57	\$37	\$33	\$29	\$25	\$20	\$17
	10yr ave.	\$89	\$85	\$81	\$77	\$73	\$69	\$65	\$62	\$60	\$58	\$57	\$53	\$46	\$39	\$34	\$24	\$19	\$14
	60% Current	\$94	\$92	\$89	\$86	\$84	\$82	\$78	\$77	\$76	\$76	\$75	\$62	\$41	\$36	\$32	\$28	\$22	\$19
	10yr ave.	\$97	\$93	\$88	\$84	\$79	\$75	\$71	\$68	\$66	\$64	\$62	\$57	\$50	\$43	\$37	\$26	\$21	\$16
	65% Current	\$102	\$100	\$96	\$94	\$91	\$88	\$85	\$84	\$82	\$82	\$81	\$67	\$44	\$39	\$34	\$30	\$24	\$20
	10yr ave.	\$105	\$100	\$95	\$91	\$86	\$81	\$77	\$74	\$71	\$69	\$67	\$62	\$54	\$46	\$40	\$28	\$23	\$17
	70% Current	\$109	\$107	\$104	\$101	\$98	\$95	\$92	\$90	\$89	\$88	\$87	\$72	\$48	\$42	\$37	\$32	\$26	\$22
	10yr ave.	\$113	\$108	\$103	\$98	\$92	\$87	\$83	\$79	\$77	\$74	\$73	\$67	\$58	\$50	\$43	\$30	\$25	\$18
	75% Current	\$117	\$115	\$111	\$108	\$105	\$102	\$98	\$97	\$95	\$95	\$93	\$77	\$51	\$45	\$40	\$35	\$28	\$24
	10yr ave.	\$121	\$116	\$110	\$105	\$99	\$94	\$89	\$85	\$82	\$79	\$78	\$72	\$63	\$53	\$46	\$32	\$26	\$19
	80% Current	\$125	\$123	\$119	\$115	\$112	\$109	\$105	\$103	\$101	\$101	\$100	\$83	\$54	\$48	\$42	\$37	\$29	\$25
	10yr ave.	\$130	\$123	\$117	\$112	\$106	\$100	\$95	\$91	\$87	\$85	\$83	\$76	\$67	\$57	\$49	\$34	\$28	\$21
	85% Current	\$133	\$130	\$126	\$122	\$119	\$116	\$111	\$110	\$108	\$107	\$106	\$88	\$58	\$51	\$45	\$39	\$31	\$27
	10yr ave.	\$138	\$131	\$125	\$119	\$112	\$106	\$101	\$96	\$93	\$90	\$88	\$81	\$71	\$60	\$52	\$37	\$30	\$22

The above shows estimated returns per head for skirted fleece wool. These figures do not take into account the value of skirtings and oddments and do not take into account discounts that may apply for faults under individual circumstances. These figures are based on a market index of 100% and should be used as a guide only. Returns over \$30 / head for fleece wool are highlighted.

Table 11: Returns pr head for skirted fleece wool.

Skirted FLC Weight		Micron																	
6 Kg		16	16.5	17	17.5	18	18.5	19	19.5	20	21	22	23	24	25	26	28	30	32
Yield (Sch Dry)	25% Current	\$33	\$33	\$32	\$31	\$30	\$29	\$28	\$28	\$27	\$27	\$27	\$22	\$15	\$13	\$11	\$10	\$8	\$7
	10yr ave.	\$35	\$33	\$31	\$30	\$28	\$27	\$25	\$24	\$23	\$23	\$22	\$20	\$18	\$15	\$13	\$9	\$8	\$6
	30% Current	\$40	\$39	\$38	\$37	\$36	\$35	\$34	\$33	\$33	\$33	\$32	\$27	\$17	\$15	\$14	\$12	\$9	\$8
	10yr ave.	\$42	\$40	\$38	\$36	\$34	\$32	\$30	\$29	\$28	\$27	\$27	\$25	\$21	\$18	\$16	\$11	\$9	\$7
	35% Current	\$47	\$46	\$44	\$43	\$42	\$41	\$39	\$39	\$38	\$38	\$37	\$31	\$20	\$18	\$16	\$14	\$11	\$9
	10yr ave.	\$49	\$46	\$44	\$42	\$40	\$37	\$35	\$34	\$33	\$32	\$31	\$29	\$25	\$21	\$18	\$13	\$11	\$8
	40% Current	\$54	\$53	\$51	\$49	\$48	\$47	\$45	\$44	\$43	\$43	\$43	\$35	\$23	\$21	\$18	\$16	\$13	\$11
	10yr ave.	\$56	\$53	\$50	\$48	\$45	\$43	\$41	\$39	\$37	\$36	\$36	\$33	\$29	\$24	\$21	\$15	\$12	\$9
	45% Current	\$60	\$59	\$57	\$56	\$54	\$52	\$50	\$50	\$49	\$49	\$48	\$40	\$26	\$23	\$20	\$18	\$14	\$12
	10yr ave.	\$62	\$59	\$57	\$54	\$51	\$48	\$46	\$44	\$42	\$41	\$40	\$37	\$32	\$27	\$24	\$17	\$14	\$10
	50% Current	\$67	\$66	\$64	\$62	\$60	\$58	\$56	\$55	\$54	\$54	\$53	\$44	\$29	\$26	\$23	\$20	\$16	\$13
	10yr ave.	\$69	\$66	\$63	\$60	\$57	\$53	\$51	\$49	\$47	\$45	\$44	\$41	\$36	\$30	\$26	\$18	\$15	\$11
	55% Current	\$74	\$72	\$70	\$68	\$66	\$64	\$62	\$61	\$60	\$60	\$59	\$49	\$32	\$28	\$25	\$22	\$17	\$15
	10yr ave.	\$76	\$73	\$69	\$66	\$62	\$59	\$56	\$53	\$52	\$50	\$49	\$45	\$39	\$33	\$29	\$20	\$17	\$12
	60% Current	\$80	\$79	\$76	\$74	\$72	\$70	\$67	\$66	\$65	\$65	\$64	\$53	\$35	\$31	\$27	\$24	\$19	\$16
	10yr ave.	\$83	\$79	\$75	\$72	\$68	\$64	\$61	\$58	\$56	\$55	\$53	\$49	\$43	\$36	\$32	\$22	\$18	\$13
	65% Current	\$87	\$85	\$83	\$80	\$78	\$76	\$73	\$72	\$71	\$70	\$69	\$58	\$38	\$33	\$29	\$26	\$20	\$17
	10yr ave.	\$90	\$86	\$82	\$78	\$73	\$70	\$66	\$63	\$61	\$59	\$58	\$53	\$46	\$39	\$34	\$24	\$20	\$14
	70% Current	\$94	\$92	\$89	\$86	\$84	\$82	\$78	\$77	\$76	\$76	\$75	\$62	\$41	\$36	\$32	\$28	\$22	\$19
	10yr ave.	\$97	\$93	\$88	\$84	\$79	\$75	\$71	\$68	\$66	\$64	\$62	\$57	\$50	\$43	\$37	\$26	\$21	\$16
	75% Current	\$100	\$98	\$95	\$93	\$90	\$87	\$84	\$83	\$82	\$81	\$80	\$66	\$44	\$39	\$34	\$30	\$24	\$20
	10yr ave.	\$104	\$99	\$94	\$90	\$85	\$80	\$76	\$73	\$70	\$68	\$67	\$61	\$54	\$46	\$39	\$28	\$23	\$17
	80% Current	\$107	\$105	\$102	\$99	\$96	\$93	\$90	\$88	\$87	\$87	\$85	\$71	\$47	\$41	\$36	\$32	\$25	\$22
	10yr ave.	\$111	\$106	\$101	\$96	\$90	\$86	\$81	\$78	\$75	\$73	\$71	\$66	\$57	\$49	\$42	\$30	\$24	\$18
	85% Current	\$114	\$112	\$108	\$105	\$102	\$99	\$95	\$94	\$92	\$92	\$91	\$75	\$49	\$44	\$39	\$34	\$27	\$23
	10yr ave.	\$118	\$112	\$107	\$102	\$96	\$91	\$86	\$83	\$80	\$77	\$75	\$70	\$61	\$52	\$45	\$31	\$26	\$19

The above shows estimated returns per head for skirted fleece wool. These figures do not take into account the value of skirtings and oddments and do not take into account discounts that may apply for faults under individual circumstances. These figures are based on a market index of 100% and should be used as a guide only. Returns over \$30 / head for fleece wool are highlighted.

Table 12: Returns pr head for skirted fleece wool.

Skirted FLC Weight 5 Kg		Micron																	
		16	16.5	17	17.5	18	18.5	19	19.5	20	21	22	23	24	25	26	28	30	32
Yield (Sch Dry)	25% Current	\$28	\$27	\$26	\$26	\$25	\$24	\$23	\$23	\$23	\$23	\$22	\$18	\$12	\$11	\$9	\$8	\$7	\$6
	10yr ave.	\$29	\$28	\$26	\$25	\$24	\$22	\$21	\$20	\$20	\$19	\$19	\$17	\$15	\$13	\$11	\$8	\$6	\$5
	30% Current	\$33	\$33	\$32	\$31	\$30	\$29	\$28	\$28	\$27	\$27	\$27	\$22	\$15	\$13	\$11	\$10	\$8	\$7
	10yr ave.	\$35	\$33	\$31	\$30	\$28	\$27	\$25	\$24	\$23	\$23	\$22	\$20	\$18	\$15	\$13	\$9	\$8	\$6
	35% Current	\$39	\$38	\$37	\$36	\$35	\$34	\$33	\$32	\$32	\$32	\$31	\$26	\$17	\$15	\$13	\$12	\$9	\$8
	10yr ave.	\$40	\$39	\$37	\$35	\$33	\$31	\$30	\$28	\$27	\$26	\$26	\$24	\$21	\$18	\$15	\$11	\$9	\$6
	40% Current	\$45	\$44	\$42	\$41	\$40	\$39	\$37	\$37	\$36	\$36	\$36	\$30	\$19	\$17	\$15	\$13	\$11	\$9
	10yr ave.	\$46	\$44	\$42	\$40	\$38	\$36	\$34	\$32	\$31	\$30	\$30	\$27	\$24	\$20	\$18	\$12	\$10	\$7
	45% Current	\$50	\$49	\$48	\$46	\$45	\$44	\$42	\$41	\$41	\$41	\$40	\$33	\$22	\$19	\$17	\$15	\$12	\$10
	10yr ave.	\$52	\$50	\$47	\$45	\$42	\$40	\$38	\$36	\$35	\$34	\$33	\$31	\$27	\$23	\$20	\$14	\$11	\$8
	50% Current	\$56	\$55	\$53	\$51	\$50	\$49	\$47	\$46	\$45	\$45	\$45	\$37	\$24	\$21	\$19	\$17	\$13	\$11
	10yr ave.	\$58	\$55	\$52	\$50	\$47	\$45	\$42	\$41	\$39	\$38	\$37	\$34	\$30	\$25	\$22	\$15	\$13	\$9
	55% Current	\$61	\$60	\$58	\$57	\$55	\$53	\$51	\$51	\$50	\$50	\$49	\$41	\$27	\$24	\$21	\$18	\$14	\$12
	10yr ave.	\$64	\$61	\$58	\$55	\$52	\$49	\$46	\$45	\$43	\$42	\$41	\$38	\$33	\$28	\$24	\$17	\$14	\$10
	60% Current	\$67	\$66	\$64	\$62	\$60	\$58	\$56	\$55	\$54	\$54	\$53	\$44	\$29	\$26	\$23	\$20	\$16	\$13
	10yr ave.	\$69	\$66	\$63	\$60	\$57	\$53	\$51	\$49	\$47	\$45	\$44	\$41	\$36	\$30	\$26	\$18	\$15	\$11
	65% Current	\$73	\$71	\$69	\$67	\$65	\$63	\$61	\$60	\$59	\$59	\$58	\$48	\$32	\$28	\$25	\$21	\$17	\$15
	10yr ave.	\$75	\$72	\$68	\$65	\$61	\$58	\$55	\$53	\$51	\$49	\$48	\$44	\$39	\$33	\$29	\$20	\$16	\$12
	70% Current	\$78	\$77	\$74	\$72	\$70	\$68	\$65	\$64	\$63	\$63	\$62	\$52	\$34	\$30	\$26	\$23	\$18	\$16
	10yr ave.	\$81	\$77	\$73	\$70	\$66	\$62	\$59	\$57	\$55	\$53	\$52	\$48	\$42	\$35	\$31	\$22	\$18	\$13
	75% Current	\$84	\$82	\$79	\$77	\$75	\$73	\$70	\$69	\$68	\$68	\$67	\$55	\$36	\$32	\$28	\$25	\$20	\$17
	10yr ave.	\$87	\$83	\$79	\$75	\$71	\$67	\$63	\$61	\$59	\$57	\$56	\$51	\$45	\$38	\$33	\$23	\$19	\$14
	80% Current	\$89	\$88	\$85	\$82	\$80	\$78	\$75	\$74	\$72	\$72	\$71	\$59	\$39	\$34	\$30	\$26	\$21	\$18
	10yr ave.	\$93	\$88	\$84	\$80	\$75	\$71	\$68	\$65	\$62	\$61	\$59	\$55	\$48	\$40	\$35	\$25	\$20	\$15
	85% Current	\$95	\$93	\$90	\$87	\$85	\$83	\$79	\$78	\$77	\$77	\$76	\$63	\$41	\$36	\$32	\$28	\$22	\$19
	10yr ave.	\$98	\$94	\$89	\$85	\$80	\$76	\$72	\$69	\$66	\$64	\$63	\$58	\$51	\$43	\$37	\$26	\$21	\$16

The above shows estimated returns per head for skirted fleece wool. These figures do not take into account the value of skirtings and oddments and do not take into account discounts that may apply for faults under individual circumstances. These figures are based on a market index of 100% and should be used as a guide only. Returns over \$30 / head for fleece wool are highlighted.

Table 13: Returns pr head for skirted fleece wool.

Skirted FLC Weight 4 Kg		Micron																	
		16	16.5	17	17.5	18	18.5	19	19.5	20	21	22	23	24	25	26	28	30	32
Yield (Sch Dry)	25% Current	\$22	\$22	\$21	\$21	\$20	\$19	\$19	\$18	\$18	\$18	\$18	\$15	\$10	\$9	\$8	\$7	\$5	\$4
	10yr ave.	\$23	\$22	\$21	\$20	\$19	\$18	\$17	\$16	\$16	\$15	\$15	\$14	\$12	\$10	\$9	\$6	\$5	\$4
	30% Current	\$27	\$26	\$25	\$25	\$24	\$23	\$22	\$22	\$22	\$22	\$21	\$18	\$12	\$10	\$9	\$8	\$6	\$5
	10yr ave.	\$28	\$26	\$25	\$24	\$23	\$21	\$20	\$19	\$19	\$18	\$18	\$16	\$14	\$12	\$11	\$7	\$6	\$4
	35% Current	\$31	\$31	\$30	\$29	\$28	\$27	\$26	\$26	\$25	\$25	\$25	\$21	\$14	\$12	\$11	\$9	\$7	\$6
	10yr ave.	\$32	\$31	\$29	\$28	\$26	\$25	\$24	\$23	\$22	\$21	\$21	\$19	\$17	\$14	\$12	\$9	\$7	\$5
	40% Current	\$36	\$35	\$34	\$33	\$32	\$31	\$30	\$29	\$29	\$29	\$28	\$24	\$16	\$14	\$12	\$11	\$8	\$7
	10yr ave.	\$37	\$35	\$34	\$32	\$30	\$29	\$27	\$26	\$25	\$24	\$24	\$22	\$19	\$16	\$14	\$10	\$8	\$6
	45% Current	\$40	\$39	\$38	\$37	\$36	\$35	\$34	\$33	\$33	\$33	\$32	\$27	\$17	\$15	\$14	\$12	\$9	\$8
	10yr ave.	\$42	\$40	\$38	\$36	\$34	\$32	\$30	\$29	\$28	\$27	\$27	\$25	\$21	\$18	\$16	\$11	\$9	\$7
	50% Current	\$45	\$44	\$42	\$41	\$40	\$39	\$37	\$37	\$36	\$36	\$36	\$30	\$19	\$17	\$15	\$13	\$11	\$9
	10yr ave.	\$46	\$44	\$42	\$40	\$38	\$36	\$34	\$32	\$31	\$30	\$30	\$27	\$24	\$20	\$18	\$12	\$10	\$7
	55% Current	\$49	\$48	\$47	\$45	\$44	\$43	\$41	\$41	\$40	\$40	\$39	\$32	\$21	\$19	\$17	\$15	\$12	\$10
	10yr ave.	\$51	\$48	\$46	\$44	\$41	\$39	\$37	\$36	\$34	\$33	\$33	\$30	\$26	\$22	\$19	\$14	\$11	\$8
	60% Current	\$54	\$53	\$51	\$49	\$48	\$47	\$45	\$44	\$43	\$43	\$43	\$35	\$23	\$21	\$18	\$16	\$13	\$11
	10yr ave.	\$56	\$53	\$50	\$48	\$45	\$43	\$41	\$39	\$37	\$36	\$36	\$33	\$29	\$24	\$21	\$15	\$12	\$9
	65% Current	\$58	\$57	\$55	\$54	\$52	\$50	\$49	\$48	\$47	\$47	\$46	\$38	\$25	\$22	\$20	\$17	\$14	\$12
	10yr ave.	\$60	\$57	\$55	\$52	\$49	\$46	\$44	\$42	\$41	\$39	\$38	\$36	\$31	\$26	\$23	\$16	\$13	\$10
	70% Current	\$62	\$61	\$59	\$58	\$56	\$54	\$52	\$52	\$51	\$51	\$50	\$41	\$27	\$24	\$21	\$18	\$15	\$13
	10yr ave.	\$65	\$62	\$59	\$56	\$53	\$50	\$47	\$45	\$44	\$42	\$41	\$38	\$33	\$28	\$25	\$17	\$14	\$10
	75% Current	\$67	\$66	\$64	\$62	\$60	\$58	\$56	\$55	\$54	\$54	\$53	\$44	\$29	\$26	\$23	\$20	\$16	\$13
	10yr ave.	\$69	\$66	\$63	\$60	\$57	\$53	\$51	\$49	\$47	\$45	\$44	\$41	\$36	\$30	\$26	\$18	\$15	\$11
	80% Current	\$71	\$70	\$68	\$66	\$64	\$62	\$60	\$59	\$58	\$58	\$57	\$47	\$31	\$27	\$24	\$21	\$17	\$14
	10yr ave.	\$74	\$70	\$67	\$64	\$60	\$57	\$54	\$52	\$50	\$48	\$47	\$44	\$38	\$32	\$28	\$20	\$16	\$12
	85% Current	\$76	\$74	\$72	\$70	\$68	\$66	\$64	\$63	\$62	\$61	\$61	\$50	\$33	\$29	\$26	\$22	\$18	\$15
	10yr ave.	\$79	\$75	\$71	\$68	\$64	\$61	\$57	\$55	\$53	\$51	\$50	\$46	\$41	\$34	\$30	\$21	\$17	\$13

The above shows estimated returns per head for skirted fleece wool. These figures do not take into account the value of skirtings and oddments and do not take into account discounts that may apply for faults under individual circumstances. These figures are based on a market index of 100% and should be used as a guide only. Returns over \$30 / head for fleece wool are highlighted.

Table 14: Returns pr head for skirted fleece wool.

Skirted FLC Weight		Micron																	
3 Kg		16	16.5	17	17.5	18	18.5	19	19.5	20	21	22	23	24	25	26	28	30	32
Yield (Sch Dry)	25% Current	\$17	\$16	\$16	\$15	\$15	\$15	\$14	\$14	\$14	\$14	\$13	\$11	\$7	\$6	\$6	\$5	\$4	\$3
	10yr ave.	\$17	\$17	\$16	\$15	\$14	\$13	\$13	\$12	\$12	\$11	\$11	\$10	\$9	\$8	\$7	\$5	\$4	\$3
	30% Current	\$20	\$20	\$19	\$19	\$18	\$17	\$17	\$17	\$16	\$16	\$16	\$13	\$9	\$8	\$7	\$6	\$5	\$4
	10yr ave.	\$21	\$20	\$19	\$18	\$17	\$16	\$15	\$15	\$14	\$14	\$13	\$12	\$11	\$9	\$8	\$6	\$5	\$3
	35% Current	\$23	\$23	\$22	\$22	\$21	\$20	\$20	\$19	\$19	\$19	\$19	\$15	\$10	\$9	\$8	\$7	\$6	\$5
	10yr ave.	\$24	\$23	\$22	\$21	\$20	\$19	\$18	\$17	\$16	\$16	\$16	\$14	\$13	\$11	\$9	\$6	\$5	\$4
	40% Current	\$27	\$26	\$25	\$25	\$24	\$23	\$22	\$22	\$22	\$22	\$21	\$18	\$12	\$10	\$9	\$8	\$6	\$5
	10yr ave.	\$28	\$26	\$25	\$24	\$23	\$21	\$20	\$19	\$19	\$18	\$18	\$16	\$14	\$12	\$11	\$7	\$6	\$4
	45% Current	\$30	\$30	\$29	\$28	\$27	\$26	\$25	\$25	\$24	\$24	\$24	\$20	\$13	\$12	\$10	\$9	\$7	\$6
	10yr ave.	\$31	\$30	\$28	\$27	\$25	\$24	\$23	\$22	\$21	\$20	\$20	\$18	\$16	\$14	\$12	\$8	\$7	\$5
	50% Current	\$33	\$33	\$32	\$31	\$30	\$29	\$28	\$28	\$27	\$27	\$27	\$22	\$15	\$13	\$11	\$10	\$8	\$7
	10yr ave.	\$35	\$33	\$31	\$30	\$28	\$27	\$25	\$24	\$23	\$23	\$22	\$20	\$18	\$15	\$13	\$9	\$8	\$6
	55% Current	\$37	\$36	\$35	\$34	\$33	\$32	\$31	\$30	\$30	\$30	\$29	\$24	\$16	\$14	\$12	\$11	\$9	\$7
	10yr ave.	\$38	\$36	\$35	\$33	\$31	\$29	\$28	\$27	\$26	\$25	\$24	\$23	\$20	\$17	\$14	\$10	\$8	\$6
	60% Current	\$40	\$39	\$38	\$37	\$36	\$35	\$34	\$33	\$33	\$33	\$32	\$27	\$17	\$15	\$14	\$12	\$9	\$8
	10yr ave.	\$42	\$40	\$38	\$36	\$34	\$32	\$30	\$29	\$28	\$27	\$27	\$25	\$21	\$18	\$16	\$11	\$9	\$7
	65% Current	\$44	\$43	\$41	\$40	\$39	\$38	\$36	\$36	\$35	\$35	\$35	\$29	\$19	\$17	\$15	\$13	\$10	\$9
	10yr ave.	\$45	\$43	\$41	\$39	\$37	\$35	\$33	\$32	\$30	\$30	\$29	\$27	\$23	\$20	\$17	\$12	\$10	\$7
	70% Current	\$47	\$46	\$44	\$43	\$42	\$41	\$39	\$39	\$38	\$38	\$37	\$31	\$20	\$18	\$16	\$14	\$11	\$9
	10yr ave.	\$49	\$46	\$44	\$42	\$40	\$37	\$35	\$34	\$33	\$32	\$31	\$29	\$25	\$21	\$18	\$13	\$11	\$8
	75% Current	\$50	\$49	\$48	\$46	\$45	\$44	\$42	\$41	\$41	\$41	\$40	\$33	\$22	\$19	\$17	\$15	\$12	\$10
	10yr ave.	\$52	\$50	\$47	\$45	\$42	\$40	\$38	\$36	\$35	\$34	\$33	\$31	\$27	\$23	\$20	\$14	\$11	\$8
	80% Current	\$54	\$53	\$51	\$49	\$48	\$47	\$45	\$44	\$43	\$43	\$43	\$35	\$23	\$21	\$18	\$16	\$13	\$11
	10yr ave.	\$56	\$53	\$50	\$48	\$45	\$43	\$41	\$39	\$37	\$36	\$36	\$33	\$29	\$24	\$21	\$15	\$12	\$9
	85% Current	\$57	\$56	\$54	\$52	\$51	\$50	\$48	\$47	\$46	\$46	\$45	\$38	\$25	\$22	\$19	\$17	\$13	\$11
	10yr ave.	\$59	\$56	\$53	\$51	\$48	\$45	\$43	\$41	\$40	\$39	\$38	\$35	\$30	\$26	\$22	\$16	\$13	\$9

The above shows estimated returns per head for skirted fleece wool. These figures do not take into account the value of skirtings and oddments and do not take into account discounts that may apply for faults under individual circumstances. These figures are based on a market index of 100% and should be used as a guide only. Returns over \$30 / head for fleece wool are highlighted.

Table 15: Returns pr head for skirted fleece wool.

Skirted FLC Weight 2 Kg			Micron																	
			16	16.5	17	17.5	18	18.5	19	19.5	20	21	22	23	24	25	26	28	30	32
Yield (Sch Dry)	25%	Current	\$11	\$11	\$11	\$10	\$10	\$10	\$9	\$9	\$9	\$9	\$9	\$7	\$5	\$4	\$4	\$3	\$3	\$2
		10yr ave.	\$12	\$11	\$10	\$10	\$9	\$9	\$8	\$8	\$8	\$8	\$7	\$7	\$6	\$5	\$4	\$3	\$3	\$2
	30%	Current	\$13	\$13	\$13	\$12	\$12	\$12	\$11	\$11	\$11	\$11	\$11	\$9	\$6	\$5	\$5	\$4	\$3	\$3
		10yr ave.	\$14	\$13	\$13	\$12	\$11	\$11	\$10	\$10	\$9	\$9	\$9	\$8	\$7	\$6	\$5	\$4	\$3	\$2
	35%	Current	\$16	\$15	\$15	\$14	\$14	\$14	\$13	\$13	\$13	\$13	\$12	\$10	\$7	\$6	\$5	\$5	\$4	\$3
		10yr ave.	\$16	\$15	\$15	\$14	\$13	\$12	\$12	\$11	\$11	\$11	\$10	\$10	\$8	\$7	\$6	\$4	\$4	\$3
	40%	Current	\$18	\$18	\$17	\$16	\$16	\$16	\$15	\$15	\$14	\$14	\$14	\$12	\$8	\$7	\$6	\$5	\$4	\$4
		10yr ave.	\$19	\$18	\$17	\$16	\$15	\$14	\$14	\$13	\$12	\$12	\$12	\$11	\$10	\$8	\$7	\$5	\$4	\$3
	45%	Current	\$20	\$20	\$19	\$19	\$18	\$17	\$17	\$17	\$16	\$16	\$16	\$13	\$9	\$8	\$7	\$6	\$5	\$4
		10yr ave.	\$21	\$20	\$19	\$18	\$17	\$16	\$15	\$15	\$14	\$14	\$13	\$12	\$11	\$9	\$8	\$6	\$5	\$3
	50%	Current	\$22	\$22	\$21	\$21	\$20	\$19	\$19	\$18	\$18	\$18	\$18	\$15	\$10	\$9	\$8	\$7	\$5	\$4
		10yr ave.	\$23	\$22	\$21	\$20	\$19	\$18	\$17	\$16	\$16	\$15	\$15	\$14	\$12	\$10	\$9	\$6	\$5	\$4
	55%	Current	\$25	\$24	\$23	\$23	\$22	\$21	\$21	\$20	\$20	\$20	\$20	\$16	\$11	\$9	\$8	\$7	\$6	\$5
		10yr ave.	\$25	\$24	\$23	\$22	\$21	\$20	\$19	\$18	\$17	\$17	\$16	\$15	\$13	\$11	\$10	\$7	\$6	\$4
	60%	Current	\$27	\$26	\$25	\$25	\$24	\$23	\$22	\$22	\$22	\$22	\$21	\$18	\$12	\$10	\$9	\$8	\$6	\$5
		10yr ave.	\$28	\$26	\$25	\$24	\$23	\$21	\$20	\$19	\$19	\$18	\$18	\$16	\$14	\$12	\$11	\$7	\$6	\$4
	65%	Current	\$29	\$28	\$28	\$27	\$26	\$25	\$24	\$24	\$24	\$23	\$23	\$19	\$13	\$11	\$10	\$9	\$7	\$6
		10yr ave.	\$30	\$29	\$27	\$26	\$24	\$23	\$22	\$21	\$20	\$20	\$19	\$18	\$15	\$13	\$11	\$8	\$7	\$5
	70%	Current	\$31	\$31	\$30	\$29	\$28	\$27	\$26	\$26	\$25	\$25	\$25	\$21	\$14	\$12	\$11	\$9	\$7	\$6
		10yr ave.	\$32	\$31	\$29	\$28	\$26	\$25	\$24	\$23	\$22	\$21	\$21	\$19	\$17	\$14	\$12	\$9	\$7	\$5
	75%	Current	\$33	\$33	\$32	\$31	\$30	\$29	\$28	\$28	\$27	\$27	\$27	\$22	\$15	\$13	\$11	\$10	\$8	\$7
		10yr ave.	\$35	\$33	\$31	\$30	\$28	\$27	\$25	\$24	\$23	\$23	\$22	\$20	\$18	\$15	\$13	\$9	\$8	\$6
	80%	Current	\$36	\$35	\$34	\$33	\$32	\$31	\$30	\$29	\$29	\$29	\$28	\$24	\$16	\$14	\$12	\$11	\$8	\$7
		10yr ave.	\$37	\$35	\$34	\$32	\$30	\$29	\$27	\$26	\$25	\$24	\$24	\$22	\$19	\$16	\$14	\$10	\$8	\$6
	85%	Current	\$38	\$37	\$36	\$35	\$34	\$33	\$32	\$31	\$31	\$31	\$30	\$25	\$16	\$15	\$13	\$11	\$9	\$8
		10yr ave.	\$39	\$37	\$36	\$34	\$32	\$30	\$29	\$28	\$27	\$26	\$25	\$23	\$20	\$17	\$15	\$10	\$9	\$6

The above shows estimated returns per head for skirted fleece wool. These figures do not take into account the value of skirtings and oddments and do not take into account discounts that may apply for faults under individual circumstances. These figures are based on a market index of 100% and should be used as a guide only. Returns over \$30 / head for fleece wool are highlighted.