



Table 1: Northern Region Micron Price Guides

CURRENT MARKET				12 MONTH COMPARISONS								3 YEAR COMPARISONS					10 YEAR COMPARISONS					
Mic.	13/07/2011	7/07/2011		12/07/2010	Now		Now	12 Month	Now							Percentile						
Guides	Price	Weekly	Change	This time	compared		compared	Low	to Low	High	to High	Low	High	Average	compared		Low	High	10 year	Now		Percentile
				Last Year	to Last Year		to Last Year								to 3yr ave				Average	to 10yr ave		
NRI	1410	+1	0.1%	913	+497	54%		890	+520	58%		1491	-81	-5%		91%	658	1491	904	+506	56%	97%
16*	2770	0		1560	+1210	78%		1540	+1230	80%		2800	-30	-1%		95%						
16.5*	2680	0		1415	+1265	89%		1395	+1285	92%		2680	0	0%		100%						
17*	2420	-10	-0.4%	1250	+1170	94%		1230	+1190	97%		2530	-110	-4%		91%	1100	2659	1440	+980	68%	95%
17.5*	2200	0		1195	+1005	84%		1185	+1015	86%		2360	-160	-7%		85%						
18	1964	-32	-1.6%	1175	+789	67%		1138	+826	73%		2193	-229	-10%		84%	916	2193	1274	+690	54%	95%
18.5	1793	-10	-0.6%	1135	+658	58%		1110	+683	62%		1963	-170	-9%		83%	843	1963				
19	1668	+2	0.1%	1061	+607	57%		1031	+637	62%		1776	-108	-6%		91%	804	1776	1084	+584	54%	97%
19.5	1570	+10	0.6%	988	+582	59%		952	+618	65%		1670	-100	-6%		95%	749	1670				
20	1493	+9	0.6%	937	+556	59%		904	+589	65%		1588	-95	-6%		96%	684	1588	947	+546	58%	98%
21	1439	+16	1.1%	931	+508	55%		878	+561	64%		1522	-83	-5%		97%	645	1522	907	+532	59%	99%
22	1390	+4	0.3%	921	+469	51%		847	+543	64%		1461	-71	-5%		97%	643	1461	883	+507	57%	99%
23	1266	-16	-1.3%	902	+364	40%		827	+439	53%		1324	-58	-4%		94%	642	1340	859	+407	47%	98%
24	1097	+12	1.1%	851	+246	29%		780	+317	41%		1170	-73	-6%		95%	637	1299	816	+281	34%	93%
25	930	-41	-4.4%	705	+225	32%		695	+235	34%		1048	-118	-11%		89%	567	1198	731	+199	27%	84%
26	851	-34	-4.0%	617	+234	38%		598	+253	42%		928	-77	-8%		89%	532	1088	669	+182	27%	81%
28	694	+14	2.0%	469	+225	48%		443	+251	57%		734	-40	-5%		94%	424	889	530	+164	31%	86%
30	616	-2	-0.3%	415	+201	48%		389	+227	58%		670	-54	-8%		92%	344	729	462	+154	33%	89%
32	565	+5	0.9%	366	+199	54%		353	+212	60%		638	-73	-11%		92%	297	669	417	+148	35%	88%
MC	801	+4	0.5%	619	+182	29%		561	+240	43%		831	-30	-4%		93%	380	831	519	+282	54%	98%

**Note:**

\* Due to the irregular market quoting for some fine wool categories, figures shown relating to micron categories below 18 micron are an estimate based on the AWEX Premium & Discounts Report & other available information.

\* For any category, where there is insufficient quantity offered to enable AWEX to quote, a quote will be provided based on the best available information.

\* 10 Year data is not available for some micron categories, which may result in blank spaces in the table above.

**Definitions:**

\* A Percentile, is a value on a scale of one hundred that indicates the percent of a distribution that is equal to or below it. In general a percentile between 25% and 75% is considered normal, a percentile below 25% is considered below normal and a percentile above 75% is considered above normal.

Three and ten year percentiles shown in the table above, detail the period of time during the past 3 & 10 years that the market has traded either at or below its current price.

The higher the percentile, the stronger the market.

Source: Australian Wool Exchange, Australian Wool Innovation, Sydney Futures Exchange, x-rates.com

Disclaimer: While all due care has been taken in the preparation of this document, no warranty is made as to its accuracy, reliability or completeness. To the extent permitted by law neither Jemalong or their sources including subsidiaries and staff, accept liability to any person for loss or damage arising from the use of this information.



## MARKET COMMENTARY

One Australian Dollar = \$ 1.07 US, as of 13/07/2011

### NORTHERN REGION –Sale Week 2/11 (59,349 bales offered nationally)

On Tuesday - After a soft start the market found increased support with pressure focused on the 21 micron area (which closed slightly higher). 19 to 20 microns eased 5-10 cents, while 22 to 23 microns slipped 10-20 cents (with the Burry & clumpy Vm lots most affected). In the finer microns, the better style & strength lots found Italian support (predominantly in the 17-17.5 micron range), however the lower style & strength types suffered with 18 to 18.5 microns losing 20-30 cents and 16.5 microns falling 60 cents. Buyer interest maintained prices for the better length skirtings, while cot & colour types continue to be heavily discounted. In the oddments, finer Locks fell 20 cents while the medium to broader microns remained unchanged. On a larger offering, 27-30 micron crossbred remained generally unchanged.

On Wednesday - A very solid market had buyers push 19 to 21 microns 15 cents higher (with selected lots attracting even greater attention). 22 microns and broader rose 20 cents on a limited offering, while fine microns maintained interest closing unchanged on a smaller offering. Merino skirtings gained ground in line with the fleece market, with the 5% Vm types 10-20 cents dearer while the burrier lots were up to 10 cents dearer. Strong support across all oddment categories had locks, crutchings & stains 10 cents dearer. The crossbred market was generally firm to slightly dearer, with 28 microns gaining the most ground, closing 14 cents dearer.

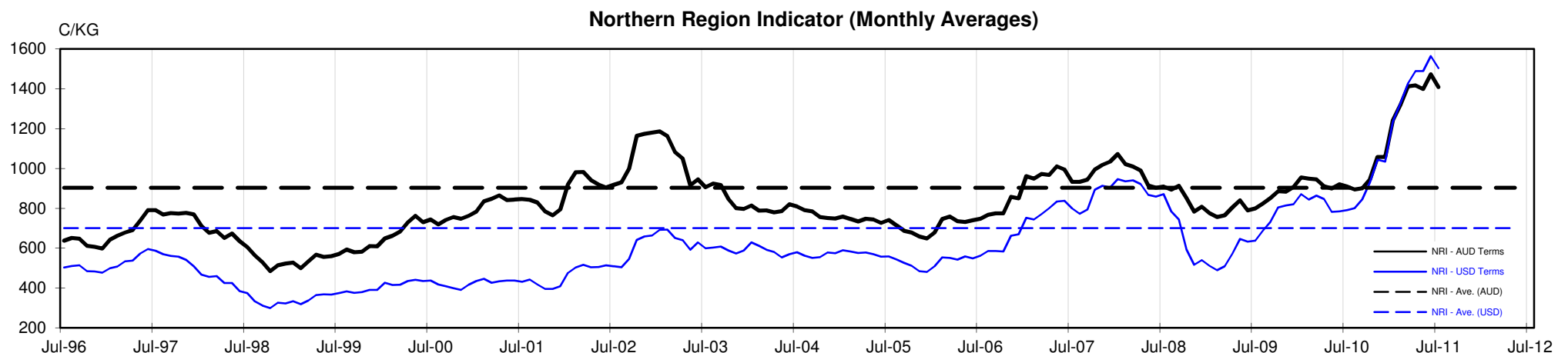




Table 4: 19 micron SFE

Tuesday, 12 July 2011

Delivery Mth	Aug-11	Oct-11	Dec-11	Feb-11	Apr-12	Jun-12	Aug-12	Oct-12	Dec-12
19 Micron SFE	1695	1640	1590	1540	1490	1460	1450	1450	1410
Average	1277	1283	1309	1114	1369	1417	1408	1419	1419
Maximum	1737	1707	1677	1640	1622	1612	1525	1525	1525
Minimum	1034	1034	1034	983	1106	1210	1285	1285	1285

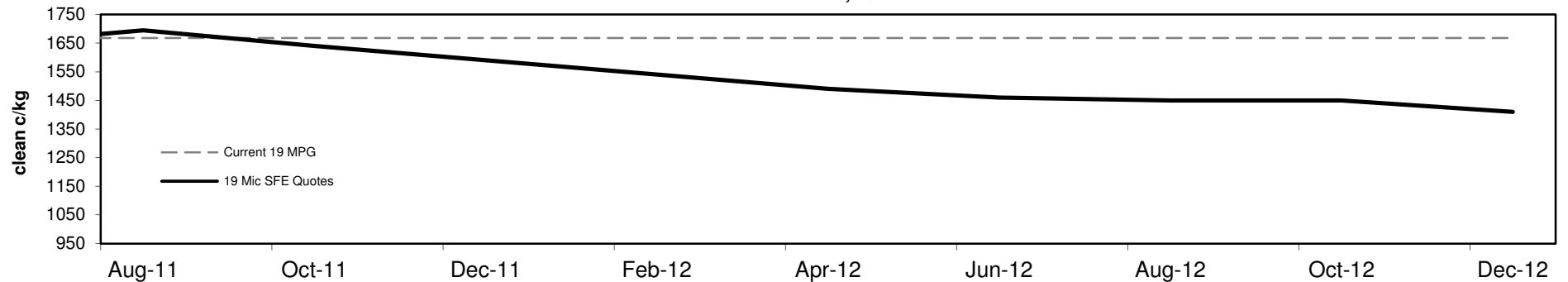
Table 5: 19 micron SFE, as a percentile of the 19 micron MPG

3 Year Percentile	93%	87%	84%	82%	82%	82%	82%	82%	82%
10 Year Percentile	98%	96%	95%	95%	95%	95%	95%	95%	94%

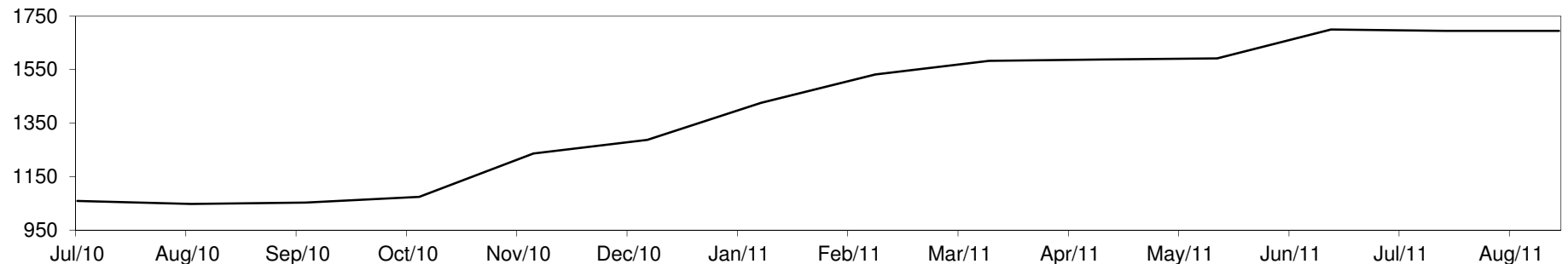
Table 6: 19 micron SFE, compared to MPG

SFE - MPG	+27	2%	-28	-2%	-78	-5%	-128	-8%	-178	-11%	-208	-12%	-218	-13%	-218	-13%	-258	-15%
SFE - MPG, 1 year Ave.	+246	17%	+191	13%	+141	10%	+91	6%	+41	3%	+11	1%	+1	0%	+1	0%	-39	-3%
SFE - MPG, 3 year Ave.	+531	46%	+476	41%	+426	37%	+376	32%	+326	28%	+296	25%	+286	25%	+286	25%	+246	21%
SFE - MPG, 10 year Ave.	+611	56%	+556	51%	+506	47%	+456	42%	+406	37%	+376	35%	+366	34%	+366	34%	+326	30%

19 MICRON SFE, QUOTES



19 Micron SFE, Front month movement





**Table 7: 21 micron SFE**

Tuesday, 12 July 2011

Delivery Mth	Aug-11	Oct-11	Dec-11	Feb-11	Apr-12	Jun-12	Aug-12	Oct-12	Dec-12
21 Micron SFE	1465	1365	1320	1300	1255	1123	1198	1165	1123
Average	1063	1052	1057	962	1092	1097	1134	1150	1150
Maximum	1515	1434	1411	1365	1303	1326	1316	1283	1283
Minimum	880	880	880	860	934	990	1046	1013	1013

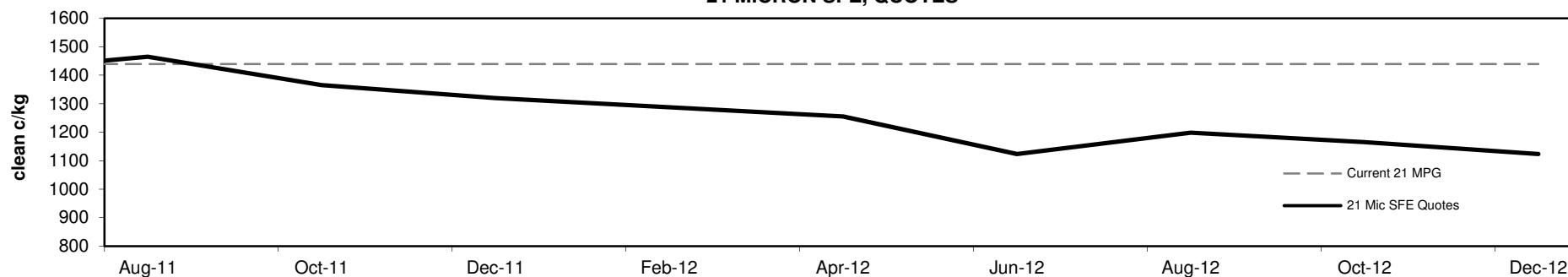
**Table 8: 21 micron SFE, as a percentile of the 21 micron MPG**

3 Year Percentile	97%	94%	91%	90%	88%	83%	87%	85%	83%
10 Year Percentile	99%	98%	97%	97%	93%	89%	91%	90%	89%

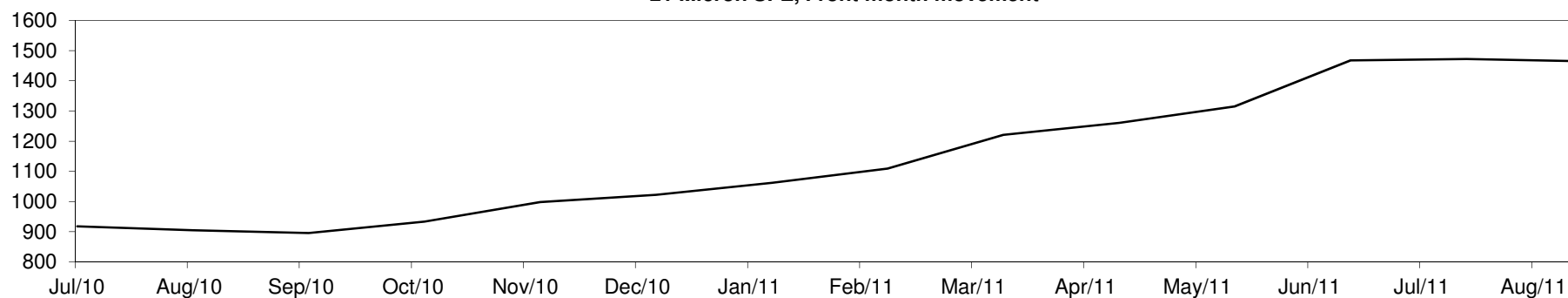
**Table 9: 21 micron SFE, compared to MPG**

SFE - MPG	+26	2%	-74	-5%	-119	-8%	-139	-10%	-184	-13%	-316	-22%	-241	-17%	-274	-19%	-316	-22%
SFE - MPG, 1 year Ave.	+314	27%	+214	19%	+169	15%	+149	13%	+104	9%	-28	-2%	+47	4%	+14	1%	-28	-2%
SFE - MPG, 3 year Ave.	+521	55%	+421	45%	+376	40%	+356	38%	+311	33%	+179	19%	+254	27%	+221	23%	+179	19%
SFE - MPG, 10 year Ave.	+558	62%	+458	50%	+413	46%	+393	43%	+348	38%	+216	24%	+291	32%	+258	28%	+216	24%

**21 MICRON SFE, QUOTES**



**21 Micron SFE, Front month movement**





**Table 10: 23 micron SFE**

Tuesday, 12 July 2011

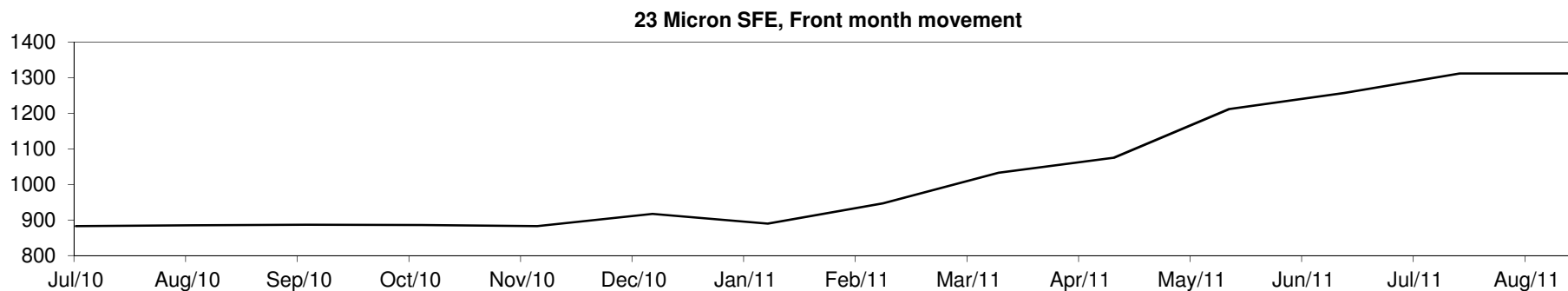
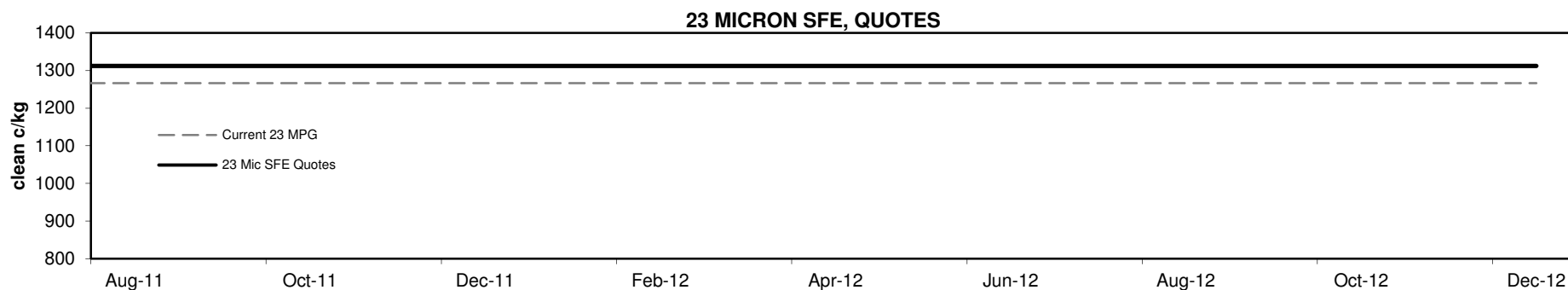
Delivery Mth	Aug-11	Oct-11	Dec-11	Feb-11	Apr-12	Jun-12	Aug-12	Oct-12	Dec-12
23 Micron SFE	1312	1312	1312	1312	1312	1312	1312	1312	1312
Average	968	973	989	870	1042	1086	1159	1246	1246
Maximum	1312	1312	1312	1312	1312	1312	1312	1312	1312
Minimum	883	883	883	760	883	890	1033	1212	1212

**Table 11: 23 micron SFE, as a percentile of the 23 micron MPG**

3 Year Percentile	98%	98%	98%	98%	98%	98%	98%	98%	98%
10 Year Percentile	99%	99%	99%	99%	99%	99%	99%	99%	99%

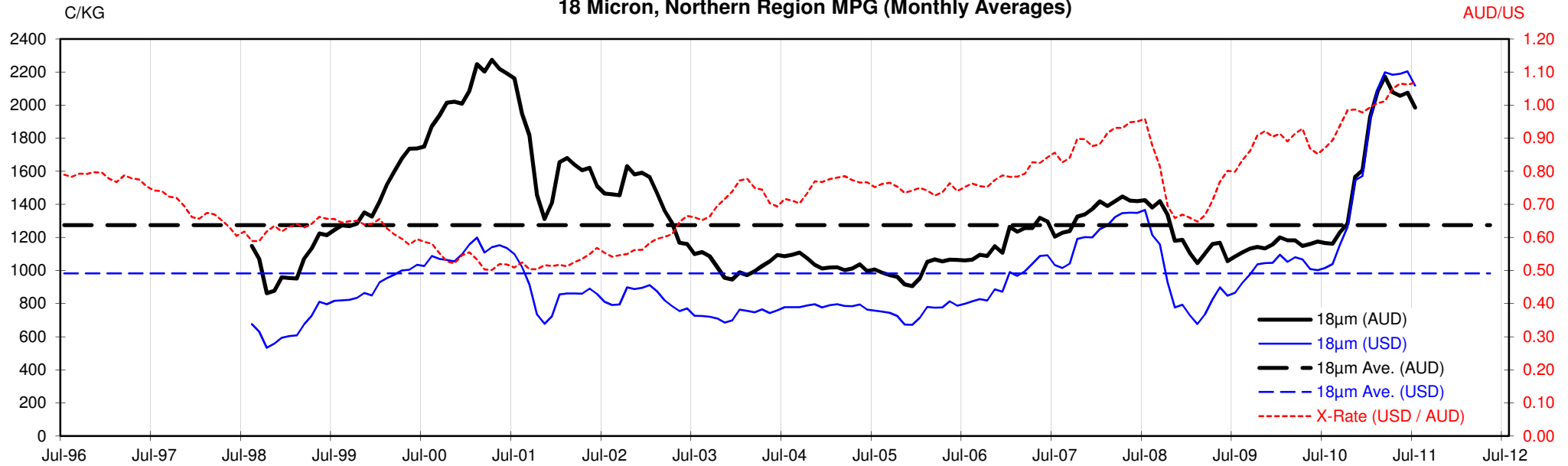
**Table 12: 23 micron SFE, compared to MPG**

SFE - MPG	+46	4%	+46	4%	+46	4%	+46	4%	+46	4%	+46	4%	+46	4%	+46	4%	+46	4%
SFE - MPG, 1 year Ave.	+253	24%	+253	24%	+253	24%	+253	24%	+253	24%	+253	24%	+253	24%	+253	24%	+253	24%
SFE - MPG, 3 year Ave.	+423	48%	+423	48%	+423	48%	+423	48%	+423	48%	+423	48%	+423	48%	+423	48%	+423	48%
SFE - MPG, 10 year Ave.	+453	53%	+453	53%	+453	53%	+453	53%	+453	53%	+453	53%	+453	53%	+453	53%	+453	53%

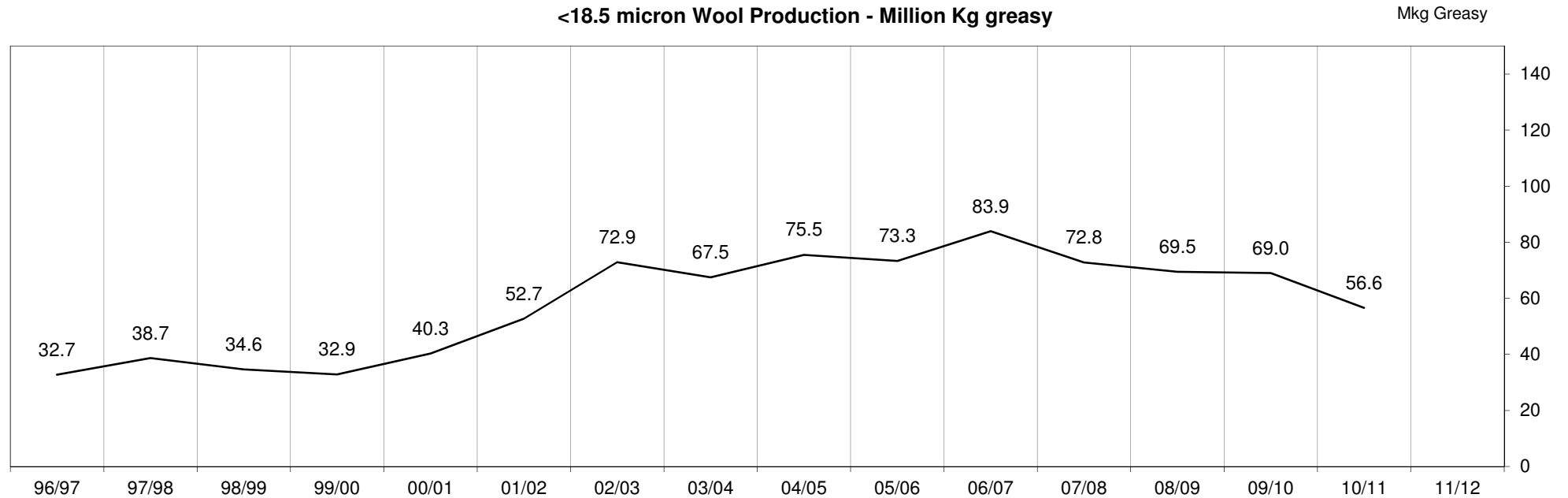


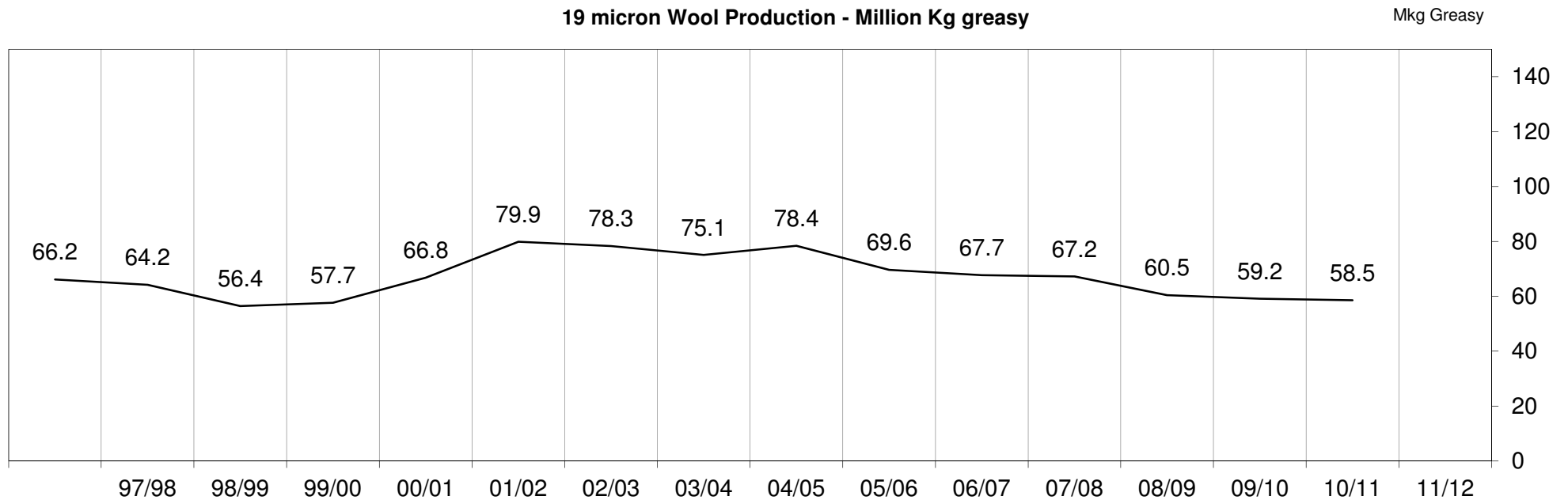
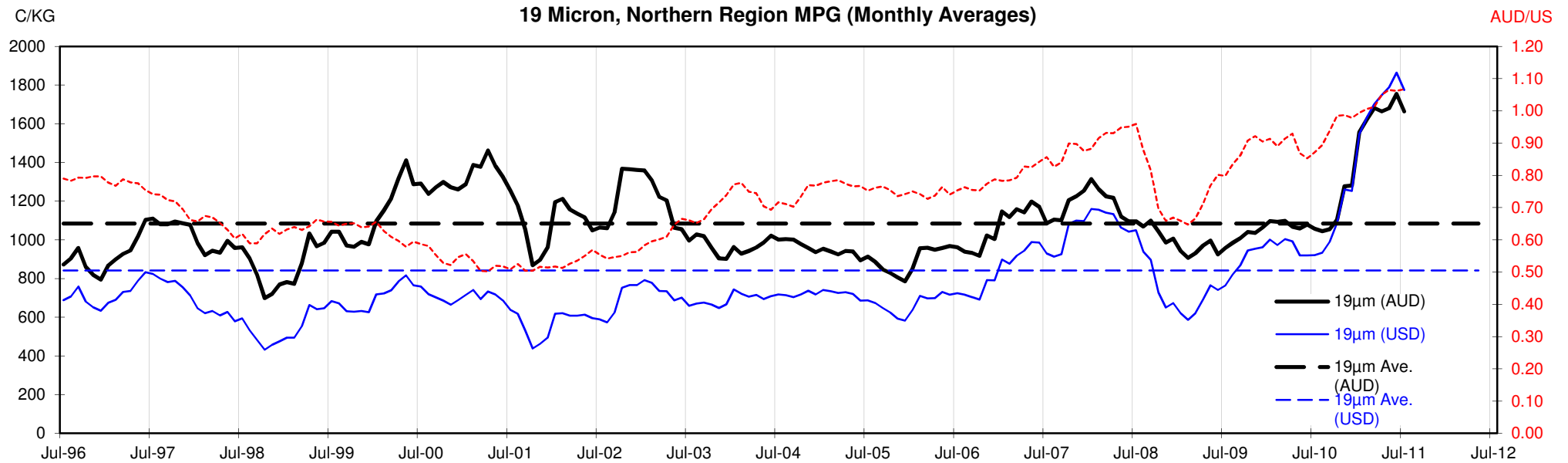


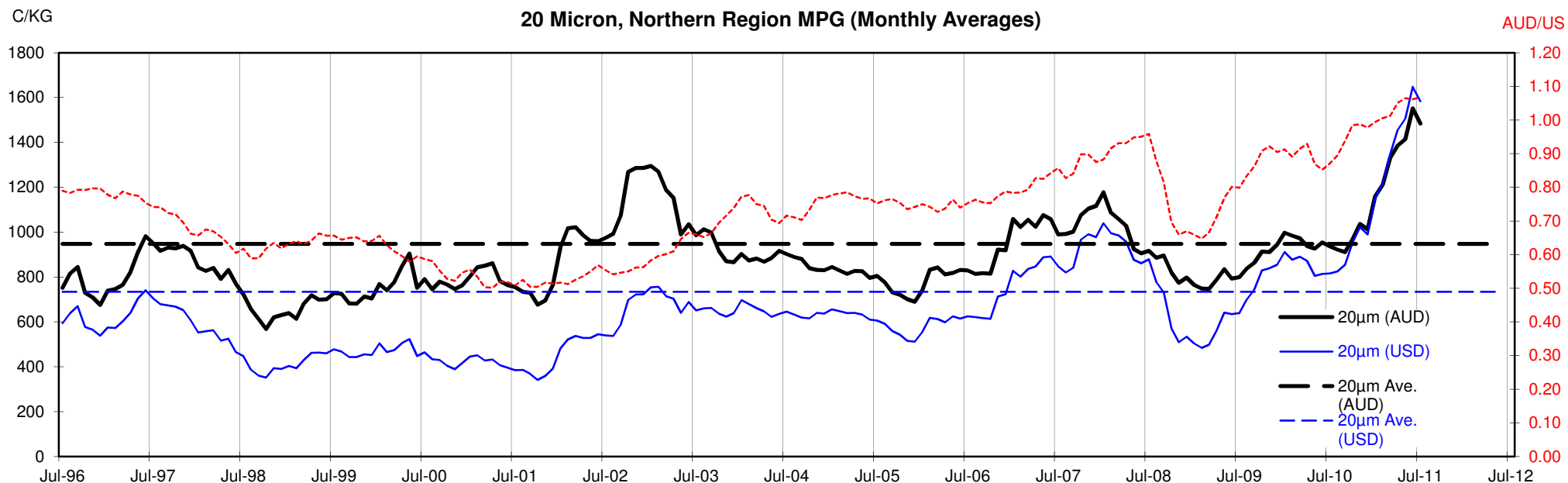
18 Micron, Northern Region MPG (Monthly Averages)



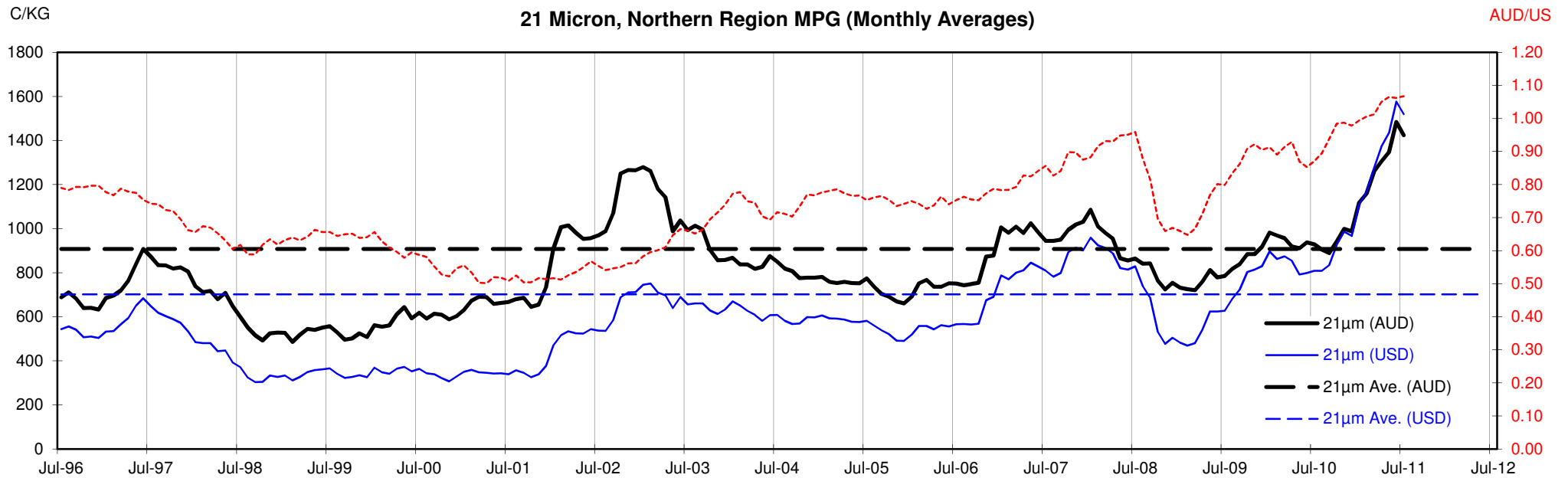
<18.5 micron Wool Production - Million Kg greasy

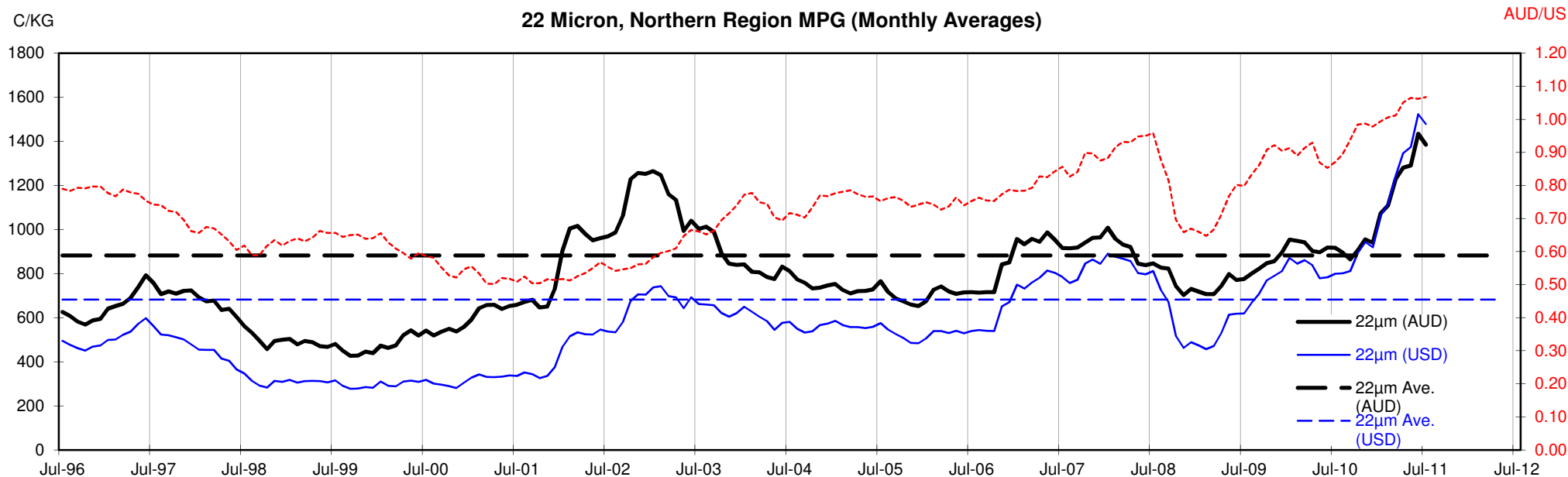


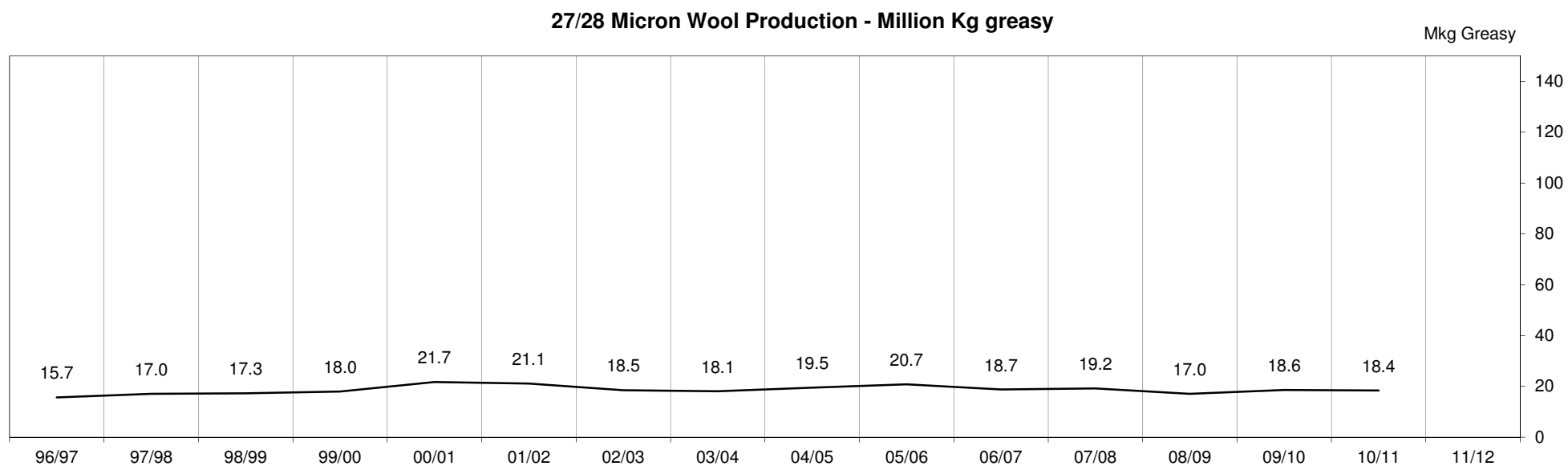
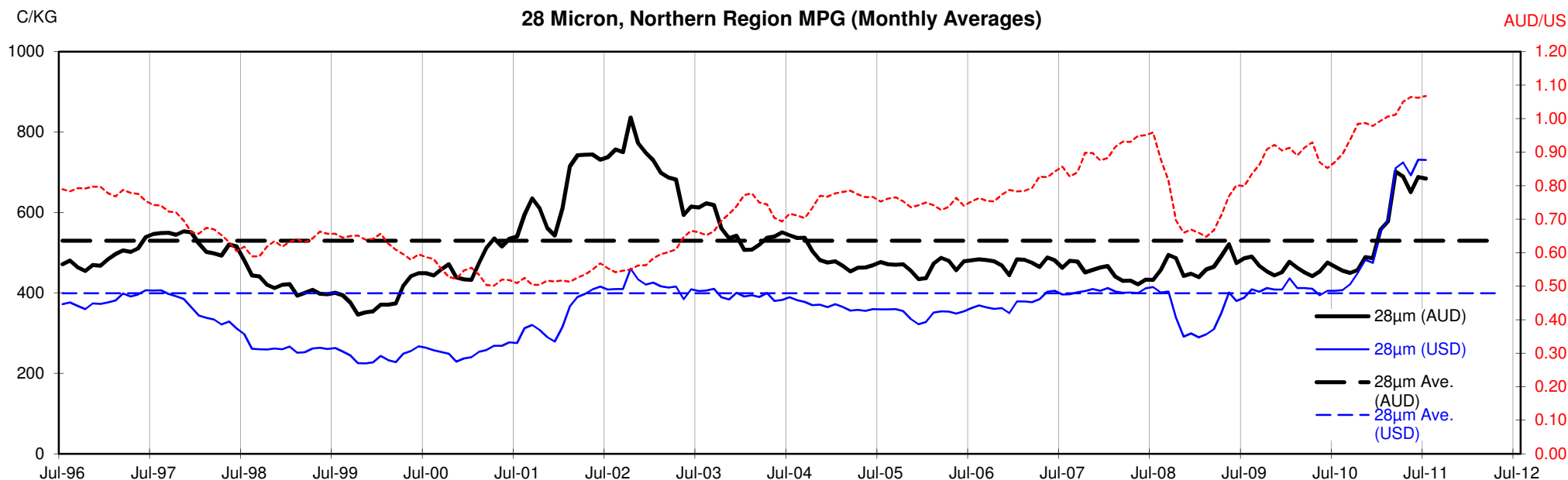












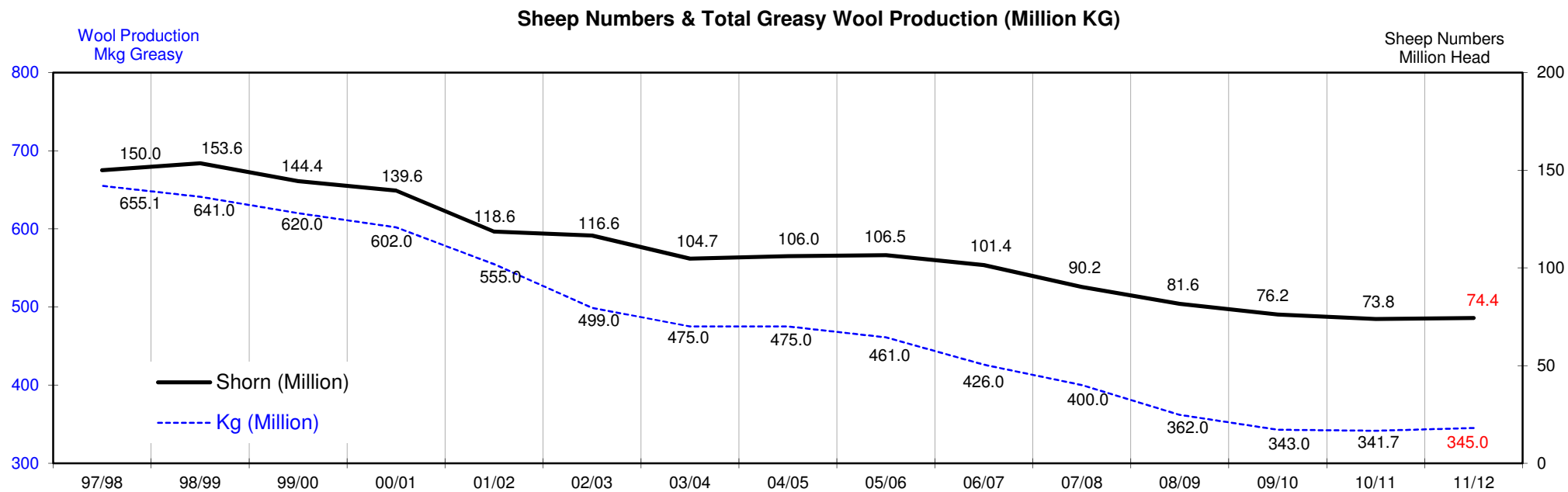
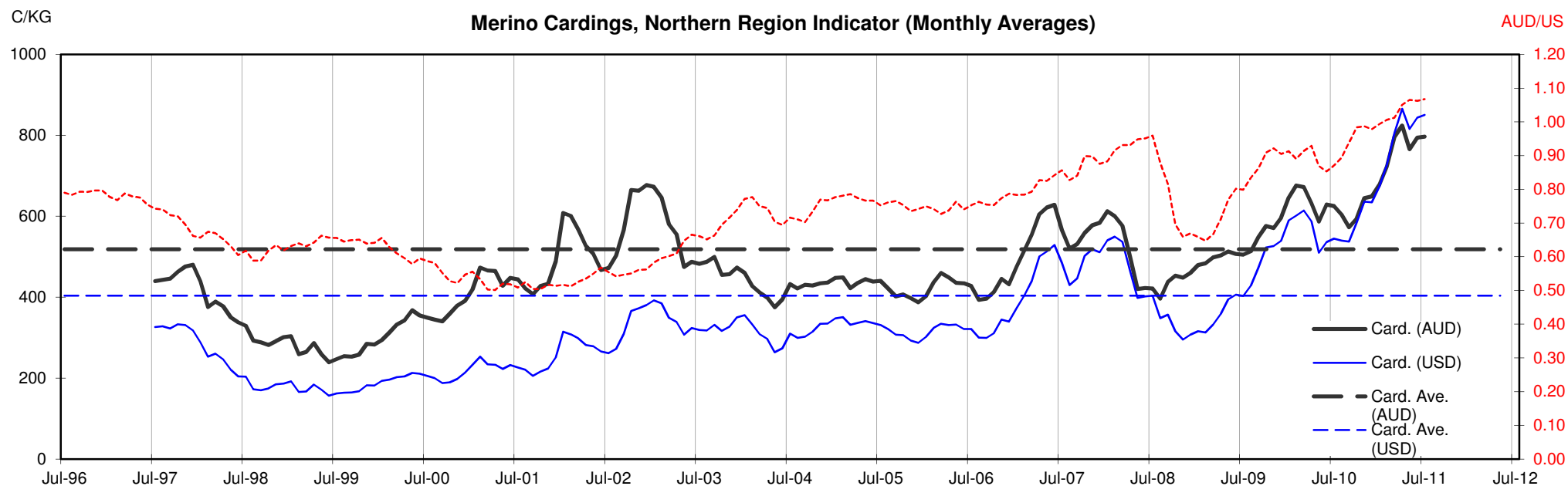




Table 13: Returns pr head for skirted fleece wool.

Skirted FLC Weight		Micron																	
9 Kg		16	16.5	17	17.5	18	18.5	19	19.5	20	21	22	23	24	25	26	28	30	32
Yield (Sch Dry)	25% Current	\$62	\$60	\$54	\$50	\$44	\$40	\$38	\$35	\$34	\$32	\$31	\$28	\$25	\$21	\$19	\$16	\$14	\$13
	10yr ave.			\$32		\$29		\$24		\$21	\$20	\$20	\$19	\$18	\$16	\$15	\$12	\$10	\$9
	30% Current	\$75	\$72	\$65	\$59	\$53	\$48	\$45	\$42	\$40	\$39	\$38	\$34	\$30	\$25	\$23	\$19	\$17	\$15
	10yr ave.			\$39		\$34		\$29		\$26	\$24	\$24	\$23	\$22	\$20	\$18	\$14	\$12	\$11
	35% Current	\$87	\$84	\$76	\$69	\$62	\$56	\$53	\$49	\$47	\$45	\$44	\$40	\$35	\$29	\$27	\$22	\$19	\$18
	10yr ave.			\$45		\$40		\$34		\$30	\$29	\$28	\$27	\$26	\$23	\$21	\$17	\$15	\$13
	40% Current	\$100	\$96	\$87	\$79	\$71	\$65	\$60	\$57	\$54	\$52	\$50	\$46	\$39	\$33	\$31	\$25	\$22	\$20
	10yr ave.			\$52		\$46		\$39		\$34	\$33	\$32	\$31	\$29	\$26	\$24	\$19	\$17	\$15
	45% Current	\$112	\$109	\$98	\$89	\$80	\$73	\$68	\$64	\$60	\$58	\$56	\$51	\$44	\$38	\$34	\$28	\$25	\$23
	10yr ave.			\$58		\$52		\$44		\$38	\$37	\$36	\$35	\$33	\$30	\$27	\$21	\$19	\$17
	50% Current	\$125	\$121	\$109	\$99	\$88	\$81	\$75	\$71	\$67	\$65	\$63	\$57	\$49	\$42	\$38	\$31	\$28	\$25
	10yr ave.			\$65		\$57		\$49		\$43	\$41	\$40	\$39	\$37	\$33	\$30	\$24	\$21	\$19
	55% Current	\$137	\$133	\$120	\$109	\$97	\$89	\$83	\$78	\$74	\$71	\$69	\$63	\$54	\$46	\$42	\$34	\$30	\$28
	10yr ave.			\$71		\$63		\$54		\$47	\$45	\$44	\$43	\$40	\$36	\$33	\$26	\$23	\$21
	60% Current	\$150	\$145	\$131	\$119	\$106	\$97	\$90	\$85	\$81	\$78	\$75	\$68	\$59	\$50	\$46	\$37	\$33	\$31
	10yr ave.			\$78		\$69		\$59		\$51	\$49	\$48	\$46	\$44	\$39	\$36	\$29	\$25	\$23
	65% Current	\$162	\$157	\$142	\$129	\$115	\$105	\$98	\$92	\$87	\$84	\$81	\$74	\$64	\$54	\$50	\$41	\$36	\$33
	10yr ave.			\$84		\$75		\$63		\$55	\$53	\$52	\$50	\$48	\$43	\$39	\$31	\$27	\$24
	70% Current	\$175	\$169	\$152	\$139	\$124	\$113	\$105	\$99	\$94	\$91	\$88	\$80	\$69	\$59	\$54	\$44	\$39	\$36
	10yr ave.			\$91		\$80		\$68		\$60	\$57	\$56	\$54	\$51	\$46	\$42	\$33	\$29	\$26
	75% Current	\$187	\$181	\$163	\$149	\$133	\$121	\$113	\$106	\$101	\$97	\$94	\$85	\$74	\$63	\$57	\$47	\$42	\$38
	10yr ave.			\$97		\$86		\$73		\$64	\$61	\$60	\$58	\$55	\$49	\$45	\$36	\$31	\$28
	80% Current	\$199	\$193	\$174	\$158	\$141	\$129	\$120	\$113	\$107	\$104	\$100	\$91	\$79	\$67	\$61	\$50	\$44	\$41
	10yr ave.			\$104		\$92		\$78		\$68	\$65	\$64	\$62	\$59	\$53	\$48	\$38	\$33	\$30
	85% Current	\$212	\$205	\$185	\$168	\$150	\$137	\$128	\$120	\$114	\$110	\$106	\$97	\$84	\$71	\$65	\$53	\$47	\$43
	10yr ave.			\$110		\$97		\$83		\$72	\$69	\$68	\$66	\$62	\$56	\$51	\$41	\$35	\$32

The above shows estimated returns per head for skirted fleece wool. These figures do not take into account the value of skirtings and oddments and do not take into account discounts that may apply for faults under individual circumstances. These figures are based on a market index of 100% and should be used as a guide only. Returns over \$30 / head for fleece wool are highlighted.

Source: Australian Wool Exchange, Australian Wool Innovation, Sydney Futures Exchange, x-rates.com

Disclaimer: While all due care has been taken in the preparation of this document, no warranty is made as to its accuracy, reliability or completeness. To the extent permitted by law neither Jemalong or their sources including subsidiaries and staff, accept liability to any person for loss or damage arising from the use of this information.



Table 14: Returns pr head for skirted fleece wool.

Skirted FLC Weight		Micron																	
8 Kg		16	16.5	17	17.5	18	18.5	19	19.5	20	21	22	23	24	25	26	28	30	32
Yield (Sch Dry)	25% Current	\$55	\$54	\$48	\$44	\$39	\$36	\$33	\$31	\$30	\$29	\$28	\$25	\$22	\$19	\$17	\$14	\$12	\$11
	10yr ave.			\$29		\$25		\$22		\$19	\$18	\$18	\$17	\$16	\$15	\$13	\$11	\$9	\$8
	30% Current	\$66	\$64	\$58	\$53	\$47	\$43	\$40	\$38	\$36	\$35	\$33	\$30	\$26	\$22	\$20	\$17	\$15	\$14
	10yr ave.			\$35		\$31		\$26		\$23	\$22	\$21	\$21	\$20	\$18	\$16	\$13	\$11	\$10
	35% Current	\$78	\$75	\$68	\$62	\$55	\$50	\$47	\$44	\$42	\$40	\$39	\$35	\$31	\$26	\$24	\$19	\$17	\$16
	10yr ave.			\$40		\$36		\$30		\$27	\$25	\$25	\$24	\$23	\$20	\$19	\$15	\$13	\$12
	40% Current	\$89	\$86	\$77	\$70	\$63	\$57	\$53	\$50	\$48	\$46	\$44	\$41	\$35	\$30	\$27	\$22	\$20	\$18
	10yr ave.			\$46		\$41		\$35		\$30	\$29	\$28	\$27	\$26	\$23	\$21	\$17	\$15	\$13
	45% Current	\$100	\$96	\$87	\$79	\$71	\$65	\$60	\$57	\$54	\$52	\$50	\$46	\$39	\$33	\$31	\$25	\$22	\$20
	10yr ave.			\$52		\$46		\$39		\$34	\$33	\$32	\$31	\$29	\$26	\$24	\$19	\$17	\$15
	50% Current	\$111	\$107	\$97	\$88	\$79	\$72	\$67	\$63	\$60	\$58	\$56	\$51	\$44	\$37	\$34	\$28	\$25	\$23
	10yr ave.			\$58		\$51		\$43		\$38	\$36	\$35	\$34	\$33	\$29	\$27	\$21	\$18	\$17
	55% Current	\$122	\$118	\$106	\$97	\$86	\$79	\$73	\$69	\$66	\$63	\$61	\$56	\$48	\$41	\$37	\$31	\$27	\$25
	10yr ave.			\$63		\$56		\$48		\$42	\$40	\$39	\$38	\$36	\$32	\$29	\$23	\$20	\$18
	60% Current	\$133	\$129	\$116	\$106	\$94	\$86	\$80	\$75	\$72	\$69	\$67	\$61	\$53	\$45	\$41	\$33	\$30	\$27
	10yr ave.			\$69		\$61		\$52		\$45	\$44	\$42	\$41	\$39	\$35	\$32	\$25	\$22	\$20
	65% Current	\$144	\$139	\$126	\$114	\$102	\$93	\$87	\$82	\$78	\$75	\$72	\$66	\$57	\$48	\$44	\$36	\$32	\$29
	10yr ave.			\$75		\$66		\$56		\$49	\$47	\$46	\$45	\$42	\$38	\$35	\$28	\$24	\$22
	70% Current	\$155	\$150	\$136	\$123	\$110	\$100	\$93	\$88	\$84	\$81	\$78	\$71	\$61	\$52	\$48	\$39	\$34	\$32
	10yr ave.			\$81		\$71		\$61		\$53	\$51	\$49	\$48	\$46	\$41	\$37	\$30	\$26	\$23
	75% Current	\$166	\$161	\$145	\$132	\$118	\$108	\$100	\$94	\$90	\$86	\$83	\$76	\$66	\$56	\$51	\$42	\$37	\$34
	10yr ave.			\$86		\$76		\$65		\$57	\$54	\$53	\$52	\$49	\$44	\$40	\$32	\$28	\$25
	80% Current	\$177	\$172	\$155	\$141	\$126	\$115	\$107	\$100	\$96	\$92	\$89	\$81	\$70	\$60	\$54	\$44	\$39	\$36
	10yr ave.			\$92		\$82		\$69		\$61	\$58	\$57	\$55	\$52	\$47	\$43	\$34	\$30	\$27
	85% Current	\$188	\$182	\$165	\$150	\$134	\$122	\$113	\$107	\$102	\$98	\$95	\$86	\$75	\$63	\$58	\$47	\$42	\$38
	10yr ave.			\$98		\$87		\$74		\$64	\$62	\$60	\$58	\$55	\$50	\$45	\$36	\$31	\$28

The above shows estimated returns per head for skirted fleece wool. These figures do not take into account the value of skirtings and oddments and do not take into account discounts that may apply for faults under individual circumstances. These figures are based on a market index of 100% and should be used as a guide only. Returns over \$30 / head for fleece wool are highlighted.

Source: Australian Wool Exchange, Australian Wool Innovation, Sydney Futures Exchange, x-rates.com

Disclaimer: While all due care has been taken in the preparation of this document, no warranty is made as to its accuracy, reliability or completeness. To the extent permitted by law neither Jemalong or their sources including subsidiaries and staff, accept liability to any person for loss or damage arising from the use of this information.



Table 15: Returns pr head for skirted fleece wool.

Skirted FLC Weight		Micron																	
7 Kg		16	16.5	17	17.5	18	18.5	19	19.5	20	21	22	23	24	25	26	28	30	32
Yield (Sch Dry)	25% Current	\$48	\$47	\$42	\$39	\$34	\$31	\$29	\$27	\$26	\$25	\$24	\$22	\$19	\$16	\$15	\$12	\$11	\$10
	10yr ave.			\$25		\$22		\$19		\$17	\$16	\$15	\$15	\$14	\$13	\$12	\$9	\$8	\$7
	30% Current	\$58	\$56	\$51	\$46	\$41	\$38	\$35	\$33	\$31	\$30	\$29	\$27	\$23	\$20	\$18	\$15	\$13	\$12
	10yr ave.			\$30		\$27		\$23		\$20	\$19	\$19	\$18	\$17	\$15	\$14	\$11	\$10	\$9
	35% Current	\$68	\$66	\$59	\$54	\$48	\$44	\$41	\$38	\$37	\$35	\$34	\$31	\$27	\$23	\$21	\$17	\$15	\$14
	10yr ave.			\$35		\$31		\$27		\$23	\$22	\$22	\$21	\$20	\$18	\$16	\$13	\$11	\$10
	40% Current	\$78	\$75	\$68	\$62	\$55	\$50	\$47	\$44	\$42	\$40	\$39	\$35	\$31	\$26	\$24	\$19	\$17	\$16
	10yr ave.			\$40		\$36		\$30		\$27	\$25	\$25	\$24	\$23	\$20	\$19	\$15	\$13	\$12
	45% Current	\$87	\$84	\$76	\$69	\$62	\$56	\$53	\$49	\$47	\$45	\$44	\$40	\$35	\$29	\$27	\$22	\$19	\$18
	10yr ave.			\$45		\$40		\$34		\$30	\$29	\$28	\$27	\$26	\$23	\$21	\$17	\$15	\$13
	50% Current	\$97	\$94	\$85	\$77	\$69	\$63	\$58	\$55	\$52	\$50	\$49	\$44	\$38	\$33	\$30	\$24	\$22	\$20
	10yr ave.			\$50		\$45		\$38		\$33	\$32	\$31	\$30	\$29	\$26	\$23	\$19	\$16	\$15
	55% Current	\$107	\$103	\$93	\$85	\$76	\$69	\$64	\$60	\$57	\$55	\$54	\$49	\$42	\$36	\$33	\$27	\$24	\$22
	10yr ave.			\$55		\$49		\$42		\$36	\$35	\$34	\$33	\$31	\$28	\$26	\$20	\$18	\$16
	60% Current	\$116	\$113	\$102	\$92	\$82	\$75	\$70	\$66	\$63	\$60	\$58	\$53	\$46	\$39	\$36	\$29	\$26	\$24
	10yr ave.			\$60		\$54		\$46		\$40	\$38	\$37	\$36	\$34	\$31	\$28	\$22	\$19	\$18
	65% Current	\$126	\$122	\$110	\$100	\$89	\$82	\$76	\$71	\$68	\$65	\$63	\$58	\$50	\$42	\$39	\$32	\$28	\$26
	10yr ave.			\$66		\$58		\$49		\$43	\$41	\$40	\$39	\$37	\$33	\$30	\$24	\$21	\$19
	70% Current	\$136	\$131	\$119	\$108	\$96	\$88	\$82	\$77	\$73	\$71	\$68	\$62	\$54	\$46	\$42	\$34	\$30	\$28
	10yr ave.			\$71		\$62		\$53		\$46	\$44	\$43	\$42	\$40	\$36	\$33	\$26	\$23	\$20
	75% Current	\$145	\$141	\$127	\$116	\$103	\$94	\$88	\$82	\$78	\$76	\$73	\$66	\$58	\$49	\$45	\$36	\$32	\$30
	10yr ave.			\$76		\$67		\$57		\$50	\$48	\$46	\$45	\$43	\$38	\$35	\$28	\$24	\$22
	80% Current	\$155	\$150	\$136	\$123	\$110	\$100	\$93	\$88	\$84	\$81	\$78	\$71	\$61	\$52	\$48	\$39	\$34	\$32
	10yr ave.			\$81		\$71		\$61		\$53	\$51	\$49	\$48	\$46	\$41	\$37	\$30	\$26	\$23
	85% Current	\$165	\$159	\$144	\$131	\$117	\$107	\$99	\$93	\$89	\$86	\$83	\$75	\$65	\$55	\$51	\$41	\$37	\$34
	10yr ave.			\$86		\$76		\$64		\$56	\$54	\$53	\$51	\$49	\$43	\$40	\$32	\$27	\$25

The above shows estimated returns per head for skirted fleece wool. These figures do not take into account the value of skirtings and oddments and do not take into account discounts that may apply for faults under individual circumstances. These figures are based on a market index of 100% and should be used as a guide only. Returns over \$30 / head for fleece wool are highlighted.

Source: Australian Wool Exchange, Australian Wool Innovation, Sydney Futures Exchange, x-rates.com

Disclaimer: While all due care has been taken in the preparation of this document, no warranty is made as to its accuracy, reliability or completeness. To the extent permitted by law neither Jemalong or their sources including subsidiaries and staff, accept liability to any person for loss or damage arising from the use of this information.



Table 16: Returns pr head for skirted fleece wool.

Skirted FLC Weight		Micron																	
6 Kg		16	16.5	17	17.5	18	18.5	19	19.5	20	21	22	23	24	25	26	28	30	32
Yield (Sch Dry)	25% Current	\$42	\$40	\$36	\$33	\$29	\$27	\$25	\$24	\$22	\$22	\$21	\$19	\$16	\$14	\$13	\$10	\$9	\$8
	10yr ave.			\$22		\$19		\$16		\$14	\$14	\$13	\$13	\$12	\$11	\$10	\$8	\$7	\$6
	30% Current	\$50	\$48	\$44	\$40	\$35	\$32	\$30	\$28	\$27	\$26	\$25	\$23	\$20	\$17	\$15	\$12	\$11	\$10
	10yr ave.			\$26		\$23		\$20		\$17	\$16	\$16	\$15	\$15	\$13	\$12	\$10	\$8	\$8
	35% Current	\$58	\$56	\$51	\$46	\$41	\$38	\$35	\$33	\$31	\$30	\$29	\$27	\$23	\$20	\$18	\$15	\$13	\$12
	10yr ave.			\$30		\$27		\$23		\$20	\$19	\$19	\$18	\$17	\$15	\$14	\$11	\$10	\$9
	40% Current	\$66	\$64	\$58	\$53	\$47	\$43	\$40	\$38	\$36	\$35	\$33	\$30	\$26	\$22	\$20	\$17	\$15	\$14
	10yr ave.			\$35		\$31		\$26		\$23	\$22	\$21	\$21	\$20	\$18	\$16	\$13	\$11	\$10
	45% Current	\$75	\$72	\$65	\$59	\$53	\$48	\$45	\$42	\$40	\$39	\$38	\$34	\$30	\$25	\$23	\$19	\$17	\$15
	10yr ave.			\$39		\$34		\$29		\$26	\$24	\$24	\$23	\$22	\$20	\$18	\$14	\$12	\$11
	50% Current	\$83	\$80	\$73	\$66	\$59	\$54	\$50	\$47	\$45	\$43	\$42	\$38	\$33	\$28	\$26	\$21	\$18	\$17
	10yr ave.			\$43		\$38		\$33		\$28	\$27	\$26	\$26	\$24	\$22	\$20	\$16	\$14	\$13
	55% Current	\$91	\$88	\$80	\$73	\$65	\$59	\$55	\$52	\$49	\$47	\$46	\$42	\$36	\$31	\$28	\$23	\$20	\$19
	10yr ave.			\$48		\$42		\$36		\$31	\$30	\$29	\$28	\$27	\$24	\$22	\$17	\$15	\$14
	60% Current	\$100	\$96	\$87	\$79	\$71	\$65	\$60	\$57	\$54	\$52	\$50	\$46	\$39	\$33	\$31	\$25	\$22	\$20
	10yr ave.			\$52		\$46		\$39		\$34	\$33	\$32	\$31	\$29	\$26	\$24	\$19	\$17	\$15
	65% Current	\$108	\$105	\$94	\$86	\$77	\$70	\$65	\$61	\$58	\$56	\$54	\$49	\$43	\$36	\$33	\$27	\$24	\$22
	10yr ave.			\$56		\$50		\$42		\$37	\$35	\$34	\$34	\$32	\$29	\$26	\$21	\$18	\$16
	70% Current	\$116	\$113	\$102	\$92	\$82	\$75	\$70	\$66	\$63	\$60	\$58	\$53	\$46	\$39	\$36	\$29	\$26	\$24
	10yr ave.			\$60		\$54		\$46		\$40	\$38	\$37	\$36	\$34	\$31	\$28	\$22	\$19	\$18
	75% Current	\$125	\$121	\$109	\$99	\$88	\$81	\$75	\$71	\$67	\$65	\$63	\$57	\$49	\$42	\$38	\$31	\$28	\$25
	10yr ave.			\$65		\$57		\$49		\$43	\$41	\$40	\$39	\$37	\$33	\$30	\$24	\$21	\$19
	80% Current	\$133	\$129	\$116	\$106	\$94	\$86	\$80	\$75	\$72	\$69	\$67	\$61	\$53	\$45	\$41	\$33	\$30	\$27
	10yr ave.			\$69		\$61		\$52		\$45	\$44	\$42	\$41	\$39	\$35	\$32	\$25	\$22	\$20
	85% Current	\$141	\$137	\$123	\$112	\$100	\$91	\$85	\$80	\$76	\$73	\$71	\$65	\$56	\$47	\$43	\$35	\$31	\$29
	10yr ave.			\$73		\$65		\$55		\$48	\$46	\$45	\$44	\$42	\$37	\$34	\$27	\$24	\$21

The above shows estimated returns per head for skirted fleece wool. These figures do not take into account the value of skirtings and oddments and do not take into account discounts that may apply for faults under individual circumstances. These figures are based on a market index of 100% and should be used as a guide only. Returns over \$30 / head for fleece wool are highlighted.

Source: Australian Wool Exchange, Australian Wool Innovation, Sydney Futures Exchange, x-rates.com

Disclaimer: While all due care has been taken in the preparation of this document, no warranty is made as to its accuracy, reliability or completeness. To the extent permitted by law neither Jemalong or their sources including subsidiaries and staff, accept liability to any person for loss or damage arising from the use of this information.





Table 17: Returns pr head for skirted fleece wool.

Skirted FLC Weight		Micron																	
5 Kg		16	16.5	17	17.5	18	18.5	19	19.5	20	21	22	23	24	25	26	28	30	32
Yield (Sch Dry)	25% Current	\$35	\$34	\$30	\$28	\$25	\$22	\$21	\$20	\$19	\$18	\$17	\$16	\$14	\$12	\$11	\$9	\$8	\$7
	10yr ave.			\$18		\$16		\$14		\$12	\$11	\$11	\$11	\$10	\$9	\$8	\$7	\$6	\$5
	30% Current	\$42	\$40	\$36	\$33	\$29	\$27	\$25	\$24	\$22	\$22	\$21	\$19	\$16	\$14	\$13	\$10	\$9	\$8
	10yr ave.			\$22		\$19		\$16		\$14	\$14	\$13	\$13	\$12	\$11	\$10	\$8	\$7	\$6
	35% Current	\$48	\$47	\$42	\$39	\$34	\$31	\$29	\$27	\$26	\$25	\$24	\$22	\$19	\$16	\$15	\$12	\$11	\$10
	10yr ave.			\$25		\$22		\$19		\$17	\$16	\$15	\$15	\$14	\$13	\$12	\$9	\$8	\$7
	40% Current	\$55	\$54	\$48	\$44	\$39	\$36	\$33	\$31	\$30	\$29	\$28	\$25	\$22	\$19	\$17	\$14	\$12	\$11
	10yr ave.			\$29		\$25		\$22		\$19	\$18	\$18	\$17	\$16	\$15	\$13	\$11	\$9	\$8
	45% Current	\$62	\$60	\$54	\$50	\$44	\$40	\$38	\$35	\$34	\$32	\$31	\$28	\$25	\$21	\$19	\$16	\$14	\$13
	10yr ave.			\$32		\$29		\$24		\$21	\$20	\$20	\$19	\$18	\$16	\$15	\$12	\$10	\$9
	50% Current	\$69	\$67	\$61	\$55	\$49	\$45	\$42	\$39	\$37	\$36	\$35	\$32	\$27	\$23	\$21	\$17	\$15	\$14
	10yr ave.			\$36		\$32		\$27		\$24	\$23	\$22	\$21	\$20	\$18	\$17	\$13	\$12	\$10
	55% Current	\$76	\$74	\$67	\$61	\$54	\$49	\$46	\$43	\$41	\$40	\$38	\$35	\$30	\$26	\$23	\$19	\$17	\$16
	10yr ave.			\$40		\$35		\$30		\$26	\$25	\$24	\$24	\$22	\$20	\$18	\$15	\$13	\$11
	60% Current	\$83	\$80	\$73	\$66	\$59	\$54	\$50	\$47	\$45	\$43	\$42	\$38	\$33	\$28	\$26	\$21	\$18	\$17
	10yr ave.			\$43		\$38		\$33		\$28	\$27	\$26	\$26	\$24	\$22	\$20	\$16	\$14	\$13
	65% Current	\$90	\$87	\$79	\$72	\$64	\$58	\$54	\$51	\$49	\$47	\$45	\$41	\$36	\$30	\$28	\$23	\$20	\$18
	10yr ave.			\$47		\$41		\$35		\$31	\$29	\$29	\$28	\$27	\$24	\$22	\$17	\$15	\$14
	70% Current	\$97	\$94	\$85	\$77	\$69	\$63	\$58	\$55	\$52	\$50	\$49	\$44	\$38	\$33	\$30	\$24	\$22	\$20
	10yr ave.			\$50		\$45		\$38		\$33	\$32	\$31	\$30	\$29	\$26	\$23	\$19	\$16	\$15
	75% Current	\$104	\$101	\$91	\$83	\$74	\$67	\$63	\$59	\$56	\$54	\$52	\$47	\$41	\$35	\$32	\$26	\$23	\$21
	10yr ave.			\$54		\$48		\$41		\$36	\$34	\$33	\$32	\$31	\$27	\$25	\$20	\$17	\$16
	80% Current	\$111	\$107	\$97	\$88	\$79	\$72	\$67	\$63	\$60	\$58	\$56	\$51	\$44	\$37	\$34	\$28	\$25	\$23
	10yr ave.			\$58		\$51		\$43		\$38	\$36	\$35	\$34	\$33	\$29	\$27	\$21	\$18	\$17
	85% Current	\$118	\$114	\$103	\$94	\$83	\$76	\$71	\$67	\$63	\$61	\$59	\$54	\$47	\$40	\$36	\$29	\$26	\$24
	10yr ave.			\$61		\$54		\$46		\$40	\$39	\$38	\$37	\$35	\$31	\$28	\$23	\$20	\$18

The above shows estimated returns per head for skirted fleece wool. These figures do not take into account the value of skirtings and oddments and do not take into account discounts that may apply for faults under individual circumstances. These figures are based on a market index of 100% and should be used as a guide only. Returns over \$30 / head for fleece wool are highlighted.

Source: Australian Wool Exchange, Australian Wool Innovation, Sydney Futures Exchange, x-rates.com

Disclaimer: While all due care has been taken in the preparation of this document, no warranty is made as to its accuracy, reliability or completeness. To the extent permitted by law neither Jemalong or their sources including subsidiaries and staff, accept liability to any person for loss or damage arising from the use of this information.



Table 18: Returns pr head for skirted fleece wool.

Skirted FLC Weight		Micron																	
4 Kg		16	16.5	17	17.5	18	18.5	19	19.5	20	21	22	23	24	25	26	28	30	32
Yield (Sch Dry)	25% Current	\$28	\$27	\$24	\$22	\$20	\$18	\$17	\$16	\$15	\$14	\$14	\$13	\$11	\$9	\$9	\$7	\$6	\$6
	10yr ave.			\$14		\$13		\$11		\$9	\$9	\$9	\$9	\$8	\$7	\$7	\$5	\$5	\$4
	30% Current	\$33	\$32	\$29	\$26	\$24	\$22	\$20	\$19	\$18	\$17	\$17	\$15	\$13	\$11	\$10	\$8	\$7	\$7
	10yr ave.			\$17		\$15		\$13		\$11	\$11	\$11	\$10	\$10	\$9	\$8	\$6	\$6	\$5
	35% Current	\$39	\$38	\$34	\$31	\$27	\$25	\$23	\$22	\$21	\$20	\$19	\$18	\$15	\$13	\$12	\$10	\$9	\$8
	10yr ave.			\$20		\$18		\$15		\$13	\$13	\$12	\$12	\$11	\$10	\$9	\$7	\$6	\$6
	40% Current	\$44	\$43	\$39	\$35	\$31	\$29	\$27	\$25	\$24	\$23	\$22	\$20	\$18	\$15	\$14	\$11	\$10	\$9
	10yr ave.			\$23		\$20		\$17		\$15	\$15	\$14	\$14	\$13	\$12	\$11	\$8	\$7	\$7
	45% Current	\$50	\$48	\$44	\$40	\$35	\$32	\$30	\$28	\$27	\$26	\$25	\$23	\$20	\$17	\$15	\$12	\$11	\$10
	10yr ave.			\$26		\$23		\$20		\$17	\$16	\$16	\$15	\$15	\$13	\$12	\$10	\$8	\$8
	50% Current	\$55	\$54	\$48	\$44	\$39	\$36	\$33	\$31	\$30	\$29	\$28	\$25	\$22	\$19	\$17	\$14	\$12	\$11
	10yr ave.			\$29		\$25		\$22		\$19	\$18	\$18	\$17	\$16	\$15	\$13	\$11	\$9	\$8
	55% Current	\$61	\$59	\$53	\$48	\$43	\$39	\$37	\$35	\$33	\$32	\$31	\$28	\$24	\$20	\$19	\$15	\$14	\$12
	10yr ave.			\$32		\$28		\$24		\$21	\$20	\$19	\$19	\$18	\$16	\$15	\$12	\$10	\$9
	60% Current	\$66	\$64	\$58	\$53	\$47	\$43	\$40	\$38	\$36	\$35	\$33	\$30	\$26	\$22	\$20	\$17	\$15	\$14
	10yr ave.			\$35		\$31		\$26		\$23	\$22	\$21	\$21	\$20	\$18	\$16	\$13	\$11	\$10
	65% Current	\$72	\$70	\$63	\$57	\$51	\$47	\$43	\$41	\$39	\$37	\$36	\$33	\$29	\$24	\$22	\$18	\$16	\$15
	10yr ave.			\$37		\$33		\$28		\$25	\$24	\$23	\$22	\$21	\$19	\$17	\$14	\$12	\$11
	70% Current	\$78	\$75	\$68	\$62	\$55	\$50	\$47	\$44	\$42	\$40	\$39	\$35	\$31	\$26	\$24	\$19	\$17	\$16
	10yr ave.			\$40		\$36		\$30		\$27	\$25	\$25	\$24	\$23	\$20	\$19	\$15	\$13	\$12
	75% Current	\$83	\$80	\$73	\$66	\$59	\$54	\$50	\$47	\$45	\$43	\$42	\$38	\$33	\$28	\$26	\$21	\$18	\$17
	10yr ave.			\$43		\$38		\$33		\$28	\$27	\$26	\$26	\$24	\$22	\$20	\$16	\$14	\$13
	80% Current	\$89	\$86	\$77	\$70	\$63	\$57	\$53	\$50	\$48	\$46	\$44	\$41	\$35	\$30	\$27	\$22	\$20	\$18
	10yr ave.			\$46		\$41		\$35		\$30	\$29	\$28	\$27	\$26	\$23	\$21	\$17	\$15	\$13
	85% Current	\$94	\$91	\$82	\$75	\$67	\$61	\$57	\$53	\$51	\$49	\$47	\$43	\$37	\$32	\$29	\$24	\$21	\$19
	10yr ave.			\$49		\$43		\$37		\$32	\$31	\$30	\$29	\$28	\$25	\$23	\$18	\$16	\$14

The above shows estimated returns per head for skirted fleece wool. These figures do not take into account the value of skirtings and oddments and do not take into account discounts that may apply for faults under individual circumstances. These figures are based on a market index of 100% and should be used as a guide only. Returns over \$30 / head for fleece wool are highlighted.

Source: Australian Wool Exchange, Australian Wool Innovation, Sydney Futures Exchange, x-rates.com

Disclaimer: While all due care has been taken in the preparation of this document, no warranty is made as to its accuracy, reliability or completeness. To the extent permitted by law neither Jemalong or their sources including subsidiaries and staff, accept liability to any person for loss or damage arising from the use of this information.



Table 19: Returns pr head for skirted fleece wool.

Skirted FLC Weight		Micron																	
3 Kg		16	16.5	17	17.5	18	18.5	19	19.5	20	21	22	23	24	25	26	28	30	32
Yield (Sch Dry)	25% Current	\$21	\$20	\$18	\$17	\$15	\$13	\$13	\$12	\$11	\$11	\$10	\$9	\$8	\$7	\$6	\$5	\$5	\$4
	10yr ave.			\$11		\$10		\$8		\$7	\$7	\$7	\$6	\$6	\$5	\$5	\$4	\$3	\$3
	30% Current	\$25	\$24	\$22	\$20	\$18	\$16	\$15	\$14	\$13	\$13	\$13	\$11	\$10	\$8	\$8	\$6	\$6	\$5
	10yr ave.			\$13		\$11		\$10		\$9	\$8	\$8	\$8	\$7	\$7	\$6	\$5	\$4	\$4
	35% Current	\$29	\$28	\$25	\$23	\$21	\$19	\$18	\$16	\$16	\$15	\$15	\$13	\$12	\$10	\$9	\$7	\$6	\$6
	10yr ave.			\$15		\$13		\$11		\$10	\$10	\$9	\$9	\$9	\$8	\$7	\$6	\$5	\$4
	40% Current	\$33	\$32	\$29	\$26	\$24	\$22	\$20	\$19	\$18	\$17	\$17	\$15	\$13	\$11	\$10	\$8	\$7	\$7
	10yr ave.			\$17		\$15		\$13		\$11	\$11	\$11	\$10	\$10	\$9	\$8	\$6	\$6	\$5
	45% Current	\$37	\$36	\$33	\$30	\$27	\$24	\$23	\$21	\$20	\$19	\$19	\$17	\$15	\$13	\$11	\$9	\$8	\$8
	10yr ave.			\$19		\$17		\$15		\$13	\$12	\$12	\$12	\$11	\$10	\$9	\$7	\$6	\$6
	50% Current	\$42	\$40	\$36	\$33	\$29	\$27	\$25	\$24	\$22	\$22	\$21	\$19	\$16	\$14	\$13	\$10	\$9	\$8
	10yr ave.			\$22		\$19		\$16		\$14	\$14	\$13	\$13	\$12	\$11	\$10	\$8	\$7	\$6
	55% Current	\$46	\$44	\$40	\$36	\$32	\$30	\$28	\$26	\$25	\$24	\$23	\$21	\$18	\$15	\$14	\$11	\$10	\$9
	10yr ave.			\$24		\$21		\$18		\$16	\$15	\$15	\$14	\$13	\$12	\$11	\$9	\$8	\$7
	60% Current	\$50	\$48	\$44	\$40	\$35	\$32	\$30	\$28	\$27	\$26	\$25	\$23	\$20	\$17	\$15	\$12	\$11	\$10
	10yr ave.			\$26		\$23		\$20		\$17	\$16	\$16	\$15	\$15	\$13	\$12	\$10	\$8	\$8
	65% Current	\$54	\$52	\$47	\$43	\$38	\$35	\$33	\$31	\$29	\$28	\$27	\$25	\$21	\$18	\$17	\$14	\$12	\$11
	10yr ave.			\$28		\$25		\$21		\$18	\$18	\$17	\$17	\$16	\$14	\$13	\$10	\$9	\$8
	70% Current	\$58	\$56	\$51	\$46	\$41	\$38	\$35	\$33	\$31	\$30	\$29	\$27	\$23	\$20	\$18	\$15	\$13	\$12
	10yr ave.			\$30		\$27		\$23		\$20	\$19	\$19	\$18	\$17	\$15	\$14	\$11	\$10	\$9
	75% Current	\$62	\$60	\$54	\$50	\$44	\$40	\$38	\$35	\$34	\$32	\$31	\$28	\$25	\$21	\$19	\$16	\$14	\$13
	10yr ave.			\$32		\$29		\$24		\$21	\$20	\$20	\$19	\$18	\$16	\$15	\$12	\$10	\$9
	80% Current	\$66	\$64	\$58	\$53	\$47	\$43	\$40	\$38	\$36	\$35	\$33	\$30	\$26	\$22	\$20	\$17	\$15	\$14
	10yr ave.			\$35		\$31		\$26		\$23	\$22	\$21	\$21	\$20	\$18	\$16	\$13	\$11	\$10
	85% Current	\$71	\$68	\$62	\$56	\$50	\$46	\$43	\$40	\$38	\$37	\$35	\$32	\$28	\$24	\$22	\$18	\$16	\$14
	10yr ave.			\$37		\$32		\$28		\$24	\$23	\$23	\$22	\$21	\$19	\$17	\$14	\$12	\$11

The above shows estimated returns per head for skirted fleece wool. These figures do not take into account the value of skirtings and oddments and do not take into account discounts that may apply for faults under individual circumstances. These figures are based on a market index of 100% and should be used as a guide only. Returns over \$30 / head for fleece wool are highlighted.

Source: Australian Wool Exchange, Australian Wool Innovation, Sydney Futures Exchange, x-rates.com

Disclaimer: While all due care has been taken in the preparation of this document, no warranty is made as to its accuracy, reliability or completeness. To the extent permitted by law neither Jemalong or their sources including subsidiaries and staff, accept liability to any person for loss or damage arising from the use of this information.



Table 20: Returns pr head for skirted fleece wool.

Skirted FLC Weight		Micron																	
2 Kg		16	16.5	17	17.5	18	18.5	19	19.5	20	21	22	23	24	25	26	28	30	32
Yield (Sch Dry)	25% Current	\$14	\$13	\$12	\$11	\$10	\$9	\$8	\$8	\$7	\$7	\$7	\$6	\$5	\$5	\$4	\$3	\$3	\$3
	10yr ave.			\$7		\$6		\$5		\$5	\$5	\$4	\$4	\$4	\$4	\$3	\$3	\$2	\$2
	30% Current	\$17	\$16	\$15	\$13	\$12	\$11	\$10	\$9	\$9	\$9	\$8	\$8	\$7	\$6	\$5	\$4	\$4	\$3
	10yr ave.			\$9		\$8		\$7		\$6	\$5	\$5	\$5	\$5	\$4	\$4	\$3	\$3	\$3
	35% Current	\$19	\$19	\$17	\$15	\$14	\$13	\$12	\$11	\$10	\$10	\$10	\$9	\$8	\$7	\$6	\$5	\$4	\$4
	10yr ave.			\$10		\$9		\$8		\$7	\$6	\$6	\$6	\$6	\$5	\$5	\$4	\$3	\$3
	40% Current	\$22	\$21	\$19	\$18	\$16	\$14	\$13	\$13	\$12	\$12	\$11	\$10	\$9	\$7	\$7	\$6	\$5	\$5
	10yr ave.			\$12		\$10		\$9		\$8	\$7	\$7	\$7	\$7	\$6	\$5	\$4	\$4	\$3
	45% Current	\$25	\$24	\$22	\$20	\$18	\$16	\$15	\$14	\$13	\$13	\$13	\$11	\$10	\$8	\$8	\$6	\$6	\$5
	10yr ave.			\$13		\$11		\$10		\$9	\$8	\$8	\$8	\$7	\$7	\$6	\$5	\$4	\$4
	50% Current	\$28	\$27	\$24	\$22	\$20	\$18	\$17	\$16	\$15	\$14	\$14	\$13	\$11	\$9	\$9	\$7	\$6	\$6
	10yr ave.			\$14		\$13		\$11		\$9	\$9	\$9	\$9	\$8	\$7	\$7	\$5	\$5	\$4
	55% Current	\$30	\$29	\$27	\$24	\$22	\$20	\$18	\$17	\$16	\$16	\$15	\$14	\$12	\$10	\$9	\$8	\$7	\$6
	10yr ave.			\$16		\$14		\$12		\$10	\$10	\$10	\$9	\$9	\$8	\$7	\$6	\$5	\$5
	60% Current	\$33	\$32	\$29	\$26	\$24	\$22	\$20	\$19	\$18	\$17	\$17	\$15	\$13	\$11	\$10	\$8	\$7	\$7
	10yr ave.			\$17		\$15		\$13		\$11	\$11	\$11	\$10	\$10	\$9	\$8	\$6	\$6	\$5
	65% Current	\$36	\$35	\$31	\$29	\$26	\$23	\$22	\$20	\$19	\$19	\$18	\$16	\$14	\$12	\$11	\$9	\$8	\$7
	10yr ave.			\$19		\$17		\$14		\$12	\$12	\$11	\$11	\$11	\$10	\$9	\$7	\$6	\$5
	70% Current	\$39	\$38	\$34	\$31	\$27	\$25	\$23	\$22	\$21	\$20	\$19	\$18	\$15	\$13	\$12	\$10	\$9	\$8
	10yr ave.			\$20		\$18		\$15		\$13	\$13	\$12	\$12	\$11	\$10	\$9	\$7	\$6	\$6
	75% Current	\$42	\$40	\$36	\$33	\$29	\$27	\$25	\$24	\$22	\$22	\$21	\$19	\$16	\$14	\$13	\$10	\$9	\$8
	10yr ave.			\$22		\$19		\$16		\$14	\$14	\$13	\$13	\$12	\$11	\$10	\$8	\$7	\$6
	80% Current	\$44	\$43	\$39	\$35	\$31	\$29	\$27	\$25	\$24	\$23	\$22	\$20	\$18	\$15	\$14	\$11	\$10	\$9
	10yr ave.			\$23		\$20		\$17		\$15	\$15	\$14	\$14	\$13	\$12	\$11	\$8	\$7	\$7
	85% Current	\$47	\$46	\$41	\$37	\$33	\$30	\$28	\$27	\$25	\$24	\$24	\$22	\$19	\$16	\$14	\$12	\$10	\$10
	10yr ave.			\$24		\$22		\$18		\$16	\$15	\$15	\$15	\$14	\$12	\$11	\$9	\$8	\$7

The above shows estimated returns per head for skirted fleece wool. These figures do not take into account the value of skirtings and oddments and do not take into account discounts that may apply for faults under individual circumstances. These figures are based on a market index of 100% and should be used as a guide only. Returns over \$30 / head for fleece wool are highlighted.

Source: Australian Wool Exchange, Australian Wool Innovation, Sydney Futures Exchange, x-rates.com

Disclaimer: While all due care has been taken in the preparation of this document, no warranty is made as to its accuracy, reliability or completeness. To the extent permitted by law neither Jemalong or their sources including subsidiaries and staff, accept liability to any person for loss or damage arising from the use of this information.