



Table 1: Northern Region Micron Price Guides

CURRENT MARKET				PERCENTILES		AVERAGES						12 MONTH COMPARISONS								TRADING RANGE		
Mic.	28/10/2010	21/10/2010	Now			Now			27/10/2009		Now		Now		Now		Clean c/kg					
Price	Current	Weekly	3yr	10yr	<u>3 year</u>	compared	10 year	compared	This time	compared	12 Month	compared	12 Month	compared	12 Month	compared	12	3	10			
Guides	Price	Change			Average	to 3yr ave		Average		to 10yr ave		Last Year		to Last Year		Low				to Low	High	to High
NRI	981	+27 2.8%	84%	86%	895	+86 10%	867	+114 13%	889	+92 10%	872	+109 13%	981	0 0%	109	343	584					
16*	1820	+120 6.6%	91%		1618	+202 12%			1400	+420 30%	1345	+475 35%	1820	0 0%	475	645						
16.5*	1605	+90 5.6%	78%		1477	+128 9%			1295	+310 24%	1260	+345 27%	1605	0 0%	345	544						
17*	1485	+70 4.7%	77%	83%	1356	+129 10%	1420	+65 5%	1215	+270 22%	1175	+310 26%	1485	0 0%	310	498	1850					
17.5*	1420	+85 6.0%	73%		1293	+127 10%			1175	+245 21%	1155	+265 23%	1420	0 0%	265	493						
18	1383	+104 7.5%	77%	68%	1235	+148 12%	1290	+93 7%	1143	+240 21%	1116	+267 24%	1383	0 0%	267	432	1392					
18.5	1304	+87 6.7%	85%		1162	+142 12%			1102	+202 18%	1073	+231 22%	1304	0 0%	231	425						
19	1168	+54 4.6%	83%	76%	1070	+98 9%	1066	+102 10%	1042	+126 12%	1021	+147 14%	1168	0 0%	147	443	706					
19.5	1067	+41 3.8%	82%		985	+82 8%			984	+83 8%	952	+115 12%	1067	0 0%	115	457						
20	989	+12 1.2%	81%	74%	915	+74 8%	911	+78 9%	916	+73 8%	893	+96 11%	1023	-34 -3%	130	464	717					
21	950	0	76%	70%	877	+73 8%	864	+86 10%	886	+64 7%	870	+80 9%	1006	-56 -6%	136	427	786					
22	913	-1 -0.1%	70%	67%	853	+60 7%	840	+73 9%	847	+66 8%	846	+67 8%	971	-58 -6%	125	360	822					
23	884	0	70%	66%	830	+54 7%	820	+64 8%	815	+69 8%	816	+68 8%	940	-56 -6%	124	311	826					
24	818	0	65%	63%	783	+35 4%	784	+34 4%	766	+52 7%	760	+58 8%	881	-63 -7%	121	256	800					
25	751	0	98%	79%	669	+82 12%	705	+46 7%	703	+48 7%	650	+101 16%	760	-9 -1%	110	194	725					
26	643	+2 0.3%	96%	71%	600	+43 7%	646	-3 0%	604	+39 6%	560	+83 15%	653	-10 -2%	93	155	641					
28	462	-1 -0.2%	56%	25%	459	+3 1%	521	-59 -11%	450	+12 3%	430	+32 7%	493	-31 -6%	63	119	465					
30	413	+3 0.7%	74%	32%	395	+18 5%	455	-42 -9%	382	+31 8%	374	+39 10%	434	-21 -5%	60	136	384					
32	370	0	93%	32%	344	+26 8%	412	-42 -10%	326	+44 13%	331	+39 12%	375	-5 -1%	44	108	372					
MC	613	+2 0.3%	83%	87%	540	+73 14%	496	+117 24%	581	+32 6%	561	+52 9%	681	-68 -10%	120	289	308					

Note:

* Due to the irregular market quoting for some fine wool categories, figures shown relating to micron categories below 18 micron are an estimate based on the AWEX Premium & Discounts Report & other available information.

* For any category, where there is insufficient quantity offered to enable AWEX to quote, a quote will be provided based on the best available information.

* 10 Year data is not available for some micron categories, which may result in blank spaces in the table above.

Definitions:

* A Percentile, is a value on a scale of one hundred that indicates the percent of a distribution that is equal to or below it. In general a percentile between 25% and 75% is considered normal, a percentile below 25% is considered below normal and a percentile above 75% is considered above normal.

Three and ten year percentiles shown in the table above, detail the period of time during the past 3 & 10 years that the market has traded either at or below its current price.

The higher the percentile, the stronger the market.

Source: Australian Wool Exchange, Australian Wool Innovation, Sydney Futures Exchange, x-rates.com

Disclaimer: While all due care has been taken in the preparation of this document, no warranty is made as to its accuracy, reliability or completeness. To the extent permitted by law neither Jemalong or their sources including subsidiaries and staff, accept liability to any person for loss or damage arising from the use of this information.



MARKET COMMENTARY

Australian Dollar 97.56 cents US as of 28/10/2010

NORTHERN REGION – Sale Week 17/10 (52,698 bales offered nationally)

The fine micron categories achieved some fantastic rises this week, on an offering consisting predominantly of spinners and best top makers:

- 19.5 micron and finer are now trading at 12 month highs,
- 18.5 micron and finer are 200-420 cents above this time last year and are trading at around 10-12% above their 3 year averages.
- In US dollar terms the NRI is now within 20 cents of its historic high (set in January 2008).

The recent rises are a direct result of supply and demand. Supply is basically at historic lows, however until recent weeks the low volumes were only enough to hold the market as demand was also weak. Demand has now returned with China having re-entered the market after letting their greasy stocks run down. For now the economic woes in Europe and the US appear to have eased (as a result of government stimulus), and although their economies are not out of trouble they are looking better than they were (for the short term at least).

The general feel in the trade at this point in time is very positive for the coming months. We may see the market ease next week if interest rates or the AUD rise on Tuesday, if the AUD falls, further rises are very possible.

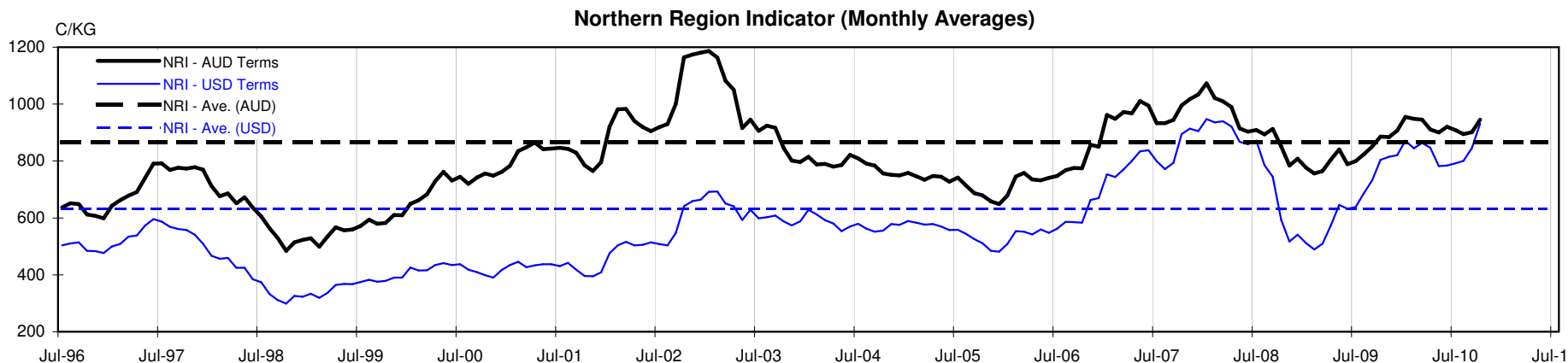




Table 4: 19 micron SFE

Wednesday, 27 October 2010

Delivery Mth	Dec-10	Feb-11	Apr-11	Jun-11	Aug-11	Oct-11	Dec-11	Feb-12	Apr-12
19 Micron SFE	1106	1106	1106	1106	1106	1106	1106	1106	1106
Average	1032	1041	1048	1052	1054	1052	1048	1055	1058
Maximum	1106	1106	1106	1106	1106	1106	1106	1106	1106
Minimum	905	936	983	1025	1034	1034	1034	1034	1053

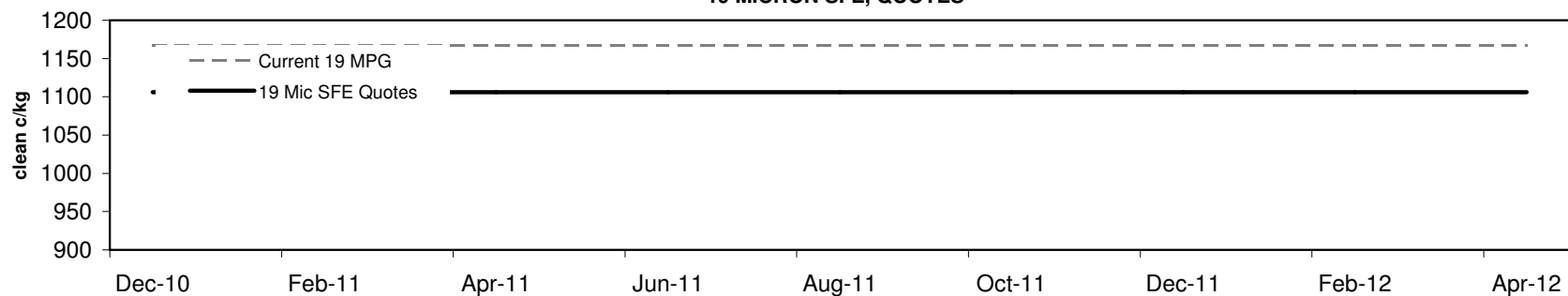
Table 5: 19 micron SFE, as a percentile of the 19 micron MPG

3 Year Percentile	76%	76%	76%	76%	76%	76%	76%	76%	76%
10 Year Percentile	67%	67%	67%	67%	67%	67%	67%	67%	67%

Table 6: 19 micron SFE, compared to MPG

Current 19 MPG	-62	-5%	-62	-5%	-62	-5%	-62	-5%	-62	-5%	-62	-5%	-62	-5%	-62	-5%	-62	-5%
19 MPG, 1 Year Average	+35	3%	+35	3%	+35	3%	+35	3%	+35	3%	+35	3%	+35	3%	+35	3%	+35	3%
19 MPG, 3 Year Average	+36	3%	+36	3%	+36	3%	+36	3%	+36	3%	+36	3%	+36	3%	+36	3%	+36	3%
19 MPG, 10 Year Average	+40	4%	+40	4%	+40	4%	+40	4%	+40	4%	+40	4%	+40	4%	+40	4%	+40	4%

19 MICRON SFE, QUOTES



19 MICRON SFE, FRONT MONTH PRICE MOVEMENT (mthly averages)

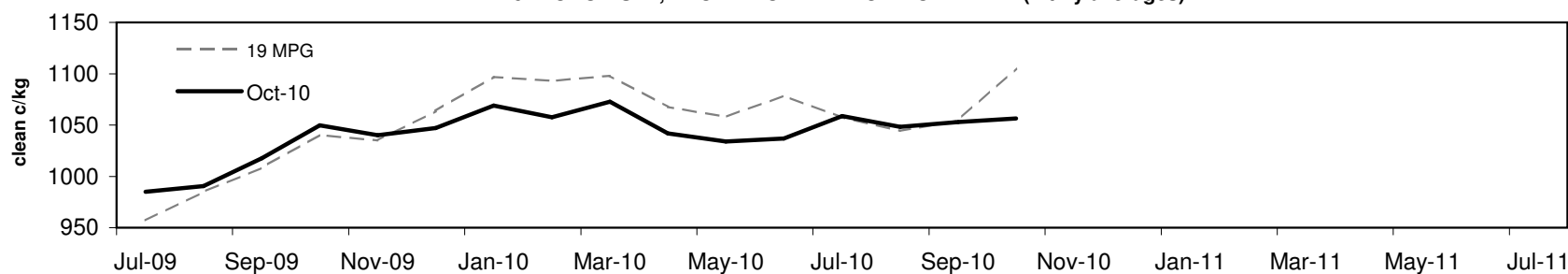




Table 7: 21 micron SFE

Wednesday, 27 October 2010

Delivery Mth	Dec-10	Feb-11	Apr-11	Jun-11	Aug-11	Oct-11	Dec-11	Feb-12	Apr-12
21 Micron SFE	968	972	972	969	969	953	953	953	953
Average	914	925	932	936	936	926	914	908	907
Maximum	1013	1004	1004	1004	1004	992	953	953	953
Minimum	780	818	860	891	890	880	880	880	880

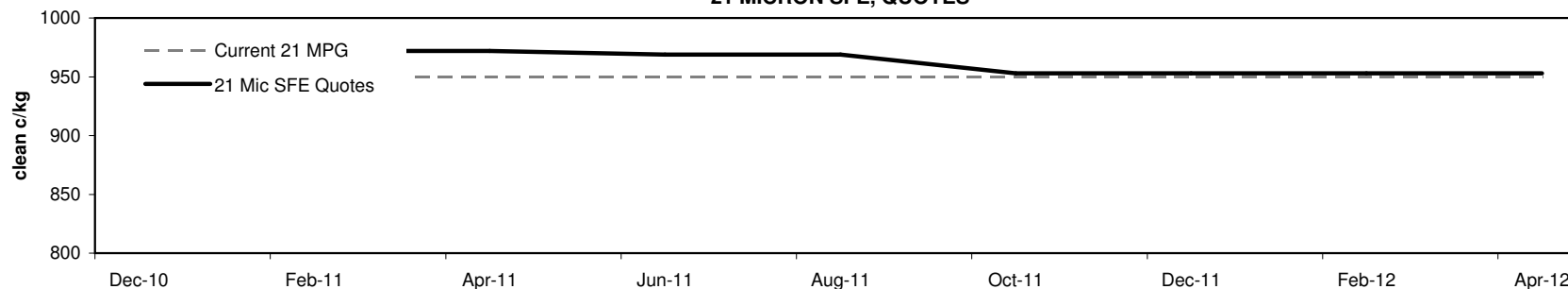
Table 8: 21 micron SFE, as a percentile of the 21 micron MPG

3 Year Percentile	82%	84%	84%	83%	83%	76%	76%	76%	76%
10 Year Percentile	74%	76%	76%	75%	75%	70%	70%	70%	70%

Table 9: 21 micron SFE, compared to MPG

Current 21 MPG	+18	2%	+22	2%	+22	2%	+19	2%	+19	2%	+3	0%	+3	0%	+3	0%	+3	0%
21 MPG, 1 Year Average	+40	4%	+44	5%	+44	5%	+41	4%	+41	4%	+25	3%	+25	3%	+25	3%	+25	3%
21 MPG, 3 Year Average	+91	10%	+95	11%	+95	11%	+92	10%	+92	10%	+76	9%	+76	9%	+76	9%	+76	9%
21 MPG, 10 Year Average	+104	12%	+108	13%	+108	13%	+105	12%	+105	12%	+89	10%	+89	10%	+89	10%	+89	10%

21 MICRON SFE, QUOTES



21 MICRON SFE, FRONT MONTH PRICE MOVEMENT (mthly averages)

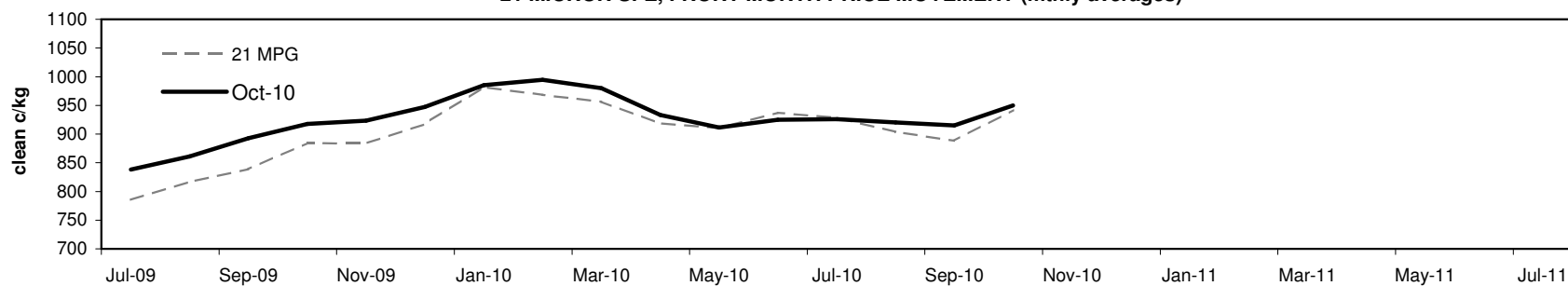




Table 10: 23 micron SFE

Wednesday, 27 October 2010

Delivery Mth	Dec-10	Feb-11	Apr-11	Jun-11	Aug-11	Oct-11	Dec-11	Feb-12	Apr-12
23 Micron SFE	883	883	883	883	883	883	883	883	883
Average	839	853	862	872	886	893	884	885	887
Maximum	927	927	927	927	927	927	887	887	887
Minimum	716	760	760	803	803	883	883	883	883

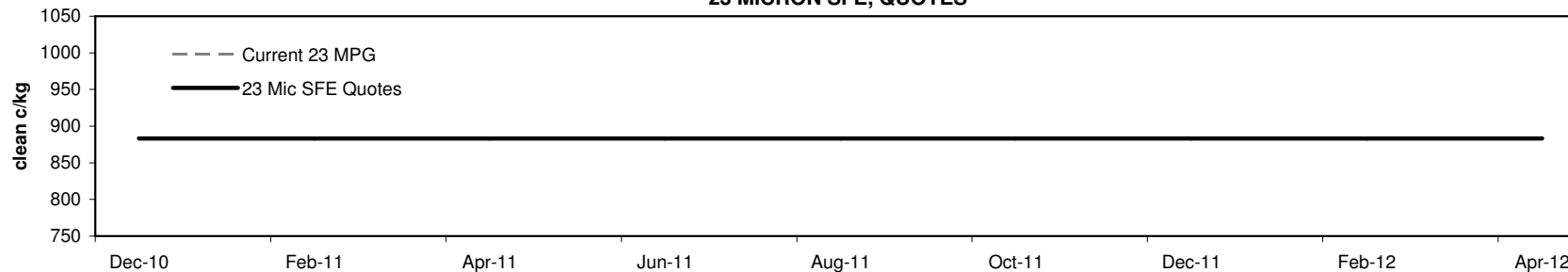
Table 11: 23 micron SFE, as a percentile of the 23 micron MPG

3 Year Percentile	69%	69%	69%	69%	69%	69%	69%	69%	69%
10 Year Percentile	65%	65%	65%	65%	65%	65%	65%	65%	65%

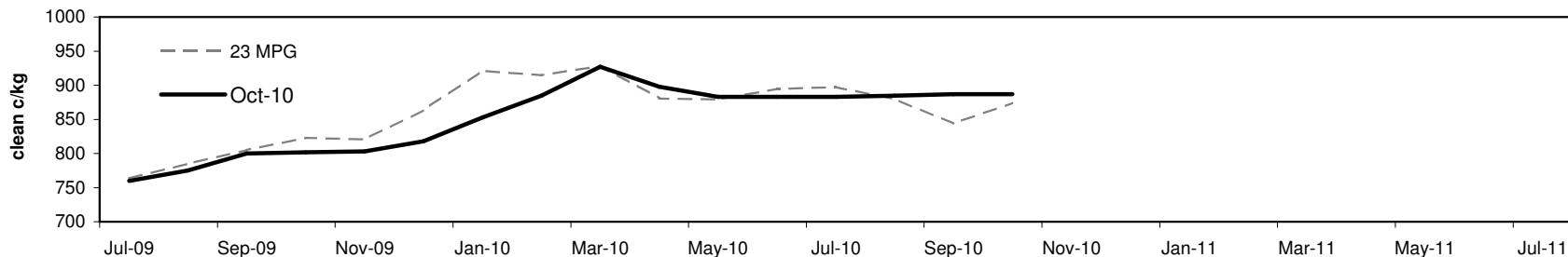
Table 12: 23 micron SFE, compared to MPG

Current 19 MPG	-1	0%	-1	0%	-1	0%	-1	0%	-1	0%	-1	0%	-1	0%	-1	0%
23 MPG, 1 Year Average	0	0%	0	0%	0	0%	0	0%	0	0%	0	0%	0	0%	0	0%
23 MPG, 3 Year Average	+53	6%	+53	6%	+53	6%	+53	6%	+53	6%	+53	6%	+53	6%	+53	6%
23 MPG, 10 Year Average	+63	8%	+63	8%	+63	8%	+63	8%	+63	8%	+63	8%	+63	8%	+63	8%

23 MICRON SFE, QUOTES

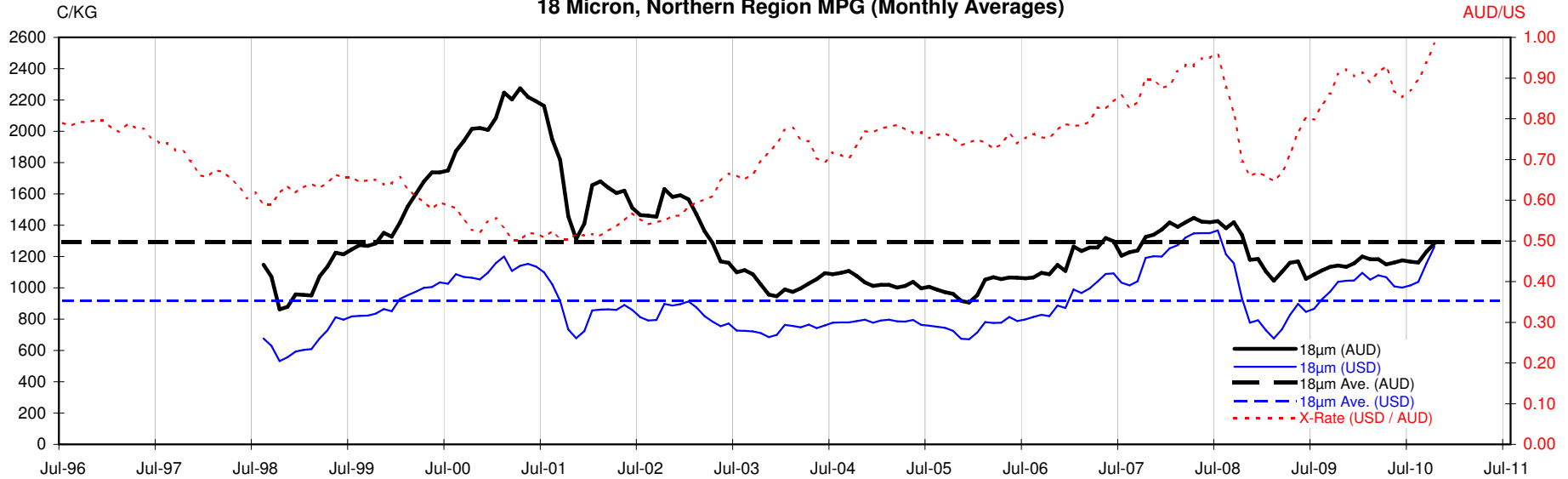


23 MICRON SFE, FRONT MONTH PRICE MOVEMENT (mthly averages)

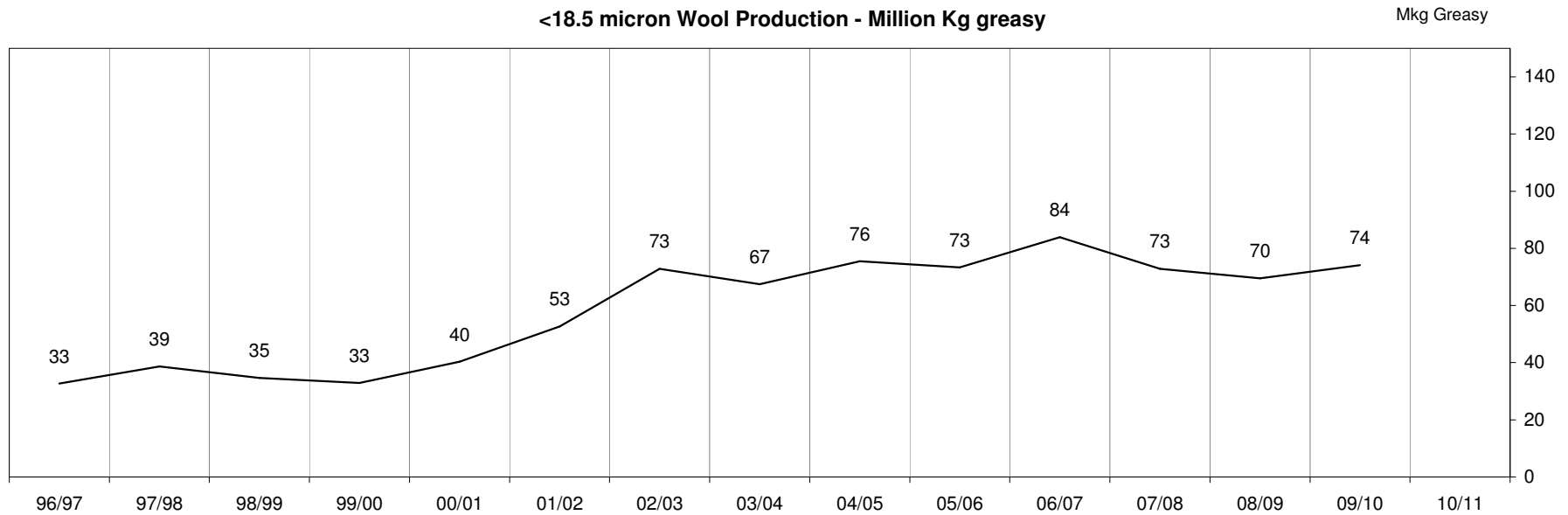


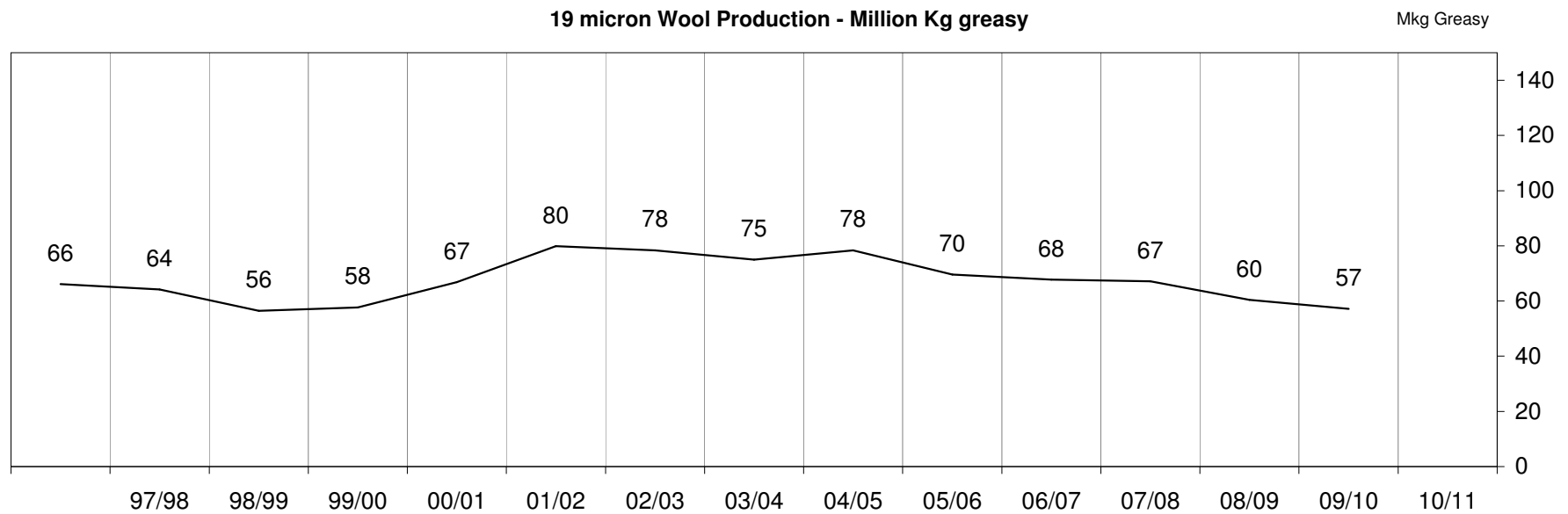
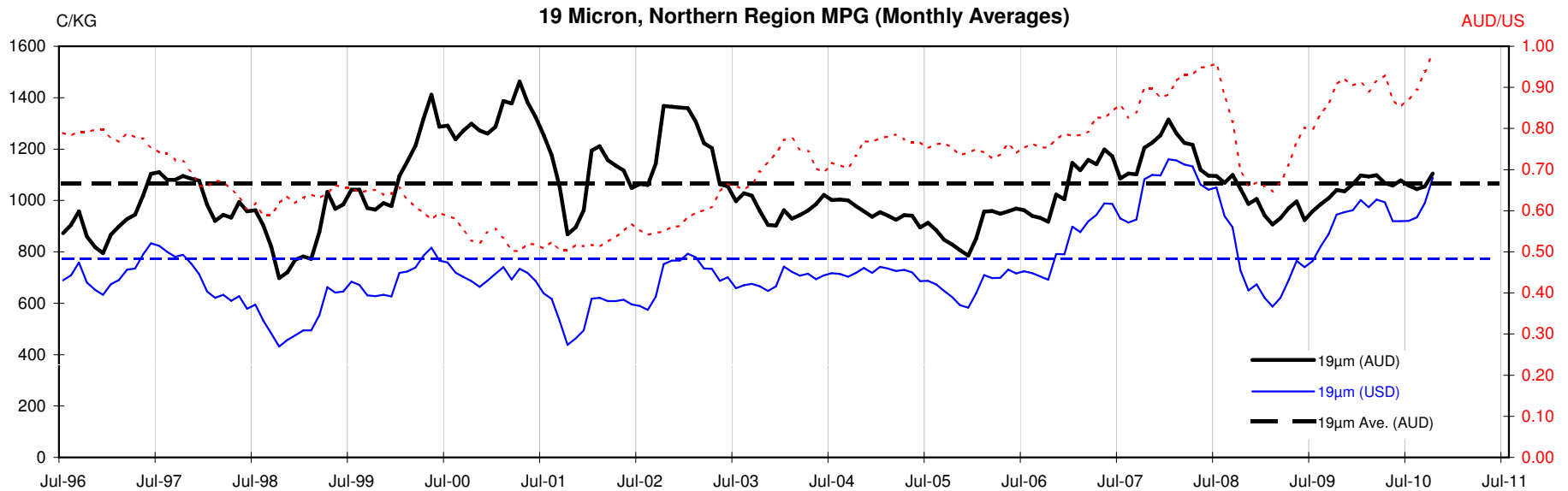


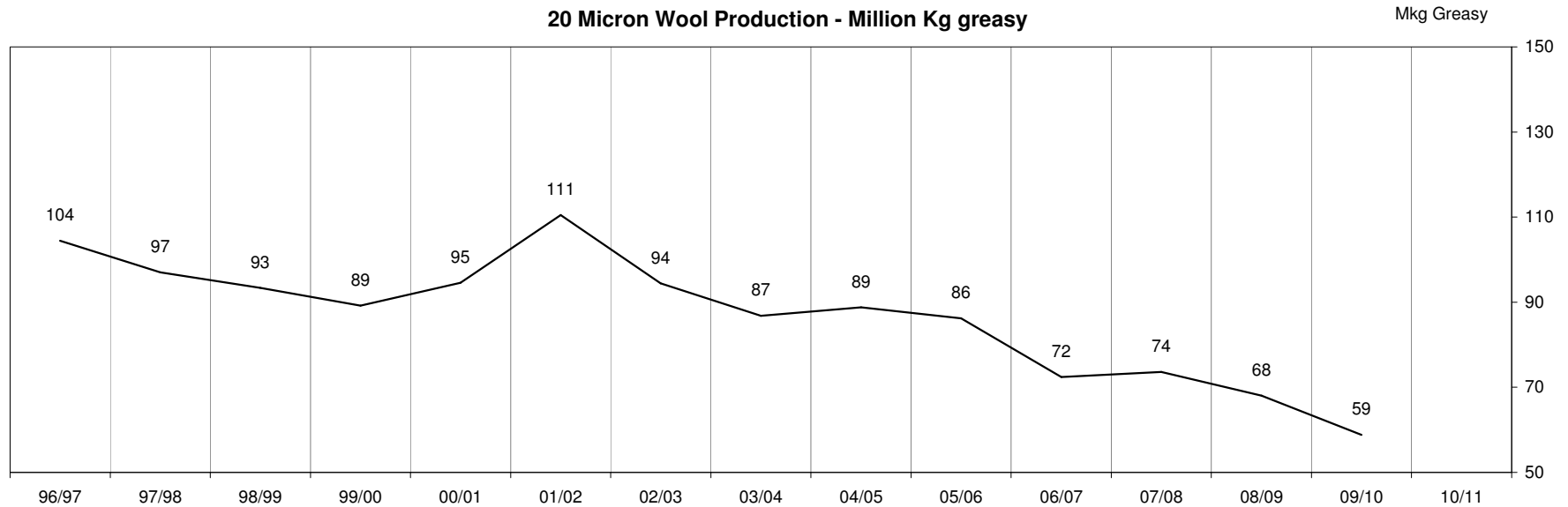
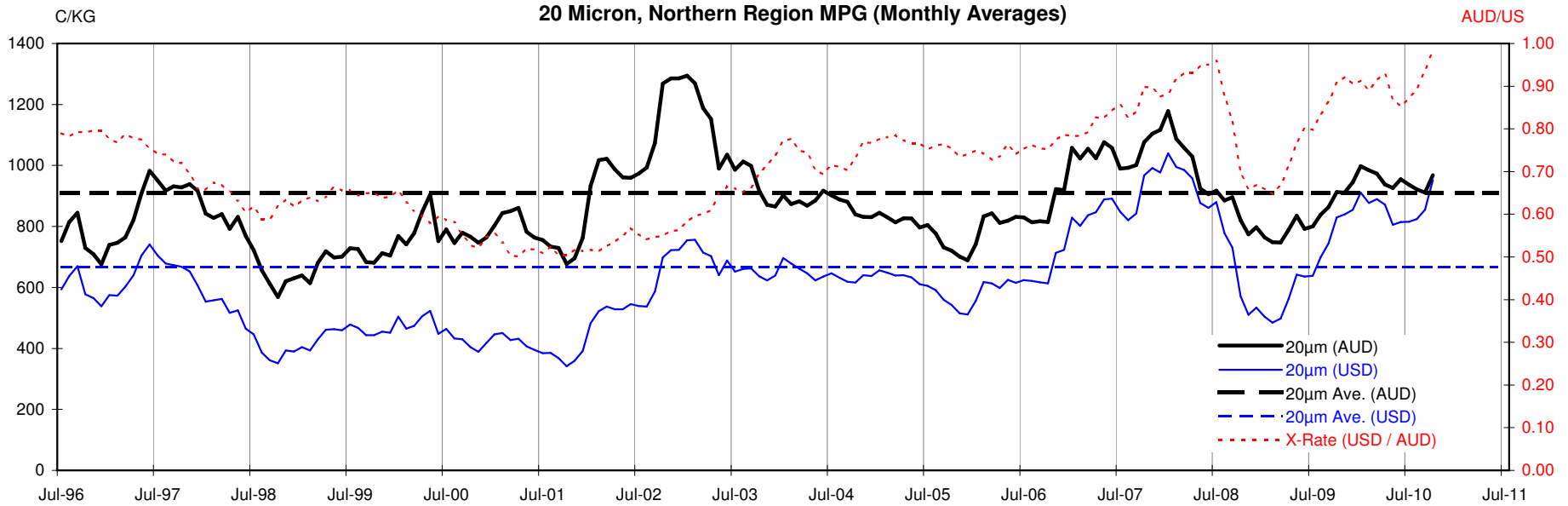
18 Micron, Northern Region MPG (Monthly Averages)

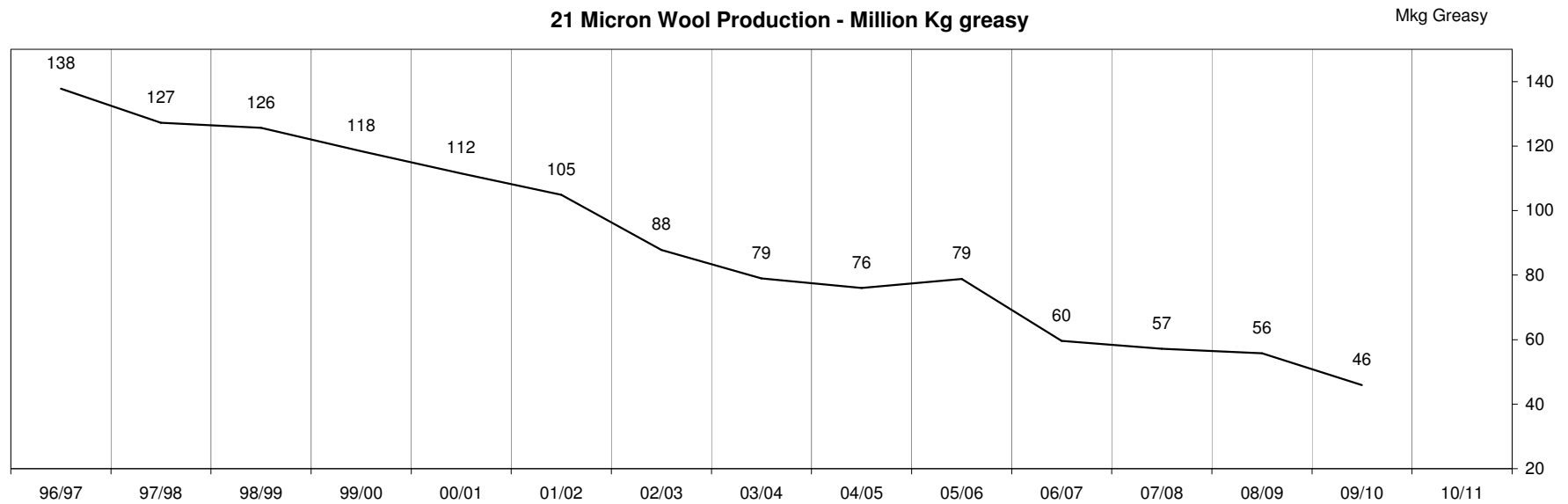
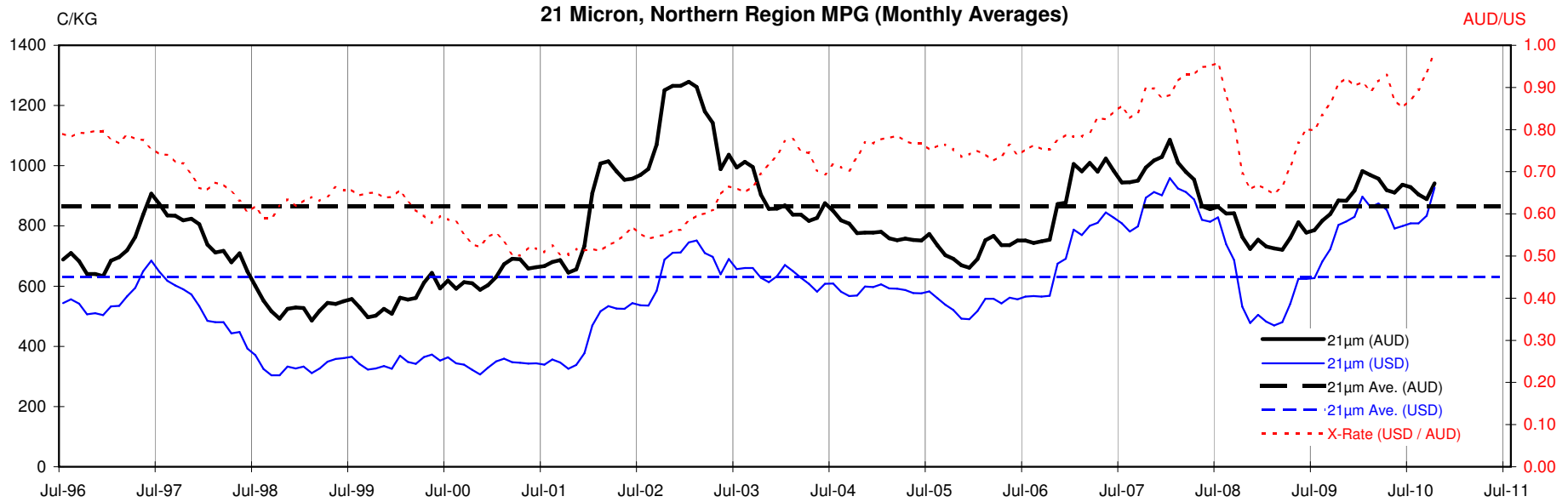


<18.5 micron Wool Production - Million Kg greasy



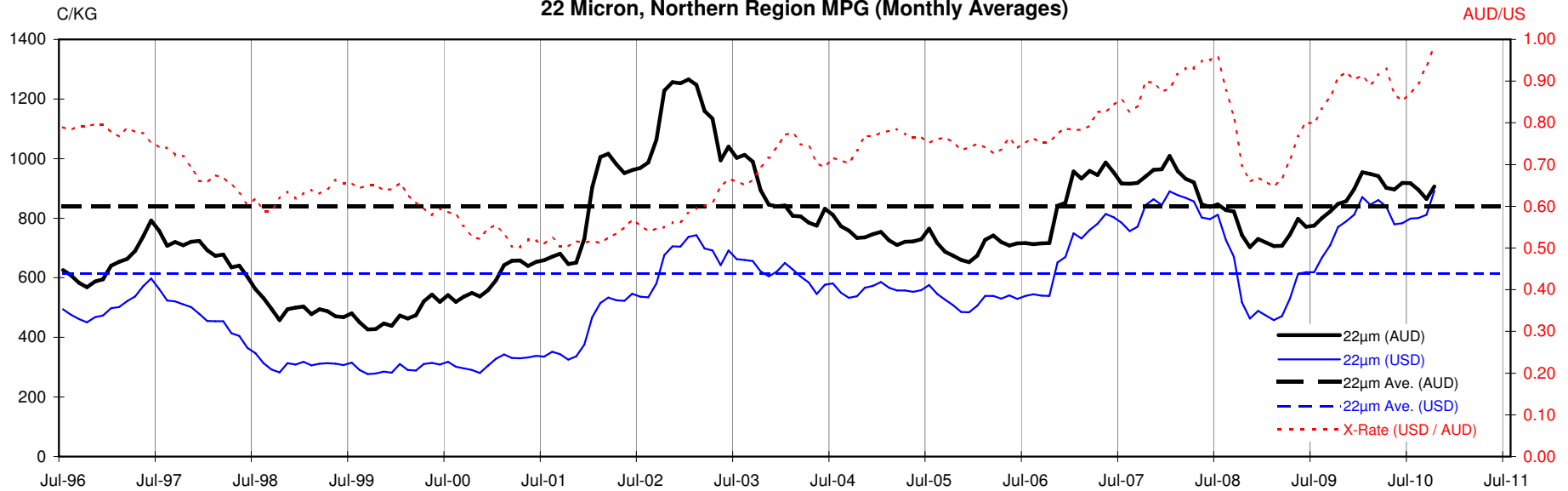






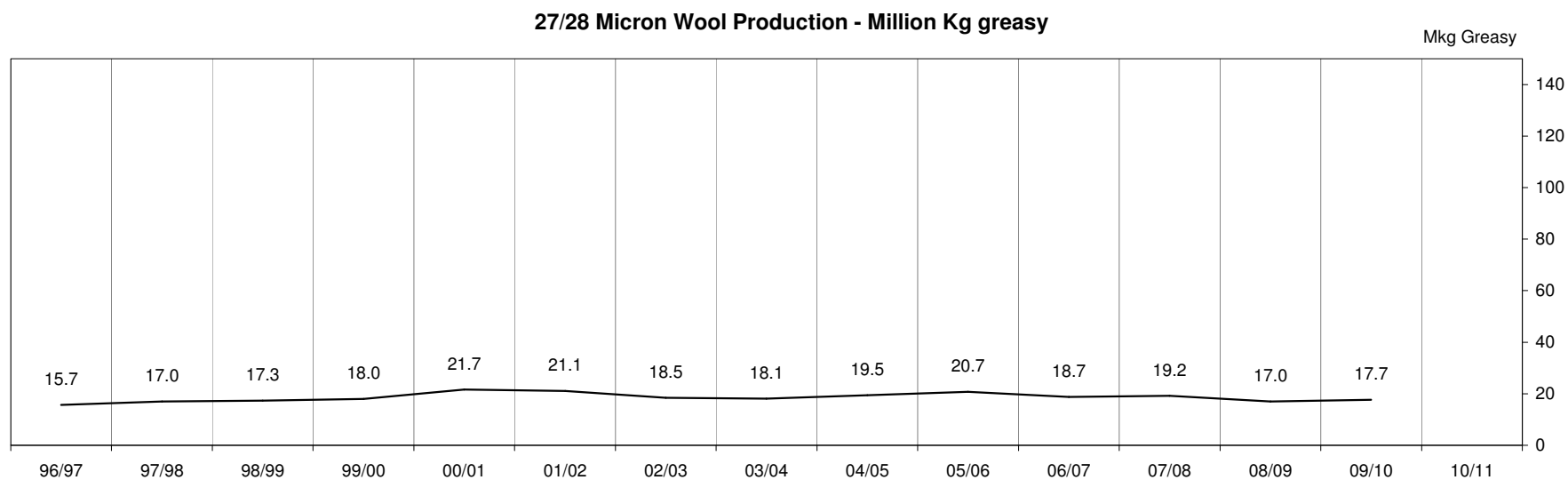
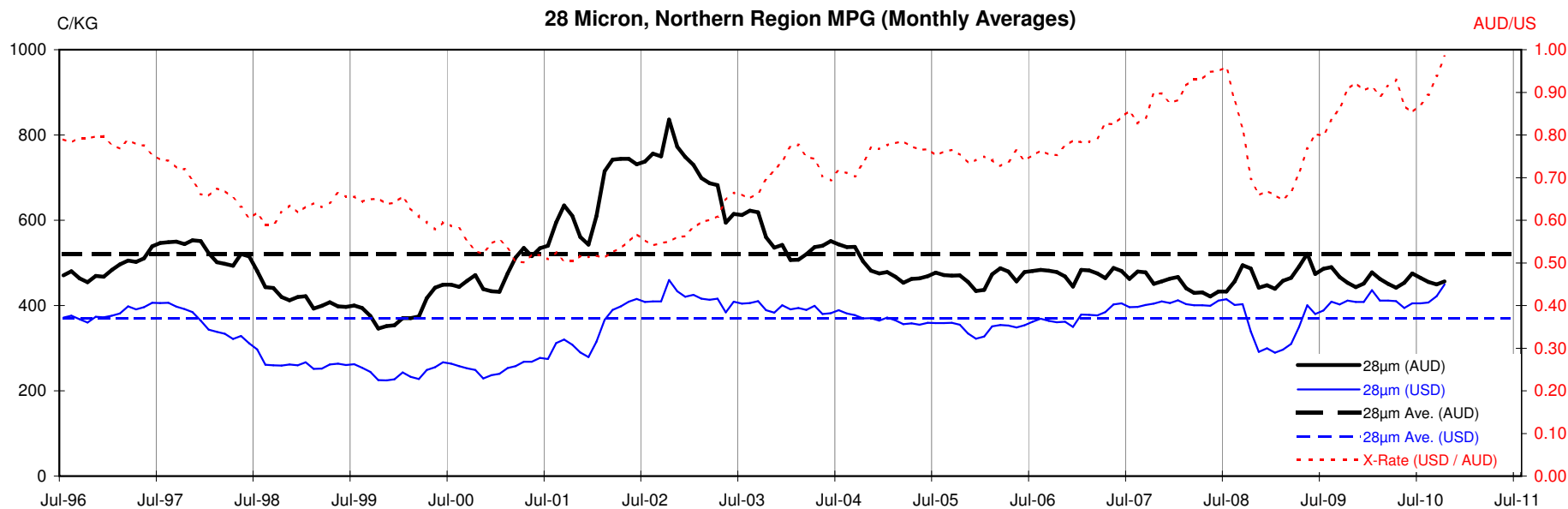


22 Micron, Northern Region MPG (Monthly Averages)



22 Micron Wool Production - Million Kg greasy





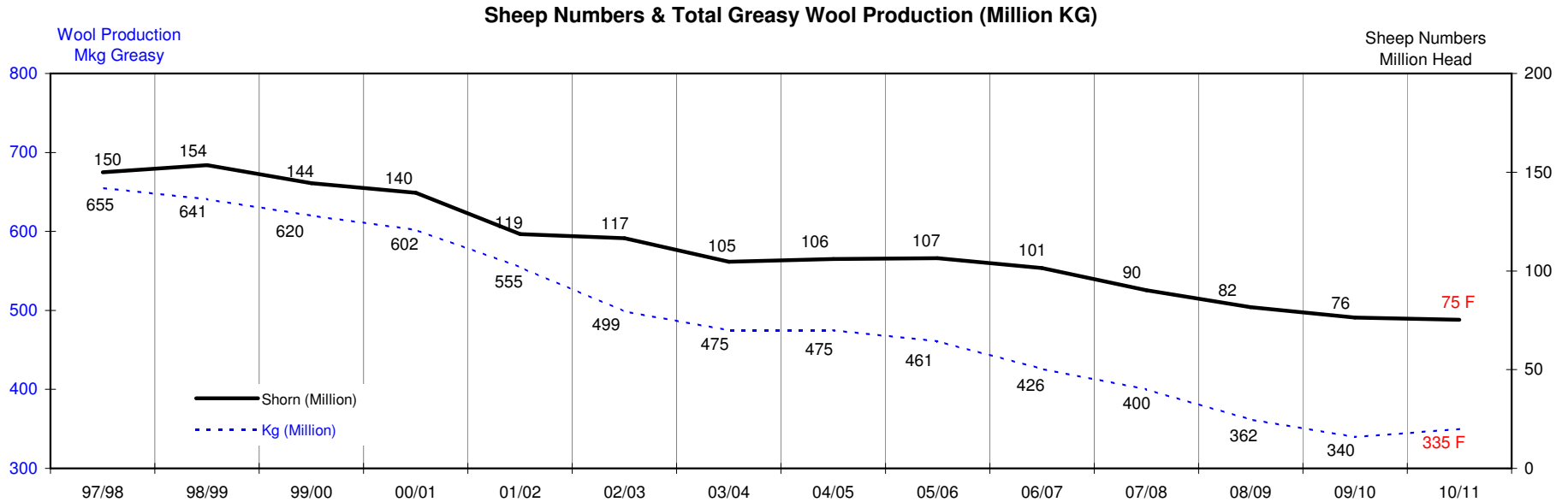
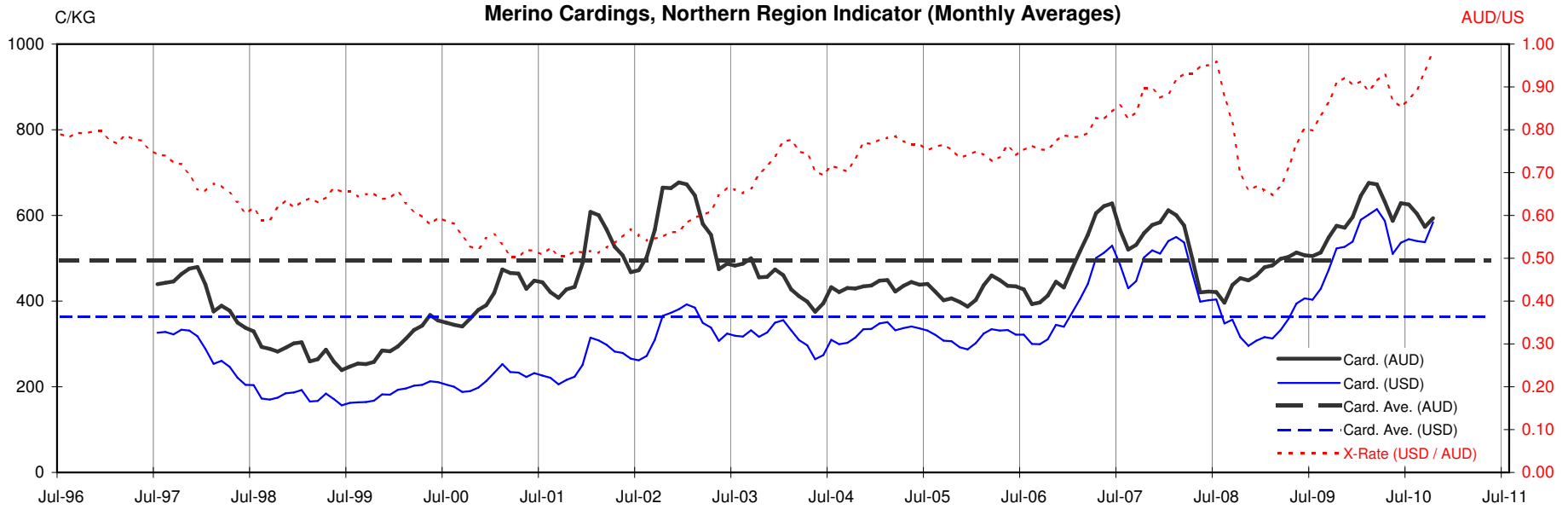




Table 13: Returns pr head for skirted fleece wool.

Skirted FLC Weight 9 Kg		Micron																	
		16	16.5	17	17.5	18	18.5	19	19.5	20	21	22	23	24	25	26	28	30	32
Yield (Sch Dry)	25% Current	\$41	\$36	\$33	\$32	\$31	\$29	\$26	\$24	\$22	\$21	\$21	\$20	\$18	\$17	\$14	\$10	\$9	\$8
	10yr ave.			\$32		\$29		\$24		\$20	\$19	\$19	\$18	\$18	\$16	\$15	\$12	\$10	\$9
	30% Current	\$49	\$43	\$40	\$38	\$37	\$35	\$32	\$29	\$27	\$26	\$25	\$24	\$22	\$20	\$17	\$12	\$11	\$10
	10yr ave.			\$38		\$35		\$29		\$25	\$23	\$23	\$22	\$21	\$19	\$17	\$14	\$12	\$11
	35% Current	\$57	\$51	\$47	\$45	\$44	\$41	\$37	\$34	\$31	\$30	\$29	\$28	\$26	\$24	\$20	\$15	\$13	\$12
	10yr ave.			\$45		\$41		\$34		\$29	\$27	\$26	\$26	\$25	\$22	\$20	\$16	\$14	\$13
	40% Current	\$66	\$58	\$53	\$51	\$50	\$47	\$42	\$38	\$36	\$34	\$33	\$32	\$29	\$27	\$23	\$17	\$15	\$13
	10yr ave.			\$51		\$46		\$38		\$33	\$31	\$30	\$30	\$28	\$25	\$23	\$19	\$16	\$15
	45% Current	\$74	\$65	\$60	\$58	\$56	\$53	\$47	\$43	\$40	\$38	\$37	\$36	\$33	\$30	\$26	\$19	\$17	\$15
	10yr ave.			\$58		\$52		\$43		\$37	\$35	\$34	\$33	\$32	\$29	\$26	\$21	\$18	\$17
	50% Current	\$82	\$72	\$67	\$64	\$62	\$59	\$53	\$48	\$45	\$43	\$41	\$40	\$37	\$34	\$29	\$21	\$19	\$17
	10yr ave.			\$64		\$58		\$48		\$41	\$39	\$38	\$37	\$35	\$32	\$29	\$23	\$20	\$19
	55% Current	\$90	\$79	\$74	\$70	\$68	\$65	\$58	\$53	\$49	\$47	\$45	\$44	\$40	\$37	\$32	\$23	\$20	\$18
	10yr ave.			\$70		\$64		\$53		\$45	\$43	\$42	\$41	\$39	\$35	\$32	\$26	\$23	\$20
	60% Current	\$98	\$87	\$80	\$77	\$75	\$70	\$63	\$58	\$53	\$51	\$49	\$48	\$44	\$41	\$35	\$25	\$22	\$20
	10yr ave.			\$77		\$70		\$58		\$49	\$47	\$45	\$44	\$42	\$38	\$35	\$28	\$25	\$22
	65% Current	\$106	\$94	\$87	\$83	\$81	\$76	\$68	\$62	\$58	\$56	\$53	\$52	\$48	\$44	\$38	\$27	\$24	\$22
	10yr ave.			\$83		\$75		\$62		\$53	\$51	\$49	\$48	\$46	\$41	\$38	\$30	\$27	\$24
	70% Current	\$115	\$101	\$94	\$89	\$87	\$82	\$74	\$67	\$62	\$60	\$58	\$56	\$52	\$47	\$41	\$29	\$26	\$23
	10yr ave.			\$89		\$81		\$67		\$57	\$54	\$53	\$52	\$49	\$44	\$41	\$33	\$29	\$26
	75% Current	\$123	\$108	\$100	\$96	\$93	\$88	\$79	\$72	\$67	\$64	\$62	\$60	\$55	\$51	\$43	\$31	\$28	\$25
	10yr ave.			\$96		\$87		\$72		\$61	\$58	\$57	\$55	\$53	\$48	\$44	\$35	\$31	\$28
	80% Current	\$131	\$116	\$107	\$102	\$100	\$94	\$84	\$77	\$71	\$68	\$66	\$64	\$59	\$54	\$46	\$33	\$30	\$27
	10yr ave.			\$102		\$93		\$77		\$66	\$62	\$60	\$59	\$56	\$51	\$47	\$38	\$33	\$30
	85% Current	\$139	\$123	\$114	\$109	\$106	\$100	\$89	\$82	\$76	\$73	\$70	\$68	\$63	\$57	\$49	\$35	\$32	\$28
	10yr ave.			\$109		\$99		\$82		\$70	\$66	\$64	\$63	\$60	\$54	\$49	\$40	\$35	\$32

The above shows estimated returns per head for skirted fleece wool. These figures do not take into account the value of skirtings and oddments and do not take into account discounts that may apply for faults under individual circumstances. These figures are based on a market index of 100% and should be used as a guide only. Returns over \$30 / head for fleece wool are highlighted.

Source: Australian Wool Exchange, Australian Wool Innovation, Sydney Futures Exchange, x-rates.com

Disclaimer: While all due care has been taken in the preparation of this document, no warranty is made as to its accuracy, reliability or completeness. To the extent permitted by law neither Jemalong or their sources including subsidiaries and staff, accept liability to any person for loss or damage arising from the use of this information.



Table 14: Returns pr head for skirted fleece wool.

Skirted FLC Weight		Micron																	
8 Kg		16	16.5	17	17.5	18	18.5	19	19.5	20	21	22	23	24	25	26	28	30	32
Yield (Sch Dry)	25% Current	\$41	\$36	\$33	\$32	\$31	\$29	\$26	\$24	\$22	\$21	\$21	\$20	\$18	\$17	\$14	\$10	\$9	\$8
	10yr ave.			\$32		\$29		\$24		\$20	\$19	\$19	\$18	\$18	\$16	\$15	\$12	\$10	\$9
	30% Current	\$49	\$43	\$40	\$38	\$37	\$35	\$32	\$29	\$27	\$26	\$25	\$24	\$22	\$20	\$17	\$12	\$11	\$10
	10yr ave.			\$38		\$35		\$29		\$25	\$23	\$23	\$22	\$21	\$19	\$17	\$14	\$12	\$11
	35% Current	\$57	\$51	\$47	\$45	\$44	\$41	\$37	\$34	\$31	\$30	\$29	\$28	\$26	\$24	\$20	\$15	\$13	\$12
	10yr ave.			\$45		\$41		\$34		\$29	\$27	\$26	\$26	\$25	\$22	\$20	\$16	\$14	\$13
	40% Current	\$66	\$58	\$53	\$51	\$50	\$47	\$42	\$38	\$36	\$34	\$33	\$32	\$29	\$27	\$23	\$17	\$15	\$13
	10yr ave.			\$51		\$46		\$38		\$33	\$31	\$30	\$30	\$28	\$25	\$23	\$19	\$16	\$15
	45% Current	\$74	\$65	\$60	\$58	\$56	\$53	\$47	\$43	\$40	\$38	\$37	\$36	\$33	\$30	\$26	\$19	\$17	\$15
	10yr ave.			\$58		\$52		\$43		\$37	\$35	\$34	\$33	\$32	\$29	\$26	\$21	\$18	\$17
	50% Current	\$82	\$72	\$67	\$64	\$62	\$59	\$53	\$48	\$45	\$43	\$41	\$40	\$37	\$34	\$29	\$21	\$19	\$17
	10yr ave.			\$64		\$58		\$48		\$41	\$39	\$38	\$37	\$35	\$32	\$29	\$23	\$20	\$19
	55% Current	\$90	\$79	\$74	\$70	\$68	\$65	\$58	\$53	\$49	\$47	\$45	\$44	\$40	\$37	\$32	\$23	\$20	\$18
	10yr ave.			\$70		\$64		\$53		\$45	\$43	\$42	\$41	\$39	\$35	\$32	\$26	\$23	\$20
	60% Current	\$98	\$87	\$80	\$77	\$75	\$70	\$63	\$58	\$53	\$51	\$49	\$48	\$44	\$41	\$35	\$25	\$22	\$20
	10yr ave.			\$77		\$70		\$58		\$49	\$47	\$45	\$44	\$42	\$38	\$35	\$28	\$25	\$22
	65% Current	\$106	\$94	\$87	\$83	\$81	\$76	\$68	\$62	\$58	\$56	\$53	\$52	\$48	\$44	\$38	\$27	\$24	\$22
	10yr ave.			\$83		\$75		\$62		\$53	\$51	\$49	\$48	\$46	\$41	\$38	\$30	\$27	\$24
	70% Current	\$115	\$101	\$94	\$89	\$87	\$82	\$74	\$67	\$62	\$60	\$58	\$56	\$52	\$47	\$41	\$29	\$26	\$23
	10yr ave.			\$89		\$81		\$67		\$57	\$54	\$53	\$52	\$49	\$44	\$41	\$33	\$29	\$26
	75% Current	\$123	\$108	\$100	\$96	\$93	\$88	\$79	\$72	\$67	\$64	\$62	\$60	\$55	\$51	\$43	\$31	\$28	\$25
	10yr ave.			\$96		\$87		\$72		\$61	\$58	\$57	\$55	\$53	\$48	\$44	\$35	\$31	\$28
	80% Current	\$131	\$116	\$107	\$102	\$100	\$94	\$84	\$77	\$71	\$68	\$66	\$64	\$59	\$54	\$46	\$33	\$30	\$27
	10yr ave.			\$102		\$93		\$77		\$66	\$62	\$60	\$59	\$56	\$51	\$47	\$38	\$33	\$30
	85% Current	\$139	\$123	\$114	\$109	\$106	\$100	\$89	\$82	\$76	\$73	\$70	\$68	\$63	\$57	\$49	\$35	\$32	\$28
	10yr ave.			\$109		\$99		\$82		\$70	\$66	\$64	\$63	\$60	\$54	\$49	\$40	\$35	\$32

The above shows estimated returns per head for skirted fleece wool. These figures do not take into account the value of skirtings and oddments and do not take into account discounts that may apply for faults under individual circumstances. These figures are based on a market index of 100% and should be used as a guide only. Returns over \$30 / head for fleece wool are highlighted.

Source: Australian Wool Exchange, Australian Wool Innovation, Sydney Futures Exchange, x-rates.com

Disclaimer: While all due care has been taken in the preparation of this document, no warranty is made as to its accuracy, reliability or completeness. To the extent permitted by law neither Jemalong or their sources including subsidiaries and staff, accept liability to any person for loss or damage arising from the use of this information.



Table 15: Returns pr head for skirted fleece wool.

Skirted FLC Weight 7 Kg		Micron																	
		16	16.5	17	17.5	18	18.5	19	19.5	20	21	22	23	24	25	26	28	30	32
Yield (Sch Dry)	25% Current	\$41	\$36	\$33	\$32	\$31	\$29	\$26	\$24	\$22	\$21	\$21	\$20	\$18	\$17	\$14	\$10	\$9	\$8
	10yr ave.			\$32		\$29		\$24		\$20	\$19	\$19	\$18	\$18	\$16	\$15	\$12	\$10	\$9
	30% Current	\$49	\$43	\$40	\$38	\$37	\$35	\$32	\$29	\$27	\$26	\$25	\$24	\$22	\$20	\$17	\$12	\$11	\$10
	10yr ave.			\$38		\$35		\$29		\$25	\$23	\$23	\$22	\$21	\$19	\$17	\$14	\$12	\$11
	35% Current	\$57	\$51	\$47	\$45	\$44	\$41	\$37	\$34	\$31	\$30	\$29	\$28	\$26	\$24	\$20	\$15	\$13	\$12
	10yr ave.			\$45		\$41		\$34		\$29	\$27	\$26	\$26	\$25	\$22	\$20	\$16	\$14	\$13
	40% Current	\$66	\$58	\$53	\$51	\$50	\$47	\$42	\$38	\$36	\$34	\$33	\$32	\$29	\$27	\$23	\$17	\$15	\$13
	10yr ave.			\$51		\$46		\$38		\$33	\$31	\$30	\$30	\$28	\$25	\$23	\$19	\$16	\$15
	45% Current	\$74	\$65	\$60	\$58	\$56	\$53	\$47	\$43	\$40	\$38	\$37	\$36	\$33	\$30	\$26	\$19	\$17	\$15
	10yr ave.			\$58		\$52		\$43		\$37	\$35	\$34	\$33	\$32	\$29	\$26	\$21	\$18	\$17
	50% Current	\$82	\$72	\$67	\$64	\$62	\$59	\$53	\$48	\$45	\$43	\$41	\$40	\$37	\$34	\$29	\$21	\$19	\$17
	10yr ave.			\$64		\$58		\$48		\$41	\$39	\$38	\$37	\$35	\$32	\$29	\$23	\$20	\$19
	55% Current	\$90	\$79	\$74	\$70	\$68	\$65	\$58	\$53	\$49	\$47	\$45	\$44	\$40	\$37	\$32	\$23	\$20	\$18
	10yr ave.			\$70		\$64		\$53		\$45	\$43	\$42	\$41	\$39	\$35	\$32	\$26	\$23	\$20
	60% Current	\$98	\$87	\$80	\$77	\$75	\$70	\$63	\$58	\$53	\$51	\$49	\$48	\$44	\$41	\$35	\$25	\$22	\$20
	10yr ave.			\$77		\$70		\$58		\$49	\$47	\$45	\$44	\$42	\$38	\$35	\$28	\$25	\$22
	65% Current	\$106	\$94	\$87	\$83	\$81	\$76	\$68	\$62	\$58	\$56	\$53	\$52	\$48	\$44	\$38	\$27	\$24	\$22
	10yr ave.			\$83		\$75		\$62		\$53	\$51	\$49	\$48	\$46	\$41	\$38	\$30	\$27	\$24
	70% Current	\$115	\$101	\$94	\$89	\$87	\$82	\$74	\$67	\$62	\$60	\$58	\$56	\$52	\$47	\$41	\$29	\$26	\$23
	10yr ave.			\$89		\$81		\$67		\$57	\$54	\$53	\$52	\$49	\$44	\$41	\$33	\$29	\$26
	75% Current	\$123	\$108	\$100	\$96	\$93	\$88	\$79	\$72	\$67	\$64	\$62	\$60	\$55	\$51	\$43	\$31	\$28	\$25
	10yr ave.			\$96		\$87		\$72		\$61	\$58	\$57	\$55	\$53	\$48	\$44	\$35	\$31	\$28
	80% Current	\$131	\$116	\$107	\$102	\$100	\$94	\$84	\$77	\$71	\$68	\$66	\$64	\$59	\$54	\$46	\$33	\$30	\$27
	10yr ave.			\$102		\$93		\$77		\$66	\$62	\$60	\$59	\$56	\$51	\$47	\$38	\$33	\$30
	85% Current	\$139	\$123	\$114	\$109	\$106	\$100	\$89	\$82	\$76	\$73	\$70	\$68	\$63	\$57	\$49	\$35	\$32	\$28
	10yr ave.			\$109		\$99		\$82		\$70	\$66	\$64	\$63	\$60	\$54	\$49	\$40	\$35	\$32

The above shows estimated returns per head for skirted fleece wool. These figures do not take into account the value of skirtings and oddments and do not take into account discounts that may apply for faults under individual circumstances. These figures are based on a market index of 100% and should be used as a guide only. Returns over \$30 / head for fleece wool are highlighted.

Source: Australian Wool Exchange, Australian Wool Innovation, Sydney Futures Exchange, x-rates.com

Disclaimer: While all due care has been taken in the preparation of this document, no warranty is made as to its accuracy, reliability or completeness. To the extent permitted by law neither Jemalong or their sources including subsidiaries and staff, accept liability to any person for loss or damage arising from the use of this information.



Table 16: Returns pr head for skirted fleece wool.

Skirted FLC Weight 6 Kg		Micron																	
		16	16.5	17	17.5	18	18.5	19	19.5	20	21	22	23	24	25	26	28	30	32
Yield (Sch Dry)	25% Current	\$41	\$36	\$33	\$32	\$31	\$29	\$26	\$24	\$22	\$21	\$21	\$20	\$18	\$17	\$14	\$10	\$9	\$8
	10yr ave.			\$32		\$29		\$24		\$20	\$19	\$19	\$18	\$18	\$16	\$15	\$12	\$10	\$9
	30% Current	\$49	\$43	\$40	\$38	\$37	\$35	\$32	\$29	\$27	\$26	\$25	\$24	\$22	\$20	\$17	\$12	\$11	\$10
	10yr ave.			\$38		\$35		\$29		\$25	\$23	\$23	\$22	\$21	\$19	\$17	\$14	\$12	\$11
	35% Current	\$57	\$51	\$47	\$45	\$44	\$41	\$37	\$34	\$31	\$30	\$29	\$28	\$26	\$24	\$20	\$15	\$13	\$12
	10yr ave.			\$45		\$41		\$34		\$29	\$27	\$26	\$26	\$25	\$22	\$20	\$16	\$14	\$13
	40% Current	\$66	\$58	\$53	\$51	\$50	\$47	\$42	\$38	\$36	\$34	\$33	\$32	\$29	\$27	\$23	\$17	\$15	\$13
	10yr ave.			\$51		\$46		\$38		\$33	\$31	\$30	\$30	\$28	\$25	\$23	\$19	\$16	\$15
	45% Current	\$74	\$65	\$60	\$58	\$56	\$53	\$47	\$43	\$40	\$38	\$37	\$36	\$33	\$30	\$26	\$19	\$17	\$15
	10yr ave.			\$58		\$52		\$43		\$37	\$35	\$34	\$33	\$32	\$29	\$26	\$21	\$18	\$17
	50% Current	\$82	\$72	\$67	\$64	\$62	\$59	\$53	\$48	\$45	\$43	\$41	\$40	\$37	\$34	\$29	\$21	\$19	\$17
	10yr ave.			\$64		\$58		\$48		\$41	\$39	\$38	\$37	\$35	\$32	\$29	\$23	\$20	\$19
	55% Current	\$90	\$79	\$74	\$70	\$68	\$65	\$58	\$53	\$49	\$47	\$45	\$44	\$40	\$37	\$32	\$23	\$20	\$18
	10yr ave.			\$70		\$64		\$53		\$45	\$43	\$42	\$41	\$39	\$35	\$32	\$26	\$23	\$20
	60% Current	\$98	\$87	\$80	\$77	\$75	\$70	\$63	\$58	\$53	\$51	\$49	\$48	\$44	\$41	\$35	\$25	\$22	\$20
	10yr ave.			\$77		\$70		\$58		\$49	\$47	\$45	\$44	\$42	\$38	\$35	\$28	\$25	\$22
	65% Current	\$106	\$94	\$87	\$83	\$81	\$76	\$68	\$62	\$58	\$56	\$53	\$52	\$48	\$44	\$38	\$27	\$24	\$22
	10yr ave.			\$83		\$75		\$62		\$53	\$51	\$49	\$48	\$46	\$41	\$38	\$30	\$27	\$24
	70% Current	\$115	\$101	\$94	\$89	\$87	\$82	\$74	\$67	\$62	\$60	\$58	\$56	\$52	\$47	\$41	\$29	\$26	\$23
	10yr ave.			\$89		\$81		\$67		\$57	\$54	\$53	\$52	\$49	\$44	\$41	\$33	\$29	\$26
	75% Current	\$123	\$108	\$100	\$96	\$93	\$88	\$79	\$72	\$67	\$64	\$62	\$60	\$55	\$51	\$43	\$31	\$28	\$25
	10yr ave.			\$96		\$87		\$72		\$61	\$58	\$57	\$55	\$53	\$48	\$44	\$35	\$31	\$28
	80% Current	\$131	\$116	\$107	\$102	\$100	\$94	\$84	\$77	\$71	\$68	\$66	\$64	\$59	\$54	\$46	\$33	\$30	\$27
	10yr ave.			\$102		\$93		\$77		\$66	\$62	\$60	\$59	\$56	\$51	\$47	\$38	\$33	\$30
	85% Current	\$139	\$123	\$114	\$109	\$106	\$100	\$89	\$82	\$76	\$73	\$70	\$68	\$63	\$57	\$49	\$35	\$32	\$28
	10yr ave.			\$109		\$99		\$82		\$70	\$66	\$64	\$63	\$60	\$54	\$49	\$40	\$35	\$32

The above shows estimated returns per head for skirted fleece wool. These figures do not take into account the value of skirtings and oddments and do not take into account discounts that may apply for faults under individual circumstances. These figures are based on a market index of 100% and should be used as a guide only. Returns over \$30 / head for fleece wool are highlighted.

Source: Australian Wool Exchange, Australian Wool Innovation, Sydney Futures Exchange, x-rates.com

Disclaimer: While all due care has been taken in the preparation of this document, no warranty is made as to its accuracy, reliability or completeness. To the extent permitted by law neither Jemalong or their sources including subsidiaries and staff, accept liability to any person for loss or damage arising from the use of this information.



Table 17: Returns pr head for skirted fleece wool.

Skirted FLC Weight		Micron																	
5 Kg		16	16.5	17	17.5	18	18.5	19	19.5	20	21	22	23	24	25	26	28	30	32
Yield (Sch Dry)	25% Current	\$41	\$36	\$33	\$32	\$31	\$29	\$26	\$24	\$22	\$21	\$21	\$20	\$18	\$17	\$14	\$10	\$9	\$8
	10yr ave.			\$32		\$29		\$24		\$20	\$19	\$19	\$18	\$18	\$16	\$15	\$12	\$10	\$9
	30% Current	\$49	\$43	\$40	\$38	\$37	\$35	\$32	\$29	\$27	\$26	\$25	\$24	\$22	\$20	\$17	\$12	\$11	\$10
	10yr ave.			\$38		\$35		\$29		\$25	\$23	\$23	\$22	\$21	\$19	\$17	\$14	\$12	\$11
	35% Current	\$57	\$51	\$47	\$45	\$44	\$41	\$37	\$34	\$31	\$30	\$29	\$28	\$26	\$24	\$20	\$15	\$13	\$12
	10yr ave.			\$45		\$41		\$34		\$29	\$27	\$26	\$26	\$25	\$22	\$20	\$16	\$14	\$13
	40% Current	\$66	\$58	\$53	\$51	\$50	\$47	\$42	\$38	\$36	\$34	\$33	\$32	\$29	\$27	\$23	\$17	\$15	\$13
	10yr ave.			\$51		\$46		\$38		\$33	\$31	\$30	\$30	\$28	\$25	\$23	\$19	\$16	\$15
	45% Current	\$74	\$65	\$60	\$58	\$56	\$53	\$47	\$43	\$40	\$38	\$37	\$36	\$33	\$30	\$26	\$19	\$17	\$15
	10yr ave.			\$58		\$52		\$43		\$37	\$35	\$34	\$33	\$32	\$29	\$26	\$21	\$18	\$17
	50% Current	\$82	\$72	\$67	\$64	\$62	\$59	\$53	\$48	\$45	\$43	\$41	\$40	\$37	\$34	\$29	\$21	\$19	\$17
	10yr ave.			\$64		\$58		\$48		\$41	\$39	\$38	\$37	\$35	\$32	\$29	\$23	\$20	\$19
	55% Current	\$90	\$79	\$74	\$70	\$68	\$65	\$58	\$53	\$49	\$47	\$45	\$44	\$40	\$37	\$32	\$23	\$20	\$18
	10yr ave.			\$70		\$64		\$53		\$45	\$43	\$42	\$41	\$39	\$35	\$32	\$26	\$23	\$20
	60% Current	\$98	\$87	\$80	\$77	\$75	\$70	\$63	\$58	\$53	\$51	\$49	\$48	\$44	\$41	\$35	\$25	\$22	\$20
	10yr ave.			\$77		\$70		\$58		\$49	\$47	\$45	\$44	\$42	\$38	\$35	\$28	\$25	\$22
	65% Current	\$106	\$94	\$87	\$83	\$81	\$76	\$68	\$62	\$58	\$56	\$53	\$52	\$48	\$44	\$38	\$27	\$24	\$22
	10yr ave.			\$83		\$75		\$62		\$53	\$51	\$49	\$48	\$46	\$41	\$38	\$30	\$27	\$24
	70% Current	\$115	\$101	\$94	\$89	\$87	\$82	\$74	\$67	\$62	\$60	\$58	\$56	\$52	\$47	\$41	\$29	\$26	\$23
	10yr ave.			\$89		\$81		\$67		\$57	\$54	\$53	\$52	\$49	\$44	\$41	\$33	\$29	\$26
	75% Current	\$123	\$108	\$100	\$96	\$93	\$88	\$79	\$72	\$67	\$64	\$62	\$60	\$55	\$51	\$43	\$31	\$28	\$25
	10yr ave.			\$96		\$87		\$72		\$61	\$58	\$57	\$55	\$53	\$48	\$44	\$35	\$31	\$28
	80% Current	\$131	\$116	\$107	\$102	\$100	\$94	\$84	\$77	\$71	\$68	\$66	\$64	\$59	\$54	\$46	\$33	\$30	\$27
	10yr ave.			\$102		\$93		\$77		\$66	\$62	\$60	\$59	\$56	\$51	\$47	\$38	\$33	\$30
	85% Current	\$139	\$123	\$114	\$109	\$106	\$100	\$89	\$82	\$76	\$73	\$70	\$68	\$63	\$57	\$49	\$35	\$32	\$28
	10yr ave.			\$109		\$99		\$82		\$70	\$66	\$64	\$63	\$60	\$54	\$49	\$40	\$35	\$32

The above shows estimated returns per head for skirted fleece wool. These figures do not take into account the value of skirtings and oddments and do not take into account discounts that may apply for faults under individual circumstances. These figures are based on a market index of 100% and should be used as a guide only. Returns over \$30 / head for fleece wool are highlighted.

Source: Australian Wool Exchange, Australian Wool Innovation, Sydney Futures Exchange, x-rates.com

Disclaimer: While all due care has been taken in the preparation of this document, no warranty is made as to its accuracy, reliability or completeness. To the extent permitted by law neither Jemalong or their sources including subsidiaries and staff, accept liability to any person for loss or damage arising from the use of this information.



Table 18: Returns pr head for skirted fleece wool.

Skirted FLC Weight		Micron																	
4 Kg		16	16.5	17	17.5	18	18.5	19	19.5	20	21	22	23	24	25	26	28	30	32
Yield (Sch Dry)	25% Current	\$41	\$36	\$33	\$32	\$31	\$29	\$26	\$24	\$22	\$21	\$21	\$20	\$18	\$17	\$14	\$10	\$9	\$8
	10yr ave.			\$32		\$29		\$24		\$20	\$19	\$19	\$18	\$18	\$16	\$15	\$12	\$10	\$9
	30% Current	\$49	\$43	\$40	\$38	\$37	\$35	\$32	\$29	\$27	\$26	\$25	\$24	\$22	\$20	\$17	\$12	\$11	\$10
	10yr ave.			\$38		\$35		\$29		\$25	\$23	\$23	\$22	\$21	\$19	\$17	\$14	\$12	\$11
	35% Current	\$57	\$51	\$47	\$45	\$44	\$41	\$37	\$34	\$31	\$30	\$29	\$28	\$26	\$24	\$20	\$15	\$13	\$12
	10yr ave.			\$45		\$41		\$34		\$29	\$27	\$26	\$26	\$25	\$22	\$20	\$16	\$14	\$13
	40% Current	\$66	\$58	\$53	\$51	\$50	\$47	\$42	\$38	\$36	\$34	\$33	\$32	\$29	\$27	\$23	\$17	\$15	\$13
	10yr ave.			\$51		\$46		\$38		\$33	\$31	\$30	\$30	\$28	\$25	\$23	\$19	\$16	\$15
	45% Current	\$74	\$65	\$60	\$58	\$56	\$53	\$47	\$43	\$40	\$38	\$37	\$36	\$33	\$30	\$26	\$19	\$17	\$15
	10yr ave.			\$58		\$52		\$43		\$37	\$35	\$34	\$33	\$32	\$29	\$26	\$21	\$18	\$17
	50% Current	\$82	\$72	\$67	\$64	\$62	\$59	\$53	\$48	\$45	\$43	\$41	\$40	\$37	\$34	\$29	\$21	\$19	\$17
	10yr ave.			\$64		\$58		\$48		\$41	\$39	\$38	\$37	\$35	\$32	\$29	\$23	\$20	\$19
	55% Current	\$90	\$79	\$74	\$70	\$68	\$65	\$58	\$53	\$49	\$47	\$45	\$44	\$40	\$37	\$32	\$23	\$20	\$18
	10yr ave.			\$70		\$64		\$53		\$45	\$43	\$42	\$41	\$39	\$35	\$32	\$26	\$23	\$20
	60% Current	\$98	\$87	\$80	\$77	\$75	\$70	\$63	\$58	\$53	\$51	\$49	\$48	\$44	\$41	\$35	\$25	\$22	\$20
	10yr ave.			\$77		\$70		\$58		\$49	\$47	\$45	\$44	\$42	\$38	\$35	\$28	\$25	\$22
	65% Current	\$106	\$94	\$87	\$83	\$81	\$76	\$68	\$62	\$58	\$56	\$53	\$52	\$48	\$44	\$38	\$27	\$24	\$22
	10yr ave.			\$83		\$75		\$62		\$53	\$51	\$49	\$48	\$46	\$41	\$38	\$30	\$27	\$24
	70% Current	\$115	\$101	\$94	\$89	\$87	\$82	\$74	\$67	\$62	\$60	\$58	\$56	\$52	\$47	\$41	\$29	\$26	\$23
	10yr ave.			\$89		\$81		\$67		\$57	\$54	\$53	\$52	\$49	\$44	\$41	\$33	\$29	\$26
	75% Current	\$123	\$108	\$100	\$96	\$93	\$88	\$79	\$72	\$67	\$64	\$62	\$60	\$55	\$51	\$43	\$31	\$28	\$25
	10yr ave.			\$96		\$87		\$72		\$61	\$58	\$57	\$55	\$53	\$48	\$44	\$35	\$31	\$28
	80% Current	\$131	\$116	\$107	\$102	\$100	\$94	\$84	\$77	\$71	\$68	\$66	\$64	\$59	\$54	\$46	\$33	\$30	\$27
	10yr ave.			\$102		\$93		\$77		\$66	\$62	\$60	\$59	\$56	\$51	\$47	\$38	\$33	\$30
	85% Current	\$139	\$123	\$114	\$109	\$106	\$100	\$89	\$82	\$76	\$73	\$70	\$68	\$63	\$57	\$49	\$35	\$32	\$28
	10yr ave.			\$109		\$99		\$82		\$70	\$66	\$64	\$63	\$60	\$54	\$49	\$40	\$35	\$32

The above shows estimated returns per head for skirted fleece wool. These figures do not take into account the value of skirtings and oddments and do not take into account discounts that may apply for faults under individual circumstances. These figures are based on a market index of 100% and should be used as a guide only. Returns over \$30 / head for fleece wool are highlighted.

Source: Australian Wool Exchange, Australian Wool Innovation, Sydney Futures Exchange, x-rates.com

Disclaimer: While all due care has been taken in the preparation of this document, no warranty is made as to its accuracy, reliability or completeness. To the extent permitted by law neither Jemalong or their sources including subsidiaries and staff, accept liability to any person for loss or damage arising from the use of this information.



Table 19: Returns pr head for skirted fleece wool.

Skirted FLC Weight		Micron																	
3 Kg		16	16.5	17	17.5	18	18.5	19	19.5	20	21	22	23	24	25	26	28	30	32
Yield (Sch Dry)	25% Current	\$41	\$36	\$33	\$32	\$31	\$29	\$26	\$24	\$22	\$21	\$21	\$20	\$18	\$17	\$14	\$10	\$9	\$8
	10yr ave.			\$32		\$29		\$24		\$20	\$19	\$19	\$18	\$18	\$16	\$15	\$12	\$10	\$9
	30% Current	\$49	\$43	\$40	\$38	\$37	\$35	\$32	\$29	\$27	\$26	\$25	\$24	\$22	\$20	\$17	\$12	\$11	\$10
	10yr ave.			\$38		\$35		\$29		\$25	\$23	\$23	\$22	\$21	\$19	\$17	\$14	\$12	\$11
	35% Current	\$57	\$51	\$47	\$45	\$44	\$41	\$37	\$34	\$31	\$30	\$29	\$28	\$26	\$24	\$20	\$15	\$13	\$12
	10yr ave.			\$45		\$41		\$34		\$29	\$27	\$26	\$26	\$25	\$22	\$20	\$16	\$14	\$13
	40% Current	\$66	\$58	\$53	\$51	\$50	\$47	\$42	\$38	\$36	\$34	\$33	\$32	\$29	\$27	\$23	\$17	\$15	\$13
	10yr ave.			\$51		\$46		\$38		\$33	\$31	\$30	\$30	\$28	\$25	\$23	\$19	\$16	\$15
	45% Current	\$74	\$65	\$60	\$58	\$56	\$53	\$47	\$43	\$40	\$38	\$37	\$36	\$33	\$30	\$26	\$19	\$17	\$15
	10yr ave.			\$58		\$52		\$43		\$37	\$35	\$34	\$33	\$32	\$29	\$26	\$21	\$18	\$17
	50% Current	\$82	\$72	\$67	\$64	\$62	\$59	\$53	\$48	\$45	\$43	\$41	\$40	\$37	\$34	\$29	\$21	\$19	\$17
	10yr ave.			\$64		\$58		\$48		\$41	\$39	\$38	\$37	\$35	\$32	\$29	\$23	\$20	\$19
	55% Current	\$90	\$79	\$74	\$70	\$68	\$65	\$58	\$53	\$49	\$47	\$45	\$44	\$40	\$37	\$32	\$23	\$20	\$18
	10yr ave.			\$70		\$64		\$53		\$45	\$43	\$42	\$41	\$39	\$35	\$32	\$26	\$23	\$20
	60% Current	\$98	\$87	\$80	\$77	\$75	\$70	\$63	\$58	\$53	\$51	\$49	\$48	\$44	\$41	\$35	\$25	\$22	\$20
	10yr ave.			\$77		\$70		\$58		\$49	\$47	\$45	\$44	\$42	\$38	\$35	\$28	\$25	\$22
	65% Current	\$106	\$94	\$87	\$83	\$81	\$76	\$68	\$62	\$58	\$56	\$53	\$52	\$48	\$44	\$38	\$27	\$24	\$22
	10yr ave.			\$83		\$75		\$62		\$53	\$51	\$49	\$48	\$46	\$41	\$38	\$30	\$27	\$24
	70% Current	\$115	\$101	\$94	\$89	\$87	\$82	\$74	\$67	\$62	\$60	\$58	\$56	\$52	\$47	\$41	\$29	\$26	\$23
	10yr ave.			\$89		\$81		\$67		\$57	\$54	\$53	\$52	\$49	\$44	\$41	\$33	\$29	\$26
	75% Current	\$123	\$108	\$100	\$96	\$93	\$88	\$79	\$72	\$67	\$64	\$62	\$60	\$55	\$51	\$43	\$31	\$28	\$25
	10yr ave.			\$96		\$87		\$72		\$61	\$58	\$57	\$55	\$53	\$48	\$44	\$35	\$31	\$28
	80% Current	\$131	\$116	\$107	\$102	\$100	\$94	\$84	\$77	\$71	\$68	\$66	\$64	\$59	\$54	\$46	\$33	\$30	\$27
	10yr ave.			\$102		\$93		\$77		\$66	\$62	\$60	\$59	\$56	\$51	\$47	\$38	\$33	\$30
	85% Current	\$139	\$123	\$114	\$109	\$106	\$100	\$89	\$82	\$76	\$73	\$70	\$68	\$63	\$57	\$49	\$35	\$32	\$28
	10yr ave.			\$109		\$99		\$82		\$70	\$66	\$64	\$63	\$60	\$54	\$49	\$40	\$35	\$32

The above shows estimated returns per head for skirted fleece wool. These figures do not take into account the value of skirtings and oddments and do not take into account discounts that may apply for faults under individual circumstances. These figures are based on a market index of 100% and should be used as a guide only. Returns over \$30 / head for fleece wool are highlighted.

Source: Australian Wool Exchange, Australian Wool Innovation, Sydney Futures Exchange, x-rates.com

Disclaimer: While all due care has been taken in the preparation of this document, no warranty is made as to its accuracy, reliability or completeness. To the extent permitted by law neither Jemalong or their sources including subsidiaries and staff, accept liability to any person for loss or damage arising from the use of this information.



Table 20: Returns pr head for skirted fleece wool.

Skirted FLC Weight		Micron																	
2 Kg		16	16.5	17	17.5	18	18.5	19	19.5	20	21	22	23	24	25	26	28	30	32
Yield (Sch Dry)	25% Current	\$41	\$36	\$33	\$32	\$31	\$29	\$26	\$24	\$22	\$21	\$21	\$20	\$18	\$17	\$14	\$10	\$9	\$8
	10yr ave.			\$32		\$29		\$24		\$20	\$19	\$19	\$18	\$18	\$16	\$15	\$12	\$10	\$9
	30% Current	\$49	\$43	\$40	\$38	\$37	\$35	\$32	\$29	\$27	\$26	\$25	\$24	\$22	\$20	\$17	\$12	\$11	\$10
	10yr ave.			\$38		\$35		\$29		\$25	\$23	\$23	\$22	\$21	\$19	\$17	\$14	\$12	\$11
	35% Current	\$57	\$51	\$47	\$45	\$44	\$41	\$37	\$34	\$31	\$30	\$29	\$28	\$26	\$24	\$20	\$15	\$13	\$12
	10yr ave.			\$45		\$41		\$34		\$29	\$27	\$26	\$26	\$25	\$22	\$20	\$16	\$14	\$13
	40% Current	\$66	\$58	\$53	\$51	\$50	\$47	\$42	\$38	\$36	\$34	\$33	\$32	\$29	\$27	\$23	\$17	\$15	\$13
	10yr ave.			\$51		\$46		\$38		\$33	\$31	\$30	\$30	\$28	\$25	\$23	\$19	\$16	\$15
	45% Current	\$74	\$65	\$60	\$58	\$56	\$53	\$47	\$43	\$40	\$38	\$37	\$36	\$33	\$30	\$26	\$19	\$17	\$15
	10yr ave.			\$58		\$52		\$43		\$37	\$35	\$34	\$33	\$32	\$29	\$26	\$21	\$18	\$17
	50% Current	\$82	\$72	\$67	\$64	\$62	\$59	\$53	\$48	\$45	\$43	\$41	\$40	\$37	\$34	\$29	\$21	\$19	\$17
	10yr ave.			\$64		\$58		\$48		\$41	\$39	\$38	\$37	\$35	\$32	\$29	\$23	\$20	\$19
	55% Current	\$90	\$79	\$74	\$70	\$68	\$65	\$58	\$53	\$49	\$47	\$45	\$44	\$40	\$37	\$32	\$23	\$20	\$18
	10yr ave.			\$70		\$64		\$53		\$45	\$43	\$42	\$41	\$39	\$35	\$32	\$26	\$23	\$20
	60% Current	\$98	\$87	\$80	\$77	\$75	\$70	\$63	\$58	\$53	\$51	\$49	\$48	\$44	\$41	\$35	\$25	\$22	\$20
	10yr ave.			\$77		\$70		\$58		\$49	\$47	\$45	\$44	\$42	\$38	\$35	\$28	\$25	\$22
	65% Current	\$106	\$94	\$87	\$83	\$81	\$76	\$68	\$62	\$58	\$56	\$53	\$52	\$48	\$44	\$38	\$27	\$24	\$22
	10yr ave.			\$83		\$75		\$62		\$53	\$51	\$49	\$48	\$46	\$41	\$38	\$30	\$27	\$24
	70% Current	\$115	\$101	\$94	\$89	\$87	\$82	\$74	\$67	\$62	\$60	\$58	\$56	\$52	\$47	\$41	\$29	\$26	\$23
	10yr ave.			\$89		\$81		\$67		\$57	\$54	\$53	\$52	\$49	\$44	\$41	\$33	\$29	\$26
	75% Current	\$123	\$108	\$100	\$96	\$93	\$88	\$79	\$72	\$67	\$64	\$62	\$60	\$55	\$51	\$43	\$31	\$28	\$25
	10yr ave.			\$96		\$87		\$72		\$61	\$58	\$57	\$55	\$53	\$48	\$44	\$35	\$31	\$28
	80% Current	\$131	\$116	\$107	\$102	\$100	\$94	\$84	\$77	\$71	\$68	\$66	\$64	\$59	\$54	\$46	\$33	\$30	\$27
	10yr ave.			\$102		\$93		\$77		\$66	\$62	\$60	\$59	\$56	\$51	\$47	\$38	\$33	\$30
	85% Current	\$139	\$123	\$114	\$109	\$106	\$100	\$89	\$82	\$76	\$73	\$70	\$68	\$63	\$57	\$49	\$35	\$32	\$28
	10yr ave.			\$109		\$99		\$82		\$70	\$66	\$64	\$63	\$60	\$54	\$49	\$40	\$35	\$32

The above shows estimated returns per head for skirted fleece wool. These figures do not take into account the value of skirtings and oddments and do not take into account discounts that may apply for faults under individual circumstances. These figures are based on a market index of 100% and should be used as a guide only. Returns over \$30 / head for fleece wool are highlighted.

Source: Australian Wool Exchange, Australian Wool Innovation, Sydney Futures Exchange, x-rates.com

Disclaimer: While all due care has been taken in the preparation of this document, no warranty is made as to its accuracy, reliability or completeness. To the extent permitted by law neither Jemalong or their sources including subsidiaries and staff, accept liability to any person for loss or damage arising from the use of this information.