



Table 1: Northern Region Micron Price Guides

CURRENT MARKET			12 MONTH COMPARISONS								3 YEAR COMPARISONS						Percentile	10 YEAR COMPARISONS						Percentile
Mic.	29/03/2012	22/03/2012	30/03/2011	Now		Now		Now				Now		Percentile				Now		Percentile				
Price Guides	Current Price	Weekly Change	This time Last Year	compared to Last Year	12 Month Low	compared to Low	12 Month High	compared to High	Low	High	Average	compared to 3yr ave	Low		High	10 year Average	compared to 10yr ave							
NRI	1245	-13 -1.0%	1443	-198 -14%	1188	+57 5%	1491	-246 -16%	784	1491	1074	+171 16%	69%	657	1491	930	+315 34%	91%						
16*	2070	0	2730	-660 -24%	1950	+120 6%	2800	-730 -26%	1385	2800	1952	+118 6%	64%											
16.5*	1910	-30 -1.6%	2620	-710 -27%	1800	+110 6%	2680	-770 -29%	1280	2680	1796	+114 6%	66%											
17*	1715	-15 -0.9%	2520	-805 -32%	1620	+95 6%	2530	-815 -32%	1180	2530	1648	+67 4%	64%	1100	2530	1452	+263 18%	85%						
17.5*	1610	-20 -1.2%	2360	-750 -32%	1530	+80 5%	2360	-750 -32%	1130	2360	1546	+64 4%	63%											
18	1526	-44 -2.9%	2158	-632 -29%	1469	+57 4%	2193	-667 -30%	1060	2193	1456	+70 5%	62%	916	2193	1273	+253 20%	84%						
18.5	1466	-38 -2.6%	1942	-476 -25%	1431	+35 2%	1960	-494 -25%	995	1963	1366	+100 7%	62%											
19	1437	-27 -1.9%	1708	-271 -16%	1391	+46 3%	1776	-339 -19%	931	1776	1269	+168 13%	68%	803	1776	1111	+326 29%	91%						
19.5	1414	-14 -1.0%	1524	-110 -7%	1344	+70 5%	1670	-256 -15%	842	1670	1177	+237 20%	74%											
20	1381	+1 0.1%	1396	-15 -1%	1247	+134 11%	1588	-207 -13%	766	1588	1104	+277 25%	82%	700	1588	984	+397 40%	95%						
21	1356	-2 -0.1%	1324	+32 2%	1188	+168 14%	1522	-166 -11%	743	1522	1070	+286 27%	90%	668	1522	943	+413 44%	97%						
22	1325	-10 -0.8%	1313	+12 1%	1134	+191 17%	1461	-136 -9%	730	1461	1036	+289 28%	92%	659	1461	915	+410 45%	97%						
23	1265	-8 -0.6%	1291	-26 -2%	1048	+217 21%	1347	-82 -6%	716	1347	990	+275 28%	90%	652	1347	886	+379 43%	97%						
24	1169	-4 -0.3%	1165	+4 0%	983	+186 19%	1213	-44 -4%	700	1207	908	+261 29%	98%	638	1299	836	+333 40%	95%						
25	952	-1 -0.1%	1045	-93 -9%	870	+82 9%	1048	-96 -9%	576	1048	783	+169 22%	86%	567	1198	742	+210 28%	87%						
26	834	+2 0.2%	928	-94 -10%	739	+95 13%	928	-94 -10%	564	928	697	+137 20%	82%	532	1088	676	+158 23%	80%						
28	647	-3 -0.5%	730	-83 -11%	596	+51 9%	734	-87 -12%	435	734	542	+105 19%	79%	424	889	531	+116 22%	82%						
30	592	+2 0.3%	668	-76 -11%	524	+68 13%	670	-78 -12%	378	670	485	+107 22%	78%	344	729	463	+129 28%	83%						
32	506	-7 -1.4%	616	-110 -18%	481	+25 5%	638	-132 -21%	326	638	433	+73 17%	69%	297	669	417	+89 21%	80%						
MC	740	-16 -2.2%	817	-77 -9%	673	+67 10%	831	-91 -11%	499	831	653	+87 13%	81%	380	831	534	+206 39%	95%						

Note:

* Due to the irregular market quoting for some fine wool categories, figures shown relating to micron categories below 18 micron are an estimate based on the AWEX Premium & Discounts Report & other available information.

* For any category, where there is insufficient quantity offered to enable AWEX to quote, a quote will be provided based on the best available information.

* 10 Year data is not available for some micron categories, which may result in blank spaces in the table above.

Definitions:

* A Percentile, is a value on a scale of one hundred that indicates the percent of a distribution that is equal to or below it. In general a percentile between 25% and 75% is considered normal, a percentile below 25% is considered below normal and a percentile above 75% is considered above normal.

Three and ten year percentiles shown in the table above, detail the period of time during the past 3 & 10 years that the market has traded either at or below its current price.

The higher the percentile, the stronger the market.

Source: Australian Wool Exchange, Australian Wool Innovation, Sydney Futures Exchange, x-rates.com

Disclaimer: While all due care has been taken in the preparation of this document, no warranty is made as to its accuracy, reliability or completeness. To the extent permitted by law neither Jemalong or their sources including subsidiaries and staff, accept liability to any person for loss or damage arising from the use of this information.



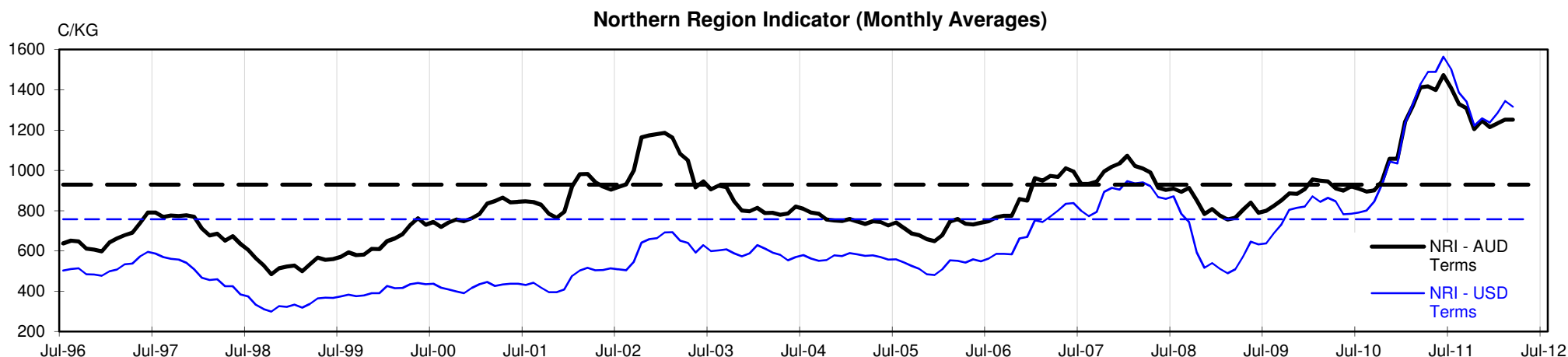
MARKET COMMENTARY

One Australian Dollar = \$ 1.04 US, as of 29/03/2012

NORTHERN REGION –Sale Week 39/11 (43,669 bales offered nationally)

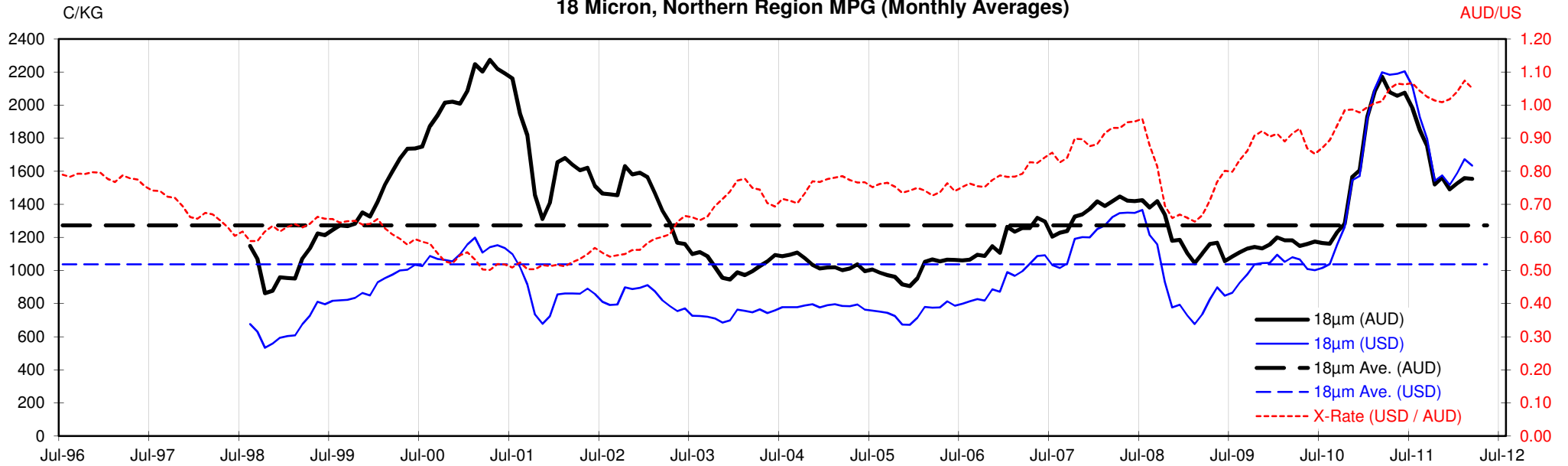
Wednesdays market found support for 20 microns and broader, with these microns ending the day par to slightly easier. The medium to finer microns continued to retreat, losing 15 to 20 cents. Lower Vm skirtings remained unchanged while the higher Vm types fell 10 cents (for 19 micron and broader). Locks closed unchanged as did crutchings and stains on a small offering. 27 to 29 micron crossbreds finished fully firm while 30 microns picked up 5 cents. 7.8% PI

Thursdays market saw another small offering with the selection ranging from 17 to 21 microns. Once again the broader end of the offering attracted the most attention with 20 and 21 microns remaining unchanged (with a few lots firming slightly). The finer end of the market was mixed with odd types unchanged while the majority eased by 10-20 cents. Solid competition propelled fine skirtings with 5-8% Vm up 20 cents while leaving the broader end fully firm. Locks fell 20-25 cents, while crutchings remained firm. Stains were also 20 cents cheaper. The crossbred market remained unchanged on a nominal basis. 12.0% PI

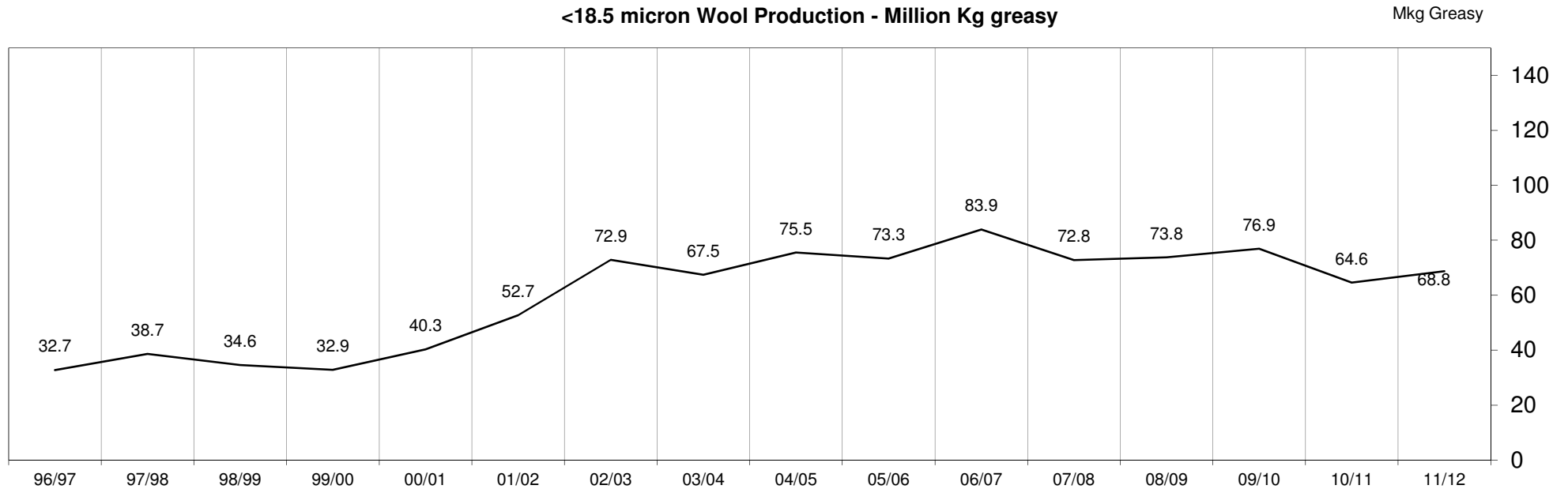


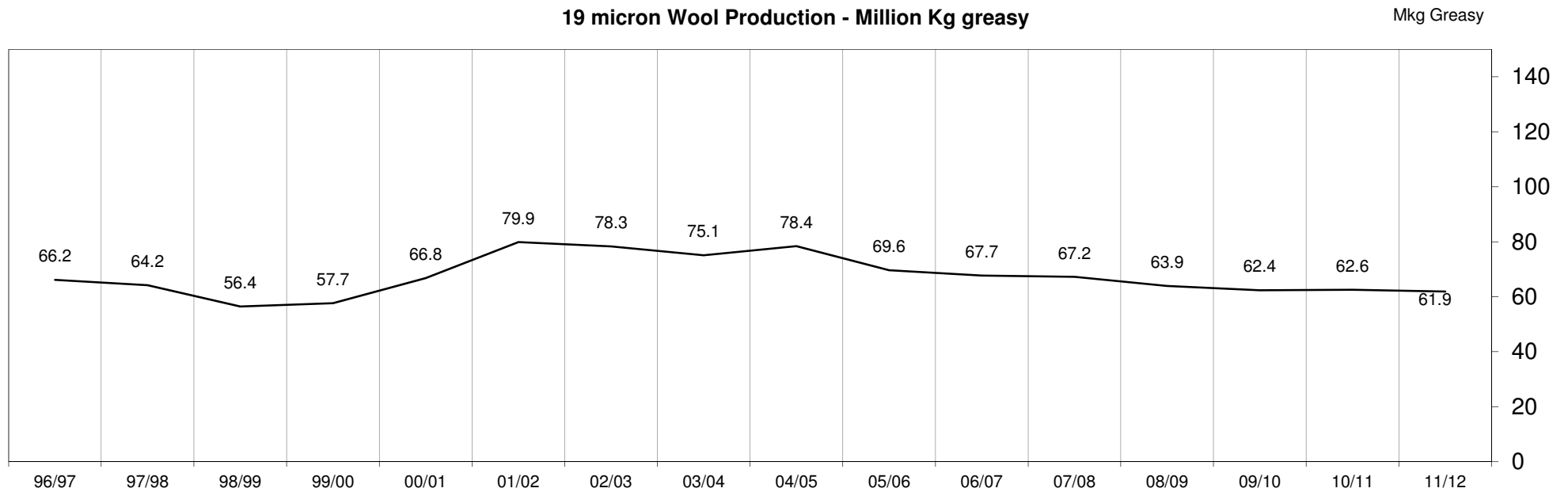
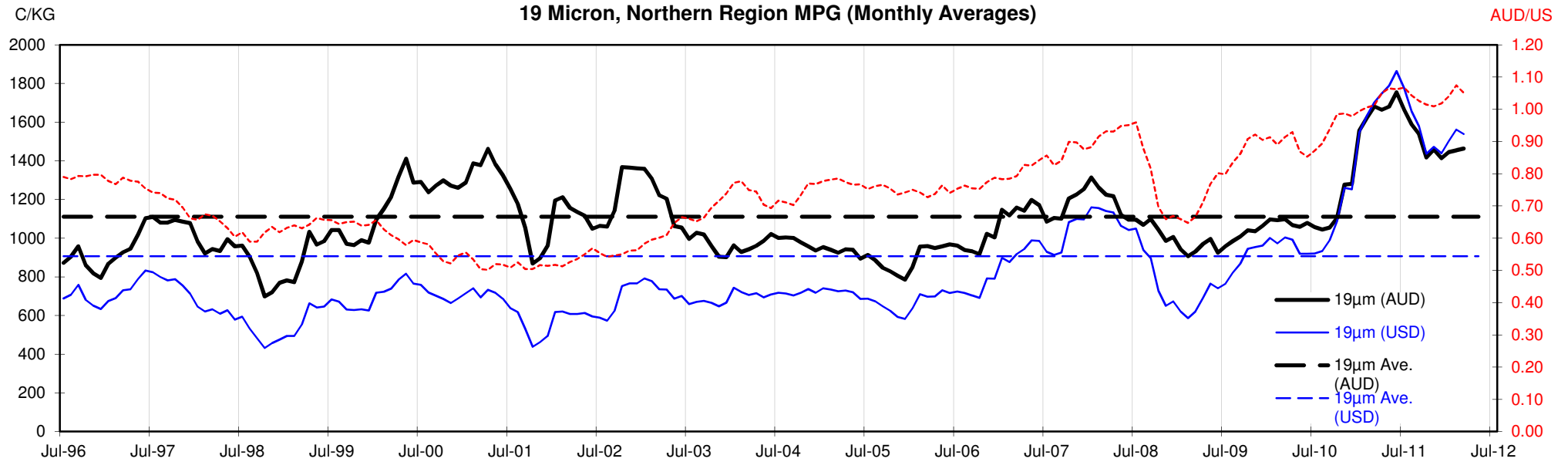


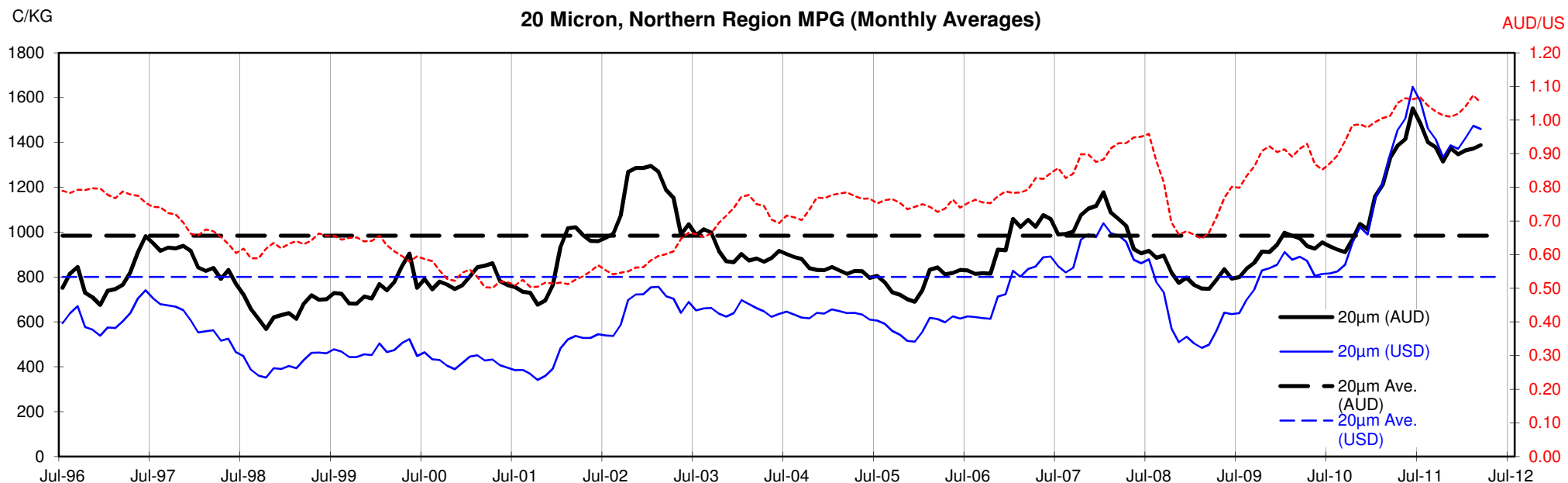
18 Micron, Northern Region MPG (Monthly Averages)

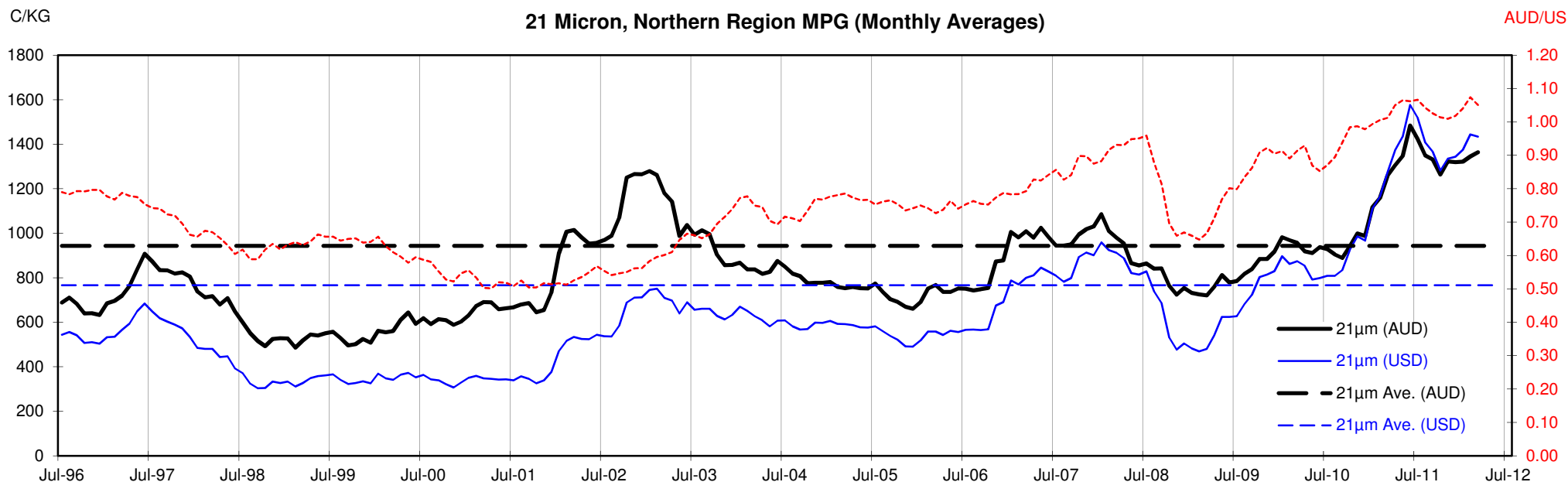


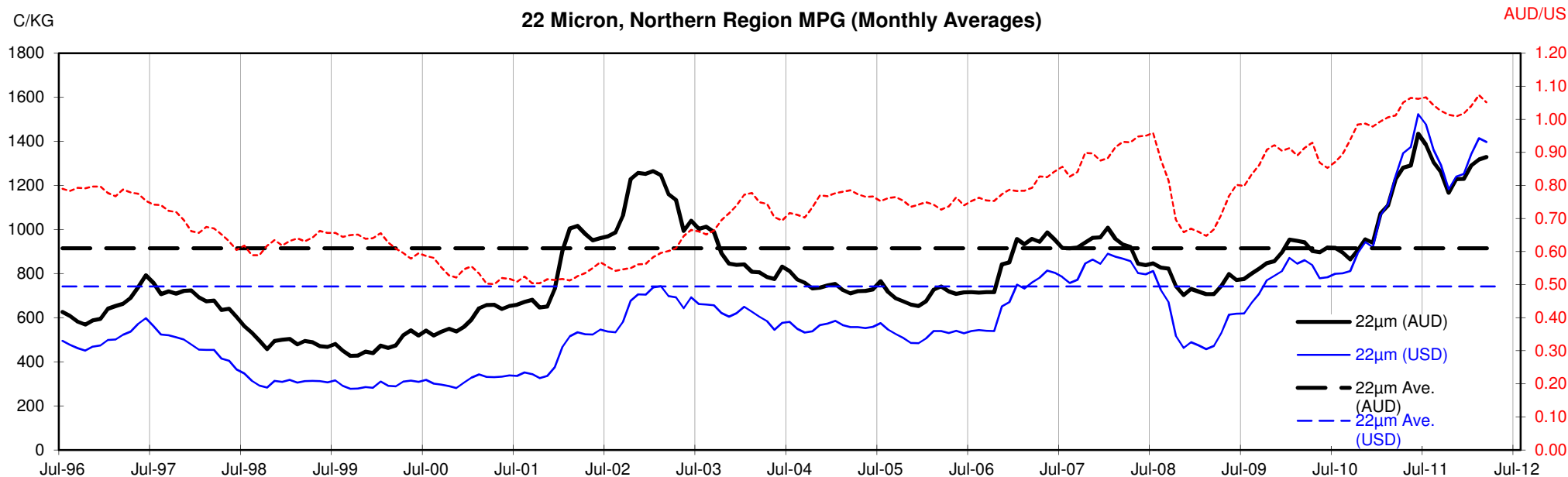
<18.5 micron Wool Production - Million Kg greasy

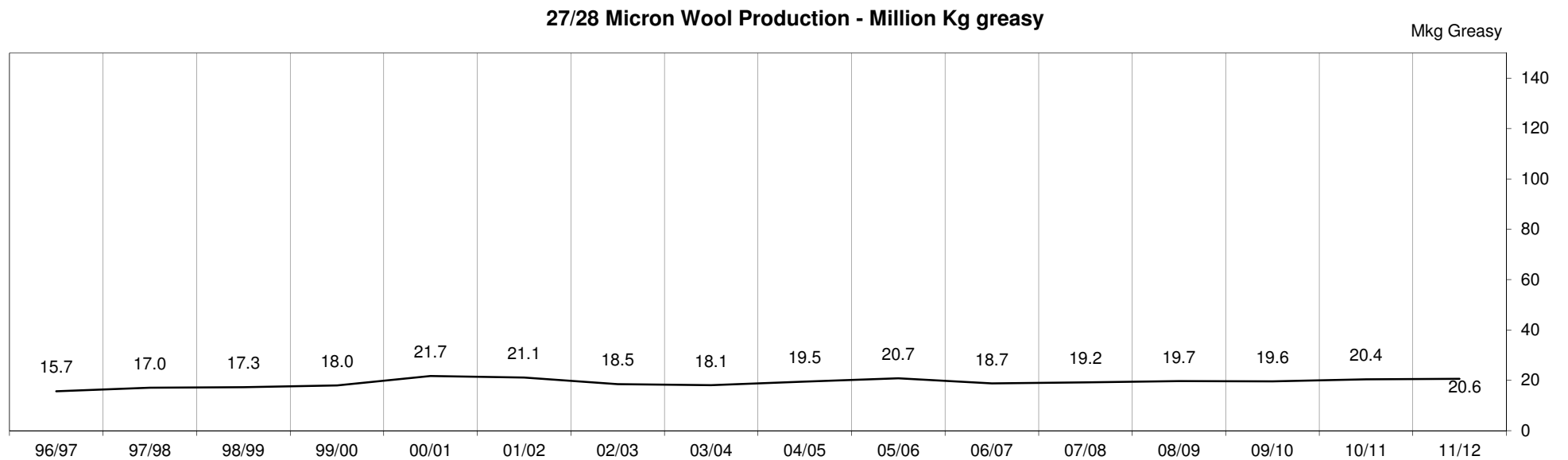
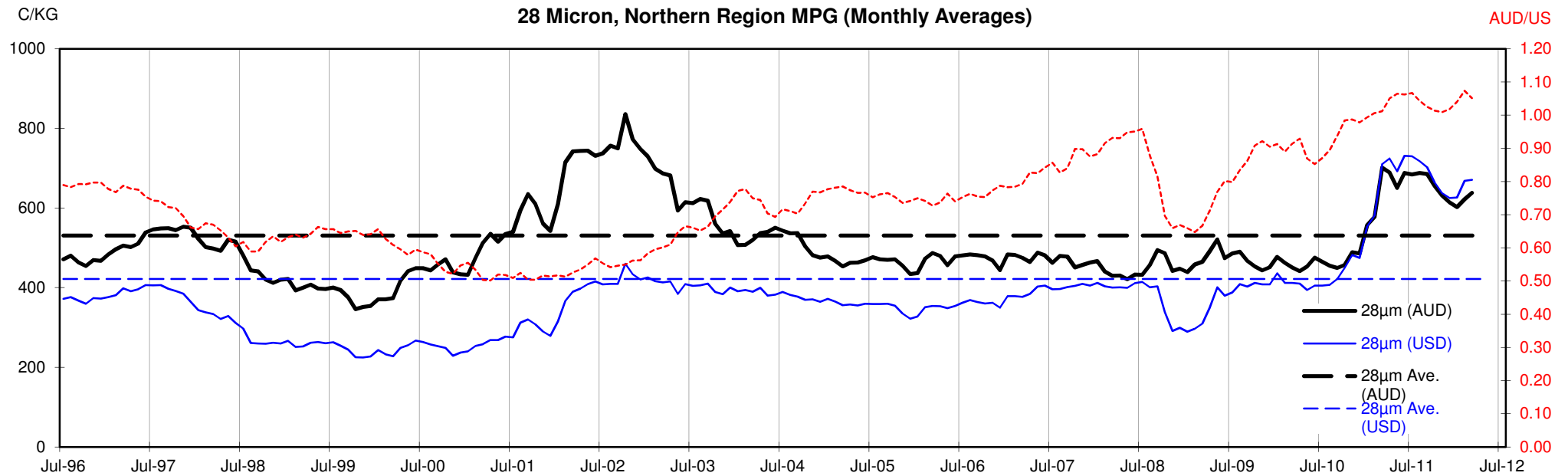












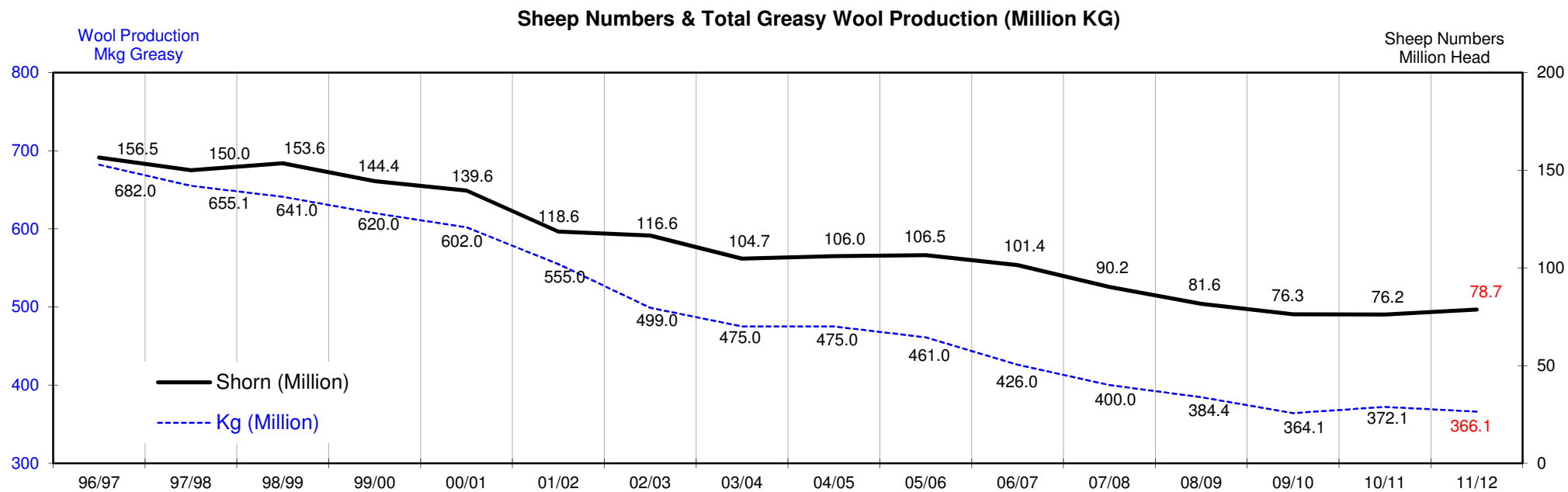
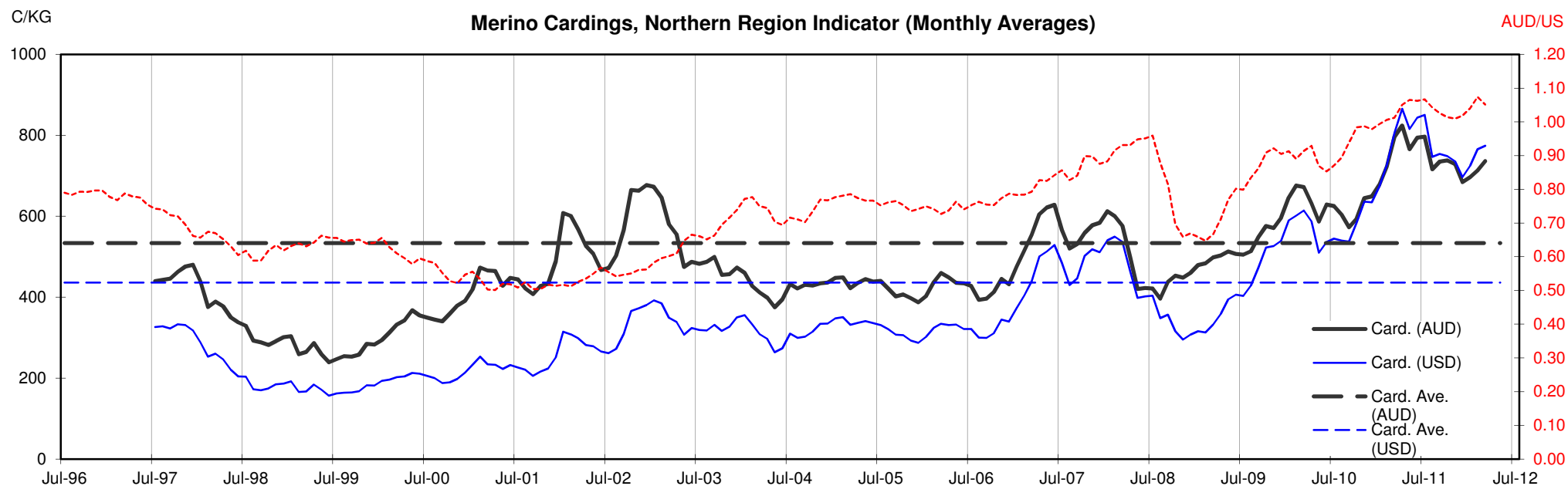




Table 13: Returns pr head for skirted fleece wool.

Skirted FLC Weight		Micron																	
9 Kg		16	16.5	17	17.5	18	18.5	19	19.5	20	21	22	23	24	25	26	28	30	32
Yield (Sch Dry)	25% Current	\$47	\$43	\$39	\$36	\$34	\$33	\$32	\$32	\$31	\$31	\$30	\$28	\$26	\$21	\$19	\$15	\$13	\$11
	10yr ave.			\$33		\$29		\$25		\$22	\$21	\$21	\$20	\$19	\$17	\$15	\$12	\$10	\$9
	30% Current	\$56	\$52	\$46	\$43	\$41	\$40	\$39	\$38	\$37	\$37	\$36	\$34	\$32	\$26	\$23	\$17	\$16	\$14
	10yr ave.			\$39		\$34		\$30		\$27	\$25	\$25	\$24	\$23	\$20	\$18	\$14	\$13	\$11
	35% Current	\$65	\$60	\$54	\$51	\$48	\$46	\$45	\$45	\$44	\$43	\$42	\$40	\$37	\$30	\$26	\$20	\$19	\$16
	10yr ave.			\$46		\$40		\$35		\$31	\$30	\$29	\$28	\$26	\$23	\$21	\$17	\$15	\$13
	40% Current	\$75	\$69	\$62	\$58	\$55	\$53	\$52	\$51	\$50	\$49	\$48	\$46	\$42	\$34	\$30	\$23	\$21	\$18
	10yr ave.			\$52		\$46		\$40		\$35	\$34	\$33	\$32	\$30	\$27	\$24	\$19	\$17	\$15
	45% Current	\$84	\$77	\$69	\$65	\$62	\$59	\$58	\$57	\$56	\$55	\$54	\$51	\$47	\$39	\$34	\$26	\$24	\$20
	10yr ave.			\$59		\$52		\$45		\$40	\$38	\$37	\$36	\$34	\$30	\$27	\$22	\$19	\$17
	50% Current	\$93	\$86	\$77	\$72	\$69	\$66	\$65	\$64	\$62	\$61	\$60	\$57	\$53	\$43	\$38	\$29	\$27	\$23
	10yr ave.			\$65		\$57		\$50		\$44	\$42	\$41	\$40	\$38	\$33	\$30	\$24	\$21	\$19
	55% Current	\$102	\$95	\$85	\$80	\$76	\$73	\$71	\$70	\$68	\$67	\$66	\$63	\$58	\$47	\$41	\$32	\$29	\$25
	10yr ave.			\$72		\$63		\$55		\$49	\$47	\$45	\$44	\$41	\$37	\$33	\$26	\$23	\$21
	60% Current	\$112	\$103	\$93	\$87	\$82	\$79	\$78	\$76	\$75	\$73	\$72	\$68	\$63	\$51	\$45	\$35	\$32	\$27
	10yr ave.			\$78		\$69		\$60		\$53	\$51	\$49	\$48	\$45	\$40	\$37	\$29	\$25	\$23
	65% Current	\$121	\$112	\$100	\$94	\$89	\$86	\$84	\$83	\$81	\$79	\$78	\$74	\$68	\$56	\$49	\$38	\$35	\$30
	10yr ave.			\$85		\$74		\$65		\$58	\$55	\$54	\$52	\$49	\$43	\$40	\$31	\$27	\$24
	70% Current	\$130	\$120	\$108	\$101	\$96	\$92	\$91	\$89	\$87	\$85	\$83	\$80	\$74	\$60	\$53	\$41	\$37	\$32
	10yr ave.			\$91		\$80		\$70		\$62	\$59	\$58	\$56	\$53	\$47	\$43	\$33	\$29	\$26
	75% Current	\$140	\$129	\$116	\$109	\$103	\$99	\$97	\$95	\$93	\$92	\$89	\$85	\$79	\$64	\$56	\$44	\$40	\$34
	10yr ave.			\$98		\$86		\$75		\$66	\$64	\$62	\$60	\$56	\$50	\$46	\$36	\$31	\$28
	80% Current	\$149	\$138	\$123	\$116	\$110	\$106	\$103	\$102	\$99	\$98	\$95	\$91	\$84	\$69	\$60	\$47	\$43	\$36
	10yr ave.			\$105		\$92		\$80		\$71	\$68	\$66	\$64	\$60	\$53	\$49	\$38	\$33	\$30
	85% Current	\$158	\$146	\$131	\$123	\$117	\$112	\$110	\$108	\$106	\$104	\$101	\$97	\$89	\$73	\$64	\$49	\$45	\$39
	10yr ave.			\$111		\$97		\$85		\$75	\$72	\$70	\$68	\$64	\$57	\$52	\$41	\$35	\$32

The above shows estimated returns per head for skirted fleece wool. These figures do not take into account the value of skirtings and oddments and do not take into account discounts that may apply for faults under individual circumstances. These figures are based on a market index of 100% and should be used as a guide only. Returns over \$30 / head for fleece wool are highlighted.

Source: Australian Wool Exchange, Australian Wool Innovation, Sydney Futures Exchange, x-rates.com

Disclaimer: While all due care has been taken in the preparation of this document, no warranty is made as to its accuracy, reliability or completeness. To the extent permitted by law neither Jemalong or their sources including subsidiaries and staff, accept liability to any person for loss or damage arising from the use of this information.



Table 14: Returns pr head for skirted fleece wool.

Skirted FLC Weight		Micron																	
8 Kg		16	16.5	17	17.5	18	18.5	19	19.5	20	21	22	23	24	25	26	28	30	32
Yield (Sch Dry)	25% Current	\$41	\$38	\$34	\$32	\$31	\$29	\$29	\$28	\$28	\$27	\$27	\$25	\$23	\$19	\$17	\$13	\$12	\$10
	10yr ave.			\$29		\$25		\$22		\$20	\$19	\$18	\$18	\$17	\$15	\$14	\$11	\$9	\$8
	30% Current	\$50	\$46	\$41	\$39	\$37	\$35	\$34	\$34	\$33	\$33	\$32	\$30	\$28	\$23	\$20	\$16	\$14	\$12
	10yr ave.			\$35		\$31		\$27		\$24	\$23	\$22	\$21	\$20	\$18	\$16	\$13	\$11	\$10
	35% Current	\$58	\$53	\$48	\$45	\$43	\$41	\$40	\$40	\$39	\$38	\$37	\$35	\$33	\$27	\$23	\$18	\$17	\$14
	10yr ave.			\$41		\$36		\$31		\$28	\$26	\$26	\$25	\$23	\$21	\$19	\$15	\$13	\$12
	40% Current	\$66	\$61	\$55	\$52	\$49	\$47	\$46	\$45	\$44	\$43	\$42	\$40	\$37	\$30	\$27	\$21	\$19	\$16
	10yr ave.			\$46		\$41		\$36		\$31	\$30	\$29	\$28	\$27	\$24	\$22	\$17	\$15	\$13
	45% Current	\$75	\$69	\$62	\$58	\$55	\$53	\$52	\$51	\$50	\$49	\$48	\$46	\$42	\$34	\$30	\$23	\$21	\$18
	10yr ave.			\$52		\$46		\$40		\$35	\$34	\$33	\$32	\$30	\$27	\$24	\$19	\$17	\$15
	50% Current	\$83	\$76	\$69	\$64	\$61	\$59	\$57	\$57	\$55	\$54	\$53	\$51	\$47	\$38	\$33	\$26	\$24	\$20
	10yr ave.			\$58		\$51		\$44		\$39	\$38	\$37	\$35	\$33	\$30	\$27	\$21	\$19	\$17
	55% Current	\$91	\$84	\$75	\$71	\$67	\$65	\$63	\$62	\$61	\$60	\$58	\$56	\$51	\$42	\$37	\$28	\$26	\$22
	10yr ave.			\$64		\$56		\$49		\$43	\$41	\$40	\$39	\$37	\$33	\$30	\$23	\$20	\$18
	60% Current	\$99	\$92	\$82	\$77	\$73	\$70	\$69	\$68	\$66	\$65	\$64	\$61	\$56	\$46	\$40	\$31	\$28	\$24
	10yr ave.			\$70		\$61		\$53		\$47	\$45	\$44	\$43	\$40	\$36	\$32	\$25	\$22	\$20
	65% Current	\$108	\$99	\$89	\$84	\$79	\$76	\$75	\$74	\$72	\$71	\$69	\$66	\$61	\$50	\$43	\$34	\$31	\$26
	10yr ave.			\$76		\$66		\$58		\$51	\$49	\$48	\$46	\$43	\$39	\$35	\$28	\$24	\$22
	70% Current	\$116	\$107	\$96	\$90	\$85	\$82	\$80	\$79	\$77	\$76	\$74	\$71	\$65	\$53	\$47	\$36	\$33	\$28
	10yr ave.			\$81		\$71		\$62		\$55	\$53	\$51	\$50	\$47	\$42	\$38	\$30	\$26	\$23
	75% Current	\$124	\$115	\$103	\$97	\$92	\$88	\$86	\$85	\$83	\$81	\$80	\$76	\$70	\$57	\$50	\$39	\$36	\$30
	10yr ave.			\$87		\$76		\$67		\$59	\$57	\$55	\$53	\$50	\$45	\$41	\$32	\$28	\$25
	80% Current	\$132	\$122	\$110	\$103	\$98	\$94	\$92	\$90	\$88	\$87	\$85	\$81	\$75	\$61	\$53	\$41	\$38	\$32
	10yr ave.			\$93		\$81		\$71		\$63	\$60	\$59	\$57	\$54	\$47	\$43	\$34	\$30	\$27
	85% Current	\$141	\$130	\$117	\$109	\$104	\$100	\$98	\$96	\$94	\$92	\$90	\$86	\$79	\$65	\$57	\$44	\$40	\$34
	10yr ave.			\$99		\$87		\$76		\$67	\$64	\$62	\$60	\$57	\$50	\$46	\$36	\$31	\$28

The above shows estimated returns per head for skirted fleece wool. These figures do not take into account the value of skirtings and oddments and do not take into account discounts that may apply for faults under individual circumstances. These figures are based on a market index of 100% and should be used as a guide only. Returns over \$30 / head for fleece wool are highlighted.

Source: Australian Wool Exchange, Australian Wool Innovation, Sydney Futures Exchange, x-rates.com

Disclaimer: While all due care has been taken in the preparation of this document, no warranty is made as to its accuracy, reliability or completeness. To the extent permitted by law neither Jemalong or their sources including subsidiaries and staff, accept liability to any person for loss or damage arising from the use of this information.



Table 15: Returns pr head for skirted fleece wool.

Skirted FLC Weight		Micron																	
7 Kg		16	16.5	17	17.5	18	18.5	19	19.5	20	21	22	23	24	25	26	28	30	32
Yield (Sch Dry)	25% Current	\$36	\$33	\$30	\$28	\$27	\$26	\$25	\$25	\$24	\$24	\$23	\$22	\$20	\$17	\$15	\$11	\$10	\$9
	10yr ave.			\$25		\$22		\$19		\$17	\$17	\$16	\$16	\$15	\$13	\$12	\$9	\$8	\$7
	30% Current	\$43	\$40	\$36	\$34	\$32	\$31	\$30	\$30	\$29	\$28	\$28	\$27	\$25	\$20	\$18	\$14	\$12	\$11
	10yr ave.			\$30		\$27		\$23		\$21	\$20	\$19	\$19	\$18	\$16	\$14	\$11	\$10	\$9
	35% Current	\$51	\$47	\$42	\$39	\$37	\$36	\$35	\$35	\$34	\$33	\$32	\$31	\$29	\$23	\$20	\$16	\$15	\$12
	10yr ave.			\$36		\$31		\$27		\$24	\$23	\$22	\$22	\$20	\$18	\$17	\$13	\$11	\$10
	40% Current	\$58	\$53	\$48	\$45	\$43	\$41	\$40	\$40	\$39	\$38	\$37	\$35	\$33	\$27	\$23	\$18	\$17	\$14
	10yr ave.			\$41		\$36		\$31		\$28	\$26	\$26	\$25	\$23	\$21	\$19	\$15	\$13	\$12
	45% Current	\$65	\$60	\$54	\$51	\$48	\$46	\$45	\$45	\$44	\$43	\$42	\$40	\$37	\$30	\$26	\$20	\$19	\$16
	10yr ave.			\$46		\$40		\$35		\$31	\$30	\$29	\$28	\$26	\$23	\$21	\$17	\$15	\$13
	50% Current	\$72	\$67	\$60	\$56	\$53	\$51	\$50	\$49	\$48	\$47	\$46	\$44	\$41	\$33	\$29	\$23	\$21	\$18
	10yr ave.			\$51		\$45		\$39		\$34	\$33	\$32	\$31	\$29	\$26	\$24	\$19	\$16	\$15
	55% Current	\$80	\$74	\$66	\$62	\$59	\$56	\$55	\$54	\$53	\$52	\$51	\$49	\$45	\$37	\$32	\$25	\$23	\$19
	10yr ave.			\$56		\$49		\$43		\$38	\$36	\$35	\$34	\$32	\$29	\$26	\$20	\$18	\$16
	60% Current	\$87	\$80	\$72	\$68	\$64	\$62	\$60	\$59	\$58	\$57	\$56	\$53	\$49	\$40	\$35	\$27	\$25	\$21
	10yr ave.			\$61		\$53		\$47		\$41	\$40	\$38	\$37	\$35	\$31	\$28	\$22	\$19	\$18
	65% Current	\$94	\$87	\$78	\$73	\$69	\$67	\$65	\$64	\$63	\$62	\$60	\$58	\$53	\$43	\$38	\$29	\$27	\$23
	10yr ave.			\$66		\$58		\$51		\$45	\$43	\$42	\$40	\$38	\$34	\$31	\$24	\$21	\$19
	70% Current	\$101	\$94	\$84	\$79	\$75	\$72	\$70	\$69	\$68	\$66	\$65	\$62	\$57	\$47	\$41	\$32	\$29	\$25
	10yr ave.			\$71		\$62		\$54		\$48	\$46	\$45	\$43	\$41	\$36	\$33	\$26	\$23	\$20
	75% Current	\$109	\$100	\$90	\$85	\$80	\$77	\$75	\$74	\$73	\$71	\$70	\$66	\$61	\$50	\$44	\$34	\$31	\$27
	10yr ave.			\$76		\$67		\$58		\$52	\$50	\$48	\$47	\$44	\$39	\$35	\$28	\$24	\$22
	80% Current	\$116	\$107	\$96	\$90	\$85	\$82	\$80	\$79	\$77	\$76	\$74	\$71	\$65	\$53	\$47	\$36	\$33	\$28
	10yr ave.			\$81		\$71		\$62		\$55	\$53	\$51	\$50	\$47	\$42	\$38	\$30	\$26	\$23
	85% Current	\$123	\$114	\$102	\$96	\$91	\$87	\$86	\$84	\$82	\$81	\$79	\$75	\$70	\$57	\$50	\$38	\$35	\$30
	10yr ave.			\$86		\$76		\$66		\$59	\$56	\$54	\$53	\$50	\$44	\$40	\$32	\$28	\$25

The above shows estimated returns per head for skirted fleece wool. These figures do not take into account the value of skirtings and oddments and do not take into account discounts that may apply for faults under individual circumstances. These figures are based on a market index of 100% and should be used as a guide only. Returns over \$30 / head for fleece wool are highlighted.

Source: Australian Wool Exchange, Australian Wool Innovation, Sydney Futures Exchange, x-rates.com

Disclaimer: While all due care has been taken in the preparation of this document, no warranty is made as to its accuracy, reliability or completeness. To the extent permitted by law neither Jemalong or their sources including subsidiaries and staff, accept liability to any person for loss or damage arising from the use of this information.



Table 16: Returns pr head for skirted fleece wool.

Skirted FLC Weight		Micron																	
6 Kg		16	16.5	17	17.5	18	18.5	19	19.5	20	21	22	23	24	25	26	28	30	32
Yield (Sch Dry)	25% Current	\$31	\$29	\$26	\$24	\$23	\$22	\$22	\$21	\$21	\$20	\$20	\$19	\$18	\$14	\$13	\$10	\$9	\$8
	10yr ave.			\$22		\$19		\$17		\$15	\$14	\$14	\$13	\$13	\$11	\$10	\$8	\$7	\$6
	30% Current	\$37	\$34	\$31	\$29	\$27	\$26	\$26	\$25	\$25	\$24	\$24	\$23	\$21	\$17	\$15	\$12	\$11	\$9
	10yr ave.			\$26		\$23		\$20		\$18	\$17	\$16	\$16	\$15	\$13	\$12	\$10	\$8	\$8
	35% Current	\$43	\$40	\$36	\$34	\$32	\$31	\$30	\$30	\$29	\$28	\$28	\$27	\$25	\$20	\$18	\$14	\$12	\$11
	10yr ave.			\$30		\$27		\$23		\$21	\$20	\$19	\$19	\$18	\$16	\$14	\$11	\$10	\$9
	40% Current	\$50	\$46	\$41	\$39	\$37	\$35	\$34	\$34	\$33	\$33	\$32	\$30	\$28	\$23	\$20	\$16	\$14	\$12
	10yr ave.			\$35		\$31		\$27		\$24	\$23	\$22	\$21	\$20	\$18	\$16	\$13	\$11	\$10
	45% Current	\$56	\$52	\$46	\$43	\$41	\$40	\$39	\$38	\$37	\$37	\$36	\$34	\$32	\$26	\$23	\$17	\$16	\$14
	10yr ave.			\$39		\$34		\$30		\$27	\$25	\$25	\$24	\$23	\$20	\$18	\$14	\$13	\$11
	50% Current	\$62	\$57	\$51	\$48	\$46	\$44	\$43	\$42	\$41	\$41	\$40	\$38	\$35	\$29	\$25	\$19	\$18	\$15
	10yr ave.			\$44		\$38		\$33		\$30	\$28	\$27	\$27	\$25	\$22	\$20	\$16	\$14	\$13
	55% Current	\$68	\$63	\$57	\$53	\$50	\$48	\$47	\$47	\$46	\$45	\$44	\$42	\$39	\$31	\$28	\$21	\$20	\$17
	10yr ave.			\$48		\$42		\$37		\$32	\$31	\$30	\$29	\$28	\$24	\$22	\$18	\$15	\$14
	60% Current	\$75	\$69	\$62	\$58	\$55	\$53	\$52	\$51	\$50	\$49	\$48	\$46	\$42	\$34	\$30	\$23	\$21	\$18
	10yr ave.			\$52		\$46		\$40		\$35	\$34	\$33	\$32	\$30	\$27	\$24	\$19	\$17	\$15
	65% Current	\$81	\$74	\$67	\$63	\$60	\$57	\$56	\$55	\$54	\$53	\$52	\$49	\$46	\$37	\$33	\$25	\$23	\$20
	10yr ave.			\$57		\$50		\$43		\$38	\$37	\$36	\$35	\$33	\$29	\$26	\$21	\$18	\$16
	70% Current	\$87	\$80	\$72	\$68	\$64	\$62	\$60	\$59	\$58	\$57	\$56	\$53	\$49	\$40	\$35	\$27	\$25	\$21
	10yr ave.			\$61		\$53		\$47		\$41	\$40	\$38	\$37	\$35	\$31	\$28	\$22	\$19	\$18
	75% Current	\$93	\$86	\$77	\$72	\$69	\$66	\$65	\$64	\$62	\$61	\$60	\$57	\$53	\$43	\$38	\$29	\$27	\$23
	10yr ave.			\$65		\$57		\$50		\$44	\$42	\$41	\$40	\$38	\$33	\$30	\$24	\$21	\$19
	80% Current	\$99	\$92	\$82	\$77	\$73	\$70	\$69	\$68	\$66	\$65	\$64	\$61	\$56	\$46	\$40	\$31	\$28	\$24
	10yr ave.			\$70		\$61		\$53		\$47	\$45	\$44	\$43	\$40	\$36	\$32	\$25	\$22	\$20
	85% Current	\$106	\$97	\$87	\$82	\$78	\$75	\$73	\$72	\$70	\$69	\$68	\$65	\$60	\$49	\$43	\$33	\$30	\$26
	10yr ave.			\$74		\$65		\$57		\$50	\$48	\$47	\$45	\$43	\$38	\$34	\$27	\$24	\$21

The above shows estimated returns per head for skirted fleece wool. These figures do not take into account the value of skirtings and oddments and do not take into account discounts that may apply for faults under individual circumstances. These figures are based on a market index of 100% and should be used as a guide only. Returns over \$30 / head for fleece wool are highlighted.

Source: Australian Wool Exchange, Australian Wool Innovation, Sydney Futures Exchange, x-rates.com

Disclaimer: While all due care has been taken in the preparation of this document, no warranty is made as to its accuracy, reliability or completeness. To the extent permitted by law neither Jemalong or their sources including subsidiaries and staff, accept liability to any person for loss or damage arising from the use of this information.



Table 17: Returns pr head for skirted fleece wool.

Skirted FLC Weight		Micron																	
5 Kg		16	16.5	17	17.5	18	18.5	19	19.5	20	21	22	23	24	25	26	28	30	32
Yield (Sch Dry)	25% Current	\$26	\$24	\$21	\$20	\$19	\$18	\$18	\$18	\$17	\$17	\$17	\$16	\$15	\$12	\$10	\$8	\$7	\$6
	10yr ave.			\$18		\$16		\$14		\$12	\$12	\$11	\$11	\$10	\$9	\$8	\$7	\$6	\$5
	30% Current	\$31	\$29	\$26	\$24	\$23	\$22	\$22	\$21	\$21	\$20	\$20	\$19	\$18	\$14	\$13	\$10	\$9	\$8
	10yr ave.			\$22		\$19		\$17		\$15	\$14	\$14	\$13	\$13	\$11	\$10	\$8	\$7	\$6
	35% Current	\$36	\$33	\$30	\$28	\$27	\$26	\$25	\$25	\$24	\$24	\$23	\$22	\$20	\$17	\$15	\$11	\$10	\$9
	10yr ave.			\$25		\$22		\$19		\$17	\$17	\$16	\$16	\$15	\$13	\$12	\$9	\$8	\$7
	40% Current	\$41	\$38	\$34	\$32	\$31	\$29	\$29	\$28	\$28	\$27	\$27	\$25	\$23	\$19	\$17	\$13	\$12	\$10
	10yr ave.			\$29		\$25		\$22		\$20	\$19	\$18	\$18	\$17	\$15	\$14	\$11	\$9	\$8
	45% Current	\$47	\$43	\$39	\$36	\$34	\$33	\$32	\$32	\$31	\$31	\$30	\$28	\$26	\$21	\$19	\$15	\$13	\$11
	10yr ave.			\$33		\$29		\$25		\$22	\$21	\$21	\$20	\$19	\$17	\$15	\$12	\$10	\$9
	50% Current	\$52	\$48	\$43	\$40	\$38	\$37	\$36	\$35	\$35	\$34	\$33	\$32	\$29	\$24	\$21	\$16	\$15	\$13
	10yr ave.			\$36		\$32		\$28		\$25	\$24	\$23	\$22	\$21	\$19	\$17	\$13	\$12	\$10
	55% Current	\$57	\$53	\$47	\$44	\$42	\$40	\$40	\$39	\$38	\$37	\$36	\$35	\$32	\$26	\$23	\$18	\$16	\$14
	10yr ave.			\$40		\$35		\$31		\$27	\$26	\$25	\$24	\$23	\$20	\$19	\$15	\$13	\$11
	60% Current	\$62	\$57	\$51	\$48	\$46	\$44	\$43	\$42	\$41	\$41	\$40	\$38	\$35	\$29	\$25	\$19	\$18	\$15
	10yr ave.			\$44		\$38		\$33		\$30	\$28	\$27	\$27	\$25	\$22	\$20	\$16	\$14	\$13
	65% Current	\$67	\$62	\$56	\$52	\$50	\$48	\$47	\$46	\$45	\$44	\$43	\$41	\$38	\$31	\$27	\$21	\$19	\$16
	10yr ave.			\$47		\$41		\$36		\$32	\$31	\$30	\$29	\$27	\$24	\$22	\$17	\$15	\$14
	70% Current	\$72	\$67	\$60	\$56	\$53	\$51	\$50	\$49	\$48	\$47	\$46	\$44	\$41	\$33	\$29	\$23	\$21	\$18
	10yr ave.			\$51		\$45		\$39		\$34	\$33	\$32	\$31	\$29	\$26	\$24	\$19	\$16	\$15
	75% Current	\$78	\$72	\$64	\$60	\$57	\$55	\$54	\$53	\$52	\$51	\$50	\$47	\$44	\$36	\$31	\$24	\$22	\$19
	10yr ave.			\$54		\$48		\$42		\$37	\$35	\$34	\$33	\$31	\$28	\$25	\$20	\$17	\$16
	80% Current	\$83	\$76	\$69	\$64	\$61	\$59	\$57	\$57	\$55	\$54	\$53	\$51	\$47	\$38	\$33	\$26	\$24	\$20
	10yr ave.			\$58		\$51		\$44		\$39	\$38	\$37	\$35	\$33	\$30	\$27	\$21	\$19	\$17
	85% Current	\$88	\$81	\$73	\$68	\$65	\$62	\$61	\$60	\$59	\$58	\$56	\$54	\$50	\$40	\$35	\$27	\$25	\$22
	10yr ave.			\$62		\$54		\$47		\$42	\$40	\$39	\$38	\$36	\$32	\$29	\$23	\$20	\$18

The above shows estimated returns per head for skirted fleece wool. These figures do not take into account the value of skirtings and oddments and do not take into account discounts that may apply for faults under individual circumstances. These figures are based on a market index of 100% and should be used as a guide only. Returns over \$30 / head for fleece wool are highlighted.

Source: Australian Wool Exchange, Australian Wool Innovation, Sydney Futures Exchange, x-rates.com

Disclaimer: While all due care has been taken in the preparation of this document, no warranty is made as to its accuracy, reliability or completeness. To the extent permitted by law neither Jemalong or their sources including subsidiaries and staff, accept liability to any person for loss or damage arising from the use of this information.



Table 18: Returns pr head for skirted fleece wool.

Skirted FLC Weight 4 Kg		Micron																	
		16	16.5	17	17.5	18	18.5	19	19.5	20	21	22	23	24	25	26	28	30	32
Yield (Sch Dry)	25% Current	\$21	\$19	\$17	\$16	\$15	\$15	\$14	\$14	\$14	\$14	\$13	\$13	\$12	\$10	\$8	\$6	\$6	\$5
	10yr ave.			\$15		\$13		\$11		\$10	\$9	\$9	\$9	\$8	\$7	\$7	\$5	\$5	\$4
	30% Current	\$25	\$23	\$21	\$19	\$18	\$18	\$17	\$17	\$17	\$16	\$16	\$15	\$14	\$11	\$10	\$8	\$7	\$6
	10yr ave.			\$17		\$15		\$13		\$12	\$11	\$11	\$11	\$10	\$9	\$8	\$6	\$6	\$5
	35% Current	\$29	\$27	\$24	\$23	\$21	\$21	\$20	\$20	\$19	\$19	\$19	\$18	\$16	\$13	\$12	\$9	\$8	\$7
	10yr ave.			\$20		\$18		\$16		\$14	\$13	\$13	\$12	\$12	\$10	\$9	\$7	\$6	\$6
	40% Current	\$33	\$31	\$27	\$26	\$24	\$23	\$23	\$23	\$22	\$22	\$21	\$20	\$19	\$15	\$13	\$10	\$9	\$8
	10yr ave.			\$23		\$20		\$18		\$16	\$15	\$15	\$14	\$13	\$12	\$11	\$8	\$7	\$7
	45% Current	\$37	\$34	\$31	\$29	\$27	\$26	\$26	\$25	\$25	\$24	\$24	\$23	\$21	\$17	\$15	\$12	\$11	\$9
	10yr ave.			\$26		\$23		\$20		\$18	\$17	\$16	\$16	\$15	\$13	\$12	\$10	\$8	\$8
	50% Current	\$41	\$38	\$34	\$32	\$31	\$29	\$29	\$28	\$28	\$27	\$27	\$25	\$23	\$19	\$17	\$13	\$12	\$10
	10yr ave.			\$29		\$25		\$22		\$20	\$19	\$18	\$18	\$17	\$15	\$14	\$11	\$9	\$8
	55% Current	\$46	\$42	\$38	\$35	\$34	\$32	\$32	\$31	\$30	\$30	\$29	\$28	\$26	\$21	\$18	\$14	\$13	\$11
	10yr ave.			\$32		\$28		\$24		\$22	\$21	\$20	\$19	\$18	\$16	\$15	\$12	\$10	\$9
	60% Current	\$50	\$46	\$41	\$39	\$37	\$35	\$34	\$34	\$33	\$33	\$32	\$30	\$28	\$23	\$20	\$16	\$14	\$12
	10yr ave.			\$35		\$31		\$27		\$24	\$23	\$22	\$21	\$20	\$18	\$16	\$13	\$11	\$10
	65% Current	\$54	\$50	\$45	\$42	\$40	\$38	\$37	\$37	\$36	\$35	\$34	\$33	\$30	\$25	\$22	\$17	\$15	\$13
	10yr ave.			\$38		\$33		\$29		\$26	\$25	\$24	\$23	\$22	\$19	\$18	\$14	\$12	\$11
	70% Current	\$58	\$53	\$48	\$45	\$43	\$41	\$40	\$40	\$39	\$38	\$37	\$35	\$33	\$27	\$23	\$18	\$17	\$14
	10yr ave.			\$41		\$36		\$31		\$28	\$26	\$26	\$25	\$23	\$21	\$19	\$15	\$13	\$12
	75% Current	\$62	\$57	\$51	\$48	\$46	\$44	\$43	\$42	\$41	\$41	\$40	\$38	\$35	\$29	\$25	\$19	\$18	\$15
	10yr ave.			\$44		\$38		\$33		\$30	\$28	\$27	\$27	\$25	\$22	\$20	\$16	\$14	\$13
	80% Current	\$66	\$61	\$55	\$52	\$49	\$47	\$46	\$45	\$44	\$43	\$42	\$40	\$37	\$30	\$27	\$21	\$19	\$16
	10yr ave.			\$46		\$41		\$36		\$31	\$30	\$29	\$28	\$27	\$24	\$22	\$17	\$15	\$13
	85% Current	\$70	\$65	\$58	\$55	\$52	\$50	\$49	\$48	\$47	\$46	\$45	\$43	\$40	\$32	\$28	\$22	\$20	\$17
	10yr ave.			\$49		\$43		\$38		\$33	\$32	\$31	\$30	\$28	\$25	\$23	\$18	\$16	\$14

The above shows estimated returns per head for skirted fleece wool. These figures do not take into account the value of skirtings and oddments and do not take into account discounts that may apply for faults under individual circumstances. These figures are based on a market index of 100% and should be used as a guide only. Returns over \$30 / head for fleece wool are highlighted.

Source: Australian Wool Exchange, Australian Wool Innovation, Sydney Futures Exchange, x-rates.com

Disclaimer: While all due care has been taken in the preparation of this document, no warranty is made as to its accuracy, reliability or completeness. To the extent permitted by law neither Jemalong or their sources including subsidiaries and staff, accept liability to any person for loss or damage arising from the use of this information.



Table 19: Returns pr head for skirted fleece wool.

Skirted FLC Weight		Micron																	
3 Kg		16	16.5	17	17.5	18	18.5	19	19.5	20	21	22	23	24	25	26	28	30	32
Yield (Sch Dry)	25% Current	\$16	\$14	\$13	\$12	\$11	\$11	\$11	\$11	\$10	\$10	\$10	\$9	\$9	\$7	\$6	\$5	\$4	\$4
	10yr ave.			\$11		\$10		\$8		\$7	\$7	\$7	\$7	\$6	\$6	\$5	\$4	\$3	\$3
	30% Current	\$19	\$17	\$15	\$14	\$14	\$13	\$13	\$13	\$12	\$12	\$12	\$11	\$11	\$9	\$8	\$6	\$5	\$5
	10yr ave.			\$13		\$11		\$10		\$9	\$8	\$8	\$8	\$8	\$7	\$6	\$5	\$4	\$4
	35% Current	\$22	\$20	\$18	\$17	\$16	\$15	\$15	\$15	\$15	\$14	\$14	\$13	\$12	\$10	\$9	\$7	\$6	\$5
	10yr ave.			\$15		\$13		\$12		\$10	\$10	\$10	\$9	\$9	\$8	\$7	\$6	\$5	\$4
	40% Current	\$25	\$23	\$21	\$19	\$18	\$18	\$17	\$17	\$17	\$16	\$16	\$15	\$14	\$11	\$10	\$8	\$7	\$6
	10yr ave.			\$17		\$15		\$13		\$12	\$11	\$11	\$11	\$10	\$9	\$8	\$6	\$6	\$5
	45% Current	\$28	\$26	\$23	\$22	\$21	\$20	\$19	\$19	\$19	\$18	\$18	\$17	\$16	\$13	\$11	\$9	\$8	\$7
	10yr ave.			\$20		\$17		\$15		\$13	\$13	\$12	\$12	\$11	\$10	\$9	\$7	\$6	\$6
	50% Current	\$31	\$29	\$26	\$24	\$23	\$22	\$22	\$21	\$21	\$20	\$20	\$19	\$18	\$14	\$13	\$10	\$9	\$8
	10yr ave.			\$22		\$19		\$17		\$15	\$14	\$14	\$13	\$13	\$11	\$10	\$8	\$7	\$6
	55% Current	\$34	\$32	\$28	\$27	\$25	\$24	\$24	\$23	\$23	\$22	\$22	\$21	\$19	\$16	\$14	\$11	\$10	\$8
	10yr ave.			\$24		\$21		\$18		\$16	\$16	\$15	\$15	\$14	\$12	\$11	\$9	\$8	\$7
	60% Current	\$37	\$34	\$31	\$29	\$27	\$26	\$26	\$25	\$25	\$24	\$24	\$23	\$21	\$17	\$15	\$12	\$11	\$9
	10yr ave.			\$26		\$23		\$20		\$18	\$17	\$16	\$16	\$15	\$13	\$12	\$10	\$8	\$8
	65% Current	\$40	\$37	\$33	\$31	\$30	\$29	\$28	\$28	\$27	\$26	\$26	\$25	\$23	\$19	\$16	\$13	\$12	\$10
	10yr ave.			\$28		\$25		\$22		\$19	\$18	\$18	\$17	\$16	\$14	\$13	\$10	\$9	\$8
	70% Current	\$43	\$40	\$36	\$34	\$32	\$31	\$30	\$30	\$29	\$28	\$28	\$27	\$25	\$20	\$18	\$14	\$12	\$11
	10yr ave.			\$30		\$27		\$23		\$21	\$20	\$19	\$19	\$18	\$16	\$14	\$11	\$10	\$9
	75% Current	\$47	\$43	\$39	\$36	\$34	\$33	\$32	\$32	\$31	\$31	\$30	\$28	\$26	\$21	\$19	\$15	\$13	\$11
	10yr ave.			\$33		\$29		\$25		\$22	\$21	\$21	\$20	\$19	\$17	\$15	\$12	\$10	\$9
	80% Current	\$50	\$46	\$41	\$39	\$37	\$35	\$34	\$34	\$33	\$33	\$32	\$30	\$28	\$23	\$20	\$16	\$14	\$12
	10yr ave.			\$35		\$31		\$27		\$24	\$23	\$22	\$21	\$20	\$18	\$16	\$13	\$11	\$10
	85% Current	\$53	\$49	\$44	\$41	\$39	\$37	\$37	\$36	\$35	\$35	\$34	\$32	\$30	\$24	\$21	\$16	\$15	\$13
	10yr ave.			\$37		\$32		\$28		\$25	\$24	\$23	\$23	\$21	\$19	\$17	\$14	\$12	\$11

The above shows estimated returns per head for skirted fleece wool. These figures do not take into account the value of skirtings and oddments and do not take into account discounts that may apply for faults under individual circumstances. These figures are based on a market index of 100% and should be used as a guide only. Returns over \$30 / head for fleece wool are highlighted.

Source: Australian Wool Exchange, Australian Wool Innovation, Sydney Futures Exchange, x-rates.com

Disclaimer: While all due care has been taken in the preparation of this document, no warranty is made as to its accuracy, reliability or completeness. To the extent permitted by law neither Jemalong or their sources including subsidiaries and staff, accept liability to any person for loss or damage arising from the use of this information.



Table 20: Returns pr head for skirted fleece wool.

Skirted FLC Weight		Micron																	
2 Kg		16	16.5	17	17.5	18	18.5	19	19.5	20	21	22	23	24	25	26	28	30	32
Yield (Sch Dry)	25% Current	\$10	\$10	\$9	\$8	\$8	\$7	\$7	\$7	\$7	\$7	\$7	\$6	\$6	\$5	\$4	\$3	\$3	\$3
	10yr ave.			\$7		\$6		\$6		\$5	\$5	\$5	\$4	\$4	\$4	\$3	\$3	\$2	\$2
	30% Current	\$12	\$11	\$10	\$10	\$9	\$9	\$9	\$8	\$8	\$8	\$8	\$8	\$7	\$6	\$5	\$4	\$4	\$3
	10yr ave.			\$9		\$8		\$7		\$6	\$6	\$5	\$5	\$5	\$4	\$4	\$3	\$3	\$3
	35% Current	\$14	\$13	\$12	\$11	\$11	\$10	\$10	\$10	\$10	\$9	\$9	\$9	\$8	\$7	\$6	\$5	\$4	\$4
	10yr ave.			\$10		\$9		\$8		\$7	\$7	\$6	\$6	\$6	\$5	\$5	\$4	\$3	\$3
	40% Current	\$17	\$15	\$14	\$13	\$12	\$12	\$11	\$11	\$11	\$11	\$11	\$10	\$9	\$8	\$7	\$5	\$5	\$4
	10yr ave.			\$12		\$10		\$9		\$8	\$8	\$7	\$7	\$7	\$6	\$5	\$4	\$4	\$3
	45% Current	\$19	\$17	\$15	\$14	\$14	\$13	\$13	\$13	\$12	\$12	\$12	\$11	\$11	\$9	\$8	\$6	\$5	\$5
	10yr ave.			\$13		\$11		\$10		\$9	\$8	\$8	\$8	\$8	\$7	\$6	\$5	\$4	\$4
	50% Current	\$21	\$19	\$17	\$16	\$15	\$15	\$14	\$14	\$14	\$14	\$13	\$13	\$12	\$10	\$8	\$6	\$6	\$5
	10yr ave.			\$15		\$13		\$11		\$10	\$9	\$9	\$9	\$8	\$7	\$7	\$5	\$5	\$4
	55% Current	\$23	\$21	\$19	\$18	\$17	\$16	\$16	\$16	\$15	\$15	\$15	\$14	\$13	\$10	\$9	\$7	\$7	\$6
	10yr ave.			\$16		\$14		\$12		\$11	\$10	\$10	\$10	\$9	\$8	\$7	\$6	\$5	\$5
	60% Current	\$25	\$23	\$21	\$19	\$18	\$18	\$17	\$17	\$17	\$16	\$16	\$15	\$14	\$11	\$10	\$8	\$7	\$6
	10yr ave.			\$17		\$15		\$13		\$12	\$11	\$11	\$11	\$10	\$9	\$8	\$6	\$6	\$5
	65% Current	\$27	\$25	\$22	\$21	\$20	\$19	\$19	\$18	\$18	\$18	\$17	\$16	\$15	\$12	\$11	\$8	\$8	\$7
	10yr ave.			\$19		\$17		\$14		\$13	\$12	\$12	\$12	\$11	\$10	\$9	\$7	\$6	\$5
	70% Current	\$29	\$27	\$24	\$23	\$21	\$21	\$20	\$20	\$19	\$19	\$19	\$18	\$16	\$13	\$12	\$9	\$8	\$7
	10yr ave.			\$20		\$18		\$16		\$14	\$13	\$13	\$12	\$12	\$10	\$9	\$7	\$6	\$6
	75% Current	\$31	\$29	\$26	\$24	\$23	\$22	\$22	\$21	\$21	\$20	\$20	\$19	\$18	\$14	\$13	\$10	\$9	\$8
	10yr ave.			\$22		\$19		\$17		\$15	\$14	\$14	\$13	\$13	\$11	\$10	\$8	\$7	\$6
	80% Current	\$33	\$31	\$27	\$26	\$24	\$23	\$23	\$23	\$22	\$22	\$21	\$20	\$19	\$15	\$13	\$10	\$9	\$8
	10yr ave.			\$23		\$20		\$18		\$16	\$15	\$15	\$14	\$13	\$12	\$11	\$8	\$7	\$7
	85% Current	\$35	\$32	\$29	\$27	\$26	\$25	\$24	\$24	\$23	\$23	\$23	\$22	\$20	\$16	\$14	\$11	\$10	\$9
	10yr ave.			\$25		\$22		\$19		\$17	\$16	\$16	\$15	\$14	\$13	\$11	\$9	\$8	\$7

The above shows estimated returns per head for skirted fleece wool. These figures do not take into account the value of skirtings and oddments and do not take into account discounts that may apply for faults under individual circumstances. These figures are based on a market index of 100% and should be used as a guide only. Returns over \$30 / head for fleece wool are highlighted.

Source: Australian Wool Exchange, Australian Wool Innovation, Sydney Futures Exchange, x-rates.com

Disclaimer: While all due care has been taken in the preparation of this document, no warranty is made as to its accuracy, reliability or completeness. To the extent permitted by law neither Jemalong or their sources including subsidiaries and staff, accept liability to any person for loss or damage arising from the use of this information.