



JEMALONG WOOL BULLETIN

(week ending 29/09/2011)

Table 1: Northern Region Micron Price Guides

CURRENT MARKET				12 MONTH COMPARISONS								3 YEAR COMPARISONS						Percentile	10 YEAR COMPARISONS						Percentile
Mic. Price Guides	29/09/2011 Current Price	22/09/2011 Weekly Change	28/09/2010 This time Last Year	Now compared to Last Year	12 Month Low	Now compared to Low	12 Month High	Now compared to High	Low	High	Average	Now compared to 3yr ave	Low	High	10 year Average	Now compared to 10yr ave									
NRI	1238	-48 -3.9%	898	+340 38%	911	+327 36%	1491	-253 -17%	749	1491	1000	+238 24%	76%	658	1491	912	+326 36%	93%							
16*	2300	-200 -8.7%	1670	+630 38%	1670	+630 38%	2800	-500 -18%	1385	2800	1861	+439 24%	76%												
16.5*	2100	-150 -7.1%	1500	+600 40%	1500	+600 40%	2680	-580 -22%	1254	2680	1713	+387 23%	76%												
17*	1950	-150 -7.7%	1390	+560 40%	1390	+560 40%	2530	-580 -23%	1171	2530	1581	+369 23%	76%			1100	2659	1444	+506 35%	88%					
17.5*	1750	-120 -6.9%	1285	+465 36%	1300	+450 35%	2360	-610 -26%	1086	2360	1484	+266 18%	76%	916	2193	1273	+293 23%	83%							
18	1566	-105 -6.7%	1232	+334 27%	1237	+329 27%	2193	-627 -29%	1035	2193	1393	+173 12%	71%												
18.5	1491	-82 -5.5%	1156	+335 29%	1163	+328 28%	1963	-472 -24%	971	1963	1297	+194 15%	75%			843	1963								
19	1437	-67 -4.7%	1052	+385 37%	1058	+379 36%	1776	-339 -19%	894	1776	1190	+247 21%	76%			804	1776	1092	+345 32%	93%					
19.5	1378	-42 -3.0%	961	+417 43%	973	+405 42%	1670	-292 -17%	814	1670	1087	+291 27%	78%	749	1670										
20	1320	-33 -2.5%	911	+409 45%	931	+389 42%	1588	-268 -17%	740	1588	1006	+314 31%	82%	684	1588	958	+362 38%	95%							
21	1281	-28 -2.2%	887	+394 44%	914	+367 40%	1522	-241 -16%	687	1522	972	+309 32%	83%	645	1522	918	+363 40%	94%							
22	1209	-32 -2.6%	861	+348 40%	885	+324 37%	1461	-252 -17%	675	1461	945	+264 28%	82%	643	1461	893	+316 35%	90%							
23	1060	-48 -4.5%	833	+227 27%	849	+211 25%	1324	-264 -20%	663	1324	909	+151 17%	79%	642	1340	868	+192 22%	87%							
24	996	-4 -0.4%	780	+216 28%	787	+209 27%	1170	-174 -15%	647	1170	839	+157 19%	79%	637	1299	822	+174 21%	85%							
25	943	-6 -0.6%	704	+239 34%	716	+227 32%	1048	-105 -10%	566	1048	729	+214 29%	88%	567	1198	735	+208 28%	85%							
26	857	-8 -0.9%	603	+254 42%	613	+244 40%	928	-71 -8%	504	928	659	+198 30%	88%	532	1088	673	+184 27%	81%							
28	676	-10 -1.5%	444	+232 52%	449	+227 51%	734	-58 -8%	431	734	514	+162 32%	87%	424	889	531	+145 27%	83%							
30	623	+1 0.2%	396	+227 57%	390	+233 60%	670	-47 -7%	377	670	458	+165 36%	89%	344	729	463	+160 35%	90%							
32	585	+1 0.2%	354	+231 65%	354	+231 65%	638	-53 -8%	326	638	405	+180 44%	94%	297	669	417	+168 40%	93%							
MC	735	+3 0.4%	571	+164 29%	569	+166 29%	831	-96 -12%	444	831	612	+123 20%	83%	380	831	524	+211 40%	95%							

Note:

* Due to the irregular market quoting for some fine wool categories, figures shown relating to micron categories below 18 micron are an estimate based on the AWEX Premium & Discounts Report & other available information.

* For any category, where there is insufficient quantity offered to enable AWEX to quote, a quote will be provided based on the best available information.

* 10 Year data is not available for some micron categories, which may result in blank spaces in the table above.

Definitions:

* A Percentile, is a value on a scale of one hundred that indicates the percent of a distribution that is equal to or below it. In general a percentile between 25% and 75% is considered normal, a percentile below 25% is considered below normal and a percentile above 75% is considered above normal.

Three and ten year percentiles shown in the table above, detail the period of time during the past 3 & 10 years that the market has traded either at or below its current price.

The higher the percentile, the stronger the market.

Source: Australian Wool Exchange, Australian Wool Innovation, Sydney Futures Exchange, x-rates.com

Disclaimer: While all due care has been taken in the preparation of this document, no warranty is made as to its accuracy, reliability or completeness. To the extent permitted by law neither Jemalong or their sources including subsidiaries and staff, accept liability to any person for loss or damage arising from the use of this information.



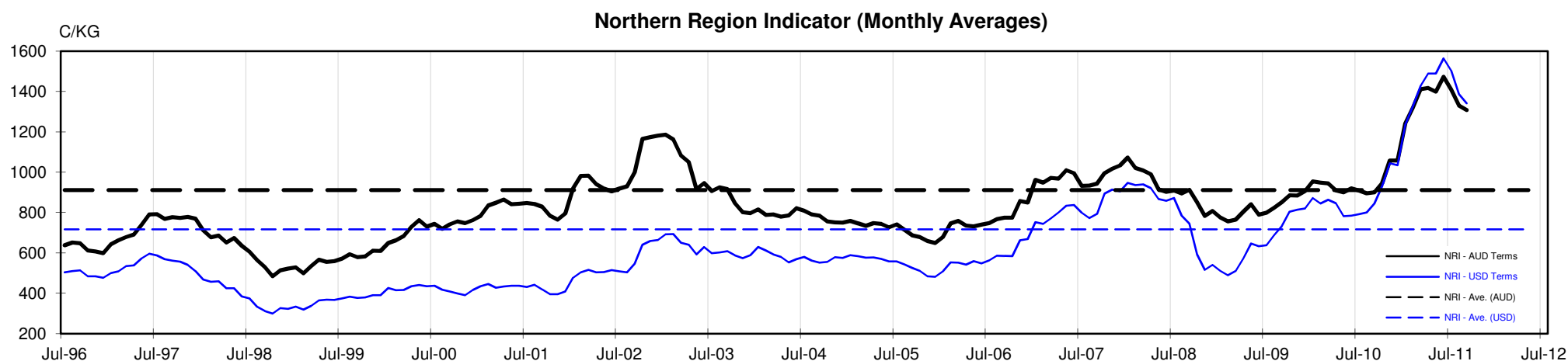
MARKET COMMENTARY

One Australian Dollar = \$ 0.98 US, as of 29/09/2011

NORTHERN REGION –Sale Week 13/11 (43,823 bales offered nationally)

On Wednesday - Merino fleece, 19.5 to 21 microns opened 15 cents lower and remained at that level until the close. 22 microns closed 20 cents cheaper on a limited selection, however it was the finer microns that posted significant reductions, with 18 to 19 microns falling 30-50 cents while 17.5 micron and finer suffered 150 cent losses. Merino skirtings, 19 micron and broader with 3-5% Vm fell 20 cents while 18 microns and finer fell 30-40 cents, with the burrier lots least affected. In the oddments, fine locks (<18um) fell 20, while others remained unchanged. Crutchings & Stains also finished generally unchanged. Crossbreds on a small offering closed a little easier with 27-29 microns up to 10 cents cheaper, while 30 micron and broader remained unchanged. 8.3% PI

On Thursday - After significant falls on Wednesday, the fine wool market (<18) were well supported with 16.5 microns improving by 24 cents, however 18 microns lost ground falling around 50 cents, as did 19 microns which lost a further 30 cents. 20 micron and broader were less affected, easing 10-15 cents. In the skirtings, the finer microns lost a further 50 cents, while 20 microns and broader closed 20 cents cheaper with the burrier 8% Vm types least affected. The oddment market had locks & crutchings firm while stains lifted 10 cents higher. Crossbreds closed fully firm with 27 to 30 microns tending in sellers favour. 16.3% PI





JEMALONG WOOL BULLETIN

(week ending 29/09/2011)

Table 4: 19 micron SFE

Wednesday, 28 September 2011

Delivery Mth	Oct-11	Dec-11	Feb-11	Apr-12	Jun-12	Aug-12	Oct-12	Dec-12	Feb-12
19 Micron SFE	1510	1460	1410	1390	1360	1350	1350	1310	1310
Average	1315	1335	1113	1378	1410	1399	1402	1402	1359
Maximum	1707	1677	1605	1622	1612	1525	1525	1525	1652
Minimum	1034	1034	983	1106	1210	1285	1285	1285	1053

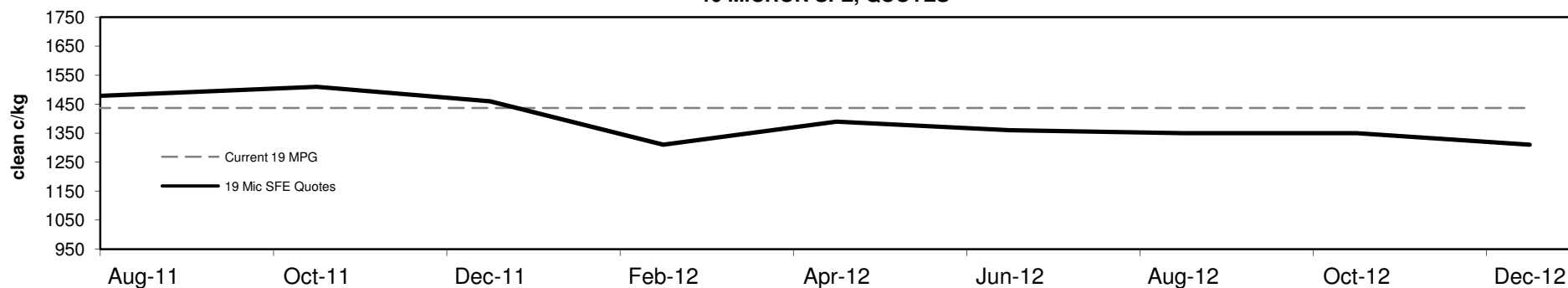
Table 5: 19 micron SFE, as a percentile of the 19 micron MPG

3 Year Percentile	77%	76%	75%	75%	75%	75%	75%	75%	75%
10 Year Percentile	93%	93%	93%	92%	91%	90%	90%	88%	88%

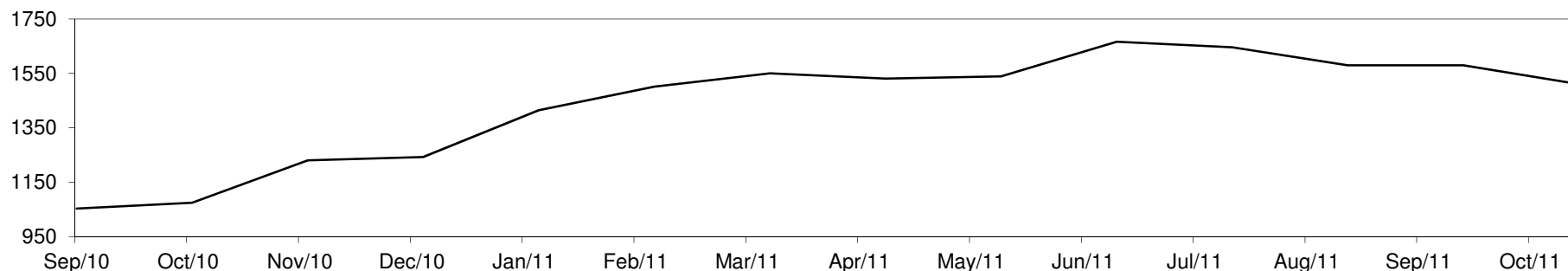
Table 6: 19 micron SFE, compared to MPG

SFE - MPG	+73	5%	+23	2%	-27	-2%	-47	-3%	-77	-5%	-87	-6%	-87	-6%	-127	-9%	-127	-9%
SFE - MPG, 1 year Ave.	-24	-2%	-74	-5%	-124	-8%	-144	-9%	-174	-11%	-184	-12%	-184	-12%	-224	-15%	-224	-15%
SFE - MPG, 3 year Ave.	+320	27%	+270	23%	+220	18%	+200	17%	+170	14%	+160	13%	+160	13%	+120	10%	+120	10%
SFE - MPG, 10 year Ave.	+418	38%	+368	34%	+318	29%	+298	27%	+268	25%	+258	24%	+258	24%	+218	20%	+218	20%

19 MICRON SFE, QUOTES



19 Micron SFE, Front month movement





JEMALONG WOOL BULLETIN

(week ending 29/09/2011)

Table 7: 21 micron SFE

Wednesday, 28 September 2011

Delivery Mth	Oct-11	Dec-11	Feb-11	Apr-12	Jun-12	Aug-12	Oct-12	Dec-12	Feb-12
21 Micron SFE	1313	1285	1248	1203	1174	1063	1131	1098	1063
Average	1087	1092	962	1119	1115	1132	1152	1152	1100
Maximum	1434	1411	1285	1303	1326	1316	1283	1283	1393
Minimum	880	880	860	934	990	1046	1013	1013	880

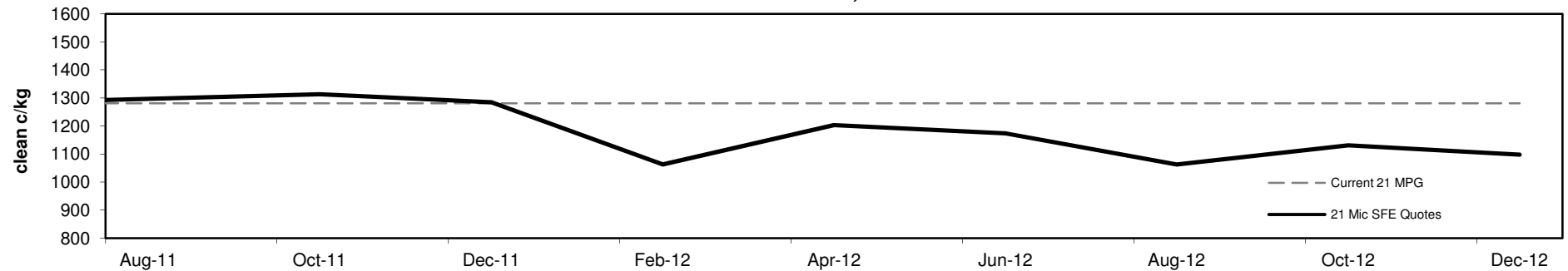
Table 8: 21 micron SFE, as a percentile of the 21 micron MPG

3 Year Percentile	86%	84%	82%	81%	79%	75%	77%	76%	75%
10 Year Percentile	96%	95%	91%	89%	88%	86%	87%	86%	86%

Table 9: 21 micron SFE, compared to MPG

SFE - MPG	+32	2%	+4	0%	-33	-3%	-78	-6%	-107	-8%	-218	-17%	-150	-12%	-183	-14%	-218	-17%
SFE - MPG, 1 year Ave.	+88	7%	+60	5%	+23	2%	-22	-2%	-51	-4%	-162	-13%	-94	-8%	-127	-10%	-162	-13%
SFE - MPG, 3 year Ave.	+341	35%	+313	32%	+276	28%	+231	24%	+202	21%	+91	9%	+159	16%	+126	13%	+91	9%
SFE - MPG, 10 year Ave.	+395	43%	+367	40%	+330	36%	+285	31%	+256	28%	+145	16%	+213	23%	+180	20%	+145	16%

21 MICRON SFE, QUOTES



21 Micron SFE, Front month movement

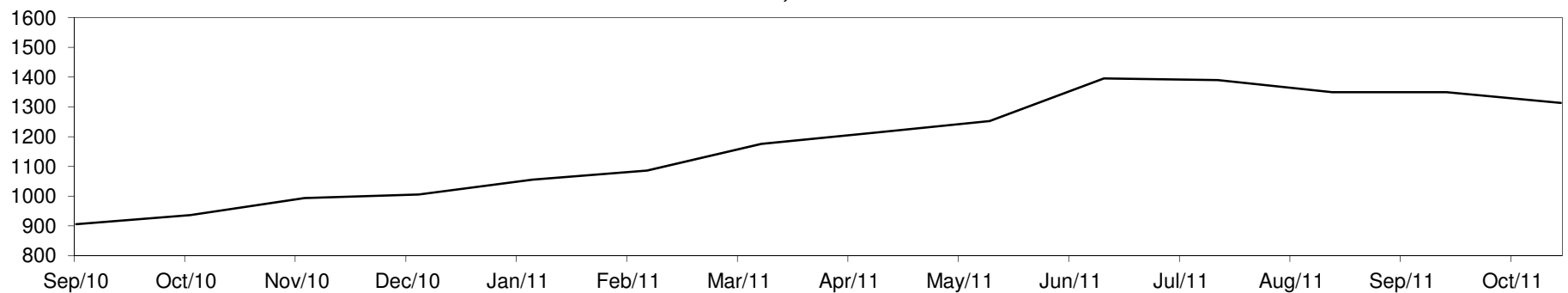




Table 10: 23 micron SFE

Wednesday, 28 September 2011

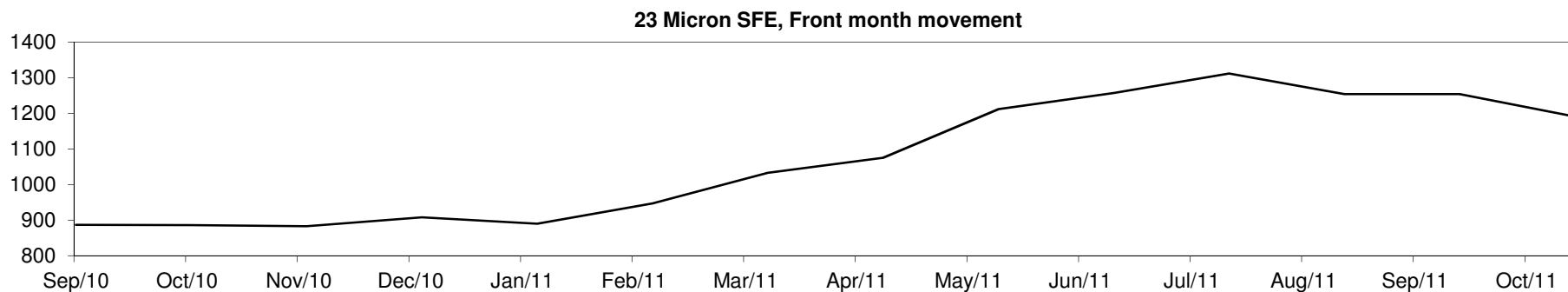
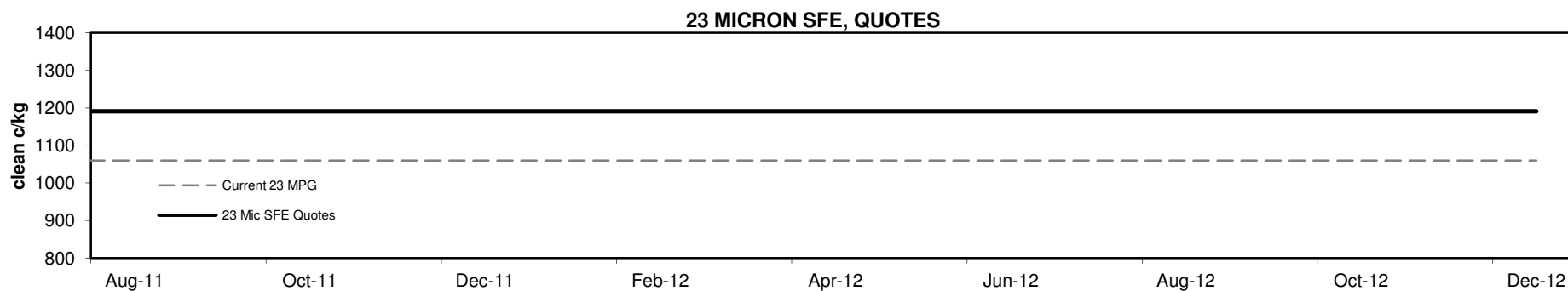
Delivery Mth	Oct-11	Dec-11	Feb-11	Apr-12	Jun-12	Aug-12	Oct-12	Dec-12	Feb-12
23 Micron SFE	1191	1191	1191	1191	1191	1191	1191	1191	1191
Average	1002	1020	870	1077	1118	1178	1236	1236	1044
Maximum	1312	1312	1191	1312	1312	1312	1312	1312	1312
Minimum	883	883	760	883	890	1033	1191	1191	883

Table 11: 23 micron SFE, as a percentile of the 23 micron MPG

3 Year Percentile	88%	88%	88%	88%	88%	88%	88%	88%	88%
10 Year Percentile	91%	91%	91%	91%	91%	91%	91%	91%	91%

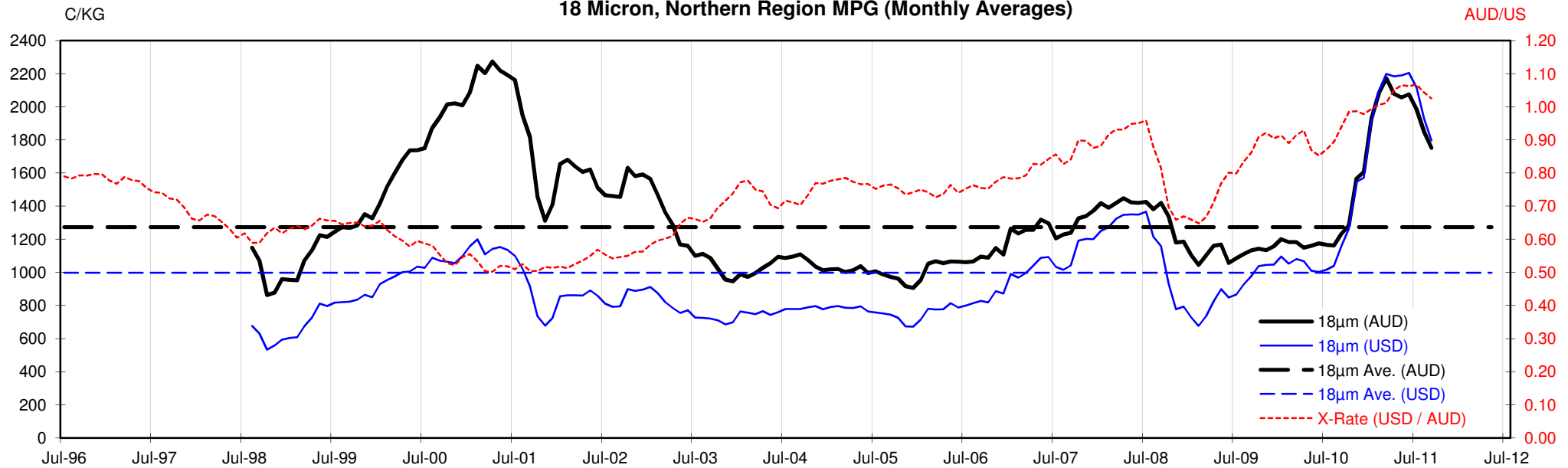
Table 12: 23 micron SFE, compared to MPG

SFE - MPG	+131	12%	+131	12%	+131	12%	+131	12%	+131	12%	+131	12%	+131	12%	+131	12%	+131	12%
SFE - MPG, 1 year Ave.	+81	7%	+81	7%	+81	7%	+81	7%	+81	7%	+81	7%	+81	7%	+81	7%	+81	7%
SFE - MPG, 3 year Ave.	+282	31%	+282	31%	+282	31%	+282	31%	+282	31%	+282	31%	+282	31%	+282	31%	+282	31%
SFE - MPG, 10 year Ave.	+323	37%	+323	37%	+323	37%	+323	37%	+323	37%	+323	37%	+323	37%	+323	37%	+323	37%

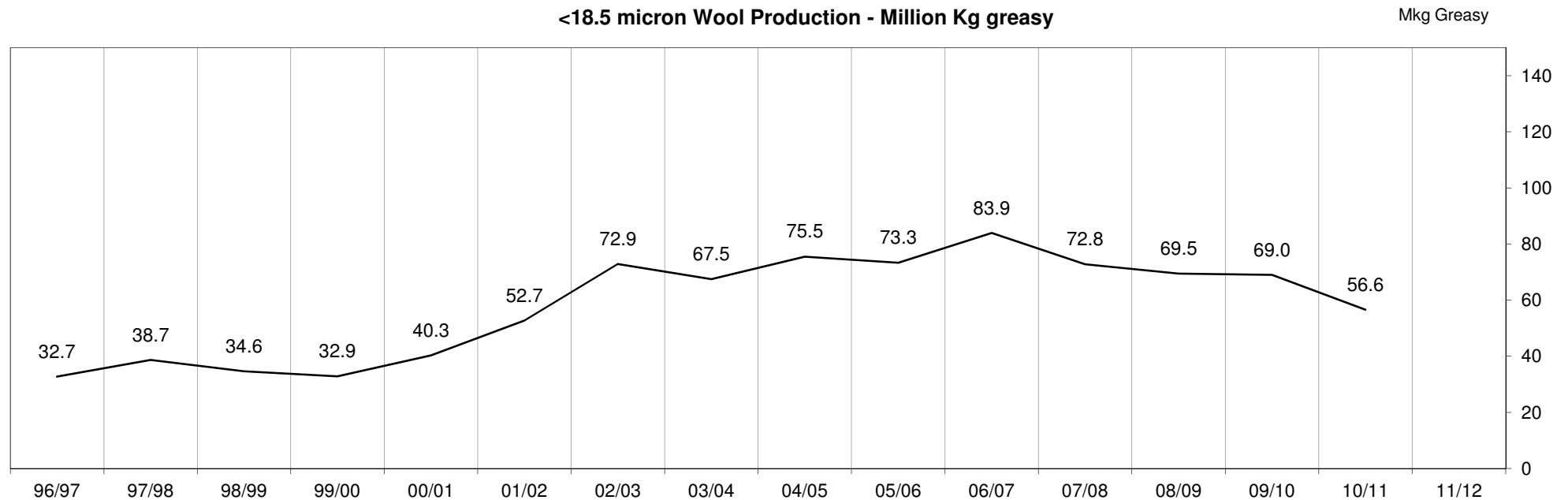


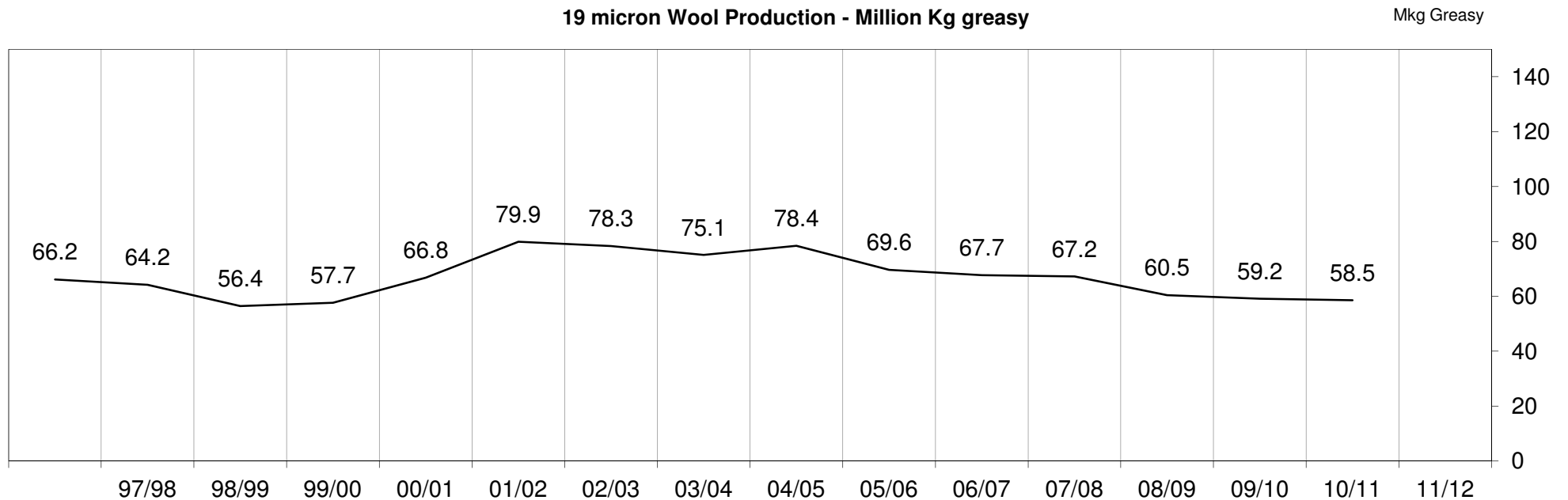
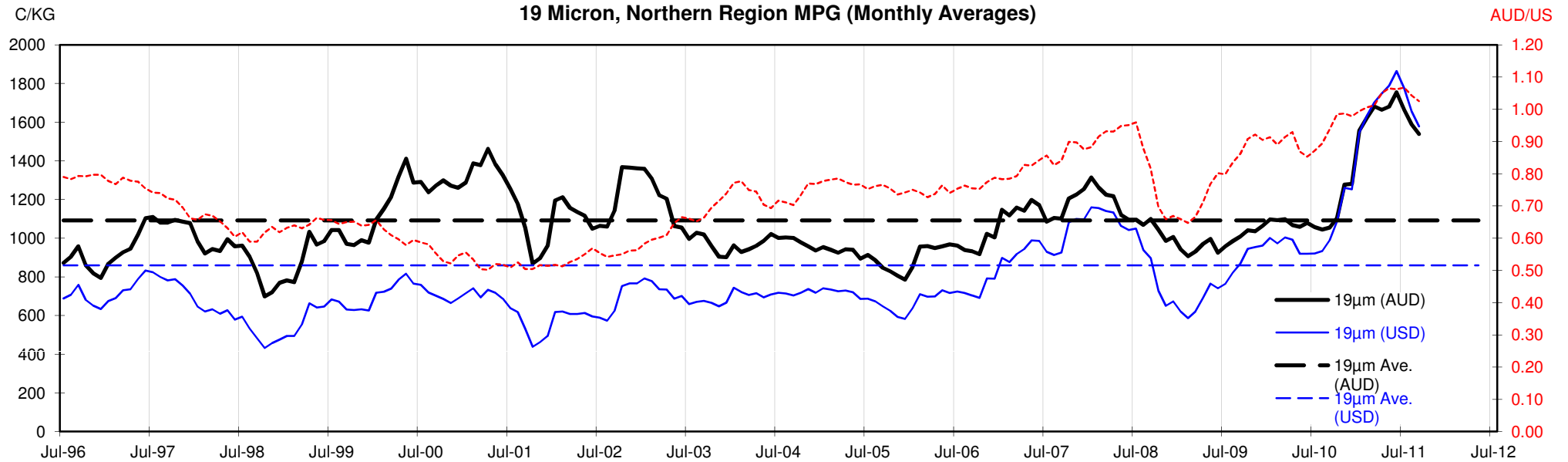


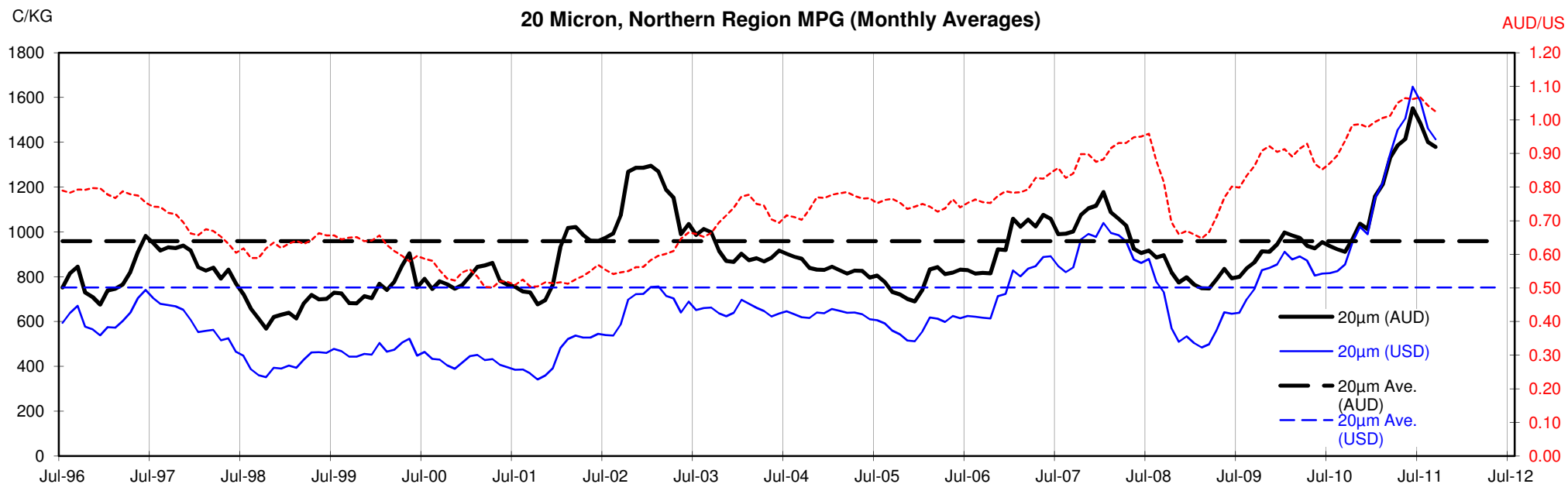
18 Micron, Northern Region MPG (Monthly Averages)

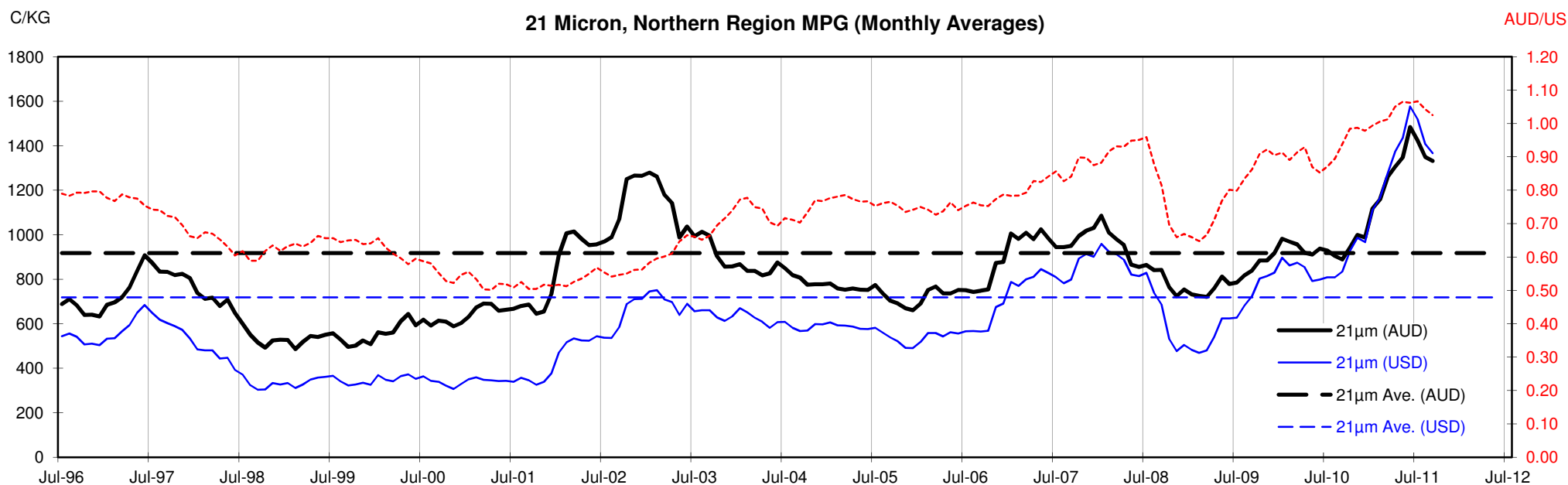


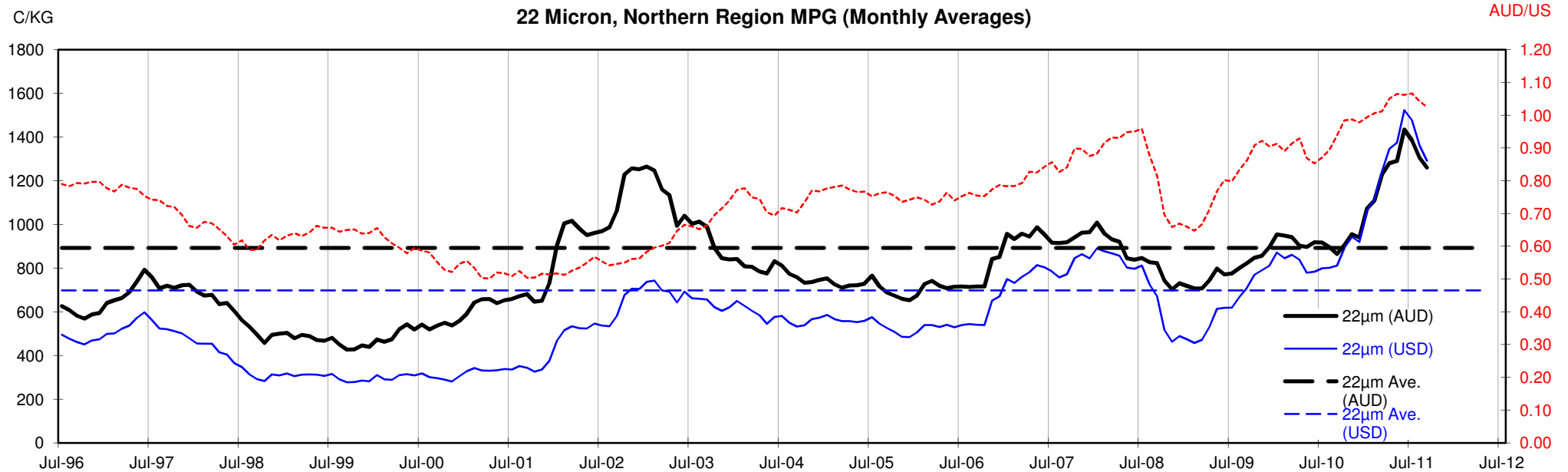
<18.5 micron Wool Production - Million Kg greasy

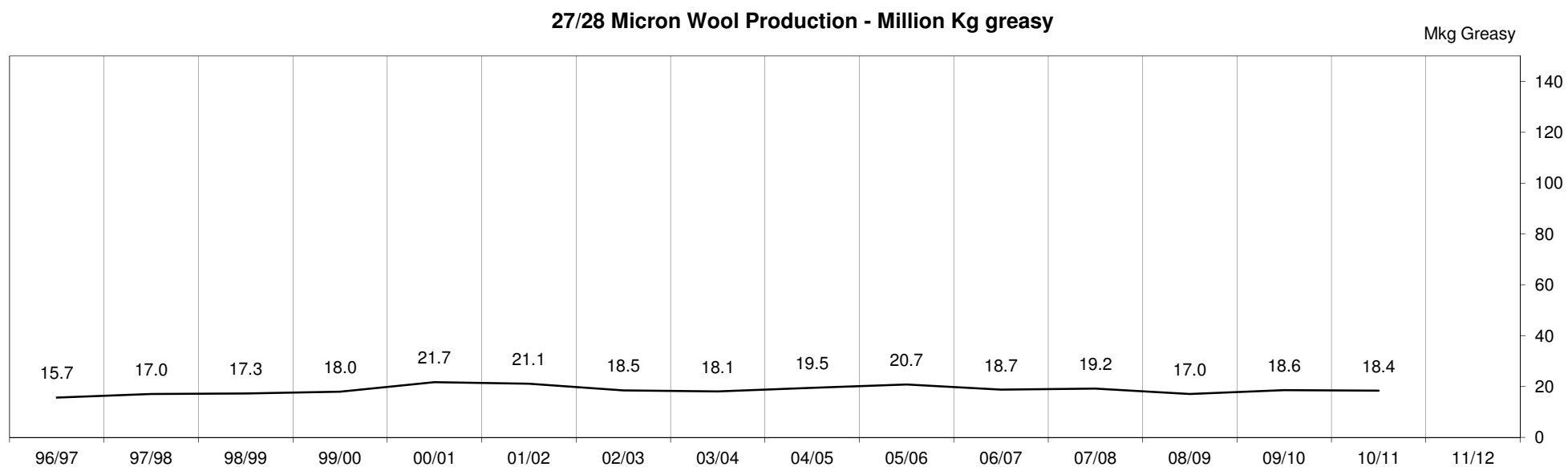
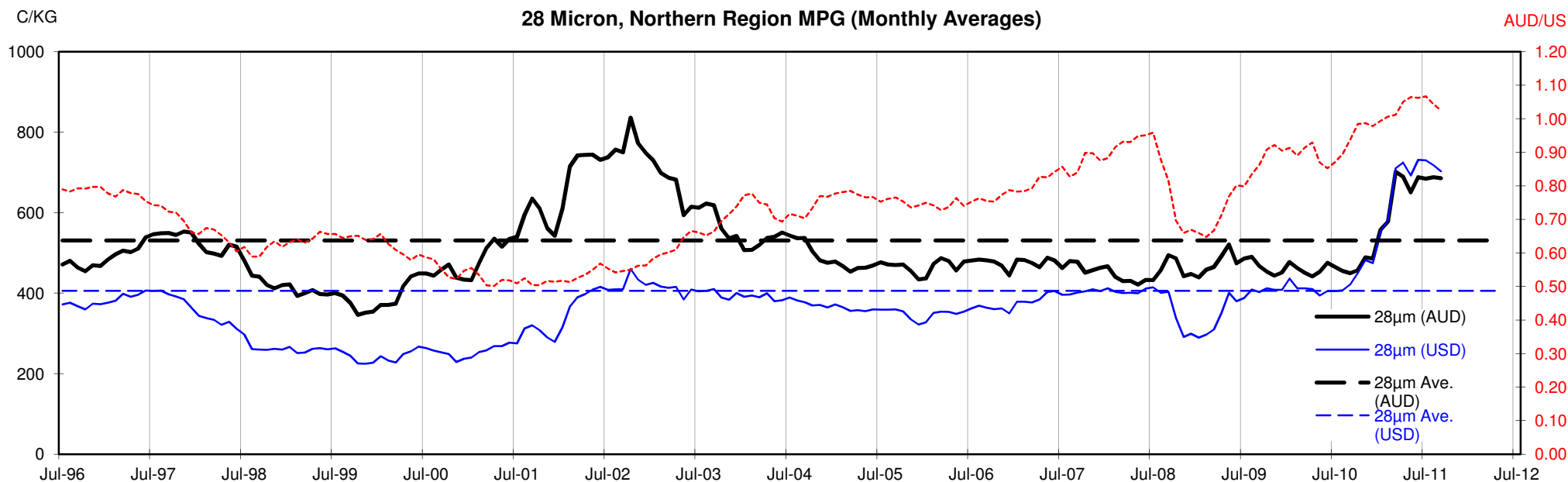












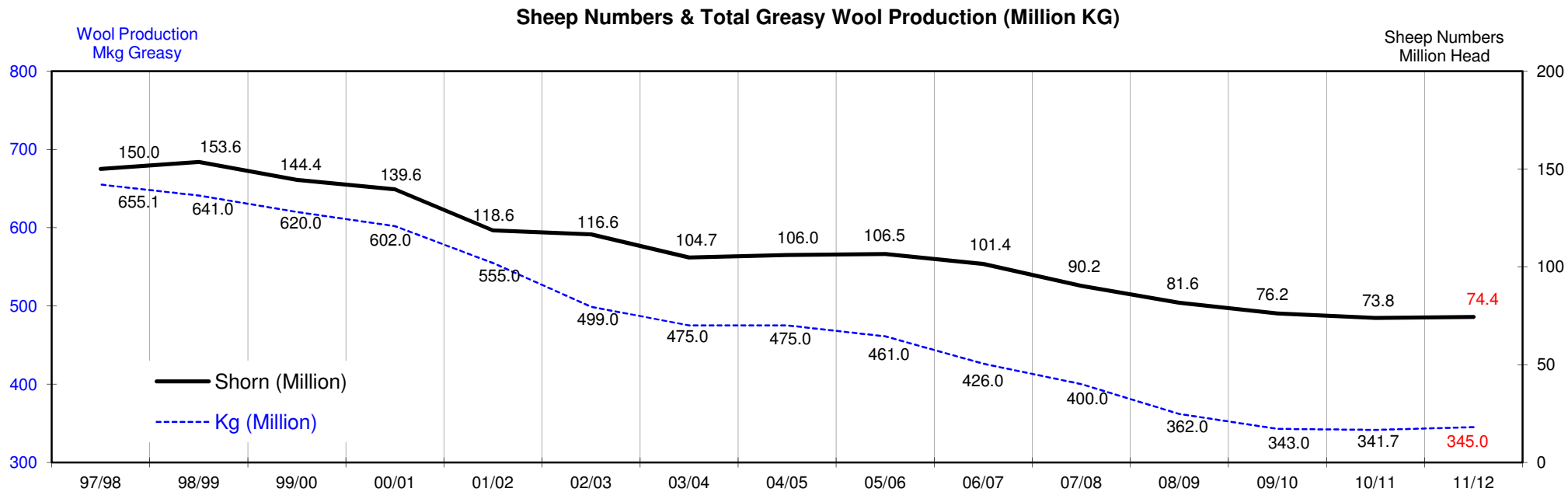
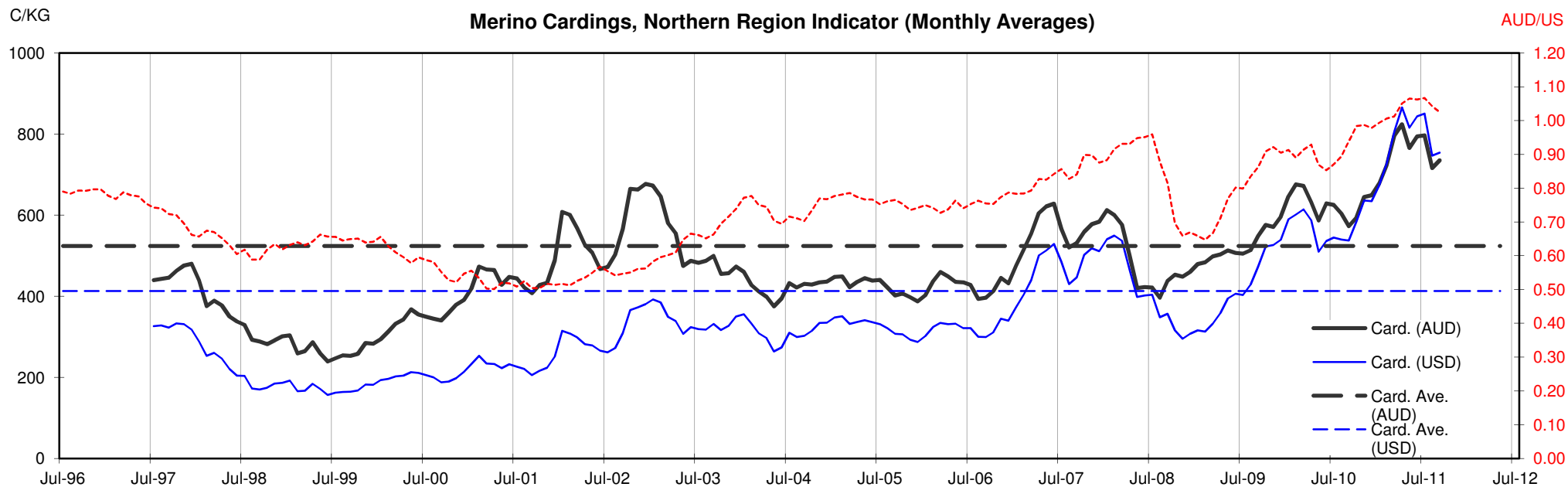




Table 13: Returns pr head for skirted fleece wool.

Skirted FLC Weight		Micron																	
9 Kg		16	16.5	17	17.5	18	18.5	19	19.5	20	21	22	23	24	25	26	28	30	32
Yield (Sch Dry)	25% Current	\$52	\$47	\$44	\$39	\$35	\$34	\$32	\$31	\$30	\$29	\$27	\$24	\$22	\$21	\$19	\$15	\$14	\$13
	10yr ave.			\$32		\$29		\$25		\$22	\$21	\$20	\$20	\$18	\$17	\$15	\$12	\$10	\$9
	30% Current	\$62	\$57	\$53	\$47	\$42	\$40	\$39	\$37	\$36	\$35	\$33	\$29	\$27	\$25	\$23	\$18	\$17	\$16
	10yr ave.			\$39		\$34		\$29		\$26	\$25	\$24	\$23	\$22	\$20	\$18	\$14	\$13	\$11
	35% Current	\$72	\$66	\$61	\$55	\$49	\$47	\$45	\$43	\$42	\$40	\$38	\$33	\$31	\$30	\$27	\$21	\$20	\$18
	10yr ave.			\$45		\$40		\$34		\$30	\$29	\$28	\$27	\$26	\$23	\$21	\$17	\$15	\$13
	40% Current	\$83	\$76	\$70	\$63	\$56	\$54	\$52	\$50	\$48	\$46	\$44	\$38	\$36	\$34	\$31	\$24	\$22	\$21
	10yr ave.			\$52		\$46		\$39		\$34	\$33	\$32	\$31	\$30	\$26	\$24	\$19	\$17	\$15
	45% Current	\$93	\$85	\$79	\$71	\$63	\$60	\$58	\$56	\$53	\$52	\$49	\$43	\$40	\$38	\$35	\$27	\$25	\$24
	10yr ave.			\$58		\$52		\$44		\$39	\$37	\$36	\$35	\$33	\$30	\$27	\$22	\$19	\$17
	50% Current	\$104	\$95	\$88	\$79	\$70	\$67	\$65	\$62	\$59	\$58	\$54	\$48	\$45	\$42	\$39	\$30	\$28	\$26
	10yr ave.			\$65		\$57		\$49		\$43	\$41	\$40	\$39	\$37	\$33	\$30	\$24	\$21	\$19
	55% Current	\$114	\$104	\$97	\$87	\$78	\$74	\$71	\$68	\$65	\$63	\$60	\$52	\$49	\$47	\$42	\$33	\$31	\$29
	10yr ave.			\$71		\$63		\$54		\$47	\$45	\$44	\$43	\$41	\$36	\$33	\$26	\$23	\$21
	60% Current	\$124	\$113	\$105	\$95	\$85	\$81	\$78	\$74	\$71	\$69	\$65	\$57	\$54	\$51	\$46	\$37	\$34	\$32
	10yr ave.			\$78		\$69		\$59		\$52	\$50	\$48	\$47	\$44	\$40	\$36	\$29	\$25	\$23
	65% Current	\$135	\$123	\$114	\$102	\$92	\$87	\$84	\$81	\$77	\$75	\$71	\$62	\$58	\$55	\$50	\$40	\$36	\$34
	10yr ave.			\$84		\$74		\$64		\$56	\$54	\$52	\$51	\$48	\$43	\$39	\$31	\$27	\$24
	70% Current	\$145	\$132	\$123	\$110	\$99	\$94	\$91	\$87	\$83	\$81	\$76	\$67	\$63	\$59	\$54	\$43	\$39	\$37
	10yr ave.			\$91		\$80		\$69		\$60	\$58	\$56	\$55	\$52	\$46	\$42	\$33	\$29	\$26
	75% Current	\$155	\$142	\$132	\$118	\$106	\$101	\$97	\$93	\$89	\$86	\$82	\$72	\$67	\$64	\$58	\$46	\$42	\$39
	10yr ave.			\$97		\$86		\$74		\$65	\$62	\$60	\$59	\$55	\$50	\$45	\$36	\$31	\$28
	80% Current	\$166	\$151	\$140	\$126	\$113	\$107	\$103	\$99	\$95	\$92	\$87	\$76	\$72	\$68	\$62	\$49	\$45	\$42
	10yr ave.			\$104		\$92		\$79		\$69	\$66	\$64	\$62	\$59	\$53	\$48	\$38	\$33	\$30
	85% Current	\$176	\$161	\$149	\$134	\$120	\$114	\$110	\$105	\$101	\$98	\$92	\$81	\$76	\$72	\$66	\$52	\$48	\$45
	10yr ave.			\$110		\$97		\$84		\$73	\$70	\$68	\$66	\$63	\$56	\$51	\$41	\$35	\$32

The above shows estimated returns per head for skirted fleece wool. These figures do not take into account the value of skirtings and oddments and do not take into account discounts that may apply for faults under individual circumstances. These figures are based on a market index of 100% and should be used as a guide only. Returns over \$30 / head for fleece wool are highlighted.

Source: Australian Wool Exchange, Australian Wool Innovation, Sydney Futures Exchange, x-rates.com

Disclaimer: While all due care has been taken in the preparation of this document, no warranty is made as to its accuracy, reliability or completeness. To the extent permitted by law neither Jemalong or their sources including subsidiaries and staff, accept liability to any person for loss or damage arising from the use of this information.



Table 14: Returns pr head for skirted fleece wool.

Skirted FLC Weight		Micron																	
8 Kg		16	16.5	17	17.5	18	18.5	19	19.5	20	21	22	23	24	25	26	28	30	32
Yield (Sch Dry)	25% Current	\$46	\$42	\$39	\$35	\$31	\$30	\$29	\$28	\$26	\$26	\$24	\$21	\$20	\$19	\$17	\$14	\$12	\$12
	10yr ave.			\$29		\$25		\$22		\$19	\$18	\$18	\$17	\$16	\$15	\$13	\$11	\$9	\$8
	30% Current	\$55	\$50	\$47	\$42	\$38	\$36	\$34	\$33	\$32	\$31	\$29	\$25	\$24	\$23	\$21	\$16	\$15	\$14
	10yr ave.			\$35		\$31		\$26		\$23	\$22	\$21	\$21	\$20	\$18	\$16	\$13	\$11	\$10
	35% Current	\$64	\$59	\$55	\$49	\$44	\$42	\$40	\$39	\$37	\$36	\$34	\$30	\$28	\$26	\$24	\$19	\$17	\$16
	10yr ave.			\$40		\$36		\$31		\$27	\$26	\$25	\$24	\$23	\$21	\$19	\$15	\$13	\$12
	40% Current	\$74	\$67	\$62	\$56	\$50	\$48	\$46	\$44	\$42	\$41	\$39	\$34	\$32	\$30	\$27	\$22	\$20	\$19
	10yr ave.			\$46		\$41		\$35		\$31	\$29	\$29	\$28	\$26	\$24	\$22	\$17	\$15	\$13
	45% Current	\$83	\$76	\$70	\$63	\$56	\$54	\$52	\$50	\$48	\$46	\$44	\$38	\$36	\$34	\$31	\$24	\$22	\$21
	10yr ave.			\$52		\$46		\$39		\$34	\$33	\$32	\$31	\$30	\$26	\$24	\$19	\$17	\$15
	50% Current	\$92	\$84	\$78	\$70	\$63	\$60	\$57	\$55	\$53	\$51	\$48	\$42	\$40	\$38	\$34	\$27	\$25	\$23
	10yr ave.			\$58		\$51		\$44		\$38	\$37	\$36	\$35	\$33	\$29	\$27	\$21	\$19	\$17
	55% Current	\$101	\$92	\$86	\$77	\$69	\$66	\$63	\$61	\$58	\$56	\$53	\$47	\$44	\$41	\$38	\$30	\$27	\$26
	10yr ave.			\$64		\$56		\$48		\$42	\$40	\$39	\$38	\$36	\$32	\$30	\$23	\$20	\$18
	60% Current	\$110	\$101	\$94	\$84	\$75	\$72	\$69	\$66	\$63	\$61	\$58	\$51	\$48	\$45	\$41	\$32	\$30	\$28
	10yr ave.			\$69		\$61		\$52		\$46	\$44	\$43	\$42	\$39	\$35	\$32	\$25	\$22	\$20
	65% Current	\$120	\$109	\$101	\$91	\$81	\$78	\$75	\$72	\$69	\$67	\$63	\$55	\$52	\$49	\$45	\$35	\$32	\$30
	10yr ave.			\$75		\$66		\$57		\$50	\$48	\$46	\$45	\$43	\$38	\$35	\$28	\$24	\$22
	70% Current	\$129	\$118	\$109	\$98	\$88	\$83	\$80	\$77	\$74	\$72	\$68	\$59	\$56	\$53	\$48	\$38	\$35	\$33
	10yr ave.			\$81		\$71		\$61		\$54	\$51	\$50	\$49	\$46	\$41	\$38	\$30	\$26	\$23
	75% Current	\$138	\$126	\$117	\$105	\$94	\$89	\$86	\$83	\$79	\$77	\$73	\$64	\$60	\$57	\$51	\$41	\$37	\$35
	10yr ave.			\$87		\$76		\$66		\$57	\$55	\$54	\$52	\$49	\$44	\$40	\$32	\$28	\$25
	80% Current	\$147	\$134	\$125	\$112	\$100	\$95	\$92	\$88	\$84	\$82	\$77	\$68	\$64	\$60	\$55	\$43	\$40	\$37
	10yr ave.			\$92		\$81		\$70		\$61	\$59	\$57	\$56	\$53	\$47	\$43	\$34	\$30	\$27
	85% Current	\$156	\$143	\$133	\$119	\$106	\$101	\$98	\$94	\$90	\$87	\$82	\$72	\$68	\$64	\$58	\$46	\$42	\$40
	10yr ave.			\$98		\$87		\$74		\$65	\$62	\$61	\$59	\$56	\$50	\$46	\$36	\$31	\$28

The above shows estimated returns per head for skirted fleece wool. These figures do not take into account the value of skirtings and oddments and do not take into account discounts that may apply for faults under individual circumstances. These figures are based on a market index of 100% and should be used as a guide only. Returns over \$30 / head for fleece wool are highlighted.

Source: Australian Wool Exchange, Australian Wool Innovation, Sydney Futures Exchange, x-rates.com

Disclaimer: While all due care has been taken in the preparation of this document, no warranty is made as to its accuracy, reliability or completeness. To the extent permitted by law neither Jemalong or their sources including subsidiaries and staff, accept liability to any person for loss or damage arising from the use of this information.



Table 15: Returns pr head for skirted fleece wool.

Skirted FLC Weight		Micron																	
7 Kg		16	16.5	17	17.5	18	18.5	19	19.5	20	21	22	23	24	25	26	28	30	32
Yield (Sch Dry)	25% Current	\$40	\$37	\$34	\$31	\$27	\$26	\$25	\$24	\$23	\$22	\$21	\$19	\$17	\$17	\$15	\$12	\$11	\$10
	10yr ave.			\$25	\$22	\$22	\$19		\$17	\$16	\$16	\$15	\$14	\$13	\$12	\$9	\$8	\$7	
	30% Current	\$48	\$44	\$41	\$37	\$33	\$31	\$30	\$29	\$28	\$27	\$25	\$22	\$21	\$20	\$18	\$14	\$13	\$12
	10yr ave.			\$30	\$27	\$27	\$23		\$20	\$19	\$19	\$18	\$17	\$15	\$14	\$11	\$10	\$9	
	35% Current	\$56	\$51	\$48	\$43	\$38	\$37	\$35	\$34	\$32	\$31	\$30	\$26	\$24	\$23	\$21	\$17	\$15	\$14
	10yr ave.			\$35	\$31	\$31	\$27		\$23	\$22	\$22	\$21	\$20	\$18	\$16	\$13	\$11	\$10	
	40% Current	\$64	\$59	\$55	\$49	\$44	\$42	\$40	\$39	\$37	\$36	\$34	\$30	\$28	\$26	\$24	\$19	\$17	\$16
	10yr ave.			\$40	\$36	\$36	\$31		\$27	\$26	\$25	\$24	\$23	\$21	\$19	\$15	\$13	\$12	
	45% Current	\$72	\$66	\$61	\$55	\$49	\$47	\$45	\$43	\$42	\$40	\$38	\$33	\$31	\$30	\$27	\$21	\$20	\$18
	10yr ave.			\$45	\$40	\$40	\$34		\$30	\$29	\$28	\$27	\$26	\$23	\$21	\$17	\$15	\$13	
	50% Current	\$81	\$74	\$68	\$61	\$55	\$52	\$50	\$48	\$46	\$45	\$42	\$37	\$35	\$33	\$30	\$24	\$22	\$20
	10yr ave.			\$51	\$45	\$45	\$38		\$34	\$32	\$31	\$30	\$29	\$26	\$24	\$19	\$16	\$15	
	55% Current	\$89	\$81	\$75	\$67	\$60	\$57	\$55	\$53	\$51	\$49	\$47	\$41	\$38	\$36	\$33	\$26	\$24	\$23
	10yr ave.			\$56	\$49	\$49	\$42		\$37	\$35	\$34	\$33	\$32	\$28	\$26	\$20	\$18	\$16	
	60% Current	\$97	\$88	\$82	\$74	\$66	\$63	\$60	\$58	\$55	\$54	\$51	\$45	\$42	\$40	\$36	\$28	\$26	\$25
	10yr ave.			\$61	\$53	\$53	\$46		\$40	\$39	\$38	\$36	\$35	\$31	\$28	\$22	\$19	\$18	
	65% Current	\$105	\$96	\$89	\$80	\$71	\$68	\$65	\$63	\$60	\$58	\$55	\$48	\$45	\$43	\$39	\$31	\$28	\$27
	10yr ave.			\$66	\$58	\$58	\$50		\$44	\$42	\$41	\$39	\$37	\$33	\$31	\$24	\$21	\$19	
	70% Current	\$113	\$103	\$96	\$86	\$77	\$73	\$70	\$68	\$65	\$63	\$59	\$52	\$49	\$46	\$42	\$33	\$31	\$29
	10yr ave.			\$71	\$62	\$62	\$54		\$47	\$45	\$44	\$43	\$40	\$36	\$33	\$26	\$23	\$20	
	75% Current	\$121	\$110	\$102	\$92	\$82	\$78	\$75	\$72	\$69	\$67	\$63	\$56	\$52	\$50	\$45	\$35	\$33	\$31
	10yr ave.			\$76	\$67	\$67	\$57		\$50	\$48	\$47	\$46	\$43	\$39	\$35	\$28	\$24	\$22	
	80% Current	\$129	\$118	\$109	\$98	\$88	\$83	\$80	\$77	\$74	\$72	\$68	\$59	\$56	\$53	\$48	\$38	\$35	\$33
	10yr ave.			\$81	\$71	\$71	\$61		\$54	\$51	\$50	\$49	\$46	\$41	\$38	\$30	\$26	\$23	
	85% Current	\$137	\$125	\$116	\$104	\$93	\$89	\$86	\$82	\$79	\$76	\$72	\$63	\$59	\$56	\$51	\$40	\$37	\$35
	10yr ave.			\$86	\$76	\$76	\$65		\$57	\$55	\$53	\$52	\$49	\$44	\$40	\$32	\$28	\$25	

The above shows estimated returns per head for skirted fleece wool. These figures do not take into account the value of skirtings and oddments and do not take into account discounts that may apply for faults under individual circumstances. These figures are based on a market index of 100% and should be used as a guide only. Returns over \$30 / head for fleece wool are highlighted.

Source: Australian Wool Exchange, Australian Wool Innovation, Sydney Futures Exchange, x-rates.com

Disclaimer: While all due care has been taken in the preparation of this document, no warranty is made as to its accuracy, reliability or completeness. To the extent permitted by law neither Jemalong or their sources including subsidiaries and staff, accept liability to any person for loss or damage arising from the use of this information.



Table 16: Returns pr head for skirted fleece wool.

Skirted FLC Weight		Micron																	
6 Kg		16	16.5	17	17.5	18	18.5	19	19.5	20	21	22	23	24	25	26	28	30	32
Yield (Sch Dry)	25% Current	\$35	\$32	\$29	\$26	\$23	\$22	\$22	\$21	\$20	\$19	\$18	\$16	\$15	\$14	\$13	\$10	\$9	\$9
	10yr ave.			\$22	\$19		\$16			\$14	\$14	\$13	\$13	\$12	\$11	\$10	\$8	\$7	\$6
	30% Current	\$41	\$38	\$35	\$32	\$28	\$27	\$26	\$25	\$24	\$23	\$22	\$19	\$18	\$17	\$15	\$12	\$11	\$11
	10yr ave.			\$26		\$23		\$20		\$17	\$17	\$16	\$16	\$15	\$13	\$12	\$10	\$8	\$8
	35% Current	\$48	\$44	\$41	\$37	\$33	\$31	\$30	\$29	\$28	\$27	\$25	\$22	\$21	\$20	\$18	\$14	\$13	\$12
	10yr ave.			\$30		\$27		\$23		\$20	\$19	\$19	\$18	\$17	\$15	\$14	\$11	\$10	\$9
	40% Current	\$55	\$50	\$47	\$42	\$38	\$36	\$34	\$33	\$32	\$31	\$29	\$25	\$24	\$23	\$21	\$16	\$15	\$14
	10yr ave.			\$35		\$31		\$26		\$23	\$22	\$21	\$21	\$20	\$18	\$16	\$13	\$11	\$10
	45% Current	\$62	\$57	\$53	\$47	\$42	\$40	\$39	\$37	\$36	\$35	\$33	\$29	\$27	\$25	\$23	\$18	\$17	\$16
	10yr ave.			\$39		\$34		\$29		\$26	\$25	\$24	\$23	\$22	\$20	\$18	\$14	\$13	\$11
	50% Current	\$69	\$63	\$59	\$53	\$47	\$45	\$43	\$41	\$40	\$38	\$36	\$32	\$30	\$28	\$26	\$20	\$19	\$18
	10yr ave.			\$43		\$38		\$33		\$29	\$28	\$27	\$26	\$25	\$22	\$20	\$16	\$14	\$13
	55% Current	\$76	\$69	\$64	\$58	\$52	\$49	\$47	\$45	\$44	\$42	\$40	\$35	\$33	\$31	\$28	\$22	\$21	\$19
	10yr ave.			\$48		\$42		\$36		\$32	\$30	\$29	\$29	\$27	\$24	\$22	\$18	\$15	\$14
	60% Current	\$83	\$76	\$70	\$63	\$56	\$54	\$52	\$50	\$48	\$46	\$44	\$38	\$36	\$34	\$31	\$24	\$22	\$21
	10yr ave.			\$52		\$46		\$39		\$34	\$33	\$32	\$31	\$30	\$26	\$24	\$19	\$17	\$15
	65% Current	\$90	\$82	\$76	\$68	\$61	\$58	\$56	\$54	\$51	\$50	\$47	\$41	\$39	\$37	\$33	\$26	\$24	\$23
	10yr ave.			\$56		\$50		\$43		\$37	\$36	\$35	\$34	\$32	\$29	\$26	\$21	\$18	\$16
	70% Current	\$97	\$88	\$82	\$74	\$66	\$63	\$60	\$58	\$55	\$54	\$51	\$45	\$42	\$40	\$36	\$28	\$26	\$25
	10yr ave.			\$61		\$53		\$46		\$40	\$39	\$38	\$36	\$35	\$31	\$28	\$22	\$19	\$18
	75% Current	\$104	\$95	\$88	\$79	\$70	\$67	\$65	\$62	\$59	\$58	\$54	\$48	\$45	\$42	\$39	\$30	\$28	\$26
	10yr ave.			\$65		\$57		\$49		\$43	\$41	\$40	\$39	\$37	\$33	\$30	\$24	\$21	\$19
	80% Current	\$110	\$101	\$94	\$84	\$75	\$72	\$69	\$66	\$63	\$61	\$58	\$51	\$48	\$45	\$41	\$32	\$30	\$28
	10yr ave.			\$69		\$61		\$52		\$46	\$44	\$43	\$42	\$39	\$35	\$32	\$25	\$22	\$20
	85% Current	\$117	\$107	\$99	\$89	\$80	\$76	\$73	\$70	\$67	\$65	\$62	\$54	\$51	\$48	\$44	\$34	\$32	\$30
	10yr ave.			\$74		\$65		\$56		\$49	\$47	\$46	\$44	\$42	\$37	\$34	\$27	\$24	\$21

The above shows estimated returns per head for skirted fleece wool. These figures do not take into account the value of skirtings and oddments and do not take into account discounts that may apply for faults under individual circumstances. These figures are based on a market index of 100% and should be used as a guide only. Returns over \$30 / head for fleece wool are highlighted.

Source: Australian Wool Exchange, Australian Wool Innovation, Sydney Futures Exchange, x-rates.com

Disclaimer: While all due care has been taken in the preparation of this document, no warranty is made as to its accuracy, reliability or completeness. To the extent permitted by law neither Jemalong or their sources including subsidiaries and staff, accept liability to any person for loss or damage arising from the use of this information.



Table 17: Returns pr head for skirted fleece wool.

Skirted FLC Weight		Micron																	
5 Kg		16	16.5	17	17.5	18	18.5	19	19.5	20	21	22	23	24	25	26	28	30	32
Yield (Sch Dry)	25% Current	\$29	\$26	\$24	\$22	\$20	\$19	\$18	\$17	\$17	\$16	\$15	\$13	\$12	\$12	\$11	\$8	\$8	\$7
	10yr ave.			\$18		\$16		\$14		\$12	\$11	\$11	\$11	\$10	\$9	\$8	\$7	\$6	\$5
	30% Current	\$35	\$32	\$29	\$26	\$23	\$22	\$22	\$21	\$20	\$19	\$18	\$16	\$15	\$14	\$13	\$10	\$9	\$9
	10yr ave.			\$22		\$19		\$16		\$14	\$14	\$13	\$13	\$12	\$11	\$10	\$8	\$7	\$6
	35% Current	\$40	\$37	\$34	\$31	\$27	\$26	\$25	\$24	\$23	\$22	\$21	\$19	\$17	\$17	\$15	\$12	\$11	\$10
	10yr ave.			\$25		\$22		\$19		\$17	\$16	\$16	\$15	\$14	\$13	\$12	\$9	\$8	\$7
	40% Current	\$46	\$42	\$39	\$35	\$31	\$30	\$29	\$28	\$26	\$26	\$24	\$21	\$20	\$19	\$17	\$14	\$12	\$12
	10yr ave.			\$29		\$25		\$22		\$19	\$18	\$18	\$17	\$16	\$15	\$13	\$11	\$9	\$8
	45% Current	\$52	\$47	\$44	\$39	\$35	\$34	\$32	\$31	\$30	\$29	\$27	\$24	\$22	\$21	\$19	\$15	\$14	\$13
	10yr ave.			\$32		\$29		\$25		\$22	\$21	\$20	\$20	\$18	\$17	\$15	\$12	\$10	\$9
	50% Current	\$58	\$53	\$49	\$44	\$39	\$37	\$36	\$34	\$33	\$32	\$30	\$27	\$25	\$24	\$21	\$17	\$16	\$15
	10yr ave.			\$36		\$32		\$27		\$24	\$23	\$22	\$22	\$21	\$18	\$17	\$13	\$12	\$10
	55% Current	\$63	\$58	\$54	\$48	\$43	\$41	\$40	\$38	\$36	\$35	\$33	\$29	\$27	\$26	\$24	\$19	\$17	\$16
	10yr ave.			\$40		\$35		\$30		\$26	\$25	\$25	\$24	\$23	\$20	\$19	\$15	\$13	\$11
	60% Current	\$69	\$63	\$59	\$53	\$47	\$45	\$43	\$41	\$40	\$38	\$36	\$32	\$30	\$28	\$26	\$20	\$19	\$18
	10yr ave.			\$43		\$38		\$33		\$29	\$28	\$27	\$26	\$25	\$22	\$20	\$16	\$14	\$13
	65% Current	\$75	\$68	\$63	\$57	\$51	\$48	\$47	\$45	\$43	\$42	\$39	\$34	\$32	\$31	\$28	\$22	\$20	\$19
	10yr ave.			\$47		\$41		\$35		\$31	\$30	\$29	\$28	\$27	\$24	\$22	\$17	\$15	\$14
	70% Current	\$81	\$74	\$68	\$61	\$55	\$52	\$50	\$48	\$46	\$45	\$42	\$37	\$35	\$33	\$30	\$24	\$22	\$20
	10yr ave.			\$51		\$45		\$38		\$34	\$32	\$31	\$30	\$29	\$26	\$24	\$19	\$16	\$15
	75% Current	\$86	\$79	\$73	\$66	\$59	\$56	\$54	\$52	\$50	\$48	\$45	\$40	\$37	\$35	\$32	\$25	\$23	\$22
	10yr ave.			\$54		\$48		\$41		\$36	\$34	\$33	\$33	\$31	\$28	\$25	\$20	\$17	\$16
	80% Current	\$92	\$84	\$78	\$70	\$63	\$60	\$57	\$55	\$53	\$51	\$48	\$42	\$40	\$38	\$34	\$27	\$25	\$23
	10yr ave.			\$58		\$51		\$44		\$38	\$37	\$36	\$35	\$33	\$29	\$27	\$21	\$19	\$17
	85% Current	\$98	\$89	\$83	\$74	\$67	\$63	\$61	\$59	\$56	\$54	\$51	\$45	\$42	\$40	\$36	\$29	\$26	\$25
	10yr ave.			\$61		\$54		\$46		\$41	\$39	\$38	\$37	\$35	\$31	\$29	\$23	\$20	\$18

The above shows estimated returns per head for skirted fleece wool. These figures do not take into account the value of skirtings and oddments and do not take into account discounts that may apply for faults under individual circumstances. These figures are based on a market index of 100% and should be used as a guide only. Returns over \$30 / head for fleece wool are highlighted.

Source: Australian Wool Exchange, Australian Wool Innovation, Sydney Futures Exchange, x-rates.com

Disclaimer: While all due care has been taken in the preparation of this document, no warranty is made as to its accuracy, reliability or completeness. To the extent permitted by law neither Jemalong or their sources including subsidiaries and staff, accept liability to any person for loss or damage arising from the use of this information.



Table 18: Returns pr head for skirted fleece wool.

Skirted FLC Weight		Micron																	
4 Kg		16	16.5	17	17.5	18	18.5	19	19.5	20	21	22	23	24	25	26	28	30	32
Yield (Sch Dry)	25% Current	\$23	\$21	\$20	\$18	\$16	\$15	\$14	\$14	\$13	\$13	\$12	\$11	\$10	\$9	\$9	\$7	\$6	\$6
	10yr ave.			\$14		\$13		\$11		\$10	\$9	\$9	\$9	\$8	\$7	\$7	\$5	\$5	\$4
	30% Current	\$28	\$25	\$23	\$21	\$19	\$18	\$17	\$17	\$16	\$15	\$15	\$13	\$12	\$11	\$10	\$8	\$7	\$7
	10yr ave.			\$17		\$15		\$13		\$11	\$11	\$11	\$10	\$10	\$9	\$8	\$6	\$6	\$5
	35% Current	\$32	\$29	\$27	\$25	\$22	\$21	\$20	\$19	\$18	\$18	\$17	\$15	\$14	\$13	\$12	\$9	\$9	\$8
	10yr ave.			\$20		\$18		\$15		\$13	\$13	\$13	\$12	\$12	\$10	\$9	\$7	\$6	\$6
	40% Current	\$37	\$34	\$31	\$28	\$25	\$24	\$23	\$22	\$21	\$20	\$19	\$17	\$16	\$15	\$14	\$11	\$10	\$9
	10yr ave.			\$23		\$20		\$17		\$15	\$15	\$14	\$14	\$13	\$12	\$11	\$8	\$7	\$7
	45% Current	\$41	\$38	\$35	\$32	\$28	\$27	\$26	\$25	\$24	\$23	\$22	\$19	\$18	\$17	\$15	\$12	\$11	\$11
	10yr ave.			\$26		\$23		\$20		\$17	\$17	\$16	\$16	\$15	\$13	\$12	\$10	\$8	\$8
	50% Current	\$46	\$42	\$39	\$35	\$31	\$30	\$29	\$28	\$26	\$26	\$24	\$21	\$20	\$19	\$17	\$14	\$12	\$12
	10yr ave.			\$29		\$25		\$22		\$19	\$18	\$18	\$17	\$16	\$15	\$13	\$11	\$9	\$8
	55% Current	\$51	\$46	\$43	\$39	\$34	\$33	\$32	\$30	\$29	\$28	\$27	\$23	\$22	\$21	\$19	\$15	\$14	\$13
	10yr ave.			\$32		\$28		\$24		\$21	\$20	\$20	\$19	\$18	\$16	\$15	\$12	\$10	\$9
	60% Current	\$55	\$50	\$47	\$42	\$38	\$36	\$34	\$33	\$32	\$31	\$29	\$25	\$24	\$23	\$21	\$16	\$15	\$14
	10yr ave.			\$35		\$31		\$26		\$23	\$22	\$21	\$21	\$20	\$18	\$16	\$13	\$11	\$10
	65% Current	\$60	\$55	\$51	\$46	\$41	\$39	\$37	\$36	\$34	\$33	\$31	\$28	\$26	\$25	\$22	\$18	\$16	\$15
	10yr ave.			\$38		\$33		\$28		\$25	\$24	\$23	\$23	\$21	\$19	\$17	\$14	\$12	\$11
	70% Current	\$64	\$59	\$55	\$49	\$44	\$42	\$40	\$39	\$37	\$36	\$34	\$30	\$28	\$26	\$24	\$19	\$17	\$16
	10yr ave.			\$40		\$36		\$31		\$27	\$26	\$25	\$24	\$23	\$21	\$19	\$15	\$13	\$12
	75% Current	\$69	\$63	\$59	\$53	\$47	\$45	\$43	\$41	\$40	\$38	\$36	\$32	\$30	\$28	\$26	\$20	\$19	\$18
	10yr ave.			\$43		\$38		\$33		\$29	\$28	\$27	\$26	\$25	\$22	\$20	\$16	\$14	\$13
	80% Current	\$74	\$67	\$62	\$56	\$50	\$48	\$46	\$44	\$42	\$41	\$39	\$34	\$32	\$30	\$27	\$22	\$20	\$19
	10yr ave.			\$46		\$41		\$35		\$31	\$29	\$29	\$28	\$26	\$24	\$22	\$17	\$15	\$13
	85% Current	\$78	\$71	\$66	\$60	\$53	\$51	\$49	\$47	\$45	\$44	\$41	\$36	\$34	\$32	\$29	\$23	\$21	\$20
	10yr ave.			\$49		\$43		\$37		\$33	\$31	\$30	\$30	\$28	\$25	\$23	\$18	\$16	\$14

The above shows estimated returns per head for skirted fleece wool. These figures do not take into account the value of skirtings and oddments and do not take into account discounts that may apply for faults under individual circumstances. These figures are based on a market index of 100% and should be used as a guide only. Returns over \$30 / head for fleece wool are highlighted.

Source: Australian Wool Exchange, Australian Wool Innovation, Sydney Futures Exchange, x-rates.com

Disclaimer: While all due care has been taken in the preparation of this document, no warranty is made as to its accuracy, reliability or completeness. To the extent permitted by law neither Jemalong or their sources including subsidiaries and staff, accept liability to any person for loss or damage arising from the use of this information.



Table 19: Returns pr head for skirted fleece wool.

Skirted FLC Weight 3 Kg		Micron																	
		16	16.5	17	17.5	18	18.5	19	19.5	20	21	22	23	24	25	26	28	30	32
Yield (Sch Dry)	25% Current	\$17	\$16	\$15	\$13	\$12	\$11	\$11	\$10	\$10	\$10	\$9	\$8	\$7	\$7	\$6	\$5	\$5	\$4
	10yr ave.			\$11		\$10		\$8		\$7	\$7	\$7	\$7	\$6	\$6	\$5	\$4	\$3	\$3
	30% Current	\$21	\$19	\$18	\$16	\$14	\$13	\$13	\$12	\$12	\$12	\$11	\$10	\$9	\$8	\$8	\$6	\$6	\$5
	10yr ave.			\$13		\$11		\$10		\$9	\$8	\$8	\$8	\$7	\$7	\$6	\$5	\$4	\$4
	35% Current	\$24	\$22	\$20	\$18	\$16	\$16	\$15	\$14	\$14	\$13	\$13	\$11	\$10	\$10	\$9	\$7	\$7	\$6
	10yr ave.			\$15		\$13		\$11		\$10	\$10	\$9	\$9	\$9	\$8	\$7	\$6	\$5	\$4
	40% Current	\$28	\$25	\$23	\$21	\$19	\$18	\$17	\$17	\$16	\$15	\$15	\$13	\$12	\$11	\$10	\$8	\$7	\$7
	10yr ave.			\$17		\$15		\$13		\$11	\$11	\$11	\$10	\$10	\$9	\$8	\$6	\$6	\$5
	45% Current	\$31	\$28	\$26	\$24	\$21	\$20	\$19	\$19	\$18	\$17	\$16	\$14	\$13	\$13	\$12	\$9	\$8	\$8
	10yr ave.			\$19		\$17		\$15		\$13	\$12	\$12	\$12	\$11	\$10	\$9	\$7	\$6	\$6
	50% Current	\$35	\$32	\$29	\$26	\$23	\$22	\$22	\$21	\$20	\$19	\$18	\$16	\$15	\$14	\$13	\$10	\$9	\$9
	10yr ave.			\$22		\$19		\$16		\$14	\$14	\$13	\$13	\$12	\$11	\$10	\$8	\$7	\$6
	55% Current	\$38	\$35	\$32	\$29	\$26	\$25	\$24	\$23	\$22	\$21	\$20	\$17	\$16	\$16	\$14	\$11	\$10	\$10
	10yr ave.			\$24		\$21		\$18		\$16	\$15	\$15	\$14	\$14	\$12	\$11	\$9	\$8	\$7
	60% Current	\$41	\$38	\$35	\$32	\$28	\$27	\$26	\$25	\$24	\$23	\$22	\$19	\$18	\$17	\$15	\$12	\$11	\$11
	10yr ave.			\$26		\$23		\$20		\$17	\$17	\$16	\$16	\$15	\$13	\$12	\$10	\$8	\$8
	65% Current	\$45	\$41	\$38	\$34	\$31	\$29	\$28	\$27	\$26	\$25	\$24	\$21	\$19	\$18	\$17	\$13	\$12	\$11
	10yr ave.			\$28		\$25		\$21		\$19	\$18	\$17	\$17	\$16	\$14	\$13	\$10	\$9	\$8
	70% Current	\$48	\$44	\$41	\$37	\$33	\$31	\$30	\$29	\$28	\$27	\$25	\$22	\$21	\$20	\$18	\$14	\$13	\$12
	10yr ave.			\$30		\$27		\$23		\$20	\$19	\$19	\$18	\$17	\$15	\$14	\$11	\$10	\$9
	75% Current	\$52	\$47	\$44	\$39	\$35	\$34	\$32	\$31	\$30	\$29	\$27	\$24	\$22	\$21	\$19	\$15	\$14	\$13
	10yr ave.			\$32		\$29		\$25		\$22	\$21	\$20	\$20	\$18	\$17	\$15	\$12	\$10	\$9
	80% Current	\$55	\$50	\$47	\$42	\$38	\$36	\$34	\$33	\$32	\$31	\$29	\$25	\$24	\$23	\$21	\$16	\$15	\$14
	10yr ave.			\$35		\$31		\$26		\$23	\$22	\$21	\$21	\$20	\$18	\$16	\$13	\$11	\$10
	85% Current	\$59	\$54	\$50	\$45	\$40	\$38	\$37	\$35	\$34	\$33	\$31	\$27	\$25	\$24	\$22	\$17	\$16	\$15
	10yr ave.			\$37		\$32		\$28		\$24	\$23	\$23	\$22	\$21	\$19	\$17	\$14	\$12	\$11

The above shows estimated returns per head for skirted fleece wool. These figures do not take into account the value of skirtings and oddments and do not take into account discounts that may apply for faults under individual circumstances. These figures are based on a market index of 100% and should be used as a guide only. Returns over \$30 / head for fleece wool are highlighted.

Source: Australian Wool Exchange, Australian Wool Innovation, Sydney Futures Exchange, x-rates.com

Disclaimer: While all due care has been taken in the preparation of this document, no warranty is made as to its accuracy, reliability or completeness. To the extent permitted by law neither Jemalong or their sources including subsidiaries and staff, accept liability to any person for loss or damage arising from the use of this information.



Table 20: Returns pr head for skirted fleece wool.

Skirted FLC Weight		Micron																	
2 Kg		16	16.5	17	17.5	18	18.5	19	19.5	20	21	22	23	24	25	26	28	30	32
Yield (Sch Dry)	25% Current	\$12	\$11	\$10	\$9	\$8	\$7	\$7	\$7	\$7	\$6	\$6	\$5	\$5	\$5	\$4	\$3	\$3	\$3
	10yr ave.			\$7		\$6		\$5		\$5	\$5	\$4	\$4	\$4	\$4	\$3	\$3	\$2	\$2
	30% Current	\$14	\$13	\$12	\$11	\$9	\$9	\$9	\$8	\$8	\$8	\$7	\$6	\$6	\$6	\$5	\$4	\$4	\$4
	10yr ave.			\$9		\$8		\$7		\$6	\$6	\$5	\$5	\$5	\$4	\$4	\$3	\$3	\$3
	35% Current	\$16	\$15	\$14	\$12	\$11	\$10	\$10	\$10	\$9	\$9	\$8	\$7	\$7	\$7	\$6	\$5	\$4	\$4
	10yr ave.			\$10		\$9		\$8		\$7	\$6	\$6	\$6	\$6	\$5	\$5	\$4	\$3	\$3
	40% Current	\$18	\$17	\$16	\$14	\$13	\$12	\$11	\$11	\$11	\$10	\$10	\$8	\$8	\$8	\$7	\$5	\$5	\$5
	10yr ave.			\$12		\$10		\$9		\$8	\$7	\$7	\$7	\$7	\$6	\$5	\$4	\$4	\$3
	45% Current	\$21	\$19	\$18	\$16	\$14	\$13	\$13	\$12	\$12	\$12	\$11	\$10	\$9	\$8	\$8	\$6	\$6	\$5
	10yr ave.			\$13		\$11		\$10		\$9	\$8	\$8	\$8	\$7	\$7	\$6	\$5	\$4	\$4
	50% Current	\$23	\$21	\$20	\$18	\$16	\$15	\$14	\$14	\$13	\$13	\$12	\$11	\$10	\$9	\$9	\$7	\$6	\$6
	10yr ave.			\$14		\$13		\$11		\$10	\$9	\$9	\$9	\$8	\$7	\$7	\$5	\$5	\$4
	55% Current	\$25	\$23	\$21	\$19	\$17	\$16	\$16	\$15	\$15	\$14	\$13	\$12	\$11	\$10	\$9	\$7	\$7	\$6
	10yr ave.			\$16		\$14		\$12		\$11	\$10	\$10	\$10	\$9	\$8	\$7	\$6	\$5	\$5
	60% Current	\$28	\$25	\$23	\$21	\$19	\$18	\$17	\$17	\$16	\$15	\$15	\$13	\$12	\$11	\$10	\$8	\$7	\$7
	10yr ave.			\$17		\$15		\$13		\$11	\$11	\$11	\$10	\$10	\$9	\$8	\$6	\$6	\$5
	65% Current	\$30	\$27	\$25	\$23	\$20	\$19	\$19	\$18	\$17	\$17	\$16	\$14	\$13	\$12	\$11	\$9	\$8	\$8
	10yr ave.			\$19		\$17		\$14		\$12	\$12	\$12	\$11	\$11	\$10	\$9	\$7	\$6	\$5
	70% Current	\$32	\$29	\$27	\$25	\$22	\$21	\$20	\$19	\$18	\$18	\$17	\$15	\$14	\$13	\$12	\$9	\$9	\$8
	10yr ave.			\$20		\$18		\$15		\$13	\$13	\$13	\$12	\$12	\$10	\$9	\$7	\$6	\$6
	75% Current	\$35	\$32	\$29	\$26	\$23	\$22	\$22	\$21	\$20	\$19	\$18	\$16	\$15	\$14	\$13	\$10	\$9	\$9
	10yr ave.			\$22		\$19		\$16		\$14	\$14	\$13	\$13	\$12	\$11	\$10	\$8	\$7	\$6
	80% Current	\$37	\$34	\$31	\$28	\$25	\$24	\$23	\$22	\$21	\$20	\$19	\$17	\$16	\$15	\$14	\$11	\$10	\$9
	10yr ave.			\$23		\$20		\$17		\$15	\$15	\$14	\$14	\$13	\$12	\$11	\$8	\$7	\$7
	85% Current	\$39	\$36	\$33	\$30	\$27	\$25	\$24	\$23	\$22	\$22	\$21	\$18	\$17	\$16	\$15	\$11	\$11	\$10
	10yr ave.			\$25		\$22		\$19		\$16	\$16	\$15	\$15	\$14	\$12	\$11	\$9	\$8	\$7

The above shows estimated returns per head for skirted fleece wool. These figures do not take into account the value of skirtings and oddments and do not take into account discounts that may apply for faults under individual circumstances. These figures are based on a market index of 100% and should be used as a guide only. Returns over \$30 / head for fleece wool are highlighted.

Source: Australian Wool Exchange, Australian Wool Innovation, Sydney Futures Exchange, x-rates.com

Disclaimer: While all due care has been taken in the preparation of this document, no warranty is made as to its accuracy, reliability or completeness. To the extent permitted by law neither Jemalong or their sources including subsidiaries and staff, accept liability to any person for loss or damage arising from the use of this information.