



Table 1: Northern Region Micron Price Guides

CURRENT MARKET			12 MONTH COMPARISONS								3 YEAR COMPARISONS					Percentile	*10 YEAR COMPARISONS					Percentile
Mic.	30/05/2013	23/05/2013	30/05/2012	Now		Now		Now				Now		* 16-17.5um since Aug 05			Now					
Price	Current	Weekly	This time	compared																		
Guides	Price	Change	Last Year	to Last Year	12 Month	compared	12 Month	compared	Low	High	Average	to 3yr ave		Low	High	Average	to *10yr ave					
NRI	1048	-6 -0.6%	1119	-71 -6%	944	+104 11%	1195	-147 -12%	894	1491	1152	-104 -9%	29%	657	1491	934	+114 12%	79%				
16*	1590	-20 -1.3%	1950	-360 -18%	1540	+50 3%	2000	-410 -21%	1540	2800	2030	-440 -22%	12%	1390	2800	1795	-205 -11%	38%				
16.5*	1440	-10 -0.7%	1830	-390 -21%	1390	+50 4%	1870	-430 -23%	1395	2680	1868	-428 -23%	14%	1275	2680	1648	-208 -13%	39%				
17*	1305	-15 -1.1%	1500	-195 -13%	1250	+55 4%	1620	-315 -19%	1230	2530	1709	-404 -24%	12%	1100	2530	1426	-121 -8%	43%				
17.5*	1255	-30 -2.4%	1400	-145 -10%	1200	+55 5%	1540	-285 -19%	1185	2360	1608	-353 -22%	13%	1020	2360	1430	-175 -12%	41%				
18	1203	-34 -2.8%	1347	-144 -11%	1148	+55 5%	1468	-265 -18%	1152	2193	1519	-316 -21%	14%	916	2193	1253	-50 -4%	57%				
18.5	1181	-28 -2.4%	1314	-133 -10%	1116	+65 6%	1409	-228 -16%	1120	1963	1436	-255 -18%	20%	843	1963	1187	-6 -1%	63%				
19	1173	-33 -2.8%	1301	-128 -10%	1084	+89 8%	1389	-216 -16%	1045	1776	1355	-182 -13%	23%	803	1776	1117	+56 5%	71%				
19.5	1154	-24 -2.1%	1285	-131 -10%	1057	+97 9%	1365	-211 -15%	956	1670	1280	-126 -10%	29%	749	1670	1050	+104 10%	77%				
20	1141	-21 -1.8%	1278	-137 -11%	1047	+94 9%	1341	-200 -15%	909	1588	1220	-79 -6%	34%	700	1588	992	+149 15%	81%				
21	1138	-9 -0.8%	1271	-133 -10%	1036	+102 10%	1321	-183 -14%	886	1522	1189	-51 -4%	37%	668	1522	951	+187 20%	83%				
22	1136	-10 -0.9%	1247	-111 -9%	1015	+121 12%	1293	-157 -12%	860	1461	1154	-18 -2%	41%	659	1461	921	+215 23%	84%				
23	1128	-5 -0.4%	1236	-108 -9%	1002	+126 13%	1248	-120 -10%	833	1347	1108	+20 2%	48%	651	1347	891	+237 27%	86%				
24	1022	-10 -1.0%	1141	-119 -10%	940	+82 9%	1151	-129 -11%	780	1213	1011	+11 1%	49%	638	1213	833	+189 23%	85%				
25	900	0	1020	-120 -12%	840	+60 7%	1049	-149 -14%	695	1049	886	+14 2%	50%	566	1049	733	+167 23%	83%				
26	816	+7 0.9%	914	-98 -11%	753	+63 8%	939	-123 -13%	603	939	788	+28 4%	55%	532	939	664	+152 23%	84%				
28	630	+15 2.4%	625	+5 1%	550	+80 15%	659	-29 -4%	444	734	597	+33 6%	62%	424	734	517	+113 22%	89%				
30	582	+16 2.7%	570	+12 2%	506	+76 15%	605	-23 -4%	391	670	544	+38 7%	67%	343	670	458	+124 27%	91%				
32	483	+15 3.1%	480	+3 1%	422	+61 14%	518	-35 -7%	354	638	484	-1 0%	44%	297	638	408	+75 18%	83%				
MC	780	+22 2.8%	634	+146 23%	512	+268 52%	780	0 0%	532	780	688	+92 13%	90%	380	831	545	+235 43%	97%				

Note:

* Due to the irregular market quoting for some fine wool categories, figures shown relating to micron categories below 18 micron are an estimate based on the AWEX Premium & Discounts Report & other available information.

* For any category, where there is insufficient quantity offered to enable AWEX to quote, a quote will be provided based on the best available information.

* 10 Year data is not available for some micron categories, which may result in blank spaces in the table above.

Definitions:

* A Percentile, is a value on a scale of one hundred that indicates the percent of a distribution that is equal to or below it. In general a percentile between 25% and 75% is considered normal, a percentile below 25% is considered below normal and a percentile above 75% is considered above normal.

Three and ten year percentiles shown in the table above, detail the period of time during the past 3 & 10 years that the market has traded either at or below its current price.

The higher the percentile, the stronger the market.

Source: Australian Wool Exchange, Australian Wool Innovation, Riemann, x-rates.com

Disclaimer: Jemalong Wool Pty Ltd make no representations about the content and suitability of the information contained in this report. Specifically, Jemalong Wool does not warrant, guarantee or make any representations regarding the correctness, accuracy, reliability, currency, or any other aspect regarding characteristics or use of information presented in these materials. The user accepts sole responsibility and risk associated with the use and results of these materials, irrespective of the purpose of which such use or results are applied. In no event shall Jemalong Wool be liable for any loss or damages (including without limitation special, or consequential damages), where in an action of contract, negligence, or tort, arising out of or in connection with the use of performance of these materials.



MARKET COMMENTARY

One Australian Dollar = 0.966710 US as of: 30/05/2013

NORTHERN REGION –Sale Week 48/12 (35,722 bales offered nationally)

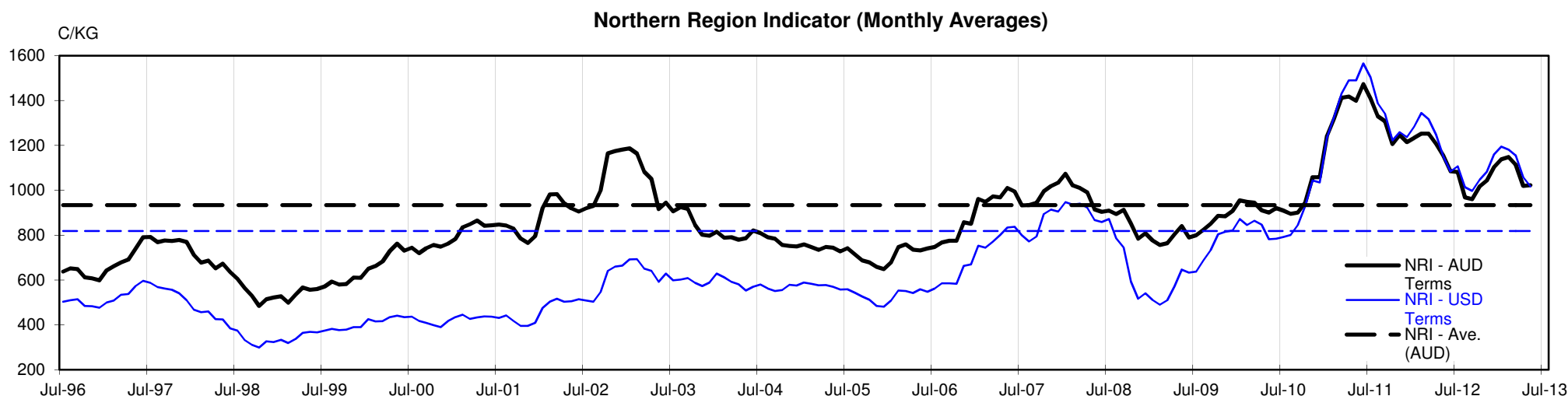
This week's market saw approximately 35,700 bales offered for sale nationally over two days. Merino fleece categories generally drifted 10-30 cents lower for the week however the Northern Region indicator was tempered somewhat by positive results in the other categories, resulting in a modest 6 cent correction. Merino skirtings were strongly sought after throughout the week managing rises of up to 10 cents each day, while merino cardings also gained ground to close 22 cents dearer. In contrast to merino fleece, the crossbred fleece market was generally 10-15 cents dearer for the week.

With little activity on the forward market, prices were generally 25-35 cents behind those achieved the previous week. 19 & 19.5 micron contracts traded for the spring at current auction levels, while 21 micron (spring) contracts were 20-40 cents behind the current market.

The strong price rise of almost 100 cents (for most micron categories) over the previous three weeks was driven by orders received for prompt shipment and whilst there are still orders in the market for June/July shipment the falling AUD means exporters who covered currency upon booking are now hurting and overseas customers are reluctant to place new orders while ever the dollar is falling.

The announcement by Landmark this week to shut down their Dalgety & Viterra wool exporting operations may also have caused some short term uncertainty, as the largest exporters market share is now up for grabs.

However despite the setback brought about by foreign exchange and possibly the Viterra/Dalgety announcement, the outlook remains positive for both the short & long term. With supply tight for the remainder of the selling season, buyers looking to buy & ship through this period will have to plan their purchases with care. A stabilising AUD, increased indents (for prompt shipment) or a shipping squeeze are all possible, if any one of them occur in the next few weeks, it will be very beneficial to the market.





JEMALONG WOOL BULLETIN

(week ending 31/05/2013)

Table 2: Riemann Forwards, latest trades as at: Tuesday 28/5/2013 15:49

Any highlighted in yellow are recent trades, trading since: Friday, 24 May 2013

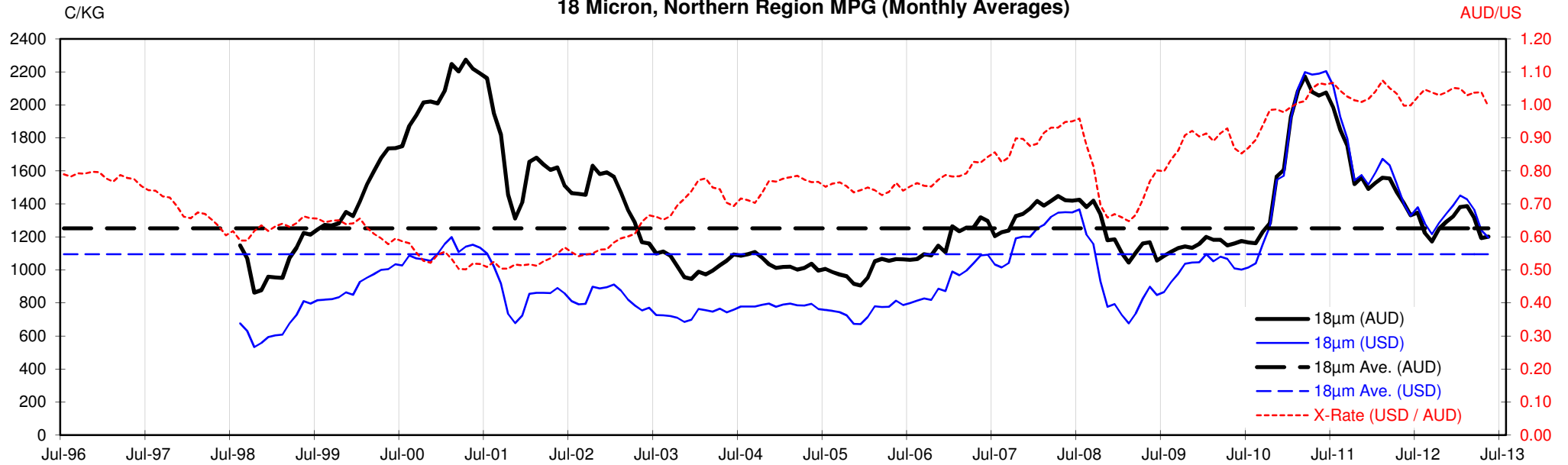
CONTRACT MICRON		18um	19um	20um	21um	22um	23um	28um	30um
CONTRACT MONTH	May-2013		14/03/13 1290	9/01/13 1250	1/05/13 1050			18/04/13 565	
	Jun-2013		22/05/13 1215		15/05/13 1125			18/04/13 555	
	Jul-2013		14/02/13 1315	5/03/13 1205	22/05/13 1160				
	Aug-2013		24/05/13 1180	8/05/13 1110	28/05/13 1115				
	Sep-2013	2/05/13 1170	10/05/13 1150		24/05/13 1110				
	Oct-2013		10/05/13 1160		24/05/13 1100	5/03/13 1150	29/01/13 1120		
	Nov-2013		5/03/13 1310		17/05/13 1115				13/05/13 510
	Dec-2013		30/01/13 1320		20/05/13 1120	29/01/13 1150			
	Jan-2014		30/01/13 1280						
	Feb-2014		18/12/12 1250		30/01/13 1180				
	Mar-2014								
	Apr-2014				18/04/13 1100				
	May-2014								
	Jun-2014								
	Jul-2014								
	Aug-2014								
	Sep-2014								
	Oct-2014				12/04/13 1050				
	Nov-2014								
	Dec-2014								
	Jan-2015								
	Feb-2015								
	Mar-2015								

Explanatory Notes: Prices quoted reflect the most recent trades, at time of print.

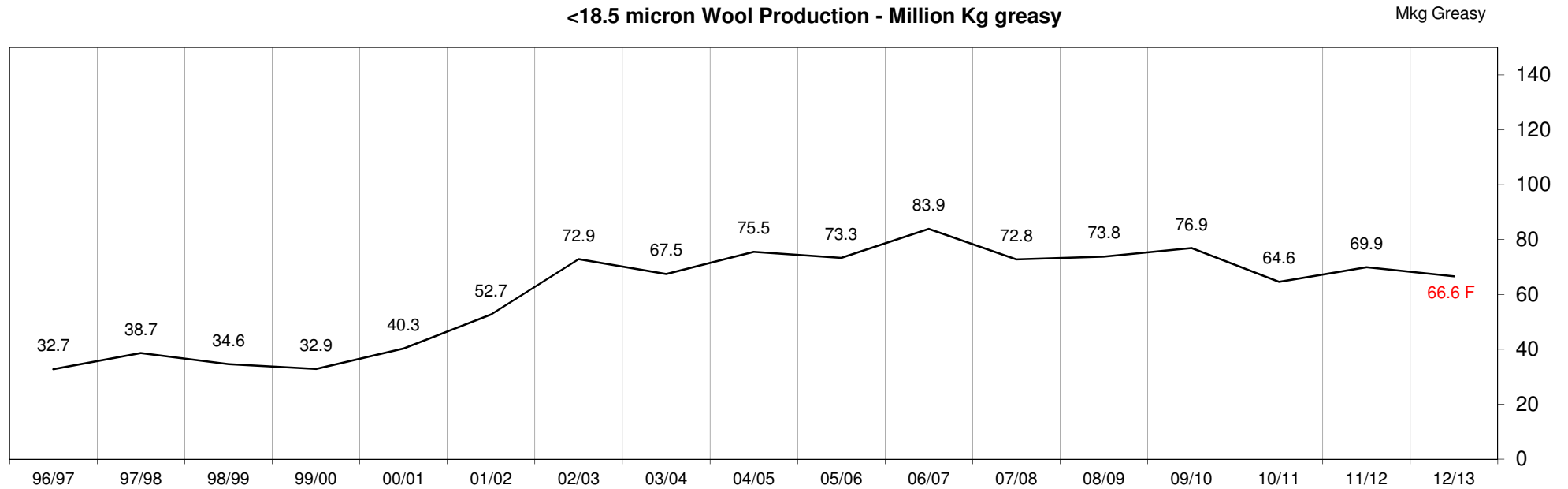
Disclaimer: While all due care has been taken in the preparation of this document, no warranty is made as to its accuracy, reliability or completeness. To the extent permitted by law neither Jemalong or their sources including subsidiaries and staff, accept liability to any person for loss or damage arising from the use of this information.

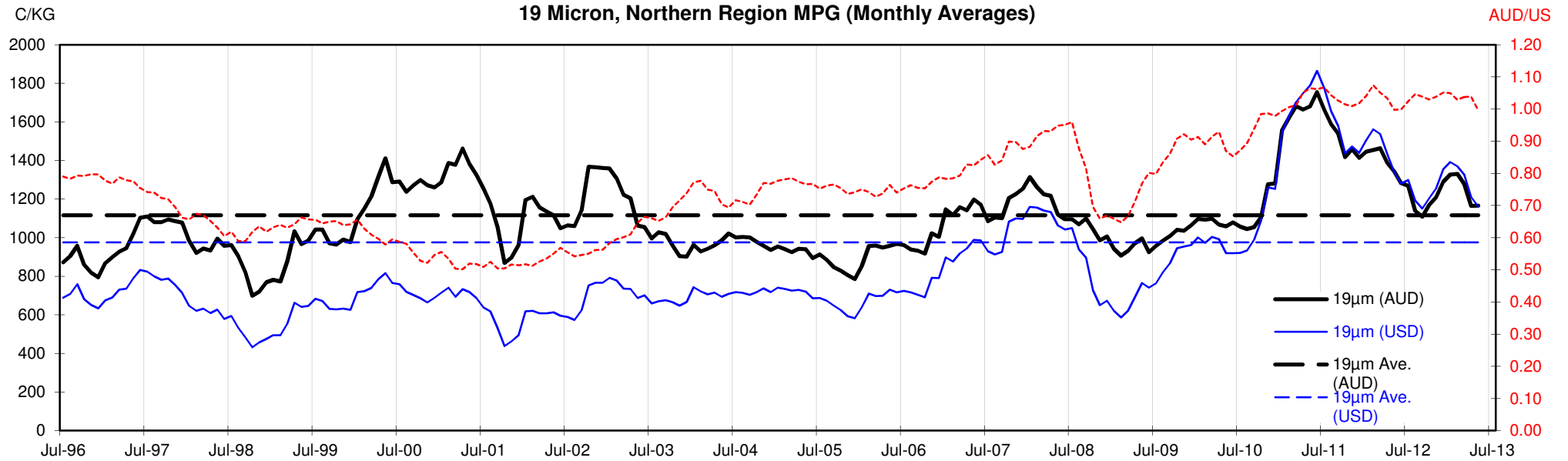


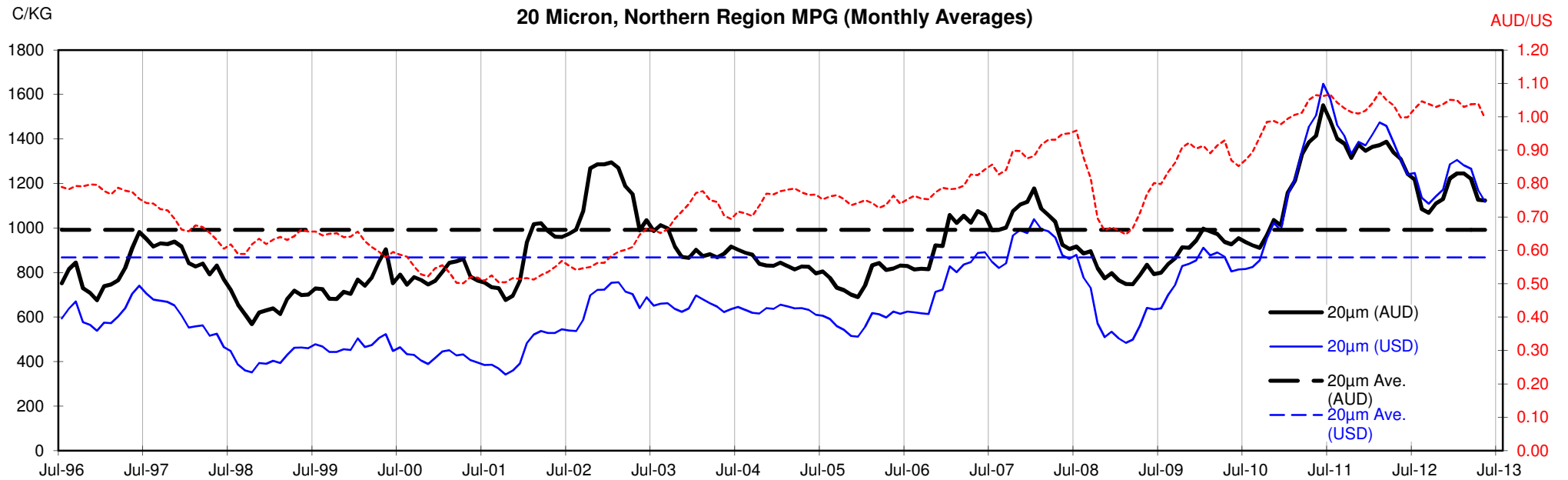
18 Micron, Northern Region MPG (Monthly Averages)

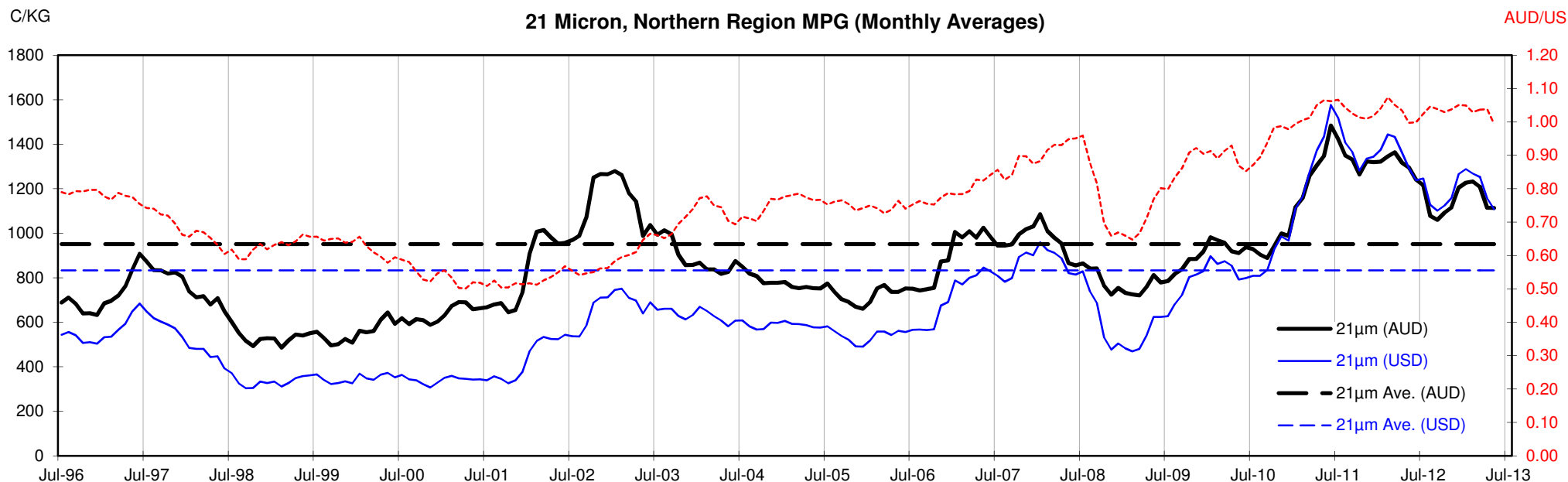


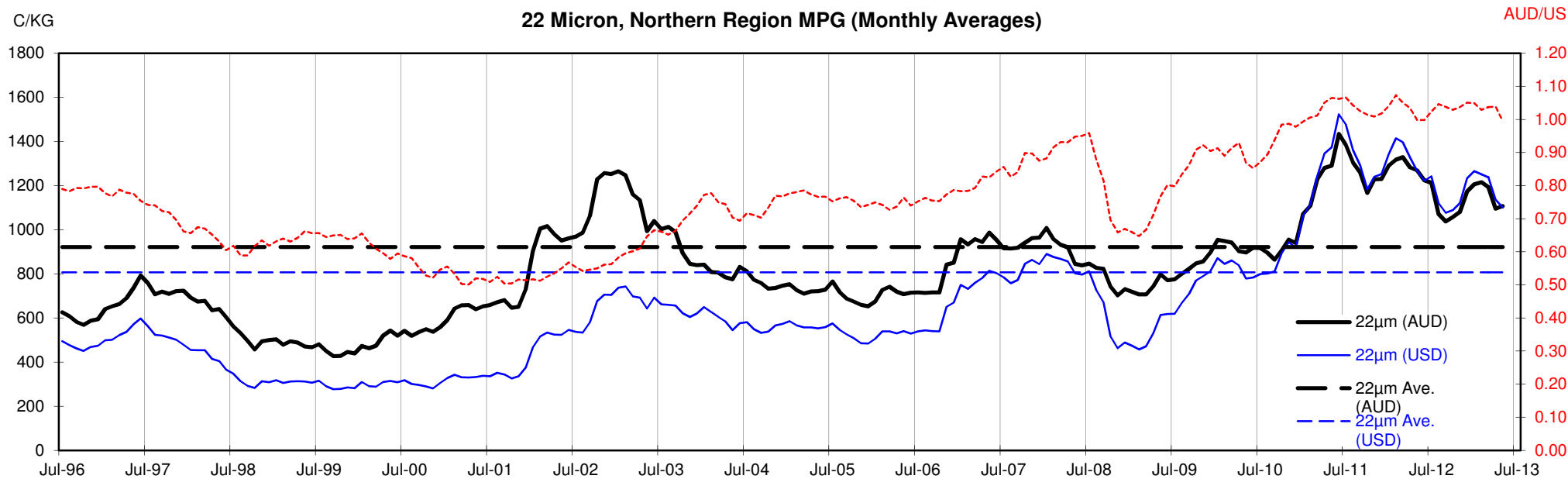
<18.5 micron Wool Production - Million Kg greasy

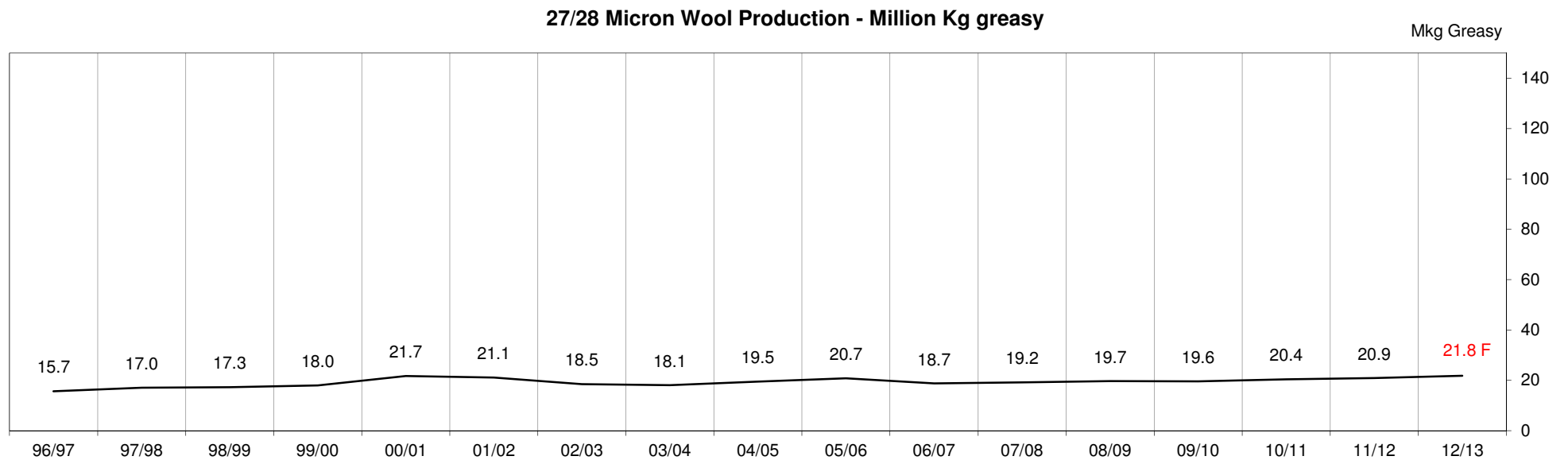
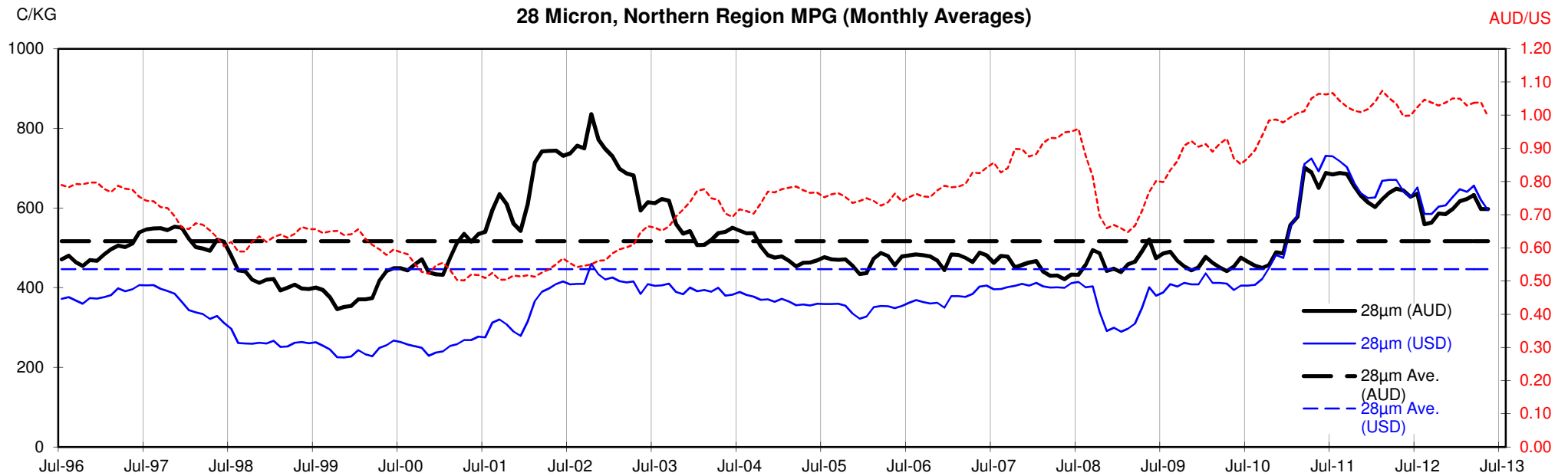












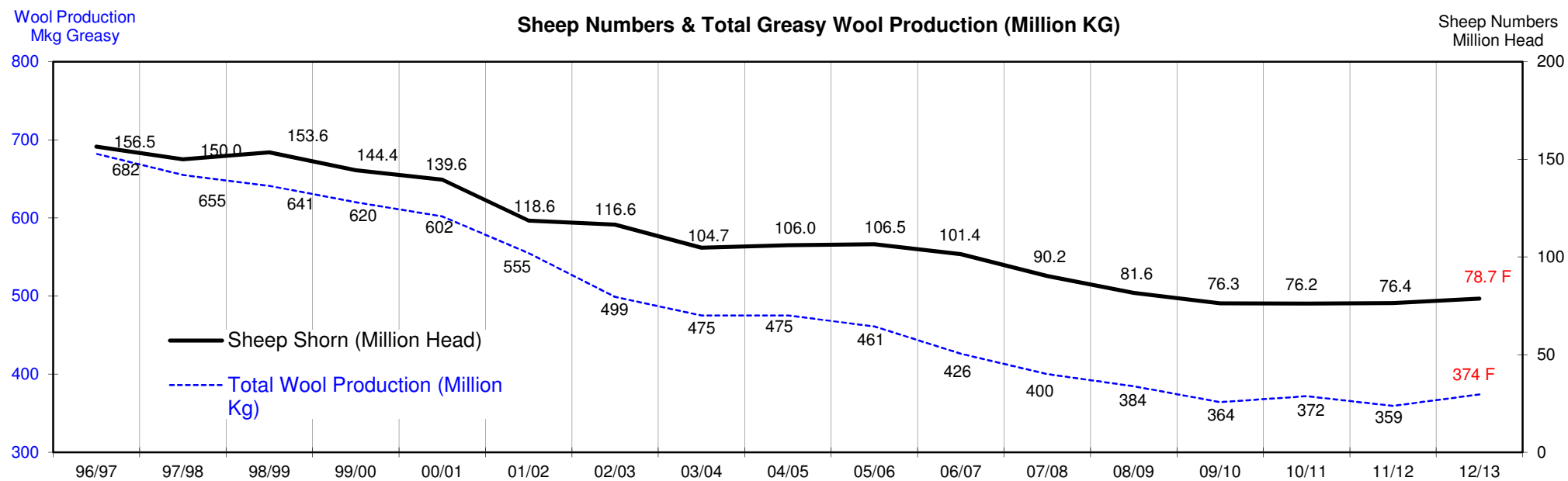
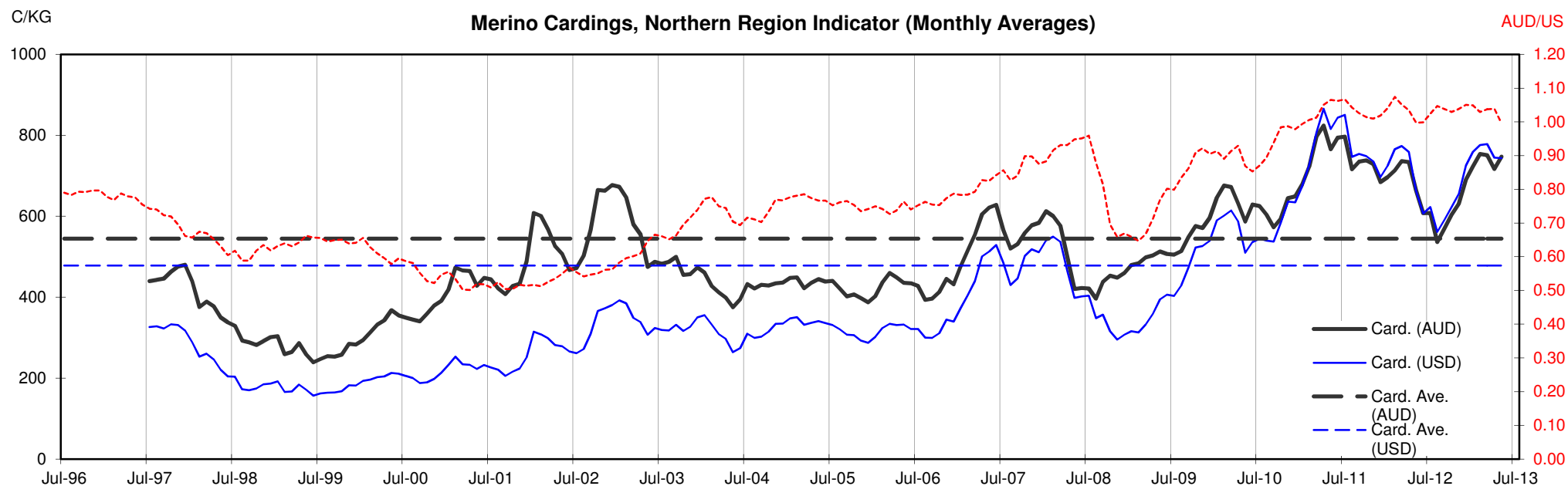




Table 13: Returns pr head for skirted fleece wool.

Skirted FLC Weight		Micron																	
9 Kg		16	16.5	17	17.5	18	18.5	19	19.5	20	21	22	23	24	25	26	28	30	32
Yield (Sch Dry)	25% Current	\$36	\$32	\$29	\$28	\$27	\$27	\$26	\$26	\$26	\$26	\$26	\$25	\$23	\$20	\$18	\$14	\$13	\$11
	10yr ave.	\$40	\$37	\$32	\$32	\$28	\$27	\$25	\$24	\$22	\$21	\$21	\$20	\$19	\$16	\$15	\$12	\$10	\$9
	30% Current	\$43	\$39	\$35	\$34	\$32	\$32	\$32	\$31	\$31	\$31	\$31	\$30	\$28	\$24	\$22	\$17	\$16	\$13
	10yr ave.	\$48	\$44	\$39	\$39	\$34	\$32	\$30	\$28	\$27	\$26	\$25	\$24	\$22	\$20	\$18	\$14	\$12	\$11
	35% Current	\$50	\$45	\$41	\$40	\$38	\$37	\$37	\$36	\$36	\$36	\$36	\$36	\$32	\$28	\$26	\$20	\$18	\$15
	10yr ave.	\$57	\$52	\$45	\$45	\$39	\$37	\$35	\$33	\$31	\$30	\$29	\$28	\$26	\$23	\$21	\$16	\$14	\$13
	40% Current	\$57	\$52	\$47	\$45	\$43	\$43	\$42	\$42	\$41	\$41	\$41	\$41	\$37	\$32	\$29	\$23	\$21	\$17
	10yr ave.	\$65	\$59	\$51	\$51	\$45	\$43	\$40	\$38	\$36	\$34	\$33	\$32	\$30	\$26	\$24	\$19	\$16	\$15
	45% Current	\$64	\$58	\$53	\$51	\$49	\$48	\$48	\$47	\$46	\$46	\$46	\$46	\$41	\$36	\$33	\$26	\$24	\$20
	10yr ave.	\$73	\$67	\$58	\$58	\$51	\$48	\$45	\$43	\$40	\$39	\$37	\$36	\$34	\$30	\$27	\$21	\$19	\$17
	50% Current	\$72	\$65	\$59	\$56	\$54	\$53	\$53	\$52	\$51	\$51	\$51	\$51	\$46	\$41	\$37	\$28	\$26	\$22
	10yr ave.	\$81	\$74	\$64	\$64	\$56	\$53	\$50	\$47	\$45	\$43	\$41	\$40	\$37	\$33	\$30	\$23	\$21	\$18
	55% Current	\$79	\$71	\$65	\$62	\$60	\$58	\$58	\$57	\$56	\$56	\$56	\$56	\$51	\$45	\$40	\$31	\$29	\$24
	10yr ave.	\$89	\$82	\$71	\$71	\$62	\$59	\$55	\$52	\$49	\$47	\$46	\$44	\$41	\$36	\$33	\$26	\$23	\$20
	60% Current	\$86	\$78	\$70	\$68	\$65	\$64	\$63	\$62	\$62	\$61	\$61	\$61	\$55	\$49	\$44	\$34	\$31	\$26
	10yr ave.	\$97	\$89	\$77	\$77	\$68	\$64	\$60	\$57	\$54	\$51	\$50	\$48	\$45	\$40	\$36	\$28	\$25	\$22
	65% Current	\$93	\$84	\$76	\$73	\$70	\$69	\$69	\$68	\$67	\$67	\$66	\$66	\$60	\$53	\$48	\$37	\$34	\$28
	10yr ave.	\$105	\$96	\$83	\$84	\$73	\$69	\$65	\$61	\$58	\$56	\$54	\$52	\$49	\$43	\$39	\$30	\$27	\$24
	70% Current	\$100	\$91	\$82	\$79	\$76	\$74	\$74	\$73	\$72	\$72	\$72	\$71	\$64	\$57	\$51	\$40	\$37	\$30
	10yr ave.	\$113	\$104	\$90	\$90	\$79	\$75	\$70	\$66	\$62	\$60	\$58	\$56	\$52	\$46	\$42	\$33	\$29	\$26
	75% Current	\$107	\$97	\$88	\$85	\$81	\$80	\$79	\$78	\$77	\$77	\$77	\$76	\$69	\$61	\$55	\$43	\$39	\$33
	10yr ave.	\$121	\$111	\$96	\$97	\$85	\$80	\$75	\$71	\$67	\$64	\$62	\$60	\$56	\$49	\$45	\$35	\$31	\$28
	80% Current	\$114	\$104	\$94	\$90	\$87	\$85	\$84	\$83	\$82	\$82	\$82	\$81	\$74	\$65	\$59	\$45	\$42	\$35
	10yr ave.	\$129	\$119	\$103	\$103	\$90	\$85	\$80	\$76	\$71	\$68	\$66	\$64	\$60	\$53	\$48	\$37	\$33	\$29
	85% Current	\$122	\$110	\$100	\$96	\$92	\$90	\$90	\$88	\$87	\$87	\$87	\$86	\$78	\$69	\$62	\$48	\$45	\$37
	10yr ave.	\$137	\$126	\$109	\$109	\$96	\$91	\$85	\$80	\$76	\$73	\$70	\$68	\$64	\$56	\$51	\$40	\$35	\$31

The above shows estimated returns per head for skirted fleece wool. These figures do not take into account the value of skirtings and oddments and do not take into account discounts that may apply for faults under individual circumstances. These figures are based on a market index of 100% and should be used as a guide only. Returns over \$30 / head for fleece wool are highlighted.

Source: Australian Wool Exchange, Australian Wool Innovation, Sydney Futures Exchange, x-rates.com

Disclaimer: While all due care has been taken in the preparation of this document, no warranty is made as to its accuracy, reliability or completeness. To the extent permitted by law neither Jemalong or their sources including subsidiaries and staff, accept liability to any person for loss or damage arising from the use of this information.



Table 14: Returns pr head for skirted fleece wool.

Skirted FLC Weight		Micron																	
8 Kg		16	16.5	17	17.5	18	18.5	19	19.5	20	21	22	23	24	25	26	28	30	32
Yield (Sch Dry)	25% Current	\$32	\$29	\$26	\$25	\$24	\$24	\$23	\$23	\$23	\$23	\$23	\$23	\$20	\$18	\$16	\$13	\$12	\$10
	10yr ave.	\$36	\$33	\$29	\$29	\$25	\$24	\$22	\$21	\$20	\$19	\$18	\$18	\$17	\$15	\$13	\$10	\$9	\$8
	30% Current	\$38	\$35	\$31	\$30	\$29	\$28	\$28	\$28	\$27	\$27	\$27	\$27	\$25	\$22	\$20	\$15	\$14	\$12
	10yr ave.	\$43	\$40	\$34	\$34	\$30	\$28	\$27	\$25	\$24	\$23	\$22	\$21	\$20	\$18	\$16	\$12	\$11	\$10
	35% Current	\$45	\$40	\$37	\$35	\$34	\$33	\$33	\$32	\$32	\$32	\$32	\$32	\$29	\$25	\$23	\$18	\$16	\$14
	10yr ave.	\$50	\$46	\$40	\$40	\$35	\$33	\$31	\$29	\$28	\$27	\$26	\$25	\$23	\$21	\$19	\$14	\$13	\$11
	40% Current	\$51	\$46	\$42	\$40	\$38	\$38	\$38	\$37	\$37	\$36	\$36	\$36	\$33	\$29	\$26	\$20	\$19	\$15
	10yr ave.	\$57	\$53	\$46	\$46	\$40	\$38	\$36	\$34	\$32	\$30	\$29	\$29	\$27	\$23	\$21	\$17	\$15	\$13
	45% Current	\$57	\$52	\$47	\$45	\$43	\$43	\$42	\$42	\$41	\$41	\$41	\$41	\$37	\$32	\$29	\$23	\$21	\$17
	10yr ave.	\$65	\$59	\$51	\$51	\$45	\$43	\$40	\$38	\$36	\$34	\$33	\$32	\$30	\$26	\$24	\$19	\$16	\$15
	50% Current	\$64	\$58	\$52	\$50	\$48	\$47	\$47	\$46	\$46	\$46	\$45	\$45	\$41	\$36	\$33	\$25	\$23	\$19
	10yr ave.	\$72	\$66	\$57	\$57	\$50	\$47	\$45	\$42	\$40	\$38	\$37	\$36	\$33	\$29	\$27	\$21	\$18	\$16
	55% Current	\$70	\$63	\$57	\$55	\$53	\$52	\$52	\$51	\$50	\$50	\$50	\$50	\$45	\$40	\$36	\$28	\$26	\$21
	10yr ave.	\$79	\$73	\$63	\$63	\$55	\$52	\$49	\$46	\$44	\$42	\$41	\$39	\$37	\$32	\$29	\$23	\$20	\$18
	60% Current	\$76	\$69	\$63	\$60	\$58	\$57	\$56	\$55	\$55	\$55	\$55	\$54	\$49	\$43	\$39	\$30	\$28	\$23
	10yr ave.	\$86	\$79	\$68	\$69	\$60	\$57	\$54	\$50	\$48	\$46	\$44	\$43	\$40	\$35	\$32	\$25	\$22	\$20
	65% Current	\$83	\$75	\$68	\$65	\$63	\$61	\$61	\$60	\$59	\$59	\$59	\$59	\$53	\$47	\$42	\$33	\$30	\$25
	10yr ave.	\$93	\$86	\$74	\$74	\$65	\$62	\$58	\$55	\$52	\$49	\$48	\$46	\$43	\$38	\$35	\$27	\$24	\$21
	70% Current	\$89	\$81	\$73	\$70	\$67	\$66	\$66	\$65	\$64	\$64	\$64	\$63	\$57	\$50	\$46	\$35	\$33	\$27
	10yr ave.	\$101	\$92	\$80	\$80	\$70	\$66	\$63	\$59	\$56	\$53	\$52	\$50	\$47	\$41	\$37	\$29	\$26	\$23
	75% Current	\$95	\$86	\$78	\$75	\$72	\$71	\$70	\$69	\$68	\$68	\$68	\$68	\$61	\$54	\$49	\$38	\$35	\$29
	10yr ave.	\$108	\$99	\$86	\$86	\$75	\$71	\$67	\$63	\$60	\$57	\$55	\$53	\$50	\$44	\$40	\$31	\$27	\$24
	80% Current	\$102	\$92	\$84	\$80	\$77	\$76	\$75	\$74	\$73	\$73	\$73	\$72	\$65	\$58	\$52	\$40	\$37	\$31
	10yr ave.	\$115	\$105	\$91	\$92	\$80	\$76	\$71	\$67	\$63	\$61	\$59	\$57	\$53	\$47	\$42	\$33	\$29	\$26
	85% Current	\$108	\$98	\$89	\$85	\$82	\$80	\$80	\$78	\$78	\$77	\$77	\$77	\$69	\$61	\$55	\$43	\$40	\$33
	10yr ave.	\$122	\$112	\$97	\$97	\$85	\$81	\$76	\$71	\$67	\$65	\$63	\$61	\$57	\$50	\$45	\$35	\$31	\$28

The above shows estimated returns per head for skirted fleece wool. These figures do not take into account the value of skirtings and oddments and do not take into account discounts that may apply for faults under individual circumstances. These figures are based on a market index of 100% and should be used as a guide only. Returns over \$30 / head for fleece wool are highlighted.

Source: Australian Wool Exchange, Australian Wool Innovation, Sydney Futures Exchange, x-rates.com

Disclaimer: While all due care has been taken in the preparation of this document, no warranty is made as to its accuracy, reliability or completeness. To the extent permitted by law neither Jemalong or their sources including subsidiaries and staff, accept liability to any person for loss or damage arising from the use of this information.



Table 15: Returns pr head for skirted fleece wool.

Skirted FLC Weight 7 Kg		Micron																	
		16	16.5	17	17.5	18	18.5	19	19.5	20	21	22	23	24	25	26	28	30	32
Yield (Sch Dry)	25% Current	\$28	\$25	\$23	\$22	\$21	\$21	\$21	\$20	\$20	\$20	\$20	\$20	\$18	\$16	\$14	\$11	\$10	\$8
	10yr ave.	\$31	\$29	\$25	\$25	\$22	\$21	\$20	\$18	\$17	\$17	\$16	\$16	\$15	\$13	\$12	\$9	\$8	\$7
	30% Current	\$33	\$30	\$27	\$26	\$25	\$25	\$25	\$24	\$24	\$24	\$24	\$24	\$21	\$19	\$17	\$13	\$12	\$10
	10yr ave.	\$38	\$35	\$30	\$30	\$26	\$25	\$23	\$22	\$21	\$20	\$19	\$19	\$17	\$15	\$14	\$11	\$10	\$9
	35% Current	\$39	\$35	\$32	\$31	\$29	\$29	\$29	\$28	\$28	\$28	\$28	\$28	\$25	\$22	\$20	\$15	\$14	\$12
	10yr ave.	\$44	\$40	\$35	\$35	\$31	\$29	\$27	\$26	\$24	\$23	\$23	\$22	\$20	\$18	\$16	\$13	\$11	\$10
	40% Current	\$45	\$40	\$37	\$35	\$34	\$33	\$33	\$32	\$32	\$32	\$32	\$32	\$29	\$25	\$23	\$18	\$16	\$14
	10yr ave.	\$50	\$46	\$40	\$40	\$35	\$33	\$31	\$29	\$28	\$27	\$26	\$25	\$23	\$21	\$19	\$14	\$13	\$11
	45% Current	\$50	\$45	\$41	\$40	\$38	\$37	\$37	\$36	\$36	\$36	\$36	\$36	\$32	\$28	\$26	\$20	\$18	\$15
	10yr ave.	\$57	\$52	\$45	\$45	\$39	\$37	\$35	\$33	\$31	\$30	\$29	\$28	\$26	\$23	\$21	\$16	\$14	\$13
	50% Current	\$56	\$50	\$46	\$44	\$42	\$41	\$41	\$40	\$40	\$40	\$40	\$39	\$36	\$32	\$29	\$22	\$20	\$17
	10yr ave.	\$63	\$58	\$50	\$50	\$44	\$42	\$39	\$37	\$35	\$33	\$32	\$31	\$29	\$26	\$23	\$18	\$16	\$14
	55% Current	\$61	\$55	\$50	\$48	\$46	\$45	\$45	\$44	\$44	\$44	\$44	\$43	\$39	\$35	\$31	\$24	\$22	\$19
	10yr ave.	\$69	\$63	\$55	\$55	\$48	\$46	\$43	\$40	\$38	\$37	\$35	\$34	\$32	\$28	\$26	\$20	\$18	\$16
	60% Current	\$67	\$60	\$55	\$53	\$51	\$50	\$49	\$48	\$48	\$48	\$48	\$47	\$43	\$38	\$34	\$26	\$24	\$20
	10yr ave.	\$75	\$69	\$60	\$60	\$53	\$50	\$47	\$44	\$42	\$40	\$39	\$37	\$35	\$31	\$28	\$22	\$19	\$17
	65% Current	\$72	\$66	\$59	\$57	\$55	\$54	\$53	\$53	\$52	\$52	\$52	\$51	\$47	\$41	\$37	\$29	\$26	\$22
	10yr ave.	\$82	\$75	\$65	\$65	\$57	\$54	\$51	\$48	\$45	\$43	\$42	\$41	\$38	\$33	\$30	\$24	\$21	\$19
	70% Current	\$78	\$71	\$64	\$61	\$59	\$58	\$57	\$57	\$56	\$56	\$56	\$55	\$50	\$44	\$40	\$31	\$29	\$24
	10yr ave.	\$88	\$81	\$70	\$70	\$61	\$58	\$55	\$51	\$49	\$47	\$45	\$44	\$41	\$36	\$33	\$25	\$22	\$20
	75% Current	\$83	\$76	\$69	\$66	\$63	\$62	\$62	\$61	\$60	\$60	\$60	\$59	\$54	\$47	\$43	\$33	\$31	\$25
	10yr ave.	\$94	\$87	\$75	\$75	\$66	\$62	\$59	\$55	\$52	\$50	\$48	\$47	\$44	\$38	\$35	\$27	\$24	\$21
	80% Current	\$89	\$81	\$73	\$70	\$67	\$66	\$66	\$65	\$64	\$64	\$64	\$63	\$57	\$50	\$46	\$35	\$33	\$27
	10yr ave.	\$101	\$92	\$80	\$80	\$70	\$66	\$63	\$59	\$56	\$53	\$52	\$50	\$47	\$41	\$37	\$29	\$26	\$23
	85% Current	\$95	\$86	\$78	\$75	\$72	\$70	\$70	\$69	\$68	\$68	\$68	\$67	\$61	\$54	\$49	\$37	\$35	\$29
	10yr ave.	\$107	\$98	\$85	\$85	\$75	\$71	\$66	\$62	\$59	\$57	\$55	\$53	\$50	\$44	\$40	\$31	\$27	\$24

The above shows estimated returns per head for skirted fleece wool. These figures do not take into account the value of skirtings and oddments and do not take into account discounts that may apply for faults under individual circumstances. These figures are based on a market index of 100% and should be used as a guide only. Returns over \$30 / head for fleece wool are highlighted.

Source: Australian Wool Exchange, Australian Wool Innovation, Sydney Futures Exchange, x-rates.com

Disclaimer: While all due care has been taken in the preparation of this document, no warranty is made as to its accuracy, reliability or completeness. To the extent permitted by law neither Jemalong or their sources including subsidiaries and staff, accept liability to any person for loss or damage arising from the use of this information.



Table 16: Returns pr head for skirted fleece wool.

Skirted FLC Weight			Micron																	
			16	16.5	17	17.5	18	18.5	19	19.5	20	21	22	23	24	25	26	28	30	32
Yield (Sch Dry)	6 Kg																			
	25%	Current 10yr ave.	\$24 \$27	\$22 \$25	\$20 \$21	\$19 \$21	\$18 \$19	\$18 \$18	\$18 \$17	\$17 \$16	\$17 \$15	\$17 \$14	\$17 \$14	\$17 \$13	\$15 \$12	\$14 \$11	\$12 \$10	\$9 \$8	\$9 \$7	\$7 \$6
	30%	Current 10yr ave.	\$29 \$32	\$26 \$30	\$23 \$26	\$23 \$26	\$22 \$23	\$21 \$21	\$21 \$20	\$21 \$19	\$21 \$18	\$20 \$17	\$20 \$17	\$20 \$16	\$18 \$15	\$16 \$13	\$15 \$12	\$11 \$9	\$10 \$8	\$9 \$7
	35%	Current 10yr ave.	\$33 \$38	\$30 \$35	\$27 \$30	\$26 \$30	\$25 \$26	\$25 \$25	\$25 \$24	\$24 \$22	\$24 \$21	\$24 \$20	\$24 \$19	\$24 \$19	\$21 \$17	\$19 \$15	\$17 \$14	\$13 \$11	\$12 \$10	\$10 \$9
	40%	Current 10yr ave.	\$38 \$43	\$35 \$40	\$31 \$34	\$30 \$34	\$29 \$30	\$28 \$28	\$28 \$27	\$28 \$25	\$27 \$24	\$27 \$23	\$27 \$22	\$27 \$21	\$25 \$20	\$22 \$18	\$20 \$16	\$15 \$12	\$14 \$11	\$12 \$10
	45%	Current 10yr ave.	\$43 \$48	\$39 \$44	\$35 \$39	\$34 \$39	\$32 \$34	\$32 \$32	\$32 \$30	\$31 \$28	\$31 \$27	\$31 \$26	\$31 \$25	\$30 \$24	\$28 \$22	\$24 \$20	\$22 \$18	\$17 \$14	\$16 \$12	\$13 \$11
	50%	Current 10yr ave.	\$48 \$54	\$43 \$49	\$39 \$43	\$38 \$43	\$36 \$38	\$35 \$36	\$35 \$34	\$35 \$32	\$34 \$30	\$34 \$29	\$34 \$28	\$34 \$27	\$31 \$25	\$27 \$22	\$24 \$20	\$19 \$16	\$17 \$14	\$14 \$12
	55%	Current 10yr ave.	\$52 \$59	\$48 \$54	\$43 \$47	\$41 \$47	\$40 \$41	\$39 \$39	\$39 \$37	\$38 \$35	\$38 \$33	\$38 \$31	\$37 \$30	\$37 \$29	\$34 \$27	\$30 \$24	\$27 \$22	\$21 \$17	\$19 \$15	\$16 \$13
	60%	Current 10yr ave.	\$57 \$65	\$52 \$59	\$47 \$51	\$45 \$51	\$43 \$45	\$43 \$43	\$42 \$40	\$42 \$38	\$41 \$36	\$41 \$34	\$41 \$33	\$41 \$32	\$37 \$30	\$32 \$26	\$29 \$24	\$23 \$19	\$21 \$16	\$17 \$15
	65%	Current 10yr ave.	\$62 \$70	\$56 \$64	\$51 \$56	\$49 \$56	\$47 \$49	\$46 \$46	\$46 \$44	\$45 \$41	\$44 \$39	\$44 \$37	\$44 \$36	\$44 \$35	\$40 \$32	\$35 \$29	\$32 \$26	\$25 \$20	\$23 \$18	\$19 \$16
	70%	Current 10yr ave.	\$67 \$75	\$60 \$69	\$55 \$60	\$53 \$60	\$51 \$53	\$50 \$50	\$49 \$47	\$48 \$44	\$48 \$42	\$48 \$40	\$48 \$39	\$47 \$37	\$43 \$35	\$38 \$31	\$34 \$28	\$26 \$22	\$24 \$19	\$20 \$17
	75%	Current 10yr ave.	\$72 \$81	\$65 \$74	\$59 \$64	\$56 \$64	\$54 \$56	\$53 \$53	\$53 \$50	\$52 \$47	\$51 \$45	\$51 \$43	\$51 \$41	\$51 \$40	\$46 \$37	\$41 \$33	\$37 \$30	\$28 \$23	\$26 \$21	\$22 \$18
	80%	Current 10yr ave.	\$76 \$86	\$69 \$79	\$63 \$68	\$60 \$69	\$58 \$60	\$57 \$57	\$56 \$54	\$55 \$50	\$55 \$48	\$55 \$46	\$55 \$44	\$54 \$43	\$49 \$40	\$43 \$35	\$39 \$32	\$30 \$25	\$28 \$22	\$23 \$20
	85%	Current 10yr ave.	\$81 \$92	\$73 \$84	\$67 \$73	\$64 \$73	\$61 \$64	\$60 \$61	\$60 \$57	\$59 \$54	\$58 \$51	\$58 \$49	\$58 \$47	\$58 \$45	\$52 \$42	\$46 \$37	\$42 \$34	\$32 \$26	\$30 \$23	\$25 \$21

The above shows estimated returns per head for skirted fleece wool. These figures do not take into account the value of skirtings and oddments and do not take into account discounts that may apply for faults under individual circumstances. These figures are based on a market index of 100% and should be used as a guide only. Returns over \$30 / head for fleece wool are highlighted.

Source: Australian Wool Exchange, Australian Wool Innovation, Sydney Futures Exchange, x-rates.com

Disclaimer: While all due care has been taken in the preparation of this document, no warranty is made as to its accuracy, reliability or completeness. To the extent permitted by law neither Jemalong or their sources including subsidiaries and staff, accept liability to any person for loss or damage arising from the use of this information.



Table 17: Returns pr head for skirted fleece wool.

Skirted FLC Weight		Micron																	
5 Kg		16	16.5	17	17.5	18	18.5	19	19.5	20	21	22	23	24	25	26	28	30	32
Yield (Sch Dry)	25% Current	\$20	\$18	\$16	\$16	\$15	\$15	\$15	\$14	\$14	\$14	\$14	\$14	\$13	\$11	\$10	\$8	\$7	\$6
	10yr ave.	\$22	\$21	\$18	\$18	\$16	\$15	\$14	\$13	\$12	\$12	\$12	\$11	\$10	\$9	\$8	\$6	\$6	\$5
	30% Current	\$24	\$22	\$20	\$19	\$18	\$18	\$18	\$17	\$17	\$17	\$17	\$17	\$15	\$14	\$12	\$9	\$9	\$7
	10yr ave.	\$27	\$25	\$21	\$21	\$19	\$18	\$17	\$16	\$15	\$14	\$14	\$13	\$12	\$11	\$10	\$8	\$7	\$6
	35% Current	\$28	\$25	\$23	\$22	\$21	\$21	\$21	\$20	\$20	\$20	\$20	\$20	\$18	\$16	\$14	\$11	\$10	\$8
	10yr ave.	\$31	\$29	\$25	\$25	\$22	\$21	\$20	\$18	\$17	\$17	\$16	\$16	\$15	\$13	\$12	\$9	\$8	\$7
	40% Current	\$32	\$29	\$26	\$25	\$24	\$24	\$23	\$23	\$23	\$23	\$23	\$23	\$20	\$18	\$16	\$13	\$12	\$10
	10yr ave.	\$36	\$33	\$29	\$29	\$25	\$24	\$22	\$21	\$20	\$19	\$18	\$18	\$17	\$15	\$13	\$10	\$9	\$8
	45% Current	\$36	\$32	\$29	\$28	\$27	\$27	\$26	\$26	\$26	\$26	\$26	\$25	\$23	\$20	\$18	\$14	\$13	\$11
	10yr ave.	\$40	\$37	\$32	\$32	\$28	\$27	\$25	\$24	\$22	\$21	\$21	\$20	\$19	\$16	\$15	\$12	\$10	\$9
	50% Current	\$40	\$36	\$33	\$31	\$30	\$30	\$29	\$29	\$29	\$28	\$28	\$28	\$26	\$23	\$20	\$16	\$15	\$12
	10yr ave.	\$45	\$41	\$36	\$36	\$31	\$30	\$28	\$26	\$25	\$24	\$23	\$22	\$21	\$18	\$17	\$13	\$11	\$10
	55% Current	\$44	\$40	\$36	\$35	\$33	\$32	\$32	\$32	\$31	\$31	\$31	\$31	\$28	\$25	\$22	\$17	\$16	\$13
	10yr ave.	\$49	\$45	\$39	\$39	\$34	\$33	\$31	\$29	\$27	\$26	\$25	\$25	\$23	\$20	\$18	\$14	\$13	\$11
	60% Current	\$48	\$43	\$39	\$38	\$36	\$35	\$35	\$35	\$34	\$34	\$34	\$34	\$31	\$27	\$24	\$19	\$17	\$14
	10yr ave.	\$54	\$49	\$43	\$43	\$38	\$36	\$34	\$32	\$30	\$29	\$28	\$27	\$25	\$22	\$20	\$16	\$14	\$12
	65% Current	\$52	\$47	\$42	\$41	\$39	\$38	\$38	\$38	\$37	\$37	\$37	\$37	\$33	\$29	\$27	\$20	\$19	\$16
	10yr ave.	\$58	\$54	\$46	\$46	\$41	\$39	\$36	\$34	\$32	\$31	\$30	\$29	\$27	\$24	\$22	\$17	\$15	\$13
	70% Current	\$56	\$50	\$46	\$44	\$42	\$41	\$41	\$40	\$40	\$40	\$40	\$39	\$36	\$32	\$29	\$22	\$20	\$17
	10yr ave.	\$63	\$58	\$50	\$50	\$44	\$42	\$39	\$37	\$35	\$33	\$32	\$31	\$29	\$26	\$23	\$18	\$16	\$14
	75% Current	\$60	\$54	\$49	\$47	\$45	\$44	\$44	\$43	\$43	\$43	\$43	\$42	\$38	\$34	\$31	\$24	\$22	\$18
	10yr ave.	\$67	\$62	\$53	\$54	\$47	\$45	\$42	\$39	\$37	\$36	\$35	\$33	\$31	\$27	\$25	\$19	\$17	\$15
	80% Current	\$64	\$58	\$52	\$50	\$48	\$47	\$47	\$46	\$46	\$46	\$45	\$45	\$41	\$36	\$33	\$25	\$23	\$19
	10yr ave.	\$72	\$66	\$57	\$57	\$50	\$47	\$45	\$42	\$40	\$38	\$37	\$36	\$33	\$29	\$27	\$21	\$18	\$16
	85% Current	\$68	\$61	\$55	\$53	\$51	\$50	\$50	\$49	\$48	\$48	\$48	\$48	\$43	\$38	\$35	\$27	\$25	\$21
	10yr ave.	\$76	\$70	\$61	\$61	\$53	\$50	\$47	\$45	\$42	\$40	\$39	\$38	\$35	\$31	\$28	\$22	\$19	\$17

The above shows estimated returns per head for skirted fleece wool. These figures do not take into account the value of skirtings and oddments and do not take into account discounts that may apply for faults under individual circumstances. These figures are based on a market index of 100% and should be used as a guide only. Returns over \$30 / head for fleece wool are highlighted.

Source: Australian Wool Exchange, Australian Wool Innovation, Sydney Futures Exchange, x-rates.com

Disclaimer: While all due care has been taken in the preparation of this document, no warranty is made as to its accuracy, reliability or completeness. To the extent permitted by law neither Jemalong or their sources including subsidiaries and staff, accept liability to any person for loss or damage arising from the use of this information.



Table 18: Returns pr head for skirted fleece wool.

Skirted FLC Weight		Micron																	
4 Kg		16	16.5	17	17.5	18	18.5	19	19.5	20	21	22	23	24	25	26	28	30	32
Yield (Sch Dry)	25% Current	\$16	\$14	\$13	\$13	\$12	\$12	\$12	\$12	\$11	\$11	\$11	\$11	\$10	\$9	\$8	\$6	\$6	\$5
	10yr ave.	\$18	\$16	\$14	\$14	\$13	\$12	\$11	\$11	\$10	\$10	\$9	\$9	\$8	\$7	\$7	\$5	\$5	\$4
	30% Current	\$19	\$17	\$16	\$15	\$14	\$14	\$14	\$14	\$14	\$14	\$14	\$14	\$12	\$11	\$10	\$8	\$7	\$6
	10yr ave.	\$22	\$20	\$17	\$17	\$15	\$14	\$13	\$13	\$12	\$11	\$11	\$11	\$10	\$9	\$8	\$6	\$5	\$5
	35% Current	\$22	\$20	\$18	\$18	\$17	\$17	\$16	\$16	\$16	\$16	\$16	\$16	\$14	\$13	\$11	\$9	\$8	\$7
	10yr ave.	\$25	\$23	\$20	\$20	\$18	\$17	\$16	\$15	\$14	\$13	\$13	\$12	\$12	\$10	\$9	\$7	\$6	\$6
	40% Current	\$25	\$23	\$21	\$20	\$19	\$19	\$19	\$18	\$18	\$18	\$18	\$18	\$16	\$14	\$13	\$10	\$9	\$8
	10yr ave.	\$29	\$26	\$23	\$23	\$20	\$19	\$18	\$17	\$16	\$15	\$15	\$14	\$13	\$12	\$11	\$8	\$7	\$7
	45% Current	\$29	\$26	\$23	\$23	\$22	\$21	\$21	\$21	\$21	\$20	\$20	\$20	\$18	\$16	\$15	\$11	\$10	\$9
	10yr ave.	\$32	\$30	\$26	\$26	\$23	\$21	\$20	\$19	\$18	\$17	\$17	\$16	\$15	\$13	\$12	\$9	\$8	\$7
	50% Current	\$32	\$29	\$26	\$25	\$24	\$24	\$23	\$23	\$23	\$23	\$23	\$23	\$20	\$18	\$16	\$13	\$12	\$10
	10yr ave.	\$36	\$33	\$29	\$29	\$25	\$24	\$22	\$21	\$20	\$19	\$18	\$18	\$17	\$15	\$13	\$10	\$9	\$8
	55% Current	\$35	\$32	\$29	\$28	\$26	\$26	\$26	\$25	\$25	\$25	\$25	\$25	\$22	\$20	\$18	\$14	\$13	\$11
	10yr ave.	\$39	\$36	\$31	\$31	\$28	\$26	\$25	\$23	\$22	\$21	\$20	\$20	\$18	\$16	\$15	\$11	\$10	\$9
	60% Current	\$38	\$35	\$31	\$30	\$29	\$28	\$28	\$28	\$27	\$27	\$27	\$27	\$25	\$22	\$20	\$15	\$14	\$12
	10yr ave.	\$43	\$40	\$34	\$34	\$30	\$28	\$27	\$25	\$24	\$23	\$22	\$21	\$20	\$18	\$16	\$12	\$11	\$10
	65% Current	\$41	\$37	\$34	\$33	\$31	\$31	\$30	\$30	\$30	\$30	\$30	\$29	\$27	\$23	\$21	\$16	\$15	\$13
	10yr ave.	\$47	\$43	\$37	\$37	\$33	\$31	\$29	\$27	\$26	\$25	\$24	\$23	\$22	\$19	\$17	\$13	\$12	\$11
	70% Current	\$45	\$40	\$37	\$35	\$34	\$33	\$33	\$32	\$32	\$32	\$32	\$32	\$29	\$25	\$23	\$18	\$16	\$14
	10yr ave.	\$50	\$46	\$40	\$40	\$35	\$33	\$31	\$29	\$28	\$27	\$26	\$25	\$23	\$21	\$19	\$14	\$13	\$11
	75% Current	\$48	\$43	\$39	\$38	\$36	\$35	\$35	\$35	\$34	\$34	\$34	\$34	\$31	\$27	\$24	\$19	\$17	\$14
	10yr ave.	\$54	\$49	\$43	\$43	\$38	\$36	\$34	\$32	\$30	\$29	\$28	\$27	\$25	\$22	\$20	\$16	\$14	\$12
	80% Current	\$51	\$46	\$42	\$40	\$38	\$38	\$38	\$37	\$37	\$36	\$36	\$36	\$33	\$29	\$26	\$20	\$19	\$15
	10yr ave.	\$57	\$53	\$46	\$46	\$40	\$38	\$36	\$34	\$32	\$30	\$29	\$29	\$27	\$23	\$21	\$17	\$15	\$13
	85% Current	\$54	\$49	\$44	\$43	\$41	\$40	\$40	\$39	\$39	\$39	\$39	\$38	\$35	\$31	\$28	\$21	\$20	\$16
	10yr ave.	\$61	\$56	\$48	\$49	\$43	\$40	\$38	\$36	\$34	\$32	\$31	\$30	\$28	\$25	\$23	\$18	\$16	\$14

The above shows estimated returns per head for skirted fleece wool. These figures do not take into account the value of skirtings and oddments and do not take into account discounts that may apply for faults under individual circumstances. These figures are based on a market index of 100% and should be used as a guide only. Returns over \$30 / head for fleece wool are highlighted.

Source: Australian Wool Exchange, Australian Wool Innovation, Sydney Futures Exchange, x-rates.com

Disclaimer: While all due care has been taken in the preparation of this document, no warranty is made as to its accuracy, reliability or completeness. To the extent permitted by law neither Jemalong or their sources including subsidiaries and staff, accept liability to any person for loss or damage arising from the use of this information.



Table 19: Returns pr head for skirted fleece wool.

Skirted FLC Weight		Micron																	
3 Kg		16	16.5	17	17.5	18	18.5	19	19.5	20	21	22	23	24	25	26	28	30	32
Yield (Sch Dry)	25% Current	\$12	\$11	\$10	\$9	\$9	\$9	\$9	\$9	\$9	\$9	\$9	\$8	\$8	\$7	\$6	\$5	\$4	\$4
	10yr ave.	\$13	\$12	\$11	\$11	\$9	\$9	\$8	\$8	\$7	\$7	\$7	\$7	\$6	\$5	\$5	\$4	\$3	\$3
	30% Current	\$14	\$13	\$12	\$11	\$11	\$11	\$11	\$10	\$10	\$10	\$10	\$10	\$9	\$8	\$7	\$6	\$5	\$4
	10yr ave.	\$16	\$15	\$13	\$13	\$11	\$11	\$10	\$9	\$9	\$9	\$8	\$8	\$7	\$7	\$6	\$5	\$4	\$4
	35% Current	\$17	\$15	\$14	\$13	\$13	\$12	\$12	\$12	\$12	\$12	\$12	\$12	\$11	\$9	\$9	\$7	\$6	\$5
	10yr ave.	\$19	\$17	\$15	\$15	\$13	\$12	\$12	\$11	\$10	\$10	\$10	\$9	\$9	\$8	\$7	\$5	\$5	\$4
	40% Current	\$19	\$17	\$16	\$15	\$14	\$14	\$14	\$14	\$14	\$14	\$14	\$14	\$12	\$11	\$10	\$8	\$7	\$6
	10yr ave.	\$22	\$20	\$17	\$17	\$15	\$14	\$13	\$13	\$12	\$11	\$11	\$11	\$10	\$9	\$8	\$6	\$5	\$5
	45% Current	\$21	\$19	\$18	\$17	\$16	\$16	\$16	\$16	\$15	\$15	\$15	\$15	\$14	\$12	\$11	\$9	\$8	\$7
	10yr ave.	\$24	\$22	\$19	\$19	\$17	\$16	\$15	\$14	\$13	\$13	\$12	\$12	\$11	\$10	\$9	\$7	\$6	\$6
	50% Current	\$24	\$22	\$20	\$19	\$18	\$18	\$18	\$17	\$17	\$17	\$17	\$17	\$15	\$14	\$12	\$9	\$9	\$7
	10yr ave.	\$27	\$25	\$21	\$21	\$19	\$18	\$17	\$16	\$15	\$14	\$14	\$13	\$12	\$11	\$10	\$8	\$7	\$6
	55% Current	\$26	\$24	\$22	\$21	\$20	\$19	\$19	\$19	\$19	\$19	\$19	\$19	\$17	\$15	\$13	\$10	\$10	\$8
	10yr ave.	\$30	\$27	\$24	\$24	\$21	\$20	\$18	\$17	\$16	\$16	\$15	\$15	\$14	\$12	\$11	\$9	\$8	\$7
	60% Current	\$29	\$26	\$23	\$23	\$22	\$21	\$21	\$21	\$21	\$20	\$20	\$20	\$18	\$16	\$15	\$11	\$10	\$9
	10yr ave.	\$32	\$30	\$26	\$26	\$23	\$21	\$20	\$19	\$18	\$17	\$17	\$16	\$15	\$13	\$12	\$9	\$8	\$7
	65% Current	\$31	\$28	\$25	\$24	\$23	\$23	\$23	\$23	\$22	\$22	\$22	\$22	\$20	\$18	\$16	\$12	\$11	\$9
	10yr ave.	\$35	\$32	\$28	\$28	\$24	\$23	\$22	\$20	\$19	\$19	\$18	\$17	\$16	\$14	\$13	\$10	\$9	\$8
	70% Current	\$33	\$30	\$27	\$26	\$25	\$25	\$25	\$24	\$24	\$24	\$24	\$24	\$21	\$19	\$17	\$13	\$12	\$10
	10yr ave.	\$38	\$35	\$30	\$30	\$26	\$25	\$23	\$22	\$21	\$20	\$19	\$19	\$17	\$15	\$14	\$11	\$10	\$9
	75% Current	\$36	\$32	\$29	\$28	\$27	\$27	\$26	\$26	\$26	\$26	\$26	\$25	\$23	\$20	\$18	\$14	\$13	\$11
	10yr ave.	\$40	\$37	\$32	\$32	\$28	\$27	\$25	\$24	\$22	\$21	\$21	\$20	\$19	\$16	\$15	\$12	\$10	\$9
	80% Current	\$38	\$35	\$31	\$30	\$29	\$28	\$28	\$28	\$27	\$27	\$27	\$27	\$25	\$22	\$20	\$15	\$14	\$12
	10yr ave.	\$43	\$40	\$34	\$34	\$30	\$28	\$27	\$25	\$24	\$23	\$22	\$21	\$20	\$18	\$16	\$12	\$11	\$10
	85% Current	\$41	\$37	\$33	\$32	\$31	\$30	\$30	\$29	\$29	\$29	\$29	\$29	\$26	\$23	\$21	\$16	\$15	\$12
	10yr ave.	\$46	\$42	\$36	\$36	\$32	\$30	\$28	\$27	\$25	\$24	\$23	\$23	\$21	\$19	\$17	\$13	\$12	\$10

The above shows estimated returns per head for skirted fleece wool. These figures do not take into account the value of skirtings and oddments and do not take into account discounts that may apply for faults under individual circumstances. These figures are based on a market index of 100% and should be used as a guide only. Returns over \$30 / head for fleece wool are highlighted.

Source: Australian Wool Exchange, Australian Wool Innovation, Sydney Futures Exchange, x-rates.com

Disclaimer: While all due care has been taken in the preparation of this document, no warranty is made as to its accuracy, reliability or completeness. To the extent permitted by law neither Jemalong or their sources including subsidiaries and staff, accept liability to any person for loss or damage arising from the use of this information.



Table 20: Returns pr head for skirted fleece wool.

Skirted FLC Weight		Micron																	
2 Kg		16	16.5	17	17.5	18	18.5	19	19.5	20	21	22	23	24	25	26	28	30	32
Yield (Sch Dry)	25% Current	\$8	\$7	\$7	\$6	\$6	\$6	\$6	\$6	\$6	\$6	\$6	\$6	\$5	\$5	\$4	\$3	\$3	\$2
	10yr ave.	\$9	\$8	\$7	\$7	\$6	\$6	\$6	\$5	\$5	\$5	\$5	\$4	\$4	\$4	\$3	\$3	\$2	\$2
	30% Current	\$10	\$9	\$8	\$8	\$7	\$7	\$7	\$7	\$7	\$7	\$7	\$7	\$6	\$5	\$5	\$4	\$3	\$3
	10yr ave.	\$11	\$10	\$9	\$9	\$8	\$7	\$7	\$6	\$6	\$6	\$6	\$5	\$5	\$4	\$4	\$3	\$3	\$2
	35% Current	\$11	\$10	\$9	\$9	\$8	\$8	\$8	\$8	\$8	\$8	\$8	\$8	\$7	\$6	\$6	\$4	\$4	\$3
	10yr ave.	\$13	\$12	\$10	\$10	\$9	\$8	\$8	\$7	\$7	\$7	\$6	\$6	\$6	\$5	\$5	\$4	\$3	\$3
	40% Current	\$13	\$12	\$10	\$10	\$10	\$9	\$9	\$9	\$9	\$9	\$9	\$9	\$8	\$7	\$7	\$5	\$5	\$4
	10yr ave.	\$14	\$13	\$11	\$11	\$10	\$9	\$9	\$8	\$8	\$8	\$7	\$7	\$7	\$6	\$5	\$4	\$4	\$3
	45% Current	\$14	\$13	\$12	\$11	\$11	\$11	\$11	\$10	\$10	\$10	\$10	\$10	\$9	\$8	\$7	\$6	\$5	\$4
	10yr ave.	\$16	\$15	\$13	\$13	\$11	\$11	\$10	\$9	\$9	\$9	\$8	\$8	\$7	\$7	\$6	\$5	\$4	\$4
	50% Current	\$16	\$14	\$13	\$13	\$12	\$12	\$12	\$12	\$11	\$11	\$11	\$11	\$10	\$9	\$8	\$6	\$6	\$5
	10yr ave.	\$18	\$16	\$14	\$14	\$13	\$12	\$11	\$11	\$10	\$10	\$9	\$9	\$8	\$7	\$7	\$5	\$5	\$4
	55% Current	\$17	\$16	\$14	\$14	\$13	\$13	\$13	\$13	\$13	\$13	\$12	\$12	\$11	\$10	\$9	\$7	\$6	\$5
	10yr ave.	\$20	\$18	\$16	\$16	\$14	\$13	\$12	\$12	\$11	\$10	\$10	\$10	\$9	\$8	\$7	\$6	\$5	\$4
	60% Current	\$19	\$17	\$16	\$15	\$14	\$14	\$14	\$14	\$14	\$14	\$14	\$14	\$12	\$11	\$10	\$8	\$7	\$6
	10yr ave.	\$22	\$20	\$17	\$17	\$15	\$14	\$13	\$13	\$12	\$11	\$11	\$11	\$10	\$9	\$8	\$6	\$5	\$5
	65% Current	\$21	\$19	\$17	\$16	\$16	\$15	\$15	\$15	\$15	\$15	\$15	\$15	\$13	\$12	\$11	\$8	\$8	\$6
	10yr ave.	\$23	\$21	\$19	\$19	\$16	\$15	\$15	\$14	\$13	\$12	\$12	\$12	\$11	\$10	\$9	\$7	\$6	\$5
	70% Current	\$22	\$20	\$18	\$18	\$17	\$17	\$16	\$16	\$16	\$16	\$16	\$16	\$14	\$13	\$11	\$9	\$8	\$7
	10yr ave.	\$25	\$23	\$20	\$20	\$18	\$17	\$16	\$15	\$14	\$13	\$13	\$12	\$12	\$10	\$9	\$7	\$6	\$6
	75% Current	\$24	\$22	\$20	\$19	\$18	\$18	\$18	\$17	\$17	\$17	\$17	\$17	\$15	\$14	\$12	\$9	\$9	\$7
	10yr ave.	\$27	\$25	\$21	\$21	\$19	\$18	\$17	\$16	\$15	\$14	\$14	\$13	\$12	\$11	\$10	\$8	\$7	\$6
	80% Current	\$25	\$23	\$21	\$20	\$19	\$19	\$19	\$18	\$18	\$18	\$18	\$18	\$16	\$14	\$13	\$10	\$9	\$8
	10yr ave.	\$29	\$26	\$23	\$23	\$20	\$19	\$18	\$17	\$16	\$15	\$15	\$14	\$13	\$12	\$11	\$8	\$7	\$7
	85% Current	\$27	\$24	\$22	\$21	\$20	\$20	\$20	\$20	\$19	\$19	\$19	\$19	\$17	\$15	\$14	\$11	\$10	\$8
	10yr ave.	\$31	\$28	\$24	\$24	\$21	\$20	\$19	\$18	\$17	\$16	\$16	\$15	\$14	\$12	\$11	\$9	\$8	\$7

The above shows estimated returns per head for skirted fleece wool. These figures do not take into account the value of skirtings and oddments and do not take into account discounts that may apply for faults under individual circumstances. These figures are based on a market index of 100% and should be used as a guide only. Returns over \$30 / head for fleece wool are highlighted.

Source: Australian Wool Exchange, Australian Wool Innovation, Sydney Futures Exchange, x-rates.com

Disclaimer: While all due care has been taken in the preparation of this document, no warranty is made as to its accuracy, reliability or completeness. To the extent permitted by law neither Jemalong or their sources including subsidiaries and staff, accept liability to any person for loss or damage arising from the use of this information.