



JEMALONG WOOL BULLETIN

(week ending 30/08/2012)

Table 1: Northern Region Micron Price Guides

CURRENT MARKET				12 MONTH COMPARISONS								3 YEAR COMPARISONS					Percentile	*10 YEAR COMPARISONS						Percentile
Mic.	30/08/2012	23/08/2012		31/08/2011	Now		Now		Now							* 16-17.5um since Aug 05		Now						
Price	Current	Weekly		This time	compared		compared		compared		Low	High	Average	compared		Low	High	Average	compared					
Guides	Price	Change		Last Year	to Last Year	12 Month	to Low	12 Month	to High		Low	High		to 3yr ave		Low	High		to *10yr ave					
						Low		High																
NRI	945	-10 -1.1%		1316	-371 -28%	945	0 0%	1361	-416 -31%		836	1491	1113	-168 -15%	32%	657	1491	937	+8 1%		62%			
16*	1650	+20 1.2%		2750	-1100 -40%	1630	+20 1%	2800	-1150 -41%		1385	2800	1988	-338 -17%	37%	1390	2800	1810	-160 -9%		57%			
16.5*	1410	+10 0.7%		2500	-1090 -44%	1400	+10 1%	2510	-1100 -44%		1280	2680	1832	-422 -23%	21%	1261	2680	1664	-254 -15%		30%			
17*	1300	+10 0.8%		2320	-1020 -44%	1290	+10 1%	2330	-1030 -44%		1180	2530	1674	-374 -22%	33%	1100	2530	1454	-154 -11%		45%			
17.5*	1245	0		2050	-805 -39%	1245	0 0%	2100	-855 -41%		1160	2360	1575	-330 -21%	33%	1020	2360	1442	-197 -14%		42%			
18	1171	-24 -2.0%		1828	-657 -36%	1171	0 0%	1899	-728 -38%		1118	2193	1489	-318 -21%	21%	916	2193	1266	-95 -8%		50%			
18.5	1124	-31 -2.8%		1656	-532 -32%	1124	0 0%	1732	-608 -35%		1063	1963	1402	-278 -20%	18%	843	1963	1193	-69 -6%		51%			
19	1096	-25 -2.3%		1572	-476 -30%	1096	0 0%	1611	-515 -32%		988	1776	1313	-217 -17%	35%	803	1776	1120	-24 -2%		60%			
19.5	1057	-27 -2.6%		1473	-416 -28%	1057	0 0%	1516	-459 -30%		912	1670	1229	-172 -14%	40%	749	1670	1052	+5 0%		64%			
20	1055	-24 -2.3%		1380	-325 -24%	1055	0 0%	1446	-391 -27%		841	1588	1163	-108 -9%	45%	700	1588	995	+60 6%		72%			
21	1051	-26 -2.5%		1329	-278 -21%	1051	0 0%	1400	-349 -25%		817	1522	1131	-80 -7%	46%	668	1522	954	+97 10%		77%			
22	1040	-20 -1.9%		1276	-236 -18%	1040	0 0%	1364	-324 -24%		805	1461	1096	-56 -5%	46%	659	1461	925	+115 12%		77%			
23	1015	-25 -2.5%		1175	-160 -14%	1015	0 0%	1347	-332 -25%		791	1347	1049	-34 -3%	48%	652	1347	895	+120 13%		77%			
24	966	-1 -0.1%		1015	-49 -5%	964	+2 0%	1213	-247 -20%		762	1213	961	+5 1%	47%	638	1299	842	+124 15%		74%			
25	913	+13 1.4%		886	+27 3%	870	+43 5%	1049	-136 -13%		650	1049	833	+80 10%	66%	567	1198	745	+168 23%		80%			
26	828	+24 2.9%		828	0 0%	739	+89 12%	939	-111 -12%		570	939	734	+94 13%	68%	532	1088	675	+153 23%		80%			
28	550	-3 -0.5%		686	-136 -20%	550	0 0%	698	-148 -21%		435	734	561	-11 -2%	47%	424	889	526	+24 5%		71%			
30	524	+4 0.8%		632	-108 -17%	506	+18 4%	635	-111 -17%		378	670	503	+21 4%	51%	344	729	461	+63 14%		76%			
32	440	+5 1.1%		581	-141 -24%	422	+18 4%	586	-146 -25%		326	638	451	-11 -2%	47%	297	669	413	+27 7%		71%			
MC	545	+15 2.8%		702	-157 -22%	512	+33 6%	756	-211 -28%		538	831	669	-124 -19%	2%	380	831	539	+6 1%		57%			

Note:

* Due to the irregular market quoting for some fine wool categories, figures shown relating to micron categories below 18 micron are an estimate based on the AWEX Premium & Discounts Report & other available information.

* For any category, where there is insufficient quantity offered to enable AWEX to quote, a quote will be provided based on the best available information.

* 10 Year data is not available for some micron categories, which may result in blank spaces in the table above.

Definitions:

* A Percentile, is a value on a scale of one hundred that indicates the percent of a distribution that is equal to or below it. In general a percentile between 25% and 75% is considered normal, a percentile below 25% is considered below normal and a percentile above 75% is considered above normal.

Three and ten year percentiles shown in the table above, detail the period of time during the past 3 & 10 years that the market has traded either at or below its current price.

The higher the percentile, the stronger the market.

Source: Australian Wool Exchange, Australian Wool Innovation, Sydney Futures Exchange, x-rates.com

Disclaimer: While all due care has been taken in the preparation of this document, no warranty is made as to its accuracy, reliability or completeness. To the extent permitted by law neither Jemalong or their sources including subsidiaries and staff, accept liability to any person for loss or damage arising from the use of this information.



MARKET COMMENTARY

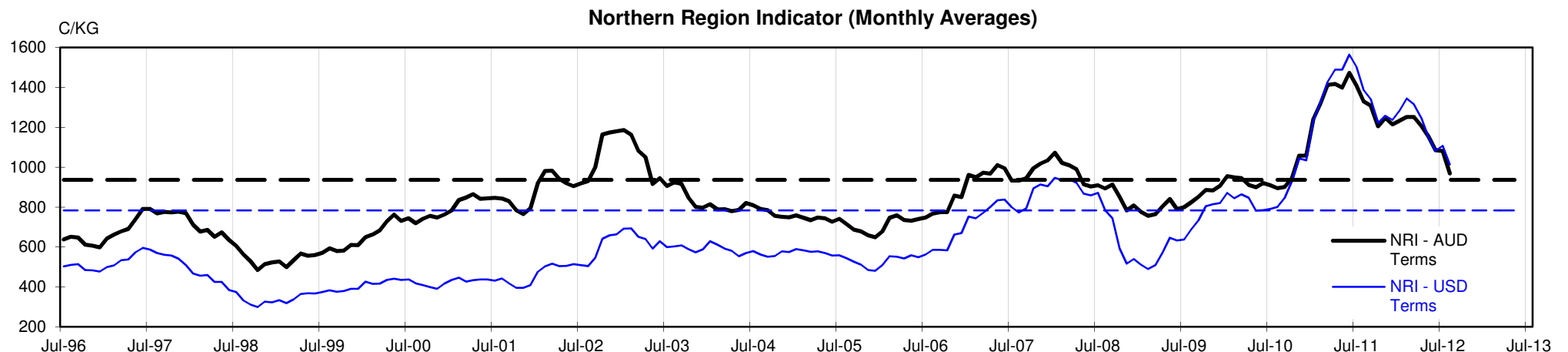
One Australian Dollar = 1.032912 US as of: 30/08/2012

NORTHERN REGION –Sale Week 09/12 (41,271 bales offered nationally)

Tuesdays market saw 19 to 20 microns ease 5-10 cents on a limited offering, but the fine microns all found good support on the back of a very stylish offering, comprising mostly of spinner to best style types. Spinner styles posted premiums ranging from moderate for 18 microns through to solid distinctions for the 15-17 micron range. Merino skirtings saw good support all round for an offering comprising of 19 microns and finer. The better style and length lots with <3% Vm displayed significant differences between the lower style and length types, while the >5% Vm types gained 10-20 cents. A fine selection of locks remained firm while 16 microns closed dearer. A stylish offering of crutchings posted some premiums while stains also improved by around 10 cents. A small but stylish offering of crossbred with varying degrees of colour, had 28 to 30 microns unchanged on a nominal basis. 6.3% Passed-In.

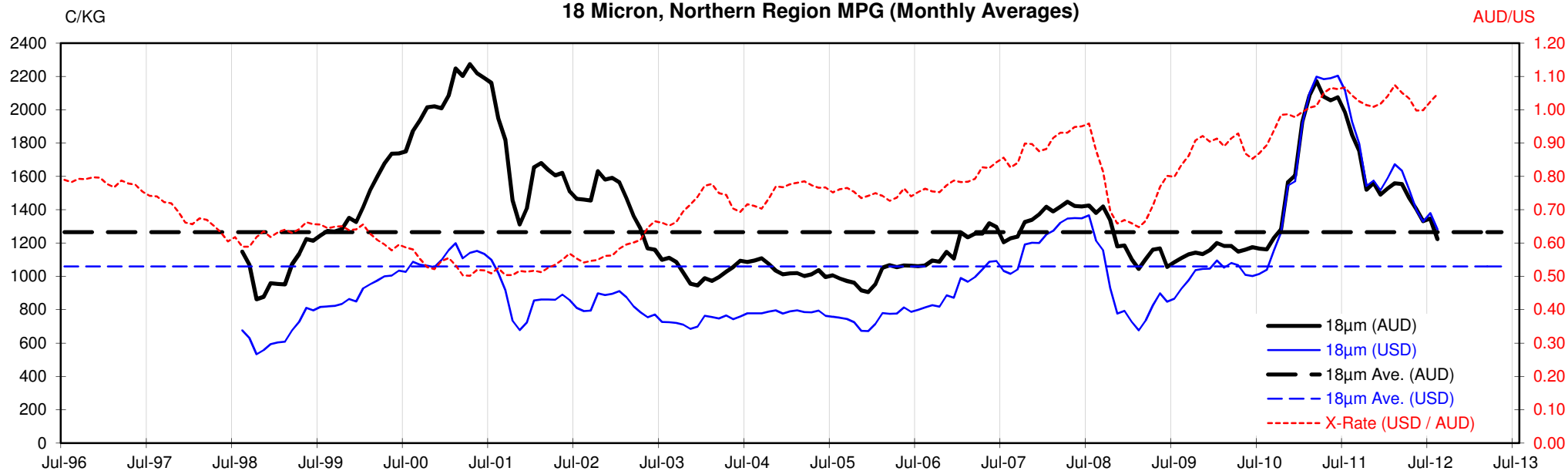
Wednesdays market was over all well supported, 18 micron and broader remained unchanged and while the spinner styles maintained their favoured position the last half hour saw 17.5 micron and finer ease 10-20 cents for the lower strength lots. Strong buyer interest had best style and length skirtings with <3% Vm slightly dearer, while other descriptions closed fully firm. All oddment categories remained firm tending in sellers favour (on the back of a good colour & bulk selection), locks and crutchings ended the day par to 5 cents dearer. Crossbreds also closed 5 cents dearer on a small offering in the 27 to 30 microns range. 9.2% PI

Thursdays market saw a late rally, with 17.5 microns and finer gaining support and lifting by 10-15 cents, however this was not enough to sustain the medium to broader microns, with 18-22 microns retreating by around 25 cents (albeit on a limited selection). All merino skirtings remained unchanged on a best to good style selection. Solid buyer pressure had locks 20 cents dearer, stains 10 cents dearer and crutchings unchanged. Crossbreds eased slightly as 28 to 30microns closed generally 5 cents cheaper. 8.0% PI

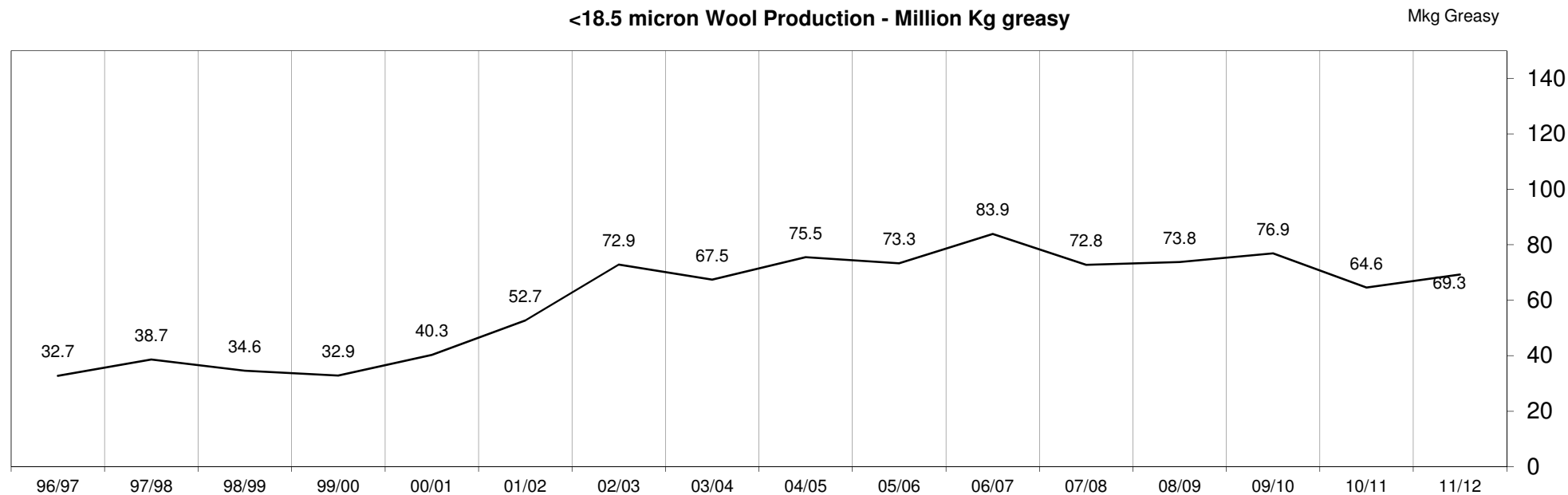


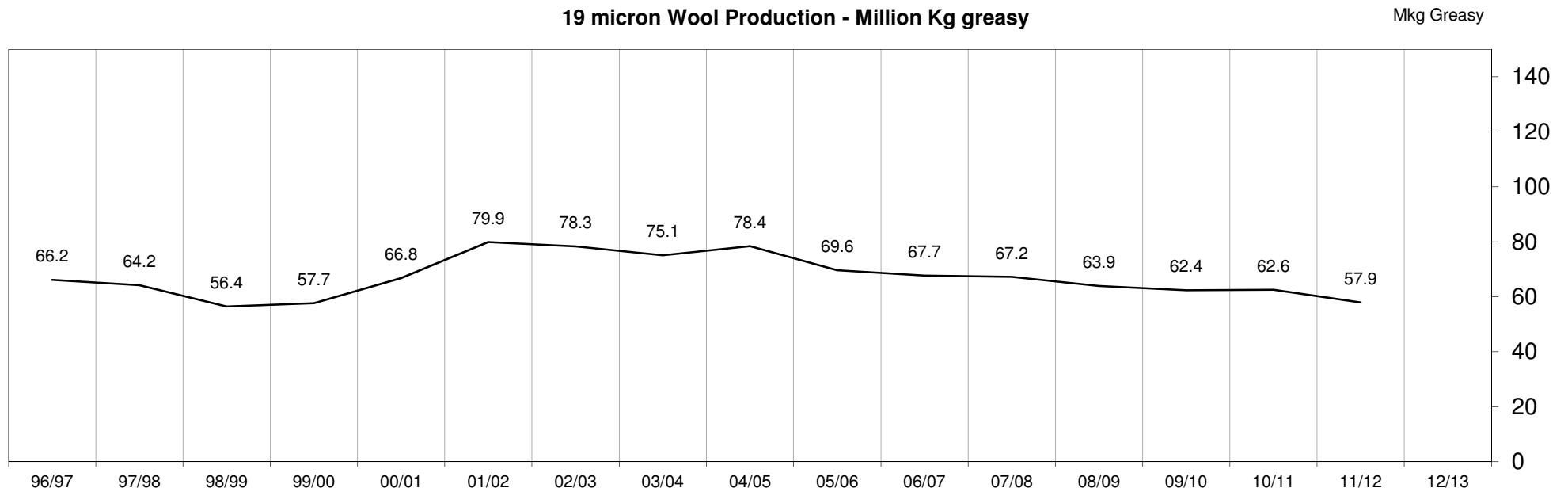
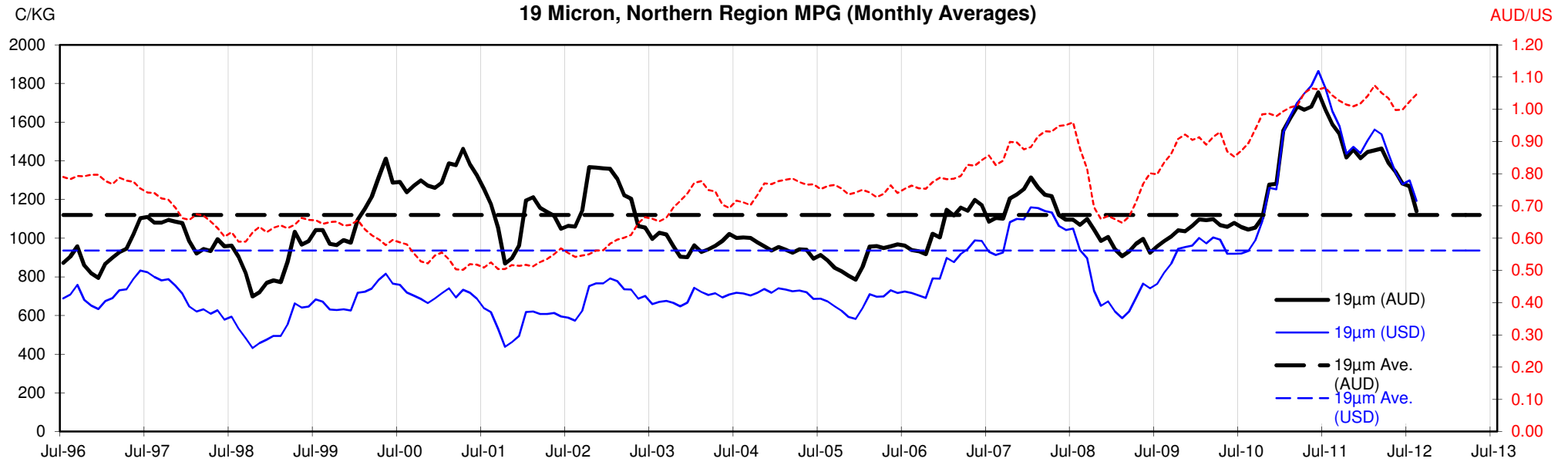


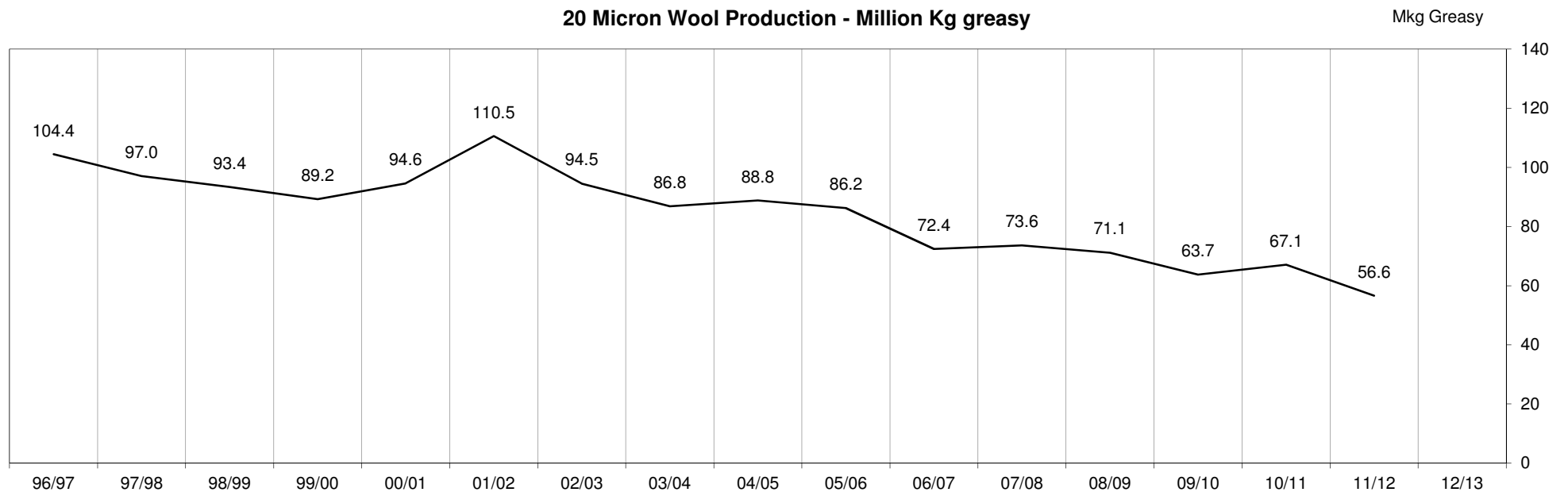
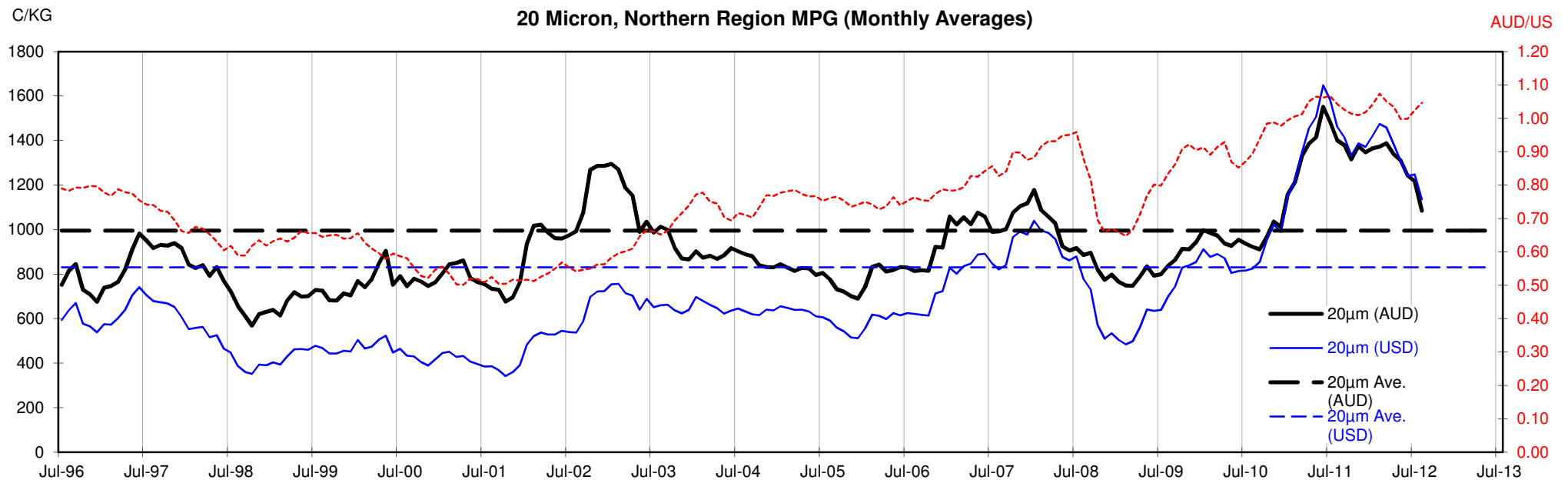
18 Micron, Northern Region MPG (Monthly Averages)

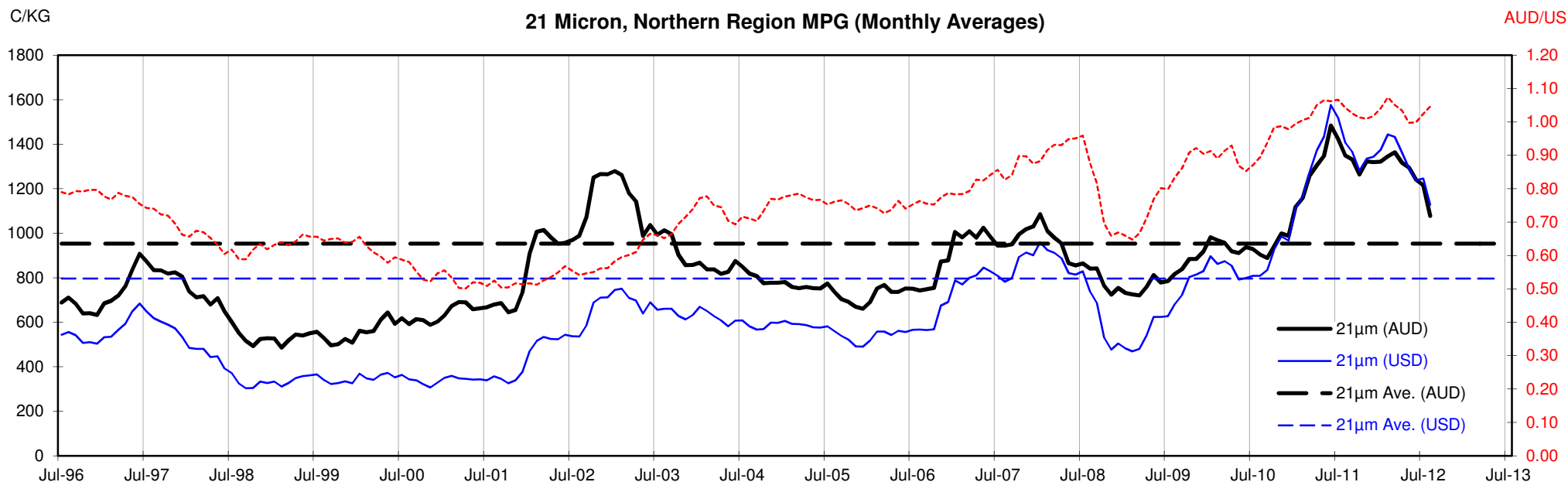


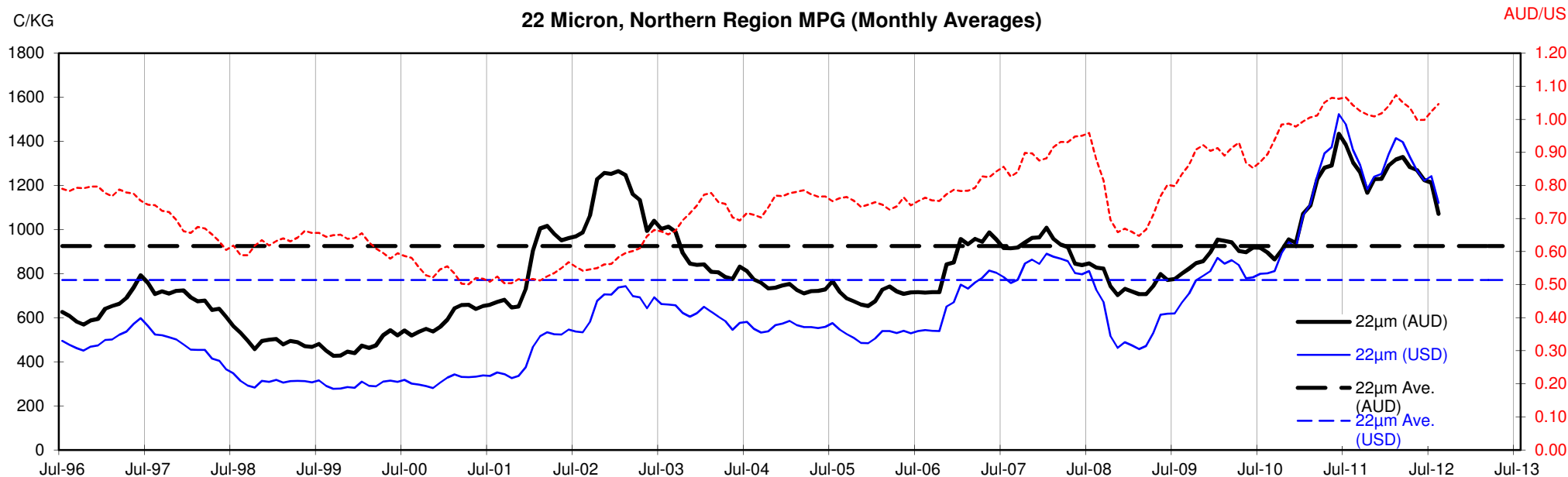
<18.5 micron Wool Production - Million Kg greasy

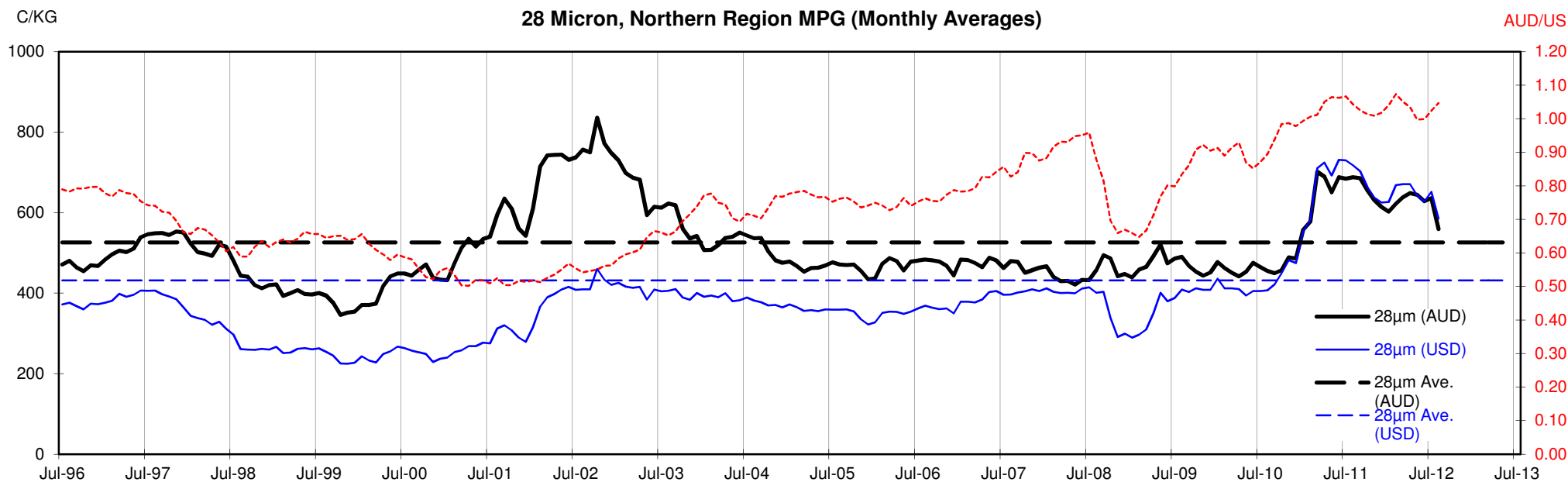












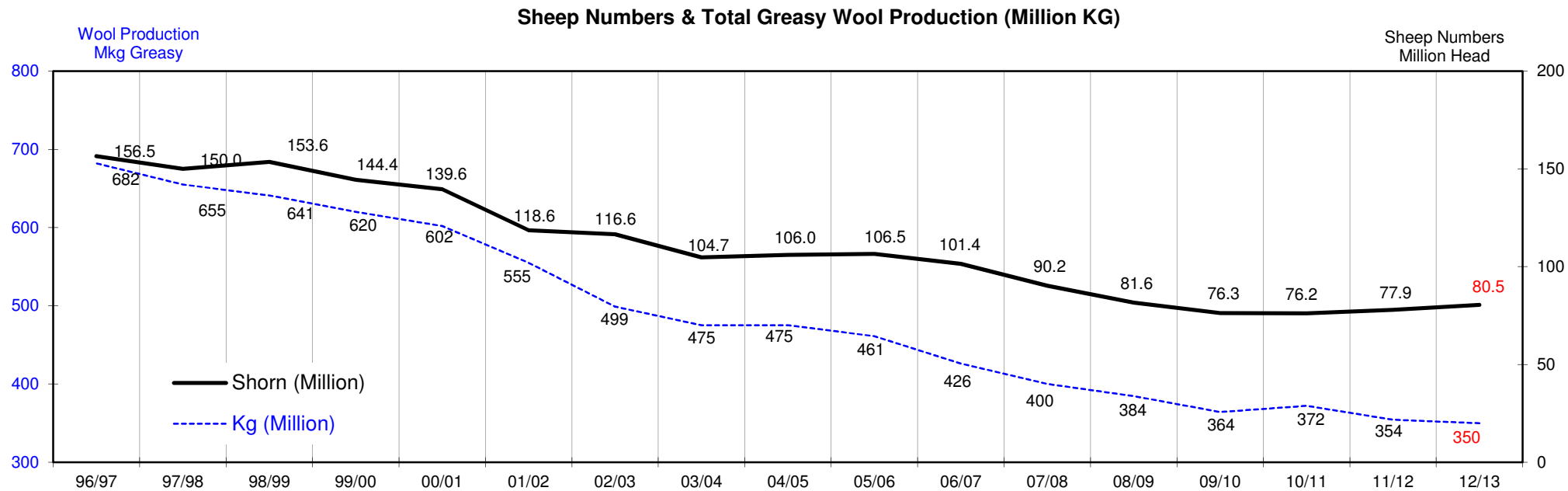
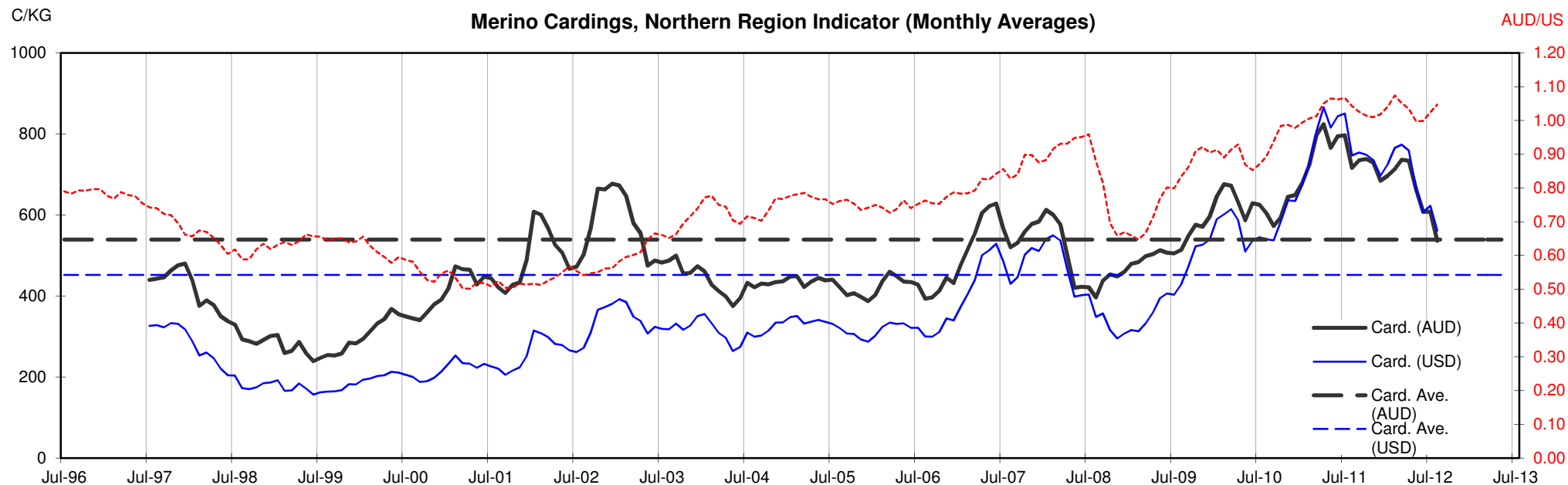




Table 13: Returns pr head for skirted fleece wool.

Skirted FLC Weight		Micron																	
9 Kg		16	16.5	17	17.5	18	18.5	19	19.5	20	21	22	23	24	25	26	28	30	32
Yield (Sch Dry)	25% Current	\$37	\$32	\$29	\$28	\$26	\$25	\$25	\$24	\$24	\$24	\$23	\$23	\$22	\$21	\$19	\$12	\$12	\$10
	10yr ave.	\$41	\$37	\$33	\$32	\$28	\$27	\$25	\$24	\$22	\$21	\$21	\$20	\$19	\$17	\$15	\$12	\$10	\$9
	30% Current	\$45	\$38	\$35	\$34	\$32	\$30	\$30	\$29	\$28	\$28	\$28	\$27	\$26	\$25	\$22	\$15	\$14	\$12
	10yr ave.	\$49	\$45	\$39	\$39	\$34	\$32	\$30	\$28	\$27	\$26	\$25	\$24	\$23	\$20	\$18	\$14	\$12	\$11
	35% Current	\$52	\$44	\$41	\$39	\$37	\$35	\$35	\$33	\$33	\$33	\$33	\$32	\$30	\$29	\$26	\$17	\$17	\$14
	10yr ave.	\$57	\$52	\$46	\$45	\$40	\$38	\$35	\$33	\$31	\$30	\$29	\$28	\$27	\$23	\$21	\$17	\$15	\$13
	40% Current	\$59	\$51	\$47	\$45	\$42	\$40	\$39	\$38	\$38	\$38	\$37	\$37	\$35	\$33	\$30	\$20	\$19	\$16
	10yr ave.	\$65	\$60	\$52	\$52	\$46	\$43	\$40	\$38	\$36	\$34	\$33	\$32	\$30	\$27	\$24	\$19	\$17	\$15
	45% Current	\$67	\$57	\$53	\$50	\$47	\$46	\$44	\$43	\$43	\$43	\$42	\$41	\$39	\$37	\$34	\$22	\$21	\$18
	10yr ave.	\$73	\$67	\$59	\$58	\$51	\$48	\$45	\$43	\$40	\$39	\$37	\$36	\$34	\$30	\$27	\$21	\$19	\$17
	50% Current	\$74	\$63	\$59	\$56	\$53	\$51	\$49	\$48	\$47	\$47	\$47	\$46	\$43	\$41	\$37	\$25	\$24	\$20
	10yr ave.	\$81	\$75	\$65	\$65	\$57	\$54	\$50	\$47	\$45	\$43	\$42	\$40	\$38	\$34	\$30	\$24	\$21	\$19
	55% Current	\$82	\$70	\$64	\$62	\$58	\$56	\$54	\$52	\$52	\$52	\$51	\$50	\$48	\$45	\$41	\$27	\$26	\$22
	10yr ave.	\$90	\$82	\$72	\$71	\$63	\$59	\$55	\$52	\$49	\$47	\$46	\$44	\$42	\$37	\$33	\$26	\$23	\$20
	60% Current	\$89	\$76	\$70	\$67	\$63	\$61	\$59	\$57	\$57	\$57	\$56	\$55	\$52	\$49	\$45	\$30	\$28	\$24
	10yr ave.	\$98	\$90	\$79	\$78	\$68	\$64	\$60	\$57	\$54	\$52	\$50	\$48	\$45	\$40	\$36	\$28	\$25	\$22
	65% Current	\$97	\$82	\$76	\$73	\$69	\$66	\$64	\$62	\$62	\$61	\$61	\$59	\$57	\$53	\$48	\$32	\$31	\$26
	10yr ave.	\$106	\$97	\$85	\$84	\$74	\$70	\$66	\$62	\$58	\$56	\$54	\$52	\$49	\$44	\$39	\$31	\$27	\$24
	70% Current	\$104	\$89	\$82	\$78	\$74	\$71	\$69	\$67	\$66	\$66	\$66	\$64	\$61	\$58	\$52	\$35	\$33	\$28
	10yr ave.	\$114	\$105	\$92	\$91	\$80	\$75	\$71	\$66	\$63	\$60	\$58	\$56	\$53	\$47	\$43	\$33	\$29	\$26
	75% Current	\$111	\$95	\$88	\$84	\$79	\$76	\$74	\$71	\$71	\$71	\$70	\$69	\$65	\$62	\$56	\$37	\$35	\$30
	10yr ave.	\$122	\$112	\$98	\$97	\$85	\$81	\$76	\$71	\$67	\$64	\$62	\$60	\$57	\$50	\$46	\$36	\$31	\$28
	80% Current	\$119	\$102	\$94	\$90	\$84	\$81	\$79	\$76	\$76	\$76	\$75	\$73	\$70	\$66	\$60	\$40	\$38	\$32
	10yr ave.	\$130	\$120	\$105	\$104	\$91	\$86	\$81	\$76	\$72	\$69	\$67	\$64	\$61	\$54	\$49	\$38	\$33	\$30
	85% Current	\$126	\$108	\$99	\$95	\$90	\$86	\$84	\$81	\$81	\$80	\$80	\$78	\$74	\$70	\$63	\$42	\$40	\$34
	10yr ave.	\$138	\$127	\$111	\$110	\$97	\$91	\$86	\$80	\$76	\$73	\$71	\$68	\$64	\$57	\$52	\$40	\$35	\$32

The above shows estimated returns per head for skirted fleece wool. These figures do not take into account the value of skirtings and oddments and do not take into account discounts that may apply for faults under individual circumstances. These figures are based on a market index of 100% and should be used as a guide only. Returns over \$30 / head for fleece wool are highlighted.

Source: Australian Wool Exchange, Australian Wool Innovation, Sydney Futures Exchange, x-rates.com

Disclaimer: While all due care has been taken in the preparation of this document, no warranty is made as to its accuracy, reliability or completeness. To the extent permitted by law neither Jemalong or their sources including subsidiaries and staff, accept liability to any person for loss or damage arising from the use of this information.



Table 14: Returns pr head for skirted fleece wool.

Skirted FLC Weight		Micron																	
8 Kg		16	16.5	17	17.5	18	18.5	19	19.5	20	21	22	23	24	25	26	28	30	32
Yield (Sch Dry)	25% Current	\$33	\$28	\$26	\$25	\$23	\$22	\$22	\$21	\$21	\$21	\$21	\$20	\$19	\$18	\$17	\$11	\$10	\$9
	10yr ave.	\$36	\$33	\$29	\$29	\$25	\$24	\$22	\$21	\$20	\$19	\$19	\$18	\$17	\$15	\$14	\$11	\$9	\$8
	30% Current	\$40	\$34	\$31	\$30	\$28	\$27	\$26	\$25	\$25	\$25	\$25	\$24	\$23	\$22	\$20	\$13	\$13	\$11
	10yr ave.	\$43	\$40	\$35	\$35	\$30	\$29	\$27	\$25	\$24	\$23	\$22	\$21	\$20	\$18	\$16	\$13	\$11	\$10
	35% Current	\$46	\$39	\$36	\$35	\$33	\$31	\$31	\$30	\$30	\$29	\$29	\$28	\$27	\$26	\$23	\$15	\$15	\$12
	10yr ave.	\$51	\$47	\$41	\$40	\$35	\$33	\$31	\$29	\$28	\$27	\$26	\$25	\$24	\$21	\$19	\$15	\$13	\$12
	40% Current	\$53	\$45	\$42	\$40	\$37	\$36	\$35	\$34	\$34	\$34	\$33	\$32	\$31	\$29	\$26	\$18	\$17	\$14
	10yr ave.	\$58	\$53	\$47	\$46	\$41	\$38	\$36	\$34	\$32	\$31	\$30	\$29	\$27	\$24	\$22	\$17	\$15	\$13
	45% Current	\$59	\$51	\$47	\$45	\$42	\$40	\$39	\$38	\$38	\$38	\$37	\$37	\$35	\$33	\$30	\$20	\$19	\$16
	10yr ave.	\$65	\$60	\$52	\$52	\$46	\$43	\$40	\$38	\$36	\$34	\$33	\$32	\$30	\$27	\$24	\$19	\$17	\$15
	50% Current	\$66	\$56	\$52	\$50	\$47	\$45	\$44	\$42	\$42	\$42	\$42	\$41	\$39	\$37	\$33	\$22	\$21	\$18
	10yr ave.	\$72	\$67	\$58	\$58	\$51	\$48	\$45	\$42	\$40	\$38	\$37	\$36	\$34	\$30	\$27	\$21	\$18	\$17
	55% Current	\$73	\$62	\$57	\$55	\$52	\$49	\$48	\$47	\$46	\$46	\$46	\$45	\$43	\$40	\$36	\$24	\$23	\$19
	10yr ave.	\$80	\$73	\$64	\$63	\$56	\$52	\$49	\$46	\$44	\$42	\$41	\$39	\$37	\$33	\$30	\$23	\$20	\$18
	60% Current	\$79	\$68	\$62	\$60	\$56	\$54	\$53	\$51	\$51	\$50	\$50	\$49	\$46	\$44	\$40	\$26	\$25	\$21
	10yr ave.	\$87	\$80	\$70	\$69	\$61	\$57	\$54	\$50	\$48	\$46	\$44	\$43	\$40	\$36	\$32	\$25	\$22	\$20
	65% Current	\$86	\$73	\$68	\$65	\$61	\$58	\$57	\$55	\$55	\$55	\$54	\$53	\$50	\$47	\$43	\$29	\$27	\$23
	10yr ave.	\$94	\$87	\$76	\$75	\$66	\$62	\$58	\$55	\$52	\$50	\$48	\$47	\$44	\$39	\$35	\$27	\$24	\$21
	70% Current	\$92	\$79	\$73	\$70	\$66	\$63	\$61	\$59	\$59	\$59	\$58	\$57	\$54	\$51	\$46	\$31	\$29	\$25
	10yr ave.	\$101	\$93	\$81	\$81	\$71	\$67	\$63	\$59	\$56	\$53	\$52	\$50	\$47	\$42	\$38	\$29	\$26	\$23
	75% Current	\$99	\$85	\$78	\$75	\$70	\$67	\$66	\$63	\$63	\$63	\$62	\$61	\$58	\$55	\$50	\$33	\$31	\$26
	10yr ave.	\$109	\$100	\$87	\$87	\$76	\$72	\$67	\$63	\$60	\$57	\$56	\$54	\$51	\$45	\$41	\$32	\$28	\$25
	80% Current	\$106	\$90	\$83	\$80	\$75	\$72	\$70	\$68	\$68	\$67	\$67	\$65	\$62	\$58	\$53	\$35	\$34	\$28
	10yr ave.	\$116	\$106	\$93	\$92	\$81	\$76	\$72	\$67	\$64	\$61	\$59	\$57	\$54	\$48	\$43	\$34	\$30	\$26
	85% Current	\$112	\$96	\$88	\$85	\$80	\$76	\$75	\$72	\$72	\$71	\$71	\$69	\$66	\$62	\$56	\$37	\$36	\$30
	10yr ave.	\$123	\$113	\$99	\$98	\$86	\$81	\$76	\$72	\$68	\$65	\$63	\$61	\$57	\$51	\$46	\$36	\$31	\$28

The above shows estimated returns per head for skirted fleece wool. These figures do not take into account the value of skirtings and oddments and do not take into account discounts that may apply for faults under individual circumstances. These figures are based on a market index of 100% and should be used as a guide only. Returns over \$30 / head for fleece wool are highlighted.

Source: Australian Wool Exchange, Australian Wool Innovation, Sydney Futures Exchange, x-rates.com

Disclaimer: While all due care has been taken in the preparation of this document, no warranty is made as to its accuracy, reliability or completeness. To the extent permitted by law neither Jemalong or their sources including subsidiaries and staff, accept liability to any person for loss or damage arising from the use of this information.



Table 15: Returns pr head for skirted fleece wool.

Skirted FLC Weight 7 Kg		Micron																	
		16	16.5	17	17.5	18	18.5	19	19.5	20	21	22	23	24	25	26	28	30	32
Yield (Sch Dry)	25% Current	\$29	\$25	\$23	\$22	\$20	\$20	\$19	\$18	\$18	\$18	\$18	\$18	\$17	\$16	\$14	\$10	\$9	\$8
	10yr ave.	\$32	\$29	\$25	\$25	\$22	\$21	\$20	\$18	\$17	\$17	\$16	\$16	\$15	\$13	\$12	\$9	\$8	\$7
	30% Current	\$35	\$30	\$27	\$26	\$25	\$24	\$23	\$22	\$22	\$22	\$22	\$21	\$20	\$19	\$17	\$12	\$11	\$9
	10yr ave.	\$38	\$35	\$31	\$30	\$27	\$25	\$24	\$22	\$21	\$20	\$19	\$19	\$18	\$16	\$14	\$11	\$10	\$9
	35% Current	\$40	\$35	\$32	\$31	\$29	\$28	\$27	\$26	\$26	\$26	\$25	\$25	\$24	\$22	\$20	\$13	\$13	\$11
	10yr ave.	\$44	\$41	\$36	\$35	\$31	\$29	\$27	\$26	\$24	\$23	\$23	\$22	\$21	\$18	\$17	\$13	\$11	\$10
	40% Current	\$46	\$39	\$36	\$35	\$33	\$31	\$31	\$30	\$30	\$29	\$29	\$28	\$27	\$26	\$23	\$15	\$15	\$12
	10yr ave.	\$51	\$47	\$41	\$40	\$35	\$33	\$31	\$29	\$28	\$27	\$26	\$25	\$24	\$21	\$19	\$15	\$13	\$12
	45% Current	\$52	\$44	\$41	\$39	\$37	\$35	\$35	\$33	\$33	\$33	\$33	\$32	\$30	\$29	\$26	\$17	\$17	\$14
	10yr ave.	\$57	\$52	\$46	\$45	\$40	\$38	\$35	\$33	\$31	\$30	\$29	\$28	\$27	\$23	\$21	\$17	\$15	\$13
	50% Current	\$58	\$49	\$46	\$44	\$41	\$39	\$38	\$37	\$37	\$37	\$36	\$36	\$34	\$32	\$29	\$19	\$18	\$15
	10yr ave.	\$63	\$58	\$51	\$50	\$44	\$42	\$39	\$37	\$35	\$33	\$32	\$31	\$29	\$26	\$24	\$18	\$16	\$14
	55% Current	\$64	\$54	\$50	\$48	\$45	\$43	\$42	\$41	\$41	\$40	\$40	\$39	\$37	\$35	\$32	\$21	\$20	\$17
	10yr ave.	\$70	\$64	\$56	\$56	\$49	\$46	\$43	\$41	\$38	\$37	\$36	\$34	\$32	\$29	\$26	\$20	\$18	\$16
	60% Current	\$69	\$59	\$55	\$52	\$49	\$47	\$46	\$44	\$44	\$44	\$44	\$43	\$41	\$38	\$35	\$23	\$22	\$18
	10yr ave.	\$76	\$70	\$61	\$61	\$53	\$50	\$47	\$44	\$42	\$40	\$39	\$38	\$35	\$31	\$28	\$22	\$19	\$17
	65% Current	\$75	\$64	\$59	\$57	\$53	\$51	\$50	\$48	\$48	\$48	\$47	\$46	\$44	\$42	\$38	\$25	\$24	\$20
	10yr ave.	\$82	\$76	\$66	\$66	\$58	\$54	\$51	\$48	\$45	\$43	\$42	\$41	\$38	\$34	\$31	\$24	\$21	\$19
	70% Current	\$81	\$69	\$64	\$61	\$57	\$55	\$54	\$52	\$52	\$51	\$51	\$50	\$47	\$45	\$41	\$27	\$26	\$22
	10yr ave.	\$89	\$82	\$71	\$71	\$62	\$58	\$55	\$52	\$49	\$47	\$45	\$44	\$41	\$37	\$33	\$26	\$23	\$20
	75% Current	\$87	\$74	\$68	\$65	\$61	\$59	\$58	\$55	\$55	\$55	\$55	\$53	\$51	\$48	\$43	\$29	\$28	\$23
	10yr ave.	\$95	\$87	\$76	\$76	\$66	\$63	\$59	\$55	\$52	\$50	\$49	\$47	\$44	\$39	\$35	\$28	\$24	\$22
	80% Current	\$92	\$79	\$73	\$70	\$66	\$63	\$61	\$59	\$59	\$59	\$58	\$57	\$54	\$51	\$46	\$31	\$29	\$25
	10yr ave.	\$101	\$93	\$81	\$81	\$71	\$67	\$63	\$59	\$56	\$53	\$52	\$50	\$47	\$42	\$38	\$29	\$26	\$23
	85% Current	\$98	\$84	\$77	\$74	\$70	\$67	\$65	\$63	\$63	\$63	\$62	\$60	\$57	\$54	\$49	\$33	\$31	\$26
	10yr ave.	\$108	\$99	\$87	\$86	\$75	\$71	\$67	\$63	\$59	\$57	\$55	\$53	\$50	\$44	\$40	\$31	\$27	\$25

The above shows estimated returns per head for skirted fleece wool. These figures do not take into account the value of skirtings and oddments and do not take into account discounts that may apply for faults under individual circumstances. These figures are based on a market index of 100% and should be used as a guide only. Returns over \$30 / head for fleece wool are highlighted.

Source: Australian Wool Exchange, Australian Wool Innovation, Sydney Futures Exchange, x-rates.com

Disclaimer: While all due care has been taken in the preparation of this document, no warranty is made as to its accuracy, reliability or completeness. To the extent permitted by law neither Jemalong or their sources including subsidiaries and staff, accept liability to any person for loss or damage arising from the use of this information.



Table 16: Returns pr head for skirted fleece wool.

Skirted FLC Weight 6 Kg			Micron																	
			16	16.5	17	17.5	18	18.5	19	19.5	20	21	22	23	24	25	26	28	30	32
Yield (Sch Dry)	25%	Current	\$25	\$21	\$20	\$19	\$18	\$17	\$16	\$16	\$16	\$16	\$16	\$15	\$14	\$14	\$12	\$8	\$8	\$7
		10yr ave.	\$27	\$25	\$22	\$22	\$19	\$18	\$17	\$16	\$15	\$14	\$14	\$13	\$13	\$11	\$10	\$8	\$7	\$6
	30%	Current	\$30	\$25	\$23	\$22	\$21	\$20	\$20	\$19	\$19	\$19	\$19	\$18	\$17	\$16	\$15	\$10	\$9	\$8
		10yr ave.	\$33	\$30	\$26	\$26	\$23	\$21	\$20	\$19	\$18	\$17	\$17	\$16	\$15	\$13	\$12	\$9	\$8	\$7
	35%	Current	\$35	\$30	\$27	\$26	\$25	\$24	\$23	\$22	\$22	\$22	\$22	\$21	\$20	\$19	\$17	\$12	\$11	\$9
		10yr ave.	\$38	\$35	\$31	\$30	\$27	\$25	\$24	\$22	\$21	\$20	\$19	\$19	\$18	\$16	\$14	\$11	\$10	\$9
	40%	Current	\$40	\$34	\$31	\$30	\$28	\$27	\$26	\$25	\$25	\$25	\$25	\$24	\$23	\$22	\$20	\$13	\$13	\$11
		10yr ave.	\$43	\$40	\$35	\$35	\$30	\$29	\$27	\$25	\$24	\$23	\$22	\$21	\$20	\$18	\$16	\$13	\$11	\$10
	45%	Current	\$45	\$38	\$35	\$34	\$32	\$30	\$30	\$29	\$28	\$28	\$28	\$27	\$26	\$25	\$22	\$15	\$14	\$12
		10yr ave.	\$49	\$45	\$39	\$39	\$34	\$32	\$30	\$28	\$27	\$26	\$25	\$24	\$23	\$20	\$18	\$14	\$12	\$11
	50%	Current	\$50	\$42	\$39	\$37	\$35	\$34	\$33	\$32	\$32	\$32	\$31	\$30	\$29	\$27	\$25	\$17	\$16	\$13
		10yr ave.	\$54	\$50	\$44	\$43	\$38	\$36	\$34	\$32	\$30	\$29	\$28	\$27	\$25	\$22	\$20	\$16	\$14	\$12
	55%	Current	\$54	\$47	\$43	\$41	\$39	\$37	\$36	\$35	\$35	\$35	\$34	\$33	\$32	\$30	\$27	\$18	\$17	\$15
		10yr ave.	\$60	\$55	\$48	\$48	\$42	\$39	\$37	\$35	\$33	\$31	\$31	\$30	\$28	\$25	\$22	\$17	\$15	\$14
	60%	Current	\$59	\$51	\$47	\$45	\$42	\$40	\$39	\$38	\$38	\$38	\$37	\$37	\$35	\$33	\$30	\$20	\$19	\$16
		10yr ave.	\$65	\$60	\$52	\$52	\$46	\$43	\$40	\$38	\$36	\$34	\$33	\$32	\$30	\$27	\$24	\$19	\$17	\$15
	65%	Current	\$64	\$55	\$51	\$49	\$46	\$44	\$43	\$41	\$41	\$41	\$41	\$40	\$38	\$36	\$32	\$21	\$20	\$17
		10yr ave.	\$71	\$65	\$57	\$56	\$49	\$47	\$44	\$41	\$39	\$37	\$36	\$35	\$33	\$29	\$26	\$21	\$18	\$16
	70%	Current	\$69	\$59	\$55	\$52	\$49	\$47	\$46	\$44	\$44	\$44	\$44	\$43	\$41	\$38	\$35	\$23	\$22	\$18
		10yr ave.	\$76	\$70	\$61	\$61	\$53	\$50	\$47	\$44	\$42	\$40	\$39	\$38	\$35	\$31	\$28	\$22	\$19	\$17
	75%	Current	\$74	\$63	\$59	\$56	\$53	\$51	\$49	\$48	\$47	\$47	\$47	\$46	\$43	\$41	\$37	\$25	\$24	\$20
		10yr ave.	\$81	\$75	\$65	\$65	\$57	\$54	\$50	\$47	\$45	\$43	\$42	\$40	\$38	\$34	\$30	\$24	\$21	\$19
	80%	Current	\$79	\$68	\$62	\$60	\$56	\$54	\$53	\$51	\$51	\$50	\$50	\$49	\$46	\$44	\$40	\$26	\$25	\$21
		10yr ave.	\$87	\$80	\$70	\$69	\$61	\$57	\$54	\$50	\$48	\$46	\$44	\$43	\$40	\$36	\$32	\$25	\$22	\$20
	85%	Current	\$84	\$72	\$66	\$63	\$60	\$57	\$56	\$54	\$54	\$54	\$53	\$52	\$49	\$47	\$42	\$28	\$27	\$22
		10yr ave.	\$92	\$85	\$74	\$74	\$65	\$61	\$57	\$54	\$51	\$49	\$47	\$46	\$43	\$38	\$34	\$27	\$24	\$21

The above shows estimated returns per head for skirted fleece wool. These figures do not take into account the value of skirtings and oddments and do not take into account discounts that may apply for faults under individual circumstances. These figures are based on a market index of 100% and should be used as a guide only. Returns over \$30 / head for fleece wool are highlighted.

Source: Australian Wool Exchange, Australian Wool Innovation, Sydney Futures Exchange, x-rates.com

Disclaimer: While all due care has been taken in the preparation of this document, no warranty is made as to its accuracy, reliability or completeness. To the extent permitted by law neither Jemalong or their sources including subsidiaries and staff, accept liability to any person for loss or damage arising from the use of this information.



Table 17: Returns pr head for skirted fleece wool.

Skirted FLC Weight		Micron																	
5 Kg		16	16.5	17	17.5	18	18.5	19	19.5	20	21	22	23	24	25	26	28	30	32
Yield (Sch Dry)	25% Current	\$21	\$18	\$16	\$16	\$15	\$14	\$14	\$13	\$13	\$13	\$13	\$13	\$12	\$11	\$10	\$7	\$7	\$6
	10yr ave.	\$23	\$21	\$18	\$18	\$16	\$15	\$14	\$13	\$12	\$12	\$12	\$11	\$11	\$9	\$8	\$7	\$6	\$5
	30% Current	\$25	\$21	\$20	\$19	\$18	\$17	\$16	\$16	\$16	\$16	\$16	\$15	\$14	\$14	\$12	\$8	\$8	\$7
	10yr ave.	\$27	\$25	\$22	\$22	\$19	\$18	\$17	\$16	\$15	\$14	\$14	\$13	\$13	\$11	\$10	\$8	\$7	\$6
	35% Current	\$29	\$25	\$23	\$22	\$20	\$20	\$19	\$18	\$18	\$18	\$18	\$18	\$17	\$16	\$14	\$10	\$9	\$8
	10yr ave.	\$32	\$29	\$25	\$25	\$22	\$21	\$20	\$18	\$17	\$17	\$16	\$16	\$15	\$13	\$12	\$9	\$8	\$7
	40% Current	\$33	\$28	\$26	\$25	\$23	\$22	\$22	\$21	\$21	\$21	\$21	\$20	\$19	\$18	\$17	\$11	\$10	\$9
	10yr ave.	\$36	\$33	\$29	\$29	\$25	\$24	\$22	\$21	\$20	\$19	\$19	\$18	\$17	\$15	\$14	\$11	\$9	\$8
	45% Current	\$37	\$32	\$29	\$28	\$26	\$25	\$25	\$24	\$24	\$24	\$23	\$23	\$22	\$21	\$19	\$12	\$12	\$10
	10yr ave.	\$41	\$37	\$33	\$32	\$28	\$27	\$25	\$24	\$22	\$21	\$21	\$20	\$19	\$17	\$15	\$12	\$10	\$9
	50% Current	\$41	\$35	\$33	\$31	\$29	\$28	\$27	\$26	\$26	\$26	\$26	\$25	\$24	\$23	\$21	\$14	\$13	\$11
	10yr ave.	\$45	\$42	\$36	\$36	\$32	\$30	\$28	\$26	\$25	\$24	\$23	\$22	\$21	\$19	\$17	\$13	\$12	\$10
	55% Current	\$45	\$39	\$36	\$34	\$32	\$31	\$30	\$29	\$29	\$29	\$29	\$28	\$27	\$25	\$23	\$15	\$14	\$12
	10yr ave.	\$50	\$46	\$40	\$40	\$35	\$33	\$31	\$29	\$27	\$26	\$25	\$25	\$23	\$20	\$19	\$14	\$13	\$11
	60% Current	\$50	\$42	\$39	\$37	\$35	\$34	\$33	\$32	\$32	\$32	\$31	\$30	\$29	\$27	\$25	\$17	\$16	\$13
	10yr ave.	\$54	\$50	\$44	\$43	\$38	\$36	\$34	\$32	\$30	\$29	\$28	\$27	\$25	\$22	\$20	\$16	\$14	\$12
	65% Current	\$54	\$46	\$42	\$40	\$38	\$37	\$36	\$34	\$34	\$34	\$34	\$33	\$31	\$30	\$27	\$18	\$17	\$14
	10yr ave.	\$59	\$54	\$47	\$47	\$41	\$39	\$36	\$34	\$32	\$31	\$30	\$29	\$27	\$24	\$22	\$17	\$15	\$13
	70% Current	\$58	\$49	\$46	\$44	\$41	\$39	\$38	\$37	\$37	\$37	\$36	\$36	\$34	\$32	\$29	\$19	\$18	\$15
	10yr ave.	\$63	\$58	\$51	\$50	\$44	\$42	\$39	\$37	\$35	\$33	\$32	\$31	\$29	\$26	\$24	\$18	\$16	\$14
	75% Current	\$62	\$53	\$49	\$47	\$44	\$42	\$41	\$40	\$40	\$39	\$39	\$38	\$36	\$34	\$31	\$21	\$20	\$17
	10yr ave.	\$68	\$62	\$55	\$54	\$47	\$45	\$42	\$39	\$37	\$36	\$35	\$34	\$32	\$28	\$25	\$20	\$17	\$15
	80% Current	\$66	\$56	\$52	\$50	\$47	\$45	\$44	\$42	\$42	\$42	\$42	\$41	\$39	\$37	\$33	\$22	\$21	\$18
	10yr ave.	\$72	\$67	\$58	\$58	\$51	\$48	\$45	\$42	\$40	\$38	\$37	\$36	\$34	\$30	\$27	\$21	\$18	\$17
	85% Current	\$70	\$60	\$55	\$53	\$50	\$48	\$47	\$45	\$45	\$45	\$44	\$43	\$41	\$39	\$35	\$23	\$22	\$19
	10yr ave.	\$77	\$71	\$62	\$61	\$54	\$51	\$48	\$45	\$42	\$41	\$39	\$38	\$36	\$32	\$29	\$22	\$20	\$18

The above shows estimated returns per head for skirted fleece wool. These figures do not take into account the value of skirtings and oddments and do not take into account discounts that may apply for faults under individual circumstances. These figures are based on a market index of 100% and should be used as a guide only. Returns over \$30 / head for fleece wool are highlighted.

Source: Australian Wool Exchange, Australian Wool Innovation, Sydney Futures Exchange, x-rates.com

Disclaimer: While all due care has been taken in the preparation of this document, no warranty is made as to its accuracy, reliability or completeness. To the extent permitted by law neither Jemalong or their sources including subsidiaries and staff, accept liability to any person for loss or damage arising from the use of this information.



Table 18: Returns pr head for skirted fleece wool.

Skirted FLC Weight		Micron																	
4 Kg		16	16.5	17	17.5	18	18.5	19	19.5	20	21	22	23	24	25	26	28	30	32
Yield (Sch Dry)	25% Current	\$17	\$14	\$13	\$12	\$12	\$11	\$11	\$11	\$11	\$11	\$10	\$10	\$10	\$9	\$8	\$6	\$5	\$4
	10yr ave.	\$18	\$17	\$15	\$14	\$13	\$12	\$11	\$11	\$10	\$10	\$9	\$9	\$8	\$7	\$7	\$5	\$5	\$4
	30% Current	\$20	\$17	\$16	\$15	\$14	\$13	\$13	\$13	\$13	\$13	\$12	\$12	\$12	\$11	\$10	\$7	\$6	\$5
	10yr ave.	\$22	\$20	\$17	\$17	\$15	\$14	\$13	\$13	\$12	\$11	\$11	\$11	\$10	\$9	\$8	\$6	\$6	\$5
	35% Current	\$23	\$20	\$18	\$17	\$16	\$16	\$15	\$15	\$15	\$15	\$15	\$14	\$14	\$13	\$12	\$8	\$7	\$6
	10yr ave.	\$25	\$23	\$20	\$20	\$18	\$17	\$16	\$15	\$14	\$13	\$13	\$13	\$12	\$10	\$9	\$7	\$6	\$6
	40% Current	\$26	\$23	\$21	\$20	\$19	\$18	\$18	\$17	\$17	\$17	\$17	\$16	\$15	\$15	\$13	\$9	\$8	\$7
	10yr ave.	\$29	\$27	\$23	\$23	\$20	\$19	\$18	\$17	\$16	\$15	\$15	\$14	\$13	\$12	\$11	\$8	\$7	\$7
	45% Current	\$30	\$25	\$23	\$22	\$21	\$20	\$20	\$19	\$19	\$19	\$19	\$18	\$17	\$16	\$15	\$10	\$9	\$8
	10yr ave.	\$33	\$30	\$26	\$26	\$23	\$21	\$20	\$19	\$18	\$17	\$17	\$16	\$15	\$13	\$12	\$9	\$8	\$7
	50% Current	\$33	\$28	\$26	\$25	\$23	\$22	\$22	\$21	\$21	\$21	\$21	\$20	\$19	\$18	\$17	\$11	\$10	\$9
	10yr ave.	\$36	\$33	\$29	\$29	\$25	\$24	\$22	\$21	\$20	\$19	\$19	\$18	\$17	\$15	\$14	\$11	\$9	\$8
	55% Current	\$36	\$31	\$29	\$27	\$26	\$25	\$24	\$23	\$23	\$23	\$23	\$22	\$21	\$20	\$18	\$12	\$12	\$10
	10yr ave.	\$40	\$37	\$32	\$32	\$28	\$26	\$25	\$23	\$22	\$21	\$20	\$20	\$19	\$16	\$15	\$12	\$10	\$9
	60% Current	\$40	\$34	\$31	\$30	\$28	\$27	\$26	\$25	\$25	\$25	\$25	\$24	\$23	\$22	\$20	\$13	\$13	\$11
	10yr ave.	\$43	\$40	\$35	\$35	\$30	\$29	\$27	\$25	\$24	\$23	\$22	\$21	\$20	\$18	\$16	\$13	\$11	\$10
	65% Current	\$43	\$37	\$34	\$32	\$30	\$29	\$28	\$27	\$27	\$27	\$27	\$26	\$25	\$24	\$22	\$14	\$14	\$11
	10yr ave.	\$47	\$43	\$38	\$37	\$33	\$31	\$29	\$27	\$26	\$25	\$24	\$23	\$22	\$19	\$18	\$14	\$12	\$11
	70% Current	\$46	\$39	\$36	\$35	\$33	\$31	\$31	\$30	\$30	\$29	\$29	\$28	\$27	\$26	\$23	\$15	\$15	\$12
	10yr ave.	\$51	\$47	\$41	\$40	\$35	\$33	\$31	\$29	\$28	\$27	\$26	\$25	\$24	\$21	\$19	\$15	\$13	\$12
	75% Current	\$50	\$42	\$39	\$37	\$35	\$34	\$33	\$32	\$32	\$32	\$31	\$30	\$29	\$27	\$25	\$17	\$16	\$13
	10yr ave.	\$54	\$50	\$44	\$43	\$38	\$36	\$34	\$32	\$30	\$29	\$28	\$27	\$25	\$22	\$20	\$16	\$14	\$12
	80% Current	\$53	\$45	\$42	\$40	\$37	\$36	\$35	\$34	\$34	\$34	\$33	\$32	\$31	\$29	\$26	\$18	\$17	\$14
	10yr ave.	\$58	\$53	\$47	\$46	\$41	\$38	\$36	\$34	\$32	\$31	\$30	\$29	\$27	\$24	\$22	\$17	\$15	\$13
	85% Current	\$56	\$48	\$44	\$42	\$40	\$38	\$37	\$36	\$36	\$36	\$35	\$35	\$33	\$31	\$28	\$19	\$18	\$15
	10yr ave.	\$62	\$57	\$49	\$49	\$43	\$41	\$38	\$36	\$34	\$32	\$31	\$30	\$29	\$25	\$23	\$18	\$16	\$14

The above shows estimated returns per head for skirted fleece wool. These figures do not take into account the value of skirtings and oddments and do not take into account discounts that may apply for faults under individual circumstances. These figures are based on a market index of 100% and should be used as a guide only. Returns over \$30 / head for fleece wool are highlighted.

Source: Australian Wool Exchange, Australian Wool Innovation, Sydney Futures Exchange, x-rates.com

Disclaimer: While all due care has been taken in the preparation of this document, no warranty is made as to its accuracy, reliability or completeness. To the extent permitted by law neither Jemalong or their sources including subsidiaries and staff, accept liability to any person for loss or damage arising from the use of this information.



Table 19: Returns pr head for skirted fleece wool.

Skirted FLC Weight		Micron																	
3 Kg		16	16.5	17	17.5	18	18.5	19	19.5	20	21	22	23	24	25	26	28	30	32
Yield (Sch Dry)	25% Current	\$12	\$11	\$10	\$9	\$9	\$8	\$8	\$8	\$8	\$8	\$8	\$8	\$7	\$7	\$6	\$4	\$4	\$3
	10yr ave.	\$14	\$12	\$11	\$11	\$9	\$9	\$8	\$8	\$7	\$7	\$7	\$7	\$6	\$6	\$5	\$4	\$3	\$3
	30% Current	\$15	\$13	\$12	\$11	\$11	\$10	\$10	\$10	\$9	\$9	\$9	\$9	\$9	\$8	\$7	\$5	\$5	\$4
	10yr ave.	\$16	\$15	\$13	\$13	\$11	\$11	\$10	\$9	\$9	\$9	\$8	\$8	\$8	\$7	\$6	\$5	\$4	\$4
	35% Current	\$17	\$15	\$14	\$13	\$12	\$12	\$12	\$11	\$11	\$11	\$11	\$11	\$10	\$10	\$9	\$6	\$6	\$5
	10yr ave.	\$19	\$17	\$15	\$15	\$13	\$13	\$12	\$11	\$10	\$10	\$10	\$9	\$9	\$8	\$7	\$6	\$5	\$4
	40% Current	\$20	\$17	\$16	\$15	\$14	\$13	\$13	\$13	\$13	\$13	\$12	\$12	\$12	\$11	\$10	\$7	\$6	\$5
	10yr ave.	\$22	\$20	\$17	\$17	\$15	\$14	\$13	\$13	\$12	\$11	\$11	\$11	\$10	\$9	\$8	\$6	\$6	\$5
	45% Current	\$22	\$19	\$18	\$17	\$16	\$15	\$15	\$14	\$14	\$14	\$14	\$14	\$13	\$12	\$11	\$7	\$7	\$6
	10yr ave.	\$24	\$22	\$20	\$19	\$17	\$16	\$15	\$14	\$13	\$13	\$12	\$12	\$11	\$10	\$9	\$7	\$6	\$6
	50% Current	\$25	\$21	\$20	\$19	\$18	\$17	\$16	\$16	\$16	\$16	\$16	\$15	\$14	\$14	\$12	\$8	\$8	\$7
	10yr ave.	\$27	\$25	\$22	\$22	\$19	\$18	\$17	\$16	\$15	\$14	\$14	\$13	\$13	\$11	\$10	\$8	\$7	\$6
	55% Current	\$27	\$23	\$21	\$21	\$19	\$19	\$18	\$17	\$17	\$17	\$17	\$17	\$16	\$15	\$14	\$9	\$9	\$7
	10yr ave.	\$30	\$27	\$24	\$24	\$21	\$20	\$18	\$17	\$16	\$16	\$15	\$15	\$14	\$12	\$11	\$9	\$8	\$7
	60% Current	\$30	\$25	\$23	\$22	\$21	\$20	\$20	\$19	\$19	\$19	\$19	\$18	\$17	\$16	\$15	\$10	\$9	\$8
	10yr ave.	\$33	\$30	\$26	\$26	\$23	\$21	\$20	\$19	\$18	\$17	\$17	\$16	\$15	\$13	\$12	\$9	\$8	\$7
	65% Current	\$32	\$27	\$25	\$24	\$23	\$22	\$21	\$21	\$21	\$20	\$20	\$20	\$19	\$18	\$16	\$11	\$10	\$9
	10yr ave.	\$35	\$32	\$28	\$28	\$25	\$23	\$22	\$21	\$19	\$19	\$18	\$17	\$16	\$15	\$13	\$10	\$9	\$8
	70% Current	\$35	\$30	\$27	\$26	\$25	\$24	\$23	\$22	\$22	\$22	\$22	\$21	\$20	\$19	\$17	\$12	\$11	\$9
	10yr ave.	\$38	\$35	\$31	\$30	\$27	\$25	\$24	\$22	\$21	\$20	\$19	\$19	\$18	\$16	\$14	\$11	\$10	\$9
	75% Current	\$37	\$32	\$29	\$28	\$26	\$25	\$25	\$24	\$24	\$24	\$23	\$23	\$22	\$21	\$19	\$12	\$12	\$10
	10yr ave.	\$41	\$37	\$33	\$32	\$28	\$27	\$25	\$24	\$22	\$21	\$21	\$20	\$19	\$17	\$15	\$12	\$10	\$9
	80% Current	\$40	\$34	\$31	\$30	\$28	\$27	\$26	\$25	\$25	\$25	\$25	\$24	\$23	\$22	\$20	\$13	\$13	\$11
	10yr ave.	\$43	\$40	\$35	\$35	\$30	\$29	\$27	\$25	\$24	\$23	\$22	\$21	\$20	\$18	\$16	\$13	\$11	\$10
	85% Current	\$42	\$36	\$33	\$32	\$30	\$29	\$28	\$27	\$27	\$27	\$27	\$26	\$25	\$23	\$21	\$14	\$13	\$11
	10yr ave.	\$46	\$42	\$37	\$37	\$32	\$30	\$29	\$27	\$25	\$24	\$24	\$23	\$21	\$19	\$17	\$13	\$12	\$11

The above shows estimated returns per head for skirted fleece wool. These figures do not take into account the value of skirtings and oddments and do not take into account discounts that may apply for faults under individual circumstances. These figures are based on a market index of 100% and should be used as a guide only. Returns over \$30 / head for fleece wool are highlighted.

Source: Australian Wool Exchange, Australian Wool Innovation, Sydney Futures Exchange, x-rates.com

Disclaimer: While all due care has been taken in the preparation of this document, no warranty is made as to its accuracy, reliability or completeness. To the extent permitted by law neither Jemalong or their sources including subsidiaries and staff, accept liability to any person for loss or damage arising from the use of this information.



Table 20: Returns pr head for skirted fleece wool.

Skirted FLC Weight		Micron																	
2 Kg		16	16.5	17	17.5	18	18.5	19	19.5	20	21	22	23	24	25	26	28	30	32
Yield (Sch Dry)	25% Current	\$8	\$7	\$7	\$6	\$6	\$6	\$5	\$5	\$5	\$5	\$5	\$5	\$5	\$5	\$4	\$3	\$3	\$2
	10yr ave.	\$9	\$8	\$7	\$7	\$6	\$6	\$6	\$5	\$5	\$5	\$5	\$4	\$4	\$4	\$3	\$3	\$2	\$2
	30% Current	\$10	\$8	\$8	\$7	\$7	\$7	\$7	\$6	\$6	\$6	\$6	\$6	\$6	\$5	\$5	\$3	\$3	\$3
	10yr ave.	\$11	\$10	\$9	\$9	\$8	\$7	\$7	\$6	\$6	\$6	\$6	\$5	\$5	\$4	\$4	\$3	\$3	\$2
	35% Current	\$12	\$10	\$9	\$9	\$8	\$8	\$8	\$7	\$7	\$7	\$7	\$7	\$7	\$6	\$6	\$4	\$4	\$3
	10yr ave.	\$13	\$12	\$10	\$10	\$9	\$8	\$8	\$7	\$7	\$7	\$6	\$6	\$6	\$5	\$5	\$4	\$3	\$3
	40% Current	\$13	\$11	\$10	\$10	\$9	\$9	\$9	\$8	\$8	\$8	\$8	\$8	\$8	\$7	\$7	\$4	\$4	\$4
	10yr ave.	\$14	\$13	\$12	\$12	\$10	\$10	\$9	\$8	\$8	\$8	\$7	\$7	\$7	\$6	\$5	\$4	\$4	\$3
	45% Current	\$15	\$13	\$12	\$11	\$11	\$10	\$10	\$10	\$9	\$9	\$9	\$9	\$9	\$8	\$7	\$5	\$5	\$4
	10yr ave.	\$16	\$15	\$13	\$13	\$11	\$11	\$10	\$9	\$9	\$9	\$8	\$8	\$8	\$7	\$6	\$5	\$4	\$4
	50% Current	\$17	\$14	\$13	\$12	\$12	\$11	\$11	\$11	\$11	\$11	\$10	\$10	\$10	\$9	\$8	\$6	\$5	\$4
	10yr ave.	\$18	\$17	\$15	\$14	\$13	\$12	\$11	\$11	\$10	\$10	\$9	\$9	\$8	\$7	\$7	\$5	\$5	\$4
	55% Current	\$18	\$16	\$14	\$14	\$13	\$12	\$12	\$12	\$12	\$12	\$11	\$11	\$11	\$10	\$9	\$6	\$6	\$5
	10yr ave.	\$20	\$18	\$16	\$16	\$14	\$13	\$12	\$12	\$11	\$10	\$10	\$10	\$9	\$8	\$7	\$6	\$5	\$5
	60% Current	\$20	\$17	\$16	\$15	\$14	\$13	\$13	\$13	\$13	\$13	\$12	\$12	\$12	\$11	\$10	\$7	\$6	\$5
	10yr ave.	\$22	\$20	\$17	\$17	\$15	\$14	\$13	\$13	\$12	\$11	\$11	\$11	\$10	\$9	\$8	\$6	\$6	\$5
	65% Current	\$21	\$18	\$17	\$16	\$15	\$15	\$14	\$14	\$14	\$14	\$14	\$13	\$13	\$12	\$11	\$7	\$7	\$6
	10yr ave.	\$24	\$22	\$19	\$19	\$16	\$16	\$15	\$14	\$13	\$12	\$12	\$12	\$11	\$10	\$9	\$7	\$6	\$5
	70% Current	\$23	\$20	\$18	\$17	\$16	\$16	\$15	\$15	\$15	\$15	\$15	\$14	\$14	\$13	\$12	\$8	\$7	\$6
	10yr ave.	\$25	\$23	\$20	\$20	\$18	\$17	\$16	\$15	\$14	\$13	\$13	\$13	\$12	\$10	\$9	\$7	\$6	\$6
	75% Current	\$25	\$21	\$20	\$19	\$18	\$17	\$16	\$16	\$16	\$16	\$16	\$15	\$14	\$14	\$12	\$8	\$8	\$7
	10yr ave.	\$27	\$25	\$22	\$22	\$19	\$18	\$17	\$16	\$15	\$14	\$14	\$13	\$13	\$11	\$10	\$8	\$7	\$6
	80% Current	\$26	\$23	\$21	\$20	\$19	\$18	\$18	\$17	\$17	\$17	\$17	\$16	\$15	\$15	\$13	\$9	\$8	\$7
	10yr ave.	\$29	\$27	\$23	\$23	\$20	\$19	\$18	\$17	\$16	\$15	\$15	\$14	\$13	\$12	\$11	\$8	\$7	\$7
	85% Current	\$28	\$24	\$22	\$21	\$20	\$19	\$19	\$18	\$18	\$18	\$18	\$17	\$16	\$16	\$14	\$9	\$9	\$7
	10yr ave.	\$31	\$28	\$25	\$25	\$22	\$20	\$19	\$18	\$17	\$16	\$16	\$15	\$14	\$13	\$11	\$9	\$8	\$7

The above shows estimated returns per head for skirted fleece wool. These figures do not take into account the value of skirtings and oddments and do not take into account discounts that may apply for faults under individual circumstances. These figures are based on a market index of 100% and should be used as a guide only. Returns over \$30 / head for fleece wool are highlighted.

Source: Australian Wool Exchange, Australian Wool Innovation, Sydney Futures Exchange, x-rates.com

Disclaimer: While all due care has been taken in the preparation of this document, no warranty is made as to its accuracy, reliability or completeness. To the extent permitted by law neither Jemalong or their sources including subsidiaries and staff, accept liability to any person for loss or damage arising from the use of this information.